

Submit to Appropriate
District Office
State Lease - 6 copies
Fee Lease - 5 copies
DISTRICT I
P.O. Box 1980, Hobbs, NM 88240

DISTRICT II
P.O. Drawer DD, Artesia, NM 88210

DISTRICT III
1000 Rio Brazos Rd., Aztec, NM 87410

State of New Mexico
Energy, Minerals and Natural Resources Department

OIL CONSERVATION DIVISION

2040 Pacheco St.
Santa Fe, NM 87505

Form C-105
Revised 1-1-89

WELL API NO.

30-025-34408

5. Indicate Type of Lease

STATE ☒

FEE ☐

6. State Oil & Gas Lease No.

B-7606

WELL COMPLETION OR RECOMPLETION REPORT AND LOG

1a. Type of Well:

OIL WELL ☒

GAS WELL ☐

DRY ☐

OTHER ☐

b. Type of Completion:

NEW WELL ☒

WORK OVER ☐

DEEPEN ☐

PLUG BACK ☐

DIFF RESVR ☐

OTHER ☐

7. Lease Name or Unit Agreement Name

Rhodes State

2. Name of Operator

Gruy Petroleum Management Company

8. Well No.

6

3. Address of Operator

P.O. Box 140907, Irving, TX 75014-0907

9. Pool name or Wildcat

Rhodes Yates Seven Rivers (Oil)

4. Well Location

Unit Letter N : 330' Feet From The South

Line and 2310'

Feet From The West

Line

Section 16

Township 26S

Range 37E

NMPM

Lea

County

10. Date Spudded

7/2/98

11. Date T.D. Reached

7/11/98

12. Date Compl. (Ready to Prod.)

11/04/98

13. Elevations (DF & RKB, RT, GR, etc.)

2982' GR

14. Elev. Casinghead

15. Total Depth

3850'

16. Plug Back T.D.

3402'

17. If Multiple Compl. How Many Zones?

18. Intervals Drilled By

Rotary Tools

Cable Tools

All

19. Producing Interval(s), of this completion - Top, Bottom, Name

2904' - 3196' Yates 3334' - 3386' Lower 7-Rivers

20. Was Directional Survey Made

Yes

21. Type Electric and Other Logs Run

PND, GR/CCL

22. Was Well Cored

No

23.

CASING RECORD (Report all strings set in well)

CASING SIZE	WEIGHT LB/FT.	DEPTH SET	HOLE SIZE	CEMENTING RECORD	AMOUNT PULLED
8 5/8" J-55	24	774	12 1/4"	275 Sx C 4% gel Tailed w/	-0-
				250 Sx C Circ 5 Sx to pit	
5-1/2" K-55	15.5	3850'	7 7/8"	850 Sx Pos/C Tailed w/350	-0-
				Sx C Circ 150 Sx to pit	

24.

LINER RECORD

SIZE	TOP	BOTTOM	SACKS CEMENT	SCREEN	SIZE	DEPTH SET	PACKER SET
					2 3/8" OD	3302'	

25. TUBING RECORD

26. Perforation record (interval, size, and number)

2904-3196', 234 hls 3 SPF, 3334'-3386', 90 hls 3 SPF

27. ACID, SHOT, FRACTURE, CEMENT, SQUEEZE, ETC.

DEPTH INTERVAL	AMOUNT AND KIND MATERIAL USED
2904' - 3386'	50000 gals 50/50 CO2, 140000 # 16/30
	brady sand with 10000 gals water
	2000 gals 15% NEFE

28.

PRODUCTION

Date First Production 9/17/98	Production Method (Flowing, gas lift, pumping - Size and type pump) Pumping 2 x 1-1/4" x 12' PAP/LBC					Well Status (Prod. or Shut-in) Producing	
Date of Test 11/08/98	Hours Tested 24	Choke Size	Prod'n For Test Period	Oil - Bbl. 5	Gas - MCF 260	Water - Bbl. 5	Gas - Oil Ratio 52000
Flow Tubing Press. 450	Casing Pressure 15	Calculated 24-Hour Rate	Oil - Bbl.	Gas - MCF	Water - Bbl.	Oil Gravity - API - (Corr.) 28.8	

29. Disposition of Gas (Sold, used for fuel, vented, etc.)

Sold

Test Witnessed By

30. List Attachments

New Mexico C-116, inclination survey, and electric log

31. I hereby certify that the information shown on both sides of this form is true and complete to the best of my knowledge and belief

Signature

Zeno Farris

Printed Name

Zeno Farris

Title

Mgr. Ops Admin

Date

03-30-00



DISTRICT I
P.O. Box 1980, Hobbs, NM 88241-1980

State of New Mexico

Energy, Minerals and Natural Resources Department

DISTRICT II
P.O. Drawer DD, Artesia, NM 88211-0719

DISTRICT III
1000 Rio Brazos Rd., Aztec, NM 87410

DISTRICT IV
P.O. Box 2088, Santa Fe, NM 87504-2088

OIL CONSERVATION DIVISION

P.O. Box 2088
Santa Fe, New Mexico 87504-2088

Form C-102
Revised February 10, 1984
Submit to Appropriate District Office
State Lease - 4 Copies
Fee Lease - 3 Copies

☒ AMENDED REPORT

WELL LOCATION AND ACREAGE DEDICATION PLAT

API Number 30-025-34408	Pool Code 52250	Pool Name RHODES YATES 7 RIVERS (Oil)
Property Code	Property Name RHODES STATE	Well Number 6
OGED No. 162683	Operator Name GRUY PETROLEUM MANAGEMENT CO.	Elevation 2982

Surface Location

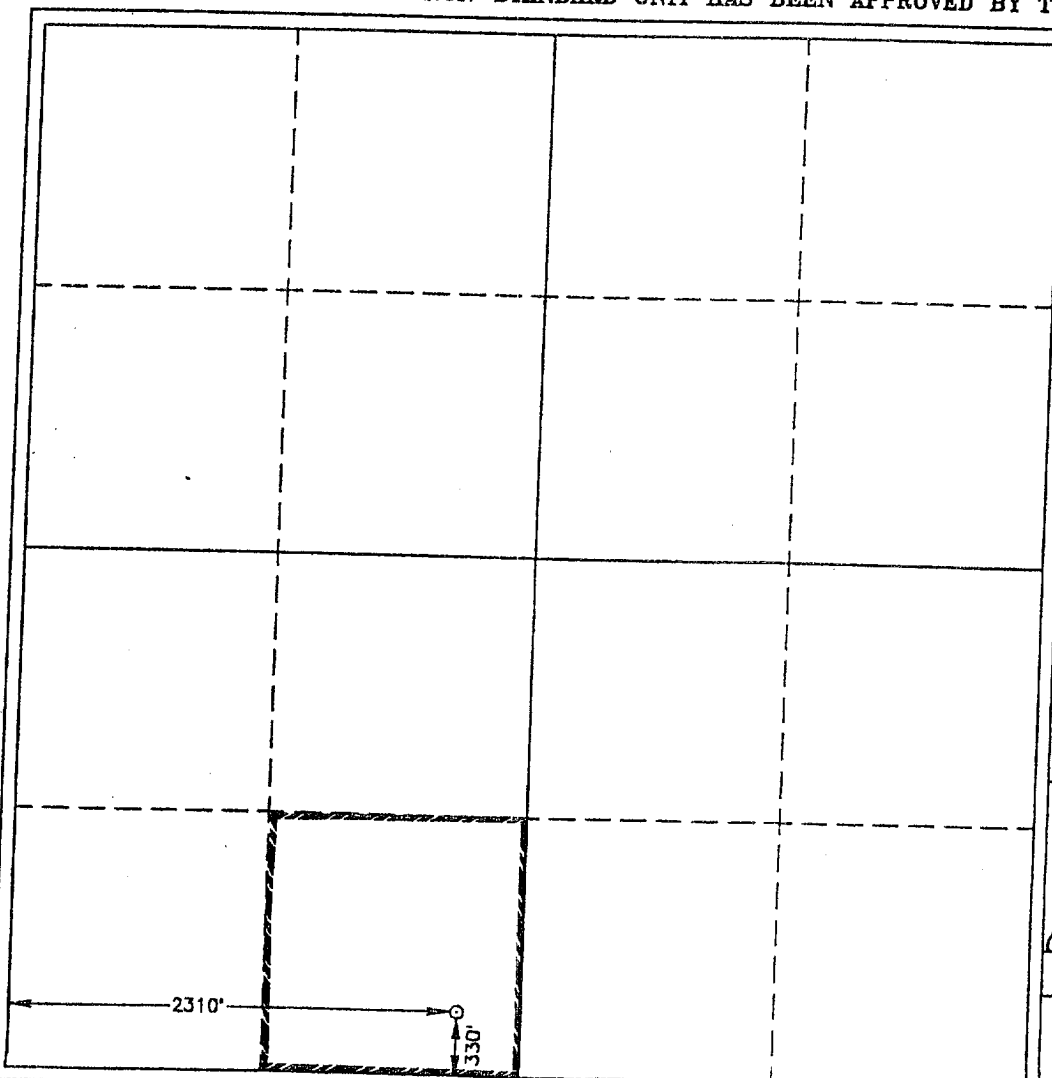
UL or lot No. N	Section 16	Township 26 S	Range 37 E	Lot Idn	Feet from the 330	North/South line SOUTH	Feet from the 2310	East/West line WEST	County LEA
--------------------	---------------	------------------	---------------	---------	----------------------	---------------------------	-----------------------	------------------------	---------------

Bottom Hole Location If Different From Surface

UL or lot No.	Section	Township	Range	Lot Idn	Feet from the	North/South line	Feet from the	East/West line	County
---------------	---------	----------	-------	---------	---------------	------------------	---------------	----------------	--------

Dedicated Acres 40	Joint or Infill N	Consolidation Code	Order No.
-----------------------	----------------------	--------------------	-----------

NO ALLOWABLE WILL BE ASSIGNED TO THIS COMPLETION UNTIL ALL INTERESTS HAVE BEEN CONSOLIDATED
OR A NON-STANDARD UNIT HAS BEEN APPROVED BY THE DIVISION



OPERATOR CERTIFICATION

I hereby certify the the information
contained herein is true and complete to the
best of my knowledge and belief.

Joe T. Janica
Signature

Joe T. Janica

Printed Name

Agent

Title

07/14/98

Date

SURVEYOR CERTIFICATION

I hereby certify that the well location shown
on this plat was plotted from field notes of
actual surveys made by me or under my
supervision, and that the same is true and
correct to the best of my belief.

MAY 7, 1998

Date Surveyed JLP

Signature of Surveyor
Professional Surveyor

Ronald E. Edson
NEW MEXICO
W.O. Num 98-0701

Certificate No. RONALD E. EDSON, 3239
GARY E. EDSON, 12641
McDONALD, 12185

