

District I
 PO Box 1980, Hobbs, NM 88241-1980
 District II
 811 South First, Artesia, NM 88210
 District III
 1000 Rio Brazos Rd., Aztec, NM 87410
 District IV
 2040 South Pacheco, Santa Fe, NM 87505

OIL CONSERVATION DIVISION
 2040 South Pacheco
 Santa Fe, NM 87505

AMENDED REPORT

APPLICATION FOR PERMIT TO DRILL, RE-ENTER, DEEPEN, PLUGBACK, OR ADD A ZONE

¹ Operator Name and Address. ARCH PETROLEUM, INC. P.O. BOX 10340 MIDLAND, TEXAS 79702-7340		² OGRID Number 962
		³ API Number 30-025-34756
⁴ Property Code 24619	⁵ Property Name SEETON	⁶ Well No. 4

⁷ Surface Location

UL or lot no.	Section	Township	Range	Lot Idn	Feet from the	North/South line	Feet from the	East/West line	County
B	21	23S	37E		330'	North	2310'	East	Lea

⁸ Proposed Bottom Hole Location If Different From Surface

UL or lot no.	Section	Township	Range	Lot Idn	Feet from the	North/South line	Feet from the	East/West line	County
⁹ Proposed Pool 1 IMPERIAL-TUBB-DRINKARD (33600)					¹⁰ Proposed Pool 2				

¹¹ Work Type Code N	¹² Well Type Code O	¹³ Cable/Rotary R	¹⁴ Lease Type Code P	¹⁵ Ground Level Elevation 3302'
¹⁶ Multiple NO	¹⁷ Proposed Depth 6500'	¹⁸ Formation DRINKARD	¹⁹ Contractor UNKNOWN	²⁰ Spud Date WHEN APPROVED

²¹ Proposed Casing and Cement Program

Hole Size	Casing Size	Casing weight/foot	Setting Depth	Sacks of Cement	Estimated TOC
25"	20"	Conductor	40'	Redi-mix	Surface
12 1/4"	8 5/8"	24	1100'	500 Sx.	Surface
7 7/8"	5 1/2"	15.5	6500'	1400 Sx.	800'

²² Describe the proposed program. If this application is to DEEPEN or PLUG BACK give the data on the present productive zone and proposed new productive zone. Describe the blowout prevention program, if any. Use additional sheets if necessary.

1. Drill 25" hole to 40'. Set 40' of 20" conductor pipe and cement to surface with Redi-mix.
2. Drill 12 1/4" hole to 1100'. Run and set 1100' of 8 5/8" 24# J-55 ST&C casing. Cement with 500 Sx. of Class "C" cement + additives, circulate cement to surface.
3. Drill 7 7/8" hole to 6500'. Run and set 6500' of 5 1/2" 15.5# J-55 ST&C casing. Cement in two stages, place DV Tool at 4900'±. Cement with 1400 Sx. of cement + additives. Estimate top of cement of 2nd stage cement 800' from surface.

Permit Expires 1 Year From Approval
 Date Unless Drilling Underway

²³ I hereby certify that the information given above is true and complete to the best of my knowledge and belief.

Signature: *Joe T. Janica*

Printed name: Joe T. Janica

Title: Agent

Date: 11/03/99

Phone: 505-391-8503

OIL CONSERVATION DIVISION

Approved by: ORIGINAL SIGNED BY
 GARY WINK

Title: FIELD REP. II

Approval Date: NOV - 4 1999

Expiration Date:

Conditions of Approval:
 Attached

MPN

[Handwritten initials]

DISTRICT I
P.O. Box 1980, Hobbs, NM 88241-1980

DISTRICT II
P.O. Drawer 20, Artesia, NM 88211-0719

DISTRICT III
1000 Rio Brazos Rd., Aztec, NM 87410

DISTRICT IV
P.O. Box 2088, Santa Fe, NM 87504-2088

State of New Mexico

Energy, Minerals and Natural Resources Department

Form C-102
Revised February 10, 1994
Submit to Appropriate District Office
State Lease - 4 Copies
Fee Lease - 3 Copies

OIL CONSERVATION DIVISION

P.O. Box 2088
Santa Fe, New Mexico 87504-2088

AMENDED REPORT

WELL LOCATION AND ACREAGE DEDICATION PLAT

API Number 30-025-34756	Pool Code 33600	Pool Name IMPERIAL-TUBB-DRINKARD
Property Code 24619	Property Name SEETON	Well Number 4
OGRID No. 962	Operator Name ARCH PETROLEUM, INC.	Elevation 3302

Surface Location

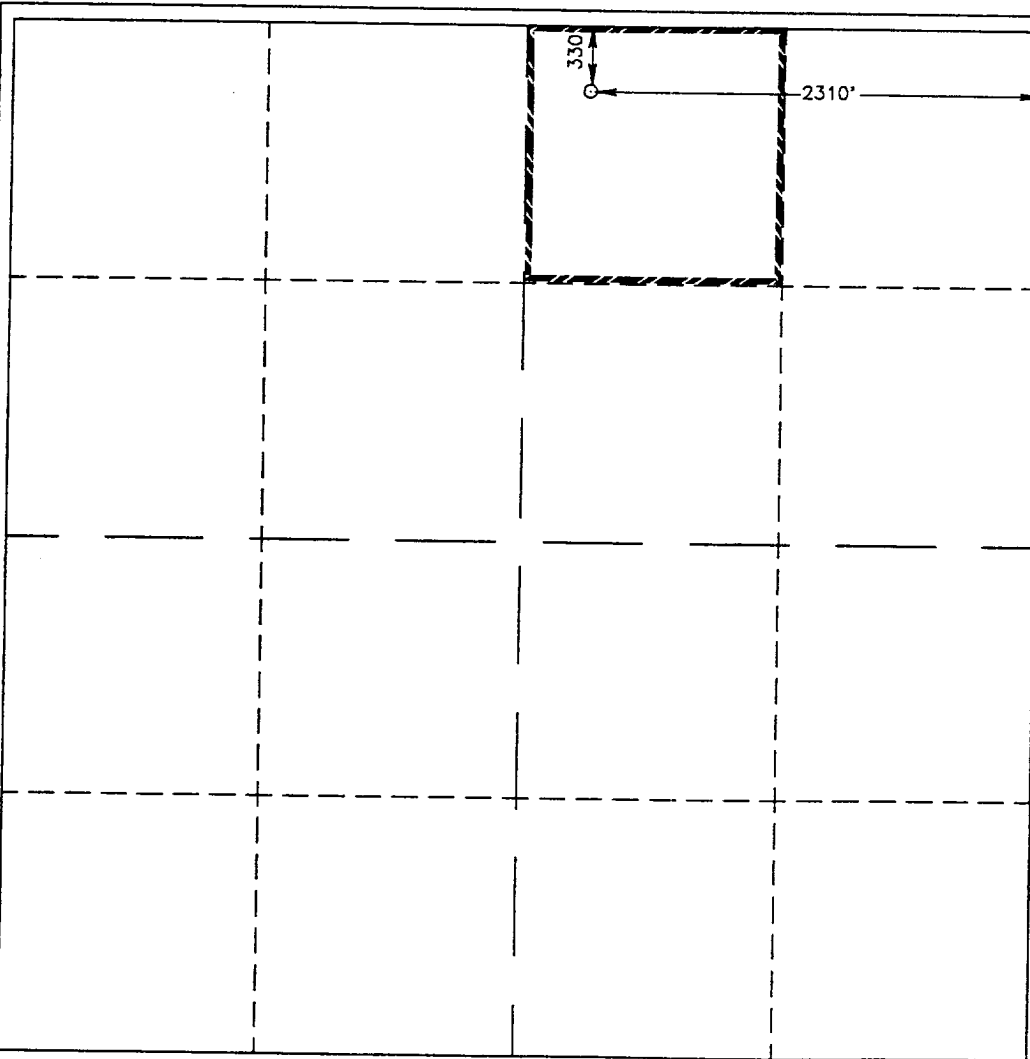
UL or lot No.	Section	Township	Range	Lot Idn	Feet from the	North/South line	Feet from the	East/West line	County
B	21	23 S	37 E		330	NORTH	2310	EAST	LEA

Bottom Hole Location If Different From Surface

UL or lot No.	Section	Township	Range	Lot Idn	Feet from the	North/South line	Feet from the	East/West line	County

Dedicated Acres 40	Joint or Infill	Consolidation Code	Order No.
-----------------------	-----------------	--------------------	-----------

NO ALLOWABLE WILL BE ASSIGNED TO THIS COMPLETION UNTIL ALL INTERESTS HAVE BEEN CONSOLIDATED OR A NON-STANDARD UNIT HAS BEEN APPROVED BY THE DIVISION



OPERATOR CERTIFICATION

I hereby certify the the information contained herein is true and complete to the best of my knowledge and belief.

Joe T. Janica
Signature
Joe T. Janica
Printed Name
Agent
Title
11/03/99
Date

SURVEYOR CERTIFICATION

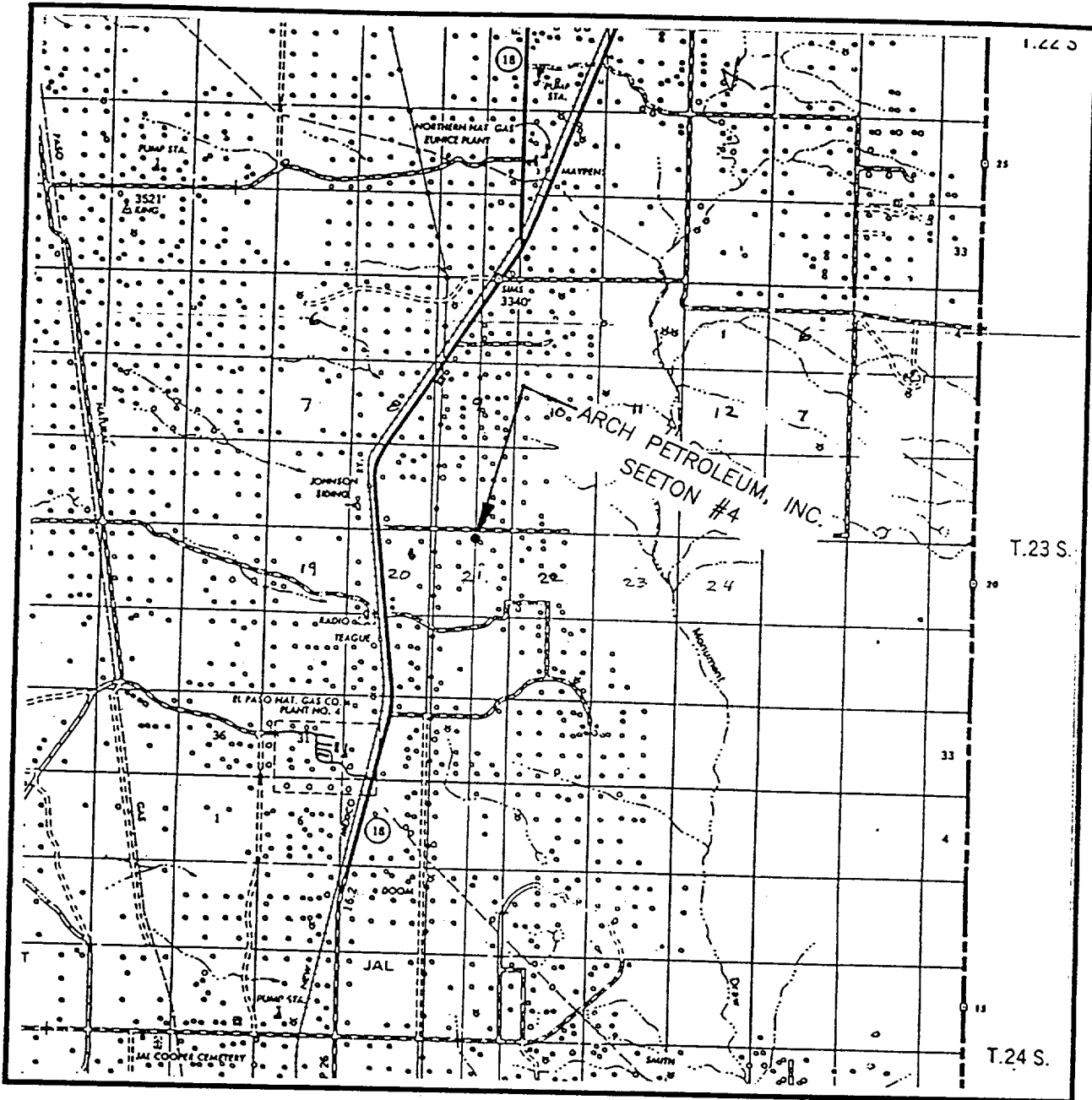
I hereby certify that the well location shown on this plat was plotted from field notes of actual surveys made by me or under my supervision and that the same is true and correct to the best of my belief.

NOVEMBER 1, 1999
Date Surveyed JLP

Signature & Seal of
Professional Surveyor
RONALD J. EIDSON
NEW MEXICO
3239
11-03-99
P.O. Box 99-10907

Certificate No. RONALD J. EIDSON, 3239
RONALD J. EIDSON, 12841
JACON McDONALD, 12185

VICINITY MAP

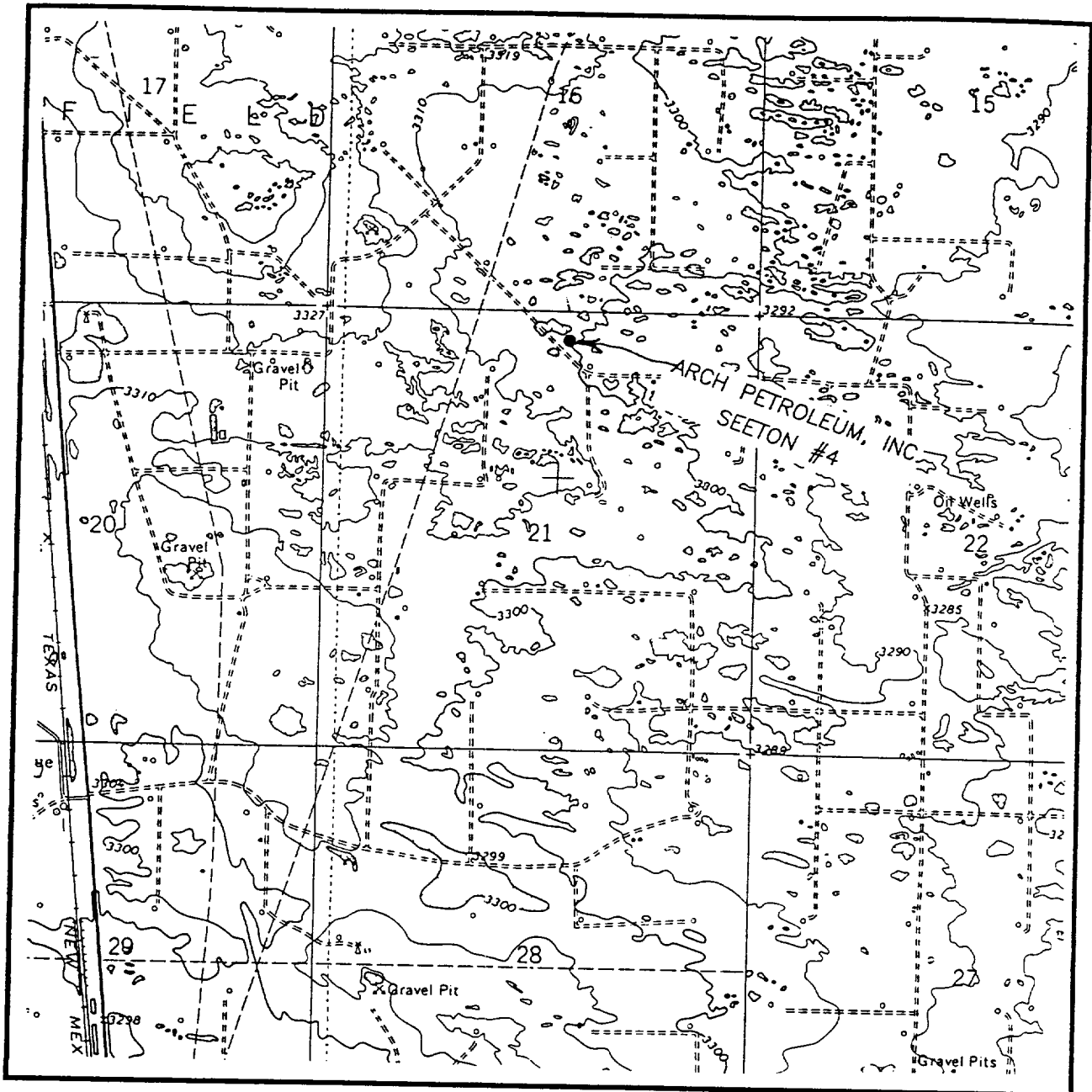


SCALE: 1" = 2 MILES

SEC. 21 TWP. 23-S RGE. 37-E
 SURVEY N.M.P.M.
 COUNTY LEA
 DESCRIPTION 330' FNL & 2310' FEL
 ELEVATION 3302
 OPERATOR ARCH PETROLEUM, INC.
 LEASE SEETON

JOHN WEST SURVEYING
HOBBS, NEW MEXICO
(505) 393-3117

LOCATION VERIFICATION MAP



SCALE: 1" = 2000'

CONTOUR INTERVAL - 10'

SEC. 21 TWP. 23-S RGE. 37-E

SURVEY N.M.P.M.

COUNTY LEA

DESCRIPTION 330' FNL & 2310' FEL

ELEVATION 3302

OPERATOR ARCH PETROLEUM, INC.

LEASE SEETON

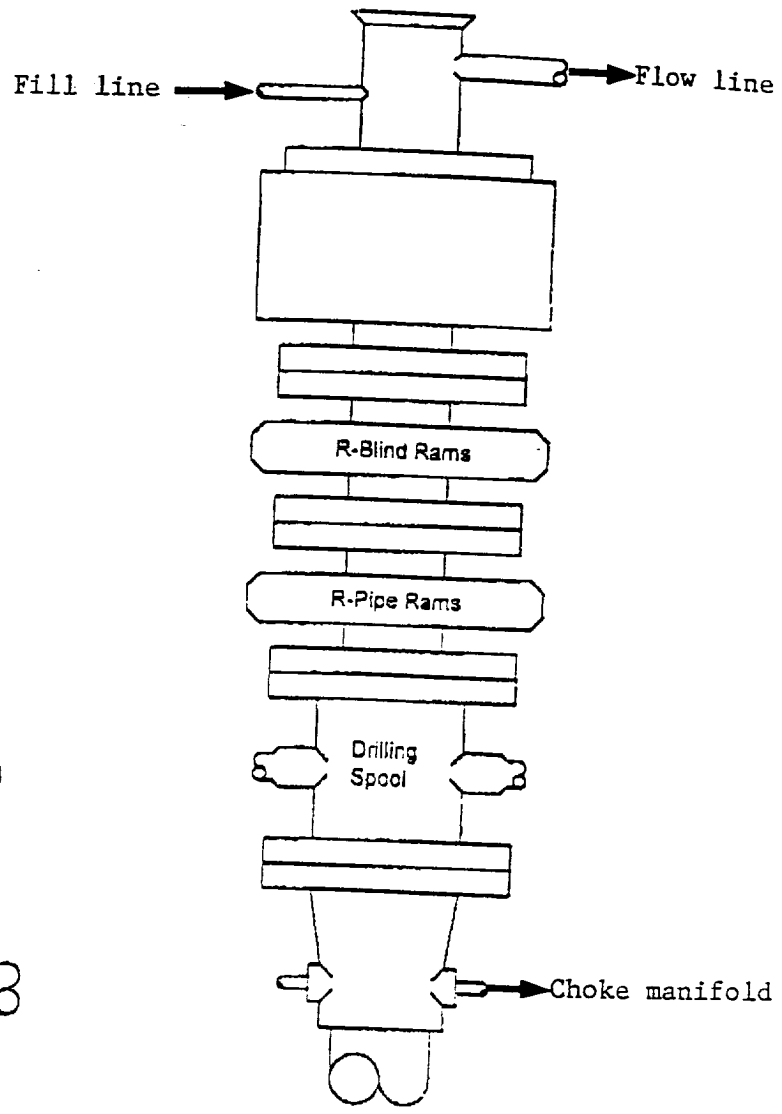
U.S.G.S. TOPOGRAPHIC MAP

RATTLESNAKE CANYON, N.M.

**JOHN WEST SURVEYING
HOBBS, NEW MEXICO**

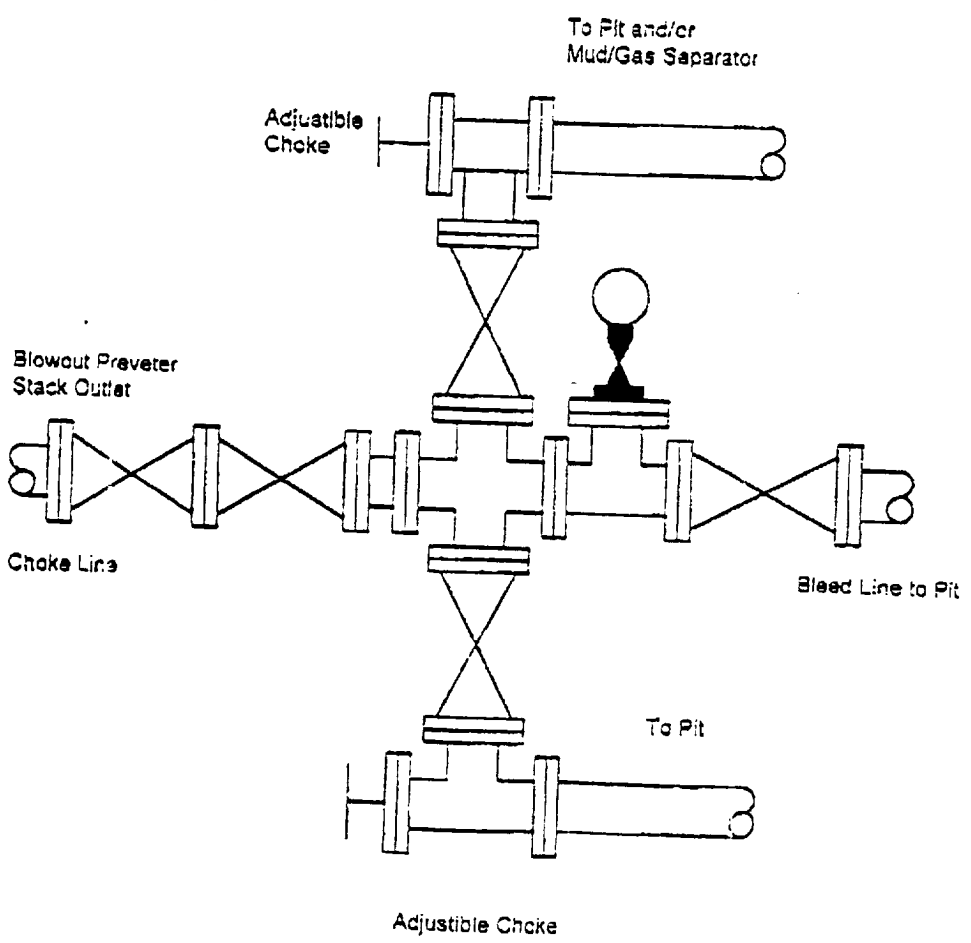
(505) 393-3117

BLOWOUT PREVENTER SYSTEM



Type 900 Series
3000 psi WP

Choke Manifold Assembly for 3M WP System



WILL BE RELEASED
CONFIDENTIAL LOGS
INDICATE WHEN
ABOVE DATE DOES NOT

3/5/00 ELF