

DISTRICT I  
P.O. Box 1980, Hobbs, NM 88241-1980

State of New Mexico

Energy, Minerals and Natural Resources Department

Form C-102  
Revised February 10, 1994  
Submit to Appropriate District Office  
State Lease - 4 Copies  
Fee Lease - 3 Copies

DISTRICT II  
P.O. Drawer DD, Artesia, NM 88211-0719

OIL CONSERVATION DIVISION

DISTRICT III  
1000 Rio Brazos Rd., Aztec, NM 87410

P.O. Box 2088

Santa Fe, New Mexico 87504-2088

DISTRICT IV  
P.O. Box 2088, Santa Fe, NM 87504-2088

AMENDED REPORT

WELL LOCATION AND ACREAGE DEDICATION PLAT

API Number <b>30-025-34979</b>	Pool Code 58300	Pool Name <i>Paddock</i> TEAGUE & BLINEBRY
Property Code <del>14908</del> 14898	Property Name LAMUNYON FEDERAL	Well Number 72
OGRID No. 962	Operator Name ARCH PETROLEUM INC.	Elevation 3309

Surface Location

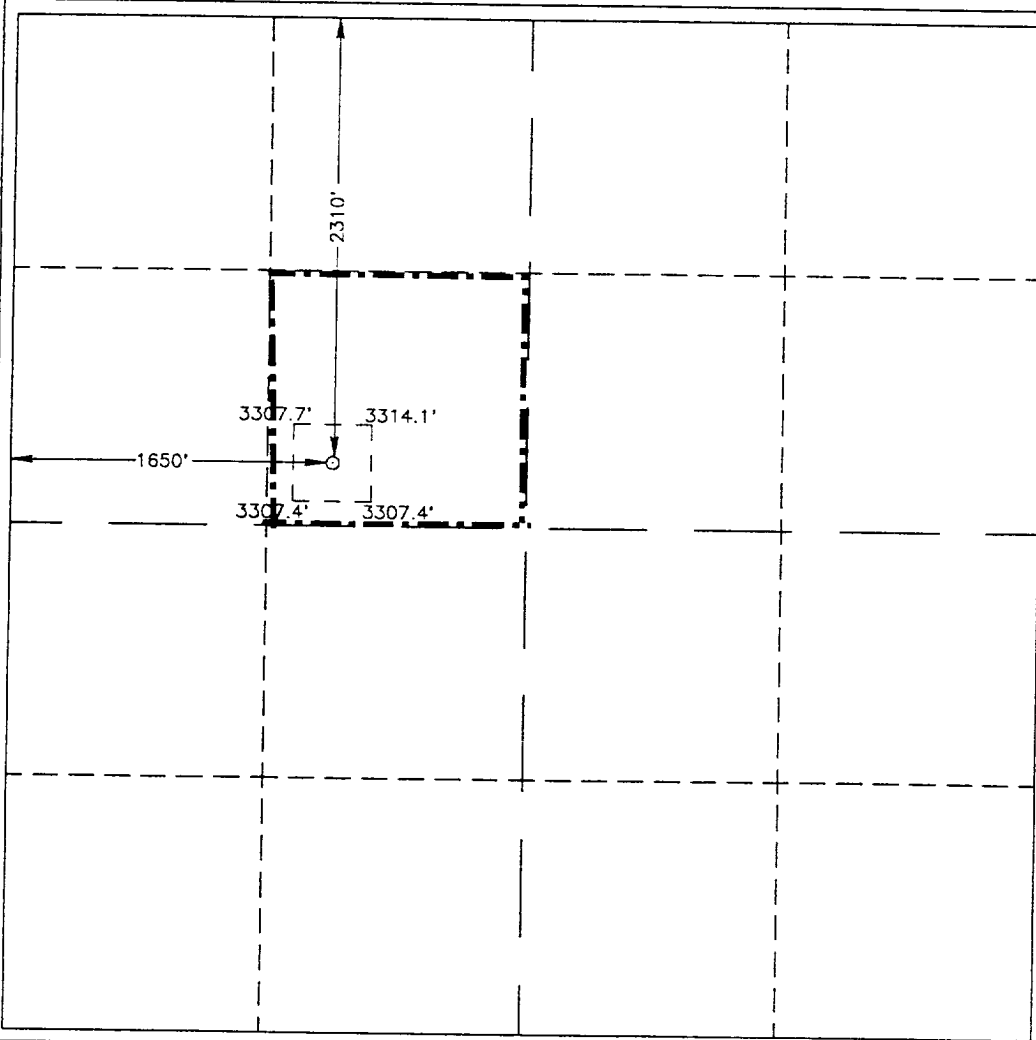
UL or lot No.	Section	Township	Range	Lot Idn	Feet from the	North/South line	Feet from the	East/West line	County
F	21	23 S	37 E		2310	NORTH	1650	WEST	LEA

Bottom Hole Location If Different From Surface

UL or lot No.	Section	Township	Range	Lot Idn	Feet from the	North/South line	Feet from the	East/West line	County

Dedicated Acres 40	Joint or Infill	Consolidation Code	Order No.
-----------------------	-----------------	--------------------	-----------

NO ALLOWABLE WILL BE ASSIGNED TO THIS COMPLETION UNTIL ALL INTERESTS HAVE BEEN CONSOLIDATED OR A NON-STANDARD UNIT HAS BEEN APPROVED BY THE DIVISION



**OPERATOR CERTIFICATION**

I hereby certify the the information contained herein is true and complete to the best of my knowledge and belief.

*Joe T. Janica*  
Signature

Joe T. Janica  
Printed Name

Agent  
Title

01/27/00  
Date

---

**SURVEYOR CERTIFICATION**

I hereby certify that the well location shown on this plat was plotted from field notes of actual surveys made by me or under my supervision and that the same is true and correct to the best of my belief.

JANUARY 19, 2000  
Date Surveyed JLP

Signature & Seal of Professional Surveyor  
*Ronald J. Edson* 01/24/2000  
W.G. Num 00-11-0051

Certificate No. RONALD J. EDSON, 3239  
GARY G. FEIDSON, 12841  
PROFESSOR MCDONALD, 12185