

DISTRICT I
P.O. Box 1980, Hobbs, NM 88241-1980

State of New Mexico
Energy, Minerals and Natural Resources Department

Form C-102
Revised February 10, 1994
Submit to Appropriate District Office
State Lease - 4 Copies
Fee Lease - 3 Copies

DISTRICT II
P.O. Drawer DD, Artesia, NM 88211-0719

OIL CONSERVATION DIVISION
P.O. Box 2088

Santa Fe, New Mexico 87504-2088

AMENDED REPORT

DISTRICT III
1000 Rio Brazos Rd., Asteo, NM 87410

DISTRICT IV
P.O. Box 2088, SANTA FE, N.M. 87504-2088

WELL LOCATION AND ACREAGE DEDICATION PLAT

API Number 30-025	Pool Code 79240	Pool Name Jalmat;Tan-Yates-7 Rvrs (Pro Gas)
Property Code 26484	Property Name STATE LMT	Well Number 11
OGRID No. 873	Operator Name APACHE CORPORATION	Elevation 3321

Surface Location

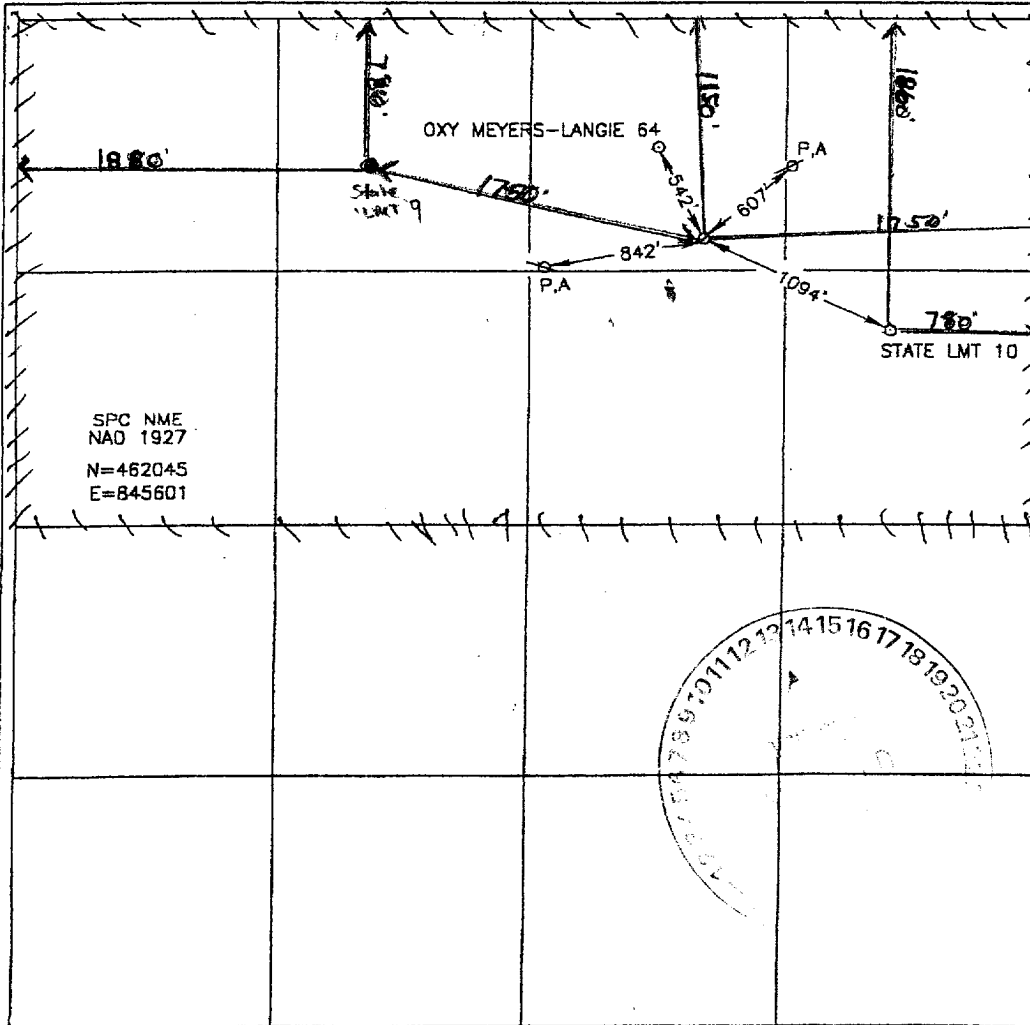
UL or lot No.	Section	Township	Range	Lot Idn	Feet from the	North/South line	Feet from the	East/West line	County
B	36	23-S	36-E		1150	NORTH	1750	EAST	LEA

Bottom Hole Location If Different From Surface

UL or lot No.	Section	Township	Range	Lot Idn	Feet from the	North/South line	Feet from the	East/West line	County

Dedicated Acres 320	Joint or Infill	Consolidation Code	Order No. NSL-4665(SD)
------------------------	-----------------	--------------------	---------------------------

NO ALLOWABLE WILL BE ASSIGNED TO THIS COMPLETION UNTIL ALL INTERESTS HAVE BEEN CONSOLIDATED OR A NON-STANDARD UNIT HAS BEEN APPROVED BY THE DIVISION



OPERATOR CERTIFICATION

I hereby certify that the information contained herein is true and complete to the best of my knowledge and belief.

Everett Ouzts
Signature

Everett Ouzts
Printed Name

Eng. Tech
Title

01/15/01
Date

SURVEYOR CERTIFICATION

I hereby certify that the well location shown on this plat was plotted from field notes of actual surveys made by me or under my supervision and that the same is true and correct to the best of my belief.

DECEMBER 29, 2000
Date Surveyed

AWB
Signature & Seal of Professional Surveyor

00-11-1631

Certificate No. RONALD J. EIDSON 3259
GARY EIDSON 12041