

NEW MEXICO OIL CONSERVATION COMMISSION  
SOUTHEAST NEW MEXICO PACKER LEAKAGE TEST

Operator <b>The Atlantic Refining Company</b>			Lease <b>Carlson Federal</b>			Well No. <b>2</b>		
Location of Well	Unit <b>L</b>	Sec <b>25</b>	Twp <b>25S</b>	Rge <b>37E</b>	County <b>Lea</b>			
	Name of Reservoir or Pool		Type of Prod (Oil or Gas)	Method of Prod Flow, Art Lift	Prod. Medium (Tbg or Csg)	Choke Size		
Upper Compl	<b>Blinstry</b>		<b>Oil</b>	<b>Flow</b>	<b>Tbg.</b>	<b>14/64</b>		
Lower Compl	<b>Tubb-Drinkard</b>		<b>Oil</b>	<b>Flow</b>	<b>Tbg.</b>	<b>20/64</b>		

FLOW TEST NO. 1 "Blinstry" Well No. 2, 1966, The Atlantic Refining Company changed its name to Atlantic Richfield Company"

Both zones shut-in at (hour, date): 9:00 a.m. 3-14-66

Well opened at (hour, date): 9:00 a.m. 3-15-66      Upper Completion      Lower Completion

Indicate by ( X ) the zone producing..... X

Pressure at beginning of test..... 1480      1049

Stabilized? (Yes or No)..... Yes      No

Maximum pressure during test..... 1480      1063

Minimum pressure during test..... 1000      1049

Pressure at conclusion of test..... 1092      1063

Pressure change during test (Maximum minus Minimum)..... 480      14

Was pressure change an increase or a decrease?..... decrease      increase

Well closed at (hour, date): 9:00 a.m. 3-16-66      Total Time On Production 24 hrs.

Oil Production      Gas Production

During Test: 83 bbls; Grav. 39.2 ; During Test 970 MCF; GOR 11,700

Remarks \_\_\_\_\_

FLOW TEST NO. 2

Well opened at (hour, date): 9:00 a.m. 3-17-66      Upper Completion      Lower Completion

Indicate by ( X ) the zone producing..... X

Pressure at beginning of test..... 1482      1083

Stabilized? (Yes or No)..... Yes      Yes

Maximum pressure during test..... 1484      1083

Minimum pressure during test..... 1482      80

Pressure at conclusion of test..... 1484      161

Pressure change during test (Maximum minus Minimum)..... 2      1003

Was pressure change an increase or a decrease?..... increase      decrease

Well closed at (hour, date) 9:00 a.m. 3-18-66      Total time on Production 24 hrs.

Oil Production      Gas Production

During Test: 30 bbls; Grav. 34.0 ; During Test 84.5 MCF; GOR 2817

Remarks \_\_\_\_\_

I hereby certify that the information herein contained is true and complete to the best of my knowledge.

Approved \_\_\_\_\_ 19 \_\_\_\_\_  
New Mexico Oil Conservation Commission

Operator The Atlantic Refining Company

By A. D. Kloxir Original Signer

A. D. Kloxir

Title District Drlg. & Prod. Supt.

Date 3-24-66

By \_\_\_\_\_  
Title \_\_\_\_\_

Following completion of Flow Test No. 1, the well shall again be shut-in in accordance with Paragraph 3 above.

Flow Test No. 2 shall be conducted even though no gas was indicated during Flow Test No. 1. Procedure for Flow Test No. 2 shall be the same as for Flow Test No. 1 except that the previously produced zone shall remain shut-in while the previously shut-in zone is produced.

All pressures, throughout the entire test, shall be continuously measured and recorded with recording pressure gauges, the accuracy of which must be checked with a deadweight tester at least before and at the beginning and once at the end, of each flow test.

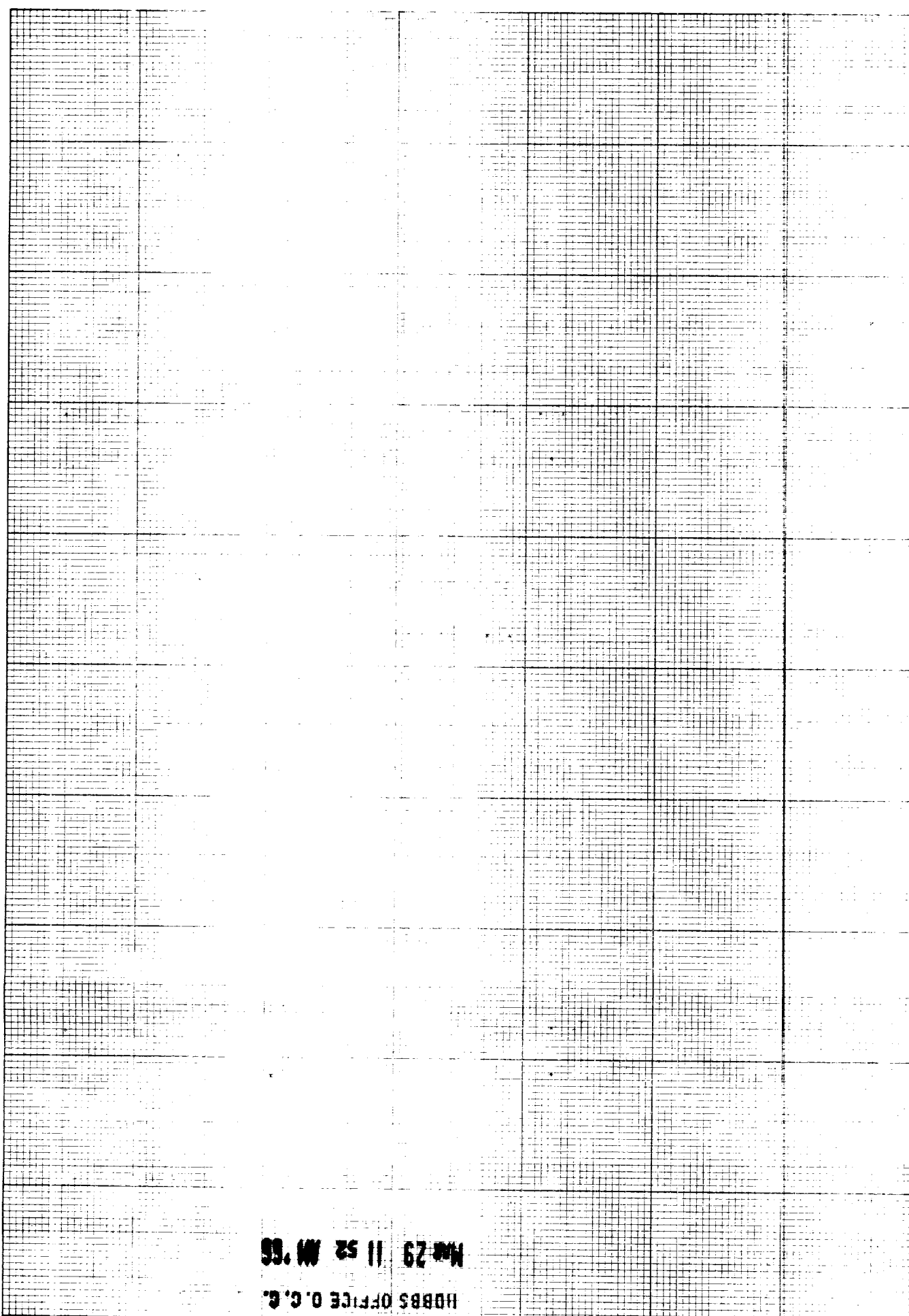
The results of the above-described tests shall be filed in triplicate within 15 days after completion of the test. Tests shall be filed with the appropriate District Office of the New Mexico Oil Conservation Commission on Southeast New Mexico Packer Leakage Test Form Revised 11-58, together with the original pressure recording gauge charts with all the deadweight pressures which were taken indicated thereon. In lieu of making the aforesaid charts, the operator may construct a pressure versus time curve for each zone of each test, indicating thereon all pressure changes which may be reflected by the gauge charts as well as all deadweight pressure readings which were taken. If the pressure curve is submitted the original chart must be permanently filed in the operator's office. Form C-116 shall also accompany the Packer Leakage Test Form when the test period coincides with a gas-oil ratio test period.

1. A packer leakage test shall be commenced and completed within seven days after actual completion of the well. Thereafter as prescribed by the order. Such tests shall also be commenced on all wells within ten days following recompletion and/or completion of the well and when ever remedial work has been done on a well and the casing or tubing have been disturbed. Tests shall also be conducted when communication is suspected or when requested by the Commission.

2. At least 72 hours prior to the commencement of the test the operator shall notify the Commission in writing that the test is to be commenced. Offset operators shall also be notified.

3. The packer leakage test shall commence at the normal rate of completion are shut-in for pressure stabilization. After such completion are shut-in until the well-head pressure in each zone has stabilized for a minimum of two hours thereafter, provided essential repairs are not required. A shut-in more than 24 hours.

4. For Flow Test No. 1, one zone of the dual completion shall be produced at the normal rate of production while the other zone is shut-in. The test shall be continued until the pressure in the shut-in zone is stabilized and for a minimum of two hours thereafter. The test shall be continued until the pressure in the shut-in zone is stabilized and for a minimum of two hours thereafter. The test shall be continued until the pressure in the shut-in zone is stabilized and for a minimum of two hours thereafter. The test shall be continued until the pressure in the shut-in zone is stabilized and for a minimum of two hours thereafter.



NO. 29 11 52 AM '66  
HOBBS OFFICE O. C. G.