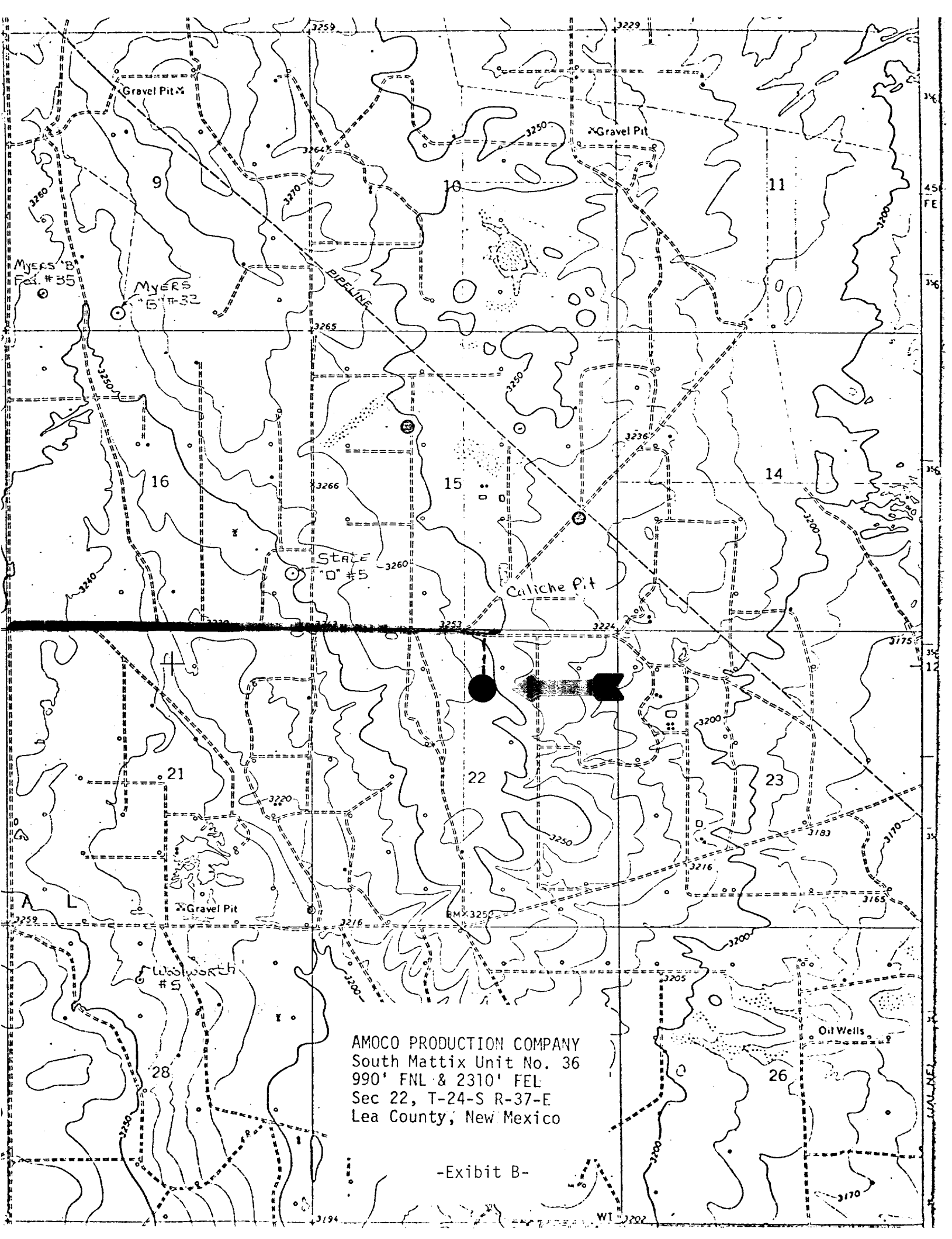


RECEIVED

JUN 19 1979

**CIL CONSERVATION COMM.
HOBBS, N. M.**



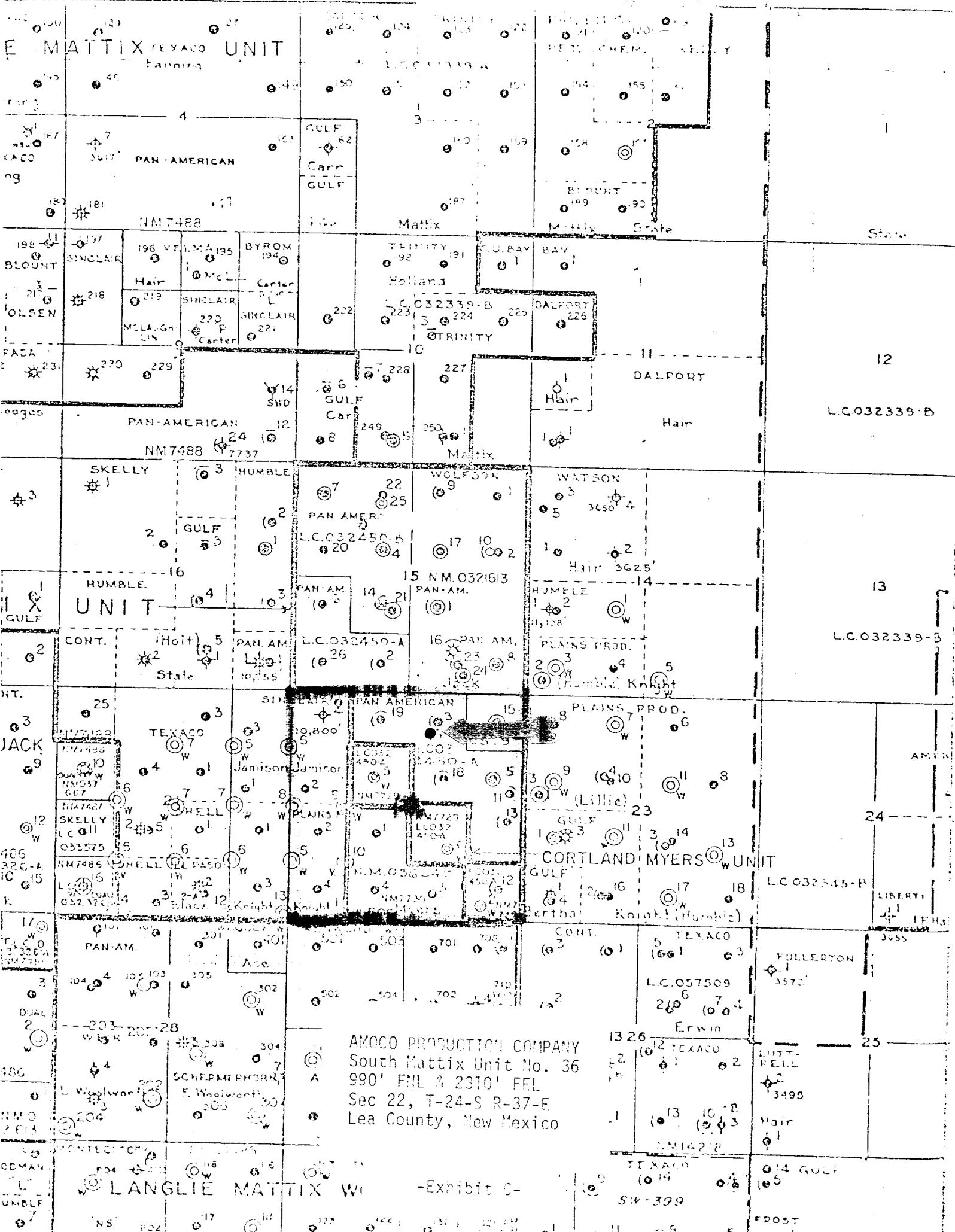
AMOCO PRODUCTION COMPANY
South Mattix Unit No. 36
990' FNL & 2310' FEL
Sec 22, T-24-S R-37-E
Lea County, New Mexico

-Exhibit B-

RECEIVED

JUN 19 1979

**OIL CONSERVATION COMM.
HOBBS, N. M.**



AMOCO PRODUCTION COMPANY
 South Mattix Unit No. 36
 990' FNL & 2310' FEL
 Sec 22, T-24-S-R-37-E
 Lea County, New Mexico

-Exhibit C-

LANGLIE MATTIX W

TEXACO
 SW-399

GULF

POST

RECEIVED

JUN 19 1979

**OIL CONSERVATION COMM.
HOBBS, N. M.**

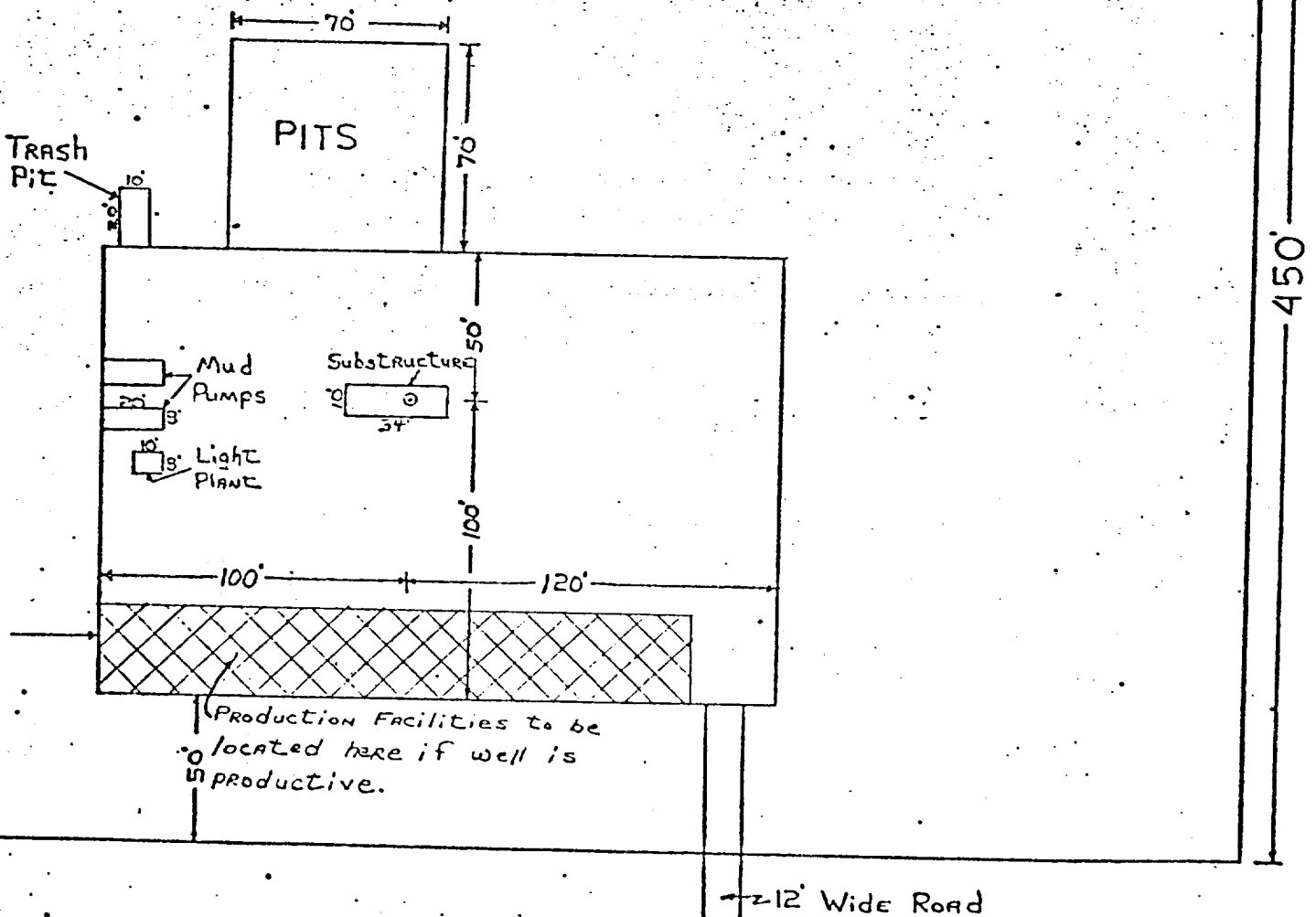
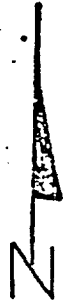
DRILL SITE DIMENSIONS

LESS THAN 8,000'

450'

AMOCO PRODUCTION COMPANY
South Mattix Unit No. 36
990' FNL & 2310' FEL
Sec 22, T-24-S R-37-E
Lea County, New Mexico

-Exhibit D-



RECEIVED

JUN 19 1979

**OIL CONSERVATION COMM.
HOBBS, N. M.**

Archaeological Clearance Report
for

Amoco Production Company

Greenwood Pregrayburg Well No.13
South Mattix Well No.35
South Mattix Well No.36
South Mattix Well No.37

Prepared

By

Dr. J. Loring Haskell

Submitted

By

Dr. J. Loring Haskell
Principal Investigator
New Mexico Archaeological Services, Inc.
Carlsbad, New Mexico

18 May 1979

Permit No.78-NM-120

Introduction

On 17 May 1979, New Mexico Archaeological Services, Inc., (NMAS), Carlsbad, undertook for Amoco Production Company, Hobbs, an archaeological reconnaissance of lands administered by the Bureau of Land Management in Eddy and Lea Counties, New Mexico. Reconnoitered locations will be impacted by the construction of drill holes. This project was administered by Mr. Ray Cox, Amoco Production Company, Hobbs, and Dr. J. Loring Haskell, Principal Investigator, NMAS. Dr. Haskell was assisted in the field by Mr. Charles A. Alyward, Staff Archaeologist.

Survey Technique

For this investigation, each of Amoco Production Company's proposed locations was reconnoitered for evidence of man's past activities by walking them in a series of 20 ft wide, close interval (15° or less), zigzag transects. In addition, an added zone embracing 20 ft on each side of the staked 450 X 450 ft locations, and hence lying outside the proposed work areas, was examined by a similar means. Methodologically, this procedure served to promote optimal conditions for the visual examination of areas to be impacted by construction.

Greenwood Pregrayburg Well No.13

Location

This location will measure 450 X 450 ft on federal lands and will be situated 1350 ft from the south line and 660 ft from the west line of:

Section 35, T18S, R31E, NMPM, Eddy County, NM

Thus it will be situated in the:

NW $\frac{1}{4}$ SW $\frac{1}{4}$, Section 35, T18S, R31E, NMPM, Eddy County, NM
 SW $\frac{1}{4}$ SW $\frac{1}{4}$, Section 35, T18S, R31E, NMPM, Eddy County, NM

It is situated on an existing road.

Map Reference: USGS Clayton Basin Quadrangle, 15 Minute Series, 1942.

Terrain

This location is situated on a generally undulating plain which locally trends toward the northeast. In its broader context, it is coextensive with the Querecho Plains. The coeval surface is marked by low coppice dunes and associated shallow deflation basins. In general, these features are stabilized. Local soils are dominated by the sand separate and consist of sandy loams and loamy sands which often contain caliche inclusions. Peds uniformly belong to the Typic Torripsamment subgroup.

Floristics

Principal plants occurring on areal soils are: Quercus havardii, Yucca glauca, Artemisia filifolia, and Opuntia polyacantha. Of these, Quercus is dominant and often occurs in essentially unbroken stands. Associated forbs include Senecio sp., Gutierrezia sp., Croton sp., Shrankia occidentalis, Suaeda sp., Hymenoxys sp., Oenothera sp., Hoffmanseggia sp., and Monarda sp. Grasses are represented principally by Aristida sp., Andropogon sp., and Sporobolus spp.

Cultural Resources

No archaeological resources were recorded during this reconnaissance. The absence of cultural resources locally can be attributed to the nature of the local landform which inhibits

even short-term occupation. Deep aeolian deposits, a lack of lithic material, a shortage of surface water, and an absence of shelter combined to keep prehistoric social activities to a minimum in this district.

Recommendations

NMAS recommends clearance for Amoco's proposed Greenwood Pregraybury Well No.13 and suggests that work-related activities proceed in accordance with company plans.

South Mattix Well No. 35

Location

As proposed, this location will measure 450 X 450 ft on lands with private surface and federal minerals and will be situated 1650 ft from the north line and 1650 ft from the west line of:

Section 15, T24S, R37E, NMPM, Lea County, NM

Thus it will be situated in the:

SE $\frac{1}{4}$ NW $\frac{1}{4}$, Section 15, T24S, R37E, NMPM, Lea County, NM

It is situated on an existing access road.

Map Reference: USGS Jal NW Quadrangle, 7.5 Minute Series, 1969.

Terrain

Locally, this landform is characterized by a gently sloping plain which trends toward the southeast in the direction of Monument Draw. A slight depressional basin occurs immediately south of the location and undoubtedly is the recipient of excess runoff during periods of heavy rainfall. Low ridges lie to the northwest and east. Attendant soils belong to the Haplargid-Torripsamment Association.

Floristics

The local floral assemblage is dominated by a low understory of forbs and grasses. Principal forbs include Phacelia sp., Erigeron sp., Zinnia acerosa, Oenothera sp., Nama sp., Plantago sp., Chamaesaracha sp., Solanum sp., Suaeda sp., Euphorbia sp., and Gaillardia sp. While distributed over much of this landform, grasses tend to predominate in swalelike depressions. Observed forms include Aristida sp., Hilaria spp., and Setaria sp.

Cultural Resources

No cultural resources were recorded during this reconnaissance. Locally, archaeological resources tend to occur near the bluffs overlooking Monument Draw or else occur in heavily duned localities on South Plain. Resources most typically belong to the Archaic period but also include Paleo-Indian and Jornada Mogollon remains.

Recommendations

NMAS recommends clearance for South Mattix Well No.35 and suggests that work-related activities proceed in accordance with existing plans.

South Mattix Well No.36

Location

This location will measure 450 X 450 ft on lands with private surface and federal minerals and will be situated 990 ft from the north line and 2310 ft from the east line of:

Section 22, T24S, R37E, NMPM, Lea County, NM

Thus it will be situated in the:

NW $\frac{1}{4}$ NE $\frac{1}{4}$, Section 22, T24S, R37E, NMPM, Lea County, NM

It will be situated on an existing access road.

Map Reference: USGS Jal NW Quadrangle, 7.5 Minute Series, 1969.

Terrain

This location is situated on the shoulder of an eastward-trending ridge which terminates at Monument Draw. In its broader context, this landform constitutes the eastern portion of the Eunice Plain. Locally, caliche commonly occurs on the slope of this feature in the form of small angular cobbles and gravels. Soils tend to be dominated by the clay separate and are composed of clay loams and silty clay loams.

Floristics

Principal denizens of local soils include Aristida sp., Hilaria sp., Munroa squarrosa, Bouteloua sp., and Setaria sp. Forbs are well represented locally and include Oenothera sp., Nama sp., Phacelia sp., Euphorbia sp., Plantago sp., and Solanum elaeagnifolium. Local soils do not support an over-story. The Cactaceae is represented mainly by Opuntia polyacantha and Echinocactus texensis.

Cultural Resources

No cultural resources were recorded during this reconnaissance. In the past, this landform was utilized by man on an ephemeral basis primarily for hunting- and hunting-related tasks. Attendant remains, reflecting this type of usage, tend to be confined to rare projectile points and debitage.

Recommendations

NMAS recommends clearance for Amoco's South Mattix Well No.36 and suggests that work-related activities proceed in accordance with work-related activities.

South Mattix Well No.37

Location

Aomoco Production Company's location will measure 450 X 450 ft on lands with private surface and federal minerals and will be situated 1840 ft from the south line and 660 ft from the east line of:

Section 15, T24S, R37E, NMPM, Lea County, NM

It will be situated in the:

NE $\frac{1}{4}$ SE $\frac{1}{4}$, Section 15, T24S, R37E, NMPM, Lea County, NM

It is located on an existing access road.

Map Reference: USGS Jal NW Quadrangle, 7.5 Minute Series, 1969.

Terrain

Topographically, the immediate area of the reconnaissance is marked by an eastward-trending ridge. Ephemeral sheetwash characterizes much of this area and drains into Monument Draw on the east. Toward Monument Draw, duripan commonly outcrops or else is present in the form of a highly weathered scree of gravels and cobbles. Soils are fine-grained clay loams and silt loams belonging to the Typic Haplargid subgroup.

Floristics

Key components of the local floral assemblage include Aristida sp., Hilaria belangeri, and Munroa squarrosa. Closely associated with grasses are Aldionia sp., Oenothera sp.,

Erigeron sp., Phacelia sp., Nama sp., Chamaesaracha sp., Solanum
eleagnifolium, Senecio sp., Euphorbia sp., and Zinnia acerosa.

Cultural Resources

No cultural resources were recorded during this reconnaissance. Although not encountered locally, typically resources occurring in this district are light scatters of lithic detritus associated with burned- and fire-cracked caliche cobbles. Ground stone and ceramics less commonly occur.

Recommendations

NMAS recommends clearance for Amoco Production Company's proposed South Mattix Well No. 37 and suggests that work-related activities proceed in accordance with company plans.