

Submit to Appropriate District Office
State Lease - 6 copies
Fed Lease - 5 copies

State of New Mexico
Energy, Minerals and Natural Resources Department

Form C-101
Revised 1-1-89

OIL CONSERVATION DIVISION
P.O. Box 2088
Santa Fe, New Mexico 87504-2088

DISTRICT I
P.O. Box 1980, Hobbs, NM 88240

DISTRICT II
P.O. Drawer DD, Artesia, NM 88210

DISTRICT III
1000 Rio Brazos Rd., Aztec, NM 87410

API NO. (assigned by OCD on New Wells)
30-025-30828

5. Indicate Type of Lease
STATE FEE

6. State Oil & Gas Lease No.
B-9613

APPLICATION FOR PERMIT TO DRILL, DEEPEN, OR PLUG BACK

1a. Type of Work:
DRILL RE-ENTER DEEPEN PLUG BACK

b. Type of Well:
OIL WELL GAS WELL OTHER

SINGLE ZONE MULTIPLE ZONE

2. Name of Operator
TEXACO PRODUCING INC.

3. Address of Operator
P.O. Box 3109 MIDLAND, TEXAS 79702

4. Well Location
Unit Letter **J**: **1363** Feet From The **SOUTH** Line and **2542** Feet From The **EAST** Line
Section **32** Township **24-SOUTH** Range **38-EAST** NMPM **LEA** County

7. Lease Name or Unit Agreement Name
WEST DOLLARHIDE DRINKARD UNIT

8. Well No.
106

9. Pool name or Wildcat
DOLLARHIDE TUBB DRINKARD

10. Proposed Depth
6950'

11. Formation
DRINKARD

12. Rotary or C.T.
ROTARY

13. Elevations (Show whether DF, RT, GR, etc.)
GR-3182'

14. Kind & Status Plug. Bond
BLANKET

15. Drilling Contractor
TO BE SELECTED

16. Approx. Date Work will start
3-31-90

17. PROPOSED CASING AND CEMENT PROGRAM

SIZE OF HOLE	SIZE OF CASING	WEIGHT PER FOOT	SETTING DEPTH	SACKS OF CEMENT	EST. TOP
20"	16"	65 #	40'	Red mix	SURFACE
14 3/4"	11 3/4"	42 #	1200'	1000 SX "H"	SURFACE
* 11"	8 5/8"	32 #	4000'	1650 SX "H"	SURFACE
7 7/8"	5 1/2"	17 # + 15.5 #	6950'	1300 SX WITH 8 5/8" 2575 SX WITHOUT 8 5/8"	SURFACE

CEMENTING PROGRAM ON BACK

*OPTIONAL - WILL BE SET IF HOLE CONDITIONS DICTATE.

SIRGO-COLLIER OPERATES A WELL IN THIS 1/4 1/4 SECTION AND HAS BEEN FURNISHED WITH A COPY OF THIS APPLICATION.

UNORTHODOX LOCATION - 10 ACRE SPACING.

IN ABOVE SPACE DESCRIBE PROPOSED PROGRAM: IF PROPOSAL IS TO DEEPEN OR PLUG BACK, GIVE DATA ON PRESENT PRODUCTIVE ZONE AND PROPOSED NEW PRODUCTIVE ZONE. GIVE BLOWOUT PREVENTER PROGRAM, IF ANY.

I hereby certify that the information above is true and complete to the best of my knowledge and belief.

SIGNATURE C. Wade Howard TITLE ENGINEER'S ASSISTANT DATE 3-8-90

TYPE OR PRINT NAME C. WADE HOWARD TELEPHONE NO. 915-688-4606

(This space for State Use)

APPROVED BY ORIGINAL SIGNED BY JERRY SEXTON TITLE _____ DATE _____
DISTRICT I SUPERVISOR

CONDITIONS OF APPROVAL, IF ANY:

782-2768

Permit Expires 6 Months From Approval
Date Unless Drilling Underway.

MAR 21 1990

CEMENTING PROGRAM

CONDUCTOR: REDIMIX

SURFACE CASING: 1000 SX CLASS 'H' WITH 2% CaCl_2 AT 15.6ppg, 1.19 ft^3/SX , 5.2 GAL WTR/SX.

INTERMEDIATE CASING: 400 SX 35/65 POZ CLASS 'H' WITH 6% GEL, 5% SALT, $\frac{1}{4}$ # FLOCELE AT 12.8ppg, 1.87 ft^3/SX , 9.9 GAL WTR/SX. FOLLOWED BY 200 SX CLASS 'H' WITH 2% CaCl_2 AT 15.6ppg, 1.19 ft^3/SX , 5.2 GAL WTR/SX.

DV TOOL AT 2600': 2ND STAGE - 1050 SX CLASS 'H' WITH 2% CaCl_2 AT 15.6ppg, 1.19 ft^3/SX , 5.2 GAL WTR/SX.

PRODUCTION CASING WITH 8 $\frac{5}{8}$ " CASING: 1ST STAGE - 525 SX 35/65 POZ CLASS 'H' WITH 6% GEL, 5% SALT, $\frac{1}{4}$ # FLOCELE AT 12.8ppg, 1.87 ft^3/SX , 9.9 GAL WTR/SX. FOLLOWED BY 200 SX CLASS 'H' AT 15.6ppg, 1.18 ft^3/SX , 5.2 GAL WTR/SX.

DV TOOL AT 4000': 2ND STAGE - 575 SX 35/65 POZ CLASS 'H' WITH 6% GEL, 5% SALT, $\frac{1}{4}$ # FLOCELE AT 12.8ppg, 1.87 ft^3/SX , 9.9 GAL WTR/SX.

PRODUCTION CASING WITHOUT 8 $\frac{5}{8}$ " CASING: 1ST STAGE - 525 SX 35/65 POZ CLASS 'H' WITH 6% GEL, 5% SALT, $\frac{1}{4}$ # FLOCELE AT 12.8ppg, 1.87 ft^3/SX , 9.9 GAL WTR/SX. FOLLOWED BY 200 SX CLASS 'H' AT 15.6ppg, 1.18 ft^3/SX , 5.2 GAL WTR/SX.

DV TOOL AT 4000': 2ND STAGE - 1850 SX 35/65 POZ CLASS 'H' WITH 6% GEL, 5% SALT, $\frac{1}{4}$ # FLOCELE AT 12.8ppg, 1.87 ft^3/SX , 9.9 GAL WTR/SX.

RECEIVED

MAR 9 1990

OCD
NOBBS OFFICE

NEW MEXICO OIL CONSERVATION COMMISSION
WELL LOCATION AND ACREAGE DEDICATION PLAT

Form C-102
Supersedes C-128
Effective 1-1-65

All distances must be from the outer boundaries of the Section.

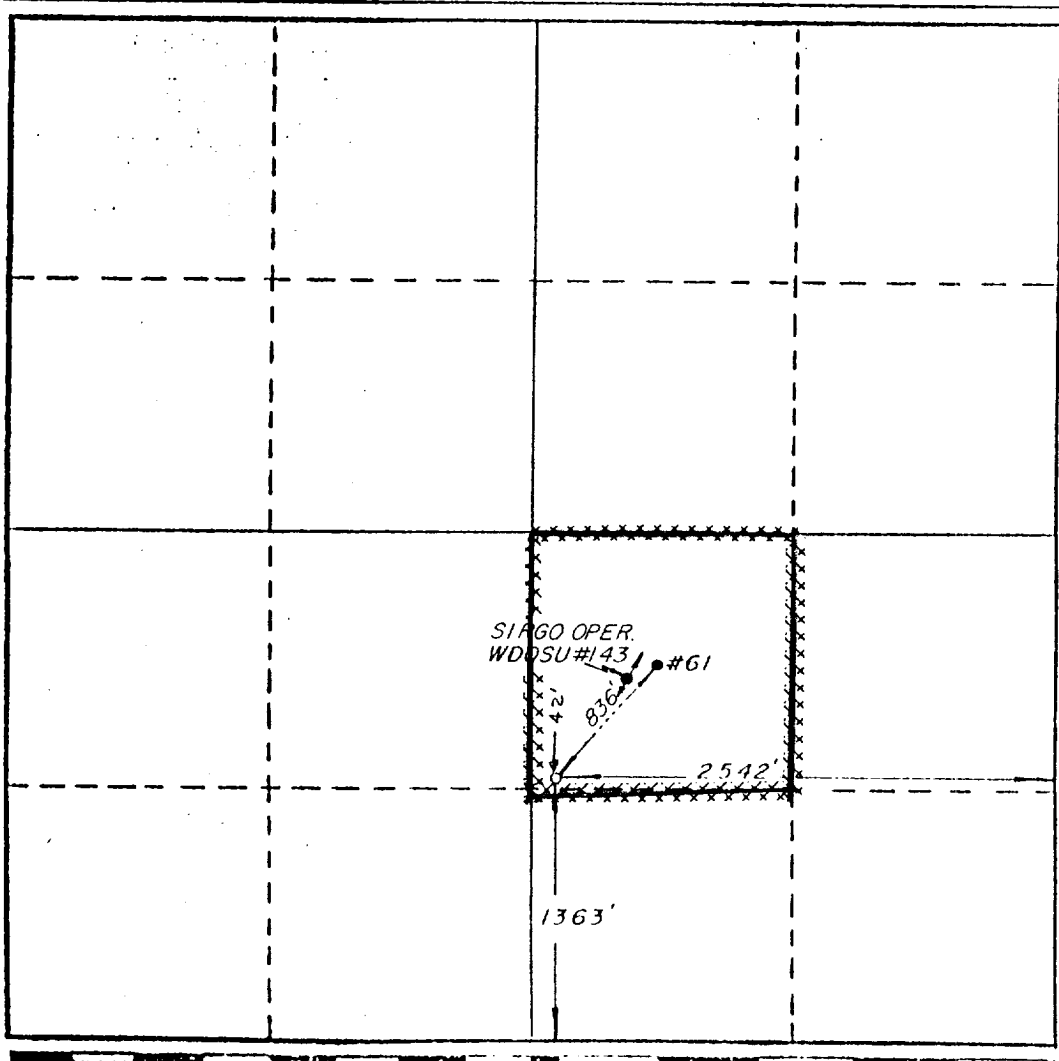
Operator TEXACO PRODUCING INC.		Lease West Dollarhide Drinkard Unit			Well No. 106
Unit Letter J	Section 32	Township 24-S	Range 38-E	County Lea	
Actual Footage Location of Well: 1363 feet from the South line and 2542 feet from the East line					
Ground Level Elev. 3182'	Producing Formation Tubb Drinkard (Drinkard)	Pool Dollarhide Tubb Drinkard	Dedicated Acreage: 40 Acres		

1. Outline the acreage dedicated to the subject well by colored pencil or hachure marks on the plat below.
2. If more than one lease is dedicated to the well, outline each and identify the ownership thereof (both as to working interest and royalty).
3. If more than one lease of different ownership is dedicated to the well, have the interests of all owners been consolidated by communitization, unitization, force-pooling, etc?

Yes No If answer is "yes," type of consolidation Unitization

If answer is "no," list the owners and tract descriptions which have actually been consolidated. (Use reverse side of this form if necessary.)

No allowable will be assigned to the well until all interests have been consolidated (by communitization, unitization, forced-pooling, or otherwise) or until a non-standard unit, eliminating such interests, has been approved by the Commission.



CERTIFICATION

I hereby certify that the information contained herein is true and complete to the best of my knowledge and belief.

Ray Mariott

Name
R. D. Mariott

Position
Division Surveyor

Company
Texaco Producing Inc.

Date
February 8, 1990

I hereby certify that the well location shown on this plat was plotted from field notes of actual surveys made by me or under my supervision, and that the same is true and correct to the best of my knowledge and belief.

FEBRUARY 8, 1990

Date Surveyed
Richard B. Duniven

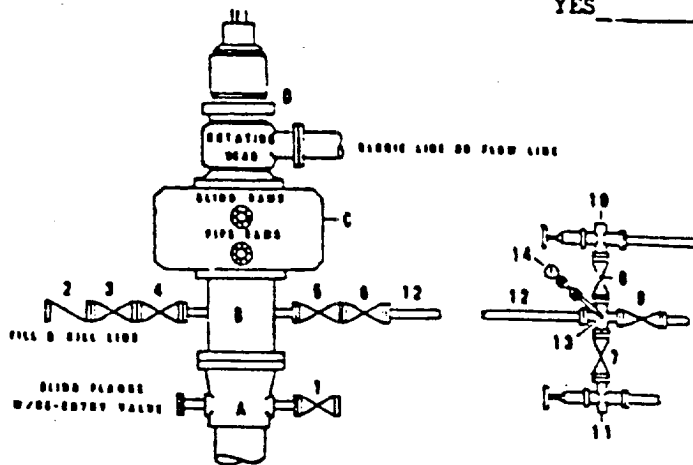
Registered Professional Engineer and/or Land Surveyor

Richard B. Duniven

Certificate No. 4882

DRILLING CONTROL
CONDITION II-B 3000 WP
FOR AIR DRILLING OR
WHERE YATES AIR BLOWS ARE EXPECTED

H₂S TRIM REQUIRED
 YES _____ NO _____



DRILLING CONTROL

MATERIAL LIST - CONDITION II - B
FOR AIR DRILLING

- A Texaco Wellhead
- B 3000# W.P. drilling spool with a 2" minimum flanged outlet for kill-line and 3" minimum flanged outlet for choke line
- C 3000# W.P. Dual ram type preventer, hydraulic operated with 1" steel, 3000# W.P. control lines (where sub-structure height is adequate, 2-3000# W.P. single ram type preventers may be utilized.)
- D Rotating Head and extended Blosie Line.
- 1,3,4, 7,8 2" minimum 3000# W.P. flanged full opening steel gate valve, or Halliburton Lo Torc Plug valve.
- 2 2" minimum 3000# W.P. back pressure valve
- 5,6,9 3" minimum 3000# W.P. flanged full opening steel gate valve, or Halliburton Lo Torc Plug valve.
- 12 3" minimum schedule 80, Grade "B", seamless line pipe
- 13 2" minimum x 3" minimum 3000# W.P. flanged cross
- 10, 11 2" minimum 3000# W.P. adjustable choke bodies
- 14 Cameron Mud Gauge or equivalent (location optional in choke line.)

	TEXACO, INC. WELLS DIVISION WIDLAND TEXAS	
SCALE	DATE	EST NO
DRAWN BY		DRG NO
CHECKED BY		
APPROVED BY		

EXHIBIT C

16/5/2/91

ELF

MAR 7 1990

POST OFFICE