

Office
 District I – (575) 393-6161
 1625 N. French Dr., Hobbs, NM 88240
 District II – (575) 748-1283
 811 S. First St., Artesia, NM 88210
 District III – (505) 334-6178
 1000 Rio Brazos Rd., Aztec, NM 87410
 District IV – (505) 476-3460
 1220 S. St. Francis Dr., Santa Fe, NM
 87505

State of New Mexico
 Energy, Minerals and Natural Resources

Form C-103
 Revised July 18, 2013

OIL CONSERVATION DIVISION
 1220 South St. Francis Dr.
 Santa Fe, NM 87505

WELL API NO. MULTIPLE
5. Indicate Type of Lease STATE <input type="checkbox"/> FEE <input type="checkbox"/>
6. State Oil & Gas Lease No.
7. Lease Name or Unit Agreement Name Modelo 10 Fed Com
8. Well Number MULTIPLE
9. OGRID Number 7377
10. Pool name or Wildcat
11. Elevation (Show whether DR, RKB, RT, GR, etc.)

SUNDRY NOTICES AND REPORTS ON WELLS (DO NOT USE THIS FORM FOR PROPOSALS TO DRILL OR TO DEEPEN OR PLUG BACK TO A DIFFERENT RESERVOIR. USE "APPLICATION FOR PERMIT" (FORM C-101) FOR SUCH PROPOSALS.)	
1. Type of Well: Oil Well <input checked="" type="checkbox"/> Gas Well <input type="checkbox"/> Other <input type="checkbox"/>	
2. Name of Operator EOG Resources, Inc.	
3. Address of Operator P.O. Box 2267, Midland, TX 79702	
4. Well Location Unit Letter _____: _____ feet from the _____ line and _____ feet from the _____ line Section 30 Township 25S Range 32E NMPM Lea County	
11. Elevation (Show whether DR, RKB, RT, GR, etc.)	

12. Check Appropriate Box to Indicate Nature of Notice, Report or Other Data

NOTICE OF INTENTION TO:		SUBSEQUENT REPORT OF:	
PERFORM REMEDIAL WORK <input type="checkbox"/>	PLUG AND ABANDON <input type="checkbox"/>	REMEDIAL WORK <input type="checkbox"/>	ALTERING CASING <input type="checkbox"/>
TEMPORARILY ABANDON <input type="checkbox"/>	CHANGE PLANS <input type="checkbox"/>	COMMENCE DRILLING OPNS. <input type="checkbox"/>	P AND A <input type="checkbox"/>
PULL OR ALTER CASING <input type="checkbox"/>	MULTIPLE COMPL <input type="checkbox"/>	CASING/CEMENT JOB <input type="checkbox"/>	
DOWNHOLE COMMINGLE <input type="checkbox"/>			
CLOSED-LOOP SYSTEM <input type="checkbox"/>			
OTHER: <input type="checkbox"/>		OTHER: PLC-870 <input checked="" type="checkbox"/>	

13. Describe proposed or completed operations. (Clearly state all pertinent details, and give pertinent dates, including estimated date of starting any proposed work). SEE RULE 19.15.7.14 NMAC. For Multiple Completions: Attach wellbore diagram of proposed completion or recompletion.

Pursuant to Administrative Order PLC-870 EOG Resources, Inc. ("EOG") respectfully request to add the following wells authorized to commingle production at the central tank battery located in the SE4 of Section 30, Township 25 South, Range 32 East, Lea County, NM. All production from the subject well will be allocated using readings from individual well meters.

Almost Eddy 30 Fed Com 510H	30-025-49006
Almost Eddy 30 Fed Com 511H	30-025-51166
Almost Eddy 30 Fed Com 512H	30-025-51167
Almost Eddy 30 Fed Com 513H	30-025-51168
Almost Eddy 30 Fed Com 578H	30-025-51169
Almost Eddy 30 Fed Com 580H	30-025-51171

Spud Date:

Rig Release Date:

I hereby certify that the information above is true and complete to the best of my knowledge and belief.

SIGNATURE Lisa Youngblood TITLE Regulatory Specialist DATE 4/19/2023

Type or print name Lisa Youngblood E-mail address: lisa_youngblood@eogresources.com PHONE: 432-247-6331

For State Use Only

APPROVED BY: Dean R. McClure TITLE Petroleum Engineer DATE 12/19/2023

Conditions of Approval (if any):

District I
1625 N. French Dr., Hobbs, NM 88240
Phone: (575) 393-6161 Fax: (575) 393-0720
District II
811 S. First St., Artesia, NM 88210
Phone: (575) 748-1283 Fax: (575) 748-9720
District III
1000 Rio Brazos Road, Aztec, NM 87410
Phone: (505) 334-6178 Fax: (505) 334-6170
District IV
1220 S. St. Francis Dr., Santa Fe, NM 87505
Phone: (505) 476-3460 Fax: (505) 476-3462

State of New Mexico
Energy, Minerals & Natural Resources
Department
OIL CONSERVATION DIVISION
1220 South St. Francis Dr.
Santa Fe, NM 87505

FORM C-102
Revised August 1, 2011
Submit one copy to appropriate
District Office
☐ AMENDED REPORT

WELL LOCATION AND ACREAGE DEDICATION PLAT

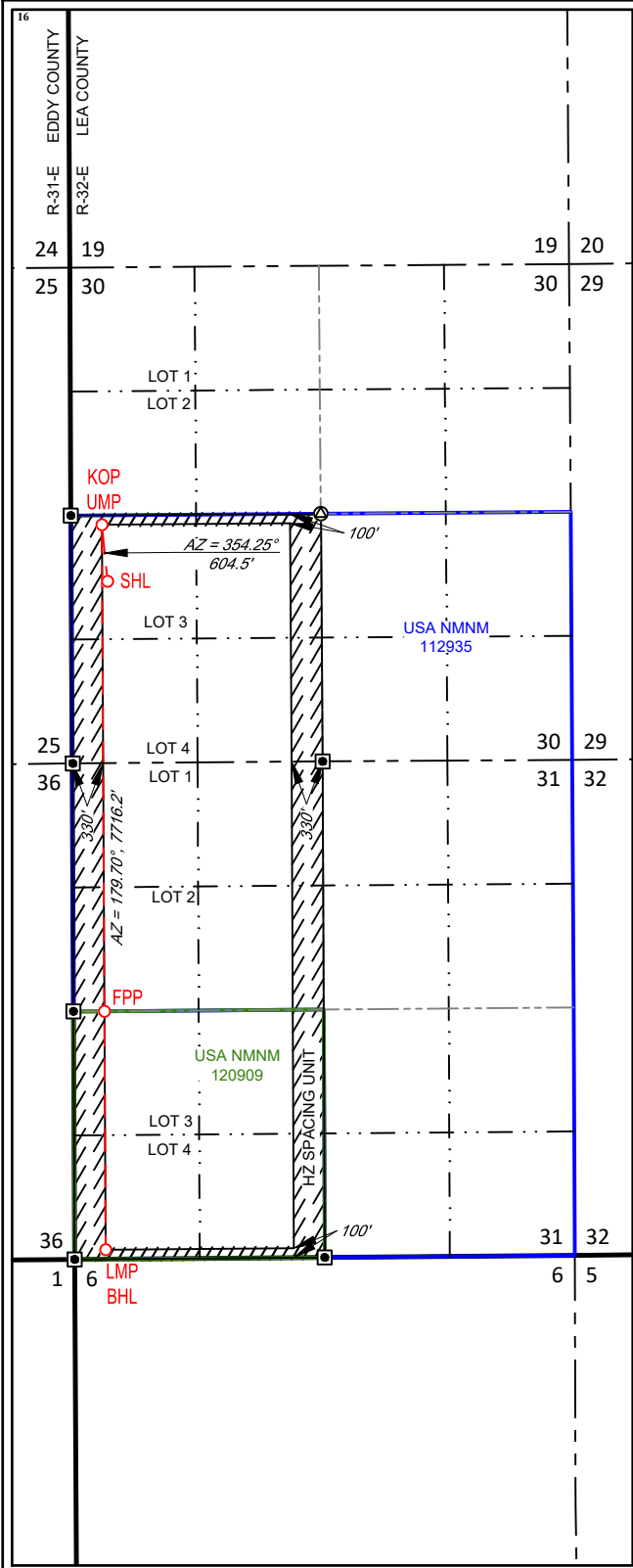
¹ API Number 30-025-49006	² Pool Code 97903	³ Pool Name WC-025 G-08 S253235G; Lower Bone Spring
⁴ Property Code 330825	⁵ Property Name ALMOST EDDY 30 FED COM	⁶ Well Number 510H
⁷ OGRID No. 7377	⁸ Operator Name EOG RESOURCES, INC.	⁹ Elevation 3341'

¹⁰ Surface Location									
UL or lot no. 3	Section 30	Township 25-S	Range 32-E	Lot Idn -	Feet from the 1936'	North/South line SOUTH	Feet from the 387'	East/West line WEST	County LEA

¹¹ Bottom Hole Location If Different From Surface									
UL or lot no. 4	Section 31	Township 25-S	Range 32-E	Lot Idn -	Feet from the 100'	North/South line SOUTH	Feet from the 330'	East/West line WEST	County LEA

¹² Dedicated Acres 480.22	¹³ Joint or Infill	¹⁴ Consolidation Code	¹⁵ Order No.
---	-------------------------------	----------------------------------	-------------------------

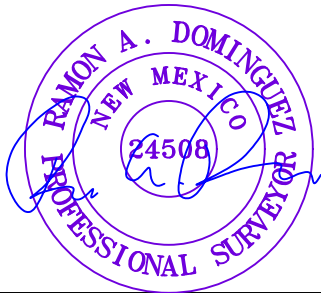
No allowable will be assigned to this completion until all interests have been consolidated or a non-standard unit has been approved by the division.



NEW MEXICO EAST
NAD 1983
SURFACE LOCATION (SHL)
1936' FSL - SEC. 30
387' FWL - SEC. 30
X=730701 Y=400427
LAT.: N 32.0993762
LONG.: W 103.7218051
KICK OFF POINT (KOP)
UPPER MOST PERF. (UMP)
2537' FSL - SEC. 30
330' FWL - SEC. 30
X=730640 Y=401028
LAT.: N 32.1010305
LONG.: W 103.7219897
FED PERF. POINT (FPP)
2639' FSL - SEC. 31
330' FWL - SEC. 31
X=730667 Y=395851
LAT.: N 32.0867999
LONG.: W 103.7219977
LOWER MOST PERF. (LMP)
BOTTOM HOLE LOCATION (BHL)
100' FSL - SEC. 31
330' FWL - SEC. 31
X=730680 Y=393312
LAT.: N 32.0798197
LONG.: W 103.7220016

¹⁷OPERATOR CERTIFICATION
I hereby certify that the information contained herein is true and complete to the best of my knowledge and belief, and that this organization either owns a working interest or unleased mineral interest in the land including the proposed bottom hole location or has a right to drill this well at this location pursuant to a contract with an owner of such a mineral or working interest, or to a voluntary pooling agreement or a compulsory pooling order heretofore entered by the division.
Star L Harrell 3/20/2023
Signature Date
Star L Harrell
Printed Name
star_harrell@eogresources.com
E-mail Address

¹⁸SURVEYOR CERTIFICATION
I hereby certify that the well location shown on this plat was plotted from field notes of actual surveys made by me or under my supervision, and that the same is true to the best of my belief.
11/21/2021
Date of Survey
Signature and Seal of Professional Surveyor



Certificate Number
NEW MEXICO EAST
NAD 1927
SURFACE LOCATION (SHL)
X=689515 Y=400369
LAT.: N 32.0992516
LONG.: W 103.7213297
KICK OFF POINT (KOP)
UPPER MOST PERF. (UMP)
X=689454 Y=400970
LAT.: N 32.1009059
LONG.: W 103.7215142
FED PERF. POINT (FPP)
X=689481 Y=395794
LAT.: N 32.0866752
LONG.: W 103.7215230
LOWER MOST PERF. (LMP)
BOTTOM HOLE LOCATION (BHL)
X=689494 Y=393254
LAT.: N 32.0796949
LONG.: W 103.7215272

District I
1625 N. French Dr., Hobbs, NM 88240
Phone: (575) 393-6161 Fax: (575) 393-0720
District II
811 S. First St., Artesia, NM 88210
Phone: (575) 748-1283 Fax: (575) 748-9720
District III
1000 Rio Brazos Road, Aztec, NM 87410
Phone: (505) 334-6178 Fax: (505) 334-6170
District IV
1220 S. St. Francis Dr., Santa Fe, NM 87505
Phone: (505) 476-3460 Fax: (505) 476-3462

State of New Mexico
Energy, Minerals & Natural Resources
Department
OIL CONSERVATION DIVISION
1220 South St. Francis Dr.
Santa Fe, NM 87505

FORM C-102

Revised August 1, 2011

Submit one copy to appropriate

District Office

☐ AMENDED REPORT

WELL LOCATION AND ACREAGE DEDICATION PLAT

¹ API Number 30-025-51166	² Pool Code 97903	³ Pool Name WC-025 G-08 S253235G; LOWER BONE SPRING
⁴ Property Code 330825	⁵ Property Name ALMOST EDDY 30 FED COM	⁶ Well Number 511H
⁷ OGRID No. 7377	⁸ Operator Name EOG RESOURCES, INC.	⁹ Elevation 3340'

¹⁰Surface Location

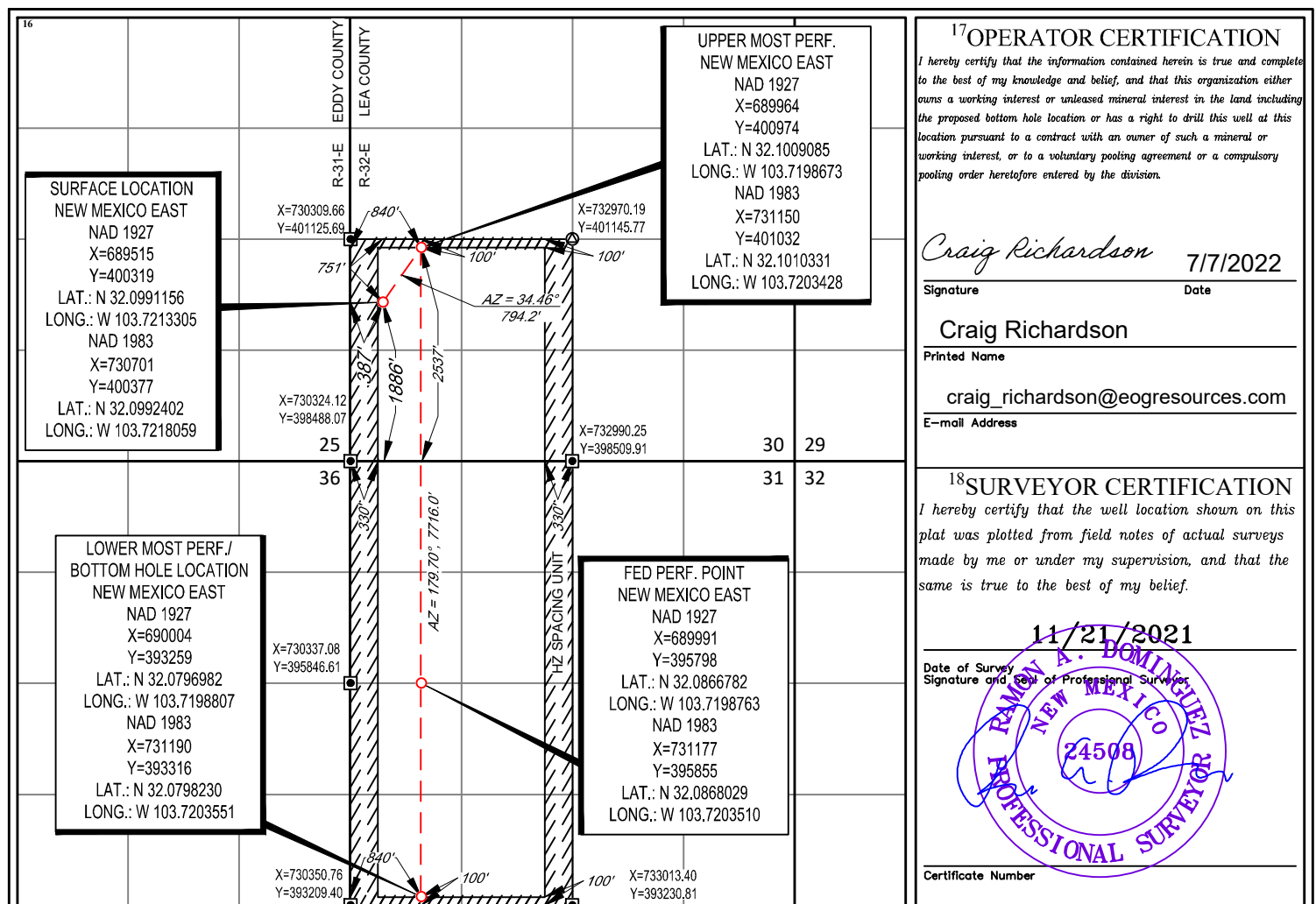
UL or lot no.	Section	Township	Range	Lot Idn	Feet from the	North/South line	Feet from the	East/West line	County
3	30	25-S	32-E	-	1886'	SOUTH	387'	WEST	LEA

¹¹Bottom Hole Location If Different From Surface

UL or lot no.	Section	Township	Range	Lot Idn	Feet from the	North/South line	Feet from the	East/West line	County
4	31	25-S	32-E	-	100'	SOUTH	840'	WEST	LEA

¹² Dedicated Acres 480.22	¹³ Joint or Infill	¹⁴ Consolidation Code	¹⁵ Order No.
--	-------------------------------	----------------------------------	-------------------------

No allowable will be assigned to this completion until all interests have been consolidated or a non-standard unit has been approved by the division.



FORM C-102
Revised August 1, 2011
Submit one copy to appropriate
District Office

☐ **AMENDED REPORT**

No allowable will be assigned to this completion until all interests have been consolidated or a non-standard unit has been approved by the division.

District I
1625 N. French Dr., Hobbs, NM 88240
Phone: (575) 393-6161 Fax: (575) 393-0720
District II
811 S. First St., Artesia, NM 88210
Phone: (575) 748-1283 Fax: (575) 748-9720
District III
1000 Rio Brazos Road, Aztec, NM 87410
Phone: (505) 334-6178 Fax: (505) 334-6170
District IV
1220 S. St. Francis Dr., Santa Fe, NM 87505
Phone: (505) 476-3460 Fax: (505) 476-3462

State of New Mexico
Energy, Minerals & Natural Resources
Department
OIL CONSERVATION DIVISION
1220 South St. Francis Dr.
Santa Fe, NM 87505

FORM C-102
Revised August 1, 2011
Submit one copy to appropriate
District Office

AMENDED REPORT

WELL LOCATION AND ACREAGE DEDICATION PLAT

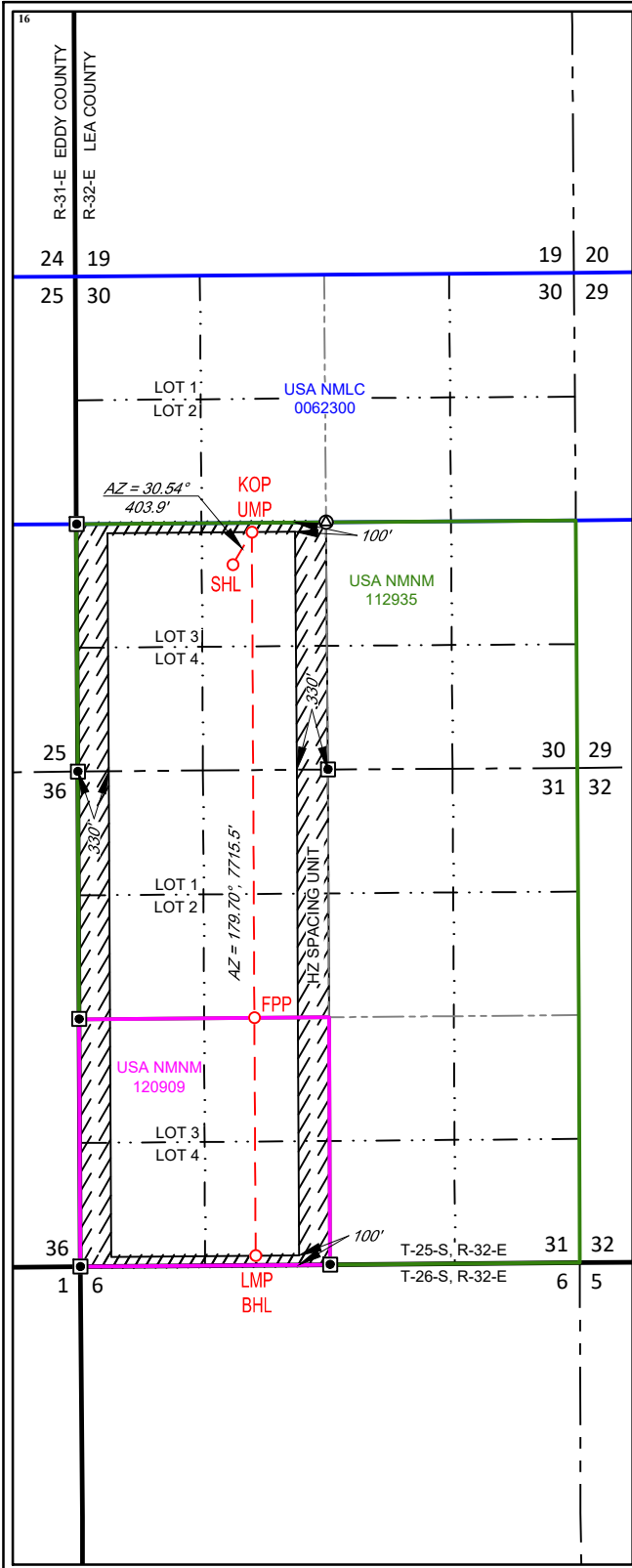
¹ API Number 30-025-51168		² Pool Code 97903		³ Pool Name WC-025 G-08 S253235G; Lwr Bone Spring	
⁴ Property Code 330825		⁵ Property Name ALMOST EDDY 30 FED COM			⁶ Well Number 513H
⁷ OGRID No. 7377		⁸ Operator Name EOG RESOURCES, INC.			⁹ Elevation 3352'

¹⁰ Surface Location									
UL or lot no. K	Section 30	Township 25-S	Range 32-E	Lot Idn -	Feet from the 2190'	North/South line SOUTH	Feet from the 1663'	East/West line WEST	County LEA

¹¹ Bottom Hole Location If Different From Surface									
UL or lot no. N	Section 31	Township 25-S	Range 32-E	Lot Idn -	Feet from the 100'	North/South line SOUTH	Feet from the 1870'	East/West line WEST	County LEA

¹² Dedicated Acres 480.22	¹³ Joint or Infill	¹⁴ Consolidation Code	¹⁵ Order No.
---	-------------------------------	----------------------------------	-------------------------

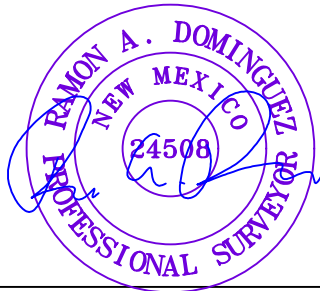
No allowable will be assigned to this completion until all interests have been consolidated or a non-standard unit has been approved by the division.



NEW MEXICO EAST
NAD 1983
SURFACE LOCATION (SHL)
2190' FSL - SEC. 30
1663' FWL - SEC. 30
X=731975 Y=400692
LAT.: N 32.1000851
LONG.: W 103.7176850
KICK OFF POINT (KOP)
UPPER MOST PERF. (UMP)
2536' FSL - SEC. 30
1870' FWL - SEC. 30
X=732180 Y=401040
LAT.: N 32.1010383
LONG.: W 103.7170158
LOWER MOST PERF. (LMP)
BOTTOM HOLE LOCATION (BHL)
100' FSL - SEC. 31
1870' FWL - SEC. 31
X=732220 Y=393324
LAT.: N 32.0798296
LONG.: W 103.7170296
FED PERF. POINT (FPP)
2641' FNL - SEC. 31
1870' FWL - SEC. 31
X=732207 Y=395862
LAT.: N 32.0868053
LONG.: W 103.7170251

¹⁷OPERATOR CERTIFICATION
I hereby certify that the information contained herein is true and complete to the best of my knowledge and belief, and that this organization either owns a working interest or unleased mineral interest in the land including the proposed bottom hole location or has a right to drill this well at this location pursuant to a contract with an owner of such a mineral or working interest, or to a voluntary pooling agreement or a compulsory pooling order heretofore entered by the division.
Star L Harrell 3/16/2023
Signature Date
Star L Harrell
Printed Name
star_harrell@eogresources.com
E-mail Address

¹⁸SURVEYOR CERTIFICATION
I hereby certify that the well location shown on this plat was plotted from field notes of actual surveys made by me or under my supervision, and that the same is true to the best of my belief.
11/21/2021
Date of Survey
Signature and Seal of Professional Surveyor



Certificate Number
NEW MEXICO EAST
NAD 1927
SURFACE LOCATION (SHL)
X=690794 Y=400633
LAT.: N 32.099577
LONG.: W 103.7171936
KICK OFF POINT (KOP)
UPPER MOST PERF. (UMP)
X=690984 Y=400982
LAT.: N 32.1009137
LONG.: W 103.7165405
LOWER MOST PERF. (LMP)
BOTTOM HOLE LOCATION (BHL)
X=691034 Y=393267
LAT.: N 32.0797049
LONG.: W 103.7165554
FED PERF. POINT (FPP)
X=691021 Y=395804
LAT.: N 32.066806
LONG.: W 103.7165505

District I
1625 N. French Dr., Hobbs, NM 88240
Phone: (575) 393-6161 Fax: (575) 393-0720
District II
811 S. First St., Artesia, NM 88210
Phone: (575) 748-1283 Fax: (575) 748-9720
District III
1000 Rio Brazos Road, Aztec, NM 87410
Phone: (505) 334-6178 Fax: (505) 334-6170
District IV
1220 S. St. Francis Dr., Santa Fe, NM 87505
Phone: (505) 476-3460 Fax: (505) 476-3462

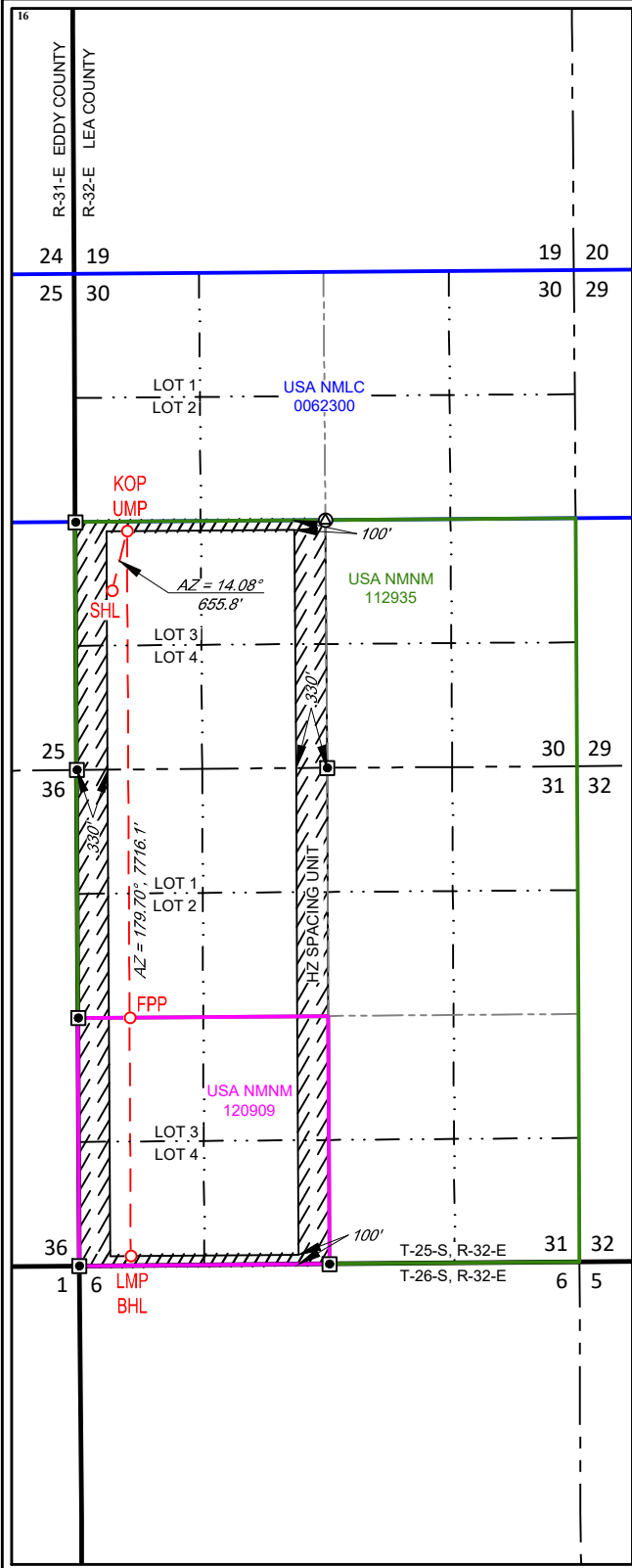
State of New Mexico
Energy, Minerals & Natural Resources
Department
OIL CONSERVATION DIVISION
1220 South St. Francis Dr.
Santa Fe, NM 87505

FORM C-102
Revised August 1, 2011
Submit one copy to appropriate
District Office
☐ AMENDED REPORT

WELL LOCATION AND ACREAGE DEDICATION PLAT

¹ API Number 30-025-51169		² Pool Code 97903		³ Pool Name WC-025 G-08 S253235G; Lwr Bone Spring					
⁴ Property Code 330825		⁵ Property Name ALMOST EDDY 30 FED COM						⁶ Well Number 578H	
⁷ OGRID No. 7377		⁸ Operator Name EOG RESOURCES, INC.						⁹ Elevation 3341'	
¹⁰ Surface Location									
UL or lot no. 3	Section 30	Township 25-S	Range 32-E	Lot Idn -	Feet from the 1903'	North/South line SOUTH	Feet from the 387'	East/West line WEST	County LEA
¹¹ Bottom Hole Location If Different From Surface									
UL or lot no. 4	Section 31	Township 25-S	Range 32-E	Lot Idn -	Feet from the 100'	North/South line SOUTH	Feet from the 550'	East/West line WEST	County LEA
¹² Dedicated Acres 480.22		¹³ Joint or Infill		¹⁴ Consolidation Code		¹⁵ Order No.			

No allowable will be assigned to this completion until all interests have been consolidated or a non-standard unit has been approved by the division.



NEW MEXICO EAST
NAD 1983

SURFACE LOCATION (SHL)

1903' FSL - SEC. 30
387' FWL - SEC. 30
X=730701 Y=400394
LAT.: N 32.0992855
LONG.: W 103.7218056

KICK OFF POINT (KOP)
UPPER MOST PERF. (UMP)

2537' FSL - SEC. 30
550' FWL - SEC. 30
X=730860 Y=401030
LAT.: N 32.1010316
LONG.: W 103.7212786

LOWER MOST PERF. (LMP)
BOTTOM HOLE LOCATION (BHL)

100' FSL - SEC. 31
550' FWL - SEC. 31
X=730900 Y=393314
LAT.: N 32.0798211
LONG.: W 103.7212914

FED PERF. POINT (FPP)

2641' FNL - SEC. 31
550' FWL - SEC. 31
X=730887 Y=395851
LAT.: N 32.0867960
LONG.: W 103.7212872

¹⁷OPERATOR CERTIFICATION

I hereby certify that the information contained herein is true and complete to the best of my knowledge and belief, and that this organization either owns a working interest or unleased mineral interest in the land including the proposed bottom hole location or has a right to drill this well at this location pursuant to a contract with an owner of such a mineral or working interest, or to a voluntary pooling agreement or a compulsory pooling order heretofore entered by the division.

Star L Harrell 3/16/2023
Signature Date

Star L Harrell
Printed Name

star_harrell@eogresources.com
E-mail Address

¹⁸SURVEYOR CERTIFICATION

I hereby certify that the well location shown on this plat was plotted from field notes of actual surveys made by me or under my supervision, and that the same is true to the best of my belief.

11/21/2021

Date of Survey
Signature and Seal of Professional Surveyor

Professional Surveyor
24508

Certificate Number

NEW MEXICO EAST
NAD 1927

<u>SURFACE LOCATION (SHL)</u> X=689515 Y=400336 LAT.: N 32.0991609 LONG.: W 103.7213302	<u>KICK OFF POINT (KOP)</u> <u>UPPER MOST PERF. (UMP)</u> X=689874 Y=400972 LAT.: N 32.1009070 LONG.: W 103.7208031
<u>LOWER MOST PERF. (LMP)</u> <u>BOTTOM HOLE LOCATION (BHL)</u> X=689714 Y=393256 LAT.: N 32.0796663 LONG.: W 103.7208170	<u>FED PERF. POINT (FPP)</u> X=689701 Y=395793 LAT.: N 32.0866713 LONG.: W 103.7208124

District I
1625 N. French Dr., Hobbs, NM 88240
Phone: (575) 393-6161 Fax: (575) 393-0720
District II
811 S. First St., Artesia, NM 88210
Phone: (575) 748-1283 Fax: (575) 748-9720
District III
1000 Rio Brazos Road, Aztec, NM 87410
Phone: (505) 334-6178 Fax: (505) 334-6170
District IV
1220 S. St. Francis Dr., Santa Fe, NM 87505
Phone: (505) 476-3460 Fax: (505) 476-3462

State of New Mexico
Energy, Minerals & Natural Resources
Department
OIL CONSERVATION DIVISION
1220 South St. Francis Dr.
Santa Fe, NM 87505

FORM C-102
Revised August 1, 2011
Submit one copy to appropriate
District Office

☐ AMENDED REPORT

WELL LOCATION AND ACREAGE DEDICATION PLAT

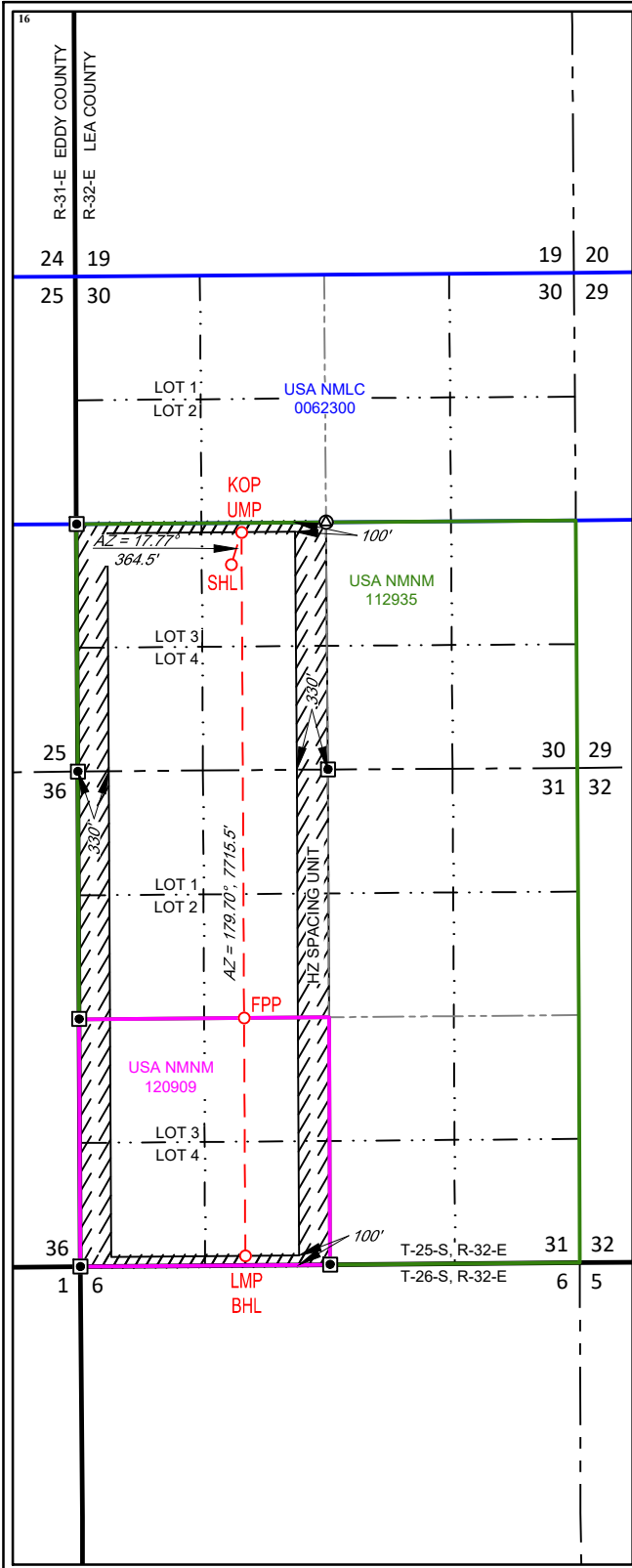
¹ API Number 30-025-51171		² Pool Code 97903	³ Pool Name WC-025 G-08 S253235G; Lwr Bone Spring
⁴ Property Code 330825	⁵ Property Name ALMOST EDDY 30 FED COM		⁶ Well Number 580H
⁷ OGRID No. 7377	⁸ Operator Name EOG RESOURCES, INC.		⁹ Elevation 3352'

¹⁰ Surface Location									
UL or lot no. K	Section 30	Township 25-S	Range 32-E	Lot Idn -	Feet from the 2190'	North/South line SOUTH	Feet from the 1647'	East/West line WEST	County LEA

¹¹ Bottom Hole Location If Different From Surface									
UL or lot no. N	Section 31	Township 25-S	Range 32-E	Lot Idn -	Feet from the 100'	North/South line SOUTH	Feet from the 1760'	East/West line WEST	County LEA

¹² Dedicated Acres 480.22	¹³ Joint or Infill	¹⁴ Consolidation Code	¹⁵ Order No.
---	-------------------------------	----------------------------------	-------------------------

No allowable will be assigned to this completion until all interests have been consolidated or a non-standard unit has been approved by the division.



NEW MEXICO EAST
NAD 1983

SURFACE LOCATION (SHL)

2190' FSL - SEC. 30
1647' FWL - SEC. 30
X=731959 Y=400692
LAT.: N 32.1000854
LONG.: W 103.7177367

KICK OFF POINT (KOP)
UPPER MOST PERF. (UMP)

2537' FSL - SEC. 30
1760' FWL - SEC. 30
X=732070 Y=401039
LAT.: N 32.1010378
LONG.: W 103.7173711

LOWER MOST PERF. (LMP)
BOTTOM HOLE LOCATION (BHL)

100' FSL - SEC. 31
1760' FWL - SEC. 31
X=732110 Y=393324
LAT.: N 32.0798289
LONG.: W 103.7173848

FED PERF. POINT (FPP)

2641' FNL - SEC. 31
1760' FWL - SEC. 31
X=732097 Y=395861
LAT.: N 32.0868045
LONG.: W 103.7173803

¹⁷OPERATOR CERTIFICATION

I hereby certify that the information contained herein is true and complete to the best of my knowledge and belief, and that this organization either owns a working interest or unleased mineral interest in the land including the proposed bottom hole location or has a right to drill this well at this location pursuant to a contract with an owner of such a mineral or working interest, or to a voluntary pooling agreement or a compulsory pooling order heretofore entered by the division.

Star L Harrell 3/16/2023
Signature Date

Star L Harrell
Printed Name

star_harrell@eogresources.com
E-mail Address

¹⁸SURVEYOR CERTIFICATION

I hereby certify that the well location shown on this plat was plotted from field notes of actual surveys made by me or under my supervision, and that the same is true to the best of my belief.

11/21/2021

Date of Survey
Signature and Seal of Professional Surveyor

Certificate Number

NEW MEXICO EAST
NAD 1927

<u>SURFACE LOCATION (SHL)</u> X=690778 Y=400633 LAT.: N 32.0999580 LONG.: W 103.7172452	<u>KICK OFF POINT (KOP)</u> <u>UPPER MOST PERF. (UMP)</u> X=690884 Y=400981 LAT.: N 32.1009132 LONG.: W 103.7168957
<u>LOWER MOST PERF. (LMP)</u> <u>BOTTOM HOLE LOCATION (BHL)</u> X=690924 Y=393266 LAT.: N 32.0797042 LONG.: W 103.7169105	<u>FED PERF. POINT (FPP)</u> X=690911 Y=3935603 LAT.: N 32.0866798 LONG.: W 103.7169057

District I
1625 N. French Dr., Hobbs, NM 88240
Phone:(575) 393-6161 Fax:(575) 393-0720
District II
811 S. First St., Artesia, NM 88210
Phone:(575) 748-1283 Fax:(575) 748-9720
District III
1000 Rio Brazos Rd., Aztec, NM 87410
Phone:(505) 334-6178 Fax:(505) 334-6170
District IV
1220 S. St Francis Dr., Santa Fe, NM 87505
Phone:(505) 476-3470 Fax:(505) 476-3462

State of New Mexico
Energy, Minerals and Natural Resources
Oil Conservation Division
1220 S. St Francis Dr.
Santa Fe, NM 87505

CONDITIONS

Action 296129

CONDITIONS

Operator: EOG RESOURCES INC P.O. Box 2267 Midland, TX 79702	OGRID: 7377
	Action Number: 296129
	Action Type: [IM-SD] Admin Order Support Doc (ENG) (IM-AAO)

CONDITIONS

Created By	Condition	Condition Date
dmcclure	Please review the content of the order to ensure you are familiar with the authorities granted and any conditions of approval. If you have any questions regarding this matter, please contact me.	12/19/2023