

Revised March 23, 2017

ID NO. 320519

NSP - 2193

RECEIVED: 03/05/24	REVIEWER:	TYPE:	APP NO: pLEL2406657476
---------------------------	-----------	-------	-------------------------------

ABOVE THIS TABLE FOR OCD DIVISION USE ONLY

NEW MEXICO OIL CONSERVATION DIVISION
 - Geological & Engineering Bureau -
 1220 South St. Francis Drive, Santa Fe, NM 87505

**ADMINISTRATIVE APPLICATION CHECKLIST**

THIS CHECKLIST IS MANDATORY FOR ALL ADMINISTRATIVE APPLICATIONS FOR EXCEPTIONS TO DIVISION RULES AND
 REGULATIONS WHICH REQUIRE PROCESSING AT THE DIVISION LEVEL IN SANTA FE

Applicant: Devon Energy Production Company, L.P. **OGRID Number:** 6137
Well Name: Marwari 21-16 State Fed Com 622H, 623H, and 714H Wells **API:** 30-025-48584, 30-025-48585, 30-025-48587
Pool: WC-025 G-08 S253216D; Upper Wolfcamp **Pool Code:** 98270

**SUBMIT ACCURATE AND COMPLETE INFORMATION REQUIRED TO PROCESS THE TYPE OF APPLICATION
 INDICATED BELOW**

- 1) **TYPE OF APPLICATION:** Check those which apply for [A]
 A. Location – Spacing Unit – Simultaneous Dedication
 NSL ☐ NSP (PROJECT AREA) ☒ NSP (PRORATION UNIT) ☐ SD
- B. Check one only for [I] or [II]
 [I] Commingling – Storage – Measurement
 ☐ DHC ☐ CTB ☐ PLC ☐ PC ☐ OLS ☐ OLM
 [II] Injection – Disposal – Pressure Increase – Enhanced Oil Recovery
 ☐ WFX ☐ PMX ☐ SWD ☐ IPI ☐ EOR ☐ PPR
- 2) **NOTIFICATION REQUIRED TO:** Check those which apply.
 A. ☒ Offset operators or lease holders
 B. ☐ Royalty, overriding royalty owners, revenue owners
 C. ☐ Application requires published notice
 D. ☒ Notification and/or concurrent approval by SLO
 E. ☒ Notification and/or concurrent approval by BLM
 F. ☐ Surface owner
 G. ☒ For all of the above, proof of notification or publication is attached, and/or,
 H. ☐ No notice required

FOR OCD ONLY

- ☐ Notice Complete
☐ Application Content Complete

- 3) **CERTIFICATION:** I hereby certify that the information submitted with this application for administrative approval is **accurate** and **complete** to the best of my knowledge. I also understand that **no action** will be taken on this application until the required information and notifications are submitted to the Division.

Note: Statement must be completed by an individual with managerial and/or supervisory capacity.

March 5, 2024

Darin Savage

Date

Print or Type Name

970-385-4401

Phone Number

darin@abadieschill.com

/s/ Darin Savage

Signature

e-mail Address

SUBMITTED TO THE OIL CONSERVATION DIVISION:

Application of Devon Energy Production Company, L.P., for administrative approval of a nonstandard spacing and proration unit for its Marwari 21-16 State Fed Com 622H, 623H, and 714H Wells, in the Wolfcamp formation underlying the E/2 W/2 and W/2 E/2 of Sections 16 and 21, Township 25 South, Range 32 East, NMPM, Lea County, New Mexico.

TABLE OF CONTENTS

Administrative Checklist for NSP

- Exhibit A: C-102 Forms, specifically identifying the NSP (19.15.15.11B)
- Exhibit B: A statement discussing the reasons for the nonstandard unit (19.15.15.11B(3)(c))
- Exhibit C: Tract map outlining (1) the proposed nonstandard unit with all adjoining spacing units; (2) an applicable standard spacing unit; and (3) the proposed dedications (19.15.15.11B(3)(a))
- Exhibit D: A list of affected persons, with addresses, entitled to notice of the application, along with a copy of the notice letter sent to affected persons, entitled to notice of the application (19.15.15.11B(3)(b))

Devon Energy Production Company, L.P.



For the Pursuit of Energy

ABADIE | SCHILL PC

Colorado	New Mexico
Louisiana	Texas
Nebraska	Kansas
Montana	Wyoming
Oklahoma	California
	North Dakota

March 5, 2024

Dylan M. Fuge, Director
Oil Conservation Division
New Mexico Department of Energy
Minerals and Natural Resources
1220 South Saint Francis Drive
Santa Fe, New Mexico 87505

Copy to: Leonard Lowe, Division Technical Examiner

Re: Application of Devon Energy Production Company, L.P., for administrative approval of a nonstandard spacing and proration unit for its Marwari 21-16 State Fed Com 622H, 623H, and 714H Wells, in the Wolfcamp formation underlying the E/2 W/2 and W/2 E/2 of Sections 16 and 21, Township 25 South, Range 32 East, NMPM, Lea County, New Mexico.

Dear Director Fuge:

Devon Energy Production Company, L.P., ("Devon"), OGRID No. 6137, is seeking administrative approval of a 640-acre, more or less, nonstandard spacing and proration unit ("NSP") for the Marwari 21-16 State Fed Com 622H (API 30-025-48584), 623H (API 30-025-48585), and 714H (API 30-025-48587) Wells, oil wells, located within the WC-025 G-08 S253216D; Upper Wolfcamp Pool (Pool Code 98270) underlying the E/2 W/2 and W/2 E/2 of Sections 16 and 21, Township 25 South, Range 32 East, NMPM, Lea County, New Mexico. C-102s for the Wells are attached as Exhibit A. The specifications for these horizontal wells are as follows:

Marwari 21-16 State Fed Com 622H Well:

- Surface Location (SL): 350' from the South line and 1480' from the West line of Section 21, Township 25 South, Range 32 East;
- Bottom Hole Location (BHL): 87' from the North line and 1659' from the West line of Section 16, Township 25 South, Range 32 East;
- First Take Point (FTP): 422' from the South line and 1641' from the West line of Section 21, Township 25 South, Range 32 East;
- Last Take Point (LTP): 111' from the North line and 1659' from the West line of Section 16, Township 25 South, Range 32 East.

Marwari 21-16 State Fed Com 623H Well:

- Surface Location (SL): 325' from the North line and 1740' from the East line of Section 28, Township 25 South, Range 32 East;

abadieschill.com

214 McKenzie Street, Santa Fe, New Mexico, 87501

O : 970.385.4401 • F : 970.385.4901

- Bottom Hole Location (BHL): 99' from the North line and 2287' from the East line of Section 16, Township 25 South, Range 32 East;
- First Take Point (FTP): 132' from the South line and 2278' from the East line of Section 21, Township 25 South, Range 32 East;
- Last Take Point (LTP): 152' from the North line and 2288' from the East line of Section 16, Township 25 South, Range 32 East.

Marwari 21-16 State Fed Com 714H Well:

- Surface Location (SL): 350' from the South line and 1510' from the West line of Section 21, Township 25 South, Range 32 East;
- Bottom Hole Location (BHL): 103' from the North line and 2317' from the West line of Section 16, Township 25 South, Range 32 East;
- First Take Point (FTP): 355' from the South line and 2264' from the West line of Section 21, Township 25 South, Range 32 East;
- Last Take Point (LTP): 105' from the North line and 2318' from the West line of Section 16, Township 25 South, Range 32 East.

Devon has included as Exhibit B, a letter explaining why this application is needed. These wells will produce from the WC-025 G-08 S253216D; Upper Wolfcamp Pool (Pool Code 98270). The WC-025 G-08 S253216D; Upper Wolfcamp Pool is designated as an oil pool and statewide rules apply.

The non-standard horizontal spacing unit will be comprised of the E/2 W/2 and W/2 E/2 of Sections 16 and 21, Township 25 South, Range 32 East, NMPM, Lea County, New Mexico, and therefore notice was provided to affected persons adjoining the non-standard unit, pursuant to 19.15.16.15B(5)(b)(ii) NMAC.

Devon attests that, on or before submission of this application, it provided notice to the affected persons as described herein; said notice described satisfies all provisions of 19.15.16.15B(5)(b) NMAC. Devon has also provided notice to the New Mexico State Land Office and the Bureau of Land Management to the extent that state and federal leases are involved, pursuant to 19.15.2.7A(8)(d) NMAC. Copies of the application and required plat maps are furnished. Devon provides herein a sectional map of this area, attached as Exhibit C. Proof of mailing, along with a copy of the notice letter sent to listed affected persons and parties, is attached hereto as Exhibit D. There is no pooling case associated with this application.

Your consideration in this matter is appreciated.

Sincerely,



Darin C. Savage

Attorney for Devon Energy
Production Company, L.P.

District I
1625 N. French Dr., Hobbs, NM 88240
Phone: (575) 393-6161 Fax: (575) 393-0720

District II
811 S. First St., Artesia, NM 88210
Phone: (575) 748-1283 Fax: (575) 748-9720

District III
1000 Rio Brazos Road, Aztec, NM 87410
Phone: (505) 334-6178 Fax: (505) 334-6170

District IV
1220 S. St. Francis Dr., Santa Fe, NM 87505
Phone: (505) 476-3460 Fax: (505) 476-3462

State of New Mexico
Energy, Minerals & Natural Resources Department
OIL CONSERVATION DIVISION
1220 South St. Francis Dr.
Santa Fe, NM 87505

Form C-102
Revised August 1, 2011
Submit one copy to appropriate
District Office
☐ AMENDED REPORT

WELL LOCATION AND ACREAGE DEDICATION PLAT

¹ API Number 30-025-48584	² Pool Code 98270	³ Pool Name WC-025 G-08 S253216D; UPPER WOLFCAMP
⁴ Property Code	⁵ Property Name MARWARI 21-16 STATE FED COM	⁶ Well Number 622H
⁷ OGRID No. 6137	⁸ Operator Name DEVON ENERGY PRODUCTION COMPANY, L.P.	⁹ Elevation 3390.3

¹⁰ Surface Location

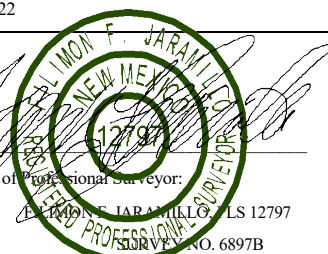
UL or lot no.	Section	Township	Range	Lot Idn	Feet from the	North/South line	Feet from the	East/West line	County
N	21	25 S	32 E		350	SOUTH	1480	WEST	LEA

¹¹ Bottom Hole Location If Different From Surface

UL or lot no.	Section	Township	Range	Lot Idn	Feet from the	North/South line	Feet from the	East/West line	County
C	16	25 S	32 E		87	NORTH	1659	WEST	LEA

¹² Dedicated Acres 640	¹³ Joint or Infill	¹⁴ Consolidation Code	¹⁵ Order No.
---	-------------------------------	----------------------------------	-------------------------

No allowable will be assigned to this completion until all interests have been consolidated or a non-standard unit has been approved by the division.

<p>NW CORNER SEC. 16 LAT. = 32.1376330°N LONG. = 103.6886037°W NMSP EAST (FT) N = 414403.87 E = 740898.71</p> <p>AS-DRIILLED LAST TAKE POINT 111' FSL, 1659' FWL LAT. = 32.1373595°N LONG. = 103.6832478°W NMSP EAST (FT) N = 414314.34 E = 742557.15</p> <p>NW CORNER SEC. 21 LAT. = 32.1231388°N LONG. = 103.6886842°W NMSP EAST (FT) N = 409130.93 E = 740905.34</p> <p>W/4 CORNER SEC. 21 LAT. = 32.1158978°N LONG. = 103.6886867°W NMSP EAST (FT) N = 406496.74 E = 740920.33</p> <p>SW CORNER SEC. 21 LAT. = 32.1085668°N LONG. = 103.6886834°W NMSP EAST (FT) N = 403829.87 E = 740937.30</p> <p>N89°15'43"E 2651.26 FT N89°20'29"E 2664.70 FT 1659' BHL LTP 87' N/4 CORNER SEC. 16 LAT. = 32.1376830°N LONG. = 103.6800405°W NMSP EAST (FT) N = 414438.01 E = 743549.18 AS-DRIILLED BOTTOM OF HOLE LAT. = 32.1374254°N LONG. = 103.6832476°W NMSP EAST (FT) N = 414338.32 E = 742557.05 DNF NOTES: LATITUDE AND LONGITUDE COORDINATES ARE SHOWN USING THE NORTH AMERICAN DATUM OF 1983 (NAD83) LISTED NEW MEXICO STATE PLANE EAST COORDINATES ARE GRID (NAD83). BASIS OF BEARING AND DISTANCES USED ARE NEW MEXICO STATE PLANE EAST COORDINATES MODIFIED TO THE SURFACE. VERTICAL DATUM NAVD88.</p> <p>N89°31'59"E 2665.28 FT N89°05'49"E 2660.43 FT N/4 CORNER SEC. 21 LAT. = 32.1231544°N LONG. = 103.6800770°W NMSP EAST (FT) N = 409152.64 E = 743569.95 MARWARI 21-16 STATE FED COM 622H ELEV. = 3390.3' LAT. = 32.1095849°N (NAD83) LONG. = 103.6839049°W AS-DRIILLED KOP 115' FSL, 1695' FWL LAT. = 32.1089479°N LONG. = 103.6832095°W NMSP EAST (FT) N = 403978.67 E = 742631.35 S/4 CORNER SEC. 21 LAT. = 32.1086683°N LONG. = 103.6800892°W NMSP EAST (FT) N = 403882.79 E = 743598.11 FTP 350' SHL 1480'</p> <p>S88°51'38"W 2661.92 FT S89°21'15"W 2660.68 FT</p>	<p>NE CORNER SEC. 16 LAT. = 32.1377224°N LONG. = 103.6714339°W NMSP EAST (FT) N = 414448.64 E = 746213.13</p> <p>E/4 CORNER SEC. 16 LAT. = 32.1304888°N LONG. = 103.6714601°W NMSP EAST (FT) N = 411837.10 E = 746221.18</p> <p>AS-DRIILLED FIRST TAKE POINT 422' FSL, 1641' FWL LAT. = 32.1097886°N LONG. = 103.6833838°W NMSP EAST (FT) N = 404284.17 E = 742575.53</p> <p>NE CORNER SEC. 21 LAT. = 32.1232250°N LONG. = 103.6714858°W NMSP EAST (FT) N = 409194.57 E = 746229.47</p> <p>E/4 CORNER SEC. 21 LAT. = 32.1159650°N LONG. = 103.6714961°W NMSP EAST (FT) N = 406553.45 E = 746242.49</p> <p>SE CORNER SEC. 21 LAT. = 32.1087061°N LONG. = 103.6714983°W NMSP EAST (FT) N = 403912.78 E = 746258.05</p>	<p>¹⁷ OPERATOR CERTIFICATION</p> <p>I hereby certify that the information contained herein is true and complete to the best of my knowledge and belief, and that this organization either owns a working interest or unleased mineral interest in the land including the proposed bottom hole location or has a right to drill this well at this location pursuant to a contract with an owner of such a mineral or working interest, or to a voluntary pooling agreement or a compulsory pooling order heretofore entered by the division.</p> <p>Signature _____ Date _____</p> <p>Printed Name _____</p> <p>E-mail Address _____</p> <p>¹⁸ SURVEYOR CERTIFICATION</p> <p>I hereby certify that the well location shown on this plat was plotted from field notes of actual surveys made by me or under my supervision, and that the same is true and correct to the best of my belief.</p> <p>JANUARY 20, 2022</p> <p>Date of Survey _____</p> <p>Signature and Seal of Professional Surveyor: </p> <p>Certificate Number: 12797</p> <p>Survey No. 6897B</p>
--	--	--

EXHIBIT

A

Intent ☐ As Drilled ☒

API #

Operator Name:	Property Name:	Well Number
DEVON ENERGY PRODUCTION CO., L.P.	MARWARI 21-16 STATE FED COM	622H

Kick Off Point (KOP)

UL N	Section 21	Township 25S	Range 32E	Lot	Feet 115	From N/S SOUTH	Feet 1695	From E/W WEST	County LEA
Latitude 32.1089479					Longitude 103.6832095			NAD 83	

First Take Point (FTP)

UL N	Section 21	Township 25S	Range 32E	Lot	Feet 422	From N/S SOUTH	Feet 1641	From E/W WEST	County LEA
Latitude 32.1097886					Longitude 103.6833838			NAD 83	

Last Take Point (LTP)

UL C	Section 16	Township 25S	Range 32E	Lot	Feet 111	From N/S NORTH	Feet 1659	From E/W WEST	County LEA
Latitude 32.1373595					Longitude 103.6832478			NAD 83	

Is this well the defining well for the Horizontal Spacing Unit?

☐

Is this well an infill well?

☐

If infill is yes please provide API if available, Operator Name and well number for Defining well for Horizontal Spacing Unit.

API #

Operator Name:	Property Name:	Well Number

KZ 06/29/2018

District I
1625 N. French Dr., Hobbs, NM 88240
Phone: (575) 393-6161 Fax: (575) 393-0720
District II
811 S. First St., Artesia, NM 88210
Phone: (575) 748-1283 Fax: (575) 748-9720
District III
1000 Rio Brazos Road, Aztec, NM 87410
Phone: (505) 334-6178 Fax: (505) 334-6170
District IV
1220 S. St. Francis Dr., Santa Fe, NM 87505
Phone: (505) 476-3460 Fax: (505) 476-3462

State of New Mexico
Energy, Minerals & Natural Resources Department
OIL CONSERVATION DIVISION
1220 South St. Francis Dr.
Santa Fe, NM 87505

Form C-102
Revised August 1, 2011
Submit one copy to appropriate
District Office
☒ AMENDED REPORT

WELL LOCATION AND ACREAGE DEDICATION PLAT

¹ API Number 30-025-48585	² Pool Code [98270]	³ Pool Name WC-025 G-08 S253216D; UPPER WOLFCAMP
⁴ Property Code 325998	⁵ Property Name MARWARI 21-16 STATE FED COM	⁶ Well Number 623H
⁷ OGRID No. 6137	⁸ Operator Name DEVON ENERGY PRODUCTION COMPANY, L.P.	⁹ Elevation 3387.9

¹⁰ Surface Location

UL or lot no.	Section	Township	Range	Lot Idn	Feet from the	North/South line	Feet from the	East/West line	County
B	28	25 S	32 E		325	NORTH	1740	EAST	LEA

¹¹ Bottom Hole Location If Different From Surface

UL or lot no.	Section	Township	Range	Lot Idn	Feet from the	North/South line	Feet from the	East/West line	County
B	16	25 S	32 E		99	NORTH	2287	EAST	LEA

¹² Dedicated Acres 640	¹³ Joint or Infill	¹⁴ Consolidation Code	¹⁵ Order No.
---	-------------------------------	----------------------------------	-------------------------

No allowable will be assigned to this completion until all interests have been consolidated or a non-standard unit has been approved by the division.

	<p>¹⁷ OPERATOR CERTIFICATION</p> <p>I hereby certify that the information contained herein is true and complete to the best of my knowledge and belief, and that this organization either owns a working interest or unleased mineral interest in the land including the proposed bottom hole location or has a right to drill this well at this location pursuant to a contract with an owner of such a mineral or working interest, or to a voluntary pooling agreement or a compulsory pooling order heretofore entered by the division.</p> <p><i>Jenny Harms</i> 2-22-2022</p> <p>Signature _____ Date _____</p> <p>JENNY HARMS</p> <p>Printed Name _____</p> <p>JENNY.HARMS@DVN.COM</p> <p>E-mail Address _____</p>
	<p>¹⁸ SURVEYOR CERTIFICATION</p> <p>I hereby certify that the well location shown on this plat was plotted from field notes of actual surveys made by me or under my supervision, and that the same is true and correct to the best of my belief.</p> <p>FEBRUARY 1, 2022</p> <p>Date of Survey _____</p> <p><i>William F. Jaramila</i></p> <p>Signature and Seal of Professional Surveyor _____</p> <p>Certificate Number: FILMONT FOR ADRIAN, PLS 12797</p> <p>SURVEY NO. 6901A</p>

Intent ☐ As Drilled ☒

API #

Operator Name:	Property Name:	Well Number
DEVON ENERGY PRODUCTION CO., L.P.	MARWARI 21-16 STATE FED COM	623H

Kick Off Point (KOP)

UL B	Section 28	Township 25S	Range 32E	Lot	Feet 196	From N/S NORTH	Feet 2265	From E/W EAST	County LEA
Latitude 32.1081355					Longitude 103.6788101			NAD 83	

First Take Point (FTP)

UL O	Section 21	Township 25S	Range 32E	Lot	Feet 132	From N/S SOUTH	Feet 2278	From E/W EAST	County LEA
Latitude 32.1090365					Longitude 103.6788528			NAD 83	

Last Take Point (LTP)

UL B	Section 16	Township 25S	Range 32E	Lot	Feet 152	From N/S NORTH	Feet 2288	From E/W EAST	County LEA
Latitude 32.1372702					Longitude 103.6788255			NAD 83	

Is this well the defining well for the Horizontal Spacing Unit?

☐ Y

Is this well an infill well?

☐ N

If infill is yes please provide API if available, Operator Name and well number for Defining well for Horizontal Spacing Unit.

API #

Operator Name:	Property Name:	Well Number

KZ 06/29/2018

District I
1625 N. French Dr., Hobbs, NM 88240
Phone: (575) 393-6161 Fax: (575) 393-0720
District II
811 S. First St., Artesia, NM 88210
Phone: (575) 748-1283 Fax: (575) 748-9720
District III
1000 Rio Brazos Road, Aztec, NM 87410
Phone: (505) 334-6178 Fax: (505) 334-6170
District IV
1220 S. St. Francis Dr., Santa Fe, NM 87505
Phone: (505) 476-3460 Fax: (505) 476-3462

State of New Mexico
Energy, Minerals & Natural Resources Department
OIL CONSERVATION DIVISION
1220 South St. Francis Dr.
Santa Fe, NM 87505

Form C-102
Revised August 1, 2011
Submit one copy to appropriate
District Office

☒ AMENDED REPORT

WELL LOCATION AND ACREAGE DEDICATION PLAT

¹ API Number 30-025-48587	² Pool Code [98270]	³ Pool Name WC-025 G-08 S253216D; UPPER WOLFCAMP
⁴ Property Code 325998	⁵ Property Name MARWARI 21-16 STATE FED COM	⁶ Well Number 714H
⁷ OGRID No. 6137	⁸ Operator Name DEVON ENERGY PRODUCTION COMPANY, L.P.	⁹ Elevation 3390.2

¹⁰ Surface Location

UL or lot no.	Section	Township	Range	Lot Idn	Feet from the	North/South line	Feet from the	East/West line	County
N	21	25 S	32 E		350	SOUTH	1510	WEST	LEA

¹¹ Bottom Hole Location If Different From Surface

UL or lot no.	Section	Township	Range	Lot Idn	Feet from the	North/South line	Feet from the	East/West line	County
C	16	25 S	32 E		103	NORTH	2317	WEST	LEA

¹² Dedicated Acres 640	¹³ Joint or Infill	¹⁴ Consolidation Code	¹⁵ Order No.
---	-------------------------------	----------------------------------	-------------------------

No allowable will be assigned to this completion until all interests have been consolidated or a non-standard unit has been approved by the division.

<p>NW CORNER SEC. 16 LAT. = 32.1376330°N LONG. = 103.6886037°W NMSP EAST (FT) N = 414403.87 E = 740898.71</p> <p>AS-DRILLED LAST TAKE POINT 105' FNL, 2318' FWL LAT. = 32.1373872°N LONG. = 103.6811185°W NMSP EAST (FT) N = 414328.40 E = 743216.17</p> <p>NW CORNER SEC. 21 LAT. = 32.1231388°N LONG. = 103.6886842°W NMSP EAST (FT) N = 409130.93 E = 740905.34</p> <p>W/4 CORNER SEC. 21 LAT. = 32.1158978°N LONG. = 103.6886867°W NMSP EAST (FT) N = 406496.74 E = 740920.33</p> <p>SW CORNER SEC. 21 LAT. = 32.1085668°N LONG. = 103.6886834°W NMSP EAST (FT) N = 403829.87 E = 740937.30</p> <p>N89°15'43"E 2651.26 FT N89°20'29"E 2664.70 FT 2317' BHL LTP 103' N/4 CORNER SEC. 16 LAT. = 32.1376830°N LONG. = 103.6800405°W NMSP EAST (FT) N = 414438.01 E = 743549.18</p> <p>N89°31'59"E 2665.28 FT N89°05'49"E 2660.43 FT N/4 CORNER SEC. 21 LAT. = 32.1231544°N LONG. = 103.6800770°W NMSP EAST (FT) N = 409152.64 E = 743569.95</p> <p>NOTE: LATITUDE AND LONGITUDE COORDINATES ARE SHOWN USING THE NORTH AMERICAN DATUM OF 1983 (NAD83) LISTED NEW MEXICO STATE PLANE EAST COORDINATES ARE GRID (NAD83). BASIS OF BEARING AND DISTANCES USED ARE NEW MEXICO STATE PLANE EAST COORDINATES MODIFIED TO THE SURFACE. VERTICAL DATUM NAVD88.</p> <p>N89°19'34"E 2667.50 FT N89°21'15"W 2660.68 FT S88°51'38"W 2661.92 FT S/4 CORNER SEC. 21 LAT. = 32.1086683°N LONG. = 103.6800892°W NMSP EAST (FT) N = 403882.79 E = 743598.11</p> <p>AS-DRILLED BOTTOM OF HOLE LAT. = 32.1373924°N LONG. = 103.6811199°W NMSP EAST (FT) N = 414330.29 E = 743215.72</p> <p>MARWARI 21-16 STATE FED COM 714H ELEV. = 3390.2' LAT. = 32.1095860°N (NAD83) LONG. = 103.6838081°W NMSP EAST (FT) N = 404209.69 E = 742444.62</p> <p>AS-DRILLED KOP 59' FSL, 2218' FWL LAT. = 32.1088128°N LONG. = 103.6815276°W NMSP EAST (FT) N = 403932.66 E = 743152.41</p> <p>SE CORNER SEC. 21 LAT. = 32.1087061°N LONG. = 103.6714983°W NMSP EAST (FT) N = 403912.78 E = 746258.05</p> <p>NE CORNER SEC. 16 LAT. = 32.1377224°N LONG. = 103.6714339°W NMSP EAST (FT) N = 414468.64 E = 746213.13</p> <p>E/4 CORNER SEC. 16 LAT. = 32.1304888°N LONG. = 103.6714601°W NMSP EAST (FT) N = 411837.10 E = 746221.18</p> <p>NE CORNER SEC. 21 LAT. = 32.1232250°N LONG. = 103.6714858°W NMSP EAST (FT) N = 409194.57 E = 746229.47</p> <p>E/4 CORNER SEC. 21 LAT. = 32.1159650°N LONG. = 103.6714961°W NMSP EAST (FT) N = 406553.45 E = 746242.49</p>	<p>¹⁷ OPERATOR CERTIFICATION</p> <p>I hereby certify that the information contained herein is true and complete to the best of my knowledge and belief, and that this organization either owns a working interest or unleased mineral interest in the land including the proposed bottom hole location or has a right to drill this well at this location pursuant to a contract with an owner of such a mineral or working interest, or to a voluntary pooling agreement or a compulsory pooling order heretofore entered by the division.</p> <p><i>Jenny Harms</i> 2-22-2022 Signature Date</p> <p>JENNY HARMS Printed Name Jenny.Harms@divn.com E-mail Address</p> <p>¹⁸ SURVEYOR CERTIFICATION</p> <p>I hereby certify that the well location shown on this plat was plotted from field notes of actual surveys made by me or under my supervision, and that the same is true and correct to the best of my belief.</p> <p>JANUARY 20, 2022 Date of Survey</p> <p><i>[Signature]</i> Signature and Seal of Professional Surveyor: 12797</p> <p>Certificate Number: 12797 Survey No. 6898B</p>
---	--

Intent ☐ As Drilled ☒

API #		
Operator Name: DEVON ENERGY PRODUCTION CO., L.P.	Property Name: MARWARI 21-16 STATE FED COM	Well Number 714H

Kick Off Point (KOP)

UL N	Section 21	Township 25S	Range 32E	Lot	Feet 59	From N/S SOUTH	Feet 2216	From E/W WEST	County LEA
Latitude 32.1088128					Longitude 103.6815276			NAD 83	

First Take Point (FTP)

UL N	Section 21	Township 25S	Range 32E	Lot	Feet 355	From N/S SOUTH	Feet 2264	From E/W WEST	County LEA
Latitude 32.1096296					Longitude 103.6813749			NAD 83	

Last Take Point (LTP)

UL C	Section 16	Township 25S	Range 32E	Lot	Feet 105	From N/S NORTH	Feet 2318	From E/W WEST	County LEA
Latitude 32.1373872					Longitude 103.6811185			NAD 83	

Is this well the defining well for the Horizontal Spacing Unit?

☐ N

Is this well an infill well?

☐ Y

If infill is yes please provide API if available, Operator Name and well number for Defining well for Horizontal Spacing Unit.

API #		
Operator Name:	Property Name:	Well Number

KZ 06/29/2018



Devon Energy Corporation
333 W. Sheridan Avenue
Oklahoma City, OK 73102

405 228 2448 Phone
www.devonenergy.com

February 26, 2024

Mr. Leonard Lowe
New Mexico Oil Conservation Division
1220 South Francis Drive
Santa Fe, New Mexico 87505

RE: Application for Non-standard Spacing Unit
Engineering Statement
Devon Energy Production Company, L.P.
Marwari 21-16 State Fed Com 622H, 623H, and 714H
(the "Marwari Wells")
The E/2W/2 and W/2E/2 of Sections 16 and 21
Township 25 South, Range 32 East, NMPPM ("Unit")
Lea County, New Mexico

Dear Mr. Lowe:

Devon Energy Production Company, L.P. ("Devon") respectfully requests administrative approval of a non-standard spacing unit for the Marwari Wells referenced above. The wells are in the WC-025 G-08 S253216D; Upper Wolfcamp Pool (Pool Code 98270).

The Marwari Wells are currently dedicated to two standard 320-acre spacing units covering the E/2W/2 and the W/2E/2 of Sections 16 and 21. The 622H and 714H Wells have been drilled and are producing from the unit covering the E/2W/2. The 623H well has also been drilled and is producing from the unit covering the W/2E/2. The proposed non-standard spacing unit would consolidate the units by covering both the E/2W/2 and W/2E/2 of Sections 16 and 21.

Having a non-standard spacing unit would avoid economic waste by eliminating the unnecessary duplication of production facilities, thus optimizing revenue to the owners from production. In addition, important environmental benefits would be achieved by reducing the impact on surface area and eliminating emissions into the air that would otherwise result from having separate facilities.

For these and other reasons, the BLM has been encouraging Devon to pursue Communitization Agreements that cover larger areas and approval of the non-standard unit would satisfy this preference for the federal lands involved.

EXHIBIT
B

Devon has the responsibility to be a prudent operator, and accordingly, we are requesting approval of the non-standard location in order optimize production, prevent waste, protect correlative rights, and reduce the environmental impact.

Sincerely,
John Dwyer, Reservoir Engineer

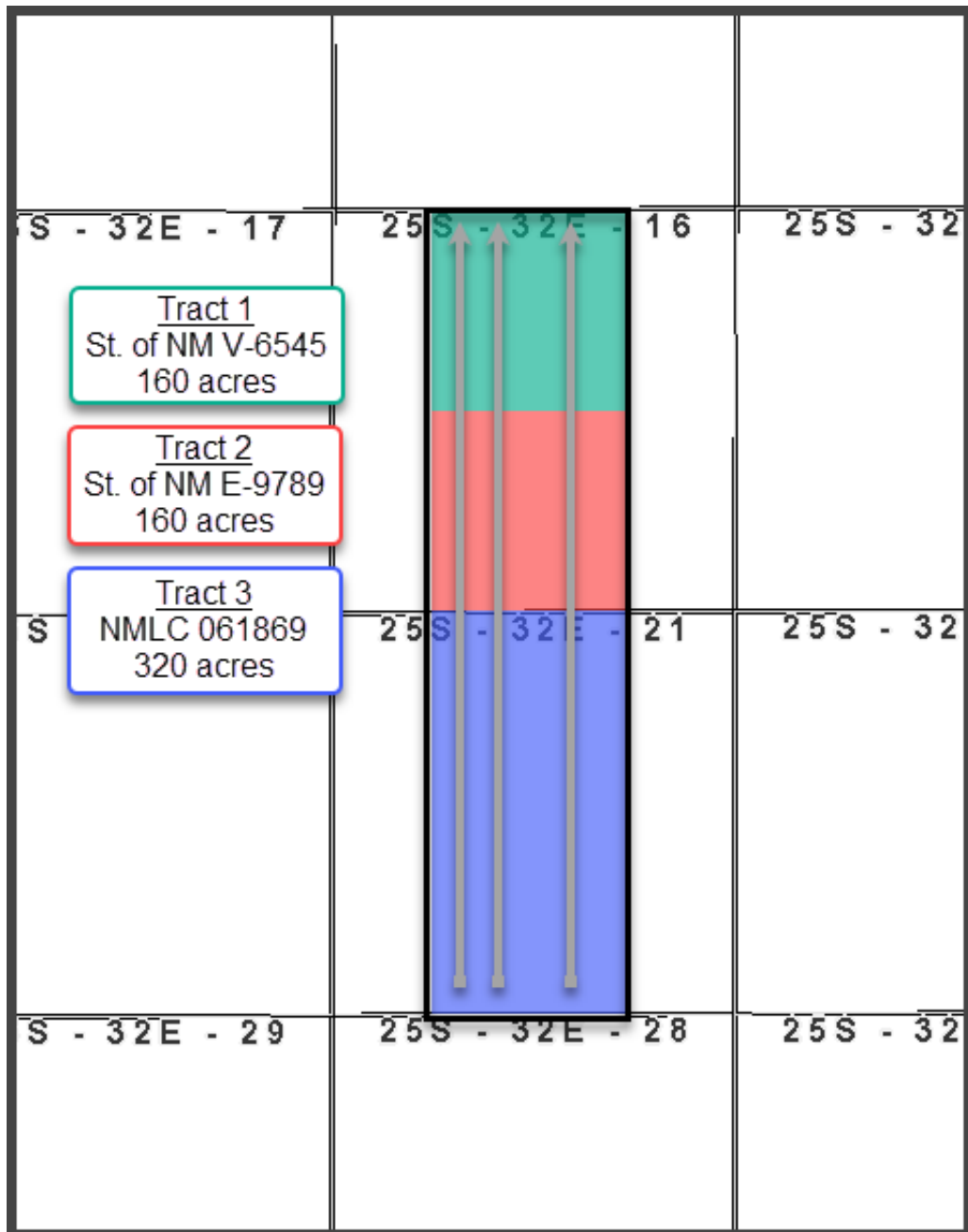
John Dwyer

Marwari 21-16 State Fed Com Area

Proposed Non-Standard Horizontal Spacing Unit

E2W2, W2E2 of Sections 16 & 21
Township 25 South, Range 32 East
Lea County, NM

Wolfcamp Development;
Upper Wolfcamp; WC-025 G-08 S253216D [98270]

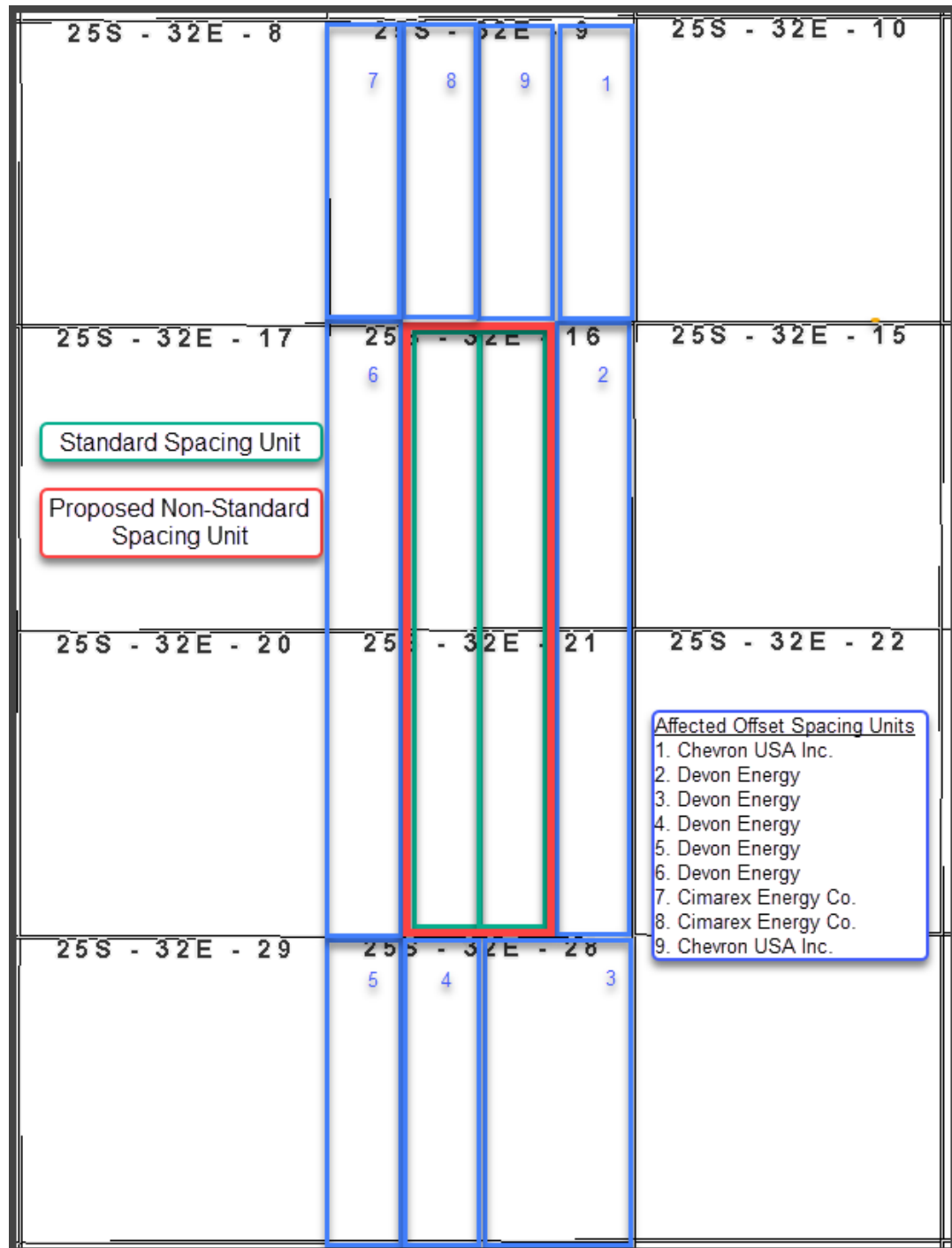


Wells: Marwari 16-21 State Fed Com 622H, 623H, & 714H

**EXHIBIT
C**

Marwari 21-16 State Fed Com Area

Applicable Standard Horizontal Spacing Unit



ReferenceNumber	Name1	Name2	Address1	Address2	Address3	City	State	Zip	ReturnReceiptType
4188.63	Chevron USA Inc.		1400 Smith St.			Houston	TX	77002	RRE
4188.63	Cimarex Energy Company		202 S. Cheyenne Ave.	Ste 1000		Tulsa	OK	74103	RRE
4188.63	Extex Operating Co.		5065 Westheimer Rd.	Suite 625		Houston	TX	77056	RRE
4188.63	Pride Energy		P.O. Box 701950			Tulsa	OK	74170	RRE
4188.63	H6 Holdings, LLC		2300 N L St.			Midland	TX	79705	RRE
4188.63	LHAH Properties, LLC		P.O. Box 1348			Fort Worth	TX	76101	RRE
4188.63	Hanley Petroleum, LLC		P.O. Box 1348			Fort Worth	TX	76101	RRE
4188.63	Marvos Oil Company, LLC		P.O. Box 50820			Midland	TX	79710	RRE
4188.63	TBO Oil & Gas LLC		P.O. Box 10502			Midland	TX	79702	RRE
4188.63	Stillwater Investments		6403 Sequoia Drive			Midland	TX	79707	RRE
4188.63	Bureau of Land Management		620 E. Greene Street			Carlsbad	NM	88220-6292	RRE
4188.63	New Mexico State Land Office		310 Old Santa Fe Trail			Santa Fe	NM	87501	RRE





For the Pursuit of Energy

ABADIE | SCHILL PC

Colorado	New Mexico
Louisiana	Texas
Nebraska	Kansas
Montana	Wyoming
Oklahoma	California
	North Dakota

March 5, 2024

**VIA CERTIFIED MAIL
RETURN RECEIPT REQUESTED**

NOTICE TO AFFECTED PERSONS/PARTIES

**RE: APPLICATIONS FOR ADMINISTRATIVE APPROVAL OF NONSTANDARD
SPACING AND PRORATION UNIT**

Re: Application of Devon Energy Production Company, L.P., for administrative approval of a nonstandard spacing and proration unit for its Marwari 21-16 State Fed Com 622H, 623H, and 714H Wells, in the Wolfcamp formation underlying the E/2 W/2 and W/2 E/2 of Sections 16 and 21, Township 25 South, Range 32 East, NMPM, Lea County, New Mexico.

To the Parties/Persons this may concern:

Enclosed in this notice is a copy of the above referenced application filed with the New Mexico Conservation Division on the date referenced above. You are being notified in your capacity as a person or party in an adjoining tract or unit pursuant to our request for approval of a nonstandard spacing and proration unit. Any objections that you have to this application must be filed in writing with the New Mexico Oil Conservation Division, 1220 South St. Francis Drive, Santa Fe, New Mexico 87505, within twenty (20) days from the date the Division receives the applications filed for administrative approval by the Division. Email correspondence for this matter can be sent to the Division at OCD.Engineer@emnrd.nm.gov.

If you have any questions concerning this application, please contact:

Ryan Cloer, Landman
Devon Energy Production Company, L.P.
(405) 228-2448
Ryan.Cloer@dvn.com

abadieschill.com

214 McKenzie Street, Santa Fe, New Mexico, 87501

O : 970.385.4401 • F : 970.385.4901

If you have no objections to this application, please sign the waiver as indicated below and return the original to the address listed on this letterhead. Your assistance and cooperation in this matter are appreciated.

Sincerely,

A handwritten signature in black ink, appearing to read 'Darin C. Savage', written over a horizontal line.

Darin C. Savage

Attorney for Devon Energy
Production Company, L.P.

Waiver

_____ hereby waives objection to the above referenced Application of Devon Energy Production Company, L.P., for administrative approval of a nonstandard spacing and proration unit for its Marwari 21-16 State Fed Com 622H, 623H, and 714H Wells, in the Wolfcamp formation underlying the E/2 W/2 and W/2 E/2 of Sections 16 and 21, Township 25 South, Range 32 East, NMPM, Lea County, New Mexico.

Dated: _____

Signature: _____

District I
1625 N. French Dr., Hobbs, NM 88240
Phone:(575) 393-6161 Fax:(575) 393-0720
District II
811 S. First St., Artesia, NM 88210
Phone:(575) 748-1283 Fax:(575) 748-9720
District III
1000 Rio Brazos Rd., Aztec, NM 87410
Phone:(505) 334-6178 Fax:(505) 334-6170
District IV
1220 S. St Francis Dr., Santa Fe, NM 87505
Phone:(505) 476-3470 Fax:(505) 476-3462

State of New Mexico
Energy, Minerals and Natural Resources
Oil Conservation Division
1220 S. St Francis Dr.
Santa Fe, NM 87505

CONDITIONS

Action 320519

CONDITIONS

Operator: DEVON ENERGY PRODUCTION COMPANY, LP 333 West Sheridan Ave. Oklahoma City, OK 73102	OGRID: 6137
	Action Number: 320519
	Action Type: [UF-NSP] Non-Standard Proration (NSP)

CONDITIONS

Created By	Condition	Condition Date
llowe	None	3/6/2024