

State of New Mexico
Energy, Minerals and Natural Resources Department

Michelle Lujan Grisham
Governor

Melanie Kenderdine
Cabinet Secretary - Designate

Ben Shelton
Deputy Secretary (Acting)

Gerasimos "Gerry" Razatos
Division Director (Acting)
Oil Conservation Division



Paula M. Vance
pmvance@hollandhart.com

ADMINISTRATIVE NON-STANDARD LOCATION

Administrative Order NSL – 8838

**Chevron U.S.A., Inc. [OGRID 4323]
SND 14 23 Federal Com Well No. 119H
API No. 30-015-55041**

Reference is made to your application received on December 12th, 2024.

Proposed Location

	Footages	Unit/Lot	Sec.	Twsp	Range	County
Surface	671 FSL & 384 FWL	M	23	24S	31E	Eddy
First Take Point	100 FSL & 1736 FWL	N	23	24S	31E	Eddy
Last Take Point/ Terminus	25 FNL & 1736 FWL	C	14	24S	31E	Eddy

Proposed Horizontal Units

Description	Acres	Pool	Pool Code
W/2 Section 23 W/2 Section 14	640	Cotton Draw; Bone Spring	13367

You have requested to drill this horizontal well at an unorthodox well location described above in the referenced pool or formation. 19.15.16.15(B)(1)(a) NMAC governs this proposed well and provides that the operator shall dedicate to each horizontal **oil** well a standard horizontal spacing unit that comprises of one or more contiguous tracts that the horizontal well's completed interval penetrates, each of which consists of a governmental quarter - quarter section or equivalent. 19.15.16.15(C)(1)(a) NMAC governs the distance in the horizontal plane from any point in the completed interval to any outer boundary of the horizontal spacing unit, measured along a line perpendicular to the completed interval or to the tangent thereof, shall be a minimum of 330 feet for an **oil** well. 19.15.16.15(C)(1)(b) NMAC governs the first and last take point of a horizontal

Administrative Order NSL – 8838

Chevron U.S.A., Inc.

Page 2 of 2

well shall be no closer than 100 feet in the horizontal plane, to any outer boundary of the horizontal spacing unit.

The request to deviate from an orthodox location has met all requirements of 19.15.16.15 (C)(5)(a) NMAC. It is understood that you are seeking this exception in order to create a non-standard location, comprised of Take Points referenced above, within the described Horizontal Spacing Unit.

This well's completed interval is as close as 25 feet to the northern edge of the horizontal spacing unit. Encroachment will impact the following tracts.

Section 11, encroachment to the SW/4

The Division understands you have given notice of this application to all operators or owners who are "affected persons," as defined in 19.15.2.7(A)(8) NMAC, in all adjoining units towards which the proposed location encroaches.

Division understands you are seeking this unorthodox location to avoid causing wasted resources and to reduce production from current and future well development within the Bone Spring formation underlying the W/2 of Section 23 and W/2 of Section 14, thereby protecting the correlative rights and the disposition of wastes resulting from oil and gas operations.

Your application has been filed under 19.15.16.15(C)(6) NMAC, 19.15.15.13 NMAC and 19.15.4.12 (A)(2) NMAC.

Per 19.15.15.13 (B) NMAC, **Division approves this unorthodox location.**

Reference this NSL order number on the As Drilled C-102 submitted with the Authorization to Transport, to place this well into production.

The above approvals are subject to your following all other applicable Division rules.

Jurisdiction of this case is retained for the entry of further orders as the Division deems necessary.



GERASIMOS RAZATOS

DIRECTOR (ACTING)

GR/lrl

Date: 2/6/2025

Revised March 23, 2017

ID NO. 411183

NSL - 8838

RECEIVED: 12/12/24	REVIEWER:	TYPE:	APP NO: pLEL2501357305
--------------------	-----------	-------	------------------------

ABOVE THIS TABLE FOR OCD DIVISION USE ONLY

NEW MEXICO OIL CONSERVATION DIVISION
 - Geological & Engineering Bureau -
 1220 South St. Francis Drive, Santa Fe, NM 87505



ADMINISTRATIVE APPLICATION CHECKLIST

THIS CHECKLIST IS MANDATORY FOR ALL ADMINISTRATIVE APPLICATIONS FOR EXCEPTIONS TO DIVISION RULES AND REGULATIONS WHICH REQUIRE PROCESSING AT THE DIVISION LEVEL IN SANTA FE

Applicant: Chevron U.S.A. Inc. OGRID Number: 4323
 Well Name: SND 14 23 Fed Com #119H well API: 30-025-55041
 Pool: Cotton Draw; Bone Spring Pool Code: 13367

SUBMIT ACCURATE AND COMPLETE INFORMATION REQUIRED TO PROCESS THE TYPE OF APPLICATION INDICATED BELOW

1) TYPE OF APPLICATION: Check those which apply for [A]

A. Location - Spacing Unit - Simultaneous Dedication

☒ NSL☐ NSP (PROJECT AREA)☐ NSP (PRORATION UNIT)☐ SD

B. Check one only for [I] or [II]

[I] Commingling - Storage - Measurement

☐ DHC☐ CTB☐ PLC☐ PC☐ OLS☐ OLM

[II] Injection - Disposal - Pressure Increase - Enhanced Oil Recovery

☐ WFX☐ PMX☐ SWD☐ IPI☐ EOR☐ PPR

2) NOTIFICATION REQUIRED TO: Check those which apply.

A. ☒ Offset operators or lease holdersB. ☐ Royalty, overriding royalty owners, revenue ownersC. ☐ Application requires published noticeD. ☐ Notification and/or concurrent approval by SLOE. ☒ Notification and/or concurrent approval by BLMF. ☐ Surface ownerG. ☐ For all of the above, proof of notification or publication is attached, and/or,H. ☐ No notice required

FOR OCD ONLY

☐ Notice Complete☐ Application
Content
Complete

3) CERTIFICATION: I hereby certify that the information submitted with this application for administrative approval is **accurate** and **complete** to the best of my knowledge. I also understand that **no action** will be taken on this application until the required information and notifications are submitted to the Division.

Note: Statement must be completed by an individual with managerial and/or supervisory capacity.

December 12, 2024

Date

Paula M. Vance

Print or Type Name

505-954-7286

Phone Number

Signature

pmvance@hollandhart.com

e-mail Address



Paula M. Vance
Associate
Phone (505) 954-7286
PMVance@hollandhart.com

December 12, 2024

VIA ONLINE FILING

Gerasimos Razatos, Acting Division Director
Oil Conservation Division
Department of Energy, Minerals and Natural Resources
1220 South Saint Francis Drive
Santa Fe, New Mexico 87505

Re: Chevron U.S.A., Inc.
Request for Administrative Approval of Unorthodox Well Location

SND 14 23 Fed Com #119H well
W/2 of Sections 14 and 23, Township 24 South, Range 31 East, NMPM, Eddy County,
New Mexico
Cotton Draw; Bone Spring [13367]
API No. 30-015-55041

Dear Mr. Razatos:

Chevron U.S.A., Inc. ("Chevron") (OGRID No. 4323), pursuant to Division Rules 19.15.16.15(C)(6) and 19.15.15.13 NMAC and applicable rules governing acreage and well location requirements for the Cotton Draw; Bone Spring [13367], seeks administrative approval of an unorthodox well location for its **SND 14 23 Fed Com #119H** well (API No. 30-015-55041), in a 640-acre, more or less, spacing unit underlying the W/2 of Sections 14 and 23, Township 24 South, Range 31 East, NMPM, Eddy County, New Mexico

The **SND 14 23 Fed Com #119H** well is an infill well. **SND 14 23 Fed Com #226H** is the defining well. The location for the **SND 14 23 Fed Com #119H oil well** is as follows:

- Surface hole location: 671' FSL and 384' FWL (Unit M) of Section 23
- First take point: 100' FSL and 1,736' FWL (Unit N) of Section 23
- Last take point: 25' FNL and 1,736' FWL (Unit C) of Section 14
- Bottom hole location: 25' FNL and 1,736' FWL (Unit C) of Section 14

T 505.988.4421 F 505.983.6043
110 North Guadalupe, Suite 1, Santa Fe, NM 87501-1849
Mail to: P.O. Box 2208, Santa Fe, NM 87504-2208
www.hollandhart.com

Alaska	Montana	Utah
Colorado	Nevada	Washington, D.C.
Idaho	New Mexico	Wyoming

Since this acreage is governed by the Division's statewide rules, the proposed last take point for this well will be unorthodox because it is closer than the standard offsets to the northern boundary of the spacing unit—thus, encroaching on Chevron's Javelina Unit to the north.

Chevron respectfully requests administrative approval of a non-standard location for the proposed **SND 14 23 Fed Com #119H** well. Chevron requests approval of this non-standard location because it is necessary to avoid causing wasted resources and reducing production from current and future well development in the area.

Exhibit A is a Form C-102 showing the **SND 14 23 Fed Com #119H** well encroaches on the Javalina Unit to the north. Also, included is the Form C-102 for the **SND 14 23 Fed Com #226H**, the defining well for the spacing unit

Exhibit B is a plat for the surrounding area that shows the proposed **SND 14 23 Fed Com 119H** well in relation to the adjoining unit/tracts to the north and south. The offsetting Javalina Unit to the north includes the following other working interest owners¹: Earthstone Permian LLC, the Mabee-Flynt Lease Trust, Randy Prude, Warwick-Artemis, LLC, the Mary Patricia Dougherty Trust, MKDWI, LLC, the Mary Margaret Olson Trust, the Catherine Grace Revocable Trust, and the Otto and Doris Schroeder Family Trust. In addition, the offsetting Javalina Unit is a federal unit that includes Bureau of Land Management (BLM) leases. Accordingly, the "affected persons"² are the other working interest owners in the Javalina Unit to the north and the BLM.

Exhibit C is a spreadsheet listing all affected persons and includes tracking information demonstrating that each of the affected persons requiring notice was sent a copy of this application with all attachments by certified mail advising that any objections must be filed in writing with the Division within 20 days from the date the Division receives the application. The following are the affected persons Chevron provided notice:

Type	Affected Party	Location
Mineral Interest	Bureau of Land Management	Javalina Unit
Working Interest	Earthstone Permian LLC	
	The Mabee-Flynt Lease Trust	
	Randy Prude	
	Warwick-Artemis, LLC	
	The Mary Patricia Dougherty Trust	
	MKDWI, LLC	
	The Mary Margaret Olson Trust	

¹ Note, Exhibit B highlights the tracts within the Javalina Unit that directly offset the proposed well. Additionally, since Chevron is the designated operator of the Javalina Unit, notice is provided to the other working interest owners within the Javalina Unit, per 19.15.2.7.A(8) NMAC.

² See NMAC §§ 19.15.2.7.A(8) [defining "affected persons" as, "in the absence of an operator, or with respect to an application wherein the operator of the spacing unit or identified tract is the applicant, each working interest owner"] and 19.15.4.12.A(2)(a).

	The Catherine Grace Revocable Trust	
	The Otto and Doris Schroeder Family Trust	

Your attention to this matter is appreciated.

Sincerely,



Paula M. Vance
ATTORNEY FOR CHEVRON U.S.A., INC.

Santa Fe Main Office Phone: (505) 476-3441 Fax: (55) 476-3462 General Information Phone: (505) 629-6116 Online Phone Directory Visit: https://www.emnrd.nm.gov/ocd/contact-us/	State of New Mexico Energy, Minerals & Natural Resources Department OIL CONSERVATION DIVISION	C-102 Revised July 9, 2024 Submit Electronically via OCD Permitting	
		Submittal Type:	<input type="checkbox"/> Initial Submittal
			<input checked="" type="checkbox"/> Amended Report
		<input type="checkbox"/> As Drilled	

WELL LOCATION INFORMATION

API Number 30-015-55041	Pool Code 13367	Pool Name COTTON DRAW;BONE SPRING
Property Code 335883	Property Name SND 14 23 FED COM	Well Number 119H
OGRID No. 4323	Operator Name CHEVRON U.S.A. INC.	Ground Level Elevation 3,538'
Surface Owner: <input type="checkbox"/> State <input type="checkbox"/> Fee <input type="checkbox"/> Tribal <input checked="" type="checkbox"/> Federal		Mineral Owner: <input type="checkbox"/> State <input type="checkbox"/> Fee <input type="checkbox"/> Tribal <input checked="" type="checkbox"/> Federal

Surface Location

UL M	Section 23	Township 24 SOUTH	Range 31 EAST, N.M.P.M.	Lot N/A	Ft. from N/S 671' SOUTH	Ft. from E/W 384' WEST	Latitude 32.197443° N	Longitude 103.755890° W	County EDDY
---------	---------------	----------------------	-------------------------------	------------	----------------------------	---------------------------	--------------------------	----------------------------	----------------

Bottom Hole Location

UL C	Section 14	Township 24 SOUTH	Range 31 EAST, N.M.P.M.	Lot N/A	Ft. from N/S 25' NORTH	Ft. from E/W 1,736' WEST	Latitude 32.224566° N	Longitude 103.751547° W	County EDDY
---------	---------------	----------------------	-------------------------------	------------	---------------------------	-----------------------------	--------------------------	----------------------------	----------------

Dedicated Acres 640	Infill or Defining Well INFILL	Defining Well API 30-015-48007	Overlapping Spacing Unit (Y/N) N	Consolidation Code F, C
Order Numbers. R-21499 and CA NMNM 105728392			Well setbacks are under Common Ownership: <input type="checkbox"/> Yes <input checked="" type="checkbox"/> No	

Kick Off Point (KOP)

UL N	Section 23	Township 24 SOUTH	Range 31 EAST, N.M.P.M.	Lot N/A	Ft. from N/S 100' SOUTH	Ft. from E/W 1,736' WEST	Latitude 32.195873° N	Longitude 103.751518° W	County EDDY
---------	---------------	----------------------	-------------------------------	------------	----------------------------	-----------------------------	--------------------------	----------------------------	----------------

First Take Point (FTP)

UL N	Section 23	Township 24 SOUTH	Range 31 EAST, N.M.P.M.	Lot N/A	Ft. from N/S 100' SOUTH	Ft. from E/W 1,736' WEST	Latitude 32.195873° N	Longitude 103.751518° W	County EDDY
---------	---------------	----------------------	-------------------------------	------------	----------------------------	-----------------------------	--------------------------	----------------------------	----------------

Last Take Point (LTP)

UL C	Section 14	Township 24 SOUTH	Range 31 EAST, N.M.P.M.	Lot N/A	Ft. from N/S 25' NORTH	Ft. from E/W 1,736' WEST	Latitude 32.224566° N	Longitude 103.751547° W	County EDDY
---------	---------------	----------------------	-------------------------------	------------	---------------------------	-----------------------------	--------------------------	----------------------------	----------------

Unitized Area or Area of Uniform Interest CA NMNM 105728392	Spacing Unit Type <input checked="" type="checkbox"/> Horizontal <input type="checkbox"/> Vertical	Ground Floor Elevation: 3,538'
--	--	--------------------------------

OPERATOR CERTIFICATIONS

I hereby certify that the information contained herein is true and complete to the best of my knowledge and belief, and, if the well is a vertical or directional well, that this organization either owns a working interest or unleased mineral interest in the land including the proposed bottom hole location or has a right to drill this well at this location pursuant to a contract with an owner of a working interest or unleased mineral interest, or to a voluntary pooling agreement or a compulsory pooling order heretofore entered by the division.

If this well is a horizontal well, I further certify that this organization has received the consent of at least one lessee or owner of a working interest or unleased mineral interest in each tract (in the target pool or formation) in which any part of the well's completed interval will be located or obtained a compulsory pooling order from the division.

Signature _____ Date _____

Printed Name _____

Email Address _____

SURVEYOR CERTIFICATIONS

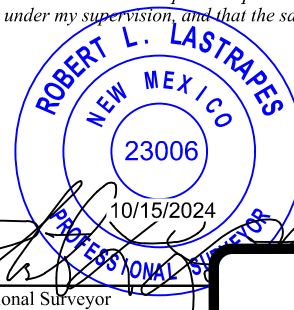
I hereby certify that the well location shown on this plat was plotted from field notes of actual surveys made by me or under my supervision, and that the same is true and correct to the best of my belief.

See Sheet 2 of 2 for plat.

Signature and Seal of Professional Surveyor

Certificate Number _____

10/19/2023
Date of Survey



**INFILL
Well**

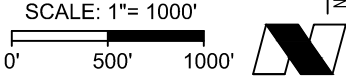
**EXHIBIT
A**

ACREAGE DEDICATION PLATS

This grid represents a standard section. You may superimpose a non-standard section, or larger area, over this grid. Operators must outline the dedicated acreage in a red box, clearly show the well surface location and bottom hole location, if it is directionally drilled, with the dimensions from the section lines in the cardinal directions. If this is a horizontal wellbore show on this plat the location of the First Take Point and Last Take Point, and the point within the Completed interval (other than the First Take Point or Last Take Point) that is closest to any outer boundary of the tract.

Surveyors shall use the latest United States government survey or dependent resurvey. Well locations will be in reference to the New Mexico Principal Meridian. If the land is not surveyed, contact the OCD Engineering Bureau. Independent subdivision surveys will not be acceptable.

See Sheet 1 of 2 for notes & certification.



SND 14 23 FED COM 119H

X = 678,771' (NAD27 NM E)
Y = 435,985'
LAT. 32.197319° N (NAD27)
LONG. 103.755408° W
X = 719,955' (NAD83/2011 NM E)
Y = 436,044'
LAT. 32.197443° N (NAD83/2011)
LONG. 103.755890° W

PROPOSED

KICK OFF POINT/
FIRST TAKE POINT

X = 680,126' (NAD27 NM E)
Y = 435,421'
LAT. 32.195749° N (NAD27)
LONG. 103.751036° W
X = 721,310' (NAD83/2011 NM E)
Y = 435,480'
LAT. 32.195873° N (NAD83/2011)
LONG. 103.751518° W

PROPOSED PPP #1

X = 680,110' (NAD27 NM E)
Y = 437,961'
LAT. 32.202732° N (NAD27)
LONG. 103.751043° W
X = 721,294' (NAD83/2011 NM E)
Y = 438,020'
LAT. 32.202856° N (NAD83/2011)
LONG. 103.751525° W

PROPOSED PPP #2

X = 680,102' (NAD27 NM E)
Y = 439,282'
LAT. 32.206362° N (NAD27)
LONG. 103.751046° W
X = 721,286' (NAD83/2011 NM E)
Y = 439,340'
LAT. 32.206485° N (NAD83/2011)
LONG. 103.751528° W

PROPOSED MID-POINT PPP #3

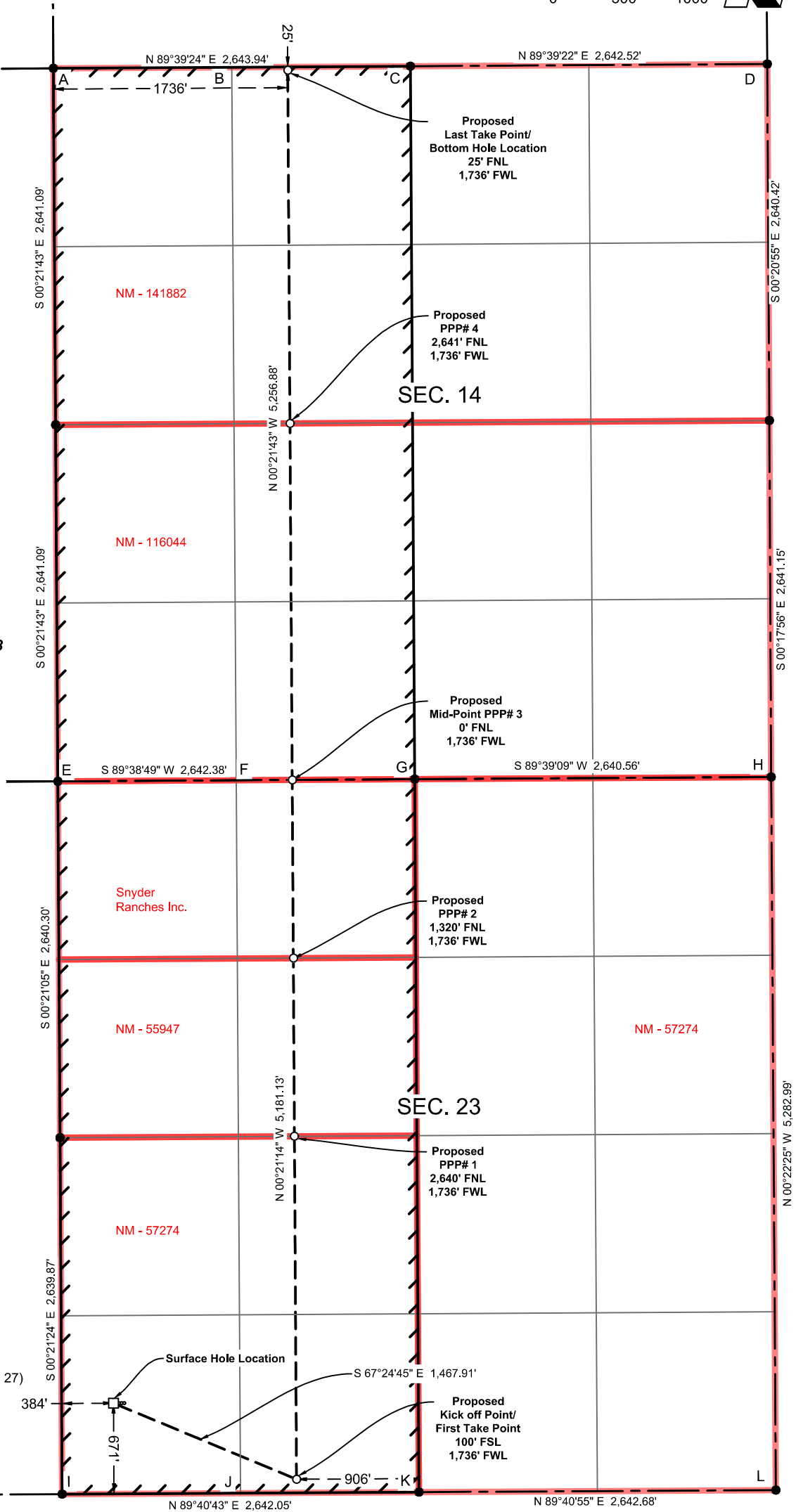
X = 680,094' (NAD27 NM E)
Y = 440,602'
LAT. 32.209992° N (NAD27)
LONG. 103.751049° W
X = 721,278' (NAD83/2011 NM E)
Y = 440,661'
LAT. 32.210115° N (NAD83/2011)
LONG. 103.751531° W

PROPOSED PPP #4

X = 680,077' (NAD27 NM E)
Y = 443,243'
LAT. 32.217251° N (NAD27)
LONG. 103.751057° W
X = 721,261' (NAD83/2011 NM E)
Y = 443,302'
LAT. 32.217375° N (NAD83/2011)
LONG. 103.751540° W

PROPOSED
LAST TAKE POINT/
BOTTOM HOLE LOCATION

X = 680,061' (NAD27 NM E)
Y = 445,859'
LAT. 32.224442° N (NAD27)
LONG. 103.751064° W
X = 721,245' (NAD83/2011 NM E)
Y = 445,918'
LAT. 32.224566° N (NAD83/2011)
LONG. 103.751547° W



CORNER COORDINATES TABLE (NAD 27)

A - Y=455873.60, X=678324.50
B - Y=445881.52, X=679646.44
C - Y=445889.44, X=680968.38
D - Y=445905.30, X=683610.86
E - Y=440591.53, X=678357.86
F - Y=440599.67, X=679679.03
G - Y=440607.81, X=681000.19
H - Y=440623.82, X=683640.70
I - Y=435311.46, X=678390.49
J - Y=435318.87, X=679711.49
K - Y=435326.28, X=681032.50
L - Y=435340.95, X=683675.14

T:\2022\2225785\DWG\SND 14 23 FED COM 119H_C-102_V2_101524.dwg

District I
1625 N. French Dr., Hobbs, NM 88240
Phone: (575) 393-6161 Fax: (575) 393-0720

District II
811 S. First St., Artesia, NM 88210
Phone: (575) 748-1283 Fax: (575) 748-9720

District III
1000 Rio Brazos Road, Aztec, NM 87410
Phone: (505) 334-6178 Fax: (505) 334-6170

District IV
1220 S. St. Francis Dr., Santa Fe, NM 87505
Phone: (505) 476-3460 Fax: (505) 476-3462

State of New Mexico
Energy, Minerals & Natural Resources Department
OIL CONSERVATION DIVISION
1220 South St. Francis Dr.
Santa Fe, NM 87505

Form C-102
Revised August 1, 2011
Submit one copy to appropriate
District Office
☐ AMENDED REPORT

WELL LOCATION AND ACREAGE DEDICATION PLAT

¹ API Number 30-015-48007	² Pool Code 13367	³ Pool Name COTTON DRAW; BONE SPRING
⁴ Property Code	⁵ Property Name SND 14 23 FED COM	⁶ Well Number 226H
⁷ OGRID No. 4323	⁸ Operator Name CHEVRON U.S.A. INC.	⁹ Elevation 3538'

¹⁰ Surface Location

UL or lot no.	Section	Township	Range	Lot Idn	Feet from the	North/South line	Feet from the	East/West line	County
M	11	24 SOUTH	31 EAST, N.M.P.M.		140'	SOUTH	1283'	WEST	EDDY

¹¹ Bottom Hole Location If Different From Surface

UL or lot no.	Section	Township	Range	Lot Idn	Feet from the	North/South line	Feet from the	East/West line	County
M	23	24 SOUTH	31 EAST, N.M.P.M.		44'	SOUTH	1259'	WEST	EDDY

¹² Dedicated Acres 640	¹³ Joint or Infill DEFINING	¹⁴ Consolidation Code	¹⁵ Order No.
--------------------------------------	---	----------------------------------	-------------------------

No allowable will be assigned to this completion until all interests have been consolidated or a non-standard unit has been approved by the division.

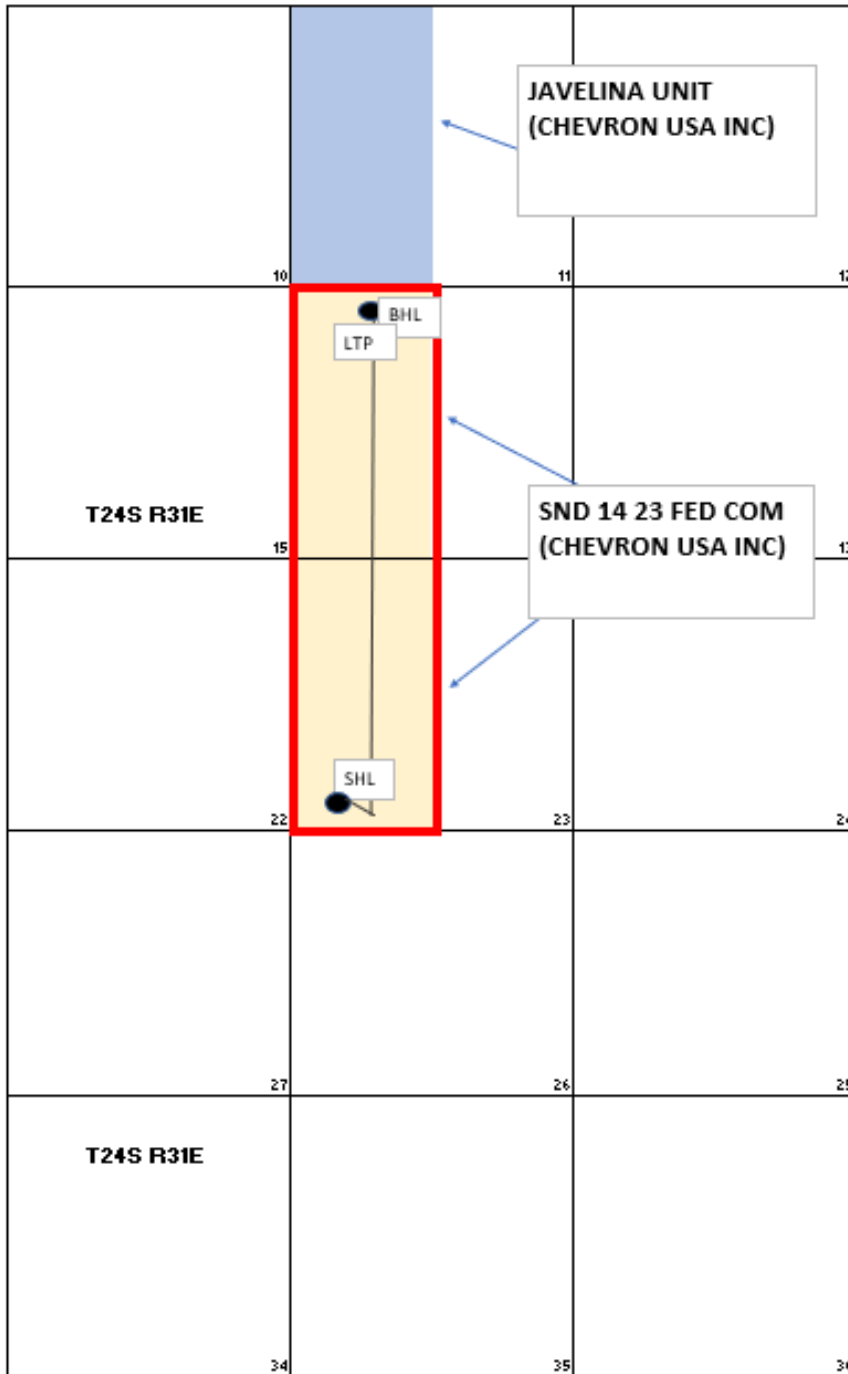
¹⁶ <table border="1"> <tr> <th>SND 14 23 FED COM 226H</th> <th>FINAL KICK OFF POINT</th> </tr> <tr> <td>X= 679,607' Y= 446,021' LAT. 32.224895° N LONG. 103.752529° W</td> <td>X= 679,579' Y= 446,370' LAT. 32.225855° N LONG. 103.752612° W</td> </tr> <tr> <td>X= 720,791' Y= 446,080' LAT. 32.225018° N LONG. 103.753012° W</td> <td>X= 720,763' Y= 446,429' LAT. 32.225978° N LONG. 103.753095° W</td> </tr> <tr> <td>ELEV. +3538' NAVD88</td> <td></td> </tr> </table>	SND 14 23 FED COM 226H	FINAL KICK OFF POINT	X= 679,607' Y= 446,021' LAT. 32.224895° N LONG. 103.752529° W	X= 679,579' Y= 446,370' LAT. 32.225855° N LONG. 103.752612° W	X= 720,791' Y= 446,080' LAT. 32.225018° N LONG. 103.753012° W	X= 720,763' Y= 446,429' LAT. 32.225978° N LONG. 103.753095° W	ELEV. +3538' NAVD88		<p>Kick Off Point at 8,453' MD 489' FSL, 1,257' FWL First Take Point at 9,406' MD 129' FNL, 1,245' FWL Last Take Point at 19,698' MD 145' FSL, 1,259' FWL</p>	¹⁷ OPERATOR CERTIFICATION I hereby certify that the information contained herein is true and complete to the best of my knowledge and belief, and that this organization either owns a working interest or unleased mineral interest in the land including the proposed bottom hole location or has a right to drill this well at this location pursuant to a contract with an owner of such a mineral or working interest, or to a voluntary pooling agreement or a compulsory pooling order heretofore entered by the division. Signature _____ Date _____ Printed Name _____ E-mail Address _____ ¹⁸ SURVEYOR CERTIFICATION I hereby certify that the well location shown on this plat was plotted from field notes of actual surveys made by me or under my supervision, and that the same is true and correct to the best of my belief. 03/31/2020 Date of Survey _____ Signature and Seal of Professional Surveyor: 11/30/2022 Certificate Number _____
SND 14 23 FED COM 226H	FINAL KICK OFF POINT									
X= 679,607' Y= 446,021' LAT. 32.224895° N LONG. 103.752529° W	X= 679,579' Y= 446,370' LAT. 32.225855° N LONG. 103.752612° W									
X= 720,791' Y= 446,080' LAT. 32.225018° N LONG. 103.753012° W	X= 720,763' Y= 446,429' LAT. 32.225978° N LONG. 103.753095° W									
ELEV. +3538' NAVD88										

CORNER COORDINATES TABLE (NAD 27)

A - Y=447193.63, X= 678318.51
 B - Y=445873.60, X=678324.50
 C - Y=435311.46, X=678390.49
 D - Y=447201.92, X=679640.10
 E - Y=445881.52, X=679646.44
 F - Y=447225.53, X=683604.04
 G - Y=435340.95, X=683675.14

**DEFINING
Well**

EXHIBIT B
SND 14 23 FED COM 119H





 HORIZONTAL SPACING UNIT
 AFFECTED TRACTS

EXHIBIT
B

Earthstone Permian LLC	300 N. Marienfeld Street, Suite 1000	Midland	TX	79701
Mabee-Flynt Lease Trust	15611 Wildwood Trace	Magnolia	TX	77354
Randy Prude	203 West Wall St., Suite 1200	Midland	TX	79701
Warwick-Artemis, LLC	6608 North Western Ave., #417	Oklahoma City	OK	73116
The Mary Patricia Dougherty Trust	98 San Jacinto Blvd., Suite 350	Austin	TX	78701
MKDWI, LLC	P.O. Box 4382	New York	NY	10163
The Mary Margaret Olson Trust	6031 W. Interstate 20, Suite 251	Arlington	TX	76017
The Catherine Grace Revocable Trust	2705 W. Marquis Circle	Arlington	TX	76016
The Otto and Doris Schroeder Family Trust	500 Hawk Court	Coppell	TX	75019
Bureau of Land Management	301 Dinosaur Trail	Santa Fe	NM	87508

EXHIBIT

C



Paula M. Vance
Associate
Phone (505) 954-7286
PMVance@hollandhart.com

November 22, 2024

VIA CERTIFIED MAIL
RETURN RECEIPT REQUESTED

TO: ALL AFFECTED PERSONS

Re: Chevron U.S.A., Inc.
Request for Administrative Approval of Unorthodox Well Location

SND 14 23 Fed Com #119H well
W/2 of Sections 14 and 23, Township 24 South, Range 31 East, NMPM, Eddy County,
New Mexico
Cotton Draw; Bone Spring [13367]
API No. 30-015-55041

Ladies and Gentlemen:

Enclosed is a copy of the above-referenced application which was filed with the New Mexico Oil Conservation Division on this date. Any objection to this application must be filed in writing within twenty days from the date this application is received by the New Mexico Oil Conservation Division, 1220 South St. Francis Drive, Santa Fe, New Mexico, 87505. If no objection is received within this twenty-day period, this application may be approved administratively by the Division.

If you have any questions about this application, please contact the following:

Corie Mathews
Chevron U.S.A., Inc.
(713) 372-0402
Corie.Mathews@chevron.com

Sincerely,

A handwritten signature in blue ink, appearing to read "Paula M. Vance".

Paula M. Vance
ATTORNEY FOR CHEVRON U.S.A., INC.

Chevron - SND 222H-224H, 516H, 119H, 513H wells - NSL
Postal Delivery Report

9414811898765483630540	Earthstone Permian LLC	300 N Marienfeld St Ste 1000	Midland	TX	79701-4688	Your item was delivered to an individual at the address at 1:10 pm on November 26, 2024 in MIDLAND, TX 79701.
9414811898765483630588	Mabee-Flynt Lease Trust	15611 Wildwood Trce	Magnolia	TX	77354-1873	We attempted to deliver your item at 1:21 pm on November 29, 2024 in MAGNOLIA, TX 77354 and a notice was left because an authorized recipient was not available.
9414811898765483630571	Randy Prude	203 W Wall St Ste 1200	Midland	TX	79701-4516	Your item was delivered to an individual at the address at 4:01 pm on November 26, 2024 in MIDLAND, TX 79701.
9414811898765483638218	Warwick-Artemis, LLC	6608 N Western Ave PMB 417	Oklahoma City	OK	73116-7326	Your item was delivered to an individual at the address at 9:18 am on November 30, 2024 in OKLAHOMA CITY, OK 73116.
9414811898765483638256	The Mary Patricia Dougherty Trust	98 San Jacinto Blvd Ste 350	Austin	TX	78701-4282	We were unable to deliver your package at 2:17 pm on November 30, 2024 in AUSTIN, TX 78701 because the business was closed. We will redeliver on the next business day. No action needed.
9414811898765483638263	MKDWI, LLC	PO Box 4382	New York	NY	10163-4382	Your package will arrive later than expected, but is still on its way. It is currently in transit to the next facility.

Chevron - SND 222H-224H, 516H, 119H, 513H wells - NSL
Postal Delivery Report

9414811898765483638225	The Mary Margaret Olson Trust	6031 W Interstate 20 Ste 251	Arlington	TX	76017-1090	Your item was delivered to an individual at the address at 12:48 pm on November 30, 2024 in ARLINGTON, TX 76017.
9414811898765483638294	The Catherine Grace Revocable Trust	2705 Marquis Cir W	Arlington	TX	76016-2017	Your item was delivered to an individual at the address at 3:12 pm on November 29, 2024 in ARLINGTON, TX 76016.
9414811898765483638287	The Otto and Doris Schroeder Family Trust	500 Hawk Ct	Coppell	TX	75019-6502	Your package will arrive later than expected, but is still on its way. It is currently in transit to the next facility.
9414811898765483638232	Bureau of Land Management	301 Dinosaur Trl	Santa Fe	NM	87508-1560	Your item was delivered to the front desk, reception area, or mail room at 2:50 pm on November 25, 2024 in SANTA FE, NM 87508.

Sante Fe Main Office
Phone: (505) 476-3441

General Information
Phone: (505) 629-6116

Online Phone Directory
<https://www.emnrd.nm.gov/ocd/contact-us>

State of New Mexico
Energy, Minerals and Natural Resources
Oil Conservation Division
1220 S. St Francis Dr.
Santa Fe, NM 87505

CONDITIONS

Action 411183

CONDITIONS

Operator: CHEVRON U S A INC 6301 Deauville Blvd Midland, TX 79706	OGRID: 4323
	Action Number: 411183
	Action Type: [UF-NSL] Non-Standard Location (NSL)

CONDITIONS

Created By	Condition	Condition Date
llowe	None	1/9/2025