

Office
 District I – (575) 393-6161
 1625 N. French Dr., Hobbs, NM 88240
 District II – (575) 748-1283
 811 S. First St., Artesia, NM 88210
 District III – (505) 334-6178
 1000 Rio Brazos Rd., Aztec, NM 87410
 District IV – (505) 476-3460
 1220 S. St. Francis Dr., Santa Fe, NM
 87505

State of New Mexico
 Energy, Minerals and Natural Resources

Form C-103
 Revised July 18, 2013

OIL CONSERVATION DIVISION
 1220 South St. Francis Dr.
 Santa Fe, NM 87505

WELL API NO. 30-025-multiple
5. Indicate Type of Lease STATE <input type="checkbox"/> FEE <input type="checkbox"/>
6. State Oil & Gas Lease No.
7. Lease Name or Unit Agreement Name Amazing 19 Fed
8. Well Number multiple
9. OGRID Number 7377
10. Pool name or Wildcat

SUNDRY NOTICES AND REPORTS ON WELLS (DO NOT USE THIS FORM FOR PROPOSALS TO DRILL OR TO DEEPEN OR PLUG BACK TO A DIFFERENT RESERVOIR. USE "APPLICATION FOR PERMIT" (FORM C-101) FOR SUCH PROPOSALS.)	
1. Type of Well: Oil Well <input checked="" type="checkbox"/> Gas Well <input type="checkbox"/> Other <input type="checkbox"/>	
2. Name of Operator EOG Resources, Inc.	
3. Address of Operator P.O. Box 2267, Midland, TX 79702	
4. Well Location Unit Letter _____: _____ feet from the _____ line and _____ feet from the _____ line Section 19 Township 22S Range 32E NMPM Lea County	
11. Elevation (Show whether DR, RKB, RT, GR, etc.)	

12. Check Appropriate Box to Indicate Nature of Notice, Report or Other Data

NOTICE OF INTENTION TO:		SUBSEQUENT REPORT OF:	
PERFORM REMEDIAL WORK <input type="checkbox"/>	PLUG AND ABANDON <input type="checkbox"/>	REMEDIAL WORK <input type="checkbox"/>	ALTERING CASING <input type="checkbox"/>
TEMPORARILY ABANDON <input type="checkbox"/>	CHANGE PLANS <input type="checkbox"/>	COMMENCE DRILLING OPNS. <input type="checkbox"/>	P AND A <input type="checkbox"/>
PULL OR ALTER CASING <input type="checkbox"/>	MULTIPLE COMPL <input type="checkbox"/>	CASING/CEMENT JOB <input type="checkbox"/>	
DOWNHOLE COMMINGLE <input type="checkbox"/>			
CLOSED-LOOP SYSTEM <input type="checkbox"/>			
OTHER: <input type="checkbox"/>		OTHER: PC-1403 <input checked="" type="checkbox"/>	

13. Describe proposed or completed operations. (Clearly state all pertinent details, and give pertinent dates, including estimated date of starting any proposed work). SEE RULE 19.15.7.14 NMAC. For Multiple Completions: Attach wellbore diagram of proposed completion or recompletion.

Pursuant to administrative Order PC-1403 EOG Resources, Inc. ("EOG") respectfully request to add the following infill wells to the Amazing 19 Fed central tank battery located in the SWNE of Section 19 in Township 22 South, Range 32 East, Lea County, NM. All production from the subject wells will be allocated using readings from individual well meters.

Amazing 19 Fed 201H	30-025-52065	Amazing 19 Fed 501H	30-025-52071
Amazing 19 Fed 204H	30-025-52067	Amazing 19 Fed 502H	30-025-52072
Amazing 19 Fed 205H	30-025-50475	Amazing 19 Fed 503H	30-025-52073
Amazing 19 Fed 206H	30-025-52133	Amazing 19 Fed 504H	30-025-52075
Amazing 19 Fed 401H	30-025-52070	Amazing 19 Fed 505H	30-025-52152
Amazing 19 Fed 402H	30-025-52074		

Spud Date:

Rig Release Date:

I hereby certify that the information above is true and complete to the best of my knowledge and belief.

SIGNATURE Lisa Youngblood TITLE Regulatory Specialist DATE 3/22/2024

Type or print name Lisa Youngblood E-mail address: lisa_youngblood@eogresources.com PHONE: 432-247-6331

For State Use Only

APPROVED BY: _____ TITLE _____ DATE _____

Conditions of Approval (if any):

Form C-102
Revised August 1, 2011
Submit one copy to appropriate
District Office
☐ AMENDED REPORT

DISTRICT I
1625 N. French Dr., Hobbs, NM 88240
Phone: (575) 393-6161 Fax: (575) 393-0720
DISTRICT II
811 S. First St., Artesia, NM 88210
Phone: (575) 748-1283 Fax: (575) 748-9720
DISTRICT III
1000 Rio Brazos Rd., Aztec, NM 87410
Phone: (505) 334-6178 Fax: (505) 334-6170
DISTRICT IV
1220 S. St. Francis Dr., Santa Fe, NM 87505
Phone: (505) 476-3460 Fax: (505) 476-3462

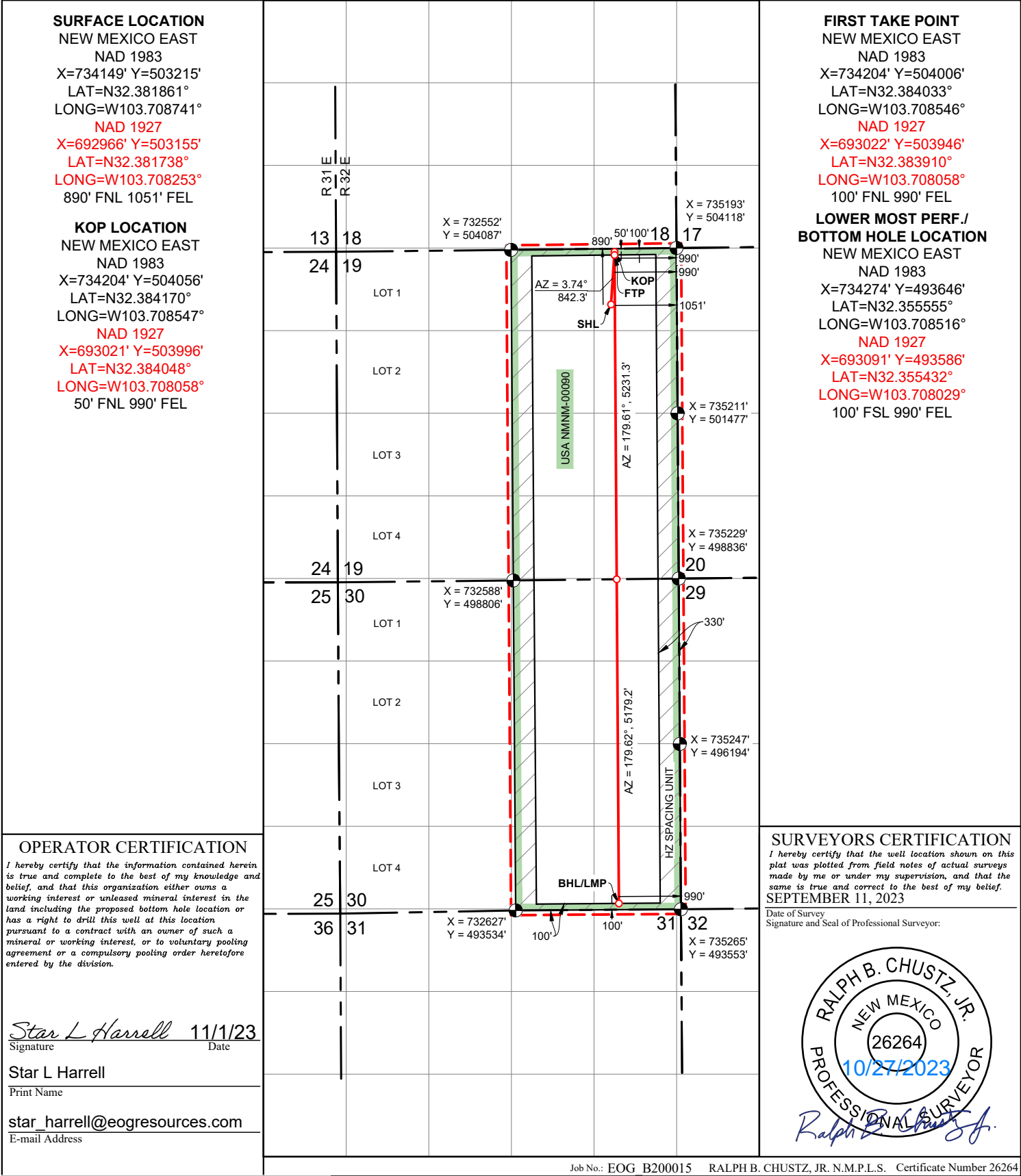
State of New Mexico
Energy, Minerals & Natural Resources Department
OIL CONSERVATION DIVISION
1220 South St. Francis Dr.
Santa Fe, New Mexico 87505

Form C-102
Revised August 1, 2011
Submit one copy to appropriate
District Office
☐ AMENDED REPORT

WELL LOCATION AND ACREAGE DEDICATION PLAT

API Number 30-025-52067		Pool Code 97366		Pool Name Bilbrey Basin; Bone Spring, South					
Property Code 333115		Property Name AMAZING 19 FED						Well Number 204H	
OGRID No. 7377		Operator Name EOG RESOURCES, INC.						Elevation 3652'	
Surface Location									
UL or lot no. A	Section 19	Township 22 S	Range 32 E	Lot Idn	Feet from the 890	North/South line NORTH	Feet from the 1051	East/West line EAST	County LEA
Bottom Hole Location If Different From Surface									
UL or lot no. P	Section 30	Township 22 S	Range 32 E	Lot Idn	Feet from the 100	North/South line SOUTH	Feet from the 990	East/West line EAST	County LEA
Dedicated Acres 640		Joint or Infill		Consolidated Code		Order No. LEASE WELL			

No allowable will be assigned to this completion until all interests have been consolidated or a non-standard unit has been approved by the division.



Form C-102
Revised August 1, 2011
Submit one copy to appropriate
District Office
☐ AMENDED REPORT

DISTRICT I
1625 N. French Dr., Hobbs, NM 88240
Phone: (575) 393-6161 Fax: (575) 393-0720
DISTRICT II
811 S. First St., Artesia, NM 88210
Phone: (575) 748-1283 Fax: (575) 748-9720
DISTRICT III
1000 Rio Brazos Rd., Aztec, NM 87410
Phone: (505) 334-6178 Fax: (505) 334-6170
DISTRICT IV
1220 S. St. Francis Dr., Santa Fe, NM 87505
Phone: (505) 476-3460 Fax: (505) 476-3462

State of New Mexico
Energy, Minerals & Natural Resources Department
OIL CONSERVATION DIVISION
1220 South St. Francis Dr.
Santa Fe, New Mexico 87505

Form C-102
Revised August 1, 2011
Submit one copy to appropriate
District Office
☐ AMENDED REPORT

WELL LOCATION AND ACREAGE DEDICATION PLAT

API Number 30-025-52133		Pool Code 97366		Pool Name Bilbrey Basin; Bone Spring, South					
Property Code 333115		Property Name AMAZING 19 FED						Well Number 206H	
OGRID No. 7377		Operator Name EOG RESOURCES, INC.						Elevation 3653'	

Surface Location

UL or lot no.	Section	Township	Range	Lot Idn	Feet from the	North/South line	Feet from the	East/West line	County
A	19	22 S	32 E		920	NORTH	1051	EAST	LEA

Bottom Hole Location If Different From Surface

UL or lot no.	Section	Township	Range	Lot Idn	Feet from the	North/South line	Feet from the	East/West line	County
O	30	22 S	32 E		100	SOUTH	1650	EAST	LEA

Dedicated Acres 640	Joint or Infill	Consolidated Code	Order No.
			LEASE WELL

No allowable will be assigned to this completion until all interests have been consolidated or a non-standard unit has been approved by the division.

SURFACE LOCATION
NEW MEXICO EAST
NAD 1983
X=734149' Y=503185'
LAT=N32.381778°
LONG=W103.708741°
NAD 1927
X=692966' Y=503125'
LAT=N32.381656°
LONG=W103.708253°
920' FNL 1051' FEL

KOP LOCATION
NEW MEXICO EAST
NAD 1983
X=733544' Y=504048'
LAT=N32.384160°
LONG=W103.710684°
NAD 1927
X=692361' Y=503988'
LAT=N32.384037°
LONG=W103.710196°
50' FNL 1650' FEL

FIRST TAKE POINT
NEW MEXICO EAST
NAD 1983
X=733544' Y=503998'
LAT=N32.384022°
LONG=W103.710684°
NAD 1927
X=692362' Y=503938'
LAT=N32.383900°
LONG=W103.710196°
100' FNL 1650' FEL

**LOWER MOST PERF./
BOTTOM HOLE LOCATION**
NEW MEXICO EAST
NAD 1983
X=733614' Y=493641'
LAT=N32.355552°
LONG=W103.710653°
NAD 1927
X=692431' Y=493581'
LAT=N32.355429°
LONG=W103.710166°
100' FSL 1650' FEL

OPERATOR CERTIFICATION
I hereby certify that the information contained herein is true and complete to the best of my knowledge and belief, and that this organization either owns a working interest or unleased mineral interest in the land including the proposed bottom hole location or has a right to drill this well at this location pursuant to a contract with an owner of such a mineral or working interest, or to voluntary pooling agreement or a compulsory pooling order heretofore entered by the division.

Star L Harrell 11/1/23
Signature Date

Star L Harrell
Print Name

star_harrell@eogresources.com
E-mail Address

SURVEYORS CERTIFICATION
I hereby certify that the well location shown on this plat was plotted from field notes of actual surveys made by me or under my supervision, and that the same is true and correct to the best of my belief.
SEPTEMBER 11, 2023
Date of Survey
Signature and Seal of Professional Surveyor:

RALPH B. CHUSTZ, JR.
NEW MEXICO
26264
10/27/2023
PROFESSIONAL SURVEYOR

Ralph B. Chustz, Jr.

Job No.: EOG B200015 RALPH B. CHUSTZ, JR. N.M.P.L.S. Certificate Number 26264

Form C-102
Revised August 1, 2011
Submit one copy to appropriate
District Office
☐ AMENDED REPORT

Form C-102
Revised August 1, 2011
Submit one copy to appropriate
District Office
☐ AMENDED REPORT

Form C-102
Revised August 1, 2011
Submit one copy to appropriate
District Office
☐ AMENDED REPORT

State of New Mexico
Energy, Minerals & Natural Resources Department
OIL CONSERVATION DIVISION
1220 South St. Francis Dr.
Santa Fe, New Mexico 87505

Form C-102
Revised August 1, 2011
Submit one copy to appropriate
District Office
☐ AMENDED REPORT

Form C-102
Revised August 1, 2011
Submit one copy to appropriate
District Office
☐ AMENDED REPORT

Form C-102
Revised August 1, 2011
Submit one copy to appropriate
District Office
☐ AMENDED REPORT

Form C-102
Revised August 1, 2011
Submit one copy to appropriate
District Office
☐ AMENDED REPORT

Sante Fe Main Office
Phone: (505) 476-3441

General Information
Phone: (505) 629-6116

Online Phone Directory
<https://www.emnrd.nm.gov/oed/contact-us>

State of New Mexico
Energy, Minerals and Natural Resources
Oil Conservation Division
1220 S. St Francis Dr.
Santa Fe, NM 87505

CONDITIONS

Action 432168

CONDITIONS

Operator: EOG RESOURCES INC 5509 Champions Drive Midland, TX 79706	OGRID: 7377
	Action Number: 432168
	Action Type: [IM-SD] Admin Order Support Doc (ENG) (IM-AAO)

CONDITIONS

Created By	Condition	Condition Date
sarah.clelland	Please review the content of the order to ensure you are familiar with the authorities granted and any conditions of approval. If you have any questions regarding this matter, please contact me.	2/14/2025