

State of New Mexico
Energy, Minerals and Natural Resources Department

Michelle Lujan Grisham
Governor

Melanie A. Kenderdine
Cabinet Secretary

Ben Shelton
Deputy Secretary

Erin Taylor
Deputy Secretary

Albert C.S. Chang
Division Director
Oil Conservation Division



Mitch Robb
mrobb@mewbourne.com

ADMINISTRATIVE NON-STANDARD LOCATION

Administrative Order NSL – 9122

Mewbourne Oil Company [OGRID 14744]
Fuller 13 12 Federal Com Well No. 827H
API No. 30-015-53953

Reference is made to your application received on September 8th, 2025.

Proposed Location

	<u>Footages</u>	<u>Unit/Lot</u>	<u>Sec.</u>	<u>Twsp</u>	<u>Range</u>	<u>County</u>
Surface	2600 FNL & 1440 FEL	G	13	26S	29E	Eddy
First Take Point	2566 FNL & 1320 FEL	G	13	26S	29E	Eddy
Last Take Point/ Terminus	330 FNL & 1320 FEL	B	12	26S	29E	Eddy

Proposed Horizontal Units

<u>Description</u>	<u>Acres</u>	<u>Pool</u>	<u>Pool Code</u>
NE/4 Section 13 E/2 Section 12	480	Purple Sage; Wolfcamp	98220

You have requested to complete this horizontal well described above in the referenced pool or formation. This well is governed by special rules R-14262, for the Purple Sage; Wolfcamp (Gas) Pool and governs wells to be located at least 330 feet from the unit outer boundary of a spacing unit and no closer than 10 feet to any quarter – quarter section line. The completed intervals of horizontal wells are to be located no closer than 330 feet to the exterior boundary of a standard 320 - acre spacing unit.

Administrative Order NSL – 9122
Mewbourne Oil Company
Page 2 of 2

The request to deviate from an orthodox location has met all requirements of 19.15.16.15 (C)(5)(a) NMAC. It is understood that you are seeking this exception in order to create a non-standard location, comprised of First and Last Take Points referenced above within the described Horizontal Spacing Unit.

The request to deviate from an orthodox location has met all requirements of 19.15.16.15 (C)(5)(a) NMAC. It is understood that you are seeking this exception in order to create a non-standard location, comprised of Take Points referenced above, within the described Horizontal Spacing Unit.

This well's completed interval is as close as 74 feet to the southern edge of the horizontal spacing unit. Encroachment will impact the following tracts.

Section 13, encroachment to the SE/4

The Division understands you have given notice of this application to all operators or owners who are "affected persons," as defined in 19.15.2.7(A)(8) NMAC, in all adjoining units towards which the proposed location encroaches.

The Division understands you are seeking this unorthodox location in order to maximize the recovery of reserves within the Wolfcamp formation underlying the NE/4 Section 13, and E/2 Section 12, thereby maximizing recovery of resources and preventing waste.

Your application has been filed under 19.15.16.15(C)(6) NMAC, 19.15.15.13 NMAC and 19.15.4.12 (A)(2) NMAC.

Per 19.15.15.13 (B) NMAC, **Division approves this unorthodox location.**

Reference this NSL order number on the As Drilled C-102 submitted with the Authorization to Transport, to place this well into production.

The above approvals are subject to your following all other applicable Division rules.

Jurisdiction of this case is retained for the entry of further orders as the Division deems necessary.



Albert C.S. Chang
Division Director
AC/lrl

Date: 12/10/2025

ID NO. 503933

NSL - 9122

Revised March 23, 2017

RECEIVED: 09/08/25	REVIEWER:	TYPE:	APP NO:
---------------------------	-----------	-------	---------

ABOVE THIS TABLE FOR OCD DIVISION USE ONLY

NEW MEXICO OIL CONSERVATION DIVISION
 - Geological & Engineering Bureau -
 1220 South St. Francis Drive, Santa Fe, NM 87505

**ADMINISTRATIVE APPLICATION CHECKLIST**

THIS CHECKLIST IS MANDATORY FOR ALL ADMINISTRATIVE APPLICATIONS FOR EXCEPTIONS TO DIVISION RULES AND
 REGULATIONS WHICH REQUIRE PROCESSING AT THE DIVISION LEVEL IN SANTA FE

Applicant: Mewbourne Oil Company**OGRID Number:** 14744**Well Name:** Fuller 13/12 Fed Com #827H**API:** 30-015-53953**Pool:** Purple Sage Wolfcamp Gas**Pool Code:** 98220

**SUBMIT ACCURATE AND COMPLETE INFORMATION REQUIRED TO PROCESS THE TYPE OF APPLICATION
 INDICATED BELOW**

1) TYPE OF APPLICATION: Check those which apply for [A]

A. Location – Spacing Unit – Simultaneous Dedication

☒ NSL☐ NSP (PROJECT AREA)☐ NSP (PRORATION UNIT)☐ SD

B. Check one only for [I] or [II]

[I] Commingling – Storage – Measurement

☐ DHC☐ CTB☐ PLC☐ PC☐ OLS☐ OLM

[II] Injection – Disposal – Pressure Increase – Enhanced Oil Recovery

☐ WFX☐ PMX☐ SWD☐ IPI☐ EOR☐ PPR**2) NOTIFICATION REQUIRED TO:** Check those which apply.A. ☒ Offset operators or lease holdersB. ☐ Royalty, overriding royalty owners, revenue ownersC. ☐ Application requires published noticeD. ☐ Notification and/or concurrent approval by SLOE. ☐ Notification and/or concurrent approval by BLMF. ☐ Surface ownerG. ☒ For all of the above, proof of notification or publication is attached, and/or,H. ☒ No notice required**FOR OCD ONLY**☐

Notice Complete

☐Application
Content
Complete

- 3) CERTIFICATION:** I hereby certify that the information submitted with this application for administrative approval is **accurate** and **complete** to the best of my knowledge. I also understand that **no action** will be taken on this application until the required information and notifications are submitted to the Division.

Note: Statement must be completed by an individual with managerial and/or supervisory capacity.

Mitch Robb

Print or Type Name

Signature

August 29, 2025

Date

432-682-3715

Phone Number

mrobb@mewbourne.com

e-mail Address

MEWBOURNE OIL COMPANY

414 West Texas Avenue
Midland, Texas 79701
Phone (432) 682-3715

August 29, 2025

Via Certified Mail

New Mexico Oil Conservation Division
1220 S. St. Francis Drive
Santa Fe, New Mexico 87505
Attn: Mr. Leonard Lowe
OCD Engineer

Re: Application for Unorthodox Well Locations
Fuller 13/12 Fed Com #827H
Surface Location: 2600' FNL & 1440' FEL (SL) (Sec. 13)
Proposed First Perf: 2566 FNL & 1320 FEL (Unit H) (Sec. 13)
Bottomhole Location: 330' FNL & 1320' FEL (BHL) (Sec. 12)
Proposed Last Perf: 330' FNL & 1320' FEL (BHL) (Sec. 12)

Sections 12 & 13 - T26S- R29E, NMPM Eddy County, New Mexico

Dear Mr. Lowe:

Pursuant to Division Rule 19.15.15.13, Mewbourne Oil Company ("Mewbourne") respectfully requests administrative approval of an unorthodox gas well location for the above captioned Fuller 13/12 Fed Com #827H well. This well will be drilled as a horizontal gas well in the Purple Sage Wolfcamp (Gas) Pool (98220).

The above well will be dedicated to a standard 480-acre gas spacing and proration unit comprising the E/2 of Section 12 and the NE/4 of Section 13.

The Purple Sage Wolfcamp (Gas) Pool is currently governed by Special Pool Rules, Hearing Order No. R-14262 which requires standard 320-acre gas spacing and proration units with wells to be located no closer than 330 feet to the outer boundary of the spacing unit, nor closer than 10 feet to any interior quarter-quarter section line or subdivision inner boundary, or in the case of a horizontal well, no closer than 330 feet to the outer boundary of the producing area.

The unorthodox location is necessary in order to maximize the recovery of oil and gas reserves from the Wolfcamp formation underlying the E/2 of Section 12 and the NE/4 of Section 13.

The affected offset acreage comprises the SE/4 of Section 13, T26S- R29E NMPM (See Attached Map). Consequently, notice of this application is being provided to Mewbourne Oil Company.

Attached is a Form C-102 showing the surface, first take point, bottomhole location, and last perf for the above captioned wells. Also, attached is a map showing the affected offset acreage, a horizontal well plan.

In summary, approval of the application will provide Mewbourne Oil Company the opportunity to recover additional oil and gas reserves from the Purple Sage Wolfcamp (Gas) Pool underlying the E/2 of Section 12 and the NE/4 of Section 13 that may otherwise not be recovered, thereby preventing waste, and will not violate correlative rights.

Should you have any questions regarding the above, please email me at mrobb@mewbourne.com or call me at (432) 682-3715.

Sincerely,

MEWBOURNE OIL COMPANY

A handwritten signature in blue ink, appearing to read 'mrobb'.

Mitch Robb
Landman

C-102 Submit Electronically Via OCD Permitting	State of New Mexico Energy, Minerals & Natural Resources Department OIL CONSERVATION DIVISION		Revised July 9, 2024	
			Submittal Type:	<input checked="" type="checkbox"/> Initial Submittal
				<input type="checkbox"/> Amended Report
		<input type="checkbox"/> As Drilled		

WELL LOCATION INFORMATION

API Number 30-015-53953	Pool Code 98220	Pool Name PURPLE SAGE WOLFCAMP GAS	
Property Code	Property Name FULLER 13/12 FED COM	Well Number 827H	
OGRID No. 14744	Operator Name MEWBOURNE OIL COMPANY	Ground Level Elevation 3012'	
Surface Owner: <input type="checkbox"/> State <input type="checkbox"/> Fee <input type="checkbox"/> Tribal <input checked="" type="checkbox"/> Federal		Mineral Owner: <input type="checkbox"/> State <input type="checkbox"/> Fee <input type="checkbox"/> Tribal <input checked="" type="checkbox"/> Federal	

Surface Location

UL	Section	Township	Range	Lot	Ft. from N/S	Ft. from E/W	Latitude	Longitude	County
G	13	26S	29E		2600 FNL	1440 FEL	32.0424750°N	103.9338699°W	EDDY

Bottom Hole Location

UL	Section	Township	Range	Lot	Ft. from N/S	Ft. from E/W	Latitude	Longitude	County
B	12	26S	29E		330 FNL	1320 FEL	32.0634049°N	103.9334943°W	EDDY

Dedicated Acres 480	Infill or Defining Well INFILL	Defining Well API	Overlapping Spacing Unit (Y/N) N	Consolidation Code C
Order Numbers. N/A			Well setbacks are under Common Ownership: <input checked="" type="checkbox"/> Yes <input type="checkbox"/> No	

Kick Off Point (KOP)

UL	Section	Township	Range	Lot	Ft. from N/S	Ft. from E/W	Latitude	Longitude	County
J	13	26S	29E		2193 FSL	1320 FEL	32.0410066°N	103.9334797°W	EDDY


First Take Point (FTP)

UL	Section	Township	Range	Lot	Ft. from N/S	Ft. from E/W	Latitude	Longitude	County
G	13	26S	29E		2566 FNL	1320 FEL	32.0425814°N	103.9334807°W	EDDY

Last Take Point (LTP)

UL	Section	Township	Range	Lot	Ft. from N/S	Ft. from E/W	Latitude	Longitude	County
B	12	26S	29E		330 FNL	1320 FEL	32.0634049°N	103.9334943°W	EDDY

Unitized Area or Area of Uniform Interest N/A	Spacing Unit Type <input checked="" type="checkbox"/> Horizontal <input type="checkbox"/> Vertical	Ground Floor Elevation: 3012'
--------------------------------------------------	----------------------------------------------------------------------------------------------------	----------------------------------

OPERATOR CERTIFICATIONS I hereby certify that the information contained herein is true and complete to the best of my knowledge and belief, and, if the well is a vertical or directional well, that this organization either owns a working interest or unleased mineral interest in the land including the proposed bottom hole location or has a right to drill this well at this location pursuant to a contract with an owner of a working interest or unleased mineral interest, or to a voluntary pooling agreement or a compulsory pooling order heretofore entered by the division. If this well is a horizontal well, I further certify that this organization has received the consent of at least one lessee or owner of a working interest or unleased mineral interest in each tract (in the target pool or formation) in which any part of the well's completed interval will be located or obtained a compulsory pooling order from the division. <i>Brett Miller</i> 08/06/2025 Signature Date Brett Miller Printed Name brett.miller@mewbourne.com Email Address		SURVEYOR CERTIFICATIONS I hereby certify that the well location shown on this plat was plotted from field notes of actual surveys made by me under my supervision and that the same is true and correct to the best of my belief.  Signature and Seal of Professional Surveyor <i>Robert M. Howell</i> Certificate Number Date of Survey 19680 08/12/2021	
------------------------------------------------------------------------------------------------------------------------------------------------------------------------------------------------------------------------------------------------------------------------------------------------------------------------------------------------------------------------------------------------------------------------------------------------------------------------------------------------------------------------------------------------------------------------------------------------------------------------------------------------------------------------------------------------------------------------------------------------------------------------------------------------------------------------------------------------------------------------------------------------------------------------------------------------------------------------------------------------------------------------------------------------------------------------------------------------------------------------------------------------------	--	--------------------------------------------------------------------------------------------------------------------------------------------------------------------------------------------------------------------------------------------------------------------------------------------------------------------------------------------------------------------------------------------------------------------------------------------------------------------------------------------------------	--

Note: No allowable will be assigned to this completion until all interests have been consolidated or a non-standard unit has been approved by the division.

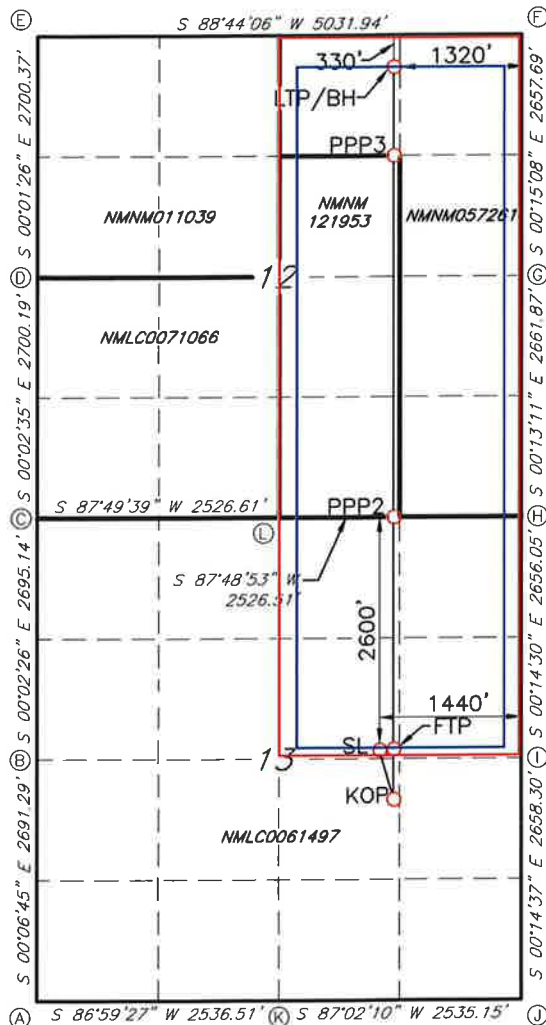
JOB #: LS21080874D2

ACREAGE DEDICATION PLATS

This grid represents a standard section. You may superimpose a non-standard section, or larger area, over this grid. Operators must outline the dedicated acreage in a red box, clearly show the well surface location and bottom hole location, if it is a directionally drilled, with the dimensions from the section lines in the cardinal directions. If this is a horizontal wellbore show on this plat the location of the First Take Point and Last Take Point, and the point within the Completed interval (other than the First Take Point or Last Take Point) that is closest to any outer boundary of the tract.

Surveyors shall use the latest United States government survey or dependent resurvey. Well locations will be in reference to the New Mexico Principal Meridian. If the land is not surveyed, contact the OCD Engineering Bureau. Independent subdivision surveys will not be acceptable.

FULLER 13/12 FED COM #827H



GEODETIC DATA
NAD 83 GRID - NM EAST

SURFACE LOCATION (SL)
2600' FNL & 1440' FEL (SEC.13)
N: 379419.5 - E: 665109.7

LAT: 32.0424750 N
LONG: 103.9338699 W

KICK OFF POINT (KOP)
2193' FSL & 1320' FEL (SEC.13)
N: 378885.8 - E: 665232.6

LAT: 32.0410066 N
LONG: 103.9334797 W

FIRST TAKE POINT (FTP)
2566' FNL & 1320' FEL (SEC.13)
N: 379458.7 - E: 665230.2

LAT: 32.0425814 N
LONG: 103.9334807 W

PROPOSED PENETRATION POINT 2 (PPP2)
0' FSL & 1320' FEL (SEC.12)
N: 382024.1 - E: 665219.2

LAT: 32.0496336 N
LONG: 103.9334853 W

PROPOSED PENETRATION POINT 3 (PPP3)
1334' FNL & 1320' FEL (SEC.12)
N: 386029.6 - E: 665202.2

LAT: 32.0606444 N
LONG: 103.9334925 W

LAST TAKE POINT/BOTTOM HOLE (LTP/BH)
330' FNL & 1320' FEL (SEC.12)
N: 387033.8 - E: 665197.9

LAT: 32.0634049 N
LONG: 103.9334943 W

CORNER DATA
NAD 83 GRID - NM EAST

A: FOUND BRASS CAP "1940"
N: 376497.1 - E: 661496.5

G: FOUND BRASS CAP "1940"
N: 384735.7 - E: 666527.5

B: FOUND BRASS CAP "1940"
N: 379187.8 - E: 661491.3

H: FOUND BRASS CAP "1940"
N: 382074.4 - E: 666537.7

C: FOUND BRASS CAP "1940"
N: 381882.4 - E: 661489.4

I: FOUND BRASS CAP "1940"
N: 379419.0 - E: 666548.9

D: FOUND BRASS CAP "1940"
N: 384582.0 - E: 661487.3

J: FOUND BRASS CAP "1940"
N: 376761.3 - E: 666560.2

E: FOUND BRASS CAP "1940"
N: 387281.8 - E: 661486.2

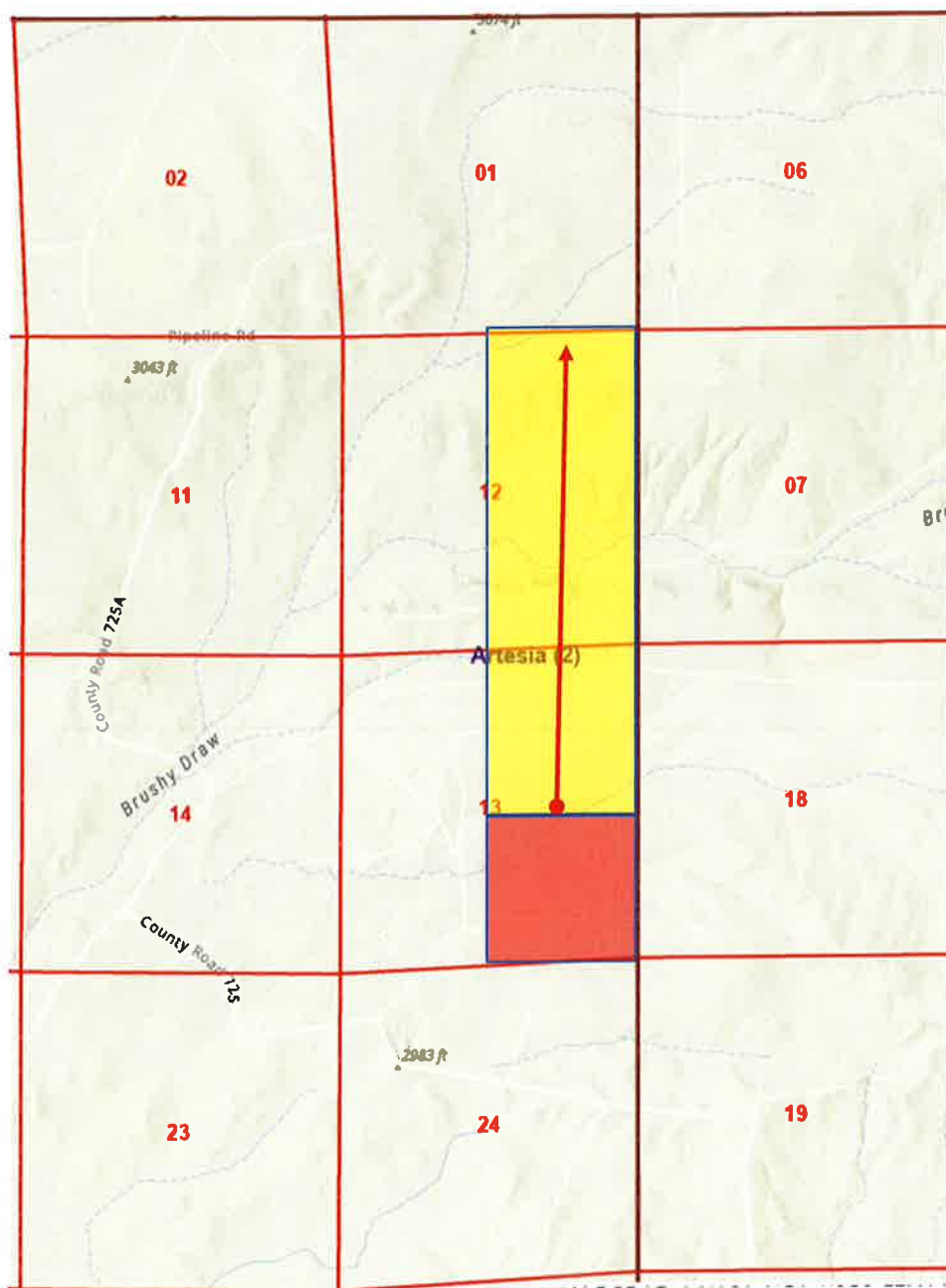
K: FOUND BRASS CAP "1940"
N: 376630.2 - E: 664029.0

F: FOUND 1/2" REBAR
N: 387392.8 - E: 666515.9

L: FOUND BRASS CAP "1940"
N: 381978.1 - E: 664013.6

JOB #: LS21080874D2

Offset Plat



Spacing Unit

Affected Tracts

Well 

Affected Parties

Fuller 13/12 NSL

Type	Owners	Location	Certified Tracking Number	Date Letter Sent
Operator	Mewbourne Oil Company	SE/4 of Section 13 T26S-R29E	N/A	N/A

Sante Fe Main Office
Phone: (505) 476-3441

General Information
Phone: (505) 629-6116

Online Phone Directory
<https://www.emnrd.nm.gov/ocd/contact-us>

State of New Mexico
Energy, Minerals and Natural Resources
Oil Conservation Division
1220 S. St Francis Dr.
Santa Fe, NM 87505

CONDITIONS

Action 503933

CONDITIONS

Operator: MEWBOURNE OIL CO P.O. Box 5270 Hobbs, NM 88241	OGRID: 14744
	Action Number: 503933
	Action Type: [UF-NSL] Non-Standard Location (NSL)

CONDITIONS

Created By	Condition	Condition Date
llowe	None	9/22/2025