

Revised March 23, 2017

RECEIVED:	REVIEWER:	TYPE:	APP NO:
-----------	-----------	-------	---------

ABOVE THIS TABLE FOR OCD DIVISION USE ONLY

**NEW MEXICO OIL CONSERVATION DIVISION**  
 - Geological & Engineering Bureau -  
 1220 South St. Francis Drive, Santa Fe, NM 87505



**ADMINISTRATIVE APPLICATION CHECKLIST**

THIS CHECKLIST IS MANDATORY FOR ALL ADMINISTRATIVE APPLICATIONS FOR EXCEPTIONS TO DIVISION RULES AND  
 REGULATIONS WHICH REQUIRE PROCESSING AT THE DIVISION LEVEL IN SANTA FE

Applicant: \_\_\_\_\_ OGRID Number: \_\_\_\_\_  
 Well Name: \_\_\_\_\_ API: \_\_\_\_\_  
 Pool: \_\_\_\_\_ Pool Code: \_\_\_\_\_

**SUBMIT ACCURATE AND COMPLETE INFORMATION REQUIRED TO PROCESS THE TYPE OF APPLICATION  
 INDICATED BELOW**

1) **TYPE OF APPLICATION:** Check those which apply for [A]

A. Location – Spacing Unit – Simultaneous Dedication

☐ NSL      ☐ NSP (PROJECT AREA)      ☐ NSP (PRORATION UNIT)      ☐ SD

B. Check one only for [ I ] or [ II ]

[ I ] Commingling – Storage – Measurement

☐ DHC    ☐ CTB    ☐ PLC    ☐ PC    ☐ OLS    ☐ OLM

[ II ] Injection – Disposal – Pressure Increase – Enhanced Oil Recovery

☐ WFX    ☐ PMX    ☐ SWD    ☐ IPI    ☐ EOR    ☐ PPR

2) **NOTIFICATION REQUIRED TO:** Check those which apply.

- A. ☐ Offset operators or lease holders  
 B. ☐ Royalty, overriding royalty owners, revenue owners  
 C. ☐ Application requires published notice  
 D. ☐ Notification and/or concurrent approval by SLO  
 E. ☐ Notification and/or concurrent approval by BLM  
 F. ☐ Surface owner  
 G. ☐ For all of the above, proof of notification or publication is attached, and/or,  
 H. ☐ No notice required

**FOR OCD ONLY**

- ☐ Notice Complete  
☐ Application  
 Content  
 Complete

- 3) **CERTIFICATION:** I hereby certify that the information submitted with this application for administrative approval is **accurate** and **complete** to the best of my knowledge. I also understand that **no action** will be taken on this application until the required information and notifications are submitted to the Division.

**Note: Statement must be completed by an individual with managerial and/or supervisory capacity.**

Print or Type Name

*Russell Young*

Signature

Date

Phone Number

e-mail Address



December 11, 2025

**VIA ONLINE FILING**

Albert C.S. Chang, Division Director  
Oil Conservation Division  
New Mexico Department of Energy, Minerals and Natural Resources  
1220 South Saint Francis Drive  
Santa Fe, NM 87505

**Re: Application of XTO Permian Operating, LLC for administrative approval to surface commingle (pool and lease) oil and gas production from leases comprised of Sections 8, 17, 18, 19, 20, 27, 28, 29, 30, 31, 32, 33 and 34, Township 25 South, Range 30 East, NMPM, AND Sections 3, 4, and 10, Township 26 North, Range 30 East, NMPM, Eddy County, New Mexico (the "Lands")**

Dear Mr. Chang:

XTO Permian Operating, LLC (OGRID No. 373075) ("XTO"), pursuant to 19.15.12.10 NMAC, seeks administrative approval to surface commingle (pool and lease) *diversely* owned oil and gas production at the Poker Lake Unit 20 BD CTB, ("Facility") *insofar as all existing and future wells drilled in the following pools and leases:*

(a) The 7,682.62-acre, more or less, Wolfcamp PA "D" (NMNM 105723198) comprised of:

Township 25 South, Range 30 East, NMPM

Section 08: E2NE, E2SW, SE  
Section 17: All  
Section 18: Lots 3 & 4, E2SW, E2  
Section 19: All  
Section 20: All  
Section 27: S2  
Section 28: All  
Section 29: All  
Section 30: NE, E2SE  
Section 31: E2NE  
Section 32: All  
Section 33: All  
Section 34: All

Township 26 South, Range 30 East. N.M.P.M.

Section 03: All  
Section 04: NE  
Section 10: N2

XTO Permian Operating, LLC.  
3617 North Big Spring Street  
Midland, Texas 79705

And includes production from the PURPLE SAGE; WOLFCAMP (GAS) [98220] pool drilled to the following wells:

<b>API</b>	<b>Well Name</b>	<b>Well Number</b>
30-015-53233	POKER LAKE UNIT 20 17 BD	#101H
30-015-53234	POKER LAKE UNIT 20 17 BD	#102H
30-015-53235	POKER LAKE UNIT 20 17 BD	#121H
30-015-53236	POKER LAKE UNIT 20 17 BD	#122H
30-015-53237	POKER LAKE UNIT 20 17 BD	#161H
30-015-53238	POKER LAKE UNIT 20 8 BD	#103H
30-015-53239	POKER LAKE UNIT 20 8 BD	#104H
30-015-53240	POKER LAKE UNIT 20 8 BD	#105H
30-015-53245	POKER LAKE UNIT 20 8 BD	#106H
30-015-53246	POKER LAKE UNIT 20 8 BD	#107H
30-015-53241	POKER LAKE UNIT 20 8 BD	#123H
30-015-53242	POKER LAKE UNIT 20 8 BD	#124H
30-015-53247	POKER LAKE UNIT 20 8 BD	#125H
30-015-53248	POKER LAKE UNIT 20 8 BD	#126H
30-015-53243	POKER LAKE UNIT 20 8 BD	#162H
30-015-53244	POKER LAKE UNIT 20 8 BD	#163H
30-015-53249	POKER LAKE UNIT 20 8 BD	#164H
30-015-53250	POKER LAKE UNIT 20 8 BD	#165H
30-015-53251	POKER LAKE UNIT 20 8 BD	#166H
30-015-45468	POKER LAKE UNIT 20 BD	#102H
30-015-56537	POKER LAKE UNIT 20 BD	#116H
30-015-45620	POKER LAKE UNIT 20 BD	#121H
30-015-45621	POKER LAKE UNIT 20 BD	#122H
30-015-45622	POKER LAKE UNIT 20 BD	#123H
30-015-45623	POKER LAKE UNIT 20 BD	#124H
30-015-45624	POKER LAKE UNIT 20 BD	#125H
30-015-45625	POKER LAKE UNIT 20 BD	#126H
30-015-45626	POKER LAKE UNIT 20 BD	#127H
30-015-45627	POKER LAKE UNIT 20 BD	#128H
30-015-56540	POKER LAKE UNIT 20 BD	#309H
30-015-45492	POKER LAKE UNIT 20 BD	#701H
30-015-45472	POKER LAKE UNIT 20 BD	#703H
30-015-45474	POKER LAKE UNIT 20 BD	#901H
30-015-45493	POKER LAKE UNIT 20 BD	#903H
30-015-45538	POKER LAKE UNIT 20 BD	#905H
30-015-45475	POKER LAKE UNIT 20 BD	#907H

- (b) Federal Leases: NMNM105466725 and NMNM105504796, consisting of all of Section 17, 20 and 29, Township 25 North, Range 30 East and NMSLO Leases: E026420006 and B106780001, consisting of the E/2 SW/4, W/2 SE/4 and E/2 E/2 of Section 8 and all of Section 32, Township 25 North, Range 30 East, drilled to the CORRAL CANYON; BONE SPRING, SOUTH [13354] pool and consisting of the following wells:

<b>API</b>	<b>Well Name</b>	<b>Number</b>
30-015-56754	POKER LAKE UNIT 20 17 BD	#201H
30-015-56755	POKER LAKE UNIT 20 17 BD	#202H
30-015-57281	POKER LAKE UNIT 20 17 BD	#203H
30-015-57268	POKER LAKE UNIT 20 8 BD	#204H
30-015-56756	POKER LAKE UNIT 20 8 BD	#205H
30-015-56538	POKER LAKE UNIT 20 BD	#117H

XTO Permian Operating, LLC.  
3617 North Big Spring Street  
Midland, Texas 79705

30-015-56638	POKER LAKE UNIT 20 BD	#118H
30-015-56539	POKER LAKE UNIT 20 BD	#308H
30-015-56541	POKER LAKE UNIT 20 BD	#310H

- (c) Pursuant to 19.15.12.10.C(4)(g), *from all future additions of pools, leases or leases and pools* with notice provided only to the owners of interests to be added.

Oil and gas production from these leases will be commingled and sold at the Facility, located ON the project area in the SW/4 of Section 20, Township 25 North, Range 30 East. XTO plans to use the well test method for allocation of production and measurement purposes. Production will flow from the wellbore to either a test separator or bulk (common) production separator. The test separator will separate the gas, oil, and water. Gas production from the test separator will be metered with a calibrated orifice meter that is manufactured to AGA specifications. Oil production from the test separator will be metered using a Coriolis meter. Gas and oil production will then be allocated on a daily basis based on the most recent individual well tests of oil, gas and water.

**Exhibit 1** is a plat showing the Facility site, well pads, well names, API numbers and leases in the subject area.

**Exhibit 2** is a completed Application for Surface Commingling (Diverse Ownership) Form C-107B, that includes a statement from Steven D. Wolfe, Senior Facilities Engineer with XTO, explaining how XTO plans to utilize the well test method and the measurement devices to be utilized, along with a detailed schematic of the surface facilities (Attachment A to the statement).

Ownership is diverse between the above-described leases, each of which are either subject to a pooling agreement, unit agreement, or a pooling order and are therefore considered "leases" as defined by 19.15.12.7(C) NMAC. **Exhibit 3** is a list of the interest owners (including any owners of royalty or overriding royalty interests) affected by this application, an example of the letter sent by certified mail advising the interest owners that any objections must be filed in writing with the Division within 20 days from the date the Division receives this application, and proof of mailing. A copy of this application has been provided to the Bureau of Land Management and New Mexico State Lands Office since federal and state lands are involved.

Thank you for your consideration of this application. Please feel free to contact me if you have any questions or need additional information.

Sincerely,

*Russell Young*

Russell Young  
New Mexico Commingle Manager  
Unconventional, Upstream

XTO Permian Operating, LLC.  
3617 North Big Spring Street  
Midland, Texas 79705





Date: 12/11/2025

Poker Lake Unit 20 BD CTB  
Lease Map

EDDY COUNTY, NM

Legend

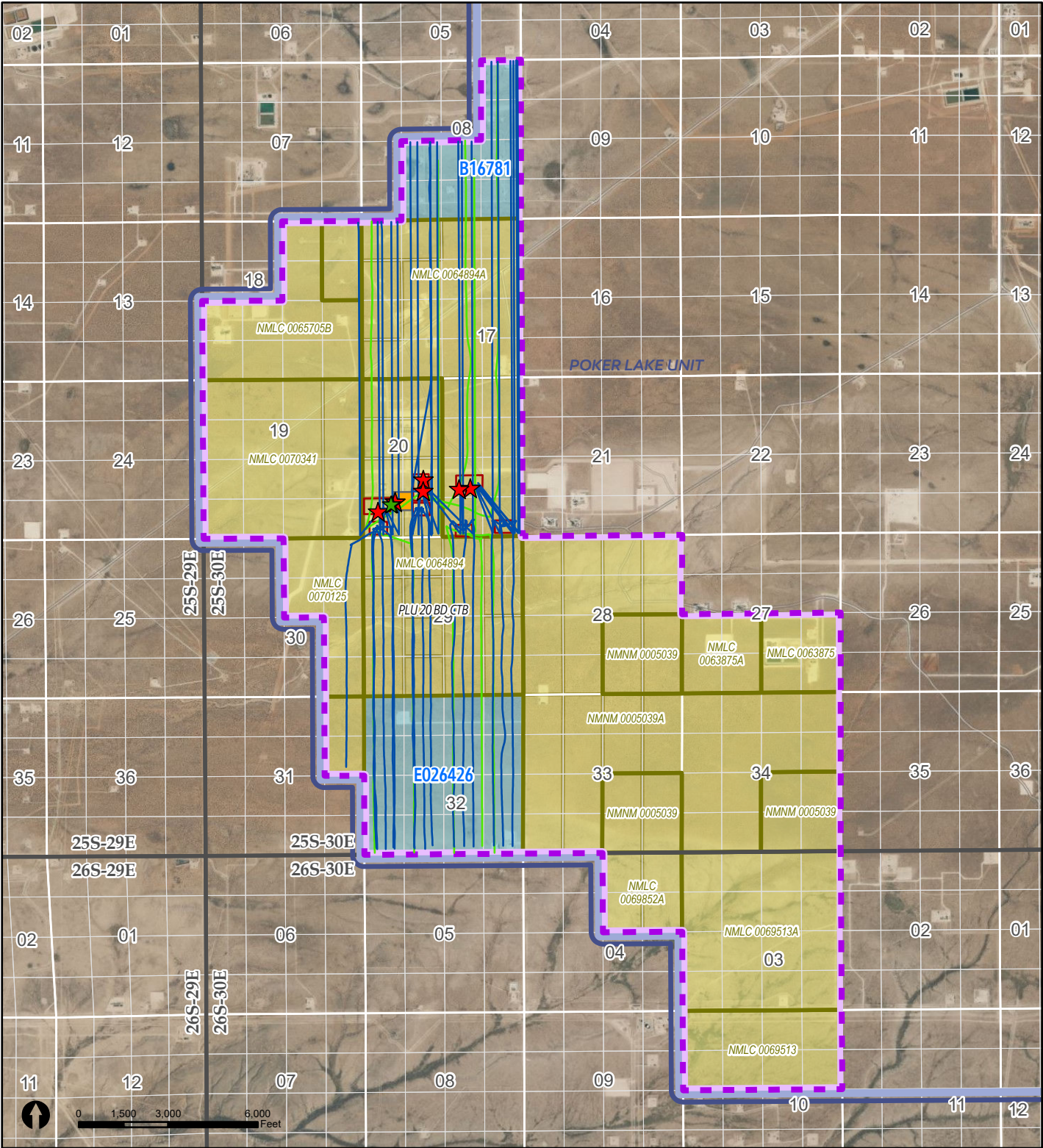
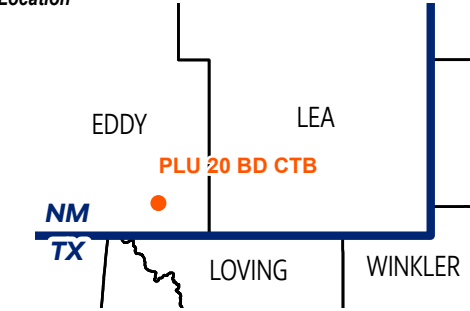
- ★ Gas FMP/Sales Meter (6)
- ★ OIL FMP/Sales Meter (2)
- CTB SITE
- Wells
  - BONE SPRING
  - WOLFCAMP
- POKER LAKE UNIT
- WOLFCAMP "D" 1ST REV NMNM105723198/NMNM071016AT
- FEDERAL SURFACE & MINERAL LEASE
- STATE SURFACE & MINERAL LEASE

Wells

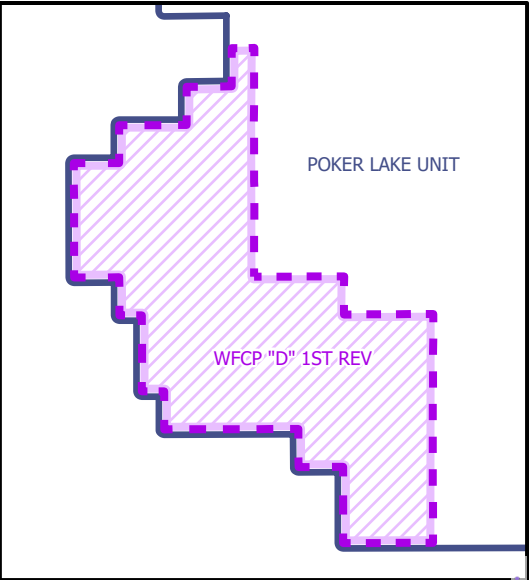
3001553233 POKER LAKE UNIT 20 17 BD 101H 3001545627 POKER LAKE UNIT 20 BD 128H  
3001553234 POKER LAKE UNIT 20 17 BD 102H 3001545492 POKER LAKE UNIT 20 BD 701H  
3001553235 POKER LAKE UNIT 20 17 BD 121H 3001545472 POKER LAKE UNIT 20 BD 703H  
3001553236 POKER LAKE UNIT 20 17 BD 122H 3001545474 POKER LAKE UNIT 20 BD 901H  
3001553237 POKER LAKE UNIT 20 17 BD 161H 3001545493 POKER LAKE UNIT 20 BD 903H  
3001553238 POKER LAKE UNIT 20 8 BD 103H 3001545538 POKER LAKE UNIT 20 BD 905H  
3001553239 POKER LAKE UNIT 20 8 BD 104H 3001545475 POKER LAKE UNIT 20 BD 907H  
3001553240 POKER LAKE UNIT 20 8 BD 105H  
3001553245 POKER LAKE UNIT 20 8 BD 106H  
3001553246 POKER LAKE UNIT 20 8 BD 107H  
3001553241 POKER LAKE UNIT 20 8 BD 123H  
3001553242 POKER LAKE UNIT 20 8 BD 124H  
3001553247 POKER LAKE UNIT 20 8 BD 125H  
3001553248 POKER LAKE UNIT 20 8 BD 126H  
3001553243 POKER LAKE UNIT 20 8 BD 162H  
3001553249 POKER LAKE UNIT 20 8 BD 164H  
3001553250 POKER LAKE UNIT 20 8 BD 165H  
3001553251 POKER LAKE UNIT 20 8 BD 166H  
3001553244 POKER LAKE UNIT 20 8 BD 163H  
3001545468 POKER LAKE UNIT 20 BD 102H  
3001556537 POKER LAKE UNIT 20 BD 116H  
3001545620 POKER LAKE UNIT 20 BD 121H  
3001545621 POKER LAKE UNIT 20 BD 122H  
3001545622 POKER LAKE UNIT 20 BD 123H  
3001545623 POKER LAKE UNIT 20 BD 124H  
3001545624 POKER LAKE UNIT 20 BD 125H  
3001545625 POKER LAKE UNIT 20 BD 126H  
3001545626 POKER LAKE UNIT 20 BD 127H

3001556754 POKER LAKE UNIT 20 17 BD 201H  
3001556755 POKER LAKE UNIT 20 17 BD 202H  
3001557281 POKER LAKE UNIT 20 17 BD 203H  
3001557268 POKER LAKE UNIT 20 8 BD 204H  
3001556756 POKER LAKE UNIT 20 8 BD 205H  
3001556538 POKER LAKE UNIT 20 BD 117H  
3001556638 POKER LAKE UNIT 20 BD 118H  
3001556539 POKER LAKE UNIT 20 BD 308H  
3001556541 POKER LAKE UNIT 20 BD 310H  
3001556540 POKER LAKE UNIT 20 BD 309H

Location



WOLFCAMP PA



District I  
1625 N. French Drive, Hobbs, NM 88240  
District II  
811 S. First St., Artesia, NM 88210  
District III  
1000 Rio Brazos Road, Aztec, NM 87410  
District IV  
1220 S. St Francis Dr, Santa Fe, NM  
87505

State of New Mexico  
Energy, Minerals and Natural Resources Department

Form C-107-B  
Revised August 1, 2011

**OIL CONSERVATION DIVISION**  
1220 S. St Francis Drive  
Santa Fe, New Mexico 87505

Submit the original  
application to the Santa Fe  
office with one copy to the  
appropriate District Office.

**APPLICATION FOR SURFACE COMMINGLING (DIVERSE OWNERSHIP)**

OPERATOR NAME: [373075] XTO PERMIAN OPERATING LLC..  
OPERATOR ADDRESS: 3617 North Big Spring Street, Midland, Texas 79705  
APPLICATION TYPE:

☐ Pool Commingling ☐ Lease Commingling ☒ Pool and Lease Commingling ☐ Off-Lease Storage and Measurement (Only if not Surface Commingled)

LEASE TYPE: ☐ Fee ☒ State ☒ Federal

Is this an Amendment to existing Order? ☐ Yes ☒ No If "Yes", please include the appropriate Order No. \_\_\_\_\_  
Have the Bureau of Land Management (BLM) and State Land office (SLO) been notified in writing of the proposed commingling  
☒ Yes ☐ No

**(A) POOL COMMINGLING**  
Please attach sheets with the following information

(1) Pool Names and Codes	Gravities / BTU of Non-Commingled Production	Calculated Gravities / BTU of Commingled Production		Calculated Value of Commingled Production	Volumes
[98220] PURPLE SAGE; WOLFCAMP (GAS)	50/1295	49/1164		\$59.17/4.95	17,496/bbl/d 108,669/mcfd
[13354] CORRAL CANYON; BONE SPRING, SOUTH	45/1159				35,911/bbl/d 28,160/mcfd

- (2) Are any wells producing at top allowables? ☐ Yes ☒ No  
(3) Has all interest owners been notified by certified mail of the proposed commingling? ☒ Yes ☐ No.  
(4) Measurement type: ☐ Metering ☒ Other (Specify) Well Test Method  
(5) Will commingling decrease the value of production? ☐ Yes ☒ No If "yes", describe why commingling should be approved

**(B) LEASE COMMINGLING**  
Please attach sheets with the following information

- (1) Pool Name and Code.  
(2) Is all production from same source of supply? ☐ Yes ☐ No  
(3) Has all interest owners been notified by certified mail of the proposed commingling? ☐ Yes ☐ No  
(4) Measurement type: ☐ Metering ☐ Other (Specify)

**(C) POOL and LEASE COMMINGLING**  
Please attach sheets with the following information

- (1) Complete Sections A and E.

**(D) OFF-LEASE STORAGE and MEASUREMENT**  
Please attached sheets with the following information

- (1) Is all production from same source of supply? ☐ Yes ☐ No  
(2) Include proof of notice to all interest owners.

**(E) ADDITIONAL INFORMATION (for all application types)**  
Please attach sheets with the following information

- (1) A schematic diagram of facility, including legal location. See attached  
(2) A plat with lease boundaries showing all well and facility locations. Include lease numbers if Federal or State lands are involved. See attached  
(3) Lease Names, Lease and Well Numbers, and API Numbers. See attached

I hereby certify that the information above is true and complete to the best of my knowledge and belief.

SIGNATURE: Russell Young TITLE: NM Commingle Manager DATE: 12/11/2025

TYPE OR PRINT NAME Russell Young TELEPHONE NO.: (832) 302-5430  
E-MAIL ADDRESS: russell.young@exxonmobil.com



## Facility Process Flow and Measurement

The production from each well will flow from its respective surface hole location through a flowline to an inlet header on the wellpad facility or the tank battery facility. The layout of the Facility is shown on the included Site Flow Diagram (SFD). The inlet header directs the well production into either a test separator or bulk (common) production separator. If a well is not directed to the test separator, the flow is directed into the bulk production separator.

The test separator is a horizontal vessel where the gas, oil, and water are separated and measured. The test separator has been designed to handle the Initial Production (IP) Rates of the wells and accurately measure the fluids. The gas flow is measured using an orifice meter following API Standard MPMS14.3.2 and the flow is calculated using an electronic flow meter (EFM). The oil flow is measured using a Coriolis flow meter following the API Standard MPMS 5.6. The water flow is measured using a mag meter. One well can be tested every day. Well test by separating and metering the oil production from the well for either (a) a minimum of twenty-four (24) consecutive hours; or (b) a combination of nonconsecutive periods that meet the following conditions: (i) each period shall be a minimum of six (6) hours; and (ii) the total duration of the nonconsecutive periods shall be a minimum of eighteen (18) hours. The Well Test Method used follows the American Petroleum Institute's Manual of Petroleum Measurement Standards, Chapter 20 (API MPMS 20.1) and meets BLM, state, and federal regulations.

The production at the well pad results in separation at the well pad facilities and the gas from the test and bulk separators is recombined into a shared gas line. This gas is measured going to the sales meter utilizing an orifice meter and the flow is calculated using an electronic flow meter (EFM). The gas meter is the gas sales meter for the Wellpad facility.

At the battery, the oil, gas and water mixtures from the well pads and the oil, gas and water mixtures from the battery test and bulk separators, are recombined at the battery for further processing. The fluid is sent to the bulk production separators where oil and gas are separated. The oil then flows into a horizontal heater treater where heat is added to meet RVP requirements. From the heater treater the oil is routed to a Vapor Recovery Tower (VRT) and then transferred into the oil pipeline using a LACT unit. The LACT unit has a Coriolis flow meter that will be used as the sales meter. The sales meter for the oil will be at the battery.

After separation at battery, the gas from the battery test and bulk separators is recombined into a shared battery gas line along with flash gas. Flash gas is recovered with compression from heater treaters, VRTs, and tanks. The shared gas line allows flow to either a gas sales line or to a flare on location at the battery. Gas flow is directed to the flare in the event of an emergency. The gas is measured going to the sales meter utilizing an orifice meter and the flow is calculated using an electronic flow meter (EFM). The gas meter is the gas sales meter for the facility.

After separation, the water from the test and bulk separators, horizontal heater treater and the Vapor Recovery Tower (VRT) is recombined into a shared line routed to a Skim Tank. The Skim Tank separates any remaining gas and oil from the water. The water is pumped into the SWD system pipeline after being measured with a mag meter. The gas is recovered using compression and sent to the gas sales line. The residual oil is recovered and pumped back to the heater treater.

## Reservoir Forecasted Declines

These wells may produce high volumes for a short three-month period and are then expected to decline for the remaining life of each well. After the initial period of hyperbolic decline, production stabilizes at a more predictable exponential decline rate.

## Production and Allocation

Based on the decline rates, the wells will be tested at differing frequencies for optimum accuracy. Based on the production decline, the following three periods will be used to determine well test frequency:

- Range 1 – Initial Production Period – from the first production until the earlier of either the peak production rate or thirty (30) days after the first production; minimum 10 well tests/per month
- Range 2 – Plateau Period – the end of the initial production period to the peak decline rate; minimum 3 well tests/per month
- Range 3 – Decline Period – the end of plateau period until well is plugged and abandoned; minimum 3 well tests/per month when the decline rate is >22% per month, 2 well tests/per month when the decline rate is between 22%-10% per month, and 1 well test/per month when the decline rate is <10% per month

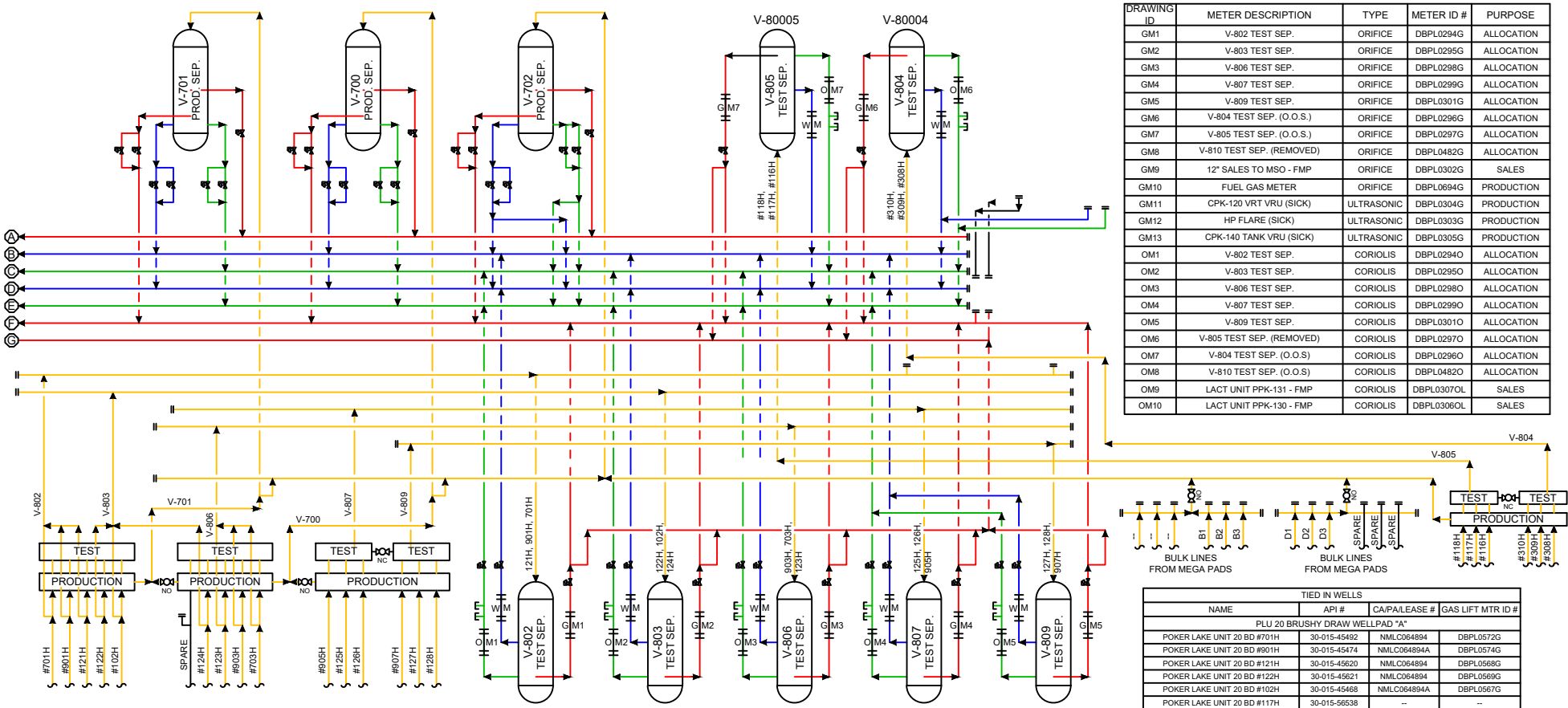
Gas and oil production will then be allocated on a daily basis based on the most recent individual well tests of oil, gas, and water.

All the Test Data is collected into our Production Accounting System for Allocation. The allocation methodology is shown specifically in the attached spreadsheet. The time increment for reported sales through the sales meter custody transfer meters is monthly.

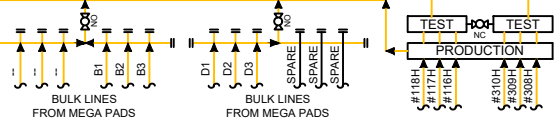
**Commingled approval will allow XTO to efficiently and effectively market production from the subject acreage.**



PLU 20-8/20-17 BRUSHY DRAW MEGA PAD "D" - WEST				PLU 20-8/20-17 BRUSHY DRAW MEGA PAD "D" - EAST			
NAME	API #	CA/PAL/LEASE #	GAS LIFT METER #	NAME	API #	CA/PAL/LEASE #	GAS LIFT METER #
POKER LAKE UNIT 20-8 BD #107H	30-015-53246	--	DBPL1125G	POKER LAKE UNIT 20-8 BD #108H	30-015-53245	NMLC064894A	DBPL1145G
POKER LAKE UNIT 20-8 BD #126H	30-015-53248	NMLC064894A	DBPL1126G	POKER LAKE UNIT 20-8 BD #125H	30-015-53247	NMLC064894A	DBPL1144G
-	-	-	-	POKER LAKE UNIT 20-8 BD #164H	30-015-53249	NMLC064894A	DBPL1146G
-	-	-	-	POKER LAKE UNIT 20-8 BD #165H	30-015-53250	NMLC064894A	DBPL1147G
-	-	-	-	POKER LAKE UNIT 20-8 BD #166H	30-015-53251	NMLC064894A	DBPL1148G



DRAWING ID	METER DESCRIPTION	TYPE	METER ID #	PURPOSE
GM1	V-802 TEST SEP.	ORIFICE	DBPL0294G	ALLOCATION
GM2	V-803 TEST SEP.	ORIFICE	DBPL0295G	ALLOCATION
GM3	V-806 TEST SEP.	ORIFICE	DBPL0298G	ALLOCATION
GM4	V-807 TEST SEP.	ORIFICE	DBPL0299G	ALLOCATION
GM5	V-809 TEST SEP.	ORIFICE	DBPL0301G	ALLOCATION
GM6	V-804 TEST SEP. (O.O.S.)	ORIFICE	DBPL0296G	ALLOCATION
GM7	V-805 TEST SEP. (O.O.S.)	ORIFICE	DBPL0297G	ALLOCATION
GM8	V-810 TEST SEP. (REMOVED)	ORIFICE	DBPL0482G	ALLOCATION
GM9	12" SALES TO MSO - FMP	ORIFICE	DBPL0302G	SALES
GM10	FUEL GAS METER	ORIFICE	DBPL0694G	PRODUCTION
GM11	CPK-120 VRT VRU (SICK)	ULTRASONIC	DBPL0304G	PRODUCTION
GM12	HP FLARE (SICK)	ULTRASONIC	DBPL0303G	PRODUCTION
GM13	CPK-140 TANK VRU (SICK)	ULTRASONIC	DBPL0305G	PRODUCTION
OM1	V-802 TEST SEP.	CORIOLIS	DBPL0294O	ALLOCATION
OM2	V-803 TEST SEP.	CORIOLIS	DBPL0295O	ALLOCATION
OM3	V-806 TEST SEP.	CORIOLIS	DBPL0298O	ALLOCATION
OM4	V-807 TEST SEP.	CORIOLIS	DBPL0299O	ALLOCATION
OM5	V-809 TEST SEP.	CORIOLIS	DBPL0301O	ALLOCATION
OM6	V-805 TEST SEP. (REMOVED)	CORIOLIS	DBPL0297O	ALLOCATION
OM7	V-804 TEST SEP. (O.O.S.)	CORIOLIS	DBPL0296O	ALLOCATION
OM8	V-810 TEST SEP. (O.O.S.)	CORIOLIS	DBPL0482O	ALLOCATION
OM9	LACT UNIT PPK-131 - FMP	CORIOLIS	DBPL0307OL	SALES
OM10	LACT UNIT PPK-130 - FMP	CORIOLIS	DBPL0306OL	SALES



TIED IN WELLS			
NAME	API #	CA/PAL/LEASE #	GAS LIFT MTR ID #
PLU 20 BRUSHY DRAW WELL PAD "A"			
POKER LAKE UNIT 20 BD #701H	30-015-45482	NMLC064894A	DBPL0572G
POKER LAKE UNIT 20 BD #901H	30-015-45474	NMLC064894A	DBPL0574G
POKER LAKE UNIT 20 BD #121H	30-015-45620	NMLC064894A	DBPL0568G
POKER LAKE UNIT 20 BD #122H	30-015-45621	NMLC064894A	DBPL0569G
POKER LAKE UNIT 20 BD #102H	30-015-45468	NMLC064894A	DBPL0567G
POKER LAKE UNIT 20 BD #117H	30-015-56538	--	--
POKER LAKE UNIT 20 BD #118H	30-015-56638	--	--
POKER LAKE UNIT 20 BD #116H	30-015-56537	--	--
PLU 20 BRUSHY DRAW WELL PAD "B"			
POKER LAKE UNIT 20 BD #124H	30-015-45623	NMLC064894A	DBPL0571G
POKER LAKE UNIT 20 BD #123H	30-015-45622	NMLC064894A	DBPL0570G
POKER LAKE UNIT 20 BD #903H	30-015-45493	NMLC064894A	DBPL0575G
POKER LAKE UNIT 20 BD #703H	30-015-45472	NMLC064894A	DBPL0573G
PLU 20 BRUSHY DRAW WELL PAD "C"			
POKER LAKE UNIT 20 BD #905H	30-015-45538	NMLC064894A	DBPL0775G
POKER LAKE UNIT 20 BD #125H	30-015-45624	NMLC064894A	DBPL0776G
POKER LAKE UNIT 20 BD #126H	30-015-45625	NMLC064894A	DBPL0777G
POKER LAKE UNIT 20 BD #200H	30-015-56540	--	--
POKER LAKE UNIT 20 BD #310H	30-015-56541	--	--
POKER LAKE UNIT 20 BD #309H	30-015-56539	--	--
PLU 20 BRUSHY DRAW WELL PAD "D"			
POKER LAKE UNIT 20 BD #907H	30-015-45475	NMLC064894A	DBPL0774G
POKER LAKE UNIT 20 BD #127H	30-015-45626	NMLC064894A	DBPL0772G
POKER LAKE UNIT 20 BD #128H	30-015-45627	NMLC064894A	DBPL0773G

WELLS AT 20-8/20-17 BRUSHY DRAW MEGA PAD "B" - NORTH			
NAME	API #	CA/PAL/LEASE #	GAS LIFT METER #
POKER LAKE UNIT 20-8 BD #103H	30-015-53238	NMLC064894A	DBPL1121G
POKER LAKE UNIT 20-8 BD #104H	30-015-53239	NMLC064894A	DBPL1119G
POKER LAKE UNIT 20-8 BD #105H	30-015-53240	NMLC064894A	DBPL1118G
POKER LAKE UNIT 20-8 BD #123H	30-015-53241	NMLC064894A	DBPL1120G
WELLS AT 20-8/20-17 BRUSHY DRAW MEGA PAD "B" - SOUTH			
POKER LAKE UNIT 20 BD #124H	30-015-53242	NMLC064894A	DBPL1122G
POKER LAKE UNIT 20-8 BD #162H	30-015-53243	NMLC064894A	DBPL1124G
POKER LAKE UNIT 20-8 BD #163H	30-015-53244	NMLC064894A	DBPL1123G
POKER LAKE UNIT 20-8 BD #204H	30-015-57268	--	--
POKER LAKE UNIT 20-8 BD #205H	30-015-56756	--	--
POKER LAKE UNIT 20-17 BD #201H	30-015-56754	--	--
POKER LAKE UNIT 20-17 BD #202H	30-015-56755	--	--
POKER LAKE UNIT 20-17 BD #203H	30-015-57281	--	--

PLU 20-8/20-17 BRUSHY DRAW MEGA PAD "A"			
NAME	API #	CA/PAL/LEASE #	GAS LIFT METER #
POKER LAKE UNIT 20-17 BD #101H	30-015-53233	NMLC064894A	DBPL1140G
POKER LAKE UNIT 20-17 BD #102H	30-015-53234	NMLC064894A	DBPL1142G
POKER LAKE UNIT 20-17 BD #121H	30-015-53235	NMLC064894A	DBPL1141G
POKER LAKE UNIT 20-17 BD #122H	30-015-53236	NMLC064894A	DBPL1143G
POKER LAKE UNIT 20-17 BD #161H	30-015-53237	NMLC064894A	DBPL1139G

Facility Gas Usage

ROYALTY FREE EQUIPMENT	USAGE
V-500 HEAT. TREAT.	5.90 MCFD
V-501 HEAT. TREAT.	5.90 MCFD
HP & LP FLARE PILOTS	1.2 MCFD

NOTES:  
1. HEATER TREATERS USAGE BASED ON MANUFACTURER'S RECOMMENDED SPECIFICATIONS.  
2. FLARE PILOTS USAGE BASED ON MANUFACTURER'S RECOMMENDED SPECIFICATIONS.

Revision

Description of Change	Date	By	ENG. APP'D By
0 AS BUILT	10/12/2021	ETL	
1 ADDED MANIFOLD	12/28/2023	TM	
2 UPDATED SPFD/GENERAL REV.	12/16/2024	J.F.SB	
3 ADDED WELLS & HEADER	12/8/2025	J.F.	

Emulsion

Water

Oil

Gas

ExxonMobil

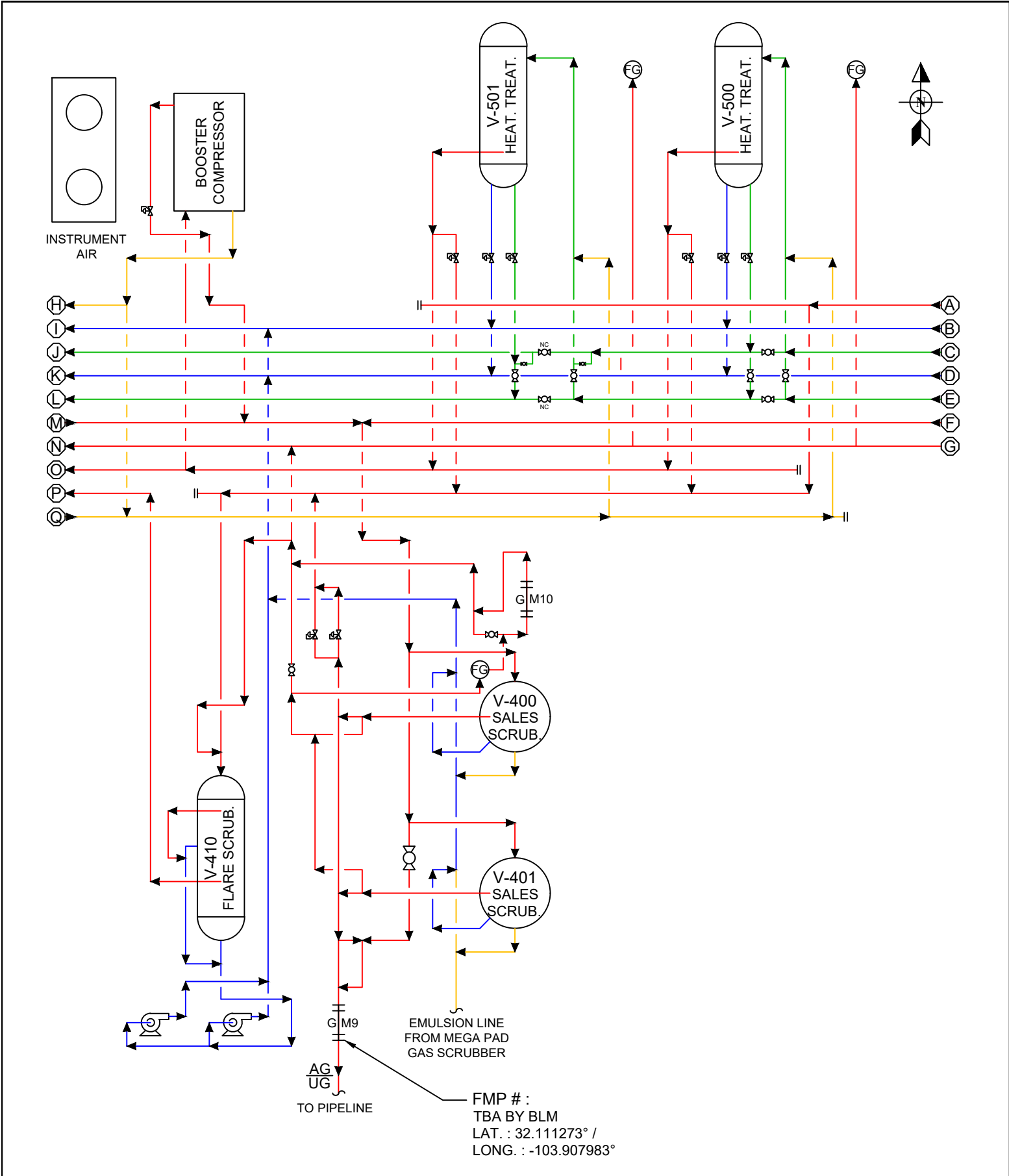
PLU 20 BRUSHY DRAW WEST  
CENTRAL TANK BATTERY  
EDDY COUNTY, NEW MEXICO


LAT.: 32.114111° / LONG.: -103.908070°  
USA NMLC064894 / SEC. 20-T25S-R30E, SWSW

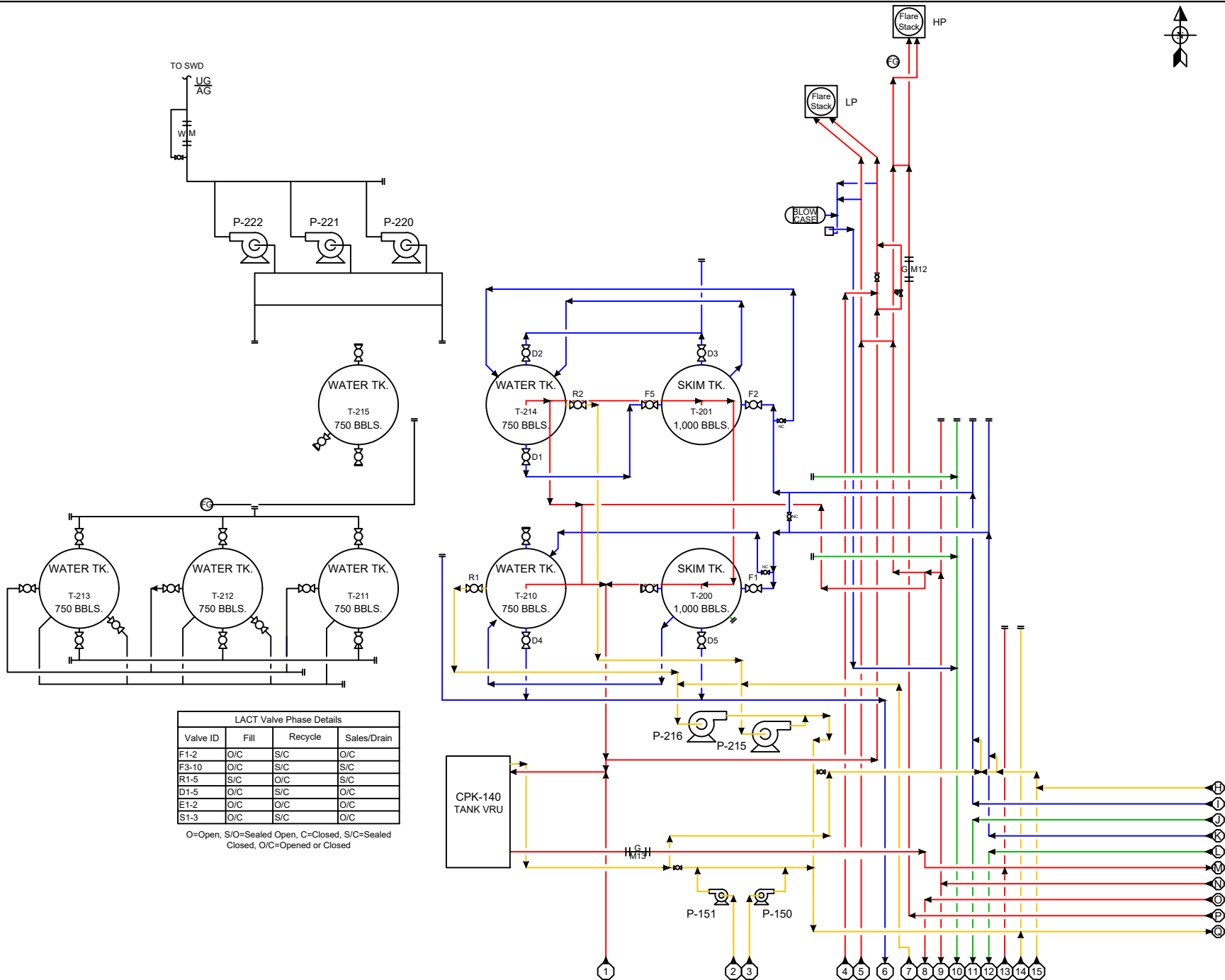
SITE FACILITY DIAGRAM - SHEET 1 OF 4

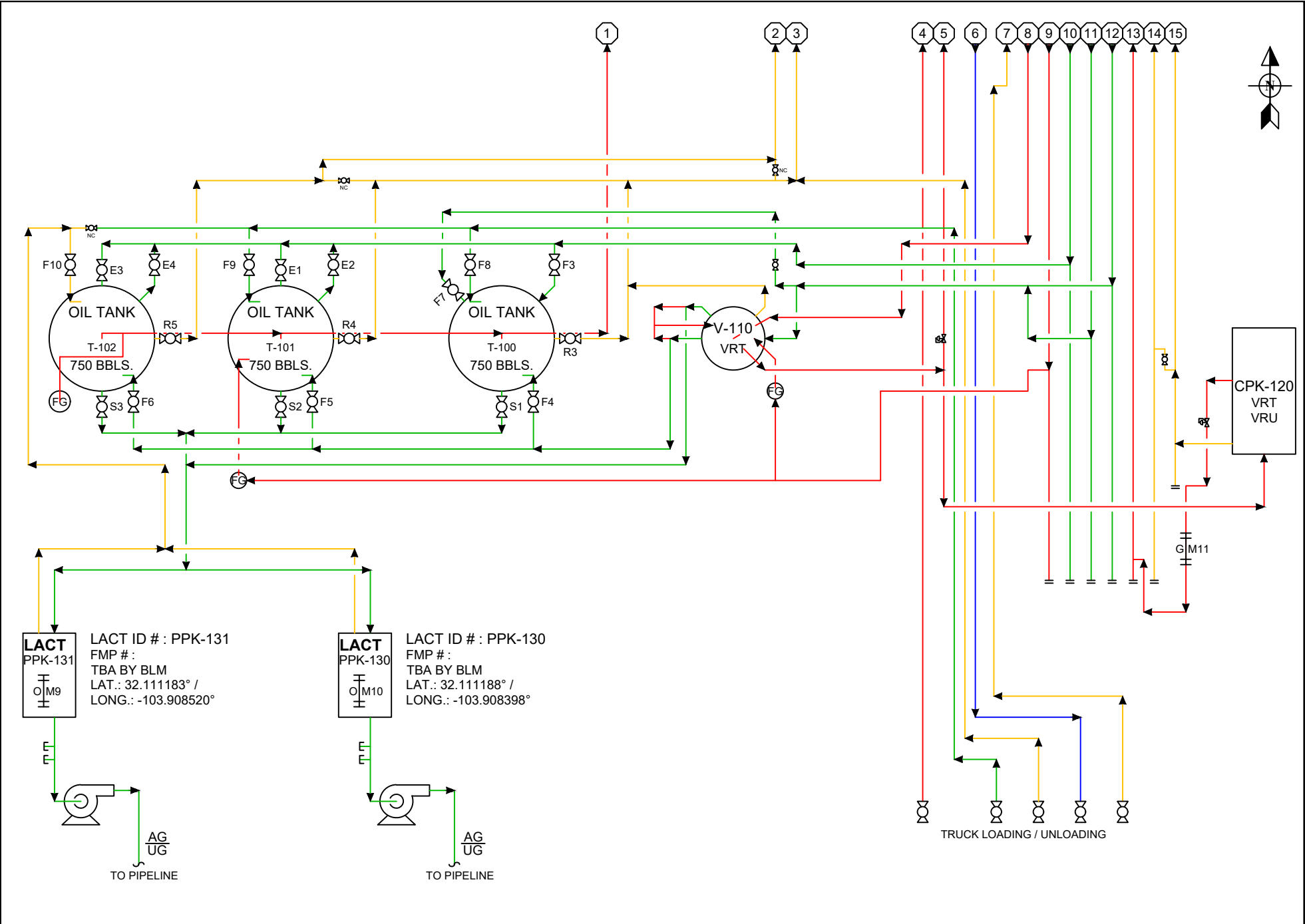
FILE NO. PLU 20 BRUSHY DRAW WEST CTB

REV. No. 3



Facility Gas Usage		NOTES: 1. HEATER TREATERS USAGE BASED ON MANUFACTURER'S RECOMMENDED SPECIFICATIONS 2. FLARE PILOTS USAGE BASED ON MANUFACTURER'S RECOMMENDED SPECIFICATIONS.	Revision	Description of Change	Date	By	ENG. APPD. By		PLU 20 BRUSHY DRAW WEST		
ROYALTY FREE EQUIPMENT	USAGE								CENTRAL TANK BATTERY EDDY COUNTY, NEW MEXICO		
V-500 HEAT. TREAT.	5.90 MCFD								LAT.: 32.111411° / LONG.: -103.908070°		
V-501 HEAT. TREAT.	5.90 MCFD								USA NMLC0064894 / SEC. 20-T25S-R30E, SWSW		
HP & LP FLARE PILOTS	1.2 MCFD								SITE FACILITY DIAGRAM - SHEET 2 OF 4		
									FILE NO.	REV. No.	
									PLU 20 BRUSHY DRAW WEST CTB		
									3		





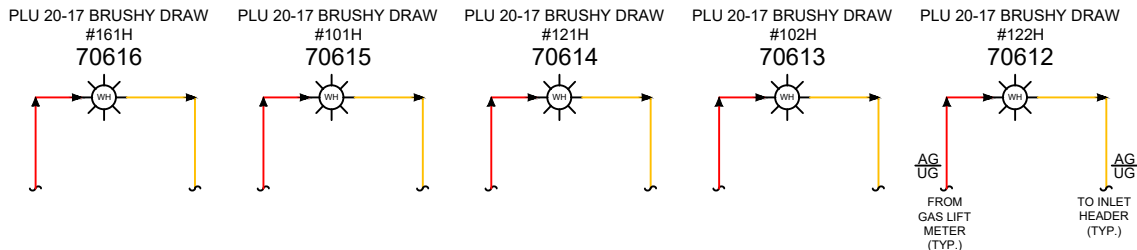
Facility Gas Usage	
ROYALTY FREE EQUIPMENT	USAGE
V-500 HEAT. TREAT.	5.90 MCFD
V-501 HEAT. TREAT.	5.90 MCFD
HP & LP FLARE PILOTS	1.2 MCFD

NOTES:  
1. HEATER TREATERS USAGE BASED ON MANUFACTURER'S RECOMMENDED SPECIFICATIONS.  
2. FLARE PILOTS USAGE BASED ON MANUFACTURER'S RECOMMENDED SPECIFICATIONS.

EMULSION  
WATER  
OIL  
GAS

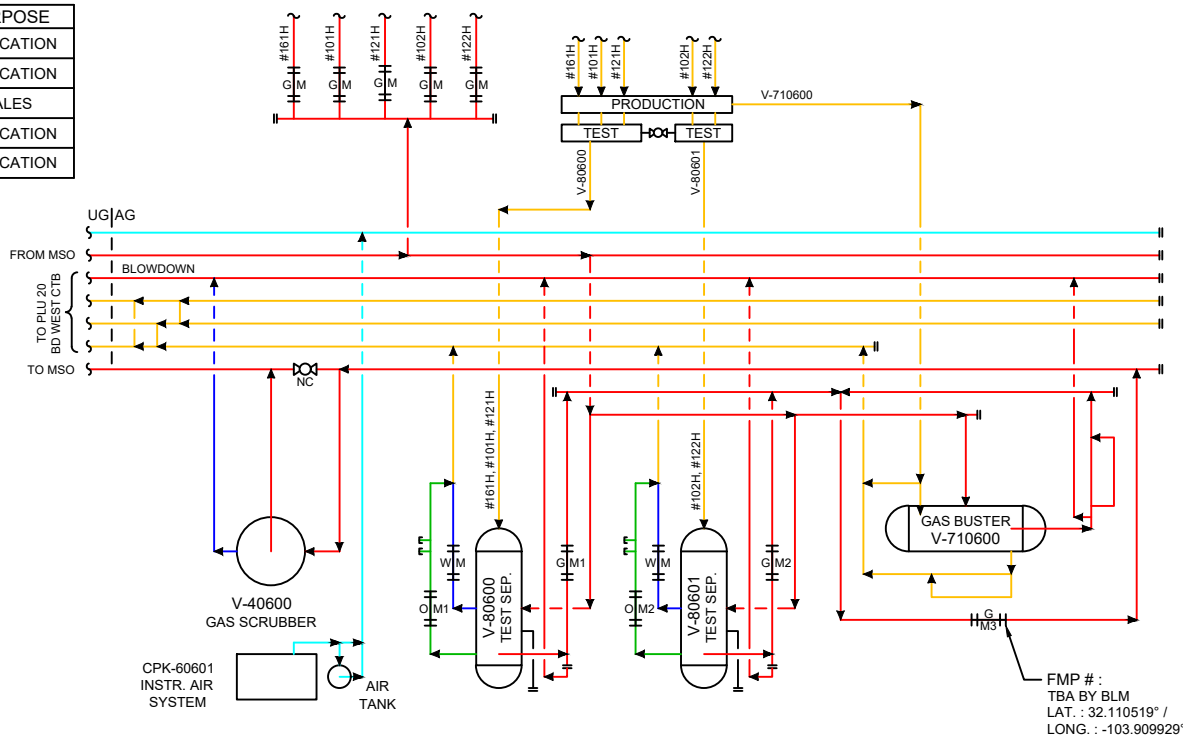
Revision	Description of Change	Date	By	ENG. APP'D By
0	AS BUILT	10/12/2021	ETL	
1	ADDED MANIFOLD	12/28/2023	TM	
2	UPDATED SPFG GENERAL REV.	12/16/2024	JLF/SB	
3	ADDED WELLS & HEADER	1/14/2025	JLF	

PLU 20 BRUSHY DRAW WEST CENTRAL TANK BATTERY EDDY COUNTY, NEW MEXICO	
LAT.: 32.111411° / LONG.: -103.908070° USA NMLC0064894 / SEC. 20-T25S-R30E, SWSW	
SITE FACILITY DIAGRAM - SHEET 4 OF 4	
FILE NO. PLU 20 BRUSHY DRAW WEST CTB	REV. No. 3



PLU 20-8/20-17 BRUSHY DRAW MEGA PAD "A"		
NAME	API #	GAS LIFT METER #
POKER LAKE UNIT 20-17 BD #101H	30-015-53233	DBPL1140G
POKER LAKE UNIT 20-17 BD #102H	30-015-53234	DBPL1142G
POKER LAKE UNIT 20-17 BD #121H	30-015-53235	DBPL1141G
POKER LAKE UNIT 20-17 BD #122H	30-015-53236	DBPL1143G
POKER LAKE UNIT 20-17 BD #161H	30-015-53237	DBPL1139G

DRAWING ID	METER DESCRIPTION	TYPE	METER ID #	PURPOSE
GM1	V-80600 TEST SEPARATOR	ORIFICE	DBPL1083G	ALLOCATION
GM2	V-80601 TEST SEPARATOR	ORIFICE	DBPL1084G	ALLOCATION
GM3	12" SALES METER TO MSO - FMP	ORIFICE	DBPL1082G	SALES
OM1	V-80600 TEST SEPARATOR	CORIOLIS	DBPL1083O	ALLOCATION
OM2	V-80601 TEST SEPARATOR	CORIOLIS	DBPL1084O	ALLOCATION



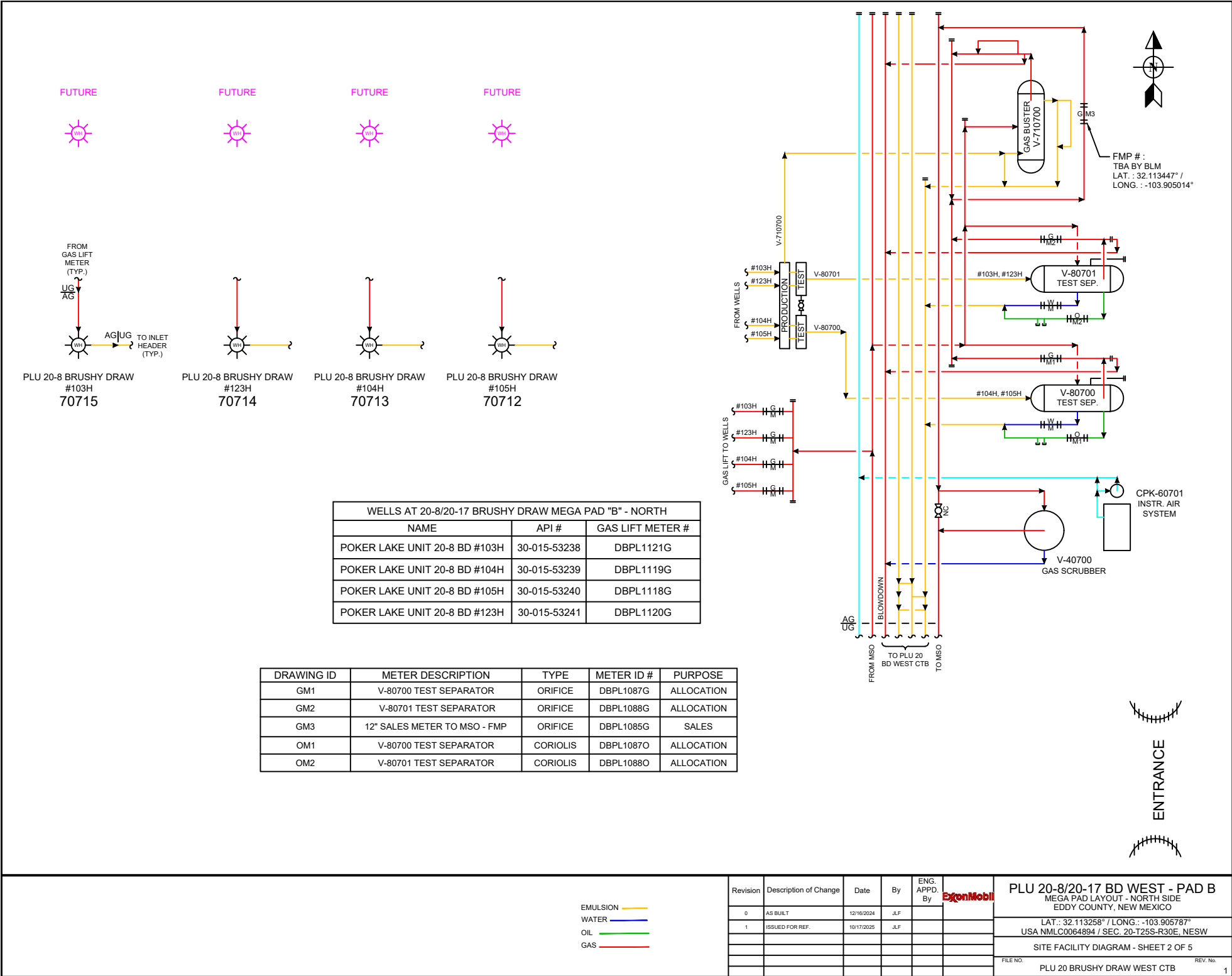
ENTRANCE

EMULSION  
WATER  
OIL  
GAS

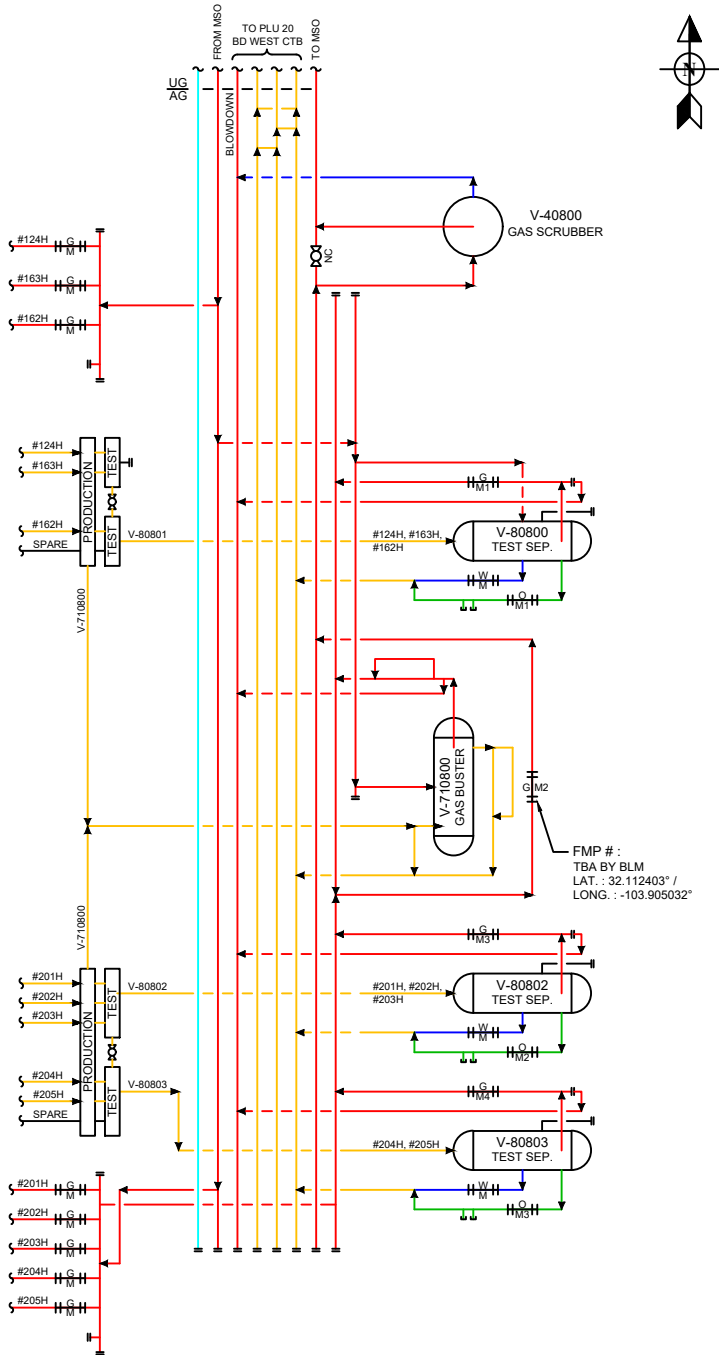
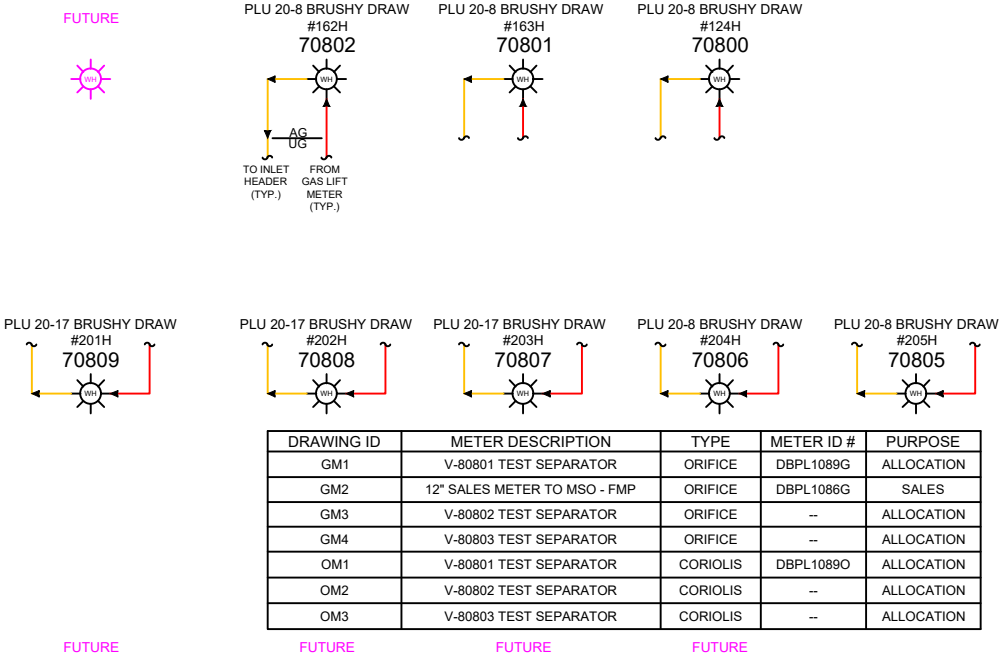
Revision	Description of Change	Date	By	ENG. APP'D. By
0	AS BUILT	12/16/2024	JLF	
1	ISSUED FOR REF.	10/17/2025	JLF	

PLU 20-8/20-17 BD WEST - PAD A MEGAPAD LAYOUT - EAST SIDE EDDY COUNTY, NEW MEXICO	
LAT.: 32.111078° / LONG.: -103.910460° USA NMLC0064894 / SEC. 20-T25S-R30E, SWSW	
SITE FACILITY DIAGRAM - SHEET 1 OF 5	
FILE NO.	REV. No.
PLU 20 BRUSHY DRAW	1





WELLS AT 20-8/20-17 BRUSHY DRAW MEGA PAD "B" - SOUTH		
NAME	API #	GAS LIFT METER #
POKER LAKE UNIT 20-8 BD #124H	30-015-53242	DBPL1122G
POKER LAKE UNIT 20-8 BD #162H	30-015-53243	DBPL1124G
POKER LAKE UNIT 20-8 BD #163H	30-015-53244	DBPL1123G
POKER LAKE UNIT 20-8 BD #204H	30-015-57268	--
POKER LAKE UNIT 20-8 BD #205H	30-015-56756	--
POKER LAKE UNIT 20-17 BD #201H	30-015-56754	--
POKER LAKE UNIT 20-17 BD #202H	30-015-56755	--
POKER LAKE UNIT 20-17 BD #203H	30-015-57281	--



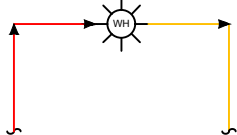
FMP # :  
TBA BY BLM  
LAT. : 32.112403° /  
LONG. : -103.905032°

EMULSION  
WATER  
OIL  
GAS

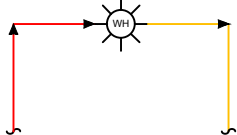
Revision	Description of Change	Date	By	ENG. APP'D By	ExxonMobil	PLU 20-8/20-17 BD WEST - PAD B	
0	AS BUILT	12/16/2024	JLF			MEGA PAD LAYOUT - SOUTH SIDE	
1	ADDED WELLS & TESTERS	12/8/2025	JLF			EDDY COUNTY, NEW MEXICO	
						LAT.: 32.112485° / LONG.: -103.905734°	
						USA NMLC0064894 / SEC. 20-T2SS-R30E, SWNE	
						SITE FACILITY DIAGRAM - SHEET 3 OF 5	
						FILE NO.	REV. No.
						PLU 20 BRUSHY DRAW WEST CTB	1



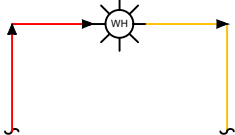
PLU 20-8 BRUSHY DRAW  
#125H  
71216



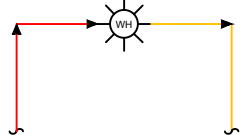
PLU 20-8 BRUSHY DRAW  
#106H  
71215



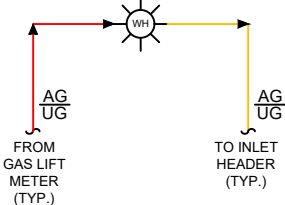
PLU 20-8 BRUSHY DRAW  
#164H  
71214



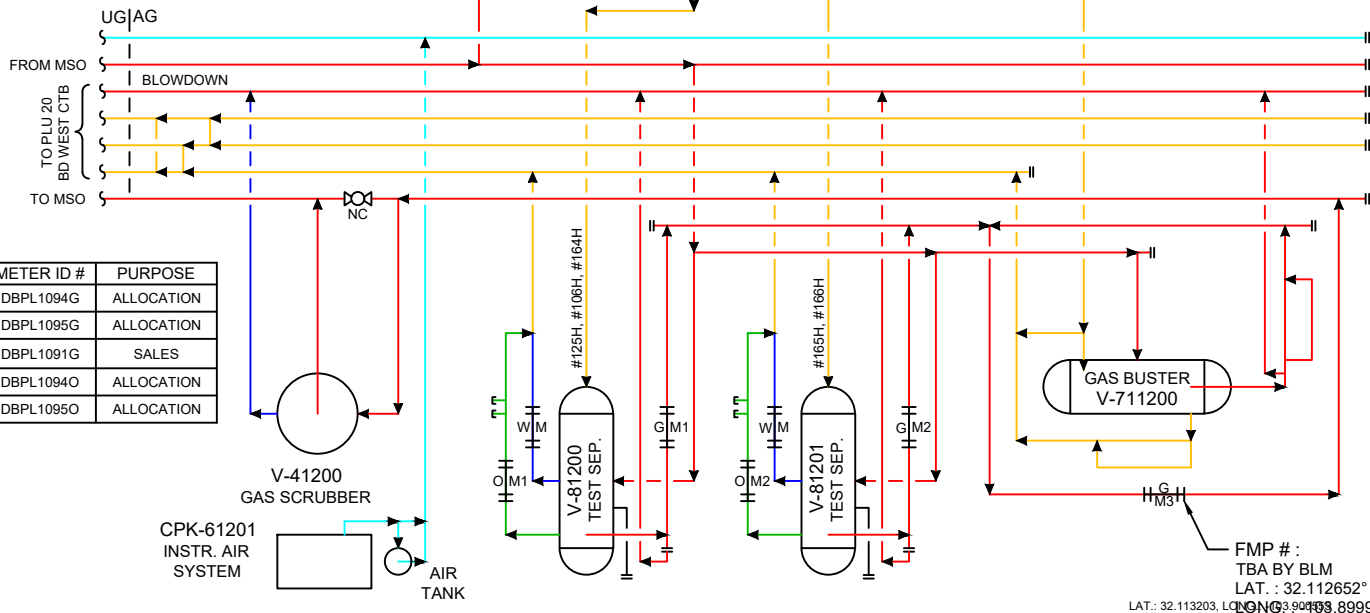
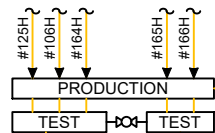
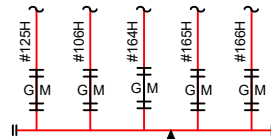
PLU 20-8 BRUSHY DRAW  
165H  
71213



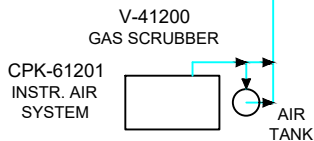
PLU 20-8 BRUSHY DRAW  
166H  
71212



PLU 20-8/20-17 BRUSHY DRAW MEGA PAD "D" - EAST		
NAME	API #	GAS LIFT METER #
POKER LAKE UNIT 20-8 BD #106H	30-015-53245	DBPL1145G
POKER LAKE UNIT 20-8 BD #125H	30-015-53247	DBPL1144G
POKER LAKE UNIT 20-8 BD #164H	30-015-53249	DBPL1146G
POKER LAKE UNIT 20-8 BD #165H	30-015-53250	DBPL1147G
POKER LAKE UNIT 20-8 BD #166H	30-015-53251	DBPL1148G



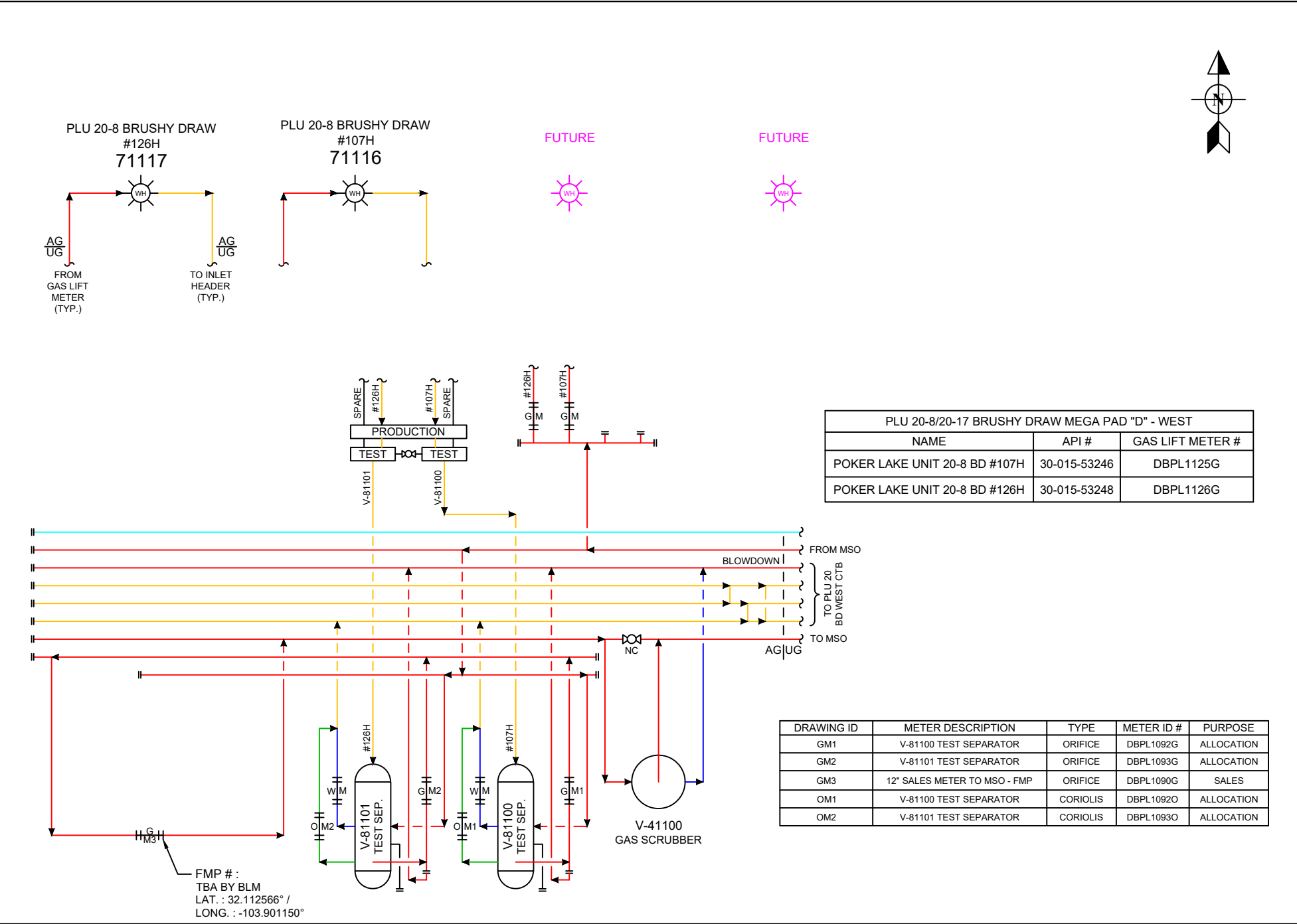
DRAWING ID	METER DESCRIPTION	TYPE	METER ID #	PURPOSE
GM1	V-81200 TEST SEPARATOR	ORIFICE	DBPL1094G	ALLOCATION
GM2	V-81201 TEST SEPARATOR	ORIFICE	DBPL1095G	ALLOCATION
GM3	12" SALES METER TO MSO - FMP	ORIFICE	DBPL1091G	SALES
OM1	V-81200 TEST SEPARATOR	CORIOILIS	DBPL1094O	ALLOCATION
OM2	V-81201 TEST SEPARATOR	CORIOILIS	DBPL1095O	ALLOCATION



FMP # :  
TBA BY BLM  
LAT.: 32.112652° /  
LONG.: 103.900555°

EMULSION  
WATER  
OIL  
GAS


Revision	Description of Change	Date	By	ENG. APP'D By	FILE NO.	REV. No.
0	FOR REVIEW	12/16/2024	JLF		PLU 20-8/20-17 BD WEST - PAD D	1
1	ISSUED FOR REF.	10/17/2025	JLF		MEGA PAD LAYOUT - EAST SIDE EDDY COUNTY, NEW MEXICO	
					LAT.: 32.113203° / LONG.: 103.900555°	
					USA NMLC0064894A / SEC. 20-T25S-R30E, SENW	
					SITE FACILITY DIAGRAM - SHEET 4 OF 5	
					PLU 20 BRUSHY DRAW	



EMULSION  
WATER  
OIL  
GAS

Revision	Description of Change	Date	By	ENG. APP'D By	PLU 20-8/20-17 BD WEST - PAD D MEGA PAD LAYOUT - WEST SIDE EDDY COUNTY, NEW MEXICO
0	FOR REVIEW	12/16/2024	JLF		LAT. : 32.113203° / LONG. : -103.90055°
1	ISSUED FOR REF.	10/17/2025	JLF		USA NMLC0064894A / SEC. 20-T25S-R30E, SENW
					SITE FACILITY DIAGRAM - SHEET 5 OF 5
					FILE NO. REV. No.
					PLU 20 BRUSHY DRAW WEST CTB 1

DRAWING REVISION LOG				
REVISION	DATE	REVISION DESCRIPTION	BY	REQUESTED BY
3	12/4/2025	ADDED NEW WELLS TO HEADER & TESTERS	JLF	SK
3	12/8/2025	ADDED NEW WELLS, HEADER & TESTERS TO MPAD B - SOUTH	JLF	SK

	Revision	Description of Change	Date	By	ENG. APPD By		PLU 20 BRUSHY DRAW WEST	
	0			JLF			CENTRAL TANK BATTERY EDDY COUNTY, NEW MEXICO	
							LAT.: 32.111411° / LONG.: -103.908070°	
							USA NMLC0064894 / SEC. 20-T25S-R30E, SWSW	
							SITE FACILITY DIAGRAM - DRAWING LOG	
							FILE NO.	REV. No.
							PLU 20 BRUSHY DRAW	
								0



NAME	ADDRESS	ADDRESS 2
Chevron U.S.A. Inc	1400 Smith Street	Houston TX 77002
Rogelio Abad Matta	1437 Medallion Street	Redlands CA 92374
BEPCO, L.P.	201 Main Street, Ste. 2600	Fort Worth TX 76102
BMT I BPEOR NM, LLC	201 Main Street, Ste. 2600	Fort Worth TX 76102
BMT II BPEOR NM, LLC	201 Main Street, Ste. 2600	Fort Worth TX 76102
CTV-CTAM BPEOR NM, LLC	201 Main Street, Ste. 2600	Fort Worth TX 76102
CTV-LMB I BPEOR NM, LLC	201 Main Street, Ste. 2600	Fort Worth TX 76102
CTV-LMB II BPEOR NM, LLC	201 Main Street, Ste. 2600	Fort Worth TX 76102
CTV-SRB I BPEOR NM, LLC	201 Main Street, Ste. 2600	Fort Worth TX 76102
CTV-SRB II BPEOR NM, LLC	201 Main Street, Ste. 2600	Fort Worth TX 76102
LMBI I BPEOR NM, LLC	201 Main Street, Ste. 2600	Fort Worth TX 76102
LMBI II BPEOR NM, LLC	201 Main Street, Ste. 2600	Fort Worth TX 76102
Perry Bass, Inc.	201 Main Street, Ste. 2600	Fort Worth TX 76102
Perry R. Bass	201 Main Street, Ste. 2600	Fort Worth TX 76102
SRBI I BPEOR NM, LLC	201 Main Street, Ste. 2600	Fort Worth TX 76102
SRBI II BPEOR NM, LLC	201 Main Street, Ste. 2600	Fort Worth TX 76102
Thru Line BPEOR NM, LLC	201 Main Street, Ste. 2600	Fort Worth TX 76102
CTAM O&G, LLC	201 Main Street, Ste.3000	Fort Worth TX 76102
GC O&G, LLC	201 Main Street, Ste.3000	Fort Worth TX 76102
Adolph Richard Matta	2605 S. Fulgham Street	Visalia CA 93277
United States of America Bureau of Land Management	301 Dinosaur Trail	Santa Fe NM 87508
McBride Oil & Gas Corporation	400 N Pennsylvania Ave # 1200	Roswell NM 88201
Pony Oil Operating, LLC	4245 N. Central Expressway, Suite 320 Box 109	Dallas TX 75205
MerPel, LLC	4245 N. Central Expy., Suite 320 Box 109	Dallas TX 75205
Mongoose Minerals LLC	600 W. Illinois Avenue	Midland TX 79701
Bureau of Land Management ATTN: Jonathan Shepard	620 E Greene St	Carlsbad NM 88220
TD Minerals LLC	8111 Westchester Dr. , Suite 900	Dallas TX 75225
State of New Mexico Land Office	P.O. Box 1148	Santa Fe NM 87504
Free Ride, LLC	P.O. Box 429	Roswell NM 88202
Pegasus Resources II	P.O. Box 470698	Fort Worth TX 76147
James M. McRoberts	UNK	UNK



December 11, 2025

**CERTIFIED MAIL**  
**RETURN RECEIPT REQUESTED**

TO: ALL AFFECTED PARTIES

**Re: Application of XTO Permian Operating, LLC for administrative approval to surface commingle (pool and lease) oil and gas production from leases comprised of Sections 8, 17, 18, 19, 20, 27, 28, 29, 30, 31, 32, 33 and 34, Township 25 South, Range 30 East, NMPM, AND Sections 3, 4, and 10, Township 26 North, Range 30 East, NMPM, Eddy County, New Mexico (the "Lands")**

To Whom It May Concern:

Enclosed is a copy of the above-referenced application, which was filed with the New Mexico Oil Conservation Division on this date. Any objection to this application must be filed in writing within twenty (20) days from the date this application is received by the Division's Santa Fe office located at 1220 South St. Francis Drive, Santa Fe, New Mexico, 87505. If no objection is received within this twenty-day period, this application may be approved administratively by the Division.

If you have any questions about this application, please contact the following:

Russell Young  
(832) 302-5430  
Russell.young@exxonmobil.com

Sincerely,

*Russell Young*

Russell Young  
New Mexico Commingle Manager  
Unconventional, Upstream

XTO Permian Operating, LLC.  
3617 North Big Spring Street  
Midland, Texas 79705

PLU 20 BD TB - POSTAL DELIVERY LIST				
CERTIFIED RECEIPT #	NAME	ADDRESS	ADDRESS	DATE NOTIFICATION SENT
9589 0710 5270 1533 1713 56	Chevron U.S.A. Inc	1400 Smith Street	Houston TX 77002	12/12/2025
9589 0710 5270 1533 1713 63	Rogelio Abad Matta	1437 Medallion Street	Redlands CA 92374	12/12/2025
9589 0710 5270 1533 1713 70	BEPCO, L.P.	201 Main Street, Ste. 2600	Fort Worth TX 76102	12/12/2025
9589 0710 5270 1533 1713 70	BMT I BPEOR NM, LLC	201 Main Street, Ste. 2600	Fort Worth TX 76102	12/12/2025
9589 0710 5270 1533 1713 70	BMT II BPEOR NM, LLC	201 Main Street, Ste. 2600	Fort Worth TX 76102	12/12/2025
9589 0710 5270 1533 1713 70	CTV-CTAM BPEOR NM, LLC	201 Main Street, Ste. 2600	Fort Worth TX 76102	12/12/2025
9589 0710 5270 1533 1713 70	CTV-LMB I BPEOR NM, LLC	201 Main Street, Ste. 2600	Fort Worth TX 76102	12/12/2025
9589 0710 5270 1533 1713 70	CTV-LMB II BPEOR NM, LLC	201 Main Street, Ste. 2600	Fort Worth TX 76102	12/12/2025
9589 0710 5270 1533 1713 70	CTV-SRB I BPEOR NM, LLC	201 Main Street, Ste. 2600	Fort Worth TX 76102	12/12/2025
9589 0710 5270 1533 1713 70	CTV-SRB II BPEOR NM, LLC	201 Main Street, Ste. 2600	Fort Worth TX 76102	12/12/2025
9589 0710 5270 1533 1713 70	LMBI I BPEOR NM, LLC	201 Main Street, Ste. 2600	Fort Worth TX 76102	12/12/2025
9589 0710 5270 1533 1713 70	LMBI II BPEOR NM, LLC	201 Main Street, Ste. 2600	Fort Worth TX 76102	12/12/2025
9589 0710 5270 1533 1713 70	Perry Bass, Inc.	201 Main Street, Ste. 2600	Fort Worth TX 76102	12/12/2025
9589 0710 5270 1533 1713 70	Perry R. Bass	201 Main Street, Ste. 2600	Fort Worth TX 76102	12/12/2025
9589 0710 5270 1533 1713 70	SRBI I BPEOR NM, LLC	201 Main Street, Ste. 2600	Fort Worth TX 76102	12/12/2025
9589 0710 5270 1533 1713 70	SRBI II BPEOR NM, LLC	201 Main Street, Ste. 2600	Fort Worth TX 76102	12/12/2025
9589 0710 5270 1533 1713 70	Thru Line BPEOR NM, LLC	201 Main Street, Ste. 2600	Fort Worth TX 76102	12/12/2025
9589 0710 5270 1533 1713 70	CTAM O&G, LLC	201 Main Street, Ste.3000	Fort Worth TX 76102	12/12/2025
9589 0710 5270 1533 1713 70	GC O&G, LLC	201 Main Street, Ste.3000	Fort Worth TX 76102	12/12/2025
9589 0710 5270 1533 1713 87	Adolph Richard Matta	2605 S. Fulgham Street	Visalia CA 93277	12/12/2025
9589 0710 5270 1533 1713 94	United States of America Bureau of Land Management	301 Dinosaur Trail	Santa Fe NM 87508	12/12/2025
9589 0710 5270 1533 1714 00	McBride Oil & Gas Corporation	400 N Pennsylvania Ave # 1200	Roswell NM 88201	12/12/2025
9589 0710 5270 1533 1714 17	Pony Oil Operating, LLC	4245 N. Central Expressway, Suite 320 Box 109	Dallas TX 75205	12/12/2025
9589 0710 5270 1533 1714 24	MerPel, LLC	4245 N. Central Expy., Suite 320 Box 109	Dallas TX 75205	12/12/2025
9589 0710 5270 1533 1714 31	Mongoose Minerals LLC	600 W. Illinois Avenue	Midland TX 79701	12/12/2025
9589 0710 5270 1533 1714 48	Bureau of Land Management ATTN: Jonathan Shepard	620 E Greene St	Carlsbad NM 88220	12/12/2025
9589 0710 5270 1533 1714 55	TD Minerals LLC	8111 Westchester Dr., Suite 900	Dallas TX 75225	12/12/2025
9589 0710 5270 1533 1714 62	State of New Mexico Land Office	P.O. Box 1148	Santa Fe NM 87504	12/12/2025
9589 0710 5270 1533 1714 79	Free Ride, LLC	P.O. Box 429	Roswell NM 88202	12/12/2025
9589 0710 5270 1533 1714 86	Pegasus Resources II	P.O. Box 470698	Fort Worth TX 76147	12/12/2025
N/A	James M. McRoberts	UNK	UNK	N/A







**Affidavit of Publication****Copy of Publication:**No. 76610

State of New Mexico

County of Eddy:

**Adrian Hedden**being duly sworn, says that he is the **Publisher**

of the Carlsbad Current Argus, a weekly newspaper of  
 general circulation, published in English at Carlsbad,  
 said county and state, and that the hereto attached

**Legal Ad**

was published in a regular and entire issue of the said  
 Carlsbad Current Argus, a weekly newspaper duly qualified  
 for that purpose within the meaning of Chapter 167 of  
 the 1937 Session Laws of the state of New Mexico for  
1 Consecutive weeks/day on the same

day as follows:

First Publication December 16, 2025Second Publication Third Publication Fourth Publication Fifth Publication Sixth Publication Seventh Publication Eighth Publication 

Subscribed and sworn before me this

16th day of December 2025

LATISHA ROMINE  
 Notary Public, State of New Mexico  
 Commission No. 1076338  
 My Commission Expires  
 05-12-2027



Latisha Romine

Notary Public, Eddy County, New Mexico



TO: ALL AFFECTED PARTIES, INCLUDING: Chevron U.S.A. Inc Rogelio Abad Matta BEPCO, L.P. BMT I BPEOR NM, LLC BMT II BPEOR NM, LLC CTV-CTAM BPEOR NM, LLC CTV-LMB I BPEOR NM, LLC CTV-LMB II BPEOR NM, LLC CTV-SRB I BPEOR NM, LLC CTV-SRB II BPEOR NM, LLC LMBI I BPEOR NM, LLC LMBI II BPEOR NM, LLC Perry Bass, Inc. Perry R. Bass SRBI I BPEOR NM, LLC SRBI II BPEOR NM, LLC Thru Line BPEOR NM, LLC CTAM O&G, LLC GC O&G, LLC Adolph Richard Matta "United States of America Bureau of Land Management" McBride Oil & Gas Corporation Pony Oil Operating, LLC MerPel, LLC Mongoose Minerals LLC "Bureau of Land Management ATTN: Jonathan Shepard" TD Minerals LLC State of New Mexico Land Office Free Ride, LLC Pegasus Resources II James M. McRoberts

30-015-45492	POKER LAKE UNIT 20 BD	#701H
30-015-45472	POKER LAKE UNIT 20 BD	#703H
30-015-45474	POKER LAKE UNIT 20 BD	#901H
30-015-45493	POKER LAKE UNIT 20 BD	#903H
30-015-45538	POKER LAKE UNIT 20 BD	#905H
30-015-45475	POKER LAKE UNIT 20 BD	#907H

(b) Federal Leases: NMNM105466725 and NMNM105504796, consisting of all of Section 17, 20 and 29, Township 25 North, Range 30 East and NMSLO Leases: E026420006 and B106780001, consisting of the E/2 SW/4, W/2 SE/4 and E/2 E/2 of Section 8 and all of Section 32, Township 25 North, Range 30 East, drilled to the CORRAL CANYON; BONE SPRING, SOUTH [13354] pool and consisting of the following wells:

**Application of XTO Permian Operating, LLC for administrative approval to surface commingle (pool and lease) oil and gas production from leases comprised of Sections 8, 17, 18, 19, 20, 27, 28, 29, 30, 31, 32, 33 and 34, Township 25 South, Range 30 East, NMPM, AND Sections 3, 4, and 10, Township 26 North, Range 30 East, NMPM, Eddy County, New Mexico (the Lands)**

API	Well Name	Number
30-015-56754	POKER LAKE UNIT 20 17 BD	#201H
30-015-56755	POKER LAKE UNIT 20 17 BD	#202H
30-015-57281	POKER LAKE UNIT 20 17 BD	#203H
30-015-57268	POKER LAKE UNIT 20 8 BD	#204H
30-015-56756	POKER LAKE UNIT 20 8 BD	#205H
30-015-56538	POKER LAKE UNIT 20 BD	#117H
30-015-56638	POKER LAKE UNIT 20 BD	#118H
30-015-56539	POKER LAKE UNIT 20 BD	#308H
30-015-56541	POKER LAKE UNIT 20 BD	#310H

XTO Permian Operating, LLC (OGRID No. 373075) (XTO), pursuant to 19.15.12.10 NMAC, seeks administrative approval to surface commingle (pool and lease) diversely owned oil and gas production at the Poker Lake Unit 20 BD CTB, (Facility) insofar as all existing and future wells drilled in the following pools and leases:

(c) Pursuant to 19.15.12.10.C(4)(g), from all future additions of pools, leases or leases and pools with notice provided only to the owners of interests to be added.

(a) The 7,682.62-acre, more or less, Wolfcamp PA D (NMNM 105723198) comprised of:

Any objection to this application must be filed in writing within twenty (20) days from the date of publication with the New Mexico Oil Conservation Division, 1220 South St. Francis Drive, Santa Fe, New Mexico, 87505. If no objection is received within this twenty-day period, this application may be approved administratively by the Division. If you have any questions about this application, please contact Russell Young, XTO Energy, Inc., (832)-454-2857 or [Russell.young@exxonmobil.com](mailto:Russell.young@exxonmobil.com).  
76610-Published in Carlsbad Current Argus Dec. 16, 2025.

Township 25 South, Range 30 East, NMPM  
Section 08: E2NE, E2SW, SE  
Section 17: All  
Section 18: Lots 3 & 4, E2SW, E2  
Section 19: All  
Section 20: All  
Section 27: S2  
Section 28: All  
Section 29: All  
Section 30: NE, E2SE  
Section 31: E2NE  
Section 32: All  
Section 33: All  
Section 34: All

Township 26 South, Range 30 East. N.M.P.M.  
Section 03: All  
Section 04: NE  
Section 10: N2

And includes production from the PURPLE SAGE; WOLFCAMP (GAS) [98220] pool drilled to the following wells:

API	Well Name	Well Number
30-015-53233	POKER LAKE UNIT 20 17 BD	#101H
30-015-53234	POKER LAKE UNIT 20 17 BD	#102H
30-015-53235	POKER LAKE UNIT 20 17 BD	#121H
30-015-53236	POKER LAKE UNIT 20 17 BD	#122H
30-015-53237	POKER LAKE UNIT 20 17 BD	#161H
30-015-53238	POKER LAKE UNIT 20 8 BD	#103H
30-015-53239	POKER LAKE UNIT 20 8 BD	#104H
30-015-53240	POKER LAKE UNIT 20 8 BD	#105H
30-015-53245	POKER LAKE UNIT 20 8 BD	#106H
30-015-53246	POKER LAKE UNIT 20 8 BD	#107H
30-015-53241	POKER LAKE UNIT 20 8 BD	#123H
30-015-53242	POKER LAKE UNIT 20 8 BD	#124H
30-015-53247	POKER LAKE UNIT 20 8 BD	#125H
30-015-53248	POKER LAKE UNIT 20 8 BD	#126H
30-015-53243	POKER LAKE UNIT 20 8 BD	#162H
30-015-53244	POKER LAKE UNIT 20 8 BD	#163H
30-015-53249	POKER LAKE UNIT 20 8 BD	#164H
30-015-53250	POKER LAKE UNIT 20 8 BD	#165H
30-015-53251	POKER LAKE UNIT 20 8 BD	#166H
30-015-45468	POKER LAKE UNIT 20 BD	#102H
30-015-56537	POKER LAKE UNIT 20 BD	#116H
30-015-45620	POKER LAKE UNIT 20 BD	#121H
30-015-45621	POKER LAKE UNIT 20 BD	#122H
30-015-45622	POKER LAKE UNIT 20 BD	#123H
30-015-45623	POKER LAKE UNIT 20 BD	#124H
30-015-45624	POKER LAKE UNIT 20 BD	#125H
30-015-45625	POKER LAKE UNIT 20 BD	#126H
30-015-45626	POKER LAKE UNIT 20 BD	#127H
30-015-45627	POKER LAKE UNIT 20 BD	#128H
30-015-56540	POKER LAKE UNIT 20 BD	#309H

**STATE OF NEW MEXICO  
ENERGY, MINERALS AND NATURAL RESOURCES DEPARTMENT  
OIL CONSERVATION DIVISION**

**APPLICATION FOR SURFACE COMMINGLING  
SUBMITTED BY XTO PERMIAN OPERATING, LLC**

**ORDER NO. PLC-1072**

**ORDER**

The Director of the New Mexico Oil Conservation Division (“OCD”), having considered the application and the recommendation of the OCD Engineering Bureau, issues the following Order.

**FINDINGS OF FACT**

1. XTO Permian Operating, LLC (“Applicant”) submitted a complete application to surface commingle the oil and gas production from the pools and leases described in Exhibit A (“Application”).
2. Applicant included a complete list of the wells currently dedicated to each pool and lease.
3. Applicant proposed a method to allocate the oil and gas production to the pools, leases, and wells to be commingled.
4. Applicant certified the commingling of oil and gas production from the pools, leases, and wells will not in reasonable probability reduce the value of the oil and gas production to less than if it had remained segregated.
5. Applicant in the notice for the Application stated that it sought authorization to prospectively include additional pools and leases in accordance with 19.15.12.10(C)(4)(g) NMAC.
6. Applicant stated that it sought authorization to surface commingle and off-lease measure, as applicable, oil and gas production from wells which have not yet been approved to be drilled, but will produce from a pool and lease as described in Exhibit A.
7. Applicant provided notice of the Application to all persons owning an interest in the oil and gas production to be commingled, including the owners of royalty and overriding royalty interests, regardless of whether they have a right or option to take their interests in kind, and those persons either submitted a written waiver or did not file an objection to the Application.
8. Applicant provided notice of the Application to the Bureau of Land Management (“BLM”) or New Mexico State Land Office (“NMSLO”), as applicable.

**CONCLUSIONS OF LAW**

9. OCD has jurisdiction to issue this Order pursuant to the Oil and Gas Act, NMSA 1978, §§ 70-2-6, 70-2-11, 70-2-12, 70-2-16, and 70-2-17, 19.15.12. NMAC, and 19.15.23. NMAC.

10. Applicant satisfied the notice requirements for the Application in accordance with 19.15.12.10(A)(2) NMAC, 19.15.12.10(C)(4)(c) NMAC, and 19.15.12.10(C)(4)(e) NMAC, as applicable.
11. Applicant satisfied the notice requirements for the Application in accordance with 19.15.23.9(A)(5) NMAC and 19.15.23.9(A)(6) NMAC, as applicable.
12. Applicant's proposed method of allocation, as modified herein, complies with 19.15.12.10(B)(1) NMAC or 19.15.12.10(C)(1) NMAC, as applicable.
13. Commingling of oil and gas production from state, federal, or tribal leases shall not commence until approved by the BLM or NMSLO, as applicable, in accordance with 19.15.12.10(B)(3) NMAC and 19.15.12.10(C)(4)(h) NMAC.
14. Applicant satisfied the notice requirements for the subsequent addition of pools, leases, and wells in the notice for the Application, in accordance with 19.15.12.10(C)(4)(g) NMAC. Subsequent additions of pools, leases, and wells within Applicant's defined parameters, as modified herein, will not, in reasonable probability, reduce the commingled production's value or otherwise adversely affect the interest owners in the production to be added.
15. By granting the Application with the conditions specified below, this Order prevents waste and protects correlative rights, public health, and the environment.

### **ORDER**

1. Applicant is authorized to surface commingle oil and gas production from the pools and leases as described in Exhibit A.

Applicant is authorized to surface commingle oil and gas production from the wells included in Exhibit A provided that they produce from a pool and lease described in Exhibit A.

Applicant is authorized to store and measure oil and gas production off-lease, as applicable, from the pools and leases as described in Exhibit A at a central tank battery or gas title transfer meter described in Exhibit A.

Applicant is authorized to surface commingle oil and gas production from wells not included in Exhibit A but that produce from a pool and lease as described in Exhibit A.

Applicant is authorized to store and measure oil and gas production off-lease, as applicable, from wells not included in Exhibit A but that produce from a pool and lease as described in Exhibit A at a central tank battery or gas title transfer meter described in Exhibit A.

2. The allocation of oil and gas production to wells not included in Exhibit A but that produce from a pool and lease as described in Exhibit A shall be determined in the same manner as to wells identified in Exhibit A that produce from that pool and lease, provided that if more than one allocation method is being used or if there are no wells identified in Exhibit A that produce from the pool and lease, then allocation of oil and gas production to each well not

included in Exhibit A shall be determined by OCD prior to commingling production from it with the production from another well.

3. The allocation of oil and gas production shall be based on the production life of each well as measured for three periods:

- a. The initial production period shall be measured from the first production until the earlier of either the peak production rate or thirty (30) days after the first production.

During the initial production period, the oil and gas production for each well identified in Exhibit A shall be allocated using a production curve calculated from a minimum of ten (10) well tests per month, except that any day in which a well test cannot achieve an accurate result due to a temporary change in oil and gas production shall not be included in the computation of time determining the well test schedule. The production curve shall be calculated by interpolating daily production for each day using the known daily production obtained by well tests and shall use a method of interpolation that is at minimum as accurate as maintaining a constant rate of change for each day's production between the known daily production values.

- b. The plateau period shall be measured from the end of the initial production period to the peak decline rate.

During the plateau period, the oil and gas production for each well identified in Exhibit A shall be allocated using a minimum of three (3) well tests per month.

- c. The decline period shall be measured from the end of the plateau period until the well is plugged and abandoned.

During the decline period, the oil and gas production for each well identified in Exhibit A shall be allocated as follows:

- i. a minimum of three (3) well tests per month when the decline rate is greater than twenty-two percent (22%) per month;
- ii. a minimum of two (2) well tests per month when the decline rate is between twenty-two percent (22%) and ten percent (10%) per month; and
- iii. a minimum of one (1) well test per month when the decline rate is less than ten percent (10%) per month.

Upon OCD's request, Applicant shall submit a Form C-103 to the OCD Engineering Bureau that contains the decline rate curve and other relevant information demonstrating the production life of a well.

Applicant shall conduct a well test by separating and metering the oil and gas production from that well for either:

- a. a minimum of twenty-four (24) consecutive hours; or

- b. a combination of nonconsecutive periods that meet the following conditions:
  - i. Each period shall be a minimum of six (6) hours.
  - ii. The total duration of the nonconsecutive periods shall be a minimum of eighteen (18) hours.
  - iii. A vessel shall be allowed to reach equilibrium and a sufficient liquid retention time for accurate measurement achieved prior to beginning the well test.

The well test requirements of this Order shall be suspended for any well shut-in for a period that continues for more than fifteen (15) days until the well commences production.

- 4. If Applicant recovers oil or gas production from produced water prior to Applicant injecting it or transferring custody of it, then that production shall be allocated to each well in the proportion that it contributed to the total produced water.
- 5. If Applicant recovers gas production using a vapor recovery unit (VRU), then that gas production shall be allocated to each well in the proportion that it contributed to the total oil production.
- 6. Applicant shall measure and market the commingled oil at a central tank battery described in Exhibit A in accordance with this Order and 19.15.18.15 NMAC or 19.15.23.8 NMAC.
- 7. Applicant shall measure and market the commingled gas at a well pad, central delivery point, central tank battery, or gas title transfer meter described in Exhibit A in accordance with this Order and 19.15.19.9 NMAC, provided however that if the gas is vented or flared, and regardless of the reason or authorization pursuant to 19.15.28.8(B) NMAC for such venting or flaring, Applicant shall measure or estimate the gas in accordance with 19.15.28.8(E) NMAC.
- 8. Applicant shall calibrate the meters used to measure or allocate oil and gas production in accordance with 19.15.12.10(C)(2) NMAC.
- 9. Applicant shall install and utilize vessels that are appropriately designed to ensure sufficient separation of the fluids and to accurately measure oil and gas production.
- 10. If the commingling of oil and gas production from any pool, lease, or well reduces the value of the commingled oil and gas production to less than if it had remained segregated, no later than sixty (60) days after the decrease in value has occurred Applicant shall submit a new surface commingling application to OCD to amend this Order to remove the pool, lease, or well whose oil and gas production caused the decrease in value. If Applicant fails to submit a new application, this Order shall terminate on the following day, and if OCD denies the application, this Order shall terminate on the date of such action.
- 11. Applicant may submit an application to amend this Order to add pools, leases, and subsequently drilled wells with spacing units adjacent to or within the tracts commingled by



this Order by submitting a Form C-107-B in accordance with 19.15.12.10(C)(4)(g) NMAC, provided the pools, leases, and subsequently drilled wells are within the identified parameters included in the Application.

12. If a well is not included in Exhibit A but produces from a pool and lease as described in Exhibit A, then Applicant shall submit Forms C-102 and C-103 to the OCD Engineering Bureau after the well has been approved to be drilled and prior to off-lease measuring or commingling oil or gas production from it with the production from another well. The Form C-103 shall reference this Order and identify the well, proposed method to determine the allocation of oil and gas production to it, and the location(s) that commingling of its production will occur.
13. Applicant shall not commence commingling oil or gas production from state, federal, or tribal leases until approved by the BLM or NMSLO, as applicable.
14. If OCD determines that Applicant has failed to comply with any provision of this Order, OCD may take any action authorized by the Oil and Gas Act or the New Mexico Administrative Code (NMAC).
15. OCD retains jurisdiction of this matter and reserves the right to modify or revoke this Order as it deems necessary.

**STATE OF NEW MEXICO  
OIL CONSERVATION DIVISION**



---

**ALBERT C. S. CHANG  
DIRECTOR**

**DATE:** 1/9/2026

State of New Mexico  
Energy, Minerals and Natural Resources Department

## Exhibit A

Order: **PLC-1072**

Operator: **XTO Permian Operating, LLC (373075)**

Central Tank Battery: **Poker Lake Unit 20 BD Central Tank Battery**

Central Tank Battery Location: **UL K, L, M, N, Section 20, Township 25 South, Range 30 East (2)**

Gas Title Transfer Meter Location: **UL J, Section 20, Township 25 South, Range 30 East (2)**

Gas Title Transfer Meter Location: **UL K, Section 20, Township 25 South, Range 30 East (2)**

Gas Title Transfer Meter Location: **UL M, Section 20, Township 25 South, Range 30 East (2)**

### Pools

Pool Name	Pool Code
<b>CORRAL CANYON;BONE SPRING, SOUTH</b>	<b>13354</b>
<b>PURPLE SAGE;WOLFCAMP (GAS)</b>	<b>98220</b>

### Leases as defined in 19.15.12.7(C) NMAC

Lease	UL or Q/Q	S-T-R
	E2NE, SE4, E2SW	08-25S-30E
	ALL	17-25S-30E
	NE4, S2	18-25S-30E
	ALL	19-25S-30E
	ALL	20-25S-30E
	S2	27-25S-30E
	ALL	28-25S-30E
	ALL	29-25S-30E
PA Wolfcamp "D" NMNM 105723198 (071016AT)	NE4, E2SE	30-25S-30E
	E2NE	31-25S-30E
	ALL	32-25S-30E
	ALL	33-25S-30E
	ALL	34-25S-30E
	ALL	03-26S-30E
	NE4	04-26S-30E
	N2	10-26S-30E
BLM Lease NMNM 105466725 (NMLC 0064894A)	ALL	17-25S-30E
	E2	20-25S-30E
BLM Lease NMNM 105504796 (NMLC 0064894)	W2	20-25S-30E
	ALL	29-25S-30E
SLO Lease E0-2642-0006	ALL	32-25S-30E
SLO Lease B1-0678-0001	E2NE, SE4, E2SW	08-25S-30E

### Wells

Well API	Well Name	UL or Q/Q	S-T-R	Pool
30-015-53233	POKER LAKE UNIT 20 17 BD #101H	W2	17-25S-30E	98220
		W2	20-25S-30E	

30-015-53234	POKER LAKE UNIT 20 17 BD #102H	W2	17-25S-30E	98220
		W2	20-25S-30E	
30-015-53235	POKER LAKE UNIT 20 17 BD #121H	W2	17-25S-30E	98220
		W2	20-25S-30E	
30-015-53236	POKER LAKE UNIT 20 17 BD #122H	W2	17-25S-30E	98220
		W2	20-25S-30E	
30-015-53237	POKER LAKE UNIT 20 17 BD #161H	E2	18-25S-30E	98220
		E2	19-25S-30E	
30-015-53238	POKER LAKE UNIT 20 8 BD #103H	SW4	08-25S-30E	98220
		W2	17-25S-30E	
		W2	20-25S-30E	
30-015-53239	POKER LAKE UNIT 20 8 BD #104H	SE4	08-25S-30E	98220
		E2	17-25S-30E	
		E2	20-25S-30E	
30-015-53240	POKER LAKE UNIT 20 8 BD #105H	SE4	08-25S-30E	98220
		E2	17-25S-30E	
		E2	20-25S-30E	
30-015-53245	POKER LAKE UNIT 20 8 BD #106H	E2	08-25S-30E	98220
		E2	17-25S-30E	
		E2	20-25S-30E	
30-015-53246	POKER LAKE UNIT 20 8 BD #107H	SE4	08-25S-30E	98220
		E2	17-25S-30E	
		E2	20-25S-30E	
30-015-53241	POKER LAKE UNIT 20 8 BD #123H	SW4	08-25S-30E	98220
		W2	17-25S-30E	
		W2	20-25S-30E	
30-015-53242	POKER LAKE UNIT 20 8 BD #124H	SW4	08-25S-30E	98220
		W2	17-25S-30E	
		W2	20-25S-30E	
30-015-53247	POKER LAKE UNIT 20 8 BD #125H	E2	08-25S-30E	98220
		E2	17-25S-30E	
		E2	20-25S-30E	
30-015-53248	POKER LAKE UNIT 20 8 BD #126H	SE4	08-25S-30E	98220
		E2	17-25S-30E	
		E2	20-25S-30E	
30-015-53243	POKER LAKE UNIT 20 8 BD #162H	SW4	08-25S-30E	98220
		W2	17-25S-30E	
		W2	20-25S-30E	
30-015-53244	POKER LAKE UNIT 20 8 BD #163H	SW4	08-25S-30E	98220
		W2	17-25S-30E	
		W2	20-25S-30E	
30-015-53249	POKER LAKE UNIT 20 8 BD #164H	E2	08-25S-30E	98220
		E2	17-25S-30E	
		E2	20-25S-30E	
30-015-53250	POKER LAKE UNIT 20 8 BD #165H	E2	08-25S-30E	98220
		E2	17-25S-30E	
		E2	20-25S-30E	

30-015-53251	POKER LAKE UNIT 20 8 BD #166H	E2	08-25S-30E	98220
		E2	17-25S-30E	
		E2	20-25S-30E	
30-015-45468	POKER LAKE UNIT 20 BD #102H	W2	29-25S-30E	98220
		W2	32-25S-30E	
30-015-56537	POKER LAKE UNIT 20 BD #116H	NE4, E2SE	30-25S-30E	98220
		E2NE	31-25S-30E	
30-015-45620	POKER LAKE UNIT 20 BD #121H	W2	29-25S-30E	98220
		W2	32-25S-30E	
30-015-45621	POKER LAKE UNIT 20 BD #122H	W2	29-25S-30E	98220
		W2	32-25S-30E	
30-015-45622	POKER LAKE UNIT 20 BD #123H	W2	29-25S-30E	98220
		W2	32-25S-30E	
30-015-45623	POKER LAKE UNIT 20 BD #124H	W2	29-25S-30E	98220
		W2	32-25S-30E	
30-015-45624	POKER LAKE UNIT 20 BD #125H	E2	29-25S-30E	98220
		E2	32-25S-30E	
30-015-45625	POKER LAKE UNIT 20 BD #126H	E2	29-25S-30E	98220
		E2	32-25S-30E	
30-015-45626	POKER LAKE UNIT 20 BD #127H	E2	29-25S-30E	98220
		E2	32-25S-30E	
30-015-45627	POKER LAKE UNIT 20 BD #128H	E2	29-25S-30E	98220
		E2	32-25S-30E	
30-015-56540	POKER LAKE UNIT 20 BD #309H	E2	29-25S-30E	98220
		E2	32-25S-30E	
30-015-45492	POKER LAKE UNIT 20 BD #701H	W2	29-25S-30E	98220
		W2	32-25S-30E	
30-015-45472	POKER LAKE UNIT 20 BD #703H	W2	29-25S-30E	98220
		W2	32-25S-30E	
30-015-45474	POKER LAKE UNIT 20 BD #901H	W2	29-25S-30E	98220
		W2	32-25S-30E	
30-015-45493	POKER LAKE UNIT 20 BD #903H	W2	29-25S-30E	98220
		W2	32-25S-30E	
30-015-45538	POKER LAKE UNIT 20 BD #905H	E2	29-25S-30E	98220
		E2	32-25S-30E	
30-015-45475	POKER LAKE UNIT 20 BD #907H	E2	29-25S-30E	98220
		E2	32-25S-30E	
30-015-56638	POKER LAKE UNIT 20 BD #118H	E2W2	29-25S-30E	13354
		E2W2	32-25S-30E	
30-015-56754	POKER LAKE UNIT 20 17 BD #201H	E2SW	08-25S-30E	13354
		W2	17-25S-30E	
		W2	20-25S-30E	
30-015-56755	POKER LAKE UNIT 20 17 BD #202H	E2SW	08-25S-30E	13354
		W2	17-25S-30E	
		W2	20-25S-30E	
30-015-57281	POKER LAKE UNIT 20 17 BD #203H	E2SW	08-25S-30E	13354
		W2	17-25S-30E	
		W2	20-25S-30E	

30-015-57268	POKER LAKE UNIT 20 8 BD #204H	W2SE	08-25S-30E	13354
		W2E2	17-25S-30E	
		W2E2	20-25S-30E	
30-015-56756	POKER LAKE UNIT 20 8 BD #205H	E2E2	08-25S-30E	13354
		E2E2	17-25S-30E	
		E2E2	20-25S-30E	
30-015-56538	POKER LAKE UNIT 20 BD #117H	W2W2	29-25S-30E	13354
		W2W2	32-25S-30E	
30-015-56539	POKER LAKE UNIT 20 BD #308H	W2E2	29-25S-30E	13354
		W2E2	32-25S-30E	
30-015-56541	POKER LAKE UNIT 20 BD #310H	E2E2	29-25S-30E	13354
		E2E2	32-25S-30E	

Sante Fe Main Office  
Phone: (505) 476-3441

General Information  
Phone: (505) 629-6116

Online Phone Directory  
<https://www.emnrd.nm.gov/oed/contact-us>

State of New Mexico  
Energy, Minerals and Natural Resources  
Oil Conservation Division  
1220 S. St Francis Dr.  
Santa Fe, NM 87505

CONDITIONS

Action 534351

CONDITIONS

Operator:  XTO PERMIAN OPERATING LLC. 6401 HOLIDAY HILL ROAD MIDLAND, TX 79707	OGRID:  373075
	Action Number:  534351
	Action Type:  [C-107] Surface Commingle or Off-Lease (C-107B)

CONDITIONS

Created By	Condition	Condition Date
sarah.clelland	Please review the content of the order to ensure you are familiar with the authorities granted and any conditions of approval. If you have any questions regarding this matter, please email us at <a href="mailto:OCD.Engineer@emnrd.nm.gov">OCD.Engineer@emnrd.nm.gov</a> .	1/12/2026