

State of New Mexico
Energy, Minerals and Natural Resources Department

Michelle Lujan Grisham
Governor

Erin Taylor
Acting Cabinet Secretary

Ben Shelton
Deputy Secretary

Albert C.S. Chang
Division Director
Oil Conservation Division



Paula M. Vance
pmvance@hollandhart.com

ADMINISTRATIVE NON-STANDARD LOCATION

Administrative Order NSL – 9092

**XTO Permian Operating, LLC [OGRID 373075]
Poker Lake Unit 20 17 BD Well No. 201H
API No. 30-015-56754**

Reference is made to your application received on August 20th, 2025.

Proposed Location

	<u>Footages</u>	<u>Unit/Lot</u>	<u>Sec.</u>	<u>Twsp</u>	<u>Range</u>	<u>County</u>
Surface	1434 FSL & 1904 FWL	K	20	25S	30E	Eddy
First Take Point	285 FSL & 109 FWL	M	20	25S	30E	Eddy
Last Take Point	100 FNL & 336 FWL	D	17	25S	30E	Eddy
Terminus	10 FNL & 336 FWL	D	17	25S	30E	Eddy

Proposed Horizontal Spacing Unit

<u>Description</u>	<u>Acres</u>	<u>Pool</u>	<u>Pool Code</u>
W/2 Section 20	720	Corral Canyon; Bone Spring, South	13354
W/2 Section 17			
E/2 SW/4 Section 08			

You have requested to drill this horizontal well at an unorthodox well location described above in the referenced pool or formation. 19.15.16.15(B)(1)(a) NMAC governs this proposed well and provides that the operator dedicate a horizontal well at a standard horizontal spacing unit that comprises of one or more contiguous tracts that the horizontal well's completed interval penetrates, each of which consists of a governmental quarter - quarter section or equivalent.

1220 South St. Francis Drive, 3rd Floor • Santa Fe, New Mexico 87505
Phone (505) 476-3441 • www.emnrd.state.nm.us/ocd

Administrative Order NSL – 9092
XTO Permian Operating, LLC
Page 2 of 2

19.15.16.15(C)(1)(a) NMAC governs the distance in the horizontal plane from any point in the completed interval to any outer boundary of the horizontal spacing unit, measured along a line perpendicular to the completed interval or to the tangent thereof, shall be a minimum of 330 feet. 19.15.16.15(C)(1)(b) NMAC governs the first and last take point of a horizontal well shall be no closer than 100 feet for a well within the horizontal plane, to any outer boundary of the horizontal spacing unit.

The request to deviate from an orthodox location has met all requirements of 19.15.16.15 (C)(5)(a) NMAC. It is understood that you are seeking this exception in order to create a non-standard location, comprised of Take Points referenced above, within the described Horizontal Spacing Unit.

This well's completed interval is as close as 109 feet to the western edge of the horizontal spacing unit. Encroachment will impact the following tracts.

Section 19, encroachment to the SE/4 SE/4

The Division understands you have given notice of this application to all operators or owners who are "affected persons," as defined in 19.15.2.7(A)(8) NMAC, in all adjoining units towards which the proposed location encroaches.

The Division understands you are seeking this unorthodox location as your preferred well spacing plan for horizontal wells within the Bone Spring formation underlying the W/2 of Section 20, the W/2 Section 17 and the E/2 SW/4 of Section 08.

Your application has been filed under 19.15.16.15(C)(6) NMAC, 19.15.15.13 NMAC and 19.15.4.12 (A)(2) NMAC.

Per 19.15.15.13 (B) NMAC, **Division approves this unorthodox location.**

Reference this NSL order number on the As Drilled C-102 submitted with the Authorization to Transport, to place this well into production.

The above approvals are subject to your following all other applicable Division rules.

Jurisdiction of this case is retained for the entry of further orders as the Division deems necessary.



Albert C.S. Chang
Division Director
AC/lrl

Date: 2/13/26

Revised March 23, 2017

ID NO. 497702

NSL - 9092

RECEIVED: 08/20/25	REVIEWER:	TYPE:	APP NO:
---------------------------	-----------	-------	---------

ABOVE THIS TABLE FOR OCD DIVISION USE ONLY

NEW MEXICO OIL CONSERVATION DIVISION
 - Geological & Engineering Bureau -
 1220 South St. Francis Drive, Santa Fe, NM 87505



ADMINISTRATIVE APPLICATION CHECKLIST

THIS CHECKLIST IS MANDATORY FOR ALL ADMINISTRATIVE APPLICATIONS FOR EXCEPTIONS TO DIVISION RULES AND REGULATIONS WHICH REQUIRE PROCESSING AT THE DIVISION LEVEL IN SANTA FE

Applicant: XTO Permian Operating, LLC **OGRID Number:** 373075
Well Name: Poker Lake Unit 20-17 BD 201H **API:** 30-015-56754
Pool: Corral Canyon; Bone Spring, South **Pool Code:** 13354

SUBMIT ACCURATE AND COMPLETE INFORMATION REQUIRED TO PROCESS THE TYPE OF APPLICATION INDICATED BELOW

- 1) **TYPE OF APPLICATION:** Check those which apply for [A]
 A. Location - Spacing Unit - Simultaneous Dedication
 NSL NSP (PROJECT AREA) NSP (PRORATION UNIT) SD
- B. Check one only for [I] or [II]
 [I] Commingling - Storage - Measurement
 DHC CTB PLC PC OLS OLM
 [II] Injection - Disposal - Pressure Increase - Enhanced Oil Recovery
 WFX PMX SWD IPI EOR PPR

- 2) **NOTIFICATION REQUIRED TO:** Check those which apply.
 A. Offset operators or lease holders
 B. Royalty, overriding royalty owners, revenue owners
 C. Application requires published notice
 D. Notification and/or concurrent approval by SLO
 E. Notification and/or concurrent approval by BLM
 F. Surface owner
 G. For all of the above, proof of notification or publication is attached, and/or,
 H. No notice required

<u>FOR OCD ONLY</u>	
<input type="checkbox"/>	Notice Complete
<input type="checkbox"/>	Application Content Complete

3) **CERTIFICATION:** I hereby certify that the information submitted with this application for administrative approval is **accurate** and **complete** to the best of my knowledge. I also understand that **no action** will be taken on this application until the required information and notifications are submitted to the Division.

Note: Statement must be completed by an individual with managerial and/or supervisory capacity.

Paula M. Vance
 Print or Type Name

Paula M. Vance
 Signature

August 20, 2025
 Date

505-954-7286
 Phone Number

pmvance@hollandhart.com
 e-mail Address



Paula M. Vance
Associate
Phone (505) 954-7286
PMVance@hollandhart.com

August 20, 2025

VIA ONLINE FILING

Albert Chang, Division Director
Oil Conservation Division
Energy, Minerals and Natural Resources Department
1220 South Saint Francis Drive
Santa Fe, New Mexico 87505

**Re: XTO Permian Operating, LLC
Request for Administrative Approval of Unorthodox Well Location**

Poker Lake Unit 20-17 BD 201H well
E/2 SW/4 of Section 8 and the W/2 of Sections 17 and 20, Township 25 South, Range 30
East, NMPM, Eddy County, New Mexico
Corral Canyon; Bone Spring, South [13354]
API No. 30-015-56754

Dear Mr. Chang:

XTO Permian Operating, LLC (“XTO”) (OGRID No. 373075), pursuant to Division Rules 19.15.16.15(C)(6) and 19.15.15.13 NMAC and applicable rules governing acreage and well location requirements for the Corral Canyon; Bone Spring, South [13354], seeks administrative approval of an unorthodox well location for its **Poker Lake Unit 20-17 BD 201H** well (API No. 30-015-56754), in a 720-acre, more or less, horizontal well spacing unit comprised of the E/2 SW/4 of Section 8 and the W/2 of Sections 17 and 20, Township 25 South, Range 30 East, NMPM, Eddy County, New Mexico.

The **Poker Lake Unit 20-17 BD 201H** oil well is an infill well. The **Poker Lake Unit 20-17 BD 202H** oil well is the defining well, creating the enlarged spacing unit.¹

The proposed location for the **Poker Lake Unit 20-17 BD 201H** well is as follows:

- SHL: 1,434’ FSL and 1,904’ FWL (Unit K) of Section 20
- FTP: 285’ FSL and 109’ FWL (Unit M) of Section 20

¹ XTO has applied separately for approval of a non-standard well spacing unit.

T 505.988.4421 F 505.983.6043
110 North Guadalupe, Suite 1, Santa Fe, NM 87501-1849
Mail to: P.O. Box 2208, Santa Fe, NM 87504-2208
www.hollandhart.com

Alaska	Montana	Utah
Colorado	Nevada	Washington, D.C.
Idaho	New Mexico	Wyoming



Paula M. Vance
Associate
Phone (505) 954-7286
 PMVance@hollandhart.com

- LTP: 100’ FNL and 336’ FWL (Unit D) of Section 17
- BHL: 10’ FNL and 336’ FWL (Unit D) of Section 17

Since the subject acreage is governed by the Division’s statewide oil rules, and is not yet under an approved Participating Area², a portion of the lateral will be unorthodox because it is closer than the standard offset to the western tracts/Unit Area—thus, encroaching on the tracts encompassing the E/2 SE/2 of Section 19.

XTO Energy Inc. respectfully requests administrative approval for the non-standard location for the **Poker Lake Unit 20-17 BD 201H** well because it is necessary to allow XTO to use its preferred well spacing plan for horizontal wells in this area, which will maximize recovery and prevent waste. The encroachment also allows XTO to use its surface hole location that has been approved by the Bureau of Land Management (“BLM”).

Exhibit A is a Form C-102 showing the proposed Poker Lake Unit 20-17 BD 201H well encroaches on the western tracts/Unit Area comprised of the E/2 SE/2 of Section 19. Also, included is the Form C-102 for the Poker Lake Unit 20-17 BD 202H, the defining well for the spacing unit.

Exhibit B is a plat for the subject area, that shows the proposed Poker Lake Unit 20-17 BD 201H well in relation to the adjoining tracts to the west that a portion of the lateral encroaches on. The offsetting acreage is part of XTO’s Poker Lake Unit (federal); therefore, the affected other working interest owner is Chevron USA Inc. In addition, the exhibit identifies that this includes a BLM lease. Accordingly, the “affected persons”³ are Chevron USA Inc. and BLM.

Exhibit C is a spreadsheet listing all affected persons requiring notice and includes tracking information demonstrating that each of the affected persons requiring notice was sent a copy of this application with all attachments by certified mail advising that any objections must be filed in writing with the Division within 20 days from the date the Division receives the application. The following are the affected persons:

Type	Affected Party	Location
WIO	Chevron USA Inc	E/2 SE/2 of Section 19
Mineral	BLM	

² XTO plans to incorporate this acreage into a Bone Spring Participating Area (“PA”). Once approved, the NSL order will no longer be necessary because the subject lands will be unitized under the agreement; however, as a precaution, XTO is filing this application since the PA has not yet been approved.

³ See NMAC §§ 19.15.2.7.A(8) [defining “affected persons” as, “in the absence of an operator, or with respect to an application wherein the operator of the spacing unit or identified tract is the applicant, each working interest owner”] and 19.15.4.12.A(2)(a).



Paula M. Vance
Associate
Phone (505) 954-7286
PMVance@hollandhart.com

Your attention to this matter is appreciated.

Sincerely,

A handwritten signature in blue ink that reads "Paula M. Vance".

Paula M. Vance
ATTORNEY FOR XTO PERMIAN OPERATING, LLC

T 505.988.4421 F 505.983.6043
110 North Guadalupe, Suite 1, Santa Fe, NM 87501-1849
Mail to: P.O. Box 2208, Santa Fe, NM 87504-2208
www.hollandhart.com

Alaska	Montana	Utah
Colorado	Nevada	Washington, D.C.
Idaho	New Mexico	Wyoming

EXHIBIT

A

Revised July 9, 2024

C-102

Submit Electronically
Via OCD Permitting

State of New Mexico
Energy, Minerals & Natural Resources Department
OIL CONSERVATION DIVISION

Submittal Type:

Initial Submittal

Amended Report

As Drilled

WELL LOCATION INFORMATION

API Number 30-015-56754	Pool Code 13354	Pool Name CORRAL CANYON; BONE SPRING, SOUTH
Property Code	Property Name POKER LAKE UNIT 20-17 BD	Well Number 201H
ORGID No. 373075	Operator Name XTO PERMIAN OPERATING, LLC.	Ground Level Elevation 3,174'

Surface Owner: State Fee Tribal Federal Mineral Owner: State Fee Tribal Federal

Surface Location

UL	Section	Township	Range	Lot	Ft. from N/S	Ft. from E/W	Latitude	Longitude	County
K	20	25 S	30 E		1,434' FSL	1,904' FWL	32.112218	-103.905920	EDDY

Bottom Hole Location

UL	Section	Township	Range	Lot	Ft. from N/S	Ft. from E/W	Latitude	Longitude	County
D	17	25 S	30 E		10' FNL	336' FWL	32.137429	-103.911012	EDDY

Dedicated Acres 720	Infill or Defining Well INFILL	Defining Well API 30-015-56754	Overlapping Spacing Unit (Y/N) N	Consolidation Code U
Order Numbers. N/A	Well setbacks are under Common Ownership: <input type="checkbox"/> Yes <input checked="" type="checkbox"/> No			

Kick Off Point (KOP)

UL	Section	Township	Range	Lot	Ft. from N/S	Ft. from E/W	Latitude	Longitude	County
M	20	25 S	30 E		285' FSL	109' FWL	32.109022	-103.911716	EDDY

First Take Point (FTP)

UL	Section	Township	Range	Lot	Ft. from N/S	Ft. from E/W	Latitude	Longitude	County
M	20	25 S	30 E		285' FSL	109' FWL	32.109022	-103.911716	EDDY

Last Take Point (LTP)

UL	Section	Township	Range	Lot	Ft. from N/S	Ft. from E/W	Latitude	Longitude	County
D	17	25 S	30 E		100' FNL	336' FWL	32.137181	-103.911011	EDDY

Unitized Area or Area of Uniform Interest NMNM105422429	Spacing Unit Type <input checked="" type="checkbox"/> Horizontal <input type="checkbox"/> Vertical	Ground Floor Elevation: 3,174'
--	--	--------------------------------

OPERATOR CERTIFICATIONS

I hereby certify that the information contained herein is true and complete to the best of my knowledge and belief, and that this organization either owns a working interest or unleased mineral interest in the land including the proposed bottom hole location or has a right to drill this well at this location pursuant to a contract with an owner of such a mineral or working interest, or to a voluntary pooling agreement or a compulsory pooling order heretofore entered by the division.

If this well is a horizontal well, I further certify that this organization has received the consent of at least one lessee or owner of a working interest or unleased mineral interest in each tract (in the target pool or formation) in which any part of the well's completed interval will be located or obtained a compulsory pooling form the division.

Samantha Weis 8/7/2025

Signature Date

Samantha Weis

Printed Name
samantha.r.bartnik@exxonmobil.com

Email Address

SURVEYOR CERTIFICATIONS

I hereby certify that the well location shown on this plat was plotted from field notes of actual surveys made by me or under my supervision, and that the same is true and correct to the best of my belief.

I, TIM C. PAPPAS, NEW MEXICO PROFESSIONAL SURVEYOR NO. 21209, DO HEREBY CERTIFY THAT THIS SURVEY PLAT AND THE ACTUAL SURVEY ON THE GROUND UPON WHICH IT IS BASED WERE PERFORMED BY ME OR UNDER MY DIRECT SUPERVISION; THAT I AM RESPONSIBLE FOR THIS SURVEY, THAT THIS SURVEY MEETS THE MINIMUM STANDARDS FOR SURVEYING IN NEW MEXICO, AND THAT IS TRUE AND CORRECT TO THE BEST OF MY KNOWLEDGE AND BELIEF.

[Signature] 6 August 2025

TIM C. PAPPAS
REGISTERED PROFESSIONAL LAND SURVEYOR
STATE OF NEW MEXICO NO. 21209



Signature and Seal of Professional Surveyor

Certificate Number Date of Survey
TIM C. PAPPAS 21209 08/06/2025

Note: No allowable will be assigned to this completion until all interests have been consolidated or a non-standard unit has been approved by the division.



2205 Walnut Street - Columbus, TX 78934
Ph: 817.349.9800 - Fax: 979.732.5271
TBPE Firm 17957 | TBPLS Firm 10000100
www.fscinc.net

© COPYRIGHT 2025 - ALL RIGHTS RESERVED

DATE:	8-6-2025	PROJECT NO:	2024060273
DRAWN BY:	LM	SCALE:	
CHECKED BY:	CH	SHEET:	1 OF 2
FIELD CREW:	IR	REVISION:	NO

ACREAGE DEDICATION PLATS

This grid represents a standard section. You may superimpose a non-standard section, or a larger area, over this grid. Operators must outline the dedicated acreage in a red box, clearly show the well surface location and bottom hole location, if it is directionally drilled, with the dimensions from the section lines in the cardinal directions. If this is a horizontal wellbore show on this plat the location of the First Take Point and Last Take Point, and the point within the Completed interval (other than the First Take Point or Last Take Point) that is the closest to any outer boundary of the tract.

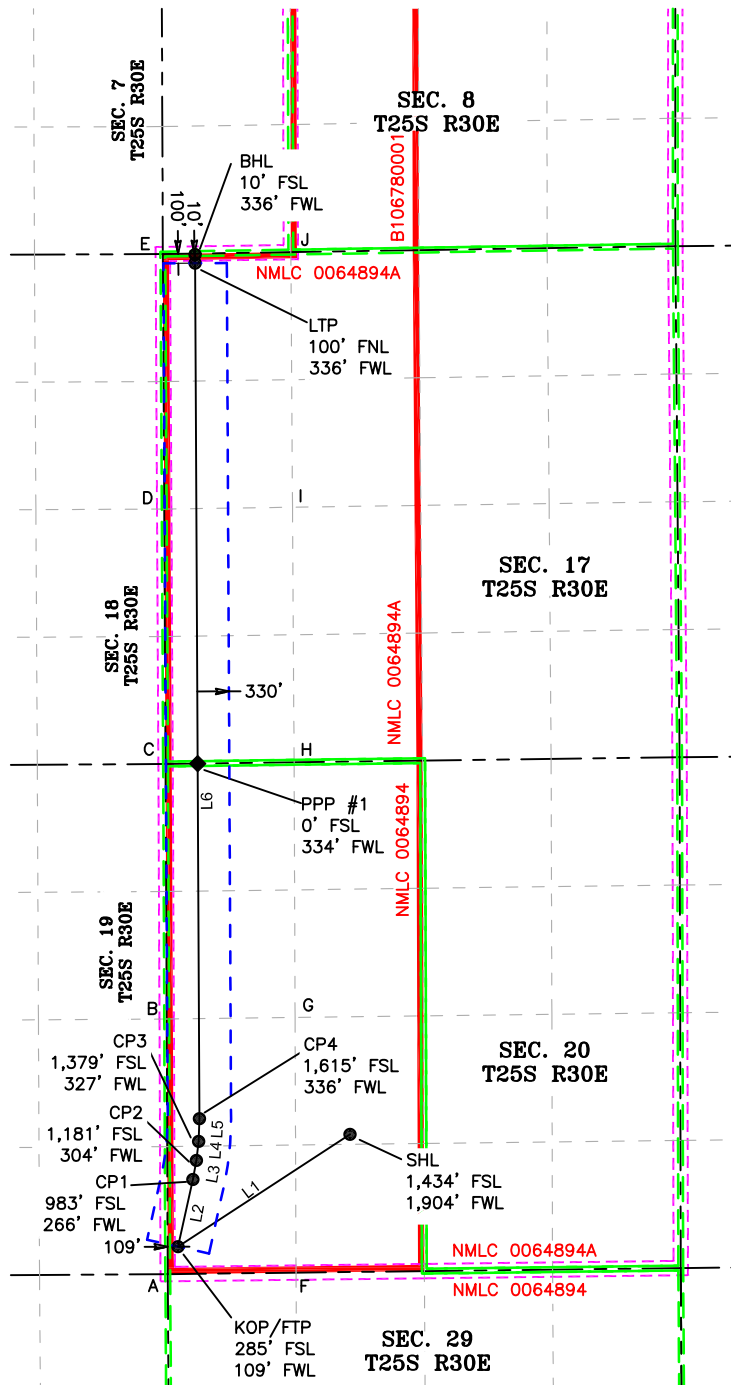
Surveyors shall use the latest United States government survey or dependent resurvey. Well locations will be in reference to the New Mexico Principal Meridian. If the land is not surveyed, contact the OCD Engineering Bureau. Independent subdivision surveys will not be acceptable.

LEGEND

- SECTION LINE
- PROPOSED WELLBORE
- NEW MEXICO MINERAL LEASE LINE
- 330' BUFFER
- DEDICATED ACREAGE
- CORRAL CANYON; BONE SPRING, SOUTH POOL (13354)

LINE TABLE		
LINE	AZIMUTH	LENGTH
L1	236° 49'55"	2,138.36'
L2	12° 26'10"	716.28'
L3	10° 28'40"	201.94'
L4	06° 27'24"	199.95'
L5	02° 05'42"	236.39'
L6	359° 42'57"	9,001.85'

COORDINATE TABLE					
SHL (NAD 83 NME)			KOP/FTP (NAD 83 NME)		
Y =	404,823.6	N	Y =	403,653.8	N
X =	673,669.5	E	X =	671,879.6	E
LAT. =	32.112218	°N	LAT. =	32.109022	°N
LONG. =	103.905920	°W	LONG. =	103.911716	°W
LTP (NAD 83 NME)			BHL (NAD 83 NME)		
Y =	413,898.5	N	Y =	413,988.5	N
X =	672,057.5	E	X =	672,057.0	E
LAT. =	32.137181	°N	LAT. =	32.137429	°N
LONG. =	103.911011	°W	LONG. =	103.911012	°W
P1 (NAD 83 NME)			P2 (NAD 83 NME)		
Y =	404,353.2	N	Y =	404,551.8	N
X =	672,033.8	E	X =	672,070.5	E
LAT. =	32.110943	°N	LAT. =	32.111488	°N
LONG. =	103.911209	°W	LONG. =	103.911088	°W
P3 (NAD 83 NME)			P4 (NAD 83 NME)		
Y =	404,750.5	N	Y =	404,986.7	N
X =	672,093.0	E	X =	672,101.7	E
LAT. =	32.112034	°N	LAT. =	32.112683	°N
LONG. =	103.911012	°W	LONG. =	103.910982	°W
SHL (NAD 27 NME)			KOP/FTP (NAD 27 NME)		
Y =	404,765.2	N	Y =	403,595.5	N
X =	632,484.7	E	X =	630,694.8	E
LAT. =	32.112093	°N	LAT. =	32.108897	°N
LONG. =	103.905437	°W	LONG. =	103.911232	°W
LTP (NAD 27 NME)			BHL (NAD 27 NME)		
Y =	413,839.9	N	Y =	413,929.9	N
X =	630,873.0	E	X =	630,872.5	E
LAT. =	32.137056	°N	LAT. =	32.137304	°N
LONG. =	103.910527	°W	LONG. =	103.910527	°W
P1 (NAD 27 NME)			P2 (NAD 27 NME)		
Y =	404,294.8	N	Y =	404,493.4	N
X =	630,849.0	E	X =	630,885.7	E
LAT. =	32.110818	°N	LAT. =	32.111363	°N
LONG. =	103.910725	°W	LONG. =	103.910604	°W
P3 (NAD 27 NME)			P4 (NAD 27 NME)		
Y =	404,692.1	N	Y =	404,928.3	N
X =	630,908.2	E	X =	630,916.9	E
LAT. =	32.111909	°N	LAT. =	32.112558	°N
LONG. =	103.910529	°W	LONG. =	103.910498	°W
PPP #1 (NAD 83 NME)			PPP #1 (NAD 27 NME)		
Y =	408,686.0	N	Y =	408,627.5	N
X =	672,083.3	E	X =	630,898.6	E
LAT. =	32.122852	°N	LAT. =	32.122727	°N
LONG. =	103.910994	°W	LONG. =	103.910510	°W



CORNER COORDINATES (NAD83 NME)					
A - Y =	403,367.5	N	A - X =	671,771.7	E
B - Y =	406,024.9	N	B - X =	671,761.0	E
C - Y =	408,681.5	N	C - X =	671,749.3	E
D - Y =	411,337.4	N	D - X =	671,735.3	E
E - Y =	413,993.2	N	E - X =	671,721.0	E
F - Y =	403,383.2	N	F - X =	673,108.1	E
G - Y =	406,041.4	N	G - X =	673,098.4	E
H - Y =	408,699.2	N	H - X =	673,088.1	E
I - Y =	411,356.4	N	I - X =	673,071.3	E
J - Y =	414,014.0	N	J - X =	673,054.3	E
CORNER COORDINATES (NAD27 NME)					
A - Y =	403,309.2	N	A - X =	630,586.9	E
B - Y =	405,966.5	N	B - X =	630,576.2	E
C - Y =	408,623.0	N	C - X =	630,564.6	E
D - Y =	411,278.9	N	D - X =	630,550.7	E
E - Y =	413,934.6	N	E - X =	630,536.5	E
F - Y =	403,324.9	N	F - X =	631,923.2	E
G - Y =	405,983.0	N	G - X =	631,913.6	E
H - Y =	408,640.7	N	H - X =	631,903.4	E
I - Y =	411,297.9	N	I - X =	631,886.7	E
J - Y =	413,955.4	N	J - X =	631,869.8	E



2205 Walnut Street - Columbus, TX 78934
 Ph: 817.349.9800 - Fax: 979.732.5271
 TBPE Firm 17957 | TBPLS Firm 10000100
 www.fscinc.net

DATE: 8-6-2025 PROJECT NO: 2024060273
 DRAWN BY: LM SCALE: 1" = 2,500'
 CHECKED BY: CH SHEET: 2 OF 2
 FIELD CREW: IR REVISION: NO

© COPYRIGHT 2025 - ALL RIGHTS RESERVED

ACREAGE DEDICATION PLATS

This grid represents a standard section. You may superimpose a non-standard section, or a larger area, over this grid. Operators must outline the dedicated acreage in a red box, clearly show the well surface location and bottom hole location, if it is directionally drilled, with the dimensions from the section lines in the cardinal directions. If this is a horizontal wellbore show on this plat the location of the First Take Point and Last Take Point, and the point within the Completed interval (other than the First Take Point or Last Take Point) that is the closest to any outer boundary of the tract.

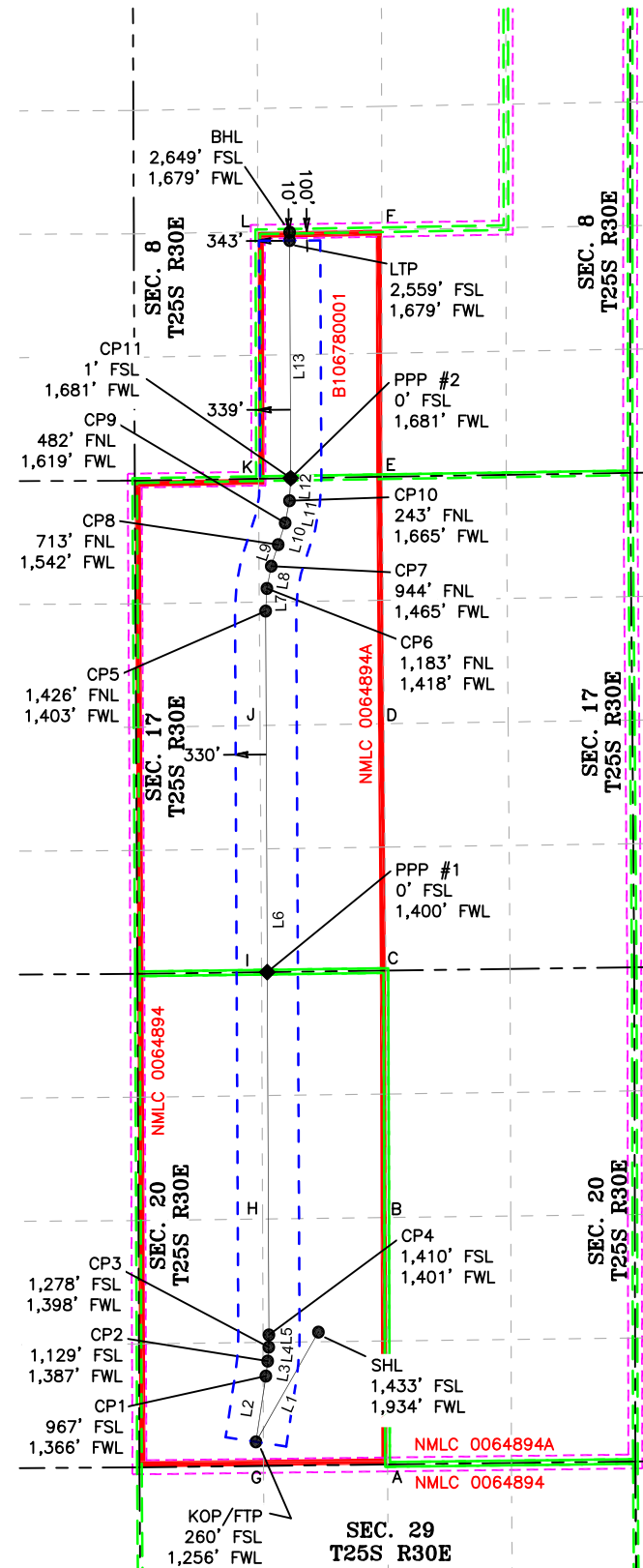
Surveyors shall use the latest United States government survey or dependent resurvey. Well locations will be in reference to the New Mexico Principal Meridian. If the land is not surveyed, contact the OCD Engineering Bureau. Independent subdivision surveys will not be acceptable.

LEGEND

- SECTION LINE
- PROPOSED WELLBORE
- NEW MEXICO MINERAL LEASE LINE
- 330' BUFFER
- DEDICATED ACREAGE
- CORRAL CANYON; BONE SPRING, SOUTH POOL (13354)

LINE TABLE		
LINE	AZIMUTH	LENGTH
L1	209° 40'25"	1,359.22'
L2	08° 37'56"	716.32'
L3	06° 59'58"	163.27'
L4	03° 54'06"	149.97'
L5	01° 03'51"	131.69'
L6	359° 44'18"	7,794.83'
L7	03° 25'11"	244.13'
L8	10° 45'07"	244.12'
L9	18° 03'09"	244.13'
L10	18° 00'31"	244.12'
L11	10° 40'40"	244.12'
L12	03° 22'21"	244.14'
L13	359° 44'04"	2,648.22'

COORDINATE TABLE			
SHL (NAD 83 NME)		KOP/FTP (NAD 83 NME)	
Y =	404,823.2	N	Y = 403,642.3
X =	673,699.5	E	X = 673,026.6
LAT. =	32.112217	"N	LAT. = 32.108978
LONG. =	103.905823	"W	LONG. = 103.908011
LTP (NAD 83 NME)		BHL (NAD 83 NME)	
Y =	416,578.2	N	Y = 416,668.2
X =	673,390.0	E	X = 673,389.6
LAT. =	32.144533	"N	LAT. = 32.144780
LONG. =	103.906672	"W	LONG. = 103.906672
P1 (NAD 83 NME)		P2 (NAD 83 NME)	
Y =	404,350.5	N	Y = 404,512.5
X =	673,134.1	E	X = 673,154.0
LAT. =	32.110923	"N	LAT. = 32.111368
LONG. =	103.907655	"W	LONG. = 103.907589
P3 (NAD 83 NME)		P4 (NAD 83 NME)	
Y =	404,662.1	N	Y = 404,793.8
X =	673,164.2	E	X = 673,166.7
LAT. =	32.111780	"N	LAT. = 32.112142
LONG. =	103.907554	"W	LONG. = 103.907544
P5 (NAD 83 NME)		P6 (NAD 83 NME)	
Y =	412,588.6	N	Y = 412,632.2
X =	673,131.1	E	X = 673,145.6
LAT. =	32.133569	"N	LAT. = 32.134238
LONG. =	103.907560	"W	LONG. = 103.907510
P7 (NAD 83 NME)		P8 (NAD 83 NME)	
Y =	413,072.1	N	Y = 413,304.2
X =	673,191.2	E	X = 673,266.8
LAT. =	32.134897	"N	LAT. = 32.135534
LONG. =	103.907359	"W	LONG. = 103.907112
P9 (NAD 83 NME)		P10 (NAD 83 NME)	
Y =	414,020.0	N	Y = 413,776.3
X =	673,401.9	E	X = 673,387.5
LAT. =	32.137501	"N	LAT. = 32.136831
LONG. =	10.906666	"W	LONG. = 103.906716
SHL (NAD 27 NME)		KOP/FTP (NAD 27 NME)	
Y =	404,764.8	N	Y = 403,584.0
X =	632,514.7	E	X = 631,841.7
LAT. =	32.112092	"N	LAT. = 32.108853
LONG. =	103.905340	"W	LONG. = 103.907528
LTP (NAD 27 NME)		BHL (NAD 27 NME)	
Y =	416,519.5	N	Y = 416,609.5
X =	632,205.6	E	X = 632,205.2
LAT. =	32.144408	"N	LAT. = 32.144655
LONG. =	103.906187	"W	LONG. = 103.906188
P1 (NAD 27 NME)		P2 (NAD 27 NME)	
Y =	404,292.1	N	Y = 404,454.1
X =	631,949.3	E	X = 631,969.2
LAT. =	32.110798	"N	LAT. = 32.111243
LONG. =	103.907172	"W	LONG. = 103.907105
P3 (NAD 27 NME)		P4 (NAD 27 NME)	
Y =	404,603.7	N	Y = 404,735.4
X =	631,979.4	E	X = 631,981.9
LAT. =	32.111655	"N	LAT. = 32.112017
LONG. =	103.907071	"W	LONG. = 103.907061
P5 (NAD 27 NME)		P6 (NAD 27 NME)	
Y =	412,530.0	N	Y = 412,773.6
X =	631,946.5	E	X = 631,961.0
LAT. =	32.133444	"N	LAT. = 32.134113
LONG. =	103.907075	"W	LONG. = 103.907025
P7 (NAD 27 NME)		P8 (NAD 27 NME)	
Y =	413,013.5	N	Y = 413,245.6
X =	632,006.6	E	X = 632,082.3
LAT. =	32.134772	"N	LAT. = 32.135410
LONG. =	103.906875	"W	LONG. = 103.906628
P9 (NAD 27 NME)		P10 (NAD 27 NME)	
Y =	413,477.8	N	Y = 413,717.7
X =	632,157.8	E	X = 632,203.0
LAT. =	32.136047	"N	LAT. = 32.136706
LONG. =	103.906381	"W	LONG. = 103.906232
PPP #1 (NAD 83 NME)		PPP #1 (NAD 27 NME)	
Y =	408,700.0	N	Y = 408,641.5
X =	673,148.8	E	X = 631,964.1
LAT. =	32.122879	"N	LAT. = 32.122754
LONG. =	103.907552	"W	LONG. = 103.907068
PPP #2 (NAD 83 NME)		PPP #2 (NAD 27 NME)	
Y =	414,019.4	N	Y = 413,960.8
X =	673,401.9	E	X = 632,217.4
LAT. =	32.137499	"N	LAT. = 32.137374
LONG. =	103.906667	"W	LONG. = 103.906182



CORNER COORDINATES (NAD83 NME)			
A - Y =	403,398.9	N	A - X = 674,444.4
B - Y =	406,057.8	N	B - X = 674,435.7
C - Y =	408,716.9	N	C - X = 674,426.9
D - Y =	411,375.4	N	D - X = 674,407.3
E - Y =	414,034.7	N	E - X = 674,387.7
F - Y =	416,694.9	N	F - X = 674,383.2
G - Y =	403,383.2	N	G - X = 673,108.1
H - Y =	406,041.4	N	H - X = 673,098.4
I - Y =	408,699.2	N	I - X = 673,088.1
J - Y =	411,356.4	N	J - X = 673,071.3
K - Y =	414,014.0	N	K - X = 673,054.3
L - Y =	416,672.4	N	L - X = 673,047.0

CORNER COORDINATES (NAD27 NME)			
A - Y =	403,340.6	N	A - X = 633,259.5
B - Y =	405,999.4	N	B - X = 633,250.9
C - Y =	408,658.4	N	C - X = 633,242.2
D - Y =	411,316.9	N	D - X = 633,222.7
E - Y =	413,976.1	N	E - X = 633,203.2
F - Y =	416,636.2	N	F - X = 633,198.7
G - Y =	403,324.9	N	G - X = 631,923.2
H - Y =	405,983.0	N	H - X = 631,913.6
I - Y =	408,640.7	N	I - X = 631,903.4
J - Y =	411,297.9	N	J - X = 631,886.7
K - Y =	413,955.4	N	K - X = 631,869.8
L - Y =	416,613.7	N	L - X = 631,862.6



2205 Walnut Street
 Columbus, TX 78934
 Ph: 817.349.9800 - Fax: 979.732.5271
 TBPE Firm 17957 | TBPLS Firm 10000100
 www.fscinc.net
 © COPYRIGHT 2025 - ALL RIGHTS RESERVED

DATE: 8-6-2025 PROJECT NO: 2024060274
 DRAWN BY: LM SCALE: 1" = 2,000'
 CHECKED BY: WL SHEET: 2 OF 2
 FIELD CREW: IR REVISION: NO

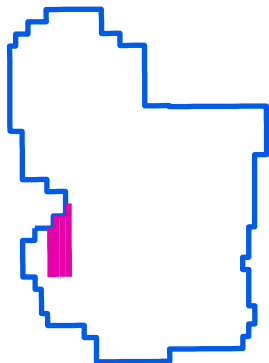
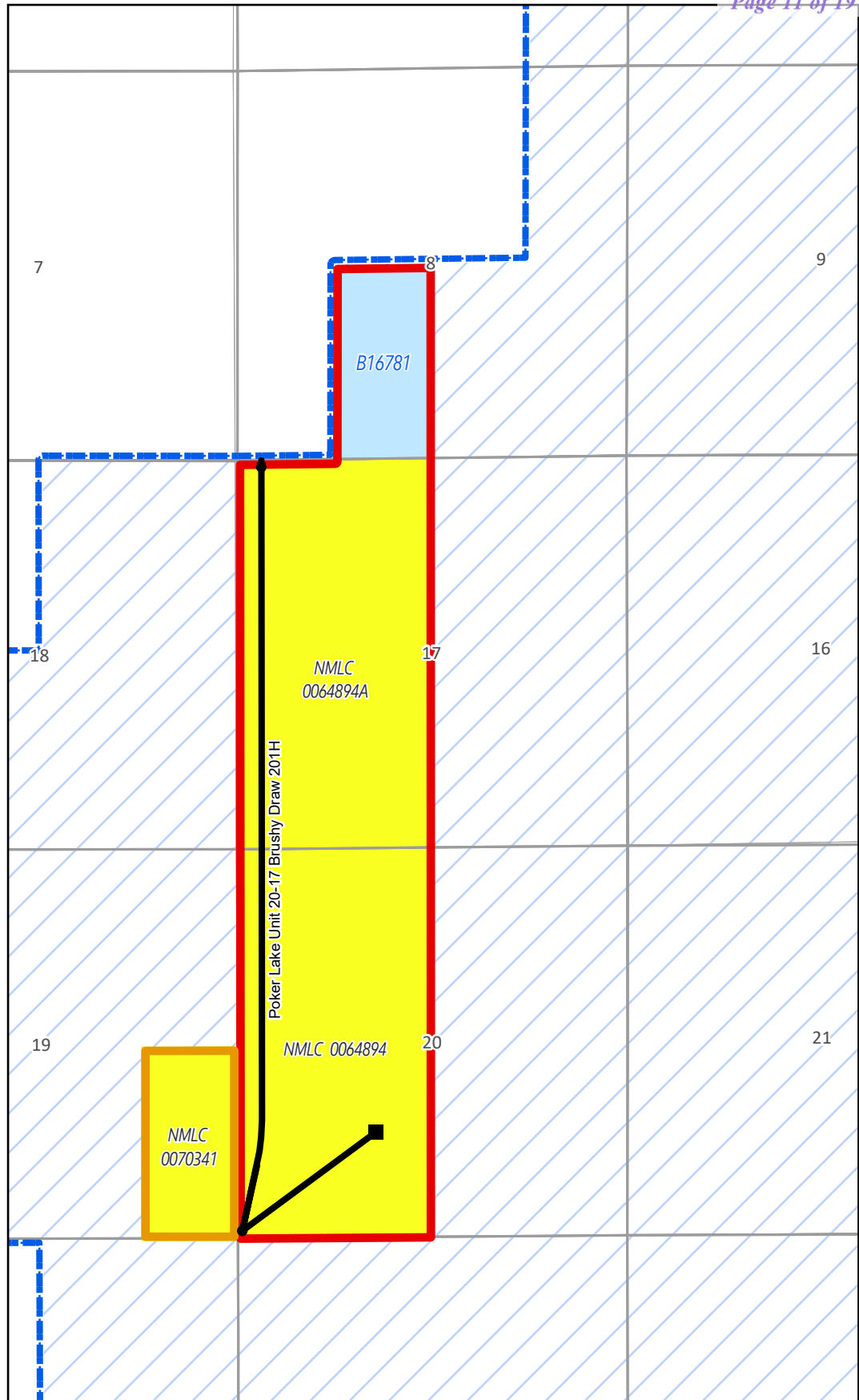


Poker Lake Unit 20-17 Brushy Draw 201H

NSL Exhibit Bonespring Pool

Notification Area:
Sec 19: E2SE
Sec 29: N2NW
160 Acres

- Takepoints
- Surface Hole
- Poker Lake Unit 20-17 Brushy Draw 201H
- ▭ Notification Area: BLM & Chevron USA Inc.
- ▭ Horizontal Spacing Unit
- ▭ Poker Lake Federal Unit
- ▭ State Acreage
- ▭ Federal Acreage



Poker Lake Unit

EXHIBIT
B

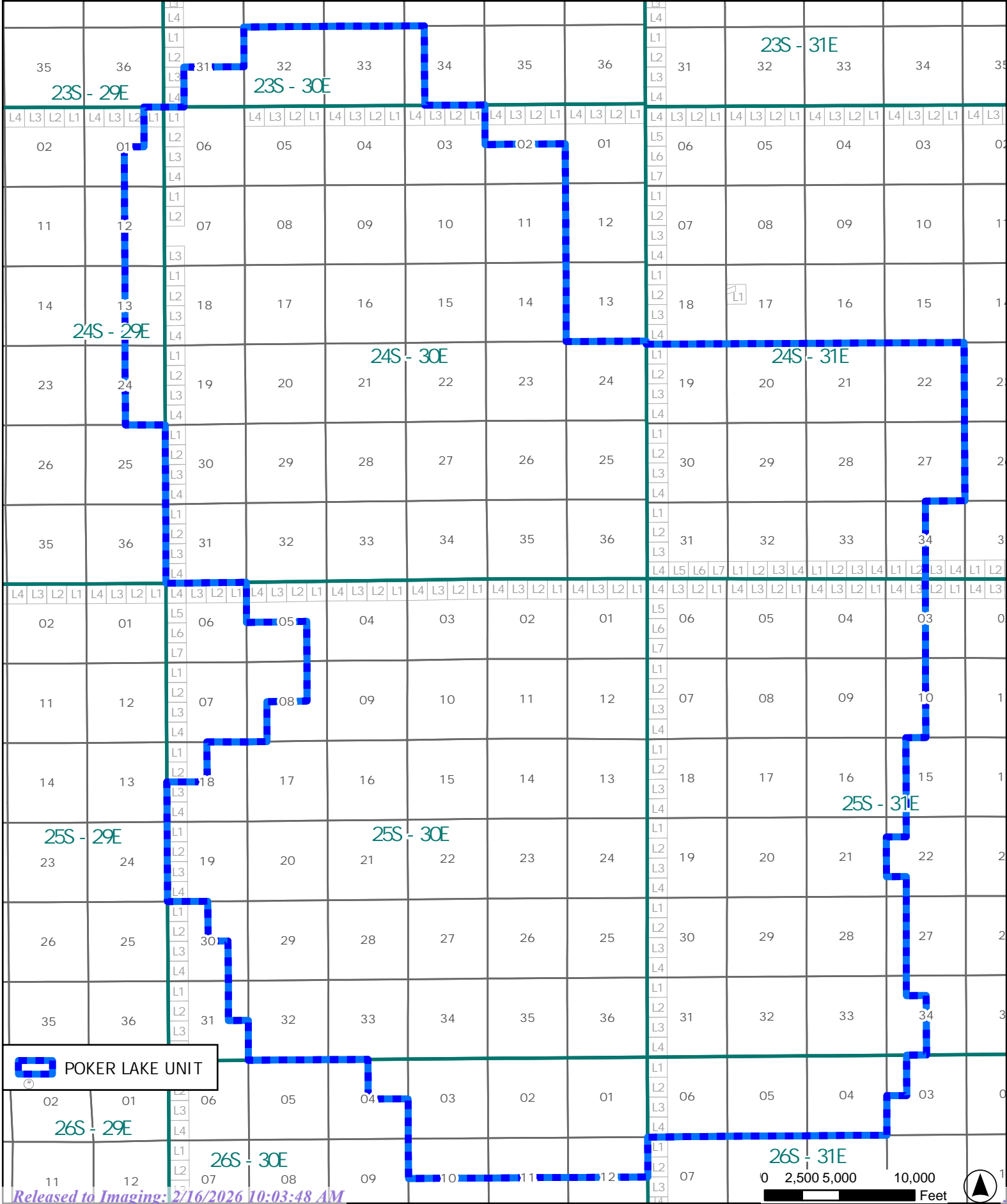
Poker Lake Unit



POKER LAKE UNIT EDDY COUNTY, NEW MEXICO

Land GIS Dept. O:\review\Projects\Kellin_Project_APRX\Delaware Federal Unit\PODs\Delaware Federal Unit\PODs.aprx Layout PLU LEASES

Date: 5/22/2025



EXHIBIT

C

Bureau of Land Management	620 E Greene St.	Carlsbad	NM	88220
Bureau of Land Management	301 Dinosaur Trail	Santa Fe	NM	87508
Chevron USA Inc.	1400 Smith Street	Houston	TX	77002
Chevron USA Inc.	6301 Deauville Blvd.	Midland	TX	79706



Paula M. Vance
Associate Attorney
Phone (505) 988-4421
Email pmvance@hollandhart.com

August 18, 2025

VIA CERTIFIED MAIL
RETURN RECEIPT REQUESTED

TO: ALL AFFECTED PERSONS

Re: XTO Permian Operating, LLC
Request for Administrative Approval of Unorthodox Well Location

Poker Lake Unit 20-17 BD 201H well
E/2 SW/4 of Section 8 and the W/2 of Sections 17 and 20, Township 25 South, Range 30
East, NMPM, Eddy County, New Mexico
Corral Canyon; Bone Spring, South [13354]
API No. 30-015-56754

Ladies and Gentlemen:

Enclosed is a copy of the above-referenced application which was filed with the New Mexico Oil Conservation Division on this date. Any objection to this application must be filed in writing within twenty days from the date this application is received by the New Mexico Oil Conservation Division, 1220 South St. Francis Drive, Santa Fe, New Mexico, 87505. If no objection is received within this twenty-day period, this application may be approved administratively by the Division.

If you have any questions about this application, please contact the following:

Dustin Nuche, CPL
XTO Energy Inc.
(346) 502-0751
dustin.nuche@exxonmobil.com

Sincerely,

Paula M. Vance
ATTORNEY FOR XTO PERMIAN OPERATING, LLC

Find UPS Closest Location



Search icon and letter A

- Shipping
- Tracking
- Products & Services
- The UPS Store

Back to Shipping History

Your shipment from **HOLLAND & HART LLP**

Delivered On **Tuesday, August 19 at 10:52 A.M.**

Delivered To
620 E GREENE ST
CARLSBAD, NM 88220 US

Received By:
WILLIAMS

Proof of Delivery

- Label Created
United States
08/18/2025, 3:04 P.M.
- We Have Your Package
Albuquerque, NM, United States
08/18/2025, 8:06 P.M.
- On the Way
Carlsbad, NM, United States
08/19/2025, 10:31 A.M.
- Out for Delivery
Carlsbad, NM, United States
08/19/2025, 10:38 A.M.
- Delivered
CARLSBAD, NM, US
08/19/2025, 10:52 A.M.

View All Shipping Details

Get Answers Fast

If you need help, use the Virtual Assistant. Still stuck? Try our Tracking Support for more specific guidance.

Notify Me

Upload Documents

File a Claim



Stay Safe - Avoid Fraud and Scams

Received a text, call, or email that seems suspicious? Don't respond to it.

Tips to Avoid Fraud

Find UPS Closest Location



Search icon and letter A

- Shipping
- Tracking
- Products & Services
- The UPS Store

Back to Shipping History

Your shipment from **HOLLAND & HART LLP**

Delivered On **Tuesday, August 19 at 11:22 A.M.**

Delivered To
301 DINOSAUR TRL
SANTA FE, NM 87508 US

Received By:
ROMERO

Proof of Delivery

- Label Created
United States
08/18/2025, 3:08 P.M.
- We Have Your Package
Albuquerque, NM, United States
08/18/2025, 8:06 P.M.
- On the Way
Santa Fe, NM, United States
08/19/2025, 7:18 A.M.
- Out for Delivery
Santa Fe, NM, United States
08/19/2025, 9:33 A.M.
- Delivered
SANTA FE, NM, US
08/19/2025, 11:22 A.M.

View All Shipping Details

Get Answers Fast

If you need help, use the Virtual Assistant. Still stuck? Try our Tracking Support for more specific guidance.

Notify Me

Upload Documents

File a Claim



Stay Safe - Avoid Fraud and Scams

Received a text, call, or email that seems suspicious? Don't respond to it.

Tips to Avoid Fraud

Find UPS Closest Location



Search icon and letter A

- Shipping
- Tracking
- Products & Services
- The UPS Store

Back to Shipping History

Your shipment from **HOLLAND & HART LLP**



Delivered On **Tuesday, August 19 at 10:14 A.M.**

Delivered To
1400 SMITH ST
HOUSTON, TX 77002 US

Received By:
PRICE

Proof of Delivery

- Label Created
United States
08/18/2025, 3:11 P.M.
- We Have Your Package
Albuquerque, NM, United States
08/18/2025, 8:06 P.M.
- On the Way
Houston, TX, United States
08/19/2025, 8:49 A.M.
- Out for Delivery
Houston, TX, United States
08/19/2025, 9:20 A.M.
- Delivered
HOUSTON, TX, US
08/19/2025, 10:14 A.M.

View All Shipping Details

Get Answers Fast

If you need help, use the [Virtual Assistant](#). Still stuck? Try our [Tracking Support](#) for more specific guidance.

Notify Me

Upload Documents

File a Claim



Stay Safe - Avoid Fraud and Scams

Received a text, call, or email that seems suspicious? Don't respond to it.

Tips to Avoid Fraud

Find UPS Closest Location



Search icon and letter A

- Shipping
- Tracking
- Products & Services
- The UPS Store

Back to Shipping History

Your shipment from

HOLLAND & HART LLP

Delivered On

Tuesday, August 19 at 10:16 A.M. at Mail Room



Delivered To

6301 DEAUVILLE
MIDLAND, TX 79706 US

Received By:

ODELL

Proof of Delivery



- Label Created**
United States
08/18/2025, 3:13 P.M.
- We Have Your Package**
Albuquerque, NM, United States
08/18/2025, 8:06 P.M.
- On the Way**
Midland, TX, United States
08/19/2025, 8:28 A.M.
- Out for Delivery**
Midland, TX, United States
08/19/2025, 9:44 A.M.
- Delivered**
MIDLAND, TX, US
08/19/2025, 10:16 A.M.

[View All Shipping Details](#)

Get Answers Fast

If you need help, use the [Virtual Assistant](#). Still stuck? Try our [Tracking Support](#) for more specific guidance.

Notify Me

Upload Documents

File a Claim



Stay Safe - Avoid Fraud and Scams

Received a text, call, or email that seems suspicious? Don't respond to it.

Sante Fe Main Office
Phone: (505) 476-3441

General Information
Phone: (505) 629-6116

Online Phone Directory
<https://www.emnrd.nm.gov/ocd/contact-us>

State of New Mexico
Energy, Minerals and Natural Resources
Oil Conservation Division
1220 S. St Francis Dr.
Santa Fe, NM 87505

CONDITIONS

Action 497702

CONDITIONS

Operator: XTO PERMIAN OPERATING LLC. 3617 Big Spring St. MIDLAND, TX 79705	OGRID: 373075
	Action Number: 497702
	Action Type: [UF-NSL] Non-Standard Location (NSL)

CONDITIONS

Created By	Condition	Condition Date
llowe	None	9/2/2025