

Office
District I - (575) 393-6161
1625 N. French Dr., Hobbs, NM 88240
District II - (575) 748-1283
811 S. First St., Artesia, NM 88210
District III - (505) 334-6178
1000 Rio Brazos Rd., Aztec, NM 87410
District IV - (505) 476-3460
1220 S. St. Francis Dr., Santa Fe, NM 87505

State of New Mexico
Energy, Minerals and Natural Resources

OIL CONSERVATION DIVISION
1220 South St. Francis Dr.
Santa Fe, NM 87505

Revised July 18, 2013

Form with fields: WELL API NO. 30-045-38520, 5. Indicate Type of Lease STATE [] FEE [x], 6. State Oil & Gas Lease No., 7. Lease Name or Unit Agreement Name Ruby Jones, 8. Well Number 1M, 9. OGRID Number 372171, 10. Pool name or Wildcat Blanco Mesaverde / Basin Dakota, 11. Elevation 5607' GL, DHC - 5552

12. Check Appropriate Box to Indicate Nature of Notice, Report or Other Data

NOTICE OF INTENTION TO: PERFORM REMEDIAL WORK [], PLUG AND ABANDON [], TEMPORARILY ABANDON [], CHANGE PLANS [], PULL OR ALTER CASING [], MULTIPLE COMPL [], DOWNHOLE COMMINGLE [x], CLOSED-LOOP SYSTEM [], OTHER: [] SIDETRACK []
SUBSEQUENT REPORT OF: REMEDIAL WORK [], ALTERING CASING [], COMMENCE DRILLING OPNS. [], P AND A [], CASING/CEMENT JOB [], OTHER: []

13. Describe proposed or completed operations. (Clearly state all pertinent details, and give pertinent dates, including estimated date of starting any proposed work). SEE RULE 19.15.7.14 NMAC. For Multiple Completions: Attach wellbore diagram of proposed completion or recompletion.

It is intended to drill and complete the subject well in the Blanco Mesaverde (pool 72319) and Basin Dakota (pool 71599). The production will be commingled per Oil Conservation Division Order Number R-11363. Commingling will not reduce the value of the production.

Proposed perforations are: ~MV 3,905' - 4,788'; ~DK 6,605' - 6,833'. These perforations are in TVD.

Hilcorp Energy will use a spinner method using the attached procedure. We will run this procedure after initial completion, 3 months, 6 months and 12 months to ensure allocations are stabilizing. Annual spinners will be ran until the allocations have stabilized, at which point a fixed allocation will be provided.

Notification of the intent to commingle the subject well was sent to all interest owners via certified mail on 1/28/2026, and a newspaper ad ran on ~1/30/2026.

Spud Date: []

Rig Release Date: []

I hereby certify that the information above is true and complete to the best of my knowledge and belief.

SIGNATURE Cherylene Weston TITLE Operations/Regulatory Tech-Sr. DATE 02/03/2026

Type or print name Cherylene Weston E-mail address: cweston@hilcorp.com PHONE: 713-289-2615

For State Use Only

APPROVED BY: [Signature] TITLE Petroleum Engineer DATE 03/12/26

Conditions of Approval (if any)

CONDITIONS OF APPROVAL

If an alteration is made to the Well or a condition within the Well changes which may cause the allocation of production to the Pools as approved within this Permit to become inaccurate, then no later than sixty (60) days after that event, the Operator shall submit Form C-103 to the OCD Engineering Bureau describing the event and include a revised allocation plan. If OCD denies the revised allocation plan, this Permit shall terminate on the date of such action.

If the downhole commingling of the Pools reduces the value of the oil and gas production to less than if it had remained segregated, no later than sixty (60) days after the decrease in value has occurred the Operator shall submit a new downhole commingling application to OCD to amend this Permit to remove the pool that caused the decrease in value. If the Operator fails to submit a new application, this Permit shall terminate on the following day, and if OCD denies the application, this Permit shall terminate on the date of such action.

If a completed interval of the Well is altered from what is submitted within this application, then no later than sixty (60) days after the alteration, the Operator shall submit Form C-103 to the OCD Engineering Bureau detailing the alteration and completed interval.

The Operator shall utilize production logs to allocate gas production from the Well to each of the Pools. Once the gas allocation is determined, the Operator shall then consider the gas oil ratio for each pool to allocate oil production from the Well to each of the Pools. The Operator shall conduct a production log:

- a. following the initial completion;
- b. three (3) months after the initial completion;
- c. six (6) months after the initial completion;
- d. twelve (12) months after the initial completion;
- e. annually thereafter until the allocation has stabilized; and
- f. additionally, as directed by OCD.

No later than ninety (90) days after conducting each production log, the Operator shall submit a Form C-103 to the OCD Engineering Bureau that includes the results of the production log and the oil and gas allocations for each of the Pools. Upon request from OCD, the Operator shall provide documentation supporting the allocations and if OCD determines that the allocations are inaccurate, the Operator shall proceed as directed by OCD.

Once the allocations have stabilized, the Operator shall submit a Form C-103 to the OCD Engineering Bureau that includes a tabulation of the oil and gas allocation following each of the conducted production logs and a proposed fixed percentage for allocating the oil and gas production from the Well to each of the Pools. If OCD approves the proposed fixed percentage, then the Operator shall allocate accordingly. If OCD denies the proposed fixed percentage, then the Operator shall continue conducting annual production logs.

A production log shall consist of either using a turbine/spinner flowmeter to determine the stabilized flow rate from each of the Pools under normal operating conditions or by another method OCD has specifically approved.



January 28, 2026

Mailed Certified with Electronic Return Receipt

To: All Interest Owners

RE: Application to Downhole Commingle Production
Well: Ruby Jones 001M
API: 30-045-38520
Section 07, Township 30 North, Range 11 West
San Juan County, New Mexico

Ladies and Gentlemen:

Hilcorp Energy Company (“Hilcorp”), as Operator of the subject well, has filed application with the New Mexico Oil Conservation Division (“NMOCD”) for approval to downhole commingle production from the **Basin Dakota** formation and **Blanco Mesaverde** formation, which Hilcorp soon intends to perforate. This letter and the application copy enclosed serve to provide you, an owner in one or more of the aforementioned formations, with written notice as prescribed by Subsection C of 19.15.12.11 New Mexico Administrative Code.

No action is required by you unless you wish to pursue a formal protest.

Any objections or requests for hearing must be submitted to the NMOCD’s Santa Fe office, in writing, within twenty (20) days from the date the NMOCD receives the subject application.

Sincerely,

A handwritten signature in blue ink, appearing to read 'Carson Parker Rice', is written over a light blue horizontal line.

Carson Parker Rice
Landman
713.757.7108
carice@hilcorp.com

CPR:dpk
Enclosures

Office
District I - (575) 393-6161
1625 N. French Dr., Hobbs, NM 88240
District II - (575) 748-1283
811 S. First St., Artesia, NM 88210
District III - (505) 334-6178
1000 Rio Brazos Rd., Aztec, NM 87410
District IV - (505) 476-3460
1220 S. St. Francis Dr., Santa Fe, NM 87505

State of New Mexico
Energy, Minerals and Natural Resources

Form C-103
Revised July 18, 2013

OIL CONSERVATION DIVISION
1220 South St. Francis Dr.
Santa Fe, NM 87505

WELL API NO. 30-045-38520
5. Indicate Type of Lease STATE [] FEE [X]
6. State Oil & Gas Lease No.
7. Lease Name or Unit Agreement Name Ruby Jones
8. Well Number 1M
9. OGRID Number 372171
10. Pool name or Wildcat Blanco Mesaverde / Basin Dakota

SUNDRY NOTICES AND REPORTS ON WELLS
(DO NOT USE THIS FORM FOR PROPOSALS TO DRILL OR TO DEEPEN OR PLUG BACK TO A DIFFERENT RESERVOIR. USE "APPLICATION FOR PERMIT" (FORM C-101) FOR SUCH PROPOSALS.)
1. Type of Well: Oil Well [] Gas Well [X] Other
2. Name of Operator Hilcorp Energy Company
3. Address of Operator 382 Road 3100, Aztec, NM 87410
4. Well Location Unit Letter N: 1054 feet from the South line and 2332 feet from the West line
Section 7 Township 030N Range 011W NMPM County SAN JUAN
11. Elevation (Show whether DR, RKB, RT, GR, etc.) 5607' GL

12. Check Appropriate Box to Indicate Nature of Notice, Report or Other Data

NOTICE OF INTENTION TO:
PERFORM REMEDIAL WORK [] PLUG AND ABANDON []
TEMPORARILY ABANDON [] CHANGE PLANS []
PULL OR ALTER CASING [] MULTIPLE COMPL []
DOWNHOLE COMMINGLE [X]
CLOSED-LOOP SYSTEM []
OTHER: [] SIDETRACK
SUBSEQUENT REPORT OF:
REMEDIAL WORK [] ALTERING CASING []
COMMENCE DRILLING OPNS. [] P AND A []
CASING/CEMENT JOB []
OTHER: []

13. Describe proposed or completed operations. (Clearly state all pertinent details, and give pertinent dates, including estimated date of starting any proposed work). SEE RULE 19.15.7.14 NMAC. For Multiple Completions: Attach wellbore diagram of proposed completion or recompletion.

It is intended to drill and complete the subject well in the Blanco Mesaverde (pool 72319) and Basin Dakota (pool 71599). The production will be commingled per Oil Conservation Division Order Number R-11363. Commingling will not reduce the value of the production.

Proposed perforations are: ~MV 3,905' - 4,788'; ~DK 6,605' - 6,833'. These perforations are in TVD.

Hilcorp Energy will use a spinner method using the attached procedure. We will run this procedure after initial completion, 3 months, 6 months and 12 months to ensure allocations are stabilizing. Annual spinners will be ran until the allocations have stabilized, at which point a fixed allocation will be provided.

This notice is being provided to you by certified mail as an interest owner per Order Number 11363. Please notify NMOCD within twenty (20) days if you have objections.

Spud Date: []

Rig Release Date: []

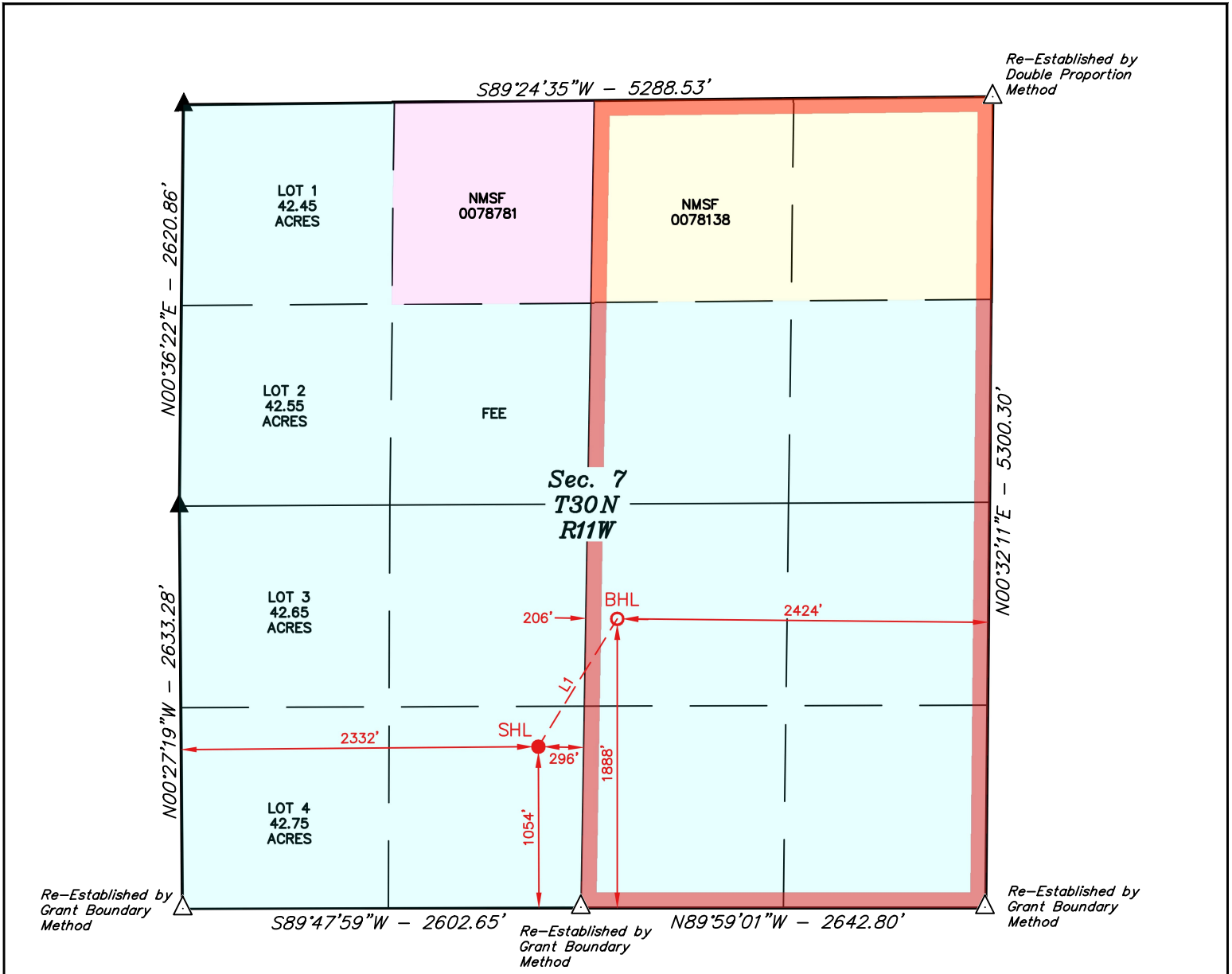
I hereby certify that the information above is true and complete to the best of my knowledge and belief.

SIGNATURE Cherylene Weston TITLE Operations/Regulatory Tech-Sr. DATE 1/15/2026

Type or print name Cherylene Weston E-mail address: cweston@hilcorp.com PHONE: 713-289-2615

For State Use Only
APPROVED BY: [Signature] TITLE Petroleum Engineer DATE 03/11/26
Conditions of Approval (if any)

Property Name RUBY JONES	Well Number 1M	Drawn By H.S.S. 11-05-25	Revised By REV. 1 T.I.R. 12-17-25 (WELL MOVE)
-----------------------------	-------------------	-----------------------------	--



LINE TABLE		
LINE	DIRECTION	LENGTH
L1	N31°41'49"E	981.57'

NOTE:

- Distances referenced on plat to section lines are perpendicular.
- Bearings, Distances, Coordinates, and Areas are based on the New Mexico Coordinate System of 1983, West Zone, in U.S. Feet.
- Colored areas within section lines represent oil & gas leases.
- Section Breakdown information for this plat may be obtained from Uintah Engineering and Land Surveying.

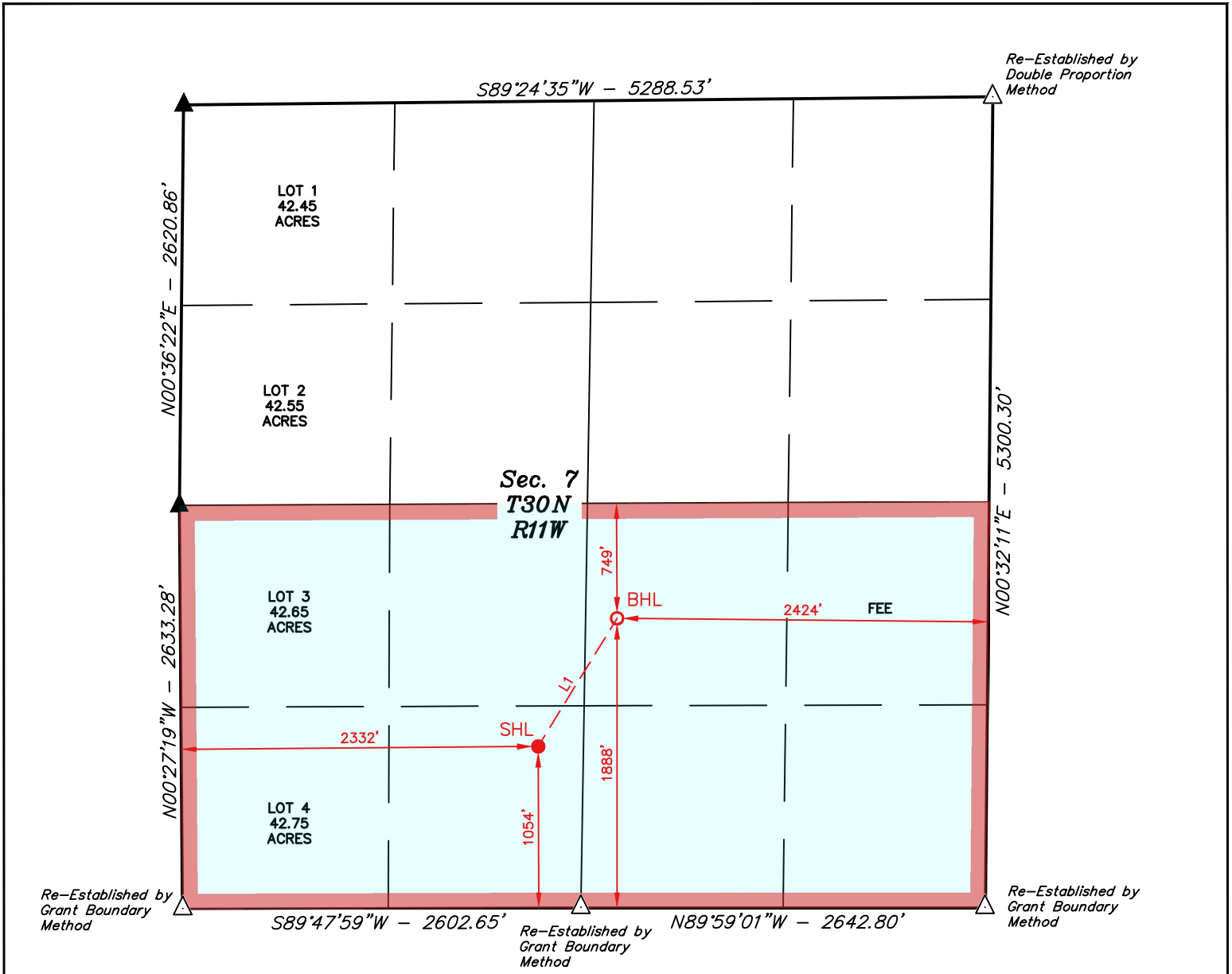


- = SURFACE HOLE LOCATION
- = BOTTOM HOLE LOCATION
- ▲ = SECTION CORNER LOCATED
- △ = SECTION CORNER RE-ESTABLISHED.
(Not Set on Ground.)
- = DESIGNATED SPACING UNIT

NAD 83 (SURFACE HOLE LOCATION)
LATITUDE = 36°49'20.79" (36.822441°)
LONGITUDE = -108°01'58.88" (-108.033023°)
NAD 27 (SURFACE HOLE LOCATION)
LATITUDE = 36°49'20.77" (36.822437°)
LONGITUDE = -108°01'56.63" (-108.032398°)
STATE PLANE NAD 83 (N.M. WEST)
N: 2118751.18' E: 2664645.43'
STATE PLANE NAD 27 (N.M. WEST)
N: 2118687.84' E: 441735.19'

NAD 83 (BOTTOM HOLE LOCATION)
LATITUDE = 36°49'29.06" (36.824738°)
LONGITUDE = -108°01'52.56" (-108.031266°)
NAD 27 (BOTTOM HOLE LOCATION)
LATITUDE = 36°49'29.04" (36.824734°)
LONGITUDE = -108°01'50.31" (-108.030642°)
STATE PLANE NAD 83 (N.M. WEST)
N: 2119586.34' E: 2665161.17'
STATE PLANE NAD 27 (N.M. WEST)
N: 2119522.98' E: 442250.92'

Property Name RUBY JONES	Well Number 1M	Drawn By H.S.S. 11-05-25	Revised By REV. 1 T.I.R. 12-17-25 (WELL MOVE)
-----------------------------	-------------------	-----------------------------	--



LINE TABLE		
LINE	DIRECTION	LENGTH
L1	N31°41'49"E	981.57'

- NOTE:**
- Distances referenced on plat to section lines are perpendicular.
 - Bearings, Distances, Coordinates, and Areas are based on the New Mexico Coordinate System of 1983, West Zone, in U.S. Feet.
 - Colored areas within section lines represent oil & gas leases.
 - Section Breakdown information for this plat may be obtained from Uintah Engineering and Land Surveying.



SCALE

- = SURFACE HOLE LOCATION
- = BOTTOM HOLE LOCATION
- ▲ = SECTION CORNER LOCATED
- △ = SECTION CORNER RE-ESTABLISHED.
(Not Set on Ground.)
- = DESIGNATED SPACING UNIT

NAD 83 (SURFACE HOLE LOCATION)
LATITUDE = 36°49'20.79" (36.822441°)
LONGITUDE = -108°01'58.88" (-108.033023°)
NAD 27 (SURFACE HOLE LOCATION)
LATITUDE = 36°49'20.77" (36.822437°)
LONGITUDE = -108°01'56.63" (-108.032398°)
STATE PLANE NAD 83 (N.M. WEST)
N: 2118751.18' E: 2664645.43'
STATE PLANE NAD 27 (N.M. WEST)
N: 2118687.84' E: 441735.19'

NAD 83 (BOTTOM HOLE LOCATION)
LATITUDE = 36°49'29.06" (36.824738°)
LONGITUDE = -108°01'52.56" (-108.031266°)
NAD 27 (BOTTOM HOLE LOCATION)
LATITUDE = 36°49'29.04" (36.824734°)
LONGITUDE = -108°01'50.31" (-108.030642°)
STATE PLANE NAD 83 (N.M. WEST)
N: 2119586.34' E: 2665161.17'
STATE PLANE NAD 27 (N.M. WEST)
N: 2119522.98' E: 442250.92'

REVENUE ALLOCATION PROCEDURE

DAKOTA/MESAVERDE WELLS

- 1.) Frac and flowback the Dakota formation
- 2.) Frac and flowback and clean up Mesaverde formation
- 3.) Stabilize MV flow up casing against area line pressure
- 4.) Record a MV flow rate through a choke using an orifice meter
- 5.) Drill out bridge plug over DK formation
- 6.) Cleanup DK formation
- 7.) Run Spinner production profile across Dakota formation
- 8.) Add MV flow rate from previous test to DK flow rate from spinner to get total flow
- 9.) Allocation is based upon MV or DK rates as a percentage of total flow

Once allocation is established, it will be used for the life of the well. Below is a summary of how the testing is performed.

Field Test (Spinner Method)

Summary

This example covers the procedure used to allocate production using the spinner method with field tests. This method was used by ConocoPhillips prior to the Burlington Resources acquisition and has been chosen as the preferred allocation method on all future Mesaverde/ Dakota commingled wells. The allocation is based on two separate tests. The first is a stabilized rate test on the Mesaverde up the casing-tubing annulus with line pressure simulated by a choke at the surface. The second test is performed by running a production log over the Dakota interval. The rate from each layer is used in a simple calculation to determine the contribution percentage.

Procedure

Allocation testing is performed after the well has been completed. A composite bridge plug is normally located above the DK and a composite frac plug is sometimes located within the MV.

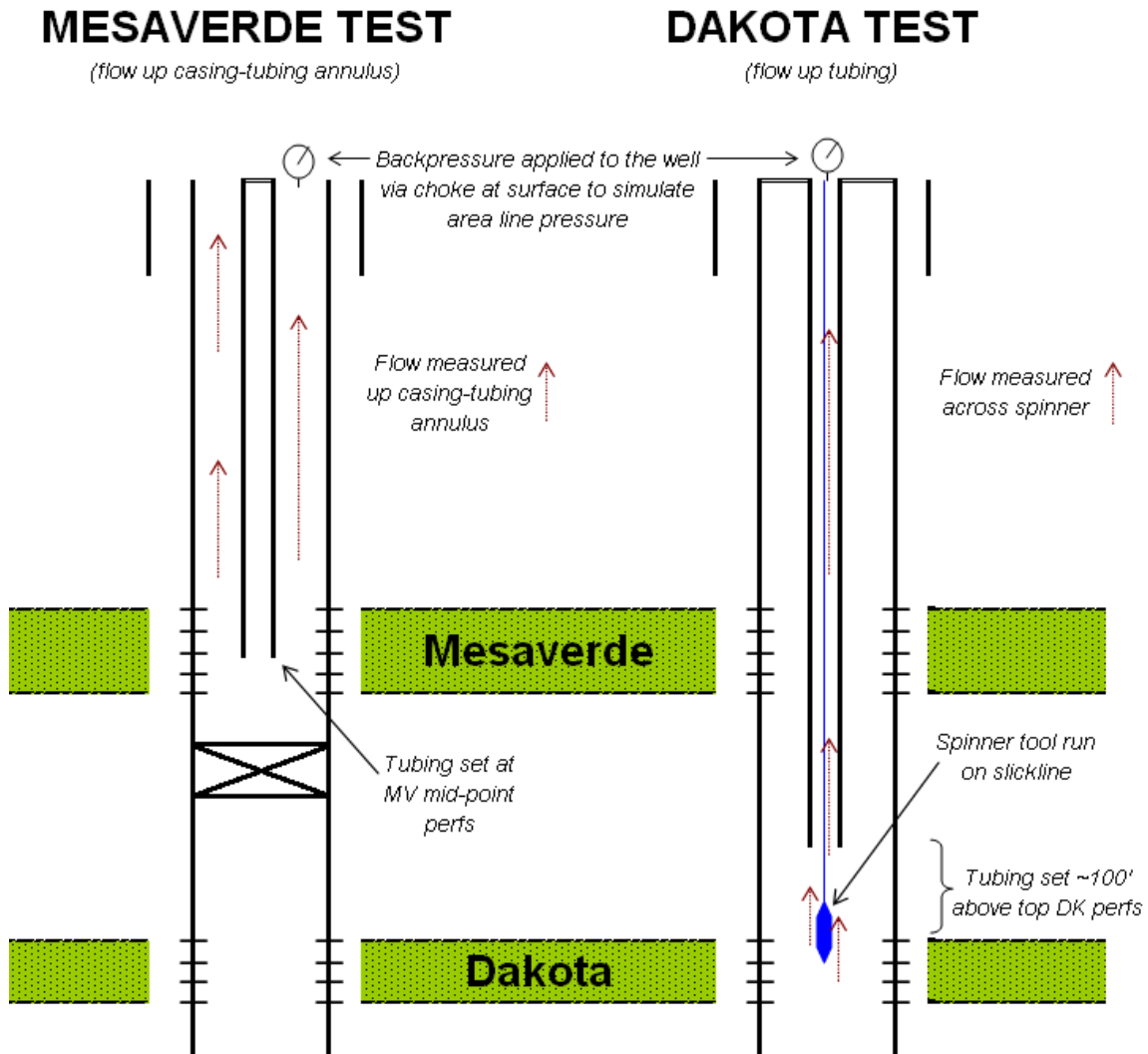
The first step in testing the MV is drilling out the plugs and cleaning out the well. Once water and sand volumes reach acceptable levels (less than 5 bph), the tubing is set at the mid-point of MV perfs. The well is then opened to flow up the casing-tubing annulus with a positive choke at the surface to simulate a back-pressure on the well. The MV is tested for a minimum of 4 hours or until pressure stabilizes. Tubing and casing pressures are reported every 15 minutes and when pressure is the same three times then it is considered stabilized. Metered gas, water, and condensate rates and volumes are all documented as well as testing conditions (tubing location, choke size, pressures).

After the MV has been tested, the composite drill plug over the DK is drilled out and the well is cleaned out to PBTD. Once the water and sand volumes reach acceptable levels (less than 5

bph), the bottom-hole assembly is configured and the tubing is landed approximately 100 feet above the DK perfs. A slickline or wireline unit is used to run the production loggings tools. The logging tools are lowered to the bottom perfs and the DK interval is logged while the well is producing up the tubing against a choke. Once again, the well is tested for a minimum of 4 hours or until the pressure has stabilized. The log is run across the entire DK interval to 50 feet above the top DK perforation. The log data is interpreted by the service company and returned to the completions group within a few days.

The stabilized MV rate is combined with the stabilized DK rate to come up with a total well production rate. The ratio of the MV rate to the total rate is used as the MV allocation percentage and the same is done for the DK. An example test and corresponding calculations are included in the report.

Diagram



Example- San Juan 31-6 Unit 40G

After the MV has been cleaned up and the well has stabilized, the MV is tested at 1,306 Mcfd (see report below). The test was performed up the tubing-casing annulus (4.5" casing/ 2.38" tubing) with a 1/2" choke at surface. The stabilized flowing casing pressure was 198 psi, which is similar to line pressure in the area.

Time Log							Operation
Start Time	End Time	Conn Dwg (Hrs)	Op Code	OpSub-C	Time P.N.T		
06:00	07:00	1.00	RPCCO...	SFTY	P		ROAD CREW TO LOCATION HOLD PJSM
07:00	10:00	4.00	RPCCO...	TRIP	P		POOH W/ 3 7/8" MILL T/H W/ RBP SET @ 6068'
10:00	11:00	5.00	RPCCO...	FCO	P		BLOW WELL TO UNLOAD KILL FLUID
11:00	15:00	9.00	RPCCO...	PRDT	P		PERFORATIONS 5087' - 6006' 2 3/8" TBNG SET @ 5580' TEST IS TO ATMOSPHERE ON 1/2" CHOKE FCP = 198 PSI SITP = 0 PSI PRODUCTION = 1306 MCF BBL OIL/DAY = 0 BBL WATER/DAY = 0 NO SAND WITNESSED BY: JOSE FRIAS
15:00	16:00	10.00	RPCCO...	FCO	P		BLOW DOWN WELL OPEN PIPE RAMS BLOW WELL
16:00	04:00	22.00	RPCCO...	FCO	P		BLOW WELL W/ NIGHT CREW

Plus	Note	To (bbl)	From (bbl)	Non-renew (bbl)	Zone

Observation Cards (BST, STOP, etc)		No. Rpts	Comment

Safety Meetings / Operational Checks			Description
Time	Type		
07:00	Pre-Job Safety Meeting		WELLSITE PJSM

Page 1/2 Report Printed: 4/11/2008

Figure 1: Pulled from WellView Initial Completion Report

The DK is then cleaned up and the logging tools are run. The reports from ProTechnics show a total rate from the DK equal to 584 Mcfd (see report below). The test was performed at a flowing tubing pressure of 125 psi with a 1/2" choke at surface.

ProTechnics A CORE LABORATORIES COMPANY		Completion Profile Analysis		
Results				
The following table summarizes the production from each producing interval				
GAS / WATER PRODUCTION PROFILE				
Flow Rates Reported at STP				
Zone Intervals	Q-Water	Op-Water	Percent of Total	Q-Gas
feet	BFPD	BFPD		MCFD
Surface to 7860	2 bpd		100 %	584 Mcf/d

Figure 2: Pulled from Protechnics Report, pg. 6

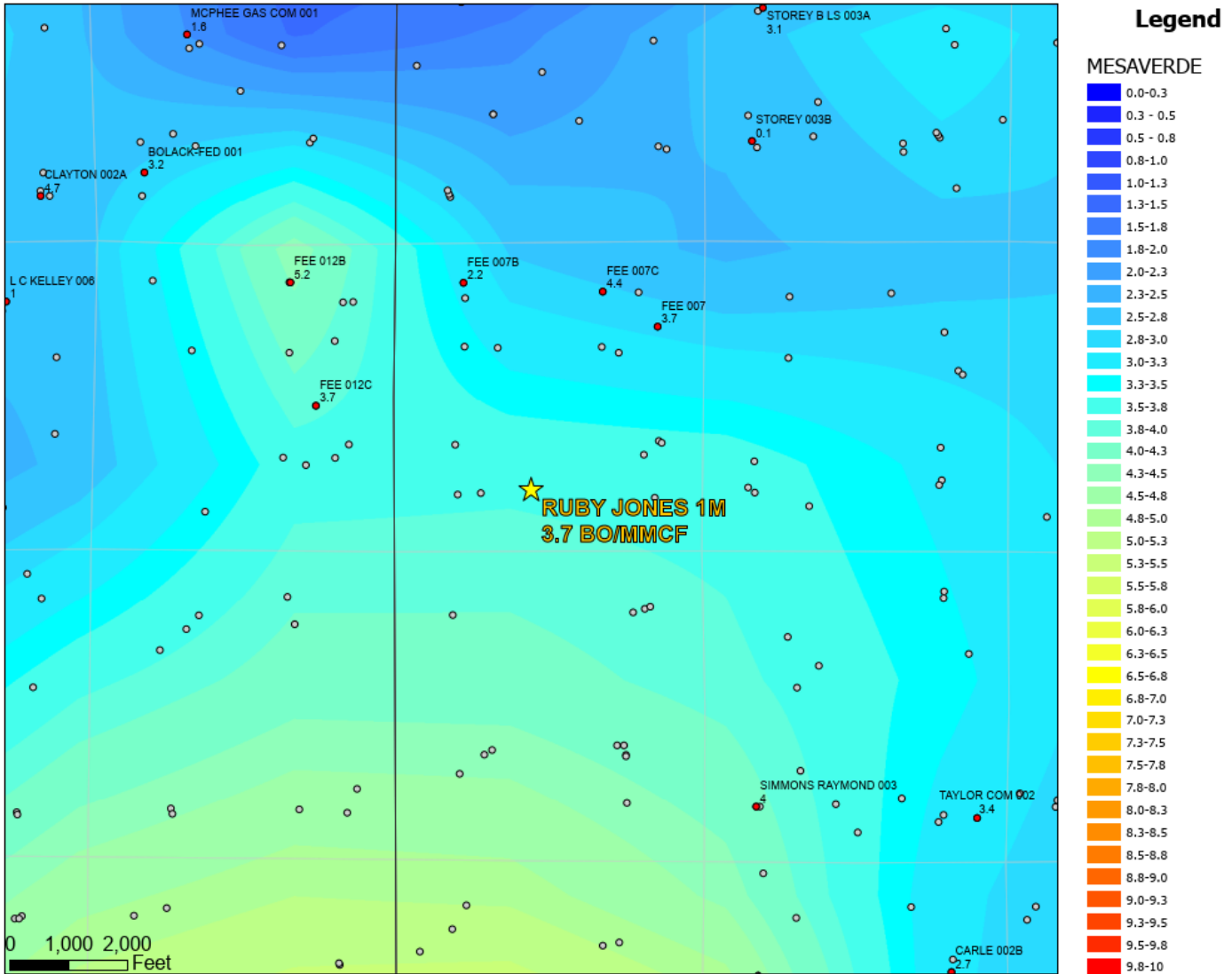
The allocation is calculated as follows and an allocation form is completed for the well. See Appendix for allocation form, WellView report, and ProTechnics report including production logs.

MV Rate	1306	% MV=	1306/1890=	69%
DK Rate	584	% DK=	584/1890=	31%
Total Rate	1890			

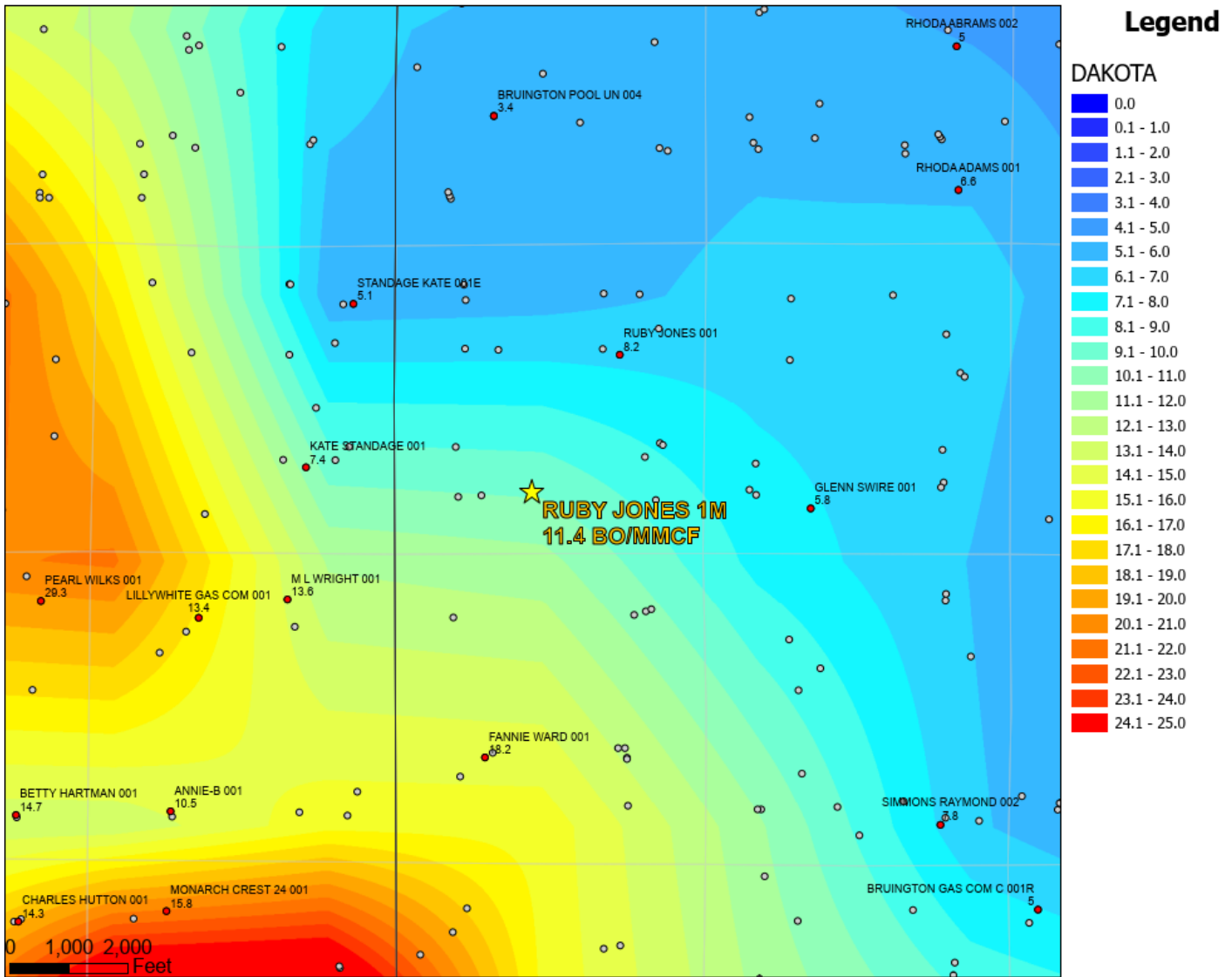
Oil Allocation:

Oil production will be allocated utilizing GOR in terms of oil yield based on actual production from offset Dakota and Mesaverde wells. Once gas allocation split is obtained from spinner, oil yield values will be applied to get final oil allocation split.

MESAVERDE GOR MAP



DAKOTA GOR MAP



Certified Number	Sender	Recipient	Date Mailed	Delivery Status
92148969009997901853322513	Dani Kuzma	, A J HALL JR, , AZTEC, NM, 87410 Code: RUBY JONES 1M DHC	1/28/2026	Signature Pending
92148969009997901853322520	Dani Kuzma	, ALICE K HARDIN, , AZTEC, NM, 87410 Code: RUBY JONES 1M DHC	1/28/2026	Signature Pending
92148969009997901853322537	Dani Kuzma	, ALISSA L PELEPCHAN, , COLORADO SPRINGS, CO, 80919-3001 Code: RUBY JONES 1M DHC	1/28/2026	Signature Pending
92148969009997901853322544	Dani Kuzma	, ALYCE SWEAZEA AND KENNETH P MAESTAS, , AZTEC, NM, 87410 Code: RUBY JONES 1M DHC	1/28/2026	Signature Pending
92148969009997901853322551	Dani Kuzma	, ANN FOURR, , FARMINGTON, NM, 87499 Code: RUBY JONES 1M DHC	1/28/2026	Signature Pending
92148969009997901853322568	Dani Kuzma	, ANNE TERESA MOULDS-LAUGHLIN, , RENO, NV, 89509 Code: RUBY JONES 1M DHC	1/28/2026	Signature Pending
92148969009997901853322575	Dani Kuzma	, BARBARA CARTER, , FARMINGTON, NM, 87499 Code: RUBY JONES 1M DHC	1/28/2026	Signature Pending
92148969009997901853322582	Dani Kuzma	, BARBARA LOUISE MOULDS, , ALBUQUERQUE, NM, 87190-0204 Code: RUBY JONES 1M DHC	1/28/2026	Signature Pending
92148969009997901853322599	Dani Kuzma	, BILLIE LEE LAQUEY, , ARLINGTON, TX, 76013 Code: RUBY JONES 1M DHC	1/28/2026	Signature Pending
92148969009997901853322605	Dani Kuzma	, BRAD H HINES and WILMA HINES JT, , UNKNOWN, TX, 99999 Code: RUBY JONES 1M DHC	1/28/2026	Signature Pending
92148969009997901853322612	Dani Kuzma	, BRONCO OIL COMPANY, , OKLAHOMA CITY, OK, 73189 Code: RUBY JONES 1M DHC	1/28/2026	Signature Pending
92148969009997901853322629	Dani Kuzma	, BRYAN WASHBURN, , FARMINGTON, NM, 87401 Code: RUBY JONES 1M DHC	1/28/2026	Signature Pending
92148969009997901853322636	Dani Kuzma	, C R HANCOCK, , AZTEC, NM, 87410 Code: RUBY JONES 1M DHC	1/28/2026	Signature Pending

92148969009997901853322643	Dani Kuzma	, CARL YOUNG, , AZTEC, NM, 87410 Code: RUBY JONES 1M DHC	1/28/2026	Signature Pending
92148969009997901853322650	Dani Kuzma	, CAROLYN L METZLER, , ALBUQUERQUE, NM, 87120-3105 Code: RUBY JONES 1M DHC	1/28/2026	Signature Pending
92148969009997901853322667	Dani Kuzma	, CATHERINE FJELSTAD, , NEW PRAGUE, MN, 56071 Code: RUBY JONES 1M DHC	1/28/2026	Signature Pending
92148969009997901853322674	Dani Kuzma	, CHARLES BARNES, , SAINT LOUIS PARK, MN, 55426 Code: RUBY JONES 1M DHC	1/28/2026	Signature Pending
92148969009997901853322681	Dani Kuzma	, CHRISTOPHER E BARNES-DEBENPORT, , BALLWIN, MO, 63021 Code: RUBY JONES 1M DHC	1/28/2026	Signature Pending
92148969009997901853322698	Dani Kuzma	, CLARENCE G SNELL, and SHIRLEY SNELL, AZTEC, NM, 87410 Code: RUBY JONES 1M DHC	1/28/2026	Signature Pending
92148969009997901853322704	Dani Kuzma	, CONNIE BACON, , WESTMINSTER, CO, 80031 Code: RUBY JONES 1M DHC	1/28/2026	Signature Pending
92148969009997901853322711	Dani Kuzma	, CONNIE J CHARTERS, , GRAND JUNCTION, CO, 81506 Code: RUBY JONES 1M DHC	1/28/2026	Signature Pending
92148969009997901853322728	Dani Kuzma	, CONNIE M BERTE TRUST, CONNIE M BERTE TTEE, GOLDEN, CO, 80401 Code: RUBY JONES 1M DHC	1/28/2026	Signature Pending
92148969009997901853322735	Dani Kuzma	, DAVID KIM BURNHAM, , STILLWATER, OK, 74075 Code: RUBY JONES 1M DHC	1/28/2026	Signature Pending
92148969009997901853322742	Dani Kuzma	, DEES FAMILY HOLDINGS LLC, DONA K DEES MBR, AZTEC, NM, 87410 Code: RUBY JONES 1M DHC	1/28/2026	Signature Pending
92148969009997901853322759	Dani Kuzma	, DENNIS FLAHERTY, , AZTEC, NM, 87410 Code: RUBY JONES 1M DHC	1/28/2026	Signature Pending
92148969009997901853322766	Dani Kuzma	, DEVIN F SMITH, , COLORADO SPRINGS, CO, 80918 Code: RUBY JONES 1M DHC	1/28/2026	Signature Pending

92148969009997901853322773	Dani Kuzma	, DON SCOTT JENSEN LIVING TRUST, DON SCOTT JENSEN TTEE, FARMINGTON, NM, 87401 Code: RUBY JONES 1M DHC	1/28/2026	Signature Pending
92148969009997901853322780	Dani Kuzma	, DONA M SUTTON LIVING TRUST, JUDITH HILMA SMITH SUCC TTEE, LOS LUNAS, NM, 87031 Code: RUBY JONES 1M DHC	1/28/2026	Signature Pending
92148969009997901853322797	Dani Kuzma	, DOROTHY E KELLEY, , GLENDALE, AZ, 85308 Code: RUBY JONES 1M DHC	1/28/2026	Signature Pending
92148969009997901853322803	Dani Kuzma	, DOYLE D PARGIN JR, , ALBUQUERQUE, NM, 87122 Code: RUBY JONES 1M DHC	1/28/2026	Signature Pending
92148969009997901853322810	Dani Kuzma	, E CHRISTINE SALAZAR LIVING TRUST, EDITH CHRISTINE SALAZAR TTEE, FLORA VISTA, NM, 87415 Code: RUBY JONES 1M DHC	1/28/2026	Signature Pending
92148969009997901853322827	Dani Kuzma	, EARL F and LULA FAY RANDLEMON LVG TR, EARL F and LULA FAY RANDLEMON TTEE, AZTEC, NM, 87410 Code: RUBY JONES 1M DHC	1/28/2026	Signature Pending
92148969009997901853322834	Dani Kuzma	, EDWARD FORGOTSON SR MINTRDTD7/25/17, ANN Y M FORGOTSON ELIZABETH FORGOTS, MIAMI, FL, 33139 Code: RUBY JONES 1M DHC	1/28/2026	Signature Pending
92148969009997901853322841	Dani Kuzma	, EDWARD H FORGOTSON JR, , BETHESDA, MD, 20814 Code: RUBY JONES 1M DHC	1/28/2026	Signature Pending
92148969009997901853322858	Dani Kuzma	, EDWARD J ADKINS, , DENVER, CO, 80238 Code: RUBY JONES 1M DHC	1/28/2026	Signature Pending
92148969009997901853322865	Dani Kuzma	, ELIZABETH FORGOTSON GOLDBERG, , BETHESDA, MD, 20817-6325 Code: RUBY JONES 1M DHC	1/28/2026	Signature Pending
92148969009997901853322872	Dani Kuzma	, ELLIOTT ENERGY LLC, , BUELLTON, CA, 93427 Code: RUBY JONES 1M DHC	1/28/2026	Signature Pending
92148969009997901853322889	Dani Kuzma	, ELLIOTT INDUSTRIES, , SANTA FE, NM, 87504 Code: RUBY JONES 1M DHC	1/28/2026	Signature Pending

92148969009997901853322896	Dani Kuzma	, ELLIOTT-HALL COMPANY, , OGDEN, UT, 84415 Code: RUBY JONES 1M DHC	1/28/2026	Signature Pending
92148969009997901853322902	Dani Kuzma	, GAIL M FLAHERTY, , AZTEC, NM, 87410 Code: RUBY JONES 1M DHC	1/28/2026	Signature Pending
92148969009997901853322919	Dani Kuzma	, GERARD LEMMONS, , DENVER, CO, 80203-4025 Code: RUBY JONES 1M DHC	1/28/2026	Signature Pending
92148969009997901853322926	Dani Kuzma	, GIULIA A MILLER URQUHART, , ALBUQUERQUE, NM, 87122 Code: RUBY JONES 1M DHC	1/28/2026	Signature Pending
92148969009997901853322933	Dani Kuzma	, GUY and CATHLEEN SHEPARD TRUST, CHARLES GUY SHEPARD III and CATHLEEN, FARMINGTON, NM, 87402 Code: RUBY JONES 1M DHC	1/28/2026	Signature Pending
92148969009997901853322940	Dani Kuzma	, HARVEY KENDRICK and, HAZEL G KENDRICK, AZTEC, NM, 87410 Code: RUBY JONES 1M DHC	1/28/2026	Signature Pending
92148969009997901853322957	Dani Kuzma	, HARVEY M KENDRICK LIVING TR, , AZTEC, NM, 87410 Code: RUBY JONES 1M DHC	1/28/2026	Signature Pending
92148969009997901853322964	Dani Kuzma	, HERB STINSON, , AZTEC, NM, 87410 Code: RUBY JONES 1M DHC	1/28/2026	Signature Pending
92148969009997901853322971	Dani Kuzma	, HOLLY E MILLER ORTIZ, , EVERGREEN, CO, 80439 Code: RUBY JONES 1M DHC	1/28/2026	Signature Pending
92148969009997901853322988	Dani Kuzma	, JAMES L JONES, , UNKNOWN, TX, 99999 Code: RUBY JONES 1M DHC	1/28/2026	Signature Pending
92148969009997901853322995	Dani Kuzma	, JAMES R J STRICKLER, and MARIE R STRICKLER JT, FARMINGTON, NM, 87401 Code: RUBY JONES 1M DHC	1/28/2026	Signature Pending
92148969009997901853323008	Dani Kuzma	, JAMES R STRICKLER, DBA JMJ RESOURCES LLC, FARMINGTON, NM, 87401 Code: RUBY JONES 1M DHC	1/28/2026	Signature Pending
92148969009997901853323015	Dani Kuzma	, JAMES WARREN EASLEY, , FARMINGTON, NM, 87401 Code: RUBY JONES 1M DHC	1/28/2026	Signature Pending

92148969009997901853323022	Dani Kuzma	, JAN MOULDS, , FLOWER MOUND, TX, 75028 Code: RUBY JONES 1M DHC	1/28/2026	Signature Pending
92148969009997901853323039	Dani Kuzma	, JANA LYNN ROGERS, , HAVRE, MT, 59501 Code: RUBY JONES 1M DHC	1/28/2026	Signature Pending
92148969009997901853323046	Dani Kuzma	, JAY BARTON BURNHAM, , FARMINGTON, NM, 87401 Code: RUBY JONES 1M DHC	1/28/2026	Signature Pending
92148969009997901853323053	Dani Kuzma	, JEAN HIGGINS, , BLOOMFIELD, NM, 87413-9631 Code: RUBY JONES 1M DHC	1/28/2026	Signature Pending
92148969009997901853323060	Dani Kuzma	, JENNIFER STINSON, , DELTA, CO, 81416 Code: RUBY JONES 1M DHC	1/28/2026	Signature Pending
92148969009997901853323077	Dani Kuzma	, JERRY LEE STINSON, , OREM, UT, 84057 Code: RUBY JONES 1M DHC	1/28/2026	Signature Pending
92148969009997901853323084	Dani Kuzma	, JERRY W WILLIAMS, , FLORA VISTA, NM, 87415-0775 Code: RUBY JONES 1M DHC	1/28/2026	Signature Pending
92148969009997901853323091	Dani Kuzma	, JESS EDWARD JONES, , PLANT CITY, FL, 33566 Code: RUBY JONES 1M DHC	1/28/2026	Signature Pending
92148969009997901853323107	Dani Kuzma	, JMJ RESOURCES LLC, , FARMINGTON, NM, 87401 Code: RUBY JONES 1M DHC	1/28/2026	Signature Pending
92148969009997901853323114	Dani Kuzma	, JO ANNE MOSS TRELOAR, , SANTA BARBARA, CA, 93105-9708 Code: RUBY JONES 1M DHC	1/28/2026	Signature Pending
92148969009997901853323121	Dani Kuzma	, JOE MCWILLIAMS, , AZTEC, NM, 87410-0858 Code: RUBY JONES 1M DHC	1/28/2026	Signature Pending
92148969009997901853323138	Dani Kuzma	, JOHN EDGAR EASLEY, , FARMINGTON, NM, 87401 Code: RUBY JONES 1M DHC	1/28/2026	Signature Pending
92148969009997901853323145	Dani Kuzma	, JOHN WAYNE UTTON EST, , FARMINGTON, NM, 87401 Code: RUBY JONES 1M DHC	1/28/2026	Signature Pending

92148969009997901853323152	Dani Kuzma	, JOHN WAYNE UTTON ESTATE, , FARMINGTON, NM, 87401 Code: RUBY JONES 1M DHC	1/28/2026	Signature Pending
92148969009997901853323169	Dani Kuzma	, JOHNNY STINSON, , MANCOS, CO, 81328 Code: RUBY JONES 1M DHC	1/28/2026	Signature Pending
92148969009997901853323176	Dani Kuzma	, JUDITH G FEIL, , AZTEC, NM, 87410 Code: RUBY JONES 1M DHC	1/28/2026	Signature Pending
92148969009997901853323183	Dani Kuzma	, JUDY FEIL LIVING TR UTA OCT 24 2005, JUDITH G FEIL TRUSTEE, AZTEC, NM, 87410 Code: RUBY JONES 1M DHC	1/28/2026	Signature Pending
92148969009997901853323190	Dani Kuzma	, JUNIPER INVESTMENTS LLC, , FARMINGTON, NM, 87401 Code: RUBY JONES 1M DHC	1/28/2026	Signature Pending
92148969009997901853323206	Dani Kuzma	, KAREN REEVES, , WICHITA, KS, 67217- 2556 Code: RUBY JONES 1M DHC	1/28/2026	Signature Pending
92148969009997901853323213	Dani Kuzma	, KATHRYN A ADKINS, , SAN DIEGO, CA, 92166 Code: RUBY JONES 1M DHC	1/28/2026	Signature Pending
92148969009997901853323220	Dani Kuzma	, KATHY BURNHAM, , SANTA FE, NM, 87502 Code: RUBY JONES 1M DHC	1/28/2026	Signature Pending
92148969009997901853323237	Dani Kuzma	, KENDRICK FAMILY PTNRSHLP LTD, , MONTGOMERY, TX, 77356-4579 Code: RUBY JONES 1M DHC	1/28/2026	Signature Pending
92148969009997901853323244	Dani Kuzma	, KENNETH P MAESTAS, and ALYCE R MAESTAS JT, FLORA VISTA, NM, 87415 Code: RUBY JONES 1M DHC	1/28/2026	Signature Pending
92148969009997901853323251	Dani Kuzma	, KERMIT M LAQUEY and, DARLENE LAQUEY, EDEN PRAIRIE, MN, 55344 Code: RUBY JONES 1M DHC	1/28/2026	Signature Pending
92148969009997901853323268	Dani Kuzma	, KIM BIXLER, , AZTEC, NM, 87410 Code: RUBY JONES 1M DHC	1/28/2026	Signature Pending
92148969009997901853323275	Dani Kuzma	, KOLBE LAQUEY FAMILY LIVING TRUST, ALLAN LAQUEY and SHARON LAQUEY TTEE, FORT WORTH, TX, 76102 Code: RUBY JONES 1M DHC	1/28/2026	Signature Pending

92148969009997901853323282	Dani Kuzma	, KRISTI HILTON, , PORT ORANGE, FL, 32128 Code: RUBY JONES 1M DHC	1/28/2026	Signature Pending
92148969009997901853323299	Dani Kuzma	, KYLER TODD LAQUEY, , LINCOLN, NE, 68512 Code: RUBY JONES 1M DHC	1/28/2026	Signature Pending
92148969009997901853323305	Dani Kuzma	, LAURIE LAQUEY, , GREENVIEW, CA, 96037 Code: RUBY JONES 1M DHC	1/28/2026	Signature Pending
92148969009997901853323312	Dani Kuzma	, MADELINE MYRA MOULDS, , FLOWER MOUND, TX, 75028 Code: RUBY JONES 1M DHC	1/28/2026	Signature Pending
92148969009997901853323329	Dani Kuzma	, MARGARET LEAH MOULDS-VITTITOW, , ALBUQUERQUE, NM, 87114 Code: RUBY JONES 1M DHC	1/28/2026	Signature Pending
92148969009997901853323336	Dani Kuzma	, MARILYN M MCWILLIAMS, , AZTEC, NM, 87410 Code: RUBY JONES 1M DHC	1/28/2026	Signature Pending
92148969009997901853323343	Dani Kuzma	, MARK ROGERS, , MANCOS, CO, 81328 Code: RUBY JONES 1M DHC	1/28/2026	Signature Pending
92148969009997901853323350	Dani Kuzma	, MARY F ADKINS, , ORMOND BEACH, FL, 32174 Code: RUBY JONES 1M DHC	1/28/2026	Signature Pending
92148969009997901853323367	Dani Kuzma	, MARY LOUISE NEWTON, , FRESNO, CA, 93703 Code: RUBY JONES 1M DHC	1/28/2026	Signature Pending
92148969009997901853323374	Dani Kuzma	, MARY MARTHA DAVIS LIFE ESTATE, , AZTEC, NM, 87410 Code: RUBY JONES 1M DHC	1/28/2026	Signature Pending
92148969009997901853323381	Dani Kuzma	, MATTHEW DAVID MOULDS, , LEWISVILLE, TX, 75067 Code: RUBY JONES 1M DHC	1/28/2026	Signature Pending
92148969009997901853323398	Dani Kuzma	, MERRION OIL and GAS CORP, , FARMINGTON, NM, 87401-2634 Code: RUBY JONES 1M DHC	1/28/2026	Signature Pending
92148969009997901853323404	Dani Kuzma	, MICHAEL H RAINWATER, and CONNIE J RAINWATER JT, AZTEC, NM, 87410 Code: RUBY JONES 1M DHC	1/28/2026	Signature Pending

92148969009997901853323411	Dani Kuzma	, MICHAEL HOYT MILLER, , FAIRWAY, KS, 66205 Code: RUBY JONES 1M DHC	1/28/2026	Signature Pending
92148969009997901853323428	Dani Kuzma	, MICHAEL JAMES MOULDS, , WICHITA FALLS, TX, 76306 Code: RUBY JONES 1M DHC	1/28/2026	Signature Pending
92148969009997901853323435	Dani Kuzma	, MICHAEL MCWILLIAMS, , SPARKS, NV, 89436 Code: RUBY JONES 1M DHC	1/28/2026	Signature Pending
92148969009997901853323442	Dani Kuzma	, MICHAEL R HUDDLESTON, and BRENDA G HUDDLESTON H/W, AZTEC, NM, 87410 Code: RUBY JONES 1M DHC	1/28/2026	Signature Pending
92148969009997901853323459	Dani Kuzma	, MOULDS FAMILY TRUST, MARGARET LEAH MOULDS VITTITOW TTEE, ALBUQUERQUE, NM, 87114 Code: RUBY JONES 1M DHC	1/28/2026	Signature Pending
92148969009997901853323466	Dani Kuzma	, MURPHY MCCAULE MOULDS, , CARROLLTON, TX, 75007 Code: RUBY JONES 1M DHC	1/28/2026	Signature Pending
92148969009997901853323473	Dani Kuzma	, NORMAN LEE STINSON, , HEBER, UT, 84032-4112 Code: RUBY JONES 1M DHC	1/28/2026	Signature Pending
92148969009997901853323480	Dani Kuzma	, OFFICE OF NATURAL RESOURCES REVENUE, BLM FARMINGTON FIELD OFFICE, FARMINGTON, NM, 87402 Code: RUBY JONES 1M DHC	1/28/2026	Signature Pending
92148969009997901853323497	Dani Kuzma	, ORION JESSE and VIOLA STINSON UTTON, SR LIVING TRUST DTD 5 25 2000, AZTEC, NM, 87410 Code: RUBY JONES 1M DHC	1/28/2026	Signature Pending
92148969009997901853323503	Dani Kuzma	, OSAGE LLC, , SANTA FE, NM, 87501 Code: RUBY JONES 1M DHC	1/28/2026	Signature Pending
92148969009997901853323510	Dani Kuzma	, PASSPORT ENERGY INC, , SANTA FE, NM, 87501 Code: RUBY JONES 1M DHC	1/28/2026	Signature Pending
92148969009997901853323527	Dani Kuzma	, PASSPORT ENERGY LLC, C/O JAMES J RUBOW, SANTA FE, NM, 87505 Code: RUBY JONES 1M DHC	1/28/2026	Signature Pending
92148969009997901853323534	Dani Kuzma	, PATRICK LOUIS MOULDS, , VANCOUVER, WA, 98664 Code: RUBY JONES 1M DHC	1/28/2026	Signature Pending

92148969009997901853323541	Dani Kuzma	, QUENTIN A LAQUEY, and BILLIE LAQUEY, ARLINGTON, TX, 76013 Code: RUBY JONES 1M DHC	1/28/2026	Signature Pending
92148969009997901853323558	Dani Kuzma	, RAY L STINSON, , AZTEC, NM, 87410-9743 Code: RUBY JONES 1M DHC	1/28/2026	Signature Pending
92148969009997901853323565	Dani Kuzma	, RICHARD A POER, , DURANGO, CO, 81301-5040 Code: RUBY JONES 1M DHC	1/28/2026	Signature Pending
92148969009997901853323572	Dani Kuzma	, RICHARD FLAHERTY, , AZTEC, NM, 87410 Code: RUBY JONES 1M DHC	1/28/2026	Signature Pending
92148969009997901853323589	Dani Kuzma	, RITA M ADKINS, , ALBUQUERQUE, NM, 87154-1268 Code: RUBY JONES 1M DHC	1/28/2026	Signature Pending
92148969009997901853323596	Dani Kuzma	, SACHIKO S STINSON, , AZTEC, NM, 87410 Code: RUBY JONES 1M DHC	1/28/2026	Signature Pending
92148969009997901853323602	Dani Kuzma	, SCHAEFER MINERALS LLC, , DURANGO, CO, 81301 Code: RUBY JONES 1M DHC	1/28/2026	Signature Pending
92148969009997901853323619	Dani Kuzma	, SHERI ELLEN PAQUIN, , MANCOS, CO, 81328 Code: RUBY JONES 1M DHC	1/28/2026	Signature Pending
92148969009997901853323626	Dani Kuzma	, SUE BURNHAM, , ALBUQUERQUE, NM, 87120 Code: RUBY JONES 1M DHC	1/28/2026	Signature Pending
92148969009997901853323633	Dani Kuzma	, SYLVIA WOOLEY, , ANDERSON, SC, 29625 Code: RUBY JONES 1M DHC	1/28/2026	Signature Pending
92148969009997901853323640	Dani Kuzma	, THOMAS A LAQUEY, and LOIS A LAQUEY, DURANGO, CO, 81301-7949 Code: RUBY JONES 1M DHC	1/28/2026	Signature Pending
92148969009997901853323657	Dani Kuzma	, TOMMY RAY STINSON, , AZTEC, NM, 87410 Code: RUBY JONES 1M DHC	1/28/2026	Signature Pending
92148969009997901853323664	Dani Kuzma	, TOMMY WARREN EASLEY, , FARMINGTON, NM, 87499-0233 Code: RUBY JONES 1M DHC	1/28/2026	Signature Pending

92148969009997901853323671	Dani Kuzma	, TONY E and PATRICIA KENDRICK LVG TR, PATRICIA KENDRICK TRUSTEE, KATY, TX, 77493 Code: RUBY JONES 1M DHC	1/28/2026	Signature Pending
92148969009997901853323688	Dani Kuzma	, VAUGHN DELL ELLIS, HER SOLE and SEPARATE PROP, DALLAS, TX, 75205 Code: RUBY JONES 1M DHC	1/28/2026	Signature Pending
92148969009997901853323695	Dani Kuzma	, WHITMIRE COMPANIES LLC, DBA BANDERA MINERALS LLC, TULSA, OK, 74136 Code: RUBY JONES 1M DHC	1/28/2026	Signature Pending
92148969009997901853323701	Dani Kuzma	, WPC OIL and GAS LP, , DALLAS, TX, 75204 Code: RUBY JONES 1M DHC	1/28/2026	Signature Pending
92148969009997901853323718	Dani Kuzma	, WYNEMA STINSON, , FARMINGTON, NM, 87401-2398 Code: RUBY JONES 1M DHC	1/28/2026	Signature Pending
92148969009997901853323725	Dani Kuzma	, YVONNE JOYCE STINSON, , BLOOMFIELD, NM, 87413 Code: RUBY JONES 1M DHC	1/28/2026	Signature Pending

BALLANTINE COMMUNICATIONS

AFFIDAVIT OF PUBLICATION

STATE OF NEW MEXICO

County of San Juan

Oselle Zamora, the undersigned, authorized Representative of the Tri-City Record, on oath states that this newspaper is duly qualified to publish legal notices or advertisements within the meaning of Section 3, Chapter 167, Session Law of 1937, that payment therefore has been made of assessed as court cost; and that the notice, copy of which is hereto attached, was published in said paper in the regular daily edition, for 1 time(s) on the following date(s):

1/30/2026

Sworn and subscribed before me, a notary public in and for the county of La Plata and the State of Colorado, 2/2/26

[Signature]
Notary Public

PRICE: 93.91

Statement to come at the end of the month.

ACCOUNT NUMBER: 109863

KARI E PATHUIS
Notary Public
State of Colorado
Notary ID # 20254043032
My Commission Expires 11-20-2029

COPY OF ADVERTISEMENT

33172
Notice by Hilcorp Energy Company for Downhole Commingling, San Juan County, New Mexico. Pursuant to Paragraph (2) of Subsection C of 19.15.12.11 NMAC, Hilcorp Energy Company, as Operator, has filed form C-103 with the New Mexico Energy, Minerals and Natural Resources Department – Oil Conservation Division (NMOCD) seeking administrative approval to downhole commingle new production from the Basin Dakota Pool (71599) and from the Blanco Mesaverde Pool (72319) in the Ruby Jones 1M well (API No. 30-045-38520) located in Unit N, Section 07, Township 30 North, Range 11 West, NMPM, San Juan County, New Mexico. Commingling will not reduce the value of production. Allocation method to be determined upon completion of this project. This notice is intended for certain unlocatable royalty interest owners in the aforementioned well for which certified mail delivery is not possible. Should you (the interest owner for which this notice is intended) have an objection, you are

required to respond within twenty (20) days from the date of this publication. Please mail your objection letter, referencing the well details above, to the New Mexico Oil Conservation Division's Santa Fe office.

Published in Tri-City Record
January 30, 2026

Sante Fe Main Office
Phone: (505) 476-3441

General Information
Phone: (505) 629-6116

Online Phone Directory
<https://www.emnrd.nm.gov/ocd/contact-us>

State of New Mexico
Energy, Minerals and Natural Resources
Oil Conservation Division
1220 S. St Francis Dr.
Santa Fe, NM 87505

CONDITIONS

Action 549623

CONDITIONS

Operator: HILCORP ENERGY COMPANY 1111 Travis Street Houston, TX 77002	OGRID: 372171
	Action Number: 549623
	Action Type: [C-107] Down Hole Commingle (C-107A)

CONDITIONS

Created By	Condition	Condition Date
llowe	None	3/10/2026