

MEWBOURNE OIL COMPANY
4801 Business Park Blvd
Hobbs, NM 88240
575-393-5905
January 17, 2025

Engineering Bureau
New Mexico Oil Conservation Division
1220 S. St. Francis Drive
Santa Fe, NM 87505

RE: Application for State Lease/Pool Commingle to a Central Tank Battery (CTB)

To: Whom It May Concern

Mewbourne Oil Company ("Mewbourne") is requesting permission to surface commingle (lease & pool) production from spacing units comprised of sections 21, 27, 28, & 3 T23S, R28E, Eddy County, New Mexico. All oil production from each well and all future wells drilled in the same spacing units is to be stored in a central tank battery located on private land in the NWNW of section 27, T23S, R28E. All gas production will be measured by an allocation meter for each well, then commingled and sold to a common gas sales meter (#TBD) located on the same pad as the central tank battery in the NWNW of section 27, T23S, R28E, Eddy County, New Mexico. Information detailing each well is attached.

Please find the following enclosed:

- Cover Letter
- Commingle Summary Page
- Form C102 of wells & battery
- Detailed Maps: lease boundaries & facility locations
- Application Checklist
- Form C-107 B
- Copy of letter sent certified to all involved parties.
- List of all involved parties

Signed: Chad Cole
Printed Name: Chad Cole
Title: Regulatory Specialist
Date: 1/17/2025

APPLICATION FOR LEASE/POOL COMMINGLING TO A CENTRAL TANK BATTERY (CTB)

Commingling Procedure for wells flowing to the Yardbirds 27-3 Battery #1:

Mewbourne Oil Company is requesting approval for lease and pool commingling to a CTB from 9 wells below, and common gas meter located on FEE land:

Well Name	Location	API #	Pool #	MCFPD	Dry BTU @ 14.73 PSI
LOVING TOWNSITE 21 WOPA FEE #2H	220' FNL & 280' FEL, Sec 28, T23S, R28E	30-015-43495	[98220] PURPLE SAGE; WOLFCAMP (GAS)	250	1250
LOVING TOWNSITE 21 W2PA FEE #1H	220' FNL & 210' FEL, Sec 28, T23S, R28E	30-015-43496	[98220] PURPLE SAGE; WOLFCAMP (GAS)	550	1250
NIGHT RANGER 28 W0AP FEE #2H	220' FNL & 650' FEL, Sec 28, T23S, R28E	30-015-44285	[98220] PURPLE SAGE; WOLFCAMP (GAS)	300	1250
NIGHT RANGER 28 W2AP FEE #1H	220' FNL & 610' FEL, Sec 28, T23S, R28E	30-015-44286	[98220] PURPLE SAGE; WOLFCAMP (GAS)	900	1250
SPEEDWAGON 27 W2DM FEE #1H	190' FNL & 660' FWL, Sec 27, T23S, R28E	30-015-42695	[98220] PURPLE SAGE; WOLFCAMP (GAS)	650	1250
YARDBIRDS 27/3 FEE #711H (W0LM)	155' FNL & 690' FWL, Sec 27, T23S, R28E	30-015-55113	[98220] PURPLE SAGE; WOLFCAMP (GAS)	~2500	~1250
YARDBIRDS 27/3 FEE #713H (W0KN)	155' FNL & 720' FWL, Sec 27, T23S, R29E	30-015-55115	[98220] PURPLE SAGE; WOLFCAMP (GAS)	~2500	~1250
YARDBIRDS 27/3 FEE #715H (W0JO)	155' FNL & 750' FWL, Sec 27, T23S, R28E	30-015-55116	[98220] PURPLE SAGE; WOLFCAMP (GAS)	~2500	~1250
YARDBIRDS 27/3 FEE #716H (W0JO)	155' FNL & 780' FWL, Sec 27, T23S, R28E	30-015-55125	[98220] PURPLE SAGE; WOLFCAMP (GAS)	~2500	~1250

Oil, Water, & Gas metering

The central tank battery is in the NWNW of Section 27, T23S, R28E, Eddy County, New Mexico. The production for each well will come to its own separator. From the separator production will be allocated as follows:

Oil Metering:

Oil volumes from each well producing to the battery will be determined by using an allocation meter at the facility for each well. Oil from each separator will be metered and then sent to a heater treater (HT). Oil from the HT will

then flow to a vapor recovery tower (VRT) and then to the 750 BBL oil tanks (OT). Oil production will be allocated daily based on the oil allocation meter downstream of the separator. This meter will be proven based on API, NMOCD and BLM specifications by tank testing. This process is performed by isolating a well to specific oil tanks and calibrating the meter based on the production numbers. The oil production from these wells listed above will be measured, commingled, and then sold via truck haul or LACT.

Water Metering:

Water volumes from each well producing to the battery will be determined by using an allocation meter at the facility for each well. Water from each separator will be metered and sent to the 1000 BBL gun barrel (GB). From the GB the water will be sent to the 750 BBL water tanks (WT). Water production will be allocated daily based on the water allocation meter downstream of the separator. The water production from these wells listed above will be measured, commingled, and disposed of via truck haul or pipelined to disposal.

Gas Metering:

Gas volumes from each well producing to this battery will be determined by using an allocation gas meter after the separator at the facility for each well. The gas production will then flow to a common gas meter (#TBD) located on the same pad as the central tank battery which is on private land in the NWNW of section 27, T23S, R28E. This meter is calibrated on a regular basis per API, NMOCD and BLM specifications.

Signed:  _____

Printed Name: Chad Cole

Title: Regulatory Specialist

Date: 1/17/2025

Economic Justification

Well Name	BOPD EST	Oil Gravity @ 60°	Value/bbl	MCFPD	Dry BTU @ 14.73 PSI	Value/MCF
LOVING TOWNSITE 21 W0PA FEE #2H	25	48	\$70	250	1250	\$2.53
LOVING TOWNSITE 21 W2PA FEE #1H	20	48	\$70	550	1250	\$2.53
NIGHT RANGER 28 W0AP FEE #2H	60	48	\$70	300	1250	\$2.53
NIGHT RANGER 28 W2AP FEE #1H	20	48	\$70	900	1250	\$2.53
SPEEDWAGON 27 W2DM FEE #1H	20	48	\$70	650	1250	\$2.53
YARDBIRDS 27/3 FEE #711H (W0LM)	~1500	~48	\$70	~2500	~1250	\$2.53
YARDBIRDS 27/3 FEE #713H (W0KN)	~1500	~48	\$70	~2500	~1250	\$2.53
YARDBIRDS 27/3 FEE #715H (W0JO)	~1500	~48	\$70	~2500	~1250	\$2.53
YARDBIRDS 27/3 FEE #716H (W0JO)	~1500	~48	\$70	~2500	~1250	\$2.53
	6,145	~48	\$77	~12,650	~1250	\$2.53

Process and Flow Descriptions:

The flow of production is shown in detail on the enclosed facility diagram and map which shows lease boundaries, wells, battery, & MM location. The commingling of production is in the interest of conservation and waste and will result in the most effective economic means of producing the reserves in place from the affected wells and will not result in reduced royalty or improper measurement of production.

Working, royalty, & overriding interest owners have been notified of the proposal via certified mail (see attached

Signed: 

Printed Name: Chad Cole

Title: Regulatory Specialist

Date: 1/17/2025

District I
1625 N. French Dr., Hobbs, NM 88240
Phone: (575) 393-6161 Fax: (575) 393-6729
District II
111 S. First St., Santa Fe, NM 87501
Phone: (575) 746-1283 Fax: (575) 746-4720
District III
1009 Rio Hondo Road, Aztec, NM 87410
Phone: (505) 334-6178 Fax: (505) 334-6170
District IV
1220 S. St. Francis Dr., Santa Fe, NM 87505
Phone: (505) 476-3400 Fax: (505) 476-3402

State of New Mexico
Energy, Minerals & Natural Resources Department
OIL CONSERVATION DIVISION
1220 South St. Francis Dr.
Santa Fe, NM 87505

Form C-102
Revised August 1, 2011
Submit one copy to appropriate
District Office

AMENDED REPORT

WELL LOCATION AND ACREAGE DEDICATION PLAT

1 API Number		2 Post Code		3 Pool Name	
4 Property Code		5 Property Name LOVING TOWNSITE 21 WOPA FEE			6 Well Number 2H
7 (CRUID) NO		8 Operator Name MEWBOURNE OIL COMPANY			9 Elevation 3035'
10 Surface Location					
UL of Acres A	Section 28	Township 23S	Range 28E	Lot Id#	Feet from the 220
				North-South line NORTH	Feet from the 280
				East-West line EAST	County EDDY
11 Bottom Hole Location If Different From Surface					
UL of Acres A	Section 21	Township 23S	Range 28E	Lot Id#	Feet from the 330
				North-South line NORTH	Feet from the 600
				East-West line EAST	County EDDY
12 Dedicated Acres	13 Area of Entry	14 Consolidation Code	15 Order No.		

No allowable will be assigned to this completion until all interest have been consolidated or a non-standard unit has been approved by the division.

16 GEODETIC DATA
NAD 27 GRID - NM EAST

17 SURFACE LOCATION
N: 466539.9 - E: 577010.4
LAT: 32.28265577° N
LONG: 104.08414132° W

18 BOTTOM HOLE
N: 471847.5 - E: 576835.7
LAT: 32.28608169° N
LONG: 104.08531464° W

19 CORNER DATA
NAD 27 GRID - NM EAST

A: FOUND 1000 NAIL
N: 461510.9 - E: 572001.0

B: FOUND 1/2" REBAR
N: 466822.6 - E: 571990.1

C: FOUND COTTON SPINDLE
N: 472141.1 - E: 571930.0

D: FOUND YPC ILLEGIBLE
N: 472181.9 - E: 574581.2

E: FOUND COTTON SPINDLE
N: 472182.0 - E: 577232.1

F: FOUND COTTON SPINDLE
N: 469326.1 - E: 577280.0

G: FOUND COTTON SPINDLE
N: 466858.9 - E: 577286.3

H: FOUND 1/2" REBAR
N: 461507.5 - E: 577337.2

I: FOUND COTTON SPINDLE
N: 466839.6 - E: 574823.6

20 OPERATOR CERTIFICATION
I, the undersigned, being the operator, declare that the information herein is true and correct to the best of my knowledge and belief, and that the operations or other work hereby authorized or proposed in respect to the land including the proposed bottom hole location is my right to drill the well and location mentioned herein, and that I am not aware of any other person claiming an interest in the location pending application or a completed pending well location certificate for the above.

Signature: _____ Title: _____
Printed Name: _____
Date of Survey: _____

21 SURVEYOR CERTIFICATION
I hereby certify that the well location shown on this plat was plotted from field notes of actual surveys made by me or under my supervision, and that the same is true and correct to the best of my belief.

8-26-2016
Date of Survey

Signature and Seal of:
19880
Certificate Number

8-29-16 SL MOVED

RRC - Firm No.: TX 10193838 NM 4655451 - Job No.: LS1508448R

District I
1625 N. French Dr., Hobbs, NM 88240
Phone: (575) 993-6161 Fax: (575) 993-0220

District II
411 S. First St., Artesia, NM 88210
Phone: (575) 746-1203 Fax: (575) 746-9220

District III
1000 Rio Brazos Road, Arroyo, NM 87410
Phone: (505) 334-6178 Fax: (505) 334-6170

District IV
1220 S. St. Francis Dr., Santa Fe, NM 87505
Phone: (505) 476-3460 Fax: (505) 476-3462

State of New Mexico
Energy, Minerals & Natural Resources Department
OIL CONSERVATION DIVISION
1220 South St. Francis Dr.
Santa Fe, NM 87505

Form C-102
Revised August 1, 2011
Submit one copy to appropriate
District Office

AMENDED REPORT

WELL LOCATION AND ACREAGE DEDICATION PLAT

1. API Number		2. Pool Code		3. Pool Name					
4. Property Code		5. Property Name LOVING TOWNSITE 21 W2PA FEE			6. Well Number 1H				
7. OPERATOR		8. Operator Name MEWBOURNE OIL COMPANY			9. Elevation 3035'				
10. Surface Location									
11. Lot No.	Section	Township	Range	East 1/4	Feet from 1/4	North-South line	Feet from 1/4	East-West line	County
A	28	23S	28E		220	NORTH		EAST	EDDY
11. Bottom Hole Location If Different From Surface									
13. Lot No.	Section	Township	Range	East 1/4	Feet from 1/4	North-South line	Feet from 1/4	East-West line	County
A	21	23S	28E		330	NORTH	450	EAST	EDDY
12. Dedicated Acres	14. Joint or Infill	15. Construction Code	16. Order No.						

No allowable will be assigned to this completion until all interest have been consolidated or a non-standard unit has been approved by the division

17. OPERATOR CERTIFICATION
I hereby certify that the information contained in this plat is true and complete to the best of my knowledge and belief and that this information is either from a reliable source or was obtained from a reliable source. I warrant that the proposed location for this well is in compliance with the rules and regulations of the Oil Conservation Division of the State of New Mexico. I warrant that the location of this well is in compliance with the rules and regulations of the Oil Conservation Division of the State of New Mexico. I warrant that the location of this well is in compliance with the rules and regulations of the Oil Conservation Division of the State of New Mexico.

Signature: _____ Date: _____

18. SURVEYOR CERTIFICATION
I hereby certify that the well location shown on this plat was plotted from field notes of actual surveys made by me or under my supervision and that the same is true and correct to the best of my belief.

8-26-2016
Date of Survey

Signature and Seal of **ROBERT M. HOWETT**
NEW MEXICO
19880
PROFESSIONAL SURVEYOR

19880
Certificate No.

8-29-16 SL MOVED

RRC - Firm No.: TX 10193838 NM 4655451 - Job No.: LS1508449R

District I
1625 N. French Dr., Hobbs, NM 88240
Phone: (505) 393-6161 Fax: (505) 393-0720

District II
811 S. First St., Artesa, NM 88210
Phone: (505) 348-1281 Fax: (505) 348-9220

District III
1000 Rio Hondo Road, Aztec, NM 87410
Phone: (505) 334-6178 Fax: (505) 334-6179

District IV
1220 S. St. Francis Dr., Santa Fe, NM 87505
Phone: (505) 476-3460 Fax: (505) 476-3462

State of New Mexico
Energy, Minerals & Natural Resources Department
OIL CONSERVATION DIVISION
1220 South St. Francis Dr.
Santa Fe, NM 87505

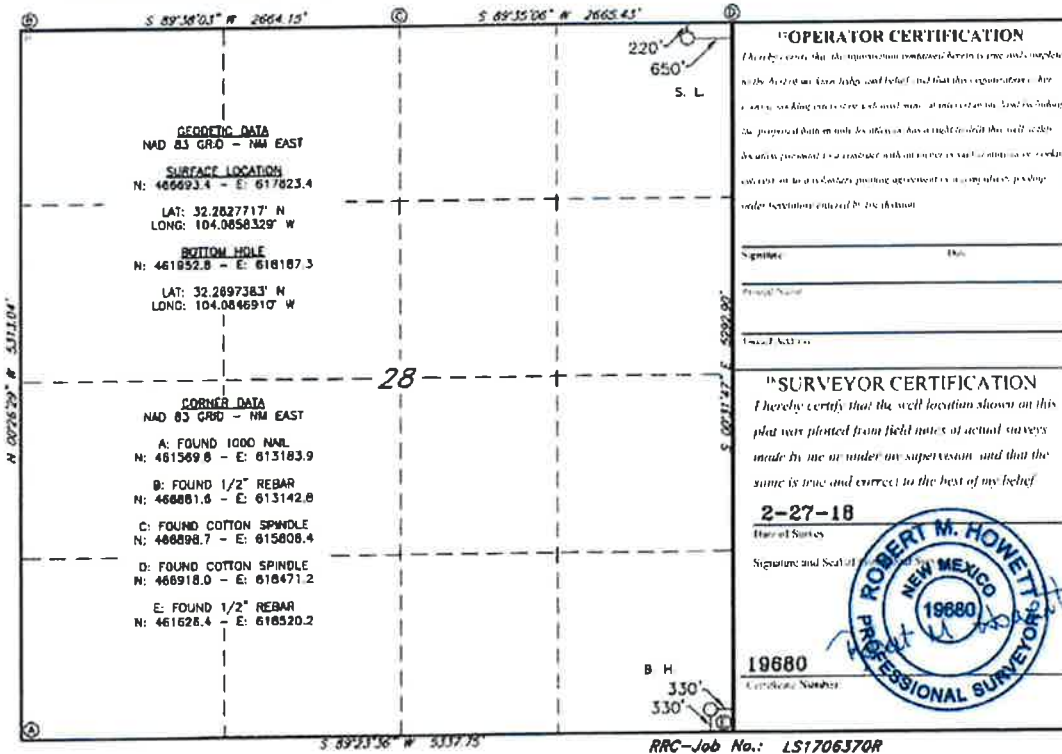
Form C-102
Revised August 1, 2011
Submit one copy to appropriate
District Office

AMENDED REPORT

WELL LOCATION AND ACREAGE DEDICATION PLAT

*API Number		*Pool Code		*Pool Name					
*Property Code		*Property Name NIGHT RANGER 28 WOAP FEE #2H			*Well Number 2H				
*GRID NO		*Operator Name MEWBOURNE OIL COMPANY			*Elevation 3036'				
* Surface Location									
UL of lot no A	Section 28	Township 23S	Range 28E	Lot Idn	Feet from the North/South line 220	North/South line NORTH	Feet from the East/West line 650	East/West line EAST	County EDDY
** Bottom Hole Location If Different From Surface									
UL of lot no P	Section 28	Township 23S	Range 28E	Lot Idn	Feet from the North/South line 330	North/South line SOUTH	Feet from the East/West line 330	East/West line EAST	County EDDY
*Dedicated Acres		** Interest In/In/In		*Consolidation Code		*Order No.			

No allowable will be assigned to this completion until all interest have been consolidated or a non-standard unit has been approved by the division.



District I
1625 N. Trench Dr., Hobbs, NM 88249
Phone: (505) 393-6101 Fax: (505) 394-0220
District II
811 S. First St., Artesia, NM 88210
Phone: (505) 748-1201 Fax: (505) 748-9220
District III
1600 Red Dragon Road, Aztec, NM 87410
Phone: (505) 534-6178 Fax: (505) 334-6170
District IV
1220 S. St. Francis Dr., Santa Fe, NM 87505
Phone: (505) 476-4400 Fax: (505) 476-4462

State of New Mexico
Energy, Minerals & Natural Resources Department
OIL CONSERVATION DIVISION
1220 South St. Francis Dr.
Santa Fe, NM 87505

Form C-102
Revised August 1, 2011
Submit one copy to appropriate
District Office

AMENDED REPORT

WELL LOCATION AND ACREAGE DEDICATION PLAT

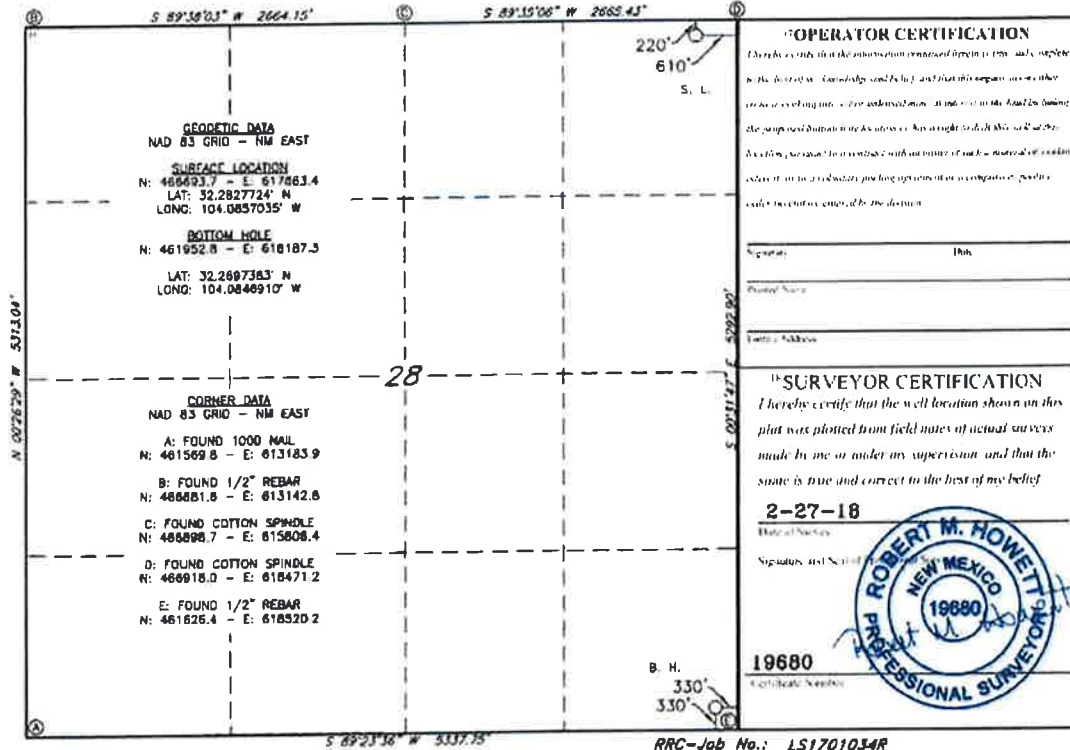
1 API Number		2 Pool Code		3 Pool Name	
4 Property Code		5 Property Name NIGHT RANGER 28 W2AP FEE			6 Well Number 1H
7 GRID NO		8 Operator Name MEWBOURNE OIL COMPANY			9 Elevation 3036'

10 Surface Location									
11 H or lot	Section	Township	Range	12 Lot	Feet from the	North-South line	Feet from the	East-West line	County
A	28	23S	28E		220	NORTH	610	EAST	EDDY

13 Bottom Hole Location If Different From Surface									
14 H or lot	Section	Township	Range	15 Lot	Feet from the	North-South line	Feet from the	East-West line	County
P	28	23S	28E		330	SOUTH	330	EAST	EDDY

16 Dedicated Acres	17 East or lot	18 Consolidation Code	19 Order No.
--------------------	----------------	-----------------------	--------------

No allowable will be assigned to this completion until all interest have been consolidated or a non-standard unit has been approved by the division



Index 1.1
1625 W. French Dr., ALBU, NM 87104
Phone: (505) 393-6161 Fax: (505) 393-6700

Index 1.2
911 S. First St., ALBU, NM 87102
Phone: (505) 344-1234 Fax: (505) 344-9120

Index 1.3
1001 E. Broadway Road, ALBU, NM 87102
Phone: (505) 334-6178 Fax: (505) 334-6140

Index 1.4
1220 S. W. French Dr. Santa Fe, NM 87506
Phone: (505) 476-3160 Fax: (505) 476-3462

State of New Mexico
Energy, Minerals & Natural Resources Department
OIL CONSERVATION DIVISION
1220 South St. Francis Dr.
Santa Fe, NM 87305

Form C-102
Revised August 1, 2011
Submit one copy to appropriate
District Office

AMENDED REPORT

WELL LOCATION AND ACREAGE DEDICATION PLAT

1 APL Number		2 Post Code		3 Post Name			
4 Property Code		5 Property Name SPEEDWAGON 27 W2DM FEE			6 Well Number 1H		
7 OGRID No.		8 Operator Name MEWBOURNE OIL COMPANY			9 Division 3034		
10 Surface Location							
UL or lot no. D	Section 27	Township 23S	Range 28E	Lot 1/4 190	Feet from the North/South line NORTH	Feet from the East/West line WEST	County EDDY
11 Bottom Hole Location If Different From Surface							
UL or lot no.	Section	Township	Range	Lot 1/4	Feet from the North/South line	Feet from the East/West line	County
12 Dedicated Acres		13 Joint or to B/L		14 Consolidation Code		15 Order No.	

No allowable will be assigned to this completion until all interests have been consolidated or a non-standard unit has been approved by the division

<p>GEOMETRIC DATA NAD 27 GRID - NM EAST SURFACE LOCATION N 488665.8 E 577949.8 LAT: 32.28278445° N LONG: 104.08110132° W</p> <p>CORNER DATA NAD 27 GRID - NM EAST A: FOUND 1/2" RBR N 461567.3 - E 577337.2 B: FOUND 1/2" RBR W/ YC ILLEG N 464196.6 - E 577312.7 C: FOUND COTTON SPINDLE N 466858.9 - E 577288.3 D: FOUND 1/2" RBR IN ASH RD. N 468926.9 - E 578923.5 E: FOUND COTTON SPINDLE IN ASH RD. N 467012.8 - E 582559.7 F: FOUND 1/2" RB N 481591.7 - E 582615.8 G: FOUND 1/2" SMOOTH ROD LEANING EAST N 461580.3 - E 578978.6</p>	<p>* OPERATOR CERTIFICATION I hereby certify that the information contained herein is true and complete to the best of my knowledge and belief, and that the operator has either owned a working interest or retained mineral interest in the land including the proposed bottom hole location or mineral rights in relation, and of the location of the well as shown on this plat, and of the location of the well as shown on this plat, and of the location of the well as shown on this plat, and of the location of the well as shown on this plat.</p> <p>Signature _____ Date _____ Printed Name _____ E-mail Address _____</p>
	<p>* SURVEYOR CERTIFICATION I hereby certify that the well location shown on this plat was plotted from field notes of actual surveys made by me or under my supervision, and that the same is true and correct to the best of my belief.</p> <p>5/22/2014 Title of Survey _____ Signature _____ 19880 PROFESSIONAL SURVEYOR</p>

Prosperity Consultants, LLC - Firm No.: TX 10193838 NM 4655451 - Job No.: LS140202

District I
1225 N. Terrace Dr., Suite 500
Phone: (505) 393-6061 Fax: (505) 393-6720
District II
411 N. First St., Suite 200
Phone: (505) 340-1200 Fax: (505) 340-0720
District III
1806 Rio Grande Blvd., Suite 250
Phone: (505) 314-6100 Fax: (505) 314-6130
District IV
1220 S. St. Francis Dr., Santa Fe, NM 87502
Phone: (505) 476-3260 Fax: (505) 476-1342

State of New Mexico
Energy, Minerals & Natural Resources Department
OIL CONSERVATION DIVISION
1220 South St. Francis Dr.
Santa Fe, NM 87505

Form C-102
Revised August 1, 2011
Submit one copy to appropriate
District Office

AMENDED REPORT

WELL LOCATION AND ACREAGE DEDICATION PLAT

1 API Number		2 Pool Code		3 Well Name	
4 Property Code		5 Property Name YARBIRDS 27/3 FEE			6 Well Number 711H
7 OGRD NO		8 Operator Name MEWBOURNE OIL COMPANY			9 Elevation 3036'
10 Surface Location					
11 L. or Sec. No. D	Section 27	Township 23S	Range 28E	Lot Idn	Feet from the North-South line 155
				Feet from the East-West line 890	County EDDY
11 Bottom Hole Location If Different From Surface					
12 L. or Sec. No. M	Section 3	Township 24S	Range 28E	Lot Idn	Feet from the North-South line 330
				Feet from the East-West line 640	County EDDY
13 Dedicated Acres	14 Joint or Infill	15 Consolidation Code	16 Order No.		

No allowable will be assigned to this completion until all interest have been consolidated or a non-standard unit has been approved by the division.

OPERATOR CERTIFICATION

I hereby certify that the information contained herein is true and complete to the best of my knowledge and belief, and that my representative either is or is not employed by the landowner or the land interest in the land included in the proposed well location and that I am duly licensed as a geologist in the State of New Mexico. I am duly licensed as a geologist in the State of New Mexico. I am duly licensed as a geologist in the State of New Mexico.

Signature: _____ Date: _____

Printed Name: _____

E-mail Address: _____

"SURVEYOR CERTIFICATION"

I hereby certify that the well location shown on this plat was plotted from field notes of actual surveys made by me or under my supervision, and that the same is true and correct to the best of my belief.

Date of Survey: **06/07/2024**

Signature and Seal of: **ROBERT M. HOWETT**

NEW MEXICO PROFESSIONAL SURVEYORS

19880

Certificate Number: _____

REV: SL MOVE

Job No: LS23030260R

District I
1623 N. French Dr., Hobbs, NM 88240
Phone: (575) 393-6161 Fax: (575) 393-0720
District II
811 S. First St., Artesia, NM 88210
Phone: (575) 748-1261 Fax: (575) 748-9720
District III
1000 Rio Hondo Road, Aztec, NM 87410
Phone: (505) 334-6176 Fax: (505) 334-8139
District IV
1220 S. St. Francis Dr., Santa Fe, NM 87505
Phone: (505) 476-3460 Fax: (505) 476-3462

State of New Mexico
Energy, Minerals & Natural Resources Department
OIL CONSERVATION DIVISION
1220 South St. Francis Dr.
Santa Fe, NM 87505

Form C-102
Revised August 1, 2011
Submit one copy to appropriate
District Office

AMENDED REPORT

WELL LOCATION AND ACREAGE DEDICATION PLAT

1 API Number		2 Pool Code		3 Well Name					
4 Property Code		5 Property Name YARDBIRDS 27/3 FEE			6 Well Number 713H				
7 OCRIID NO		8 Operator Name MEWBOURNE OIL COMPANY			9 Elevation 3036'				
10 Surface Location									
UL or lot no D	Section 27	Township 23S	Range 28E	Lot Idn	Feet from the North-South line 155	North-South line NORTH	Feet from the East-West line 720	East-West line WEST	County EDDY
11 Bottom Hole Location (if Different From Surface)									
UL or lot no M	Section 3	Township 24S	Range 28E	Lot Idn	Feet from the North-South line 330	North-South line SOUTH	Feet from the East-West line 1685	East-West line WEST	County EDDY
12 Dedicated Acres	13 Vent or Infill	14 Consolidation Code	15 Order No.						

No allowable will be assigned to this completion until all interest have been consolidated or a non-standard unit has been approved by the division.

OPERATOR CERTIFICATION

I, the undersigned, being a duly qualified and licensed geologist, hereby certify that the information contained herein is true and correct to the best of my knowledge and belief, and that the same was obtained from reliable sources and that the same are true and correct to the best of my knowledge and belief.

Signature: _____ Title: _____

1. e-mail Address: _____

SURVEYOR CERTIFICATION

I hereby certify that the well location shown on this plat was plotted from field notes of actual surveys made by me or under my supervision, and that the same is true and correct to the best of my belief.

08/07/2024
Date of Survey

Signature and Seal of: **ROBERT M. HOWETT**
NEW MEXICO PROFESSIONAL SURVEYOR
19880

19880
Certificate Number

REV: SL MOVE

Job No: LS23030261R

District I
1625 N. Francis Dr., Alamosa, NM 85829
Phone: (505) 333-6154 Fax: (505) 333-6570
District II
813 N. First St., Arroyo, NM 85816
Phone: (505) 338-1233 or (505) 788-8729
District III
1000 Rio Grande Blvd., Aztec, NM 87410
Phone: (505) 333-6178 Fax: (505) 333-6179
District IV
1220 S. W. Francis Dr., Santa Fe, NM 87505
Phone: (505) 426-3463 or (505) 476-3462

State of New Mexico
Energy, Minerals & Natural Resources Department
OIL CONSERVATION DIVISION
1220 South St. Francis Dr.
Santa Fe, NM 87505

Form C-102
Revised August 1, 2011
Submit one copy to appropriate
District Office

AMENDED REPORT

WELL LOCATION AND ACREAGE DEDICATION PLAT

1 API Number		2 Pool Code		3 Pool Name			
4 Property Code		5 Property Name YARDBIRDS 27/3 FEE			6 Well Number 715H		
7 GRID NO		8 Operator Name MEWBOURNE OIL COMPANY			9 Elevation 3036'		
10 Surface Location							
UL or lot no. D	Section 27	Township 23S	Range 28E	Lot Idn	Feet from the North/South line 155 NORTH	Feet from the East/West line 750 WEST	County EDDY
11 Bottom Hole Location If Different From Surface							
UL or lot no. O	Section 3	Township 24S	Range 28E	Lot Idn	Feet from the North/South line 330 SOUTH	Feet from the East/West line 2595 EAST	County EDDY
12 Dedicated Acres	13 Acres of tailfill	14 Completion Code	15 Order No.				

No allowable will be assigned to this completion until all interest have been consolidated or a non-standard unit has been approved by the division

16 OPERATOR CERTIFICATION
I hereby certify that the information contained herein is true and complete to the best of my knowledge and belief and that the same was obtained from the records and files of the State of New Mexico and that the proposed well location is in accordance with the provisions of the proposed well location and that the same is in accordance with the provisions of the proposed well location and that the same is in accordance with the provisions of the proposed well location.

Name: _____ Title: _____
Printed Name: _____
E-mail Address: _____

17 SURVEYOR CERTIFICATION
I hereby certify that the well location shown on this plat was plotted from field notes of actual surveys made by me or under my supervision, and that the same is true and correct to the best of my belief.

06/07/2024
Date of Survey

19880
Certificate Number

REV: SL MOVE

Job No: LS25030262R

District I
1625 N. Lincoln Dr., Hobbs, NM 88240
Phone: (505) 393-6151 Fax: (505) 393-6120

District II
811 S. First St., Artesia, NM 88210
Phone: (505) 748-1203 Fax: (505) 748-9320

District III
1900 Ray Guzman Road, Aztec, NM 87410
Phone: (505) 334-6178 Fax: (505) 334-6170

District IV
1320 S. St. Francis Dr., Santa Fe, NM 87505
Phone: (505) 476-3460 Fax: (505) 476-3462

State of New Mexico
Energy, Minerals & Natural Resources Department
OIL CONSERVATION DIVISION
1220 South St. Francis Dr.
Santa Fe, NM 87505

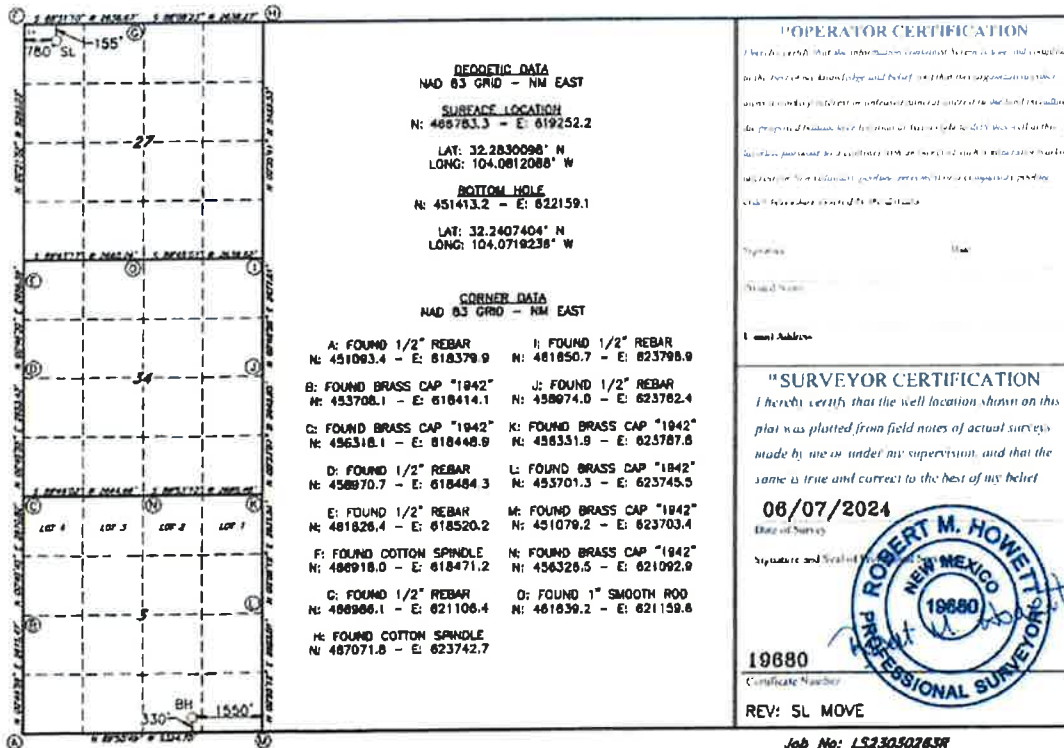
Form C-102
Revised August 1, 2011
Submit one copy to appropriate
District Office

AMENDED REPORT

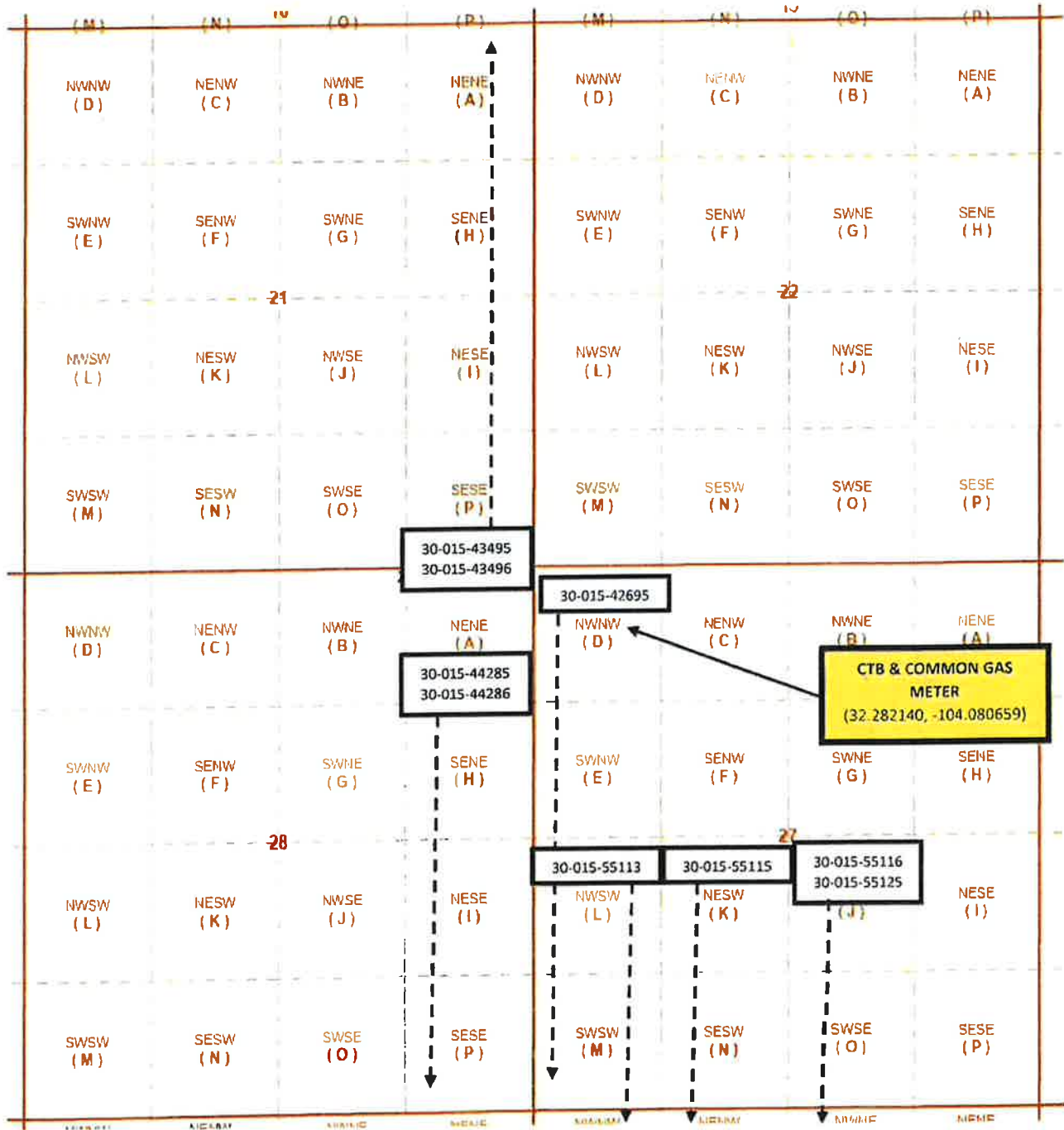
WELL LOCATION AND ACREAGE DEDICATION PLAT

1 API Number		2 Pool Code		3 Pool Name			
4 Property Code		5 Property Name YARBIRDS 27/3 FEE			6 Well Number 716H		
7 OGRID NO		8 Operator Name MEWBOURNE OIL COMPANY			9 Elevation 3036'		
10 Surface Location							
UL or lot no	Section	Township	Range	Lot Idn	Feet from the North/South line	Feet from the East/West line	County
D	27	23S	28E		155	780	EDDY
11 Bottom Hole Location If Different From Surface							
UL or lot no	Section	Township	Range	Lot Idn	Feet from the North/South line	Feet from the East/West line	County
0	3	24S	28E		330	1550	EDDY
12 Dedicated Acres	13 Joint or Infill	14 Consolidation Code		15 Order No			

No allowable will be assigned to this completion until all interest have been consolidated or a non-standard unit has been approved by the division.



LEASE BOUNDARY MAP



30-015-55113 (L)	30-015-55115 (K)	30-015-55116 30-015-55125 (J)	NESE (I)
SWSW (M)	SESW (N)	27 SWSE (O)	SESE (P)
NWNW (D)	NENW (C)	NWNE (B)	NENE (A)
SWNW (E)	SENW (F)	SWNE (G)	SENE (H)
NWSW (L)	NESW (K)	34 NWSE (J)	NESE (I)
SWSW (M)	SESW (N)	SWSE (O)	SESE (P)
L 4	L 3	L 2	L 1
SWNW (E)	SENW (F)	03 SWNE (G)	SENE (H)
NWSW (L)	NESW (K)	NWSE (J)	NESE (I)
SWSW (M)	SESW (N)	SWSE (O)	SESE (P)

DATE IN	SUSPENSE	ENGINEER	LOGGED IN	TYPE	APP NO
---------	----------	----------	-----------	------	--------

ABOVE THIS LINE FOR DIVISION USE ONLY

NEW MEXICO OIL CONSERVATION DIVISION

- Engineering Bureau -



ADMINISTRATIVE APPLICATION CHECKLIST

THIS CHECKLIST IS MANDATORY FOR ALL ADMINISTRATIVE APPLICATIONS FOR EXCEPTIONS TO DIVISION RULES AND REGULATIONS WHICH REQUIRE PROCESSING AT THE DIVISION LEVEL IN SANTA FE

Application Acronyms:

- [NSL-Non-Standard Location] [NSP-Non-Standard Proration Unit] [SD-Simultaneous Dedication]
- [DHC-Downhole Commingling] [CTB-Lease Commingling] [PLC-Pool/Lease Commingling]
- [PC-Pool Commingling] [OLS - Off-Lease Storage] [OLM-Off-Lease Measurement]
- [WFX-Waterflood Expansion] [PMX-Pressure Maintenance Expansion]
- [SWD-Salt Water Disposal] [IPI-Injection Pressure Increase]
- [EOR-Qualified Enhanced Oil Recovery Certification] [PPR-Positive Production Response]

[1] **TYPE OF APPLICATION** - Check Those Which Apply for [A]

- [A] Location - Spacing Unit - Simultaneous Dedication
 NSL NSP SD

Check One Only for [B] or [C]

- [B] Commingling - Storage - Measurement
 DHC CTB PLC PC OLS OLM

- [C] Injection - Disposal - Pressure Increase - Enhanced Oil Recovery
 WFX PMX SWD IPI EOR PPR

[D] Other: Specify _____

[2] **NOTIFICATION REQUIRED TO:** - Check Those Which Apply, or Does Not Apply

- [A] Working, Royalty or Overriding Royalty Interest Owners
- [B] Offset Operators, Leaseholders or Surface Owner
- [C] Application is One Which Requires Published Legal Notice
- [D] Notification and/or Concurrent Approval by BLM or SLO
U.S. Bureau of Land Management - Commissioner of Public Lands, State Land Office
- [E] For all of the above, Proof of Notification or Publication is Attached, and/or,
- [F] Waivers are Attached

[3] **SUBMIT ACCURATE AND COMPLETE INFORMATION REQUIRED TO PROCESS THE TYPE OF APPLICATION INDICATED ABOVE.**

[4] **CERTIFICATION:** I hereby certify that the information submitted with this application for administrative approval is accurate and complete to the best of my knowledge. I also understand that no action will be taken on this application until the required information and notifications are submitted to the Division.

Note: Statement must be completed by an individual with managerial and/or supervisory capacity.

Chad Cole
 Print or Type Name

Signature

Regulatory Specialist 1/17/2025
 Title Date

ccole@mewbourne.com
 e-mail Address

District I
1625 N. French Drive, Hobbs, NM 88240
District II
811 S. First St., Artesia, NM 88210
District III
1000 Rio Brazos Road, Aztec, NM 87410
District IV
1220 S. St Francis Dr. Santa Fe, NM
87505

State of New Mexico
Energy, Minerals and Natural Resources Department

Form C-107-B
Revised August 1, 2011

OIL CONSERVATION DIVISION
1220 S. St Francis Drive
Santa Fe, New Mexico 87505

Submit the original application to the Santa Fe office with one copy to the appropriate District Office.

APPLICATION FOR SURFACE COMMINGLING (DIVERSE OWNERSHIP)

OPERATOR NAME: Mewbourne Oil Company

OPERATOR ADDRESS: 4801 Business Park BLVD PO Box 5270 Hobbs NM 88240

APPLICATION TYPE:
 Pool Commingling Lease Commingling Pool and Lease Commingling Off-Lease Storage and Measurement (Only if not Surface Commingled)

LEASE TYPE: Fee State Federal

Is this an Amendment to existing Order? Yes No If "Yes", please include the appropriate Order No. _____
 Have the Bureau of Land Management (BLM) and State Land office (SLO) been notified in writing of the proposed commingling
 Yes No

(A) POOL COMMINGLING
Please attach sheets with the following information

(1) Pool Names and Codes	Gravities / BTU of Non-Commingled Production	Calculated Gravities / BTU of Commingled Production	Calculated Value of Commingled Production	Volumes

- (2) Are any wells producing at top allowables? Yes No
 (3) Has all interest owners been notified by certified mail of the proposed commingling? Yes No.
 (4) Measurement type: Metering Other (Specify) _____
 (5) Will commingling decrease the value of production? Yes No If "yes", describe why commingling should be approved

(B) LEASE COMMINGLING
Please attach sheets with the following information

- (1) Pool Name and Code.
 (2) Is all production from same source of supply? Yes No
 (3) Has all interest owners been notified by certified mail of the proposed commingling? Yes No
 (4) Measurement type: Metering Other (Specify) _____

(C) POOL and LEASE COMMINGLING
Please attach sheets with the following information

- (1) Complete Sections A and E.

(D) OFF-LEASE STORAGE and MEASUREMENT
Please attached sheets with the following information

- (1) Is all production from same source of supply? Yes No
 (2) Include proof of notice to all interest owners.

(E) ADDITIONAL INFORMATION (for all application types)
Please attach sheets with the following information

- (1) A schematic diagram of facility, including legal location.
 (2) A plat with lease boundaries showing all well and facility locations. Include lease numbers if Federal or State lands are involved.
 (3) Lease Names, Lease and Well Numbers, and API Numbers.

I hereby certify that the information above is true and complete to the best of my knowledge and belief.

SIGNATURE: Chad Cole TITLE: Regulatory Specialist DATE: 1/17/2025

TYPE OR PRINT NAME Chad Cole TELEPHONE NO.: 575-393-5905

E-MAIL ADDRESS: ccole@mewbourne.com

Well Name	Location	API #	Pool #	MCFPD	Dry BTU @ 14.73 PSI
LOVING TOWNSITE 21 WOPA FEE #2H	220' FNL & 280' FEL, Sec 28, T23S, R28E	30-015-43495	[98220] PURPLE SAGE; WOLFCAMP (GAS)	250	1250
LOVING TOWNSITE 21 W2PA FEE #1H	220' FNL & 210' FEL, Sec 28, T23S, R28E	30-015-43496	[98220] PURPLE SAGE; WOLFCAMP (GAS)	550	1250
NIGHT RANGER 28 W0AP FEE #2H	220' FNL & 650' FEL, Sec 28, T23S, R28E	30-015-44285	[98220] PURPLE SAGE; WOLFCAMP (GAS)	300	1250
NIGHT RANGER 28 W2AP FEE #1H	220' FNL & 610' FEL, Sec 28, T23S, R28E	30-015-44286	[98220] PURPLE SAGE; WOLFCAMP (GAS)	900	1250
SPEEDWAGON 27 W2DM FEE #1H	190' FNL & 660' FWL, Sec 27, T23S, R28E	30-015-42695	[98220] PURPLE SAGE; WOLFCAMP (GAS)	650	1250
YARDBIRDS 27/3 FEE #711H (WOLM)	155' FNL & 690' FWL, Sec 27, T23S, R28E	30-015-55113	[98220] PURPLE SAGE; WOLFCAMP (GAS)	~2500	~1250
YARDBIRDS 27/3 FEE #713H (WOKN)	155' FNL & 720' FWL, Sec 27, T23S, R29E	30-015-55115	[98220] PURPLE SAGE; WOLFCAMP (GAS)	~2500	~1250
YARDBIRDS 27/3 FEE #715H (W0JO)	155' FNL & 750' FWL, Sec 27, T23S, R28E	30-015-55116	[98220] PURPLE SAGE; WOLFCAMP (GAS)	~2500	~1250
YARDBIRDS 27/3 FEE #716H (W0JO)	155' FNL & 780' FWL, Sec 27, T23S, R28E	30-015-55125	[98220] PURPLE SAGE; WOLFCAMP (GAS)	~2500	~1250

MEWBOURNE OIL COMPANY

4801 Business Park Blvd
Hobbs, NM 88240
575-393-5905

January 17, 2025

Via Certified Mail

See Attached Address List

Ladies and Gentlemen:

Mewbourne Oil Company ("Mewbourne") has filed an application with the New Mexico Oil Conservation Division ("Division") seeking authorization to surface commingle production from the wells attached hereto and all future wells located on Leases, covering all or portions of Sections 21, 27, 28, & 34, T23S, R28E & 3, T24S, R28E, Eddy County, New Mexico. All oil production from these wells is to be stored in a Central Tank Battery, located in the NW/4NW/4 of said Section 27. Also, Mewbourne has filed to surface commingle gas production from these wells. The gas production from these wells will flow to an on lease common gas sales meter (#TBD) located in the NW/4NW/4 of Section 27. Mewbourne will meter all production at the facility using an allocation meter for each well. Information detailing each well is attached.

If you object to the either application, you must notify the Division in writing no later than 20 days from the date of this letter (the Division's address is 1220 South St. Francis Drive, Santa Fe, New Mexico 87505). Failure to object will preclude you from contesting this matter later.

Should you have any questions regarding the above, please email Chad Cole at ccole@mewbourne.com call him at (575) 393-5905.

Sincerely,

Mitch Robb

Mitch Robb
Landman

Yardbirds 27-3 Battery #1
 Commingle Notice List

OWNER NAME	ADDRESS 1	CITY	STATE	ZIP	TRACKING NUMBERS
VIRGINIA NEVILL HOFF MANAGEMENT TRUST	2601 LAKEWOOD CIRCLE	TUSCALOOSA	AL	35405	9414836208551277393670
YVONNE SUMNER	P O BOX 874402	WASILLA	AK	99687	9414836208551277393694
BEVERLY A WILLIAMS	1345 NORTH GREENFIELD RD	GILBERT	AZ	85234	9414836208551277393687
LINVILLE D WILLIAMS	1345 NORTH GREENFIELD RD	GILBERT	AZ	85234	9414836208551277393717
MARC LILLEY AND WIFE LISA LILLEY	18720 N 101ST STREET, UNIT 3021	SCOTTSDALE	AZ	85255	9414836208551277393700
MARK AND LAURA BUNN LIVING TRUST	2485 W SANTA LIBRE ROAD	CHINO VALLEY	AZ	86323	9414836208551277393724
BILLY DON BAKER ESTATE	15178 MALLICO MT RD	WEST FORK	AR	72774	9414836208551277393731
LAURA C JAMES	171 SYLVIA FINCH ROAD	ROMANCE	AR	72136	9414836208551277393779
ROBERT LAFAYETTE JAMES III	599 FOSTER CHAPEL RD	SEARCY	AR	72143	9414836208551277393762
THERESE LYNN BERRY	205 CHINKAPIN DR N	PANGBURN	AR	72121	9414836208551277393755
ALAN KARBOUSKY	3161 CARVEL DRIVE	SANTA ROSA	CA	95403	9414836208551277393748
BETTY BLANCO AKA ELIZABETH BLANCO	636 SAN ANTONIO ROAD #101	PALO ALTO	CA	94306	9414836208551277393786
BILL C RUIZ	P O BOX 161	SULTANA	CA	93666	9414836208551277393793
CHRISTOPHER KATHI & GARY BUSHBY	2612 BRALORNE CT	BAKERSFIELD	CA	93309	9414836208551277393809
DAVID RANDALL JONES	22121 WOOD ISLAND LANE	HUNTINGTON BEACH	CA	92646	9414836208551277393854
ERIC G LAKEY, SEPERATE PROPERTY	4517 RADNOR AVE	LAKEWOOD	CA	90713	9414836208551277393892
FACOWIE ENERGY	1732 STAR CREST PLACE	SAN MARCOS	CA	92078	9414836208551277393861
EATE-DIXON TRUST	615 WINDMILL RANCH ROAD	ENCINITAS	CA	92024	9414836208551277393908
JAIME P RUIZ	6717 WEST GIBSON AVE	FRESNO	CA	93723	9414836208551277393885
JOHN ZACHARIUS GRACE	8033 WEST SUNSET BLVD #1994	LOS ANGELES	CA	90046	9414836208551277393823
LAURA JEAN HOEFER ADM TRUST	11248 S TURNER AVE	ONTARIO	CA	91761	9414836208551277393847
MURCHISON-GUITAR FAMILY LP	P O BOX 712	RED BLUFF	CA	96080	9414836208551277393816
RICHARD GRADDIS	8794 LOOKOUT MOUNTAIN	LOS ANGELES	CA	90046	9414836208551277393830
COVERT TRUST	P O BOX 22294	DENVER	CO	80222	9414836208551277393922
DAVID A CARRICK & PAMELA K CHANDLER	1929 OAK AVENUE	BOULDER	CO	80304	9414836208551277393878
FRANKLIN MOUNTAIN ROYALTY INVESTMENTS LLC	44 COOK STREET, SUITE 1000	DENVER	CO	80206	9414836208551277393939
GREGORY J PETRUSKA DBA PRISM ENERGY LLC	910 OWL GROVE PLACE	LOVELAND	CO	80537	9414836208551277394042
HONDO MINERALS LP	37 BROOKHAVEN PLACE	LITTLETON	CO	80123	9414836208551277393946
JAK MINERALS LLLP	P O BOX 3753	LITTLETON	CO	80161	9414836208551277394004
ION N BLAUW	607 OWL DRIVE	LOUISVILLE	CO	80027	9414836208551277393953
JUSTIN AND SARA NINE	1900 LARKSPUR DRIVE	GOLDEN	CO	80401	9414836208551277393915
KATHY JEAN COOK	23696 COUNTY ROAD 21	FORT MORGAN	CO	80701	9414836208551277393960
LAPLANTE/JOHNSON FAMILY TRUST	37 BROOKHAVEN PLACE	LITTLETON	CO	80123	9414836208551277393991
LML PROPERTIES LLC	P O BOX 3194	BOULDER	CO	80307	9414836208551277393977
MARGI FORT BRUNS AKA MARGUERITE FORT BRUNS	7800 E 148TH DR	THORNTON	CO	80602	9414836208551277393984
MARGUERITE FORT BRUNS	7800 E 148TH DR	THORNTON	CO	80602	9414836208551277393984
PLATTE STREET MINERALS I, LP	3040 BLAKE STREET, #110	DENVER	CO	80205	9414836208551277394127

PREVAIL ENERGY LLC	521 DEXTER ST	DENVER	CO	80220	9414836208551277394035
REBECCA A ROTHER	369000 COUNTY ROAD 46PP	VILLA GROVE	CO	81155	9414836208551277394028
RICHARD FRANKLIN BEEMAN	1322 LYONS LN	ERIE	CO	80516	9414836208551277394172
SITIO PERLMAN LP	1401 LAWRENCE ST., STE 1750	DENVER	CO	80202	9414836208551277394141
THOMAS C ROBER 1992 TRUST	4060 ALBION ST #306	DENVER	CO	80216	9414836208551277394226
TIM LILLEY AND WIFE TASHINA LILLEY	P O BOX 310	PARKER	CO	80134	9414836208551277394196
MICHAEL GRACE	APDO 121-6000	PURISCAL, SAN JOSE	CR	10401	9414836208551277394318
PRINCESS PROPERTIES LLC	33530 TIDERRUNNER AVENUE	MILLSBORO	DE	19966	9414836208551277394011
CHARLES PARDUE BUNCH SPRING	3808 4TH ST NW	WASHINGTON	DC	20011	9414836208551277394073
COMPTON JAMES TUCKER III	443 11TH ST NE	WASHINGTON	DC	20002	9414836208551277394097
LARRY WAYNE DUNAGAN	14975 SW 232ND ST	MIAMI	FL	33170	9414836208551277394165
OUARLES INCOME TRUST	1217 N FLORIDA AVE	TARPON SPRINGS	FL	34689	9414836208551277394066
OUATRO RESOURCES LLC	2970 LURAVILLE ROAD	THE VILLAGES	FL	32163	9414836208551277394110
TERRA OIL COMPANY LLC	P O BOX 1220	JUPITER	FL	33468	9414836208551277394103
WINSTON GRACE	4940 NW 65TH AVE	LAUDERHILL	FL	33319	9414836208551277394202
BOYS CLUB OF AMERICA	1275 PEACHTREE ST NE	ATLANTA	GA	30309	9414836208551277394080
CARRIE DENISE HALL	143 GORDON ST	ROCHELLE	GA	31079	9414836208551277394189
GERRI LYNN GRAY	117 ELDERBERRY ROAD	FITZGERALD	GA	31750	9414836208551277394158
KAREN M BOHANNON	118A MIAMI RD	FITZGERALD	GA	31750	9414836208551277394257
MICHELLE MARIE DIAL	608 N 15TH ST	COUER D ALENE	ID	83814	9414836208551277394134
MITCHEL S FIDERLICK	4096 N CHATBERTON AVE	BOISE	ID	83713	9414836208551277394240
BUJAG INVESTMENTS LLC	139 SHERIDAN ROAD	WINNETKA	IL	60093	9414836208551277394219
CALM FT WORTH VENTURES	139 SHERIDAN	WINNETKA	IL	60093	9414836208551277394288
DEBORAH D HOLTON	P O BOX 282	CENTRAL CITY	IA	52214	9414836208551277394233
ANNA PAULINE SWEARINGEN	512 CEDAR STREET	CONCORDIA	KS	66901	9414836208551277394363
CLAY M MCEWEN	219 WILLIAMSBURG ST	ANDOVER	KS	67002	9414836208551277394264
DREW MATTHEW MCEWEN	9350 E WILSON ESTATES CT	WICHITA	KS	67206	9414836208551277394370
ERIC L COLLINS TRUST	4011 SW 29TH ST #116	TOPEKA	KS	66614	9414836208551277394301
EVALYN SWEARINGEN TEST TRUST	1362 N 80TH RD	CONCORDIA	KS	66901	9414836208551277394424
GRANT A SWEARINGEN	209 ASHLEY PARK	WICHITA	KS	67209	9414836208551277394271
GREATER SALINA COMMUNITY FOUNDATION	P O BOX 369	BELoit	KS	67420	9414836208551277394387
HEATHER MCEWEN IRREV TRUST	8837 SW US HIGHWAY 54	AUGUSTA	KS	67010	9414836208551277394295
JESMA HOPPER DSSP	2926 COLUMBINE	WICHITA	KS	67204	9414836208551277394417
JOHN DAVID MCEWEN	8837 SW US HIGHWAY 54	AUGUSTA	KS	67010	9414836208551277394332
KEVIN BEACHY MCEWEN	7077 E CENTRAL AVE APT 17	WICHITA	KS	67602	9414836208551277394455
TERRY & CARLA WHITE TRUST	1302 W 3RD ST	CHANUTE	KS	66720	9414836208551277394349
JUDY GUITAR UHEY, LLC	P O BOX 632	ELIZABETHTOWN	KY	42702	9414836208551277394394
LINDA WILLIAMS MILITELLO	P O BOX 305	WATSON	LA	70786	9414836208551277394462
JAMES HAROLD QUALLS	3230 COOL BRANCH RD	CHURCHVILLE	MD	21028	9414836208551277394530
MARY ANN DYE	54 EMANUEL DRIVE	BOXBOROUGH	MA	1719	9414836208551277394493
MARGURETT E PETSCHKE REV TRUST	38901 TOWNHALL ST	HARRISON TOWNSHP	MI	48045	9414836208551277394547
CRESS FAMILY TRUST	1241 STANFORD AVE	ST PAUL	MN	55105	9414836208551277394356
JOHN T WITT	35191 STATE HWY 11	ROSEAU	MN	56751	9414836208551277394509

NORTHERN OIL & GAS INC	4350 BAKER ROAD, SUITE 400	MINNETONKA	MN	55343	9414836208551277394578
SHATTUCK ST MARYS SCHOOL	1000 SHUMWAY AVE	FARBAAULT	MN	55021	9414836208551277394745
CAROLYN SCHOONOVER	10749 OAK LEAF DRIVE	OLIVE BRANCH	MS	38654	9414836208551277394400
ALEXA LARAE CHRISTEN	908 EAST 9TH STREET	MOUNTAIN GROVE	MO	65711	9414836208551277394486
AUSTIN BRADY MORTON	3226 WEST GREENWOOD STREET #B	SPRINGFIELD	MO	65807	9414836208551277394479
CITIFINANCIAL SERVICING LLC	1000 TECHNOLOGY DR	OFALLON	MO	63368	9414836208551277394585
COURTNEY LYNN KITREL	1031 EAST ROSEBRIER STREET	SPRINGFIELD	MO	65807	9414836208551277394615
DRU LYNN CHRISTEN	3143 COUNTY LINE RD	MOUNTAIN GROVE	MO	65711	9414836208551277394691
ERICKA SANDERSON	10353 RED SPRING ROAD	MOUNTAIN GROVE	MO	65711	9414836208551277394431
GB WILLIAMS PROPERTIES LLC	3166 COUNTY LINE ROAD	MOUNTAIN GROVE	MO	65711	9414836208551277394523
GLEN ROBIN WILLIAMS	7852 HWY ZZ	NORWOOD	MO	65717	9414836208551277394639
JAMES BURL WILLIAMS	10546 BEAVER ROAD	MOUNTAIN GROVE	MO	65711	9414836208551277394707
JAMES W WILLIAMS	7985 HIGHWAY 38	MOUNTAIN GROVE	MO	65711	9414836208551277394448
JANIE LARAE MORTON PETERSON	10201 TUCKER RD	MOUNTAIN GROVE	MO	65711	9414836208551277394608
JOHN EVAN RICHARDSON	4254 RIPLEY K-1	DONIPHAN	MO	63935	9414836208551277394516
JOYCE ANN SASSE	2500 LONGVIEW DR	COLUMBIA	MO	65203	9414836208551277394653
KIRSTEN WATSON	1218 N ROGERS AVE UNIT B	SPRINGFIELD	MO	65802	9414836208551277394592
KYLLA SANDERSON DODDS	214 S HIGH STREET	MOUNTAIN GROVE	MO	65711	9414836208551277394677
LINDA RICHARDSON	38194 W HIGHWAY T	CAMDEN	MO	64017	9414836208551277394554
MARGARET L MEHL	702 NE CAMBRIDGE DRIVE	LEES SUMMIT	MO	64086	9414836208551277394646
WILLIAM D WILLIAMS	7364 RAYBORN ROAD	MOUNTAIN GROVE	MO	65711	9414836208551277394714
SKYHOUSE LLC	P O BOX 161501	BIG SKY	MT	59716	9414836208551277394783
AMERICAN LEGION OF KENESAW NE	P O BOX 245	KENESAW	NE	68956	9414836208551277394561
CEMETERY ASSOCIATION OF KENESAW	P O BOX 302	KENESAW	NE	68956	9414836208551277394622
ELKS NATIONAL FOUNDATION	P O BOX 542016	OMAHA	NE	68103	9414836208551277394684
HASTINGS COLLEGE	710 TURNER AVE	HASTINGS	NE	68901	9414836208551277394820
RESCUE UNIT OF KENESAW	P O BOX 43	KENESAW	NE	68956	9414836208551277394738
SENIOR CENTER OF KENESAW	114 W MAPLE PO BOX 95	KENESAW	NE	68956	9414836208551277394776
GERALYN AGLORO	350 ALTO AVE C LANE	HENDERSON	NV	89011	9414836208551277394482
KATHERINE R MCPARTLAND	2056 ANTELOPE VALLEY RD	RENO	NV	89506	9414836208551277394929
ADAMA N VASQUEZ	2 EAST OGDEN RD	LOVING	NM	88256	9414836208551277394660
ALFRED S BLAUW II	2533 VIOLA SW	ALBUQUERQUE	NM	87105	9414836208551277394769
ALLIANCE LAND AND MINERALS LLC	P O BOX 809	ARTESIA	NM	88211	9414836208551277394912
ANGEL & ANNA RODRIGUEZ	3737 ALBIO AVE	LAS CRUCES	NM	88012	9414836208551277395025
ANTONIO VASQUEZ	1808 PECOS HWY	LOVING	NM	88256	9414836208551277394721
ARTESIA OIL & GAS LLC	P O BOX 1768	ARTESIA	NM	88211	9414836208551277394790
B&G ROYALTIES PARTNERSHIP	P O BOX 376	ARTESIA	NM	88211	9414836208551277394851
BEN V CHAVEZ & ROSA A CHAVEZ	P O BOX 533	LOVING	NM	88256	9414836208551277394752
BENJAMIN VASQUEZ JR	TWO EAST OGDEN	ROSWELL	NM	88202	9414836208551277394851
BIG THREE ENERGY GROUP LLC	P O BOX 429	ARTESIA	NM	88211	9414836208551277394943
BRANDY MICHELL BEEMAN	P.O. BOX 809	CARLSBAD	NM	88220	9414836208551277395100
BRETT C BARTON	1919 NORTH TURNER	HOBSBS	NM	88241	9414836208551277394813

CARMEN VASQUEZ	406 S MESA P O BOX 1718	CARLSBAD	NM	88220	9414836208551277394899
CARMEX INC	403 TIERRA BERRENDA	CARLSBAD	NM	88221	9414836208551277394981
CHALCAM EXPLORATION LLC	P O BOX 90952	ROSWELL	NM	88201	9414836208551277395063
CHARLES A WYMAN	P O BOX 122	ALBUQUERQUE	NM	87199	9414836208551277394806
CRUZ & SANDRA ORNELAS	5315 TIDWELL ROAD	LOVING	NM	88256	9414836208551277394936
DANIEL S VASQUEZ	618 CULPEPPER CIRCLE	CARLSBAD	NM	88220	9414836208551277395056
DIANNE MATIHS	P O BOX 1473	CARLSBAD	NM	88221	9414836208551277394837
DORA MADRID	1312 CHICO	CARLSBAD	NM	88220	9414836208551277394967
EDDIE E CARRASCO & WIFE, IMOGENE CARRASCO	717 JARALES	BELEN	NM	87002	9414836208551277395094
EDWARD FRANCISO BLANCO ESTATE	1324 BERNARDO COURT NE	ALBUQUERQUE	NM	87113	9414836208551277395261
ELIZABETH NGUYEN	1802 N GUADALUPE	CARLSBAD	NM	88220	9414836208551277394844
EMMA Q THOMPSON	P O BOX 429	ROSWELL	NM	88202	9414836208551277394905
FEATHERSTONE DEVELOPMENT CORP	P O BOX 12	LOVING	NM	88256	9414836208551277394998
FELIPE AND MARIA LARA	1405 WEST URAL DRIVE	CARLSBAD	NM	88220	9414836208551277395087
FRANCIS F BEEMAN	2604 BERT LANE	CARLSBAD	NM	88220	9414836208551277394868
FRANCIS T SEGURA	P O BOX 596	LOVING	NM	88256	9414836208551277394974
FRANK A RODRIGUEZ	1504 WEST URAL DRIVE	CARLSBAD	NM	88220	9414836208551277395049
GARY VASQUEZ	104 E CEDAR STREET	LOVING	NM	88256	9414836208551277395193
GEORGIA SUE DUNCAN	P O BOX 1324	LOVING	NM	88256	9414836208551277394875
GINA S RODRIGUEZ	216 S FIRST ST	LOVING	NM	88256	9414836208551277395001
GLORIA ORNELAS	1846 PECOS HWY	LOVING	NM	88256	9414836208551277395032
GUADALUPE M VASQUEZ	1846 PECOS HWY NO 1	LOVING	NM	88256	9414836208551277395179
GUADALUPE VASQUEZ	P O BOX 1515	ROSWELL	NM	88202	9414836208551277395018
HANSON-MCBRIDE PETROLEUM CO	P O BOX 936	ROSWELL	NM	88202	9414836208551277395117
HARVARD ENERGY PARTNERS LP	P O BOX 111	MALAGA	NM	88263	9414836208551277395186
HARVEY G RUIZ	P O BOX 126	LOVING	NM	88256	9414836208551277395285
HAYDEN EDWARD KIMBLEY & DEBRA A KIMBLEY	1919 N TURNER ST	HOBBS	NM	88240	9414836208551277395070
HEIDI C BARTON	7220 PORTER ROAD	CARLSBAD	NM	88220	9414836208551277395131
HENRY VASQUEZ	P O BOX 1933	ROSWELL	NM	88202	9414836208551277395278
HEYCO DEVELOPMENT CORPORATION	P O BOX 1933	ROSWELL	NM	88202	9414836208551277395346
HEYCO ENERGY GROUP INC	P O BOX 2527	ROSWELL	NM	88202	9414836208551277395148
HOLSUM INC	P O BOX 1326	ARTESIA	NM	88211	9414836208551277395216
HOPE ROYALTIIES LLC	P O BOX 2282	CARLSBAD	NM	88221	9414836208551277395377
JAMES S WITT III	P O BOX 809	ARTESIA	NM	88211	9414836208551277395452
JAMES W MARBACH & WIFE CARRIE MARBACH	73 VILLA VENTOSA RD	EL PRADO	NM	87529	9414836208551277395230
JOHN M ROPER 1992 TRUST	P O BOX 1789	MESILLA PARK	NM	88047	9414836208551277395322
JOHN S VASQUEZ	P O BOX 2136	CARLSBAD	NM	88221	9414836208551277395407
JOHN W MORRIS & NELDA F MORRIS REV TRUST	15 WEST OGDEN RD	LOVING	NM	88256	9414836208551277395537
JUAN M VASQUEZ	7004 PORTER ROAD	CARLSBAD	NM	88220	9414836208551277395155
LAWRENCE VASQUEZ	808 WEST TILDEN	ROSWELL	NM	88203	9414836208551277395247
LESTLEY YARBRO NAJERA	8425 JAMES NE	ALBUQUERQUE	NM	87111	9414836208551277395315
LOVELLA KILMAN					

LUCY MORENO	P O BOX 901	HOBS	NM	88241	9414836208551277395469
MALCOLM CUNNINGHAM	2419 OREGAN	CARLSBAD	NM	88220	9414836208551277395223
MARGARET V DOWLING	1829 GEORGIA ST NE	ALBUQUERQUE	NM	87110	9414836208551277395292
MARIA CELIA GUTIERREZ	13124 SUNRISE TRAIL PL NE	ALBUQUERQUE	NM	87111	9414836208551277395414
MARIA ELENA VASQUEZ	42 EAST OGDEN	LOVING	NM	88256	9414836208551277395506
MARK A BEEMAN	P O BOX 8255	ROSWELL	NM	88202	9414836208551277395209
MARK MCCLELLAN AND WIFE PAULA MCCLELLAN	P O BOX 730	ROSWELL	NM	88202	9414836208551277395308
MARK VASQUEZ	7216 PORTER ROAD	CARLSBAD	NM	88220	9414836208551277395445
MARTHA VASQUEZ	1793 PECOS HWY	LOVING	NM	88256	9414836208551277395520
MARY H WALKER	1319 4TH STREET NW APT 303A	ALBUQUERQUE	NM	87102	9414836208551277395254
MARY L SMITH	P O BOX 291	CARLSBAD	NM	88221	9414836208551277395360
MARY LONDON WHITLOCK LIFE ESTATE	1008 N ALAMEDA	CARLSBAD	NM	88220	9414836208551277395391
MARY LOU VASQUEZ	7531 GRANDI ROAD	CARLSBAD	NM	88220	9414836208551277395483
MAX VASQUEZ JR	7218 PORTER ROAD	CARLSBAD	NM	88220	9414836208551277395339
MELVIN I & LILLY Q (AKA OLIDIA) BALDERRAMA	2606 GARDEN ST	CARLSBAD	NM	88220	9414836208551277395421
MERLAND INC	PO BOX 548	CARLSBAD	NM	88221	9414836208551277395568
MILAVEC MINERALS LLC	2308 13TH ST SE	RIO RANCHO	NM	87124	9414836208551277395636
MINDY KOVACS	1010 S COUNTRY CLUB CIR	CARLSBAD	NM	88220	9414836208551277395553
MMV FARMS LLC	P O BOX 216	LAS CRUCES	NM	88004	9414836208551277395476
NORMA BEEMAN	1006 DOGWOOD	CARLSBAD	NM	88220	9414836208551277395575
NORMA J CHANLEY	P O BOX 728	HOBS	NM	88241	9414836208551277395674
NUOVO SEIS LP	P O BOX 2588	ROSWELL	NM	88202	9414836208551277395384
OLGA C RODRIGUEZ	P O BOX 1050	LOVING	NM	88256	9414836208551277395490
PAMELA MCPHERSON	2702 HEATH STREET	ARTESIA	NM	88210	9414836208551277395605
PARDUE LIMITED COMPANY	P O BOX 2018	CARLSBAD	NM	88221	9414836208551277395667
PATRICIA ANN BEEMAN ALLEN	P O BOX 574	CARLSBAD	NM	88221	9414836208551277395438
PATRICIA ANN BEEMAN ALLEN TST	P O BOX 574	CARLSBAD	NM	88221	9414836208551277395513
PEDRO VASQUEZ	42 EAST OGDEN	LOVING	NM	88256	9414836208551277395681
PENASCO PETROLEUM LLC	P O BOX 4168	ROSWELL	NM	88202	9414836208551277395797
PERLA C MARTINEZ	1612 WEST TANSILL STREET	CARLSBAD	NM	88220	9414836208551277395544
PROSPECTOR LLC	P O BOX 429	ROSWELL	NM	88202	9414836208551277395643
RALPH Q VASQUEZ	1797 PECOS HIGHWAY	LOVING	NM	88256	9414836208551277395766
REED KIMBLEY	P O BOX 595	LOVING	NM	88256	9414836208551277395902
RFORT MINERAL PROPERTIES LLC	9716 ADMIRAL EMERSON AVE NE	ALBUQUERQUE	NM	87111	9414836208551277395551
RICHARD VASQUEZ	P O BOX 1	CARLSBAD	NM	88221	9414836208551277395629
ROBERT B BEEMAN	1520 N GUADALUPE STREET	CARLSBAD	NM	88220	9414836208551277395742
ROLLA R HINKLE III	P O BOX 2292	ROSWELL	NM	88202	9414836208551277395865
ROLLA R HINKLE III SEP PROP	P O BOX 2292	ROSWELL	NM	88202	9414836208551277395582
ROSALINDA MARTINEZ	193 WEST ASH ROAD	LOVING	NM	88256	9414836208551277395704
ROSS DUNCAN PROPERTIES LLC	P O BOX 647	ARTESIA	NM	88211	9414836208551277395735
ROY G BARTON III	1919 N TURNER ST	HOBS	NM	88240	9414836208551277395896
ROY G BARTON JR	1919 NORTH TURNER STREET	HOBS	NM	88240	9414836208551277395995
ROY G BARTON JR & CLAUDIA BARTON	1919 N TURNER	HOBS	NM	88240	9414836208551277396084

ROY G BARTON SR & OPAL BARTON REV TRUST	1919 NORTH TURNER STREET	HOBBS	NM	88240	9414836208551277396121
RUBEN GRANADO	P O BOX 473	LOVING	NM	88256	9414836208551277396268
RUSVEL GRANADO	P O BOX 162	LOVING	NM	88256	9414836208551277395599
SAMUEL PAULETTE BURKHAM	303 W ORCHARD LANE	CARLSBAD	NM	88220	9414836208551277395650
SAMUEL Q VASQUEZ	8720 PLACTAS ROCA ROAD	ALBUQUERQUE	NM	87120	9414836208551277395803
STANLEY DEAN WILLIAMS	P O BOX 634	LOVING	NM	88256	9414836208551277395872
THE DISTRICT COURT OF EDDY COUNTY NEW MEXICO, JOE H BEEMAN HEIRS/SUCCESSORS	102 N CANAL, STE 240	CARLSBAD	NM	88220	9414836208551277395612
THE DISTRICT COURT OF EDDY COUNTY NEW MEXICO, STRIBLING HEIRS/SUCCESSORS	102 N CANAL, STE 240	CARLSBAD	NM	88220	9414836208551277395711
THOMAS Q VASQUEZ	6425 KEVIL ROAD	CARLSBAD	NM	88220	9414836208551277395810
TRADERS OF CARLSBAD INC	P O BOX 248	CARLSBAD	NM	88221	9414836208551277395919
TRES PRIMO PARTNERS LLC	P O BOX 1938	ROSWELL	NM	88202	9414836208551277395698
TRINIDAD ARMENDARIZ	209 S 1ST ST	LOVING	NM	88256	9414836208551277395759
UNIV OF NEW MEXICO REGENTS, UNM REAL ESTATE DEPT	MSC 06 3595, 1 UNIVERSITY OF NM	ALBUQUERQUE	NM	87131	9414836208551277395834
WALTER E TARVIN	P O BOX 326	LOVING	NM	88256	9414836208551277395971
WILLIAM F BEEMAN	71 APACHE DRIVE	CARLSBAD	NM	88220	9414836208551277396077
XPLOR RESOURCES LLC	1003 NORTH SHORE DR	CARLSBAD	NM	88220	9414836208551277396190
ZIA ENTERPRISES	PO Box 2160	HOBBS	NM	88241	9414836208551277396244
ZIA ROYALTY LLC	P.O. BOX 2160	HOBBS	NM	88241	9414836208551277396381
WESLEY ROYCE SCOTT	319 WILLOW SPRING COURT	GREENSBORO	NC	27410	9414836208551277395728
ANDREA OSLUND	1323 WEST 112TH	CLEVELAND	OH	44102	9414836208551277395889
JESSICA WALTERS	1323 WEST 112TH	CLEVELAND	OH	44102	9414836208551277395940
JOSEPH OSLUND	670 E 240TH	EUCLID	OH	44123	9414836208551277396015
LANORA ALLOMONG	14644 COUNTY ROAD 8	MONTPELIER	OH	43543	9414836208551277396114
MARY NOLAN OSLUND	6212 TALL OAKS	MENTOR	OH	44060	9414836208551277396220
MICHELLE OSLUND	670 E 240TH	EUCLID	OH	44123	9414836208551277396367
TERRY WILLIAMS	14644 CR 8	MONTPELIER	OH	43543	9414836208551277396480
ADVENTURE ENERGY CORPORATION	P O BOX 1797	OWASSO	OK	74055	9414836208551277395773
ALLEN REVOCABLE TRUST UTA DTD 4-10-1996	100 EAST 7TH	ARCADIA	OK	73007	9414836208551277395858
BILL M BURKS LIVING TRUST LLC	615 E LOWRY ROAD	CLAREMORE	OK	74017	9414836208551277395988
BK EXPLORATION CORPORATION	P O BOX 52098	TULSA	OK	74152	9414836208551277396091
BK ROYALTIES LLC	P O BOX 52098	TULSA	OK	74152	9414836208551277396183
HELEN J & MEREDITH E HARDGRAVE REVOCABLE TRUST	2626 EAST 40TH ST	TULSA	OK	74105	9414836208551277396299
COG PRODUCTION LLC	P O BOX 7500	BARTLESVILLE	OK	74005	9414836208551277396343
DAVIS FAMILY TRUST	3957 E 110TH STREET	TULSA	OK	74137	9414836208551277396435
DEVON ENERGY PRODUCTION CO L P	333 W SHERIDAN AVE	OKLAHOMA CITY	OK	73102	9414836208551277395780
DONNA PHILLIPS	P O BOX 1058	SEMINOLE	OK	74818	9414836208551277395841
FERR O&G LLC	P O BOX 2318	EDMOND	OK	73083	9414836208551277395964
GREGORY COLLIER	3336 NW 12TH STREET APT #4	OKLAHOMA CITY	OK	73107	9414836208551277396107
JAMES A BROWN FAMILY TRUST	P O BOX 928	ELK CITY	OK	73648	9414836208551277396176

JANET LORINE BEEMAN JANZEN	26702 NS 123 ROAD	BALCO	OK	739361	9414836208551277396282
KAISER FRANCIS OIL COMPANY	P O BOX 21468	TULSA	OK	74121	9414836208551277396336
KIMBERLY ROSE JORDAN	16880 COUNTY ROAD 3530	PONTOTOC	OK	74820	9414836208551277396442
LESLIE DIANE REED LIVING TRUST	618 W 40TH STREET	SAND SPRINGS	OK	74063	9414836208551277395827
MANDM RESOURCES LLC	10909 S PITTSBURG AVE	TULSA	OK	74137	9414836208551277395933
MELISSA WILLIAMS MCHUGH	1514 NE OAK RIDGE DR	CLAREMORE	OK	74017	9414836208551277396053
MJB PETROLEUM LLC	8015 W PARKWAY BLVD, APT 304	TULSA	OK	74127	9414836208551277396169
MJF FAMILY LIVING TRUST DTD 2/22/2010	6616 SW 92ND STREET	OKLAHOMA CITY	OK	73169	9414836208551277396237
OLDE CYPRESS RESOURCES LLC	2465 E 22 PLACE	TULSA	OK	74114	9414836208551277396350
PATRICIA ANN JAMES	P O BOX 1127	NOBLE	OK	73068	9414836208551277396466
RAZORBACK PETROLEUM LLC	11916 S 2ND CT	JENKS	OK	74037	9414836208551277396602
RONALD PEACE	415 E 7TH STREET	HOLDENVILLE	OK	74848	9414836208551277395926
SHARLENE MURPHY	616 N BURGESS	HOLDENVILLE	OK	74848	9414836208551277396046
STANICO ENERGY CORPORATION	P O BOX 32467	OKLAHOMA CITY	OK	73123	9414836208551277396145
STARRETT ROYALTY LLC	P O BOX 700093	TULSA	OK	74170	9414836208551277396251
TIFANY GUNTHER	6717 HUMMINGBIRD CT	OWASSO	OK	74055	9414836208551277396312
CAMELLIA LAND LLC	24030 NE AIRPORT RD	AURORA	OR	97002	9414836208551277396398
KEITH WINSOR	2755 NW CHAMPION CIRCLE	BEND	OR	97703	9414836208551277396497
VICTORIA ANNE FATE GORRELL TRUST	350 WEST STREET	KENNETT SQUARE	PA	19348	9414836208551277396572
D & M OIL INVESTMENTS LLC	550 FOREST BLUFFS RD	AIKEN	SC	29803	9414836208551277395957
GOOD GALL E FAMILY LIMITED PARTNERSHIP	P O BOX 1288	MT. PLEASANT	SC	29465	9414836208551277396022
JOANNE BRINGHAM	1201 SNOWDEN FARM COVE	COLLIERVILLE	TN	38017	9414836208551277396206
ROBERT L BRINGHAM & WIFE JOANNE BRINGHAM	1201 SNOWDEN FARM COVE	COLLIERVILLE	TN	38017	9414836208551277396305
1836 ROYALTY PARTNERS LLC	116 S. FM 1187	ALEDO	TX	76008	9414836208551277396329
2024 FLATLAND GUITAR LP	P O BOX 341342	AUSTIN	TX	78734	9414836208551277396404
ALBERTO H GUTIERREZ JR	5617 ESCONDIDO PASS	MCALLEN	TX	78504	9414836208551277396459
ALMA DESHAZO GRANBERY	4811 - 14TH STREET	LUBBOCK	TX	79416	9414836208551277396558
ALPHA ROYALTY PARTNERS, LLC	P O BOX 10701	MIDLAND	TX	79702	9414836208551277396008
ANGELA ESSMAN SPENCER	8 HANOVER DR	MIDLAND	TX	79705	9414836208551277396060
ANTHONY LOUIS MOSCHETTO REV TRUST	P O BOX 600635	DALLAS	TX	75360	9414836208551277396152
BARBARA M NORDSTRAND	634 SHOREWOOD DRIVE	TAYLOR LAKE VILLAGE	TX	77586	9414836208551277396275
BELINDA WILLIAMS	13260 W 42ND STREET	ODESSA	TX	79764	9414836208551277396428
BENNIE RAY OUALLS ESTATE	210 REIDD RD APT 308	EL PASO	TX	79932	9414836208551277396541
BGW MINERALS LTD	P.O. BOX 100635	FT WORTH	TX	76185	9414836208551277396671
BMNW RESOURCES LLC	P O BOX 180573	DALLAS	TX	75218	9414836208551277396756
BORAD INVESTMENTS LLC	820 LAKE PARK DR	OAK POINT	TX	75068	9414836208551277396039
BR2 HOLDINGS LLC	P O BOX 980552	HOUSTON	TX	77098	9414836208551277396138
BRADY LYNN RAINDL	P O BOX 65043	LUBBOCK	TX	79464	9414836208551277396213
BRANDI BLAIR RAINDL	2005 GULF AVE	MIDLAND	TX	79705	9414836208551277396374
BRECK MINERALS LP	P O BOX 911	BRECKENRIDGE	TX	76424	9414836208551277396473
BRENT MITCHELL RAINDL	33151 LANELOT DRIVE	DALLAS	TX	75229	9414836208551277396688
BROOKS MINERAL TRUST UTA DTD 01-28-2015	6301 MEADOWCREST LANE	SACHSE	TX	75048	9414836208551277396770
BTA OIL PRODUCERS LLC	104 SOUTH PECOS STREET	MIDLAND	TX	79701	9414836208551277396879

BUCKHORN MINERALS IV, LP	1885 ST JAMES PLACE, SUITE 820	HOUSTON	TX	77056	9414836208551277396411
CAKI FAMILY LIMITED PTNS	5851 ROYAL CREST DRIVE	DALLAS	TX	75230	9414836208551277396534
CAMARIE OIL & GAS LLC	2502 CAMARIE	MIDLAND	TX	79705	9414836208551277396589
CARROCK RESOURCES LLC	P O BOX 670581	DALLAS	TX	75367	9414836208551277396664
CARL M NORDSTRAND	713 BAYOU CREST DRIVE	DICKINSON	TX	77539	9414836208551277396800
CARNEGIE ENERGY LLC	P O BOX 12307	DALLAS	TX	75225	9414836208551277396916
CAROL GIBSON TRUST	P O BOX 701	ABILENE	TX	79604	9414836208551277396961
CESARINE KNIGHT SANCHEZ	7400 CRESTWAY RD #417	SAN ANTONIO	TX	78239	9414836208551277397227
CHARLES W SELTZER TRUST	214 WEST TEXAS AVENUE, SUITE 509	MIDLAND	TX	79701	9414836208551277396503
CHARLOTTE E WELLS AND KAUULANI L BUMPUS JOINT TENANTS	807 DEBUS DR	TAYLOR	TX	76574	9414836208551277396633
CHARLOTTE RENEE SCOTT LONGLEY	958 CABALLO DRIVE	ABILENE	TX	79602	9414836208551277396732
CHEVRON MIDCONTINENT LP	P.O. BOX 2100	HOUSTON	TX	77252	9414836208551277396848
CHEVRON USA INC	P.O. BOX 2100	HOUSTON	TX	77252	9414836208551277396947
CHIEF CAPITAL (O&G) II LLC	8111 WESTCHESTER, SUITE 900	DALLAS	TX	75225	9414836208551277397036
CHRISTINA M LANGHAM	6013 BOGARD	THE COLONY	TX	75056	9414836208551277397197
COLLINS PERMIAN LP	3824 CEDAR SPRINGS ROAD #414	DALLAS	TX	75219	9414836208551277397296
CRESS FAMILY HOLDINGS LLC	116 TOWNE VIEW CIRCLE	BOERNE	TX	78006	9414836208551277396510
CROWNROCK MINERALS LP	PO BOX 51933	MIDLAND	TX	79710	9414836208551277396596
CRUMP ENERGY INVESTMENTS IV LLC	P O BOX 50820	MIDLAND	TX	79710	9414836208551277396701
CYNTHIA RHODES TRUST	P O BOX 701	ABILENE	TX	79604	9414836208551277396794
DALE M RICHARDSON	5093 EAST HIGHWAY 82	GAINESVILLE	TX	76240	9414836208551277396831
DANA REESE	204 DOVE CREST DR	BOERNE	TX	78006	9414836208551277397005
DAVID L TOMLIN	P O BOX 2641	MIDLAND	TX	79702	9414836208551277397074
DDDF CO INC	P O BOX 554	MIDLAND	TX	79702	9414836208551277397098
DEBRA C LONDON-HAYES	#9 JEFFREY CIRCLE	WAKE VILLAGE	TX	75505	9414836208551277396527
DEBRA H ROLAND	P O BOX 456	GARDENDALE	TX	79758	9414836208551277396640
DEBRA KAY PRIMERA	P O BOX 143277	IRVING	TX	75014	9414836208551277396749
DORCHESTER MINERALS LP	3838 OAK LAWN AVE-STE 300	DALLAS	TX	75219	9414836208551277396855
EAR NOSE & THROAT ASSOCIATES PENSION PLAN TRUST	3344 OCEAN DRIVE	CORPUS CHRISTI	TX	78411	9414836208551277396923
EARL B GUITAR JR BYPASS TRUST	P O BOX 56429	HOUSTON	TX	77256	9414836208551277397029
ELAINE MIRELES	2806 AVENUE V	SNYDER	TX	79549	9414836208551277397180
ELAND ENERGY INC	16400 DALLAS PARKWAY, KNOWL TRAIL PLAZA SUITE 100	DALLAS	TX	75248	9414836208551277397180
ELK RANGE ROYALTIES LP	2110 FARRINGTON ST	DALLAS	TX	75207	9414836208551277396565
ELA LEONARD LP	8525 FERNDALE SUITE 204	DALLAS	TX	75238	9414836208551277396619
ELLIPSIS OIL & GAS INC	3500 MAPLE AVENUE STE 1080	DALLAS	TX	75219	9414836208551277396718
EMIL Y RODRIGUEZ	2170 MARSH POINT DR	FRISCO	TX	75034	9414836208551277396824
ENCANTO MINERALS LLC	2929 ALLEN PARKWAY, SUITE 200	HOUSTON	TX	77019	9414836208551277396954
ESTATE OF JOHN P BATES AND ANN L BATES LLC	P O BOX 8241	WACO	TX	76714	9414836208551277397104
EVV LIVING TRUST DTD 9/27/2023	2170 MARSH POINT DR	FRISCO	TX	75036	9414836208551277397159
EXCESS ENERGY LLC	300 STATE ST, P O BOX 93449	SOUTHLAKE	TX	76092	9414836208551277397258
EXXONMOBIL OIL CORPORATION	2277 SPRINGWOODS VILLAGE PKWY	SPRING	TX	77389	9414836208551277396657

FLATROCK ROYALTIES LLC	16607 COUNTY ROAD 1940	LUBBOCK	TX	79424	9414836208551277396763
FOUNDATIION MINERALS II LLC	P O BOX 50820	MIDLAND	TX	79710	9414836208551277396886
GAHR ENERGY COMPANY	P O BOX 1889	MIDLAND	TX	79702	9414836208551277396885
GENE A ADAMS & WIFE BRENDA L ADAMS	4315 ALEDO OAKS CT	FORT WORTH	TX	76125	9414836208551277397081
GEORGE M O'BRIEN	P O BOX 1743	MIDLAND	TX	79702	9414836208551277397135
GEORGE MICHAEL SHOOK	10325 COLINA DR.	FORT WORTH	TX	76126	9414836208551277397241
GUITAR GALUSHA LP	P O BOX 1438	ABILENE	TX	79604	9414836208551277397289
GUITAR LAND & CATTLE COLP	P O BOX 2213	ABILENE	TX	79604	9414836208551277396626
GUY P WITHERSPOON III	P O BOX 100403	FORT WORTH	TX	76185	9414836208551277396725
H GRADY PAYNE III	P O BOX 1585	COLLEYVILLE	TX	76034	9414836208551277396862
HADEN R HOLCOMB AND KAREN L HOLCOMB JT	2201 LOUIS TRAIL	WEATHERFORD	TX	76087	9414836208551277396992
HARLOW EASTON LLC	P O BOX 129	WOLFFORTH	TX	79382	9414836208551277397173
HAROLD L HENSLEY JR & WIFE SANDRA HENSLEY	#8 LAKES DR	MIDLAND	TX	79705	9414836208551277397265
HMTK ROYALTY LLC	P O BOX 50688	MIDLAND	TX	79710	9414836208551277397395
HORNED FROG OIL & GAS LP	6500 WEST FREEWAY, STE 222	FORT WORTH	TX	76116	9414836208551277397456
IVORY OIL COMPANY LLC	6500 WEST FREEWAY, SUITE 222	FORT WORTH	TX	76116	9414836208551277396695
J M MINERAL & LAND COMPANY INC	P O BOX 1015	MIDLAND	TX	79702	9414836208551277396787
JACK N ROBER III	4538 CEDARBRUSH DRIVE	DALLAS	TX	75229	9414836208551277396909
JACK N ROBER JR	4538 CEDARBRUSH DR	DALLAS	TX	75229	9414836208551277397012
JACKS PEAK LLC	P O BOX 294928	KERRVILLE	TX	78029	9414836208551277397043
JAMES A COLLIER III	1101 PECAN HOLLOW TRAIL	MCKINNEY	TX	75070	9414836208551277397111
JAMES C WILLIAMS	743 N OAK STREET	KERMIT	TX	79745	9414836208551277397142
JAMES P RIGGS LIVING TRUST	P O BOX 33	FREDERICKSBURG	TX	78624	9414836208551277397234
JAMES W ESSMAN	1209 COUNTRY CLUB DR	MIDLAND	TX	79701	9414836208551277396893
JANIS CHAFEE YATES	1601 S SHEPHERD DR #122	HOUSTON	TX	77019	9414836208551277396978
JENNIFER L SLAVINSKAS	28954 BUCKING BULL	FAIR OAKS	TX	78015	9414836208551277397050
JENNIFER M TURNEY	6458 KIRKWOOD ROAD	FORT WORTH	TX	76116	9414836208551277397210
JIGOB ENERGY SERVICES LLC	23 APPLEHEAD ISLAND DR	HORSESHOE BAY	TX	78657	9414836208551277397326
JKGUITAR LLC	1202 SYLVAN DRIVE	ABILENE	TX	79605	9414836208551277397470
JMA OIL PROPERTIES LTD	P O BOX 58	ABILENE	TX	79604	9414836208551277397586
JOHN GUITAR	P O BOX 1121	CLYDE	TX	79510	9414836208551277397685
JOHN GUITAR WITHERSPOON JR	7404 LEMONWOOD LANE	FORT WORTH	TX	76133	9414836208551277396930
JOYCE CHAFEE WHITE	304 KICKAPOO LANE	GEORGETOWN	TX	78633	9414836208551277397067
JOYCE WEHMEYER	117 BRADSHAW DRIVE	AUSTIN	TX	78737	9414836208551277397128
JPH HOLDINGS LP	4400 ARCADY	DALLAS	TX	75205	9414836208551277397203
JUAN MARIA RIOS	2603 STRATFORD DR	AUSTIN	TX	78746	9414836208551277397302
KARIN LANETTE WILLIAMS	P O BOX 52	IRA	TX	79527	9414836208551277397418
KATHLEEN A PHILLIPS	P O BOX 11313	MIDLAND	TX	79702	9414836208551277397548
KATHY GADDY ROBBINS	PO BOX 10428	MIDLAND	TX	77070	9414836208551277397166
KCK ENERGY LLC	20405 STATE HIGHWAY 249, STE 820	HOUSTON	TX	77070	9414836208551277397166
KCK RESOURCES, INC.	5600 FENWAY	MIDLAND	TX	79707	9414836208551277397166
KEVIN K LEONARD CHILDS TRUST	P O BOX 50688	MIDLAND	TX	79710	9414836208551277397371
KIRBY RANDALL SCOTT	745 BAXTER TRAIL	FATE	TX	75087	9414836208551277397487

LAURA PATRICIA ROPER EGEMEYER 1992 TRUST	4735 ELSBY AVE	DALLAS	TX	75209	9414836208551277397593
LAUREN LEWIS	1501 PAISLEY DRIVE	ARLINGTON	TX	76015	9414836208551277397708
LAWRENCE W ROBINETTE & WIFE SALLY ROBINETTE	9912 SILVER ROCK WAY	DENTON	TX	76207	9414836208551277397760
LEONARD LEGACY ROYALTY LLC	P O BOX 3422	MIDLAND	TX	79702	9414836208551277397890
LER WI LLC	P O BOX 303424	AUSTIN	TX	78703	9414836208551277397333
LESLI GUITAR NICHOLS	P O BOX 327	BIG SPRING	TX	79721	9414836208551277397388
LESLIE KAY DUFF	1628 WYOMING	SAN ANGELO	TX	76904	9414836208551277397463
LINDA S NORDSTRAND	634 SHOREWOOD DRIVE	TAYLOR LAKE VILLAGE	TX	77586	9414836208551277397524
LUNAR PETROLEUM LLC	1020 E. LEVEE STREET, SUITE 130	DALLAS	TX	75207	9414836208551277397616
LUTHER MONROE FISHER	3414 EAST DRIVE	TEMPLE	TX	76502	9414836208551277397739
M BRAD BENNETT & WIFE LINDA M BENNETT	P O BOX 51510	MIDLAND	TX	79710	9414836208551277397869
MAGNOLIA ROYALTY COMPANY INC	P O BOX 10703	MIDLAND	TX	79702	9414836208551277397975
MARATHON OIL PERMAN LLC	P O BOX 2069	HOUSTON	TX	77252	9414836208551277397319
MARGIE GROSSENBACHER ALLEN	3019 BRAEMAR ST	WACO	TX	76710	9414836208551277397425
MARILYN INZER	10207 TIMBER TRAIL DR	DALLAS	TX	75229	9414836208551277397517
MARKE EXPLORATION INC	PO BOX 470748	FORT WORTH	TX	76147	9414836208551277397647
MARTA V YBARRA	1249 PORTLAND AVE	ABILENE	TX	79605	9414836208551277397777
MARY QUEEN BRYAN	3665 W 12TH STREET	ODESSA	TX	79763	9414836208551277397838
MCALISTER ROYALTIES LLC	P O BOX 1488	MIDLAND	TX	79702	9414836208551277398002
MCGEE MINERAL MANAGEMENT LP	569 MEDINA DRIVE	HIGHLAND VILLAGE	TX	75077	9414836208551277398101
MELISSA GRAY MCGEE	6 WOODHAVEN CIRCLE	ABILENE	TX	79605	9414836208551277397357
MICHAEL D MANSFIELD	5949 BURGANDY ST	PLANO	TX	75093	9414836208551277397401
MICHAEL KYLE LEONARD CHILD'S TRUST	P O BOX 2625	EAGLE PASS	TX	78853	9414836208551277397500
MIKE K BULLOCK	147 ROCKINGSHIRE COURT	SPRING BRANCH	TX	78070	9414836208551277397609
MITT R ROGERS	5058 SCARLET OAK LANE	SAN ANGELO	TX	76904	9414836208551277397692
MOLLY M AZOPARDI	P O BOX 620	WIMBERLY	TX	78676	9414836208551277397746
MOMENTUM MINERALS OPERATING LP	P O BOX 620	WIMBERLEY	TX	78676	9414836208551277397876
MONTICELLO MINERALS LLC	750 TOWN & COUNTRY BLVD, SUITE 420	HOUSTON	TX	77024	9414836208551277397951
MORGAN CAPITAL GROUP INC	4128 BRYN MAWR DRIVE	DALLAS	TX	75225	9414836208551277397364
MRC PERMIAN COMPANY	P O BOX 1385	BROWNWOOD	TX	76804	9414836208551277397494
MRC PERMIAN LKE COMPANY LLC	ONE LINCOLN CENTRE, 5400 LBJ FREEWAY STE 1500	DALLAS	TX	75240	9414836208551277397562
MSH FAMILY REAL ESTATE PARTNERSHIP II LLC	ONE LINCOLN CENTER, 5400 LBJ FREEWAY STE 1500	DALLAS	TX	75240	9414836208551277397678
MVDR RESOURCES LLC	4143 MAPLE AVE, SUITE 500	DALLAS	TX	75219	9414836208551277397753
NATHAN ARNOLD SCOTT	3811 TURTLE CREEK BLVD STE 1100	DALLAS	TX	75219	9414836208551277397845
NEW MEXICO BOYS & GIRLS RANGH FOUNDATION INC, ACCT #72814100	5363 MEADOW DRIVE	ABILENE	TX	79606	9414836208551277397982
NOBLE E YARBRO	P O BOX 40909	AUSTIN	TX	78704	9414836208551277398057
NORDSTRAND ENGINEERING INC	19635 PITCHSTONE DRIVE	TOMBALL	TX	77377	9414836208551277397449
OAK VALLEY MINERAL & LAND LP	1400 SMITH STREET	HOUSTON	TX	77002	9414836208551277397579
OLL ENERGY LLC	3229 DAMICO ST - SUITE 200	HOUSTON	TX	77019	9414836208551277397661
	P O BOX 50820	MIDLAND	TX	79710	9414836208551277397784
	2540 KING ARTHUR BLVD, STE 209K	LEWISVILLE	TX	75056	9414836208551277397883

OTSS INVESTMENTS	6500 WEST FREEWAY, STE 222	FORT WORTH	TX	76116	9414836208551277397944
OXY USA INC	P O BOX 27570	HOUSTON	TX	77227	9414836208551277398040
PATRICK LEONARD CHILD'S TRUST	P O BOX 700633	SAN ANTONIO	TX	78270	9414836208551277398132
PAUL D QUEEN	138 NATCHES TRUCE	COPELL	TX	75019	9414836208551277397432
PAULA KAY SABRSULA	1513 COLBY LANE	CEDAR PARK	TX	78613	9414836208551277397555
PECOS BEND ROYALTIES LLLP	P O BOX 2802	MIDLAND	TX	79702	9414836208551277397630
PEGASUS RESOURCES II LLC	P O BOX 470698	FORT WORTH	TX	76147	9414836208551277397791
PETROLIMA LLC	PO BOX 1113	MIDLAND	TX	79702	9414836208551277397821
PHOENIX FOUR LLC	4455 CAMP BOWIE BLVD, SUITE 11498	FORT WORTH	TX	76107	9414836208551277397999
POLARIS PRODUCTION CORPORATION	P O BOX 158	LINGLEVILLE	TX	76461	9414836208551277398033
POLK LAND & MINERALS LP	P O BOX 701	ABILENE	TX	79604	9414836208551277398118
PONTEM ENERGY PARTNERS I LP	RICHLAND CORP. CENTRE, STE 825, 9001 AIRPORT FREEWAY,	NORTH RICHLAND HILLS	TX	76180	9414836208551277397531
PRESSLEY HUDSON GUITAR	P O BOX 5383	ABILENE	TX	79608	9414836208551277397623
PRESSLEY HUDSON GUITAR, LP	P O BOX 5383	ABILENE	TX	79608	9414836208551277397715
R & R ROYALTY LTD	500 N. SHORELINE, STE 501	CORPUS CHRISTI	TX	78401	9414836208551277397814
RAINTREE LLC	1109 TELLURIDE CT.	MIDLAND	TX	79705	9414836208551277397968
RANCHITO AD4 LP	2100 ROSS AVENUE, SUITE 1870, LB-9	DALLAS	TX	75201	9414836208551277398095
RAYLENE TAYLOR	P O BOX 95	CARLSBAD	TX	76934	9414836208551277398125
REALEZA DEL SPEAR LP	P O BOX 1684	MIDLAND	TX	79702	9414836208551277398255
RED-HEN ENERGY I PARTNERS LP	5949 SHERRY LANE STE STE 1175	DALLAS	TX	75225	9414836208551277397722
REK OIL & GAS LLC	4455 CAMP BOWIE BLVD, SUITE 114 #11	FORT WORTH	TX	76107	9414836208551277397852
REMORA OPERATING LLC	1900 ST. JAMES PL. STE 800	HOUSTON	TX	77056	9414836208551277397937
REYNOLDS NATURAL RESOURCES LP	420 THROCKMORTON ST - STE 750	FORT WORTH	TX	76102	9414836208551277398019
RHEINER HOLDINGS LLC	PO BOX 980552	HOUSTON	TX	77098	9414836208551277398224
RICHARD LEE LONDON	205 PINE FOREST	TEXARKANA	TX	75501	9414836208551277398284
RICHARD M GADDY	1409 RANCHO VISTA DR	MCKINNEY	TX	75072	9414836208551277398316
RICKY D RAINDL	P O BOX 142454	IRVING	TX	75014	9414836208551277398385
RIVERBEND OIL & GAS IX INVESTMENTS LLC	TWO ALLEN CENTER, 1200 SMITH STREET, STE 1930	HOUSTON	TX	77002	9414836208551277397807
R-N LIMITED PARTNERSHIP	705 BELMEADE LN	FLOWER MOUND	TX	75028	9414836208551277397906
ROBERT B COLEMAN	P O BOX 501	MIDLAND	TX	79702	9414836208551277397920
ROBERT MITCHELL RAINDL	P O BOX 853	TAHOKA	TX	79373	9414836208551277398064
ROCKWOOD ENERGY LP	4450 OAK PARK LANE STE 101897	FORT WORTH	TX	76109	9414836208551277398156
RODEN OIL COMPANY	P O BOX 10909	MIDLAND	TX	79702	9414836208551277398248
RODNEY LYNN REESE	204 DOVE CREST DRIVE	BOERNE	TX	78006	9414836208551277398323
ROMAN A GONZALEZ & CHERI R GONZALEZ	4735 COUNTRY CLUB DR	MIDLAND	TX	79703	9414836208551277398439
ROSS I GANN	P O BOX 3	MONAHANS	TX	79756	9414836208551277397913
RUSSELL T RUDY ENERGY LLC	320 WESTCOTT ST	HOUSTON	TX	77007	9414836208551277398026
S J MANSFIELD III	412 SHADOW BEND DR	RICHARDSON	TX	75081	9414836208551277398149
SALLY GUITAR	10 WOODHAVEN CIRCLE	ABILENE	TX	79605	9414836208551277398231
SANTA ELENA MINERALS LP	P O BOX 470788	FORT WORTH	TX	76147	9414836208551277398354
SAPPHIRE ROYALTIES INC	P O BOX 682	MIDLAND	TX	79702	9414836208551277398392
SCHANNTI CORP	5990 HALEY WAY	FRISCO	TX	75034	9414836208551277398446
SEAFM LLC	18011 WHISPERING GABLES LANE	DALLAS	TX	75287	9414836208551277398538

SHANNON C LEONARD CHILDS TR	1018 SUNSET CANYON DR N	DRIPPING SPRING	TX	78620	9414836208551277398552
SHAUNA SELTZER REDWINE TRUST	4416 SAN CARLOS ST	DALLAS	TX	75205	9414836208551277398613
SIERRA ENERGY ROYALTIES II LLC	P.O. BOX 50576	AUSTIN	TX	78763	9414836208551277398675
SILVER SPUR RESOURCES LLC	16400 DALLAS PARKWAY STE 400	DALLAS	TX	75248	9414836208551277398699
SKV LLC	PO BOX 92761	SOUTH LAKE	TX	76092	9414836208551277398804
SMP SIDECAR TITAN MINERAL HOLDINGS LP	P O BOX 471489	FORT WORTH	TX	76147	9414836208551277398804
SMP TITAN FLEX LP	4143 MAPLE AVE, SUITE 500	DALLAS	TX	75219	9414836208551277398842
SMP TITAN MINERAL HOLDINGS LP	4143 MAPLE AVE, SUITE 500	DALLAS	TX	75219	9414836208551277398866
SONDRA ELLYSON	4143 MAPLE AVE, SUITE 500	DALLAS	TX	75219	9414836208551277398808
SONYA BARON	536 ROSE BRANCH DRIVE	LA VERNIA	TX	78121	9414836208551277398187
SOUTHWEST ROYALTIES INC	207 DODDS CREEK DRIVE	GATESVILLE	TX	76528	9414836208551277398286
SP JOHNSON IV	P O BOX 53570	MIDLAND	TX	79710	9414836208551277398361
SPRINGBOK ENERGY PARTNERS II LLC	3220 PLUMB	HOUSTON	TX	77005	9414836208551277398408
SPRINGBOK ENERGY PARTNERS LLC	777 TAYLOR STREET, SUITE 810	FT WORTH	TX	76102	9414836208551277398477
SPRINGWOOD MINERALS 6, LP	777 TAYLOR STREET, SUITE 810	FT WORTH	TX	76102	9414836208551277398507
SRR PERMAN LLC	P O BOX 3579	MIDLAND	TX	79702	9414836208551277398583
STEPHANIE MARIE SCOTT HARPER	1701 RIVER RUN, STE 902	FORT WORTH	TX	76107	9414836208551277398637
STEPHEN J SHOOK	1309 RAYTA ROAD	ABILENE	TX	79602	9414836208551277398682
STEVEN WILLIAMS	4204 TALLOWOOD DR	AUSTIN	TX	78731	9414836208551277398729
T L REES & MARGARET D REES	100 RUSHY CREEK CIRCLE	RED OAK	TX	79512	9414836208551277398767
T L REES SEPARATE PROPERTY	P O BOX 1007	COLORADO CITY	TX	79512	9414836208551277398828
TD MINERALS LLC	P O BOX 1007	DALLAS	TX	75225	9414836208551277398873
TERRY LYN SHOOK	8111 WESTCHESTER DR, STE 900	AUSTIN	TX	78739	9414836208551277398897
THE BEVERIDGE COMPANY	7316 SENECA FALLS LOOP	MIDLAND	TX	79705	94148362085512773988071
THE DON AND RUTH JAMES TRUST DTD 10/7/2008	4305 N GARFIELD, STE 261	KINGSLAND	TX	78639	94148362085512773988200
THE WHITTEN G WITHERSPOON FAMILY TRUST	1513 COUNTY ROAD 132A	FORT WORTH	TX	76133	94148362085512773988279
THUNDER MOON RESOURCES LLC	7524 PEAR TREE LANE	DALLAS	TX	75206	9414836208551277398847
TIDES OUT PETRO LLC	6440 N CENTRAL EXPRESSWAY, SUITE 804	LINGLEVILLE	TX	76461	9414836208551277398415
TOMMY L FORT	P O BOX 158	SAN ANGELO	TX	76904	9414836208551277398453
TRABALDO DEL SPEAR LP	4914 ROYAL OAK COURT	MIDLAND	TX	79702	9414836208551277398491
TRUCHAS PEAKS LLC	P O BOX 1684	MIDLAND	TX	79705	9414836208551277398569
TTXMCQ, LLC	6 DESTA DRIVE STE 4325	FORT WORTH	TX	76147	9414836208551277398606
TULAROSA MINERAL COMPANY LLC	214 W TEXAS AVE, SUITE 807	DALLAS	TX	75225	9414836208551277398668
TULSA ENERGY LLC	P O BOX 471349	DALLAS	TX	75201	9414836208551277398712
TUNDR ADB LP	PO BOX 12100	FORT WORTH	TX	76116	9414836208551277398798
UNA OREIA LLC	2100 ROSS AVE, SUITE 1870, LB-9	MIDLAND	TX	79702	9414836208551277398811
UNIVERSITY OF TEXAS SYSTEM, DOROTHY LEE FUND,	6500 WEST FREEWAY, STE 222	MIDLAND	TX	79702	9414836208551277398859
UNIVERSITY OF TEXAS SYSTEM, BOARD OF REGENTS	P O BOX 551	MIDLAND	TX	79702	9414836208551277398859
UNIVERSITY OF TEXAS SYSTEM, DOROTHY LEE FUND,	P O BOX 551	MIDLAND	TX	79702	9414836208551277398859
FBO SOUTHWESTERN MEDICAL SCHOOL OF DALLAS	P O BOX 551	MIDLAND	TX	79702	9414836208551277398859

VIVIAN Q HAMILTON	13841 TANGLE AIRE POINT	AMARILLO	TX	79118	9414836208551277398910
WALLACE FAMILY PARTNERSHIP LP	508 W WALL ST SUITE 1200	MIDLAND	TX	79701	9414836208551277398170
WALTER E GRANBERRY JR	4811 - 14TH STREET	LUBBOCK	TX	79416	9414836208551277398217
WATTS PROPERTIES LLC	1221 GRUENE ESTATE	NEW BRAUNFELS	TX	78130	9414836208551277398309
WAYNE A BISSETT WHOSE WIFE IS LAURA BISSETT	P O BOX 2101	MIDLAND	TX	79702	9414836208551277398378
WEATHERVANE MANAGEMENT LP	4610 8TH STREET	LUBBOCK	TX	79416	9414836208551277398460
WELLBARK RESOURCES LLC	P O BOX 1987	FRISCO	TX	75034	9414836208551277398521
WENDE WITHERSPOON MORGAN	7627 GUINEVERE DRIVE	SUGAR LAND	TX	77479	9414836208551277398545
WENDELL W IVERSON JR	P O BOX 205	MIDLAND	TX	79702	9414836208551277398620
WESTWAY PETRO, A TEXAS JOINT VENTURE	13917 CHARCOAL LANE	FARMERS BRANCH	TX	75234	9414836208551277398651
WHITTEN GUITAR WITHERSPOON	7524 PEAR TREE LANE	FORT WORTH	TX	76133	9414836208551277398705
WILLIAM S NOELKE	3406 SILVER SPUR DR	SAN ANGELO	TX	76904	9414836208551277398736
WILLIAMS LIVING TRUST DTD 3/18/2008	P O BOX 122	FARMERSVILLE	TX	75442	9414836208551277398835
WOOD AND WIRE MANAGEMENT LP	P O BOX 341342	AUSTIN	TX	78734	9414836208551277398835
WOODS DICKENS RANCH LP	4610 8TH STREET	LUBBOCK	TX	79416	9414836208551277398880
WORD B WILSON INVESTMENTS LP	P O BOX 51790	MIDLAND	TX	79710	9414836208551277398903
XTO HOLDINGS LLC, LAND ADMIN DEPT LOC 116	22777 SPRINGWOOD VILLAGE PKWY	SPRING	TX	77389	9414836208551277398927
BECKMILL INVESTMENTS INC	108 DEER DRIVE	LEXINGTON	VA	24450	9414836208551277398163
EASLEY L MOORE JR	104 JOHNSTONE ST	LEXINGTON	VA	22901	9414836208551277398262
BARBARA LEE BACKMAN INC	893 KING WILLIAM DRIVE	CHARLOTTESVILLE	VA	99201	9414836208551277398422
JAMES S WITT	203 N WASHINGTON STREET, STE 200-2	SPOKANE	WA	98597	9414836208551277398484
MELISSA GMCCARTHY	P O BOX 2121	YELM	WA	99008	9414836208551277398514
SHARON GUITAR ELLIS LLC	48073 LARRABEE	VALLEYFORD	WA	99036	9414836208551277398576
TERRI MARIE EVANS	P O BOX 469	MCKENNA	WA	98558	9414836208551277398590
SWEARINGEN LLC	P O BOX 81	SHERIDAN	WY	82801	9414836208551277398644
	1309 COFFEE AVE, STE 1200				

Commingling Notice List

OWNER NAME	ADDRESS 1	CITY	STATE	ZIP	TRACKING NUMBERS
VIRGINIA NEVILL HOFF MANAGEMENT TRUST	2601 LAKEWOOD CIRCLE	TUSCALOOSA	AL	35405	9414836208551277393670
YVONNE SUNNER	P O BOX 874402	WASILLA	AK	99687	9414836208551277393694
BEVERLY A WILLIAMS	1345 NORTH GREENFIELD RD	GILBERT	AZ	85234	9414836208551277393687
LINVILLE D WILLIAMS	1345 NORTH GREENFIELD RD	GILBERT	AZ	85234	9414836208551277393717
MARC LILLEY AND WIFE LISA LILLEY	18720 N 101ST STREET, UNIT 3021	SCOTTSDALE	AZ	85255	9414836208551277393700
MARK AND LAURA BUNN LYVING TRUST	2485 W CANTA LIBRE ROAD	CHINO VALLEY	AZ	86323	9414836208551277393724
BILLY DON BAKER ESTATE	15178 MALICO MT RD	WEST FORK	AR	72774	9414836208551277393731
LAURA C JAMES	171 SYLVIA FINCH ROAD	ROMANCE	AR	72136	9414836208551277393779
ROBERT LAFAYETTE JAMES III	599 FOSTER CHAPEL RD	SEARCY	AR	72143	9414836208551277393762
THERESE LYNN BERRY	205 CHINKAPIN DR N	PANGBURN	AR	72121	9414836208551277393755
ALAN KARBOUSKY	3161 CARVEL DRIVE	SANTA ROSA	CA	95405	9414836208551277393748
BETTY BLANCO AKA ELIZABETH BLANCO	636 SAN ANTONIO ROAD #101	PALO ALTO	CA	94306	9414836208551277393786
BILL C RUIZ	P O BOX 161	SULTANA	CA	95666	9414836208551277393793
CHRISTOPHER KATHI & GARY BUSHBY	2612 BRALORNE CT	BAKERSFIELD	CA	93309	9414836208551277393809
DAVID RANDALL JONES	22121 WOOD ISLAND LANE	HUNTINGTON BEACH	CA	92646	9414836208551277393854
ERIC G LAKEY, SEPERATE PROPERTY	4517 RADNOR AVE	LAKEWOOD	CA	90713	9414836208551277393892
FACOWIE ENERGY	1732 STAR CREST PLACE	SAN MARCOS	CA	92078	9414836208551277393861
FATE-DIXON TRUST	615 WINDMILL RANCH ROAD	ENCINITAS	CA	92024	9414836208551277393908
JADME P RUIZ	6717 WEST GIBSON AVE	FRESNO	CA	93723	9414836208551277393885
JOHN ZACHARIUS GRACE	8033 WEST SUNSET BLVD #1994	LOS ANGELES	CA	90046	9414836208551277393823
LAURA JEAN HOFER ADM TRUST	11248 S TURNER AVE	ONTARIO	CA	91761	9414836208551277393847
MURCHISON-GUITAR FAMILY LP	P O BOX 712	RED BLUFF	CA	96080	9414836208551277393816
RICHARD GRADDIS	8794 LOOKOUT MOUNTAIN	LOS ANGELES	CA	90046	9414836208551277393830
COVERT TRUST	P O BOX 22294	DENVER	CO	80222	9414836208551277393922
DAVID A CARRICK & PAMELA K CHANDLER	1929 OAK AVENUE	BOULDER	CO	80304	9414836208551277393878
FRANKLIN MOUNTAIN ROYALTY INVESTMENTS LLC	44 COOK STREET, SUITE 1000	DENVER	CO	80206	9414836208551277393939
GREGORY J PETRUSKA DBA PRISM ENERGY LLC	910 OWL GROVE PLACE	LOVELAND	CO	80537	9414836208551277394042
HONDO MINERALS LP	37 BROOKHAVEN PLACE	LITTLETON	CO	80123	9414836208551277393946
JAK MINERALS LLLP	P O BOX 3753	LITTLETON	CO	80161	9414836208551277394004
JON N BLAUW	607 OWL DRIVE	LOUISVILLE	CO	80027	9414836208551277393953
JUSTIN AND SARA NINE	1900 LARKSPUR DRIVE	GOLDEN	CO	80401	9414836208551277393915
KATHY JEAN COOK	23696 COUNTY ROAD 21	FORT MORGAN	CO	80701	9414836208551277393960
LAPLANTE/JOHNSON FAMILY TRUST	37 BROOKHAVEN PLACE	LITTLETON	CO	80123	9414836208551277393991
LML PROPERTIES LLC	P O BOX 3194	BOULDER	CO	80307	9414836208551277393977
MARGI FORT BRUNS AKA MARGUERITE FORT BRUNS	7800 E 148TH DR	THORNTON	CO	80602	9414836208551277393984
MARGUERITE FORT BRUNS	7800 E 148TH DR	THORNTON	CO	80602	9414836208551277393984
PLATTE STREET MINERALS I, LP	3040 BLAKE STREET, #110	DENVER	CO	80205	9414836208551277394127
PREVAIL ENERGY LLC	521 DEXTER ST	DENVER	CO	80220	9414836208551277394035
REBECCA A ROTHER	369000 COUNTY ROAD 46PP	VILLA GROVE	CO	81155	9414836208551277394028

RICHARD FRANKLIN BEEMAN	1322 LYONS LN	ERIE	CO	80516	9414836208551277394172
SITTO PERMAN LP	1401 LAWRENCE ST., STE 1750	DENVER	CO	80202	9414836208551277394141
THOMAS C ROPER 1992 TRUST	4060 ALBION ST #306	DENVER	CO	80216	9414836208551277394226
TIM LILLEY AND WIFE TASHINA LILLEY	P O BOX 310	PARKER	CO	80134	9414836208551277394196
MICHAEL GRACE	APDO 121-6000	PURISCAL, SAN JOSE	CR	10401	9414836208551277394318
PRINCESS PROPERTIES LLC	33330 TIDERUNNER AVENUE	MILLSBORO	DE	19966	9414836208551277394011
CHARLES PARDUE BUNCH SPRING	3808 4TH ST NW	WASHINGTON	DC	20011	9414836208551277394073
COMPTON JAMES TUCKER III	443 11TH ST NE	WASHINGTON	DC	20002	9414836208551277394097
LARRY WAYNE DUNAGAN	14975 SW 232ND ST	MIAMI	FL	33170	9414836208551277394165
QUARES INCOME TRUST	1217 N FLORIDA AVE	TARPOON SPRINGS	FL	34689	9414836208551277394066
QUATRO RESOURCES LLC	2970 LURAVILLE ROAD	THE VILLAGES	FL	32163	9414836208551277394110
TERRA OIL COMPANY LLC	P O BOX 1220	JUPITER	FL	33468	9414836208551277394103
WINSTON GRACE	4940 NW 65TH AVE	LAUDERHILL	FL	33319	9414836208551277394202
BOYS CLUB OF AMERICA	1275 PEACHTREE ST NE	ATLANTA	GA	30309	9414836208551277394080
CARRIE DENISE HALL	143 GORDON ST	ROCHELLE	GA	31079	9414836208551277394189
GERRI LYNN GRAY	117 ELDERBERRY ROAD	FITZGERALD	GA	31750	9414836208551277394158
KAREN M BOHANNON	118A MIAMI RD	FITZGERALD	GA	31750	9414836208551277394257
MICHELLE MARIE DIAL	608 N 15TH ST	COUER D ALENE	ID	83814	9414836208551277394134
MITCHEL S FIDERLICK	4096 N CHATTEERTON AVE	BOISE	ID	83713	9414836208551277394240
BUGIAG INVESTMENTS LLC	139 SHERIDAN ROAD	WINNETKA	IL	60093	9414836208551277394219
CALM FT WORTH VENTURES	139 SHERIDAN	WINNETKA	IL	60093	9414836208551277394288
DEBORAH D HOLTON	P O BOX 282	CENTRAL CITY	IA	52214	9414836208551277394233
ANNA PAULINE SWEARINGEN	512 CEDAR STREET	CONCORDIA	KS	66901	9414836208551277394363
CLAY M MCEWEN	219 WILLIAMSBURG ST	ANDOVER	KS	67002	9414836208551277394264
DREW MATTHEW MCEWEN	9350 E WILSON ESTATES CT	WICHITA	KS	67206	9414836208551277394370
ERIC L COLLINS TRUST	4011 SW 29TH ST #116	TOPEKA	KS	66614	9414836208551277394301
EVALYN SWEARINGEN TEST TRUST	1362 N 80TH RD	CONCORDIA	KS	66901	9414836208551277394424
GRANT A SWEARINGEN	209 ASHLEY PARK	WICHITA	KS	67209	9414836208551277394271
GREATER SALINA COMMUNITY FOUNDATION	P O BOX 369	BELOIT	KS	67420	9414836208551277394387
HEATHER MCEWEN IRREV TRUST	8837 SW US HIGHWAY 54	AUGUSTA	KS	67010	9414836208551277394295
JESMA HOPPER DSSP	2926 COLUMBINE	WICHITA	KS	67204	9414836208551277394417
JOHN DAVID MCEWEN	8837 SW US HIGHWAY 54	AUGUSTA	KS	67010	9414836208551277394332
KEVIN BEACHY MCEWEN	7077 E CENTRAL AVE APT 17	WICHITA	KS	67602	9414836208551277394455
TERRY & CARLA WHITE TRUST	1302 W 3RD ST	CHANUTE	KS	66720	9414836208551277394349
JUDY GUTTAR UHEY, LLC	P O BOX 632	ELIZABETHTOWN	KY	42702	9414836208551277394394
LINDA WILLIAMS MILITELLO	P O BOX 305	WATSON	LA	70786	9414836208551277394462
JAMES HAROLD OUALIS	3230 COOL BRANCH RD	CHURCHVILLE	MD	21028	9414836208551277394530
MARY ANN DYE	54 EMANUEL DRIVE	BOXBOROUGH	MA	1719	9414836208551277394493
MARGURETT E PETSCHKE REV TRUST	38901 TOWNHALL ST	HARRISON TOWNSHIP	MI	48045	9414836208551277394547
GRESS FAMILY TRUST	1241 STANFORD AVE	ST PAUL	MN	55105	9414836208551277394356
JOHN T WITT	35191 STATE HWY 11	ROSEAU	MN	56751	9414836208551277394509
NORTHERN OIL & GAS INC	4350 BAKER ROAD, SUITE 400	MINNETONKA	MN	55343	9414836208551277394578
SHATTUCK ST MARYS SCHOOL	1000 SHUMWAY AVE	FARIBAULT	MN	55021	9414836208551277394745

CAROYN SCHOONOVER	10749 OAK LEAF DRIVE	OLIVE BRANCH	MS	38654	9414836208551277394400
ALEXA LARAE CHRISTEN	908 EAST 9TH STREET	MOUNTAIN GROVE	MO	65711	9414836208551277394486
AUSTIN BRADY MORTON	3226 WEST GREENWOOD STREET #B	SPRINGFIELD	MO	65807	9414836208551277394479
CITIFINANCIAL SERVICING LLC	1000 TECHNOLOGY DR	OFALON	MO	63368	9414836208551277394585
COURTNEY LYNN KITREL	1031 EAST ROSEBRIER STREET	SPRINGFIELD	MO	65807	9414836208551277394615
DRU LYNN CHRISTEN	3143 COUNTY LINE RD	MOUNTAIN GROVE	MO	65711	9414836208551277394691
ERICKA SANDERSON	10353 RED SPRING ROAD	MOUNTAIN GROVE	MO	65711	9414836208551277394431
GB WILLIAMS PROPERTIES LLC	3166 COUNTY LINE ROAD	MOUNTAIN GROVE	MO	65711	9414836208551277394523
GLEN ROBIN WILLIAMS	7852 HWY ZZ	NORWOOD	MO	65717	9414836208551277394639
JAMES BURL WILLIAMS	10546 BEAVER ROAD	MOUNTAIN GROVE	MO	65711	9414836208551277394707
JAMES W WILLIAMS	7985 HIGHWAY 38	MOUNTAIN GROVE	MO	65711	9414836208551277394448
JANIE LARAE MORTON PETERSON	10201 TUCKER RD	MOUNTAIN GROVE	MO	65711	9414836208551277394608
JOHN EVAN RICHARDSON	4254 RIPLEY K-1	DONIPHAN	MO	63935	9414836208551277394516
JOYCE ANN SASSE	2500 LONGVIEW DR	COLUMBIA	MO	65203	9414836208551277394653
KIRSTEN WATSON	1218 N ROGERS AVE UNIT B	SPRINGFIELD	MO	65802	9414836208551277394592
KYLLA SANDERSON DODDS	214 S HIGH STREET	MOUNTAIN GROVE	MO	65711	9414836208551277394677
LINDA RICHARDSON	38194 W HIGHWAY T	CAMDEN	MO	64017	9414836208551277394554
MARGARET L MEHL	702 NE CAMBRIDGE DRIVE	LEES SUMMIT	MO	64086	9414836208551277394646
WILLIAM D WILLIAMS	7364 RAYBORN ROAD	MOUNTAIN GROVE	MO	65711	9414836208551277394714
SKYHOUSE LLC	P O BOX 161501	BIG SKY	MT	59716	9414836208551277394783
AMERICAN LEGION OF KENESAW NE	P O BOX 245	KENESAW	NE	68956	9414836208551277394561
CEMETERY ASSOCIATION OF KENESAW	P O BOX 302	KENESAW	NE	68956	9414836208551277394622
ELDS NATIONAL FOUNDATION	P O BOX 542016	OMAHA	NE	68103	9414836208551277394684
HASTINGS COLLEGE	710 TURNER AVE	HASTINGS	NE	68901	9414836208551277394820
RESCUE UNIT OF KENESAW	P O BOX 43	KENESAW	NE	68956	9414836208551277394738
SENIOR CENTER OF KENESAW	114 W MAPLE PO BOX 95	KENESAW	NE	68956	9414836208551277394776
GERALYN AGLORO	350 ALTO AVECL LANE	HENDERSON	NV	89011	9414836208551277394882
KATHERINE R MCPARTLAND	2056 ANTELOPE VALLEY RD	RENO	NV	89506	9414836208551277394929
ADAMAN VASQUEZ	2 EAST OGDEN RD	LOVING	NM	88256	9414836208551277394660
ALFRED S BLAUW II	2533 VIOLA SW	ALBUQUERQUE	NM	87105	9414836208551277394769
ALLIANCE LAND AND MINERALS LLC	P O BOX 809	ARTESIA	NM	88211	9414836208551277394912
ANGEL & ANNA RODRIGUEZ	3737 ALBIO AVE	LAS CRUCES	NM	88012	9414836208551277395025
ANTONIO VASQUEZ	1808 PECOS HWY	LOVING	NM	88256	9414836208551277394721
ARTESIA OIL & GAS LLC	P O BOX 1768	ARTESIA	NM	88211	9414836208551277394790
B&G ROYALTIES PARTNERSHIP	P O BOX 376	ARTESIA	NM	88211	9414836208551277394950
BEN V CHAVEZ & ROSA A CHAVEZ	P O BOX 533	LOVING	NM	88256	94148362085512773945124
BENJAMIN VASQUEZ JR	TWO EAST OGDEN	ROSWELL	NM	88202	9414836208551277394752
BIG THREE ENERGY GROUP LLC	P O BOX 429	ARTESIA	NM	88211	9414836208551277394851
BLACK RAM PROPERTIES LLC	P.O. BOX 809	ARTESIA	NM	88211	9414836208551277394943
BRANDY MICHELL BEEMAN	1006 DOGWOOD LANE	CARLSBAD	NM	88220	9414836208551277395100
BRETT C BARTON	1919 NORTH TURNER	HOBSBS	NM	88241	9414836208551277394813
CARMEN VASQUEZ	406 S MESA	CARLSBAD	NM	88220	9414836208551277394899
CARMEX INC	P O BOX 1718	CARLSBAD	NM	88221	9414836208551277394981

CHALCAM EXPLORATION LLC	403 TIERRA BERRENDA	ROSWELL	NM	88201	9414836208551277395063
CHARLES A WYMAN	P O BOX 90952	ALBUQUERQUE	NM	87199	9414836208551277394806
CRUZ & SANDRA ORNELAS	P O BOX 122	LOVING	NM	88256	9414836208551277394936
DANIEL S VASQUEZ	5315 TIDWELL ROAD	CARLSBAD	NM	88220	9414836208551277395056
DIANNE MATTHIS	618 CULPEPPER CIRCLE	CARLSBAD	NM	88220	9414836208551277395162
DORA MADRID	P O BOX 1473	CARLSBAD	NM	88221	9414836208551277394837
EDDIE E CARRASCO & WIFE, IMOGENE CARRASCO	1312 CHICO	CARLSBAD	NM	88220	9414836208551277394967
EDWARD FRANCISCO BLANCO ESTATE	717 JARALES	BELEN	NM	87002	9414836208551277395094
ELIZABETH NGUYEN	1324 BERNARDO COURT NE	ALBUQUERQUE	NM	87113	9414836208551277395261
EMMA O THOMPSON	1802 N GUADALUPE	CARLSBAD	NM	88220	9414836208551277394844
FEATHERSTONE DEVELOPMENT CORP	P O BOX 429	ROSWELL	NM	88202	9414836208551277394905
FELIPE AND MARIA LARA	P O BOX 12	LOVING	NM	88256	9414836208551277394998
FRANCIS F BEEMAN	1405 WEST URAL DRIVE	CARLSBAD	NM	88220	9414836208551277395087
FRANCIS T SEGURA	2604 BERT LANE	CARLSBAD	NM	88220	9414836208551277394868
FRANK A RODRIGUEZ	P O BOX 596	LOVING	NM	88256	9414836208551277394974
GARY VASQUEZ	1504 WEST URAL DRIVE	CARLSBAD	NM	88220	9414836208551277395049
GEORGIA SUE DUNCAN	104 E CEDAR STREET	LOVING	NM	88256	9414836208551277395193
GINA S RODRIGUEZ	P O BOX 1324	LOVING	NM	88256	9414836208551277394875
GLORIA ORNELAS	216 S FIRST ST	LOVING	NM	88256	9414836208551277395001
GUADALUPE M VASQUEZ	1846 PECOS HWY	LOVING	NM	88256	9414836208551277395032
GUADALUPE VASQUEZ	1846 PECOS HWY NO 1	LOVING	NM	88256	9414836208551277395179
HANSON-MCBRIDE PETROLEUM CO	P O BOX 1515	ROSWELL	NM	88202	9414836208551277395018
HARVARD ENERGY PARTNERS LP	P O BOX 936	ROSWELL	NM	88202	9414836208551277395117
HARVEY G RUIZ	P O BOX 111	MALAGA	NM	88263	9414836208551277395186
HAYDEN EDWARD KIMBLEY & DEBRA A KIMBLEY	P O BOX 126	LOVING	NM	88256	9414836208551277395285
HEIDI C BARTON	1919 N TURNER ST	HOBSBS	NM	88240	9414836208551277395070
HENRY VASQUEZ	7220 PORTER ROAD	CARLSBAD	NM	88220	9414836208551277395131
HEYCO DEVELOPMENT CORPORATION	P O BOX 1933	ROSWELL	NM	88202	9414836208551277395278
HEYCO ENERGY GROUP INC	P O BOX 1933	ROSWELL	NM	88202	9414836208551277395346
HOLSUM INC	P O BOX 2527	ROSWELL	NM	88202	9414836208551277395148
HOPE ROYALTIIES LLC	P O BOX 1326	ARTESIA	NM	88211	9414836208551277395216
JAMES S WITT III	P O BOX 2282	CARLSBAD	NM	88221	9414836208551277395377
JAMES W MARBACH & WIFE CARRIE MARBACH	P O BOX 809	ARTESIA	NM	88211	9414836208551277395452
JOHN M ROPER 1992 TRUST	73 VILLA VENTOSA RD	EL PRADO	NM	87529	9414836208551277395230
JOHN S VASQUEZ	P O BOX 1789	MESILLA PARK	NM	88047	9414836208551277395522
JOHN W MORRIS & NELDA F MORRIS REV TRUST	P O BOX 2136	CARLSBAD	NM	88221	9414836208551277395407
JUAN M VASQUEZ	15 WEST OGDEN RD	LOVING	NM	88256	9414836208551277395537
LAWRENCE VASQUEZ	7004 PORTER ROAD	CARLSBAD	NM	88220	9414836208551277395155
LESLEY YARBRO NAJERA	808 WEST TILDEN	ROSWELL	NM	88203	9414836208551277395247
LOVELLA KILMAN	8425 JAMES NE	ALBUQUERQUE	NM	87111	9414836208551277395315
LUCY MORENO	P O BOX 901	HOBSBS	NM	88241	9414836208551277395469
MALCOLM CUNNINGHAM	2419 OREGAN	CARLSBAD	NM	88220	9414836208551277395223

MARGARET V DOWLING	1829 GEORGIA ST NE	ALBUQUERQUE	NM	87110	9414836208551277395292
MARIA CELIA GUTIERREZ	13124 SUNRISE TRAIL PL. NE	ALBUQUERQUE	NM	87111	9414836208551277395414
MARIA ELENA VASQUEZ	42 EAST OGDEN	LOVING	NM	88256	9414836208551277395506
MARK A BEEMAN	P O BOX 8255	ROSWELL	NM	88202	9414836208551277395209
MARK MCCLELLAN AND WIFE PAULA MCCLELLAN	P O BOX 730	ROSWELL	NM	88202	9414836208551277395308
MARK VASQUEZ	7216 PORTER ROAD	CARLSBAD	NM	88220	9414836208551277395445
MARTHA VASQUEZ	1793 PECOS HWY	LOVING	NM	88256	9414836208551277395520
MARY H WALKER	1319 4TH STREET NW APT 303A	ALBUQUERQUE	NM	87102	9414836208551277395254
MARY L SMITH	P O BOX 291	CARLSBAD	NM	88221	9414836208551277395360
MARY LONDON WHITLOCK LIFE ESTATE	1008 N ALAMEDA	CARLSBAD	NM	88220	9414836208551277395391
MARY LOU VASQUEZ	7531 GRANDI ROAD	CARLSBAD	NM	88220	9414836208551277395483
MAX VASQUEZ JR	7218 PORTER ROAD	CARLSBAD	NM	88220	9414836208551277395339
MELVIN L & LILLY Q (AKA OLIDIA) BALDERRAMA	2606 GARDEN ST	CARLSBAD	NM	88220	9414836208551277395421
MERLAND INC	PO BOX 548	CARLSBAD	NM	88221	9414836208551277395568
MILAVEC MINERALS LLC	2308 13TH ST SE	RIO RANCHO	NM	87124	9414836208551277395636
MINDY KOVACS	1010 S COUNTRY CLUB CIR	CARLSBAD	NM	88220	9414836208551277395353
MMV FARMS LLC	P O BOX 216	LAS CRUCES	NM	88004	9414836208551277395476
NORMA BEEMAN	1006 DOGWOOD	CARLSBAD	NM	88220	9414836208551277395575
NORMA J CHANLEY	P O BOX 728	HOHBS	NM	88241	9414836208551277395674
NUEVO SEIS LP	P O BOX 2588	ROSWELL	NM	88202	9414836208551277395384
OLGA C RODRIGUEZ	P O BOX 1050	LOVING	NM	88256	9414836208551277395490
PAMELA MCPHERSON	2702 HEATH STREET	ARTESIA	NM	88210	9414836208551277395605
PARDUE LIMITED COMPANY	P O BOX 2018	CARLSBAD	NM	88221	9414836208551277395667
PATRICIA ANN BEEMAN ALLEN	P O BOX 574	CARLSBAD	NM	88221	9414836208551277395438
PATRICIA ANN BEEMAN ALLEN TST	P O BOX 574	CARLSBAD	NM	88221	9414836208551277395513
PEDRO VASQUEZ	42 EAST OGDEN	LOVING	NM	88256	9414836208551277395681
PENASCO PETROLEUM LLC	P O BOX 4168	ROSWELL	NM	88202	9414836208551277395797
PERLA C MARTINEZ	1612 WEST TANSILL STREET	CARLSBAD	NM	88220	9414836208551277395544
PROSPECTOR LLC	P O BOX 429	ROSWELL	NM	88202	9414836208551277395643
RALPH Q VASQUEZ	1797 PECOS HIGHWAY	LOVING	NM	88256	9414836208551277395766
REED KIMBLEY	P O BOX 595	LOVING	NM	88256	9414836208551277395902
REFORT MINERAL PROPERTIES LLC	9716 ADMIRAL EMERSON AVE NE	ALBUQUERQUE	NM	87111	9414836208551277395551
RICHARD VASQUEZ	P O BOX 1	CARLSBAD	NM	88221	9414836208551277395629
ROBERT B BEEMAN	1520 N GUADALUPE STREET	CARLSBAD	NM	88220	9414836208551277395742
ROLIA R HINKLE III	P O BOX 2292	ROSWELL	NM	88202	9414836208551277395865
ROLIA R HINKLE III SEP PROP	P O BOX 2292	ROSWELL	NM	88202	9414836208551277395582
ROSALINDA MARTINEZ	193 WEST ASH ROAD	LOVING	NM	88256	9414836208551277395704
ROSS DUNCAN PROPERTIES LLC	P O BOX 647	ARTESIA	NM	88211	9414836208551277395735
ROY G BARTON III	1919 N TURNER ST	HOHBS	NM	88240	9414836208551277395896
ROY G BARTON JR	1919 NORTH TURNER STREET	HOHBS	NM	88240	9414836208551277395995
ROY G BARTON JR & CLAUDIA BARTON	1919 N TURNER	HOHBS	NM	88240	9414836208551277396084
ROY G BARTON SR & OPAL BARTON REV TRUST	1919 NORTH TURNER STREET	HOHBS	NM	88240	9414836208551277396121
RUBEN GRANADO	P O BOX 473	LOVING	NM	88256	9414836208551277396268

RUSVEL GRANADO	P O BOX 162	LOVING	NM	88256	9414836208551277395599
SAMUEL PAULETTE BURKHAM	303 W ORCHARD LANE	CARLSBAD	NM	88220	9414836208551277395650
SAMUEL Q VASQUEZ	8720 PLACITAS ROCA ROAD	ALBUQUERQUE	NM	87120	9414836208551277395803
STANLEY DEAN WILLIAMS	P O BOX 634	LOVING	NM	88256	9414836208551277395872
THE DISTRICT COURT OF EDDY COUNTY NEW MEXICO, JOE H BEEMAN HEIRS/SUCCESSORS	102 N CANAL, STE 240	CARLSBAD	NM	88220	9414836208551277395612
THE DISTRICT COURT OF EDDY COUNTY NEW MEXICO, STRUBLING HEIRS/SUCCESSORS	102 N CANAL, STE 240	CARLSBAD	NM	88220	9414836208551277395711
THOMAS Q VASQUEZ	6425 KEVIL ROAD	CARLSBAD	NM	88220	9414836208551277395810
TRADERS OF CARLSBAD INC	P O BOX 248	CARLSBAD	NM	88221	9414836208551277395919
TRES PRIMO PARTNERS LLC	P O BOX 1938	ROSWELL	NM	88202	9414836208551277395698
TRINIDAD ARMENDARIZ	209 S 1ST ST	LOVING	NM	88256	9414836208551277395759
UNIV OF NEW MEXICO REGENTS, UNM REAL ESTATE DEPT	MSC 06 3595, UNIVERSITY OF NM	ALBUQUERQUE	NM	87131	9414836208551277395834
WALTER E TARVIN	P O BOX 326	LOVING	NM	88256	9414836208551277395971
WILLIAM F BEEMAN	71 APACHE DRIVE	CARLSBAD	NM	88220	9414836208551277396077
XPLOR RESOURCES LLC	1003 NORTH SHORE DR	CARLSBAD	NM	88220	9414836208551277396190
ZIA ENTERPRISES	PO Box 2160	HOBBBS	NM	88241	9414836208551277396244
ZIA ROYALTY LLC	P.O. BOX 2160	HOBBBS	NM	88241	9414836208551277396381
WESLEY ROYCE SCOTT	319 WILLOW SPRING COURT	GREENSBORO	NC	27410	9414836208551277395728
ANDREA OSLUND	1323 WEST 112TH	CLEVELAND	OH	44102	9414836208551277395889
JESSICA WALTERS	1323 WEST 112TH	CLEVELAND	OH	44102	9414836208551277395940
JOSEPH OSLUND	670 E 240TH	EUCLID	OH	44123	9414836208551277396015
LANORA ALLOMONG	14644 COUNTY ROAD 8	MONTPELIER	OH	43543	9414836208551277396114
MARY NOLAN OSLUND	6212 TALL OAKS	MENTOR	OH	44060	9414836208551277396220
MICHELLE OSLUND	670 E 240TH	EUCLID	OH	44123	9414836208551277396367
TERRY WILLIAMS	14644 CR 8	MONTPELIER	OH	43543	9414836208551277396480
ADVENTURE ENERGY CORPORATION	P O BOX 1797	OWASSO	OK	74055	9414836208551277395773
ALLEN REVOCABLE TRUST UTA DTD 4-10-1996	100 EAST 7TH	ARCADIA	OK	73007	9414836208551277395858
BILL M BURKS LIVING TRUST LLC	615 E. LOWRY ROAD	CLAREMORE	OK	74017	9414836208551277395988
BK EXPLORATION CORPORATION	P O BOX 52098	TULSA	OK	74152	9414836208551277396091
BK ROYALTIES LLC	P O BOX 52098	TULSA	OK	74152	9414836208551277396183
HELEN J & MEREDITH E HARDGRAVE REVOCABLE TRUST	2626 EAST 40TH ST	TULSA	OK	74105	9414836208551277396299
COG PRODUCTION LLC	P O BOX 7500	BARTLESVILLE	OK	74005	9414836208551277396343
DAVIS FAMILY TRUST	3957 E 110TH STREET	TULSA	OK	74137	9414836208551277396435
DEVON ENERGY PRODUCTION CO LP	333 W SHERIDAN AVE	OKLAHOMA CITY	OK	73102	9414836208551277395780
DONNA PHILLIPS	P O BOX 1058	SEMINOLE	OK	74818	9414836208551277395841
FERR O&G LLC	P O BOX 2318	EDMOND	OK	73083	9414836208551277395964
GREGORY COLLIER	3336 NW 12TH STREET APT #4	OKLAHOMA CITY	OK	73107	9414836208551277396107
JAMES A BROWN FAMILY TRUST	P O BOX 928	EIK CITY	OK	73648	9414836208551277396176
JANET LORINE BEEMAN JANZEN	26702 NS 123 ROAD	BALIKO	OK	739361	9414836208551277396282
KAISER FRANCIS OIL COMPANY	P O BOX 21468	TULSA	OK	74121	9414836208551277396336

KIMBERLY ROSE JORDAN	16880 COUNTY ROAD 3530	PONTOTOC	OK	74820	9414836208551277396442
LESLIE DIANE REED LIVING TRUST	618 W 40TH STREET	SAND SPRINGS	OK	74063	9414836208551277395827
MANDM RESOURCES LLC	10909 S PITTSBURG AVE	TULSA	OK	74137	9414836208551277395933
MELISSA WILLIAMS MCHUGH	1514 NE OAK RIDGE DR	CLAREMORE	OK	74017	9414836208551277396053
MJB PETROLEUM LLC	8015 W PARKWAY BLVD, APT 304	TULSA	OK	74127	9414836208551277396169
MJF FAMILY LIVING TRUST DTD 2/22/2010	6616 SW 92ND STREET	OKLAHOMA CITY	OK	73169	9414836208551277396237
OLDE CYRESS RESOURCES LLC	2465 E 22 PLACE	TULSA	OK	74114	9414836208551277396350
PATRICIA ANN JAMES	P O BOX 1127	NOBLE	OK	73068	9414836208551277396466
RAZORBACK PETROLEUM LLC	11916 S 2ND CT	JENKS	OK	74037	9414836208551277396602
RONALD PEACE	415 E 7TH STREET	HOLDENVILLE	OK	74848	9414836208551277396046
SHARLENE MURPHY	616 N BURGESS	HOLDENVILLE	OK	74848	9414836208551277396046
STANICO ENERGY CORPORATION	P O BOX 32467	OKLAHOMA CITY	OK	73123	9414836208551277396145
STARRETT ROYALTY LLC	P O BOX 700093	TULSA	OK	74170	9414836208551277396251
TIFFANY GUNTHER	6717 HUMMINGBIRD CT	OWASSO	OK	74055	9414836208551277396312
CAMELLIA LAND LLC	24030 NE AIRPORT RD	AURORA	OR	97002	9414836208551277396398
KEITH WINSOR	2755 NW CHAMPION CIRCLE	BEND	OR	97703	9414836208551277396497
VICTORIA ANNE FATE GORRELL TRUST	350 WEST STREET	KENNETT SQUARE	PA	19348	9414836208551277396572
D & M OIL INVESTMENTS LLC	550 FOREST BLUFFS RD	AIKEN	SC	29803	9414836208551277396597
GOOD GALL E FAMILY LIMITED PARTNERSHIP	P O BOX 1288	MT. PLEASANT	SC	29465	9414836208551277396602
JOANNE BRINGHAM	1201 SNOWDEN FARM COVE	COLLIERVILLE	TN	38017	9414836208551277396206
ROBERT L BRINGHAM & WIFE JOANNE BRINGHAM	1201 SNOWDEN FARM COVE	COLLIERVILLE	TN	38017	9414836208551277396305
1836 ROYALTY PARTNERS LLC	116 S. FM 1187	ALEDO	TX	76008	9414836208551277396329
2024 FLATLAND GUITAR LP	P O BOX 341342	AUSTIN	TX	78734	9414836208551277396404
ALBERTO H GUTIERREZ JR	5617 ESCONDIDO PASS	MCALLEN	TX	78504	9414836208551277396459
ALMA DESHAZO GRANBERRY	4811 - 14TH STREET	LUBBOCK	TX	79416	9414836208551277396558
ALPHA ROYALTY PARTNERS, LLC	P O BOX 10701	MIDLAND	TX	79702	9414836208551277396608
ANGELA ESSMAN SPENCER	8 HANOVER DR	MIDLAND	TX	79705	9414836208551277396606
ANTHONY LOUIS MOSCHETTO REV TRUST	P O BOX 600635	DALLAS	TX	75360	9414836208551277396152
BARBARA M NORDSTRAND	634 SHOREWOOD DRIVE	TAYLOR LAKE VILLAGE	TX	77586	9414836208551277396275
BELINDA WILLIAMS	13260 W 42ND STREET	ODESSA	TX	79764	9414836208551277396428
BENNIE RAY OUALLS ESTATE	210 REDD RD APT 308	EL PASO	TX	79932	9414836208551277396541
BGW MINERALS LTD	P.O. BOX 100635	FT WORTH	TX	76185	9414836208551277396671
BMNW RESOURCES LLC	P O BOX 180573	DALLAS	TX	75218	9414836208551277396756
BORAD INVESTMENTS LLC	820 LAKE PARK DR	OAK POINT	TX	75068	9414836208551277396039
BR2 HOLDINGS LLC	P O BOX 980552	HOUSTON	TX	77098	9414836208551277396138
BRADY LYNN RAINDL	P O BOX 65043	LUBBOCK	TX	79464	9414836208551277396213
BRANDI BLAIR RAINDL	2005 GULF AVE	MIDLAND	TX	79705	9414836208551277396374
BRECK MINERALS LP	P O BOX 911	BRECKENRIDGE	TX	76424	9414836208551277396473
BRENT MITCHELL RAINDL	3315 LANCELOT DRIVE	DALLAS	TX	75229	9414836208551277396688
BROOKS MINERAL TRUST UTA DTD 01-28-2015	6301 MEADOWCREST LANE	SACHSE	TX	75048	9414836208551277396770
BTA OIL PRODUCERS LLC	104 SOUTH PECOS STREET	MIDLAND	TX	79701	9414836208551277396879
BUCKHORN MINERALS IV, LP	1885 ST JAMES PLACE, SUITE 820	HOUSTON	TX	77056	9414836208551277396411
CAKI FAMILY LIMITED PTNS	5851 ROYAL CREST DRIVE	DALLAS	TX	75230	9414836208551277396534

CAMARIE OIL & GAS LLC	2502 CAMARIE	MIDLAND	TX	79705	9414836208551277396589
CARROCK RESOURCES LLC	P O BOX 670581	DALLAS	TX	75367	9414836208551277396664
CARL M NORDBRAND	713 BAYOU CREST DRIVE	DICKINSON	TX	77539	9414836208551277396800
CARNEGIE ENERGY LLC	P O BOX 12307	DALLAS	TX	75225	9414836208551277396916
CAROL GIBSON TRUST	P O BOX 701	ABILENE	TX	79604	9414836208551277396961
CESARINE KNIGHT SANCHEZ	7400 CRESTWAY RD #417	SAN ANTONIO	TX	78239	9414836208551277397227
CHARLES W SELTZER TRUST	214 WEST TEXAS AVENUE, SUITE 509	MIDLAND	TX	79701	9414836208551277396503
CHARLOTTE E WELLS AND KAIULANI L BUMPUS JOINT TENANTS	807 DEBUS DR	TAYLOR	TX	76574	9414836208551277396633
CHARLOTTE RENEE SCOTT LONGLEY	958 CABALLO DRIVE	ABILENE	TX	79602	9414836208551277396732
CHEVRON MIDCONTINENT LP	P.O. BOX 2100	HOUSTON	TX	77252	9414836208551277396848
CHEVRON USA INC	P.O. BOX 2100	HOUSTON	TX	77252	9414836208551277396947
CHIEF CAPITAL (O&G) II LLC	8111 WESTCHESTER, SUITE 900	DALLAS	TX	75225	9414836208551277397036
CHRISTINA M LANGHAM	6013 BOGARD	THE COLONY	TX	75056	9414836208551277397197
COLLINS PERMIAN LP	3824 CEDAR SPRINGS ROAD #414	DALLAS	TX	75219	9414836208551277397296
CRESS FAMILY HOLDINGS LLC	116 TOWNE VIEW CIRCLE	BOERNE	TX	78006	9414836208551277396510
CROWNROCK MINERALS LP	PO BOX 51933	MIDLAND	TX	79710	9414836208551277396596
GRUMP ENERGY INVESTMENTS IV LLC	P O BOX 50820	MIDLAND	TX	79710	9414836208551277396701
CYNTHIA RHODES TRUST	P O BOX 701	ABILENE	TX	79604	9414836208551277396794
DALE M RICHARDSON	5093 EAST HIGHWAY 82	GAINESVILLE	TX	76240	9414836208551277396831
DANA REESE	204 DOVE CREST DR	BOERNE	TX	78006	9414836208551277397005
DAVID L TOMLIN	P O BOX 2641	MIDLAND	TX	79702	9414836208551277397074
DDDF CO INC	P O BOX 554	MIDLAND	TX	79702	9414836208551277397098
DEBRA C LONDON-HAYES	#9 JEFFREY CIRCLE	WAKE VILLAGE	TX	75505	9414836208551277396527
DEBRA H ROLAND	P O BOX 456	GARDENDALE	TX	79758	9414836208551277396640
DEBRA KAY PRIMERA	P O BOX 143277	IRVING	TX	75014	9414836208551277396749
DORCHESTER MINERALS LP	3838 OAK LAWN AVE-STE 300	DALLAS	TX	75219	9414836208551277396855
EAR NOSE & THROAT ASSOCIATES PENSION PLAN TRUST	3344 OCEAN DRIVE	CORPUS CHRISTI	TX	78411	9414836208551277396923
EARL B GUITAR JR BYPASS TRUST	P O BOX 56429	HOUSTON	TX	77256	9414836208551277397029
ELAINE MIRELES	2806 AVENUE V	SNYDER	TX	79549	9414836208551277397180
ELAND ENERGY INC	16400 DALLAS PARKWAY, KNOLL TRAIL PLAZA SUITE 100	DALLAS	TX	75248	9414836208551277397340
ELK RANGE ROYALTIES LP	21110 FARRINGTON ST	DALLAS	TX	75207	9414836208551277396565
ELA LEONARD LP	8525 FERRIDALE SUITE 204	DALLAS	TX	75238	9414836208551277396619
ELIPSIS OIL & GAS INC	3500 MAPLE AVENUE STE 1080	DALLAS	TX	75219	9414836208551277396718
EMILY RODRIGUEZ	2170 MARSH POINT DR	FRISCO	TX	75034	9414836208551277396824
ENCANTO MINERALS LLC	2929 ALLEN PARKWAY, SUITE 200	HOUSTON	TX	77019	9414836208551277396954
ESTATE OF JOHN P BATES AND ANN L BATES LLC	P O BOX 8241	WACO	TX	76714	9414836208551277397104
EXCESS ENERGY LLC	2170 MARSH POINT DR	FRISCO	TX	75036	9414836208551277397159
EXXONMOBIL OIL CORPORATION	3000 STATE ST, P O BOX 93449	SOUTHLAKE	TX	76092	9414836208551277397258
FLATROCK ROYALTIES LLC	2277 SPRINGWOODS VILLAGE PKWY	SPRING	TX	77389	9414836208551277396657
FOUNDATTUON MINERALS II LLC	16607 COUNTY ROAD 1940	LUBBOCK	TX	79424	9414836208551277396763
	P O BOX 50820	MIDLAND	TX	79710	9414836208551277396886

GAHR ENERGY COMPANY	P O BOX 1889	MIDLAND	TX	79702	9414836208551277396985
GENE A ADAMS & WIFE BRENDA L ADAMS	4315 ALEDO OAKS CT	FORT WORTH	TX	76125	9414836208551277397081
GEORGE M O'BRIEN	P O BOX 1743	MIDLAND	TX	79702	9414836208551277397135
GEORGE MICHAEL SHOOK	10325 COLINA DR.	FORT WORTH	TX	76126	9414836208551277397241
GUITAR GALUSHA LP	P O BOX 1438	ABILENE	TX	79604	9414836208551277397289
GUITAR LAND & CATTLE CO LP	P O BOX 2213	ABILENE	TX	79604	9414836208551277396626
GUY P WITHERSPOON III	P O BOX 100403	FORT WORTH	TX	76185	9414836208551277396725
H GRADY PAYNE III	P O BOX 1585	COLLEYVILLE	TX	76034	9414836208551277396862
HADEN R HOLCOMB AND KAREN L HOLCOMB JT	2201 LOUIS TRAIL	WEATHERFORD	TX	76087	9414836208551277396992
HARLOW EASTON LLC	P O BOX 129	WOLFORTH	TX	79382	9414836208551277397173
HAROLD L HENSLEY JR & WIFE SANDRA HENSLEY	#8 LAKES DR	MIDLAND	TX	79705	9414836208551277397265
HMTK ROYALTY LLC	P O BOX 50688	MIDLAND	TX	79710	9414836208551277397395
HORNED FROG OIL & GAS LP	6500 WEST FREEWAY, STE 222	FORT WORTH	TX	76116	9414836208551277397456
IVORY OIL COMPANY LLC	6500 WEST FREEWAY, SUITE 222	FORT WORTH	TX	76116	9414836208551277396695
J M MINERAL & LAND COMPANY INC	P O BOX 1015	MIDLAND	TX	79702	9414836208551277396787
JACK N ROPER III	4538 CEDARBRUSH DRIVE	DALLAS	TX	75229	9414836208551277396909
JACK N ROPER JR	4538 CEDARBRUSH DR	DALLAS	TX	75229	9414836208551277397012
JACKS PEAK LLC	P O BOX 294928	KERRVILLE	TX	78029	9414836208551277397043
JAMES A COLLIER III	1101 PECAN HOLLOW TRAIL	MCKINNEY	TX	75070	9414836208551277397111
JAMES C WILLIAMS	743 N OAK STREET	KERMIT	TX	79745	9414836208551277397142
JAMES P RIGGS LIVING TRUST	P O BOX 33	FREDERICKSBURG	TX	78624	9414836208551277397234
JAMES W ESSMAN	1209 COUNTRY CLUB DR	MIDLAND	TX	79701	9414836208551277396893
JANIS CHAPEE YATES	1601 S SHEPHERD DR #122	HOUSTON	TX	77019	9414836208551277396978
JENNIFER L SLAVINSKAS	28954 BUCKING BULL	FAIR OAKS	TX	78015	9414836208551277397050
JENNIFER M TURNEY	6458 KIRKWOOD ROAD	FORT WORTH	TX	76116	9414836208551277397210
JIGCB ENERGY SERVICES LLC	23 APRLEHEAD ISLAND DR	HORSESHOE BAY	TX	78657	9414836208551277397226
JIGGUTAR LLC	1202 SYLVAN DRIVE	ABILENE	TX	79605	9414836208551277397470
JMA OIL PROPERTIES LTD	P O BOX 58	ABILENE	TX	79604	9414836208551277397586
JOHN GUITAR	P O BOX 1121	CLYDE	TX	79510	9414836208551277397685
JOHN GUITAR WITHERSPOON JR	7404 LEMONWOOD LANE	FORT WORTH	TX	76133	9414836208551277396930
JOYCE CHAPEE WHITE	304 KICKAPOO LANE	GEORGETOWN	TX	78633	9414836208551277397067
JOYCE WEHMEYER	117 BRADSHAW DRIVE	AUSTIN	TX	78737	9414836208551277397128
JPH HOLDINGS LP	4400 ARCADY	DALLAS	TX	75205	9414836208551277397203
IUAN MARIA RIOS	2603 STRATFORD DR	AUSTIN	TX	78746	9414836208551277397302
KARIN LANETTE WILLIAMS	P O BOX 52	IRA	TX	79527	9414836208551277397418
KATHLEEN A PHILLIPS	P O BOX 11313	MIDLAND	TX	79702	9414836208551277397548
KATHY GADDY ROBBINS	PO BOX 10428	MIDLAND	TX	79702	9414836208551277397654
KCK ENERGY LLC	20405 STATE HIGHWAY 249, STE 820	HOUSTON	TX	77070	9414836208551277397166
KCK RESOURCES, INC.	5600 FENWAY	MIDLAND	TX	79707	9414836208551277397166
KEVIN K LEONARD CHILDS TRUST	P O BOX 50688	MIDLAND	TX	79710	9414836208551277397371
KIRBY RANDALL SCOTT	745 BAXTER TRAIL	FATE	TX	75087	9414836208551277397487
LAURA PATRICIA ROPER EGEMEYER 1992 TRUST	4735 ELSBY AVE	DALLAS	TX	75209	9414836208551277397593
LAUREN LEWIS	1501 PAISLEY DRIVE	ARLINGTON	TX	76015	9414836208551277397708

LAWRENCE W ROBINETTE & WIFE SALLY ROBINETTE	9912 SILVER ROCK WAY	DENTON	TX	76207	9414836208551277397760
LEONARD LEGACY ROYALTY LLC	P O BOX 3422	MIDLAND	TX	79702	9414836208551277397890
LER WILLIAMS	P O BOX 303424	AUSTIN	TX	78703	9414836208551277397333
LESLIE GUITAR NICHOLS	P O BOX 327	BIG SPRING	TX	79721	9414836208551277397388
LESLIE KAY DUFF	1628 WYOMING	SAN ANGELO	TX	76904	9414836208551277397463
LINDA S NORDSTRAND	634 SHOREWOOD DRIVE	TAYLOR LAKE VILLAGE	TX	77586	9414836208551277397524
LUNAR PETROLEUM LLC	1020 E. LEVEE STREET, SUITE 130	DALLAS	TX	75207	9414836208551277397616
LUTHER MONROE FISHER	3414 EAST DRIVE	TEMPLE	TX	76502	9414836208551277397739
M BRAD BENNETT & WIFE LINDA M BENNETT	P O BOX 51510	MIDLAND	TX	79710	9414836208551277397869
MAGNOLIA ROYALTY COMPANY INC	P O BOX 10703	MIDLAND	TX	79702	9414836208551277397975
MARATHON OIL PERMIAN LLC	P O BOX 2069	HOUSTON	TX	77252	9414836208551277397319
MARGIE GROSSENBACHER ALLEN	3019 BRAEMAR ST	WACO	TX	76710	9414836208551277397425
MARILYN INZER	10207 TIMBER TRAIL DR	DALLAS	TX	75229	9414836208551277397517
MARKE EXPLORATION INC	PO BOX 470748	FORT WORTH	TX	76147	9414836208551277397647
MARTA V YBARRA	1249 PORTLAND AVE	ABILENE	TX	79605	9414836208551277397777
MARY QUEEN BRYAN	3665 W 12TH STREET	ODESSA	TX	79763	9414836208551277397838
MICALISTER ROYALTIES LLC	P O BOX 1488	MIDLAND	TX	79702	9414836208551277398002
MCGEE MINERAL MANAGEMENT LP	569 MEDINA DRIVE	HIGHLAND VILLAGE	TX	75077	9414836208551277398101
MELISSA GRAY MCGEE	6 WOODHAVEN CIRCLE	ABILENE	TX	79605	9414836208551277397357
MICHAEL D MANSFIELD	5949 BURGANDY ST	PLANO	TX	75093	9414836208551277397401
MICHAEL KYLE LEONARD CHILD'S TRUST	P O BOX 2625	EAGLE PASS	TX	78853	9414836208551277397500
MIKE R BULLOCK	147 ROCKINGSHIRE COURT	SPRING BRANCH	TX	76070	9414836208551277397609
MITT R ROGERS	5058 SCARLET OAK LANE	SAN ANGELO	TX	76904	9414836208551277397692
MOLLY M AZOPARDI	P O BOX 620	WIMBERLY	TX	78676	9414836208551277397746
MOLLY M AZOPARDI CHILD'S TRUST	P O BOX 620	WIMBERLEY	TX	78676	9414836208551277397746
MOMENTUM MINERALS OPERATING LP	750 TOWN & COUNTRY BLVD, SUITE 420	HOUSTON	TX	77024	9414836208551277397951
MONTICELLO MINERALS LLC	4128 BRYNN MAWR DRIVE	DALLAS	TX	75225	9414836208551277397364
MORGAN CAPITAL GROUP INC	P O BOX 1385	BROWNWOOD	TX	76804	9414836208551277397494
MRC PERMIAN COMPANY	ONE LINCOLN CENTRE, 5400 LBJ FREEWAY STE 1500	DALLAS	TX	75240	9414836208551277397562
MRC PERMIAN LKE COMPANY LLC	ONE LINCOLN CENTER, 5400 LBJ FREEWAY STE 1500	DALLAS	TX	75240	9414836208551277397678
MSH FAMILY REAL ESTATE PARTNERSHIP II LLC	4143 MAPLE AVE, SUITE 500	DALLAS	TX	75219	9414836208551277397753
MVDR RESOURCES LLC	3811 TURKLE CREEK BLVD STE 1100	DALLAS	TX	75219	9414836208551277397845
NATHAN ARNOLD SCOTT	5363 MEADOW DRIVE	ABILENE	TX	79606	9414836208551277397982
NEW MEXICO BOYS & GIRLS RANCH FOUNDATION INC, ACCT #72814100	P O BOX 40909	AUSTIN	TX	78704	9414836208551277398057
NOBLE E VARBRRO	19635 PITCHSTONE DRIVE	TOMBALL	TX	77377	9414836208551277397449
NOBLE ENERGY INC	1400 SMITH STREET	HOUSTON	TX	77002	9414836208551277397579
NORDSTRAND ENGINEERING INC	3229 D'AMICO ST - SUITE 200	HOUSTON	TX	77019	9414836208551277397661
OAK VALLEY MINERAL & LAND LP	P O BOX 50820	MIDLAND	TX	79710	9414836208551277397784
OLL ENERGY LLC	2540 KING ARTHUR BLVD, STE 209K	LEWISVILLE	TX	75056	9414836208551277397883
OTSS INVESTMENTS	6500 WEST FREEWAY, STE 222	FORT WORTH	TX	76116	9414836208551277397944
OXY USA INC	P O BOX 27570	HOUSTON	TX	77227	9414836208551277398040

PATRICK LEONARD CHILDS TRUST	P O BOX 700633	SAN ANTONIO	TX	78270	9414836208551277398132
PAUL D QUEEN	138 NATCHES TRUCE	COPELL	TX	75019	9414836208551277397432
PAULA KAY SABRSULA	1513 COLBY LANE	CEDAR PARK	TX	78613	9414836208551277397555
PECOS BEND ROYALTIES LLLP	P O BOX 2802	MIDLAND	TX	79702	9414836208551277397630
PEGASUS RESOURCES II LLC	P O BOX 470698	FORT WORTH	TX	76147	9414836208551277397791
PETROLIMA LLC	PO BOX 1113	MIDLAND	TX	79702	9414836208551277397821
PHOENIX FOUR LLC	4455 CAMP BOWIE BLVD, SUITE 11498	FORT WORTH	TX	76107	9414836208551277397999
POLARIS PRODUCTION CORPORATION	P O BOX 158	LINGLEVILLE	TX	76461	9414836208551277398033
POLK LAND & MINERALS LP	P O BOX 701	ABILENE	TX	79604	9414836208551277398118
PONTEM ENERGY PARTNERS I LP	RICHLAND CORP. CENTRE, STE 825, 9001 AIRPORT FREEW/	NORTH RICHLAND HILLS	TX	76180	9414836208551277397531
PRESSLEY HUDSON GUITAR	P O BOX 5383	ABILENE	TX	79608	9414836208551277397623
PRESSLEY HUDSON GUITAR, LP	P O BOX 5383	ABILENE	TX	79608	9414836208551277397715
R & R ROYALTY LTD	500 N. SHORELINE, STE 501	CORPUS CHRISTI	TX	78401	9414836208551277397814
RAINTREE LLC	1109 TELLURIDE CT.	MIDLAND	TX	79705	9414836208551277397968
RANCHITO AD4 LP	2100 ROSS AVENUE, SUITE 1870, LB-9	DALLAS	TX	75201	9414836208551277398095
RAYLENE TAYLOR	P O BOX 95	CARLSBAD	TX	76934	9414836208551277398125
REALIZA DEL SPEAR LP	P O BOX 1684	MIDLAND	TX	79702	9414836208551277398255
RED-HEN ENERGY I PARTNERS LP	5949 SHERRY LANE STE STE 1175	DALLAS	TX	75225	9414836208551277397722
REK OIL & GAS LLC	4455 CAMP BOWIE BLVD, SUITE 114 #11	FORT WORTH	TX	76107	9414836208551277397852
REMORA OPERATING LLC	1900 ST. JAMES PL, STE 800	HOUSTON	TX	77056	9414836208551277397937
REYNOLDS NATURAL RESOURCES LP	420 THEOCKMORTON ST - STE 750	FORT WORTH	TX	76102	9414836208551277398019
RHEINER HOLDINGS LLC	PO BOX 980552	HOUSTON	TX	77098	9414836208551277398194
RICHARD LEE LONDON	205 PINE FOREST	TEXARKANA	TX	75501	9414836208551277398224
RICHARD M GADDY	1409 RANCHO VISTA DR	MCKINNEY	TX	75012	9414836208551277398316
RICKY D RAINDL	P O BOX 142454	IRVING	TX	75014	9414836208551277398385
RIVERBEND OIL & GAS IX INVESTMENTS LLC	TWO ALLEN CENTER, 1200 SMITH STREET, STE 1950	HOUSTON	TX	77002	9414836208551277397807
R-N LIMITED PARTNERSHIP	705 BELMEADE LN	FLOWER MOUND	TX	75028	9414836208551277397906
ROBERT B COLEMAN	P O BOX 501	MIDLAND	TX	79702	9414836208551277397920
ROBERT MITCHELL RAINDL	P O BOX 833	TAHOKA	TX	79373	9414836208551277398064
ROCKWOOD ENERGY LP	4450 OAK PARK LANE STE 101897	FORT WORTH	TX	76109	9414836208551277398156
RODEN OIL COMPANY	P O BOX 10909	MIDLAND	TX	79702	9414836208551277398248
RODNEY LYNN REESE	204 DOVE CREST DRIVE	BOERNE	TX	78006	9414836208551277398323
ROMAN A GONZALEZ & CHERI R GONZALEZ	4735 COUNTRY CLUB DR	MIDLAND	TX	79703	9414836208551277398439
ROSS I GANN	P O BOX 3	MONAHANS	TX	79756	9414836208551277397913
RUSSELL T RUDY ENERGY LLC	320 WESTCOTT ST	HOUSTON	TX	77007	9414836208551277398026
S J MANSFIELD III	412 SHADOW BEND DR	RICHARDSON	TX	75081	9414836208551277398149
SALLY GUITAR	10 WOODHAVEN CIRCLE	ABILENE	TX	79605	9414836208551277398354
SANTA ELENA MINERALS LP	P O BOX 470788	FORT WORTH	TX	76147	9414836208551277398354
SAPPHIRE ROYALTIES INC	P O BOX 682	MIDLAND	TX	79702	9414836208551277398392
SCHANTI CORP	5990 HALEY WAY	FRISCO	TX	75034	9414836208551277398446
SEAMI LLC	18011 WHISPERING GABLES LANE	DALLAS	TX	75287	9414836208551277398538
SHANNON C LEONARD CHILDS TR	1018 SUNSET CANYON DR N	DRIPPING SPRING	TX	78620	9414836208551277398552
SHAUNA SELTZER REDWINE TRUST	4416 SAN CARLOS ST	DALLAS	TX	75205	9414836208551277398613

SHOW GOAT CAPITAL, L.P.	P O BOX 50576	AUSTIN	TX	78763	9414836208551277398675
SIERRA ENERGY ROYALTIES II LLC	16400 DALLAS PARKWAY STE 400	DALLAS	TX	75248	9414836208551277398699
SILVER SPUR RESOURCES LLC	PO BOX 92761	SOUTHLAKE	TX	76092	9414836208551277398743
SKV LLC	P O BOX 471489	FORT WORTH	TX	76147	9414836208551277398804
SMP SIDECAR TITAN MINERAL HOLDINGS LP	4143 MAPLE AVE, SUITE 500	DALLAS	TX	75219	9414836208551277398842
SMP TITAN FLEX LP	4143 MAPLE AVE, SUITE 500	DALLAS	TX	75219	9414836208551277398866
SMP TITAN MINERAL HOLDINGS LP	4143 MAPLE AVE, SUITE 500	DALLAS	TX	75219	9414836208551277398808
SONDRA ELLYSON	536 ROSE BRANCH DRIVE	LA VERNIA	TX	78121	9414836208551277398187
SONYA BARRON	207 DODDS CREEK DRIVE	GATESVILLE	TX	76528	9414836208551277398286
SOUTHWEST ROYALTIES INC	P O BOX 53570	MIDLAND	TX	79710	9414836208551277398361
SP JOHNSON IV	3220 PLUMB	HOUSTON	TX	77005	9414836208551277398408
SPRINGBOK ENERGY PARTNERS II LLC	777 TAYLOR STREET, SUITE 810	FT WORTH	TX	76102	9414836208551277398477
SPRINGBOK ENERGY PARTNERS LLC	777 TAYLOR STREET, SUITE 810	FT WORTH	TX	76102	9414836208551277398507
SPRINGWOOD MINERALS 6, LP	P O BOX 3579	MIDLAND	TX	79702	9414836208551277398583
SRR PERMIAN LLC	1701 RIVER RUN, STE 902	FORT WORTH	TX	76107	9414836208551277398637
STEPHANIE MARIE SCOTT HARPER	1309 RIATA ROAD	ABILENE	TX	79602	9414836208551277398682
STEPHEN J SHOOK	4204 TALLOWOOD DR	AUSTIN	TX	78731	9414836208551277398729
STEVEN WILLIAMS	100 RUSHY CREEK CIRCLE	RED OAK	TX	75154	9414836208551277398767
T L REES & MARGARET D REES	P O BOX 1007	COLORADO CITY	TX	79512	9414836208551277398774
T L REES SEPARATE PROPERTY	P O BOX 1007	COLORADO CITY	TX	79512	9414836208551277398828
TD MINERALS LLC	8111 WESTCHESTER DR, STE 900	DALLAS	TX	75225	9414836208551277398873
TERRY LYN SHOOK	7316 SENECA FALLS LOOP	AUSTIN	TX	78739	9414836208551277398897
THE BEVERIDGE COMPANY	4305 N GARFIELD, STE 261	MIDLAND	TX	79705	9414836208551277398871
THE DON AND RUTH JAMES TRUST DTD 10/7/2008	1513 COUNTY ROAD 132A	KINGSLAND	TX	78639	94148362085512773988200
THE WHITTEN G WITHERSPOON FAMILY TRUST	7524 PEAR TREE LANE	FORT WORTH	TX	76133	94148362085512773988279
THUNDER MOON RESOURCES LLC	6440 N CENTRAL EXPRESSWAY, SUITE 804	DALLAS	TX	75206	94148362085512773988347
TIDES OUT PETRO LLC	P O BOX 158	LINGLEVILLE	TX	76461	94148362085512773988415
TOMMY L FORT	4914 ROYAL OAK COURT	SAN ANGELO	TX	76904	94148362085512773988453
TRABAJO DEL SPEAR LP	P O BOX 1684	MIDLAND	TX	79702	94148362085512773988491
TRUCHAS PEAKS LLC	6 DESTA DRIVE STE 4325	MIDLAND	TX	79705	94148362085512773988569
TTXMOO, LLC	214 W TEXAS AVE, SUITE 807	MIDLAND	TX	79701	94148362085512773988606
TULAROSA MINERAL COMPANY LLC	P O BOX 471349	FORT WORTH	TX	76147	94148362085512773988668
TULSA ENERGY LLC	PO BOX 12100	DALLAS	TX	75225	94148362085512773988712
TUNDRA AD3 LP	2100 ROSS AVE, SUITE 1870, LB-9	DALLAS	TX	75201	94148362085512773988750
UNA OREJA LLC	6500 WEST FREEWAY, STE 222	FORT WORTH	TX	76116	94148362085512773988798
UNIVERSITY OF TEXAS SYSTEM, FBO SOUTHWESTERN MEDICAL SCHOOL AT DALLAS, BOARD OF REGENTS	P O BOX 551	MIDLAND	TX	79702	94148362085512773988811
UNIVERSITY OF TEXAS SYSTEM, DOROTHY LEE FUND, FBO SOUTHWESTERN MEDICAL SCHOOL OF DALLAS	P O BOX 551	MIDLAND	TX	79702	94148362085512773988859
VIVIAN Q HAMILTON	13841 TANGLE AIRE POINT	AMARILLO	TX	79118	9414836208551277398910
WALLACE FAMILY PARTNERSHIP LP	508 W WALL ST SUITE 1200	MIDLAND	TX	79701	94148362085512773989170

WALTER E GRANBERRY JR	4811 - 14TH STREET	LUBBOCK	TX	79416	9414836208551277398217
WATTS PROPERTIES LLC	1221 GRUENE ESTATE	NEW BRAUNFELS	TX	78130	9414836208551277398309
WAYNE A BISSETT WHOSE WIFE IS LAURA BISSETT	P O BOX 2101	MIDLAND	TX	79702	9414836208551277398378
WEATHERVANE MANAGEMENT LP	4610 8TH STREET	LUBBOCK	TX	79416	9414836208551277398460
WELLBARK RESOURCES LLC	P O BOX 1987	FRISCO	TX	75034	9414836208551277398521
WENDE WITHERSPOON MORGAN	7627 GUINEVERE DRIVE	SUGAR LAND	TX	77479	9414836208551277398545
WENDELL W IVERSON JR	P O BOX 205	MIDLAND	TX	79702	9414836208551277398620
WESTWAY PETRO, A TEXAS JOINT VENTURE	13917 CHARCOAL LANE	FARMERS BRANCH	TX	75234	9414836208551277398651
WHITTEN GUITAR WITHERSPOON	7524 PEAR TREE LANE	FORT WORTH	TX	76133	9414836208551277398705
WILLIAM S NOELKE	3406 SILVER SPUR DR	SAN ANGELO	TX	76904	9414836208551277398736
WILLIAMS LIVING TRUST DTD 3/18/2008	P O BOX 122	FARMERSVILLE	TX	75442	9414836208551277398781
WOOD AND WIRE MANAGEMENT LP	P O BOX 341342	AUSTIN	TX	78734	9414836208551277398835
WOODS DICKENS RANCH LP	4610 8TH STREET	LUBBOCK	TX	79416	9414836208551277398860
WORD B WILSON INVESTMENTS LP	P O BOX 51790	MIDLAND	TX	79710	9414836208551277398903
XTO HOLDINGS LLC, LAND ADMIN DEPT LOC 116	22777 SPRINGWOOD VILLAGE PKWY	SPRING	TX	77389	9414836208551277398927
BECKMILL INVESTMENTS INC	108 DEER DRIVE	LEXINGTON	VA	24450	9414836208551277398163
EASLEY L MOORE JR	104 JOHNSTONE ST	LEXINGTON	VA	24450	9414836208551277398262
PBI LLC	893 KING WILLIAM DRIVE	CHARLOTTESVILLE	VA	22901	9414836208551277398330
BARBARA LEE BACKMAN INC	203 N WASHINGTON STREET, STE 200-2	SPOKANE	WA	99201	9414836208551277398422
JAMES S WITT	P O BOX 2121	YELM	WA	98597	9414836208551277398484
MELISSA G MCCARTHY	48073 LARRABEE	EDWALL	WA	99008	9414836208551277398514
SHARON GUITAR ELLIS LLC	P O BOX 469	VALLEYFORD	WA	99036	9414836208551277398576
TERRI MARIE EVANS	P O BOX 81	MCKENNA	WA	98558	9414836208551277398590
SWEARINGEN LLC	1309 COFFEEBEN AVE, STE 1200	SHERIDAN	WY	82801	9414836208551277398644

**STATE OF NEW MEXICO
ENERGY, MINERALS AND NATURAL RESOURCES DEPARTMENT
OIL CONSERVATION DIVISION**

**APPLICATION FOR SURFACE COMMINGLING
SUBMITTED BY MEWBOURNE OIL COMPANY**

ORDER NO. CTB-1228

ORDER

The Director of the New Mexico Oil Conservation Division (“OCD”), having considered the application and the recommendation of the OCD Engineering Bureau, issues the following Order.

FINDINGS OF FACT

1. Mewbourne Oil Company (“Applicant”) submitted a complete application to surface commingle the oil and gas production from the pools and leases described in Exhibit A (“Application”).
2. Applicant included a complete list of the wells currently dedicated to each pool and lease.
3. Applicant proposed a method to allocate the oil and gas production to the pools, leases, and wells to be commingled.
4. Applicant stated that it sought authorization to surface commingle and off-lease measure, as applicable, oil and gas production from wells which have not yet been approved to be drilled, but will produce from a pool and lease as described in Exhibit A.
5. Applicant provided notice of the Application to all persons owning an interest in the oil and gas production to be commingled, including the owners of royalty and overriding royalty interests, regardless of whether they have a right or option to take their interests in kind, and those persons either submitted a written waiver or did not file an objection to the Application.
6. Applicant provided notice of the Application to the Bureau of Land Management (“BLM”) or New Mexico State Land Office (“NMSLO”), as applicable.

CONCLUSIONS OF LAW

7. OCD has jurisdiction to issue this Order pursuant to the Oil and Gas Act, NMSA 1978, §§ 70-2-6, 70-2-11, 70-2-12, 70-2-16, and 70-2-17, 19.15.12. NMAC, and 19.15.23. NMAC.
8. Applicant satisfied the notice requirements for the Application in accordance with 19.15.12.10(A)(2) NMAC, 19.15.12.10(C)(4)(c) NMAC, and 19.15.12.10(C)(4)(e) NMAC, as applicable.
9. Applicant satisfied the notice requirements for the Application in accordance with 19.15.23.9(A)(5) NMAC and 19.15.23.9(A)(6) NMAC, as applicable.

10. Applicant's proposed method of allocation, as modified herein, complies with 19.15.12.10(B)(1) NMAC or 19.15.12.10(C)(1) NMAC, as applicable.
11. Commingling of oil and gas production from state, federal, or tribal leases shall not commence until approved by the BLM or NMSLO, as applicable, in accordance with 19.15.12.10(B)(3) NMAC and 19.15.12.10(C)(4)(h) NMAC.
12. By granting the Application with the conditions specified below, this Order prevents waste and protects correlative rights, public health, and the environment.

ORDER

1. Applicant is authorized to surface commingle oil and gas production from the pools and leases as described in Exhibit A.

Applicant is authorized to surface commingle oil and gas production from the wells included in Exhibit A provided that they produce from a pool and lease described in Exhibit A.

Applicant is authorized to store and measure oil and gas production off-lease, as applicable, from the pools and leases as described in Exhibit A at a central tank battery or gas title transfer meter described in Exhibit A.

Applicant is authorized to surface commingle oil and gas production from wells not included in Exhibit A but that produce from a pool and lease as described in Exhibit A.

Applicant is authorized to store and measure oil and gas production off-lease, as applicable, from wells not included in Exhibit A but that produce from a pool and lease as described in Exhibit A at a central tank battery or gas title transfer meter described in Exhibit A.

2. The allocation of oil and gas production to wells not included in Exhibit A but that produce from a pool and lease as described in Exhibit A shall be determined in the same manner as to wells identified in Exhibit A that produce from that pool and lease, provided that if more than one allocation method is being used or if there are no wells identified in Exhibit A that produce from the pool and lease, then allocation of oil and gas production to each well not included in Exhibit A shall be determined by OCD prior to commingling production from it with the production from another well.
3. The oil and gas production for each well identified in Exhibit A shall be separated and metered prior to commingling it with production from another well.
4. If Applicant recovers oil or gas production from produced water prior to Applicant injecting it or transferring custody of it, then that production shall be allocated to each well in the proportion that it contributed to the total produced water.

5. If Applicant recovers gas production using a vapor recovery unit (VRU), then that gas production shall be allocated to each well in the proportion that it contributed to the total oil production.
6. Applicant shall measure and market the commingled oil at a central tank battery described in Exhibit A in accordance with this Order and 19.15.18.15 NMAC or 19.15.23.8 NMAC.
7. Applicant shall measure and market the commingled gas at a well pad, central delivery point, central tank battery, or gas title transfer meter described in Exhibit A in accordance with this Order and 19.15.19.9 NMAC, provided however that if the gas is vented or flared, and regardless of the reason or authorization pursuant to 19.15.28.8(B) NMAC for such venting or flaring, Applicant shall measure or estimate the gas in accordance with 19.15.28.8(E) NMAC.
8. Applicant shall calibrate the meters used to measure or allocate oil and gas production in accordance with 19.15.12.10(C)(2) NMAC.
9. Applicant shall install and utilize vessels that are appropriately designed to ensure sufficient separation of the fluids and to accurately measure oil and gas production.
10. If the commingling of oil and gas production from any pool, lease, or well reduces the value of the commingled oil and gas production to less than if it had remained segregated, no later than sixty (60) days after the decrease in value has occurred Applicant shall submit a new surface commingling application to OCD to amend this Order to remove the pool, lease, or well whose oil and gas production caused the decrease in value. If Applicant fails to submit a new application, this Order shall terminate on the following day, and if OCD denies the application, this Order shall terminate on the date of such action.
11. If a well is not included in Exhibit A but produces from a pool and lease as described in Exhibit A, then Applicant shall submit Forms C-102 and C-103 to the OCD Engineering Bureau after the well has been approved to be drilled and prior to off-lease measuring or commingling oil or gas production from it with the production from another well. The Form C-103 shall reference this Order and identify the well, proposed method to determine the allocation of oil and gas production to it, and the location(s) that commingling of its production will occur.
12. Applicant shall not commence commingling oil or gas production from state, federal, or tribal leases until approved by the BLM or NMSLO, as applicable.
13. If OCD determines that Applicant has failed to comply with any provision of this Order, OCD may take any action authorized by the Oil and Gas Act or the New Mexico Administrative Code (NMAC).

14. OCD retains jurisdiction of this matter and reserves the right to modify or revoke this Order as it deems necessary.

**STATE OF NEW MEXICO
OIL CONSERVATION DIVISION**

Albert Chang

**ALBERT C. S. CHANG
DIRECTOR**

DATE: 5/8/26

State of New Mexico
Energy, Minerals and Natural Resources Department

Exhibit A

Order: CTB-1228

Operator: Mewbourne Oil Company (14744)

Central Tank Battery: Yardbirds 27-3 Battery #1

Central Tank Battery Location: UL D, Section 27, Township 23 South, Range 28 East

Gas Title Transfer Meter Location: UL D, Section 27, Township 23 South, Range 28 East

Pools

Pool Name	Pool Code
PURPLE SAGE;WOLFCAMP (GAS)	98220

Leases as defined in 19.15.12.7(C) NMAC

Lease	UL or Q/Q	S-T-R
FEE Lease "A"	E2	21-23S-28E
FEE Lease "B"	E2	28-23S-28E
FEE Lease "C"	W2	27-23S-28E
FEE Lease "D"	W2	27-23S-28E
FEE Lease "D"	W2	34-23S-28E
FEE Lease "D"	W2	03-24S-28E
FEE Lease "E"	ALL	27-23S-28E
FEE Lease "E"	ALL	34-23S-28E
FEE Lease "E"	ALL	03-24S-28E
FEE Lease "F"	E2	27-23S-28E
FEE Lease "F"	E2	34-23S-28E
FEE Lease "F"	E2	03-24S-28E

Wells

Well API	Well Name	UL or Q/Q	S-T-R	Pool
30-015-43495	LOVING TOWNSITE 21 W0PA FEE #002H	E2	21-23S-28E	98220
30-015-43496	LOVING TOWNSITE 21 W2PA FEE #001H	E2	21-23S-28E	98220
30-015-44285	NIGHT RANGER 28 W0AP FEE #002H	E2	28-23S-28E	98220
30-015-44286	NIGHT RANGER 28 W2AP FEE #001H	E2	28-23S-28E	98220
30-015-42695	SPEEDWAGON 27 W2DM FEE #001H	W2	27-23S-28E	98220
30-015-55113	YARDBIRDS 27 3 FEE #711H	W2	27-23S-28E	98220
30-015-55113	YARDBIRDS 27 3 FEE #711H	W2	34-23S-28E	98220
30-015-55113	YARDBIRDS 27 3 FEE #711H	W2	03-24S-28E	98220
30-015-55115	YARDBIRDS 27 3 FEE #713H	W2	27-23S-28E	98220
30-015-55115	YARDBIRDS 27 3 FEE #713H	W2	34-23S-28E	98220
30-015-55115	YARDBIRDS 27 3 FEE #713H	W2	03-24S-28E	98220

30-015-55116	YARDBIRDS 27 3 FEE #715H	ALL	27-23S-28E	
		ALL	34-23S-28E	98220
		ALL	03-24S-28E	
<hr/>				
30-015-55125	YARDBIRDS 27 3 FEE #716H	E2	27-23S-28E	
		E2	34-23S-28E	98220
		E2	03-24S-28E	

Sante Fe Main Office
Phone: (505) 476-3441

General Information
Phone: (505) 629-6116

Online Phone Directory
<https://www.emnrd.nm.gov/ocd/contact-us>

State of New Mexico
Energy, Minerals and Natural Resources
Oil Conservation Division
1220 S. St Francis Dr.
Santa Fe, NM 87505

CONDITIONS

Action 422494

CONDITIONS

Operator: MEWBOURNE OIL CO P.O. Box 5270 Hobbs, NM 88240	OGRID: 14744
	Action Number: 422494
	Action Type: [C-107] Surface Commingle or Off-Lease (C-107B)

CONDITIONS

Created By	Condition	Condition Date
sarah.clelland	Please review the content of the order to ensure you are familiar with the authorities granted and any conditions of approval. If you have any questions regarding this matter, please email us at OCD.Engineer@emnrd.nm.gov .	5/11/2026