

**STATE OF NEW MEXICO
ENERGY, MINERALS, AND NATURAL RESOURCES DEPARTMENT
OIL CONSERVATION DIVISION**

**APPLICATION OF XTO PERMIAN OPERATING,
LLC FOR APPROVAL OF NON-STANDARD
HORIZONTAL SPACING UNIT, EDDY COUNTY,
NEW MEXICO**

CASE NO. 25231

NOTICE OF AMENDED EXHIBIT PACKET

XTO Permian Operating, LLC ("XTO"), provides notice that it is amending the evidentiary record in this case, pursuant to a request from Oil Conservation Division Technical Staff member, Mr. Dean McClure, at the April 10, 2025, OCD hearing, with respect to the following application materials:

- Providing an amended Exhibit B-1 with updated C-102s reflecting the proposed horizontal spacing unit reflecting acreage in Section 23, and for each of the pools as instructed at the April 10, 2025, hearing.

Respectfully submitted,

BEATTY & WOZNIAK, P.C.

By: 

Miguel A. Suazo

James P. Parrot

Jacob L. Everhart

Beatty & Wozniak, P.C.

500 Don Gaspar Ave.,

Santa Fe, NM 87505

(505) 946-2090

Fax: 800-886-6566

msuazo@bwenergylaw.com

jparrot@bwenergylaw.com

jeverhart@bwenergylaw.com

Attorneys for XTO Permian Operating, LLC

**BEFORE THE OIL CONSERVATION DIVISION
EXAMINER HEARING APRIL 10, 2025**

Case No. 25231

Poker Lake 23 DTD Fed State Com #151H
Poker Lake 23 DTD Fed State Com #152H
Poker Lake 23 DTD Fed State Com #176H
Poker Lake 23 DTD Fed State Com #177H
Poker Lake 23 DTD Fed State Com #178H
Poker Lake 23 DTD Fed State Com #179H

Eddy County, New Mexico



**STATE OF NEW MEXICO
ENERGY, MINERALS, AND NATURAL RESOURCES DEPARTMENT
OIL CONSERVATION DIVISION**

**APPLICATION OF XTO PERMIAN OPERATING,
LLC FOR APPROVAL OF NON-STANDARD
HORIZONTAL SPACING UNIT, EDDY COUNTY,
NEW MEXICO**

CASE NO. 25231

**HEARING PACKAGE
TABLE OF CONTENTS**

XTO Exhibit A: Filed Amended Application & Proposed Notice of Hearing

XTO Exhibit B: Prepared by Greg Davis, Senior Landman

- XTO Exhibit B-1: C-102(s)
- XTO Exhibit B-2: Depiction of Spacing Unit
- XTO Exhibit B-3: Map of Non-Standard Spacing Unit

XTO Exhibit C: Prepared by Jennifer L. McHarge, Senior Geologist

- XTO Exhibit C-1: Resume of Jennifer L. McHarge
- XTO Exhibit C-2: Base Map and Wolfcamp Structure Map
- XTO Exhibit C-3: Stratigraphic and Cross Section Locator Maps
- XTO Exhibit C-4: Gunbarell Diagram

XTO Exhibit D: Notice Affidavit

- Notice Letter to Interested Parties
- Certified Mail Receipts

XTO Exhibit E: Affidavit of Publication

**STATE OF NEW MEXICO
ENERGY, MINERALS, AND NATURAL RESOURCES DEPARTMENT
OIL CONSERVATION DIVISION**

**AMENDED APPLICATION OF XTO
PERMIAN OPERATING, LLC FOR
APPROVAL OF NON-STANDARD
HORIZONTAL SPACING UNIT, EDDY
COUNTY, NEW MEXICO**

CASE NO. 25231

AMENDED APPLICATION

XTO Permian Operating, LLC, OGRID No. 5380 (“XTO” or “Applicant”), through its undersigned attorneys, hereby files this Amended Application with the Oil Conservation Division (“Division”) pursuant to the provisions of NMSA 1978, § 70-2-17 and 19.15.16.15(B)(5) NMAC, for an order (1) approving a 2,080.66-acre, more or less, non-standard horizontal spacing unit (“HSU”) composed of all of Sections 2, 11, 14, and the N/2 N/2 of Section 23, Township 24 South, Range 30 East, N.M.P.M. (the “Application Lands”).

In support of its Application, XTO states the following:

1. XTO is a working interest owner in the subject lands and has a right to drill wells thereon.
2. XTO seeks to dedicate all of the Application Lands to form a 2,080.66-acre, more or less, HSU.
3. XTO seeks to dedicate the above-referenced HSU to the following proposed wells:
 - A. **Poker Lake Unit 23 DTD Fed State Com #151H** (API No. 30-15-54820), which is a gas well that will be horizontally drilled from a surface location in the SW/4 SW/4 (Unit M) of Section 14, Township 24 South, Range 30 East, to a bottom hole location in the Purple Sage, Wolfcamp Formation in the NW/4 NW/4 (Unit D) of Section 2, Township 24 South, Range 30 East;

B. **Poker Lake Unit 23 DTD Fed State Com #152H** (API No. 30-15-54416), which is a gas well that will be horizontally drilled from a surface location in the SW/4 SW/4 (Unit M) of Section 14, Township 24 South, Range 30 East, to a bottom hole location in the Purple Sage, Wolfcamp Formation in the NE/4 NW/4 (Unit C) of Section 2, Township 24 South, Range 30 East;

C. **Poker Lake Unit 23 DTD Fed State Com #176H** (API No. 30-15-49652), which is a gas well that will be horizontally drilled from a surface location in the NE/4 NW/4 (Unit C) of Section 23, Township 24 South, Range 30 East, to a bottom hole location in the Purple Sage, Wolfcamp Formation in the NE/4 NW/4 (Unit C) of Section 2, Township 24 South, Range 30 East;

D. **Poker Lake Unit 23 DTD Fed State Com #177H** (API No. 30-15-54422), which is a gas well that will be horizontally drilled from a surface location in the SE/4 SE/4 (Unit P) of Section 14, Township 24 South, Range 30 East, to a bottom hole location in the Purple Sage, Wolfcamp Formation in the NE/4 NE/4 (Unit A) of Section 2, Township 24 South, Range 30 East;

E. **Poker Lake Unit 23 DTD Fed State Com #178H** (API No. 30-15-54423), which is a gas well that will be horizontally drilled from a surface location in the SE/4 SE/4 (Unit P) of Section 14, Township 24 South, Range 30 East, to a bottom hole location in the Purple Sage, Wolfcamp Formation in the NE/4 NE/4 (Unit A) of Section 2, Township 24 South, Range 30 East, and;

F. **Poker Lake Unit 23 DTD Fed State Com #179H** (API No. 30-15-54424), which is a gas well that will be horizontally drilled from a surface location in the SE/4 SE/4 (Unit P) of Section 14, Township 24 South, Range 30 East, to a bottom hole location in the

Purple Sage, Wolfcamp Formation in the NW/4 NE/4 (Unit B) of Section 2, Township 24 South, Range 30 East.

4. The wells are orthodox in their location as defined by 19.15.16.15.(C) NMAC, and the take points and laterals comply with Statewide Rules for setbacks under 19.15.16.15.(C) NMAC.

5. Approval of a non-standard horizontal spacing unit is necessary to prevent waste and protect correlative rights.

WHEREFORE, XTO requests this Application be set for hearing on April 10, 2025, before an Examiner of the Oil Conservation Division, and after notice and hearing as required by law, the Division enter an order:

- A. Approving the creation of an approximately 2,080.66-acre non-standard HSU, composed of the Application Lands, pursuant to 19.15.16.15(B)(5) NMAC;
- B. Approving the **Poker Lake Unit 23 DTD Fed State Com #151H, Poker Lake Unit 23 DTD Fed State Com #152H, Poker Lake Unit 23 DTD Fed State Com #176H, Poker Lake Unit 23 DTD Fed State Com #177H, Poker Lake Unit 23 DTD Fed State Com #178H, and Poker Lake Unit 23 DTD Fed State Com #179H** as the wells for the HSU.

Respectfully submitted,

BEATTY & WOZNIAK, P.C.

By: 

Miguel A. Suazo

James P. Parrot

Jacob L. Everhart

Ryan McKee

500 Don Gaspar Ave.,

Santa Fe, NM 87505

(505) 946-2090

msuazo@bwenerylaw.com

jparrot@bwenerylaw.com

jeverhart@bwenerylaw.com

rmckee@bwenerylaw.com

Attorneys for XTO Permian Operating, LLC

Application of XTO Permian Operating, LLC, for Approval of a Non-Standard Horizontal Spacing Unit, Eddy County, New Mexico. Applicant in the above-styled cause seeks an order from the Division: (1) approving a 2,080.66-acre, more or less, non-standard horizontal spacing and proration unit composed of all of Sections 2, 11, 14, and the N/2 N/2 of Section 23, Township 24 South, Range 30 East, N.M.P.M. The proposed wells to be dedicated to the horizontal spacing unit are the **Poker Lake Unit 23 DTD Fed State Com #151H**, which is a gas well that will be horizontally drilled from a surface location in the SW/4 SW/4 (Unit M) of Section 14, Township 24 South, Range 30 East, to a bottom hole location in the Purple Sage, Wolfcamp Formation in the NW/4 NW/4 (Unit D) of Section 2, Township 24 South, Range 30 East; **Poker Lake Unit 23 DTD Fed State Com #152H**, which is a gas well that will be horizontally drilled from a surface location in the SW/4 SW/4 (Unit M) of Section 14, Township 24 South, Range 30 East, to a bottom hole location in the Purple Sage, Wolfcamp Formation in the NE/4 NW/4 (Unit C) of Section 2, Township 24 South, Range 30 East; **Poker Lake Unit 23 DTD Fed State Com #176H**, which is a gas well that will be horizontally drilled from a surface location in the NE/4 NW/4 (Unit C) of Section 23, Township 24 South, Range 30 East, to a bottom hole location in the Purple Sage, Wolfcamp Formation in the NE/4 NW/4 (Unit C) of Section 2, Township 24 South, Range 30 East; **Poker Lake Unit 23 DTD Fed State Com #177**, which is a gas well that will be horizontally drilled from a surface location in the SE/4 SE/4 (Unit P) of Section 14, Township 24 South, Range 30 East, to a bottom hole location in the Purple Sage, Wolfcamp Formation in the NE/4 NE/4 (Unit A) of Section 2, Township 24 South, Range 30 East; **Poker Lake Unit 23 DTD Fed State Com #178H**, which is a gas well that will be horizontally drilled from a surface location in the SE/4 SE/4 (Unit P) of Section 14, Township 24 South, Range 30 East, to a bottom hole location in the Purple Sage, Wolfcamp Formation in the NE/4 NE/4 (Unit A) of Section 2, Township 24 South, Range 30 East, and; and **Poker Lake Unit 23 DTD Fed State Com #179H**, which is a gas well that will be horizontally drilled from a surface location in the SE/4 SE/4 (Unit P) of Section 14, Township 24 South, Range 30 East, to a bottom hole location in the Purple Sage, Wolfcamp Formation in the NW/4 NE/4 (Unit B) of Section 2, Township 24 South, Range 30 East. The wells are orthodox in location, and the take points and laterals comply with Statewide Rules for setbacks. The wells and lands are located approximately 39 miles southeast from Carlsbad, New Mexico.

**STATE OF NEW MEXICO
ENERGY, MINERALS, AND NATURAL RESOURCES DEPARTMENT
OIL CONSERVATION DIVISION**

**APPLICATION OF XTO PERMIAN
OPERATING, LLC FOR APPROVAL OF NON-
STANDARD HORIZONTAL SPACING UNIT,
EDDY COUNTY, NEW MEXICO**

CASE NO. 25231

AFFIDAVIT OF GREG DAVIS

Greg Davis, being first duly sworn upon oath, deposes and states as follows:

1. My name is Greg Davis and I am employed by XTO Permian Operating, LLC (“XTO”) as a Senior Landman.
2. I have previously testified before the New Mexico Oil Conservation Division (“Division”), and my qualifications as an expert in petroleum land matters were accepted and made a matter of record. I have several years of experience in petroleum land matters, and I have worked directly or in a supervisory role with the properties that are the subject of this matter.
3. I am familiar with the application filed by XTO in the above-referenced case and the status of the lands in the subject lands.
4. I am submitting this affidavit in support of XTO’s application in the above-referenced case, as required by the Pre-Hearing Order issued by the Division. I intend to present this case by affidavit pursuant to 19.15.4.12.(A)(1) NMAC.
5. Under Case No. 25231, XTO seeks an order (1) approving a non-standard 2,080.66-acre, more or less, non-standard horizontal spacing unit (“HSU”) underlying the Application Lands.

6. **XTO Exhibit B-1** contains the Form C-102s reflecting the Wolfcamp wells drilled and completed in the subject unit. The location of each well is orthodox and meets the Division's offset requirements.

7. **XTO Exhibit B-2** also outlines the acreage comprising the non-standard horizontal well spacing unit. I have identified with different colors the two federal leases and one state lease covering this acreage. XTO and Chevron USA Inc., own all the working interests in the Wolfcamp formation underlying this proposed non-standard horizontal well spacing unit. XTO has been in contact with Chevron, and they do not object to the proposed non-standard horizontal spacing unit.

8. **XTO Exhibit B-3** is a map depicting the non-standard spacing unit in relation to the outline of a standard spacing unit. The map also identified the interest owners in the tracts surrounding the proposed units, who were also provided notice of the applications.

9. XTO's request for approval of non-standard spacing unit will allow it to consolidate surface facilities and will consequently prevent surface, environmental, and economic waste. As a result, approval of the proposed non-standard spacing unit is necessary to prevent waste and protect correlative rights.

10. XTO intends to commingle production from the non-standard horizontal spacing unit in a single facility to reduce surface facilities and surface disturbance.

11. XTO seeks approval of the non-standard horizontal well spacing unit to allow corresponding Federal and State forms of communitization within this subject area. If the Division approves the proposed non-standard horizontal well spacing unit, XTO understands that the BLM and the Commissioner of Public Lands of the State of New Mexico will issue corresponding Communitization Agreements for the federal and state leases to allow commingling and thereby a reduction in the necessary surface facilities.

12. In compiling the addresses for the various interest owners, I conducted a diligent search of the public records in Eddy County, New Mexico, where the wells are located, phone directories, and did computer searches to locate the contact information for parties entitled to notification. All interest owners were locatable and noticed, and there are no unleased mineral interest owners. XTO caused notice to be published in the Carlsbad Current-Argus, a newspaper of general circulation in Eddy County, New Mexico. I provided the law firm Beatty & Wozniak, P.C., with the names and addresses for these mineral owners and instructed that each owner be provided notice of the hearing in these matters.

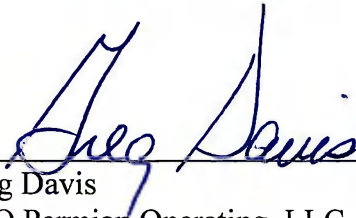
13. **Exhibit B-1** through **Exhibit B-3** were either prepared by me or compiled from XTO's company business records under my direction and supervision.

14. I hereby swear that to the best of my knowledge and belief, all of the matters set forth herein and in the exhibits are true, correct, and accurate.

[Remainder of page left intentionally blank]

FURTHER AFFIANT SAYETH NOT.

Dated this 5th day of March, 2025.



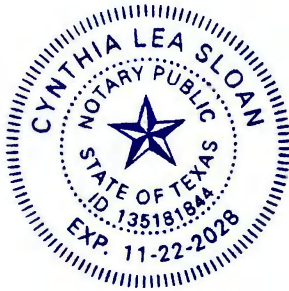
Greg Davis
XTO Permian Operating, LLC


STATE OF TEXAS)
) ss.
COUNTY OF HARRIS)

The foregoing instrument was subscribed and sworn to before me this 5th day of March, 2025, by Greg Davis, Commercial and Land Advisor for XTO Permian Operating, LLC.

Witness my hand and official seal.

My commission expires: 11.22.2028





NOTARY PUBLIC

C-102 Sumbit electronically Via OCD Permitting	State of New Mexico Energy, Minerals & Natural Resources Department OIL CONVERSION DIVISION	Revised July, 09 2024	
		Submittal Type:	<input type="checkbox"/> Initial Submittal
			<input checked="" type="checkbox"/> Amended Report
		<input type="checkbox"/> As Drilled	

WELL LOCATION INFORMATION			
API Number 30-015-54820	Pool Code 98220	Pool Name PURPLE SAGE; WOLFCAMP	
Property Code	Property Name POKER LAKE UNIT 23 DTD FED STATE COM	Well Number 151H	
OGRID No. 373075	Operator Name XTO PERMIAN OPERATING, LLC.	Ground Level Elevation 3,448'	
Surface Owner: <input type="checkbox"/> State <input type="checkbox"/> Fee <input type="checkbox"/> Tribal <input checked="" type="checkbox"/> Federal		Mineral Owner: <input type="checkbox"/> State <input type="checkbox"/> Fee <input type="checkbox"/> Tribal <input checked="" type="checkbox"/> Federal	

Surface Hole Location									
UL	Section	Township	Range	Lot	Ft. from N/S	Ft. from E/W	Latitude	Longitude	County
M	14	24S	30E		366 FSL	621 FWL	32.211620	-103.858266	EDDY

Bottom Hole Location									
UL	Section	Township	Range	Lot	Ft. from N/S	Ft. from E/W	Latitude	Longitude	County
	2	24S	30E	4	230 FNL	670 FWL	32.253479	-103.858081	EDDY




Dedicated Acres 2,080.66	Infill or Defining Well INFILL	Defining Well API 30-015-54424	Overlapping Spacing Unit (Y/N) Y	Consolidation Code U
Order Numbers.			Well Setbacks are under Common Ownership: <input checked="" type="checkbox"/> Yes <input type="checkbox"/> No	

Kick Off Point (KOP)									
UL	Section	Township	Range	Lot	Ft. from N/S	Ft. from E/W	Latitude	Longitude	County
M	14	24S	30E		366 FSL	621 FWL	32.211620	-103.858266	EDDY

First Take Point (FTP)									
UL	Section	Township	Range	Lot	Ft. from N/S	Ft. from E/W	Latitude	Longitude	County
D	23	24S	30E		500 FNL	670 FWL	32.209240	-103.858113	EDDY

Last Take Point (LTP)									
UL	Section	Township	Range	Lot	Ft. from N/S	Ft. from E/W	Latitude	Longitude	County
	2	24S	30E	4	330 FNL	670 FWL	32.253204	-103.858080	EDDY

Unitized Area of Area of Interest NMNM105422429	Spacing Unit Type : <input checked="" type="checkbox"/> Horizontal <input type="checkbox"/> Vertical	Ground Elevation 3,448'
---	--	-----------------------------------

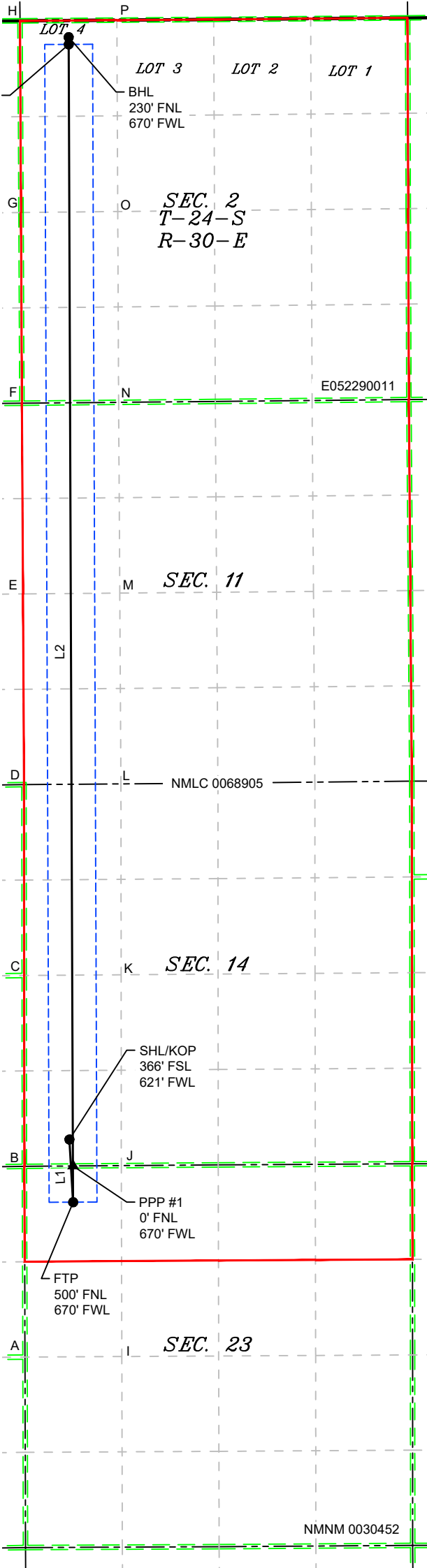
<div>OPERATOR CERTIFICATIONS</div> <div>I hereby certify that the information contained herein is true and complete to the best of my knowledge and belief, and, if the well is vertical or directional well, that this organization either owns a working interest or unleased mineral interest in the land including the proposed bottom hole location or has a right to drill this at this location pursuant to a contract with an owner of a working interest or unleased mineral interest, or a voluntary pooling agreement or a compulsory pooling order of heretofore entered by the division.</div> <div>If this well is a horizontal well, I further certify that this organization has received the consent of at least one lessee or owner of a working interest or unleased mineral interest in each tract (in the target pool or information) in which any part of the well's completed interval will be located or obtained a compulsory pooling order from the division.</div> <div><div></div><div>04/14/2025</div></div> <div>SignatureDate</div> <div>Manoj Venkatesh</div> <div>Printed Name</div> <div>manoj.venkatesh@exxonmobil.com</div> <div>Email Address</div>	<div>SURVEYOR CERTIFICATIONS</div> <div>I hereby certify that the well location shown on this plat was plotted from field notes of actual surveys made by me or under my supervision, and that the same is true and correct to the best of my belief</div> <div><div></div><div></div></div> <div>Signature and Seal of Professional Surveyor</div> <div><div>MARK DILLON HARP 23786</div><div>4/11/2025</div></div> <div>Certificate NumberDate of Survey</div> <div>DN618.013003.09-09</div>
---	---

Note: No allowable will be assigned to this completion until all interest have been consolidated or a non-standard unit has been approved by the division.

ACREAGE DEDICATION PLATS

This grid represents a standard section. You may superimpose a non-standard section, or larger area, over this grid. Operators must outline the dedicated acreage in a red box, clearly show the well surface location and bottom hole location, if it is a directionally drilled, with the dimensions from the section lines in the cardinal directions. If this is a horizontal wellbore show on this plat the location of the First Take Point and Last Take Point, and the point within the Completed interval (other then the First Take Point and Last Take Point) that is closest to any outer boundary of the tract.

Surveyor shall use the latest United States government survey or dependent resurvey. Well locations will be in reference to the New Mexico Principal Meridian. If the land in not surveyed, contact the OCD Engineering Bureau. Independent subdivision surveys will not be acceptable.



LEGEND

	SECTION LINE
	PROPOSED WELL BORE
	NEW MEXICO MINERAL LEASE
	330' BUFFER
	ALLOCATION AREA

LOT ACREAGE TABLE

SECTION 2
T-24-S R-30-E
LOT 1 = 39.96 ACRES
LOT 2 = 40.10 ACRES
LOT 3 = 40.23 ACRES
LOT 4 = 40.37 ACRES

LINE TABLE

LINE	AZIMUTH	LENGTH
L1	176°38'11"	867.10'
L2	359°46'57"	16,093.73'

COORDINATE TABLE

SHL/KOP (NAD 83 NME)		SHL/KOP (NAD 27 NME)	
Y =	441,046.2	N	Y = 440,987.1
X =	688,264.3	E	X = 647,080.6
LAT. =	32.211620	°N	LAT. = 32.211496
LONG. =	103.858266	°W	LONG. = 103.857779
FTP (NAD 83 NME)		FTP (NAD 27 NME)	
Y =	440,180.6	N	Y = 440,121.5
X =	688,315.2	E	X = 647,131.5
LAT. =	32.209240	°N	LAT. = 32.209116
LONG. =	103.858113	°W	LONG. = 103.857627
PPP #1 (NAD 83 NME)		PPP #1 (NAD 27 NME)	
Y =	440,680.6	N	Y = 440,621.5
X =	688,313.3	E	X = 647,129.6
LAT. =	32.210615	°N	LAT. = 32.210491
LONG. =	103.858112	°W	LONG. = 103.857626
LTP (NAD 83 NME)		LTP (NAD 27 NME)	
Y =	456,174.2	N	Y = 456,114.7
X =	688,254.6	E	X = 647,071.5
LAT. =	32.253204	°N	LAT. = 32.253081
LONG. =	103.858080	°W	LONG. = 103.857592
BHL (NAD 83 NME)		BHL (NAD 27 NME)	
Y =	456,274.2	N	Y = 456,214.7
X =	688,254.1	E	X = 647,071.0
LAT. =	32.253479	°N	LAT. = 32.253355
LONG. =	103.858081	°W	LONG. = 103.857592
CORNER COORDINATES (NAD 83 NME)			
A - Y =	438,041.1	N	A - X = 687,651.9
B - Y =	440,675.5	N	B - X = 687,643.7
C - Y =	443,315.0	N	C - X = 687,640.1
D - Y =	445,948.5	N	D - X = 687,638.0
E - Y =	448,583.6	N	E - X = 687,624.1
F - Y =	451,217.2	N	F - X = 687,609.8
G - Y =	453,851.5	N	G - X = 687,596.7
H - Y =	456,499.4	N	H - X = 687,582.9
I - Y =	438,048.4	N	I - X = 688,988.5
J - Y =	440,685.6	N	J - X = 688,981.2
K - Y =	443,323.9	N	K - X = 688,978.3
L - Y =	445,958.8	N	L - X = 688,976.1
M - Y =	448,594.8	N	M - X = 688,960.2
N - Y =	451,229.1	N	N - X = 688,944.0
O - Y =	453,865.0	N	O - X = 688,932.1
P - Y =	456,509.0	N	P - X = 688,919.8
CORNER COORDINATES (NAD 27 NME)			
A - Y =	437,982.1	N	A - X = 646,468.1
B - Y =	440,616.4	N	B - X = 646,459.9
C - Y =	443,255.9	N	C - X = 646,456.5
D - Y =	445,889.3	N	D - X = 646,454.4
E - Y =	448,524.3	N	E - X = 646,440.6
F - Y =	451,157.9	N	F - X = 646,426.4
G - Y =	453,792.1	N	G - X = 646,413.4
H - Y =	456,439.9	N	H - X = 646,399.8
I - Y =	437,989.4	N	I - X = 647,804.6
J - Y =	440,626.6	N	J - X = 647,797.5
K - Y =	443,264.7	N	K - X = 647,794.7
L - Y =	445,899.6	N	L - X = 647,792.6
M - Y =	448,535.6	N	M - X = 647,776.7
N - Y =	451,169.8	N	N - X = 647,760.7
O - Y =	453,805.6	N	O - X = 647,748.8
P - Y =	456,449.5	N	P - X = 647,736.6

DN

618.013003.09-09

Case No. 25231

XTO Permian Operating, LLC - Exhibit B-1

C-102 Sumbit electronically Via OCD Permitting	State of New Mexico Energy, Minerals & Natural Resources Department OIL CONVERSION DIVISION	Revised July, 09 2024	
		Submittal Type:	<input type="checkbox"/> Initial Submittal
			<input checked="" type="checkbox"/> Amended Report
		<input type="checkbox"/> As Drilled	

WELL LOCATION INFORMATION			
API Number 30-015-54416	Pool Code 98220	Pool Name PURPLE SAGE; WOLFCAMP	
Property Code	Property Name POKER LAKE UNIT 23 DTD FED STATE COM	Well Number 152H	
OGRID No. 373075	Operator Name XTO PERMIAN OPERATING, LLC.	Ground Level Elevation 3,445'	
Surface Owner: <input type="checkbox"/> State <input type="checkbox"/> Fee <input type="checkbox"/> Tribal <input checked="" type="checkbox"/> Federal		Mineral Owner: <input type="checkbox"/> State <input type="checkbox"/> Fee <input type="checkbox"/> Tribal <input checked="" type="checkbox"/> Federal	

Surface Hole Location									
UL	Section	Township	Range	Lot	Ft. from N/S	Ft. from E/W	Latitude	Longitude	County
M	14	24S	30E		366 FSL	741 FWL	32.211621	-103.857878	EDDY

Bottom Hole Location									
UL	Section	Township	Range	Lot	Ft. from N/S	Ft. from E/W	Latitude	Longitude	County
	2	24S	30E	3	230 FNL	1,800 FWL	32.253488	-103.854425	EDDY




Dedicated Acres 2,080.66	Infill or Defining Well INFILL	Defining Well API 30-015-54424	Overlapping Spacing Unit (Y/N) Y	Consolidation Code U
Order Numbers.			Well Setbacks are under Common Ownership: <input checked="" type="checkbox"/> Yes <input type="checkbox"/> No	

Kick Off Point (KOP)									
UL	Section	Township	Range	Lot	Ft. from N/S	Ft. from E/W	Latitude	Longitude	County
M	14	24S	30E		366 FSL	741 FWL	32.211621	-103.857878	EDDY

First Take Point (FTP)									
UL	Section	Township	Range	Lot	Ft. from N/S	Ft. from E/W	Latitude	Longitude	County
C	23	24S	30E		500 FNL	1,800 FWL	32.209250	-103.854460	EDDY

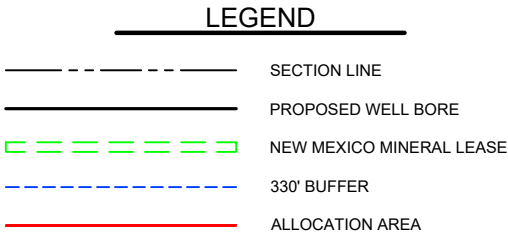
Last Take Point (LTP)									
UL	Section	Township	Range	Lot	Ft. from N/S	Ft. from E/W	Latitude	Longitude	County
	2	24S	30E	3	330 FNL	1,800 FWL	32.253213	-103.854425	EDDY

Unitized Area of Area of Interest NMNM105422429	Spacing Unit Type : <input checked="" type="checkbox"/> Horizontal <input type="checkbox"/> Vertical	Ground Elevation 3,445'
---	--	-----------------------------------

<div>OPERATOR CERTIFICATIONS</div> <div>I hereby certify that the information contained herein is true and complete to the best of my knowledge and belief, and, if the well is vertical or directional well, that this organization either owns a working interest or unleased mineral interest in the land including the proposed bottom hole location or has a right to drill this at this location pursuant to a contract with an owner of a working interest or unleased mineral interest, or a voluntary pooling agreement or a compulsory pooling order of heretofore entered by the division.</div> <div>If this well is a horizontal well, I further certify that this organization has received the consent of at least one lessee or owner of a working interest or unleased mineral interest in each tract (in the target pool or information) in which any part of the well's completed interval will be located or obtained a compulsory pooling order from the division.</div> <div><div></div><div>04/14/2025</div></div> <div>SignatureDate</div> <div>Manoj Venkatesh</div> <div>Printed Name</div> <div>manoj.venkatesh@exxonmobil.com</div> <div>Email Address</div>	<div>SURVEYOR CERTIFICATIONS</div> <div>I hereby certify that the well location shown on this plat was plotted from field notes of actual surveys made by me or under my supervision, and that the same is true and correct to the best of my belief</div> <div><div></div><div></div></div> <div>Signature and Seal of Professional Surveyor</div> <div><div>MARK DILLON HARP 23786</div><div>4/11/2025</div></div> <div>Certificate NumberDate of Survey</div> <div>DN618.013003.09-10</div>
---	---

Note: No allowable will be assigned to this completion until all interest have been consolidated or a non-standard unit has been approved by the division.

Surveyor shall use the latest United States government survey or dependent resurvey. Well locations will be in reference to the New Mexico Principal Meridian. If the land in not surveyed, contact the OCD Engineering Bureau. Independent subdivision surveys will not be acceptable.



LOT ACREAGE TABLE		LINE TABLE		
SECTION 2 T-24-S R-30-E		LINE	AZIMUTH	LENGTH
LOT 1 = 39.96 ACRES		L1	128°57'47"	1,364.36'
LOT 2 = 40.10 ACRES				
LOT 3 = 40.23 ACRES		L2	359°46'57"	16,093.27'
LOT 4 = 40.37 ACRES				

COORDINATE TABLE					
SHL/KOP (NAD 83 NME)			SHL/KOP (NAD 27 NME)		
Y =	441,047.1	N	Y =	440,988.0	N
X =	688,384.3	E	X =	647,200.6	E
LAT. =	32.211621	°N	LAT. =	32.211497	°N
LONG. =	103.857878	°W	LONG. =	103.857391	°W
FTP (NAD 83 NME)			FTP (NAD 27 NME)		
Y =	440,189.1	N	Y =	440,130.1	N
X =	689,445.2	E	X =	648,261.4	E
LAT. =	32.209250	°N	LAT. =	32.209126	°N
LONG. =	103.854460	°W	LONG. =	103.853974	°W
PPP #1 (NAD 83 NME)			PPP #1 (NAD 27 NME)		
Y =	440,689.1	N	Y =	440,630.1	N
X =	689,443.3	E	X =	648,259.6	E
LAT. =	32.210624	°N	LAT. =	32.210500	°N
LONG. =	103.854459	°W	LONG. =	103.853973	°W
LTP (NAD 83 NME)			LTP (NAD 27 NME)		
Y =	456,182.3	N	Y =	456,122.9	N
X =	689,384.6	E	X =	648,201.4	E
LAT. =	32.253213	°N	LAT. =	32.253089	°N
LONG. =	103.854425	°W	LONG. =	103.853937	°W
BHL (NAD 83 NME)			BHL (NAD 27 NME)		
Y =	456,282.3	N	Y =	456,222.8	N
X =	689,384.1	E	X =	648,200.9	E
LAT. =	32.253488	°N	LAT. =	32.253364	°N
LONG. =	103.854425	°W	LONG. =	103.853937	°W
CORNER COORDINATES (NAD 83 NME)					
A - Y =	438,055.8	N	A - X =	690,325.0	E
B - Y =	440,695.8	N	B - X =	690,318.7	E
C - Y =	443,332.7	N	C - X =	690,316.5	E
D - Y =	445,969.1	N	D - X =	690,314.3	E
E - Y =	448,606.1	N	E - X =	690,296.3	E
F - Y =	451,241.1	N	F - X =	690,278.3	E
G - Y =	453,878.5	N	G - X =	690,267.5	E
H - Y =	456,518.6	N	H - X =	690,256.7	E
I - Y =	438,048.4	N	I - X =	688,988.5	E
J - Y =	440,685.6	N	J - X =	688,981.2	E
K - Y =	443,323.9	N	K - X =	688,978.3	E
L - Y =	445,958.8	N	L - X =	688,976.1	E
M - Y =	448,594.8	N	M - X =	688,960.2	E
N - Y =	451,229.1	N	N - X =	688,944.0	E
O - Y =	453,865.0	N	O - X =	688,932.1	E
P - Y =	456,509.0	N	P - X =	688,919.8	E
CORNER COORDINATES (NAD 27 NME)					
A - Y =	437,996.8	N	A - X =	649,141.1	E
B - Y =	440,636.8	N	B - X =	649,135.0	E
C - Y =	443,273.6	N	C - X =	649,132.9	E
D - Y =	445,909.9	N	D - X =	649,130.8	E
E - Y =	448,546.9	N	E - X =	649,112.8	E
F - Y =	451,181.8	N	F - X =	649,094.9	E
G - Y =	453,819.1	N	G - X =	649,084.2	E
H - Y =	456,459.1	N	H - X =	649,073.5	E
I - Y =	437,989.4	N	I - X =	647,804.6	E
J - Y =	440,626.6	N	J - X =	647,797.5	E
K - Y =	443,264.7	N	K - X =	647,794.7	E
L - Y =	445,899.6	N	L - X =	647,792.6	E
M - Y =	448,535.6	N	M - X =	647,776.7	E
N - Y =	451,169.8	N	N - X =	647,760.7	E
O - Y =	453,805.6	N	O - X =	647,748.8	E
P - Y =	456,449.5	N	P - X =	647,736.6	E

DN 618.013003.09-10

C-102 Sumbit electronically Via OCD Permitting	State of New Mexico Energy, Minerals & Natural Resources Department OIL CONVERSION DIVISION	Revised July, 09 2024	
		Submittal Type:	<input type="checkbox"/> Initial Submittal
			<input checked="" type="checkbox"/> Amended Report
		<input type="checkbox"/> As Drilled	

WELL LOCATION INFORMATION			
API Number 30-015-49652	Pool Code 98220	Pool Name PURPLE SAGE; WOLFCAMP	
Property Code	Property Name POKER LAKE UNIT 23 DTD FED STATE COM	Well Number 176H	
OGRID No. 373075	Operator Name XTO PERMIAN OPERATING, LLC.	Ground Level Elevation 3,426'	
Surface Owner: <input type="checkbox"/> State <input type="checkbox"/> Fee <input type="checkbox"/> Tribal <input checked="" type="checkbox"/> Federal		Mineral Owner: <input type="checkbox"/> State <input type="checkbox"/> Fee <input type="checkbox"/> Tribal <input checked="" type="checkbox"/> Federal	

Surface Hole Location									
UL	Section	Township	Range	Lot	Ft. from N/S	Ft. from E/W	Latitude	Longitude	County
C	23	24S	30E		336 FNL	2,312 FWL	32.209704	-103.852803	EDDY

Bottom Hole Location									
UL	Section	Township	Range	Lot	Ft. from N/S	Ft. from E/W	Latitude	Longitude	County
C	2	24S	30E	3	200 FNL	2,530 FWL	32.253576	-103.852064	EDDY




Dedicated Acres 2,080.66	Infill or Defining Well INFILL	Defining Well API 30-015-54424	Overlapping Spacing Unit (Y/N) Y	Consolidation Code U
Order Numbers.			Well Setbacks are under Common Ownership: <input checked="" type="checkbox"/> Yes <input type="checkbox"/> No	

Kick Off Point (KOP)									
UL	Section	Township	Range	Lot	Ft. from N/S	Ft. from E/W	Latitude	Longitude	County
C	23	24S	30E		336 FNL	2,312 FWL	32.209704	-103.852803	EDDY

First Take Point (FTP)									
UL	Section	Township	Range	Lot	Ft. from N/S	Ft. from E/W	Latitude	Longitude	County
C	14	24S	30E		136 FNL	2,530 FWL	32.210257	-103.852098	EDDY

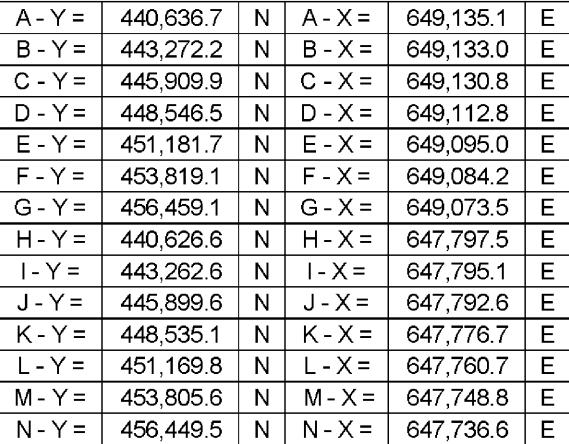
Last Take Point (LTP)									
UL	Section	Township	Range	Lot	Ft. from N/S	Ft. from E/W	Latitude	Longitude	County
C	2	24S	30E	3	330 FNL	2,530 FWL	32.253218	-103.852064	EDDY

Unitized Area of Area of Interest NMNM105422429	Spacing Unit Type : <input checked="" type="checkbox"/> Horizontal <input type="checkbox"/> Vertical	Ground Elevation 3,426'
---	--	-----------------------------------

<div>OPERATOR CERTIFICATIONS</div> <div>I hereby certify that the information contained herein is true and complete to the best of my knowledge and belief, and, if the well is vertical or directional well, that this organization either owns a working interest or unleased mineral interest in the land including the proposed bottom hole location or has a right to drill this at this location pursuant to a contract with an owner of a working interest or unleased mineral interest, or a voluntary pooling agreement or a compulsory pooling order of heretofore entered by the division.</div> <div>If this well is a horizontal well, I further certify that this organization has received the consent of at least one lessee or owner of a working interest or unleased mineral interest in each tract (in the target pool or information) in which any part of the well's completed interval will be located or obtained a compulsory pooling order from the division.</div> <div><div></div><div>04/14/2025</div></div> <div>SignatureDate</div> <div>Manoj Venkatesh</div> <div>Printed Name</div> <div>manoj.venkatesh@exxonmobil.com</div> <div>Email Address</div>	<div>SURVEYOR CERTIFICATIONS</div> <div>I hereby certify that the well location shown on this plat was plotted from field notes of actual surveys made by me or under my supervision, and that the same is true and correct to the best of my belief</div> <div><div></div><div></div></div> <div>Signature and Seal of Professional Surveyor</div> <div><div>MARK DILLON HARP 23786</div><div>4/11/2025</div></div> <div>Certificate NumberDate of Survey</div> <div>DN618.013003.09-06</div>
---	---

Note: No allowable will be assigned to this completion until all interest have been consolidated or a non-standard unit has been approved by the division.

Surveyor shall use the latest United States government survey or dependent resurvey. Well locations will be in reference to the New Mexico Principal Meridian. If the land in not surveyed, contact the OCD Engineering Bureau. Independent subdivision surveys will not be acceptable.



C-102 Sumbit electronically Via OCD Permitting	State of New Mexico Energy, Minerals & Natural Resources Department OIL CONVERSION DIVISION	Revised July, 09 2024	
		Submittal Type:	<input type="checkbox"/> Initial Submittal
			<input checked="" type="checkbox"/> Amended Report
		<input type="checkbox"/> As Drilled	

WELL LOCATION INFORMATION			
API Number 30-015-54422	Pool Code 98220	Pool Name PURPLE SAGE; WOLFCAMP	
Property Code	Property Name POKER LAKE UNIT 23 DTD FED STATE COM	Well Number 177H	
OGRID No. 373075	Operator Name XTO PERMIAN OPERATING, LLC.	Ground Level Elevation 3,445'	
Surface Owner: <input type="checkbox"/> State <input type="checkbox"/> Fee <input type="checkbox"/> Tribal <input checked="" type="checkbox"/> Federal		Mineral Owner: <input type="checkbox"/> State <input type="checkbox"/> Fee <input type="checkbox"/> Tribal <input checked="" type="checkbox"/> Federal	

Surface Hole Location									
UL	Section	Township	Range	Lot	Ft. from N/S	Ft. from E/W	Latitude	Longitude	County
P	14	24S	30E		845 FSL	548 FEL	32.212962	-103.844730	EDDY

Bottom Hole Location									
UL	Section	Township	Range	Lot	Ft. from N/S	Ft. from E/W	Latitude	Longitude	County
	2	24S	30E	1	230 FNL	1,300 FEL	32.253508	-103.847150	EDDY




Dedicated Acres 2,080.66	Infill or Defining Well INFILL	Defining Well API 30-015-54424	Overlapping Spacing Unit (Y/N) Y	Consolidation Code U
Order Numbers.			Well Setbacks are under Common Ownership: <input checked="" type="checkbox"/> Yes <input type="checkbox"/> No	

Kick Off Point (KOP)									
UL	Section	Township	Range	Lot	Ft. from N/S	Ft. from E/W	Latitude	Longitude	County
P	14	24S	30E		845 FSL	548 FEL	32.212962	-103.844730	EDDY

First Take Point (FTP)									
UL	Section	Township	Range	Lot	Ft. from N/S	Ft. from E/W	Latitude	Longitude	County
A	23	24S	30E		500 FNL	1,300 FEL	32.209262	-103.847176	EDDY

Last Take Point (LTP)									
UL	Section	Township	Range	Lot	Ft. from N/S	Ft. from E/W	Latitude	Longitude	County
	2	24S	30E	1	330 FNL	1,300 FEL	32.253233	-103.847151	EDDY

Unitized Area of Area of Interest NMNM105422429	Spacing Unit Type : <input checked="" type="checkbox"/> Horizontal <input type="checkbox"/> Vertical	Ground Elevation 3,445'
---	--	-----------------------------------

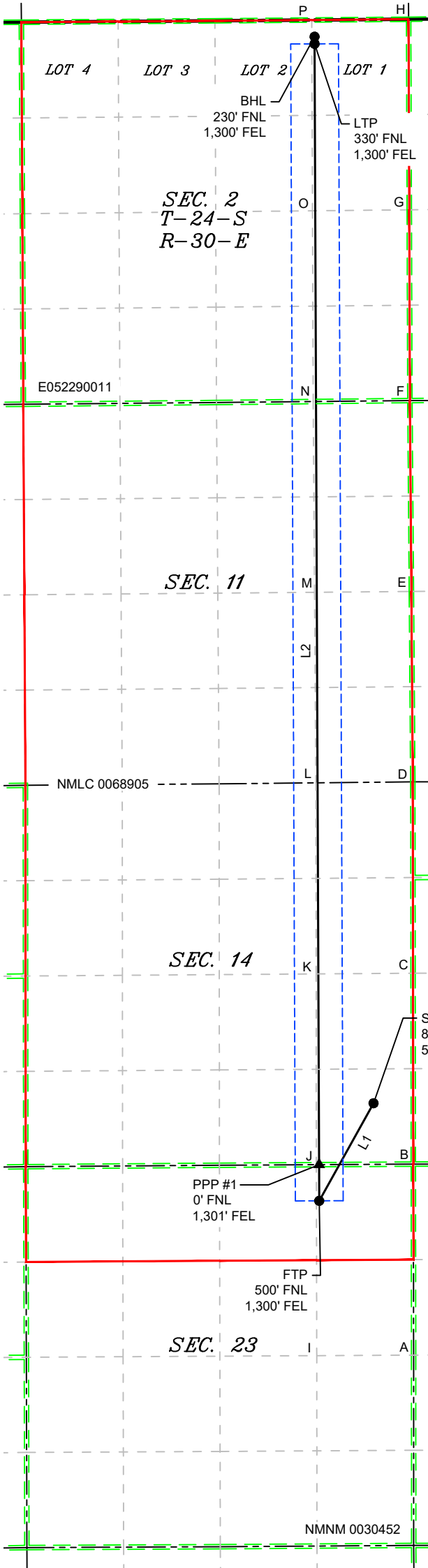
<div>OPERATOR CERTIFICATIONS</div> <div>I hereby certify that the information contained herein is true and complete to the best of my knowledge and belief, and, if the well is vertical or directional well, that this organization either owns a working interest or unleased mineral interest in the land including the proposed bottom hole location or has a right to drill this at this location pursuant to a contract with an owner of a working interest or unleased mineral interest, or a voluntary pooling agreement or a compulsory pooling order of heretofore entered by the division.</div> <div>If this well is a horizontal well, I further certify that this organization has received the consent of at least one lessee or owner of a working interest or unleased mineral interest in each tract (in the target pool or information) in which any part of the well's completed interval will be located or obtained a compulsory pooling order from the division.</div> <div><div></div><div>04/14/2025</div></div> <div>SignatureDate</div> <div>Manoj Venkatesh</div> <div>Printed Name</div> <div>manoj.venkatesh@exxonmobil.com</div> <div>Email Address</div>	<div>SURVEYOR CERTIFICATIONS</div> <div>I hereby certify that the well location shown on this plat was plotted from field notes of actual surveys made by me or under my supervision, and that the same is true and correct to the best of my belief</div> <div><div></div><div></div></div> <div>Signature and Seal of Professional Surveyor</div> <div><div>MARK DILLON HARP 23786</div><div>4/11/2025</div></div> <div>Certificate NumberDate of Survey</div> <div>DN618.013003.09-13</div>
---	---

Note: No allowable will be assigned to this completion until all interest have been consolidated or a non-standard unit has been approved by the division.

ACREAGE DEDICATION PLATS

This grid represents a standard section. You may superimpose a non-standard section, or larger area, over this grid. Operators must outline the dedicated acreage in a red box, clearly show the well surface location and bottom hole location, if it is a directionally drilled, with the dimensions from the section lines in the cardinal directions. If this is a horizontal wellbore show on this plat the location of the First Take Point and Last Take Point, and the point within the Completed interval (other then the First Take Point and Last Take Point) that is closest to any outer boundary of the tract.

Surveyor shall use the latest United States government survey or dependent resurvey. Well locations will be in reference to the New Mexico Principal Meridian. If the land in not surveyed, contact the OCD Engineering Bureau. Independent subdivision surveys will not be acceptable.



LEGEND

- SECTION LINE
- PROPOSED WELL BORE
- NEW MEXICO MINERAL LEASE
- 330' BUFFER
- ALLOCATION AREA

LOT ACREAGE TABLE

SECTION 2
T-24-S R-30-E
LOT 1 = 39.96 ACRES
LOT 2 = 40.10 ACRES
LOT 3 = 40.23 ACRES
LOT 4 = 40.37 ACRES

LINE TABLE

LINE	AZIMUTH	LENGTH
L1	209°04'50"	1,543.96'
L2	359°46'10"	16,096.11'

COORDINATE TABLE

SHL/KOP (NAD 83 NME)			SHL/KOP (NAD 27 NME)		
Y =	441,553.1	N	Y =	441,494.1	N
X =	692,448.3	E	X =	651,264.6	E
LAT. =	32.212962	°N	LAT. =	32.212838	°N
LONG. =	103.844730	°W	LONG. =	103.844244	°W
FTP (NAD 83 NME)			FTP (NAD 27 NME)		
Y =	440,203.8	N	Y =	440,144.8	N
X =	691,697.9	E	X =	650,514.1	E
LAT. =	32.209262	°N	LAT. =	32.209139	°N
LONG. =	103.847176	°W	LONG. =	103.846690	°W
PPP #1 (NAD 83 NME)			PPP #1 (NAD 27 NME)		
Y =	440,703.8	N	Y =	440,644.8	N
X =	691,695.9	E	X =	650,512.1	E
LAT. =	32.210637	°N	LAT. =	32.210513	°N
LONG. =	103.847175	°W	LONG. =	103.846689	°W
LTP (NAD 83 NME)			LTP (NAD 27 NME)		
Y =	456,199.8	N	Y =	456,140.4	N
X =	691,633.5	E	X =	650,450.2	E
LAT. =	32.253233	°N	LAT. =	32.253109	°N
LONG. =	103.847151	°W	LONG. =	103.846663	°W
BHL (NAD 83 NME)			BHL (NAD 27 NME)		
Y =	456,299.8	N	Y =	456,240.4	N
X =	691,633.1	E	X =	650,449.9	E
LAT. =	32.253508	°N	LAT. =	32.253384	°N
LONG. =	103.847150	°W	LONG. =	103.846662	°W
CORNER COORDINATES (NAD 83 NME)					
A - Y =	438,070.5	N	A - X =	693,001.3	E
B - Y =	440,711.4	N	B - X =	692,997.1	E
C - Y =	443,350.4	N	C - X =	692,993.8	E
D - Y =	445,996.6	N	D - X =	692,990.2	E
E - Y =	448,628.6	N	E - X =	692,970.4	E
F - Y =	451,268.0	N	F - X =	692,950.1	E
G - Y =	453,905.4	N	G - X =	692,941.2	E
H - Y =	456,540.4	N	H - X =	692,932.3	E
I - Y =	438,063.2	N	I - X =	691,663.1	E
J - Y =	440,703.6	N	J - X =	691,657.9	E
K - Y =	443,341.5	N	K - X =	691,655.2	E
L - Y =	445,982.8	N	L - X =	691,652.3	E
M - Y =	448,617.4	N	M - X =	691,633.4	E
N - Y =	451,254.5	N	N - X =	691,614.2	E
O - Y =	453,892.0	N	O - X =	691,604.4	E
P - Y =	456,529.5	N	P - X =	691,594.5	E
CORNER COORDINATES (NAD 27 NME)					
A - Y =	438,011.6	N	A - X =	651,817.4	E
B - Y =	440,652.4	N	B - X =	651,813.3	E
C - Y =	443,291.3	N	C - X =	651,810.1	E
D - Y =	445,937.4	N	D - X =	651,806.7	E
E - Y =	448,569.4	N	E - X =	651,786.9	E
F - Y =	451,208.7	N	F - X =	651,766.7	E
G - Y =	453,846.1	N	G - X =	651,757.9	E
H - Y =	456,481.0	N	H - X =	651,749.1	E
I - Y =	438,004.2	N	I - X =	650,479.3	E
J - Y =	440,644.6	N	J - X =	650,474.1	E
K - Y =	443,282.4	N	K - X =	650,471.5	E
L - Y =	445,923.7	N	L - X =	650,468.7	E
M - Y =	448,558.1	N	M - X =	650,449.9	E
N - Y =	451,195.2	N	N - X =	650,430.8	E
O - Y =	453,832.6	N	O - X =	650,421.1	E
P - Y =	456,470.0	N	P - X =	650,411.3	E

DN

618.013003.09-13

Case No. 25231

XTO Permian Operating, LLC - Exhibit B-1

C-102 Sumbit electronically Via OCD Permitting	State of New Mexico Energy, Minerals & Natural Resources Department OIL CONVERSION DIVISION	Revised July, 09 2024	
		Submittal Type:	<input type="checkbox"/> Initial Submittal
			<input checked="" type="checkbox"/> Amended Report
		<input type="checkbox"/> As Drilled	

WELL LOCATION INFORMATION			
API Number 30-015-54423	Pool Code 98220	Pool Name PURPLE SAGE; WOLFCAMP	
Property Code	Property Name POKER LAKE UNIT 23 DTD FED STATE COM	Well Number 178H	
OGRID No. 373075	Operator Name XTO PERMIAN OPERATING, LLC.	Ground Level Elevation 3,445'	
Surface Owner: <input type="checkbox"/> State <input type="checkbox"/> Fee <input type="checkbox"/> Tribal <input checked="" type="checkbox"/> Federal		Mineral Owner: <input type="checkbox"/> State <input type="checkbox"/> Fee <input type="checkbox"/> Tribal <input checked="" type="checkbox"/> Federal	

Surface Hole Location									
UL	Section	Township	Range	Lot	Ft. from N/S	Ft. from E/W	Latitude	Longitude	County
P	14	24S	30E		845 FSL	518 FEL	32.212962	-103.844633	EDDY

Bottom Hole Location									
UL	Section	Township	Range	Lot	Ft. from N/S	Ft. from E/W	Latitude	Longitude	County
	2	24S	30E	1	230 FNL	330 FEL	32.253518	-103.844012	EDDY




Dedicated Acres 2,080.66	Infill or Defining Well INFILL	Defining Well API 30-015-54424	Overlapping Spacing Unit (Y/N) Y	Consolidation Code U
Order Numbers.			Well Setbacks are under Common Ownership: <input checked="" type="checkbox"/> Yes <input type="checkbox"/> No	

Kick Off Point (KOP)									
UL	Section	Township	Range	Lot	Ft. from N/S	Ft. from E/W	Latitude	Longitude	County
P	14	24S	30E		845 FSL	518 FEL	32.212962	-103.844633	EDDY

First Take Point (FTP)									
UL	Section	Township	Range	Lot	Ft. from N/S	Ft. from E/W	Latitude	Longitude	County
A	23	24S	30E		500 FNL	330 FEL	32.209266	-103.844040	EDDY

Last Take Point (LTP)									
UL	Section	Township	Range	Lot	Ft. from N/S	Ft. from E/W	Latitude	Longitude	County
	2	24S	30E	1	330 FNL	330 FEL	32.253243	-103.844013	EDDY

Unitized Area of Area of Interest NMNM105422429	Spacing Unit Type : <input checked="" type="checkbox"/> Horizontal <input type="checkbox"/> Vertical	Ground Elevation 3,445'
---	--	-----------------------------------

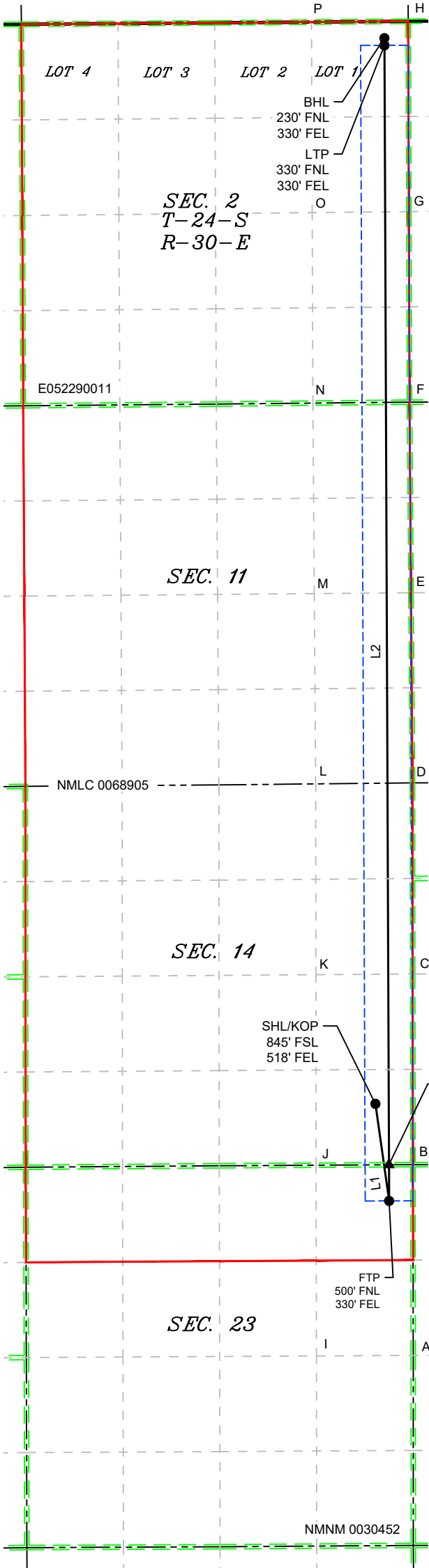
<div>OPERATOR CERTIFICATIONS</div> <div>I hereby certify that the information contained herein is true and complete to the best of my knowledge and belief, and, if the well is vertical or directional well, that this organization either owns a working interest or unleased mineral interest in the land including the proposed bottom hole location or has a right to drill this at this location pursuant to a contract with an owner of a working interest or unleased mineral interest, or a voluntary pooling agreement or a compulsory pooling order of heretofore entered by the division.</div> <div>If this well is a horizontal well, I further certify that this organization has received the consent of at least one lessee or owner of a working interest or unleased mineral interest in each tract (in the target pool or information) in which any part of the well's completed interval will be located or obtained a compulsory pooling order from the division.</div> <div><div></div><div>04/14/2025</div></div> <div>SignatureDate</div> <div>Manoj Venkatesh</div> <div>Printed Name</div> <div>manoj.venkatesh@exxonmobil.com</div> <div>Email Address</div>	<div>SURVEYOR CERTIFICATIONS</div> <div>I hereby certify that the well location shown on this plat was plotted from field notes of actual surveys made by me or under my supervision, and that the same is true and correct to the best of my belief</div> <div><div></div><div></div></div> <div>Signature and Seal of Professional Surveyor</div> <div><div>MARK DILLON HARP 23786</div><div>4/11/2025</div></div> <div>Certificate NumberDate of Survey</div> <div>DN618.013003.09-14</div>
---	---

Note: No allowable will be assigned to this completion until all interest have been consolidated or a non-standard unit has been approved by the division.

ACREAGE DEDICATION PLATS

This grid represents a standard section. You may superimpose a non-standard section, or larger area, over this grid. Operators must outline the dedicated acreage in a red box, clearly show the well surface location and bottom hole location, if it is a directionally drilled, with the dimensions from the section lines in the cardinal directions. If this is a horizontal wellbore show on this plat the location of the First Take Point and Last Take Point, and the point within the Completed interval (other then the First Take Point and Last Take Point) that is closest to any outer boundary of the tract.

Surveyor shall use the latest United States government survey or dependent resurvey. Well locations will be in reference to the New Mexico Principal Meridian. If the land in not surveyed, contact the OCD Engineering Bureau. Independent subdivision surveys will not be acceptable.



LEGEND

- SECTION LINE
- PROPOSED WELL BORE
- NEW MEXICO MINERAL LEASE
- 330' BUFFER
- ALLOCATION AREA

LOT ACREAGE TABLE

SECTION 2
T-24-S R-30-E
LOT 1 = 39.96 ACRES
LOT 2 = 40.10 ACRES
LOT 3 = 40.23 ACRES
LOT 4 = 40.37 ACRES

LINE TABLE

LINE	AZIMUTH	LENGTH
L1	171°58'14"	1,357.15'
L2	359°46'10"	16,098.37'

COORDINATE TABLE

SHL/KOP (NAD 83 NME)			SHL/KOP (NAD 27 NME)		
Y =	441,553.3	N	Y =	441,494.3	N
X =	692,478.3	E	X =	651,294.6	E
LAT. =	32.212962	°N	LAT. =	32.212838	°N
LONG. =	103.844633	°W	LONG. =	103.844147	°W
FTP (NAD 83 NME)			FTP (NAD 27 NME)		
Y =	440,209.5	N	Y =	440,150.5	N
X =	692,667.9	E	X =	651,484.1	E
LAT. =	32.209266	°N	LAT. =	32.209142	°N
LONG. =	103.844040	°W	LONG. =	103.843554	°W
PPP #1 (NAD 83 NME)			PPP #1 (NAD 27 NME)		
Y =	440,709.5	N	Y =	440,650.4	N
X =	692,665.9	E	X =	651,482.1	E
LAT. =	32.210640	°N	LAT. =	32.210516	°N
LONG. =	103.844039	°W	LONG. =	103.843553	°W
LTP (NAD 83 NME)			LTP (NAD 27 NME)		
Y =	456,207.7	N	Y =	456,148.3	N
X =	692,603.4	E	X =	651,420.2	E
LAT. =	32.253243	°N	LAT. =	32.253119	°N
LONG. =	103.844013	°W	LONG. =	103.843525	°W
BHL (NAD 83 NME)			BHL (NAD 27 NME)		
Y =	456,307.7	N	Y =	456,248.3	N
X =	692,603.1	E	X =	651,419.9	E
LAT. =	32.253518	°N	LAT. =	32.253394	°N
LONG. =	103.844012	°W	LONG. =	103.843525	°W
CORNER COORDINATES (NAD 83 NME)					
A - Y =	438,070.5	N	A - X =	693,001.3	E
B - Y =	440,711.4	N	B - X =	692,997.1	E
C - Y =	443,350.4	N	C - X =	692,993.8	E
D - Y =	445,996.6	N	D - X =	692,990.2	E
E - Y =	448,628.6	N	E - X =	692,970.4	E
F - Y =	451,268.0	N	F - X =	692,950.1	E
G - Y =	453,905.4	N	G - X =	692,941.2	E
H - Y =	456,540.4	N	H - X =	692,932.3	E
I - Y =	438,063.2	N	I - X =	691,663.1	E
J - Y =	440,703.6	N	J - X =	691,657.9	E
K - Y =	443,341.5	N	K - X =	691,655.2	E
L - Y =	445,982.8	N	L - X =	691,652.3	E
M - Y =	448,617.4	N	M - X =	691,633.4	E
N - Y =	451,254.5	N	N - X =	691,614.2	E
O - Y =	453,892.0	N	O - X =	691,604.4	E
P - Y =	456,529.5	N	P - X =	691,594.5	E
CORNER COORDINATES (NAD 27 NME)					
A - Y =	438,011.6	N	A - X =	651,817.4	E
B - Y =	440,652.4	N	B - X =	651,813.3	E
C - Y =	443,291.3	N	C - X =	651,810.1	E
D - Y =	445,937.4	N	D - X =	651,806.7	E
E - Y =	448,569.4	N	E - X =	651,786.9	E
F - Y =	451,208.7	N	F - X =	651,766.7	E
G - Y =	453,846.1	N	G - X =	651,757.9	E
H - Y =	456,481.0	N	H - X =	651,749.1	E
I - Y =	438,004.2	N	I - X =	650,479.3	E
J - Y =	440,644.6	N	J - X =	650,474.1	E
K - Y =	443,282.4	N	K - X =	650,471.5	E
L - Y =	445,923.7	N	L - X =	650,468.7	E
M - Y =	448,558.1	N	M - X =	650,449.9	E
N - Y =	451,195.2	N	N - X =	650,430.8	E
O - Y =	453,832.6	N	O - X =	650,421.1	E
P - Y =	456,470.0	N	P - X =	650,411.3	E

DN

618.013003.09-14

Case No. 25231

XTO Permian Operating, LLC - Exhibit B-1

C-102 Sumbit electronically Via OCD Permitting	State of New Mexico Energy, Minerals & Natural Resources Department OIL CONVERSION DIVISION	Revised July, 09 2024	
		Submittal Type:	<input type="checkbox"/> Initial Submittal
			<input checked="" type="checkbox"/> Amended Report
		<input type="checkbox"/> As Drilled	

WELL LOCATION INFORMATION			
API Number 30-015-54424	Pool Code 98220	Pool Name PURPLE SAGE; WOLFCAMP	
Property Code	Property Name POKER LAKE UNIT 23 DTD FED STATE COM	Well Number 179H	
OGRID No. 373075	Operator Name XTO PERMIAN OPERATING, LLC.	Ground Level Elevation 3,445'	
Surface Owner: <input type="checkbox"/> State <input type="checkbox"/> Fee <input type="checkbox"/> Tribal <input checked="" type="checkbox"/> Federal		Mineral Owner: <input type="checkbox"/> State <input type="checkbox"/> Fee <input type="checkbox"/> Tribal <input checked="" type="checkbox"/> Federal	

Surface Hole Location									
UL P	Section 14	Township 24S	Range 30E	Lot	Ft. from N/S 845 FSL	Ft. from E/W 578 FEL	Latitude 32.212962	Longitude -103.844827	County EDDY

Bottom Hole Location									
UL	Section 2	Township 24S	Range 30E	Lot 2	Ft. from N/S 230 FNL	Ft. from E/W 2,510 FEL	Latitude 32.253496	Longitude -103.851064	County EDDY




Dedicated Acres 2,080.66	Infill or Defining Well DEFINING	Defining Well API	Overlapping Spacing Unit (Y/N) Y	Consolidation Code U
Order Numbers.			Well Setbacks are under Common Ownership: <input checked="" type="checkbox"/> Yes <input type="checkbox"/> No	

Kick Off Point (KOP)									
UL P	Section 14	Township 24S	Range 30E	Lot	Ft. from N/S 845 FSL	Ft. from E/W 578 FEL	Latitude 32.212962	Longitude -103.844827	County EDDY

First Take Point (FTP)									
UL B	Section 23	Township 24S	Range 30E	Lot	Ft. from N/S 500 FNL	Ft. from E/W 2,510 FEL	Latitude 32.209258	Longitude -103.851088	County EDDY

Last Take Point (LTP)									
UL	Section 2	Township 24S	Range 30E	Lot 2	Ft. from N/S 330 FNL	Ft. from E/W 2,510 FEL	Latitude 32.253221	Longitude -103.851065	County EDDY

Unitized Area of Area of Interest NMNM105422429	Spacing Unit Type : <input checked="" type="checkbox"/> Horizontal <input type="checkbox"/> Vertical	Ground Elevation 3,445'
---	--	-----------------------------------

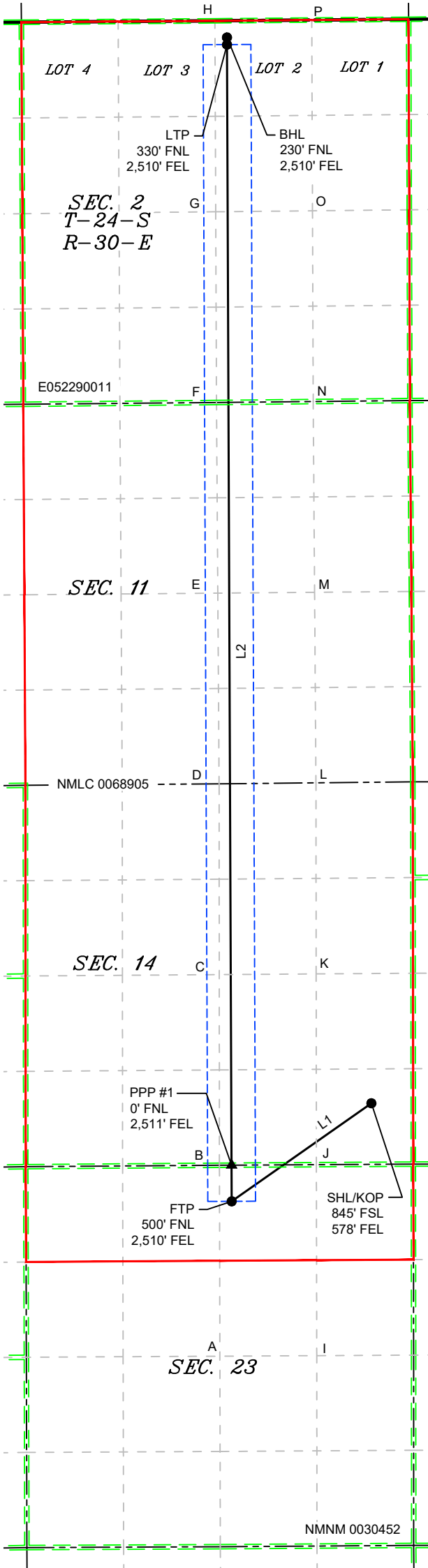
<div>OPERATOR CERTIFICATIONS</div> <div>I hereby certify that the information contained herein is true and complete to the best of my knowledge and belief, and, if the well is vertical or directional well, that this organization either owns a working interest or unleased mineral interest in the land including the proposed bottom hole location or has a right to drill this at this location pursuant to a contract with an owner of a working interest or unleased mineral interest, or a voluntary pooling agreement or a compulsory pooling order of heretofore entered by the division.</div> <div>If this well is a horizontal well, I further certify that this organization has received the consent of at least one lessee or owner of a working interest or unleased mineral interest in each tract (in the target pool or information) in which any part of the well's completed interval will be located or obtained a compulsory pooling order from the division.</div> <div><div></div><div>04/14/2025</div></div> <div>SignatureDate</div> <div>Manoj Venkatesh</div> <div>Printed Name</div> <div>manoj.venkatesh@exxonmobil.com</div> <div>Email Address</div>	<div>SURVEYOR CERTIFICATIONS</div> <div>I hereby certify that the well location shown on this plat was plotted from field notes of actual surveys made by me or under my supervision, and that the same is true and correct to the best of my belief</div> <div><div></div><div></div></div> <div>Signature and Seal of Professional Surveyor</div> <div><div>MARK DILLON HARP 23786</div><div>4/11/2025</div></div> <div>Certificate NumberDate of Survey</div> <div>DN618.013003.09-15</div>
---	---

Note: No allowable will be assigned to this completion until all interest have been consolidated or a non-standard unit has been approved by the division.

ACREAGE DEDICATION PLATS

This grid represents a standard section. You may superimpose a non-standard section, or larger area, over this grid. Operators must outline the dedicated acreage in a red box, clearly show the well surface location and bottom hole location, if it is a directionally drilled, with the dimensions from the section lines in the cardinal directions. If this is a horizontal wellbore show on this plat the location of the First Take Point and Last Take Point, and the point within the Completed interval (other then the First Take Point and Last Take Point) that is closest to any outer boundary of the tract.

Surveyor shall use the latest United States government survey or dependent resurvey. Well locations will be in reference to the New Mexico Principal Meridian. If the land in not surveyed, contact the OCD Engineering Bureau. Independent subdivision surveys will not be acceptable.



LEGEND

- SECTION LINE
- PROPOSED WELL BORE
- NEW MEXICO MINERAL LEASE
- 330' BUFFER
- ALLOCATION AREA

LOT ACREAGE TABLE

SECTION 2
T-24-S R-30-E
LOT 1 = 39.96 ACRES
LOT 2 = 40.10 ACRES
LOT 3 = 40.23 ACRES
LOT 4 = 40.37 ACRES

LINE TABLE

LINE	AZIMUTH	LENGTH
L1	234°54'37"	2,359.19'
L2	359°46'10"	16,093.28'

COORDINATE TABLE

SHL/KOP (NAD 83 NME)		SHL/KOP (NAD 27 NME)	
Y =	441,553.0	N	Y = 441,493.9
X =	692,418.3	E	X = 651,234.6
LAT. =	32.212962	°N	LAT. = 32.212838
LONG. =	103.844827	°W	LONG. = 103.844341
FTP (NAD 83 NME)		FTP (NAD 27 NME)	
Y =	440,196.8	N	Y = 440,137.8
X =	690,487.9	E	X = 649,304.1
LAT. =	32.209258	°N	LAT. = 32.209134
LONG. =	103.851088	°W	LONG. = 103.850602
PPP #1 (NAD 83 NME)		PPP #1 (NAD 27 NME)	
Y =	440,696.7	N	Y = 440,637.7
X =	690,485.9	E	X = 649,302.1
LAT. =	32.210632	°N	LAT. = 32.210509
LONG. =	103.851088	°W	LONG. = 103.850602
LTP (NAD 83 NME)		LTP (NAD 27 NME)	
Y =	456,189.9	N	Y = 456,130.5
X =	690,423.5	E	X = 649,240.3
LAT. =	32.253221	°N	LAT. = 32.253097
LONG. =	103.851065	°W	LONG. = 103.850577
BHL (NAD 83 NME)		BHL (NAD 27 NME)	
Y =	456,289.9	N	Y = 456,230.5
X =	690,423.1	E	X = 649,239.9
LAT. =	32.253496	°N	LAT. = 32.253372
LONG. =	103.851064	°W	LONG. = 103.850576
CORNER COORDINATES (NAD 83 NME)			
A - Y =	438,055.8	N	A - X = 690,325.0
B - Y =	440,695.8	N	B - X = 690,318.7
C - Y =	443,332.7	N	C - X = 690,316.5
D - Y =	445,969.1	N	D - X = 690,314.3
E - Y =	448,606.1	N	E - X = 690,296.3
F - Y =	451,241.1	N	F - X = 690,278.3
G - Y =	453,878.5	N	G - X = 690,267.5
H - Y =	456,518.6	N	H - X = 690,256.7
I - Y =	438,063.2	N	I - X = 691,663.1
J - Y =	440,703.6	N	J - X = 691,657.9
K - Y =	443,341.5	N	K - X = 691,655.2
L - Y =	445,982.8	N	L - X = 691,652.3
M - Y =	448,617.4	N	M - X = 691,633.4
N - Y =	451,254.5	N	N - X = 691,614.2
O - Y =	453,892.0	N	O - X = 691,604.4
P - Y =	456,529.5	N	P - X = 691,594.5
CORNER COORDINATES (NAD 27 NME)			
A - Y =	437,996.8	N	A - X = 649,141.1
B - Y =	440,636.8	N	B - X = 649,135.0
C - Y =	443,273.6	N	C - X = 649,132.9
D - Y =	445,909.9	N	D - X = 649,130.8
E - Y =	448,546.9	N	E - X = 649,112.8
F - Y =	451,181.8	N	F - X = 649,094.9
G - Y =	453,819.1	N	G - X = 649,084.2
H - Y =	456,459.1	N	H - X = 649,073.5
I - Y =	438,004.2	N	I - X = 650,479.3
J - Y =	440,644.6	N	J - X = 650,474.1
K - Y =	443,282.4	N	K - X = 650,471.5
L - Y =	445,923.7	N	L - X = 650,468.7
M - Y =	448,558.1	N	M - X = 650,449.9
N - Y =	451,195.2	N	N - X = 650,430.8
O - Y =	453,832.6	N	O - X = 650,421.1
P - Y =	456,470.0	N	P - X = 650,411.3

DN

618.013003.09-15

Case No. 25231

XTO Permian Operating, LLC - Exhibit B-1

\\618.013 XTO Energy - NM\003 Poker Lake Unit\09 - PLU 23 DTD - EDDY\Wells\15 - PLU 23 DTD - 179H\DWG\179H C-102.dwg

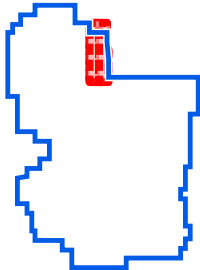
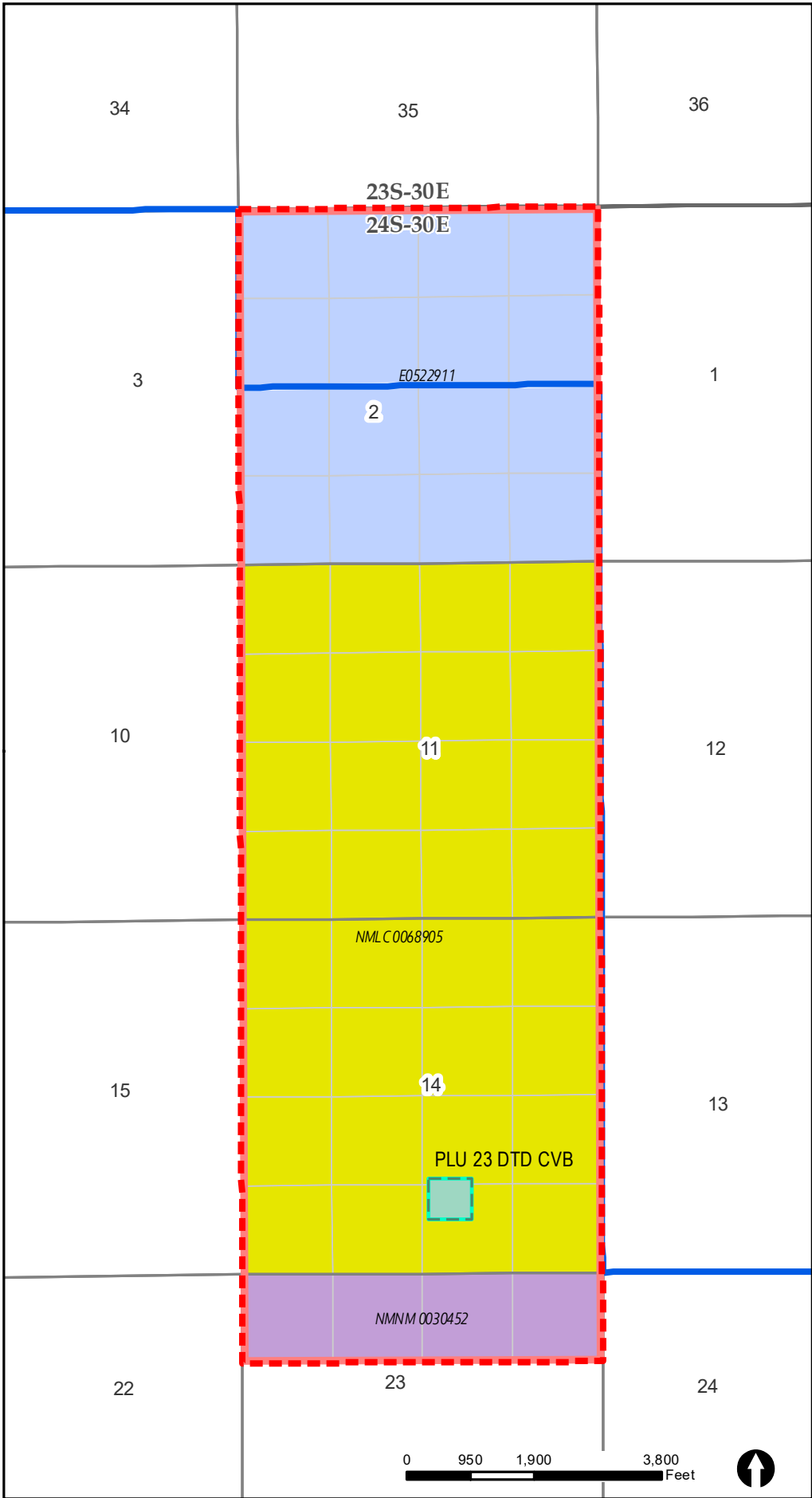


Date: 1/30/2025

**Poker Lake Unit 23 DTD
Fed State Com
Non-Standard Spacing Unit**

SEC 2: ALL, SEC 11: ALL, SEC 14: ALL
SEC 23: N/2 OF N/2 IN 24S-30E
CONTAINING 2,080 ACRES, MORE OR LESS.

- CVB SITE
- SPACING UNIT
- Unit
- FEDERAL - NMNM 0030452
- FEDERAL - NMLC 0068905
- STATE - E0522911

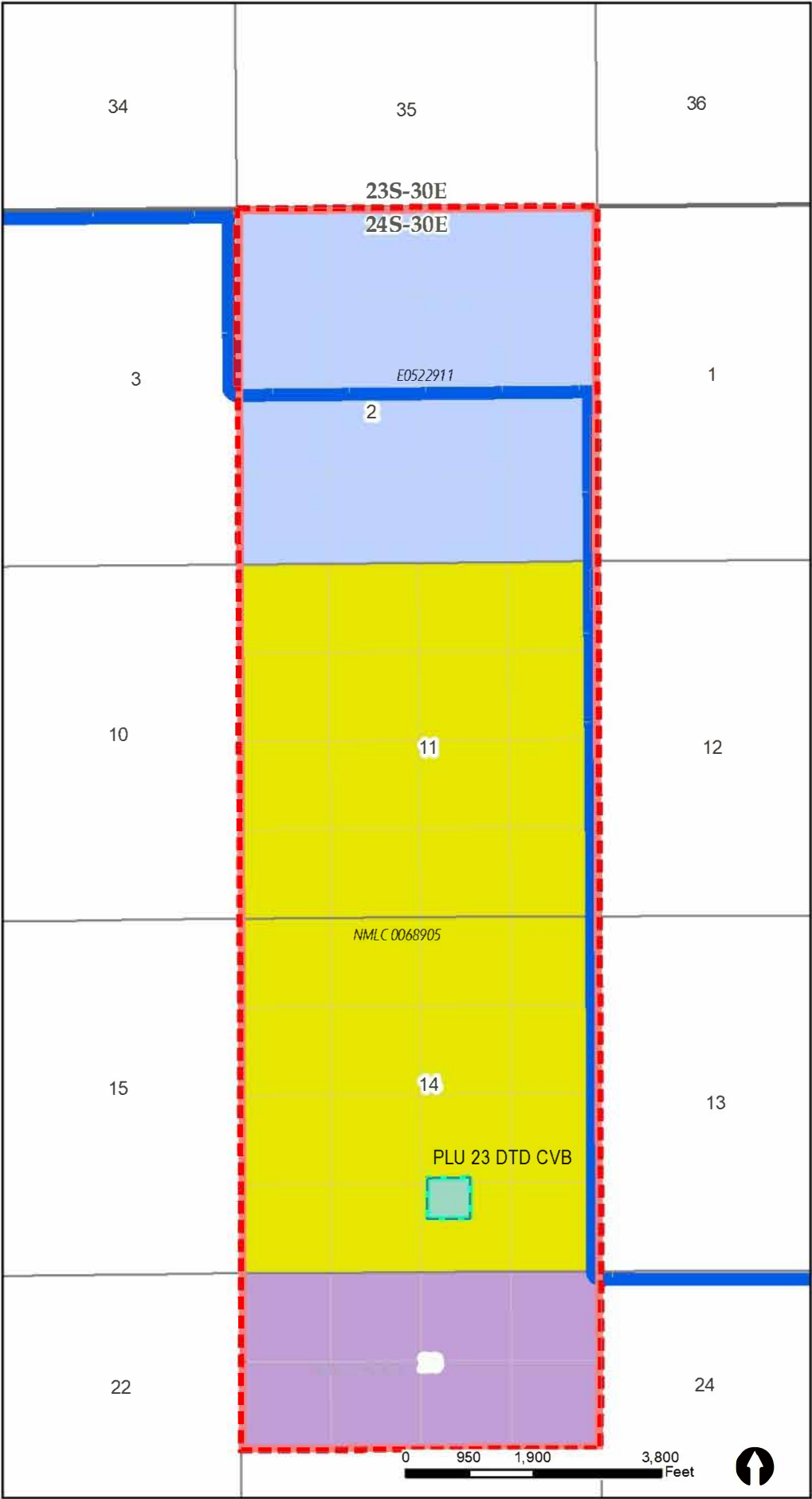




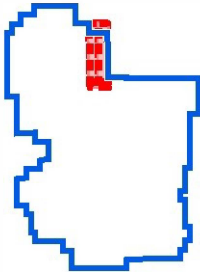
**Poker Lake Unit 23 DTD
Fed State Com
Standard Spacing Unit**

SEC 2: ALL, SEC 11: ALL, SEC 14: ALL
SEC 23: N/2 IN 24S-30E
CONTAINING 2,240 ACRES, MORE OR LESS.

- CVB SITE
- SPACING UNIT
- Unit
- FEDERAL - NMNM 0030452
- FEDERAL - NMLC 0068905
- STATE - E0522911



Source: BLM, 2023. Data provided for informational purposes only. Not for use in legal proceedings. All rights reserved. 2023. BLM. All rights reserved.



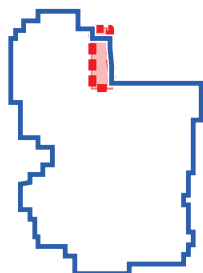
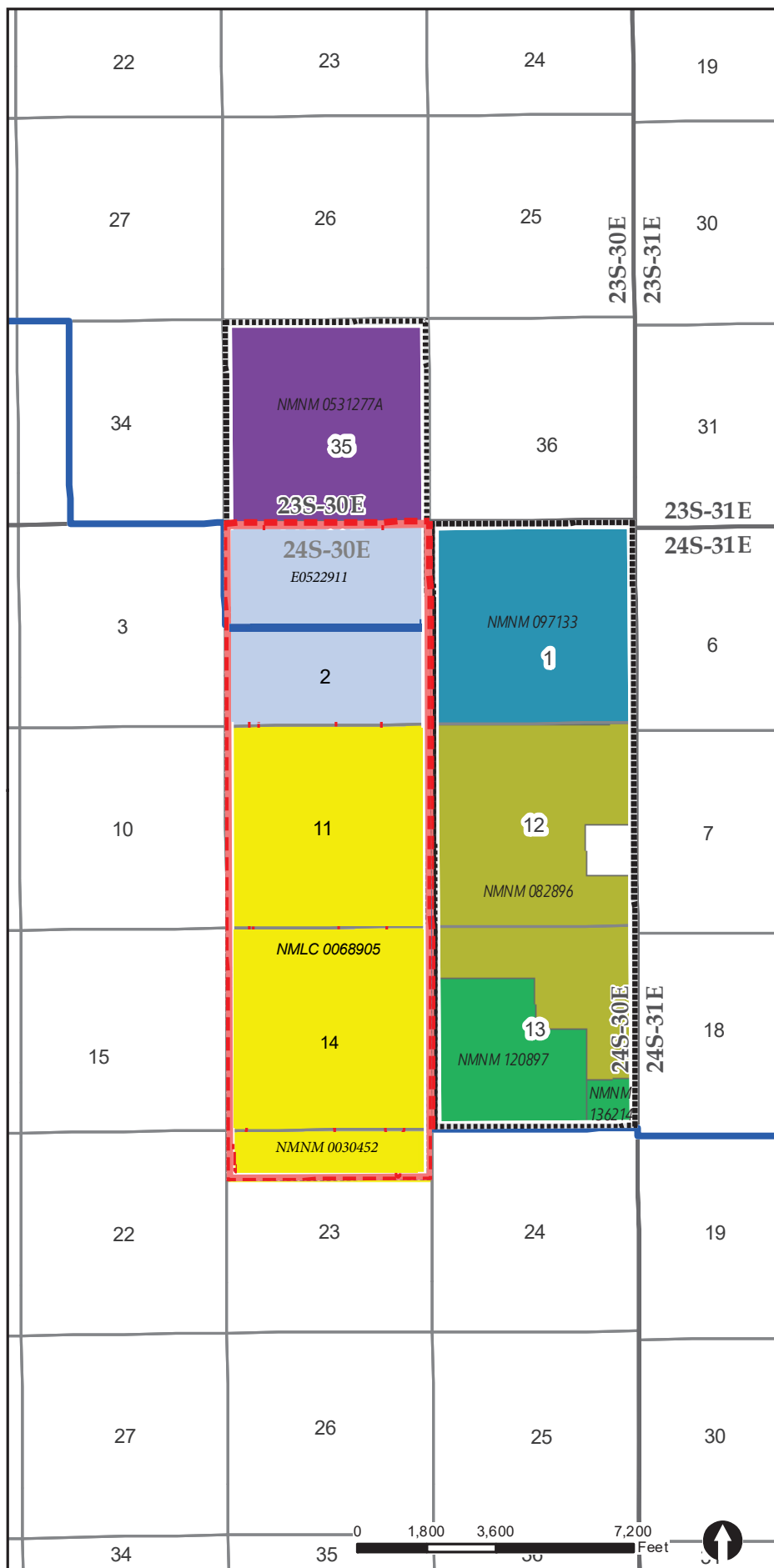


Date: 10/21/2024

PLU 23 DOG TOWN DRAW NON-STANDARD SPACING UNIT

SEC 2: ALL, SEC 11: ALL, SEC 14: ALL IN 24S-30E SEC
23: N/2 OF N/2
CONTAINING 2,080 ACRES, MORE OR LESS.

- POKER LAKE UNIT
- PROPOSED NON-STANDARD SPACING UNIT
- NOTIFICATION AREA
- Party in Interest:** COP, OXY
Type: Federal Acreage
- Party in Interest:** OXY
Type: Federal Acreage
- Party in Interest:** EOG
Type: Federal Acreage
- Party in Interest:** Devon
Type: Federal Acreage
- Operator:** XTO Permian
WI Owner: XTO Holdings
Type: Federal Acreage
- Operator:** XTO Permian
WI Owner: XTO Holdings
Type: State Acreage



POKER LAKE UNIT

**STATE OF NEW MEXICO
ENERGY, MINERALS, AND NATURAL RESOURCES DEPARTMENT
OIL CONSERVATION DIVISION**

**APPLICATION OF XTO OPERATING, LLC
FOR APPROVAL OF NON-STANDARD
HORIZONTAL SPACING UNIT, EDDY
COUNTY, NEW MEXICO**

CASE NO. 25231

AFFIDAVIT OF JENNIFER L. MCHARGE

Jennifer L. McHarge, being first duly sworn upon oath, deposes and states as follows:

1. My name is Jennifer L. McHarge, and I am employed by XTO Permian Operating, LLC ("XTO") as a Senior Geoscientist.
2. I have not previously testified before the New Mexico Oil Conservation Division ("Division"), and my qualifications as an expert in petroleum geology have not been accepted and made a matter of record. I have several years of experience in petroleum geology and have worked directly or in a supervisory role with the properties that are the subject of this matter. A copy of my resume is attached to the end of this Affidavit.
3. I am familiar with the applications filed by XTO in this case and the geology involved.
4. I am submitting this affidavit in support of XTO's application in the above-referenced case, as required by the Pre-Hearing Order issued by the Division. I intend to present this case by affidavit pursuant to 19.15.4.12.(A)(1) NMAC.
5. **XTO Exhibit C-2** includes a base map of the lands showing the proposed Wolfcamp formation spacing unit.

6. **Exhibit C-2** also depicts a subsea structure map that I prepared on the top of the Wolfcamp formation, over the subject area, with a contour interval of 30 feet. The structure map shows the formation gently dipping to the East. The structure appears consistent across the non-standard horizontal spacing unit, and I do not observe any faulting, pinch outs, or other geologic impediments to development of this acreage with horizontal wells.

7. **Exhibit C-2** also shows the location of the wells utilized to construct a cross-section of the Wolfcamp formation. I choose these wells because I consider them to be representative of the geology underlying the subject area.

8. **Exhibit C-3** is a cross-section I prepared for the Wolfcamp formation using the logs from the wells depicted on Exhibit C-2. Each of these logs contain gamma ray, resistivity and porosity information. The logs demonstrate that the Wolfcamp Formation is continuous across the proposed non-standard horizontal spacing unit and all quarter-quarter sections to be included in the non-standard horizontal spacing unit are expected to be productive.

9. **XTO Exhibit C-4** shows the gun barrel diagram within the Wolfcamp formation in the vicinity of the proposed unit.

10. Based on the attached exhibits, I hereby conclude as follows:

(a) The target formation is present and continuous throughout the lands subject to the applications.

(b) The non-standard horizontal spacing and proration unit is justified from a geologic standpoint.

(c) There are no structural impediments or faulting that will interfere with horizontal development.

(d) Each quarter-quarter section in the unit will contribute more or less equally to production, and I can confirm each quarter section along the lateral will also contribute more or less equally to production.

(e) The proposed non-standard horizontal spacing unit will afford XTO the flexibility to match the well spacing over time to the targeted reservoir rather than individual standard spacing units and allow for more efficient and effective development since the internal setbacks required by standard spacing units will be eliminated.

11. **Exhibit C-1** through **Exhibit C-4** were prepared by me or compiled from XTO's company business records under my direct supervision.


12. The granting of these applications is in the best interest of conservation, the prevention of waste, and the protection of correlative rights, and will avoid the drilling of unnecessary wells.

13. I hereby swear that to the best of my knowledge and belief, all of the matters set forth herein and in the exhibits are true, correct, and accurate.

[Remainder of page left intentionally blank]

FURTHER AFFIANT SAYETH NOT.

Dated this 5th day of March, 2025.




Jennifer L. McHarge
XTO Permian Operating, LLC

STATE OF TEXAS)
) ss.
COUNTY OF HARRIS)

The foregoing instrument was subscribed and sworn to before me this 5th day of March, 2025, by Jennifer L. McHarge, Senior Geoscientist for XTO Permian Operating, LLC.

Witness my hand and official seal.

My commission expires: 11.22.2028



NOTARY PUBLIC



JENNIFER L. MCHARGE

Work: 832.684.5974

Cell: 713.380.1513

jennifer.l.mcharge@exxonmobil.com**SUMMARY**

Highly accomplished Senior Petroleum Geologist with 20 years of experience in hydrocarbon exploration, reservoir characterization, and field development. Adept at integrating geological, geophysical, and petrophysical data to identify and evaluate hydrocarbon prospects. Recognized for excellent communication and interpersonal skills, fostering collaboration among multidisciplinary teams, stakeholders, and regulatory agencies. Passionate about mentoring junior geologists and driving innovation in exploration and production.

PROFESSIONAL EXPERIENCE**ExxonMobil Corporation (05/2008 – present)**

- Led geological evaluations for offshore and onshore exploration projects, integrating seismic, well log, and core data to identify drilling prospects.
- Collaborated with reservoir engineers and geophysicists to optimize field development plans, increasing recovery rates and maximizing asset value.
- Conducted detailed structural and stratigraphic interpretation to support well planning, reducing drilling risks and enhancing success rates
- Prepared and delivered technical reports and presentations to senior management, partners, and regulatory agencies.
- Mentored junior geologists, fostering knowledge sharing and professional growth within the team.
- Performed subsurface mapping and seismic interpretation to support exploration and appraisal activities.
- Evaluated petrophysical data to estimate reservoir properties and hydrocarbon potential.
- Provided geological input for drilling programs, including well prognosis, geosteering, and post-drill analysis.
- Engaged with government agencies and joint venture partners to ensure compliance with exploration and development regulations.

Projects worked within ExxonMobil

- 2024 – present: Delaware Basin, NM South, Permian Basin – “Poker Lake Unit Row 2” geoscientist – development drilling, well planning, development planning, basin characterization regarding hydrocarbon fluid properties
- 2022 – 2024: Payara Development, Guyana – “Reservoir 4” geoscientist – subsurface characterization through production start-up; OBN (ocean bottom node) seismic data planning and acquisition team as geoscience coordinator
- 2018 – 2022: Offshore Brazil Exploration – regional characterization and evaluation of Santos and Campos basins, opportunity generation and maturation, prospect assessment and risking, extensional basin analysis, polyphase structural interpretation
- 2017 – 2018 Maternity Leave
- 2012-2016: Expatriate Assignment - Melbourne, Australia - Northwest Shelf, Carnarvon Basin, Australia Exploration – opportunity generation and prospect assessment in proven play. Drilled 2 discoveries – Elfin -1 and Cloverhill – 1
- 2010-2012: Expatriate Assignment – Stavanger, Norway - West and Northeast Greenland Frontier Exploration – basin modeling, identification of play elements, opportunity generation, prospect assessment and risking & Offshore Norway to North Sea play mapping, basin modeling, plate reconstruction, opportunity generation, prospect assessment and risking, sub-basalt seismic imaging and interpretation

- 2009 – 2010: Angola Block 17 – Rosa D’ Prospect mapping, reservoir characterization, structural interpretation, assessment and risking
- 2008 – 2009: Reservoir Characterization of Piceance Basin, CO-UT – core description, EOD analysis, generation of porosity/permeability transforms toward building predictive petrophysical model.

EDUCATION

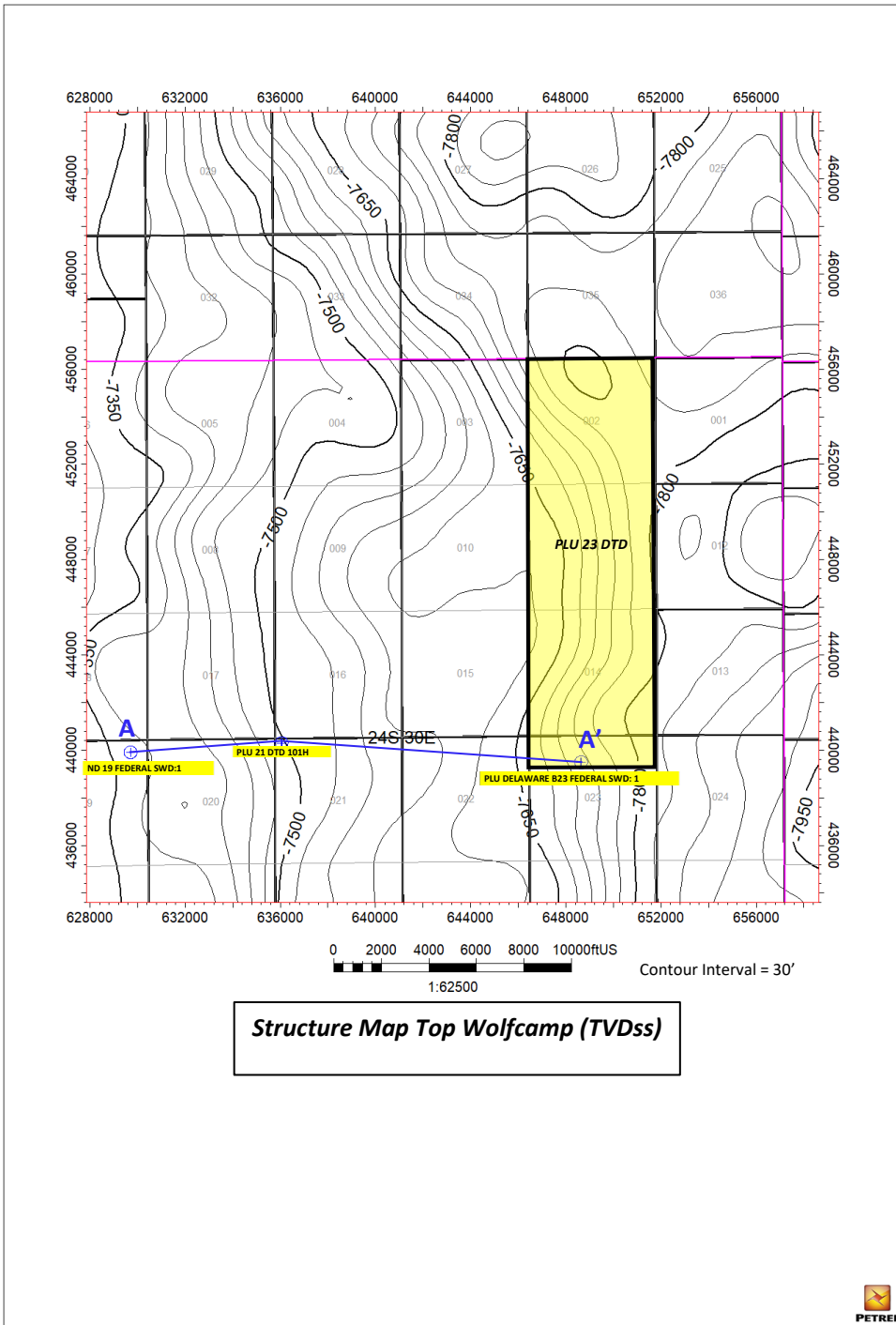
2008 M.S. Geology, University of Wyoming, Laramie, WY – “Fluvial Architecture of the Lance Formation, Bighorn Basin, WY”

2005 – Internship Western Gas Resources – Geotech, Denver, CO (8 mo)

2004 – Internship Colorado Geological Survey – Mapping Sedalia Quadrangle & ran FEMA “HAZUS” Earthquake simulation software, assessing earthquake hazard risk for state of Colorado, Denver, CO (6 mo)

2004 – Internship Antero Resources, Geotech, Denver, CO (6 mo)

2003 B.S. Geology, Western State College of Colorado, Gunnison, CO

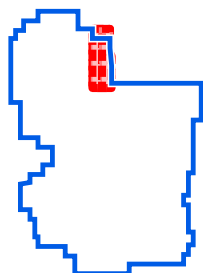
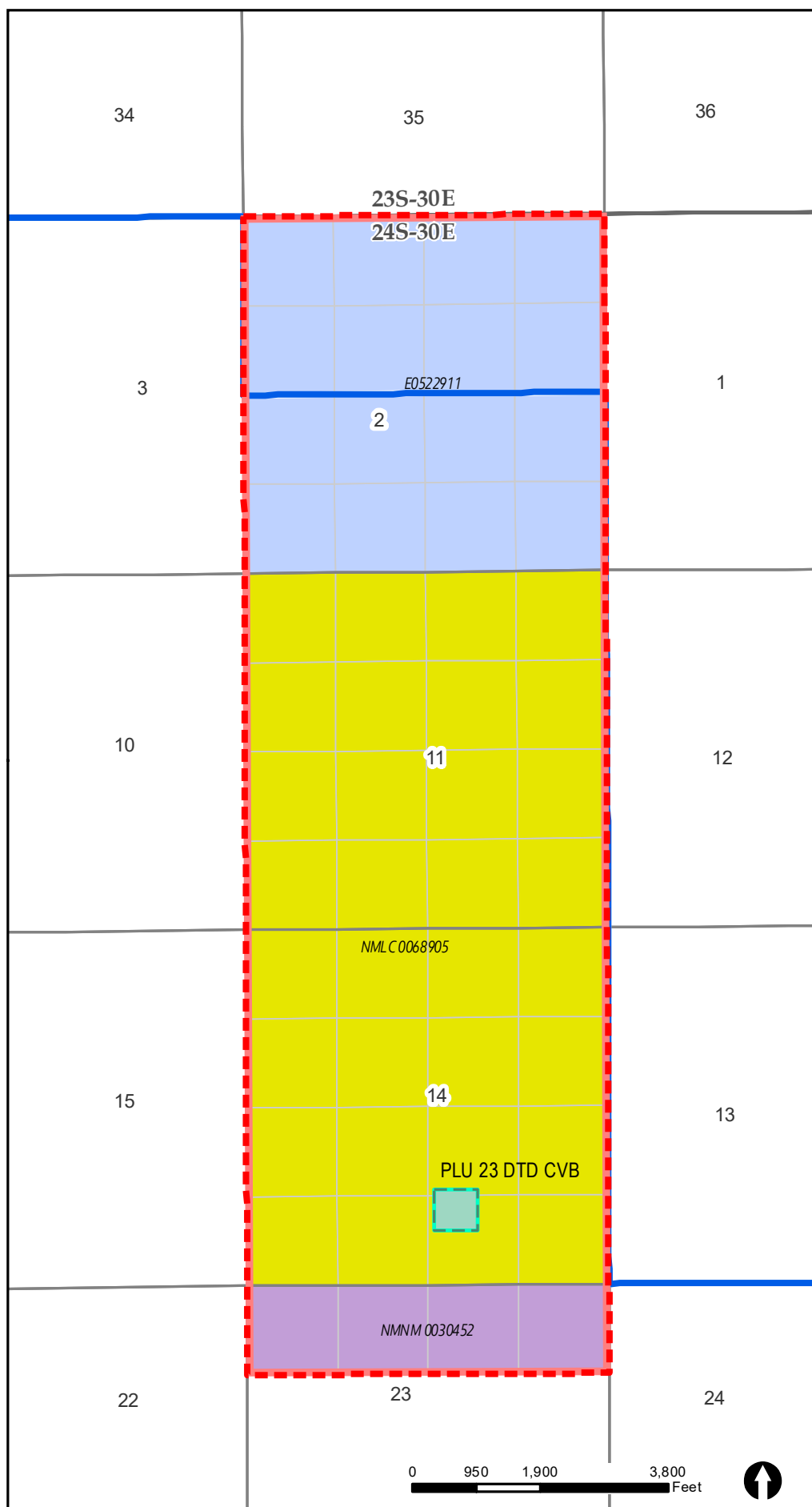
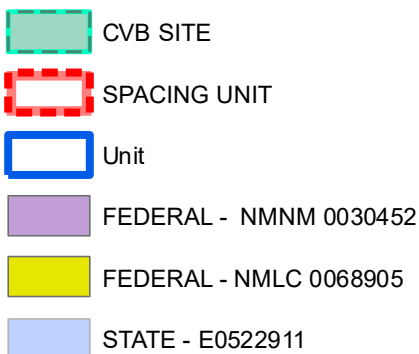




Date: 1/30/2025

Poker Lake Unit 23 DTD
Fed State Com
Non-Standard Spacing Unit

SEC 2: ALL, SEC 11: ALL, SEC 14: ALL
SEC 23: N/2 OF N/2 IN 24S-30E
CONTAINING 2,080 ACRES, MORE OR LESS.



POKER LAKE UNIT

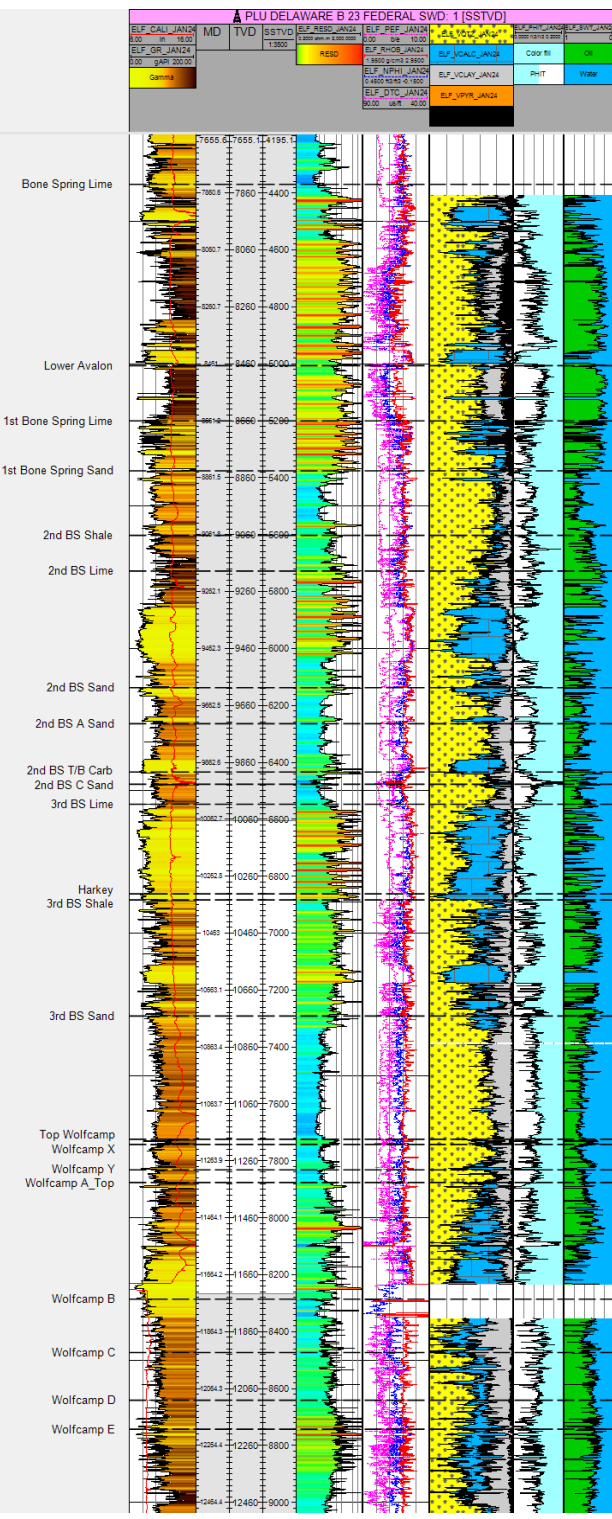
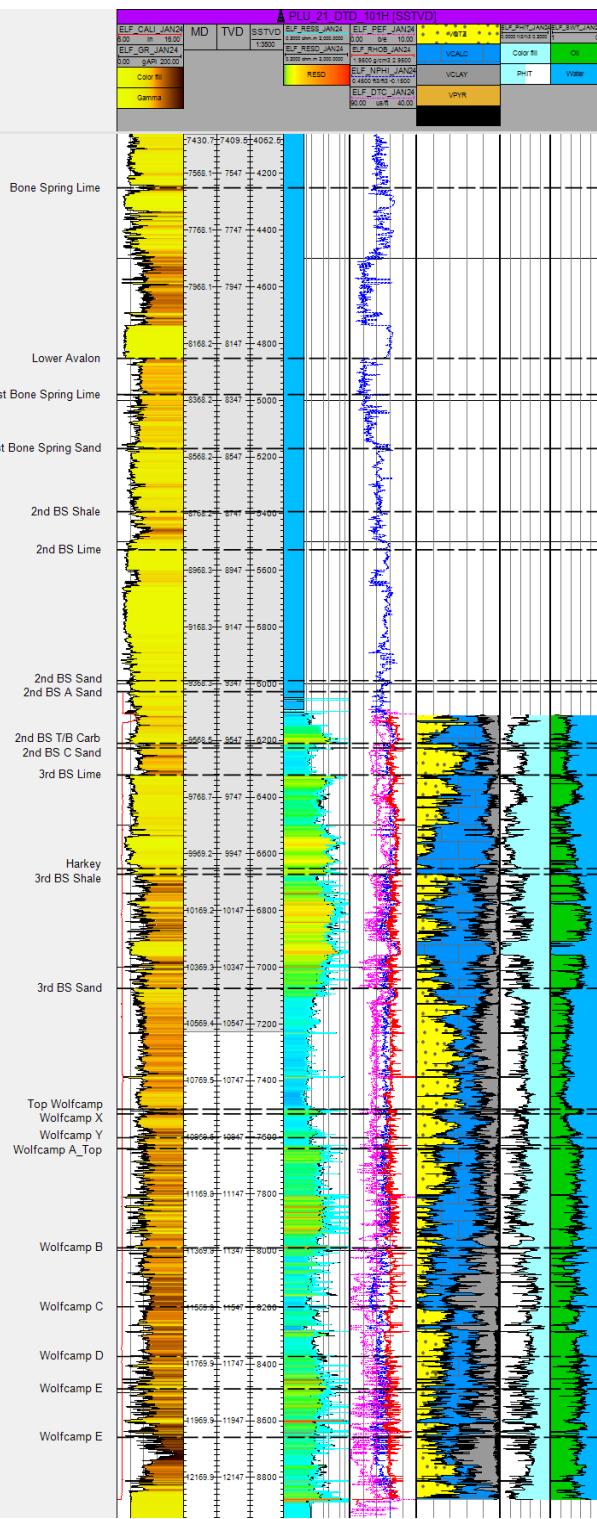
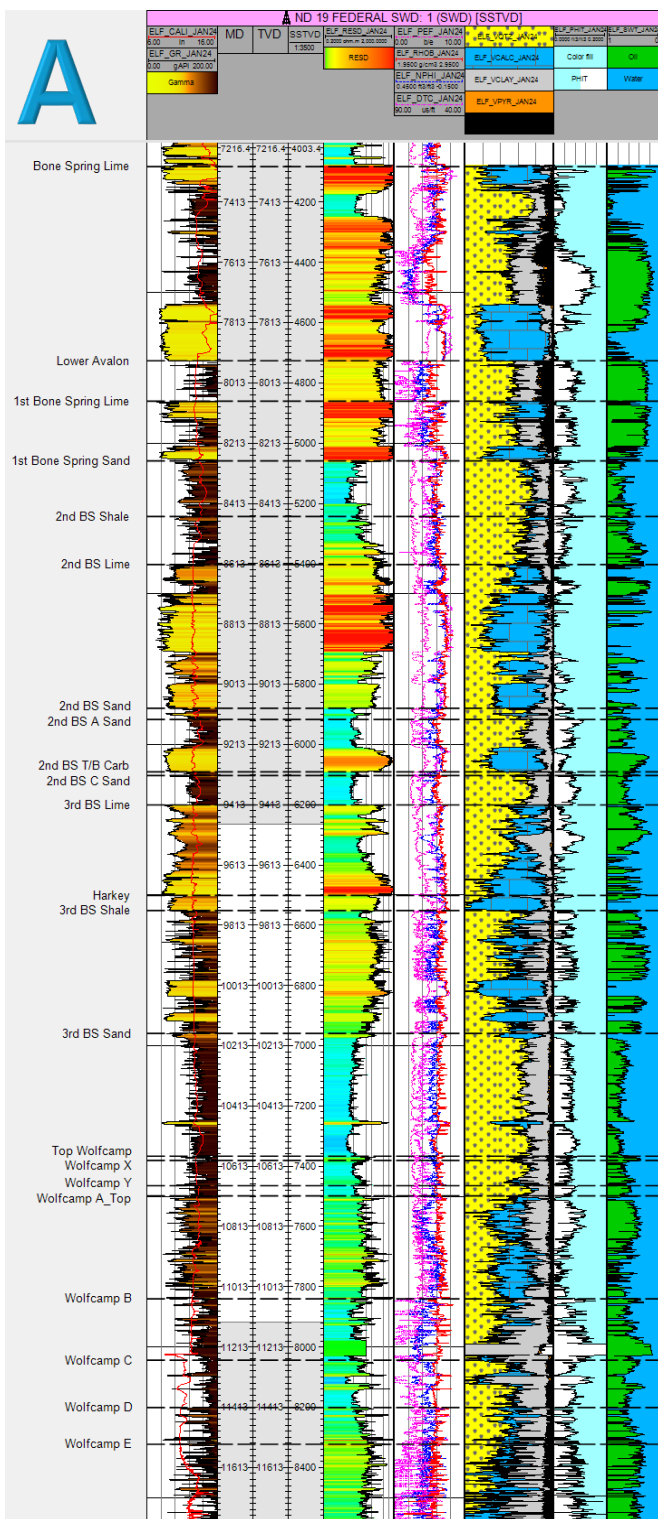
Released to Imaging: 4/16/2025 11:57:05 AM

Document Path: O:\Arcview\Projects\Kelila_Project_MXD\PD_GregDavis_PLU_23DTD_NonStandardSpacingUnit_AreaOnly.mxd

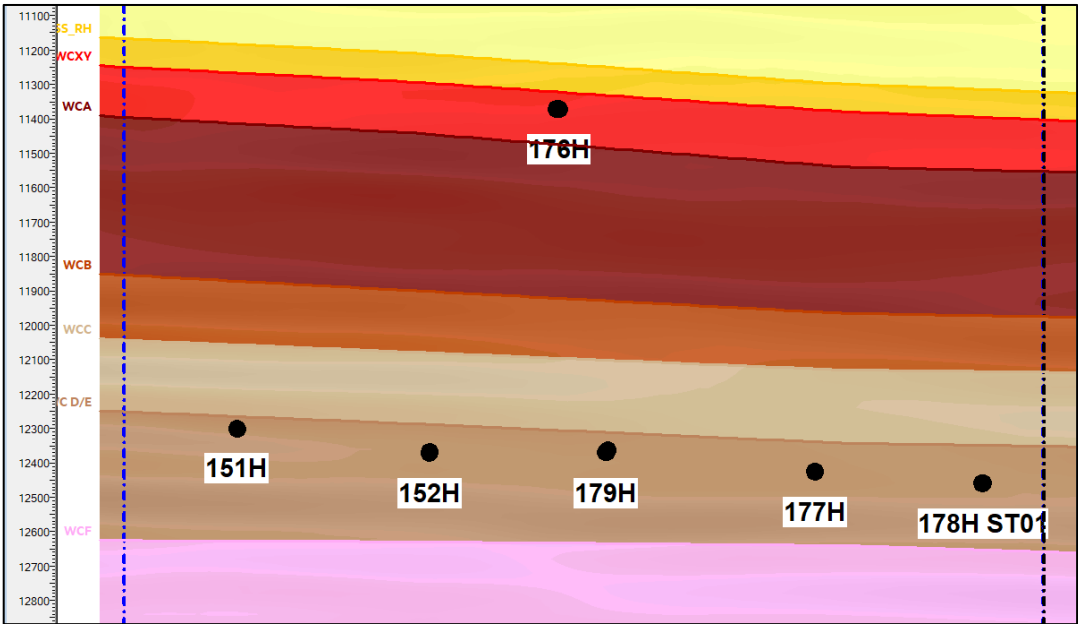
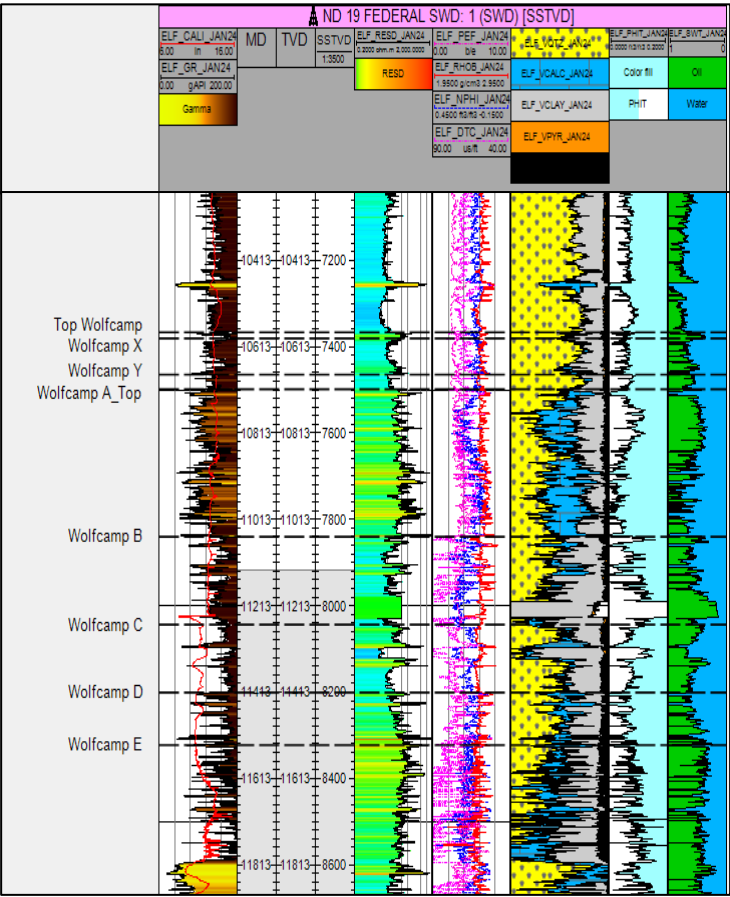
Case No. 25231

XTO Permian Operating, LLC - Exhibit C-2

A



A



Page 38 of 50

STATE OF NEW MEXICO
ENERGY, MINERALS AND NATURAL RESOURCES DEPARTMENT
OIL CONSERVATION DIVISION

APPLICATION OF XTO PERMIAN
OPERATING, LLC FOR APPROVAL OF NON-
STANDARD HORIZONTAL SPACING UNIT,
EDDY COUNTY, NEW MEXICO

CASE NO. 25231

AFFIDAVIT

STATE OF COLORADO)
) ss.
CITY AND COUNTY OF DENVER)

Rachael Ketchledge, legal assistant and authorized representative of XTO Permian Operating, LLC ("XTO"), the Applicant herein, being first duly sworn, upon oath, states that the above-referenced Application has been provided under Notice Letters dated March 19, 2025, which the Applicant mailed via U.S. Postal Service Certified Mail. Notice was delivered to the interested parties on or about March 24, 2025, as shown on certified mail receipts attached as Exhibit D.

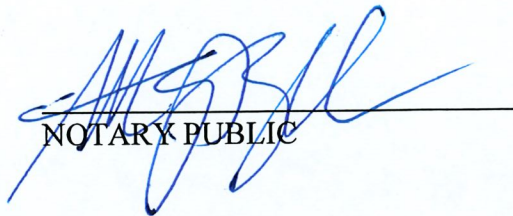
Applicant also published notice of the Application in the Carlsbad Current-Argus on March 22, 2025. Proof of receipt is shown on Exhibit E.



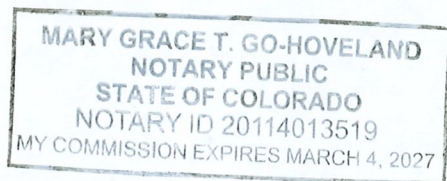
Rachael Ketchledge

SUBSCRIBED AND SWORN to before me on April 1, 2025, by Rachael Ketchledge.

My commission expires: *March 4, 2027*



NOTARY PUBLIC



BEATTY & WOZNIAK, P.C.

ATTORNEYS AT LAW
500 DON GASPAR AVENUE
SANTA FE, NEW MEXICO 87505
TELEPHONE 505-983-8545
FACSIMILE 800-886-6566
www.bwenergylaw.com

COLORADO
NEW MEXICO
WYOMING

MIGUEL SUAZO

505-946-2090
MSUAZO@BWENERGYLAW.COM

March 19, 2025

VIA CERTIFIED MAIL
RETURN RECEIPT REQUESTED

TO: ALL INTEREST OWNERS SUBJECT TO SPACING AND POOLING PROCEEDINGS

Re: Application of XTO Permian Operating, LLC for Approval of a Non-Standard Horizontal Spacing Unit in Eddy County, New Mexico (Case No. 25231)

Dear Interest Owners:

This letter is to advise you that XTO Permian Operating, LLC ("XTO") has filed the enclosed amended application, Case No. 25231, with the New Mexico Oil Conservation Division for Approval of a Non-Standard Spacing Unit in Eddy County, New Mexico.

In Case No. 25231, XTO seeks an Order from the Division to: approve a 2,080.66-acre, more or less, non-standard horizontal spacing and proration unit composed of all of Sections 2, 11, 14, and the N/2 N/2 of Section 23, Township 24 South, Range 30 East, N.M.P.M.

A hearing has been requested before a Division Examiner on April 10, 2025, and the status of the hearing can be monitored through the Division's website. Division hearings will commence at 9 a.m. MST and will be conducted in a hybrid fashion, both in-person at the Energy, Minerals, Natural Resources Department, Wendell Chino Building, Pecos Hall, 1220 South St. Francis Drive, 1st Floor, Santa Fe, NM 87505 and via the Microsoft Teams virtual meeting platform. To view the hearing docket and to determine how to participate in the electronic hearing, visit the Division's website at: <https://www.emnrd.nm.gov/ocd/hearing-info/> or call (505) 476-3441.

You are being notified as an interest owner and are not required to attend this hearing, but as an owner of an interest that may be affected by this application, you may appear and present testimony. Failure to appear at that time and become a party of record will preclude you from contesting the matter at a later date.

Parties appearing in cases who intend to present evidence are required by Division Rule 19.15.4.13.B NMAC to file a Prehearing Statement at least four business days in advance of a scheduled hearing, but in no event later than 5 p.m. mountain time on the Thursday preceding the scheduled hearing date. This statement must be submitted through the OCD E-Permitting system (<https://wwwapps.emnrd.nm.gov/ocd/ocdpermitting/>) or via e-mail to ocd.hearings@emnrd.nm.gov should include: the names of the parties and their attorneys; a concise statement of the case; the names of all witnesses the party will call to testify at the hearing;

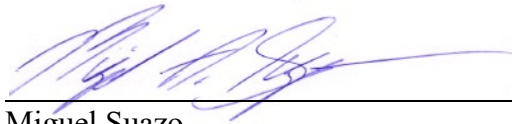
BEATTY & WOZNIAK, P.C.

March 18, 2025
Case No. 25231
Page 2

the approximate time the party will need to present its case; and identification of any procedural matters that are to be resolved prior to the hearing. The statement must also be provided to the attorney for the applicant, Miguel Suazo at msuazo@bwenergylaw.com.

If you have any questions about this matter, please contact Greg Davis at william.davis@exxonmobil.com.

Sincerely,



Miguel Suazo

Attorney for XTO Permian Operating, LLC

**STATE OF NEW MEXICO
ENERGY, MINERALS, AND NATURAL RESOURCES DEPARTMENT
OIL CONSERVATION DIVISION**

**AMENDED APPLICATION OF XTO
PERMIAN OPERATING, LLC FOR
APPROVAL OF NON-STANDARD
HORIZONTAL SPACING UNIT, EDDY
COUNTY, NEW MEXICO**

CASE NO. 25231

AMENDED APPLICATION

XTO Permian Operating, LLC, OGRID No. 5380 (“XTO” or “Applicant”), through its undersigned attorneys, hereby files this Amended Application with the Oil Conservation Division (“Division”) pursuant to the provisions of NMSA 1978, § 70-2-17 and 19.15.16.15(B)(5) NMAC, for an order (1) approving a 2,080.66-acre, more or less, non-standard horizontal spacing unit (“HSU”) composed of all of Sections 2, 11, 14, and the N/2 N/2 of Section 23, Township 24 South, Range 30 East, N.M.P.M. (the “Application Lands”).

In support of its Application, XTO states the following:

1. XTO is a working interest owner in the subject lands and has a right to drill wells thereon.
2. XTO seeks to dedicate all of the Application Lands to form a 2,080.66-acre, more or less, HSU.
3. XTO seeks to dedicate the above-referenced HSU to the following proposed wells:
 - A. **Poker Lake Unit 23 DTD Fed State Com #151H** (API No. 30-15-54820), which is a gas well that will be horizontally drilled from a surface location in the SW/4 SW/4 (Unit M) of Section 14, Township 24 South, Range 30 East, to a bottom hole location in the Purple Sage, Wolfcamp Formation in the NW/4 NW/4 (Unit D) of Section 2, Township 24 South, Range 30 East;

B. **Poker Lake Unit 23 DTD Fed State Com #152H** (API No. 30-15-54416), which is a gas well that will be horizontally drilled from a surface location in the SW/4 SW/4 (Unit M) of Section 14, Township 24 South, Range 30 East, to a bottom hole location in the Purple Sage, Wolfcamp Formation in the NE/4 NW/4 (Unit C) of Section 2, Township 24 South, Range 30 East;

C. **Poker Lake Unit 23 DTD Fed State Com #176H** (API No. 30-15-49652), which is a gas well that will be horizontally drilled from a surface location in the NE/4 NW/4 (Unit C) of Section 23, Township 24 South, Range 30 East, to a bottom hole location in the Purple Sage, Wolfcamp Formation in the NE/4 NW/4 (Unit C) of Section 2, Township 24 South, Range 30 East;

D. **Poker Lake Unit 23 DTD Fed State Com #177H** (API No. 30-15-54422), which is a gas well that will be horizontally drilled from a surface location in the SE/4 SE/4 (Unit P) of Section 14, Township 24 South, Range 30 East, to a bottom hole location in the Purple Sage, Wolfcamp Formation in the NE/4 NE/4 (Unit A) of Section 2, Township 24 South, Range 30 East;

E. **Poker Lake Unit 23 DTD Fed State Com #178H** (API No. 30-15-54423), which is a gas well that will be horizontally drilled from a surface location in the SE/4 SE/4 (Unit P) of Section 14, Township 24 South, Range 30 East, to a bottom hole location in the Purple Sage, Wolfcamp Formation in the NE/4 NE/4 (Unit A) of Section 2, Township 24 South, Range 30 East, and;

F. **Poker Lake Unit 23 DTD Fed State Com #179H** (API No. 30-15-54424), which is a gas well that will be horizontally drilled from a surface location in the SE/4 SE/4 (Unit P) of Section 14, Township 24 South, Range 30 East, to a bottom hole location in the

Purple Sage, Wolfcamp Formation in the NW/4 NE/4 (Unit B) of Section 2, Township 24 South, Range 30 East.

4. The wells are orthodox in their location as defined by 19.15.16.15.(C) NMAC, and the take points and laterals comply with Statewide Rules for setbacks under 19.15.16.15.(C) NMAC.

5. Approval of a non-standard horizontal spacing unit is necessary to prevent waste and protect correlative rights.

WHEREFORE, XTO requests this Application be set for hearing on April 10, 2025, before an Examiner of the Oil Conservation Division, and after notice and hearing as required by law, the Division enter an order:

- A. Approving the creation of an approximately 2,080.66-acre non-standard HSU, composed of the Application Lands, pursuant to 19.15.16.15(B)(5) NMAC;
- B. Approving the **Poker Lake Unit 23 DTD Fed State Com #151H, Poker Lake Unit 23 DTD Fed State Com #152H, Poker Lake Unit 23 DTD Fed State Com #176H, Poker Lake Unit 23 DTD Fed State Com #177H, Poker Lake Unit 23 DTD Fed State Com #178H, and Poker Lake Unit 23 DTD Fed State Com #179H** as the wells for the HSU.

Respectfully submitted,

BEATTY & WOZNIAK, P.C.

By: 

Miguel A. Suazo

James P. Parrot

Jacob L. Everhart

Ryan McKee

500 Don Gaspar Ave.,

Santa Fe, NM 87505

(505) 946-2090

msuazo@bwenerylaw.com

jparrot@bwenerylaw.com

jeverhart@bwenerylaw.com

rmckee@bwenerylaw.com

Attorneys for XTO Permian Operating, LLC

Application of XTO Permian Operating, LLC, for Approval of a Non-Standard Horizontal Spacing Unit, Eddy County, New Mexico. Applicant in the above-styled cause seeks an order from the Division: (1) approving a 2,080.66-acre, more or less, non-standard horizontal spacing and proration unit composed of all of Sections 2, 11, 14, and the N/2 N/2 of Section 23, Township 24 South, Range 30 East, N.M.P.M. The proposed wells to be dedicated to the horizontal spacing unit are the **Poker Lake Unit 23 DTD Fed State Com #151H**, which is a gas well that will be horizontally drilled from a surface location in the SW/4 SW/4 (Unit M) of Section 14, Township 24 South, Range 30 East, to a bottom hole location in the Purple Sage, Wolfcamp Formation in the NW/4 NW/4 (Unit D) of Section 2, Township 24 South, Range 30 East; **Poker Lake Unit 23 DTD Fed State Com #152H**, which is a gas well that will be horizontally drilled from a surface location in the SW/4 SW/4 (Unit M) of Section 14, Township 24 South, Range 30 East, to a bottom hole location in the Purple Sage, Wolfcamp Formation in the NE/4 NW/4 (Unit C) of Section 2, Township 24 South, Range 30 East; **Poker Lake Unit 23 DTD Fed State Com #176H**, which is a gas well that will be horizontally drilled from a surface location in the NE/4 NW/4 (Unit C) of Section 23, Township 24 South, Range 30 East, to a bottom hole location in the Purple Sage, Wolfcamp Formation in the NE/4 NW/4 (Unit C) of Section 2, Township 24 South, Range 30 East; **Poker Lake Unit 23 DTD Fed State Com #177H**, which is a gas well that will be horizontally drilled from a surface location in the SE/4 SE/4 (Unit P) of Section 14, Township 24 South, Range 30 East, to a bottom hole location in the Purple Sage, Wolfcamp Formation in the NE/4 NE/4 (Unit A) of Section 2, Township 24 South, Range 30 East; **Poker Lake Unit 23 DTD Fed State Com #178H**, which is a gas well that will be horizontally drilled from a surface location in the SE/4 SE/4 (Unit P) of Section 14, Township 24 South, Range 30 East, to a bottom hole location in the Purple Sage, Wolfcamp Formation in the NE/4 NE/4 (Unit A) of Section 2, Township 24 South, Range 30 East, and; and **Poker Lake Unit 23 DTD Fed State Com #179H**, which is a gas well that will be horizontally drilled from a surface location in the SE/4 SE/4 (Unit P) of Section 14, Township 24 South, Range 30 East, to a bottom hole location in the Purple Sage, Wolfcamp Formation in the NW/4 NE/4 (Unit B) of Section 2, Township 24 South, Range 30 East. The wells are orthodox in location, and the take points and laterals comply with Statewide Rules for setbacks. The wells and lands are located approximately 39 miles southeast from Carlsbad, New Mexico.

Case No. 25231 Certified Mailing Status

MAIL DATE	OWNER	ADDRESS	TYPE INT	MAIL CLASS	TRACKING NUMBER
March 19, 2025	ConocoPhillips Company	600 W Illinois Ave Midland TX, 79701	WI	Certified w/ Return Receipt (Signature)	9589 0710 5270 1506 7125 24
March 19, 2025	OXY USA Inc. Occidental Permian LP	5 Greenway Plaza Suite 110 Houston TX 77046	WI	Certified w/ Return Receipt (Signature)	9589 0710 5270 1506 7130 19
March 19, 2025	Chevron USA Inc.	1400 Smith Street Houston, TX 77002	WI	Certified w/ Return Receipt (Signature)	9589 0710 5270 1506 7130 02
March 19, 2025	Devon Energy Production Company LP	333 West Sheridan Ave Oklahoma City, OK 73102	WI	Certified w/ Return Receipt (Signature)	9589 0710 5270 1506 7129 99
March 19, 2025	EOG Resources Inc.	5509 Champions Dr. Midland, TX 79706	WI	Certified w/ Return Receipt (Signature)	9589 0710 5270 1506 7129 82
March 19, 2025	Bureau of Land Management	301 Dinosaur Trail Santa Fe, NM 87508	WI	Certified w/ Return Receipt (Signature)	9589 0710 5270 1506 7129 75

20 DETL 905T 0225 0T20 6956

**U.S. Postal Service™
CERTIFIED MAIL® RECEIPT**
Domestic Mail Only
For delivery information, visit our website at www.usps.com®.**OFFICIAL USE**

Certified Mail Fee

\$

Extra Services & Fees (check box, add fee as appropriate)

☐ Return Receipt (hardcopy)☐ Return☐ Certified☐ Adult \$☐ Adult \$

Postage

\$

Total Post

\$

Sent To

Street and Apt. No., or PO Box No.

City, State, ZIP+4®

Chevron USA Inc.
1400 Smith Street
Houston, TX 77002

2510.32A

PS Form 3800, January 2023 PSN 7530-02-000-9047 See Reverse for Instructions

SENDER: COMPLETE THIS SECTION

- Complete items 1, 2, and 3.
- Print your name and address on the reverse so that we can return the card to you.
- Attach this card to the back of the mailpiece, or on the front if space permits.

1. Article Addressed to:

2510.32 A

Bureau of Land Management
301 Dinosaur Trail
Santa Fe, NM 87508



9590 9402 8974 4064 3762 17

2. Article Number (Transfer from service label)

9589 0710 5270 1506 7129 75

PS Form 3811, July 2020 PSN 7530-02-000-9053

COMPLETE THIS SECTION ON DELIVERY

A. Signature

x R Duran

☐ Agent☒ Address

B. Received by (Printed Name)

C. Date of Delivery

3-24-25

D. Is delivery address different from item 1? ☒ Yes
If YES, enter delivery address below: ☐ No

BUREAU OF LAND MANAGEMENT
CARLSBAD FIELD OFFICE
620 EAST GREEN STREET
CARLSBAD, NM 88220-6292

- ☐ Adult Signature
- ☐ Adult Signature Restricted Delivery
- ☒ Certified Mail®
- ☐ Certified Mail Restricted Delivery
- ☐ Collect on Delivery
- ☐ Collect on Delivery Restricted Delivery
- ☐ Mail Restricted Delivery (over \$500)

- ☐ Registered Mail™
- ☐ Registered Mail Restricted Delivery
- ☐ Signature Confirmation™
- ☐ Signature Confirmation Restricted Delivery

Domestic Return Receipt

41 DETL 905T 0225 0T20 6956

**U.S. Postal Service™
CERTIFIED MAIL® RECEIPT**
Domestic Mail Only
For delivery information, visit our website at www.usps.com®.**OFFICIAL USE**

Certified Mail Fee

\$

Extra Services & Fees (check box, add fee as appropriate)

☐ Return Receipt (hardcopy)☐ Return☐ Certified☐ Adult \$☐ Adult \$

Postage

\$

Total Post

\$

Sent To

Street and Apt. No., or PO Box No.

City, State, ZIP+4®

OXY USA Inc.
Occidental Permian LP
5 Greenway Plaza, Suite 110
Houston, TX 77046

2510.32 A

PS Form 3800, January 2023 PSN 7530-02-000-9047 See Reverse for Instructions

42 52T 2129 905T 0225 0T20 6956

**U.S. Postal Service™
CERTIFIED MAIL® RECEIPT**
Domestic Mail Only
For delivery information, visit our website at www.usps.com®.**OFFICIAL USE**

Certified Mail Fee

\$

Extra Services & Fees (check box, add fee as appropriate)

☐ Return Receipt (hardcopy)☐ Return Receipt (electronic)☐ Certified Mail Restricted Delivery☐ Adult Signature Restricted☐ Adult Signa

Postage

\$

Total Postage

\$

Sent To

Street and Apt. No., or PO Box No.

City, State, ZIP+4®

ConocoPhillips Company
600 W Illinois Ave
Midland, TX 79701

Postmark
Here
2510.32A

PS Form 3800, January 2023 PSN 7530-02-000-9047 See Reverse for Instructions

29 62T 905T 0225 0T20 6956

**U.S. Postal Service™
CERTIFIED MAIL® RECEIPT**
Domestic Mail Only
For delivery information, visit our website at www.usps.com®.**OFFICIAL USE**

Certified Mail Fee

\$

Extra Services & Fees (check box, add fee as appropriate)

☐ Return Re☐ Return R☐ Certified☐ Adult Sign☐ Adult Sign

Postage

\$

Total Postag

\$

Sent To

Street and Apt. No., or PO Box No.

City, State, ZIP+4®

EOG Resources Inc.
5509 Champions Dr
Midland, TX 79706

2510.32 A

PS Form 3800, January 2023 PSN 7530-02-000-9047 See Reverse for Instructions

66 62T 905T 0225 0T20 6956

**U.S. Postal Service™
CERTIFIED MAIL® RECEIPT**
Domestic Mail Only
For delivery information, visit our website at www.usps.com®.**OFFICIAL USE**

Certified Mail Fee

\$

Extra Services & Fees (check box, add fee as appropriate)

☐ Return Receipt (hardcopy)☐ Return Receipt (electronic)☐ Certified Mail Restricted☐ Adult☐ Adult

Postage

\$

Total Post

\$

Sent To

Street and Apt. No., or PO Box No.

City, State, ZIP+4®

Devon Energy Production Company LP
333 West Sheridan Ave
Oklahoma City, OK 73102

2510.32 A

PS Form 3800, January 2023 PSN 7530-02-000-9047 See Reverse for Instructions

AFFIDAVIT OF PUBLICATION

CARLSBAD CURRENT-ARGUS
PO BOX 507
HUTCHINSON, KS 67504-0507

STATE OF NEW MEXICO } SS
COUNTY OF EDDY }

Account Number: 96
Ad Number: 39870
Description: XTO Poker Lake
Ad Cost: \$220.59

Sherry Groves, being first duly sworn, says:

That she is the Agent of the the Carlsbad Current-Argus, a Weekly newspaper of general circulation, printed and published in Carlsbad, Eddy County, New Mexico; that the publication, a copy of which is attached hereto, was published in said newspaper on the following dates:

March 22, 2025

That said newspaper was regularly issued and circulated on those dates.

SIGNED:

Sherry Groves

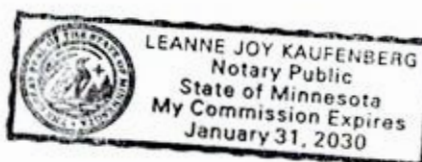
Agent

Subscribed to and sworn to me this 22th day of March 2025.

Leanne Kaufenberg

Leanne Kaufenberg, Notary Public, Redwood County
Minnesota

Beatty & Wozniak, P.C.
BEATTY & WOZNIAK, P.C.
1675 Broadway # 600
Denver, CO 80202-4692
rketchledge@bwenerylaw.com



**LEGAL NOTICE
MARCH 22, 2025**

**STATE OF NEW MEXICO
ENERGY, MINERALS,
AND NATURAL RESOURCES DEPARTMENT
OIL CONSERVATION DIVISION,
SANTA FE, NEW MEXICO**

The State of New Mexico, Energy Minerals and Natural Resources Department, Oil Conservation Division ("Division") hereby gives notice that the Division will hold public hearings before a hearing examiner on the following case: Amended Application of XTO Permian Operating, LLC, for Approval a Non-Standard Horizontal Spacing Unit, Eddy County, New Mexico, Case No. 25231.

The hearing will be conducted on **Thursday, April 10, 2025, beginning at 9:00 A.M. MST** in a hybrid fashion, both in-person at the Energy, Minerals, Natural Resources Department, Wendell Chino Building, Pecos Hall, 1220 South St. Francis Drive, 1st Floor, Santa Fe, NM 87505 and via the Microsoft Teams virtual meeting platform. To view the hearing docket and to determine how to participate in the electronic hearing, visit the Division's website at: <http://www.emnrd.state.nm.us/OCD/hearing-info/> or contact Sheila Apodaca at Sheila.Apodaca@emnrd.nm.gov. Documents filed in the case may also be viewed at <https://ocdimage.emnrd.nm.gov/imaging/CaseFileCriteria.aspx>. If you are an individual with a disability who needs a reader, amplifier, qualified sign language interpreter, or other form of auxiliary aid or service to attend or participate in the hearing, contact Sheila Apodaca or the New Mexico Relay Network at 1-800-659-1779, no later than **April 3, 2025**.

STATE OF NEW MEXICO TO:

All named parties and persons
having any right, title, interest
or claim in the following case
and notice to the public.

(NOTE: All land descriptions herein refer to the New Mexico Principal Meridian whether or not so stated.)

TO: All interested parties, including: ConocoPhillips Company; OXY USA Inc.; Occidental Permian LP; Chevron USA Inc.; Devon Energy Production Company LP; EOG Resources Inc.; Bureau of Land Management.

CASE NO. 25231: Amended Application of XTO Permian Operating, LLC, for Approval of a Non-Standard Horizontal Spacing Unit, Eddy County, New Mexico. Applicant in the above-styled cause seeks an order from the Division: (1) approving a 2,080.66-acre, more or less, non-standard horizontal spacing and proration unit composed of all of Sections 2, 11, 14, and the N/2 N/2 of Section 23, Township 24 South, Range 30 East, N.M.P.M. The proposed wells to be dedicated to the horizontal spacing unit are the **Poker Lake Unit 23 DTD Fed State Com #151H** (API No. 30-15-54820), which is a gas well that will be horizontally drilled from a surface location in the SW/4 SW/4 (Unit M) of Section 14, Township 24 South, Range 30 East, to a bottom hole location in the Purple Sage, Wolfcamp Formation in the NW/4 NW/4 (Unit D) of Section 2, Township 24 South, Range 30 East; **Poker Lake Unit 23 DTD Fed State Com #152H** (API No. 30-15-54416), which is a gas well that will be horizontally drilled from a surface location in the SW/4 SW/4 (Unit M) of Section 14, Township 24 South, Range 30 East, to a bottom hole location in the Purple Sage, Wolfcamp Formation in the NE/4 NW/4 (Unit C) of Section 2, Township 24 South, Range 30 East; **Poker Lake Unit 23 DTD Fed State Com #176H** (API No. 30-15-49652), which is a gas well that will be horizontally drilled from a surface location in the NE/4 NW/4 (Unit C) of Section 23, Township 24 South, Range 30 East, to a bottom hole location in the Purple Sage, Wolfcamp Formation in the NE/4 NW/4 (Unit C) of Section 2, Township 24 South, Range 30 East; **Poker Lake Unit 23 DTD Fed State Com #177H** (API No. 30-15-54422), which is a gas well that will be horizontally drilled from a surface location in the SE/4 SE/4 (Unit P) of Section 14, Township 24 South, Range 30 East, to a bottom hole location in the Purple Sage, Wolfcamp Formation in the NE/4 NE/4 (Unit A) of Section 2, Township 24 South, Range 30 East; **Poker Lake Unit 23 DTD Fed State Com #178H** (API No. 30-15-54423), which is a gas well that will be horizontally drilled from a surface location in the SE/4 SE/4 (Unit P) of Section 14, Township 24 South, Range 30 East, to a bottom hole location in the Purple Sage, Wolfcamp Formation in the NE/4 NE/4 (Unit A) of Section 2, Township 24 South, Range 30 East, and; and **Poker Lake Unit 23 DTD Fed State Com #179H** (API No. 30-15-54424), which is a gas well that will be horizontally drilled from a surface location in the SE/4 SE/4 (Unit P) of Section 14, Township 24 South,

Range 30 East, to a bottom hole location in the Purple Sage, Wolfcamp Formation in the NW/4 NE/4 (Unit B) of Section 2, Township 24 South, Range 30 East. The wells are orthodox in location, and the take points and laterals comply with Statewide Rules for setbacks. The wells and lands are located approximately 39 miles southeast from Carlsbad, New Mexico.

Published in the Carlsbad Current-Argus March 22, 2025.
#39870