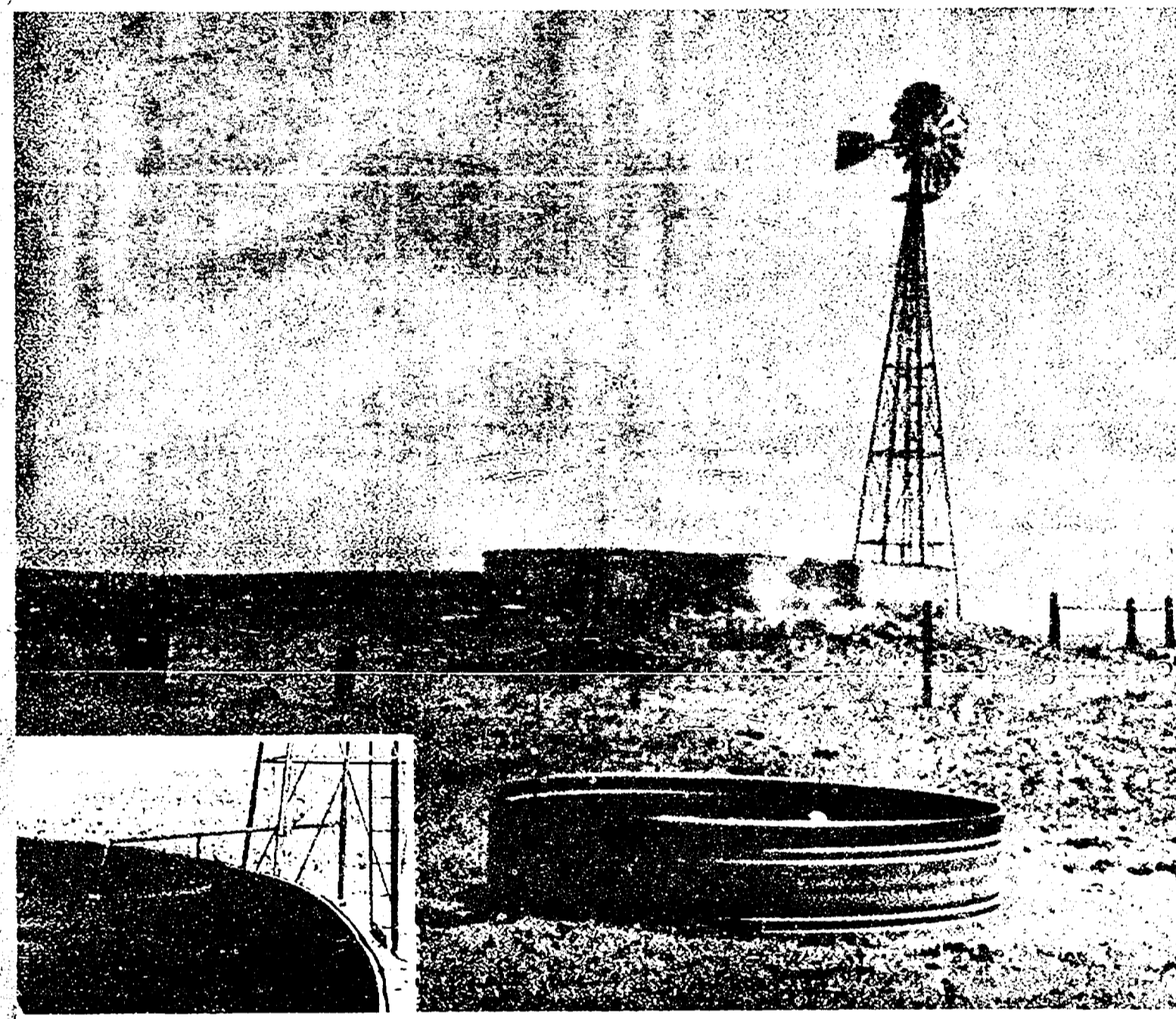


Case Number
3807

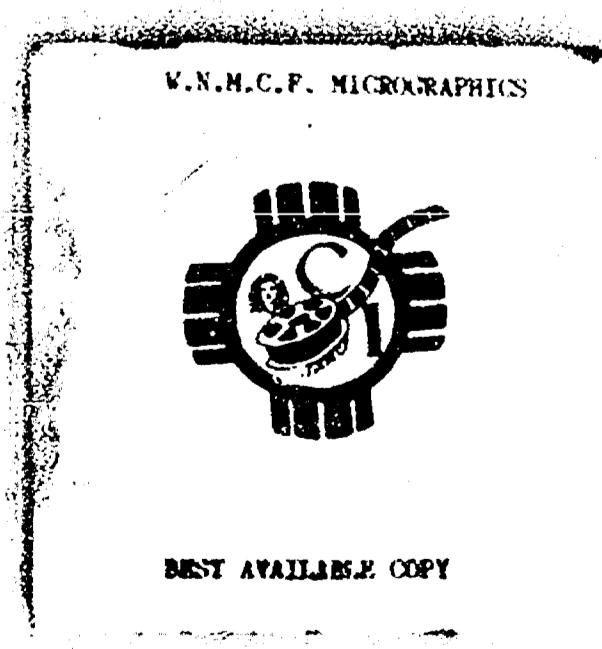
Large
Exhibits

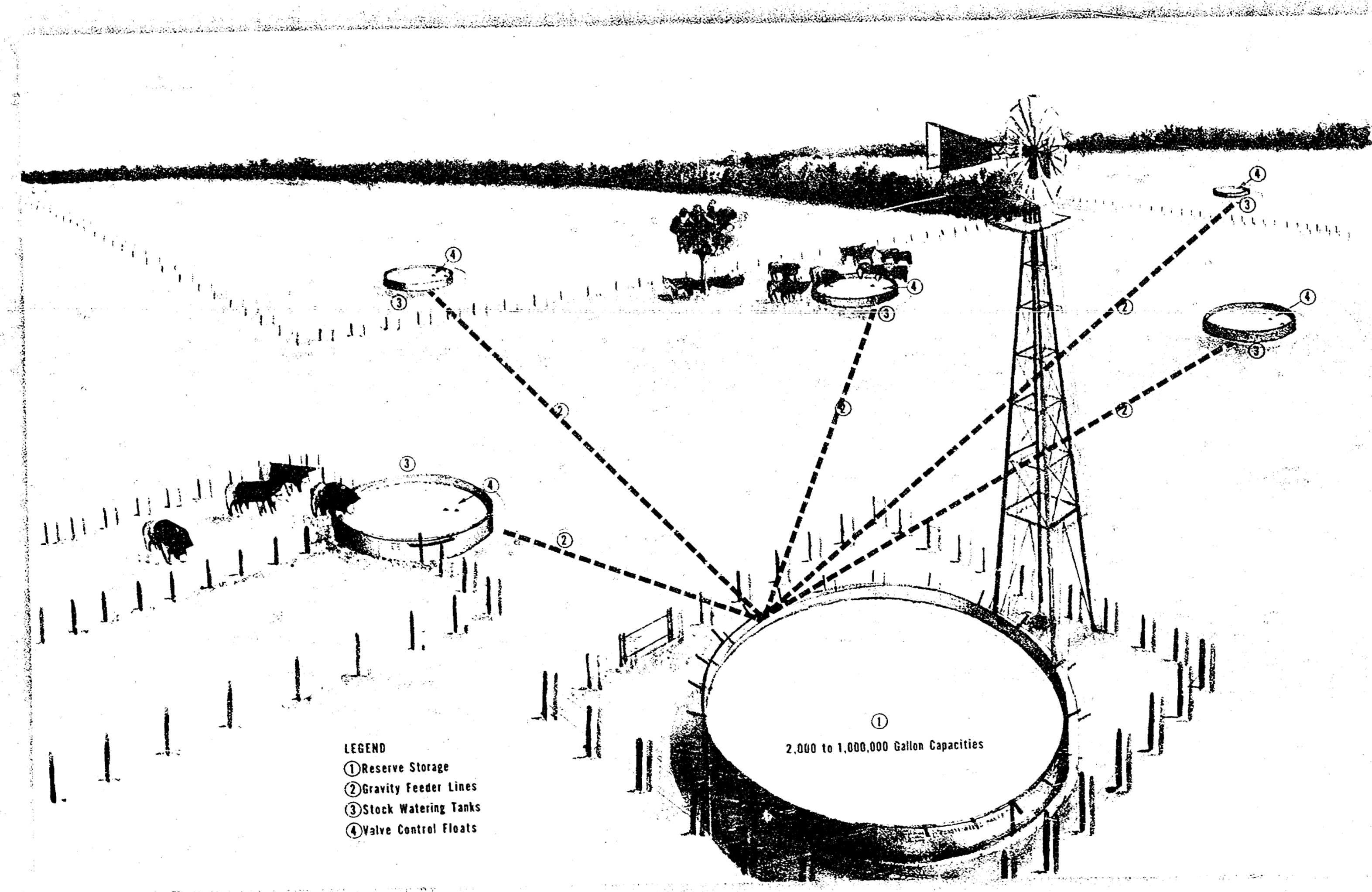


"PLASTI-STEEL TANKS"
for
Ranch - Farm - Wildlife - Forestry
(SIZES - 2,000 TO 640,000 GALLONS)

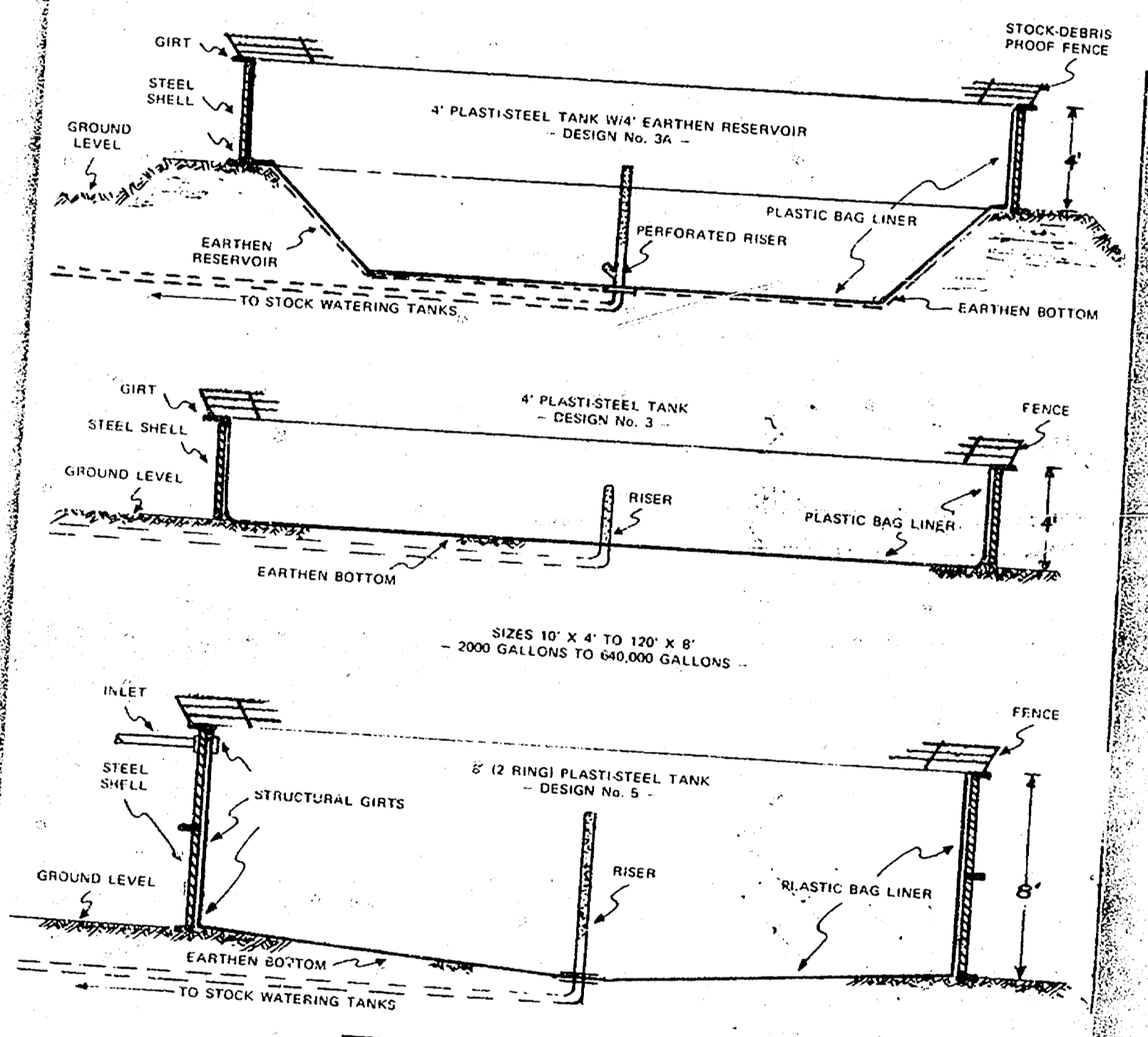


PLASTI-STEEL INC.
Plasti-Steel Products, Inc.
1005 WICHITA PLAZA / AM 2-8861 / WICHITA, KANSAS 67202



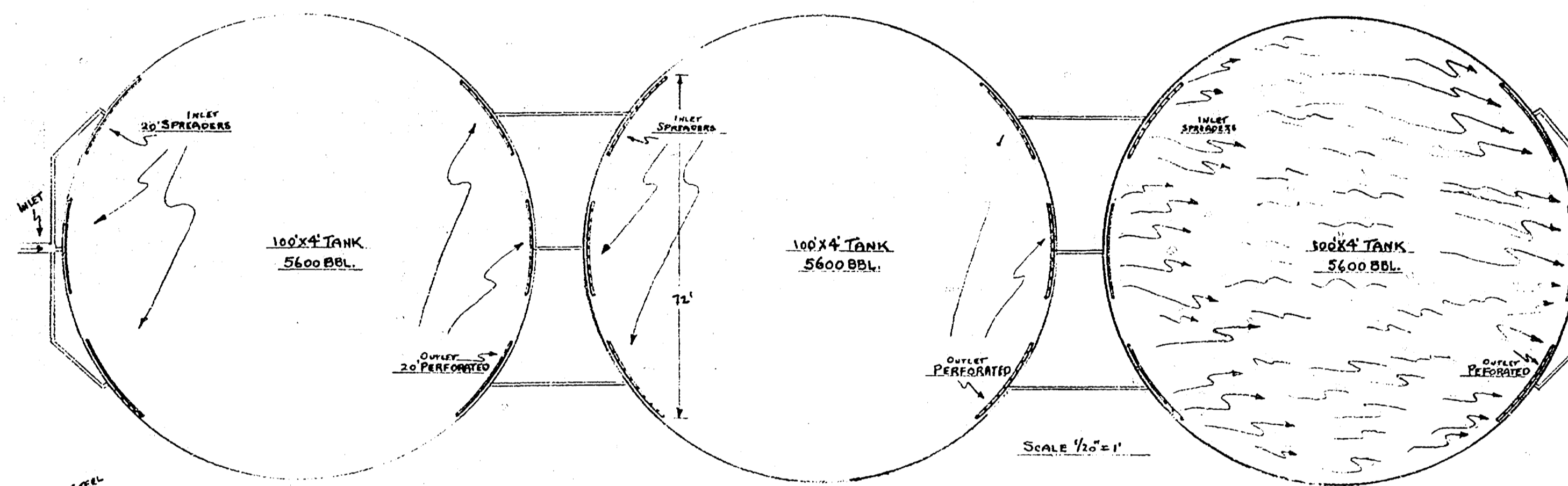


SUGGESTED DESIGNS
 "PLASTI-STEEL TANK"
 RESERVOIR INSTALLATIONS



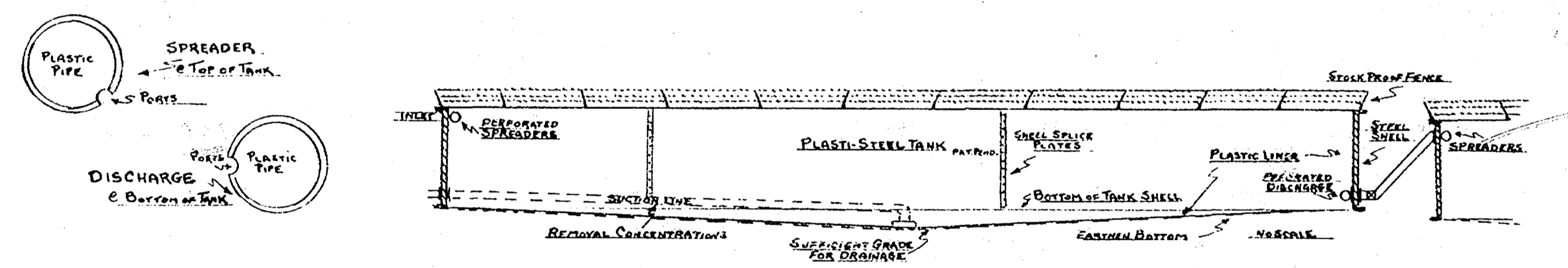
PLASTI-STEEL INC.
 FORMERLY PLASTI-STEEL TANK CO.
 1005 NORTH PLAZA / AM 7 0811 / WORTH, KANSAS 67201





SUGGESTIVE DESIGN
SEDIMENTATION AERATION ASSEMBLY

"PLASTI-STEEL TANKS"
3 100' x 4' MAX. CAPACITY 16,800 BBLs.
(SIZES AVAILABLE TO 48 48 BBLs.)



L-33-47 PLASTIC PRODUCTS INC.
Div. 342 100 WICHITA PLAZA WICHITA, KANSAS 67202



DESIGN DETAIL
AND
ERECTION PROCEDURE
PLASTI-STEEL TANKS

TANKS CONSIST OF —
PREFABRICATED GALVANIZED STEEL SHELL
 from sections
 Punched and formed for assembly and erection in
 10' sections.
ONE-PIECE HEAVY DUTY PLASTIC BAG LINER
 Electronically fabricated in polar cap design
 to meet tank dimensions.

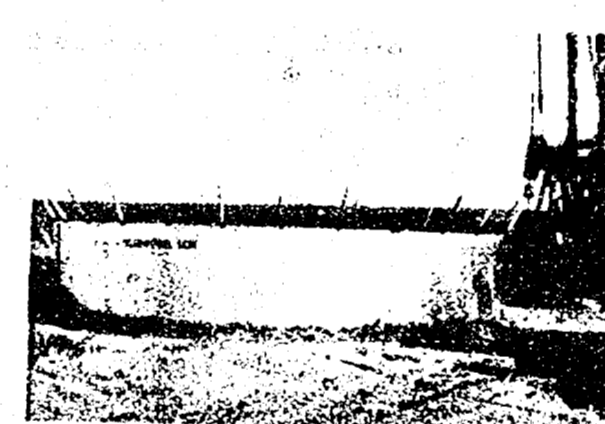
AVAILABLE IN SIZES
 50 BBL. TO 16,000 BBL.

UNIT SIZE DIA. x HGT.	CAPACITY IN BARRELS	UNIT SIZE DIA. x HGT.	CAPACITY IN BARRELS
10' x 4'	50 BBL.	80' x 4'	3,548 BBL.
12' x 4'	90 BBL.	100' x 4'	4,488 BBL.
15' x 4'	143 BBL.	120' x 4'	6,488 BBL.
20' x 4'	230 BBL.	150' x 4'	8,000 BBL.
25' x 4'	354 BBL.	200' x 4'	11,200 BBL.
30' x 4'	500 BBL.	300' x 4'	16,500 BBL.
35' x 4'	687 BBL.	400' x 4'	22,400 BBL.
40' x 4'	917 BBL.	500' x 4'	29,000 BBL.
45' x 4'	1,190 BBL.	600' x 4'	36,300 BBL.
50' x 4'	1,500 BBL.	700' x 4'	44,200 BBL.
60' x 4'	2,000 BBL.	800' x 4'	52,800 BBL.
70' x 4'	2,750 BBL.	900' x 4'	61,000 BBL.



PLANT WASTE WATER ACCUMULATION TANK

Suitable for storage of fresh water, salt water, chemicals,
 or wastes, etc.
 Low initial cost — — — good salvage value.
 Easy to transport and install.
 Minimum of grade preparation.
 Suitable for either permanent or temporary reusable storage.
 Little expensive to salt water, wastes, and most chemicals.
 Can be visually inspected.
 Acceptable to regulatory agencies.
 Stock, weld, and drive proved.
 Easy to modify or repair.



OIL FIELD SALT WATER TANK

PLASTI-STEEL
 (FORMERLY PLASTIC PRODUCTS, INC.)

1005 WICHITA PLAZA — AREA 316 — AM 2-6861 — WICHITA, KANSAS 67202



DESIGN DETAIL
AND
ERECTION PROCEDURE
PLASTI-STEEL TANKS

— TANKS CONSIST OF —
PREFABRICATED GALVANIZED STEEL SHELL
(on bottom)
Punched and formed for assembly and erection in 10' sections.
ONE-PIECE HEAVY DUTY PLASTIC BAG LINER
Electrically fabricated in plant cap design to exact tank dimensions.



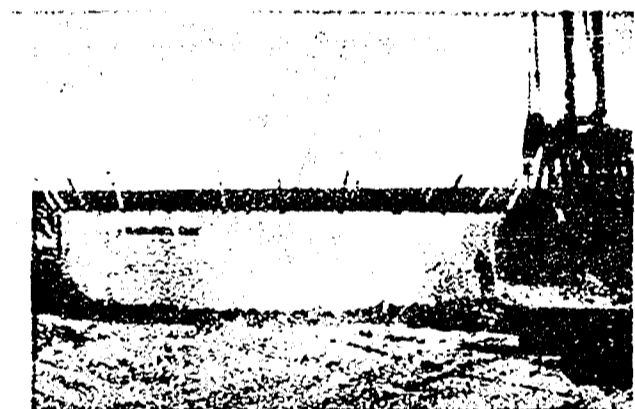
PLANT WASTE WATER ACCUMULATION TANK

Suitable for storage of fresh water, salt water, chemicals, or waste, etc.
 Low initial cost — good salvage value.
 Easy to transport and erect.
 Minimum of grade preparation.
 Suitable for either permanent or temporary reusable storage.
 Liners impervious to salt water, waste, and most chemicals.
 Can be visually inspected.
 Acceptable to regulatory agencies.
 Stock, weed, and debris proof.
 Easy to modify or equip.

AVAILABLE IN SIZES
 50,000 BBL. TO 16,000,000 BBL.

RE: IMPROVED DESIGN "PLASTI-STEEL TANKS"

1. Tank, regardless of size, can now be erected, dismantled, transported and re-erected in 4" x 10' panels. Dismantling and erecting requires only the removal and replacement of splice bolts.
2. Steel angle and structural girts are in 10' one-punched and matched lengths for simple joining into panels.
3. Self-raising bolts by cutting threads in girt back shell to same increasing structural strength.
4. Structural design reduces steel requirements and erection time. 4" x 10' panels can be handled easily by 2 men.
5. Erection has been simplified with the absence of mis-measuring or alignment.
6. Shell splice widths have been increased from 2" to 4", splice bolts from 1/2" to 3/4", which on 10' panels vs. 20' to 40' diameter increases load within the same working.
7. Steel panels can be pre-assembled in the warehouse or at job site prior to erection. Flanges bolted with to get with 1/2" off-lapping bolts.
8. All steel plates are now electric galvanized or cadmium plated for better corrosion resistance.



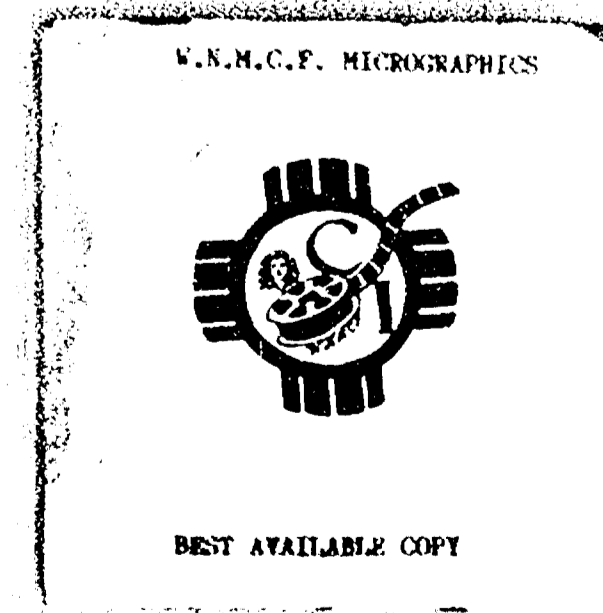
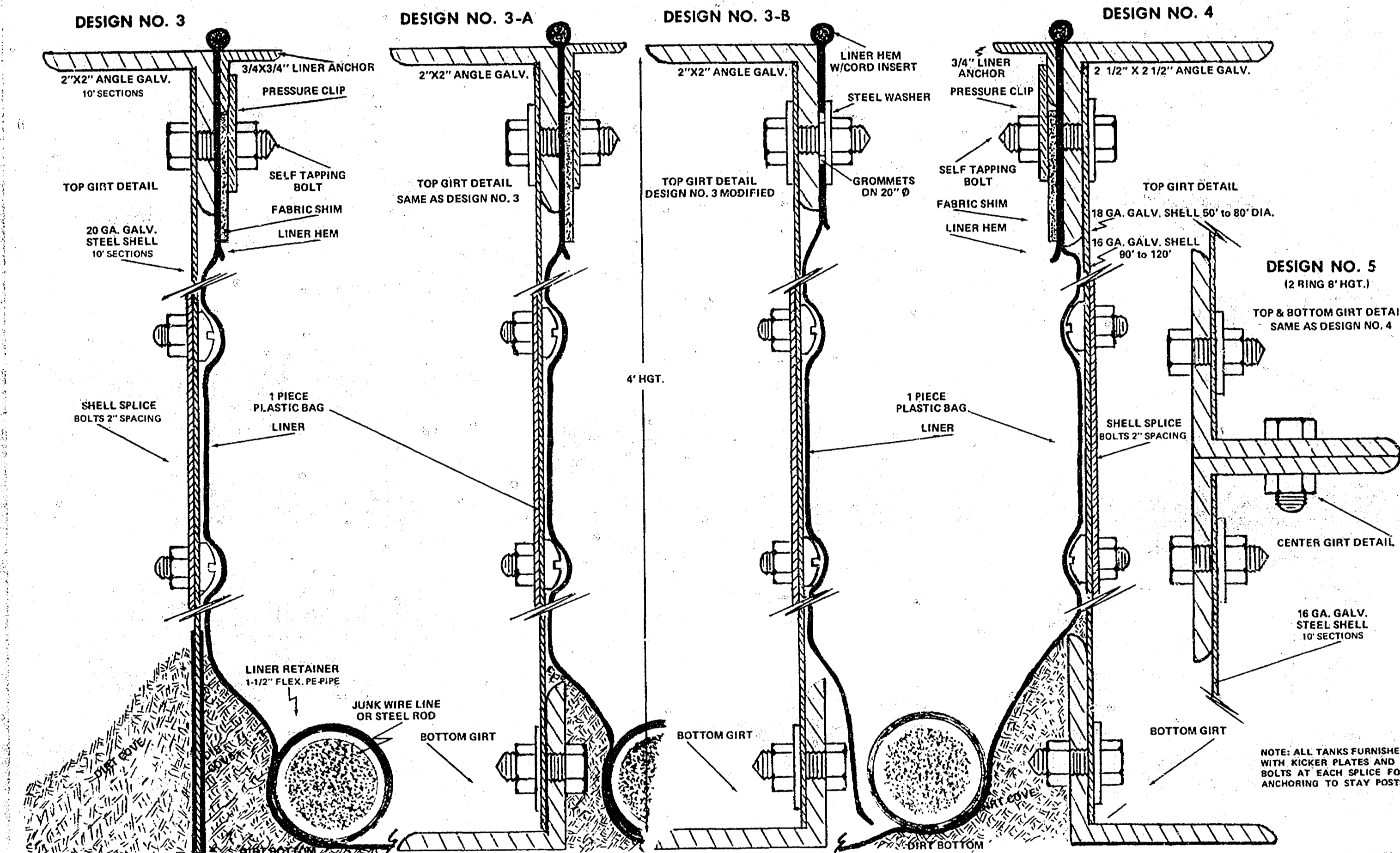
OIL FIELD SALT WATER TANK

PLASTI-STEEL
(FORMERLY PLASTIC PRODUCTS, INC.)

1005 WICHITA PLAZA — AREA 318 — AM 24881 — WICHITA, KANSAS 67202



PLASTI-STEEL TANK DESIGNS



GENERAL INSTALLATION PROCEDURE

GRADE PREPARATION

1. Clear and level area where tank is to be set, removing rocks, brush, stubble, etc. Note: Dirt is preferable to sand if any fill of grade is required.
2. Lay out bottom girt on grade, bolt together, check for roundness using a center grade stake. Level the girt by digging out or filling in under girt, using a string level or transit for guidance. Note: With tanks Design No. 3 (Top Girt Only), use girt for checking grade, then remove for attachment to after scribing a circle on the earthen surface.

STEEL ERECTION

1. Bolt top girt to steel shell securely, starting the self-tapping bolts from center towards each end.
2. Stand first panel on bottom girt, centering top girt splice with bottom girt, then attach second and succeeding panels to first, bolting both girt and shell splices (hand tight only) as you go. Note: Insert caulking compound between shell splices prior to bolting together. With Tanks Design No. 3 (Top Girt Only), stand panel on second circle.
3. When last panel is in place, check top girt for roundness against center grade stake and plumb lines, using plumb bob or level, bracing or tying down, if necessary, to hold tank round and plumb. Then tighten all splice bolts, and again check for levelness with string level or transit.
4. Bolt panels to bottom girt.
5. Build a 2" to 3" dirt cover as shown around inside perimeter of tank, utilizing dirt from inside of tank and foot compact. (Also build cover on outside of Design No. 3 Tanks). Then rake or smooth entire bottom of tank.

LINER INSTALLATION

1. Unroll liner towards center of tank and position under cap (which is exact center of liner) in a shallow dug hole in center of tank. Then unfold liner and stretch out to side.
2. Hang the liner on the top girt with clip clamps spacing the liner out evenly. Work slack out from center of tank so that liner is properly positioned with seams of liner hanging vertical.
3. Puncture liner approximately 1" down from coat insert in hem and slip over protruding bolt as shown on drawing. Leave slack between bolts equal to curvature of tank. Do not pull taut. Note: Liners of Design 2-B are pre-stressed for hanging.
4. Install protective skin on bolt - long end down.
5. Compress liner anchor against tank with clips and bolt.
6. Again position liner and lay weighted liner retainer ring out against liner tightly, completely around perimeter of tank.

COMPLETION OF TANK

1. Install stay posts and attach to tank with the U Bolts provided.
2. If fence arms are utilized, bolt to tank and attach barbed wire.

NOTES: 1. On tanks Design No. 3-B, bolt both top and bottom girts to shell. Dismantling and reassembling will necessitate removal and replacing splice bolts only.
2. Where corrosion board is required, apply to bottom of shell before assembling panel.

PLASTI-STEEL, INC.
1025 NORTH HUNTER / SUITE 1300 / WENCH, MISSOURI 64486

V.A.N.C.C.F. MICROGRAMMES



BEST AVAILABLE COPY