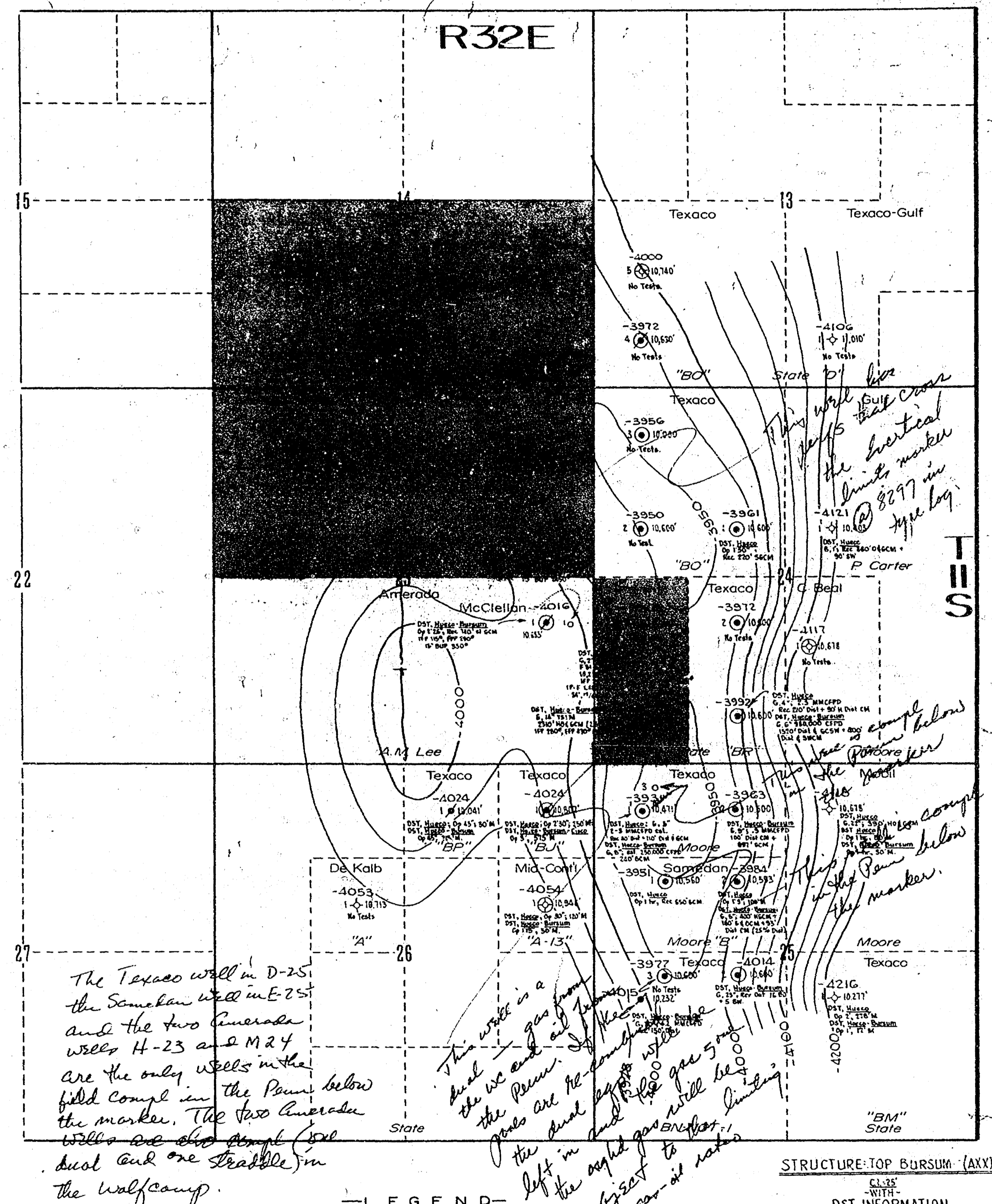
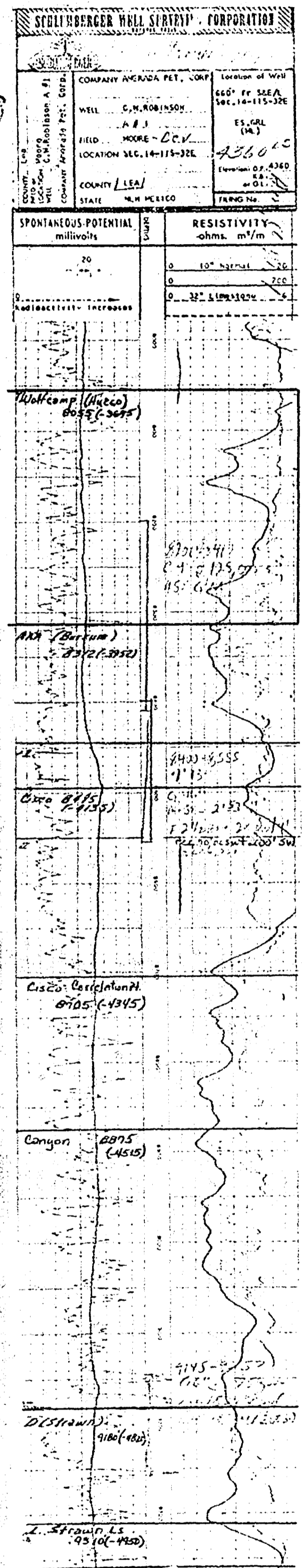


Case No
3808

Large Exhibits



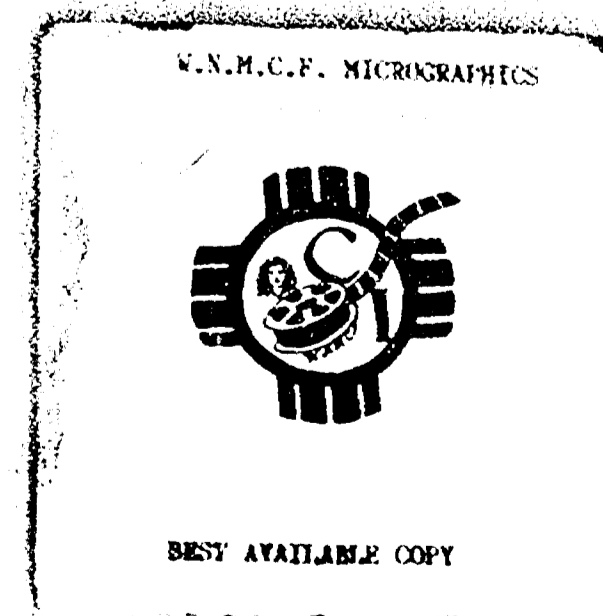


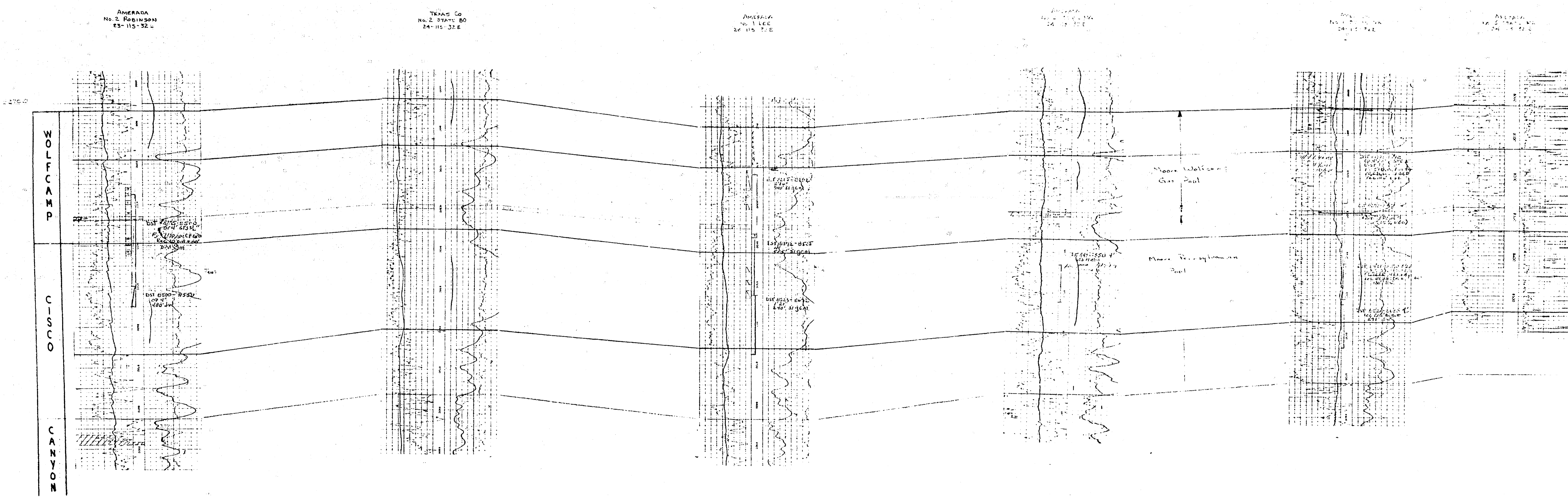
The Texaco well in D-25, the Semoran well in E-25 and the two Semoran wells H-23 and M-24 are the only wells in the field comp in the Pennsylvanian marker. The two Amoroso wells are also comp in the Wolfcamp.

Proposed soln - recombine the Wolfcamp and the Pennsylvanian into Pennsylvanian with all gas prod going to BOR units.

- LEGEND
- DEVONIAN PRODUCER
 - ⊙ ABANDONED DEVONIAN PRODUCER
 - ⊖ DRY DEVONIAN TEST
 - ⊕ DRY DEVONIAN TEST - PENNSYLVANIAN PRODUCER
 - ⊗ PENNSYLVANIAN PRODUCER
 - ⊘ ABANDONED PENNSYLVANIAN PRODUCER
 - ⊙ DRY - PENETRATED TOP MISSISSIPPIAN OR SHALLOWER HORIZON

STRUCTURE TOP BURSUM (AXX)
 DST INFORMATION
 HUECO TO BURSUM
MOORE FIELD
 T11S - R32E
 LEA COUNTY, NEW MEXICO
 Scale: 1"=1000'
 H.C. Tabor
 April, 1966





Structural Section
 Moore Field

