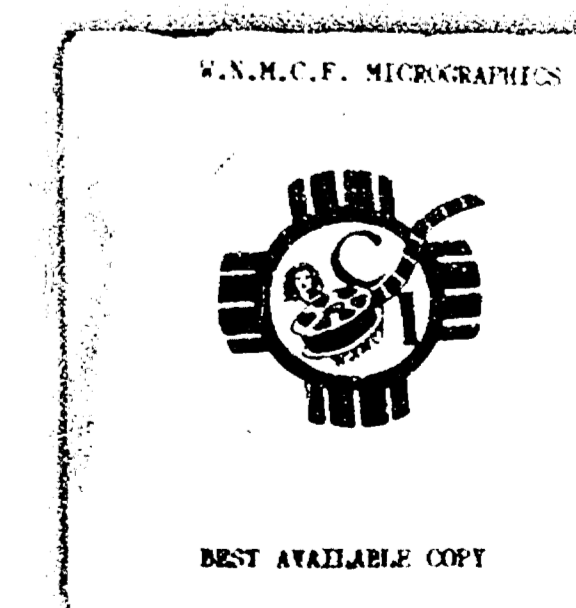
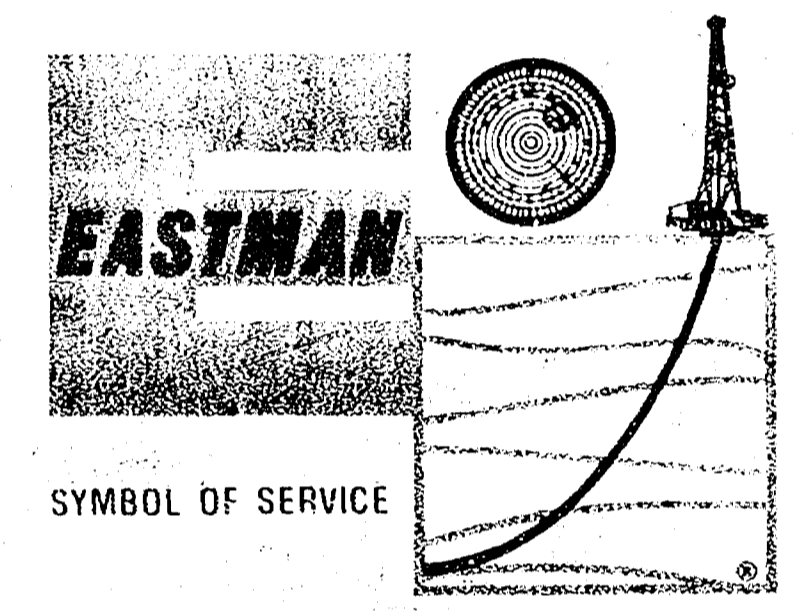


Case Number  
3827

Large  
Exhibits





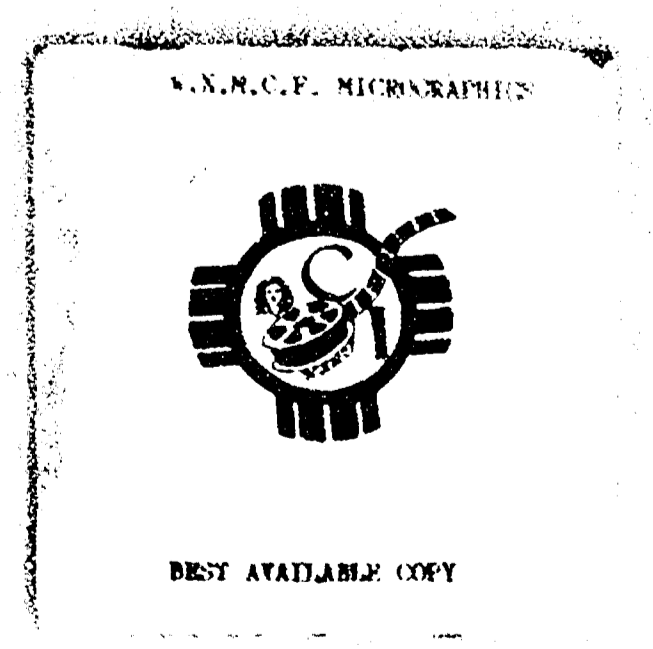
SYMBOL OF SERVICE

**SURVEY REPORT**

PREPARED BY: P. UTZ  
*[Signature]*  
CASE NO. 3827

**EASTMAN OIL WELL SURVEY COMPANY**

DIRECTIONAL DRILLING • TOOLS • INSTRUMENTS • TECHNIQUES  
Consult The Yellow Pages For Your Nearest Eastman Office  
LONG BEACH • HOUSTON • LAFAYETTE



THIS IS A RECORD OF A SUB-SURFACE  
SURVEY OF YOUR WELL

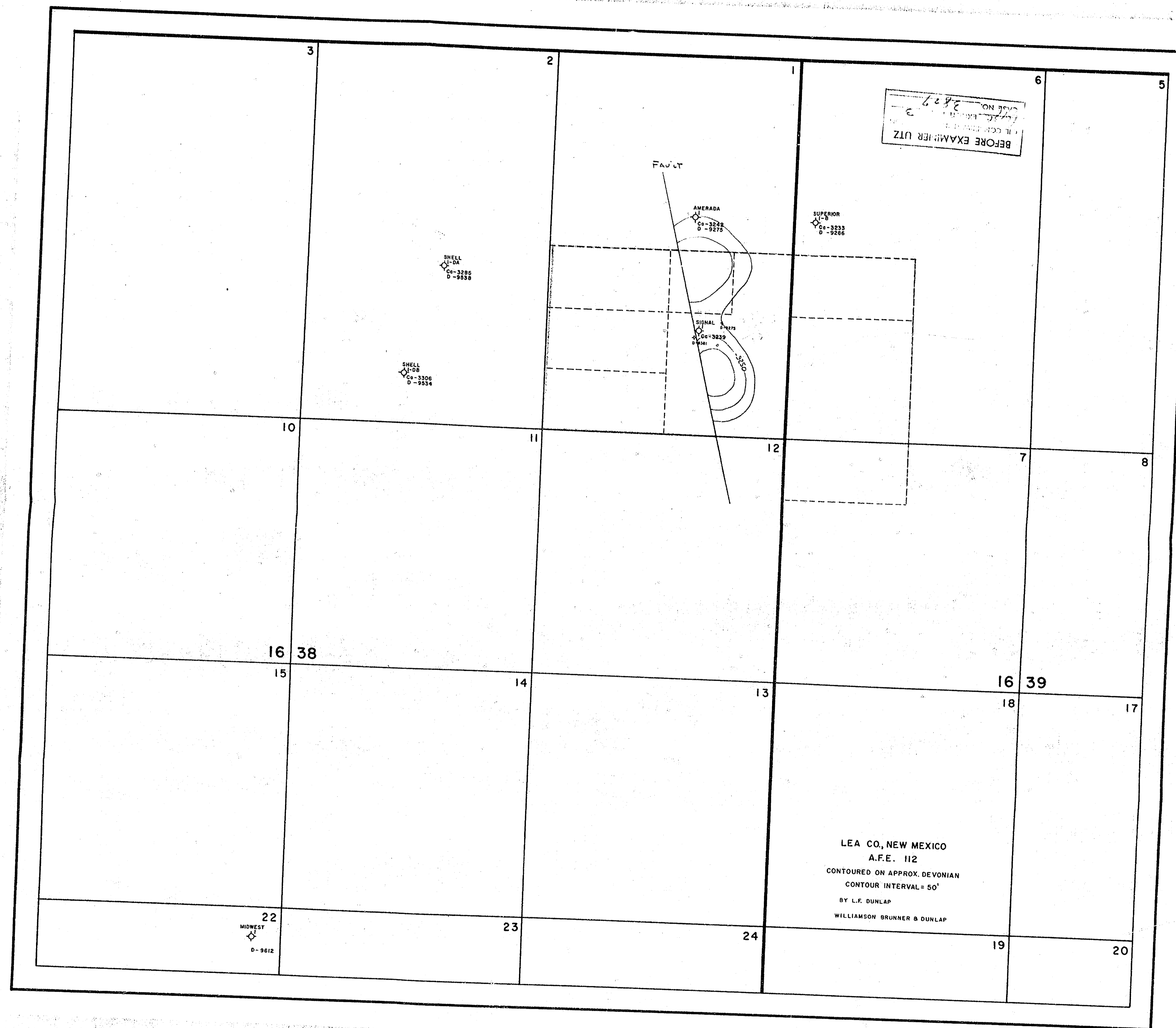
We have retained a copy of your survey report in our files for your convenience; however, should you so desire, all copies of the survey report will be forwarded to you on written request. All surveys are kept in a locked file and are held in strictest confidence. Additional copies of your survey report can be made from the original by any blueprint company.







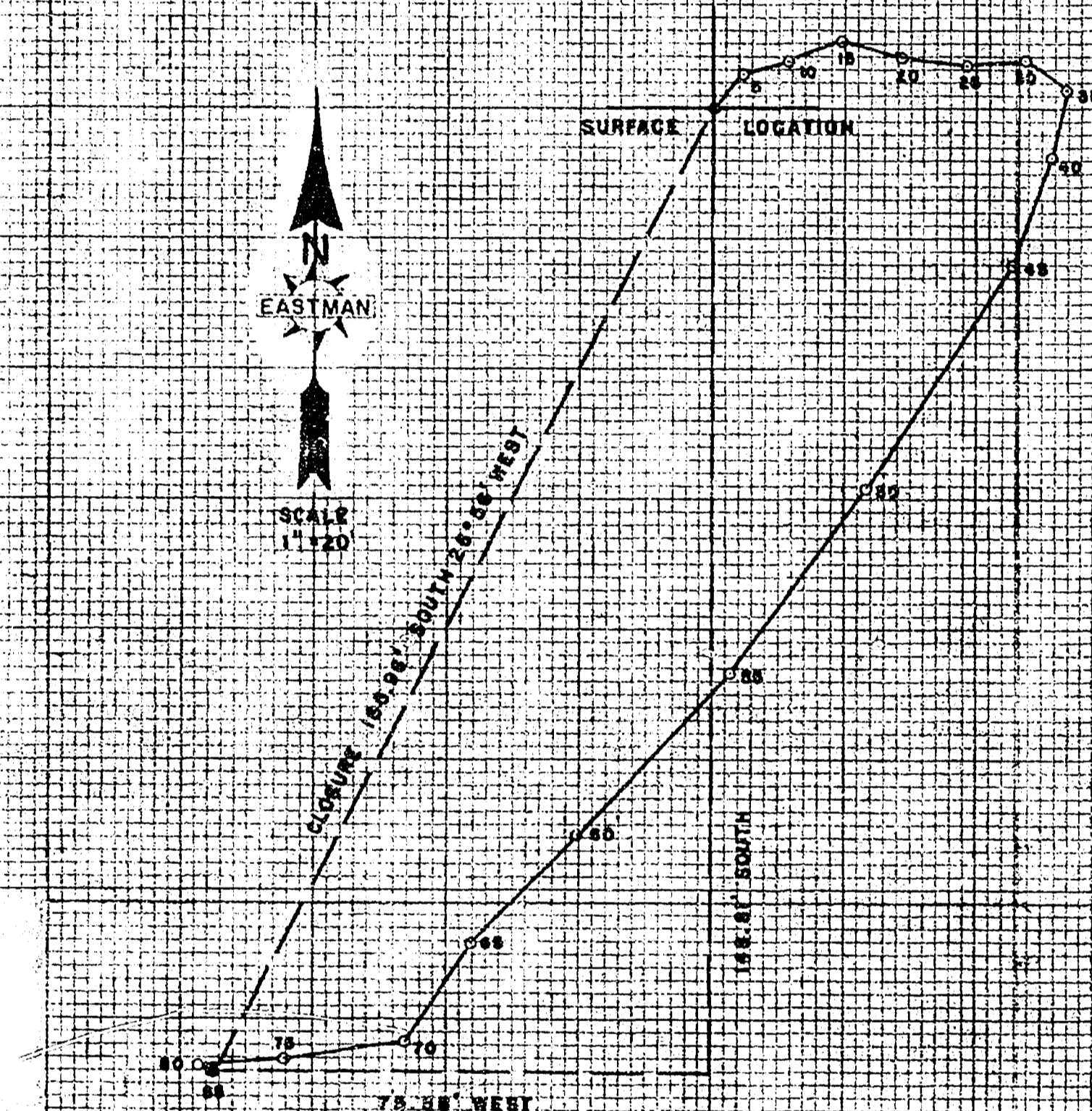






SIGNAL OIL & GAS CO.  
T.P. STATE NO. 1  
LEA COUNTY, N.M.

WT2888



SIGNAL OIL & GAS CO.  
T.P. STATE NO. 1  
LEA COUNTY, N.M.

WT3088 WT3888

