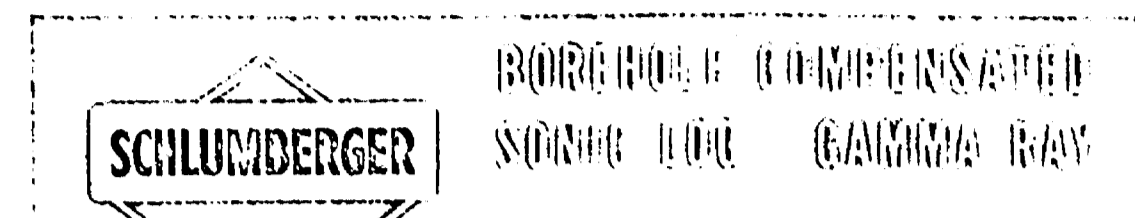


Case Number
3829

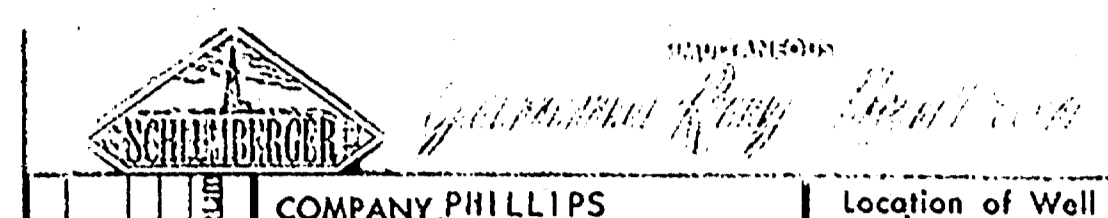
Large
Exhibits





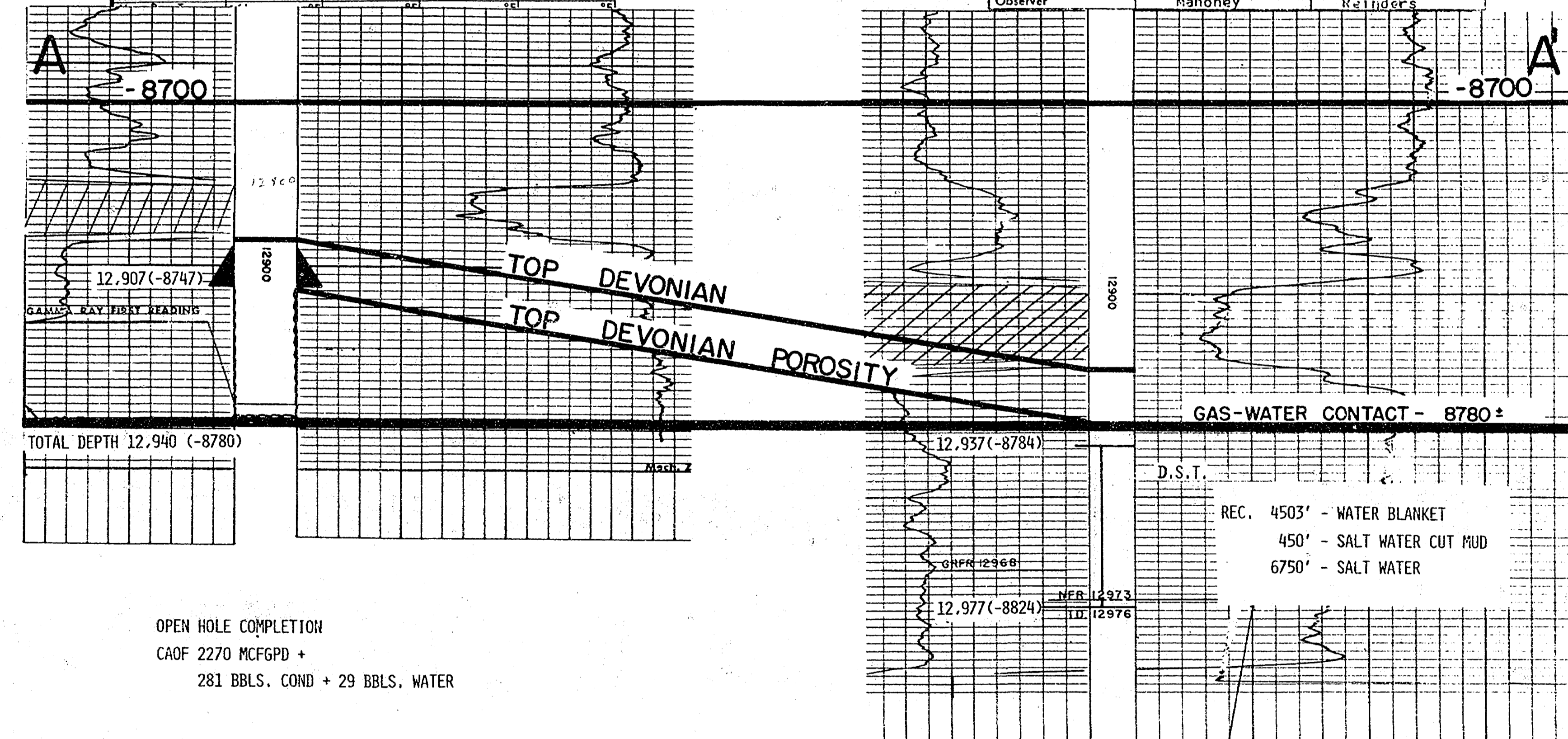
COMPANY TEXAS PACIFIC OIL COMPANY
 WELL WEST RANGER UNIT #2
 FIELD WILDCAT
 COUNTY LEA STATE NEW MEXICO
 LOCATION 1980' FROM S/L
 1980' FROM W/L
 Sec. 23 Twp. 12S Rge. 34E
 Other Services LL, ML, CDD

Permanent Down	61	Elev. K.B. 4160
Log Measured from	KB 12 Ft. Above Palm. Datum	Elev. D.F. 4155
Drilling Measured from	KB	Elev. G.L. 4145
Date	8-2-66	
Run No.	01	
Depth-Driller	12940	
Depth-Logger	12943	
Dim. Log Interval	12935	
Top Log Interval	100 (6.8)	
Logging-Driller	8 5768-200	
Logging-Logger	420	
Bit Size	7 7/8	
Type Field in Hole	SALT GEL	
Depth - Visc.	0-6	
pH Fluid Loss	6-8 (4-8 ml)	
Source of Sample		
Sp. @ Mean Temp.	11 @ 80 °F	
Sp. @ Mean Temp.	0.92 @ 82 °F	
Sp. @ Mean Temp.	1.1 @ 87 °F	
Source of Sp.	M.S. MEAS.	
Sp. @ Bit	0.95 @ 100 ft	
Time Since Circ.	11 HOURS	



COMPANY PHILLIPS
 PETROLEUM COMPANY
 WELL WEST RANGER UNIT
 # 1
 FIELD WILDCAT
 LOCATION SEC. 23-12S-34E
 COUNTY LEA STATE NEW MEXICO
 Location of Well 860' ± SAE/L
 GRN(ES-ML-LL)
 Elevation D.F. 4151
 or G.L.
 FILING No.

DATE	8-2-66	3-17-68
Depth Reference	16 1/2' Abv	13 3/4' Flange
First Reading	4201	12375
Last Reading	100	4000
Footage Measured	4101	8375
Max. Depth Reached	4202	8376
Bottom Driller	4200	8377
Maximum Temp. °F.	30	30
Mud Nature	Oil	Salt-Gel
Density	10.8	3.4
Viscosity	37	43
Country Site & Weight	0.5 @ 30 °F	0
Open Hole	13 3/4" to 355	8 3/4" to 4204
	12 1/4" to TD	8 3/4" to 12976
Fluid Level		Surf. face
Recording Speed (ft/hr)	2000' & 4000'	2000' & 4000'
Sensitivity (sp. GR)	40 (N) 280/400 (GR)	150 (N) 400
Time Constant	1.4	2.2
Panel	GNP-B # 54	GNP-C # 255
Core Log Time	2 Hr. 1	3 Hr. 1
Scale Size & Type	3 7/8"	3 7/8"
Trust No.	1762-Hobbs	1758-Hobbs
Observer	Johnson	Johnson



OPEN HOLE COMPLETION
 CAF 2270 MCFGPD +
 281 BBLS. COND + 29 BBLS. WATER

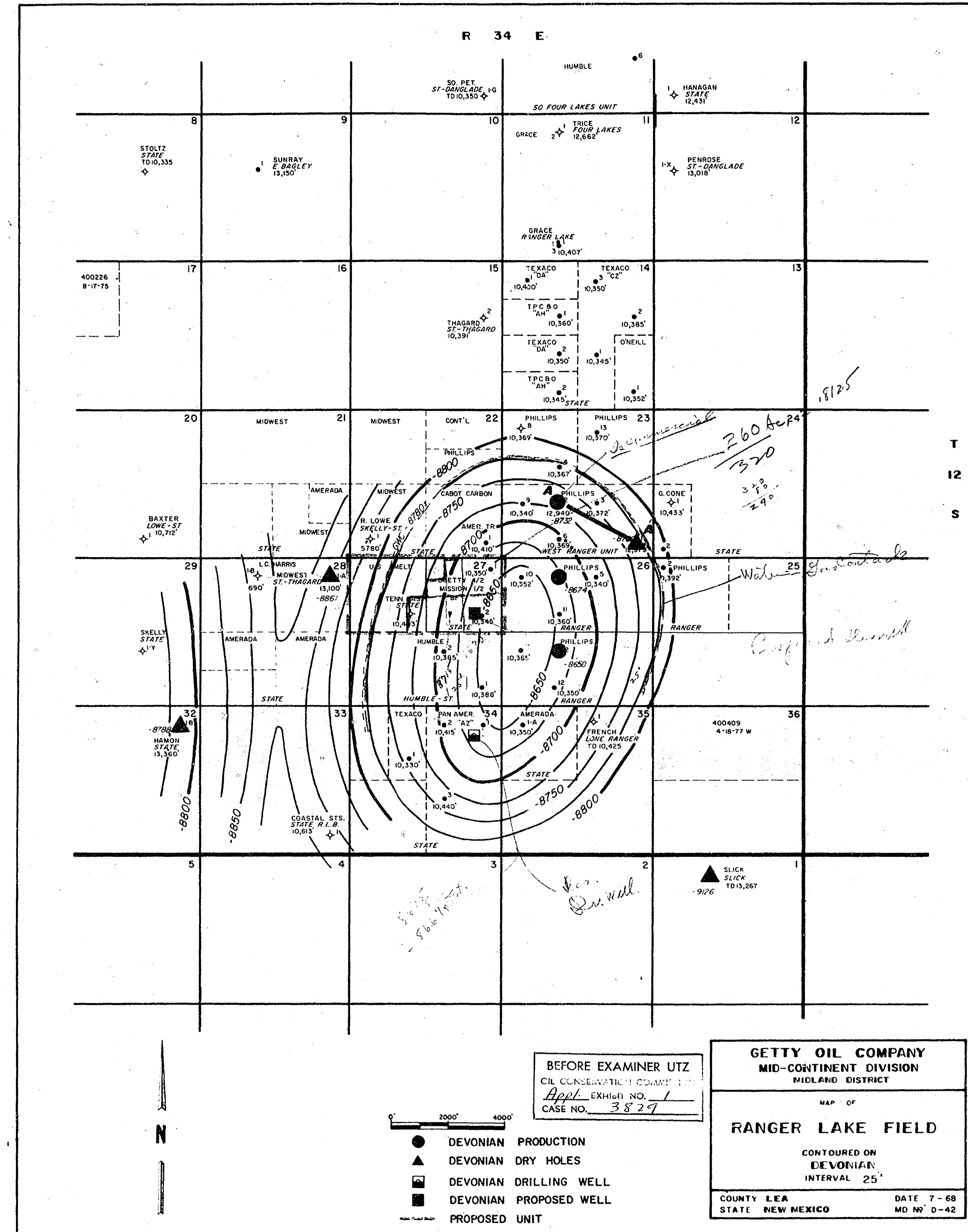
D.S.T.
 REC. 450' - WATER BLANKET
 450' - SALT WATER CUT MUD
 6750' - SALT WATER

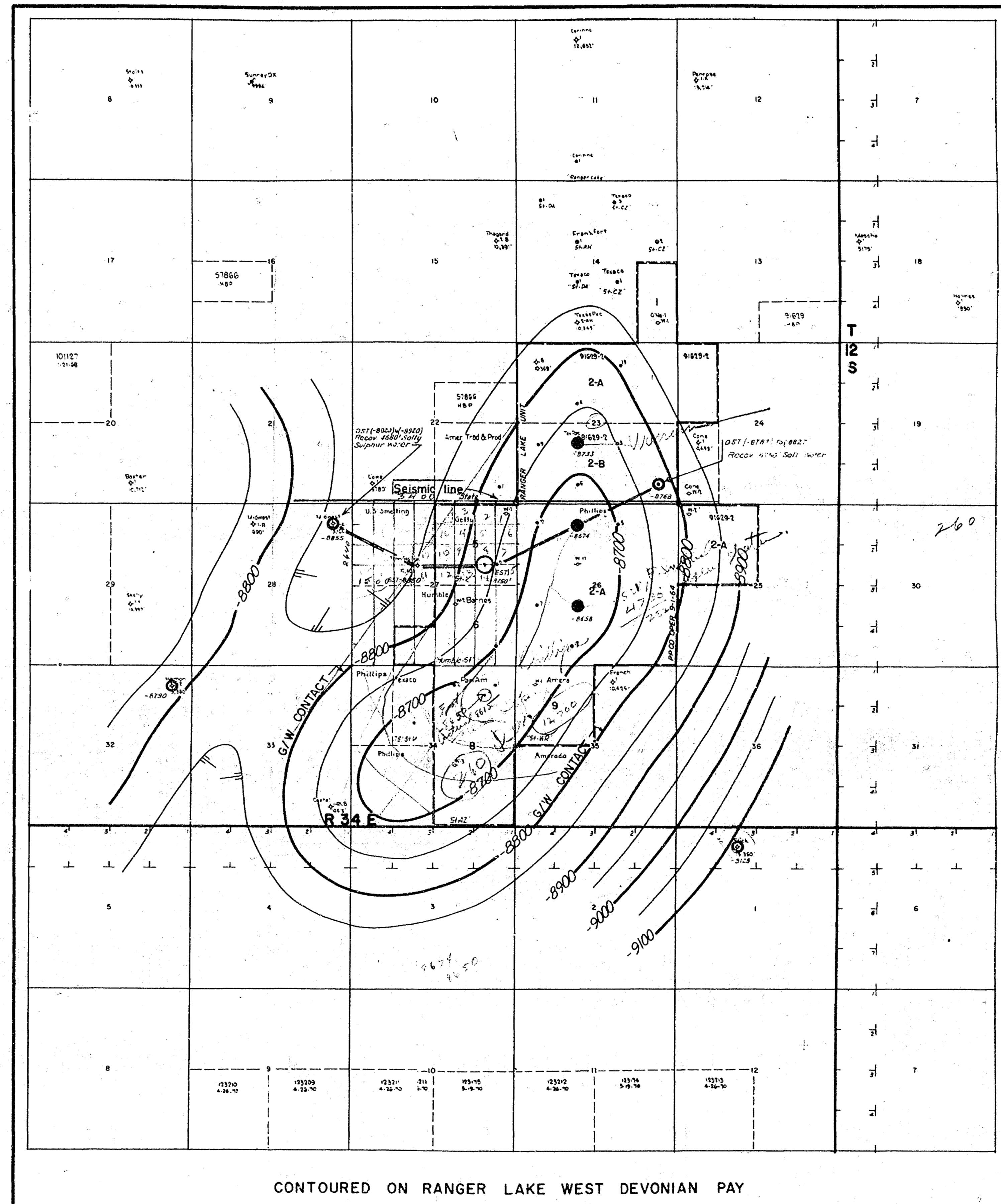
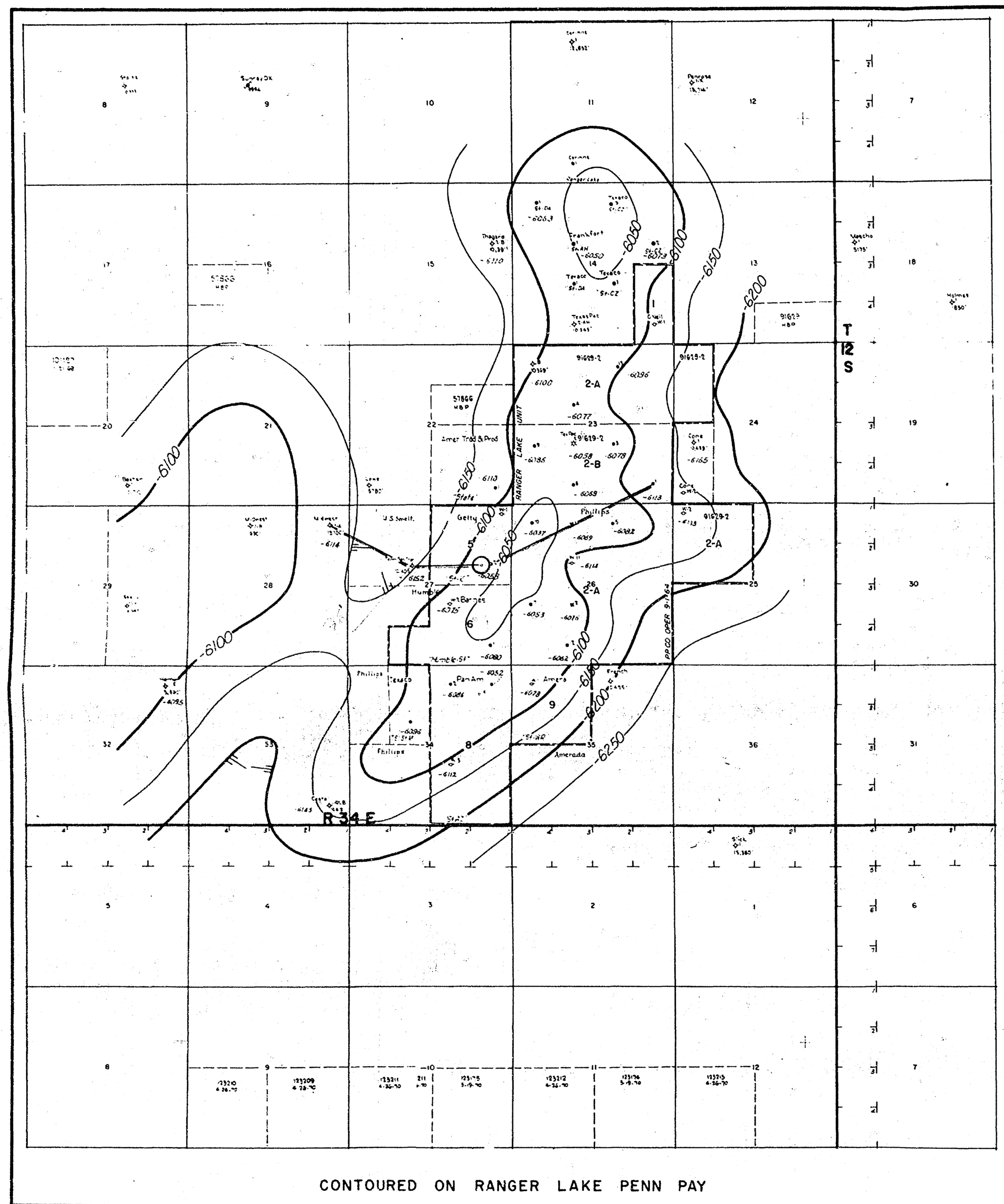
BEFORE EXAMINER UTZ
 Appl. Serial No. 2
 CASE NO. 3827

GETTY OIL COMPANY
 MID-CONTINENT DIVISION
 MIDLAND DISTRICT
 MAP OF
RANGER LAKE FIELD
 CROSS SECTION A-A

COUNTY LEA DATE 7-68
 STATE NEW MEXICO MD NO D-42







PHILLIPS PETROLEUM COMPANY
 RANGER LAKE WEST DEVONIAN GAS FIELD
 LEA COUNTY, NEW MEXICO
 SCALE: 1" = 2000'

26021500
 26021500 - 1700 = 26004500
 26004500 - 1500 = 26003000
 26003000 - 125 = 26001750
 26001750 - 820 = 25993550
 25993550 - 17240 = 25976310

PROOF EXAMINER UTZ
 PHILLIPS PETROLEUM COMPANY
 CASE NO. 3829

