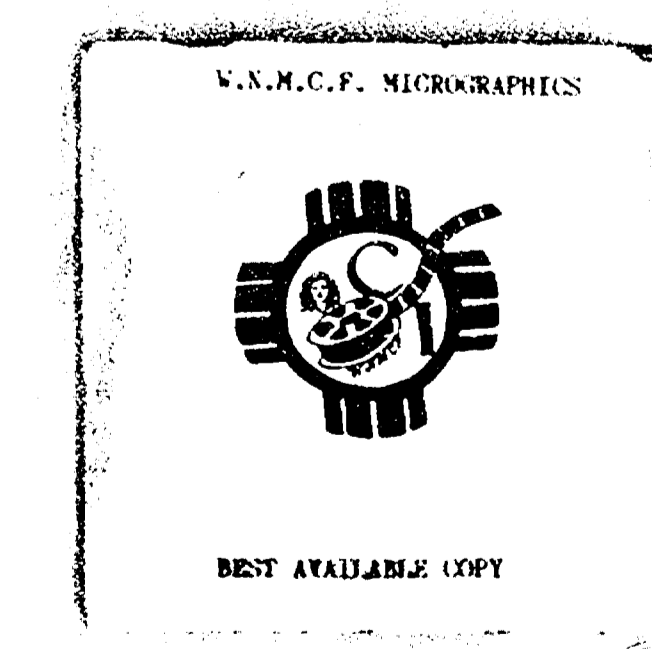
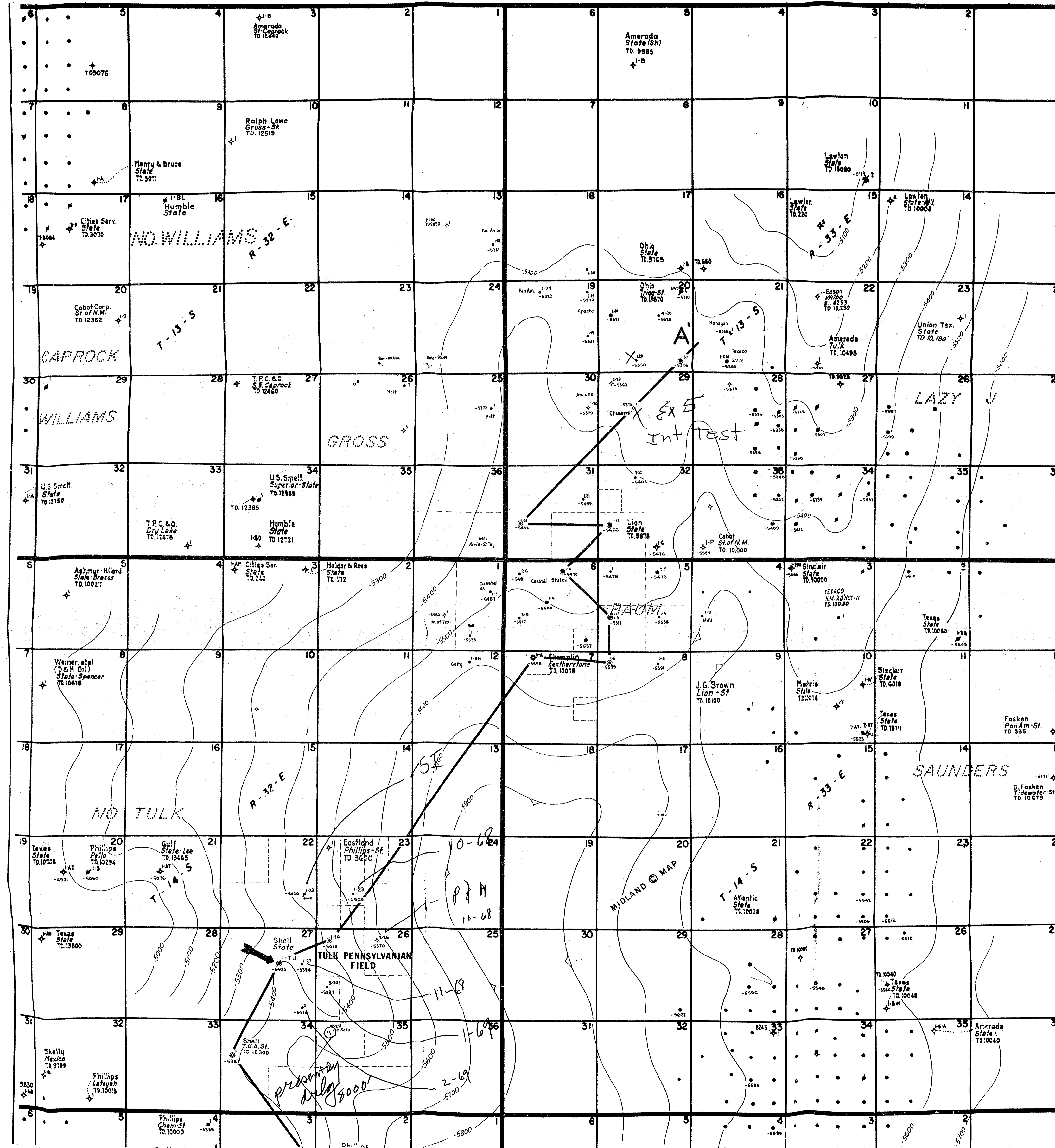
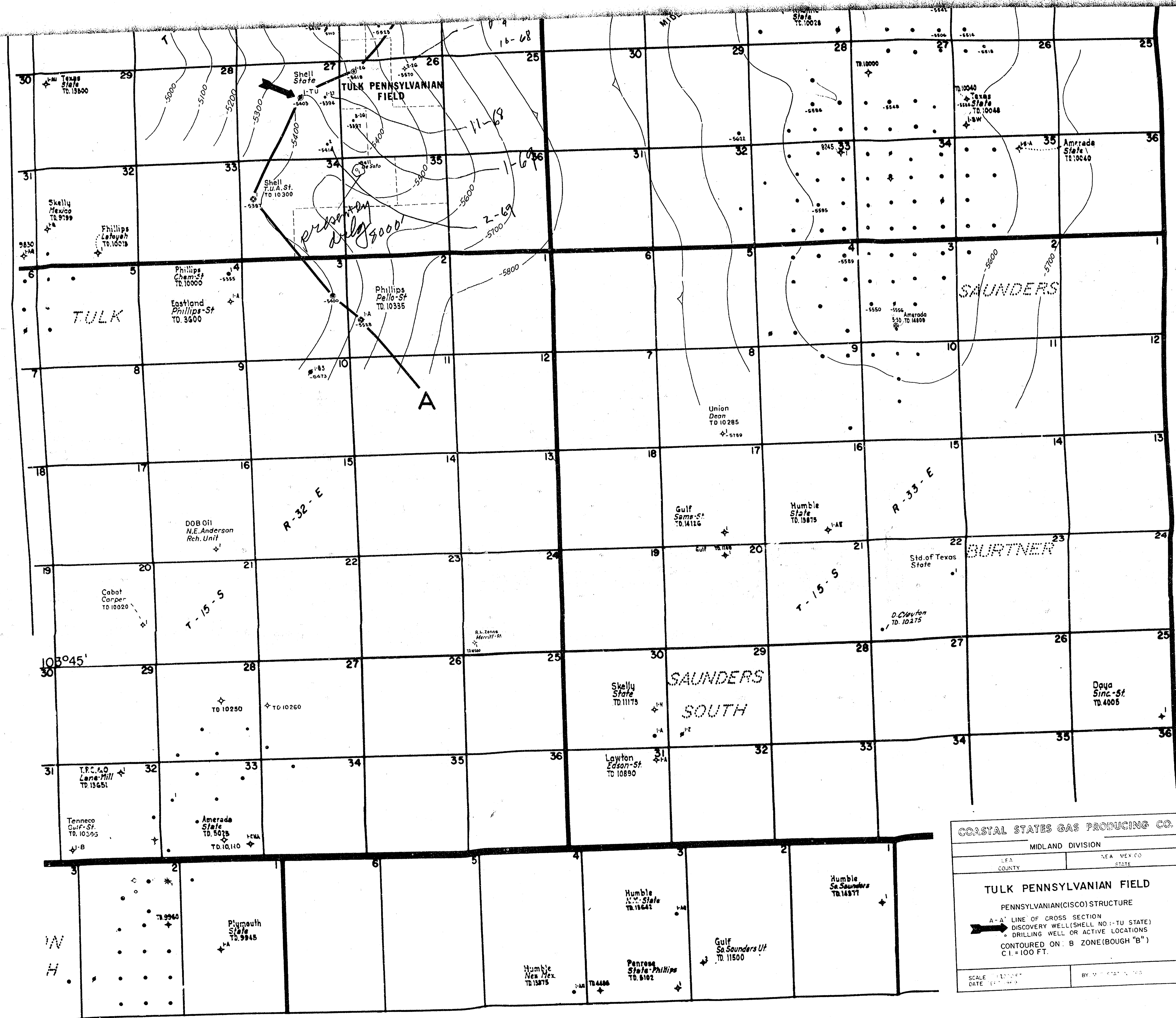


Case Number
3857

Large
Exhibits



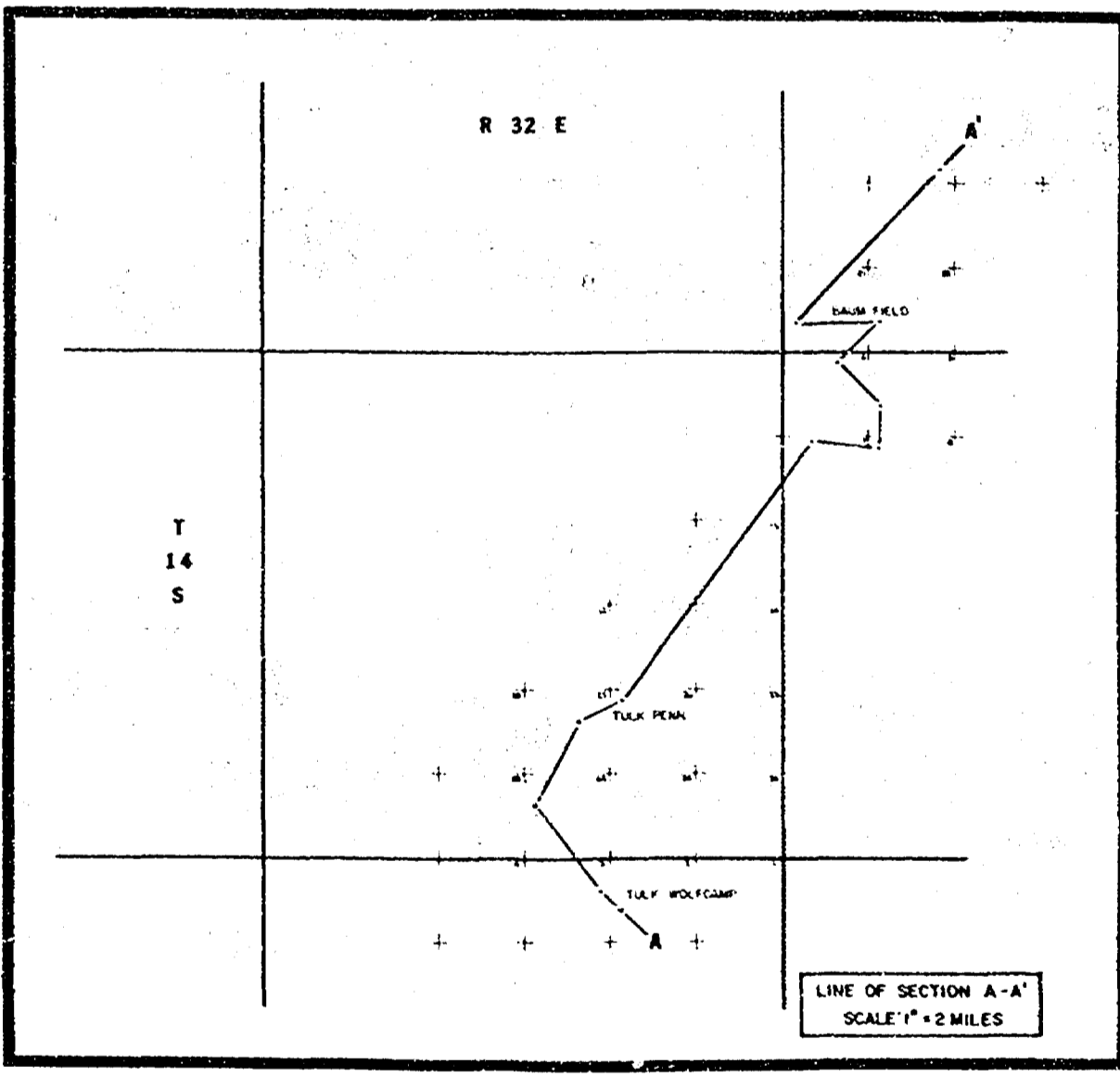
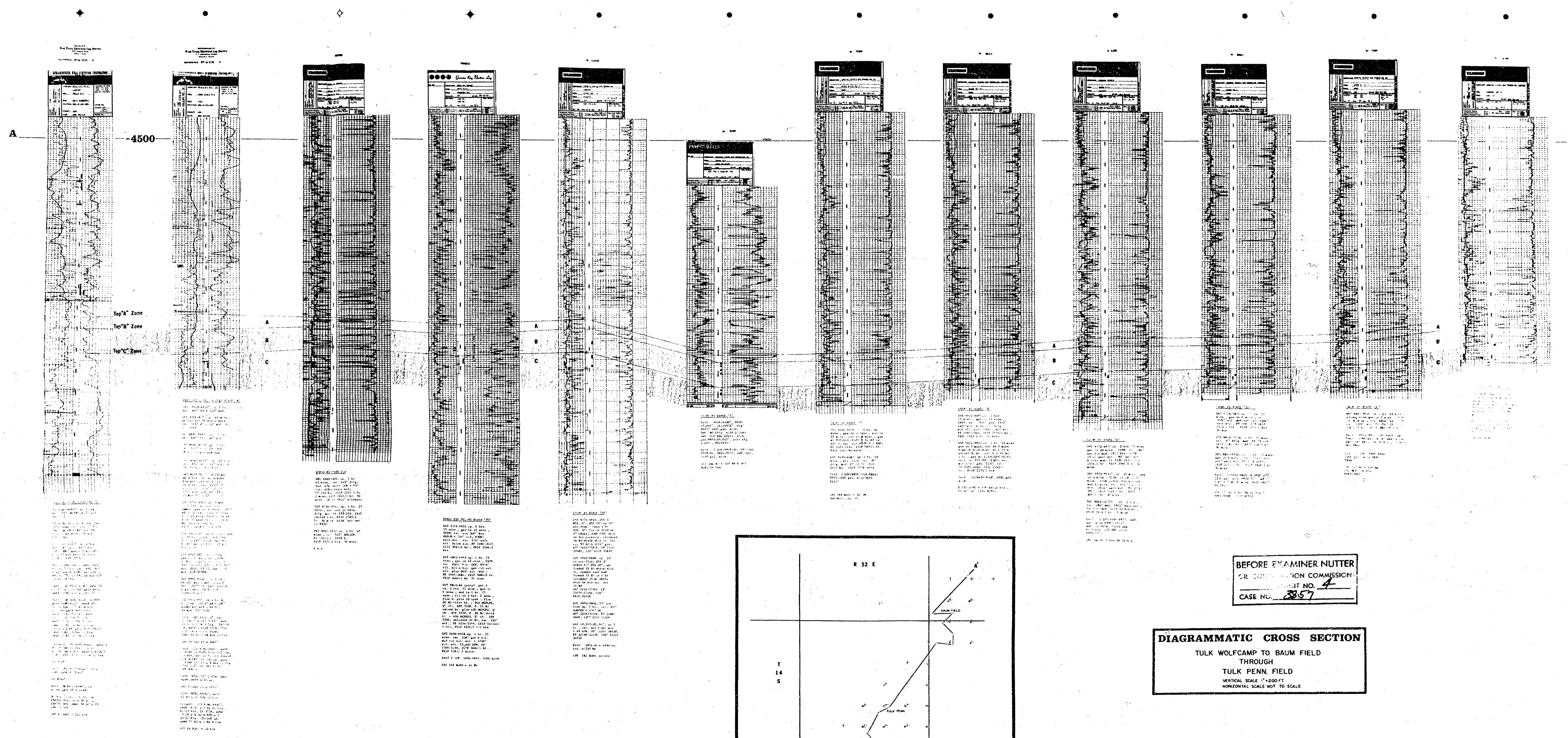




COASTAL STATES GAS PRODUCING CO.
 MIDLAND DIVISION
 LEA COUNTY TEXAS
 TULK PENNSYLVANIAN FIELD
 PENNSYLVANIAN(CISCO) STRUCTURE
 A-A' LINE OF CROSS SECTION
 DISCOVERY WELL(SHELL NO. 1-TU STATE)
 DRILLING WELL OR ACTIVE LOCATIONS
 CONTOURED ON B ZONE(BOUGH 'B')
 C.I. = 100 FT.
 SCALE 1:25000
 DATE 11-1-69
 BY M. J. ...

BEFORE EXAMINER MUTTER
 THE CONSERVATION COMMISSION
 CASE NO. 2427

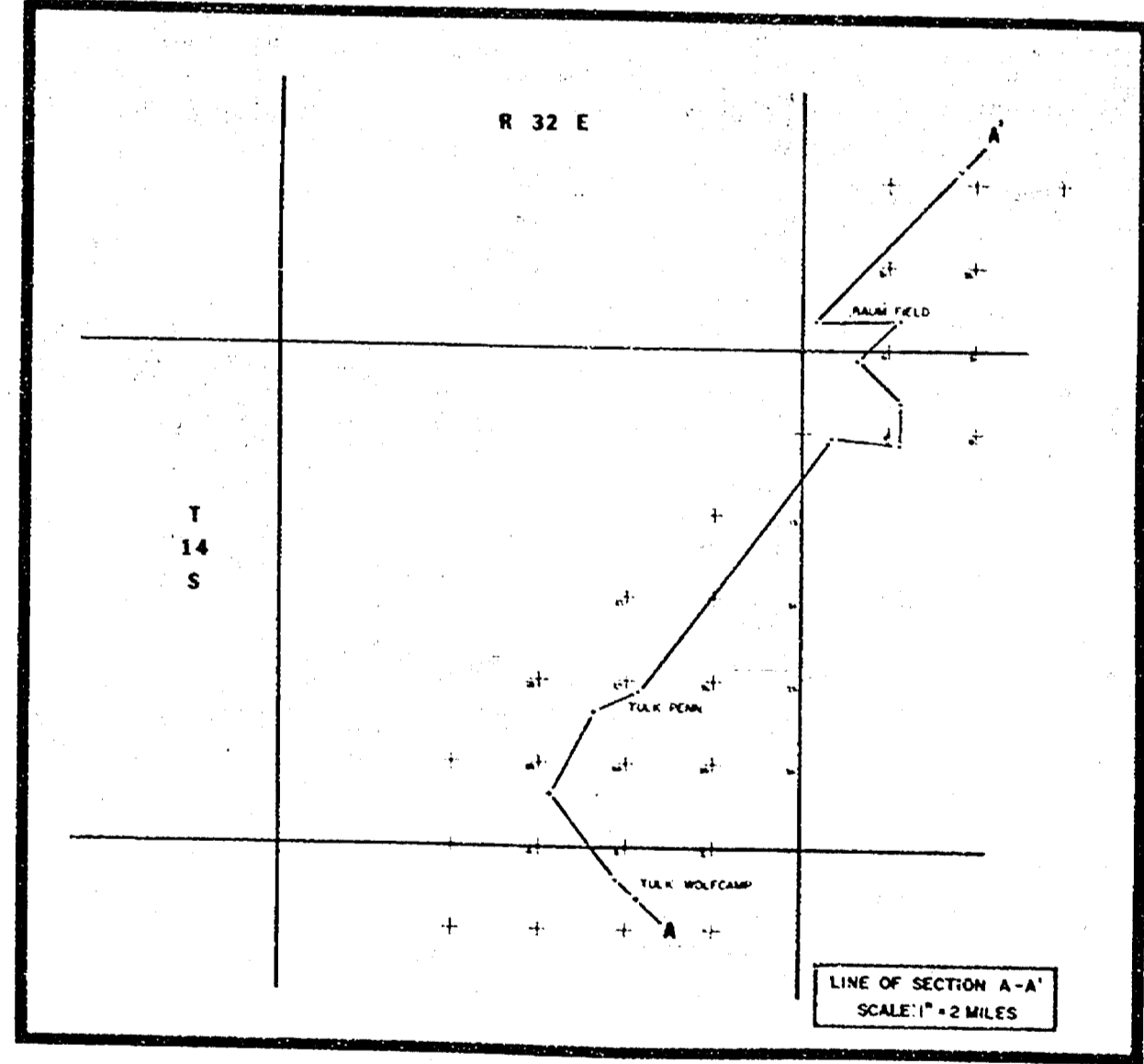
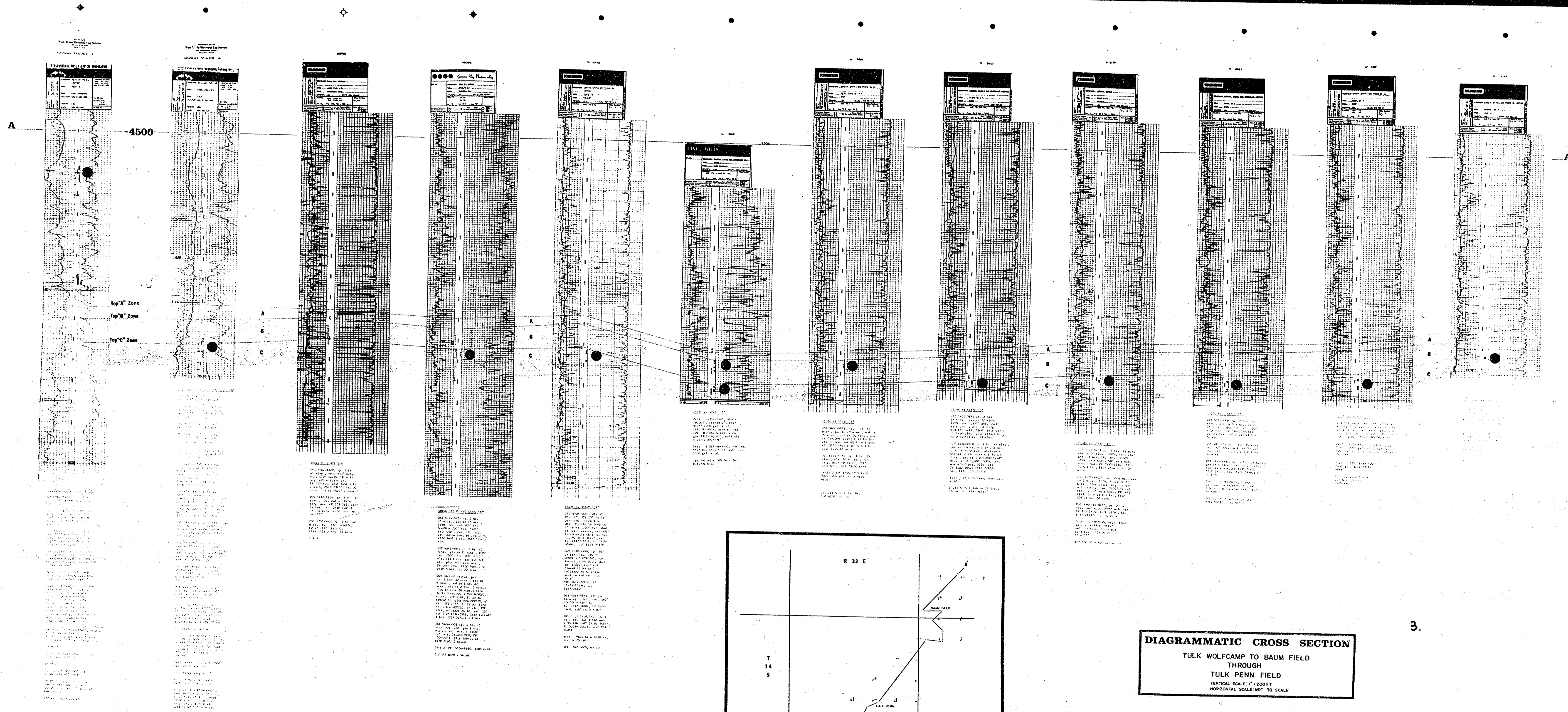




BEFORE EXAMINER NUTTER
 CIVIL ENGINEERING COMMISSION
 LICENSE NO. 4
 CASE NO. 3857

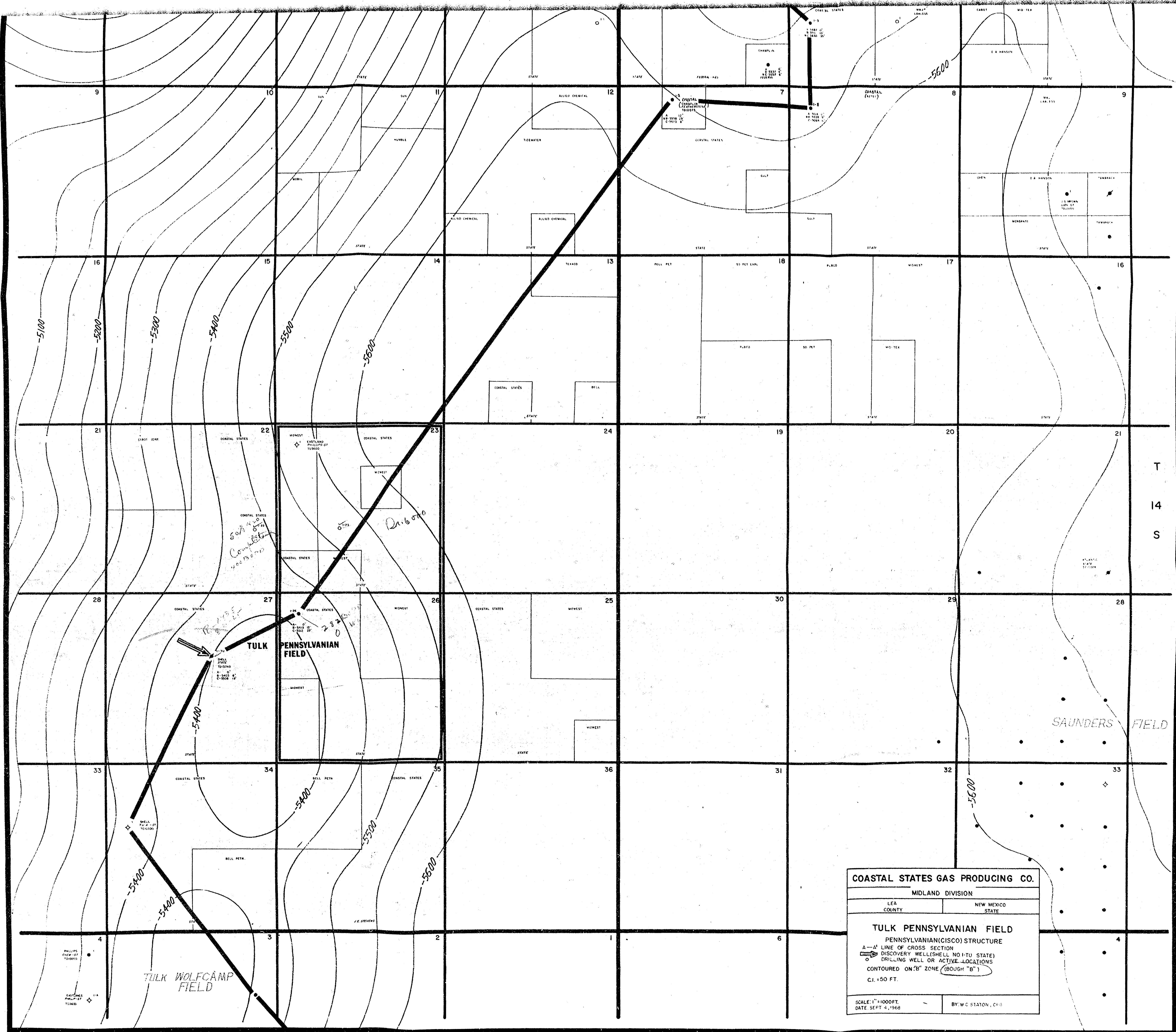
DIAGRAMMATIC CROSS SECTION
 TULK WOLF CAMP TO BAUM FIELD
 THROUGH
 TULK PENN. FIELD
 VERTICAL SCALE 1"=200 FT
 HORIZONTAL SCALE NOT TO SCALE





DIAGRAMMATIC CROSS SECTION
 TULK WOLF CAMP TO BAUM FIELD
 THROUGH
 TULK PENN FIELD
 VERTICAL SCALE 1"=200 FT
 HORIZONTAL SCALE NOT TO SCALE

BEFORE EXAMINER UTZ



REVIEW EXAMINER UTZ