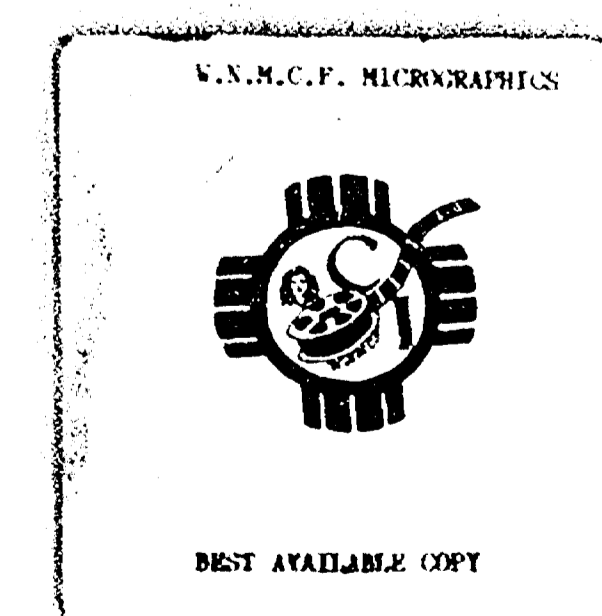
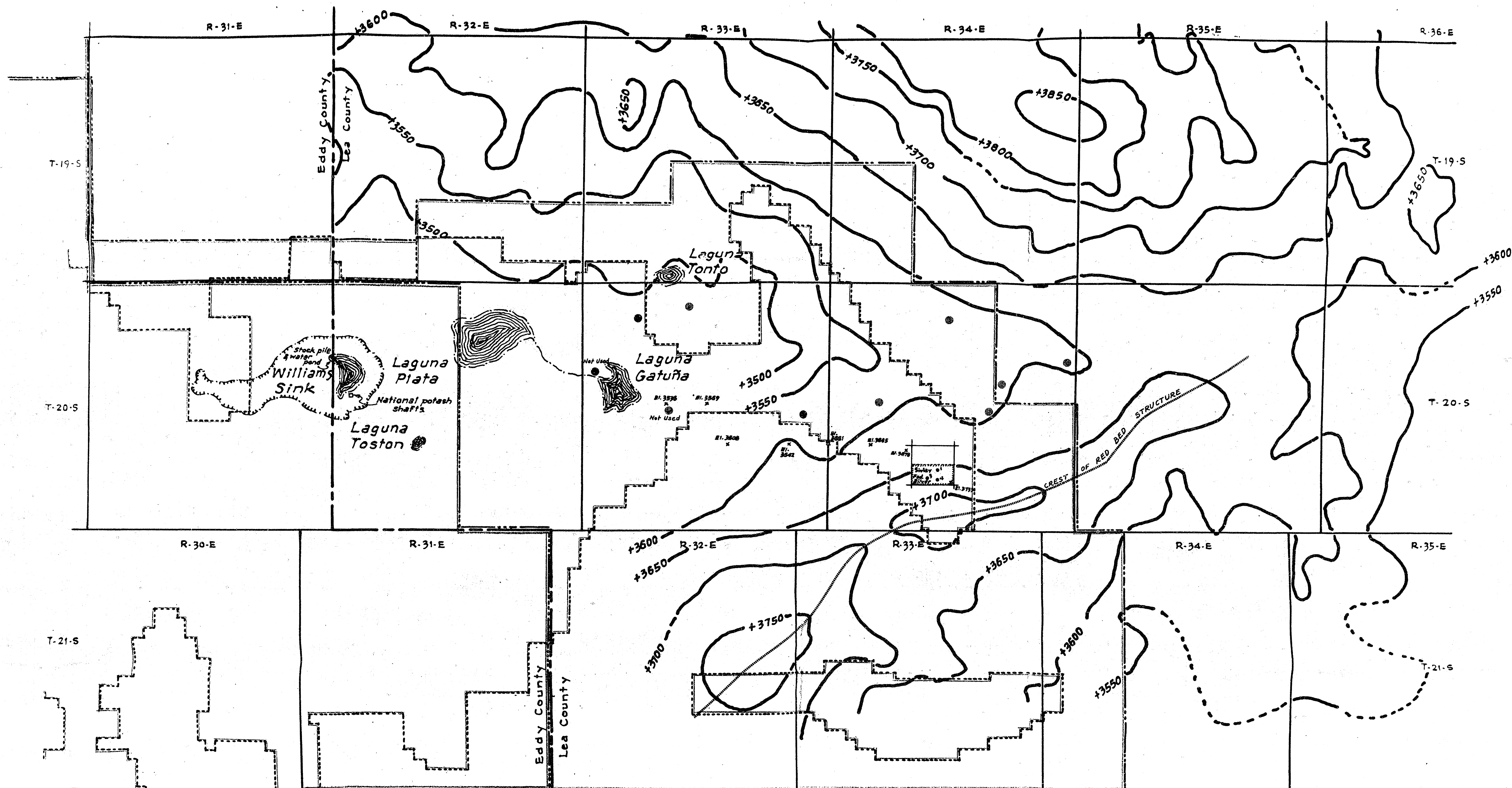


Case Number  
3860

Large  
Exhibits

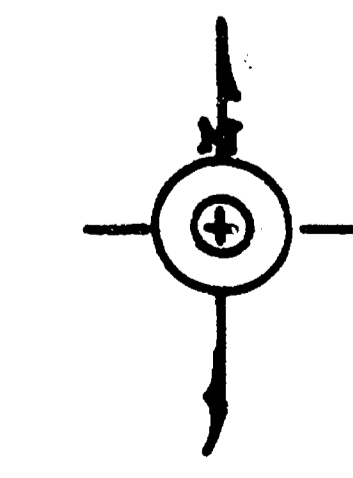






- Legend:
- Boundary of State Potash Area
  - Boundary of Federal Potash Area
  - Boundary of area exempt under Order No. R-3221-B
  - Shallow Water Well
  - Deep Water Well

Contours are on the "buried red-bed surface" and have been traced from Plate 1, Geologic Map of Southern Lea County, New Mexico, by Nicholson, Clebsch & Ash, which is contained in Ground-Water Report 6, "Geology and Ground-Water Conditions in Southern Lea County, New Mexico" by Alexander Nicholson, Jr. and Alfred Clebsch, Jr., U.S.G.S., published in 1961 by State Bureau of Mines and Mineral Resources, N.M.I.M. & T., Socorro, New Mexico.



CASE NO. 3860  
 Application of T.J. Sivley,  
 Artesia, New Mexico,  
 Re: Federal-Silver Lease,  
 being the South One Half of  
 Sec. 28, T. 20-S, R. 34-E,  
 Lea County, New Mexico.

Map Scale: 1" = 2 mi.  
 9-10-68



