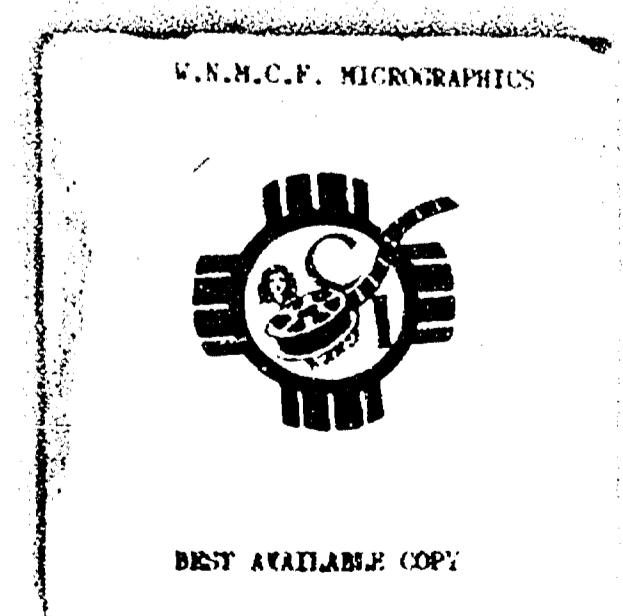


Case Number

3866

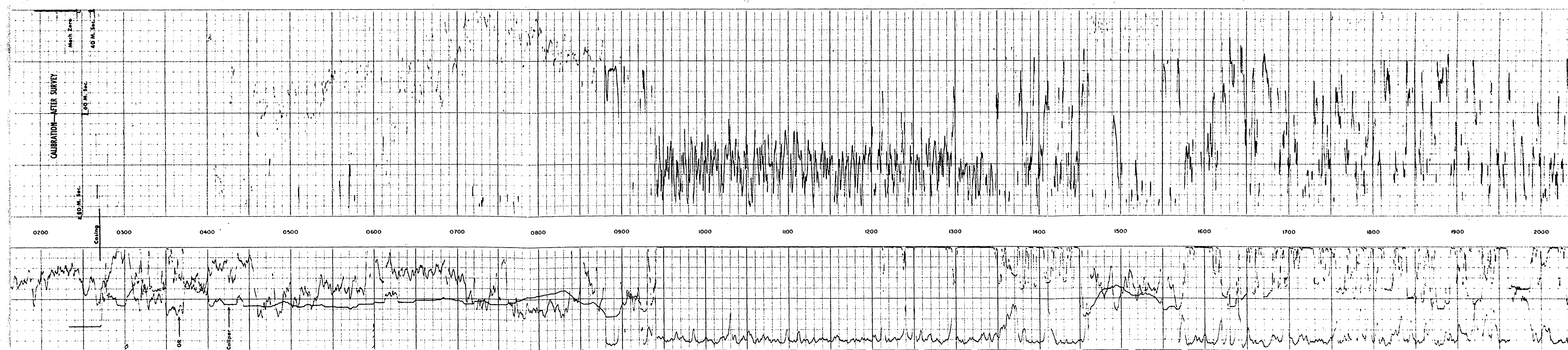
Large

Exhibits

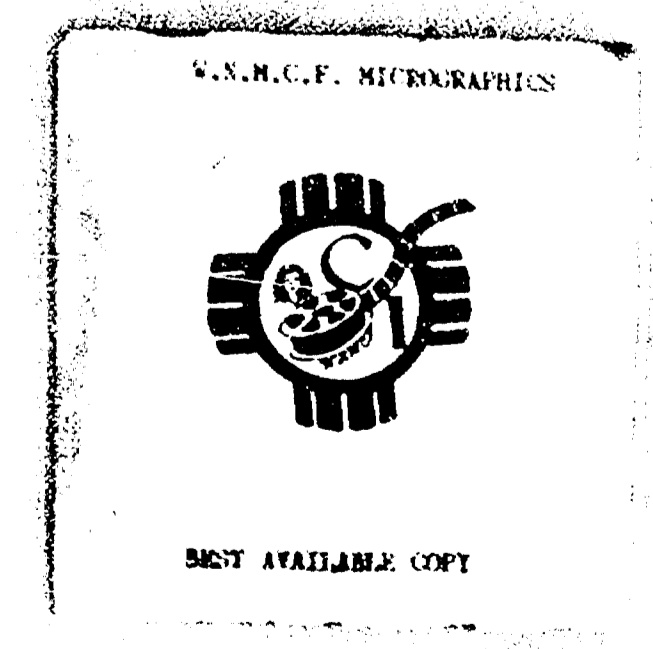
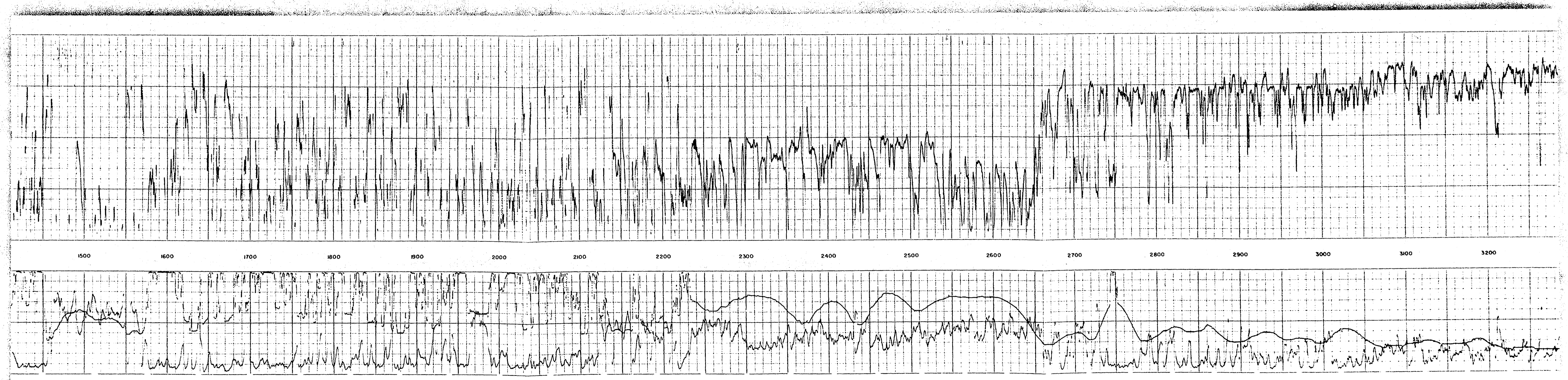




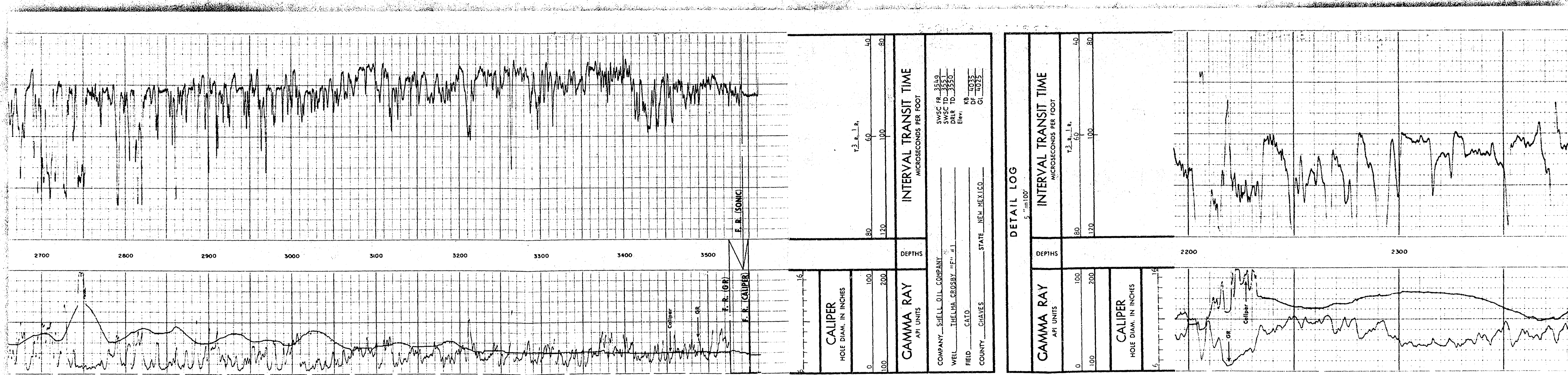






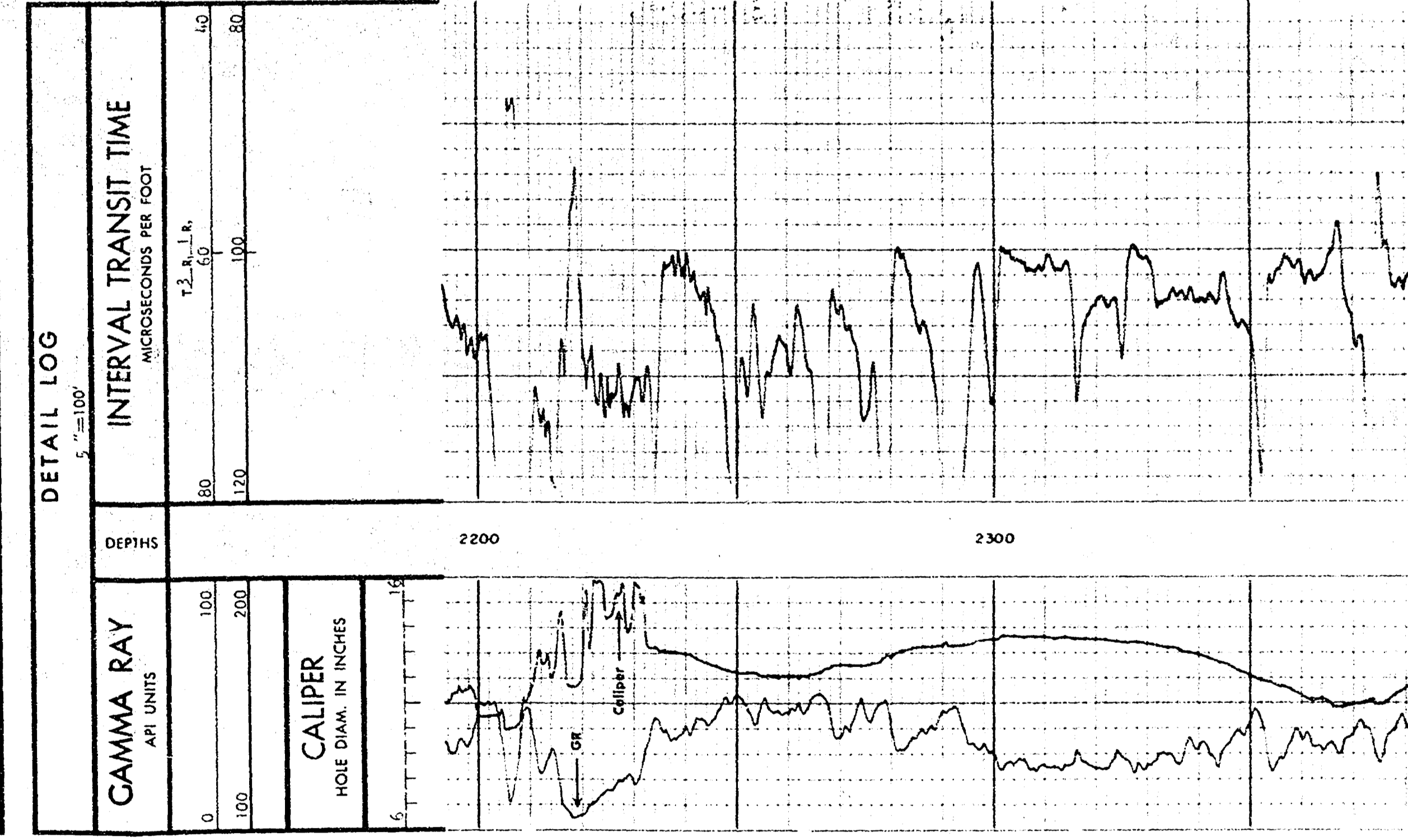






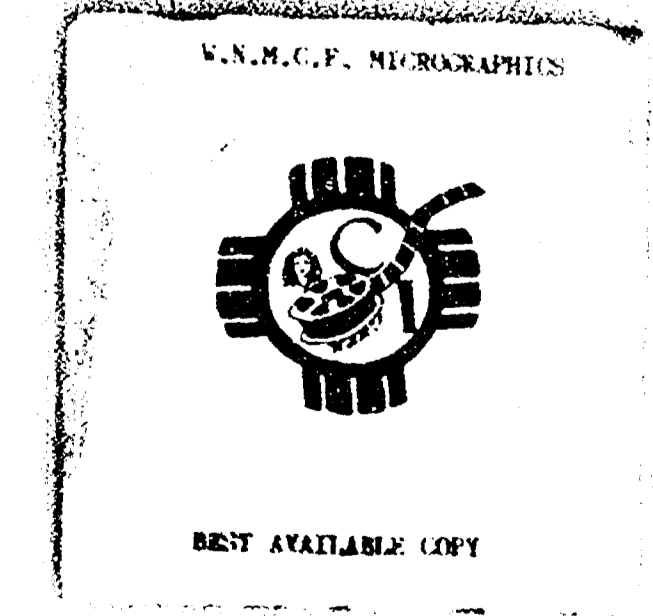
CALIPER HOLE DIAM. IN INCHES 0 100 200 300 400 500 1.2, 1.1, 1.0, 0.9, 0.8		INTERVAL TRANSIT TIME MICROSECONDS PER FOOT 0 100 200 300 400 500	
GAMMA RAY API UNITS 0 100 200 300 400 500		DEPTHS 0 100 200 300 400 500	

COMPANY: SHEL DILL COMPANY  
 WELL: DELTA-208-1  
 FIELD: CAYO  
 COUNTY: CHEVES STATE: MISSISSIPPI  
 SWPC #A-3549  
 SWPC #D-3551  
 SWPC #E-3552  
 SWPC #F-3553  
 SWPC #G-3554  
 SWPC #H-3555  
 SWPC #I-3556  
 SWPC #J-3557  
 SWPC #K-3558  
 SWPC #L-3559  
 SWPC #M-3560

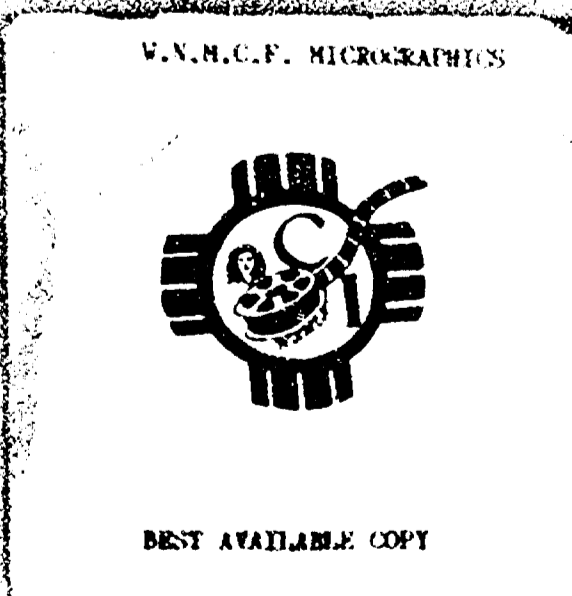
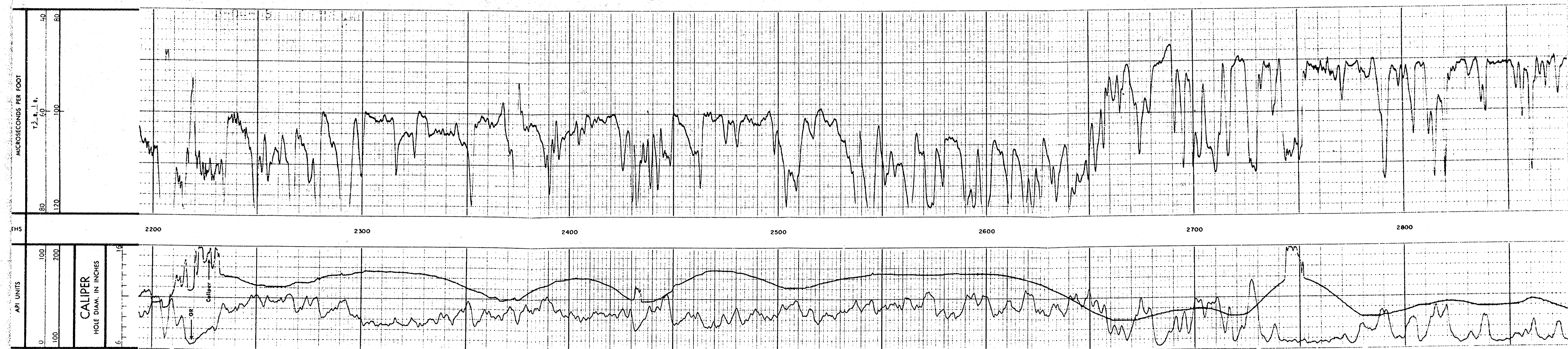


CALIPER HOLE DIAM. IN INCHES 0 100 200 300 400 500 1.2, 1.1, 1.0, 0.9, 0.8		INTERVAL TRANSIT TIME MICROSECONDS PER FOOT 0 100 200 300 400 500	
GAMMA RAY API UNITS 0 100 200 300 400 500		DEPTHS 0 100 200 300 400 500	

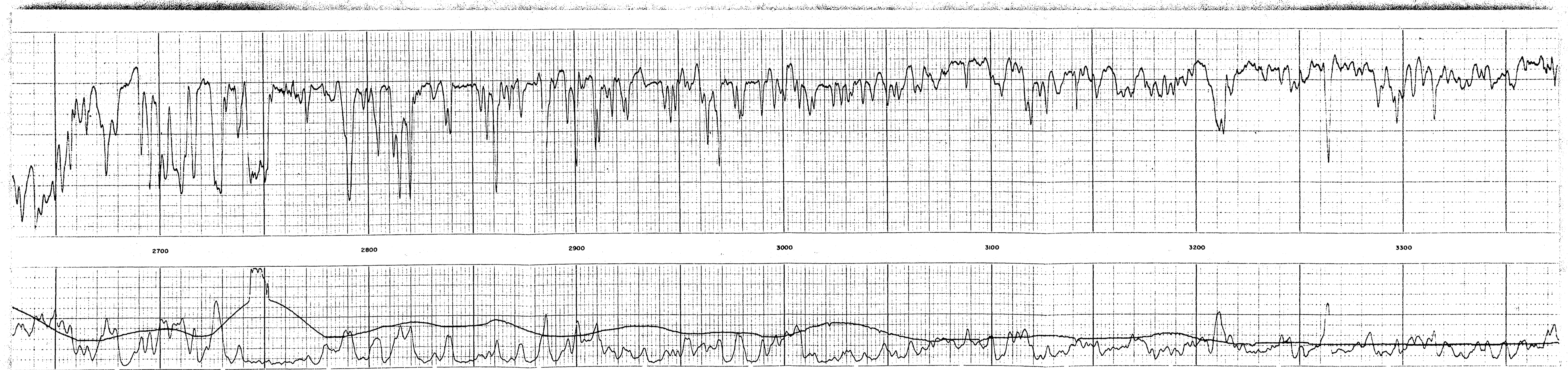
COMPANY: SHEL DILL COMPANY  
 WELL: DELTA-208-1  
 FIELD: CAYO  
 COUNTY: CHEVES STATE: MISSISSIPPI



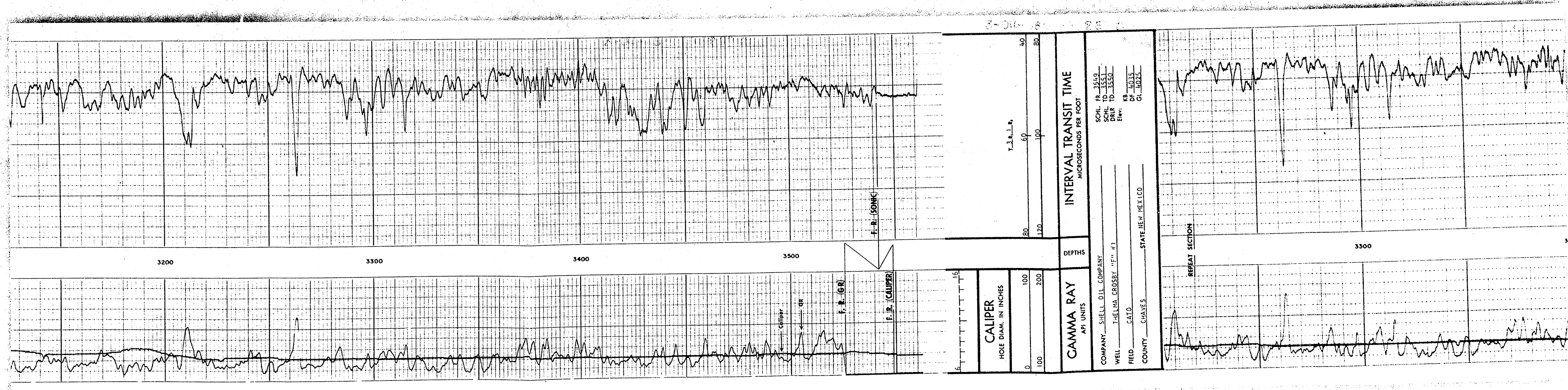












COMPANY SHELL OIL COMPANY  
 WELL FIELD NO. CROSSBY "F" #1  
 FIELD FIELD STATE TEXAS  
 COUNTY GRAMES

SCALE IN 3500  
 FEET TO 3500  
 OF 3032  
 G. 100

CALIPER  
 HOLE DIA. IN INCHES  
 0 100 200 300  
 40  
 30  
 20  
 10  
 0

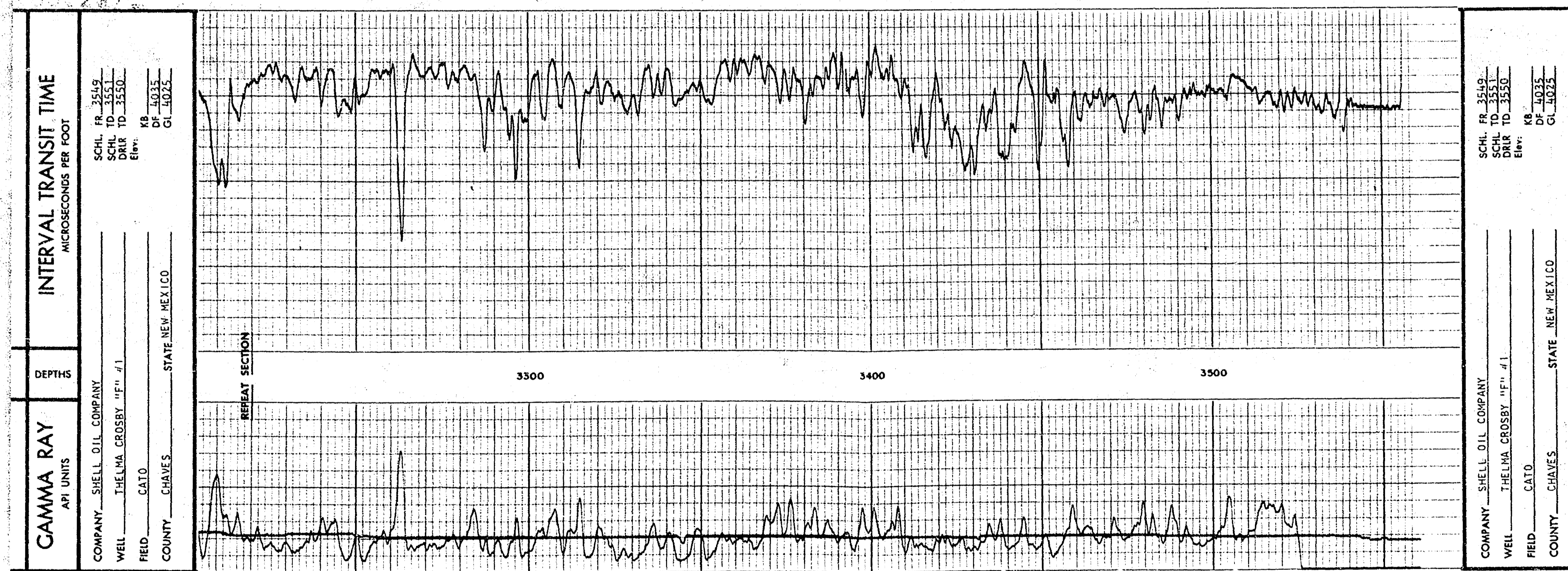
GAMMA RAY  
 INTENSITY IN MILLIROENTGENS PER HOUR

DEPTH  
 3200 3300 3400 3500

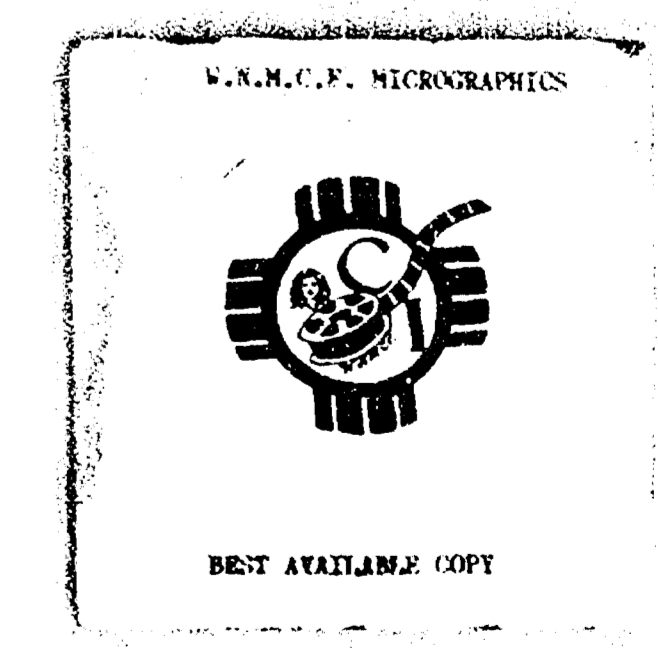
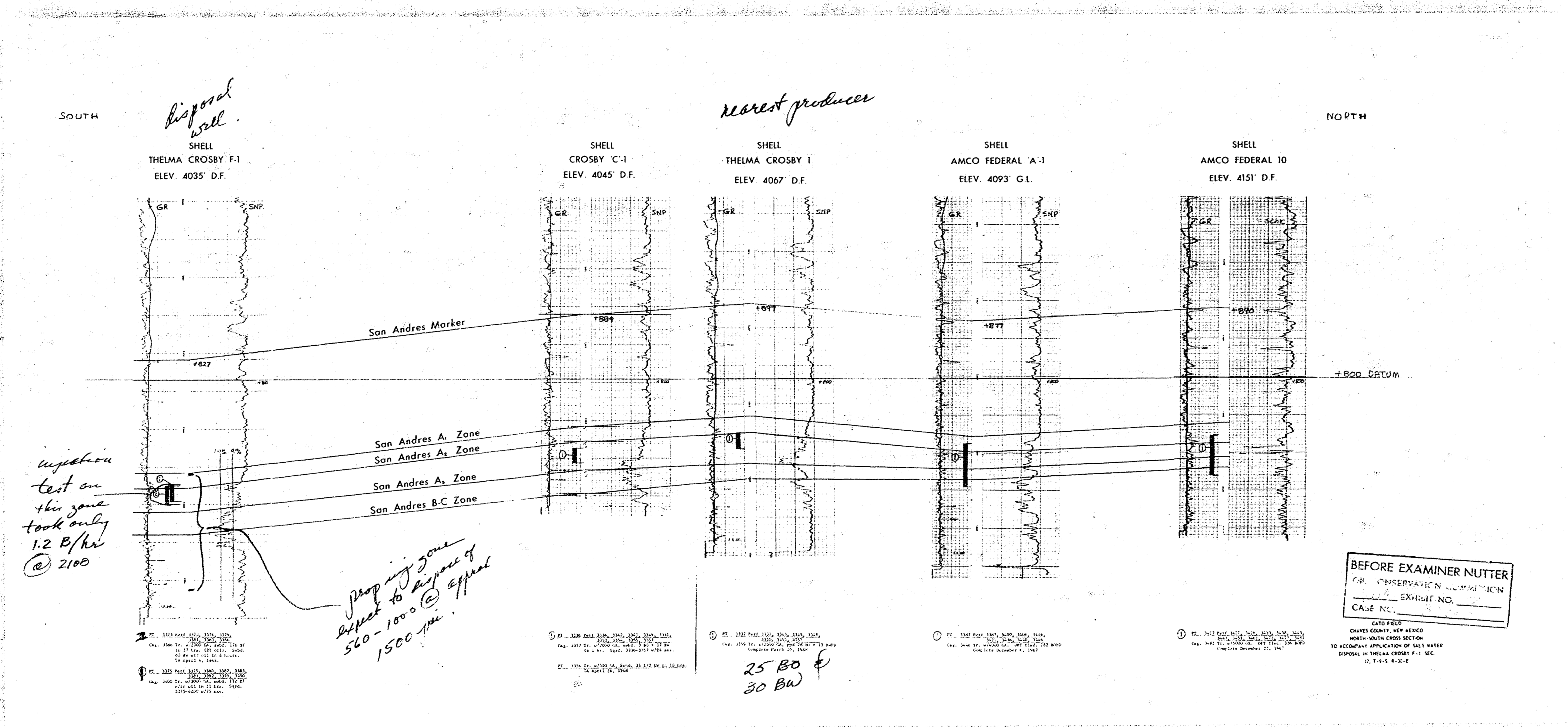
WIRELINE SECTION



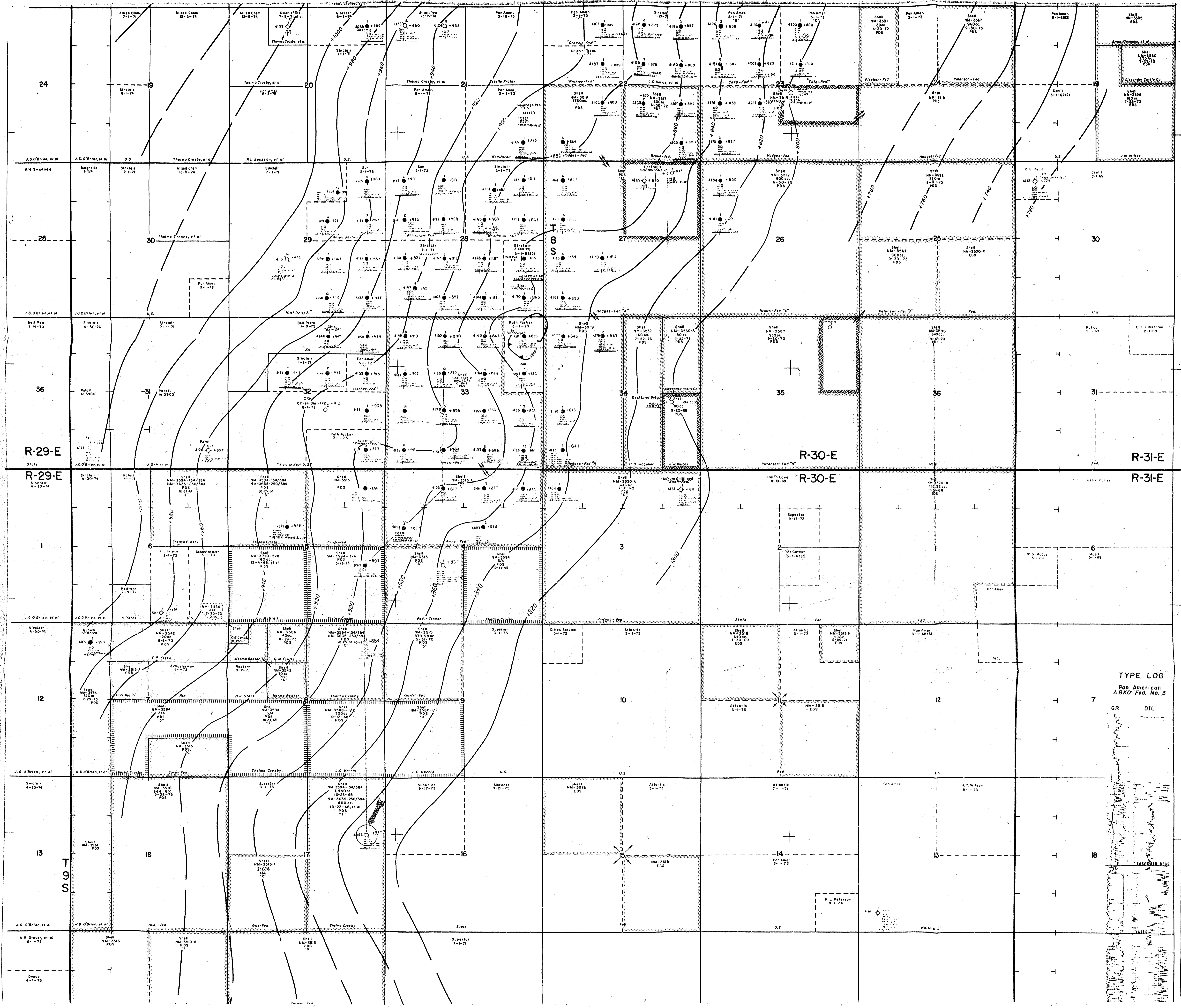




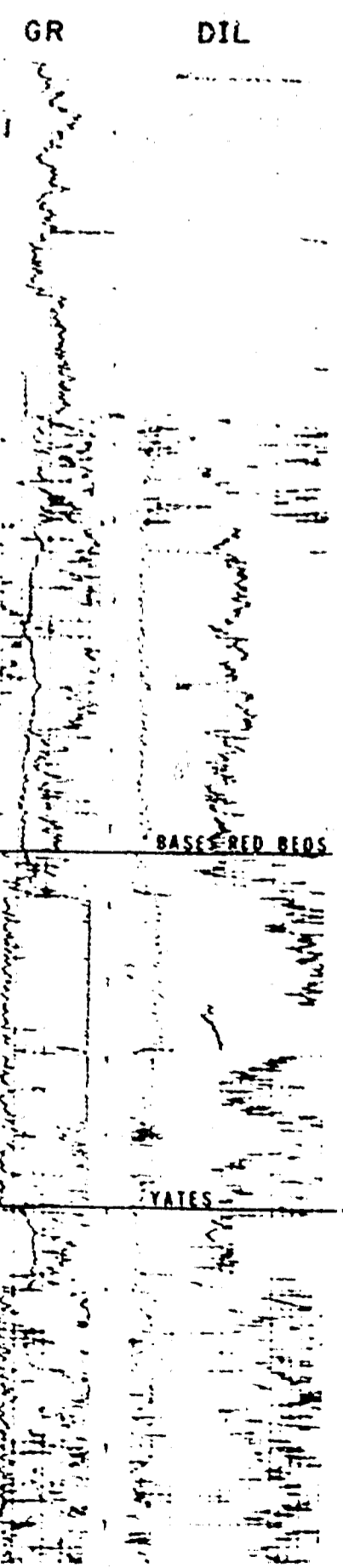








TYPE LOG  
Pan American  
ABCO Fed. No. 3

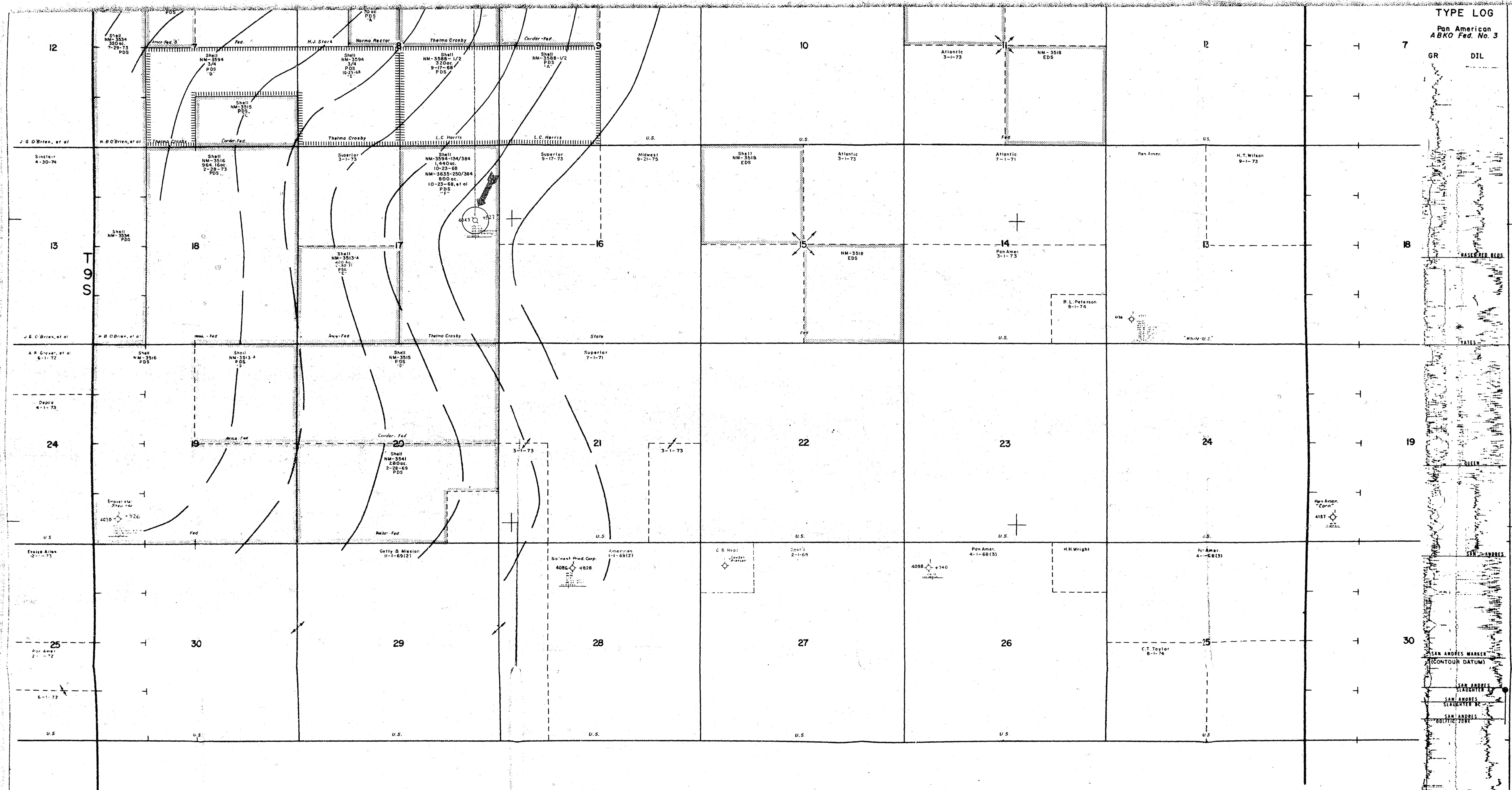


V.A.P.C.F. MICROGRAPHICS



BEST AVAILABLE COPY





**TYPE LOG**  
Pan American  
ABKO Prod. No. 3

7	GR	DIL
18		
19		
30		

Well Number  
Total Depth  
Submerged Total Depth  
Plugged Back Total Depth  
Reamed Total Depth

**LEGEND**

- SAN ANDRES PRODUCER
- DEVONIAN PRODUCER

BEFORE EXAMINER NUTTER  
C.R. COOPER, REGISTRAR  
C-100-10-1-72

CATO FIELD  
CHAVES COUNTY, NEW MEXICO  
TO ACCOMPANY APPLICATION FOR SALT WATER  
DISPOSAL IN SHELL-CROSS BY F-1  
SEC. 17, 95-3E

