

Case Number

3881

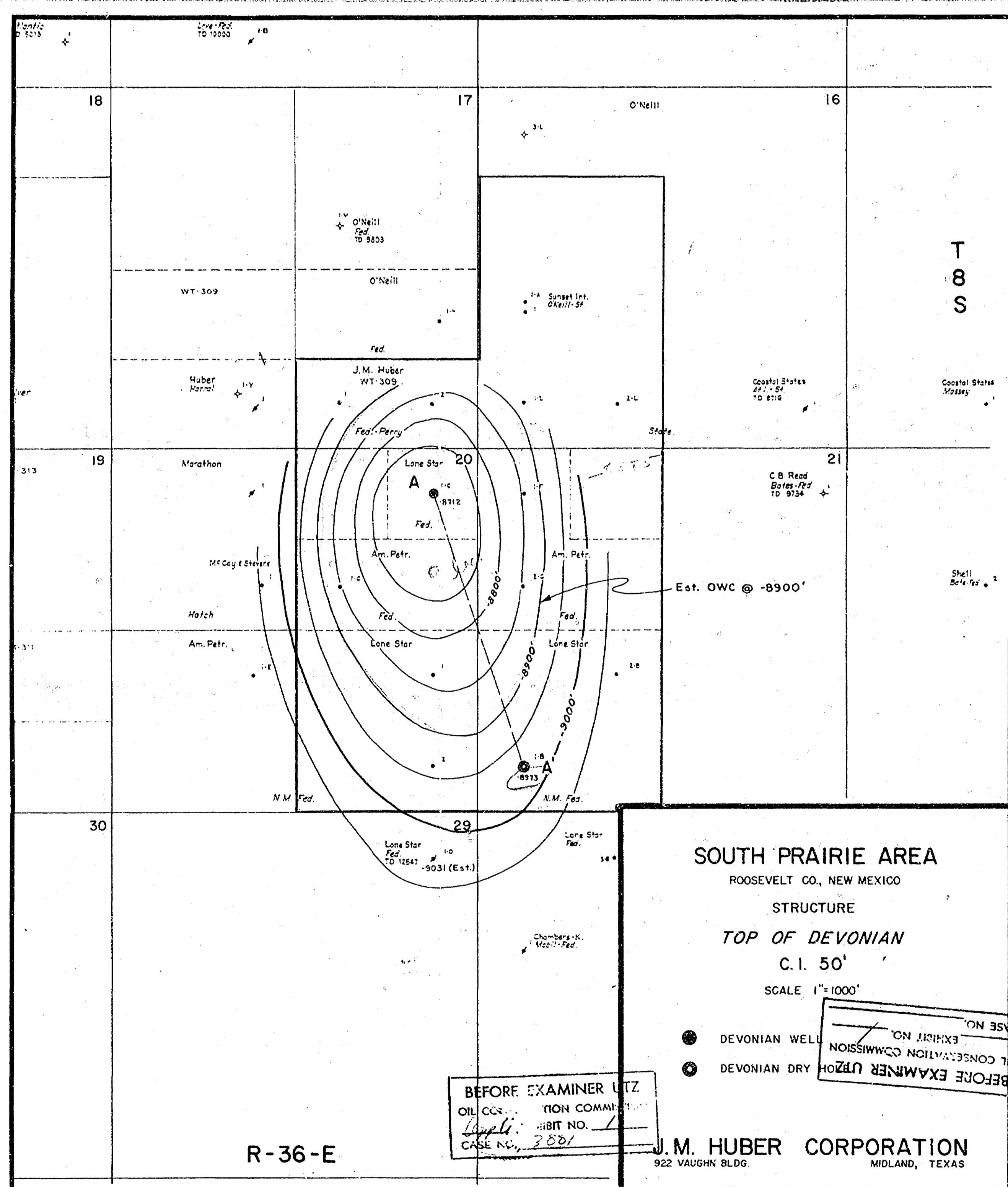
Large

Exhibits









**SOUTH PRAIRIE AREA**

ROOSEVELT CO., NEW MEXICO

STRUCTURE

TOP OF DEVONIAN

C. I. 50'

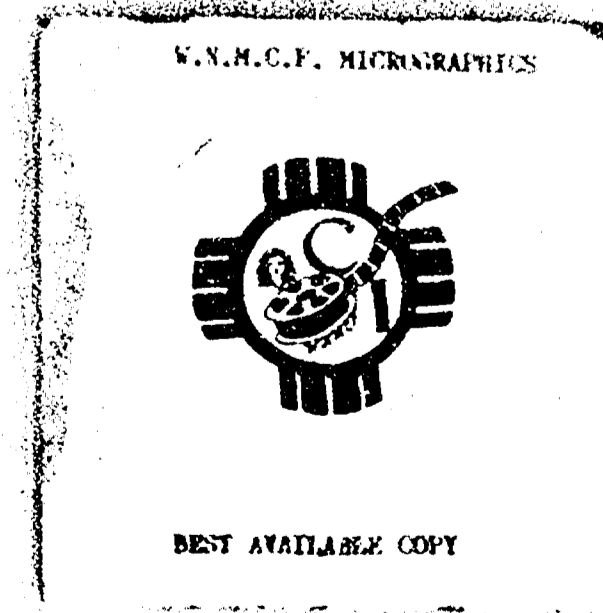
SCALE 1" = 1000'

- DEVONIAN WELL
- DEVONIAN DRY

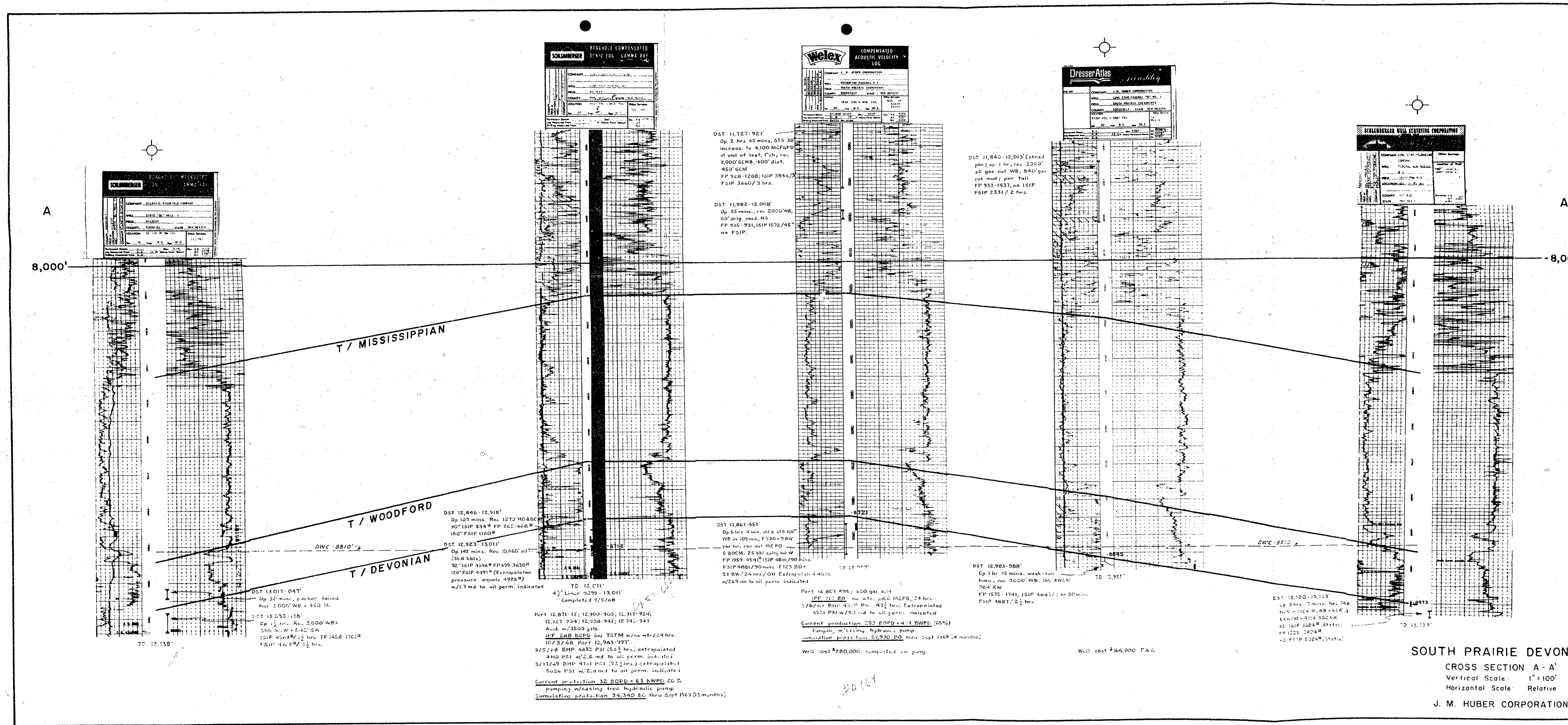
BEFORE EXAMINER LITZ  
 OIL COMPANY  
 WELLS  
 CASE NO. 2827

J. M. HUBER CORPORATION  
 922 VAUGHN BLDG.  
 MIDLAND, TEXAS

R-36-E







**SOUTH PRAIRIE DEVONIAN**  
 CROSS SECTION A - A'  
 Vertical Scale: 1" = 100'  
 Horizontal Scale: Relative  
 J. M. HUBER CORPORATION

