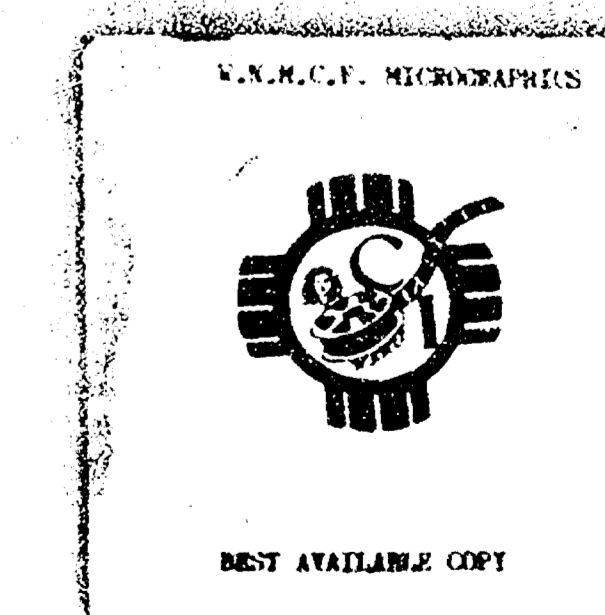


Case Number

3884

Large

Exhibits



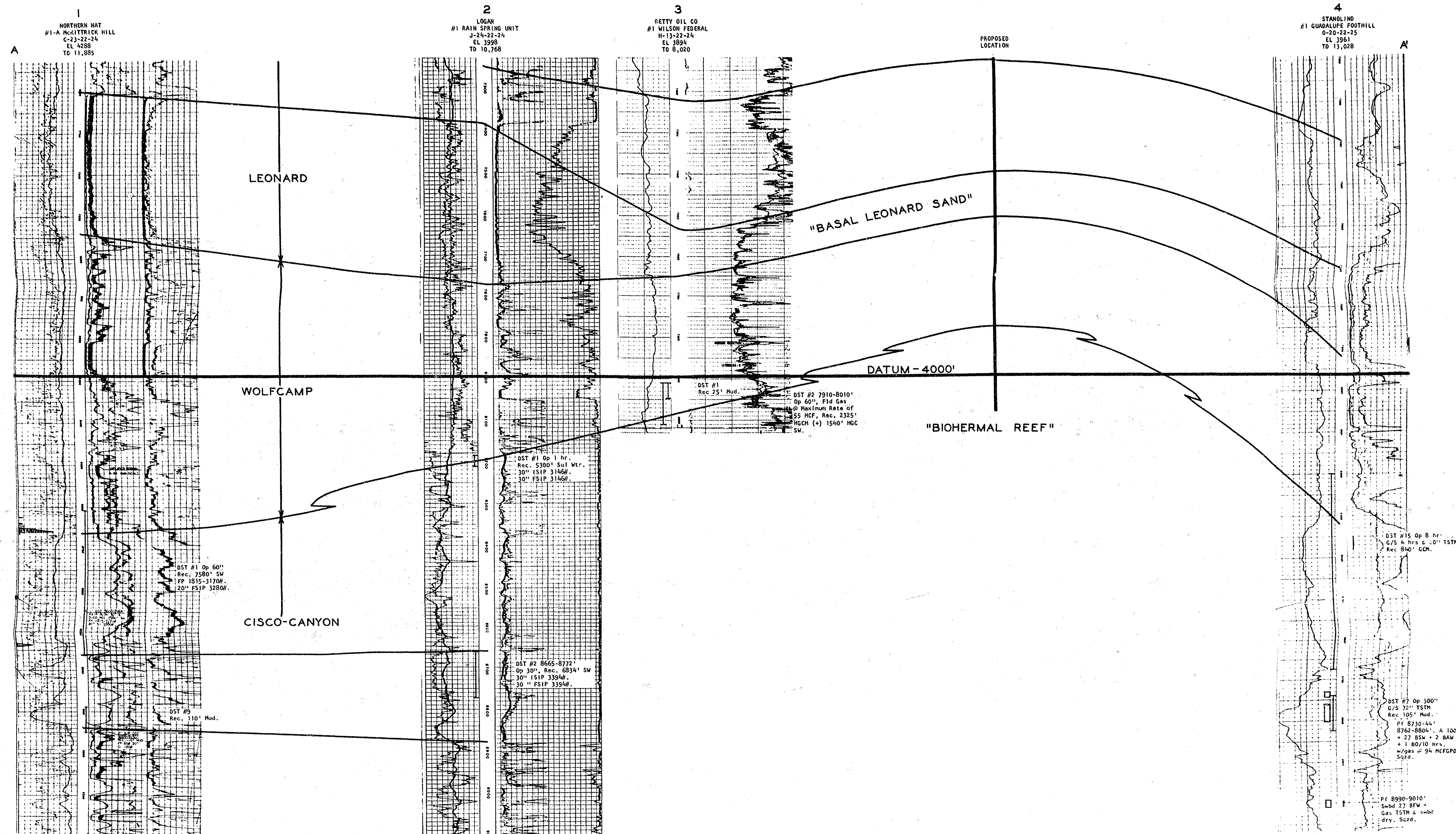
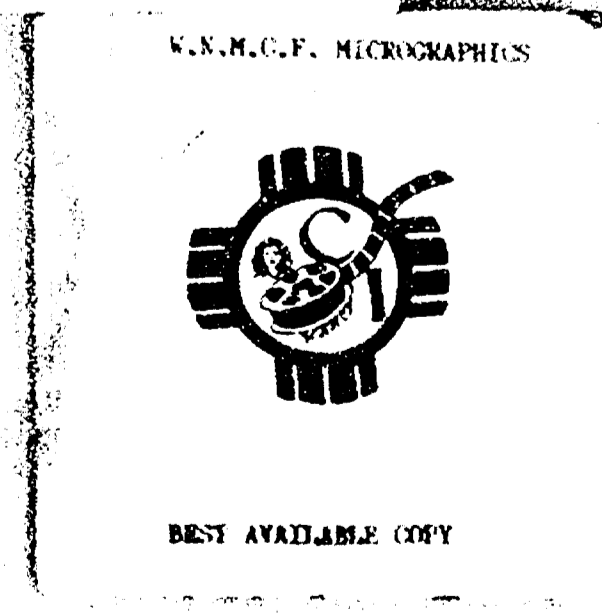
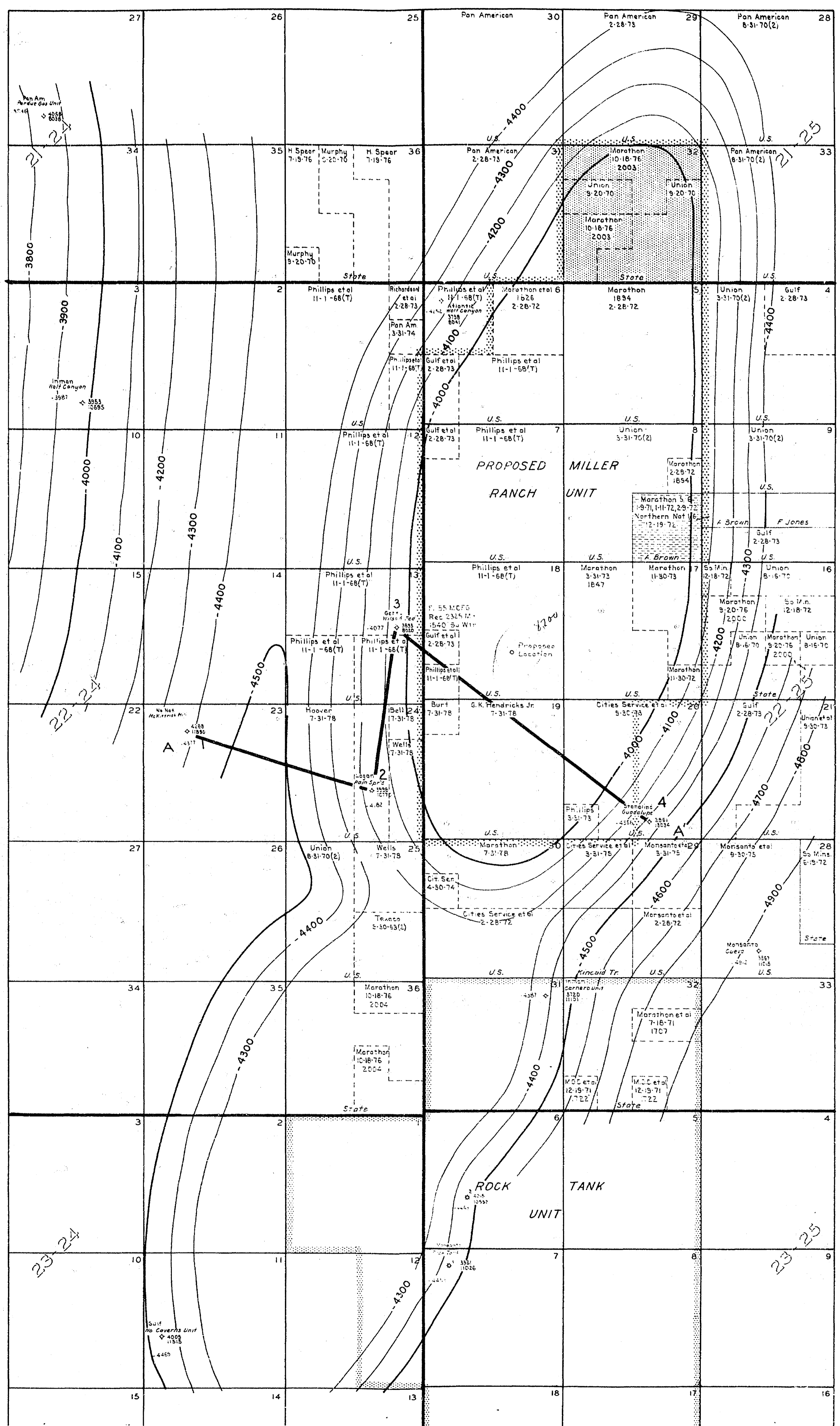


EXHIBIT
MILLER RANCH UNIT
EDDY COUNTY, NEW MEXICO

NOT TO SCALE
CROSS SECTION A-A'
Line of Section
Shown on Exhibit
Marathon Oil Company
Midland, Texas
July 17, 1968

BEFORE EXAMINER UTZ
OIL CONSERVATION COMMISSION
EXHIBIT NO. 227
CASE NO. 227





LEGEND

- FEDERAL LAND
- STATE OF NEW MEXICO LAND
- FEE LAND - LEASED

EXHIBIT

MILLER RANCH UNIT

EDDY COUNTY, NEW MEXICO

0 2000 4000

Scale in Feet

Contoured on Upper Penn - 100' Interval

Marathon Oil Company, Midland, Texas

July 17, 1968



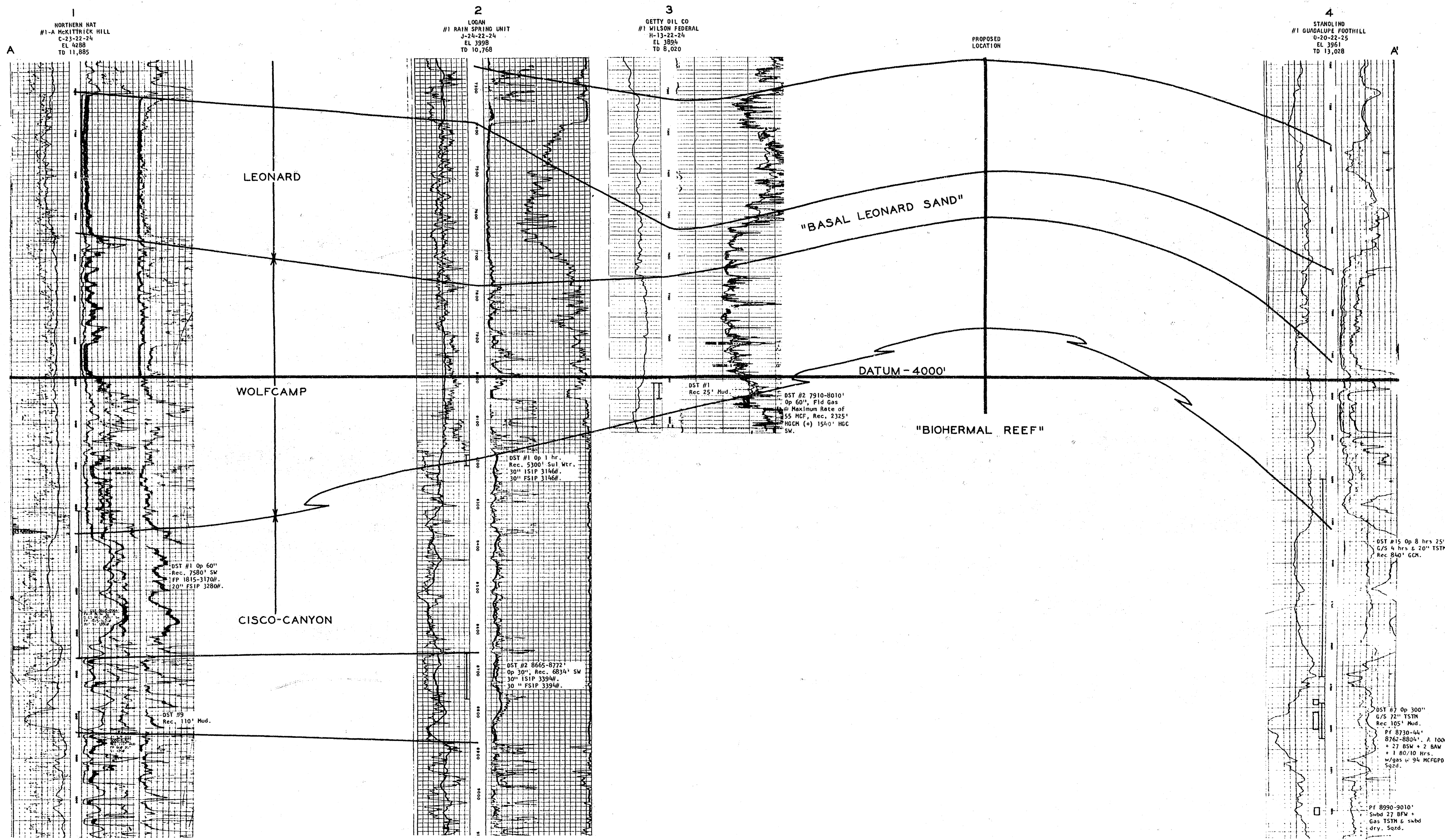
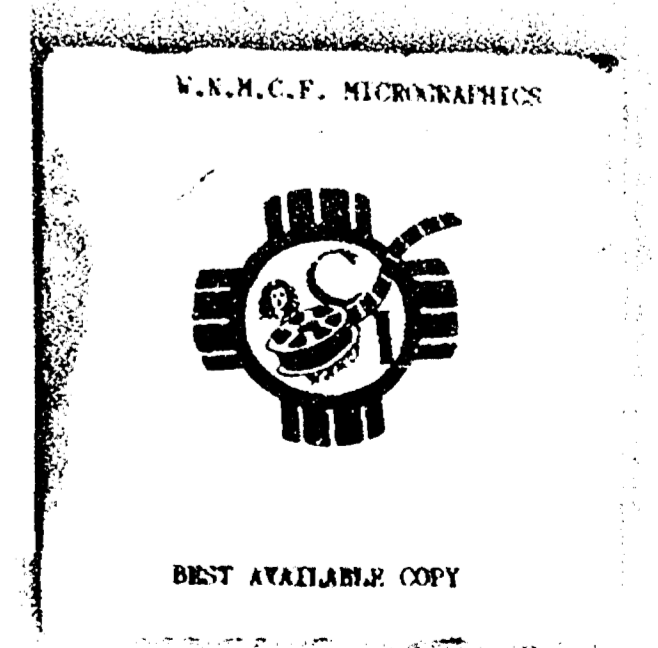
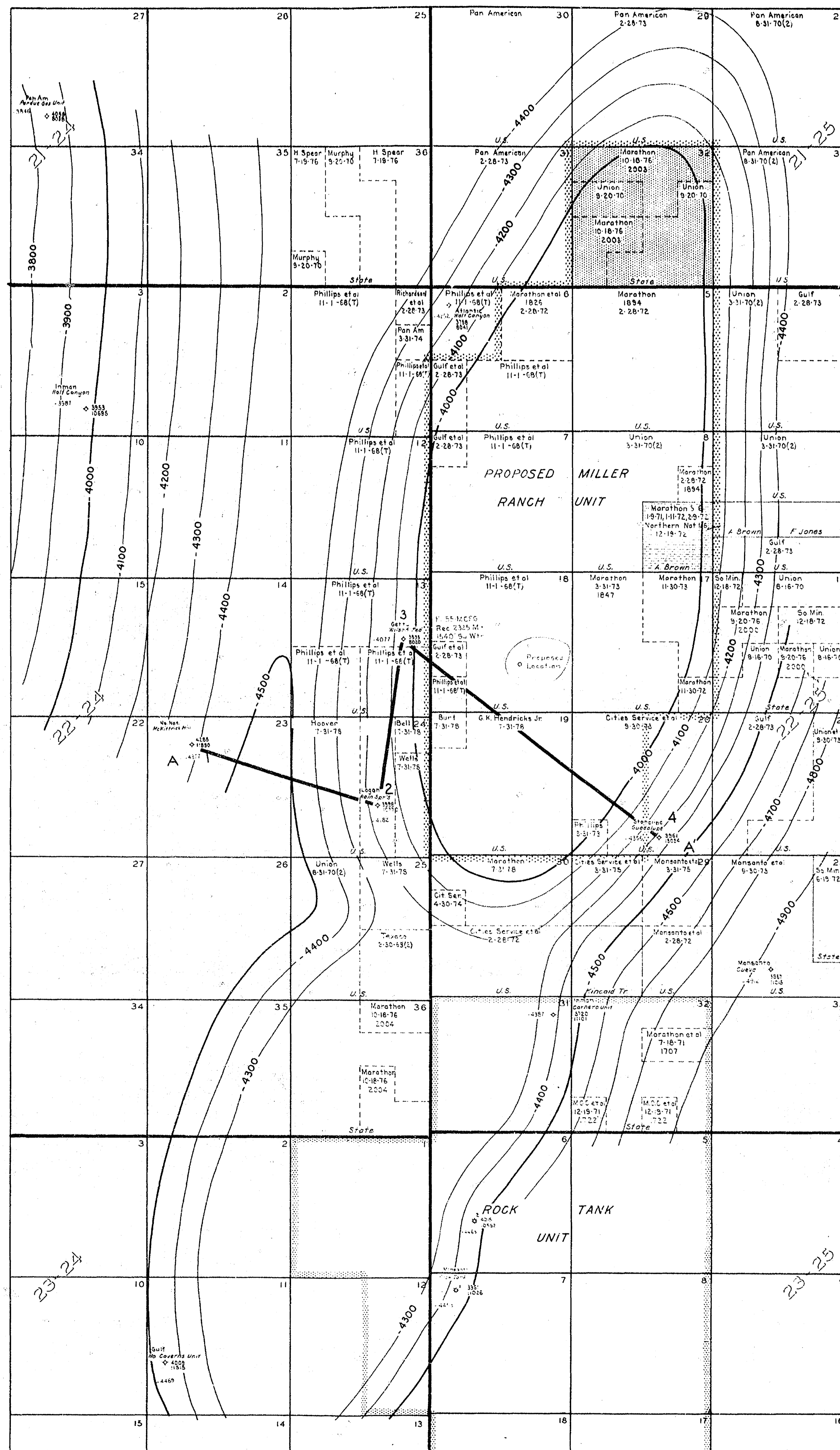


EXHIBIT
MILLER RANCH UNIT
EDDY COUNTY, NEW MEXICO
NOT TO SCALE
CROSS SECTION A-A'
Line of Section
Shown on Exhibit
Marathon Oil Company
July 17, 1960
Midland, Texas





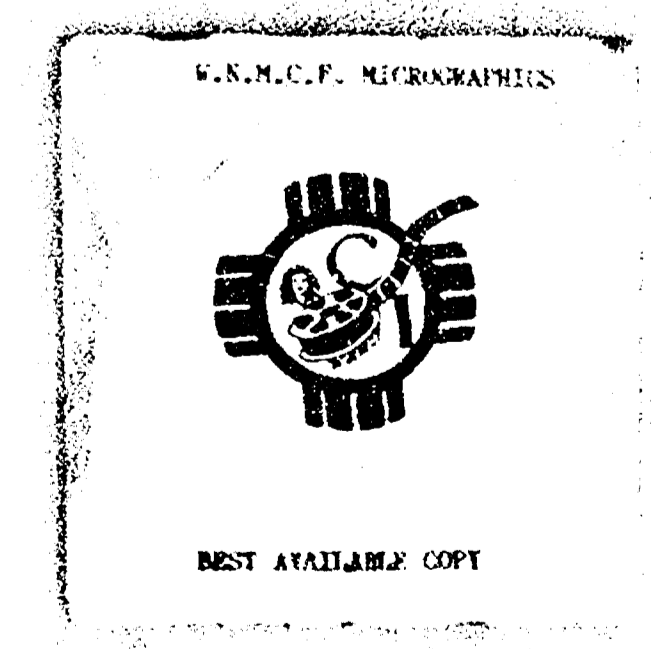
LEGEND

- FEDERAL LAND
- STATE OF NEW MEXICO LAND
- FEE LAND - LEASED

EXHIBIT
MILLER RANCH UNIT
EDDY COUNTY, NEW MEXICO

Scale in Feet
 Contoured on Upper Penn - 100' Interval
 Marathon Oil Company, Midland, Texas
 July 17, 1968

BEFORE EXAMINER UTZ
 OIL CONSERVATION COMMISSION
 CASE NO. 2884



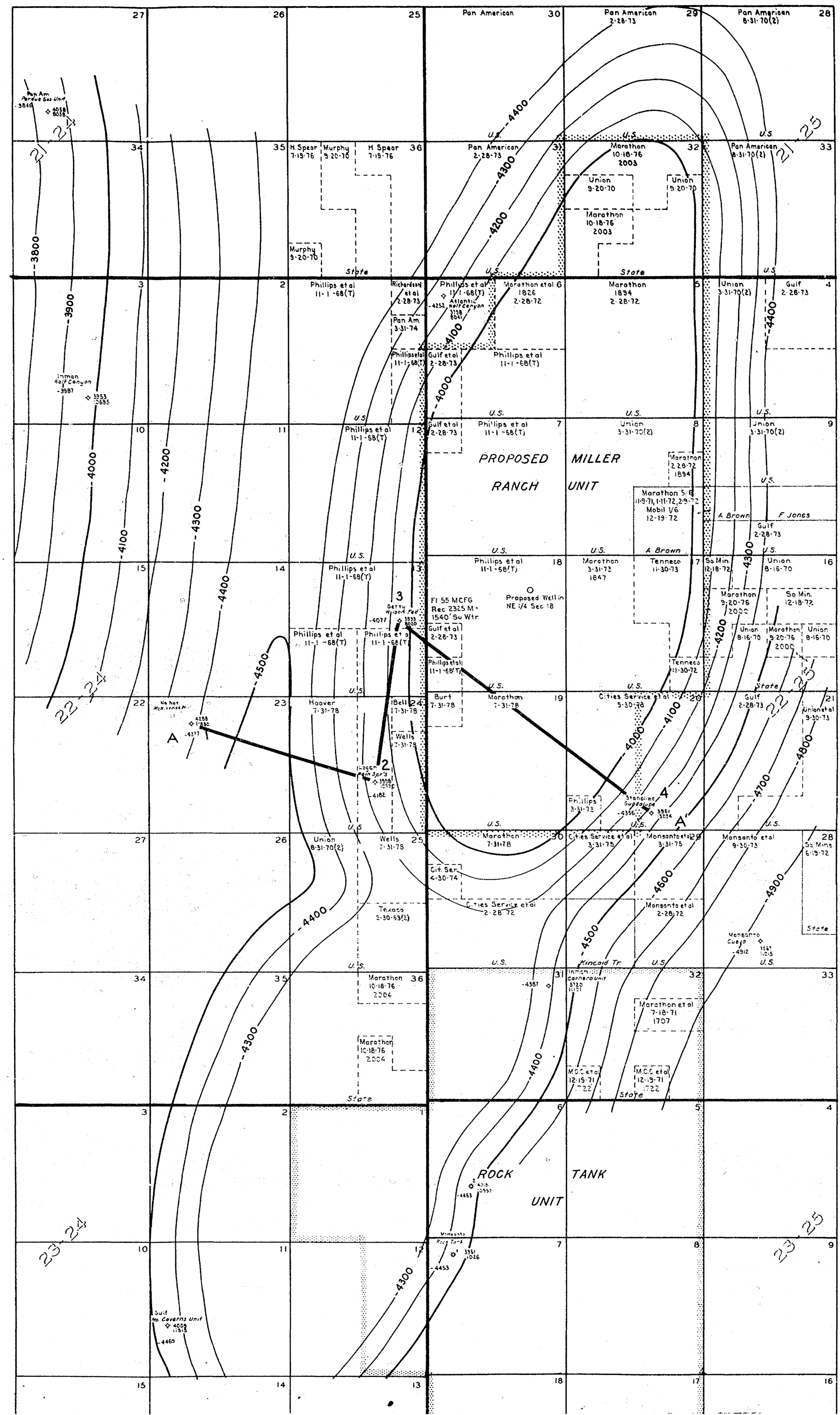
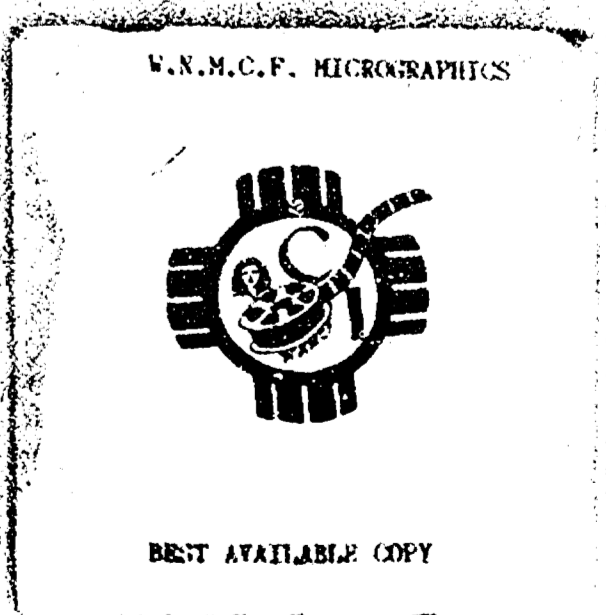


EXHIBIT B-1
MILLER RANCH UNIT
EDDY COUNTY, NEW MEXICO

Scale in Feet
0 2000 4000
Contoured on Upper Penn - 100' Interval
Marathon Oil Company Midland, Texas
July 17, 1968



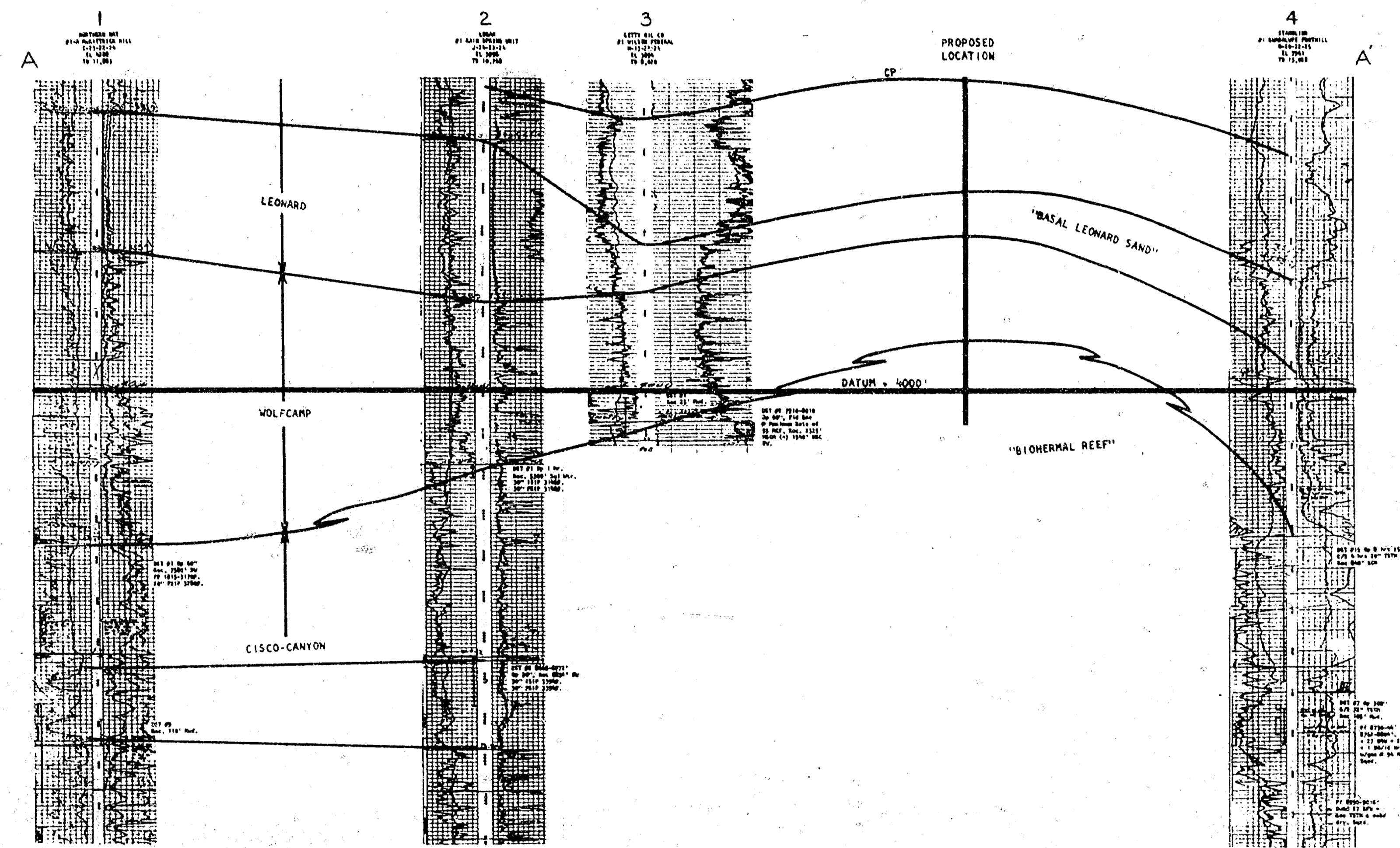


EXHIBIT B-3
 MILLER RANCH UNIT
 EDDY COUNTY, NEW MEXICO
 NOT TO SCALE
 CROSS SECTION A-A'
 Line of Section
 Shown in Exhibit B-1
 Marathon Oil Company, Midland, Texas
 July 17, 1968



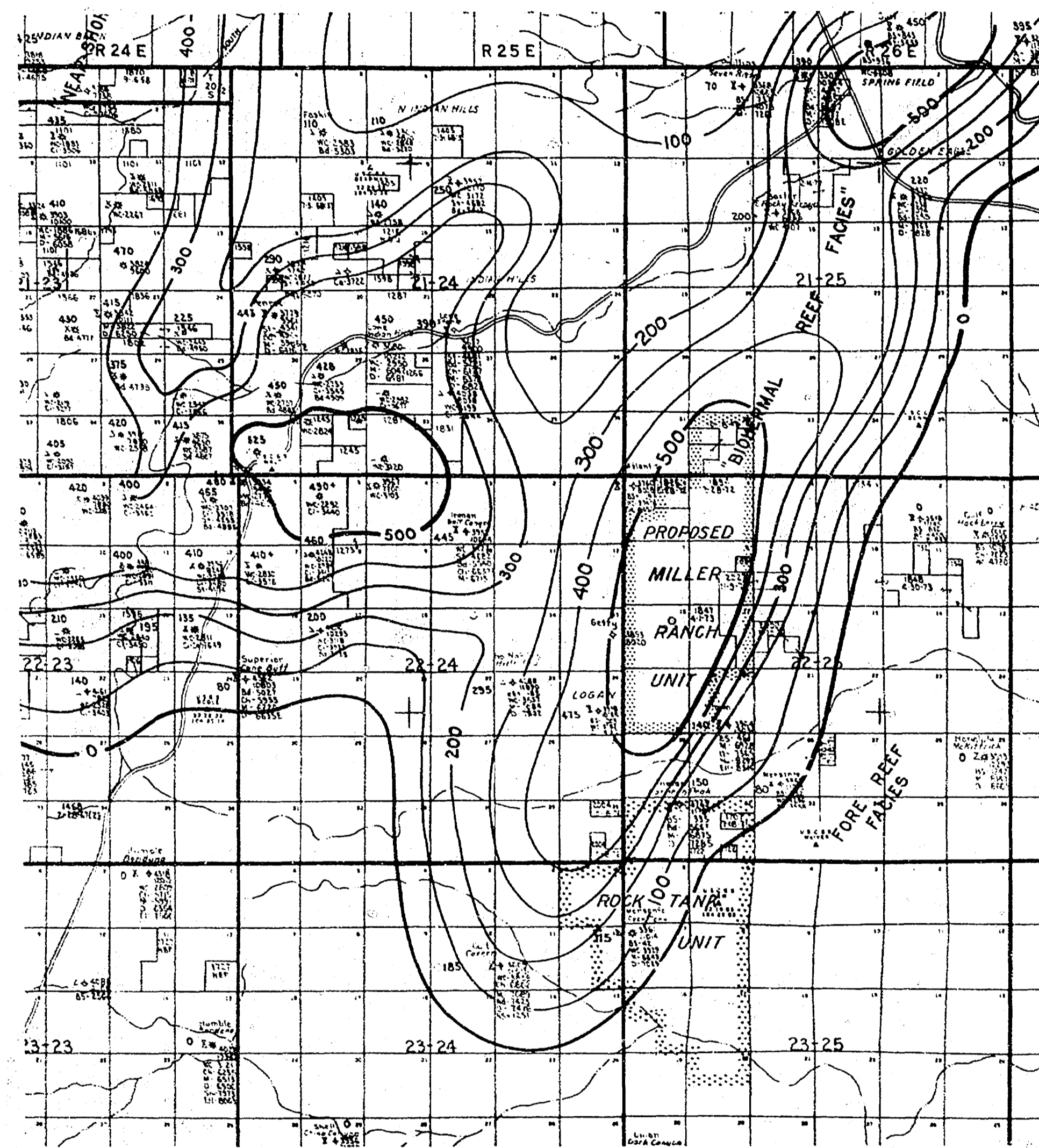


EXHIBIT B-2
MILLER RANCH UNIT
 EDDY COUNTY, NEW MEXICO

Scale in Feet
 0 8000 16000
 ISOPACH OF UPPER PENN NET CARBONATE
 INDIAN BASIN REEF INTERVAL
 CI -100'
 Marathon Oil Company, Midland, Texas
 July 17, 1968

