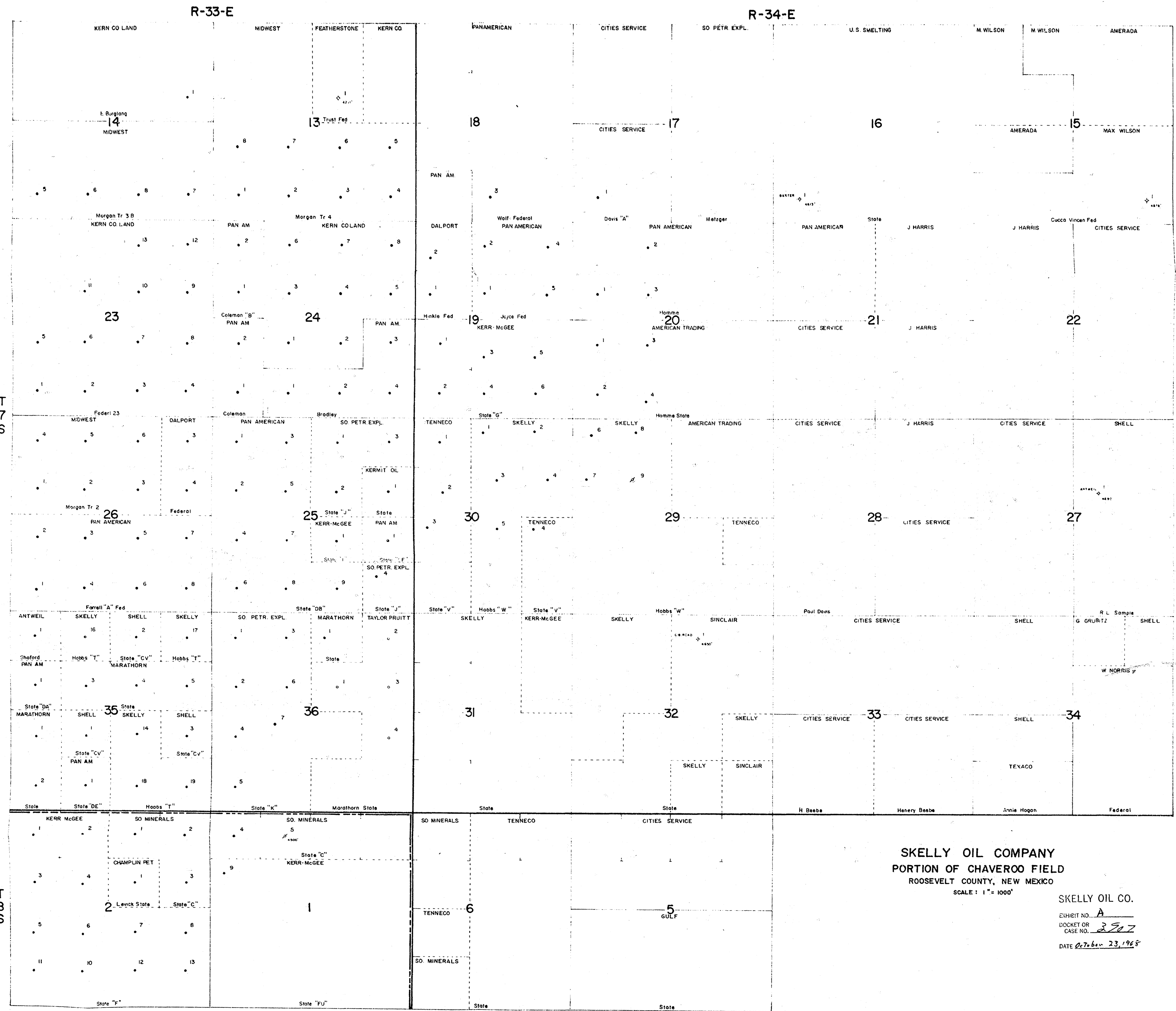


Case No.
3907

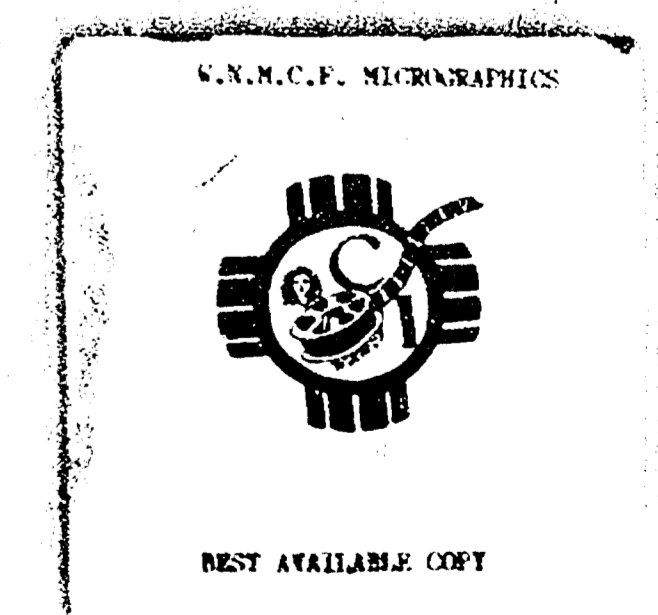
Large Exhibits

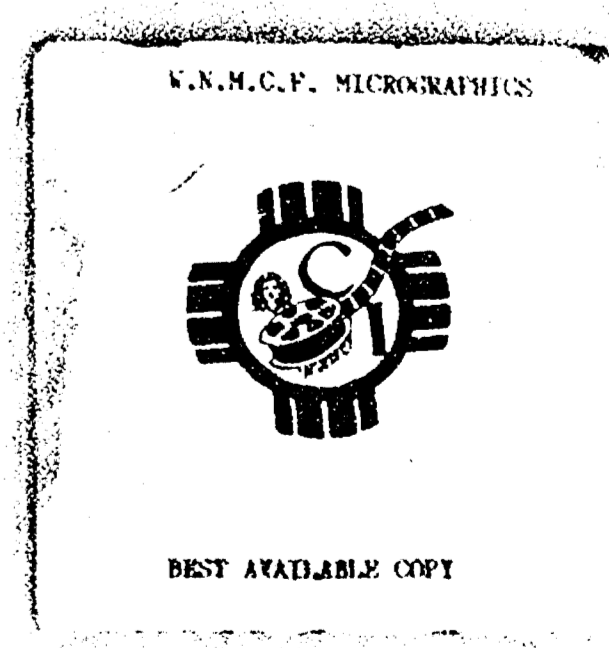
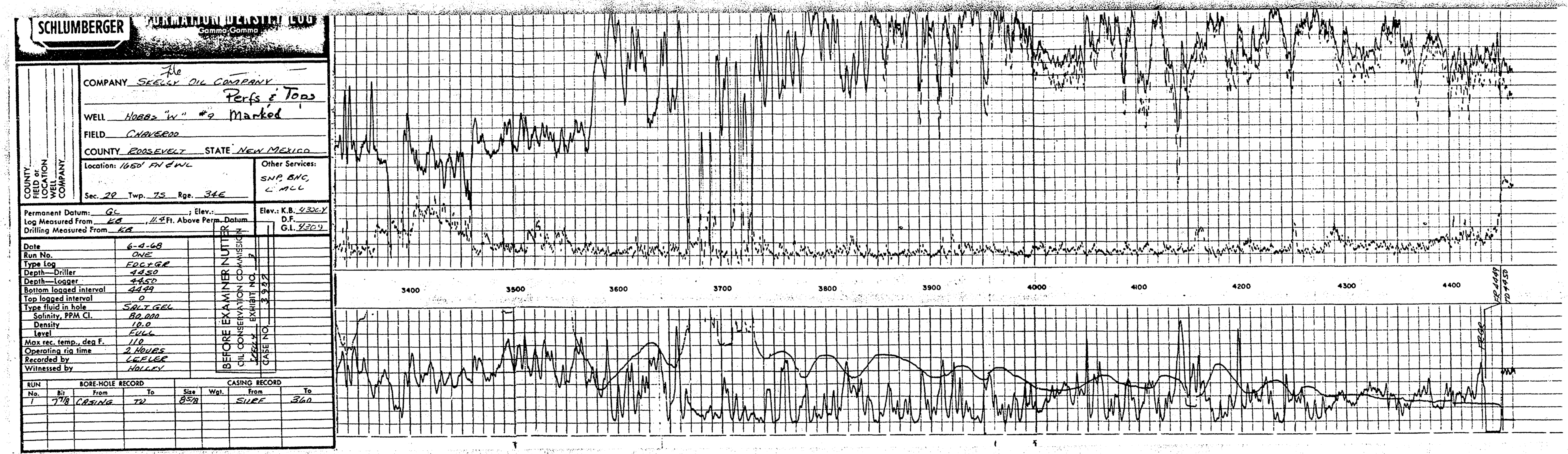
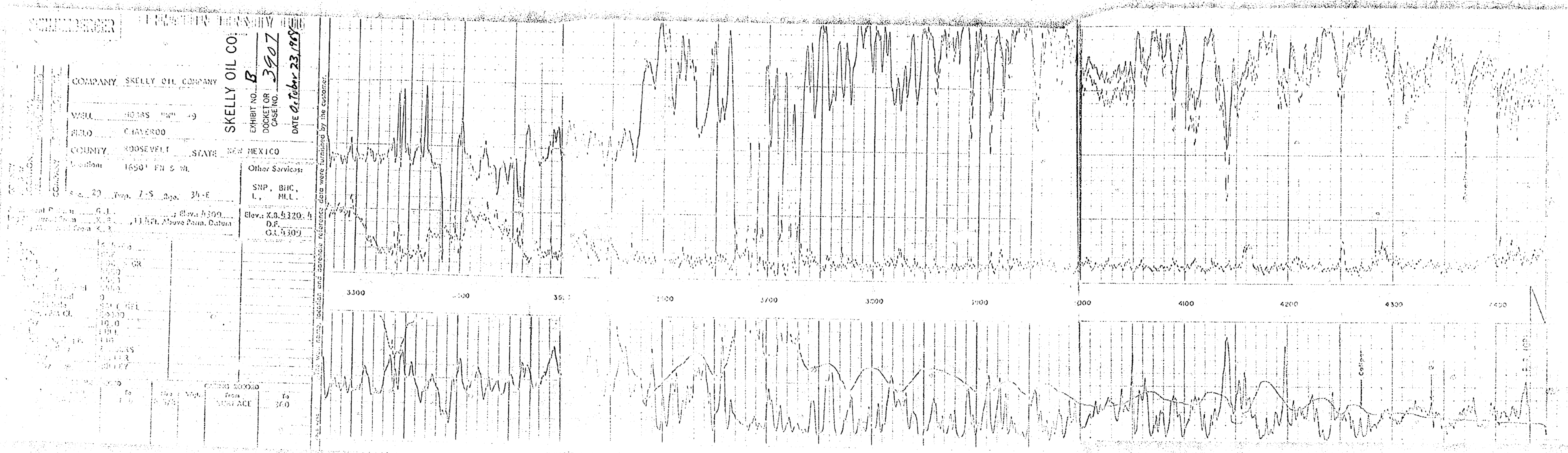




SKELLY OIL COMPANY
 PORTION OF CHAVEROO FIELD
 ROOSEVELT COUNTY, NEW MEXICO
 SCALE: 1" = 1000'

SKELLY OIL CO.
 EXHIBIT NO. A
 DOCKET OR CASE NO. 2927
 DATE 02.6.23, 1928



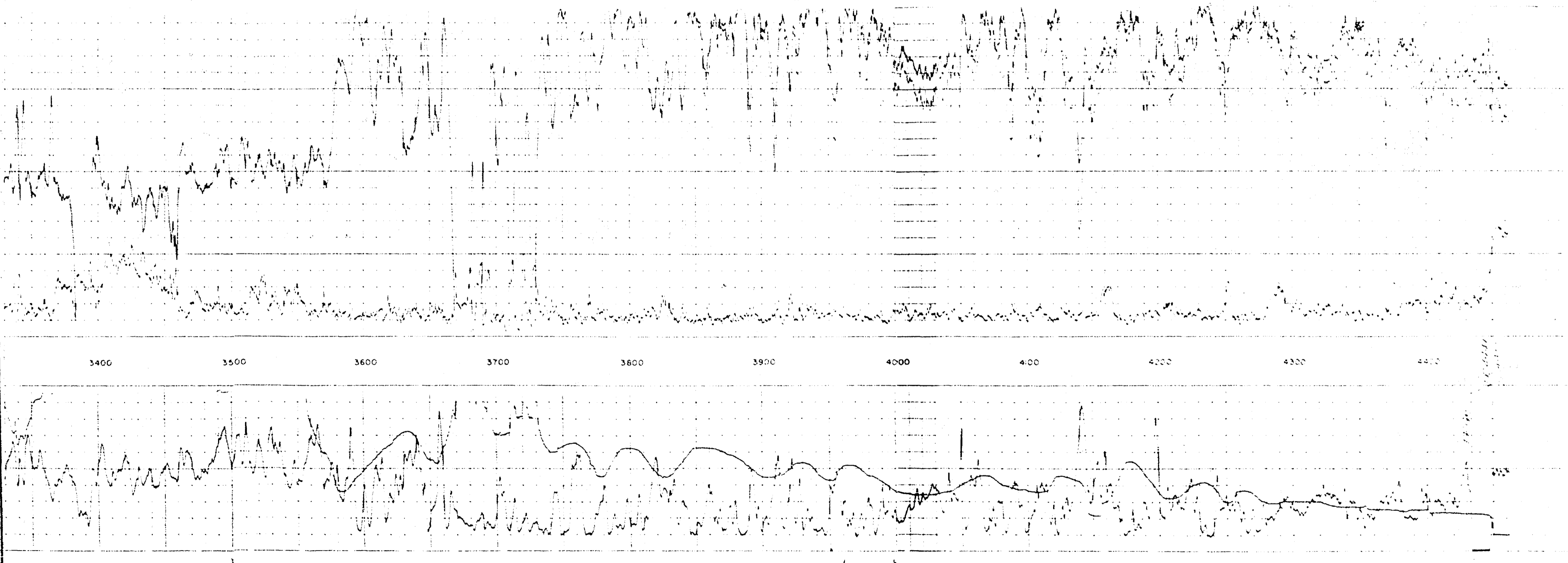


Schlumberger

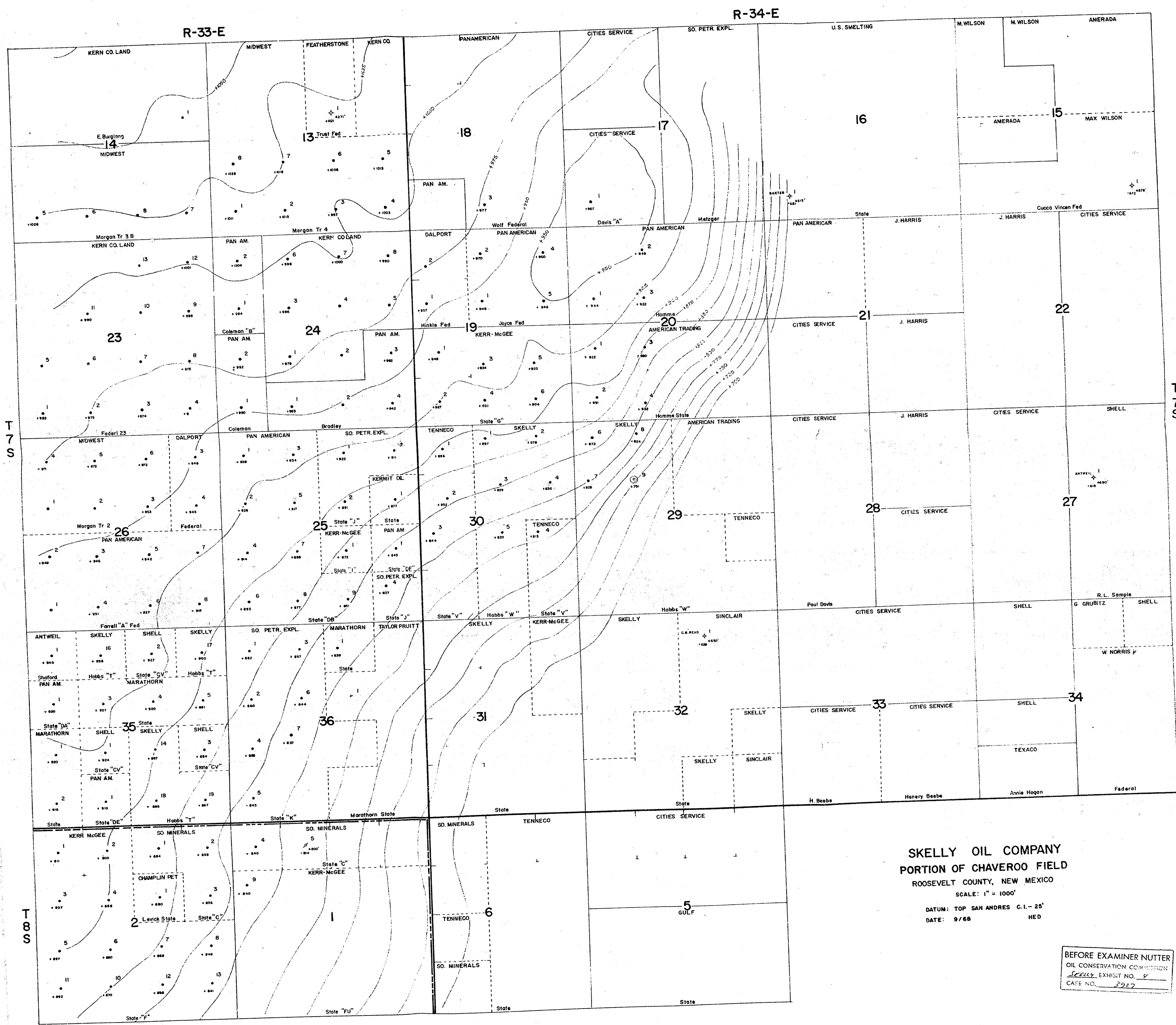
COMPANY: Peris / Las
 WELL: Blanked
 FIELD: Blanked
 COUNTY: STATE: Other Services:
 LOCATION: Other Services:
 Ser. No. Log No. Pole Log No.

Particular Depth: Elevation: Elev. KB
 Log Measured from: of: Hole Assie. Perm. Down: D.F.
 Log Measured from: of: Hole Assie. Perm. Down: D.F.

| | | | | | | | | | | | | | | | | | | | | | |
|---------|-------|-------|-------|-------|-------|-------|-------|-------|-------|-------|-------|-------|-------|-------|-------|-------|-------|-------|-------|-------|-------|
| Depth | 17.30 | 17.30 | 17.30 | 17.30 | 17.30 | 17.30 | 17.30 | 17.30 | 17.30 | 17.30 | 17.30 | 17.30 | 17.30 | 17.30 | 17.30 | 17.30 | 17.30 | 17.30 | 17.30 | 17.30 | 17.30 |
| Log No. | 17.30 | 17.30 | 17.30 | 17.30 | 17.30 | 17.30 | 17.30 | 17.30 | 17.30 | 17.30 | 17.30 | 17.30 | 17.30 | 17.30 | 17.30 | 17.30 | 17.30 | 17.30 | 17.30 | 17.30 | 17.30 |
| Log No. | 17.30 | 17.30 | 17.30 | 17.30 | 17.30 | 17.30 | 17.30 | 17.30 | 17.30 | 17.30 | 17.30 | 17.30 | 17.30 | 17.30 | 17.30 | 17.30 | 17.30 | 17.30 | 17.30 | 17.30 | 17.30 |
| Log No. | 17.30 | 17.30 | 17.30 | 17.30 | 17.30 | 17.30 | 17.30 | 17.30 | 17.30 | 17.30 | 17.30 | 17.30 | 17.30 | 17.30 | 17.30 | 17.30 | 17.30 | 17.30 | 17.30 | 17.30 | 17.30 |
| Log No. | 17.30 | 17.30 | 17.30 | 17.30 | 17.30 | 17.30 | 17.30 | 17.30 | 17.30 | 17.30 | 17.30 | 17.30 | 17.30 | 17.30 | 17.30 | 17.30 | 17.30 | 17.30 | 17.30 | 17.30 | 17.30 |
| Log No. | 17.30 | 17.30 | 17.30 | 17.30 | 17.30 | 17.30 | 17.30 | 17.30 | 17.30 | 17.30 | 17.30 | 17.30 | 17.30 | 17.30 | 17.30 | 17.30 | 17.30 | 17.30 | 17.30 | 17.30 | 17.30 |



© 1993 Schlumberger



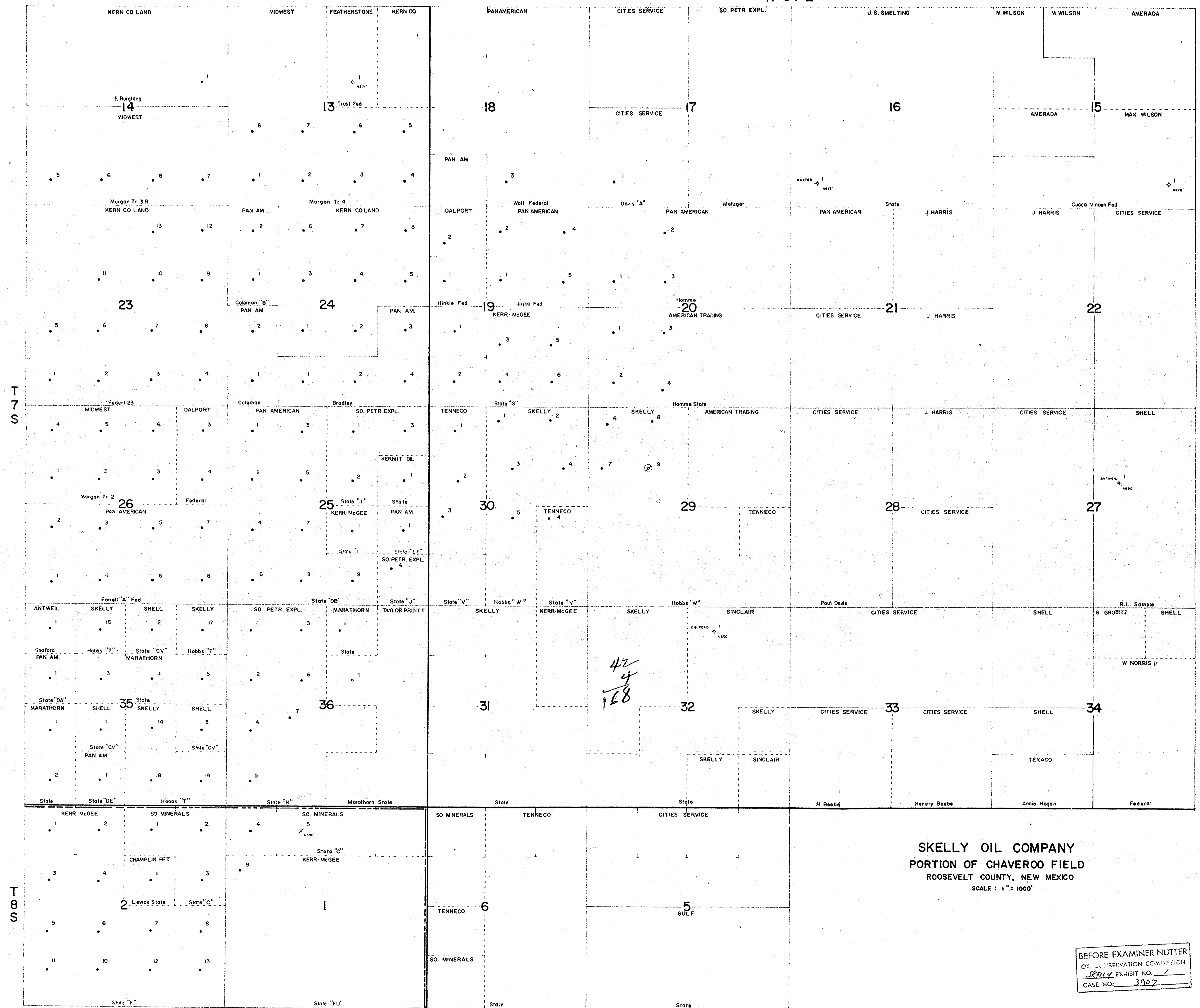
SKELLY OIL COMPANY
 PORTION OF CHAVEROO FIELD
 ROOSEVELT COUNTY, NEW MEXICO
 SCALE: 1" = 1000'
 DATUM: TOP SAN ANDRES C.I. - 25'
 DATE: 9/68 HED

BEFORE EXAMINER NUTTER
 OIL CONSERVATION COMMISSION
 SKELLY EXHIBIT NO. 4
 CASE NO. 2927



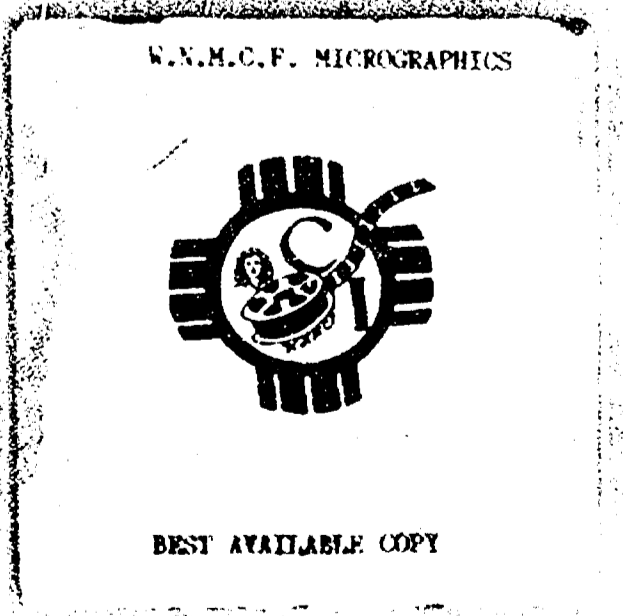
R-33-E

R-34-E



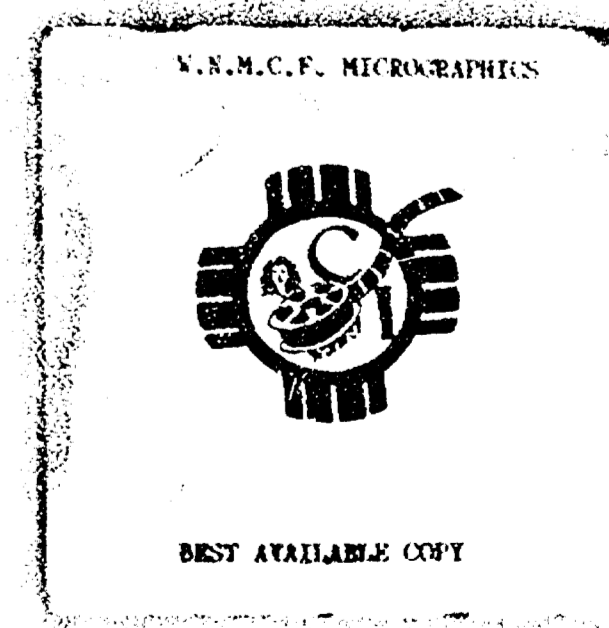
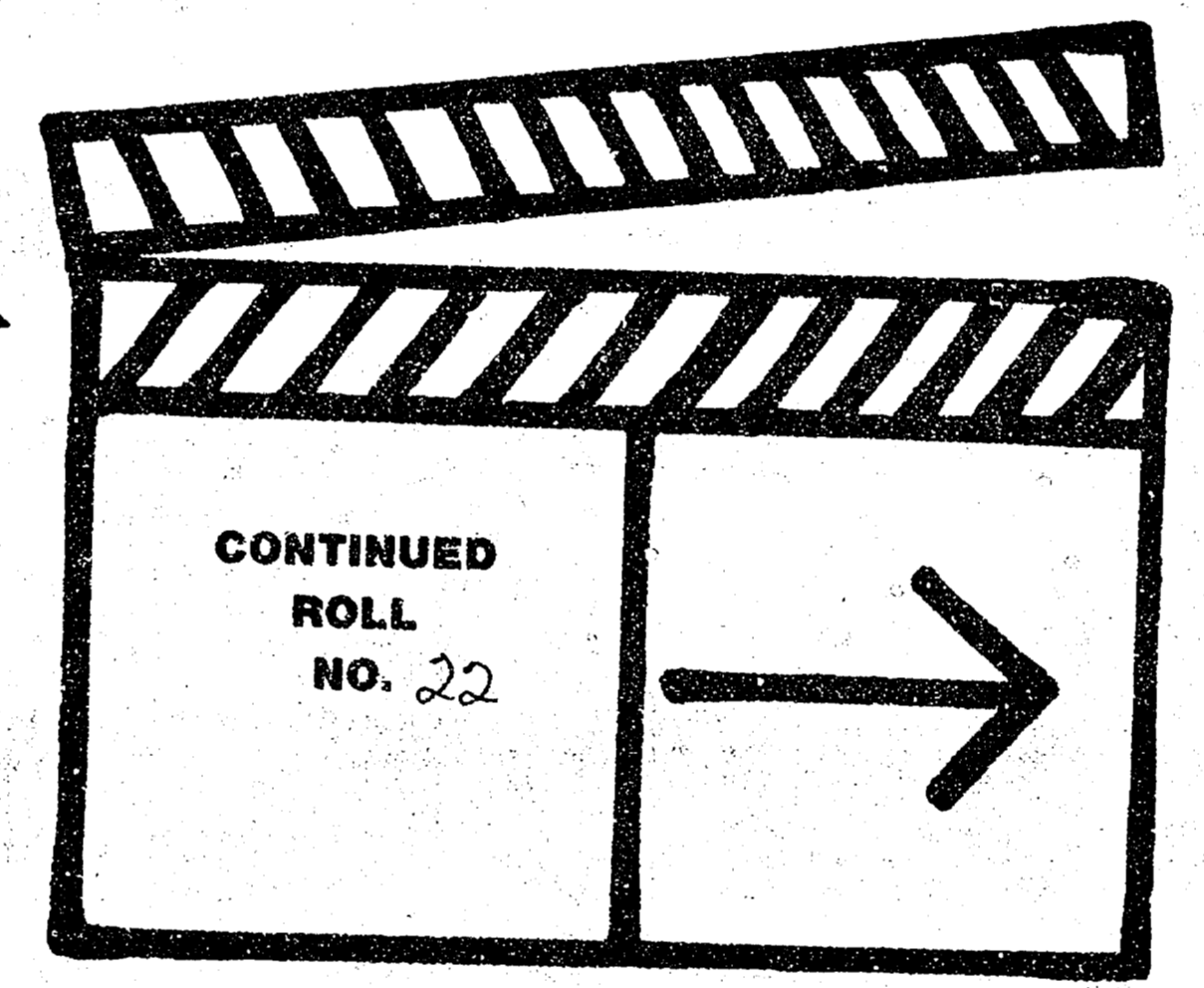
SKELLY OIL COMPANY
 PORTION OF CHAVEROO FIELD
 ROOSEVELT COUNTY, NEW MEXICO
 SCALE: 1" = 1000'

BEFORE EXAMINER NUTTER
 OIL CONSERVATION COMMISSION
 EXHIBIT NO. 1
 CASE NO. 3587



*42
 y
 148*

THIS IS A CONTINUED ROLL
SEE ROLL NUMBER: 23



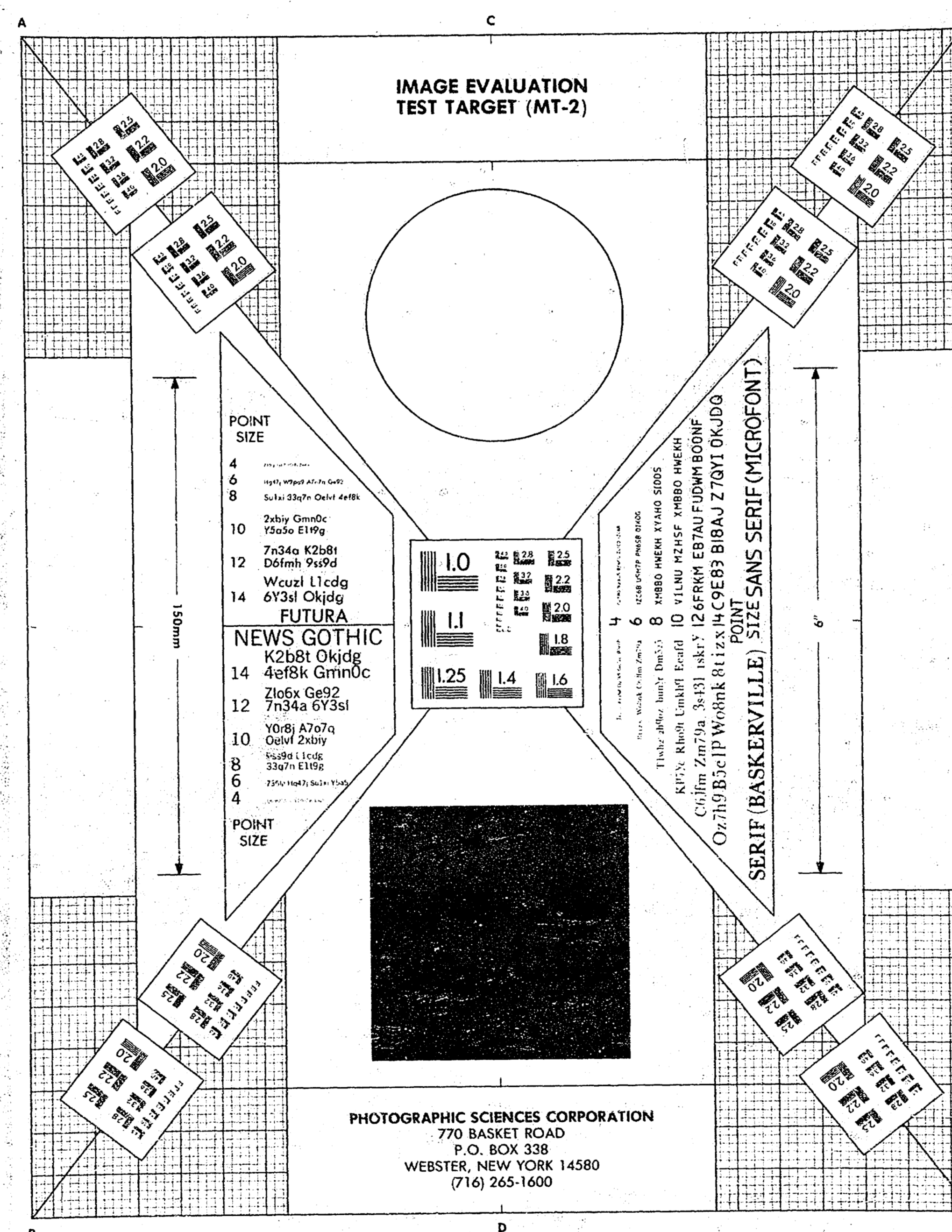
**END
OF
ROLL**



22
ROLL NUMBER
DOCUMENT TYPE *Oil Conservation Division*
DATE OF FILMING *12-17-87*
CAMERA OPERATOR *Maria Hernandez + Jolie Oles*
ENDING DOCUMENT *Case No. 3909*







STATEMENT OF DOCUMENT CERTIFICATION

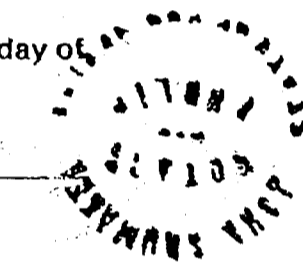
All micrographic images of documents following this certificate are of authorized documents in the possession of this agency. These documents are routinely microfilmed as a necessary operation in the generation of an inviolate document file.

[Signature]
Director

STATE OF NEW MEXICO }
COUNTY OF SANTA FE }

Sworn and subscribed to before me, a notary public, this 10th day of April, 19 84.

[Signature]
Notary Public



MY COMMISSION EXPIRES May 17, 1984

CERTIFICATE OF AUTHENTICITY

THIS IS TO CERTIFY that the microphotographs appearing on this roll of film are accurate and complete reproductions of the records of the Administration Division as delivered in the regular course of business for microfilming.

[Signature]
Camera Operator

SRC Rule No. 80-12

