



U.S. Feet
Scale 1"=60'

Rev. 4 - Issued for Information Preliminary Version 1	Apr. 21, 2023	Drafted by: LaVerne Woroschuk (Elite Optz.)
	Apr. 21, 2023	Reviewed by: Ramon Barrera (Caza Petro)
		Approved by: (Caza Petro)
Rev. 5 - Issued for Information Preliminary Version 0	June 19, 2023	Drafted by: LaVerne Woroschuk (Elite Optz.)
		Reviewed by: Ramon Barrera (Caza Petro)
		Approved by: (Caza Petro)
Rev. 6 - Issued for Information Preliminary Version 3	Nov. 6, 2023	Drafted by: Marcos Barriga (Elite Optz.)
		Reviewed by: (Caza Petro)
		Approved by: (Caza Petro)
Job. #: 21-EliteOptz-0016-Rev6		Page 1 of 6

Aerial As-Built Overview of
Caza Petroleum, LLC.
Comanche 25-36 Fed State Com CTB
1H, 2H, 3H, 4H, 2Y
Unit B. Sec. 25-26S-35E
Lease Number: NMNM125402



Disclaimer: This drawing is intended for Caza Petroleum, LLC. internal purposes only and is not to be relied upon as a boundary survey or to establish real property interests. Survey information shown on this drawing was gathered between the dates of: June 1, 2021 and Nov. 1, 2023. Survey information was collected using a combination of GNSS observations and geo-referenced aerial drone imagery when required. Observations refer to: NAD83 (2011) Datum, New Mexico State Plane Coordinate System, East Zone (3001), US Survey Feet, CSF=0.99990909. This drawing includes additional information that was collected from various sources including first hand observations, walk-through photos when applicable and third party information as well as information provided by Caza Petroleum, LLC. Caza Petroleum, LLC. is to verify the accuracy of all information as presented on this drawing. Elite Optimization, LP. is not responsible for design by engineer of records, erection or operation of any facilities represented by this drawing. This drawing is not an official engineering drawing or land survey drawing; this drawing is not to be used for construction.



Equipment Layout Plan up to date as of: Nov. 1, 2023

LEGEND:

Wellhead is shown thus:.....

Berms/Containments/Skids are shown thus:.....

Pad Edge is shown thus:.....

Overhead Power line is shown thus:.....

As-built UG Flowline is shown thus:.....

As-built UG Oil Line is shown thus:.....

As-built UG Water Line is shown thus:.....

As-built UG Gas Line is shown thus:.....

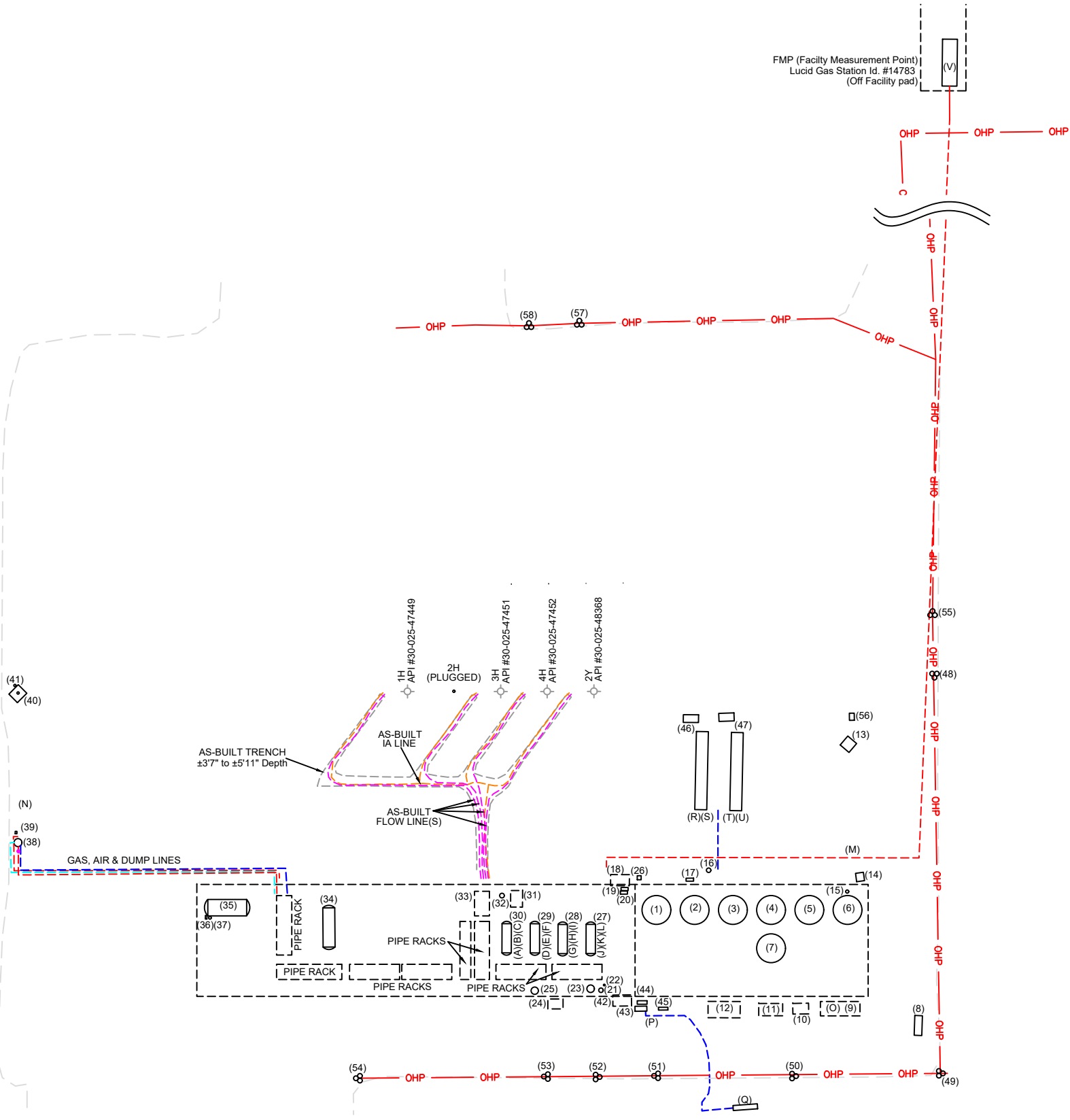
As-built UG Air Line is shown thus:.....

As-built AG Oil Line is shown thus:.....

As-built AG Water Line is shown thus:.....

As-built AG Oil & Water Line is shown thus:.....

As-built AG Gas Line is shown thus:.....



N

U.S. Feet
Scale 1"=70'

Rev. 4 - Issued for Information Preliminary Version 1	Apr. 21, 2023	Drafted by: LaVerne Woroschuk (Elite Optz.)
	Apr. 21, 2023	Reviewed by: Ramon Barrera (Caza Petro)
Rev. 5 - Issued for Information Preliminary Version 0	June 19, 2023	Drafted by: LaVerne Woroschuk (Elite Optz.)
		Reviewed by: Ramon Barrera (Caza Petro)
Rev. 6 - Issued for Information Preliminary Version 3	Nov. 6, 2023	Drafted by: Marcos Barriga (Elite Optz.)
		Reviewed by: (Caza Petro)
Job. #: 21-EliteOptz-0016-Rev6		Page 2 of 6

As-Built Equipment Layout Plan for
Caza Petroleum, LLC.
Comanche 25-36 Fed State Com CTB
1H, 2H, 3H, 4H, 2Y
Unit B. Sec. 25-26S-35E
Lease Number: NMNM125402

Caza
Petroleum, LLC

Disclaimer: This drawing is intended for Caza Petroleum, LLC. internal purposes only and is not to be relied upon as a boundary survey or to establish real property interests. Survey information shown on this drawing was gathered between the dates of: June 1, 2021 and Nov. 1, 2023. Survey information was collected using a combination of GNSS observations and geo-referenced aerial drone imagery when required. Observations refer to: NAD83 (2011) Datum, New Mexico State Plane Coordinate System, East Zone (3001), US Survey Feet, CSF=0.99990909. This drawing includes additional information that was collected from various sources including first hand observations, walk-through photos when applicable and third party information as well as information provided by Caza Petroleum, LLC. Caza Petroleum, LLC. is to verify the accuracy of all information as presented on this drawing. Elite Optimization, LP. is not responsible for design by engineer of records, erection or operation of any facilities represented by this drawing. This drawing is not an official engineering drawing or land survey drawing; this drawing is not to be used for construction.

ELITE
OPTIMIZATION

Ref.	Piece	Year	Manufacturer	Serial No.	Model No.	Dimensions	Details	Lat.	Long.
1	Water Tank	2021	Permian Tank	OS260920	--	15.5 x 30 - 1000 BBL	DP 16 oz.	32.020183	-103.317059
2	Water Tank	2021	Permian Tank	OS264617	--	15.5 x 30 - 1000 BBL	DP 16 oz.	32.020184	-103.316991
3	Oil Tank	2021	Permian Tank	OS254710	--	15.5 x 30 - 1000 BBL	DP 16 oz.	32.020184	-103.316927
4	Oil Tank	2021	Permian Tank	OS264635	--	15.5 x 30 - 1000 BBL	DP 16 oz.	32.020182	-103.316858
5	Oil Tank	2021	Permian Tank	OS264525	--	15.5 x 30 - 1000 BBL	DP 16 oz.	32.020183	-103.316795
6	Oil Tank	2021	Permian Tank	OS265237	--	15.5 x 30 - 1000 BBL	DP 16 oz.	32.020180	-103.316729
7	Skim/Divert Tank	2021	Permian Tank	OS264442	--	15.5 x 30 - 1000 BBL	DP 16 oz.	32.020125	-103.316861
8	LACT Panel Rack	--	--	--	--	--	--	32.020014	-103.316608
9	LACT	2021	Angus Measurements	36901	--	--	Skid #30992	32.020040	-103.316733
10	VRU	2021	Platinum	PVR-1985	--	--	16-48-V2PH-300-PLT	32.020038	-103.316810
11	VRU	2021	Platinum	PVR-1974	--	--	16-48-V2PH-300-PLT	32.020038	-103.316861
12	VRU	--	S & R Compression	Skid #21007	--	--	3040 VRU-03	32.020036	-103.316943
13	Flare	--	Flaretech	Not Available	--	--	--	32.020423	-103.316729
14	Flare Controls	--	Flaretech	06072021-3	FT-VFD-480-10HP	--	--	32.020231	-103.316705
15	Fuel Pot	--	--	--	--	--	--	32.020212	-103.316727
16	Filter Separator	2019	Global Filter	GL-45975	--	--	--	32.020245	-103.316965
17	Pump	2021	Odessa Pumps	670629	--	--	4x3-13, 30HP	32.020231	-103.317000
18	Panel Rack	--	--	N/A	--	--	--	32.020231	-103.317121
19	Pump - Recycle	2021	Odessa Pumps	661137	--	--	--	32.020218	-103.317115
20	Pump - Recycle	2021	Odessa Pumps	661667	--	--	--	32.020211	-103.317115
21	Vert. Separator	2021	Permian Tank	F-37154	--	30 x 10	WP 250 psi, TP 325 psi	32.020070	-103.317155
22	Fuel Gas Filter	--	ACI/Bailey's Welding	1775-13	--	--	--	32.020080	-103.317145
23	Vert. Separator	2021	Permian Tank	F8718	--	48 x 15	WP 250 psi, TP 150 psi	32.020072	-103.317172
24	VRU	2021	Platinum	PVR-1960	--	--	16-48-V2PH-300-PLT	32.020048	-103.317240
25	Vert. Separator	2021	Permian Tank	F-37150	--	48 x 10	WP 250 psi, TP 325 psi	32.020070	-103.317268
26	Oxygen Tank	--	--	N/A	--	--	--	32.020234	-103.317086
27	Horz. Test Separator	2021	Permian Tank	F-37141	--	60 x 15	WP 250 psi, TP 325 psi (1H Well)	32.020147	-103.317172
28	Horz. Test Separator	2021	Permian Tank	F-37142	--	60 x 15	WP 250 psi, TP 325 psi (3H Well)	32.020146	-103.317220
29	Horz. Test Separator	2021	Permian Tank	F-37139	--	60 x 15	WP 250 psi, TP 325 psi (4H Well)	32.020147	-103.317267
30	Horz. Test Separator	2021	Permian Tank	F-37140	--	60 x 15	WP 250 psi, TP 325 psi (2Y Well)	32.020148	-103.317317
31	IA Compressor	--	Vanzandt	CBV729156	2-7100e15	--	--	32.020206	-103.317299
32	IA Tank	--	Samuel Pressure Vessel	975260	--	--	--	32.020211	-103.317324
33	Inlet Header	--	--	N/A	--	--	--	32.020199	-103.317359
34	FWKO	2019	Production Equipment	1972	--	6 x 20	WP 125 psi, TP 200 psi	32.020168	-103.317624
35	Horz. Heater Treater	2021	Permian Tank	F-37145	--	96 x 20	WP 250 psi, TP 325 psi	32.020195	-103.317800
36	Combustor Ignition Controller	--	Platinum	2019080600044	--	--	Horz. Heater Treater F-37145	32.020182	-103.317838
37	Fuel Gas Filter	2020	Manchester	2253333	--	--	Heater Treater F-37145	32.020182	-103.317830
38	Flare Scrubber	2021	Permian Tank	F8751	--	48 x 15	WP 250 psi, TP 150 psi	32.020296	-103.318159
39	Flare Controls	--	Flaretech	06072021-2	FT-PMI-CP-PH	--	--	32.020313	-103.318154
40	HP Flare	2021	Flaretech	21-1094-2	FT-PMI-PH	--	--	32.020515	-103.318160
41	Fuel Pot	--	--	--	--	--	HP Flare 21-1094-2	32.020526	-103.318164
42	Panel Rack	--	--	N/A	--	--	--	32.020055	-103.317117
43	Pump - Transfer	2020	Centrifugal Pump	100-001436	Part # IS-640-202222-1T70	--	4x3x13,125HP	32.020040	-103.317085
44	Pump - Transfer	--	Centripump	306121-DR	MTX	--	1.5x3-13, 60HP	32.020051	-103.317089
45	Pump - Transfer	--	Centripump	Not Available	MTX	--	4x6-13, 30HP	32.020041	-103.317049
46	Jet Pump	--	Summit	13667367	1:3XRC CP	--	--	32.020400	-103.316978
47	Jet Pump	--	Summit	13641083	1:3XRC CP	--	--	32.020396	-103.316917
48	Transformer (No Meter)	--	--	No Meter	--	--	(3) 250 kVa	32.020532	-103.316572
49	Transformer (No Meter)	--	--	No Meter	--	--	(3) 167 kVa	32.019942	-103.316568
50	Transformer (No Meter)	--	--	No Meter	--	--	(3) 75 kVa	32.019941	-103.316822
51	Transformer (No Meter)	--	--	No Meter	--	--	(3) 100 kVa	32.019942	-103.317059
52	Transformer (No Meter)	--	--	No Meter	--	--	(3) 37.5/42 kVa	32.019940	-103.317163
53	Transformer (No Meter)	--	--	No Meter	--	--	(3) 37.5/42 kVa	32.019942	-103.317248
54	Transformer (No Meter)	--	--	No Meter	--	--	(3) 37.5/42 kVa	32.019948	-103.317571
55	Transformer (No Meter)	--	--	No Meter	--	--	(3) 250 kVa	32.020617	-103.316575

Rev. 4 - Issued for Information Preliminary Version 1

Apr. 21, 2023

Drafted by: LaVerne Woroschuk (Elite Optz.)

Apr. 21, 2023

Reviewed by: Ramon Barrera (Caza Petro)

Approved by: (Caza Petro)

Rev. 5 - Issued for Information Preliminary Version 0

June 19, 2023

Drafted by: LaVerne Woroschuk (Elite Optz.)

Reviewed by: Ramon Barrera (Caza Petro)

Approved by: (Caza Petro)

Rev. 6 - Issued for Information Preliminary Version 3

Nov. 6, 2023

Drafted by: Marcos Barriga (Elite Optz.)

Reviewed by: (Caza Petro)

Approved by: (Caza Petro)

Job. #: 21-EliteOptz-0016-Rev6

Page 3 of 6

As-Built Equipment List for
Caza Petroleum, LLC.
Comanche 25-36 Fed State Com CTB
1H, 2H, 3H, 4H, 2Y
Unit B. Sec. 25-26S-35E
Lease Number: NMNM125402



Disclaimer: This drawing is intended for Caza Petroleum, LLC. internal purposes only and is not to be relied upon as a boundary survey or to establish real property interests. Survey information shown on this drawing was gathered between the dates of: June 1, 2021 and Nov. 1, 2023. Survey information was collected using a combination of GNSS observations and geo-referenced aerial drone imagery when required. Observations refer to: NAD83 (2011) Datum, New Mexico State Plane Coordinate System, East Zone (3001), US Survey Feet, CSF=0.99990909 This drawing includes additional information that was collected from various sources including first hand observations, walk-through photos when applicable and third party information as well as information provided by Caza Petroleum, LLC. Caza Petroleum, LLC. is to verify the accuracy of all information as presented on this drawing. Elite Optimization, LP. is not responsible for design by engineer of records, erection or operation of any facilities represented by this drawing. This drawing is not an official engineering drawing or land survey drawing; this drawing is not to be used for construction.



Ref.	Piece	Year	Manufacturer	Serial No.	Model No.	Dimensions	Details	Lat.	Long.
56	Flare Control	2023	Ignition Management System / Platinum Control	2023053000001	--	--	--	32.020471	-103.316716
57	Transformer (No Meter)	--	--	--	--	--	(3) 250 kVa	32.021051	-103.317180
58	Transformer (No Meter)	--	--	--	--	--	(3) 250 kVa	32.021048	-103.317268
A	Meter - Oil	--	Endress + Hauser	RB06D616000	Promass 300	--	Test Sep. F-37140	32.020154	-103.317302
B	Meter - Water	--	NuFlo	12167202127	--	--	Test Sep. F-37140	32.020140	-103.317307
C	Meter - Gas	--	Precision Flo	SF21911	Precision 14.3	--	Test Sep. F-37140, ABB T211527597	32.020142	-103.317332
D	Meter - Oil	--	Endress + Hauser	RB070E16000	Promass 300	--	Test Sep. F-37139	32.020153	-103.317254
E	Meter - Water	--	NuFlo	12167202128	--	--	Test Sep. F-37139	32.020140	-103.317257
F	Meter - Gas	--	Precision Flo	SF21909	Precision 14.3	--	Test Sep. F-37139, ABB T211527594	32.020142	-103.317282
G	Meter - Oil	--	Endress + Hauser	RB06D216000	Promass 300	--	Test Sep. F-37142	32.020154	-103.317206
H	Meter - Water	--	NuFlo	12168051309	--	--	Test Sep. F-37142	32.020139	-103.317210
I	Meter - Gas	--	Precision Flo	SF22051	Precision 14.3	--	Test Sep. F-37142, ABB T211225065	32.020141	-103.317234
J	Meter - Oil	--	Endress + Hauser	RB076C16000	Promass 300	--	Test Sep. F-37141	32.020153	-103.317157
K	Meter - Water	--	NuFlo	12168568749	--	--	Test Sep. F-37141	32.020138	-103.317160
L	Meter - Gas	--	Precision Flo	SF22050	Precision 14.3	--	Test Sep. F-37141, ABB T211527595	32.020141	-103.317185
M	Meter- Flare	--	Sierra	301220	6401-VT-2-L13-M0-E2-P2-V4-DD-0-8-99-MB-0MIX	--	--	32.020230	-103.316728
N	Meter - Flare	--	Sierra	314274	--	--	--	32.020332	-103.318161
O	Meter - LACT	--	Endress + Hauser	Not Available	--	--	--	32.020038	-103.316756
P	Meter - Water	--	Turbines Inc.	2201125	--	--	--	32.020032	-103.317062
Q	Meter - Water	--	Rosemount	14988461	8732EMT2M1N5DA1M4	--	--	32.019902	-103.316919
R	Meter - Water Injection	--	Turbines Inc.	2137399	F103-P-AH-CH-HGI-IB-IG-OG-PB-PX-XN-ZU-1TO	--	Jet Pump #13667367	32.020335	-103.317008
S	Meter - Water Injection	--	Turbines Inc.	2137398	--	--	Jet Pump #13667367	32.020344	-103.317007
T	Meter - Water Injection	--	NuFlo	12180009002	--	--	Jet Pump #13641083	32.020310	-103.316933
U	Meter - Water Injection	--	NuFlo	12174450349	--	--	Jet Pump #13641083	32.020324	-103.316934
V	Meter - Gas Sales	--	Sureshot	150528	22063040	--	ABB #T212332233	32.021454	-103.316522



Rev. 4 - Issued for Information Preliminary Version 1

Apr. 21, 2023

Drafted by: LaVerne Woroschuk (Elite Optz.)

Rev. 5 - Issued for Information Preliminary Version 0

June 19, 2023

Drafted by: LaVerne Woroschuk (Elite Optz.)

Rev. 6 - Issued for Information Preliminary Version 3

Nov. 6, 2023

Drafted by: Marcos Barriga (Elite Optz.)

Apr. 21, 2023

Reviewed by: Ramon Barrera (Caza Petro)

Approved by: (Caza Petro)

June 19, 2023

Reviewed by: Ramon Barrera (Caza Petro)

Approved by: (Caza Petro)

Nov. 6, 2023

Reviewed by: (Caza Petro)

Approved by: (Caza Petro)

Job. #: 21-EliteOptz-0016-Rev6

Page 4 of 6

As-Built Equipment & Meter List for

Caza Petroleum, LLC.

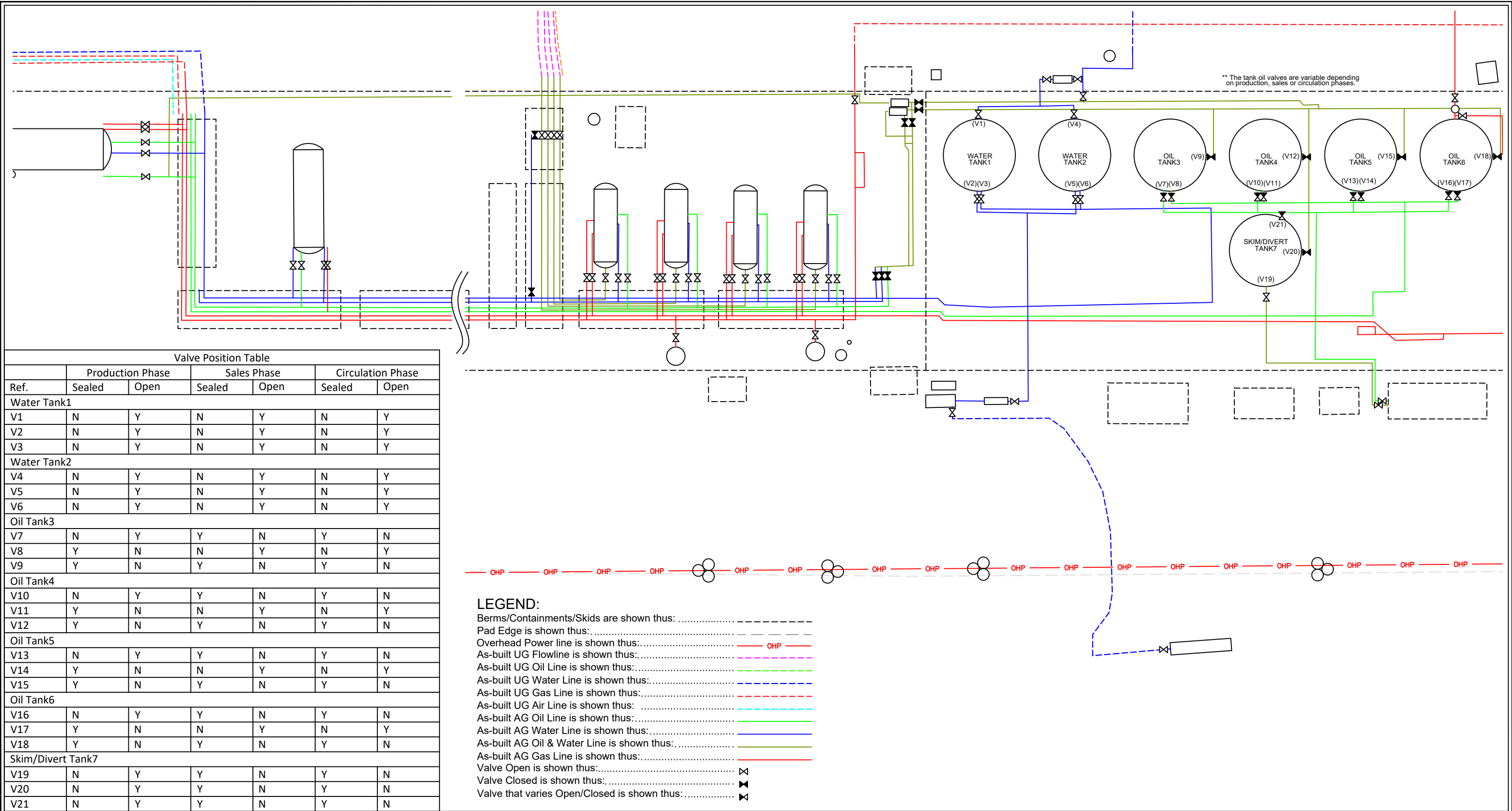
Comanche 25-36 Fed State Com CTB

1H, 2H, 3H, 4H, 2Y

Unit B. Sec. 25-26S-35E

Lease Number: NMNM125402

Disclaimer: This drawing is intended for Caza Petroleum, LLC. internal purposes only and is not to be relied upon as a boundary survey or to establish real property interests. Survey information shown on this drawing was gathered between the dates of: June 1, 2021 and Nov. 1, 2023. Survey information was collected using a combination of GNSS observations and geo-referenced aerial drone imagery when required. Observations refer to: NAD83 (2011) Datum, New Mexico State Plane Coordinate System, East Zone (3001), US Survey Feet, CSF=0.99990909 This drawing includes additional information that was collected from various sources including first hand observations, walk-through photos when applicable and third party information as well as information provided by Caza Petroleum, LLC. Caza Petroleum, LLC. is to verify the accuracy of all information as presented on this drawing. Elite Optimization, LP. is not responsible for design by engineer of records, erection or operation of any facilities represented by this drawing. This drawing is not an official engineering drawing or land survey drawing; this drawing is not to be used for construction.



N

U.S. Feet

Scale 1"=20'

Rev. 4 - Issued for Information Preliminary Version 1

Apr. 21, 2023

Drafted by: LaVerne Woroschuk (Elite Optz.)

Rev. 5 - Issued for Information Preliminary Version 0

June 19, 2023

Drafted by: LaVerne Woroschuk (Elite Optz.)

Rev. 6 - Issued for Information Preliminary Version 3

Nov. 6, 2023

Drafted by: Marcos Barriga (Elite Optz.)

Job. #: 21-EliteOptz-0016-Rev6

Page 5 of 6

As-Built Piping and Valve Facility Detail

Caza Petroleum, LLC.

Comanche 25-36 Fed State Com CTB

1H, 2H, 3H, 4H, 2Y

Unit B. Sec. 25-26S-35E

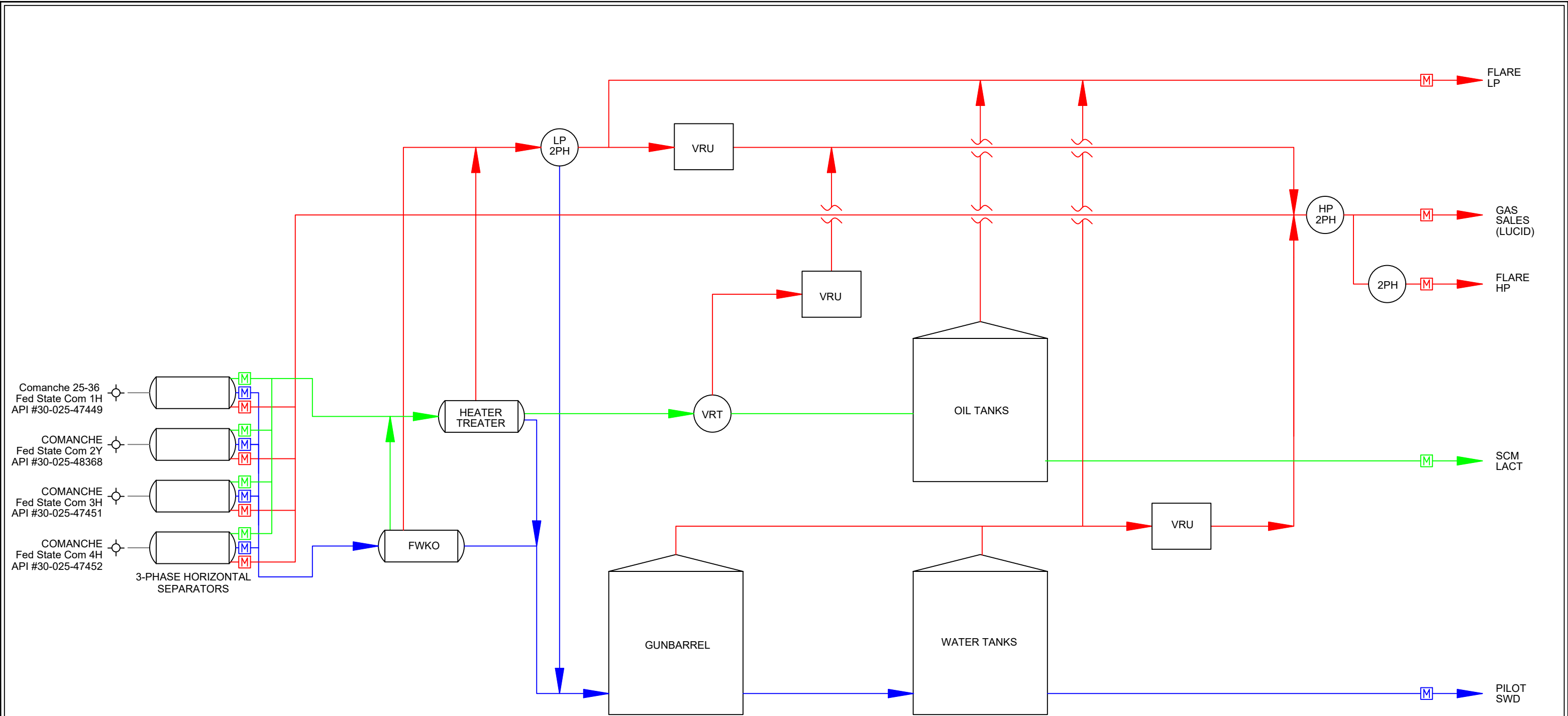
Lease Number: NMNM125402

Caza Petroleum, LLC

Disclaimer: This drawing is intended for Caza Petroleum, LLC. internal purposes only and is not to be relied upon as a boundary survey or to establish real property interests. Survey information shown on this drawing was gathered between the dates of: June 1, 2021 and Nov. 1, 2023. Survey information was collected using a combination of GNSS observations and geo-referenced aerial drone imagery when required. Observations refer to: NAD83 (2011) Datum, New Mexico State Plane Coordinate System, East Zone (3001), US Survey Feet, CSF=0.99990909. This drawing includes additional information that was collected from various sources including first hand observations, walk-through photos when applicable and third party information as well as information provided by Caza Petroleum, LLC. Caza Petroleum, LLC. is to verify the accuracy of all information as presented on this drawing. Elite Optimization, LP. is not responsible for design by engineer of records, erection or operation of any facilities represented by this drawing. This drawing is not an official engineering drawing or land survey drawing; this drawing is not to be used for construction.

ELITE OPTIMIZATION

Released to Imaging: 10/16/2024 12:39:46 PM



LEGEND:

Wellstream is shown thus:.....

Oil and Water is shown thus:.....

Gas is shown thus:.....

Oil is shown thus:.....

Water is shown thus:.....

Gas Meter is shown thus:.....

Oil Meter is shown thus:.....

Water Meter is shown thus:.....

Rev. 4 - Issued for Information Preliminary Version 1	Apr. 21, 2023	Drafted by: LaVerne Woroschuk (Elite Optz.)
	Apr. 21, 2023	Reviewed by: Ramon Barrera (Caza Petro)
		Approved by: (Caza Petro)
Rev. 5 - Issued for Information Preliminary Version 0	June 19, 2023	Drafted by: LaVerne Woroschuk (Elite Optz.)
		Reviewed by: Ramon Barrera (Caza Petro)
		Approved by: (Caza Petro)
Rev. 6 - Issued for Information Preliminary Version 3	Nov. 6, 2023	Drafted by: Marcos Barriga (Elite Optz.)
		Reviewed by: (Caza Petro)
		Approved by: (Caza Petro)

Job. #: 21-EliteOptz-0016-Rev6

Page 6 of 6

As-Built Process Flow Diagram for

Caza Petroleum, LLC.

Comanche 25-36 Fed State Com CTB

1H, 2H, 3H, 4H, 2Y

Unit B. Sec. 25-26S-35E

Lease Number: NMNM125402

Disclaimer: This drawing is intended for Caza Petroleum, LLC. internal purposes only and is not to be relied upon as a boundary survey or to establish real property interests. Survey information shown on this drawing was gathered between the dates of: June 1, 2021 and Nov. 1, 2023. Survey information was collected using a combination of GNSS observations and geo-referenced aerial drone imagery when required. Observations refer to: NAD83 (2011) Datum, New Mexico State Plane Coordinate System, East Zone (3001), US Survey Feet, CSF=0.99990909. This drawing includes additional information that was collected from various sources including first hand observations, walk-through photos when applicable and third party information as well as information provided by Caza Petroleum, LLC. Caza Petroleum, LLC. is to verify the accuracy of all information as presented on this drawing. Elite Optimization, LP. is not responsible for design by engineer of records, erection or operation of any facilities represented by this drawing. This drawing is not an official engineering drawing or land survey drawing; this drawing is not to be used for construction.

District I
1625 N. French Dr., Hobbs, NM 88240
Phone:(575) 393-6161 Fax:(575) 393-0720
District II
811 S. First St., Artesia, NM 88210
Phone:(575) 748-1283 Fax:(575) 748-9720
District III
1000 Rio Brazos Rd., Aztec, NM 87410
Phone:(505) 334-6178 Fax:(505) 334-6170
District IV
1220 S. St Francis Dr., Santa Fe, NM 87505
Phone:(505) 476-3470 Fax:(505) 476-3462

State of New Mexico
Energy, Minerals and Natural Resources
Oil Conservation Division
1220 S. St Francis Dr.
Santa Fe, NM 87505

QUESTIONS

Action 393103

QUESTIONS

Operator: CAZA OPERATING, LLC 200 N Loraine St Midland, TX 79701	OGRID: 249099
	Action Number: 393103
	Action Type: [UF-FAC] TB Registration (TB-REG)

QUESTIONS

Facility Details	
Please answer all the questions in this group.	
Name of the facility	Comanche 25-36 Fed State Com 1H-4H Production Facility
Date the facility was opened	07/27/2021
Depth to ground water, if known	Not answered.

Verification	
Does the operator have other facilities with a matching name	No
Are there other facilites located within approximately 50 feet	No

District I
1625 N. French Dr., Hobbs, NM 88240
Phone:(575) 393-6161 Fax:(575) 393-0720
District II
811 S. First St., Artesia, NM 88210
Phone:(575) 748-1283 Fax:(575) 748-9720
District III
1000 Rio Brazos Rd., Aztec, NM 87410
Phone:(505) 334-6178 Fax:(505) 334-6170
District IV
1220 S. St Francis Dr., Santa Fe, NM 87505
Phone:(505) 476-3470 Fax:(505) 476-3462

State of New Mexico
Energy, Minerals and Natural Resources
Oil Conservation Division
1220 S. St Francis Dr.
Santa Fe, NM 87505

ACKNOWLEDGMENTS

Action 393103

ACKNOWLEDGMENTS

Operator: CAZA OPERATING, LLC 200 N Loraine St Midland, TX 79701	OGRID: 249099
	Action Number: 393103
	Action Type: [UF-FAC] TB Registration (TB-REG)

ACKNOWLEDGMENTS

<input checked="" type="checkbox"/>	I certify that I am authorized to register a facility on behalf of the responsible operator.
<input checked="" type="checkbox"/>	I certify that I will notify OCD of any changes of ownership for this facility.
<input checked="" type="checkbox"/>	I certify that I will notify OCD when this facility is closed.