

Drone Imagery Date: Sept. 5, 2023



U.S. Feet
Scale 1"=70'

Rev. 2 - Issued for Information Updated Plan Preliminary Version 2	Nov. 30, 2022	Drafted by: LaVerne Woroschuk	(Elite Optz.)
	Apr. 3, 2023	Reviewed by:	(Elite Optz.)
Rev. 3 - Issued for Information Updated Plan Preliminary Version 0	June 12, 2023	Drafted by: Marcos Barriga	(Elite Optz.)
		Reviewed by: LaVerne Woroschuk	(Elite Optz.)
Rev. 4 - Issued for Information Updated Plan Preliminary Version 3	Oct. 11, 2023	Approved by:	(Caza Petro.)
		Drafted by: Marcos Barriga	(Elite Optz.)
		Reviewed by:	(Elite Optz.)
		Approved by:	(Caza Petro.)

Job. #: 21-EliteOptz-0030-Rev4

Page 1 of 5

Aerial As-Built Overview of
Caza Petroleum, LLC.
West Copperline 29 Fed State Com
UNIT C, SEC. 29, T23S, R34E
1H (API # 30-025-41313) & 3H (API #30-025-41536)



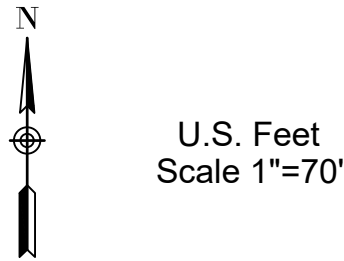
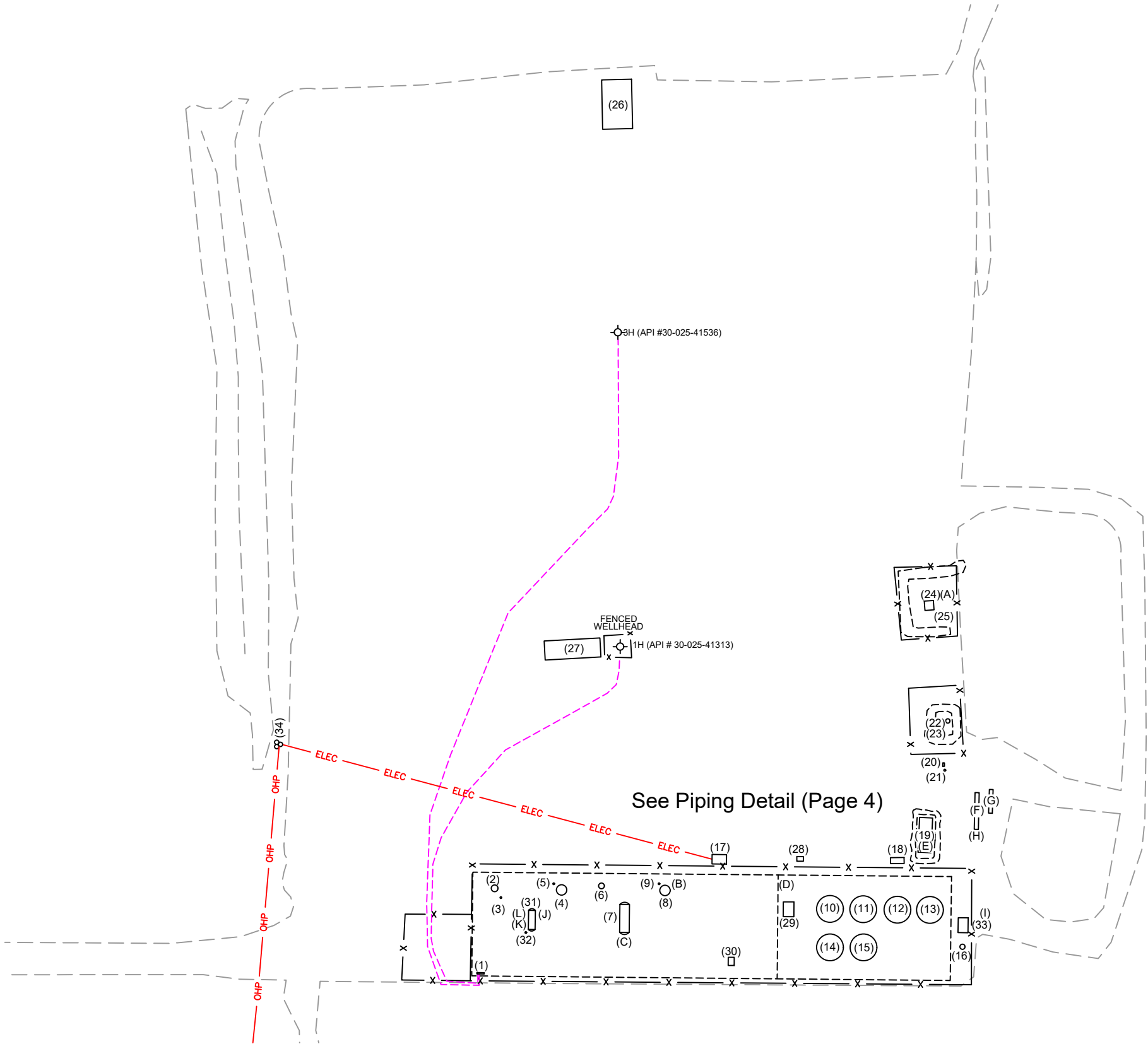
Disclaimer: This drawing is intended for Caza Petroleum, LLC. internal purposes only and is not to be relied upon as a boundary survey or to establish real property interests. Survey information shown on this drawing was gathered between the dates of: Feb. 14, 2021 and Oct. 4, 2023. Survey information was collected using a combination of GNSS observations and geo-referenced aerial drone imagery when required. Observations refer to: NAD83 (2011) Datum, New Mexico State Plane Coordinate System, East Zone (3001), US Survey Feet, CSF=0.99990909. This drawing includes additional information that was collected from various sources including first hand observations, walk-through photos when applicable and third party information as well as information provided by Caza Petroleum, LLC. Caza Petroleum, LLC. is to verify the accuracy of all information as presented on this drawing. Elite Optimization, LP. is not responsible for design by engineer of records, erection or operation of any facilities represented by this drawing. This drawing is not an official engineering drawing or land survey drawing; this drawing is not to be used for construction.



Page 2 of 7
Received by OCD: 10/21/2024 9:40:33 AM
Released to Imaging: 10/21/2024 9:43:52 AM

Equipment Layout Plan up to date as of: Oct. 4, 2023

LEGEND:
Wellhead is shown thus:
Berms/Containments/Skids are shown thus:
Pad Edge/Approaches/Lease Roads are shown thus:
Fences are shown thus:
Overhead Power line is shown thus:
Underground Electrical line is shown thus:



Rev. 2 - Issued for Information Updated Plan	Nov. 30, 2022	Drafted by: LaVerne Woroschuk	(Elite Optz.)
Preliminary Version 2	Apr. 3, 2023	Reviewed by:	(Elite Optz.)
Rev. 3 - Issued for Information Updated Plan	June 12, 2023	Drafted by: Marcos Barriga	(Elite Optz.)
Preliminary Version 0		Reviewed by: LaVerne Woroschuk	(Elite Optz.)
Rev. 4 - Issued for Information Updated Plan	Oct. 11, 2023	Approved by:	(Caza Petro.)
Preliminary Version 3		Drafted by: Marcos Barriga	(Elite Optz.)
		Reviewed by:	(Elite Optz.)
		Approved by:	(Caza Petro.)
Job. #: 21-EliteOptz-0030-Rev4		Page 2 of 5	

As-Built Equipment Layout Plan for
Caza Petroleum, LLC.
West Copperline 29 Fed State Com
UNIT C, SEC. 29, T23S, R34E
1H (API # 30-025-41313) & 3H (API #30-025-41536)



Disclaimer: This drawing is intended for Caza Petroleum, LLC. internal purposes only and is not to be relied upon as a boundary survey or to establish real property interests. Survey information shown on this drawing was gathered between the dates of: Feb. 14, 2021 and Oct. 4, 2023. Survey information was collected using a combination of GNSS observations and geo-referenced aerial drone imagery when required. Observations refer to: NAD83 (2011) Datum, New Mexico State Plane Coordinate System, East Zone (3001), US Survey Feet, CSF=0.99990909. This drawing includes additional information that was collected from various sources including first hand observations, walk-through photos when applicable and third party information as well as information provided by Caza Petroleum, LLC. Caza Petroleum, LLC. is to verify the accuracy of all information as presented on this drawing. Elite Optimization, LP. is not responsible for design by engineer of records, erection or operation of any facilities represented by this drawing. This drawing is not an official engineering drawing or land survey drawing; this drawing is not to be used for construction.



Ref.	Piece	Year	Manufacturer	Serial No.	Model No.	Dimensions	Additional Info.	Lat.	Long.
1	Inlet Header	--	--	N/A	--	--	--	32.281429	-103.494495
2	Vert. Separator	2016	Azteca Fabrication	CA1834	--	--	MAWP 1440 psi @ 150 F	32.281568	-103.494464
3	Fuel Pot	--	--	--	--	--	Heater Treater CA1834	32.281561	-103.494457
4	Vert. Heater Treater	2014	Edge Manufacturing	6692	--	6 x 20	WP 75 psi	32.281566	-103.494337
5	Fuel Pot	--	--	--	--	--	Heater Treater 6692	32.281578	-103.494353
6	Vert. Separator	2013	Edge Manufacturing	EMT0336	--	30 x 10	2PH	32.281572	-103.494261
7	FWKO	2013	Edge Manufacturing	EMT0321	--	6 x 15	WP 125 psi	32.281524	-103.494221
8	Vert. Heater Treater	2018	Edge Manufacturing	6591	--	6 x 20	WP 75 psi	32.281566	-103.494147
9	Fuel Pot	--	--	--	--	--	Heater Treater 6591	32.281575	-103.494166
10	Tank	2013	Edge Manufacturing	ST1407	--	15.5 x 16 - 500 BBL	DP 8 oz	32.281532	-103.493836
11	Tank	2013	Edge Manufacturing	ST1405	--	15.5 x 16 - 500 BBL	DP 8 oz	32.281533	-103.493771
12	Tank	2013	Edge Manufacturing	ST1409	--	15.5 x 16 - 500 BBL	DP 8 oz	32.281531	-103.493708
13	Tank	2013	Edge Manufacturing	ST1284	--	15.5 x 16 - 500 BBL	DP 8 oz	32.281531	-103.493649
14	Tank	2013	Edge Manufacturing	ST1474	--	15.5 x 16 - 500 BBL	DP 8 oz	32.281473	-103.493836
15	Tank	2013	Edge Manufacturing	ST1483	--	15.5 x 16 - 500 BBL	DP 8 oz	32.281473	-103.493779
16	Flare Scrubber	2014	Edge Manufacturing	AT.08	--	24 x 10	WP 125 psi	32.281472	-103.493592
17	Elec. Panel	--	--	N/A	--	--	--	32.281613	-103.494047
18	LACT Panel	--	--	N/A	--	--	--	32.281611	-103.493712
19	LACT	2019	Angus Measurement	25674-22	--	--	--	32.281660	-103.493657
20	Jatco Pot	--	Jatco Inc.	N/A	J-5000CX	--	--	32.281759	-103.493621
21	Fuel Pot	--	--	--	--	--	--	32.281748	-103.493623
22	Combustor	2014	Edge Manufacturing	CVXF023	COM-B0	--	--	32.281830	-103.493615
23	Combustor Ignition Control	--	Ignition Management System / Platinum Control	2019102800076	Edge-600	--	--	32.281817	-103.493635
24	Flare - HP	--	Edge Manufacturing	FL464-2	25x4	--	--	32.282013	-103.493645
25	Flare Control	--	Ignition Management System / Platinum Control	2014111900092	Platinum-600	--	--	32.281987	-103.493617
26	Compressor - Gas Lift	--	--	SS0042	--	--	--	32.282809	-103.494230
27	Pumping Unit	2013	Shores Lift Solutions	SLS13-1147	C64OD-365-168TH	--	--	32.281949	-103.494319
28	Comm Tower	--	--	N/A	--	--	--	32.281610	-103.493889
29	VRU	2021	Platinum	Skid# PVR-1982	--	--	16-48/2PH-60-PLT	32.281534	-103.493919
30	Recycle Pump	--	Gorman-Rupp	1532941	GMS1 1/2GH3-B	--	1.5HP	32.281450	-103.494025
31	Horz. Separator	2014	Edge Manufacturing	ANEC-519	--	48 x 15	WP 250 psi	32.281519	-103.494394
32	Fuel Pot	--	--	--	--	--	Test Separator ANEC-519	32.281500	-103.494403
33	VRU	--	Platinum	Skid PVR-1983	--	--	--	32.281501	-103.493589
34	Transformer & Meter	--	--	Meter# 328958451	--	--	(3) 75/84 kVa	32.281803	-103.494863
A	Meter - Flare	--	Turbines Inc.	2201187	F103-P-AH-CH-HGL-IB-IG-OG-PB-PX-XN-ZU-1TO	--	--	32.282007	-103.493598
B	Meter - Oil	--	Endress + Hauser	S9072516000	Promass300	--	--	32.281571	-103.494129
C	Meter - Water	--	NuFlo	12184121850	--	--	9A-50179027, FWKO EMT-0321	32.281487	-103.494222
D	Meter - VRU	2021	Turbines Inc.	F16832	--	--	--	32.281576	-103.493928
E	Meter - LACT	--	Endress + Hauser	P5014B16000	Promass300	--	--	32.281630	-103.493651
F	Meter - Gas	--	Daniel	150024053	--	--	ABB S/N T144504280	32.281699	-103.493563
G	Meter - Gas	--	Flozone	91610370	--	--	ABB S/N T170771577	32.281698	-103.493536
H	Meter - Gas	--	Cameron/NuFlo	34726338/D-330523	--	--	--	32.281648	-103.493563
I	Meter - VRU	--	Turbines Inc.	2237504	--	--	Skid PVR-1983	32.281527	-103.493581
J	Meter - Gas	--	Precision Flow	SF21816	--	--	Test Separator ANEC-519 ABB T193784329	32.281523	-103.494384
K	Meter - Water	--	NuFlo	12180009007	--	--	Test Separator ANEC-519	32.281516	-103.494407
L	Meter - Oil	--	Endress + Hauser	T303A516000	Promass 300	--	Test Separator ANEC-519	32.281520	-103.494407

--

Rev. 2 - Issued for Information Updated Plan

Nov. 30, 2022

Drafted by: LaVerne Woroschuk (Elite Optz.)

Preliminary Version 2

Approved by: (Caza Petro.)

Rev. 3 - Issued for Information Updated Plan

June 12, 2023

Drafted by: Marcos Barriga (Elite Optz.)

Preliminary Version 0

Approved by: (Caza Petro.)

Rev. 4 - Issued for Information Updated Plan

Oct. 11, 2023

Drafted by: Marcos Barriga (Elite Optz.)

Preliminary Version 3

Approved by: (Caza Petro.)

Job. #: 21-EliteOptz-0030-Rev4

Page 3 of 5

As-Built Equipment & Meter List for

Caza Petroleum, LLC.

West Copperline 29 Fed State Com

UNIT C, SEC. 29, T23S, R34E

1H (API # 30-025-41313) & 3H (API #30-025-41536)



Disclaimer: This drawing is intended for Caza Petroleum, LLC. internal purposes only and is not to be relied upon as a boundary survey or to establish real property interests. Survey information shown on this drawing was gathered between the dates of: Feb. 14, 2021 and Oct. 4, 2023. Survey information was collected using a combination of GNSS observations and geo-referenced aerial drone imagery when required. Observations refer to: NAD83 (2011) Datum, New Mexico State Plane Coordinate System, East Zone (3001), US Survey Feet, CSF=0.99990909 This drawing includes additional information that was collected from various sources including first hand observations, walk-through photos when applicable and third party information as well as information provided by Caza Petroleum, LLC. Caza Petroleum, LLC. is to verify the accuracy of all information as presented on this drawing. Elite Optimization, LP. is not responsible for design by engineer of records, erection or operation of any facilities represented by this drawing. This drawing is not an official engineering drawing or land survey drawing; this drawing is not to be used for construction.



Berms/Containments/Skids are shown thus: - - - - -

Pad Edge/Approaches/Lease Roads are shown thus:..... - - - - -

Fences are shown thus:..... ——— x ———

Underground Electrical line is shown thus:..... ——— ELEC ———

UG Flowline is shown thus:..... - - - - -

UG Oil Line is shown thus:..... - - - - -

UG Water Line is shown thus:..... - - - - -

UG Oil and Water Line is shown thus:..... - - - - -

UG SWD Line is shown thus:..... - - - - -

UG Gas Line is shown thus:..... - - - - -

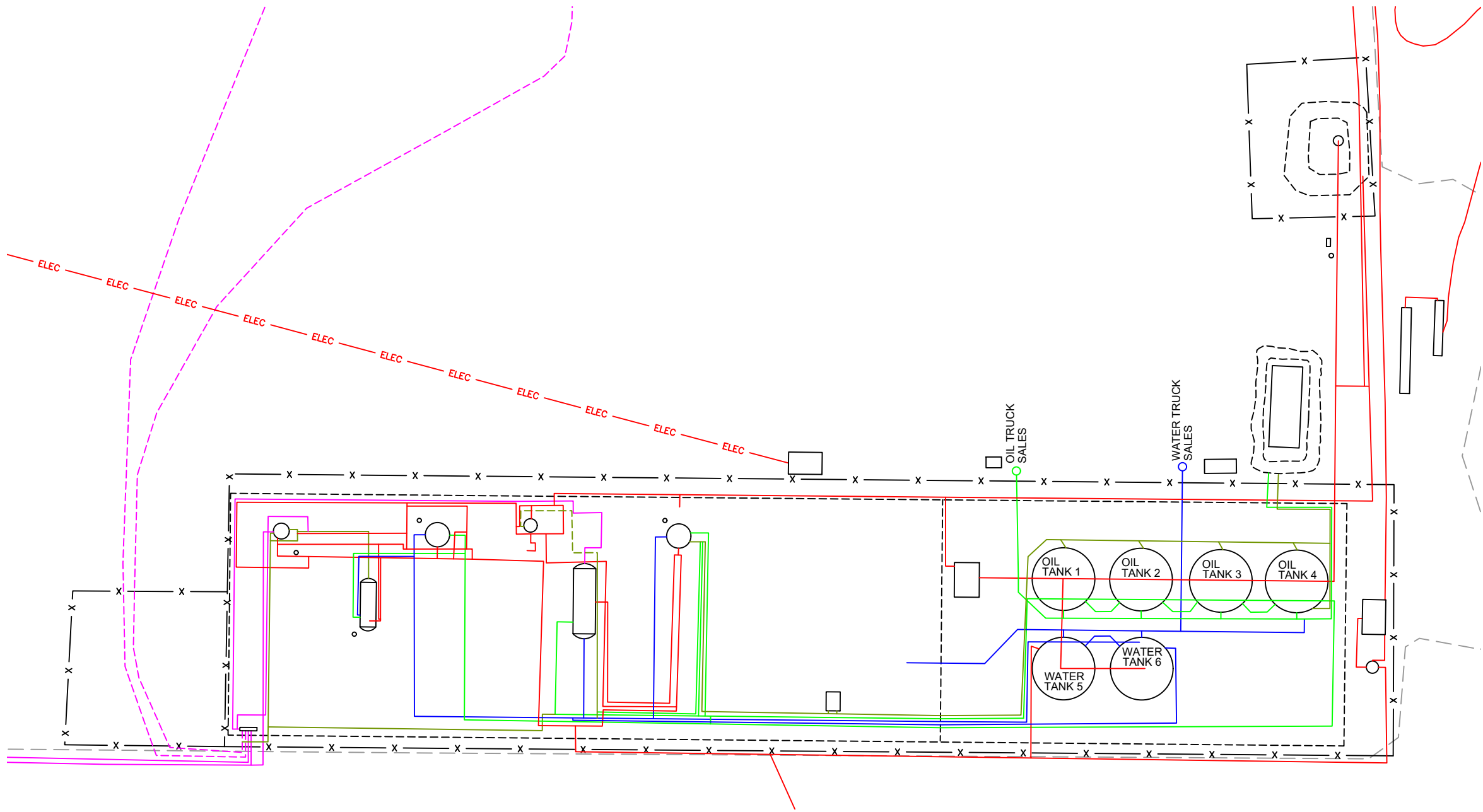
AG Flowline is shown thus:..... - - - - -

AG Oil Line is shown thus:..... - - - - -

AG Water Line is shown thus:..... - - - - -

AG Oil and Water Line is shown thus:..... - - - - -

AG Gas Line is shown thus:..... - - - - -



N

U.S. Feet
Scale 1"=70'

Rev. 2 - Issued for Information	Nov. 30, 2022	Drafted by:	LaVerne Woroschuk	(Elite Optz.)
Updated Plan	Apr. 3, 2023	Reviewed by:		(Elite Optz.)
Preliminary Version 2		Approved by:		(Caza Petro.)
Rev. 3 - Issued for Information	June 12, 2023	Drafted by:	Marcos Barriga	(Elite Optz.)
Updated Plan		Reviewed by:	LaVerne Woroschuk	(Elite Optz.)
Preliminary Version 0		Approved by:		(Caza Petro.)
Rev. 4 - Issued for Information	Oct. 11, 2023	Drafted by:	Marcos Barriga	(Elite Optz.)
Updated Plan		Reviewed by:		(Elite Optz.)
Preliminary Version 3		Approved by:		(Caza Petro.)
<div> <div>Job. #: 21-EliteOptz-0030-Rev4</div> <div>Page 4 of 5</div> </div>				

As-Built Piping Detail for
Caza Petroleum, LLC.
West Copperline 29 Fed State Com
UNIT C, SEC. 29, T23S, R34E
1H (API # 30-025-41313) & 3H (API #30-025-41536)




Disclaimer: This drawing is intended for Caza Petroleum, LLC. internal purposes only and is not to be relied upon as a boundary survey or to establish real property interests. Survey information shown on this drawing was gathered between the dates of: Feb. 14, 2021 and Oct. 4, 2023.

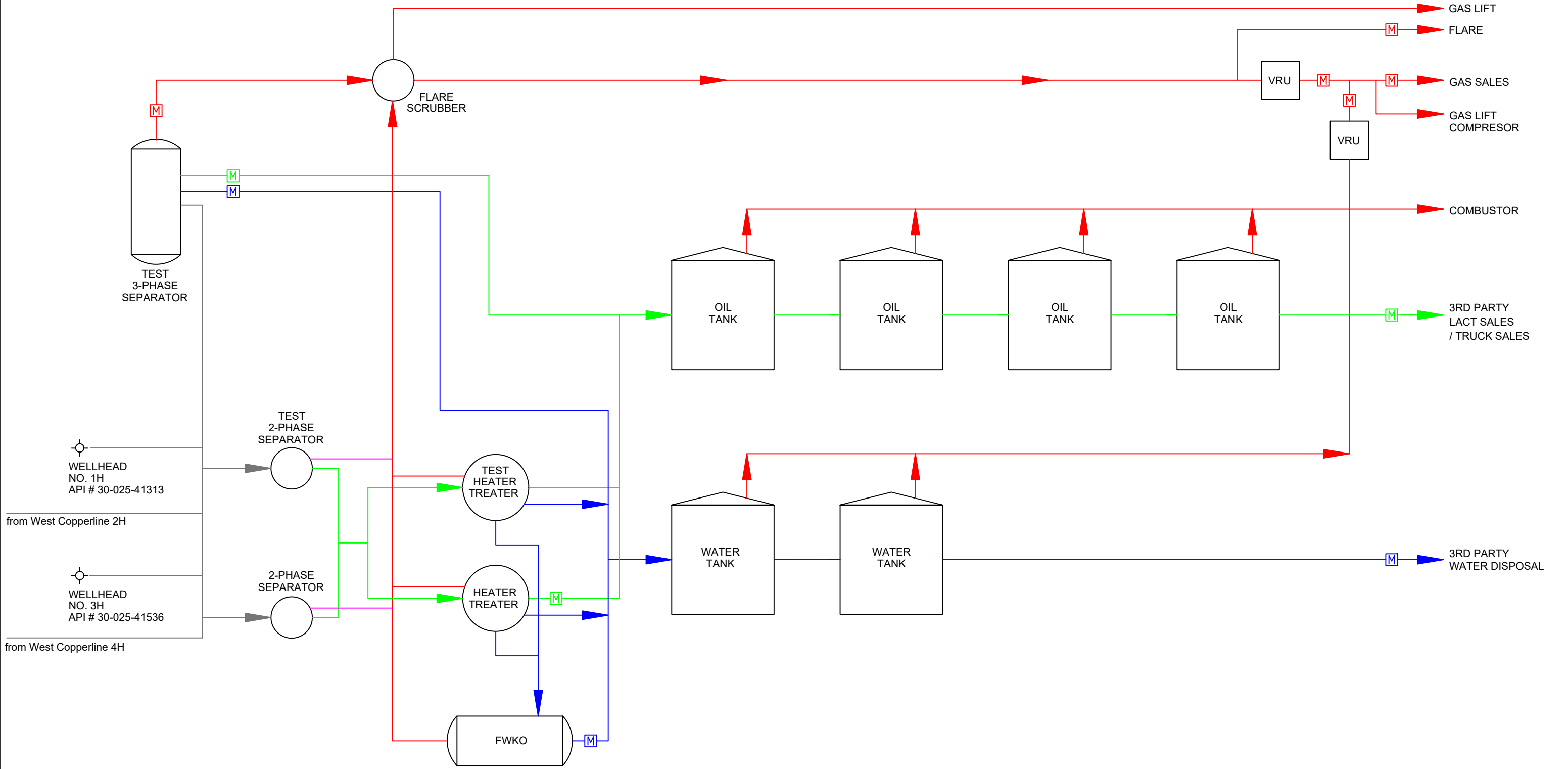
Survey information was collected using a combination of GNSS observations and geo-referenced aerial drone imagery when required. Observations refer to: NAD83 (2011) Datum, New Mexico State Plane Coordinate System, East Zone (3001), US Survey Feet, CSF=0.99990909

This drawing includes additional information that was collected from various sources including first hand observations, walk-through photos when applicable and third party information as well as information provided by Caza Petroleum, LLC.

Caza Petroleum, LLC. is to verify the accuracy of all information as presented on this drawing. Elite Optimization, LP, is not responsible for design by engineer of records, erection or operation of any facilities represented by this drawing.

This drawing is not an official engineering drawing or land survey drawing; this drawing is not to be used for construction.

 ELITE
OPTIMIZATION



LEGEND:
Wellstream is shown thus:
Gas is shown thus:
Oil is shown thus:
Water is shown thus:
Oil & Water / Bad Oil is shown thus:
Gas Meter is shown thus:
Oil Meter is shown thus:
Water Meter is shown thus:

Rev. 2 - Issued for Information Updated Plan	Nov. 30, 2022	Drafted by: LaVerne Woroschuk (Elite Optz.)
Preliminary Version 2	Apr. 3, 2023	Reviewed by: (Elite Optz.)
Rev. 3 - Issued for Information Updated Plan	June 12, 2023	Drafted by: Marcos Barriga (Elite Optz.)
Preliminary Version 0		Reviewed by: LaVerne Woroschuk (Elite Optz.)
Rev. 4 - Issued for Information Updated Plan	Oct. 11, 2023	Approved by: (Caza Petro.)
Preliminary Version 3		Drafted by: Marcos Barriga (Elite Optz.)
		Reviewed by: (Elite Optz.)
		Approved by: (Caza Petro.)

Job. #: 21-EliteOptz-0030-Rev4

As-Built Process Flow Diagram for Caza Petroleum, LLC.
West Copperline 29 Fed State Com UNIT C, SEC. 29, T23S, R34E
1H (API # 30-025-41313) & 3H (API #30-025-41536)



Disclaimer: This drawing is intended for Caza Petroleum, LLC. internal purposes only and is not to be relied upon as a boundary survey or to establish real property interests. Survey information shown on this drawing was gathered between the dates of: Feb. 14, 2021 and Oct. 4, 2023. Survey information was collected using a combination of GNSS observations and geo-referenced aerial drone imagery when required. Observations refer to: NAD83 (2011) Datum, New Mexico State Plane Coordinate System, East Zone (3001), US Survey Feet, CSF=0.99990909. This drawing includes additional information that was collected from various sources including first hand observations, walk-through photos when applicable and third party information as well as information provided by Caza Petroleum, LLC. Caza Petroleum, LLC. is to verify the accuracy of all information as presented on this drawing. Elite Optimization, LP. is not responsible for design by engineer of records, erection or operation of any facilities represented by this drawing. This drawing is not an official engineering drawing or land survey drawing; this drawing is not to be used for construction.

District I
1625 N. French Dr., Hobbs, NM 88240
Phone:(575) 393-6161 Fax:(575) 393-0720
District II
811 S. First St., Artesia, NM 88210
Phone:(575) 748-1283 Fax:(575) 748-9720
District III
1000 Rio Brazos Rd., Aztec, NM 87410
Phone:(505) 334-6178 Fax:(505) 334-6170
District IV
1220 S. St Francis Dr., Santa Fe, NM 87505
Phone:(505) 476-3470 Fax:(505) 476-3462

State of New Mexico
Energy, Minerals and Natural Resources
Oil Conservation Division
1220 S. St Francis Dr.
Santa Fe, NM 87505

QUESTIONS

Action 394063

QUESTIONS

Operator: CAZA OPERATING, LLC 200 N Loraine St Midland, TX 79701	OGRID: 249099
	Action Number: 394063
	Action Type: [UF-FAC] TB Registration (TB-REG)

QUESTIONS

Facility Details	
<i>Please answer all the questions in this group.</i>	
Name of the facility	West Copperline 29 Production Facility
Date the facility was opened	11/09/2013
Depth to ground water, if known	Not answered.

Verification	
Does the operator have other facilities with a matching name	No
Are there other facilites located within approximately 50 feet	No

District I
1625 N. French Dr., Hobbs, NM 88240
Phone:(575) 393-6161 Fax:(575) 393-0720
District II
811 S. First St., Artesia, NM 88210
Phone:(575) 748-1283 Fax:(575) 748-9720
District III
1000 Rio Brazos Rd., Aztec, NM 87410
Phone:(505) 334-6178 Fax:(505) 334-6170
District IV
1220 S. St Francis Dr., Santa Fe, NM 87505
Phone:(505) 476-3470 Fax:(505) 476-3462

State of New Mexico
Energy, Minerals and Natural Resources
Oil Conservation Division
1220 S. St Francis Dr.
Santa Fe, NM 87505

ACKNOWLEDGMENTS

Action 394063

ACKNOWLEDGMENTS

Operator: CAZA OPERATING, LLC 200 N Loraine St Midland, TX 79701	OGRID: 249099
	Action Number: 394063
	Action Type: [UF-FAC] TB Registration (TB-REG)

ACKNOWLEDGMENTS

<input checked="" type="checkbox"/>	I certify that I am authorized to register a facility on behalf of the responsible operator.
<input checked="" type="checkbox"/>	I certify that I will notify OCD of any changes of ownership for this facility.
<input checked="" type="checkbox"/>	I certify that I will notify OCD when this facility is closed.