



U.S. Feet
Scale 1"=60'

Rev. 4 - Issued for Information Updated Plan Preliminary Version 0	Mar. 24, 2023	Drafted by: Marcos Barriga (Elite Optz.)	Reviewed by: (Elite Optz.)
Rev. 5 - Issued for Information Updated Plan Preliminary Version 0	May 17, 2023	Drafted by: LaVerne Woroschuk (Elite Optz.)	Reviewed by: (Elite Optz.)
Rev. 6 - Issued for Information Updated Plan Preliminary Version 5	May 5, 2024	Drafted by: Marcos Barriga (Elite Optz.)	Reviewed by: LaVerne Woroschuk (Elite Optz.)
Job. #: 21-EliteOptz-0044-Rev6		Page 1 of 9	

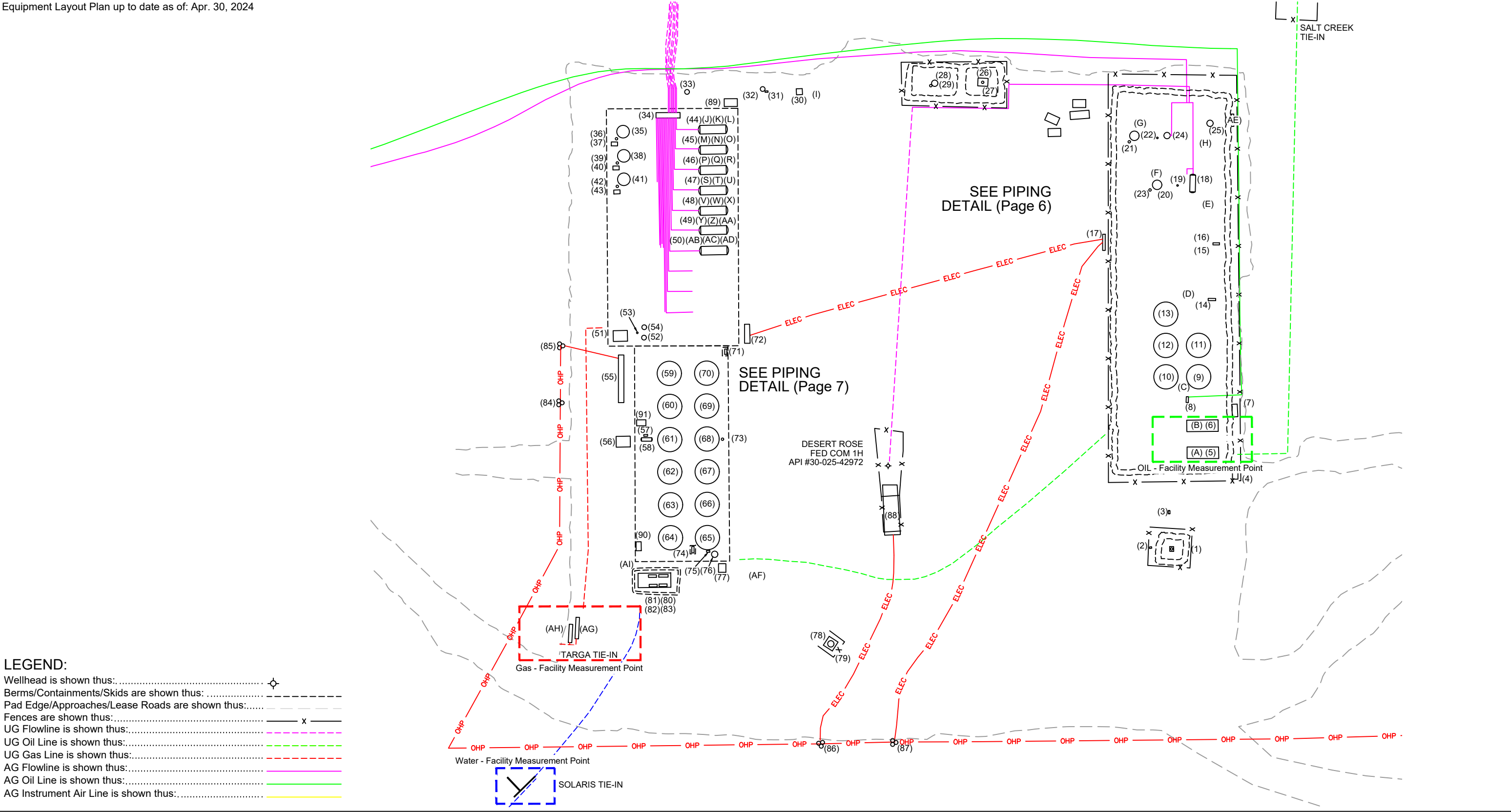
Aerial As-Built Overview of
Caza Petroleum, LLC.
Desert Rose Fed Com
Well 1H (East TB) and
Wells 3H, 5H, 7H, 8H, 10H, 12H, 13H (West TB)
Unit M. Sec. 17-20S-35E
BLM Lease Number: NMNM140457



Disclaimer: This drawing is intended for Caza Petroleum, LLC. internal purposes only and is not to be relied upon as a boundary survey or to establish real property interests. Survey information shown on this drawing was gathered between the dates of: Dec. 7, 2021 and Apr. 30, 2024. Survey information was collected using a combination of GNSS observations and geo-referenced aerial drone imagery when required. Observations refer to: NAD83 (2011) Datum, New Mexico State Plane Coordinate System, East Zone (3001), US Survey Feet, CSF=0.99990909. This drawing includes additional information that was collected from various sources including first hand observations, walk-through photos when applicable and third party information as well as information provided by Caza Petroleum, LLC. Caza Petroleum, LLC. is to verify the accuracy of all information as presented on this drawing. Elite Optimization, LP. is not responsible for design by engineer of records, erection or operation of any facilities represented by this drawing. This drawing is not an official engineering drawing or land survey drawing; this drawing is not to be used for construction.



Equipment Layout Plan up to date as of: Apr. 30, 2024



- LEGEND:**
- Wellhead is shown thus:
 - Berms/Containments/Skids are shown thus:
 - Pad Edge/Approaches/Lease Roads are shown thus:
 - Fences are shown thus:
 - UG Flowline is shown thus:
 - UG Oil Line is shown thus:
 - UG Gas Line is shown thus:
 - AG Flowline is shown thus:
 - AG Oil Line is shown thus:
 - AG Instrument Air Line is shown thus:

N

U.S. Feet

Scale 1"=60'

Rev. 4 - Issued for Information Updated Plan Preliminary Version 0	Mar. 24, 2023	Drafted by: Marcos Barriga (Elite Optz.)	Reviewed by: (Elite Optz.)
Rev. 5 - Issued for Information Updated Plan Preliminary Version 0	May 17, 2023	Drafted by: LaVerne Woroschuk (Elite Optz.)	Approved by: (Caza Petro.)
Rev. 6 - Issued for Information Updated Plan Preliminary Version 5	May 5, 2024	Drafted by: Marcos Barriga (Elite Optz.)	Reviewed by: LaVerne Woroschuk (Elite Optz.)
Job. #: 21-EliteOptz-0044-Rev6		Page 2 of 9	

As-Built Equipment Layout Plan for
Caza Petroleum, LLC.
Desert Rose Fed Com
Well 1H (East TB) and
Wells 3H, 5H, 7H, 8H, 10H, 12H, 13H (West TB)
Unit M. Sec. 17-20S-35E
BLM Lease Number: NMNM140457



Disclaimer: This drawing is intended for Caza Petroleum, LLC. internal purposes only and is not to be relied upon as a boundary survey or to establish real property interests. Survey information shown on this drawing was gathered between the dates of: Dec. 7, 2021 and Apr. 30, 2024. Survey information was collected using a combination of GNSS observations and geo-referenced aerial drone imagery when required. Observations refer to: NAD83 (2011) Datum, New Mexico State Plane Coordinate System, East Zone (3001), US Survey Feet, CSF=0.99990909. This drawing includes additional information that was collected from various sources including first hand observations, walk-through photos when applicable and third party information as well as information provided by Caza Petroleum, LLC. Caza Petroleum, LLC. is to verify the accuracy of all information as presented on this drawing. Elite Optimization, LP. is not responsible for design by engineer of records, erection or operation of any facilities represented by this drawing. This drawing is not an official engineering drawing or land survey drawing; this drawing is not to be used for construction.



Ref.	Piece	Year	Manufacturer	Serial No.	Model No.	Dimensions	Additional Information	Lat.	Long.
1	Combustor	--	--	N/A	--	--	--	32.566286	-103.485933
2	Combustor Ignition Controller	--	Ignition Management System / Platinum Control	201902200057	--	--	--	32.566299	-103.485981
3	Jatco Pot	--	Jatco Inc	N/A	J-5000CX	--	--	32.566363	-103.485945
4	LACT Panel Rack	--	--	N/A	--	--	--	32.566427	-103.485806
5	LACT	2019	Angus Measurement	25674-18	--	--	--	32.566467	-103.485865
6	LACT	--	Angus Measurement	25674-15 / 40242-1	--	--	--	32.566513	-103.485856
7	LACT Panel	--	--	--	--	--	LACT 25674-15740242-1	32.566537	-103.485808
8	Transfer Pump	--	Summit	Not Available	--	--	10HP	32.566555	-103.485903
9	2H Oil Tank	2018	Fox Tank	4483	--	15.5 x 16, 500bbl	--	32.566598	-103.485877
10	Oil Tank	2018	Fox Tank	4480	--	15.5 x 16, 500bbl	--	32.566596	-103.485952
11	2H Oil Tank	2018	Fox Tank	4482	--	15.5 x 16, 500bbl	--	32.566650	-103.485879
12	Bad Oil Tank	2018	Fox Tank	4487	--	15.5 x 16, 500bbl	--	32.566652	-103.485948
13	Water Tank	2018	Fox Tank	4481	--	15.5 x 16, 500bbl	--	32.566705	-103.485946
14	Transfer Pump	--	Centripump	Not Available	MTX	--	1.5x3-10, 40HP	32.566734	-103.485852
15	Recycle Pump - Decommissioned	--	--	No Tag	--	--	1.5HP, Not in use	32.566835	-103.485862
16	Recycle Pump	--	BNL Pumps & Service	No Tag	--	--	1.5HP	32.566833	-103.485841
17	Panel Rack	--	--	N/A	--	--	--	32.566836	-103.486071
18	Horz. Inlet Scrubber	2012/15	Azteca	1412151AEI/R-7505	--	--	MAWP 1440 psi @ 120 F	32.566938	-103.485889
19	Fuel Pot	--	--	N/A	--	--	Inlet Scrubber 1412151AEI	32.566935	-103.485922
20	Vert. Heater Treater	2018	Conner Farm	67	--	6 x 20	DP 75	32.566935	-103.485965
21	Fuel Pot	--	--	--	--	--	Heater Treater No Serial	32.567012	-103.486019
22	Vert. Heater Treater	2018	Production Equipment	Not Available	--	6 x 20	--	32.567022	-103.486010
23	Fuel Pot	--	--	--	--	--	Heater Treater 97	32.566923	-103.485976
24	Vert. Separator	2018	Production Equipment	Not Available	--	48 x 10	--	32.567022	-103.485941
25	Vert. Separator	2018	Fox Tank	1032	--	4 x 10	2PH	32.567044	-103.485853
26	Flare - HP	--	--	Not Available	--	--	--	32.567121	-103.486321
27	Flare Control	2019	Ignition Management / Platinum Control	2019052800037	Edge-600	--	--	32.567100	-103.486323
28	Flare	--	FlareTech	22-1160-2	--	--	6 VSS x 50 Tall	32.567119	-103.486424
29	Fuel Pot	--	--	--	--	--	HP flare 22-1160-2	32.567115	-103.486432
30	Flare Control	2022	FlareTech	22-1160-2	FT-PMI-CP-PH	--	--	32.567104	-103.486705
31	Reduction Pump	--	Gorman Rupp	1782238	GMS1 1/2GH3--B /S2	--	2 HP	32.567106	-103.486772
32	Vert. Scrubber	2018	Fox Tank	1111	--	--	DP 125	32.567110	-103.486781
33	Vert. Scrubber	2022	Pessco	2353	--	36 x 10	WP 250 TP 325	32.567107	-103.486938
34	Inlet Header	--	--	--	--	--	--	32.567072	-103.486981
35	Vert. Heater Treater	2022	Pessco	2356	--	8 x 20	WP 125 TP 200	32.567037	-103.487072
36	Fuel Pot	--	--	--	--	--	Heater Treater 02356	32.567026	-103.487086
37	Control Box	2022	Platinum	2022093000062	--	--	Heater Treater 02356	32.567016	-103.487091
38	Vert. Heater Treater	2022	Pessco	2355	--	8 x 20	WP 125 TP 200	32.566995	-103.487070
39	Fuel Pot	--	--	--	--	--	Heater Treater 02355	32.566981	-103.487085
40	Control Box	2022	Platinum	2022093000076	--	--	Heater Treater 02355	32.566974	-103.487089
41	Vert. Heater Treater	2022	Pessco	2347	--	8 x 20	WP 125 TP 200	32.566955	-103.487070
42	Fuel Pot	--	--	--	--	--	Heater Treater 02347	32.566943	-103.487087
43	Control Box	2022	Platinum	2022110200032	--	--	Heater Treater 02347	32.566931	-103.487087
44	Horz. Test Separator	2021	Petrosmith	V-5586	--	6 x 15	--	32.567040	-103.486884
45	Horz. Test Separator	2021	Petrosmith	V-5584	--	6 x 15	TP 250 DP 250	32.567006	-103.486885
46	Horz. Test Separator	2021	Petrosmith	V-5588	--	6 x 15	TP 250 DP 250	32.566970	-103.486885
47	Horz. Test Separator	2021	Petrosmith	V-5589	--	6 x 15	DP 250 TP 250	32.566934	-103.486882
48	Horz. Test Separator	2022	Pessco	2439	--	6 x 15	WP 125, TP 200	32.566898	-103.486884
49	Horz. Test Separator	2022	Pessco	2438	--	6 x 15	WP 125, TP 200	32.566863	-103.486885
50	Test Separator	2021	Pitts	NC 254	--	72 x 15	MAWP 250	32.566827	-103.486882
51	VRU	--	JESSCO	Skid #A118-1409-1 REV C	0 0	0 0	50 HP	32.566682	-103.487082
52	Vert. Scrubber	2022	Pessco	2361	--	36 x 10	--	32.566675	-103.487031
53	Fuel Gas Filter	--	--	--	--	--	For scrubbers 02354 and 02361	32.566683	-103.487046
54	Vert. Scrubber	2022	Pessco	2354	--	36 x 10	WP 250 TP 325	32.566693	-103.487031
55	Elec. Panel	--	--	--	--	--	--	32.566602	-103.487080

Rev. 4 - Issued for Information Updated Plan

Mar. 24, 2023

Drafted by: Marcos Barriga (Elite Optz.)

Reviewed by: (Elite Optz.)

Approved by: (Caza Petro.)

Rev. 5 - Issued for Information Updated Plan

May 17, 2023

Drafted by: LaVerne Woroschuk (Elite Optz.)

Reviewed by: (Elite Optz.)

Approved by: (Caza Petro.)

Rev. 6 - Issued for Information Updated Plan

May 5, 2024

Drafted by: Marcos Barriga (Elite Optz.)


Reviewed by: LaVerne Woroschuk (Elite Optz.)

Approved by: (Caza Petro.)


Job. #: 21-EliteOptz-0044-Rev6

Page 3 of 9

As-Built Equipment List for
Caza Petroleum, LLC.
Desert Rose Fed Com
Well 1H (East TB) and
Wells 3H, 5H, 7H, 8H, 10H, 12H, 13H (West TB)
Unit M. Sec. 17-20S-35E
BLM Lease Number: NMNM140457



Disclaimer: This drawing is intended for Caza Petroleum, LLC. internal purposes only and is not to be relied upon as a boundary survey or to establish real property interests. Survey information shown on this drawing was gathered between the dates of: Dec. 7, 2021 and Apr. 30, 2024. Survey information was collected using a combination of GNSS observations and geo-referenced aerial drone imagery when required. Observations refer to: NAD83 (2011) Datum, New Mexico State Plane Coordinate System, East Zone (3001), US Survey Feet, CSF=0.99990909 This drawing includes additional information that was collected from various sources including first hand observations, walk-through photos when applicable and third party information as well as information provided by Caza Petroleum, LLC. Caza Petroleum, LLC. is to verify the accuracy of all information as presented on this drawing. Elite Optimization, LP. is not responsible for design by engineer of records, erection or operation of any facilities represented by this drawing. This drawing is not an official engineering drawing or land survey drawing; this drawing is not to be used for construction.

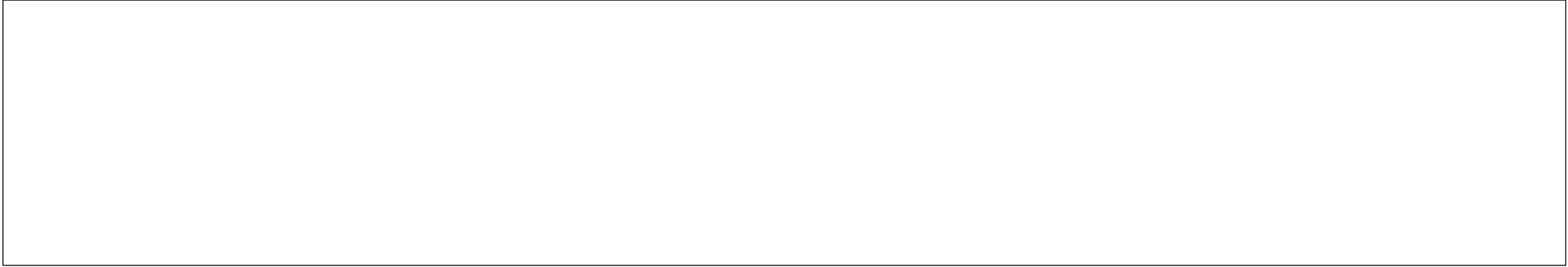


(Paper: 11 x 17)

Received by OCD: 10/21/2024 9:48:45 AM

Released to Imaging: 10/21/2024 9:52:07 AM

Ref.	Piece	Year	Manufacturer	Serial No.	Model No.	Dimensions	Additional Information	Lat.	Long.
56	VRU	--	JESCO	Skid #A118-1408 REV G	--	--	--	32.566495	-103.487069
57	Reduction Pump	--	Gould Pump	1782234	--	--	--	32.566504	-103.487028
58	Blow Case / Skid Dump	2008	--	M-7127	--	--	MAWP 125 psi @ 200 F	32.566496	-103.487028
59	Gunbarrel	2017	Petrosmith	T-14271	--	15.5 x 30 - 1000 BBL	DP 8 oz	32.566612	-103.486979
60	Bad Oil Tank	2017	Lide Industries	4-15217	--	15.5 x 24 - 750 BBL	DP 8 oz	32.566553	-103.486979
61	Water Tank	2018	Lide Industries	4-15475	--	15.5 x 24 - 750 BBL	DP 8 oz	32.566496	-103.486978
62	Water Tank	2018	Lide Industries	4-15458	--	15.5 x 24 - 750 BBL	DP 8 oz	32.566438	-103.486978
63	Water Tank	2018	Lide Industries	4-15419	--	15.5 x 24 - 750 BBL	DP 8 oz	32.566378	-103.486977
64	Test Oil Tank	2018	Lide Industries	4-15478	--	15.5 x 24 - 750 BBL	DP 8 oz	32.566323	-103.486980
65	Oil Tank	2017	Petrosmith	API-14236	--	15.5 x 24 - 750 BBL	DP 8 oz	32.566320	-103.486903
66	Oil Tank	2017	Petrosmith	API-14237	--	15.5 x 24 - 750 BBL	DP 8 oz	32.566379	-103.486904
67	Oil Tank	2018	Lide Industries	4-15459	--	15.5 x 24 - 750 BBL	DP 8 oz	32.566436	-103.486902
68	Oil Tank	2018	Lide Industries	4-15449	--	15.5 x 24 - 750 BBL	DP 8 oz	32.566494	-103.486902
69	Oil Tank	2018	Lide Industries	4-15476	--	15.5 x 24 - 750 BBL	DP 8 oz	32.566552	-103.486901
70	Oil Tank	2016	Lide Industries	4-15456	--	15.5 x 24 - 750 BBL	DP 8 oz	32.566609	-103.486901
71	Recycle Pump	--	MPX Pumps	MG15123	--	--	1.5x8-6HP	32.566649	-103.486861
72	Elec. Panel	--	--	--	--	--	--	32.566680	-103.486818
73	Fuel Pot	--	--	--	--	--	Tank 4-15449	32.566479	-103.486830
74	Transfer Pump	--	Replicate	11204A	--	--	3x4-10, 10 HP	32.566300	-103.486933
75	Reduction Pump	--	Gorman Rupp	1792237	GMS1 1/2GH3-B /S2	--	2 HP	32.566298	-103.486900
76	Vert. Flare Scrubber	2014	Edge Manufacturing	EMT196-2	--	30 x 10	2PH, WP 125 PSI	32.566294	-103.486888
77	Flare Control	2022	FlareTech	22-1160-1	--	--	--	32.566266	-103.486873
78	Flare	--	FlareTech	22-1160-1	--	--	6 x 18 SL x 30 Tall, Assisted Flare	32.566133	-103.486649
79	Fuel Pot	--	--	--	--	--	HP Flare	32.566121	-103.486648
80	Transfer Pump	--	Centripump	50322-DR	MTX	--	3x4-10, 75 HP	32.566255	-103.486995
81	Charge Pump	--	Centripump	50222-DR	MTX	--	4x6-13, 15 HP	32.566255	-103.487018
82	Charge Pump	--	Centripump	49922-DR	MTX	--	4x6-13, 10 HP	32.566239	-103.487019
83	Transfer Pump	--	Centripump	50022-DR	MTX	--	1.5x3-10, 40 HP	32.566239	-103.486996
84	Transformer (No Meter)	--	--	--	--	--	(3) 100 kVa	32.566559	-103.487208
85	Transformer (No Meter)	--	--	--	--	--	(3) 100 kVa	32.566661	-103.487204
86	Transformer (No Meter)	--	--	N/A	--	--	(3) 37.5 kVa	32.565954	-103.486665
87	Transformer (No Meter)	--	--	N/A	--	--	(3) 37.5 kVa	32.565950	-103.486529
88	Pumping Unit	2019	Jack Artificial Lift Machinery Co.	SLS19-1606	C1280D-365-240TH	--	--	32.566360	-103.486528
89	Compressor	2023	Ingersol Rand	CBV926885	2-2475E5-V	120 Gallon	MAWP 200 PSI @ 650 F	32.567088	-103.486844
90	Transfer Pump		Centripump	67823-DR			1800 RPM, 3x4-13 HP	32.566247	-103.487087
91	Transfer Pump	--	Centripump	75-7423-DR	--	--	2 x 3 - 10	32.566524	-103.487038



Rev. 4 - Issued for Information Updated Plan Preliminary Version 0

Mar. 24, 2023

Drafted by: Marcos Barriga (Elite Optz.)

Reviewed by: (Elite Optz.)

Approved by: (Caza Petro.)

Rev. 5 - Issued for Information Updated Plan Preliminary Version 0

May 17, 2023

Drafted by: LaVerne Woroschuk (Elite Optz.)

Reviewed by: (Elite Optz.)

Approved by: (Caza Petro.)

Rev. 6 - Issued for Information Updated Plan Preliminary Version 5

May 5, 2024

Drafted by: Marcos Barriga (Elite Optz.)

Reviewed by: LaVerne Woroschuk (Elite Optz.)

Approved by: (Caza Petro.)

Job. #: 21-EliteOptz-0044-Rev6

Page 4 of 9

As-Built Equipment List (cont.) for Caza Petroleum, LLC.

Desert Rose Fed Com

Well 1H (East TB) and Wells 3H, 5H, 7H, 8H, 10H, 12H, 13H (West TB)

Unit M. Sec. 17-20S-35E

BLM Lease Number: NMNM140457

Disclaimer: This drawing is intended for Caza Petroleum, LLC. internal purposes only and is not to be relied upon as a boundary survey or to establish real property interests. Survey information shown on this drawing was gathered between the dates of: Dec. 7, 2021 and Apr. 30, 2024.

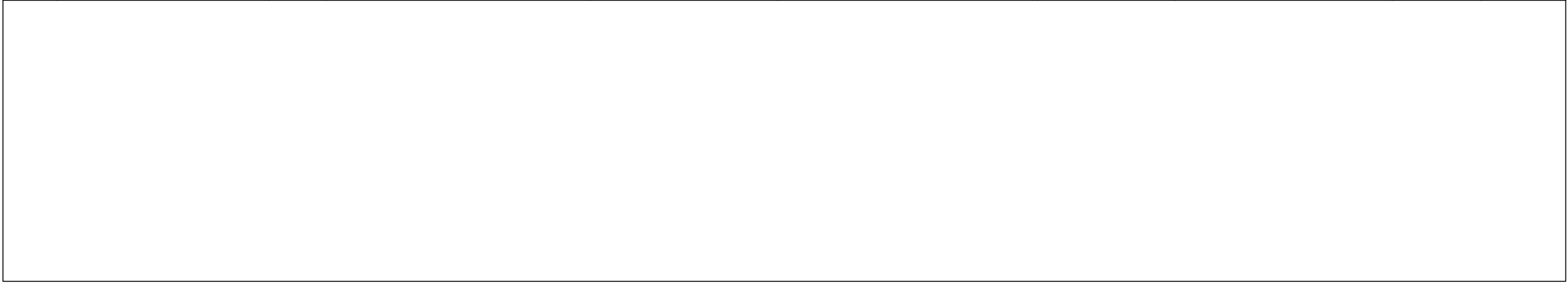
Survey information was collected using a combination of GNSS observations and geo-referenced aerial drone imagery when required. Observations refer to: NAD83 (2011) Datum, New Mexico State Plane Coordinate System, East Zone (3001), US Survey Feet, CSF=0.99990909

This drawing includes additional information that was collected from various sources including first hand observations, walk-through photos when applicable and third party information as well as information provided by Caza Petroleum, LLC.

Caza Petroleum, LLC. is to verify the accuracy of all information as presented on this drawing. Elite Optimization, LP. is not responsible for design by engineer of records, erection or operation of any facilities represented by this drawing.

This drawing is not an official engineering drawing or land survey drawing; this drawing is not to be used for construction.

Ref.	Piece	Year	Manufacturer	Serial No.	Model No.	Dimensions	Additional Information	Lat.	Long.
A	Meter - LACT	--	Endress + Hauser	NA04B816000	Promass 300	--	LACT 25674-18	32.566467	-103.485896
B	Meter - LACT	--	Endress + Hauser	N90B1616000	Promass 300	--	LACT 25674-15740242-1	32.566513	-103.485897
C	Meter - Oil	--	Endress + Hauser	R605F316000	--	--	--	32.566578	-103.485908
D	Meter - Water	2017	Rosemount	14731085	8732EMT2M1KUM4	--	--	32.566733	-103.485903
E	Meter - Water	2020	Rosemount	14984047	8750WDMT2M1FTSA020CA1/Z5M4G1	--	--	32.566911	-103.485865
F	Meter - Oil	--	Endress + Hauser	PB012216000	Promass 300	--	Heater Treater 067	32.566960	-103.485973
G	Meter - Oil	2019	Micromotion	3442885	1700R12ABAEZZZ	--	--	32.567038	-103.486019
H	Meter - Water	--	NuFlo	12185401009	--	--	--	32.566999	-103.485864
I	Meter - Flare	2022	Sierra	310582	640i-VT-2-L13-M0-E2-P2-V4-DD-0-8-99-MB-QMIX	--	--	32.567112	-103.486688
J	Meter - Gas	--	RJ Single	728	--	--	ABB-T224282658, Horz. Test Sep. V-5586	32.567051	-103.486878
K	Meter - Oil	--	Endress + Hauser	T6091416000	--	--	Horz. Test Sep. V-5586	32.567029	-103.486883
L	Meter - Water	--	NuFlo	12180008740	--	--	Horz. Test Sep. V-5586	32.567028	-103.486875
M	Meter - Gas	--	RJ Single	8022	--	--	ABB T222267640, Horz. Test Sep. V-5584	32.567016	-103.486879
N	Meter - Oil	--	Endress + Hauser	T50DB816000	Promass 300	--	Horz. Test Sep. V-5584	32.566993	-103.486883
O	Meter - Water	--	NuFlo	12185401033	--	--	Horz. Test Sep. V-5584	32.566992	-103.486875
P	Meter - Gas	--	RJ Single	697	--	--	ABB T221863993, Horz. Test Sep. V-5588	32.566980	-103.486880
Q	Meter - Oil	--	Endress + Hauser	T50DB416000	--	--	Horz. Test Sep. V-5588	32.566957	-103.486884
R	Meter - Water	--	NuFlo	12185401010	--	--	Horz. Test Sep. V-5588	32.566956	-103.486877
S	Meter - Gas	--	RJ Single	750	--	--	ABB T222971577, Horz. Test Sep. V-5589	32.566944	-103.486879
T	Meter - Oil	--	Endress + Hauser	T6091616000	Promass 300	--	Horz. Test Sep. V-5589	32.566922	-103.486884
U	Meter - Water	--	NuFlo	12173464939	--	--	Horz. Test Sep. V-5589	32.566921	-103.486876
V	Meter - Gas	--	RJ Single	696	--	--	ABB T224282656, Horz. Test Sep. 02439	32.566909	-103.486883
W	Meter - Oil	--	Endress + Hauser	T6091716000	Promass 300	--	Horz. Test Sep. 02439	32.566885	-103.486887
X	Meter - Water	--	NuFlo	12185401029	--	--	Horz. Test Sep. 02439	32.566885	-103.486878
Y	Meter - Gas	--	RJ Single	744	--	--	ABB T222971671, Horz. Test Sep. 02438	32.566875	-103.486878
Z	Meter - Oil	--	Endress + Hauser	T6091316000	Promass 300	--	Horz. Test Sep. 02438	32.566851	-103.486889
AA	Meter - Water	--	NuFlo	12185401035	--	--	Horz. Test Sep. 02438	32.566850	-103.486879
AB	Meter - Gas	--	RJ Single	138477-04	--	--	ABB T224989392, Horz. Test Sep. NC254	32.566839	-103.486880
AC	Meter - Oil	--	Endress + Hauser	T50DB716000	--	--	Horz. Test Sep. NC254	32.566816	-103.486885
AD	Meter - Water	--	NuFlo	12185401027	--	--	Horz. Test Sep. NC254	32.566816	-103.486876
AE	Meter - Gas	--	Canalta	S0312983	360SC40	--	ABB S/N T182425810	32.567046	-103.485810
AF	Meter - Flare	2022	Sierra	310583	640i-VT-2-L13-M0-E2-P2-V4-DD-0-8-99-MB-QMIX	--	--	32.566243	-103.486811
AG	Meter - Gas	--	Daniel	160044149	--	--	ABB S/N T184342300	32.566156	-103.487176
AH	Meter - Gas	--	Flozone	15039159	DR2-065	--	ABB S/N T184342303	32.566155	-103.487189
AI	Meter - Water	--	NuFlo	12193096244	9A-50179024	--	--	32.566284	-103.487039



Rev. 4 - Issued for Information Updated Plan Preliminary Version 0

Mar. 24, 2023

Drafted by: Marcos Barriga (Elite Optz.)

Reviewed by: (Elite Optz.)

Approved by: (Caza Petro.)

Rev. 5 - Issued for Information Updated Plan Preliminary Version 0

May 17, 2023

Drafted by: LaVerne Woroschuk (Elite Optz.)

Reviewed by: (Elite Optz.)

Approved by: (Caza Petro.)

Rev. 6 - Issued for Information Updated Plan Preliminary Version 5

May 5, 2024

Drafted by: Marcos Barriga (Elite Optz.)

Reviewed by: LaVerne Woroschuk (Elite Optz.)

Approved by: (Caza Petro.)

Job. #: 21-EliteOptz-0044-Rev6

Page 5 of 9

As-Built Meter List for

Caza Petroleum, LLC.

Desert Rose Fed Com

Well 1H (East TB) and

Wells 3H, 5H, 7H, 8H, 10H, 12H, 13H (West TB)

Unit M. Sec. 17-20S-35E

BLM Lease Number: NMNM140457

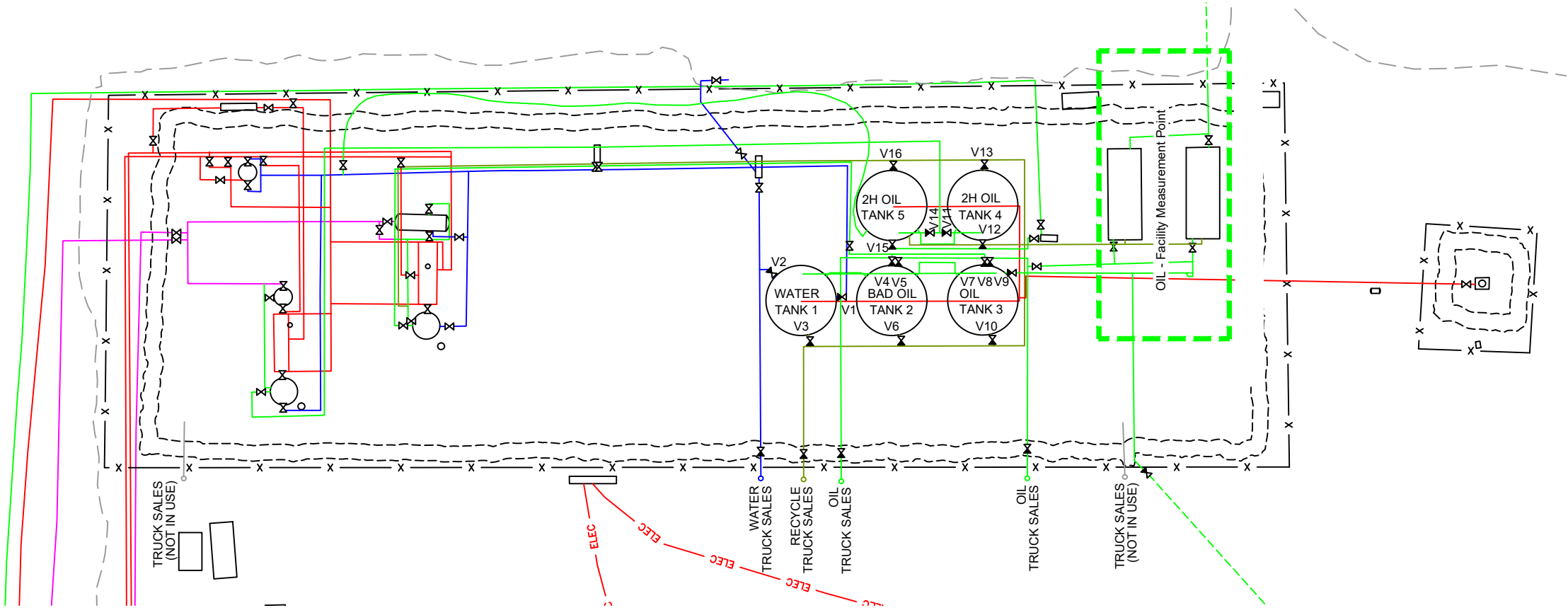
Disclaimer: This drawing is intended for Caza Petroleum, LLC. internal purposes only and is not to be relied upon as a boundary survey or to establish real property interests. Survey information shown on this drawing was gathered between the dates of: Dec. 7, 2021 and Apr. 30, 2024. Survey information was collected using a combination of GNSS observations and geo-referenced aerial drone imagery when required. Observations refer to: NAD83 (2011) Datum, New Mexico State Plane Coordinate System, East Zone (3001), US Survey Feet, CSF=0.99990909 This drawing includes additional information that was collected from various sources including first hand observations, walk-through photos when applicable and third party information as well as information provided by Caza Petroleum, LLC. Caza Petroleum, LLC. is to verify the accuracy of all information as presented on this drawing. Elite Optimization, LP. is not responsible for design by engineer of records, erection or operation of any facilities represented by this drawing. This drawing is not an official engineering drawing or land survey drawing; this drawing is not to be used for construction.

Received by OCD: 10/21/2024 9:48:45 AM

Released to Imaging: 10/21/2024 9:52:07 AM

(Paper: 11 x 17)

Piping Detail is up to date as of: Oct. 5, 2023



- LEGEND:**
- Wellhead is shown thus:
 - Berms/Containments/Skids are shown thus:
 - Pad Edge is shown thus:
 - As-built UG Flowline is shown thus:
 - As-built UG Oil Line is shown thus:
 - As-built UG Water Line is shown thus:
 - As-built UG Gas Line is shown thus:
 - As-built UG Air Line is shown thus:
 - As-built AG Oil Line is shown thus:
 - As-built AG Water Line is shown thus:
 - As-built AG Oil & Water Line is shown thus:
 - As-built AG Gas Line is shown thus:
 - Valve Open is shown thus:
 - Valve Closed is shown thus:
 - Valve that varies Open/Closed is shown thus:

Valve Position Table						
Ref.	Production Phase		Sales Phase		Circulation Phase	
	Sealed	Open	Sealed	Open	Sealed	Open
Water Tank 1						
V1 (Fill)	N	Y	Y	N	N	Y
V2 (Sales)	Y	N	N	Y	Y	N
V3 (Recycle)	N	Y	Y	N	N	Y
Bad Oil Tank 2						
V4 (Fill)	N	Y	Y	N	N	Y
V5 (Sales)	Y	N	N	Y	Y	N
V6 (Recycle)	N	Y	Y	N	N	Y
Oil Tank 3						
V7 (Fill)	N	Y	Y	N	N	Y
V8 (Fill)	N	Y	Y	N	N	Y
V9 (Sales)	Y	N	N	Y	Y	N
V10 (Recycle)	N	Y	Y	N	N	Y
2H Oil Tank 4						
V11 (Fill)	N	Y	Y	N	N	Y
V12 (Sales)	Y	N	N	Y	Y	N
V13 (Recycle)	N	Y	Y	N	N	Y
2H Oil Tank 5						
V14 (Fill)	N	Y	Y	N	N	Y
V15 (Sales)	Y	N	N	Y	Y	N
V16 (Recycle)	N	Y	Y	N	N	Y

N

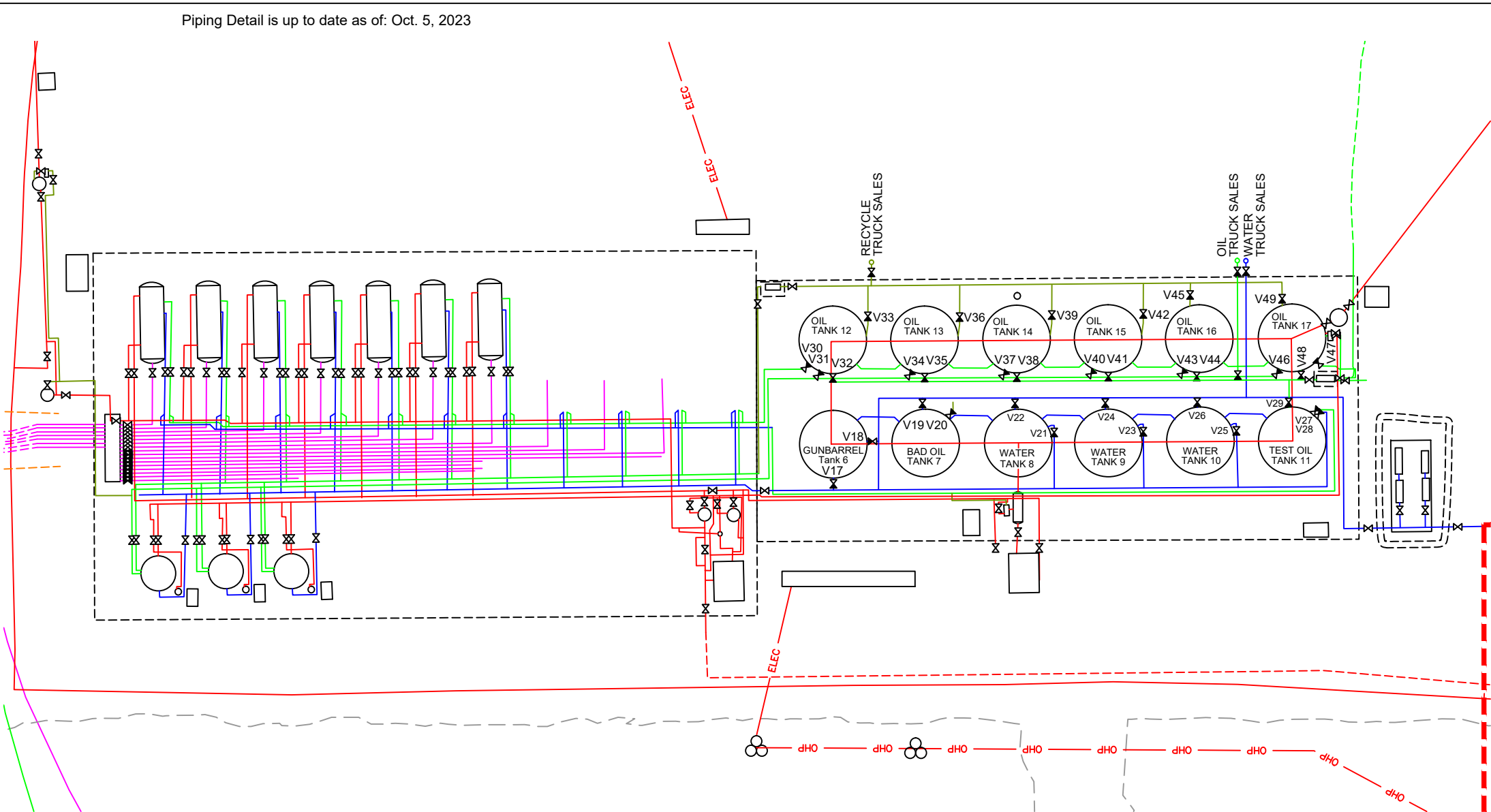
U.S. Feet
Scale 1"=30'

Rev. 4 - Issued for Information Updated Plan Preliminary Version 0	Mar. 24, 2023	Drafted by:	Marcos Barriga	(Elite Optz.)
		Reviewed by:		(Elite Optz.)
Rev. 5 - Issued for Information Updated Plan Preliminary Version 0	May 17, 2023	Drafted by:	LaVerne Woroschuk	(Elite Optz.)
		Reviewed by:		(Elite Optz.)
Rev. 6 - Issued for Information Updated Plan Preliminary Version 5	May 5, 2024	Drafted by:	Marcos Barriga	(Elite Optz.)
		Reviewed by:	LaVerne Woroschuk	(Elite Optz.)
Job. #: 21-EliteOptz-0044-Rev6		Page 6 of 9		

As-Built Piping Detail for
Caza Petroleum, LLC.
Desert Rose Fed Com
Well 1H (East TB)
Unit M. Sec. 17-20S-35E
BLM Lease Number: NMNM140457

Disclaimer: This drawing is intended for Caza Petroleum, LLC. internal purposes only and is not to be relied upon as a boundary survey or to establish real property interests. Survey information shown on this drawing was gathered between the dates of: Dec. 7, 2021 and Apr. 30, 2024. Survey information was collected using a combination of GNSS observations and geo-referenced aerial drone imagery when required. Observations refer to: NAD83 (2011) Datum, New Mexico State Plane Coordinate System, East Zone (3001), US Survey Feet, CSF=0.99990909. This drawing includes additional information that was collected from various sources including first hand observations, walk-through photos when applicable and third party information as well as information provided by Caza Petroleum, LLC. Caza Petroleum, LLC. is to verify the accuracy of all information as presented on this drawing. Elite Optimization, LP. is not responsible for design by engineer of records, erection or operation of any facilities represented by this drawing. This drawing is not an official engineering drawing or land survey drawing; this drawing is not to be used for construction.

Valve Position Table						
	Production Phase		Sales Phase		Circulation Phase	
Ref.	Sealed	Open	Sealed	Open	Sealed	Open
Gunbarrel Tank 6						
V17 (Fill)	N	Y	N	Y	N/A	
V18 (Sales)	N	Y	N	Y	N/A	
Bad Oil Tank 7						
V19 (Sales)	Y	N	N	Y	Y	N
V20 (Recycle)	N	N	Y	N	N	Y
Water Tank 8						
V21 (Fill)	N	Y	N	Y	N	Y
V22 (Sales)	N	Y	N	Y	N	Y
Water Tank 9						
V23 (Fill)	N	Y	N	Y	N	Y
V24 (Sales)	N	Y	N	Y	N	Y
Water Tank 10						
V25 (Fill)	N	Y	N	Y	N	Y
V26 (Sales)	N	Y	N	Y	N	Y
Test Oil Tank 11						
V27 (Fill Oil)	Y	N	N	Y	N/A	N/A
V28 (Fill Water)	Y	N	N	Y	N/A	N/A
V29 (Oil Sales)	Y	N	N	Y	N/A	N/A
Oil Tank 12						
V30 (Fill)	N	Y	Y	N	N	Y
V31 (Fill)	N	Y	Y	N	N	Y
V32 (Sales)	Y	N	N	Y	Y	N
V33 (Recycle)	N	Y	Y	N	N	Y
Oil Tank 13						
V34 (Fill)	N	Y	Y	N	N	Y
V35 (Sales)	Y	N	N	Y	Y	N
V36 (Recycle)	N	Y	Y	N	N	Y
Oil Tank 14						
V37 (Fill)	N	Y	Y	N	N	Y
V38 (Sales)	Y	N	N	Y	Y	N
V39 (Recycle)	N	Y	Y	N	N	Y
Oil Tank 15						
V40 (Fill)	N	Y	Y	N	N	Y
V41 (Sales)	Y	N	N	Y	Y	N
V42 (Recycle)	N	Y	Y	N	N	Y
Oil Tank 16						
V43 (Fill)	N	Y	Y	N	N	Y
V44 (Sales)	Y	N	N	Y	Y	N
V45 (Recycle)	N	Y	Y	N	N	Y
Oil Tank 17						
V46 (Fill)	N	Y	Y	N	N	Y
V47 (Fill)	N	Y	Y	N	N	Y
V48 (Sales)	Y	N	N	Y	Y	N
V49 (Recycle)	N	Y	Y	N	N	Y



- LEGEND:**
- Wellhead is shown thus:⊕
- Berms/Containments/Skids are shown thus:- - - - -
- Pad Edge is shown thus:- - - - -
- As-built UG Flowline is shown thus:- - - - -
- As-built UG Oil Line is shown thus:- - - - -
- As-built UG Water Line is shown thus:- - - - -
- As-built UG Gas Line is shown thus:- - - - -
- As-built UG Air Line is shown thus:- - - - -
- As-built AG Oil Line is shown thus:- - - - -
- As-built AG Water Line is shown thus:- - - - -
- As-built AG Oil & Water Line is shown thus:- - - - -
- As-built AG Gas Line is shown thus:- - - - -
- Valve Open is shown thus:⊕
- Valve Closed is shown thus:⊙
- Valve that varies Open/Closed is shown thus:⊕/⊙

N

U.S. Feet

Scale 1"=30'

Rev. 4 - Issued for Information Updated Plan Preliminary Version 0	Mar. 24, 2023	Drafted by: Marcos Barriga (Elite Optz.)	Reviewed by: (Elite Optz.)
Rev. 5 - Issued for Information Updated Plan Preliminary Version 0	May 17, 2023	Drafted by: LaVerne Woroschuk (Elite Optz.)	Reviewed by: (Elite Optz.)
Rev. 6 - Issued for Information Updated Plan Preliminary Version 5	May 5, 2024	Drafted by: Marcos Barriga (Elite Optz.)	Reviewed by: LaVerne Woroschuk (Elite Optz.)

Job. #: 21-EliteOptz-0044-Rev6

Page 7 of 9

As-Built Piping Detail for

Caza Petroleum, LLC.

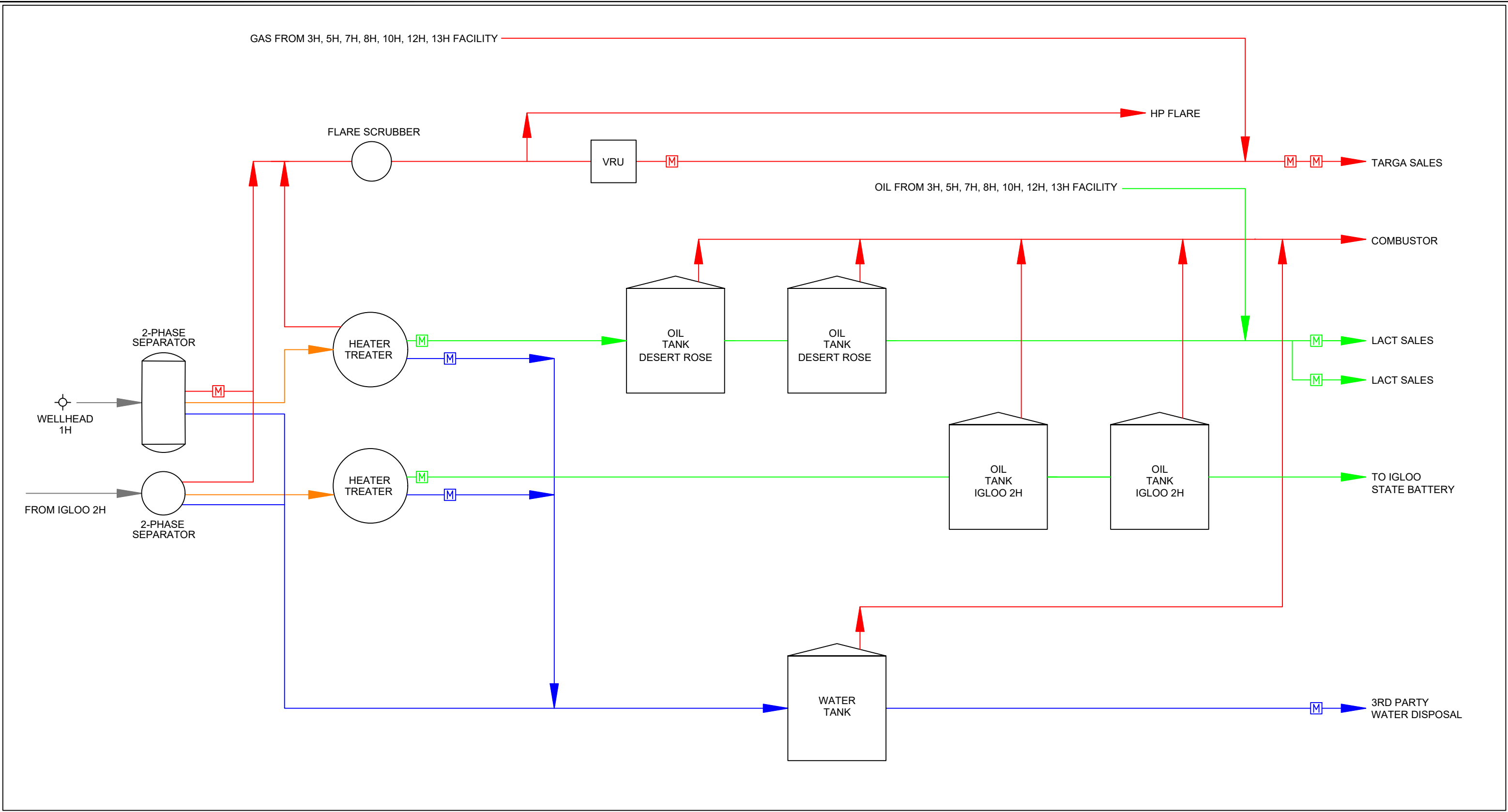
Desert Rose Fed Com

Wells 3H, 5H, 7H, 8H, 10H, 12H, 13H (West TB)

Unit M. Sec. 17-20S-35E

BLM Lease Number: NMNM140457

Disclaimer: This drawing is intended for Caza Petroleum, LLC. internal purposes only and is not to be relied upon as a boundary survey or to establish real property interests. Survey information shown on this drawing was gathered between the dates of: Dec. 7, 2021 and Apr. 30, 2024. Survey information was collected using a combination of GNSS observations and geo-referenced aerial drone imagery when required. Observations refer to: NAD83 (2011) Datum, New Mexico State Plane Coordinate System, East Zone (3001), US Survey Feet, CSF=0.99990909. This drawing includes additional information that was collected from various sources including first hand observations, walk-through photos when applicable and third party information as well as information provided by Caza Petroleum, LLC. Caza Petroleum, LLC. is to verify the accuracy of all information as presented on this drawing. Elite Optimization, LP. is not responsible for design by engineer of records, erection or operation of any facilities represented by this drawing. This drawing is not an official engineering drawing or land survey drawing; this drawing is not to be used for construction.



LEGEND:

Wellstream is shown thus:

Oil and Water is shown thus:

Gas is shown thus:

Oil is shown thus:

Water is shown thus:

Gas Orifice Meter is shown thus: [M]

Oil Coriolis Meter is shown thus: [M]

Water Turbine Meter is shown thus: [M]

Rev. 4 - Issued for Information	Mar. 24, 2023	Drafted by:	Marcos Barriga	(Elite Optz.)
Updated Plan		Reviewed by:		(Elite Optz.)
Preliminary Version 0		Approved by:		(Caza Petro.)
Rev. 5 - Issued for Information	May 17, 2023	Drafted by:	LaVerne Woroschuk	(Elite Optz.)
Updated Plan		Reviewed by:		(Elite Optz.)
Preliminary Version 0		Approved by:		(Caza Petro.)
Rev. 6 - Issued for Information	May 5, 2024	Drafted by:	Marcos Barriga	(Elite Optz.)
Updated Plan		Reviewed by:	LaVerne Woroschuk	(Elite Optz.)
Preliminary Version 5		Approved by:		(Caza Petro.)

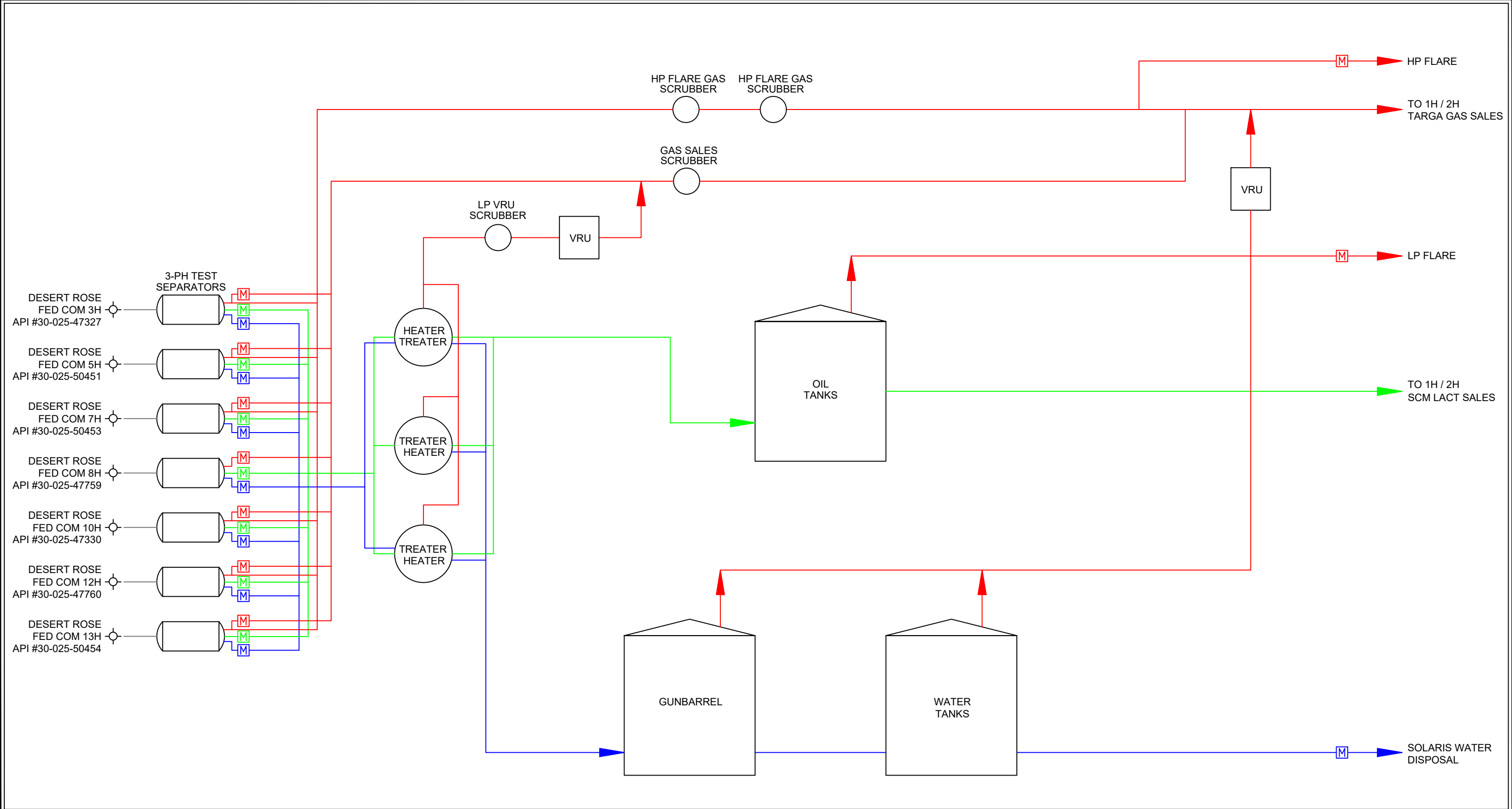
Job. #: 21-EliteOptz-0044-Rev6

As-Built Process Flow Diagram
(Part 1) for
Caza Petroleum, LLC.
Desert Rose Fed Com
Well 1H (East TB)
Unit M. Sec. 17-20S-35E
BLM Lease Number: NMNM140457

Caza Petroleum, LLC

Disclaimer: This drawing is intended for Caza Petroleum, LLC. internal purposes only and is not to be relied upon as a boundary survey or to establish real property interests. Survey information shown on this drawing was gathered between the dates of: Dec. 7, 2021 and Apr. 30, 2024. Survey information was collected using a combination of GNSS observations and geo-referenced aerial drone imagery when required. Observations refer to: NAD83 (2011) Datum, New Mexico State Plane Coordinate System, East Zone (3001), US Survey Feet, CSF=0.99990909. This drawing includes additional information that was collected from various sources including first hand observations, walk-through photos when applicable and third party information as well as information provided by Caza Petroleum, LLC. Caza Petroleum, LLC. is to verify the accuracy of all information as presented on this drawing. Elite Optimization, LP. is not responsible for design by engineer of records, erection or operation of any facilities represented by this drawing. This drawing is not an official engineering drawing or land survey drawing; this drawing is not to be used for construction.

ELITE OPTIMIZATION



LEGEND:

Wellstream is shown thus:

Oil and Water is shown thus:

Gas is shown thus:

Oil is shown thus:

Water is shown thus:

Gas Orifice Meter is shown thus: [M]

Oil Coriolis Meter is shown thus: [M]

Water Turbine Meter is shown thus: [M]

Rev. 4 - Issued for Information	Mar. 24, 2023	Drafted by: Marcos Barriga (Elite Optz.)
Updated Plan		Reviewed by: (Elite Optz.)
Preliminary Version 0		Approved by: (Caza Petro.)
Rev. 5 - Issued for Information	May 17, 2023	Drafted by: LaVerne Woroschuk (Elite Optz.)
Updated Plan		Reviewed by: (Elite Optz.)
Preliminary Version 0		Approved by: (Caza Petro.)
Rev. 6 - Issued for Information	May 5, 2024	Drafted by: Marcos Barriga (Elite Optz.)
Updated Plan		Reviewed by: LaVerne Woroschuk (Elite Optz.)
Preliminary Version 5		Approved by: (Caza Petro.)

Job. #: 21-EliteOptz-0044-Rev6

Page 9 of 9

As-Built Process Flow Diagram
(Part 1) for
Caza Petroleum, LLC.
Desert Rose Fed Com
Wells 3H, 5H, 7H, 8H, 10H, 12H, 13H (West TB)
Unit M. Sec. 17-20S-35E
BLM Lease Number: NMNM140457

Disclaimer: This drawing is intended for Caza Petroleum, LLC. internal purposes only and is not to be relied upon as a boundary survey or to establish real property interests. Survey information shown on this drawing was gathered between the dates of: Dec. 7, 2021 and Apr. 30, 2024. Survey information was collected using a combination of GNSS observations and geo-referenced aerial drone imagery when required. Observations refer to: NAD83 (2011) Datum, New Mexico State Plane Coordinate System, East Zone (3001), US Survey Feet, CSF=0.99990909. This drawing includes additional information that was collected from various sources including first hand observations, walk-through photos when applicable and third party information as well as information provided by Caza Petroleum, LLC. Caza Petroleum, LLC. is to verify the accuracy of all information as presented on this drawing. Elite Optimization, LP. is not responsible for design by engineer of records, erection or operation of any facilities represented by this drawing. This drawing is not an official engineering drawing or land survey drawing; this drawing is not to be used for construction.

District I
1625 N. French Dr., Hobbs, NM 88240
Phone:(575) 393-6161 Fax:(575) 393-0720
District II
811 S. First St., Artesia, NM 88210
Phone:(575) 748-1283 Fax:(575) 748-9720
District III
1000 Rio Brazos Rd., Aztec, NM 87410
Phone:(505) 334-6178 Fax:(505) 334-6170
District IV
1220 S. St Francis Dr., Santa Fe, NM 87505
Phone:(505) 476-3470 Fax:(505) 476-3462

State of New Mexico
Energy, Minerals and Natural Resources
Oil Conservation Division
1220 S. St Francis Dr.
Santa Fe, NM 87505

QUESTIONS

Action 394069

QUESTIONS

Operator: CAZA OPERATING, LLC 200 N Loraine St Midland, TX 79701	OGRID: 249099
	Action Number: 394069
	Action Type: [UF-FAC] TB Registration (TB-REG)

QUESTIONS

Facility Details	
<i>Please answer all the questions in this group.</i>	
Name of the facility	Desert Rose Production Facility
Date the facility was opened	03/04/2019
Depth to ground water, if known	Not answered.

Verification	
Does the operator have other facilities with a matching name	No
Are there other facilites located within approximately 50 feet	No

District I
1625 N. French Dr., Hobbs, NM 88240
Phone:(575) 393-6161 Fax:(575) 393-0720
District II
811 S. First St., Artesia, NM 88210
Phone:(575) 748-1283 Fax:(575) 748-9720
District III
1000 Rio Brazos Rd., Aztec, NM 87410
Phone:(505) 334-6178 Fax:(505) 334-6170
District IV
1220 S. St Francis Dr., Santa Fe, NM 87505
Phone:(505) 476-3470 Fax:(505) 476-3462

State of New Mexico
Energy, Minerals and Natural Resources
Oil Conservation Division
1220 S. St Francis Dr.
Santa Fe, NM 87505

ACKNOWLEDGMENTS

Action 394069

ACKNOWLEDGMENTS

Operator: CAZA OPERATING, LLC 200 N Loraine St Midland, TX 79701	OGRID: 249099
	Action Number: 394069
	Action Type: [UF-FAC] TB Registration (TB-REG)

ACKNOWLEDGMENTS

<input checked="" type="checkbox"/>	I certify that I am authorized to register a facility on behalf of the responsible operator.
<input checked="" type="checkbox"/>	I certify that I will notify OCD of any changes of ownership for this facility.
<input checked="" type="checkbox"/>	I certify that I will notify OCD when this facility is closed.