

STATE OF NEW MEXICO  
DEPARTMENT OF ENERGY, MINERALS AND NATURAL RESOURCES  
OIL CONSERVATION COMMISSION

IN THE MATTER OF  
APPLICATION OF APACHE CORPORATION  
FOR AN ADJUDICATORY HEARING TO  
CONTEST THE DIVISION'S CONDITIONS OF  
APPROVAL ON APACHE CORPORATION'S  
SCOPE OF WORK FOR ADDITIONAL  
INVESTIGATION, LEA COUNTY, NEW MEXICO

OCC CASE NO. 24912  
ORDER NO. R-23728-A

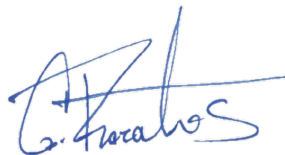
ORDER GRANTING APACHE CORPORATION AND THE OIL CONSERVATION DIVISION'S  
JOINT MOTION TO AMEND ORDER NO. R-23728

This matter is before the Commission on OCC CASE NO. 24912 on APACHE CORPORATION and the OIL CONSERVATION DIVISION'S JOINT MOTION to amend ORDER NO. R-23728. Having considered the request, and being fully appraised in the matter,  
IT IS HEREBY ORDERED as follows:

1. On April 17, 2025, APACHE CORPORATION and the OIL CONSERVATION DIVISION filed a JOINT MOTION to amend ORDER NO. R-23728.
2. On April 21, 2025, APACHE CORPORATION and the OIL CONSERVATION DIVISION appeared at the OCC meeting and provided an oral explanation for the Motion.
3. The OCC voted unanimously to grant the Motion.
4. Therefore, good cause does exist to grant the Motion and the Motion therefore is GRANTED.

IT IS SO ORDERED.

DATED: 06/05/2025



---

Gerasimos Razatos, Acting Chairman  
New Mexico Oil Conservation Commission

**Exhibit A: Modified Final Conditions of Approval**

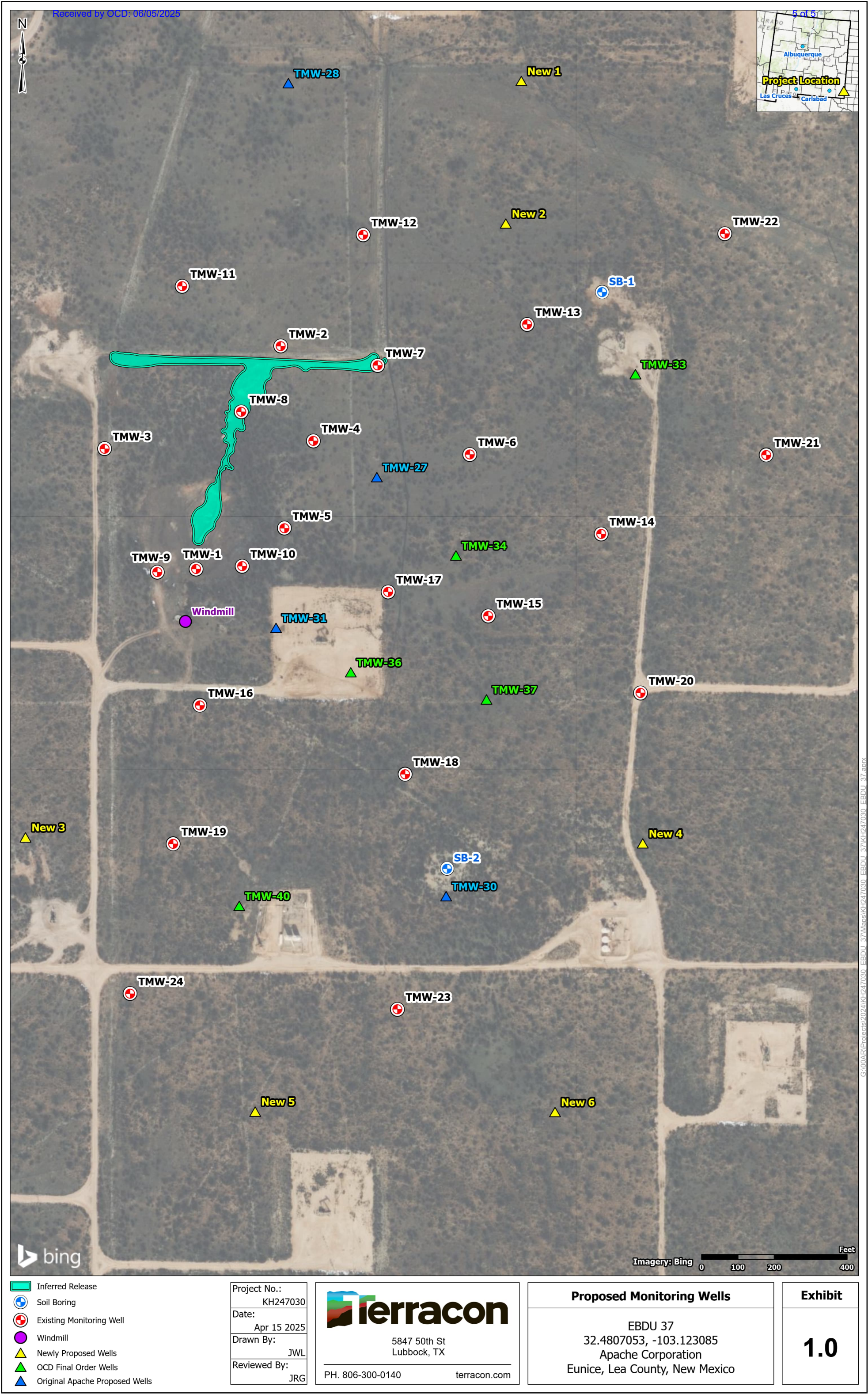
1. As part of Permit API 30-025-06556, Apache Corporation must commence the following within ninety (90) days of the date of the Oil Conservation Commission's Order granting the Joint Motion to Amend Order No R-23728. The coordinates for each monitoring well are included below. Groundwater Monitoring Wells:
  - a. TMW-27 (32.479989°, -103.120675°) will serve to confirm the chloride plume is continuous between the source (near TMW-7) and TMW-17, which has shown elevated chlorides in recent sampling.
  - b. TMW-28 (32.482492°, -103.121341°) will provide upgradient delineation. This well will be located approximately 750 feet upgradient of the source.
  - c. TMW-30 (32.477327°, -103.120154°) will be located approximately 200 feet southeast of TMW-18 to provide information on stratigraphy and groundwater chemistry in the space between current TMW-18, TMW-23, and proposed New 4. This is the location identified as TMW-39 from the original OCD Conditions of Approval.
  - d. TMW-31 (32.479032°, -103.121434°) will be installed approximately 200 feet east of the Windmill. This well is also requested in condition 5 of the OCD final order.
  - e. TMW-33 (32.480650, - 103.118951) will be installed approximately 415 feet southwest of TMW-22. Reduces the distance between TMW-21 and TMW-13 for more precise characterization.
  - f. TMW-34 (32.479492, - 103.120080) will be installed approximately 350 feet west of TMW-14. Achieves more characterization near TMW-17.
  - g. TMW-36 (32.478749, -103.120871) will be installed approximately 175 feet southwest of TMW-17. Addresses need for more characterization near TMW-17
  - h. TMW-37 (32.478577, -103.119850) will be installed approximately 275 feet southeast of TMW-17. Provides additional characterization near TMW-17.
  - i. TMW-40 (32.477265°, -103.121711°) will be installed approximately 200 feet southeast of TMW-19. Addresses lack of characterization and assessment between TMW-19 and TMW-18
  - j. New 1 (32.482505°, -103.119588°) This is a modification (approximately 100 feet east) of the OCD final order well TMW-30. Better defines background concentrations.
  - k. New 2 (32.481600°, -103.119705°) This is a modification (approximately 100 feet northeast) of the OCD final order well TMW-32. Reduces distance between adjacent wells for more precise characterization.
  - l. New 3 (32.477701°, -103.123321°) This is a modification (approximately 150 feet west) of the well requested in Condition 6 of the OCD final order well. Provides delineation west of TMW-19.

- m. New 4 (32.477662°, -103.118673°) This is a modification (approximately 250 feet east) of the OCD final order well TMW-38. Better defines background concentrations. Provides characterization in the southeast of the site.
  - n. New 5 (32.475958°, -103.121591°) This is a modification (approximately 200 feet south) of the OCD final order well TMW-41. Provides downgradient characterization at the southern extent of the release area.
  - o. New 6 (32.475825°, -103.119373°) This is a modification (approximately 200 feet southeast) of the OCD final order well TMW-42 (condition 11). Provides downgradient characterization at the southeastern extent of the release area.
2. Soil borings:
- a. SB-1 (32.481164°, -103.118979°) This boring is proposed in a location approximately 180 feet northeast of existing monitoring well TMW-13. The boring is located centered on an area with restricted vegetation growth suspected of being a potential source of contaminants leaching to groundwater.
  - b. SB-2 (32.477502°, -103.120147°) This boring is proposed approximately 230 feet southeast of existing TMW-18. The boring is located centered on an area with restricted vegetation growth suspected of being a potential source of contaminants leaching to groundwater.
3. Sampling and monitoring:
- a. The windmill well must be sampled and analyzed for barium in the next round of groundwater monitoring.
  - b. All additional monitoring wells must be logged by a qualified person and have soil sample analyses for TPH, chloride, and BTEX by EPA Methods 8260, EPA Method 300 and EPA Method 8015. Five (5) foot interval composite samples are acceptable.
  - c. Drilling for all wells is required to commence within ninety (90) days from the date of approval of the Order approving the Modified Conditions of Approval.
  - d. Include general chemistry water analysis on all samples including Cation/Anion results to understand TDS exceedances that are not chloride related.
  - e. In the next sampling event, sample all wells for the following 20.6.2.3103 NMAC constituents: (add all constituents with exceedances or which were not yet tested for)
    - i. Barium, Cyanide, Boron, due to exceedances of their regulatory limits.
    - ii. Pentachlorophenol, atrazine, Ethylene dibromide (EDB) also known as 1,2-Dibromoethane as these constituents were either not previously analyzed or had reporting limits and/or minimum detection limits that are above the regulatory limits.
    - iii. Temperature and pH must be analyzed for in the field as they were reported out of hold time.

- f. Apache shall complete and sample each additional well within thirty days of completion of drilling.
  - g. Apache must continue taking quarterly sampling and provide the results to the Division via the online permitting system. Results received by Apache must be submitted (via email) within 30 days, even if the report is still pending or waiting on additional results.
  - h. Apache shall include all field notes and calibration logs for field equipment used during groundwater monitoring events in all subsequent reports submitted through the OCD permitting system.
- 4. The Division may administratively extend deadlines related to drilling or sampling activities specified in this Order and may approve minor adjustments to the specified well locations for good cause shown.



Exhibit B



G:\00AR\Projects\2024\KH247030 EBDU 37\Maps\KH247030 EBDU 37\KH247030 EBDU 37.aprx