

**District I**  
1625 N. French Dr., Hobbs, NM 88240  
**District II**  
811 S. First St., Artesia, NM 88210  
**District III**  
1000 Rio Brazos Road, Aztec, NM 87410  
**District IV**  
1220 S. St. Francis Dr., Santa Fe, NM 87505

State of New Mexico  
Energy Minerals and Natural  
Resources Department

Oil Conservation Division  
1220 South St. Francis Dr.  
Santa Fe, NM 87505

Form C-141  
Revised August 24, 2018  
Submit to appropriate OCD District office

Incident ID	
District RP	
Facility ID	
Application ID	

## Release Notification

### Responsible Party

Responsible Party: <b>Enterprise Field Services, LLC</b>	OGRID: <b>151618</b>
Contact Name: <b>Thomas Long</b>	Contact Telephone: <b>505-599-2286</b>
Contact email: <b>tjlong@eprod.com</b>	Incident # (assigned by OCD): <b>NCS1935249968</b>
Contact mailing address: <b>614 Reilly Ave, Farmington, NM 87401</b>	

### Location of Release Source

Latitude **36.378303** Longitude **-107.616105** (NAD 83 in decimal degrees to 5 decimal places)

Site Name <b>Lateral 2C-55</b>	Site Type <b>Natural Gas Gathering Pipeline</b>
Date Release Discovered: <b>11/9/2019</b>	Serial Number (if applicable): <b>NM 032322</b>

Unit Letter	Section	Township	Range	County
<b>C</b>	<b>30</b>	<b>25N</b>	<b>7 W</b>	<b>Rio Arriba</b>

Surface Owner: ☐ State ☒ Federal ☐ Tribal ☐ Private (Name: **BLM**)

### Nature and Volume of Release

Material(s) Released (Select all that apply and attach calculations or specific justification for the volumes provided below)

<input type="checkbox"/> Crude Oil	Volume Released (bbls)	Volume Recovered (bbls)
<input type="checkbox"/> Produced Water	Volume Released (bbls)	Volume Recovered (bbls)
	Is the concentration of dissolved chloride in the produced water >10,000 mg/l?	<input type="checkbox"/> Yes <input type="checkbox"/> No
<input checked="" type="checkbox"/> Condensate	Volume Released (bbls): <b>15-20 BBLs</b>	Volume Recovered (bbls): <b>None</b>
<input checked="" type="checkbox"/> Natural Gas	Volume Released (Mcf): <b>&lt; 1.0 MCF</b>	Volume Recovered (Mcf): <b>None</b>
<input type="checkbox"/> Other (describe)	Volume/Weight Released (provide units):	Volume/Weight Recovered (provide units)

**Cause of Release:** On November 9, 2019, Enterprise discovered a release of natural gas and condensate from the Lateral 2C-55 pipeline valve. An area of approximately six feet in diameter was impacted by the released fluids. No washes were affected. The pipeline was isolated, depressurized, locked and tagged out. Enterprise began remediation on November 14, 2019 and determined the release reportable per NMOCD regulation, due to the volume of impacted subsurface soil. Remediation was completed on December 13, 2019. The final excavation dimensions measured approximately 35 feet long by 28 feet wide by approximately 18.5 feet deep. Approximately 1,188 cubic yards of hydrocarbon impacted soil were excavated and transported to a New Mexico Oil Conservation Division approved land farm facility. Surface reclamation was not completed until the Spring of 2020, due to the Bureau Land Management winter closure requirement. A third party closure report is included with this "Final." C-141.

Incident ID	
District RP	
Facility ID	
Application ID	

## Closure

The responsible party must attach information demonstrating they have complied with all applicable closure requirements and any conditions or directives of the OCD. This demonstration should be in the form of a comprehensive report (electronic submittals in .pdf format are preferred) including a scaled site map, sampling diagrams, relevant field notes, photographs of any excavation prior to backfilling, laboratory data including chain of custody documents of final sampling, and a narrative of the remedial activities. Refer to 19.15.29.12 NMAC.

**Closure Report Attachment Checklist:** *Each of the following items must be included in the closure report.*

- ☒ A scaled site and sampling diagram as described in 19.15.29.11 NMAC
- ☒ Photographs of the remediated site prior to backfill or photos of the liner integrity if applicable (Note: appropriate OCD District office must be notified 2 days prior to liner inspection)
- ☒ Laboratory analyses of final sampling (Note: appropriate ODC District office must be notified 2 days prior to final sampling)
- ☒ Description of remediation activities

I hereby certify that the information given above is true and complete to the best of my knowledge and understand that pursuant to OCD rules and regulations all operators are required to report and/or file certain release notifications and perform corrective actions for releases which may endanger public health or the environment. The acceptance of a C-141 report by the OCD does not relieve the operator of liability should their operations have failed to adequately investigate and remediate contamination that pose a threat to groundwater, surface water, human health or the environment. In addition, OCD acceptance of a C-141 report does not relieve the operator of responsibility for compliance with any other federal, state, or local laws and/or regulations. The responsible party acknowledges they must substantially restore, reclaim, and re-vegetate the impacted surface area to the conditions that existed prior to the release or their final land use in accordance with 19.15.29.13 NMAC including notification to the OCD when reclamation and re-vegetation are complete.

Printed Name: Jon E. Fields

Title: Director, Field Environmental

Signature: 

Date: 8/7/2020

email: jefields@eprod.com

Telephone: (713) 381-6684

### OCD Only

Received by: \_\_\_\_\_

Date: \_\_\_\_\_

Closure approval by the OCD does not relieve the responsible party of liability should their operations have failed to adequately investigate and remediate contamination that poses a threat to groundwater, surface water, human health, or the environment nor does not relieve the responsible party of compliance with any other federal, state, or local laws and/or regulations.

Closure Approved by: \_\_\_\_\_ Date: \_\_\_\_\_

Printed Name: \_\_\_\_\_ Title: \_\_\_\_\_



## CLOSURE REPORT

Property:

**Lateral 2C-55 Valve Release  
NW 1/4, S30 T25N R7W  
Rio Arriba County, New Mexico**

June 8, 2020  
Ensolum Project No. 05A1226080

Prepared for:

**Enterprise Field Services, LLC  
614 Reilly Avenue  
Farmington, NM 87401  
Attn: Mr. Thomas Long**

Prepared by:

A handwritten signature in blue ink, reading "Rane Deechilly".

Rane Deechilly  
Environmental Scientist

A handwritten signature in blue ink, reading "Chad D'Aponti".

Chad D'Aponti  
Field Environmental Scientist

A handwritten signature in blue ink, reading "Kyle Summers".

Kyle Summers, CPG  
Sr. Project Manager

## Table of Contents

<b>1.0</b>	<b>INTRODUCTION.....</b>	<b>1</b>
1.1	SITE DESCRIPTION & BACKGROUND .....	1
1.2	PROJECT OBJECTIVE .....	1
<b>2.0</b>	<b>CLOSURE CRITERIA.....</b>	<b>1</b>
<b>3.0</b>	<b>SOIL REMEDIATION ACTIVITIES.....</b>	<b>3</b>
<b>4.0</b>	<b>SOIL SAMPLING PROGRAM.....</b>	<b>3</b>
<b>5.0</b>	<b>SOIL LABORATORY ANALYTICAL METHODS .....</b>	<b>4</b>
<b>6.0</b>	<b>DATA EVALUATION .....</b>	<b>4</b>
<b>7.0</b>	<b>RECLAMATION AND REVEGETATION .....</b>	<b>4</b>
<b>8.0</b>	<b>FINDINGS AND RECOMMENDATION .....</b>	<b>5</b>
<b>9.0</b>	<b>STANDARDS OF CARE, LIMITATIONS, AND RELIANCE.....</b>	<b>5</b>
9.1	STANDARD OF CARE .....	5
9.2	ADDITIONAL LIMITATIONS.....	5
9.3	RELIANCE .....	5

## **LIST OF APPENDICES**

### **Appendix A: Figures**

- Figure 1 Topographic Map
- Figure 2 Site Vicinity Map
- Figure 3 Site Map with Soil Analytical Results

### **Appendix B: Siting Documentation**

### **Appendix C: Executed C-138 Solid Waste Acceptance Forms**

### **Appendix D: Photographic Documentation**

### **Appendix E: Table 1 - Soil Analytical Summary**

### **Appendix F: Laboratory Data Sheets & Chain of Custody Documentation**

### **Appendix G: Regulatory Correspondence**



## CLOSURE REPORT

**Lateral 2C-55 Valve Release  
NW ¼, S30 T25N R7W  
Rio Arriba County, New Mexico**

**Ensolum Project No. 05A1226080**

### 1.0 INTRODUCTION

#### 1.1 Site Description & Background

<b>Operator:</b>	Enterprise Field Services, LLC / Enterprise Products Operating LLC (Enterprise)
<b>Site Name:</b>	Lateral 2C-55 Valve Release (Site)
<b>Location:</b>	36.378303° North, 107.616105° West Northwest (NW) ¼ of Section 30, Township 25 North, Range 7 West Rio Arriba County, New Mexico
<b>Property:</b>	United States Bureau of Land Management (BLM)
<b>Regulatory:</b>	New Mexico Energy, Minerals and Natural Resources Department (EMNRD) Oil Conservation Division (OCD)

On November 9, 2019, Enterprise personnel identified a release of natural gas on the Lateral 2C-55 (an out of service line that was still connected to the gathering system). Enterprise subsequently isolated and locked the pipeline out of service. On November 14, 2019, Enterprise initiated response activities to remediate petroleum hydrocarbon impact resulting from the release.

A **Topographic Map** depicting the location of the Site is included as **Figure 1**, and a **Site Vicinity Map** is included as **Figure 2** in **Appendix A**.

#### 1.2 Project Objective

The primary objective of the closure activities was to reduce constituent of concern (COC) concentrations in the on-site soils to below the applicable New Mexico EMNRD OCD closure criteria.

### 2.0 CLOSURE CRITERIA

The Site is subject to regulatory oversight by the New Mexico EMNRD OCD. To address activities related to exempt oil and gas releases, the New Mexico EMNRD OCD references New Mexico Administrative Code (NMAC) 19.15.29 *Releases*, which establishes investigation and abatement action requirements for oil and gas release sites subject to reporting and/or corrective action. Ensolum, LLC (Ensolum) utilized information provided by Enterprise, the general site characteristics, and information available from the New Mexico Office of the State Engineer (OSE) and the New Mexico EMNRD OCD imaging database to determine the appropriate closure criteria for the Site.

- The OSE tracks the usage and assignment of water rights and water well installations and records this information in the Water Rights Reporting System (WRRS) database. Water wells and other points of diversion (PODs) are each assigned POD numbers in the database (which is searchable and includes an interactive map). One POD (SJ-03275) was identified within approximately 0.5 miles of the Site in the OSE WRRS database. The well record for SJ-03275 indicates a depth to

Enterprise Field Services, LLC  
 Closure Report  
 Lateral 2C-55 Valve Release  
 June 8, 2020



water of 18 feet below grade surface (bgs). Two (2) additional PODs (SJ-00681-40 and SJ-00681-42) are located between 0.85 miles and 1.5 miles from the Site. Records for the two PODs do not indicate depth to water and appear to be related to seep tanks for livestock water use. Supporting documentation is provided in **Appendix B**.

- No cathodic-protection wells were identified within one mile of the Site.
- The Site is located within 300 feet of a New Mexico EMNRD OCD-defined continuously flowing watercourse or significant watercourse. An ephemeral wash is located approximately 290 feet from the excavation.
- The Site is not located within 200 feet of a lakebed, sinkhole or playa lake.
- The Site is not located within 300 feet of a permanent residence, school, hospital, institution or church.
- No springs, or private domestic fresh water wells used by less than five (5) households for domestic or stock watering purposes were identified within 500 feet of the Site.
- No fresh water wells or springs were identified within 1,000 feet of the Site.
- The Site is not located within incorporated municipal boundaries or within a defined municipal fresh water well field covered under a municipal ordinance adopted pursuant to NMSA 1978, Section 3-27-3.
- The Site is not located within 300 feet of a wetland.
- Based on information identified on the New Mexico Mining and Minerals Division's GIS, Maps and Mine Data database, the Site is not located within an area overlying a subsurface mine.
- The Site is not located within an unstable area.
- The Site is not located within a 100-year floodplain.

Based on the identified siting criteria, cleanup goals for soils remaining in place at the Site include:

Closure Criteria for Soils Impacted by a Release		
Constituent	Method	Limit
Chloride	EPA 300.0 or SM4500 Cl B	600 mg/kg
TPH (GRO+DRO+MRO)	EPA SW-846 Method #8015	100 mg/kg
BTEX	EPA SW-846 Method #8021 or #8260	50 mg/kg
Benzene	EPA SW-846 Method #8021 or #8260	10 mg/kg

Enterprise Field Services, LLC  
Closure Report  
Lateral 2C-55 Valve Release  
June 8, 2020



### 3.0 SOIL REMEDIATION ACTIVITIES

On November 14, 2019, Enterprise performed initial response clean-up of the affected soils at the location to mitigate potential safety. During the remediation and corrective action activities West States Energy Contractors, Inc., provided heavy equipment and labor support, while Ensolum provided environmental consulting support.

The final remediation excavation measured approximately 35 feet long and 28 feet wide at the maximum extents. The maximum depth of the excavation measured approximately (18.5) feet bgs.

The lithology encountered during the completion of remediation activities consisted primarily of unconsolidated silty sandy clay underlain by weathered shale and sandstone.

A total of approximately 1,188 cubic yards (yd<sup>3</sup>) of petroleum hydrocarbon affected soils were transported to Envirotech landfarm near Hilltop, New Mexico for disposal/remediation. The executed C-138 solid waste acceptance forms are provided in **Appendix C**. The excavation was backfilled with imported fill and then contoured to surrounding grade.

**Figure 3** is a map that identifies approximate soil sample locations and depicts the approximate dimensions of the excavation with respect to the pipeline (**Appendix A**). Photographic documentation of the field activities is included in **Appendix D**.

### 4.0 SOIL SAMPLING PROGRAM

Ensolum field screened the soil samples from the excavation utilizing a calibrated Dextsil PetroFLAG<sup>®</sup> hydrocarbon analyzer and a photoionization detector (PID) fitted with a 10.6 eV lamp to guide excavation extents.

Ensolum's soil sampling program included the collection of 18 composite soil samples (S-1 through S-18), comprised of five (5) aliquots each, from the excavation for laboratory analyses. A clean shovel was utilized to obtain fresh aliquots from each accessible area of the excavation. An excavator was utilized to obtain fresh aliquots from areas of the excavation that exceeded depths greater than six (6) feet bgs. The New Mexico EMNRD OCD approved Enterprises' proposed sampling plan for the December 5, 2019 sampling event (**Appendix G**). A New Mexico EMNRD OCD representative was on Site during the final sampling event (December 13, 2019).

#### First Sampling Event

On December 5, 2019, composite soil samples S-1 (9'-18'), S-2 (0'-9'), S-3 (9'-18'), S-4 (0'-9'), S-6 (9'-18'), S-7 (0'-9'), S-8 (9'-18'), S-9 (0'-9'), S-10 (9'-18'), S-11 (0'-9'), S-13 (9'-18'), and S-14 (0'-9') were collected from the sidewalls of the excavation. Composite soil samples S-5 (18') and S-12 (18') were collected from the base of the excavation for laboratory analysis. Analytical results from composite soil samples S-2, S-5, S-6, and S-8 indicated New Mexico EMNRD OCD closure standard exceedances. In response to the data exceedances, the excavation was deepened and extended to removed petroleum hydrocarbon impact. Soil associated with composite soil samples S-2, S-5, S-6, and through S-9 were removed by excavation and transported to the landfarm for disposal/remediation.

#### Second Sampling Event

On December 13, 2019, a second sampling event was performed. Composite soil samples S-15 (0'-9'), S-17 (9'-18'), and S-18 (9'-18') were collected from the sidewalls of the excavation. Composite soil sample S-16 (18.5') was collected from the floor of the excavation.

The soil samples were collected and placed in laboratory prepared glassware, labeled/sealed using the laboratory supplied labels and custody seals, and stored on ice in a cooler. The samples were relinquished

Enterprise Field Services, LLC  
Closure Report  
Lateral 2C-55 Valve Release  
June 8, 2020



to the courier for Hall Environmental Analysis Laboratory of Albuquerque, New Mexico, under proper chain-of-custody procedures.

## 5.0 SOIL LABORATORY ANALYTICAL METHODS

The composite soil samples were analyzed for benzene, toluene, ethylbenzene and total xylenes (BTEX) using Environmental Protection Agency (EPA) SW-846 Method #8021, total petroleum hydrocarbon (TPH) gasoline range organics (GRO), diesel range organics (DRO), and motor oil/lube oil range organics (MRO) using EPA SW-846 Method #8015, and chlorides using EPA Method #300.0.

The laboratory analytical results are summarized in **Table 1** in **Appendix E**. The executed chain-of-custody forms and laboratory data sheets are provided in **Appendix F**.

## 6.0 DATA EVALUATION

Ensolum compared the BTEX, TPH, and chloride laboratory analytical results or laboratory practical quantitation limits (PQLs) / reporting limits (RLs) associated with the composite soil samples (S-1, S-3, S-4, and S-10 through S-18) to the applicable New Mexico EMNRD OCD closure criteria. Soil associated with composite soil samples S-2 and S-5 through S-9 were removed from the Site by excavation and transported to the landfarm for disposal/remediation and are not included in the following discussion.

- The laboratory analytical results for the composite soil samples collected from soils remaining at the Site indicate benzene is not present in concentrations greater than the laboratory PQLs/RLs, which are less than the New Mexico EMNRD OCD closure criteria of 10 milligrams per kilogram (mg/kg).
- The laboratory analytical results for the composite soil samples collected from soils remaining at the Site indicate total BTEX is not present in concentrations greater than the laboratory PQLs/RLs, which are less than the New Mexico EMNRD OCD closure criteria of 50 mg/kg.
- The laboratory analytical results for composite soil samples S-1, S-4, S-12, and S-16 collected from soils remaining at the Site, indicate combined TPH GRO/DRO/MRO concentrations ranging from 4.4 mg/kg (S-4) to 20 mg/kg (S-12), which do not exceed the New Mexico EMNRD OCD closure criteria of 100 mg/kg. The laboratory analytical results for the remaining composite soil samples collected from soils remaining at the Site indicate combined TPH GRO/DRO/MRO is not present in concentrations greater than the laboratory PQLs/RLs, which are less than the New Mexico EMNRD OCD closure criteria of 100 mg/kg.
- The laboratory analytical results for the composite soil samples collected from soils remaining at the Site indicate chloride is not present in concentrations greater than laboratory PQLs/RLs, which are less than the New Mexico EMNRD OCD closure criteria of 600 mg/kg for chlorides.

The laboratory analytical results are summarized in **Table 1** (**Appendix E**).

## 7.0 RECLAMATION AND REVEGETATION

The excavation was backfilled with imported fill and then contoured to the surrounding grade. Enterprise will re-seed the Site with an approved seeding mixture at the beginning of the next favorable growing season.

Enterprise Field Services, LLC  
Closure Report  
Lateral 2C-55 Valve Release  
June 8, 2020



## 8.0 FINDINGS AND RECOMMENDATION

On November 9, 2019, Enterprise personnel identified a release of natural gas on the Lateral 2C-55. Enterprise subsequently isolated and locked the pipeline out of service. On November 14, 2019, Enterprise initiated response activities to remediate petroleum hydrocarbon impact resulting from the release.

- The primary objective of the closure activities was to reduce COC concentrations in the on-Site soils to below the applicable New Mexico EMNRD OCD closure criteria using the New Mexico EMNRD OCD's NMAC 19.15.29 *Releases* as guidance.
- A total of 18 composite soil samples were collected from the walls and floor of the excavation for laboratory analysis. Based on soil laboratory analytical results, soils remaining in place do not exhibit COC concentrations above the New Mexico EMNRD OCD closure criteria.
- A total of approximately 1,188 yd<sup>3</sup> of petroleum hydrocarbon affected soils were transported to Envirotech landfarm near Hilltop, New Mexico for disposal/remediation. The excavation was backfilled with imported fill and then contoured to surrounding grade.

**Based on field observations and laboratory analytical results, no additional investigation or corrective action appears warranted at this time.**

## 9.0 STANDARDS OF CARE, LIMITATIONS, AND RELIANCE

### 9.1 Standard of Care

Ensolum's services were performed in accordance with standards customarily provided by a firm rendering the same or similar services in the area during the same time period. Ensolum makes no warranties, express or implied, as to the services performed hereunder. Additionally, Ensolum does not warrant the work of third parties supplying information used in the report (e.g. laboratories, regulatory agencies, or other third parties).

### 9.2 Additional Limitations

Findings, conclusions, and recommendations resulting from these services are based upon information derived from the on-site activities and other services performed under this scope of work and it should be noted that this information is subject to change over time. Certain indicators of the presence of hazardous substances, petroleum products, or other constituents may have been latent, inaccessible, unobservable, or not present during these services, and Ensolum cannot represent that the Site contains no hazardous substances, toxic materials, petroleum products, or other latent conditions beyond those identified during the investigation. Environmental conditions at other areas or portions of the Site may vary from those encountered at actual sample locations. Ensolum's findings and recommendation are based solely upon data available to Ensolum at the time of these services.

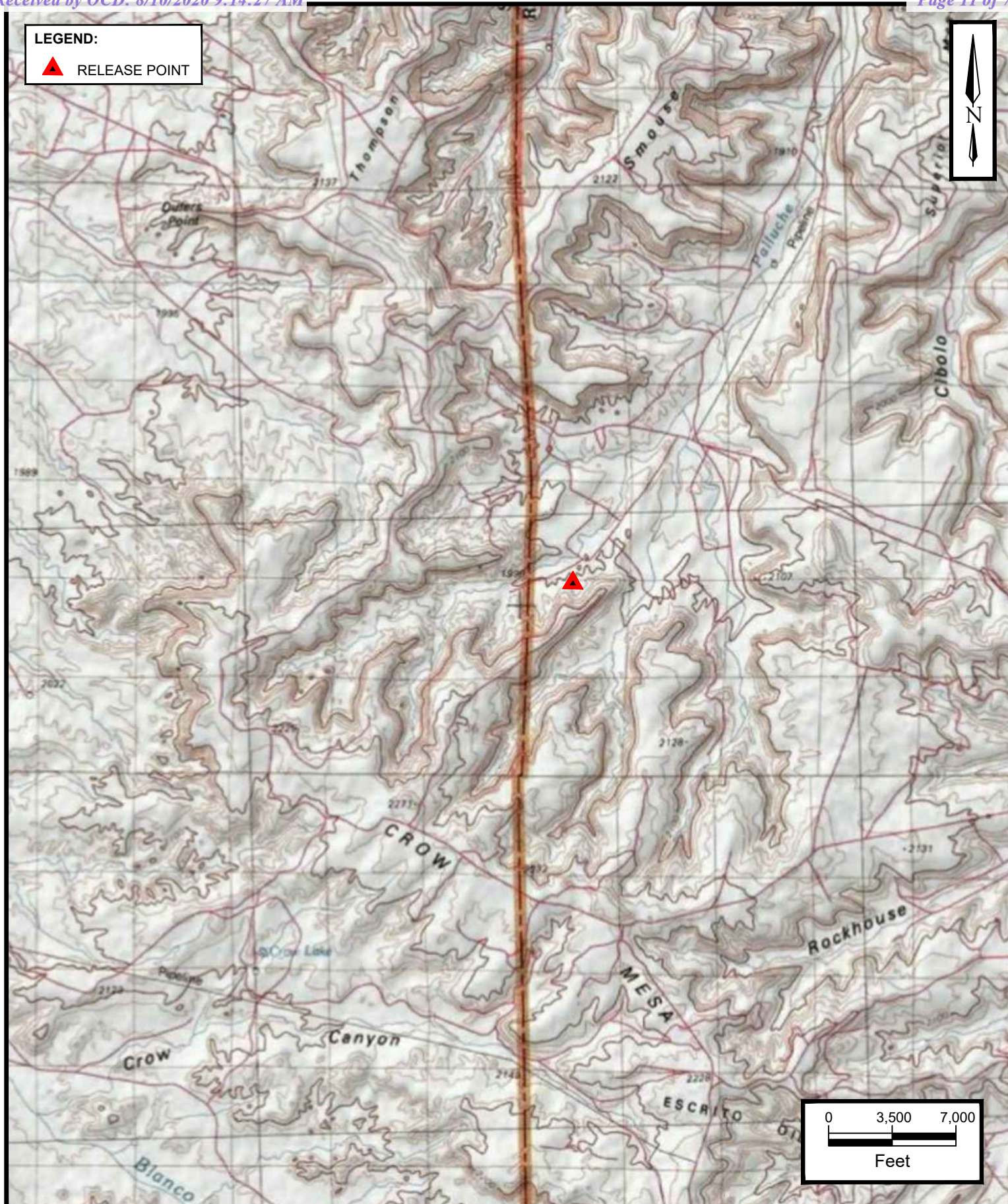
### 9.3 Reliance

This report has been prepared for the exclusive use of Enterprise, and any authorization for use or reliance by any other party (except a governmental entity having jurisdiction over the Site) is prohibited without the express written authorization of Enterprise and Ensolum. Any unauthorized distribution or reuse is at the client's sole risk. Notwithstanding the foregoing, reliance by authorized parties will be subject to the terms, conditions and limitations stated in the Closure Report, and Ensolum's Master Services Agreement. The limitation of liability defined in the agreement is the aggregate limit of Ensolum's liability to the client.



## APPENDIX A

### Figures



**ENSOLUM**

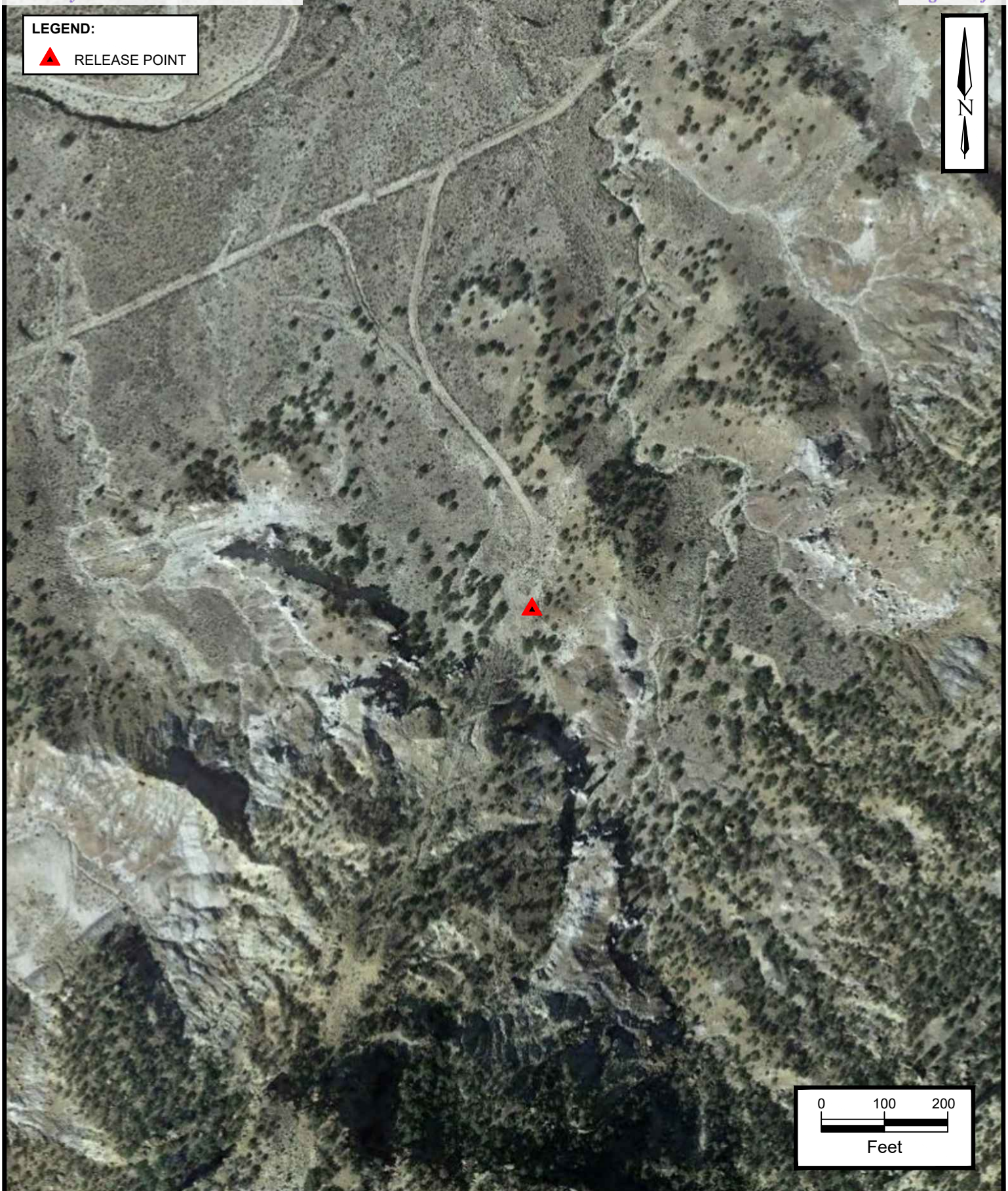
Environmental & Hydrogeologic Consultants

**TOPOGRAPHIC MAP**  
 ENTERPRISE FIELD SERVICES, LLC.  
 LATERAL 2C-55 VALVE RELEASE  
 NW  $\frac{1}{4}$ , S30 T25N R7W, Rio Arriba County, New Mexico  
 36.378303° N, 107.616105° W

Ensolum Project No.: 05A1226080

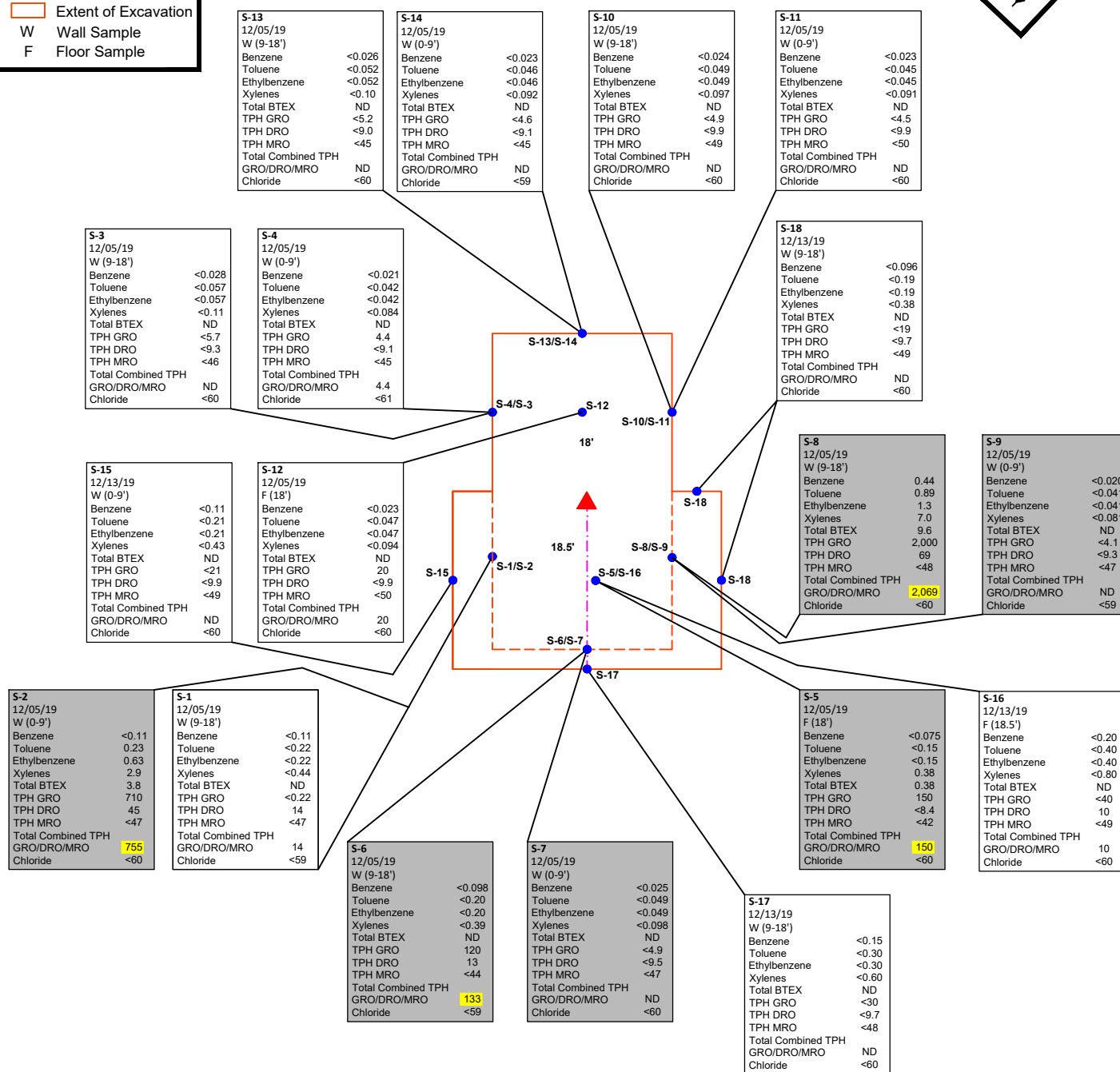
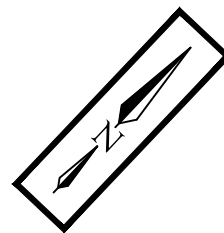
**FIGURE**

**1**



**Legend:**

- Pipeline
- - - Former Sidewall
- ▲ Release Point
- Composite Soil Sample Location
- Extent of Excavation
- W Wall Sample
- F Floor Sample

**Notes:**

All Concentrations Are Listed in mg/Kg.  
 Concentrations in **Yellow** Exceed the Applicable NM EMNRD OCD Closure Criteria.  
 All Depths Are Listed in Feet BGS.  
 Analytical Callouts in Gray Denote Sampling Location Removed By Excavation.

**SITE MAP WITH SOIL ANALYTICAL RESULTS**

ENTERPRISE FIELD SERVICES, LLC.  
 LATERAL 2C-55 VALVE RELEASE  
 NW ¼, S30 T25N R7W, Rio Arriba County, New Mexico  
 36.78303° N, 107.616105° W

Ensolum Project No.: 05A1226080

FIGURE

3



## APPENDIX B

### Siting Documentation



# New Mexico Office of the State Engineer

## Water Column/Average Depth to Water

---

No records found.

**PLSS Search:**

**Section(s):** 30, 19, 20, 29, **Township:** 25N **Range:** 07W  
32, 31

---

The data is furnished by the NMOSE/ISC and is accepted by the recipient with the expressed understanding that the OSE/ISC make no warranties, expressed or implied, concerning the accuracy, completeness, reliability, usability, or suitability for any particular purpose of the data.

---

5/14/20 9:47 AM

Page 1 of 1

WATER COLUMN/ AVERAGE  
DEPTH TO WATER



# New Mexico Office of the State Engineer

## Water Column/Average Depth to Water

(A CLW##### in the POD suffix indicates the POD has been replaced & no longer serves a water right file.)

(R=POD has been replaced,  
O=orphaned,  
C=the file is closed)

(quarters are 1=NW 2=NE 3=SW 4=SE)

(quarters are smallest to largest) (NAD83 UTM in meters)

(In feet)

POD Number	POD Sub-Code	basin	County	Q 64	Q 16	Q 4	Sec	Tws	Rng	X	Y	Depth Well	Depth Water	Water Column
<a href="#">SJ 03275</a>	SJ	SJ		4	2	2	25	25N	08W	264502	4028868*	57	18	39

Average Depth to Water: **18 feet**

Minimum Depth: **18 feet**

Maximum Depth: **18 feet**

Record Count: 1

### PLSS Search:

**Section(s):** 24, 25, 36

**Township:** 25N

**Range:** 08W

\*UTM location was derived from PLSS - see Help

The data is furnished by the NMOSE/ISC and is accepted by the recipient with the expressed understanding that the OSE/ISC make no warranties, expressed or implied, concerning the accuracy, completeness, reliability, usability, or suitability for any particular purpose of the data.

5/14/20 9:49 AM

Page 1 of 1

WATER COLUMN/ AVERAGE  
DEPTH TO WATER



# New Mexico Office of the State Engineer


## Active & Inactive Points of Diversion

(with Ownership Information)

(acre ft per annum)

(R=POD has been replaced  
and no longer serves this file, (quarters are 1=NW 2=NE 3=SW 4=SE)

C=the file is closed) (quarters are smallest to largest) (NAD83 UTM in meters)

WR File Nbr	Sub basin	Use	Diversion	Owner	County	POD Number	Well Tag	Code	Grant	Source	q q q	6416 4	Sec	Tws	Rng	X	Y
<a href="#">SJ 00681 40</a>	SJ	STK	48	HOMER C. BERRY	RA	<a href="#">SJ 00681 40</a>					1 4 4	30	25N	07W	265817	4027822*	

Record Count: 1

**PLSS Search:**

**Section(s):** 30, 19, 20, 29, **Township:** 25N **Range:** 07W  
32, 31

**Sorted by:** File Number**\*UTM location was derived from PLSS - see Help**

The data is furnished by the NMOSE/ISC and is accepted by the recipient with the expressed understanding that the OSE/ISC make no warranties, expressed or implied, concerning the accuracy, completeness, reliability, usability, or suitability for any particular purpose of the data.

5/14/20 10:03 AM

Page 1 of 1

ACTIVE &amp; INACTIVE POINTS OF DIVERSION



# New Mexico Office of the State Engineer

## Active & Inactive Points of Diversion

(with Ownership Information)

(acre ft per annum)

(R=POD has been replaced  
and no longer serves this file, (quarters are 1=NW 2=NE 3=SW 4=SE)

C=the file is closed) (quarters are smallest to largest) (NAD83 UTM in meters)

WR File Nbr	Sub basin	Use	Diversion	Owner	County	POD Number	Well Tag	Code	Grant	Source	q 6416	q 4	q Sec	Tws	Rng	X	Y
<a href="#">SJ 00681 42</a>	SJ	STK	10	HOMER C. BERRY	SJ	<a href="#">SJ 00681 42</a>					3	3	1	25	25N 08W	263117	4028481*
<a href="#">SJ 03275</a>	SJ	STK	3	US BLM	SJ	<a href="#">SJ 03275</a>				Shallow	4	2	2	25	25N 08W	264502	4028868*

**Record Count:** 2**PLSS Search:****Section(s):** 24, 25, 36**Township:** 25N**Range:** 08W**Sorted by:** File Number**\*UTM location was derived from PLSS - see Help**

The data is furnished by the NMOSE/ISC and is accepted by the recipient with the expressed understanding that the OSE/ISC make no warranties, expressed or implied, concerning the accuracy, completeness, reliability, usability, or suitability for any particular purpose of the data.

5/14/20 10:02 AM

Page 1 of 1

ACTIVE &amp; INACTIVE POINTS OF DIVERSION



## APPENDIX C

### Executed C-138 Solid Waste Acceptance Forms

---

District I  
1625 N. French Dr., Hobbs, NM 88240  
District II  
1301 W. Grand Avenue, Artesia, NM 88210  
District III  
1000 Rio Brazos Road, Aztec, NM 87410  
District IV  
1220 S. St. Francis Dr., Santa Fe, NM 87505

State of New Mexico  
Energy Minerals and Natural Resources  
Oil Conservation Division  
1220 South St. Francis Dr.  
Santa Fe, NM 87505

97057-1049  
Form C-138  
Revised 08/01/11  
\*Surface Waste Management Facility Operator  
and Generator shall maintain and make this  
documentation available for Division inspection.

## REQUEST FOR APPROVAL TO ACCEPT SOLID WASTE

### 1. Generator Name and Address:

Enterprise Field Services, LLC, 614 Reilly Ave, Farmington NM 87401

### 2. Originating Site:

Lateral 2C-55

AFE: N44328

PM: Maron O'Brien

Pay Key: RB21200

### 2. Location of Material (Street Address, City, State or ULSTR):

UL C Section 30 T25N R7W; 36.616105, -107.378303

Nov/Dec 2019

### 4. Source and Description of Waste:

Source: Hydrocarbon contaminated soil/sludge associated with remediation activities from a natural gas pipeline release.

Description: Hydrocarbon contaminated soil/sludge associated with remediation activities from a natural gas pipeline release.

Estimated Volume 50 (yd<sup>3</sup>) bbls Known Volume (to be entered by the operator at the end of the haul) 672 (yd<sup>3</sup>) bbls

### 5. GENERATOR CERTIFICATION STATEMENT OF WASTE STATUS

I, Thomas Long *Thomas Long*, representative or authorized agent for Enterprise Products Operating do hereby

Generator Signature

certify that according to the Resource Conservation and Recovery Act (RCRA) and the US Environmental Protection Agency's July 1988 regulatory determination, the above described waste is: (Check the appropriate classification)

☒ RCRA Exempt: Oil field wastes generated from oil and gas exploration and production operations and are not mixed with non-exempt waste. Operator Use Only: Waste Acceptance Frequency ☐ Monthly ☐ Weekly ☐ Per Load

☐ RCRA Non-Exempt: Oil field waste which is non-hazardous that does not exceed the minimum standards for waste hazardous by characteristics established in RCRA regulations, 40 CFR 261.21-261.24, or listed hazardous waste as defined in 40 CFR, part 261, subpart D, as amended. The following documentation is attached to demonstrate the above-described waste is non-hazardous. (Check the appropriate items)

☐ MSDS Information ☐ RCRA Hazardous Waste Analysis ☐ Process Knowledge ☐ Other (Provide description in Box 4)

### GENERATOR 19.15.36.15 WASTE TESTING CERTIFICATION STATEMENT FOR LANDFARMS

I, Thomas Long *Thomas Long*, representative for Enterprise Products Operating authorize to complete

Generator Signature

the required testing/sign the Generator Waste Testing Certification.

I, Greg Crabtree, representative for Envirotech, Inc. do hereby certify that representative samples of the oil field waste have been subjected to the paint filter test and tested for chloride content and that the samples have been found to conform to the specific requirements applicable to landfarms pursuant to Section 15 of 19.15.36 NMAC. The results of the representative samples are attached to demonstrate the above-described waste conform to the requirements of Section 15 of 19.15.36 NMAC.

5. Transporter: TBD, Acc services, Yucca, West States, Prado Farms, Del Herrera, LTL Oilfield  
OCD Permitted Surface Waste Management Facility J.P. Trucking

Name and Facility Permit #: Envirotech, Inc. Soil Remediation Facility \* Permit #: NM01-0011

Address of Facility: Hill Top, NM

Method of Treatment and/or Disposal:

☐ Evaporation ☐ Injection ☐ Treating Plant ☒ Landfarm ☐ Landfill ☐ Other

Waste Acceptance Status:

☒ APPROVED

☐ DENIED (Must Be Maintained As Permanent Record)

PRINT NAME:

Greg Crabtree

TITLE:

Enviro Manager

DATE:

11/14/19

SIGNATURE:

*Greg Crabtree*

TELEPHONE NO.: 505-632-0615

Surface Waste Management Facility Authorized Agent

District I  
1625 N. French Dr., Hobbs, NM 88240  
District II  
1301 W. Grand Avenue, Artesia, NM 88210  
District III  
1000 Rio Brazos Road, Aztec, NM 87410  
District IV  
1220 S. St. Francis Dr., Santa Fe, NM 87505

State of New Mexico  
Energy Minerals and Natural Resources  
Oil Conservation Division  
1220 South St. Francis Dr.  
Santa Fe, NM 87505

97257-1049 Form C-138  
Revised 08/01/11  
\*Surface Waste Management Facility Operator  
and Generator shall maintain and make this  
documentation available for Division inspection.

## REQUEST FOR APPROVAL TO ACCEPT SOLID WASTE

<b>1. Generator Name and Address:</b> Enterprise Field Services, LLC, 614 Reilly Ave, Farmington NM 87401	
<b>2. Originating Site:</b> Lateral 2C-55	AFE: N44328 PM: Maron O'Brien Pay Key: RB21200
<b>2. Location of Material (Street Address, City, State or ULSTR):</b> UL C Section 30 T25N R7W; 36.616105, -107.378303	
<b>4. Source and Description of Waste:</b> Source: Hydrocarbon contaminated soil/sludge associated with remediation activities from a natural gas pipeline release. Description: Hydrocarbon contaminated soil/sludge associated with remediation activities from a natural gas pipeline release. Estimated Volume <u>50</u> yd <sup>3</sup> bbls Known Volume (to be entered by the operator at the end of the haul) <u>516</u> yd <sup>3</sup> bbls	
<b>5. GENERATOR CERTIFICATION STATEMENT OF WASTE STATUS</b>  I, Thomas Long <i>Thomas Long</i> , representative or authorized agent for Enterprise Products Operating do hereby <b>Generator Signature</b> certify that according to the Resource Conservation and Recovery Act (RCRA) and the US Environmental Protection Agency's July 1988 regulatory determination, the above described waste is: (Check the appropriate classification)  <input checked="" type="checkbox"/> RCRA Exempt: Oil field wastes generated from oil and gas exploration and production operations and are not mixed with non-exempt waste. <u>Operator Use Only: Waste Acceptance Frequency</u> <input type="checkbox"/> Monthly <input type="checkbox"/> Weekly <input type="checkbox"/> Per Load  <input type="checkbox"/> RCRA Non-Exempt: Oil field waste which is non-hazardous that does not exceed the minimum standards for waste hazardous by characteristics established in RCRA regulations, 40 CFR 261.21-261.24, or listed hazardous waste as defined in 40 CFR, part 261, subpart D, as amended. The following documentation is attached to demonstrate the above-described waste is non-hazardous. (Check the appropriate items)  <input type="checkbox"/> MSDS Information <input type="checkbox"/> RCRA Hazardous Waste Analysis <input type="checkbox"/> Process Knowledge <input type="checkbox"/> Other (Provide description in Box 4)	
<b>GENERATOR 19.15.36.15 WASTE TESTING CERTIFICATION STATEMENT FOR LANDFARMS</b>  I, Thomas Long <i>Thomas Long</i> 12-16-19, representative for Enterprise Products Operating authorize to complete <b>Generator Signature</b> the required testing/sign the Generator Waste Testing Certification.  I, <i>Greg Crabtree</i> , representative for <u>Envirotech, Inc.</u> do hereby certify that representative samples of the oil field waste have been subjected to the paint filter test and tested for chloride content and that the samples have been found to conform to the specific requirements applicable to landfarms pursuant to Section 15 of 19.15.36 NMAC. The results of the representative samples are attached to demonstrate the above-described waste conform to the requirements of Section 15 of 19.15.36 NMAC.	
<b>5. Transporter: TBD, DeHerrera, Yucca, West States, Prado Farms,</b>	

OCD Permitted Surface Waste Management Facility

Name and Facility Permit #: Envirotech, Inc. Soil Remediation Facility \* Permit #: NM01-0011

Address of Facility: Hill Top, NM

Method of Treatment and/or Disposal:

☐ Evaporation ☐ Injection ☐ Treating Plant ☒ Landfarm ☐ Landfill ☐ Other

Waste Acceptance Status:

☒ APPROVED

☐ DENIED (Must Be Maintained As Permanent Record)

PRINT NAME: Greg Crabtree

TITLE: Enviro Manager

DATE: 12/16/19

SIGNATURE: *Greg Crabtree*  
Surface Waste Management Facility Authorized Agent

TELEPHONE NO.: 505-632-0615



## APPENDIX D

### Photographic Documentation

---

## SITE PHOTOGRAPHS

Enterprise Field Services, LLC  
Closure Report  
Lateral 2C-55 Valve Release  
Ensolum Project No. 05A1226080

**Photograph 1**

Photograph Description: View of the release area.

**Photograph 2**

Photograph Description: View of in-process excavation activities.

**Photograph 3**

Photograph Description: View of in-process excavation activities.



## SITE PHOTOGRAPHS

Enterprise Field Services, LLC  
Closure Report  
Lateral 2C-55 Valve Release  
Ensolum Project No. 05A1226080

**Photograph 4**

Photograph Description: View of in-process excavation activities.

**Photograph 5**

Photograph Description: View of the final excavation.

**Photograph 6**

Photograph Description: View of the final excavation after initial restoration.





## APPENDIX E

### Table 1 – Soil Analytical Summary

---

**TABLE 1**  
**Lateral 2C-55 Valve Release**  
**SOIL ANALYTICAL SUMMARY**

Sample I.D.	Date	Sample Type C- Composite G - Grab	Sample Depth (feet)	Benzene (mg/kg)	Toluene (mg/kg)	Ethylbenzene (mg/kg)	Xylenes (mg/kg)	Total BTEX (mg/kg)	TPH GRO (mg/kg)	TPH DRO (mg/kg)	TPH MRO (mg/kg)	Total Combined TPH (GRO/DRO/MRO) (mg/kg)	Chloride (mg/kg)
New Mexico Energy, Mineral & Natural Resources Department Oil Conservation Division Closure Criteria				10	NE	NE	NE	50				100	600
Excavation Soil Samples Removed by Excavation													
S-2	12.05.19	C	0 to 9	<0.11	0.23	0.63	2.9	3.8	710	45	<47	<b>755</b>	<60
S-5	12.05.19	C	18	<0.075	<0.15	<0.15	0.38	0.38	150	<8.4	<42	<b>150</b>	<60
S-6	12.05.19	C	9 to 18	<0.098	<0.20	<0.20	<0.39	ND	120	13	<44	<b>133</b>	<59
S-7	12.05.19	C	0 to 9	<0.025	<0.049	<0.049	<0.098	ND	<4.9	<9.5	<47	ND	<60
S-8	12.05.19	C	9 to 18	0.44	0.89	1.3	7.0	9.6	2,000	69	<48	<b>2,069</b>	<60
S-9	12.05.19	C	0 to 9	<0.020	<0.041	<0.041	<0.081	ND	<4.1	<9.3	<47	ND	<59
Excavation Composite Soil Samples													
S-1	12.05.19	C	9 to 18	<0.11	<0.22	<0.22	<0.44	ND	<22	14	<47	14	<59
S-3	12.05.19	C	9 to 18	<0.028	<0.057	<0.057	<0.11	ND	<5.7	<9.3	<46	ND	<60
S-4	12.05.19	C	0 to 9	<0.021	<0.042	<0.042	<0.084	ND	4.4	<9.1	<45	4.4	<61
S-10	12.05.19	C	9 to 18	<0.024	<0.049	<0.049	<0.097	ND	<4.9	<9.9	<49	ND	<60
S-11	12.05.19	C	0 to 9	<0.023	<0.045	<0.045	<0.091	ND	<4.5	<9.9	<50	ND	<60
S-12	12.05.19	C	18	<0.023	<0.047	<0.047	<0.094	ND	20	<9.9	<50	20	<60
S-13	12.05.19	C	9 to 18	<0.026	<0.052	<0.052	<0.10	ND	<5.2	<9.0	<45	ND	<60
S-14	12.05.19	C	0 to 9	<0.023	<0.046	<0.046	<0.092	ND	<4.6	<9.1	<45	ND	<59
S-15	12.13.19	C	0 to 9	<0.11	<0.21	<0.21	<0.43	ND	<21	<9.9	<49	ND	<60
S-16	12.13.19	C	18.5	<0.20	<0.40	<0.40	<0.80	ND	<40	10	<49	10	<60
S-17	12.13.19	C	9 to 18	<0.15	<0.30	<0.30	<0.60	ND	<30	<9.7	<48	ND	<60
S-18	12.13.19	C	9 to 18	<0.096	<0.19	<0.19	<0.38	ND	<19	<9.7	<49	ND	<60

Note: Concentrations in **bold** and yellow exceed the applicable NM EMNRD Closure Criteria

ND = Not Detected above the Practical Quantitation Limits or Reporting Limits

NA = Not Analyzed

NE = Not established

mg/kg = milligram per kilogram

BTEX = Benzene, Toluene, Ethylbenzene, and Xylenes

TPH = Total Petroleum Hydrocarbon

GRO = Gasoline Range Organics

DRO = Diesel Range Organics

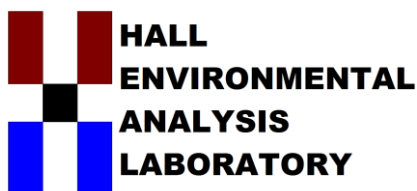
MRO = Motor Oil/Lube Oil Range Organics



## APPENDIX F

### Laboratory Data Sheets & Chain of Custody Documentation

---



Hall Environmental Analysis Laboratory  
4901 Hawkins NE  
Albuquerque, NM 87109  
TEL: 505-345-3975 FAX: 505-345-4107  
Website: [www.hallenvironmental.com](http://www.hallenvironmental.com)

December 09, 2019

Kyle Summers

ENSOLUM

606 S. Rio Grande Suite A

Aztec, NM 87410

TEL: (903) 821-5603

FAX

RE: Lateral 2C 55

OrderNo.: 1912266

Dear Kyle Summers:

Hall Environmental Analysis Laboratory received 14 sample(s) on 12/6/2019 for the analyses presented in the following report.

These were analyzed according to EPA procedures or equivalent. To access our accredited tests please go to [www.hallenvironmental.com](http://www.hallenvironmental.com) or the state specific web sites. In order to properly interpret your results, it is imperative that you review this report in its entirety. See the sample checklist and/or the Chain of Custody for information regarding the sample receipt temperature and preservation. Data qualifiers or a narrative will be provided if the sample analysis or analytical quality control parameters require a flag. When necessary, data qualifiers are provided on both the sample analysis report and the QC summary report, both sections should be reviewed. All samples are reported, as received, unless otherwise indicated. Lab measurement of analytes considered field parameters that require analysis within 15 minutes of sampling such as pH and residual chlorine are qualified as being analyzed outside of the recommended holding time.

Please don't hesitate to contact HEAL for any additional information or clarifications.

ADHS Cert #AZ0682 -- NMED-DWB Cert #NM9425 -- NMED-Micro Cert #NM0901

Sincerely,

A handwritten signature in black ink, appearing to read "Andy Freeman".

Andy Freeman

Laboratory Manager

4901 Hawkins NE

Albuquerque, NM 87109

## Analytical Report

Lab Order 1912266

Date Reported: 12/9/2019

## Hall Environmental Analysis Laboratory, Inc.

CLIENT: ENSOLUM

Client Sample ID: S-1

Project: Lateral 2C 55

Collection Date: 12/5/2019 11:00:00 AM

Lab ID: 1912266-001

Matrix: MEOH (SOIL)

Received Date: 12/6/2019 8:00:00 AM

Analyses	Result	RL	Qual	Units	DF	Date Analyzed	Batch
<b>EPA METHOD 300.0: ANIONS</b>							Analyst: <b>MRA</b>
Chloride	ND	59		mg/Kg	20	12/6/2019 10:30:47 AM	49195
<b>EPA METHOD 8015M/D: DIESEL RANGE ORGANICS</b>							Analyst: <b>BRM</b>
Diesel Range Organics (DRO)	14	9.4		mg/Kg	1	12/6/2019 10:23:37 AM	49194
Motor Oil Range Organics (MRO)	ND	47		mg/Kg	1	12/6/2019 10:23:37 AM	49194
Surr: DNOP	89.6	70-130		%Rec	1	12/6/2019 10:23:37 AM	49194
<b>EPA METHOD 8015D: GASOLINE RANGE</b>							Analyst: <b>NSB</b>
Gasoline Range Organics (GRO)	ND	22		mg/Kg	5	12/6/2019 9:24:30 AM	G64998
Surr: BFB	95.8	66.6-105		%Rec	5	12/6/2019 9:24:30 AM	G64998
<b>EPA METHOD 8021B: VOLATILES</b>							Analyst: <b>NSB</b>
Benzene	ND	0.11		mg/Kg	5	12/6/2019 9:24:30 AM	B64998
Toluene	ND	0.22		mg/Kg	5	12/6/2019 9:24:30 AM	B64998
Ethylbenzene	ND	0.22		mg/Kg	5	12/6/2019 9:24:30 AM	B64998
Xylenes, Total	ND	0.44		mg/Kg	5	12/6/2019 9:24:30 AM	B64998
Surr: 4-Bromofluorobenzene	107	80-120		%Rec	5	12/6/2019 9:24:30 AM	B64998

Refer to the QC Summary report and sample login checklist for flagged QC data and preservation information.

<b>Qualifiers:</b>	*	Value exceeds Maximum Contaminant Level.	B	Analyte detected in the associated Method Blank
	D	Sample Diluted Due to Matrix	E	Value above quantitation range
	H	Holding times for preparation or analysis exceeded	J	Analyte detected below quantitation limits
	ND	Not Detected at the Reporting Limit	P	Sample pH Not In Range
	PQL	Practical Quantitative Limit	RL	Reporting Limit
	S	% Recovery outside of range due to dilution or matrix		

Page 1 of 20

## Analytical Report

Lab Order 1912266

Date Reported: 12/9/2019

## Hall Environmental Analysis Laboratory, Inc.

CLIENT: ENSOLUM

Client Sample ID: S-2

Project: Lateral 2C 55

Collection Date: 12/5/2019 11:05:00 AM

Lab ID: 1912266-002

Matrix: MEOH (SOIL)

Received Date: 12/6/2019 8:00:00 AM

Analyses	Result	RL	Qual	Units	DF	Date Analyzed	Batch
<b>EPA METHOD 300.0: ANIONS</b>							Analyst: <b>MRA</b>
Chloride	ND	60		mg/Kg	20	12/6/2019 10:43:08 AM	49195
<b>EPA METHOD 8015M/D: DIESEL RANGE ORGANICS</b>							Analyst: <b>BRM</b>
Diesel Range Organics (DRO)	45	9.3		mg/Kg	1	12/6/2019 10:32:28 AM	49194
Motor Oil Range Organics (MRO)	ND	47		mg/Kg	1	12/6/2019 10:32:28 AM	49194
Surr: DNOP	91.4	70-130		%Rec	1	12/6/2019 10:32:28 AM	49194
<b>EPA METHOD 8015D: GASOLINE RANGE</b>							Analyst: <b>NSB</b>
Gasoline Range Organics (GRO)	710	21		mg/Kg	5	12/6/2019 9:47:18 AM	G64998
Surr: BFB	624	66.6-105	S	%Rec	5	12/6/2019 9:47:18 AM	G64998
<b>EPA METHOD 8021B: VOLATILES</b>							Analyst: <b>NSB</b>
Benzene	ND	0.11		mg/Kg	5	12/6/2019 9:47:18 AM	B64998
Toluene	0.23	0.21		mg/Kg	5	12/6/2019 9:47:18 AM	B64998
Ethylbenzene	0.63	0.21		mg/Kg	5	12/6/2019 9:47:18 AM	B64998
Xylenes, Total	2.9	0.43		mg/Kg	5	12/6/2019 9:47:18 AM	B64998
Surr: 4-Bromofluorobenzene	131	80-120	S	%Rec	5	12/6/2019 9:47:18 AM	B64998

Refer to the QC Summary report and sample login checklist for flagged QC data and preservation information.

<b>Qualifiers:</b>	*	Value exceeds Maximum Contaminant Level.	B	Analyte detected in the associated Method Blank
	D	Sample Diluted Due to Matrix	E	Value above quantitation range
	H	Holding times for preparation or analysis exceeded	J	Analyte detected below quantitation limits
	ND	Not Detected at the Reporting Limit	P	Sample pH Not In Range
	PQL	Practical Quantitative Limit	RL	Reporting Limit
	S	% Recovery outside of range due to dilution or matrix		

Page 2 of 20

## Analytical Report

Lab Order 1912266

Date Reported: 12/9/2019

## Hall Environmental Analysis Laboratory, Inc.

CLIENT: ENSOLUM

Client Sample ID: S-3

Project: Lateral 2C 55

Collection Date: 12/5/2019 11:10:00 AM

Lab ID: 1912266-003

Matrix: MEOH (SOIL)

Received Date: 12/6/2019 8:00:00 AM

Analyses	Result	RL	Qual	Units	DF	Date Analyzed	Batch
<b>EPA METHOD 300.0: ANIONS</b>							Analyst: <b>MRA</b>
Chloride	ND	60		mg/Kg	20	12/6/2019 10:55:29 AM	49195
<b>EPA METHOD 8015M/D: DIESEL RANGE ORGANICS</b>							Analyst: <b>BRM</b>
Diesel Range Organics (DRO)	ND	9.3		mg/Kg	1	12/6/2019 10:41:25 AM	49194
Motor Oil Range Organics (MRO)	ND	46		mg/Kg	1	12/6/2019 10:41:25 AM	49194
Surr: DNOP	87.1	70-130		%Rec	1	12/6/2019 10:41:25 AM	49194
<b>EPA METHOD 8015D: GASOLINE RANGE</b>							Analyst: <b>NSB</b>
Gasoline Range Organics (GRO)	ND	5.7		mg/Kg	1	12/6/2019 10:10:10 AM	G64998
Surr: BFB	95.0	66.6-105		%Rec	1	12/6/2019 10:10:10 AM	G64998
<b>EPA METHOD 8021B: VOLATILES</b>							Analyst: <b>NSB</b>
Benzene	ND	0.028		mg/Kg	1	12/6/2019 10:10:10 AM	B64998
Toluene	ND	0.057		mg/Kg	1	12/6/2019 10:10:10 AM	B64998
Ethylbenzene	ND	0.057		mg/Kg	1	12/6/2019 10:10:10 AM	B64998
Xylenes, Total	ND	0.11		mg/Kg	1	12/6/2019 10:10:10 AM	B64998
Surr: 4-Bromofluorobenzene	107	80-120		%Rec	1	12/6/2019 10:10:10 AM	B64998

Refer to the QC Summary report and sample login checklist for flagged QC data and preservation information.

<b>Qualifiers:</b>	*	Value exceeds Maximum Contaminant Level.	B	Analyte detected in the associated Method Blank
	D	Sample Diluted Due to Matrix	E	Value above quantitation range
	H	Holding times for preparation or analysis exceeded	J	Analyte detected below quantitation limits
	ND	Not Detected at the Reporting Limit	P	Sample pH Not In Range
	PQL	Practical Quantitative Limit	RL	Reporting Limit
	S	% Recovery outside of range due to dilution or matrix		

Page 3 of 20

## Analytical Report

Lab Order 1912266

Date Reported: 12/9/2019

## Hall Environmental Analysis Laboratory, Inc.

CLIENT: ENSOLUM

Client Sample ID: S-4

Project: Lateral 2C 55

Collection Date: 12/5/2019 11:15:00 AM

Lab ID: 1912266-004

Matrix: MEOH (SOIL)

Received Date: 12/6/2019 8:00:00 AM

Analyses	Result	RL	Qual	Units	DF	Date Analyzed	Batch
<b>EPA METHOD 300.0: ANIONS</b>							Analyst: <b>MRA</b>
Chloride	ND	61		mg/Kg	20	12/6/2019 11:07:50 AM	49195
<b>EPA METHOD 8015M/D: DIESEL RANGE ORGANICS</b>							Analyst: <b>BRM</b>
Diesel Range Organics (DRO)	ND	9.1		mg/Kg	1	12/6/2019 10:50:24 AM	49194
Motor Oil Range Organics (MRO)	ND	45		mg/Kg	1	12/6/2019 10:50:24 AM	49194
Surr: DNOP	80.5	70-130		%Rec	1	12/6/2019 10:50:24 AM	49194
<b>EPA METHOD 8015D: GASOLINE RANGE</b>							Analyst: <b>NSB</b>
Gasoline Range Organics (GRO)	4.4	4.2		mg/Kg	1	12/6/2019 10:33:05 AM	G64998
Surr: BFB	99.8	66.6-105		%Rec	1	12/6/2019 10:33:05 AM	G64998
<b>EPA METHOD 8021B: VOLATILES</b>							Analyst: <b>NSB</b>
Benzene	ND	0.021		mg/Kg	1	12/6/2019 10:33:05 AM	B64998
Toluene	ND	0.042		mg/Kg	1	12/6/2019 10:33:05 AM	B64998
Ethylbenzene	ND	0.042		mg/Kg	1	12/6/2019 10:33:05 AM	B64998
Xylenes, Total	ND	0.084		mg/Kg	1	12/6/2019 10:33:05 AM	B64998
Surr: 4-Bromofluorobenzene	105	80-120		%Rec	1	12/6/2019 10:33:05 AM	B64998

Refer to the QC Summary report and sample login checklist for flagged QC data and preservation information.

<b>Qualifiers:</b>	*	Value exceeds Maximum Contaminant Level.	B	Analyte detected in the associated Method Blank
	D	Sample Diluted Due to Matrix	E	Value above quantitation range
	H	Holding times for preparation or analysis exceeded	J	Analyte detected below quantitation limits
	ND	Not Detected at the Reporting Limit	P	Sample pH Not In Range
	PQL	Practical Quantitative Limit	RL	Reporting Limit
	S	% Recovery outside of range due to dilution or matrix		

Page 4 of 20

## Analytical Report

Lab Order 1912266

Date Reported: 12/9/2019

## Hall Environmental Analysis Laboratory, Inc.

CLIENT: ENSOLUM

Client Sample ID: S-5

Project: Lateral 2C 55

Collection Date: 12/5/2019 11:20:00 AM

Lab ID: 1912266-005

Matrix: MEOH (SOIL)

Received Date: 12/6/2019 8:00:00 AM

Analyses	Result	RL	Qual	Units	DF	Date Analyzed	Batch
<b>EPA METHOD 300.0: ANIONS</b>							Analyst: <b>MRA</b>
Chloride	ND	60		mg/Kg	20	12/6/2019 11:44:53 AM	49195
<b>EPA METHOD 8015M/D: DIESEL RANGE ORGANICS</b>							Analyst: <b>BRM</b>
Diesel Range Organics (DRO)	ND	8.4		mg/Kg	1	12/6/2019 10:59:22 AM	49194
Motor Oil Range Organics (MRO)	ND	42		mg/Kg	1	12/6/2019 10:59:22 AM	49194
Surr: DNOP	80.6	70-130		%Rec	1	12/6/2019 10:59:22 AM	49194
<b>EPA METHOD 8015D: GASOLINE RANGE</b>							Analyst: <b>NSB</b>
Gasoline Range Organics (GRO)	150	15		mg/Kg	5	12/6/2019 10:55:53 AM	G64998
Surr: BFB	443	66.6-105	S	%Rec	5	12/6/2019 10:55:53 AM	G64998
<b>EPA METHOD 8021B: VOLATILES</b>							Analyst: <b>NSB</b>
Benzene	ND	0.075		mg/Kg	5	12/6/2019 10:55:53 AM	B64998
Toluene	ND	0.15		mg/Kg	5	12/6/2019 10:55:53 AM	B64998
Ethylbenzene	ND	0.15		mg/Kg	5	12/6/2019 10:55:53 AM	B64998
Xylenes, Total	0.38	0.30		mg/Kg	5	12/6/2019 10:55:53 AM	B64998
Surr: 4-Bromofluorobenzene	116	80-120		%Rec	5	12/6/2019 10:55:53 AM	B64998

Refer to the QC Summary report and sample login checklist for flagged QC data and preservation information.

<b>Qualifiers:</b>	*	Value exceeds Maximum Contaminant Level.	B	Analyte detected in the associated Method Blank
	D	Sample Diluted Due to Matrix	E	Value above quantitation range
	H	Holding times for preparation or analysis exceeded	J	Analyte detected below quantitation limits
	ND	Not Detected at the Reporting Limit	P	Sample pH Not In Range
	PQL	Practical Quantitative Limit	RL	Reporting Limit
	S	% Recovery outside of range due to dilution or matrix		

Page 5 of 20

## Analytical Report

Lab Order 1912266

Date Reported: 12/9/2019

## Hall Environmental Analysis Laboratory, Inc.

CLIENT: ENSOLUM

Client Sample ID: S-6

Project: Lateral 2C 55

Collection Date: 12/5/2019 11:25:00 AM

Lab ID: 1912266-006

Matrix: MEOH (SOIL)

Received Date: 12/6/2019 8:00:00 AM

Analyses	Result	RL	Qual	Units	DF	Date Analyzed	Batch
<b>EPA METHOD 300.0: ANIONS</b>							Analyst: <b>MRA</b>
Chloride	ND	59		mg/Kg	20	12/6/2019 11:57:13 AM	49195
<b>EPA METHOD 8015M/D: DIESEL RANGE ORGANICS</b>							Analyst: <b>BRM</b>
Diesel Range Organics (DRO)	13	8.8		mg/Kg	1	12/6/2019 11:08:23 AM	49194
Motor Oil Range Organics (MRO)	ND	44		mg/Kg	1	12/6/2019 11:08:23 AM	49194
Surr: DNOP	81.4	70-130		%Rec	1	12/6/2019 11:08:23 AM	49194
<b>EPA METHOD 8015D: GASOLINE RANGE</b>							Analyst: <b>NSB</b>
Gasoline Range Organics (GRO)	120	20		mg/Kg	5	12/6/2019 11:18:46 AM	G64998
Surr: BFB	217	66.6-105	S	%Rec	5	12/6/2019 11:18:46 AM	G64998
<b>EPA METHOD 8021B: VOLATILES</b>							Analyst: <b>NSB</b>
Benzene	ND	0.098		mg/Kg	5	12/6/2019 11:18:46 AM	B64998
Toluene	ND	0.20		mg/Kg	5	12/6/2019 11:18:46 AM	B64998
Ethylbenzene	ND	0.20		mg/Kg	5	12/6/2019 11:18:46 AM	B64998
Xylenes, Total	ND	0.39		mg/Kg	5	12/6/2019 11:18:46 AM	B64998
Surr: 4-Bromofluorobenzene	110	80-120		%Rec	5	12/6/2019 11:18:46 AM	B64998

Refer to the QC Summary report and sample login checklist for flagged QC data and preservation information.

<b>Qualifiers:</b>	*	Value exceeds Maximum Contaminant Level.	B	Analyte detected in the associated Method Blank
	D	Sample Diluted Due to Matrix	E	Value above quantitation range
	H	Holding times for preparation or analysis exceeded	J	Analyte detected below quantitation limits
	ND	Not Detected at the Reporting Limit	P	Sample pH Not In Range
	PQL	Practical Quantitative Limit	RL	Reporting Limit
	S	% Recovery outside of range due to dilution or matrix		

Page 6 of 20

## Analytical Report

Lab Order 1912266

Date Reported: 12/9/2019

## Hall Environmental Analysis Laboratory, Inc.

CLIENT: ENSOLUM

Client Sample ID: S-7

Project: Lateral 2C 55

Collection Date: 12/5/2019 11:30:00 AM

Lab ID: 1912266-007

Matrix: MEOH (SOIL)

Received Date: 12/6/2019 8:00:00 AM

Analyses	Result	RL	Qual	Units	DF	Date Analyzed	Batch
<b>EPA METHOD 300.0: ANIONS</b>							Analyst: <b>MRA</b>
Chloride	ND	60		mg/Kg	20	12/6/2019 12:09:33 PM	49195
<b>EPA METHOD 8015M/D: DIESEL RANGE ORGANICS</b>							Analyst: <b>BRM</b>
Diesel Range Organics (DRO)	ND	9.5		mg/Kg	1	12/6/2019 11:17:23 AM	49194
Motor Oil Range Organics (MRO)	ND	47		mg/Kg	1	12/6/2019 11:17:23 AM	49194
Surr: DNOP	85.1	70-130		%Rec	1	12/6/2019 11:17:23 AM	49194
<b>EPA METHOD 8015D: GASOLINE RANGE</b>							Analyst: <b>NSB</b>
Gasoline Range Organics (GRO)	ND	4.9		mg/Kg	1	12/6/2019 11:41:42 AM	G64998
Surr: BFB	93.9	66.6-105		%Rec	1	12/6/2019 11:41:42 AM	G64998
<b>EPA METHOD 8021B: VOLATILES</b>							Analyst: <b>NSB</b>
Benzene	ND	0.025		mg/Kg	1	12/6/2019 11:41:42 AM	B64998
Toluene	ND	0.049		mg/Kg	1	12/6/2019 11:41:42 AM	B64998
Ethylbenzene	ND	0.049		mg/Kg	1	12/6/2019 11:41:42 AM	B64998
Xylenes, Total	ND	0.098		mg/Kg	1	12/6/2019 11:41:42 AM	B64998
Surr: 4-Bromofluorobenzene	104	80-120		%Rec	1	12/6/2019 11:41:42 AM	B64998

Refer to the QC Summary report and sample login checklist for flagged QC data and preservation information.

<b>Qualifiers:</b>	*	Value exceeds Maximum Contaminant Level.	B	Analyte detected in the associated Method Blank
	D	Sample Diluted Due to Matrix	E	Value above quantitation range
	H	Holding times for preparation or analysis exceeded	J	Analyte detected below quantitation limits
	ND	Not Detected at the Reporting Limit	P	Sample pH Not In Range
	PQL	Practical Quantitative Limit	RL	Reporting Limit
	S	% Recovery outside of range due to dilution or matrix		

Page 7 of 20

## Analytical Report

Lab Order 1912266

Date Reported: 12/9/2019

## Hall Environmental Analysis Laboratory, Inc.

CLIENT: ENSOLUM

Client Sample ID: S-8

Project: Lateral 2C 55

Collection Date: 12/5/2019 11:35:00 AM

Lab ID: 1912266-008

Matrix: MEOH (SOIL)

Received Date: 12/6/2019 8:00:00 AM

Analyses	Result	RL	Qual	Units	DF	Date Analyzed	Batch
<b>EPA METHOD 300.0: ANIONS</b>							Analyst: <b>MRA</b>
Chloride	ND	60		mg/Kg	20	12/6/2019 12:21:54 PM	49195
<b>EPA METHOD 8015M/D: DIESEL RANGE ORGANICS</b>							Analyst: <b>BRM</b>
Diesel Range Organics (DRO)	69	9.6		mg/Kg	1	12/6/2019 11:26:25 AM	49194
Motor Oil Range Organics (MRO)	ND	48		mg/Kg	1	12/6/2019 11:26:25 AM	49194
Surr: DNOP	84.2	70-130		%Rec	1	12/6/2019 11:26:25 AM	49194
<b>EPA METHOD 8015D: GASOLINE RANGE</b>							Analyst: <b>NSB</b>
Gasoline Range Organics (GRO)	2000	220		mg/Kg	50	12/6/2019 1:13:13 PM	G64998
Surr: BFB	191	66.6-105	S	%Rec	50	12/6/2019 1:13:13 PM	G64998
<b>EPA METHOD 8021B: VOLATILES</b>							Analyst: <b>NSB</b>
Benzene	0.44	0.11		mg/Kg	5	12/6/2019 12:04:36 PM	B64998
Toluene	0.89	0.22		mg/Kg	5	12/6/2019 12:04:36 PM	B64998
Ethylbenzene	1.3	0.22		mg/Kg	5	12/6/2019 12:04:36 PM	B64998
Xylenes, Total	7.0	0.45		mg/Kg	5	12/6/2019 12:04:36 PM	B64998
Surr: 4-Bromofluorobenzene	142	80-120	S	%Rec	5	12/6/2019 12:04:36 PM	B64998

Refer to the QC Summary report and sample login checklist for flagged QC data and preservation information.

<b>Qualifiers:</b>	*	Value exceeds Maximum Contaminant Level.	B	Analyte detected in the associated Method Blank
	D	Sample Diluted Due to Matrix	E	Value above quantitation range
	H	Holding times for preparation or analysis exceeded	J	Analyte detected below quantitation limits
	ND	Not Detected at the Reporting Limit	P	Sample pH Not In Range
	PQL	Practical Quantitative Limit	RL	Reporting Limit
	S	% Recovery outside of range due to dilution or matrix		

Page 8 of 20

## Analytical Report

Lab Order 1912266

Date Reported: 12/9/2019

## Hall Environmental Analysis Laboratory, Inc.

CLIENT: ENSOLUM

Client Sample ID: S-9

Project: Lateral 2C 55

Collection Date: 12/5/2019 11:40:00 AM

Lab ID: 1912266-009

Matrix: MEOH (SOIL)

Received Date: 12/6/2019 8:00:00 AM

Analyses	Result	RL	Qual	Units	DF	Date Analyzed	Batch
<b>EPA METHOD 300.0: ANIONS</b>							Analyst: <b>MRA</b>
Chloride	ND	59		mg/Kg	20	12/6/2019 12:34:14 PM	49195
<b>EPA METHOD 8015M/D: DIESEL RANGE ORGANICS</b>							Analyst: <b>BRM</b>
Diesel Range Organics (DRO)	ND	9.3		mg/Kg	1	12/6/2019 11:35:29 AM	49194
Motor Oil Range Organics (MRO)	ND	47		mg/Kg	1	12/6/2019 11:35:29 AM	49194
Surr: DNOP	84.5	70-130		%Rec	1	12/6/2019 11:35:29 AM	49194
<b>EPA METHOD 8015D: GASOLINE RANGE</b>							Analyst: <b>NSB</b>
Gasoline Range Organics (GRO)	ND	4.1		mg/Kg	1	12/6/2019 12:27:22 PM	G64998
Surr: BFB	92.2	66.6-105		%Rec	1	12/6/2019 12:27:22 PM	G64998
<b>EPA METHOD 8021B: VOLATILES</b>							Analyst: <b>NSB</b>
Benzene	ND	0.020		mg/Kg	1	12/6/2019 12:27:22 PM	B64998
Toluene	ND	0.041		mg/Kg	1	12/6/2019 12:27:22 PM	B64998
Ethylbenzene	ND	0.041		mg/Kg	1	12/6/2019 12:27:22 PM	B64998
Xylenes, Total	ND	0.081		mg/Kg	1	12/6/2019 12:27:22 PM	B64998
Surr: 4-Bromofluorobenzene	105	80-120		%Rec	1	12/6/2019 12:27:22 PM	B64998

Refer to the QC Summary report and sample login checklist for flagged QC data and preservation information.

<b>Qualifiers:</b>	*	Value exceeds Maximum Contaminant Level.	B	Analyte detected in the associated Method Blank
	D	Sample Diluted Due to Matrix	E	Value above quantitation range
	H	Holding times for preparation or analysis exceeded	J	Analyte detected below quantitation limits
	ND	Not Detected at the Reporting Limit	P	Sample pH Not In Range
	PQL	Practical Quantitative Limit	RL	Reporting Limit
	S	% Recovery outside of range due to dilution or matrix		

Page 9 of 20

## Analytical Report

Lab Order 1912266

Date Reported: 12/9/2019

## Hall Environmental Analysis Laboratory, Inc.

CLIENT: ENSOLUM

Client Sample ID: S-10

Project: Lateral 2C 55

Collection Date: 12/5/2019 11:45:00 AM

Lab ID: 1912266-010

Matrix: MEOH (SOIL)

Received Date: 12/6/2019 8:00:00 AM

Analyses	Result	RL	Qual	Units	DF	Date Analyzed	Batch
<b>EPA METHOD 300.0: ANIONS</b>							Analyst: <b>MRA</b>
Chloride	ND	60		mg/Kg	20	12/6/2019 12:46:35 PM	49195
<b>EPA METHOD 8015M/D: DIESEL RANGE ORGANICS</b>							Analyst: <b>BRM</b>
Diesel Range Organics (DRO)	ND	9.9		mg/Kg	1	12/6/2019 11:44:33 AM	49194
Motor Oil Range Organics (MRO)	ND	49		mg/Kg	1	12/6/2019 11:44:33 AM	49194
Surr: DNOP	85.0	70-130		%Rec	1	12/6/2019 11:44:33 AM	49194
<b>EPA METHOD 8015D: GASOLINE RANGE</b>							Analyst: <b>NSB</b>
Gasoline Range Organics (GRO)	ND	4.9		mg/Kg	1	12/6/2019 12:50:18 PM	G64998
Surr: BFB	84.8	66.6-105		%Rec	1	12/6/2019 12:50:18 PM	G64998
<b>EPA METHOD 8021B: VOLATILES</b>							Analyst: <b>NSB</b>
Benzene	ND	0.024		mg/Kg	1	12/6/2019 12:50:18 PM	B64998
Toluene	ND	0.049		mg/Kg	1	12/6/2019 12:50:18 PM	B64998
Ethylbenzene	ND	0.049		mg/Kg	1	12/6/2019 12:50:18 PM	B64998
Xylenes, Total	ND	0.097		mg/Kg	1	12/6/2019 12:50:18 PM	B64998
Surr: 4-Bromofluorobenzene	99.6	80-120		%Rec	1	12/6/2019 12:50:18 PM	B64998

Refer to the QC Summary report and sample login checklist for flagged QC data and preservation information.

<b>Qualifiers:</b>	*	Value exceeds Maximum Contaminant Level.	B	Analyte detected in the associated Method Blank
	D	Sample Diluted Due to Matrix	E	Value above quantitation range
	H	Holding times for preparation or analysis exceeded	J	Analyte detected below quantitation limits
	ND	Not Detected at the Reporting Limit	P	Sample pH Not In Range
	PQL	Practical Quantitative Limit	RL	Reporting Limit
	S	% Recovery outside of range due to dilution or matrix		

Page 10 of 20

## Analytical Report

Lab Order 1912266

Date Reported: 12/9/2019

## Hall Environmental Analysis Laboratory, Inc.

CLIENT: ENSOLUM

Client Sample ID: S-11

Project: Lateral 2C 55

Collection Date: 12/5/2019 11:50:00 AM

Lab ID: 1912266-011

Matrix: MEOH (SOIL)

Received Date: 12/6/2019 8:00:00 AM

Analyses	Result	RL	Qual	Units	DF	Date Analyzed	Batch
<b>EPA METHOD 300.0: ANIONS</b>							Analyst: <b>MRA</b>
Chloride	ND	60		mg/Kg	20	12/6/2019 12:58:56 PM	49195
<b>EPA METHOD 8015M/D: DIESEL RANGE ORGANICS</b>							Analyst: <b>BRM</b>
Diesel Range Organics (DRO)	ND	9.9		mg/Kg	1	12/6/2019 11:53:36 AM	49194
Motor Oil Range Organics (MRO)	ND	50		mg/Kg	1	12/6/2019 11:53:36 AM	49194
Surr: DNOP	84.6	70-130		%Rec	1	12/6/2019 11:53:36 AM	49194
<b>EPA METHOD 8015D: GASOLINE RANGE</b>							Analyst: <b>NSB</b>
Gasoline Range Organics (GRO)	ND	4.5		mg/Kg	1	12/6/2019 9:27:32 AM	49182
Surr: BFB	82.4	66.6-105		%Rec	1	12/6/2019 9:27:32 AM	49182
<b>EPA METHOD 8021B: VOLATILES</b>							Analyst: <b>NSB</b>
Benzene	ND	0.023		mg/Kg	1	12/6/2019 9:27:32 AM	49182
Toluene	ND	0.045		mg/Kg	1	12/6/2019 9:27:32 AM	49182
Ethylbenzene	ND	0.045		mg/Kg	1	12/6/2019 9:27:32 AM	49182
Xylenes, Total	ND	0.091		mg/Kg	1	12/6/2019 9:27:32 AM	49182
Surr: 4-Bromofluorobenzene	95.8	80-120		%Rec	1	12/6/2019 9:27:32 AM	49182

Refer to the QC Summary report and sample login checklist for flagged QC data and preservation information.

<b>Qualifiers:</b>	*	Value exceeds Maximum Contaminant Level.	B	Analyte detected in the associated Method Blank
	D	Sample Diluted Due to Matrix	E	Value above quantitation range
	H	Holding times for preparation or analysis exceeded	J	Analyte detected below quantitation limits
	ND	Not Detected at the Reporting Limit	P	Sample pH Not In Range
	PQL	Practical Quantitative Limit	RL	Reporting Limit
	S	% Recovery outside of range due to dilution or matrix		

## Analytical Report

Lab Order 1912266

Date Reported: 12/9/2019

## Hall Environmental Analysis Laboratory, Inc.

CLIENT: ENSOLUM

Client Sample ID: S-12

Project: Lateral 2C 55

Collection Date: 12/5/2019 11:55:00 AM

Lab ID: 1912266-012

Matrix: MEOH (SOIL)

Received Date: 12/6/2019 8:00:00 AM

Analyses	Result	RL	Qual	Units	DF	Date Analyzed	Batch
<b>EPA METHOD 300.0: ANIONS</b>							Analyst: <b>MRA</b>
Chloride	ND	60		mg/Kg	20	12/6/2019 1:11:17 PM	49195
<b>EPA METHOD 8015M/D: DIESEL RANGE ORGANICS</b>							Analyst: <b>BRM</b>
Diesel Range Organics (DRO)	ND	9.9		mg/Kg	1	12/6/2019 12:02:39 PM	49194
Motor Oil Range Organics (MRO)	ND	50		mg/Kg	1	12/6/2019 12:02:39 PM	49194
Surr: DNOP	84.3	70-130		%Rec	1	12/6/2019 12:02:39 PM	49194
<b>EPA METHOD 8015D: GASOLINE RANGE</b>							Analyst: <b>NSB</b>
Gasoline Range Organics (GRO)	20	4.7		mg/Kg	1	12/6/2019 9:50:59 AM	49182
Surr: BFB	127	66.6-105	S	%Rec	1	12/6/2019 9:50:59 AM	49182
<b>EPA METHOD 8021B: VOLATILES</b>							Analyst: <b>NSB</b>
Benzene	ND	0.023		mg/Kg	1	12/6/2019 9:50:59 AM	49182
Toluene	ND	0.047		mg/Kg	1	12/6/2019 9:50:59 AM	49182
Ethylbenzene	ND	0.047		mg/Kg	1	12/6/2019 9:50:59 AM	49182
Xylenes, Total	ND	0.094		mg/Kg	1	12/6/2019 9:50:59 AM	49182
Surr: 4-Bromofluorobenzene	103	80-120		%Rec	1	12/6/2019 9:50:59 AM	49182

Refer to the QC Summary report and sample login checklist for flagged QC data and preservation information.

<b>Qualifiers:</b>	*	Value exceeds Maximum Contaminant Level.	B	Analyte detected in the associated Method Blank
	D	Sample Diluted Due to Matrix	E	Value above quantitation range
	H	Holding times for preparation or analysis exceeded	J	Analyte detected below quantitation limits
	ND	Not Detected at the Reporting Limit	P	Sample pH Not In Range
	PQL	Practical Quantitative Limit	RL	Reporting Limit
	S	% Recovery outside of range due to dilution or matrix		

Page 12 of 20

## Analytical Report

Lab Order 1912266

Date Reported: 12/9/2019

## Hall Environmental Analysis Laboratory, Inc.

CLIENT: ENSOLUM

Client Sample ID: S-13

Project: Lateral 2C 55

Collection Date: 12/5/2019 12:00:00 PM

Lab ID: 1912266-013

Matrix: MEOH (SOIL)

Received Date: 12/6/2019 8:00:00 AM

Analyses	Result	RL	Qual	Units	DF	Date Analyzed	Batch
<b>EPA METHOD 300.0: ANIONS</b>							Analyst: <b>MRA</b>
Chloride	ND	60		mg/Kg	20	12/6/2019 1:23:37 PM	49195
<b>EPA METHOD 8015M/D: DIESEL RANGE ORGANICS</b>							Analyst: <b>BRM</b>
Diesel Range Organics (DRO)	ND	9.0		mg/Kg	1	12/6/2019 12:11:43 PM	49194
Motor Oil Range Organics (MRO)	ND	45		mg/Kg	1	12/6/2019 12:11:43 PM	49194
Surr: DNOP	82.8	70-130		%Rec	1	12/6/2019 12:11:43 PM	49194
<b>EPA METHOD 8015D: GASOLINE RANGE</b>							Analyst: <b>NSB</b>
Gasoline Range Organics (GRO)	ND	5.2		mg/Kg	1	12/6/2019 10:14:29 AM	49182
Surr: BFB	86.4	66.6-105		%Rec	1	12/6/2019 10:14:29 AM	49182
<b>EPA METHOD 8021B: VOLATILES</b>							Analyst: <b>NSB</b>
Benzene	ND	0.026		mg/Kg	1	12/6/2019 10:14:29 AM	49182
Toluene	ND	0.052		mg/Kg	1	12/6/2019 10:14:29 AM	49182
Ethylbenzene	ND	0.052		mg/Kg	1	12/6/2019 10:14:29 AM	49182
Xylenes, Total	ND	0.10		mg/Kg	1	12/6/2019 10:14:29 AM	49182
Surr: 4-Bromofluorobenzene	96.9	80-120		%Rec	1	12/6/2019 10:14:29 AM	49182

Refer to the QC Summary report and sample login checklist for flagged QC data and preservation information.

<b>Qualifiers:</b>	*	Value exceeds Maximum Contaminant Level.	B	Analyte detected in the associated Method Blank
	D	Sample Diluted Due to Matrix	E	Value above quantitation range
	H	Holding times for preparation or analysis exceeded	J	Analyte detected below quantitation limits
	ND	Not Detected at the Reporting Limit	P	Sample pH Not In Range
	PQL	Practical Quantitative Limit	RL	Reporting Limit
	S	% Recovery outside of range due to dilution or matrix		

## Analytical Report

Lab Order 1912266

Date Reported: 12/9/2019

## Hall Environmental Analysis Laboratory, Inc.

CLIENT: ENSOLUM

Client Sample ID: S-14

Project: Lateral 2C 55

Collection Date: 12/5/2019 12:05:00 PM

Lab ID: 1912266-014

Matrix: MEOH (SOIL)

Received Date: 12/6/2019 8:00:00 AM

Analyses	Result	RL	Qual	Units	DF	Date Analyzed	Batch
<b>EPA METHOD 300.0: ANIONS</b>							Analyst: <b>MRA</b>
Chloride	ND	59		mg/Kg	20	12/6/2019 1:35:58 PM	49195
<b>EPA METHOD 8015M/D: DIESEL RANGE ORGANICS</b>							Analyst: <b>BRM</b>
Diesel Range Organics (DRO)	ND	9.1		mg/Kg	1	12/6/2019 12:20:45 PM	49194
Motor Oil Range Organics (MRO)	ND	45		mg/Kg	1	12/6/2019 12:20:45 PM	49194
Surr: DNOP	83.7	70-130		%Rec	1	12/6/2019 12:20:45 PM	49194
<b>EPA METHOD 8015D: GASOLINE RANGE</b>							Analyst: <b>NSB</b>
Gasoline Range Organics (GRO)	ND	4.6		mg/Kg	1	12/6/2019 10:38:00 AM	49182
Surr: BFB	84.2	66.6-105		%Rec	1	12/6/2019 10:38:00 AM	49182
<b>EPA METHOD 8021B: VOLATILES</b>							Analyst: <b>NSB</b>
Benzene	ND	0.023		mg/Kg	1	12/6/2019 10:38:00 AM	49182
Toluene	ND	0.046		mg/Kg	1	12/6/2019 10:38:00 AM	49182
Ethylbenzene	ND	0.046		mg/Kg	1	12/6/2019 10:38:00 AM	49182
Xylenes, Total	ND	0.092		mg/Kg	1	12/6/2019 10:38:00 AM	49182
Surr: 4-Bromofluorobenzene	95.8	80-120		%Rec	1	12/6/2019 10:38:00 AM	49182

Refer to the QC Summary report and sample login checklist for flagged QC data and preservation information.

<b>Qualifiers:</b>	*	Value exceeds Maximum Contaminant Level.	B	Analyte detected in the associated Method Blank
	D	Sample Diluted Due to Matrix	E	Value above quantitation range
	H	Holding times for preparation or analysis exceeded	J	Analyte detected below quantitation limits
	ND	Not Detected at the Reporting Limit	P	Sample pH Not In Range
	PQL	Practical Quantitative Limit	RL	Reporting Limit
	S	% Recovery outside of range due to dilution or matrix		

**QC SUMMARY REPORT****Hall Environmental Analysis Laboratory, Inc.**

WO#: 1912266

09-Dec-19

**Client:** ENSOLUM  
**Project:** Lateral 2C 55

Sample ID: <b>MB-49195</b>	SampType: <b>mblk</b>	TestCode: <b>EPA Method 300.0: Anions</b>								
Client ID: <b>PBS</b>	Batch ID: <b>49195</b>	RunNo: <b>65000</b>								
Prep Date: <b>12/6/2019</b>	Analysis Date: <b>12/6/2019</b>	SeqNo: <b>2230260</b>	Units: <b>mg/Kg</b>							
Analyte	Result	PQL	SPK value	SPK Ref Val	%REC	LowLimit	HighLimit	%RPD	RPDLimit	Qual
Chloride	ND	1.5								

Sample ID: <b>LCS-49195</b>	SampType: <b>lcs</b>	TestCode: <b>EPA Method 300.0: Anions</b>								
Client ID: <b>LCSS</b>	Batch ID: <b>49195</b>	RunNo: <b>65000</b>								
Prep Date: <b>12/6/2019</b>	Analysis Date: <b>12/6/2019</b>	SeqNo: <b>2230261</b>	Units: <b>mg/Kg</b>							
Analyte	Result	PQL	SPK value	SPK Ref Val	%REC	LowLimit	HighLimit	%RPD	RPDLimit	Qual
Chloride	15	1.5	15.00	0	97.0	90	110			

**Qualifiers:**

\* Value exceeds Maximum Contaminant Level.  
D Sample Diluted Due to Matrix  
H Holding times for preparation or analysis exceeded  
ND Not Detected at the Reporting Limit  
PQL Practical Quantitative Limit  
S % Recovery outside of range due to dilution or matrix

B Analyte detected in the associated Method Blank  
E Value above quantitation range  
J Analyte detected below quantitation limits  
P Sample pH Not In Range  
RL Reporting Limit

**QC SUMMARY REPORT****Hall Environmental Analysis Laboratory, Inc.**

WO#: 1912266

09-Dec-19

**Client:** ENSOLUM  
**Project:** Lateral 2C 55

Sample ID: <b>LCS-49194</b>	SampType: <b>LCS</b>	TestCode: <b>EPA Method 8015M/D: Diesel Range Organics</b>								
Client ID: <b>LCSS</b>	Batch ID: <b>49194</b>	RunNo: <b>64995</b>								
Prep Date: <b>12/6/2019</b>	Analysis Date: <b>12/6/2019</b>	SeqNo: <b>2229278</b>	Units: <b>mg/Kg</b>							
Analyte	Result	PQL	SPK value	SPK Ref Val	%REC	LowLimit	HighLimit	%RPD	RPDLimit	Qual
Diesel Range Organics (DRO)	44	10	50.00	0	87.4	63.9	124			
Surr: DNOP	3.8		5.000		75.2	70	130			

Sample ID: <b>MB-49194</b>	SampType: <b>MBLK</b>	TestCode: <b>EPA Method 8015M/D: Diesel Range Organics</b>								
Client ID: <b>PBS</b>	Batch ID: <b>49194</b>	RunNo: <b>64995</b>								
Prep Date: <b>12/6/2019</b>	Analysis Date: <b>12/6/2019</b>	SeqNo: <b>2229279</b>	Units: <b>mg/Kg</b>							
Analyte	Result	PQL	SPK value	SPK Ref Val	%REC	LowLimit	HighLimit	%RPD	RPDLimit	Qual
Diesel Range Organics (DRO)	ND	10								
Motor Oil Range Organics (MRO)	ND	50								
Surr: DNOP	12		10.00		122	70	130			

**Qualifiers:**

\* Value exceeds Maximum Contaminant Level.  
D Sample Diluted Due to Matrix  
H Holding times for preparation or analysis exceeded  
ND Not Detected at the Reporting Limit  
PQL Practical Quantitative Limit  
S % Recovery outside of range due to dilution or matrix

B Analyte detected in the associated Method Blank  
E Value above quantitation range  
J Analyte detected below quantitation limits  
P Sample pH Not In Range  
RL Reporting Limit

Page 16 of 20

**QC SUMMARY REPORT****Hall Environmental Analysis Laboratory, Inc.**

WO#: 1912266

09-Dec-19

**Client:** ENSOLUM  
**Project:** Lateral 2C 55

Sample ID: <b>mb-49182</b>	SampType: <b>MBLK</b>	TestCode: <b>EPA Method 8015D: Gasoline Range</b>								
Client ID: <b>PBS</b>	Batch ID: <b>49182</b>	RunNo: <b>64997</b>								
Prep Date: <b>12/5/2019</b>	Analysis Date: <b>12/6/2019</b>	SeqNo: <b>2229609</b> Units: <b>mg/Kg</b>								
Analyte	Result	PQL	SPK value	SPK Ref Val	%REC	LowLimit	HighLimit	%RPD	RPDLimit	Qual
Gasoline Range Organics (GRO)	ND	5.0								
Surr: BFB	900		1000		89.8	66.6	105			

Sample ID: <b>lcs-49182</b>	SampType: <b>LCS</b>	TestCode: <b>EPA Method 8015D: Gasoline Range</b>								
Client ID: <b>LCSS</b>	Batch ID: <b>49182</b>	RunNo: <b>64997</b>								
Prep Date: <b>12/5/2019</b>	Analysis Date: <b>12/6/2019</b>	SeqNo: <b>2229610</b> Units: <b>mg/Kg</b>								
Analyte	Result	PQL	SPK value	SPK Ref Val	%REC	LowLimit	HighLimit	%RPD	RPDLimit	Qual
Gasoline Range Organics (GRO)	22	5.0	25.00	0	88.7	80	120			
Surr: BFB	1000		1000		102	66.6	105			

Sample ID: <b>rb</b>	SampType: <b>MBLK</b>	TestCode: <b>EPA Method 8015D: Gasoline Range</b>								
Client ID: <b>PBS</b>	Batch ID: <b>G64998</b>	RunNo: <b>64998</b>								
Prep Date:	Analysis Date: <b>12/6/2019</b>	SeqNo: <b>2229654</b> Units: <b>mg/Kg</b>								
Analyte	Result	PQL	SPK value	SPK Ref Val	%REC	LowLimit	HighLimit	%RPD	RPDLimit	Qual
Gasoline Range Organics (GRO)	ND	5.0								
Surr: BFB	890		1000		89.5	66.6	105			

Sample ID: <b>2.5ug gro lcs</b>	SampType: <b>LCS</b>	TestCode: <b>EPA Method 8015D: Gasoline Range</b>								
Client ID: <b>LCSS</b>	Batch ID: <b>G64998</b>	RunNo: <b>64998</b>								
Prep Date:	Analysis Date: <b>12/6/2019</b>	SeqNo: <b>2229655</b> Units: <b>mg/Kg</b>								
Analyte	Result	PQL	SPK value	SPK Ref Val	%REC	LowLimit	HighLimit	%RPD	RPDLimit	Qual
Gasoline Range Organics (GRO)	23	5.0	25.00	0	90.2	80	120			
Surr: BFB	1000		1000		103	66.6	105			

Sample ID: <b>1912266-001ams</b>	SampType: <b>MS</b>	TestCode: <b>EPA Method 8015D: Gasoline Range</b>								
Client ID: <b>S-1</b>	Batch ID: <b>G64998</b>	RunNo: <b>64998</b>								
Prep Date:	Analysis Date: <b>12/6/2019</b>	SeqNo: <b>2229656</b> Units: <b>mg/Kg</b>								
Analyte	Result	PQL	SPK value	SPK Ref Val	%REC	LowLimit	HighLimit	%RPD	RPDLimit	Qual
Gasoline Range Organics (GRO)	110	22	111.0	9.281	93.2	69.1	142			
Surr: BFB	4800		4440		108	66.6	105			S

Sample ID: <b>1912266-001amsd</b>	SampType: <b>MSD</b>	TestCode: <b>EPA Method 8015D: Gasoline Range</b>								
Client ID: <b>S-1</b>	Batch ID: <b>G64998</b>	RunNo: <b>64998</b>								
Prep Date:	Analysis Date: <b>12/6/2019</b>	SeqNo: <b>2229657</b> Units: <b>mg/Kg</b>								
Analyte	Result	PQL	SPK value	SPK Ref Val	%REC	LowLimit	HighLimit	%RPD	RPDLimit	Qual

**Qualifiers:**

\* Value exceeds Maximum Contaminant Level.  
D Sample Diluted Due to Matrix  
H Holding times for preparation or analysis exceeded  
ND Not Detected at the Reporting Limit  
PQL Practical Quantitative Limit  
S % Recovery outside of range due to dilution or matrix

B Analyte detected in the associated Method Blank  
E Value above quantitation range  
J Analyte detected below quantitation limits  
P Sample pH Not In Range  
RL Reporting Limit

QC SUMMARY REPORT  
Hall Environmental Analysis Laboratory, Inc.

WO#: 1912266  
09-Dec-19

Client: ENSOLUM  
Project: Lateral 2C 55

Sample ID: 1912266-001amsd		SampType: MSD		TestCode: EPA Method 8015D: Gasoline Range						
Client ID: S-1		Batch ID: G64998		RunNo: 64998						
Prep Date:		Analysis Date: 12/6/2019		SeqNo: 2229657		Units: mg/Kg				
Analyte	Result	PQL	SPK value	SPK Ref Val	%REC	LowLimit	HighLimit	%RPD	RPDLimit	Qual
Gasoline Range Organics (GRO)	110	22	111.0	9.281	89.5	69.1	142	3.73	20	
Surr: BFB	4500		4440		102	66.6	105	0	0	

Qualifiers:

- \*

Value exceeds Maximum Contaminant Level.
- D

Sample Diluted Due to Matrix
- H

Holding times for preparation or analysis exceeded
- ND

Not Detected at the Reporting Limit
- PQL

Practical Quantitative Limit
- S

% Recovery outside of range due to dilution or matrix
- B

Analyte detected in the associated Method Blank
- E

Value above quantitation range
- J

Analyte detected below quantitation limits
- P

Sample pH Not In Range
- RL

Reporting Limit

**QC SUMMARY REPORT****Hall Environmental Analysis Laboratory, Inc.**

WO#: 1912266

09-Dec-19

**Client:** ENSOLUM  
**Project:** Lateral 2C 55

Sample ID: <b>mb-49182</b>	SampType: <b>MBLK</b>	TestCode: <b>EPA Method 8021B: Volatiles</b>								
Client ID: <b>PBS</b>	Batch ID: <b>49182</b>	RunNo: <b>64997</b>								
Prep Date: <b>12/5/2019</b>	Analysis Date: <b>12/6/2019</b>	SeqNo: <b>2229631</b> Units: <b>mg/Kg</b>								
Analyte	Result	PQL	SPK value	SPK Ref Val	%REC	LowLimit	HighLimit	%RPD	RPDLimit	Qual
Benzene	ND	0.025								
Toluene	ND	0.050								
Ethylbenzene	ND	0.050								
Xylenes, Total	ND	0.10								
Surr: 4-Bromofluorobenzene	1.0		1.000		104	80	120			

Sample ID: <b>LCS-49182</b>	SampType: <b>LCS</b>	TestCode: <b>EPA Method 8021B: Volatiles</b>								
Client ID: <b>LCSS</b>	Batch ID: <b>49182</b>	RunNo: <b>64997</b>								
Prep Date: <b>12/5/2019</b>	Analysis Date: <b>12/6/2019</b>	SeqNo: <b>2229632</b> Units: <b>mg/Kg</b>								
Analyte	Result	PQL	SPK value	SPK Ref Val	%REC	LowLimit	HighLimit	%RPD	RPDLimit	Qual
Benzene	0.99	0.025	1.000	0	99.3	80	120			
Toluene	1.0	0.050	1.000	0	104	80	120			
Ethylbenzene	1.1	0.050	1.000	0	106	80	120			
Xylenes, Total	3.2	0.10	3.000	0	107	80	120			
Surr: 4-Bromofluorobenzene	1.2		1.000		116	80	120			

Sample ID: <b>rb</b>	SampType: <b>MBLK</b>	TestCode: <b>EPA Method 8021B: Volatiles</b>								
Client ID: <b>PBS</b>	Batch ID: <b>B64998</b>	RunNo: <b>64998</b>								
Prep Date:	Analysis Date: <b>12/6/2019</b>	SeqNo: <b>2229704</b> Units: <b>mg/Kg</b>								
Analyte	Result	PQL	SPK value	SPK Ref Val	%REC	LowLimit	HighLimit	%RPD	RPDLimit	Qual
Benzene	ND	0.025								
Toluene	ND	0.050								
Ethylbenzene	ND	0.050								
Xylenes, Total	ND	0.10								
Surr: 4-Bromofluorobenzene	1.1		1.000		112	80	120			

Sample ID: <b>100ng btex lcs</b>	SampType: <b>LCS</b>	TestCode: <b>EPA Method 8021B: Volatiles</b>								
Client ID: <b>LCSS</b>	Batch ID: <b>B64998</b>	RunNo: <b>64998</b>								
Prep Date:	Analysis Date: <b>12/6/2019</b>	SeqNo: <b>2229705</b> Units: <b>mg/Kg</b>								
Analyte	Result	PQL	SPK value	SPK Ref Val	%REC	LowLimit	HighLimit	%RPD	RPDLimit	Qual
Benzene	0.99	0.025	1.000	0	98.6	80	120			
Toluene	0.98	0.050	1.000	0	97.9	80	120			
Ethylbenzene	0.98	0.050	1.000	0	97.8	80	120			
Xylenes, Total	2.9	0.10	3.000	0	97.6	80	120			
Surr: 4-Bromofluorobenzene	1.2		1.000		117	80	120			

**Qualifiers:**

\* Value exceeds Maximum Contaminant Level.  
D Sample Diluted Due to Matrix  
H Holding times for preparation or analysis exceeded  
ND Not Detected at the Reporting Limit  
PQL Practical Quantitative Limit  
S % Recovery outside of range due to dilution or matrix

B Analyte detected in the associated Method Blank  
E Value above quantitation range  
J Analyte detected below quantitation limits  
P Sample pH Not In Range  
RL Reporting Limit

**QC SUMMARY REPORT****Hall Environmental Analysis Laboratory, Inc.**

WO#: 1912266

09-Dec-19

**Client:** ENSOLUM  
**Project:** Lateral 2C 55

Sample ID: <b>1912266-002ams</b>	SampType: <b>MS</b>		TestCode: <b>EPA Method 8021B: Volatiles</b>							
Client ID: <b>S-2</b>	Batch ID: <b>B64998</b>		RunNo: <b>64998</b>							
Prep Date:	Analysis Date: <b>12/6/2019</b>		SeqNo: <b>2229706</b>		Units: <b>mg/Kg</b>					
Analyte	Result	PQL	SPK value	SPK Ref Val	%REC	LowLimit	HighLimit	%RPD	RPDLimit	Qual
Benzene	4.1	0.11	4.270	0.07293	93.2	76	123			
Toluene	4.3	0.21	4.270	0.2339	94.5	80.3	127			
Ethylbenzene	4.7	0.21	4.270	0.6280	95.6	80.2	131			
Xylenes, Total	15	0.43	12.81	2.875	95.2	78	133			
Surr: 4-Bromofluorobenzene	5.2		4.270		121	80	120			S

Sample ID: <b>1912266-002amsd</b>	SampType: <b>MSD</b>		TestCode: <b>EPA Method 8021B: Volatiles</b>							
Client ID: <b>S-2</b>	Batch ID: <b>B64998</b>		RunNo: <b>64998</b>							
Prep Date:	Analysis Date: <b>12/6/2019</b>		SeqNo: <b>2229707</b>		Units: <b>mg/Kg</b>					
Analyte	Result	PQL	SPK value	SPK Ref Val	%REC	LowLimit	HighLimit	%RPD	RPDLimit	Qual
Benzene	4.1	0.11	4.270	0.07293	93.7	76	123	0.499	20	
Toluene	4.2	0.21	4.270	0.2339	93.9	80.3	127	0.679	20	
Ethylbenzene	4.7	0.21	4.270	0.6280	95.3	80.2	131	0.231	20	
Xylenes, Total	15	0.43	12.81	2.875	94.9	78	133	0.257	20	
Surr: 4-Bromofluorobenzene	5.0		4.270		118	80	120	0	0	

**Qualifiers:**

\* Value exceeds Maximum Contaminant Level.  
D Sample Diluted Due to Matrix  
H Holding times for preparation or analysis exceeded  
ND Not Detected at the Reporting Limit  
PQL Practical Quantitative Limit  
S % Recovery outside of range due to dilution or matrix

B Analyte detected in the associated Method Blank  
E Value above quantitation range  
J Analyte detected below quantitation limits  
P Sample pH Not In Range  
RL Reporting Limit



Hall Environmental Analysis Laboratory  
4901 Hawkins NE  
Albuquerque, NM 87109  
TEL: 505-345-3975 FAX: 505-345-4107  
Website: www.hallenvironmental.com

## Sample Log-In Check List

Client Name: **ENSOLUM AZTEC**Work Order Number: **1912266**

RcptNo: 1

Received By: **JUAN ROJAS**

12/6/2019 8:00:00 AM

Completed By: **Erin Melendrez**

12/6/2019 8:22:50 AM

Reviewed By: **ENM**

12/6/19

### Chain of Custody

1. Is Chain of Custody sufficiently complete? Yes ☒ No ☐ Not Present ☐
2. How was the sample delivered? Courier

### Log In

3. Was an attempt made to cool the samples? Yes ☒ No ☐ NA ☐
4. Were all samples received at a temperature of  $>0^{\circ}\text{C}$  to  $6.0^{\circ}\text{C}$ ? Yes ☒ No ☐ NA ☐
5. Sample(s) in proper container(s)? Yes ☒ No ☐
6. Sufficient sample volume for indicated test(s)? Yes ☒ No ☐
7. Are samples (except VOA and ONG) properly preserved? Yes ☒ No ☐
8. Was preservative added to bottles? Yes ☐ No ☒ NA ☐
9. Received at least 1 vial with headspace  $<1/4"$  for AQ VOA? Yes ☐ No ☐ NA ☒
10. Were any sample containers received broken? Yes ☐ No ☒
11. Does paperwork match bottle labels?  
(Note discrepancies on chain of custody) Yes ☒ No ☐
12. Are matrices correctly identified on Chain of Custody? Yes ☒ No ☐
13. Is it clear what analyses were requested? Yes ☒ No ☐
14. Were all holding times able to be met?  
(If no, notify customer for authorization.) Yes ☒ No ☐

# of preserved  
bottles checked  
for pH:  
( $\leq 2$  or  $>12$  unless noted)

Adjusted? \_\_\_\_\_

Checked by: **DAD 12/6/19**

### Special Handling (if applicable)

15. Was client notified of all discrepancies with this order? Yes ☐ No ☐ NA ☒

Person Notified: \_\_\_\_\_

Date: \_\_\_\_\_

By Whom: \_\_\_\_\_

Via: ☐ eMail ☐ Phone ☐ Fax ☐ In Person

Regarding: \_\_\_\_\_

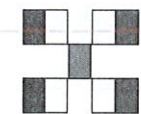
Client Instructions: \_\_\_\_\_

16. Additional remarks:

### 17. Cooler Information

Cooler No	Temp $^{\circ}\text{C}$	Condition	Seal Intact	Seal No	Seal Date	Signed By
1	3.4	Good	Yes			

Chain-of-Custody Record		Turn-Around Time: <u>100%</u>
Client: <u>Ensolun</u>	<input type="checkbox"/> Standard <input checked="" type="checkbox"/> Rush	<u>12-6-13</u>
Mailing Address: <u>Box 5800 Grande</u>	Project Name: <u>Lateral JC-55</u>	
<u>Suite A 87410</u>	Project #: <u>05A 1226680</u>	
Phone #: _____	Project Manager: <u>K. Summers</u>	
email or Fax#: _____	Sampler: <u>CD Agents</u>	
QA/QC Package: <input type="checkbox"/> Standard <input type="checkbox"/> Level 4 (Full Validation)	On Ice: <input checked="" type="checkbox"/> Yes <input type="checkbox"/> No	
Accreditation: <input type="checkbox"/> Az Compliance <input type="checkbox"/> NELAC <input type="checkbox"/> Other _____	# of Coolers: <u>1</u>	
<input type="checkbox"/> EDD (Type) _____		



**HALL ENVIRONMENTAL  
ANALYSIS LABORATORY**

[www.hallenvironmental.com](http://www.hallenvironmental.com)

4901 Hawkins NE - Albuquerque, NM 87109

Tel. 505-345-3975 Fax 505-345-4107

## Analysis Request

[illegible]

Remarks:

PM Tom Long  
Pang King A B 21200  
AIE # N44328

Long

Page 2

805 441

15

4.

If necessary, samples submitted to Hall Environmental may be subcontracted to other accredited laboratories. This serves as notice of this possibility. Any sub-contracted data will be clearly notated on the analytical report.

Chain-of-Custody Record		Turn-Around Time: 100%
Client: Ensolium	<input type="checkbox"/> Standard <input checked="" type="checkbox"/> Rush	12-6-19
Mailing Address: 606 S. Rio Grande	Project Name: Lateral 2C-55	
Suite A 87410	Project #: 05A1226080	
Phone #:	Project Manager: K. Summers	
email or Fax#:	Sampler: Chad D'Aponti	
QA/QC Package:	On Ice: <input checked="" type="checkbox"/> Yes <input type="checkbox"/> No	
<input type="checkbox"/> Standard <input type="checkbox"/> Level 4 (Full Validation)	# of Coolers: 1	
Accreditation: <input type="checkbox"/> Az Compliance		
<input type="checkbox"/> NELAC <input type="checkbox"/> Other		
<input type="checkbox"/> EDD (Type)		

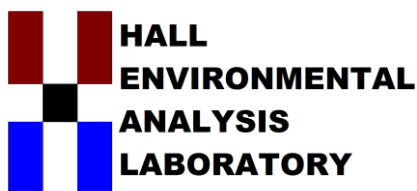
Turn-Around Time:	100Y.
<input type="checkbox"/> Standard	<input checked="" type="checkbox"/> Rush
Project Name:	Lateral 2C-55
Project #:	05A1226080
Project Manager:	K. Summers
Sampler:	Chad D'Aponti
On Ice:	<input type="checkbox"/> Yes <input type="checkbox"/> No
# of Coolers:	1

Chain-of-Custody Record	
Client:	Ensolium
Mailing Address:	606 S. Rio Grande Suite A 87410
Phone #:	
email or Fax#:	
QA/QC Package:	<input type="checkbox"/> Standard <input type="checkbox"/> Level 4 (Full Validation)
Accreditation:	<input type="checkbox"/> Az Compliance
<input type="checkbox"/> NELAC	<input type="checkbox"/> Other
<input type="checkbox"/> EDD (Type)	

[illegible]

Date	Time	Matrix	Sample Name
12/5/19	12060	S	S-13
12/5/19	1205	S	S-14
Date:	Time:	Relinquished by:	
12/5/19	1542		
Date:	Time:	Relinquished by:	
12/5/19	1746		

[illegible][illegible]



Hall Environmental Analysis Laboratory  
4901 Hawkins NE  
Albuquerque, NM 87109  
TEL: 505-345-3975 FAX: 505-345-4107  
Website: [www.hallenvironmental.com](http://www.hallenvironmental.com)

December 17, 2019

Kyle Summers

ENSOLUM

606 S. Rio Grande Suite A

Aztec, NM 87410

TEL: (903) 821-5603

FAX

RE: Lateral 2C 55

OrderNo.: 1912768

Dear Kyle Summers:

Hall Environmental Analysis Laboratory received 4 sample(s) on 12/14/2019 for the analyses presented in the following report.

These were analyzed according to EPA procedures or equivalent. To access our accredited tests please go to [www.hallenvironmental.com](http://www.hallenvironmental.com) or the state specific web sites. In order to properly interpret your results, it is imperative that you review this report in its entirety. See the sample checklist and/or the Chain of Custody for information regarding the sample receipt temperature and preservation. Data qualifiers or a narrative will be provided if the sample analysis or analytical quality control parameters require a flag. When necessary, data qualifiers are provided on both the sample analysis report and the QC summary report, both sections should be reviewed. All samples are reported, as received, unless otherwise indicated. Lab measurement of analytes considered field parameters that require analysis within 15 minutes of sampling such as pH and residual chlorine are qualified as being analyzed outside of the recommended holding time.

Please don't hesitate to contact HEAL for any additional information or clarifications.

ADHS Cert #AZ0682 -- NMED-DWB Cert #NM9425 -- NMED-Micro Cert #NM0901

Sincerely,

A handwritten signature in black ink, appearing to read "Andy Freeman", is written over a horizontal line.

Andy Freeman

Laboratory Manager

4901 Hawkins NE

Albuquerque, NM 87109

## Analytical Report

Lab Order 1912768

Date Reported: 12/17/2019

## Hall Environmental Analysis Laboratory, Inc.

CLIENT: ENSOLUM

Client Sample ID: S-15

Project: Lateral 2C 55

Collection Date: 12/13/2019 10:00:00 AM

Lab ID: 1912768-001

Matrix: SOIL

Received Date: 12/14/2019 10:15:00 AM

Analyses	Result	RL	Qual	Units	DF	Date Analyzed	Batch
<b>EPA METHOD 300.0: ANIONS</b>							Analyst: <b>CJS</b>
Chloride	ND	60		mg/Kg	20	12/16/2019 12:02:01 PM	49353
<b>EPA METHOD 8015M/D: DIESEL RANGE ORGANICS</b>							Analyst: <b>BRM</b>
Diesel Range Organics (DRO)	ND	9.9		mg/Kg	1	12/16/2019 12:11:38 PM	49351
Motor Oil Range Organics (MRO)	ND	49		mg/Kg	1	12/16/2019 12:11:38 PM	49351
Surr: DNOP	85.5	70-130		%Rec	1	12/16/2019 12:11:38 PM	49351
<b>EPA METHOD 8015D: GASOLINE RANGE</b>							Analyst: <b>NSB</b>
Gasoline Range Organics (GRO)	ND	21		mg/Kg	5	12/16/2019 9:27:31 AM	G65198
Surr: BFB	86.7	66.6-105		%Rec	5	12/16/2019 9:27:31 AM	G65198
<b>EPA METHOD 8021B: VOLATILES</b>							Analyst: <b>NSB</b>
Benzene	ND	0.11		mg/Kg	5	12/16/2019 9:27:31 AM	B65198
Toluene	ND	0.21		mg/Kg	5	12/16/2019 9:27:31 AM	B65198
Ethylbenzene	ND	0.21		mg/Kg	5	12/16/2019 9:27:31 AM	B65198
Xylenes, Total	ND	0.43		mg/Kg	5	12/16/2019 9:27:31 AM	B65198
Surr: 4-Bromofluorobenzene	105	80-120		%Rec	5	12/16/2019 9:27:31 AM	B65198

Refer to the QC Summary report and sample login checklist for flagged QC data and preservation information.

<b>Qualifiers:</b>	*	Value exceeds Maximum Contaminant Level.	B	Analyte detected in the associated Method Blank
	D	Sample Diluted Due to Matrix	E	Value above quantitation range
	H	Holding times for preparation or analysis exceeded	J	Analyte detected below quantitation limits
	ND	Not Detected at the Reporting Limit	P	Sample pH Not In Range
	PQL	Practical Quantitative Limit	RL	Reporting Limit
	S	% Recovery outside of range due to dilution or matrix		

Page 1 of 9

## Analytical Report

Lab Order 1912768

Date Reported: 12/17/2019

## Hall Environmental Analysis Laboratory, Inc.

CLIENT: ENSOLUM

Client Sample ID: S-16

Project: Lateral 2C 55

Collection Date: 12/13/2019 10:05:00 AM

Lab ID: 1912768-002

Matrix: SOIL

Received Date: 12/14/2019 10:15:00 AM

Analyses	Result	RL	Qual	Units	DF	Date Analyzed	Batch
<b>EPA METHOD 300.0: ANIONS</b>							Analyst: <b>CJS</b>
Chloride	ND	60		mg/Kg	20	12/16/2019 12:14:23 PM	49353
<b>EPA METHOD 8015M/D: DIESEL RANGE ORGANICS</b>							Analyst: <b>BRM</b>
Diesel Range Organics (DRO)	10	9.7		mg/Kg	1	12/16/2019 12:20:54 PM	49351
Motor Oil Range Organics (MRO)	ND	49		mg/Kg	1	12/16/2019 12:20:54 PM	49351
Surr: DNOP	80.8	70-130		%Rec	1	12/16/2019 12:20:54 PM	49351
<b>EPA METHOD 8015D: GASOLINE RANGE</b>							Analyst: <b>NSB</b>
Gasoline Range Organics (GRO)	ND	40		mg/Kg	5	12/16/2019 9:50:15 AM	G65198
Surr: BFB	85.7	66.6-105		%Rec	5	12/16/2019 9:50:15 AM	G65198
<b>EPA METHOD 8021B: VOLATILES</b>							Analyst: <b>NSB</b>
Benzene	ND	0.20		mg/Kg	5	12/16/2019 9:50:15 AM	B65198
Toluene	ND	0.40		mg/Kg	5	12/16/2019 9:50:15 AM	B65198
Ethylbenzene	ND	0.40		mg/Kg	5	12/16/2019 9:50:15 AM	B65198
Xylenes, Total	ND	0.80		mg/Kg	5	12/16/2019 9:50:15 AM	B65198
Surr: 4-Bromofluorobenzene	104	80-120		%Rec	5	12/16/2019 9:50:15 AM	B65198

Refer to the QC Summary report and sample login checklist for flagged QC data and preservation information.

<b>Qualifiers:</b>	*	Value exceeds Maximum Contaminant Level.	B	Analyte detected in the associated Method Blank
	D	Sample Diluted Due to Matrix	E	Value above quantitation range
	H	Holding times for preparation or analysis exceeded	J	Analyte detected below quantitation limits
	ND	Not Detected at the Reporting Limit	P	Sample pH Not In Range
	PQL	Practical Quantitative Limit	RL	Reporting Limit
	S	% Recovery outside of range due to dilution or matrix		

Page 2 of 9

## Analytical Report

Lab Order 1912768

Date Reported: 12/17/2019

## Hall Environmental Analysis Laboratory, Inc.

CLIENT: ENSOLUM

Client Sample ID: S-17

Project: Lateral 2C 55

Collection Date: 12/13/2019 10:10:00 AM

Lab ID: 1912768-003

Matrix: SOIL

Received Date: 12/14/2019 10:15:00 AM

Analyses	Result	RL	Qual	Units	DF	Date Analyzed	Batch
<b>EPA METHOD 300.0: ANIONS</b>							Analyst: CJS
Chloride	ND	60		mg/Kg	20	12/16/2019 12:26:44 PM	49353
<b>EPA METHOD 8015M/D: DIESEL RANGE ORGANICS</b>							Analyst: BRM
Diesel Range Organics (DRO)	ND	9.7		mg/Kg	1	12/16/2019 12:30:08 PM	49351
Motor Oil Range Organics (MRO)	ND	48		mg/Kg	1	12/16/2019 12:30:08 PM	49351
Surr: DNOP	80.5	70-130		%Rec	1	12/16/2019 12:30:08 PM	49351
<b>EPA METHOD 8015D: GASOLINE RANGE</b>							Analyst: NSB
Gasoline Range Organics (GRO)	ND	30		mg/Kg	5	12/16/2019 10:13:06 AM	G65198
Surr: BFB	81.1	66.6-105		%Rec	5	12/16/2019 10:13:06 AM	G65198
<b>EPA METHOD 8021B: VOLATILES</b>							Analyst: NSB
Benzene	ND	0.15		mg/Kg	5	12/16/2019 10:13:06 AM	B65198
Toluene	ND	0.30		mg/Kg	5	12/16/2019 10:13:06 AM	B65198
Ethylbenzene	ND	0.30		mg/Kg	5	12/16/2019 10:13:06 AM	B65198
Xylenes, Total	ND	0.60		mg/Kg	5	12/16/2019 10:13:06 AM	B65198
Surr: 4-Bromofluorobenzene	97.7	80-120		%Rec	5	12/16/2019 10:13:06 AM	B65198

Refer to the QC Summary report and sample login checklist for flagged QC data and preservation information.

<b>Qualifiers:</b>	*	Value exceeds Maximum Contaminant Level.	B	Analyte detected in the associated Method Blank
	D	Sample Diluted Due to Matrix	E	Value above quantitation range
	H	Holding times for preparation or analysis exceeded	J	Analyte detected below quantitation limits
	ND	Not Detected at the Reporting Limit	P	Sample pH Not In Range
	PQL	Practical Quantitative Limit	RL	Reporting Limit
	S	% Recovery outside of range due to dilution or matrix		

Page 3 of 9

## Analytical Report

Lab Order 1912768

Date Reported: 12/17/2019

## Hall Environmental Analysis Laboratory, Inc.

CLIENT: ENSOLUM

Client Sample ID: S-18

Project: Lateral 2C 55

Collection Date: 12/13/2019 10:15:00 AM

Lab ID: 1912768-004

Matrix: SOIL

Received Date: 12/14/2019 10:15:00 AM

Analyses	Result	RL	Qual	Units	DF	Date Analyzed	Batch
<b>EPA METHOD 300.0: ANIONS</b>							Analyst: CJS
Chloride	ND	60		mg/Kg	20	12/16/2019 12:39:05 PM	49353
<b>EPA METHOD 8015M/D: DIESEL RANGE ORGANICS</b>							Analyst: BRM
Diesel Range Organics (DRO)	ND	9.7		mg/Kg	1	12/16/2019 12:39:27 PM	49351
Motor Oil Range Organics (MRO)	ND	49		mg/Kg	1	12/16/2019 12:39:27 PM	49351
Surr: DNOP	81.5	70-130		%Rec	1	12/16/2019 12:39:27 PM	49351
<b>EPA METHOD 8015D: GASOLINE RANGE</b>							Analyst: NSB
Gasoline Range Organics (GRO)	ND	19		mg/Kg	5	12/16/2019 10:35:50 AM	G65198
Surr: BFB	77.6	66.6-105		%Rec	5	12/16/2019 10:35:50 AM	G65198
<b>EPA METHOD 8021B: VOLATILES</b>							Analyst: NSB
Benzene	ND	0.096		mg/Kg	5	12/16/2019 10:35:50 AM	B65198
Toluene	ND	0.19		mg/Kg	5	12/16/2019 10:35:50 AM	B65198
Ethylbenzene	ND	0.19		mg/Kg	5	12/16/2019 10:35:50 AM	B65198
Xylenes, Total	ND	0.38		mg/Kg	5	12/16/2019 10:35:50 AM	B65198
Surr: 4-Bromofluorobenzene	94.5	80-120		%Rec	5	12/16/2019 10:35:50 AM	B65198

Refer to the QC Summary report and sample login checklist for flagged QC data and preservation information.

<b>Qualifiers:</b>	*	Value exceeds Maximum Contaminant Level.	B	Analyte detected in the associated Method Blank
	D	Sample Diluted Due to Matrix	E	Value above quantitation range
	H	Holding times for preparation or analysis exceeded	J	Analyte detected below quantitation limits
	ND	Not Detected at the Reporting Limit	P	Sample pH Not In Range
	PQL	Practical Quantitative Limit	RL	Reporting Limit
	S	% Recovery outside of range due to dilution or matrix		

Page 4 of 9

**QC SUMMARY REPORT****Hall Environmental Analysis Laboratory, Inc.**

WO#: 1912768

17-Dec-19

**Client:** ENSOLUM  
**Project:** Lateral 2C 55

Sample ID: <b>MB-49353</b>	SampType: <b>mblk</b>	TestCode: <b>EPA Method 300.0: Anions</b>								
Client ID: <b>PBS</b>	Batch ID: <b>49353</b>	RunNo: <b>65201</b>								
Prep Date: <b>12/16/2019</b>	Analysis Date: <b>12/16/2019</b>	SeqNo: <b>2239011</b>	Units: <b>mg/Kg</b>							
Analyte	Result	PQL	SPK value	SPK Ref Val	%REC	LowLimit	HighLimit	%RPD	RPDLimit	Qual
Chloride	ND	1.5								

Sample ID: <b>LCS-49353</b>	SampType: <b>lcs</b>	TestCode: <b>EPA Method 300.0: Anions</b>								
Client ID: <b>LCSS</b>	Batch ID: <b>49353</b>	RunNo: <b>65201</b>								
Prep Date: <b>12/16/2019</b>	Analysis Date: <b>12/16/2019</b>	SeqNo: <b>2239012</b>	Units: <b>mg/Kg</b>							
Analyte	Result	PQL	SPK value	SPK Ref Val	%REC	LowLimit	HighLimit	%RPD	RPDLimit	Qual
Chloride	14	1.5	15.00	0	96.3	90	110			

**Qualifiers:**

\* Value exceeds Maximum Contaminant Level.  
D Sample Diluted Due to Matrix  
H Holding times for preparation or analysis exceeded  
ND Not Detected at the Reporting Limit  
PQL Practical Quantitative Limit  
S % Recovery outside of range due to dilution or matrix

B Analyte detected in the associated Method Blank  
E Value above quantitation range  
J Analyte detected below quantitation limits  
P Sample pH Not In Range  
RL Reporting Limit

**QC SUMMARY REPORT****Hall Environmental Analysis Laboratory, Inc.**

WO#: 1912768

17-Dec-19

**Client:** ENSOLUM  
**Project:** Lateral 2C 55

Sample ID: <b>LCS-49351</b>	SampType: <b>LCS</b>		TestCode: <b>EPA Method 8015M/D: Diesel Range Organics</b>							
Client ID: <b>LCSS</b>	Batch ID: <b>49351</b>		RunNo: <b>65199</b>							
Prep Date: <b>12/16/2019</b>	Analysis Date: <b>12/16/2019</b>		SeqNo: <b>2238107</b>		Units: <b>mg/Kg</b>					
Analyte	Result	PQL	SPK value	SPK Ref Val	%REC	LowLimit	HighLimit	%RPD	RPDLimit	Qual
Diesel Range Organics (DRO)	46	10	50.00	0	91.9	63.9	124			
Surr: DNOP	4.0		5.000		79.3	70	130			

Sample ID: <b>MB-49351</b>	SampType: <b>MBLK</b>		TestCode: <b>EPA Method 8015M/D: Diesel Range Organics</b>							
Client ID: <b>PBS</b>	Batch ID: <b>49351</b>		RunNo: <b>65199</b>							
Prep Date: <b>12/16/2019</b>	Analysis Date: <b>12/16/2019</b>		SeqNo: <b>2238108</b>		Units: <b>mg/Kg</b>					
Analyte	Result	PQL	SPK value	SPK Ref Val	%REC	LowLimit	HighLimit	%RPD	RPDLimit	Qual
Diesel Range Organics (DRO)	ND	10								
Motor Oil Range Organics (MRO)	ND	50								
Surr: DNOP	8.2		10.00		82.1	70	130			

Sample ID: <b>1912768-001AMS</b>	SampType: <b>MS</b>		TestCode: <b>EPA Method 8015M/D: Diesel Range Organics</b>							
Client ID: <b>S-15</b>	Batch ID: <b>49351</b>		RunNo: <b>65199</b>							
Prep Date: <b>12/16/2019</b>	Analysis Date: <b>12/16/2019</b>		SeqNo: <b>2238608</b>		Units: <b>mg/Kg</b>					
Analyte	Result	PQL	SPK value	SPK Ref Val	%REC	LowLimit	HighLimit	%RPD	RPDLimit	Qual
Diesel Range Organics (DRO)	51	9.7	48.36	5.785	92.7	57	142			
Surr: DNOP	5.0		4.836		104	70	130			

Sample ID: <b>1912768-001AMSD</b>	SampType: <b>MSD</b>		TestCode: <b>EPA Method 8015M/D: Diesel Range Organics</b>							
Client ID: <b>S-15</b>	Batch ID: <b>49351</b>		RunNo: <b>65199</b>							
Prep Date: <b>12/16/2019</b>	Analysis Date: <b>12/16/2019</b>		SeqNo: <b>2238609</b>		Units: <b>mg/Kg</b>					
Analyte	Result	PQL	SPK value	SPK Ref Val	%REC	LowLimit	HighLimit	%RPD	RPDLimit	Qual
Diesel Range Organics (DRO)	48	9.8	49.21	5.785	85.2	57	142	5.87	20	
Surr: DNOP	4.2		4.921		86.4	70	130	0	0	

**Qualifiers:**

\* Value exceeds Maximum Contaminant Level.  
D Sample Diluted Due to Matrix  
H Holding times for preparation or analysis exceeded  
ND Not Detected at the Reporting Limit  
PQL Practical Quantitative Limit  
S % Recovery outside of range due to dilution or matrix

B Analyte detected in the associated Method Blank  
E Value above quantitation range  
J Analyte detected below quantitation limits  
P Sample pH Not In Range  
RL Reporting Limit

**QC SUMMARY REPORT****Hall Environmental Analysis Laboratory, Inc.**

WO#: 1912768

17-Dec-19

**Client:** ENSOLUM  
**Project:** Lateral 2C 55

Sample ID: <b>rb</b>	SampType: <b>MBLK</b>			TestCode: <b>EPA Method 8015D: Gasoline Range</b>						
Client ID: <b>PBS</b>	Batch ID: <b>G65198</b>			RunNo: <b>65198</b>						
Prep Date:	Analysis Date: <b>12/16/2019</b>			SeqNo: <b>2238489</b>		Units: <b>mg/Kg</b>				
Analyte	Result	PQL	SPK value	SPK Ref Val	%REC	LowLimit	HighLimit	%RPD	RPDLimit	Qual
Gasoline Range Organics (GRO)	ND	5.0								
Surr: BFB	880		1000		87.8	66.6	105			

Sample ID: <b>2.5ug gro lcs</b>	SampType: <b>LCS</b>			TestCode: <b>EPA Method 8015D: Gasoline Range</b>						
Client ID: <b>LCSS</b>	Batch ID: <b>G65198</b>			RunNo: <b>65198</b>						
Prep Date:	Analysis Date: <b>12/16/2019</b>			SeqNo: <b>2238490</b>		Units: <b>mg/Kg</b>				
Analyte	Result	PQL	SPK value	SPK Ref Val	%REC	LowLimit	HighLimit	%RPD	RPDLimit	Qual
Gasoline Range Organics (GRO)	23	5.0	25.00	0	92.9	80	120			
Surr: BFB	980		1000		98.4	66.6	105			

Sample ID: <b>1912768-001ams</b>	SampType: <b>MS</b>			TestCode: <b>EPA Method 8015D: Gasoline Range</b>						
Client ID: <b>S-15</b>	Batch ID: <b>G65198</b>			RunNo: <b>65198</b>						
Prep Date:	Analysis Date: <b>12/16/2019</b>			SeqNo: <b>2238491</b>		Units: <b>mg/Kg</b>				
Analyte	Result	PQL	SPK value	SPK Ref Val	%REC	LowLimit	HighLimit	%RPD	RPDLimit	Qual
Gasoline Range Organics (GRO)	91	21	106.8	0	85.5	69.1	142			
Surr: BFB	3800		4270		89.7	66.6	105			

Sample ID: <b>1912768-001amsd</b>	SampType: <b>MSD</b>			TestCode: <b>EPA Method 8015D: Gasoline Range</b>						
Client ID: <b>S-15</b>	Batch ID: <b>G65198</b>			RunNo: <b>65198</b>						
Prep Date:	Analysis Date: <b>12/16/2019</b>			SeqNo: <b>2238492</b>		Units: <b>mg/Kg</b>				
Analyte	Result	PQL	SPK value	SPK Ref Val	%REC	LowLimit	HighLimit	%RPD	RPDLimit	Qual
Gasoline Range Organics (GRO)	89	21	106.8	0	83.7	69.1	142	2.08	20	
Surr: BFB	3800		4270		88.8	66.6	105	0	0	

Sample ID: <b>mb-49336</b>	SampType: <b>MBLK</b>			TestCode: <b>EPA Method 8015D: Gasoline Range</b>						
Client ID: <b>PBS</b>	Batch ID: <b>49336</b>			RunNo: <b>65198</b>						
Prep Date: <b>12/13/2019</b>	Analysis Date: <b>12/16/2019</b>			SeqNo: <b>2238493</b>		Units: <b>%Rec</b>				
Analyte	Result	PQL	SPK value	SPK Ref Val	%REC	LowLimit	HighLimit	%RPD	RPDLimit	Qual
Surr: BFB	860		1000		85.6	66.6	105			

Sample ID: <b>lcs-49336</b>	SampType: <b>LCS</b>			TestCode: <b>EPA Method 8015D: Gasoline Range</b>						
Client ID: <b>LCSS</b>	Batch ID: <b>49336</b>			RunNo: <b>65198</b>						
Prep Date: <b>12/13/2019</b>	Analysis Date: <b>12/16/2019</b>			SeqNo: <b>2238494</b>		Units: <b>%Rec</b>				
Analyte	Result	PQL	SPK value	SPK Ref Val	%REC	LowLimit	HighLimit	%RPD	RPDLimit	Qual
Surr: BFB	870		1000		86.7	66.6	105			

**Qualifiers:**

\* Value exceeds Maximum Contaminant Level.  
D Sample Diluted Due to Matrix  
H Holding times for preparation or analysis exceeded  
ND Not Detected at the Reporting Limit  
PQL Practical Quantitative Limit  
S % Recovery outside of range due to dilution or matrix

B Analyte detected in the associated Method Blank  
E Value above quantitation range  
J Analyte detected below quantitation limits  
P Sample pH Not In Range  
RL Reporting Limit

**QC SUMMARY REPORT****Hall Environmental Analysis Laboratory, Inc.**

WO#: 1912768

17-Dec-19

**Client:** ENSOLUM  
**Project:** Lateral 2C 55

Sample ID: <b>rb</b>	SampType: <b>MBLK</b>		TestCode: <b>EPA Method 8021B: Volatiles</b>							
Client ID: <b>PBS</b>	Batch ID: <b>B65198</b>		RunNo: <b>65198</b>							
Prep Date:	Analysis Date: <b>12/16/2019</b>		SeqNo: <b>2238521</b>		Units: <b>mg/Kg</b>					
Analyte	Result	PQL	SPK value	SPK Ref Val	%REC	LowLimit	HighLimit	%RPD	RPDLimit	Qual
Benzene	ND	0.025								
Toluene	ND	0.050								
Ethylbenzene	ND	0.050								
Xylenes, Total	ND	0.10								
Surr: 4-Bromofluorobenzene	1.1		1.000		109	80	120			

Sample ID: <b>100ng btex lcs</b>	SampType: <b>LCS</b>		TestCode: <b>EPA Method 8021B: Volatiles</b>							
Client ID: <b>LCSS</b>	Batch ID: <b>B65198</b>		RunNo: <b>65198</b>							
Prep Date:	Analysis Date: <b>12/16/2019</b>		SeqNo: <b>2238522</b>		Units: <b>mg/Kg</b>					
Analyte	Result	PQL	SPK value	SPK Ref Val	%REC	LowLimit	HighLimit	%RPD	RPDLimit	Qual
Benzene	0.93	0.025	1.000	0	93.3	80	120			
Toluene	0.93	0.050	1.000	0	93.1	80	120			
Ethylbenzene	0.94	0.050	1.000	0	94.2	80	120			
Xylenes, Total	2.8	0.10	3.000	0	94.0	80	120			
Surr: 4-Bromofluorobenzene	1.1		1.000		109	80	120			

Sample ID: <b>1912768-002ams</b>	SampType: <b>MS</b>		TestCode: <b>EPA Method 8021B: Volatiles</b>							
Client ID: <b>S-16</b>	Batch ID: <b>B65198</b>		RunNo: <b>65198</b>							
Prep Date:	Analysis Date: <b>12/16/2019</b>		SeqNo: <b>2238523</b>		Units: <b>mg/Kg</b>					
Analyte	Result	PQL	SPK value	SPK Ref Val	%REC	LowLimit	HighLimit	%RPD	RPDLimit	Qual
Benzene	7.6	0.20	8.039	0	94.0	76	123			
Toluene	7.6	0.40	8.039	0.05675	93.3	80.3	127			
Ethylbenzene	7.5	0.40	8.039	0	93.1	80.2	131			
Xylenes, Total	23	0.80	24.12	0	93.5	78	133			
Surr: 4-Bromofluorobenzene	8.5		8.039		106	80	120			

Sample ID: <b>1912768-002amsd</b>	SampType: <b>MSD</b>		TestCode: <b>EPA Method 8021B: Volatiles</b>							
Client ID: <b>S-16</b>	Batch ID: <b>B65198</b>		RunNo: <b>65198</b>							
Prep Date:	Analysis Date: <b>12/17/2019</b>		SeqNo: <b>2238524</b>		Units: <b>mg/Kg</b>					
Analyte	Result	PQL	SPK value	SPK Ref Val	%REC	LowLimit	HighLimit	%RPD	RPDLimit	Qual
Benzene	7.3	0.20	8.039	0	90.6	76	123	3.68	20	
Toluene	7.3	0.40	8.039	0.05675	89.6	80.3	127	3.97	20	
Ethylbenzene	7.3	0.40	8.039	0	90.3	80.2	131	3.05	20	
Xylenes, Total	22	0.80	24.12	0	90.3	78	133	3.42	20	
Surr: 4-Bromofluorobenzene	8.2		8.039		103	80	120	0	0	

**Qualifiers:**

\* Value exceeds Maximum Contaminant Level.  
D Sample Diluted Due to Matrix  
H Holding times for preparation or analysis exceeded  
ND Not Detected at the Reporting Limit  
PQL Practical Quantitative Limit  
S % Recovery outside of range due to dilution or matrix

B Analyte detected in the associated Method Blank  
E Value above quantitation range  
J Analyte detected below quantitation limits  
P Sample pH Not In Range  
RL Reporting Limit

**QC SUMMARY REPORT****Hall Environmental Analysis Laboratory, Inc.**

WO#: 1912768

17-Dec-19

**Client:** ENSOLUM  
**Project:** Lateral 2C 55

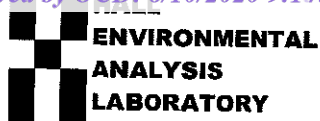
Sample ID: <b>mb-49336</b>	SampType: <b>MBLK</b>				TestCode: <b>EPA Method 8021B: Volatiles</b>					
Client ID: <b>PBS</b>	Batch ID: <b>49336</b>				RunNo: <b>65198</b>					
Prep Date: <b>12/13/2019</b>	Analysis Date: <b>12/16/2019</b>				SeqNo: <b>2238525</b>	Units: <b>%Rec</b>				
Analyte	Result	PQL	SPK value	SPK Ref Val	%REC	LowLimit	HighLimit	%RPD	RPDLimit	Qual
Surr: 4-Bromofluorobenzene	1.1		1.000		105	80	120			

Sample ID: <b>LCS-49336</b>	SampType: <b>LCS</b>				TestCode: <b>EPA Method 8021B: Volatiles</b>					
Client ID: <b>LCSS</b>	Batch ID: <b>49336</b>				RunNo: <b>65198</b>					
Prep Date: <b>12/13/2019</b>	Analysis Date: <b>12/16/2019</b>				SeqNo: <b>2238526</b>	Units: <b>%Rec</b>				
Analyte	Result	PQL	SPK value	SPK Ref Val	%REC	LowLimit	HighLimit	%RPD	RPDLimit	Qual
Surr: 4-Bromofluorobenzene	0.92		1.000		91.8	80	120			

**Qualifiers:**

\* Value exceeds Maximum Contaminant Level.  
D Sample Diluted Due to Matrix  
H Holding times for preparation or analysis exceeded  
ND Not Detected at the Reporting Limit  
PQL Practical Quantitative Limit  
S % Recovery outside of range due to dilution or matrix

B Analyte detected in the associated Method Blank  
E Value above quantitation range  
J Analyte detected below quantitation limits  
P Sample pH Not In Range  
RL Reporting Limit



## Sample Log-In Check List

Client Name: ENSOLUM AZTEC

Work Order Number: 1912768

RcptNo: 1

Received By: Anne Thorne

12/14/2019 10:15:00 AM

Completed By: Anne Thorne

12/16/2019 7:34:22 AM

Reviewed By: DAD 12/16/19

Chain of Custody

1. Is Chain of Custody sufficiently complete? Yes ☒ No ☐ Not Present ☐
2. How was the sample delivered? Courier

Log In

3. Was an attempt made to cool the samples? Yes ☒ No ☐ NA ☐
4. Were all samples received at a temperature of  $>0^{\circ}\text{C}$  to  $6.0^{\circ}\text{C}$ ? Yes ☒ No ☐ NA ☐
5. Sample(s) in proper container(s)? Yes ☒ No ☐
6. Sufficient sample volume for indicated test(s)? Yes ☒ No ☐
7. Are samples (except VOA and ONG) properly preserved? Yes ☒ No ☐
8. Was preservative added to bottles? Yes ☐ No ☒ NA ☐
9. Received at least 1 vial with headspace  $<1/4"$  for AQ VOA? Yes ☐ No ☐ NA ☒
10. Were any sample containers received broken? Yes ☐ No ☒
11. Does paperwork match bottle labels?  
(Note discrepancies on chain of custody) Yes ☒ No ☐
12. Are matrices correctly identified on Chain of Custody? Yes ☒ No ☐
13. Is it clear what analyses were requested? Yes ☒ No ☐
14. Were all holding times able to be met?  
(If no, notify customer for authorization.) Yes ☒ No ☐

# of preserved  
bottles checked  
for pH:

(&lt;2 or &gt;12 unless noted)

Adjusted? \_\_\_\_\_

Checked by: AD 12/16/19Special Handling (if applicable)

15. Was client notified of all discrepancies with this order? Yes ☐ No ☐ NA ☒

Person Notified: \_\_\_\_\_

Date: \_\_\_\_\_

By Whom: \_\_\_\_\_

Via: ☐ eMail ☐ Phone ☐ Fax ☐ In Person

Regarding: \_\_\_\_\_

Client Instructions: \_\_\_\_\_

16. Additional remarks:

CUSTODY SEALS INTACT ON SOIL JARS/at 12/14.19

17. Cooler Information

Cooler No	Temp °C	Condition	Seal Intact	Seal No	Seal Date	Signed By
1	1.5	Good	Yes			

## Chain-of-Custody Record

Client: Ensalum Turn-Around Time: 1000

☐ Standard ☒ Rush 12-16-19

Project Name: Letoral 22-55

Project #: 05A1226080

Project Manager: B Summers

QA/QC Package: ☐ Standard ☐ Level 4 (Full Validation)

Accreditation: ☐ Az Compliance ☐ NELAC ☐ Other

email or Fax#: 87410

Phone #: 87410

Sampler: 1000

On Ice: ☒ Yes ☐ No

# of Coolers: 1

Cooler Temp (including dry): 1.5 ± 0.5 = 1.5

HEAL No. 1912-768

Preservative Type Coal

Container Type and # 4oz 15oz

Date	Time	Matrix	Sample Name
12/13/19	1000	S	S-15
12/13/19	1005	S	S-16
12/13/19	1010	S	S-17
12/13/19	1015	S	S-18

Date	Time	Relinquished by:	Relinquished by:
12/13/19	1000	<u>[Signature]</u>	<u>[Signature]</u>
12/13/19	1005	<u>[Signature]</u>	<u>[Signature]</u>
12/13/19	1010	<u>[Signature]</u>	<u>[Signature]</u>
12/13/19	1015	<u>[Signature]</u>	<u>[Signature]</u>

Received by: Charlotte Walker Date: 12/13/19 Time: 1350

Received by: [Signature] Date: 12/14/19 Time: 1015



## HALL ENVIRONMENTAL ANALYSIS LABORATORY

www.hallenvironmental.com

4901 Hawkins NE - Albuquerque, NM 87109

Tel. 505-345-3975 Fax 505-345-4107

## Analysis Request

TPH:8015D(GRO / DRO / MRO)	8081 Pesticides/8082 PCBs	EDB (Method 504.1)	PAHs by 8310 or 8270SIMS	RCRA 8 Metals	Cd, Pb, NO <sub>2</sub> , NO <sub>3</sub> , PO <sub>4</sub> , SO <sub>4</sub>	8260 (VOA)	8270 (Semi-VOA)	Total Coliform (Present/Absent)
<input checked="" type="checkbox"/>	<input checked="" type="checkbox"/>	<input checked="" type="checkbox"/>	<input checked="" type="checkbox"/>	<input checked="" type="checkbox"/>	<input checked="" type="checkbox"/>	<input checked="" type="checkbox"/>	<input checked="" type="checkbox"/>	<input checked="" type="checkbox"/>

Remarks: Don Tom Long

Ray Ray RB 21200

AFB # N44328

If necessary, samples submitted to Hall Environmental may be subcontracted to other accredited laboratories. This serves as notice of this possibility. Any sub-contracted data will be clearly notated on the analytical report.



## APPENDIX G

### Regulatory Correspondence

---

**From:** [Smith, Cory, EMNRD](#)  
**To:** [Long, Thomas](#); [kwchristesen@blm.gov](mailto:kwchristesen@blm.gov)  
**Cc:** [Stone, Brian](#)  
**Subject:** RE: Lateral 2C-55 - UL C Section 30 T25N R7W; 36.378303, -107.616105  
**Date:** Wednesday, December 4, 2019 7:10:22 AM

---

Tom,

OCD approves of the below Sampling plan, Please include this approval in your final report.

Thank you,

Cory Smith  
Environmental Specialist  
Oil Conservation Division  
Energy, Minerals, & Natural Resources  
1000 Rio Brazos, Aztec, NM 87410  
(505)334-6178 ext 115  
[cory.smith@state.nm.us](mailto:cory.smith@state.nm.us)

---

**From:** Long, Thomas <[tjlong@eprod.com](mailto:tjlong@eprod.com)>  
**Sent:** Tuesday, December 3, 2019 3:03 PM  
**To:** Smith, Cory, EMNRD <[Cory.Smith@state.nm.us](mailto:Cory.Smith@state.nm.us)>; [kwchristesen@blm.gov](mailto:kwchristesen@blm.gov)  
**Cc:** Stone, Brian <[bmstone@eprod.com](mailto:bmstone@eprod.com)>  
**Subject:** [EXT] Lateral 2C-55 - UL C Section 30 T25N R7W; 36.378303, -107.616105

Cory/Kenneth,

Enterprise would like to request an alternate sampling interval from the required 200 square foot soil sampling interval . The proposed sampling is the following:

1. 4 (0-9' and 9-18') – 5 point composite from each of the long walls (east and west walls). Four samples total from each long wall.
2. 2 Base samples
3. 2 (0-9' and 9-18') – 5 point composite from each of the short walls (north and south). Two samples total from each short wall.

I have attached a picture and site sketch. Please acknowledge if you agree with this proposed sampling interval.

If you have any questions, please call or email.

**Thomas J. Long**  
**Senior Environmental Scientist**  
**Enterprise Products Company**  
**614 Reilly Ave.**  
**Farmington, New Mexico 87401**  
**505-599-2286 (office)**  
**505-215-4727 (Cell)**  
[tjlong@eprod.com](mailto:tjlong@eprod.com)



---

**From:** Chad D'Apointi <[cdaponti@ensolum.com](mailto:cdaponti@ensolum.com)>  
**Sent:** Tuesday, December 3, 2019 2:31 PM  
**To:** Long, Thomas <[tjlong@eprod.com](mailto:tjlong@eprod.com)>  
**Cc:** Kyle Summers <[ksummers@ensolum.com](mailto:ksummers@ensolum.com)>  
**Subject:** Lateral 2C-55

Attached is the site drawing with proposed sample locations, we are looking at 14 samples all together.

Let me know if you would like to sample any different.

L-33'  
W-20'  
D-18'

**Chad D'Apointi**  
Ensolum, LLC | Environmental & Hydrogeologic Consultants  
606 South Rio Grande, Suite A | Aztec, NM 87410  
970.216.5235  
[cdaponti@ensolum.com](mailto:cdaponti@ensolum.com)  
[www.ensolum.com](http://www.ensolum.com)



---

This message (including any attachments) is confidential and intended for a specific individual and purpose. If you are not the intended recipient, please notify the sender immediately and delete this message.

**From:** [Long, Thomas](#)  
**To:** "[Smith, Cory, EMNRD \(Cory.Smith@state.nm.us\)](#)"; [kwchristesen@blm.gov](#)  
**Cc:** [Stone, Brian](#); [Abbott, Patrick](#)  
**Subject:** FW: Lateral 2C-55 - UL C Section 30 T25N R7W; 36.378303, -107.616105  
**Attachments:** [Lat 2C-55 Site Drawing 3.pdf](#)  
[Lateral 2C 55.pdf](#)  
[Rpt\\_1912266\\_Lateral\\_2C\\_55\\_Final\\_v1.pdf](#)

---

Cory/Kenneth,

Please find the attached site sketch and lab reports for the Lateral 2C-55 excavation. All samples results are below NMOCD Tier I standards. Enterprise will backfill the excavation with clean imported fill material. If you have any questions, please call or email.

**Thomas J. Long**  
**Senior Environmental Scientist**  
**Enterprise Products Company**  
**614 Reilly Ave.**  
**Farmington, New Mexico 87401**  
**505-599-2286 (office)**  
**505-215-4727 (Cell)**  
[tjlong@eprod.com](mailto:tjlong@eprod.com)



---

**From:** Long, Thomas <[tjlong@eprod.com](mailto:tjlong@eprod.com)>  
**Sent:** Friday, December 13, 2019 7:19 AM  
**To:** Smith, Cory, EMNRD <[Cory.Smith@state.nm.us](mailto:Cory.Smith@state.nm.us)>  
**Cc:** [kwchristesen@blm.gov](#); Stone, Brian <[bmstone@eprod.com](mailto:bmstone@eprod.com)>  
**Subject:** Re: Lateral 2C-55 - UL C Section 30 T25N R7W; 36.378303, -107.616105

Cory/Kenneth,

We will be collecting four samples today.

Tom Long

On Dec 13, 2019, at 7:14 AM, Smith, Cory, EMNRD <[Cory.Smith@state.nm.us](mailto:Cory.Smith@state.nm.us)> wrote:

Tom,

How many samples are expected to be collected today?

Cory Smith  
Environmental Specialist  
Oil Conservation Division  
Energy, Minerals, & Natural Resources  
1000 Rio Brazos, Aztec, NM 87410  
(505)334-6178 ext 115  
[cory.smith@state.nm.us](mailto:cory.smith@state.nm.us)

---

**From:** Long, Thomas <[tjlong@eprod.com](mailto:tjlong@eprod.com)>  
**Sent:** Thursday, December 12, 2019 11:55 AM  
**To:** Smith, Cory, EMNRD <[Cory.Smith@state.nm.us](mailto:Cory.Smith@state.nm.us)>; [kwchristesen@blm.gov](#)  
**Cc:** Stone, Brian <[bmstone@eprod.com](mailto:bmstone@eprod.com)>

**Subject:** [EXT] Fwd: Lateral 2C-55 - UL C Section 30 T25N R7W; 36.378303, -107.616105

Cory/Kenneth,

This email is to notify you that Enterprise will be collecting soil samples for laboratory analysis at the Lateral 2C-55 excavation tomorrow, December 13, 2019 at 10:00 a.m. If you have any questions, please call or email.

Tom Long

Begin forwarded message:

From: "Long, Thomas" <[tjlong@eprod.com](mailto:tjlong@eprod.com)>  
Date: December 4, 2019 at 7:28:00 AM MST  
To: "Smith, Cory, EMNRD" <[Cory.Smith@state.nm.us](mailto:Cory.Smith@state.nm.us)>, "[kwchristesen@blm.gov](mailto:kwchristesen@blm.gov)" <[kwchristesen@blm.gov](mailto:kwchristesen@blm.gov)>  
Cc: "Stone, Brian" <[bmstone@eprod.com](mailto:bmstone@eprod.com)>  
Subject: RE: Lateral 2C-55 - UL C Section 30 T25N R7W; 36.378303, -107.616105

Cory/Kenneth,

We will not be sampling today as that the weather has created adverse road conditions. We will attempt to sample tomorrow December 5, 2019 at 11:00 a.m. If you have any questions, please all or email.

Thomas J. Long  
Senior Environmental Scientist  
Enterprise Products Company  
614 Reilly Ave.  
Farmington, New Mexico 87401  
505-599-2286 (office)  
505-215-4727 (Cell)  
[tjlong@eprod.com](mailto:tjlong@eprod.com)<<mailto:tjlong@eprod.com>>

[logo]

From: Smith, Cory, EMNRD <[Cory.Smith@state.nm.us](mailto:Cory.Smith@state.nm.us)>  
Sent: Wednesday, December 4, 2019 7:10 AM  
To: Long, Thomas <[tjlong@eprod.com](mailto:tjlong@eprod.com)>; [kwchristesen@blm.gov](mailto:kwchristesen@blm.gov)  
Cc: Stone, Brian <[bmstone@eprod.com](mailto:bmstone@eprod.com)>  
Subject: RE: Lateral 2C-55 - UL C Section 30 T25N R7W; 36.378303, -107.616105

Tom,

OCD approves of the below Sampling plan, Please include this approval in your final report.

Thank you,

Cory Smith  
Environmental Specialist  
Oil Conservation Division  
Energy, Minerals, & Natural Resources  
1000 Rio Brazos, Aztec, NM 87410  
(505)334-6178 ext 115  
[cory.smith@state.nm.us](mailto:cory.smith@state.nm.us)<<mailto:cory.smith@state.nm.us>>

From: Long, Thomas <[tjlong@eprod.com](mailto:tjlong@eprod.com)<<mailto:tjlong@eprod.com>>>

Sent: Tuesday, December 3, 2019 3:03 PM  
To: Smith, Cory, EMNRD <[Cory.Smith@state.nm.us](mailto:Cory.Smith@state.nm.us)<<mailto:Cory.Smith@state.nm.us>>>;  
[kwchristesen@blm.gov](mailto:kwchristesen@blm.gov)<<mailto:kwchristesen@blm.gov>>  
Cc: Stone, Brian <[bmstone@eprod.com](mailto:bmstone@eprod.com)<<mailto:bmstone@eprod.com>>>  
Subject: [EXT] Lateral 2C-55 - UL C Section 30 T25N R7W; 36.378303, -107.616105

Cory/Kenneth,

Enterprise would like to request an alternate sampling interval from the required 200 square foot soil sampling interval . The proposed sampling is the following:

1. 4 (0-9' and 9-18') – 5 point composite from each of the long walls (east and west walls). Four samples total from each long wall.
2. 2 Base samples
3. 2 (0-9' and 9-18') – 5 point composite from each of the short walls (north and south). Two samples total from each short wall.

I have attached a picture and site sketch. Please acknowledge if you agree with this proposed sampling interval.

If you have any questions, please call or email.

Thomas J. Long  
Senior Environmental Scientist  
Enterprise Products Company  
614 Reilly Ave.  
Farmington, New Mexico 87401  
505-599-2286 (office)  
505-215-4727 (Cell)  
[tjlong@eprod.com](mailto:tjlong@eprod.com)<<mailto:tjlong@eprod.com>>

[logo]

From: Chad D'Aponti <[cdaponti@ensolum.com](mailto:cdaponti@ensolum.com)<<mailto:cdaponti@ensolum.com>>>  
Sent: Tuesday, December 3, 2019 2:31 PM  
To: Long, Thomas <[tjlong@eprod.com](mailto:tjlong@eprod.com)<<mailto:tjlong@eprod.com>>>  
Cc: Kyle Summers <[ksummers@ensolum.com](mailto:ksummers@ensolum.com)<<mailto:ksummers@ensolum.com>>>  
Subject: Lateral 2C-55

Attached is the site drawing with proposed sample locations, we are looking at 14 samples all together.

Let me know if you would like to sample any different.

L-33'  
W-20'  
D-18'

Chad D'Aponti  
Ensolum, LLC | Environmental & Hydrogeologic Consultants  
606 South Rio Grande, Suite A | Aztec, NM 87410  
970.216.5235  
[cdaponti@ensolum.com](mailto:cdaponti@ensolum.com)<<mailto:cdaponti@ensolum.com>>  
[www.ensolum.com](https://urldefense.proofpoint.com/v2/url?u=http-)<<https://urldefense.proofpoint.com/v2/url?u=http->

[3A\\_www.ensolum.com\\_&d=DwMFAg&c=6zpojTijpf-nAlEmob0p1NKp0XhcK4lau5zCDf5n3i4&r=ddvZ1T9a\\_VnOax5oP1jlng&m=Pnns9qTx5mafiYQF1fhqhgyDvGveKBzsrxFT1i9Uc-k&s=CCum9-nwAN5kAz1asZZMrhADrQuA7uB36SdBtKhyA8w&e=>](http://www.ensolum.com_&d=DwMFAg&c=6zpojTijpf-nAlEmob0p1NKp0XhcK4lau5zCDf5n3i4&r=ddvZ1T9a_VnOax5oP1jlng&m=Pnns9qTx5mafiYQF1fhqhgyDvGveKBzsrxFT1i9Uc-k&s=CCum9-nwAN5kAz1asZZMrhADrQuA7uB36SdBtKhyA8w&e=>)

[Ensolum - Report Logo - Header]

---

This message (including any attachments) is confidential and intended for a specific individual and purpose. If you are not the intended recipient, please notify the sender immediately and delete this message.

**District I**  
1625 N. French Dr., Hobbs, NM 88240  
Phone:(575) 393-6161 Fax:(575) 393-0720  
**District II**  
811 S. First St., Artesia, NM 88210  
Phone:(575) 748-1283 Fax:(575) 748-9720  
**District III**  
1000 Rio Brazos Rd., Aztec, NM 87410  
Phone:(505) 334-6178 Fax:(505) 334-6170  
**District IV**  
1220 S. St Francis Dr., Santa Fe, NM 87505  
Phone:(505) 476-3470 Fax:(505) 476-3462

State of New Mexico  
Energy, Minerals and Natural Resources  
Oil Conservation Division  
1220 S. St Francis Dr.  
Santa Fe, NM 87505

CONDITIONS  
  
Action 9573

CONDITIONS

Operator: Enterprise Field Services, LLC PO Box 4324 Houston, TX 77210	OGRID: 241602
	Action Number: 9573
	Action Type: [C-141] Release Corrective Action (C-141)

CONDITIONS

Created By	Condition	Condition Date
kcollins	None	7/16/2021