



PHONE (575) 397-6388 • FAX (575) 397- 0397 • 1324 W. MARLAND • P.O. BOX 805 • HOBBS, NM 88241-0805
E-MAIL: cbrunson@bbcinternational.com

DELINEATION/REMEDATION WORKPLAN

OXY – SHU RMT INJ BLD #3 (Leak Date: 6/9/21)

Incident Reference #: NAPP2116655568

This delineation workplan and remediation proposal addresses the releases associated with Incident Reference #: NAPP2116655568.

The following information includes:

1. Appropriate completed and signed C-141 pages.
2. Scaled digital site map with spill area demarcated and leak point identified along with sample point locations and areas of remediation at appropriate depths.
3. GPS information for sample points and sample methodology.
4. Depth to groundwater information (i.e., pdf of OSE search results, USGS search results).
5. Watercourse/features map within 1000 feet.
6. BLM Cave Karst map.
7. FEMA National Flood map.
8. Laboratory analysis results summary table and original laboratory analysis reports.
9. Potentially other pertinent information as necessary for site specific purposes.

Based on the information included in this package and the NMOCD rules, the following remediation is proposed:

OXY will excavate the spill area as depicted on the following site diagram.

The leak area near SP1, SP3 – SP5, SP7 – SP9, and SP12 – SP14 (GREEN shade on diagram) will be excavated to a depth of 1 foot. The leak area near SP2 (BLUE shade on diagram) will be excavated to a depth of 2 feet. The leak area near SP6, SP10, and SP11 (WHITE shade on diagram) will require zero remediation.

OXY will collect sidewall and bottom confirmation samples every 200 square feet. The estimated amount of soil to be excavated is 977 cubic yards. The remediation will be completed within 90 days of approval.

The entire site will then be backfilled with clean soil and revegetated (if warranted) to the standards of the appropriate regulatory agency or private surface owner.

All excavated materials will be disposed of at an NMOCD-approved disposal facility.

Form C-141

Page 3

State of New Mexico
Oil Conservation Division

Incident ID	nAPP2116655568
District RP	
Facility ID	
Application ID	

Site Assessment/Characterization*This information must be provided to the appropriate district office no later than 90 days after the release discovery date.*

What is the shallowest depth to groundwater beneath the area affected by the release?	28 (ft bgs)
Did this release impact groundwater or surface water?	<input type="checkbox"/> Yes <input checked="" type="checkbox"/> No
Are the lateral extents of the release within 300 feet of a continuously flowing watercourse or any other significant watercourse?	<input type="checkbox"/> Yes <input checked="" type="checkbox"/> No
Are the lateral extents of the release within 200 feet of any lakebed, sinkhole, or playa lake (measured from the ordinary high-water mark)?	<input type="checkbox"/> Yes <input checked="" type="checkbox"/> No
Are the lateral extents of the release within 300 feet of an occupied permanent residence, school, hospital, institution, or church?	<input type="checkbox"/> Yes <input checked="" type="checkbox"/> No
Are the lateral extents of the release within 500 horizontal feet of a spring or a private domestic fresh water well used by less than five households for domestic or stock watering purposes?	<input type="checkbox"/> Yes <input checked="" type="checkbox"/> No
Are the lateral extents of the release within 1000 feet of any other fresh water well or spring?	<input type="checkbox"/> Yes <input checked="" type="checkbox"/> No
Are the lateral extents of the release within incorporated municipal boundaries or within a defined municipal fresh water well field?	<input type="checkbox"/> Yes <input checked="" type="checkbox"/> No
Are the lateral extents of the release within 300 feet of a wetland?	<input type="checkbox"/> Yes <input checked="" type="checkbox"/> No
Are the lateral extents of the release overlying a subsurface mine?	<input type="checkbox"/> Yes <input checked="" type="checkbox"/> No
Are the lateral extents of the release overlying an unstable area such as karst geology?	<input type="checkbox"/> Yes <input checked="" type="checkbox"/> No
Are the lateral extents of the release within a 100-year floodplain?	<input type="checkbox"/> Yes <input checked="" type="checkbox"/> No
Did the release impact areas not on an exploration, development, production, or storage site?	<input type="checkbox"/> Yes <input checked="" type="checkbox"/> No

Attach a comprehensive report (electronic submittals in .pdf format are preferred) demonstrating the lateral and vertical extents of soil contamination associated with the release have been determined. Refer to 19.15.29.11 NMAC for specifics.

Characterization Report Checklist: *Each of the following items must be included in the report.*

- ☒ Scaled site map showing impacted area, surface features, subsurface features, delineation points, and monitoring wells.
- ☐ Field data
- ☒ Data table of soil contaminant concentration data
- ☒ Depth to water determination
- ☒ Determination of water sources and significant watercourses within ½-mile of the lateral extents of the release
- ☐ Boring or excavation logs
- ☐ Photographs including date and GIS information
- ☒ Topographic/Aerial maps
- ☒ Laboratory data including chain of custody

If the site characterization report does not include completed efforts at remediation of the release, the report must include a proposed remediation plan. That plan must include the estimated volume of material to be remediated, the proposed remediation technique, proposed sampling plan and methods, anticipated timelines for beginning and completing the remediation. The closure criteria for a release are contained in Table 1 of 19.15.29.12 NMAC, however, use of the table is modified by site- and release-specific parameters.

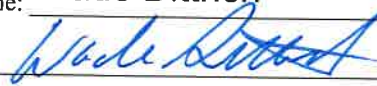
Form C-141

State of New Mexico
Oil Conservation Division

Page 4

Incident ID	nAPP2116655568
District RP	
Facility ID	
Application ID	

I hereby certify that the information given above is true and complete to the best of my knowledge and understand that pursuant to OCD rules and regulations all operators are required to report and/or file certain release notifications and perform corrective actions for releases which may endanger public health or the environment. The acceptance of a C-141 report by the OCD does not relieve the operator of liability should their operations have failed to adequately investigate and remediate contamination that pose a threat to groundwater, surface water, human health or the environment. In addition, OCD acceptance of a C-141 report does not relieve the operator of responsibility for compliance with any other federal, state, or local laws and/or regulations.

Printed Name: Wade DittrichTitle: Environmental CoordinatorSignature: Date: 10-26-21email: wade_dittrich@oxy.comTelephone: (575) 390-2828**OCD Only**

Received by: _____

Date: _____

Form C-141

State of New Mexico
Oil Conservation Division

Page 5

Incident ID	nAPP2116655568
District RP	
Facility ID	
Application ID	

Remediation Plan


Remediation Plan Checklist: *Each of the following items must be included in the plan.*


- ☒ Detailed description of proposed remediation technique
- ☒ Scaled sitemap with GPS coordinates showing delineation points
- ☒ Estimated volume of material to be remediated
- ☒ Closure criteria is to Table 1 specifications subject to 19.15.29.12(C)(4) NMAC
- ☒ Proposed schedule for remediation (note if remediation plan timeline is more than 90 days OCD approval is required)

Deferral Requests Only: *Each of the following items must be confirmed as part of any request for deferral of remediation.*

- ☐ Contamination must be in areas immediately under or around production equipment where remediation could cause a major facility deconstruction.
- ☐ Extents of contamination must be fully delineated.
- ☐ Contamination does not cause an imminent risk to human health, the environment, or groundwater.

I hereby certify that the information given above is true and complete to the best of my knowledge and understand that pursuant to OCD rules and regulations all operators are required to report and/or file certain release notifications and perform corrective actions for releases which may endanger public health or the environment. The acceptance of a C-141 report by the OCD does not relieve the operator of liability should their operations have failed to adequately investigate and remediate contamination that pose a threat to groundwater, surface water, human health or the environment. In addition, OCD acceptance of a C-141 report does not relieve the operator of responsibility for compliance with any other federal, state, or local laws and/or regulations.

Printed Name: Wade Dittrich Title: Environmental Coordinator
Signature:  Date: 10-26-21
email: wade_dittrich@oxy.com Telephone: (575) 390-2828

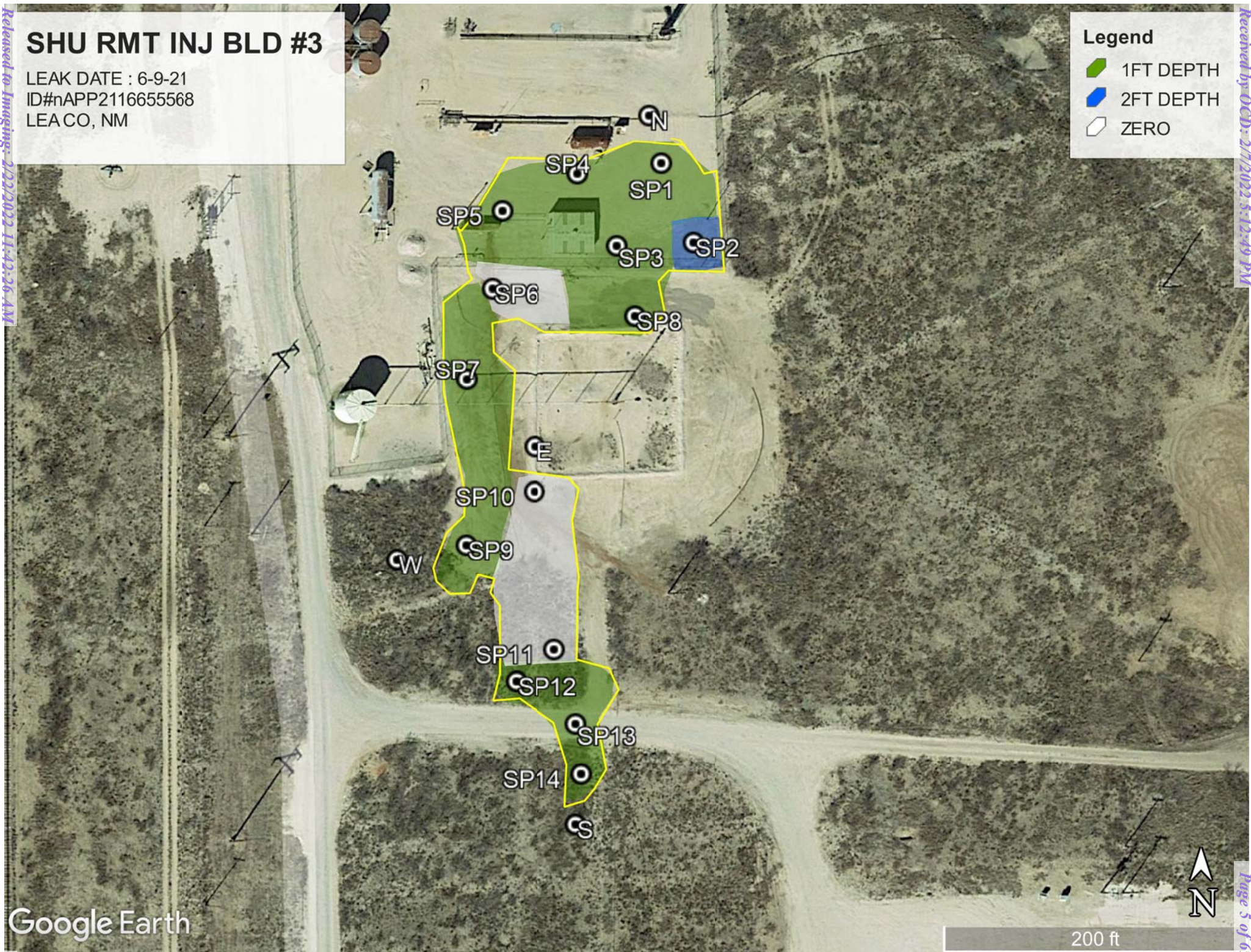
OCD OnlyReceived by: Chad Hensley Date: 02/22/2022☒ Approved ☐ Approved with Attached Conditions of Approval ☐ Denied ☐ Deferral ApprovedSignature:  Date: 02/22/2022

SHU RMT INJ BLD #3

LEAK DATE : 6-9-21
ID#nAPP2116655568
LEA CO, NM

Legend

- 1FT DEPTH
- 2FT DEPTH
- ZERO



SHU RMT INJ BLDG 3 (6-9-21)

LEAK AREA WITH SAMPLE POINTS

SP N	N32.679590	W103.142252
SP E	N32.678992	W103.142497
SP W	N32.678788	W103.142792
SP S	N32.678309	W103.142409
SP1	N32.679504	W103.142226
SP2	N32.679360	W103.142157
SP3	N32.679354	W103.142321
SP4	N32.679485	W103.142405
SP5	N32.679417	W103.142567
SP6	N32.679277	W103.142588
SP7	N32.679114	W103.142643
SP8	N32.679228	W103.142282
SP9	N32.678814	W103.142644
SP10	N32.678911	W103.142498
SP11	N32.678625	W103.142455
SP12	N32.678568	W103.142537
SP13	N32.678491	W103.142409
SP14	N32.678400	W103.142397



USGS Home
Contact USGS
Search USGS

National Water Information System: Web Interface

[USGS Water Resources](#)

Data Category:


Groundwater

Geographic Area:

New Mexico

GO

Click to hide News Bulletins

- Explore the *NEW* [USGS National Water Dashboard](#) interactive map to access real-time water data from over 13,500 stations nationwide.
- [Full News](#) 

Groundwater levels for New Mexico

Click to hide state-specific text



Important: [Next Generation Monitoring Location Page](#)

Search Results -- 1 sites found

Agency code = usgs

site_no list =

- 323948103080501

Minimum number of levels = 1

[Save file of selected sites](#) to local disk for future upload

USGS 323948103080501 19S.38E.10.43341

Available data for this site

Groundwater: Field measurements

GO

Lea County, New Mexico

Hydrologic Unit Code 12080003

Latitude 32°39'48", Longitude 103°08'05" NAD27

Land-surface elevation 3,601 feet above NAVD88

The depth of the well is 58 feet below land surface.

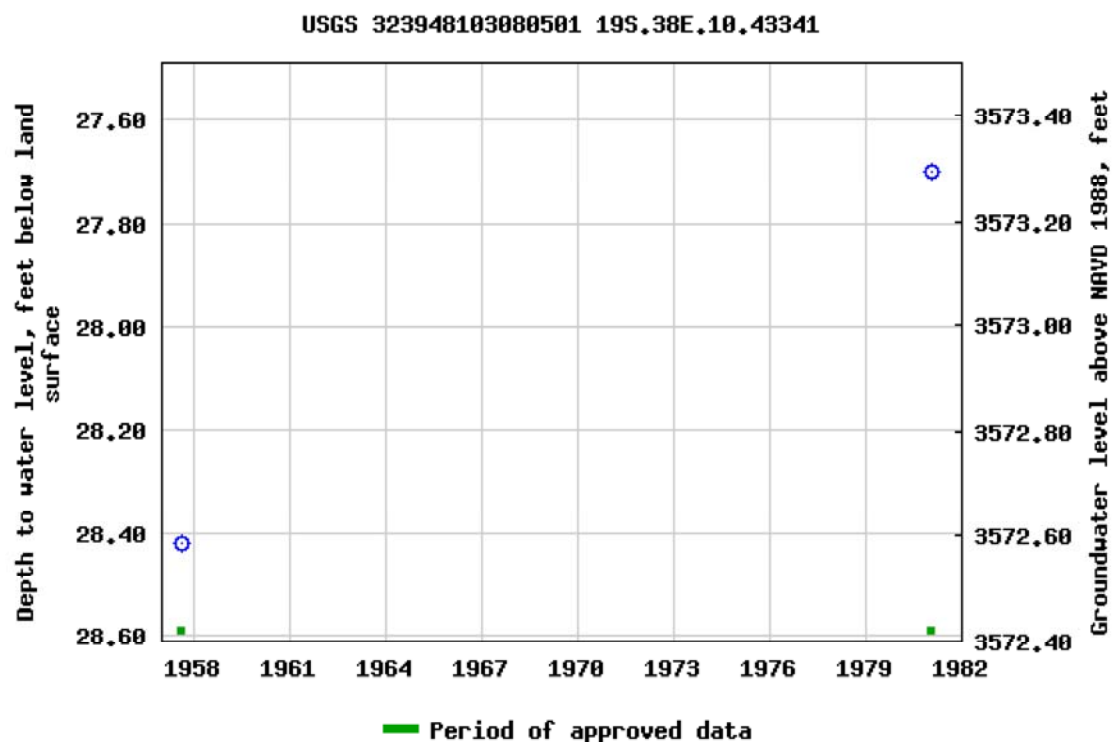
This well is completed in the High Plains aquifer (N100HGHPLN) national aquifer.

This well is completed in the Ogallala Formation (121OGLL) local aquifer.

Output formats

[Table of data](#)

[Tab-separated data](#)

[Graph of data](#)[Reselect period](#)

Breaks in the plot represent a gap of at least one year between field measurements.

[Download a presentation-quality graph](#)

[Questions about sites/data?](#)

[Feedback on this web site](#)

[Automated retrievals](#)

[Help](#)

[Data Tips](#)

[Explanation of terms](#)

[Subscribe for system changes](#)

[News](#)

[Accessibility](#)

[FOIA](#)

[Privacy](#)

[Policies and Notices](#)

[U.S. Department of the Interior](#) | [U.S. Geological Survey](#)

Title: Groundwater for New Mexico: Water Levels

URL: <https://nwis.waterdata.usgs.gov/nm/nwis/gwlevels?>

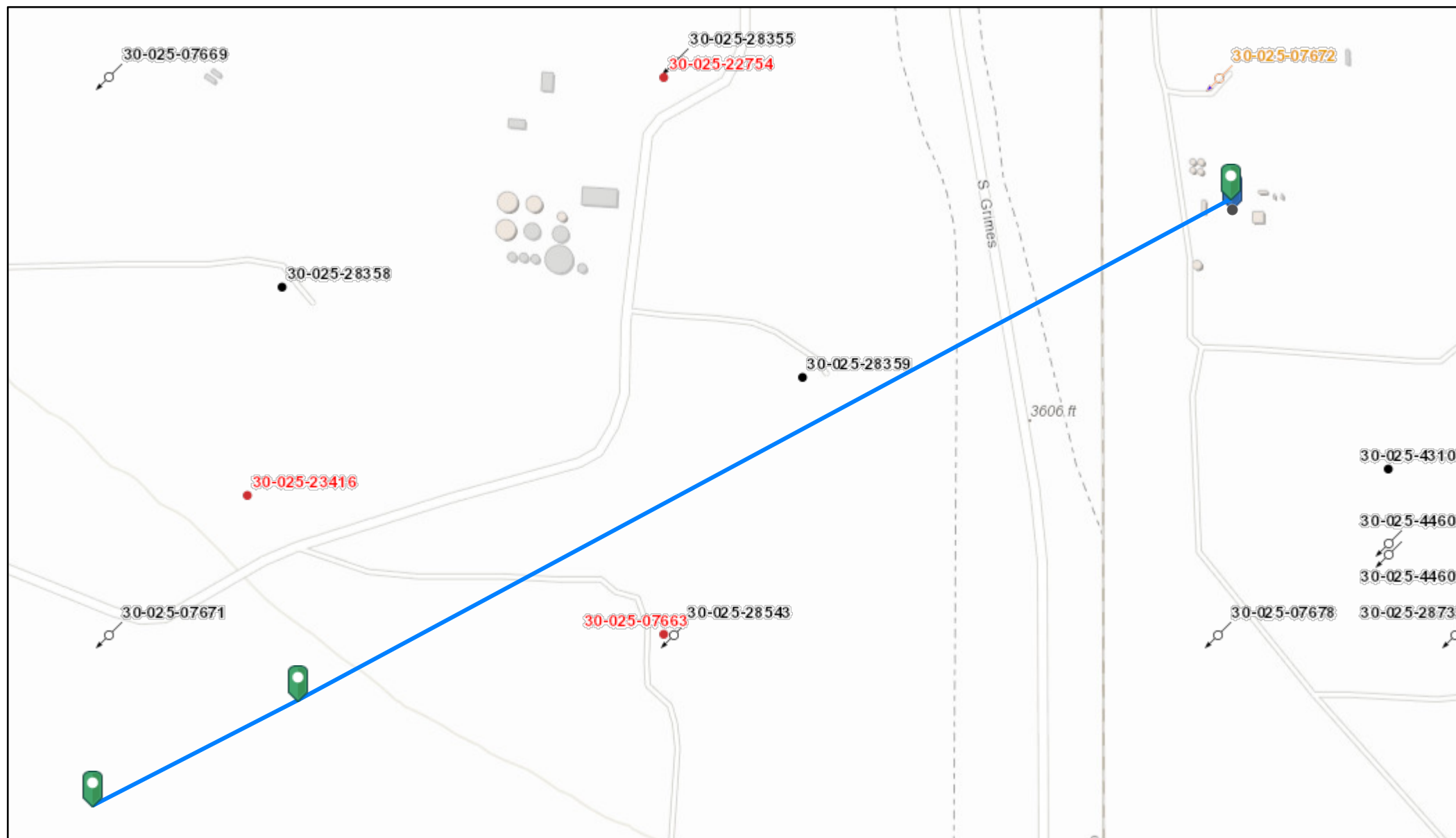
Page Contact Information: [New Mexico Water Data Maintainer](#)

Page Last Modified: 2022-02-04 18:25:35 EST

0.59 0.47 nadww01



OCD Well Locations



11/2/2021 2:49:21 PM

Wells - Large Scale



CO2, Cancelled



Gas, Active



Gas, Temporarily Abandoned



Injection, Plugged



undefined



CO2, New



Gas, Cancelled



Injection, Active



Miscellaneous



CO2, Plugged



Gas, New



Injection, Cancelled



CO2, Active



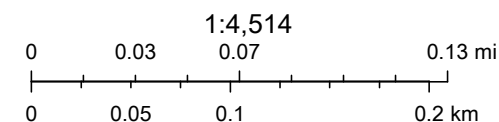
CO2, Temporarily Abandoned



Gas, Plugged



Injection, New



City of Hobbs, Bureau of Land Management, Texas Parks & Wildlife, Esri, HERE, Garmin, INCREMENT P, USGS, EPA, USDA, Oil Conservation Division of the New Mexico Energy, Minerals and Natural Resources Department., OCD



Oxy-Shu Rmt Inj BLDG3

Leak Date: 6/9/21

Lea County, NM

BLM CAVE KARST MAP

Legend

-  Leak Area
-  Low



National Flood Hazard Layer FIRMette



Legend

SEE FIS REPORT FOR DETAILED LEGEND AND INDEX MAP FOR FIRM PANEL LAYOUT

SPECIAL FLOOD HAZARD AREAS

- Without Base Flood Elevation (BFE)
Zone A, V, AE, AH, VE, AH
- Regulatory Floodway

OTHER AREAS OF FLOOD HAZARD

- 0.2% Annual Chance Flood Hazard, Area of 1% annual chance flood with average depth less than one foot or with drainage areas of less than one square mile Zone X
- Future Conditions 1% Annual Chance Flood Hazard Zone X
- Area with Reduced Flood Risk due to Levee. See Notes. Zone X
- Area with Flood Risk due to Levee Zone C

OTHER AREAS

- NO SCREEN Area of Minimal Flood Hazard Zone X
- Effective LOMRS
- Area of Undetermined Flood Hazard Zone X
- GENERAL STRUCTURES
- Channel, Culvert, or Storm Sewer
- Levee, Dike, or Floodwall

OTHER FEATURES

- 202 Cross Sections with 1% Annual Chance Water Surface Elevation
- 17.5 Coastal Transect
- Base Flood Elevation Line (BFE)
- Limit of Study
- Jurisdiction Boundary
- Coastal Transect Baseline
- Profile Baseline
- Hydrographic Feature

MAP PANELS

- Digital Data Available
- No Digital Data Available
- Unmapped

The pin displayed on the map is an approximate point selected by the user and does not represent an authoritative property location.

This map complies with FEMA's standards for the use of digital flood maps if it is not void as described below. The basemap shown complies with FEMA's basemap accuracy standards.

The flood hazard information is derived directly from the authoritative NFHL web services provided by FEMA. This map was exported on 10/26/2021 at 12:38 PM and does not reflect changes or amendments subsequent to this date and time. The NFHL and effective information may change or become superseded by new data over time.

This map image is void if the one or more of the following map elements do not appear: basemap imagery, flood zone labels, legend, scale bar, map creation date, community identifiers, FIRM panel number, and FIRM effective date. Map images for unmapped and unmapped areas cannot be used for regulatory purposes.

		Sample ID	SP N @ SURFACE	SP E @ SURFACE	SP W @ SURFACE	SP S @ SURFACE
Analyte	Method	Date	6/17/21	6/17/21	6/17/21	6/17/21
			mg/kg	mg/kg	mg/kg	mg/kg
Benzene	BTEX 8021B		<0.050	<0.050	<0.050	<0.050
Toluene	BTEX 8021B		<0.050	<0.050	<0.050	<0.050
Ethylbenzene	BTEX 8021B		<0.050	<0.050	<0.050	<0.050
Total Xylenes	BTEX 8021B		<0.150	<0.150	<0.150	<0.150
Total BTEX	BTEX 8021B		<0.300	<0.300	<0.300	<0.300
Chloride	SM4500Cl-B		64.0	<16.0	48.0	<16.0
GRO	TPH 8015M		<10.0	<10.0	<10.0	<10.0
DRO	TPH 8015M		<10.0	10.7	<10.0	12.4
EXT DRO	TPH 8015M		<10.0	12.9	<10.0	24.0

		Sample ID	SP 1 @ SURFACE	SP 1 @ 1'	SP 1 @ 2'
Analyte	Method	Date	6/17/21	6/17/21	6/17/21
			mg/kg	mg/kg	mg/kg
Benzene	BTEX 8021B		<0.050	<0.050	N/A
Toluene	BTEX 8021B		<0.050	<0.050	N/A
Ethylbenzene	BTEX 8021B		<0.050	<0.050	N/A
Total Xylenes	BTEX 8021B		<0.150	<0.150	N/A
Total BTEX	BTEX 8021B		<0.300	<0.300	N/A
Chloride	SM4500Cl-B		1090	240	192
GRO	TPH 8015M		<10.0	<10.0	N/A
DRO	TPH 8015M		75.3	<10.0	N/A
EXT DRO	TPH 8015M		34.2	<10.0	N/A

		Sample ID	SP 2 @ SURFACE	SP 2 @ 1'	SP 2 @ 2'
Analyte	Method	Date	6/17/21	6/17/21	6/17/21
			mg/kg	mg/kg	mg/kg
Benzene	BTEX 8021B		<0.050	<0.050	N/A
Toluene	BTEX 8021B		<0.050	<0.050	N/A
Ethylbenzene	BTEX 8021B		<0.050	<0.050	N/A
Total Xylenes	BTEX 8021B		<0.150	<0.150	N/A
Total BTEX	BTEX 8021B		<0.300	<0.300	N/A
Chloride	SM4500Cl-B		3760	624	32.0
GRO	TPH 8015M		<10.0	<10.0	N/A
DRO	TPH 8015M		56.5	<10.0	N/A
EXT DRO	TPH 8015M		19.9	<10.0	N/A

		Sample ID	SP 3 @ SURFACE	SP 3 @ 1'	SP 3 @ 2'	SP 3 @ 3'
Analyte	Method	Date	6/17/21	6/17/21	6/17/21	6/17/21
			mg/kg	mg/kg	mg/kg	mg/kg
Benzene	BTEX 8021B		<0.050	<0.050	N/A	N/A
Toluene	BTEX 8021B		<0.050	<0.050	N/A	N/A
Ethylbenzene	BTEX 8021B		<0.050	<0.050	N/A	N/A
Total Xylenes	BTEX 8021B		<0.150	<0.150	N/A	N/A
Total BTEX	BTEX 8021B		<0.300	<0.300	N/A	N/A
Chloride	SM4500Cl-B		2120	160	240	272
GRO	TPH 8015M		<10.0	<10.0	N/A	N/A
DRO	TPH 8015M		123	<10.0	N/A	N/A
EXT DRO	TPH 8015M		47.0	<10.0	N/A	N/A

		Sample ID	SP 4@ SURFACE	SP 4 @ 1'
Analyte	Method	Date	6/17/21	6/17/21
			mg/kg	mg/kg
Benzene	BTEX 8021B		<0.050	<0.050
Toluene	BTEX 8021B		<0.050	<0.050
Ethylbenzene	BTEX 8021B		<0.050	<0.050
Total Xylenes	BTEX 8021B		<0.150	<0.150
Total BTEX	BTEX 8021B		<0.300	<0.300
Chloride	SM4500Cl-B		2080	160
GRO	TPH 8015M		<10.0	<10.0
DRO	TPH 8015M		33.9	<10.0
EXT DRO	TPH 8015M		14.8	<10.0

		Sample ID	SP 5@ SURFACE	SP 5 @ 1'	SP 5 @ 2'
Analyte	Method	Date	6/17/21	6/17/21	6/17/21
			mg/kg	mg/kg	mg/kg
Benzene	BTEX 8021B		<0.050	<0.050	N/A
Toluene	BTEX 8021B		<0.050	<0.050	N/A
Ethylbenzene	BTEX 8021B		<0.050	<0.050	N/A
Total Xylenes	BTEX 8021B		<0.150	<0.150	N/A
Total BTEX	BTEX 8021B		<0.300	<0.300	N/A
Chloride	SM4500Cl-B		7460	208	160
GRO	TPH 8015M		<10.0	<10.0	N/A
DRO	TPH 8015M		<10.0	<10.0	N/A
EXT DRO	TPH 8015M		<10.0	<10.0	N/A

		Sample ID	SP 6@ SURFACE	SP 6 @ 1'	SP 6 @ 2'
Analyte	Method	Date	6/17/21	6/17/21	6/17/21
			mg/kg	mg/kg	mg/kg
Benzene	BTEX 8021B		<0.050	<0.050	N/A
Toluene	BTEX 8021B		<0.050	<0.050	N/A
Ethylbenzene	BTEX 8021B		<0.050	<0.050	N/A
Total Xylenes	BTEX 8021B		<0.150	<0.150	N/A
Total BTEX	BTEX 8021B		<0.300	<0.300	N/A
Chloride	SM4500Cl-B		48.0	32.0	32.0
GRO	TPH 8015M		<10.0	<10.0	N/A
DRO	TPH 8015M		<10.0	<10.0	N/A
EXT DRO	TPH 8015M		<10.0	<10.0	N/A

		Sample ID	SP 7@ SURFACE	SP 7 @ 1'	SP 7 @ 2'	SP 7 @ 3'
Analyte	Method	Date	6/17/21	6/17/21	6/17/21	6/17/21
			mg/kg	mg/kg	mg/kg	mg/kg
Benzene	BTEX 8021B		<0.050	<0.050	N/A	N/A
Toluene	BTEX 8021B		<0.050	<0.050	N/A	N/A
Ethylbenzene	BTEX 8021B		<0.050	<0.050	N/A	N/A
Total Xylenes	BTEX 8021B		<0.150	<0.150	N/A	N/A
Total BTEX	BTEX 8021B		<0.300	<0.300	N/A	N/A
Chloride	SM4500Cl-B		11200	528	512	16.0
GRO	TPH 8015M		<10.0	<10.0	N/A	N/A
DRO	TPH 8015M		113	<10.0	N/A	N/A
EXT DRO	TPH 8015M		55.3	<10.0	N/A	N/A

		Sample ID	SP 8@ SURFACE	SP 8@ 1'	SP 8@ 2'
Analyte	Method	Date	6/17/21	6/17/21	6/17/21
			mg/kg	mg/kg	mg/kg
Benzene	BTEX 8021B		<0.050	<0.050	N/A
Toluene	BTEX 8021B		<0.050	<0.050	N/A
Ethylbenzene	BTEX 8021B		<0.050	<0.050	N/A
Total Xylenes	BTEX 8021B		<0.150	<0.150	N/A
Total BTEX	BTEX 8021B		<0.300	<0.300	N/A
Chloride	SM4500Cl-B		3680	176	192
GRO	TPH 8015M		<10.0	<10.0	N/A
DRO	TPH 8015M		<10.0	<10.0	N/A
EXT DRO	TPH 8015M		<10.0	<10.0	N/A

		Sample ID	SP 9@ SURFACE	SP 9@ 1'	SP 9@ 2'	SP 9@ 3'
Analyte	Method	Date	6/18/21	6/18/21	6/18/21	6/18/21
			mg/kg	mg/kg	mg/kg	mg/kg
Benzene	BTEX 8021B		<0.050	<0.050	N/A	N/A
Toluene	BTEX 8021B		<0.050	<0.050	N/A	N/A
Ethylbenzene	BTEX 8021B		<0.050	<0.050	N/A	N/A
Total Xylenes	BTEX 8021B		<0.150	<0.150	N/A	N/A
Total BTEX	BTEX 8021B		<0.300	<0.300	N/A	N/A
Chloride	SM4500Cl-B		3840	336	272	192
GRO	TPH 8015M		<10.0	<10.0	N/A	N/A
DRO	TPH 8015M		100	<10.0	N/A	N/A
EXT DRO	TPH 8015M		<10.0	<10.0	N/A	N/A

		Sample ID	SP 10@ SURFACE	SP 10@ 1'	SP 10@ 2'	SP 10@ 3'
Analyte	Method	Date	6/18/21	6/18/21	6/18/21	6/18/21
			mg/kg	mg/kg	mg/kg	mg/kg
Benzene	BTEX 8021B		<0.050	<0.050	N/A	N/A
Toluene	BTEX 8021B		<0.050	<0.050	N/A	N/A
Ethylbenzene	BTEX 8021B		<0.050	<0.050	N/A	N/A
Total Xylenes	BTEX 8021B		<0.150	<0.150	N/A	N/A
Total BTEX	BTEX 8021B		<0.300	<0.300	N/A	N/A
Chloride	SM4500Cl-B		320	64.0	32.0	32.0
GRO	TPH 8015M		<10.0	<10.0	N/A	N/A
DRO	TPH 8015M		<10.0	<10.0	N/A	N/A
EXT DRO	TPH 8015M		<10.0	<10.0	N/A	N/A

		Sample ID	SP 11@ SURFACE	SP 11@ 1'	SP 11@ 2'	SP 11@ 3'
Analyte	Method	Date	6/18/21	6/18/21	6/18/21	6/18/21
			mg/kg	mg/kg	mg/kg	mg/kg
Benzene	BTEX 8021B		<0.050	<0.050	N/A	N/A
Toluene	BTEX 8021B		<0.050	<0.050	N/A	N/A
Ethylbenzene	BTEX 8021B		<0.050	<0.050	N/A	N/A
Total Xylenes	BTEX 8021B		<0.150	<0.150	N/A	N/A
Total BTEX	BTEX 8021B		<0.300	<0.300	N/A	N/A
Chloride	SM4500Cl-B		512	432	384	32.0
GRO	TPH 8015M		<10.0	<10.0	N/A	N/A
DRO	TPH 8015M		<10.0	<10.0	N/A	N/A
EXT DRO	TPH 8015M		<10.0	<10.0	N/A	N/A

		Sample ID	SP 12@ SURFACE	SP 12@ 1'	SP 12@ 2'	SP 12@ 3'
Analyte	Method	Date	6/18/21	6/18/21	6/18/21	6/18/21
			mg/kg	mg/kg	mg/kg	mg/kg
Benzene	BTEX 8021B		<0.050	<0.050	N/A	N/A
Toluene	BTEX 8021B		<0.050	<0.050	N/A	N/A
Ethylbenzene	BTEX 8021B		<0.050	<0.050	N/A	N/A
Total Xylenes	BTEX 8021B		<0.150	<0.150	N/A	N/A
Total BTEX	BTEX 8021B		<0.300	<0.300	N/A	N/A
Chloride	SM4500Cl-B		400	544	240	240
GRO	TPH 8015M		<10.0	<10.0	N/A	N/A
DRO	TPH 8015M		366	<10.0	N/A	N/A
EXT DRO	TPH 8015M		299	<10.0	N/A	N/A

		Sample ID	SP 13@ SURFACE	SP 13@ 1'	SP 13@ 2'	SP 13@ 3'	SP 13@ 4'
Analyte	Method	Date	6/18/21	6/18/21	6/18/21	6/18/21	6/18/21
			mg/kg	mg/kg	mg/kg	mg/kg	mg/kg
Benzene	BTEX 8021B		<0.050	<0.050	N/A	N/A	N/A
Toluene	BTEX 8021B		<0.050	<0.050	N/A	N/A	N/A
Ethylbenzene	BTEX 8021B		<0.050	<0.050	N/A	N/A	N/A
Total Xylenes	BTEX 8021B		<0.150	<0.150	N/A	N/A	N/A
Total BTEX	BTEX 8021B		<0.300	<0.300	N/A	N/A	N/A
Chloride	SM4500Cl-B		416	448	400	240	288
GRO	TPH 8015M		<10.0	<10.0	N/A	N/A	N/A
DRO	TPH 8015M		159	<10.0	N/A	N/A	N/A
EXT DRO	TPH 8015M		139	<10.0	N/A	N/A	N/A

		Sample ID	SP 14@ SURFACE	SP 14@ 1'	SP 14@ 2'	SP 14@ 3'	SP 14@ 4'
Analyte	Method	Date	6/18/21	6/18/21	6/18/21	6/18/21	6/18/21
			mg/kg	mg/kg	mg/kg	mg/kg	mg/kg
Benzene	BTEX 8021B		<0.050	<0.050	N/A	N/A	N/A
Toluene	BTEX 8021B		<0.050	<0.050	N/A	N/A	N/A
Ethylbenzene	BTEX 8021B		<0.050	<0.050	N/A	N/A	N/A
Total Xylenes	BTEX 8021B		<0.150	<0.150	N/A	N/A	N/A
Total BTEX	BTEX 8021B		<0.300	<0.300	N/A	N/A	N/A
Chloride	SM4500Cl-B		464	448	400	272	352
GRO	TPH 8015M		<10.0	<10.0	N/A	N/A	N/A
DRO	TPH 8015M		166	<10.0	N/A	N/A	N/A
EXT DRO	TPH 8015M		139	<10.0	N/A	N/A	N/A



PHONE (575) 393-2326 ° 101 E. MARLAND ° HOBBS, NM 88240

June 28, 2021

Cliff Brunson

BBC International, Inc.

P.O. Box 805

Hobbs, NM 88241

RE: SHU RMT INJ BLDG 3

Enclosed are the results of analyses for samples received by the laboratory on 06/22/21 16:00.

Cardinal Laboratories is accredited through Texas NELAP under certificate number T104704398-20-13. Accreditation applies to drinking water, non-potable water and solid and chemical materials. All accredited analytes are denoted by an asterisk (*). For a complete list of accredited analytes and matrices visit the TCEQ website at www.tceq.texas.gov/field/qa/lab_accred_certif.html.

Cardinal Laboratories is accredited through the State of Colorado Department of Public Health and Environment for:

Method EPA 552.2	Haloacetic Acids (HAA-5)
Method EPA 524.2	Total Trihalomethanes (TTHM)
Method EPA 524.4	Regulated VOCs (V1, V2, V3)

Accreditation applies to public drinking water matrices.

This report meets NELAP requirements and is made up of a cover page, analytical results, and a copy of the original chain-of-custody. If you have any questions concerning this report, please feel free to contact me.

Sincerely,

A handwritten signature in black ink that reads "Celey D. Keene". The signature is written in a cursive, flowing style.

Celey D. Keene

Lab Director/Quality Manager



PHONE (575) 393-2326 ° 101 E. MARLAND ° HOBBS, NM 88240

Analytical Results For:

BBC International, Inc.
 Cliff Brunson
 P.O. Box 805
 Hobbs NM, 88241
 Fax To: (575) 397-0397

Received:	06/22/2021	Sampling Date:	06/17/2021
Reported:	06/28/2021	Sampling Type:	Soil
Project Name:	SHU RMT INJ BLDG 3	Sampling Condition:	Cool & Intact
Project Number:	(6-9-21)	Sample Received By:	Tamara Oldaker
Project Location:	OXY		

Sample ID: SP N @ SURFACE (H211622-01)

BTEX 8021B		mg/kg		Analyzed By: MS					
Analyte	Result	Reporting Limit	Analyzed	Method Blank	BS	% Recovery	True Value QC	RPD	Qualifier
Benzene*	<0.050	0.050	06/23/2021	ND	2.06	103	2.00	3.32	
Toluene*	<0.050	0.050	06/23/2021	ND	1.99	99.6	2.00	3.55	
Ethylbenzene*	<0.050	0.050	06/23/2021	ND	1.91	95.6	2.00	3.65	
Total Xylenes*	<0.150	0.150	06/23/2021	ND	5.80	96.6	6.00	3.67	
Total BTEX	<0.300	0.300	06/23/2021	ND					

Surrogate: 4-Bromofluorobenzene (PID) 112 % 69.9-140

Chloride, SM4500Cl-B		mg/kg		Analyzed By: GM						
Analyte	Result	Reporting Limit	Analyzed	Method Blank	BS	% Recovery	True Value QC	RPD	Qualifier	
Chloride	64.0	16.0	06/24/2021	ND	432	108	400	0.00		

TPH 8015M		mg/kg		Analyzed By: MS					
Analyte	Result	Reporting Limit	Analyzed	Method Blank	BS	% Recovery	True Value QC	RPD	Qualifier
GRO C6-C10*	<10.0	10.0	06/23/2021	ND	207	104	200	0.370	
DRO >C10-C28*	<10.0	10.0	06/23/2021	ND	226	113	200	1.77	
EXT DRO >C28-C36	<10.0	10.0	06/23/2021	ND					

Surrogate: 1-Chlorooctane 98.8 % 44.3-133

Surrogate: 1-Chlorooctadecane 99.8 % 38.9-142

Cardinal Laboratories

*=Accredited Analyte

PLEASE NOTE: Liability and Damages. Cardinal's liability and client's exclusive remedy for any claim arising, whether based in contract or tort, shall be limited to the amount paid by client for analyses. All claims, including those for negligence and any other cause whatsoever shall be deemed waived unless made in writing and received by Cardinal within thirty (30) days after completion of the applicable service. In no event shall Cardinal be liable for incidental or consequential damages, including, without limitation, business interruptions, loss of use, or loss of profits incurred by client, its subsidiaries, affiliates or successors arising out of or related to the performance of the services hereunder by Cardinal, regardless of whether such claim is based upon any of the above stated reasons or otherwise. Results relate only to the samples identified above. This report shall not be reproduced except in full with written approval of Cardinal Laboratories.

Celey D. Keene, Lab Director/Quality Manager



PHONE (575) 393-2326 ° 101 E. MARLAND ° HOBBS, NM 88240

Analytical Results For:

BBC International, Inc.
 Cliff Brunson
 P.O. Box 805
 Hobbs NM, 88241
 Fax To: (575) 397-0397

Received: 06/22/2021
 Reported: 06/28/2021
 Project Name: SHU RMT INJ BLDG 3
 Project Number: (6-9-21)
 Project Location: OXY

Sampling Date: 06/17/2021
 Sampling Type: Soil
 Sampling Condition: Cool & Intact
 Sample Received By: Tamara Oldaker

Sample ID: SP E @ SURFACE (H211622-02)

BTEx 8021B		mg/kg		Analyzed By: MS						
Analyte	Result	Reporting Limit	Analyzed	Method Blank	BS	% Recovery	True Value QC	RPD	Qualifier	
Benzene*	<0.050	0.050	06/23/2021	ND	2.06	103	2.00	3.32		
Toluene*	<0.050	0.050	06/23/2021	ND	1.99	99.6	2.00	3.55		
Ethylbenzene*	<0.050	0.050	06/23/2021	ND	1.91	95.6	2.00	3.65		
Total Xylenes*	<0.150	0.150	06/23/2021	ND	5.80	96.6	6.00	3.67		
Total BTEx	<0.300	0.300	06/23/2021	ND						

Surrogate: 4-Bromofluorobenzene (PID) 113 % 69.9-140

Chloride, SM4500CI-B		mg/kg		Analyzed By: GM						
Analyte	Result	Reporting Limit	Analyzed	Method Blank	BS	% Recovery	True Value QC	RPD	Qualifier	
Chloride	<16.0	16.0	06/24/2021	ND	432	108	400	0.00		

TPH 8015M		mg/kg		Analyzed By: MS					
Analyte	Result	Reporting Limit	Analyzed	Method Blank	BS	% Recovery	True Value QC	RPD	Qualifier
GRO C6-C10*	<10.0	10.0	06/24/2021	ND	207	104	200	0.370	
DRO >C10-C28*	10.7	10.0	06/24/2021	ND	226	113	200	1.77	
EXT DRO >C28-C36	12.9	10.0	06/24/2021	ND					

Surrogate: 1-Chlorooctane 99.4 % 44.3-133

Surrogate: 1-Chlorooctadecane 103 % 38.9-142

Cardinal Laboratories

*=Accredited Analyte

PLEASE NOTE: Liability and Damages. Cardinal's liability and client's exclusive remedy for any claim arising, whether based in contract or tort, shall be limited to the amount paid by client for analyses. All claims, including those for negligence and any other cause whatsoever shall be deemed waived unless made in writing and received by Cardinal within thirty (30) days after completion of the applicable service. In no event shall Cardinal be liable for incidental or consequential damages, including, without limitation, business interruptions, loss of use, or loss of profits incurred by client, its subsidiaries, affiliates or successors arising out of or related to the performance of the services hereunder by Cardinal, regardless of whether such claim is based upon any of the above stated reasons or otherwise. Results relate only to the samples identified above. This report shall not be reproduced except in full with written approval of Cardinal Laboratories.

Celey D. Keene, Lab Director/Quality Manager



PHONE (575) 393-2326 ° 101 E. MARLAND ° HOBBS, NM 88240

Analytical Results For:

BBC International, Inc.
 Cliff Brunson
 P.O. Box 805
 Hobbs NM, 88241
 Fax To: (575) 397-0397

Received: 06/22/2021
 Reported: 06/28/2021
 Project Name: SHU RMT INJ BLDG 3
 Project Number: (6-9-21)
 Project Location: OXY

Sampling Date: 06/17/2021
 Sampling Type: Soil
 Sampling Condition: Cool & Intact
 Sample Received By: Tamara Oldaker

Sample ID: SP W @ SURFACE (H211622-03)

BTEx 8021B		mg/kg		Analyzed By: MS						
Analyte	Result	Reporting Limit	Analyzed	Method Blank	BS	% Recovery	True Value QC	RPD	Qualifier	
Benzene*	<0.050	0.050	06/23/2021	ND	2.06	103	2.00	3.32		
Toluene*	<0.050	0.050	06/23/2021	ND	1.99	99.6	2.00	3.55		
Ethylbenzene*	<0.050	0.050	06/23/2021	ND	1.91	95.6	2.00	3.65		
Total Xylenes*	<0.150	0.150	06/23/2021	ND	5.80	96.6	6.00	3.67		
Total BTEx	<0.300	0.300	06/23/2021	ND						

Surrogate: 4-Bromofluorobenzene (PID) 112 % 69.9-140

Chloride, SM4500CI-B		mg/kg		Analyzed By: GM					
Analyte	Result	Reporting Limit	Analyzed	Method Blank	BS	% Recovery	True Value QC	RPD	Qualifier
Chloride	48.0	16.0	06/24/2021	ND	432	108	400	0.00	

TPH 8015M		mg/kg		Analyzed By: MS					
Analyte	Result	Reporting Limit	Analyzed	Method Blank	BS	% Recovery	True Value QC	RPD	Qualifier
GRO C6-C10*	<10.0	10.0	06/24/2021	ND	207	104	200	0.370	
DRO >C10-C28*	<10.0	10.0	06/24/2021	ND	226	113	200	1.77	
EXT DRO >C28-C36	<10.0	10.0	06/24/2021	ND					

Surrogate: 1-Chlorooctane 95.8 % 44.3-133

Surrogate: 1-Chlorooctadecane 97.9 % 38.9-142

Cardinal Laboratories

*=Accredited Analyte

PLEASE NOTE: Liability and Damages. Cardinal's liability and client's exclusive remedy for any claim arising, whether based in contract or tort, shall be limited to the amount paid by client for analyses. All claims, including those for negligence and any other cause whatsoever shall be deemed waived unless made in writing and received by Cardinal within thirty (30) days after completion of the applicable service. In no event shall Cardinal be liable for incidental or consequential damages, including, without limitation, business interruptions, loss of use, or loss of profits incurred by client, its subsidiaries, affiliates or successors arising out of or related to the performance of the services hereunder by Cardinal, regardless of whether such claim is based upon any of the above stated reasons or otherwise. Results relate only to the samples identified above. This report shall not be reproduced except in full with written approval of Cardinal Laboratories.

Celey D. Keene, Lab Director/Quality Manager



PHONE (575) 393-2326 ° 101 E. MARLAND ° HOBBS, NM 88240

Analytical Results For:

BBC International, Inc.
 Cliff Brunson
 P.O. Box 805
 Hobbs NM, 88241
 Fax To: (575) 397-0397

Received: 06/22/2021
 Reported: 06/28/2021
 Project Name: SHU RMT INJ BLDG 3
 Project Number: (6-9-21)
 Project Location: OXY

Sampling Date: 06/17/2021
 Sampling Type: Soil
 Sampling Condition: Cool & Intact
 Sample Received By: Tamara Oldaker

Sample ID: SP S @ SURFACE (H211622-04)

BTEx 8021B		mg/kg		Analyzed By: MS						
Analyte	Result	Reporting Limit	Analyzed	Method Blank	BS	% Recovery	True Value QC	RPD	Qualifier	
Benzene*	<0.050	0.050	06/23/2021	ND	2.06	103	2.00	3.32		
Toluene*	<0.050	0.050	06/23/2021	ND	1.99	99.6	2.00	3.55		
Ethylbenzene*	<0.050	0.050	06/23/2021	ND	1.91	95.6	2.00	3.65		
Total Xylenes*	<0.150	0.150	06/23/2021	ND	5.80	96.6	6.00	3.67		
Total BTEx	<0.300	0.300	06/23/2021	ND						

Surrogate: 4-Bromofluorobenzene (PID) 112 % 69.9-140

Chloride, SM4500CI-B		mg/kg		Analyzed By: GM						
Analyte	Result	Reporting Limit	Analyzed	Method Blank	BS	% Recovery	True Value QC	RPD	Qualifier	
Chloride	<16.0	16.0	06/24/2021	ND	432	108	400	0.00		

TPH 8015M		mg/kg		Analyzed By: MS					
Analyte	Result	Reporting Limit	Analyzed	Method Blank	BS	% Recovery	True Value QC	RPD	Qualifier
GRO C6-C10*	<10.0	10.0	06/24/2021	ND	207	104	200	0.370	
DRO >C10-C28*	12.4	10.0	06/24/2021	ND	226	113	200	1.77	
EXT DRO >C28-C36	24.0	10.0	06/24/2021	ND					

Surrogate: 1-Chlorooctane 103 % 44.3-133

Surrogate: 1-Chlorooctadecane 106 % 38.9-142

Cardinal Laboratories

*=Accredited Analyte

PLEASE NOTE: Liability and Damages. Cardinal's liability and client's exclusive remedy for any claim arising, whether based in contract or tort, shall be limited to the amount paid by client for analyses. All claims, including those for negligence and any other cause whatsoever shall be deemed waived unless made in writing and received by Cardinal within thirty (30) days after completion of the applicable service. In no event shall Cardinal be liable for incidental or consequential damages, including, without limitation, business interruptions, loss of use, or loss of profits incurred by client, its subsidiaries, affiliates or successors arising out of or related to the performance of the services hereunder by Cardinal, regardless of whether such claim is based upon any of the above stated reasons or otherwise. Results relate only to the samples identified above. This report shall not be reproduced except in full with written approval of Cardinal Laboratories.

Celey D. Keene, Lab Director/Quality Manager



PHONE (575) 393-2326 ° 101 E. MARLAND ° HOBBS, NM 88240

Analytical Results For:

BBC International, Inc.
 Cliff Brunson
 P.O. Box 805
 Hobbs NM, 88241
 Fax To: (575) 397-0397

Received: 06/22/2021
 Reported: 06/28/2021
 Project Name: SHU RMT INJ BLDG 3
 Project Number: (6-9-21)
 Project Location: OXY

Sampling Date: 06/17/2021
 Sampling Type: Soil
 Sampling Condition: Cool & Intact
 Sample Received By: Tamara Oldaker

Sample ID: SP 1 @ SURFACE (H211622-05)

BTEx 8021B		mg/kg		Analyzed By: MS					
Analyte	Result	Reporting Limit	Analyzed	Method Blank	BS	% Recovery	True Value QC	RPD	Qualifier
Benzene*	<0.050	0.050	06/23/2021	ND	2.06	103	2.00	3.32	
Toluene*	<0.050	0.050	06/23/2021	ND	1.99	99.6	2.00	3.55	
Ethylbenzene*	<0.050	0.050	06/23/2021	ND	1.91	95.6	2.00	3.65	
Total Xylenes*	<0.150	0.150	06/23/2021	ND	5.80	96.6	6.00	3.67	
Total BTEx	<0.300	0.300	06/23/2021	ND					

Surrogate: 4-Bromofluorobenzene (PID) 111 % 69.9-140

Chloride, SM4500CI-B		mg/kg		Analyzed By: GM						
Analyte	Result	Reporting Limit	Analyzed	Method Blank	BS	% Recovery	True Value QC	RPD	Qualifier	
Chloride	1090	16.0	06/24/2021	ND	432	108	400	0.00		

TPH 8015M		mg/kg		Analyzed By: MS					
Analyte	Result	Reporting Limit	Analyzed	Method Blank	BS	% Recovery	True Value QC	RPD	Qualifier
GRO C6-C10*	<10.0	10.0	06/24/2021	ND	207	104	200	0.370	
DRO >C10-C28*	75.3	10.0	06/24/2021	ND	226	113	200	1.77	
EXT DRO >C28-C36	34.2	10.0	06/24/2021	ND					

Surrogate: 1-Chlorooctane 95.5 % 44.3-133

Surrogate: 1-Chlorooctadecane 104 % 38.9-142

Cardinal Laboratories

*=Accredited Analyte

PLEASE NOTE: Liability and Damages. Cardinal's liability and client's exclusive remedy for any claim arising, whether based in contract or tort, shall be limited to the amount paid by client for analyses. All claims, including those for negligence and any other cause whatsoever shall be deemed waived unless made in writing and received by Cardinal within thirty (30) days after completion of the applicable service. In no event shall Cardinal be liable for incidental or consequential damages, including, without limitation, business interruptions, loss of use, or loss of profits incurred by client, its subsidiaries, affiliates or successors arising out of or related to the performance of the services hereunder by Cardinal, regardless of whether such claim is based upon any of the above stated reasons or otherwise. Results relate only to the samples identified above. This report shall not be reproduced except in full with written approval of Cardinal Laboratories.

Celey D. Keene, Lab Director/Quality Manager



PHONE (575) 393-2326 • 101 E. MARLAND • HOBBS, NM 88240

Analytical Results For:

BBC International, Inc.
 Cliff Brunson
 P.O. Box 805
 Hobbs NM, 88241
 Fax To: (575) 397-0397

Received: 06/22/2021
 Reported: 06/28/2021
 Project Name: SHU RMT INJ BLDG 3
 Project Number: (6-9-21)
 Project Location: OXY

Sampling Date: 06/17/2021
 Sampling Type: Soil
 Sampling Condition: Cool & Intact
 Sample Received By: Tamara Oldaker

Sample ID: SP 1 @ 1' (H211622-06)

BTX 8021B		mg/kg		Analyzed By: MS					
Analyte	Result	Reporting Limit	Analyzed	Method Blank	BS	% Recovery	True Value QC	RPD	Qualifier
Benzene*	<0.050	0.050	06/23/2021	ND	2.06	103	2.00	3.32	
Toluene*	<0.050	0.050	06/23/2021	ND	1.99	99.6	2.00	3.55	
Ethylbenzene*	<0.050	0.050	06/23/2021	ND	1.91	95.6	2.00	3.65	
Total Xylenes*	<0.150	0.150	06/23/2021	ND	5.80	96.6	6.00	3.67	
Total BTX	<0.300	0.300	06/23/2021	ND					

Surrogate: 4-Bromofluorobenzene (PID) 112 % 69.9-140

Chloride, SM4500CI-B		mg/kg		Analyzed By: GM						
Analyte	Result	Reporting Limit	Analyzed	Method Blank	BS	% Recovery	True Value QC	RPD	Qualifier	
Chloride	240	16.0	06/24/2021	ND	432	108	400	0.00		

TPH 8015M		mg/kg		Analyzed By: MS					
Analyte	Result	Reporting Limit	Analyzed	Method Blank	BS	% Recovery	True Value QC	RPD	Qualifier
GRO C6-C10*	<10.0	10.0	06/24/2021	ND	207	104	200	0.370	
DRO >C10-C28*	<10.0	10.0	06/24/2021	ND	226	113	200	1.77	
EXT DRO >C28-C36	<10.0	10.0	06/24/2021	ND					

Surrogate: 1-Chlorooctane 95.2 % 44.3-133

Surrogate: 1-Chlorooctadecane 98.6 % 38.9-142

Cardinal Laboratories

*=Accredited Analyte

PLEASE NOTE: Liability and Damages. Cardinal's liability and client's exclusive remedy for any claim arising, whether based in contract or tort, shall be limited to the amount paid by client for analyses. All claims, including those for negligence and any other cause whatsoever shall be deemed waived unless made in writing and received by Cardinal within thirty (30) days after completion of the applicable service. In no event shall Cardinal be liable for incidental or consequential damages, including, without limitation, business interruptions, loss of use, or loss of profits incurred by client, its subsidiaries, affiliates or successors arising out of or related to the performance of the services hereunder by Cardinal, regardless of whether such claim is based upon any of the above stated reasons or otherwise. Results relate only to the samples identified above. This report shall not be reproduced except in full with written approval of Cardinal Laboratories.

Celey D. Keene, Lab Director/Quality Manager



PHONE (575) 393-2326 ° 101 E. MARLAND ° HOBBS, NM 88240

Analytical Results For:

BBC International, Inc.
 Cliff Brunson
 P.O. Box 805
 Hobbs NM, 88241
 Fax To: (575) 397-0397

Received: 06/22/2021
 Reported: 06/28/2021
 Project Name: SHU RMT INJ BLDG 3
 Project Number: (6-9-21)
 Project Location: OXY

Sampling Date: 06/17/2021
 Sampling Type: Soil
 Sampling Condition: Cool & Intact
 Sample Received By: Tamara Oldaker

Sample ID: SP 1 @ 2' (H211622-07)

Chloride, SM4500Cl-B		mg/kg		Analyzed By: GM						
Analyte	Result	Reporting Limit	Analyzed	Method Blank	BS	% Recovery	True Value QC	RPD	Qualifier	
Chloride	192	16.0	06/24/2021	ND	432	108	400	0.00		

Cardinal Laboratories

*=Accredited Analyte

PLEASE NOTE: Liability and Damages. Cardinal's liability and client's exclusive remedy for any claim arising, whether based in contract or tort, shall be limited to the amount paid by client for analyses. All claims, including those for negligence and any other cause whatsoever shall be deemed waived unless made in writing and received by Cardinal within thirty (30) days after completion of the applicable service. In no event shall Cardinal be liable for incidental or consequential damages, including, without limitation, business interruptions, loss of use, or loss of profits incurred by client, its subsidiaries, affiliates or successors arising out of or related to the performance of the services hereunder by Cardinal, regardless of whether such claim is based upon any of the above stated reasons or otherwise. Results relate only to the samples identified above. This report shall not be reproduced except in full with written approval of Cardinal Laboratories.

Celey D. Keene, Lab Director/Quality Manager



PHONE (575) 393-2326 ° 101 E. MARLAND ° HOBBS, NM 88240

Analytical Results For:

BBC International, Inc.
 Cliff Brunson
 P.O. Box 805
 Hobbs NM, 88241
 Fax To: (575) 397-0397

Received: 06/22/2021
 Reported: 06/28/2021
 Project Name: SHU RMT INJ BLDG 3
 Project Number: (6-9-21)
 Project Location: OXY

Sampling Date: 06/17/2021
 Sampling Type: Soil
 Sampling Condition: Cool & Intact
 Sample Received By: Tamara Oldaker

Sample ID: SP 2 @ SURFACE (H211622-08)

BTX 8021B		mg/kg		Analyzed By: MS						
Analyte	Result	Reporting Limit	Analyzed	Method Blank	BS	% Recovery	True Value QC	RPD	Qualifier	
Benzene*	<0.050	0.050	06/24/2021	ND	2.06	103	2.00	3.32		
Toluene*	<0.050	0.050	06/24/2021	ND	1.99	99.6	2.00	3.55		
Ethylbenzene*	<0.050	0.050	06/24/2021	ND	1.91	95.6	2.00	3.65		
Total Xylenes*	<0.150	0.150	06/24/2021	ND	5.80	96.6	6.00	3.67		
Total BTX	<0.300	0.300	06/24/2021	ND						

Surrogate: 4-Bromofluorobenzene (PID) 112 % 69.9-140

Chloride, SM4500CI-B		mg/kg		Analyzed By: GM						
Analyte	Result	Reporting Limit	Analyzed	Method Blank	BS	% Recovery	True Value QC	RPD	Qualifier	
Chloride	3760	16.0	06/24/2021	ND	432	108	400	3.77	QM-07	

TPH 8015M		mg/kg		Analyzed By: MS					
Analyte	Result	Reporting Limit	Analyzed	Method Blank	BS	% Recovery	True Value QC	RPD	Qualifier
GRO C6-C10*	<10.0	10.0	06/24/2021	ND	207	104	200	0.370	
DRO >C10-C28*	56.5	10.0	06/24/2021	ND	226	113	200	1.77	
EXT DRO >C28-C36	19.9	10.0	06/24/2021	ND					

Surrogate: 1-Chlorooctane 98.6 % 44.3-133

Surrogate: 1-Chlorooctadecane 105 % 38.9-142

Cardinal Laboratories

*=Accredited Analyte

PLEASE NOTE: Liability and Damages. Cardinal's liability and client's exclusive remedy for any claim arising, whether based in contract or tort, shall be limited to the amount paid by client for analyses. All claims, including those for negligence and any other cause whatsoever shall be deemed waived unless made in writing and received by Cardinal within thirty (30) days after completion of the applicable service. In no event shall Cardinal be liable for incidental or consequential damages, including, without limitation, business interruptions, loss of use, or loss of profits incurred by client, its subsidiaries, affiliates or successors arising out of or related to the performance of the services hereunder by Cardinal, regardless of whether such claim is based upon any of the above stated reasons or otherwise. Results relate only to the samples identified above. This report shall not be reproduced except in full with written approval of Cardinal Laboratories.

Celey D. Keene, Lab Director/Quality Manager



PHONE (575) 393-2326 ° 101 E. MARLAND ° HOBBS, NM 88240

Analytical Results For:

BBC International, Inc.
 Cliff Brunson
 P.O. Box 805
 Hobbs NM, 88241
 Fax To: (575) 397-0397

Received: 06/22/2021
 Reported: 06/28/2021
 Project Name: SHU RMT INJ BLDG 3
 Project Number: (6-9-21)
 Project Location: OXY

Sampling Date: 06/17/2021
 Sampling Type: Soil
 Sampling Condition: Cool & Intact
 Sample Received By: Tamara Oldaker

Sample ID: SP 2 @ 1' (H211622-09)

BTX 8021B		mg/kg		Analyzed By: MS					
Analyte	Result	Reporting Limit	Analyzed	Method Blank	BS	% Recovery	True Value QC	RPD	Qualifier
Benzene*	<0.050	0.050	06/23/2021	ND	2.06	103	2.00	3.32	
Toluene*	<0.050	0.050	06/23/2021	ND	1.99	99.6	2.00	3.55	
Ethylbenzene*	<0.050	0.050	06/23/2021	ND	1.91	95.6	2.00	3.65	
Total Xylenes*	<0.150	0.150	06/23/2021	ND	5.80	96.6	6.00	3.67	
Total BTX	<0.300	0.300	06/23/2021	ND					

Surrogate: 4-Bromofluorobenzene (PID) 113 % 69.9-140

Chloride, SM4500CI-B		mg/kg		Analyzed By: GM					
Analyte	Result	Reporting Limit	Analyzed	Method Blank	BS	% Recovery	True Value QC	RPD	Qualifier
Chloride	624	16.0	06/24/2021	ND	432	108	400	3.77	

TPH 8015M		mg/kg		Analyzed By: MS					
Analyte	Result	Reporting Limit	Analyzed	Method Blank	BS	% Recovery	True Value QC	RPD	Qualifier
GRO C6-C10*	<10.0	10.0	06/24/2021	ND	207	104	200	0.370	
DRO >C10-C28*	<10.0	10.0	06/24/2021	ND	226	113	200	1.77	
EXT DRO >C28-C36	<10.0	10.0	06/24/2021	ND					

Surrogate: 1-Chlorooctane 103 % 44.3-133

Surrogate: 1-Chlorooctadecane 107 % 38.9-142

Cardinal Laboratories

*=Accredited Analyte

PLEASE NOTE: Liability and Damages. Cardinal's liability and client's exclusive remedy for any claim arising, whether based in contract or tort, shall be limited to the amount paid by client for analyses. All claims, including those for negligence and any other cause whatsoever shall be deemed waived unless made in writing and received by Cardinal within thirty (30) days after completion of the applicable service. In no event shall Cardinal be liable for incidental or consequential damages, including, without limitation, business interruptions, loss of use, or loss of profits incurred by client, its subsidiaries, affiliates or successors arising out of or related to the performance of the services hereunder by Cardinal, regardless of whether such claim is based upon any of the above stated reasons or otherwise. Results relate only to the samples identified above. This report shall not be reproduced except in full with written approval of Cardinal Laboratories.

Celey D. Keene, Lab Director/Quality Manager



PHONE (575) 393-2326 ° 101 E. MARLAND ° HOBBS, NM 88240

Analytical Results For:

BBC International, Inc.
 Cliff Brunson
 P.O. Box 805
 Hobbs NM, 88241
 Fax To: (575) 397-0397

Received: 06/22/2021
 Reported: 06/28/2021
 Project Name: SHU RMT INJ BLDG 3
 Project Number: (6-9-21)
 Project Location: OXY

Sampling Date: 06/17/2021
 Sampling Type: Soil
 Sampling Condition: Cool & Intact
 Sample Received By: Tamara Oldaker

Sample ID: SP 2 @ 2' (H211622-10)

Chloride, SM4500Cl-B		mg/kg		Analyzed By: GM						
Analyte	Result	Reporting Limit	Analyzed	Method Blank	BS	% Recovery	True Value QC	RPD	Qualifier	
Chloride	32.0	16.0	06/24/2021	ND	432	108	400	3.77		

Cardinal Laboratories

*=Accredited Analyte

PLEASE NOTE: Liability and Damages. Cardinal's liability and client's exclusive remedy for any claim arising, whether based in contract or tort, shall be limited to the amount paid by client for analyses. All claims, including those for negligence and any other cause whatsoever shall be deemed waived unless made in writing and received by Cardinal within thirty (30) days after completion of the applicable service. In no event shall Cardinal be liable for incidental or consequential damages, including, without limitation, business interruptions, loss of use, or loss of profits incurred by client, its subsidiaries, affiliates or successors arising out of or related to the performance of the services hereunder by Cardinal, regardless of whether such claim is based upon any of the above stated reasons or otherwise. Results relate only to the samples identified above. This report shall not be reproduced except in full with written approval of Cardinal Laboratories.

Celey D. Keene, Lab Director/Quality Manager



PHONE (575) 393-2326 ° 101 E. MARLAND ° HOBBS, NM 88240

Analytical Results For:

BBC International, Inc.
 Cliff Brunson
 P.O. Box 805
 Hobbs NM, 88241
 Fax To: (575) 397-0397

Received:	06/22/2021	Sampling Date:	06/17/2021
Reported:	06/28/2021	Sampling Type:	Soil
Project Name:	SHU RMT INJ BLDG 3	Sampling Condition:	Cool & Intact
Project Number:	(6-9-21)	Sample Received By:	Tamara Oldaker
Project Location:	OXY		

Sample ID: SP 3 @ SURFACE (H211622-11)

BTEx 8021B		mg/kg		Analyzed By: MS						
Analyte	Result	Reporting Limit	Analyzed	Method Blank	BS	% Recovery	True Value QC	RPD	Qualifier	
Benzene*	<0.050	0.050	06/23/2021	ND	2.06	103	2.00	3.32		
Toluene*	<0.050	0.050	06/23/2021	ND	1.99	99.6	2.00	3.55		
Ethylbenzene*	<0.050	0.050	06/23/2021	ND	1.91	95.6	2.00	3.65		
Total Xylenes*	<0.150	0.150	06/23/2021	ND	5.80	96.6	6.00	3.67		
Total BTEX	<0.300	0.300	06/23/2021	ND						

Surrogate: 4-Bromofluorobenzene (PID) 112 % 69.9-140

Chloride, SM4500Cl-B		mg/kg		Analyzed By: GM						
Analyte	Result	Reporting Limit	Analyzed	Method Blank	BS	% Recovery	True Value QC	RPD	Qualifier	
Chloride	2120	16.0	06/24/2021	ND	432	108	400	3.77		

TPH 8015M		mg/kg		Analyzed By: MS					
Analyte	Result	Reporting Limit	Analyzed	Method Blank	BS	% Recovery	True Value QC	RPD	Qualifier
GRO C6-C10*	<10.0	10.0	06/24/2021	ND	207	104	200	0.370	
DRO >C10-C28*	123	10.0	06/24/2021	ND	226	113	200	1.77	
EXT DRO >C28-C36	47.0	10.0	06/24/2021	ND					

Surrogate: 1-Chlorooctane 97.6 % 44.3-133

Surrogate: 1-Chlorooctadecane 109 % 38.9-142

Cardinal Laboratories

*=Accredited Analyte

PLEASE NOTE: Liability and Damages. Cardinal's liability and client's exclusive remedy for any claim arising, whether based in contract or tort, shall be limited to the amount paid by client for analyses. All claims, including those for negligence and any other cause whatsoever shall be deemed waived unless made in writing and received by Cardinal within thirty (30) days after completion of the applicable service. In no event shall Cardinal be liable for incidental or consequential damages, including, without limitation, business interruptions, loss of use, or loss of profits incurred by client, its subsidiaries, affiliates or successors arising out of or related to the performance of the services hereunder by Cardinal, regardless of whether such claim is based upon any of the above stated reasons or otherwise. Results relate only to the samples identified above. This report shall not be reproduced except in full with written approval of Cardinal Laboratories.

Celey D. Keene, Lab Director/Quality Manager



PHONE (575) 393-2326 ° 101 E. MARLAND ° HOBBS, NM 88240

Analytical Results For:

BBC International, Inc.
 Cliff Brunson
 P.O. Box 805
 Hobbs NM, 88241
 Fax To: (575) 397-0397

Received: 06/22/2021
 Reported: 06/28/2021
 Project Name: SHU RMT INJ BLDG 3
 Project Number: (6-9-21)
 Project Location: OXY

Sampling Date: 06/17/2021
 Sampling Type: Soil
 Sampling Condition: Cool & Intact
 Sample Received By: Tamara Oldaker

Sample ID: SP 3 @ 1' (H211622-12)

BTEx 8021B		mg/kg		Analyzed By: MS						
Analyte	Result	Reporting Limit	Analyzed	Method Blank	BS	% Recovery	True Value QC	RPD	Qualifier	
Benzene*	<0.050	0.050	06/23/2021	ND	2.06	103	2.00	3.32		
Toluene*	<0.050	0.050	06/23/2021	ND	1.99	99.6	2.00	3.55		
Ethylbenzene*	<0.050	0.050	06/23/2021	ND	1.91	95.6	2.00	3.65		
Total Xylenes*	<0.150	0.150	06/23/2021	ND	5.80	96.6	6.00	3.67		
Total BTEx	<0.300	0.300	06/23/2021	ND						

Surrogate: 4-Bromofluorobenzene (PID) 113 % 69.9-140

Chloride, SM4500CI-B		mg/kg		Analyzed By: GM						
Analyte	Result	Reporting Limit	Analyzed	Method Blank	BS	% Recovery	True Value QC	RPD	Qualifier	
Chloride	160	16.0	06/24/2021	ND	432	108	400	3.77		

TPH 8015M		mg/kg		Analyzed By: MS					
Analyte	Result	Reporting Limit	Analyzed	Method Blank	BS	% Recovery	True Value QC	RPD	Qualifier
GRO C6-C10*	<10.0	10.0	06/24/2021	ND	207	104	200	0.370	
DRO >C10-C28*	<10.0	10.0	06/24/2021	ND	226	113	200	1.77	
EXT DRO >C28-C36	<10.0	10.0	06/24/2021	ND					

Surrogate: 1-Chlorooctane 108 % 44.3-133

Surrogate: 1-Chlorooctadecane 112 % 38.9-142

Cardinal Laboratories

*=Accredited Analyte

PLEASE NOTE: Liability and Damages. Cardinal's liability and client's exclusive remedy for any claim arising, whether based in contract or tort, shall be limited to the amount paid by client for analyses. All claims, including those for negligence and any other cause whatsoever shall be deemed waived unless made in writing and received by Cardinal within thirty (30) days after completion of the applicable service. In no event shall Cardinal be liable for incidental or consequential damages, including, without limitation, business interruptions, loss of use, or loss of profits incurred by client, its subsidiaries, affiliates or successors arising out of or related to the performance of the services hereunder by Cardinal, regardless of whether such claim is based upon any of the above stated reasons or otherwise. Results relate only to the samples identified above. This report shall not be reproduced except in full with written approval of Cardinal Laboratories.

Celey D. Keene, Lab Director/Quality Manager



PHONE (575) 393-2326 ° 101 E. MARLAND ° HOBBS, NM 88240

Analytical Results For:

BBC International, Inc.
 Cliff Brunson
 P.O. Box 805
 Hobbs NM, 88241
 Fax To: (575) 397-0397

Received:	06/22/2021	Sampling Date:	06/17/2021
Reported:	06/28/2021	Sampling Type:	Soil
Project Name:	SHU RMT INJ BLDG 3	Sampling Condition:	Cool & Intact
Project Number:	(6-9-21)	Sample Received By:	Tamara Oldaker
Project Location:	OXY		

Sample ID: SP 3 @ 2' (H211622-13)

Chloride, SM4500Cl-B		mg/kg		Analyzed By: GM						
Analyte	Result	Reporting Limit	Analyzed	Method Blank	BS	% Recovery	True Value QC	RPD	Qualifier	
Chloride	240	16.0	06/24/2021	ND	432	108	400	3.77		

Sample ID: SP 3 @ 3' (H211622-14)

Chloride, SM4500Cl-B		mg/kg		Analyzed By: GM					
Analyte	Result	Reporting Limit	Analyzed	Method Blank	BS	% Recovery	True Value QC	RPD	Qualifier
Chloride	272	16.0	06/24/2021	ND	432	108	400	3.77	

Cardinal Laboratories

*=Accredited Analyte

PLEASE NOTE: Liability and Damages. Cardinal's liability and client's exclusive remedy for any claim arising, whether based in contract or tort, shall be limited to the amount paid by client for analyses. All claims, including those for negligence and any other cause whatsoever shall be deemed waived unless made in writing and received by Cardinal within thirty (30) days after completion of the applicable service. In no event shall Cardinal be liable for incidental or consequential damages, including, without limitation, business interruptions, loss of use, or loss of profits incurred by client, its subsidiaries, affiliates or successors arising out of or related to the performance of the services hereunder by Cardinal, regardless of whether such claim is based upon any of the above stated reasons or otherwise. Results relate only to the samples identified above. This report shall not be reproduced except in full with written approval of Cardinal Laboratories.

Celey D. Keene, Lab Director/Quality Manager



PHONE (575) 393-2326 • 101 E. MARLAND • HOBBS, NM 88240

Analytical Results For:

BBC International, Inc.
 Cliff Brunson
 P.O. Box 805
 Hobbs NM, 88241
 Fax To: (575) 397-0397

Received: 06/22/2021
 Reported: 06/28/2021
 Project Name: SHU RMT INJ BLDG 3
 Project Number: (6-9-21)
 Project Location: OXY

Sampling Date: 06/17/2021
 Sampling Type: Soil
 Sampling Condition: Cool & Intact
 Sample Received By: Tamara Oldaker

Sample ID: SP 4 @ SURFACE (H211622-15)

BTEx 8021B		mg/kg		Analyzed By: MS					
Analyte	Result	Reporting Limit	Analyzed	Method Blank	BS	% Recovery	True Value QC	RPD	Qualifier
Benzene*	<0.050	0.050	06/23/2021	ND	2.06	103	2.00	3.32	
Toluene*	<0.050	0.050	06/23/2021	ND	1.99	99.6	2.00	3.55	
Ethylbenzene*	<0.050	0.050	06/23/2021	ND	1.91	95.6	2.00	3.65	
Total Xylenes*	<0.150	0.150	06/23/2021	ND	5.80	96.6	6.00	3.67	
Total BTEx	<0.300	0.300	06/23/2021	ND					

Surrogate: 4-Bromofluorobenzene (PID) 112 % 69.9-140

Chloride, SM4500CI-B		mg/kg		Analyzed By: GM						
Analyte	Result	Reporting Limit	Analyzed	Method Blank	BS	% Recovery	True Value QC	RPD	Qualifier	
Chloride	2080	16.0	06/24/2021	ND	432	108	400	3.77		

TPH 8015M		mg/kg		Analyzed By: MS					
Analyte	Result	Reporting Limit	Analyzed	Method Blank	BS	% Recovery	True Value QC	RPD	Qualifier
GRO C6-C10*	<10.0	10.0	06/24/2021	ND	207	104	200	0.370	
DRO >C10-C28*	33.9	10.0	06/24/2021	ND	226	113	200	1.77	
EXT DRO >C28-C36	14.8	10.0	06/24/2021	ND					

Surrogate: 1-Chlorooctane 98.1 % 44.3-133

Surrogate: 1-Chlorooctadecane 102 % 38.9-142

Cardinal Laboratories

*=Accredited Analyte

PLEASE NOTE: Liability and Damages. Cardinal's liability and client's exclusive remedy for any claim arising, whether based in contract or tort, shall be limited to the amount paid by client for analyses. All claims, including those for negligence and any other cause whatsoever shall be deemed waived unless made in writing and received by Cardinal within thirty (30) days after completion of the applicable service. In no event shall Cardinal be liable for incidental or consequential damages, including, without limitation, business interruptions, loss of use, or loss of profits incurred by client, its subsidiaries, affiliates or successors arising out of or related to the performance of the services hereunder by Cardinal, regardless of whether such claim is based upon any of the above stated reasons or otherwise. Results relate only to the samples identified above. This report shall not be reproduced except in full with written approval of Cardinal Laboratories.

Celey D. Keene, Lab Director/Quality Manager



PHONE (575) 393-2326 ° 101 E. MARLAND ° HOBBS, NM 88240

Analytical Results For:

BBC International, Inc.
 Cliff Brunson
 P.O. Box 805
 Hobbs NM, 88241
 Fax To: (575) 397-0397

Received: 06/22/2021
 Reported: 06/28/2021
 Project Name: SHU RMT INJ BLDG 3
 Project Number: (6-9-21)
 Project Location: OXY

Sampling Date: 06/17/2021
 Sampling Type: Soil
 Sampling Condition: Cool & Intact
 Sample Received By: Tamara Oldaker

Sample ID: SP 4 @ 1' (H211622-16)

BTEx 8021B		mg/kg		Analyzed By: MS					
Analyte	Result	Reporting Limit	Analyzed	Method Blank	BS	% Recovery	True Value QC	RPD	Qualifier
Benzene*	<0.050	0.050	06/24/2021	ND	2.06	103	2.00	3.32	
Toluene*	<0.050	0.050	06/24/2021	ND	1.99	99.6	2.00	3.55	
Ethylbenzene*	<0.050	0.050	06/24/2021	ND	1.91	95.6	2.00	3.65	
Total Xylenes*	<0.150	0.150	06/24/2021	ND	5.80	96.6	6.00	3.67	
Total BTEx	<0.300	0.300	06/24/2021	ND					

Surrogate: 4-Bromofluorobenzene (PID) 113 % 69.9-140

Chloride, SM4500CI-B		mg/kg		Analyzed By: GM						
Analyte	Result	Reporting Limit	Analyzed	Method Blank	BS	% Recovery	True Value QC	RPD	Qualifier	
Chloride	160	16.0	06/24/2021	ND	432	108	400	3.77		

TPH 8015M		mg/kg		Analyzed By: MS					
Analyte	Result	Reporting Limit	Analyzed	Method Blank	BS	% Recovery	True Value QC	RPD	Qualifier
GRO C6-C10*	<10.0	10.0	06/24/2021	ND	207	104	200	0.370	
DRO >C10-C28*	<10.0	10.0	06/24/2021	ND	226	113	200	1.77	
EXT DRO >C28-C36	<10.0	10.0	06/24/2021	ND					

Surrogate: 1-Chlorooctane 104 % 44.3-133

Surrogate: 1-Chlorooctadecane 106 % 38.9-142

Cardinal Laboratories

*=Accredited Analyte

PLEASE NOTE: Liability and Damages. Cardinal's liability and client's exclusive remedy for any claim arising, whether based in contract or tort, shall be limited to the amount paid by client for analyses. All claims, including those for negligence and any other cause whatsoever shall be deemed waived unless made in writing and received by Cardinal within thirty (30) days after completion of the applicable service. In no event shall Cardinal be liable for incidental or consequential damages, including, without limitation, business interruptions, loss of use, or loss of profits incurred by client, its subsidiaries, affiliates or successors arising out of or related to the performance of the services hereunder by Cardinal, regardless of whether such claim is based upon any of the above stated reasons or otherwise. Results relate only to the samples identified above. This report shall not be reproduced except in full with written approval of Cardinal Laboratories.

Celey D. Keene, Lab Director/Quality Manager



PHONE (575) 393-2326 ° 101 E. MARLAND ° HOBBS, NM 88240

Analytical Results For:

BBC International, Inc.
 Cliff Brunson
 P.O. Box 805
 Hobbs NM, 88241
 Fax To: (575) 397-0397

Received: 06/22/2021
 Reported: 06/28/2021
 Project Name: SHU RMT INJ BLDG 3
 Project Number: (6-9-21)
 Project Location: OXY

Sampling Date: 06/17/2021
 Sampling Type: Soil
 Sampling Condition: Cool & Intact
 Sample Received By: Tamara Oldaker

Sample ID: SP 5 @ SURFACE (H211622-17)

BTEx 8021B		mg/kg		Analyzed By: MS					
Analyte	Result	Reporting Limit	Analyzed	Method Blank	BS	% Recovery	True Value QC	RPD	Qualifier
Benzene*	<0.050	0.050	06/24/2021	ND	2.06	103	2.00	3.32	
Toluene*	<0.050	0.050	06/24/2021	ND	1.99	99.6	2.00	3.55	
Ethylbenzene*	<0.050	0.050	06/24/2021	ND	1.91	95.6	2.00	3.65	
Total Xylenes*	<0.150	0.150	06/24/2021	ND	5.80	96.6	6.00	3.67	
Total BTEX	<0.300	0.300	06/24/2021	ND					

Surrogate: 4-Bromofluorobenzene (PID) 111 % 69.9-140

Chloride, SM4500Cl-B		mg/kg		Analyzed By: GM					
Analyte	Result	Reporting Limit	Analyzed	Method Blank	BS	% Recovery	True Value QC	RPD	Qualifier
Chloride	7460	16.0	06/24/2021	ND	432	108	400	3.77	

TPH 8015M		mg/kg		Analyzed By: MS					
Analyte	Result	Reporting Limit	Analyzed	Method Blank	BS	% Recovery	True Value QC	RPD	Qualifier
GRO C6-C10*	<10.0	10.0	06/24/2021	ND	207	104	200	0.370	
DRO >C10-C28*	<10.0	10.0	06/24/2021	ND	226	113	200	1.77	
EXT DRO >C28-C36	<10.0	10.0	06/24/2021	ND					

Surrogate: 1-Chlorooctane 63.7 % 44.3-133

Surrogate: 1-Chlorooctadecane 63.1 % 38.9-142

Cardinal Laboratories

*=Accredited Analyte

PLEASE NOTE: Liability and Damages. Cardinal's liability and client's exclusive remedy for any claim arising, whether based in contract or tort, shall be limited to the amount paid by client for analyses. All claims, including those for negligence and any other cause whatsoever shall be deemed waived unless made in writing and received by Cardinal within thirty (30) days after completion of the applicable service. In no event shall Cardinal be liable for incidental or consequential damages, including, without limitation, business interruptions, loss of use, or loss of profits incurred by client, its subsidiaries, affiliates or successors arising out of or related to the performance of the services hereunder by Cardinal, regardless of whether such claim is based upon any of the above stated reasons or otherwise. Results relate only to the samples identified above. This report shall not be reproduced except in full with written approval of Cardinal Laboratories.

Celey D. Keene, Lab Director/Quality Manager



PHONE (575) 393-2326 ° 101 E. MARLAND ° HOBBS, NM 88240

Analytical Results For:

BBC International, Inc.
 Cliff Brunson
 P.O. Box 805
 Hobbs NM, 88241
 Fax To: (575) 397-0397

Received: 06/22/2021
 Reported: 06/28/2021
 Project Name: SHU RMT INJ BLDG 3
 Project Number: (6-9-21)
 Project Location: OXY

Sampling Date: 06/17/2021
 Sampling Type: Soil
 Sampling Condition: Cool & Intact
 Sample Received By: Tamara Oldaker

Sample ID: SP 5 @ 1' (H211622-18)

BTEx 8021B		mg/kg		Analyzed By: MS					
Analyte	Result	Reporting Limit	Analyzed	Method Blank	BS	% Recovery	True Value QC	RPD	Qualifier
Benzene*	<0.050	0.050	06/24/2021	ND	2.06	103	2.00	3.32	
Toluene*	<0.050	0.050	06/24/2021	ND	1.99	99.6	2.00	3.55	
Ethylbenzene*	<0.050	0.050	06/24/2021	ND	1.91	95.6	2.00	3.65	
Total Xylenes*	<0.150	0.150	06/24/2021	ND	5.80	96.6	6.00	3.67	
Total BTEx	<0.300	0.300	06/24/2021	ND					

Surrogate: 4-Bromofluorobenzene (PID) 111 % 69.9-140

Chloride, SM4500CI-B		mg/kg		Analyzed By: GM						
Analyte	Result	Reporting Limit	Analyzed	Method Blank	BS	% Recovery	True Value QC	RPD	Qualifier	
Chloride	208	16.0	06/24/2021	ND	432	108	400	3.77		

TPH 8015M		mg/kg		Analyzed By: MS					
Analyte	Result	Reporting Limit	Analyzed	Method Blank	BS	% Recovery	True Value QC	RPD	Qualifier
GRO C6-C10*	<10.0	10.0	06/24/2021	ND	207	104	200	0.370	
DRO >C10-C28*	<10.0	10.0	06/24/2021	ND	226	113	200	1.77	
EXT DRO >C28-C36	<10.0	10.0	06/24/2021	ND					

Surrogate: 1-Chlorooctane 99.5 % 44.3-133

Surrogate: 1-Chlorooctadecane 104 % 38.9-142

Cardinal Laboratories

*=Accredited Analyte

PLEASE NOTE: Liability and Damages. Cardinal's liability and client's exclusive remedy for any claim arising, whether based in contract or tort, shall be limited to the amount paid by client for analyses. All claims, including those for negligence and any other cause whatsoever shall be deemed waived unless made in writing and received by Cardinal within thirty (30) days after completion of the applicable service. In no event shall Cardinal be liable for incidental or consequential damages, including, without limitation, business interruptions, loss of use, or loss of profits incurred by client, its subsidiaries, affiliates or successors arising out of or related to the performance of the services hereunder by Cardinal, regardless of whether such claim is based upon any of the above stated reasons or otherwise. Results relate only to the samples identified above. This report shall not be reproduced except in full with written approval of Cardinal Laboratories.

Celey D. Keene, Lab Director/Quality Manager



PHONE (575) 393-2326 ° 101 E. MARLAND ° HOBBS, NM 88240

Analytical Results For:

BBC International, Inc.
 Cliff Brunson
 P.O. Box 805
 Hobbs NM, 88241
 Fax To: (575) 397-0397

Received: 06/22/2021
 Reported: 06/28/2021
 Project Name: SHU RMT INJ BLDG 3
 Project Number: (6-9-21)
 Project Location: OXY

Sampling Date: 06/17/2021
 Sampling Type: Soil
 Sampling Condition: Cool & Intact
 Sample Received By: Tamara Oldaker

Sample ID: SP 5 @ 2' (H211622-19)

Chloride, SM4500Cl-B		mg/kg		Analyzed By: GM					
Analyte	Result	Reporting Limit	Analyzed	Method Blank	BS	% Recovery	True Value QC	RPD	Qualifier
Chloride	160	16.0	06/24/2021	ND	432	108	400	3.77	

Cardinal Laboratories

*=Accredited Analyte

PLEASE NOTE: Liability and Damages. Cardinal's liability and client's exclusive remedy for any claim arising, whether based in contract or tort, shall be limited to the amount paid by client for analyses. All claims, including those for negligence and any other cause whatsoever shall be deemed waived unless made in writing and received by Cardinal within thirty (30) days after completion of the applicable service. In no event shall Cardinal be liable for incidental or consequential damages, including, without limitation, business interruptions, loss of use, or loss of profits incurred by client, its subsidiaries, affiliates or successors arising out of or related to the performance of the services hereunder by Cardinal, regardless of whether such claim is based upon any of the above stated reasons or otherwise. Results relate only to the samples identified above. This report shall not be reproduced except in full with written approval of Cardinal Laboratories.

Celey D. Keene, Lab Director/Quality Manager



PHONE (575) 393-2326 • 101 E. MARLAND • HOBBS, NM 88240

Analytical Results For:

BBC International, Inc.
 Cliff Brunson
 P.O. Box 805
 Hobbs NM, 88241
 Fax To: (575) 397-0397

Received: 06/22/2021
 Reported: 06/28/2021
 Project Name: SHU RMT INJ BLDG 3
 Project Number: (6-9-21)
 Project Location: OXY

Sampling Date: 06/17/2021
 Sampling Type: Soil
 Sampling Condition: Cool & Intact
 Sample Received By: Tamara Oldaker

Sample ID: SP 6 @ SURFACE (H211622-20)

BTX 8021B		mg/kg		Analyzed By: MS					
Analyte	Result	Reporting Limit	Analyzed	Method Blank	BS	% Recovery	True Value QC	RPD	Qualifier
Benzene*	<0.050	0.050	06/24/2021	ND	2.06	103	2.00	3.32	
Toluene*	<0.050	0.050	06/24/2021	ND	1.99	99.6	2.00	3.55	
Ethylbenzene*	<0.050	0.050	06/24/2021	ND	1.91	95.6	2.00	3.65	
Total Xylenes*	<0.150	0.150	06/24/2021	ND	5.80	96.6	6.00	3.67	
Total BTX	<0.300	0.300	06/24/2021	ND					

Surrogate: 4-Bromofluorobenzene (PID) 112 % 69.9-140

Chloride, SM4500CI-B		mg/kg		Analyzed By: GM						
Analyte	Result	Reporting Limit	Analyzed	Method Blank	BS	% Recovery	True Value QC	RPD	Qualifier	
Chloride	48.0	16.0	06/24/2021	ND	432	108	400	3.77		

TPH 8015M		mg/kg		Analyzed By: MS					
Analyte	Result	Reporting Limit	Analyzed	Method Blank	BS	% Recovery	True Value QC	RPD	Qualifier
GRO C6-C10*	<10.0	10.0	06/24/2021	ND	207	104	200	0.370	
DRO >C10-C28*	<10.0	10.0	06/24/2021	ND	226	113	200	1.77	
EXT DRO >C28-C36	<10.0	10.0	06/24/2021	ND					

Surrogate: 1-Chlorooctane 94.1 % 44.3-133

Surrogate: 1-Chlorooctadecane 86.4 % 38.9-142

Cardinal Laboratories

*=Accredited Analyte

PLEASE NOTE: Liability and Damages. Cardinal's liability and client's exclusive remedy for any claim arising, whether based in contract or tort, shall be limited to the amount paid by client for analyses. All claims, including those for negligence and any other cause whatsoever shall be deemed waived unless made in writing and received by Cardinal within thirty (30) days after completion of the applicable service. In no event shall Cardinal be liable for incidental or consequential damages, including, without limitation, business interruptions, loss of use, or loss of profits incurred by client, its subsidiaries, affiliates or successors arising out of or related to the performance of the services hereunder by Cardinal, regardless of whether such claim is based upon any of the above stated reasons or otherwise. Results relate only to the samples identified above. This report shall not be reproduced except in full with written approval of Cardinal Laboratories.

Celey D. Keene, Lab Director/Quality Manager



PHONE (575) 393-2326 ° 101 E. MARLAND ° HOBBS, NM 88240

Analytical Results For:

BBC International, Inc.
 Cliff Brunson
 P.O. Box 805
 Hobbs NM, 88241
 Fax To: (575) 397-0397

Received: 06/22/2021
 Reported: 06/28/2021
 Project Name: SHU RMT INJ BLDG 3
 Project Number: (6-9-21)
 Project Location: OXY

Sampling Date: 06/17/2021
 Sampling Type: Soil
 Sampling Condition: Cool & Intact
 Sample Received By: Tamara Oldaker

Sample ID: SP 6 @ 1' (H211622-21)

BTEx 8021B		mg/kg		Analyzed By: MS						
Analyte	Result	Reporting Limit	Analyzed	Method Blank	BS	% Recovery	True Value QC	RPD	Qualifier	
Benzene*	<0.050	0.050	06/24/2021	ND	2.06	103	2.00	3.32		
Toluene*	<0.050	0.050	06/24/2021	ND	1.99	99.6	2.00	3.55		
Ethylbenzene*	<0.050	0.050	06/24/2021	ND	1.91	95.6	2.00	3.65		
Total Xylenes*	<0.150	0.150	06/24/2021	ND	5.80	96.6	6.00	3.67		
Total BTEx	<0.300	0.300	06/24/2021	ND						

Surrogate: 4-Bromofluorobenzene (PID) 112 % 69.9-140

Chloride, SM4500CI-B		mg/kg		Analyzed By: GM						
Analyte	Result	Reporting Limit	Analyzed	Method Blank	BS	% Recovery	True Value QC	RPD	Qualifier	
Chloride	32.0	16.0	06/24/2021	ND	432	108	400	3.77		

TPH 8015M		mg/kg		Analyzed By: MS					
Analyte	Result	Reporting Limit	Analyzed	Method Blank	BS	% Recovery	True Value QC	RPD	Qualifier
GRO C6-C10*	<10.0	10.0	06/24/2021	ND	207	104	200	0.370	
DRO >C10-C28*	<10.0	10.0	06/24/2021	ND	226	113	200	1.77	
EXT DRO >C28-C36	<10.0	10.0	06/24/2021	ND					

Surrogate: 1-Chlorooctane 104 % 44.3-133

Surrogate: 1-Chlorooctadecane 108 % 38.9-142

Cardinal Laboratories

*=Accredited Analyte

PLEASE NOTE: Liability and Damages. Cardinal's liability and client's exclusive remedy for any claim arising, whether based in contract or tort, shall be limited to the amount paid by client for analyses. All claims, including those for negligence and any other cause whatsoever shall be deemed waived unless made in writing and received by Cardinal within thirty (30) days after completion of the applicable service. In no event shall Cardinal be liable for incidental or consequential damages, including, without limitation, business interruptions, loss of use, or loss of profits incurred by client, its subsidiaries, affiliates or successors arising out of or related to the performance of the services hereunder by Cardinal, regardless of whether such claim is based upon any of the above stated reasons or otherwise. Results relate only to the samples identified above. This report shall not be reproduced except in full with written approval of Cardinal Laboratories.

Celey D. Keene, Lab Director/Quality Manager



PHONE (575) 393-2326 ° 101 E. MARLAND ° HOBBS, NM 88240

Analytical Results For:

BBC International, Inc.
 Cliff Brunson
 P.O. Box 805
 Hobbs NM, 88241
 Fax To: (575) 397-0397

Received: 06/22/2021
 Reported: 06/28/2021
 Project Name: SHU RMT INJ BLDG 3
 Project Number: (6-9-21)
 Project Location: OXY

Sampling Date: 06/17/2021
 Sampling Type: Soil
 Sampling Condition: Cool & Intact
 Sample Received By: Tamara Oldaker

Sample ID: SP 6 @ 2' (H211622-22)**Chloride, SM4500Cl-B****mg/kg****Analyzed By: GM**

Analyte	Result	Reporting Limit	Analyzed	Method Blank	BS	% Recovery	True Value QC	RPD	Qualifier
Chloride	32.0	16.0	06/24/2021	ND	432	108	400	3.77	

Cardinal Laboratories

*=Accredited Analyte

PLEASE NOTE: Liability and Damages. Cardinal's liability and client's exclusive remedy for any claim arising, whether based in contract or tort, shall be limited to the amount paid by client for analyses. All claims, including those for negligence and any other cause whatsoever shall be deemed waived unless made in writing and received by Cardinal within thirty (30) days after completion of the applicable service. In no event shall Cardinal be liable for incidental or consequential damages, including, without limitation, business interruptions, loss of use, or loss of profits incurred by client, its subsidiaries, affiliates or successors arising out of or related to the performance of the services hereunder by Cardinal, regardless of whether such claim is based upon any of the above stated reasons or otherwise. Results relate only to the samples identified above. This report shall not be reproduced except in full with written approval of Cardinal Laboratories.

Celey D. Keene, Lab Director/Quality Manager



PHONE (575) 393-2326 • 101 E. MARLAND • HOBBS, NM 88240

Analytical Results For:

BBC International, Inc.
 Cliff Brunson
 P.O. Box 805
 Hobbs NM, 88241
 Fax To: (575) 397-0397

Received:	06/22/2021	Sampling Date:	06/17/2021
Reported:	06/28/2021	Sampling Type:	Soil
Project Name:	SHU RMT INJ BLDG 3	Sampling Condition:	Cool & Intact
Project Number:	(6-9-21)	Sample Received By:	Tamara Oldaker
Project Location:	OXY		

Sample ID: SP 7 @ SURFACE (H211622-23)

BTEx 8021B		mg/kg		Analyzed By: MS						
Analyte	Result	Reporting Limit	Analyzed	Method Blank	BS	% Recovery	True Value QC	RPD	Qualifier	
Benzene*	<0.050	0.050	06/24/2021	ND	2.06	103	2.00	3.32		
Toluene*	<0.050	0.050	06/24/2021	ND	1.99	99.6	2.00	3.55		
Ethylbenzene*	<0.050	0.050	06/24/2021	ND	1.91	95.6	2.00	3.65		
Total Xylenes*	<0.150	0.150	06/24/2021	ND	5.80	96.6	6.00	3.67		
Total BTEx	<0.300	0.300	06/24/2021	ND						

Surrogate: 4-Bromofluorobenzene (PID) 112 % 69.9-140

Chloride, SM4500CI-B		mg/kg		Analyzed By: GM						
Analyte	Result	Reporting Limit	Analyzed	Method Blank	BS	% Recovery	True Value QC	RPD	Qualifier	
Chloride	11200	16.0	06/24/2021	ND	432	108	400	3.77		

TPH 8015M		mg/kg		Analyzed By: MS					
Analyte	Result	Reporting Limit	Analyzed	Method Blank	BS	% Recovery	True Value QC	RPD	Qualifier
GRO C6-C10*	<10.0	10.0	06/24/2021	ND	207	104	200	0.370	
DRO >C10-C28*	113	10.0	06/24/2021	ND	226	113	200	1.77	
EXT DRO >C28-C36	55.3	10.0	06/24/2021	ND					

Surrogate: 1-Chlorooctane 80.2 % 44.3-133

Surrogate: 1-Chlorooctadecane 88.1 % 38.9-142

Cardinal Laboratories

*=Accredited Analyte

PLEASE NOTE: Liability and Damages. Cardinal's liability and client's exclusive remedy for any claim arising, whether based in contract or tort, shall be limited to the amount paid by client for analyses. All claims, including those for negligence and any other cause whatsoever shall be deemed waived unless made in writing and received by Cardinal within thirty (30) days after completion of the applicable service. In no event shall Cardinal be liable for incidental or consequential damages, including, without limitation, business interruptions, loss of use, or loss of profits incurred by client, its subsidiaries, affiliates or successors arising out of or related to the performance of the services hereunder by Cardinal, regardless of whether such claim is based upon any of the above stated reasons or otherwise. Results relate only to the samples identified above. This report shall not be reproduced except in full with written approval of Cardinal Laboratories.

Celey D. Keene, Lab Director/Quality Manager



PHONE (575) 393-2326 • 101 E. MARLAND • HOBBS, NM 88240

Analytical Results For:

BBC International, Inc.
 Cliff Brunson
 P.O. Box 805
 Hobbs NM, 88241
 Fax To: (575) 397-0397

Received: 06/22/2021
 Reported: 06/28/2021
 Project Name: SHU RMT INJ BLDG 3
 Project Number: (6-9-21)
 Project Location: OXY

Sampling Date: 06/17/2021
 Sampling Type: Soil
 Sampling Condition: Cool & Intact
 Sample Received By: Tamara Oldaker

Sample ID: SP 7 @ 1' (H211622-24)

BTEx 8021B		mg/kg		Analyzed By: MS						
Analyte	Result	Reporting Limit	Analyzed	Method Blank	BS	% Recovery	True Value QC	RPD	Qualifier	
Benzene*	<0.050	0.050	06/24/2021	ND	2.06	103	2.00	3.32		
Toluene*	<0.050	0.050	06/24/2021	ND	1.99	99.6	2.00	3.55		
Ethylbenzene*	<0.050	0.050	06/24/2021	ND	1.91	95.6	2.00	3.65		
Total Xylenes*	<0.150	0.150	06/24/2021	ND	5.80	96.6	6.00	3.67		
Total BTEx	<0.300	0.300	06/24/2021	ND						

Surrogate: 4-Bromofluorobenzene (PID) 111 % 69.9-140

Chloride, SM4500CI-B		mg/kg		Analyzed By: GM						
Analyte	Result	Reporting Limit	Analyzed	Method Blank	BS	% Recovery	True Value QC	RPD	Qualifier	
Chloride	528	16.0	06/24/2021	ND	432	108	400	3.77		

TPH 8015M		mg/kg		Analyzed By: MS					
Analyte	Result	Reporting Limit	Analyzed	Method Blank	BS	% Recovery	True Value QC	RPD	Qualifier
GRO C6-C10*	<10.0	10.0	06/24/2021	ND	193	96.3	200	6.51	
DRO >C10-C28*	<10.0	10.0	06/24/2021	ND	210	105	200	5.76	
EXT DRO >C28-C36	<10.0	10.0	06/24/2021	ND					

Surrogate: 1-Chlorooctane 99.0 % 44.3-133

Surrogate: 1-Chlorooctadecane 111 % 38.9-142

Cardinal Laboratories

*=Accredited Analyte

PLEASE NOTE: Liability and Damages. Cardinal's liability and client's exclusive remedy for any claim arising, whether based in contract or tort, shall be limited to the amount paid by client for analyses. All claims, including those for negligence and any other cause whatsoever shall be deemed waived unless made in writing and received by Cardinal within thirty (30) days after completion of the applicable service. In no event shall Cardinal be liable for incidental or consequential damages, including, without limitation, business interruptions, loss of use, or loss of profits incurred by client, its subsidiaries, affiliates or successors arising out of or related to the performance of the services hereunder by Cardinal, regardless of whether such claim is based upon any of the above stated reasons or otherwise. Results relate only to the samples identified above. This report shall not be reproduced except in full with written approval of Cardinal Laboratories.

Celey D. Keene, Lab Director/Quality Manager



PHONE (575) 393-2326 ° 101 E. MARLAND ° HOBBS, NM 88240

Analytical Results For:

BBC International, Inc.
 Cliff Brunson
 P.O. Box 805
 Hobbs NM, 88241
 Fax To: (575) 397-0397

Received: 06/22/2021
 Reported: 06/28/2021
 Project Name: SHU RMT INJ BLDG 3
 Project Number: (6-9-21)
 Project Location: OXY

Sampling Date: 06/17/2021
 Sampling Type: Soil
 Sampling Condition: Cool & Intact
 Sample Received By: Tamara Oldaker

Sample ID: SP 7 @ 2' (H211622-25)

Chloride, SM4500Cl-B		mg/kg		Analyzed By: GM					
Analyte	Result	Reporting Limit	Analyzed	Method Blank	BS	% Recovery	True Value QC	RPD	Qualifier
Chloride	512	16.0	06/24/2021	ND	432	108	400	3.77	

Sample ID: SP 7 @ 3' (H211622-26)

Chloride, SM4500Cl-B		mg/kg		Analyzed By: GM					
Analyte	Result	Reporting Limit	Analyzed	Method Blank	BS	% Recovery	True Value QC	RPD	Qualifier
Chloride	16.0	16.0	06/24/2021	ND	432	108	400	3.77	

Cardinal Laboratories

*=Accredited Analyte

PLEASE NOTE: Liability and Damages. Cardinal's liability and client's exclusive remedy for any claim arising, whether based in contract or tort, shall be limited to the amount paid by client for analyses. All claims, including those for negligence and any other cause whatsoever shall be deemed waived unless made in writing and received by Cardinal within thirty (30) days after completion of the applicable service. In no event shall Cardinal be liable for incidental or consequential damages, including, without limitation, business interruptions, loss of use, or loss of profits incurred by client, its subsidiaries, affiliates or successors arising out of or related to the performance of the services hereunder by Cardinal, regardless of whether such claim is based upon any of the above stated reasons or otherwise. Results relate only to the samples identified above. This report shall not be reproduced except in full with written approval of Cardinal Laboratories.

Celey D. Keene, Lab Director/Quality Manager



PHONE (575) 393-2326 • 101 E. MARLAND • HOBBS, NM 88240

Analytical Results For:

BBC International, Inc.
 Cliff Brunson
 P.O. Box 805
 Hobbs NM, 88241
 Fax To: (575) 397-0397

Received: 06/22/2021
 Reported: 06/28/2021
 Project Name: SHU RMT INJ BLDG 3
 Project Number: (6-9-21)
 Project Location: OXY

Sampling Date: 06/17/2021
 Sampling Type: Soil
 Sampling Condition: Cool & Intact
 Sample Received By: Tamara Oldaker

Sample ID: SP 8 @ SURFACE (H211622-27)

BTX 8021B		mg/kg		Analyzed By: MS						
Analyte	Result	Reporting Limit	Analyzed	Method Blank	BS	% Recovery	True Value QC	RPD	Qualifier	
Benzene*	<0.050	0.050	06/24/2021	ND	2.06	103	2.00	3.32		
Toluene*	<0.050	0.050	06/24/2021	ND	1.99	99.6	2.00	3.55		
Ethylbenzene*	<0.050	0.050	06/24/2021	ND	1.91	95.6	2.00	3.65		
Total Xylenes*	<0.150	0.150	06/24/2021	ND	5.80	96.6	6.00	3.67		
Total BTX	<0.300	0.300	06/24/2021	ND						

Surrogate: 4-Bromofluorobenzene (PID) 113 % 69.9-140

Chloride, SM4500CI-B		mg/kg		Analyzed By: GM						
Analyte	Result	Reporting Limit	Analyzed	Method Blank	BS	% Recovery	True Value QC	RPD	Qualifier	
Chloride	3680	16.0	06/24/2021	ND	432	108	400	3.77		

TPH 8015M		mg/kg		Analyzed By: MS					
Analyte	Result	Reporting Limit	Analyzed	Method Blank	BS	% Recovery	True Value QC	RPD	Qualifier
GRO C6-C10*	<10.0	10.0	06/24/2021	ND	193	96.3	200	6.51	
DRO >C10-C28*	<10.0	10.0	06/24/2021	ND	210	105	200	5.76	
EXT DRO >C28-C36	<10.0	10.0	06/24/2021	ND					

Surrogate: 1-Chlorooctane 99.4 % 44.3-133

Surrogate: 1-Chlorooctadecane 114 % 38.9-142

Cardinal Laboratories

*=Accredited Analyte

PLEASE NOTE: Liability and Damages. Cardinal's liability and client's exclusive remedy for any claim arising, whether based in contract or tort, shall be limited to the amount paid by client for analyses. All claims, including those for negligence and any other cause whatsoever shall be deemed waived unless made in writing and received by Cardinal within thirty (30) days after completion of the applicable service. In no event shall Cardinal be liable for incidental or consequential damages, including, without limitation, business interruptions, loss of use, or loss of profits incurred by client, its subsidiaries, affiliates or successors arising out of or related to the performance of the services hereunder by Cardinal, regardless of whether such claim is based upon any of the above stated reasons or otherwise. Results relate only to the samples identified above. This report shall not be reproduced except in full with written approval of Cardinal Laboratories.

Celey D. Keene, Lab Director/Quality Manager



PHONE (575) 393-2326 ° 101 E. MARLAND ° HOBBS, NM 88240

Analytical Results For:

BBC International, Inc.
 Cliff Brunson
 P.O. Box 805
 Hobbs NM, 88241
 Fax To: (575) 397-0397

Received: 06/22/2021
 Reported: 06/28/2021
 Project Name: SHU RMT INJ BLDG 3
 Project Number: (6-9-21)
 Project Location: OXY

Sampling Date: 06/17/2021
 Sampling Type: Soil
 Sampling Condition: Cool & Intact
 Sample Received By: Tamara Oldaker

Sample ID: SP 8 @ 1' (H211622-28)

BTEx 8021B		mg/kg		Analyzed By: MS						
Analyte	Result	Reporting Limit	Analyzed	Method Blank	BS	% Recovery	True Value QC	RPD	Qualifier	
Benzene*	<0.050	0.050	06/24/2021	ND	1.96	98.0	2.00	4.10		
Toluene*	<0.050	0.050	06/24/2021	ND	1.99	99.4	2.00	5.59		
Ethylbenzene*	<0.050	0.050	06/24/2021	ND	1.94	97.1	2.00	3.86		
Total Xylenes*	<0.150	0.150	06/24/2021	ND	5.84	97.4	6.00	4.23		
Total BTEx	<0.300	0.300	06/24/2021	ND						

Surrogate: 4-Bromofluorobenzene (PID) 95.9 % 69.9-140

Chloride, SM4500CI-B		mg/kg		Analyzed By: GM						
Analyte	Result	Reporting Limit	Analyzed	Method Blank	BS	% Recovery	True Value QC	RPD	Qualifier	
Chloride	176	16.0	06/24/2021	ND	432	108	400	3.77		

TPH 8015M		mg/kg		Analyzed By: MS					
Analyte	Result	Reporting Limit	Analyzed	Method Blank	BS	% Recovery	True Value QC	RPD	Qualifier
GRO C6-C10*	<10.0	10.0	06/24/2021	ND	193	96.3	200	6.51	
DRO >C10-C28*	<10.0	10.0	06/24/2021	ND	210	105	200	5.76	
EXT DRO >C28-C36	<10.0	10.0	06/24/2021	ND					

Surrogate: 1-Chlorooctane 102 % 44.3-133

Surrogate: 1-Chlorooctadecane 119 % 38.9-142

Cardinal Laboratories

*=Accredited Analyte

PLEASE NOTE: Liability and Damages. Cardinal's liability and client's exclusive remedy for any claim arising, whether based in contract or tort, shall be limited to the amount paid by client for analyses. All claims, including those for negligence and any other cause whatsoever shall be deemed waived unless made in writing and received by Cardinal within thirty (30) days after completion of the applicable service. In no event shall Cardinal be liable for incidental or consequential damages, including, without limitation, business interruptions, loss of use, or loss of profits incurred by client, its subsidiaries, affiliates or successors arising out of or related to the performance of the services hereunder by Cardinal, regardless of whether such claim is based upon any of the above stated reasons or otherwise. Results relate only to the samples identified above. This report shall not be reproduced except in full with written approval of Cardinal Laboratories.

Celey D. Keene, Lab Director/Quality Manager



PHONE (575) 393-2326 ° 101 E. MARLAND ° HOBBS, NM 88240

Analytical Results For:

BBC International, Inc.
 Cliff Brunson
 P.O. Box 805
 Hobbs NM, 88241
 Fax To: (575) 397-0397

Received: 06/22/2021
 Reported: 06/28/2021
 Project Name: SHU RMT INJ BLDG 3
 Project Number: (6-9-21)
 Project Location: OXY

Sampling Date: 06/17/2021
 Sampling Type: Soil
 Sampling Condition: Cool & Intact
 Sample Received By: Tamara Oldaker

Sample ID: SP 8 @ 2' (H211622-29)

Chloride, SM4500Cl-B		mg/kg		Analyzed By: GM						
Analyte	Result	Reporting Limit	Analyzed	Method Blank	BS	% Recovery	True Value QC	RPD	Qualifier	
Chloride	192	16.0	06/24/2021	ND	432	108	400	3.77		

Cardinal Laboratories

*=Accredited Analyte

PLEASE NOTE: Liability and Damages. Cardinal's liability and client's exclusive remedy for any claim arising, whether based in contract or tort, shall be limited to the amount paid by client for analyses. All claims, including those for negligence and any other cause whatsoever shall be deemed waived unless made in writing and received by Cardinal within thirty (30) days after completion of the applicable service. In no event shall Cardinal be liable for incidental or consequential damages, including, without limitation, business interruptions, loss of use, or loss of profits incurred by client, its subsidiaries, affiliates or successors arising out of or related to the performance of the services hereunder by Cardinal, regardless of whether such claim is based upon any of the above stated reasons or otherwise. Results relate only to the samples identified above. This report shall not be reproduced except in full with written approval of Cardinal Laboratories.

Celey D. Keene, Lab Director/Quality Manager



PHONE (575) 393-2326 ° 101 E. MARLAND ° HOBBS, NM 88240

Analytical Results For:

BBC International, Inc.
 Cliff Brunson
 P.O. Box 805
 Hobbs NM, 88241
 Fax To: (575) 397-0397

Received:	06/22/2021	Sampling Date:	06/18/2021
Reported:	06/28/2021	Sampling Type:	Soil
Project Name:	SHU RMT INJ BLDG 3	Sampling Condition:	Cool & Intact
Project Number:	(6-9-21)	Sample Received By:	Tamara Oldaker
Project Location:	OXY		

Sample ID: SP 9 @ SURFACE (H211622-30)

BTX 8021B		mg/kg		Analyzed By: MS						
Analyte	Result	Reporting Limit	Analyzed	Method Blank	BS	% Recovery	True Value QC	RPD	Qualifier	
Benzene*	<0.050	0.050	06/24/2021	ND	1.96	98.0	2.00	4.10		
Toluene*	<0.050	0.050	06/24/2021	ND	1.99	99.4	2.00	5.59		
Ethylbenzene*	<0.050	0.050	06/24/2021	ND	1.94	97.1	2.00	3.86		
Total Xylenes*	<0.150	0.150	06/24/2021	ND	5.84	97.4	6.00	4.23		
Total BTX	<0.300	0.300	06/24/2021	ND						

Surrogate: 4-Bromofluorobenzene (PID) 93.9 % 69.9-140

Chloride, SM4500CI-B		mg/kg		Analyzed By: GM						
Analyte	Result	Reporting Limit	Analyzed	Method Blank	BS	% Recovery	True Value QC	RPD	Qualifier	
Chloride	3840	16.0	06/24/2021	ND	432	108	400	3.77		

TPH 8015M		mg/kg		Analyzed By: MS					
Analyte	Result	Reporting Limit	Analyzed	Method Blank	BS	% Recovery	True Value QC	RPD	Qualifier
GRO C6-C10*	<10.0	10.0	06/24/2021	ND	193	96.3	200	6.51	
DRO >C10-C28*	100	10.0	06/24/2021	ND	210	105	200	5.76	
EXT DRO >C28-C36	<10.0	10.0	06/24/2021	ND					

Surrogate: 1-Chlorooctane 78.0 % 44.3-133

Surrogate: 1-Chlorooctadecane 93.0 % 38.9-142

Cardinal Laboratories

*=Accredited Analyte

PLEASE NOTE: Liability and Damages. Cardinal's liability and client's exclusive remedy for any claim arising, whether based in contract or tort, shall be limited to the amount paid by client for analyses. All claims, including those for negligence and any other cause whatsoever shall be deemed waived unless made in writing and received by Cardinal within thirty (30) days after completion of the applicable service. In no event shall Cardinal be liable for incidental or consequential damages, including, without limitation, business interruptions, loss of use, or loss of profits incurred by client, its subsidiaries, affiliates or successors arising out of or related to the performance of the services hereunder by Cardinal, regardless of whether such claim is based upon any of the above stated reasons or otherwise. Results relate only to the samples identified above. This report shall not be reproduced except in full with written approval of Cardinal Laboratories.

Celey D. Keene, Lab Director/Quality Manager



PHONE (575) 393-2326 ° 101 E. MARLAND ° HOBBS, NM 88240

Analytical Results For:

BBC International, Inc.
 Cliff Brunson
 P.O. Box 805
 Hobbs NM, 88241
 Fax To: (575) 397-0397

Received: 06/22/2021
 Reported: 06/28/2021
 Project Name: SHU RMT INJ BLDG 3
 Project Number: (6-9-21)
 Project Location: OXY

Sampling Date: 06/18/2021
 Sampling Type: Soil
 Sampling Condition: Cool & Intact
 Sample Received By: Tamara Oldaker

Sample ID: SP 9 @ 1' (H211622-31)

BTX 8021B		mg/kg		Analyzed By: MS					
Analyte	Result	Reporting Limit	Analyzed	Method Blank	BS	% Recovery	True Value QC	RPD	Qualifier
Benzene*	<0.050	0.050	06/24/2021	ND	1.96	98.0	2.00	4.10	
Toluene*	<0.050	0.050	06/24/2021	ND	1.99	99.4	2.00	5.59	
Ethylbenzene*	<0.050	0.050	06/24/2021	ND	1.94	97.1	2.00	3.86	
Total Xylenes*	<0.150	0.150	06/24/2021	ND	5.84	97.4	6.00	4.23	
Total BTX	<0.300	0.300	06/24/2021	ND					

Surrogate: 4-Bromofluorobenzene (PID) 96.8 % 69.9-140

Chloride, SM4500CI-B		mg/kg		Analyzed By: GM						
Analyte	Result	Reporting Limit	Analyzed	Method Blank	BS	% Recovery	True Value QC	RPD	Qualifier	
Chloride	336	16.0	06/24/2021	ND	432	108	400	3.77		

TPH 8015M		mg/kg		Analyzed By: MS					
Analyte	Result	Reporting Limit	Analyzed	Method Blank	BS	% Recovery	True Value QC	RPD	Qualifier
GRO C6-C10*	<10.0	10.0	06/24/2021	ND	193	96.3	200	6.51	
DRO >C10-C28*	<10.0	10.0	06/24/2021	ND	210	105	200	5.76	
EXT DRO >C28-C36	<10.0	10.0	06/24/2021	ND					

Surrogate: 1-Chlorooctane 92.6 % 44.3-133

Surrogate: 1-Chlorooctadecane 104 % 38.9-142

Cardinal Laboratories

*=Accredited Analyte

PLEASE NOTE: Liability and Damages. Cardinal's liability and client's exclusive remedy for any claim arising, whether based in contract or tort, shall be limited to the amount paid by client for analyses. All claims, including those for negligence and any other cause whatsoever shall be deemed waived unless made in writing and received by Cardinal within thirty (30) days after completion of the applicable service. In no event shall Cardinal be liable for incidental or consequential damages, including, without limitation, business interruptions, loss of use, or loss of profits incurred by client, its subsidiaries, affiliates or successors arising out of or related to the performance of the services hereunder by Cardinal, regardless of whether such claim is based upon any of the above stated reasons or otherwise. Results relate only to the samples identified above. This report shall not be reproduced except in full with written approval of Cardinal Laboratories.

Celey D. Keene, Lab Director/Quality Manager



PHONE (575) 393-2326 ° 101 E. MARLAND ° HOBBS, NM 88240

Analytical Results For:

BBC International, Inc.
 Cliff Brunson
 P.O. Box 805
 Hobbs NM, 88241
 Fax To: (575) 397-0397

Received:	06/22/2021	Sampling Date:	06/18/2021
Reported:	06/28/2021	Sampling Type:	Soil
Project Name:	SHU RMT INJ BLDG 3	Sampling Condition:	Cool & Intact
Project Number:	(6-9-21)	Sample Received By:	Tamara Oldaker
Project Location:	OXY		

Sample ID: SP 9 @ 2' (H211622-32)

Chloride, SM4500Cl-B		mg/kg		Analyzed By: GM						
Analyte	Result	Reporting Limit	Analyzed	Method Blank	BS	% Recovery	True Value QC	RPD	Qualifier	
Chloride	272	16.0	06/24/2021	ND	432	108	400	3.77		

Sample ID: SP 9 @ 3' (H211622-33)

Chloride, SM4500Cl-B		mg/kg		Analyzed By: GM					
Analyte	Result	Reporting Limit	Analyzed	Method Blank	BS	% Recovery	True Value QC	RPD	Qualifier
Chloride	192	16.0	06/24/2021	ND	432	108	400	3.77	

Cardinal Laboratories

*=Accredited Analyte

PLEASE NOTE: Liability and Damages. Cardinal's liability and client's exclusive remedy for any claim arising, whether based in contract or tort, shall be limited to the amount paid by client for analyses. All claims, including those for negligence and any other cause whatsoever shall be deemed waived unless made in writing and received by Cardinal within thirty (30) days after completion of the applicable service. In no event shall Cardinal be liable for incidental or consequential damages, including, without limitation, business interruptions, loss of use, or loss of profits incurred by client, its subsidiaries, affiliates or successors arising out of or related to the performance of the services hereunder by Cardinal, regardless of whether such claim is based upon any of the above stated reasons or otherwise. Results relate only to the samples identified above. This report shall not be reproduced except in full with written approval of Cardinal Laboratories.

Celey D. Keene, Lab Director/Quality Manager



PHONE (575) 393-2326 ° 101 E. MARLAND ° HOBBS, NM 88240

Analytical Results For:

BBC International, Inc.
 Cliff Brunson
 P.O. Box 805
 Hobbs NM, 88241
 Fax To: (575) 397-0397

Received:	06/22/2021	Sampling Date:	06/18/2021
Reported:	06/28/2021	Sampling Type:	Soil
Project Name:	SHU RMT INJ BLDG 3	Sampling Condition:	Cool & Intact
Project Number:	(6-9-21)	Sample Received By:	Tamara Oldaker
Project Location:	OXY		

Sample ID: SP 10 @ SURFACE (H211622-34)

BTEx 8021B		mg/kg		Analyzed By: MS						
Analyte	Result	Reporting Limit	Analyzed	Method Blank	BS	% Recovery	True Value QC	RPD	Qualifier	
Benzene*	<0.050	0.050	06/24/2021	ND	1.96	98.0	2.00	4.10		
Toluene*	<0.050	0.050	06/24/2021	ND	1.99	99.4	2.00	5.59		
Ethylbenzene*	<0.050	0.050	06/24/2021	ND	1.94	97.1	2.00	3.86		
Total Xylenes*	<0.150	0.150	06/24/2021	ND	5.84	97.4	6.00	4.23		
Total BTEX	<0.300	0.300	06/24/2021	ND						

Surrogate: 4-Bromofluorobenzene (PID) 94.5 % 69.9-140

Chloride, SM4500CI-B		mg/kg		Analyzed By: GM						
Analyte	Result	Reporting Limit	Analyzed	Method Blank	BS	% Recovery	True Value QC	RPD	Qualifier	
Chloride	320	16.0	06/24/2021	ND	432	108	400	3.77		

TPH 8015M		mg/kg		Analyzed By: MS					
Analyte	Result	Reporting Limit	Analyzed	Method Blank	BS	% Recovery	True Value QC	RPD	Qualifier
GRO C6-C10*	<10.0	10.0	06/24/2021	ND	193	96.3	200	6.51	
DRO >C10-C28*	<10.0	10.0	06/24/2021	ND	210	105	200	5.76	
EXT DRO >C28-C36	<10.0	10.0	06/24/2021	ND					

Surrogate: 1-Chlorooctane 89.3 % 44.3-133

Surrogate: 1-Chlorooctadecane 99.8 % 38.9-142

Cardinal Laboratories

*=Accredited Analyte

PLEASE NOTE: Liability and Damages. Cardinal's liability and client's exclusive remedy for any claim arising, whether based in contract or tort, shall be limited to the amount paid by client for analyses. All claims, including those for negligence and any other cause whatsoever shall be deemed waived unless made in writing and received by Cardinal within thirty (30) days after completion of the applicable service. In no event shall Cardinal be liable for incidental or consequential damages, including, without limitation, business interruptions, loss of use, or loss of profits incurred by client, its subsidiaries, affiliates or successors arising out of or related to the performance of the services hereunder by Cardinal, regardless of whether such claim is based upon any of the above stated reasons or otherwise. Results relate only to the samples identified above. This report shall not be reproduced except in full with written approval of Cardinal Laboratories.

Celey D. Keene, Lab Director/Quality Manager



PHONE (575) 393-2326 ° 101 E. MARLAND ° HOBBS, NM 88240

Analytical Results For:

BBC International, Inc.
 Cliff Brunson
 P.O. Box 805
 Hobbs NM, 88241
 Fax To: (575) 397-0397

Received: 06/22/2021
 Reported: 06/28/2021
 Project Name: SHU RMT INJ BLDG 3
 Project Number: (6-9-21)
 Project Location: OXY

Sampling Date: 06/18/2021
 Sampling Type: Soil
 Sampling Condition: Cool & Intact
 Sample Received By: Tamara Oldaker

Sample ID: SP 10 @ 1' (H211622-35)

BTX 8021B		mg/kg		Analyzed By: MS						
Analyte	Result	Reporting Limit	Analyzed	Method Blank	BS	% Recovery	True Value QC	RPD	Qualifier	
Benzene*	<0.050	0.050	06/24/2021	ND	1.96	98.0	2.00	4.10		
Toluene*	<0.050	0.050	06/24/2021	ND	1.99	99.4	2.00	5.59		
Ethylbenzene*	<0.050	0.050	06/24/2021	ND	1.94	97.1	2.00	3.86		
Total Xylenes*	<0.150	0.150	06/24/2021	ND	5.84	97.4	6.00	4.23		
Total BTX	<0.300	0.300	06/24/2021	ND						

Surrogate: 4-Bromofluorobenzene (PID) 98.7 % 69.9-140

Chloride, SM4500Cl-B		mg/kg		Analyzed By: GM						
Analyte	Result	Reporting Limit	Analyzed	Method Blank	BS	% Recovery	True Value QC	RPD	Qualifier	
Chloride	64.0	16.0	06/24/2021	ND	432	108	400	3.77		

TPH 8015M		mg/kg		Analyzed By: MS					
Analyte	Result	Reporting Limit	Analyzed	Method Blank	BS	% Recovery	True Value QC	RPD	Qualifier
GRO C6-C10*	<10.0	10.0	06/24/2021	ND	193	96.3	200	6.51	
DRO >C10-C28*	<10.0	10.0	06/24/2021	ND	210	105	200	5.76	
EXT DRO >C28-C36	<10.0	10.0	06/24/2021	ND					

Surrogate: 1-Chlorooctane 89.2 % 44.3-133

Surrogate: 1-Chlorooctadecane 101 % 38.9-142

Cardinal Laboratories

*=Accredited Analyte

PLEASE NOTE: Liability and Damages. Cardinal's liability and client's exclusive remedy for any claim arising, whether based in contract or tort, shall be limited to the amount paid by client for analyses. All claims, including those for negligence and any other cause whatsoever shall be deemed waived unless made in writing and received by Cardinal within thirty (30) days after completion of the applicable service. In no event shall Cardinal be liable for incidental or consequential damages, including, without limitation, business interruptions, loss of use, or loss of profits incurred by client, its subsidiaries, affiliates or successors arising out of or related to the performance of the services hereunder by Cardinal, regardless of whether such claim is based upon any of the above stated reasons or otherwise. Results relate only to the samples identified above. This report shall not be reproduced except in full with written approval of Cardinal Laboratories.

Celey D. Keene, Lab Director/Quality Manager



PHONE (575) 393-2326 ° 101 E. MARLAND ° HOBBS, NM 88240

Analytical Results For:

BBC International, Inc.
 Cliff Brunson
 P.O. Box 805
 Hobbs NM, 88241
 Fax To: (575) 397-0397

Received:	06/22/2021	Sampling Date:	06/18/2021
Reported:	06/28/2021	Sampling Type:	Soil
Project Name:	SHU RMT INJ BLDG 3	Sampling Condition:	Cool & Intact
Project Number:	(6-9-21)	Sample Received By:	Tamara Oldaker
Project Location:	OXY		

Sample ID: SP 10 @ 2' (H211622-36)

Chloride, SM4500Cl-B		mg/kg		Analyzed By: GM						
Analyte	Result	Reporting Limit	Analyzed	Method Blank	BS	% Recovery	True Value QC	RPD	Qualifier	
Chloride	32.0	16.0	06/24/2021	ND	432	108	400	3.77		

Sample ID: SP 10 @ 3' (H211622-37)

Chloride, SM4500Cl-B		mg/kg		Analyzed By: GM					
Analyte	Result	Reporting Limit	Analyzed	Method Blank	BS	% Recovery	True Value QC	RPD	Qualifier
Chloride	32.0	16.0	06/24/2021	ND	432	108	400	3.77	

Cardinal Laboratories

*=Accredited Analyte

PLEASE NOTE: Liability and Damages. Cardinal's liability and client's exclusive remedy for any claim arising, whether based in contract or tort, shall be limited to the amount paid by client for analyses. All claims, including those for negligence and any other cause whatsoever shall be deemed waived unless made in writing and received by Cardinal within thirty (30) days after completion of the applicable service. In no event shall Cardinal be liable for incidental or consequential damages, including, without limitation, business interruptions, loss of use, or loss of profits incurred by client, its subsidiaries, affiliates or successors arising out of or related to the performance of the services hereunder by Cardinal, regardless of whether such claim is based upon any of the above stated reasons or otherwise. Results relate only to the samples identified above. This report shall not be reproduced except in full with written approval of Cardinal Laboratories.

Celey D. Keene, Lab Director/Quality Manager



PHONE (575) 393-2326 ° 101 E. MARLAND ° HOBBS, NM 88240

Analytical Results For:

BBC International, Inc.
 Cliff Brunson
 P.O. Box 805
 Hobbs NM, 88241
 Fax To: (575) 397-0397

Received: 06/22/2021
 Reported: 06/28/2021
 Project Name: SHU RMT INJ BLDG 3
 Project Number: (6-9-21)
 Project Location: OXY

Sampling Date: 06/18/2021
 Sampling Type: Soil
 Sampling Condition: Cool & Intact
 Sample Received By: Tamara Oldaker

Sample ID: SP 11 @ SURFACE (H211622-38)

BTX 8021B		mg/kg		Analyzed By: MS						
Analyte	Result	Reporting Limit	Analyzed	Method Blank	BS	% Recovery	True Value QC	RPD	Qualifier	
Benzene*	<0.050	0.050	06/24/2021	ND	1.96	98.0	2.00	4.10		
Toluene*	<0.050	0.050	06/24/2021	ND	1.99	99.4	2.00	5.59		
Ethylbenzene*	<0.050	0.050	06/24/2021	ND	1.94	97.1	2.00	3.86		
Total Xylenes*	<0.150	0.150	06/24/2021	ND	5.84	97.4	6.00	4.23		
Total BTX	<0.300	0.300	06/24/2021	ND						

Surrogate: 4-Bromofluorobenzene (PID) 99.0 % 69.9-140

Chloride, SM4500CI-B		mg/kg		Analyzed By: GM					
Analyte	Result	Reporting Limit	Analyzed	Method Blank	BS	% Recovery	True Value QC	RPD	Qualifier
Chloride	512	16.0	06/24/2021	ND	432	108	400	3.77	

TPH 8015M		mg/kg		Analyzed By: MS					
Analyte	Result	Reporting Limit	Analyzed	Method Blank	BS	% Recovery	True Value QC	RPD	Qualifier
GRO C6-C10*	<10.0	10.0	06/24/2021	ND	193	96.3	200	6.51	
DRO >C10-C28*	<10.0	10.0	06/24/2021	ND	210	105	200	5.76	
EXT DRO >C28-C36	<10.0	10.0	06/24/2021	ND					

Surrogate: 1-Chlorooctane 86.2 % 44.3-133

Surrogate: 1-Chlorooctadecane 96.5 % 38.9-142

Cardinal Laboratories

*=Accredited Analyte

PLEASE NOTE: Liability and Damages. Cardinal's liability and client's exclusive remedy for any claim arising, whether based in contract or tort, shall be limited to the amount paid by client for analyses. All claims, including those for negligence and any other cause whatsoever shall be deemed waived unless made in writing and received by Cardinal within thirty (30) days after completion of the applicable service. In no event shall Cardinal be liable for incidental or consequential damages, including, without limitation, business interruptions, loss of use, or loss of profits incurred by client, its subsidiaries, affiliates or successors arising out of or related to the performance of the services hereunder by Cardinal, regardless of whether such claim is based upon any of the above stated reasons or otherwise. Results relate only to the samples identified above. This report shall not be reproduced except in full with written approval of Cardinal Laboratories.

Celey D. Keene, Lab Director/Quality Manager



PHONE (575) 393-2326 ° 101 E. MARLAND ° HOBBS, NM 88240

Analytical Results For:

BBC International, Inc.
 Cliff Brunson
 P.O. Box 805
 Hobbs NM, 88241
 Fax To: (575) 397-0397

Received: 06/22/2021
 Reported: 06/28/2021
 Project Name: SHU RMT INJ BLDG 3
 Project Number: (6-9-21)
 Project Location: OXY

Sampling Date: 06/18/2021
 Sampling Type: Soil
 Sampling Condition: Cool & Intact
 Sample Received By: Tamara Oldaker

Sample ID: SP 11 @ 1' (H211622-39)

BTEx 8021B		mg/kg		Analyzed By: MS						
Analyte	Result	Reporting Limit	Analyzed	Method Blank	BS	% Recovery	True Value QC	RPD	Qualifier	
Benzene*	<0.050	0.050	06/24/2021	ND	1.96	98.0	2.00	4.10		
Toluene*	<0.050	0.050	06/24/2021	ND	1.99	99.4	2.00	5.59		
Ethylbenzene*	<0.050	0.050	06/24/2021	ND	1.94	97.1	2.00	3.86		
Total Xylenes*	<0.150	0.150	06/24/2021	ND	5.84	97.4	6.00	4.23		
Total BTEx	<0.300	0.300	06/24/2021	ND						

Surrogate: 4-Bromofluorobenzene (PID) 97.5 % 69.9-140

Chloride, SM4500CI-B		mg/kg		Analyzed By: GM					
Analyte	Result	Reporting Limit	Analyzed	Method Blank	BS	% Recovery	True Value QC	RPD	Qualifier
Chloride	432	16.0	06/24/2021	ND	432	108	400	3.77	

TPH 8015M		mg/kg		Analyzed By: MS					
Analyte	Result	Reporting Limit	Analyzed	Method Blank	BS	% Recovery	True Value QC	RPD	Qualifier
GRO C6-C10*	<10.0	10.0	06/24/2021	ND	193	96.3	200	6.51	
DRO >C10-C28*	<10.0	10.0	06/24/2021	ND	210	105	200	5.76	
EXT DRO >C28-C36	<10.0	10.0	06/24/2021	ND					

Surrogate: 1-Chlorooctane 87.6 % 44.3-133

Surrogate: 1-Chlorooctadecane 98.4 % 38.9-142

Cardinal Laboratories

*=Accredited Analyte

PLEASE NOTE: Liability and Damages. Cardinal's liability and client's exclusive remedy for any claim arising, whether based in contract or tort, shall be limited to the amount paid by client for analyses. All claims, including those for negligence and any other cause whatsoever shall be deemed waived unless made in writing and received by Cardinal within thirty (30) days after completion of the applicable service. In no event shall Cardinal be liable for incidental or consequential damages, including, without limitation, business interruptions, loss of use, or loss of profits incurred by client, its subsidiaries, affiliates or successors arising out of or related to the performance of the services hereunder by Cardinal, regardless of whether such claim is based upon any of the above stated reasons or otherwise. Results relate only to the samples identified above. This report shall not be reproduced except in full with written approval of Cardinal Laboratories.

Celey D. Keene, Lab Director/Quality Manager



PHONE (575) 393-2326 ° 101 E. MARLAND ° HOBBS, NM 88240

Analytical Results For:

BBC International, Inc.
 Cliff Brunson
 P.O. Box 805
 Hobbs NM, 88241
 Fax To: (575) 397-0397

Received:	06/22/2021	Sampling Date:	06/18/2021
Reported:	06/28/2021	Sampling Type:	Soil
Project Name:	SHU RMT INJ BLDG 3	Sampling Condition:	Cool & Intact
Project Number:	(6-9-21)	Sample Received By:	Tamara Oldaker
Project Location:	OXY		

Sample ID: SP 11 @ 2' (H211622-40)

Chloride, SM4500Cl-B		mg/kg		Analyzed By: GM						
Analyte	Result	Reporting Limit	Analyzed	Method Blank	BS	% Recovery	True Value QC	RPD	Qualifier	
Chloride	384	16.0	06/24/2021	ND	432	108	400	3.77		

Sample ID: SP 11 @ 3' (H211622-42)

Chloride, SM4500Cl-B		mg/kg		Analyzed By: GM					
Analyte	Result	Reporting Limit	Analyzed	Method Blank	BS	% Recovery	True Value QC	RPD	Qualifier
Chloride	32.0	16.0	06/24/2021	ND	432	108	400	3.77	

Cardinal Laboratories

*=Accredited Analyte

PLEASE NOTE: Liability and Damages. Cardinal's liability and client's exclusive remedy for any claim arising, whether based in contract or tort, shall be limited to the amount paid by client for analyses. All claims, including those for negligence and any other cause whatsoever shall be deemed waived unless made in writing and received by Cardinal within thirty (30) days after completion of the applicable service. In no event shall Cardinal be liable for incidental or consequential damages, including, without limitation, business interruptions, loss of use, or loss of profits incurred by client, its subsidiaries, affiliates or successors arising out of or related to the performance of the services hereunder by Cardinal, regardless of whether such claim is based upon any of the above stated reasons or otherwise. Results relate only to the samples identified above. This report shall not be reproduced except in full with written approval of Cardinal Laboratories.

Celey D. Keene, Lab Director/Quality Manager



PHONE (575) 393-2326 ° 101 E. MARLAND ° HOBBS, NM 88240

Analytical Results For:

BBC International, Inc.
 Cliff Brunson
 P.O. Box 805
 Hobbs NM, 88241
 Fax To: (575) 397-0397

Received:	06/22/2021	Sampling Date:	06/18/2021
Reported:	06/28/2021	Sampling Type:	Soil
Project Name:	SHU RMT INJ BLDG 3	Sampling Condition:	Cool & Intact
Project Number:	(6-9-21)	Sample Received By:	Tamara Oldaker
Project Location:	OXY		

Sample ID: SP 12 @ SURFACE (H211622-43)

BTEx 8021B		mg/kg		Analyzed By: MS						
Analyte	Result	Reporting Limit	Analyzed	Method Blank	BS	% Recovery	True Value QC	RPD	Qualifier	
Benzene*	<0.050	0.050	06/24/2021	ND	1.96	98.0	2.00	4.10		
Toluene*	<0.050	0.050	06/24/2021	ND	1.99	99.4	2.00	5.59		
Ethylbenzene*	<0.050	0.050	06/24/2021	ND	1.94	97.1	2.00	3.86		
Total Xylenes*	<0.150	0.150	06/24/2021	ND	5.84	97.4	6.00	4.23		
Total BTEX	<0.300	0.300	06/24/2021	ND						

Surrogate: 4-Bromofluorobenzene (PID) 95.3 % 69.9-140

Chloride, SM4500Cl-B		mg/kg		Analyzed By: GM					
Analyte	Result	Reporting Limit	Analyzed	Method Blank	BS	% Recovery	True Value QC	RPD	Qualifier
Chloride	400	16.0	06/24/2021	ND	432	108	400	3.77	

TPH 8015M		mg/kg		Analyzed By: MS					
Analyte	Result	Reporting Limit	Analyzed	Method Blank	BS	% Recovery	True Value QC	RPD	Qualifier
GRO C6-C10*	<10.0	10.0	06/24/2021	ND	193	96.3	200	6.51	
DRO >C10-C28*	366	10.0	06/24/2021	ND	210	105	200	5.76	
EXT DRO >C28-C36	299	10.0	06/24/2021	ND					

Surrogate: 1-Chlorooctane 77.6 % 44.3-133

Surrogate: 1-Chlorooctadecane 93.6 % 38.9-142

Cardinal Laboratories

*=Accredited Analyte

PLEASE NOTE: Liability and Damages. Cardinal's liability and client's exclusive remedy for any claim arising, whether based in contract or tort, shall be limited to the amount paid by client for analyses. All claims, including those for negligence and any other cause whatsoever shall be deemed waived unless made in writing and received by Cardinal within thirty (30) days after completion of the applicable service. In no event shall Cardinal be liable for incidental or consequential damages, including, without limitation, business interruptions, loss of use, or loss of profits incurred by client, its subsidiaries, affiliates or successors arising out of or related to the performance of the services hereunder by Cardinal, regardless of whether such claim is based upon any of the above stated reasons or otherwise. Results relate only to the samples identified above. This report shall not be reproduced except in full with written approval of Cardinal Laboratories.

Celey D. Keene, Lab Director/Quality Manager



PHONE (575) 393-2326 ° 101 E. MARLAND ° HOBBS, NM 88240

Analytical Results For:

BBC International, Inc.
 Cliff Brunson
 P.O. Box 805
 Hobbs NM, 88241
 Fax To: (575) 397-0397

Received:	06/22/2021	Sampling Date:	06/18/2021
Reported:	06/28/2021	Sampling Type:	Soil
Project Name:	SHU RMT INJ BLDG 3	Sampling Condition:	Cool & Intact
Project Number:	(6-9-21)	Sample Received By:	Tamara Oldaker
Project Location:	OXY		

Sample ID: SP 12 @ 1' (H211622-44)

BTEx 8021B		mg/kg		Analyzed By: MS						
Analyte	Result	Reporting Limit	Analyzed	Method Blank	BS	% Recovery	True Value QC	RPD	Qualifier	
Benzene*	<0.050	0.050	06/24/2021	ND	1.96	98.0	2.00	4.10		
Toluene*	<0.050	0.050	06/24/2021	ND	1.99	99.4	2.00	5.59		
Ethylbenzene*	<0.050	0.050	06/24/2021	ND	1.94	97.1	2.00	3.86		
Total Xylenes*	<0.150	0.150	06/24/2021	ND	5.84	97.4	6.00	4.23		
Total BTEx	<0.300	0.300	06/24/2021	ND						

Surrogate: 4-Bromofluorobenzene (PID) 96.3 % 69.9-140

Chloride, SM4500CI-B		mg/kg		Analyzed By: GM						
Analyte	Result	Reporting Limit	Analyzed	Method Blank	BS	% Recovery	True Value QC	RPD	Qualifier	
Chloride	544	16.0	06/24/2021	ND	432	108	400	3.77		

TPH 8015M		mg/kg		Analyzed By: MS					
Analyte	Result	Reporting Limit	Analyzed	Method Blank	BS	% Recovery	True Value QC	RPD	Qualifier
GRO C6-C10*	<10.0	10.0	06/24/2021	ND	193	96.3	200	6.51	
DRO >C10-C28*	<10.0	10.0	06/24/2021	ND	210	105	200	5.76	
EXT DRO >C28-C36	<10.0	10.0	06/24/2021	ND					

Surrogate: 1-Chlorooctane 93.5 % 44.3-133

Surrogate: 1-Chlorooctadecane 105 % 38.9-142

Cardinal Laboratories

*=Accredited Analyte

PLEASE NOTE: Liability and Damages. Cardinal's liability and client's exclusive remedy for any claim arising, whether based in contract or tort, shall be limited to the amount paid by client for analyses. All claims, including those for negligence and any other cause whatsoever shall be deemed waived unless made in writing and received by Cardinal within thirty (30) days after completion of the applicable service. In no event shall Cardinal be liable for incidental or consequential damages, including, without limitation, business interruptions, loss of use, or loss of profits incurred by client, its subsidiaries, affiliates or successors arising out of or related to the performance of the services hereunder by Cardinal, regardless of whether such claim is based upon any of the above stated reasons or otherwise. Results relate only to the samples identified above. This report shall not be reproduced except in full with written approval of Cardinal Laboratories.

Celey D. Keene, Lab Director/Quality Manager



PHONE (575) 393-2326 ° 101 E. MARLAND ° HOBBS, NM 88240

Analytical Results For:

BBC International, Inc.
 Cliff Brunson
 P.O. Box 805
 Hobbs NM, 88241
 Fax To: (575) 397-0397

Received:	06/22/2021	Sampling Date:	06/18/2021
Reported:	06/28/2021	Sampling Type:	Soil
Project Name:	SHU RMT INJ BLDG 3	Sampling Condition:	Cool & Intact
Project Number:	(6-9-21)	Sample Received By:	Tamara Oldaker
Project Location:	OXY		

Sample ID: SP 12 @ 2' (H211622-45)

Chloride, SM4500Cl-B		mg/kg		Analyzed By: GM						
Analyte	Result	Reporting Limit	Analyzed	Method Blank	BS	% Recovery	True Value QC	RPD	Qualifier	
Chloride	240	16.0	06/24/2021	ND	432	108	400	3.77		

Sample ID: SP 12 @ 3' (H211622-46)

Chloride, SM4500Cl-B		mg/kg		Analyzed By: GM					
Analyte	Result	Reporting Limit	Analyzed	Method Blank	BS	% Recovery	True Value QC	RPD	Qualifier
Chloride	240	16.0	06/24/2021	ND	432	108	400	3.77	

Cardinal Laboratories

*=Accredited Analyte

PLEASE NOTE: Liability and Damages. Cardinal's liability and client's exclusive remedy for any claim arising, whether based in contract or tort, shall be limited to the amount paid by client for analyses. All claims, including those for negligence and any other cause whatsoever shall be deemed waived unless made in writing and received by Cardinal within thirty (30) days after completion of the applicable service. In no event shall Cardinal be liable for incidental or consequential damages, including, without limitation, business interruptions, loss of use, or loss of profits incurred by client, its subsidiaries, affiliates or successors arising out of or related to the performance of the services hereunder by Cardinal, regardless of whether such claim is based upon any of the above stated reasons or otherwise. Results relate only to the samples identified above. This report shall not be reproduced except in full with written approval of Cardinal Laboratories.

Celey D. Keene, Lab Director/Quality Manager



PHONE (575) 393-2326 • 101 E. MARLAND • HOBBS, NM 88240

Analytical Results For:

BBC International, Inc.
 Cliff Brunson
 P.O. Box 805
 Hobbs NM, 88241
 Fax To: (575) 397-0397

Received:	06/22/2021	Sampling Date:	06/18/2021
Reported:	06/28/2021	Sampling Type:	Soil
Project Name:	SHU RMT INJ BLDG 3	Sampling Condition:	Cool & Intact
Project Number:	(6-9-21)	Sample Received By:	Tamara Oldaker
Project Location:	OXY		

Sample ID: SP 13 @ SURFACE (H211622-47)

BTEx 8021B		mg/kg		Analyzed By: MS						
Analyte	Result	Reporting Limit	Analyzed	Method Blank	BS	% Recovery	True Value QC	RPD	Qualifier	
Benzene*	<0.050	0.050	06/24/2021	ND	1.96	98.0	2.00	4.10		
Toluene*	<0.050	0.050	06/24/2021	ND	1.99	99.4	2.00	5.59		
Ethylbenzene*	<0.050	0.050	06/24/2021	ND	1.94	97.1	2.00	3.86		
Total Xylenes*	<0.150	0.150	06/24/2021	ND	5.84	97.4	6.00	4.23		
Total BTEx	<0.300	0.300	06/24/2021	ND						

Surrogate: 4-Bromofluorobenzene (PID) 97.7 % 69.9-140

Chloride, SM4500CI-B		mg/kg		Analyzed By: GM						
Analyte	Result	Reporting Limit	Analyzed	Method Blank	BS	% Recovery	True Value QC	RPD	Qualifier	
Chloride	416	16.0	06/24/2021	ND	432	108	400	3.77		

TPH 8015M		mg/kg		Analyzed By: MS					
Analyte	Result	Reporting Limit	Analyzed	Method Blank	BS	% Recovery	True Value QC	RPD	Qualifier
GRO C6-C10*	<10.0	10.0	06/24/2021	ND	193	96.3	200	6.51	
DRO >C10-C28*	159	10.0	06/24/2021	ND	210	105	200	5.76	
EXT DRO >C28-C36	139	10.0	06/24/2021	ND					

Surrogate: 1-Chlorooctane 85.1 % 44.3-133

Surrogate: 1-Chlorooctadecane 103 % 38.9-142

Cardinal Laboratories

*=Accredited Analyte

PLEASE NOTE: Liability and Damages. Cardinal's liability and client's exclusive remedy for any claim arising, whether based in contract or tort, shall be limited to the amount paid by client for analyses. All claims, including those for negligence and any other cause whatsoever shall be deemed waived unless made in writing and received by Cardinal within thirty (30) days after completion of the applicable service. In no event shall Cardinal be liable for incidental or consequential damages, including, without limitation, business interruptions, loss of use, or loss of profits incurred by client, its subsidiaries, affiliates or successors arising out of or related to the performance of the services hereunder by Cardinal, regardless of whether such claim is based upon any of the above stated reasons or otherwise. Results relate only to the samples identified above. This report shall not be reproduced except in full with written approval of Cardinal Laboratories.

Celey D. Keene, Lab Director/Quality Manager



PHONE (575) 393-2326 ° 101 E. MARLAND ° HOBBS, NM 88240

Analytical Results For:

BBC International, Inc.
 Cliff Brunson
 P.O. Box 805
 Hobbs NM, 88241
 Fax To: (575) 397-0397

Received: 06/22/2021
 Reported: 06/28/2021
 Project Name: SHU RMT INJ BLDG 3
 Project Number: (6-9-21)
 Project Location: OXY

Sampling Date: 06/18/2021
 Sampling Type: Soil
 Sampling Condition: Cool & Intact
 Sample Received By: Tamara Oldaker

Sample ID: SP 13 @ 1' (H211622-48)

BTEx 8021B		mg/kg		Analyzed By: MS					
Analyte	Result	Reporting Limit	Analyzed	Method Blank	BS	% Recovery	True Value QC	RPD	Qualifier
Benzene*	<0.050	0.050	06/24/2021	ND	1.96	98.0	2.00	4.10	
Toluene*	<0.050	0.050	06/24/2021	ND	1.99	99.4	2.00	5.59	
Ethylbenzene*	<0.050	0.050	06/24/2021	ND	1.94	97.1	2.00	3.86	
Total Xylenes*	<0.150	0.150	06/24/2021	ND	5.84	97.4	6.00	4.23	
Total BTEx	<0.300	0.300	06/24/2021	ND					

Surrogate: 4-Bromofluorobenzene (PID) 96.6 % 69.9-140

Chloride, SM4500CI-B		mg/kg		Analyzed By: GM					
Analyte	Result	Reporting Limit	Analyzed	Method Blank	BS	% Recovery	True Value QC	RPD	Qualifier
Chloride	448	16.0	06/24/2021	ND	416	104	400	0.00	

TPH 8015M		mg/kg		Analyzed By: MS					
Analyte	Result	Reporting Limit	Analyzed	Method Blank	BS	% Recovery	True Value QC	RPD	Qualifier
GRO C6-C10*	<10.0	10.0	06/24/2021	ND	193	96.3	200	6.51	
DRO >C10-C28*	<10.0	10.0	06/24/2021	ND	210	105	200	5.76	
EXT DRO >C28-C36	<10.0	10.0	06/24/2021	ND					

Surrogate: 1-Chlorooctane 98.5 % 44.3-133

Surrogate: 1-Chlorooctadecane 107 % 38.9-142

Cardinal Laboratories

*=Accredited Analyte

PLEASE NOTE: Liability and Damages. Cardinal's liability and client's exclusive remedy for any claim arising, whether based in contract or tort, shall be limited to the amount paid by client for analyses. All claims, including those for negligence and any other cause whatsoever shall be deemed waived unless made in writing and received by Cardinal within thirty (30) days after completion of the applicable service. In no event shall Cardinal be liable for incidental or consequential damages, including, without limitation, business interruptions, loss of use, or loss of profits incurred by client, its subsidiaries, affiliates or successors arising out of or related to the performance of the services hereunder by Cardinal, regardless of whether such claim is based upon any of the above stated reasons or otherwise. Results relate only to the samples identified above. This report shall not be reproduced except in full with written approval of Cardinal Laboratories.

Celey D. Keene, Lab Director/Quality Manager



PHONE (575) 393-2326 ° 101 E. MARLAND ° HOBBS, NM 88240

Analytical Results For:

BBC International, Inc.
 Cliff Brunson
 P.O. Box 805
 Hobbs NM, 88241
 Fax To: (575) 397-0397

Received: 06/22/2021
 Reported: 06/28/2021
 Project Name: SHU RMT INJ BLDG 3
 Project Number: (6-9-21)
 Project Location: OXY

Sampling Date: 06/18/2021
 Sampling Type: Soil
 Sampling Condition: Cool & Intact
 Sample Received By: Tamara Oldaker

Sample ID: SP 13 @ 2' (H211622-49)

Chloride, SM4500Cl-B		mg/kg		Analyzed By: GM						
Analyte	Result	Reporting Limit	Analyzed	Method Blank	BS	% Recovery	True Value QC	RPD	Qualifier	
Chloride	400	16.0	06/24/2021	ND	416	104	400	0.00		

Sample ID: SP 13 @ 3' (H211622-50)

Chloride, SM4500Cl-B		mg/kg		Analyzed By: GM						
Analyte	Result	Reporting Limit	Analyzed	Method Blank	BS	% Recovery	True Value QC	RPD	Qualifier	
Chloride	240	16.0	06/24/2021	ND	416	104	400	0.00		

Sample ID: SP 13 @ 4' (H211622-51)

Chloride, SM4500Cl-B		mg/kg		Analyzed By: GM					
Analyte	Result	Reporting Limit	Analyzed	Method Blank	BS	% Recovery	True Value QC	RPD	Qualifier
Chloride	288	16.0	06/24/2021	ND	416	104	400	0.00	

Cardinal Laboratories

*=Accredited Analyte

PLEASE NOTE: Liability and Damages. Cardinal's liability and client's exclusive remedy for any claim arising, whether based in contract or tort, shall be limited to the amount paid by client for analyses. All claims, including those for negligence and any other cause whatsoever shall be deemed waived unless made in writing and received by Cardinal within thirty (30) days after completion of the applicable service. In no event shall Cardinal be liable for incidental or consequential damages, including, without limitation, business interruptions, loss of use, or loss of profits incurred by client, its subsidiaries, affiliates or successors arising out of or related to the performance of the services hereunder by Cardinal, regardless of whether such claim is based upon any of the above stated reasons or otherwise. Results relate only to the samples identified above. This report shall not be reproduced except in full with written approval of Cardinal Laboratories.

Celey D. Keene, Lab Director/Quality Manager



PHONE (575) 393-2326 ° 101 E. MARLAND ° HOBBS, NM 88240

Analytical Results For:

BBC International, Inc.
 Cliff Brunson
 P.O. Box 805
 Hobbs NM, 88241
 Fax To: (575) 397-0397

Received:	06/22/2021	Sampling Date:	06/18/2021
Reported:	06/28/2021	Sampling Type:	Soil
Project Name:	SHU RMT INJ BLDG 3	Sampling Condition:	Cool & Intact
Project Number:	(6-9-21)	Sample Received By:	Tamara Oldaker
Project Location:	OXY		

Sample ID: SP 14 @ SURFACE (H211622-52)

BTEx 8021B		mg/kg		Analyzed By: MS						
Analyte	Result	Reporting Limit	Analyzed	Method Blank	BS	% Recovery	True Value QC	RPD	Qualifier	
Benzene*	<0.050	0.050	06/24/2021	ND	1.96	98.0	2.00	4.10		
Toluene*	<0.050	0.050	06/24/2021	ND	1.99	99.4	2.00	5.59		
Ethylbenzene*	<0.050	0.050	06/24/2021	ND	1.94	97.1	2.00	3.86		
Total Xylenes*	<0.150	0.150	06/24/2021	ND	5.84	97.4	6.00	4.23		
Total BTEx	<0.300	0.300	06/24/2021	ND						

Surrogate: 4-Bromofluorobenzene (PID) 96.2 % 69.9-140

Chloride, SM4500Cl-B		mg/kg		Analyzed By: GM						
Analyte	Result	Reporting Limit	Analyzed	Method Blank	BS	% Recovery	True Value QC	RPD	Qualifier	
Chloride	464	16.0	06/24/2021	ND	416	104	400	0.00		

TPH 8015M		mg/kg		Analyzed By: MS					
Analyte	Result	Reporting Limit	Analyzed	Method Blank	BS	% Recovery	True Value QC	RPD	Qualifier
GRO C6-C10*	<10.0	10.0	06/24/2021	ND	193	96.3	200	6.51	
DRO >C10-C28*	166	10.0	06/24/2021	ND	210	105	200	5.76	
EXT DRO >C28-C36	139	10.0	06/24/2021	ND					

Surrogate: 1-Chlorooctane 84.2 % 44.3-133

Surrogate: 1-Chlorooctadecane 101 % 38.9-142

Cardinal Laboratories

*=Accredited Analyte

PLEASE NOTE: Liability and Damages. Cardinal's liability and client's exclusive remedy for any claim arising, whether based in contract or tort, shall be limited to the amount paid by client for analyses. All claims, including those for negligence and any other cause whatsoever shall be deemed waived unless made in writing and received by Cardinal within thirty (30) days after completion of the applicable service. In no event shall Cardinal be liable for incidental or consequential damages, including, without limitation, business interruptions, loss of use, or loss of profits incurred by client, its subsidiaries, affiliates or successors arising out of or related to the performance of the services hereunder by Cardinal, regardless of whether such claim is based upon any of the above stated reasons or otherwise. Results relate only to the samples identified above. This report shall not be reproduced except in full with written approval of Cardinal Laboratories.

Celey D. Keene, Lab Director/Quality Manager



PHONE (575) 393-2326 ° 101 E. MARLAND ° HOBBS, NM 88240

Analytical Results For:

BBC International, Inc.
 Cliff Brunson
 P.O. Box 805
 Hobbs NM, 88241
 Fax To: (575) 397-0397

Received: 06/22/2021
 Reported: 06/28/2021
 Project Name: SHU RMT INJ BLDG 3
 Project Number: (6-9-21)
 Project Location: OXY

Sampling Date: 06/18/2021
 Sampling Type: Soil
 Sampling Condition: Cool & Intact
 Sample Received By: Tamara Oldaker

Sample ID: SP 14 @ 1' (H211622-53)

BTEx 8021B		mg/kg		Analyzed By: MS						
Analyte	Result	Reporting Limit	Analyzed	Method Blank	BS	% Recovery	True Value QC	RPD	Qualifier	
Benzene*	<0.050	0.050	06/24/2021	ND	1.96	98.0	2.00	4.10		
Toluene*	<0.050	0.050	06/24/2021	ND	1.99	99.4	2.00	5.59		
Ethylbenzene*	<0.050	0.050	06/24/2021	ND	1.94	97.1	2.00	3.86		
Total Xylenes*	<0.150	0.150	06/24/2021	ND	5.84	97.4	6.00	4.23		
Total BTEX	<0.300	0.300	06/24/2021	ND						

Surrogate: 4-Bromofluorobenzene (PID) 95.0 % 69.9-140

Chloride, SM4500Cl-B		mg/kg		Analyzed By: GM					
Analyte	Result	Reporting Limit	Analyzed	Method Blank	BS	% Recovery	True Value QC	RPD	Qualifier
Chloride	448	16.0	06/24/2021	ND	416	104	400	0.00	

TPH 8015M		mg/kg		Analyzed By: MS					
Analyte	Result	Reporting Limit	Analyzed	Method Blank	BS	% Recovery	True Value QC	RPD	Qualifier
GRO C6-C10*	<10.0	10.0	06/24/2021	ND	193	96.3	200	6.51	
DRO >C10-C28*	<10.0	10.0	06/24/2021	ND	210	105	200	5.76	
EXT DRO >C28-C36	<10.0	10.0	06/24/2021	ND					

Surrogate: 1-Chlorooctane 86.6 % 44.3-133

Surrogate: 1-Chlorooctadecane 96.7 % 38.9-142

Cardinal Laboratories

*=Accredited Analyte

PLEASE NOTE: Liability and Damages. Cardinal's liability and client's exclusive remedy for any claim arising, whether based in contract or tort, shall be limited to the amount paid by client for analyses. All claims, including those for negligence and any other cause whatsoever shall be deemed waived unless made in writing and received by Cardinal within thirty (30) days after completion of the applicable service. In no event shall Cardinal be liable for incidental or consequential damages, including, without limitation, business interruptions, loss of use, or loss of profits incurred by client, its subsidiaries, affiliates or successors arising out of or related to the performance of the services hereunder by Cardinal, regardless of whether such claim is based upon any of the above stated reasons or otherwise. Results relate only to the samples identified above. This report shall not be reproduced except in full with written approval of Cardinal Laboratories.

Celey D. Keene, Lab Director/Quality Manager



PHONE (575) 393-2326 ° 101 E. MARLAND ° HOBBS, NM 88240

Analytical Results For:

BBC International, Inc.
 Cliff Brunson
 P.O. Box 805
 Hobbs NM, 88241
 Fax To: (575) 397-0397

Received: 06/22/2021
 Reported: 06/28/2021
 Project Name: SHU RMT INJ BLDG 3
 Project Number: (6-9-21)
 Project Location: OXY

Sampling Date: 06/18/2021
 Sampling Type: Soil
 Sampling Condition: Cool & Intact
 Sample Received By: Tamara Oldaker

Sample ID: SP 14 @ 2' (H211622-54)

Chloride, SM4500Cl-B		mg/kg		Analyzed By: GM						
Analyte	Result	Reporting Limit	Analyzed	Method Blank	BS	% Recovery	True Value QC	RPD	Qualifier	
Chloride	400	16.0	06/24/2021	ND	416	104	400	0.00		

Sample ID: SP 14 @ 3' (H211622-55)

Chloride, SM4500CI-B		mg/kg		Analyzed By: GM					
Analyte	Result	Reporting Limit	Analyzed	Method Blank	BS	% Recovery	True Value QC	RPD	Qualifier
Chloride	272	16.0	06/24/2021	ND	416	104	400	0.00	

Sample ID: SP 14 @ 4' (H211622-56)

Chloride, SM4500CI-B		mg/kg		Analyzed By: GM						
Analyte	Result	Reporting Limit	Analyzed	Method Blank	BS	% Recovery	True Value QC	RPD	Qualifier	
Chloride	352	16.0	06/24/2021	ND	416	104	400	0.00		

Cardinal Laboratories

*=Accredited Analyte

PLEASE NOTE: Liability and Damages. Cardinal's liability and client's exclusive remedy for any claim arising, whether based in contract or tort, shall be limited to the amount paid by client for analyses. All claims, including those for negligence and any other cause whatsoever shall be deemed waived unless made in writing and received by Cardinal within thirty (30) days after completion of the applicable service. In no event shall Cardinal be liable for incidental or consequential damages, including, without limitation, business interruptions, loss of use, or loss of profits incurred by client, its subsidiaries, affiliates or successors arising out of or related to the performance of the services hereunder by Cardinal, regardless of whether such claim is based upon any of the above stated reasons or otherwise. Results relate only to the samples identified above. This report shall not be reproduced except in full with written approval of Cardinal Laboratories.

Celey D. Keene, Lab Director/Quality Manager



PHONE (575) 393-2326 • 101 E. MARLAND • HOBBS, NM 88240

Notes and Definitions

QM-07	The spike recovery was outside acceptance limits for the MS and/or MSD. The batch was accepted based on acceptable LCS recovery.
ND	Analyte NOT DETECTED at or above the reporting limit
RPD	Relative Percent Difference
**	Samples not received at proper temperature of 6°C or below.
***	Insufficient time to reach temperature.
-	Chloride by SM4500Cl-B does not require samples be received at or below 6°C Samples reported on an as received basis (wet) unless otherwise noted on report

Cardinal Laboratories

*=Accredited Analyte

PLEASE NOTE: Liability and Damages. Cardinal's liability and client's exclusive remedy for any claim arising, whether based in contract or tort, shall be limited to the amount paid by client for analyses. All claims, including those for negligence and any other cause whatsoever shall be deemed waived unless made in writing and received by Cardinal within thirty (30) days after completion of the applicable service. In no event shall Cardinal be liable for incidental or consequential damages, including, without limitation, business interruptions, loss of use, or loss of profits incurred by client, its subsidiaries, affiliates or successors arising out of or related to the performance of the services hereunder by Cardinal, regardless of whether such claim is based upon any of the above stated reasons or otherwise. Results relate only to the samples identified above. This report shall not be reproduced except in full with written approval of Cardinal Laboratories.

A handwritten signature in black ink, appearing to read "Celey D. Keene".

Celey D. Keene, Lab Director/Quality Manager

CARDINAL LABORATORIES101 East Marland, Hobbs, NM 88240
(505) 393-2326 FAX (505) 393-2476**CHAIN-OF-CUSTODY AND ANALYSIS REQUEST**

Company Name: BBC International, Inc.

Project Manager: Cliff Brunson

Address: P.O. Box 805

City: Hobbs

Phone #: 575-397-6388

Project #:

State: NM Zip: 88241
Fax #: 575-397-0397

Project Name: SHU RMT INJ BLDG 3 (6-9-21)

Project Location:

Sampler Name: SIMON RENDON

FOR LAB USE ONLY

P.O. #:

Company: OXY

Attn: WADE

Address:

City:

State: Zip:

Phone #:

Fax #:

BILL TO**ANALYSIS REQUEST**

Lab I.D.

Sample I.D.

Hall 622

SP N @ SURFACE

SP E @ SURFACE

SP W @ SURFACE

SP S @ SURFACE

SP 1 @ SURFACE

SP 1 @ 1'

SP 2 @ 2'

SP 2 @ SURFACE

SP 2 @ 1'

SP 2 @ 2'

(G)RAB OR (C)OMP.

CONTAINERS

GROUNDWATER

WASTEWATER

SOIL

OIL

SLUDGE

OTHER :

ACID/BASE:

ICE / COOL

OTHER :

DATE

TIME

CL

BTX

TPH EXT

CL

BTX

TPH EXT

CL

BTX

TPH EXT

CL

BTX

TPH EXT

CL

BTX

TPH EXT

CL

BTX

TPH EXT

CL

BTX

TPH EXT

CL

BTX

TPH EXT

CL

BTX

TPH EXT

CL

BTX

TPH EXT

CL

BTX

TPH EXT

PLEASE NOTE: Liability and Damages. Cardinal's liability and client's exclusive remedy for any claim arising from this contract or tort shall be limited to the amount paid by the client for the service. In no event shall Cardinal be liable for incidental or consequential damages, including without limitation, business interruptions, loss of use, or loss of profits incurred by client, its subsidiaries, affiliates or successors arising out of or related to the performance of services hereunder by Cardinal, regardless of whether such claim is based upon any of the above stated reasons or otherwise.

Relinquished By:

Date: 6-22-21

Time: 1600

Received By:

Date: 6-22-21

Time: 1600

Received By:

Date: 6-22-21

Time: 1600

Received By:

Date: 6-22-21

Time: 1600

Delivered By: (Circle One)

Sampler - UPS - Bus - Other:

Cardinal cannot accept verbal changes. Please fax written changes to 505-393-2476

Sample Condition

Cool Intact

Yes Yes

No No

CHECKED BY:

(Initials)

Phone Result:

Fax Result:

Add'l Phone #:

Add'l Fax #:



CARDINAL LABORATORIES

101 East Marland, Hobbs, NM 88240
(505) 393-2326 FAX (505) 393-2476

CHAIN-OF-CUSTODY AND ANALYSIS REQUEST

Company Name: BBC International, Inc. Project Manager: Cliff Brunson Address: P.O. Box 805 City: Hobbs Phone #: 575-397-6388 Project #: Project Name: SHU RMT INJ BLDG 3 (6-9-21) Project Location: Sampler Name: SIMON RENDON		P.O. #: Company: OXY Attn: WADE Address: City: State: Zip: Phone #: Fax #:	
BILL TO			
ANALYSIS REQUEST			
Lab I.D. H211622	Sample I.D. SP3 @ SURFACE SP3 @ 1' SP3 @ 2' SP3 @ 3' SP4 @ SURFACE SP4 @ 1' SP5 @ SURFACE SP5 @ 1' SP5 @ 2' SP6 @ SURFACE	(G)RAB OR (C)OMP. # CONTAINERS GROUNDWATER WASTEWATER SOIL OIL SLUDGE OTHER : ACID/BASE: ICE / COOL OTHER :	DATE TIME CL BTEX TPH EXT
		MATRIX PRESERV SAMPLING	6-17-21 10:45 6-17-21 10:58 6-17-21 11:17 6-17-21 11:31 6-17-21 11:43 6-17-21 11:56 6-17-21 12:47 6-17-21 1:10 6-17-21 1:24 6-17-21 2:05
PLEASE NOTE: Liability and Damages. Cardinal's liability and clients exclusive remedy for any claim arising whether based in contract or tort, shall be limited to the amount paid by the client for the analyses. All claims, including those for negligence and any other cause whatsoever shall be deemed waived unless made in writing and received by Cardinal within 30 days after completion of the applicable service. In no event shall Cardinal be liable for incidental or consequential damages, including without limitation, business interruptions, loss of use, or loss of profits incurred by client, its subsidiaries, affiliates or successors arising out of or related to the performance of services hereunder by Cardinal, regardless of whether such claim is based upon any of the above stated reasons or otherwise.			
Relinquished By: [Signature] Date: 6-22-21 Time: 1:00		Received By: [Signature] Date: 6-22-21 Time: 1:00	
Delivered By: (Circle One) Sampler - UPS - Bus - Other: -1.1c #113		Sample Condition Cool <input checked="" type="checkbox"/> Yes <input type="checkbox"/> No Intact <input checked="" type="checkbox"/> Yes <input type="checkbox"/> No CHECKED BY: [Signature] (Initials)	
REMARKS:			

† Cardinal cannot accept verbal changes. Please fax written changes to 505-393-2476



ORDINAL LABORATORIES

101 East Marland, Hobbs, NM 88240
(505) 393-2326 FAX (505) 393-2476

CHAIN-OF-CUSTODY AND ANALYSIS REQUEST

[illegible]



CARDINAL LABORATORIES
101 East Marland, Hobbs, NM 88240
(505) 393-2326 FAX (505) 393-2476

CHAIN-OF-CUSTODY AND ANALYSIS REQUEST

Company Name: BBC International, Inc.				BILL TO				ANALYSIS REQUEST																							
Project Manager: Cliff Brunson				P.O. #:																											
Address: P.O. Box 805				Company: OXY																											
City: Hobbs				Attn: WADE																											
Phone #: 575-397-6388				State: NM Zip: 88241																											
Fax #: 575-397-0397				Address:																											
Project #:				City:																											
Project Name: SHU RMT INJ BLDG 3 (6-7-21)				State:																											
Project Location:				Zip:																											
Sampler Name: SIMON RENDON				Phone #:																											
Fax #:																															
FOR LAB USE ONLY																															
Lab I.D.		Sample I.D.		(G)RAB OR (C)OMP.		# CONTAINERS		MATRIX		PRESERV		SAMPLING		CL		BTEX		TPH EXT													
H211622		SP9 @ 1'		G		1		GROUNDWATER						6-18-21		8:12		✓		✓											
31		SP9 @ 2'						WASTEWATER						6-18-21		8:24		✓													
32		SP9 @ 3'						SOIL						6-18-21		8:42		✓													
33		SP10 @ SURFACE						OIL						6-18-21		9:07		✓		✓											
34		SP10 @ 1'						SLUDGE						6-18-21		9:20		✓													
35		SP10 @ 2'						OTHER :						6-18-21		9:37		✓													
36		SP10 @ 3'						ACID/BASE:						6-18-21		9:51		✓													
37		SP11 @ SURFACE						ICE / COOL						6-18-21		10:00		✓		✓											
38		SP11 @ 1'						OTHER :						6-18-21		10:23		✓													
39		SP11 @ 2'												6-18-21		10:38		✓		✓											
40																															

PLEASE NOTE: Liability and Damages. Cardinal's liability and client's exclusive remedy for any claim arising whether based in contract or tort, shall be limited to the amount paid by the client for the analyses. All claims, including those for negligence and any other cause whatsoever shall be deemed waived unless made in writing and received by Cardinal within 30 days after completion of the applicable service. In no event shall Cardinal be liable for incidental or consequential damages, including without limitation, business interruptions, loss of use, or loss of profits incurred by client, its subsidiaries, affiliates or successors arising out of or related to the performance of services hereunder by Cardinal, regardless of whether such claim is based upon any of the above stated reasons or otherwise.

Relinquished By:	Date: 6-22-21	Received By:	Phone Result: <input type="checkbox"/> Yes <input type="checkbox"/> No	Add'l Phone #:
Relinquished By:	Date: 7-6-21	Received By:	Fax Result: <input type="checkbox"/> Yes <input type="checkbox"/> No	Add'l Fax #:
REMARKS:				

Delivered By: (Circle One)	Sample Condition	CHECKED BY:
Sampler - UPS - Bus - Other:	Cool <input type="checkbox"/> Intact <input type="checkbox"/> Yes <input checked="" type="checkbox"/> No <input type="checkbox"/>	(Initials)

† Cardinal cannot accept verbal changes. Please fax written changes to 505-393-2476



CARDINAL LABORATORIES
101 East Marland, Hobbs, NM 88240
(505) 393-2326 FAX (505) 393-2476

CHAIN-OF-CUSTODY AND ANALYSIS REQUEST

Company Name: BBC International, Inc.				BILL TO				ANALYSIS REQUEST									
Project Manager: Cliff Brunson				P.O. #:													
Address: P.O. Box 805				Company: OXY													
City: Hobbs				Attn: WADE													
Phone #: 575-397-6388				Fax #: 575-397-0397													
Project #:				Address:													
Project Name: SHU RMT INJ BLDG 3 (6-9-21)				City:													
Project Location:				State:				Zip:									
Sample Name: SIMON RENDON				Phone #:													
Fax #:																	
FOR LAB USE ONLY																	
Lab I.D.		Sample I.D.		(G)RAB OR (C)OMP.		# CONTAINERS		MATRIX		PRESERV.		SAMPLING					
Hall 1622		SP41 @ 2'		G		1											
41		SP1 @ 3'															
42		SP12 @ SURFACE															
43		SP12 @ 1'															
44		SP12 @ 2'															
45		SP12 @ 3'															
46		SP13 @ SURFACE															
47		SP13 @ 1'															
48		SP13 @ 2'															
49		SP13 @ 3'															
50																	
PLEASE NOTE: Liability and Damages. Cardinal's liability and client's exclusive remedy for any claim arising whether based in contract or tort, shall be limited to the amount paid by the client for the analyses. All claims, including those for negligence and any other cause whatsoever shall be deemed waived unless made in writing and received by Cardinal within 30 days after completion of the applicable service. In no event shall Cardinal be liable for incidental or consequential damages, including without limitation, business interruptions, loss of use, or loss of profits incurred by client, its subsidiaries, affiliates or successors arising out of or related to the performance of services hereunder by Cardinal, regardless of whether such claim is based upon any of the above stated reasons or otherwise.																	
Relinquished By: <i>[Signature]</i> Date: 6-23-21 Received By: <i>[Signature]</i> Date: 6-23-21																	
Relinquished By: <i>[Signature]</i> Date: 6-23-21 Received By: <i>[Signature]</i> Date: 6-23-21																	
Delivered By: (Circle One) Sample Condition CHECKED BY: (Initials)																	
Sampler - UPS - Bus - Other: -1.1c #113 <input type="checkbox"/> Cool <input type="checkbox"/> Intact <input type="checkbox"/> Yes <input type="checkbox"/> No <input type="checkbox"/> Yes <input type="checkbox"/> No																	
† Cardinal cannot accept verbal changes. Please fax written changes to 505-393-2476																	



CHAIN-OF-CUSTODY AND ANALYSIS REQUEST

ARDINAL LABORATORIES
101 East Marland, Hobbs, NM 88240
(505) 393-2326 FAX (505) 393-2476

BILL TO

ANALYSIS REQUEST

Company Name: BBC International, Inc.		P.O. #:
Project Manager: Cliff Brunson		Company: OXY
Address: P.O. Box 805		Attn: WADE
City: Hobbs	State: NM Zip: 88241	Address:
Phone #: 575-397-6388	Fax #: 575-397-0397	City:
Project #:	Project Owner: Oxy	State: Zip:
Project Name: SHU RMT INJ BLDG 3 (6-Q-21)		Phone #:
Project Location:		Fax #:
Sampler Name: SIMON RENDON		

FOR LAB USE ONLY																																																																																																																																																																																																																																																																																																																																																																																																																																																																																																																																																																																																																																																																																																																																																																																																																																																																																																																																																																																																																																																																																																																																																																																																																																																																																																																																																																																																																																																																																																																																																	
Lab I.D.	Sample I.D.	(G)RAB OR (C)OMP.	# CONTAINERS	MATRIX						PRESERV.	SAMPLING																																																																																																																																																																																																																																																																																																																																																																																																																																																																																																																																																																																																																																																																																																																																																																																																																																																																																																																																																																																																																																																																																																																																																																																																																																																																																																																																																																																																																																																																																																																																						
				GROUNDWATER	WASTEWATER	SOIL	OIL	SLUDGE	OTHER :		DATE	TIME	CL	BTEX	TPH EXT																																																																																																																																																																																																																																																																																																																																																																																																																																																																																																																																																																																																																																																																																																																																																																																																																																																																																																																																																																																																																																																																																																																																																																																																																																																																																																																																																																																																																																																																																																																																		

PLEASE NOTE: Liability and Damages. Cardinal's liability and client's exclusive remedy for any claim arising from this contract or tort, shall be limited to the amount paid by the client for the analyses. All claims, including those for negligence and any other cause whatsoever shall be deemed waived unless made in writing and received by Cardinal within 30 days after completion of the applicable service. In no event shall Cardinal be liable for incidental or consequential damages, including without limitation, business interruptions, loss of use, or loss of profits incurred by client, its subsidiaries, affiliates or successors arising out of or related to the performance of services hereunder by Cardinal, regardless of whether such claim is based upon any of the above stated remedies or otherwise.

Relinquished By:	Date: 6-22-21	Received By:	Time: 10:00	REMARKS:
Relinquished By:	Date: 6-22-21	Received By:	Time: 10:00	
Delivered By: (Circle One)	Sample Condition	CHECKED BY: (Initials)		
Sampler - UPS - Bus - Other: -1.1c #113	Cool <input checked="" type="checkbox"/> Intact <input checked="" type="checkbox"/>	Yes <input checked="" type="checkbox"/> No <input type="checkbox"/>		

† Cardinal cannot accept verbal changes. Please fax written changes to 505-393-2476

District I
1625 N. French Dr., Hobbs, NM 88240
Phone:(575) 393-6161 Fax:(575) 393-0720
District II
811 S. First St., Artesia, NM 88210
Phone:(575) 748-1283 Fax:(575) 748-9720
District III
1000 Rio Brazos Rd., Aztec, NM 87410
Phone:(505) 334-6178 Fax:(505) 334-6170
District IV
1220 S. St Francis Dr., Santa Fe, NM 87505
Phone:(505) 476-3470 Fax:(505) 476-3462

State of New Mexico
Energy, Minerals and Natural Resources
Oil Conservation Division
1220 S. St Francis Dr.
Santa Fe, NM 87505

CONDITIONS

Action 79319

CONDITIONS

Operator: OXY USA INC P.O. Box 4294 Houston, TX 772104294	OGRID: 16696
	Action Number: 79319
	Action Type: [C-141] Release Corrective Action (C-141)

CONDITIONS

Created By	Condition	Condition Date
chensley	Closure report due 05/23/2022	2/22/2022