



## CLOSURE REPORT

Property:

**Indian Hills Trunk Line**

**Eddy County, New Mexico  
32.44024 N, 104.50120 W  
NMOCD Incident ID: nKMW1101328085  
RP No.: 2RP-557**

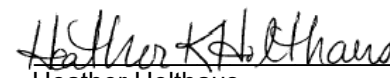
July 19, 2022  
Ensolum Project No. 03B1417036

Prepared for:

**Oxy USA Inc.  
P.O. Box 4294  
Houston, TX 77210  
Attn: Mr. Wade Dittrich**

Prepared by:

  
Beaux Jennings  
Senior Project Manager

  
Heather Holthaus  
Senior Project Manager



## TABLE OF CONTENTS

1.0	INTRODUCTION.....	1
1.1	EXECUTIVE SUMMARY .....	1
1.2	SITE DESCRIPTION & BACKGROUND .....	2
1.3	PROJECT OBJECTIVE.....	2
2.0	CLOSURE CRITERIA.....	2
3.0	SOIL REMEDIATION ACTIVITIES.....	3
4.0	SOIL SAMPLING PROGRAM .....	4
5.0	SOIL LABORATORY ANALYTICAL METHODS .....	4
6.0	DATA EVALUATION .....	4
7.0	RECLAMATION AND RE-VEGETATION .....	5
8.0	FINDINGS AND RECOMMENDATION .....	5
9.0	STANDARDS OF CARE, LIMITATIONS, AND RELIANCE .....	5
9.1	STANDARD OF CARE.....	5
9.2	LIMITATIONS .....	6
9.3	RELIANCE.....	6

### LIST OF APPENDICES

Appendix A: Figures

Appendix B: Supporting Documentation

Appendix C: Photographic Documentation

Appendix D: Table

Appendix E: Laboratory Data Sheets & Chain-of-Custody Documentation

Appendix F: C-141



## CLOSURE REPORT

Indian Hills Trunk Line

Eddy County, New Mexico  
32.44024 N, 104.50120 W  
NMOCD Incident ID: nKMW110328085  
RP No.: 2RP-557

Ensolum Project No. 03B1417036

### 1.0 INTRODUCTION

#### 1.1 Executive Summary

- On December 9, 2009, a release of crude oil and produced water occurred from a corroded line. Approximately 60 barrels (bbls) of crude oil and 5,000 bbls of produced water were released onto the ground surface. Due to the lack of information regarding the release, it is unknown if the impacted soil was remediated at the Indian Hills Trunk Line, hereinafter referred to as the "Site". Based on the lack of remediation information, Oxy USA Inc. (Oxy) contracted Ensolum, LLC (Ensolum) to perform sampling of the approximate spill location at the Site.
- On April 12, 2022, Ensolum arrived on-Site and collected 12 composite soil samples from eight (8) potholes that had been installed in the release area with a backhoe (PH-1 through PH-8) at depths ranging from 0.5 to four (4) feet below ground surface (bgs).
- The primary objective of the closure activities was to reduce chemical of concern (COC) concentrations in the on-Site soils to below the applicable New Mexico Energy, Minerals and Natural Resources Department (EMNRD) Oil Conservation Division (OCD) Closure Criteria for Soils Impacted by a Release using the New Mexico Administrative Code (NMAC) 19.15.29 *Releases* as guidance.
- The impacting an area approximately 185 feet long by 170 feet wide at the maximum extents. The maximum depth of the impacted area measured approximately four (4) feet bgs.
- A total of 12 composite soil samples from eight (8) locations were collected from the original release area. Based on the sample analytical results, composite pothole soil samples PH-1 through PH-8 exhibited all results below the applicable NMOCD Closure Criteria. Subsequent to the results of the pothole soil sampling, the soils removed from the potholes were placed back into their original location, then contoured to the original surrounding grade.

**Based on field observations and laboratory analytical results, no additional investigation or corrective action appears warranted at this time.**

Oxy USA Inc.  
 Closure Report  
 Indian Hills Trunk Line  
 July 19, 2022



## 1.2 Site Description & Background

<b>Operator:</b>	Oxy USA Inc. (Oxy)
<b>Site Name:</b>	Indian Hills Trunk Line
<b>Location:</b>	32.44024 N, 104.50120 W Eddy County, New Mexico
<b>Property:</b>	Bureau of Land Management (BLM)
<b>Regulatory:</b>	New Mexico Energy, Minerals and Natural Resources Department (EMNRD) Oil Conservation Division (OCD)

On December 9, 2009, a release of crude oil and produced water occurred from a corroded line. Approximately 60 bbls of crude oil and 5,000 bbls of produced water were released onto the ground surface.

The Topographic Map depicting the location of the Site is included as **Figure 1**, the Site Vicinity Map is included as **Figure 2**, the Site Map indicating the locations of composite soil samples is included as **Figure 3**, and the Closure Criteria Map is included as **Figure 4** in **Appendix A**.

## 1.3 Project Objective

The primary objective of the closure activities was to reduce COC concentrations in the on-Site soils to below the applicable New Mexico EMNRD OCD closure criteria concentrations.

## 2.0 CLOSURE CRITERIA

The Site is subject to regulatory oversight by the New Mexico EMNRD OCD. In order to address activities related to exempt oil and gas releases, the New Mexico EMNRD OCD references New Mexico Administrative Code (NMAC) 19.15.29 *Releases*, which establishes investigation and abatement action requirements for sites subject to reporting and/or corrective action. Ensolum utilized information provided by Oxy, the general site characteristics, and information available from the New Mexico Office of the State Engineer (OSE) and the New Mexico EMNRD OCD Imaging database to determine the appropriate closure criteria for the Site.

- The Site is not located within 300 feet of a New Mexico EMNRD OCD-defined continuously flowing watercourse or any other significant watercourse.
- The Site is not located within 200 feet of a lakebed, sinkhole, or playa lake.
- The Site is not located within 300 feet from an occupied permanent residence, school, hospital, institution, or church.
- According to the OSE WRSS database there are no private, domestic freshwater wells used by less than five (5) households for domestic or stock water purposes identified within 500 feet of the Site.
- According to the OSE WRSS database there are no freshwater wells identified within 1,000 feet of the Site as declared in the previous bullet.
- The Site is not located within incorporated municipal boundaries or within a defined municipal fresh water well field covered under a municipal ordinance adopted pursuant to NMSA 1978, Section 3-27-3.

Oxy USA Inc.  
Closure Report  
Indian Hills Trunk Line  
July 19, 2022



- The Site is not located within 300 feet of a wetland.
- Based on information identified on the New Mexico Mining and Minerals Division's GIS, Maps and Mine Data database, the Site is not located within an area overlying a subsurface mine.
- Based on the Karst Occurrence Potential (.kmz) provided by the BLM, the Site is located within an unstable area, also referred to as high karst.
- The Site is noted to be located within an area of minimal flood hazard.

Based on the identified siting criteria, cleanup goals for soils remaining in place at the Site include:

Closure Criteria for Soils Impacted by a Release			
Minimum depth below any point within horizontal boundary of the release to groundwater less than 10,000 mg/l TDS	Constituent	Method	Limit
≤50 feet	Chloride	EPA 300.0 or SM4500 Cl B	600 mg/kg
	TPH (GRO+DRO+MRO)	EPA SW-846 Method 8015M	100 mg/kg
	BTEX	EPA SW-846 Method 8021B or 8260B	50 mg/kg
	Benzene	EPA SW-846 Method 8021B or 8260B	10 mg/kg

### 3.0 SOIL REMEDIATION ACTIVITIES

On December 9, 2009, a release of crude oil and produced water occurred from a corroded line. Approximately 60 bbls of crude oil and 5,000 bbls of produced water were released onto the ground surface. Due to the lack of information regarding the release, it is unknown if the impacted soil was remediated at the Indian Hills Trunk Line. Based on the lack of remediation information, Oxy contracted Ensolum to perform sampling of the approximate spill location at the Site.

On March 24, 2022, Ensolum was contacted by Oxy with the purpose of sampling the area of the release to determine if further excavation was required.

On April 12, 2022, Ensolum arrived on-Site and collected 12 composite soil samples from eight (8) potholes that had been installed in the release area with a backhoe (PH-1 through PH-8). The composite soil samples were collected at depths ranging from 0.5 feet bgs to four (4) feet bgs, and were analyzed for benzene, toluene, ethylbenzene, and xylene (BTEX), total petroleum hydrocarbons (TPH), gasoline range organics (GRO), diesel range organics (DRO), motor oil range organics (MRO and chloride in accordance with NMOCD Closure Criteria for Soils Impacted by a Release (NMOCD Closure Criteria). The composite pothole soil samples did not exhibit analytical results above the applicable NMOCD Closure Criteria.

Subsequent to the results of the pothole soil sampling, the soils removed from the potholes were placed back into their original location.

Oxy USA Inc.  
Closure Report  
Indian Hills Trunk Line  
July 19, 2022



The lithology encountered during the completion of sampling activities consisted primarily of a well graded sand with limestone gravel. The potholes were installed to depths until refusal with the backhoe.

**Figure 3** identifies approximate pothole soil sample locations and approximate dimensions of the original impacted area with respect to the Site (**Appendix A**). Photographic documentation of the field activities is included in **Appendix C**.

#### 4.0 SOIL SAMPLING PROGRAM

Ensolum's composite soil sampling program included the collection of 12 composite soil samples from eight (8) locations (PH-1 through PH-8) from the original impacted area.

The composite soil samples were collected and placed in laboratory prepared glassware, labeled/sealed using laboratory supplied labels and custody seals, and stored on ice in a cooler. The samples were relinquished to Cardinal Laboratories in Hobbs, New Mexico for an expedited laboratory analysis.

#### 5.0 SOIL LABORATORY ANALYTICAL METHODS

The composite soil samples were analyzed for BTEX utilizing Environmental Protection Agency (EPA) SW-846 Method 8021B, TPH GRO/DRO/MRO utilizing EPA SW-846 Method 8015M, and chloride utilizing EPA Method 4500-Cl B.

Laboratory analytical results are summarized in **Table 1** in **Appendix D**. The executed chain-of-custody forms and laboratory analytical reports are provided in **Appendix E**.

#### 6.0 DATA EVALUATION

Ensolum compared the BTEX, TPH GRO/DRO/MRO, and chloride concentrations associated with the composite soil samples (PH-1 through PH-8) to the applicable NMOCD Closure Criteria.

- Laboratory analytical results indicate benzene concentrations for the composite soil samples are below the laboratory sample detection limits (SDLs), which are below the applicable NMOCD Closure Criteria of 10 milligrams per kilogram (mg/kg).
- Laboratory analytical results indicate that total BTEX concentrations for the composite soil samples below the laboratory SDLs and/or the applicable NMOCD Closure Criteria of 50 mg/kg.
- Laboratory analytical results indicate combined TPH GRO/DRO/MRO concentrations for the composite soil samples are below the laboratory SDLs and/or the applicable NMOCD Closure Criteria of 100 mg/kg from ≤50 feet.
- Laboratory analytical results indicate chloride concentrations for the composite soil samples exhibited concentrations ranging from 32.0 mg/kg to 48.0 mg/kg, which are below the applicable NMOCD Closure Criteria of 600 mg/kg from ≤50 feet.

Laboratory analytical results are summarized in **Table 1** in **Appendix D**.

Oxy USA Inc.  
Closure Report  
Indian Hills Trunk Line  
July 19, 2022



## 7.0 RECLAMATION AND RE-VEGETATION

Subsequent to the results of the pothole soil sampling, the soils removed from the potholes were placed back into their original location, then contoured to the original surrounding grade.

## 8.0 FINDINGS AND RECOMMENDATION

- On December 9, 2009, a release of crude oil and produced water occurred from a corroded line. Approximately 60 bbls of crude oil and 5,000 bbls of produced water were released onto the surface. Due to the lack of information regarding the release, it is unknown if the impacted soil was remediated at the Indian Hills Trunk Line. Based on the lack of remediation information, Oxy contracted Ensolum to perform sampling of the approximate spill location at the Site.
- On April 12, 2022, Ensolum arrived on-Site and collected 12 composite soil samples from eight (8) potholes that had been installed in the release area with a backhoe (PH-1 through PH-8) at depths ranging from 0.5 to four (4) feet bgs.
- The primary objective of the closure activities was to reduce COC concentrations in the on-Site soils to below the applicable New Mexico EMNRD OCD Closure Criteria for Soils Impacted by a Release using the NMAC 19.15.29 *Releases* as guidance.
- The impacting an area approximately 185 feet long by 170 feet wide at the maximum extents. The maximum depth of the impacted area measured approximately four (4) feet bgs.
- A total of 12 composite soil samples from eight (8) locations were collected from the original release area. Based on the sample analytical results, composite pothole soil samples PH-1 through PH-8 exhibited all results below the applicable NMOCD Closure Criteria. Subsequent to the results of the pothole soil sampling, the soils removed from the potholes were placed back into their original location, then contoured to the original surrounding grade.

**Based on field observations and laboratory analytical results, no additional investigation or corrective action appears warranted at this time.**

## 9.0 STANDARDS OF CARE, LIMITATIONS, AND RELIANCE

### 9.1 Standard of Care

Ensolum's services were performed in accordance with standards customarily provided by a firm rendering the same or similar services in the area during the same time period. Ensolum makes no warranties, express or implied, as to the services performed hereunder. Additionally, Ensolum does not warrant the work of third parties supplying information used in the report (e.g., laboratories, regulatory agencies, or other third parties). This scope of services was performed in accordance with the scope of work agreed with the client, as detailed in our proposal.

Oxy USA Inc.  
Closure Report  
Indian Hills Trunk Line  
July 19, 2022



## 9.2 Limitations

Findings, conclusions, and recommendations resulting from these services are based upon information derived from the on-Site activities and other services performed under this scope of work and it should be noted that this information is subject to change over time. Certain indicators of the presence of hazardous substances, petroleum products, or other constituents may have been latent, inaccessible, unobservable, or not present during these services, and Ensolum cannot represent that the Site contains no hazardous substances, toxic materials, petroleum products, or other latent conditions beyond those identified during the investigation. Environmental conditions at other areas or portions of the Site may vary from those encountered at actual sample locations. Ensolum's findings, and recommendations are based solely upon data available to Ensolum at the time of these services.

## 9.3 Reliance

This report has been prepared for the exclusive use of Oxy USA, Inc., and any authorization for use or reliance by any other party (except a governmental entity having jurisdiction over the Site) is prohibited without the express written authorization Oxy USA, Inc. and Ensolum. Any unauthorized distribution or reuse is at the client's sole risk. Notwithstanding the foregoing, reliance by authorized parties will be subject to the terms, conditions and limitations stated in the Closure Report, and Ensolum's Master Services Agreement. The limitation of liability defined in the agreement is the aggregate limit of Ensolum's liability to the client.

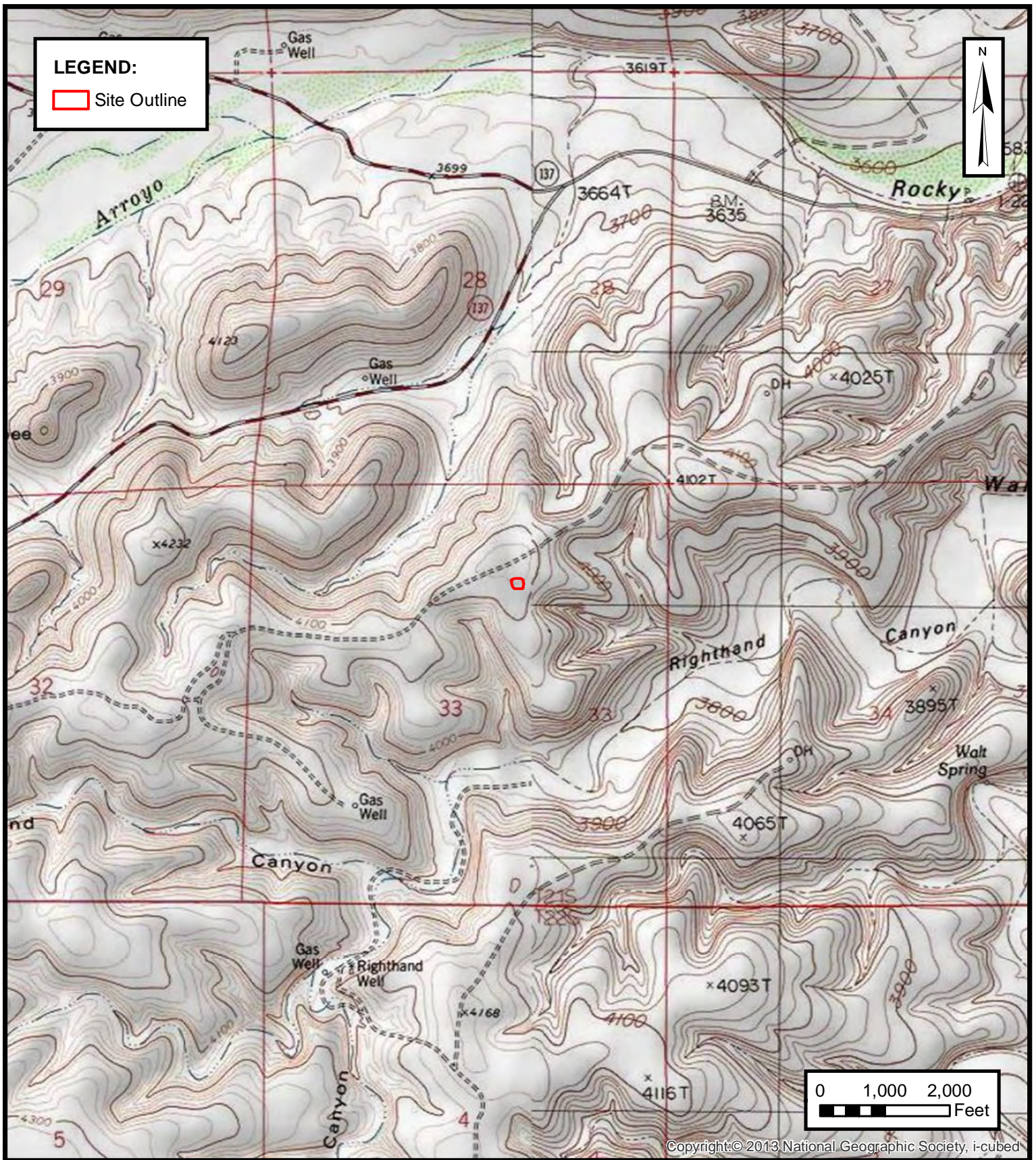




## APPENDIX A

### Figures





**ENSOLUM**  
 Environmental & Hydrogeologic Consultants

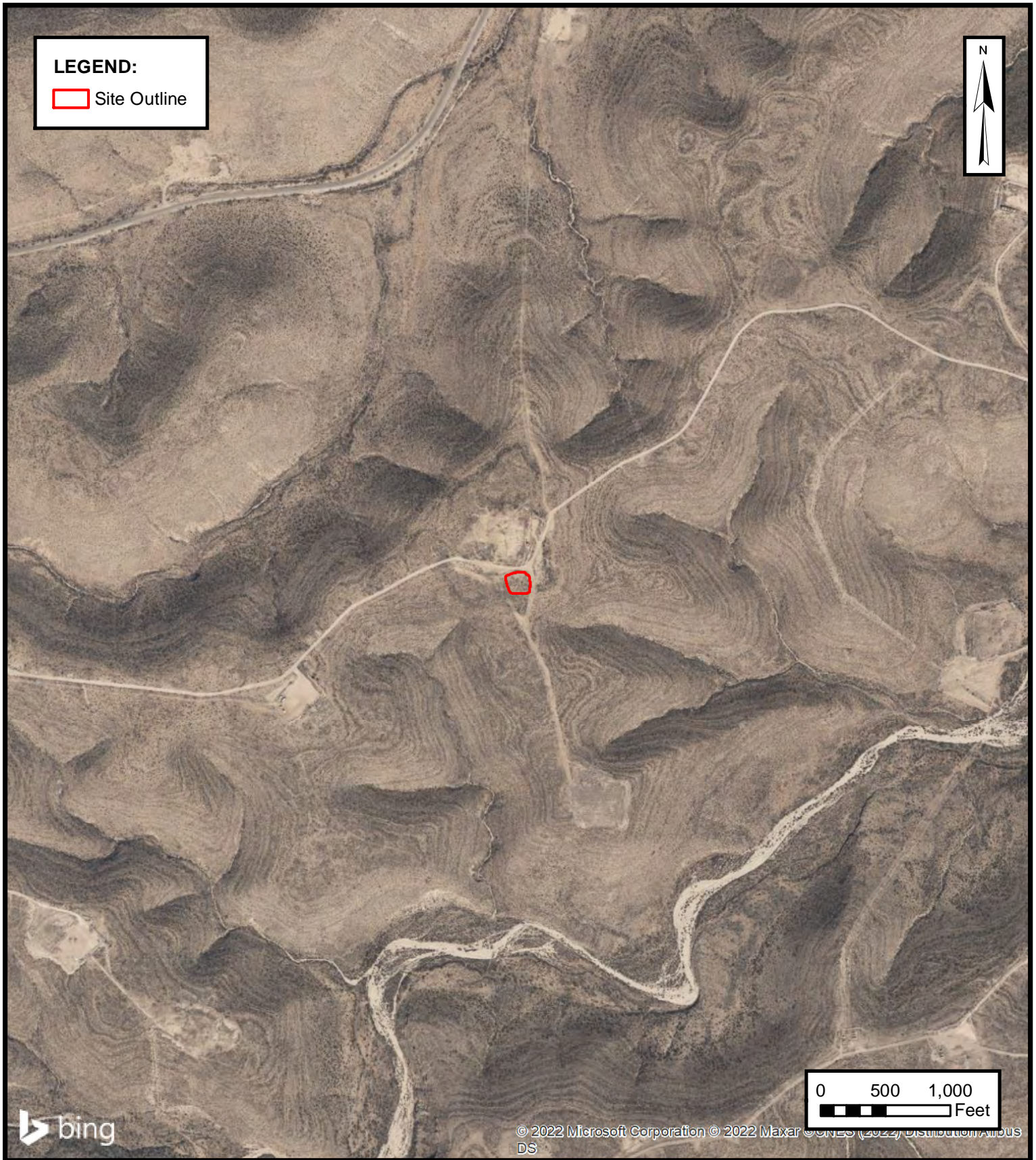
### TOPOGRAPHIC MAP

OXY USA INC.  
 INDIAN HILLS TRUNK LINE  
 Eddy County, New Mexico  
 32.44024° N, 104.50120° W

PROJECT NUMBER: 03B1417036

**FIGURE**  
**1**



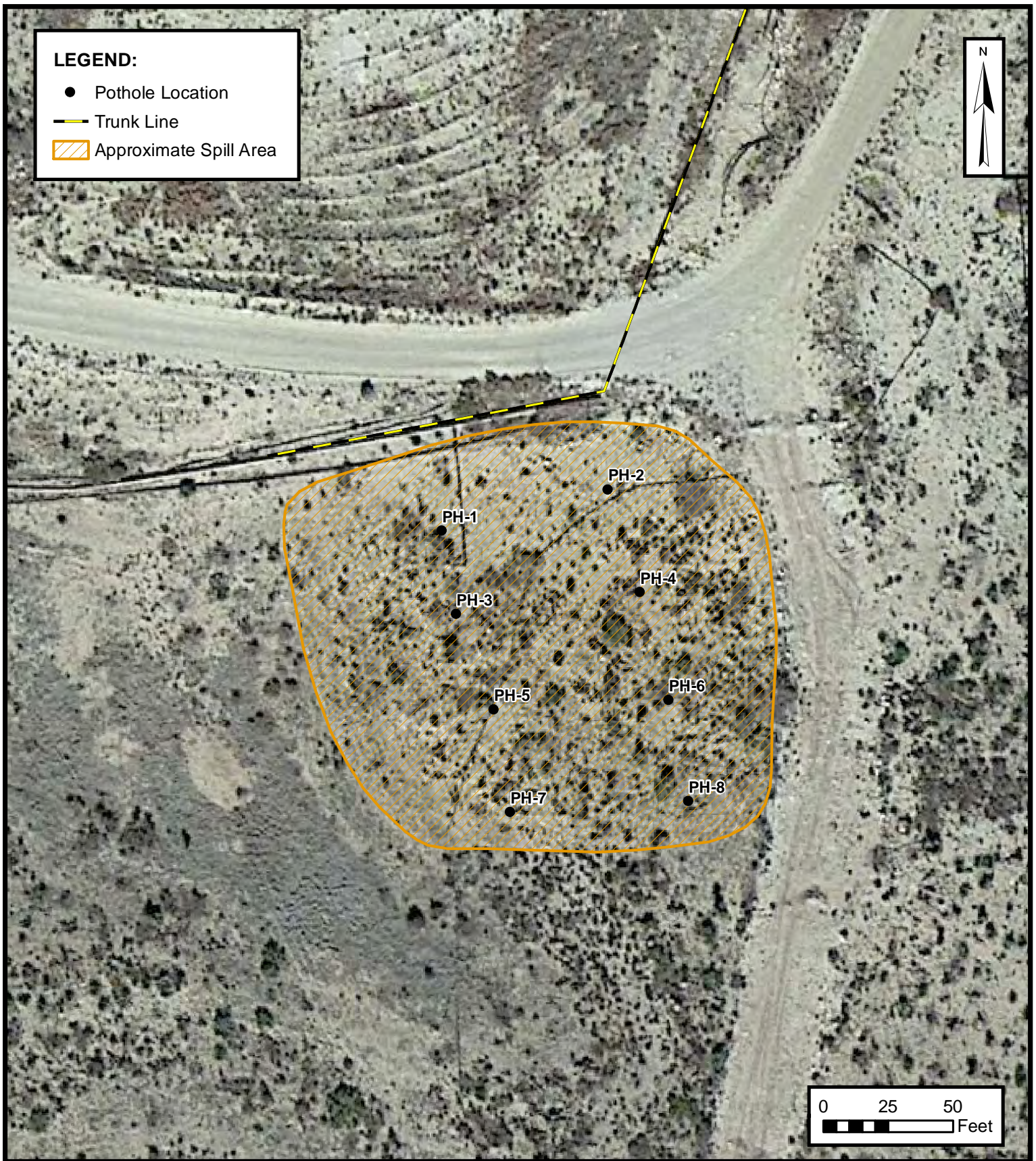


 **ENSOLUM**  
Environmental & Hydrogeologic Consultants

**SITE VICINITY MAP**  
OXY USA INC.  
INDIAN HILLS TRUNK LINE  
Eddy County, New Mexico  
32.44024° N, 104.50120° W  
PROJECT NUMBER: 03B1417036

**FIGURE**  
**2**





**SITE MAP**

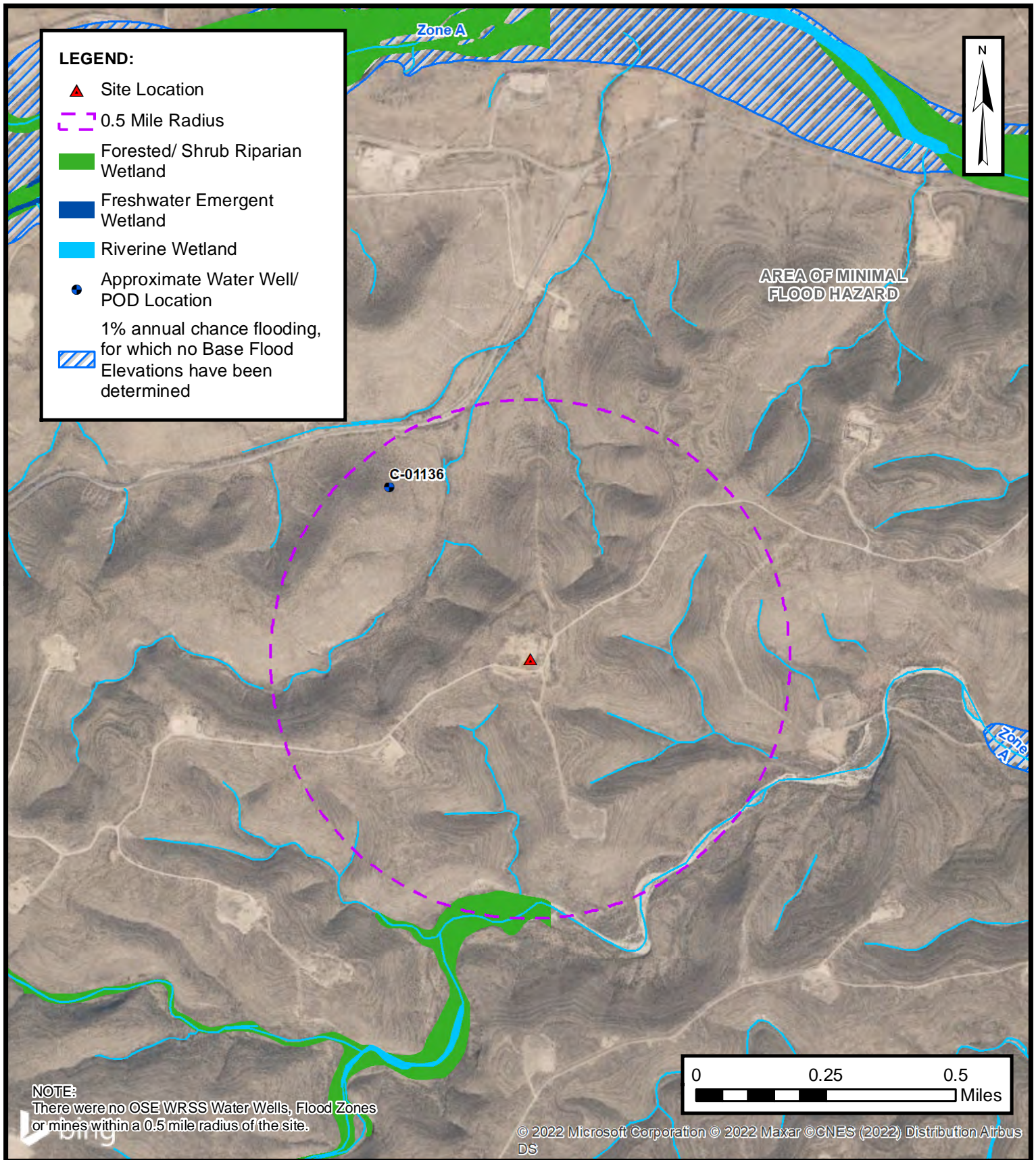
OXY USA INC.  
INDIAN HILLS TRUNK LINE  
Eddy County, New Mexico  
32.44024° N, 104.50120° W

PROJECT NUMBER: 03B1417036

**FIGURE**

**3**



**CLOSURE CRITERIA MAP**

OXY USA INC.  
INDIAN HILLS TRUNK LINE  
Eddy County, New Mexico  
32.44024° N, 104.50120° W

PROJECT NUMBER: 03B1417036

**FIGURE****4**

**ENSOLUM**  
Environmental & Hydrogeologic Consultants



## APPENDIX B

### Supporting Documentation

**Beaux Jennings**

---

**From:** Hamlet, Robert, EMNRD <Robert.Hamlet@state.nm.us>  
**Sent:** Tuesday, April 5, 2022 8:58 AM  
**To:** Beaux Jennings  
**Cc:** Bratcher, Mike, EMNRD; Hensley, Chad, EMNRD; Velez, Nelson, EMNRD; Nobui, Jennifer, EMNRD  
**Subject:** RE: [EXTERNAL] Indian Hills Trunk Line (2RP-557)

Beaux,

Thank you for the notification. Please include a copy of this and all notifications in the remedial and/or closure reports to ensure the notifications are documented in the project file.

**Robert Hamlet** • Environmental Specialist - Advanced  
Environmental Bureau  
EMNRD - Oil Conservation Division  
811 S. First Street | Artesia, NM 88210  
575.909.0302 | [robert.hamlet@state.nm.us](mailto:robert.hamlet@state.nm.us)  
<http://www.emnrd.state.nm.us/OCD/>



---

**From:** Enviro, OCD, EMNRD <OCD.Enviro@state.nm.us>  
**Sent:** Friday, April 1, 2022 2:59 PM  
**To:** Hamlet, Robert, EMNRD <Robert.Hamlet@state.nm.us>; Hensley, Chad, EMNRD <Chad.Hensley@state.nm.us>  
**Subject:** Fw: [EXTERNAL] Indian Hills Trunk Line (2RP-557)

---

**From:** Beaux Jennings <[bjennings@ensolum.com](mailto:bjennings@ensolum.com)>  
**Sent:** Friday, April 1, 2022 2:10 PM  
**To:** Enviro, OCD, EMNRD <[OCD.Enviro@state.nm.us](mailto:OCD.Enviro@state.nm.us)>  
**Subject:** [EXTERNAL] Indian Hills Trunk Line (2RP-557)

**CAUTION:** This email originated outside of our organization. Exercise caution prior to clicking on links or opening attachments.

Good Afternoon,

On behalf of Oxy USA Inc, Ensolum, LLC would like to provided notification for characterization sampling activities that will be conducted at the Indian Hills Trunk Line (2RP-557). The characterization samples may be used for closure, provided that they meet applicable closure limits.

Thank you,



**Beaux Jennings**

Senior Project Manager

210-219-8858

**Ensolum, LLC**

**in f** 





## APPENDIX C

### Photographic Documentation





View of the release area and the replaced portion of the trunk line, facing southwest.



View of the release area, facing southeast.





View of the installation of the potholes (PH-1 through PH-8), facing northeast.



View of the release area during pothole sampling, facing southwest.



## APPENDIX D

### Tables

**TABLE 1**  
**SOIL SAMPLE ANALYTICAL RESULTS**  
 Oxy USA Inc. - Indian Hills Trunk Line  
 Eddy County, New Mexico

Ensolum Project No. 03B1417036

Sample I.D.	Sample Date	Sample Depth (feet bgs)	Benzene (mg/kg)	Toluene (mg/kg)	Ethylbenzene (mg/kg)	Total Xylenes (mg/kg)	Total BTEX (mg/kg)	TPH GRO (mg/kg)	TPH DRO (mg/kg)	TPH MRO (mg/kg)	Total TPH (GRO+DRO+MRO) (mg/kg)	Chloride (mg/kg)
New Mexico Oil Conservation Division Closure Criteria for Soils Impacted by a Release (≤ 50 feet)			10	NE	NE	NE	50	NE	NE	NE	100	600
Pothole Sample Analytical Results												
PH-1	4/12/2022	0.5	<0.050	<b>0.130</b>	<0.050	<0.150	<0.300	<10.0	<10.0	<10.0	<10.0	<b>32.0</b>
		1	<0.050	<0.050	<0.050	<0.150	<0.300	<10.0	<10.0	<10.0	<10.0	<b>48.0</b>
PH-2	4/12/2022	0.5	<0.050	<0.050	<0.050	<0.150	<0.300	<10.0	<10.0	<10.0	<10.0	<b>48.0</b>
		1	<0.050	<b>0.059</b>	<0.050	<0.150	<0.300	<10.0	<10.0	<10.0	<10.0	<b>32.0</b>
PH-3	4/12/2022	0.5	<0.050	<b>1.61</b>	<0.050	<0.150	<b>1.75</b>	<10.0	<10.0	<10.0	<10.0	<b>48.0</b>
		1	<0.050	<0.050	<0.050	<0.150	<0.300	<10.0	<10.0	<10.0	<10.0	<b>32.0</b>
PH-4	4/12/2022	0.5	<0.050	<0.050	<0.050	<0.150	<0.300	<10.0	<10.0	<10.0	<10.0	<b>32.0</b>
PH-5	4/12/2022	0.5	<0.050	<0.050	<0.050	<0.150	<0.300	<10.0	<10.0	<10.0	<10.0	<b>48.0</b>
PH-6	4/12/2022	0.5	<0.050	<0.050	<0.050	<0.150	<0.300	<10.0	<10.0	<10.0	<10.0	<b>32.0</b>
PH-7	4/12/2022	0.5	<0.050	<b>0.090</b>	<0.050	<0.150	<0.300	<10.0	<10.0	<10.0	<10.0	<b>32.0</b>
PH-8	4/12/2022	0.5	<0.050	<b>0.123</b>	<0.050	<0.150	<0.300	<10.0	<10.0	<10.0	<10.0	<b>32.0</b>
		4	<0.050	<0.050	<0.050	<0.150	<0.300	<10.0	<10.0	<10.0	<10.0	<b>32.0</b>

bgs: below ground surface

mg/kg: milligrams per kilogram

NE: Not Established

BTEX: Benzene, Toluene, Ethylbenzene, and Xylenes

GRO: Gasoline Range Organics

DRO: Diesel Range Organics

MRO: Motor Oil/Lube Oil Range Organics

TPH: Total Petroleum Hydrocarbon





## APPENDIX E

### Laboratory Data Sheets and Chain-of-Custody Documentation



PHONE (575) 393-2326 ° 101 E. MARLAND ° HOBBS, NM 88240

April 19, 2022

BEAUX JENNINGS

ENSOLUM, LLC

705 W WADLEY AVE.

MIDLAND, TX 79705

RE: INDIAN HILLS TRUNK LINE

Enclosed are the results of analyses for samples received by the laboratory on 04/13/22 13:05.

Cardinal Laboratories is accredited through Texas NELAP under certificate number T104704398-21-14. Accreditation applies to drinking water, non-potable water and solid and chemical materials. All accredited analytes are denoted by an asterisk (\*). For a complete list of accredited analytes and matrices visit the TCEQ website at [www.tceq.texas.gov/field/qa/lab\\_accred\\_certif.html](http://www.tceq.texas.gov/field/qa/lab_accred_certif.html).

Cardinal Laboratories is accredited through the State of Colorado Department of Public Health and Environment for:

Method EPA 552.2	Haloacetic Acids (HAA-5)
Method EPA 524.2	Total Trihalomethanes (TTHM)
Method EPA 524.4	Regulated VOCs (V1, V2, V3)

Accreditation applies to public drinking water matrices.

This report meets NELAP requirements and is made up of a cover page, analytical results, and a copy of the original chain-of-custody. If you have any questions concerning this report, please feel free to contact me.

Sincerely,

A handwritten signature in black ink that reads "Celey D. Keene". The signature is fluid and cursive, with the first name "Celey" and last name "Keene" clearly distinguishable.

Celey D. Keene

Lab Director/Quality Manager



PHONE (575) 393-2326 ° 101 E. MARLAND ° HOBBS, NM 88240

**Analytical Results For:**

ENSOLUM, LLC  
 BEAUX JENNINGS  
 705 W WADLEY AVE.  
 MIDLAND TX, 79705  
 Fax To:

Received:	04/13/2022	Sampling Date:	04/12/2022
Reported:	04/19/2022	Sampling Type:	Soil
Project Name:	INDIAN HILLS TRUNK LINE	Sampling Condition:	Cool & Intact
Project Number:	03B1417036	Sample Received By:	Tamara Oldaker
Project Location:	OXY		

**Sample ID: PH - 1 0.5' (H221539-01)**

BTX 8021B		mg/kg	Analyzed By: MS/						
Analyte	Result	Reporting Limit	Analyzed	Method Blank	BS	% Recovery	True Value QC	RPD	Qualifier
Benzene*	<0.050	0.050	04/16/2022	ND	1.99	99.6	2.00	1.78	
<b>Toluene*</b>	<b>0.130</b>	0.050	04/16/2022	ND	1.97	98.5	2.00	2.93	
Ethylbenzene*	<0.050	0.050	04/16/2022	ND	1.89	94.3	2.00	2.34	
Total Xylenes*	<0.150	0.150	04/16/2022	ND	5.87	97.8	6.00	2.61	
Total BTX	<0.300	0.300	04/16/2022	ND					

Surrogate: 4-Bromofluorobenzene (PID) 102 % 69.9-140

Chloride, SM4500Cl-B		mg/kg	Analyzed By: GM						
Analyte	Result	Reporting Limit	Analyzed	Method Blank	BS	% Recovery	True Value QC	RPD	Qualifier
<b>Chloride</b>	<b>32.0</b>	16.0	04/18/2022	ND	416	104	400	3.77	

TPH 8015M		mg/kg	Analyzed By: MS						
Analyte	Result	Reporting Limit	Analyzed	Method Blank	BS	% Recovery	True Value QC	RPD	Qualifier
GRO C6-C10*	<10.0	10.0	04/18/2022	ND	229	115	200	1.68	
DRO >C10-C28*	<10.0	10.0	04/18/2022	ND	237	118	200	5.82	
EXT DRO >C28-C36	<10.0	10.0	04/18/2022	ND					

Surrogate: 1-Chlorooctane 109 % 66.9-136

Surrogate: 1-Chlorooctadecane 120 % 59.5-142

Cardinal Laboratories

\*=Accredited Analyte

PLEASE NOTE: Liability and Damages. Cardinal's liability and client's exclusive remedy for any claim arising, whether based in contract or tort, shall be limited to the amount paid by client for analyses. All claims, including those for negligence and any other cause whatsoever shall be deemed waived unless made in writing and received by Cardinal within thirty (30) days after completion of the applicable service. In no event shall Cardinal be liable for incidental or consequential damages, including, without limitation, business interruptions, loss of use, or loss of profits incurred by client, its subsidiaries, affiliates or successors arising out of or related to the performance of the services hereunder by Cardinal, regardless of whether such claim is based upon any of the above stated reasons or otherwise. Results relate only to the samples identified above. This report shall not be reproduced except in full with written approval of Cardinal Laboratories.

Celey D. Keene, Lab Director/Quality Manager





PHONE (575) 393-2326 ° 101 E. MARLAND ° HOBBS, NM 88240

**Analytical Results For:**

ENSOLUM, LLC  
 BEAUX JENNINGS  
 705 W WADLEY AVE.  
 MIDLAND TX, 79705  
 Fax To:

Received: 04/13/2022  
 Reported: 04/19/2022  
 Project Name: INDIAN HILLS TRUNK LINE  
 Project Number: 03B1417036  
 Project Location: OXY

Sampling Date: 04/12/2022  
 Sampling Type: Soil  
 Sampling Condition: Cool & Intact  
 Sample Received By: Tamara Oldaker

**Sample ID: PH - 1 1' (H221539-02)**

BTEx 8021B		mg/kg		Analyzed By: MS/						
Analyte	Result	Reporting Limit	Analyzed	Method Blank	BS	% Recovery	True Value QC	RPD	Qualifier	
Benzene*	<0.050	0.050	04/16/2022	ND	1.99	99.6	2.00	1.78		
Toluene*	<0.050	0.050	04/16/2022	ND	1.97	98.5	2.00	2.93		
Ethylbenzene*	<0.050	0.050	04/16/2022	ND	1.89	94.3	2.00	2.34		
Total Xylenes*	<0.150	0.150	04/16/2022	ND	5.87	97.8	6.00	2.61		
Total BTEx	<0.300	0.300	04/16/2022	ND						

Surrogate: 4-Bromofluorobenzene (PID) 102 % 69.9-140

Chloride, SM4500CI-B		mg/kg		Analyzed By: GM						
Analyte	Result	Reporting Limit	Analyzed	Method Blank	BS	% Recovery	True Value QC	RPD	Qualifier	
Chloride	48.0	16.0	04/18/2022	ND	416	104	400	3.77		

TPH 8015M		mg/kg		Analyzed By: MS					
Analyte	Result	Reporting Limit	Analyzed	Method Blank	BS	% Recovery	True Value QC	RPD	Qualifier
GRO C6-C10*	<10.0	10.0	04/18/2022	ND	229	115	200	1.68	
DRO >C10-C28*	<10.0	10.0	04/18/2022	ND	237	118	200	5.82	
EXT DRO >C28-C36	<10.0	10.0	04/18/2022	ND					

Surrogate: 1-Chlorooctane 114 % 66.9-136

Surrogate: 1-Chlorooctadecane 123 % 59.5-142

Cardinal Laboratories

\*=Accredited Analyte

PLEASE NOTE: Liability and Damages. Cardinal's liability and client's exclusive remedy for any claim arising, whether based in contract or tort, shall be limited to the amount paid by client for analyses. All claims, including those for negligence and any other cause whatsoever shall be deemed waived unless made in writing and received by Cardinal within thirty (30) days after completion of the applicable service. In no event shall Cardinal be liable for incidental or consequential damages, including, without limitation, business interruptions, loss of use, or loss of profits incurred by client, its subsidiaries, affiliates or successors arising out of or related to the performance of the services hereunder by Cardinal, regardless of whether such claim is based upon any of the above stated reasons or otherwise. Results relate only to the samples identified above. This report shall not be reproduced except in full with written approval of Cardinal Laboratories.

Celey D. Keene, Lab Director/Quality Manager



PHONE (575) 393-2326 ° 101 E. MARLAND ° HOBBS, NM 88240

**Analytical Results For:**

ENSOLUM, LLC  
 BEAUX JENNINGS  
 705 W WADLEY AVE.  
 MIDLAND TX, 79705  
 Fax To:

Received: 04/13/2022  
 Reported: 04/19/2022  
 Project Name: INDIAN HILLS TRUNK LINE  
 Project Number: 03B1417036  
 Project Location: OXY

Sampling Date: 04/12/2022  
 Sampling Type: Soil  
 Sampling Condition: Cool & Intact  
 Sample Received By: Tamara Oldaker

**Sample ID: PH - 2 0.5' (H221539-03)**

BTEX 8021B		mg/kg		Analyzed By: MS\					
Analyte	Result	Reporting Limit	Analyzed	Method Blank	BS	% Recovery	True Value QC	RPD	Qualifier
Benzene*	<0.050	0.050	04/15/2022	ND	2.01	101	2.00	0.943	
Toluene*	<0.050	0.050	04/15/2022	ND	1.99	99.6	2.00	0.192	
Ethylbenzene*	<0.050	0.050	04/15/2022	ND	1.99	99.3	2.00	0.978	
Total Xylenes*	<0.150	0.150	04/15/2022	ND	6.14	102	6.00	1.27	
Total BTEX	<0.300	0.300	04/15/2022	ND					

Surrogate: 4-Bromofluorobenzene (PID) 104 % 69.9-140

Chloride, SM4500CI-B		mg/kg		Analyzed By: GM					
Analyte	Result	Reporting Limit	Analyzed	Method Blank	BS	% Recovery	True Value QC	RPD	Qualifier
Chloride	48.0	16.0	04/18/2022	ND	416	104	400	3.77	

TPH 8015M		mg/kg		Analyzed By: MS					
Analyte	Result	Reporting Limit	Analyzed	Method Blank	BS	% Recovery	True Value QC	RPD	Qualifier
GRO C6-C10*	<10.0	10.0	04/18/2022	ND	229	115	200	1.68	
DRO >C10-C28*	<10.0	10.0	04/18/2022	ND	237	118	200	5.82	
EXT DRO >C28-C36	<10.0	10.0	04/18/2022	ND					

Surrogate: 1-Chlorooctane 124 % 66.9-136

Surrogate: 1-Chlorooctadecane 136 % 59.5-142

Cardinal Laboratories

\*=Accredited Analyte

PLEASE NOTE: Liability and Damages. Cardinal's liability and client's exclusive remedy for any claim arising, whether based in contract or tort, shall be limited to the amount paid by client for analyses. All claims, including those for negligence and any other cause whatsoever shall be deemed waived unless made in writing and received by Cardinal within thirty (30) days after completion of the applicable service. In no event shall Cardinal be liable for incidental or consequential damages, including, without limitation, business interruptions, loss of use, or loss of profits incurred by client, its subsidiaries, affiliates or successors arising out of or related to the performance of the services hereunder by Cardinal, regardless of whether such claim is based upon any of the above stated reasons or otherwise. Results relate only to the samples identified above. This report shall not be reproduced except in full with written approval of Cardinal Laboratories.

Celey D. Keene, Lab Director/Quality Manager



PHONE (575) 393-2326 ° 101 E. MARLAND ° HOBBS, NM 88240

**Analytical Results For:**

ENSOLUM, LLC  
 BEAUX JENNINGS  
 705 W WADLEY AVE.  
 MIDLAND TX, 79705  
 Fax To:

Received: 04/13/2022  
 Reported: 04/19/2022  
 Project Name: INDIAN HILLS TRUNK LINE  
 Project Number: 03B1417036  
 Project Location: OXY

Sampling Date: 04/12/2022  
 Sampling Type: Soil  
 Sampling Condition: Cool & Intact  
 Sample Received By: Tamara Oldaker

**Sample ID: PH - 2 1' (H221539-04)**

BTEX 8021B		mg/kg		Analyzed By: MS\					
Analyte	Result	Reporting Limit	Analyzed	Method Blank	BS	% Recovery	True Value QC	RPD	Qualifier
Benzene*	<0.050	0.050	04/15/2022	ND	2.01	101	2.00	0.943	
Toluene*	0.059	0.050	04/15/2022	ND	1.99	99.6	2.00	0.192	
Ethylbenzene*	<0.050	0.050	04/15/2022	ND	1.99	99.3	2.00	0.978	
Total Xylenes*	<0.150	0.150	04/15/2022	ND	6.14	102	6.00	1.27	
Total BTEX	<0.300	0.300	04/15/2022	ND					

Surrogate: 4-Bromofluorobenzene (PID) 105 % 69.9-140

Chloride, SM4500CI-B		mg/kg		Analyzed By: GM						
Analyte	Result	Reporting Limit	Analyzed	Method Blank	BS	% Recovery	True Value QC	RPD	Qualifier	
Chloride	32.0	16.0	04/18/2022	ND	416	104	400	3.77		

TPH 8015M		mg/kg		Analyzed By: MS					
Analyte	Result	Reporting Limit	Analyzed	Method Blank	BS	% Recovery	True Value QC	RPD	Qualifier
GRO C6-C10*	<10.0	10.0	04/18/2022	ND	229	115	200	1.68	
DRO >C10-C28*	<10.0	10.0	04/18/2022	ND	237	118	200	5.82	
EXT DRO >C28-C36	<10.0	10.0	04/18/2022	ND					

Surrogate: 1-Chlorooctane 109 % 66.9-136

Surrogate: 1-Chlorooctadecane 121 % 59.5-142

Cardinal Laboratories

\*=Accredited Analyte

PLEASE NOTE: Liability and Damages. Cardinal's liability and client's exclusive remedy for any claim arising, whether based in contract or tort, shall be limited to the amount paid by client for analyses. All claims, including those for negligence and any other cause whatsoever shall be deemed waived unless made in writing and received by Cardinal within thirty (30) days after completion of the applicable service. In no event shall Cardinal be liable for incidental or consequential damages, including, without limitation, business interruptions, loss of use, or loss of profits incurred by client, its subsidiaries, affiliates or successors arising out of or related to the performance of the services hereunder by Cardinal, regardless of whether such claim is based upon any of the above stated reasons or otherwise. Results relate only to the samples identified above. This report shall not be reproduced except in full with written approval of Cardinal Laboratories.

Celey D. Keene, Lab Director/Quality Manager



PHONE (575) 393-2326 ° 101 E. MARLAND ° HOBBS, NM 88240

**Analytical Results For:**

ENSOLUM, LLC  
 BEAUX JENNINGS  
 705 W WADLEY AVE.  
 MIDLAND TX, 79705  
 Fax To:

Received: 04/13/2022  
 Reported: 04/19/2022  
 Project Name: INDIAN HILLS TRUNK LINE  
 Project Number: 03B1417036  
 Project Location: OXY

Sampling Date: 04/12/2022  
 Sampling Type: Soil  
 Sampling Condition: Cool & Intact  
 Sample Received By: Tamara Oldaker

**Sample ID: PH - 3 0.5' (H221539-05)**

BTEx 8021B		mg/kg		Analyzed By: MS\						
Analyte	Result	Reporting Limit	Analyzed	Method Blank	BS	% Recovery	True Value QC	RPD	Qualifier	
Benzene*	<0.050	0.050	04/15/2022	ND	2.01	101	2.00	0.943		
Toluene*	1.61	0.050	04/15/2022	ND	1.99	99.6	2.00	0.192		
Ethylbenzene*	<0.050	0.050	04/15/2022	ND	1.99	99.3	2.00	0.978		
Total Xylenes*	<0.150	0.150	04/15/2022	ND	6.14	102	6.00	1.27		
Total BTEx	1.75	0.300	04/15/2022	ND						

Surrogate: 4-Bromofluorobenzene (PID) 106 % 69.9-140

Chloride, SM4500CI-B		mg/kg		Analyzed By: GM						
Analyte	Result	Reporting Limit	Analyzed	Method Blank	BS	% Recovery	True Value QC	RPD	Qualifier	
Chloride	48.0	16.0	04/18/2022	ND	416	104	400	3.77		

TPH 8015M		mg/kg		Analyzed By: MS					
Analyte	Result	Reporting Limit	Analyzed	Method Blank	BS	% Recovery	True Value QC	RPD	Qualifier
GRO C6-C10*	<10.0	10.0	04/18/2022	ND	229	115	200	1.68	
DRO >C10-C28*	<10.0	10.0	04/18/2022	ND	237	118	200	5.82	
EXT DRO >C28-C36	<10.0	10.0	04/18/2022	ND					

Surrogate: 1-Chlorooctane 113 % 66.9-136

Surrogate: 1-Chlorooctadecane 127 % 59.5-142

Cardinal Laboratories

\*=Accredited Analyte

PLEASE NOTE: Liability and Damages. Cardinal's liability and client's exclusive remedy for any claim arising, whether based in contract or tort, shall be limited to the amount paid by client for analyses. All claims, including those for negligence and any other cause whatsoever shall be deemed waived unless made in writing and received by Cardinal within thirty (30) days after completion of the applicable service. In no event shall Cardinal be liable for incidental or consequential damages, including, without limitation, business interruptions, loss of use, or loss of profits incurred by client, its subsidiaries, affiliates or successors arising out of or related to the performance of the services hereunder by Cardinal, regardless of whether such claim is based upon any of the above stated reasons or otherwise. Results relate only to the samples identified above. This report shall not be reproduced except in full with written approval of Cardinal Laboratories.

Celey D. Keene, Lab Director/Quality Manager



PHONE (575) 393-2326 ° 101 E. MARLAND ° HOBBS, NM 88240

**Analytical Results For:**

ENSOLUM, LLC  
 BEAUX JENNINGS  
 705 W WADLEY AVE.  
 MIDLAND TX, 79705  
 Fax To:

Received: 04/13/2022  
 Reported: 04/19/2022  
 Project Name: INDIAN HILLS TRUNK LINE  
 Project Number: 03B1417036  
 Project Location: OXY

Sampling Date: 04/12/2022  
 Sampling Type: Soil  
 Sampling Condition: Cool & Intact  
 Sample Received By: Tamara Oldaker

**Sample ID: PH - 3 1' (H221539-06)**

BTEX 8021B		mg/kg		Analyzed By: MS\						
Analyte	Result	Reporting Limit	Analyzed	Method Blank	BS	% Recovery	True Value QC	RPD	Qualifier	
Benzene*	<0.050	0.050	04/15/2022	ND	2.01	101	2.00	0.943		
Toluene*	<0.050	0.050	04/15/2022	ND	1.99	99.6	2.00	0.192		
Ethylbenzene*	<0.050	0.050	04/15/2022	ND	1.99	99.3	2.00	0.978		
Total Xylenes*	<0.150	0.150	04/15/2022	ND	6.14	102	6.00	1.27		
Total BTEX	<0.300	0.300	04/15/2022	ND						

Surrogate: 4-Bromofluorobenzene (PID) 104 % 69.9-140

Chloride, SM4500CI-B		mg/kg		Analyzed By: GM						
Analyte	Result	Reporting Limit	Analyzed	Method Blank	BS	% Recovery	True Value QC	RPD	Qualifier	
Chloride	32.0	16.0	04/18/2022	ND	416	104	400	3.77		

TPH 8015M		mg/kg		Analyzed By: MS					
Analyte	Result	Reporting Limit	Analyzed	Method Blank	BS	% Recovery	True Value QC	RPD	Qualifier
GRO C6-C10*	<10.0	10.0	04/18/2022	ND	229	115	200	1.68	
DRO >C10-C28*	<10.0	10.0	04/18/2022	ND	237	118	200	5.82	
EXT DRO >C28-C36	<10.0	10.0	04/18/2022	ND					

Surrogate: 1-Chlorooctane 111 % 66.9-136

Surrogate: 1-Chlorooctadecane 125 % 59.5-142

Cardinal Laboratories

\*=Accredited Analyte

PLEASE NOTE: Liability and Damages. Cardinal's liability and client's exclusive remedy for any claim arising, whether based in contract or tort, shall be limited to the amount paid by client for analyses. All claims, including those for negligence and any other cause whatsoever shall be deemed waived unless made in writing and received by Cardinal within thirty (30) days after completion of the applicable service. In no event shall Cardinal be liable for incidental or consequential damages, including, without limitation, business interruptions, loss of use, or loss of profits incurred by client, its subsidiaries, affiliates or successors arising out of or related to the performance of the services hereunder by Cardinal, regardless of whether such claim is based upon any of the above stated reasons or otherwise. Results relate only to the samples identified above. This report shall not be reproduced except in full with written approval of Cardinal Laboratories.

Celey D. Keene, Lab Director/Quality Manager



PHONE (575) 393-2326 ° 101 E. MARLAND ° HOBBS, NM 88240

**Analytical Results For:**

ENSOLUM, LLC  
 BEAUX JENNINGS  
 705 W WADLEY AVE.  
 MIDLAND TX, 79705  
 Fax To:

Received: 04/13/2022  
 Reported: 04/19/2022  
 Project Name: INDIAN HILLS TRUNK LINE  
 Project Number: 03B1417036  
 Project Location: OXY

Sampling Date: 04/12/2022  
 Sampling Type: Soil  
 Sampling Condition: Cool & Intact  
 Sample Received By: Tamara Oldaker

**Sample ID: PH - 4 0.5' (H221539-07)**

BTEX 8021B		mg/kg		Analyzed By: MS\						
Analyte	Result	Reporting Limit	Analyzed	Method Blank	BS	% Recovery	True Value QC	RPD	Qualifier	
Benzene*	<0.050	0.050	04/15/2022	ND	2.01	101	2.00	0.943		
Toluene*	<0.050	0.050	04/15/2022	ND	1.99	99.6	2.00	0.192		
Ethylbenzene*	<0.050	0.050	04/15/2022	ND	1.99	99.3	2.00	0.978		
Total Xylenes*	<0.150	0.150	04/15/2022	ND	6.14	102	6.00	1.27		
Total BTEX	<0.300	0.300	04/15/2022	ND						

Surrogate: 4-Bromofluorobenzene (PID) 104 % 69.9-140

Chloride, SM4500CI-B		mg/kg		Analyzed By: GM						
Analyte	Result	Reporting Limit	Analyzed	Method Blank	BS	% Recovery	True Value QC	RPD	Qualifier	
Chloride	32.0	16.0	04/18/2022	ND	416	104	400	3.77		

TPH 8015M		mg/kg		Analyzed By: MS					
Analyte	Result	Reporting Limit	Analyzed	Method Blank	BS	% Recovery	True Value QC	RPD	Qualifier
GRO C6-C10*	<10.0	10.0	04/18/2022	ND	213	107	200	1.57	
DRO >C10-C28*	<10.0	10.0	04/18/2022	ND	195	97.6	200	0.225	
EXT DRO >C28-C36	<10.0	10.0	04/18/2022	ND					

Surrogate: 1-Chlorooctane 82.0 % 66.9-136

Surrogate: 1-Chlorooctadecane 85.6 % 59.5-142

Cardinal Laboratories

\*=Accredited Analyte

PLEASE NOTE: Liability and Damages. Cardinal's liability and client's exclusive remedy for any claim arising, whether based in contract or tort, shall be limited to the amount paid by client for analyses. All claims, including those for negligence and any other cause whatsoever shall be deemed waived unless made in writing and received by Cardinal within thirty (30) days after completion of the applicable service. In no event shall Cardinal be liable for incidental or consequential damages, including, without limitation, business interruptions, loss of use, or loss of profits incurred by client, its subsidiaries, affiliates or successors arising out of or related to the performance of the services hereunder by Cardinal, regardless of whether such claim is based upon any of the above stated reasons or otherwise. Results relate only to the samples identified above. This report shall not be reproduced except in full with written approval of Cardinal Laboratories.

Celey D. Keene, Lab Director/Quality Manager



PHONE (575) 393-2326 ° 101 E. MARLAND ° HOBBS, NM 88240

**Analytical Results For:**

ENSOLUM, LLC  
 BEAUX JENNINGS  
 705 W WADLEY AVE.  
 MIDLAND TX, 79705  
 Fax To:

Received: 04/13/2022  
 Reported: 04/19/2022  
 Project Name: INDIAN HILLS TRUNK LINE  
 Project Number: 03B1417036  
 Project Location: OXY

Sampling Date: 04/12/2022  
 Sampling Type: Soil  
 Sampling Condition: Cool & Intact  
 Sample Received By: Tamara Oldaker

**Sample ID: PH - 5 0.5' (H221539-08)**

BTEX 8021B		mg/kg		Analyzed By: MS\						
Analyte	Result	Reporting Limit	Analyzed	Method Blank	BS	% Recovery	True Value QC	RPD	Qualifier	
Benzene*	<0.050	0.050	04/15/2022	ND	2.01	101	2.00	0.943		
Toluene*	<0.050	0.050	04/15/2022	ND	1.99	99.6	2.00	0.192		
Ethylbenzene*	<0.050	0.050	04/15/2022	ND	1.99	99.3	2.00	0.978		
Total Xylenes*	<0.150	0.150	04/15/2022	ND	6.14	102	6.00	1.27		
Total BTEX	<0.300	0.300	04/15/2022	ND						

Surrogate: 4-Bromofluorobenzene (PID) 104 % 69.9-140

Chloride, SM4500CI-B		mg/kg		Analyzed By: GM						
Analyte	Result	Reporting Limit	Analyzed	Method Blank	BS	% Recovery	True Value QC	RPD	Qualifier	
Chloride	48.0	16.0	04/18/2022	ND	416	104	400	3.77		

TPH 8015M		mg/kg		Analyzed By: MS					
Analyte	Result	Reporting Limit	Analyzed	Method Blank	BS	% Recovery	True Value QC	RPD	Qualifier
GRO C6-C10*	<10.0	10.0	04/18/2022	ND	213	107	200	1.57	
DRO >C10-C28*	<10.0	10.0	04/18/2022	ND	195	97.6	200	0.225	
EXT DRO >C28-C36	<10.0	10.0	04/18/2022	ND					

Surrogate: 1-Chlorooctane 91.1 % 66.9-136

Surrogate: 1-Chlorooctadecane 93.8 % 59.5-142

Cardinal Laboratories

\*=Accredited Analyte

PLEASE NOTE: Liability and Damages. Cardinal's liability and client's exclusive remedy for any claim arising, whether based in contract or tort, shall be limited to the amount paid by client for analyses. All claims, including those for negligence and any other cause whatsoever shall be deemed waived unless made in writing and received by Cardinal within thirty (30) days after completion of the applicable service. In no event shall Cardinal be liable for incidental or consequential damages, including, without limitation, business interruptions, loss of use, or loss of profits incurred by client, its subsidiaries, affiliates or successors arising out of or related to the performance of the services hereunder by Cardinal, regardless of whether such claim is based upon any of the above stated reasons or otherwise. Results relate only to the samples identified above. This report shall not be reproduced except in full with written approval of Cardinal Laboratories.

Celey D. Keene, Lab Director/Quality Manager



PHONE (575) 393-2326 ° 101 E. MARLAND ° HOBBS, NM 88240

**Analytical Results For:**

ENSOLUM, LLC  
 BEAUX JENNINGS  
 705 W WADLEY AVE.  
 MIDLAND TX, 79705  
 Fax To:

Received: 04/13/2022  
 Reported: 04/19/2022  
 Project Name: INDIAN HILLS TRUNK LINE  
 Project Number: 03B1417036  
 Project Location: OXY

Sampling Date: 04/12/2022  
 Sampling Type: Soil  
 Sampling Condition: Cool & Intact  
 Sample Received By: Tamara Oldaker

**Sample ID: PH - 6 0.5' (H221539-09)**

BTX 8021B			mg/kg							
			Analyzed By: MS\							
Analyte	Result	Reporting Limit	Analyzed	Method Blank	BS	% Recovery	True Value QC	RPD	Qualifier	
Benzene*	<0.050	0.050	04/15/2022	ND	2.01	101	2.00	0.943		
Toluene*	<0.050	0.050	04/15/2022	ND	1.99	99.6	2.00	0.192		
Ethylbenzene*	<0.050	0.050	04/15/2022	ND	1.99	99.3	2.00	0.978		
Total Xylenes*	<0.150	0.150	04/15/2022	ND	6.14	102	6.00	1.27		
Total BTX	<0.300	0.300	04/15/2022	ND						

Surrogate: 4-Bromofluorobenzene (PID) 103 % 69.9-140

Chloride, SM4500CI-B			mg/kg							
			Analyzed By: GM							
Analyte	Result	Reporting Limit	Analyzed	Method Blank	BS	% Recovery	True Value QC	RPD	Qualifier	
Chloride	32.0	16.0	04/18/2022	ND	400	100	400	3.92		

TPH 8015M			mg/kg							
			Analyzed By: MS							
Analyte	Result	Reporting Limit	Analyzed	Method Blank	BS	% Recovery	True Value QC	RPD	Qualifier	
GRO C6-C10*	<10.0	10.0	04/18/2022	ND	213	107	200	1.57		
DRO >C10-C28*	<10.0	10.0	04/18/2022	ND	195	97.6	200	0.225		
EXT DRO >C28-C36	<10.0	10.0	04/18/2022	ND						

Surrogate: 1-Chlorooctane 85.0 % 66.9-136

Surrogate: 1-Chlorooctadecane 87.0 % 59.5-142

Cardinal Laboratories

\*=Accredited Analyte

PLEASE NOTE: Liability and Damages. Cardinal's liability and client's exclusive remedy for any claim arising, whether based in contract or tort, shall be limited to the amount paid by client for analyses. All claims, including those for negligence and any other cause whatsoever shall be deemed waived unless made in writing and received by Cardinal within thirty (30) days after completion of the applicable service. In no event shall Cardinal be liable for incidental or consequential damages, including, without limitation, business interruptions, loss of use, or loss of profits incurred by client, its subsidiaries, affiliates or successors arising out of or related to the performance of the services hereunder by Cardinal, regardless of whether such claim is based upon any of the above stated reasons or otherwise. Results relate only to the samples identified above. This report shall not be reproduced except in full with written approval of Cardinal Laboratories.

Celey D. Keene, Lab Director/Quality Manager





PHONE (575) 393-2326 ° 101 E. MARLAND ° HOBBS, NM 88240

**Analytical Results For:**

ENSOLUM, LLC  
 BEAUX JENNINGS  
 705 W WADLEY AVE.  
 MIDLAND TX, 79705  
 Fax To:

Received: 04/13/2022  
 Reported: 04/19/2022  
 Project Name: INDIAN HILLS TRUNK LINE  
 Project Number: 03B1417036  
 Project Location: OXY

Sampling Date: 04/12/2022  
 Sampling Type: Soil  
 Sampling Condition: Cool & Intact  
 Sample Received By: Tamara Oldaker

**Sample ID: PH - 7 0.5' (H221539-10)**

BTEX 8021B		mg/kg		Analyzed By: MS\						
Analyte	Result	Reporting Limit	Analyzed	Method Blank	BS	% Recovery	True Value QC	RPD	Qualifier	
Benzene*	<0.050	0.050	04/15/2022	ND	2.01	101	2.00	0.943		
<b>Toluene*</b>	<b>0.090</b>	0.050	04/15/2022	ND	1.99	99.6	2.00	0.192		
Ethylbenzene*	<0.050	0.050	04/15/2022	ND	1.99	99.3	2.00	0.978		
Total Xylenes*	<0.150	0.150	04/15/2022	ND	6.14	102	6.00	1.27		
Total BTEX	<0.300	0.300	04/15/2022	ND						

Surrogate: 4-Bromofluorobenzene (PID) 105 % 69.9-140

Chloride, SM4500Cl-B		mg/kg		Analyzed By: GM					
Analyte	Result	Reporting Limit	Analyzed	Method Blank	BS	% Recovery	True Value QC	RPD	Qualifier
Chloride	32.0	16.0	04/18/2022	ND	400	100	400	3.92	

TPH 8015M		mg/kg		Analyzed By: MS					
Analyte	Result	Reporting Limit	Analyzed	Method Blank	BS	% Recovery	True Value QC	RPD	Qualifier
GRO C6-C10*	<10.0	10.0	04/18/2022	ND	213	107	200	1.57	
DRO >C10-C28*	<10.0	10.0	04/18/2022	ND	195	97.6	200	0.225	
EXT DRO >C28-C36	<10.0	10.0	04/18/2022	ND					

Surrogate: 1-Chlorooctane 87.5 % 66.9-136

Surrogate: 1-Chlorooctadecane 89.1 % 59.5-142

Cardinal Laboratories

\*=Accredited Analyte

PLEASE NOTE: Liability and Damages. Cardinal's liability and client's exclusive remedy for any claim arising, whether based in contract or tort, shall be limited to the amount paid by client for analyses. All claims, including those for negligence and any other cause whatsoever shall be deemed waived unless made in writing and received by Cardinal within thirty (30) days after completion of the applicable service. In no event shall Cardinal be liable for incidental or consequential damages, including, without limitation, business interruptions, loss of use, or loss of profits incurred by client, its subsidiaries, affiliates or successors arising out of or related to the performance of the services hereunder by Cardinal, regardless of whether such claim is based upon any of the above stated reasons or otherwise. Results relate only to the samples identified above. This report shall not be reproduced except in full with written approval of Cardinal Laboratories.

Celey D. Keene, Lab Director/Quality Manager



PHONE (575) 393-2326 ° 101 E. MARLAND ° HOBBS, NM 88240

**Analytical Results For:**

ENSOLUM, LLC  
 BEAUX JENNINGS  
 705 W WADLEY AVE.  
 MIDLAND TX, 79705  
 Fax To:

Received: 04/13/2022  
 Reported: 04/19/2022  
 Project Name: INDIAN HILLS TRUNK LINE  
 Project Number: 03B1417036  
 Project Location: OXY

Sampling Date: 04/12/2022  
 Sampling Type: Soil  
 Sampling Condition: Cool & Intact  
 Sample Received By: Tamara Oldaker

**Sample ID: PH - 8 0.5' (H221539-11)**

BTEX 8021B		mg/kg		Analyzed By: MS\					
Analyte	Result	Reporting Limit	Analyzed	Method Blank	BS	% Recovery	True Value QC	RPD	Qualifier
Benzene*	<0.050	0.050	04/15/2022	ND	2.01	101	2.00	0.943	
Toluene*	0.123	0.050	04/15/2022	ND	1.99	99.6	2.00	0.192	
Ethylbenzene*	<0.050	0.050	04/15/2022	ND	1.99	99.3	2.00	0.978	
Total Xylenes*	<0.150	0.150	04/15/2022	ND	6.14	102	6.00	1.27	
Total BTEX	<0.300	0.300	04/15/2022	ND					

Surrogate: 4-Bromofluorobenzene (PID) 103 % 69.9-140

Chloride, SM4500CI-B		mg/kg		Analyzed By: GM					
Analyte	Result	Reporting Limit	Analyzed	Method Blank	BS	% Recovery	True Value QC	RPD	Qualifier
Chloride	32.0	16.0	04/18/2022	ND	400	100	400	3.92	

TPH 8015M		mg/kg		Analyzed By: MS					
Analyte	Result	Reporting Limit	Analyzed	Method Blank	BS	% Recovery	True Value QC	RPD	Qualifier
GRO C6-C10*	<10.0	10.0	04/18/2022	ND	213	107	200	1.57	
DRO >C10-C28*	<10.0	10.0	04/18/2022	ND	195	97.6	200	0.225	
EXT DRO >C28-C36	<10.0	10.0	04/18/2022	ND					

Surrogate: 1-Chlorooctane 92.4 % 66.9-136

Surrogate: 1-Chlorooctadecane 96.4 % 59.5-142

Cardinal Laboratories

\*=Accredited Analyte

PLEASE NOTE: Liability and Damages. Cardinal's liability and client's exclusive remedy for any claim arising, whether based in contract or tort, shall be limited to the amount paid by client for analyses. All claims, including those for negligence and any other cause whatsoever shall be deemed waived unless made in writing and received by Cardinal within thirty (30) days after completion of the applicable service. In no event shall Cardinal be liable for incidental or consequential damages, including, without limitation, business interruptions, loss of use, or loss of profits incurred by client, its subsidiaries, affiliates or successors arising out of or related to the performance of the services hereunder by Cardinal, regardless of whether such claim is based upon any of the above stated reasons or otherwise. Results relate only to the samples identified above. This report shall not be reproduced except in full with written approval of Cardinal Laboratories.

Celey D. Keene, Lab Director/Quality Manager



PHONE (575) 393-2326 ° 101 E. MARLAND ° HOBBS, NM 88240

**Analytical Results For:**

ENSOLUM, LLC  
 BEAUX JENNINGS  
 705 W WADLEY AVE.  
 MIDLAND TX, 79705  
 Fax To:

Received: 04/13/2022  
 Reported: 04/19/2022  
 Project Name: INDIAN HILLS TRUNK LINE  
 Project Number: 03B1417036  
 Project Location: OXY

Sampling Date: 04/12/2022  
 Sampling Type: Soil  
 Sampling Condition: Cool & Intact  
 Sample Received By: Tamara Oldaker

**Sample ID: PH - 8 4' (H221539-12)**

BTX 8021B		mg/kg		Analyzed By: MS\						
Analyte	Result	Reporting Limit	Analyzed	Method Blank	BS	% Recovery	True Value QC	RPD	Qualifier	
Benzene*	<0.050	0.050	04/15/2022	ND	2.01	101	2.00	0.943		
Toluene*	<0.050	0.050	04/15/2022	ND	1.99	99.6	2.00	0.192		
Ethylbenzene*	<0.050	0.050	04/15/2022	ND	1.99	99.3	2.00	0.978		
Total Xylenes*	<0.150	0.150	04/15/2022	ND	6.14	102	6.00	1.27		
Total BTX	<0.300	0.300	04/15/2022	ND						

Surrogate: 4-Bromofluorobenzene (PID) 103 % 69.9-140

Chloride, SM4500CI-B		mg/kg		Analyzed By: GM						
Analyte	Result	Reporting Limit	Analyzed	Method Blank	BS	% Recovery	True Value QC	RPD	Qualifier	
Chloride	32.0	16.0	04/18/2022	ND	400	100	400	3.92		

TPH 8015M		mg/kg		Analyzed By: MS					
Analyte	Result	Reporting Limit	Analyzed	Method Blank	BS	% Recovery	True Value QC	RPD	Qualifier
GRO C6-C10*	<10.0	10.0	04/18/2022	ND	213	107	200	1.57	
DRO >C10-C28*	<10.0	10.0	04/18/2022	ND	195	97.6	200	0.225	
EXT DRO >C28-C36	<10.0	10.0	04/18/2022	ND					

Surrogate: 1-Chlorooctane 86.1 % 66.9-136

Surrogate: 1-Chlorooctadecane 87.2 % 59.5-142

Cardinal Laboratories

\*=Accredited Analyte

PLEASE NOTE: Liability and Damages. Cardinal's liability and client's exclusive remedy for any claim arising, whether based in contract or tort, shall be limited to the amount paid by client for analyses. All claims, including those for negligence and any other cause whatsoever shall be deemed waived unless made in writing and received by Cardinal within thirty (30) days after completion of the applicable service. In no event shall Cardinal be liable for incidental or consequential damages, including, without limitation, business interruptions, loss of use, or loss of profits incurred by client, its subsidiaries, affiliates or successors arising out of or related to the performance of the services hereunder by Cardinal, regardless of whether such claim is based upon any of the above stated reasons or otherwise. Results relate only to the samples identified above. This report shall not be reproduced except in full with written approval of Cardinal Laboratories.

Celey D. Keene, Lab Director/Quality Manager



---

PHONE (575) 393-2326 ° 101 E. MARLAND ° HOBBS, NM 88240

---

### Notes and Definitions

ND	Analyte NOT DETECTED at or above the reporting limit
RPD	Relative Percent Difference
**	Samples not received at proper temperature of 6°C or below.
***	Insufficient time to reach temperature.
-	Chloride by SM4500Cl-B does not require samples be received at or below 6°C Samples reported on an as received basis (wet) unless otherwise noted on report

---

Cardinal Laboratories

\*=Accredited Analyte

PLEASE NOTE: Liability and Damages. Cardinal's liability and client's exclusive remedy for any claim arising, whether based in contract or tort, shall be limited to the amount paid by client for analyses. All claims, including those for negligence and any other cause whatsoever shall be deemed waived unless made in writing and received by Cardinal within thirty (30) days after completion of the applicable service. In no event shall Cardinal be liable for incidental or consequential damages, including, without limitation, business interruptions, loss of use, or loss of profits incurred by client, its subsidiaries, affiliates or successors arising out of or related to the performance of the services hereunder by Cardinal, regardless of whether such claim is based upon any of the above stated reasons or otherwise. Results relate only to the samples identified above. This report shall not be reproduced except in full with written approval of Cardinal Laboratories.

A handwritten signature in black ink, appearing to read "Celey D. Keene".

---

Celey D. Keene, Lab Director/Quality Manager



101 East Marland, Hobbs, NM 88240  
(575) 393-2326 FAX (575) 393-2476

# CHAIN-OF-CUSTODY AND ANALYSIS REQUEST

page 1 of 2

<b>Company Name:</b> <u>BEAUX JEWELLINGS</u> <b>Project Manager:</b> <u>BEAUX JEWELLINGS</u>		<b>P.O. #:</b> <b>Company:</b> <u>OLY USA INC.</u>	
<b>Address:</b> <u>705 W WADLEY AVE, SUITE 240</u> <b>City:</b> <u>MIDLAND</u>		<b>Attn:</b> <u>WADE DITTRICH</u>	
<b>Phone #:</b> <u>(214) 214-8858</u> <b>State:</b> <u>TX</u> <b>Zip:</b> <u>79705</u> <b>Fax #:</b>		<b>Address:</b>	
<b>Project #:</b> <u>03B1417036</u> <b>Project Owner:</b>		<b>City:</b>	
<b>Project Name:</b> <u>INDIAN HILLS TRUNK LINE</u>		<b>State:</b> <b>Zip:</b>	
<b>Project Location:</b>		<b>Phone #:</b> <u>(575) 390-2828</u> <b>Fax #:</b>	
<b>Sampler Name:</b> <u>GILBERT NUENES</u>			

Lab I.D.	Sample I.D.	Depth	(G)RAB OR (C)OMP.	# CONTAINERS	MATRIX							DATE	TIME	ANALYSIS REQUEST
					GROUNDWATER	WASTEWATER	SOIL	OIL	SLUDGE	OTHER :	ACID/BASE:			
H081539	PH-1	0.5'	C	1								4/12/22	12:30	TPH (8015 M)
	PH-1	1'	C	1									12:35	BTEX
	PH-2	0.5'	C	1									12:45	CHLORIDES (4500)
	PH-2	1'	C	1									12:50	
	PH-3	0.5'	C	1									13:00	
	PH-3	1'	C	1									13:05	
	PH-4	0.5'	C	1									14:00	
	PH-4	0.5'	C	1									14:05	

PLEASE NOTE: Liability and Damages. Cardinal's liability and client's exclusive remedy for any claim arising whether based in contract or tort, shall be limited to the amount paid by the client for the analysis. All claims including those for negligence and any other cause whatsoever shall be deemed waived unless made in writing and received by Cardinal within 30 days after completion of the applicable service. In no event shall Cardinal be liable for incidental or consequential damages, including without limitation, business interruptions, loss of use, or loss of profits incurred by client, its subsidiaries, affiliates or successors arising out of or related to the performance of services hereunder by Cardinal, regardless of whether such claim is based upon any of the above stated reasons or otherwise.

**Relinquished By:** [Signature] **Date:** 4-13-22 **Received By:** [Signature] **Date:** 4-13-22

**Relinquished By:** [Signature] **Date:** 4-13-22 **Received By:** [Signature] **Date:** 4-13-22

**Delivered By:** (Circle One) Observed Temp. °C 11.1 **Sample Condition** ☒ Intact ☐ Cool ☐ Yes ☐ No **CHECKED BY:** (Initials) [Signature]

**Sampler - UPS - Bus - Other:** Corrected Temp. °C 0.6 ☐ Yes ☐ No ☐ No Yes

**Turnaround Time:** Standard ☒ Rush ☐ **Bacteria (only)** ☐ **Sample Condition** ☐ Intact ☐ Cool ☐ Yes ☐ No ☐ No **Observed Temp. °C** **Corrected Temp. °C**

**Thermometer ID #113** **Correction Factor -0.5°C**

**REMARKS:** BEAUX JEWELLINGS @ ENJOY.UK.COM, WADE DITTRICH

**Verbal Result:** ☐ Yes ☐ No **Add'l Phone #:** **All Results are emailed. Please provide Email address:**

**FORM 000 R 3.2 10/07/21**





## CHAIN-OF-CUSTODY AND ANALYSIS REQUEST

101 East Marland, Hobbs, NM 88240  
(575) 393-2326 FAX (575) 393-2476

Company Name: **ENSOLVM**

Project Manager: **BETH JEANINGS**

Address: **705 W WILBURY, SUITE 240**

City: **MILAN, NM**

State: **NM** Zip: **87005**

Phone #: **(505) 219-8858**

Fax #:

Project #: **0381417036**

Project Owner:

Project Name: **INDIAN HILLS TRUNK LINE**

Project Location:

Sample Name: **GILBERT MORRIS**

FOR LAB USE ONLY

## BILL TO

P.O. #:

Company: **OUT USA INC.**

Attn: **WHITE DITTRICH**

Address:

City:

State: Zip:

Phone #: **(575) 390-2828**

Fax #:

## ANALYSIS REQUEST

Lab I.D.

Sample I.D.

**H281539**

**11**

**12**

**PH-8**

**PH-8**

**PH-8**

**PH-8**

**PH-8**

**PH-8**

**PH-8**

**PH-8**

**PH-8**

**PH-8**

**PH-8**

**PH-8**

**PH-8**

**PH-8**

**PH-8**

**PH-8**

**PH-8**

**PH-8**

**PH-8**

**PH-8**

**PH-8**

**PH-8**

**PH-8**

**PH-8**

**PH-8**

**PH-8**

**PH-8**

**PH-8**

**TPH (8015 M)**

**BTEX**

**CHLORIDES (4500)**

**CHLORIDES (4500)**

**CHLORIDES (4500)**

**CHLORIDES (4500)**

**CHLORIDES (4500)**

**CHLORIDES (4500)**

**CHLORIDES (4500)**

**CHLORIDES (4500)**

**CHLORIDES (4500)**

**CHLORIDES (4500)**

**CHLORIDES (4500)**

**CHLORIDES (4500)**

PLEASE NOTE: Liability and Damages. Cardinal's liability and client's exclusive remedy for any claim arising from this contract or tort, shall be limited to the amount paid by the client for the analysis. All claims including those for negligence and any other cause whatsoever shall be deemed waived unless made in writing and received by Cardinal within 30 days after completion of the applicable service. In no event shall Cardinal be liable for incidental or consequential damages, including without limitation, business interruptions, loss of use, or loss of profits incurred by client, its subsidiaries, affiliates or successors arising out of or related to the performance of services hereunder by Cardinal, regardless of whether such claim is based upon any of the above stated reasons or otherwise.

Relinquished By:

**4-13-22**

**4-13-22**

**4-13-22**

**4-13-22**

**4-13-22**

**4-13-22**

**4-13-22**

**4-13-22**

**4-13-22**

**4-13-22**

**4-13-22**

**4-13-22**

**4-13-22**

**4-13-22**

**4-13-22**

**4-13-22**

**4-13-22**

**4-13-22**

**4-13-22**

**4-13-22**

**4-13-22**

**4-13-22**

**4-13-22**

**4-13-22**

**4-13-22**

**4-13-22**

**4-13-22**

**4-13-22**

**4-13-22**

**4-13-22**

**4-13-22**

**4-13-22**

**4-13-22**

**4-13-22**

**4-13-22**

**4-13-22**

**4-13-22**

**4-13-22**

**4-13-22**

**4-13-22**

**4-13-22**

**4-13-22**

**4-13-22**

**4-13-22**

**4-13-22**

**4-13-22**

**4-13-22**

**4-13-22**

**4-13-22**

**4-13-22**

**4-13-22**

**4-13-22**

**4-13-22**

**4-13-22**

**4-13-22**

**4-13-22**

**4-13-22**

**4-13-22**

**4-13-22**

**4-13-22**

**4-13-22**

**4-13-22**

**4-13-22**

**4-13-22**

**4-13-22**

**4-13-22**

**4-13-22**

**4-13-22**

**4-13-22**

**4-13-22**

**4-13-22**

**4-13-22**

**4-13-22**

**4-13-22**

**4-13-22**

**4-13-22**

**4-13-22**

**4-13-22**

**4-13-22**

**4-13-22**

**4-13-22**

**4-13-22**

**4-13-22**

**4-13-22**

**4-13-22**

**4-13-22**

**4-13-22**

**4-13-22**

**4-13-22**

**4-13-22**

**4-13-22**

**4-13-22**

**4-13-22**

**4-13-22**

**4-13-22**

**4-13-22**

**4-13-22**

**4-13-22**

**4-13-22**

**4-13-22**

**4-13-22**

**4-13-22**

**4-13-22**

**4-13-22**

**4-13-22**

**4-13-22**

**4-13-22**

**4-13-22**

**4-13-22**

**4-13-22**

**4-13-22**

**4-13-22**

**4-13-22**

**4-13-22**

**4-13-22**

**4-13-22**

**4-13-22**

**4-13-22**

**4-13-22**

**4-13-22**

**4-13-22**

**4-13-22**

**4-13-22**

**4-13-22**

**4-13-22**

**4-13-22**

**4-13-22**

**4-13-22**

**4-13-22**

**4-13-22**

**4-13-22**

**4-13-22**

**4-13-22**

**4-13-22**

**4-13-22**

**4-13-22**

**4-13-22**

**4-13-22**

**4-13-22**

**4-13-22**

**4-13-22**

**4-13-22**

**4-13-22**

**4-13-22**

**4-13-22**

**4-13-22**

**4-13-22**

**4-13-22**

**4-13-22**

**4-13-22**

**4-13-22**

**4-13-22**

**4-13-22**

**4-13-22**

**4-13-22**

**4-13-22**

**4-13-22**

**4-13-22**

**4-13-22**

**4-13-22**

**4-13-22**

**4-13-22**

**4-13-22**

**4-13-22**

**4-13-22**

**4-13-22**

**4-13-22**

**4-13-22**

**4-13-22**

**4-13-22**

**4-13-22**

**4-13-22**

**4-13-22**

**4-13-22**

**4-13-22**

**4-13-22**

**4-13-22**

**4-13-22**

**4-13-22**

**4-13-22**

**4-13-22**

**4-13-22**

</



## APPENDIX F

C-141

District I  
1625 N. French Dr., Hobbs, NM 88240  
District II  
1301 W. Grand Avenue, Artesia, NM 88210  
District III  
1000 Rio Brazos Road, Aztec, NM 87410  
District IV  
1220 S. St. Francis Dr., Santa Fe, NM 87505

State of New Mexico  
Energy Minerals and Natural Resources  
Oil Conservation Division  
1220 South St. Francis Dr.  
Santa Fe, NM 87505

RECEIVED

JAN 19 2010

Form C-141  
Revised October 10, 2003

Submit 2 Copies to appropriate  
District Office in accordance  
with Rule 116 on back  
side of form

## Release Notification and Corrective Action

## OPERATOR

☒ Initial Report ☐ Final Report

Name of Company	OXY USA	Contact	Kelton Beaird
Address	1502 W. Commerce Carlsbad, NM 88220	Telephone No. (O)	575-628-4100
Facility Name	Indian Hills Trunk line	Facility Type	Trunk Line

Surface Owner	BLM	Mineral Owner	BLM	Lease No.	3001532199
---------------	-----	---------------	-----	-----------	------------

## LOCATION OF RELEASE

Unit Letter	Section	Township	Range	Feet from the	North/South Line	Feet from the	East/West Line	County
B	33	21S	24E					EDDY

Latitude \_\_\_\_\_ Longitude \_\_\_\_\_

## NATURE OF RELEASE

Type of Release	Crude Oil & Produced Water	Volume of Release	5000 bbls water / 60bbls oil	Volume Recovered	0
Source of Release	Truck Line	Date and Hour of Occurrence		Date and Hour of Discovery	12-9-09 12:00pm
Was Immediate Notice Given?	<input checked="" type="checkbox"/> Yes <input type="checkbox"/> No <input type="checkbox"/> Not Required	If YES, To Whom?	Mike Bratcher-NMOCD Jim Amos BLM		
By Whom?	Kelton Beaird HES - Oxy	Date and Hour	See above		
Was a Watercourse Reached?	<input type="checkbox"/> Yes <input checked="" type="checkbox"/> No	If YES, Volume Impacting the Watercourse.			

If a Watercourse was Impacted, Describe Fully.\*

Describe Cause of Problem and Remedial Action Taken.\*  
Line corroded

Describe Area Affected and Cleanup Action Taken.\*  
Area affected was off location. Site will be delineated and a clean-up plan will be submitted for approval

I hereby certify that the information given above is true and complete to the best of my knowledge and understand that pursuant to NMOCD rules and regulations all operators are required to report and/or file certain release notifications and perform corrective actions for releases which may endanger public health or the environment. The acceptance of a C-141 report by the NMOCD marked as "Final Report" does not relieve the operator of liability should their operations have failed to adequately investigate and remediate contamination that pose a threat to ground water, surface water, human health or the environment. In addition, NMOCD acceptance of a C-141 report does not relieve the operator of responsibility for compliance with any other federal, state, or local laws and/or regulations.

Signature:

Printed Name: Kelton Beaird

Title: HES Specialist

E-mail Address: kelton\_beaird@oxy.com

Date: 12-15-09

## OIL CONSERVATION DIVISION

Approved by District Supervisor

Approval Date: 3/9/11

Expiration Date:

Conditions of Approval:  
Remediation per OCD Rules &  
Guidelines. **SUBMIT REMEDIATION  
PROPOSAL NOT LATER THAN:**

Attached ☐

\* Attach Additional Sheets If Necessary

2RP-557

4/9/11



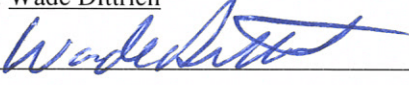
State of New Mexico  
Oil Conservation Division

Incident ID	nKMW1101328085
District RP	2RP-557
Facility ID	N/A
Application ID	pKMW1101328370

Was this a major release as defined by 19.15.29.7(A) NMAC?  <input checked="" type="checkbox"/> Yes <input type="checkbox"/> No	If YES, for what reason(s) does the responsible party consider this a major release? Release is greater than 25 barrels.
If YES, was immediate notice given to the OCD? By whom? To whom? When and by what means (phone, email, etc)? Yes, to Mike Bratcher and Jim Amos (NMOCD) by Kelton Beaird (Oxy).	

### Initial Response

*The responsible party must undertake the following actions immediately unless they could create a safety hazard that would result in injury*

<input checked="" type="checkbox"/> The source of the release has been stopped.	
<input checked="" type="checkbox"/> The impacted area has been secured to protect human health and the environment.	
<input checked="" type="checkbox"/> Released materials have been contained via the use of berms or dikes, absorbent pads, or other containment devices.	
<input checked="" type="checkbox"/> All free liquids and recoverable materials have been removed and managed appropriately.	
If all the actions described above have <u>not</u> been undertaken, explain why:	
Per 19.15.29.8 B. (4) NMAC the responsible party may commence remediation immediately after discovery of a release. If remediation has begun, please attach a narrative of actions to date. If remedial efforts have been successfully completed or if the release occurred within a lined containment area (see 19.15.29.11(A)(5)(a) NMAC), please attach all information needed for closure evaluation.	
I hereby certify that the information given above is true and complete to the best of my knowledge and understand that pursuant to OCD rules and regulations all operators are required to report and/or file certain release notifications and perform corrective actions for releases which may endanger public health or the environment. The acceptance of a C-141 report by the OCD does not relieve the operator of liability should their operations have failed to adequately investigate and remediate contamination that pose a threat to groundwater, surface water, human health or the environment. In addition, OCD acceptance of a C-141 report does not relieve the operator of responsibility for compliance with any other federal, state, or local laws and/or regulations.	
Printed Name: <u>Wade Dittrich</u>	Title: <u>Environmental Specialist</u>
Signature: <u></u>	Date: <u>7-19-22</u>
email: <u>wade_dittrich@oxy.com</u>	Telephone: <u>575-390-2828</u>
<b><u>OCD Only</u></b>	
Received by: _____	Date: _____

Incident ID	nKMW1101328085
District RP	2RP-557
Facility ID	N/A
Application ID	pKMW1101328370

## Site Assessment/Characterization

*This information must be provided to the appropriate district office no later than 90 days after the release discovery date.*

What is the shallowest depth to groundwater beneath the area affected by the release?	N/A (ft bgs)
Did this release impact groundwater or surface water?	<input type="checkbox"/> Yes <input checked="" type="checkbox"/> No
Are the lateral extents of the release within 300 feet of a continuously flowing watercourse or any other significant watercourse?	<input type="checkbox"/> Yes <input checked="" type="checkbox"/> No
Are the lateral extents of the release within 200 feet of any lakebed, sinkhole, or playa lake (measured from the ordinary high-water mark)?	<input type="checkbox"/> Yes <input checked="" type="checkbox"/> No
Are the lateral extents of the release within 300 feet of an occupied permanent residence, school, hospital, institution, or church?	<input type="checkbox"/> Yes <input checked="" type="checkbox"/> No
Are the lateral extents of the release within 500 horizontal feet of a spring or a private domestic fresh water well used by less than five households for domestic or stock watering purposes?	<input type="checkbox"/> Yes <input checked="" type="checkbox"/> No
Are the lateral extents of the release within 1000 feet of any other fresh water well or spring?	<input type="checkbox"/> Yes <input checked="" type="checkbox"/> No
Are the lateral extents of the release within incorporated municipal boundaries or within a defined municipal fresh water well field?	<input type="checkbox"/> Yes <input checked="" type="checkbox"/> No
Are the lateral extents of the release within 300 feet of a wetland?	<input type="checkbox"/> Yes <input checked="" type="checkbox"/> No
Are the lateral extents of the release overlying a subsurface mine?	<input type="checkbox"/> Yes <input checked="" type="checkbox"/> No
Are the lateral extents of the release overlying an unstable area such as karst geology?	<input checked="" type="checkbox"/> Yes <input type="checkbox"/> No
Are the lateral extents of the release within a 100-year floodplain?	<input type="checkbox"/> Yes <input checked="" type="checkbox"/> No
Did the release impact areas <b>not</b> on an exploration, development, production, or storage site?	<input type="checkbox"/> Yes <input checked="" type="checkbox"/> No

Attach a comprehensive report (electronic submittals in .pdf format are preferred) demonstrating the lateral and vertical extents of soil contamination associated with the release have been determined. Refer to 19.15.29.11 NMAC for specifics.

### **Characterization Report Checklist:** *Each of the following items must be included in the report.*

- ☒ Scaled site map showing impacted area, surface features, subsurface features, delineation points, and monitoring wells.
- ☒ Field data
- ☒ Data table of soil contaminant concentration data
- ☒ Depth to water determination
- ☒ Determination of water sources and significant watercourses within 1/2-mile of the lateral extents of the release
- ☒ Boring or excavation logs
- ☒ Photographs including date and GIS information
- ☒ Topographic/Aerial maps
- ☒ Laboratory data including chain of custody

If the site characterization report does not include completed efforts at remediation of the release, the report must include a proposed remediation plan. That plan must include the estimated volume of material to be remediated, the proposed remediation technique, proposed sampling plan and methods, anticipated timelines for beginning and completing the remediation. The closure criteria for a release are contained in Table 1 of 19.15.29.12 NMAC, however, use of the table is modified by site- and release-specific parameters.



State of New Mexico  
Oil Conservation Division

Incident ID	nKMW1101328085
District RP	2RP-557
Facility ID	N/A
Application ID	pKMW1101328370

I hereby certify that the information given above is true and complete to the best of my knowledge and understand that pursuant to OCD rules and regulations all operators are required to report and/or file certain release notifications and perform corrective actions for releases which may endanger public health or the environment. The acceptance of a C-141 report by the OCD does not relieve the operator of liability should their operations have failed to adequately investigate and remediate contamination that pose a threat to groundwater, surface water, human health or the environment. In addition, OCD acceptance of a C-141 report does not relieve the operator of responsibility for compliance with any other federal, state, or local laws and/or regulations.

Printed Name: Wade Dittrich

Title: Environmental Specialist

Signature: \_\_\_\_\_

Date: \_\_\_\_\_

email: wade\_dittrich@oxy.com

Telephone: 575-390-2828

**OCD Only**

Received by: \_\_\_\_\_

Date: \_\_\_\_\_

Incident ID	nKMW1101328085
District RP	2RP-557
Facility ID	N/A
Application ID	pKMW1101328370

## Closure

The responsible party must attach information demonstrating they have complied with all applicable closure requirements and any conditions or directives of the OCD. This demonstration should be in the form of a comprehensive report (electronic submittals in .pdf format are preferred) including a scaled site map, sampling diagrams, relevant field notes, photographs of any excavation prior to backfilling, laboratory data including chain of custody documents of final sampling, and a narrative of the remedial activities. Refer to 19.15.29.12 NMAC.

**Closure Report Attachment Checklist:** *Each of the following items must be included in the closure report.*

- ☒ A scaled site and sampling diagram as described in 19.15.29.11 NMAC
- ☒ Photographs of the remediated site prior to backfill or photos of the liner integrity if applicable (Note: appropriate OCD District office must be notified 2 days prior to liner inspection)
- ☒ Laboratory analyses of final sampling (Note: appropriate ODC District office must be notified 2 days prior to final sampling)
- ☒ Description of remediation activities

I hereby certify that the information given above is true and complete to the best of my knowledge and understand that pursuant to OCD rules and regulations all operators are required to report and/or file certain release notifications and perform corrective actions for releases which may endanger public health or the environment. The acceptance of a C-141 report by the OCD does not relieve the operator of liability should their operations have failed to adequately investigate and remediate contamination that pose a threat to groundwater, surface water, human health or the environment. In addition, OCD acceptance of a C-141 report does not relieve the operator of responsibility for compliance with any other federal, state, or local laws and/or regulations. The responsible party acknowledges they must substantially restore, reclaim, and re-vegetate the impacted surface area to the conditions that existed prior to the release or their final land use in accordance with 19.15.29.13 NMAC including notification to the OCD when reclamation and re-vegetation are complete.

Printed Name: Wade Dittrich

Title: Environmental Specialist

Signature: \_\_\_\_\_

Date: 7-19-22

email: wade\_dittrich@oxy.com

Telephone: 575-390-2828

**OCD Only**

Received by: \_\_\_\_\_ OCD

Date: 7/20/2022

Closure approval by the OCD does not relieve the responsible party of liability should their operations have failed to adequately investigate and remediate contamination that poses a threat to groundwater, surface water, human health, or the environment nor does not relieve the responsible party of compliance with any other federal, state, or local laws and/or regulations.

Closure Approved by: \_\_\_\_\_

Date: 2/21/2023

Printed Name: Ashley Maxwell

Title: Environmental Specialist



**District I**  
1625 N. French Dr., Hobbs, NM 88240  
Phone:(575) 393-6161 Fax:(575) 393-0720

**District II**  
811 S. First St., Artesia, NM 88210  
Phone:(575) 748-1283 Fax:(575) 748-9720

**District III**  
1000 Rio Brazos Rd., Aztec, NM 87410  
Phone:(505) 334-6178 Fax:(505) 334-6170

**District IV**  
1220 S. St Francis Dr., Santa Fe, NM 87505  
Phone:(505) 476-3470 Fax:(505) 476-3462

**State of New Mexico**  
**Energy, Minerals and Natural Resources**  
**Oil Conservation Division**  
**1220 S. St Francis Dr.**  
**Santa Fe, NM 87505**

CONDITIONS

Action 127239

CONDITIONS

Operator: OXY USA INC P.O. Box 4294 Houston, TX 772104294	OGRID: 16696
	Action Number: 127239
	Action Type: [C-141] Release Corrective Action (C-141)

CONDITIONS

Created By	Condition	Condition Date
amaxwell	None	2/21/2023