

District I
1625 N. French Dr., Hobbs, NM 88240
District II
811 S. First St., Artesia, NM 88210
District III
1000 Rio Brazos Road, Aztec, NM 87410
District IV
1220 S. St. Francis Dr., Santa Fe, NM 87505

State of New Mexico
Energy Minerals and Natural
Resources Department
Oil Conservation Division
1220 South St. Francis Dr.
Santa Fe, NM 87505

Form C-141
Revised August 24, 2018
Submit to appropriate OCD District office

| | |
|----------------|--|
| Incident ID | |
| District RP | |
| Facility ID | |
| Application ID | |

Closure

The responsible party must attach information demonstrating they have complied with all applicable closure requirements and any conditions or directives of the OCD. This demonstration should be in the form of a comprehensive report (electronic submittals in .pdf format are preferred) including a scaled site map, sampling diagrams, relevant field notes, photographs of any excavation prior to backfilling, laboratory data including chain of custody documents of final sampling, and a narrative of the remedial activities. Refer to 19.15.29.12 NMAC.

Closure Report Attachment Checklist: *Each of the following items must be included in the closure report.*

- A scaled site and sampling diagram as described in 19.15.29.11 NMAC
- Photographs of the remediated site prior to backfill or photos of the liner integrity if applicable (Note: appropriate OCD District office must be notified 2 days prior to liner inspection)
- Laboratory analyses of final sampling (Note: appropriate ODC District office must be notified 2 days prior to final sampling)
- Description of remediation activities

I hereby certify that the information given above is true and complete to the best of my knowledge and understand that pursuant to OCD rules and regulations all operators are required to report and/or file certain release notifications and perform corrective actions for releases which may endanger public health or the environment. The acceptance of a C-141 report by the OCD does not relieve the operator of liability should their operations have failed to adequately investigate and remediate contamination that pose a threat to groundwater, surface water, human health or the environment. In addition, OCD acceptance of a C-141 report does not relieve the operator of responsibility for compliance with any other federal, state, or local laws and/or regulations. The responsible party acknowledges they must substantially restore, reclaim, and re-vegetate the impacted surface area to the conditions that existed prior to the release or their final land use in accordance with 19.15.29.13 NMAC including notification to the OCD when reclamation and re-vegetation are complete.

Printed Name: Robert Dunaway Title: Senior Environmental Engineer

Signature:  Date: 12/7/22

email: rhunaway@eprod.com Telephone: 575-628-6802

State of New Mexico
Oil Conservation Division

| | |
|----------------|--|
| Incident ID | |
| District RP | |
| Facility ID | |
| Application ID | |

OCD Only

Received by: _____ Date: _____

Closure approval by the OCD does not relieve the responsible party of liability should their operations have failed to adequately investigate and remediate contamination that poses a threat to groundwater, surface water, human health, or the environment nor does not relieve the responsible party of compliance with any other federal, state, or local laws and/or regulations.

Closure Approved by: _____ Date: _____

Printed Name: _____ Title: _____

District I
1625 N. French Dr., Hobbs, NM 88240
District II
811 S. First St., Artesia, NM 88210
District III
1000 Rio Brazos Road, Aztec, NM 87410
District IV
1220 S. St. Francis Dr., Santa Fe, NM 87505

State of New Mexico
Energy Minerals and Natural
Resources Department
Oil Conservation Division
1220 South St. Francis Dr.
Santa Fe, NM 87505

Form C-141
Revised August 24, 2018
Submit to appropriate OCD District office

| | |
|----------------|----------------|
| Incident ID | NAPP2209526360 |
| District RP | |
| Facility ID | |
| Application ID | |

Closure

The responsible party must attach information demonstrating they have complied with all applicable closure requirements and any conditions or directives of the OCD. This demonstration should be in the form of a comprehensive report (electronic submittals in .pdf format are preferred) including a scaled site map, sampling diagrams, relevant field notes, photographs of any excavation prior to backfilling, laboratory data including chain of custody documents of final sampling, and a narrative of the remedial activities. Refer to 19.15.29.12 NMAC.

Closure Report Attachment Checklist: *Each of the following items must be included in the closure report.*

- A scaled site and sampling diagram as described in 19.15.29.11 NMAC
- Photographs of the remediated site prior to backfill or photos of the liner integrity if applicable (Note: appropriate OCD District office must be notified 2 days prior to liner inspection)
- Laboratory analyses of final sampling (Note: appropriate ODC District office must be notified 2 days prior to final sampling)
- Description of remediation activities

I hereby certify that the information given above is true and complete to the best of my knowledge and understand that pursuant to OCD rules and regulations all operators are required to report and/or file certain release notifications and perform corrective actions for releases which may endanger public health or the environment. The acceptance of a C-141 report by the OCD does not relieve the operator of liability should their operations have failed to adequately investigate and remediate contamination that pose a threat to groundwater, surface water, human health or the environment. In addition, OCD acceptance of a C-141 report does not relieve the operator of responsibility for compliance with any other federal, state, or local laws and/or regulations. The responsible party acknowledges they must substantially restore, reclaim, and re-vegetate the impacted surface area to the conditions that existed prior to the release or their final land use in accordance with 19.15.29.13 NMAC including notification to the OCD when reclamation and re-vegetation are complete.

Printed Name: Robert Dunaway Title: Senior Environmental Engineer

Signature:  Date: 12/7/22

email: rhunaway@eprod.com Telephone: 575-628-6802

| | |
|----------------|----------------|
| Incident ID | NAPP2209526360 |
| District RP | |
| Facility ID | |
| Application ID | |

OCD Only

Received by: Robert Hamlet

Date: 3/13/2023

Closure approval by the OCD does not relieve the responsible party of liability should their operations have failed to adequately investigate and remediate contamination that poses a threat to groundwater, surface water, human health, or the environment nor does not relieve the responsible party of compliance with any other federal, state, or local laws and/or regulations.

Closure Approved by: Robert Hamlet

Date: 3/13/2023

Printed Name: Robert Hamlet

Title: Environmental Specialist - Advanced



December 5, 2022

#5E31002-BG7

NMOCD District 2
 811 S. First St.
 Artesia, New Mexico 88210

SUBJECT: Remediation Closure Report for the Poker Lake Discharge (Line 16-24-30) Release (NAPP2209526360), Eddy County, New Mexico

1.0 Executive Summary

On behalf of Enterprise Field Services LLC (Enterprise), Souder, Miller & Associates (SMA) has prepared this Remediation Closure Report that describes the remediation of a natural gas and condensate release related to oil and gas production activities at the Poker Lake Discharge (Line 16-24-30) Release (NAPP2209526360). The release site is located in Unit B, Section 30, Township 24S, Range 30E, Eddy County, New Mexico, on public land administered by the Bureau of Land Management (BLM). Figure 1 illustrates the vicinity and site location on a United States Geological Survey (USGS) 7.5-minute quadrangle map.

This report demonstrates that the release area has been remediated to meet the standards of Table I of 19.15.29.12 New Mexico Administrative Code (NMAC). The information provided in this report is intended to fulfill final New Mexico Oil Conservation Division (NMOCD) closure requirements.

The gas portion of this release constitutes venting that occurred during an emergency or malfunction, as authorized by NMOCD regulations at NMAC 19.15.28.8.A and B(1). This release therefore is not prohibited by NMAC 19.15.29.8.A.

SMA recommends no further action and requests that the release associated with the Poker Lake Discharge (Line 16-24-30) Release (NAPP2209526360) be closed.

| Table 1: Release Information and Closure Criteria | | | |
|--|--------------------------------------|------------------------|-------------------------------|
| Name | Poker Lake Discharge (Line 16-24-30) | Company | Enterprise Field Services LLC |
| API Number | N/A | Location | 32.193277, -103.91797 |
| Tracking Number | NAPP2209526360 | Source of Release | Leak on a gathering pipeline |
| Estimated Date of Release | April 1, 2022 | Date Reported to NMOCD | April 8, 2022 |
| Land Status | BLM | Reported To | NMOCD District II |
| Released Volume | 298 Mcf, 1 bbls | Released Material | Natural Gas, Condensate |
| Recovered Volume | 0 Mcf, 0 bbls | Net Release | 298 Mcf, 1 bbls |
| NMOCD Closure Criteria | <50 feet | SMA Response Dates | May 4, 11, 16 and 27, 2022 |

2.0 Background

On April 1, 2022, a natural gas and condensate release was discovered at the Poker Lake Discharge (Line 16-2-30) site. Initial response activities were conducted by Enterprise, and included source elimination and site security, containment, and site stabilization activities. Figure 1 illustrates the vicinity and site location; Figure 2 illustrates the release location. A copy of the initial C-141 form is included in Appendix A.

3.0 Site Information and Closure Criteria

The release site is located approximately 11 miles southeast of Malaga, New Mexico on BLM land at an elevation of approximately 3,160 feet above mean sea level (amsl).

Depth to Groundwater

A search of the New Mexico Office of the State Engineer (NMOSE) New Mexico Water Rights Reporting System (NMWRRS) and the USGS National Water Information System did not yield any results within ½-mile of the site (Appendix B). Thus, depth to groundwater is considered to be less than 50 feet below grade surface (bgs) for Closure Criteria determinations.

Wellhead Protection Area

There are no known water sources within ½-mile of the location, according to the NMOSE NMWRRS and USGS National Water Information System. Registered wells in the vicinity are shown on Figure 1.

Distance to Nearest Significant Watercourse

The release site is located approximately 1,392 feet north of Pierce Canyon.

Table 2 demonstrates the Closure Criteria applicable to this location. Figures 1 and 2 illustrate the 500 and 1,000-foot and the 0.5-mile radii which indicate that the site does not lie within a sensitive area as described in Paragraph (4) of Subsection (C) of 19.15.29.12 NMAC.

Based on the information presented herein, the applicable NMOCD Closure Criteria for this site is for a groundwater depth of less than 50 feet bgs.

4.0 Release Characterization and Remediation Activities

Following pipeline repair activities, SMA personnel performed excavation guidance and closure confirmation sampling beginning on May 4, 2022. Due to the length of the remedial excavation, the final excavation was sampled in phases to maintain the ability to reach the necessary portions of the excavation with the heavy equipment.

Soil samples were field screened for hydrocarbon impacts using a calibrated MiniRAE 3000 photoionization detector (PID) equipped with a 10.6 eV lamp. Field notes are included in Appendix C.

Excavation confirmation samples were collected on May 4, 16, and 27, 2022. The confirmation samples were analyzed for total chloride using United States Environmental Protection Agency (USEPA) Method 300.0; benzene, toluene, ethylbenzene and total xylenes (BTEX) using USEPA Method 8021B; and total petroleum hydrocarbons (TPH) as gasoline, diesel and motor oil range organics (GRO, DRO, and DRO) by USEPA Method 8015D. Excavation samples were composed of 5-point composites collected every 200 square feet or less in accordance with the sampling protocol included in Appendix D. Copies of the sampling notification emails are included in Appendix A.

Poker Lake Discharge (Line 16-24-30) NAPP2209526360 Closure Report
December 5, 2022

Page 3 of 4

Laboratory analytical results reported concentrations of constituents of concern exceeding NMOCD Closure Criteria for samples SC-2 and SC-17. Therefore, the two areas of the excavation base represented by these samples were advanced an additional foot, then resampled as confirmation samples SC-15 and SC-24, respectively.

The final remediation excavation measured approximately 14 to 16.5 feet wide by 56.5 feet long with depths ranging from 11 to 14 feet bgs. An XTO pipeline crossed perpendicular and below the Enterprise Poker Lake Discharge (Line 16-24-30) pipeline within the excavation. The supporting rock immediately below the pipelines was left in place as it could not be safely excavated.

Excavation extents and closure confirmation sample locations are depicted in Figure 3. A photo log is included in Appendix C. Confirmation sample laboratory results are summarized in Table 3. Laboratory reports are included in Appendix E.

5.0 Recommendations

As demonstrated in Table 3, all final excavation closure confirmation samples meet NMOCD Closure Criteria as described in Table I of 19.15.29.12 NMAC.

Excavated soils were removed and replaced with clean backfill material to return the surface to previous contours. All excavated soil was transported and disposed of at Lea Land LLC, Hobbs, New Mexico, an NMOCD-permitted disposal facility.

SMA recommends no further action and requests closure of Incident Number NAPP2209526360.

6.0 Scope and Limitations

The scope of our services included: assessment sampling; verifying release stabilization; regulatory liaison; remediation guidance; and preparing this report. All work has been performed in accordance with generally accepted professional environmental consulting practices for oil and gas releases in the Permian Basin in New Mexico.

If there are any questions regarding this report, please contact Ashley Maxwell at 505-320-8975.

Submitted by:
SOUDER, MILLER & ASSOCIATES

Reviewed by:



Sarahmay Schlea
Staff Scientist



Heather M. Woods, P.G.
Project Geoscientist

REFERENCES:

New Mexico Office of the State Engineer (NMOSE) online water well database
https://gis.ose.state.nm.us/gisapps/ose_pod_locations/; accessed 5/24/2022

Poker Lake Discharge (Line 16-24-30) NAPP2209526360 Closure Report
December 5, 2022

Page 4 of 4

ATTACHMENTS:

Figures:

Figure 1: Topographic Site Map
Figure 2: Surface Water Protection Map
Figure 3: Site and Sample Location Map

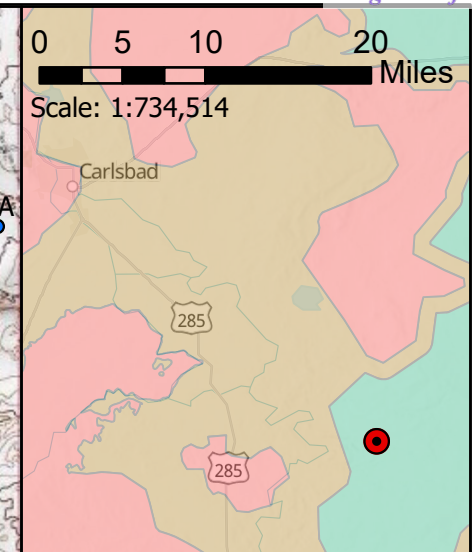
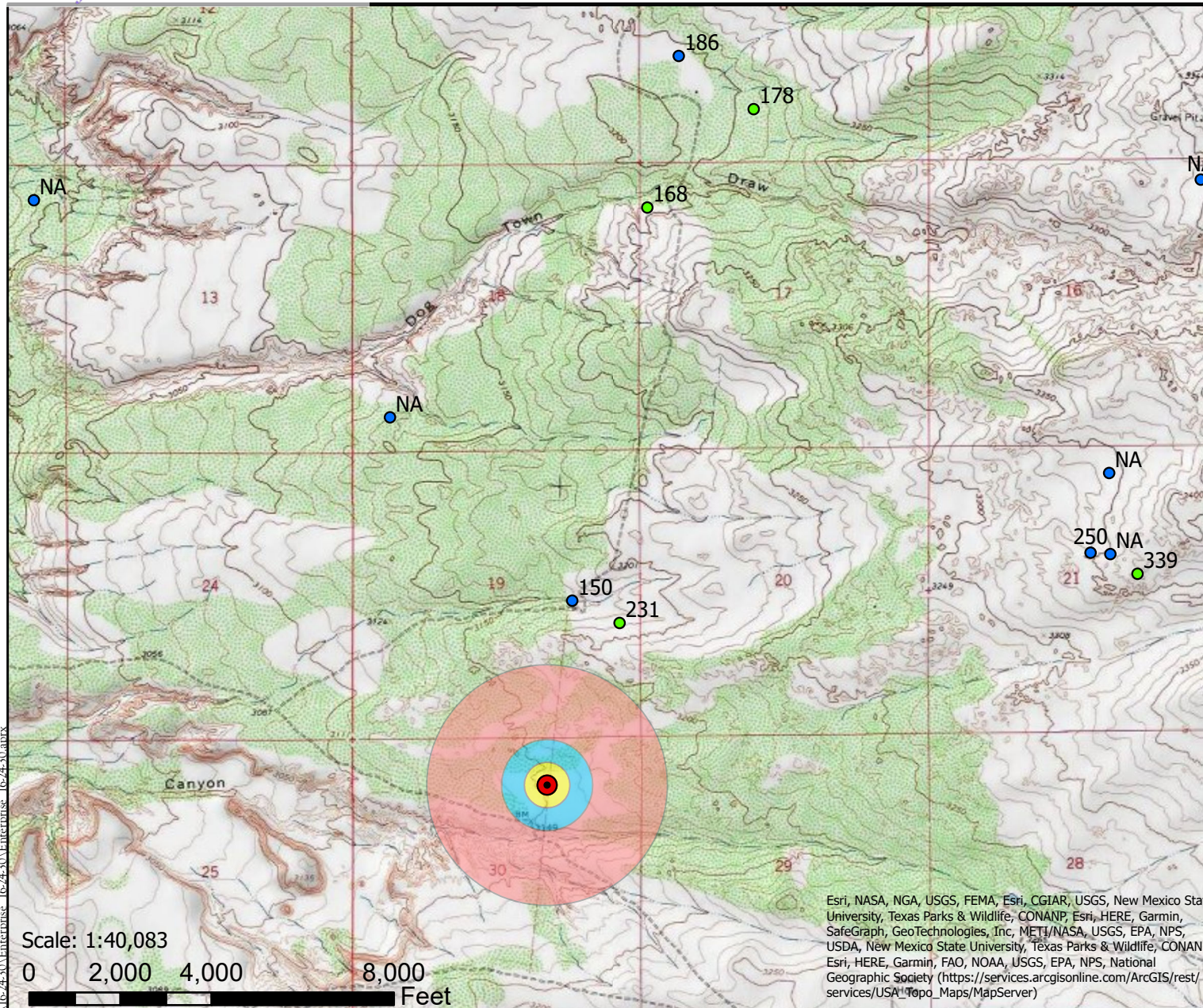
Tables:

Table 2: NMOCD Closure Criteria Justification
Table 3: Summary of Sample Results

Appendices:

Appendix A: Form C-141 and Sampling Notifications
Appendix B: Water Well Data
Appendix C: Field Notes and Photo Log
Appendix D: Sampling Protocol
Appendix E: Laboratory Analytical Reports

FIGURES



Legend

- Point of Release
- USGS GW Wells (depth in ft)
- OSE GW Wells (depth in ft)

Buffer Distance

- 500 feet
- 1000 feet
- 0.5 mile

Karst Potential

- High
- Medium
- Low

Point of Release Coordinates:
-103.91797W 32.193277N

Topographic Site Map
 Poker Lake Line 16-24-30 - Enterprise Field Services LLC
 UL: B S: 30 T: 24S R: 30E, Eddy County, New Mexico

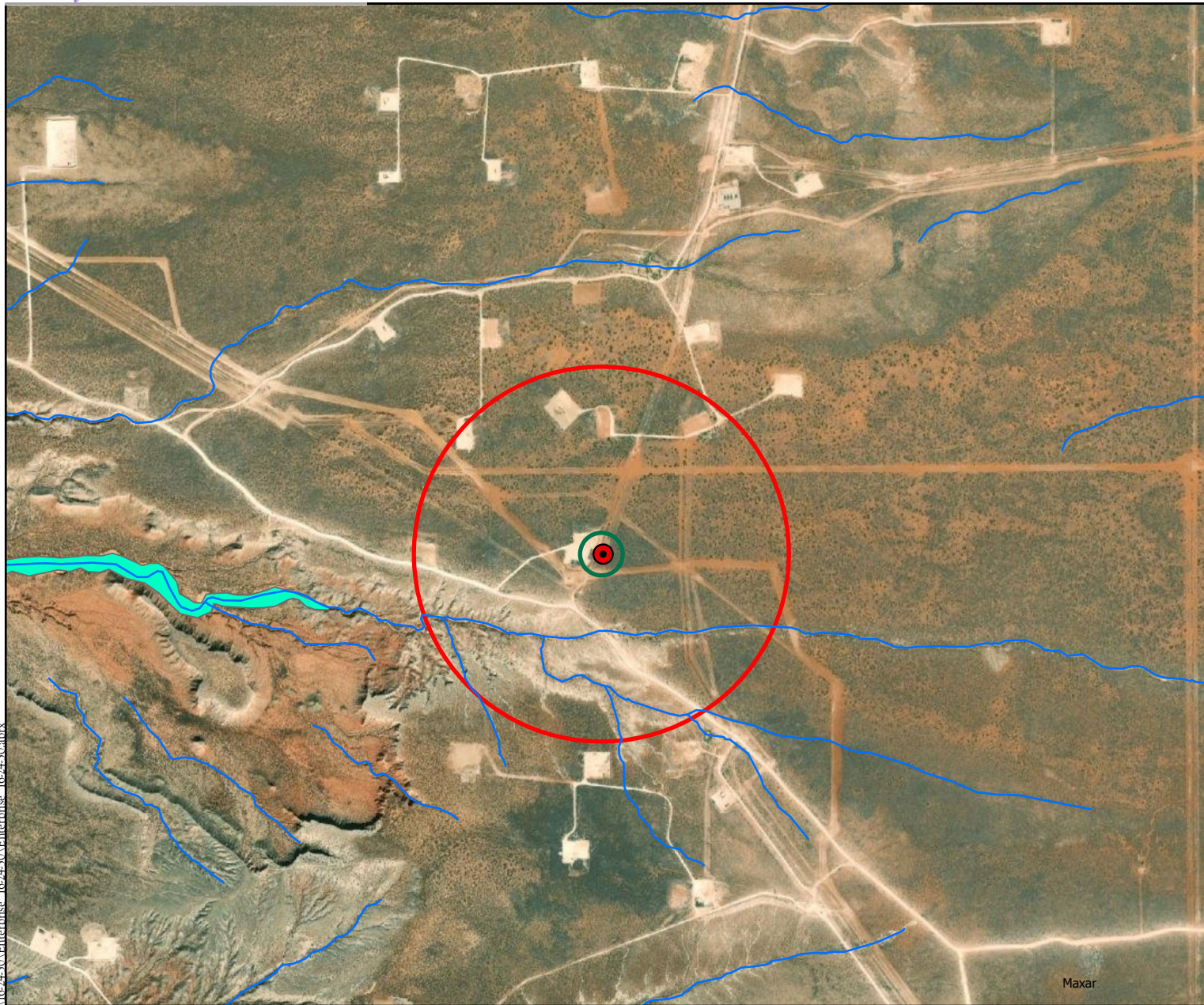
Figure 1

| Revisions | | |
|-----------|-------------|--------------|
| By: _____ | Date: _____ | Descr: _____ |
| By: _____ | Date: _____ | Descr: _____ |

© Souder, Miller & Associates, 2021, All Rights Reserved

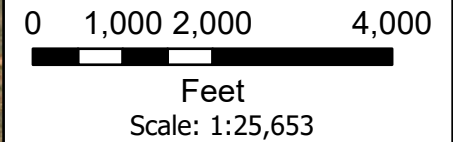
| | |
|----------|-----------------|
| Drawn | Sarahmay Schlea |
| Date | 6/28/2022 |
| Checked | _____ |
| Approved | _____ |

201 South Halagueno Street
 Carlsbad, New Mexico 88221
 (575) 689-7040
 Serving the Southwest & Rocky Mountains



Legend

- Point of Release
- Streams/Canals/Flowlines
- FEMA Flood Zones
- 0.5 Mile Radius
- 300 Foot Radius



Point of Release Coordinates:
-103.91797W 32.193277N

Aerial Site Map
Poker Lake Line 16-24-30 - Enterprise Field Services LLC
UL: B S: 30 T: 24S R: 30E, Eddy County, New Mexico

Figure 2

C:\Users\ss\Desktop\GIS\Enterprise\16-24-30\Enterprise_16-24-30.aprx
Date Saved: 6/28/2022

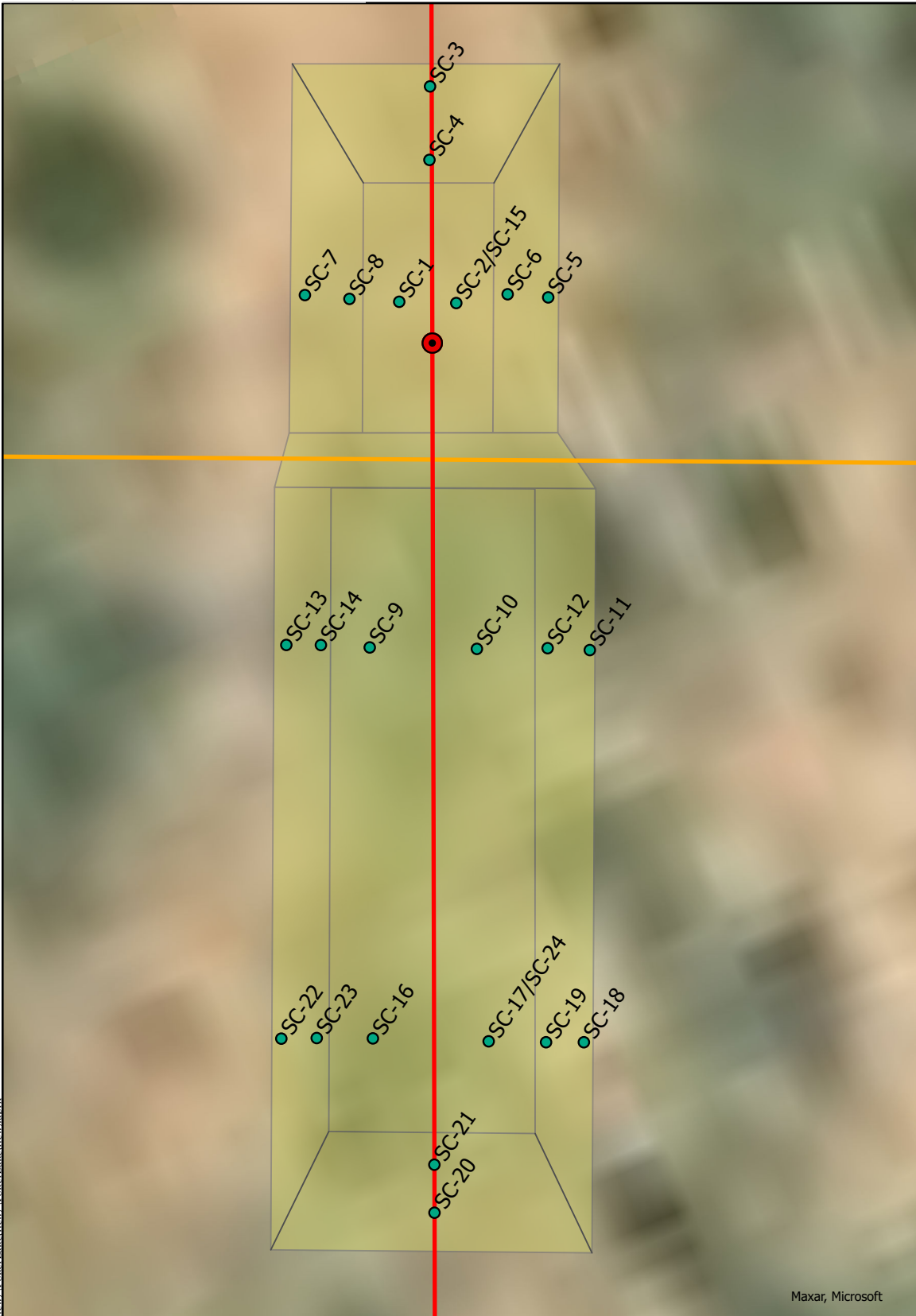
| Revisions | | |
|-----------|-------------|--------------|
| By: _____ | Date: _____ | Descr: _____ |
| By: _____ | Date: _____ | Descr: _____ |

| | |
|----------|-----------------|
| Drawn | Sarahmay Schlea |
| Date | 6/28/2022 |
| Checked | _____ |
| Approved | _____ |



201 South Halagueno Street
Carlsbad, New Mexico 88221
(575) 689-7040
Serving the Southwest & Rocky Mountains

© Souder, Miller & Associates, 2021, All Rights Reserved

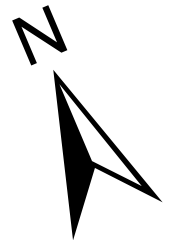


Legend

- Point of Release
- Confirmation Samples
- Enterprise Lines
- XTO Lines
- Excavation Extent

0 5 10
 Feet

Scale: 1:96



Point of Release
 Coordinates:
 -103.91797W
 32.193277N

Site and Sample Location Map

Poker Lake Discharge (Line 16-24-30) - Enterprise Field Services LLC
 UL: B S: 30 T: 24S R: 30E, Eddy County, New Mexico

Figure 3

Revisions

| | | |
|-----------|-------------|--------------|
| By: _____ | Date: _____ | Descr: _____ |
| By: _____ | Date: _____ | Descr: _____ |

Drawn Sarahmay Schlea
 Date 6/28/2022
 Checked _____
 Approved _____



201 South Halagueno Street
 Carlsbad, New Mexico 88221
 (575) 689-7040
 Serving the Southwest & Rocky Mountains

C:\Users\ss\Desktop\GIS\Enterprise\BakerLake\BakerLakeNew\BakerLakeNew.aprx
 Date Saved: 6/28/2022

TABLES

Table 2:
NMOCD Closure Criteria

Enterprise Field Services
Poker Lake Discharge (Line 16-24-30)
nAPP2209526360

| Site Information (19.15.29.11.A(2, 3, and 4) NMAC) | | Source/Notes |
|---|---------|--------------------------------|
| Depth to Groundwater (feet bgs) | No Data | NMOSE and USGS Water Well Data |
| Horizontal Distance From All Water Sources Within 1/2 Mile (ft) | >1/2 | NMOSE and USGS Water Well Data |
| Horizontal Distance to Nearest Significant Watercourse (ft) | 1,392 | USGS 7.5-minute Quadrangle Map |

| Closure Criteria (19.15.29.12.B(4) and Table 1 NMAC) | | | | | | |
|---|-----------|--|------|--------------|------|---------|
| Depth to Groundwater | | Closure Criteria (units in mg/kg) | | | | |
| | | Chloride ^{*numerical} limit or background, whichever is greater | TPH | GRO + DRO | BTEX | Benzene |
| < 50' BGS | X | 600 | 100 | | 50 | 10 |
| 51' to 100' | | 10000 | 2500 | 1000 | 50 | 10 |
| >100' | | 20000 | 2500 | 1000 | 50 | 10 |
| Surface Water | yes or no | if yes, then | | | | |
| <300' from continuously flowing watercourse or other significant watercourse? | no | 600 | 100 | | 50 | 10 |
| <200' from lakebed, sinkhole or playa lake? | no | | | | | |
| Water Well or Water Source | | | | | | |
| <500 feet from spring or a private, domestic fresh water well used by less than 5 households for domestic or stock watering purposes? | no | | | | | |
| <1000' from fresh water well or spring? | no | | | | | |
| Human and Other Areas | | | | | | |
| <300' from an occupied permanent residence, school, hospital, institution or church? | no | | | | | |
| within incorporated municipal boundaries or within a defined municipal fresh water well field? | no | | | | | |
| <100' from wetland? | no | | | | | |
| within area overlying a subsurface mine | no | | | | | |
| within an unstable area? | no | | | | | |
| within a 100-year floodplain? | no | | | | | |



Table 3:
Summary of Laboratory Analytical Results

Enterprise Field Services
Poker Lake Discharge (Line 16-24-30)
nAPP2209526360

| Sample ID | Sample Date | Depth of Sample (feet bgs) | Method 8021B | | | | | Method 8015D | | | | Method 300.0 |
|--|-------------|----------------------------|--------------|---------|--------------|---------------|-----------|--------------|------------|------------|------------|--------------|
| | | | Benzene | Toluene | Ethylbenzene | Total Xylenes | BTEX | GRO | DRO | MRO | Total TPH | Chloride |
| | | | mg/kg | mg/kg | mg/kg | mg/kg | mg/kg | mg/kg | mg/kg | mg/kg | mg/kg | mg/kg |
| NMOCD Closure Criteria | | | 10 | -- | -- | -- | 50 | -- | -- | -- | 100 | 600 |
| REMOVED BY EXCAVATION | | | | | | | | | | | | |
| SC-2 | 5/4/2022 | 13 | <0.017 | <0.034 | <0.034 | <0.069 | <0.154 | <3.4 | <9.3 | <46 | <59 | 4,800 |
| SC-17 | 5/16/2022 | 11 | <0.025 | <0.050 | <0.050 | <0.099 | <0.224 | <5.0 | 410 | 530 | 940 | 910 |
| FINAL EXCAVATION CONFIRMATION SAMPLES | | | | | | | | | | | | |
| SC-1 | 5/4/2022 | 12 | <0.020 | <0.040 | <0.040 | <0.079 | <0.179 | <4.0 | <9.8 | <49 | <63 | 78 |
| SC-3 | 5/4/2022 | 0-6 | <0.018 | <0.035 | <0.035 | <0.070 | <0.158 | <3.5 | <9.9 | <50 | <63 | 210 |
| SC-4 | 5/4/2022 | 6-13 | <0.020 | <0.040 | <0.040 | <0.079 | <0.179 | <4.0 | <9.2 | <46 | <59 | 230 |
| SC-5 | 5/4/2022 | 0-6 | <0.017 | <0.033 | <0.033 | <0.067 | <0.150 | <3.3 | <9.6 | <48 | <61 | <60.0 |
| SC-6 | 5/4/2022 | 6-13 | <0.019 | <0.039 | <0.039 | <0.078 | <0.175 | <3.9 | <9.7 | <48 | <62 | 260 |
| SC-7 | 5/4/2022 | 0-6 | <0.018 | <0.036 | <0.036 | <0.072 | <0.162 | <3.6 | <10 | <50 | <64 | <60 |
| SC-8 | 5/4/2022 | 6-12 | <0.016 | <0.032 | <0.032 | <0.064 | <0.144 | <3.2 | <9.7 | <49 | <62 | <60 |
| SC-9 | 5/4/2022 | 12 | <0.020 | <0.041 | <0.041 | <0.082 | <0.182 | <4.1 | <9.9 | <49 | <63 | 68 |
| SC-10 | 5/4/2022 | 11 | <0.020 | <0.040 | <0.040 | <0.081 | <0.181 | <4.0 | <9.5 | <47 | <61 | <60 |
| SC-11 | 5/4/2022 | 0-5.5 | <0.018 | <0.035 | <0.035 | <0.070 | <0.158 | <3.5 | <9.2 | <46 | <59 | <60 |
| SC-12 | 5/4/2022 | 5.5-11 | <0.018 | <0.035 | <0.035 | <0.071 | <0.159 | <3.5 | <9.7 | <49 | <62 | 88 |
| SC-13 | 5/4/2022 | 0-6 | <0.015 | <0.031 | <0.031 | <0.062 | <0.139 | <3.1 | <10 | <50 | <63 | <60 |
| SC-14 | 5/4/2022 | 6-12 | <0.017 | <0.033 | <0.033 | <0.067 | <0.150 | <3.3 | <9.7 | <48 | <61 | <60 |
| SC-15 | 5/16/2022 | 14 | <0.025 | <0.049 | <0.049 | <0.098 | <0.221 | <4.9 | <9.8 | <49 | <64 | 68 |
| SC-16 | 5/16/2022 | 12 | <0.025 | <0.050 | <0.050 | <0.10 | <0.225 | <5.0 | <9.6 | <48 | <63 | 70 |
| SC-18 | 5/16/2022 | 0-5.5 | <0.024 | <0.049 | <0.049 | <0.098 | <0.220 | <4.9 | <9.8 | <49 | <64 | <59 |
| SC-19 | 5/16/2022 | 5.5-11 | <0.024 | <0.049 | <0.049 | <0.098 | <0.220 | <4.9 | <9.8 | <49 | <64 | <60 |
| SC-20 | 5/16/2022 | 0-6 | <0.025 | <0.049 | <0.049 | <0.099 | <0.222 | <4.9 | <9.8 | <49 | <64 | <60 |
| SC-21 | 5/16/2022 | 6-12 | <0.024 | <0.049 | <0.049 | <0.098 | <0.220 | <4.9 | <9.4 | <47 | <61 | <60 |
| SC-22 | 5/16/2022 | 0-6 | <0.024 | <0.048 | <0.048 | <0.097 | <0.217 | <4.8 | <9.5 | <47 | <61 | <60 |
| SC-23 | 5/16/2022 | 6-12 | <0.025 | <0.050 | <0.050 | <0.10 | <0.225 | <5.0 | <9.8 | <49 | <64 | <60 |
| SC-24 | 5/27/2022 | 12 | <0.025 | <0.049 | <0.049 | <0.098 | <0.221 | <4.9 | <10 | <50 | <65 | <60 |

Notes bgs - below grade surface
mg/kg - milligram per kilogram
BTEX - benzene, toluene, ethylbenzene, and xylenes

GRO - gasoline range organics
DRO - diesel range organics
MRO - motor oil range organics

TPH - total petroleum hydrocarbons
NMOCD - New Mexico Oil Conservation Division



APPENDIX A

FORM C141 AND SAMPLING NOTIFICATIONS

District I
1625 N. French Dr., Hobbs, NM 88240
District II
811 S. First St., Artesia, NM 88210
District III
1000 Rio Brazos Road, Aztec, NM 87410
District IV
1220 S. St. Francis Dr., Santa Fe, NM 87505

State of New Mexico
Energy Minerals and Natural
Resources Department

Oil Conservation Division
1220 South St. Francis Dr.
Santa Fe, NM 87505

Form C-141
Revised August 24, 2018
Submit to appropriate OCD District office

| | |
|----------------|----------------|
| Incident ID | NAPP2209526360 |
| District RP | |
| Facility ID | |
| Application ID | |

Release Notification

Responsible Party

| | | | |
|-------------------------|--------------------------------|------------------------------|----------------|
| Responsible Party | Enterprise Field Services LLC | OGRID | 241602 |
| Contact Name | Robert Dunaway | Contact Telephone | 575-628-6802 |
| Contact email | rhunaway@eprod.com | Incident # (assigned by OCD) | nAPP2209526360 |
| Contact mailing address | PO Box 4324, Houston, TX 77210 | | |

Location of Release Source

Latitude 32.193277 Longitude -103.91797
(NAD 83 in decimal degrees to 5 decimal places)

| | | | |
|-------------------------|---------------|----------------------|--------------------|
| Site Name | Line 16-24-30 | Site Type | Gathering Pipeline |
| Date Release Discovered | 4/1/2022 | API# (if applicable) | |

| Unit Letter | Section | Township | Range | County |
|-------------|---------|----------|-------|--------|
| B | 30 | 24S | 30E | Eddy |

Surface Owner: State Federal Tribal Private (Name: _____)

Nature and Volume of Release

Material(s) Released (Select all that apply and attach calculations or specific justification for the volumes provided below)

| | | |
|---|--|--|
| <input type="checkbox"/> Crude Oil | Volume Released (bbls) | Volume Recovered (bbls) |
| <input type="checkbox"/> Produced Water | Volume Released (bbls) | Volume Recovered (bbls) |
| | Is the concentration of dissolved chloride in the produced water >10,000 mg/l? | <input type="checkbox"/> Yes <input type="checkbox"/> No |
| <input checked="" type="checkbox"/> Condensate | Volume Released (bbls) 1 | Volume Recovered (bbls) -0- |
| <input checked="" type="checkbox"/> Natural Gas | Volume Released (Mcf) 298 | Volume Recovered (Mcf) -0- |
| <input type="checkbox"/> Other (describe) | Volume/Weight Released (provide units) | Volume/Weight Recovered (provide units) |

Cause of Release

Found a leak on a gathering pipeline, cause is to be determined.


State of New Mexico
Oil Conservation Division

| | |
|----------------|----------------|
| Incident ID | NAPP2209526360 |
| District RP | |
| Facility ID | |
| Application ID | |

| | |
|---|--|
| Was this a major release as defined by 19.15.29.7(A) NMAC? <input type="checkbox"/> Yes <input checked="" type="checkbox"/> No | If YES, for what reason(s) does the responsible party consider this a major release? |
| If YES, was immediate notice given to the OCD? By whom? To whom? When and by what means (phone, email, etc)? | |

Initial Response

The responsible party must undertake the following actions immediately unless they could create a safety hazard that would result in injury

| |
|--|
| <input checked="" type="checkbox"/> The source of the release has been stopped. <input checked="" type="checkbox"/> The impacted area has been secured to protect human health and the environment. <input checked="" type="checkbox"/> Released materials have been contained via the use of berms or dikes, absorbent pads, or other containment devices. <input checked="" type="checkbox"/> All free liquids and recoverable materials have been removed and managed appropriately. |
| If all the actions described above have <u>not</u> been undertaken, explain why: |
| Per 19.15.29.8 B. (4) NMAC the responsible party may commence remediation immediately after discovery of a release. If remediation has begun, please attach a narrative of actions to date. If remedial efforts have been successfully completed or if the release occurred within a lined containment area (see 19.15.29.11(A)(5)(a) NMAC), please attach all information needed for closure evaluation. |
| I hereby certify that the information given above is true and complete to the best of my knowledge and understand that pursuant to OCD rules and regulations all operators are required to report and/or file certain release notifications and perform corrective actions for releases which may endanger public health or the environment. The acceptance of a C-141 report by the OCD does not relieve the operator of liability should their operations have failed to adequately investigate and remediate contamination that pose a threat to groundwater, surface water, human health or the environment. In addition, OCD acceptance of a C-141 report does not relieve the operator of responsibility for compliance with any other federal, state, or local laws and/or regulations. |
| Printed Name: <u>Robert Dunaway</u> Title: <u>Senior Environmental Engineer</u> Signature: <u></u> Date: <u>4/8/22</u> email: <u>rhunaway@eprod.com</u> Telephone: <u>575-628-6802</u> |
| OCD Only Received by: <u>Jocelyn Harimon</u> Date: <u>04/08/2022</u> |

District I
 1625 N. French Dr., Hobbs, NM 88240
 Phone:(575) 393-6161 Fax:(575) 393-0720

District II
 811 S. First St., Artesia, NM 88210
 Phone:(575) 748-1283 Fax:(575) 748-9720

District III
 1000 Rio Brazos Rd., Aztec, NM 87410
 Phone:(505) 334-6178 Fax:(505) 334-6170

District IV
 1220 S. St Francis Dr., Santa Fe, NM 87505
 Phone:(505) 476-3470 Fax:(505) 476-3462

State of New Mexico
Energy, Minerals and Natural Resources
Oil Conservation Division
1220 S. St Francis Dr.
Santa Fe, NM 87505

CONDITIONS
 Action 96905

CONDITIONS

| | |
|---|---|
| Operator: Enterprise Field Services, LLC PO Box 4324 Houston, TX 77210 | OGRID: 241602 |
| | Action Number: 96905 |
| | Action Type: [C-141] Release Corrective Action (C-141) |

CONDITIONS

| Created By | Condition | Condition Date |
|------------|-----------|----------------|
| jharimon | None | 4/8/2022 |

Heather Woods

From: Hamlet, Robert, EMNRD <Robert.Hamlet@state.nm.us>
Sent: Thursday, April 28, 2022 9:31 AM
To: Heather Woods
Cc: Ashley Maxwell; Sarahmay Schlea; Dunaway, Robert; Bratcher, Mike, EMNRD; Nobui, Jennifer, EMNRD
Subject: RE: [EXTERNAL] 48-Hour Notification: nAPP2209526360 and nAPP2210932844 Enterprise Line 16-24-30 (Poker Lake Discharge)

Heather,

Thank you for the notification. Please include a copy of this and all notifications in the remedial and/or closure reports to ensure the notifications are documented in the project file.

Robert Hamlet • Environmental Specialist - Advanced
Environmental Bureau
EMNRD - Oil Conservation Division
811 S. First Street | Artesia, NM 88210
575.909.0302 | robert.hamlet@state.nm.us
<http://www.emnrd.state.nm.us/OCD/>



From: Enviro, OCD, EMNRD <OCD.Enviro@state.nm.us>
Sent: Wednesday, April 27, 2022 3:53 PM
To: Hamlet, Robert, EMNRD <Robert.Hamlet@state.nm.us>
Subject: Fw: [EXTERNAL] 48-Hour Notification: nAPP2209526360 and nAPP2210932844 Enterprise Line 16-24-30 (Poker Lake Discharge)

From: Heather Woods <Heather.Woods@soudermiller.com>
Sent: Wednesday, April 27, 2022 1:14 PM
To: Enviro, OCD, EMNRD <OCD.Enviro@state.nm.us>
Cc: Ashley Maxwell <ashley.maxwell@soudermiller.com>; Sarahmay Schlea <sarahmay.schlea@soudermiller.com>; rhunaway@eprod.com <rhunaway@eprod.com>
Subject: [EXTERNAL] 48-Hour Notification: nAPP2209526360 and nAPP2210932844 Enterprise Line 16-24-30 (Poker Lake Discharge)

CAUTION: This email originated outside of our organization. Exercise caution prior to clicking on links or opening attachments.

Good Afternoon,

Souder, Miller and Associates will be on location Monday, May 2, 2022, beginning at 9:00am to conduct confirmation

sampling at the Enterprise Line 16-24-30 (Poker Lake Discharge) (nAPP2209526360 and nAPP2210932844) release sites located at 32.193277, -103.91797 and 32.194002, -103.917758, respectively. Please contact me with any questions.

Heather Woods, P.G.
Project Geoscientist

Personal Registrations: UT Professional Geologist
Corporate Registrations: AZ Engineering/Geology/Surveying Firm (14070), FL Engineering Firm (34203), ID Engineering/Surveying Firm (C-3564), ND Engineering Firm (28545PE), OK Engineering Firm (8498), SD Surveying Firm (C-7436), TX Engineering Firm (8877), TX Geology Firm (50254), TX PST CAPM (CS-0000051), TX Surveying Firm (10162200), WY Engineering/Surveying Firm (S-1704)



Souder, Miller & Associates

Engineering ♦ Environmental ♦ Geomatics
401 West Broadway
Farmington, NM 87401
(505) 716-2787 (mobile)
(505) 325-7535 (office)
www.soudermiller.com



Notice of Confidentiality and Privileged Status: This electronic mail message, including all attachments, is for the sole use of the intended recipient(s) and may contain confidential and/or privileged information or otherwise may be protected from disclosure. Any unauthorized review, use, disclosure, distribution or actions which rely on the contents of this information is prohibited. If you are not the intended recipient, please contact the sender and delete the message and any attachment(s) from your system.

Statement on Viruses and Harmful Software: While the message and attachment(s) have been scanned with anti-virus software, SMA does not guarantee that this message or any attachment(s) is free of computer viruses or other harmful software. SMA does not accept liability for any damages caused by any computer virus or other harmful software transmitted herewith.

Heather Woods

From: Hamlet, Robert, EMNRD <Robert.Hamlet@state.nm.us>
Sent: Wednesday, May 4, 2022 1:23 PM
To: Heather Woods
Cc: Ashley Maxwell; Sarahmay Schlea; Dunaway, Robert; Bratcher, Mike, EMNRD; Nobui, Jennifer, EMNRD
Subject: RE: [EXTERNAL] 48-Hour Notification: nAPP2209526360 and nAPP2210932844 Enterprise Line 16-24-30 (Poker Lake Discharge)

Heather,

Please, collect confirmation samples at the Poker Lake Discharge excavation today. In the future, allow 48 hours' notice in case the OCD would like to witness.

Regards,

Robert Hamlet • Environmental Specialist - Advanced
Environmental Bureau
EMNRD - Oil Conservation Division
811 S. First Street | Artesia, NM 88210
575.909.0302 | robert.hamlet@state.nm.us
<http://www.emnrd.state.nm.us/OCD/>



From: Heather Woods <Heather.Woods@soudermiller.com>
Sent: Wednesday, May 4, 2022 12:53 PM
To: Hamlet, Robert, EMNRD <Robert.Hamlet@state.nm.us>
Cc: Ashley Maxwell <ashley.maxwell@soudermiller.com>; Sarahmay Schlea <sarahmay.schlea@soudermiller.com>; Dunaway, Robert <rhodunaway@eprod.com>; Bratcher, Mike, EMNRD <mike.bratcher@state.nm.us>; Nobui, Jennifer, EMNRD <Jennifer.Nobui@state.nm.us>
Subject: Re: [EXTERNAL] 48-Hour Notification: nAPP2209526360 and nAPP2210932844 Enterprise Line 16-24-30 (Poker Lake Discharge)

Good Afternoon Mr. Hamlet,

We were able to collect the confirmation samples at the Line 16-24-30 release as planned Monday, but did not get to the Poker Lake Discharge excavation until today. Would it be acceptable to collect these confirmation samples today?

Many Thanks,
Heather

Sent from my Verizon, Samsung Galaxy smartphone

----- Original message -----

From: "Hamlet, Robert, EMNRD" <Robert.Hamlet@state.nm.us>

Date: 4/28/22 9:31 AM (GMT-07:00)

To: Heather Woods <Heather.Woods@soudermiller.com>

Cc: Ashley Maxwell <ashley.maxwell@soudermiller.com>, Sarahmay Schlea

<sarahmay.schlea@soudermiller.com>, "Dunaway, Robert" <rhodunaway@eprod.com>, "Bratcher, Mike, EMNRD" <mike.bratcher@state.nm.us>, "Nobui, Jennifer, EMNRD" <Jennifer.Nobui@state.nm.us>

Subject: RE: [EXTERNAL] 48-Hour Notification: nAPP2209526360 and nAPP2210932844 Enterprise Line 16-24-30 (Poker Lake Discharge)

Heather,

Thank you for the notification. Please include a copy of this and all notifications in the remedial and/or closure reports to ensure the notifications are documented in the project file.

Robert Hamlet • Environmental Specialist - Advanced
Environmental Bureau
EMNRD - Oil Conservation Division
811 S. First Street | Artesia, NM 88210
575.909.0302 | robert.hamlet@state.nm.us
<http://www.emnrd.state.nm.us/OCD/>



From: Enviro, OCD, EMNRD <OCD.Enviro@state.nm.us>

Sent: Wednesday, April 27, 2022 3:53 PM

To: Hamlet, Robert, EMNRD <Robert.Hamlet@state.nm.us>

Subject: Fw: [EXTERNAL] 48-Hour Notification: nAPP2209526360 and nAPP2210932844 Enterprise Line 16-24-30 (Poker Lake Discharge)

From: Heather Woods <Heather.Woods@soudermiller.com>

Sent: Wednesday, April 27, 2022 1:14 PM

To: Enviro, OCD, EMNRD <OCD.Enviro@state.nm.us>

Cc: Ashley Maxwell <ashley.maxwell@soudermiller.com>; Sarahmay Schlea <sarahmay.schlea@soudermiller.com>; rhodunaway@eprod.com <rhodunaway@eprod.com>

Subject: [EXTERNAL] 48-Hour Notification: nAPP2209526360 and nAPP2210932844 Enterprise Line 16-24-30 (Poker Lake Discharge)

CAUTION: This email originated outside of our organization. Exercise caution prior to clicking on links or opening attachments.

Good Afternoon,

Souder, Miller and Associates will be on location Monday, May 2, 2022, beginning at 9:00am to conduct confirmation sampling at the Enterprise Line 16-24-30 (Poker Lake Discharge) (nAPP2209526360 and nAPP2210932844) release sites located at 32.193277, -103.91797 and 32.194002, -103.917758, respectively. Please contact me with any questions.

Heather Woods, P.G.
Project Geoscientist

Personal Registrations: UT Professional Geologist

Corporate Registrations: AZ Engineering/Geology/Surveying Firm (14070), FL Engineering Firm (34203), ID Engineering/Surveying Firm (C-3564), ND Engineering Firm (28545PE), OK Engineering Firm (8498), SD Surveying Firm (C-7436), TX Engineering Firm (8877), TX Geology Firm (50254), TX PST CAPM (CS-0000051), TX Surveying Firm (10162200), WY Engineering/Surveying Firm (S-1704)



Souder, Miller & Associates

Engineering ♦ Environmental ♦ Geomatics
401 West Broadway
Farmington, NM 87401
(505) 716-2787 (mobile)
(505) 325-7535 (office)
www.soudermiller.com



Notice of Confidentiality and Privileged Status: This electronic mail message, including all attachments, is for the sole use of the intended recipient(s) and may contain confidential and/or privileged information or otherwise may be protected from disclosure. Any unauthorized review, use, disclosure, distribution or actions which rely on the contents of this information is prohibited. If you are not the intended recipient, please contact the sender and delete the message and any attachment(s) from your system.

Statement on Viruses and Harmful Software: While the message and attachment(s) have been scanned with anti-virus software, SMA does not guarantee that this message or any attachment(s) is free of computer viruses or other harmful software. SMA does not accept liability for any damages caused by any computer virus or other harmful software transmitted herewith.

Heather Woods

From: Heather Woods
Sent: Wednesday, May 11, 2022 4:10 PM
To: Enviro, OCD, EMNRD
Cc: Ashley Maxwell; Sarahmay Schlea; rhdunaway@eprod.com
Subject: 48-Hour Notification: nAPP2209526360 Enterprise Line 16-24-30 (Poker Lake Discharge)

Good Afternoon,

Souder, Miller and Associates will be on location Friday, May 13, 2022, to conduct confirmation sampling at the Enterprise Line 16-24-30 (Poker Lake Discharge) (nAPP2209526360) release site located at 32.193277, -103.91797. Please contact me with any questions.

Many Thanks,
Heather

Heather Woods, P.G.
Project Geoscientist

Personal Registrations: UT Professional Geologist
Corporate Registrations: AZ Engineering/Geology/Surveying Firm (14070), FL Engineering Firm (34203), ID Engineering/Surveying Firm (C-3564), ND Engineering Firm (28545PE), OK Engineering Firm (8498), SD Surveying Firm (C-7436), TX Engineering Firm (8877), TX Geology Firm (50254), TX PST CAPM (CS-0000051), TX Surveying Firm (10162200), WY Engineering/Surveying Firm (S-1704)



Souder, Miller & Associates

Engineering ♦ Environmental ♦ Geomatics
401 West Broadway
Farmington, NM 87401
(505) 716-2787 (mobile)
(505) 325-7535 (office)
www.soudermiller.com



Notice of Confidentiality and Privileged Status: This electronic mail message, including all attachments, is for the sole use of the intended recipient(s) and may contain confidential and/or privileged information or otherwise may be protected from disclosure. Any unauthorized review, use, disclosure, distribution or actions which rely on the contents of this information is prohibited. If you are not the intended recipient, please contact the sender and delete the message and any attachment(s) from your system.

Statement on Viruses and Harmful Software: While the message and attachment(s) have been scanned with anti-virus software, SMA does not guarantee that this message or any attachment(s) is free of computer viruses or other harmful software. SMA does not accept liability for any damages caused by any computer virus or other harmful software transmitted herewith.

Heather Woods

From: Heather Woods
Sent: Friday, May 13, 2022 7:57 AM
To: 'Enviro, OCD, EMNRD'
Cc: Ashley Maxwell; Sarahmay Schlea; 'rhdunaway@eprod.com'
Subject: RE: 48-Hour Notification: nAPP2209526360 Enterprise Line 16-24-30 (Poker Lake Discharge)

Good Morning,

Due to scheduling conflicts, the sampling at Enterprise Line 16-24-30 (Poker Lake Discharge) (nAPP2209526360) has been moved to Monday, May 16th beginning at 9:00am.

Thanks,
Heather

From: Heather Woods
Sent: Wednesday, May 11, 2022 4:10 PM
To: Enviro, OCD, EMNRD <ocd.enviro@state.nm.us>
Cc: Ashley Maxwell <ashley.maxwell@soudermiller.com>; Sarahmay Schlea <sarahmay.schlea@soudermiller.com>; rhdunaway@eprod.com
Subject: 48-Hour Notification: nAPP2209526360 Enterprise Line 16-24-30 (Poker Lake Discharge)

Good Afternoon,

Souder, Miller and Associates will be on location Friday, May 13, 2022, to conduct confirmation sampling at the Enterprise Line 16-24-30 (Poker Lake Discharge) (nAPP2209526360) release site located at 32.193277, -103.91797. Please contact me with any questions.

Many Thanks,
Heather

Heather Woods, P.G.
Project Geoscientist

Personal Registrations: UT Professional Geologist

Corporate Registrations: AZ Engineering/Geology/Surveying Firm (14070), FL Engineering Firm (34203), ID Engineering/Surveying Firm (C-3564), ND Engineering Firm (28545PE), OK Engineering Firm (8498), SD Surveying Firm (C-7436), TX Engineering Firm (8877), TX Geology Firm (50254), TX PST CAPM (CS-0000051), TX Surveying Firm (10162200), WY Engineering/Surveying Firm (S-1704)



Souder, Miller & Associates

Engineering ♦ Environmental ♦ Geomatics
401 West Broadway
Farmington, NM 87401
(505) 716-2787 (mobile)
(505) 325-7535 (office)
www.soudermiller.com



Notice of Confidentiality and Privileged Status: This electronic mail message, including all attachments, is for the sole use of the intended recipient(s) and may contain confidential and/or privileged information or otherwise may be protected from disclosure. Any unauthorized review, use, disclosure, distribution or actions which rely on the contents of this information is prohibited. If you are not the intended recipient, please contact the sender and delete the message and any attachment(s) from your system.

Statement on Viruses and Harmful Software: While the message and attachment(s) have been scanned with anti-virus software, SMA does not guarantee that this message or any attachment(s) is free of computer viruses or other harmful software. SMA does not accept liability for any damages caused by any computer virus or other harmful software transmitted herewith.

Heather Woods

From: Heather Woods
Sent: Wednesday, May 25, 2022 12:33 PM
To: Enviro, OCD, EMNRD
Cc: rhdunaway@eprod.com; Ashley Maxwell; Sarahmay Schlea
Subject: 48-Hour Notification: nAPP2209526360 Enterprise Line 16-24-30 (Poker Lake Discharge)

Good Afternoon,

Souder, Miller and Associates will be on location Friday, May 27, 2022, to conduct confirmation sampling at the Enterprise Line 16-24-30 (Poker Lake Discharge) (nAPP2209526360) release site located at 32.193277, -103.91797. Please contact me with any questions.

Many Thanks,
Heather

Heather Woods, P.G.
Project Geoscientist

Personal Registrations: UT Professional Geologist
Corporate Registrations: AZ Engineering/Geology/Surveying Firm (14070), FL Engineering Firm (34203), ID Engineering/Surveying Firm (C-3564), ND Engineering Firm (28545PE), OK Engineering Firm (8498), SD Surveying Firm (C-7436), TX Engineering Firm (8877), TX Geology Firm (50254), TX PST CAPM (CS-0000051), TX Surveying Firm (10162200), WY Engineering/Surveying Firm (S-1704)



Souder, Miller & Associates

Engineering ♦ Environmental ♦ Geomatics
401 West Broadway
Farmington, NM 87401
(505) 716-2787 (mobile)
(505) 325-7535 (office)
www.soudermiller.com



Notice of Confidentiality and Privileged Status: This electronic mail message, including all attachments, is for the sole use of the intended recipient(s) and may contain confidential and/or privileged information or otherwise may be protected from disclosure. Any unauthorized review, use, disclosure, distribution or actions which rely on the contents of this information is prohibited. If you are not the intended recipient, please contact the sender and delete the message and any attachment(s) from your system.

Statement on Viruses and Harmful Software: While the message and attachment(s) have been scanned with anti-virus software, SMA does not guarantee that this message or any attachment(s) is free of computer viruses or other harmful software. SMA does not accept liability for any damages caused by any computer virus or other harmful software transmitted herewith.

APPENDIX B

WATER WELL DATA



New Mexico Office of the State Engineer Water Column/Average Depth to Water

(A CLW##### in the POD suffix indicates the POD has been replaced & no longer serves a water right file.)

(R=POD has been replaced, O=orphaned, C=the file is closed)

(quarters are 1=NW 2=NE 3=SW 4=SE)
(quarters are smallest to largest)

(NAD83 UTM in meters)

(In feet)

| POD Number | POD Sub-Code | basin | County | Q 64 | Q 16 | Q 4 | Sec | Tws | Rng | X | Y | Depth Well | Depth Water | Water Column |
|-------------------------|--------------|-------|--------|------|------|-----|-----|-----|-----|--------|---------|------------|-------------|--------------|
| C 02109 | CUB | ED | | 1 | 2 | 4 | 19 | 24S | 30E | 602130 | 3563412 | 130 | 150 | -20 |

Average Depth to Water: **150 feet**

Minimum Depth: **150 feet**

Maximum Depth: **150 feet**

Record Count: 1

PLSS Search:

Section(s): 19, 30, 31, 20, 29, 32 **Township:** 24S **Range:** 30E

The data is furnished by the NMOSE/ISC and is accepted by the recipient with the expressed understanding that the OSE/ISC make no warranties, expressed or implied, concerning the accuracy, completeness, reliability, usability, or suitability for any particular purpose of the data.



New Mexico Office of the State Engineer Water Column/Average Depth to Water

No records found.

PLSS Search:

Section(s): 24, 25, 36

Township: 24S

Range: 29E

The data is furnished by the NMOSE/ISC and is accepted by the recipient with the expressed understanding that the OSE/ISC make no warranties, expressed or implied, concerning the accuracy, completeness, reliability, usability, or suitability for any particular purpose of the data.



National Water Information System: Web Interface

USGS Water Resources

Data Category: Geographic Area:

Click to hide News Bulletins

- Explore the *NEW* [USGS National Water Dashboard](#) interactive map to access real-time water data from over 13,500 stations nationwide.
- [Full News](#)

Groundwater levels for the Nation

Important: [Next Generation Monitoring Location Page](#)

Search Results -- 1 sites found

Agency code = usgs

site_no list =
• 321205103544701

Minimum number of levels = 1

[Save file of selected sites](#) to local disk for future upload

USGS 321205103544701 24S.30E.19.42113

Eddy County, New Mexico

Latitude 32°12'05", Longitude 103°54'47" NAD27

Land-surface elevation 3,188 feet above NAVD88

The depth of the well is 452 feet below land surface.

This well is completed in the Pecos River Basin alluvial aquifer (N100PCSRVR) national aquifer.

This well is completed in the Rustler Formation (312RSLR) local aquifer.

Output formats

| |
|------------------------------------|
| Table of data |
| Tab-separated data |
| Graph of data |
| Reselect period |

| Date | Time | ? Water-level date- time accuracy | ? Parameter code | Water level, feet below land surface | Water level, feet above specific vertical datum | Referenced vertical datum | ? Status | ? Method of measurement | ? Measuring agency | ? Source of measurement | ? Water- level approval status |
|------------|------|---|------------------------|---|---|---------------------------------|-------------|-------------------------------|--------------------------|-------------------------------|--|
| 1958-10-24 | | | D | 62610 | 2958.66 | NGVD29 | 1 | Z | | | A |
| 1958-10-24 | | | D | 62611 | 2960.30 | NAVD88 | 1 | Z | | | A |
| 1958-10-24 | | | D | 72019 | 227.70 | | 1 | Z | | | A |
| 1959-03-19 | | | D | 62610 | 2958.61 | NGVD29 | 1 | Z | | | A |
| 1959-03-19 | | | D | 62611 | 2960.25 | NAVD88 | 1 | Z | | | A |
| 1959-03-19 | | | D | 72019 | 227.75 | | 1 | Z | | | A |
| 1975-12-10 | | | D | 62610 | 2954.58 | NGVD29 | 1 | Z | | | A |
| 1975-12-10 | | | D | 62611 | 2956.22 | NAVD88 | 1 | Z | | | A |
| 1975-12-10 | | | D | 72019 | 231.78 | | 1 | Z | | | A |
| 1976-01-16 | | | D | 62610 | 2949.10 | NGVD29 | 1 | Z | | | A |
| 1976-01-16 | | | D | 62611 | 2950.74 | NAVD88 | 1 | Z | | | A |
| 1976-01-16 | | | D | 72019 | 237.26 | | 1 | Z | | | A |
| 1976-12-01 | | | D | 62610 | 2955.63 | NGVD29 | 1 | Z | | | A |
| 1976-12-01 | | | D | 62611 | 2957.27 | NAVD88 | 1 | Z | | | A |
| 1976-12-01 | | | D | 72019 | 230.73 | | 1 | Z | | | A |
| 1977-01-14 | | | D | 62610 | 2955.74 | NGVD29 | 1 | Z | | | A |
| 1977-01-14 | | | D | 62611 | 2957.38 | NAVD88 | 1 | Z | | | A |
| 1977-01-14 | | | D | 72019 | 230.62 | | 1 | Z | | | A |
| 1983-02-01 | | | D | 62610 | 2950.43 | NGVD29 | 1 | Z | | | A |
| 1983-02-01 | | | D | 62611 | 2952.07 | NAVD88 | 1 | Z | | | A |
| 1983-02-01 | | | D | 72019 | 235.93 | | 1 | Z | | | A |
| 1987-10-15 | | | D | 62610 | 2953.06 | NGVD29 | 1 | S | | | A |
| 1987-10-15 | | | D | 62611 | 2954.70 | NAVD88 | 1 | S | | | A |
| 1987-10-15 | | | D | 72019 | 233.30 | | 1 | S | | | A |
| 1998-01-27 | | | D | 62610 | 2955.34 | NGVD29 | 1 | S | | | A |
| 1998-01-27 | | | D | 62611 | 2956.98 | NAVD88 | 1 | S | | | A |
| 1998-01-27 | | | D | 72019 | 231.02 | | 1 | S | | | A |

Explanation

| Section | Code | Description |
|--------------------------------|--------|--|
| Water-level date-time accuracy | D | Date is accurate to the Day |
| Parameter code | 62610 | Groundwater level above NGVD 1929, feet |
| Parameter code | 62611 | Groundwater level above NAVD 1988, feet |
| Parameter code | 72019 | Depth to water level, feet below land surface |
| Referenced vertical datum | NAVD88 | North American Vertical Datum of 1988 |
| Referenced vertical datum | NGVD29 | National Geodetic Vertical Datum of 1929 |
| Status | 1 | Static |
| Method of measurement | S | Steel-tape measurement. |
| Method of measurement | Z | Other. |
| Measuring agency | | Not determined |
| Source of measurement | | Not determined |
| Water-level approval status | A | Approved for publication -- Processing and review completed. |

[Questions about sites/data?](#)

[Feedback on this web site](#)

[Automated retrievals](#)

[Help](#)

[Data Tips](#)

[Explanation of terms](#)

[Subscribe for system changes](#)

[News](#)

[Accessibility](#) [FOIA](#) [Privacy](#) [Policies and Notices](#)

[U.S. Department of the Interior](#) | [U.S. Geological Survey](#)

Title: Groundwater for USA: Water Levels

URL: <https://nwis.waterdata.usgs.gov/nwis/gwlevels?>

Page Contact Information: [USGS Water Data Support Team](#)

Page Last Modified: 2022-05-24 17:42:06 EDT

0.33 0.29 nadww01



APPENDIX C

FIELD NOTES AND PHOTO LOG



Field Screening

Date: 5/14/2022

page 1 of 3

Location Name: Enterprise Poker Lake Discharge

| Sample Name: | Collection Time: | EC (mS) | Temp (°C) | PID Reading /PF | Soil Color | Primary Soil Type | Moisture Level | Other Remarks/Notes: |
|-------------------------|------------------|---------|-----------|-----------------|---|------------------------------------|----------------|----------------------|
| West base - north | 0945 | | | 24.7 | Light Tan Gray Yellow Dark Brown Olive Red | Gravel Sand Clay Rock Silt Clay | Dry Moist Wet | 513 TPH (ZC.S) |
| West base - north | 0950 | | | 85.0 | Light Tan Gray Yellow Dark Brown Olive Red | Gravel Sand Clay Rock Silt Clay | Dry Moist Wet | 360 TPH |
| East base - north | 1000 | | | 35.0 | Light Tan Gray Yellow Dark Brown Olive Red | Gravel Sand Clay Rock Silt Clay | Dry Moist Wet | 140 TPH |
| West base - north | 1115 | | | 46.5 | Light Tan Gray Yellow Dark Brown Olive Red | Gravel Sand Clay Rock Silt Clay | Dry Moist Wet | 74 TPH SC-1 |
| East base - north | 1136 | | | 2848 | Light Tan Gray Yellow Dark Brown Olive Red | Gravel Sand Clay Rock Silt Clay | Dry Moist Wet | |
| East base - north | 1152 | | | 122 | Light Tan Gray Yellow Dark Brown Olive Red | Gravel Sand Clay Rock Silt Clay | Dry Moist Wet | 3 TPH SC-2 |
| West wall - north - btm | 1228 | | | 401 | Light Tan Gray Yellow Dark Brown Olive Red | Gravel Sand Clay Rock Silt Clay | Dry Moist Wet | |
| West wall - north - top | 1232 | | | 117 | Light Tan Gray Yellow Dark Brown Olive Red | Gravel Sand Clay Rock Silt Clay | Dry Moist Wet | SC-7 |
| East wall - north - top | 1235 | | | 40.4 | Light Tan Gray Yellow Dark Brown Olive Red | Gravel Sand Clay Rock Silt Clay | Dry Moist Wet | SC-5 |



Field Screening

| Location Name: Enterprise Poker Lake Discharge | | Date: 5/4/2022 | | Other Remarks/Notes: | | | | |
|--|------------------|----------------|-----------|----------------------|---|------------------------------------|----------------|------------------|
| Sample Name: | Collection Time: | EC (mS) | Temp (°C) | PID Reading /PF | Soil Color | Primary Soil Type | Moisture Level | |
| East wall - north - btm | 1230 | | | 173.1 | Light Tan Gray Yellow Dark Brown Olive Red | Gravel Sand Clay Rock Silt Clay | Dry Moist Wet | SC-6 |
| North wall - btm | 1244 | | | 44.6 | Light Tan Gray Yellow Dark Brown Olive Red | Gravel Sand Clay Rock Silt Clay | Dry Moist Wet | SC-4 |
| North wall - top | 1245 | | | 13.9 | Light Tan Gray Yellow Dark Brown Olive Red | Gravel Sand Clay Rock Silt Clay | Dry Moist Wet | SC-3 |
| West wall - north - btm | 1308 | | | 60.8 | Light Tan Gray Yellow Dark Brown Olive Red | Gravel Sand Clay Rock Silt Clay | Dry Moist Wet | SC-8 |
| West base - south | 1334 | | | 109 | Light Tan Gray Yellow Dark Brown Olive Red | Gravel Sand Clay Rock Silt Clay | Dry Moist Wet | 276 TPH SC-10 |
| East base - south | 1340 | | | 42.1 | Light Tan Gray Yellow Dark Brown Olive Red | Gravel Sand Clay Rock Silt Clay | Dry Moist Wet | SC-12 |
| East wall - south - btm | 1352 | | | 6.0 | Light Tan Gray Yellow Dark Brown Olive Red | Gravel Sand Clay Rock Silt Clay | Dry Moist Wet | SC-11 |
| East wall - south - top | 1356 | | | 10.8 | Light Tan Gray Yellow Dark Brown Olive Red | Gravel Sand Clay Rock Silt Clay | Dry Moist Wet | |
| West wall - south - btm | 1412 | | | 79.5 | Light Tan Gray Yellow Dark Brown Olive Red | Gravel Sand Clay Rock Silt Clay | Dry Moist Wet | |



Field Screening

| Location Name: Enterprise Power Lake Discharge | | Date: 5/11/2022 | | | | | | | Page 3 of 3 |
|--|------------------|-----------------|-----------|-----------------|---|------------------------------------|----------------|----------------------|-------------|
| Sample Name: | Collection Time: | EC (mS) | Temp (°C) | PID Reading /PF | Soil Color | Primary Soil Type | Moisture Level | Other Remarks/Notes: | |
| West wall - south - top | 1414 | | | 34.9 | Light Tan Gray Yellow Dark Brown Olive Red | Gravel Sand Clay Rock Silt Clay | Dry Moist Wet | | |
| West base - south | 1427 | | | 44.0 | Light Tan Gray Yellow Dark Brown Olive Red | Gravel Sand Clay Rock Silt Clay | Dry Moist Wet | SC-9 | |
| West wall - south - btm | 1436 | | | 6.9 | Light Tan Gray Yellow Dark Brown Olive Red | Gravel Sand Clay Rock Silt Clay | Dry Moist Wet | SC-14 | |
| West wall - south - top | 1439 | | | 3.8 | Light Tan Gray Yellow Dark Brown Olive Red | Gravel Sand Clay Rock Silt Clay | Dry Moist Wet | SC-13 | |
| South wall - btm | 1442 | | | 50.2 | Light Tan Gray Yellow Dark Brown Olive Red | Gravel Sand Clay Rock Silt Clay | Dry Moist Wet | | |
| South wall - top | 1444 | | | 50.7 | Light Tan Gray Yellow Dark Brown Olive Red | Gravel Sand Clay Rock Silt Clay | Dry Moist Wet | | |
| South wall - top | 1456 | | | 2600 | Light Tan Gray Yellow Dark Brown Olive Red | Gravel Sand Clay Rock Silt Clay | Dry Moist Wet | | |
| South wall - btm - east | 1459 | | | 3000 | Light Tan Gray Yellow Dark Brown Olive Red | Gravel Sand Clay Rock Silt Clay | Dry Moist Wet | | |
| South wall - top - east | 1500 | | | 3060 | Light Tan Gray Yellow Dark Brown Olive Red | Gravel Sand Clay Rock Silt Clay | Dry Moist Wet | | |

Field Screening



| Location Name: Enterprise Power Lake (16-24-30) | | Date: 5/16/2022 | | | | | | |
|---|------------------|-----------------|-----------|-----------------|---|------------------------------------|----------------|------------------------|
| Sample Name: | Collection Time: | EC (mS) | Temp (°C) | PID Reading /PF | Soil Color | Primary Soil Type | Moisture Level | Other Remarks/Notes: |
| N. Base - East | 1038 | | | | Light Tan Gray Yellow Dark Brown Olive Red | Gravel Sand Clay Rock Silt Clay | Dry Moist Wet | SC-15 |
| S. S. Base - West | 1044 | | | | Light Tan Gray Yellow Dark Brown Olive Red | Gravel Sand Clay Rock Silt Clay | Dry Moist Wet | SC-16 |
| S.S. Base - East | 1049 | | | | Light Tan Gray Yellow Dark Brown Olive Red | Gravel Sand Clay Rock Silt Clay | Dry Moist Wet | SC-17 |
| S.S. East well - Btm | 1051 | | | | Light Tan Gray Yellow Dark Brown Olive Red | Gravel Sand Clay Rock Silt Clay | Dry Moist Wet | SC-18 SC-19 |
| S.S. East well - Top | 1052 | | | | Light Tan Gray Yellow Dark Brown Olive Red | Gravel Sand Clay Rock Silt Clay | Dry Moist Wet | SC-18 |
| SS. West well - Btm | 1057 | | | | Light Tan Gray Yellow Dark Brown Olive Red | Gravel Sand Clay Rock Silt Clay | Dry Moist Wet | SC-23 |
| S.S. West well - Top | 1058 | | | | Light Tan Gray Yellow Dark Brown Olive Red | Gravel Sand Clay Rock Silt Clay | Dry Moist Wet | SC-22 |
| S.S. South well - Btm | 1101 | | | | Light Tan Gray Yellow Dark Brown Olive Red | Gravel Sand Clay Rock Silt Clay | Dry Moist Wet | SC-21 |
| S.S. South well - Top | 1103 | | | | Light Tan Gray Yellow Dark Brown Olive Red | Gravel Sand Clay Rock Silt Clay | Dry Moist Wet | SC-20 |

ASMA
Field Screening

Location Name: *Enterprise Poker Lake (16-24-30)*

Date: *5/27/2022*

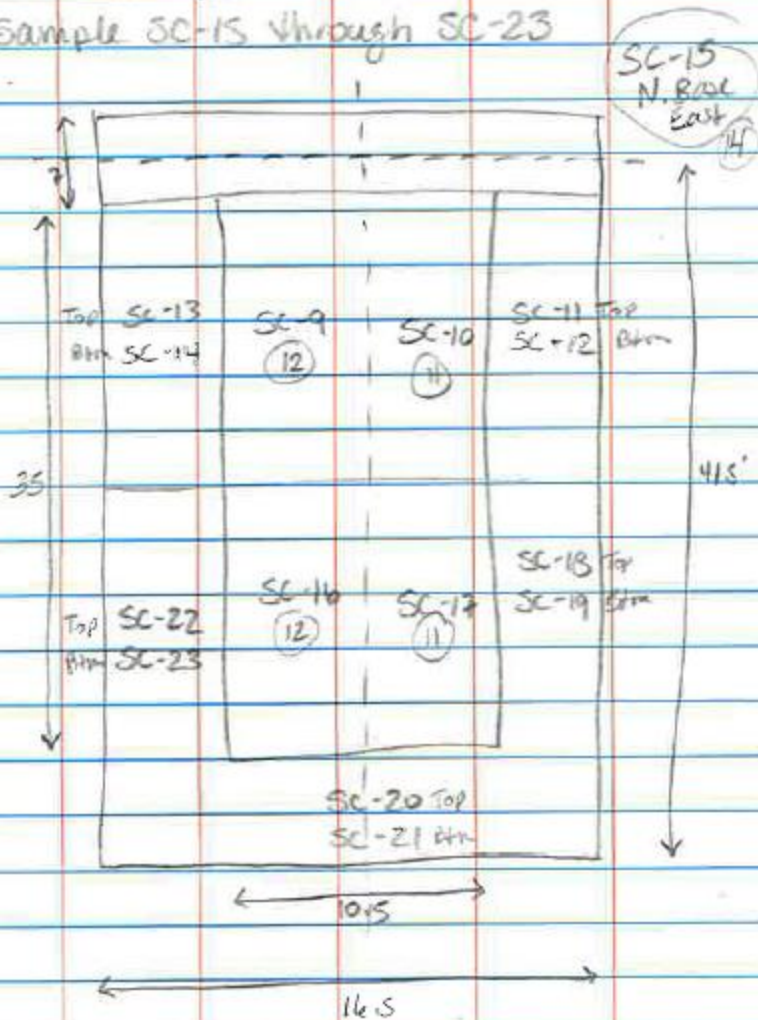
| Sample Name: | Collection Time: | EC (mS) | Temp (°C) | PID Reading /PF | Soil Color | Primary Soil Type | Moisture Level | Other Remarks/Notes: |
|--------------|------------------|---------|-----------|-----------------|---|------------------------------------|----------------|--|
| <i>SC-24</i> | <i>0908</i> | | | | Light Tan Gray Yellow Dark Brown Olive Red | Gravel Sand Clay Rock Silt Clay | Dry Moist Wet | <i>Same area as SC-17 S.S. Base East</i> |
| | | | | | Light Tan Gray Yellow Dark Brown Olive Red | Gravel Sand Clay Rock Silt Clay | Dry Moist Wet | |
| | | | | | Light Tan Gray Yellow Dark Brown Olive Red | Gravel Sand Clay Rock Silt Clay | Dry Moist Wet | |
| | | | | | Light Tan Gray Yellow Dark Brown Olive Red | Gravel Sand Clay Rock Silt Clay | Dry Moist Wet | |
| | | | | | Light Tan Gray Yellow Dark Brown Olive Red | Gravel Sand Clay Rock Silt Clay | Dry Moist Wet | |
| | | | | | Light Tan Gray Yellow Dark Brown Olive Red | Gravel Sand Clay Rock Silt Clay | Dry Moist Wet | |
| | | | | | Light Tan Gray Yellow Dark Brown Olive Red | Gravel Sand Clay Rock Silt Clay | Dry Moist Wet | |
| | | | | | Light Tan Gray Yellow Dark Brown Olive Red | Gravel Sand Clay Rock Silt Clay | Dry Moist Wet | |
| | | | | | Light Tan Gray Yellow Dark Brown Olive Red | Gravel Sand Clay Rock Silt Clay | Dry Moist Wet | |

5/11/2022 Enterprise Poker Lake Discharge
 onsite @ 0830, Enterprise (Armando) and NMR
 Excavate north portion of excavation
 Call Jason Crawford with KTO for
 encroachment on perpendicular line
 Excavate south portion of excavation
 Field screening shows south wall increasing

offsite @ 1620

5/11/2022 Enterprise Poker Lake Discharge
 onsite @ 0800, Armando w/ Enterprise &
 NMR excavate + field screen south
 portion of excavation.

5/16/22 Enterprise Poker Lake Discharge
onsite @ 0800, wait on NMR Crew,
Armando w/ Enterprise
Sample SC-15 through SC-23





Photograph Log
Poker Lake Discharge (Line 16-24-30)
Enterprise Field Services

| | |
|---|--|
| <p>Photograph #1</p> | |
| <p>Client: Enterprise Field Services</p> | |
| <p>Site Name: Poker Lake Discharge (Line 16-24-30)</p> | |
| <p>Date Photo Taken: May 4, 2022</p> | |
| <p>Release Location: N32.193277, W103.91797 B-Sec 30-T24S-R30E Eddy County, New Mexico</p> | |
| <p>Photo Taken by: Heather Woods</p> | |



Photograph Log
Poker Lake Discharge (Line 16-24-30)
Enterprise Field Services

| | |
|---|---|
| <p>Photograph #2</p> | |
| <p>Client: Enterprise Field Services</p> | <p>UTC: 2022.05.04T21:16:00Z Lat, Lon: 32.193474, -103.91797 Alt: 938m MSL WGS84 CEP: 5m</p> |
| <p>Site Name: Poker Lake Discharge (Line 16-24-30)</p> | <p>Azimuth and Bearing 65° N64E</p> |
| <p>Date Photo Taken: May 4, 2022</p> | <p>0° -1.0° -5° -16.9° -30°</p> |
| <p>Release Location: N32.193277, W103.91797 B-Sec 30-T24S-R30E Eddy County, New Mexico</p> | <p>NE E</p> |
| <p>Photo Taken by: Heather Woods</p> | <p>Description: Facing northeast, view of the excavation on May 4, 2022.</p> |



Photograph Log
Poker Lake Discharge (Line 16-24-30)
Enterprise Field Services

| | |
|---|--|
| <p>Photograph #3</p> | |
| <p>Client: Enterprise Field Services</p> | |
| <p>Site Name: Poker Lake Discharge (Line 16-24-30)</p> | |
| <p>Date Photo Taken: May 16, 2022</p> | |
| <p>Release Location: N32.193277, W103.91797 B-Sec 30-T24S-R30E Eddy County, New Mexico</p> | |
| <p>Photo Taken by: Heather Woods</p> | |
| <p>Description: Facing southwest, view of the excavation on May 16, 2022.</p> | |



Photograph Log
Poker Lake Discharge (Line 16-24-30)
Enterprise Field Services

| | |
|---|--|
| <p>Photograph #4</p> | |
| <p>Client: Enterprise Field Services</p> | |
| <p>Site Name: Poker Lake Discharge (Line 16-24-30)</p> | |
| <p>Date Photo Taken: May 27, 2022</p> | |
| <p>Release Location: N32.193277, W103.91797 B-Sec 30-T24S-R30E Eddy County, New Mexico</p> | |
| <p>Photo Taken by: Heather Woods</p> | |
| <p>Description: Facing southwest, view of the excavation on May 27, 2022.</p> | |

APPENDIX D

SAMPLING PROTOCOL



Sampling Protocol

The soil samples were collected in laboratory supplied containers in accordance with this sampling protocol, immediately placed on ice and sent under standard chain-of-custody protocols to Hall Environmental Analysis Laboratory in Albuquerque, New Mexico for analysis. A total of 24 samples were collected for laboratory analysis for total chloride using EPA Method 300.0; benzene, toluene, ethylbenzene and total xylenes (BTEX) using EPA Method 8021B; and motor, diesel and gasoline range organics (MRO, DRO, and GRO) by EPA Method 8015D.

Sampling Analysis Field Quality Assurance Procedures

A unique sample numbering was used to identify each sample collected and designated for on-site and off-site laboratory analysis. The purpose of this numbering scheme was to provide a tracking system for the retrieval of analytical and field data on each sample. Sample identification numbers were recorded on sample labels or tags, field notes, chain-of-custody records (COC) and all other applicable documentation used during the project. Sample labels were affixed to all sample containers during sampling activities. Information was recorded on each sample container label at the time of sample collection. The information recorded on the labels were as follows: sample identification number; sample type (discrete or composite); site name and area/location number; analysis to be performed; type of chemical preservative present in container; date and time of sample collection; and sample collector's name and initials. All samples were packed in ice in an approved rigid body container, custody sealed signed and shipped to the appropriate laboratory via insured carrier service.

COC procedures implemented for the project provided documentation of the handling of each sample from the time of collection until completion of laboratory analysis. A COC form serves as a legal record of possession of the sample. A sample is considered to be under custody if one or more of the following criteria are met: the sample is in the sampler's possession; the sample is in the sampler's view after being in possession; the sample was in the sampler's possession and then was placed into a locked area to prevent tampering; and/or the sample is in a designated secure area. Custody was documented throughout the project field sampling activities by a chain-of custody form initiated each day during which samples are collected. Container custody seals placed on either individual samples or on the rigid body container were used to ensure that no sample tampering occurs between the time the samples are placed into the containers and the time the containers are opened for analysis at the laboratory.

Container custody seals were signed and dated by the individual responsible for completing the COC form contained within the container.

APPENDIX E

LABORATORY ANALYTICAL REPORTS



Hall Environmental Analysis Laboratory
4901 Hawkins NE
Albuquerque, NM 87109
TEL: 505-345-3975 FAX: 505-345-4107
Website: www.hallenvironmental.com

May 23, 2022

Ashley Maxwell
Souder, Miller & Associates
201 S Halagueno
Carlsbad, NM 88221
TEL: (575) 689-8801
FAX:

RE: Enterprise Poker Lake Discharge

OrderNo.: 2205382

Dear Ashley Maxwell:

Hall Environmental Analysis Laboratory received 14 sample(s) on 5/7/2022 for the analyses presented in the following report.

These were analyzed according to EPA procedures or equivalent. To access our accredited tests please go to www.hallenvironmental.com or the state specific web sites. In order to properly interpret your results, it is imperative that you review this report in its entirety. See the sample checklist and/or the Chain of Custody for information regarding the sample receipt temperature and preservation. Data qualifiers or a narrative will be provided if the sample analysis or analytical quality control parameters require a flag. When necessary, data qualifiers are provided on both the sample analysis report and the QC summary report, both sections should be reviewed. All samples are reported, as received, unless otherwise indicated. Lab measurement of analytes considered field parameters that require analysis within 15 minutes of sampling such as pH and residual chlorine are qualified as being analyzed outside of the recommended holding time.

Please don't hesitate to contact HEAL for any additional information or clarifications.

ADHS Cert #AZ0682 -- NMED-DWB Cert #NM9425 -- NMED-Micro Cert #NM0901

Sincerely,

A handwritten signature in black ink, appearing to read 'Andy Freeman', is written over a white background.

Andy Freeman
Laboratory Manager
4901 Hawkins NE
Albuquerque, NM 87109

Analytical Report

Lab Order **2205382**

Date Reported: **5/23/2022**

Hall Environmental Analysis Laboratory, Inc.

CLIENT: Souder, Miller & Associates

Client Sample ID: SC-1

Project: Enterprise Poker Lake Discharge

Collection Date: 5/4/2022 11:15:00 AM

Lab ID: 2205382-001

Matrix: MEOH (SOIL)

Received Date: 5/7/2022 7:50:00 AM

| Analyses | Result | RL | Qual | Units | DF | Date Analyzed | Batch |
|--|--------|----------|------|-------|----|----------------------|---------------------|
| EPA METHOD 300.0: ANIONS | | | | | | | Analyst: JMT |
| Chloride | 78 | 60 | | mg/Kg | 20 | 5/9/2022 10:55:30 AM | 67339 |
| EPA METHOD 8015M/D: DIESEL RANGE ORGANICS | | | | | | | Analyst: ED |
| Diesel Range Organics (DRO) | ND | 9.8 | | mg/Kg | 1 | 5/9/2022 10:55:54 AM | 67336 |
| Motor Oil Range Organics (MRO) | ND | 49 | | mg/Kg | 1 | 5/9/2022 10:55:54 AM | 67336 |
| Surr: DNOP | 100 | 51.1-141 | | %Rec | 1 | 5/9/2022 10:55:54 AM | 67336 |
| EPA METHOD 8015D: GASOLINE RANGE | | | | | | | Analyst: BRM |
| Gasoline Range Organics (GRO) | ND | 4.0 | | mg/Kg | 1 | 5/7/2022 3:35:00 PM | A87825 |
| Surr: BFB | 100 | 37.7-212 | | %Rec | 1 | 5/7/2022 3:35:00 PM | A87825 |
| EPA METHOD 8021B: VOLATILES | | | | | | | Analyst: BRM |
| Benzene | ND | 0.020 | | mg/Kg | 1 | 5/7/2022 3:35:00 PM | B87825 |
| Toluene | ND | 0.040 | | mg/Kg | 1 | 5/7/2022 3:35:00 PM | B87825 |
| Ethylbenzene | ND | 0.040 | | mg/Kg | 1 | 5/7/2022 3:35:00 PM | B87825 |
| Xylenes, Total | ND | 0.079 | | mg/Kg | 1 | 5/7/2022 3:35:00 PM | B87825 |
| Surr: 4-Bromofluorobenzene | 81.3 | 70-130 | | %Rec | 1 | 5/7/2022 3:35:00 PM | B87825 |

Refer to the QC Summary report and sample login checklist for flagged QC data and preservation information.

| | | | | |
|--------------------|-----|--|----|---|
| Qualifiers: | * | Value exceeds Maximum Contaminant Level. | B | Analyte detected in the associated Method Blank |
| | D | Sample Diluted Due to Matrix | E | Estimated value |
| | H | Holding times for preparation or analysis exceeded | J | Analyte detected below quantitation limits |
| | ND | Not Detected at the Reporting Limit | P | Sample pH Not In Range |
| | PQL | Practical Quantitative Limit | RL | Reporting Limit |
| | S | % Recovery outside of range due to dilution or matrix interference | | |

Analytical Report

Lab Order **2205382**

Date Reported: **5/23/2022**

Hall Environmental Analysis Laboratory, Inc.

CLIENT: Souder, Miller & Associates

Client Sample ID: SC-2

Project: Enterprise Poker Lake Discharge

Collection Date: 5/4/2022 11:52:00 AM

Lab ID: 2205382-002

Matrix: MEOH (SOIL)

Received Date: 5/7/2022 7:50:00 AM

| Analyses | Result | RL | Qual | Units | DF | Date Analyzed | Batch |
|--|--------|----------|------|-------|-----|----------------------|---------------------|
| EPA METHOD 300.0: ANIONS | | | | | | | Analyst: JMT |
| Chloride | 4800 | 300 | | mg/Kg | 100 | 5/9/2022 3:28:26 PM | 67339 |
| EPA METHOD 8015M/D: DIESEL RANGE ORGANICS | | | | | | | Analyst: ED |
| Diesel Range Organics (DRO) | ND | 9.3 | | mg/Kg | 1 | 5/9/2022 11:06:28 AM | 67336 |
| Motor Oil Range Organics (MRO) | ND | 46 | | mg/Kg | 1 | 5/9/2022 11:06:28 AM | 67336 |
| Surr: DNOP | 98.3 | 51.1-141 | | %Rec | 1 | 5/9/2022 11:06:28 AM | 67336 |
| EPA METHOD 8015D: GASOLINE RANGE | | | | | | | Analyst: BRM |
| Gasoline Range Organics (GRO) | ND | 3.4 | | mg/Kg | 1 | 5/7/2022 3:55:00 PM | A87825 |
| Surr: BFB | 99.8 | 37.7-212 | | %Rec | 1 | 5/7/2022 3:55:00 PM | A87825 |
| EPA METHOD 8021B: VOLATILES | | | | | | | Analyst: BRM |
| Benzene | ND | 0.017 | | mg/Kg | 1 | 5/7/2022 3:55:00 PM | B87825 |
| Toluene | ND | 0.034 | | mg/Kg | 1 | 5/7/2022 3:55:00 PM | B87825 |
| Ethylbenzene | ND | 0.034 | | mg/Kg | 1 | 5/7/2022 3:55:00 PM | B87825 |
| Xylenes, Total | ND | 0.069 | | mg/Kg | 1 | 5/7/2022 3:55:00 PM | B87825 |
| Surr: 4-Bromofluorobenzene | 80.1 | 70-130 | | %Rec | 1 | 5/7/2022 3:55:00 PM | B87825 |

Refer to the QC Summary report and sample login checklist for flagged QC data and preservation information.

| | | | | |
|--------------------|-----|--|----|---|
| Qualifiers: | * | Value exceeds Maximum Contaminant Level. | B | Analyte detected in the associated Method Blank |
| | D | Sample Diluted Due to Matrix | E | Estimated value |
| | H | Holding times for preparation or analysis exceeded | J | Analyte detected below quantitation limits |
| | ND | Not Detected at the Reporting Limit | P | Sample pH Not In Range |
| | PQL | Practical Quantitative Limit | RL | Reporting Limit |
| | S | % Recovery outside of range due to dilution or matrix interference | | |

Analytical Report

Lab Order **2205382**

Date Reported: **5/23/2022**

Hall Environmental Analysis Laboratory, Inc.

CLIENT: Souder, Miller & Associates

Client Sample ID: SC-3

Project: Enterprise Poker Lake Discharge

Collection Date: 5/4/2022 12:45:00 PM

Lab ID: 2205382-003

Matrix: MEOH (SOIL)

Received Date: 5/7/2022 7:50:00 AM

| Analyses | Result | RL | Qual | Units | DF | Date Analyzed | Batch |
|--|--------|----------|------|-------|----|----------------------|---------------------|
| EPA METHOD 300.0: ANIONS | | | | | | | Analyst: JMT |
| Chloride | 210 | 60 | | mg/Kg | 20 | 5/9/2022 11:20:18 AM | 67339 |
| EPA METHOD 8015M/D: DIESEL RANGE ORGANICS | | | | | | | Analyst: ED |
| Diesel Range Organics (DRO) | ND | 9.9 | | mg/Kg | 1 | 5/9/2022 11:17:04 AM | 67336 |
| Motor Oil Range Organics (MRO) | ND | 50 | | mg/Kg | 1 | 5/9/2022 11:17:04 AM | 67336 |
| Surr: DNOP | 94.0 | 51.1-141 | | %Rec | 1 | 5/9/2022 11:17:04 AM | 67336 |
| EPA METHOD 8015D: GASOLINE RANGE | | | | | | | Analyst: BRM |
| Gasoline Range Organics (GRO) | ND | 3.5 | | mg/Kg | 1 | 5/7/2022 4:15:00 PM | A87825 |
| Surr: BFB | 99.1 | 37.7-212 | | %Rec | 1 | 5/7/2022 4:15:00 PM | A87825 |
| EPA METHOD 8021B: VOLATILES | | | | | | | Analyst: BRM |
| Benzene | ND | 0.018 | | mg/Kg | 1 | 5/7/2022 4:15:00 PM | B87825 |
| Toluene | ND | 0.035 | | mg/Kg | 1 | 5/7/2022 4:15:00 PM | B87825 |
| Ethylbenzene | ND | 0.035 | | mg/Kg | 1 | 5/7/2022 4:15:00 PM | B87825 |
| Xylenes, Total | ND | 0.070 | | mg/Kg | 1 | 5/7/2022 4:15:00 PM | B87825 |
| Surr: 4-Bromofluorobenzene | 81.6 | 70-130 | | %Rec | 1 | 5/7/2022 4:15:00 PM | B87825 |

Refer to the QC Summary report and sample login checklist for flagged QC data and preservation information.

| | | | | |
|--------------------|-----|--|----|---|
| Qualifiers: | * | Value exceeds Maximum Contaminant Level. | B | Analyte detected in the associated Method Blank |
| | D | Sample Diluted Due to Matrix | E | Estimated value |
| | H | Holding times for preparation or analysis exceeded | J | Analyte detected below quantitation limits |
| | ND | Not Detected at the Reporting Limit | P | Sample pH Not In Range |
| | PQL | Practical Quantitative Limit | RL | Reporting Limit |
| | S | % Recovery outside of range due to dilution or matrix interference | | |

Analytical Report

Lab Order **2205382**

Date Reported: **5/23/2022**

Hall Environmental Analysis Laboratory, Inc.

CLIENT: Souder, Miller & Associates

Client Sample ID: SC-4

Project: Enterprise Poker Lake Discharge

Collection Date: 5/4/2022 12:44:00 PM

Lab ID: 2205382-004

Matrix: MEOH (SOIL)

Received Date: 5/7/2022 7:50:00 AM

| Analyses | Result | RL | Qual | Units | DF | Date Analyzed | Batch |
|--|--------|----------|------|-------|----|----------------------|---------------------|
| EPA METHOD 300.0: ANIONS | | | | | | | Analyst: JMT |
| Chloride | 230 | 60 | | mg/Kg | 20 | 5/9/2022 11:32:42 AM | 67339 |
| EPA METHOD 8015M/D: DIESEL RANGE ORGANICS | | | | | | | Analyst: ED |
| Diesel Range Organics (DRO) | ND | 9.2 | | mg/Kg | 1 | 5/9/2022 11:27:40 AM | 67336 |
| Motor Oil Range Organics (MRO) | ND | 46 | | mg/Kg | 1 | 5/9/2022 11:27:40 AM | 67336 |
| Surr: DNOP | 96.2 | 51.1-141 | | %Rec | 1 | 5/9/2022 11:27:40 AM | 67336 |
| EPA METHOD 8015D: GASOLINE RANGE | | | | | | | Analyst: BRM |
| Gasoline Range Organics (GRO) | ND | 4.0 | | mg/Kg | 1 | 5/7/2022 4:35:00 PM | A87825 |
| Surr: BFB | 95.8 | 37.7-212 | | %Rec | 1 | 5/7/2022 4:35:00 PM | A87825 |
| EPA METHOD 8021B: VOLATILES | | | | | | | Analyst: BRM |
| Benzene | ND | 0.020 | | mg/Kg | 1 | 5/7/2022 4:35:00 PM | B87825 |
| Toluene | ND | 0.040 | | mg/Kg | 1 | 5/7/2022 4:35:00 PM | B87825 |
| Ethylbenzene | ND | 0.040 | | mg/Kg | 1 | 5/7/2022 4:35:00 PM | B87825 |
| Xylenes, Total | ND | 0.079 | | mg/Kg | 1 | 5/7/2022 4:35:00 PM | B87825 |
| Surr: 4-Bromofluorobenzene | 76.9 | 70-130 | | %Rec | 1 | 5/7/2022 4:35:00 PM | B87825 |

Refer to the QC Summary report and sample login checklist for flagged QC data and preservation information.

| | | | | |
|--------------------|-----|--|----|---|
| Qualifiers: | * | Value exceeds Maximum Contaminant Level. | B | Analyte detected in the associated Method Blank |
| | D | Sample Diluted Due to Matrix | E | Estimated value |
| | H | Holding times for preparation or analysis exceeded | J | Analyte detected below quantitation limits |
| | ND | Not Detected at the Reporting Limit | P | Sample pH Not In Range |
| | PQL | Practical Quantitative Limit | RL | Reporting Limit |
| | S | % Recovery outside of range due to dilution or matrix interference | | |

Analytical Report

Lab Order **2205382**

Date Reported: **5/23/2022**

Hall Environmental Analysis Laboratory, Inc.

CLIENT: Souder, Miller & Associates

Client Sample ID: SC-5

Project: Enterprise Poker Lake Discharge

Collection Date: 5/4/2022 12:35:00 PM

Lab ID: 2205382-005

Matrix: MEOH (SOIL)

Received Date: 5/7/2022 7:50:00 AM

| Analyses | Result | RL | Qual | Units | DF | Date Analyzed | Batch |
|--|--------|----------|------|-------|----|----------------------|---------------------|
| EPA METHOD 300.0: ANIONS | | | | | | | Analyst: JMT |
| Chloride | ND | 60 | | mg/Kg | 20 | 5/9/2022 11:45:06 AM | 67339 |
| EPA METHOD 8015M/D: DIESEL RANGE ORGANICS | | | | | | | Analyst: ED |
| Diesel Range Organics (DRO) | ND | 9.6 | | mg/Kg | 1 | 5/9/2022 11:38:16 AM | 67336 |
| Motor Oil Range Organics (MRO) | ND | 48 | | mg/Kg | 1 | 5/9/2022 11:38:16 AM | 67336 |
| Surr: DNOP | 95.4 | 51.1-141 | | %Rec | 1 | 5/9/2022 11:38:16 AM | 67336 |
| EPA METHOD 8015D: GASOLINE RANGE | | | | | | | Analyst: BRM |
| Gasoline Range Organics (GRO) | ND | 3.3 | | mg/Kg | 1 | 5/7/2022 4:54:00 PM | A87825 |
| Surr: BFB | 95.0 | 37.7-212 | | %Rec | 1 | 5/7/2022 4:54:00 PM | A87825 |
| EPA METHOD 8021B: VOLATILES | | | | | | | Analyst: BRM |
| Benzene | ND | 0.017 | | mg/Kg | 1 | 5/7/2022 4:54:00 PM | B87825 |
| Toluene | ND | 0.033 | | mg/Kg | 1 | 5/7/2022 4:54:00 PM | B87825 |
| Ethylbenzene | ND | 0.033 | | mg/Kg | 1 | 5/7/2022 4:54:00 PM | B87825 |
| Xylenes, Total | ND | 0.067 | | mg/Kg | 1 | 5/7/2022 4:54:00 PM | B87825 |
| Surr: 4-Bromofluorobenzene | 75.5 | 70-130 | | %Rec | 1 | 5/7/2022 4:54:00 PM | B87825 |

Refer to the QC Summary report and sample login checklist for flagged QC data and preservation information.

| | | | | |
|--------------------|-----|--|----|---|
| Qualifiers: | * | Value exceeds Maximum Contaminant Level. | B | Analyte detected in the associated Method Blank |
| | D | Sample Diluted Due to Matrix | E | Estimated value |
| | H | Holding times for preparation or analysis exceeded | J | Analyte detected below quantitation limits |
| | ND | Not Detected at the Reporting Limit | P | Sample pH Not In Range |
| | PQL | Practical Quantitative Limit | RL | Reporting Limit |
| | S | % Recovery outside of range due to dilution or matrix interference | | |

Analytical Report

Lab Order **2205382**

Date Reported: **5/23/2022**

Hall Environmental Analysis Laboratory, Inc.

CLIENT: Souder, Miller & Associates

Client Sample ID: SC-6

Project: Enterprise Poker Lake Discharge

Collection Date: 5/4/2022 12:38:00 PM

Lab ID: 2205382-006

Matrix: MEOH (SOIL)

Received Date: 5/7/2022 7:50:00 AM

| Analyses | Result | RL | Qual | Units | DF | Date Analyzed | Batch |
|--|--------|----------|------|-------|----|----------------------|---------------------|
| EPA METHOD 300.0: ANIONS | | | | | | | Analyst: JMT |
| Chloride | 260 | 60 | | mg/Kg | 20 | 5/9/2022 11:57:31 AM | 67339 |
| EPA METHOD 8015M/D: DIESEL RANGE ORGANICS | | | | | | | Analyst: ED |
| Diesel Range Organics (DRO) | ND | 9.7 | | mg/Kg | 1 | 5/9/2022 11:48:53 AM | 67336 |
| Motor Oil Range Organics (MRO) | ND | 48 | | mg/Kg | 1 | 5/9/2022 11:48:53 AM | 67336 |
| Surr: DNOP | 97.3 | 51.1-141 | | %Rec | 1 | 5/9/2022 11:48:53 AM | 67336 |
| EPA METHOD 8015D: GASOLINE RANGE | | | | | | | Analyst: BRM |
| Gasoline Range Organics (GRO) | ND | 3.9 | | mg/Kg | 1 | 5/7/2022 5:14:00 PM | A87825 |
| Surr: BFB | 98.5 | 37.7-212 | | %Rec | 1 | 5/7/2022 5:14:00 PM | A87825 |
| EPA METHOD 8021B: VOLATILES | | | | | | | Analyst: BRM |
| Benzene | ND | 0.019 | | mg/Kg | 1 | 5/7/2022 5:14:00 PM | B87825 |
| Toluene | ND | 0.039 | | mg/Kg | 1 | 5/7/2022 5:14:00 PM | B87825 |
| Ethylbenzene | ND | 0.039 | | mg/Kg | 1 | 5/7/2022 5:14:00 PM | B87825 |
| Xylenes, Total | ND | 0.078 | | mg/Kg | 1 | 5/7/2022 5:14:00 PM | B87825 |
| Surr: 4-Bromofluorobenzene | 75.7 | 70-130 | | %Rec | 1 | 5/7/2022 5:14:00 PM | B87825 |

Refer to the QC Summary report and sample login checklist for flagged QC data and preservation information.

| | | | | |
|--------------------|-----|--|----|---|
| Qualifiers: | * | Value exceeds Maximum Contaminant Level. | B | Analyte detected in the associated Method Blank |
| | D | Sample Diluted Due to Matrix | E | Estimated value |
| | H | Holding times for preparation or analysis exceeded | J | Analyte detected below quantitation limits |
| | ND | Not Detected at the Reporting Limit | P | Sample pH Not In Range |
| | PQL | Practical Quantitative Limit | RL | Reporting Limit |
| | S | % Recovery outside of range due to dilution or matrix interference | | |

Analytical Report

Lab Order **2205382**

Date Reported: 5/23/2022

Hall Environmental Analysis Laboratory, Inc.

CLIENT: Souder, Miller & Associates

Client Sample ID: SC-7

Project: Enterprise Poker Lake Discharge

Collection Date: 5/4/2022 12:32:00 PM

Lab ID: 2205382-007

Matrix: MEOH (SOIL)

Received Date: 5/7/2022 7:50:00 AM

| Analyses | Result | RL | Qual | Units | DF | Date Analyzed | Batch |
|--|--------|----------|------|-------|----|----------------------|---------------------|
| EPA METHOD 300.0: ANIONS | | | | | | | Analyst: JMT |
| Chloride | ND | 60 | | mg/Kg | 20 | 5/9/2022 12:09:55 PM | 67339 |
| EPA METHOD 8015M/D: DIESEL RANGE ORGANICS | | | | | | | Analyst: ED |
| Diesel Range Organics (DRO) | ND | 10 | | mg/Kg | 1 | 5/9/2022 11:59:30 AM | 67336 |
| Motor Oil Range Organics (MRO) | ND | 50 | | mg/Kg | 1 | 5/9/2022 11:59:30 AM | 67336 |
| Surr: DNOP | 95.8 | 51.1-141 | | %Rec | 1 | 5/9/2022 11:59:30 AM | 67336 |
| EPA METHOD 8015D: GASOLINE RANGE | | | | | | | Analyst: BRM |
| Gasoline Range Organics (GRO) | ND | 3.6 | | mg/Kg | 1 | 5/7/2022 5:33:00 PM | A87825 |
| Surr: BFB | 90.1 | 37.7-212 | | %Rec | 1 | 5/7/2022 5:33:00 PM | A87825 |
| EPA METHOD 8021B: VOLATILES | | | | | | | Analyst: BRM |
| Benzene | ND | 0.018 | | mg/Kg | 1 | 5/7/2022 5:33:00 PM | B87825 |
| Toluene | ND | 0.036 | | mg/Kg | 1 | 5/7/2022 5:33:00 PM | B87825 |
| Ethylbenzene | ND | 0.036 | | mg/Kg | 1 | 5/7/2022 5:33:00 PM | B87825 |
| Xylenes, Total | ND | 0.072 | | mg/Kg | 1 | 5/7/2022 5:33:00 PM | B87825 |
| Surr: 4-Bromofluorobenzene | 74.0 | 70-130 | | %Rec | 1 | 5/7/2022 5:33:00 PM | B87825 |

Refer to the QC Summary report and sample login checklist for flagged QC data and preservation information.

| | | | | |
|--------------------|-----|--|----|---|
| Qualifiers: | * | Value exceeds Maximum Contaminant Level. | B | Analyte detected in the associated Method Blank |
| | D | Sample Diluted Due to Matrix | E | Estimated value |
| | H | Holding times for preparation or analysis exceeded | J | Analyte detected below quantitation limits |
| | ND | Not Detected at the Reporting Limit | P | Sample pH Not In Range |
| | PQL | Practical Quantitative Limit | RL | Reporting Limit |
| | S | % Recovery outside of range due to dilution or matrix interference | | |

Analytical Report

Lab Order **2205382**

Date Reported: **5/23/2022**

Hall Environmental Analysis Laboratory, Inc.

CLIENT: Souder, Miller & Associates

Client Sample ID: SC-8

Project: Enterprise Poker Lake Discharge

Collection Date: 5/4/2022 1:08:00 PM

Lab ID: 2205382-008

Matrix: MEOH (SOIL)

Received Date: 5/7/2022 7:50:00 AM

| Analyses | Result | RL | Qual | Units | DF | Date Analyzed | Batch |
|--|--------|----------|------|-------|----|----------------------|---------------------|
| EPA METHOD 300.0: ANIONS | | | | | | | Analyst: JMT |
| Chloride | ND | 60 | | mg/Kg | 20 | 5/9/2022 12:22:20 PM | 67339 |
| EPA METHOD 8015M/D: DIESEL RANGE ORGANICS | | | | | | | Analyst: ED |
| Diesel Range Organics (DRO) | ND | 9.7 | | mg/Kg | 1 | 5/9/2022 12:10:09 PM | 67336 |
| Motor Oil Range Organics (MRO) | ND | 49 | | mg/Kg | 1 | 5/9/2022 12:10:09 PM | 67336 |
| Surr: DNOP | 98.9 | 51.1-141 | | %Rec | 1 | 5/9/2022 12:10:09 PM | 67336 |
| EPA METHOD 8015D: GASOLINE RANGE | | | | | | | Analyst: BRM |
| Gasoline Range Organics (GRO) | ND | 3.2 | | mg/Kg | 1 | 5/7/2022 5:53:00 PM | A87825 |
| Surr: BFB | 92.6 | 37.7-212 | | %Rec | 1 | 5/7/2022 5:53:00 PM | A87825 |
| EPA METHOD 8021B: VOLATILES | | | | | | | Analyst: BRM |
| Benzene | ND | 0.016 | | mg/Kg | 1 | 5/7/2022 5:53:00 PM | B87825 |
| Toluene | ND | 0.032 | | mg/Kg | 1 | 5/7/2022 5:53:00 PM | B87825 |
| Ethylbenzene | ND | 0.032 | | mg/Kg | 1 | 5/7/2022 5:53:00 PM | B87825 |
| Xylenes, Total | ND | 0.064 | | mg/Kg | 1 | 5/7/2022 5:53:00 PM | B87825 |
| Surr: 4-Bromofluorobenzene | 75.3 | 70-130 | | %Rec | 1 | 5/7/2022 5:53:00 PM | B87825 |

Refer to the QC Summary report and sample login checklist for flagged QC data and preservation information.

| | | | | |
|--------------------|-----|--|----|---|
| Qualifiers: | * | Value exceeds Maximum Contaminant Level. | B | Analyte detected in the associated Method Blank |
| | D | Sample Diluted Due to Matrix | E | Estimated value |
| | H | Holding times for preparation or analysis exceeded | J | Analyte detected below quantitation limits |
| | ND | Not Detected at the Reporting Limit | P | Sample pH Not In Range |
| | PQL | Practical Quantitative Limit | RL | Reporting Limit |
| | S | % Recovery outside of range due to dilution or matrix interference | | |

Analytical Report

Lab Order **2205382**

Date Reported: **5/23/2022**

Hall Environmental Analysis Laboratory, Inc.

CLIENT: Souder, Miller & Associates

Client Sample ID: SC-9

Project: Enterprise Poker Lake Discharge

Collection Date: 5/4/2022 2:27:00 PM

Lab ID: 2205382-009

Matrix: MEOH (SOIL)

Received Date: 5/7/2022 7:50:00 AM

| Analyses | Result | RL | Qual | Units | DF | Date Analyzed | Batch |
|--|--------|----------|------|-------|----|----------------------|---------------------|
| EPA METHOD 300.0: ANIONS | | | | | | | Analyst: JMT |
| Chloride | 68 | 60 | | mg/Kg | 20 | 5/9/2022 12:59:33 PM | 67339 |
| EPA METHOD 8015M/D: DIESEL RANGE ORGANICS | | | | | | | Analyst: ED |
| Diesel Range Organics (DRO) | ND | 9.9 | | mg/Kg | 1 | 5/9/2022 12:20:49 PM | 67336 |
| Motor Oil Range Organics (MRO) | ND | 49 | | mg/Kg | 1 | 5/9/2022 12:20:49 PM | 67336 |
| Surr: DNOP | 94.4 | 51.1-141 | | %Rec | 1 | 5/9/2022 12:20:49 PM | 67336 |
| EPA METHOD 8015D: GASOLINE RANGE | | | | | | | Analyst: BRM |
| Gasoline Range Organics (GRO) | ND | 4.1 | | mg/Kg | 1 | 5/7/2022 6:13:00 PM | A87825 |
| Surr: BFB | 94.4 | 37.7-212 | | %Rec | 1 | 5/7/2022 6:13:00 PM | A87825 |
| EPA METHOD 8021B: VOLATILES | | | | | | | Analyst: BRM |
| Benzene | ND | 0.020 | | mg/Kg | 1 | 5/7/2022 6:13:00 PM | B87825 |
| Toluene | ND | 0.041 | | mg/Kg | 1 | 5/7/2022 6:13:00 PM | B87825 |
| Ethylbenzene | ND | 0.041 | | mg/Kg | 1 | 5/7/2022 6:13:00 PM | B87825 |
| Xylenes, Total | ND | 0.082 | | mg/Kg | 1 | 5/7/2022 6:13:00 PM | B87825 |
| Surr: 4-Bromofluorobenzene | 75.2 | 70-130 | | %Rec | 1 | 5/7/2022 6:13:00 PM | B87825 |

Refer to the QC Summary report and sample login checklist for flagged QC data and preservation information.

| | | | | |
|--------------------|-----|--|----|---|
| Qualifiers: | * | Value exceeds Maximum Contaminant Level. | B | Analyte detected in the associated Method Blank |
| | D | Sample Diluted Due to Matrix | E | Estimated value |
| | H | Holding times for preparation or analysis exceeded | J | Analyte detected below quantitation limits |
| | ND | Not Detected at the Reporting Limit | P | Sample pH Not In Range |
| | PQL | Practical Quantitative Limit | RL | Reporting Limit |
| | S | % Recovery outside of range due to dilution or matrix interference | | |

Analytical Report

Lab Order **2205382**

Date Reported: **5/23/2022**

Hall Environmental Analysis Laboratory, Inc.

CLIENT: Souder, Miller & Associates

Client Sample ID: SC-10

Project: Enterprise Poker Lake Discharge

Collection Date: 5/4/2022 1:40:00 PM

Lab ID: 2205382-010

Matrix: MEOH (SOIL)

Received Date: 5/7/2022 7:50:00 AM

| Analyses | Result | RL | Qual | Units | DF | Date Analyzed | Batch |
|--|--------|----------|------|-------|----|----------------------|---------------------|
| EPA METHOD 300.0: ANIONS | | | | | | | Analyst: JMT |
| Chloride | ND | 60 | | mg/Kg | 20 | 5/9/2022 1:11:58 PM | 67339 |
| EPA METHOD 8015M/D: DIESEL RANGE ORGANICS | | | | | | | Analyst: ED |
| Diesel Range Organics (DRO) | ND | 9.5 | | mg/Kg | 1 | 5/9/2022 12:31:28 PM | 67336 |
| Motor Oil Range Organics (MRO) | ND | 47 | | mg/Kg | 1 | 5/9/2022 12:31:28 PM | 67336 |
| Surr: DNOP | 102 | 51.1-141 | | %Rec | 1 | 5/9/2022 12:31:28 PM | 67336 |
| EPA METHOD 8015D: GASOLINE RANGE | | | | | | | Analyst: BRM |
| Gasoline Range Organics (GRO) | ND | 4.0 | | mg/Kg | 1 | 5/7/2022 6:32:00 PM | A87825 |
| Surr: BFB | 90.6 | 37.7-212 | | %Rec | 1 | 5/7/2022 6:32:00 PM | A87825 |
| EPA METHOD 8021B: VOLATILES | | | | | | | Analyst: BRM |
| Benzene | ND | 0.020 | | mg/Kg | 1 | 5/7/2022 6:32:00 PM | B87825 |
| Toluene | ND | 0.040 | | mg/Kg | 1 | 5/7/2022 6:32:00 PM | B87825 |
| Ethylbenzene | ND | 0.040 | | mg/Kg | 1 | 5/7/2022 6:32:00 PM | B87825 |
| Xylenes, Total | ND | 0.081 | | mg/Kg | 1 | 5/7/2022 6:32:00 PM | B87825 |
| Surr: 4-Bromofluorobenzene | 74.0 | 70-130 | | %Rec | 1 | 5/7/2022 6:32:00 PM | B87825 |

Refer to the QC Summary report and sample login checklist for flagged QC data and preservation information.

| | | | | |
|--------------------|-----|--|----|---|
| Qualifiers: | * | Value exceeds Maximum Contaminant Level. | B | Analyte detected in the associated Method Blank |
| | D | Sample Diluted Due to Matrix | E | Estimated value |
| | H | Holding times for preparation or analysis exceeded | J | Analyte detected below quantitation limits |
| | ND | Not Detected at the Reporting Limit | P | Sample pH Not In Range |
| | PQL | Practical Quantitative Limit | RL | Reporting Limit |
| | S | % Recovery outside of range due to dilution or matrix interference | | |

Analytical Report

Lab Order **2205382**

Date Reported: **5/23/2022**

Hall Environmental Analysis Laboratory, Inc.

CLIENT: Souder, Miller & Associates

Client Sample ID: SC-11

Project: Enterprise Poker Lake Discharge

Collection Date: 5/4/2022 1:56:00 PM

Lab ID: 2205382-011

Matrix: MEOH (SOIL)

Received Date: 5/7/2022 7:50:00 AM

| Analyses | Result | RL | Qual | Units | DF | Date Analyzed | Batch |
|--|--------|----------|------|-------|----|----------------------|---------------------|
| EPA METHOD 300.0: ANIONS | | | | | | | Analyst: JMT |
| Chloride | ND | 60 | | mg/Kg | 20 | 5/9/2022 1:24:22 PM | 67339 |
| EPA METHOD 8015M/D: DIESEL RANGE ORGANICS | | | | | | | Analyst: ED |
| Diesel Range Organics (DRO) | ND | 9.2 | | mg/Kg | 1 | 5/9/2022 12:42:09 PM | 67336 |
| Motor Oil Range Organics (MRO) | ND | 46 | | mg/Kg | 1 | 5/9/2022 12:42:09 PM | 67336 |
| Surr: DNOP | 103 | 51.1-141 | | %Rec | 1 | 5/9/2022 12:42:09 PM | 67336 |
| EPA METHOD 8015D: GASOLINE RANGE | | | | | | | Analyst: BRM |
| Gasoline Range Organics (GRO) | ND | 3.5 | | mg/Kg | 1 | 5/7/2022 7:51:00 PM | A87825 |
| Surr: BFB | 92.7 | 37.7-212 | | %Rec | 1 | 5/7/2022 7:51:00 PM | A87825 |
| EPA METHOD 8021B: VOLATILES | | | | | | | Analyst: BRM |
| Benzene | ND | 0.018 | | mg/Kg | 1 | 5/7/2022 7:51:00 PM | B87825 |
| Toluene | ND | 0.035 | | mg/Kg | 1 | 5/7/2022 7:51:00 PM | B87825 |
| Ethylbenzene | ND | 0.035 | | mg/Kg | 1 | 5/7/2022 7:51:00 PM | B87825 |
| Xylenes, Total | ND | 0.070 | | mg/Kg | 1 | 5/7/2022 7:51:00 PM | B87825 |
| Surr: 4-Bromofluorobenzene | 75.3 | 70-130 | | %Rec | 1 | 5/7/2022 7:51:00 PM | B87825 |

Refer to the QC Summary report and sample login checklist for flagged QC data and preservation information.

| | | | | |
|--------------------|-----|--|----|---|
| Qualifiers: | * | Value exceeds Maximum Contaminant Level. | B | Analyte detected in the associated Method Blank |
| | D | Sample Diluted Due to Matrix | E | Estimated value |
| | H | Holding times for preparation or analysis exceeded | J | Analyte detected below quantitation limits |
| | ND | Not Detected at the Reporting Limit | P | Sample pH Not In Range |
| | PQL | Practical Quantitative Limit | RL | Reporting Limit |
| | S | % Recovery outside of range due to dilution or matrix interference | | |

Analytical Report

Lab Order **2205382**

Date Reported: **5/23/2022**

Hall Environmental Analysis Laboratory, Inc.

CLIENT: Souder, Miller & Associates

Client Sample ID: SC-12

Project: Enterprise Poker Lake Discharge

Collection Date: 5/4/2022 1:52:00 PM

Lab ID: 2205382-012

Matrix: MEOH (SOIL)

Received Date: 5/7/2022 7:50:00 AM

| Analyses | Result | RL | Qual | Units | DF | Date Analyzed | Batch |
|--|--------|----------|------|-------|----|----------------------|---------------------|
| EPA METHOD 300.0: ANIONS | | | | | | | Analyst: JMT |
| Chloride | 88 | 60 | | mg/Kg | 20 | 5/9/2022 1:36:47 PM | 67339 |
| EPA METHOD 8015M/D: DIESEL RANGE ORGANICS | | | | | | | Analyst: ED |
| Diesel Range Organics (DRO) | ND | 9.7 | | mg/Kg | 1 | 5/9/2022 12:52:51 PM | 67336 |
| Motor Oil Range Organics (MRO) | ND | 49 | | mg/Kg | 1 | 5/9/2022 12:52:51 PM | 67336 |
| Surr: DNOP | 110 | 51.1-141 | | %Rec | 1 | 5/9/2022 12:52:51 PM | 67336 |
| EPA METHOD 8015D: GASOLINE RANGE | | | | | | | Analyst: BRM |
| Gasoline Range Organics (GRO) | ND | 3.5 | | mg/Kg | 1 | 5/7/2022 8:10:00 PM | A87825 |
| Surr: BFB | 90.0 | 37.7-212 | | %Rec | 1 | 5/7/2022 8:10:00 PM | A87825 |
| EPA METHOD 8021B: VOLATILES | | | | | | | Analyst: BRM |
| Benzene | ND | 0.018 | | mg/Kg | 1 | 5/7/2022 8:10:00 PM | B87825 |
| Toluene | ND | 0.035 | | mg/Kg | 1 | 5/7/2022 8:10:00 PM | B87825 |
| Ethylbenzene | ND | 0.035 | | mg/Kg | 1 | 5/7/2022 8:10:00 PM | B87825 |
| Xylenes, Total | ND | 0.071 | | mg/Kg | 1 | 5/7/2022 8:10:00 PM | B87825 |
| Surr: 4-Bromofluorobenzene | 73.1 | 70-130 | | %Rec | 1 | 5/7/2022 8:10:00 PM | B87825 |

Refer to the QC Summary report and sample login checklist for flagged QC data and preservation information.

| | | | | |
|--------------------|-----|--|----|---|
| Qualifiers: | * | Value exceeds Maximum Contaminant Level. | B | Analyte detected in the associated Method Blank |
| | D | Sample Diluted Due to Matrix | E | Estimated value |
| | H | Holding times for preparation or analysis exceeded | J | Analyte detected below quantitation limits |
| | ND | Not Detected at the Reporting Limit | P | Sample pH Not In Range |
| | PQL | Practical Quantitative Limit | RL | Reporting Limit |
| | S | % Recovery outside of range due to dilution or matrix interference | | |

Analytical Report

Lab Order **2205382**

Date Reported: **5/23/2022**

Hall Environmental Analysis Laboratory, Inc.

CLIENT: Souder, Miller & Associates

Client Sample ID: SC-13

Project: Enterprise Poker Lake Discharge

Collection Date: 5/4/2022 2:39:00 PM

Lab ID: 2205382-013

Matrix: MEOH (SOIL)

Received Date: 5/7/2022 7:50:00 AM

| Analyses | Result | RL | Qual | Units | DF | Date Analyzed | Batch |
|--|--------|----------|------|-------|----|---------------------|---------------------|
| EPA METHOD 300.0: ANIONS | | | | | | | Analyst: JMT |
| Chloride | ND | 60 | | mg/Kg | 20 | 5/9/2022 1:49:11 PM | 67339 |
| EPA METHOD 8015M/D: DIESEL RANGE ORGANICS | | | | | | | Analyst: ED |
| Diesel Range Organics (DRO) | ND | 10 | | mg/Kg | 1 | 5/9/2022 1:03:34 PM | 67336 |
| Motor Oil Range Organics (MRO) | ND | 50 | | mg/Kg | 1 | 5/9/2022 1:03:34 PM | 67336 |
| Surr: DNOP | 107 | 51.1-141 | | %Rec | 1 | 5/9/2022 1:03:34 PM | 67336 |
| EPA METHOD 8015D: GASOLINE RANGE | | | | | | | Analyst: BRM |
| Gasoline Range Organics (GRO) | ND | 3.1 | | mg/Kg | 1 | 5/7/2022 8:30:00 PM | A87825 |
| Surr: BFB | 88.9 | 37.7-212 | | %Rec | 1 | 5/7/2022 8:30:00 PM | A87825 |
| EPA METHOD 8021B: VOLATILES | | | | | | | Analyst: BRM |
| Benzene | ND | 0.015 | | mg/Kg | 1 | 5/7/2022 8:30:00 PM | B87825 |
| Toluene | ND | 0.031 | | mg/Kg | 1 | 5/7/2022 8:30:00 PM | B87825 |
| Ethylbenzene | ND | 0.031 | | mg/Kg | 1 | 5/7/2022 8:30:00 PM | B87825 |
| Xylenes, Total | ND | 0.062 | | mg/Kg | 1 | 5/7/2022 8:30:00 PM | B87825 |
| Surr: 4-Bromofluorobenzene | 74.3 | 70-130 | | %Rec | 1 | 5/7/2022 8:30:00 PM | B87825 |

Refer to the QC Summary report and sample login checklist for flagged QC data and preservation information.

| | | | | |
|--------------------|-----|--|----|---|
| Qualifiers: | * | Value exceeds Maximum Contaminant Level. | B | Analyte detected in the associated Method Blank |
| | D | Sample Diluted Due to Matrix | E | Estimated value |
| | H | Holding times for preparation or analysis exceeded | J | Analyte detected below quantitation limits |
| | ND | Not Detected at the Reporting Limit | P | Sample pH Not In Range |
| | PQL | Practical Quantitative Limit | RL | Reporting Limit |
| | S | % Recovery outside of range due to dilution or matrix interference | | |

Analytical Report

Lab Order **2205382**

Date Reported: **5/23/2022**

Hall Environmental Analysis Laboratory, Inc.

CLIENT: Souder, Miller & Associates

Client Sample ID: SC-14

Project: Enterprise Poker Lake Discharge

Collection Date: 5/4/2022 2:38:00 PM

Lab ID: 2205382-014

Matrix: MEOH (SOIL)

Received Date: 5/7/2022 7:50:00 AM

| Analyses | Result | RL | Qual | Units | DF | Date Analyzed | Batch |
|--|--------|----------|------|-------|----|---------------------|---------------------|
| EPA METHOD 300.0: ANIONS | | | | | | | Analyst: JMT |
| Chloride | ND | 60 | | mg/Kg | 20 | 5/9/2022 2:01:35 PM | 67339 |
| EPA METHOD 8015M/D: DIESEL RANGE ORGANICS | | | | | | | Analyst: ED |
| Diesel Range Organics (DRO) | ND | 9.7 | | mg/Kg | 1 | 5/9/2022 1:14:17 PM | 67336 |
| Motor Oil Range Organics (MRO) | ND | 48 | | mg/Kg | 1 | 5/9/2022 1:14:17 PM | 67336 |
| Surr: DNOP | 102 | 51.1-141 | | %Rec | 1 | 5/9/2022 1:14:17 PM | 67336 |
| EPA METHOD 8015D: GASOLINE RANGE | | | | | | | Analyst: BRM |
| Gasoline Range Organics (GRO) | ND | 3.3 | | mg/Kg | 1 | 5/7/2022 8:50:00 PM | A87825 |
| Surr: BFB | 88.6 | 37.7-212 | | %Rec | 1 | 5/7/2022 8:50:00 PM | A87825 |
| EPA METHOD 8021B: VOLATILES | | | | | | | Analyst: BRM |
| Benzene | ND | 0.017 | | mg/Kg | 1 | 5/7/2022 8:50:00 PM | B87825 |
| Toluene | ND | 0.033 | | mg/Kg | 1 | 5/7/2022 8:50:00 PM | B87825 |
| Ethylbenzene | ND | 0.033 | | mg/Kg | 1 | 5/7/2022 8:50:00 PM | B87825 |
| Xylenes, Total | ND | 0.067 | | mg/Kg | 1 | 5/7/2022 8:50:00 PM | B87825 |
| Surr: 4-Bromofluorobenzene | 73.6 | 70-130 | | %Rec | 1 | 5/7/2022 8:50:00 PM | B87825 |

Refer to the QC Summary report and sample login checklist for flagged QC data and preservation information.

| | | | | |
|--------------------|-----|--|----|---|
| Qualifiers: | * | Value exceeds Maximum Contaminant Level. | B | Analyte detected in the associated Method Blank |
| | D | Sample Diluted Due to Matrix | E | Estimated value |
| | H | Holding times for preparation or analysis exceeded | J | Analyte detected below quantitation limits |
| | ND | Not Detected at the Reporting Limit | P | Sample pH Not In Range |
| | PQL | Practical Quantitative Limit | RL | Reporting Limit |
| | S | % Recovery outside of range due to dilution or matrix interference | | |

QC SUMMARY REPORT

Hall Environmental Analysis Laboratory, Inc.

WO#: 2205382

23-May-22

Client: Souder, Miller & Associates
Project: Enterprise Poker Lake Discharge

| Sample ID: MB-67339 | SampType: mblk | TestCode: EPA Method 300.0: Anions | | | | | | | | |
|----------------------------|--------------------------------|---|---------------------|-------------|------|----------|-----------|------|----------|------|
| Client ID: PBS | Batch ID: 67339 | RunNo: 87845 | | | | | | | | |
| Prep Date: 5/9/2022 | Analysis Date: 5/9/2022 | SeqNo: 3112966 | Units: mg/Kg | | | | | | | |
| Analyte | Result | PQL | SPK value | SPK Ref Val | %REC | LowLimit | HighLimit | %RPD | RPDLimit | Qual |
| Chloride | ND | 1.5 | | | | | | | | |

| Sample ID: LCS-67339 | SampType: lcs | TestCode: EPA Method 300.0: Anions | | | | | | | | |
|-----------------------------|--------------------------------|---|---------------------|-------------|------|----------|-----------|------|----------|------|
| Client ID: LCSS | Batch ID: 67339 | RunNo: 87845 | | | | | | | | |
| Prep Date: 5/9/2022 | Analysis Date: 5/9/2022 | SeqNo: 3112967 | Units: mg/Kg | | | | | | | |
| Analyte | Result | PQL | SPK value | SPK Ref Val | %REC | LowLimit | HighLimit | %RPD | RPDLimit | Qual |
| Chloride | 14 | 1.5 | 15.00 | 0 | 92.4 | 90 | 110 | | | |

Qualifiers:

- * Value exceeds Maximum Contaminant Level.
- D Sample Diluted Due to Matrix
- H Holding times for preparation or analysis exceeded
- ND Not Detected at the Reporting Limit
- PQL Practical Quantitative Limit
- S % Recovery outside of range due to dilution or matrix interference
- B Analyte detected in the associated Method Blank
- E Estimated value
- J Analyte detected below quantitation limits
- P Sample pH Not In Range
- RL Reporting Limit

QC SUMMARY REPORT

Hall Environmental Analysis Laboratory, Inc.

WO#: 2205382

23-May-22

Client: Souder, Miller & Associates
Project: Enterprise Poker Lake Discharge

| Sample ID: 2205382-001AMS | SampType: MS | TestCode: EPA Method 8015M/D: Diesel Range Organics | | | | | | | | |
|----------------------------------|--------------------------------|--|---------------------|-------------|------|----------|-----------|------|----------|------|
| Client ID: SC-1 | Batch ID: 67336 | RunNo: 87842 | | | | | | | | |
| Prep Date: 5/9/2022 | Analysis Date: 5/9/2022 | SeqNo: 3112123 | Units: mg/Kg | | | | | | | |
| Analyte | Result | PQL | SPK value | SPK Ref Val | %REC | LowLimit | HighLimit | %RPD | RPDLimit | Qual |
| Diesel Range Organics (DRO) | 53 | 9.8 | 49.07 | 5.985 | 94.9 | 36.1 | 154 | | | |
| Surr: DNOP | 4.2 | | 4.907 | | 85.3 | 51.1 | 141 | | | |

| Sample ID: 2205382-001AMSD | SampType: MSD | TestCode: EPA Method 8015M/D: Diesel Range Organics | | | | | | | | |
|-----------------------------------|--------------------------------|--|---------------------|-------------|------|----------|-----------|-------|----------|------|
| Client ID: SC-1 | Batch ID: 67336 | RunNo: 87842 | | | | | | | | |
| Prep Date: 5/9/2022 | Analysis Date: 5/9/2022 | SeqNo: 3112124 | Units: mg/Kg | | | | | | | |
| Analyte | Result | PQL | SPK value | SPK Ref Val | %REC | LowLimit | HighLimit | %RPD | RPDLimit | Qual |
| Diesel Range Organics (DRO) | 52 | 9.8 | 48.88 | 5.985 | 94.6 | 36.1 | 154 | 0.631 | 33.9 | |
| Surr: DNOP | 4.0 | | 4.888 | | 82.4 | 51.1 | 141 | 0 | 0 | |

| Sample ID: LCS-67336 | SampType: LCS | TestCode: EPA Method 8015M/D: Diesel Range Organics | | | | | | | | |
|-----------------------------|--------------------------------|--|---------------------|-------------|------|----------|-----------|------|----------|------|
| Client ID: LCSS | Batch ID: 67336 | RunNo: 87842 | | | | | | | | |
| Prep Date: 5/9/2022 | Analysis Date: 5/9/2022 | SeqNo: 3112140 | Units: mg/Kg | | | | | | | |
| Analyte | Result | PQL | SPK value | SPK Ref Val | %REC | LowLimit | HighLimit | %RPD | RPDLimit | Qual |
| Diesel Range Organics (DRO) | 52 | 10 | 50.00 | 0 | 103 | 68.9 | 135 | | | |
| Surr: DNOP | 4.5 | | 5.000 | | 89.6 | 51.1 | 141 | | | |

| Sample ID: MB-67336 | SampType: MBLK | TestCode: EPA Method 8015M/D: Diesel Range Organics | | | | | | | | |
|--------------------------------|--------------------------------|--|---------------------|-------------|------|----------|-----------|------|----------|------|
| Client ID: PBS | Batch ID: 67336 | RunNo: 87842 | | | | | | | | |
| Prep Date: 5/9/2022 | Analysis Date: 5/9/2022 | SeqNo: 3112141 | Units: mg/Kg | | | | | | | |
| Analyte | Result | PQL | SPK value | SPK Ref Val | %REC | LowLimit | HighLimit | %RPD | RPDLimit | Qual |
| Diesel Range Organics (DRO) | ND | 10 | | | | | | | | |
| Motor Oil Range Organics (MRO) | ND | 50 | | | | | | | | |
| Surr: DNOP | 9.7 | | 10.00 | | 96.6 | 51.1 | 141 | | | |

Qualifiers:

- * Value exceeds Maximum Contaminant Level.
- D Sample Diluted Due to Matrix
- H Holding times for preparation or analysis exceeded
- ND Not Detected at the Reporting Limit
- PQL Practical Quantitative Limit
- S % Recovery outside of range due to dilution or matrix interference
- B Analyte detected in the associated Method Blank
- E Estimated value
- J Analyte detected below quantitation limits
- P Sample pH Not In Range
- RL Reporting Limit

QC SUMMARY REPORT

Hall Environmental Analysis Laboratory, Inc.

WO#: 2205382

23-May-22

Client: Souder, Miller & Associates
Project: Enterprise Poker Lake Discharge

| Sample ID: 2.5ug gro lcs | SampType: LCS | | TestCode: EPA Method 8015D: Gasoline Range | | | | | | | |
|---------------------------------|--------------------------------|-----|---|-------------|---------------------|----------|-----------|------|----------|------|
| Client ID: LCSS | Batch ID: A87825 | | RunNo: 87825 | | | | | | | |
| Prep Date: | Analysis Date: 5/7/2022 | | SeqNo: 3110975 | | Units: mg/Kg | | | | | |
| Analyte | Result | PQL | SPK value | SPK Ref Val | %REC | LowLimit | HighLimit | %RPD | RPDLimit | Qual |
| Gasoline Range Organics (GRO) | 25 | 5.0 | 25.00 | 0 | 102 | 72.3 | 137 | | | |
| Surr: BFB | 2200 | | 1000 | | 218 | 37.7 | 212 | | | S |

| Sample ID: mb | SampType: MBLK | | TestCode: EPA Method 8015D: Gasoline Range | | | | | | | |
|-------------------------------|--------------------------------|-----|---|-------------|---------------------|----------|-----------|------|----------|------|
| Client ID: PBS | Batch ID: A87825 | | RunNo: 87825 | | | | | | | |
| Prep Date: | Analysis Date: 5/7/2022 | | SeqNo: 3110976 | | Units: mg/Kg | | | | | |
| Analyte | Result | PQL | SPK value | SPK Ref Val | %REC | LowLimit | HighLimit | %RPD | RPDLimit | Qual |
| Gasoline Range Organics (GRO) | ND | 5.0 | | | | | | | | |
| Surr: BFB | 1000 | | 1000 | | 104 | 37.7 | 212 | | | |

| Sample ID: 2205382-001ams | SampType: MS | | TestCode: EPA Method 8015D: Gasoline Range | | | | | | | |
|----------------------------------|--------------------------------|-----|---|-------------|---------------------|----------|-----------|------|----------|------|
| Client ID: SC-1 | Batch ID: A87825 | | RunNo: 87825 | | | | | | | |
| Prep Date: | Analysis Date: 5/7/2022 | | SeqNo: 3110991 | | Units: mg/Kg | | | | | |
| Analyte | Result | PQL | SPK value | SPK Ref Val | %REC | LowLimit | HighLimit | %RPD | RPDLimit | Qual |
| Gasoline Range Organics (GRO) | 19 | 4.0 | 19.87 | 0 | 97.4 | 70 | 130 | | | |
| Surr: BFB | 1600 | | 794.9 | | 199 | 37.7 | 212 | | | |

| Sample ID: 2205382-001AMSD | SampType: MSD | | TestCode: EPA Method 8015D: Gasoline Range | | | | | | | |
|-----------------------------------|--------------------------------|-----|---|-------------|---------------------|----------|-----------|------|----------|------|
| Client ID: SC-1 | Batch ID: A87825 | | RunNo: 87825 | | | | | | | |
| Prep Date: | Analysis Date: 5/7/2022 | | SeqNo: 3110992 | | Units: mg/Kg | | | | | |
| Analyte | Result | PQL | SPK value | SPK Ref Val | %REC | LowLimit | HighLimit | %RPD | RPDLimit | Qual |
| Gasoline Range Organics (GRO) | 20 | 4.0 | 19.87 | 0 | 101 | 70 | 130 | 3.98 | 20 | |
| Surr: BFB | 1600 | | 794.9 | | 200 | 37.7 | 212 | 0 | 0 | |

Qualifiers:

- * Value exceeds Maximum Contaminant Level.
- D Sample Diluted Due to Matrix
- H Holding times for preparation or analysis exceeded
- ND Not Detected at the Reporting Limit
- PQL Practical Quantitative Limit
- S % Recovery outside of range due to dilution or matrix interference
- B Analyte detected in the associated Method Blank
- E Estimated value
- J Analyte detected below quantitation limits
- P Sample pH Not In Range
- RL Reporting Limit

QC SUMMARY REPORT

Hall Environmental Analysis Laboratory, Inc.

WO#: 2205382

23-May-22

Client: Souder, Miller & Associates
Project: Enterprise Poker Lake Discharge

| Sample ID: 100ng btex lcs | SampType: LCS | | TestCode: EPA Method 8021B: Volatiles | | | | | | | |
|----------------------------------|--------------------------------|-------|--|-------------|---------------------|----------|-----------|------|----------|------|
| Client ID: LCSS | Batch ID: B87825 | | RunNo: 87825 | | | | | | | |
| Prep Date: | Analysis Date: 5/7/2022 | | SeqNo: 3110997 | | Units: mg/Kg | | | | | |
| Analyte | Result | PQL | SPK value | SPK Ref Val | %REC | LowLimit | HighLimit | %RPD | RPDLimit | Qual |
| Benzene | 0.99 | 0.025 | 1.000 | 0 | 98.8 | 80 | 120 | | | |
| Toluene | 1.0 | 0.050 | 1.000 | 0 | 101 | 80 | 120 | | | |
| Ethylbenzene | 1.0 | 0.050 | 1.000 | 0 | 101 | 80 | 120 | | | |
| Xylenes, Total | 3.0 | 0.10 | 3.000 | 0 | 101 | 80 | 120 | | | |
| Surr: 4-Bromofluorobenzene | 0.84 | | 1.000 | | 83.6 | 70 | 130 | | | |

| Sample ID: mb | SampType: MBLK | | TestCode: EPA Method 8021B: Volatiles | | | | | | | |
|----------------------------|--------------------------------|-------|--|-------------|---------------------|----------|-----------|------|----------|------|
| Client ID: PBS | Batch ID: B87825 | | RunNo: 87825 | | | | | | | |
| Prep Date: | Analysis Date: 5/7/2022 | | SeqNo: 3110999 | | Units: mg/Kg | | | | | |
| Analyte | Result | PQL | SPK value | SPK Ref Val | %REC | LowLimit | HighLimit | %RPD | RPDLimit | Qual |
| Benzene | ND | 0.025 | | | | | | | | |
| Toluene | ND | 0.050 | | | | | | | | |
| Ethylbenzene | ND | 0.050 | | | | | | | | |
| Xylenes, Total | ND | 0.10 | | | | | | | | |
| Surr: 4-Bromofluorobenzene | 0.85 | | 1.000 | | 85.0 | 70 | 130 | | | |

| Sample ID: 2205382-002ams | SampType: MS | | TestCode: EPA Method 8021B: Volatiles | | | | | | | |
|----------------------------------|--------------------------------|-------|--|-------------|---------------------|----------|-----------|------|----------|------|
| Client ID: SC-2 | Batch ID: B87825 | | RunNo: 87825 | | | | | | | |
| Prep Date: | Analysis Date: 5/7/2022 | | SeqNo: 3111015 | | Units: mg/Kg | | | | | |
| Analyte | Result | PQL | SPK value | SPK Ref Val | %REC | LowLimit | HighLimit | %RPD | RPDLimit | Qual |
| Benzene | 0.60 | 0.017 | 0.6878 | 0 | 86.9 | 68.8 | 120 | | | |
| Toluene | 0.60 | 0.034 | 0.6878 | 0 | 87.0 | 73.6 | 124 | | | |
| Ethylbenzene | 0.60 | 0.034 | 0.6878 | 0 | 86.8 | 72.7 | 129 | | | |
| Xylenes, Total | 1.8 | 0.069 | 2.063 | 0 | 85.7 | 75.7 | 126 | | | |
| Surr: 4-Bromofluorobenzene | 0.50 | | 0.6878 | | 72.6 | 70 | 130 | | | |

| Sample ID: 2205382-002AMSD | SampType: MSD | | TestCode: EPA Method 8021B: Volatiles | | | | | | | |
|-----------------------------------|--------------------------------|-------|--|-------------|---------------------|----------|-----------|------|----------|------|
| Client ID: SC-2 | Batch ID: B87825 | | RunNo: 87825 | | | | | | | |
| Prep Date: | Analysis Date: 5/7/2022 | | SeqNo: 3111017 | | Units: mg/Kg | | | | | |
| Analyte | Result | PQL | SPK value | SPK Ref Val | %REC | LowLimit | HighLimit | %RPD | RPDLimit | Qual |
| Benzene | 0.57 | 0.017 | 0.6878 | 0 | 82.7 | 68.8 | 120 | 4.87 | 20 | |
| Toluene | 0.57 | 0.034 | 0.6878 | 0 | 83.0 | 73.6 | 124 | 4.70 | 20 | |
| Ethylbenzene | 0.58 | 0.034 | 0.6878 | 0 | 83.6 | 72.7 | 129 | 3.68 | 20 | |
| Xylenes, Total | 1.7 | 0.069 | 2.063 | 0 | 83.2 | 75.7 | 126 | 2.97 | 20 | |
| Surr: 4-Bromofluorobenzene | 0.51 | | 0.6878 | | 74.0 | 70 | 130 | 0 | 0 | |

Qualifiers:

- * Value exceeds Maximum Contaminant Level.
- D Sample Diluted Due to Matrix
- H Holding times for preparation or analysis exceeded
- ND Not Detected at the Reporting Limit
- PQL Practical Quantitative Limit
- S % Recovery outside of range due to dilution or matrix interference
- B Analyte detected in the associated Method Blank
- E Estimated value
- J Analyte detected below quantitation limits
- P Sample pH Not In Range
- RL Reporting Limit



Hall Environmental Analysis Laboratory
4901 Hawkins NE
Albuquerque, NM 87109
TEL: 505-345-3975 FAX: 505-345-4107
Website: www.hallenvironmental.com

Sample Log-In Check List

Client Name: Souder, Miller & Associates

Work Order Number: 2205382

RcptNo: 1

Received By: Cheyenne Cason

5/7/2022 7:50:00 AM

Handwritten signature

Completed By: Cheyenne Cason

5/7/2022 8:07:25 AM

Handwritten signature

Reviewed By: JP 5/7/22

Chain of Custody

- 1. Is Chain of Custody complete? Yes [checked] No [] Not Present []
2. How was the sample delivered? Courier

Log In

- 3. Was an attempt made to cool the samples? Yes [checked] No [] NA []
4. Were all samples received at a temperature of >0° C to 6.0° C? Yes [] No [checked] NA []
5. Sample(s) in proper container(s)? Yes [checked] No []
6. Sufficient sample volume for indicated test(s)? Yes [checked] No []
7. Are samples (except VOA and ONG) properly preserved? Yes [checked] No []
8. Was preservative added to bottles? Yes [] No [checked] NA []
9. Received at least 1 vial with headspace <1/4" for AQ VOA? Yes [] No [] NA [checked]
10. Were any sample containers received broken? Yes [] No [checked]
11. Does paperwork match bottle labels? Yes [checked] No []
12. Are matrices correctly identified on Chain of Custody? Yes [checked] No []
13. Is it clear what analyses were requested? Yes [checked] No []
14. Were all holding times able to be met? Yes [checked] No []

of preserved bottles checked for pH:
Adjusted?
Checked by: Handwritten signatures and date 5/7/22

Special Handling (if applicable)

- 15. Was client notified of all discrepancies with this order? Yes [] No [] NA [checked]

Person Notified: [] Date: []
By Whom: [] Via: [] eMail [] Phone [] Fax [] In Person []
Regarding: []
Client Instructions: []

16. Additional remarks:

17. Cooler Information

Table with 7 columns: Cooler No, Temp °C, Condition, Seal Intact, Seal No, Seal Date, Signed By. Row 1: 1, 7.0, Good, Not Present, [], [], []

Chain-of-Custody Record

Client: Souder, Miller & Associates
 Mailing Address: 201 S. Halesqueno St.
Carlsbad, NM 88220
 Phone #: (575) 449-2750
 email or Fax#: Heather.Woods@soudermiller.com
 QA/QC Package: Standard Level 4 (Full Validation)
 Accreditation: Az Compliance Other
 NELAC Other
 EDD (Type) _____

Turn-Around Time:
 Standard Rush Same Day
 Project Name:
Enterprise Poker Lake Discharge
 Project #:

Project Manager:
Ashley Maxwell
 Sampler: Heather Woods
 On Ice: Yes No
 # of Coolers: 1

| Date | Time | Matrix | Sample Name | Container Type and # | Preservative Type | HEAL No. | Cooler Temp (including CP): |
|--------|------|--------|-------------|----------------------|-------------------|----------|-----------------------------|
| 5/4/22 | 1115 | Soil | SC-1 | (1) 4oz Glass | Non | 2205382 | 7.1-0.1-7.0 (°C) |
| 5/4/22 | 1152 | Soil | SC-2 | (1) 4oz Glass | Non | | |
| 5/4/22 | 1245 | Soil | SC-3 | (1) 4oz Glass | Non | | |
| 5/4/22 | 1244 | Soil | SC-4 | (1) 4oz Glass | Non | | |
| 5/4/22 | 1235 | Soil | SC-5 | (1) 4oz Glass | Non | | |
| 5/4/22 | 1230 | Soil | SC-6 | (1) 4oz Glass | Non | | |
| 5/4/22 | 1232 | Soil | SC-7 | (1) 4oz Glass | Non | | |
| 5/4/22 | 1308 | Soil | SC-8 | (1) 4oz Glass | Non | | |
| 5/4/22 | 1427 | Soil | SC-9 | (1) 4oz Glass | Non | | |
| 5/4/22 | 1340 | Soil | SC-10 | (1) 4oz Glass | Non | | |
| 5/4/22 | 1350 | Soil | SC-11 | (1) 4oz Glass | Non | | |
| 5/4/22 | 1352 | Soil | SC-12 | (1) 4oz Glass | Non | | |

Date: _____ Time: _____ Relinquished by: Heather M. Woods
 Date: 5/10/22 Time: 1900 Relinquished by: Glenn
 Received by: William Date: 5/10/22 Time: 900
 Received by: Cmc Carr Date: 5/11/22 Time: 0750



HALL ENVIRONMENTAL ANALYSIS LABORATORY
 www.hallenvironmental.com
 4901 Hawkins NE - Albuquerque, NM 87109
 Tel. 505-345-3975 Fax 505-345-4107

Analysis Request

| BTEX / MTBE / TMBs (8021) | TPH:8015D(GRO / DRO / MRO) | 8081 Pesticides/8082 PCB's | EDB (Method 504.1) | PAHs by 8310 or 8270SIMS | RCRA 8 Metals | CP, F, BI, NO ₃ , NO ₂ , PO ₄ , SO ₄ | 8260 (VOA) | 8270 (Semi-VOA) | Total Coliform (Present/Absent) |
|---------------------------|----------------------------|----------------------------|--------------------|--------------------------|---------------|--|------------|-----------------|---------------------------------|
| X | X | | | | | X | | | |
| X | X | | | | | X | | | |
| X | X | | | | | X | | | |
| X | X | | | | | X | | | |
| X | X | | | | | X | | | |
| X | X | | | | | X | | | |
| X | X | | | | | X | | | |
| X | X | | | | | X | | | |
| X | X | | | | | X | | | |
| X | X | | | | | X | | | |
| X | X | | | | | X | | | |

Remarks:



Hall Environmental Analysis Laboratory
4901 Hawkins NE
Albuquerque, NM 87109
TEL: 505-345-3975 FAX: 505-345-4107
Website: www.hallenvironmental.com

May 27, 2022

Ashley Maxwell
Souder, Miller & Associates
201 S Halagueno
Carlsbad, NM 88221
TEL: (575) 689-7040
FAX:

RE: Enterprise Poker Lake Discharge

OrderNo.: 2205792

Dear Ashley Maxwell:

Hall Environmental Analysis Laboratory received 9 sample(s) on 5/18/2022 for the analyses presented in the following report.

These were analyzed according to EPA procedures or equivalent. To access our accredited tests please go to www.hallenvironmental.com or the state specific web sites. In order to properly interpret your results, it is imperative that you review this report in its entirety. See the sample checklist and/or the Chain of Custody for information regarding the sample receipt temperature and preservation. Data qualifiers or a narrative will be provided if the sample analysis or analytical quality control parameters require a flag. When necessary, data qualifiers are provided on both the sample analysis report and the QC summary report, both sections should be reviewed. All samples are reported, as received, unless otherwise indicated. Lab measurement of analytes considered field parameters that require analysis within 15 minutes of sampling such as pH and residual chlorine are qualified as being analyzed outside of the recommended holding time.

Please don't hesitate to contact HEAL for any additional information or clarifications.

ADHS Cert #AZ0682 -- NMED-DWB Cert #NM9425 -- NMED-Micro Cert #NM0901

Sincerely,

A handwritten signature in black ink, appearing to read "Andy Freeman".

Andy Freeman
Laboratory Manager
4901 Hawkins NE
Albuquerque, NM 87109

Analytical Report

Lab Order **2205792**

Date Reported: **5/27/2022**

Hall Environmental Analysis Laboratory, Inc.

CLIENT: Souder, Miller & Associates

Client Sample ID: SC-15

Project: Enterprise Poker Lake Discharge

Collection Date: 5/16/2022 10:38:00 AM

Lab ID: 2205792-001

Matrix: SOIL

Received Date: 5/18/2022 8:27:00 AM

| Analyses | Result | RL | Qual | Units | DF | Date Analyzed | Batch |
|--|--------|----------|------|-------|----|-----------------------|---------------------|
| EPA METHOD 300.0: ANIONS | | | | | | | Analyst: NAI |
| Chloride | 68 | 60 | | mg/Kg | 20 | 5/19/2022 9:48:25 PM | 67579 |
| EPA METHOD 8015M/D: DIESEL RANGE ORGANICS | | | | | | | Analyst: SB |
| Diesel Range Organics (DRO) | ND | 9.8 | | mg/Kg | 1 | 5/20/2022 12:56:41 PM | 67547 |
| Motor Oil Range Organics (MRO) | ND | 49 | | mg/Kg | 1 | 5/20/2022 12:56:41 PM | 67547 |
| Surr: DNOP | 104 | 51.1-141 | | %Rec | 1 | 5/20/2022 12:56:41 PM | 67547 |
| EPA METHOD 8015D: GASOLINE RANGE | | | | | | | Analyst: NSB |
| Gasoline Range Organics (GRO) | ND | 4.9 | | mg/Kg | 1 | 5/19/2022 1:39:31 PM | 67544 |
| Surr: BFB | 95.6 | 37.7-212 | | %Rec | 1 | 5/19/2022 1:39:31 PM | 67544 |
| EPA METHOD 8021B: VOLATILES | | | | | | | Analyst: NSB |
| Benzene | ND | 0.025 | | mg/Kg | 1 | 5/19/2022 1:39:31 PM | 67544 |
| Toluene | ND | 0.049 | | mg/Kg | 1 | 5/19/2022 1:39:31 PM | 67544 |
| Ethylbenzene | ND | 0.049 | | mg/Kg | 1 | 5/19/2022 1:39:31 PM | 67544 |
| Xylenes, Total | ND | 0.098 | | mg/Kg | 1 | 5/19/2022 1:39:31 PM | 67544 |
| Surr: 4-Bromofluorobenzene | 95.2 | 70-130 | | %Rec | 1 | 5/19/2022 1:39:31 PM | 67544 |

Refer to the QC Summary report and sample login checklist for flagged QC data and preservation information.

| | | | | |
|--------------------|-----|--|----|---|
| Qualifiers: | * | Value exceeds Maximum Contaminant Level. | B | Analyte detected in the associated Method Blank |
| | D | Sample Diluted Due to Matrix | E | Estimated value |
| | H | Holding times for preparation or analysis exceeded | J | Analyte detected below quantitation limits |
| | ND | Not Detected at the Reporting Limit | P | Sample pH Not In Range |
| | PQL | Practical Quantitative Limit | RL | Reporting Limit |
| | S | % Recovery outside of range due to dilution or matrix interference | | |

Analytical Report

Lab Order **2205792**

Date Reported: 5/27/2022

Hall Environmental Analysis Laboratory, Inc.

CLIENT: Souder, Miller & Associates

Client Sample ID: SC-16

Project: Enterprise Poker Lake Discharge

Collection Date: 5/16/2022 10:44:00 AM

Lab ID: 2205792-002

Matrix: SOIL

Received Date: 5/18/2022 8:27:00 AM

| Analyses | Result | RL | Qual | Units | DF | Date Analyzed | Batch |
|--|--------|----------|------|-------|----|-----------------------|---------------------|
| EPA METHOD 300.0: ANIONS | | | | | | | Analyst: NAI |
| Chloride | 70 | 60 | | mg/Kg | 20 | 5/19/2022 10:00:46 PM | 67579 |
| EPA METHOD 8015M/D: DIESEL RANGE ORGANICS | | | | | | | Analyst: SB |
| Diesel Range Organics (DRO) | ND | 9.6 | | mg/Kg | 1 | 5/20/2022 1:07:28 PM | 67547 |
| Motor Oil Range Organics (MRO) | ND | 48 | | mg/Kg | 1 | 5/20/2022 1:07:28 PM | 67547 |
| Surr: DNOP | 85.9 | 51.1-141 | | %Rec | 1 | 5/20/2022 1:07:28 PM | 67547 |
| EPA METHOD 8015D: GASOLINE RANGE | | | | | | | Analyst: NSB |
| Gasoline Range Organics (GRO) | ND | 5.0 | | mg/Kg | 1 | 5/19/2022 2:50:26 PM | 67544 |
| Surr: BFB | 97.9 | 37.7-212 | | %Rec | 1 | 5/19/2022 2:50:26 PM | 67544 |
| EPA METHOD 8021B: VOLATILES | | | | | | | Analyst: NSB |
| Benzene | ND | 0.025 | | mg/Kg | 1 | 5/19/2022 2:50:26 PM | 67544 |
| Toluene | ND | 0.050 | | mg/Kg | 1 | 5/19/2022 2:50:26 PM | 67544 |
| Ethylbenzene | ND | 0.050 | | mg/Kg | 1 | 5/19/2022 2:50:26 PM | 67544 |
| Xylenes, Total | ND | 0.10 | | mg/Kg | 1 | 5/19/2022 2:50:26 PM | 67544 |
| Surr: 4-Bromofluorobenzene | 101 | 70-130 | | %Rec | 1 | 5/19/2022 2:50:26 PM | 67544 |

Refer to the QC Summary report and sample login checklist for flagged QC data and preservation information.

| | | | | |
|--------------------|-----|--|----|---|
| Qualifiers: | * | Value exceeds Maximum Contaminant Level. | B | Analyte detected in the associated Method Blank |
| | D | Sample Diluted Due to Matrix | E | Estimated value |
| | H | Holding times for preparation or analysis exceeded | J | Analyte detected below quantitation limits |
| | ND | Not Detected at the Reporting Limit | P | Sample pH Not In Range |
| | PQL | Practical Quantitative Limit | RL | Reporting Limit |
| | S | % Recovery outside of range due to dilution or matrix interference | | |

Analytical Report

Lab Order **2205792**

Date Reported: **5/27/2022**

Hall Environmental Analysis Laboratory, Inc.

CLIENT: Souder, Miller & Associates

Client Sample ID: SC-17

Project: Enterprise Poker Lake Discharge

Collection Date: 5/16/2022 10:49:00 AM

Lab ID: 2205792-003

Matrix: SOIL

Received Date: 5/18/2022 8:27:00 AM

| Analyses | Result | RL | Qual | Units | DF | Date Analyzed | Batch |
|--|--------|----------|------|-------|----|-----------------------|---------------------|
| EPA METHOD 300.0: ANIONS | | | | | | | Analyst: NAI |
| Chloride | 910 | 60 | | mg/Kg | 20 | 5/19/2022 10:13:06 PM | 67579 |
| EPA METHOD 8015M/D: DIESEL RANGE ORGANICS | | | | | | | Analyst: SB |
| Diesel Range Organics (DRO) | 410 | 9.7 | | mg/Kg | 1 | 5/20/2022 1:18:14 PM | 67547 |
| Motor Oil Range Organics (MRO) | 530 | 49 | | mg/Kg | 1 | 5/20/2022 1:18:14 PM | 67547 |
| Surr: DNOP | 88.5 | 51.1-141 | | %Rec | 1 | 5/20/2022 1:18:14 PM | 67547 |
| EPA METHOD 8015D: GASOLINE RANGE | | | | | | | Analyst: NSB |
| Gasoline Range Organics (GRO) | ND | 5.0 | | mg/Kg | 1 | 5/19/2022 3:14:06 PM | 67544 |
| Surr: BFB | 108 | 37.7-212 | | %Rec | 1 | 5/19/2022 3:14:06 PM | 67544 |
| EPA METHOD 8021B: VOLATILES | | | | | | | Analyst: NSB |
| Benzene | ND | 0.025 | | mg/Kg | 1 | 5/19/2022 3:14:06 PM | 67544 |
| Toluene | ND | 0.050 | | mg/Kg | 1 | 5/19/2022 3:14:06 PM | 67544 |
| Ethylbenzene | ND | 0.050 | | mg/Kg | 1 | 5/19/2022 3:14:06 PM | 67544 |
| Xylenes, Total | ND | 0.099 | | mg/Kg | 1 | 5/19/2022 3:14:06 PM | 67544 |
| Surr: 4-Bromofluorobenzene | 97.8 | 70-130 | | %Rec | 1 | 5/19/2022 3:14:06 PM | 67544 |

Refer to the QC Summary report and sample login checklist for flagged QC data and preservation information.

| | | | | |
|--------------------|-----|--|----|---|
| Qualifiers: | * | Value exceeds Maximum Contaminant Level. | B | Analyte detected in the associated Method Blank |
| | D | Sample Diluted Due to Matrix | E | Estimated value |
| | H | Holding times for preparation or analysis exceeded | J | Analyte detected below quantitation limits |
| | ND | Not Detected at the Reporting Limit | P | Sample pH Not In Range |
| | PQL | Practical Quantitative Limit | RL | Reporting Limit |
| | S | % Recovery outside of range due to dilution or matrix interference | | |

Analytical Report

Lab Order **2205792**

Date Reported: 5/27/2022

Hall Environmental Analysis Laboratory, Inc.

CLIENT: Souder, Miller & Associates

Client Sample ID: SC-18

Project: Enterprise Poker Lake Discharge

Collection Date: 5/16/2022 10:52:00 AM

Lab ID: 2205792-004

Matrix: SOIL

Received Date: 5/18/2022 8:27:00 AM

| Analyses | Result | RL | Qual | Units | DF | Date Analyzed | Batch |
|--|--------|----------|------|-------|----|-----------------------|---------------------|
| EPA METHOD 300.0: ANIONS | | | | | | | Analyst: NAI |
| Chloride | ND | 59 | | mg/Kg | 20 | 5/19/2022 10:25:27 PM | 67579 |
| EPA METHOD 8015M/D: DIESEL RANGE ORGANICS | | | | | | | Analyst: SB |
| Diesel Range Organics (DRO) | ND | 9.8 | | mg/Kg | 1 | 5/25/2022 3:03:35 PM | 67547 |
| Motor Oil Range Organics (MRO) | ND | 49 | | mg/Kg | 1 | 5/25/2022 3:03:35 PM | 67547 |
| Surr: DNOP | 126 | 51.1-141 | | %Rec | 1 | 5/25/2022 3:03:35 PM | 67547 |
| EPA METHOD 8015D: GASOLINE RANGE | | | | | | | Analyst: NSB |
| Gasoline Range Organics (GRO) | ND | 4.9 | | mg/Kg | 1 | 5/19/2022 3:37:46 PM | 67544 |
| Surr: BFB | 97.8 | 37.7-212 | | %Rec | 1 | 5/19/2022 3:37:46 PM | 67544 |
| EPA METHOD 8021B: VOLATILES | | | | | | | Analyst: NSB |
| Benzene | ND | 0.024 | | mg/Kg | 1 | 5/19/2022 3:37:46 PM | 67544 |
| Toluene | ND | 0.049 | | mg/Kg | 1 | 5/19/2022 3:37:46 PM | 67544 |
| Ethylbenzene | ND | 0.049 | | mg/Kg | 1 | 5/19/2022 3:37:46 PM | 67544 |
| Xylenes, Total | ND | 0.098 | | mg/Kg | 1 | 5/19/2022 3:37:46 PM | 67544 |
| Surr: 4-Bromofluorobenzene | 100 | 70-130 | | %Rec | 1 | 5/19/2022 3:37:46 PM | 67544 |

Refer to the QC Summary report and sample login checklist for flagged QC data and preservation information.

| | | | | |
|--------------------|-----|--|----|---|
| Qualifiers: | * | Value exceeds Maximum Contaminant Level. | B | Analyte detected in the associated Method Blank |
| | D | Sample Diluted Due to Matrix | E | Estimated value |
| | H | Holding times for preparation or analysis exceeded | J | Analyte detected below quantitation limits |
| | ND | Not Detected at the Reporting Limit | P | Sample pH Not In Range |
| | PQL | Practical Quantitative Limit | RL | Reporting Limit |
| | S | % Recovery outside of range due to dilution or matrix interference | | |

Analytical Report

Lab Order **2205792**

Date Reported: **5/27/2022**

Hall Environmental Analysis Laboratory, Inc.

CLIENT: Souder, Miller & Associates

Client Sample ID: SC-19

Project: Enterprise Poker Lake Discharge

Collection Date: 5/16/2022 10:51:00 AM

Lab ID: 2205792-005

Matrix: SOIL

Received Date: 5/18/2022 8:27:00 AM

| Analyses | Result | RL | Qual | Units | DF | Date Analyzed | Batch |
|--|--------|----------|------|-------|----|-----------------------|---------------------|
| EPA METHOD 300.0: ANIONS | | | | | | | Analyst: NAI |
| Chloride | ND | 60 | | mg/Kg | 20 | 5/19/2022 10:37:48 PM | 67579 |
| EPA METHOD 8015M/D: DIESEL RANGE ORGANICS | | | | | | | Analyst: SB |
| Diesel Range Organics (DRO) | ND | 9.8 | | mg/Kg | 1 | 5/20/2022 1:40:03 PM | 67547 |
| Motor Oil Range Organics (MRO) | ND | 49 | | mg/Kg | 1 | 5/20/2022 1:40:03 PM | 67547 |
| Surr: DNOP | 92.0 | 51.1-141 | | %Rec | 1 | 5/20/2022 1:40:03 PM | 67547 |
| EPA METHOD 8015D: GASOLINE RANGE | | | | | | | Analyst: NSB |
| Gasoline Range Organics (GRO) | ND | 4.9 | | mg/Kg | 1 | 5/19/2022 4:01:26 PM | 67544 |
| Surr: BFB | 93.8 | 37.7-212 | | %Rec | 1 | 5/19/2022 4:01:26 PM | 67544 |
| EPA METHOD 8021B: VOLATILES | | | | | | | Analyst: NSB |
| Benzene | ND | 0.024 | | mg/Kg | 1 | 5/19/2022 4:01:26 PM | 67544 |
| Toluene | ND | 0.049 | | mg/Kg | 1 | 5/19/2022 4:01:26 PM | 67544 |
| Ethylbenzene | ND | 0.049 | | mg/Kg | 1 | 5/19/2022 4:01:26 PM | 67544 |
| Xylenes, Total | ND | 0.098 | | mg/Kg | 1 | 5/19/2022 4:01:26 PM | 67544 |
| Surr: 4-Bromofluorobenzene | 96.7 | 70-130 | | %Rec | 1 | 5/19/2022 4:01:26 PM | 67544 |

Refer to the QC Summary report and sample login checklist for flagged QC data and preservation information.

| | | | | |
|--------------------|-----|--|----|---|
| Qualifiers: | * | Value exceeds Maximum Contaminant Level. | B | Analyte detected in the associated Method Blank |
| | D | Sample Diluted Due to Matrix | E | Estimated value |
| | H | Holding times for preparation or analysis exceeded | J | Analyte detected below quantitation limits |
| | ND | Not Detected at the Reporting Limit | P | Sample pH Not In Range |
| | PQL | Practical Quantitative Limit | RL | Reporting Limit |
| | S | % Recovery outside of range due to dilution or matrix interference | | |

Analytical Report

Lab Order **2205792**

Date Reported: **5/27/2022**

Hall Environmental Analysis Laboratory, Inc.

CLIENT: Souder, Miller & Associates

Client Sample ID: SC-20

Project: Enterprise Poker Lake Discharge

Collection Date: 5/16/2022 11:03:00 AM

Lab ID: 2205792-006

Matrix: SOIL

Received Date: 5/18/2022 8:27:00 AM

| Analyses | Result | RL | Qual | Units | DF | Date Analyzed | Batch |
|--|--------|----------|------|-------|----|-----------------------|---------------------|
| EPA METHOD 300.0: ANIONS | | | | | | | Analyst: NAI |
| Chloride | ND | 60 | | mg/Kg | 20 | 5/19/2022 11:39:33 PM | 67579 |
| EPA METHOD 8015M/D: DIESEL RANGE ORGANICS | | | | | | | Analyst: SB |
| Diesel Range Organics (DRO) | ND | 9.8 | | mg/Kg | 1 | 5/20/2022 1:50:47 PM | 67547 |
| Motor Oil Range Organics (MRO) | ND | 49 | | mg/Kg | 1 | 5/20/2022 1:50:47 PM | 67547 |
| Surr: DNOP | 86.2 | 51.1-141 | | %Rec | 1 | 5/20/2022 1:50:47 PM | 67547 |
| EPA METHOD 8015D: GASOLINE RANGE | | | | | | | Analyst: NSB |
| Gasoline Range Organics (GRO) | ND | 4.9 | | mg/Kg | 1 | 5/19/2022 4:25:09 PM | 67544 |
| Surr: BFB | 99.3 | 37.7-212 | | %Rec | 1 | 5/19/2022 4:25:09 PM | 67544 |
| EPA METHOD 8021B: VOLATILES | | | | | | | Analyst: NSB |
| Benzene | ND | 0.025 | | mg/Kg | 1 | 5/19/2022 4:25:09 PM | 67544 |
| Toluene | ND | 0.049 | | mg/Kg | 1 | 5/19/2022 4:25:09 PM | 67544 |
| Ethylbenzene | ND | 0.049 | | mg/Kg | 1 | 5/19/2022 4:25:09 PM | 67544 |
| Xylenes, Total | ND | 0.099 | | mg/Kg | 1 | 5/19/2022 4:25:09 PM | 67544 |
| Surr: 4-Bromofluorobenzene | 99.8 | 70-130 | | %Rec | 1 | 5/19/2022 4:25:09 PM | 67544 |

Refer to the QC Summary report and sample login checklist for flagged QC data and preservation information.

| | | | | |
|--------------------|-----|--|----|---|
| Qualifiers: | * | Value exceeds Maximum Contaminant Level. | B | Analyte detected in the associated Method Blank |
| | D | Sample Diluted Due to Matrix | E | Estimated value |
| | H | Holding times for preparation or analysis exceeded | J | Analyte detected below quantitation limits |
| | ND | Not Detected at the Reporting Limit | P | Sample pH Not In Range |
| | PQL | Practical Quantitative Limit | RL | Reporting Limit |
| | S | % Recovery outside of range due to dilution or matrix interference | | |

Analytical Report

Lab Order **2205792**

Date Reported: **5/27/2022**

Hall Environmental Analysis Laboratory, Inc.

CLIENT: Souder, Miller & Associates

Client Sample ID: SC-21

Project: Enterprise Poker Lake Discharge

Collection Date: 5/16/2022 11:01:00 AM

Lab ID: 2205792-007

Matrix: SOIL

Received Date: 5/18/2022 8:27:00 AM

| Analyses | Result | RL | Qual | Units | DF | Date Analyzed | Batch |
|--|--------|----------|------|-------|----|-----------------------|---------------------|
| EPA METHOD 300.0: ANIONS | | | | | | | Analyst: NAI |
| Chloride | ND | 60 | | mg/Kg | 20 | 5/19/2022 11:51:54 PM | 67579 |
| EPA METHOD 8015M/D: DIESEL RANGE ORGANICS | | | | | | | Analyst: SB |
| Diesel Range Organics (DRO) | ND | 9.4 | | mg/Kg | 1 | 5/20/2022 2:01:34 PM | 67547 |
| Motor Oil Range Organics (MRO) | ND | 47 | | mg/Kg | 1 | 5/20/2022 2:01:34 PM | 67547 |
| Surr: DNOP | 79.5 | 51.1-141 | | %Rec | 1 | 5/20/2022 2:01:34 PM | 67547 |
| EPA METHOD 8015D: GASOLINE RANGE | | | | | | | Analyst: NSB |
| Gasoline Range Organics (GRO) | ND | 4.9 | | mg/Kg | 1 | 5/19/2022 5:59:57 PM | 67544 |
| Surr: BFB | 96.7 | 37.7-212 | | %Rec | 1 | 5/19/2022 5:59:57 PM | 67544 |
| EPA METHOD 8021B: VOLATILES | | | | | | | Analyst: NSB |
| Benzene | ND | 0.024 | | mg/Kg | 1 | 5/19/2022 5:59:57 PM | 67544 |
| Toluene | ND | 0.049 | | mg/Kg | 1 | 5/19/2022 5:59:57 PM | 67544 |
| Ethylbenzene | ND | 0.049 | | mg/Kg | 1 | 5/19/2022 5:59:57 PM | 67544 |
| Xylenes, Total | ND | 0.098 | | mg/Kg | 1 | 5/19/2022 5:59:57 PM | 67544 |
| Surr: 4-Bromofluorobenzene | 99.3 | 70-130 | | %Rec | 1 | 5/19/2022 5:59:57 PM | 67544 |

Refer to the QC Summary report and sample login checklist for flagged QC data and preservation information.

| | | | | |
|--------------------|-----|--|----|---|
| Qualifiers: | * | Value exceeds Maximum Contaminant Level. | B | Analyte detected in the associated Method Blank |
| | D | Sample Diluted Due to Matrix | E | Estimated value |
| | H | Holding times for preparation or analysis exceeded | J | Analyte detected below quantitation limits |
| | ND | Not Detected at the Reporting Limit | P | Sample pH Not In Range |
| | PQL | Practical Quantitative Limit | RL | Reporting Limit |
| | S | % Recovery outside of range due to dilution or matrix interference | | |

Analytical Report

Lab Order **2205792**

Date Reported: **5/27/2022**

Hall Environmental Analysis Laboratory, Inc.

CLIENT: Souder, Miller & Associates

Client Sample ID: SC-22

Project: Enterprise Poker Lake Discharge

Collection Date: 5/16/2022 10:58:00 AM

Lab ID: 2205792-008

Matrix: SOIL

Received Date: 5/18/2022 8:27:00 AM

| Analyses | Result | RL | Qual | Units | DF | Date Analyzed | Batch |
|--|--------|----------|------|-------|----|-----------------------|---------------------|
| EPA METHOD 300.0: ANIONS | | | | | | | Analyst: NAI |
| Chloride | ND | 60 | | mg/Kg | 20 | 5/20/2022 12:04:15 AM | 67579 |
| EPA METHOD 8015M/D: DIESEL RANGE ORGANICS | | | | | | | Analyst: SB |
| Diesel Range Organics (DRO) | ND | 9.5 | | mg/Kg | 1 | 5/20/2022 2:12:18 PM | 67547 |
| Motor Oil Range Organics (MRO) | ND | 47 | | mg/Kg | 1 | 5/20/2022 2:12:18 PM | 67547 |
| Surr: DNOP | 59.2 | 51.1-141 | | %Rec | 1 | 5/20/2022 2:12:18 PM | 67547 |
| EPA METHOD 8015D: GASOLINE RANGE | | | | | | | Analyst: NSB |
| Gasoline Range Organics (GRO) | ND | 4.8 | | mg/Kg | 1 | 5/19/2022 6:23:34 PM | 67544 |
| Surr: BFB | 96.7 | 37.7-212 | | %Rec | 1 | 5/19/2022 6:23:34 PM | 67544 |
| EPA METHOD 8021B: VOLATILES | | | | | | | Analyst: NSB |
| Benzene | ND | 0.024 | | mg/Kg | 1 | 5/19/2022 6:23:34 PM | 67544 |
| Toluene | ND | 0.048 | | mg/Kg | 1 | 5/19/2022 6:23:34 PM | 67544 |
| Ethylbenzene | ND | 0.048 | | mg/Kg | 1 | 5/19/2022 6:23:34 PM | 67544 |
| Xylenes, Total | ND | 0.097 | | mg/Kg | 1 | 5/19/2022 6:23:34 PM | 67544 |
| Surr: 4-Bromofluorobenzene | 98.9 | 70-130 | | %Rec | 1 | 5/19/2022 6:23:34 PM | 67544 |

Refer to the QC Summary report and sample login checklist for flagged QC data and preservation information.

| | | | | |
|--------------------|-----|--|----|---|
| Qualifiers: | * | Value exceeds Maximum Contaminant Level. | B | Analyte detected in the associated Method Blank |
| | D | Sample Diluted Due to Matrix | E | Estimated value |
| | H | Holding times for preparation or analysis exceeded | J | Analyte detected below quantitation limits |
| | ND | Not Detected at the Reporting Limit | P | Sample pH Not In Range |
| | PQL | Practical Quantitative Limit | RL | Reporting Limit |
| | S | % Recovery outside of range due to dilution or matrix interference | | |

Analytical Report

Lab Order **2205792**

Date Reported: **5/27/2022**

Hall Environmental Analysis Laboratory, Inc.

CLIENT: Souder, Miller & Associates

Client Sample ID: SC-23

Project: Enterprise Poker Lake Discharge

Collection Date: 5/16/2022 10:57:00 AM

Lab ID: 2205792-009

Matrix: SOIL

Received Date: 5/18/2022 8:27:00 AM

| Analyses | Result | RL | Qual | Units | DF | Date Analyzed | Batch |
|--|--------|----------|------|-------|----|-----------------------|---------------------|
| EPA METHOD 300.0: ANIONS | | | | | | | Analyst: NAI |
| Chloride | ND | 60 | | mg/Kg | 20 | 5/20/2022 12:16:36 AM | 67579 |
| EPA METHOD 8015M/D: DIESEL RANGE ORGANICS | | | | | | | Analyst: SB |
| Diesel Range Organics (DRO) | ND | 9.8 | | mg/Kg | 1 | 5/20/2022 2:23:04 PM | 67547 |
| Motor Oil Range Organics (MRO) | ND | 49 | | mg/Kg | 1 | 5/20/2022 2:23:04 PM | 67547 |
| Surr: DNOP | 90.0 | 51.1-141 | | %Rec | 1 | 5/20/2022 2:23:04 PM | 67547 |
| EPA METHOD 8015D: GASOLINE RANGE | | | | | | | Analyst: NSB |
| Gasoline Range Organics (GRO) | ND | 5.0 | | mg/Kg | 1 | 5/19/2022 6:47:17 PM | 67544 |
| Surr: BFB | 98.6 | 37.7-212 | | %Rec | 1 | 5/19/2022 6:47:17 PM | 67544 |
| EPA METHOD 8021B: VOLATILES | | | | | | | Analyst: NSB |
| Benzene | ND | 0.025 | | mg/Kg | 1 | 5/19/2022 6:47:17 PM | 67544 |
| Toluene | ND | 0.050 | | mg/Kg | 1 | 5/19/2022 6:47:17 PM | 67544 |
| Ethylbenzene | ND | 0.050 | | mg/Kg | 1 | 5/19/2022 6:47:17 PM | 67544 |
| Xylenes, Total | ND | 0.10 | | mg/Kg | 1 | 5/19/2022 6:47:17 PM | 67544 |
| Surr: 4-Bromofluorobenzene | 102 | 70-130 | | %Rec | 1 | 5/19/2022 6:47:17 PM | 67544 |

Refer to the QC Summary report and sample login checklist for flagged QC data and preservation information.

| | | | | |
|--------------------|-----|--|----|---|
| Qualifiers: | * | Value exceeds Maximum Contaminant Level. | B | Analyte detected in the associated Method Blank |
| | D | Sample Diluted Due to Matrix | E | Estimated value |
| | H | Holding times for preparation or analysis exceeded | J | Analyte detected below quantitation limits |
| | ND | Not Detected at the Reporting Limit | P | Sample pH Not In Range |
| | PQL | Practical Quantitative Limit | RL | Reporting Limit |
| | S | % Recovery outside of range due to dilution or matrix interference | | |

QC SUMMARY REPORT

Hall Environmental Analysis Laboratory, Inc.

WO#: 2205792

27-May-22

Client: Souder, Miller & Associates
Project: Enterprise Poker Lake Discharge

| Sample ID: MB-67579 | SampType: mblk | TestCode: EPA Method 300.0: Anions | | | | | | | | |
|-----------------------------|---------------------------------|---|---------------------|-------------|------|----------|-----------|------|----------|------|
| Client ID: PBS | Batch ID: 67579 | RunNo: 88138 | | | | | | | | |
| Prep Date: 5/19/2022 | Analysis Date: 5/19/2022 | SeqNo: 3125317 | Units: mg/Kg | | | | | | | |
| Analyte | Result | PQL | SPK value | SPK Ref Val | %REC | LowLimit | HighLimit | %RPD | RPDLimit | Qual |
| Chloride | ND | 1.5 | | | | | | | | |

| Sample ID: LCS-67579 | SampType: lcs | TestCode: EPA Method 300.0: Anions | | | | | | | | |
|-----------------------------|---------------------------------|---|---------------------|-------------|------|----------|-----------|------|----------|------|
| Client ID: LCSS | Batch ID: 67579 | RunNo: 88138 | | | | | | | | |
| Prep Date: 5/19/2022 | Analysis Date: 5/19/2022 | SeqNo: 3125318 | Units: mg/Kg | | | | | | | |
| Analyte | Result | PQL | SPK value | SPK Ref Val | %REC | LowLimit | HighLimit | %RPD | RPDLimit | Qual |
| Chloride | 14 | 1.5 | 15.00 | 0 | 96.5 | 90 | 110 | | | |

Qualifiers:

- * Value exceeds Maximum Contaminant Level.
- D Sample Diluted Due to Matrix
- H Holding times for preparation or analysis exceeded
- ND Not Detected at the Reporting Limit
- PQL Practical Quantitative Limit
- S % Recovery outside of range due to dilution or matrix interference
- B Analyte detected in the associated Method Blank
- E Estimated value
- J Analyte detected below quantitation limits
- P Sample pH Not In Range
- RL Reporting Limit

QC SUMMARY REPORT

Hall Environmental Analysis Laboratory, Inc.

WO#: 2205792

27-May-22

Client: Souder, Miller & Associates
Project: Enterprise Poker Lake Discharge

| Sample ID: LCS-67548 | SampType: LCS | | TestCode: EPA Method 8015M/D: Diesel Range Organics | | | | | | | |
|-----------------------------|---------------------------------|-----|--|-------------|------|----------|--------------------|------|----------|------|
| Client ID: LCSS | Batch ID: 67548 | | RunNo: 88170 | | | | | | | |
| Prep Date: 5/19/2022 | Analysis Date: 5/20/2022 | | SeqNo: 3126893 | | | | Units: %Rec | | | |
| Analyte | Result | PQL | SPK value | SPK Ref Val | %REC | LowLimit | HighLimit | %RPD | RPDLimit | Qual |
| Surr: DNOP | 5.0 | | 5.000 | | 101 | 51.1 | 141 | | | |

| Sample ID: MB-67548 | SampType: MBLK | | TestCode: EPA Method 8015M/D: Diesel Range Organics | | | | | | | |
|-----------------------------|---------------------------------|-----|--|-------------|------|----------|--------------------|------|----------|------|
| Client ID: PBS | Batch ID: 67548 | | RunNo: 88170 | | | | | | | |
| Prep Date: 5/19/2022 | Analysis Date: 5/20/2022 | | SeqNo: 3126897 | | | | Units: %Rec | | | |
| Analyte | Result | PQL | SPK value | SPK Ref Val | %REC | LowLimit | HighLimit | %RPD | RPDLimit | Qual |
| Surr: DNOP | 11 | | 10.00 | | 112 | 51.1 | 141 | | | |

| Sample ID: LCS-67547 | SampType: LCS | | TestCode: EPA Method 8015M/D: Diesel Range Organics | | | | | | | |
|-----------------------------|---------------------------------|-----|--|-------------|------|----------|---------------------|------|----------|------|
| Client ID: LCSS | Batch ID: 67547 | | RunNo: 88170 | | | | | | | |
| Prep Date: 5/18/2022 | Analysis Date: 5/20/2022 | | SeqNo: 3126924 | | | | Units: mg/Kg | | | |
| Analyte | Result | PQL | SPK value | SPK Ref Val | %REC | LowLimit | HighLimit | %RPD | RPDLimit | Qual |
| Diesel Range Organics (DRO) | 46 | 10 | 50.00 | 0 | 91.7 | 64.4 | 127 | | | |
| Surr: DNOP | 4.4 | | 5.000 | | 87.3 | 51.1 | 141 | | | |

| Sample ID: MB-67547 | SampType: MBLK | | TestCode: EPA Method 8015M/D: Diesel Range Organics | | | | | | | |
|--------------------------------|---------------------------------|-----|--|-------------|------|----------|---------------------|------|----------|------|
| Client ID: PBS | Batch ID: 67547 | | RunNo: 88170 | | | | | | | |
| Prep Date: 5/18/2022 | Analysis Date: 5/20/2022 | | SeqNo: 3126925 | | | | Units: mg/Kg | | | |
| Analyte | Result | PQL | SPK value | SPK Ref Val | %REC | LowLimit | HighLimit | %RPD | RPDLimit | Qual |
| Diesel Range Organics (DRO) | ND | 10 | | | | | | | | |
| Motor Oil Range Organics (MRO) | ND | 50 | | | | | | | | |
| Surr: DNOP | 11 | | 10.00 | | 113 | 51.1 | 141 | | | |

| Sample ID: LCS-67667 | SampType: LCS | | TestCode: EPA Method 8015M/D: Diesel Range Organics | | | | | | | |
|-----------------------------|---------------------------------|-----|--|-------------|------|----------|--------------------|------|----------|------|
| Client ID: LCSS | Batch ID: 67667 | | RunNo: 88262 | | | | | | | |
| Prep Date: 5/24/2022 | Analysis Date: 5/25/2022 | | SeqNo: 3129962 | | | | Units: %Rec | | | |
| Analyte | Result | PQL | SPK value | SPK Ref Val | %REC | LowLimit | HighLimit | %RPD | RPDLimit | Qual |
| Surr: DNOP | 6.2 | | 5.000 | | 124 | 51.1 | 141 | | | |

| Sample ID: LCS-67670 | SampType: LCS | | TestCode: EPA Method 8015M/D: Diesel Range Organics | | | | | | | |
|-----------------------------|---------------------------------|-----|--|-------------|------|----------|--------------------|------|----------|------|
| Client ID: LCSS | Batch ID: 67670 | | RunNo: 88262 | | | | | | | |
| Prep Date: 5/24/2022 | Analysis Date: 5/25/2022 | | SeqNo: 3129963 | | | | Units: %Rec | | | |
| Analyte | Result | PQL | SPK value | SPK Ref Val | %REC | LowLimit | HighLimit | %RPD | RPDLimit | Qual |
| Surr: DNOP | 6.5 | | 5.000 | | 129 | 51.1 | 141 | | | |

Qualifiers:

- * Value exceeds Maximum Contaminant Level.
- D Sample Diluted Due to Matrix
- H Holding times for preparation or analysis exceeded
- ND Not Detected at the Reporting Limit
- PQL Practical Quantitative Limit
- S % Recovery outside of range due to dilution or matrix interference
- B Analyte detected in the associated Method Blank
- E Estimated value
- J Analyte detected below quantitation limits
- P Sample pH Not In Range
- RL Reporting Limit

QC SUMMARY REPORT

Hall Environmental Analysis Laboratory, Inc.

WO#: 2205792

27-May-22

Client: Souder, Miller & Associates
Project: Enterprise Poker Lake Discharge

| Sample ID: MB-67667 | SampType: MBLK | TestCode: EPA Method 8015M/D: Diesel Range Organics | | | | | | | | |
|-----------------------------|---------------------------------|--|--------------------|-------------|------|----------|-----------|------|----------|------|
| Client ID: PBS | Batch ID: 67667 | RunNo: 88262 | | | | | | | | |
| Prep Date: 5/24/2022 | Analysis Date: 5/25/2022 | SeqNo: 3129964 | Units: %Rec | | | | | | | |
| Analyte | Result | PQL | SPK value | SPK Ref Val | %REC | LowLimit | HighLimit | %RPD | RPDLimit | Qual |
| Surr: DNOP | 9.3 | | 10.00 | | 93.2 | 51.1 | 141 | | | |

| Sample ID: MB-67670 | SampType: MBLK | TestCode: EPA Method 8015M/D: Diesel Range Organics | | | | | | | | |
|-----------------------------|---------------------------------|--|--------------------|-------------|------|----------|-----------|------|----------|------|
| Client ID: PBS | Batch ID: 67670 | RunNo: 88262 | | | | | | | | |
| Prep Date: 5/24/2022 | Analysis Date: 5/25/2022 | SeqNo: 3129965 | Units: %Rec | | | | | | | |
| Analyte | Result | PQL | SPK value | SPK Ref Val | %REC | LowLimit | HighLimit | %RPD | RPDLimit | Qual |
| Surr: DNOP | 9.7 | | 10.00 | | 96.8 | 51.1 | 141 | | | |

Qualifiers:

- * Value exceeds Maximum Contaminant Level.
- D Sample Diluted Due to Matrix
- H Holding times for preparation or analysis exceeded
- ND Not Detected at the Reporting Limit
- PQL Practical Quantitative Limit
- S % Recovery outside of range due to dilution or matrix interference
- B Analyte detected in the associated Method Blank
- E Estimated value
- J Analyte detected below quantitation limits
- P Sample pH Not In Range
- RL Reporting Limit

QC SUMMARY REPORT

Hall Environmental Analysis Laboratory, Inc.

WO#: 2205792

27-May-22

Client: Souder, Miller & Associates
Project: Enterprise Poker Lake Discharge

| Sample ID: mb-67544 | SampType: MBLK | | TestCode: EPA Method 8015D: Gasoline Range | | | | | | | |
|-------------------------------|---------------------------------|-----|---|-------------|---------------------|----------|-----------|------|----------|------|
| Client ID: PBS | Batch ID: 67544 | | RunNo: 88115 | | | | | | | |
| Prep Date: 5/18/2022 | Analysis Date: 5/19/2022 | | SeqNo: 3124661 | | Units: mg/Kg | | | | | |
| Analyte | Result | PQL | SPK value | SPK Ref Val | %REC | LowLimit | HighLimit | %RPD | RPDLimit | Qual |
| Gasoline Range Organics (GRO) | ND | 5.0 | | | | | | | | |
| Surr: BFB | 960 | | 1000 | | 96.3 | 37.7 | 212 | | | |

| Sample ID: lcs-67544 | SampType: LCS | | TestCode: EPA Method 8015D: Gasoline Range | | | | | | | |
|-------------------------------|---------------------------------|-----|---|-------------|---------------------|----------|-----------|------|----------|------|
| Client ID: LCSS | Batch ID: 67544 | | RunNo: 88115 | | | | | | | |
| Prep Date: 5/18/2022 | Analysis Date: 5/19/2022 | | SeqNo: 3124662 | | Units: mg/Kg | | | | | |
| Analyte | Result | PQL | SPK value | SPK Ref Val | %REC | LowLimit | HighLimit | %RPD | RPDLimit | Qual |
| Gasoline Range Organics (GRO) | 28 | 5.0 | 25.00 | 0 | 113 | 72.3 | 137 | | | |
| Surr: BFB | 2200 | | 1000 | | 223 | 37.7 | 212 | | | S |

Qualifiers:

- * Value exceeds Maximum Contaminant Level.
- D Sample Diluted Due to Matrix
- H Holding times for preparation or analysis exceeded
- ND Not Detected at the Reporting Limit
- PQL Practical Quantitative Limit
- S % Recovery outside of range due to dilution or matrix interference
- B Analyte detected in the associated Method Blank
- E Estimated value
- J Analyte detected below quantitation limits
- P Sample pH Not In Range
- RL Reporting Limit

QC SUMMARY REPORT

Hall Environmental Analysis Laboratory, Inc.

WO#: 2205792

27-May-22

Client: Souder, Miller & Associates
Project: Enterprise Poker Lake Discharge

| Sample ID: mb-67544 | SampType: MBLK | TestCode: EPA Method 8021B: Volatiles | | | | | | | | |
|-----------------------------|---------------------------------|--|---------------------|-------------|------|----------|-----------|------|----------|------|
| Client ID: PBS | Batch ID: 67544 | RunNo: 88115 | | | | | | | | |
| Prep Date: 5/18/2022 | Analysis Date: 5/19/2022 | SeqNo: 3124723 | Units: mg/Kg | | | | | | | |
| Analyte | Result | PQL | SPK value | SPK Ref Val | %REC | LowLimit | HighLimit | %RPD | RPDLimit | Qual |
| Benzene | ND | 0.025 | | | | | | | | |
| Toluene | ND | 0.050 | | | | | | | | |
| Ethylbenzene | ND | 0.050 | | | | | | | | |
| Xylenes, Total | ND | 0.10 | | | | | | | | |
| Surr: 4-Bromofluorobenzene | 0.97 | | 1.000 | | 97.0 | 70 | 130 | | | |

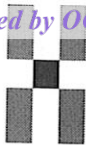
| Sample ID: LCS-67544 | SampType: LCS | TestCode: EPA Method 8021B: Volatiles | | | | | | | | |
|-----------------------------|---------------------------------|--|---------------------|-------------|------|----------|-----------|------|----------|------|
| Client ID: LCSS | Batch ID: 67544 | RunNo: 88115 | | | | | | | | |
| Prep Date: 5/18/2022 | Analysis Date: 5/19/2022 | SeqNo: 3124728 | Units: mg/Kg | | | | | | | |
| Analyte | Result | PQL | SPK value | SPK Ref Val | %REC | LowLimit | HighLimit | %RPD | RPDLimit | Qual |
| Benzene | 0.94 | 0.025 | 1.000 | 0 | 94.0 | 80 | 120 | | | |
| Toluene | 0.97 | 0.050 | 1.000 | 0 | 97.0 | 80 | 120 | | | |
| Ethylbenzene | 0.98 | 0.050 | 1.000 | 0 | 97.6 | 80 | 120 | | | |
| Xylenes, Total | 2.9 | 0.10 | 3.000 | 0 | 97.3 | 80 | 120 | | | |
| Surr: 4-Bromofluorobenzene | 1.0 | | 1.000 | | 103 | 70 | 130 | | | |

| Sample ID: 2205792-001ams | SampType: MS | TestCode: EPA Method 8021B: Volatiles | | | | | | | | |
|----------------------------------|---------------------------------|--|---------------------|-------------|------|----------|-----------|------|----------|------|
| Client ID: SC-15 | Batch ID: 67544 | RunNo: 88115 | | | | | | | | |
| Prep Date: 5/18/2022 | Analysis Date: 5/19/2022 | SeqNo: 3124763 | Units: mg/Kg | | | | | | | |
| Analyte | Result | PQL | SPK value | SPK Ref Val | %REC | LowLimit | HighLimit | %RPD | RPDLimit | Qual |
| Benzene | 0.91 | 0.025 | 0.9960 | 0 | 91.3 | 68.8 | 120 | | | |
| Toluene | 0.94 | 0.050 | 0.9960 | 0 | 94.4 | 73.6 | 124 | | | |
| Ethylbenzene | 0.95 | 0.050 | 0.9960 | 0 | 95.2 | 72.7 | 129 | | | |
| Xylenes, Total | 2.9 | 0.10 | 2.988 | 0 | 96.1 | 75.7 | 126 | | | |
| Surr: 4-Bromofluorobenzene | 1.0 | | 0.9960 | | 103 | 70 | 130 | | | |

| Sample ID: 2205792-001amsd | SampType: MSD | TestCode: EPA Method 8021B: Volatiles | | | | | | | | |
|-----------------------------------|---------------------------------|--|---------------------|-------------|------|----------|-----------|------|----------|------|
| Client ID: SC-15 | Batch ID: 67544 | RunNo: 88115 | | | | | | | | |
| Prep Date: 5/18/2022 | Analysis Date: 5/19/2022 | SeqNo: 3124777 | Units: mg/Kg | | | | | | | |
| Analyte | Result | PQL | SPK value | SPK Ref Val | %REC | LowLimit | HighLimit | %RPD | RPDLimit | Qual |
| Benzene | 0.93 | 0.025 | 0.9862 | 0 | 94.6 | 68.8 | 120 | 2.64 | 20 | |
| Toluene | 0.97 | 0.049 | 0.9862 | 0 | 98.4 | 73.6 | 124 | 3.15 | 20 | |
| Ethylbenzene | 0.98 | 0.049 | 0.9862 | 0 | 99.9 | 72.7 | 129 | 3.79 | 20 | |
| Xylenes, Total | 3.0 | 0.099 | 2.959 | 0 | 101 | 75.7 | 126 | 4.18 | 20 | |
| Surr: 4-Bromofluorobenzene | 1.0 | | 0.9862 | | 101 | 70 | 130 | 0 | 0 | |

Qualifiers:

- * Value exceeds Maximum Contaminant Level.
- D Sample Diluted Due to Matrix
- H Holding times for preparation or analysis exceeded
- ND Not Detected at the Reporting Limit
- PQL Practical Quantitative Limit
- S % Recovery outside of range due to dilution or matrix interference
- B Analyte detected in the associated Method Blank
- E Estimated value
- J Analyte detected below quantitation limits
- P Sample pH Not In Range
- RL Reporting Limit



**ENVIRONMENTAL
ANALYSIS
LABORATORY**

Hall Environmental Analysis Laboratory
4901 Hawkins NE
Albuquerque, NM 87109
TEL: 505-345-3975 FAX: 505-345-4107
Website: www.hallenvironmental.com

Sample Log-In Check List

Client Name: **Souder, Miller & Associates**

Work Order Number: **2205792**

RcptNo: 1

Received By: **Joseph Alderette** 5/17/2022 8:27:00 AM

Completed By: **Desiree Dominguez** 5/18/2022 8:51:03 AM

Reviewed By: **KDC 5.18.22**

Handwritten initials/signature

Chain of Custody

- 1. Is Chain of Custody complete? Yes No Not Present
- 2. How was the sample delivered? Courier

Log In

- 3. Was an attempt made to cool the samples? Yes No NA
- 4. Were all samples received at a temperature of >0° C to 6.0°C Yes No NA
- 5. Sample(s) in proper container(s)? Yes No
- 6. Sufficient sample volume for indicated test(s)? Yes No
- 7. Are samples (except VOA and ONG) properly preserved? Yes No
- 8. Was preservative added to bottles? Yes No NA
- 9. Received at least 1 vial with headspace <1/4" for AQ VOA? Yes No NA
- 10. Were any sample containers received broken? Yes No
- 11. Does paperwork match bottle labels? (Note discrepancies on chain of custody) Yes No
- 12. Are matrices correctly identified on Chain of Custody? Yes No
- 13. Is it clear what analyses were requested? Yes No
- 14. Were all holding times able to be met? (If no, notify customer for authorization.) Yes No

of preserved bottles checked for pH:
(<2 or >12 unless noted)

Adjusted?

Checked by: **JA 5/18/22**

Special Handling (if applicable)

- 15. Was client notified of all discrepancies with this order? Yes No NA

Person Notified: _____ Date: _____
 By Whom: _____ Via: eMail Phone Fax In Person
 Regarding: _____
 Client Instructions: _____

16. Additional remarks:

17. Cooler Information

| Cooler No | Temp °C | Condition | Seal Intact | Seal No | Seal Date | Signed By |
|-----------|---------|-----------|-------------|---------|-----------|-----------|
| 1 | 5.5 | Good | | | | |



Hall Environmental Analysis Laboratory
4901 Hawkins NE
Albuquerque, NM 87109
TEL: 505-345-3975 FAX: 505-345-4107
Website: www.hallenvironmental.com

June 07, 2022

Heather Woods
Souder, Miller & Associates
201 S Halagueno
Carlsbad, NM 88221
TEL: (575) 689-8801
FAX: (505) 327-1496

RE: Enterprise Poker Lake Discharge

OrderNo.: 2205D07

Dear Heather Woods:

Hall Environmental Analysis Laboratory received 1 sample(s) on 5/28/2022 for the analyses presented in the following report.

These were analyzed according to EPA procedures or equivalent. To access our accredited tests please go to www.hallenvironmental.com or the state specific web sites. In order to properly interpret your results, it is imperative that you review this report in its entirety. See the sample checklist and/or the Chain of Custody for information regarding the sample receipt temperature and preservation. Data qualifiers or a narrative will be provided if the sample analysis or analytical quality control parameters require a flag. When necessary, data qualifiers are provided on both the sample analysis report and the QC summary report, both sections should be reviewed. All samples are reported, as received, unless otherwise indicated. Lab measurement of analytes considered field parameters that require analysis within 15 minutes of sampling such as pH and residual chlorine are qualified as being analyzed outside of the recommended holding time.

Please don't hesitate to contact HEAL for any additional information or clarifications.

ADHS Cert #AZ0682 -- NMED-DWB Cert #NM9425 -- NMED-Micro Cert #NM0901

Sincerely,

A handwritten signature in black ink, appearing to read "Andy Freeman", is written over a white background.

Andy Freeman
Laboratory Manager
4901 Hawkins NE
Albuquerque, NM 87109

Analytical Report

Lab Order **2205D07**

Date Reported: **6/7/2022**

Hall Environmental Analysis Laboratory, Inc.

CLIENT: Souder, Miller & Associates

Client Sample ID: SC-24

Project: Enterprise Poker Lake Discharge

Collection Date: 5/27/2022 9:08:00 AM

Lab ID: 2205D07-001

Matrix: SOIL

Received Date: 5/28/2022 8:00:00 AM

| Analyses | Result | RL | Qual | Units | DF | Date Analyzed | Batch |
|--|--------|----------|------|-------|----|----------------------|---------------------|
| EPA METHOD 300.0: ANIONS | | | | | | | Analyst: NAI |
| Chloride | ND | 60 | | mg/Kg | 20 | 6/2/2022 8:38:01 PM | 67872 |
| EPA METHOD 8015M/D: DIESEL RANGE ORGANICS | | | | | | | Analyst: ED |
| Diesel Range Organics (DRO) | ND | 10 | | mg/Kg | 1 | 6/2/2022 5:54:30 PM | 67802 |
| Motor Oil Range Organics (MRO) | ND | 50 | | mg/Kg | 1 | 6/2/2022 5:54:30 PM | 67802 |
| Surr: DNOP | 85.9 | 51.1-141 | | %Rec | 1 | 6/2/2022 5:54:30 PM | 67802 |
| EPA METHOD 8015D: GASOLINE RANGE | | | | | | | Analyst: RAA |
| Gasoline Range Organics (GRO) | ND | 4.9 | | mg/Kg | 1 | 5/31/2022 4:28:00 PM | 67777 |
| Surr: BFB | 84.7 | 37.7-212 | | %Rec | 1 | 5/31/2022 4:28:00 PM | 67777 |
| EPA METHOD 8021B: VOLATILES | | | | | | | Analyst: RAA |
| Benzene | ND | 0.025 | | mg/Kg | 1 | 5/31/2022 4:28:00 PM | 67777 |
| Toluene | ND | 0.049 | | mg/Kg | 1 | 5/31/2022 4:28:00 PM | 67777 |
| Ethylbenzene | ND | 0.049 | | mg/Kg | 1 | 5/31/2022 4:28:00 PM | 67777 |
| Xylenes, Total | ND | 0.098 | | mg/Kg | 1 | 5/31/2022 4:28:00 PM | 67777 |
| Surr: 4-Bromofluorobenzene | 85.4 | 70-130 | | %Rec | 1 | 5/31/2022 4:28:00 PM | 67777 |

Refer to the QC Summary report and sample login checklist for flagged QC data and preservation information.

| | | | | |
|--------------------|-----|--|----|---|
| Qualifiers: | * | Value exceeds Maximum Contaminant Level. | B | Analyte detected in the associated Method Blank |
| | D | Sample Diluted Due to Matrix | E | Estimated value |
| | H | Holding times for preparation or analysis exceeded | J | Analyte detected below quantitation limits |
| | ND | Not Detected at the Reporting Limit | P | Sample pH Not In Range |
| | PQL | Practical Quantitative Limit | RL | Reporting Limit |
| | S | % Recovery outside of range due to dilution or matrix interference | | |

QC SUMMARY REPORT

Hall Environmental Analysis Laboratory, Inc.

WO#: 2205D07

07-Jun-22

Client: Souder, Miller & Associates
Project: Enterprise Poker Lake Discharge

| Sample ID: LCS-67872 | SampType: lcs | TestCode: EPA Method 300.0: Anions | | | | | | | | |
|-----------------------------|--------------------------------|---|---------------------|-------------|------|----------|-----------|------|----------|------|
| Client ID: LCSS | Batch ID: 67872 | RunNo: 88449 | | | | | | | | |
| Prep Date: 6/2/2022 | Analysis Date: 6/2/2022 | SeqNo: 3138047 | Units: mg/Kg | | | | | | | |
| Analyte | Result | PQL | SPK value | SPK Ref Val | %REC | LowLimit | HighLimit | %RPD | RPDLimit | Qual |
| Chloride | 14 | 1.5 | 15.00 | 0 | 92.9 | 90 | 110 | | | |

Qualifiers:

- * Value exceeds Maximum Contaminant Level.
- D Sample Diluted Due to Matrix
- H Holding times for preparation or analysis exceeded
- ND Not Detected at the Reporting Limit
- PQL Practical Quantitative Limit
- S % Recovery outside of range due to dilution or matrix interference
- B Analyte detected in the associated Method Blank
- E Estimated value
- J Analyte detected below quantitation limits
- P Sample pH Not In Range
- RL Reporting Limit

QC SUMMARY REPORT

Hall Environmental Analysis Laboratory, Inc.

WO#: 2205D07

07-Jun-22

Client: Souder, Miller & Associates
Project: Enterprise Poker Lake Discharge

| Sample ID: MB-67802 | SampType: MBLK | TestCode: EPA Method 8015M/D: Diesel Range Organics | | | | | | | | |
|--------------------------------|--------------------------------|--|---------------------|-------------|------|----------|-----------|------|----------|------|
| Client ID: PBS | Batch ID: 67802 | RunNo: 88418 | | | | | | | | |
| Prep Date: 5/31/2022 | Analysis Date: 6/1/2022 | SeqNo: 3136875 | Units: mg/Kg | | | | | | | |
| Analyte | Result | PQL | SPK value | SPK Ref Val | %REC | LowLimit | HighLimit | %RPD | RPDLimit | Qual |
| Diesel Range Organics (DRO) | ND | 10 | | | | | | | | |
| Motor Oil Range Organics (MRO) | ND | 50 | | | | | | | | |
| Surr: DNOP | 7.3 | | 10.00 | | 72.8 | 51.1 | 141 | | | |

| Sample ID: LCS-67802 | SampType: LCS | TestCode: EPA Method 8015M/D: Diesel Range Organics | | | | | | | | |
|-----------------------------|--------------------------------|--|---------------------|-------------|------|----------|-----------|------|----------|------|
| Client ID: LCSS | Batch ID: 67802 | RunNo: 88418 | | | | | | | | |
| Prep Date: 5/31/2022 | Analysis Date: 6/1/2022 | SeqNo: 3136893 | Units: mg/Kg | | | | | | | |
| Analyte | Result | PQL | SPK value | SPK Ref Val | %REC | LowLimit | HighLimit | %RPD | RPDLimit | Qual |
| Diesel Range Organics (DRO) | 44 | 10 | 50.00 | 0 | 87.8 | 64.4 | 127 | | | |
| Surr: DNOP | 2.9 | | 5.000 | | 58.3 | 51.1 | 141 | | | |

Qualifiers:

- * Value exceeds Maximum Contaminant Level.
- D Sample Diluted Due to Matrix
- H Holding times for preparation or analysis exceeded
- ND Not Detected at the Reporting Limit
- PQL Practical Quantitative Limit
- S % Recovery outside of range due to dilution or matrix interference
- B Analyte detected in the associated Method Blank
- E Estimated value
- J Analyte detected below quantitation limits
- P Sample pH Not In Range
- RL Reporting Limit

QC SUMMARY REPORT

Hall Environmental Analysis Laboratory, Inc.

WO#: 2205D07

07-Jun-22

Client: Souder, Miller & Associates
Project: Enterprise Poker Lake Discharge

| Sample ID: ics-67777 | SampType: LCS | TestCode: EPA Method 8015D: Gasoline Range | | | | | | | | |
|-------------------------------|---------------------------------|---|---------------------|-------------|------|----------|-----------|------|----------|------|
| Client ID: LCSS | Batch ID: 67777 | RunNo: 88377 | | | | | | | | |
| Prep Date: 5/29/2022 | Analysis Date: 5/31/2022 | SeqNo: 3135016 | Units: mg/Kg | | | | | | | |
| Analyte | Result | PQL | SPK value | SPK Ref Val | %REC | LowLimit | HighLimit | %RPD | RPDLimit | Qual |
| Gasoline Range Organics (GRO) | 23 | 5.0 | 25.00 | 0 | 93.8 | 72.3 | 137 | | | |
| Surr: BFB | 1800 | | 1000 | | 183 | 37.7 | 212 | | | |

| Sample ID: mb-67777 | SampType: MBLK | TestCode: EPA Method 8015D: Gasoline Range | | | | | | | | |
|-------------------------------|---------------------------------|---|---------------------|-------------|------|----------|-----------|------|----------|------|
| Client ID: PBS | Batch ID: 67777 | RunNo: 88377 | | | | | | | | |
| Prep Date: 5/29/2022 | Analysis Date: 5/31/2022 | SeqNo: 3135017 | Units: mg/Kg | | | | | | | |
| Analyte | Result | PQL | SPK value | SPK Ref Val | %REC | LowLimit | HighLimit | %RPD | RPDLimit | Qual |
| Gasoline Range Organics (GRO) | ND | 5.0 | | | | | | | | |
| Surr: BFB | 870 | | 1000 | | 86.7 | 37.7 | 212 | | | |

Qualifiers:

- * Value exceeds Maximum Contaminant Level.
- D Sample Diluted Due to Matrix
- H Holding times for preparation or analysis exceeded
- ND Not Detected at the Reporting Limit
- PQL Practical Quantitative Limit
- S % Recovery outside of range due to dilution or matrix interference
- B Analyte detected in the associated Method Blank
- E Estimated value
- J Analyte detected below quantitation limits
- P Sample pH Not In Range
- RL Reporting Limit

QC SUMMARY REPORT

Hall Environmental Analysis Laboratory, Inc.

WO#: 2205D07

07-Jun-22

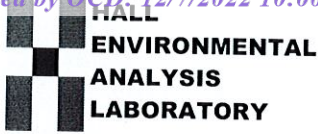
Client: Souder, Miller & Associates
Project: Enterprise Poker Lake Discharge

| Sample ID: ics-67777 | SampType: LCS | | TestCode: EPA Method 8021B: Volatiles | | | | | | | |
|-----------------------------|---------------------------------|-------|--|-------------|---------------------|----------|-----------|------|----------|------|
| Client ID: LCSS | Batch ID: 67777 | | RunNo: 88377 | | | | | | | |
| Prep Date: 5/29/2022 | Analysis Date: 5/31/2022 | | SeqNo: 3135071 | | Units: mg/Kg | | | | | |
| Analyte | Result | PQL | SPK value | SPK Ref Val | %REC | LowLimit | HighLimit | %RPD | RPDLimit | Qual |
| Benzene | 0.92 | 0.025 | 1.000 | 0 | 92.2 | 80 | 120 | | | |
| Toluene | 0.94 | 0.050 | 1.000 | 0 | 94.0 | 80 | 120 | | | |
| Ethylbenzene | 0.93 | 0.050 | 1.000 | 0 | 93.0 | 80 | 120 | | | |
| Xylenes, Total | 2.7 | 0.10 | 3.000 | 0 | 91.6 | 80 | 120 | | | |
| Surr: 4-Bromofluorobenzene | 0.89 | | 1.000 | | 88.7 | 70 | 130 | | | |

| Sample ID: mb-67777 | SampType: MBLK | | TestCode: EPA Method 8021B: Volatiles | | | | | | | |
|-----------------------------|---------------------------------|-------|--|-------------|---------------------|----------|-----------|------|----------|------|
| Client ID: PBS | Batch ID: 67777 | | RunNo: 88377 | | | | | | | |
| Prep Date: 5/29/2022 | Analysis Date: 5/31/2022 | | SeqNo: 3135072 | | Units: mg/Kg | | | | | |
| Analyte | Result | PQL | SPK value | SPK Ref Val | %REC | LowLimit | HighLimit | %RPD | RPDLimit | Qual |
| Benzene | ND | 0.025 | | | | | | | | |
| Toluene | ND | 0.050 | | | | | | | | |
| Ethylbenzene | ND | 0.050 | | | | | | | | |
| Xylenes, Total | ND | 0.10 | | | | | | | | |
| Surr: 4-Bromofluorobenzene | 0.86 | | 1.000 | | 86.1 | 70 | 130 | | | |

Qualifiers:

- * Value exceeds Maximum Contaminant Level.
- D Sample Diluted Due to Matrix
- H Holding times for preparation or analysis exceeded
- ND Not Detected at the Reporting Limit
- PQL Practical Quantitative Limit
- S % Recovery outside of range due to dilution or matrix interference
- B Analyte detected in the associated Method Blank
- E Estimated value
- J Analyte detected below quantitation limits
- P Sample pH Not In Range
- RL Reporting Limit



Hall Environmental Analysis Laboratory
4901 Hawkins NE
Albuquerque, NM 87109
TEL: 505-345-3975 FAX: 505-345-4107
Website: www.hallenvironmental.com

Sample Log-In Check List

Client Name: Souder, Miller & Associates Work Order Number: 2205D07 RcptNo: 1

Received By: Cheyenne Cason 5/28/2022 8:00:00 AM
Completed By: Cheyenne Cason 5/28/2022 8:45:20 AM
Reviewed By: [Signature] 05/28/2022

Chain of Custody

- 1. Is Chain of Custody complete? Yes [checked] No [] Not Present []
2. How was the sample delivered? Courier

Log In

- 3. Was an attempt made to cool the samples? Yes [checked] No [] NA []
4. Were all samples received at a temperature of >0° C to 6.0°C Yes [checked] No [] NA []
5. Sample(s) in proper container(s)? Yes [checked] No []
6. Sufficient sample volume for indicated test(s)? Yes [checked] No []
7. Are samples (except VOA and ONG) properly preserved? Yes [checked] No []
8. Was preservative added to bottles? Yes [] No [checked] NA []
9. Received at least 1 vial with headspace <1/4" for AQ VOA? Yes [] No [] NA [checked]
10. Were any sample containers received broken? Yes [] No [checked]
11. Does paperwork match bottle labels? Yes [checked] No []
12. Are matrices correctly identified on Chain of Custody? Yes [checked] No []
13. Is it clear what analyses were requested? Yes [checked] No []
14. Were all holding times able to be met? Yes [checked] No []

of preserved bottles checked for pH:
(<2 or >12 unless noted)
Adjusted?
Checked by: [Signature]

Special Handling (if applicable)

- 15. Was client notified of all discrepancies with this order? Yes [] No [] NA [checked]

Person Notified: [] Date: []
By Whom: [] Via: [] eMail [] Phone [] Fax [] In Person []
Regarding: []
Client Instructions: []

16. Additional remarks:

17. Cooler Information

Table with 7 columns: Cooler No, Temp °C, Condition, Seal Intact, Seal No, Seal Date, Signed By. Row 1: 1, 3.0, Good, Not Present, [], [], []

Chain-of-Custody Record

Client: Souder, Miller & Associates
 Mailing Address: 201 South Halagueño
Carlsbad, NM 88220
 Phone #: (505) 716-2787

email or Fax#: Heather.Woods@soudermiller.com
 QA/QC Package:
 Standard Level 4 (Full Validation)
 Accreditation: Az Compliance
 NELAC Other
 EDD (Type)

Project Manager:
Heather Woods

Sampler: Heather Woods/Sarahmy Schlu
 On Ice: Yes No
 # of Coolers: 1
 Cooler Temp (including CF): 3.0 - 0 = 3.0 (°C)

Container Type and #: (1) 4oz Glass
 Preservative Type: Non
 HEAL No.: 2205D07
001

Turn-Around Time:
 Standard Rush 5-Day
 Project Name:
Enterprise Poker Lake Discharge

Project #:
Enterprise Poker Lake Discharge

HALL ENVIRONMENTAL ANALYSIS LABORATORY

www.hallenvironmental.com

4901 Hawkins NE - Albuquerque, NM 87109
 Tel. 505-345-3975 Fax 505-345-4107

Analysis Request

| | |
|--|---|
| BTEX / MTBE / THMs (8021) | X |
| TPH:8015D(GRO / DRO / MRO) | X |
| 8081 Pesticides/8082 PCB's | |
| EDB (Method 504.1) | |
| PAHs by 8310 or 8270SIMS | |
| RCRA 8 Metals | X |
| (C) F, Br, NO ₃ , NO ₂ , PO ₄ , SO ₄ | X |
| 8260 (VOA) | |
| 8270 (Semi-VOA) | |
| Total Coliform (Present/Absent) | |

Remarks:

Received by: Adminis Date: 5/17/22 1130
 Received by: CMC Courier Date: 05/18/22 0800

Relinquished by: Heather M. Wood Date: 5/17/22 1130
 Relinquished by: Admin Date: 5/17/22 1900

District I
 1625 N. French Dr., Hobbs, NM 88240
 Phone:(575) 393-6161 Fax:(575) 393-0720
District II
 811 S. First St., Artesia, NM 88210
 Phone:(575) 748-1283 Fax:(575) 748-9720
District III
 1000 Rio Brazos Rd., Aztec, NM 87410
 Phone:(505) 334-6178 Fax:(505) 334-6170
District IV
 1220 S. St Francis Dr., Santa Fe, NM 87505
 Phone:(505) 476-3470 Fax:(505) 476-3462

State of New Mexico
Energy, Minerals and Natural Resources
Oil Conservation Division
1220 S. St Francis Dr.
Santa Fe, NM 87505

CONDITIONS

Action 164784

CONDITIONS

| | |
|---|---|
| Operator: Enterprise Field Services, LLC PO Box 4324 Houston, TX 77210 | OGRID: 241602 |
| | Action Number: 164784 |
| | Action Type: [C-141] Release Corrective Action (C-141) |

CONDITIONS

| Created By | Condition | Condition Date |
|------------|---|----------------|
| rhamlet | We have received your closure report and final C-141 for Incident #NAPP2209526360 LINE 16-24-30, thank you. This closure is approved. | 3/13/2023 |