



May 1, 2023

District Supervisor
Oil Conservation Division, District 1
1625 North French Drive
Hobbs, New Mexico 88240

Accepted for the record. Incident cancelled due to not meeting reportable event of > 5 barrels of liquid. Operator must remediate volume discharged into the surrounding area and keep records for any future endeavor.

**Re: Release Characterization and Remediation Work Plan
Maverick Natural Resources
EVGSAU 2418-001 Flowline Leak
Unit Letter P, Section 24, Township 17 South, Range 34 East
Lea County, New Mexico
Incident ID# nAPP2310153358**

Dear Sir or Madam,

Tetra Tech, Inc. (Tetra Tech) was contracted by Maverick Permian, LLC (Maverick) to assess a release that occurred from a subsurface flow line associated with the East Vacuum Grayburg San Andres Unit (EVGSAU) 2418-001. The release footprint is located off Highway 238, in Public Land Survey System (PLSS) Unit Letter P, Section 24, Township 17 South, Range 34 East, in Lea County, New Mexico (Site). The approximate release point occurred at coordinates 32.816677°,-103.508215° as shown in **Figures 1 and 2**.

BACKGROUND

According to the State of New Mexico Oil Conservation Division (NMOCD) C-141 Initial Report, the release was discovered on March 7, 2023. The C-141 reports that the release occurred due to internal corrosion of a surface production flow line leading to a 4 barrel (bbl) spill off-pad. Approximately 3 bbls of produced water and 1 bbl of crude oil were reported released and no liquids were recovered. The NMOCD received the Initial C-141 on April 11, 2023, and subsequently assigned the release Incident ID nAPP2310153358. The initial C-141 Release notification form is included in **Attachment 1**.

1.1 SITE CHARACTERIZATION

Tetra Tech performed a site characterization for the release location which did not identify any watercourses, sinkholes, residences, schools, hospitals, institutions, churches, springs, private domestic water wells, springs, wetlands, incorporated municipal boundaries, subsurface mines, or floodplains within the distances specified in 19.15.09 New Mexico Administrative Code (NMAC). Based on a review of the NMOCD Mapper The Site is in an area of low karst potential. There are probable playas located less than 0.5 miles from the site, as shown in **Attachment 2**.

According to the New Mexico Office of the State Engineers (NMOSE) reporting system, there are six (6) water wells located within an 800-meter (approximately ½-mile) radius of the release location. The average depth to groundwater reported at these six wells is 82 feet below ground surface (bgs), however, only one well reports current groundwater elevation data less than 25 years old at 45 feet bgs at L 06350 POD3. The site characterization data is included in **Attachment 2**.

Tetra Tech, Inc.

1500 CityWest Boulevard, Houston, Texas 77042
Tel +1.832.251.5160 | tetratech.com/oga | tetratech.com

Release Characterization Work Plan
Maverick Permian, LLC
EVGSAU 2418-001
Incident ID: nAPP2310153358

May 1, 2023

REGULATORY FRAMEWORK

Based upon the release footprint location and in accordance with Subsection E of 19.15.29.12 NMAC, per 19.15.29.11 NMAC, the site characterization data was used to determine recommended remedial action levels (RRALs) for benzene, toluene, ethylbenzene, and xylene (collectively referred to as BTEX), total petroleum hydrocarbons (TPH), and chlorides in soil.

Based on the site characterization and in accordance with Table I of 19.15.29.12 NMAC, the remediation RRALs for the Site are as follows for depth to groundwater as less than 50 feet below ground surface (bgs):

Closure Criteria for Soils Impacted by a Release

Constituent	Remediation RRAL
Chloride	600 mg/kg
TPH (GRO+DRO+ORO)	100 mg/kg
BTEX	50 mg/kg
Benzene	10 mg/kg

Additionally, in accordance with the NMOCD guidance Procedures for Implementation of the Spill Rule (19.15.29 NMAC) (September 6, 2019), the following reclamation requirements for surface soils (0-4 feet bgs) outside of active oil and gas operations are as follows:

Reclamation Requirements

Constituent	Remediation RRAL
Chloride	600 mg/kg
TPH (GRO+DRO+ORO)	100 mg/kg

INITIAL RESPONSE ACTIVITIES

The release occurred due to internal corrosion of a surface production flow line consisting of an approximately 1,750 square foot area in open pasture, as shown in **Figure 3**. According to site records, initial response actions were taken by Maverick at the release site on March 8, 2023. Maverick responded to the site and made an initial excavation/scrape of approximately the top 6 inches of impacted material. The scraped material was sent to R360 for disposal. Confirmation samples were not collected during the initial response activities. Tetra Tech conducted a visual site inspection on March 16, 2023, to document the release and initial scrape area. The area encompassing this initial scrape was approximately 4,000 square feet as shown in **Figure 3**.

1.2 SITE ASSESSMENT SUMMARY

On April 6, 2023, Tetra Tech personnel returned to the Site to conduct soil sampling to delineate the release extent and confirm the efficacy of the reported remediation activities conducted during the initial response. A total of eight (8) hand auger borings were installed to achieve horizontal delineation of the release. Hand auger borings (AH-1 through AH-6) were installed along the perimeter of the reported release extent to depths ranging from 0-1 feet

Release Characterization Work Plan
Maverick Permian, LLC
EVGSAU 2418-001
Incident ID: nAPP2310153358

May 1, 2023

below ground surface to horizontally delineate the release. One additional sample was taken at 1-2 feet bgs at AH-1. Hand auger refusal was encountered between 1 and 2 feet bgs due to hardpan soil material. Two additional hand auger borings, AH-7 and AH-8 were installed 0-1 feet bgs in the center of the release area. Boring locations are presented in **Figure 4**.

A total of nine (9) samples were collected from the eight (8) borings and submitted to Cardinal Laboratory in Hobbs, New Mexico, for analysis of Total Petroleum Hydrocarbons (GRO, DRO, and EXT DRO) by EPA Method 8015M, benzene, toluene, ethylbenzene, and xylenes (BTEX) by EPA Method 8021B, and chloride by EPA Method SM4500Cl-B. Copies of the laboratory analytical data packages are included in **Attachment 3**.

SUMMARY OF SAMPLING RESULTS

Results from the April 6, 2023 soil sampling event are summarized in **Table 1**. The analytical reported concentrations of chloride, TPH, and BTEX as less than RRALs and Reclamation Requirements in samples AH-1 through AH-6. Sample AH-7 reported concentrations of chloride as greater than RRALs and Reclamation Requirements, and AH-8 reported concentrations of BTEX and TPH as greater than RRALs and Reclamation Requirements. Photographic documentation of Site conditions at the time of the assessment is presented in **Attachment 4**.

1.3 REMEDIATION WORK PLAN

Based on the analytical results from the assessment, Maverick proposes to remove the impacted material within the release extent as shown in **Figure 5**. Impacted soils will be excavated using heavy equipment (backhoes, hoe rams, and track hoes) to an approximate depth of 2 to 4 feet below the surrounding surface until representative samples from the excavation sidewalls and the floor of the excavation report concentrations of constituents as less than Site RRALs and Reclamation Requirements. Heavy equipment will come no more than two feet from any pressurized lines. Impacted soils within the vicinity of the surface and subsurface lines which intersect the release footprint will be excavated with hydro-vac excavation or dug by hand to the maximum extent practicable.

Excavated soils will be transported offsite and disposed of at an NMOCD-approved or permitted facility. Confirmation floor and sidewall samples will be collected for verification of remedial activities and analyzed for TPH, BTEX, and chloride. Once analytical results are received, NMOCD will be notified, and the excavation will then be backfilled with clean material to surface grade. The estimated volume of material to be remediated is between 275 to 550 cubic yards.

CONFIRMATION SAMPLING PLAN

In accordance with 19.15.29.12(D)(1)(b) NMAC, Maverick proposes the following alternative confirmation sampling plan to adhere to NMOCD requirements. The proposed confirmation sample locations are depicted in **Figure 6**. Nine (9) confirmation floor samples and six (6) confirmation sidewall samples are proposed for verification of remedial activities. The proposed excavation encompasses a surface area of approximately 3600 square feet.

These confirmation sidewall samples will be representative of approximately 200 square feet each and floor samples will be representative of no more than approximately 500 square feet of the excavated area. Confirmation samples will be submitted to Cardinal Laboratory for analysis of TPH (Method 8015 modified), BTEX (Method 8260B), and chloride (EPA SM4500Cl-B). Once results are received, NMOCD will be notified, and the excavation will then be backfilled with clean material to surface grade.

Release Characterization Work Plan
Maverick Permian, LLC
EVGSAU 2418-001
Incident ID: nAPP2310153358

May 1, 2023

SITE RECLAMATION AND RESTORATION PLAN

Post-remediation, the backfilled pasture areas will be seeded (in the next first favorable growing season) to aid in revegetation. Based on the soils at the site, gravelly loam, the New Mexico State Land Office (NMSLO) Coarse (CS) Sites Seed Mixture will be used for seeding and will be planted in the amount specified in pounds of pure live seed (PLS) per acre. The seed mixture will be spread by a drill equipped with a depth regulator or a broadcaster and raked. If a broadcaster is used for dispersal, the quantity of PLS per acre will be doubled.

Site inspections will be performed to assess the revegetation progress and evaluate the site for the presence of primary or secondary noxious weeds. If noxious weeds are identified, the NMSLO will be contacted to determine an effective method for eradication. If the site does not show revegetation after one growing season, the area will be reseeded as appropriate. The NMSLO seed mixture details and corresponding pounds PLS per acre are included in **Attachment 5**. Final reclamation will create a landform that approximates and blends in with the surrounding landform while controlling erosion.

1.4 CONCLUSION

Maverick Natural Resources proposes to begin remediation activities at the Site within 120 days of NMOCD plan approval. Upon completion of the proposed work, a final closure report detailing the remediation activities and the results of the confirmation sampling will be submitted to NMOCD. If you have any questions concerning the soil assessment or the proposed remediation activities for the Site, please call me at (832) 252-2093.

Sincerely,



Steve Jester
Program Manager
Tetra Tech, Inc.



Charles H. Terhune IV, P.G.
Program Manager
Tetra Tech, Inc.

cc: Bryce Wagoner, Maverick Permian, LLC
New Mexico State Land Office

Release Characterization Work Plan
Maverick Permian, LLC
EVGSAU 2418-001
Incident ID: nAPP2310153358

May 1, 2023

LIST OF ATTACHMENTS

Figures

- Figure 1 – Overview Map
- Figure 2 – Topographic Map
- Figure 3 – Approximate Release Extent and Site Features
- Figure 4 – Site Assessment Map
- Figure 5 – Proposed Remediation Extent
- Figure 6 – Confirmation Sampling Plan

Tables

- Table 1 – Summary of Analytical Results – Soil Assessment

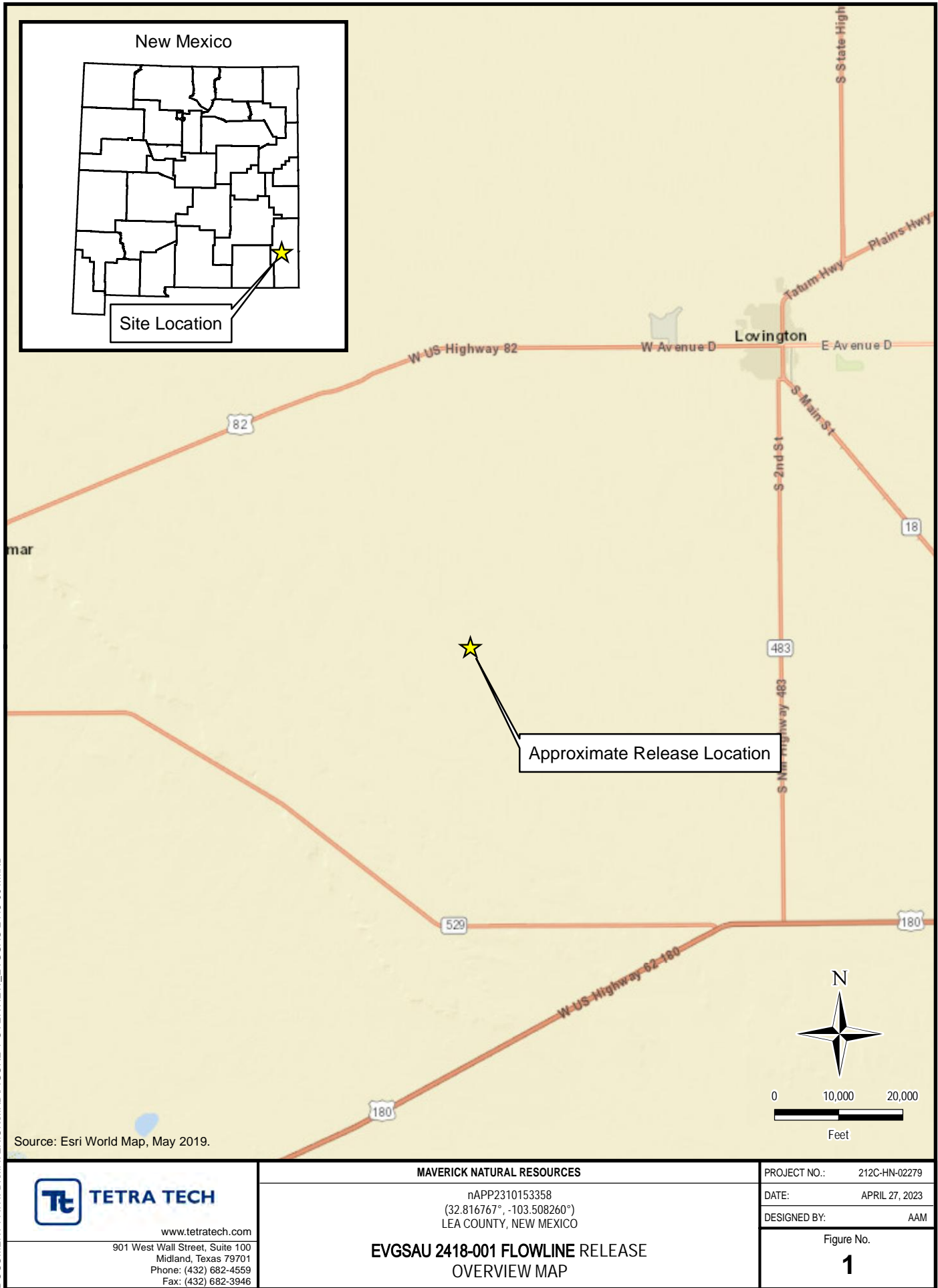
Attachments

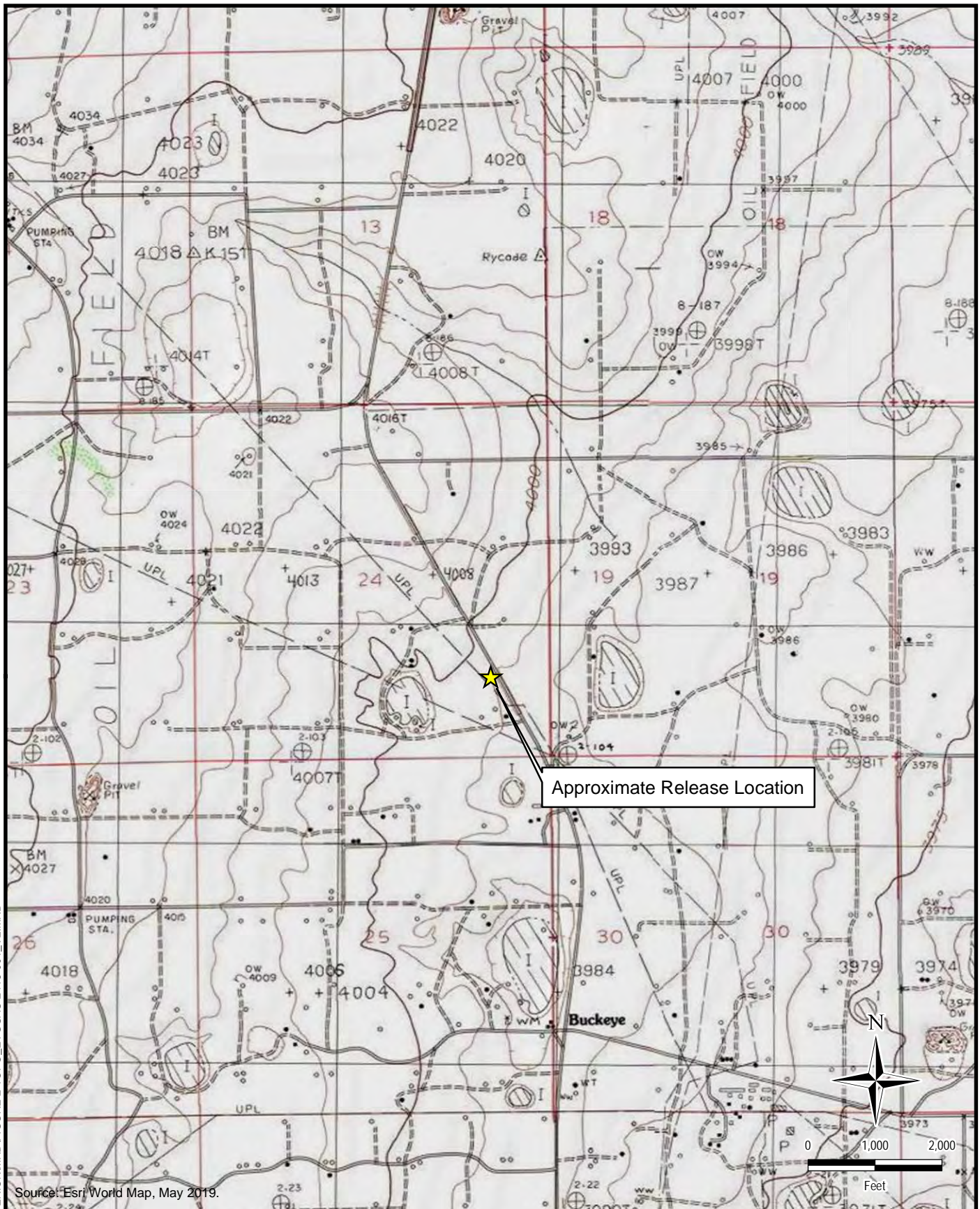
- Attachment 1 – C-141 Forms
- Attachment 2 – Site Characterization Data
- Attachment 3 – Laboratory Analytical Data
- Attachment 4 – Photographic Documentation
- Attachment 5 – NMSLO Seed Mixture Details

Release Characterization Work Plan
Maverick Permian, LLC
EVGSAU 2418-001
Incident ID: nAPP2310153358

May 1, 2023

FIGURES





DOCUMENT PATH: D:\MAVERICK\WMD\FIGURE 2 TOPO_EVGSAU 2418-001_V2.MXD


TETRA TECH
www.tetrattech.com

 901 West Wall Street, Suite 100
 Midland, Texas 79701
 Phone: (432) 682-4559
 Fax: (432) 682-3946

MAVERICK NATURAL RESOURCES

 nAPP2310153358
 (32.816767°, -103.508260°)
 LEA COUNTY, NEW MEXICO

**EVGSAU 2418-001 FLOWLINE RELEASE
 TOPOGRAPHIC MAP**

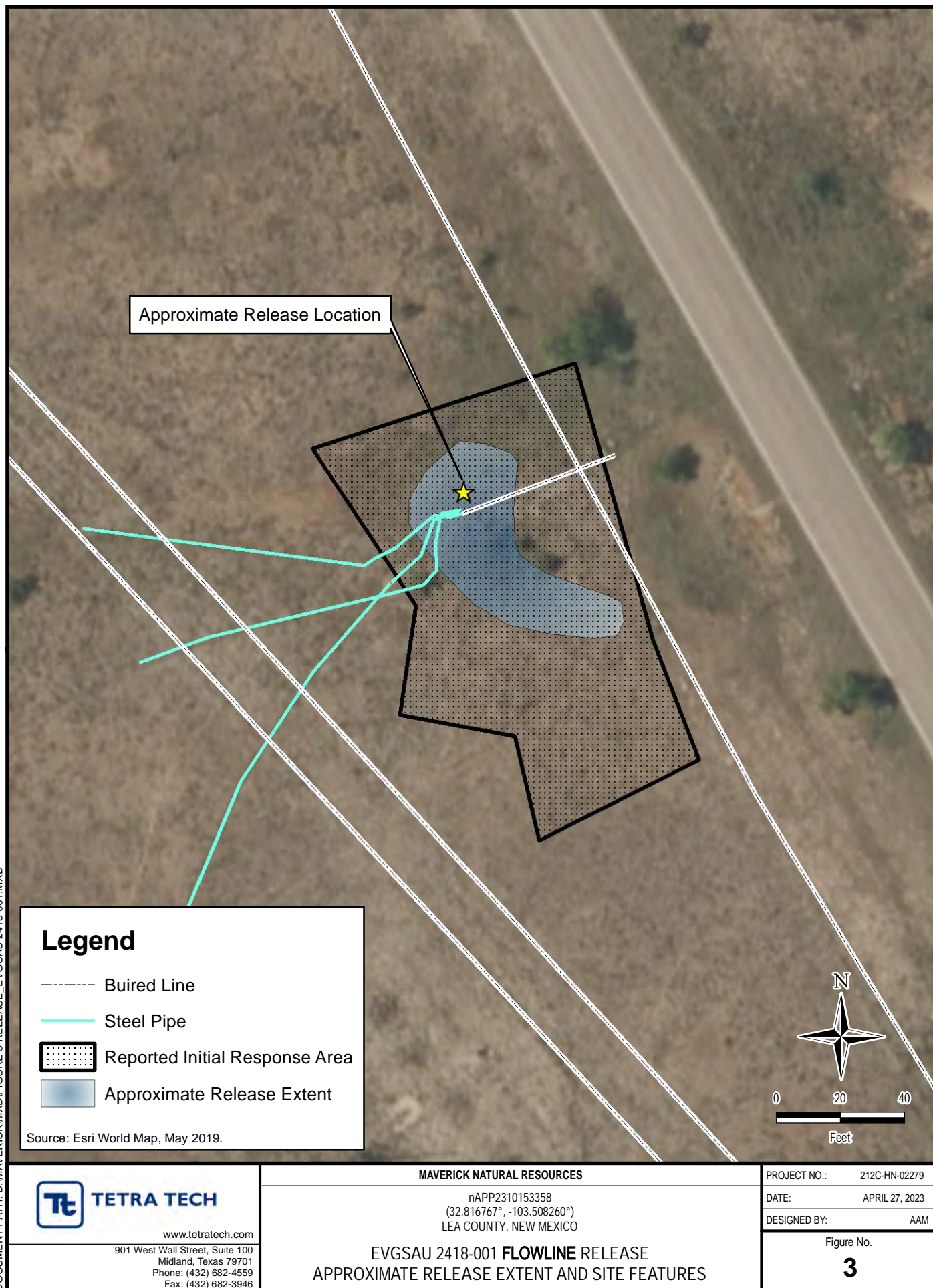
PROJECT NO.: 212C-HN-02279

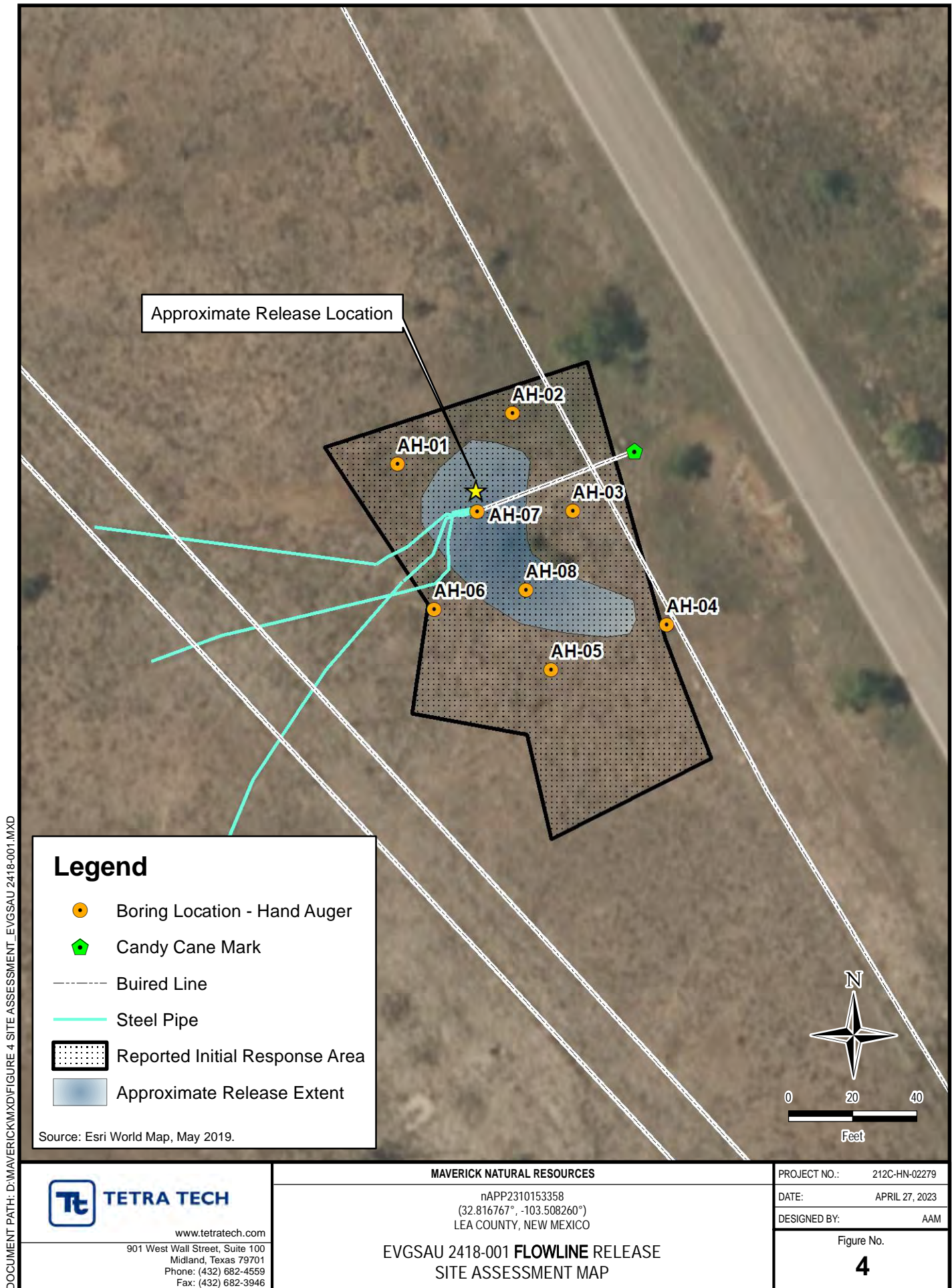
DATE: APRIL 27, 2023

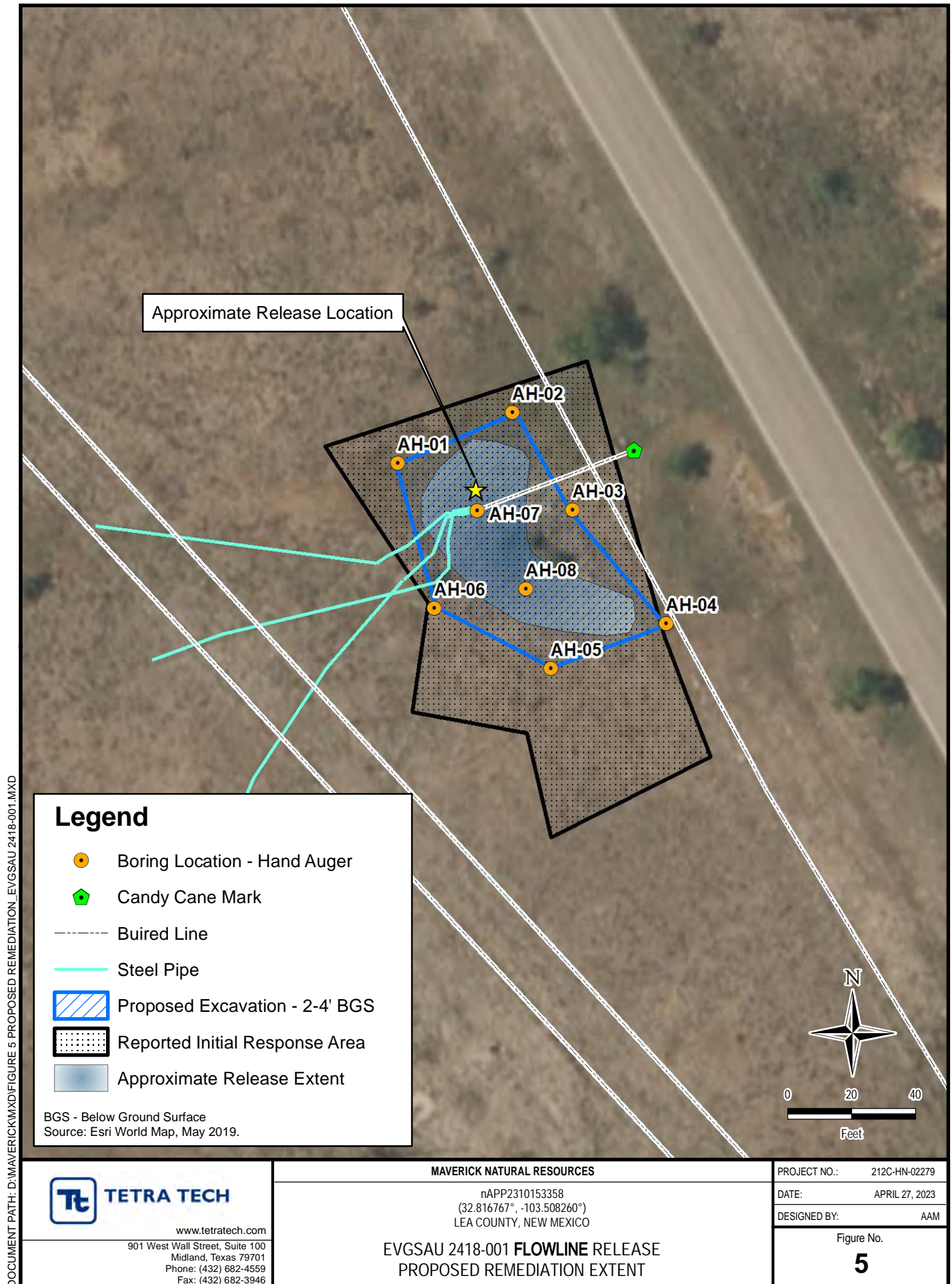
DESIGNED BY: AAM

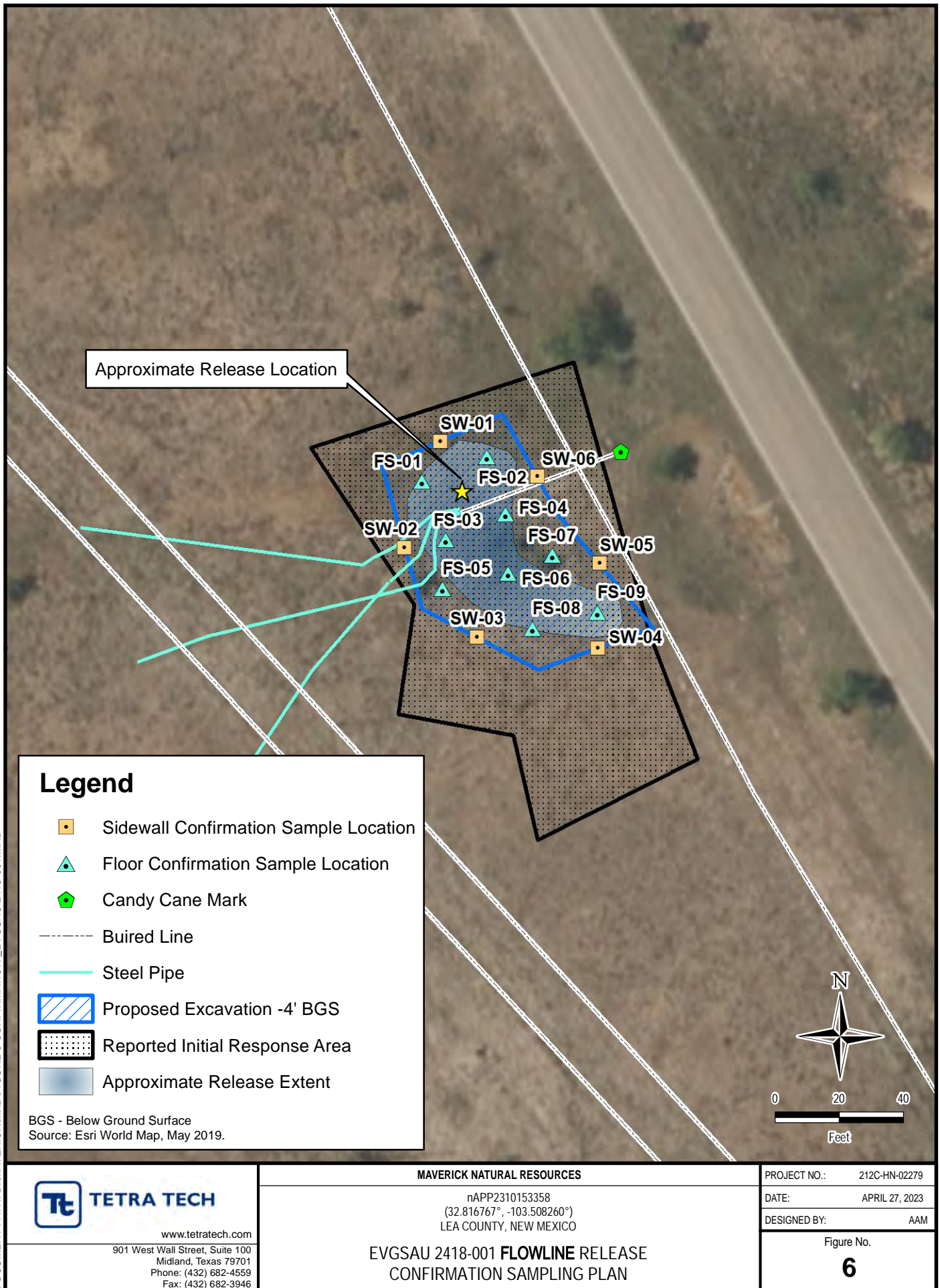
Figure No.

2









Release Characterization Work Plan
Maverick Permian, LLC
EVGSAU 2418-001
Incident ID: nAPP2310153358

May 1, 2023

TABLES

TABLE 1
SUMMARY OF ANALYTICAL RESULTS
ASSESSMENT SAMPLING - INCIDENT ID NAPP2310153358
MAVERICK NATURAL RESOURCES
EVGSAU 2418-001 FLOWLINE RELEASE
LEA COUNTY, NEW MEXICO

Sample ID	Sample Date	Sample Depth	Field Screening Results		Chloride ¹		BTEX ²										TPH ³							
							Benzene		Toluene		Ethylbenzene		Total Xylenes		Total BTEX		GRO		DRO		EXT DRO		Total TPH	
			C ₆ - C ₁₀														> C ₁₀ - C ₂₈		> C ₂₈ - C ₃₆		(GRO+DRO+EXT DRO)			
			feet bgs	ppm			mg/kg	Q	mg/kg	Q	mg/kg	Q	mg/kg	Q	mg/kg	Q	mg/kg	Q	mg/kg	Q	mg/kg	Q	mg/kg	Q
Reclamation Requirements (19.15.29 NMAC)					600		10							50							100			
AH-1	4/6/2023	0 - 1			48		<0.050		<0.050		<0.050		<0.150		<0.300		<10.0		<10.0		<10.0		<30.0	
AH-1	4/6/2023	1 - 2			32		<0.050		<0.050		<0.050		<0.150		<0.300		<10.0		<10.0		<10.0		<30.0	
AH-2	4/6/2023	0 - 1			16		<0.050		<0.050		<0.050		<0.150		<0.300		<10.0		<10.0		<10.0		<30.0	
AH-3	4/6/2023	0 - 1			128		<0.050		<0.050		<0.050		<0.150		<0.300		<10.0		<10.0		<10.0		<30.0	
AH-4	4/6/2023	0 - 1			48		<0.050		<0.050		<0.050		<0.150		<0.300		<10.0		<10.0		<10.0		<30.0	
AH-5	4/6/2023	0 - 1			64		<0.050		<0.050		<0.050		<0.150		<0.300		<10.0		18.5		<10.0		18.5	
AH-6	4/6/2023	0 - 1			64		<0.050		<0.050		<0.050		<0.150		<0.300		<10.0		<10.0		<10.0		<30.0	
AH-7	4/6/2023	0 - 1			1,600		<0.050		<0.050		<0.050		<0.150		<0.300		<10.0		<10.0		<10.0		<30.0	
AH-8	4/6/2023	0 - 1			30,000		0.934		21.3		40.9		67.2		130		1,530		15,100		2,820		19,450	

NOTES:

ft.: Feet

bgs: Below ground surface

mg/kg: Milligrams per kilogram

TPH: Total Petroleum Hydrocarbons

GRO: Gasoline range organics

DRO: Diesel range organics

1: Method SM4500Cl-B

2: Method 8021B

3: Method 8015M

Bold highlighted values indicate concentrations greater than Remediation RRALs or Reclamation Requirements.

Release Characterization Work Plan
Maverick Permian, LLC
EVGSAU 2418-001
Incident ID: nAPP2310153358

May 1, 2023

ATTACHMENT 1 – C-141 FORMS

District I
1625 N. French Dr., Hobbs, NM 88240
District II
811 S. First St., Artesia, NM 88210
District III
1000 Rio Brazos Road, Aztec, NM 87410
District IV
1220 S. St. Francis Dr., Santa Fe, NM 87505

State of New Mexico
Energy Minerals and Natural
Resources Department
Oil Conservation Division
1220 South St. Francis Dr.
Santa Fe, NM 87505

Form C-141
Revised August 24, 2018
Submit to appropriate OCD District office

Incident ID	nAPP2310153358
District RP	
Facility ID	
Application ID	

Release Notification

Responsible Party

Responsible Party	Maverick Permian, LLC	OGRID	331199
Contact Name	Bryce Wagoner	Contact Telephone	(928) 241-1862
Contact email	Bryce.Wagoner@mavresources.com	Incident # <i>(assigned by OCD)</i>	nAPP2310153358
Contact mailing address	1410 NW County Road Hobbs, New Mexico 88240		

Location of Release Source

Latitude 32.81670 Longitude -103.50798
(NAD 83 in decimal degrees to 5 decimal places)

Site Name	EVGSAU 2418-001	Site Type	Flowline Leak
Date Release Discovered	03/08/2023	API#	(if applicable)

Unit Letter	Section	Township	Range	County
P	24	17S	34E	Lea

Surface Owner: ☒ State ☐ Federal ☐ Tribal ☐ Private (Name: _____)

Nature and Volume of Release

Material(s) Released (Select all that apply and attach calculations or specific justification for the volumes provided below)

<input checked="" type="checkbox"/> Crude Oil	Volume Released (bbls) 1	Volume Recovered (bbls) 0
<input checked="" type="checkbox"/> Produced Water	Volume Released (bbls) 3	Volume Recovered (bbls) 0
	Is the concentration of dissolved chloride in the produced water >10,000 mg/l?	<input type="checkbox"/> Yes <input checked="" type="checkbox"/> No
<input type="checkbox"/> Condensate	Volume Released (bbls)	Volume Recovered (bbls)
<input type="checkbox"/> Natural Gas	Volume Released (Mcf)	Volume Recovered (Mcf)
<input type="checkbox"/> Other (describe)	Volume/Weight Released (provide units)	Volume/Weight Recovered (provide units)

Cause of Release

Internal corrosion of a surface production flow line leading to a 5 bbl spill off-pad. No fluid was able to be recovered upon discovery.

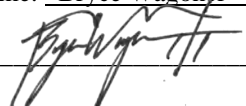
State of New Mexico
Oil Conservation Division

Incident ID	nAPP2310153358
District RP	
Facility ID	
Application ID	

Was this a major release as defined by 19.15.29.7(A) NMAC? <input type="checkbox"/> Yes <input checked="" type="checkbox"/> No	If YES, for what reason(s) does the responsible party consider this a major release?
If YES, was immediate notice given to the OCD? By whom? To whom? When and by what means (phone, email, etc)? Not Applicable	

Initial Response

The responsible party must undertake the following actions immediately unless they could create a safety hazard that would result in injury

<input checked="" type="checkbox"/> The source of the release has been stopped. <input checked="" type="checkbox"/> The impacted area has been secured to protect human health and the environment. <input checked="" type="checkbox"/> Released materials have been contained via the use of berms or dikes, absorbent pads, or other containment devices. <input checked="" type="checkbox"/> All free liquids and recoverable materials have been removed and managed appropriately.	
If all the actions described above have <u>not</u> been undertaken, explain why:	
Per 19.15.29.8 B. (4) NMAC the responsible party may commence remediation immediately after discovery of a release. If remediation has begun, please attach a narrative of actions to date. If remedial efforts have been successfully completed or if the release occurred within a lined containment area (see 19.15.29.11(A)(5)(a) NMAC), please attach all information needed for closure evaluation.	
I hereby certify that the information given above is true and complete to the best of my knowledge and understand that pursuant to OCD rules and regulations all operators are required to report and/or file certain release notifications and perform corrective actions for releases which may endanger public health or the environment. The acceptance of a C-141 report by the OCD does not relieve the operator of liability should their operations have failed to adequately investigate and remediate contamination that pose a threat to groundwater, surface water, human health or the environment. In addition, OCD acceptance of a C-141 report does not relieve the operator of responsibility for compliance with any other federal, state, or local laws and/or regulations.	
Printed Name: <u>Bryce Wagoner</u>	Title: <u>Permian HSE Specialist</u>
Signature: 	Date: <u>4/21/2023</u>
email: <u>Bryce.Wagoner@mavresources.com</u>	Telephone: <u>(928) 241-1862</u>
<u>OCD Only</u>	
Received by: <u>Jocelyn Harimon</u>	Date: <u>04/21/2023</u>

Incident ID	nAPP2310153358
District RP	
Facility ID	
Application ID	

Site Assessment/Characterization

This information must be provided to the appropriate district office no later than 90 days after the release discovery date.

What is the shallowest depth to groundwater beneath the area affected by the release?	TBD (ft bgs)
Did this release impact groundwater or surface water?	<input type="checkbox"/> Yes <input checked="" type="checkbox"/> No
Are the lateral extents of the release within 300 feet of a continuously flowing watercourse or any other significant watercourse?	<input type="checkbox"/> Yes <input checked="" type="checkbox"/> No
Are the lateral extents of the release within 200 feet of any lakebed, sinkhole, or playa lake (measured from the ordinary high-water mark)?	<input type="checkbox"/> Yes <input checked="" type="checkbox"/> No
Are the lateral extents of the release within 300 feet of an occupied permanent residence, school, hospital, institution, or church?	<input type="checkbox"/> Yes <input checked="" type="checkbox"/> No
Are the lateral extents of the release within 500 horizontal feet of a spring or a private domestic fresh water well used by less than five households for domestic or stock watering purposes?	<input type="checkbox"/> Yes <input checked="" type="checkbox"/> No
Are the lateral extents of the release within 1000 feet of any other fresh water well or spring?	<input type="checkbox"/> Yes <input checked="" type="checkbox"/> No
Are the lateral extents of the release within incorporated municipal boundaries or within a defined municipal fresh water well field?	<input type="checkbox"/> Yes <input checked="" type="checkbox"/> No
Are the lateral extents of the release within 300 feet of a wetland?	<input type="checkbox"/> Yes <input checked="" type="checkbox"/> No
Are the lateral extents of the release overlying a subsurface mine?	<input type="checkbox"/> Yes <input checked="" type="checkbox"/> No
Are the lateral extents of the release overlying an unstable area such as karst geology?	<input type="checkbox"/> Yes <input checked="" type="checkbox"/> No
Are the lateral extents of the release within a 100-year floodplain?	<input type="checkbox"/> Yes <input checked="" type="checkbox"/> No
Did the release impact areas not on an exploration, development, production, or storage site?	<input type="checkbox"/> Yes <input checked="" type="checkbox"/> No

Attach a comprehensive report (electronic submittals in .pdf format are preferred) demonstrating the lateral and vertical extents of soil contamination associated with the release have been determined. Refer to 19.15.29.11 NMAC for specifics.

Characterization Report Checklist: *Each of the following items must be included in the report.*

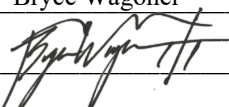
- ☒ Scaled site map showing impacted area, surface features, subsurface features, delineation points, and monitoring wells.
- ☒ Field data
- ☒ Data table of soil contaminant concentration data
- ☒ Depth to water determination
- ☒ Determination of water sources and significant watercourses within ½-mile of the lateral extents of the release
- ☐ Boring or excavation logs NA
- ☒ Photographs including date and GIS information
- ☒ Topographic/Aerial maps
- ☒ Laboratory data including chain of custody

If the site characterization report does not include completed efforts at remediation of the release, the report must include a proposed remediation plan. That plan must include the estimated volume of material to be remediated, the proposed remediation technique, proposed sampling plan and methods, anticipated timelines for beginning and completing the remediation. The closure criteria for a release are contained in Table 1 of 19.15.29.12 NMAC, however, use of the table is modified by site- and release-specific parameters.

State of New Mexico
Oil Conservation Division

Incident ID	nAPP2310153358
District RP	
Facility ID	
Application ID	

I hereby certify that the information given above is true and complete to the best of my knowledge and understand that pursuant to OCD rules and regulations all operators are required to report and/or file certain release notifications and perform corrective actions for releases which may endanger public health or the environment. The acceptance of a C-141 report by the OCD does not relieve the operator of liability should their operations have failed to adequately investigate and remediate contamination that pose a threat to groundwater, surface water, human health or the environment. In addition, OCD acceptance of a C-141 report does not relieve the operator of responsibility for compliance with any other federal, state, or local laws and/or regulations.

Printed Name: Bryce Wagoner Title: Permian HSE Specialist
Signature:  Date: 5/11/2023
email: Bryce.Wagoner@mavresources.com Telephone: (928) 241-1862

OCD Only

Received by: Jocelyn Harimon Date: 05/12/2023

Incident ID	nAPP2310153358
District RP	
Facility ID	
Application ID	

Remediation Plan

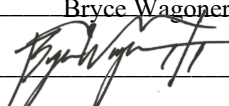
Remediation Plan Checklist: *Each of the following items must be included in the plan.*

- ☒ Detailed description of proposed remediation technique
- ☒ Scaled sitemap with GPS coordinates showing delineation points
- ☒ Estimated volume of material to be remediated
- ☒ Closure criteria is to Table 1 specifications subject to 19.15.29.12(C)(4) NMAC
- ☒ Proposed schedule for remediation (note if remediation plan timeline is more than 90 days OCD approval is required)

Deferral Requests Only: *Each of the following items must be confirmed as part of any request for deferral of remediation.*

- ☐ Contamination must be in areas immediately under or around production equipment where remediation could cause a major facility deconstruction.
- ☐ Extents of contamination must be fully delineated.
- ☐ Contamination does not cause an imminent risk to human health, the environment, or groundwater.

I hereby certify that the information given above is true and complete to the best of my knowledge and understand that pursuant to OCD rules and regulations all operators are required to report and/or file certain release notifications and perform corrective actions for releases which may endanger public health or the environment. The acceptance of a C-141 report by the OCD does not relieve the operator of liability should their operations have failed to adequately investigate and remediate contamination that pose a threat to groundwater, surface water, human health or the environment. In addition, OCD acceptance of a C-141 report does not relieve the operator of responsibility for compliance with any other federal, state, or local laws and/or regulations.

Printed Name: Bryce Wagoner Title: Permian HSE Specialist
Signature:  Date: 5/11/2023
email: Bryce.Wagoner@mavresources.com Telephone: (928) 241-1862

OCD Only

Received by: Jocelyn Harimon Date: 05/12/2023

☐ Approved ☐ Approved v ☐ Denied ☐ Deferral Approved

Cancelled

Signature: _____ Date: _____

08/01/2023 - NV

Incident ID	nAPP2310153358
District RP	
Facility ID	
Application ID	

Closure

The responsible party must attach information demonstrating they have complied with all applicable closure requirements and any conditions or directives of the OCD. This demonstration should be in the form of a comprehensive report (electronic submittals in .pdf format are preferred) including a scaled site map, sampling diagrams, relevant field notes, photographs of any excavation prior to backfilling, laboratory data including chain of custody documents of final sampling, and a narrative of the remedial activities. Refer to 19.15.29.12 NMAC.

Closure Report Attachment Checklist: Each of the following items must be included in the closure report.

- ☐ A scaled site and sampling diagram as described in 19.15.29.11 NMAC
- ☐ Photographs of the remediated site prior to backfill or photos of the liner integrity if applicable (Note: appropriate OCD District office must be notified 2 days prior to liner inspection)
- ☐ Laboratory analyses of final sampling (Note: appropriate ODC District office must be notified 2 days prior to final sampling)
- ☐ Description of remediation activities

I hereby certify that the information given above is true and complete to the best of my knowledge and understand that pursuant to OCD rules and regulations all operators are required to report and/or file certain release notifications and perform corrective actions for releases which may endanger public health or the environment. The acceptance of a C-141 report by the OCD does not relieve the operator of liability should their operations have failed to adequately investigate and remediate contamination that pose a threat to groundwater, surface water, human health or the environment. In addition, OCD acceptance of a C-141 report does not relieve the operator of responsibility for compliance with any other federal, state, or local laws and/or regulations. The responsible party acknowledges they must substantially restore, reclaim, and re-vegetate the impacted surface area to the conditions that existed prior to the release or their final land use in accordance with 19.15.29.13 NMAC including notification to the OCD when reclamation and re-vegetation are complete.

Printed Name: _____ Title: _____

Signature: _____ Date: _____

email: _____ Telephone: _____

OCD Only

Received by: _____ Date: _____

Closure approval by the OCD does not relieve the responsible party of liability should their operations have failed to adequately investigate and remediate contamination that poses a threat to groundwater, surface water, human health, or the environment nor does not relieve the responsible party of compliance with any other federal, state, or local laws and/or regulations.

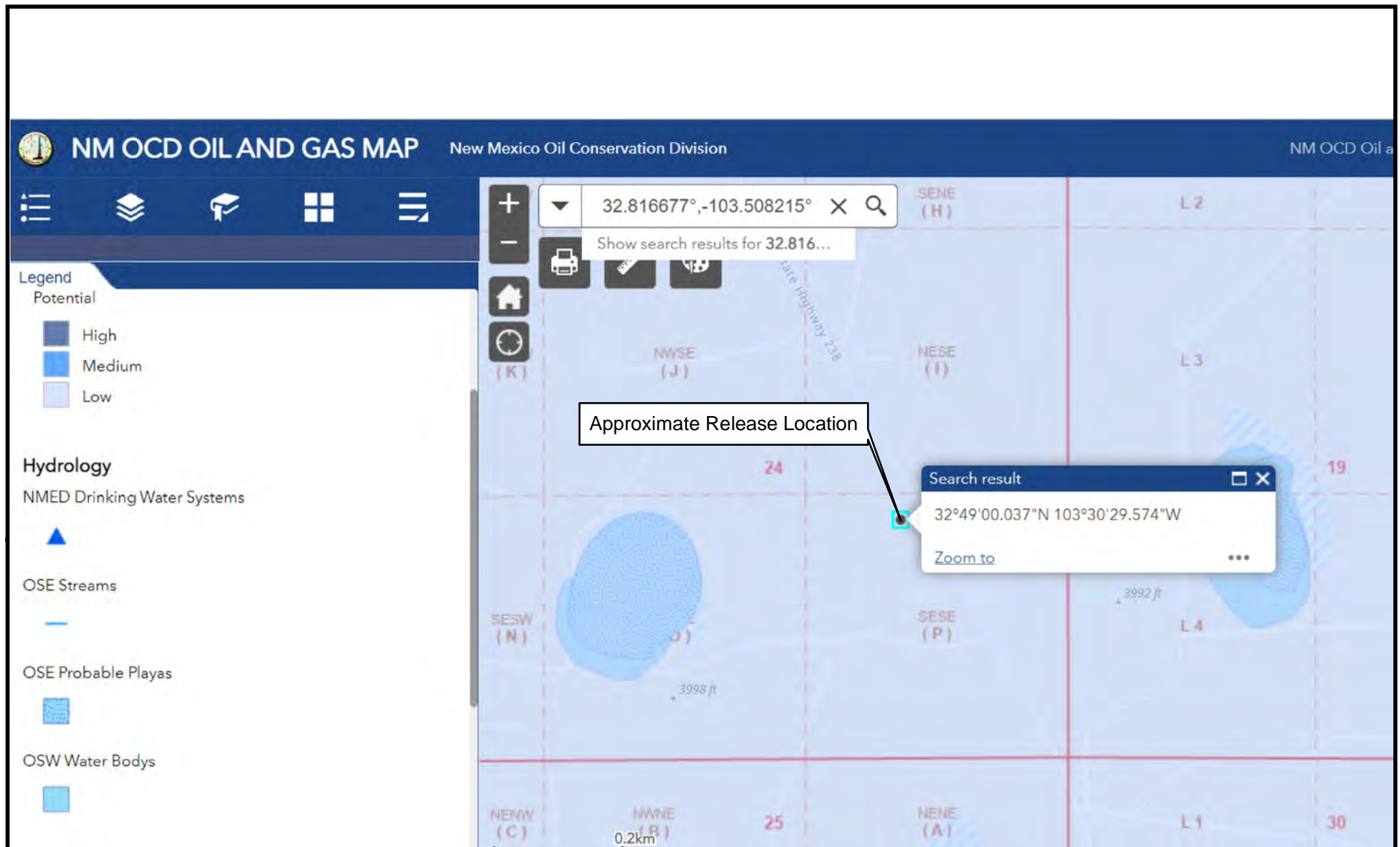
Closure Approved by: _____ Date: _____

Printed Name: _____ Title: _____


Release Characterization Work Plan
Maverick Permian, LLC
EVGSAU 2418-001
Incident ID: nAPP2310153358

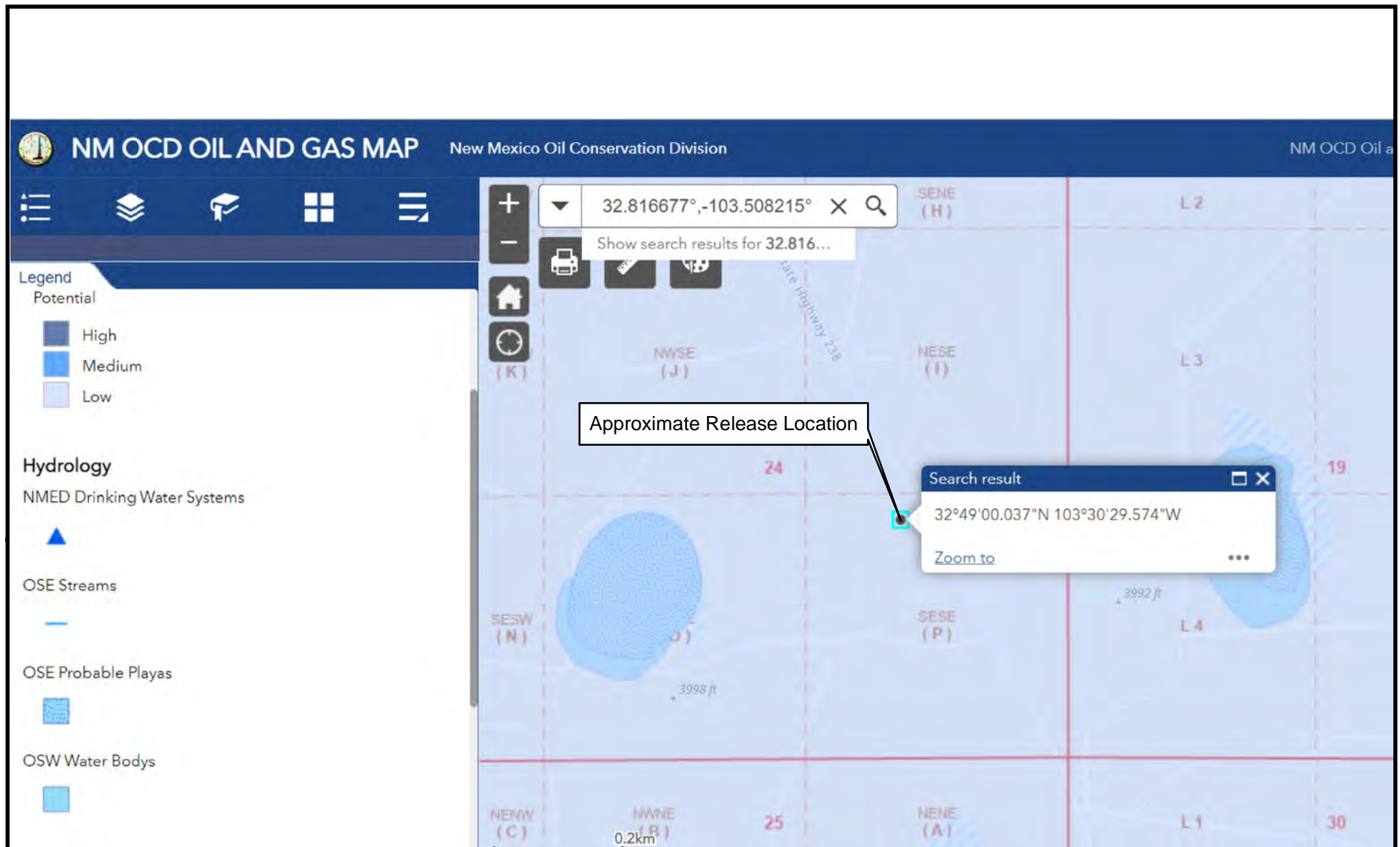
May 1, 2023

ATTACHMENT 2 – SITE CHARACTERIZATION DATA




DOCUMENT PATH: D:\MAVERICK\MXDA\APPENDIX_EYGS\AU 2418-001.MXD

<div>TETRA TECH</div> <div>www.tetrattech.com</div> <div>901 West Wall Street, Suite 100 Midland, Texas 79701 Phone: (432) 682-4559 Fax: (432) 682-3946</div>	MAVERICK NATURAL RESOURCES		PROJECT NO.: 212C-HN-02279
	nAPP2310153358 (32.816767°, -103.508260°) LEA COUNTY, NEW MEXICO		DATE: APRIL 27, 2023
	MCA 478 INJECTION LINE RELEASE KARST POTENTIAL, PROBABLE PLAYAS, AND WATER BODIES		DESIGNED BY: AAM
			Appendix B



DOCUMENT PATH: D:\MAVERICK\MXDA\APPENDIX_EYGS\AU 2418-001.MXD

<div>TETRA TECH</div> <div>www.tetrattech.com</div> <div>901 West Wall Street, Suite 100 Midland, Texas 79701 Phone: (432) 682-4559 Fax: (432) 682-3946</div>	MAVERICK NATURAL RESOURCES		PROJECT NO.: 212C-HN-02279
	nAPP2310153358 (32.816767°, -103.508260°) LEA COUNTY, NEW MEXICO		DATE: APRIL 27, 2023
	MCA 478 INJECTION LINE RELEASE KARST POTENTIAL, PROBABLE PLAYAS AND WATER BODIES		DESIGNED BY: AAM
Figure No. Appendix B			



New Mexico Office of the State Engineer

Water Column/Average Depth to Water

(A CLW##### in the POD suffix indicates the POD has been replaced & no longer serves a water right file.)

(R=POD has been replaced,
O=orphaned,
C=the file is closed)

(quarters are 1=NW 2=NE 3=SW 4=SE)

(quarters are smallest to largest)

(NAD83 UTM in meters)

(In feet)

POD Number	POD Sub-Code	basin	County	Q 64	Q 16	Q 4	Sec	Tws	Rng	X	Y	Distance	Depth Well	Depth Water	Water Column
L 05022	L	LE		3	4	24	17S	34E		639310	3631773*	389	140	80	60
L 04829 POD7	L	LE		3	3	3	19	17S	35E	640012	3631688*	451	210	70	140
L 05439	L	LE		2	3	3	19	17S	35E	640212	3631888*	564	135	85	50
L 03846	L	LE		4	2	24	17S	34E		639699	3632588*	630	225		
L 14650 POD3	L	LE		1	1	2	25	17S	34E	639107	3631506	708	250	45	205
L 06357 S	L	LE		1	1	30	17S	35E		640119	3631386*	739	163	85	78
L 06357 S2	L	LE		3	1	1	30	17S	35E	640017	3631285	766	230	130	100

Average Depth to Water: **82 feet**

Minimum Depth: **45 feet**

Maximum Depth: **130 feet**

Record Count: 7

Basin/County Search:

County: Lea

UTMNAD83 Radius Search (in meters):

Easting (X): 639651.87

Northing (Y): 3631959.56

Radius: 800

*UTM location was derived from PLSS - see Help

The data is furnished by the NMOSE/ISC and is accepted by the recipient with the expressed understanding that the OSE/ISC make no warranties, expressed or implied, concerning the accuracy, completeness, reliability, usability, or suitability for any particular purpose of the data.

4/20/23 11:29 AM

Page 1 of 1

WATER COLUMN/ AVERAGE
DEPTH TO WATER

Release Characterization Work Plan
Maverick Permian, LLC
EVGSAU 2418-001
Incident ID: nAPP2310153358

May 1, 2023

ATTACHMENT 3 – LABORATORY ANALYTICAL DATA



PHONE (575) 393-2326 ° 101 E. MARLAND ° HOBBS, NM 88240

April 14, 2023

CHUCK TERHUNE

TETRA TECH

901 WEST WALL STREET , STE 100

MIDLAND, TX 79701

RE: EVGSAU - 2418-001

Enclosed are the results of analyses for samples received by the laboratory on 04/10/23 9:30.

Cardinal Laboratories is accredited through Texas NELAP under certificate number T104704398-22-15. Accreditation applies to drinking water, non-potable water and solid and chemical materials. All accredited analytes are denoted by an asterisk (*). For a complete list of accredited analytes and matrices visit the TCEQ website at www.tceq.texas.gov/field/qa/lab_accred_certif.html.

Cardinal Laboratories is accredited through the State of Colorado Department of Public Health and Environment for:

Method EPA 552.2	Haloacetic Acids (HAA-5)
Method EPA 524.2	Total Trihalomethanes (TTHM)
Method EPA 524.4	Regulated VOCs (V1, V2, V3)

Accreditation applies to public drinking water matrices.

This report meets NELAP requirements and is made up of a cover page, analytical results, and a copy of the original chain-of-custody. If you have any questions concerning this report, please feel free to contact me.

Sincerely,

A handwritten signature in black ink that reads "Celey D. Keene". The signature is written in a cursive, flowing style.

Celey D. Keene

Lab Director/Quality Manager



PHONE (575) 393-2326 ° 101 E. MARLAND ° HOBBS, NM 88240

Analytical Results For:

TETRA TECH
 CHUCK TERHUNE
 901 WEST WALL STREET , STE 100
 MIDLAND TX, 79701
 Fax To: (432) 682-3946

Received:	04/10/2023	Sampling Date:	04/06/2023
Reported:	04/14/2023	Sampling Type:	Soil
Project Name:	EVGSAU - 2418-001	Sampling Condition:	Cool & Intact
Project Number:	212C-HN-02279	Sample Received By:	Tamara Oldaker
Project Location:	MAVERICK - LEA COUNTY, NM		

Sample ID: AH - 1 (0-1') (H231663-01)

BTEx 8021B		mg/kg		Analyzed By: JH/						
Analyte	Result	Reporting Limit	Analyzed	Method Blank	BS	% Recovery	True Value QC	RPD	Qualifier	
Benzene*	<0.050	0.050	04/13/2023	ND	1.90	95.0	2.00	14.7		
Toluene*	<0.050	0.050	04/13/2023	ND	2.06	103	2.00	15.7		
Ethylbenzene*	<0.050	0.050	04/13/2023	ND	2.12	106	2.00	15.4		
Total Xylenes*	<0.150	0.150	04/13/2023	ND	6.40	107	6.00	14.7		
Total BTEx	<0.300	0.300	04/13/2023	ND						

Surrogate: 4-Bromofluorobenzene (PID) 102 % 71.5-134

Chloride, SM4500Cl-B		mg/kg		Analyzed By: GM						
Analyte	Result	Reporting Limit	Analyzed	Method Blank	BS	% Recovery	True Value QC	RPD	Qualifier	
Chloride	48.0	16.0	04/13/2023	ND	416	104	400	0.00		

TPH 8015M		mg/kg		Analyzed By: MS					
Analyte	Result	Reporting Limit	Analyzed	Method Blank	BS	% Recovery	True Value QC	RPD	Qualifier
GRO C6-C10*	<10.0	10.0	04/13/2023	ND	176	88.2	200	9.85	
DRO >C10-C28*	<10.0	10.0	04/13/2023	ND	218	109	200	14.4	
EXT DRO >C28-C36	<10.0	10.0	04/13/2023	ND					

Surrogate: 1-Chlorooctane 70.8 % 48.2-134

Surrogate: 1-Chlorooctadecane 85.9 % 49.1-148

Cardinal Laboratories

*=Accredited Analyte

PLEASE NOTE: Liability and Damages. Cardinal's liability and client's exclusive remedy for any claim arising, whether based in contract or tort, shall be limited to the amount paid by client for analyses. All claims, including those for negligence and any other cause whatsoever shall be deemed waived unless made in writing and received by Cardinal within thirty (30) days after completion of the applicable service. In no event shall Cardinal be liable for incidental or consequential damages, including, without limitation, business interruptions, loss of use, or loss of profits incurred by client, its subsidiaries, affiliates or successors arising out of or related to the performance of the services hereunder by Cardinal, regardless of whether such claim is based upon any of the above stated reasons or otherwise. Results relate only to the samples identified above. This report shall not be reproduced except in full with written approval of Cardinal Laboratories.

Celey D. Keene, Lab Director/Quality Manager



PHONE (575) 393-2326 ° 101 E. MARLAND ° HOBBS, NM 88240

Analytical Results For:

TETRA TECH
 CHUCK TERHUNE
 901 WEST WALL STREET , STE 100
 MIDLAND TX, 79701
 Fax To: (432) 682-3946

Received:	04/10/2023	Sampling Date:	04/06/2023
Reported:	04/14/2023	Sampling Type:	Soil
Project Name:	EVGSAU - 2418-001	Sampling Condition:	Cool & Intact
Project Number:	212C-HN-02279	Sample Received By:	Tamara Oldaker
Project Location:	MAVERICK - LEA COUNTY, NM		

Sample ID: AH - 1 (1-2') (H231663-02)

BTEx 8021B		mg/kg		Analyzed By: JH/						
Analyte	Result	Reporting Limit	Analyzed	Method Blank	BS	% Recovery	True Value QC	RPD	Qualifier	
Benzene*	<0.050	0.050	04/13/2023	ND	1.90	95.0	2.00	14.7		
Toluene*	<0.050	0.050	04/13/2023	ND	2.06	103	2.00	15.7		
Ethylbenzene*	<0.050	0.050	04/13/2023	ND	2.12	106	2.00	15.4		
Total Xylenes*	<0.150	0.150	04/13/2023	ND	6.40	107	6.00	14.7		
Total BTEx	<0.300	0.300	04/13/2023	ND						

Surrogate: 4-Bromofluorobenzene (PID) 103 % 71.5-134

Chloride, SM4500CI-B		mg/kg		Analyzed By: GM						
Analyte	Result	Reporting Limit	Analyzed	Method Blank	BS	% Recovery	True Value QC	RPD	Qualifier	
Chloride	32.0	16.0	04/13/2023	ND	416	104	400	0.00		

TPH 8015M		mg/kg		Analyzed By: MS					
Analyte	Result	Reporting Limit	Analyzed	Method Blank	BS	% Recovery	True Value QC	RPD	Qualifier
GRO C6-C10*	<10.0	10.0	04/13/2023	ND	176	88.2	200	9.85	
DRO >C10-C28*	<10.0	10.0	04/13/2023	ND	218	109	200	14.4	
EXT DRO >C28-C36	<10.0	10.0	04/13/2023	ND					

Surrogate: 1-Chlorooctane 83.6 % 48.2-134

Surrogate: 1-Chlorooctadecane 101 % 49.1-148

Cardinal Laboratories

*=Accredited Analyte

PLEASE NOTE: Liability and Damages. Cardinal's liability and client's exclusive remedy for any claim arising, whether based in contract or tort, shall be limited to the amount paid by client for analyses. All claims, including those for negligence and any other cause whatsoever shall be deemed waived unless made in writing and received by Cardinal within thirty (30) days after completion of the applicable service. In no event shall Cardinal be liable for incidental or consequential damages, including, without limitation, business interruptions, loss of use, or loss of profits incurred by client, its subsidiaries, affiliates or successors arising out of or related to the performance of the services hereunder by Cardinal, regardless of whether such claim is based upon any of the above stated reasons or otherwise. Results relate only to the samples identified above. This report shall not be reproduced except in full with written approval of Cardinal Laboratories.

Celey D. Keene, Lab Director/Quality Manager



PHONE (575) 393-2326 ° 101 E. MARLAND ° HOBBS, NM 88240

Analytical Results For:

TETRA TECH
 CHUCK TERHUNE
 901 WEST WALL STREET , STE 100
 MIDLAND TX, 79701
 Fax To: (432) 682-3946

Received:	04/10/2023	Sampling Date:	04/06/2023
Reported:	04/14/2023	Sampling Type:	Soil
Project Name:	EVGSAU - 2418-001	Sampling Condition:	Cool & Intact
Project Number:	212C-HN-02279	Sample Received By:	Tamara Oldaker
Project Location:	MAVERICK - LEA COUNTY, NM		

Sample ID: AH - 2 (0-1') (H231663-03)

BTX 8021B		mg/kg		Analyzed By: JH/						
Analyte	Result	Reporting Limit	Analyzed	Method Blank	BS	% Recovery	True Value QC	RPD	Qualifier	
Benzene*	<0.050	0.050	04/13/2023	ND	1.90	95.0	2.00	14.7		
Toluene*	<0.050	0.050	04/13/2023	ND	2.06	103	2.00	15.7		
Ethylbenzene*	<0.050	0.050	04/13/2023	ND	2.12	106	2.00	15.4		
Total Xylenes*	<0.150	0.150	04/13/2023	ND	6.40	107	6.00	14.7		
Total BTX	<0.300	0.300	04/13/2023	ND						

Surrogate: 4-Bromofluorobenzene (PID) 104 % 71.5-134

Chloride, SM4500CI-B		mg/kg		Analyzed By: GM						
Analyte	Result	Reporting Limit	Analyzed	Method Blank	BS	% Recovery	True Value QC	RPD	Qualifier	
Chloride	16.0	16.0	04/13/2023	ND	416	104	400	0.00		

TPH 8015M		mg/kg		Analyzed By: MS					
Analyte	Result	Reporting Limit	Analyzed	Method Blank	BS	% Recovery	True Value QC	RPD	Qualifier
GRO C6-C10*	<10.0	10.0	04/13/2023	ND	176	88.2	200	9.85	
DRO >C10-C28*	<10.0	10.0	04/13/2023	ND	218	109	200	14.4	
EXT DRO >C28-C36	<10.0	10.0	04/13/2023	ND					

Surrogate: 1-Chlorooctane 94.7 % 48.2-134

Surrogate: 1-Chlorooctadecane 118 % 49.1-148

Cardinal Laboratories

*=Accredited Analyte

PLEASE NOTE: Liability and Damages. Cardinal's liability and client's exclusive remedy for any claim arising, whether based in contract or tort, shall be limited to the amount paid by client for analyses. All claims, including those for negligence and any other cause whatsoever shall be deemed waived unless made in writing and received by Cardinal within thirty (30) days after completion of the applicable service. In no event shall Cardinal be liable for incidental or consequential damages, including, without limitation, business interruptions, loss of use, or loss of profits incurred by client, its subsidiaries, affiliates or successors arising out of or related to the performance of the services hereunder by Cardinal, regardless of whether such claim is based upon any of the above stated reasons or otherwise. Results relate only to the samples identified above. This report shall not be reproduced except in full with written approval of Cardinal Laboratories.

Celey D. Keene, Lab Director/Quality Manager



PHONE (575) 393-2326 ° 101 E. MARLAND ° HOBBS, NM 88240

Analytical Results For:

TETRA TECH
 CHUCK TERHUNE
 901 WEST WALL STREET , STE 100
 MIDLAND TX, 79701
 Fax To: (432) 682-3946

Received:	04/10/2023	Sampling Date:	04/06/2023
Reported:	04/14/2023	Sampling Type:	Soil
Project Name:	EVGSAU - 2418-001	Sampling Condition:	Cool & Intact
Project Number:	212C-HN-02279	Sample Received By:	Tamara Oldaker
Project Location:	MAVERICK - LEA COUNTY, NM		

Sample ID: AH - 3 (0-1') (H231663-04)

BTX 8021B		mg/kg		Analyzed By: JH/						
Analyte	Result	Reporting Limit	Analyzed	Method Blank	BS	% Recovery	True Value QC	RPD	Qualifier	
Benzene*	<0.050	0.050	04/13/2023	ND	1.90	95.0	2.00	14.7		
Toluene*	<0.050	0.050	04/13/2023	ND	2.06	103	2.00	15.7		
Ethylbenzene*	<0.050	0.050	04/13/2023	ND	2.12	106	2.00	15.4		
Total Xylenes*	<0.150	0.150	04/13/2023	ND	6.40	107	6.00	14.7		
Total BTX	<0.300	0.300	04/13/2023	ND						

Surrogate: 4-Bromofluorobenzene (PID) 103 % 71.5-134

Chloride, SM4500CI-B		mg/kg		Analyzed By: GM						
Analyte	Result	Reporting Limit	Analyzed	Method Blank	BS	% Recovery	True Value QC	RPD	Qualifier	
Chloride	128	16.0	04/13/2023	ND	416	104	400	0.00		

TPH 8015M		mg/kg		Analyzed By: MS					
Analyte	Result	Reporting Limit	Analyzed	Method Blank	BS	% Recovery	True Value QC	RPD	Qualifier
GRO C6-C10*	<10.0	10.0	04/13/2023	ND	176	88.2	200	9.85	
DRO >C10-C28*	<10.0	10.0	04/13/2023	ND	218	109	200	14.4	
EXT DRO >C28-C36	<10.0	10.0	04/13/2023	ND					

Surrogate: 1-Chlorooctane 79.6 % 48.2-134

Surrogate: 1-Chlorooctadecane 97.5 % 49.1-148

Cardinal Laboratories

*=Accredited Analyte

PLEASE NOTE: Liability and Damages. Cardinal's liability and client's exclusive remedy for any claim arising, whether based in contract or tort, shall be limited to the amount paid by client for analyses. All claims, including those for negligence and any other cause whatsoever shall be deemed waived unless made in writing and received by Cardinal within thirty (30) days after completion of the applicable service. In no event shall Cardinal be liable for incidental or consequential damages, including, without limitation, business interruptions, loss of use, or loss of profits incurred by client, its subsidiaries, affiliates or successors arising out of or related to the performance of the services hereunder by Cardinal, regardless of whether such claim is based upon any of the above stated reasons or otherwise. Results relate only to the samples identified above. This report shall not be reproduced except in full with written approval of Cardinal Laboratories.

Celey D. Keene, Lab Director/Quality Manager



PHONE (575) 393-2326 ° 101 E. MARLAND ° HOBBS, NM 88240

Analytical Results For:

TETRA TECH
 CHUCK TERHUNE
 901 WEST WALL STREET , STE 100
 MIDLAND TX, 79701
 Fax To: (432) 682-3946

Received:	04/10/2023	Sampling Date:	04/06/2023
Reported:	04/14/2023	Sampling Type:	Soil
Project Name:	EVGSAU - 2418-001	Sampling Condition:	Cool & Intact
Project Number:	212C-HN-02279	Sample Received By:	Tamara Oldaker
Project Location:	MAVERICK - LEA COUNTY, NM		

Sample ID: AH - 4 (0-1') (H231663-05)

BTEx 8021B		mg/kg		Analyzed By: JH/						
Analyte	Result	Reporting Limit	Analyzed	Method Blank	BS	% Recovery	True Value QC	RPD	Qualifier	
Benzene*	<0.050	0.050	04/13/2023	ND	1.90	95.0	2.00	14.7		
Toluene*	<0.050	0.050	04/13/2023	ND	2.06	103	2.00	15.7		
Ethylbenzene*	<0.050	0.050	04/13/2023	ND	2.12	106	2.00	15.4		
Total Xylenes*	<0.150	0.150	04/13/2023	ND	6.40	107	6.00	14.7		
Total BTEx	<0.300	0.300	04/13/2023	ND						

Surrogate: 4-Bromofluorobenzene (PID) 105 % 71.5-134

Chloride, SM4500CI-B		mg/kg		Analyzed By: GM					
Analyte	Result	Reporting Limit	Analyzed	Method Blank	BS	% Recovery	True Value QC	RPD	Qualifier
Chloride	48.0	16.0	04/13/2023	ND	416	104	400	0.00	

TPH 8015M		mg/kg		Analyzed By: MS					
Analyte	Result	Reporting Limit	Analyzed	Method Blank	BS	% Recovery	True Value QC	RPD	Qualifier
GRO C6-C10*	<10.0	10.0	04/13/2023	ND	176	88.2	200	9.85	
DRO >C10-C28*	<10.0	10.0	04/13/2023	ND	218	109	200	14.4	
EXT DRO >C28-C36	<10.0	10.0	04/13/2023	ND					

Surrogate: 1-Chlorooctane 84.4 % 48.2-134

Surrogate: 1-Chlorooctadecane 105 % 49.1-148

Cardinal Laboratories

*=Accredited Analyte

PLEASE NOTE: Liability and Damages. Cardinal's liability and client's exclusive remedy for any claim arising, whether based in contract or tort, shall be limited to the amount paid by client for analyses. All claims, including those for negligence and any other cause whatsoever shall be deemed waived unless made in writing and received by Cardinal within thirty (30) days after completion of the applicable service. In no event shall Cardinal be liable for incidental or consequential damages, including, without limitation, business interruptions, loss of use, or loss of profits incurred by client, its subsidiaries, affiliates or successors arising out of or related to the performance of the services hereunder by Cardinal, regardless of whether such claim is based upon any of the above stated reasons or otherwise. Results relate only to the samples identified above. This report shall not be reproduced except in full with written approval of Cardinal Laboratories.

Celey D. Keene, Lab Director/Quality Manager



PHONE (575) 393-2326 ° 101 E. MARLAND ° HOBBS, NM 88240

Analytical Results For:

TETRA TECH
 CHUCK TERHUNE
 901 WEST WALL STREET , STE 100
 MIDLAND TX, 79701
 Fax To: (432) 682-3946

Received:	04/10/2023	Sampling Date:	04/06/2023
Reported:	04/14/2023	Sampling Type:	Soil
Project Name:	EVGSAU - 2418-001	Sampling Condition:	Cool & Intact
Project Number:	212C-HN-02279	Sample Received By:	Tamara Oldaker
Project Location:	MAVERICK - LEA COUNTY, NM		

Sample ID: AH - 5 (0-1') (H231663-06)

BTEx 8021B		mg/kg		Analyzed By: JH/						
Analyte	Result	Reporting Limit	Analyzed	Method Blank	BS	% Recovery	True Value QC	RPD	Qualifier	
Benzene*	<0.050	0.050	04/13/2023	ND	1.90	95.0	2.00	14.7		
Toluene*	<0.050	0.050	04/13/2023	ND	2.06	103	2.00	15.7		
Ethylbenzene*	<0.050	0.050	04/13/2023	ND	2.12	106	2.00	15.4		
Total Xylenes*	<0.150	0.150	04/13/2023	ND	6.40	107	6.00	14.7		
Total BTEx	<0.300	0.300	04/13/2023	ND						

Surrogate: 4-Bromofluorobenzene (PID) 101 % 71.5-134

Chloride, SM4500Cl-B		mg/kg		Analyzed By: GM						
Analyte	Result	Reporting Limit	Analyzed	Method Blank	BS	% Recovery	True Value QC	RPD	Qualifier	
Chloride	64.0	16.0	04/13/2023	ND	416	104	400	0.00		

TPH 8015M		mg/kg		Analyzed By: MS					
Analyte	Result	Reporting Limit	Analyzed	Method Blank	BS	% Recovery	True Value QC	RPD	Qualifier
GRO C6-C10*	<10.0	10.0	04/13/2023	ND	176	88.2	200	9.85	
DRO >C10-C28*	18.5	10.0	04/13/2023	ND	218	109	200	14.4	
EXT DRO >C28-C36	<10.0	10.0	04/13/2023	ND					

Surrogate: 1-Chlorooctane 87.9 % 48.2-134

Surrogate: 1-Chlorooctadecane 113 % 49.1-148

Cardinal Laboratories

*=Accredited Analyte

PLEASE NOTE: Liability and Damages. Cardinal's liability and client's exclusive remedy for any claim arising, whether based in contract or tort, shall be limited to the amount paid by client for analyses. All claims, including those for negligence and any other cause whatsoever shall be deemed waived unless made in writing and received by Cardinal within thirty (30) days after completion of the applicable service. In no event shall Cardinal be liable for incidental or consequential damages, including, without limitation, business interruptions, loss of use, or loss of profits incurred by client, its subsidiaries, affiliates or successors arising out of or related to the performance of the services hereunder by Cardinal, regardless of whether such claim is based upon any of the above stated reasons or otherwise. Results relate only to the samples identified above. This report shall not be reproduced except in full with written approval of Cardinal Laboratories.

Celey D. Keene, Lab Director/Quality Manager



PHONE (575) 393-2326 • 101 E. MARLAND • HOBBS, NM 88240

Analytical Results For:

TETRA TECH
 CHUCK TERHUNE
 901 WEST WALL STREET , STE 100
 MIDLAND TX, 79701
 Fax To: (432) 682-3946

Received:	04/10/2023	Sampling Date:	04/06/2023
Reported:	04/14/2023	Sampling Type:	Soil
Project Name:	EVGSAU - 2418-001	Sampling Condition:	Cool & Intact
Project Number:	212C-HN-02279	Sample Received By:	Tamara Oldaker
Project Location:	MAVERICK - LEA COUNTY, NM		

Sample ID: AH - 6 (0-1') (H231663-07)

BTEx 8021B		mg/kg		Analyzed By: JH/						
Analyte	Result	Reporting Limit	Analyzed	Method Blank	BS	% Recovery	True Value QC	RPD	Qualifier	
Benzene*	<0.050	0.050	04/13/2023	ND	1.90	95.0	2.00	14.7		
Toluene*	<0.050	0.050	04/13/2023	ND	2.06	103	2.00	15.7		
Ethylbenzene*	<0.050	0.050	04/13/2023	ND	2.12	106	2.00	15.4		
Total Xylenes*	<0.150	0.150	04/13/2023	ND	6.40	107	6.00	14.7		
Total BTEx	<0.300	0.300	04/13/2023	ND						

Surrogate: 4-Bromofluorobenzene (PID) 102 % 71.5-134

Chloride, SM4500CI-B		mg/kg		Analyzed By: GM						
Analyte	Result	Reporting Limit	Analyzed	Method Blank	BS	% Recovery	True Value QC	RPD	Qualifier	
Chloride	64.0	16.0	04/13/2023	ND	400	100	400	3.92		

TPH 8015M		mg/kg		Analyzed By: MS					
Analyte	Result	Reporting Limit	Analyzed	Method Blank	BS	% Recovery	True Value QC	RPD	Qualifier
GRO C6-C10*	<10.0	10.0	04/13/2023	ND	176	88.2	200	9.85	
DRO >C10-C28*	<10.0	10.0	04/13/2023	ND	218	109	200	14.4	
EXT DRO >C28-C36	<10.0	10.0	04/13/2023	ND					

Surrogate: 1-Chlorooctane 76.6 % 48.2-134

Surrogate: 1-Chlorooctadecane 96.4 % 49.1-148

Cardinal Laboratories

*=Accredited Analyte

PLEASE NOTE: Liability and Damages. Cardinal's liability and client's exclusive remedy for any claim arising, whether based in contract or tort, shall be limited to the amount paid by client for analyses. All claims, including those for negligence and any other cause whatsoever shall be deemed waived unless made in writing and received by Cardinal within thirty (30) days after completion of the applicable service. In no event shall Cardinal be liable for incidental or consequential damages, including, without limitation, business interruptions, loss of use, or loss of profits incurred by client, its subsidiaries, affiliates or successors arising out of or related to the performance of the services hereunder by Cardinal, regardless of whether such claim is based upon any of the above stated reasons or otherwise. Results relate only to the samples identified above. This report shall not be reproduced except in full with written approval of Cardinal Laboratories.

Celey D. Keene, Lab Director/Quality Manager



PHONE (575) 393-2326 • 101 E. MARLAND • HOBBS, NM 88240

Analytical Results For:

TETRA TECH
 CHUCK TERHUNE
 901 WEST WALL STREET , STE 100
 MIDLAND TX, 79701
 Fax To: (432) 682-3946

Received:	04/10/2023	Sampling Date:	04/06/2023
Reported:	04/14/2023	Sampling Type:	Soil
Project Name:	EVGSAU - 2418-001	Sampling Condition:	Cool & Intact
Project Number:	212C-HN-02279	Sample Received By:	Tamara Oldaker
Project Location:	MAVERICK - LEA COUNTY, NM		

Sample ID: AH - 7 (0-1') (H231663-08)

BTEx 8021B		mg/kg		Analyzed By: JH/						
Analyte	Result	Reporting Limit	Analyzed	Method Blank	BS	% Recovery	True Value QC	RPD	Qualifier	
Benzene*	<0.050	0.050	04/13/2023	ND	1.90	95.0	2.00	14.7		
Toluene*	<0.050	0.050	04/13/2023	ND	2.06	103	2.00	15.7		
Ethylbenzene*	<0.050	0.050	04/13/2023	ND	2.12	106	2.00	15.4		
Total Xylenes*	<0.150	0.150	04/13/2023	ND	6.40	107	6.00	14.7		
Total BTEx	<0.300	0.300	04/13/2023	ND						

Surrogate: 4-Bromofluorobenzene (PID) 102 % 71.5-134

Chloride, SM4500CI-B		mg/kg		Analyzed By: GM						
Analyte	Result	Reporting Limit	Analyzed	Method Blank	BS	% Recovery	True Value QC	RPD	Qualifier	
Chloride	1600	16.0	04/13/2023	ND	400	100	400	3.92		

TPH 8015M		mg/kg		Analyzed By: MS					
Analyte	Result	Reporting Limit	Analyzed	Method Blank	BS	% Recovery	True Value QC	RPD	Qualifier
GRO C6-C10*	<10.0	10.0	04/13/2023	ND	176	88.2	200	9.85	
DRO >C10-C28*	<10.0	10.0	04/13/2023	ND	218	109	200	14.4	
EXT DRO >C28-C36	<10.0	10.0	04/13/2023	ND					

Surrogate: 1-Chlorooctane 96.7 % 48.2-134

Surrogate: 1-Chlorooctadecane 124 % 49.1-148

Cardinal Laboratories

*=Accredited Analyte

PLEASE NOTE: Liability and Damages. Cardinal's liability and client's exclusive remedy for any claim arising, whether based in contract or tort, shall be limited to the amount paid by client for analyses. All claims, including those for negligence and any other cause whatsoever shall be deemed waived unless made in writing and received by Cardinal within thirty (30) days after completion of the applicable service. In no event shall Cardinal be liable for incidental or consequential damages, including, without limitation, business interruptions, loss of use, or loss of profits incurred by client, its subsidiaries, affiliates or successors arising out of or related to the performance of the services hereunder by Cardinal, regardless of whether such claim is based upon any of the above stated reasons or otherwise. Results relate only to the samples identified above. This report shall not be reproduced except in full with written approval of Cardinal Laboratories.

Celey D. Keene, Lab Director/Quality Manager



PHONE (575) 393-2326 ° 101 E. MARLAND ° HOBBS, NM 88240

Analytical Results For:

TETRA TECH
 CHUCK TERHUNE
 901 WEST WALL STREET , STE 100
 MIDLAND TX, 79701
 Fax To: (432) 682-3946

Received:	04/10/2023	Sampling Date:	04/06/2023
Reported:	04/14/2023	Sampling Type:	Soil
Project Name:	EVGSAU - 2418-001	Sampling Condition:	Cool & Intact
Project Number:	212C-HN-02279	Sample Received By:	Tamara Oldaker
Project Location:	MAVERICK - LEA COUNTY, NM		

Sample ID: AH - 8 (0-1') (H231663-09)

BTEx 8021B		mg/kg		Analyzed By: JH/					
Analyte	Result	Reporting Limit	Analyzed	Method Blank	BS	% Recovery	True Value QC	RPD	Qualifier
Benzene*	0.934	0.500	04/14/2023	ND	1.90	95.0	2.00	14.7	
Toluene*	21.3	0.500	04/14/2023	ND	2.06	103	2.00	15.7	
Ethylbenzene*	40.9	0.500	04/14/2023	ND	2.12	106	2.00	15.4	
Total Xylenes*	67.2	1.50	04/14/2023	ND	6.40	107	6.00	14.7	
Total BTEX	130	3.00	04/14/2023	ND					

Surrogate: 4-Bromofluorobenzene (PID) 118 % 71.5-134

Chloride, SM4500Cl-B		mg/kg		Analyzed By: GM						
Analyte	Result	Reporting Limit	Analyzed	Method Blank	BS	% Recovery	True Value QC	RPD	Qualifier	
Chloride	30000	16.0	04/13/2023	ND	400	100	400	3.92		

TPH 8015M		mg/kg		Analyzed By: MS				S-06	
Analyte	Result	Reporting Limit	Analyzed	Method Blank	BS	% Recovery	True Value QC	RPD	Qualifier
GRO C6-C10*	1530	100	04/13/2023	ND	176	88.2	200	9.85	
DRO >C10-C28*	15100	100	04/13/2023	ND	218	109	200	14.4	
EXT DRO >C28-C36	2820	100	04/13/2023	ND					

Surrogate: 1-Chlorooctane 326 % 48.2-134

Surrogate: 1-Chlorooctadecane 403 % 49.1-148

Cardinal Laboratories

*=Accredited Analyte

PLEASE NOTE: Liability and Damages. Cardinal's liability and client's exclusive remedy for any claim arising, whether based in contract or tort, shall be limited to the amount paid by client for analyses. All claims, including those for negligence and any other cause whatsoever shall be deemed waived unless made in writing and received by Cardinal within thirty (30) days after completion of the applicable service. In no event shall Cardinal be liable for incidental or consequential damages, including, without limitation, business interruptions, loss of use, or loss of profits incurred by client, its subsidiaries, affiliates or successors arising out of or related to the performance of the services hereunder by Cardinal, regardless of whether such claim is based upon any of the above stated reasons or otherwise. Results relate only to the samples identified above. This report shall not be reproduced except in full with written approval of Cardinal Laboratories.

Celey D. Keene, Lab Director/Quality Manager

PHONE (575) 393-2326 ° 101 E. MARLAND ° HOBBS, NM 88240

Notes and Definitions

S-06	The recovery of this surrogate is outside control limits due to sample dilution required from high analyte concentration and/or matrix interference's.
BS-3	Blank spike recovery outside of lab established statistical limits, but still within method limits. Data is not adversely affected.
ND	Analyte NOT DETECTED at or above the reporting limit
RPD	Relative Percent Difference
**	Samples not received at proper temperature of 6°C or below.
***	Insufficient time to reach temperature.
-	Chloride by SM4500Cl-B does not require samples be received at or below 6°C Samples reported on an as received basis (wet) unless otherwise noted on report

Cardinal Laboratories

*=Accredited Analyte

PLEASE NOTE: Liability and Damages. Cardinal's liability and client's exclusive remedy for any claim arising, whether based in contract or tort, shall be limited to the amount paid by client for analyses. All claims, including those for negligence and any other cause whatsoever shall be deemed waived unless made in writing and received by Cardinal within thirty (30) days after completion of the applicable service. In no event shall Cardinal be liable for incidental or consequential damages, including, without limitation, business interruptions, loss of use, or loss of profits incurred by client, its subsidiaries, affiliates or successors arising out of or related to the performance of the services hereunder by Cardinal, regardless of whether such claim is based upon any of the above stated reasons or otherwise. Results relate only to the samples identified above. This report shall not be reproduced except in full with written approval of Cardinal Laboratories.

A handwritten signature in black ink, appearing to read "Celey D. Keene".

Celey D. Keene, Lab Director/Quality Manager

Analysis Request of Chain of Custody Record



Tetra Tech, Inc.

901 W Wall Street, Ste 100
Midland, Texas 79701
Tel (432) 682-4559
Fax (432) 682-3946

Client Name: **Maverick** Site Manager: **Chuck Terhune**

Project Name: **EVGSAU - 2418-001** (281) 755-8965
chuck.terhune@tetratech.com

Project Location: **Lea County, NM** Project #: **212C-HN-02279**

Invoice to: **chuck.terhune@tetratech.com**

Receiving Laboratory: **Cardinal Labs** Sampler Signature: **Miguel A. Flores**

Comments:

LAB #
LAB USE ONLY

SAMPLE IDENTIFICATION

LAB #	SAMPLE IDENTIFICATION	SAMPLING		MATRIX		PRESERVATIVE METHOD		# CONTAINERS	FILTERED (Y/N)
		DATE	TIME	WATER	SOIL	HCL	HNO ₃		
1	AH-1 (0-1')	4/6/2023		X			X		
2	AH-1 (1-2')	4/6/2023		X			X		
3	AH-2 (0-1')	4/6/2023		X			X		
4	AH-3 (0-1')	4/6/2023		X			X		
5	AH-4 (0-1')	4/6/2023		X			X		
6	AH-5 (0-1')	4/6/2023		X			X		
7	AH-6 (0-1')	4/6/2023		X			X		
8	AH-7 (0-1')	4/6/2023		X			X		
9	AH-8 (0-1')	4/6/2023		X			X		

Inquired by: **Miguel A Flores** Date: Time:
Inquired by: **Juanita** Date: **4/10/23** Time: **0930**
Inquired by: Date: Time:
Received by: Date: Time:

ANALYSIS REQUEST
(Circle or Specify Method No.)

BTEX 8021B	BTEX 8260B
TPH TX1005 (Ext to C35)	
TPH 8015M (GRO - DRO - ORO)	
PAH 8270C	
Total Metals Ag As Ba Cd Cr Pb Se Hg	
TCLP Metals Ag As Ba Cd Cr Pb Se Hg	
TCLP Volatiles	
TCLP Semi Volatiles	
RCI	
GC/MS Vol. 8260B / 624	
GC/MS Semi. Vol. 8270C/625	
PCB's 8082 / 608	
NORM	
PLM (Asbestos)	
Chloride	
Chloride Sulfate TDS	
General Water Chemistry (see attached list)	
Anion/Cation Balance	
Hold	

LAB USE ONLY

Sample Temperature

REMARKS: Standard
☐ RUSH: Same Day 24 hr 48 hr 72 hr
☐ Rush Charges Authorized
☐ Special Report Limits or TRRP Report

(Circle) HAND DELIVERED FEDEX UPS Tracking #:

ORIGINAL COPY

Release Characterization Work Plan
Maverick Permian, LLC
EVGSAU 2418-001
Incident ID: nAPP2310153358

May 1, 2023

ATTACHMENT 4 – PHOTOGRAPHIC DOCUMENTATION



☀ 204°SW (T) LAT: 32.816711 LON: -103.508334 ±4m ▲ 1219m



Site Assessment
Tetra Tech

Maverick - EVGSAU 2418-001
Apr 06 2023, 09:49:54 MDT

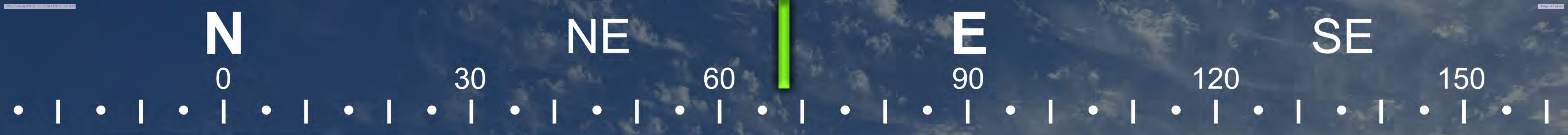


☉ 243°SW (T) LAT: 32.816789 LON: -103.508175 ±4m ▲ 1220m



Site Assessment
Tetra Tech

Maverick - EVGSAU 2418-001
Apr 06 2023, 09:49:37 MDT



☀ 68°E (T) LAT: 32.816681 LON: -103.508405 ±4m ▲ 1219m



Site Assessment
Tetra Tech

Maverick - EVGSAU 2418-001
Apr 06 2023, 09:50:05 MDT

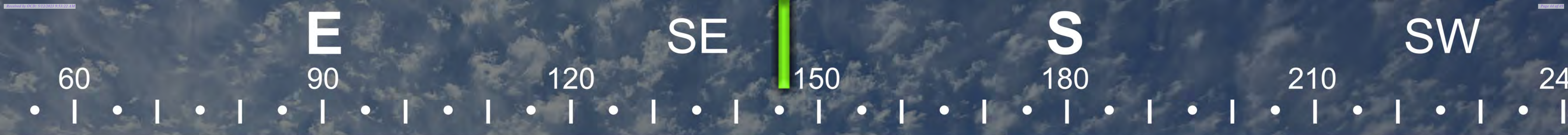


☀ 322°NW (T) LAT: 32.816579 LON: -103.508103 ±4m ▲ 1221m



Site Assessment
Tetra Tech

Maverick - EVGSAU 2418-001
Apr 06 2023, 09:51:18 MDT



☀ 146°SE (T) LAT: 32.816821 LON: -103.508384 ±4m ▲ 1220m



Site Assessment
Tetra Tech

Maverick - EVGSAU 2418-001
Apr 06 2023, 09:50:19 MDT



☉ 267°W (T) LAT: 32.816662 LON: -103.508017 ±4m ▲ 1220m



Site Assessment
Tetra Tech

Maverick - EVGSAU 2418-001
Apr 06 2023, 09:51:03 MDT



☉ 301°NW (T) LAT: 32.816658 LON: -103.508012 ±4m ▲ 1221m



Site Assessment
Tetra Tech

Maverick - EVGSAU 2418-001
Apr 06 2023, 09:50:58 MDT

Release Characterization Work Plan
Maverick Permian, LLC
EVGSAU 2418-001
Incident ID: nAPP2310153358

May 1, 2023

ATTACHMENT 5 – NMSLO SEED MIXTURE DETAILS

NMSLO Seed Mix**Coarse (CS)****COARSE (CS) SITES SEED MIXTURE:**

COMMON NAME	VARIETY	APPLICATION RATE (PLS/Acre)	DRILL BOX
Grasses:			
Sand bluestem	VNS, Southern	2.0	F
Sideoats grama	Vaughn, El Reno	2.0	F
Blue grama	Hachita, Lovington	1.5	D
Little bluestem	Cimmaron, Pastura	1.5	F
Sand dropseed	VNS, Southern	1.0	S
Plains bristlegrass	VNS, Southern	0.75	D
Forbs:			
Parry penstemon	VNS, Southern	1.0	D
Desert globemallow	VNS, Southern	1.0	D
White prairieclover	Kaneb, VNS	0.5	D
Sulfur buckwheat	VNS, Southern	0.5	D
Shrubs:			
Fourwing saltbush	VNS, Southern	1.0	D
Skunkbush sumac	VNS, Southern	1.0	D
Common winterfat	VNS, Southern	1.0	F
Fringed sagewort	VNS, Southern	0.5	F
Total PLS/acre		18.25	

S = Small seed drill box, D = Standard seed drill box, F = Fluffy seed drill box

- VNS, Southern – No Variety Stated, seed should be from a southern latitude collection of this species.
- Double above seed rates for broadcast or hydroseeding.
- If Parry is not available, substitute firecracker penstemon.
- If desert globemallow is not available, substitute scarlet globemallow.
- If one species is not available, provide a suggested substitute to the New Mexico Land Office for approval. Increasing all other species proportionately may be acceptable.



District I
1625 N. French Dr., Hobbs, NM 88240
Phone:(575) 393-6161 Fax:(575) 393-0720

District II
811 S. First St., Artesia, NM 88210
Phone:(575) 748-1283 Fax:(575) 748-9720

District III
1000 Rio Brazos Rd., Aztec, NM 87410
Phone:(505) 334-6178 Fax:(505) 334-6170

District IV
1220 S. St Francis Dr., Santa Fe, NM 87505
Phone:(505) 476-3470 Fax:(505) 476-3462

State of New Mexico
Energy, Minerals and Natural Resources
Oil Conservation Division
1220 S. St Francis Dr.
Santa Fe, NM 87505

CONDITIONS

Action 216437

CONDITIONS

Operator: Maverick Permian LLC 1111 Bagby Street Suite 1600 Houston, TX 77002	OGRID: 331199
	Action Number: 216437
	Action Type: [C-141] Release Corrective Action (C-141)

CONDITIONS

Created By	Condition	Condition Date
nvelez	Incident cancelled due to not meeting reportable event of > 5 barrels of liquid. Operator must remediate volume discharged into the surrounding area and keep records for any future endeavor.	8/1/2023