

District I
1625 N. French Dr., Hobbs, NM 88240
District II
811 S. First St., Artesia, NM 88210
District III
1000 Rio Brazos Road, Aztec, NM 87410
District IV
1220 S. St. Francis Dr., Santa Fe, NM 87505

State of New Mexico
Energy Minerals and Natural
Resources Department

Oil Conservation Division
1220 South St. Francis Dr.
Santa Fe, NM 87505

Form C-141
Revised August 24, 2018
Submit to appropriate OCD District office

Incident ID	
District RP	
Facility ID	
Application ID	

Release Notification

Responsible Party

Responsible Party	OGRID
Contact Name	Contact Telephone
Contact email	Incident # (assigned by OCD)
Contact mailing address	

Location of Release Source

Latitude _____ Longitude _____
(NAD 83 in decimal degrees to 5 decimal places)

Site Name	Site Type
Date Release Discovered	API# (if applicable)

Unit Letter	Section	Township	Range	County

Surface Owner: ☐ State ☐ Federal ☐ Tribal ☐ Private (Name: _____)

Nature and Volume of Release

Material(s) Released (Select all that apply and attach calculations or specific justification for the volumes provided below)

<input type="checkbox"/> Crude Oil	Volume Released (bbls)	Volume Recovered (bbls)
<input type="checkbox"/> Produced Water	Volume Released (bbls)	Volume Recovered (bbls)
	Is the concentration of dissolved chloride in the produced water >10,000 mg/l?	<input type="checkbox"/> Yes <input type="checkbox"/> No
<input type="checkbox"/> Condensate	Volume Released (bbls)	Volume Recovered (bbls)
<input type="checkbox"/> Natural Gas	Volume Released (Mcf)	Volume Recovered (Mcf)
<input type="checkbox"/> Other (describe)	Volume/Weight Released (provide units)	Volume/Weight Recovered (provide units)

Cause of Release

Oil Conservation Division

Incident ID	
District RP	
Facility ID	
Application ID	

Was this a major release as defined by 19.15.29.7(A) NMAC? <input type="checkbox"/> Yes <input type="checkbox"/> No	If YES, for what reason(s) does the responsible party consider this a major release?
If YES, was immediate notice given to the OCD? By whom? To whom? When and by what means (phone, email, etc)?	

Initial Response

The responsible party must undertake the following actions immediately unless they could create a safety hazard that would result in injury

<input type="checkbox"/> The source of the release has been stopped.	
<input type="checkbox"/> The impacted area has been secured to protect human health and the environment.	
<input type="checkbox"/> Released materials have been contained via the use of berms or dikes, absorbent pads, or other containment devices.	
<input type="checkbox"/> All free liquids and recoverable materials have been removed and managed appropriately.	
If all the actions described above have <u>not</u> been undertaken, explain why:	
Per 19.15.29.8 B. (4) NMAC the responsible party may commence remediation immediately after discovery of a release. If remediation has begun, please attach a narrative of actions to date. If remedial efforts have been successfully completed or if the release occurred within a lined containment area (see 19.15.29.11(A)(5)(a) NMAC), please attach all information needed for closure evaluation.	
I hereby certify that the information given above is true and complete to the best of my knowledge and understand that pursuant to OCD rules and regulations all operators are required to report and/or file certain release notifications and perform corrective actions for releases which may endanger public health or the environment. The acceptance of a C-141 report by the OCD does not relieve the operator of liability should their operations have failed to adequately investigate and remediate contamination that pose a threat to groundwater, surface water, human health or the environment. In addition, OCD acceptance of a C-141 report does not relieve the operator of responsibility for compliance with any other federal, state, or local laws and/or regulations.	
Printed Name: _____	Title: _____
Signature: <u>Patricia Espinoza</u>	Date: _____
email: _____	Telephone: _____
<u>OCD Only</u>	
Received by: _____	Date: _____



December 19, 2023

District Supervisor
Oil Conservation Division, District 1
1625 North French Drive
Hobbs, New Mexico 88240

**Re: Release Characterization, Remediation and Closure Report
ConocoPhillips
Airacuda 31 Federal #002H Flare Fire Release
Unit Letter B, Section 31, Township 25 South, Range 33 East
DOR: 10/18/2023
Approximate Release Point 32.093131, -103.609394
Lea County, New Mexico
Incident ID: NAPP2329636934**

Sir or Madam:

Tetra Tech, Inc. (Tetra Tech) was contacted by ConocoPhillips to assess a release that occurred as a result of a flare fire at the Airacuda 31 Federal #002H (API # 30-025-40407) well. The release footprint is located within Public Land Survey System (PLSS) Unit Letter B, Section 31, Township 25 South, Range 33 East, in Lea County, New Mexico (Site). The approximate release point occurred at coordinates 32.093131, -103.609394, as shown on Figures 1 and 2.

BACKGROUND

According to the C-141 Initial Report, the release occurred on October 18, 2023, and was caused by a free water knockout (FWKO) overfilling causing fluid to be released out of the flare leading to a fire off pad. Approximately 0.06 bbls of oil and 1.11 bbls of produced water were reported and no fluids were recovered due to the fire. The provided spill calculator indicates an irregular release area of approximately 5,250 square feet. This release extent was identified based on information provided by ConocoPhillips representatives and a review of photographs collected at the release area. The approximate release extent is shown in Figure 3. The New Mexico Oil Conservation Division (NMOCD) approved the initial C-141 on October 23, 2023, and assigned the release Incident ID NAPP2329636934. The C-141 is included as Appendix A.

LAND OWNERSHIP

According to the NMOCD Oil and Gas Map, the site is located on land owned by the Bureau of Land Management (BLM). Tetra Tech requested BLM clearance to remediate via email on November 14, 2023. The BLM cleared the Site for remediation activities via verbal notification from Shelly Tucker, BLM.

SITE CHARACTERIZATION

A site characterization was performed and no sinkholes, residences, schools, hospitals, institutions, churches, springs, private domestic water wells, stream bodies, springs, playa lakes, wetlands, incorporated municipal boundaries, subsurface mines, or floodplains are located within the distances

Tetra Tech

901 West Wall St., Suite 100, Midland, TX 79701

Tel 432.682.4559 Fax 432.682.3946 www.tetrattech.com

specified in 19.15. 29 New Mexico Administrative Code (NMAC). The Site is in an area of medium karst potential.

According to the NMOSE, there is one well within 0.93 miles (1497 meters) with a total depth to water of 280 feet. According to the United States Geological Survey (USGS) groundwater well search through the New Mexico Oil Conservation Division (NMOCD) mapping system, there are one (1) active water wells within a ½-mile (800-meter) radius of the Site. COP will use the USGS historical groundwater well (Site # 320504103361801) measured on January 16, 2013, with a well depth of 320 feet. The site characterization data is included in Appendix C.

REGULATORY FRAMEWORK

Based upon the release footprint and in accordance with Subsection E of 19.15.29.12 NMAC, per 19.15.29.11 NMAC, the site characterization data was used to determine recommended remedial action levels (RRALs) for benzene, toluene, ethylbenzene, and xylene (collectively referred to as BTEX), total petroleum hydrocarbons (TPH), and chlorides in soil.

Based on the site characterization and in accordance with Table I of 19.15.29.12 NMAC, the remediation RRALs for the Site are as follows:

Constituent	Remediation RRAL
Chloride	20,000 mg/kg
TPH (GRO+DRO+ORO)	2,500 mg/kg
BTEX	50 mg/kg
Benzene	10 mg/kg

Additionally, in accordance with the NMOCD guidance *Procedures for Implementation of the Spill Rule (19.15.29 NMAC)* (September 6, 2019), the following reclamation requirements for surface soils (0-4 feet bgs) outside of active oil and gas operations are as follows:

Constituent	Reclamation Requirements
Chloride	600 mg/kg
TPH (GRO+DRO+ORO)	100 mg/kg

SITE ASSESSMENT AND SAMPLING RESULTS

Tetra Tech personnel mobilized to the site on October 30, 2023, to conduct assessment activities. A total of seven (7) borings (AH-1 through AH-7) were installed within and around the release footprint. Three (3) borings (AH-1 through AH-3) were installed to a depth of 2 feet bgs and four (4) borings (AH-4 through AH-7) were installed to 1-foot bgs. Boring locations from the October 2023 sampling event are presented in Figure 3.

A total of ten (10) samples were collected from the seven (7) boring locations and submitted to Cardinal Laboratories (Cardinal) in Hobbs, New Mexico to be analyzed for chlorides via EPA Method 4500.0, TPH via EPA Method 8015M, and BTEX via EPA Method 8021B. All analytical results were below the applicable Site RRALs for all constituents. A copy of the laboratory analytical report and chain-of-custody documentation are included in Appendix D. Photographic documentation of Site conditions at the time of the assessment is presented in Appendix E.

INITIAL RESPONSE AND REMEDIAL ACTIVITIES

In accordance with 19.15.29.8. B. (4) NMAC that states “the responsible party may commence remediation immediately after discovery of a release,” ConocoPhillips elected to begin remediation of the impacted area on November 14, 2023. The entire release extent was excavated by scraping the surface to a depth of approximately 6 inches bgs, resulting in approximately 93 cubic yards of contaminated soil being removed.

Photographic documentation of the release extent before and after the scrape is included in Appendix E. Waste manifests are not currently available however, the initial response area is indicated in Figure 4.

SITE CONFIRMATION SAMPLING RESULTS

Post initial response, Tetra Tech personnel re-mobilized to the site to conduct confirmation sampling on November 16, 2023, for verification of initial response activities. Prior to confirmation sampling, in accordance with Subsection D of 19.15.29.12 NMAC, the NMOCD district office was notified via email on November 14, 2023. Copies of the regulatory correspondence are included in Appendix B.

The observed release extent consisted of approximately 3,476 square feet; however, the surface scrape was conducted over an area of approximately 5,000 square feet. As shown, in Appendix E, the release was limited to the shallow surface and was not consistent in shape. Samples were collected such that each discrete sample (horizontal and vertical) was representative of approximately 200 square feet of remediated area. A total of eight (8) floor sample locations and eight (8) sidewall sample locations were used during the sampling activities. Confirmation sidewall sample locations were labeled with "SW"-#, and confirmation floor sample locations were labeled with "FS"-#. Analytical results for all confirmation soil samples (floor and sidewall) were below the applicable Site RRALs for chloride, BTEX, and TPH. The results of the 2023 confirmation sampling events are summarized in Table 2. Laboratory analytical data is included in Appendix D. The initial response remedial action was successful in removing the contaminant mass to meet the standards of Table I of 19.15.29.12 NMAC.

CONCLUSION

Based on the results of the site assessment, initial response actions, and confirmation sampling, ConocoPhillips respectfully requests closure of the incident. The analytical results from the assessment indicated that observable impacts were limited to the upper foot of soils. The release footprint was fully delineated.

All analytical results associated with the on-pad site confirmation sampling events were below applicable Site RRALs. Therefore, remediation of the release footprint is complete. All confirmation sampling analytical results associated with the off-pad pasture area were below the reclamation requirements. The impacted surface area was remediated to meet the standards of Table I of 19.15.29.12 NMAC during the initial response remedial activities.

This final closure report has been submitted within 90 days of discovery of the release. This final closure report details the release characterization, remediation activities and the results of the assessment sampling. The final C-141 forms are enclosed in Appendix A. If you have any questions concerning the soil assessment activities for the Site, please call me at (512) 596-8201.

Sincerely,

Tetra Tech, Inc.



Lisbeth Chavira
Staff Geoscientist



Christian M. Llull, P.G.
Program Manager

cc:
Mr. Jacob Laird, GPBU – ConocoPhillips

LIST OF ATTACHMENTS

Figures:

- Figure 1 – Overview Map
- Figure 2 – Site Location/Topographic Map
- Figure 3 – Approximate Release Extent Site Assessment
- Figure 4 – Site Assessment and Initial Response
- Figure 5 – Initial Response and Confirmation Sampling Locations

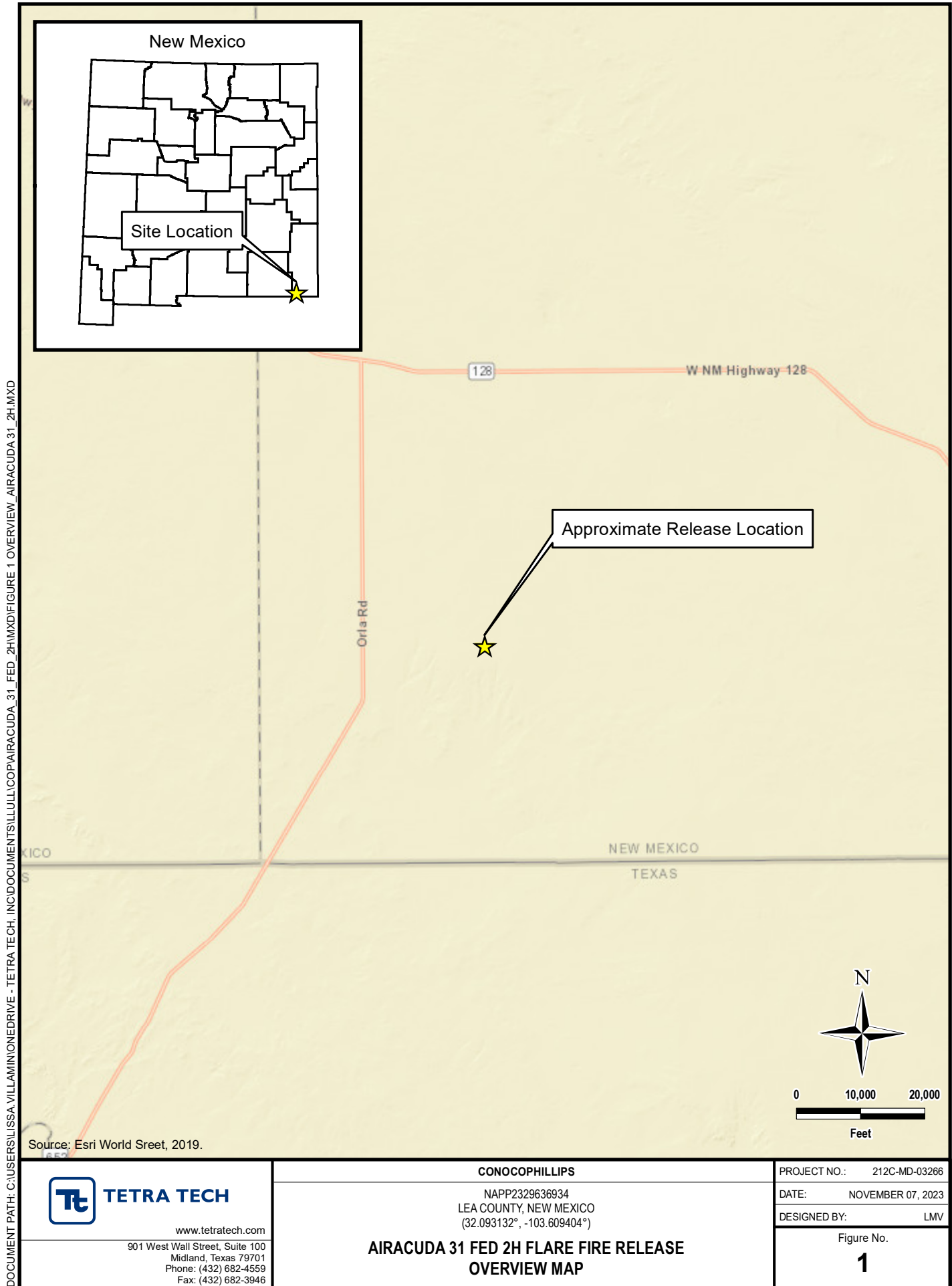
Tables:

- Table 1 – Summary of Analytical Results – 2023 Soil Assessment
- Table 2 – Summary of Analytical Results – 2023 Soil Remediation

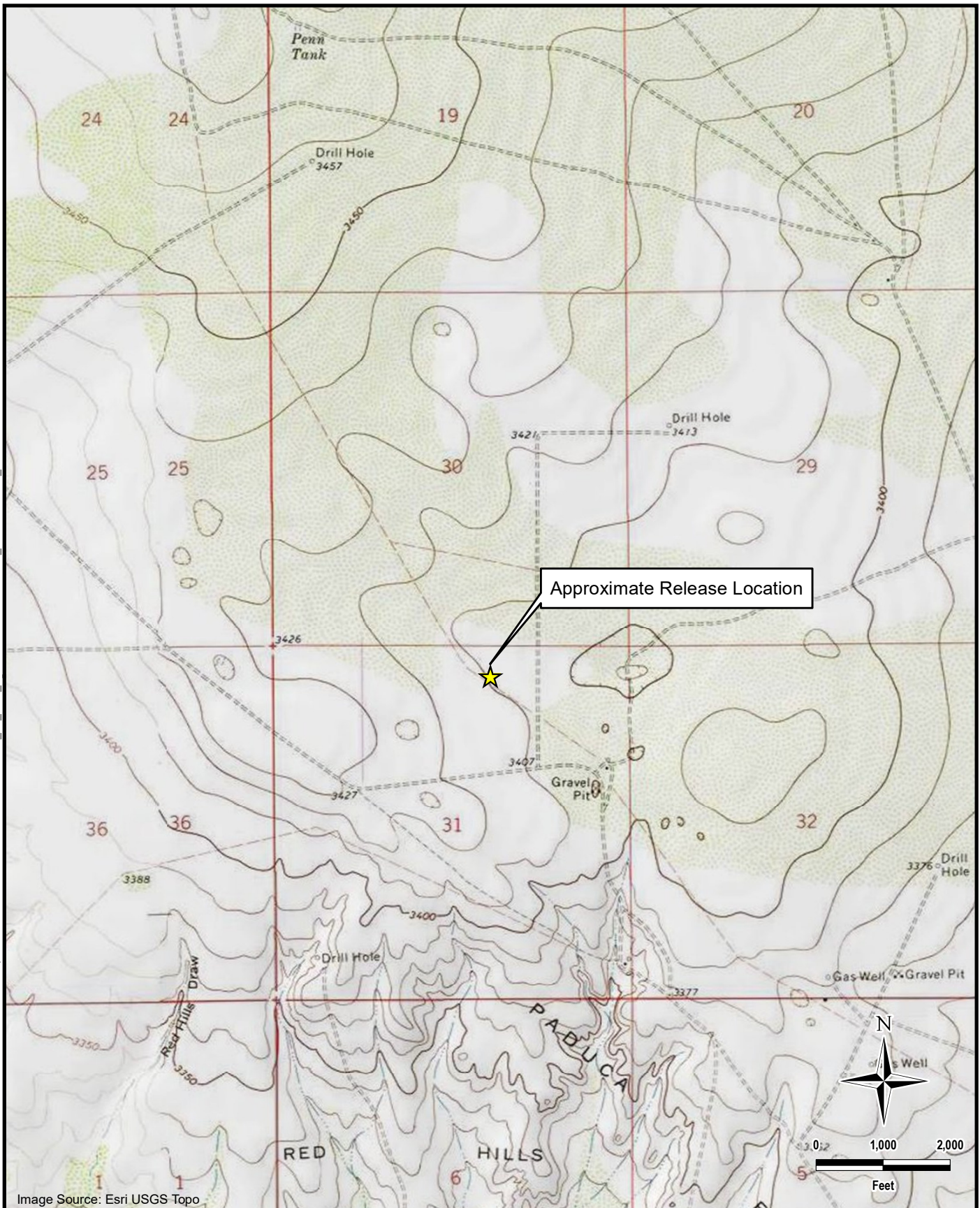
Appendices:

- Appendix A – C-141 Forms
- Appendix B – Regulatory Correspondence
- Appendix C – Site Characterization Data
- Appendix D – Laboratory Analytical Data
- Appendix E – Photographic Documentation

FIGURES



DOCUMENT PATH: C:\USERS\ISSA.VILLAMONEDRIVE - TETRA TECH\INCIDENTS\ILLICOPIAIRACUDA 31_FED_2HMXD\FIGURE 2 TOPO_AIRACUDA 31_2H.MXD

**TETRA TECH**

www.tetrattech.com

901 West Wall Street, Suite 100
Midland, Texas 79701
Phone: (432) 682-4559
Fax: (432) 682-3946**CONOCOPHILLIPS**NAPP2329636934
LEA COUNTY, NEW MEXICO
(32.093132°, -103.609404°)**AIRACUDA 31 FED 2H FLARE FIRE RELEASE
TOPOGRAPHIC MAP**

PROJECT NO.: 212C-MD-03266

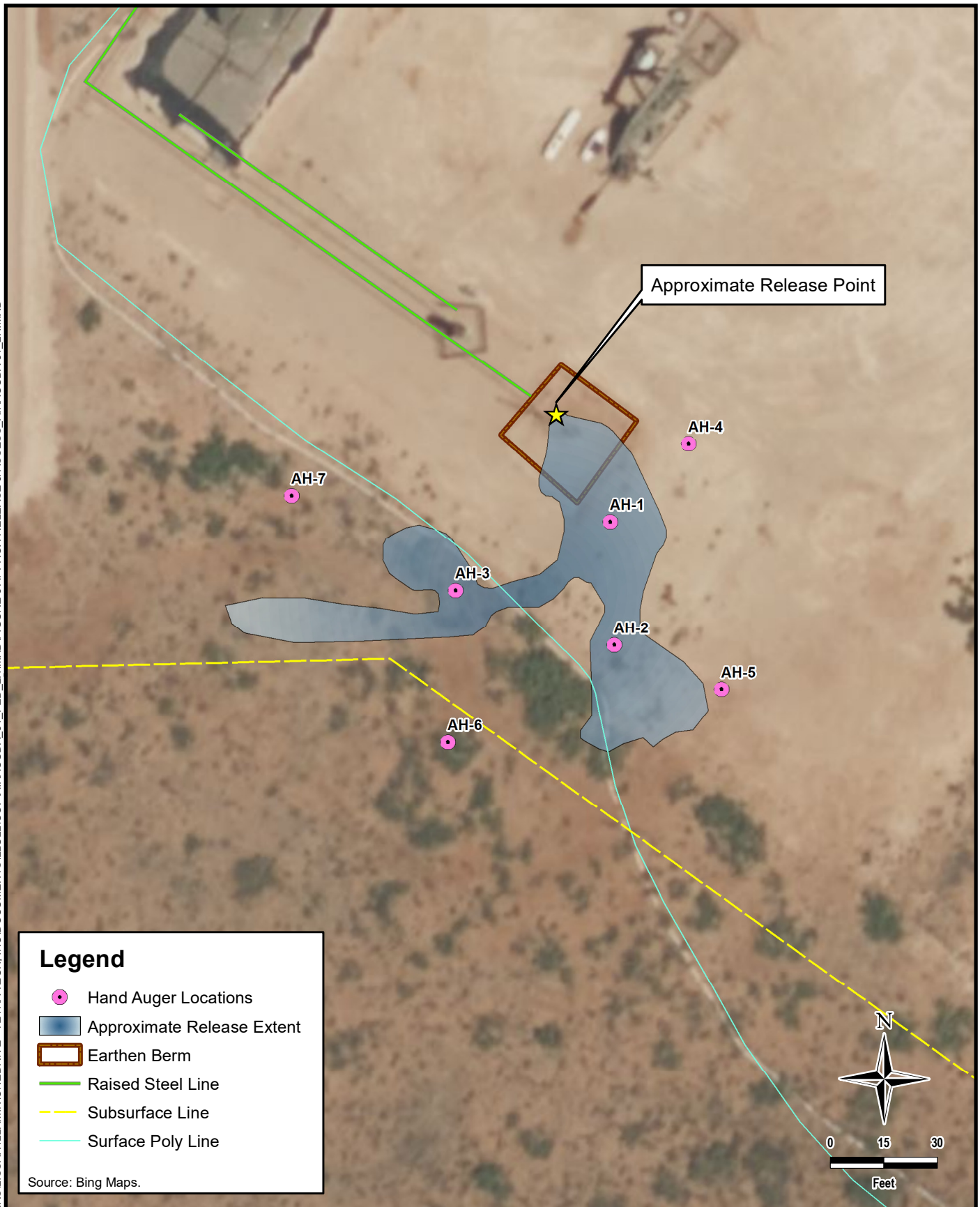
DATE: NOVEMBER 07, 2023

DESIGNED BY: LMV

Figure No.

2

DOCUMENT PATH: C:\USERS\LISSA.VILLAMINIONEDRIVE - TETRA TECH, INC\DOCUMENTS\ILLULLICOPAIRACUDA_31_FED_2HMXD\FIGURE 3 APPROX RELEASE & ASSESS_AIRACUDA 31_2H.MXD



Legend

- Hand Auger Locations
- Approximate Release Extent
- Earthen Berm
- Raised Steel Line
- - Subsurface Line
- Surface Poly Line

Source: Bing Maps.



TETRA TECH

www.tetrattech.com

901 West Wall Street, Suite 100
Midland, Texas 79701
Phone: (432) 682-4559
Fax: (432) 682-3946

CONOCOPHILLIPS

NAPP2329636934
LEA COUNTY, NEW MEXICO
(32.093132°, -103.609404°)

AIRACUDA 31 FED 2H FLARE FIRE RELEASE APPROXIMATE RELEASE EXTENT AND SITE ASSESSMENT

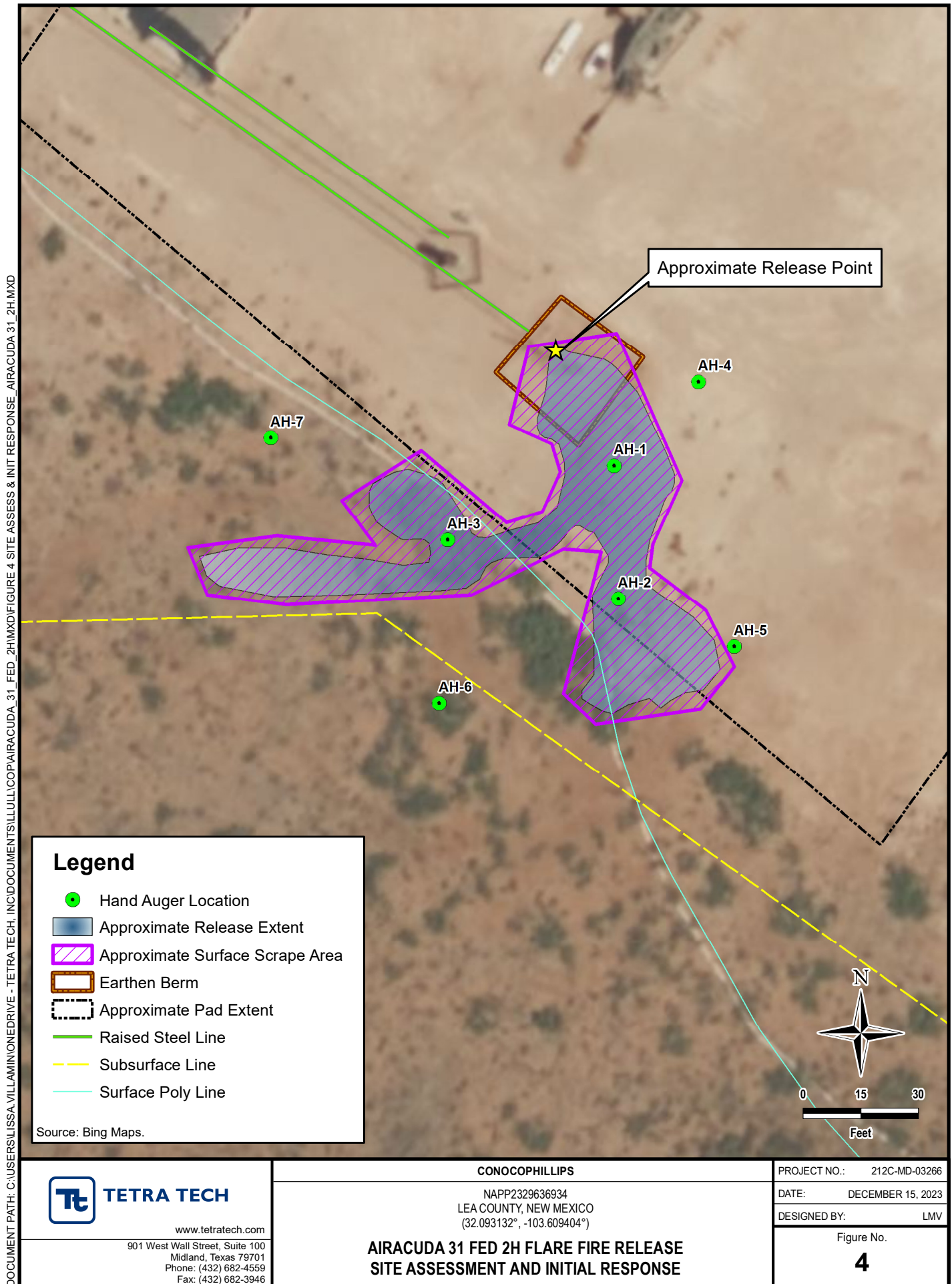
PROJECT NO.: 212C-MD-03266

DATE: NOVEMBER 07, 2023

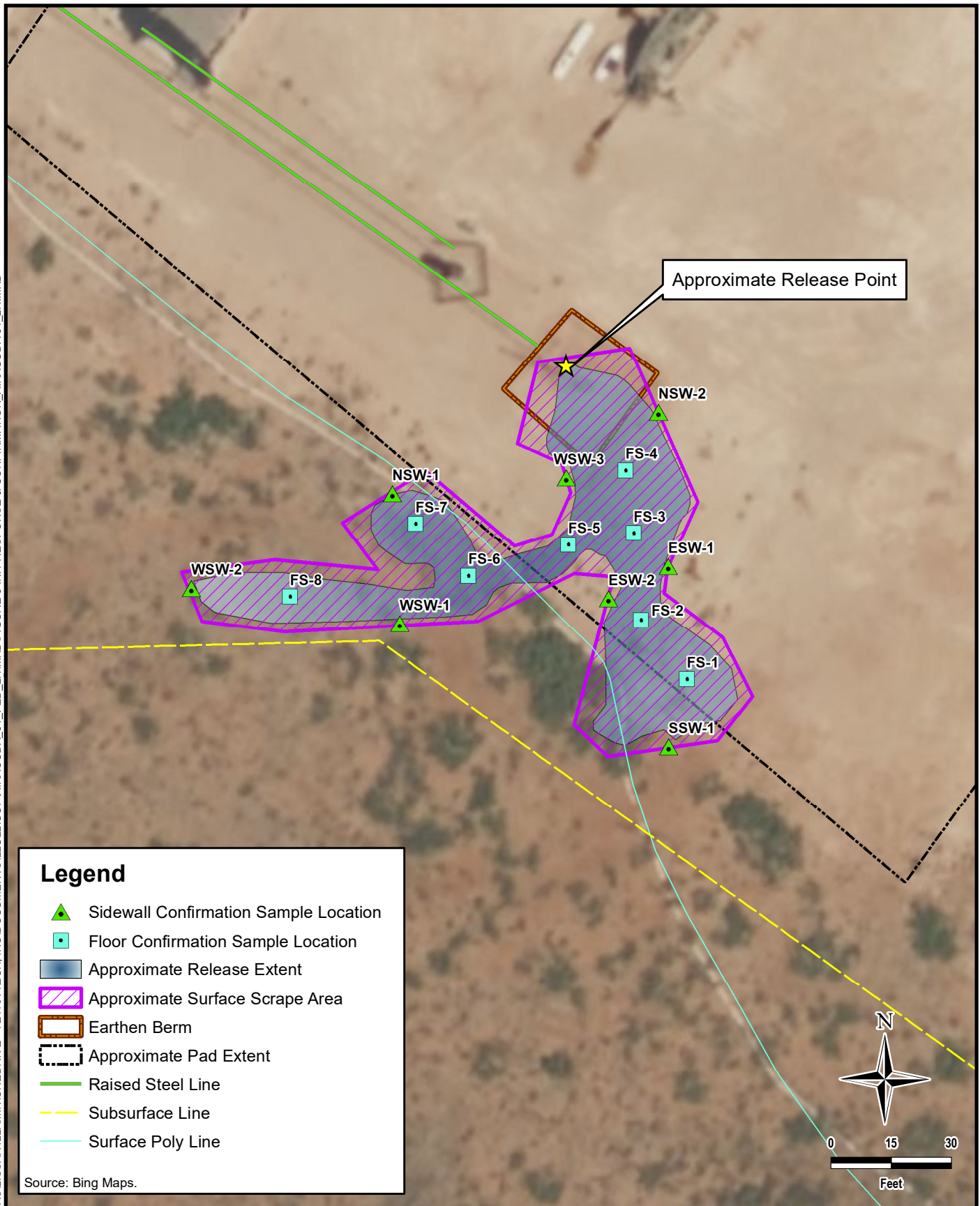
DESIGNED BY: LMV

Figure No.

3



DOCUMENT PATH: C:\USERS\LISSA.VILLAMINION\DRIVE - TETRA TECH\INC\DOCUMENTS\ILLULLICOPAIRACUDA_31_FED_2H\FED_2H\MD\FIGURE 5 INT RESPONSE & CONFIRMATION AIRACUDA 31_2H.MXD



Legend

- ▲ Sidewall Confirmation Sample Location
- Floor Confirmation Sample Location
- Approximate Release Extent
- Approximate Surface Scrape Area
- Earthen Berm
- Approximate Pad Extent
- Raised Steel Line
- - - Subsurface Line
- Surface Poly Line

Source: Bing Maps.

**TETRA TECH**

www.tetrattech.com

901 West Wall Street, Suite 100
Midland, Texas 79701
Phone: (432) 682-4559
Fax: (432) 682-3946

CONOCOPHILLIPS

NAPP2329636934
LEA COUNTY, NEW MEXICO
(32.093132°, -103.609404°)

AIRACUDA 31 FED 2H FLARE FIRE RELEASE INITIAL RESPONSE AND CONFIRMATION SAMPLING LOCATIONS

PROJECT NO.: 212C-MD-03266

DATE: DECEMBER 15, 2023

DESIGNED BY: LMV

Figure No.

5

TABLES

TABLE 1
SUMMARY OF ANALYTICAL RESULTS
SOIL ASSESSMENT- NAPP2329636934
CONOCOPHILLIPS
AIRACUDA 31 FED 2H FLARE FIRE RELEASE
LEA COUNTY, NM

19.15.29.12 NMAC Closure Criteria for Soils Impacted by a Release (≤ 50 ft):					Chlorides ¹		BTEX ²										TPH ³									
					< 600 mg/kg		< 10 mg/kg		Toluene		Ethylbenzene		Total Xylenes		< 50 mg/kg		GRO		DRO		EXT DRO		< 100 mg/kg		-	
Sample ID	Sample Date	Sample Depth Interval	Field Screening Results		Chloride		Benzene																Total BTEX		Total TPH (GRO+DRO+EXT DRO)	
			Chlorides	PID	mg/kg	Q	mg/kg	Q							mg/kg	Q	mg/kg	Q	mg/kg	Q	mg/kg	Q	mg/kg	Q	mg/kg	Q
AH-1	10/30/2023	0-1	-		32.0		<0.050		<0.050		<0.050		<0.150		<0.300		<10.0		<10.0		<10.0		-	-		
		1-2	42.6		<16.0		<0.050		<0.050		<0.050		<0.150		<0.300		<10.0		<10.0		<10.0		-	-		
AH-2	10/30/2023	0-1	-		<16.0		<0.050		<0.050		<0.050		<0.150		<0.300		<10.0		<10.0		<10.0		-	-		
		1-2	39.6		<16.0		<0.050		<0.050		<0.050		<0.150		<0.300		<10.0		<10.0		<10.0		-	-		
AH-3	10/30/2023	0-1	-		<16.0		<0.050		<0.050		<0.050		<0.150		<0.300		<10.0		<10.0		<10.0		-	-		
		1-2	48.1		<16.0		<0.050		<0.050		<0.050		<0.150		<0.300		<10.0		<10.0		<10.0		-	-		
AH-4	10/30/2023	0-1	191		176		<0.050		<0.050		<0.050		<0.150		<0.300		<10.0		<10.0		<10.0		-	-		
AH-5	10/30/2023	0-1	70.1		16.0		<0.050		<0.050		<0.050		<0.150		<0.300		<10.0		22.2		<10.0		22.2	22.2		
AH-6	10/30/2023	0-1	51.7		<16.0		<0.050		<0.050		<0.050		<0.150		<0.300		<10.0		<10.0		<10.0		-	-		
AH-7	10/30/2023	0-1	44.1		<16.0		<0.050		<0.050		<0.050		<0.150		<0.300		<10.0		<10.0		<10.0		-	-		

NOTES:

ft. Feet

bgs Below ground surface

mg/kg Milligrams per kilogram

TPH Total Petroleum Hydrocarbons

GRO Gasoline range organics

DRO Diesel range organics

1 Method SM4500Cl-B

2 Method 8021B

3 Method 8015M

Bold and italicized values indicate exceedance of proposed RRALs and/or Reclamation Requirements.

TABLE 2
SUMMARY OF ANALYTICAL RESULTS
SOIL REMEDIATION - NAPP2329636934
CONOCOPHILLIPS
AIRACUDA 31 FED 2H FLARE FIRE RELEASE
LEA COUNTY, NM

Sample ID	Sample Date	Sample Depth	Chloride ¹		BTEx ²										TPH ³							
					Benzene		Toluene		Ethylbenzene		Total Xylenes		Total BTEx		GRO		DRO		EXT DRO		Total TPH (GRO+DRO+EXT DRO)	
															C ₆ - C ₁₀		> C ₁₀ - C ₂₈		> C ₂₈ - C ₃₆			
		ft. bgs	mg/kg	Q	mg/kg	Q	mg/kg	Q	mg/kg	Q	mg/kg	Q	mg/kg	Q	mg/kg	Q	mg/kg	Q	mg/kg	Q	mg/kg	
FS-1	11/16/2023	-	16		<0.050		<0.050		<0.050		<0.150		<0.300		<10.0		93		44.1		137.1	
FS-2	11/16/2023	-	496		<0.050		<0.050		<0.050		<0.150		<0.300		<10.0		<10.0		<10.0		-	
FS-3	11/16/2023	-	16		<0.050		<0.050		<0.050		<0.150		<0.300		<10.0		<10.0		<10.0		-	
FS-4	11/16/2023	-	48		<0.050		<0.050		<0.050		<0.150		<0.300		<10.0		<10.0		<10.0		-	
FS-5	11/16/2023	-	16		<0.050		<0.050		<0.050		<0.150		<0.300		<10.0		<10.0		<10.0		-	
FS-6	11/16/2023	-	16		<0.050		<0.050		<0.050		<0.150		<0.300		<10.0		<10.0		<10.0		-	
FS-7	11/16/2023	-	128		<0.050		<0.050		<0.050		<0.150		<0.300		<10.0		<10.0		<10.0		-	
FS-8	11/16/2023	-	32		<0.050		<0.050		<0.050		<0.150		<0.300		<10.0		<10.0		<10.0		-	
NSW-1	11/16/2023	-	112		<0.050		<0.050		<0.050		<0.150		<0.300		<10.0		<10.0		<10.0		-	
NSW-2	11/16/2023	-	48		<0.050		<0.050		<0.050		<0.150		<0.300		<10.0		<10.0		<10.0		-	
ESW-1	11/16/2023	-	32		<0.050		<0.050		<0.050		<0.150		<0.300		<10.0		<10.0		<10.0		-	
ESW-2	11/16/2023	-	32		<0.050		<0.050		<0.050		<0.150		<0.300		<10.0		<10.0		<10.0		-	
SSW-1	11/16/2023	-	144		<0.050		<0.050		<0.050		<0.150		<0.300		<10.0		<10.0		<10.0		-	
WSW-1	11/16/2023	-	32		<0.050		<0.050		<0.050		<0.150		<0.300		<10.0		<10.0		<10.0		-	
WSW-2	11/16/2023	-	16		<0.050		<0.050		<0.050		<0.150		<0.300		<10.0		<10.0		<10.0		-	
WSW-3	11/16/2023	-	448		<0.050		<0.050		<0.050		<0.150		<0.300		<10.0		22.8		<10.0		22.8	

- NOTES:
- ft. Feet
 - bgs Below ground surface
 - mg/kg Milligrams per kilogram
 - TPH Total Petroleum Hydrocarbons
 - GRO Gasoline range organics
 - DRO Diesel range organics
 - 1 Method SM4500Cl-B
 - 2 Method 8021B
 - 3 Method 8015M

APPENDIX A

C-141 Forms

District I
1625 N. French Dr., Hobbs, NM 88240
District II
811 S. First St., Artesia, NM 88210
District III
1000 Rio Brazos Road, Aztec, NM 87410
District IV
1220 S. St. Francis Dr., Santa Fe, NM 87505

State of New Mexico
Energy Minerals and Natural
Resources Department

Oil Conservation Division
1220 South St. Francis Dr.
Santa Fe, NM 87505

Form C-141
Revised August 24, 2018
Submit to appropriate OCD District office

Incident ID	
District RP	
Facility ID	
Application ID	

Release Notification

Responsible Party

Responsible Party	OGRID
Contact Name	Contact Telephone
Contact email	Incident # (assigned by OCD)
Contact mailing address	

Location of Release Source

Latitude _____ Longitude _____
(NAD 83 in decimal degrees to 5 decimal places)

Site Name	Site Type
Date Release Discovered	API# (if applicable)

Unit Letter	Section	Township	Range	County

Surface Owner: ☐ State ☐ Federal ☐ Tribal ☐ Private (Name: _____)

Nature and Volume of Release

Material(s) Released (Select all that apply and attach calculations or specific justification for the volumes provided below)

<input type="checkbox"/> Crude Oil	Volume Released (bbls)	Volume Recovered (bbls)
<input type="checkbox"/> Produced Water	Volume Released (bbls)	Volume Recovered (bbls)
	Is the concentration of dissolved chloride in the produced water >10,000 mg/l?	<input type="checkbox"/> Yes <input type="checkbox"/> No
<input type="checkbox"/> Condensate	Volume Released (bbls)	Volume Recovered (bbls)
<input type="checkbox"/> Natural Gas	Volume Released (Mcf)	Volume Recovered (Mcf)
<input type="checkbox"/> Other (describe)	Volume/Weight Released (provide units)	Volume/Weight Recovered (provide units)

Cause of Release

Incident ID	
District RP	
Facility ID	
Application ID	

Was this a major release as defined by 19.15.29.7(A) NMAC? <input type="checkbox"/> Yes <input type="checkbox"/> No	If YES, for what reason(s) does the responsible party consider this a major release?
If YES, was immediate notice given to the OCD? By whom? To whom? When and by what means (phone, email, etc)?	

Initial Response

The responsible party must undertake the following actions immediately unless they could create a safety hazard that would result in injury

<input type="checkbox"/> The source of the release has been stopped.	
<input type="checkbox"/> The impacted area has been secured to protect human health and the environment.	
<input type="checkbox"/> Released materials have been contained via the use of berms or dikes, absorbent pads, or other containment devices.	
<input type="checkbox"/> All free liquids and recoverable materials have been removed and managed appropriately.	
If all the actions described above have <u>not</u> been undertaken, explain why:	
Per 19.15.29.8 B. (4) NMAC the responsible party may commence remediation immediately after discovery of a release. If remediation has begun, please attach a narrative of actions to date. If remedial efforts have been successfully completed or if the release occurred within a lined containment area (see 19.15.29.11(A)(5)(a) NMAC), please attach all information needed for closure evaluation.	
I hereby certify that the information given above is true and complete to the best of my knowledge and understand that pursuant to OCD rules and regulations all operators are required to report and/or file certain release notifications and perform corrective actions for releases which may endanger public health or the environment. The acceptance of a C-141 report by the OCD does not relieve the operator of liability should their operations have failed to adequately investigate and remediate contamination that pose a threat to groundwater, surface water, human health or the environment. In addition, OCD acceptance of a C-141 report does not relieve the operator of responsibility for compliance with any other federal, state, or local laws and/or regulations.	
Printed Name: _____	Title: _____
Signature: <u>Patricia Zapata</u>	Date: _____
email: _____	Telephone: _____
<u>OCD Only</u>	
Received by: <u>Shelly Wells</u>	Date: <u>10/23/2023</u>

Spill Calculation - Subsurface Spill - Rectangle												Remediation Recommendation	
												Page 20 of 90	
Convert Irregular shape into a series of rectangles	Length (ft.)	Width (ft.)	Average Depth (in.)	On/Off Pad (dropdown)	Soil Spilled-Fluid Saturation (%)	Estimated volume of each area (bbl.)	Total Estimated Volume of Spill (bbl.)	Percentage of Oil if Spilled Fluid is a Mixture (%)	Total Estimated Volume of Spilled Oil (bbl.)	Total Estimated Volume of Spilled Liquid other than Oil (bbl.)	Total Estimated Contaminated Soil, uncompacted, 25% (yd³.)	Current Rule of Thumb - RMR Handover Volume, (yd³.)	
Rectangle A	105.0	50.0	0.1	Off-Pad ✓	15.02%	7.79	1.17	5%	0.06	1.11	2.03	750	
Rectangle B				On-Pad ✓	10.50%	0.00	0.00		0.00	0.00	0.00		
Rectangle C				On-Pad ✓	10.50%	0.00	0.00		0.00	0.00	0.00		
Rectangle D				On-Pad ✓	10.50%	0.00	0.00		0.00	0.00	0.00		
Rectangle E				✓		0.00					0.00		
Rectangle F				✓		0.00					0.00		
Rectangle G				✓		0.00					0.00		
Rectangle H				✓		0.00					0.00		
Rectangle I				✓		0.00					0.00		
Rectangle J				✓		0.00					0.00		
Total Subsurface Volume Released:							1.1697		0.0585	1.1112	2.03	BU	

District I
1625 N. French Dr., Hobbs, NM 88240
Phone:(575) 393-6161 Fax:(575) 393-0720
District II
811 S. First St., Artesia, NM 88210
Phone:(575) 748-1283 Fax:(575) 748-9720
District III
1000 Rio Brazos Rd., Aztec, NM 87410
Phone:(505) 334-6178 Fax:(505) 334-6170
District IV
1220 S. St Francis Dr., Santa Fe, NM 87505
Phone:(505) 476-3470 Fax:(505) 476-3462

State of New Mexico
Energy, Minerals and Natural Resources
Oil Conservation Division
1220 S. St Francis Dr.
Santa Fe, NM 87505

CONDITIONS

Action 278272

CONDITIONS

Operator: COG OPERATING LLC 600 W Illinois Ave Midland, TX 79701	OGRID: 229137
	Action Number: 278272
	Action Type: [C-141] Release Corrective Action (C-141)

CONDITIONS

Created By	Condition	Condition Date
scwells	None	10/23/2023

Incident ID	
District RP	
Facility ID	
Application ID	

Site Assessment/Characterization

This information must be provided to the appropriate district office no later than 90 days after the release discovery date.

What is the shallowest depth to groundwater beneath the area affected by the release?	_____ (ft bgs)
Did this release impact groundwater or surface water?	<input type="checkbox"/> Yes <input type="checkbox"/> No
Are the lateral extents of the release within 300 feet of a continuously flowing watercourse or any other significant watercourse?	<input type="checkbox"/> Yes <input type="checkbox"/> No
Are the lateral extents of the release within 200 feet of any lakebed, sinkhole, or playa lake (measured from the ordinary high-water mark)?	<input type="checkbox"/> Yes <input type="checkbox"/> No
Are the lateral extents of the release within 300 feet of an occupied permanent residence, school, hospital, institution, or church?	<input type="checkbox"/> Yes <input type="checkbox"/> No
Are the lateral extents of the release within 500 horizontal feet of a spring or a private domestic fresh water well used by less than five households for domestic or stock watering purposes?	<input type="checkbox"/> Yes <input type="checkbox"/> No
Are the lateral extents of the release within 1000 feet of any other fresh water well or spring?	<input type="checkbox"/> Yes <input type="checkbox"/> No
Are the lateral extents of the release within incorporated municipal boundaries or within a defined municipal fresh water well field?	<input type="checkbox"/> Yes <input type="checkbox"/> No
Are the lateral extents of the release within 300 feet of a wetland?	<input type="checkbox"/> Yes <input type="checkbox"/> No
Are the lateral extents of the release overlying a subsurface mine?	<input type="checkbox"/> Yes <input type="checkbox"/> No
Are the lateral extents of the release overlying an unstable area such as karst geology?	<input type="checkbox"/> Yes <input type="checkbox"/> No
Are the lateral extents of the release within a 100-year floodplain?	<input type="checkbox"/> Yes <input type="checkbox"/> No
Did the release impact areas not on an exploration, development, production, or storage site?	<input type="checkbox"/> Yes <input type="checkbox"/> No

Attach a comprehensive report (electronic submittals in .pdf format are preferred) demonstrating the lateral and vertical extents of soil contamination associated with the release have been determined. Refer to 19.15.29.11 NMAC for specifics.

<p>Characterization Report Checklist: <i>Each of the following items must be included in the report.</i></p> <div><input type="checkbox"/> Scaled site map showing impacted area, surface features, subsurface features, delineation points, and monitoring wells.<input type="checkbox"/> Field data<input type="checkbox"/> Data table of soil contaminant concentration data<input type="checkbox"/> Depth to water determination<input type="checkbox"/> Determination of water sources and significant watercourses within ½-mile of the lateral extents of the release<input type="checkbox"/> Boring or excavation logs<input type="checkbox"/> Photographs including date and GIS information<input type="checkbox"/> Topographic/Aerial maps<input type="checkbox"/> Laboratory data including chain of custody</div>

If the site characterization report does not include completed efforts at remediation of the release, the report must include a proposed remediation plan. That plan must include the estimated volume of material to be remediated, the proposed remediation technique, proposed sampling plan and methods, anticipated timelines for beginning and completing the remediation. The closure criteria for a release are contained in Table 1 of 19.15.29.12 NMAC, however, use of the table is modified by site- and release-specific parameters.

Oil Conservation Division

Incident ID	
District RP	
Facility ID	
Application ID	

I hereby certify that the information given above is true and complete to the best of my knowledge and understand that pursuant to OCD rules and regulations all operators are required to report and/or file certain release notifications and perform corrective actions for releases which may endanger public health or the environment. The acceptance of a C-141 report by the OCD does not relieve the operator of liability should their operations have failed to adequately investigate and remediate contamination that pose a threat to groundwater, surface water, human health or the environment. In addition, OCD acceptance of a C-141 report does not relieve the operator of responsibility for compliance with any other federal, state, or local laws and/or regulations.

Printed Name: _____ Title: _____

Signature: Jacob Laird Date: _____

email: _____ Telephone: _____

OCD Only

Received by: _____ Date: _____

Incident ID	
District RP	
Facility ID	
Application ID	

Closure

The responsible party must attach information demonstrating they have complied with all applicable closure requirements and any conditions or directives of the OCD. This demonstration should be in the form of a comprehensive report (electronic submittals in .pdf format are preferred) including a scaled site map, sampling diagrams, relevant field notes, photographs of any excavation prior to backfilling, laboratory data including chain of custody documents of final sampling, and a narrative of the remedial activities. Refer to 19.15.29.12 NMAC.

Closure Report Attachment Checklist: *Each of the following items must be included in the closure report.*

- ☐ A scaled site and sampling diagram as described in 19.15.29.11 NMAC
- ☐ Photographs of the remediated site prior to backfill or photos of the liner integrity if applicable (Note: appropriate OCD District office must be notified 2 days prior to liner inspection)
- ☐ Laboratory analyses of final sampling (Note: appropriate ODC District office must be notified 2 days prior to final sampling)
- ☐ Description of remediation activities

I hereby certify that the information given above is true and complete to the best of my knowledge and understand that pursuant to OCD rules and regulations all operators are required to report and/or file certain release notifications and perform corrective actions for releases which may endanger public health or the environment. The acceptance of a C-141 report by the OCD does not relieve the operator of liability should their operations have failed to adequately investigate and remediate contamination that pose a threat to groundwater, surface water, human health or the environment. In addition, OCD acceptance of a C-141 report does not relieve the operator of responsibility for compliance with any other federal, state, or local laws and/or regulations. The responsible party acknowledges they must substantially restore, reclaim, and re-vegetate the impacted surface area to the conditions that existed prior to the release or their final land use in accordance with 19.15.29.13 NMAC including notification to the OCD when reclamation and re-vegetation are complete.

Printed Name: _____ Title: _____

Signature: Jacob Laird Date: _____

email: _____ Telephone: _____

OCD Only

Received by: _____ Date: _____

Closure approval by the OCD does not relieve the responsible party of liability should their operations have failed to adequately investigate and remediate contamination that poses a threat to groundwater, surface water, human health, or the environment nor does not relieve the responsible party of compliance with any other federal, state, or local laws and/or regulations.

Closure Approved by: _____ Date: _____

Printed Name: _____ Title: _____

APPENDIX B

Regulatory Correspondence

Chavira, Lisbeth

From: Llull, Christian
Sent: Friday, October 27, 2023 1:14 PM
To: Taylor, Shelly J
Cc: Chavira, Lisbeth
Subject: Request for Approval - Assessment/Remediation (Airacuda 31 Fed 2H Flare Fire Release)
Attachments: Airacuda 31 Fed 2H Flare Fire_.kmz

Hey Shelly,

Good afternoon! Another small assessment/remediation for ConocoPhillips.

Tetra Tech is conducting a soil assessment and is assisting with remedial action associated with a previously reported unplanned release that occurred on October 18, 2023.

The **Airacuda 31 Fed 2H Flare Fire Release** was caused by a FWKO overfilling causing fluid to be released out of the flare leading to a fire off pad. The release extent is predominantly on-pad but does have a small pasture component in ROW. Assessment activities to begin October 30th.

We are requesting verbal approval to proceed with any assessment and cleanup activities at the location listed below. KMZ file attached and screengrab below.

Please let me know if you require any other permitting or compliance items in addition to this email approval before we begin work.

Name of Release: Airacuda 31 Fed 2H Flare Fire Release

Unit Letter B, Section 31, Township 25 South, Range 33 East

Lea County, New Mexico

Incident Identification (ID) nAPP2329636934

Approximate Release Location: 32.093131, -103.609394

Date Release Discovered: October 18, 2023

Volume Released: Approximately 0.06 barrels (bbls) of crude oil and 1.11 bbls of produced water were released.

Release in Pasture and On-Pad



Thank you,

Christian

From: [Wells, Shelly, EMNRD](#)
To: [Chavira, Lisbeth](#)
Cc: [Llull, Christian](#); [Velez, Nelson, EMNRD](#); [Bratcher, Michael, EMNRD](#)
Subject: RE: [EXTERNAL] Incident ID: nAPP2329636934- Confirmation Sampling
Date: Tuesday, November 14, 2023 2:21:12 PM
Attachments: [image001.png](#)
[image002.png](#)
[image003.png](#)
[image004.png](#)
[image005.png](#)

You don't often get email from shelly.wells@emnrd.nm.gov. [Learn why this is important](#)

CAUTION: This email originated from an external sender. Verify the source before opening links or attachments.

Good afternoon Lisbeth,

The OCD has received your notification. Notification requirements are **two full business days**, per rule. You may proceed on your schedule. This, and all correspondence, should be included in the closure report to ensure inclusion in the project file.

Thank you,

Shelly

Shelly Wells * Environmental Specialist-Advanced
Environmental Bureau
EMNRD-Oil Conservation Division
1220 S. St. Francis Drive | Santa Fe, NM 87505
(505)469-7520 | Shelly.Wells@emnrd.nm.gov
<http://www.emnrd.state.nm.us/OCD/>

From: Chavira, Lisbeth <LISBETH.CHAVIRA@tetrattech.com>
Sent: Tuesday, November 14, 2023 11:52 AM
To: Enviro, OCD, EMNRD <OCD.Enviro@emnrd.nm.gov>
Cc: Llull, Christian <Christian.Llull@tetrattech.com>
Subject: [EXTERNAL] Incident ID: nAPP2329636934- Confirmation Sampling

CAUTION: This email originated outside of our organization. Exercise caution prior to clicking on links or opening attachments.

Incident ID (n#) **nAPP2329636934** (Airacuda 31 Fed 2H Flare Fire Release)

To whom it may concern,

In accordance with Subsection D of 19.15.29.12 NMAC, the responsible party must verbally notify the appropriate division district office prior to conducting confirmation sampling.

Remediation activities are beginning at the site today, Tuesday November 14, 2023.

Thus, on behalf of ConocoPhillips for the above referenced incident, Tetra Tech is duly providing this communication which serves as notification that final confirmation sampling will be conducted at this site Wednesday, November 15, 2023.

NOTE: If you have any questions regarding this sampling schedule, please contact me.

Thank you,

Lisbeth Chavira | Staff Geoscientist
Direct Mobile **+1 (512) 596-8201** | Lisbeth.chavira@tetrattech.com

Tetra Tech | *Leading with Science®* | OGA
8911 N. Capital of Texas Highway | Bldg. 2, Suite 2310 | Austin, TX 78759 | tetrattech.com

This message, including any attachments, may include privileged, confidential and/or inside information. Any distribution or use of this communication by anyone other than the intended recipient is strictly prohibited and may be unlawful. If you are not the intended recipient, please notify the sender by replying to this message and then delete it from your system.



Please consider the environment before printing. [Read more](#)

Adobe Systems



Chavira, Lisbeth

From: OCDOnline@state.nm.us
Sent: Tuesday, December 19, 2023 9:58 AM
To: Llull, Christian
Subject: The Oil Conservation Division (OCD) has accepted the application, Application ID: 296054

⚠ CAUTION: This email originated from an external sender. Verify the source before opening links or attachments. **⚠**

To whom it may concern (c/o Christian Llull for COG OPERATING LLC),

The OCD has received the submitted *Notification for (Final) Sampling of a Release (C-141N)*, for incident ID (n#) nAPP2329636934.

The sampling event is expected to take place:

When: 11/16/2023 @ 10:00

Where: B-31-25S-33E 0 FNL 0 FEL (32.09311,-103.60931)

Additional Information: Airacuda 31 Fed 2H Flare Fire Release

ConocoPhillips

Lea County, New Mexico

DOR: 10/18/2023

INCIDENT ID nAPP2329636934

Approximate Release Point 32.093131, -103.609394

BLM Land

Additional Instructions: Sampling notification was provided to the NMOCD via email on Tuesday, November 14, 2023, prior to the C-141 submittal changes.

An OCD representative may be available onsite at the date and time reported. In the absence or presence of an OCD representative, sampling pursuant to 19.15.29.12.D NMAC is required. Sampling must be performed following an approved sampling plan or pursuant to 19.15.29.12.D.(1).(c) NMAC. Should there be a change in the scheduled date and time of the sampling event, then another notification should be resubmitted through OCD permitting as soon as possible.

- **Failure to notify the OCD of sampling events including any changes in date/time per the requirements of 19.15.29.12.D.(1).(a) NMAC, may result in the remediation closure samples not being accepted.**

If you have any questions regarding this application, or don't know why you have received this email, please contact us.

New Mexico Energy, Minerals and Natural Resources Department

1220 South St. Francis Drive

Santa Fe, NM 87505

APPENDIX C

Site Characterization Data

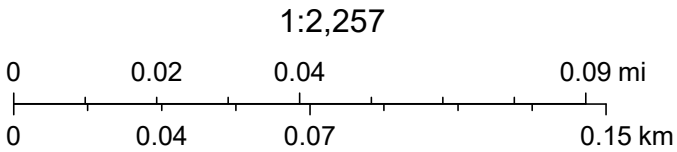
OCD - Land Ownership



11/2/2023, 10:20:29 AM

Land Ownership

- BLM
- P



U.S. BLM, Maxar, Microsoft, Esri, HERE, Garmin, iPC

National Flood Hazard Layer FIRMette



103°36'53"W 32°5'51"N



Legend

SEE FIS REPORT FOR DETAILED LEGEND AND INDEX MAP FOR FIRM PANEL LAYOUT

SPECIAL FLOOD HAZARD AREAS		Without Base Flood Elevation (BFE) Zone A, V, A99
		With BFE or Depth Zone AE, AO, AH, VE, AR
		Regulatory Floodway
OTHER AREAS OF FLOOD HAZARD		0.2% Annual Chance Flood Hazard, Areas of 1% annual chance flood with average depth less than one foot or with drainage areas of less than one square mile Zone X
		Future Conditions 1% Annual Chance Flood Hazard Zone X
		Area with Reduced Flood Risk due to Levee. See Notes. Zone X
		Area with Flood Risk due to Levee Zone D
OTHER AREAS		NO SCREEN Area of Minimal Flood Hazard Zone X
		Effective LOMRs
		Area of Undetermined Flood Hazard Zone D
GENERAL STRUCTURES		Channel, Culvert, or Storm Sewer
		Levee, Dike, or Floodwall
OTHER FEATURES		20.2 Cross Sections with 1% Annual Chance Water Surface Elevation
		17.5 Cross Sections with 1% Annual Chance Water Surface Elevation
		Coastal Transect
		Base Flood Elevation Line (BFE)
		Limit of Study
		Jurisdiction Boundary
		Coastal Transect Baseline
MAP PANELS		Digital Data Available
		No Digital Data Available
		Unmapped



The pin displayed on the map is an approximate point selected by the user and does not represent an authoritative property location.

This map complies with FEMA's standards for the use of digital flood maps if it is not void as described below. The basemap shown complies with FEMA's basemap accuracy standards

The flood hazard information is derived directly from the authoritative NFHL web services provided by FEMA. This map was exported on **11/2/2023 at 11:50 AM** and does not reflect changes or amendments subsequent to this date and time. The NFHL and effective information may change or become superseded by new data over time.

This map image is void if the one or more of the following map elements do not appear: basemap imagery, flood zone labels, legend, scale bar, map creation date, community identifiers, FIRM panel number, and FIRM effective date. Map images for unmapped and unmodernized areas cannot be used for regulatory purposes.

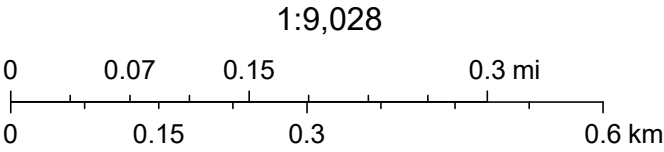
OCD - Karst Potential Map



11/2/2023, 10:43:53 AM

Karst Occurrence Potential

- Medium
- Low



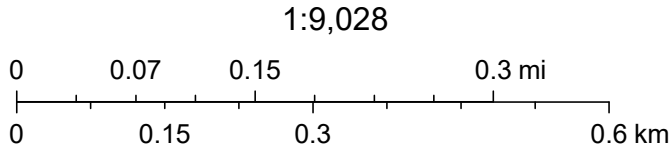
BLM, OCD, New Mexico Tech, Esri, HERE, Garmin, iPC, Maxar

OCD - USGS Groundwater Wells

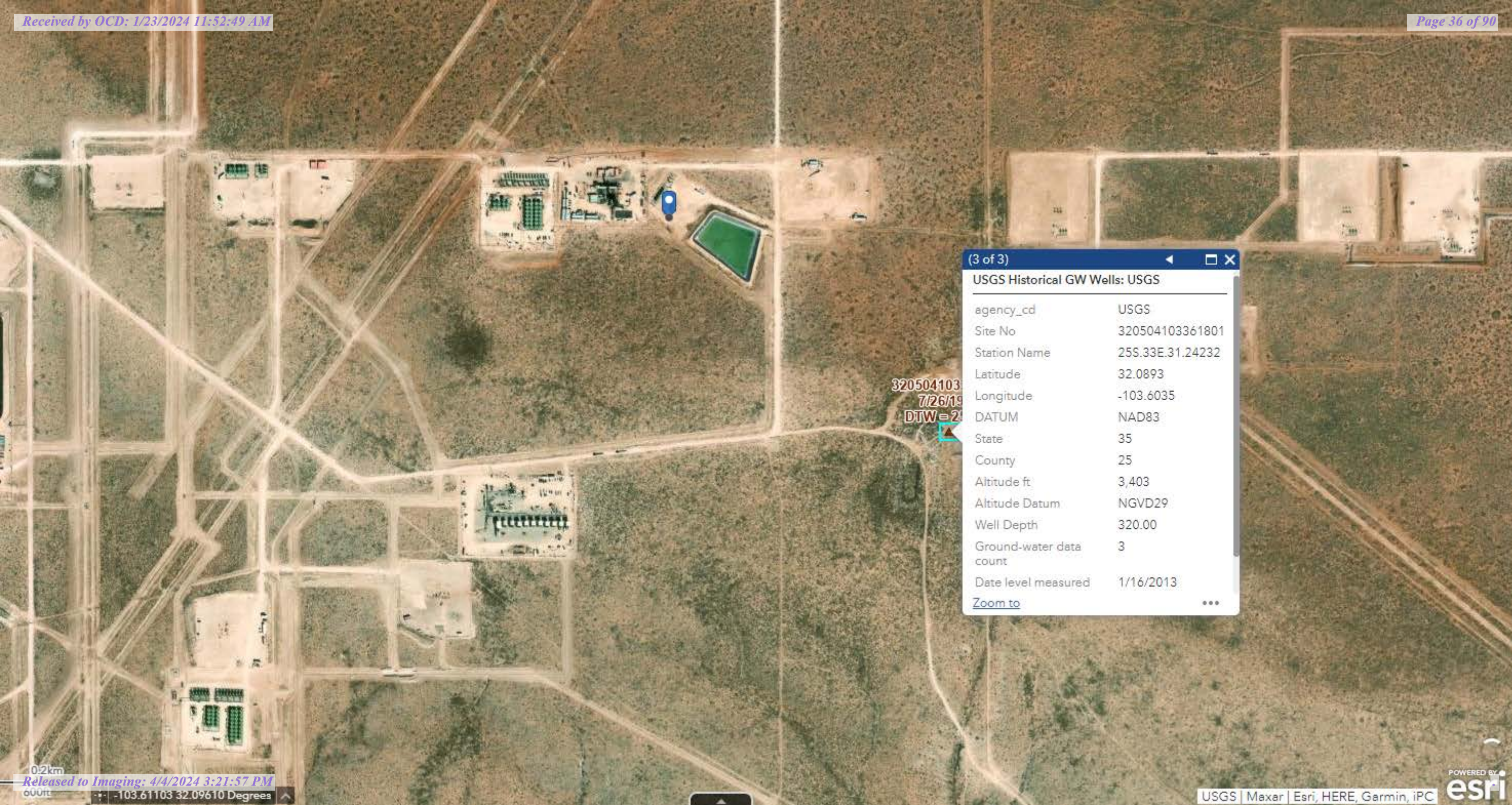


11/2/2023, 10:23:03 AM

▲ USGS Historical GW Wells



USGS, Esri, HERE, Garmin, iPC, Maxar



(3 of 3) ◀ □ ✕

USGS Historical GW Wells: USGS

agency_cd	USGS
Site No	320504103361801
Station Name	25S.33E.31.24232
Latitude	32.0893
Longitude	-103.6035
DATUM	NAD83
State	35
County	25
Altitude ft	3,403
Altitude Datum	NGVD29
Well Depth	320.00
Ground-water data count	3
Date level measured	1/16/2013

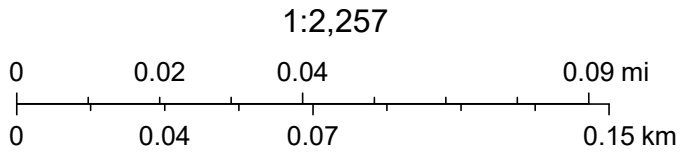
[Zoom to](#) ⋮

320504103
7/26/19
DTW=21

OCD - Waterbodies Map



11/2/2023, 10:45:41 AM



Maxar, Microsoft, Esri, HERE, Garmin, IPC, NM OSE



New Mexico Office of the State Engineer

Water Column/Average Depth to Water

(A CLW##### in the POD suffix indicates the POD has been replaced & no longer serves a water right file.)

(R=POD has been replaced,
O=orphaned,
C=the file is closed)

(quarters are 1=NW 2=NE 3=SW 4=SE)

(quarters are smallest to largest)

(NAD83 UTM in meters)

(In feet)

POD Number	POD Sub-Code	basin	County	Q 64	Q 16	Q 4	Sec	Tws	Rng	X	Y	Distance	Depth Well	Depth Water	Water Column
C 04537 POD1	C	LE		4	4	4	31	25S	33E	631847	3550243	1497	500	280	220

Average Depth to Water: **280 feet**

Minimum Depth: **280 feet**

Maximum Depth: **280 feet**

Record Count: 1

UTMNAD83 Radius Search (in meters):

Easting (X): 631222.88

Northing (Y): 3551604.79

Radius: 1600

The data is furnished by the NMOSE/ISC and is accepted by the recipient with the expressed understanding that the OSE/ISC make no warranties, expressed or implied, concerning the accuracy, completeness, reliability, usability, or suitability for any particular purpose of the data.

11/2/23 9:47 AM

Page 1 of 1

WATER COLUMN/ AVERAGE
DEPTH TO WATER

APPENDIX D

Laboratory Analytical Data



PHONE (575) 393-2326 ° 101 E. MARLAND ° HOBBS, NM 88240

November 06, 2023

CHRISTIAN LLULL

TETRA TECH

901 WEST WALL STREET , STE 100

MIDLAND, TX 79701

RE: AIRACUDA 31 FED 2H FLARE FIRE RELEASE

Enclosed are the results of analyses for samples received by the laboratory on 10/30/23 12:00.

Cardinal Laboratories is accredited through Texas NELAP under certificate number T104704398-22-15. Accreditation applies to drinking water, non-potable water and solid and chemical materials. All accredited analytes are denoted by an asterisk (*). For a complete list of accredited analytes and matrices visit the TCEQ website at www.tceq.texas.gov/field/qa/lab_accred_certif.html.

Cardinal Laboratories is accredited through the State of Colorado Department of Public Health and Environment for:

Method EPA 552.2	Haloacetic Acids (HAA-5)
Method EPA 524.2	Total Trihalomethanes (TTHM)
Method EPA 524.4	Regulated VOCs (V1, V2, V3)

Accreditation applies to public drinking water matrices.

This report meets NELAP requirements and is made up of a cover page, analytical results, and a copy of the original chain-of-custody. If you have any questions concerning this report, please feel free to contact me.

Sincerely,

A handwritten signature in black ink that reads "Celey D. Keene". The signature is written in a cursive style with a large, stylized 'C' and 'K'.

Celey D. Keene

Lab Director/Quality Manager



PHONE (575) 393-2326 ° 101 E. MARLAND ° HOBBS, NM 88240

Analytical Results For:

TETRA TECH
 CHRISTIAN LLULL
 901 WEST WALL STREET , STE 100
 MIDLAND TX, 79701
 Fax To: (432) 682-3946

Received:	10/30/2023	Sampling Date:	10/30/2023
Reported:	11/06/2023	Sampling Type:	Soil
Project Name:	AIRACUDA 31 FED 2H FLARE FIRE RELE/	Sampling Condition:	Cool & Intact
Project Number:	212C - MD - 03266	Sample Received By:	Tamara Oldaker
Project Location:	LEA COUNTY, NM		

Sample ID: AH - 1 (0-1') (H235927-01)

BTX 8021B		mg/kg		Analyzed By: JH/					
Analyte	Result	Reporting Limit	Analyzed	Method Blank	BS	% Recovery	True Value QC	RPD	Qualifier
Benzene*	<0.050	0.050	11/03/2023	ND	2.07	103	2.00	2.11	
Toluene*	<0.050	0.050	11/03/2023	ND	1.87	93.3	2.00	3.15	
Ethylbenzene*	<0.050	0.050	11/03/2023	ND	1.91	95.6	2.00	3.01	
Total Xylenes*	<0.150	0.150	11/03/2023	ND	5.70	95.0	6.00	3.06	
Total BTX	<0.300	0.300	11/03/2023	ND					

Surrogate: 4-Bromofluorobenzene (PID) 102 % 71.5-134

Chloride, SM4500Cl-B		mg/kg		Analyzed By: AC					
Analyte	Result	Reporting Limit	Analyzed	Method Blank	BS	% Recovery	True Value QC	RPD	Qualifier
Chloride	32.0	16.0	11/06/2023	ND	416	104	400	3.77	

TPH 8015M	mg/kg		Analyzed By: MS						
Analyte	Result	Reporting Limit	Analyzed	Method Blank	BS	% Recovery	True Value QC	RPD	Qualifier
GRO C6-C10*	<10.0	10.0	11/02/2023	ND	207	103	200	1.00	
DRO >C10-C28*	<10.0	10.0	11/02/2023	ND	207	103	200	1.48	
EXT DRO >C28-C36	<10.0	10.0	11/02/2023	ND					

Surrogate: 1-Chlorooctane 87.3 % 48.2-134

Surrogate: 1-Chlorooctadecane 86.1 % 49.1-148

Cardinal Laboratories

*=Accredited Analyte

PLEASE NOTE: Liability and Damages. Cardinal's liability and client's exclusive remedy for any claim arising, whether based in contract or tort, shall be limited to the amount paid by client for analyses. All claims, including those for negligence and any other cause whatsoever shall be deemed waived unless made in writing and received by Cardinal within thirty (30) days after completion of the applicable service. In no event shall Cardinal be liable for incidental or consequential damages, including, without limitation, business interruptions, loss of use, or loss of profits incurred by client, its subsidiaries, affiliates or successors arising out of or related to the performance of the services hereunder by Cardinal, regardless of whether such claim is based upon any of the above stated reasons or otherwise. Results relate only to the samples identified above. This report shall not be reproduced except in full with written approval of Cardinal Laboratories.

Celey D. Keene, Lab Director/Quality Manager



PHONE (575) 393-2326 ° 101 E. MARLAND ° HOBBS, NM 88240

Analytical Results For:

TETRA TECH
 CHRISTIAN LLULL
 901 WEST WALL STREET , STE 100
 MIDLAND TX, 79701
 Fax To: (432) 682-3946

Received:	10/30/2023	Sampling Date:	10/30/2023
Reported:	11/06/2023	Sampling Type:	Soil
Project Name:	AIRACUDA 31 FED 2H FLARE FIRE RELE/	Sampling Condition:	Cool & Intact
Project Number:	212C - MD - 03266	Sample Received By:	Tamara Oldaker
Project Location:	LEA COUNTY, NM		

Sample ID: AH - 1 (1'-2') (H235927-02)

BTEx 8021B		mg/kg		Analyzed By: JH/						
Analyte	Result	Reporting Limit	Analyzed	Method Blank	BS	% Recovery	True Value QC	RPD	Qualifier	
Benzene*	<0.050	0.050	11/03/2023	ND	2.07	103	2.00	2.11		
Toluene*	<0.050	0.050	11/03/2023	ND	1.87	93.3	2.00	3.15		
Ethylbenzene*	<0.050	0.050	11/03/2023	ND	1.91	95.6	2.00	3.01		
Total Xylenes*	<0.150	0.150	11/03/2023	ND	5.70	95.0	6.00	3.06		
Total BTEx	<0.300	0.300	11/03/2023	ND						

Surrogate: 4-Bromofluorobenzene (PID) 102 % 71.5-134

Chloride, SM4500CI-B		mg/kg		Analyzed By: AC						
Analyte	Result	Reporting Limit	Analyzed	Method Blank	BS	% Recovery	True Value QC	RPD	Qualifier	
Chloride	<16.0	16.0	11/06/2023	ND	416	104	400	3.77		

TPH 8015M		mg/kg		Analyzed By: MS					
Analyte	Result	Reporting Limit	Analyzed	Method Blank	BS	% Recovery	True Value QC	RPD	Qualifier
GRO C6-C10*	<10.0	10.0	11/02/2023	ND	207	103	200	1.00	
DRO >C10-C28*	<10.0	10.0	11/02/2023	ND	207	103	200	1.48	
EXT DRO >C28-C36	<10.0	10.0	11/02/2023	ND					

Surrogate: 1-Chlorooctane 89.5 % 48.2-134

Surrogate: 1-Chlorooctadecane 89.6 % 49.1-148

Cardinal Laboratories

*=Accredited Analyte

PLEASE NOTE: Liability and Damages. Cardinal's liability and client's exclusive remedy for any claim arising, whether based in contract or tort, shall be limited to the amount paid by client for analyses. All claims, including those for negligence and any other cause whatsoever shall be deemed waived unless made in writing and received by Cardinal within thirty (30) days after completion of the applicable service. In no event shall Cardinal be liable for incidental or consequential damages, including, without limitation, business interruptions, loss of use, or loss of profits incurred by client, its subsidiaries, affiliates or successors arising out of or related to the performance of the services hereunder by Cardinal, regardless of whether such claim is based upon any of the above stated reasons or otherwise. Results relate only to the samples identified above. This report shall not be reproduced except in full with written approval of Cardinal Laboratories.

Celey D. Keene, Lab Director/Quality Manager



PHONE (575) 393-2326 ° 101 E. MARLAND ° HOBBS, NM 88240

Analytical Results For:

TETRA TECH
 CHRISTIAN LLULL
 901 WEST WALL STREET , STE 100
 MIDLAND TX, 79701
 Fax To: (432) 682-3946

Received:	10/30/2023	Sampling Date:	10/30/2023
Reported:	11/06/2023	Sampling Type:	Soil
Project Name:	AIRACUDA 31 FED 2H FLARE FIRE RELE/	Sampling Condition:	Cool & Intact
Project Number:	212C - MD - 03266	Sample Received By:	Tamara Oldaker
Project Location:	LEA COUNTY, NM		

Sample ID: AH - 2 (0-1') (H235927-03)

BTEx 8021B		mg/kg		Analyzed By: JH/						
Analyte	Result	Reporting Limit	Analyzed	Method Blank	BS	% Recovery	True Value QC	RPD	Qualifier	
Benzene*	<0.050	0.050	11/03/2023	ND	2.07	103	2.00	2.11		
Toluene*	<0.050	0.050	11/03/2023	ND	1.87	93.3	2.00	3.15		
Ethylbenzene*	<0.050	0.050	11/03/2023	ND	1.91	95.6	2.00	3.01		
Total Xylenes*	<0.150	0.150	11/03/2023	ND	5.70	95.0	6.00	3.06		
Total BTEX	<0.300	0.300	11/03/2023	ND						

Surrogate: 4-Bromofluorobenzene (PID) 103 % 71.5-134

Chloride, SM4500CI-B		mg/kg		Analyzed By: AC						
Analyte	Result	Reporting Limit	Analyzed	Method Blank	BS	% Recovery	True Value QC	RPD	Qualifier	
Chloride	<16.0	16.0	11/06/2023	ND	416	104	400	3.77		

TPH 8015M		mg/kg		Analyzed By: MS					
Analyte	Result	Reporting Limit	Analyzed	Method Blank	BS	% Recovery	True Value QC	RPD	Qualifier
GRO C6-C10*	<10.0	10.0	11/02/2023	ND	207	103	200	1.00	
DRO >C10-C28*	<10.0	10.0	11/02/2023	ND	207	103	200	1.48	
EXT DRO >C28-C36	<10.0	10.0	11/02/2023	ND					

Surrogate: 1-Chlorooctane 81.5 % 48.2-134

Surrogate: 1-Chlorooctadecane 83.8 % 49.1-148

Cardinal Laboratories

*=Accredited Analyte

PLEASE NOTE: Liability and Damages. Cardinal's liability and client's exclusive remedy for any claim arising, whether based in contract or tort, shall be limited to the amount paid by client for analyses. All claims, including those for negligence and any other cause whatsoever shall be deemed waived unless made in writing and received by Cardinal within thirty (30) days after completion of the applicable service. In no event shall Cardinal be liable for incidental or consequential damages, including, without limitation, business interruptions, loss of use, or loss of profits incurred by client, its subsidiaries, affiliates or successors arising out of or related to the performance of the services hereunder by Cardinal, regardless of whether such claim is based upon any of the above stated reasons or otherwise. Results relate only to the samples identified above. This report shall not be reproduced except in full with written approval of Cardinal Laboratories.

Celey D. Keene, Lab Director/Quality Manager



PHONE (575) 393-2326 ° 101 E. MARLAND ° HOBBS, NM 88240

Analytical Results For:

TETRA TECH
 CHRISTIAN LLULL
 901 WEST WALL STREET , STE 100
 MIDLAND TX, 79701
 Fax To: (432) 682-3946

Received:	10/30/2023	Sampling Date:	10/30/2023
Reported:	11/06/2023	Sampling Type:	Soil
Project Name:	AIRACUDA 31 FED 2H FLARE FIRE RELE/	Sampling Condition:	Cool & Intact
Project Number:	212C - MD - 03266	Sample Received By:	Tamara Oldaker
Project Location:	LEA COUNTY, NM		

Sample ID: AH - 2 (1'-2') (H235927-04)

BTEx 8021B		mg/kg		Analyzed By: JH/						
Analyte	Result	Reporting Limit	Analyzed	Method Blank	BS	% Recovery	True Value QC	RPD	Qualifier	
Benzene*	<0.050	0.050	11/03/2023	ND	2.07	103	2.00	2.11		
Toluene*	<0.050	0.050	11/03/2023	ND	1.87	93.3	2.00	3.15		
Ethylbenzene*	<0.050	0.050	11/03/2023	ND	1.91	95.6	2.00	3.01		
Total Xylenes*	<0.150	0.150	11/03/2023	ND	5.70	95.0	6.00	3.06		
Total BTEx	<0.300	0.300	11/03/2023	ND						

Surrogate: 4-Bromofluorobenzene (PID) 96.7 % 71.5-134

Chloride, SM4500CI-B		mg/kg		Analyzed By: AC						
Analyte	Result	Reporting Limit	Analyzed	Method Blank	BS	% Recovery	True Value QC	RPD	Qualifier	
Chloride	<16.0	16.0	11/06/2023	ND	416	104	400	0.00		

TPH 8015M		mg/kg		Analyzed By: MS					
Analyte	Result	Reporting Limit	Analyzed	Method Blank	BS	% Recovery	True Value QC	RPD	Qualifier
GRO C6-C10*	<10.0	10.0	11/02/2023	ND	207	103	200	1.00	
DRO >C10-C28*	<10.0	10.0	11/02/2023	ND	207	103	200	1.48	
EXT DRO >C28-C36	<10.0	10.0	11/02/2023	ND					

Surrogate: 1-Chlorooctane 96.0 % 48.2-134

Surrogate: 1-Chlorooctadecane 97.2 % 49.1-148

Cardinal Laboratories

*=Accredited Analyte

PLEASE NOTE: Liability and Damages. Cardinal's liability and client's exclusive remedy for any claim arising, whether based in contract or tort, shall be limited to the amount paid by client for analyses. All claims, including those for negligence and any other cause whatsoever shall be deemed waived unless made in writing and received by Cardinal within thirty (30) days after completion of the applicable service. In no event shall Cardinal be liable for incidental or consequential damages, including, without limitation, business interruptions, loss of use, or loss of profits incurred by client, its subsidiaries, affiliates or successors arising out of or related to the performance of the services hereunder by Cardinal, regardless of whether such claim is based upon any of the above stated reasons or otherwise. Results relate only to the samples identified above. This report shall not be reproduced except in full with written approval of Cardinal Laboratories.

Celey D. Keene, Lab Director/Quality Manager



PHONE (575) 393-2326 ° 101 E. MARLAND ° HOBBS, NM 88240

Analytical Results For:

TETRA TECH
 CHRISTIAN LLULL
 901 WEST WALL STREET , STE 100
 MIDLAND TX, 79701
 Fax To: (432) 682-3946

Received:	10/30/2023	Sampling Date:	10/30/2023
Reported:	11/06/2023	Sampling Type:	Soil
Project Name:	AIRACUDA 31 FED 2H FLARE FIRE RELE/	Sampling Condition:	Cool & Intact
Project Number:	212C - MD - 03266	Sample Received By:	Tamara Oldaker
Project Location:	LEA COUNTY, NM		

Sample ID: AH - 3 (0-1') (H235927-05)

BTEx 8021B		mg/kg		Analyzed By: JH/						
Analyte	Result	Reporting Limit	Analyzed	Method Blank	BS	% Recovery	True Value QC	RPD	Qualifier	
Benzene*	<0.050	0.050	11/03/2023	ND	2.07	103	2.00	2.11		
Toluene*	<0.050	0.050	11/03/2023	ND	1.87	93.3	2.00	3.15		
Ethylbenzene*	<0.050	0.050	11/03/2023	ND	1.91	95.6	2.00	3.01		
Total Xylenes*	<0.150	0.150	11/03/2023	ND	5.70	95.0	6.00	3.06		
Total BTEX	<0.300	0.300	11/03/2023	ND						

Surrogate: 4-Bromofluorobenzene (PID) 96.3 % 71.5-134

Chloride, SM4500Cl-B		mg/kg		Analyzed By: AC						
Analyte	Result	Reporting Limit	Analyzed	Method Blank	BS	% Recovery	True Value QC	RPD	Qualifier	
Chloride	<16.0	16.0	11/06/2023	ND	416	104	400	0.00		

TPH 8015M		mg/kg		Analyzed By: MS					
Analyte	Result	Reporting Limit	Analyzed	Method Blank	BS	% Recovery	True Value QC	RPD	Qualifier
GRO C6-C10*	<10.0	10.0	11/02/2023	ND	207	103	200	1.00	
DRO >C10-C28*	<10.0	10.0	11/02/2023	ND	207	103	200	1.48	
EXT DRO >C28-C36	<10.0	10.0	11/02/2023	ND					

Surrogate: 1-Chlorooctane 91.9 % 48.2-134

Surrogate: 1-Chlorooctadecane 92.1 % 49.1-148

Cardinal Laboratories

*=Accredited Analyte

PLEASE NOTE: Liability and Damages. Cardinal's liability and client's exclusive remedy for any claim arising, whether based in contract or tort, shall be limited to the amount paid by client for analyses. All claims, including those for negligence and any other cause whatsoever shall be deemed waived unless made in writing and received by Cardinal within thirty (30) days after completion of the applicable service. In no event shall Cardinal be liable for incidental or consequential damages, including, without limitation, business interruptions, loss of use, or loss of profits incurred by client, its subsidiaries, affiliates or successors arising out of or related to the performance of the services hereunder by Cardinal, regardless of whether such claim is based upon any of the above stated reasons or otherwise. Results relate only to the samples identified above. This report shall not be reproduced except in full with written approval of Cardinal Laboratories.

Celey D. Keene, Lab Director/Quality Manager



PHONE (575) 393-2326 ° 101 E. MARLAND ° HOBBS, NM 88240

Analytical Results For:

TETRA TECH
 CHRISTIAN LLULL
 901 WEST WALL STREET , STE 100
 MIDLAND TX, 79701
 Fax To: (432) 682-3946

Received:	10/30/2023	Sampling Date:	10/30/2023
Reported:	11/06/2023	Sampling Type:	Soil
Project Name:	AIRACUDA 31 FED 2H FLARE FIRE RELE/	Sampling Condition:	Cool & Intact
Project Number:	212C - MD - 03266	Sample Received By:	Tamara Oldaker
Project Location:	LEA COUNTY, NM		

Sample ID: AH - 3 (1'-2') (H235927-06)

BTEX 8021B		mg/kg		Analyzed By: JH/						
Analyte	Result	Reporting Limit	Analyzed	Method Blank	BS	% Recovery	True Value QC	RPD	Qualifier	
Benzene*	<0.050	0.050	11/03/2023	ND	2.07	103	2.00	2.11		
Toluene*	<0.050	0.050	11/03/2023	ND	1.87	93.3	2.00	3.15		
Ethylbenzene*	<0.050	0.050	11/03/2023	ND	1.91	95.6	2.00	3.01		
Total Xylenes*	<0.150	0.150	11/03/2023	ND	5.70	95.0	6.00	3.06		
Total BTEX	<0.300	0.300	11/03/2023	ND						

Surrogate: 4-Bromofluorobenzene (PID) 96.7 % 71.5-134

Chloride, SM4500Cl-B		mg/kg		Analyzed By: AC						
Analyte	Result	Reporting Limit	Analyzed	Method Blank	BS	% Recovery	True Value QC	RPD	Qualifier	
Chloride	<16.0	16.0	11/06/2023	ND	416	104	400	0.00		

TPH 8015M		mg/kg		Analyzed By: MS					
Analyte	Result	Reporting Limit	Analyzed	Method Blank	BS	% Recovery	True Value QC	RPD	Qualifier
GRO C6-C10*	<10.0	10.0	11/02/2023	ND	207	103	200	1.00	
DRO >C10-C28*	<10.0	10.0	11/02/2023	ND	207	103	200	1.48	
EXT DRO >C28-C36	<10.0	10.0	11/02/2023	ND					

Surrogate: 1-Chlorooctane 86.2 % 48.2-134

Surrogate: 1-Chlorooctadecane 85.5 % 49.1-148

Cardinal Laboratories

*=Accredited Analyte

PLEASE NOTE: Liability and Damages. Cardinal's liability and client's exclusive remedy for any claim arising, whether based in contract or tort, shall be limited to the amount paid by client for analyses. All claims, including those for negligence and any other cause whatsoever shall be deemed waived unless made in writing and received by Cardinal within thirty (30) days after completion of the applicable service. In no event shall Cardinal be liable for incidental or consequential damages, including, without limitation, business interruptions, loss of use, or loss of profits incurred by client, its subsidiaries, affiliates or successors arising out of or related to the performance of the services hereunder by Cardinal, regardless of whether such claim is based upon any of the above stated reasons or otherwise. Results relate only to the samples identified above. This report shall not be reproduced except in full with written approval of Cardinal Laboratories.

Celey D. Keene, Lab Director/Quality Manager



PHONE (575) 393-2326 ° 101 E. MARLAND ° HOBBS, NM 88240

Analytical Results For:

TETRA TECH
 CHRISTIAN LLULL
 901 WEST WALL STREET , STE 100
 MIDLAND TX, 79701
 Fax To: (432) 682-3946

Received:	10/30/2023	Sampling Date:	10/30/2023
Reported:	11/06/2023	Sampling Type:	Soil
Project Name:	AIRACUDA 31 FED 2H FLARE FIRE RELE/	Sampling Condition:	Cool & Intact
Project Number:	212C - MD - 03266	Sample Received By:	Tamara Oldaker
Project Location:	LEA COUNTY, NM		

Sample ID: AH - 4 (0-1') (H235927-07)

BTEx 8021B		mg/kg		Analyzed By: JH/						
Analyte	Result	Reporting Limit	Analyzed	Method Blank	BS	% Recovery	True Value QC	RPD	Qualifier	
Benzene*	<0.050	0.050	11/03/2023	ND	2.07	103	2.00	2.11		
Toluene*	<0.050	0.050	11/03/2023	ND	1.87	93.3	2.00	3.15		
Ethylbenzene*	<0.050	0.050	11/03/2023	ND	1.91	95.6	2.00	3.01		
Total Xylenes*	<0.150	0.150	11/03/2023	ND	5.70	95.0	6.00	3.06		
Total BTEX	<0.300	0.300	11/03/2023	ND						

Surrogate: 4-Bromofluorobenzene (PID) 95.2 % 71.5-134

Chloride, SM4500Cl-B		mg/kg		Analyzed By: AC					
Analyte	Result	Reporting Limit	Analyzed	Method Blank	BS	% Recovery	True Value QC	RPD	Qualifier
Chloride	176	16.0	11/06/2023	ND	416	104	400	0.00	

TPH 8015M		mg/kg		Analyzed By: MS					
Analyte	Result	Reporting Limit	Analyzed	Method Blank	BS	% Recovery	True Value QC	RPD	Qualifier
GRO C6-C10*	<10.0	10.0	11/02/2023	ND	207	103	200	1.00	
DRO >C10-C28*	<10.0	10.0	11/02/2023	ND	207	103	200	1.48	
EXT DRO >C28-C36	<10.0	10.0	11/02/2023	ND					

Surrogate: 1-Chlorooctane 87.8 % 48.2-134

Surrogate: 1-Chlorooctadecane 85.4 % 49.1-148

Cardinal Laboratories

*=Accredited Analyte

PLEASE NOTE: Liability and Damages. Cardinal's liability and client's exclusive remedy for any claim arising, whether based in contract or tort, shall be limited to the amount paid by client for analyses. All claims, including those for negligence and any other cause whatsoever shall be deemed waived unless made in writing and received by Cardinal within thirty (30) days after completion of the applicable service. In no event shall Cardinal be liable for incidental or consequential damages, including, without limitation, business interruptions, loss of use, or loss of profits incurred by client, its subsidiaries, affiliates or successors arising out of or related to the performance of the services hereunder by Cardinal, regardless of whether such claim is based upon any of the above stated reasons or otherwise. Results relate only to the samples identified above. This report shall not be reproduced except in full with written approval of Cardinal Laboratories.

Celey D. Keene, Lab Director/Quality Manager



PHONE (575) 393-2326 ° 101 E. MARLAND ° HOBBS, NM 88240

Analytical Results For:

TETRA TECH
 CHRISTIAN LLULL
 901 WEST WALL STREET , STE 100
 MIDLAND TX, 79701
 Fax To: (432) 682-3946

Received:	10/30/2023	Sampling Date:	10/30/2023
Reported:	11/06/2023	Sampling Type:	Soil
Project Name:	AIRACUDA 31 FED 2H FLARE FIRE RELE/	Sampling Condition:	Cool & Intact
Project Number:	212C - MD - 03266	Sample Received By:	Tamara Oldaker
Project Location:	LEA COUNTY, NM		

Sample ID: AH - 5 (0-1') (H235927-08)

BTEx 8021B		mg/kg		Analyzed By: JH/						
Analyte	Result	Reporting Limit	Analyzed	Method Blank	BS	% Recovery	True Value QC	RPD	Qualifier	
Benzene*	<0.050	0.050	11/03/2023	ND	2.07	103	2.00	2.11		
Toluene*	<0.050	0.050	11/03/2023	ND	1.87	93.3	2.00	3.15		
Ethylbenzene*	<0.050	0.050	11/03/2023	ND	1.91	95.6	2.00	3.01		
Total Xylenes*	<0.150	0.150	11/03/2023	ND	5.70	95.0	6.00	3.06		
Total BTEX	<0.300	0.300	11/03/2023	ND						

Surrogate: 4-Bromofluorobenzene (PID) 96.0 % 71.5-134

Chloride, SM4500Cl-B		mg/kg		Analyzed By: AC						
Analyte	Result	Reporting Limit	Analyzed	Method Blank	BS	% Recovery	True Value QC	RPD	Qualifier	
Chloride	16.0	16.0	11/06/2023	ND	416	104	400	0.00		

TPH 8015M		mg/kg		Analyzed By: MS					
Analyte	Result	Reporting Limit	Analyzed	Method Blank	BS	% Recovery	True Value QC	RPD	Qualifier
GRO C6-C10*	<10.0	10.0	11/02/2023	ND	207	103	200	1.00	
DRO >C10-C28*	22.2	10.0	11/02/2023	ND	207	103	200	1.48	
EXT DRO >C28-C36	<10.0	10.0	11/02/2023	ND					

Surrogate: 1-Chlorooctane 86.1 % 48.2-134

Surrogate: 1-Chlorooctadecane 86.8 % 49.1-148

Cardinal Laboratories

*=Accredited Analyte

PLEASE NOTE: Liability and Damages. Cardinal's liability and client's exclusive remedy for any claim arising, whether based in contract or tort, shall be limited to the amount paid by client for analyses. All claims, including those for negligence and any other cause whatsoever shall be deemed waived unless made in writing and received by Cardinal within thirty (30) days after completion of the applicable service. In no event shall Cardinal be liable for incidental or consequential damages, including, without limitation, business interruptions, loss of use, or loss of profits incurred by client, its subsidiaries, affiliates or successors arising out of or related to the performance of the services hereunder by Cardinal, regardless of whether such claim is based upon any of the above stated reasons or otherwise. Results relate only to the samples identified above. This report shall not be reproduced except in full with written approval of Cardinal Laboratories.

Celey D. Keene, Lab Director/Quality Manager



PHONE (575) 393-2326 ° 101 E. MARLAND ° HOBBS, NM 88240

Analytical Results For:

TETRA TECH
 CHRISTIAN LLULL
 901 WEST WALL STREET , STE 100
 MIDLAND TX, 79701
 Fax To: (432) 682-3946

Received:	10/30/2023	Sampling Date:	10/30/2023
Reported:	11/06/2023	Sampling Type:	Soil
Project Name:	AIRACUDA 31 FED 2H FLARE FIRE RELE/	Sampling Condition:	Cool & Intact
Project Number:	212C - MD - 03266	Sample Received By:	Tamara Oldaker
Project Location:	LEA COUNTY, NM		

Sample ID: AH - 6 (0-1') (H235927-09)

BTEx 8021B		mg/kg		Analyzed By: JH/						
Analyte	Result	Reporting Limit	Analyzed	Method Blank	BS	% Recovery	True Value QC	RPD	Qualifier	
Benzene*	<0.050	0.050	11/03/2023	ND	2.07	103	2.00	2.11		
Toluene*	<0.050	0.050	11/03/2023	ND	1.87	93.3	2.00	3.15		
Ethylbenzene*	<0.050	0.050	11/03/2023	ND	1.91	95.6	2.00	3.01		
Total Xylenes*	<0.150	0.150	11/03/2023	ND	5.70	95.0	6.00	3.06		
Total BTEX	<0.300	0.300	11/03/2023	ND						

Surrogate: 4-Bromofluorobenzene (PID) 96.0 % 71.5-134

Chloride, SM4500Cl-B		mg/kg		Analyzed By: AC						
Analyte	Result	Reporting Limit	Analyzed	Method Blank	BS	% Recovery	True Value QC	RPD	Qualifier	
Chloride	<16.0	16.0	11/06/2023	ND	416	104	400	0.00		

TPH 8015M		mg/kg		Analyzed By: MS					
Analyte	Result	Reporting Limit	Analyzed	Method Blank	BS	% Recovery	True Value QC	RPD	Qualifier
GRO C6-C10*	<10.0	10.0	11/02/2023	ND	207	103	200	1.00	
DRO >C10-C28*	<10.0	10.0	11/02/2023	ND	207	103	200	1.48	
EXT DRO >C28-C36	<10.0	10.0	11/02/2023	ND					

Surrogate: 1-Chlorooctane 90.8 % 48.2-134

Surrogate: 1-Chlorooctadecane 89.6 % 49.1-148

Cardinal Laboratories

*=Accredited Analyte

PLEASE NOTE: Liability and Damages. Cardinal's liability and client's exclusive remedy for any claim arising, whether based in contract or tort, shall be limited to the amount paid by client for analyses. All claims, including those for negligence and any other cause whatsoever shall be deemed waived unless made in writing and received by Cardinal within thirty (30) days after completion of the applicable service. In no event shall Cardinal be liable for incidental or consequential damages, including, without limitation, business interruptions, loss of use, or loss of profits incurred by client, its subsidiaries, affiliates or successors arising out of or related to the performance of the services hereunder by Cardinal, regardless of whether such claim is based upon any of the above stated reasons or otherwise. Results relate only to the samples identified above. This report shall not be reproduced except in full with written approval of Cardinal Laboratories.

Celey D. Keene, Lab Director/Quality Manager



PHONE (575) 393-2326 ° 101 E. MARLAND ° HOBBS, NM 88240

Analytical Results For:

TETRA TECH
 CHRISTIAN LLULL
 901 WEST WALL STREET , STE 100
 MIDLAND TX, 79701
 Fax To: (432) 682-3946

Received:	10/30/2023	Sampling Date:	10/30/2023
Reported:	11/06/2023	Sampling Type:	Soil
Project Name:	AIRACUDA 31 FED 2H FLARE FIRE RELE/	Sampling Condition:	Cool & Intact
Project Number:	212C - MD - 03266	Sample Received By:	Tamara Oldaker
Project Location:	LEA COUNTY, NM		

Sample ID: AH - 7 (0-1') (H235927-10)

BTEx 8021B		mg/kg		Analyzed By: JH/						
Analyte	Result	Reporting Limit	Analyzed	Method Blank	BS	% Recovery	True Value QC	RPD	Qualifier	
Benzene*	<0.050	0.050	11/03/2023	ND	2.07	103	2.00	2.11		
Toluene*	<0.050	0.050	11/03/2023	ND	1.87	93.3	2.00	3.15		
Ethylbenzene*	<0.050	0.050	11/03/2023	ND	1.91	95.6	2.00	3.01		
Total Xylenes*	<0.150	0.150	11/03/2023	ND	5.70	95.0	6.00	3.06		
Total BTEX	<0.300	0.300	11/03/2023	ND						

Surrogate: 4-Bromofluorobenzene (PID) 98.0 % 71.5-134

Chloride, SM4500Cl-B		mg/kg		Analyzed By: AC						
Analyte	Result	Reporting Limit	Analyzed	Method Blank	BS	% Recovery	True Value QC	RPD	Qualifier	
Chloride	<16.0	16.0	11/06/2023	ND	416	104	400	0.00		

TPH 8015M		mg/kg		Analyzed By: MS					
Analyte	Result	Reporting Limit	Analyzed	Method Blank	BS	% Recovery	True Value QC	RPD	Qualifier
GRO C6-C10*	<10.0	10.0	11/02/2023	ND	207	103	200	1.00	
DRO >C10-C28*	<10.0	10.0	11/02/2023	ND	207	103	200	1.48	
EXT DRO >C28-C36	<10.0	10.0	11/02/2023	ND					

Surrogate: 1-Chlorooctane 94.1 % 48.2-134

Surrogate: 1-Chlorooctadecane 93.4 % 49.1-148

Cardinal Laboratories

*=Accredited Analyte

PLEASE NOTE: Liability and Damages. Cardinal's liability and client's exclusive remedy for any claim arising, whether based in contract or tort, shall be limited to the amount paid by client for analyses. All claims, including those for negligence and any other cause whatsoever shall be deemed waived unless made in writing and received by Cardinal within thirty (30) days after completion of the applicable service. In no event shall Cardinal be liable for incidental or consequential damages, including, without limitation, business interruptions, loss of use, or loss of profits incurred by client, its subsidiaries, affiliates or successors arising out of or related to the performance of the services hereunder by Cardinal, regardless of whether such claim is based upon any of the above stated reasons or otherwise. Results relate only to the samples identified above. This report shall not be reproduced except in full with written approval of Cardinal Laboratories.

Celey D. Keene, Lab Director/Quality Manager



PHONE (575) 393-2326 ° 101 E. MARLAND ° HOBBS, NM 88240

Notes and Definitions

- ND Analyte NOT DETECTED at or above the reporting limit
- RPD Relative Percent Difference
- ** Samples not received at proper temperature of 6°C or below.
- *** Insufficient time to reach temperature.
- Chloride by SM4500Cl-B does not require samples be received at or below 6°C
Samples reported on an as received basis (wet) unless otherwise noted on report

Cardinal Laboratories *=Accredited Analyte

PLEASE NOTE: Liability and Damages. Cardinal's liability and client's exclusive remedy for any claim arising, whether based in contract or tort, shall be limited to the amount paid by client for analyses. All claims, including those for negligence and any other cause whatsoever shall be deemed waived unless made in writing and received by Cardinal within thirty (30) days after completion of the applicable service. In no event shall Cardinal be liable for incidental or consequential damages, including, without limitation, business interruptions, loss of use, or loss of profits incurred by client, its subsidiaries, affiliates or successors arising out of or related to the performance of the services hereunder by Cardinal, regardless of whether such claim is based upon any of the above stated reasons or otherwise. Results relate only to the samples identified above. This report shall not be reproduced except in full with written approval of Cardinal Laboratories.

A handwritten signature in black ink, appearing to read "Celey D. Keene".

Celey D. Keene, Lab Director/Quality Manager

CHAIN-OF-CUSTODY AND ANALYSIS REQUEST

Company Name: Tetra Tech Project Manager: Christina Hill Address: _____ City: _____ State: _____ Zip: _____ Phone #: _____ Fax #: _____ Project #: 200-MD-0326 Project Owner: _____ Project Name: Avalude 31 Fed 24 Fire Fire Release Project Location: 100 Lewis, NY Sample Name: Water Borehole #2 FOR LAB USE ONLY		P.O. #: _____ Company: Tetra Tech Attn: Christina Hill Address: 100 Lewis City: _____ State: _____ Zip: _____ Phone #: _____ Fax #: _____	
Lab I.D. _____ Sample I.D. _____ (G)RAB OR (C)OMP _____ # CONTAINERS _____ GROUNDWATER _____ WASTEWATER _____ SOIL _____ OIL _____ SLUDGE _____ OTHER: _____ ACID/BASE: _____ ICE / COOL _____ OTHER: _____ DATE _____ TIME _____ BTEX _____ Chloride _____ TPH _____		MATRIX _____ PRESERV _____ SAMPLING _____	
Delivered By: (Circle One) Sampler - UPS - Bus - Other: _____ Observed Temp. °C: 0.1 Corrected Temp. °C: _____ Time: 1:300 Date: 10/30/13 Received By: Christina Hill Received By: _____ Time: _____ Date: _____ Verbal Result: <input type="checkbox"/> Yes <input checked="" type="checkbox"/> No Add'l Phone #: _____ All Results are emailed. Please provide Email address: _____ REMARKS: Christina Hill et al. at 100 Lewis		Turnaround Time: _____ Standard <input checked="" type="checkbox"/> Rush <input type="checkbox"/> Thermometer ID #113 #1140 Correction Factor #666 Bacteria (only) Sample Condition Cool Intact <input type="checkbox"/> Yes <input type="checkbox"/> No Observed Temp. °C: _____ Corrected Temp. °C: _____	



PHONE (575) 393-2326 ° 101 E. MARLAND ° HOBBS, NM 88240

November 21, 2023

CHRISTIAN LLULL

TETRA TECH

901 WEST WALL STREET , STE 100

MIDLAND, TX 79701

RE: AIRACUDA 31 FED 2H FLARE FIRE RELEASE

Enclosed are the results of analyses for samples received by the laboratory on 11/16/23 16:50.

Cardinal Laboratories is accredited through Texas NELAP under certificate number T104704398-22-15. Accreditation applies to drinking water, non-potable water and solid and chemical materials. All accredited analytes are denoted by an asterisk (*). For a complete list of accredited analytes and matrices visit the TCEQ website at www.tceq.texas.gov/field/qa/lab_accred_certif.html.

Cardinal Laboratories is accredited through the State of Colorado Department of Public Health and Environment for:

Method EPA 552.2	Haloacetic Acids (HAA-5)
Method EPA 524.2	Total Trihalomethanes (TTHM)
Method EPA 524.4	Regulated VOCs (V1, V2, V3)

Accreditation applies to public drinking water matrices.

This report meets NELAP requirements and is made up of a cover page, analytical results, and a copy of the original chain-of-custody. If you have any questions concerning this report, please feel free to contact me.

Sincerely,

A handwritten signature in black ink that reads "Mike Snyder". The signature is fluid and cursive, with the first name "Mike" and last name "Snyder" clearly distinguishable.

Mike Snyder For Celey D. Keene

Lab Director/Quality Manager



PHONE (575) 393-2326 ° 101 E. MARLAND ° HOBBS, NM 88240

Analytical Results For:

TETRA TECH
 CHRISTIAN LLULL
 901 WEST WALL STREET , STE 100
 MIDLAND TX, 79701
 Fax To: (432) 682-3946

Received:	11/16/2023	Sampling Date:	11/16/2023
Reported:	11/21/2023	Sampling Type:	Soil
Project Name:	AIRACUDA 31 FED 2H FLARE FIRE RELE/	Sampling Condition:	Cool & Intact
Project Number:	212C - MD - 03266	Sample Received By:	Tamara Oldaker
Project Location:	LEA COUNTY, NM		

Sample ID: FS - 1 (H236289-01)

BTEX 8021B		mg/kg		Analyzed By: JH					
Analyte	Result	Reporting Limit	Analyzed	Method Blank	BS	% Recovery	True Value QC	RPD	Qualifier
Benzene*	<0.050	0.050	11/18/2023	ND	2.06	103	2.00	0.823	
Toluene*	<0.050	0.050	11/18/2023	ND	2.14	107	2.00	1.44	
Ethylbenzene*	<0.050	0.050	11/18/2023	ND	2.18	109	2.00	0.504	
Total Xylenes*	<0.150	0.150	11/18/2023	ND	6.64	111	6.00	0.0806	
Total BTEX	<0.300	0.300	11/18/2023	ND					

Surrogate: 4-Bromofluorobenzene (PID) 120 % 71.5-134

Chloride, SM4500Cl-B		mg/kg		Analyzed By: AC					
Analyte	Result	Reporting Limit	Analyzed	Method Blank	BS	% Recovery	True Value QC	RPD	Qualifier
Chloride	16.0	16.0	11/20/2023	ND	416	104	400	0.00	

TPH 8015M		mg/kg		Analyzed By: MS					
Analyte	Result	Reporting Limit	Analyzed	Method Blank	BS	% Recovery	True Value QC	RPD	Qualifier
GRO C6-C10*	<10.0	10.0	11/17/2023	ND	181	90.7	200	2.69	
DRO >C10-C28*	93.0	10.0	11/17/2023	ND	180	89.8	200	2.73	
EXT DRO >C28-C36	44.1	10.0	11/17/2023	ND					

Surrogate: 1-Chlorooctane 79.2 % 48.2-134

Surrogate: 1-Chlorooctadecane 81.7 % 49.1-148

Cardinal Laboratories

*=Accredited Analyte

PLEASE NOTE: Liability and Damages. Cardinal's liability and client's exclusive remedy for any claim arising, whether based in contract or tort, shall be limited to the amount paid by client for analyses. All claims, including those for negligence and any other cause whatsoever shall be deemed waived unless made in writing and received by Cardinal within thirty (30) days after completion of the applicable service. In no event shall Cardinal be liable for incidental or consequential damages, including, without limitation, business interruptions, loss of use, or loss of profits incurred by client, its subsidiaries, affiliates or successors arising out of or related to the performance of the services hereunder by Cardinal, regardless of whether such claim is based upon any of the above stated reasons or otherwise. Results relate only to the samples identified above. This report shall not be reproduced except in full with written approval of Cardinal Laboratories.

Mike Snyder For Celey D. Keene, Lab Director/Quality Manager



PHONE (575) 393-2326 ° 101 E. MARLAND ° HOBBS, NM 88240

Analytical Results For:

TETRA TECH
 CHRISTIAN LLULL
 901 WEST WALL STREET , STE 100
 MIDLAND TX, 79701
 Fax To: (432) 682-3946

Received:	11/16/2023	Sampling Date:	11/16/2023
Reported:	11/21/2023	Sampling Type:	Soil
Project Name:	AIRACUDA 31 FED 2H FLARE FIRE RELE/	Sampling Condition:	Cool & Intact
Project Number:	212C - MD - 03266	Sample Received By:	Tamara Oldaker
Project Location:	LEA COUNTY, NM		

Sample ID: FS - 2 (H236289-02)

BTEx 8021B		mg/kg		Analyzed By: JH						
Analyte	Result	Reporting Limit	Analyzed	Method Blank	BS	% Recovery	True Value QC	RPD	Qualifier	
Benzene*	<0.050	0.050	11/17/2023	ND	2.18	109	2.00	2.63		
Toluene*	<0.050	0.050	11/17/2023	ND	2.15	108	2.00	3.18		
Ethylbenzene*	<0.050	0.050	11/17/2023	ND	2.14	107	2.00	3.19		
Total Xylenes*	<0.150	0.150	11/17/2023	ND	6.66	111	6.00	2.88		
Total BTEx	<0.300	0.300	11/17/2023	ND						

Surrogate: 4-Bromofluorobenzene (PID) 103 % 71.5-134

Chloride, SM4500CI-B		mg/kg		Analyzed By: AC						
Analyte	Result	Reporting Limit	Analyzed	Method Blank	BS	% Recovery	True Value QC	RPD	Qualifier	
Chloride	496	16.0	11/20/2023	ND	416	104	400	0.00		

TPH 8015M		mg/kg		Analyzed By: MS					
Analyte	Result	Reporting Limit	Analyzed	Method Blank	BS	% Recovery	True Value QC	RPD	Qualifier
GRO C6-C10*	<10.0	10.0	11/17/2023	ND	181	90.7	200	2.69	
DRO >C10-C28*	<10.0	10.0	11/17/2023	ND	180	89.8	200	2.73	
EXT DRO >C28-C36	<10.0	10.0	11/17/2023	ND					

Surrogate: 1-Chlorooctane 88.1 % 48.2-134

Surrogate: 1-Chlorooctadecane 87.1 % 49.1-148

Cardinal Laboratories

*=Accredited Analyte

PLEASE NOTE: Liability and Damages. Cardinal's liability and client's exclusive remedy for any claim arising, whether based in contract or tort, shall be limited to the amount paid by client for analyses. All claims, including those for negligence and any other cause whatsoever shall be deemed waived unless made in writing and received by Cardinal within thirty (30) days after completion of the applicable service. In no event shall Cardinal be liable for incidental or consequential damages, including, without limitation, business interruptions, loss of use, or loss of profits incurred by client, its subsidiaries, affiliates or successors arising out of or related to the performance of the services hereunder by Cardinal, regardless of whether such claim is based upon any of the above stated reasons or otherwise. Results relate only to the samples identified above. This report shall not be reproduced except in full with written approval of Cardinal Laboratories.

Mike Snyder For Celey D. Keene, Lab Director/Quality Manager



PHONE (575) 393-2326 ° 101 E. MARLAND ° HOBBS, NM 88240

Analytical Results For:

TETRA TECH
 CHRISTIAN LLULL
 901 WEST WALL STREET , STE 100
 MIDLAND TX, 79701
 Fax To: (432) 682-3946

Received:	11/16/2023	Sampling Date:	11/16/2023
Reported:	11/21/2023	Sampling Type:	Soil
Project Name:	AIRACUDA 31 FED 2H FLARE FIRE RELE/	Sampling Condition:	Cool & Intact
Project Number:	212C - MD - 03266	Sample Received By:	Tamara Oldaker
Project Location:	LEA COUNTY, NM		

Sample ID: FS - 3 (H236289-03)

BTEx 8021B		mg/kg		Analyzed By: JH						
Analyte	Result	Reporting Limit	Analyzed	Method Blank	BS	% Recovery	True Value QC	RPD	Qualifier	
Benzene*	<0.050	0.050	11/17/2023	ND	2.18	109	2.00	2.63		
Toluene*	<0.050	0.050	11/17/2023	ND	2.15	108	2.00	3.18		
Ethylbenzene*	<0.050	0.050	11/17/2023	ND	2.14	107	2.00	3.19		
Total Xylenes*	<0.150	0.150	11/17/2023	ND	6.66	111	6.00	2.88		
Total BTEX	<0.300	0.300	11/17/2023	ND						

Surrogate: 4-Bromofluorobenzene (PID) 101 % 71.5-134

Chloride, SM4500Cl-B		mg/kg		Analyzed By: AC						
Analyte	Result	Reporting Limit	Analyzed	Method Blank	BS	% Recovery	True Value QC	RPD	Qualifier	
Chloride	16.0	16.0	11/20/2023	ND	416	104	400	0.00		

TPH 8015M		mg/kg		Analyzed By: MS					
Analyte	Result	Reporting Limit	Analyzed	Method Blank	BS	% Recovery	True Value QC	RPD	Qualifier
GRO C6-C10*	<10.0	10.0	11/17/2023	ND	181	90.7	200	2.69	
DRO >C10-C28*	<10.0	10.0	11/17/2023	ND	180	89.8	200	2.73	
EXT DRO >C28-C36	<10.0	10.0	11/17/2023	ND					

Surrogate: 1-Chlorooctane 83.0 % 48.2-134

Surrogate: 1-Chlorooctadecane 84.6 % 49.1-148

Cardinal Laboratories

*=Accredited Analyte

PLEASE NOTE: Liability and Damages. Cardinal's liability and client's exclusive remedy for any claim arising, whether based in contract or tort, shall be limited to the amount paid by client for analyses. All claims, including those for negligence and any other cause whatsoever shall be deemed waived unless made in writing and received by Cardinal within thirty (30) days after completion of the applicable service. In no event shall Cardinal be liable for incidental or consequential damages, including, without limitation, business interruptions, loss of use, or loss of profits incurred by client, its subsidiaries, affiliates or successors arising out of or related to the performance of the services hereunder by Cardinal, regardless of whether such claim is based upon any of the above stated reasons or otherwise. Results relate only to the samples identified above. This report shall not be reproduced except in full with written approval of Cardinal Laboratories.

Mike Snyder For Celey D. Keene, Lab Director/Quality Manager



PHONE (575) 393-2326 ° 101 E. MARLAND ° HOBBS, NM 88240

Analytical Results For:

TETRA TECH
 CHRISTIAN LLULL
 901 WEST WALL STREET , STE 100
 MIDLAND TX, 79701
 Fax To: (432) 682-3946

Received:	11/16/2023	Sampling Date:	11/16/2023
Reported:	11/21/2023	Sampling Type:	Soil
Project Name:	AIRACUDA 31 FED 2H FLARE FIRE RELE/	Sampling Condition:	Cool & Intact
Project Number:	212C - MD - 03266	Sample Received By:	Tamara Oldaker
Project Location:	LEA COUNTY, NM		

Sample ID: FS - 4 (H236289-04)

BTEX 8021B		mg/kg		Analyzed By: JH						
Analyte	Result	Reporting Limit	Analyzed	Method Blank	BS	% Recovery	True Value QC	RPD	Qualifier	
Benzene*	<0.050	0.050	11/17/2023	ND	2.18	109	2.00	2.63		
Toluene*	<0.050	0.050	11/17/2023	ND	2.15	108	2.00	3.18		
Ethylbenzene*	<0.050	0.050	11/17/2023	ND	2.14	107	2.00	3.19		
Total Xylenes*	<0.150	0.150	11/17/2023	ND	6.66	111	6.00	2.88		
Total BTEX	<0.300	0.300	11/17/2023	ND						

Surrogate: 4-Bromofluorobenzene (PID) 102 % 71.5-134

Chloride, SM4500Cl-B		mg/kg		Analyzed By: AC						
Analyte	Result	Reporting Limit	Analyzed	Method Blank	BS	% Recovery	True Value QC	RPD	Qualifier	
Chloride	48.0	16.0	11/20/2023	ND	416	104	400	0.00		

TPH 8015M		mg/kg		Analyzed By: MS					
Analyte	Result	Reporting Limit	Analyzed	Method Blank	BS	% Recovery	True Value QC	RPD	Qualifier
GRO C6-C10*	<10.0	10.0	11/17/2023	ND	181	90.7	200	2.69	
DRO >C10-C28*	<10.0	10.0	11/17/2023	ND	180	89.8	200	2.73	
EXT DRO >C28-C36	<10.0	10.0	11/17/2023	ND					

Surrogate: 1-Chlorooctane 69.1 % 48.2-134

Surrogate: 1-Chlorooctadecane 70.0 % 49.1-148

Cardinal Laboratories

*=Accredited Analyte

PLEASE NOTE: Liability and Damages. Cardinal's liability and client's exclusive remedy for any claim arising, whether based in contract or tort, shall be limited to the amount paid by client for analyses. All claims, including those for negligence and any other cause whatsoever shall be deemed waived unless made in writing and received by Cardinal within thirty (30) days after completion of the applicable service. In no event shall Cardinal be liable for incidental or consequential damages, including, without limitation, business interruptions, loss of use, or loss of profits incurred by client, its subsidiaries, affiliates or successors arising out of or related to the performance of the services hereunder by Cardinal, regardless of whether such claim is based upon any of the above stated reasons or otherwise. Results relate only to the samples identified above. This report shall not be reproduced except in full with written approval of Cardinal Laboratories.

Mike Snyder For Celey D. Keene, Lab Director/Quality Manager



PHONE (575) 393-2326 ° 101 E. MARLAND ° HOBBS, NM 88240

Analytical Results For:

TETRA TECH
 CHRISTIAN LLULL
 901 WEST WALL STREET , STE 100
 MIDLAND TX, 79701
 Fax To: (432) 682-3946

Received:	11/16/2023	Sampling Date:	11/16/2023
Reported:	11/21/2023	Sampling Type:	Soil
Project Name:	AIRACUDA 31 FED 2H FLARE FIRE RELE/	Sampling Condition:	Cool & Intact
Project Number:	212C - MD - 03266	Sample Received By:	Tamara Oldaker
Project Location:	LEA COUNTY, NM		

Sample ID: FS - 5 (H236289-05)

BTEx 8021B		mg/kg		Analyzed By: JH						
Analyte	Result	Reporting Limit	Analyzed	Method Blank	BS	% Recovery	True Value QC	RPD	Qualifier	
Benzene*	<0.050	0.050	11/17/2023	ND	2.18	109	2.00	2.63		
Toluene*	<0.050	0.050	11/17/2023	ND	2.15	108	2.00	3.18		
Ethylbenzene*	<0.050	0.050	11/17/2023	ND	2.14	107	2.00	3.19		
Total Xylenes*	<0.150	0.150	11/17/2023	ND	6.66	111	6.00	2.88		
Total BTEX	<0.300	0.300	11/17/2023	ND						

Surrogate: 4-Bromofluorobenzene (PID) 101 % 71.5-134

Chloride, SM4500Cl-B		mg/kg		Analyzed By: AC						
Analyte	Result	Reporting Limit	Analyzed	Method Blank	BS	% Recovery	True Value QC	RPD	Qualifier	
Chloride	16.0	16.0	11/20/2023	ND	416	104	400	0.00		

TPH 8015M		mg/kg		Analyzed By: MS						
Analyte	Result	Reporting Limit	Analyzed	Method Blank	BS	% Recovery	True Value QC	RPD	Qualifier	
GRO C6-C10*	<10.0	10.0	11/17/2023	ND	181	90.7	200	2.69		
DRO >C10-C28*	<10.0	10.0	11/17/2023	ND	180	89.8	200	2.73		
EXT DRO >C28-C36	<10.0	10.0	11/17/2023	ND						

Surrogate: 1-Chlorooctane 81.0 % 48.2-134

Surrogate: 1-Chlorooctadecane 83.3 % 49.1-148

Cardinal Laboratories

*=Accredited Analyte

PLEASE NOTE: Liability and Damages. Cardinal's liability and client's exclusive remedy for any claim arising, whether based in contract or tort, shall be limited to the amount paid by client for analyses. All claims, including those for negligence and any other cause whatsoever shall be deemed waived unless made in writing and received by Cardinal within thirty (30) days after completion of the applicable service. In no event shall Cardinal be liable for incidental or consequential damages, including, without limitation, business interruptions, loss of use, or loss of profits incurred by client, its subsidiaries, affiliates or successors arising out of or related to the performance of the services hereunder by Cardinal, regardless of whether such claim is based upon any of the above stated reasons or otherwise. Results relate only to the samples identified above. This report shall not be reproduced except in full with written approval of Cardinal Laboratories.

Mike Snyder For Celey D. Keene, Lab Director/Quality Manager



PHONE (575) 393-2326 ° 101 E. MARLAND ° HOBBS, NM 88240

Analytical Results For:

TETRA TECH
 CHRISTIAN LLULL
 901 WEST WALL STREET , STE 100
 MIDLAND TX, 79701
 Fax To: (432) 682-3946

Received:	11/16/2023	Sampling Date:	11/16/2023
Reported:	11/21/2023	Sampling Type:	Soil
Project Name:	AIRACUDA 31 FED 2H FLARE FIRE RELE/	Sampling Condition:	Cool & Intact
Project Number:	212C - MD - 03266	Sample Received By:	Tamara Oldaker
Project Location:	LEA COUNTY, NM		

Sample ID: FS - 6 (H236289-06)

BTEx 8021B		mg/kg		Analyzed By: JH						
Analyte	Result	Reporting Limit	Analyzed	Method Blank	BS	% Recovery	True Value QC	RPD	Qualifier	
Benzene*	<0.050	0.050	11/17/2023	ND	2.18	109	2.00	2.63		
Toluene*	<0.050	0.050	11/17/2023	ND	2.15	108	2.00	3.18		
Ethylbenzene*	<0.050	0.050	11/17/2023	ND	2.14	107	2.00	3.19		
Total Xylenes*	<0.150	0.150	11/17/2023	ND	6.66	111	6.00	2.88		
Total BTEX	<0.300	0.300	11/17/2023	ND						

Surrogate: 4-Bromofluorobenzene (PID) 102 % 71.5-134

Chloride, SM4500Cl-B		mg/kg		Analyzed By: AC						
Analyte	Result	Reporting Limit	Analyzed	Method Blank	BS	% Recovery	True Value QC	RPD	Qualifier	
Chloride	16.0	16.0	11/20/2023	ND	416	104	400	0.00		

TPH 8015M		mg/kg		Analyzed By: MS					
Analyte	Result	Reporting Limit	Analyzed	Method Blank	BS	% Recovery	True Value QC	RPD	Qualifier
GRO C6-C10*	<10.0	10.0	11/17/2023	ND	181	90.7	200	2.69	
DRO >C10-C28*	<10.0	10.0	11/17/2023	ND	180	89.8	200	2.73	
EXT DRO >C28-C36	<10.0	10.0	11/17/2023	ND					

Surrogate: 1-Chlorooctane 74.6 % 48.2-134

Surrogate: 1-Chlorooctadecane 74.8 % 49.1-148

Cardinal Laboratories

*=Accredited Analyte

PLEASE NOTE: Liability and Damages. Cardinal's liability and client's exclusive remedy for any claim arising, whether based in contract or tort, shall be limited to the amount paid by client for analyses. All claims, including those for negligence and any other cause whatsoever shall be deemed waived unless made in writing and received by Cardinal within thirty (30) days after completion of the applicable service. In no event shall Cardinal be liable for incidental or consequential damages, including, without limitation, business interruptions, loss of use, or loss of profits incurred by client, its subsidiaries, affiliates or successors arising out of or related to the performance of the services hereunder by Cardinal, regardless of whether such claim is based upon any of the above stated reasons or otherwise. Results relate only to the samples identified above. This report shall not be reproduced except in full with written approval of Cardinal Laboratories.

Mike Snyder For Celey D. Keene, Lab Director/Quality Manager



PHONE (575) 393-2326 ° 101 E. MARLAND ° HOBBS, NM 88240

Analytical Results For:

TETRA TECH
 CHRISTIAN LLULL
 901 WEST WALL STREET , STE 100
 MIDLAND TX, 79701
 Fax To: (432) 682-3946

Received:	11/16/2023	Sampling Date:	11/16/2023
Reported:	11/21/2023	Sampling Type:	Soil
Project Name:	AIRACUDA 31 FED 2H FLARE FIRE RELE/	Sampling Condition:	Cool & Intact
Project Number:	212C - MD - 03266	Sample Received By:	Tamara Oldaker
Project Location:	LEA COUNTY, NM		

Sample ID: FS - 7 (H236289-07)

BTEx 8021B		mg/kg		Analyzed By: JH						
Analyte	Result	Reporting Limit	Analyzed	Method Blank	BS	% Recovery	True Value QC	RPD	Qualifier	
Benzene*	<0.050	0.050	11/17/2023	ND	2.18	109	2.00	2.63		
Toluene*	<0.050	0.050	11/17/2023	ND	2.15	108	2.00	3.18		
Ethylbenzene*	<0.050	0.050	11/17/2023	ND	2.14	107	2.00	3.19		
Total Xylenes*	<0.150	0.150	11/17/2023	ND	6.66	111	6.00	2.88		
Total BTEx	<0.300	0.300	11/17/2023	ND						

Surrogate: 4-Bromofluorobenzene (PID) 102 % 71.5-134

Chloride, SM4500CI-B		mg/kg		Analyzed By: AC						
Analyte	Result	Reporting Limit	Analyzed	Method Blank	BS	% Recovery	True Value QC	RPD	Qualifier	
Chloride	128	16.0	11/20/2023	ND	416	104	400	0.00		

TPH 8015M		mg/kg		Analyzed By: MS					
Analyte	Result	Reporting Limit	Analyzed	Method Blank	BS	% Recovery	True Value QC	RPD	Qualifier
GRO C6-C10*	<10.0	10.0	11/17/2023	ND	181	90.7	200	2.69	
DRO >C10-C28*	<10.0	10.0	11/17/2023	ND	180	89.8	200	2.73	
EXT DRO >C28-C36	<10.0	10.0	11/17/2023	ND					

Surrogate: 1-Chlorooctane 57.4 % 48.2-134

Surrogate: 1-Chlorooctadecane 61.2 % 49.1-148

Cardinal Laboratories

*=Accredited Analyte

PLEASE NOTE: Liability and Damages. Cardinal's liability and client's exclusive remedy for any claim arising, whether based in contract or tort, shall be limited to the amount paid by client for analyses. All claims, including those for negligence and any other cause whatsoever shall be deemed waived unless made in writing and received by Cardinal within thirty (30) days after completion of the applicable service. In no event shall Cardinal be liable for incidental or consequential damages, including, without limitation, business interruptions, loss of use, or loss of profits incurred by client, its subsidiaries, affiliates or successors arising out of or related to the performance of the services hereunder by Cardinal, regardless of whether such claim is based upon any of the above stated reasons or otherwise. Results relate only to the samples identified above. This report shall not be reproduced except in full with written approval of Cardinal Laboratories.

Mike Snyder For Celey D. Keene, Lab Director/Quality Manager



PHONE (575) 393-2326 ° 101 E. MARLAND ° HOBBS, NM 88240

Analytical Results For:

TETRA TECH
 CHRISTIAN LLULL
 901 WEST WALL STREET , STE 100
 MIDLAND TX, 79701
 Fax To: (432) 682-3946

Received:	11/16/2023	Sampling Date:	11/16/2023
Reported:	11/21/2023	Sampling Type:	Soil
Project Name:	AIRACUDA 31 FED 2H FLARE FIRE RELE/	Sampling Condition:	Cool & Intact
Project Number:	212C - MD - 03266	Sample Received By:	Tamara Oldaker
Project Location:	LEA COUNTY, NM		

Sample ID: FS - 8 (H236289-08)

BTEx 8021B		mg/kg		Analyzed By: JH						
Analyte	Result	Reporting Limit	Analyzed	Method Blank	BS	% Recovery	True Value QC	RPD	Qualifier	
Benzene*	<0.050	0.050	11/17/2023	ND	2.18	109	2.00	2.63		
Toluene*	<0.050	0.050	11/17/2023	ND	2.15	108	2.00	3.18		
Ethylbenzene*	<0.050	0.050	11/17/2023	ND	2.14	107	2.00	3.19		
Total Xylenes*	<0.150	0.150	11/17/2023	ND	6.66	111	6.00	2.88		
Total BTEX	<0.300	0.300	11/17/2023	ND						

Surrogate: 4-Bromofluorobenzene (PID) 102 % 71.5-134

Chloride, SM4500Cl-B		mg/kg		Analyzed By: AC						
Analyte	Result	Reporting Limit	Analyzed	Method Blank	BS	% Recovery	True Value QC	RPD	Qualifier	
Chloride	32.0	16.0	11/20/2023	ND	416	104	400	0.00		

TPH 8015M		mg/kg		Analyzed By: MS					
Analyte	Result	Reporting Limit	Analyzed	Method Blank	BS	% Recovery	True Value QC	RPD	Qualifier
GRO C6-C10*	<10.0	10.0	11/17/2023	ND	181	90.7	200	2.69	
DRO >C10-C28*	<10.0	10.0	11/17/2023	ND	180	89.8	200	2.73	
EXT DRO >C28-C36	<10.0	10.0	11/17/2023	ND					

Surrogate: 1-Chlorooctane 79.8 % 48.2-134

Surrogate: 1-Chlorooctadecane 80.0 % 49.1-148

Cardinal Laboratories

*=Accredited Analyte

PLEASE NOTE: Liability and Damages. Cardinal's liability and client's exclusive remedy for any claim arising, whether based in contract or tort, shall be limited to the amount paid by client for analyses. All claims, including those for negligence and any other cause whatsoever shall be deemed waived unless made in writing and received by Cardinal within thirty (30) days after completion of the applicable service. In no event shall Cardinal be liable for incidental or consequential damages, including, without limitation, business interruptions, loss of use, or loss of profits incurred by client, its subsidiaries, affiliates or successors arising out of or related to the performance of the services hereunder by Cardinal, regardless of whether such claim is based upon any of the above stated reasons or otherwise. Results relate only to the samples identified above. This report shall not be reproduced except in full with written approval of Cardinal Laboratories.

Mike Snyder For Celey D. Keene, Lab Director/Quality Manager



PHONE (575) 393-2326 ° 101 E. MARLAND ° HOBBS, NM 88240

Analytical Results For:

TETRA TECH
 CHRISTIAN LLULL
 901 WEST WALL STREET , STE 100
 MIDLAND TX, 79701
 Fax To: (432) 682-3946

Received:	11/16/2023	Sampling Date:	11/16/2023
Reported:	11/21/2023	Sampling Type:	Soil
Project Name:	AIRACUDA 31 FED 2H FLARE FIRE RELE/	Sampling Condition:	Cool & Intact
Project Number:	212C - MD - 03266	Sample Received By:	Tamara Oldaker
Project Location:	LEA COUNTY, NM		

Sample ID: NSW - 1 (H236289-09)

BTEx 8021B		mg/kg		Analyzed By: JH					
Analyte	Result	Reporting Limit	Analyzed	Method Blank	BS	% Recovery	True Value QC	RPD	Qualifier
Benzene*	<0.050	0.050	11/17/2023	ND	2.18	109	2.00	2.63	
Toluene*	<0.050	0.050	11/17/2023	ND	2.15	108	2.00	3.18	
Ethylbenzene*	<0.050	0.050	11/17/2023	ND	2.14	107	2.00	3.19	
Total Xylenes*	<0.150	0.150	11/17/2023	ND	6.66	111	6.00	2.88	
Total BTEX	<0.300	0.300	11/17/2023	ND					

Surrogate: 4-Bromofluorobenzene (PID) 102 % 71.5-134

Chloride, SM4500Cl-B		mg/kg		Analyzed By: AC					
Analyte	Result	Reporting Limit	Analyzed	Method Blank	BS	% Recovery	True Value QC	RPD	Qualifier
Chloride	112	16.0	11/20/2023	ND	416	104	400	0.00	

TPH 8015M		mg/kg		Analyzed By: MS					
Analyte	Result	Reporting Limit	Analyzed	Method Blank	BS	% Recovery	True Value QC	RPD	Qualifier
GRO C6-C10*	<10.0	10.0	11/17/2023	ND	181	90.7	200	2.69	
DRO >C10-C28*	<10.0	10.0	11/17/2023	ND	180	89.8	200	2.73	
EXT DRO >C28-C36	<10.0	10.0	11/17/2023	ND					

Surrogate: 1-Chlorooctane 73.8 % 48.2-134

Surrogate: 1-Chlorooctadecane 75.2 % 49.1-148

Cardinal Laboratories

*=Accredited Analyte

PLEASE NOTE: Liability and Damages. Cardinal's liability and client's exclusive remedy for any claim arising, whether based in contract or tort, shall be limited to the amount paid by client for analyses. All claims, including those for negligence and any other cause whatsoever shall be deemed waived unless made in writing and received by Cardinal within thirty (30) days after completion of the applicable service. In no event shall Cardinal be liable for incidental or consequential damages, including, without limitation, business interruptions, loss of use, or loss of profits incurred by client, its subsidiaries, affiliates or successors arising out of or related to the performance of the services hereunder by Cardinal, regardless of whether such claim is based upon any of the above stated reasons or otherwise. Results relate only to the samples identified above. This report shall not be reproduced except in full with written approval of Cardinal Laboratories.

Mike Snyder For Celey D. Keene, Lab Director/Quality Manager



PHONE (575) 393-2326 ° 101 E. MARLAND ° HOBBS, NM 88240

Analytical Results For:

TETRA TECH
 CHRISTIAN LLULL
 901 WEST WALL STREET , STE 100
 MIDLAND TX, 79701
 Fax To: (432) 682-3946

Received:	11/16/2023	Sampling Date:	11/16/2023
Reported:	11/21/2023	Sampling Type:	Soil
Project Name:	AIRACUDA 31 FED 2H FLARE FIRE RELE/	Sampling Condition:	Cool & Intact
Project Number:	212C - MD - 03266	Sample Received By:	Tamara Oldaker
Project Location:	LEA COUNTY, NM		

Sample ID: NSW - 2 (H236289-10)

BTEX 8021B		mg/kg		Analyzed By: JH						
Analyte	Result	Reporting Limit	Analyzed	Method Blank	BS	% Recovery	True Value QC	RPD	Qualifier	
Benzene*	<0.050	0.050	11/17/2023	ND	2.18	109	2.00	2.63		
Toluene*	<0.050	0.050	11/17/2023	ND	2.15	108	2.00	3.18		
Ethylbenzene*	<0.050	0.050	11/17/2023	ND	2.14	107	2.00	3.19		
Total Xylenes*	<0.150	0.150	11/17/2023	ND	6.66	111	6.00	2.88		
Total BTEX	<0.300	0.300	11/17/2023	ND						

Surrogate: 4-Bromofluorobenzene (PID) 101 % 71.5-134

Chloride, SM4500Cl-B		mg/kg		Analyzed By: AC						
Analyte	Result	Reporting Limit	Analyzed	Method Blank	BS	% Recovery	True Value QC	RPD	Qualifier	
Chloride	48.0	16.0	11/20/2023	ND	416	104	400	0.00		

TPH 8015M		mg/kg		Analyzed By: MS					
Analyte	Result	Reporting Limit	Analyzed	Method Blank	BS	% Recovery	True Value QC	RPD	Qualifier
GRO C6-C10*	<10.0	10.0	11/17/2023	ND	181	90.7	200	2.69	
DRO >C10-C28*	<10.0	10.0	11/17/2023	ND	180	89.8	200	2.73	
EXT DRO >C28-C36	<10.0	10.0	11/17/2023	ND					

Surrogate: 1-Chlorooctane 70.0 % 48.2-134

Surrogate: 1-Chlorooctadecane 72.4 % 49.1-148

Cardinal Laboratories

*=Accredited Analyte

PLEASE NOTE: Liability and Damages. Cardinal's liability and client's exclusive remedy for any claim arising, whether based in contract or tort, shall be limited to the amount paid by client for analyses. All claims, including those for negligence and any other cause whatsoever shall be deemed waived unless made in writing and received by Cardinal within thirty (30) days after completion of the applicable service. In no event shall Cardinal be liable for incidental or consequential damages, including, without limitation, business interruptions, loss of use, or loss of profits incurred by client, its subsidiaries, affiliates or successors arising out of or related to the performance of the services hereunder by Cardinal, regardless of whether such claim is based upon any of the above stated reasons or otherwise. Results relate only to the samples identified above. This report shall not be reproduced except in full with written approval of Cardinal Laboratories.

Mike Snyder For Celey D. Keene, Lab Director/Quality Manager



PHONE (575) 393-2326 ° 101 E. MARLAND ° HOBBS, NM 88240

Analytical Results For:

TETRA TECH
 CHRISTIAN LLULL
 901 WEST WALL STREET , STE 100
 MIDLAND TX, 79701
 Fax To: (432) 682-3946

Received:	11/16/2023	Sampling Date:	11/16/2023
Reported:	11/21/2023	Sampling Type:	Soil
Project Name:	AIRACUDA 31 FED 2H FLARE FIRE RELE/	Sampling Condition:	Cool & Intact
Project Number:	212C - MD - 03266	Sample Received By:	Tamara Oldaker
Project Location:	LEA COUNTY, NM		

Sample ID: ESW - 1 (H236289-11)

BTX 8021B		mg/kg		Analyzed By: JH					
Analyte	Result	Reporting Limit	Analyzed	Method Blank	BS	% Recovery	True Value QC	RPD	Qualifier
Benzene*	<0.050	0.050	11/17/2023	ND	2.18	109	2.00	2.63	
Toluene*	<0.050	0.050	11/17/2023	ND	2.15	108	2.00	3.18	
Ethylbenzene*	<0.050	0.050	11/17/2023	ND	2.14	107	2.00	3.19	
Total Xylenes*	<0.150	0.150	11/17/2023	ND	6.66	111	6.00	2.88	
Total BTX	<0.300	0.300	11/17/2023	ND					

Surrogate: 4-Bromofluorobenzene (PID) 102 % 71.5-134

Chloride, SM4500Cl-B		mg/kg		Analyzed By: AC					
Analyte	Result	Reporting Limit	Analyzed	Method Blank	BS	% Recovery	True Value QC	RPD	Qualifier
Chloride	32.0	16.0	11/20/2023	ND	416	104	400	0.00	

TPH 8015M		mg/kg		Analyzed By: MS					
Analyte	Result	Reporting Limit	Analyzed	Method Blank	BS	% Recovery	True Value QC	RPD	Qualifier
GRO C6-C10*	<10.0	10.0	11/17/2023	ND	181	90.7	200	2.69	
DRO >C10-C28*	<10.0	10.0	11/17/2023	ND	180	89.8	200	2.73	
EXT DRO >C28-C36	<10.0	10.0	11/17/2023	ND					

Surrogate: 1-Chlorooctane 64.4 % 48.2-134

Surrogate: 1-Chlorooctadecane 70.0 % 49.1-148

Cardinal Laboratories

*=Accredited Analyte

PLEASE NOTE: Liability and Damages. Cardinal's liability and client's exclusive remedy for any claim arising, whether based in contract or tort, shall be limited to the amount paid by client for analyses. All claims, including those for negligence and any other cause whatsoever shall be deemed waived unless made in writing and received by Cardinal within thirty (30) days after completion of the applicable service. In no event shall Cardinal be liable for incidental or consequential damages, including, without limitation, business interruptions, loss of use, or loss of profits incurred by client, its subsidiaries, affiliates or successors arising out of or related to the performance of the services hereunder by Cardinal, regardless of whether such claim is based upon any of the above stated reasons or otherwise. Results relate only to the samples identified above. This report shall not be reproduced except in full with written approval of Cardinal Laboratories.

Mike Snyder For Celey D. Keene, Lab Director/Quality Manager



PHONE (575) 393-2326 ° 101 E. MARLAND ° HOBBS, NM 88240

Analytical Results For:

TETRA TECH
 CHRISTIAN LLULL
 901 WEST WALL STREET , STE 100
 MIDLAND TX, 79701
 Fax To: (432) 682-3946

Received:	11/16/2023	Sampling Date:	11/16/2023
Reported:	11/21/2023	Sampling Type:	Soil
Project Name:	AIRACUDA 31 FED 2H FLARE FIRE RELE/	Sampling Condition:	Cool & Intact
Project Number:	212C - MD - 03266	Sample Received By:	Tamara Oldaker
Project Location:	LEA COUNTY, NM		

Sample ID: ESW - 2 (H236289-12)

BTEx 8021B		mg/kg		Analyzed By: JH						
Analyte	Result	Reporting Limit	Analyzed	Method Blank	BS	% Recovery	True Value QC	RPD	Qualifier	
Benzene*	<0.050	0.050	11/17/2023	ND	2.18	109	2.00	2.63		
Toluene*	<0.050	0.050	11/17/2023	ND	2.15	108	2.00	3.18		
Ethylbenzene*	<0.050	0.050	11/17/2023	ND	2.14	107	2.00	3.19		
Total Xylenes*	<0.150	0.150	11/17/2023	ND	6.66	111	6.00	2.88		
Total BTEx	<0.300	0.300	11/17/2023	ND						

Surrogate: 4-Bromofluorobenzene (PID) 102 % 71.5-134

Chloride, SM4500CI-B		mg/kg		Analyzed By: AC					
Analyte	Result	Reporting Limit	Analyzed	Method Blank	BS	% Recovery	True Value QC	RPD	Qualifier
Chloride	32.0	16.0	11/20/2023	ND	416	104	400	0.00	

TPH 8015M		mg/kg		Analyzed By: MS					
Analyte	Result	Reporting Limit	Analyzed	Method Blank	BS	% Recovery	True Value QC	RPD	Qualifier
GRO C6-C10*	<10.0	10.0	11/17/2023	ND	181	90.7	200	2.69	
DRO >C10-C28*	<10.0	10.0	11/17/2023	ND	180	89.8	200	2.73	
EXT DRO >C28-C36	<10.0	10.0	11/17/2023	ND					

Surrogate: 1-Chlorooctane 78.3 % 48.2-134

Surrogate: 1-Chlorooctadecane 79.8 % 49.1-148

Cardinal Laboratories

*=Accredited Analyte

PLEASE NOTE: Liability and Damages. Cardinal's liability and client's exclusive remedy for any claim arising, whether based in contract or tort, shall be limited to the amount paid by client for analyses. All claims, including those for negligence and any other cause whatsoever shall be deemed waived unless made in writing and received by Cardinal within thirty (30) days after completion of the applicable service. In no event shall Cardinal be liable for incidental or consequential damages, including, without limitation, business interruptions, loss of use, or loss of profits incurred by client, its subsidiaries, affiliates or successors arising out of or related to the performance of the services hereunder by Cardinal, regardless of whether such claim is based upon any of the above stated reasons or otherwise. Results relate only to the samples identified above. This report shall not be reproduced except in full with written approval of Cardinal Laboratories.

Mike Snyder For Celey D. Keene, Lab Director/Quality Manager



PHONE (575) 393-2326 ° 101 E. MARLAND ° HOBBS, NM 88240

Analytical Results For:

TETRA TECH
 CHRISTIAN LLULL
 901 WEST WALL STREET , STE 100
 MIDLAND TX, 79701
 Fax To: (432) 682-3946

Received:	11/16/2023	Sampling Date:	11/16/2023
Reported:	11/21/2023	Sampling Type:	Soil
Project Name:	AIRACUDA 31 FED 2H FLARE FIRE RELE/	Sampling Condition:	Cool & Intact
Project Number:	212C - MD - 03266	Sample Received By:	Tamara Oldaker
Project Location:	LEA COUNTY, NM		

Sample ID: SSW - 1 (H236289-13)

BTEX 8021B		mg/kg		Analyzed By: JH						
Analyte	Result	Reporting Limit	Analyzed	Method Blank	BS	% Recovery	True Value QC	RPD	Qualifier	
Benzene*	<0.050	0.050	11/17/2023	ND	2.18	109	2.00	2.63		
Toluene*	<0.050	0.050	11/17/2023	ND	2.15	108	2.00	3.18		
Ethylbenzene*	<0.050	0.050	11/17/2023	ND	2.14	107	2.00	3.19		
Total Xylenes*	<0.150	0.150	11/17/2023	ND	6.66	111	6.00	2.88		
Total BTEX	<0.300	0.300	11/17/2023	ND						

Surrogate: 4-Bromofluorobenzene (PID) 101 % 71.5-134

Chloride, SM4500Cl-B		mg/kg		Analyzed By: AC						
Analyte	Result	Reporting Limit	Analyzed	Method Blank	BS	% Recovery	True Value QC	RPD	Qualifier	
Chloride	144	16.0	11/20/2023	ND	416	104	400	0.00		

TPH 8015M		mg/kg		Analyzed By: MS					
Analyte	Result	Reporting Limit	Analyzed	Method Blank	BS	% Recovery	True Value QC	RPD	Qualifier
GRO C6-C10*	<10.0	10.0	11/17/2023	ND	181	90.7	200	2.69	
DRO >C10-C28*	<10.0	10.0	11/17/2023	ND	180	89.8	200	2.73	
EXT DRO >C28-C36	<10.0	10.0	11/17/2023	ND					

Surrogate: 1-Chlorooctane 74.4 % 48.2-134

Surrogate: 1-Chlorooctadecane 75.4 % 49.1-148

Cardinal Laboratories

*=Accredited Analyte

PLEASE NOTE: Liability and Damages. Cardinal's liability and client's exclusive remedy for any claim arising, whether based in contract or tort, shall be limited to the amount paid by client for analyses. All claims, including those for negligence and any other cause whatsoever shall be deemed waived unless made in writing and received by Cardinal within thirty (30) days after completion of the applicable service. In no event shall Cardinal be liable for incidental or consequential damages, including, without limitation, business interruptions, loss of use, or loss of profits incurred by client, its subsidiaries, affiliates or successors arising out of or related to the performance of the services hereunder by Cardinal, regardless of whether such claim is based upon any of the above stated reasons or otherwise. Results relate only to the samples identified above. This report shall not be reproduced except in full with written approval of Cardinal Laboratories.

Mike Snyder For Celey D. Keene, Lab Director/Quality Manager



PHONE (575) 393-2326 ° 101 E. MARLAND ° HOBBS, NM 88240

Analytical Results For:

TETRA TECH
 CHRISTIAN LLULL
 901 WEST WALL STREET , STE 100
 MIDLAND TX, 79701
 Fax To: (432) 682-3946

Received:	11/16/2023	Sampling Date:	11/16/2023
Reported:	11/21/2023	Sampling Type:	Soil
Project Name:	AIRACUDA 31 FED 2H FLARE FIRE RELE/	Sampling Condition:	Cool & Intact
Project Number:	212C - MD - 03266	Sample Received By:	Tamara Oldaker
Project Location:	LEA COUNTY, NM		

Sample ID: WSW - 1 (H236289-14)

BTEx 8021B		mg/kg		Analyzed By: JH						
Analyte	Result	Reporting Limit	Analyzed	Method Blank	BS	% Recovery	True Value QC	RPD	Qualifier	
Benzene*	<0.050	0.050	11/17/2023	ND	2.18	109	2.00	2.63		
Toluene*	<0.050	0.050	11/17/2023	ND	2.15	108	2.00	3.18		
Ethylbenzene*	<0.050	0.050	11/17/2023	ND	2.14	107	2.00	3.19		
Total Xylenes*	<0.150	0.150	11/17/2023	ND	6.66	111	6.00	2.88		
Total BTEx	<0.300	0.300	11/17/2023	ND						

Surrogate: 4-Bromofluorobenzene (PID) 101 % 71.5-134

Chloride, SM4500CI-B		mg/kg		Analyzed By: AC						
Analyte	Result	Reporting Limit	Analyzed	Method Blank	BS	% Recovery	True Value QC	RPD	Qualifier	
Chloride	32.0	16.0	11/20/2023	ND	416	104	400	0.00		

TPH 8015M		mg/kg		Analyzed By: MS					
Analyte	Result	Reporting Limit	Analyzed	Method Blank	BS	% Recovery	True Value QC	RPD	Qualifier
GRO C6-C10*	<10.0	10.0	11/17/2023	ND	181	90.7	200	2.69	
DRO >C10-C28*	<10.0	10.0	11/17/2023	ND	180	89.8	200	2.73	
EXT DRO >C28-C36	<10.0	10.0	11/17/2023	ND					

Surrogate: 1-Chlorooctane 87.2 % 48.2-134

Surrogate: 1-Chlorooctadecane 87.5 % 49.1-148

Cardinal Laboratories

*=Accredited Analyte

PLEASE NOTE: Liability and Damages. Cardinal's liability and client's exclusive remedy for any claim arising, whether based in contract or tort, shall be limited to the amount paid by client for analyses. All claims, including those for negligence and any other cause whatsoever shall be deemed waived unless made in writing and received by Cardinal within thirty (30) days after completion of the applicable service. In no event shall Cardinal be liable for incidental or consequential damages, including, without limitation, business interruptions, loss of use, or loss of profits incurred by client, its subsidiaries, affiliates or successors arising out of or related to the performance of the services hereunder by Cardinal, regardless of whether such claim is based upon any of the above stated reasons or otherwise. Results relate only to the samples identified above. This report shall not be reproduced except in full with written approval of Cardinal Laboratories.

Mike Snyder For Celey D. Keene, Lab Director/Quality Manager



PHONE (575) 393-2326 ° 101 E. MARLAND ° HOBBS, NM 88240

Analytical Results For:

TETRA TECH
 CHRISTIAN LLULL
 901 WEST WALL STREET , STE 100
 MIDLAND TX, 79701
 Fax To: (432) 682-3946

Received:	11/16/2023	Sampling Date:	11/16/2023
Reported:	11/21/2023	Sampling Type:	Soil
Project Name:	AIRACUDA 31 FED 2H FLARE FIRE RELE/	Sampling Condition:	Cool & Intact
Project Number:	212C - MD - 03266	Sample Received By:	Tamara Oldaker
Project Location:	LEA COUNTY, NM		

Sample ID: WSW - 2 (H236289-15)

BTEx 8021B		mg/kg		Analyzed By: JH					
Analyte	Result	Reporting Limit	Analyzed	Method Blank	BS	% Recovery	True Value QC	RPD	Qualifier
Benzene*	<0.050	0.050	11/17/2023	ND	2.18	109	2.00	2.63	
Toluene*	<0.050	0.050	11/17/2023	ND	2.15	108	2.00	3.18	
Ethylbenzene*	<0.050	0.050	11/17/2023	ND	2.14	107	2.00	3.19	
Total Xylenes*	<0.150	0.150	11/17/2023	ND	6.66	111	6.00	2.88	
Total BTEX	<0.300	0.300	11/17/2023	ND					

Surrogate: 4-Bromofluorobenzene (PID) 101 % 71.5-134

Chloride, SM4500Cl-B		mg/kg		Analyzed By: AC					
Analyte	Result	Reporting Limit	Analyzed	Method Blank	BS	% Recovery	True Value QC	RPD	Qualifier
Chloride	16.0	16.0	11/20/2023	ND	416	104	400	0.00	

TPH 8015M		mg/kg		Analyzed By: MS					
Analyte	Result	Reporting Limit	Analyzed	Method Blank	BS	% Recovery	True Value QC	RPD	Qualifier
GRO C6-C10*	<10.0	10.0	11/17/2023	ND	181	90.7	200	2.69	
DRO >C10-C28*	<10.0	10.0	11/17/2023	ND	180	89.8	200	2.73	
EXT DRO >C28-C36	<10.0	10.0	11/17/2023	ND					

Surrogate: 1-Chlorooctane 79.6 % 48.2-134

Surrogate: 1-Chlorooctadecane 80.7 % 49.1-148

Cardinal Laboratories

*=Accredited Analyte

PLEASE NOTE: Liability and Damages. Cardinal's liability and client's exclusive remedy for any claim arising, whether based in contract or tort, shall be limited to the amount paid by client for analyses. All claims, including those for negligence and any other cause whatsoever shall be deemed waived unless made in writing and received by Cardinal within thirty (30) days after completion of the applicable service. In no event shall Cardinal be liable for incidental or consequential damages, including, without limitation, business interruptions, loss of use, or loss of profits incurred by client, its subsidiaries, affiliates or successors arising out of or related to the performance of the services hereunder by Cardinal, regardless of whether such claim is based upon any of the above stated reasons or otherwise. Results relate only to the samples identified above. This report shall not be reproduced except in full with written approval of Cardinal Laboratories.

Mike Snyder For Celey D. Keene, Lab Director/Quality Manager



PHONE (575) 393-2326 ° 101 E. MARLAND ° HOBBS, NM 88240

Analytical Results For:

TETRA TECH
 CHRISTIAN LLULL
 901 WEST WALL STREET , STE 100
 MIDLAND TX, 79701
 Fax To: (432) 682-3946

Received:	11/16/2023	Sampling Date:	11/16/2023
Reported:	11/21/2023	Sampling Type:	Soil
Project Name:	AIRACUDA 31 FED 2H FLARE FIRE RELE/	Sampling Condition:	Cool & Intact
Project Number:	212C - MD - 03266	Sample Received By:	Tamara Oldaker
Project Location:	LEA COUNTY, NM		

Sample ID: WSW - 3 (H236289-16)

BTEx 8021B		mg/kg		Analyzed By: JH						
Analyte	Result	Reporting Limit	Analyzed	Method Blank	BS	% Recovery	True Value QC	RPD	Qualifier	
Benzene*	<0.050	0.050	11/17/2023	ND	2.18	109	2.00	2.63		
Toluene*	<0.050	0.050	11/17/2023	ND	2.15	108	2.00	3.18		
Ethylbenzene*	<0.050	0.050	11/17/2023	ND	2.14	107	2.00	3.19		
Total Xylenes*	<0.150	0.150	11/17/2023	ND	6.66	111	6.00	2.88		
Total BTEx	<0.300	0.300	11/17/2023	ND						

Surrogate: 4-Bromofluorobenzene (PID) 102 % 71.5-134

Chloride, SM4500CI-B		mg/kg		Analyzed By: AC						
Analyte	Result	Reporting Limit	Analyzed	Method Blank	BS	% Recovery	True Value QC	RPD	Qualifier	
Chloride	448	16.0	11/20/2023	ND	416	104	400	0.00		

TPH 8015M		mg/kg		Analyzed By: MS					
Analyte	Result	Reporting Limit	Analyzed	Method Blank	BS	% Recovery	True Value QC	RPD	Qualifier
GRO C6-C10*	<10.0	10.0	11/17/2023	ND	181	90.7	200	2.69	
DRO >C10-C28*	22.8	10.0	11/17/2023	ND	180	89.8	200	2.73	
EXT DRO >C28-C36	<10.0	10.0	11/17/2023	ND					

Surrogate: 1-Chlorooctane 70.5 % 48.2-134

Surrogate: 1-Chlorooctadecane 70.8 % 49.1-148

Cardinal Laboratories

*=Accredited Analyte

PLEASE NOTE: Liability and Damages. Cardinal's liability and client's exclusive remedy for any claim arising, whether based in contract or tort, shall be limited to the amount paid by client for analyses. All claims, including those for negligence and any other cause whatsoever shall be deemed waived unless made in writing and received by Cardinal within thirty (30) days after completion of the applicable service. In no event shall Cardinal be liable for incidental or consequential damages, including, without limitation, business interruptions, loss of use, or loss of profits incurred by client, its subsidiaries, affiliates or successors arising out of or related to the performance of the services hereunder by Cardinal, regardless of whether such claim is based upon any of the above stated reasons or otherwise. Results relate only to the samples identified above. This report shall not be reproduced except in full with written approval of Cardinal Laboratories.

Mike Snyder For Celey D. Keene, Lab Director/Quality Manager



PHONE (575) 393-2326 ° 101 E. MARLAND ° HOBBS, NM 88240

Notes and Definitions

- ND Analyte NOT DETECTED at or above the reporting limit
- RPD Relative Percent Difference
- ** Samples not received at proper temperature of 6°C or below.
- *** Insufficient time to reach temperature.
- Chloride by SM4500Cl-B does not require samples be received at or below 6°C
Samples reported on an as received basis (wet) unless otherwise noted on report

Cardinal Laboratories

*=Accredited Analyte

PLEASE NOTE: Liability and Damages. Cardinal's liability and client's exclusive remedy for any claim arising, whether based in contract or tort, shall be limited to the amount paid by client for analyses. All claims, including those for negligence and any other cause whatsoever shall be deemed waived unless made in writing and received by Cardinal within thirty (30) days after completion of the applicable service. In no event shall Cardinal be liable for incidental or consequential damages, including, without limitation, business interruptions, loss of use, or loss of profits incurred by client, its subsidiaries, affiliates or successors arising out of or related to the performance of the services hereunder by Cardinal, regardless of whether such claim is based upon any of the above stated reasons or otherwise. Results relate only to the samples identified above. This report shall not be reproduced except in full with written approval of Cardinal Laboratories.

A handwritten signature in black ink, appearing to read "Mike Snyder", is written over a horizontal line.

Mike Snyder For Celey D. Keene, Lab Director/Quality Manager



101 East Marland, Hobbs, NM 88240
(575) 393-2326 FAX (575) 393-2476

CHAIN-OF-CUSTODY AND ANALYSIS REQUEST

Company Name: Tetre Tech for CardioPhillips						BILL TO		ANALYSIS REQUEST												
Project Manager: Christian Livi						P.O.#:														
Address: 8911 N. Capital of Texas Hwy						Company: Tetre Tech														
City: Austin						Attn: Christian Livi														
State: TX Zip: 78759						Address: 8911 N. Capital of Texas Hwy														
Phone #: (512) 565-0190 Fax #: N/A						City: Austin														
Project #: 212C-MD-03266 Project Owner: ConocoPhillips						State: TX Zip: 78759														
Project Name: Airacade 31 Fed 2H Flare Fire						Phone #: (512) 565-0190														
Project Location: Lee County, NM						Fax #: N/A														
Sampler Name: David Brown																				
<small>FOR LAB USE ONLY</small>																				
Lab I.D.		Sample I.D.		(G)RAB OR (C)OMP.		MATRIX		PRESERV.	SAMPLING											
				# CONTAINERS	GROUNDWATER	WASTEWATER	SOIL	OIL	SLUDGE	OTHER :	ACID/BASE:	ICE / COOL	OTHER :	DATE	TIME					
H336287		ES-1		✓		X						11-16-23	1302	X	BTEX 8021B					
		ES-2											1306	X	Chloride SM4500 Cl-B					
		ES-3											1311							
		ES-4											1318							
		ES-5											1323							
		ES-6											1416							
		ES-7											1408							
		ES-8											1410							
		NSU-1											1406							
		NSU-2											1225							

PLEASE NOTE: Liability and Damages. Cardinal's liability and client's exclusive remedy for any claim arising whether based in contract or tort, shall be limited to the amount paid by the client for the analyses. All claims including those for negligence and any other cause whatsoever shall be deemed waived unless made in writing and received by Cardinal within 30 days after completion of the applicable service. In no event shall Cardinal be liable for incidental or consequential damages, including without limitation, business interruptions, loss of use, or loss of profits incurred by client, its subsidiaries, affiliates or successors arising out of or related to the performance of services hereunder by Cardinal, regardless of whether such claim is based upon any of the above stated reasons or otherwise.

Relinquished By:		Date: 11-16-23	Received By:	Verbal Result: <input type="checkbox"/> Yes <input checked="" type="checkbox"/> No <input type="checkbox"/> Add'l Phone #:
Relinquished By:		Date: 1650	Received By:	All Results are emailed. Please provide Email address:
REMARKS:				

Delivered By: (Circle One)	Observed Temp. °C	Corrected Temp. °C	Sample Condition	CHECKED BY: (Initials)	Turnaround Time:	Standard	Bacteria (only)	Sample Condition
Sampler - UPS - Bus - Other:	116		Cool <input checked="" type="checkbox"/> Intact <input checked="" type="checkbox"/>	(Signature)		Rush <input checked="" type="checkbox"/>	Cool <input type="checkbox"/> Intact <input type="checkbox"/>	Observed Temp. °C Corrected Temp. °C



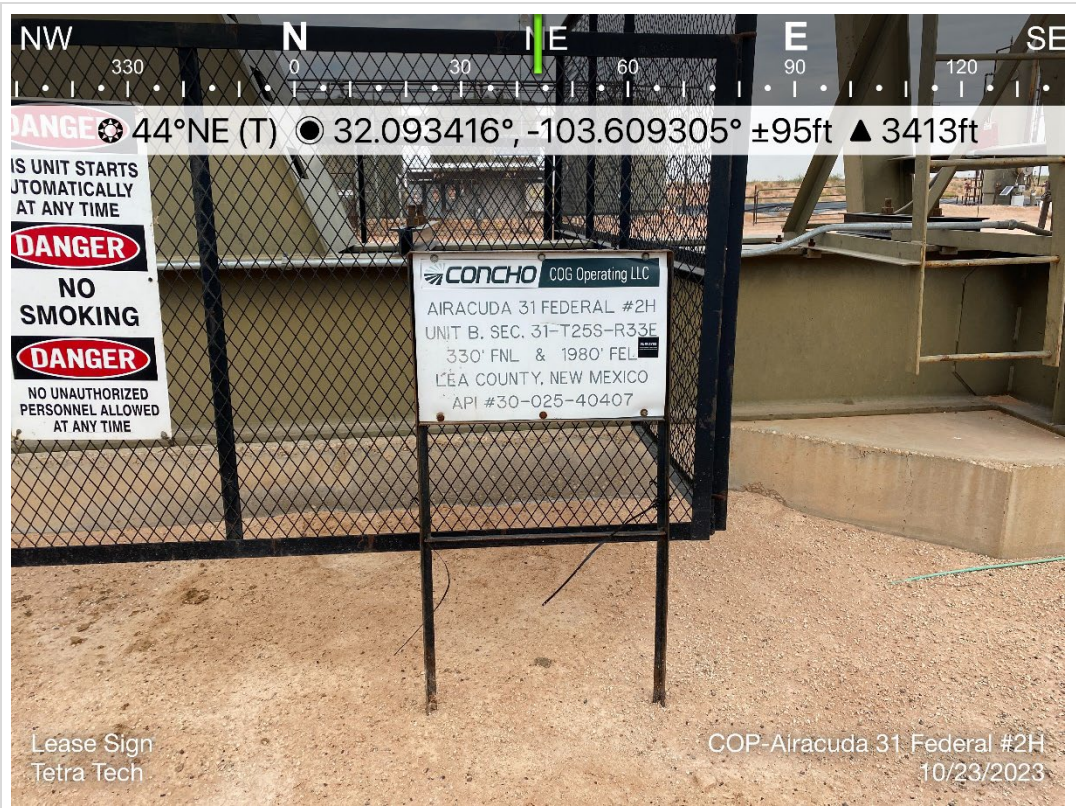
101 East Marland, Hobbs, NM 88240
(575) 393-2326 FAX (575) 393-2476

CHAIN-OF-CUSTODY AND ANALYSIS REQUEST

[illegible]

APPENDIX E

Photographic Documentation



Lease Sign
Tetra Tech

COP-Airacuda 31 Federal #2H
10/23/2023

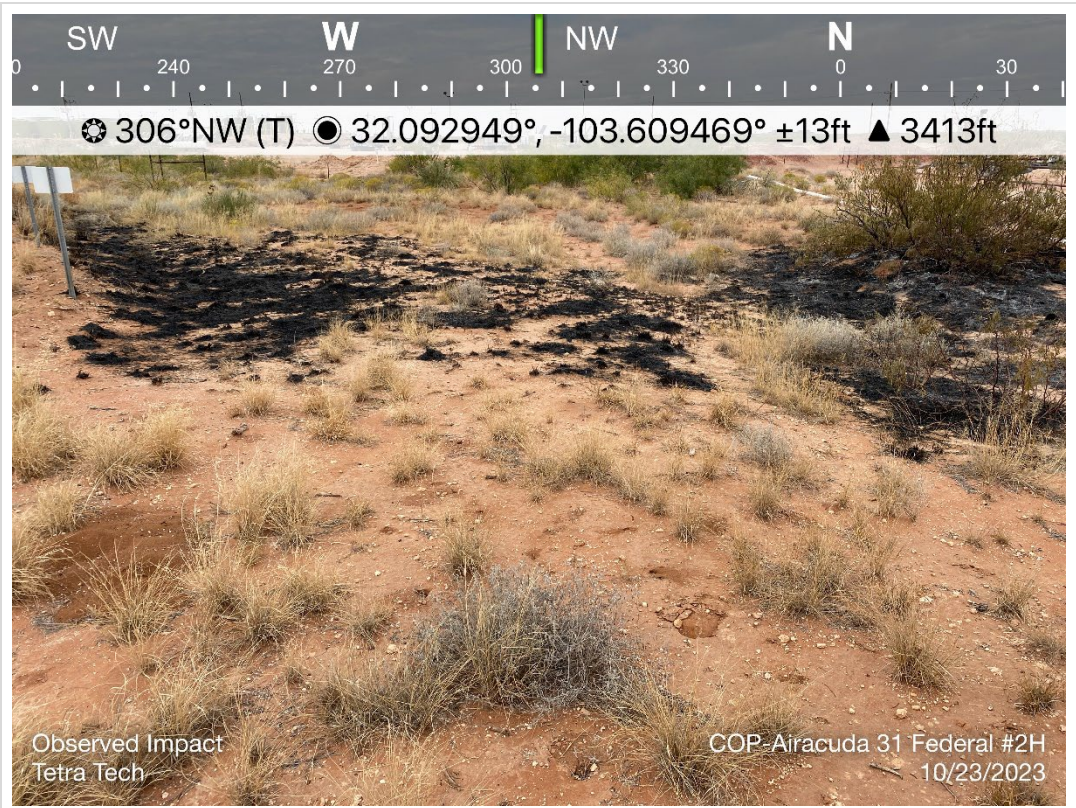
TETRA TECH, INC. PROJECT NO. 212C-MD-03266	DESCRIPTION	View northeast of site signage. Airacuda 31 Federal #2H.	1
	SITE NAME	AIRACUDA 31 FEDERAL 2H FLARE FIRE Release	10/23/2023



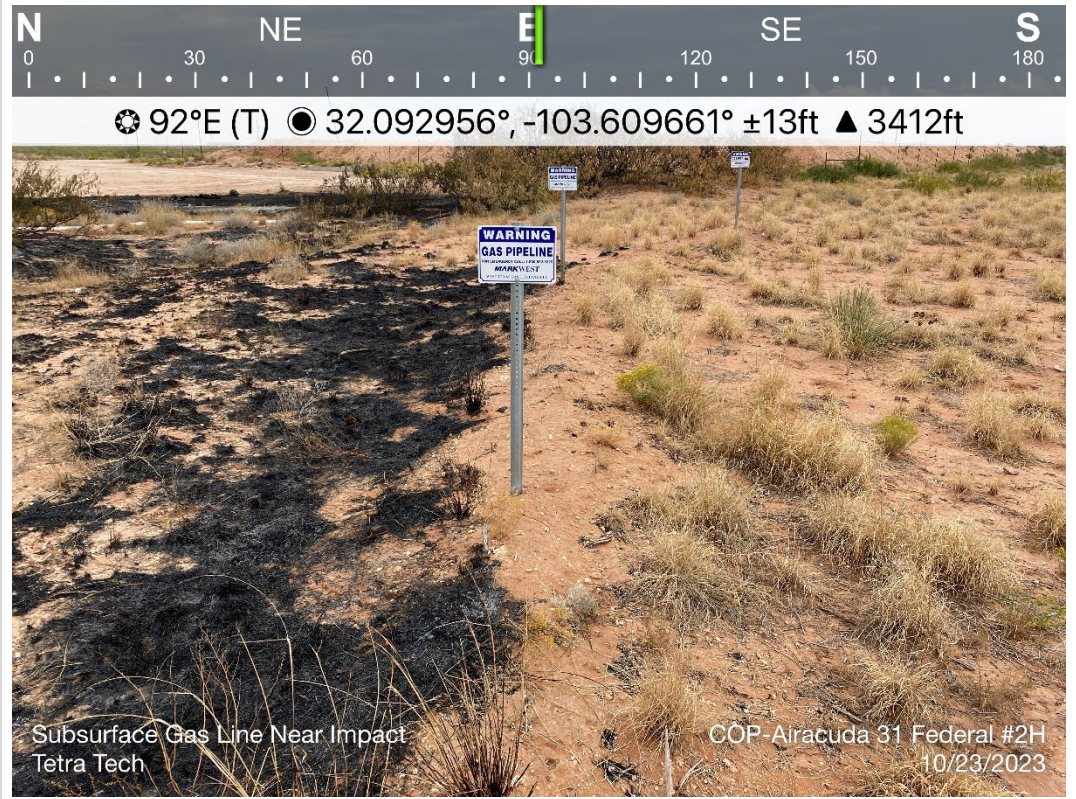
Observed Impact
Tetra Tech

COP-Airacuda 31 Federal #2H
10/23/2023

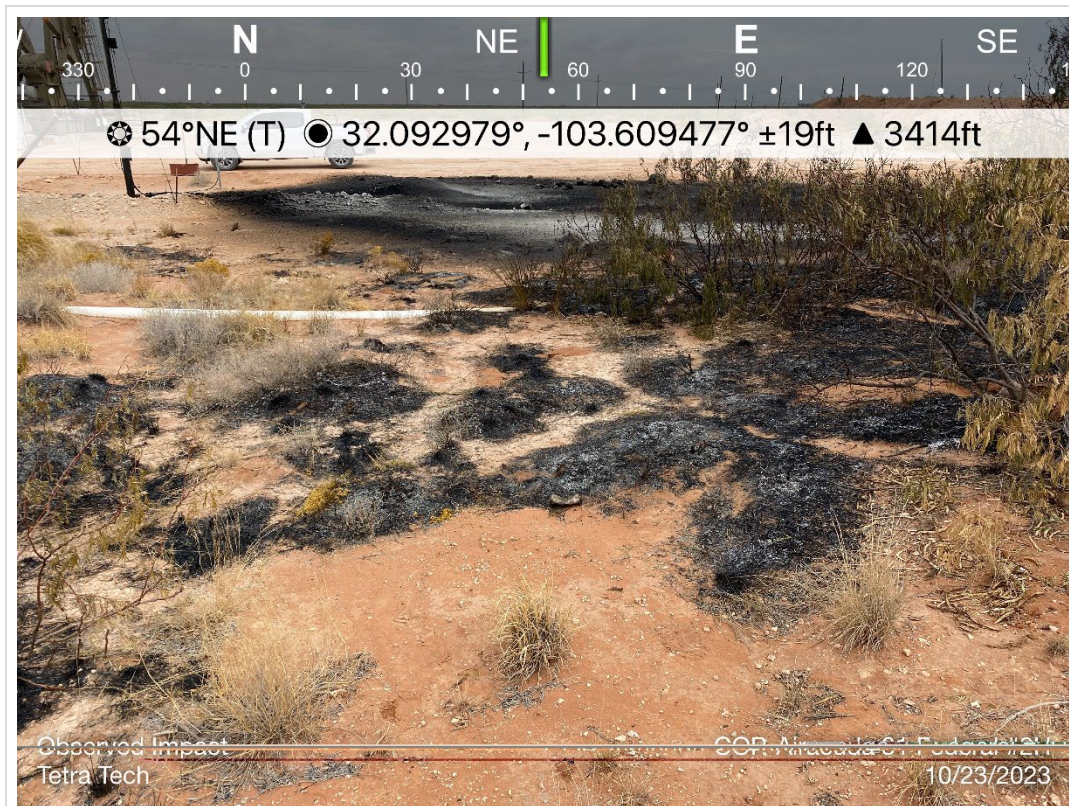
TETRA TECH, INC. PROJECT NO. 212C-MD-03266	DESCRIPTION	View northwest of approximate release extent and surface polyline. Scorched surface and burnt vegetation observed.	2
	SITE NAME	AIRACUDA 31 FEDERAL 2H FLARE FIRE Release	10/23/2023



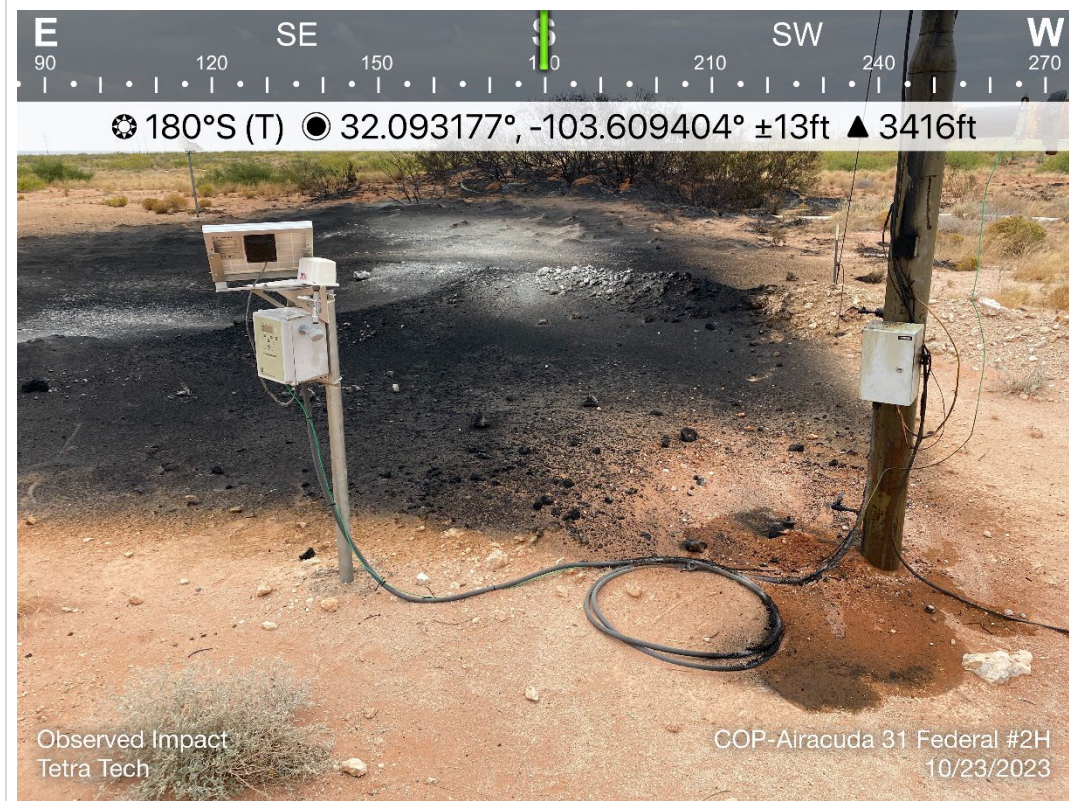
TETRA TECH, INC. PROJECT NO. 212C-MD-03266	DESCRIPTION	View west-northwest of approximate release extent and subsurface gas pipeline. Scorched surface and burnt vegetation observed.	3
	SITE NAME	AIRACUDA 31 FEDERAL 2H FLARE FIRE Release	10/23/2023



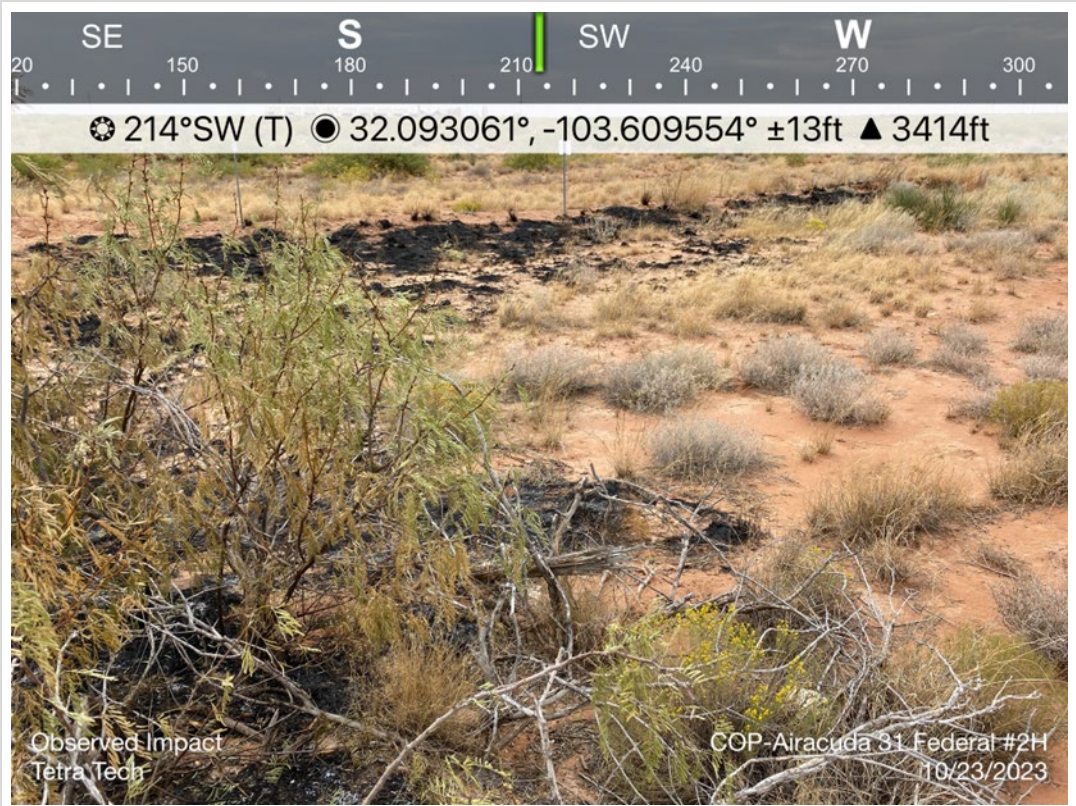
TETRA TECH, INC. PROJECT NO. 212C-MD-03266	DESCRIPTION	View east of approximate release extent and subsurface gas pipeline. Scorched surface and burnt vegetation observed.	4
	SITE NAME	AIRACUDA 31 FEDERAL 2H FLARE FIRE Release	10/23/2023



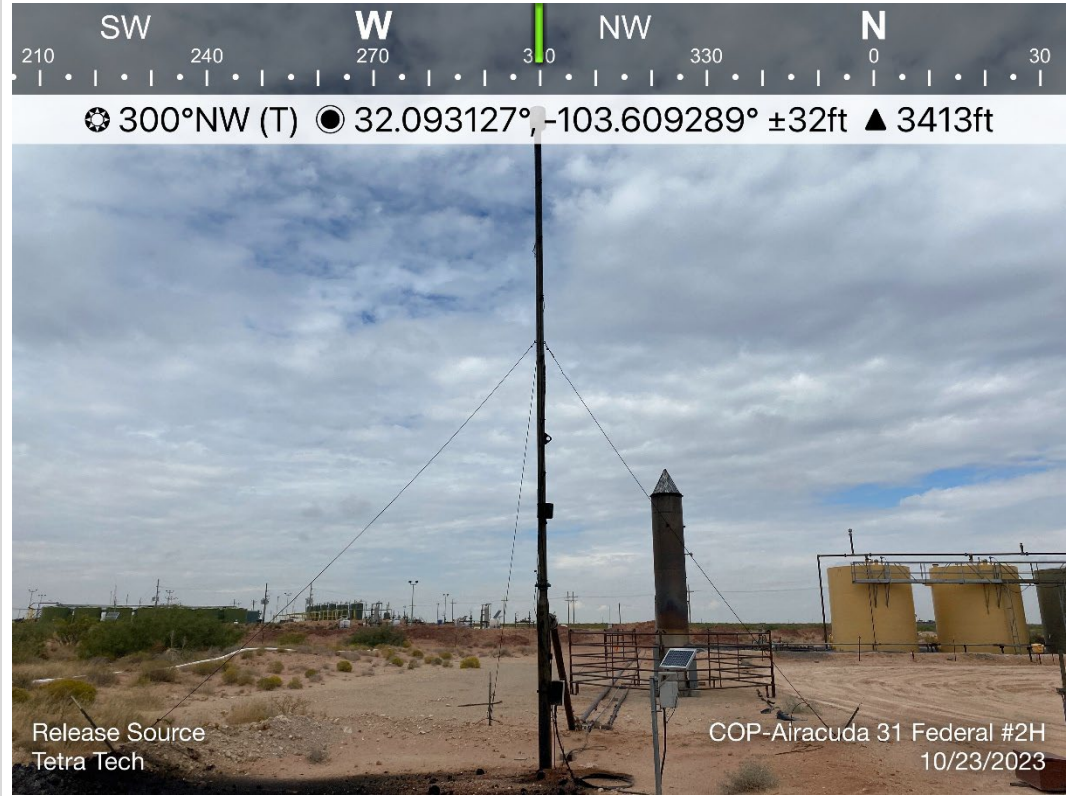
TETRA TECH, INC. PROJECT NO. 212C-MD-03266	DESCRIPTION	View northeast of approximate release extent and surface polyline. Scorched surface and burnt vegetation observed.	5
	SITE NAME	AIRACUDA 31 FEDERAL 2H FLARE FIRE Release	10/23/2023



TETRA TECH, INC. PROJECT NO. 212C-MD-03266	DESCRIPTION	View south of approximate release point and observed impact. Scorched surface and burnt vegetation observed.	6
	SITE NAME	AIRACUDA 31 FEDERAL 2H FLARE FIRE Release	10/23/2023



TETRA TECH, INC. PROJECT NO. 212C-MD-03266	DESCRIPTION	View south-southwest. View of release extent before surface scrape of approximate release area.	7
	SITE NAME	AIRACUDA 31 FEDERAL 2H FLARE FIRE Release	10/23/2023



TETRA TECH, INC. PROJECT NO. 212C-MD-03266	DESCRIPTION	View west-northwest of approximate release point and observed impact. Scorched surface and burnt vegetation observed.	8
	SITE NAME	AIRACUDA 31 FEDERAL 2H FLARE FIRE Release	10/23/2023



TETRA TECH, INC. PROJECT NO. 212C-MD-03266	DESCRIPTION	View south-southwest. View of approximate release point. View of release before surface scrape.	9
	SITE NAME	AIRACUDA 31 FEDERAL 2H FLARE FIRE Release	11/14/2023



TETRA TECH, INC. PROJECT NO. 212C-MD-03266	DESCRIPTION	View northwest of site conditions before surface scrape.	10
	SITE NAME	AIRACUDA 31 FEDERAL 2H FLARE FIRE Release	11/16/2023



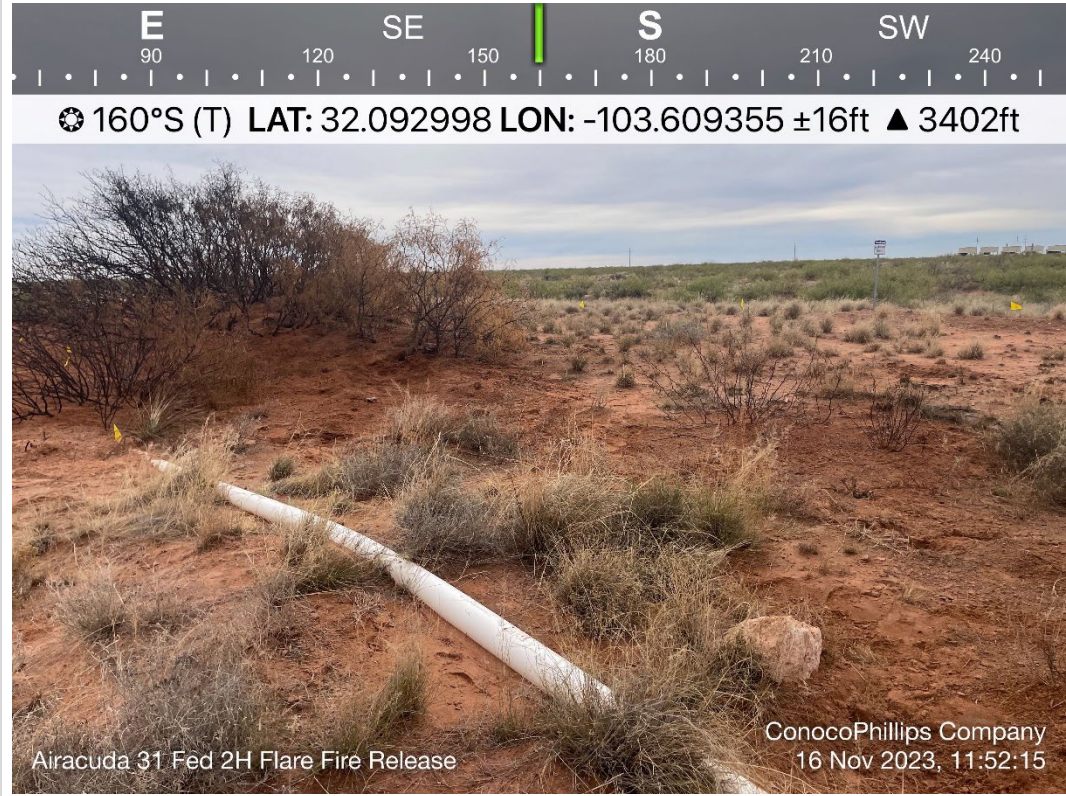
TETRA TECH, INC. PROJECT NO. 212C-MD-03266	DESCRIPTION	View northeast. View site conditions before surface scrape of approximate release area.	9
	SITE NAME	AIRACUDA 31 FEDERAL 2H FLARE FIRE Release	11/14/2023



TETRA TECH, INC. PROJECT NO. 212C-MD-03266	DESCRIPTION	View south of site conditions following surface scrape. View of release point.	10
	SITE NAME	AIRACUDA 31 FEDERAL 2H FLARE FIRE Release	11/16/2023



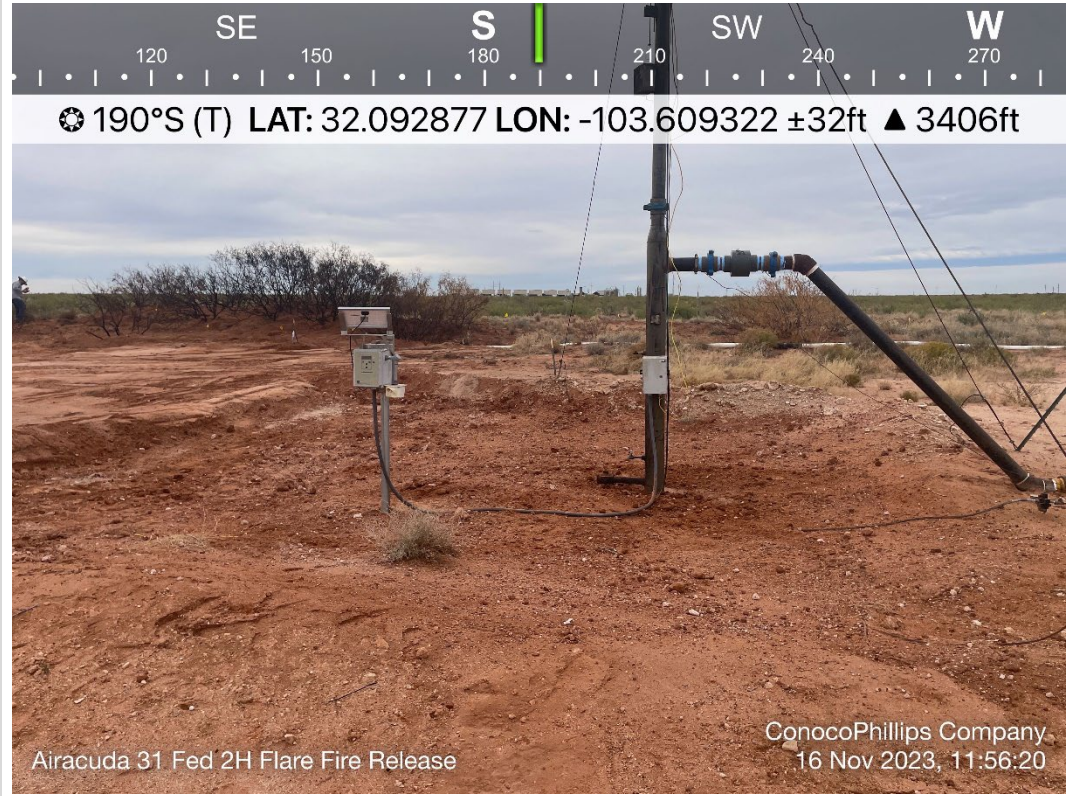
TETRA TECH, INC. PROJECT NO. 212C-MD-03266	DESCRIPTION	View northwest. View following surface scrape of approximate release area.	9
	SITE NAME	AIRACUDA 31 FEDERAL 2H FLARE FIRE Release	11/14/2023



TETRA TECH, INC. PROJECT NO. 212C-MD-03266	DESCRIPTION	View south-southeast of site conditions following surface scrape.	10
	SITE NAME	AIRACUDA 31 FEDERAL 2H FLARE FIRE Release	11/16/2023



TETRA TECH, INC. PROJECT NO. 212C-MD-03266	DESCRIPTION	View east of site conditions following surface scrape.	11
	SITE NAME	AIRACUDA 31 FEDERAL 2H FLARE FIRE Release	11/16/2023



TETRA TECH, INC. PROJECT NO. 212C-MD-03266	DESCRIPTION	View south of site conditions following surface scrape near approximate release point.	12
	SITE NAME	AIRACUDA 31 FEDERAL 2H FLARE FIRE Release	11/16/2023



TETRA TECH, INC. PROJECT NO. 212C-MD-03266	DESCRIPTION	View west-northwest of site conditions following surface scrape near approximate release point.	13
	SITE NAME	AIRACUDA 31 FEDERAL 2H FLARE FIRE Release	11/16/2023



TETRA TECH, INC. PROJECT NO. 212C-MD-03266	DESCRIPTION	View west of site conditions following surface scrape.	14
	SITE NAME	AIRACUDA 31 FEDERAL 2H FLARE FIRE Release	11/16/2023

District I
1625 N. French Dr., Hobbs, NM 88240
Phone:(575) 393-6161 Fax:(575) 393-0720
District II
811 S. First St., Artesia, NM 88210
Phone:(575) 748-1283 Fax:(575) 748-9720
District III
1000 Rio Brazos Rd., Aztec, NM 87410
Phone:(505) 334-6178 Fax:(505) 334-6170
District IV
1220 S. St Francis Dr., Santa Fe, NM 87505
Phone:(505) 476-3470 Fax:(505) 476-3462

State of New Mexico
Energy, Minerals and Natural Resources
Oil Conservation Division
1220 S. St Francis Dr.
Santa Fe, NM 87505

QUESTIONS

Action 306768

QUESTIONS

Operator: COG OPERATING LLC 600 W Illinois Ave Midland, TX 79701	OGRID:	229137
	Action Number:	306768
	Action Type:	[C-141] Remediation Closure Request C-141 (C-141-v-Closure)

QUESTIONS

Prerequisites	
Incident ID (n#)	nAPP2329636934
Incident Name	NAPP2329636934 AIRACUDA FEDERAL 002H @ 0
Incident Type	Fire
Incident Status	Remediation Closure Report Received
Incident Facility	[fAPP2202553078] Airacuda 31 Fed 2H Rt Btty

Location of Release Source	
Please answer all the questions in this group.	
Site Name	AIRACUDA FEDERAL 002H
Date Release Discovered	10/18/2023
Surface Owner	Federal

Incident Details	
Please answer all the questions in this group.	
Incident Type	Fire
Did this release result in a fire or is the result of a fire	Yes
Did this release result in any injuries	No
Has this release reached or does it have a reasonable probability of reaching a watercourse	No
Has this release endangered or does it have a reasonable probability of endangering public health	No
Has this release substantially damaged or will it substantially damage property or the environment	No
Is this release of a volume that is or may with reasonable probability be detrimental to fresh water	No

Nature and Volume of Release	
Material(s) released, please answer all that apply below. Any calculations or specific justifications for the volumes provided should be attached to the follow-up C-141 submission.	
Crude Oil Released (bbls) Details	Cause: Equipment Failure Other (Specify) Crude Oil Released: 0 BBL Recovered: 0 BBL Lost: 0 BBL.
Produced Water Released (bbls) Details	Cause: Equipment Failure Other (Specify) Produced Water Released: 1 BBL Recovered: 0 BBL Lost: 1 BBL.
Is the concentration of chloride in the produced water >10,000 mg/l	Yes
Condensate Released (bbls) Details	Not answered.
Natural Gas Vented (Mcf) Details	Not answered.
Natural Gas Flared (Mcf) Details	Not answered.
Other Released Details	Not answered.
Are there additional details for the questions above (i.e. any answer containing Other, Specify, Unknown, and/or Fire, or any negative lost amounts)	The release was caused by a FWKO overfilling causing fluid to be released out of the flare leading to a fire off pad.

District I

1625 N. French Dr., Hobbs, NM 88240
Phone:(575) 393-6161 Fax:(575) 393-0720

District II

811 S. First St., Artesia, NM 88210
Phone:(575) 748-1283 Fax:(575) 748-9720

District III

1000 Rio Brazos Rd., Aztec, NM 87410
Phone:(505) 334-6178 Fax:(505) 334-6170

District IV

1220 S. St Francis Dr., Santa Fe, NM 87505
Phone:(505) 476-3470 Fax:(505) 476-3462

State of New Mexico
Energy, Minerals and Natural Resources
Oil Conservation Division
1220 S. St Francis Dr.
Santa Fe, NM 87505

QUESTIONS, Page 2

Action 306768

QUESTIONS (continued)

Operator: COG OPERATING LLC 600 W Illinois Ave Midland, TX 79701	OGRID:	229137
	Action Number:	306768
	Action Type:	[C-141] Remediation Closure Request C-141 (C-141-v-Closure)

QUESTIONS

Nature and Volume of Release (continued)	
Is this a gas only submission (i.e. only significant Mcf values reported)	More info needed to determine if this will be treated as a "gas only" report.
Was this a major release as defined by Subsection A of 19.15.29.7 NMAC	Yes
Reasons why this would be considered a submission for a notification of a major release	From paragraph A. "Major release" determine using: (2) an unauthorized release of a volume that: (a) results in a fire or is the result of a fire.
With the implementation of the 19.15.27 NMAC (05/25/2021), venting and/or flaring of natural gas (i.e. gas only) are to be submitted on the C-129 form.	

Initial Response

The responsible party must undertake the following actions immediately unless they could create a safety hazard that would result in injury.

The source of the release has been stopped	True
The impacted area has been secured to protect human health and the environment	True
Released materials have been contained via the use of berms or dikes, absorbent pads, or other containment devices	True
All free liquids and recoverable materials have been removed and managed appropriately	True
If all the actions described above have not been undertaken, explain why	Not answered.

Per Paragraph (4) of Subsection B of 19.15.29.8 NMAC the responsible party may commence remediation immediately after discovery of a release. If remediation has begun, please prepare and attach a narrative of actions to date in the follow-up C-141 submission. If remedial efforts have been successfully completed or if the release occurred within a lined containment area (see Subparagraph (a) of Paragraph (5) of Subsection A of 19.15.29.11 NMAC), please prepare and attach all information needed for closure evaluation in the follow-up C-141 submission.

I hereby certify that the information given above is true and complete to the best of my knowledge and understand that pursuant to OCD rules and regulations all operators are required to report and/or file certain release notifications and perform corrective actions for releases which may endanger public health or the environment. The acceptance of a C-141 report by the OCD does not relieve the operator of liability should their operations have failed to adequately investigate and remediate contamination that pose a threat to groundwater, surface water, human health or the environment. In addition, OCD acceptance of a C-141 report does not relieve the operator of responsibility for compliance with any other federal, state, or local laws and/or regulations.

I hereby agree and sign off to the above statement	Name: Brittany Esparza Title: Environmental Technician Email: brittany.Esparza@ConocoPhillips.com Date: 01/23/2024
--	---

District I
1625 N. French Dr., Hobbs, NM 88240
Phone:(575) 393-6161 Fax:(575) 393-0720

District II
811 S. First St., Artesia, NM 88210
Phone:(575) 748-1283 Fax:(575) 748-9720

District III
1000 Rio Brazos Rd., Aztec, NM 87410
Phone:(505) 334-6178 Fax:(505) 334-6170

District IV
1220 S. St Francis Dr., Santa Fe, NM 87505
Phone:(505) 476-3470 Fax:(505) 476-3462

State of New Mexico
Energy, Minerals and Natural Resources
Oil Conservation Division
1220 S. St Francis Dr.
Santa Fe, NM 87505

QUESTIONS, Page 3

Action 306768

QUESTIONS (continued)

Operator: COG OPERATING LLC 600 W Illinois Ave Midland, TX 79701	OGRID:
	229137
	Action Number:
	306768
Action Type:	
[C-141] Remediation Closure Request C-141 (C-141-v-Closure)	

QUESTIONS

Site Characterization

Please answer all the questions in this group (only required when seeking remediation plan approval and beyond). This information must be provided to the appropriate district office no later than 90 days after the release discovery date.

What is the shallowest depth to groundwater beneath the area affected by the release in feet below ground surface (ft bgs)	Between 100 and 500 (ft.)
What method was used to determine the depth to ground water	U.S. Geological Survey
Did this release impact groundwater or surface water	No
What is the minimum distance, between the closest lateral extents of the release and the following surface areas:	
A continuously flowing watercourse or any other significant watercourse	Between ½ and 1 (mi.)
Any lakebed, sinkhole, or playa lake (measured from the ordinary high-water mark)	Greater than 5 (mi.)
An occupied permanent residence, school, hospital, institution, or church	Greater than 5 (mi.)
A spring or a private domestic fresh water well used by less than five households for domestic or stock watering purposes	Greater than 5 (mi.)
Any other fresh water well or spring	Greater than 5 (mi.)
Incorporated municipal boundaries or a defined municipal fresh water well field	Greater than 5 (mi.)
A wetland	Greater than 5 (mi.)
A subsurface mine	Greater than 5 (mi.)
An (non-karst) unstable area	Greater than 5 (mi.)
Categorize the risk of this well / site being in a karst geology	Medium
A 100-year floodplain	Greater than 5 (mi.)
Did the release impact areas not on an exploration, development, production, or storage site	No

Remediation Plan

Please answer all the questions that apply or are indicated. This information must be provided to the appropriate district office no later than 90 days after the release discovery date.

Requesting a remediation plan approval with this submission	Yes
Attach a comprehensive report demonstrating the lateral and vertical extents of soil contamination associated with the release have been determined, pursuant to 19.15.29.11 NMAC and 19.15.29.13 NMAC.	
Have the lateral and vertical extents of contamination been fully delineated	Yes
Was this release entirely contained within a lined containment area	No

Soil Contamination Sampling: (Provide the highest observable value for each, in milligrams per kilograms.)

Chloride	(EPA 300.0 or SM4500 Cl B)	0
TPH (GRO+DRO+MRO)	(EPA SW-846 Method 8015M)	0
GRO+DRO	(EPA SW-846 Method 8015M)	0
BTEX	(EPA SW-846 Method 8021B or 8260B)	0
Benzene	(EPA SW-846 Method 8021B or 8260B)	0

Per Subsection B of 19.15.29.11 NMAC unless the site characterization report includes completed efforts at remediation, the report must include a proposed remediation plan in accordance with 19.15.29.12 NMAC, which includes the anticipated timelines for beginning and completing the remediation.

On what estimated date will the remediation commence	01/23/2024
On what date will (or did) the final sampling or liner inspection occur	01/23/2024
On what date will (or was) the remediation complete(d)	01/24/2024
What is the estimated surface area (in square feet) that will be reclaimed	0
What is the estimated volume (in cubic yards) that will be reclaimed	0
What is the estimated surface area (in square feet) that will be remediated	0
What is the estimated volume (in cubic yards) that will be remediated	0

These estimated dates and measurements are recognized to be the best guess or calculation at the time of submission and may (be) change(d) over time as more remediation efforts are completed.

The OCD recognizes that proposed remediation measures may have to be minimally adjusted in accordance with the physical realities encountered during remediation. If the responsible party has any need to significantly deviate from the remediation plan proposed, then it should consult with the division to determine if another remediation plan submission is required.

District I

1625 N. French Dr., Hobbs, NM 88240
Phone:(575) 393-6161 Fax:(575) 393-0720

District II

811 S. First St., Artesia, NM 88210
Phone:(575) 748-1283 Fax:(575) 748-9720

District III

1000 Rio Brazos Rd., Aztec, NM 87410
Phone:(505) 334-6178 Fax:(505) 334-6170

District IV

1220 S. St Francis Dr., Santa Fe, NM 87505
Phone:(505) 476-3470 Fax:(505) 476-3462

State of New Mexico
Energy, Minerals and Natural Resources
Oil Conservation Division
1220 S. St Francis Dr.
Santa Fe, NM 87505

QUESTIONS, Page 4

Action 306768

QUESTIONS (continued)

Operator: COG OPERATING LLC 600 W Illinois Ave Midland, TX 79701	OGRID:	229137
	Action Number:	306768
	Action Type:	[C-141] Remediation Closure Request C-141 (C-141-v-Closure)

QUESTIONS**Remediation Plan (continued)**

Please answer all the questions that apply or are indicated. This information must be provided to the appropriate district office no later than 90 days after the release discovery date.

This remediation will (or is expected to) utilize the following processes to remediate / reduce contaminants:

(Select all answers below that apply.)

(Ex Situ) Excavation and off-site disposal (i.e. dig and haul, hydrovac, etc.)	No
(Ex Situ) Excavation and on-site remediation (i.e. On-Site Land Farms)	No
(In Situ) Soil Vapor Extraction	No
(In Situ) Chemical processing (i.e. Soil Shredding, Potassium Permanganate, etc.)	No
(In Situ) Biological processing (i.e. Microbes / Fertilizer, etc.)	No
(In Situ) Physical processing (i.e. Soil Washing, Gypsum, Disking, etc.)	No
Ground Water Abatement pursuant to 19.15.30 NMAC	No
OTHER (Non-listed remedial process)	Yes
Other Non-listed Remedial Process. Please specify	The entire release extent was excavated by scraping the surface to a depth of approximately 6 inches bgs.

Per Subsection B of 19.15.29.11 NMAC unless the site characterization report includes completed efforts at remediation, the report must include a proposed remediation plan in accordance with 19.15.29.12 NMAC, which includes the anticipated timelines for beginning and completing the remediation.

I hereby certify that the information given above is true and complete to the best of my knowledge and understand that pursuant to OCD rules and regulations all operators are required to report and/or file certain release notifications and perform corrective actions for releases which may endanger public health or the environment. The acceptance of a C-141 report by the OCD does not relieve the operator of liability should their operations have failed to adequately investigate and remediate contamination that pose a threat to groundwater, surface water, human health or the environment. In addition, OCD acceptance of a C-141 report does not relieve the operator of responsibility for compliance with any other federal, state, or local laws and/or regulations.

I hereby agree and sign off to the above statement	Name: Brittany Esparza Title: Environmental Technician Email: brittany.Esparza@ConocoPhillips.com Date: 01/23/2024
--	---

The OCD recognizes that proposed remediation measures may have to be minimally adjusted in accordance with the physical realities encountered during remediation. If the responsible party has any need to significantly deviate from the remediation plan proposed, then it should consult with the division to determine if another remediation plan submission is required.

District I
1625 N. French Dr., Hobbs, NM 88240
Phone:(575) 393-6161 Fax:(575) 393-0720
District II
811 S. First St., Artesia, NM 88210
Phone:(575) 748-1283 Fax:(575) 748-9720
District III
1000 Rio Brazos Rd., Aztec, NM 87410
Phone:(505) 334-6178 Fax:(505) 334-6170
District IV
1220 S. St Francis Dr., Santa Fe, NM 87505
Phone:(505) 476-3470 Fax:(505) 476-3462

State of New Mexico
Energy, Minerals and Natural Resources
Oil Conservation Division
1220 S. St Francis Dr.
Santa Fe, NM 87505

QUESTIONS, Page 5

Action 306768

QUESTIONS (continued)

Operator: COG OPERATING LLC 600 W Illinois Ave Midland, TX 79701	OGRID: 229137
	Action Number: 306768
	Action Type: [C-141] Remediation Closure Request C-141 (C-141-v-Closure)

QUESTIONS

Deferral Requests Only	
<i>Only answer the questions in this group if seeking a deferral upon approval this submission. Each of the following items must be confirmed as part of any request for deferral of remediation.</i>	
Requesting a deferral of the remediation closure due date with the approval of this submission	No

District I

1625 N. French Dr., Hobbs, NM 88240
Phone:(575) 393-6161 Fax:(575) 393-0720

District II

811 S. First St., Artesia, NM 88210
Phone:(575) 748-1283 Fax:(575) 748-9720

District III

1000 Rio Brazos Rd., Aztec, NM 87410
Phone:(505) 334-6178 Fax:(505) 334-6170

District IV

1220 S. St Francis Dr., Santa Fe, NM 87505
Phone:(505) 476-3470 Fax:(505) 476-3462

State of New Mexico
Energy, Minerals and Natural Resources
Oil Conservation Division
1220 S. St Francis Dr.
Santa Fe, NM 87505

QUESTIONS, Page 6

Action 306768

QUESTIONS (continued)

Operator: COG OPERATING LLC 600 W Illinois Ave Midland, TX 79701	OGRID:	229137
	Action Number:	306768
	Action Type:	[C-141] Remediation Closure Request C-141 (C-141-v-Closure)

QUESTIONS

Sampling Event Information	
Last sampling notification (C-141N) recorded	296054
Sampling date pursuant to Subparagraph (a) of Paragraph (1) of Subsection D of 19.15.29.12 NMAC	11/16/2023
What was the (estimated) number of samples that were to be gathered	16
What was the sampling surface area in square feet	3476

Remediation Closure Request

Only answer the questions in this group if seeking remediation closure for this release because all remediation steps have been completed.

Requesting a remediation closure approval with this submission	Yes
Have the lateral and vertical extents of contamination been fully delineated	Yes
Was this release entirely contained within a lined containment area	No
All areas reasonably needed for production or subsequent drilling operations have been stabilized, returned to the sites existing grade, and have a soil cover that prevents ponding of water, minimizing dust and erosion	Yes
What was the total surface area (in square feet) remediated	5000
What was the total volume (cubic yards) remediated	93
All areas not reasonably needed for production or subsequent drilling operations have been reclaimed to contain a minimum of four feet of non-waste contain earthen material with concentrations less than 600 mg/kg chlorides, 100 mg/kg TPH, 50 mg/kg BTEX, and 10 mg/kg Benzene	Yes
What was the total surface area (in square feet) reclaimed	5000
What was the total volume (in cubic yards) reclaimed	93
Summarize any additional remediation activities not included by answers (above)	The entire release extent was excavated by scraping the surface to a depth of approximately 6 inches bgs.

The responsible party must attach information demonstrating they have complied with all applicable closure requirements and any conditions or directives of the OCD. This demonstration should be in the form of a comprehensive report (in .pdf format) including a scaled site map, sampling diagrams, relevant field notes, photographs of any excavation prior to backfilling, laboratory data including chain of custody documents of final sampling, and a narrative of the remedial activities. Refer to 19.15.29.12 NMAC.

I hereby certify that the information given above is true and complete to the best of my knowledge and understand that pursuant to OCD rules and regulations all operators are required to report and/or file certain release notifications and perform corrective actions for releases which may endanger public health or the environment. The acceptance of a C-141 report by the OCD does not relieve the operator of liability should their operations have failed to adequately investigate and remediate contamination that pose a threat to groundwater, surface water, human health or the environment. In addition, OCD acceptance of a C-141 report does not relieve the operator of responsibility for compliance with any other federal, state, or local laws and/or regulations. The responsible party acknowledges they must substantially restore, reclaim, and re-vegetate the impacted surface area to the conditions that existed prior to the release or their final land use in accordance with 19.15.29.13 NMAC including notification to the OCD when reclamation and re-vegetation are complete.

I hereby agree and sign off to the above statement	Name: Brittany Esparza Title: Environmental Technician Email: brittany.Esparza@ConocoPhillips.com Date: 01/23/2024
--	---

District I
1625 N. French Dr., Hobbs, NM 88240
Phone:(575) 393-6161 Fax:(575) 393-0720
District II
811 S. First St., Artesia, NM 88210
Phone:(575) 748-1283 Fax:(575) 748-9720
District III
1000 Rio Brazos Rd., Aztec, NM 87410
Phone:(505) 334-6178 Fax:(505) 334-6170
District IV
1220 S. St Francis Dr., Santa Fe, NM 87505
Phone:(505) 476-3470 Fax:(505) 476-3462

State of New Mexico
Energy, Minerals and Natural Resources
Oil Conservation Division
1220 S. St Francis Dr.
Santa Fe, NM 87505

QUESTIONS, Page 7

Action 306768

QUESTIONS (continued)

Operator: COG OPERATING LLC 600 W Illinois Ave Midland, TX 79701	OGRID:	229137
	Action Number:	306768
	Action Type:	
	[C-141] Remediation Closure Request C-141 (C-141-v-Closure)	

QUESTIONS

Reclamation Report	
Only answer the questions in this group if all reclamation steps have been completed.	
Requesting a reclamation approval with this submission	No

District I
1625 N. French Dr., Hobbs, NM 88240
Phone:(575) 393-6161 Fax:(575) 393-0720

District II
811 S. First St., Artesia, NM 88210
Phone:(575) 748-1283 Fax:(575) 748-9720

District III
1000 Rio Brazos Rd., Aztec, NM 87410
Phone:(505) 334-6178 Fax:(505) 334-6170

District IV
1220 S. St Francis Dr., Santa Fe, NM 87505
Phone:(505) 476-3470 Fax:(505) 476-3462

State of New Mexico

Energy, Minerals and Natural Resources

Oil Conservation Division

1220 S. St Francis Dr.

Santa Fe, NM 87505

CONDITIONS

Action 306768

CONDITIONS

Operator: COG OPERATING LLC 600 W Illinois Ave Midland, TX 79701	OGRID: 229137
	Action Number: 306768
	Action Type: [C-141] Remediation Closure Request C-141 (C-141-v-Closure)

CONDITIONS

Created By	Condition	Condition Date
scott.rodgers	This Remediation Closure Report is approved. Areas reasonably needed for production or subsequent drilling operations will need to be reclaimed and revegetated as soon as they are no longer reasonably needed. A report for reclamation and revegetation will need to be submitted and approved prior to this incident receiving the final status of "Restoration Complete".	4/4/2024