



SITE INFORMATION

Closure Report

Clawhammer 33-28-21 Federal Com West and East Pad

Incident ID: NAPP2401953748

Unit F Sec 33 T26S R30E

Eddy County, New Mexico

32.002310°, -103.888430° (West Pad)

32.002351°, -103.881849° (East Pad)

Crude Oil and Produced Water Release

Point of Release: Pump

Release Date: 01.18.2024

Volume Released: 20 Barrels of Crude Oil and 20 Barrels of Produced Water

Volume Recovered: 20 Barrels of Crude Oil and 20 Barrels of Produced Water

CARMONA RESOURCES



Prepared for:

Devon Energy

5315 Buena Vista Drive,

Carlsbad, New Mexico 88220

Prepared by:

Carmona Resources, LLC

310 West Wall Street

Suite 500

Midland, Texas 79701



TABLE OF CONTENTS

1.0 SITE INFORMATION AND BACKGROUND

2.0 SITE CHARACTERIZATION AND GROUNDWATER

3.0 NMAC REGULATORY CRITERIA

4.0 LINER INSPECTION ACTIVITIES

5.0 CONCLUSIONS

FIGURES

FIGURE 1 OVERVIEW FIGURE 2 TOPOGRAPHIC

FIGURE 3-3B SECONDARY CONTAINMENT MAP

APPENDICES

APPENDIX A PHOTOS

APPENDIX B INITIAL AND FINAL C-141/NMOCD CORRESPONDENCE

APPENDIX C SITE CHARACTERIZATION AND GROUNDWATER

May 7, 2024

Mike Bratcher
District Supervisor
Oil Conservation Division, District 2
811 S. First Street
Artesia, New Mexico 88210

Re: Closure Report
Clawhammer 33-28-21 Federal Com West and East Pad
Devon Energy
Incident ID: NAPP2401953748
Site Location: Unit F, S33, T26S, R30E
32.002310°, -103.888430° (West Pad)
32.002351°, -103.881849° (East Pad)
Eddy County, New Mexico

Mr. Bratcher:

On behalf of Devon Energy (Devon), Carmona Resources, LLC has prepared this letter to document site activities for the Clawhammer 33-28-21 Federal Com West and East Pad. The sites are located at 32.002310°, -103.888430° (West Pad) and 32.002351°, -103.881849° (East Pad) within Unit F, S33, T26S, R30E, in Eddy County, New Mexico (Figures 1 and 2).

1.0 Site Information and Background

Based on the initial C-141 obtained from the New Mexico Oil Conservation Division (NMOCD), the release was discovered on January 18, 2024, caused by equipment failure. It resulted in the release of approximately twenty (20) barrels of crude oil and twenty (20) barrels of produced water, with twenty (20) barrels of crude oil and twenty (20) barrels of produced water recovered within the lined facility. Refer to Figure 3. The initial C-141 form is attached in Appendix C.

2.0 Site Characterization and Groundwater

The site is located within a medium karst area. Based on a review of the New Mexico Office of State Engineers and USGS databases, no known water sources are within a 0.50-mile radius of the location. The closest well is located approximately 1.88 miles Northeast of the site in S22, T26S, R30E and was drilled in 1987. The well has a reported depth to groundwater of 117.03 feet below the ground surface (ft bgs). A copy of the associated point of diversion is attached in Appendix C.

In February 2024, Carmona Resources personnel were onsite to drill a groundwater determination bore to 105' below ground surface and within 0.5 miles of both locations. The bore was left open for 72 hours and tagged with a water level meter. No water was detected at 105' below the surface. The coordinates for the groundwater determination bore are 32.00073°, -103.88776°. See Appendix D for the driller's log.

3.0 NMAC Regulatory Criteria

Per the NMOCD regulatory criteria established in 19.15.29.12 NMAC, the following criteria were utilized in assessing the site.

- Benzene: 10 milligrams per kilogram (mg/kg).
- Benzene, toluene, ethylbenzene, and total xylenes (BTEX): 50 mg/kg.
- TPH: 2,500 mg/kg (GRO + DRO + MRO).



- Chloride: 20,000 mg/kg.

4.0 Liner Inspection Activities

On May 1, 2024, a third-party was on-site to power wash the liners. Before performing the liner inspection, the NMOCD division office was notified via the NMOCD portal on April 25, 2024, per Subsection D of 19.15.29.12 NMAC. On May 2, 2024, Carmona Resources, LLC personnel inspected the liner visually and determined it to be intact with no integrity issues.

Refer to the Photolog.

5.0 Conclusions

Based on the liner inspection throughout the facility, no further actions are required at the site. The final C-141 is attached, and Devon formally requests the closure of the spill. If you have any questions regarding this report or need additional information, please contact us at 432-813-1992.

Sincerely,

Carmona Resources, LLC

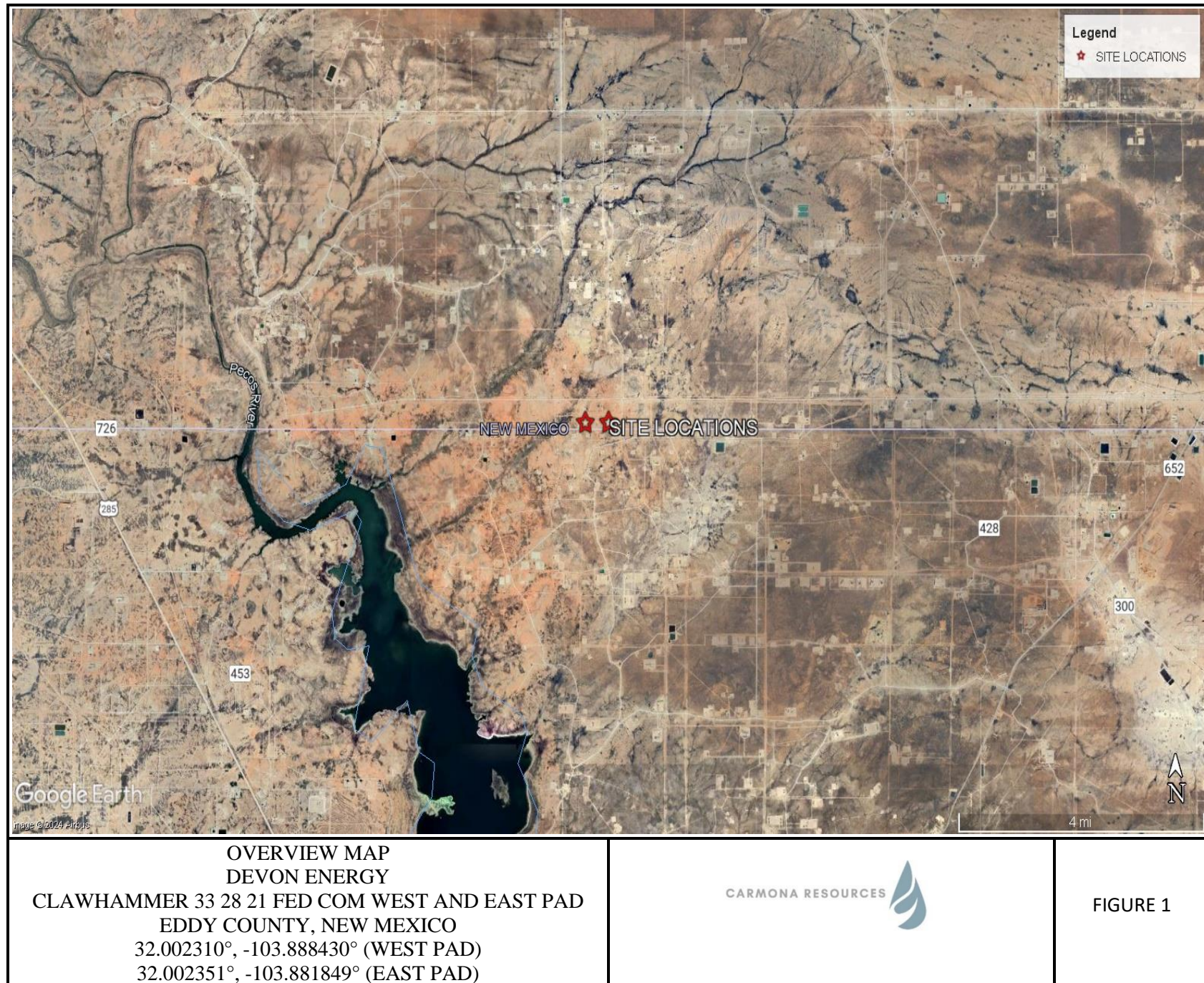
Conner Moehring
Sr. Project Manager

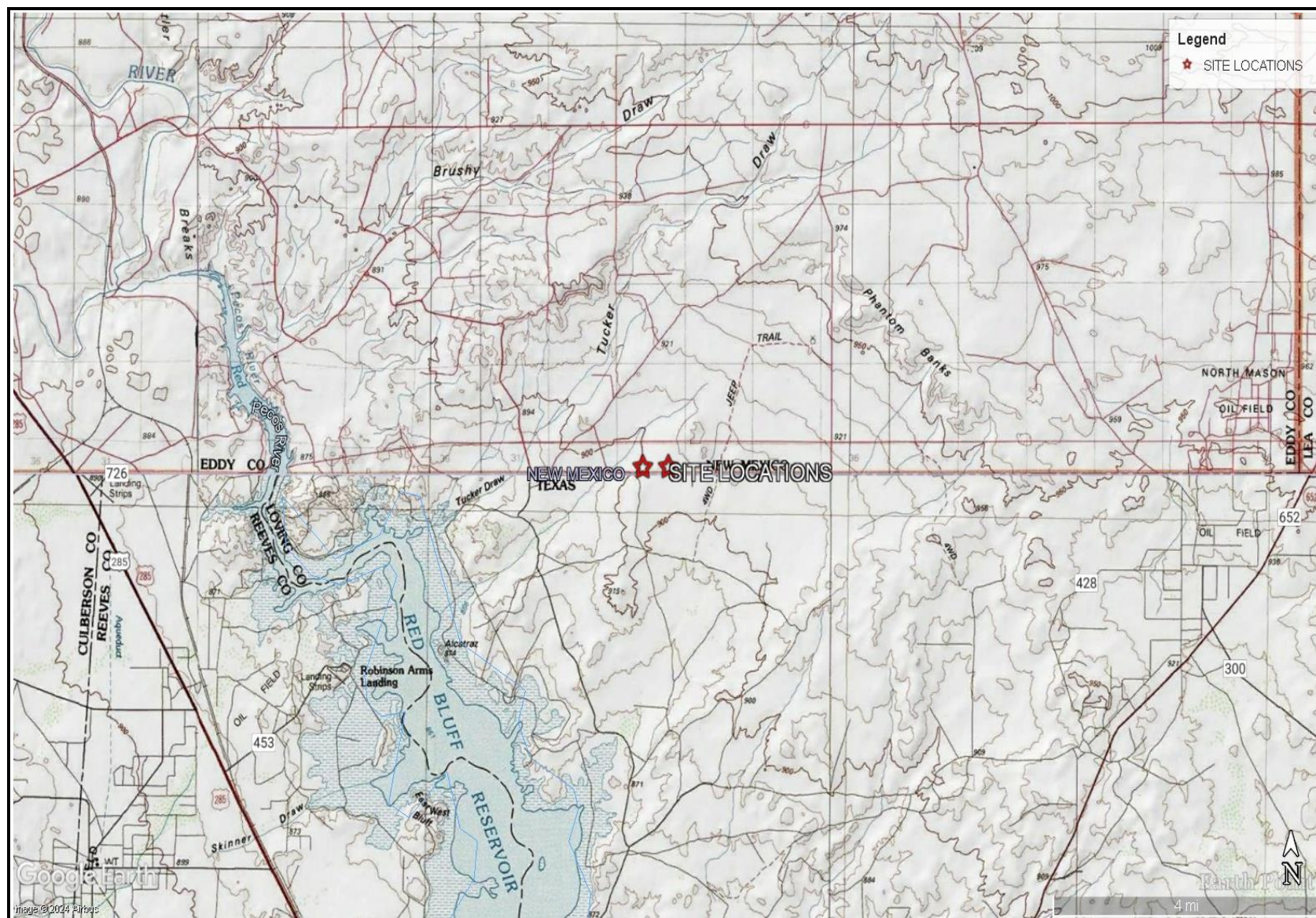
Miranda Milwee
Project Manager

FIGURES

CARMONA RESOURCES



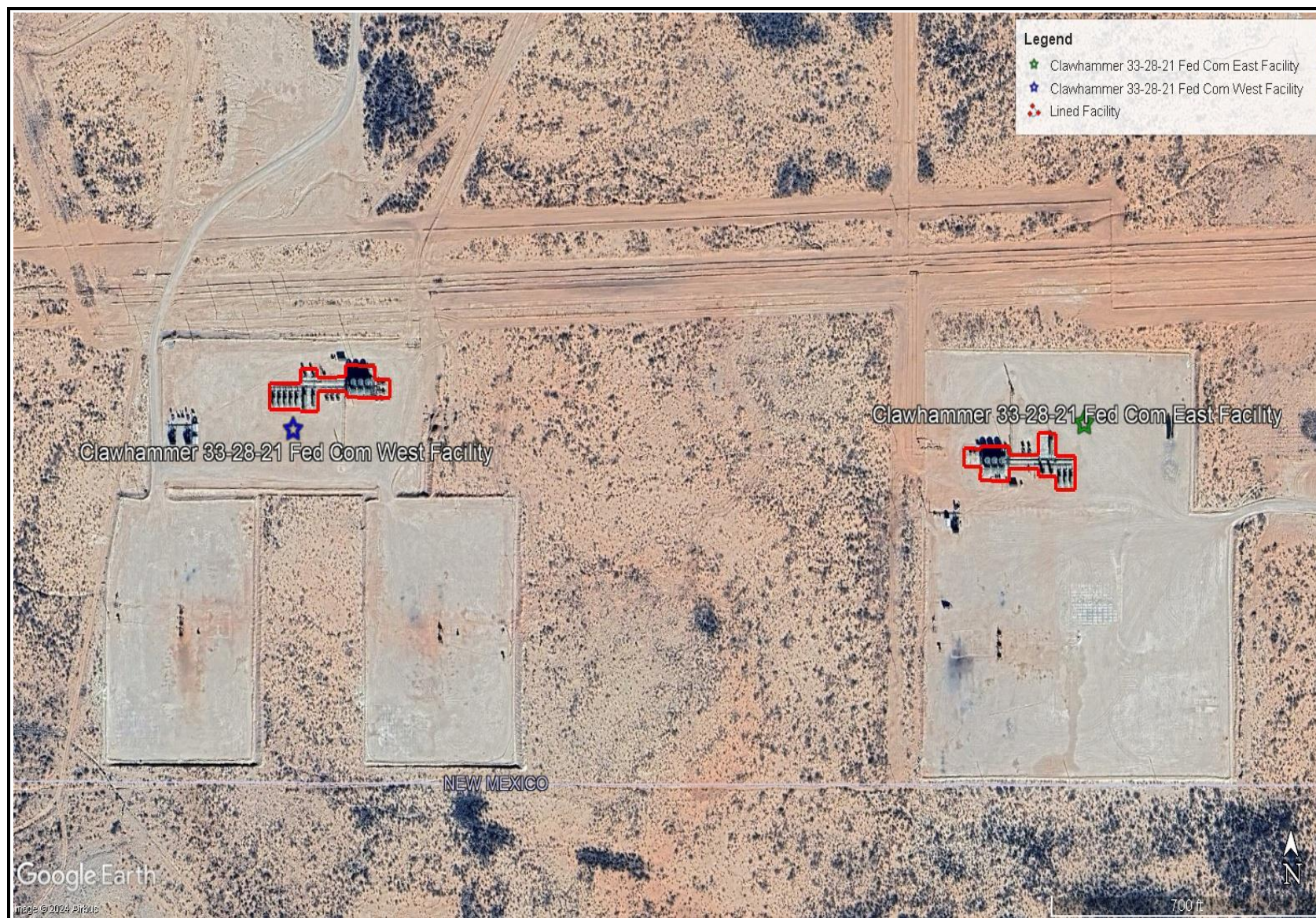




TOPOGRAPHIC MAP
DEVON ENERGY
CLAWHAMMER 33 28 21 FED COM WEST AND EAST PAD
EDDY COUNTY, NEW MEXICO
32.002310°, -103.888430° (WEST PAD)
32.002351°, -103.881849° (EAST PAD)



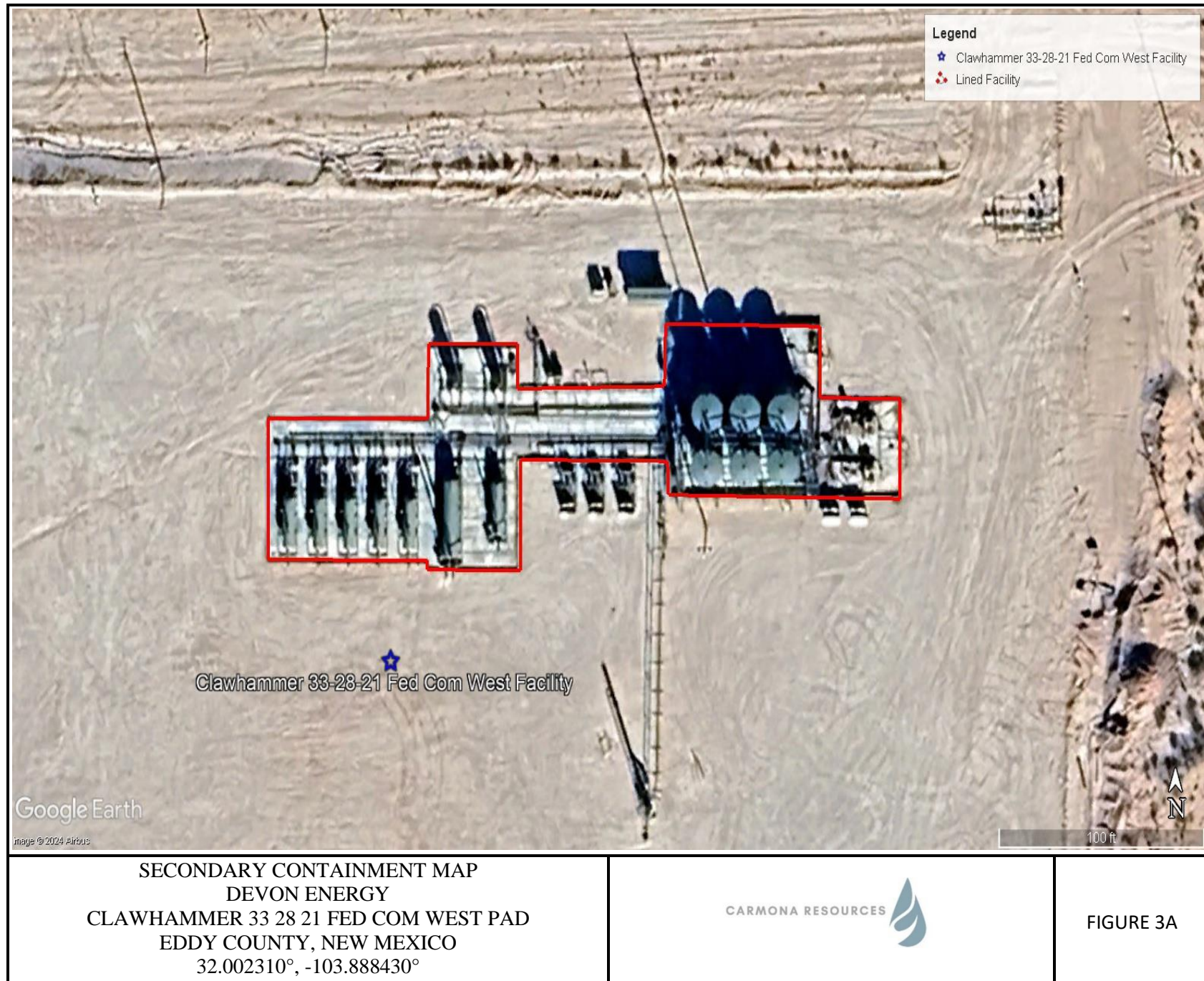
FIGURE 2

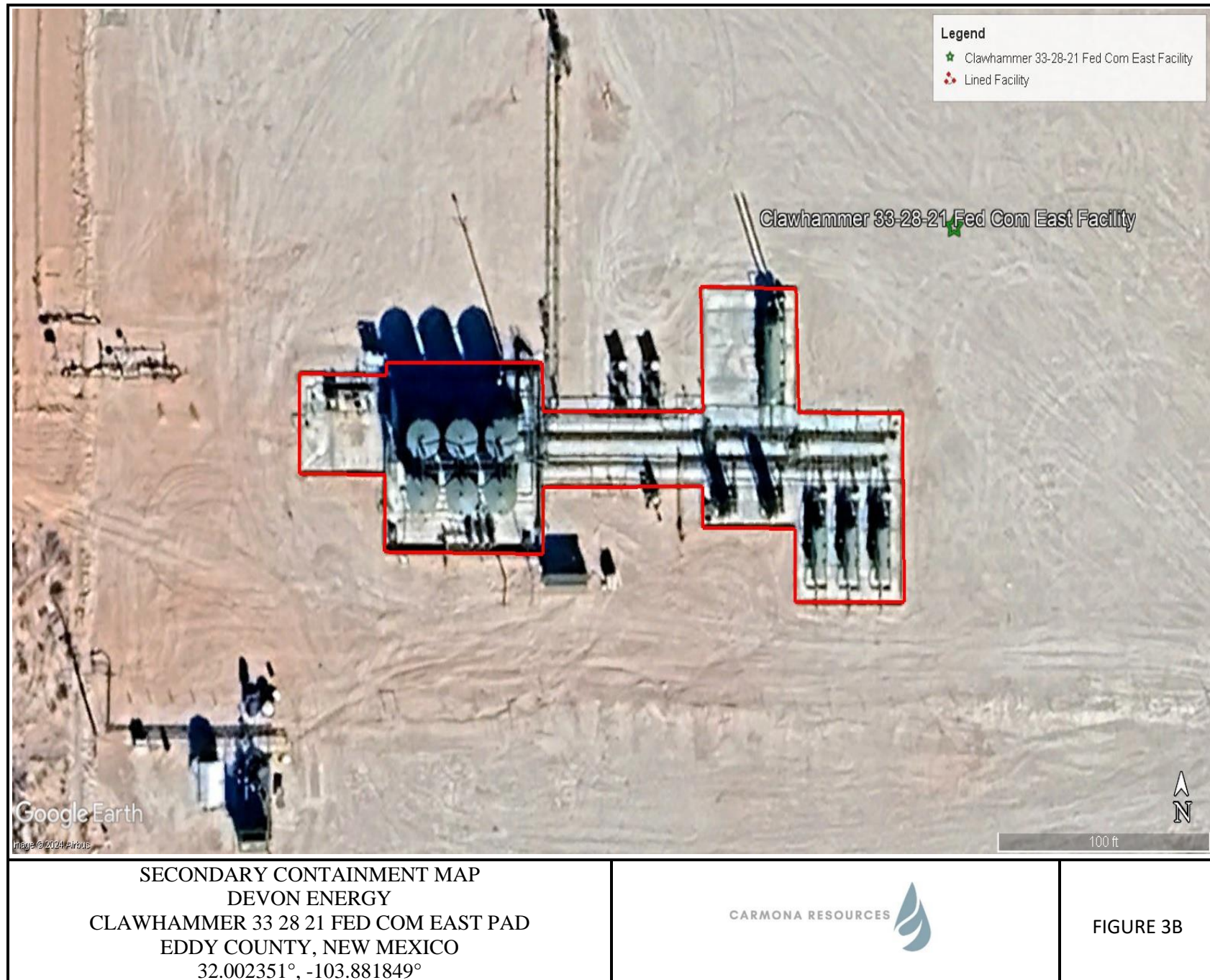


SECONDARY CONTAINMENT MAP
DEVON ENERGY
CLAWHAMMER 33 28 21 FED COM WEST AND EAST PAD
EDDY COUNTY, NEW MEXICO
32.002310°, -103.888430° (WEST PAD)
32.002351°, -103.881849° (EAST PAD)



FIGURE 3





APPENDIX A

CARMONA RESOURCES



PHOTOGRAPHIC LOG

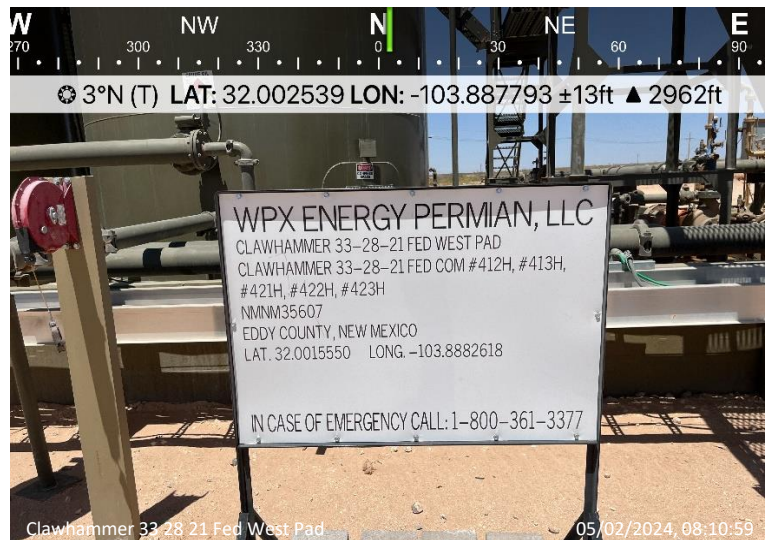
Devon Energy

Photograph No. 1

Facility: Clawhammer 33-28-21 Federal West Pad

County: Eddy County, New Mexico

Description:
View North of facility sign.



Photograph No. 2

Facility: Clawhammer 33-28-21 Federal West Pad

County: Eddy County, New Mexico

Description:
View Southeast of lined facility.



Photograph No. 3

Facility: Clawhammer 33-28-21 Federal West Pad

County: Eddy County, New Mexico

Description:
View West of lined facility.



PHOTOGRAPHIC LOG

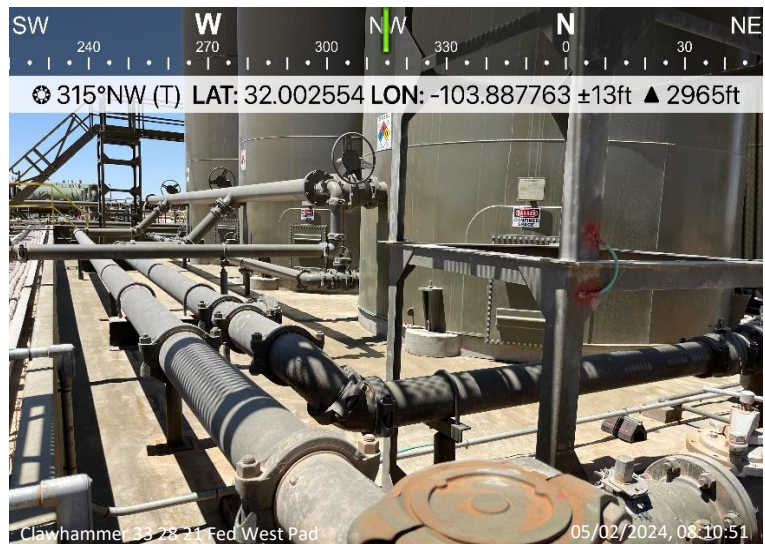
Devon Energy

Photograph No. 4

Facility: Clawhammer 33-28-21 Federal West Pad

County: Eddy County, New Mexico

Description:
View Northwest of lined facility.

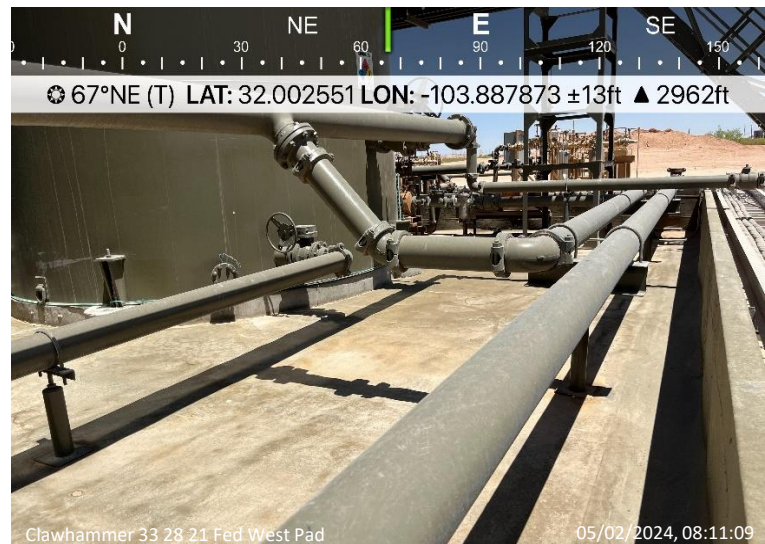


Photograph No. 5

Facility: Clawhammer 33-28-21 Federal West Pad

County: Eddy County, New Mexico

Description:
View Northeast of lined facility.



Photograph No. 6

Facility: Clawhammer 33-28-21 Federal West Pad

County: Eddy County, New Mexico

Description:
View North of lined facility and water line.



PHOTOGRAPHIC LOG

Devon Energy

Photograph No. 7

Facility: Clawhammer 33-28-21 Federal West Pad

County: Eddy County, New Mexico

Description:
View Northeast of lined facility.



Photograph No. 8

Facility: Clawhammer 33-28-21 Federal West Pad

County: Eddy County, New Mexico

Description:
View East of lined facility.



Photograph No. 9

Facility: Clawhammer 33-28-21 Federal West Pad

County: Eddy County, New Mexico

Description:
View South of lined facility.



PHOTOGRAPHIC LOG

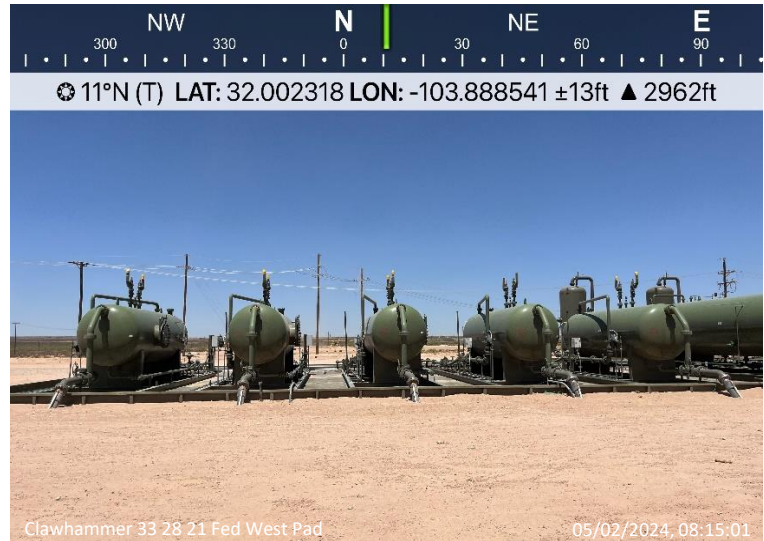
Devon Energy

Photograph No. 10

Facility: Clawhammer 33-28-21 Federal West Pad

County: Eddy County, New Mexico

Description:
View North of lined facility.



Photograph No. 11

Facility: Clawhammer 33-28-21 Federal East Pad

County: Eddy County, New Mexico

Description:
View North of facility sign.



Photograph No. 12

Facility: Clawhammer 33-28-21 Federal East Pad

County: Eddy County, New Mexico

Description:
View North of lined facility.



PHOTOGRAPHIC LOG

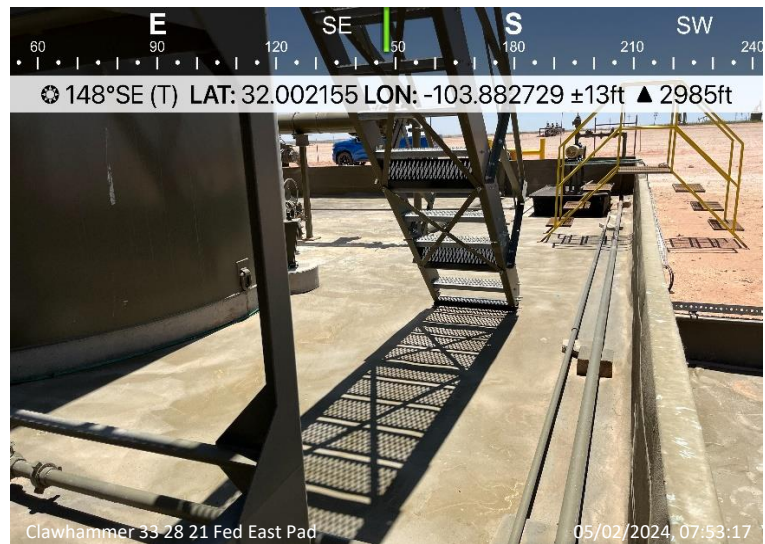
Devon Energy

Photograph No. 13

Facility: Clawhammer 33-28-21 Federal East Pad

County: Eddy County, New Mexico

Description:
View Southeast of lined facility.

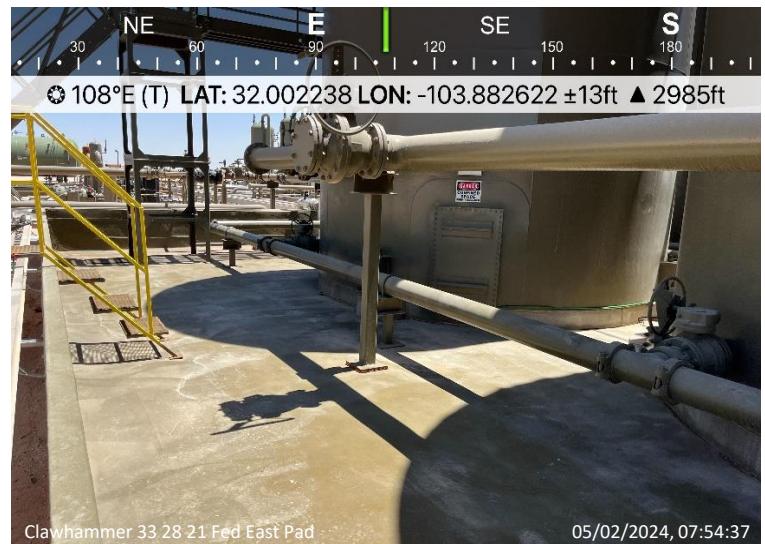


Photograph No. 14

Facility: Clawhammer 33-28-21 Federal East Pad

County: Eddy County, New Mexico

Description:
View East of lined facility.



Photograph No. 15

Facility: Clawhammer 33-28-21 Federal East Pad

County: Eddy County, New Mexico

Description:
View Southwest of lined facility.



PHOTOGRAPHIC LOG

Devon Energy

Photograph No. 16

Facility: Clawhammer 33-28-21 Federal East Pad

County: Eddy County, New Mexico

Description:
View Southwest of lined facility.



Photograph No. 17

Facility: Clawhammer 33-28-21 Federal East Pad

County: Eddy County, New Mexico

Description:
View West of lined facility.



Photograph No. 18

Facility: Clawhammer 33-28-21 Federal East Pad

County: Eddy County, New Mexico

Description:
View West of lined facility.



PHOTOGRAPHIC LOG

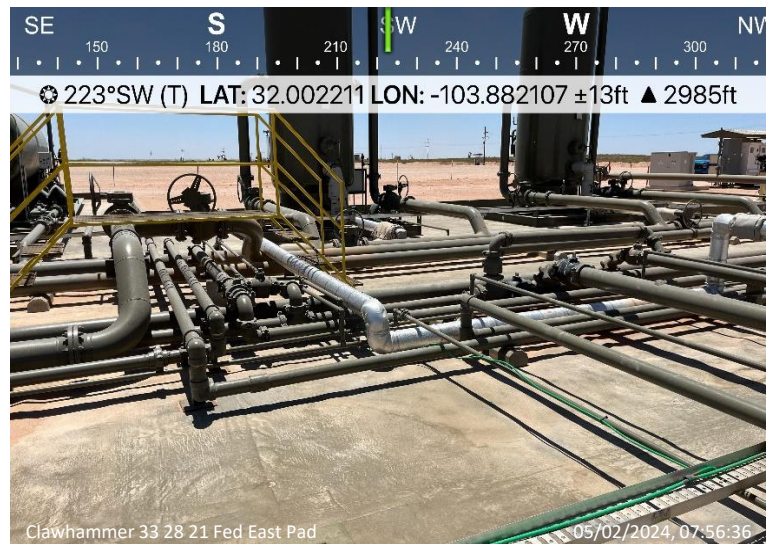
Devon Energy

Photograph No. 19

Facility: Clawhammer 33-28-21 Federal East Pad

County: Eddy County, New Mexico

Description:
View Southwest of lined facility.



Photograph No. 20

Facility: Clawhammer 33-28-21 Federal East Pad

County: Eddy County, New Mexico

Description:
View North of lined facility.

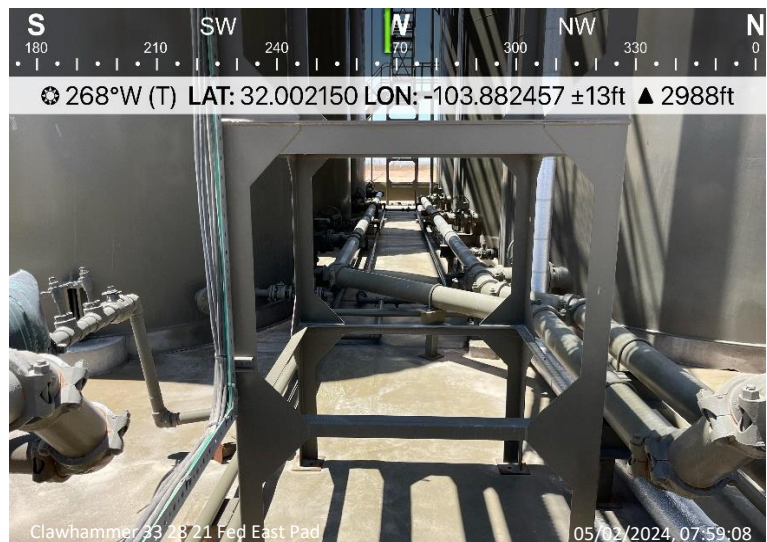


Photograph No. 21

Facility: Clawhammer 33-28-21 Federal East Pad

County: Eddy County, New Mexico

Description:
View West of lined facility.



PHOTOGRAPHIC LOG

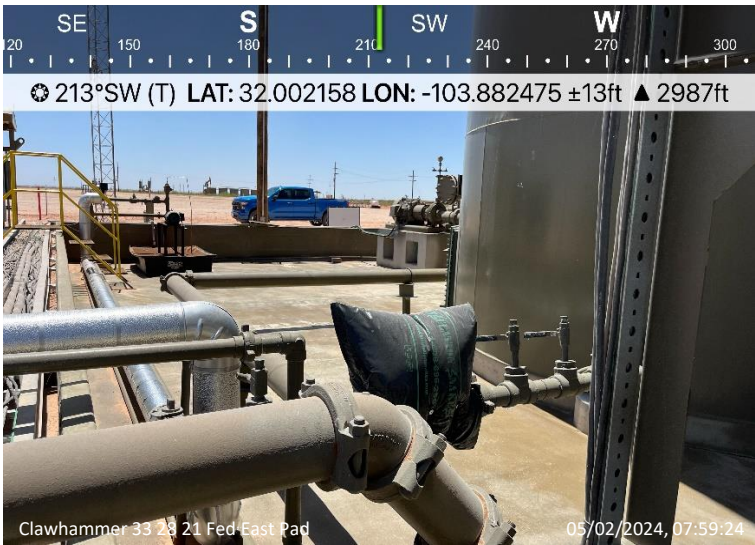
Devon Energy

Photograph No. 22

Facility: Clawhammer 33-28-21 Federal East Pad

County: Eddy County, New Mexico

Description: View Southwest of lined facility.



APPENDIX B

CARMONA RESOURCES



District I
1625 N. French Dr., Hobbs, NM 88240
Phone:(575) 393-6161 Fax:(575) 393-0720
District II
811 S. First St., Artesia, NM 88210
Phone:(575) 748-1283 Fax:(575) 748-9720
District III
1000 Rio Brazos Rd., Aztec, NM 87410
Phone:(505) 334-6178 Fax:(505) 334-6170
District IV
1220 S. St Francis Dr., Santa Fe, NM 87505
Phone:(505) 476-3470 Fax:(505) 476-3462

State of New Mexico
Energy, Minerals and Natural Resources
Oil Conservation Division
1220 S. St Francis Dr.
Santa Fe, NM 87505

QUESTIONS
Action 305745

QUESTIONS

Operator: WPX Energy Permian, LLC Devon Energy - Regulatory Oklahoma City, OK 73102	OGRID: 246289
	Action Number: 305745
	Action Type: [NOTIFY] Notification Of Release (NOR)

QUESTIONS

Location of Release Source Please answer all the questions in this group.	
Site Name	CLAWHAMMER 33 28 21 FEDERAL COM #425H
Date Release Discovered	01/18/2024
Surface Owner	Federal

Incident Details Please answer all the questions in this group.	
Incident Type	Oil Release
Did this release result in a fire or is the result of a fire	No
Did this release result in any injuries	No
Has this release reached or does it have a reasonable probability of reaching a watercourse	No
Has this release endangered or does it have a reasonable probability of endangering public health	No
Has this release substantially damaged or will it substantially damage property or the environment	No
Is this release of a volume that is or may with reasonable probability be detrimental to fresh water	No

Nature and Volume of Release Material(s) released, please answer all that apply below. Any calculations or specific justifications for the volumes provided should be attached to the follow-up C-141 submission.	
Crude Oil Released (bbls) Details	Cause: Equipment Failure Pump Crude Oil Released: 20 BBL Recovered: 20 BBL Lost: 0 BBL.
Produced Water Released (bbls) Details	Cause: Equipment Failure Pump Produced Water Released: 20 BBL Recovered: 20 BBL Lost: 0 BBL.
Is the concentration of chloride in the produced water >10,000 mg/l	Yes
Condensate Released (bbls) Details	Not answered.
Natural Gas Vented (Mcf) Details	Not answered.
Natural Gas Flared (Mcf) Details	Not answered.
Other Released Details	Not answered.
Are there additional details for the questions above (i.e. any answer containing Other, Specify, Unknown, and/or Fire, or any negative lost amounts)	Not answered.

District I
1625 N. French Dr., Hobbs, NM 88240
Phone:(575) 393-6161 Fax:(575) 393-0720

District II
811 S. First St., Artesia, NM 88210
Phone:(575) 748-1283 Fax:(575) 748-9720

District III
1000 Rio Brazos Rd., Aztec, NM 87410
Phone:(505) 334-6178 Fax:(505) 334-6170

District IV
1220 S. St Francis Dr., Santa Fe, NM 87505
Phone:(505) 476-3470 Fax:(505) 476-3462

State of New Mexico
Energy, Minerals and Natural Resources
Oil Conservation Division
1220 S. St Francis Dr.
Santa Fe, NM 87505

QUESTIONS, Page 2

Action 305745

QUESTIONS (continued)

Operator: WPX Energy Permian, LLC Devon Energy - Regulatory Oklahoma City, OK 73102	OGRID: 246289
	Action Number: 305745
	Action Type: [NOTIFY] Notification Of Release (NOR)

QUESTIONS

Nature and Volume of Release (continued)	
Is this a gas only submission (i.e. only significant Mcf values reported)	No, according to supplied volumes this does not appear to be a "gas only" report.
Was this a major release as defined by Subsection A of 19.15.29.7 NMAC	Yes
Reasons why this would be considered a submission for a notification of a major release	From paragraph A. "Major release" determine using: (1) an unauthorized release of a volume, excluding gases, of 25 barrels or more.
With the implementation of the 19.15.27 NMAC (05/25/2021), venting and/or flaring of natural gas (i.e. gas only) are to be submitted on the C-129 form.	

Initial Response	
The responsible party must undertake the following actions immediately unless they could create a safety hazard that would result in injury.	
The source of the release has been stopped	True
The impacted area has been secured to protect human health and the environment	True
Released materials have been contained via the use of berms or dikes, absorbent pads, or other containment devices	True
All free liquids and recoverable materials have been removed and managed appropriately	True
If all the actions described above have not been undertaken, explain why	Not answered.
Per Paragraph 4 of Subsection B of 19.15.29.8 NMAC the responsible party may commence remediation immediately after discovery of a release. If remediation has begun, please prepare and attach a narrative of actions to date in the follow-up C-141 submission. If remedial efforts have been successfully completed or if the release occurred within a lined containment area (see 19.15.29.11(A)(5)(a) NMAC), please prepare and attach all information needed for closure evaluation in the follow-up C-141 submission.	

District I
1625 N. French Dr., Hobbs, NM 88240
Phone:(575) 393-6161 Fax:(575) 393-0720
District II
811 S. First St., Artesia, NM 88210
Phone:(575) 748-1283 Fax:(575) 748-9720
District III
1000 Rio Brazos Rd., Aztec, NM 87410
Phone:(505) 334-6178 Fax:(505) 334-6170
District IV
1220 S. St Francis Dr., Santa Fe, NM 87505
Phone:(505) 476-3470 Fax:(505) 476-3462

State of New Mexico
Energy, Minerals and Natural Resources
Oil Conservation Division
1220 S. St Francis Dr.
Santa Fe, NM 87505

ACKNOWLEDGMENTS

Action 305745

ACKNOWLEDGMENTS

Operator: WPX Energy Permian, LLC Devon Energy - Regulatory Oklahoma City, OK 73102	OGRID: 246289
	Action Number: 305745
	Action Type: [NOTIFY] Notification Of Release (NOR)

ACKNOWLEDGMENTS

<input checked="" type="checkbox"/>	I acknowledge that I am authorized to submit notification of a release on behalf of my operator.
<input checked="" type="checkbox"/>	I acknowledge that upon submitting this application, I will be creating a new incident file (assigned to my operator) to track the notification(s) and corrective action(s) for a release, pursuant to NMAC 19.15.29.
<input checked="" type="checkbox"/>	I acknowledge that creating a new incident file will require my operator to file subsequent submission(s) of form "C-141, Application for administrative approval of a release notification and corrective action", pursuant to NMAC 19.15.29.
<input checked="" type="checkbox"/>	I hereby certify that the information given above is true and complete to the best of my knowledge and understand that pursuant to OCD rules and regulations all operators are required to report and/or file certain release notifications and perform corrective actions for releases which may endanger public health or the environment.
<input checked="" type="checkbox"/>	I acknowledge the fact that the acceptance of a C-141 report by the OCD does not relieve the operator of liability should their operations have failed to adequately investigate and remediate contamination that pose a threat to groundwater, surface water, human health or the environment.
<input checked="" type="checkbox"/>	I acknowledge the fact that, in addition, OCD acceptance of a C-141 report does not relieve the operator of responsibility for compliance with any other federal, state, or local laws and/or regulations.

District I
1625 N. French Dr., Hobbs, NM 88240
Phone:(575) 393-6161 Fax:(575) 393-0720
District II
811 S. First St., Artesia, NM 88210
Phone:(575) 748-1283 Fax:(575) 748-9720
District III
1000 Rio Brazos Rd., Aztec, NM 87410
Phone:(505) 334-6178 Fax:(505) 334-6170
District IV
1220 S. St Francis Dr., Santa Fe, NM 87505
Phone:(505) 476-3470 Fax:(505) 476-3462

State of New Mexico
Energy, Minerals and Natural Resources
Oil Conservation Division
1220 S. St Francis Dr.
Santa Fe, NM 87505

CONDITIONS

Action 305745

CONDITIONS

Operator: WPX Energy Permian, LLC Devon Energy - Regulatory Oklahoma City, OK 73102	OGRID: 246289
	Action Number: 305745
	Action Type: [NOTIFY] Notification Of Release (NOR)

CONDITIONS

Created By	Condition	Condition Date
jralej	When submitting future reports regarding this release, please submit the calculations used or specific justification for the volumes reported on the initial C-141.	1/19/2024

Incident ID	
District RP	
Facility ID	
Application ID	

Closure

The responsible party must attach information demonstrating they have complied with all applicable closure requirements and any conditions or directives of the OCD. This demonstration should be in the form of a comprehensive report (electronic submittals in .pdf format are preferred) including a scaled site map, sampling diagrams, relevant field notes, photographs of any excavation prior to backfilling, laboratory data including chain of custody documents of final sampling, and a narrative of the remedial activities. Refer to 19.15.29.12 NMAC.

Closure Report Attachment Checklist: Each of the following items must be included in the closure report.

- ☐ A scaled site and sampling diagram as described in 19.15.29.11 NMAC
- ☐ Photographs of the remediated site prior to backfill or photos of the liner integrity if applicable (Note: appropriate OCD District office must be notified 2 days prior to liner inspection)
- ☐ Laboratory analyses of final sampling (Note: appropriate ODC District office must be notified 2 days prior to final sampling)
- ☐ Description of remediation activities

I hereby certify that the information given above is true and complete to the best of my knowledge and understand that pursuant to OCD rules and regulations all operators are required to report and/or file certain release notifications and perform corrective actions for releases which may endanger public health or the environment. The acceptance of a C-141 report by the OCD does not relieve the operator of liability should their operations have failed to adequately investigate and remediate contamination that pose a threat to groundwater, surface water, human health or the environment. In addition, OCD acceptance of a C-141 report does not relieve the operator of responsibility for compliance with any other federal, state, or local laws and/or regulations. The responsible party acknowledges they must substantially restore, reclaim, and re-vegetate the impacted surface area to the conditions that existed prior to the release or their final land use in accordance with 19.15.29.13 NMAC including notification to the OCD when reclamation and re-vegetation are complete.

Printed Name: _____ Title: _____

Signature:  _____ Date: _____

email: _____ Telephone: _____

OCD Only

Received by: _____ Date: _____

Closure approval by the OCD does not relieve the responsible party of liability should their operations have failed to adequately investigate and remediate contamination that poses a threat to groundwater, surface water, human health, or the environment nor does not relieve the responsible party of compliance with any other federal, state, or local laws and/or regulations.

Closure Approved by: _____ Date: _____

Printed Name: _____ Title: _____

District I
1625 N. French Dr., Hobbs, NM 88240
Phone:(575) 393-6161 Fax:(575) 393-0720

District II
811 S. First St., Artesia, NM 88210
Phone:(575) 748-1283 Fax:(575) 748-9720

District III
1000 Rio Brazos Rd., Aztec, NM 87410
Phone:(505) 334-6178 Fax:(505) 334-6170

District IV
1220 S. St Francis Dr., Santa Fe, NM 87505
Phone:(505) 476-3470 Fax:(505) 476-3462

State of New Mexico

Energy, Minerals and Natural Resources

Oil Conservation Division

1220 S. St Francis Dr.

Santa Fe, NM 87505

QUESTIONS

Action 337698

QUESTIONS

Operator: WPX Energy Permian, LLC Devon Energy - Regulatory Oklahoma City, OK 73102	OGRID: 246289
	Action Number: 337698
	Action Type: [NOTIFY] Notification Of Liner Inspection (C-141L)

QUESTIONS

Prerequisites	
Incident ID (n#)	nAPP2401953748
Incident Name	NAPP2401953748 CLAWHAMMER 33 28 21 FEDERAL COM #425H @ 30-015-49841
Incident Type	Oil Release
Incident Status	Cancellation Request Received
Incident Well	[30-015-49841] CLAWHAMMER 33 28 21 FEDERAL COM #425H

Location of Release Source	
Site Name	CLAWHAMMER 33 28 21 FEDERAL COM #425H
Date Release Discovered	01/18/2024
Surface Owner	Federal

Liner Inspection Event Information	
Please answer all the questions in this group.	
What is the liner inspection surface area in square feet	17,554
Have all the impacted materials been removed from the liner	Yes
Liner inspection date pursuant to Subparagraph (a) of Paragraph (5) of Subsection A of 19.15.29.11 NMAC	05/02/2024
Time liner inspection will commence	08:00 AM
Please provide any information necessary for observers to liner inspection	Miranda Milwee 432-813-9652
Please provide any information necessary for navigation to liner inspection site	: From the intersection of NM-128 and Orla Rd trvl S on Orla Rd for 15.2 mi, trn R onto State Line Rd trvl W for 9.5 mi trn L and trvl S on Unnamed Lease Rd for 0.21 mi. Turn R onto the pad and arrive on location.

District I
1625 N. French Dr., Hobbs, NM 88240
Phone:(575) 393-6161 Fax:(575) 393-0720
District II
811 S. First St., Artesia, NM 88210
Phone:(575) 748-1283 Fax:(575) 748-9720
District III
1000 Rio Brazos Rd., Aztec, NM 87410
Phone:(505) 334-6178 Fax:(505) 334-6170
District IV
1220 S. St Francis Dr., Santa Fe, NM 87505
Phone:(505) 476-3470 Fax:(505) 476-3462

State of New Mexico
Energy, Minerals and Natural Resources
Oil Conservation Division
1220 S. St Francis Dr.
Santa Fe, NM 87505

CONDITIONS

Action 337698

CONDITIONS

Operator: WPX Energy Permian, LLC Devon Energy - Regulatory Oklahoma City, OK 73102	OGRID: 246289
	Action Number: 337698
	Action Type: [NOTIFY] Notification Of Liner Inspection (C-141L)

CONDITIONS

Created By	Condition	Condition Date
jraleay	Failure to notify the OCD of liner inspections including any changes in date/time per the requirements of 19.15.29.11.A(5)(a)(ii) NMAC, may result in the inspection not being accepted.	4/25/2024

To: Wells, Shelly, EMNRD
Cc: Raley, Jim
Subject: RE: [EXTERNAL] Clawhammer Correction
Date: Friday, April 26, 2024 9:18:26 AM
Attachments: emnrd001.png
emnrd001.png
emnrd001.png
emnrd001.png
emnrd001.png
emnrd001.png

Hi Jim,

Thank you for clarifying the location of the release! Sounds good on conducting an inspection at both

Have a great day,

Shelly

From: Raley, Jim <jim.raley@dm.com>
Sent: Friday, April 26, 2024 9:16 AM
To: Wells, Shelly, EMNRD <Shelly.Wells@emnrd.nm.gov>
Cc: Miranda Milwee <MilweeM@carmonaresources.com>
Subject: RE: [EXTERNAL] Clawhammer Correction

Shelly,

As discussed we will inspect both the Clawhammer East and Clawhammer West containments and submit them with our liner inspection report.

Appreciate your help.

Jim Raley | Environmental Professional - Permian Basin
5315 Buena Vista Dr., Carlsbad, NM 88220
C: (575)689-7397 | jim.raley@dm.com



From: Wells, Shelly, EMNRD <Shelly.Wells@emnrd.nm.gov>
Sent: Friday, April 26, 2024 8:46 AM
To: Raley, Jim <jim.raley@dm.com>
Subject: RE: [EXTERNAL] Clawhammer Correction

Hi Jim,

I am looking at the rejected liner report and Figure 3 shows this figure with the coordinates as 32.001101, -103.88126.

Oil Conservation Division - Home | OCD Permitting - Incidents | OCD Permitting | APP_310312_954220.pdf

Adobe Acrobat: PDF edit, convert, sign tools | chrome-extension://efaidnbnmnihpcjgclbfldndmka/https://www.emnrd.nm.gov/OCD/OCDPermitting/SupportingDocuments/APP/APP_310312_954220.pdf

SHARE Sign-in | 5.0.0 Recent Applica... | OCD Rules - Oil Con... | OCD Forms - Oil Co... | OSE POD Locations | Registered Mines in... | The National Map -- | FEMA's National Flo... | National Wetlands L... | Submission Form | Calculator, Landsc... | Water Rights Looka...

www.gov... / APP_310312_954220

Hi, Shelly

Enjoy the PDF tools included in your subscription.

CONVERT

- PDF to Word
- PDF to JPG
- PDF to Excel
- PDF to PPT
- Convert to PDF

EDIT

- Edit text & images
- Reorder pages
- Rotate pages
- Delete pages
- Split a PDF

SIGN

- Fill & Sign
- Request e-signatures

MORE

- Compress a PDF
- Combine files
- Protect a PDF

SECONDARY CONTAINMENT MAP
DEVON ENERGY
CLAWHAMMER 33 28 21 FEDERAL COM #423H
EDDY COUNTY, NEW MEXICO
32.001101° -103.88126°

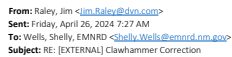
CAROLINA RESOURCES

FIGURE 3

Legend
★ Lined Facility

8
38
^
v
C
Q
Q

The lat/long in the liner inspection photos shows it here on Google Earth. Wouldn't that make it the Fed East location?



I am around office today if you need to call for more info. Sorry I missed your calls Thursday evening.



From: Wells, Shelly, EMNRD <Shelly.Wells@emnrd.nm.gov>
Sent: Thursday, April 25, 2024 4:04 PM
To: Raley, Jim <Jim.Raley@dvn.com>
Subject: RE: [EXTERNAL] Clawhammer Correction

Shelly



From: Raley, Jim <Jim.Raley@dyn.com>
Sent: Thursday, April 25, 2024 2:28 PM
To: Wells, Shelly, EMNRD <Shelly.Wells@emnrld.nm.gov>
Subject: [EXTERNAL] Clawhammer Correction

CAUTION: This email originated outside of our organization. Exercise caution prior to clicking on links or opening attachments.

Shelly,
After checking with production I think my notes in the cancellation request were right, regardless. The incident nAPP2401953748 should be assigned to the following well. Appreciate the help with this.

CLAWHAMMER 33 2B 21 FEDERAL COM #424H
30-015-49842
32.027844,-103.880547

Jim Raley | Environmental Professional - Permian Basin
5315 Buena Vista Dr., Carlsbad, NM 88220
C: (575)689-7597 | jim.ralej@dyn.com



From: OCDOnline@state.nm.us <OCDOnline@state.nm.us>
Sent: Thursday, April 25, 2024 2:17 PM
To: Raley, Jim <Jim.Raley@dyn.com>
Subject: [EXTERNAL] The Oil Conservation Division (OCD) has rejected the application, Application ID: 334272

To whom it may concern (c/o James Raley for WPX Energy Permian, LLC),

The OCD has rejected the submitted *Request to Cancel the Notification of a Release (C-141C)*, for incident ID (n#) nAPP2401953748, for the following reasons:

- Incorrect location given. Release location will be updated by Shelly Wells in permitting once James Raley sends correct information to me.

The rejected C-141C can be found in the OCD Online: Permitting - Action Status, under the Application ID: 334272.
Please review and make the required correction(s) prior to resubmitting.
If you have any questions why this application was rejected or believe it was rejected in error, please contact me prior to submitting an additional C-141C.

Thank you,
Shelly Wells
Environmental Specialist-A
505-469-7520
Shelly.Wells@emnrld.nm.gov

New Mexico Energy, Minerals and Natural Resources Department
1220 South St. Francis Drive
Santa Fe, NM 87505

Confidentiality Warning: This message and any attachments are intended only for the use of the intended recipient(s), are confidential, and may be privileged. If you are not the intended recipient, you are hereby notified that any review, retransmission, conversion to hard copy, copying, circulation or other use of all or any portion of this message and any attachments is strictly prohibited. If you are not the intended recipient, please notify the sender immediately by return e-mail, and delete this message and any attachments from your system.

APPENDIX C


CARMONA RESOURCES





Nearest water well


Devon Energy

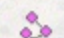
Legend


 0.38 Miles


 0.50 Mile Radius

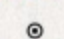
 0.82 Miles


 1.10 Miles


 1.47 Miles

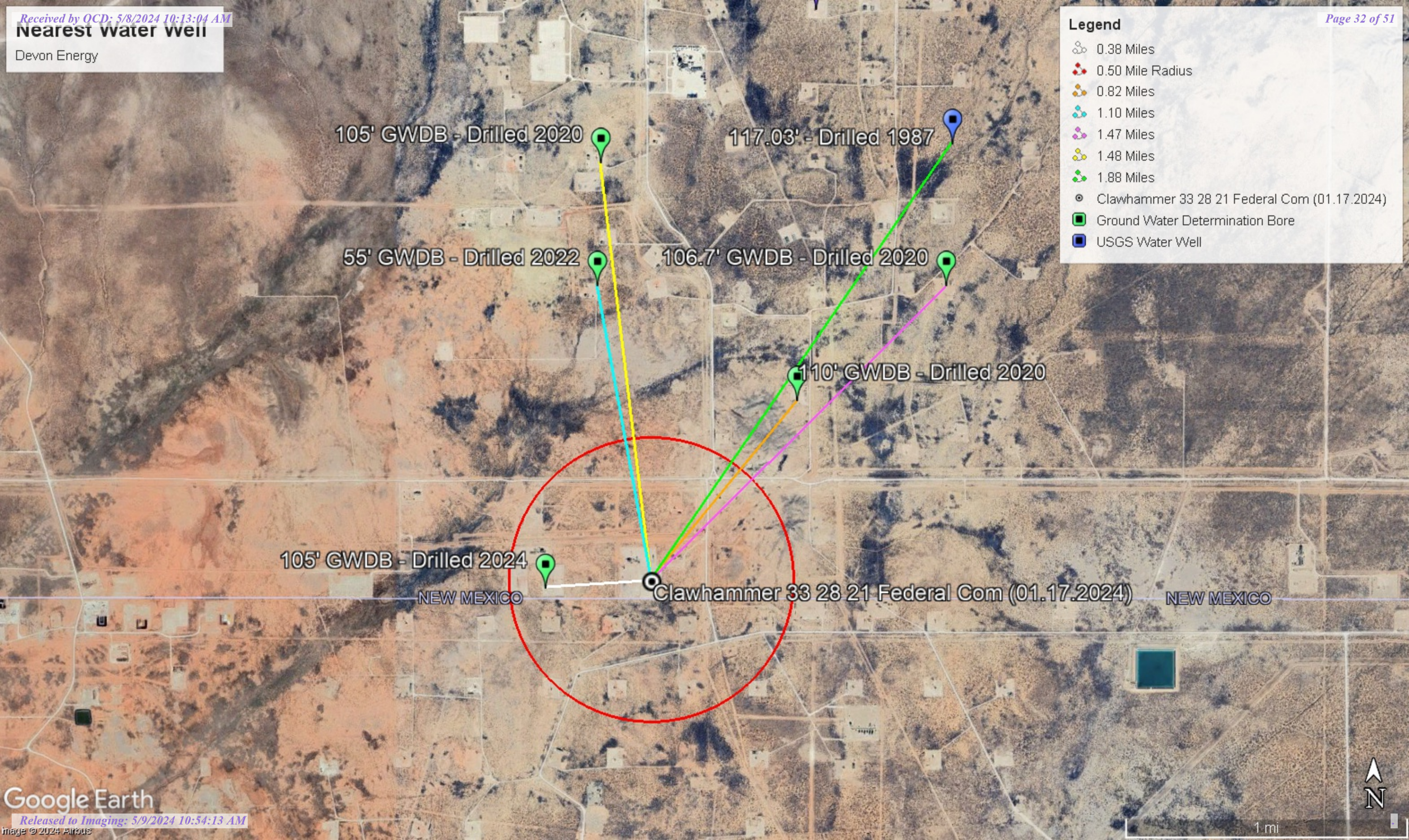
 1.48 Miles

 1.88 Miles

 Clawhammer 33 28 21 Federal Com (01.17.2024)

 Ground Water Determination Bore

 USGS Water Well



Medium Karst

Devon Energy

Legend

- Clawhammer 33 28 21 Federal Com #425H (01.17.2024)
- High
- Medium

Clawhammer 33 28 21 Federal Com #425H (01.17.2024)

Google Earth

1 mi





New Mexico Office of the State Engineer

Water Column/Average Depth to Water

(A CLW##### in the POD suffix indicates the POD has been replaced & no longer serves a water right file.)

(R=POD has been replaced, O=orphaned, C=the file is closed)

(quarters are 1=NW 2=NE 3=SW 4=SE)

(quarters are smallest to largest)

(NAD83 UTM in meters)

(In feet)

POD Number	POD Sub-Code	basin	County	Q 64	Q 16	Q 4	Sec	Tws	Rng	X	Y	Distance	Depth Well	Depth Water	Water Column
C 04625 POD1	CUB	ED	1	3	2	28	26S	30E	605340	3542781		1709	55		
C 04629 POD1	CUB	ED	4	3	4	21	26S	30E	605381	3543462		2375			

Average Depth to Water: --

Minimum Depth: --

Maximum Depth: --

Record Count: 2

UTMNAD83 Radius Search (in meters):

Easting (X): 605672.68

Northing (Y): 3541104.49

Radius: 4000

The data is furnished by the NMOSE/ISC and is accepted by the recipient with the expressed understanding that the OSE/ISC make no warranties, expressed or implied, concerning the accuracy, completeness, reliability, usability, or suitability for any particular purpose of the data.

1/19/24 7:10 AM

Page 1 of 1


WATER COLUMN/ AVERAGE
DEPTH TO WATER



Project Name :	Devon Clawhammer 33-28-21 412H	Date :	February 14th, 2024
Project No. :	2199	Sampler :	Ivan Ramos
Location :	Eddy County, New Mexico	Driller :	H&R Enterprises, LLC
Coordinates :	32.00073, -103.88776	Method :	Air Rotary
Elevation :	2950 feet		

Depth (ft.)	WL	Soil Description	Lithology	Depth (ft.)	WL	Soil Description	Lithology
0		(0') - Tan, poorly cemented small to medium subangular gravel with 65% fine, silty, soft loose sand. Dry, no odor, no organics (SW).		50		(50') - Brownish red, poorly cemented clay with 30% fines. Dry, no odor, no organics (ML).	
5		(5') - Light brown, poorly cemented small to medium subangular gravel with 75% fine, silty, soft loose sand. Dry, no odor, no organics (SW)		55		(55') - Brown, poorly cemented clay with 30% fines. Dry, no odor, no organics (ML).	
10		(10') - Red, poorly cemented small to medium sandstone nodules with 90% fine, silty, soft loose sand. Dry, no odor, no organics (SM)		60		(60') - Reddish-brown, poorly cemented small clayey silt nodules with 95% fine, silty, soft clayey silt. Dry, no odor, no organics (ML).	
15		(15') - Reddish brown, poorly cemented small subrounded sandstone nodules with 90% fine, silty, soft loose sand. Dry, no odor, no organics (SM).		65		(65') - Reddish-brown, poorly cemented small clayey silt nodules with 95% fine, silty, soft clayey silt. Dry, no odor, no organics (ML).	
20		(20') - Pinkish brown, poorly cemented small to medium subrounded gypsum nodules with 80% fine, silty, soft loose sand. Dry, no odor, no organics (SM).		70		(70') - Brown, poorly cemented, medium stiff, well graded clay. Dry, no odor, no organics (CL).	
25		(25') - Pinkish brown, poorly cemented small to medium subrounded gypsum nodules with 80% fine, silty, soft loose sand. Dry, no odor, no organics (SM).		75		(75') - Brown, poorly cemented small to medium clay nodules with 70% gray, silty soft sandy silt. Dry, no odor, no organics (ML).	
30		(30') - Brownish-red, poorly cemented small subrounded clayey silt nodules with 90% fine, silty, soft loose silty clay. Dry, no odor, no organics (ML).		80		(80') - Brown, moderately cemented, brittle to medium stiff clay. Dry, no odor, no organics (CL).	
35		(35') - Brownish-red, poorly cemented small subrounded clayey silt nodules with 90% fine, silty, soft loose silty clay. Dry, no odor, no organics (ML).		85		(85') - Brown, moderately cemented, brittle to medium stiff clay. Dry, no odor, no organics (CL).	
40		(40') - Brownish-red, poorly cemented small subrounded clayey silt nodules with 70% fine, silty, soft loose silty clay. Dry, no odor, no organics (ML).		90		(90') - Brown, poorly cemented small to medium clay nodules with 75% fine, silty, soft loose clayey silt. Dry, no odor, no organics (ML).	
45		(45') - Brownish-red, poorly cemented small subrounded clayey silt nodules with 80% fine, silty, soft loose silty clay. Dry, no odor, no organics (ML).		95		(95') - Brown, poorly cemented small to medium clay nodules with 75% fine, silty, soft loose clayey silt. Dry, no odor, no organics (ML).	
50				105		(105) - Light brown, poorly cemented clay nodules with 40% clayey silt. Dry, no odor, no organics (ML).	

Comments : (02/14/24) Boring terminated at 105' at 11:30 A.M. Mountain Time with no presence of groundwater or moisture.

 HRL COMPLIANCE SOLUTIONS		BORING LOG/MONITORING WELL COMPLETION DIAGRAM													
		Boring/Well Number: MW-1				Location: Ross Draw Unit #57									
Date: 12/9/2020				Client: WPX Energy											
Drilling Method: Air Rotary				Sampling Method: None				Logged By: J. Linn, PG				Drilled By: Talon LPE			
Gravel Pack Type: 10/20 Sand				Gravel Pack Depth Interval: 3 Bags				Seal Type: None		Seal Depth Interval: None		Latitude: 32.01032			
Casing Type: PVC		Diameter: 2-inch		Depth Interval: 0-105 feet bgs		Boring Total Depth (ft. BGS): 110				Longitude: -103.87246					
Screen Type: PVC		Slot: 0.010-inch		Diameter: 2-inch		Depth Interval: 105-110 ft		Well Total Depth (ft. BGS): 110				Depth to Water (ft. BTWC): > 110		DTW Date: 12/16/2020	
Depth Interval (ft)	Recovery (ft)	Plasticity	Moisture	Odor	Staining	PID (ppm)	USCS	Sample ID	Lithology/Remarks				Well Completion		
0	NM	L/M	D	N	N	NM	SM	NS	Tan/pale orange/pale brown poorly graded fine sand						
5															
10															
15															
20															
25															
30															
35	NM	M	D	N	N	NM	SW	NS	Hard, dry pale pink orange well graded sand with gravel						
40															
45															
50	NM	M	D	N	N	NM	SM	NS	Pale orange red tan silty fine sand						
55															
60	NM	L	D	N	N	NM	SW	NS	Dark brown greyish well graded sand						
65															
70	NM	L/M	D to SL M	N	N	NM	SW	NS	Grey well graded sand						
75															
80															
85															
90															
95															
100	NM	L/M	D	N	N	NM	SM	NS	Tan/pale orange/pale brown poorly graded fine sand - TD 110' bgs						
105															



WELL RECORD & LOG

OFFICE OF THE STATE ENGINEER

www.ose.state.nm.us

OSE DTI AUG 8 2022 AM 10:19

1. GENERAL AND WELL LOCATION	OSE POD NO. (WELL NO.) POD 1 (TW-1)		WELL TAG ID NO. N/A		OSE FILE NO(S). C-4625		
	WELL OWNER NAME(S) Devon Energy				PHONE (OPTIONAL) 575-748-1838		
	WELL OWNER MAILING ADDRESS 6488 7 Rivers Hwy				CITY Artesia	STATE NM	ZIP 88210
	WELL LOCATION (FROM GPS)	DEGREES LATITUDE 32	MINUTES 0	SECONDS 58.53 N	* ACCURACY REQUIRED: ONE TENTH OF A SECOND		
		LONGITUDE 103	53	4.54 W	* DATUM REQUIRED: WGS 84		
DESCRIPTION RELATING WELL LOCATION TO STREET ADDRESS AND COMMON LANDMARKS – PLSS (SECTION, TOWNSHIP, RANGE) WHERE AVAILABLE NW SW NE Sec.28 T26S R30S NMPM							
2. DRILLING & CASING INFORMATION	LICENSE NO. 1249		NAME OF LICENSED DRILLER Jackie D. Atkins			NAME OF WELL DRILLING COMPANY Atkins Engineering Associates, Inc.	
	DRILLING STARTED 6/15/2022		DRILLING ENDED 6/15/2022		DEPTH OF COMPLETED WELL (FT) Temporary Well	BORE HOLE DEPTH (FT) ±55	DEPTH WATER FIRST ENCOUNTERED (FT) n/a
	COMPLETED WELL IS: <input type="checkbox"/> ARTESIAN <input checked="" type="checkbox"/> DRY HOLE <input type="checkbox"/> SHALLOW (UNCONFINED)					STATIC WATER LEVEL IN COMPLETED WELL (FT) n/a	DATE STATIC MEASURED 6/15/22, 7/12/22
	DRILLING FLUID: <input type="checkbox"/> AIR <input type="checkbox"/> MUD ADDITIVES – SPECIFY:						
	DRILLING METHOD: <input type="checkbox"/> ROTARY <input type="checkbox"/> HAMMER <input type="checkbox"/> CABLE TOOL <input checked="" type="checkbox"/> OTHER – SPECIFY: Hollow Stem Auger						CHECK HERE IF PITLESS ADAPTER IS INSTALLED <input type="checkbox"/>
	DEPTH (feet bgl) FROM TO		BORE HOLE DIAM. (inches)	CASING MATERIAL AND/OR GRADE (include each casing string, and note sections of screen)	CASING CONNECTION TYPE (add coupling diameter)	CASING INSIDE DIAM. (inches)	CASING WALL THICKNESS (inches)
	0 55		±6.5	Boring-HSA	--	--	--
3. ANNULAR MATERIAL	DEPTH (feet bgl) FROM TO		BORE HOLE DIAM. (inches)	LIST ANNULAR SEAL MATERIAL AND GRAVEL PACK SIZE-RANGE BY INTERVAL		AMOUNT (cubic feet)	METHOD OF PLACEMENT

FOR OSE INTERNAL USE

WR-20 WELL RECORD & LOG (Version 01/28/2022)

FILE NO. C-04625	POD NO. 1	TRN NO. 726170
LOCATION 26S.30E.28.1.3.2	WELL TAG ID NO. —	PAGE 1 OF 2

DSE DTI AUG 8 2022 AM 10:19

Released to Imaging: 5/9/2024 10:54:13 AM



2904 W 2nd St.
Roswell, NM 88201
voice: 575.624.2420
fax: 575.624.2421
www.atkinseng.com

August 4, 2022

DII-NMOSE
1900 W 2nd Street
Roswell, NM 88201

Hand Delivered to the DII Office of the State Engineer

Re: Well Record C-4625 Pod1

To whom it may concern:

Attached please find a well log & record and a plugging record, in duplicate, for a one (1) soil borings, C-4625 Pod1.

If you have any questions, please contact me at 575.499.9244 or lucas@atkinseng.com.

Sincerely,

A handwritten signature in black ink that reads "Lucas Middleton". The signature is written in a cursive, flowing style.

Lucas Middleton

Enclosures: as noted above

QSE DIT AUG 8 2022 PM 10:19


**COMPLIANCE
SOLUTIONS**

Drilling Method: Air Rotary		Sampling Method: None		Logging By: J. Linn, PG		Drilled By: Talon LPE	
Gravel Pack Type: 10/20 Sand		Gravel Pack Depth Interval: 3 Bags		Seal Type: None		Seal Depth Interval: None	
Casing Type: PVC		Diameter: 2-inch		Depth Interval: 0-101'7"		Boring Total Depth (ft. BGS): 106'7"	
Screen Type: PVC		Slot: 0.010-inch		Diameter: 2-inch		Depth Interval: 101'7" - 106'7"	
				Well Total Depth (ft. BGS): 106'7"		Latitude: 32.016165	
						Longitude: -103.86346	
						Depth to Water (ft. BTWC): >106' 7"	
						DTW Date: 12/16/2020	

Depth Interval (ft)	Recovery (ft)	Plasticity	Moisture	Odor	Staining	PTD (ppm)	USCS	Sample ID	Lithology/Remarks	Well Completion	
0	NM	L	D	N	N	NM	SP	NS	Pale pink to buff colored poorly graded sand with minor silt		
5											
10											
15											
20	NM	L	D	N	N	NM	SW	NS	Pale tan orange well graded fine sand with minor medium and coarse sand		
25											
30											
35											
40	NM	L	D	N	N	NM	SP	NS	Pale orange brown poorly graded fine sand with minor gravel		
45											
50											
55											
60	NM	L	D	N	N	NM	SP	NS	Grey poorly graded fine sand with minor gravel		
65											
70											
75											
80	NM	L	D	N	N	NM	SP	NS	Darker grey poorly graded fine sand with minor silt and minor medium sand		
85											
90											
95											
100	NM	M	D	N	N	NM	SC	NS	Dark grey fine sand with moderate silt and clay - TD 106'7"		
106'7"	Classified as: Imagined 5/0/2024 10:54:12 AM										


HRL
COMPLIANCE
SOLUTIONS
BORING LOG/MONITORING WELL COMPLETION DIAGRAM

Boring/Well Number:		MW-1		Location:		RDX Federal Com 21-43	
Date:		12/9/2020		Client:		WPX Energy	
Logged By:		J. Linn, P.G.		Drilled By:		Talon LPE	
Drilling Method:		Sampling Method:		Seal Type:		Seal Depth Interval:	
Air Rotary		None		None		None	
Gravel Pack Type:		Gravel Pack Depth Interval:		Latitude:		Longitude:	
10/20 Sand		3 Bags		32.022571		-103.884371	
Casing Type:		Diameter:		Depth Interval:		Boring Total Depth (ft. BGS):	
PVC		2-inch		0-100 feet bgs		110	
Screen Type:		Slot:		Diameter:		Depth Interval:	
PVC		0.010-inch		2-inch		100 - 105 ft	
Well Total Depth (ft. BGS):		Depth to Water (ft. BTWC):		DTW Date:			
105		> 105		12/16/2020			

Depth Interval (ft)	Recovery (ft)	Plasticity	Moisture	Odor	Staining	PID (ppm)	USCS	Sample ID	Lithology/Remarks	Well Completion		
0	NM	L	D	N	N	NM	SP	NS	Pale orange to tan poorly graded fine sand			
5												
10												
15												
20	NM	H	D	N	N	NM	CL	NS	Pale orange/tan/pale red clay, dry, with silt, fine sand, and minor caliche			
25	NM	L	D	N	N	NM	SP	NS	Pale orange to pale red poorly graded fine sand			
30												
35												
40												
45	NM	L	D	N	N	NM	SP	NS	Golden yellow poorly graded fine sand with minor silt and clay			
50												
55												
60												
65	NM	L	D	N	N	NM	SP	NS	Pale orange to pale red poorly graded fine sand with minor silt/clay			
70												
75												
80												
85	NM	M	D	N	N	NM	SC	NS	Buff to orange color fine sand with medium sand and clay			
90												
95												
100												
105	NM	H	D	N	N	NM	SC	NS	Golden yellow and buff colored clay with fine sand - TD Boring: 110' BGS; Sand 110' - 105' BGS			

Released to Imaging: 5/9/2024 10:54:13 AM



USGS Home
Contact USGS
Search USGS

National Water Information System: Web Interface

USGS Water Resources

Data Category:
Groundwater

Geographic Area:
New Mexico

GO

Click to hideNews Bulletins

- Explore the NEW [USGS National Water Dashboard](#) interactive map to access real-time water data from over 13,500 stations nationwide.
- [Full News](#)

Groundwater levels for New Mexico

Click to hide state-specific text

Important: [Next Generation Monitoring Location Page](#)

Search Results -- 1 sites found

Agency code = usgs
site_no list =

- 320125103514701

Minimum number of levels = 1
[Save file of selected sites](#) to local disk for future upload

USGS 320125103514701 26S.30E.22.44124

Eddy County, New Mexico
Latitude 32°01'25", Longitude 103°51'47" NAD27
Land-surface elevation 3,044 feet above NGVD29
This well is completed in the Pecos River Basin alluvial aquifer (N100PCSRVR) national aquifer.

Output formats

Table of data
Tab-separated data
Graph of data
Reselect period

Date	Time	? Water-level date-time accuracy	? Parameter code	Water level, feet below land surface	Water level, feet above specific vertical datum	Referenced vertical datum	? Status	? Method of measurement	? Measuring agency	? Source of measurement
1987-10-21			D	62610	2926.97	NGVD29	1		S	
1987-10-21			D	62611	2928.54	NAVD88	1		S	
1987-10-21			D	72019	117.03		1		S	

Explanation

Section	Code	Description
Water-level date-time accuracy	D	Date is accurate to the Day
Parameter code	62610	Groundwater level above NGVD 1929, feet
Parameter code	62611	Groundwater level above NAVD 1988, feet
Parameter code	72019	Depth to water level, feet below land surface
Referenced vertical datum	NAVD88	North American Vertical Datum of 1988
Referenced vertical datum	NGVD29	National Geodetic Vertical Datum of 1929
Status	1	Static
Method of measurement	S	Steel-tape measurement.

Section	Code	Description
Measuring agency		Not determined
Source of measurement		Not determined
Water-level approval status	A	Approved for publication -- Processing and review completed.

- [Questions or Comments](#)
[Automated retrievals](#)
[Help](#)
[Data Tips](#)
[Explanation of terms](#)
[Subscribe for system changes](#)
[News](#)

[Accessibility](#) [FOIA](#) [Privacy](#) [Policies and Notices](#)
[U.S. Department of the Interior](#) | [U.S. Geological Survey](#)
Title: Groundwater for New Mexico: Water Levels
URL: <https://nwis.waterdata.usgs.gov/nm/nwis/gwlevels?>



Page Contact Information: [New Mexico Water Data Maintainer](#)
Page Last Modified: 2023-11-22 08:48:02 EST
0.28 0.24 nadww01

National Flood Hazard Layer FIRMMette



103°53'11"W 32°0'19"N



0 250 500 1,000 1,500 2,000 Feet

1:6,000

103°52'34"W 31°59'49"N

Released to Imaging: 5/9/2024 10:34:13 AM

Basemap Imagery Source: USGS National Map 2023

Legend

SEE FIS REPORT FOR DETAILED LEGEND AND INDEX MAP FOR FIRM PANEL LAYOUT

SPECIAL FLOOD HAZARD AREAS		Without Base Flood Elevation (BFE) Zone A, V, A99
		With BFE or Depth Zone AE, AO, AH, VE, AR
		Regulatory Floodway
OTHER AREAS OF FLOOD HAZARD		0.2% Annual Chance Flood Hazard, Areas of 1% annual chance flood with average depth less than one foot or with drainage areas of less than one square mile Zone X
		Future Conditions 1% Annual Chance Flood Hazard Zone X
		Area with Reduced Flood Risk due to Levee. See Notes. Zone X
		Area with Flood Risk due to Levee Zone D
OTHER AREAS		NO SCREEN Area of Minimal Flood Hazard Zone X
		Effective LOMRs
		Area of Undetermined Flood Hazard Zone D
GENERAL STRUCTURES		Channel, Culvert, or Storm Sewer
		Levee, Dike, or Floodwall
OTHER FEATURES		20.2 Cross Sections with 1% Annual Chance Water Surface Elevation
		17.5
		Coastal Transect
		Base Flood Elevation Line (BFE)
		Limit of Study
		Jurisdiction Boundary
		Coastal Transect Baseline
		Profile Baseline
MAP PANELS		Digital Data Available
		No Digital Data Available
		Unmapped



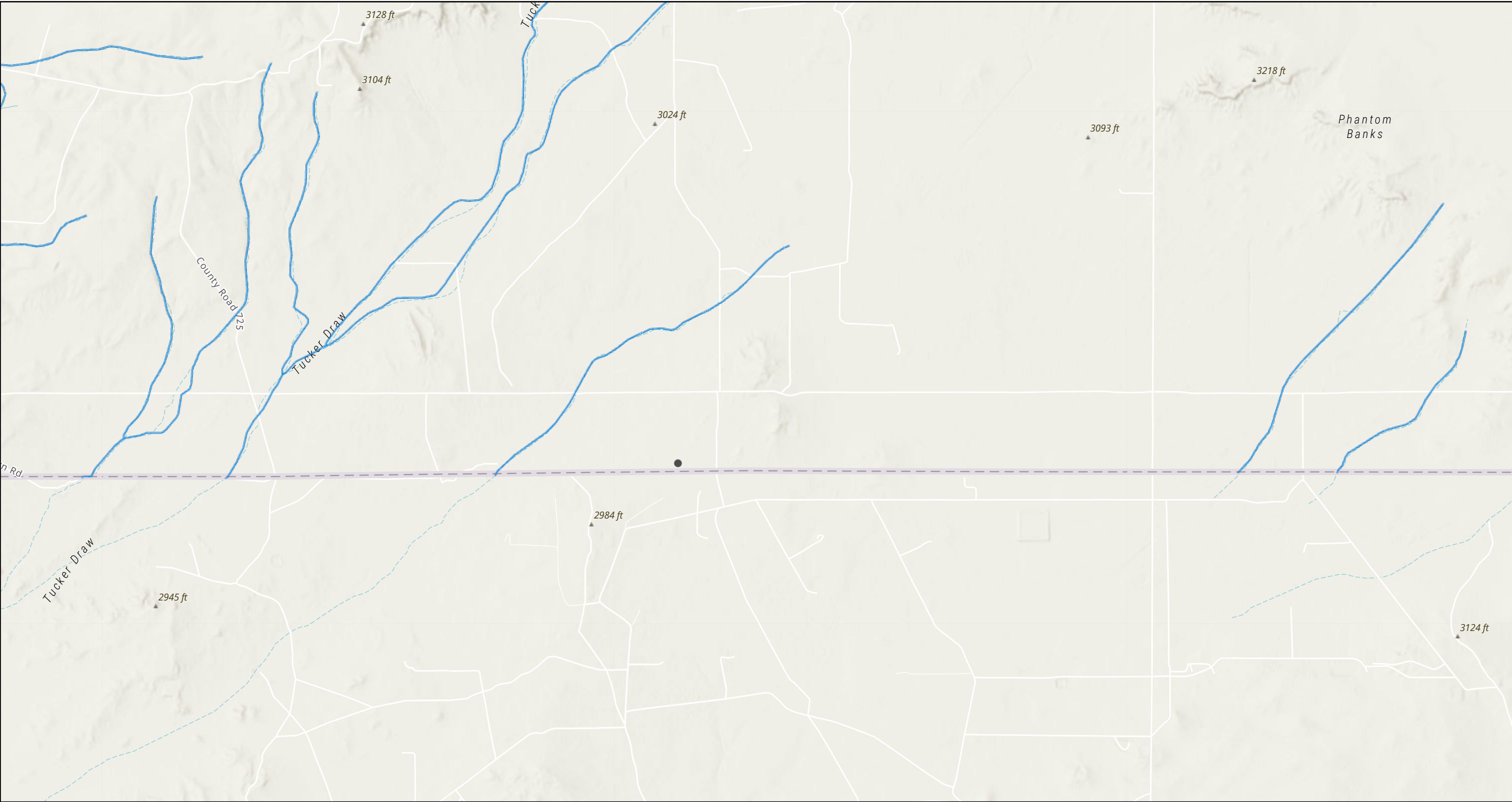
The pin displayed on the map is an approximate point selected by the user and does not represent an authoritative property location.

This map complies with FEMA's standards for the use of digital flood maps if it is not void as described below. The basemap shown complies with FEMA's basemap accuracy standards

The flood hazard information is derived directly from the authoritative NFHL web services provided by FEMA. This map was exported on 1/19/2024 at 9:07 AM and does not reflect changes or amendments subsequent to this date and time. The NFHL and effective information may change or become superseded by new data over time.

This map image is void if the one or more of the following map elements do not appear: basemap imagery, flood zone labels, legend, scale bar, map creation date, community identifiers, FIRM panel number, and FIRM effective date. Map images for unmapped and unmodernized areas cannot be used for regulatory purposes.

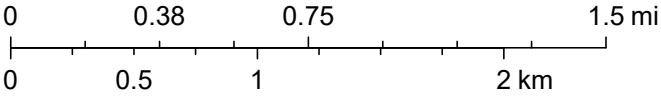
Clawhammer 33 28 21 Federal Com #425H (01.17.2024)



1/19/2024, 8:08:59 AM

OSE Streams

1:36,112



Esri, NASA, NGA, USGS, FEMA, Texas Parks & Wildlife, CONANP, Esri, TomTom, Garmin, SafeGraph, GeoTechnologies, Inc, METI/NASA, USGS, EPA, NPS, US Census Bureau, USDA, USFWS, NM OSE

District I
1625 N. French Dr., Hobbs, NM 88240
Phone:(575) 393-6161 Fax:(575) 393-0720
District II
811 S. First St., Artesia, NM 88210
Phone:(575) 748-1283 Fax:(575) 748-9720
District III
1000 Rio Brazos Rd., Aztec, NM 87410
Phone:(505) 334-6178 Fax:(505) 334-6170
District IV
1220 S. St Francis Dr., Santa Fe, NM 87505
Phone:(505) 476-3470 Fax:(505) 476-3462

State of New Mexico
Energy, Minerals and Natural Resources
Oil Conservation Division
1220 S. St Francis Dr.
Santa Fe, NM 87505

QUESTIONS

Action 342020

QUESTIONS

Operator: WPX Energy Permian, LLC Devon Energy - Regulatory Oklahoma City, OK 73102	OGRID:	246289
	Action Number:	342020
	Action Type:	[C-141] Remediation Closure Request C-141 (C-141-v-Closure)

QUESTIONS

Prerequisites	
Incident ID (n#)	nAPP2401953748
Incident Name	NAPP2401953748 CLAWHAMMER 33-28-21 FED WEST PAD @ 0
Incident Type	Oil Release
Incident Status	Remediation Closure Report Received
Incident Facility	[fAPP2313836673] CLAWHAMMER 33-28-21 FED WEST PAD

Location of Release Source	
Please answer all the questions in this group.	
Site Name	CLAWHAMMER 33-28-21 FED WEST PAD
Date Release Discovered	01/18/2024
Surface Owner	Federal

Incident Details	
Please answer all the questions in this group.	
Incident Type	Oil Release
Did this release result in a fire or is the result of a fire	No
Did this release result in any injuries	No
Has this release reached or does it have a reasonable probability of reaching a watercourse	No
Has this release endangered or does it have a reasonable probability of endangering public health	No
Has this release substantially damaged or will it substantially damage property or the environment	No
Is this release of a volume that is or may with reasonable probability be detrimental to fresh water	No

Nature and Volume of Release	
Material(s) released, please answer all that apply below. Any calculations or specific justifications for the volumes provided should be attached to the follow-up C-141 submission.	
Crude Oil Released (bbls) Details	Cause: Equipment Failure Pump Crude Oil Released: 20 BBL Recovered: 20 BBL Lost: 0 BBL.
Produced Water Released (bbls) Details	Cause: Equipment Failure Pump Produced Water Released: 20 BBL Recovered: 20 BBL Lost: 0 BBL.
Is the concentration of chloride in the produced water >10,000 mg/l	Yes
Condensate Released (bbls) Details	Not answered.
Natural Gas Vented (Mcf) Details	Not answered.
Natural Gas Flared (Mcf) Details	Not answered.
Other Released Details	Not answered.
Are there additional details for the questions above (i.e. any answer containing Other, Specify, Unknown, and/or Fire, or any negative lost amounts)	Not answered.

District I

1625 N. French Dr., Hobbs, NM 88240
Phone:(575) 393-6161 Fax:(575) 393-0720

District II

811 S. First St., Artesia, NM 88210
Phone:(575) 748-1283 Fax:(575) 748-9720

District III

1000 Rio Brazos Rd., Aztec, NM 87410
Phone:(505) 334-6178 Fax:(505) 334-6170

District IV

1220 S. St Francis Dr., Santa Fe, NM 87505
Phone:(505) 476-3470 Fax:(505) 476-3462

State of New Mexico
Energy, Minerals and Natural Resources
Oil Conservation Division
1220 S. St Francis Dr.
Santa Fe, NM 87505

QUESTIONS, Page 2

Action 342020

QUESTIONS (continued)

Operator: WPX Energy Permian, LLC Devon Energy - Regulatory Oklahoma City, OK 73102	OGRID:	246289
	Action Number:	342020
	Action Type:	[C-141] Remediation Closure Request C-141 (C-141-v-Closure)

QUESTIONS

Nature and Volume of Release (continued)	
Is this a gas only submission (i.e. only significant Mcf values reported)	No, according to supplied volumes this does not appear to be a "gas only" report.
Was this a major release as defined by Subsection A of 19.15.29.7 NMAC	Yes
Reasons why this would be considered a submission for a notification of a major release	From paragraph A. "Major release" determine using: (1) an unauthorized release of a volume, excluding gases, of 25 barrels or more.
<i>With the implementation of the 19.15.27 NMAC (05/25/2021), venting and/or flaring of natural gas (i.e. gas only) are to be submitted on the C-129 form.</i>	

Initial Response

The responsible party must undertake the following actions immediately unless they could create a safety hazard that would result in injury.

The source of the release has been stopped	True
The impacted area has been secured to protect human health and the environment	True
Released materials have been contained via the use of berms or dikes, absorbent pads, or other containment devices	True
All free liquids and recoverable materials have been removed and managed appropriately	True
If all the actions described above have not been undertaken, explain why	Not answered.

Per Paragraph (4) of Subsection B of 19.15.29.8 NMAC the responsible party may commence remediation immediately after discovery of a release. If remediation has begun, please prepare and attach a narrative of actions to date in the follow-up C-141 submission. If remedial efforts have been successfully completed or if the release occurred within a lined containment area (see Subparagraph (a) of Paragraph (5) of Subsection A of 19.15.29.11 NMAC), please prepare and attach all information needed for closure evaluation in the follow-up C-141 submission.

I hereby certify that the information given above is true and complete to the best of my knowledge and understand that pursuant to OCD rules and regulations all operators are required to report and/or file certain release notifications and perform corrective actions for releases which may endanger public health or the environment. The acceptance of a C-141 report by the OCD does not relieve the operator of liability should their operations have failed to adequately investigate and remediate contamination that pose a threat to groundwater, surface water, human health or the environment. In addition, OCD acceptance of a C-141 report does not relieve the operator of responsibility for compliance with any other federal, state, or local laws and/or regulations.

I hereby agree and sign off to the above statement	Name: James Raley Title: EHS Professional Email: jim.raley@dmv.com Date: 05/08/2024
--	--

District I

1625 N. French Dr., Hobbs, NM 88240
Phone:(575) 393-6161 Fax:(575) 393-0720

District II

811 S. First St., Artesia, NM 88210
Phone:(575) 748-1283 Fax:(575) 748-9720

District III

1000 Rio Brazos Rd., Aztec, NM 87410
Phone:(505) 334-6178 Fax:(505) 334-6170

District IV

1220 S. St Francis Dr., Santa Fe, NM 87505
Phone:(505) 476-3470 Fax:(505) 476-3462

State of New Mexico
Energy, Minerals and Natural Resources
Oil Conservation Division
1220 S. St Francis Dr.
Santa Fe, NM 87505

QUESTIONS, Page 3

Action 342020

QUESTIONS (continued)

Operator: WPX Energy Permian, LLC Devon Energy - Regulatory Oklahoma City, OK 73102	OGRID:	246289
	Action Number:	342020
	Action Type:	[C-141] Remediation Closure Request C-141 (C-141-v-Closure)

QUESTIONS**Site Characterization**

Please answer all the questions in this group (only required when seeking remediation plan approval and beyond). This information must be provided to the appropriate district office no later than 90 days after the release discovery date.

What is the shallowest depth to groundwater beneath the area affected by the release in feet below ground surface (ft bgs)	Between 100 and 500 (ft.)
What method was used to determine the depth to ground water	NM OSE iWaters Database Search
Did this release impact groundwater or surface water	No
What is the minimum distance, between the closest lateral extents of the release and the following surface areas:	
A continuously flowing watercourse or any other significant watercourse	Between ½ and 1 (mi.)
Any lakebed, sinkhole, or playa lake (measured from the ordinary high-water mark)	Between ½ and 1 (mi.)
An occupied permanent residence, school, hospital, institution, or church	Greater than 5 (mi.)
A spring or a private domestic fresh water well used by less than five households for domestic or stock watering purposes	Greater than 5 (mi.)
Any other fresh water well or spring	Greater than 5 (mi.)
Incorporated municipal boundaries or a defined municipal fresh water well field	Greater than 5 (mi.)
A wetland	Greater than 5 (mi.)
A subsurface mine	Greater than 5 (mi.)
An (non-karst) unstable area	Greater than 5 (mi.)
Categorize the risk of this well / site being in a karst geology	Medium
A 100-year floodplain	Greater than 5 (mi.)
Did the release impact areas not on an exploration, development, production, or storage site	No

Remediation Plan

Please answer all the questions that apply or are indicated. This information must be provided to the appropriate district office no later than 90 days after the release discovery date.

Requesting a remediation plan approval with this submission	Yes
Attach a comprehensive report demonstrating the lateral and vertical extents of soil contamination associated with the release have been determined, pursuant to 19.15.29.11 NMAC and 19.15.29.13 NMAC.	
Have the lateral and vertical extents of contamination been fully delineated	Yes
Was this release entirely contained within a lined containment area	Yes
Per Subsection B of 19.15.29.11 NMAC unless the site characterization report includes completed efforts at remediation, the report must include a proposed remediation plan in accordance with 19.15.29.12 NMAC, which includes the anticipated timelines for beginning and completing the remediation.	
On what estimated date will the remediation commence	05/02/2024
On what date will (or did) the final sampling or liner inspection occur	05/02/2024
On what date will (or was) the remediation complete(d)	05/02/2024
What is the estimated surface area (in square feet) that will be remediated	36012
What is the estimated volume (in cubic yards) that will be remediated	0
These estimated dates and measurements are recognized to be the best guess or calculation at the time of submission and may (be) change(d) over time as more remediation efforts are completed.	
The OCD recognizes that proposed remediation measures may have to be minimally adjusted in accordance with the physical realities encountered during remediation. If the responsible party has any need to significantly deviate from the remediation plan proposed, then it should consult with the division to determine if another remediation plan submission is required.	

District I

1625 N. French Dr., Hobbs, NM 88240
Phone:(575) 393-6161 Fax:(575) 393-0720

District II

811 S. First St., Artesia, NM 88210
Phone:(575) 748-1283 Fax:(575) 748-9720

District III

1000 Rio Brazos Rd., Aztec, NM 87410
Phone:(505) 334-6178 Fax:(505) 334-6170

District IV

1220 S. St Francis Dr., Santa Fe, NM 87505
Phone:(505) 476-3470 Fax:(505) 476-3462

State of New Mexico
Energy, Minerals and Natural Resources
Oil Conservation Division
1220 S. St Francis Dr.
Santa Fe, NM 87505

QUESTIONS, Page 4

Action 342020

QUESTIONS (continued)

Operator: WPX Energy Permian, LLC Devon Energy - Regulatory Oklahoma City, OK 73102	OGRID:	246289
	Action Number:	342020
	Action Type:	[C-141] Remediation Closure Request C-141 (C-141-v-Closure)

QUESTIONS**Remediation Plan (continued)**

Please answer all the questions that apply or are indicated. This information must be provided to the appropriate district office no later than 90 days after the release discovery date.

This remediation will (or is expected to) utilize the following processes to remediate / reduce contaminants:

(Select all answers below that apply.)

Is (or was) there affected material present needing to be removed	Yes
Is (or was) there a power wash of the lined containment area (to be) performed	Yes
OTHER (Non-listed remedial process)	Not answered.

Per Subsection B of 19.15.29.11 NMAC unless the site characterization report includes completed efforts at remediation, the report must include a proposed remediation plan in accordance with 19.15.29.12 NMAC, which includes the anticipated timelines for beginning and completing the remediation.

I hereby certify that the information given above is true and complete to the best of my knowledge and understand that pursuant to OCD rules and regulations all operators are required to report and/or file certain release notifications and perform corrective actions for releases which may endanger public health or the environment. The acceptance of a C-141 report by the OCD does not relieve the operator of liability should their operations have failed to adequately investigate and remediate contamination that pose a threat to groundwater, surface water, human health or the environment. In addition, OCD acceptance of a C-141 report does not relieve the operator of responsibility for compliance with any other federal, state, or local laws and/or regulations.

I hereby agree and sign off to the above statement	Name: James Raley Title: EHS Professional Email: jim.raley@dvsn.com Date: 05/08/2024
--	---

The OCD recognizes that proposed remediation measures may have to be minimally adjusted in accordance with the physical realities encountered during remediation. If the responsible party has any need to significantly deviate from the remediation plan proposed, then it should consult with the division to determine if another remediation plan submission is required.

District I

1625 N. French Dr., Hobbs, NM 88240
Phone:(575) 393-6161 Fax:(575) 393-0720

District II

811 S. First St., Artesia, NM 88210
Phone:(575) 748-1283 Fax:(575) 748-9720

District III

1000 Rio Brazos Rd., Aztec, NM 87410
Phone:(505) 334-6178 Fax:(505) 334-6170

District IV

1220 S. St Francis Dr., Santa Fe, NM 87505
Phone:(505) 476-3470 Fax:(505) 476-3462

State of New Mexico
Energy, Minerals and Natural Resources
Oil Conservation Division
1220 S. St Francis Dr.
Santa Fe, NM 87505

QUESTIONS, Page 6

Action 342020

QUESTIONS (continued)

Operator: WPX Energy Permian, LLC Devon Energy - Regulatory Oklahoma City, OK 73102	OGRID:
	246289
	Action Number:
	342020
Action Type: [C-141] Remediation Closure Request C-141 (C-141-v-Closure)	

QUESTIONS

Liner Inspection Information	
Last liner inspection notification (C-141L) recorded	337700
Liner inspection date pursuant to Subparagraph (a) of Paragraph (5) of Subsection A of 19.15.29.11 NMAC	05/03/2024
Was all the impacted materials removed from the liner	Yes
What was the liner inspection surface area in square feet	17554

Remediation Closure Request

Only answer the questions in this group if seeking remediation closure for this release because all remediation steps have been completed.

Requesting a remediation closure approval with this submission	Yes
Have the lateral and vertical extents of contamination been fully delineated	Yes
Was this release entirely contained within a lined containment area	Yes
What was the total surface area (in square feet) remediated	36012
What was the total volume (cubic yards) remediated	0
Summarize any additional remediation activities not included by answers (above)	Liner was washed and successfully inspected.

The responsible party must attach information demonstrating they have complied with all applicable closure requirements and any conditions or directives of the OCD. This demonstration should be in the form of a comprehensive report (in .pdf format) including a scaled site map, sampling diagrams, relevant field notes, photographs of any excavation prior to backfilling, laboratory data including chain of custody documents of final sampling, and a narrative of the remedial activities. Refer to 19.15.29.12 NMAC.

I hereby certify that the information given above is true and complete to the best of my knowledge and understand that pursuant to OCD rules and regulations all operators are required to report and/or file certain release notifications and perform corrective actions for releases which may endanger public health or the environment. The acceptance of a C-141 report by the OCD does not relieve the operator of liability should their operations have failed to adequately investigate and remediate contamination that pose a threat to groundwater, surface water, human health or the environment. In addition, OCD acceptance of a C-141 report does not relieve the operator of responsibility for compliance with any other federal, state, or local laws and/or regulations. The responsible party acknowledges they must substantially restore, reclaim, and re-vegetate the impacted surface area to the conditions that existed prior to the release or their final land use in accordance with 19.15.29.13 NMAC including notification to the OCD when reclamation and re-vegetation are complete.

I hereby agree and sign off to the above statement	Name: James Raley Title: EHS Professional Email: jim.raley@dmn.com Date: 05/08/2024
--	--

District I
1625 N. French Dr., Hobbs, NM 88240
Phone:(575) 393-6161 Fax:(575) 393-0720
District II
811 S. First St., Artesia, NM 88210
Phone:(575) 748-1283 Fax:(575) 748-9720
District III
1000 Rio Brazos Rd., Aztec, NM 87410
Phone:(505) 334-6178 Fax:(505) 334-6170
District IV
1220 S. St Francis Dr., Santa Fe, NM 87505
Phone:(505) 476-3470 Fax:(505) 476-3462

State of New Mexico
Energy, Minerals and Natural Resources
Oil Conservation Division
1220 S. St Francis Dr.
Santa Fe, NM 87505

CONDITIONS

Action 342020

CONDITIONS

Operator: WPX Energy Permian, LLC Devon Energy - Regulatory Oklahoma City, OK 73102	OGRID: 246289
	Action Number: 342020
	Action Type: [C-141] Remediation Closure Request C-141 (C-141-v-Closure)

CONDITIONS

Created By	Condition	Condition Date
scwells	None	5/9/2024