

Spill Volume(Bbls) Calculator		
<i>Inputs in blue, Outputs in red</i>		
Length(Ft)	Width(Ft)	Depth(In)
<u>74.000</u>	<u>40.000</u>	<u>1.000</u>
Cubic Feet Impacted		<u>246.667</u>
Barrels		<u>43.93</u>
Soil Type		Lined Containment
Bbls Assuming 100% Saturation		<u>43.93</u>
Saturation	Fluid present with shovel/backhoe	
Estimated Barrels Released		44.00000

Instructions
1. Input spill measurements below. Length and width need to be input in feet and depth in inches.
2. Select a soil type from the drop down menu.
3. Select a saturation level from the drop down menu.
(For data gathering instructions see appendix tab)

Measurements	
Length (ft)	74
Width (ft)	40
Depth (in)	1.000









April 14, 2024

NMOCD District 2
Mike Bratcher
Artesia, NM 88210

Bureau of Land Management
Crisha Morgan
Carlsbad Field Office

Re: Site Assessment and Closure Report
Bragg 10 Fee #1H
API No. 30-015-41462
GPS: Latitude 32.6682816 Longitude -104.3772125
UL "M", Sec. 10, T19S, R26E
Eddy County, NM
NMOCD Ref. No. NAPP2236229593

Paragon Environmental, LLC (Paragon) has been contracted by Spur Energy Partners (Spur) to perform a spill assessment, conduct remediation activities and write a closure report for the release site known as the Bragg 10 Fee #1H (Bragg). Details of the release are summarized below:

Release Details			
Type of Release:	Produced Water	Volume of Release:	44 bbls
		Volume Recovered:	44 bbls
Source of Release:	Fire Tube	Date of Release:	12/27/22
Was Immediate Notice Given?	Yes	If, Yes, to Whom?	Mike Bratcher, NMOCD
Was a Watercourse Reached?	No	If Yes, Volume Impacting Watercourse:	N/A
Surface Owner:	Private	Mineral Owner:	Private
Internal corrosion caused a hole in the fire tube to release produced water into the lined containment.			

Topographical and Aerial Maps are provided in Figures #2 and #4.

REGULATORY FRAMEWORK

Surface impacts from unauthorized releases of fluids or gases are generally regulated by the New Mexico Oil Conservation Division (NMOCD) in accordance with 19.15.29 of the New Mexico Administrative Code (NMAC). 19.15.29 NMAC establishes reporting, site assessment/characterization, remediation, closure, variance, and enforcement procedures. Table I of 19.15.29.12 NMAC determines the closure criteria for soils impacted by a release based on depth to groundwater and the following characteristics:

A search of the groundwater database maintained by the New Mexico Office of the State Engineer (NMOSE) was conducted to determine the average groundwater depth within one (1) Mile radius of the Release Site and identify any registered water wells within ½ Mile of the Release Site. The data initially found on the State Engineers website showed no water data within a ½ mile radius. With this being the case, we cleaned it up to the most stringent criteria.

Depth to groundwater information is provided in Appendix A.

Per the New Mexico Bureau of Geology and Mineral Resources, the geology is in the Quaternary Formation- and is made up of Piedmont alluvial deposits (Holocene to lower Pleistocene)—Includes deposits of higher gradient tributaries bordering major stream valleys, alluvial veneers of the piedmont slope, and alluvial fans. May locally include uppermost Pliocene deposits (QP). The soil in this area is made up of Reagan Loam, with 0 to 3 percent slopes, according to the United States Department of Agriculture Natural Resources Conservation Service. The drainage courses in this area are well-drained. There is NOT a high potential for karst geology to be present around the Bragg (Figure #3).

The Soil Survey and FEMA Flood Map are provided in Appendix B. A Karst Map is provided in Figure #3.

TABLE I CLOSURE CRITERIA FOR SOILS IMPACTED BY A RELEASE			
	Constituent	Method	Limit
<50 Feet	Chloride	EPA 300.0	600 mg/kg
	TPH (GRO+DRO+MRO)	EPA SW-846 Method 8015M	100 mg/kg
	BTEX	EPA SW-846 Method 8021B or 8260B	50 mg/kg
	Benzene	EPA SW-846 Method 8021B or 8260B	10 mg/kg

INITIAL SITE ASSESSMENT

On March 26, 2024, Paragon conducted a site visit to evaluate the site. Upon arrival, we found that it was a falcon lined containment. There was no evidence that any fluids had breached the containment, therefore no samples were taken. However, there was still an area of the containment that needed to be cleaned.

A Site Map is provided in Figure #1.

REMEDATION ACTIVITIES

On March 28, 2024, Paragon mobilized personnel and equipment to conduct remedial activities. Based on the site characteristics and field observations made during the site assessment, the following details the remedial activities we conducted to advance the Release Site toward an NMOCD-approved site closure.

- We utilized a vac truck, power washer and hand crew to clean up the residue and staining of the liner.
- The surface staining affected an area measured app 930 S/F.
- After the cleaning was performed, a notification was submitted, and a liner inspection was performed to ensure the liner was intact. The liner inspection sheet can be found in Appendix C.

CLOSURE REQUEST

After careful review, Paragon requests that the incident, NAPP2236229593, be closed. Spur has complied with the applicable closure requirements outlined in rule 19.15.19.12 NMAC.

If you have any questions or need additional information, please contact Tristan Jones by phone at (575)318-6841 or email at tristan@paragonenvironmental.net.

Respectfully,



Tristan Jones
Project Coordinator
Paragon Environmental, LLC



Chris Jones
Environmental Professional
Paragon Environmental, LLC



Attachments

Figures:

- 1- Site Map
- 2- Topographic Map
- 3- Karst Map
- 4- Aerial Map

Appendices:

- Appendix A – Referenced Water Surveys
Appendix B – Soil Survey and FEMA Flood Map
Appendix C – Inspection Notification, Liner Inspection, & Photographic Documentation




Figures:

- 1- Site Map
- 2- Topo Map
- 3- Karst Map
- 4- Aerial Map

Spur Energy Partners

Bragg 10 Fee #1H
API# 30-015-41462
Eddy County, NM
Site Map

Legend

 Spill Area 930 S/F

Bragg 10 Fee 1H

Google Earth

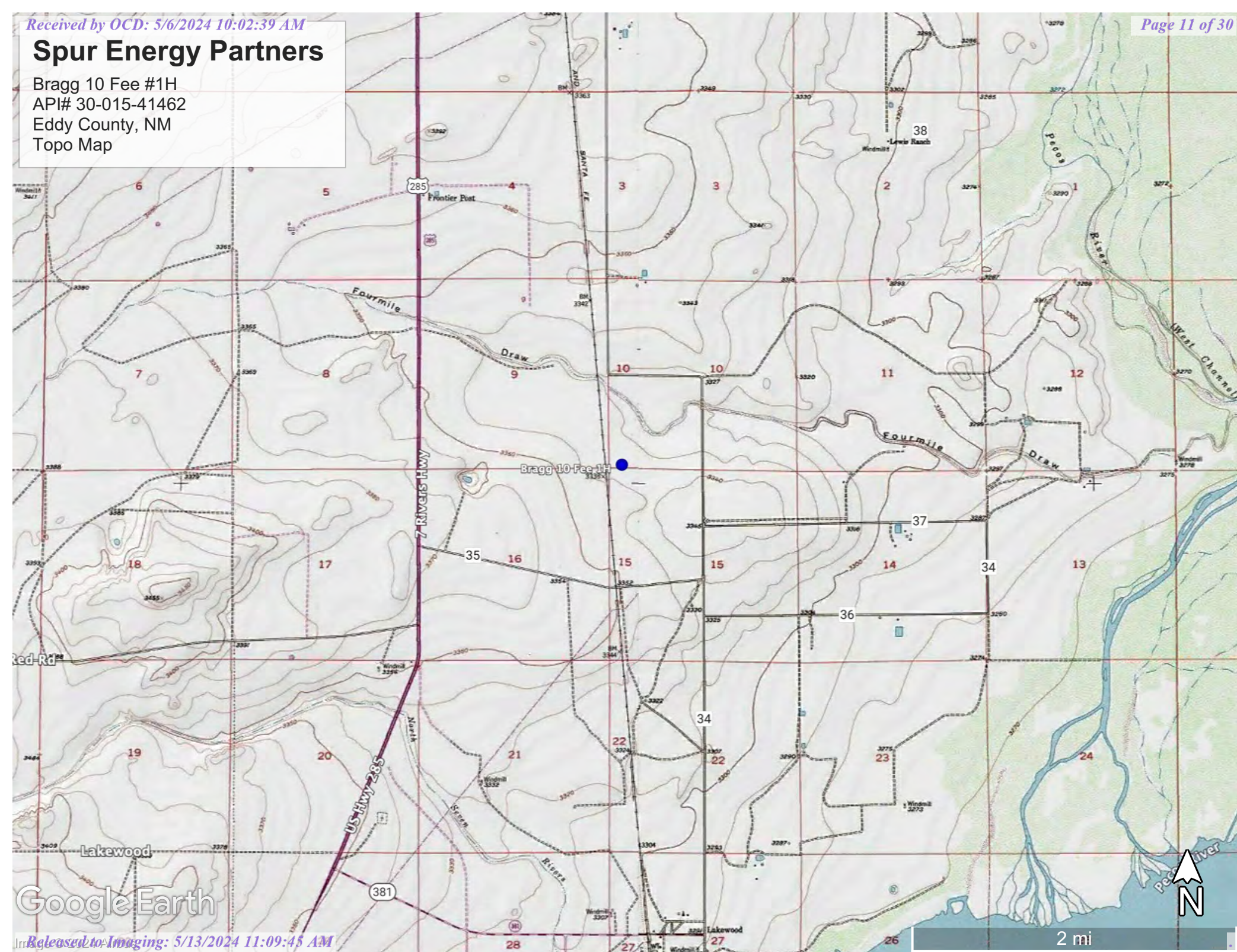
Released to Imaging: 5/13/2024 11:09:45 AM



100 ft

Spur Energy Partners

Bragg 10 Fee #1H
API# 30-015-41462
Eddy County, NM
Topo Map



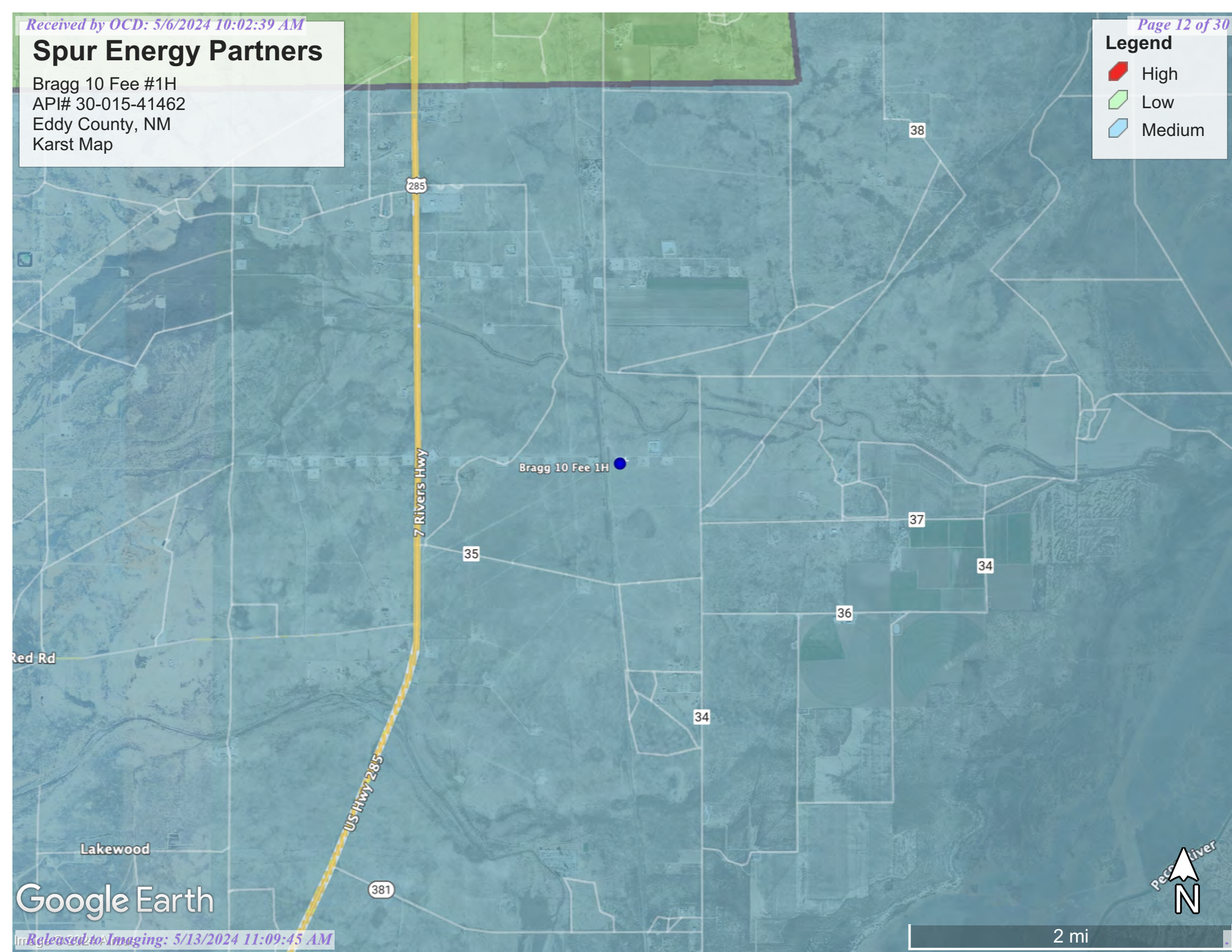
Google Earth

Spur Energy Partners

Bragg 10 Fee #1H
API# 30-015-41462
Eddy County, NM
Karst Map

Legend

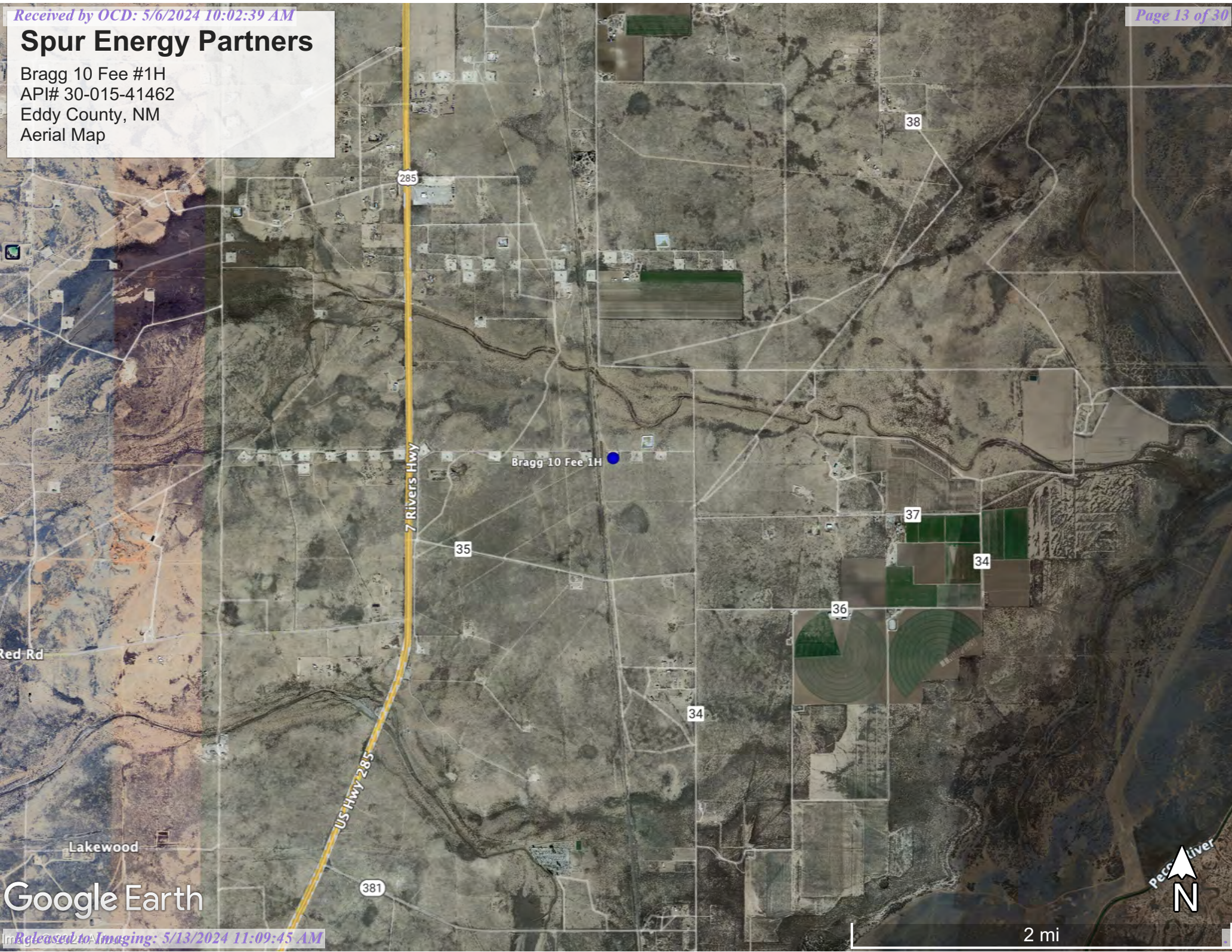
- High
- Low
- Medium



Google Earth

Spur Energy Partners

Bragg 10 Fee #1H
API# 30-015-41462
Eddy County, NM
Aerial Map



Red Rd

Lakewood

Google Earth



Appendix A
Referenced Water Data:

New Mexico State of Engineers Office



New Mexico Office of the State Engineer

Water Column/Average Depth to Water






(A CLW#### in the
POD suffix indicates the
POD has been replaced
& no longer serves a
water right file.)

(R=POD has been
replaced,
O=orphaned,
C=the file is
closed)

(quarters are 1=NW 2=NE 3=SW 4=SE)
(quarters are smallest to largest)

(NAD83 UTM in meters)

(In feet)

POD Number	POD Sub-basin	Q	Q	Q	Sec	Tws	Rng	X	Y	Distance	Depth Well	Depth Water	Water Column
RA01215	RA	ED	4	3	3	10	19S	26E	558603	3614739*		213	1192
RA03564	RA	ED	1	1	1	10	19S	26E	558491	3616060*		1379	200
RA01215 CLW	RA	ED	2	1	1	10	19S	26E	558590	3616159*		1487	880
RA01215 CLWPU	RA	ED	2	1	1	10	19S	26E	558590	3616159*		1487	1000
RA03118	RA	ED	2	1	1	10	19S	26E	558590	3616159*		1487	195

Average Depth to Water: 60 feet

Minimum Depth: 50 feet

Maximum Depth: 70 feet

Record Count: 5

UTM NAD83 Radius Search (in meters):

Easting (X): 558396.541

Northing (Y): 3614684.133

Radius: 1500

*UTM location was derived from PLSS - see Help

The data is furnished by the NMOSE/ISC and is accepted by the recipient with the expressed understanding that the OSE/ISC make no warranties, expressed or implied, concerning the accuracy, completeness, reliability, usability, or suitability for any particular purpose of the data.

2/20/24 11:39 AM

WATER COLUMN/ AVERAGE DEPTH TO WATER



Appendix B
Soil Survey:

U.S.D.A.

FEMA Flood Map

Map Unit Description: Reagan loam, 0 to 3 percent slopes---Eddy Area, New Mexico

Eddy Area, New Mexico

RA—Reagan loam, 0 to 3 percent slopes

Map Unit Setting

National map unit symbol: 1w5c

Elevation: 1,100 to 4,400 feet

Mean annual precipitation: 7 to 14 inches

Mean annual air temperature: 60 to 70 degrees F

Frost-free period: 200 to 240 days

Farmland classification: Farmland of statewide importance

Map Unit Composition

Reagan and similar soils: 98 percent

Minor components: 2 percent

Estimates are based on observations, descriptions, and transects of the mapunit.

Description of Reagan

Setting

Landform: Fan remnants, alluvial fans

Landform position (three-dimensional): Rise

Down-slope shape: Convex, linear

Across-slope shape: Linear

Parent material: Alluvium and/or eolian deposits

Typical profile

H1 - 0 to 8 inches: loam

H2 - 8 to 60 inches: loam

Properties and qualities

Slope: 0 to 3 percent

Depth to restrictive feature: More than 80 inches

Drainage class: Well drained

Runoff class: Low

Capacity of the most limiting layer to transmit water

(Ksat): Moderately high to high (0.60 to 2.00 in/hr)

Depth to water table: More than 80 inches

Frequency of flooding: None

Frequency of ponding: None

Calcium carbonate, maximum content: 40 percent

Maximum salinity: Very slightly saline to moderately saline (2.0 to 8.0 mmhos/cm)

Sodium adsorption ratio, maximum: 1.0

Available water supply, 0 to 60 inches: Moderate (about 8.2 inches)

Interpretive groups

Land capability classification (irrigated): 2e

Land capability classification (nonirrigated): 6e

Hydrologic Soil Group: B

Map Unit Description: Reagan loam, 0 to 3 percent slopes---Eddy Area, New Mexico

Ecological site: R070BC007NM - Loamy
Hydric soil rating: No

Minor Components

Upton

Percent of map unit: 1 percent
Ecological site: R070BC025NM - Shallow
Hydric soil rating: No

Atoka

Percent of map unit: 1 percent
Ecological site: R070BC007NM - Loamy
Hydric soil rating: No

Data Source Information

Soil Survey Area: Eddy Area, New Mexico
Survey Area Data: Version 19, Sep 7, 2023

National Flood Hazard Layer FIRMette



104°22'57"W 32°40'21"N



Released to Imaging: 5/13/2024 11:09:45 AM

1:6,000

104°22'19"W 32°39'51"N

Basemap Imagery Source: USGS National Map 2023

Legend

SEE FIS REPORT FOR DETAILED LEGEND AND INDEX MAP FOR FIRM PANEL LAYOUT

SPECIAL FLOOD HAZARD AREAS		Without Base Flood Elevation (BFE) Zone A, V, A99
		With BFE or Depth Zone AE, AO, AH, VE, AR
		Regulatory Floodway
OTHER AREAS OF FLOOD HAZARD		0.2% Annual Chance Flood Hazard, Areas of 1% annual chance flood with average depth less than one foot or with drainage areas of less than one square mile Zone X
		Future Conditions 1% Annual Chance Flood Hazard Zone X
		Area with Reduced Flood Risk due to Levee. See Notes. Zone X
		Area with Flood Risk due to Levee Zone D
OTHER AREAS		NO SCREEN Area of Minimal Flood Hazard Zone X
		Effective LOMRs
GENERAL STRUCTURES		Area of Undetermined Flood Hazard Zone D
		Channel, Culvert, or Storm Sewer
		Levee, Dike, or Floodwall
OTHER FEATURES		Cross Sections with 1% Annual Chance Water Surface Elevation
		Coastal Transect
		Base Flood Elevation Line (BFE)
		Limit of Study
		Jurisdiction Boundary
		Coastal Transect Baseline
		Profile Baseline
MAP PANELS		Digital Data Available
		No Digital Data Available
		Unmapped



The pin displayed on the map is an approximate point selected by the user and does not represent an authoritative property location.

This map complies with FEMA's standards for the use of digital flood maps if it is not void as described below. The basemap shown complies with FEMA's basemap accuracy standards

The flood hazard information is derived directly from the authoritative NFHL web services provided by FEMA. This map was exported on 4/29/2024 at 10:40 AM and does not reflect changes or amendments subsequent to this date and time. The NFHL and effective information may change or become superseded by new data over time.

This map image is void if the one or more of the following map elements do not appear: basemap imagery, flood zone labels, legend, scale bar, map creation date, community identifiers, FIRM panel number, and FIRM effective date. Map images for unmapped and unmodernized areas cannot be used for regulatory purposes.



Appendix C:

Notification

Liner Inspection

Photographic Documentation



Angel Pena <angel@paragonenvironmental.net>

The Oil Conservation Division (OCD) has accepted the application, Application ID: 325880

<OCDOnline@state.nm.us>

Fri, Mar 22 at 10:34 AM

To: <angel@paragonenvironmental.net>

To whom it may concern (c/o Angel Pena for Spur Energy Partners LLC),

The OCD has received the submitted *Notification for Liner Inspection for a Release* (C-141L), for incident ID (n#) nAPP2236229593.

The liner inspection is expected to take place:

When: 03/26/2024 @ 11:00

Where: M-10-19S-26E 0 FNL 0 FEL (32.66828,-104.37721)

Additional Information: Angel Pena
575-605-0773

Additional Instructions: 32.66828,-104.37721

An OCD representative may be available onsite at the date and time reported. In the absence or presence of an OCD representative, liner inspection pursuant to 19.15.29.11.A(5)(a) NMAC is required. Should there be a change in the scheduled date and time of the sampling event, then another notification should be resubmitted through OCD permitting as soon as possible.

- **Failure to notify the OCD of liner inspections including any changes in date/time per the requirements of 19.15.29.11.A(5)(a)(ii) NMAC, may result in the inspection not being accepted.**

If you have any questions regarding this application, or don't know why you have received this email, please contact us.

New Mexico Energy, Minerals and Natural Resources Department
[1220 South St. Francis Drive](#)
[Santa Fe, NM 87505](#)



Paragon Environmental LLC

Liner Inspection Form

Company Name: SPUR Energy

Site: Bagg 10 Feedhoppers

Lat/Long: 32.66828, -104.37721

NMOCD Incident ID & Incident Date: Na PP2236229593

2-Day Notification Sent: 03-22-24

Inspection Date: 03-26-24

Liner Type: Earthen w/liner Earthen no liner Polystar
 Steel w/poly liner Steel w/spray epoxy No Liner

Other: _____

Visualization	Yes	No	Comments
Is there a tear in the liner?		✓	
Are there holes in the liner?		✓	
Is the liner retaining any fluids?		✓	
Does the liner have integrity to contain a leak?	✓		

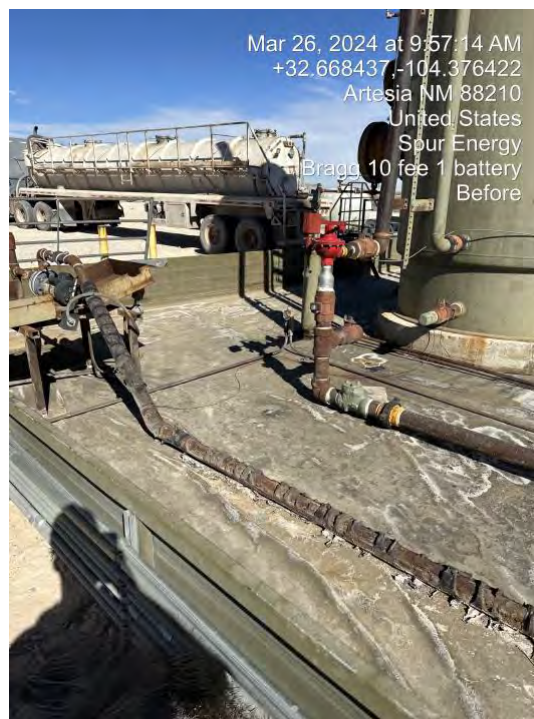
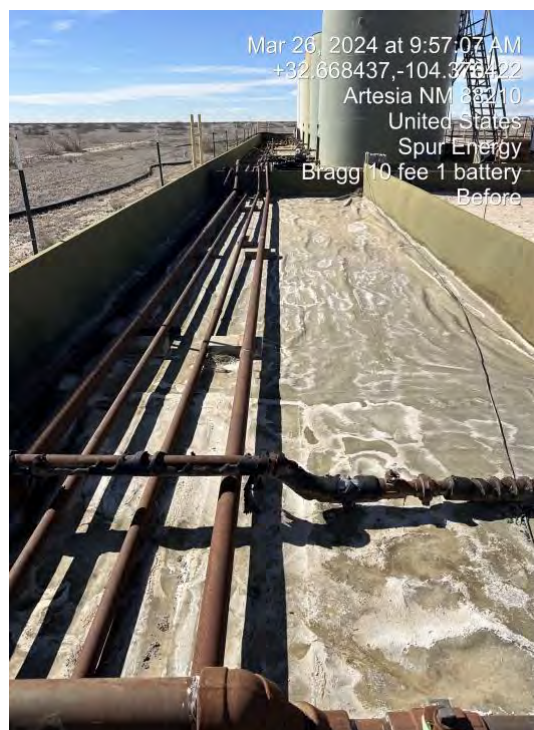
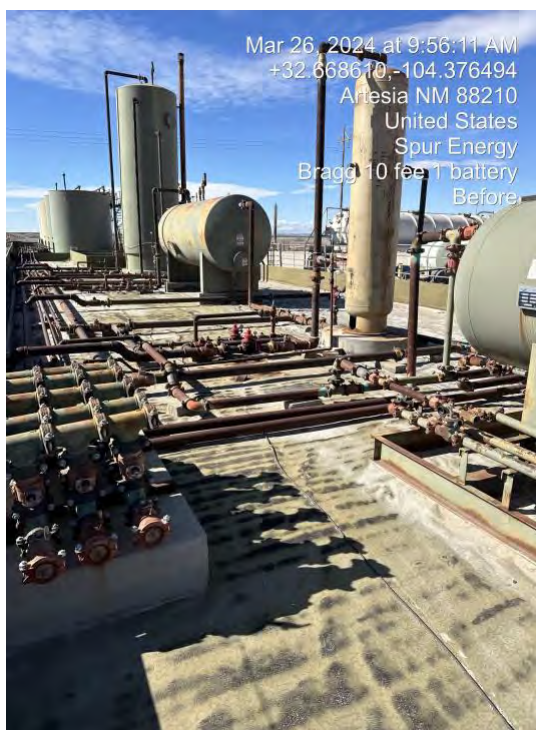
Comments: liner is cleaned up and looks good

Inspector Name: Angel O. Perez Inspector Signature: [Signature]



Photographic Documentation

Before





After



District I
1625 N. French Dr., Hobbs, NM 88240
Phone:(575) 393-6161 Fax:(575) 393-0720
District II
811 S. First St., Artesia, NM 88210
Phone:(575) 748-1283 Fax:(575) 748-9720
District III
1000 Rio Brazos Rd., Aztec, NM 87410
Phone:(505) 334-6178 Fax:(505) 334-6170
District IV
1220 S. St Francis Dr., Santa Fe, NM 87505
Phone:(505) 476-3470 Fax:(505) 476-3462

State of New Mexico
Energy, Minerals and Natural Resources
Oil Conservation Division
1220 S. St Francis Dr.
Santa Fe, NM 87505

QUESTIONS

Action 341063

QUESTIONS

Operator: Spur Energy Partners LLC 9655 Katy Freeway Houston, TX 77024	OGRID:	328947
	Action Number:	341063
	Action Type:	[C-141] Remediation Closure Request C-141 (C-141-v-Closure)

QUESTIONS

Prerequisites	
Incident ID (n#)	nAPP2236229593
Incident Name	NAPP2236229593 BRAGG 10 FEE #001H @ 30-015-41462
Incident Type	Produced Water Release
Incident Status	Remediation Closure Report Received
Incident Well	[30-015-41462] BRAGG 10 FEE #001H

Location of Release Source	
Please answer all the questions in this group.	
Site Name	BRAGG 10 FEE #001H
Date Release Discovered	12/27/2022
Surface Owner	Private

Incident Details	
Please answer all the questions in this group.	
Incident Type	Produced Water Release
Did this release result in a fire or is the result of a fire	No
Did this release result in any injuries	No
Has this release reached or does it have a reasonable probability of reaching a watercourse	No
Has this release endangered or does it have a reasonable probability of endangering public health	No
Has this release substantially damaged or will it substantially damage property or the environment	No
Is this release of a volume that is or may with reasonable probability be detrimental to fresh water	No

Nature and Volume of Release	
Material(s) released, please answer all that apply below. Any calculations or specific justifications for the volumes provided should be attached to the follow-up C-141 submission.	
Crude Oil Released (bbls) Details	Not answered.
Produced Water Released (bbls) Details	Cause: Corrosion Other (Specify) Produced Water Released: 44 BBL Recovered: 44 BBL Lost: 0 BBL.
Is the concentration of chloride in the produced water >10,000 mg/l	No
Condensate Released (bbls) Details	Not answered.
Natural Gas Vented (Mcf) Details	Not answered.
Natural Gas Flared (Mcf) Details	Not answered.
Other Released Details	Not answered.
Are there additional details for the questions above (i.e. any answer containing Other, Specify, Unknown, and/or Fire, or any negative lost amounts)	Internal corrosion caused a hole in the fire tube releasing produced water into lined containment

District I
1625 N. French Dr., Hobbs, NM 88240
Phone:(575) 393-6161 Fax:(575) 393-0720
District II
811 S. First St., Artesia, NM 88210
Phone:(575) 748-1283 Fax:(575) 748-9720
District III
1000 Rio Brazos Rd., Aztec, NM 87410
Phone:(505) 334-6178 Fax:(505) 334-6170
District IV
1220 S. St Francis Dr., Santa Fe, NM 87505
Phone:(505) 476-3470 Fax:(505) 476-3462

State of New Mexico
Energy, Minerals and Natural Resources
Oil Conservation Division
1220 S. St Francis Dr.
Santa Fe, NM 87505

QUESTIONS, Page 2

Action 341063

QUESTIONS (continued)

Operator: Spur Energy Partners LLC 9655 Katy Freeway Houston, TX 77024	OGRID: 328947
	Action Number: 341063
	Action Type: [C-141] Remediation Closure Request C-141 (C-141-v-Closure)

QUESTIONS

Nature and Volume of Release (continued)	
Is this a gas only submission (i.e. only significant Mcf values reported)	No, according to supplied volumes this does not appear to be a "gas only" report.
Was this a major release as defined by Subsection A of 19.15.29.7 NMAC	Yes
Reasons why this would be considered a submission for a notification of a major release	From paragraph A. "Major release" determine using: (1) an unauthorized release of a volume, excluding gases, of 25 barrels or more.
With the implementation of the 19.15.27 NMAC (05/25/2021), venting and/or flaring of natural gas (i.e. gas only) are to be submitted on the C-129 form.	

Initial Response

The responsible party must undertake the following actions immediately unless they could create a safety hazard that would result in injury.

The source of the release has been stopped	True
The impacted area has been secured to protect human health and the environment	True
Released materials have been contained via the use of berms or dikes, absorbent pads, or other containment devices	True
All free liquids and recoverable materials have been removed and managed appropriately	True
If all the actions described above have not been undertaken, explain why	N/A

Per Paragraph (4) of Subsection B of 19.15.29.8 NMAC the responsible party may commence remediation immediately after discovery of a release. If remediation has begun, please prepare and attach a narrative of actions to date in the follow-up C-141 submission. If remedial efforts have been successfully completed or if the release occurred within a lined containment area (see Subparagraph (a) of Paragraph (5) of Subsection A of 19.15.29.11 NMAC), please prepare and attach all information needed for closure evaluation in the follow-up C-141 submission.

I hereby certify that the information given above is true and complete to the best of my knowledge and understand that pursuant to OCD rules and regulations all operators are required to report and/or file certain release notifications and perform corrective actions for releases which may endanger public health or the environment. The acceptance of a C-141 report by the OCD does not relieve the operator of liability should their operations have failed to adequately investigate and remediate contamination that pose a threat to groundwater, surface water, human health or the environment. In addition, OCD acceptance of a C-141 report does not relieve the operator of responsibility for compliance with any other federal, state, or local laws and/or regulations.

I hereby agree and sign off to the above statement	Name: Katherine Purvis Title: EHS Coordinator Email: katherine.purvis@spurenergy.com Date: 05/06/2024
--	--

District I

1625 N. French Dr., Hobbs, NM 88240
Phone:(575) 393-6161 Fax:(575) 393-0720

District II

811 S. First St., Artesia, NM 88210
Phone:(575) 748-1283 Fax:(575) 748-9720

District III

1000 Rio Brazos Rd., Aztec, NM 87410
Phone:(505) 334-6178 Fax:(505) 334-6170

District IV

1220 S. St Francis Dr., Santa Fe, NM 87505
Phone:(505) 476-3470 Fax:(505) 476-3462

State of New Mexico
Energy, Minerals and Natural Resources
Oil Conservation Division
1220 S. St Francis Dr.
Santa Fe, NM 87505

QUESTIONS, Page 3

Action 341063

QUESTIONS (continued)

Operator: Spur Energy Partners LLC 9655 Katy Freeway Houston, TX 77024	OGRID:
	328947
	Action Number:
	341063
Action Type: [C-141] Remediation Closure Request C-141 (C-141-v-Closure)	

QUESTIONS**Site Characterization**

Please answer all the questions in this group (only required when seeking remediation plan approval and beyond). This information must be provided to the appropriate district office no later than 90 days after the release discovery date.

What is the shallowest depth to groundwater beneath the area affected by the release in feet below ground surface (ft bgs)	Between 26 and 50 (ft.)
What method was used to determine the depth to ground water	Estimate or Other
Did this release impact groundwater or surface water	No
What is the minimum distance, between the closest lateral extents of the release and the following surface areas:	
A continuously flowing watercourse or any other significant watercourse	Between 500 and 1000 (ft.)
Any lakebed, sinkhole, or playa lake (measured from the ordinary high-water mark)	Between 1000 (ft.) and ½ (mi.)
An occupied permanent residence, school, hospital, institution, or church	Between 1 and 5 (mi.)
A spring or a private domestic fresh water well used by less than five households for domestic or stock watering purposes	Between 1 and 5 (mi.)
Any other fresh water well or spring	Between ½ and 1 (mi.)
Incorporated municipal boundaries or a defined municipal fresh water well field	Between ½ and 1 (mi.)
A wetland	Between ½ and 1 (mi.)
A subsurface mine	Between 1 and 5 (mi.)
An (non-karst) unstable area	Between 1000 (ft.) and ½ (mi.)
Categorize the risk of this well / site being in a karst geology	Medium
A 100-year floodplain	Between 500 and 1000 (ft.)
Did the release impact areas not on an exploration, development, production, or storage site	No

Remediation Plan

Please answer all the questions that apply or are indicated. This information must be provided to the appropriate district office no later than 90 days after the release discovery date.

Requesting a remediation plan approval with this submission	Yes
Attach a comprehensive report demonstrating the lateral and vertical extents of soil contamination associated with the release have been determined, pursuant to 19.15.29.11 NMAC and 19.15.29.13 NMAC.	
Have the lateral and vertical extents of contamination been fully delineated	Yes
Was this release entirely contained within a lined containment area	Yes
Per Subsection B of 19.15.29.11 NMAC unless the site characterization report includes completed efforts at remediation, the report must include a proposed remediation plan in accordance with 19.15.29.12 NMAC, which includes the anticipated timelines for beginning and completing the remediation.	
On what estimated date will the remediation commence	03/26/2024
On what date will (or did) the final sampling or liner inspection occur	03/26/2024
On what date will (or was) the remediation complete(d)	03/26/2024
What is the estimated surface area (in square feet) that will be remediated	930
What is the estimated volume (in cubic yards) that will be remediated	0
These estimated dates and measurements are recognized to be the best guess or calculation at the time of submission and may (be) change(d) over time as more remediation efforts are completed.	
The OCD recognizes that proposed remediation measures may have to be minimally adjusted in accordance with the physical realities encountered during remediation. If the responsible party has any need to significantly deviate from the remediation plan proposed, then it should consult with the division to determine if another remediation plan submission is required.	

District I

1625 N. French Dr., Hobbs, NM 88240
Phone:(575) 393-6161 Fax:(575) 393-0720

District II

811 S. First St., Artesia, NM 88210
Phone:(575) 748-1283 Fax:(575) 748-9720

District III

1000 Rio Brazos Rd., Aztec, NM 87410
Phone:(505) 334-6178 Fax:(505) 334-6170

District IV

1220 S. St Francis Dr., Santa Fe, NM 87505
Phone:(505) 476-3470 Fax:(505) 476-3462

State of New Mexico
Energy, Minerals and Natural Resources
Oil Conservation Division
1220 S. St Francis Dr.
Santa Fe, NM 87505

QUESTIONS, Page 4

Action 341063

QUESTIONS (continued)

Operator: Spur Energy Partners LLC 9655 Katy Freeway Houston, TX 77024	OGRID:	328947
	Action Number:	341063
	Action Type:	[C-141] Remediation Closure Request C-141 (C-141-v-Closure)

QUESTIONS**Remediation Plan (continued)**

Please answer all the questions that apply or are indicated. This information must be provided to the appropriate district office no later than 90 days after the release discovery date.

This remediation will (or is expected to) utilize the following processes to remediate / reduce contaminants:

(Select all answers below that apply.)

Is (or was) there affected material present needing to be removed	No
Is (or was) there a power wash of the lined containment area (to be) performed	Yes
OTHER (Non-listed remedial process)	Not answered.

Per Subsection B of 19.15.29.11 NMAC unless the site characterization report includes completed efforts at remediation, the report must include a proposed remediation plan in accordance with 19.15.29.12 NMAC, which includes the anticipated timelines for beginning and completing the remediation.

I hereby certify that the information given above is true and complete to the best of my knowledge and understand that pursuant to OCD rules and regulations all operators are required to report and/or file certain release notifications and perform corrective actions for releases which may endanger public health or the environment. The acceptance of a C-141 report by the OCD does not relieve the operator of liability should their operations have failed to adequately investigate and remediate contamination that pose a threat to groundwater, surface water, human health or the environment. In addition, OCD acceptance of a C-141 report does not relieve the operator of responsibility for compliance with any other federal, state, or local laws and/or regulations.

I hereby agree and sign off to the above statement	Name: Katherine Purvis Title: EHS Coordinator Email: katherine.purvis@spurenergy.com Date: 05/06/2024
--	--

The OCD recognizes that proposed remediation measures may have to be minimally adjusted in accordance with the physical realities encountered during remediation. If the responsible party has any need to significantly deviate from the remediation plan proposed, then it should consult with the division to determine if another remediation plan submission is required.

District I

1625 N. French Dr., Hobbs, NM 88240
Phone:(575) 393-6161 Fax:(575) 393-0720

District II

811 S. First St., Artesia, NM 88210
Phone:(575) 748-1283 Fax:(575) 748-9720

District III

1000 Rio Brazos Rd., Aztec, NM 87410
Phone:(505) 334-6178 Fax:(505) 334-6170

District IV

1220 S. St Francis Dr., Santa Fe, NM 87505
Phone:(505) 476-3470 Fax:(505) 476-3462

State of New Mexico
Energy, Minerals and Natural Resources
Oil Conservation Division
1220 S. St Francis Dr.
Santa Fe, NM 87505

QUESTIONS, Page 6

Action 341063

QUESTIONS (continued)

Operator: Spur Energy Partners LLC 9655 Katy Freeway Houston, TX 77024	OGRID:	328947
	Action Number:	341063
	Action Type:	[C-141] Remediation Closure Request C-141 (C-141-v-Closure)

QUESTIONS

Liner Inspection Information	
Last liner inspection notification (C-141L) recorded	325880
Liner inspection date pursuant to Subparagraph (a) of Paragraph (5) of Subsection A of 19.15.29.11 NMAC	03/26/2024
Was all the impacted materials removed from the liner	Yes
What was the liner inspection surface area in square feet	8500

Remediation Closure Request

Only answer the questions in this group if seeking remediation closure for this release because all remediation steps have been completed.

Requesting a remediation closure approval with this submission	Yes
Have the lateral and vertical extents of contamination been fully delineated	Yes
Was this release entirely contained within a lined containment area	Yes
What was the total surface area (in square feet) remediated	930
What was the total volume (cubic yards) remediated	0
Summarize any additional remediation activities not included by answers (above)	LINER INSPECTED AND IN GOOD CONDITION

The responsible party must attach information demonstrating they have complied with all applicable closure requirements and any conditions or directives of the OCD. This demonstration should be in the form of a comprehensive report (in .pdf format) including a scaled site map, sampling diagrams, relevant field notes, photographs of any excavation prior to backfilling, laboratory data including chain of custody documents of final sampling, and a narrative of the remedial activities. Refer to 19.15.29.12 NMAC.

I hereby certify that the information given above is true and complete to the best of my knowledge and understand that pursuant to OCD rules and regulations all operators are required to report and/or file certain release notifications and perform corrective actions for releases which may endanger public health or the environment. The acceptance of a C-141 report by the OCD does not relieve the operator of liability should their operations have failed to adequately investigate and remediate contamination that pose a threat to groundwater, surface water, human health or the environment. In addition, OCD acceptance of a C-141 report does not relieve the operator of responsibility for compliance with any other federal, state, or local laws and/or regulations. The responsible party acknowledges they must substantially restore, reclaim, and re-vegetate the impacted surface area to the conditions that existed prior to the release or their final land use in accordance with 19.15.29.13 NMAC including notification to the OCD when reclamation and re-vegetation are complete.

I hereby agree and sign off to the above statement	Name: Katherine Purvis Title: EHS Coordinator Email: katherine.purvis@spurenergy.com Date: 05/06/2024
--	--

District I
1625 N. French Dr., Hobbs, NM 88240
Phone:(575) 393-6161 Fax:(575) 393-0720
District II
811 S. First St., Artesia, NM 88210
Phone:(575) 748-1283 Fax:(575) 748-9720
District III
1000 Rio Brazos Rd., Aztec, NM 87410
Phone:(505) 334-6178 Fax:(505) 334-6170
District IV
1220 S. St Francis Dr., Santa Fe, NM 87505
Phone:(505) 476-3470 Fax:(505) 476-3462

State of New Mexico
Energy, Minerals and Natural Resources
Oil Conservation Division
1220 S. St Francis Dr.
Santa Fe, NM 87505

CONDITIONS

Action 341063

CONDITIONS

Operator: Spur Energy Partners LLC 9655 Katy Freeway Houston, TX 77024	OGRID: 328947
	Action Number: 341063
	Action Type: [C-141] Remediation Closure Request C-141 (C-141-v-Closure)

CONDITIONS

Created By	Condition	Condition Date
scott.rodgers	App ID 341063 Liner Inspection approved.	5/13/2024