

**Spill Volume(Bbls) Calculator***Inputs in blue, Outputs in red*

Length(Ft)	Width(Ft)	Depth(In)
<u>75.000</u>	<u>50.000</u>	<u>0.500</u>
Cubic Feet Impacted		<u>156.250</u>
Barrels		<u>27.83</u>
Soil Type		Lined Containment
Bbls Assuming 100% Saturation		<u>27.83</u>
Saturation	Fluid present with shovel/backhoe	
Estimated Barrels Released		27.90000

**Instructions**

1. Input spill measurements below. Length and width need to be input in feet and depth in inches.
2. Select a soil type from the drop down menu.
3. Select a saturation level from the drop down menu.

(For data gathering instructions see appendix tab)

**Measurements**

Length (ft)	75
Width (ft)	50
Depth (in)	0.500

















**Pima Environmental Services**  
**5614 N. Lovington Highway**  
**Hobbs, NM 88240**  
**575-964-7740**

June 11, 2024

NMOCD District 2  
811 S. First St  
Artesia, NM, 88210

Bureau of Land Management  
620 East Green Street  
Carlsbad, NM 88220

**RE: Liner Inspection and Closure Report**  
**Skelly Unit #973**  
**API No. 30-015-36283**  
**GPS: Latitude 32.8261375 Longitude -103.8740616**  
**UL- F, Section 21, Township 17S, Range 31E**  
**Eddy County, NM**  
**NMOCD Reference No. NAPP2217442660**

Spur Energy Partners (Spur) has contracted Pima Environmental Services, LLC (Pima) to perform a liner inspection and prepare this closure report for the release of produced water that happened at the Skelly Unit #973 Battery (Skelly). On May 28, 2024, the initial C-141 was formally submitted. The corresponding release received the designation Incident ID NAPP2217442660 from the New Mexico Oil Conservation Division (NMOCD).

#### **Site Information and Site Characterization**

The Skelly is located approximately 7 miles southwest of Maljamar, NM. This spill site is in Unit F, Section 21, Township 17S, Range 31E, Latitude 32.8261375 Longitude -103.8740616, Eddy County, NM. A Location Map can be found in Figure 1.

Based on well water data from the New Mexico Office of the State Engineer, the nearest groundwater in this area (RA 13235 POD1) is 102 feet below the ground surface (BGS), located about 0.45 miles from the Skelly, with drilling completed on October 8, 2022. In contrast, the United States Geological Survey reports the nearest water well (USGS 325223103462501) in this region at a depth of 122.14 feet BGS, approximately 6.54 miles from the Skelly, with the last measurement taken on December 11, 2010. For detailed water survey references and precise well locations, see Appendix A, which includes relevant maps. It is notable that Skelly is situated in an area with a low potential for karst, as shown in Figure 3. A comprehensive Topographic Map can be found in Figure 2.

#### **Release Information**

**NAPP2217442660:** On January 9, 2022, a break occurred in the nipple under the air eliminator, causing fluid to leak into the lined containment area. Approximately 28 barrels of produced water were released, and recovery efforts successfully retrieved 27 barrels. All the fluid remained within the lined containment.

A Site Map can be found in Figure 4.

#### **Site Assessment and Liner Inspection**

From May 27 to June 3, 2024, Pima Environmental was deployed to the Skelly site to perform remediation activities. Pima personnel removed the overlying gravel that covered the spill area, extending from the middle tank to the easternmost edge of the lined containment. The excavated area measured approximately 1,756 square feet and was excavated to a depth of about 3-4 inches. In total, 19 cubic yards of gravel were removed and hauled to an NMOCD-approved landfill for disposal.



On June 3, 2024, Spur personnel submitted a notification for a liner inspection, adhering to the necessary 48-hour notice period. The details of the 48-hour notification can be referenced in Appendix C.

On June 6, 2024, Pima Environmental conducted a liner inspection at the Skelly, covering approximately 1,756 square feet. We concluded that the liner and containment maintained their integrity and successfully retained the fluids. The liner inspection form and photographic documentation are available in Appendix C.

#### **Closure Request**

After careful review, Pima requests that this incident NAPP2217442660 be closed. Spur has complied with the applicable closure requirements.

Should you have any questions or need additional information, please feel free to contact Sebastian Orozco at 619-721-4813 or [sebastian@pimaoil.com](mailto:sebastian@pimaoil.com).

Respectfully,

*Sebastian Orozco*

Sebastian Orozco  
Project Manager  
Pima Environmental Services, LLC

#### **Attachments**

Figures:

- 1- Location Map
- 2- Topographic Map
- 3- Karst Map
- 4- Site Map

Appendices:

- Appendix A- Referenced Water Surveys
- Appendix B- 48 Hour Notification
- Appendix C- Liner Inspection Form & Photographic Documentation





Pima Environmental Services

**Figures:**

1-Location Map

2- Topographic Map

3- Karst Map



4- Site Map

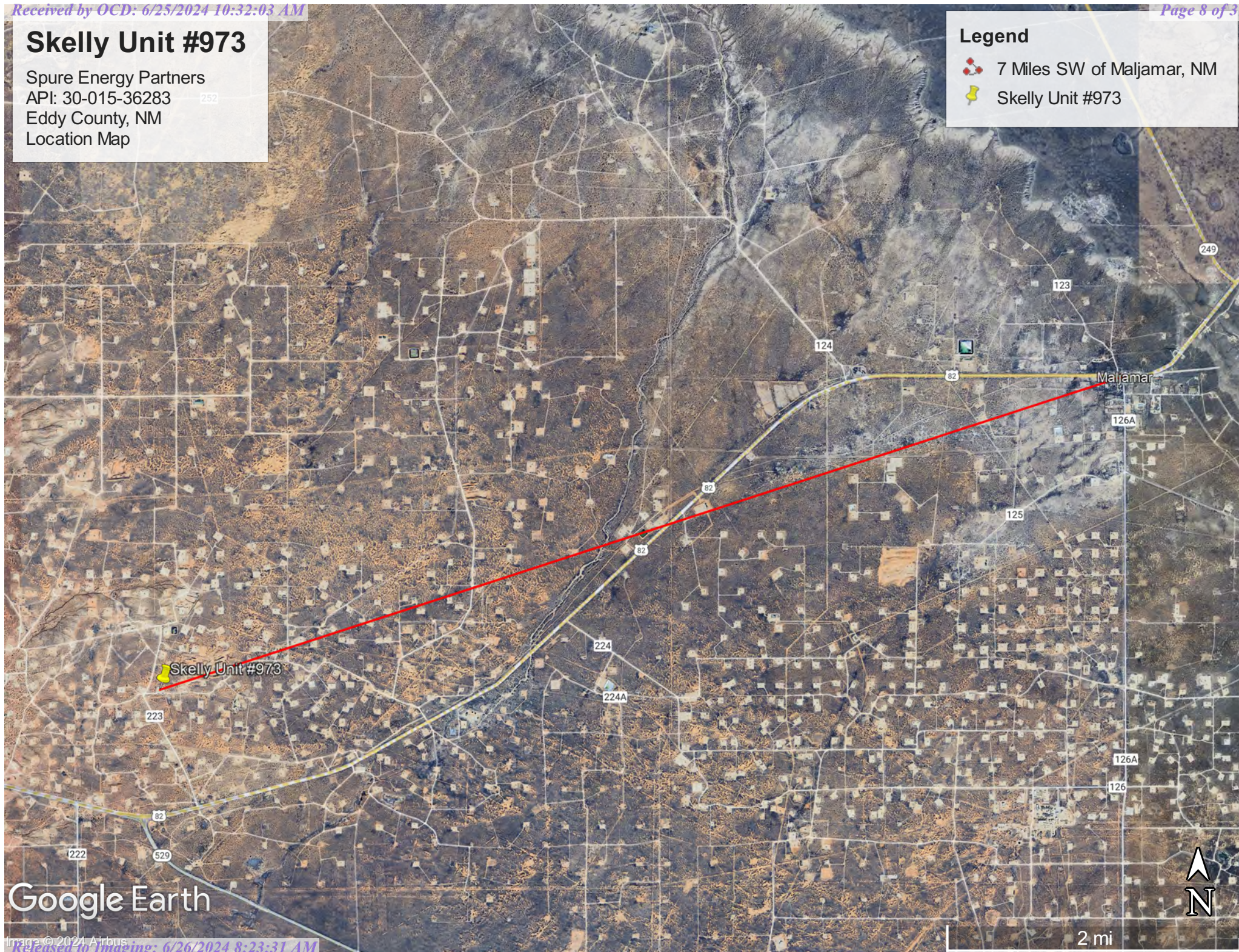


# Skelly Unit #973

Spure Energy Partners  
API: 30-015-36283  
Eddy County, NM  
Location Map

## Legend


-  7 Miles SW of Maljamar, NM
-  Skelly Unit #973



Google Earth



Spure Energy Partners  
API: 30-015-36283  
Eddy County, NM  
Topographic Map

 Skelly Unit #973





# Skelly Unit #973

Spure Energy Partners  
API: 30-015-36283  
Eddy County, NM  
Karst Map

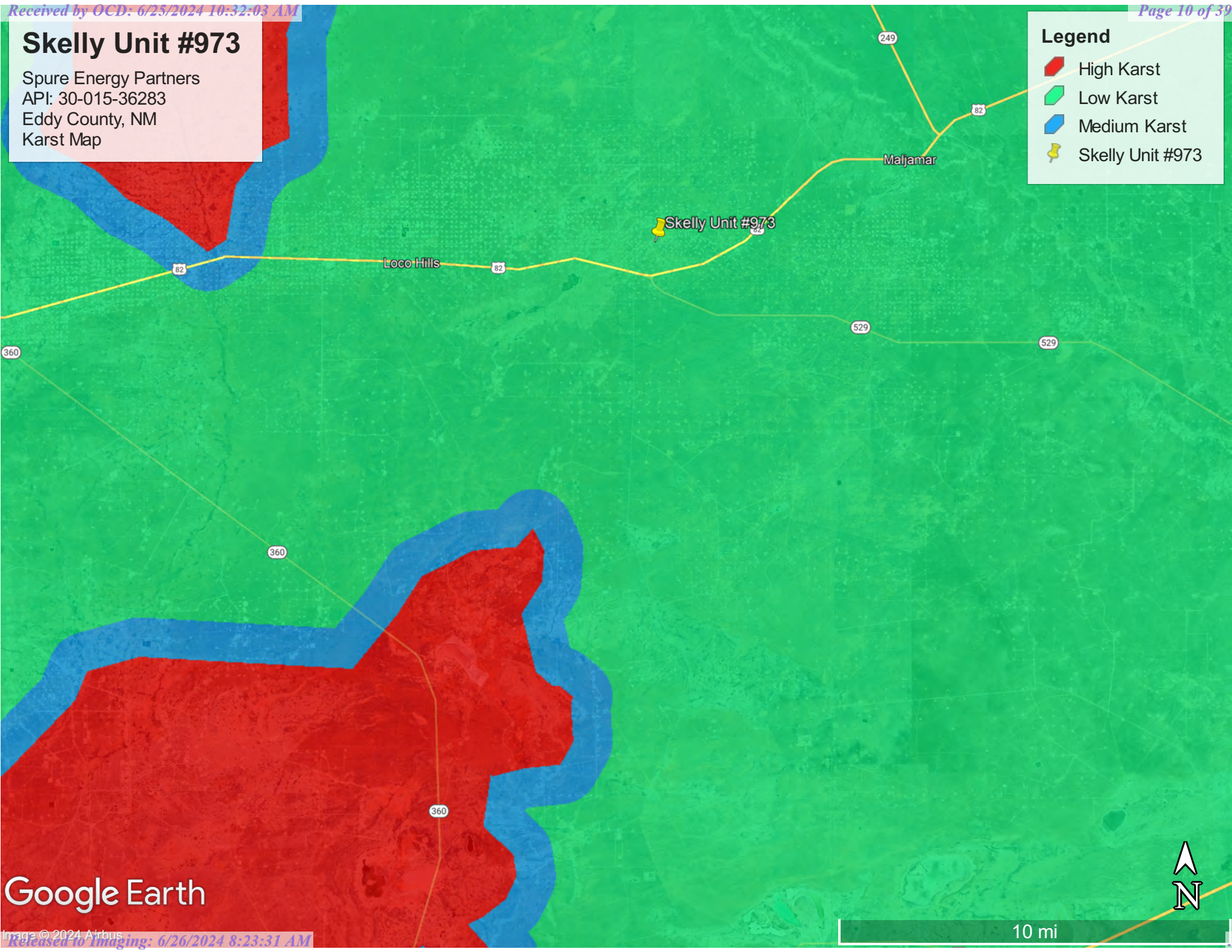
Legend

High Karst

Low Karst

Medium Karst

Skelly Unit #973




Google Earth



## Skelly Unit #973

Spure Energy Partners  
API: 30-015-36283  
Eddy County, NM  
Site Map

 Excavated Area







Pima Environmental Services

## **Appendix A**

Water Surveys:

OSE

USGS

Surface Water Map

Wetlands Map

FEMA

SOIL

Geological Data

Geological Map





New Mexico Office of the State Engineer  
Water Column/Average Depth to Water

(A CLW##### in the  
POD suffix indicates the  
POD has been replaced  
& no longer serves a  
water right file.)

(R=POD has been  
replaced,  
O=orphaned,  
C=the file is  
closed)

(quarters are 1=NW 2=NE 3=SW 4=SE)  
(quarters are smallest to largest)      (NAD83 UTM in meters)

(In feet)

POD Number	Code	POD Sub-basin	County	Q 64	Q 16	Q 4	Sec	Tws	Rng	X	Y	Distance	DepthWell	DepthWater	Water Column
<a href="#">RA 13235 POD1</a>		RA	ED	1	1	1	21	17S	31E	604631	3632537	760	102		
<a href="#">RA 13382 POD1</a>		RA	ED	1	3	3	21	17S	31E	604604	3631344	1458	101		
<a href="#">RA 13324 POD1</a>		RA	ED	4	4	1	10	17S	31E	606711	3635310	3038	55		
<a href="#">RA 11590 POD3</a>		RA	ED	3	1	2	32	17S	31E	603932	3629260	3619	60		
<a href="#">RA 11590 POD4</a>		RA	ED	4	1	1	32	17S	31E	603308	3629253	3918	55		
<a href="#">L 14207 POD3</a>		L	LE	2	3	3	31	16S	37E	606117	3636977	4463	240	96	144
<a href="#">RA 11590 POD1</a>		RA	ED	2	1	3	32	17S	31E	603315	3628545	4531	158		
<a href="#">RA 13213 POD1</a>		RA	CH	2	2	1	24	17S	30E	600489	3632575	4900	101		
Average Depth to Water:														96 feet	
Minimum Depth:														96 feet	
Maximum Depth:														96 feet	

Record Count: 8

UTMNAD83 Radius Search (in meters):

Easting (X): 605389.97

Northing (Y): 3632573.59

Radius: 5000

The data is furnished by the NMOSE/ISC and is accepted by the recipient with the expressed understanding that the OSE/ISC make no warranties, expressed or implied, concerning the accuracy, completeness, reliability, usability, or suitability for any particular purpose of the data.

6/4/24 10:48 AM


WATER COLUMN/ AVERAGE DEPTH TO WATER





# New Mexico Office of the State Engineer

## Point of Diversion Summary

		(quarters are 1=NW 2=NE 3=SW 4=SE)							
		(quarters are smallest to largest)					(NAD83 UTM in meters)		
<b>Well Tag</b>	<b>POD Number</b>	<b>Q64</b>	<b>Q16</b>	<b>Q4</b>	<b>Sec</b>	<b>Tws</b>	<b>Rng</b>	<b>X</b>	<b>Y</b>
NA	RA 13235 POD1	1	1	1	21	17S	31E	604631	3632537 

x

**Driller License:** 1249 **Driller Company:** ATKINS ENGINEERING ASSOC. INC.

**Driller Name:** JACKIE D ATKINS

**Drill Start Date:** 10/08/2022 **Drill Finish Date:** 10/09/2022 **Plug Date:**

**Log File Date:** 11/04/2022 **PCW Rev Date:** **Source:**

**Pump Type:** **Pipe Discharge Size:** **Estimated Yield:**

**Casing Size:** **Depth Well:** 102 feet **Depth Water:**

x

The data is furnished by the NMOSE/ISC and is accepted by the recipient with the expressed understanding that the OSE/ISC make no warranties, expressed or implied, concerning the accuracy, completeness, reliability, usability, or suitability for any particular purpose of the data.

6/4/24 10:48 AM

POINT OF DIVERSION SUMMARY

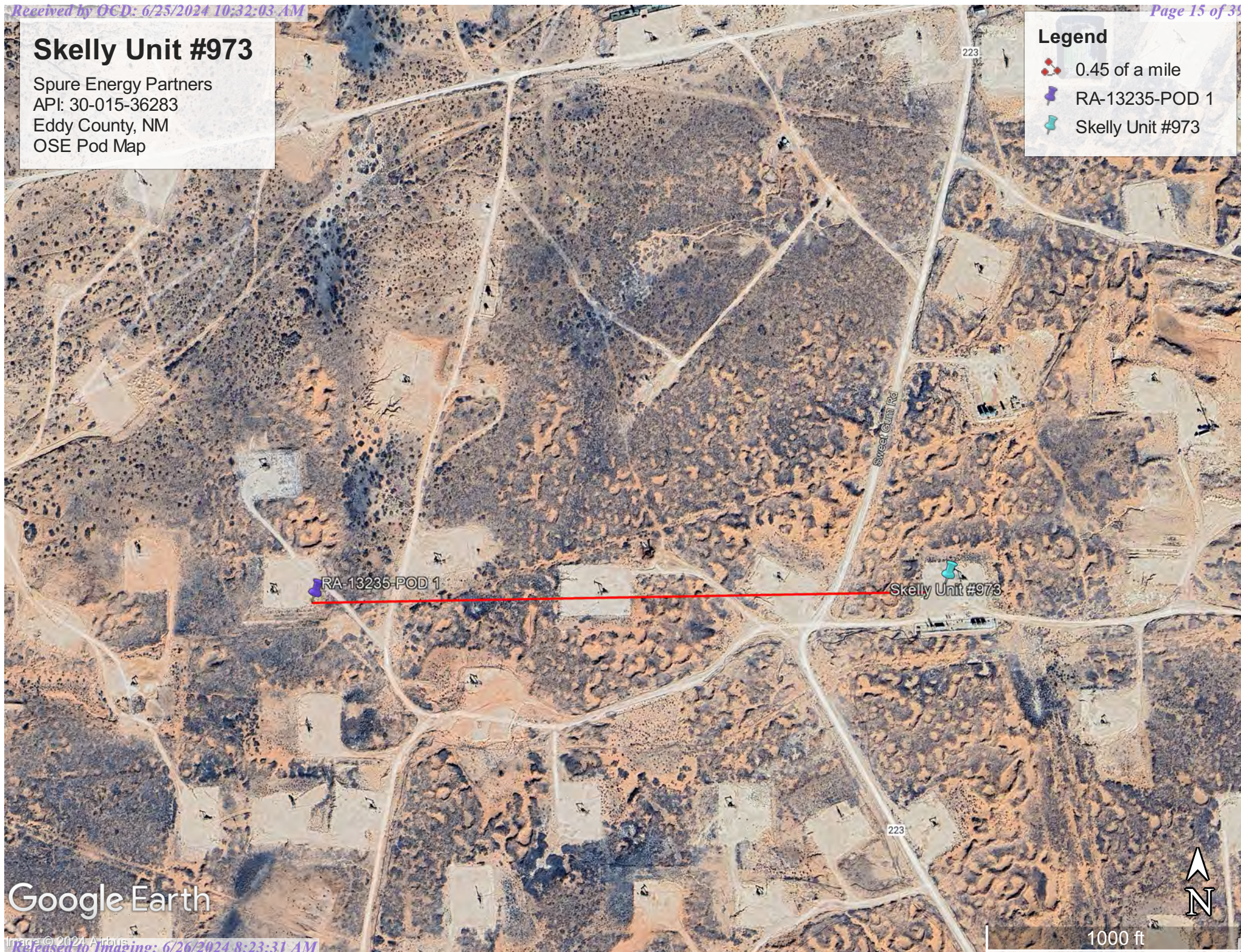


## Skelly Unit #973

Spure Energy Partners  
API: 30-015-36283  
Eddy County, NM  
OSE Pod Map

### Legend

- 0.45 of a mile
- RA-13235-POD 1
- Skelly Unit #973



Google Earth





[USGS Home](#)  
[Contact USGS](#)  
[Search USGS](#)

## National Water Information System: Web Interface

USGS Water Resources

Data Category:


Groundwater

Geographic Area:

United States

GO

Click to hide News Bulletins

- Explore the *NEW* [USGS National Water Dashboard](#) interactive map to access real-time water data from over 13,500 stations nationwide.
- [Full News](#) 

Groundwater levels for the Nation

 Important: [Next Generation Monitoring Location Page](#)

### Search Results -- 1 sites found

site\_no list =

- 325223103462501

Minimum number of levels = 1

[Save file of selected sites](#) to local disk for future upload

### USGS 325223103462501 16S.32E.33.33212

Available data for this site

Groundwater: Field measurements

GO

Lea County, New Mexico

Hydrologic Unit Code 13060011

Latitude 32°52'26", Longitude 103°46'37" NAD27

Land-surface elevation 4,196.00 feet above NGVD29

This well is completed in the High Plains aquifer (N100HGHPLN) national aquifer.

This well is completed in the Ogallala Formation (121OGLL) local aquifer.

#### Output formats

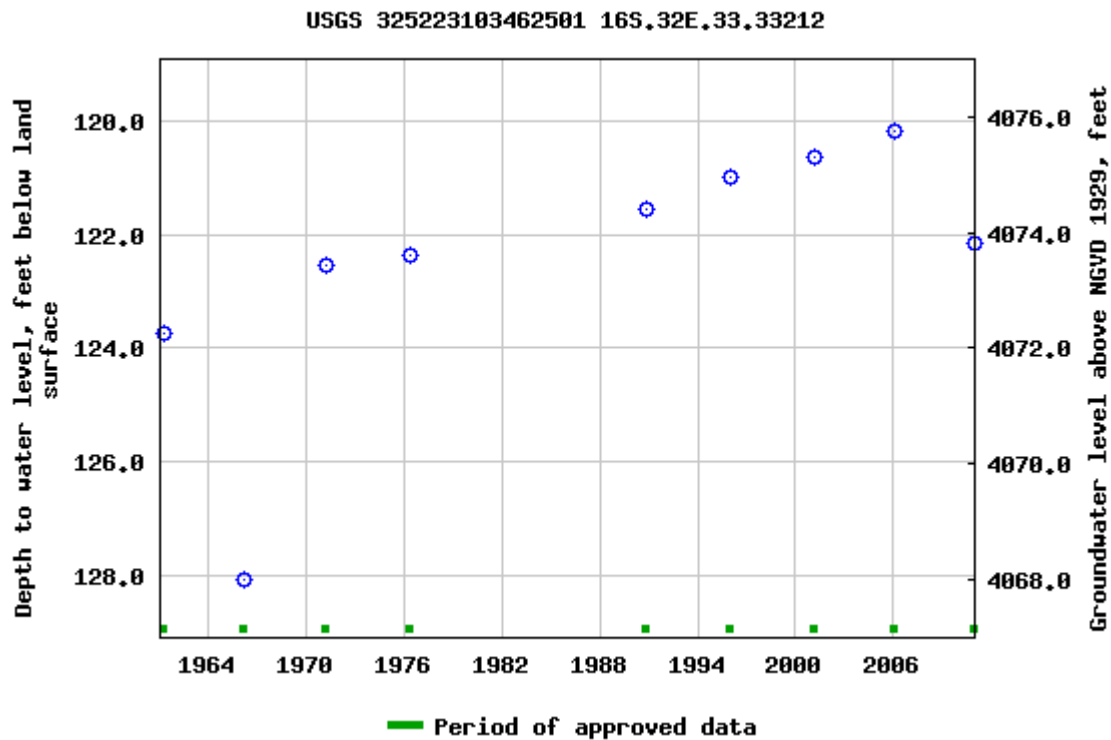
[Table of data](#)

[Tab-separated data](#)

[Graph of data](#)

[Reselect period](#)





Breaks in the plot represent a gap of at least one year between field measurements.  
[Download a presentation-quality graph](#)

[Questions or Comments](#)

[Automated retrievals](#)

[Help](#)

[Data Tips](#)

[Explanation of terms](#)

[Subscribe for system changes](#)

[News](#)

[Accessibility](#)

[FOIA](#)

[Privacy](#)

[Policies and Notices](#)

[U.S. Department of the Interior](#) | [U.S. Geological Survey](#)

**Title: Groundwater for USA: Water Levels**

**URL: <https://nwis.waterdata.usgs.gov/nwis/gwlevels?>**



Page Contact Information: [USGS Water Data Support Team](#)

Page Last Modified: 2024-06-04 12:47:08 EDT

0.55 0.48 nadww01

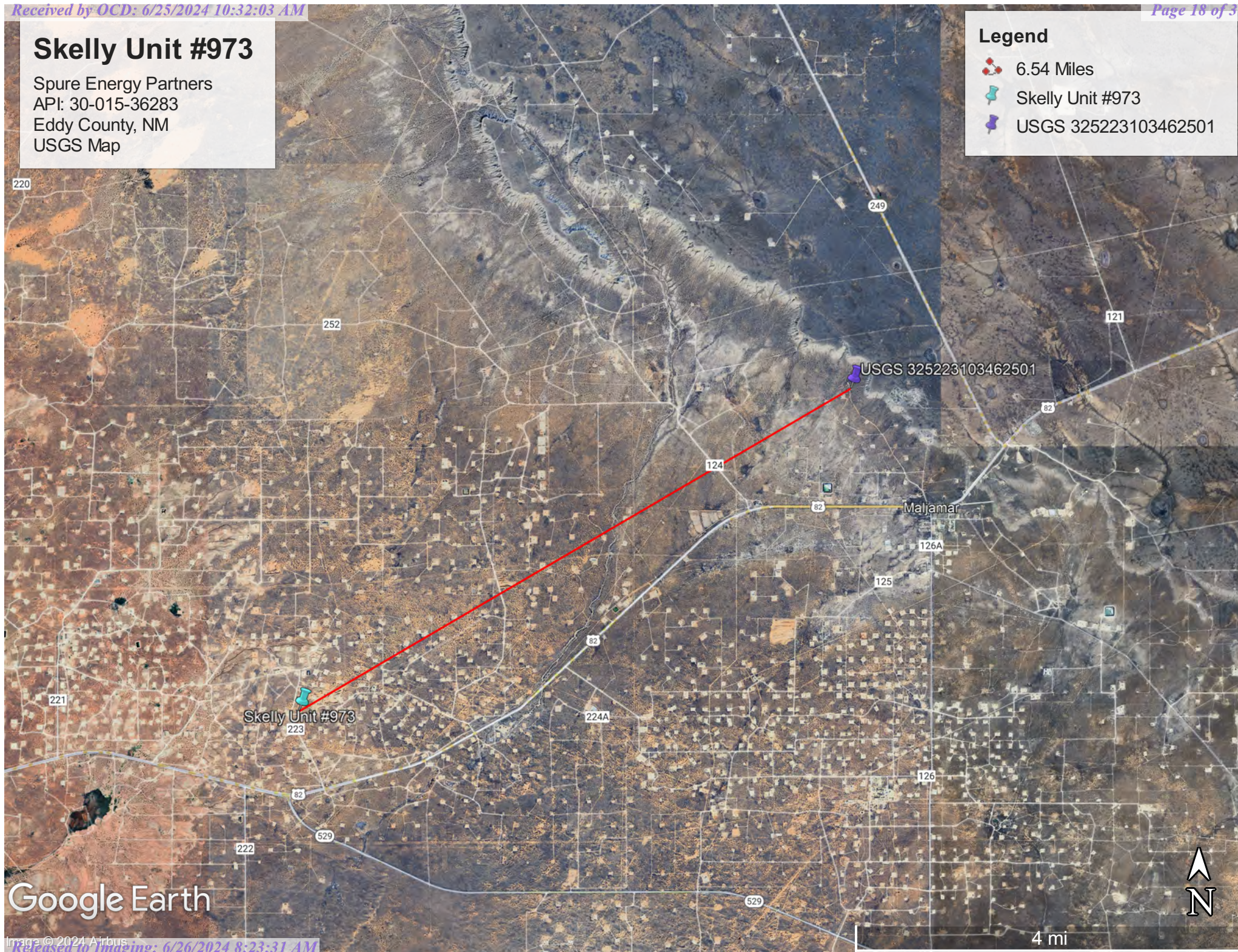


# Skelly Unit #973

Spure Energy Partners  
API: 30-015-36283  
Eddy County, NM  
USGS Map

## Legend

- 6.54 Miles
- Skelly Unit #973
- USGS 325223103462501



Google Earth



# Skelly Unit #973

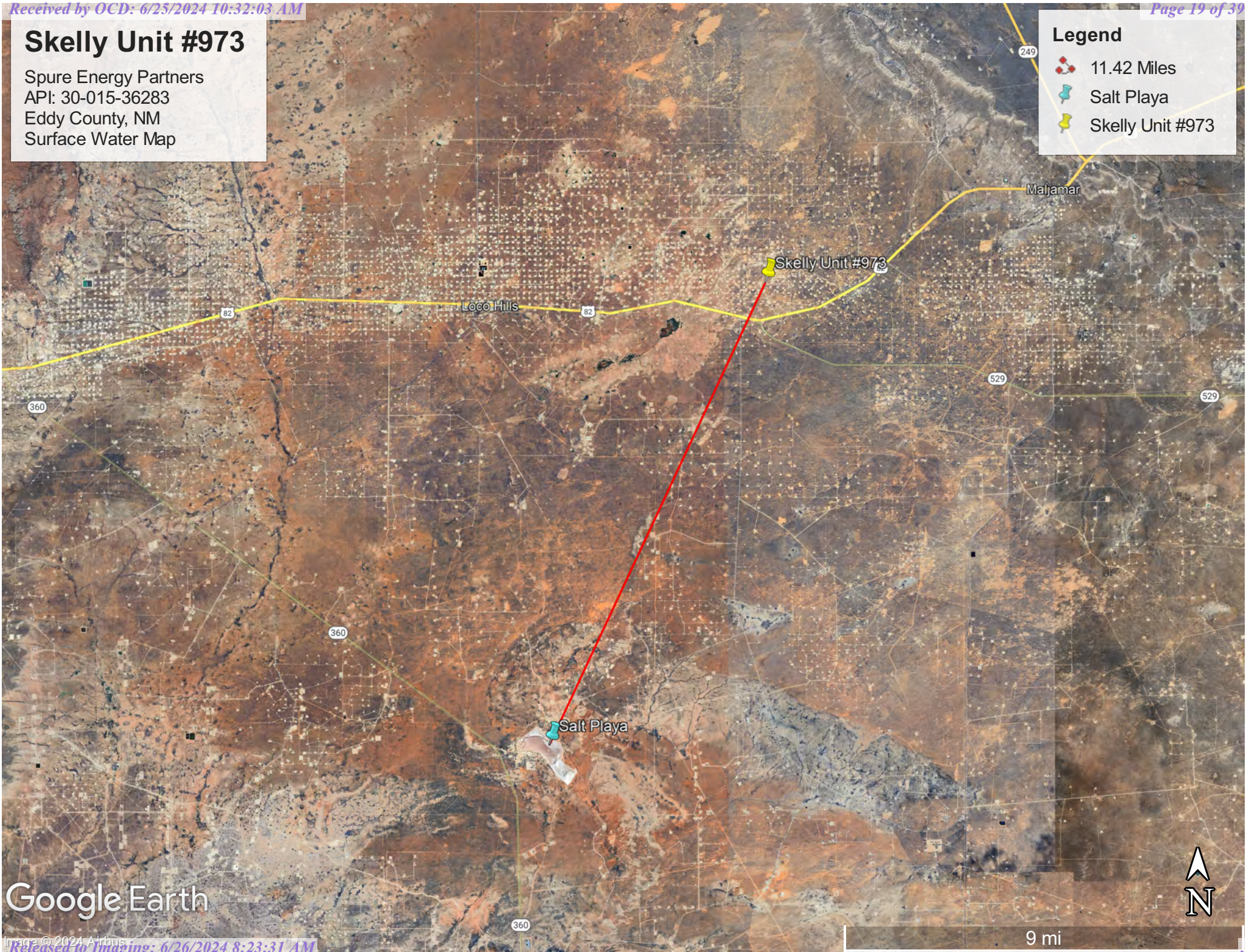
Spure Energy Partners  
API: 30-015-36283  
Eddy County, NM  
Surface Water Map

Legend

 11.42 Miles

 Salt Playa

 Skelly Unit #973









Google Earth





June 4, 2024

Wetlands

- |  |   |  |
|--|---|--|
|  Estuarine and Marine Deepwater |  Freshwater Emergent Wetland       |  Lake     |
|  Estuarine and Marine Wetland   |  Freshwater Forested/Shrub Wetland |  Other    |
|  |  Freshwater Pond                   |  Riverine |

This map is for general reference only. The US Fish and Wildlife Service is not responsible for the accuracy or currentness of the base data shown on this map. All wetlands related data should be used in accordance with the layer metadata found on the Wetlands Mapper web site.

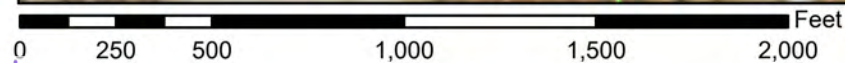
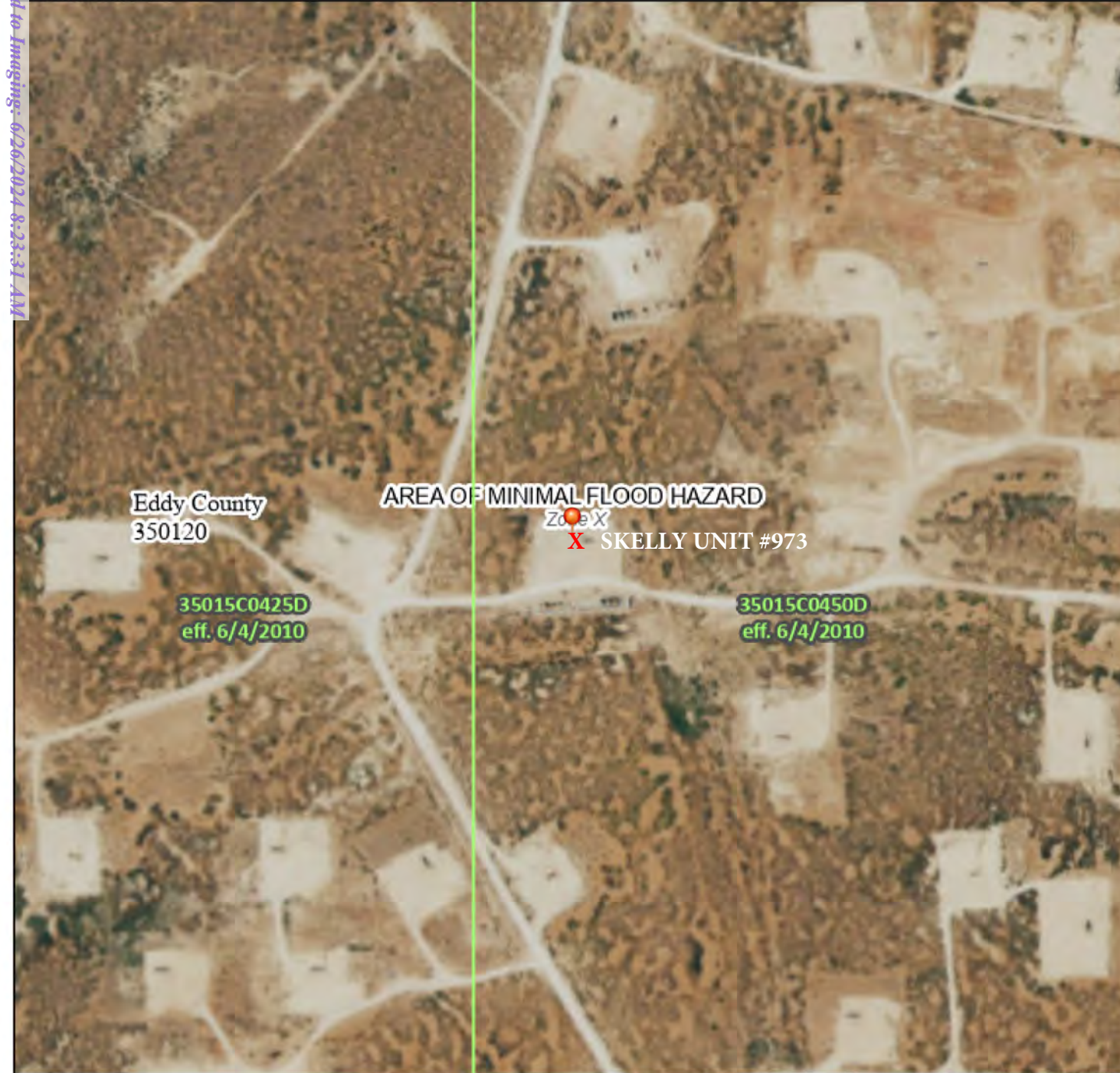


Released to Imaging: 6/26/2024 8:23:31 AM

# National Flood Hazard Layer FIRMette



103°52'45"W 32°49'49"N



1:6,000

103°52'8"W 32°49'19"N

Basemap Imagery Source: USGS National Map 2023

## Legend

SEE FIS REPORT FOR DETAILED LEGEND AND INDEX MAP FOR FIRM PANEL LAYOUT

SPECIAL FLOOD HAZARD AREAS		Without Base Flood Elevation (BFE) Zone A, V, A99
		With BFE or Depth Zone AE, AO, AH, VE, AR
		Regulatory Floodway
OTHER AREAS OF FLOOD HAZARD		0.2% Annual Chance Flood Hazard, Areas of 1% annual chance flood with average depth less than one foot or with drainage areas of less than one square mile Zone X
		Future Conditions 1% Annual Chance Flood Hazard Zone X
		Area with Reduced Flood Risk due to Levee. See Notes. Zone X
		Area with Flood Risk due to Levee Zone X
OTHER AREAS		NO SCREEN Area of Minimal Flood Hazard Zone X
		Effective LOMRs
GENERAL STRUCTURES		Area of Undetermined Flood Hazard Zone D
		Channel, Culvert, or Storm Sewer
OTHER FEATURES		Levee, Dike, or Floodwall
		Cross Sections with 1% Annual Chance Water Surface Elevation
MAP PANELS		Coastal Transect
		Base Flood Elevation Line (BFE)
MAP PANELS		Limit of Study
		Jurisdiction Boundary
MAP PANELS		Coastal Transect Baseline
		Profile Baseline
MAP PANELS		Hydrographic Feature
		Digital Data Available
MAP PANELS		No Digital Data Available
		Unmapped

This map complies with FEMA's standards for the use of digital flood maps if it is not void as described below. The basemap shown complies with FEMA's basemap accuracy standards

The flood hazard information is derived directly from the authoritative NFHL web services provided by FEMA. This map was exported on 6/4/2024 at 12:52 PM and does not reflect changes or amendments subsequent to this date and time. The NFHL and effective information may change or become superseded by new data over time.

This map image is void if the one or more of the following map elements do not appear: basemap imagery, flood zone labels, legend, scale bar, map creation date, community identifiers, FIRM panel number, and FIRM effective date. Map images for unmapped and unmodernized areas cannot be used for regulatory purposes.

Received by OCD: 6/25/2024 10:32:03 AM

Page 21 of 39



Map Unit Description: Kermit-Berino fine sands, 0 to 3 percent slopes---Eddy Area, New Mexico

---

## Eddy Area, New Mexico

### KM—Kermit-Berino fine sands, 0 to 3 percent slopes

#### Map Unit Setting

*National map unit symbol:* 1w4q

*Elevation:* 3,100 to 4,200 feet

*Mean annual precipitation:* 10 to 14 inches

*Mean annual air temperature:* 60 to 64 degrees F

*Frost-free period:* 190 to 230 days

*Farmland classification:* Not prime farmland

#### Map Unit Composition

*Kermit and similar soils:* 50 percent

*Berino and similar soils:* 35 percent

*Minor components:* 15 percent

*Estimates are based on observations, descriptions, and transects of the mapunit.*

#### Description of Kermit

##### Setting

*Landform:* Plains, alluvial fans

*Landform position (three-dimensional):* Talf, rise

*Down-slope shape:* Convex, linear

*Across-slope shape:* Linear

*Parent material:* Mixed alluvium and/or eolian sands

##### Typical profile

*H1 - 0 to 7 inches:* fine sand

*H2 - 7 to 60 inches:* fine sand

##### Properties and qualities

*Slope:* 0 to 3 percent

*Depth to restrictive feature:* More than 80 inches

*Drainage class:* Excessively drained

*Runoff class:* Negligible

*Capacity of the most limiting layer to transmit water (Ksat):* Very high (20.00 in/hr)

*Depth to water table:* More than 80 inches

*Frequency of flooding:* None

*Frequency of ponding:* None

*Maximum salinity:* Nonsaline (0.0 to 1.0 mmhos/cm)

*Sodium adsorption ratio, maximum:* 1.0

*Available water supply, 0 to 60 inches:* Low (about 3.1 inches)

##### Interpretive groups

*Land capability classification (irrigated):* None specified

*Land capability classification (nonirrigated):* 7e

*Hydrologic Soil Group:* A

*Ecological site:* R070BD005NM - Deep Sand

*Hydric soil rating:* No



Map Unit Description: Kermit-Berino fine sands, 0 to 3 percent slopes---Eddy Area, New Mexico

---

## Description of Berino

### Setting

*Landform:* Plains, fan piedmonts  
*Landform position (three-dimensional):* Riser  
*Down-slope shape:* Convex  
*Across-slope shape:* Linear  
*Parent material:* Mixed alluvium and/or eolian sands

### Typical profile

*H1 - 0 to 17 inches:* fine sand  
*H2 - 17 to 50 inches:* fine sandy loam  
*H3 - 50 to 58 inches:* loamy sand

### Properties and qualities

*Slope:* 0 to 3 percent  
*Depth to restrictive feature:* More than 80 inches  
*Drainage class:* Well drained  
*Runoff class:* Low  
*Capacity of the most limiting layer to transmit water (Ksat):* Moderately high to high (0.60 to 2.00 in/hr)  
*Depth to water table:* More than 80 inches  
*Frequency of flooding:* None  
*Frequency of ponding:* None  
*Calcium carbonate, maximum content:* 40 percent  
*Maximum salinity:* Very slightly saline to slightly saline (2.0 to 4.0 mmhos/cm)  
*Sodium adsorption ratio, maximum:* 1.0  
*Available water supply, 0 to 60 inches:* Moderate (about 7.2 inches)

### Interpretive groups

*Land capability classification (irrigated):* 4e  
*Land capability classification (nonirrigated):* 7e  
*Hydrologic Soil Group:* B  
*Ecological site:* R070BD003NM - Loamy Sand  
*Hydric soil rating:* No

## Minor Components

### Active dune land

*Percent of map unit:* 15 percent  
*Hydric soil rating:* No

## Data Source Information

Soil Survey Area: Eddy Area, New Mexico  
Survey Area Data: Version 19, Sep 7, 2023



(<https://www.usgs.gov/>)

Mineral Resources (<https://www.usgs.gov/energy-and-minerals/mineral-resources-program>)  
/ Online Spatial Data (/) / Geology (/geology/) / by state (/geology/state/)  
/ New Mexico (/geology/state/state.php?state=NM)

## Eolian and piedmont deposits

XML ( <a href="/geology/state/xml/NMQep;0">/geology/state/xml/NMQep;0</a> )	JSON ( <a href="/geology/state/json/NMQep;0">/geology/state/json/NMQep;0</a> )
Shapefile ( <a href="/geology/state/unit-shape.php?unit=NMQep;0">/geology/state/unit-shape.php?unit=NMQep;0</a> )	

*Interlayered eolian sands and piedmont-slope deposits along the eastern flank of the Pecos River valley, primarily between Roswell and Carlsbad. Typically capped by thin eolian deposits.*

State	New Mexico ( <a href="/geology/state/state.php?state=NM">/geology/state/state.php?state=NM</a> )		
Name	Eolian and piedmont deposits		
Geologic age	Holocene to middle Pleistocene		
Lithologic constituents	Major		
	Unconsolidated	(Eolian)	Interlayered eolian sands and piedmont-slope deposits
References	New Mexico Bureau of Geology and Mineral Resources, 2003, Geologic Map of New Mexico, scale 1:500,000 (includes some new polygons, faults, and attributes not in NM001 - heads up digitizing by JHorton).		
NGMDB product	NGMDB product page for 22974 ( <a href="https://ngmdb.usgs.gov/Prodesc/proddesc_22974.htm">https://ngmdb.usgs.gov/Prodesc/proddesc_22974.htm</a> )		
Counties	Chaves ( <a href="/geology/state/fips-unit.php?code=f35005">/geology/state/fips-unit.php?code=f35005</a> ) - DeBaca ( <a href="/geology/state/fips-unit.php?code=f35011">/geology/state/fips-unit.php?code=f35011</a> ) - Eddy ( <a href="/geology/state/fips-unit.php?code=f35015">/geology/state/fips-unit.php?code=f35015</a> ) - Lea ( <a href="/geology/state/fips-unit.php?code=f35025">/geology/state/fips-unit.php?code=f35025</a> ) - Roosevelt ( <a href="/geology/state/fips-unit.php?code=f35041">/geology/state/fips-unit.php?code=f35041</a> )		

DOI Privacy Policy (<https://www.doi.gov/privacy>) | Legal ([https://www.usgs.gov/laws/policies\\_notices.html](https://www.usgs.gov/laws/policies_notices.html)) |  
Accessibility (<https://www2.usgs.gov/laws/accessibility.html>) | Site Map (<https://www.usgs.gov/sitemap.html>) |  
Contact USGS (<https://answers.usgs.gov/>)

U.S. Department of the Interior (<https://www.doi.gov/>) | DOI Inspector General (<https://www.doiig.gov/>) |



White House (<https://www.whitehouse.gov/>) | E-gov (<https://www.whitehouse.gov/omb/management/egov/>) |

No Fear Act (<https://www.doi.gov/pmb/eeo/no-fear-act>) | FOIA (<https://www2.usgs.gov/foia>)

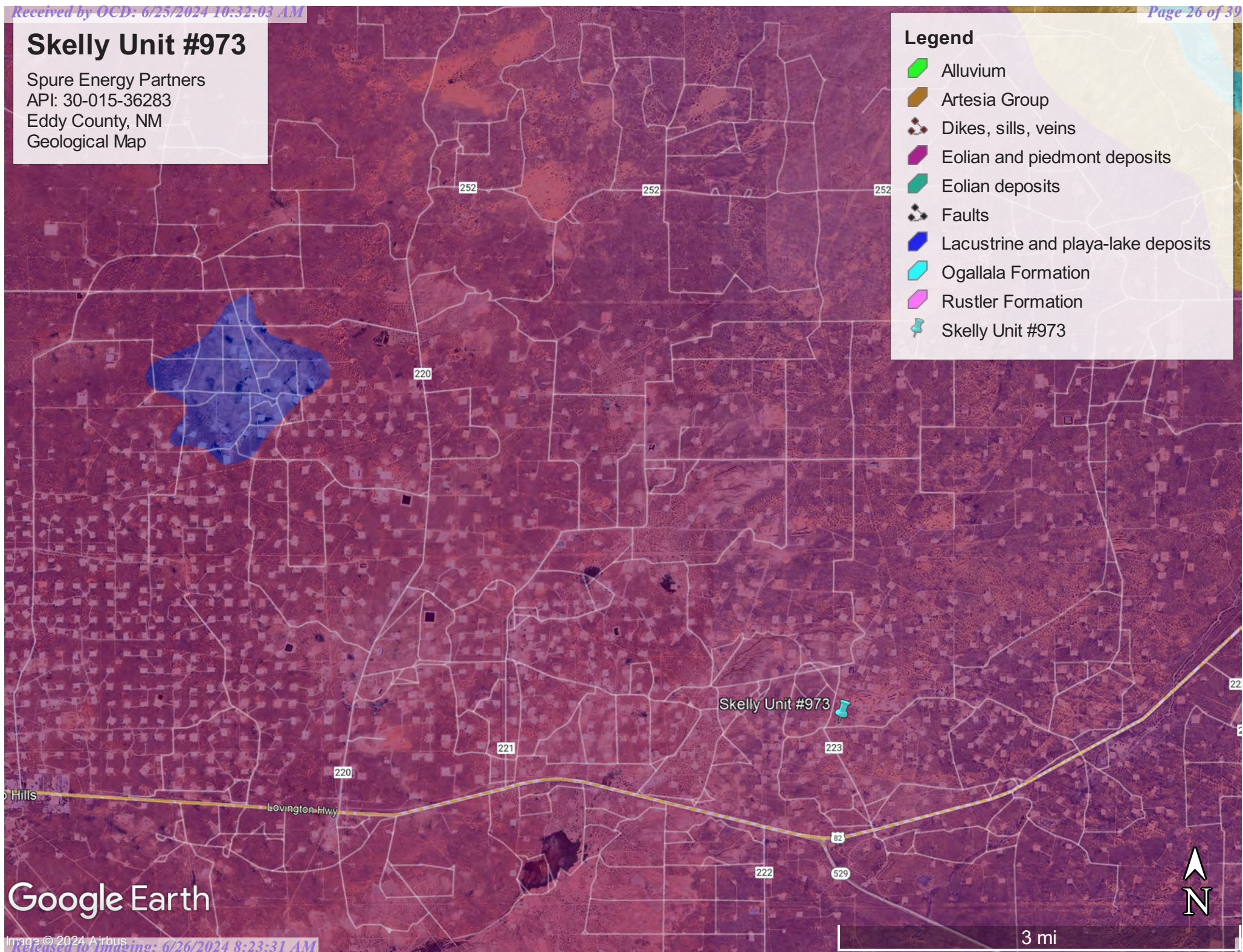


# Skelly Unit #973

Spure Energy Partners  
API: 30-015-36283  
Eddy County, NM  
Geological Map

## Legend

- Alluvium
- Artesia Group
- Dikes, sills, veins
- Eolian and piedmont deposits
- Eolian deposits
- Faults
- Lacustrine and playa-lake deposits
- Ogallala Formation
- Rustler Formation
- Skelly Unit #973



Google Earth





Pima Environmental Services

## **Appendix B**

### 48-Hour Notification



**Sebastian@pimaoil.com**

---

**From:** OCDOnline@state.nm.us  
**Sent:** Monday, June 3, 2024 6:21 PM  
**To:** sebastian@pimaoil.com  
**Subject:** The Oil Conservation Division (OCD) has accepted the application, Application ID: 350543

To whom it may concern (c/o Sebastian Orozco for Spur Energy Partners LLC),

The OCD has received the submitted *Notification for Liner Inspection for a Release* (C-141L), for incident ID (n#) nAPP2217442660.

The liner inspection is expected to take place:

**When:** 06/06/2024 @ 07:00

**Where:** F-21-17S-31E 0 FNL 0 FEL (32.8261375,-103.8740616)

**Additional Information:** Andrew Franco  
806-200-0054

**Additional Instructions:** 32.8261375, -103.8740616

An OCD representative may be available onsite at the date and time reported. In the absence or presence of an OCD representative, liner inspection pursuant to 19.15.29.11.A(5)(a) NMAC is required. Should there be a change in the scheduled date and time of the sampling event, then another notification should be resubmitted through OCD permitting as soon as possible.

- **Failure to notify the OCD of liner inspections including any changes in date/time per the requirements of 19.15.29.11.A(5)(a)(ii) NMAC, may result in the inspection not being accepted.**

If you have any questions regarding this application, or don't know why you have received this email, please contact us.

**New Mexico Energy, Minerals and Natural Resources Department**  
1220 South St. Francis Drive  
Santa Fe, NM 87505





Pima Environmental Services

## **Appendix C**

Liner Inspection Form

Photographic Documentation





## Pima Environmental Services, LLC

**Liner Inspection Form**Company Name: Spur EnergySite: Skelly Unit #973Lat/Long: 32.8261375, -103.8740616NMOCD Incident ID  
& Incident Date: NAPP2217442660 01/09/20222-Day Notification  
Sent: via OCD Portal by Sebastian Orozco 06/03/2024Inspection Date: 06/06/2024

Liner Type: Earthen w/liner      Earthen no liner      Polyester  
Steel w/poly liner      Steel w/spray epoxy      No Liner

Other: \_\_\_\_\_

Visualization	Yes	No	Comments
Is there a tear in the liner?		X	
Are there holes in the liner?		X	
Is the liner retaining any fluids?		X	
Does the liner have integrity to contain a leak?	X		

Comments: \_\_\_\_\_

Inspector Name: Andrew Franco      Inspector Signature: Andrew Franco





## SITE PHOTOGRAPHS

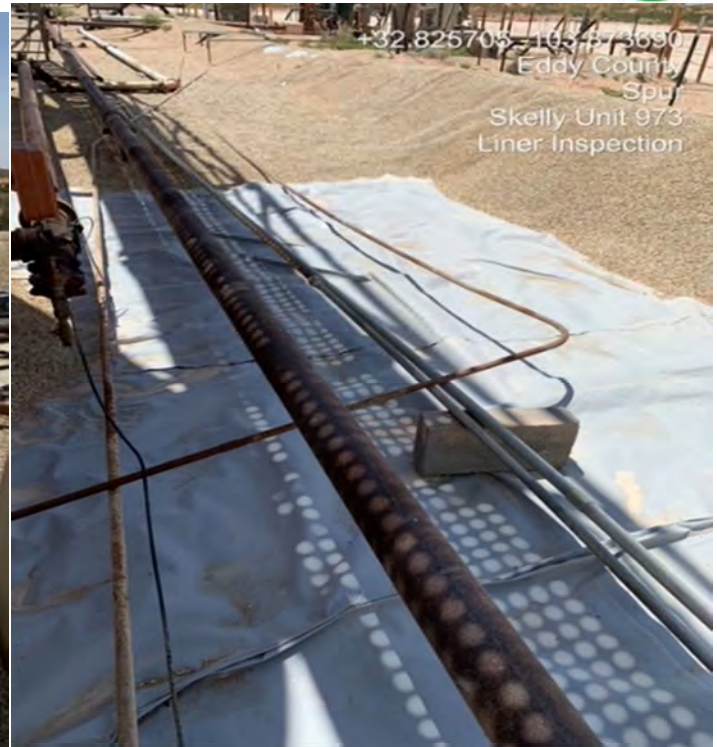
### SPUR ENERGY

#### Skelly Unit #973

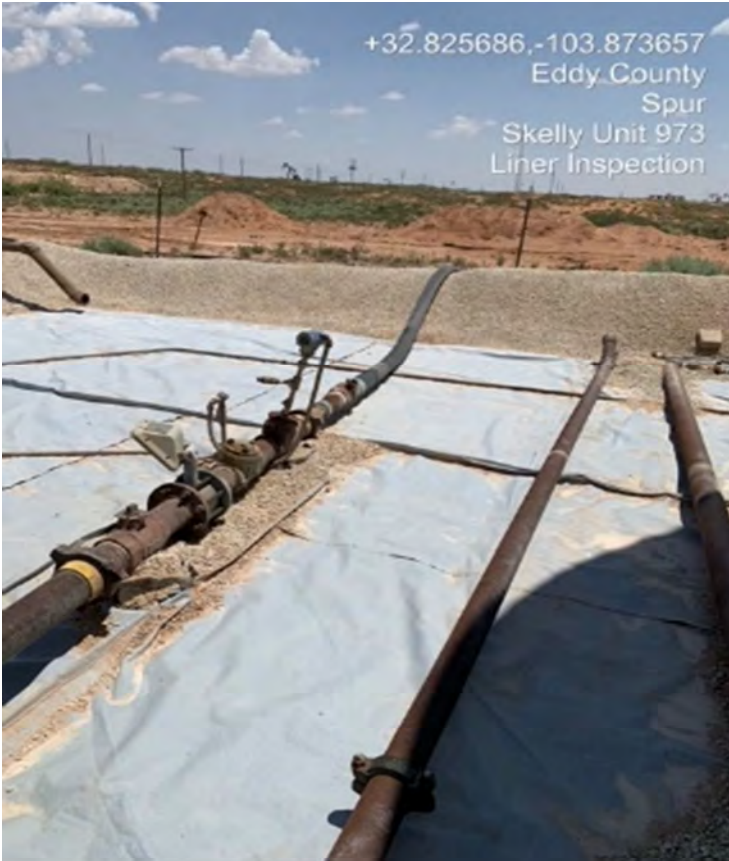
#### Liner Inspection-













**District I**  
1625 N. French Dr., Hobbs, NM 88240  
Phone:(575) 393-6161 Fax:(575) 393-0720  
**District II**  
811 S. First St., Artesia, NM 88210  
Phone:(575) 748-1283 Fax:(575) 748-9720  
**District III**  
1000 Rio Brazos Rd., Aztec, NM 87410  
Phone:(505) 334-6178 Fax:(505) 334-6170  
**District IV**  
1220 S. St Francis Dr., Santa Fe, NM 87505  
Phone:(505) 476-3470 Fax:(505) 476-3462

State of New Mexico  
Energy, Minerals and Natural Resources  
Oil Conservation Division  
1220 S. St Francis Dr.  
Santa Fe, NM 87505

QUESTIONS  
Action 357279

QUESTIONS

Operator: Spur Energy Partners LLC 9655 Katy Freeway Houston, TX 77024	OGRID:	328947
	Action Number:	357279
	Action Type:	[C-141] Remediation Closure Request C-141 (C-141-v-Closure)

QUESTIONS

Prerequisites	
Incident ID (n#)	nAPP2217442660
Incident Name	NAPP2217442660 SKELLY UNIT # 973 @ 30-015-36283
Incident Type	Produced Water Release
Incident Status	Remediation Closure Report Received
Incident Well	[30-015-36283] SKELLY UNIT #973

Location of Release Source	
Please answer all the questions in this group.	
Site Name	SKELLY UNIT # 973
Date Release Discovered	01/09/2022
Surface Owner	Federal

Incident Details	
Please answer all the questions in this group.	
Incident Type	Produced Water Release
Did this release result in a fire or is the result of a fire	No
Did this release result in any injuries	No
Has this release reached or does it have a reasonable probability of reaching a watercourse	No
Has this release endangered or does it have a reasonable probability of endangering public health	No
Has this release substantially damaged or will it substantially damage property or the environment	No
Is this release of a volume that is or may with reasonable probability be detrimental to fresh water	No

Nature and Volume of Release	
Material(s) released, please answer all that apply below. Any calculations or specific justifications for the volumes provided should be attached to the follow-up C-141 submission.	
Crude Oil Released (bbls) Details	Not answered.
Produced Water Released (bbls) Details	Cause: Human Error   Water Tank   Produced Water   Released: 28 BBL   Recovered: 27 BBL   Lost: 1 BBL.
Is the concentration of chloride in the produced water >10,000 mg/l	No
Condensate Released (bbls) Details	Cause: Human Error   Valve   Condensate   Released: 28 BBL   Recovered: 27 BBL   Lost: 1 BBL.
Natural Gas Vented (Mcf) Details	Not answered.
Natural Gas Flared (Mcf) Details	Not answered.
Other Released Details	Not answered.
Are there additional details for the questions above (i.e. any answer containing Other, Specify, Unknown, and/or Fire, or any negative lost amounts)	NIPPLE UNDER AIR ELIMINATOR BROKE OFF RELEASING PW INTO LINED CONTAINMENT



**District I**

1625 N. French Dr., Hobbs, NM 88240  
Phone:(575) 393-6161 Fax:(575) 393-0720

**District II**

811 S. First St., Artesia, NM 88210  
Phone:(575) 748-1283 Fax:(575) 748-9720

**District III**

1000 Rio Brazos Rd., Aztec, NM 87410  
Phone:(505) 334-6178 Fax:(505) 334-6170

**District IV**

1220 S. St Francis Dr., Santa Fe, NM 87505  
Phone:(505) 476-3470 Fax:(505) 476-3462

**State of New Mexico**  
**Energy, Minerals and Natural Resources**  
**Oil Conservation Division**  
**1220 S. St Francis Dr.**  
**Santa Fe, NM 87505**

QUESTIONS, Page 2

Action 357279

**QUESTIONS (continued)**

Operator: Spur Energy Partners LLC 9655 Katy Freeway Houston, TX 77024	OGRID:	328947
	Action Number:	357279
	Action Type:	[C-141] Remediation Closure Request C-141 (C-141-v-Closure)

**QUESTIONS**

<b>Nature and Volume of Release (continued)</b>	
Is this a gas only submission (i.e. only significant Mcf values reported)	No, according to supplied volumes this does not appear to be a "gas only" report.
Was this a major release as defined by Subsection A of 19.15.29.7 NMAC	Yes
Reasons why this would be considered a submission for a notification of a major release	From paragraph A. "Major release" determine using: (1) an unauthorized release of a volume, excluding gases, of 25 barrels or more.
With the implementation of the 19.15.27 NMAC (05/25/2021), venting and/or flaring of natural gas (i.e. gas only) are to be submitted on the C-129 form.	

**Initial Response**

The responsible party must undertake the following actions immediately unless they could create a safety hazard that would result in injury.

The source of the release has been stopped	True
The impacted area has been secured to protect human health and the environment	True
Released materials have been contained via the use of berms or dikes, absorbent pads, or other containment devices	True
All free liquids and recoverable materials have been removed and managed appropriately	True
If all the actions described above have not been undertaken, explain why	N/A

Per Paragraph (4) of Subsection B of 19.15.29.8 NMAC the responsible party may commence remediation immediately after discovery of a release. If remediation has begun, please prepare and attach a narrative of actions to date in the follow-up C-141 submission. If remedial efforts have been successfully completed or if the release occurred within a lined containment area (see Subparagraph (a) of Paragraph (5) of Subsection A of 19.15.29.11 NMAC), please prepare and attach all information needed for closure evaluation in the follow-up C-141 submission.

I hereby certify that the information given above is true and complete to the best of my knowledge and understand that pursuant to OCD rules and regulations all operators are required to report and/or file certain release notifications and perform corrective actions for releases which may endanger public health or the environment. The acceptance of a C-141 report by the OCD does not relieve the operator of liability should their operations have failed to adequately investigate and remediate contamination that pose a threat to groundwater, surface water, human health or the environment. In addition, OCD acceptance of a C-141 report does not relieve the operator of responsibility for compliance with any other federal, state, or local laws and/or regulations.

I hereby agree and sign off to the above statement	Name: Katherine Purvis Title: EHS Coordinator Email: katherine.purvis@spurenergy.com Date: 06/25/2024
--	--



**District I**

1625 N. French Dr., Hobbs, NM 88240  
Phone:(575) 393-6161 Fax:(575) 393-0720

**District II**

811 S. First St., Artesia, NM 88210  
Phone:(575) 748-1283 Fax:(575) 748-9720

**District III**

1000 Rio Brazos Rd., Aztec, NM 87410  
Phone:(505) 334-6178 Fax:(505) 334-6170

**District IV**

1220 S. St Francis Dr., Santa Fe, NM 87505  
Phone:(505) 476-3470 Fax:(505) 476-3462

**State of New Mexico**  
**Energy, Minerals and Natural Resources**  
**Oil Conservation Division**  
**1220 S. St Francis Dr.**  
**Santa Fe, NM 87505**

QUESTIONS, Page 3

Action 357279

**QUESTIONS (continued)**

Operator: Spur Energy Partners LLC 9655 Katy Freeway Houston, TX 77024	OGRID:	328947
	Action Number:	357279
	Action Type:	[C-141] Remediation Closure Request C-141 (C-141-v-Closure)

**QUESTIONS****Site Characterization**

Please answer all the questions in this group (only required when seeking remediation plan approval and beyond). This information must be provided to the appropriate district office no later than 90 days after the release discovery date.

What is the shallowest depth to groundwater beneath the area affected by the release in feet below ground surface (ft bgs)	Between 100 and 500 (ft.)
What method was used to determine the depth to ground water	NM OSE iWaters Database Search
Did this release impact groundwater or surface water	No
<b>What is the minimum distance, between the closest lateral extents of the release and the following surface areas:</b>	
A continuously flowing watercourse or any other significant watercourse	Between 1 and 5 (mi.)
Any lakebed, sinkhole, or playa lake (measured from the ordinary high-water mark)	Between 1 and 5 (mi.)
An occupied permanent residence, school, hospital, institution, or church	Between 1 and 5 (mi.)
A spring or a private domestic fresh water well used by less than five households for domestic or stock watering purposes	Between 1 and 5 (mi.)
Any other fresh water well or spring	Between 1 and 5 (mi.)
Incorporated municipal boundaries or a defined municipal fresh water well field	Between 1 and 5 (mi.)
A wetland	Between 1 and 5 (mi.)
A subsurface mine	Between 1 and 5 (mi.)
An (non-karst) unstable area	Between 1 and 5 (mi.)
Categorize the risk of this well / site being in a karst geology	Low
A 100-year floodplain	Between 1 and 5 (mi.)
Did the release impact areas not on an exploration, development, production, or storage site	No

**Remediation Plan**

Please answer all the questions that apply or are indicated. This information must be provided to the appropriate district office no later than 90 days after the release discovery date.

Requesting a remediation plan approval with this submission	Yes
Attach a comprehensive report demonstrating the lateral and vertical extents of soil contamination associated with the release have been determined, pursuant to 19.15.29.11 NMAC and 19.15.29.13 NMAC.	
Have the lateral and vertical extents of contamination been fully delineated	Yes
Was this release entirely contained within a lined containment area	Yes
Per Subsection B of 19.15.29.11 NMAC unless the site characterization report includes completed efforts at remediation, the report must include a proposed remediation plan in accordance with 19.15.29.12 NMAC, which includes the anticipated timelines for beginning and completing the remediation.	
On what estimated date will the remediation commence	05/27/2024
On what date will (or did) the final sampling or liner inspection occur	06/06/2024
On what date will (or was) the remediation complete(d)	06/03/2024
What is the estimated surface area (in square feet) that will be remediated	1756
What is the estimated volume (in cubic yards) that will be remediated	19
These estimated dates and measurements are recognized to be the best guess or calculation at the time of submission and may (be) change(d) over time as more remediation efforts are completed.	
The OCD recognizes that proposed remediation measures may have to be minimally adjusted in accordance with the physical realities encountered during remediation. If the responsible party has any need to significantly deviate from the remediation plan proposed, then it should consult with the division to determine if another remediation plan submission is required.	



**District I**

1625 N. French Dr., Hobbs, NM 88240  
Phone:(575) 393-6161 Fax:(575) 393-0720

**District II**

811 S. First St., Artesia, NM 88210  
Phone:(575) 748-1283 Fax:(575) 748-9720

**District III**

1000 Rio Brazos Rd., Aztec, NM 87410  
Phone:(505) 334-6178 Fax:(505) 334-6170

**District IV**

1220 S. St Francis Dr., Santa Fe, NM 87505  
Phone:(505) 476-3470 Fax:(505) 476-3462

**State of New Mexico**  
**Energy, Minerals and Natural Resources**  
**Oil Conservation Division**  
**1220 S. St Francis Dr.**  
**Santa Fe, NM 87505**

QUESTIONS, Page 4

Action 357279

**QUESTIONS (continued)**

Operator: Spur Energy Partners LLC 9655 Katy Freeway Houston, TX 77024	OGRID:	328947
	Action Number:	357279
	Action Type:	[C-141] Remediation Closure Request C-141 (C-141-v-Closure)

**QUESTIONS**

<b>Remediation Plan (continued)</b>	
<i>Please answer all the questions that apply or are indicated. This information must be provided to the appropriate district office no later than 90 days after the release discovery date.</i>	
<b>This remediation will (or is expected to) utilize the following processes to remediate / reduce contaminants:</b>	
<i>(Select all answers below that apply.)</i>	
Is (or was) there affected material present needing to be removed	Yes
Is (or was) there a power wash of the lined containment area (to be) performed	Yes
OTHER (Non-listed remedial process)	No
<i>Per Subsection B of 19.15.29.11 NMAC unless the site characterization report includes completed efforts at remediation, the report must include a proposed remediation plan in accordance with 19.15.29.12 NMAC, which includes the anticipated timelines for beginning and completing the remediation.</i>	
I hereby certify that the information given above is true and complete to the best of my knowledge and understand that pursuant to OCD rules and regulations all operators are required to report and/or file certain release notifications and perform corrective actions for releases which may endanger public health or the environment. The acceptance of a C-141 report by the OCD does not relieve the operator of liability should their operations have failed to adequately investigate and remediate contamination that pose a threat to groundwater, surface water, human health or the environment. In addition, OCD acceptance of a C-141 report does not relieve the operator of responsibility for compliance with any other federal, state, or local laws and/or regulations.	
I hereby agree and sign off to the above statement	Name: Katherine Purvis Title: EHS Coordinator Email: katherine.purvis@spurenergy.com Date: 06/25/2024
<i>The OCD recognizes that proposed remediation measures may have to be minimally adjusted in accordance with the physical realities encountered during remediation. If the responsible party has any need to significantly deviate from the remediation plan proposed, then it should consult with the division to determine if another remediation plan submission is required.</i>	



**District I**

1625 N. French Dr., Hobbs, NM 88240  
Phone:(575) 393-6161 Fax:(575) 393-0720

**District II**

811 S. First St., Artesia, NM 88210  
Phone:(575) 748-1283 Fax:(575) 748-9720

**District III**

1000 Rio Brazos Rd., Aztec, NM 87410  
Phone:(505) 334-6178 Fax:(505) 334-6170

**District IV**

1220 S. St Francis Dr., Santa Fe, NM 87505  
Phone:(505) 476-3470 Fax:(505) 476-3462

**State of New Mexico**  
**Energy, Minerals and Natural Resources**  
**Oil Conservation Division**  
**1220 S. St Francis Dr.**  
**Santa Fe, NM 87505**

QUESTIONS, Page 6

Action 357279

**QUESTIONS (continued)**

Operator: Spur Energy Partners LLC 9655 Katy Freeway Houston, TX 77024	OGRID:	328947
	Action Number:	357279
	Action Type:	[C-141] Remediation Closure Request C-141 (C-141-v-Closure)

**QUESTIONS**

<b>Liner Inspection Information</b>	
Last liner inspection notification (C-141L) recorded	<b>350543</b>
Liner inspection date pursuant to Subparagraph (a) of Paragraph (5) of Subsection A of 19.15.29.11 NMAC	<b>06/06/2024</b>
Was all the impacted materials removed from the liner	<b>Yes</b>
What was the liner inspection surface area in square feet	<b>2000</b>

**Remediation Closure Request**

*Only answer the questions in this group if seeking remediation closure for this release because all remediation steps have been completed.*

Requesting a remediation closure approval with this submission	<b>Yes</b>
Have the lateral and vertical extents of contamination been fully delineated	<b>Yes</b>
Was this release entirely contained within a lined containment area	<b>Yes</b>
What was the total surface area (in square feet) remediated	<b>1756</b>
What was the total volume (cubic yards) remediated	<b>19</b>
Summarize any additional remediation activities not included by answers (above)	<b>ALL CONTAMINATED MATERIAL WAS REMOVED FROM THE LINER, THE LINER WAS POWERWASHED, AND THE LINER WAS INSPECTED AND FOUND TO BE ABLE TO CONTAIN FLUIDS SUCCESSFULLY.</b>

*The responsible party must attach information demonstrating they have complied with all applicable closure requirements and any conditions or directives of the OCD. This demonstration should be in the form of a comprehensive report (in .pdf format) including a scaled site map, sampling diagrams, relevant field notes, photographs of any excavation prior to backfilling, laboratory data including chain of custody documents of final sampling, and a narrative of the remedial activities. Refer to 19.15.29.12 NMAC.*

I hereby certify that the information given above is true and complete to the best of my knowledge and understand that pursuant to OCD rules and regulations all operators are required to report and/or file certain release notifications and perform corrective actions for releases which may endanger public health or the environment. The acceptance of a C-141 report by the OCD does not relieve the operator of liability should their operations have failed to adequately investigate and remediate contamination that pose a threat to groundwater, surface water, human health or the environment. In addition, OCD acceptance of a C-141 report does not relieve the operator of responsibility for compliance with any other federal, state, or local laws and/or regulations. The responsible party acknowledges they must substantially restore, reclaim, and re-vegetate the impacted surface area to the conditions that existed prior to the release or their final land use in accordance with 19.15.29.13 NMAC including notification to the OCD when reclamation and re-vegetation are complete.

I hereby agree and sign off to the above statement	Name: Katherine Purvis Title: EHS Coordinator Email: katherine.purvis@spurenergy.com Date: 06/25/2024
--	--



**District I**  
1625 N. French Dr., Hobbs, NM 88240  
Phone:(575) 393-6161 Fax:(575) 393-0720  
**District II**  
811 S. First St., Artesia, NM 88210  
Phone:(575) 748-1283 Fax:(575) 748-9720  
**District III**  
1000 Rio Brazos Rd., Aztec, NM 87410  
Phone:(505) 334-6178 Fax:(505) 334-6170  
**District IV**  
1220 S. St Francis Dr., Santa Fe, NM 87505  
Phone:(505) 476-3470 Fax:(505) 476-3462

State of New Mexico  
Energy, Minerals and Natural Resources  
Oil Conservation Division  
1220 S. St Francis Dr.  
Santa Fe, NM 87505

CONDITIONS  
  
Action 357279

CONDITIONS

Operator: Spur Energy Partners LLC 9655 Katy Freeway Houston, TX 77024	OGRID: 328947
	Action Number: 357279
	Action Type: [C-141] Remediation Closure Request C-141 (C-141-v-Closure)

CONDITIONS

Created By	Condition	Condition Date
crystal.walker	None	6/26/2024