

CARMONA RESOURCES



SITE INFORMATION

Closure Report

M- 10 17 Loop St HH #1 - 10" - PL - 06172024

Incident ID: NAPP2417032594

Lea County, New Mexico

Unit B Sec 36 T19S R32E

32.6239166°, -103.7163334°

Condensate Release

Point of Release: Flow Line

Release Date: 06.17.2024

Volume Released: 30 Barrels of Condensate

Volume Recovered: 30 Barrels of Condensate

CARMONA RESOURCES



Prepared for:

Kinetik Midstream

47 Conoco Rd.

Maljamar, New Mexico 88264

Prepared by:

Carmona Resources, LLC

310 West Wall Street

Suite 500

Midland, Texas 79701

310 West Wall Street, Suite 500
Midland TX, 79701
432.813.1992

TABLE OF CONTENTS

1.0 SITE INFORMATION AND BACKGROUND

2.0 SITE CHARACTERIZATION AND GROUNDWATER

3.0 NMAC REGULATORY CRITERIA

4.0 REMEDIATION ACTIVITIES

5.0 CONCLUSIONS

FIGURES

FIGURE 1 OVERVIEW FIGURE 2 TOPOGRAPHIC

FIGURE 3 EXCAVATION

APPENDICES

APPENDIX A TABLES
APPENDIX B PHOTOS
APPENDIX C INITIAL AND FINAL C-141/NMOCD CORRESPONDENCE
APPENDIX D SITE CHARACTERIZATION AND GROUNDWATER
APPENDIX E LABORATORY REPORTS



July 16, 2024

New Mexico Oil Conservation Division
1220 South St, Francis Drive
Santa Fe, NM 87505

Re: Closure Report
M- 10 17 Loop St HH #1 - 10" - PL – 06172024
Incident ID: NAPP2417032594
Kinetik Midstream
Site Location: Unit B, S36 T19S, R32E
(Lat 32.6239166°, Long -103.7163334°)
Lea County, New Mexico

To whom it may concern:

On behalf of Kinetik Midstream (Kinetik), Carmona Resources, LLC has prepared this letter to document site activities for the M- 10 17 Loop St HH #1 - 10" - PL – 06172024. The site is located at 32.6239166°, - 103.7163334° within Unit B, S36, T19S, R32E, in Lea County, New Mexico (Figures 1 and 2).

1.0 Site Information and Background

Based on the initial C-141 obtained from the New Mexico Oil Conservation Division (NMOCD), the release was discovered on June 17, 2024, caused by human error to a production flow line. It resulted in approximately thirty (30) barrels of condensate, and thirty (30) barrels of condensate were recovered. The impacted area is located on a pipeline right-of-way. A third-party crew was on-site to repair the line and immediately excavate contaminated material. Refer to Figure 3 for spill overview. The initial C-141 form is attached in Appendix C.

2.0 Site Characterization and Groundwater

The site is located within a low karst area. Based on a review of the New Mexico Office of State Engineers and USGS databases, no known water sources are within a 0.50-mile radius of the location. The nearest identified well is approximately 1.70 miles Southeast of the site in S32, T19S, R33E and was drilled in 1970. The well has a reported depth to groundwater of 185' feet below the ground surface (ft bgs). A copy of the associated Summary Report is attached in Appendix D.

3.0 NMAC Regulatory Criteria

Per the NMOCD regulatory criteria established in 19.15.29.12 NMAC, the following criteria were utilized in assessing the site.

- Benzene: 10 milligrams per kilogram (mg/kg).
- Benzene, toluene, ethylbenzene, and total xylenes (BTEX): 50 mg/kg.
- TPH: 100 mg/kg (GRO + DRO + MRO).
- Chloride: 600 mg/kg.

4.0 Remediation Activities

Carmona Resources personnel were onsite to collect confirmation samples. An area measuring 49' x 11' and ranging from 4' to 7' deep was excavated to repair the line and immediately remove contaminated material. Before collecting composite confirmation samples, the NMOCD division office was notified via email on June 24, 2024, per Subsection D of 19.15.29.12 NMAC. See Appendix C. A total of four (4) floor confirmation samples were collected (CS-1 through CS-4), and nine (9) sidewall samples (SW-1 through SW-9) were collected every 200 square feet to ensure the proper removal of the contaminated soils. All collected samples were analyzed for TPH analysis by EPA method 8015 modified, BTEX by EPA Method 8021B, and chloride



by EPA method 4500. Copies of laboratory analysis and chain-of-custody documentation are included in Appendix E. The excavation depths and confirmation sample locations are shown in Figure 3.

SW-2 and SW-7 showed elevated TPH ranging from 106.3 mg/kg to 110 mg/kg. SW-2 and SW-7 were excavated an additional 1' to removed impacted material. All final confirmation samples were below the regulatory requirements for TPH, BTEX, and chloride. Refer to Table 2.

Once the remediation activities were completed, the excavated areas were backfilled with clean material to surface grade. The material utilized for backfill was sourced from Lea Land, located at 6387 Hobbs Hwy, Hobbs, NM 88240. The pit sample was analyzed for TPH analysis by EPA method 8015 modified, BTEX by EPA Method 8021B, and chloride by EPA method 4500. Copies of laboratory analysis and chain-of-custody documentation are included in Appendix E.

Approximately 144 cubic yards of material were excavated and transported offsite for proper disposal.

5.0 Conclusions

Based on the assessment results and the analytical data, no further actions are required at the site. The final C-141 is attached, and Kinetik Midstream, LLC formally requests the closure of the spill. If you have any questions regarding this report or need additional information, please get in touch with us at 432-813-1992.

Sincerely,

Carmona Resources, LLC

Ashton Thielke
Sr. Project Manager

Miranda Milwee
Project Manager

FIGURES

CARMONA RESOURCES





FIGURE 1

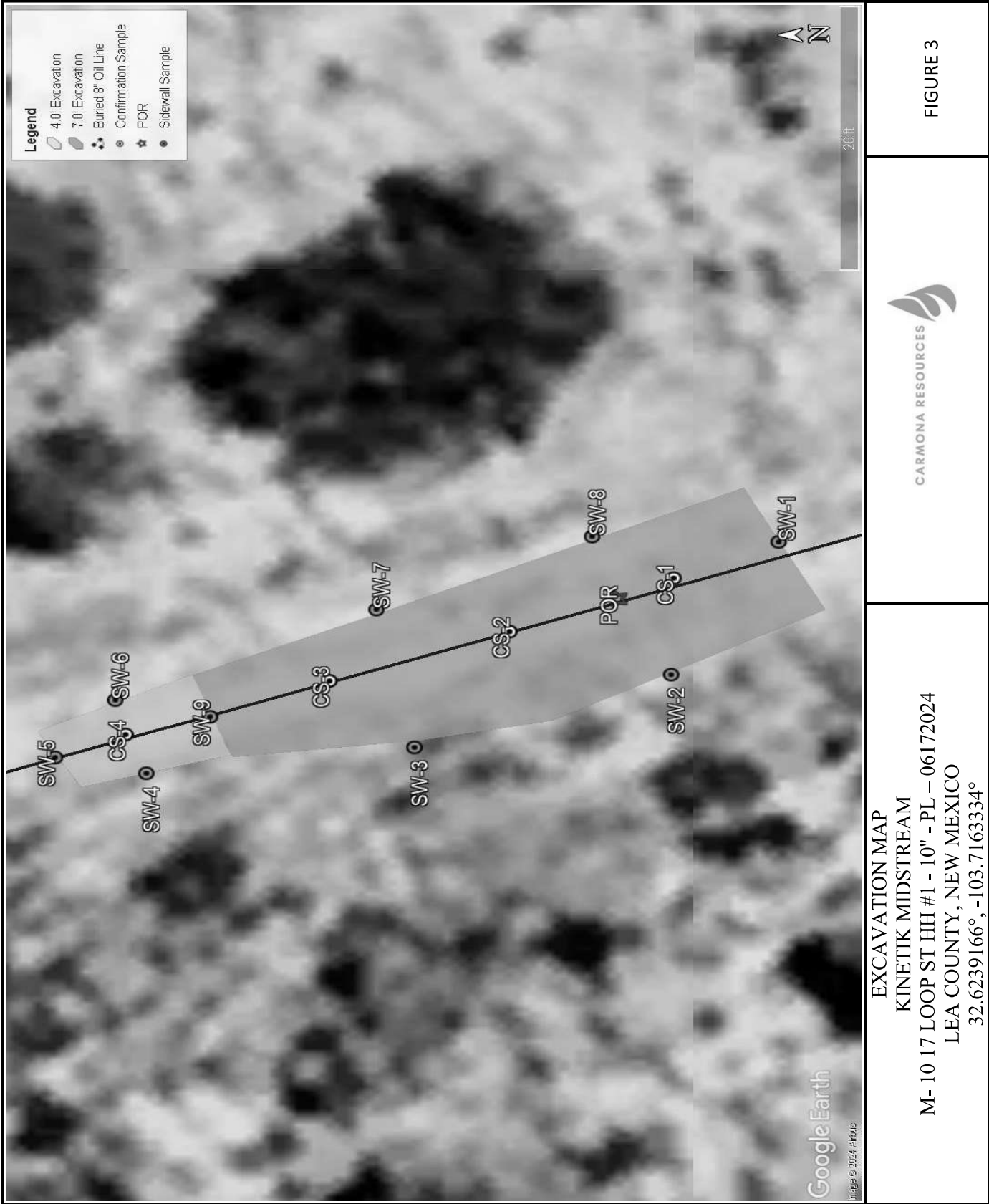
OVERVIEW MAP
KINETIK MIDSTREAM
M-10 17 LOOP ST HH #1 - 10" - PL - 06172024
LEA COUNTY, NEW MEXICO
32.6239166°, -103.7163334°



FIGURE 2



TOPOGRAPHIC MAP
KINETIK MIDSTREAM
M-10 17 LOOP ST HH #1 - 10" - PL - 06172024
LEA COUNTY, NEW MEXICO
32.6239166°, -103.7163334°



APPENDIX A

CARMONA RESOURCES



Table 1
Kinetik Midstream
M-10 17 LOOP ST HH #1 - 10" - PL - 06172024
Lea County, New Mexico

Sample ID	Date	Depth (ft)	TPH (mg/kg)				Benzene (mg/kg)	Toluene (mg/kg)	Ethlybenzene (mg/kg)	Xylene (mg/kg)	Total BTEX (mg/kg)	Chloride (mg/kg)
			GRO	DRO	MRO	Total						
CS-1	6/26/2024	7.0'	<10.0	<10.0	<10.0	<10.0	<0.050	<0.050	<0.050	<0.150	<0.300	32.0
CS-2	6/26/2024	7.0'	<10.0	36.8	14.1	50.9	<0.050	<0.050	<0.050	<0.150	<0.300	192
CS-3	6/26/2024	7.0'	<10.0	21.0	<10.0	21.0	<0.050	<0.050	<0.050	<0.150	<0.300	64.0
CS-4	6/26/2024	4.0'	<10.0	<10.0	<10.0	<10.0	<0.050	<0.050	<0.050	<0.150	<0.300	48.0
SW-1	6/26/2024	7.0'	<10.0	<10.0	<10.0	<10.0	<0.050	<0.050	<0.050	<0.150	<0.300	48.0
SW-2	6/26/2024	7.0'	<10.0	82.7	27.3	110	<0.050	<0.050	<0.050	<0.150	<0.300	128
	7/3/2024	7.0'	<10.0	<10.0	<10.0	<10.0	<0.050	<0.050	<0.050	<0.150	<0.300	32.0
SW-3	6/26/2024	7.0'	<10.0	<10.0	<10.0	<10.0	<0.050	<0.050	<0.050	<0.150	<0.300	32.0
SW-4	6/26/2024	4.0'	<10.0	<10.0	<10.0	<10.0	<0.050	<0.050	<0.050	<0.150	<0.300	16.0
SW-5	6/26/2024	4.0'	<10.0	20.9	<10.0	20.9	<0.050	<0.050	<0.050	<0.150	<0.300	<16.0
SW-6	6/26/2024	4.0'	<10.0	32.6	<10.0	<10.0	<0.050	<0.050	<0.050	<0.150	<0.300	96.0
SW-7	6/26/2024	7.0'	<10.0	85.3	21.0	106.3	<0.050	<0.050	<0.050	<0.150	<0.300	256
	7/3/2024	7.0'	<10.0	<10.0	<10.0	<10.0	<0.050	<0.050	<0.050	<0.150	<0.300	32.0
SW-8	6/26/2024	7.0'	<10.0	27.7	13.0	40.7	<0.050	<0.050	<0.050	<0.150	<0.300	96.0
SW-9	6/26/2024	3.0'	<10.0	71.2	22.7	93.9	<0.050	<0.050	<0.050	<0.150	<0.300	560
Lea Land Stockpile	7/2/2024	-	<10.0	<10.0	<10.0	<10.0	<0.050	<0.050	<0.050	<0.150	<0.300	272
Regulatory Criteria ^A			100 mg/kg				10 mg/kg				50 mg/kg	600 mg/kg

(-) Not Analyzed
A – Table 1 - 19.15.29 NMAC
mg/kg - milligram per kilogram
TPH- Total Petroleum Hydrocarbons
ft-feet
(CS) Confirmation Sample
(SW) Sidewall
Removed

APPENDIX B

CARMONA RESOURCES



PHOTOGRAPHIC LOG

Kinetik Midstream

Photograph No. 1

Facility: M- 10 17 LOOP ST HH #1 - 10" - PL
- 06172024

County: Lea County, New Mexico

Description:

View North, area of CS-1 through CS-4.



Photograph No. 2

Facility: M- 10 17 LOOP ST HH #1 - 10" - PL
- 06172024

County: Lea County, New Mexico

Description:

View Southeast, area of CS-1 and CS-2.



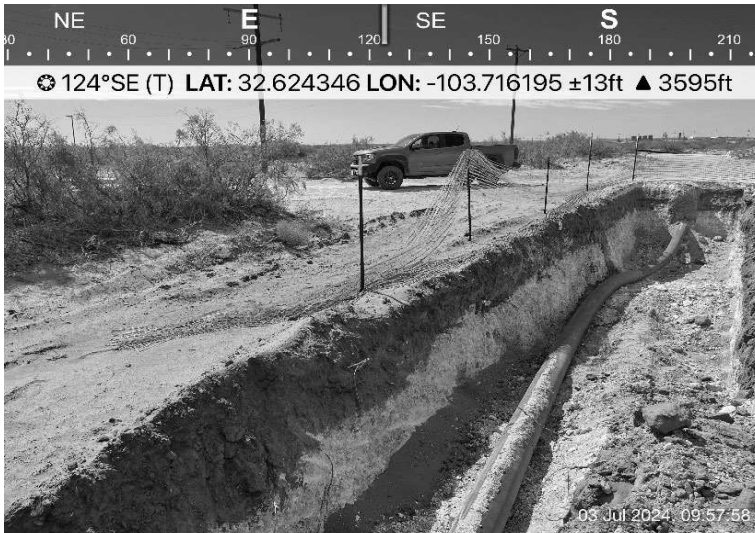
Photograph No. 3

Facility: M- 10 17 LOOP ST HH #1 - 10" - PL
- 06172024

County: Lea County, New Mexico

Description:

View Southeast, area of CS-1 through CS-4.



APPENDIX C

CARMONA RESOURCES



District I
1625 N. French Dr., Hobbs, NM 88240
Phone:(575) 393-6161 Fax:(575) 393-0720
District II
811 S. First St., Artesia, NM 88210
Phone:(575) 748-1283 Fax:(575) 748-9720
District III
1000 Rio Brazos Rd., Aztec, NM 87410
Phone:(505) 334-6178 Fax:(505) 334-6170
District IV
1220 S. St Francis Dr., Santa Fe, NM 87505
Phone:(505) 476-3470 Fax:(505) 476-3462

State of New Mexico
Energy, Minerals and Natural Resources
Oil Conservation Division
1220 S. St Francis Dr.
Santa Fe, NM 87505

QUESTIONS

Action 355381

QUESTIONS

Operator: FRONTIER FIELD SERVICES, LLC 10077 Grogans Mill Rd. The Woodlands, TX 77380	OGRID: 221115
	Action Number: 355381
	Action Type: [NOTIFY] Notification Of Release (NOR)

QUESTIONS

Location of Release Source	
Please answer all the questions in this group.	
Site Name	M- 10 17 Loop St HH #1 - 10" - PL - 06172024
Date Release Discovered	06/17/2024
Surface Owner	State

Incident Details	
Please answer all the questions in this group.	
Incident Type	Other
Did this release result in a fire or is the result of a fire	No
Did this release result in any injuries	No
Has this release reached or does it have a reasonable probability of reaching a watercourse	No
Has this release endangered or does it have a reasonable probability of endangering public health	No
Has this release substantially damaged or will it substantially damage property or the environment	No
Is this release of a volume that is or may with reasonable probability be detrimental to fresh water	No

Nature and Volume of Release	
Material(s) released, please answer all that apply below. Any calculations or specific justifications for the volumes provided should be attached to the follow-up C-141 submission.	
Crude Oil Released (bbls) Details	Not answered.
Produced Water Released (bbls) Details	Not answered.
Is the concentration of chloride in the produced water >10,000 mg/l	Not answered.
Condensate Released (bbls) Details	Cause: Human Error Flow Line - Production Condensate Released: 30 BBL Recovered: 30 BBL Lost: 0 BBL.
Natural Gas Vented (Mcf) Details	Cause: Human Error Flow Line - Production Natural Gas Vented Released: 6 Mcf Recovered: 0 Mcf Lost: 6 Mcf.
Natural Gas Flared (Mcf) Details	Not answered.
Other Released Details	Not answered.
Are there additional details for the questions above (i.e. any answer containing Other, Specify, Unknown, and/or Fire, or any negative lost amounts)	Not answered.

District I
1625 N. French Dr., Hobbs, NM 88240
Phone:(575) 393-6161 Fax:(575) 393-0720
District II
811 S. First St., Artesia, NM 88210
Phone:(575) 748-1283 Fax:(575) 748-9720
District III
1000 Rio Brazos Rd., Aztec, NM 87410
Phone:(505) 334-6178 Fax:(505) 334-6170
District IV
1220 S. St Francis Dr., Santa Fe, NM 87505
Phone:(505) 476-3470 Fax:(505) 476-3462

State of New Mexico
Energy, Minerals and Natural Resources
Oil Conservation Division
1220 S. St Francis Dr.
Santa Fe, NM 87505

QUESTIONS, Page 2

Action 355381

QUESTIONS (continued)

Operator: FRONTIER FIELD SERVICES, LLC 10077 Grogans Mill Rd. The Woodlands, TX 77380	OGRID: 221115
	Action Number: 355381
	Action Type: [NOTIFY] Notification Of Release (NOR)

QUESTIONS

Nature and Volume of Release (continued)	
Is this a gas only submission (i.e. only significant Mcf values reported)	No, according to supplied volumes this does not appear to be a "gas only" report.
Was this a major release as defined by Subsection A of 19.15.29.7 NMAC	Yes
Reasons why this would be considered a submission for a notification of a major release	From paragraph A. "Major release" determine using: (1) an unauthorized release of a volume, excluding gases, of 25 barrels or more.
With the implementation of the 19.15.27 NMAC (05/25/2021), venting and/or flaring of natural gas (i.e. gas only) are to be submitted on the C-129 form.	

Initial Response

The responsible party must undertake the following actions immediately unless they could create a safety hazard that would result in injury.	
The source of the release has been stopped	True
The impacted area has been secured to protect human health and the environment	True
Released materials have been contained via the use of berms or dikes, absorbent pads, or other containment devices	True
All free liquids and recoverable materials have been removed and managed appropriately	True
If all the actions described above have not been undertaken, explain why	Not answered.
Per Paragraph 4 of Subsection B of 19.15.29.8 NMAC the responsible party may commence remediation immediately after discovery of a release. If remediation has begun, please prepare and attach a narrative of actions to date in the follow-up C-141 submission. If remedial efforts have been successfully completed or if the release occurred within a lined containment area (see 19.15.29.11(A)(5)(a) NMAC), please prepare and attach all information needed for closure evaluation in the follow-up C-141 submission.	

District I
1625 N. French Dr., Hobbs, NM 88240
Phone:(575) 393-6161 Fax:(575) 393-0720
District II
811 S. First St., Artesia, NM 88210
Phone:(575) 748-1283 Fax:(575) 748-9720
District III
1000 Rio Brazos Rd., Aztec, NM 87410
Phone:(505) 334-6178 Fax:(505) 334-6170
District IV
1220 S. St Francis Dr., Santa Fe, NM 87505
Phone:(505) 476-3470 Fax:(505) 476-3462

State of New Mexico
Energy, Minerals and Natural Resources
Oil Conservation Division
1220 S. St Francis Dr.
Santa Fe, NM 87505

ACKNOWLEDGMENTS

Action 355381

ACKNOWLEDGMENTS

Operator: FRONTIER FIELD SERVICES, LLC 10077 Grogans Mill Rd. The Woodlands, TX 77380	OGRID: 221115
	Action Number: 355381
	Action Type: [NOTIFY] Notification Of Release (NOR)

ACKNOWLEDGMENTS

<input checked="" type="checkbox"/>	I acknowledge that I am authorized to submit notification of a release on behalf of my operator.
<input checked="" type="checkbox"/>	I acknowledge that upon submitting this application, I will be creating a new incident file (assigned to my operator) to track the notification(s) and corrective action(s) for a release, pursuant to NMAC 19.15.29.
<input checked="" type="checkbox"/>	I acknowledge that creating a new incident file will require my operator to file subsequent submission(s) of form "C-141, Application for administrative approval of a release notification and corrective action", pursuant to NMAC 19.15.29.
<input checked="" type="checkbox"/>	I hereby certify that the information given above is true and complete to the best of my knowledge and understand that pursuant to OCD rules and regulations all operators are required to report and/or file certain release notifications and perform corrective actions for releases which may endanger public health or the environment.
<input checked="" type="checkbox"/>	I acknowledge the fact that the acceptance of a C-141 report by the OCD does not relieve the operator of liability should their operations have failed to adequately investigate and remediate contamination that pose a threat to groundwater, surface water, human health or the environment.
<input checked="" type="checkbox"/>	I acknowledge the fact that, in addition, OCD acceptance of a C-141 report does not relieve the operator of responsibility for compliance with any other federal, state, or local laws and/or regulations.

District I
1625 N. French Dr., Hobbs, NM 88240
Phone:(575) 393-6161 Fax:(575) 393-0720
District II
811 S. First St., Artesia, NM 88210
Phone:(575) 748-1283 Fax:(575) 748-9720
District III
1000 Rio Brazos Rd., Aztec, NM 87410
Phone:(505) 334-6178 Fax:(505) 334-6170
District IV
1220 S. St Francis Dr., Santa Fe, NM 87505
Phone:(505) 476-3470 Fax:(505) 476-3462

State of New Mexico
Energy, Minerals and Natural Resources
Oil Conservation Division
1220 S. St Francis Dr.
Santa Fe, NM 87505

CONDITIONS

Action 355381

CONDITIONS

Operator: FRONTIER FIELD SERVICES, LLC 10077 Grogans Mill Rd. The Woodlands, TX 77380	OGRID: 221115
	Action Number: 355381
	Action Type: [NOTIFY] Notification Of Release (NOR)

CONDITIONS

Created By	Condition	Condition Date
sorozco	When submitting future reports regarding this release, please submit the calculations used or specific justification for the volumes reported on the initial C-141.	6/18/2024

District I
1625 N. French Dr., Hobbs, NM 88240
Phone:(575) 393-6161 Fax:(575) 393-0720
District II
811 S. First St., Artesia, NM 88210
Phone:(575) 748-1283 Fax:(575) 748-9720
District III
1000 Rio Brazos Rd., Aztec, NM 87410
Phone:(505) 334-6178 Fax:(505) 334-6170
District IV
1220 S. St Francis Dr., Santa Fe, NM 87505
Phone:(505) 476-3470 Fax:(505) 476-3462

State of New Mexico
Energy, Minerals and Natural Resources
Oil Conservation Division
1220 S. St Francis Dr.
Santa Fe, NM 87505

QUESTIONS

Action 356820

QUESTIONS

Operator: FRONTIER FIELD SERVICES, LLC 10077 Grogans Mill Rd. The Woodlands, TX 77380	OGRID: 221115
	Action Number: 356820
	Action Type: [NOTIFY] Notification Of Sampling (C-141N)

QUESTIONS

Prerequisites	
Incident ID (n#)	nAPP2417032594
Incident Name	NAPP2417032594 M- 10 17 LOOP ST HH #1 - 10" - PL - 06172024 @ 0
Incident Type	Other
Incident Status	Initial C-141 Approved

Location of Release Source	
Site Name	M- 10 17 Loop St HH #1 - 10" - PL - 06172024
Date Release Discovered	06/17/2024
Surface Owner	State

Sampling Event General Information	
Please answer all the questions in this group.	
What is the sampling surface area in square feet	1,200
What is the estimated number of samples that will be gathered	12
Sampling date pursuant to Subparagraph (a) of Paragraph (1) of Subsection D of 19.15.29.12 NMAC	06/26/2024
Time sampling will commence	07:30 AM
Please provide any information necessary for observers to contact samplers	Miranda Milwee 432-813-9652
Please provide any information necessary for navigation to sampling site	32.6239166,-103.7163334

District I
1625 N. French Dr., Hobbs, NM 88240
Phone:(575) 393-6161 Fax:(575) 393-0720
District II
811 S. First St., Artesia, NM 88210
Phone:(575) 748-1283 Fax:(575) 748-9720
District III
1000 Rio Brazos Rd., Aztec, NM 87410
Phone:(505) 334-6178 Fax:(505) 334-6170
District IV
1220 S. St Francis Dr., Santa Fe, NM 87505
Phone:(505) 476-3470 Fax:(505) 476-3462

State of New Mexico
Energy, Minerals and Natural Resources
Oil Conservation Division
1220 S. St Francis Dr.
Santa Fe, NM 87505

CONDITIONS

Action 356820

CONDITIONS

Operator: FRONTIER FIELD SERVICES, LLC 10077 Grogans Mill Rd. The Woodlands, TX 77380	OGRID: 221115
	Action Number: 356820
	Action Type: [NOTIFY] Notification Of Sampling (C-141N)

CONDITIONS

Created By	Condition	Condition Date
sorozco	Failure to notify the OCD of sampling events including any changes in date/time per the requirements of 19.15.29.12.D.(1).(a) NMAC, may result in the remediation closure samples not being accepted.	6/24/2024

District I
1625 N. French Dr., Hobbs, NM 88240
Phone:(575) 393-6161 Fax:(575) 393-0720
District II
811 S. First St., Artesia, NM 88210
Phone:(575) 748-1283 Fax:(575) 748-9720
District III
1000 Rio Brazos Rd., Aztec, NM 87410
Phone:(505) 334-6178 Fax:(505) 334-6170
District IV
1220 S. St Francis Dr., Santa Fe, NM 87505
Phone:(505) 476-3470 Fax:(505) 476-3462

State of New Mexico
Energy, Minerals and Natural Resources
Oil Conservation Division
1220 S. St Francis Dr.
Santa Fe, NM 87505

QUESTIONS

Action 359832

QUESTIONS

Operator: FRONTIER FIELD SERVICES, LLC 10077 Grogans Mill Rd. The Woodlands, TX 77380	OGRID: 221115
	Action Number: 359832
	Action Type: [NOTIFY] Notification Of Sampling (C-141N)

QUESTIONS

Prerequisites	
Incident ID (n#)	nAPP2417032594
Incident Name	NAPP2417032594 M- 10 17 LOOP ST HH #1 - 10" - PL - 06172024 @ 0
Incident Type	Other
Incident Status	Initial C-141 Approved

Location of Release Source	
Site Name	M- 10 17 Loop St HH #1 - 10" - PL - 06172024
Date Release Discovered	06/17/2024
Surface Owner	State

Sampling Event General Information	
Please answer all the questions in this group.	
What is the sampling surface area in square feet	500
What is the estimated number of samples that will be gathered	2
Sampling date pursuant to Subparagraph (a) of Paragraph (1) of Subsection D of 19.15.29.12 NMAC	07/03/2024
Time sampling will commence	09:00 AM
Please provide any information necessary for observers to contact samplers	Miranda Milwee 4328139652
Please provide any information necessary for navigation to sampling site	From the Intersection of NM-243 and U.S. HWY 62, trvl E on U.S. HWY 62 for 7.55 mi. Turn L onto Smith Ranch Rd and trvl NW for 2.08 mi. Turn L and trvl SW on Unnamed Lease Rd for 3.30 mi. Turn R onto Unnamed Lease Rd and trvl N for 1.28 mi. Turn R and trvl NE for 0.78 mi. Turn L and trvl NW for 1.35 mi. Turn L and trvl SW for 0.97 mi. Turn R and trvl NW for 0.58 mi. Turn L and trvl SW for 0.39 mi. Turn R and trvl W for 0.23 mi and arrive with location on the R. Location is at GPS coordinates 32.6239166, -103.7163334.

District I
1625 N. French Dr., Hobbs, NM 88240
Phone:(575) 393-6161 Fax:(575) 393-0720
District II
811 S. First St., Artesia, NM 88210
Phone:(575) 748-1283 Fax:(575) 748-9720
District III
1000 Rio Brazos Rd., Aztec, NM 87410
Phone:(505) 334-6178 Fax:(505) 334-6170
District IV
1220 S. St Francis Dr., Santa Fe, NM 87505
Phone:(505) 476-3470 Fax:(505) 476-3462

State of New Mexico
Energy, Minerals and Natural Resources
Oil Conservation Division
1220 S. St Francis Dr.
Santa Fe, NM 87505

CONDITIONS

Action 359832

CONDITIONS

Operator: FRONTIER FIELD SERVICES, LLC 10077 Grogans Mill Rd. The Woodlands, TX 77380	OGRID: 221115
	Action Number: 359832
	Action Type: [NOTIFY] Notification Of Sampling (C-141N)

CONDITIONS

Created By	Condition	Condition Date
sorozco	Failure to notify the OCD of sampling events including any changes in date/time per the requirements of 19.15.29.12.D.(1).(a) NMAC, may result in the remediation closure samples not being accepted.	7/1/2024

Incident ID	NAPP2417032594
District RP	
Facility ID	
Application ID	

Closure

The responsible party must attach information demonstrating they have complied with all applicable closure requirements and any conditions or directives of the OCD. This demonstration should be in the form of a comprehensive report (electronic submittals in .pdf format are preferred) including a scaled site map, sampling diagrams, relevant field notes, photographs of any excavation prior to backfilling, laboratory data including chain of custody documents of final sampling, and a narrative of the remedial activities. Refer to 19.15.29.12 NMAC.

Closure Report Attachment Checklist: *Each of the following items must be included in the closure report.*

- ☒ A scaled site and sampling diagram as described in 19.15.29.11 NMAC
- ☒ Photographs of the remediated site prior to backfill or photos of the liner integrity if applicable (Note: appropriate OCD District office must be notified 2 days prior to liner inspection)
- ☒ Laboratory analyses of final sampling (Note: appropriate ODC District office must be notified 2 days prior to final sampling)
- ☒ Description of remediation activities

I hereby certify that the information given above is true and complete to the best of my knowledge and understand that pursuant to OCD rules and regulations all operators are required to report and/or file certain release notifications and perform corrective actions for releases which may endanger public health or the environment. The acceptance of a C-141 report by the OCD does not relieve the operator of liability should their operations have failed to adequately investigate and remediate contamination that pose a threat to groundwater, surface water, human health or the environment. In addition, OCD acceptance of a C-141 report does not relieve the operator of responsibility for compliance with any other federal, state, or local laws and/or regulations. The responsible party acknowledges they must substantially restore, reclaim, and re-vegetate the impacted surface area to the conditions that existed prior to the release or their final land use in accordance with 19.15.29.13 NMAC including notification to the OCD when reclamation and re-vegetation are complete.

Printed Name: Sebastian Orozco Title: Environmental Specialist

Signature: Sebastian Orozco Date: 7/17/2024

email: sorozco@kinetik.com Telephone: 575-909-0340

OCD Only

Received by: _____ Date: _____

Closure approval by the OCD does not relieve the responsible party of liability should their operations have failed to adequately investigate and remediate contamination that poses a threat to groundwater, surface water, human health, or the environment nor does not relieve the responsible party of compliance with any other federal, state, or local laws and/or regulations.

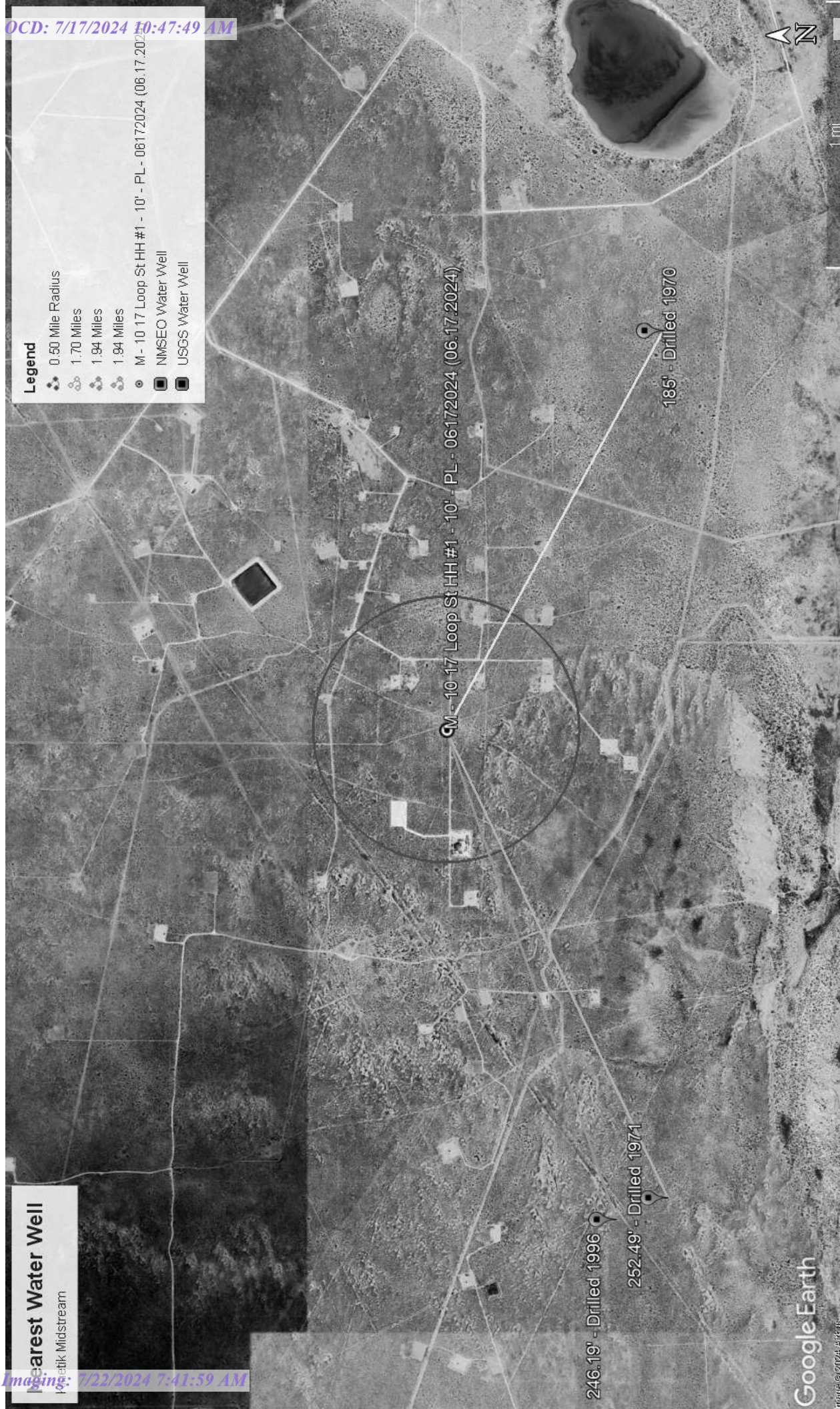
Closure Approved by: _____ Date: _____

Printed Name: _____ Title: _____

APPENDIX D

CARMONA RESOURCES







Legend

Low

M - 10 17 Loop St HH #1 - 10' - PL - 06172024 (06.17.2024)

Low Karst

10' - PL - 06172024 (06.17.2024)

Google Earth

Image © 2024, Airbus



New Mexico Office of the State Engineer

Water Column/Average Depth to Water

(A CLW##### in the
POD suffix indicates the
POD has been replaced
& no longer serves a
water right file.)

(R=POD has
been replaced,
O=orphaned,
C=the file is
closed)

(quarters are 1=NW 2=NE 3=SW 4=SE)
(quarters are smallest to largest)

(NAD83 UTM in meters)

(In feet)

POD Number	POD Sub-		Q Q Q				Sec	Tws	Rng	X	Y	Distance	Depth Well	Depth Water	Water Column
	Code	basin	County	64	16	4									
L 07023	L	LE		2	3	3	32	19S	33E	622840	3609047*	2731	262	185	77
CP 00075	O	CP	LE		2	4	34	19S	32E	617502	3609301	3096	575		
CP 01967 POD1		CP	LE	2	2	2	24	19S	32E	620720	3613546	3236	110		

Average Depth to Water: 185 feet

Minimum Depth: 185 feet

Maximum Depth: 185 feet

Record Count: 3

UTMNAD83 Radius Search (in meters):

Easting (X): 620425.19

Northing (Y): 3610322.92

Radius: 4000

*UTM location was derived from PLSS - see Help

The data is furnished by the NMOSE/ISC and is accepted by the recipient with the expressed understanding that the OSE/ISC make no warranties, expressed or implied, concerning the accuracy, completeness, reliability, usability, or suitability for any particular purpose of the data.



New Mexico Office of the State Engineer

Point of Diversion Summary

(quarters are 1=NW 2=NE 3=SW 4=SE)
(quarters are smallest to largest)

(NAD83 UTM in meters)

Well Tag	POD Number	Q64	Q16	Q4	Sec	Tws	Rng	X	Y
L 07023		2	3	3	32	19S	33E	622840	3609047*

x

Driller License: 46

Driller Company: ABBOTT BROTHERS COMPANY

Driller Name: MURRELL ABBOTT

Drill Start Date: 11/12/1970

Drill Finish Date: 11/15/1970

Plug Date:

Log File Date: 11/19/1970

PCW Rev Date:

Source: Shallow

Pump Type:

Pipe Discharge Size:

Estimated Yield:

Casing Size: 7.00

Depth Well: 262 feet

Depth Water: 185 feet

x

Water Bearing Stratifications:	Top	Bottom	Description
	185	214	Sandstone/Gravel/Conglomerate

x

Casing Perforations:	Top	Bottom
	200	260

*UTM location was derived from PLSS - see Help

The data is furnished by the NMOSE/ISC and is accepted by the recipient with the expressed understanding that the OSE/ISC make no warranties, expressed or implied, concerning the accuracy, completeness, reliability, usability, or suitability for any particular purpose of the data.

Click to hideNews Bulletins

- Explore the [NEW USGS National Water Dashboard](#) interactive map to access real-time water data from over 13,500 stations nationwide.

Groundwater levels for New Mexico

Click to hide state-specific text

I Important: [Next Generation Monitoring Location Page](#)

Search Results -- 1 sites found

Agency code = usgs
site_no list =

- 323641103444801

Minimum number of levels = 1
[Save file of selected sites](#) to local disk for future upload

USGS 323641103444801 19S.32E.34.42322

Lea County, New Mexico
Latitude 32°36'53", Longitude 103°44'52" NAD27
Land-surface elevation 3,559.00 feet above NGVD29
The depth of the well is 575 feet below land surface.
This well is completed in the Other aquifers (N9999OTHER) national aquifer.
This well is completed in the Santa Rosa Sandstone (231SNRS) local aquifer.

Output formats

Table of data
Tab-separated data
Graph of data
Reselect period

Date	Time	? Water-level date-time accuracy	? Parameter code	Water level, feet below land surface	Water level, feet above specific vertical datum	Referenced vertical datum	? Status	? Method of measurement	? Measuring agency	? Source of measur
1965-11-18			D 62610		3295.16	NGVD29	1		Z	
1965-11-18			D 62611		3296.72	NAVD88	1		Z	
1965-11-18			D 72019	263.84			1		Z	
1968-06-27			D 62610		3303.50	NGVD29	1		Z	
1968-06-27			D 62611		3305.06	NAVD88	1		Z	
1968-06-27			D 72019	255.50			1		Z	
1971-01-28			D 62610		3306.73	NGVD29	1		Z	
1971-01-28			D 62611		3308.29	NAVD88	1		Z	
1971-01-28			D 72019	252.27			1		Z	
1976-12-14			D 62610		3311.62	NGVD29	1		Z	
1976-12-14			D 62611		3313.18	NAVD88	1		Z	
1976-12-14			D 72019	247.38			1		Z	
1986-03-27			D 62610		3310.26	NGVD29	1		Z	
1986-03-27			D 62611		3311.82	NAVD88	1		Z	
1986-03-27			D 72019	248.74			1		Z	

	Water-level date-time accuracy	Parameter code	feet below land surface	feet above specific vertical datum		S
1991-05-24	D	62610	3310.46	NGVD29	1	Z
1991-05-24	D	62611	3312.02	NAVD88	1	Z
1991-05-24	D	72019	248.54		1	Z
1996-02-06	D	62610	3312.81	NGVD29	1	S
1996-02-06	D	62611	3314.37	NAVD88	1	S
1996-02-06	D	72019	246.19		1	S

Explanation		
Section	Code	Description
Water-level date-time accuracy	D	Date is accurate to the Day
Parameter code	62610	Groundwater level above NGVD 1929, feet
Parameter code	62611	Groundwater level above NAVD 1988, feet
Parameter code	72019	Depth to water level, feet below land surface
Referenced vertical datum	NAVD88	North American Vertical Datum of 1988
Referenced vertical datum	NGVD29	National Geodetic Vertical Datum of 1929
Status	1	Static
Method of measurement	S	Steel-tape measurement.
Method of measurement	Z	Other.
Measuring agency		Not determined
Source of measurement		Not determined
Water-level approval status	A	Approved for publication -- Processing and review completed.

[Questions or Comments](#)
[Help](#)
[Data Tips](#)
[Explanation of terms](#)
[Subscribe for system changes](#)

[Accessibility](#) [FOIA](#) [Privacy](#) [Policies and Notices](#)
[U.S. Department of the Interior | U.S. Geological Survey](#)
Title: Groundwater for New Mexico: Water Levels
URL: [https://nwis.waterdata.usgs.gov/nm/nwis/gwlevels?](https://nwis.waterdata.usgs.gov/nm/nwis/gwlevels?site_no=323641103444801&agency_cd=USGS&format=html)



Page Contact Information: [New Mexico Water Data Maintainer](#)
Page Last Modified: 2024-06-19 08:27:08 EDT
0.25 0.22 nadww01

USGS Water Resources

Data Category:
Groundwater

Geographic Area:
New Mexico

GO

Click to hideNews Bulletins

- Explore the *NEW* [USGS National Water Dashboard](#) interactive map to access real-time water data from over 13,500 stations nationwide.

Groundwater levels for New Mexico

Click to hide state-specific text

i Important: [Next Generation Monitoring Location Page](#)

Search Results -- 1 sites found

Agency code = usgs
site_no list =

- 323643103444701

Minimum number of levels = 1
[Save file of selected sites](#) to local disk for future upload

USGS 323643103444701 19S.32E.34.421442

Lea County, New Mexico
Latitude 32°36'43", Longitude 103°44'47" NAD27
Land-surface elevation 3,553 feet above NAVD88
The depth of the well is 575 feet below land surface.
This well is completed in the Other aquifers (N9999OTHER) national aquifer.
This well is completed in the Santa Rosa Sandstone (231SNRS) local aquifer.

Output formats

Table of data
Tab-separated data
Graph of data
Reselect period

Date	Time	? Water-level date-time accuracy	? Parameter code	Water level, feet below land surface	Water level, feet above specific vertical datum	Referenced vertical datum	? Status	? Method of measurement	? Measuring agency	? Source of measurement
1965-11-18			D	62610	3288.59	NGVD29	1		Z	
1965-11-18			D	62611	3290.15	NAVD88	1		Z	
1965-11-18			D	72019	262.85		1		Z	
1971-01-28			D	62610	3298.95	NGVD29	1		Z	
1971-01-28			D	62611	3300.51	NAVD88	1		Z	
1971-01-28			D	72019	252.49		1		Z	

Explanation

Section	Code	Description
Water-level date-time accuracy	D	Date is accurate to the Day
Parameter code	62610	Groundwater level above NGVD 1929, feet
Parameter code	62611	Groundwater level above NAVD 1988, feet
Parameter code	72019	Depth to water level, feet below land surface

Received by OGD: 7/17/2024 10:47:49 AM

Released to Imaging: 7/29/2024 7:41:59 AM

Referenced vertical datum	NAVD88	North American Vertical Datum of 1988
Ref. Date (Year/Day/Month)	6/19/24, 7:31 AM	
Status	1	Static
Method of measurement	Z	Other.
Measuring agency		Not determined
Source of measurement		Not determined
Water-level approval status	A	Approved for publication -- Processing and review completed.

USGS Groundwater for New Mexico: Water Levels -- 1 sites

Page 31 of 69

Questions or Comments

Help

Data Tips

Explanation of terms

Subscribe for system changes

[Accessibility](#) [FOIA](#) [Privacy](#) [Policies and Notices](#)

[U.S. Department of the Interior](#) | [U.S. Geological Survey](#)

Title: Groundwater for New Mexico: Water Levels

URL: <https://nwis.waterdata.usgs.gov/nm/nwis/gwlevels?>



Page Contact Information: [New Mexico Water Data Maintainer](#)

Page Last Modified: 2024-06-19 08:30:11 EDT

0.28 0.25 nadww01

FEMA National Flood Hazard Layer (NFHL)



Bureau of Land Management, Texas Parks & Wildlife, Esri, HERE, Garmin, INCREMENT P, USGS, METI/NASA, EPA, USDA

FEMA National Flood Hazard Layer (NFHL)



FEMA flood layer

Maxar | Esri Community Maps Contributors, New Mexico State University, Texas Parks & Wildlife, © OpenStreetMap, Microsoft, CONANP, Esri, TomTom, Garmin, SafeGraph, GeoTechnologies, Inc, METI/NASA, USGS, EPA, NPS, US Census Bureau, USDA, USFWS

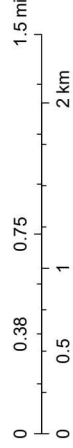
M-10 17 Loop St HH #1 - 10' - PL - 06172024 (06.17.2024)



6/19/2024, 7:24:26 AM

- OSW Water Bodys
- OSE Probable Playas
- OSE Streams

1:36,112



Esri, NASA, NGA, USGS, FEMA, Texas Parks & Wildlife, CONANP, Esri, TomTom, Garmin, SafeGraph, GeoTechnologies, Inc, METINASA, USGS, EPA, NPS, US Census Bureau, USDA, USFWS, NM OSE

APPENDIX E

CARMONA RESOURCES





PHONE (575) 393-2326 ° 101 E. MARLAND ° HOBBS, NM 88240

June 27, 2024

MIRANDA MILWEE

CARMONA RESOURCES

310 W WALL ST, SUITE 500

MIDLAND, TX 79701

RE: M - 10 17 LOOP ST HH #1 - 10"

Enclosed are the results of analyses for samples received by the laboratory on 06/26/24 13:20.

Cardinal Laboratories is accredited through Texas NELAP under certificate number TX-C24-00112. Accreditation applies to drinking water, non-potable water and solid and chemical materials. All accredited analytes are denoted by an asterisk (*). For a complete list of accredited analytes and matrices visit the TCEQ website at www.tceq.texas.gov/field/qa/lab_accred_certif.html.

Cardinal Laboratories is accredited through the State of Colorado Department of Public Health and Environment for:

Method EPA 552.2	Haloacetic Acids (HAA-5)
Method EPA 524.2	Total Trihalomethanes (TTHM)
Method EPA 524.4	Regulated VOCs (V1, V2, V3)

Accreditation applies to public drinking water matrices.

This report meets NELAP requirements and is made up of a cover page, analytical results, and a copy of the original chain-of-custody. If you have any questions concerning this report, please feel free to contact me.

Sincerely,

A handwritten signature in black ink that reads "Celey D. Keene". The signature is fluid and cursive, with the first name "Celey" and last name "Keene" clearly distinguishable.

Celey D. Keene

Lab Director/Quality Manager



PHONE (575) 393-2326 ° 101 E. MARLAND ° HOBBS, NM 88240

Analytical Results For:

CARMONA RESOURCES
MIRANDA MILWEE
310 W WALL ST, SUITE 500
MIDLAND TX, 79701
Fax To:

Received: 06/26/2024
Reported: 06/27/2024
Project Name: M - 10 17 LOOP ST HH #1 - 10"
Project Number: 2420
Project Location: KINETIK MIDSTREAM - LEA CO NM

Sampling Date: 06/26/2024
Sampling Type: Soil
Sampling Condition: Cool & Intact
Sample Received By: Shalyn Rodriguez

Sample ID: CS - 1 (7') (H243825-01)

BTEx 8021B			mg/kg		Analyzed By: JH				
Analyte	Result	Reporting Limit	Analyzed	Method Blank	BS	% Recovery	True Value QC	RPD	Qualifier
Benzene*	<0.050	0.050	06/26/2024	ND	2.04	102	2.00	2.57	
Toluene*	<0.050	0.050	06/26/2024	ND	2.01	100	2.00	1.82	
Ethylbenzene*	<0.050	0.050	06/26/2024	ND	2.05	103	2.00	1.67	
Total Xylenes*	<0.150	0.150	06/26/2024	ND	6.02	100	6.00	1.91	
Total BTEX	<0.300	0.300	06/26/2024	ND					

Surrogate: 4-Bromofluorobenzene (PIE) 96.3 % 71.5-134

Chloride, SM4500Cl-B			mg/kg		Analyzed By: AC				
Analyte	Result	Reporting Limit	Analyzed	Method Blank	BS	% Recovery	True Value QC	RPD	Qualifier
Chloride	32.0	16.0	06/27/2024	ND	432	108	400	0.00	

TPH 8015M			mg/kg		Analyzed By: MS				
Analyte	Result	Reporting Limit	Analyzed	Method Blank	BS	% Recovery	True Value QC	RPD	Qualifier
GRO C6-C10*	<10.0	10.0	06/26/2024	ND	192	95.9	200	1.46	
DRO >C10-C28*	<10.0	10.0	06/26/2024	ND	187	93.6	200	0.454	
EXT DRO >C28-C36	<10.0	10.0	06/26/2024	ND					

Surrogate: 1-Chlorooctane 110 % 48.2-134

Surrogate: 1-Chlorooctadecane 128 % 49.1-148

Cardinal Laboratories

*=Accredited Analyte

PLEASE NOTE: Liability and Damages. Cardinal's liability and client's exclusive remedy for any claim arising, whether based in contract or tort, shall be limited to the amount paid by client for analyses. All claims, including those for negligence and any other cause whatsoever shall be deemed waived unless made in writing and received by Cardinal within thirty (30) days after completion of the applicable service. In no event shall Cardinal be liable for incidental or consequential damages, including, without limitation, business interruptions, loss of use, or loss of profits incurred by client, its subsidiaries, affiliates or successors arising out of or related to the performance of the services hereunder by Cardinal, regardless of whether such claim is based upon any of the above stated reasons or otherwise. Results relate only to the samples identified above. This report shall not be reproduced except in full with written approval of Cardinal Laboratories.

Celey D. Keene, Lab Director/Quality Manager



PHONE (575) 393-2326 ° 101 E. MARLAND ° HOBBS, NM 88240

Analytical Results For:

CARMONA RESOURCES
MIRANDA MILWEE
310 W WALL ST, SUITE 500
MIDLAND TX, 79701
Fax To:

Received: 06/26/2024
Reported: 06/27/2024
Project Name: M - 10 17 LOOP ST HH #1 - 10"
Project Number: 2420
Project Location: KINETIK MIDSTREAM - LEA CO NM

Sampling Date: 06/26/2024
Sampling Type: Soil
Sampling Condition: Cool & Intact
Sample Received By: Shalyn Rodriguez

Sample ID: CS - 2 (7') (H243825-02)

BTEx 8021B		mg/kg		Analyzed By: JH					
Analyte	Result	Reporting Limit	Analyzed	Method Blank	BS	% Recovery	True Value QC	RPD	Qualifier
Benzene*	<0.050	0.050	06/26/2024	ND	2.04	102	2.00	2.57	
Toluene*	<0.050	0.050	06/26/2024	ND	2.01	100	2.00	1.82	
Ethylbenzene*	<0.050	0.050	06/26/2024	ND	2.05	103	2.00	1.67	
Total Xylenes*	<0.150	0.150	06/26/2024	ND	6.02	100	6.00	1.91	
Total BTEX	<0.300	0.300	06/26/2024	ND					

Surrogate: 4-Bromofluorobenzene (PIE) 96.9 % 71.5-134

Chloride, SM4500Cl-B		mg/kg		Analyzed By: AC					
Analyte	Result	Reporting Limit	Analyzed	Method Blank	BS	% Recovery	True Value QC	RPD	Qualifier
Chloride	192	16.0	06/27/2024	ND	432	108	400	0.00	

TPH 8015M		mg/kg		Analyzed By: MS					
Analyte	Result	Reporting Limit	Analyzed	Method Blank	BS	% Recovery	True Value QC	RPD	Qualifier
GRO C6-C10*	<10.0	10.0	06/26/2024	ND	188	94.2	200	2.09	
DRO >C10-C28*	36.8	10.0	06/26/2024	ND	193	96.4	200	2.37	
EXT DRO >C28-C36	14.1	10.0	06/26/2024	ND					

Surrogate: 1-Chlorooctane 89.0 % 48.2-134

Surrogate: 1-Chlorooctadecane 104 % 49.1-148

Cardinal Laboratories

*=Accredited Analyte

PLEASE NOTE: Liability and Damages. Cardinal's liability and client's exclusive remedy for any claim arising, whether based in contract or tort, shall be limited to the amount paid by client for analyses. All claims, including those for negligence and any other cause whatsoever shall be deemed waived unless made in writing and received by Cardinal within thirty (30) days after completion of the applicable service. In no event shall Cardinal be liable for incidental or consequential damages, including, without limitation, business interruptions, loss of use, or loss of profits incurred by client, its subsidiaries, affiliates or successors arising out of or related to the performance of the services hereunder by Cardinal, regardless of whether such claim is based upon any of the above stated reasons or otherwise. Results relate only to the samples identified above. This report shall not be reproduced except in full with written approval of Cardinal Laboratories.

Celey D. Keene, Lab Director/Quality Manager



PHONE (575) 393-2326 ° 101 E. MARLAND ° HOBBS, NM 88240

Analytical Results For:

CARMONA RESOURCES
MIRANDA MILWEE
310 W WALL ST, SUITE 500
MIDLAND TX, 79701
Fax To:

Received: 06/26/2024
Reported: 06/27/2024
Project Name: M - 10 17 LOOP ST HH #1 - 10"
Project Number: 2420
Project Location: KINETIK MIDSTREAM - LEA CO NM

Sampling Date: 06/26/2024
Sampling Type: Soil
Sampling Condition: Cool & Intact
Sample Received By: Shalyn Rodriguez

Sample ID: CS - 3 (7') (H243825-03)

BTEx 8021B		mg/kg		Analyzed By: JH					
Analyte	Result	Reporting Limit	Analyzed	Method Blank	BS	% Recovery	True Value QC	RPD	Qualifier
Benzene*	<0.050	0.050	06/26/2024	ND	2.04	102	2.00	2.57	
Toluene*	<0.050	0.050	06/26/2024	ND	2.01	100	2.00	1.82	
Ethylbenzene*	<0.050	0.050	06/26/2024	ND	2.05	103	2.00	1.67	
Total Xylenes*	<0.150	0.150	06/26/2024	ND	6.02	100	6.00	1.91	
Total BTEX	<0.300	0.300	06/26/2024	ND					

Surrogate: 4-Bromofluorobenzene (PIE) 97.4 % 71.5-134

Chloride, SM4500Cl-B		mg/kg		Analyzed By: AC					
Analyte	Result	Reporting Limit	Analyzed	Method Blank	BS	% Recovery	True Value QC	RPD	Qualifier
Chloride	64.0	16.0	06/27/2024	ND	432	108	400	0.00	

TPH 8015M		mg/kg		Analyzed By: MS					
Analyte	Result	Reporting Limit	Analyzed	Method Blank	BS	% Recovery	True Value QC	RPD	Qualifier
GRO C6-C10*	<10.0	10.0	06/26/2024	ND	188	94.2	200	2.09	
DRO >C10-C28*	21.0	10.0	06/26/2024	ND	193	96.4	200	2.37	
EXT DRO >C28-C36	<10.0	10.0	06/26/2024	ND					

Surrogate: 1-Chlorooctane 108 % 48.2-134

Surrogate: 1-Chlorooctadecane 131 % 49.1-148

Cardinal Laboratories

*=Accredited Analyte

PLEASE NOTE: Liability and Damages. Cardinal's liability and client's exclusive remedy for any claim arising, whether based in contract or tort, shall be limited to the amount paid by client for analyses. All claims, including those for negligence and any other cause whatsoever shall be deemed waived unless made in writing and received by Cardinal within thirty (30) days after completion of the applicable service. In no event shall Cardinal be liable for incidental or consequential damages, including, without limitation, business interruptions, loss of use, or loss of profits incurred by client, its subsidiaries, affiliates or successors arising out of or related to the performance of the services hereunder by Cardinal, regardless of whether such claim is based upon any of the above stated reasons or otherwise. Results relate only to the samples identified above. This report shall not be reproduced except in full with written approval of Cardinal Laboratories.

Celey D. Keene, Lab Director/Quality Manager



PHONE (575) 393-2326 ° 101 E. MARLAND ° HOBBS, NM 88240

Analytical Results For:

CARMONA RESOURCES
MIRANDA MILWEE
310 W WALL ST, SUITE 500
MIDLAND TX, 79701
Fax To:

Received: 06/26/2024
Reported: 06/27/2024
Project Name: M - 10 17 LOOP ST HH #1 - 10"
Project Number: 2420
Project Location: KINETIK MIDSTREAM - LEA CO NM

Sampling Date: 06/26/2024
Sampling Type: Soil
Sampling Condition: Cool & Intact
Sample Received By: Shalyn Rodriguez

Sample ID: CS - 4 (4') (H243825-04)

BTEx 8021B		mg/kg		Analyzed By: JH					
Analyte	Result	Reporting Limit	Analyzed	Method Blank	BS	% Recovery	True Value QC	RPD	Qualifier
Benzene*	<0.050	0.050	06/26/2024	ND	2.04	102	2.00	2.57	
Toluene*	<0.050	0.050	06/26/2024	ND	2.01	100	2.00	1.82	
Ethylbenzene*	<0.050	0.050	06/26/2024	ND	2.05	103	2.00	1.67	
Total Xylenes*	<0.150	0.150	06/26/2024	ND	6.02	100	6.00	1.91	
Total BTEX	<0.300	0.300	06/26/2024	ND					

Surrogate: 4-Bromofluorobenzene (PIE) 97.6 % 71.5-134

Chloride, SM4500Cl-B		mg/kg		Analyzed By: AC					
Analyte	Result	Reporting Limit	Analyzed	Method Blank	BS	% Recovery	True Value QC	RPD	Qualifier
Chloride	48.0	16.0	06/27/2024	ND	432	108	400	0.00	

TPH 8015M		mg/kg		Analyzed By: MS					
Analyte	Result	Reporting Limit	Analyzed	Method Blank	BS	% Recovery	True Value QC	RPD	Qualifier
GRO C6-C10*	<10.0	10.0	06/26/2024	ND	188	94.2	200	2.09	
DRO >C10-C28*	<10.0	10.0	06/26/2024	ND	193	96.4	200	2.37	
EXT DRO >C28-C36	<10.0	10.0	06/26/2024	ND					

Surrogate: 1-Chlorooctane 110 % 48.2-134

Surrogate: 1-Chlorooctadecane 128 % 49.1-148

Cardinal Laboratories

*=Accredited Analyte

PLEASE NOTE: Liability and Damages. Cardinal's liability and client's exclusive remedy for any claim arising, whether based in contract or tort, shall be limited to the amount paid by client for analyses. All claims, including those for negligence and any other cause whatsoever shall be deemed waived unless made in writing and received by Cardinal within thirty (30) days after completion of the applicable service. In no event shall Cardinal be liable for incidental or consequential damages, including, without limitation, business interruptions, loss of use, or loss of profits incurred by client, its subsidiaries, affiliates or successors arising out of or related to the performance of the services hereunder by Cardinal, regardless of whether such claim is based upon any of the above stated reasons or otherwise. Results relate only to the samples identified above. This report shall not be reproduced except in full with written approval of Cardinal Laboratories.

Celey D. Keene, Lab Director/Quality Manager



PHONE (575) 393-2326 ° 101 E. MARLAND ° HOBBS, NM 88240

Analytical Results For:

CARMONA RESOURCES
MIRANDA MILWEE
310 W WALL ST, SUITE 500
MIDLAND TX, 79701
Fax To:

Received: 06/26/2024
Reported: 06/27/2024
Project Name: M - 10 17 LOOP ST HH #1 - 10"
Project Number: 2420
Project Location: KINETIK MIDSTREAM - LEA CO NM

Sampling Date: 06/26/2024
Sampling Type: Soil
Sampling Condition: Cool & Intact
Sample Received By: Shalyn Rodriguez

Sample ID: SW - 1 (7') (H243825-05)

BTEx 8021B		mg/kg		Analyzed By: JH					
Analyte	Result	Reporting Limit	Analyzed	Method Blank	BS	% Recovery	True Value QC	RPD	Qualifier
Benzene*	<0.050	0.050	06/26/2024	ND	2.04	102	2.00	2.57	
Toluene*	<0.050	0.050	06/26/2024	ND	2.01	100	2.00	1.82	
Ethylbenzene*	<0.050	0.050	06/26/2024	ND	2.05	103	2.00	1.67	
Total Xylenes*	<0.150	0.150	06/26/2024	ND	6.02	100	6.00	1.91	
Total BTEX	<0.300	0.300	06/26/2024	ND					

Surrogate: 4-Bromofluorobenzene (PIE) 97.4 % 71.5-134

Chloride, SM4500Cl-B		mg/kg		Analyzed By: AC					
Analyte	Result	Reporting Limit	Analyzed	Method Blank	BS	% Recovery	True Value QC	RPD	Qualifier
Chloride	48.0	16.0	06/27/2024	ND	432	108	400	0.00	

TPH 8015M		mg/kg		Analyzed By: MS					
Analyte	Result	Reporting Limit	Analyzed	Method Blank	BS	% Recovery	True Value QC	RPD	Qualifier
GRO C6-C10*	<10.0	10.0	06/26/2024	ND	188	94.2	200	2.09	
DRO >C10-C28*	<10.0	10.0	06/26/2024	ND	193	96.4	200	2.37	
EXT DRO >C28-C36	<10.0	10.0	06/26/2024	ND					

Surrogate: 1-Chlorooctane 84.5 % 48.2-134

Surrogate: 1-Chlorooctadecane 99.2 % 49.1-148

Cardinal Laboratories

*=Accredited Analyte

PLEASE NOTE: Liability and Damages. Cardinal's liability and client's exclusive remedy for any claim arising, whether based in contract or tort, shall be limited to the amount paid by client for analyses. All claims, including those for negligence and any other cause whatsoever shall be deemed waived unless made in writing and received by Cardinal within thirty (30) days after completion of the applicable service. In no event shall Cardinal be liable for incidental or consequential damages, including, without limitation, business interruptions, loss of use, or loss of profits incurred by client, its subsidiaries, affiliates or successors arising out of or related to the performance of the services hereunder by Cardinal, regardless of whether such claim is based upon any of the above stated reasons or otherwise. Results relate only to the samples identified above. This report shall not be reproduced except in full with written approval of Cardinal Laboratories.

Celey D. Keene, Lab Director/Quality Manager



PHONE (575) 393-2326 ° 101 E. MARLAND ° HOBBS, NM 88240

Analytical Results For:

CARMONA RESOURCES
MIRANDA MILWEE
310 W WALL ST, SUITE 500
MIDLAND TX, 79701
Fax To:

Received: 06/26/2024
Reported: 06/27/2024
Project Name: M - 10 17 LOOP ST HH #1 - 10"
Project Number: 2420
Project Location: KINETIK MIDSTREAM - LEA CO NM

Sampling Date: 06/26/2024
Sampling Type: Soil
Sampling Condition: Cool & Intact
Sample Received By: Shalyn Rodriguez

Sample ID: SW - 2 (7') (H243825-06)

BTEx 8021B		mg/kg		Analyzed By: JH					
Analyte	Result	Reporting Limit	Analyzed	Method Blank	BS	% Recovery	True Value QC	RPD	Qualifier
Benzene*	<0.050	0.050	06/26/2024	ND	2.04	102	2.00	2.57	
Toluene*	<0.050	0.050	06/26/2024	ND	2.01	100	2.00	1.82	
Ethylbenzene*	<0.050	0.050	06/26/2024	ND	2.05	103	2.00	1.67	
Total Xylenes*	<0.150	0.150	06/26/2024	ND	6.02	100	6.00	1.91	
Total BTEX	<0.300	0.300	06/26/2024	ND					

Surrogate: 4-Bromofluorobenzene (PIE) 96.1 % 71.5-134

Chloride, SM4500Cl-B		mg/kg		Analyzed By: AC					
Analyte	Result	Reporting Limit	Analyzed	Method Blank	BS	% Recovery	True Value QC	RPD	Qualifier
Chloride	128	16.0	06/27/2024	ND	432	108	400	0.00	

TPH 8015M		mg/kg		Analyzed By: MS					
Analyte	Result	Reporting Limit	Analyzed	Method Blank	BS	% Recovery	True Value QC	RPD	Qualifier
GRO C6-C10*	<10.0	10.0	06/26/2024	ND	188	94.2	200	2.09	
DRO >C10-C28*	82.7	10.0	06/26/2024	ND	193	96.4	200	2.37	
EXT DRO >C28-C36	27.3	10.0	06/26/2024	ND					

Surrogate: 1-Chlorooctane 92.5 % 48.2-134

Surrogate: 1-Chlorooctadecane 110 % 49.1-148

Cardinal Laboratories

*=Accredited Analyte

PLEASE NOTE: Liability and Damages. Cardinal's liability and client's exclusive remedy for any claim arising, whether based in contract or tort, shall be limited to the amount paid by client for analyses. All claims, including those for negligence and any other cause whatsoever shall be deemed waived unless made in writing and received by Cardinal within thirty (30) days after completion of the applicable service. In no event shall Cardinal be liable for incidental or consequential damages, including, without limitation, business interruptions, loss of use, or loss of profits incurred by client, its subsidiaries, affiliates or successors arising out of or related to the performance of the services hereunder by Cardinal, regardless of whether such claim is based upon any of the above stated reasons or otherwise. Results relate only to the samples identified above. This report shall not be reproduced except in full with written approval of Cardinal Laboratories.

Celey D. Keene, Lab Director/Quality Manager



PHONE (575) 393-2326 ° 101 E. MARLAND ° HOBBS, NM 88240

Analytical Results For:

CARMONA RESOURCES
MIRANDA MILWEE
310 W WALL ST, SUITE 500
MIDLAND TX, 79701
Fax To:

Received: 06/26/2024
Reported: 06/27/2024
Project Name: M - 10 17 LOOP ST HH #1 - 10"
Project Number: 2420
Project Location: KINETIK MIDSTREAM - LEA CO NM

Sampling Date: 06/26/2024
Sampling Type: Soil
Sampling Condition: Cool & Intact
Sample Received By: Shalyn Rodriguez

Sample ID: SW - 3 (7') (H243825-07)

BTEx 8021B		mg/kg		Analyzed By: JH					
Analyte	Result	Reporting Limit	Analyzed	Method Blank	BS	% Recovery	True Value QC	RPD	Qualifier
Benzene*	<0.050	0.050	06/27/2024	ND	2.04	102	2.00	2.57	
Toluene*	<0.050	0.050	06/27/2024	ND	2.01	100	2.00	1.82	
Ethylbenzene*	<0.050	0.050	06/27/2024	ND	2.05	103	2.00	1.67	
Total Xylenes*	<0.150	0.150	06/27/2024	ND	6.02	100	6.00	1.91	
Total BTEX	<0.300	0.300	06/27/2024	ND					

Surrogate: 4-Bromofluorobenzene (PIE) 102 % 71.5-134

Chloride, SM4500Cl-B		mg/kg		Analyzed By: AC					
Analyte	Result	Reporting Limit	Analyzed	Method Blank	BS	% Recovery	True Value QC	RPD	Qualifier
Chloride	32.0	16.0	06/27/2024	ND	432	108	400	0.00	

TPH 8015M		mg/kg		Analyzed By: MS					
Analyte	Result	Reporting Limit	Analyzed	Method Blank	BS	% Recovery	True Value QC	RPD	Qualifier
GRO C6-C10*	<10.0	10.0	06/26/2024	ND	188	94.2	200	2.09	
DRO >C10-C28*	<10.0	10.0	06/26/2024	ND	193	96.4	200	2.37	
EXT DRO >C28-C36	<10.0	10.0	06/26/2024	ND					

Surrogate: 1-Chlorooctane 96.0 % 48.2-134

Surrogate: 1-Chlorooctadecane 112 % 49.1-148

Cardinal Laboratories

*=Accredited Analyte

PLEASE NOTE: Liability and Damages. Cardinal's liability and client's exclusive remedy for any claim arising, whether based in contract or tort, shall be limited to the amount paid by client for analyses. All claims, including those for negligence and any other cause whatsoever shall be deemed waived unless made in writing and received by Cardinal within thirty (30) days after completion of the applicable service. In no event shall Cardinal be liable for incidental or consequential damages, including, without limitation, business interruptions, loss of use, or loss of profits incurred by client, its subsidiaries, affiliates or successors arising out of or related to the performance of the services hereunder by Cardinal, regardless of whether such claim is based upon any of the above stated reasons or otherwise. Results relate only to the samples identified above. This report shall not be reproduced except in full with written approval of Cardinal Laboratories.

Celey D. Keene, Lab Director/Quality Manager



PHONE (575) 393-2326 ° 101 E. MARLAND ° HOBBS, NM 88240

Analytical Results For:

CARMONA RESOURCES
MIRANDA MILWEE
310 W WALL ST, SUITE 500
MIDLAND TX, 79701
Fax To:

Received: 06/26/2024
Reported: 06/27/2024
Project Name: M - 10 17 LOOP ST HH #1 - 10"
Project Number: 2420
Project Location: KINETIK MIDSTREAM - LEA CO NM

Sampling Date: 06/26/2024
Sampling Type: Soil
Sampling Condition: Cool & Intact
Sample Received By: Shalyn Rodriguez

Sample ID: SW - 4 (4') (H243825-08)

BTEx 8021B		mg/kg		Analyzed By: JH					
Analyte	Result	Reporting Limit	Analyzed	Method Blank	BS	% Recovery	True Value QC	RPD	Qualifier
Benzene*	<0.050	0.050	06/27/2024	ND	2.04	102	2.00	2.57	
Toluene*	<0.050	0.050	06/27/2024	ND	2.01	100	2.00	1.82	
Ethylbenzene*	<0.050	0.050	06/27/2024	ND	2.05	103	2.00	1.67	
Total Xylenes*	<0.150	0.150	06/27/2024	ND	6.02	100	6.00	1.91	
Total BTEX	<0.300	0.300	06/27/2024	ND					

Surrogate: 4-Bromofluorobenzene (PIE) 95.6 % 71.5-134

Chloride, SM4500Cl-B		mg/kg		Analyzed By: AC					
Analyte	Result	Reporting Limit	Analyzed	Method Blank	BS	% Recovery	True Value QC	RPD	Qualifier
Chloride	16.0	16.0	06/27/2024	ND	432	108	400	0.00	

TPH 8015M		mg/kg		Analyzed By: MS					
Analyte	Result	Reporting Limit	Analyzed	Method Blank	BS	% Recovery	True Value QC	RPD	Qualifier
GRO C6-C10*	<10.0	10.0	06/26/2024	ND	188	94.2	200	2.09	
DRO >C10-C28*	<10.0	10.0	06/26/2024	ND	193	96.4	200	2.37	
EXT DRO >C28-C36	<10.0	10.0	06/26/2024	ND					

Surrogate: 1-Chlorooctane 92.1 % 48.2-134

Surrogate: 1-Chlorooctadecane 106 % 49.1-148

Cardinal Laboratories

*=Accredited Analyte

PLEASE NOTE: Liability and Damages. Cardinal's liability and client's exclusive remedy for any claim arising, whether based in contract or tort, shall be limited to the amount paid by client for analyses. All claims, including those for negligence and any other cause whatsoever shall be deemed waived unless made in writing and received by Cardinal within thirty (30) days after completion of the applicable service. In no event shall Cardinal be liable for incidental or consequential damages, including, without limitation, business interruptions, loss of use, or loss of profits incurred by client, its subsidiaries, affiliates or successors arising out of or related to the performance of the services hereunder by Cardinal, regardless of whether such claim is based upon any of the above stated reasons or otherwise. Results relate only to the samples identified above. This report shall not be reproduced except in full with written approval of Cardinal Laboratories.

Celey D. Keene, Lab Director/Quality Manager



PHONE (575) 393-2326 ° 101 E. MARLAND ° HOBBS, NM 88240

Analytical Results For:

CARMONA RESOURCES
MIRANDA MILWEE
310 W WALL ST, SUITE 500
MIDLAND TX, 79701
Fax To:

Received: 06/26/2024
Reported: 06/27/2024
Project Name: M - 10 17 LOOP ST HH #1 - 10"
Project Number: 2420
Project Location: KINETIK MIDSTREAM - LEA CO NM

Sampling Date: 06/26/2024
Sampling Type: Soil
Sampling Condition: Cool & Intact
Sample Received By: Shalyn Rodriguez

Sample ID: SW - 5 (4') (H243825-09)

BTEx 8021B		mg/kg		Analyzed By: JH					
Analyte	Result	Reporting Limit	Analyzed	Method Blank	BS	% Recovery	True Value QC	RPD	Qualifier
Benzene*	<0.050	0.050	06/27/2024	ND	2.04	102	2.00	2.57	
Toluene*	<0.050	0.050	06/27/2024	ND	2.01	100	2.00	1.82	
Ethylbenzene*	<0.050	0.050	06/27/2024	ND	2.05	103	2.00	1.67	
Total Xylenes*	<0.150	0.150	06/27/2024	ND	6.02	100	6.00	1.91	
Total BTEX	<0.300	0.300	06/27/2024	ND					

Surrogate: 4-Bromofluorobenzene (PIE) 97.2 % 71.5-134

Chloride, SM4500Cl-B		mg/kg		Analyzed By: AC					
Analyte	Result	Reporting Limit	Analyzed	Method Blank	BS	% Recovery	True Value QC	RPD	Qualifier
Chloride	<16.0	16.0	06/27/2024	ND	432	108	400	0.00	

TPH 8015M		mg/kg		Analyzed By: MS					
Analyte	Result	Reporting Limit	Analyzed	Method Blank	BS	% Recovery	True Value QC	RPD	Qualifier
GRO C6-C10*	<10.0	10.0	06/26/2024	ND	188	94.2	200	2.09	
DRO >C10-C28*	20.9	10.0	06/26/2024	ND	193	96.4	200	2.37	
EXT DRO >C28-C36	<10.0	10.0	06/26/2024	ND					

Surrogate: 1-Chlorooctane 90.2 % 48.2-134

Surrogate: 1-Chlorooctadecane 106 % 49.1-148

Cardinal Laboratories

*=Accredited Analyte

PLEASE NOTE: Liability and Damages. Cardinal's liability and client's exclusive remedy for any claim arising, whether based in contract or tort, shall be limited to the amount paid by client for analyses. All claims, including those for negligence and any other cause whatsoever shall be deemed waived unless made in writing and received by Cardinal within thirty (30) days after completion of the applicable service. In no event shall Cardinal be liable for incidental or consequential damages, including, without limitation, business interruptions, loss of use, or loss of profits incurred by client, its subsidiaries, affiliates or successors arising out of or related to the performance of the services hereunder by Cardinal, regardless of whether such claim is based upon any of the above stated reasons or otherwise. Results relate only to the samples identified above. This report shall not be reproduced except in full with written approval of Cardinal Laboratories.

Celey D. Keene, Lab Director/Quality Manager



PHONE (575) 393-2326 ° 101 E. MARLAND ° HOBBS, NM 88240

Analytical Results For:

CARMONA RESOURCES
MIRANDA MILWEE
310 W WALL ST, SUITE 500
MIDLAND TX, 79701
Fax To:

Received: 06/26/2024
Reported: 06/27/2024
Project Name: M - 10 17 LOOP ST HH #1 - 10"
Project Number: 2420
Project Location: KINETIK MIDSTREAM - LEA CO NM

Sampling Date: 06/26/2024
Sampling Type: Soil
Sampling Condition: Cool & Intact
Sample Received By: Shalyn Rodriguez

Sample ID: SW - 6 (4') (H243825-10)

BTEx 8021B		mg/kg		Analyzed By: JH					
Analyte	Result	Reporting Limit	Analyzed	Method Blank	BS	% Recovery	True Value QC	RPD	Qualifier
Benzene*	<0.050	0.050	06/27/2024	ND	2.04	102	2.00	2.57	
Toluene*	<0.050	0.050	06/27/2024	ND	2.01	100	2.00	1.82	
Ethylbenzene*	<0.050	0.050	06/27/2024	ND	2.05	103	2.00	1.67	
Total Xylenes*	<0.150	0.150	06/27/2024	ND	6.02	100	6.00	1.91	
Total BTEX	<0.300	0.300	06/27/2024	ND					

Surrogate: 4-Bromofluorobenzene (PIE) 97.7 % 71.5-134

Chloride, SM4500Cl-B		mg/kg		Analyzed By: AC					
Analyte	Result	Reporting Limit	Analyzed	Method Blank	BS	% Recovery	True Value QC	RPD	Qualifier
Chloride	96.0	16.0	06/27/2024	ND	432	108	400	0.00	

TPH 8015M		mg/kg		Analyzed By: MS					
Analyte	Result	Reporting Limit	Analyzed	Method Blank	BS	% Recovery	True Value QC	RPD	Qualifier
GRO C6-C10*	<10.0	10.0	06/26/2024	ND	188	94.2	200	2.09	
DRO >C10-C28*	32.6	10.0	06/26/2024	ND	193	96.4	200	2.37	
EXT DRO >C28-C36	<10.0	10.0	06/26/2024	ND					

Surrogate: 1-Chlorooctane 107 % 48.2-134

Surrogate: 1-Chlorooctadecane 129 % 49.1-148

Cardinal Laboratories

*=Accredited Analyte

PLEASE NOTE: Liability and Damages. Cardinal's liability and client's exclusive remedy for any claim arising, whether based in contract or tort, shall be limited to the amount paid by client for analyses. All claims, including those for negligence and any other cause whatsoever shall be deemed waived unless made in writing and received by Cardinal within thirty (30) days after completion of the applicable service. In no event shall Cardinal be liable for incidental or consequential damages, including, without limitation, business interruptions, loss of use, or loss of profits incurred by client, its subsidiaries, affiliates or successors arising out of or related to the performance of the services hereunder by Cardinal, regardless of whether such claim is based upon any of the above stated reasons or otherwise. Results relate only to the samples identified above. This report shall not be reproduced except in full with written approval of Cardinal Laboratories.

Celey D. Keene, Lab Director/Quality Manager



PHONE (575) 393-2326 ° 101 E. MARLAND ° HOBBS, NM 88240

Analytical Results For:

CARMONA RESOURCES
MIRANDA MILWEE
310 W WALL ST, SUITE 500
MIDLAND TX, 79701
Fax To:

Received: 06/26/2024
Reported: 06/27/2024
Project Name: M - 10 17 LOOP ST HH #1 - 10"
Project Number: 2420
Project Location: KINETIK MIDSTREAM - LEA CO NM

Sampling Date: 06/26/2024
Sampling Type: Soil
Sampling Condition: Cool & Intact
Sample Received By: Shalyn Rodriguez

Sample ID: SW - 7 (7') (H243825-11)

BTEx 8021B		mg/kg		Analyzed By: JH					
Analyte	Result	Reporting Limit	Analyzed	Method Blank	BS	% Recovery	True Value QC	RPD	Qualifier
Benzene*	<0.050	0.050	06/27/2024	ND	2.11	105	2.00	6.49	
Toluene*	<0.050	0.050	06/27/2024	ND	2.21	111	2.00	7.67	
Ethylbenzene*	<0.050	0.050	06/27/2024	ND	2.19	109	2.00	9.19	
Total Xylenes*	<0.150	0.150	06/27/2024	ND	6.73	112	6.00	9.38	
Total BTEX	<0.300	0.300	06/27/2024	ND					

Surrogate: 4-Bromofluorobenzene (PIE) 110 % 71.5-134

Chloride, SM4500Cl-B		mg/kg		Analyzed By: AC					
Analyte	Result	Reporting Limit	Analyzed	Method Blank	BS	% Recovery	True Value QC	RPD	Qualifier
Chloride	256	16.0	06/27/2024	ND	432	108	400	0.00	

TPH 8015M		mg/kg		Analyzed By: MS					
Analyte	Result	Reporting Limit	Analyzed	Method Blank	BS	% Recovery	True Value QC	RPD	Qualifier
GRO C6-C10*	<10.0	10.0	06/27/2024	ND	188	94.2	200	2.09	
DRO >C10-C28*	85.3	10.0	06/27/2024	ND	193	96.4	200	2.37	
EXT DRO >C28-C36	21.0	10.0	06/27/2024	ND					

Surrogate: 1-Chlorooctane 88.7 % 48.2-134

Surrogate: 1-Chlorooctadecane 106 % 49.1-148

Cardinal Laboratories

*=Accredited Analyte

PLEASE NOTE: Liability and Damages. Cardinal's liability and client's exclusive remedy for any claim arising, whether based in contract or tort, shall be limited to the amount paid by client for analyses. All claims, including those for negligence and any other cause whatsoever shall be deemed waived unless made in writing and received by Cardinal within thirty (30) days after completion of the applicable service. In no event shall Cardinal be liable for incidental or consequential damages, including, without limitation, business interruptions, loss of use, or loss of profits incurred by client, its subsidiaries, affiliates or successors arising out of or related to the performance of the services hereunder by Cardinal, regardless of whether such claim is based upon any of the above stated reasons or otherwise. Results relate only to the samples identified above. This report shall not be reproduced except in full with written approval of Cardinal Laboratories.

Celey D. Keene, Lab Director/Quality Manager



PHONE (575) 393-2326 ° 101 E. MARLAND ° HOBBS, NM 88240

Analytical Results For:

CARMONA RESOURCES
MIRANDA MILWEE
310 W WALL ST, SUITE 500
MIDLAND TX, 79701
Fax To:

Received: 06/26/2024
Reported: 06/27/2024
Project Name: M - 10 17 LOOP ST HH #1 - 10"
Project Number: 2420
Project Location: KINETIK MIDSTREAM - LEA CO NM

Sampling Date: 06/26/2024
Sampling Type: Soil
Sampling Condition: Cool & Intact
Sample Received By: Shalyn Rodriguez

Sample ID: SW - 8 (7') (H243825-12)

BTEx 8021B		mg/kg		Analyzed By: JH					
Analyte	Result	Reporting Limit	Analyzed	Method Blank	BS	% Recovery	True Value QC	RPD	Qualifier
Benzene*	<0.050	0.050	06/27/2024	ND	2.11	105	2.00	6.49	
Toluene*	<0.050	0.050	06/27/2024	ND	2.21	111	2.00	7.67	
Ethylbenzene*	<0.050	0.050	06/27/2024	ND	2.19	109	2.00	9.19	
Total Xylenes*	<0.150	0.150	06/27/2024	ND	6.73	112	6.00	9.38	
Total BTEX	<0.300	0.300	06/27/2024	ND					

Surrogate: 4-Bromofluorobenzene (PIE) 109 % 71.5-134

Chloride, SM4500Cl-B		mg/kg		Analyzed By: AC					
Analyte	Result	Reporting Limit	Analyzed	Method Blank	BS	% Recovery	True Value QC	RPD	Qualifier
Chloride	96.0	16.0	06/27/2024	ND	432	108	400	0.00	

TPH 8015M		mg/kg		Analyzed By: MS					
Analyte	Result	Reporting Limit	Analyzed	Method Blank	BS	% Recovery	True Value QC	RPD	Qualifier
GRO C6-C10*	<10.0	10.0	06/27/2024	ND	188	94.2	200	2.09	
DRO >C10-C28*	27.7	10.0	06/27/2024	ND	193	96.4	200	2.37	
EXT DRO >C28-C36	13.0	10.0	06/27/2024	ND					

Surrogate: 1-Chlorooctane 86.8 % 48.2-134

Surrogate: 1-Chlorooctadecane 99.9 % 49.1-148

Cardinal Laboratories

*=Accredited Analyte

PLEASE NOTE: Liability and Damages. Cardinal's liability and client's exclusive remedy for any claim arising, whether based in contract or tort, shall be limited to the amount paid by client for analyses. All claims, including those for negligence and any other cause whatsoever shall be deemed waived unless made in writing and received by Cardinal within thirty (30) days after completion of the applicable service. In no event shall Cardinal be liable for incidental or consequential damages, including, without limitation, business interruptions, loss of use, or loss of profits incurred by client, its subsidiaries, affiliates or successors arising out of or related to the performance of the services hereunder by Cardinal, regardless of whether such claim is based upon any of the above stated reasons or otherwise. Results relate only to the samples identified above. This report shall not be reproduced except in full with written approval of Cardinal Laboratories.

Celey D. Keene, Lab Director/Quality Manager



PHONE (575) 393-2326 ° 101 E. MARLAND ° HOBBS, NM 88240

Analytical Results For:

CARMONA RESOURCES
MIRANDA MILWEE
310 W WALL ST, SUITE 500
MIDLAND TX, 79701
Fax To:

Received: 06/26/2024
Reported: 06/27/2024
Project Name: M - 10 17 LOOP ST HH #1 - 10"
Project Number: 2420
Project Location: KINETIK MIDSTREAM - LEA CO NM

Sampling Date: 06/26/2024
Sampling Type: Soil
Sampling Condition: Cool & Intact
Sample Received By: Shalyn Rodriguez

Sample ID: SW - 9 (3') (H243825-13)

BTEx 8021B		mg/kg		Analyzed By: JH					
Analyte	Result	Reporting Limit	Analyzed	Method Blank	BS	% Recovery	True Value QC	RPD	Qualifier
Benzene*	<0.050	0.050	06/27/2024	ND	2.11	105	2.00	6.49	
Toluene*	<0.050	0.050	06/27/2024	ND	2.21	111	2.00	7.67	
Ethylbenzene*	<0.050	0.050	06/27/2024	ND	2.19	109	2.00	9.19	
Total Xylenes*	<0.150	0.150	06/27/2024	ND	6.73	112	6.00	9.38	
Total BTEX	<0.300	0.300	06/27/2024	ND					

Surrogate: 4-Bromofluorobenzene (PIE) 110 % 71.5-134

Chloride, SM4500Cl-B		mg/kg		Analyzed By: AC					
Analyte	Result	Reporting Limit	Analyzed	Method Blank	BS	% Recovery	True Value QC	RPD	Qualifier
Chloride	560	16.0	06/27/2024	ND	432	108	400	0.00	

TPH 8015M		mg/kg		Analyzed By: MS					
Analyte	Result	Reporting Limit	Analyzed	Method Blank	BS	% Recovery	True Value QC	RPD	Qualifier
GRO C6-C10*	<10.0	10.0	06/27/2024	ND	188	94.2	200	2.09	
DRO >C10-C28*	71.2	10.0	06/27/2024	ND	193	96.4	200	2.37	
EXT DRO >C28-C36	22.7	10.0	06/27/2024	ND					

Surrogate: 1-Chlorooctane 87.3 % 48.2-134

Surrogate: 1-Chlorooctadecane 106 % 49.1-148

Cardinal Laboratories

*=Accredited Analyte

PLEASE NOTE: Liability and Damages. Cardinal's liability and client's exclusive remedy for any claim arising, whether based in contract or tort, shall be limited to the amount paid by client for analyses. All claims, including those for negligence and any other cause whatsoever shall be deemed waived unless made in writing and received by Cardinal within thirty (30) days after completion of the applicable service. In no event shall Cardinal be liable for incidental or consequential damages, including, without limitation, business interruptions, loss of use, or loss of profits incurred by client, its subsidiaries, affiliates or successors arising out of or related to the performance of the services hereunder by Cardinal, regardless of whether such claim is based upon any of the above stated reasons or otherwise. Results relate only to the samples identified above. This report shall not be reproduced except in full with written approval of Cardinal Laboratories.

Celey D. Keene, Lab Director/Quality Manager



PHONE (575) 393-2326 ° 101 E. MARLAND ° HOBBS, NM 88240

Notes and Definitions

- QM-07 The spike recovery was outside acceptance limits for the MS and/or MSD. The batch was accepted based on acceptable LCS recovery.
- ND Analyte NOT DETECTED at or above the reporting limit
- RPD Relative Percent Difference
- ** Samples not received at proper temperature of 6°C or below.
- *** Insufficient time to reach temperature.
- Chloride by SM4500Cl-B does not require samples be received at or below 6°C
- Samples reported on an as received basis (wet) unless otherwise noted on report

Cardinal Laboratories *=Accredited Analyte

PLEASE NOTE: Liability and Damages. Cardinal's liability and client's exclusive remedy for any claim arising, whether based in contract or tort, shall be limited to the amount paid by client for analyses. All claims, including those for negligence and any other cause whatsoever shall be deemed waived unless made in writing and received by Cardinal within thirty (30) days after completion of the applicable service. In no event shall Cardinal be liable for incidental or consequential damages, including, without limitation, business interruptions, loss of use, or loss of profits incurred by client, its subsidiaries, affiliates or successors arising out of or related to the performance of the services hereunder by Cardinal, regardless of whether such claim is based upon any of the above stated reasons or otherwise. Results relate only to the samples identified above. This report shall not be reproduced except in full with written approval of Cardinal Laboratories.

A handwritten signature in cursive script, reading "Celey D. Keene".

Celey D. Keene, Lab Director/Quality Manager

Chain of Custody

Work Order No: 1243825

Project Manager:	Miranda Milwee	Bill to: (if different)	Sebastian Orozco
Company Name:	Carmona Resources	Company Name:	Kinetik Midstream
Address:	310 W Wall St Ste 500	Address:	288 W. Kincaid Ranch Rd.
City, State ZIP:	Midland, TX 79701	City, State ZIP:	Artesia, NM 88210
Phone:	432-813-9652	Email:	sorozco@kinetik.com
Project Name:	M-10 17 Loop St HH #1 - 10"	Turn Around	
Project Number:	2420	<input type="checkbox"/> Routine	<input checked="" type="checkbox"/> Rush
Project Location:	Lea County, New Mexico	Due Date:	24 hrs
Sampler's Name:	MM		
PO #:			

Work Order Comments			
Program: UST/PT	<input type="checkbox"/> PRP	<input type="checkbox"/> Brownfields	<input type="checkbox"/> IJC
State of Project:			
Reporting Level II	<input type="checkbox"/> Level III	<input type="checkbox"/> ST/UST	<input type="checkbox"/> RRP
Deliverables: EDD	<input type="checkbox"/> ADAPT	<input type="checkbox"/> Other:	

SAMPLE RECEIPT		Temp Blank:		Yes	No	Wet Ice:	Yes	No
Received Intact:	Yes	No	Thermometer ID:					
Cooler Custody Seals:	Yes	No	Correction Factor:					
Sample Custody Seals:	Yes	No	Temperature Reading:					4.9°C
Total Containers:			Corrected Temperature:					

Sample Identification	Date	Time	Soil	Water	Grab/Comp	# of Cont	Parameters	ANALYSIS REQUEST	Preservative Codes
CS-1 (7)	6/26/2024		X		C	1	X	X	X
CS-2 (7)	6/26/2024		X		C	1	X	X	X
CS-3 (7)	6/26/2024		X		C	1	X	X	X
CS-4 (4)	6/26/2024		X		C	1	X	X	X
SW-1 (7)	6/26/2024		X		C	1	X	X	X
SW-2 (7)	6/26/2024		X		C	1	X	X	X
SW-3 (7)	6/26/2024		X		C	1	X	X	X
SW-4 (4)	6/26/2024		X		C	1	X	X	X
SW-5 (4)	6/26/2024		X		C	1	X	X	X
SW-6 (4)	6/26/2024		X		C	1	X	X	X

Comments: Email to Mike Carmona / mcarmona@carmonaresources.com and Conner Moehring / cmoehring@carmonaresources.com

Relinquished by: (Signature)	Date/Time	Received by: (Signature)	Date/Time
<u>[Signature]</u>	6/26/24 1330	<u>[Signature]</u>	

Work Order No.

1843825

[illegible]



PHONE (575) 393-2326 ° 101 E. MARLAND ° HOBBS, NM 88240

July 05, 2024

MIRANDA MILWEE

CARMONA RESOURCES

310 W WALL ST, SUITE 500

MIDLAND, TX 79701

RE: M - 10 17 LOOP ST HH #1 - 10"

Enclosed are the results of analyses for samples received by the laboratory on 07/03/24 11:38.

Cardinal Laboratories is accredited through Texas NELAP under certificate number TX-C24-00112. Accreditation applies to drinking water, non-potable water and solid and chemical materials. All accredited analytes are denoted by an asterisk (*). For a complete list of accredited analytes and matrices visit the TCEQ website at www.tceq.texas.gov/field/qa/lab_accred_certif.html.

Cardinal Laboratories is accredited through the State of Colorado Department of Public Health and Environment for:

Method EPA 552.2	Haloacetic Acids (HAA-5)
Method EPA 524.2	Total Trihalomethanes (TTHM)
Method EPA 524.4	Regulated VOCs (V1, V2, V3)

Accreditation applies to public drinking water matrices.

This report meets NELAP requirements and is made up of a cover page, analytical results, and a copy of the original chain-of-custody. If you have any questions concerning this report, please feel free to contact me.

Sincerely,

Celey D. Keene

Lab Director/Quality Manager



PHONE (575) 393-2326 ° 101 E. MARLAND ° HOBBS, NM 88240

Analytical Results For:

CARMONA RESOURCES
MIRANDA MILWEE
310 W WALL ST, SUITE 500
MIDLAND TX, 79701
Fax To:

Received: 07/03/2024
Reported: 07/05/2024
Project Name: M - 10 17 LOOP ST HH #1 - 10"
Project Number: 2420
Project Location: KINETIK MIDSTREAM - LEA CO NM

Sampling Date: 07/03/2024
Sampling Type: Soil
Sampling Condition: Cool & Intact
Sample Received By: Alyssa Parras

Sample ID: SW - 2 (7') (H244004-01)

BTEx 8021B		mg/kg		Analyzed By: JH					
Analyte	Result	Reporting Limit	Analyzed	Method Blank	BS	% Recovery	True Value QC	RPD	Qualifier
Benzene*	<0.050	0.050	07/04/2024	ND	1.99	99.5	2.00	2.72	
Toluene*	<0.050	0.050	07/04/2024	ND	2.03	102	2.00	2.90	
Ethylbenzene*	<0.050	0.050	07/04/2024	ND	2.09	104	2.00	2.10	
Total Xylenes*	<0.150	0.150	07/04/2024	ND	6.13	102	6.00	2.26	
Total BTEX	<0.300	0.300	07/04/2024	ND					

Surrogate: 4-Bromofluorobenzene (PIE) 114 % 71.5-134

Chloride, SM4500Cl-B		mg/kg		Analyzed By: CT					
Analyte	Result	Reporting Limit	Analyzed	Method Blank	BS	% Recovery	True Value QC	RPD	Qualifier
Chloride	32.0	16.0	07/03/2024	ND	432	108	400	0.00	

TPH 8015M		mg/kg		Analyzed By: MS					
Analyte	Result	Reporting Limit	Analyzed	Method Blank	BS	% Recovery	True Value QC	RPD	Qualifier
GRO C6-C10*	<10.0	10.0	07/03/2024	ND	212	106	200	0.340	
DRO >C10-C28*	<10.0	10.0	07/03/2024	ND	194	97.1	200	0.260	
EXT DRO >C28-C36	<10.0	10.0	07/03/2024	ND					

Surrogate: 1-Chlorooctane 109 % 48.2-134

Surrogate: 1-Chlorooctadecane 112 % 49.1-148

Cardinal Laboratories

*=Accredited Analyte

PLEASE NOTE: Liability and Damages. Cardinal's liability and client's exclusive remedy for any claim arising, whether based in contract or tort, shall be limited to the amount paid by client for analyses. All claims, including those for negligence and any other cause whatsoever shall be deemed waived unless made in writing and received by Cardinal within thirty (30) days after completion of the applicable service. In no event shall Cardinal be liable for incidental or consequential damages, including, without limitation, business interruptions, loss of use, or loss of profits incurred by client, its subsidiaries, affiliates or successors arising out of or related to the performance of the services hereunder by Cardinal, regardless of whether such claim is based upon any of the above stated reasons or otherwise. Results relate only to the samples identified above. This report shall not be reproduced except in full with written approval of Cardinal Laboratories.

Celey D. Keene, Lab Director/Quality Manager



PHONE (575) 393-2326 ° 101 E. MARLAND ° HOBBS, NM 88240

Analytical Results For:

CARMONA RESOURCES
MIRANDA MILWEE
310 W WALL ST, SUITE 500
MIDLAND TX, 79701
Fax To:

Received: 07/03/2024
Reported: 07/05/2024
Project Name: M - 10 17 LOOP ST HH #1 - 10"
Project Number: 2420
Project Location: KINETIK MIDSTREAM - LEA CO NM

Sampling Date: 07/03/2024
Sampling Type: Soil
Sampling Condition: Cool & Intact
Sample Received By: Alyssa Parras

Sample ID: SW - 7 (7') (H244004-02)

BTEx 8021B		mg/kg		Analyzed By: JH					
Analyte	Result	Reporting Limit	Analyzed	Method Blank	BS	% Recovery	True Value QC	RPD	Qualifier
Benzene*	<0.050	0.050	07/04/2024	ND	1.99	99.5	2.00	2.72	
Toluene*	<0.050	0.050	07/04/2024	ND	2.03	102	2.00	2.90	
Ethylbenzene*	<0.050	0.050	07/04/2024	ND	2.09	104	2.00	2.10	
Total Xylenes*	<0.150	0.150	07/04/2024	ND	6.13	102	6.00	2.26	
Total BTEX	<0.300	0.300	07/04/2024	ND					

Surrogate: 4-Bromofluorobenzene (PIE) 111 % 71.5-134

Chloride, SM4500Cl-B		mg/kg		Analyzed By: CT					
Analyte	Result	Reporting Limit	Analyzed	Method Blank	BS	% Recovery	True Value QC	RPD	Qualifier
Chloride	32.0	16.0	07/03/2024	ND	432	108	400	0.00	

TPH 8015M		mg/kg		Analyzed By: MS					
Analyte	Result	Reporting Limit	Analyzed	Method Blank	BS	% Recovery	True Value QC	RPD	Qualifier
GRO C6-C10*	<10.0	10.0	07/03/2024	ND	212	106	200	0.340	
DRO >C10-C28*	<10.0	10.0	07/03/2024	ND	194	97.1	200	0.260	
EXT DRO >C28-C36	<10.0	10.0	07/03/2024	ND					

Surrogate: 1-Chlorooctane 106 % 48.2-134

Surrogate: 1-Chlorooctadecane 106 % 49.1-148

Cardinal Laboratories

*=Accredited Analyte

PLEASE NOTE: Liability and Damages. Cardinal's liability and client's exclusive remedy for any claim arising, whether based in contract or tort, shall be limited to the amount paid by client for analyses. All claims, including those for negligence and any other cause whatsoever shall be deemed waived unless made in writing and received by Cardinal within thirty (30) days after completion of the applicable service. In no event shall Cardinal be liable for incidental or consequential damages, including, without limitation, business interruptions, loss of use, or loss of profits incurred by client, its subsidiaries, affiliates or successors arising out of or related to the performance of the services hereunder by Cardinal, regardless of whether such claim is based upon any of the above stated reasons or otherwise. Results relate only to the samples identified above. This report shall not be reproduced except in full with written approval of Cardinal Laboratories.

Celey D. Keene, Lab Director/Quality Manager



PHONE (575) 393-2326 ° 101 E. MARLAND ° HOBBS, NM 88240

Notes and Definitions

- ND Analyte NOT DETECTED at or above the reporting limit
- RPD Relative Percent Difference
- ** Samples not received at proper temperature of 6°C or below.
- *** Insufficient time to reach temperature.
- Chloride by SM4500Cl-B does not require samples be received at or below 6°C
Samples reported on an as received basis (wet) unless otherwise noted on report

Cardinal Laboratories *=Accredited Analyte

PLEASE NOTE: Liability and Damages. Cardinal's liability and client's exclusive remedy for any claim arising, whether based in contract or tort, shall be limited to the amount paid by client for analyses. All claims, including those for negligence and any other cause whatsoever shall be deemed waived unless made in writing and received by Cardinal within thirty (30) days after completion of the applicable service. In no event shall Cardinal be liable for incidental or consequential damages, including, without limitation, business interruptions, loss of use, or loss of profits incurred by client, its subsidiaries, affiliates or successors arising out of or related to the performance of the services hereunder by Cardinal, regardless of whether such claim is based upon any of the above stated reasons or otherwise. Results relate only to the samples identified above. This report shall not be reproduced except in full with written approval of Cardinal Laboratories.

A handwritten signature in cursive script, appearing to read "Celey D. Keene".

Celey D. Keene, Lab Director/Quality Manager

Chain of Custody

Work Order No: H 699064

Page 1 of 1

Project Manager:	Mitranida Milwee	Bill to: (if different)	Sebastian Orozco
Company Name:	Carmona Resources	Company Name:	Kinetik Midstream
Address:	310 W Wall St Ste 500	Address:	288 W. Kincaid Ranch Rd.
City, State ZIP:	Midland, TX 79701	City, State ZIP:	Artesia, NM 88210
Phone:	432-813-9652	Email:	sorozco@kinetik.com

Work Order Comments

Program: UST/PST ☐ PRP ☐ Brownfields ☐ JRC ☐ Superfund ☐

State of Project:

Reporting Level II ☐ Level III ☐ PST/UST ☐ RRP ☐ Level IV ☐

Deliverables: EDD ☐ ADaPT ☐ Other: _____

[illegible]

Comments: Email to Mike Carmona / Mcarmona@carmonaresources.com and Conner Moehring / Cmoehring@carmonaresources.com

[illegible]



PHONE (575) 393-2326 ° 101 E. MARLAND ° HOBBS, NM 88240

July 09, 2024

MIRANDA MILWEE

CARMONA RESOURCES

310 W WALL ST, SUITE 500

MIDLAND, TX 79701

RE: M - 10 17 LOOP ST HH #1 - 10"

Enclosed are the results of analyses for samples received by the laboratory on 07/02/24 16:14.

Cardinal Laboratories is accredited through Texas NELAP under certificate number TX-C24-00112. Accreditation applies to drinking water, non-potable water and solid and chemical materials. All accredited analytes are denoted by an asterisk (*). For a complete list of accredited analytes and matrices visit the TCEQ website at www.tceq.texas.gov/field/qa/lab_accred_certif.html.

Cardinal Laboratories is accredited through the State of Colorado Department of Public Health and Environment for:

Method EPA 552.2	Haloacetic Acids (HAA-5)
Method EPA 524.2	Total Trihalomethanes (TTHM)
Method EPA 524.4	Regulated VOCs (V1, V2, V3)

Accreditation applies to public drinking water matrices.

This report meets NELAP requirements and is made up of a cover page, analytical results, and a copy of the original chain-of-custody. If you have any questions concerning this report, please feel free to contact me.

Sincerely,

Celey D. Keene

Lab Director/Quality Manager



PHONE (575) 393-2326 • 101 E. MARLAND • HOBBS, NM 88240

Analytical Results For:

CARMONA RESOURCES
MIRANDA MILWEE
310 W WALL ST, SUITE 500
MIDLAND TX, 79701
Fax To:

Received: 07/02/2024

Reported: 07/09/2024

Project Name: M - 10 17 LOOP ST HH #1 - 10"

Project Number: 2420

Project Location: KINETIK MIDSTREAM - LEA CO NM

Sampling Date: 07/02/2024

Sampling Type: Soil

Sampling Condition: Cool & Intact

Sample Received By: Tamara Oldaker

Sample ID: LEA LAND STOCKPILE (H243984-01)

BTEx 8021B		mg/kg		Analyzed By: JH					
Analyte	Result	Reporting Limit	Analyzed	Method Blank	BS	% Recovery	True Value QC	RPD	Qualifier
Benzene*	<0.050	0.050	07/06/2024	ND	2.03	102	2.00	1.84	
Toluene*	<0.050	0.050	07/06/2024	ND	1.98	99.0	2.00	1.50	
Ethylbenzene*	<0.050	0.050	07/06/2024	ND	1.99	99.7	2.00	1.07	
Total Xylenes*	<0.150	0.150	07/06/2024	ND	5.87	97.8	6.00	1.21	
Total BTEX	<0.300	0.300	07/06/2024	ND					

Surrogate: 4-Bromofluorobenzene (PIE) 98.6 % 71.5-134

Chloride, SM4500Cl-B		mg/kg		Analyzed By: CT					
Analyte	Result	Reporting Limit	Analyzed	Method Blank	BS	% Recovery	True Value QC	RPD	Qualifier
Chloride	272	16.0	07/05/2024	ND	432	108	400	0.00	

TPH 8015M		mg/kg		Analyzed By: MS					
Analyte	Result	Reporting Limit	Analyzed	Method Blank	BS	% Recovery	True Value QC	RPD	Qualifier
GRO C6-C10*	<10.0	10.0	07/08/2024	ND	218	109	200	4.73	
DRO >C10-C28*	<10.0	10.0	07/08/2024	ND	215	107	200	5.27	
EXT DRO >C28-C36	<10.0	10.0	07/08/2024	ND					

Surrogate: 1-Chlorooctane 89.3 % 48.2-134

Surrogate: 1-Chlorooctadecane 88.0 % 49.1-148

Cardinal Laboratories

*=Accredited Analyte

PLEASE NOTE: Liability and Damages. Cardinal's liability and client's exclusive remedy for any claim arising, whether based in contract or tort, shall be limited to the amount paid by client for analyses. All claims, including those for negligence and any other cause whatsoever shall be deemed waived unless made in writing and received by Cardinal within thirty (30) days after completion of the applicable service. In no event shall Cardinal be liable for incidental or consequential damages, including, without limitation, business interruptions, loss of use, or loss of profits incurred by client, its subsidiaries, affiliates or successors arising out of or related to the performance of the services hereunder by Cardinal, regardless of whether such claim is based upon any of the above stated reasons or otherwise. Results relate only to the samples identified above. This report shall not be reproduced except in full with written approval of Cardinal Laboratories.

Celey D. Keene, Lab Director/Quality Manager



PHONE (575) 393-2326 ° 101 E. MARLAND ° HOBBS, NM 88240

Notes and Definitions

- ND Analyte NOT DETECTED at or above the reporting limit
- RPD Relative Percent Difference
- ** Samples not received at proper temperature of 6°C or below.
- *** Insufficient time to reach temperature.
- Chloride by SM4500Cl-B does not require samples be received at or below 6°C
Samples reported on an as received basis (wet) unless otherwise noted on report

Cardinal Laboratories

*=Accredited Analyte

PLEASE NOTE: Liability and Damages. Cardinal's liability and client's exclusive remedy for any claim arising, whether based in contract or tort, shall be limited to the amount paid by client for analyses. All claims, including those for negligence and any other cause whatsoever shall be deemed waived unless made in writing and received by Cardinal within thirty (30) days after completion of the applicable service. In no event shall Cardinal be liable for incidental or consequential damages, including, without limitation, business interruptions, loss of use, or loss of profits incurred by client, its subsidiaries, affiliates or successors arising out of or related to the performance of the services hereunder by Cardinal, regardless of whether such claim is based upon any of the above stated reasons or otherwise. Results relate only to the samples identified above. This report shall not be reproduced except in full with written approval of Cardinal Laboratories.

A handwritten signature in cursive script, appearing to read "C. D. Keene".

Celey D. Keene, Lab Director/Quality Manager

Work Order No:

HAZ 3984

Page 1 of 1

Work Order Comments				
Program:	UST/ST	<input type="checkbox"/> PRP	<input type="checkbox"/> Brownfields	<input type="checkbox"/> RRC
State of Project:				<input type="checkbox"/> Superfund
Reporting Level II	<input type="checkbox"/>	Level III	<input type="checkbox"/> pST/UST	<input type="checkbox"/> RRP
Deliverables:	EDD	<input type="checkbox"/>	AdAPT	<input type="checkbox"/>
			Other:	

[illegible]

Date/Time:

7-2-24 1104

Received by: (Signature)

District I
1625 N. French Dr., Hobbs, NM 88240
Phone:(575) 393-6161 Fax:(575) 393-0720
District II
811 S. First St., Artesia, NM 88210
Phone:(575) 748-1283 Fax:(575) 748-9720
District III
1000 Rio Brazos Rd., Aztec, NM 87410
Phone:(505) 334-6178 Fax:(505) 334-6170
District IV
1220 S. St Francis Dr., Santa Fe, NM 87505
Phone:(505) 476-3470 Fax:(505) 476-3462

State of New Mexico
Energy, Minerals and Natural Resources
Oil Conservation Division
1220 S. St Francis Dr.
Santa Fe, NM 87505

QUESTIONS

Action 364831

QUESTIONS

Operator: FRONTIER FIELD SERVICES, LLC 303 Veterans Airpark Lane Midland, TX 79705	OGRID: 221115
	Action Number: 364831
	Action Type: [C-141] Remediation Closure Request C-141 (C-141-v-Closure)

QUESTIONS

Prerequisites	
Incident ID (n#)	nAPP2417032594
Incident Name	NAPP2417032594 M- 10 17 LOOP ST HH #1 - 10" - PL - 06172024 @ 0
Incident Type	Other
Incident Status	Remediation Closure Report Received

Location of Release Source	
Please answer all the questions in this group.	
Site Name	M- 10 17 Loop St HH #1 - 10" - PL - 06172024
Date Release Discovered	06/17/2024
Surface Owner	State

Incident Details	
Please answer all the questions in this group.	
Incident Type	Other
Did this release result in a fire or is the result of a fire	No
Did this release result in any injuries	No
Has this release reached or does it have a reasonable probability of reaching a watercourse	No
Has this release endangered or does it have a reasonable probability of endangering public health	No
Has this release substantially damaged or will it substantially damage property or the environment	No
Is this release of a volume that is or may with reasonable probability be detrimental to fresh water	No

Nature and Volume of Release	
Material(s) released, please answer all that apply below. Any calculations or specific justifications for the volumes provided should be attached to the follow-up C-141 submission.	
Crude Oil Released (bbls) Details	Not answered.
Produced Water Released (bbls) Details	Not answered.
Is the concentration of chloride in the produced water >10,000 mg/l	No
Condensate Released (bbls) Details	Cause: Human Error Flow Line - Production Condensate Released: 30 BBL Recovered: 30 BBL Lost: 0 BBL.
Natural Gas Vented (Mcf) Details	Not answered.
Natural Gas Flared (Mcf) Details	Not answered.
Other Released Details	Not answered.
Are there additional details for the questions above (i.e. any answer containing Other, Specify, Unknown, and/or Fire, or any negative lost amounts)	Not answered.

District I

1625 N. French Dr., Hobbs, NM 88240
Phone:(575) 393-6161 Fax:(575) 393-0720

District II

811 S. First St., Artesia, NM 88210
Phone:(575) 748-1283 Fax:(575) 748-9720

District III

1000 Rio Brazos Rd., Aztec, NM 87410
Phone:(505) 334-6178 Fax:(505) 334-6170

District IV

1220 S. St Francis Dr., Santa Fe, NM 87505
Phone:(505) 476-3470 Fax:(505) 476-3462

State of New Mexico
Energy, Minerals and Natural Resources
Oil Conservation Division
1220 S. St Francis Dr.
Santa Fe, NM 87505

QUESTIONS, Page 2

Action 364831

QUESTIONS (continued)

Operator: FRONTIER FIELD SERVICES, LLC 303 Veterans Airpark Lane Midland, TX 79705	OGRID: 221115
	Action Number: 364831
	Action Type: [C-141] Remediation Closure Request C-141 (C-141-v-Closure)

QUESTIONS

Nature and Volume of Release (continued)	
Is this a gas only submission (i.e. only significant Mcf values reported)	No, according to supplied volumes this does not appear to be a "gas only" report.
Was this a major release as defined by Subsection A of 19.15.29.7 NMAC	Yes
Reasons why this would be considered a submission for a notification of a major release	From paragraph A. "Major release" determine using: (1) an unauthorized release of a volume, excluding gases, of 25 barrels or more.
With the implementation of the 19.15.27 NMAC (05/25/2021), venting and/or flaring of natural gas (i.e. gas only) are to be submitted on the C-129 form.	

Initial Response

The responsible party must undertake the following actions immediately unless they could create a safety hazard that would result in injury.

The source of the release has been stopped	True
The impacted area has been secured to protect human health and the environment	True
Released materials have been contained via the use of berms or dikes, absorbent pads, or other containment devices	True
All free liquids and recoverable materials have been removed and managed appropriately	True
If all the actions described above have not been undertaken, explain why	Not answered.

Per Paragraph (4) of Subsection B of 19.15.29.8 NMAC the responsible party may commence remediation immediately after discovery of a release. If remediation has begun, please prepare and attach a narrative of actions to date in the follow-up C-141 submission. If remedial efforts have been successfully completed or if the release occurred within a lined containment area (see Subparagraph (a) of Paragraph (5) of Subsection A of 19.15.29.11 NMAC), please prepare and attach all information needed for closure evaluation in the follow-up C-141 submission.

I hereby certify that the information given above is true and complete to the best of my knowledge and understand that pursuant to OCD rules and regulations all operators are required to report and/or file certain release notifications and perform corrective actions for releases which may endanger public health or the environment. The acceptance of a C-141 report by the OCD does not relieve the operator of liability should their operations have failed to adequately investigate and remediate contamination that pose a threat to groundwater, surface water, human health or the environment. In addition, OCD acceptance of a C-141 report does not relieve the operator of responsibility for compliance with any other federal, state, or local laws and/or regulations.

I hereby agree and sign off to the above statement	Name: Sebastian Orozco Title: Sr. Environmental Specialist Email: sorozco@durangomidstream.com Date: 06/18/2024
--	--

District I1625 N. French Dr., Hobbs, NM 88240
Phone:(575) 393-6161 Fax:(575) 393-0720**District II**811 S. First St., Artesia, NM 88210
Phone:(575) 748-1283 Fax:(575) 748-9720**District III**1000 Rio Brazos Rd., Aztec, NM 87410
Phone:(505) 334-6178 Fax:(505) 334-6170**District IV**1220 S. St Francis Dr., Santa Fe, NM 87505
Phone:(505) 476-3470 Fax:(505) 476-3462

State of New Mexico
Energy, Minerals and Natural Resources
Oil Conservation Division
1220 S. St Francis Dr.
Santa Fe, NM 87505

QUESTIONS, Page 3

Action 364831

QUESTIONS (continued)

Operator: FRONTIER FIELD SERVICES, LLC 303 Veterans Airpark Lane Midland, TX 79705	OGRID: 221115
	Action Number: 364831
	Action Type: [C-141] Remediation Closure Request C-141 (C-141-v-Closure)

QUESTIONS**Site Characterization**

Please answer all the questions in this group (only required when seeking remediation plan approval and beyond). This information must be provided to the appropriate district office no later than 90 days after the release discovery date.

What is the shallowest depth to groundwater beneath the area affected by the release in feet below ground surface (ft bgs)	Between 100 and 500 (ft.)
What method was used to determine the depth to ground water	NM OSE iWaters Database Search
Did this release impact groundwater or surface water	No
What is the minimum distance, between the closest lateral extents of the release and the following surface areas:	
A continuously flowing watercourse or any other significant watercourse	Greater than 5 (mi.)
Any lakebed, sinkhole, or playa lake (measured from the ordinary high-water mark)	Between 1 and 5 (mi.)
An occupied permanent residence, school, hospital, institution, or church	Greater than 5 (mi.)
A spring or a private domestic fresh water well used by less than five households for domestic or stock watering purposes	Between 1 and 5 (mi.)
Any other fresh water well or spring	Greater than 5 (mi.)
Incorporated municipal boundaries or a defined municipal fresh water well field	Greater than 5 (mi.)
A wetland	Greater than 5 (mi.)
A subsurface mine	Greater than 5 (mi.)
An (non-karst) unstable area	Greater than 5 (mi.)
Categorize the risk of this well / site being in a karst geology	Low
A 100-year floodplain	Greater than 5 (mi.)
Did the release impact areas not on an exploration, development, production, or storage site	Yes

Remediation Plan

Please answer all the questions that apply or are indicated. This information must be provided to the appropriate district office no later than 90 days after the release discovery date.

Requesting a remediation plan approval with this submission	Yes
Attach a comprehensive report demonstrating the lateral and vertical extents of soil contamination associated with the release have been determined, pursuant to 19.15.29.11 NMAC and 19.15.29.13 NMAC.	
Have the lateral and vertical extents of contamination been fully delineated	Yes
Was this release entirely contained within a lined containment area	No

Soil Contamination Sampling: (Provide the highest observable value for each, in milligrams per kilograms.)

Chloride	(EPA 300.0 or SM4500 Cl B)	560
TPH (GRO+DRO+MRO)	(EPA SW-846 Method 8015M)	110
GRO+DRO	(EPA SW-846 Method 8015M)	85
BTEX	(EPA SW-846 Method 8021B or 8260B)	0.3
Benzene	(EPA SW-846 Method 8021B or 8260B)	0.1

Per Subsection B of 19.15.29.11 NMAC unless the site characterization report includes completed efforts at remediation, the report must include a proposed remediation plan in accordance with 19.15.29.12 NMAC, which includes the anticipated timelines for beginning and completing the remediation.

On what estimated date will the remediation commence	06/17/2024
On what date will (or did) the final sampling or liner inspection occur	07/03/2024
On what date will (or was) the remediation complete(d)	07/09/2024
What is the estimated surface area (in square feet) that will be reclaimed	0
What is the estimated volume (in cubic yards) that will be reclaimed	0
What is the estimated surface area (in square feet) that will be remediated	460
What is the estimated volume (in cubic yards) that will be remediated	144

These estimated dates and measurements are recognized to be the best guess or calculation at the time of submission and may (be) change(d) over time as more remediation efforts are completed.

The OCD recognizes that proposed remediation measures may have to be minimally adjusted in accordance with the physical realities encountered during remediation. If the responsible party has any need to significantly deviate from the remediation plan proposed, then it should consult with the division to determine if another remediation plan submission is required.

District I

1625 N. French Dr., Hobbs, NM 88240
Phone:(575) 393-6161 Fax:(575) 393-0720

District II

811 S. First St., Artesia, NM 88210
Phone:(575) 748-1283 Fax:(575) 748-9720

District III

1000 Rio Brazos Rd., Aztec, NM 87410
Phone:(505) 334-6178 Fax:(505) 334-6170

District IV

1220 S. St Francis Dr., Santa Fe, NM 87505
Phone:(505) 476-3470 Fax:(505) 476-3462

State of New Mexico
Energy, Minerals and Natural Resources
Oil Conservation Division
1220 S. St Francis Dr.
Santa Fe, NM 87505

QUESTIONS, Page 4

Action 364831

QUESTIONS (continued)

Operator: FRONTIER FIELD SERVICES, LLC 303 Veterans Airpark Lane Midland, TX 79705	OGRID: 221115
	Action Number: 364831
	Action Type: [C-141] Remediation Closure Request C-141 (C-141-v-Closure)

QUESTIONS**Remediation Plan (continued)**

Please answer all the questions that apply or are indicated. This information must be provided to the appropriate district office no later than 90 days after the release discovery date.

This remediation will (or is expected to) utilize the following processes to remediate / reduce contaminants:

(Select all answers below that apply.)

(Ex Situ) Excavation and off-site disposal (i.e. dig and haul, hydrovac, etc.)	Yes
Which OCD approved facility will be used for off-site disposal	LEA LAND LANDFILL [fEEM0112342028]
OR which OCD approved well (API) will be used for off-site disposal	Not answered.
OR is the off-site disposal site, to be used, out-of-state	Not answered.
OR is the off-site disposal site, to be used, an NMED facility	Not answered.
(Ex Situ) Excavation and on-site remediation (i.e. On-Site Land Farms)	No
(In Situ) Soil Vapor Extraction	No
(In Situ) Chemical processing (i.e. Soil Shredding, Potassium Permanganate, etc.)	No
(In Situ) Biological processing (i.e. Microbes / Fertilizer, etc.)	No
(In Situ) Physical processing (i.e. Soil Washing, Gypsum, Disking, etc.)	No
Ground Water Abatement pursuant to 19.15.30 NMAC	No
OTHER (Non-listed remedial process)	No

Per Subsection B of 19.15.29.11 NMAC unless the site characterization report includes completed efforts at remediation, the report must include a proposed remediation plan in accordance with 19.15.29.12 NMAC, which includes the anticipated timelines for beginning and completing the remediation.

I hereby certify that the information given above is true and complete to the best of my knowledge and understand that pursuant to OCD rules and regulations all operators are required to report and/or file certain release notifications and perform corrective actions for releases which may endanger public health or the environment. The acceptance of a C-141 report by the OCD does not relieve the operator of liability should their operations have failed to adequately investigate and remediate contamination that pose a threat to groundwater, surface water, human health or the environment. In addition, OCD acceptance of a C-141 report does not relieve the operator of responsibility for compliance with any other federal, state, or local laws and/or regulations.

I hereby agree and sign off to the above statement	Name: Sebastian Orozco Title: Sr. Environmental Specialist Email: sorozco@kinetik.com Date: 07/17/2024
--	---

The OCD recognizes that proposed remediation measures may have to be minimally adjusted in accordance with the physical realities encountered during remediation. If the responsible party has any need to significantly deviate from the remediation plan proposed, then it should consult with the division to determine if another remediation plan submission is required.

District I
1625 N. French Dr., Hobbs, NM 88240
Phone:(575) 393-6161 Fax:(575) 393-0720
District II
811 S. First St., Artesia, NM 88210
Phone:(575) 748-1283 Fax:(575) 748-9720
District III
1000 Rio Brazos Rd., Aztec, NM 87410
Phone:(505) 334-6178 Fax:(505) 334-6170
District IV
1220 S. St Francis Dr., Santa Fe, NM 87505
Phone:(505) 476-3470 Fax:(505) 476-3462

State of New Mexico
Energy, Minerals and Natural Resources
Oil Conservation Division
1220 S. St Francis Dr.
Santa Fe, NM 87505

QUESTIONS, Page 5

Action 364831

QUESTIONS (continued)

Operator: FRONTIER FIELD SERVICES, LLC 303 Veterans Airpark Lane Midland, TX 79705	OGRID: 221115
	Action Number: 364831
	Action Type: [C-141] Remediation Closure Request C-141 (C-141-v-Closure)

QUESTIONS

Deferral Requests Only	
<i>Only answer the questions in this group if seeking a deferral upon approval this submission. Each of the following items must be confirmed as part of any request for deferral of remediation.</i>	
Requesting a deferral of the remediation closure due date with the approval of this submission	No

District I

1625 N. French Dr., Hobbs, NM 88240
Phone:(575) 393-6161 Fax:(575) 393-0720

District II

811 S. First St., Artesia, NM 88210
Phone:(575) 748-1283 Fax:(575) 748-9720

District III

1000 Rio Brazos Rd., Aztec, NM 87410
Phone:(505) 334-6178 Fax:(505) 334-6170

District IV

1220 S. St Francis Dr., Santa Fe, NM 87505
Phone:(505) 476-3470 Fax:(505) 476-3462

State of New Mexico
Energy, Minerals and Natural Resources
Oil Conservation Division
1220 S. St Francis Dr.
Santa Fe, NM 87505

QUESTIONS, Page 6

Action 364831

QUESTIONS (continued)

Operator: FRONTIER FIELD SERVICES, LLC 303 Veterans Airpark Lane Midland, TX 79705	OGRID:
	221115
	Action Number:
	364831
Action Type:	
[C-141] Remediation Closure Request C-141 (C-141-v-Closure)	

QUESTIONS

Sampling Event Information	
Last sampling notification (C-141N) recorded	359832
Sampling date pursuant to Subparagraph (a) of Paragraph (1) of Subsection D of 19.15.29.12 NMAC	07/03/2024
What was the (estimated) number of samples that were to be gathered	2
What was the sampling surface area in square feet	500

Remediation Closure Request

Only answer the questions in this group if seeking remediation closure for this release because all remediation steps have been completed.

Requesting a remediation closure approval with this submission	Yes
Have the lateral and vertical extents of contamination been fully delineated	Yes
Was this release entirely contained within a lined containment area	No
All areas reasonably needed for production or subsequent drilling operations have been stabilized, returned to the sites existing grade, and have a soil cover that prevents ponding of water, minimizing dust and erosion	Yes
What was the total surface area (in square feet) remediated	460
What was the total volume (cubic yards) remediated	144
All areas not reasonably needed for production or subsequent drilling operations have been reclaimed to contain a minimum of four feet of non-waste contain earthen material with concentrations less than 600 mg/kg chlorides, 100 mg/kg TPH, 50 mg/kg BTEX, and 10 mg/kg Benzene	Yes
What was the total surface area (in square feet) reclaimed	0
What was the total volume (in cubic yards) reclaimed	0
Summarize any additional remediation activities not included by answers (above)	Dug and Hauled contaminated material to disposal. Backfilled with clean backfill material once satisfactory analytical results were received from the lab.

The responsible party must attach information demonstrating they have complied with all applicable closure requirements and any conditions or directives of the OCD. This demonstration should be in the form of a comprehensive report (in .pdf format) including a scaled site map, sampling diagrams, relevant field notes, photographs of any excavation prior to backfilling, laboratory data including chain of custody documents of final sampling, and a narrative of the remedial activities. Refer to 19.15.29.12 NMAC.

I hereby certify that the information given above is true and complete to the best of my knowledge and understand that pursuant to OCD rules and regulations all operators are required to report and/or file certain release notifications and perform corrective actions for releases which may endanger public health or the environment. The acceptance of a C-141 report by the OCD does not relieve the operator of liability should their operations have failed to adequately investigate and remediate contamination that pose a threat to groundwater, surface water, human health or the environment. In addition, OCD acceptance of a C-141 report does not relieve the operator of responsibility for compliance with any other federal, state, or local laws and/or regulations. The responsible party acknowledges they must substantially restore, reclaim, and re-vegetate the impacted surface area to the conditions that existed prior to the release or their final land use in accordance with 19.15.29.13 NMAC including notification to the OCD when reclamation and re-vegetation are complete.

I hereby agree and sign off to the above statement	Name: Sebastian Orozco Title: Sr. Environmental Specialist Email: sorozco@kinetik.com Date: 07/17/2024
--	---

District I
1625 N. French Dr., Hobbs, NM 88240
Phone:(575) 393-6161 Fax:(575) 393-0720
District II
811 S. First St., Artesia, NM 88210
Phone:(575) 748-1283 Fax:(575) 748-9720
District III
1000 Rio Brazos Rd., Aztec, NM 87410
Phone:(505) 334-6178 Fax:(505) 334-6170
District IV
1220 S. St Francis Dr., Santa Fe, NM 87505
Phone:(505) 476-3470 Fax:(505) 476-3462

State of New Mexico
Energy, Minerals and Natural Resources
Oil Conservation Division
1220 S. St Francis Dr.
Santa Fe, NM 87505

QUESTIONS, Page 7

Action 364831

QUESTIONS (continued)

Operator: FRONTIER FIELD SERVICES, LLC 303 Veterans Airpark Lane Midland, TX 79705	OGRID: 221115
	Action Number: 364831
	Action Type: [C-141] Remediation Closure Request C-141 (C-141-v-Closure)

QUESTIONS

Reclamation Report	
<i>Only answer the questions in this group if all reclamation steps have been completed.</i>	
Requesting a reclamation approval with this submission	No

District I
1625 N. French Dr., Hobbs, NM 88240
Phone:(575) 393-6161 Fax:(575) 393-0720
District II
811 S. First St., Artesia, NM 88210
Phone:(575) 748-1283 Fax:(575) 748-9720
District III
1000 Rio Brazos Rd., Aztec, NM 87410
Phone:(505) 334-6178 Fax:(505) 334-6170
District IV
1220 S. St Francis Dr., Santa Fe, NM 87505
Phone:(505) 476-3470 Fax:(505) 476-3462

State of New Mexico
Energy, Minerals and Natural Resources
Oil Conservation Division
1220 S. St Francis Dr.
Santa Fe, NM 87505

CONDITIONS

Action 364831

CONDITIONS

Operator: FRONTIER FIELD SERVICES, LLC 303 Veterans Airpark Lane Midland, TX 79705	OGRID: 221115
	Action Number: 364831
	Action Type: [C-141] Remediation Closure Request C-141 (C-141-v-Closure)

CONDITIONS

Created By	Condition	Condition Date
rhamlet	We have received your Remediation Closure Report for Incident #NAPP2417032594 M- 10 17 LOOP ST HH #1 - 10" - PL - 06172024, thank you. This Remediation Closure Report is approved.	7/22/2024