



209 W. McKay Street
Carlsbad, New Mexico 88220
Tel. 432-701-2159
www.ntgenvironmental.com

January 15, 2025

Mike Bratcher
District Supervisor
Oil Conservation Division, District 2
811 S. First Street
Artesia, New Mexico 88210

Re: Site Characterization and Remediation Work Plan
BTA Oil Producers
9418 JV-P Vaca Draw Battery
Unit A, Section 10, Township 25S, Range 33E
Site Coordinates: 32.1518059, -103.563446
Lea County, New Mexico
Incident ID: nJXK1611133725 and nKJ1518155255

Introduction

On behalf of BTA Oil Producers (BTA), New Tech Global Environmental, LLC (NTGE) has prepared this Site Characterization and Remediation Work Plan for submittal to the New Mexico Oil Conservation Division (NMCOD) District 2 Office in Artesia, New Mexico to document site assessment, remedial action activities, and sample analysis results for incident IDs: nJXK1611133725 and nKJ1518155255 – 9418 JV-P Vaca Draw Battery (Site). The Site is in Unit Letter A, Section 10, of Township 25 South and Range 33 East in Lea County, New Mexico. The GPS coordinates for the release site are 32.1518059° N latitude and 103.563446° W longitude. The site location with respect to the nearest town is shown on Figure 1 and the topography of the area is shown on Figure 2.

Background

Incident nKJ1518155255: Based on the initial C-141 submitted by BTA and obtained by the New Mexico Oil Conservation District (NMOCD), the release was discovered on June 30, 2015, and was the result of a cutout dump malfunctioning, resulting in the release of forty-five (45) barrels (bbls) of crude oil, of which forty (40) bbls were recovered for a net loss of five (5) bbls. Upon discovery, all associated wells were shut in, and the area was secured. The release area is shown on Figure 3

Incident nJXK1611133725: Based on the initial C-141 submitted by BTA and obtained by the New Mexico Oil Conservation District (NMOCD), the release was discovered on April 3, 2016, and was the result of a gasket on a separator failing, resulting in the release of thirty-four (34)

Creating a Better
Environment
For Oil & Gas
Operations

Mr. Mike Bratcher
January 15, 2025
Page 2 of 3

barrels (bbls) of crude oil, of which thirty (30) bbls were recovered for a net loss of four (4) bbls. Upon discovery, all associated wells were shut in, and the area was secured. The release area is shown on Figure 3.

Groundwater and Site Characterization

Based on a review of the New Mexico Office of State Engineers and USGS databases, there are no known water sources within a ½-mile radius of the Site. One receptor, a riverine is located 886 feet west of the site. No other receptors (playas, wetlands, waterways, lakebeds, or ordinance boundaries) are located within each specific boundary or distance from the Site. According to the Karst Potential Map, the Site is located within a Low Karst area. The Site characterization documentation (Points of Diversion, Karst Potential, Significant Watercourse Map, Wetlands Map, and FEMA Map) is attached to the report.

NTGE characterized the Site according to Table I, Closure Criteria for Soils Impacted by a Release, from the New Mexico Administrative Code (NMCA) Title 19, Chapter 15, Part 29, Section 12 (NMAC 19.15.29.12).

Site Characterization	Average Groundwater Depth (ft)
Low Karst	Unknown

Table 3.1 Closure Criteria for Soils Impacted by a Release (NMAC 19.15.29.12)

Regulatory Standard	Chloride	TPH (GRO+DRO+MRO)	GRO+DRO	BTEX	Benzene
19.15.29.12 Remediation and Closure Criteria for Soils Impacted by a Release	600 mg/kg	100 mg/kg	---	50 mg/kg	10 mg/kg
Notes: --- = not defined					

Initial Soil Delineation Assessment Summary and Findings

On December 27, 2024, NTGE conducted site assessment activities to assess the extent of impacts at the Site. Seven (7) vertical sample points (V-1 through V-7) were installed within the release area and seven (7) horizontal sample points (H-1 through H-7) were installed adjacent to the release area in order to vertically and horizontally characterize the impacts. Vertical soil samples were collected at one (1) foot intervals from depths ranging from zero (0) to three (3) feet ft below ground surface (bgs), and horizontal soil samples were collected at zero to half a foot (0-0.5') increments with a geotechnical hand auger. The auger was decontaminated with Alconox® and deionized water between sample points to prevent cross contamination. Soil samples were placed directly into laboratory provided samples containers, placed on ice, and transported under proper chain-of-custody protocol to Cardinal Laboratories in Hobbs, New Mexico for analysis of benzene, toluene, ethylbenzene, and xylene (BTEX) (Method SW846 8021B), total petroleum hydrocarbon (TPH) (Method SW846 8015B), and chloride (method EPA 4500CL-B). Analytical results indicated that TPH and/or chloride concentrations exceeded the NMOCD regulatory limits at

NTGE Project No.: 249317

Mr. Mike Bratcher
January 15, 2025
Page 3 of 3

zero (0) ft in the areas of V-4 through V-7. All horizontal samples were below NMOCD regulatory limits at a depth of zero (0) to a half foot (0-0.5') bgs.

Analytical results are included in Table 1, while soil boring and delineated locations are shown on Figure 3. Laboratory reports containing analytical methods and chain-of-custody documents are attached to the report.

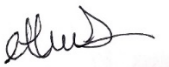
Proposed Work Plan

After receiving and evaluating the soil boring data NTGE proposes to excavate the areas of V-4 through V-7 to a depth of half a foot (0.5) bgs to ensure that the impacted soils have been removed from the Site. Approximately 227 cubic yards of impacted material will be excavated and transported offsite for disposal at an NMOCD approved landfill. The proposed excavation map is shown on Figure 4.

Upon completion of the excavation, confirmation samples will be taken with a five (5) point composite sample and represent an area no greater than 200 square feet to comply with NMAC 19.15.23.12 and 19.15.29.13. Discrete soil samples will be collected from the sidewalls and bottom of the excavation if any staining is observed. All confirmation samples will be taken to a certified laboratory and analyzed for BTEX by EPA Method 8021B, TPH by EPA Method 8015B Modified, and chloride by SM4500 Cl-B. If any of the confirmation samples collected exhibit concentrations above regulatory standards set by NMAC 19.15.23.12 and 19.15.23.13, the areas will be further excavated until concentrations are below Table I Closure Criteria.

If you have any questions regarding this letter, please contact us at (432)-701-2159.

Sincerely,
NTG Environmental



Ethan Sessums
Jr. Field Operations Manager



Kellan Smith
Project Manager

Attachments:

- Tables
- Figures
- Photographic Log
- Site Characterization Documentation
- Laboratory Reports and Chain-of-Custody Documents

Tables

Table 1
Summary of Soil Analytical Data - Delineation Samples
9418 JV-P Vaca Draw Battery
BTA Oil Producers
Lea County, New Mexico

Sample ID	Sample Date	Depth (ft bgs)	Benzene	Toluene	Ethylbenzene	Xylenes	BTEX	TPH					Chloride
								GRO (C6-C10)	DRO (C10-C28)	GRO + DRO (C6-C28)	MRO (C28-C35)	Total GRO/DRO/MRO (C6-C35)	
			(mg/kg)	(mg/kg)	(mg/kg)	(mg/kg)	(mg/kg)	(mg/kg)	(mg/kg)	(mg/kg)	(mg/kg)	(mg/kg)	
			Table I Closure Criteria for Soil ≤50 feet Depth to Groundwater 19.15.29 NMAC										
			10 mg/kg	---	---	---	50 mg/kg	---	---	---	---	100 mg/kg	600 mg/kg
Vertical Delineation Samples													
V-1	12/27/24	0'	<0.050	<0.050	<0.050	<0.150	<0.300	<10.0	<10.0	<10.0	<10.0	<10.0	48.0
	12/27/24	1'	<0.050	<0.050	<0.050	<0.150	<0.300	<10.0	<10.0	<10.0	<10.0	<10.0	96.0
	12/27/24	2'	<0.050	<0.050	<0.050	<0.150	<0.300	<10.0	<10.0	<10.0	<10.0	<10.0	32.0
V-2	12/27/24	0'	<0.050	<0.050	<0.050	<0.150	<0.300	<10.0	<10.0	<10.0	<10.0	<10.0	80.0
	12/27/24	1'	<0.050	<0.050	<0.050	<0.150	<0.300	<10.0	<10.0	<10.0	<10.0	<10.0	112
	12/27/24	2'	<0.050	<0.050	<0.050	<0.150	<0.300	<10.0	<10.0	<10.0	<10.0	<10.0	80.0
	12/27/24	3'	<0.050	<0.050	<0.050	<0.150	<0.300	<10.0	<10.0	<10.0	<10.0	<10.0	32.0
V-3	12/27/24	0'	<0.050	<0.050	<0.050	<0.150	<0.300	<10.0	<10.0	<10.0	<10.0	<10.0	64.0
	12/27/24	1'	<0.050	<0.050	<0.050	<0.150	<0.300	<10.0	<10.0	<10.0	<10.0	<10.0	64.0
	12/27/24	2'	<0.050	<0.050	<0.050	<0.150	<0.300	<10.0	29.0	29.0	<10.0	29.0	64.0
V-4	12/27/24	0'	<0.050	2.09	0.093	0.488	2.67	11.2	<10.0	11.2	<10.0	11.2	784
	12/27/24	1'	<0.050	0.067	<0.050	<0.150	<0.300	<10.0	18.8	18.8	10.4	29.2	320
	12/27/24	2'	<0.050	<0.050	<0.050	<0.150	<0.300	<10.0	<10.0	<10.0	<10.0	<10.0	96.0
	12/27/24	3'	<0.050	<0.050	<0.050	<0.150	<0.300	<10.0	27	27	11.4	38.4	48.0
V-5	12/27/24	0'	<0.050	<0.050	<0.050	<0.150	<0.300	<10.0	<10.0	<10.0	<10.0	<10.0	1,760
	12/27/24	1'	<0.050	<0.050	<0.050	<0.150	<0.300	<10.0	<10.0	<10.0	<10.0	<10.0	240
	12/27/24	2'	<0.050	<0.050	<0.050	<0.150	<0.300	<10.0	<10.0	<10.0	<10.0	<10.0	176
V-6	12/27/24	0'	<0.050	<0.050	<0.050	<0.150	<0.300	<10.0	67.7	67.7	47.5	115.2	4,240
	12/27/24	1'	<0.050	<0.050	<0.050	<0.150	<0.300	<10.0	<10.0	<10.0	<10.0	<10.0	304
	12/27/24	2'	<0.050	<0.050	<0.050	<0.150	<0.300	<10.0	<10.0	<10.0	<10.0	<10.0	576
	12/27/24	3'	<0.050	<0.050	<0.050	<0.150	<0.300	<10.0	<10.0	<10.0	<10.0	<10.0	32.0
V-7	12/27/24	0'	<0.050	<0.050	<0.050	<0.150	<0.300	<10.0	24.6	24.6	28.8	53.4	1,140
	12/27/24	1'	<0.050	<0.050	<0.050	<0.150	<0.300	<10.0	<10.0	<10.0	<10.0	<10.0	336
	12/27/24	2'	<0.050	<0.050	<0.050	<0.150	<0.300	<10.0	<10.0	<10.0	<10.0	<10.0	112
Horizontal Delineation Samples													
H-1	12/27/24	0-0.5'	<0.050	<0.050	<0.050	<0.150	<0.300	<10.0	<10.0	<10.0	<10.0	<10.0	80.0
H-2	12/27/24	0-0.5'	<0.050	<0.050	<0.050	<0.150	<0.300	<10.0	12.3	12.3	<10.0	12.3	352
H-3	12/27/24	0-0.5'	<0.050	<0.050	<0.050	<0.150	<0.300	<10.0	<10.0	<10.0	<10.0	<10.0	320
H-4	12/27/24	0-0.5'	<0.050	<0.050	<0.050	<0.150	<0.300	<10.0	<10.0	<10.0	<10.0	<10.0	288
H-5	12/27/24	0-0.5'	<0.050	<0.050	<0.050	<0.150	<0.300	<10.0	<10.0	<10.0	<10.0	<10.0	64.0
H-6	12/27/24	0-0.5'	<0.050	<0.050	<0.050	<0.150	<0.300	<10.0	<10.0	<10.0	<10.0	<10.0	80.0
H-7	12/27/24	0-0.5'	<0.050	<0.050	<0.050	<0.150	<0.300	<10.0	<10.0	<10.0	<10.0	<10.0	64.0

Notes:

1. Values reported in mg/kg
2. < = Value Less Than Reporting Limit (RL)
3. Bold indicates Analyte Detected
4. BTEX analyses by EPA Method SW 8021B

5. TPH analyses by EPA Method SW 8015 Mod.

6. GRO/DRO/MRO - Gasoline/Diesel/Motor Oil

7. Yellow shaded cells indicate analytical samples that exceed the NMAC 19.15.29.12 Table I Closure Criteria for the site.

8. Peach shaded cells indicate analytical samples that exceed the NMAC 19.15.29.13 Table I Closure Criteria for the site (Surface to 4 Feet Below Grade).

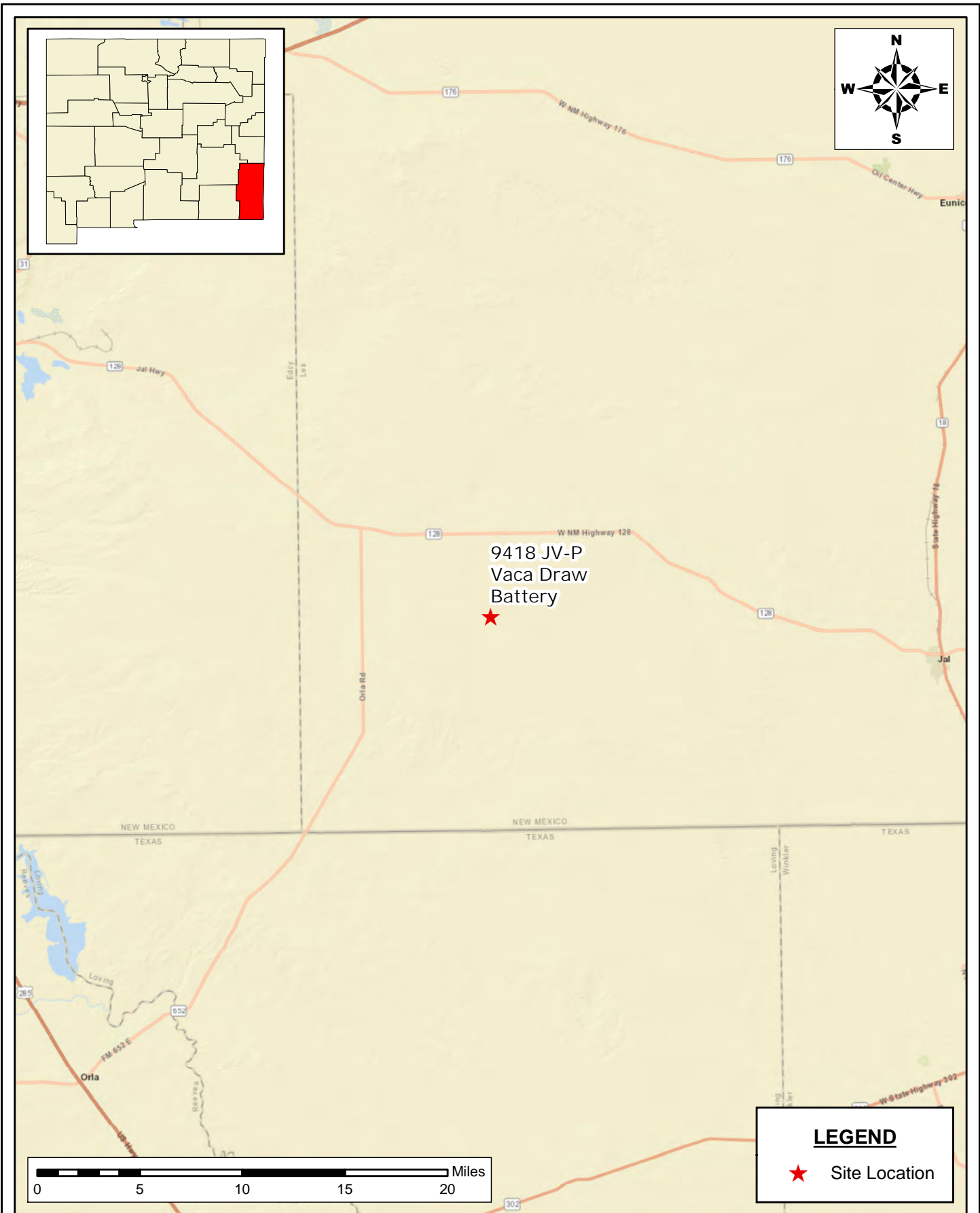
9. --- Not Analyzed

SP-1

Sample Point Excavated

Figures

Document Path: C:\Users\ntg\Documents\New Tech Global\NTGE - Projects\2024 PROJECTS\BTA\SC\249317 - 9418 JV-P Vaca Draw Battery\7- Figures\GIS\Figure_1_SL_SC_REMED_WORKPLAN.mxd



SITE LOCATION MAP
SITE CHARACTERIZATION AND REMEDIATION WORKPLAN
 BTA OIL PRODUCERS, LLC
 9418 JV-P VACA DRAW BATTERY
 LEA COUNTY, NEW MEXICO

SCALE: As Shown

Date: 1/15/2025

PROJECT #: 249317



New Tech Global Environmental, LLC
 911 Regional Park Drive
 Houston, Texas 77060
 T - 281.872.9300
 F - 281.872.4521
 Web: www.ntgenviroinmental.com

NOTES:

1. Base Image: ESRI Maps & Data 2013
2. Map Projection: NAD 1983

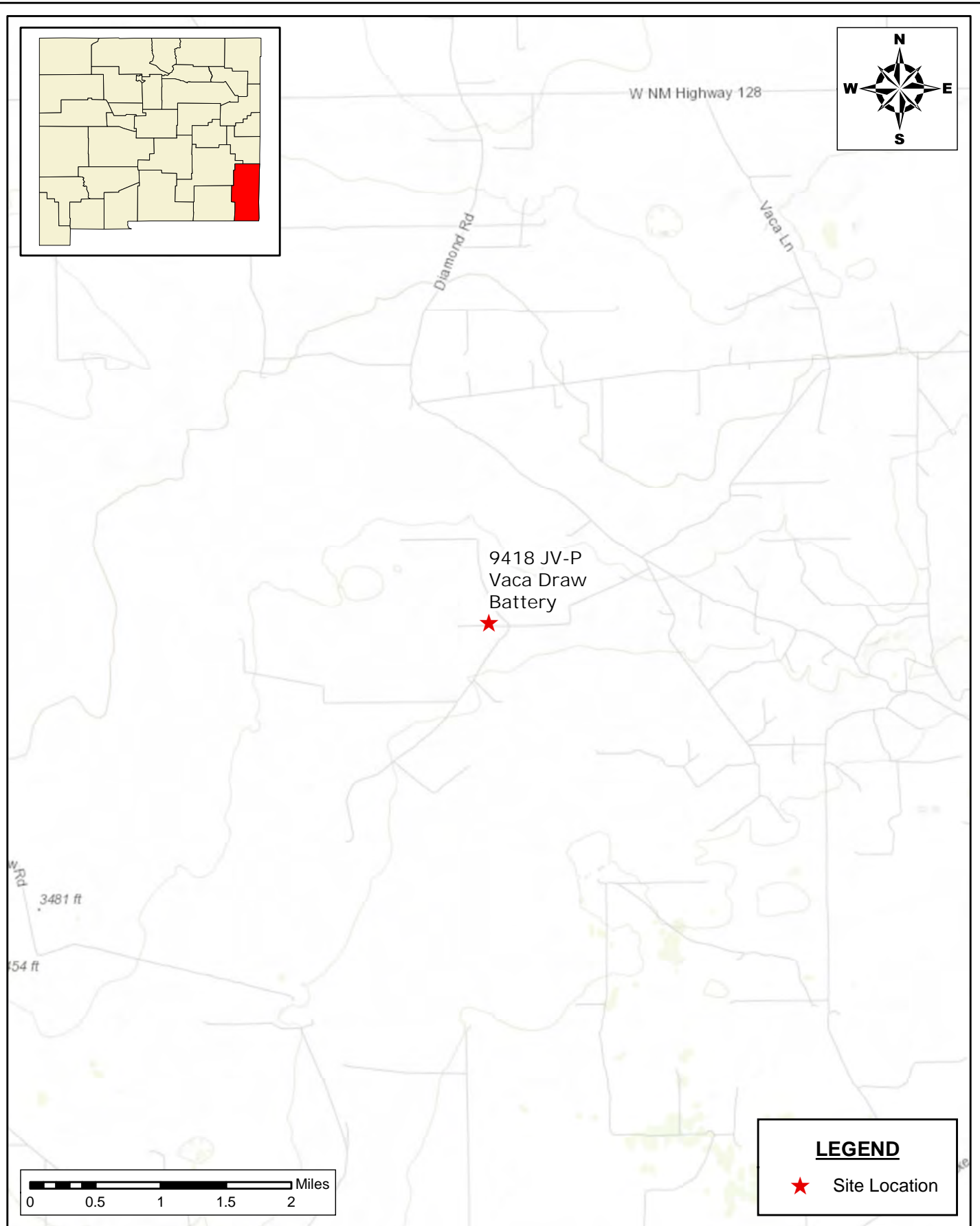
DRAWING NUMBER:

FIGURE 1

SHEET NUMBER:

1 of 1

Document Path: C:\Users\ntg\Documents\New Tech Global\NTG - Projects\2024 PROJECTS\BTA\SC\249317 - 9418 JV-P Vaca Draw Battery\7- Figures\GIS\Figure_2_TOPO_SC_REMED_WORKPLAN.mxd



TOPOGRAPHIC MAP
SITE CHARACTERIZATION AND REMEDIATION WORKPLAN
BTA OIL PRODUCERS, LLC
9418 JV-P VACA DRAW BATTERY
LEA COUNTY, NEW MEXICO

SCALE: As Shown

Date: 1/15/2025

PROJECT #: 249317



New Tech Global Environmental, LLC
911 Regional Park Drive
Houston, Texas 77060
T - 281.872.9300
F - 281.872.4521
Web: www.ntgenviroinmental.com

NOTES:

1. Base Image: ESRI Maps & Data 2013
2. Map Projection: NAD 1983

DRAWING NUMBER:

FIGURE 2

SHEET NUMBER:

1 of 1

Document Path: C:\Users\ntgegis\New Tech Global\NTGE - Documents\NTGE - Projects\2024 PROJECTS\BTA\SC\249317 - 9418 JV-P Vaca Draw Battery\7- Figures\GIS\Figure_3_IA_SC_REMED_WORKPLAN.mxd



DELINEATION SAMPLE MAP
SITE CHARACTERIZATION AND REMEDIATION WORKPLAN
BTA OIL PRODUCERS, LLC
9418 JV-P VACA DRAW BATTERY
LEA COUNTY, NEW MEXICO

SCALE: As Shown Date: 1/15/2025 PROJECT #: 249317



New Tech Global Environmental, LLC
911 Regional Park Drive
Houston, Texas 77060
T - 281.872.9300
F - 281.872.4521
Web: www.ntgenviroinmental.com

NOTES:

1. Base Image: ESRI Maps & Data 2013
2. Map Projection: NAD 1983

DRAWING NUMBER:

FIGURE 3

SHEET NUMBER:

1 of 1



Proposed Excavation Map

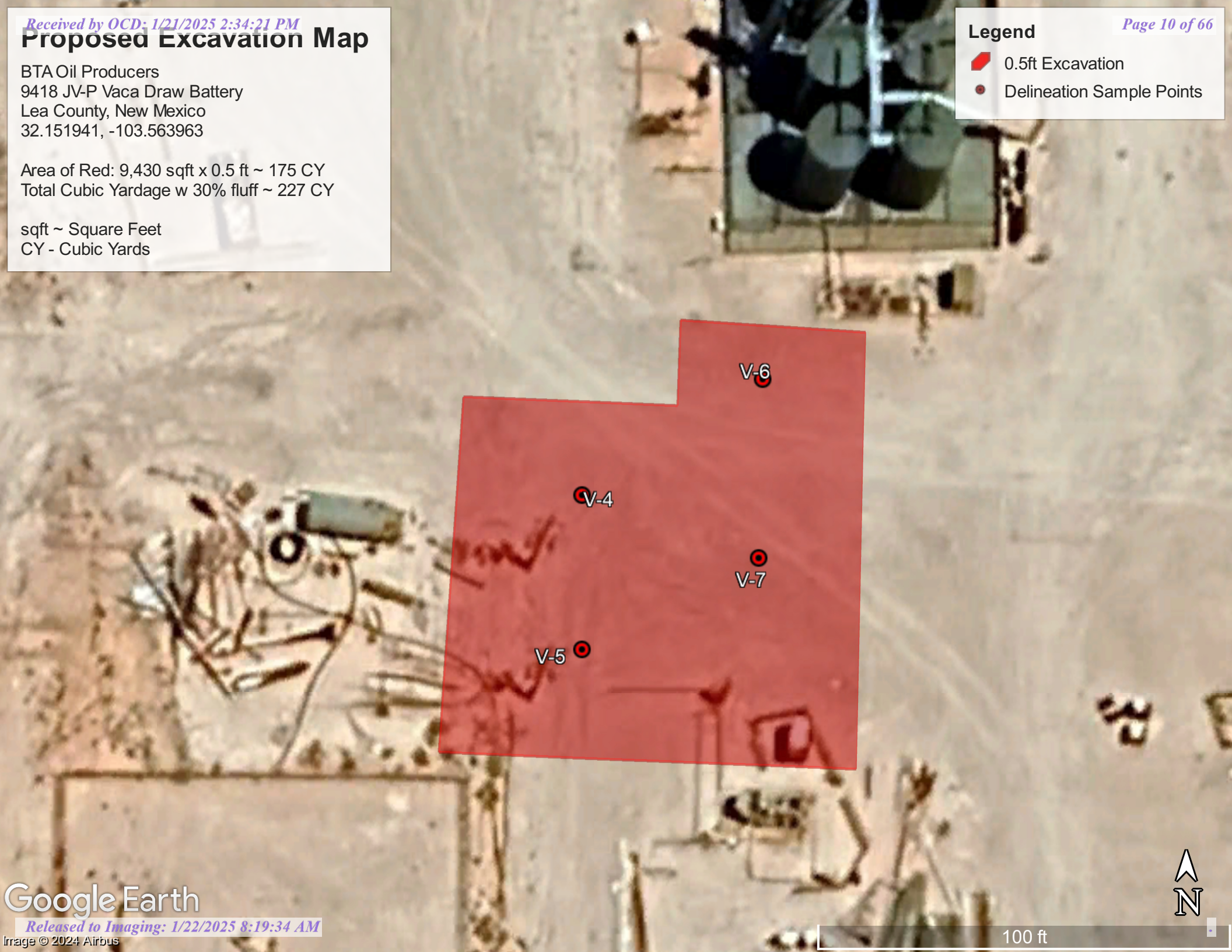
BTA Oil Producers
9418 JV-P Vaca Draw Battery
Lea County, New Mexico
32.151941, -103.563963

Area of Red: 9,430 sqft x 0.5 ft ~ 175 CY
Total Cubic Yardage w 30% fluff ~ 227 CY

sqft ~ Square Feet
CY - Cubic Yards

Legend

-  0.5ft Excavation
-  Delineation Sample Points



Site Characterization Information

NMOCD Closure Criteria

9418 JV-P Vaca Draw Battery

Site Information (19.15.29.11.A (2,3, & 4) NMAC)		Source/Notes
Depth to Groundwater (ft bgs)	Unknown	Office of the State Engineer (OSE)
Horizontal Distance from All Water Sources Within 0.5 mile (ft)	886 ft	National Wetlands Inventory (NWS)
Horizontal Distance to Nearest Significant Watercourse (ft)	N/A	National Wetlands Inventory (NWS)

Closure Criteria (19.15.29.12.B(4) and Table 1 NMAC)						
Depth to Groundwater (ft)		Closure Criteria (mg/kg)				
		Chloride*	TPH	GRO + DRO	BTEX	Benzene
< 50	X	600	100	--	50	10
51 - 100		10,000	2,500	1,000	50	10
>100		20,000	2,500	1,000	50	10
Surface Water	Yes/No	in yes, then				
<300 ft from a continuously flowing watercourse or other significant watercourse?	No	600	100		50	10
<200 ft from a lakebed, sinkhole, or playa lake?	No					
Water Well or Water Source						
<500 ft from a spring or a private, domestic fresh waster well used by less that 5 households for domestic or livestock purposes?	No					
<1,000 ft from a fresh water well or spring?	No					
Human and Other Area						
<300 ft from an occupied permanent residence, school, hospital, institution or church?	No					
Within incorporated municipal boundaries or within a defined municipal fresh water well field?	No					
<100 ft from a wetland?	No					
Within an area overlying a subsurface mine?	No					
Within and unstable area?	No					
Within a 100 yr floodplain?	No					

* - numerical limit or background, whichever is greater

OSE POD Location Map



11/8/2024, 12:29:43 PM

- Override 1

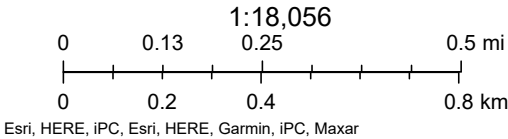
OSE District Boundary
- Water Right Regulations

Closure Area

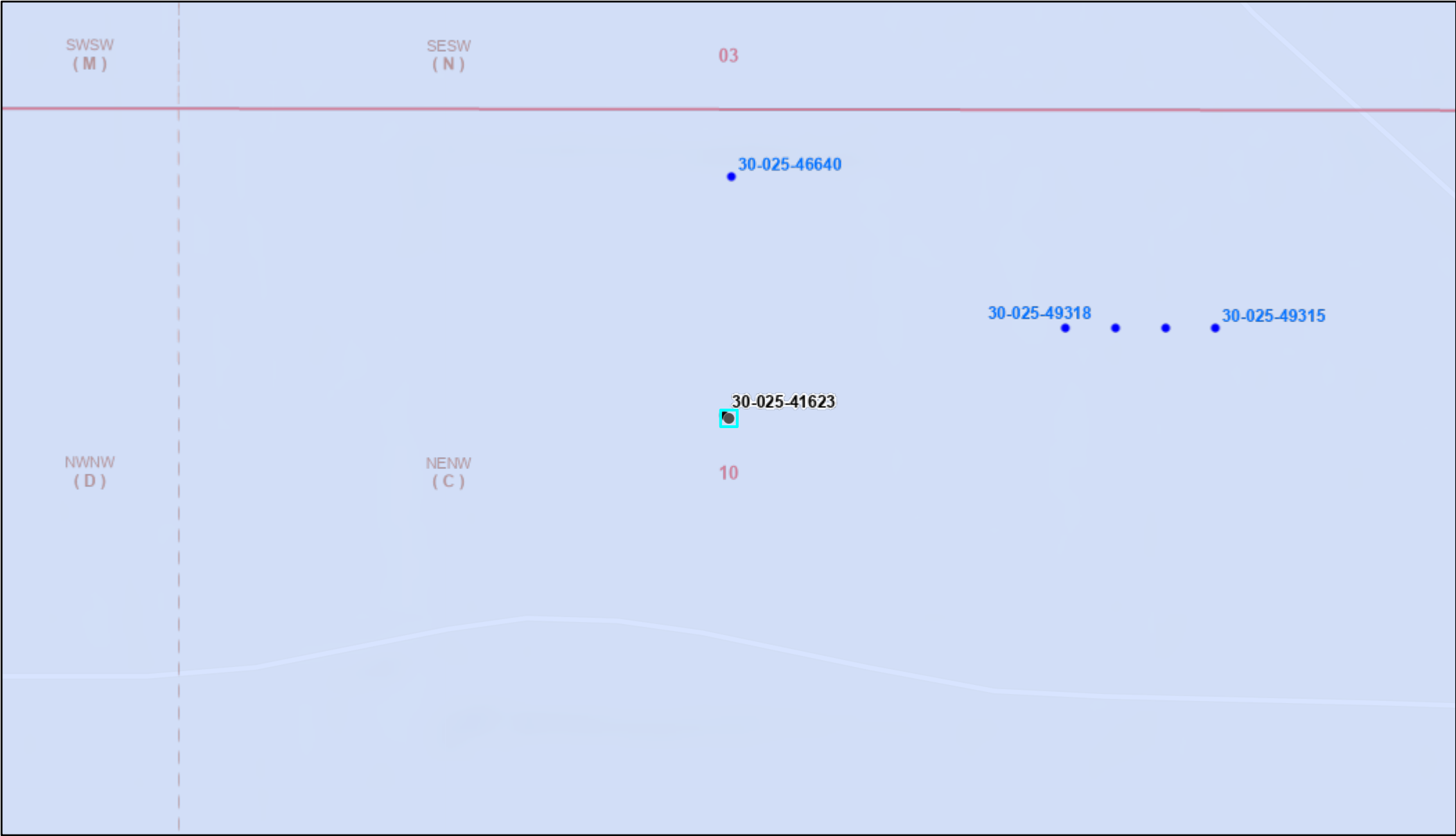
New Mexico State Trust Lands

Both Estates

NHD Flowlines
Stream River





Karst Potential Map



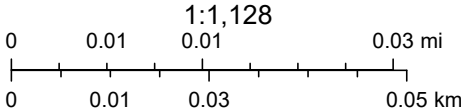
11/8/2024, 12:37:25 PM

Wells - Large Scale Karst Occurrence Potential

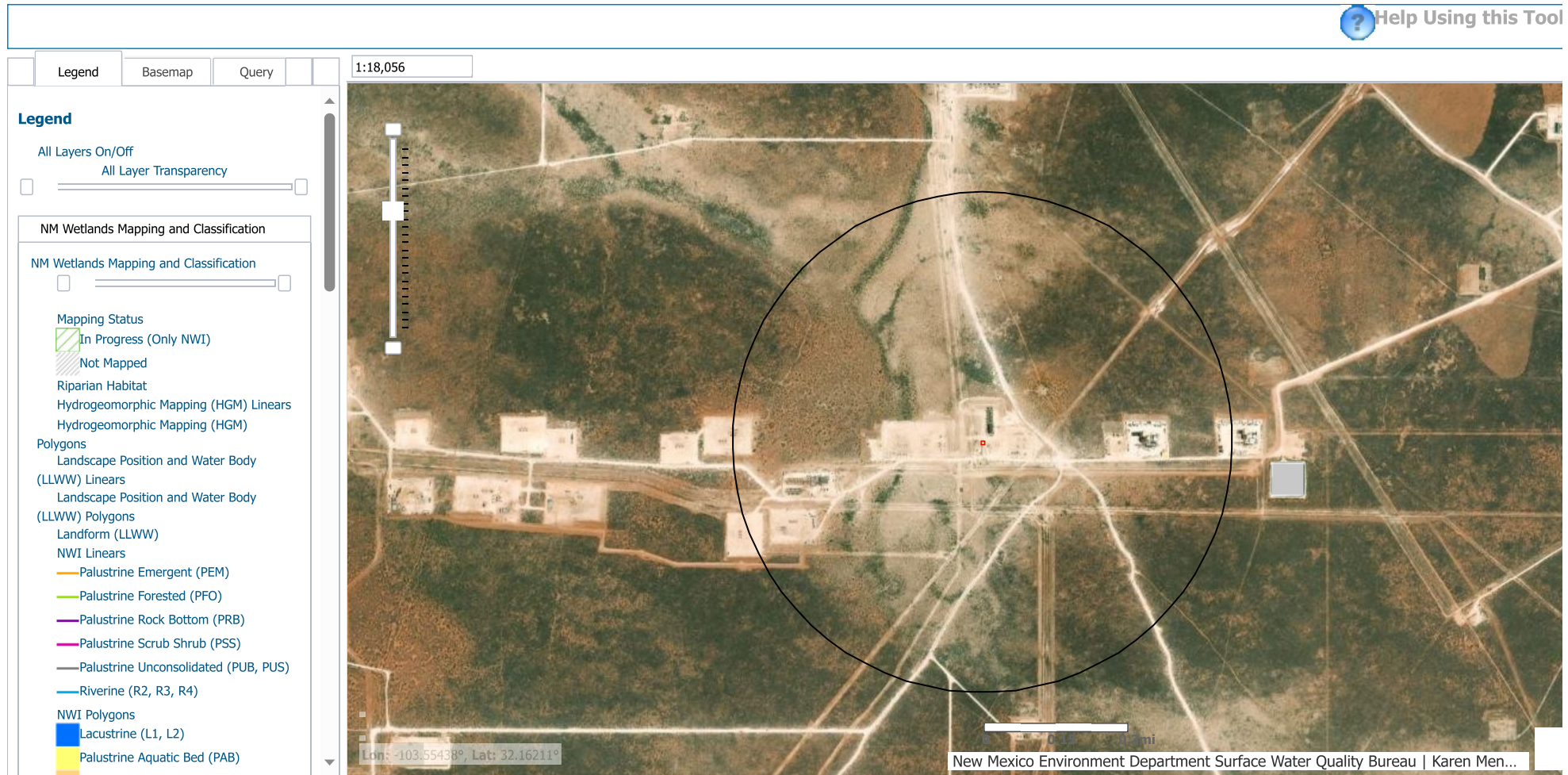
 PLSS First Division

 Oil, Active  Low

 Oil, New  PLSS Second Division






BLM, OCD, New Mexico Tech, Esri Community Maps Contributors, Texas Parks & Wildlife, © OpenStreetMap, Microsoft, CONANP, Esri, TomTom, Garmin, SafeGraph, GeoTechnologies, Inc, METI/NASA, USGS, EPA, NPS, US Census Bureau, USDA, USFWS, Sources: Esri, Airbus DS, USGS, NGA, NASA, CGIAR,

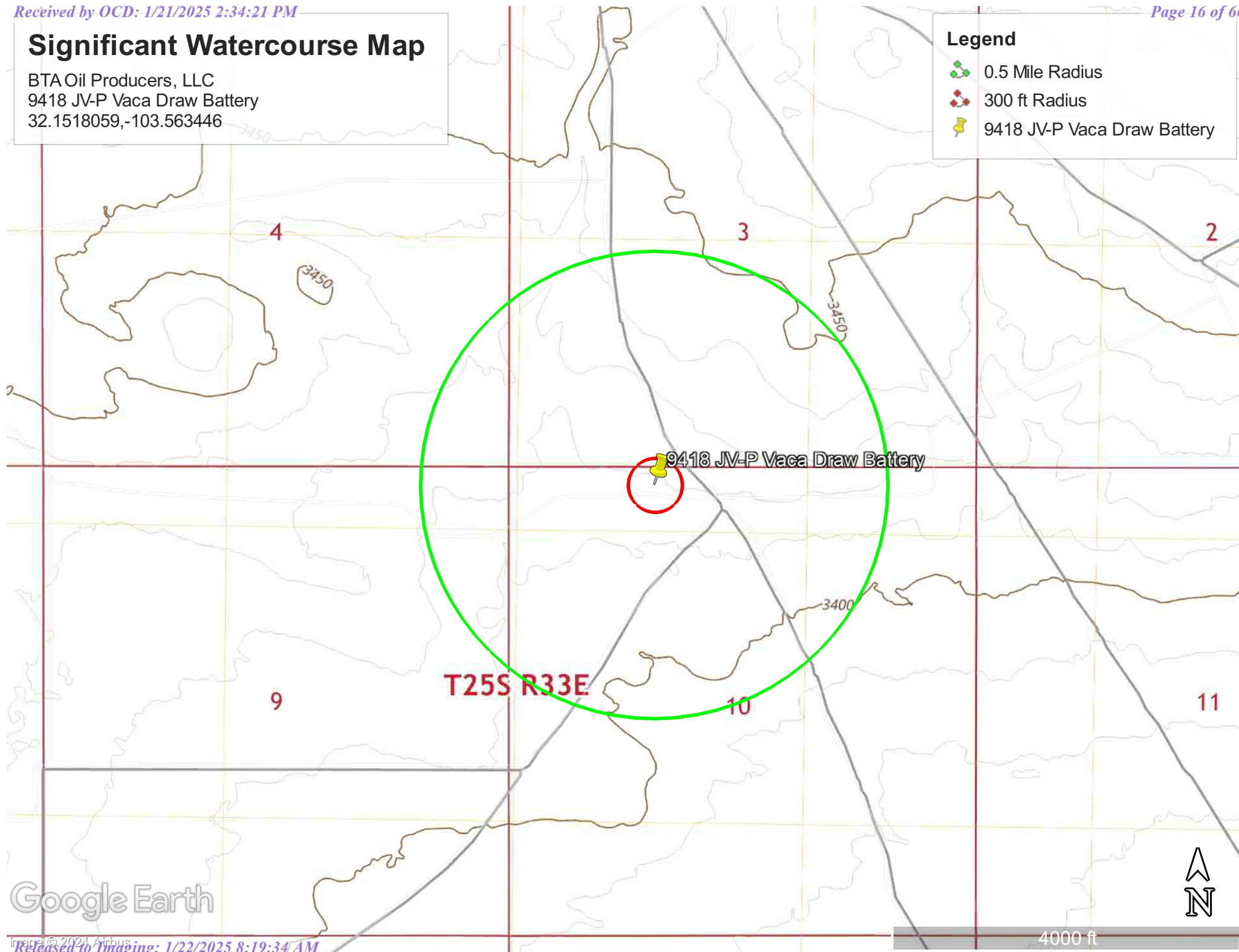


Significant Watercourse Map

BTA Oil Producers, LLC
9418 JV-P Vaca Draw Battery
32.1518059,-103.563446

Legend

-  0.5 Mile Radius
-  300 ft Radius
-  9418 JV-P Vaca Draw Battery



Google Earth



Wetlands Map



November 8, 2024

Wetlands

- Estuarine and Marine Deepwater
- Estuarine and Marine Wetland

- Freshwater Emergent Wetland
- Freshwater Forested/Shrub Wetland
- Freshwater Pond

- Lake
- Other
- Riverine

This map is for general reference only. The US Fish and Wildlife Service is not responsible for the accuracy or currentness of the base data shown on this map. All wetlands related data should be used in accordance with the layer metadata found on the Wetlands Mapper web site.

National Flood Hazard Layer FIRMMette



103°34'7"W 32°9'22"N



0 250 500 1,000 1,500 2,000 Feet

1:6,000

103°33'30"W 32°8'51"N

Released to Imaging: 1/22/2025 8:19:34 AM

Basemap Imagery Source: USGS National Map 2023

Legend

SEE FIS REPORT FOR DETAILED LEGEND AND INDEX MAP FOR FIRM PANEL LAYOUT

SPECIAL FLOOD HAZARD AREAS		Without Base Flood Elevation (BFE) Zone A, V, A99
		With BFE or Depth Zone AE, AO, AH, VE, AR
		Regulatory Floodway
OTHER AREAS OF FLOOD HAZARD		0.2% Annual Chance Flood Hazard, Areas of 1% annual chance flood with average depth less than one foot or with drainage areas of less than one square mile Zone X
		Future Conditions 1% Annual Chance Flood Hazard Zone X
		Area with Reduced Flood Risk due to Levee. See Notes. Zone X
		Area with Flood Risk due to Levee Zone D
OTHER AREAS		NO SCREEN Area of Minimal Flood Hazard Zone X
		Effective LOMRs
		Area of Undetermined Flood Hazard Zone D
GENERAL STRUCTURES		Channel, Culvert, or Storm Sewer
		Levee, Dike, or Floodwall
OTHER FEATURES		20.2 Cross Sections with 1% Annual Chance Water Surface Elevation
		17.5 Cross Sections with 1% Annual Chance Water Surface Elevation
		Coastal Transect
		Base Flood Elevation Line (BFE)
		Limit of Study
		Jurisdiction Boundary
		Coastal Transect Baseline
MAP PANELS		Digital Data Available
		No Digital Data Available
		Unmapped



The pin displayed on the map is an approximate point selected by the user and does not represent an authoritative property location.

This map complies with FEMA's standards for the use of digital flood maps if it is not void as described below. The basemap shown complies with FEMA's basemap accuracy standards

The flood hazard information is derived directly from the authoritative NFHL web services provided by FEMA. This map was exported on 11/8/2024 at 6:24 PM and does not reflect changes or amendments subsequent to this date and time. The NFHL and effective information may change or become superseded by new data over time.

This map image is void if the one or more of the following map elements do not appear: basemap imagery, flood zone labels, legend, scale bar, map creation date, community identifiers, FIRM panel number, and FIRM effective date. Map images for unmapped and unmodernized areas cannot be used for regulatory purposes.

Photographic Log

PHOTOGRAPHIC LOG**BTA Oil Producers
9418 JV-P Vaca Draw Battery****Photograph No. 1****Facility:** 9418 JV-P Vaca Draw Battery**County:** Lea County, New Mexico**Description:**

View of Initial Assessment Activities

**Photograph No. 2****Facility:** 9418 JV-P Vaca Draw Battery**County:** Lea County, New Mexico**Description:**

View of Initial Assessment Activities

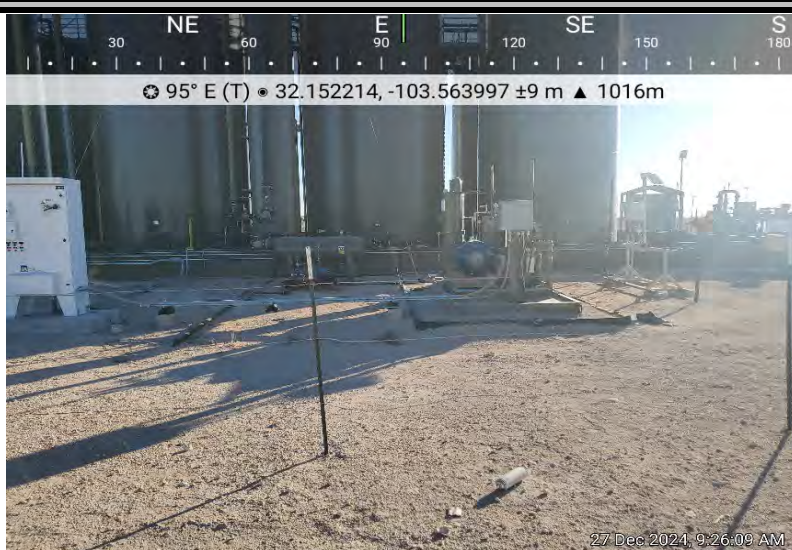
**Photograph No. 3****Facility:** 9418 JV-P Vaca Draw Battery**County:** Lea County, New Mexico**Description:**

View of Initial Assessment Activities



PHOTOGRAPHIC LOG**BTA Oil Producers
9418 JV-P Vaca Draw Battery****Photograph No. 4****Facility:** 9418 JV-P Vaca Draw Battery**County:** Lea County, New Mexico**Description:**

View of Initial Assessment Activities

**Photograph No. 5****Facility:** 9418 JV-P Vaca Draw Battery**County:** Lea County, New Mexico**Description:**

View of Initial Assessment Activities

**Photograph No. 6****Facility:** 9418 JV-P Vaca Draw Battery**County:** Lea County, New Mexico**Description:**

View of Initial Assessment Activities



Laboratory Reports and Chain-of-Custody Documents



PHONE (575) 393-2326 ° 101 E. MARLAND ° HOBBS, NM 88240

January 02, 2025

ETHAN SESSUMS

NTG ENVIRONMENTAL

701 TRADEWINDS BLVD. SUITE C

MIDLAND, TX 79706

RE: 9418 JV-P VACA DRAW BATTERY

Enclosed are the results of analyses for samples received by the laboratory on 12/27/24 12:30.

Cardinal Laboratories is accredited through Texas NELAP under certificate number TX-C24-00112. Accreditation applies to drinking water, non-potable water and solid and chemical materials. All accredited analytes are denoted by an asterisk (*). For a complete list of accredited analytes and matrices visit the TCEQ website at www.tceq.texas.gov/field/qa/lab_accred_certif.html.

Cardinal Laboratories is accredited through the State of Colorado Department of Public Health and Environment for:

Method EPA 552.2	Haloacetic Acids (HAA-5)
Method EPA 524.2	Total Trihalomethanes (TTHM)
Method EPA 524.4	Regulated VOCs (V1, V2, V3)

Accreditation applies to public drinking water matrices.

This report meets NELAP requirements and is made up of a cover page, analytical results, and a copy of the original chain-of-custody. If you have any questions concerning this report, please feel free to contact me.

Sincerely,

A handwritten signature in black ink that reads "Celey D. Keene". The signature is written in a cursive style with a large, stylized 'C' at the beginning.

Celey D. Keene

Lab Director/Quality Manager



PHONE (575) 393-2326 ° 101 E. MARLAND ° HOBBS, NM 88240

Analytical Results For:

NTG ENVIRONMENTAL
 ETHAN SESSUMS
 701 TRADEWINDS BLVD. SUITE C
 MIDLAND TX, 79706
 Fax To:

Received:	12/27/2024	Sampling Date:	12/27/2024
Reported:	01/02/2025	Sampling Type:	Soil
Project Name:	9418 JV-P VACA DRAW BATTERY	Sampling Condition:	Cool & Intact
Project Number:	249317	Sample Received By:	Tamara Oldaker
Project Location:	BTA - LEA CO NM		

Sample ID: V - 1 SURFACE (H247771-01)

BTEx 8021B		mg/kg		Analyzed By: JH						
Analyte	Result	Reporting Limit	Analyzed	Method Blank	BS	% Recovery	True Value QC	RPD	Qualifier	
Benzene*	<0.050	0.050	12/27/2024	ND	1.94	96.9	2.00	4.47		
Toluene*	<0.050	0.050	12/27/2024	ND	2.00	100	2.00	4.63		
Ethylbenzene*	<0.050	0.050	12/27/2024	ND	1.94	97.1	2.00	4.75		
Total Xylenes*	<0.150	0.150	12/27/2024	ND	5.71	95.1	6.00	4.56		
Total BTEx	<0.300	0.300	12/27/2024	ND						

Surrogate: 4-Bromofluorobenzene (PID) 97.5 % 71.5-134

Chloride, SM4500Cl-B		mg/kg		Analyzed By: KV						
Analyte	Result	Reporting Limit	Analyzed	Method Blank	BS	% Recovery	True Value QC	RPD	Qualifier	
Chloride	48.0	16.0	12/27/2024	ND	400	100	400	7.69		

TPH 8015M		mg/kg		Analyzed By: MS					
Analyte	Result	Reporting Limit	Analyzed	Method Blank	BS	% Recovery	True Value QC	RPD	Qualifier
GRO C6-C10*	<10.0	10.0	12/27/2024	ND	245	122	200	7.89	
DRO >C10-C28*	<10.0	10.0	12/27/2024	ND	224	112	200	6.46	
EXT DRO >C28-C36	<10.0	10.0	12/27/2024	ND					

Surrogate: 1-Chlorooctane 111 % 48.2-134

Surrogate: 1-Chlorooctadecane 105 % 49.1-148

Cardinal Laboratories

*=Accredited Analyte

PLEASE NOTE: Liability and Damages. Cardinal's liability and client's exclusive remedy for any claim arising, whether based in contract or tort, shall be limited to the amount paid by client for analyses. All claims, including those for negligence and any other cause whatsoever shall be deemed waived unless made in writing and received by Cardinal within thirty (30) days after completion of the applicable service. In no event shall Cardinal be liable for incidental or consequential damages, including, without limitation, business interruptions, loss of use, or loss of profits incurred by client, its subsidiaries, affiliates or successors arising out of or related to the performance of the services hereunder by Cardinal, regardless of whether such claim is based upon any of the above stated reasons or otherwise. Results relate only to the samples identified above. This report shall not be reproduced except in full with written approval of Cardinal Laboratories.

Celey D. Keene, Lab Director/Quality Manager



PHONE (575) 393-2326 ° 101 E. MARLAND ° HOBBS, NM 88240

Analytical Results For:

NTG ENVIRONMENTAL
 ETHAN SESSUMS
 701 TRADEWINDS BLVD. SUITE C
 MIDLAND TX, 79706
 Fax To:

Received: 12/27/2024
 Reported: 01/02/2025
 Project Name: 9418 JV-P VACA DRAW BATTERY
 Project Number: 249317
 Project Location: BTA - LEA CO NM

Sampling Date: 12/27/2024
 Sampling Type: Soil
 Sampling Condition: Cool & Intact
 Sample Received By: Tamara Oldaker

Sample ID: V - 1 1' (H247771-02)

BTEX 8021B		mg/kg		Analyzed By: JH					
Analyte	Result	Reporting Limit	Analyzed	Method Blank	BS	% Recovery	True Value QC	RPD	Qualifier
Benzene*	<0.050	0.050	12/27/2024	ND	1.94	96.9	2.00	4.47	
Toluene*	<0.050	0.050	12/27/2024	ND	2.00	100	2.00	4.63	
Ethylbenzene*	<0.050	0.050	12/27/2024	ND	1.94	97.1	2.00	4.75	
Total Xylenes*	<0.150	0.150	12/27/2024	ND	5.71	95.1	6.00	4.56	
Total BTEX	<0.300	0.300	12/27/2024	ND					

Surrogate: 4-Bromofluorobenzene (PID) 99.1 % 71.5-134

Chloride, SM4500Cl-B		mg/kg		Analyzed By: KV					
Analyte	Result	Reporting Limit	Analyzed	Method Blank	BS	% Recovery	True Value QC	RPD	Qualifier
Chloride	96.0	16.0	12/27/2024	ND	400	100	400	7.69	

TPH 8015M		mg/kg		Analyzed By: MS					
Analyte	Result	Reporting Limit	Analyzed	Method Blank	BS	% Recovery	True Value QC	RPD	Qualifier
GRO C6-C10*	<10.0	10.0	12/27/2024	ND	245	122	200	7.89	
DRO >C10-C28*	<10.0	10.0	12/27/2024	ND	224	112	200	6.46	
EXT DRO >C28-C36	<10.0	10.0	12/27/2024	ND					

Surrogate: 1-Chlorooctane 114 % 48.2-134

Surrogate: 1-Chlorooctadecane 108 % 49.1-148

Cardinal Laboratories

*=Accredited Analyte

PLEASE NOTE: Liability and Damages. Cardinal's liability and client's exclusive remedy for any claim arising, whether based in contract or tort, shall be limited to the amount paid by client for analyses. All claims, including those for negligence and any other cause whatsoever shall be deemed waived unless made in writing and received by Cardinal within thirty (30) days after completion of the applicable service. In no event shall Cardinal be liable for incidental or consequential damages, including, without limitation, business interruptions, loss of use, or loss of profits incurred by client, its subsidiaries, affiliates or successors arising out of or related to the performance of the services hereunder by Cardinal, regardless of whether such claim is based upon any of the above stated reasons or otherwise. Results relate only to the samples identified above. This report shall not be reproduced except in full with written approval of Cardinal Laboratories.

Celey D. Keene, Lab Director/Quality Manager



PHONE (575) 393-2326 ° 101 E. MARLAND ° HOBBS, NM 88240

Analytical Results For:

NTG ENVIRONMENTAL
 ETHAN SESSUMS
 701 TRADEWINDS BLVD. SUITE C
 MIDLAND TX, 79706
 Fax To:

Received: 12/27/2024
 Reported: 01/02/2025
 Project Name: 9418 JV-P VACA DRAW BATTERY
 Project Number: 249317
 Project Location: BTA - LEA CO NM

Sampling Date: 12/27/2024
 Sampling Type: Soil
 Sampling Condition: Cool & Intact
 Sample Received By: Tamara Oldaker

Sample ID: V - 1 2' (H247771-03)

BTEX 8021B		mg/kg		Analyzed By: JH					
Analyte	Result	Reporting Limit	Analyzed	Method Blank	BS	% Recovery	True Value QC	RPD	Qualifier
Benzene*	<0.050	0.050	12/27/2024	ND	1.94	96.9	2.00	4.47	
Toluene*	<0.050	0.050	12/27/2024	ND	2.00	100	2.00	4.63	
Ethylbenzene*	<0.050	0.050	12/27/2024	ND	1.94	97.1	2.00	4.75	
Total Xylenes*	<0.150	0.150	12/27/2024	ND	5.71	95.1	6.00	4.56	
Total BTEX	<0.300	0.300	12/27/2024	ND					

Surrogate: 4-Bromofluorobenzene (PID) 98.0 % 71.5-134

Chloride, SM4500Cl-B		mg/kg		Analyzed By: KV					
Analyte	Result	Reporting Limit	Analyzed	Method Blank	BS	% Recovery	True Value QC	RPD	Qualifier
Chloride	32.0	16.0	12/27/2024	ND	400	100	400	7.69	

TPH 8015M		mg/kg		Analyzed By: MS					
Analyte	Result	Reporting Limit	Analyzed	Method Blank	BS	% Recovery	True Value QC	RPD	Qualifier
GRO C6-C10*	<10.0	10.0	12/27/2024	ND	245	122	200	7.89	
DRO >C10-C28*	<10.0	10.0	12/27/2024	ND	224	112	200	6.46	
EXT DRO >C28-C36	<10.0	10.0	12/27/2024	ND					

Surrogate: 1-Chlorooctane 110 % 48.2-134

Surrogate: 1-Chlorooctadecane 103 % 49.1-148

Cardinal Laboratories

*=Accredited Analyte

PLEASE NOTE: Liability and Damages. Cardinal's liability and client's exclusive remedy for any claim arising, whether based in contract or tort, shall be limited to the amount paid by client for analyses. All claims, including those for negligence and any other cause whatsoever shall be deemed waived unless made in writing and received by Cardinal within thirty (30) days after completion of the applicable service. In no event shall Cardinal be liable for incidental or consequential damages, including, without limitation, business interruptions, loss of use, or loss of profits incurred by client, its subsidiaries, affiliates or successors arising out of or related to the performance of the services hereunder by Cardinal, regardless of whether such claim is based upon any of the above stated reasons or otherwise. Results relate only to the samples identified above. This report shall not be reproduced except in full with written approval of Cardinal Laboratories.

Celey D. Keene, Lab Director/Quality Manager



PHONE (575) 393-2326 ° 101 E. MARLAND ° HOBBS, NM 88240

Analytical Results For:

NTG ENVIRONMENTAL
 ETHAN SESSUMS
 701 TRADEWINDS BLVD. SUITE C
 MIDLAND TX, 79706
 Fax To:

Received:	12/27/2024	Sampling Date:	12/27/2024
Reported:	01/02/2025	Sampling Type:	Soil
Project Name:	9418 JV-P VACA DRAW BATTERY	Sampling Condition:	Cool & Intact
Project Number:	249317	Sample Received By:	Tamara Oldaker
Project Location:	BTA - LEA CO NM		

Sample ID: V - 2 SURFACE (H247771-04)

BTEx 8021B		mg/kg		Analyzed By: JH						
Analyte	Result	Reporting Limit	Analyzed	Method Blank	BS	% Recovery	True Value QC	RPD	Qualifier	
Benzene*	<0.050	0.050	12/27/2024	ND	2.23	112	2.00	0.763		
Toluene*	<0.050	0.050	12/27/2024	ND	2.08	104	2.00	1.16		
Ethylbenzene*	<0.050	0.050	12/27/2024	ND	2.09	105	2.00	2.84		
Total Xylenes*	<0.150	0.150	12/27/2024	ND	6.25	104	6.00	4.39		
Total BTEx	<0.300	0.300	12/27/2024	ND						

Surrogate: 4-Bromofluorobenzene (PID) 112 % 71.5-134

Chloride, SM4500CI-B		mg/kg		Analyzed By: KV						
Analyte	Result	Reporting Limit	Analyzed	Method Blank	BS	% Recovery	True Value QC	RPD	Qualifier	
Chloride	80.0	16.0	12/27/2024	ND	400	100	400	7.69		

TPH 8015M		mg/kg		Analyzed By: MS					
Analyte	Result	Reporting Limit	Analyzed	Method Blank	BS	% Recovery	True Value QC	RPD	Qualifier
GRO C6-C10*	<10.0	10.0	12/27/2024	ND	245	122	200	7.89	
DRO >C10-C28*	<10.0	10.0	12/27/2024	ND	224	112	200	6.46	
EXT DRO >C28-C36	<10.0	10.0	12/27/2024	ND					

Surrogate: 1-Chlorooctane 116 % 48.2-134

Surrogate: 1-Chlorooctadecane 107 % 49.1-148

Cardinal Laboratories

*=Accredited Analyte

PLEASE NOTE: Liability and Damages. Cardinal's liability and client's exclusive remedy for any claim arising, whether based in contract or tort, shall be limited to the amount paid by client for analyses. All claims, including those for negligence and any other cause whatsoever shall be deemed waived unless made in writing and received by Cardinal within thirty (30) days after completion of the applicable service. In no event shall Cardinal be liable for incidental or consequential damages, including, without limitation, business interruptions, loss of use, or loss of profits incurred by client, its subsidiaries, affiliates or successors arising out of or related to the performance of the services hereunder by Cardinal, regardless of whether such claim is based upon any of the above stated reasons or otherwise. Results relate only to the samples identified above. This report shall not be reproduced except in full with written approval of Cardinal Laboratories.

Celey D. Keene, Lab Director/Quality Manager



PHONE (575) 393-2326 ° 101 E. MARLAND ° HOBBS, NM 88240

Analytical Results For:

NTG ENVIRONMENTAL
 ETHAN SESSUMS
 701 TRADEWINDS BLVD. SUITE C
 MIDLAND TX, 79706
 Fax To:

Received:	12/27/2024	Sampling Date:	12/27/2024
Reported:	01/02/2025	Sampling Type:	Soil
Project Name:	9418 JV-P VACA DRAW BATTERY	Sampling Condition:	Cool & Intact
Project Number:	249317	Sample Received By:	Tamara Oldaker
Project Location:	BTA - LEA CO NM		

Sample ID: V - 2 1' (H247771-05)

BTEx 8021B		mg/kg		Analyzed By: JH						
Analyte	Result	Reporting Limit	Analyzed	Method Blank	BS	% Recovery	True Value QC	RPD	Qualifier	
Benzene*	<0.050	0.050	12/27/2024	ND	2.23	112	2.00	0.763		
Toluene*	<0.050	0.050	12/27/2024	ND	2.08	104	2.00	1.16		
Ethylbenzene*	<0.050	0.050	12/27/2024	ND	2.09	105	2.00	2.84		
Total Xylenes*	<0.150	0.150	12/27/2024	ND	6.25	104	6.00	4.39		
Total BTEX	<0.300	0.300	12/27/2024	ND						

Surrogate: 4-Bromofluorobenzene (PID) 113 % 71.5-134

Chloride, SM4500Cl-B		mg/kg		Analyzed By: KV						
Analyte	Result	Reporting Limit	Analyzed	Method Blank	BS	% Recovery	True Value QC	RPD	Qualifier	
Chloride	112	16.0	12/27/2024	ND	400	100	400	7.69		

TPH 8015M		mg/kg		Analyzed By: MS					
Analyte	Result	Reporting Limit	Analyzed	Method Blank	BS	% Recovery	True Value QC	RPD	Qualifier
GRO C6-C10*	<10.0	10.0	12/27/2024	ND	245	122	200	7.89	
DRO >C10-C28*	<10.0	10.0	12/27/2024	ND	224	112	200	6.46	
EXT DRO >C28-C36	<10.0	10.0	12/27/2024	ND					

Surrogate: 1-Chlorooctane 109 % 48.2-134

Surrogate: 1-Chlorooctadecane 99.4 % 49.1-148

Cardinal Laboratories

*=Accredited Analyte

PLEASE NOTE: Liability and Damages. Cardinal's liability and client's exclusive remedy for any claim arising, whether based in contract or tort, shall be limited to the amount paid by client for analyses. All claims, including those for negligence and any other cause whatsoever shall be deemed waived unless made in writing and received by Cardinal within thirty (30) days after completion of the applicable service. In no event shall Cardinal be liable for incidental or consequential damages, including, without limitation, business interruptions, loss of use, or loss of profits incurred by client, its subsidiaries, affiliates or successors arising out of or related to the performance of the services hereunder by Cardinal, regardless of whether such claim is based upon any of the above stated reasons or otherwise. Results relate only to the samples identified above. This report shall not be reproduced except in full with written approval of Cardinal Laboratories.

Celey D. Keene, Lab Director/Quality Manager



PHONE (575) 393-2326 ° 101 E. MARLAND ° HOBBS, NM 88240

Analytical Results For:

NTG ENVIRONMENTAL
 ETHAN SESSUMS
 701 TRADEWINDS BLVD. SUITE C
 MIDLAND TX, 79706
 Fax To:

Received:	12/27/2024	Sampling Date:	12/27/2024
Reported:	01/02/2025	Sampling Type:	Soil
Project Name:	9418 JV-P VACA DRAW BATTERY	Sampling Condition:	Cool & Intact
Project Number:	249317	Sample Received By:	Tamara Oldaker
Project Location:	BTA - LEA CO NM		

Sample ID: V - 2 ' (H247771-06)

BTEX 8021B		mg/kg		Analyzed By: JH					
Analyte	Result	Reporting Limit	Analyzed	Method Blank	BS	% Recovery	True Value QC	RPD	Qualifier
Benzene*	<0.050	0.050	12/27/2024	ND	2.23	112	2.00	0.763	
Toluene*	<0.050	0.050	12/27/2024	ND	2.08	104	2.00	1.16	
Ethylbenzene*	<0.050	0.050	12/27/2024	ND	2.09	105	2.00	2.84	
Total Xylenes*	<0.150	0.150	12/27/2024	ND	6.25	104	6.00	4.39	
Total BTEX	<0.300	0.300	12/27/2024	ND					

Surrogate: 4-Bromofluorobenzene (PID) 116 % 71.5-134

Chloride, SM4500Cl-B		mg/kg		Analyzed By: KV					
Analyte	Result	Reporting Limit	Analyzed	Method Blank	BS	% Recovery	True Value QC	RPD	Qualifier
Chloride	80.0	16.0	12/27/2024	ND	400	100	400	7.69	

TPH 8015M		mg/kg		Analyzed By: MS					
Analyte	Result	Reporting Limit	Analyzed	Method Blank	BS	% Recovery	True Value QC	RPD	Qualifier
GRO C6-C10*	<10.0	10.0	12/27/2024	ND	245	122	200	7.89	
DRO >C10-C28*	<10.0	10.0	12/27/2024	ND	224	112	200	6.46	
EXT DRO >C28-C36	<10.0	10.0	12/27/2024	ND					

Surrogate: 1-Chlorooctane 125 % 48.2-134

Surrogate: 1-Chlorooctadecane 118 % 49.1-148

Cardinal Laboratories

*=Accredited Analyte

PLEASE NOTE: Liability and Damages. Cardinal's liability and client's exclusive remedy for any claim arising, whether based in contract or tort, shall be limited to the amount paid by client for analyses. All claims, including those for negligence and any other cause whatsoever shall be deemed waived unless made in writing and received by Cardinal within thirty (30) days after completion of the applicable service. In no event shall Cardinal be liable for incidental or consequential damages, including, without limitation, business interruptions, loss of use, or loss of profits incurred by client, its subsidiaries, affiliates or successors arising out of or related to the performance of the services hereunder by Cardinal, regardless of whether such claim is based upon any of the above stated reasons or otherwise. Results relate only to the samples identified above. This report shall not be reproduced except in full with written approval of Cardinal Laboratories.

Celey D. Keene, Lab Director/Quality Manager



PHONE (575) 393-2326 ° 101 E. MARLAND ° HOBBS, NM 88240

Analytical Results For:

NTG ENVIRONMENTAL
 ETHAN SESSUMS
 701 TRADEWINDS BLVD. SUITE C
 MIDLAND TX, 79706
 Fax To:

Received:	12/27/2024	Sampling Date:	12/27/2024
Reported:	01/02/2025	Sampling Type:	Soil
Project Name:	9418 JV-P VACA DRAW BATTERY	Sampling Condition:	Cool & Intact
Project Number:	249317	Sample Received By:	Tamara Oldaker
Project Location:	BTA - LEA CO NM		

Sample ID: V - 2 3' (H247771-07)

BTEX 8021B		mg/kg		Analyzed By: JH					
Analyte	Result	Reporting Limit	Analyzed	Method Blank	BS	% Recovery	True Value QC	RPD	Qualifier
Benzene*	<0.050	0.050	12/27/2024	ND	2.23	112	2.00	0.763	
Toluene*	<0.050	0.050	12/27/2024	ND	2.08	104	2.00	1.16	
Ethylbenzene*	<0.050	0.050	12/27/2024	ND	2.09	105	2.00	2.84	
Total Xylenes*	<0.150	0.150	12/27/2024	ND	6.25	104	6.00	4.39	
Total BTEX	<0.300	0.300	12/27/2024	ND					

Surrogate: 4-Bromofluorobenzene (PID) 114 % 71.5-134

Chloride, SM4500Cl-B		mg/kg		Analyzed By: KV					
Analyte	Result	Reporting Limit	Analyzed	Method Blank	BS	% Recovery	True Value QC	RPD	Qualifier
Chloride	32.0	16.0	12/27/2024	ND	400	100	400	7.69	

TPH 8015M		mg/kg		Analyzed By: MS					
Analyte	Result	Reporting Limit	Analyzed	Method Blank	BS	% Recovery	True Value QC	RPD	Qualifier
GRO C6-C10*	<10.0	10.0	12/27/2024	ND	245	122	200	7.89	
DRO >C10-C28*	<10.0	10.0	12/27/2024	ND	224	112	200	6.46	
EXT DRO >C28-C36	<10.0	10.0	12/27/2024	ND					

Surrogate: 1-Chlorooctane 134 % 48.2-134

Surrogate: 1-Chlorooctadecane 124 % 49.1-148

Cardinal Laboratories

*=Accredited Analyte

PLEASE NOTE: Liability and Damages. Cardinal's liability and client's exclusive remedy for any claim arising, whether based in contract or tort, shall be limited to the amount paid by client for analyses. All claims, including those for negligence and any other cause whatsoever shall be deemed waived unless made in writing and received by Cardinal within thirty (30) days after completion of the applicable service. In no event shall Cardinal be liable for incidental or consequential damages, including, without limitation, business interruptions, loss of use, or loss of profits incurred by client, its subsidiaries, affiliates or successors arising out of or related to the performance of the services hereunder by Cardinal, regardless of whether such claim is based upon any of the above stated reasons or otherwise. Results relate only to the samples identified above. This report shall not be reproduced except in full with written approval of Cardinal Laboratories.

Celey D. Keene, Lab Director/Quality Manager



PHONE (575) 393-2326 ° 101 E. MARLAND ° HOBBS, NM 88240

Analytical Results For:

NTG ENVIRONMENTAL
 ETHAN SESSUMS
 701 TRADEWINDS BLVD. SUITE C
 MIDLAND TX, 79706
 Fax To:

Received: 12/27/2024
 Reported: 01/02/2025
 Project Name: 9418 JV-P VACA DRAW BATTERY
 Project Number: 249317
 Project Location: BTA - LEA CO NM

Sampling Date: 12/27/2024
 Sampling Type: Soil
 Sampling Condition: Cool & Intact
 Sample Received By: Tamara Oldaker

Sample ID: V - 3 SURFACE (H247771-08)

BTEX 8021B		mg/kg		Analyzed By: JH					
Analyte	Result	Reporting Limit	Analyzed	Method Blank	BS	% Recovery	True Value QC	RPD	Qualifier
Benzene*	<0.050	0.050	12/27/2024	ND	2.23	112	2.00	0.763	
Toluene*	<0.050	0.050	12/27/2024	ND	2.08	104	2.00	1.16	
Ethylbenzene*	<0.050	0.050	12/27/2024	ND	2.09	105	2.00	2.84	
Total Xylenes*	<0.150	0.150	12/27/2024	ND	6.25	104	6.00	4.39	
Total BTEX	<0.300	0.300	12/27/2024	ND					

Surrogate: 4-Bromofluorobenzene (PID) 115 % 71.5-134

Chloride, SM4500Cl-B		mg/kg		Analyzed By: KV					
Analyte	Result	Reporting Limit	Analyzed	Method Blank	BS	% Recovery	True Value QC	RPD	Qualifier
Chloride	64.0	16.0	12/27/2024	ND	400	100	400	7.69	

TPH 8015M		mg/kg		Analyzed By: MS					
Analyte	Result	Reporting Limit	Analyzed	Method Blank	BS	% Recovery	True Value QC	RPD	Qualifier
GRO C6-C10*	<10.0	10.0	12/27/2024	ND	245	122	200	7.89	
DRO >C10-C28*	<10.0	10.0	12/27/2024	ND	224	112	200	6.46	
EXT DRO >C28-C36	<10.0	10.0	12/27/2024	ND					

Surrogate: 1-Chlorooctane 114 % 48.2-134

Surrogate: 1-Chlorooctadecane 105 % 49.1-148

Cardinal Laboratories

*=Accredited Analyte

PLEASE NOTE: Liability and Damages. Cardinal's liability and client's exclusive remedy for any claim arising, whether based in contract or tort, shall be limited to the amount paid by client for analyses. All claims, including those for negligence and any other cause whatsoever shall be deemed waived unless made in writing and received by Cardinal within thirty (30) days after completion of the applicable service. In no event shall Cardinal be liable for incidental or consequential damages, including, without limitation, business interruptions, loss of use, or loss of profits incurred by client, its subsidiaries, affiliates or successors arising out of or related to the performance of the services hereunder by Cardinal, regardless of whether such claim is based upon any of the above stated reasons or otherwise. Results relate only to the samples identified above. This report shall not be reproduced except in full with written approval of Cardinal Laboratories.

Celey D. Keene, Lab Director/Quality Manager



PHONE (575) 393-2326 ° 101 E. MARLAND ° HOBBS, NM 88240

Analytical Results For:

NTG ENVIRONMENTAL
 ETHAN SESSUMS
 701 TRADEWINDS BLVD. SUITE C
 MIDLAND TX, 79706
 Fax To:

Received: 12/27/2024
 Reported: 01/02/2025
 Project Name: 9418 JV-P VACA DRAW BATTERY
 Project Number: 249317
 Project Location: BTA - LEA CO NM

Sampling Date: 12/27/2024
 Sampling Type: Soil
 Sampling Condition: Cool & Intact
 Sample Received By: Tamara Oldaker

Sample ID: V - 3 1' (H247771-09)

BTX 8021B		mg/kg		Analyzed By: JH					
Analyte	Result	Reporting Limit	Analyzed	Method Blank	BS	% Recovery	True Value QC	RPD	Qualifier
Benzene*	<0.050	0.050	12/27/2024	ND	2.23	112	2.00	0.763	
Toluene*	<0.050	0.050	12/27/2024	ND	2.08	104	2.00	1.16	
Ethylbenzene*	<0.050	0.050	12/27/2024	ND	2.09	105	2.00	2.84	
Total Xylenes*	<0.150	0.150	12/27/2024	ND	6.25	104	6.00	4.39	
Total BTX	<0.300	0.300	12/27/2024	ND					

Surrogate: 4-Bromofluorobenzene (PID) 111 % 71.5-134

Chloride, SM4500Cl-B		mg/kg		Analyzed By: KV					
Analyte	Result	Reporting Limit	Analyzed	Method Blank	BS	% Recovery	True Value QC	RPD	Qualifier
Chloride	64.0	16.0	12/27/2024	ND	400	100	400	7.69	

TPH 8015M		mg/kg		Analyzed By: MS					
Analyte	Result	Reporting Limit	Analyzed	Method Blank	BS	% Recovery	True Value QC	RPD	Qualifier
GRO C6-C10*	<10.0	10.0	12/27/2024	ND	245	122	200	7.89	
DRO >C10-C28*	<10.0	10.0	12/27/2024	ND	224	112	200	6.46	
EXT DRO >C28-C36	<10.0	10.0	12/27/2024	ND					

Surrogate: 1-Chlorooctane 131 % 48.2-134

Surrogate: 1-Chlorooctadecane 124 % 49.1-148

Cardinal Laboratories

*=Accredited Analyte

PLEASE NOTE: Liability and Damages. Cardinal's liability and client's exclusive remedy for any claim arising, whether based in contract or tort, shall be limited to the amount paid by client for analyses. All claims, including those for negligence and any other cause whatsoever shall be deemed waived unless made in writing and received by Cardinal within thirty (30) days after completion of the applicable service. In no event shall Cardinal be liable for incidental or consequential damages, including, without limitation, business interruptions, loss of use, or loss of profits incurred by client, its subsidiaries, affiliates or successors arising out of or related to the performance of the services hereunder by Cardinal, regardless of whether such claim is based upon any of the above stated reasons or otherwise. Results relate only to the samples identified above. This report shall not be reproduced except in full with written approval of Cardinal Laboratories.

Celey D. Keene, Lab Director/Quality Manager



PHONE (575) 393-2326 ° 101 E. MARLAND ° HOBBS, NM 88240

Analytical Results For:

NTG ENVIRONMENTAL
 ETHAN SESSUMS
 701 TRADEWINDS BLVD. SUITE C
 MIDLAND TX, 79706
 Fax To:

Received:	12/27/2024	Sampling Date:	12/27/2024
Reported:	01/02/2025	Sampling Type:	Soil
Project Name:	9418 JV-P VACA DRAW BATTERY	Sampling Condition:	Cool & Intact
Project Number:	249317	Sample Received By:	Tamara Oldaker
Project Location:	BTA - LEA CO NM		

Sample ID: V - 3 2' (H247771-10)

BTEx 8021B		mg/kg		Analyzed By: JH					
Analyte	Result	Reporting Limit	Analyzed	Method Blank	BS	% Recovery	True Value QC	RPD	Qualifier
Benzene*	<0.050	0.050	12/27/2024	ND	2.23	112	2.00	0.763	
Toluene*	<0.050	0.050	12/27/2024	ND	2.08	104	2.00	1.16	
Ethylbenzene*	<0.050	0.050	12/27/2024	ND	2.09	105	2.00	2.84	
Total Xylenes*	<0.150	0.150	12/27/2024	ND	6.25	104	6.00	4.39	
Total BTEX	<0.300	0.300	12/27/2024	ND					

Surrogate: 4-Bromofluorobenzene (PID) 108 % 71.5-134

Chloride, SM4500Cl-B		mg/kg		Analyzed By: KV					
Analyte	Result	Reporting Limit	Analyzed	Method Blank	BS	% Recovery	True Value QC	RPD	Qualifier
Chloride	64.0	16.0	12/27/2024	ND	400	100	400	7.69	

TPH 8015M		mg/kg		Analyzed By: MS					
Analyte	Result	Reporting Limit	Analyzed	Method Blank	BS	% Recovery	True Value QC	RPD	Qualifier
GRO C6-C10*	<10.0	10.0	12/27/2024	ND	245	122	200	7.89	
DRO >C10-C28*	29.0	10.0	12/27/2024	ND	224	112	200	6.46	
EXT DRO >C28-C36	<10.0	10.0	12/27/2024	ND					

Surrogate: 1-Chlorooctane 119 % 48.2-134

Surrogate: 1-Chlorooctadecane 112 % 49.1-148

Cardinal Laboratories

*=Accredited Analyte

PLEASE NOTE: Liability and Damages. Cardinal's liability and client's exclusive remedy for any claim arising, whether based in contract or tort, shall be limited to the amount paid by client for analyses. All claims, including those for negligence and any other cause whatsoever shall be deemed waived unless made in writing and received by Cardinal within thirty (30) days after completion of the applicable service. In no event shall Cardinal be liable for incidental or consequential damages, including, without limitation, business interruptions, loss of use, or loss of profits incurred by client, its subsidiaries, affiliates or successors arising out of or related to the performance of the services hereunder by Cardinal, regardless of whether such claim is based upon any of the above stated reasons or otherwise. Results relate only to the samples identified above. This report shall not be reproduced except in full with written approval of Cardinal Laboratories.

Celey D. Keene, Lab Director/Quality Manager



PHONE (575) 393-2326 ° 101 E. MARLAND ° HOBBS, NM 88240

Analytical Results For:

NTG ENVIRONMENTAL
 ETHAN SESSUMS
 701 TRADEWINDS BLVD. SUITE C
 MIDLAND TX, 79706
 Fax To:

Received:	12/27/2024	Sampling Date:	12/27/2024
Reported:	01/02/2025	Sampling Type:	Soil
Project Name:	9418 JV-P VACA DRAW BATTERY	Sampling Condition:	Cool & Intact
Project Number:	249317	Sample Received By:	Tamara Oldaker
Project Location:	BTA - LEA CO NM		

Sample ID: V - 4 SURFACE (H247771-11)

BTEx 8021B		mg/kg		Analyzed By: JH					
Analyte	Result	Reporting Limit	Analyzed	Method Blank	BS	% Recovery	True Value QC	RPD	Qualifier
Benzene*	<0.050	0.050	12/27/2024	ND	2.23	112	2.00	0.763	
Toluene*	2.09	0.050	12/27/2024	ND	2.08	104	2.00	1.16	
Ethylbenzene*	0.093	0.050	12/27/2024	ND	2.09	105	2.00	2.84	
Total Xylenes*	0.488	0.150	12/27/2024	ND	6.25	104	6.00	4.39	
Total BTEX	2.67	0.300	12/27/2024	ND					

Surrogate: 4-Bromofluorobenzene (PID) 128 % 71.5-134

Chloride, SM4500CI-B		mg/kg		Analyzed By: HM						
Analyte	Result	Reporting Limit	Analyzed	Method Blank	BS	% Recovery	True Value QC	RPD	Qualifier	
Chloride	784	16.0	12/30/2024	ND	448	112	400	0.00	QM-07	

TPH 8015M		mg/kg		Analyzed By: MS					
Analyte	Result	Reporting Limit	Analyzed	Method Blank	BS	% Recovery	True Value QC	RPD	Qualifier
GRO C6-C10*	11.2	10.0	12/27/2024	ND	202	101	200	3.46	
DRO >C10-C28*	<10.0	10.0	12/27/2024	ND	209	105	200	4.05	
EXT DRO >C28-C36	<10.0	10.0	12/27/2024	ND					

Surrogate: 1-Chlorooctane 125 % 48.2-134

Surrogate: 1-Chlorooctadecane 141 % 49.1-148

Cardinal Laboratories

*=Accredited Analyte

PLEASE NOTE: Liability and Damages. Cardinal's liability and client's exclusive remedy for any claim arising, whether based in contract or tort, shall be limited to the amount paid by client for analyses. All claims, including those for negligence and any other cause whatsoever shall be deemed waived unless made in writing and received by Cardinal within thirty (30) days after completion of the applicable service. In no event shall Cardinal be liable for incidental or consequential damages, including, without limitation, business interruptions, loss of use, or loss of profits incurred by client, its subsidiaries, affiliates or successors arising out of or related to the performance of the services hereunder by Cardinal, regardless of whether such claim is based upon any of the above stated reasons or otherwise. Results relate only to the samples identified above. This report shall not be reproduced except in full with written approval of Cardinal Laboratories.

Celey D. Keene, Lab Director/Quality Manager



PHONE (575) 393-2326 ° 101 E. MARLAND ° HOBBS, NM 88240

Analytical Results For:

NTG ENVIRONMENTAL
 ETHAN SESSUMS
 701 TRADEWINDS BLVD. SUITE C
 MIDLAND TX, 79706
 Fax To:

Received:	12/27/2024	Sampling Date:	12/27/2024
Reported:	01/02/2025	Sampling Type:	Soil
Project Name:	9418 JV-P VACA DRAW BATTERY	Sampling Condition:	Cool & Intact
Project Number:	249317	Sample Received By:	Tamara Oldaker
Project Location:	BTA - LEA CO NM		

Sample ID: V - 4 1' (H247771-12)

BTEX 8021B		mg/kg		Analyzed By: JH					
Analyte	Result	Reporting Limit	Analyzed	Method Blank	BS	% Recovery	True Value QC	RPD	Qualifier
Benzene*	<0.050	0.050	12/27/2024	ND	2.23	112	2.00	0.763	
Toluene*	0.067	0.050	12/27/2024	ND	2.08	104	2.00	1.16	
Ethylbenzene*	<0.050	0.050	12/27/2024	ND	2.09	105	2.00	2.84	
Total Xylenes*	<0.150	0.150	12/27/2024	ND	6.25	104	6.00	4.39	
Total BTEX	<0.300	0.300	12/27/2024	ND					

Surrogate: 4-Bromofluorobenzene (PID) 113 % 71.5-134

Chloride, SM4500Cl-B		mg/kg		Analyzed By: HM					
Analyte	Result	Reporting Limit	Analyzed	Method Blank	BS	% Recovery	True Value QC	RPD	Qualifier
Chloride	320	16.0	12/30/2024	ND	448	112	400	0.00	

TPH 8015M		mg/kg		Analyzed By: MS					
Analyte	Result	Reporting Limit	Analyzed	Method Blank	BS	% Recovery	True Value QC	RPD	Qualifier
GRO C6-C10*	<10.0	10.0	12/27/2024	ND	202	101	200	3.46	
DRO >C10-C28*	18.8	10.0	12/27/2024	ND	209	105	200	4.05	
EXT DRO >C28-C36	10.4	10.0	12/27/2024	ND					

Surrogate: 1-Chlorooctane 116 % 48.2-134

Surrogate: 1-Chlorooctadecane 135 % 49.1-148

Cardinal Laboratories

*=Accredited Analyte

PLEASE NOTE: Liability and Damages. Cardinal's liability and client's exclusive remedy for any claim arising, whether based in contract or tort, shall be limited to the amount paid by client for analyses. All claims, including those for negligence and any other cause whatsoever shall be deemed waived unless made in writing and received by Cardinal within thirty (30) days after completion of the applicable service. In no event shall Cardinal be liable for incidental or consequential damages, including, without limitation, business interruptions, loss of use, or loss of profits incurred by client, its subsidiaries, affiliates or successors arising out of or related to the performance of the services hereunder by Cardinal, regardless of whether such claim is based upon any of the above stated reasons or otherwise. Results relate only to the samples identified above. This report shall not be reproduced except in full with written approval of Cardinal Laboratories.

Celey D. Keene, Lab Director/Quality Manager



PHONE (575) 393-2326 ° 101 E. MARLAND ° HOBBS, NM 88240

Analytical Results For:

NTG ENVIRONMENTAL
 ETHAN SESSUMS
 701 TRADEWINDS BLVD. SUITE C
 MIDLAND TX, 79706
 Fax To:

Received: 12/27/2024
 Reported: 01/02/2025
 Project Name: 9418 JV-P VACA DRAW BATTERY
 Project Number: 249317
 Project Location: BTA - LEA CO NM

Sampling Date: 12/27/2024
 Sampling Type: Soil
 Sampling Condition: Cool & Intact
 Sample Received By: Tamara Oldaker

Sample ID: V - 4 2' (H247771-13)

BTEX 8021B		mg/kg		Analyzed By: JH					
Analyte	Result	Reporting Limit	Analyzed	Method Blank	BS	% Recovery	True Value QC	RPD	Qualifier
Benzene*	<0.050	0.050	12/27/2024	ND	2.23	112	2.00	0.763	
Toluene*	<0.050	0.050	12/27/2024	ND	2.08	104	2.00	1.16	
Ethylbenzene*	<0.050	0.050	12/27/2024	ND	2.09	105	2.00	2.84	
Total Xylenes*	<0.150	0.150	12/27/2024	ND	6.25	104	6.00	4.39	
Total BTEX	<0.300	0.300	12/27/2024	ND					

Surrogate: 4-Bromofluorobenzene (PID) 113 % 71.5-134

Chloride, SM4500Cl-B		mg/kg		Analyzed By: HM					
Analyte	Result	Reporting Limit	Analyzed	Method Blank	BS	% Recovery	True Value QC	RPD	Qualifier
Chloride	96.0	16.0	12/30/2024	ND	448	112	400	0.00	

TPH 8015M		mg/kg		Analyzed By: MS					
Analyte	Result	Reporting Limit	Analyzed	Method Blank	BS	% Recovery	True Value QC	RPD	Qualifier
GRO C6-C10*	<10.0	10.0	12/27/2024	ND	202	101	200	3.46	
DRO >C10-C28*	<10.0	10.0	12/27/2024	ND	209	105	200	4.05	
EXT DRO >C28-C36	<10.0	10.0	12/27/2024	ND					

Surrogate: 1-Chlorooctane 128 % 48.2-134

Surrogate: 1-Chlorooctadecane 145 % 49.1-148

Cardinal Laboratories

*=Accredited Analyte

PLEASE NOTE: Liability and Damages. Cardinal's liability and client's exclusive remedy for any claim arising, whether based in contract or tort, shall be limited to the amount paid by client for analyses. All claims, including those for negligence and any other cause whatsoever shall be deemed waived unless made in writing and received by Cardinal within thirty (30) days after completion of the applicable service. In no event shall Cardinal be liable for incidental or consequential damages, including, without limitation, business interruptions, loss of use, or loss of profits incurred by client, its subsidiaries, affiliates or successors arising out of or related to the performance of the services hereunder by Cardinal, regardless of whether such claim is based upon any of the above stated reasons or otherwise. Results relate only to the samples identified above. This report shall not be reproduced except in full with written approval of Cardinal Laboratories.

Celey D. Keene, Lab Director/Quality Manager



PHONE (575) 393-2326 ° 101 E. MARLAND ° HOBBS, NM 88240

Analytical Results For:

NTG ENVIRONMENTAL
 ETHAN SESSUMS
 701 TRADEWINDS BLVD. SUITE C
 MIDLAND TX, 79706
 Fax To:

Received: 12/27/2024
 Reported: 01/02/2025
 Project Name: 9418 JV-P VACA DRAW BATTERY
 Project Number: 249317
 Project Location: BTA - LEA CO NM

Sampling Date: 12/27/2024
 Sampling Type: Soil
 Sampling Condition: Cool & Intact
 Sample Received By: Tamara Oldaker

Sample ID: V - 4 3' (H247771-14)

BTEX 8021B		mg/kg		Analyzed By: JH					
Analyte	Result	Reporting Limit	Analyzed	Method Blank	BS	% Recovery	True Value QC	RPD	Qualifier
Benzene*	<0.050	0.050	12/27/2024	ND	2.23	112	2.00	0.763	
Toluene*	<0.050	0.050	12/27/2024	ND	2.08	104	2.00	1.16	
Ethylbenzene*	<0.050	0.050	12/27/2024	ND	2.09	105	2.00	2.84	
Total Xylenes*	<0.150	0.150	12/27/2024	ND	6.25	104	6.00	4.39	
Total BTEX	<0.300	0.300	12/27/2024	ND					

Surrogate: 4-Bromofluorobenzene (PID) 109 % 71.5-134

Chloride, SM4500Cl-B		mg/kg		Analyzed By: HM					
Analyte	Result	Reporting Limit	Analyzed	Method Blank	BS	% Recovery	True Value QC	RPD	Qualifier
Chloride	48.0	16.0	12/30/2024	ND	448	112	400	0.00	

TPH 8015M		mg/kg		Analyzed By: MS				S-04	
Analyte	Result	Reporting Limit	Analyzed	Method Blank	BS	% Recovery	True Value QC	RPD	Qualifier
GRO C6-C10*	<10.0	10.0	12/27/2024	ND	202	101	200	3.46	
DRO >C10-C28*	27.0	10.0	12/27/2024	ND	209	105	200	4.05	
EXT DRO >C28-C36	11.4	10.0	12/27/2024	ND					

Surrogate: 1-Chlorooctane 134 % 48.2-134

Surrogate: 1-Chlorooctadecane 155 % 49.1-148

Cardinal Laboratories

*=Accredited Analyte

PLEASE NOTE: Liability and Damages. Cardinal's liability and client's exclusive remedy for any claim arising, whether based in contract or tort, shall be limited to the amount paid by client for analyses. All claims, including those for negligence and any other cause whatsoever shall be deemed waived unless made in writing and received by Cardinal within thirty (30) days after completion of the applicable service. In no event shall Cardinal be liable for incidental or consequential damages, including, without limitation, business interruptions, loss of use, or loss of profits incurred by client, its subsidiaries, affiliates or successors arising out of or related to the performance of the services hereunder by Cardinal, regardless of whether such claim is based upon any of the above stated reasons or otherwise. Results relate only to the samples identified above. This report shall not be reproduced except in full with written approval of Cardinal Laboratories.

Celey D. Keene, Lab Director/Quality Manager



PHONE (575) 393-2326 ° 101 E. MARLAND ° HOBBS, NM 88240

Analytical Results For:

NTG ENVIRONMENTAL
 ETHAN SESSUMS
 701 TRADEWINDS BLVD. SUITE C
 MIDLAND TX, 79706
 Fax To:

Received: 12/27/2024
 Reported: 01/02/2025
 Project Name: 9418 JV-P VACA DRAW BATTERY
 Project Number: 249317
 Project Location: BTA - LEA CO NM

Sampling Date: 12/27/2024
 Sampling Type: Soil
 Sampling Condition: Cool & Intact
 Sample Received By: Tamara Oldaker

Sample ID: V - 5 SURFACE (H247771-15)

BTEx 8021B		mg/kg		Analyzed By: JH					
Analyte	Result	Reporting Limit	Analyzed	Method Blank	BS	% Recovery	True Value QC	RPD	Qualifier
Benzene*	<0.050	0.050	12/27/2024	ND	2.23	112	2.00	0.763	
Toluene*	<0.050	0.050	12/27/2024	ND	2.08	104	2.00	1.16	
Ethylbenzene*	<0.050	0.050	12/27/2024	ND	2.09	105	2.00	2.84	
Total Xylenes*	<0.150	0.150	12/27/2024	ND	6.25	104	6.00	4.39	
Total BTEX	<0.300	0.300	12/27/2024	ND					

Surrogate: 4-Bromofluorobenzene (PID) 111 % 71.5-134

Chloride, SM4500Cl-B		mg/kg		Analyzed By: HM					
Analyte	Result	Reporting Limit	Analyzed	Method Blank	BS	% Recovery	True Value QC	RPD	Qualifier
Chloride	1760	16.0	12/30/2024	ND	448	112	400	0.00	

TPH 8015M		mg/kg		Analyzed By: MS					
Analyte	Result	Reporting Limit	Analyzed	Method Blank	BS	% Recovery	True Value QC	RPD	Qualifier
GRO C6-C10*	<10.0	10.0	12/27/2024	ND	202	101	200	3.46	
DRO >C10-C28*	<10.0	10.0	12/27/2024	ND	209	105	200	4.05	
EXT DRO >C28-C36	<10.0	10.0	12/27/2024	ND					

Surrogate: 1-Chlorooctane 107 % 48.2-134

Surrogate: 1-Chlorooctadecane 118 % 49.1-148

Cardinal Laboratories

*=Accredited Analyte

PLEASE NOTE: Liability and Damages. Cardinal's liability and client's exclusive remedy for any claim arising, whether based in contract or tort, shall be limited to the amount paid by client for analyses. All claims, including those for negligence and any other cause whatsoever shall be deemed waived unless made in writing and received by Cardinal within thirty (30) days after completion of the applicable service. In no event shall Cardinal be liable for incidental or consequential damages, including, without limitation, business interruptions, loss of use, or loss of profits incurred by client, its subsidiaries, affiliates or successors arising out of or related to the performance of the services hereunder by Cardinal, regardless of whether such claim is based upon any of the above stated reasons or otherwise. Results relate only to the samples identified above. This report shall not be reproduced except in full with written approval of Cardinal Laboratories.

Celey D. Keene, Lab Director/Quality Manager



PHONE (575) 393-2326 ° 101 E. MARLAND ° HOBBS, NM 88240

Analytical Results For:

NTG ENVIRONMENTAL
 ETHAN SESSUMS
 701 TRADEWINDS BLVD. SUITE C
 MIDLAND TX, 79706
 Fax To:

Received:	12/27/2024	Sampling Date:	12/27/2024
Reported:	01/02/2025	Sampling Type:	Soil
Project Name:	9418 JV-P VACA DRAW BATTERY	Sampling Condition:	Cool & Intact
Project Number:	249317	Sample Received By:	Tamara Oldaker
Project Location:	BTA - LEA CO NM		

Sample ID: V - 5 1' (H247771-16)

BTEX 8021B		mg/kg		Analyzed By: JH						
Analyte	Result	Reporting Limit	Analyzed	Method Blank	BS	% Recovery	True Value QC	RPD	Qualifier	
Benzene*	<0.050	0.050	12/27/2024	ND	2.23	112	2.00	0.763		
Toluene*	<0.050	0.050	12/27/2024	ND	2.08	104	2.00	1.16		
Ethylbenzene*	<0.050	0.050	12/27/2024	ND	2.09	105	2.00	2.84		
Total Xylenes*	<0.150	0.150	12/27/2024	ND	6.25	104	6.00	4.39		
Total BTEX	<0.300	0.300	12/27/2024	ND						

Surrogate: 4-Bromofluorobenzene (PID) 113 % 71.5-134

Chloride, SM4500CI-B		mg/kg		Analyzed By: HM						
Analyte	Result	Reporting Limit	Analyzed	Method Blank	BS	% Recovery	True Value QC	RPD	Qualifier	
Chloride	240	16.0	12/30/2024	ND	448	112	400	0.00		

TPH 8015M		mg/kg		Analyzed By: MS					
Analyte	Result	Reporting Limit	Analyzed	Method Blank	BS	% Recovery	True Value QC	RPD	Qualifier
GRO C6-C10*	<10.0	10.0	12/30/2024	ND	202	101	200	3.46	
DRO >C10-C28*	<10.0	10.0	12/30/2024	ND	209	105	200	4.05	
EXT DRO >C28-C36	<10.0	10.0	12/30/2024	ND					

Surrogate: 1-Chlorooctane 95.2 % 48.2-134

Surrogate: 1-Chlorooctadecane 98.4 % 49.1-148

Cardinal Laboratories

*=Accredited Analyte

PLEASE NOTE: Liability and Damages. Cardinal's liability and client's exclusive remedy for any claim arising, whether based in contract or tort, shall be limited to the amount paid by client for analyses. All claims, including those for negligence and any other cause whatsoever shall be deemed waived unless made in writing and received by Cardinal within thirty (30) days after completion of the applicable service. In no event shall Cardinal be liable for incidental or consequential damages, including, without limitation, business interruptions, loss of use, or loss of profits incurred by client, its subsidiaries, affiliates or successors arising out of or related to the performance of the services hereunder by Cardinal, regardless of whether such claim is based upon any of the above stated reasons or otherwise. Results relate only to the samples identified above. This report shall not be reproduced except in full with written approval of Cardinal Laboratories.

Celey D. Keene, Lab Director/Quality Manager



PHONE (575) 393-2326 ° 101 E. MARLAND ° HOBBS, NM 88240

Analytical Results For:

NTG ENVIRONMENTAL
 ETHAN SESSUMS
 701 TRADEWINDS BLVD. SUITE C
 MIDLAND TX, 79706
 Fax To:

Received:	12/27/2024	Sampling Date:	12/27/2024
Reported:	01/02/2025	Sampling Type:	Soil
Project Name:	9418 JV-P VACA DRAW BATTERY	Sampling Condition:	Cool & Intact
Project Number:	249317	Sample Received By:	Tamara Oldaker
Project Location:	BTA - LEA CO NM		

Sample ID: V - 5 2' (H247771-17)

BTEX 8021B		mg/kg		Analyzed By: JH						
Analyte	Result	Reporting Limit	Analyzed	Method Blank	BS	% Recovery	True Value QC	RPD	Qualifier	
Benzene*	<0.050	0.050	12/27/2024	ND	2.23	112	2.00	0.763		
Toluene*	<0.050	0.050	12/27/2024	ND	2.08	104	2.00	1.16		
Ethylbenzene*	<0.050	0.050	12/27/2024	ND	2.09	105	2.00	2.84		
Total Xylenes*	<0.150	0.150	12/27/2024	ND	6.25	104	6.00	4.39		
Total BTEX	<0.300	0.300	12/27/2024	ND						

Surrogate: 4-Bromofluorobenzene (PID) 114 % 71.5-134

Chloride, SM4500CI-B		mg/kg		Analyzed By: HM						
Analyte	Result	Reporting Limit	Analyzed	Method Blank	BS	% Recovery	True Value QC	RPD	Qualifier	
Chloride	176	16.0	12/30/2024	ND	448	112	400	0.00		

TPH 8015M		mg/kg		Analyzed By: MS					
Analyte	Result	Reporting Limit	Analyzed	Method Blank	BS	% Recovery	True Value QC	RPD	Qualifier
GRO C6-C10*	<10.0	10.0	12/30/2024	ND	202	101	200	3.46	
DRO >C10-C28*	<10.0	10.0	12/30/2024	ND	209	105	200	4.05	
EXT DRO >C28-C36	<10.0	10.0	12/30/2024	ND					

Surrogate: 1-Chlorooctane 97.8 % 48.2-134

Surrogate: 1-Chlorooctadecane 101 % 49.1-148

Cardinal Laboratories

*=Accredited Analyte

PLEASE NOTE: Liability and Damages. Cardinal's liability and client's exclusive remedy for any claim arising, whether based in contract or tort, shall be limited to the amount paid by client for analyses. All claims, including those for negligence and any other cause whatsoever shall be deemed waived unless made in writing and received by Cardinal within thirty (30) days after completion of the applicable service. In no event shall Cardinal be liable for incidental or consequential damages, including, without limitation, business interruptions, loss of use, or loss of profits incurred by client, its subsidiaries, affiliates or successors arising out of or related to the performance of the services hereunder by Cardinal, regardless of whether such claim is based upon any of the above stated reasons or otherwise. Results relate only to the samples identified above. This report shall not be reproduced except in full with written approval of Cardinal Laboratories.

Celey D. Keene, Lab Director/Quality Manager



PHONE (575) 393-2326 ° 101 E. MARLAND ° HOBBS, NM 88240

Analytical Results For:

NTG ENVIRONMENTAL
 ETHAN SESSUMS
 701 TRADEWINDS BLVD. SUITE C
 MIDLAND TX, 79706
 Fax To:

Received:	12/27/2024	Sampling Date:	12/27/2024
Reported:	01/02/2025	Sampling Type:	Soil
Project Name:	9418 JV-P VACA DRAW BATTERY	Sampling Condition:	Cool & Intact
Project Number:	249317	Sample Received By:	Tamara Oldaker
Project Location:	BTA - LEA CO NM		

Sample ID: V - 6 SURFACE (H247771-18)

BTEx 8021B		mg/kg		Analyzed By: JH					
Analyte	Result	Reporting Limit	Analyzed	Method Blank	BS	% Recovery	True Value QC	RPD	Qualifier
Benzene*	<0.050	0.050	12/27/2024	ND	2.23	112	2.00	0.763	
Toluene*	<0.050	0.050	12/27/2024	ND	2.08	104	2.00	1.16	
Ethylbenzene*	<0.050	0.050	12/27/2024	ND	2.09	105	2.00	2.84	
Total Xylenes*	<0.150	0.150	12/27/2024	ND	6.25	104	6.00	4.39	
Total BTEX	<0.300	0.300	12/27/2024	ND					

Surrogate: 4-Bromofluorobenzene (PID) 111 % 71.5-134

Chloride, SM4500Cl-B		mg/kg		Analyzed By: HM					
Analyte	Result	Reporting Limit	Analyzed	Method Blank	BS	% Recovery	True Value QC	RPD	Qualifier
Chloride	4240	16.0	12/30/2024	ND	448	112	400	0.00	

TPH 8015M		mg/kg		Analyzed By: MS					
Analyte	Result	Reporting Limit	Analyzed	Method Blank	BS	% Recovery	True Value QC	RPD	Qualifier
GRO C6-C10*	<10.0	10.0	12/27/2024	ND	202	101	200	3.46	
DRO >C10-C28*	67.7	10.0	12/27/2024	ND	209	105	200	4.05	
EXT DRO >C28-C36	47.5	10.0	12/27/2024	ND					

Surrogate: 1-Chlorooctane 118 % 48.2-134

Surrogate: 1-Chlorooctadecane 131 % 49.1-148

Cardinal Laboratories

*=Accredited Analyte

PLEASE NOTE: Liability and Damages. Cardinal's liability and client's exclusive remedy for any claim arising, whether based in contract or tort, shall be limited to the amount paid by client for analyses. All claims, including those for negligence and any other cause whatsoever shall be deemed waived unless made in writing and received by Cardinal within thirty (30) days after completion of the applicable service. In no event shall Cardinal be liable for incidental or consequential damages, including, without limitation, business interruptions, loss of use, or loss of profits incurred by client, its subsidiaries, affiliates or successors arising out of or related to the performance of the services hereunder by Cardinal, regardless of whether such claim is based upon any of the above stated reasons or otherwise. Results relate only to the samples identified above. This report shall not be reproduced except in full with written approval of Cardinal Laboratories.

Celey D. Keene, Lab Director/Quality Manager



PHONE (575) 393-2326 ° 101 E. MARLAND ° HOBBS, NM 88240

Analytical Results For:

NTG ENVIRONMENTAL
 ETHAN SESSUMS
 701 TRADEWINDS BLVD. SUITE C
 MIDLAND TX, 79706
 Fax To:

Received:	12/27/2024	Sampling Date:	12/27/2024
Reported:	01/02/2025	Sampling Type:	Soil
Project Name:	9418 JV-P VACA DRAW BATTERY	Sampling Condition:	Cool & Intact
Project Number:	249317	Sample Received By:	Tamara Oldaker
Project Location:	BTA - LEA CO NM		

Sample ID: V - 6 1' (H247771-19)

BTX 8021B		mg/kg		Analyzed By: JH					
Analyte	Result	Reporting Limit	Analyzed	Method Blank	BS	% Recovery	True Value QC	RPD	Qualifier
Benzene*	<0.050	0.050	12/27/2024	ND	2.23	112	2.00	0.763	
Toluene*	<0.050	0.050	12/27/2024	ND	2.08	104	2.00	1.16	
Ethylbenzene*	<0.050	0.050	12/27/2024	ND	2.09	105	2.00	2.84	
Total Xylenes*	<0.150	0.150	12/27/2024	ND	6.25	104	6.00	4.39	
Total BTX	<0.300	0.300	12/27/2024	ND					

Surrogate: 4-Bromofluorobenzene (PID) 114 % 71.5-134

Chloride, SM4500Cl-B		mg/kg		Analyzed By: HM					
Analyte	Result	Reporting Limit	Analyzed	Method Blank	BS	% Recovery	True Value QC	RPD	Qualifier
Chloride	304	16.0	12/30/2024	ND	448	112	400	0.00	

TPH 8015M		mg/kg		Analyzed By: MS					
Analyte	Result	Reporting Limit	Analyzed	Method Blank	BS	% Recovery	True Value QC	RPD	Qualifier
GRO C6-C10*	<10.0	10.0	12/30/2024	ND	202	101	200	3.46	
DRO >C10-C28*	<10.0	10.0	12/30/2024	ND	209	105	200	4.05	
EXT DRO >C28-C36	<10.0	10.0	12/30/2024	ND					

Surrogate: 1-Chlorooctane 94.2 % 48.2-134

Surrogate: 1-Chlorooctadecane 93.3 % 49.1-148

Cardinal Laboratories

*=Accredited Analyte

PLEASE NOTE: Liability and Damages. Cardinal's liability and client's exclusive remedy for any claim arising, whether based in contract or tort, shall be limited to the amount paid by client for analyses. All claims, including those for negligence and any other cause whatsoever shall be deemed waived unless made in writing and received by Cardinal within thirty (30) days after completion of the applicable service. In no event shall Cardinal be liable for incidental or consequential damages, including, without limitation, business interruptions, loss of use, or loss of profits incurred by client, its subsidiaries, affiliates or successors arising out of or related to the performance of the services hereunder by Cardinal, regardless of whether such claim is based upon any of the above stated reasons or otherwise. Results relate only to the samples identified above. This report shall not be reproduced except in full with written approval of Cardinal Laboratories.

Celey D. Keene, Lab Director/Quality Manager



PHONE (575) 393-2326 ° 101 E. MARLAND ° HOBBS, NM 88240

Analytical Results For:

NTG ENVIRONMENTAL
 ETHAN SESSUMS
 701 TRADEWINDS BLVD. SUITE C
 MIDLAND TX, 79706
 Fax To:

Received: 12/27/2024
 Reported: 01/02/2025
 Project Name: 9418 JV-P VACA DRAW BATTERY
 Project Number: 249317
 Project Location: BTA - LEA CO NM

Sampling Date: 12/27/2024
 Sampling Type: Soil
 Sampling Condition: Cool & Intact
 Sample Received By: Tamara Oldaker

Sample ID: V - 6 2' (H247771-20)

BTEX 8021B		mg/kg		Analyzed By: JH					
Analyte	Result	Reporting Limit	Analyzed	Method Blank	BS	% Recovery	True Value QC	RPD	Qualifier
Benzene*	<0.050	0.050	12/27/2024	ND	2.23	112	2.00	0.763	
Toluene*	<0.050	0.050	12/27/2024	ND	2.08	104	2.00	1.16	
Ethylbenzene*	<0.050	0.050	12/27/2024	ND	2.09	105	2.00	2.84	
Total Xylenes*	<0.150	0.150	12/27/2024	ND	6.25	104	6.00	4.39	
Total BTEX	<0.300	0.300	12/27/2024	ND					

Surrogate: 4-Bromofluorobenzene (PID) 113 % 71.5-134

Chloride, SM4500Cl-B		mg/kg		Analyzed By: HM					
Analyte	Result	Reporting Limit	Analyzed	Method Blank	BS	% Recovery	True Value QC	RPD	Qualifier
Chloride	576	16.0	12/30/2024	ND	448	112	400	0.00	

TPH 8015M		mg/kg		Analyzed By: MS					
Analyte	Result	Reporting Limit	Analyzed	Method Blank	BS	% Recovery	True Value QC	RPD	Qualifier
GRO C6-C10*	<10.0	10.0	12/27/2024	ND	202	101	200	3.46	
DRO >C10-C28*	<10.0	10.0	12/27/2024	ND	209	105	200	4.05	
EXT DRO >C28-C36	<10.0	10.0	12/27/2024	ND					

Surrogate: 1-Chlorooctane 130 % 48.2-134

Surrogate: 1-Chlorooctadecane 145 % 49.1-148

Cardinal Laboratories

*=Accredited Analyte

PLEASE NOTE: Liability and Damages. Cardinal's liability and client's exclusive remedy for any claim arising, whether based in contract or tort, shall be limited to the amount paid by client for analyses. All claims, including those for negligence and any other cause whatsoever shall be deemed waived unless made in writing and received by Cardinal within thirty (30) days after completion of the applicable service. In no event shall Cardinal be liable for incidental or consequential damages, including, without limitation, business interruptions, loss of use, or loss of profits incurred by client, its subsidiaries, affiliates or successors arising out of or related to the performance of the services hereunder by Cardinal, regardless of whether such claim is based upon any of the above stated reasons or otherwise. Results relate only to the samples identified above. This report shall not be reproduced except in full with written approval of Cardinal Laboratories.

Celey D. Keene, Lab Director/Quality Manager



PHONE (575) 393-2326 ° 101 E. MARLAND ° HOBBS, NM 88240

Analytical Results For:

NTG ENVIRONMENTAL
 ETHAN SESSUMS
 701 TRADEWINDS BLVD. SUITE C
 MIDLAND TX, 79706
 Fax To:

Received:	12/27/2024	Sampling Date:	12/27/2024
Reported:	01/02/2025	Sampling Type:	Soil
Project Name:	9418 JV-P VACA DRAW BATTERY	Sampling Condition:	Cool & Intact
Project Number:	249317	Sample Received By:	Tamara Oldaker
Project Location:	BTA - LEA CO NM		

Sample ID: V - 6 3' (H247771-21)

BTEx 8021B		mg/kg		Analyzed By: JH						
Analyte	Result	Reporting Limit	Analyzed	Method Blank	BS	% Recovery	True Value QC	RPD	Qualifier	
Benzene*	<0.050	0.050	12/27/2024	ND	2.23	112	2.00	0.763		
Toluene*	<0.050	0.050	12/27/2024	ND	2.08	104	2.00	1.16		
Ethylbenzene*	<0.050	0.050	12/27/2024	ND	2.09	105	2.00	2.84		
Total Xylenes*	<0.150	0.150	12/27/2024	ND	6.25	104	6.00	4.39		
Total BTEX	<0.300	0.300	12/27/2024	ND						

Surrogate: 4-Bromofluorobenzene (PID) 113 % 71.5-134

Chloride, SM4500Cl-B		mg/kg		Analyzed By: HM						
Analyte	Result	Reporting Limit	Analyzed	Method Blank	BS	% Recovery	True Value QC	RPD	Qualifier	
Chloride	32.0	16.0	12/30/2024	ND	448	112	400	0.00		

TPH 8015M		mg/kg		Analyzed By: MS					
Analyte	Result	Reporting Limit	Analyzed	Method Blank	BS	% Recovery	True Value QC	RPD	Qualifier
GRO C6-C10*	<10.0	10.0	12/27/2024	ND	202	101	200	3.46	
DRO >C10-C28*	<10.0	10.0	12/27/2024	ND	209	105	200	4.05	
EXT DRO >C28-C36	<10.0	10.0	12/27/2024	ND					

Surrogate: 1-Chlorooctane 121 % 48.2-134

Surrogate: 1-Chlorooctadecane 137 % 49.1-148

Cardinal Laboratories

*=Accredited Analyte

PLEASE NOTE: Liability and Damages. Cardinal's liability and client's exclusive remedy for any claim arising, whether based in contract or tort, shall be limited to the amount paid by client for analyses. All claims, including those for negligence and any other cause whatsoever shall be deemed waived unless made in writing and received by Cardinal within thirty (30) days after completion of the applicable service. In no event shall Cardinal be liable for incidental or consequential damages, including, without limitation, business interruptions, loss of use, or loss of profits incurred by client, its subsidiaries, affiliates or successors arising out of or related to the performance of the services hereunder by Cardinal, regardless of whether such claim is based upon any of the above stated reasons or otherwise. Results relate only to the samples identified above. This report shall not be reproduced except in full with written approval of Cardinal Laboratories.

Celey D. Keene, Lab Director/Quality Manager



PHONE (575) 393-2326 ° 101 E. MARLAND ° HOBBS, NM 88240

Analytical Results For:

NTG ENVIRONMENTAL
 ETHAN SESSUMS
 701 TRADEWINDS BLVD. SUITE C
 MIDLAND TX, 79706
 Fax To:

Received:	12/27/2024	Sampling Date:	12/27/2024
Reported:	01/02/2025	Sampling Type:	Soil
Project Name:	9418 JV-P VACA DRAW BATTERY	Sampling Condition:	Cool & Intact
Project Number:	249317	Sample Received By:	Tamara Oldaker
Project Location:	BTA - LEA CO NM		

Sample ID: V - 7 SURFACE (H247771-22)

BTX 8021B		mg/kg		Analyzed By: JH					
Analyte	Result	Reporting Limit	Analyzed	Method Blank	BS	% Recovery	True Value QC	RPD	Qualifier
Benzene*	<0.050	0.050	12/27/2024	ND	2.23	112	2.00	0.763	
Toluene*	<0.050	0.050	12/27/2024	ND	2.08	104	2.00	1.16	
Ethylbenzene*	<0.050	0.050	12/27/2024	ND	2.09	105	2.00	2.84	
Total Xylenes*	<0.150	0.150	12/27/2024	ND	6.25	104	6.00	4.39	
Total BTX	<0.300	0.300	12/27/2024	ND					

Surrogate: 4-Bromofluorobenzene (PID) 108 % 71.5-134

Chloride, SM4500Cl-B		mg/kg		Analyzed By: HM					
Analyte	Result	Reporting Limit	Analyzed	Method Blank	BS	% Recovery	True Value QC	RPD	Qualifier
Chloride	1140	16.0	12/30/2024	ND	448	112	400	0.00	

TPH 8015M		mg/kg		Analyzed By: MS					
Analyte	Result	Reporting Limit	Analyzed	Method Blank	BS	% Recovery	True Value QC	RPD	Qualifier
GRO C6-C10*	<10.0	10.0	12/27/2024	ND	202	101	200	3.46	
DRO >C10-C28*	24.6	10.0	12/27/2024	ND	209	105	200	4.05	
EXT DRO >C28-C36	28.8	10.0	12/27/2024	ND					

Surrogate: 1-Chlorooctane 106 % 48.2-134

Surrogate: 1-Chlorooctadecane 120 % 49.1-148

Cardinal Laboratories

*=Accredited Analyte

PLEASE NOTE: Liability and Damages. Cardinal's liability and client's exclusive remedy for any claim arising, whether based in contract or tort, shall be limited to the amount paid by client for analyses. All claims, including those for negligence and any other cause whatsoever shall be deemed waived unless made in writing and received by Cardinal within thirty (30) days after completion of the applicable service. In no event shall Cardinal be liable for incidental or consequential damages, including, without limitation, business interruptions, loss of use, or loss of profits incurred by client, its subsidiaries, affiliates or successors arising out of or related to the performance of the services hereunder by Cardinal, regardless of whether such claim is based upon any of the above stated reasons or otherwise. Results relate only to the samples identified above. This report shall not be reproduced except in full with written approval of Cardinal Laboratories.

Celey D. Keene, Lab Director/Quality Manager



PHONE (575) 393-2326 ° 101 E. MARLAND ° HOBBS, NM 88240

Analytical Results For:

NTG ENVIRONMENTAL
 ETHAN SESSUMS
 701 TRADEWINDS BLVD. SUITE C
 MIDLAND TX, 79706
 Fax To:

Received:	12/27/2024	Sampling Date:	12/27/2024
Reported:	01/02/2025	Sampling Type:	Soil
Project Name:	9418 JV-P VACA DRAW BATTERY	Sampling Condition:	Cool & Intact
Project Number:	249317	Sample Received By:	Tamara Oldaker
Project Location:	BTA - LEA CO NM		

Sample ID: V - 7 1' (H247771-23)

BTEx 8021B		mg/kg		Analyzed By: JH						
Analyte	Result	Reporting Limit	Analyzed	Method Blank	BS	% Recovery	True Value QC	RPD	Qualifier	
Benzene*	<0.050	0.050	12/27/2024	ND	2.23	112	2.00	0.763		
Toluene*	<0.050	0.050	12/27/2024	ND	2.08	104	2.00	1.16		
Ethylbenzene*	<0.050	0.050	12/27/2024	ND	2.09	105	2.00	2.84		
Total Xylenes*	<0.150	0.150	12/27/2024	ND	6.25	104	6.00	4.39		
Total BTEX	<0.300	0.300	12/27/2024	ND						

Surrogate: 4-Bromofluorobenzene (PID) 109 % 71.5-134

Chloride, SM4500Cl-B		mg/kg		Analyzed By: HM						
Analyte	Result	Reporting Limit	Analyzed	Method Blank	BS	% Recovery	True Value QC	RPD	Qualifier	
Chloride	336	16.0	12/30/2024	ND	448	112	400	0.00		

TPH 8015M		mg/kg		Analyzed By: MS					
Analyte	Result	Reporting Limit	Analyzed	Method Blank	BS	% Recovery	True Value QC	RPD	Qualifier
GRO C6-C10*	<10.0	10.0	12/27/2024	ND	202	101	200	3.46	
DRO >C10-C28*	<10.0	10.0	12/27/2024	ND	209	105	200	4.05	
EXT DRO >C28-C36	<10.0	10.0	12/27/2024	ND					

Surrogate: 1-Chlorooctane 119 % 48.2-134

Surrogate: 1-Chlorooctadecane 133 % 49.1-148

Cardinal Laboratories

*=Accredited Analyte

PLEASE NOTE: Liability and Damages. Cardinal's liability and client's exclusive remedy for any claim arising, whether based in contract or tort, shall be limited to the amount paid by client for analyses. All claims, including those for negligence and any other cause whatsoever shall be deemed waived unless made in writing and received by Cardinal within thirty (30) days after completion of the applicable service. In no event shall Cardinal be liable for incidental or consequential damages, including, without limitation, business interruptions, loss of use, or loss of profits incurred by client, its subsidiaries, affiliates or successors arising out of or related to the performance of the services hereunder by Cardinal, regardless of whether such claim is based upon any of the above stated reasons or otherwise. Results relate only to the samples identified above. This report shall not be reproduced except in full with written approval of Cardinal Laboratories.

Celey D. Keene, Lab Director/Quality Manager



PHONE (575) 393-2326 ° 101 E. MARLAND ° HOBBS, NM 88240

Analytical Results For:

NTG ENVIRONMENTAL
 ETHAN SESSUMS
 701 TRADEWINDS BLVD. SUITE C
 MIDLAND TX, 79706
 Fax To:

Received:	12/27/2024	Sampling Date:	12/27/2024
Reported:	01/02/2025	Sampling Type:	Soil
Project Name:	9418 JV-P VACA DRAW BATTERY	Sampling Condition:	Cool & Intact
Project Number:	249317	Sample Received By:	Tamara Oldaker
Project Location:	BTA - LEA CO NM		

Sample ID: V - 7 2' (H247771-24)

BTEX 8021B		mg/kg		Analyzed By: JH					
Analyte	Result	Reporting Limit	Analyzed	Method Blank	BS	% Recovery	True Value QC	RPD	Qualifier
Benzene*	<0.050	0.050	12/27/2024	ND	2.00	100	2.00	2.46	
Toluene*	<0.050	0.050	12/27/2024	ND	2.08	104	2.00	2.11	
Ethylbenzene*	<0.050	0.050	12/27/2024	ND	2.01	101	2.00	2.31	
Total Xylenes*	<0.150	0.150	12/27/2024	ND	5.88	98.0	6.00	1.82	
Total BTEX	<0.300	0.300	12/27/2024	ND					

Surrogate: 4-Bromofluorobenzene (PID) 98.6 % 71.5-134

Chloride, SM4500Cl-B		mg/kg		Analyzed By: HM					
Analyte	Result	Reporting Limit	Analyzed	Method Blank	BS	% Recovery	True Value QC	RPD	Qualifier
Chloride	112	16.0	12/30/2024	ND	448	112	400	0.00	

TPH 8015M		mg/kg		Analyzed By: MS					
Analyte	Result	Reporting Limit	Analyzed	Method Blank	BS	% Recovery	True Value QC	RPD	Qualifier
GRO C6-C10*	<10.0	10.0	12/30/2024	ND	202	101	200	3.46	
DRO >C10-C28*	<10.0	10.0	12/30/2024	ND	209	105	200	4.05	
EXT DRO >C28-C36	<10.0	10.0	12/30/2024	ND					

Surrogate: 1-Chlorooctane 98.0 % 48.2-134

Surrogate: 1-Chlorooctadecane 96.3 % 49.1-148

Cardinal Laboratories

*=Accredited Analyte

PLEASE NOTE: Liability and Damages. Cardinal's liability and client's exclusive remedy for any claim arising, whether based in contract or tort, shall be limited to the amount paid by client for analyses. All claims, including those for negligence and any other cause whatsoever shall be deemed waived unless made in writing and received by Cardinal within thirty (30) days after completion of the applicable service. In no event shall Cardinal be liable for incidental or consequential damages, including, without limitation, business interruptions, loss of use, or loss of profits incurred by client, its subsidiaries, affiliates or successors arising out of or related to the performance of the services hereunder by Cardinal, regardless of whether such claim is based upon any of the above stated reasons or otherwise. Results relate only to the samples identified above. This report shall not be reproduced except in full with written approval of Cardinal Laboratories.

Celey D. Keene, Lab Director/Quality Manager



PHONE (575) 393-2326 ° 101 E. MARLAND ° HOBBS, NM 88240

Analytical Results For:

NTG ENVIRONMENTAL
 ETHAN SESSUMS
 701 TRADEWINDS BLVD. SUITE C
 MIDLAND TX, 79706
 Fax To:

Received:	12/27/2024	Sampling Date:	12/27/2024
Reported:	01/02/2025	Sampling Type:	Soil
Project Name:	9418 JV-P VACA DRAW BATTERY	Sampling Condition:	Cool & Intact
Project Number:	249317	Sample Received By:	Tamara Oldaker
Project Location:	BTA - LEA CO NM		

Sample ID: H - 1 0-6" (H247771-25)

BTEx 8021B		mg/kg		Analyzed By: JH					
Analyte	Result	Reporting Limit	Analyzed	Method Blank	BS	% Recovery	True Value QC	RPD	Qualifier
Benzene*	<0.050	0.050	12/27/2024	ND	2.00	100	2.00	2.46	
Toluene*	<0.050	0.050	12/27/2024	ND	2.08	104	2.00	2.11	
Ethylbenzene*	<0.050	0.050	12/27/2024	ND	2.01	101	2.00	2.31	
Total Xylenes*	<0.150	0.150	12/27/2024	ND	5.88	98.0	6.00	1.82	
Total BTEX	<0.300	0.300	12/27/2024	ND					

Surrogate: 4-Bromofluorobenzene (PID) 98.4 % 71.5-134

Chloride, SM4500Cl-B		mg/kg		Analyzed By: HM					
Analyte	Result	Reporting Limit	Analyzed	Method Blank	BS	% Recovery	True Value QC	RPD	Qualifier
Chloride	80.0	16.0	12/30/2024	ND	448	112	400	0.00	

TPH 8015M		mg/kg		Analyzed By: MS					
Analyte	Result	Reporting Limit	Analyzed	Method Blank	BS	% Recovery	True Value QC	RPD	Qualifier
GRO C6-C10*	<10.0	10.0	12/27/2024	ND	202	101	200	3.46	
DRO >C10-C28*	<10.0	10.0	12/27/2024	ND	209	105	200	4.05	
EXT DRO >C28-C36	<10.0	10.0	12/27/2024	ND					

Surrogate: 1-Chlorooctane 128 % 48.2-134

Surrogate: 1-Chlorooctadecane 141 % 49.1-148

Cardinal Laboratories

*=Accredited Analyte

PLEASE NOTE: Liability and Damages. Cardinal's liability and client's exclusive remedy for any claim arising, whether based in contract or tort, shall be limited to the amount paid by client for analyses. All claims, including those for negligence and any other cause whatsoever shall be deemed waived unless made in writing and received by Cardinal within thirty (30) days after completion of the applicable service. In no event shall Cardinal be liable for incidental or consequential damages, including, without limitation, business interruptions, loss of use, or loss of profits incurred by client, its subsidiaries, affiliates or successors arising out of or related to the performance of the services hereunder by Cardinal, regardless of whether such claim is based upon any of the above stated reasons or otherwise. Results relate only to the samples identified above. This report shall not be reproduced except in full with written approval of Cardinal Laboratories.

Celey D. Keene, Lab Director/Quality Manager



PHONE (575) 393-2326 ° 101 E. MARLAND ° HOBBS, NM 88240

Analytical Results For:

NTG ENVIRONMENTAL
 ETHAN SESSUMS
 701 TRADEWINDS BLVD. SUITE C
 MIDLAND TX, 79706
 Fax To:

Received:	12/27/2024	Sampling Date:	12/27/2024
Reported:	01/02/2025	Sampling Type:	Soil
Project Name:	9418 JV-P VACA DRAW BATTERY	Sampling Condition:	Cool & Intact
Project Number:	249317	Sample Received By:	Tamara Oldaker
Project Location:	BTA - LEA CO NM		

Sample ID: H - 2 0-6" (H247771-26)

BTEX 8021B		mg/kg		Analyzed By: JH					
Analyte	Result	Reporting Limit	Analyzed	Method Blank	BS	% Recovery	True Value QC	RPD	Qualifier
Benzene*	<0.050	0.050	12/27/2024	ND	2.00	100	2.00	2.46	
Toluene*	<0.050	0.050	12/27/2024	ND	2.08	104	2.00	2.11	
Ethylbenzene*	<0.050	0.050	12/27/2024	ND	2.01	101	2.00	2.31	
Total Xylenes*	<0.150	0.150	12/27/2024	ND	5.88	98.0	6.00	1.82	
Total BTEX	<0.300	0.300	12/27/2024	ND					

Surrogate: 4-Bromofluorobenzene (PID) 97.3 % 71.5-134

Chloride, SM4500Cl-B		mg/kg		Analyzed By: HM						
Analyte	Result	Reporting Limit	Analyzed	Method Blank	BS	% Recovery	True Value QC	RPD	Qualifier	
Chloride	352	16.0	12/30/2024	ND	448	112	400	0.00		

TPH 8015M		mg/kg		Analyzed By: MS					
Analyte	Result	Reporting Limit	Analyzed	Method Blank	BS	% Recovery	True Value QC	RPD	Qualifier
GRO C6-C10*	<10.0	10.0	12/27/2024	ND	202	101	200	3.46	
DRO >C10-C28*	12.3	10.0	12/27/2024	ND	209	105	200	4.05	
EXT DRO >C28-C36	<10.0	10.0	12/27/2024	ND					

Surrogate: 1-Chlorooctane 134 % 48.2-134

Surrogate: 1-Chlorooctadecane 146 % 49.1-148

Cardinal Laboratories

*=Accredited Analyte

PLEASE NOTE: Liability and Damages. Cardinal's liability and client's exclusive remedy for any claim arising, whether based in contract or tort, shall be limited to the amount paid by client for analyses. All claims, including those for negligence and any other cause whatsoever shall be deemed waived unless made in writing and received by Cardinal within thirty (30) days after completion of the applicable service. In no event shall Cardinal be liable for incidental or consequential damages, including, without limitation, business interruptions, loss of use, or loss of profits incurred by client, its subsidiaries, affiliates or successors arising out of or related to the performance of the services hereunder by Cardinal, regardless of whether such claim is based upon any of the above stated reasons or otherwise. Results relate only to the samples identified above. This report shall not be reproduced except in full with written approval of Cardinal Laboratories.

Celey D. Keene, Lab Director/Quality Manager



PHONE (575) 393-2326 ° 101 E. MARLAND ° HOBBS, NM 88240

Analytical Results For:

NTG ENVIRONMENTAL
 ETHAN SESSUMS
 701 TRADEWINDS BLVD. SUITE C
 MIDLAND TX, 79706
 Fax To:

Received:	12/27/2024	Sampling Date:	12/27/2024
Reported:	01/02/2025	Sampling Type:	Soil
Project Name:	9418 JV-P VACA DRAW BATTERY	Sampling Condition:	Cool & Intact
Project Number:	249317	Sample Received By:	Tamara Oldaker
Project Location:	BTA - LEA CO NM		

Sample ID: H - 3 0-6" (H247771-27)

BTEx 8021B		mg/kg		Analyzed By: JH						
Analyte	Result	Reporting Limit	Analyzed	Method Blank	BS	% Recovery	True Value QC	RPD	Qualifier	
Benzene*	<0.050	0.050	12/27/2024	ND	2.00	100	2.00	2.46		
Toluene*	<0.050	0.050	12/27/2024	ND	2.08	104	2.00	2.11		
Ethylbenzene*	<0.050	0.050	12/27/2024	ND	2.01	101	2.00	2.31		
Total Xylenes*	<0.150	0.150	12/27/2024	ND	5.88	98.0	6.00	1.82		
Total BTEX	<0.300	0.300	12/27/2024	ND						

Surrogate: 4-Bromofluorobenzene (PID) 98.3 % 71.5-134

Chloride, SM4500Cl-B		mg/kg		Analyzed By: HM						
Analyte	Result	Reporting Limit	Analyzed	Method Blank	BS	% Recovery	True Value QC	RPD	Qualifier	
Chloride	320	16.0	12/30/2024	ND	448	112	400	0.00		

TPH 8015M		mg/kg		Analyzed By: MS						
Analyte	Result	Reporting Limit	Analyzed	Method Blank	BS	% Recovery	True Value QC	RPD	Qualifier	
GRO C6-C10*	<10.0	10.0	12/27/2024	ND	202	101	200	3.46		
DRO >C10-C28*	<10.0	10.0	12/27/2024	ND	209	105	200	4.05		
EXT DRO >C28-C36	<10.0	10.0	12/27/2024	ND						

Surrogate: 1-Chlorooctane 97.2 % 48.2-134

Surrogate: 1-Chlorooctadecane 107 % 49.1-148

Cardinal Laboratories

*=Accredited Analyte

PLEASE NOTE: Liability and Damages. Cardinal's liability and client's exclusive remedy for any claim arising, whether based in contract or tort, shall be limited to the amount paid by client for analyses. All claims, including those for negligence and any other cause whatsoever shall be deemed waived unless made in writing and received by Cardinal within thirty (30) days after completion of the applicable service. In no event shall Cardinal be liable for incidental or consequential damages, including, without limitation, business interruptions, loss of use, or loss of profits incurred by client, its subsidiaries, affiliates or successors arising out of or related to the performance of the services hereunder by Cardinal, regardless of whether such claim is based upon any of the above stated reasons or otherwise. Results relate only to the samples identified above. This report shall not be reproduced except in full with written approval of Cardinal Laboratories.

Celey D. Keene, Lab Director/Quality Manager



PHONE (575) 393-2326 ° 101 E. MARLAND ° HOBBS, NM 88240

Analytical Results For:

NTG ENVIRONMENTAL
 ETHAN SESSUMS
 701 TRADEWINDS BLVD. SUITE C
 MIDLAND TX, 79706
 Fax To:

Received:	12/27/2024	Sampling Date:	12/27/2024
Reported:	01/02/2025	Sampling Type:	Soil
Project Name:	9418 JV-P VACA DRAW BATTERY	Sampling Condition:	Cool & Intact
Project Number:	249317	Sample Received By:	Tamara Oldaker
Project Location:	BTA - LEA CO NM		

Sample ID: H - 4 0-6" (H247771-28)

BTEx 8021B		mg/kg		Analyzed By: JH					
Analyte	Result	Reporting Limit	Analyzed	Method Blank	BS	% Recovery	True Value QC	RPD	Qualifier
Benzene*	<0.050	0.050	12/27/2024	ND	2.00	100	2.00	2.46	
Toluene*	<0.050	0.050	12/27/2024	ND	2.08	104	2.00	2.11	
Ethylbenzene*	<0.050	0.050	12/27/2024	ND	2.01	101	2.00	2.31	
Total Xylenes*	<0.150	0.150	12/27/2024	ND	5.88	98.0	6.00	1.82	
Total BTEX	<0.300	0.300	12/27/2024	ND					

Surrogate: 4-Bromofluorobenzene (PID) 98.3 % 71.5-134

Chloride, SM4500Cl-B		mg/kg		Analyzed By: HM						
Analyte	Result	Reporting Limit	Analyzed	Method Blank	BS	% Recovery	True Value QC	RPD	Qualifier	
Chloride	288	16.0	12/30/2024	ND	448	112	400	0.00		

TPH 8015M		mg/kg		Analyzed By: MS						
Analyte	Result	Reporting Limit	Analyzed	Method Blank	BS	% Recovery	True Value QC	RPD	Qualifier	
GRO C6-C10*	<10.0	10.0	12/27/2024	ND	202	101	200	3.46		
DRO >C10-C28*	<10.0	10.0	12/27/2024	ND	209	105	200	4.05		
EXT DRO >C28-C36	<10.0	10.0	12/27/2024	ND						

Surrogate: 1-Chlorooctane 119 % 48.2-134

Surrogate: 1-Chlorooctadecane 133 % 49.1-148

Cardinal Laboratories

*=Accredited Analyte

PLEASE NOTE: Liability and Damages. Cardinal's liability and client's exclusive remedy for any claim arising, whether based in contract or tort, shall be limited to the amount paid by client for analyses. All claims, including those for negligence and any other cause whatsoever shall be deemed waived unless made in writing and received by Cardinal within thirty (30) days after completion of the applicable service. In no event shall Cardinal be liable for incidental or consequential damages, including, without limitation, business interruptions, loss of use, or loss of profits incurred by client, its subsidiaries, affiliates or successors arising out of or related to the performance of the services hereunder by Cardinal, regardless of whether such claim is based upon any of the above stated reasons or otherwise. Results relate only to the samples identified above. This report shall not be reproduced except in full with written approval of Cardinal Laboratories.

Celey D. Keene, Lab Director/Quality Manager



PHONE (575) 393-2326 ° 101 E. MARLAND ° HOBBS, NM 88240

Analytical Results For:

NTG ENVIRONMENTAL
 ETHAN SESSUMS
 701 TRADEWINDS BLVD. SUITE C
 MIDLAND TX, 79706
 Fax To:

Received:	12/27/2024	Sampling Date:	12/27/2024
Reported:	01/02/2025	Sampling Type:	Soil
Project Name:	9418 JV-P VACA DRAW BATTERY	Sampling Condition:	Cool & Intact
Project Number:	249317	Sample Received By:	Tamara Oldaker
Project Location:	BTA - LEA CO NM		

Sample ID: H - 5 0-6" (H247771-29)

BTEx 8021B		mg/kg		Analyzed By: JH					
Analyte	Result	Reporting Limit	Analyzed	Method Blank	BS	% Recovery	True Value QC	RPD	Qualifier
Benzene*	<0.050	0.050	12/27/2024	ND	2.00	100	2.00	2.46	
Toluene*	<0.050	0.050	12/27/2024	ND	2.08	104	2.00	2.11	
Ethylbenzene*	<0.050	0.050	12/27/2024	ND	2.01	101	2.00	2.31	
Total Xylenes*	<0.150	0.150	12/27/2024	ND	5.88	98.0	6.00	1.82	
Total BTEX	<0.300	0.300	12/27/2024	ND					

Surrogate: 4-Bromofluorobenzene (PID) 98.6 % 71.5-134

Chloride, SM4500Cl-B		mg/kg		Analyzed By: HM					
Analyte	Result	Reporting Limit	Analyzed	Method Blank	BS	% Recovery	True Value QC	RPD	Qualifier
Chloride	64.0	16.0	12/30/2024	ND	448	112	400	0.00	

TPH 8015M		mg/kg		Analyzed By: MS					
Analyte	Result	Reporting Limit	Analyzed	Method Blank	BS	% Recovery	True Value QC	RPD	Qualifier
GRO C6-C10*	<10.0	10.0	12/30/2024	ND	202	101	200	3.46	
DRO >C10-C28*	<10.0	10.0	12/30/2024	ND	209	105	200	4.05	
EXT DRO >C28-C36	<10.0	10.0	12/30/2024	ND					

Surrogate: 1-Chlorooctane 101 % 48.2-134

Surrogate: 1-Chlorooctadecane 103 % 49.1-148

Cardinal Laboratories

*=Accredited Analyte

PLEASE NOTE: Liability and Damages. Cardinal's liability and client's exclusive remedy for any claim arising, whether based in contract or tort, shall be limited to the amount paid by client for analyses. All claims, including those for negligence and any other cause whatsoever shall be deemed waived unless made in writing and received by Cardinal within thirty (30) days after completion of the applicable service. In no event shall Cardinal be liable for incidental or consequential damages, including, without limitation, business interruptions, loss of use, or loss of profits incurred by client, its subsidiaries, affiliates or successors arising out of or related to the performance of the services hereunder by Cardinal, regardless of whether such claim is based upon any of the above stated reasons or otherwise. Results relate only to the samples identified above. This report shall not be reproduced except in full with written approval of Cardinal Laboratories.

Celey D. Keene, Lab Director/Quality Manager



PHONE (575) 393-2326 ° 101 E. MARLAND ° HOBBS, NM 88240

Analytical Results For:

NTG ENVIRONMENTAL
 ETHAN SESSUMS
 701 TRADEWINDS BLVD. SUITE C
 MIDLAND TX, 79706
 Fax To:

Received:	12/27/2024	Sampling Date:	12/27/2024
Reported:	01/02/2025	Sampling Type:	Soil
Project Name:	9418 JV-P VACA DRAW BATTERY	Sampling Condition:	Cool & Intact
Project Number:	249317	Sample Received By:	Tamara Oldaker
Project Location:	BTA - LEA CO NM		

Sample ID: H - 6 0-6" (H247771-30)

BTEx 8021B		mg/kg		Analyzed By: JH					
Analyte	Result	Reporting Limit	Analyzed	Method Blank	BS	% Recovery	True Value QC	RPD	Qualifier
Benzene*	<0.050	0.050	12/27/2024	ND	2.00	100	2.00	2.46	
Toluene*	<0.050	0.050	12/27/2024	ND	2.08	104	2.00	2.11	
Ethylbenzene*	<0.050	0.050	12/27/2024	ND	2.01	101	2.00	2.31	
Total Xylenes*	<0.150	0.150	12/27/2024	ND	5.88	98.0	6.00	1.82	
Total BTEX	<0.300	0.300	12/27/2024	ND					

Surrogate: 4-Bromofluorobenzene (PID) 99.1 % 71.5-134

Chloride, SM4500Cl-B		mg/kg		Analyzed By: HM					
Analyte	Result	Reporting Limit	Analyzed	Method Blank	BS	% Recovery	True Value QC	RPD	Qualifier
Chloride	80.0	16.0	12/30/2024	ND	448	112	400	0.00	

TPH 8015M		mg/kg		Analyzed By: MS					
Analyte	Result	Reporting Limit	Analyzed	Method Blank	BS	% Recovery	True Value QC	RPD	Qualifier
GRO C6-C10*	<10.0	10.0	12/30/2024	ND	202	101	200	3.46	
DRO >C10-C28*	<10.0	10.0	12/30/2024	ND	209	105	200	4.05	
EXT DRO >C28-C36	<10.0	10.0	12/30/2024	ND					

Surrogate: 1-Chlorooctane 92.4 % 48.2-134

Surrogate: 1-Chlorooctadecane 91.5 % 49.1-148

Cardinal Laboratories

*=Accredited Analyte

PLEASE NOTE: Liability and Damages. Cardinal's liability and client's exclusive remedy for any claim arising, whether based in contract or tort, shall be limited to the amount paid by client for analyses. All claims, including those for negligence and any other cause whatsoever shall be deemed waived unless made in writing and received by Cardinal within thirty (30) days after completion of the applicable service. In no event shall Cardinal be liable for incidental or consequential damages, including, without limitation, business interruptions, loss of use, or loss of profits incurred by client, its subsidiaries, affiliates or successors arising out of or related to the performance of the services hereunder by Cardinal, regardless of whether such claim is based upon any of the above stated reasons or otherwise. Results relate only to the samples identified above. This report shall not be reproduced except in full with written approval of Cardinal Laboratories.

Celey D. Keene, Lab Director/Quality Manager



PHONE (575) 393-2326 ° 101 E. MARLAND ° HOBBS, NM 88240

Analytical Results For:

NTG ENVIRONMENTAL
 ETHAN SESSUMS
 701 TRADEWINDS BLVD. SUITE C
 MIDLAND TX, 79706
 Fax To:

Received:	12/27/2024	Sampling Date:	12/27/2024
Reported:	01/02/2025	Sampling Type:	Soil
Project Name:	9418 JV-P VACA DRAW BATTERY	Sampling Condition:	Cool & Intact
Project Number:	249317	Sample Received By:	Tamara Oldaker
Project Location:	BTA - LEA CO NM		

Sample ID: H - 7 0-6" (H247771-31)

BTEx 8021B		mg/kg		Analyzed By: JH					
Analyte	Result	Reporting Limit	Analyzed	Method Blank	BS	% Recovery	True Value QC	RPD	Qualifier
Benzene*	<0.050	0.050	12/27/2024	ND	2.00	100	2.00	2.46	
Toluene*	<0.050	0.050	12/27/2024	ND	2.08	104	2.00	2.11	
Ethylbenzene*	<0.050	0.050	12/27/2024	ND	2.01	101	2.00	2.31	
Total Xylenes*	<0.150	0.150	12/27/2024	ND	5.88	98.0	6.00	1.82	
Total BTEX	<0.300	0.300	12/27/2024	ND					

Surrogate: 4-Bromofluorobenzene (PID) 98.9 % 71.5-134

Chloride, SM4500Cl-B		mg/kg		Analyzed By: KV					
Analyte	Result	Reporting Limit	Analyzed	Method Blank	BS	% Recovery	True Value QC	RPD	Qualifier
Chloride	64.0	16.0	12/30/2024	ND	432	108	400	3.64	

TPH 8015M		mg/kg		Analyzed By: MS					
Analyte	Result	Reporting Limit	Analyzed	Method Blank	BS	% Recovery	True Value QC	RPD	Qualifier
GRO C6-C10*	<10.0	10.0	12/27/2024	ND	209	105	200	1.13	
DRO >C10-C28*	<10.0	10.0	12/27/2024	ND	202	101	200	5.40	
EXT DRO >C28-C36	<10.0	10.0	12/27/2024	ND					

Surrogate: 1-Chlorooctane 97.0 % 48.2-134

Surrogate: 1-Chlorooctadecane 94.5 % 49.1-148

Cardinal Laboratories

*=Accredited Analyte

PLEASE NOTE: Liability and Damages. Cardinal's liability and client's exclusive remedy for any claim arising, whether based in contract or tort, shall be limited to the amount paid by client for analyses. All claims, including those for negligence and any other cause whatsoever shall be deemed waived unless made in writing and received by Cardinal within thirty (30) days after completion of the applicable service. In no event shall Cardinal be liable for incidental or consequential damages, including, without limitation, business interruptions, loss of use, or loss of profits incurred by client, its subsidiaries, affiliates or successors arising out of or related to the performance of the services hereunder by Cardinal, regardless of whether such claim is based upon any of the above stated reasons or otherwise. Results relate only to the samples identified above. This report shall not be reproduced except in full with written approval of Cardinal Laboratories.

Celey D. Keene, Lab Director/Quality Manager

PHONE (575) 393-2326 ° 101 E. MARLAND ° HOBBS, NM 88240

Notes and Definitions

S-05	The surrogate recovery is outside of lab established statistical control limits but still within method limits. Data is not adversely affected.
S-04	The surrogate recovery for this sample is outside of established control limits due to a sample matrix effect.
QM-07	The spike recovery was outside acceptance limits for the MS and/or MSD. The batch was accepted based on acceptable LCS recovery.
ND	Analyte NOT DETECTED at or above the reporting limit
RPD	Relative Percent Difference
**	Samples not received at proper temperature of 6°C or below.
***	Insufficient time to reach temperature.
-	Chloride by SM4500Cl-B does not require samples be received at or below 6°C Samples reported on an as received basis (wet) unless otherwise noted on report

Cardinal Laboratories

*=Accredited Analyte

PLEASE NOTE: Liability and Damages. Cardinal's liability and client's exclusive remedy for any claim arising, whether based in contract or tort, shall be limited to the amount paid by client for analyses. All claims, including those for negligence and any other cause whatsoever shall be deemed waived unless made in writing and received by Cardinal within thirty (30) days after completion of the applicable service. In no event shall Cardinal be liable for incidental or consequential damages, including, without limitation, business interruptions, loss of use, or loss of profits incurred by client, its subsidiaries, affiliates or successors arising out of or related to the performance of the services hereunder by Cardinal, regardless of whether such claim is based upon any of the above stated reasons or otherwise. Results relate only to the samples identified above. This report shall not be reproduced except in full with written approval of Cardinal Laboratories.

A handwritten signature in black ink, appearing to read "Celey D. Keene".

Celey D. Keene, Lab Director/Quality Manager



Chain of Custody

Work Order No: H247771

Page 1 of 4

Project Manager:	Ethan Sessums	Bill to: (if different)	Ray Ramos
Company Name:	NTG Environmental	Company Name:	BTA Oil Producers
Address:	209 W. McKay St.	Address:	
City, State ZIP:	Carlsbad, New Mexico, 88220	City, State ZIP:	
Phone:	432-701-2159	Email:	esessums@ntgglobal.com

Work Order Comments	
Program: UST/PST <input type="checkbox"/> PRP <input type="checkbox"/> Brownfields <input type="checkbox"/> RRC <input type="checkbox"/> Unperfund <input type="checkbox"/>	
State of Project:	
Reporting Level I <input type="checkbox"/> Level II <input type="checkbox"/> Level III <input type="checkbox"/> PST/UST <input type="checkbox"/> RRP <input type="checkbox"/> Level IV <input type="checkbox"/>	
Deliverables: EDD <input type="checkbox"/> ADAPT <input type="checkbox"/> Other:	

Project Name:	9418 JV-P Vaca Draw Battery	Turn Around				Pres. Code	ANALYSIS REQUEST												Preservative Codes	
Project Number:	249317	<input checked="" type="checkbox"/> Routine	<input type="checkbox"/> Rush														None: NO	DI Water: H ₂ O		
Project Location	Lea County, NM	Due Date:															Cool: Cool	MeOH: Me		
Sampler's Name:	Nick Hart	TAT starts the day received by the lab, if received by 4:30pm															HCL: HC	HNO ₃ : HN		
PO #:																	H ₂ SO ₄ : H ₂	NaOH: Na		
SAMPLE RECEIPT		Temp Blank:	Yes <input checked="" type="checkbox"/> No <input type="checkbox"/>	Wet Ice:	Yes <input checked="" type="checkbox"/> No <input type="checkbox"/>	Parameters														
Received Intact:	Yes <input checked="" type="checkbox"/> No <input type="checkbox"/>	Thermometer ID:	#140			TPH 8015														
Cooler Custody Seals:	Yes <input type="checkbox"/> No <input checked="" type="checkbox"/>	Correction Factor:	-0.62			BTEX 8021B														
Sample Custody Seals:	Yes <input type="checkbox"/> No <input checked="" type="checkbox"/>	Temperature Reading:	0.82			Chloride 4500														
Total Containers:	31	Corrected Temperature:	0.22																	
Sample Identification	Depth (ft bgs)	Date	Time	Soil	Water	Grab/Comp	# of Cont	HOLD												Sample Comments
V-1	Surface	12/27/2024		X		Grab	1	X	X	X										
V-1	1'	12/27/2024		X		Grab	1	X	X	X										
V-1	2'	12/27/2024		X		Grab	1	X	X	X										
V-2	Surface	12/27/2024		X		Grab	1	X	X	X										
V-2	1'	12/27/2024		X		Grab	1	X	X	X										
V-2	2'	12/27/2024		X		Grab	1	X	X	X										
V-2	3'	12/27/2024		X		Grab	1	X	X	X										
V-3	Surface	12/27/2024		X		Grab	1	X	X	X										
V-3	1'	12/27/2024		X		Grab	1	X	X	X										
V-3	2'	12/27/2024		X		Grab	1	X	X	X										

Additional Comments:

Notice: Signature of this document and relinquishment of samples constitutes a valid purchase order from client company to Xenco, its affiliates and subcontractors. It assigns standard terms and conditions of service. Xenco will be liable only for the cost of samples and shall not assume any responsibility for any losses or expenses incurred by the client if such losses are due to circumstances beyond the control of Xenco. A minimum charge of \$85.00 will be applied to each project and a charge of \$5 for each sample submitted to Xenco, but not analyzed. These terms will be enforced unless previously negotiated.

Relinquished by: (Signature)	Received by: (Signature)	Date/Time	Relinquished by: (Signature)	Received by: (Signature)	Date/Time
1 <u>Maura</u>	<u>Maura</u>	12-27-24 1230			
3					
5					



Chain of Custody

Work Order No: H247771

Page 2 of 4

Project Manager:	Ethan Sessums	Bill to: (if different)	Ray Ramos
Company Name:	NTG Environmental	Company Name:	BTA Oil Producers
Address:	209 W. McKay St.	Address:	
City, State ZIP:	Carlsbad, New Mexico, 88220	City, State ZIP:	
Phone:	432-701-2159	Email:	esessums@ntglobal.com
Project Name:	9418 JV-P Vaca Draw Battery	Turn Around	
Project Number:	249317	<input checked="" type="checkbox"/> Routine <input type="checkbox"/> Rush	
Project Location:	Lea County, NM	Due Date:	
Sampler's Name:	Nick Hart	TAI starts the day received by the lab, if received by 4:30pm	
PO #:			
SAMPLE RECEIPT	Temp Blank: <input checked="" type="checkbox"/> Yes <input checked="" type="checkbox"/> No	Wet Ice: <input checked="" type="checkbox"/> Yes <input checked="" type="checkbox"/> No	
Received In tact:	<input checked="" type="checkbox"/> Yes <input checked="" type="checkbox"/> No	Thermometer ID:	#140
Cooler Custody Seals:	<input checked="" type="checkbox"/> Yes <input checked="" type="checkbox"/> No	Correction Factor:	-0.66
Sample Custody Seals:	<input checked="" type="checkbox"/> Yes <input checked="" type="checkbox"/> No	Temperature Reading:	0.86
Total Containers:	31	Corrected Temperature:	0.26

Program: UST/PST <input type="checkbox"/> PRP <input type="checkbox"/> Brownfields <input type="checkbox"/> RRC <input type="checkbox"/> InupTund <input type="checkbox"/>
State of Project:
Reporting Level II <input type="checkbox"/> Level III <input type="checkbox"/> PST/UST <input type="checkbox"/> RRP <input type="checkbox"/> Level IV <input type="checkbox"/>
Deliverables: EDD <input type="checkbox"/> ADAPT <input type="checkbox"/> Other:

Sample Identification	Depth (ft bgs)	Date	Time	Soil	Water	Grab/Comp	# of Cont	ANALYSIS REQUEST										Preservative Codes
								TPH 8015	BTEX 8021B	Chloride 4500								
V-4	Surface	12/27/2024		X		Grab	1	X	X	X								None: NO DI Water: H ₂ O
V-4	1'	12/27/2024		X		Grab	1	X	X	X								Cool: Cool MeOH: Me
V-4	2'	12/27/2024		X		Grab	1	X	X	X								HCL: HC HNO ₃ : HN
V-4	3'	12/27/2024		X		Grab	1	X	X	X								H ₂ SO ₄ : H ₂ NaOH: Na
V-5	Surface	12/27/2024		X		Grab	1	X	X	X								H ₃ PO ₄ : HP
V-5	1'	12/27/2024		X		Grab	1	X	X	X								NaHSO ₄ : NABIS
V-5	2'	12/27/2024		X		Grab	1	X	X	X								Na ₂ S ₂ O ₅ : NaSO ₃
V-6	Surface	12/27/2024		X		Grab	1	X	X	X								Zn Acetate+NaOH: Zn
V-6	1'	12/27/2024		X		Grab	1	X	X	X								NaOH+Ascorbic Acid: SAPC
V-6	2'	12/27/2024		X		Grab	1	X	X	X								

Additional Comments:

Notice: Signature of this document and relinquishment of samples constitutes a valid purchase order from client company to Xenco, its affiliates and subcontractors. It assigns standard terms and conditions of service. Xenco will be liable only for the cost of samples and shall not assume any responsibility for any losses or expenses incurred by the client if such losses are due to circumstances beyond the control of Xenco. A minimum charge of \$85.00 will be applied to each project and a charge of \$5 for each sample submitted to Xenco, but not analyzed. These terms will be enforced unless previously negotiated.

Relinquished by: (Signature)	Received by: (Signature)	Date/Time	Relinquished by: (Signature)	Received by: (Signature)	Date/Time
1	Nick Hart	12-27-24 1:30			
3					
5					



Chain of Custody

Work Order No: A247771

Page 3 of 4

Project Manager:	Ethan Sessums	Bill to: (if different)	Ray Ramos
Company Name:	NTG Environmental	Company Name:	BTA Oil Producers
Address:	209 W. McKay St.	Address:	
City, State ZIP:	Carlsbad, New Mexico, 88220	City, State ZIP:	
Phone:	432-701-2159	Email:	esessums@ntglobal.com

Project Name:	9418 JV-P Vaca Draw Battery	Turn Around	<input checked="" type="checkbox"/> Routine <input type="checkbox"/> Rush	Pres. Code	
Project Number:	249317	Due Date:			
Project Location:	Lea County, NM	TAT starts the day received by the lab, if received by 4:30pm			
Sampler's Name:	Nick Hart				
PO #:					

SAMPLE RECEIPT	Temp Blank:	Yes <input checked="" type="checkbox"/> No <input type="checkbox"/>	Wet Ice:	Yes <input checked="" type="checkbox"/> No <input type="checkbox"/>	Parameters
Received intact:	Yes <input checked="" type="checkbox"/> No <input type="checkbox"/>	Thermometer ID:	#140		TPH 8015
Cooler Custody Seals:	Yes <input checked="" type="checkbox"/> No <input type="checkbox"/>	Correction Factor:	-0.65		BTEX 8021B
Sample Custody Seals:	Yes <input checked="" type="checkbox"/> No <input type="checkbox"/>	Temperature Reading:	0.85		Chloride 4500
Total Containers:	#31	Corrected Temperature:	0.25		

Program:	UST/PST <input type="checkbox"/> PRP <input type="checkbox"/> Brownfields <input type="checkbox"/> RRC <input type="checkbox"/> Superfund <input type="checkbox"/>
State of Project:	
Reporting Level:	Level II <input type="checkbox"/> Level III <input type="checkbox"/> PST/UST <input type="checkbox"/> TRRP <input type="checkbox"/> Level IV <input type="checkbox"/>
Deliverables:	EDD <input type="checkbox"/> ADAPT <input type="checkbox"/> Other: <input type="checkbox"/>

21
22
23
24
25
26
27
28
29
30

Sample Identification	Depth (ft bgs)	Date	Time	Soil	Water	Grab/Comp	# of Cont	ANALYSIS REQUEST	Preservative Codes	Sample Comments
V-6	3'	12/27/2024		X		Grab	1	X X X	None: NO Cool: Cool HCL: HC H ₂ SO ₄ : H ₂ H ₃ PO ₄ : HP NaHSO ₄ : NABIS Na ₂ S ₂ O ₅ : NaSO ₃ Zn Acetate+NaOH: Zn NaOH+Ascorbic Acid: SAPC	
V-7	Surface	12/27/2024		X		Grab	1	X X X		
V-7	1'	12/27/2024		X		Grab	1	X X X		
V-7	2'	12/27/2024		X		Grab	1	X X X		
H-1	0-6"	12/27/2024		X		Grab	1	X X X		
H-2	0-6"	12/27/2024		X		Grab	1	X X X		
H-3	0-6"	12/27/2024		X		Grab	1	X X X		
H-4	0-6"	12/27/2024		X		Grab	1	X X X		
H-5	0-6"	12/27/2024		X		Grab	1	X X X		
H-6	0-6"	12/27/2024		X		Grab	1	X X X		

Additional Comments:

Notice: Signature of this document and relinquishment of samples constitutes a valid purchase order from client company to Xenco, its affiliates and subcontractors. It assigns standard terms and conditions of service. Xenco will be liable only for the cost of samples and shall not assume any responsibility for any losses or expenses incurred by the client if such losses are due to circumstances beyond the control of Xenco. A minimum charge of \$85.00 will be applied to each project and a charge of \$5 for each sample submitted to Xenco, but not analyzed. These terms will be enforced unless previously negotiated.

Relinquished by: (Signature)	Received by: (Signature)	Date/Time	Relinquished by: (Signature)	Received by: (Signature)	Date/Time
<u>Nick Hart</u>	<u>Ethan Sessums</u>	<u>12-27-24 1330</u>			
3		4			
5		6			



Chain of Custody

Work Order No: 6247771

Page 4 of 24

Project Manager:	Ethan Sessums	Bill to: (if different)	Ray Ramos
Company Name:	NTG Environmental	Company Name:	BYA Oil Producers
Address:	209 W. McKay St.	Address:	
City, State ZIP:	Carlsbad, New Mexico, 88220	City, State ZIP:	
Phone:	432-701-2159	Email:	esessums@ntglobal.com

Work Order Comments

Program: UST/PST ☐ PRP ☐ Brownfields ☐ RRC ☐ Superfund ☐

State of Project:

Reporting Level II ☐ Level III ☐ PST/UST ☐ TRRP ☐ Level IV ☐

Deliverables: EDD ☐ ADAPT ☐ Other: _____

Project Name:	9418 JV-F Vacca Draw Battery	Turn Around		Pres. Code		ANALYSIS REQUEST							Preservative Codes					
Project Number:	249317	<input checked="" type="checkbox"/> Routine <input type="checkbox"/> Rush													None: NO	DI Water: H ₂ O		
Project Location	Lea County, NM	Due Date:													Cool: Cool	MeOH: Me		
Sampler's Name:	Nick Hart														HCL: HC	HNO ₃ : HN		
PO #:															H ₂ SO ₄ : H ₂	NaOH: Na		
															H ₃ PO ₄ : HP			
															NaHSO ₄ : NABIS			
															Na ₂ S ₂ O ₃ : NASO ₃			
															Zn Acetate+NaOH: Zn			
															NaOH+Ascorbic Acid: SACP			

[illegible]

Additional Comments:

Notice: Signature of this document and relinquishment of samples constitutes a valid purchase order from client company to Xencio, its affiliates and subcontractors. It assigns standard terms and conditions of service. Xencio will be liable only for the cost of samples and shall not assume any responsibility for any losses or expenses incurred by the client if such losses are due to circumstances beyond the control of Xencio. A minimum charge of \$65.00 will be applied to each project and a charge of \$5 for each sample submitted to Xencio, but not analyzed. These terms will be enforced unless previously negotiated.

Relinquished by: (Signature)	Received by: (Signature)	Date/Time	Relinquished by: (Signature)	Received by: (Signature)	Date/Time
1 <i>[Signature]</i>	<i>[Signature]</i>	12-22-24 12:30	2		
3			4		
5			6		

Sante Fe Main Office
Phone: (505) 476-3441

General Information
Phone: (505) 629-6116

Online Phone Directory
<https://www.emnrd.nm.gov/ocd/contact-us>

State of New Mexico
Energy, Minerals and Natural Resources
Oil Conservation Division
1220 S. St Francis Dr.
Santa Fe, NM 87505

QUESTIONS

Action 423009

QUESTIONS

Operator: BTA OIL PRODUCERS, LLC 104 S Pecos Midland, TX 79701	OGRID: 260297
	Action Number: 423009
	Action Type: [C-141] Site Char./Remediation Plan C-141 (C-141-v-Plan)

QUESTIONS

Prerequisites	
Incident ID (n#)	nKJ1518155255
Incident Name	NKJ1518155255 9418 JV-P VACA DRAW BATTERY @ 0
Incident Type	Oil Release
Incident Status	Remediation Plan Received
Incident Facility	[fKJ1518152426] 9418 JV-P Vaca Draw Battery

Location of Release Source

Please answer all the questions in this group.

Site Name	9418 JV-P Vaca Draw Battery
Date Release Discovered	06/30/2015
Surface Owner	Federal

Incident Details

Please answer all the questions in this group.

Incident Type	Oil Release
Did this release result in a fire or is the result of a fire	No
Did this release result in any injuries	No
Has this release reached or does it have a reasonable probability of reaching a watercourse	No
Has this release endangered or does it have a reasonable probability of endangering public health	No
Has this release substantially damaged or will it substantially damage property or the environment	No
Is this release of a volume that is or may with reasonable probability be detrimental to fresh water	No

Nature and Volume of Release

Material(s) released, please answer all that apply below. Any calculations or specific justifications for the volumes provided should be attached to the follow-up C-141 submission.

Crude Oil Released (bbls) Details	Cause: Equipment Failure Valve Crude Oil Released: 45 BBL Recovered: 40 BBL Lost: 5 BBL.
Produced Water Released (bbls) Details	Not answered.
Is the concentration of chloride in the produced water >10,000 mg/l	Not answered.
Condensate Released (bbls) Details	Not answered.
Natural Gas Vented (Mcf) Details	Not answered.
Natural Gas Flared (Mcf) Details	Not answered.
Other Released Details	Not answered.
Are there additional details for the questions above (i.e. any answer containing Other, Specify, Unknown, and/or Fire, or any negative lost amounts)	Not answered.

Sante Fe Main Office
Phone: (505) 476-3441

General Information
Phone: (505) 629-6116

Online Phone Directory
<https://www.emnrd.nm.gov/ocd/contact-us>

State of New Mexico
Energy, Minerals and Natural Resources
Oil Conservation Division
1220 S. St Francis Dr.
Santa Fe, NM 87505

QUESTIONS, Page 2

Action 423009

QUESTIONS (continued)

Operator: BTA OIL PRODUCERS, LLC 104 S Pecos Midland, TX 79701	OGRID: 260297
	Action Number: 423009
	Action Type: [C-141] Site Char./Remediation Plan C-141 (C-141-v-Plan)

QUESTIONS

Nature and Volume of Release (continued)	
Is this a gas only submission (i.e. only significant Mcf values reported)	No, according to supplied volumes this does not appear to be a "gas only" report.
Was this a major release as defined by Subsection A of 19.15.29.7 NMAC	Yes
Reasons why this would be considered a submission for a notification of a major release	From paragraph A. "Major release" determine using: (1) an unauthorized release of a volume, excluding gases, of 25 barrels or more.
With the implementation of the 19.15.27 NMAC (05/25/2021), venting and/or flaring of natural gas (i.e. gas only) are to be submitted on the C-129 form.	

Initial Response

The responsible party must undertake the following actions immediately unless they could create a safety hazard that would result in injury.

The source of the release has been stopped	True
The impacted area has been secured to protect human health and the environment	True
Released materials have been contained via the use of berms or dikes, absorbent pads, or other containment devices	True
All free liquids and recoverable materials have been removed and managed appropriately	True
If all the actions described above have not been undertaken, explain why	Not answered.

Per Paragraph (4) of Subsection B of 19.15.29.8 NMAC the responsible party may commence remediation immediately after discovery of a release. If remediation has begun, please prepare and attach a narrative of actions to date in the follow-up C-141 submission. If remedial efforts have been successfully completed or if the release occurred within a lined containment area (see Subparagraph (a) of Paragraph (5) of Subsection A of 19.15.29.11 NMAC), please prepare and attach all information needed for closure evaluation in the follow-up C-141 submission.

I hereby certify that the information given above is true and complete to the best of my knowledge and understand that pursuant to OCD rules and regulations all operators are required to report and/or file certain release notifications and perform corrective actions for releases which may endanger public health or the environment. The acceptance of a C-141 report by the OCD does not relieve the operator of liability should their operations have failed to adequately investigate and remediate contamination that pose a threat to groundwater, surface water, human health or the environment. In addition, OCD acceptance of a C-141 report does not relieve the operator of responsibility for compliance with any other federal, state, or local laws and/or regulations.

I hereby agree and sign off to the above statement	Name: Ray Ramos Title: Environmental Manager Email: rramos@btaoil.com Date: 01/21/2025
--	---

Sante Fe Main Office
Phone: (505) 476-3441

General Information
Phone: (505) 629-6116

Online Phone Directory
<https://www.emnrd.nm.gov/ocd/contact-us>

State of New Mexico
Energy, Minerals and Natural Resources
Oil Conservation Division
1220 S. St Francis Dr.
Santa Fe, NM 87505

QUESTIONS, Page 3

Action 423009

QUESTIONS (continued)

Operator: BTA OIL PRODUCERS, LLC 104 S Pecos Midland, TX 79701	OGRID: 260297
	Action Number: 423009
	Action Type: [C-141] Site Char./Remediation Plan C-141 (C-141-v-Plan)

QUESTIONS

Site Characterization	
<i>Please answer all the questions in this group (only required when seeking remediation plan approval and beyond). This information must be provided to the appropriate district office no later than 90 days after the release discovery date.</i>	
What is the shallowest depth to groundwater beneath the area affected by the release in feet below ground surface (ft bgs)	Between 26 and 50 (ft.)
What method was used to determine the depth to ground water	NM OSE iWaters Database Search
Did this release impact groundwater or surface water	No
What is the minimum distance, between the closest lateral extents of the release and the following surface areas:	
A continuously flowing watercourse or any other significant watercourse	Between 500 and 1000 (ft.)
Any lakebed, sinkhole, or playa lake (measured from the ordinary high-water mark)	Between 1 and 5 (mi.)
An occupied permanent residence, school, hospital, institution, or church	Greater than 5 (mi.)
A spring or a private domestic fresh water well used by less than five households for domestic or stock watering purposes	Between 1 and 5 (mi.)
Any other fresh water well or spring	Greater than 5 (mi.)
Incorporated municipal boundaries or a defined municipal fresh water well field	Greater than 5 (mi.)
A wetland	Between 500 and 1000 (ft.)
A subsurface mine	Greater than 5 (mi.)
An (non-karst) unstable area	Greater than 5 (mi.)
Categorize the risk of this well / site being in a karst geology	Low
A 100-year floodplain	Between 1 and 5 (mi.)
Did the release impact areas not on an exploration, development, production, or storage site	No

Remediation Plan	
<i>Please answer all the questions that apply or are indicated. This information must be provided to the appropriate district office no later than 90 days after the release discovery date.</i>	
Requesting a remediation plan approval with this submission	Yes
<i>Attach a comprehensive report demonstrating the lateral and vertical extents of soil contamination associated with the release have been determined, pursuant to 19.15.29.11 NMAC and 19.15.29.13 NMAC.</i>	
Have the lateral and vertical extents of contamination been fully delineated	Yes
Was this release entirely contained within a lined containment area	No
Soil Contamination Sampling: (Provide the highest observable value for each, in milligrams per kilograms.)	
Chloride (EPA 300.0 or SM4500 Cl B)	4240
TPH (GRO+DRO+MRO) (EPA SW-846 Method 8015M)	115
GRO+DRO (EPA SW-846 Method 8015M)	67.8
BTEX (EPA SW-846 Method 8021B or 8260B)	2.7
Benzene (EPA SW-846 Method 8021B or 8260B)	0
<i>Per Subsection B of 19.15.29.11 NMAC unless the site characterization report includes completed efforts at remediation, the report must include a proposed remediation plan in accordance with 19.15.29.12 NMAC, which includes the anticipated timelines for beginning and completing the remediation.</i>	
On what estimated date will the remediation commence	02/03/2025
On what date will (or did) the final sampling or liner inspection occur	02/05/2025
On what date will (or was) the remediation complete(d)	02/07/2025
What is the estimated surface area (in square feet) that will be reclaimed	0
What is the estimated volume (in cubic yards) that will be reclaimed	0
What is the estimated surface area (in square feet) that will be remediated	9430
What is the estimated volume (in cubic yards) that will be remediated	227
<i>These estimated dates and measurements are recognized to be the best guess or calculation at the time of submission and may (be) change(d) over time as more remediation efforts are completed.</i>	
<i>The OCD recognizes that proposed remediation measures may have to be minimally adjusted in accordance with the physical realities encountered during remediation. If the responsible party has any need to significantly deviate from the remediation plan proposed, then it should consult with the division to determine if another remediation plan submission is required.</i>	

Sante Fe Main Office
Phone: (505) 476-3441

General Information
Phone: (505) 629-6116

Online Phone Directory
<https://www.emnrd.nm.gov/ocd/contact-us>

State of New Mexico
Energy, Minerals and Natural Resources
Oil Conservation Division
1220 S. St Francis Dr.
Santa Fe, NM 87505

QUESTIONS, Page 4

Action 423009

QUESTIONS (continued)

Operator: BTA OIL PRODUCERS, LLC 104 S Pecos Midland, TX 79701	OGRID: 260297
	Action Number: 423009
	Action Type: [C-141] Site Char./Remediation Plan C-141 (C-141-v-Plan)

QUESTIONS

Remediation Plan (continued)	
<i>Please answer all the questions that apply or are indicated. This information must be provided to the appropriate district office no later than 90 days after the release discovery date.</i>	
This remediation will (or is expected to) utilize the following processes to remediate / reduce contaminants:	
<i>(Select all answers below that apply.)</i>	
(Ex Situ) Excavation and off-site disposal (i.e. dig and haul, hydrovac, etc.)	Yes
Which OCD approved facility will be used for off-site disposal	LEA LAND LANDFILL [fEEM0112342028]
OR which OCD approved well (API) will be used for off-site disposal	Not answered.
OR is the off-site disposal site, to be used, out-of-state	No
OR is the off-site disposal site, to be used, an NMED facility	No
(Ex Situ) Excavation and on-site remediation (i.e. On-Site Land Farms)	No
(In Situ) Soil Vapor Extraction	No
(In Situ) Chemical processing (i.e. Soil Shredding, Potassium Permanganate, etc.)	No
(In Situ) Biological processing (i.e. Microbes / Fertilizer, etc.)	No
(In Situ) Physical processing (i.e. Soil Washing, Gypsum, Disking, etc.)	No
Ground Water Abatement pursuant to 19.15.30 NMAC	No
OTHER (Non-listed remedial process)	No
<i>Per Subsection B of 19.15.29.11 NMAC unless the site characterization report includes completed efforts at remediation, the report must include a proposed remediation plan in accordance with 19.15.29.12 NMAC, which includes the anticipated timelines for beginning and completing the remediation.</i>	
I hereby certify that the information given above is true and complete to the best of my knowledge and understand that pursuant to OCD rules and regulations all operators are required to report and/or file certain release notifications and perform corrective actions for releases which may endanger public health or the environment. The acceptance of a C-141 report by the OCD does not relieve the operator of liability should their operations have failed to adequately investigate and remediate contamination that pose a threat to groundwater, surface water, human health or the environment. In addition, OCD acceptance of a C-141 report does not relieve the operator of responsibility for compliance with any other federal, state, or local laws and/or regulations.	
I hereby agree and sign off to the above statement	Name: Ray Ramos Title: Environmental Manager Email: rramos@btaoil.com Date: 01/21/2025
<i>The OCD recognizes that proposed remediation measures may have to be minimally adjusted in accordance with the physical realities encountered during remediation. If the responsible party has any need to significantly deviate from the remediation plan proposed, then it should consult with the division to determine if another remediation plan submission is required.</i>	

Sante Fe Main Office
Phone: (505) 476-3441

General Information
Phone: (505) 629-6116

Online Phone Directory
<https://www.emnrd.nm.gov/ocd/contact-us>

State of New Mexico
Energy, Minerals and Natural Resources
Oil Conservation Division
1220 S. St Francis Dr.
Santa Fe, NM 87505

QUESTIONS, Page 5

Action 423009

QUESTIONS (continued)

Operator: BTA OIL PRODUCERS, LLC 104 S Pecos Midland, TX 79701	OGRID: 260297
	Action Number: 423009
	Action Type: [C-141] Site Char./Remediation Plan C-141 (C-141-v-Plan)

QUESTIONS

Deferral Requests Only	
Only answer the questions in this group if seeking a deferral upon approval this submission. Each of the following items must be confirmed as part of any request for deferral of remediation.	
Requesting a deferral of the remediation closure due date with the approval of this submission	No

Sante Fe Main Office
Phone: (505) 476-3441

General Information
Phone: (505) 629-6116

Online Phone Directory
<https://www.emnrd.nm.gov/ocd/contact-us>

State of New Mexico
Energy, Minerals and Natural Resources
Oil Conservation Division
1220 S. St Francis Dr.
Santa Fe, NM 87505

QUESTIONS, Page 6

Action 423009

QUESTIONS (continued)

Operator: BTA OIL PRODUCERS, LLC 104 S Pecos Midland, TX 79701	OGRID: 260297
	Action Number: 423009
	Action Type: [C-141] Site Char./Remediation Plan C-141 (C-141-v-Plan)

QUESTIONS

Sampling Event Information	
Last sampling notification (C-141N) recorded	{Unavailable.}

Remediation Closure Request	
Only answer the questions in this group if seeking remediation closure for this release because all remediation steps have been completed.	
Requesting a remediation closure approval with this submission	No

Sante Fe Main Office
Phone: (505) 476-3441

General Information
Phone: (505) 629-6116

Online Phone Directory
<https://www.emnrd.nm.gov/ocd/contact-us>

State of New Mexico
Energy, Minerals and Natural Resources
Oil Conservation Division
1220 S. St Francis Dr.
Santa Fe, NM 87505

CONDITIONS

Action 423009

CONDITIONS

Operator: BTA OIL PRODUCERS, LLC 104 S Pecos Midland, TX 79701	OGRID: 260297
	Action Number: 423009
	Action Type: [C-141] Site Char./Remediation Plan C-141 (C-141-v-Plan)

CONDITIONS

Created By	Condition	Condition Date
amaxwell	Remediation work plan approved.	1/22/2025
amaxwell	Submit a report via the OCD permitting portal by April 21, 2025.	1/22/2025