



Rose South CTB

Incident ID nAPP2435429070

PREPARED BY:
PIMA ENVIRONMENTAL SERVICES, LLC

PREPARED FOR:
Spur Energy

Liner Inspection and Closure Report

January 7, 2024



Pima Environmental Services
5614 N. Lovington Highway
Hobbs, NM 88240
575-964-7740

January 7, 2025

NMOCD District 2
811 S. First St
Artesia, NM, 88210

RE: Liner Inspection and Closure Report
Rose South CTB
API No. N/A
GPS: Latitude 32.6702 Longitude -104.4274
UL- M, Section 07, Township 19S, Range 26E
NMOCD Reference No. NAPP2435429070

Spur Energy Partners (Spur) engaged Pima Environmental Services, LLC (Pima) to conduct a liner inspection and prepare this closure report addressing the release of crude oil and produced water at the Rose South CTB (Rose). An initial C-141 form was submitted on December 19, 2024, and the New Mexico Oil Conservation Division (NMOCD) assigned the incident ID NAPP2435429070 to this event.

Site Information and Site Characterization

Rose is located approximately 5 miles northwest of Seven Rivers, NM. This spill site is in Unit M, Section 07, Township 19S, Range 26E, Latitude 32.6702 Longitude -104.4274, Eddy County, NM. A Location Map can be found in Figure 1.

Based on the well water data from the New Mexico Office of the State Engineer, the depth to the nearest groundwater in this vicinity measures 69 feet below grade surface (BGS), positioned roughly 0.22 miles away from the Rose, with the last meter reading being completed on July 26, 2004. Conversely, as per the United States Geological Survey well water data, the nearest groundwater depth in this region is recorded at 102.53 feet BGS, situated approximately 2.06 miles away from the Rose, with the last gauge conducted on January 10, 2017. For detailed references to water surveys and the precise locations of water wells, please refer to Appendix A, inclusive of the relevant maps. Notably, Rose is situated within an area with a medium potential for karst, as illustrated in Figure 3. Additionally, a comprehensive Topographic Map is available for reference in Figure 2.

Release Information

NAPP2435429070: On December 18, 2024, a pinhole leak developed in a vessel fill line, resulting in the release of approximately 1 barrel of crude oil and 7 barrels of produced water into a lined containment area. Immediate measures were taken to stop the leak, and a vacuum truck was promptly dispatched to the site. The truck successfully recovered all released fluids, ensuring the 1 barrel of crude oil and 7 barrels of produced water remained fully contained within the 5,500-square-foot lined area.

A Site Map can be found in Figure 4.

Site Assessment and Liner Inspection

On December 25, 2024, Spur personnel submitted a notification for a liner inspection, adhering to the necessary 48-hour notice period. The details of the 48-hour notification can be referenced in Appendix C.

On December 30, 2024, Pima Environmental conducted a thorough inspection of the lined containment area. The evaluation process included cleaning the liner with a power washer and using a vacuum truck to ensure the complete removal of any residual fluids. The inspection confirmed that the system remained intact and successfully retained all fluids. As a result, the liner was deemed functional, preventing any further environmental impact. A detailed report, including photographic evidence, is provided in Appendices C and D.

Closure Request

After careful review, Pima requests that this incident NAPP2435429070 be closed. Spur has complied with the applicable closure requirements.

For questions or additional information, please feel free to contact:

Spur Energy – Katherine Purvis at 575-441-8619 or katherine.purvis@spurenergy.com

Pima Environmental Services – Sebastian Orozco at 619-721-4813 or Sebastian@pimaoil.com.

Attachments

Figures:

- 1- Location Map
- 2- Topographic Map
- 3- Karst Map
- 4- Site Map

Appendices:

Appendix A- Referenced Water Surveys

Appendix B- Soil Survey, Geological Data, FEMA Flood Map, Wetland Map

Appendix C- 48 Hour Notification and Liner Inspection Form

Appendix D- Photographic Documentation

Figures:

Figure 1- Location Map

Figure 2- Topographic Map


Figure 3- Karst Map


Figure 4- Site Map

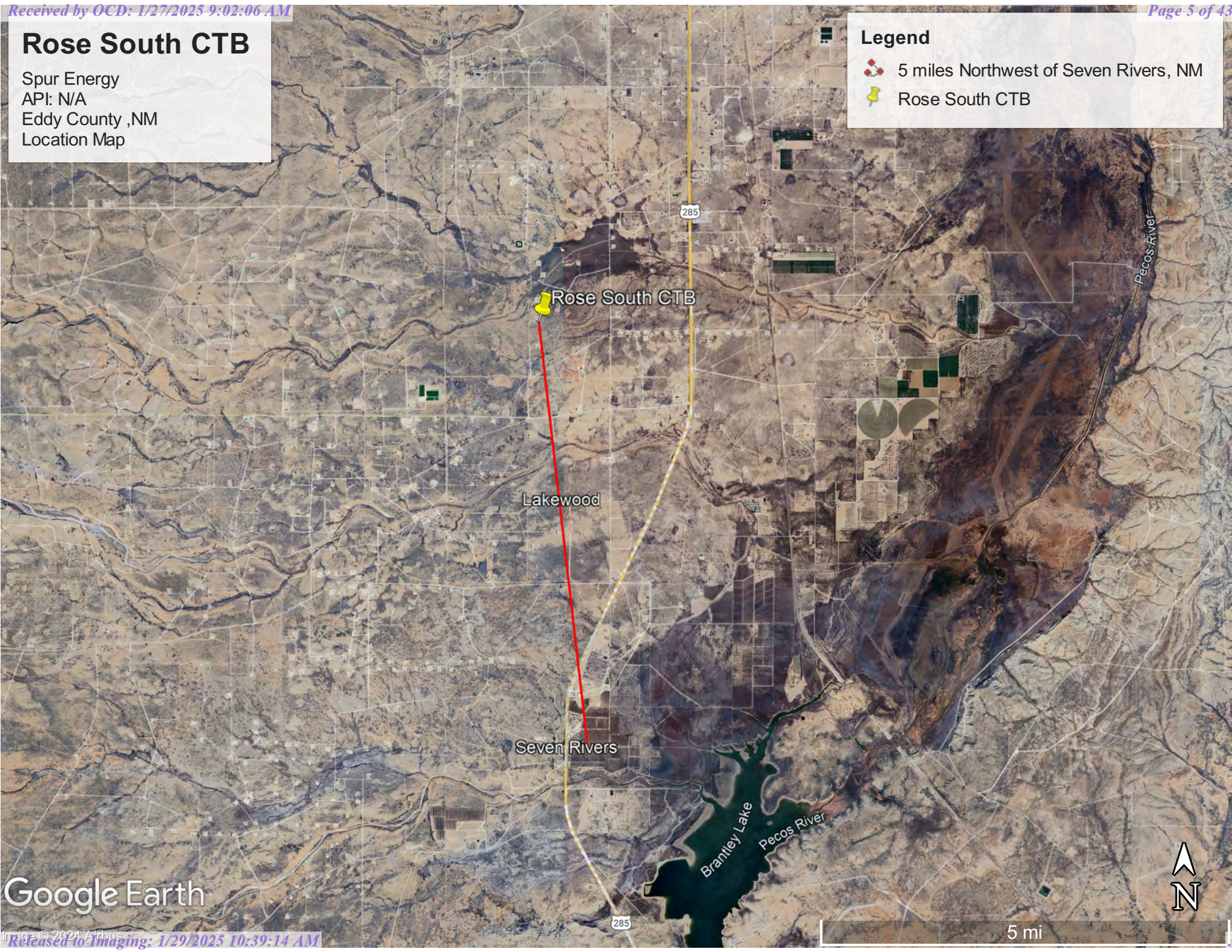
Rose South CTB

Spur Energy
API: N/A
Eddy County ,NM
Location Map

Legend

 5 miles Northwest of Seven Rivers, NM

 Rose South CTB




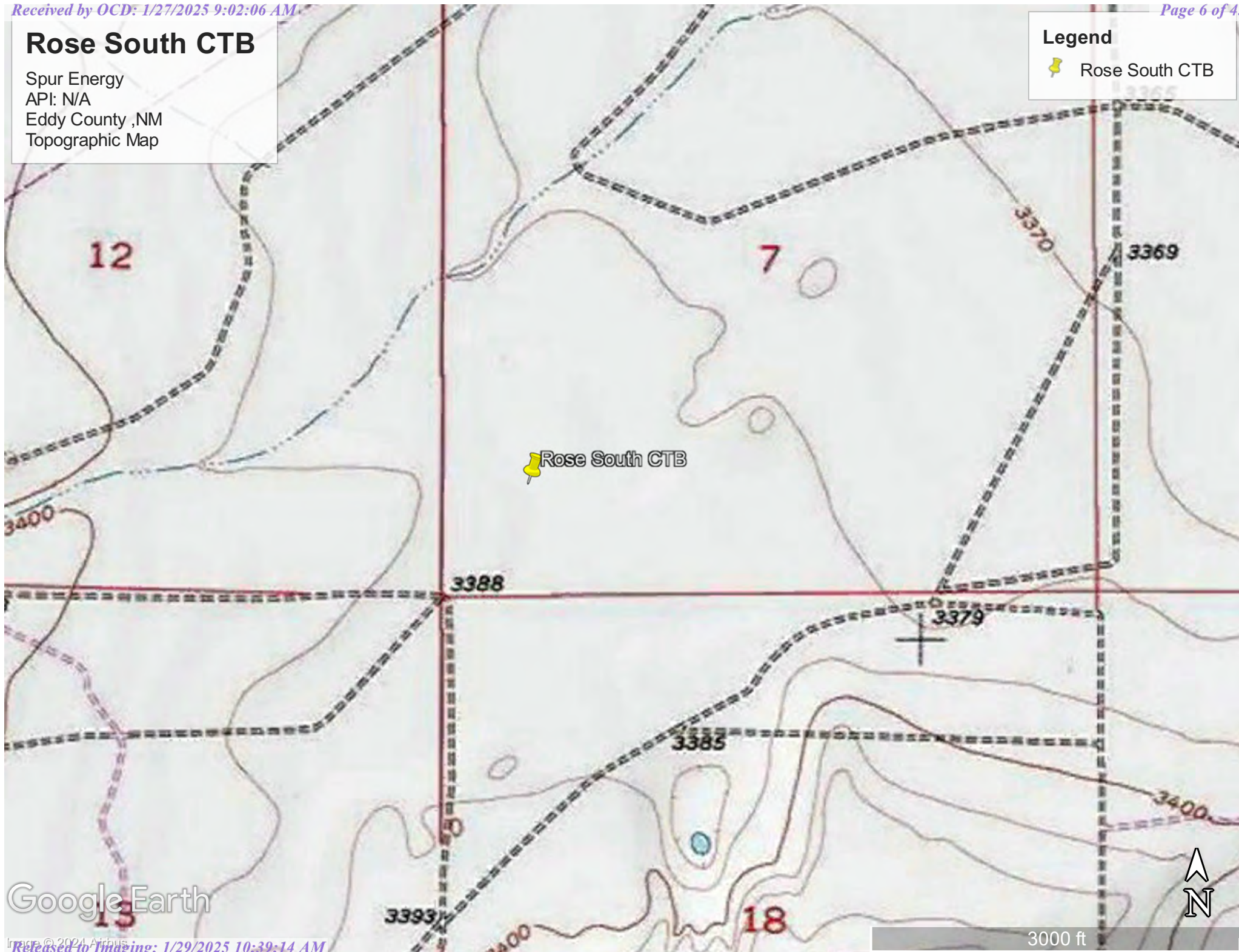
Google Earth

Rose South CTB

Spur Energy
API: N/A
Eddy County, NM
Topographic Map

Legend

 Rose South CTB



Google Earth


Image © 2021 Airbus
Released to Imaging: 1/29/2025 10:39:14 AM


Rose South CTB


Spur Energy
API: N/A
Eddy County ,NM
Karst Map

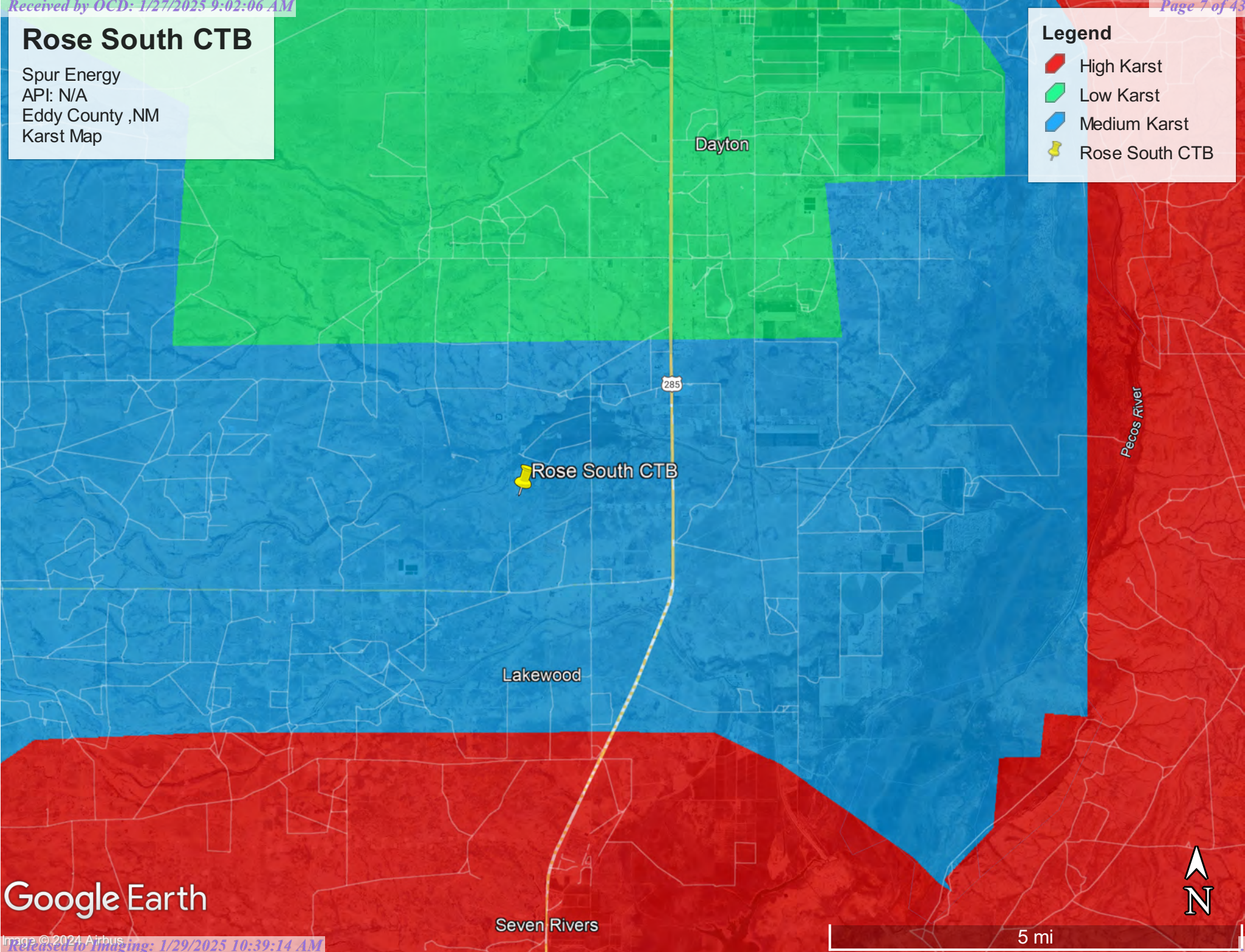
Legend

 High Karst

 Low Karst

 Medium Karst

 Rose South CTB




Google Earth

Rose South CTB

Spur Energy
API: N/A
Eddy County, NM
Site Map

Legend

 Rose South CTB-Liner Inspection Area



Google Earth


Appendix A

Water Surveys:

- OSE
- USGS
- Surface Water Map

Point of Diversion Summary

quarters are 1=NW 2=NE 3=SW 4=SE
quarters are smallest to largest
NAD83 UTM in meters

Well Tag	POD Nbr	Q64	Q16	Q4	Sec	Tw	Rng	X	Y	Map
	RA 01343	NE	NW	NW	18	19S	26E	553777.0	3614525.0 *	

* UTM location was derived from PLSS - see Help

Driller License:		Driller Company:	
Driller Name:		R. T. SCHENCK	
Drill Start Date:		Drill Finish Date:	1942-12-20
Log File Date:		PCW Rcv Date:	1943-05-17
Pump Type:		Pipe Discharge Size:	Estimated Yield:
Casing Size:		Depth Well:	440
		Depth Water:	69

Meter Information

Meter Number:	4239	Meter Make:	MCCROMETER
Meter Serial Number:	916161	Meter Multiplier:	1.0000
Number of Dials:	3	Meter Type:	Diversion
Unit of Measure:	Acre-Feet	Reading Frequency:	Monthly (No Reading Expected)

Meter Readings (in Acre-Feet)

Read Date	Year	Mtr Reading	Flag	Rdr	Comment	Mtr Amount	Online
1996-10-28	1997	469.695	A	PF		0.000	
1997-10-29	1997	569.016	A	PF		99.321	
1998-10-29	1998	685.373	A	PF		116.357	
1999-10-27	1999	785.063	A	PF		99.690	
2000-10-24	2000	908.288	A	PF		123.225	
2001-04-04	2001	920.242	A	PF		11.954	
2001-05-23	2001	942.802	A	PF		22.560	
2001-07-11	2001	966.151	A	PF		23.349	
2001-08-28	2001	990.694	A	pf		24.543	

Read Date	Year	Mtr Reading	Flag	Rdr	Comment	Mtr Amount	Online
2001-10-26	2001	1.034	R	pf	Meter Rollover	10.340	
2002-03-29	2002	13.934	A	pf		12.900	
2002-09-24	2002	102.655	A	BT		88.721	
2004-04-05	2004	124.710	A	sj		22.055	
2004-07-26	2004	125.528	A	sj		0.818	

YTD Meter Amounts:

Year	Amount
1997	99.321
1998	116.357
1999	99.690
2000	123.225
2001	92.746
2002	101.621
2004	22.873

The data is furnished by the NMOSE/ISC and is accepted by the recipient with the expressed understanding that the OSE/ISC make no warranties, expressed or implied, concerning the accuracy, completeness, reliability, usability, or suitability for any particular purpose of the data.




12/19/24 1:00 PM MST

Point of Diversion Summary

Rose South CTB

Spur Energy
API: N/A
Eddy County ,NM
OSE POD Map

Legend

-  0.22 of a mile
-  RA 01343
-  Rose South CTB

Rose South CTB

RA 01343

Google Earth



1000 ft



[USGS Home](#)
[Contact USGS](#)
[Search USGS](#)

National Water Information System: Web Interface

USGS Water Resources

Data Category:

Groundwater

Geographic Area:

United States

GO

Click to hide News Bulletins

- Explore the *NEW* [USGS National Water Dashboard](#) interactive map to access real-time water data from over 13,500 stations nationwide.

Groundwater levels for the Nation



Important: [Next Generation Monitoring Location Page](#)

Search Results -- 1 sites found

site_no list =

- 323953104274401

Minimum number of levels = 1

[Save file of selected sites](#) to local disk for future upload

USGS 323953104274401 19S.25E.14.133131

Available data for this site

Groundwater: Field measurements

GO

Eddy County, New Mexico

Hydrologic Unit Code 13060011

Latitude 32°39'53", Longitude 104°27'44" NAD27

Land-surface elevation 3,433 feet above NAVD88

This well is completed in the Roswell Basin aquifer system (S400RSWLBS) national aquifer.

This well is completed in the Alluvium, Bolson Deposits and Other Surface Deposits (110AVMB) local aquifer.

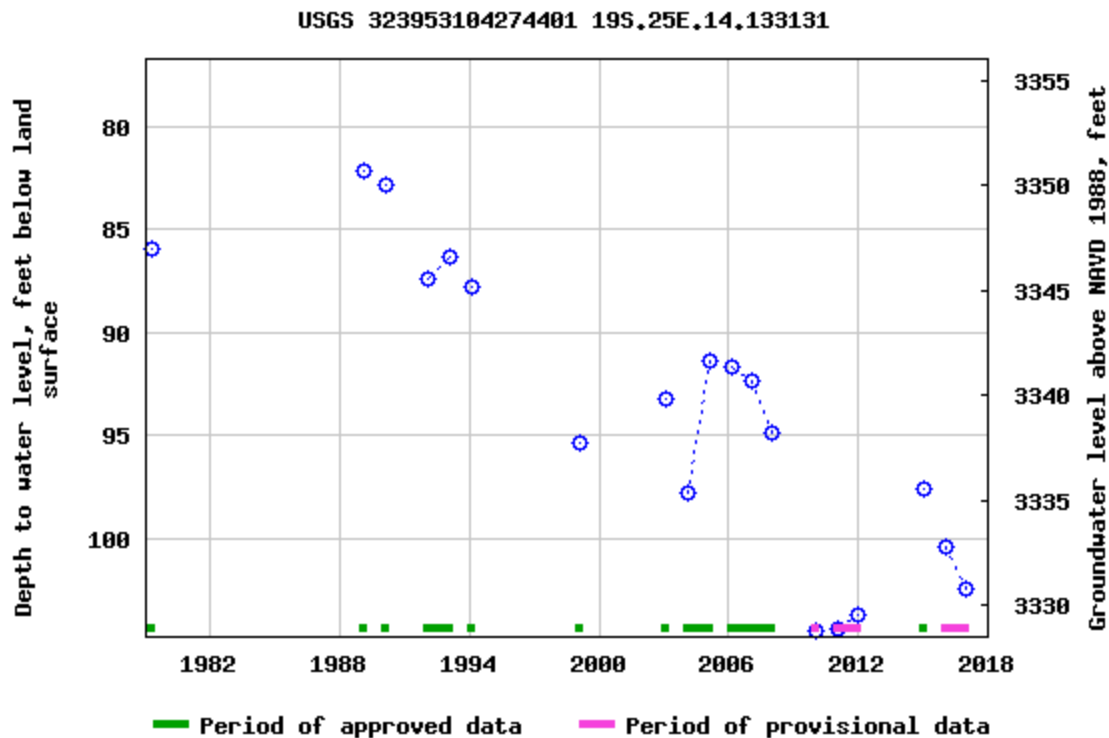
Output formats

[Table of data](#)

[Tab-separated data](#)

[Graph of data](#)

[Reselect period](#)



Breaks in the plot represent a gap of at least one year between field measurements.
[Download a presentation-quality graph](#)

[Questions or Comments](#)

[Help](#)

[Data Tips](#)

[Explanation of terms](#)

[Subscribe for system changes](#)

[Accessibility](#)

[FOIA](#)

[Privacy](#)

[Policies and Notices](#)

[U.S. Department of the Interior](#) | [U.S. Geological Survey](#)

Title: Groundwater for USA: Water Levels

URL: <https://nwis.waterdata.usgs.gov/nwis/gwlevels?>

Page Contact Information: [USGS Water Data Support Team](#)

Page Last Modified: 2024-12-19 15:09:10 EST




0.71 0.46 nadww01

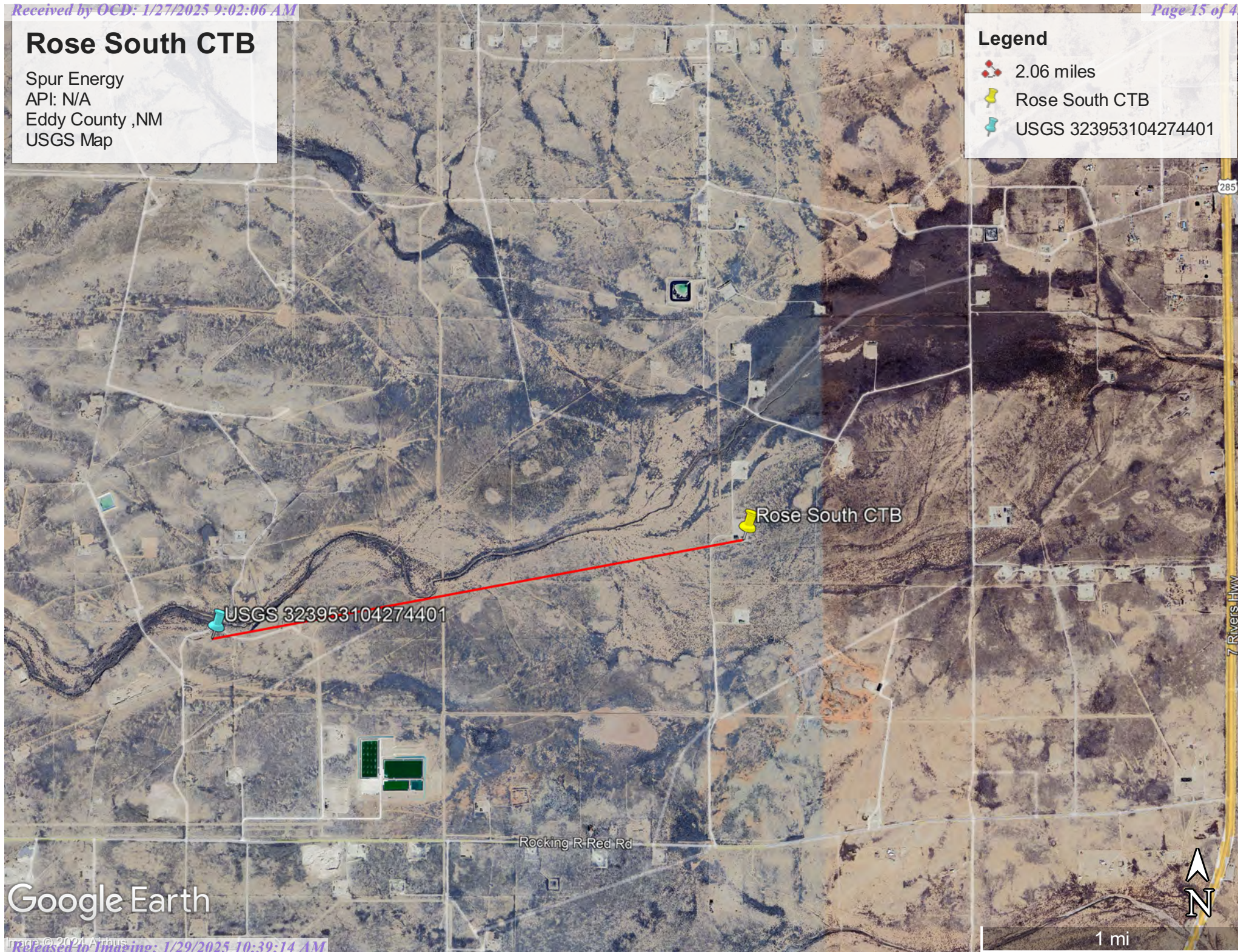


Rose South CTB

Spur Energy
API: N/A
Eddy County ,NM
USGS Map

Legend

-  2.06 miles
-  Rose South CTB
-  USGS 323953104274401



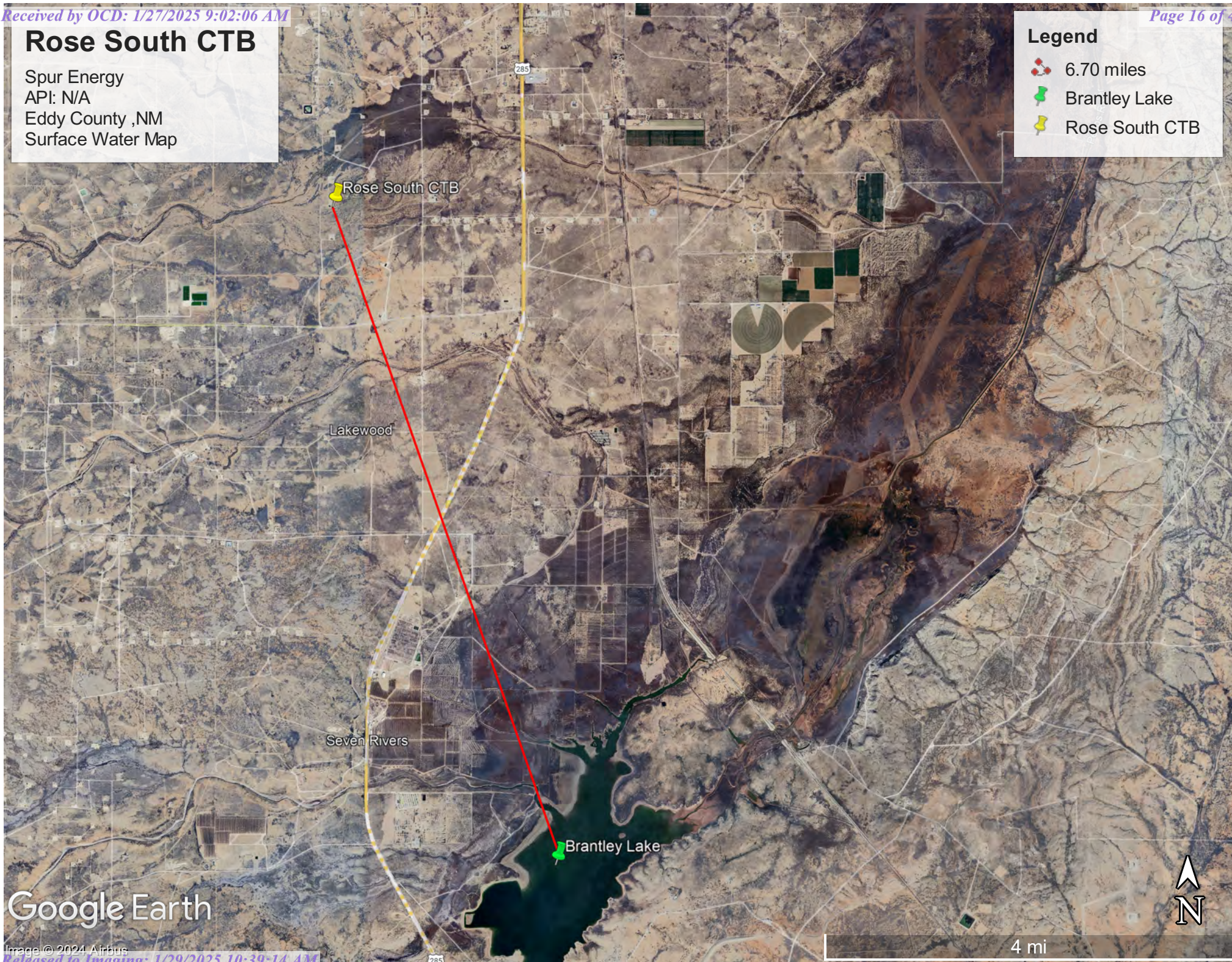
Google Earth

Rose South CTB

Spur Energy
API: N/A
Eddy County ,NM
Surface Water Map

Legend

- 6.70 miles
- Brantley Lake
- Rose South CTB



Google Earth

Image © 2024 Airbus

Appendix B

- Soil Survey & Soil Maps
- Geological Data
- FEMA Flood Map
- Wetlands Map

Map Unit Description: Reagan-Upton association, 0 to 9 percent slopes---Eddy Area, New Mexico

Eddy Area, New Mexico

RE—Reagan-Upton association, 0 to 9 percent slopes

Map Unit Setting

National map unit symbol: 1w5d

Elevation: 1,100 to 5,400 feet

Mean annual precipitation: 6 to 14 inches

Mean annual air temperature: 60 to 64 degrees F

Frost-free period: 180 to 240 days

Farmland classification: Farmland of statewide importance

Map Unit Composition

Reagan and similar soils: 70 percent

Upton and similar soils: 25 percent

Minor components: 5 percent

Estimates are based on observations, descriptions, and transects of the mapunit.

Description of Reagan

Setting

Landform: Fan remnants, alluvial fans

Landform position (three-dimensional): Rise

Down-slope shape: Convex, linear

Across-slope shape: Linear

Parent material: Alluvium and/or eolian deposits

Typical profile

H1 - 0 to 8 inches: loam

H2 - 8 to 60 inches: loam

Properties and qualities

Slope: 0 to 3 percent

Depth to restrictive feature: More than 80 inches

Drainage class: Well drained

Runoff class: Low

Capacity of the most limiting layer to transmit water

(Ksat): Moderately high to high (0.60 to 2.00 in/hr)

Depth to water table: More than 80 inches

Frequency of flooding: None

Frequency of ponding: None

Calcium carbonate, maximum content: 40 percent

Maximum salinity: Very slightly saline to moderately saline (2.0 to 8.0 mmhos/cm)

Sodium adsorption ratio, maximum: 1.0

Available water supply, 0 to 60 inches: Moderate (about 8.2 inches)

Interpretive groups

Land capability classification (irrigated): 2e

Land capability classification (nonirrigated): 6e

Map Unit Description: Reagan-Upton association, 0 to 9 percent slopes---Eddy Area, New Mexico

Hydrologic Soil Group: B
Ecological site: R042CY153NM - Loamy
Hydric soil rating: No

Description of Upton

Setting

Landform: Ridges, fans
Landform position (three-dimensional): Side slope, rise
Down-slope shape: Convex
Across-slope shape: Convex
Parent material: Residuum weathered from limestone

Typical profile

H1 - 0 to 9 inches: gravelly loam
H2 - 9 to 13 inches: gravelly loam
H3 - 13 to 21 inches: cemented
H4 - 21 to 60 inches: very gravelly loam

Properties and qualities

Slope: 0 to 9 percent
Depth to restrictive feature: 7 to 20 inches to petrocalcic
Drainage class: Well drained
Runoff class: High
Capacity of the most limiting layer to transmit water (Ksat): Low to moderately high (0.01 to 0.60 in/hr)
Depth to water table: More than 80 inches
Frequency of flooding: None
Frequency of ponding: None
Calcium carbonate, maximum content: 75 percent
Maximum salinity: Nonsaline to very slightly saline (0.0 to 2.0 mmhos/cm)
Sodium adsorption ratio, maximum: 1.0
Available water supply, 0 to 60 inches: Very low (about 1.4 inches)

Interpretive groups

Land capability classification (irrigated): None specified
Land capability classification (nonirrigated): 7s
Hydrologic Soil Group: D
Ecological site: R042CY159NM - Shallow Loamy
Hydric soil rating: No

Minor Components

Atoka

Percent of map unit: 3 percent
Ecological site: R070BC007NM - Loamy
Hydric soil rating: No

Pima

Percent of map unit: 2 percent
Ecological site: R070BC017NM - Bottomland

Map Unit Description: Reagan-Upton association, 0 to 9 percent slopes---Eddy Area, New Mexico

Hydric soil rating: No

Data Source Information

Soil Survey Area: Eddy Area, New Mexico

Survey Area Data: Version 20, Sep 3, 2024

Soil Map—Eddy Area, New Mexico



Natural Resources
Conservation Service

Web Soil Survey
National Cooperative Soil Survey

12/20/2024
Page 1 of 3

MAP INFORMATION

Feature Type	Feature Name	Symbol
Water Features	Streams and Canals	
	Special Line Features	
	Other	
	Wet Spot	
	Very Stony Spot	
	Stony Spot	
	Spoil Area	
Transportation	Local Roads	
	Major Roads	
	US Routes	
	Interstate Highways	
	Rails	
Background	Aerial Photography	

The soil surveys that comprise your AOI were mapped at 1:20,000.

Warning: Soil Map may not be valid at this scale.

Enlargement of maps beyond the scale of mapping can cause misunderstanding of the detail of mapping and accuracy of soil line placement. The maps do not show the small areas of contrasting soils that could have been shown at a more detailed scale.

Please rely on the bar scale on each map sheet for map measurements.

Source of Map: Natural Resources Conservation Service
Web Soil Survey URL: <https://websoilsurvey.sc.egov.usda.gov/App/WebSoilSurvey.aspx>
Coordinate System: Web Mercator (EPSG:3857)

Maps from the Web Soil Survey are based on the Web Mercator projection, which preserves direction and shape but distorts distance and area. A projection that preserves area, such as the Albers equal-area conic projection, should be used if more accurate calculations of distance or area are required.

This product is generated from the USDA-NRCS certified data as of the version date(s) listed below:

Soil Survey Area: Eddy Area, New Mexico
Survey Area Data: Version 20, Sep 3, 2024

Soil map units are labeled (as space allows) for map scales 1:50,000 or larger.

Date(s) aerial images were photographed: Nov 12, 2022—Dec 2, 2022

The orthophoto or other base map on which the soil lines were compiled and digitized probably differs from the background imagery displayed on these maps. As a result, some minor shifting of map unit boundaries may be evident.

Map Unit Legend

Map Unit Symbol	Map Unit Name	Acres in AOI	Percent of AOI
RE	Reagan-Upton association, 0 to 9 percent slopes	3.4	100.0%
Totals for Area of Interest		3.4	100.0%

(<https://www.usgs.gov/>)

Mineral Resources (<https://www.usgs.gov/energy-and-minerals/mineral-resources-program>)
/ Online Spatial Data (/) / Geology (/geology/) / by state (/geology/state/)
/ New Mexico (/geology/state/state.php?state=NM)

Piedmont alluvial deposits

XML (/geology/state/xml/NMQp;0)

JSON (/geology/state/json/NMQp;0)

Shapefile (/geology/state/unit-shape.php?unit=NMQp;0)

Includes deposits of higher gradient tributaries bordering major stream valleys, alluvial veneers of the piedmont slope, and alluvial fans. May locally include uppermost Pliocene deposits.

State	New Mexico (/geology/state/state.php?state=NM)
Name	Piedmont alluvial deposits
Geologic age	Holocene to lower Pleistocene
Lithologic constituents	Major Unconsolidated (Alluvial) Includes deposits of higher gradient tributaries bordering major stream valleys, alluvial veneers of the piedmont slope, and alluvial fans
References	Green, G.N., Jones, G.E., and Anderson, O.J., 1997, The Digital Geologic Map of New Mexico in ARC/INFO Format: U.S. Geological Survey Open-File Report 97-0052, 9 p., scale 1:500,000. https://pubs.er.usgs.gov/publication/ofr9752 (https://pubs.er.usgs.gov/publication/ofr9752)
NGMDB product	NGMDB product page for 59219 (https://ngmdb.usgs.gov/Prodesc/proddesc_59219.htm) NGMDB product page for 22974 (https://ngmdb.usgs.gov/Prodesc/proddesc_22974.htm)

Counties Bernalillo (/geology/state/fips-unit.php?code=f35001) - Catron (/geology/state/fips-unit.php?code=f35003) - Chaves (/geology/state/fips-unit.php?code=f35005) - Colfax (/geology/state/fips-unit.php?code=f35007) - DeBaca (/geology/state/fips-unit.php?code=f35011) - Dona Ana (/geology/state/fips-unit.php?code=f35013) - Eddy (/geology/state/fips-unit.php?code=f35015) - Grant (/geology/state/fips-unit.php?code=f35017) - Guadalupe (/geology/state/fips-unit.php?code=f35019) - Hidalgo (/geology/state/fips-unit.php?code=f35023) - Lea (/geology/state/fips-unit.php?code=f35025) - Lincoln (/geology/state/fips-unit.php?code=f35027) - Los Alamos (/geology/state/fips-unit.php?code=f35028) - Luna (/geology/state/fips-unit.php?code=f35029) - Mora (/geology/state/fips-unit.php?code=f35033) - Otero (/geology/state/fips-unit.php?code=f35035) - Quay (/geology/state/fips-unit.php?code=f35037) - Rio Arriba (/geology/state/fips-unit.php?code=f35039) - Roosevelt (/geology/state/fips-unit.php?code=f35041) - Sandoval (/geology/state/fips-unit.php?code=f35043) - San Miguel (/geology/state/fips-unit.php?code=f35047) - Santa Fe (/geology/state/fips-unit.php?code=f35049) - Sierra (/geology/state/fips-unit.php?code=f35051) - Socorro (/geology/state/fips-unit.php?code=f35053) - Taos (/geology/state/fips-unit.php?code=f35055) - Torrance (/geology/state/fips-unit.php?code=f35057) - Valencia (/geology/state/fips-unit.php?code=f35061)

DOI Privacy Policy (<https://www.doi.gov/privacy>) | Legal (https://www.usgs.gov/laws/policies_notices.html) |

Accessibility (<https://www2.usgs.gov/laws/accessibility.html>) | Site Map (<https://www.usgs.gov/sitemap.html>) |

Contact USGS (<https://answers.usgs.gov/>)

U.S. Department of the Interior (<https://www.doi.gov/>) | DOI Inspector General (<https://www.doiig.gov/>) |

White House (<https://www.whitehouse.gov/>) | E-gov (<https://www.whitehouse.gov/omb/management/egov/>) |

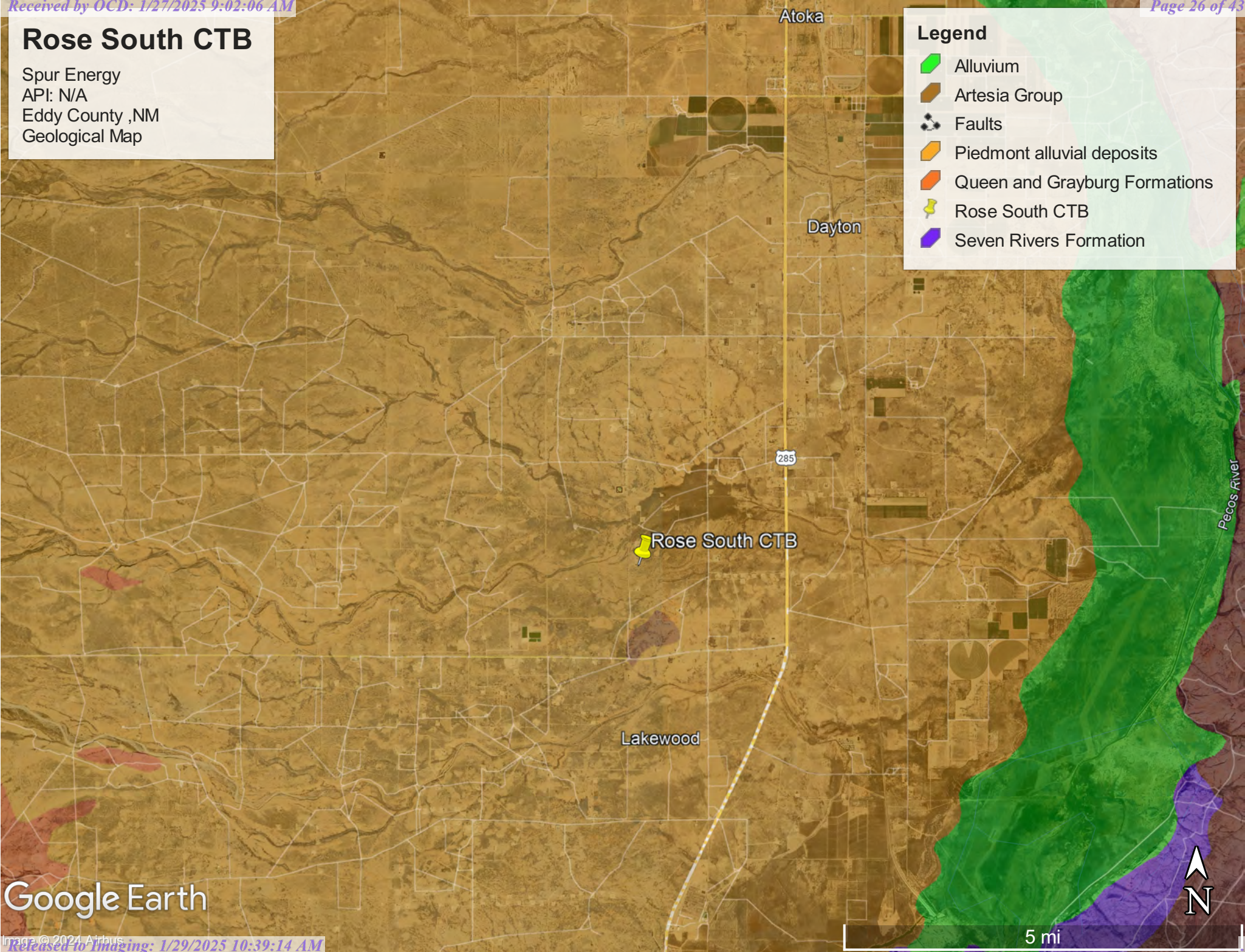
No Fear Act (<https://www.doi.gov/pmb/eeo/no-fear-act>) | FOIA (<https://www2.usgs.gov/foia>)

Rose South CTB

Spur Energy
API: N/A
Eddy County ,NM
Geological Map

Legend

- Alluvium
- Artesia Group
- Faults
- Piedmont alluvial deposits
- Queen and Grayburg Formations
- Rose South CTB
- Seven Rivers Formation

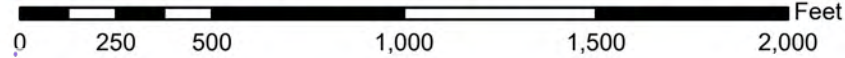


Google Earth

National Flood Hazard Layer FIRMette



104°25'57"W 32°40'28"N



1:6,000

104°25'20"W 32°39'58"N

Basemap Imagery Source: USGS National Map 2023

Legend

SEE FIS REPORT FOR DETAILED LEGEND AND INDEX MAP FOR FIRM PANEL LAYOUT

SPECIAL FLOOD HAZARD AREAS		Without Base Flood Elevation (BFE) Zone A, V, A99
		With BFE or Depth Zone AE, AO, AH, VE, AR
		Regulatory Floodway
OTHER AREAS OF FLOOD HAZARD		0.2% Annual Chance Flood Hazard, Areas of 1% annual chance flood with average depth less than one foot or with drainage areas of less than one square mile Zone X
		Future Conditions 1% Annual Chance Flood Hazard Zone X
		Area with Reduced Flood Risk due to Levee. See Notes. Zone X
		Area with Flood Risk due to Levee Zone X
OTHER AREAS		NO SCREEN Area of Minimal Flood Hazard Zone X
		Effective LOMRs
GENERAL STRUCTURES		Area of Undetermined Flood Hazard Zone D
		Channel, Culvert, or Storm Sewer
OTHER FEATURES		Levee, Dike, or Floodwall
		20.2 Cross Sections with 1% Annual Chance Water Surface Elevation
MAP PANELS		17.5 Coastal Transect
		Base Flood Elevation Line (BFE)
		Limit of Study
		Jurisdiction Boundary
		Coastal Transect Baseline
		Profile Baseline
		Hydrographic Feature
		Digital Data Available
		No Digital Data Available
		Unmapped

This map complies with FEMA's standards for the use of digital flood maps if it is not void as described below. The basemap shown complies with FEMA's basemap accuracy standards

The flood hazard information is derived directly from the authoritative NFHL web services provided by FEMA. This map was exported on **12/20/2024 at 4:08 PM** and does not reflect changes or amendments subsequent to this date and time. The NFHL and effective information may change or become superseded by new data over time.

This map image is void if the one or more of the following map elements do not appear: basemap imagery, flood zone labels, legend, scale bar, map creation date, community identifiers, FIRM panel number, and FIRM effective date. Map images for unmapped and unmodernized areas cannot be used for regulatory purposes.

Released to Imaging: 1/29/2025 10:39:14 AM

Received by OCD: 1/29/2025 9:02:06 AM



December 19, 2024

Wetlands

- | | | |
|--|---|--|
|  Estuarine and Marine Deepwater |  Freshwater Emergent Wetland |  Lake |
|  Estuarine and Marine Wetland |  Freshwater Forested/Shrub Wetland |  Other |
| |  Freshwater Pond |  Riverine |

This map is for general reference only. The US Fish and Wildlife Service is not responsible for the accuracy or currentness of the base data shown on this map. All wetlands related data should be used in accordance with the layer metadata found on the Wetlands Mapper web site.



Appendix C

- 48-Hour Notification
- Liner Inspection Form

Sebastian@pimaoil.com

From: OCDOnline@state.nm.us
Sent: Wednesday, December 25, 2024 7:49 PM
To: sebastian@pimaoil.com
Subject: The Oil Conservation Division (OCD) has accepted the application, Application ID: 415044

To whom it may concern (c/o Sebastian Orozco for Spur Energy Partners LLC),

The OCD has received the submitted *Notification for Liner Inspection for a Release* (C-141L), for incident ID (n#) nAPP2435429070.

The liner inspection is expected to take place:

When: 12/30/2024 @ 08:00

Where: M-07-19S-26E 0 FNL 0 FEL (32.6702,-104.4274)

Additional Information: Marisa Loya
575-416-0639

Additional Instructions: 32.6702,-104.4274

An OCD representative may be available onsite at the date and time reported. In the absence or presence of an OCD representative, liner inspection pursuant to 19.15.29.11.A(5)(a) NMAC is required. Should there be a change in the scheduled date and time of the sampling event, then another notification should be resubmitted through OCD permitting as soon as possible.

- **Failure to notify the OCD of liner inspections including any changes in date/time per the requirements of 19.15.29.11.A(5)(a)(ii) NMAC, may result in the inspection not being accepted.**

If you have any questions regarding this application, or don't know why you have received this email, please contact us.

New Mexico Energy, Minerals and Natural Resources Department
1220 South St. Francis Drive
Santa Fe, NM 87505



Pima Environmental Services, LLC

Liner Inspection FormCompany Name: Spur EnergySite: Rose South STBLat/Long: 32.6702, -104.4274

NMOCD Incident ID

& Incident Date: NAPP2435429070 12/18/2024

2-Day Notification

Sent: via Email by Sebastian Orozco on OCD portal 12/25/2024Inspection Date: 12/30/2024

Liner Type: Earthen w/liner Earthen no liner Polystar

 Steel w/poly liner Steel w/spray epoxy No Liner

Other: _____

Visualization	Yes	No	Comments
Is there a tear in the liner?		X	
Are there holes in the liner?		X	
Is the liner retaining any fluids?	X		Residual liquid is visible in the photo log from the power washing cleaning event.
Does the liner have integrity to contain a leak?	X		

Comments: _____

Inspector Name: Marisa Loya Inspector Signature: Marisa Loya



Appendix D

○ Photographic Documentation



PHOTOGRAPHIC DOCUMENTATION

SITE NAME: Rose South CTB

Pre- Power wash Pictures :



Photo of liner taken prior to power washing.
Facing West.



Photo of liner taken prior to power washing.
Facing North.



Photo of liner taken prior to power washing.
Facing West.



Photo of liner taken prior to power washing.
Facing South

PHOTOGRAPHIC DOCUMENTATION

SITE NAME: Rose South CTB

Pre- Power wash Aerial Photos :



Aerial Photos prior to power wash.



Aerial Photos prior to power wash.



Aerial Photos prior to power wash.



Photo of liner taken prior to power washing.
Facing South

PHOTOGRAPHIC DOCUMENTATION

SITE NAME: Rose South CTB

Liner Inspection :

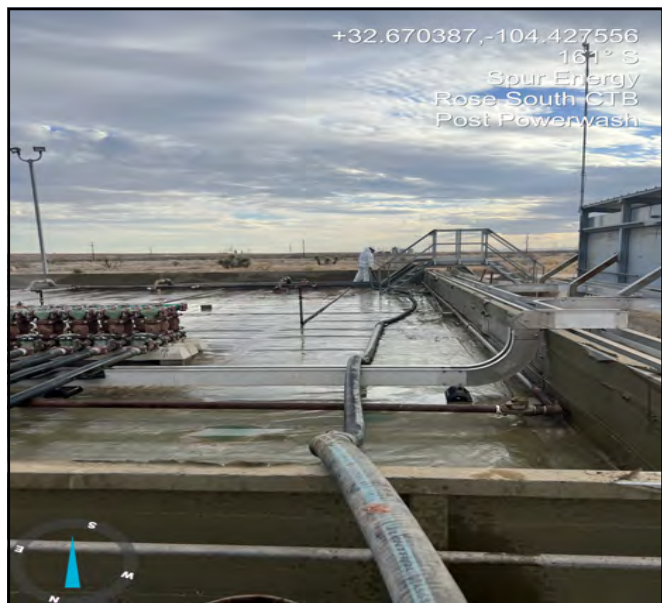


Photo taken pursuant to power washing.
Facing South.



Photo taken pursuant to power washing.
Facing North.



Photo taken pursuant to power washing.
Facing East.

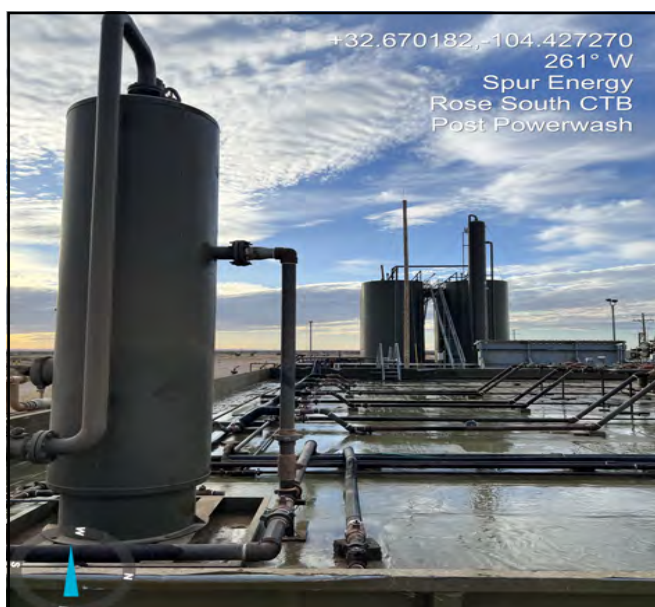


Photo taken pursuant to power washing.
Facing West.



Photo taken pursuant to power washing.
Facing North.



Photo taken pursuant to power washing.
Facing South.

PHOTOGRAPHIC DOCUMENTATION

SITE NAME: Rose South CTB

Aerial Photos :



Aerial Photos pursuant to power wash.



Aerial Photos pursuant to power wash.



Aerial Photos pursuant to power wash.



Aerial Photos pursuant to power wash.

Sante Fe Main Office
Phone: (505) 476-3441

General Information
Phone: (505) 629-6116

Online Phone Directory
<https://www.emnrd.nm.gov/ocd/contact-us>

State of New Mexico
Energy, Minerals and Natural Resources
Oil Conservation Division
1220 S. St Francis Dr.
Santa Fe, NM 87505

QUESTIONS

Action 424853

QUESTIONS

Operator: Spur Energy Partners LLC 9655 Katy Freeway Houston, TX 77024	OGRID: 328947
	Action Number: 424853
	Action Type: [C-141] Remediation Closure Request C-141 (C-141-v-Closure)

QUESTIONS

Prerequisites	
Incident ID (n#)	nAPP2435429070
Incident Name	NAPP2435429070 ROSE SOUTH CTB @ 0
Incident Type	Release Other
Incident Status	Remediation Closure Report Received
Incident Facility	[fAPP2132748973] Rose South Tank Battery

Location of Release Source

Please answer all the questions in this group.

Site Name	ROSE SOUTH CTB
Date Release Discovered	12/18/2024
Surface Owner	Private

Incident Details

Please answer all the questions in this group.

Incident Type	Release Other
Did this release result in a fire or is the result of a fire	No
Did this release result in any injuries	No
Has this release reached or does it have a reasonable probability of reaching a watercourse	No
Has this release endangered or does it have a reasonable probability of endangering public health	No
Has this release substantially damaged or will it substantially damage property or the environment	No
Is this release of a volume that is or may with reasonable probability be detrimental to fresh water	No

Nature and Volume of Release

Material(s) released, please answer all that apply below. Any calculations or specific justifications for the volumes provided should be attached to the follow-up C-141 submission.

Crude Oil Released (bbls) Details	Cause: Corrosion Other (Specify) Crude Oil Released: 1 BBL Recovered: 1 BBL Lost: 0 BBL.
Produced Water Released (bbls) Details	Cause: Corrosion Other (Specify) Produced Water Released: 7 BBL Recovered: 7 BBL Lost: 0 BBL.
Is the concentration of chloride in the produced water >10,000 mg/l	Yes
Condensate Released (bbls) Details	Not answered.
Natural Gas Vented (Mcf) Details	Not answered.
Natural Gas Flared (Mcf) Details	Not answered.
Other Released Details	Not answered.
Are there additional details for the questions above (i.e. any answer containing Other, Specify, Unknown, and/or Fire, or any negative lost amounts)	VESSEL FILL LINE DEVELOPED A PINHOLE RELEASING AN OIL AND PW MIX INTO LINED CONTAINMENT

Sante Fe Main Office
Phone: (505) 476-3441

General Information
Phone: (505) 629-6116

Online Phone Directory
<https://www.emnrd.nm.gov/ocd/contact-us>

State of New Mexico
Energy, Minerals and Natural Resources
Oil Conservation Division
1220 S. St Francis Dr.
Santa Fe, NM 87505

QUESTIONS, Page 2

Action 424853

QUESTIONS (continued)

Operator: Spur Energy Partners LLC 9655 Katy Freeway Houston, TX 77024	OGRID: 328947
	Action Number: 424853
	Action Type: [C-141] Remediation Closure Request C-141 (C-141-v-Closure)

QUESTIONS

Nature and Volume of Release (continued)	
Is this a gas only submission (i.e. only significant Mcf values reported)	No, according to supplied volumes this does not appear to be a "gas only" report.
Was this a major release as defined by Subsection A of 19.15.29.7 NMAC	No
Reasons why this would be considered a submission for a notification of a major release	<i>Unavailable.</i>
<i>With the implementation of the 19.15.27 NMAC (05/25/2021), venting and/or flaring of natural gas (i.e. gas only) are to be submitted on the C-129 form.</i>	

Initial Response

The responsible party must undertake the following actions immediately unless they could create a safety hazard that would result in injury.

The source of the release has been stopped	True
The impacted area has been secured to protect human health and the environment	True
Released materials have been contained via the use of berms or dikes, absorbent pads, or other containment devices	True
All free liquids and recoverable materials have been removed and managed appropriately	True
If all the actions described above have not been undertaken, explain why	N/A

Per Paragraph (4) of Subsection B of 19.15.29.8 NMAC the responsible party may commence remediation immediately after discovery of a release. If remediation has begun, please prepare and attach a narrative of actions to date in the follow-up C-141 submission. If remedial efforts have been successfully completed or if the release occurred within a lined containment area (see Subparagraph (a) of Paragraph (5) of Subsection A of 19.15.29.11 NMAC), please prepare and attach all information needed for closure evaluation in the follow-up C-141 submission.

I hereby certify that the information given above is true and complete to the best of my knowledge and understand that pursuant to OCD rules and regulations all operators are required to report and/or file certain release notifications and perform corrective actions for releases which may endanger public health or the environment. The acceptance of a C-141 report by the OCD does not relieve the operator of liability should their operations have failed to adequately investigate and remediate contamination that pose a threat to groundwater, surface water, human health or the environment. In addition, OCD acceptance of a C-141 report does not relieve the operator of responsibility for compliance with any other federal, state, or local laws and/or regulations.

I hereby agree and sign off to the above statement	Name: Katherine Purvis Title: EHS Coordinator Email: katherine.purvis@spurenergy.com Date: 12/19/2024
--	---

Sante Fe Main Office
Phone: (505) 476-3441

General Information
Phone: (505) 629-6116

Online Phone Directory
<https://www.emnrd.nm.gov/ocd/contact-us>

State of New Mexico
Energy, Minerals and Natural Resources
Oil Conservation Division
1220 S. St Francis Dr.
Santa Fe, NM 87505

QUESTIONS, Page 3

Action 424853

QUESTIONS (continued)

Operator: Spur Energy Partners LLC 9655 Katy Freeway Houston, TX 77024	OGRID:
	328947
	Action Number:
	424853
Action Type:	
[C-141] Remediation Closure Request C-141 (C-141-v-Closure)	

QUESTIONS

Site Characterization	
<i>Please answer all the questions in this group (only required when seeking remediation plan approval and beyond). This information must be provided to the appropriate district office no later than 90 days after the release discovery date.</i>	
What is the shallowest depth to groundwater beneath the area affected by the release in feet below ground surface (ft bgs)	Between 51 and 75 (ft.)
What method was used to determine the depth to ground water	NM OSE iWaters Database Search
Did this release impact groundwater or surface water	No
What is the minimum distance, between the closest lateral extents of the release and the following surface areas:	
A continuously flowing watercourse or any other significant watercourse	Between ½ and 1 (mi.)
Any lakebed, sinkhole, or playa lake (measured from the ordinary high-water mark)	Between ½ and 1 (mi.)
An occupied permanent residence, school, hospital, institution, or church	Greater than 5 (mi.)
A spring or a private domestic fresh water well used by less than five households for domestic or stock watering purposes	Between ½ and 1 (mi.)
Any other fresh water well or spring	Between ½ and 1 (mi.)
Incorporated municipal boundaries or a defined municipal fresh water well field	Greater than 5 (mi.)
A wetland	Between ½ and 1 (mi.)
A subsurface mine	Between 1 and 5 (mi.)
An (non-karst) unstable area	Between 1 and 5 (mi.)
Categorize the risk of this well / site being in a karst geology	Medium
A 100-year floodplain	Between ½ and 1 (mi.)
Did the release impact areas not on an exploration, development, production, or storage site	No

Remediation Plan	
<i>Please answer all the questions that apply or are indicated. This information must be provided to the appropriate district office no later than 90 days after the release discovery date.</i>	
Requesting a remediation plan approval with this submission	Yes
<i>Attach a comprehensive report demonstrating the lateral and vertical extents of soil contamination associated with the release have been determined, pursuant to 19.15.29.11 NMAC and 19.15.29.13 NMAC.</i>	
Have the lateral and vertical extents of contamination been fully delineated	Yes
Was this release entirely contained within a lined containment area	Yes
<i>Per Subsection B of 19.15.29.11 NMAC unless the site characterization report includes completed efforts at remediation, the report must include a proposed remediation plan in accordance with 19.15.29.12 NMAC, which includes the anticipated timelines for beginning and completing the remediation.</i>	
On what estimated date will the remediation commence	12/30/2024
On what date will (or did) the final sampling or liner inspection occur	12/30/2024
On what date will (or was) the remediation complete(d)	12/30/2024
What is the estimated surface area (in square feet) that will be remediated	5500
What is the estimated volume (in cubic yards) that will be remediated	0
<i>These estimated dates and measurements are recognized to be the best guess or calculation at the time of submission and may (be) change(d) over time as more remediation efforts are completed.</i>	
<i>The OCD recognizes that proposed remediation measures may have to be minimally adjusted in accordance with the physical realities encountered during remediation. If the responsible party has any need to significantly deviate from the remediation plan proposed, then it should consult with the division to determine if another remediation plan submission is required.</i>	

Sante Fe Main Office
Phone: (505) 476-3441

General Information
Phone: (505) 629-6116

Online Phone Directory
<https://www.emnrd.nm.gov/ocd/contact-us>

State of New Mexico
Energy, Minerals and Natural Resources
Oil Conservation Division
1220 S. St Francis Dr.
Santa Fe, NM 87505

QUESTIONS, Page 4

Action 424853

QUESTIONS (continued)

Operator: Spur Energy Partners LLC 9655 Katy Freeway Houston, TX 77024	OGRID: 328947
	Action Number: 424853
	Action Type: [C-141] Remediation Closure Request C-141 (C-141-v-Closure)

QUESTIONS

Remediation Plan (continued)	
<i>Please answer all the questions that apply or are indicated. This information must be provided to the appropriate district office no later than 90 days after the release discovery date.</i>	
This remediation will (or is expected to) utilize the following processes to remediate / reduce contaminants:	
<i>(Select all answers below that apply.)</i>	
Is (or was) there affected material present needing to be removed	No
Is (or was) there a power wash of the lined containment area (to be) performed	Yes
OTHER (Non-listed remedial process)	Not answered.
<i>Per Subsection B of 19.15.29.11 NMAC unless the site characterization report includes completed efforts at remediation, the report must include a proposed remediation plan in accordance with 19.15.29.12 NMAC, which includes the anticipated timelines for beginning and completing the remediation.</i>	
I hereby certify that the information given above is true and complete to the best of my knowledge and understand that pursuant to OCD rules and regulations all operators are required to report and/or file certain release notifications and perform corrective actions for releases which may endanger public health or the environment. The acceptance of a C-141 report by the OCD does not relieve the operator of liability should their operations have failed to adequately investigate and remediate contamination that pose a threat to groundwater, surface water, human health or the environment. In addition, OCD acceptance of a C-141 report does not relieve the operator of responsibility for compliance with any other federal, state, or local laws and/or regulations.	
I hereby agree and sign off to the above statement	Name: Katherine Purvis Title: EHS Coordinator Email: katherine.purvis@spurenergy.com Date: 01/27/2025
<i>The OCD recognizes that proposed remediation measures may have to be minimally adjusted in accordance with the physical realities encountered during remediation. If the responsible party has any need to significantly deviate from the remediation plan proposed, then it should consult with the division to determine if another remediation plan submission is required.</i>	

Sante Fe Main Office
Phone: (505) 476-3441

General Information
Phone: (505) 629-6116

Online Phone Directory
<https://www.emnrd.nm.gov/ocd/contact-us>

State of New Mexico
Energy, Minerals and Natural Resources
Oil Conservation Division
1220 S. St Francis Dr.
Santa Fe, NM 87505

QUESTIONS, Page 6

Action 424853

QUESTIONS (continued)

Operator: Spur Energy Partners LLC 9655 Katy Freeway Houston, TX 77024	OGRID: 328947
	Action Number: 424853
	Action Type: [C-141] Remediation Closure Request C-141 (C-141-v-Closure)

QUESTIONS

Liner Inspection Information	
Last liner inspection notification (C-141L) recorded	415044
Liner inspection date pursuant to Subparagraph (a) of Paragraph (5) of Subsection A of 19.15.29.11 NMAC	12/30/2024
Was all the impacted materials removed from the liner	Yes
What was the liner inspection surface area in square feet	5500

Remediation Closure Request

Only answer the questions in this group if seeking remediation closure for this release because all remediation steps have been completed.

Requesting a remediation closure approval with this submission	Yes
Have the lateral and vertical extents of contamination been fully delineated	Yes
Was this release entirely contained within a lined containment area	Yes
What was the total surface area (in square feet) remediated	5500
What was the total volume (cubic yards) remediated	0
Summarize any additional remediation activities not included by answers (above)	LINER WAS POWERWASHED AND INSPECTED AND FOUND TO BE ABLE TO CONTAIN LIQUIDS.

The responsible party must attach information demonstrating they have complied with all applicable closure requirements and any conditions or directives of the OCD. This demonstration should be in the form of a comprehensive report (in .pdf format) including a scaled site map, sampling diagrams, relevant field notes, photographs of any excavation prior to backfilling, laboratory data including chain of custody documents of final sampling, and a narrative of the remedial activities. Refer to 19.15.29.12 NMAC.

I hereby certify that the information given above is true and complete to the best of my knowledge and understand that pursuant to OCD rules and regulations all operators are required to report and/or file certain release notifications and perform corrective actions for releases which may endanger public health or the environment. The acceptance of a C-141 report by the OCD does not relieve the operator of liability should their operations have failed to adequately investigate and remediate contamination that pose a threat to groundwater, surface water, human health or the environment. In addition, OCD acceptance of a C-141 report does not relieve the operator of responsibility for compliance with any other federal, state, or local laws and/or regulations. The responsible party acknowledges they must substantially restore, reclaim, and re-vegetate the impacted surface area to the conditions that existed prior to the release or their final land use in accordance with 19.15.29.13 NMAC including notification to the OCD when reclamation and re-vegetation are complete.

I hereby agree and sign off to the above statement	Name: Katherine Purvis Title: EHS Coordinator Email: katherine.purvis@spurenergy.com Date: 01/27/2025
--	---

Sante Fe Main Office
Phone: (505) 476-3441

General Information
Phone: (505) 629-6116

Online Phone Directory
<https://www.emnrd.nm.gov/ocd/contact-us>

State of New Mexico
Energy, Minerals and Natural Resources
Oil Conservation Division
1220 S. St Francis Dr.
Santa Fe, NM 87505

CONDITIONS

Action 424853

CONDITIONS

Operator: Spur Energy Partners LLC 9655 Katy Freeway Houston, TX 77024	OGRID: 328947
	Action Number: 424853
	Action Type: [C-141] Remediation Closure Request C-141 (C-141-v-Closure)

CONDITIONS

Created By	Condition	Condition Date
rhamlet	We have received your Remediation Closure Report for Incident #NAPP2435429070 ROSE SOUTH CTB, thank you. This Remediation Closure Report is approved.	1/29/2025