



February 14, 2025

District Supervisor
Oil Conservation Division, District 1
1625 N. French Drive
Hobbs, New Mexico 88240

**Re: Liner Inspection and Closure Request
BTA Oil Producers, LLC
Mesa Cowboy CTB Release
Unit Letter D, Section 11, Township 26 South, Range 32 East
Lea County, New Mexico
Incident ID# nAPP2502345164**

Sir or Madam:

BTA Oil Producers, LLC (BTA) contracted Tetra Tech, Inc. (Tetra Tech) to assess a release that occurred at the Mesa Cowboy CTB (fAPP2430953482). The release footprint is located within Public Land Survey System (PLSS) Unit Letter D, Section 11, Township 26 South, Range 32 East, in Lea County, New Mexico (Site). The approximate release point occurred at coordinates 32.062861°, -103.652968°, as shown on Figure 1 and Figure 2. This release is located on BLM land.

BACKGROUND

On January 21, 2025, a release was discovered at the Mesa Cowboy Central Tank Battery (CTB). The cause of the release is indicated in the NOR as due to a cold weather event where multiple ball valves failed. Photographs provided by BTA indicate that the release footprint was limited to the lined containment area, as presented in Figure 3. The release was reported as approximately 67 barrels (bbls) of produced water, of which 67 bbls of produced water were recovered. A Notification of Release (NOR) was submitted to the New Mexico Oil Conservation Division (NMOCD) online portal system. Following the NOR submittal the release was assigned the Incident ID nAPP2502345164. The NMOCD initial C-141 Initial Report was duly submitted via the NMOCD online portal system within the required timeframe. A copy of the NMOCD initial C-141 and NOR are included in Appendix A.

SITE CHARACTERIZATION

A site characterization was performed in accordance with 19.15.29.11 New Mexico State Administrative Code (NMAC) and the guidance document Process Updates re: Submissions of Form C-141 Release Notification and Corrective Actions (12/01/2023).

A summary of the site characterization is presented below:

Shallowest depth to groundwater beneath the area affected by the release in feet below ground surface (feet bgs)	Between 100 and 500 (ft.)
Method used to determine the depth to ground water	NM OSE iWaters Database Search
Did this release impact groundwater or surface water?	No

The minimum distance between the closest lateral extents of the release and the following surface areas:

Tetra Tech

901 West Wall St., Suite 100, Midland, TX 79701

Tel 432.682.4559 Fax 432.682.3946 www.tetrattech.com

Liner Inspection and Closure Request
February 14, 2025

BTA Oil Producers, LLC

A continuously flowing watercourse or any other significant watercourse	Between 500 and 1000 (ft.)
Any lakebed, sinkhole, or playa lake (measured from the ordinary high-water mark)	Between 1 and 5 (mi.)
An occupied permanent residence, school, hospital, institution, or church	Greater than 5 (mi.)
A spring or private domestic fresh water well used by less than five households for domestic or stock watering purposes	Greater than 5 (mi.)
Any other fresh water well or spring	Greater than 5 (mi.)
Incorporated municipal boundaries or a defined municipal fresh water well field	Greater than 5 (mi.)
A wetland	Between 500 and 1000 (ft.)
A subsurface mine	Greater than 5 (mi.)
A (non-karst) unstable area	Greater than 5 (mi.)
Categorized risk of this well / site being in a karst geology	Medium
A 100-year floodplain	Between 1 and 5 (mi.)
Did the release impact areas not on an exploration, development, production, or storage site?	No

According to the New Mexico Office of the State Engineers (NMOSE) reporting system, there is one groundwater well record within ½ mile (800 meters) of the Site. The Well record indicates a borehole depth of 103 feet and was dry upon completion. The site characterization data are presented in Appendix B.

REGULATORY FRAMEWORK

Based upon the release footprint as contained completely within a lined secondary containment structure and in accordance with Subsection A(5)(a) of 19.15.29.11 NMAC, If the release occurred within a lined containment area, the responsible party must demonstrate liner integrity after affected material is removed and the affected area of the liner is exposed and provide the following:

- Certification on Form C-141 that the responsible party has visually inspected the liner where the release occurred, and the liner remains intact and had the ability to contain the leak in question; and
- The appropriate division district office is provided notification at least two business days before conducting the liner inspection.

LINER INTEGRITY

Prior to the liner inspection, the facility was power washed, thus, the integrity of the liner could be inspected and confirmed clean. In accordance with 19.15.29.11(A)(5)(a) NMAC, notification of a liner inspection at the Mesa Cowboy Battery was submitted via the NMOCDD portal on January 28, 2025. The liner inspection notification is included in Appendix C.

On January 30, 2025, Tetra Tech personnel was on site to perform an inspection of the liner within the containment area of the Mesa Cowboy Battery. This work was completed to verify the integrity of the liner. The liner was observed to underlie the entirety of the tank battery containment area. The liner was intact with no visible rips or tears and encompassed by an approximately 2-foot-tall muscle wall. The liner was anchored on the interior. Photographic documentation of the liner inspection is included in Appendix D.

Liner Inspection and Closure Request
February 14, 2025

BTA Oil Producers, LLC

CONCLUSION

Based on the results of the liner inspection, BTA respectfully requests closure of the subject line incident. The release occurred within a lined containment area. The liner integrity demonstration is complete. The affected area of the liner has been visually inspected where the release occurred, and the liner remains intact and had the ability to contain the leak in question. Two business days' notice (C-141N) was provided to the appropriate division district office before conducting the liner inspection.


The final C-141 forms are enclosed in Appendix A. If you have any questions concerning the liner inspection for the Site, please call me at (512) 560-9064.

Sincerely,

Tetra Tech, Inc.



Nicholas M. Poole, P.G.
Project Manager



Samantha Allen
Project Lead

cc:

Mr. Ray Ramos, BTA Oil Producers, LLC

Liner Inspection and Closure Request
February 14, 2025

BTA Oil Producers, LLC

LIST OF ATTACHMENTS

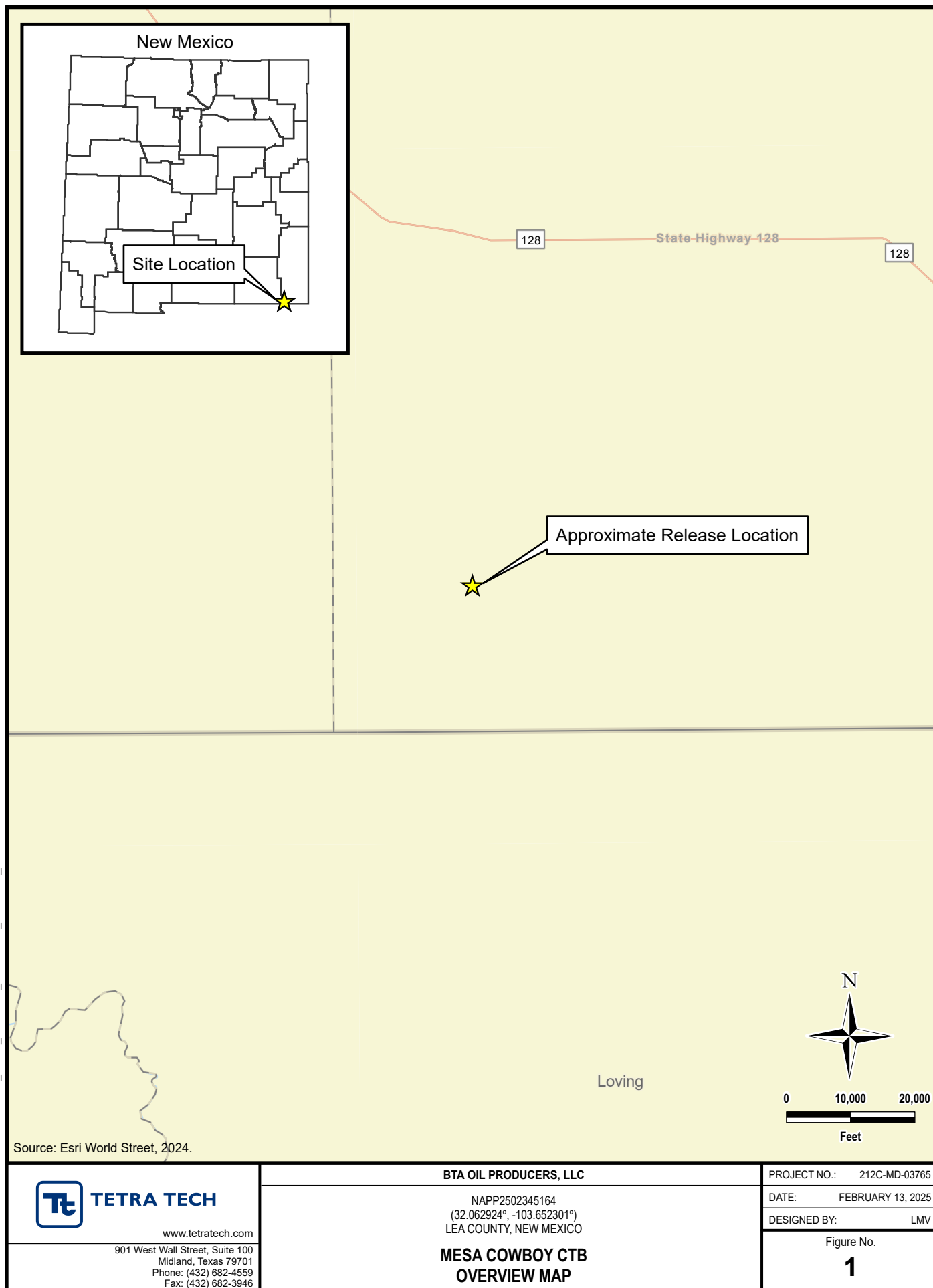
Figures:

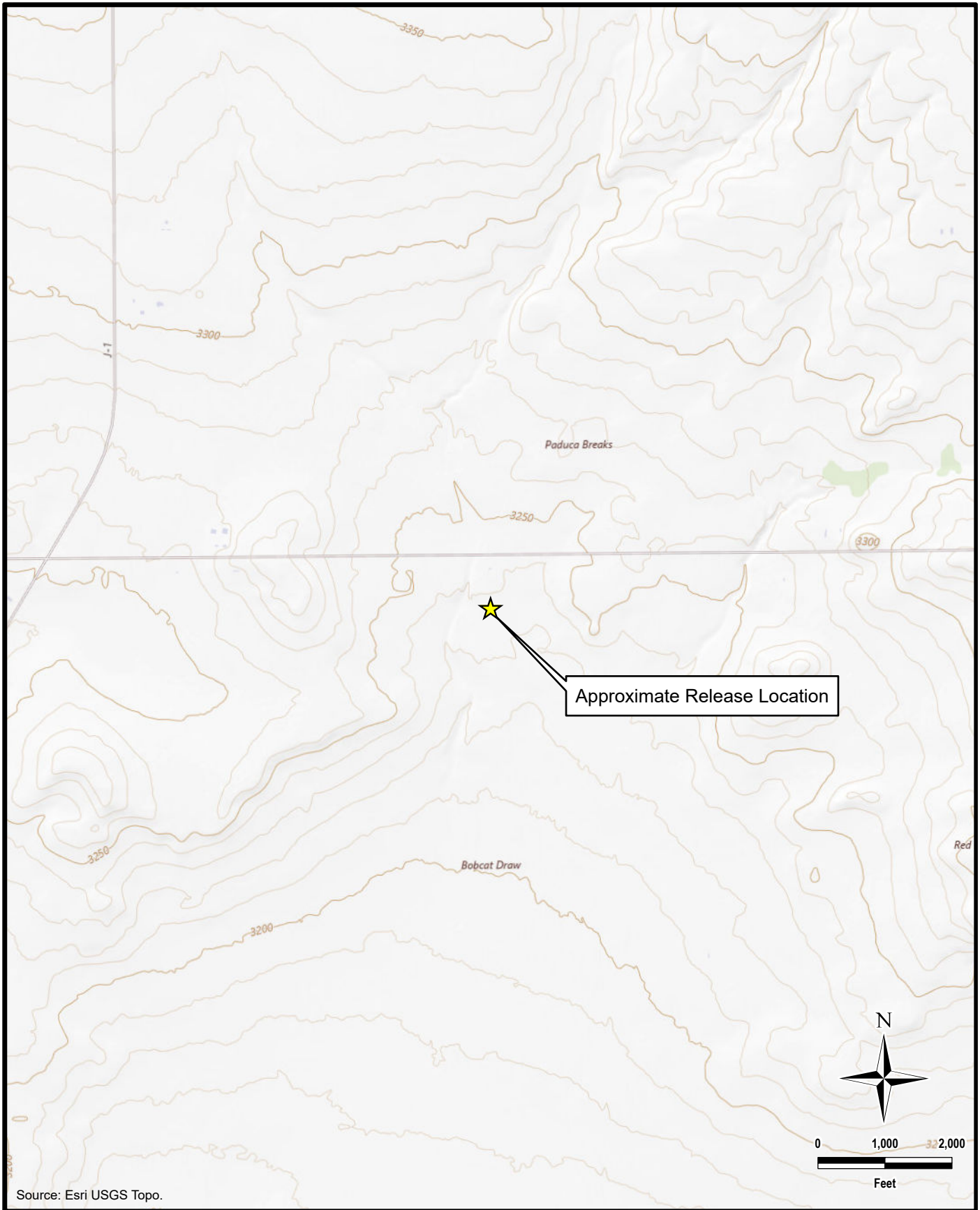
- Figure 1 – Overview Map
- Figure 2 – Topographic Map
- Figure 3 – Approximate Release Extent and Liner Inspection

Appendices:

- Appendix A – C-141 Forms
- Appendix B – Site Characterization Data
- Appendix C – Regulatory Correspondence
- Appendix D – Photographic Documentation

FIGURES





DOCUMENT PATH: Y:\BTA\212C-MD-03765_MESA_COWBOY_CTB\MESA_COWBOY_CTB.APRX

Source: Esri USGS Topo.



TETRA TECH

www.tetrattech.com

901 West Wall Street, Suite 100
Midland, Texas 79701
Phone: (432) 682-4559
Fax: (432) 682-3946

BTA OIL PRODUCERS, LLC

NAPP2502345164
(32.062924°, -103.652301°)
LEA COUNTY, NEW MEXICO

**MESA COWBOY CTB
TOPOGRAPHIC MAP**

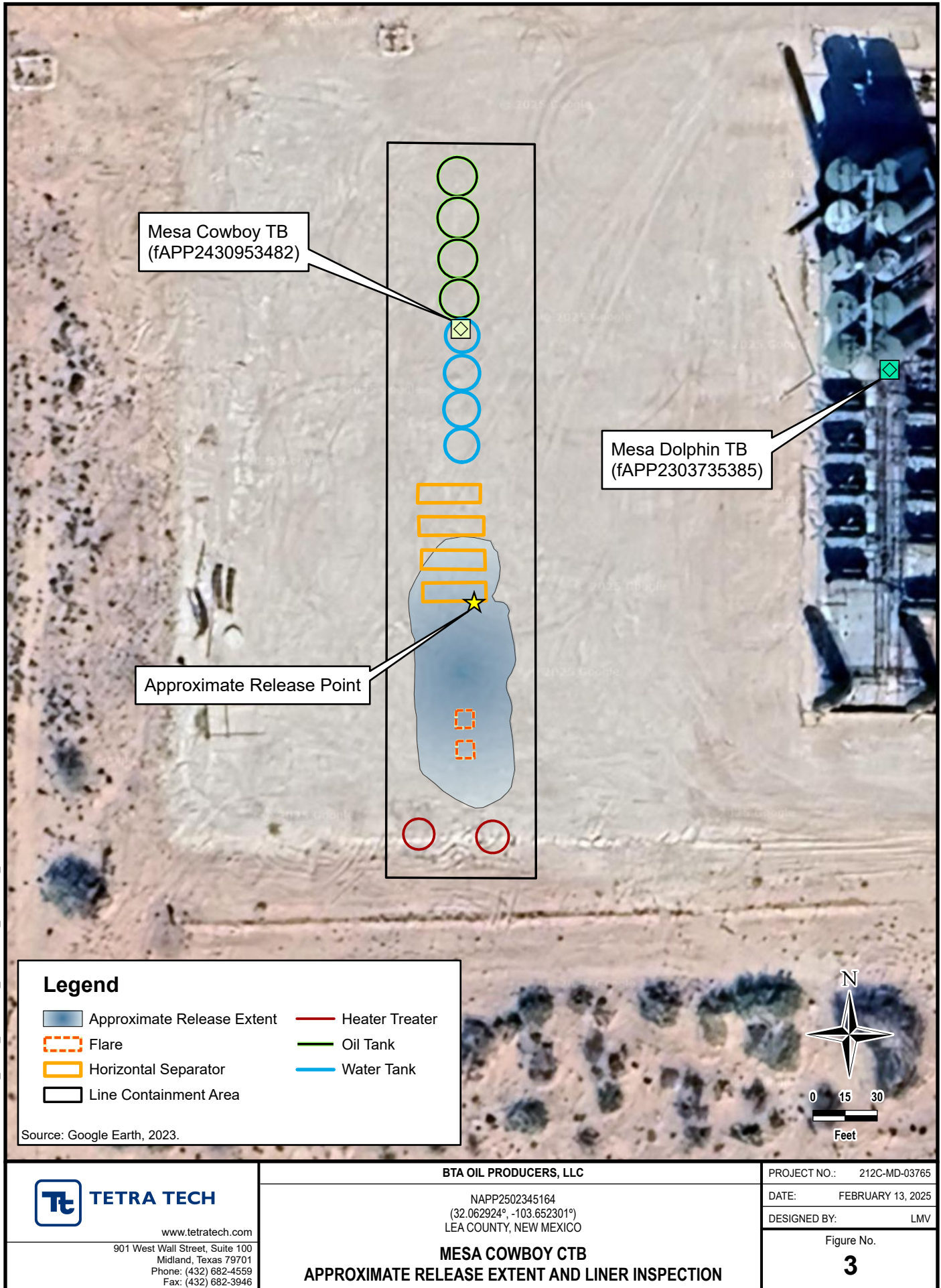
PROJECT NO.: 212C-MD-03765

DATE: FEBRUARY 13, 2025

DESIGNED BY: LMV

Figure No.

2



APPENDIX A C-141 Forms

Sante Fe Main Office
Phone: (505) 476-3441

General Information
Phone: (505) 629-6116

Online Phone Directory
<https://www.emnrd.nm.gov/ocd/contact-us>

State of New Mexico
Energy, Minerals and Natural Resources
Oil Conservation Division
1220 S. St Francis Dr.
Santa Fe, NM 87505

QUESTIONS

Action 424169

QUESTIONS

Operator: BTA OIL PRODUCERS, LLC 104 S Pecos Midland, TX 79701	OGRID: 260297
	Action Number: 424169
	Action Type: [NOTIFY] Notification Of Release (NOR)

QUESTIONS

Location of Release Source <i>Please answer all the questions in this group.</i>	
Site Name	Mesa Cowboy CTB
Date Release Discovered	01/21/2025
Surface Owner	Federal

Incident Details <i>Please answer all the questions in this group.</i>	
Incident Type	Produced Water Release
Did this release result in a fire or is the result of a fire	No
Did this release result in any injuries	No
Has this release reached or does it have a reasonable probability of reaching a watercourse	No
Has this release endangered or does it have a reasonable probability of endangering public health	No
Has this release substantially damaged or will it substantially damage property or the environment	No
Is this release of a volume that is or may with reasonable probability be detrimental to fresh water	No

Nature and Volume of Release <i>Material(s) released, please answer all that apply below. Any calculations or specific justifications for the volumes provided should be attached to the follow-up C-141 submission.</i>	
Crude Oil Released (bbls) Details	Not answered.
Produced Water Released (bbls) Details	Cause: Equipment Failure Valve Produced Water Released: 67 BBL Recovered: 67 BBL Lost: 0 BBL.
Is the concentration of chloride in the produced water >10,000 mg/l	Yes
Condensate Released (bbls) Details	Not answered.
Natural Gas Vented (Mcf) Details	Not answered.
Natural Gas Flared (Mcf) Details	Not answered.
Other Released Details	Not answered.
Are there additional details for the questions above (i.e. any answer containing Other, Specify, Unknown, and/or Fire, or any negative lost amounts)	On January 21, 2025, multiple ball valves within the lined containment facility (Mesa Cowboy CTB) failed due to extreme cold weather event. Approximately 67 BBLS of produced water were released of which 67 BBLS of fluids were recovered. All fluids were contained within the lined facility. The facility will be power washed and cleaned prior to an inspection of the liner. a C-141L will be submitted with minimum 48 hour notice.

Sante Fe Main Office
Phone: (505) 476-3441

General Information
Phone: (505) 629-6116

Online Phone Directory
<https://www.emnrd.nm.gov/ocd/contact-us>

State of New Mexico
Energy, Minerals and Natural Resources
Oil Conservation Division
1220 S. St Francis Dr.
Santa Fe, NM 87505

QUESTIONS, Page 2

Action 424169

QUESTIONS (continued)

Operator: BTA OIL PRODUCERS, LLC 104 S Pecos Midland, TX 79701	OGRID: 260297
	Action Number: 424169
	Action Type: [NOTIFY] Notification Of Release (NOR)

QUESTIONS

Nature and Volume of Release (continued)	
Is this a gas only submission (i.e. only significant Mcf values reported)	No, according to supplied volumes this does not appear to be a "gas only" report.
Was this a major release as defined by Subsection A of 19.15.29.7 NMAC	Yes
Reasons why this would be considered a submission for a notification of a major release	From paragraph A. "Major release" determine using: (1) an unauthorized release of a volume, excluding gases, of 25 barrels or more.
With the implementation of the 19.15.27 NMAC (05/25/2021), venting and/or flaring of natural gas (i.e. gas only) are to be submitted on the C-129 form.	

Initial Response

The responsible party must undertake the following actions immediately unless they could create a safety hazard that would result in injury.

The source of the release has been stopped	True
The impacted area has been secured to protect human health and the environment	True
Released materials have been contained via the use of berms or dikes, absorbent pads, or other containment devices	True
All free liquids and recoverable materials have been removed and managed appropriately	True
If all the actions described above have not been undertaken, explain why	Not answered.

Per Paragraph 4 of Subsection B of 19.15.29.8 NMAC the responsible party may commence remediation immediately after discovery of a release. If remediation has begun, please prepare and attach a narrative of actions to date in the follow-up C-141 submission. If remedial efforts have been successfully completed or if the release occurred within a lined containment area (see 19.15.29.11(A)(5)(a) NMAC), please prepare and attach all information needed for closure evaluation in the follow-up C-141 submission.

Sante Fe Main Office
Phone: (505) 476-3441

General Information
Phone: (505) 629-6116

Online Phone Directory
<https://www.emnrd.nm.gov/ocd/contact-us>

State of New Mexico
Energy, Minerals and Natural Resources
Oil Conservation Division
1220 S. St Francis Dr.
Santa Fe, NM 87505

ACKNOWLEDGMENTS

Action 424169

ACKNOWLEDGMENTS

Operator: BTA OIL PRODUCERS, LLC 104 S Pecos Midland, TX 79701	OGRID: 260297
	Action Number: 424169
	Action Type: [NOTIFY] Notification Of Release (NOR)

ACKNOWLEDGMENTS

<input checked="" type="checkbox"/>	I acknowledge that I am authorized to submit notification of a release on behalf of my operator.
<input checked="" type="checkbox"/>	I acknowledge that upon submitting this application, I will be creating a new incident file (assigned to my operator) to track the notification(s) and corrective action(s) for a release, pursuant to NMAC 19.15.29.
<input checked="" type="checkbox"/>	I acknowledge that creating a new incident file will require my operator to file subsequent submission(s) of form "C-141, Application for administrative approval of a release notification and corrective action", pursuant to NMAC 19.15.29.
<input checked="" type="checkbox"/>	I hereby certify that the information given above is true and complete to the best of my knowledge and understand that pursuant to OCD rules and regulations all operators are required to report and/or file certain release notifications and perform corrective actions for releases which may endanger public health or the environment.
<input checked="" type="checkbox"/>	I acknowledge the fact that the acceptance of a C-141 report by the OCD does not relieve the operator of liability should their operations have failed to adequately investigate and remediate contamination that pose a threat to groundwater, surface water, human health or the environment.
<input checked="" type="checkbox"/>	I acknowledge the fact that, in addition, OCD acceptance of a C-141 report does not relieve the operator of responsibility for compliance with any other federal, state, or local laws and/or regulations.

Sante Fe Main Office
Phone: (505) 476-3441

General Information
Phone: (505) 629-6116

Online Phone Directory
<https://www.emnrd.nm.gov/oed/contact-us>

State of New Mexico
Energy, Minerals and Natural Resources
Oil Conservation Division
1220 S. St Francis Dr.
Santa Fe, NM 87505

CONDITIONS

Action 424169

CONDITIONS

Operator: BTA OIL PRODUCERS, LLC 104 S Pecos Midland, TX 79701	OGRID: 260297
	Action Number: 424169
	Action Type: [NOTIFY] Notification Of Release (NOR)

CONDITIONS

Created By	Condition	Condition Date
nicholas poole	When submitting future reports regarding this release, please submit the calculations used or specific justification for the volumes reported on the initial C-141.	1/23/2025

***** LIQUID SPILLS - VOLUME CALCULATIONS *****

Release Location Name: Mesa Cowboy CTB

Date of Release: 1/21/2025

If the leak/spill is associated with production equipment, i.e. - wellhead, stuffing box,
flowline, tank battery, production vessel, transfer pump, or storage tank place an "X" here: ☒

Input Data:

If spill volumes from measurement, i.e. metering, tank volumes, etc. are known enter the volumes here: OIL: 0.0000 BBL WATER: 66.0000 BBL

If "known" spill volumes are given, input data for the following "Area Calculations" is optional. The above will override the calculated volumes.

Total Area Calculations						Standing Liquid Calculations							
Total Surface Area			wet soil		oil (%)	Standing Liquid Area					oil (%)		
	width	length	depth	width			length	liquid depth					
Rectangle Area #1	0.00 ft	X	0.00 ft	X	0.00 in	0.00%	Rectangle Area #1	60.00 ft	X	75.00 ft	X	1.00 in	0.00%
Rectangle Area #2	0.00 ft	X	0.00 ft	X	0.00 in	0.00%	Rectangle Area #2	0.00 ft	X	0.00 ft	X	0.00 in	0.00%
Rectangle Area #3	0.00 ft	X	0.00 ft	X	0.00 in	0.00%	Rectangle Area #3	0.00 ft	X	0.00 ft	X	0.00 in	0.00%
Rectangle Area #4	0.00 ft	X	0.00 ft	X	0.00 in	0.00%	Rectangle Area #4	0.00 ft	X	0.00 ft	X	0.00 in	0.00%
Rectangle Area #5	0.00 ft	X	0.00 ft	X	0.00 in	0.00%	Rectangle Area #5	0.00 ft	X	0.00 ft	X	0.00 in	0.00%
Rectangle Area #6	0.00 ft	X	0.00 ft	X	0.00 in	0.00%	Rectangle Area #6	0.00 ft	X	0.00 ft	X	0.00 in	0.00%
Rectangle Area #7	0.00 ft	X	0.00 ft	X	0.00 in	0.00%	Rectangle Area #7	0.00 ft	X	0.00 ft	X	0.00 in	0.00%
Rectangle Area #8	0.00 ft	X	0.00 ft	X	0.00 in	0.00%	Rectangle Area #8	0.00 ft	X	0.00 ft	X	0.00 in	0.00%

ERROR - Standing Liquid Area larger than Total Area, Review Data Input
production system leak - DAILY PRODUCTION DATA REQUIRED

Average Daily Production: Oil _____ BBL Water _____ BBL

Did leak occur before the separator?: ☐ YES ☒ N/A (place an "X")

Amount of Free Liquid Recovered: 66 BBL okay

Percentage of Oil in Free Liquid Recovered: 0.00% (percentage)

Liquid holding factor *: _____ gal per gal

Use the following when the spill wets the grains of the soil.

* sand = .08 gallon liquid per gallon volume of soil.

* gravelly (caliche) loam = .14 gallon liquid per gallon volume of soil.

* sandy clay loam soil = .14 gallon liquid per gallon volume of soil.

* clay loam = .16 gallon liquid per gallon volume of soil.

Use the following when the liquid completely fills the pore space of the soil;

Occurs when the spill soaked soil is contained by barriers, natural (or not).

* gravelly (caliche) loam = .25 gallon liquid per gallon volume of soil.

* sandy loam = .5 gallon liquid per gallon volume of soil.

Saturated Soil Volume Calculations:

Total Solid/Liquid Volume: sq. ft. H₂O cu. ft. OIL cu. ft.

Estimated Volumes Spilled

Liquid in Soil: 0.0 BBL 0.0 BBL
Free Liquid: 66.8 BBL 0.0 BBL
Totals: 66.8 BBL 0.0 BBL

Total Spill Liquid: 66.0 BBL 0.0 BBL

Recovered Volumes

Estimated oil recovered: 0.0 BBL check - okay
Estimated water recovered: 66.0 BBL check - okay

Free Liquid Volume Calculations:

Total Free Liquid Volume: 4,500 sq. ft. 375 cu. ft. OIL cu. ft.

Estimated Production Volumes Lost

Estimated Production Spilled: 66.0 BBL 0.0 BBL

Estimated Surface Damage

Surface Area: 4,500 sq. ft.

Surface Area: .1033 acre

Estimated Weights, and Volumes

Saturated Soil = lbs cu. ft. cu. yds.
Total Liquid = 66 BBL 2,772 gallon 23,063 lbs

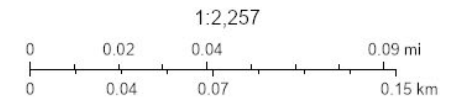
NMOCD - Karst Potential Map



1/23/2025, 1:06:50 PM

Karst Occurrence Potential

Medium



BLM, OCD, New Mexico Tech, Maxar, Microsoft, Esri, HERE, Garmin, IPC

New Mexico Oil Conservation Division
NM OCD Oil and Gas Map. <http://nm-emnrd.maps.arcgis.com/apps/webappviewer/index.html?id=4d017f2306164de29fd2fb9f8f35ca75>: New Mexico Oil Conservation Division



WELL RECORD & LOG

OFFICE OF THE STATE ENGINEER

www.ose.state.nm.us

OSE DTT AUG 2 2021 PM4:45


1. GENERAL AND WELL LOCATION	OSE POD NO. (WELL NO.) POD1 (MW-1)		WELL TAG ID NO. n/a		OSE FILE NO(S). C-4549			
	WELL OWNER NAME(S) BTA Oil Producers				PHONE (OPTIONAL)			
	WELL OWNER MAILING ADDRESS 104 S. Pecos St.				CITY Midland	STATE TX	ZIP 79701	
	WELL LOCATION (FROM GPS)	DEGREES LATITUDE 32	MINUTES 4	SECONDS 40.92 N	* ACCURACY REQUIRED: ONE TENTH OF A SECOND			
		LONGITUDE 103	37	53.68 W	* DATUM REQUIRED: WGS 84			
DESCRIPTION RELATING WELL LOCATION TO STREET ADDRESS AND COMMON LANDMARKS - PLSS (SECTION, TOWNSHIP, RANGE) WHERE AVAILABLE NW NW NW Sec. 11 T26S R32E								
2. DRILLING & CASING INFORMATION	LICENSE NO. 1249		NAME OF LICENSED DRILLER Jackie D. Atkins			NAME OF WELL DRILLING COMPANY Atkins Engineering Associates, Inc.		
	DRILLING STARTED 07/14/2021	DRILLING ENDED 07/14/2021	DEPTH OF COMPLETED WELL (FT) temporary well material	BORE HOLE DEPTH (FT) 103	DEPTH WATER FIRST ENCOUNTERED (FT) n/a			
	COMPLETED WELL IS: <input type="checkbox"/> ARTESIAN <input checked="" type="checkbox"/> DRY HOLE <input type="checkbox"/> SHALLOW (UNCONFINED)				STATIC WATER LEVEL IN COMPLETED WELL (FT) n/a			
	DRILLING FLUID: <input checked="" type="checkbox"/> AIR <input type="checkbox"/> MUD ADDITIVES - SPECIFY:							
	DRILLING METHOD: <input type="checkbox"/> ROTARY <input type="checkbox"/> HAMMER <input type="checkbox"/> CABLE TOOL <input checked="" type="checkbox"/> OTHER - SPECIFY: Hollow Stem Auger							
	DEPTH (feet bgl)		BORE HOLE DIAM. (inches)	CASING MATERIAL AND/OR GRADE (include each casing string, and note sections of screen)	CASING CONNECTION TYPE (add coupling diameter)	CASING INSIDE DIAM. (inches)	CASING WALL THICKNESS (inches)	SLOT SIZE (inches)
	FROM	TO						
	0	103	±8.5	Boring- HSA	--	--	--	--
3. ANNULAR MATERIAL	DEPTH (feet bgl)		BORE HOLE DIAM. (inches)	LIST ANNULAR SEAL MATERIAL AND GRAVEL PACK SIZE-RANGE BY INTERVAL	AMOUNT (cubic feet)	METHOD OF PLACEMENT		
	FROM	TO						

FOR OSE INTERNAL USE

WR-20 WELL RECORD & LOG (Version 06/30/17)

FILE NO. C-4549	POD NO. 1	TRN NO. 698318
LOCATION 26S-32E-11	1.1.1	WELL TAG ID NO. NA -
		PAGE 1 OF 2

05E DTI AUG 2 2021 PM4:45

4. HYDROGEOLOGIC LOG OF WELL	DEPTH (feet bgl)		THICKNESS (feet)	COLOR AND TYPE OF MATERIAL ENCOUNTERED - INCLUDE WATER-BEARING CAVITIES OR FRACTURE ZONES (attach supplemental sheets to fully describe all units)	WATER BEARING? (YES / NO)	ESTIMATED YIELD FOR WATER- BEARING ZONES (gpm)
	FROM	TO				
	0	4	4	Caliche, Consolidated , White	Y ✓ N	
	4	9	5	Caliche, Consolidated , with fine-grained, Tan	Y ✓ N	
	9	14	5	Caliche, Consolidated , White	Y ✓ N	
	14	19	5	Caliche, Consolidated , with fine-grained, Tan	Y ✓ N	
	19	69	50	Sand, Fine-grained poorly graded, with caliche , Tanish Brown	Y ✓ N	
	69	79	103	Clay, Stiff, High Plasticity, Dark Brown,	Y ✓ N	
					Y N	
					Y N	
					Y N	
					Y N	
					Y N	
					Y N	
					Y N	
					Y N	
					Y N	
					Y N	
	METHOD USED TO ESTIMATE YIELD OF WATER-BEARING STRATA: <input type="checkbox"/> PUMP <input type="checkbox"/> AIR LIFT <input type="checkbox"/> BAILER <input type="checkbox"/> OTHER – SPECIFY:				TOTAL ESTIMATED WELL YIELD (gpm): 0.00	
	5. TEST; RIG SUPERVISION	WELL TEST	TEST RESULTS - ATTACH A COPY OF DATA COLLECTED DURING WELL TESTING, INCLUDING DISCHARGE METHOD, START TIME, END TIME, AND A TABLE SHOWING DISCHARGE AND DRAWDOWN OVER THE TESTING PERIOD.			
MISCELLANEOUS INFORMATION: Temporary well materials removed and the soil boring backfilled using drill cuttings from total depth to ten feet below ground surface, then hydrated bentonite chips from ten feet below ground surface to surface.						
PRINT NAME(S) OF DRILL RIG SUPERVISOR(S) THAT PROVIDED ONSITE SUPERVISION OF WELL CONSTRUCTION OTHER THAN LICENSEE: Shane Eldridge, Cameron Pruitt, Carmelo Trevino						
6. SIGNATURE	THE UNDERSIGNED HEREBY CERTIFIES THAT, TO THE BEST OF HIS OR HER KNOWLEDGE AND BELIEF, THE FOREGOING IS A TRUE AND CORRECT RECORD OF THE ABOVE DESCRIBED HOLE AND THAT HE OR SHE WILL FILE THIS WELL RECORD WITH THE STATE ENGINEER AND THE PERMIT HOLDER WITHIN 30 DAYS AFTER COMPLETION OF WELL DRILLING:					
	 SIGNATURE OF DRILLER / PRINT SIGNEE NAME			Jackie D. Atkins DATE		

FOR OSE INTERNAL USE

WR-20 WELL RECORD & LOG (Version 06/30/2017)

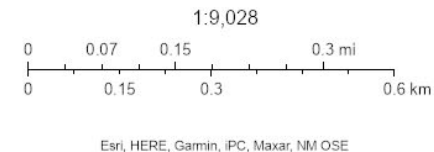
FILE NO.	C-4549	POD NO.	1	TRN NO.	698318
LOCATION	96S-32E-11	1.1.1		WELL TAG ID NO	NA

NMOCD - Hydrology Map



1/23/2025, 1:12:18 PM

— OSE Streams



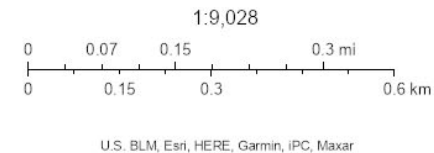
NMOCD - Surface Ownership Map



1/23/2025, 1:12:57 PM

Land Ownership

- BLM
- S



National Flood Hazard Layer FIRMette



103°39'27"W 32°4'2"N



Legend

SEE FIS REPORT FOR DETAILED LEGEND AND INDEX MAP FOR FIRM PANEL LAYOUT

SPECIAL FLOOD HAZARD AREAS		Without Base Flood Elevation (BFE) Zone A, V, A99
		With BFE or Depth Zone AE, AO, AH, VE, AR
		Regulatory Floodway
OTHER AREAS OF FLOOD HAZARD		0.2% Annual Chance Flood Hazard, Areas of 1% annual chance flood with average depth less than one foot or with drainage areas of less than one square mile Zone X
		Future Conditions 1% Annual Chance Flood Hazard Zone X
		Area with Reduced Flood Risk due to Levee. See Notes. Zone X
		Area with Flood Risk due to Levee Zone D
OTHER AREAS		NO SCREEN Area of Minimal Flood Hazard Zone X
		Effective LOMRs
GENERAL STRUCTURES		Area of Undetermined Flood Hazard Zone D
		Channel, Culvert, or Storm Sewer
OTHER FEATURES		Levee, Dike, or Floodwall
		Cross Sections with 1% Annual Chance Water Surface Elevation
OTHER FEATURES		Coastal Transect
		Base Flood Elevation Line (BFE)
OTHER FEATURES		Limit of Study
		Jurisdiction Boundary
OTHER FEATURES		Coastal Transect Baseline
		Profile Baseline
OTHER FEATURES		Hydrographic Feature
		Digital Data Available
MAP PANELS		No Digital Data Available
		Unmapped



The pin displayed on the map is an approximate point selected by the user and does not represent an authoritative property location.

This map complies with FEMA's standards for the use of digital flood maps if it is not void as described below. The basemap shown complies with FEMA's basemap accuracy standards

The flood hazard information is derived directly from the authoritative NFHL web services provided by FEMA. This map was exported on 1/23/2025 at 7:05 PM and does not reflect changes or amendments subsequent to this date and time. The NFHL and effective information may change or become superseded by new data over time.

This map image is void if the one or more of the following map elements do not appear: basemap imagery, flood zone labels, legend, scale bar, map creation date, community identifiers, FIRM panel number, and FIRM effective date. Map images for unmapped and unmodernized areas cannot be used for regulatory purposes.



U.S. Fish and Wildlife Service

National Wetlands Inventory

National Wetlands Inventory Map



January 23, 2025

Wetlands

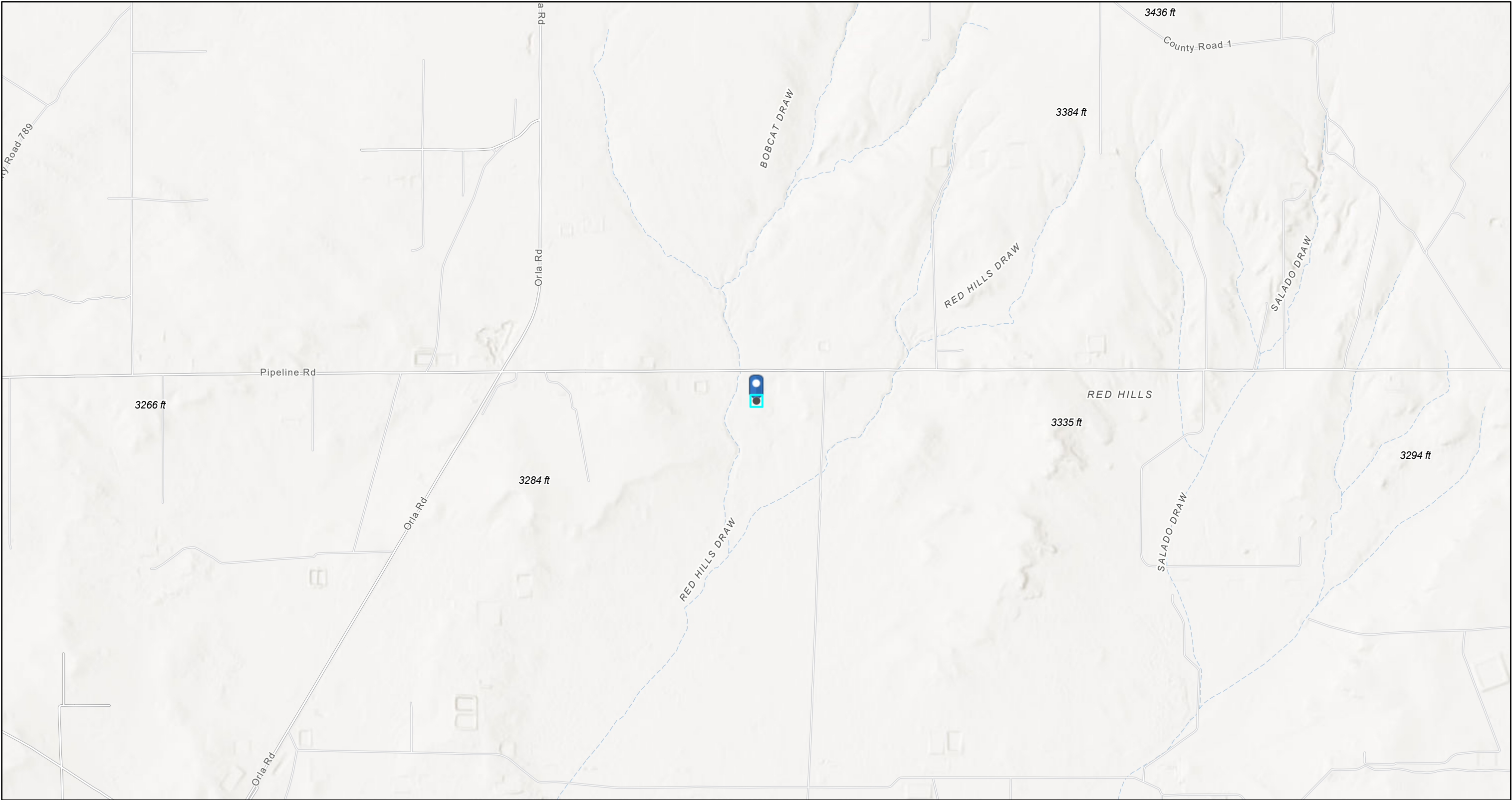
- Estuarine and Marine Deepwater
- Estuarine and Marine Wetland

- Freshwater Emergent Wetland
- Freshwater Forested/Shrub Wetland
- Freshwater Pond

- Lake
- Other
- Riverine

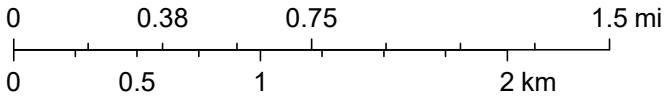
This map is for general reference only. The US Fish and Wildlife Service is not responsible for the accuracy or currentness of the base data shown on this map. All wetlands related data should be used in accordance with the layer metadata found on the Wetlands Mapper web site.

Active Mines in New Mexico



1/23/2025, 1:06:06 PM

1:36,112



Esri, NASA, NGA, USGS, FEMA, Texas Parks & Wildlife, CONANP, Esri, TomTom, Garmin, SafeGraph, GeoTechnologies, Inc, METI/NASA, USGS, EPA, NPS, US Census Bureau, USDA, USFWS

Sante Fe Main Office
Phone: (505) 476-3441

General Information
Phone: (505) 629-6116

Online Phone Directory
<https://www.emnrd.nm.gov/ocd/contact-us>

State of New Mexico
Energy, Minerals and Natural Resources
Oil Conservation Division
1220 S. St Francis Dr.
Santa Fe, NM 87505

QUESTIONS

Action 424625

QUESTIONS

Operator: BTA OIL PRODUCERS, LLC 104 S Pecos Midland, TX 79701	OGRID: 260297
	Action Number: 424625
	Action Type: [C-141] Initial C-141 (C-141-v-Initial)

QUESTIONS

Prerequisites	
Incident ID (n#)	nAPP2502345164
Incident Name	NAPP2502345164 MESA COWBOY CTB @ 0
Incident Type	Produced Water Release
Incident Status	Initial C-141 Received
Incident Facility	[fAPP2430953482] Mesa Cowboy

Location of Release Source*Please answer all the questions in this group.*

Site Name	Mesa Cowboy CTB
Date Release Discovered	01/21/2025
Surface Owner	Federal

Incident Details*Please answer all the questions in this group.*

Incident Type	Produced Water Release
Did this release result in a fire or is the result of a fire	No
Did this release result in any injuries	No
Has this release reached or does it have a reasonable probability of reaching a watercourse	No
Has this release endangered or does it have a reasonable probability of endangering public health	No
Has this release substantially damaged or will it substantially damage property or the environment	No
Is this release of a volume that is or may with reasonable probability be detrimental to fresh water	No

Nature and Volume of Release*Material(s) released, please answer all that apply below. Any calculations or specific justifications for the volumes provided should be attached to the follow-up C-141 submission.*

Crude Oil Released (bbls) Details	Not answered.
Produced Water Released (bbls) Details	Cause: Equipment Failure Valve Produced Water Released: 67 BBL Recovered: 67 BBL Lost: 0 BBL.
Is the concentration of chloride in the produced water >10,000 mg/l	Yes
Condensate Released (bbls) Details	Not answered.
Natural Gas Vented (Mcf) Details	Not answered.
Natural Gas Flared (Mcf) Details	Not answered.
Other Released Details	Not answered.
Are there additional details for the questions above (i.e. any answer containing Other, Specify, Unknown, and/or Fire, or any negative lost amounts)	On January 21, 2025, multiple ball valves within the lined containment facility (Mesa Cowboy CTB) failed due to extreme cold weather event. Approximately 67 BBLS of produced water were released of which 67 BBLS of fluids were recovered. All fluids were contained within the lined facility. The facility will be power washed and cleaned prior to an inspection of the liner. a C-141L will be submitted with minimum 48 hour notice.

Sante Fe Main Office
Phone: (505) 476-3441

General Information
Phone: (505) 629-6116

Online Phone Directory
<https://www.emnrd.nm.gov/ocd/contact-us>

State of New Mexico
Energy, Minerals and Natural Resources
Oil Conservation Division
1220 S. St Francis Dr.
Santa Fe, NM 87505

QUESTIONS, Page 2

Action 424625

QUESTIONS (continued)

Operator: BTA OIL PRODUCERS, LLC 104 S Pecos Midland, TX 79701	OGRID: 260297
	Action Number: 424625
	Action Type: [C-141] Initial C-141 (C-141-v-Initial)

QUESTIONS

Nature and Volume of Release (continued)	
Is this a gas only submission (i.e. only significant Mcf values reported)	No, according to supplied volumes this does not appear to be a "gas only" report.
Was this a major release as defined by Subsection A of 19.15.29.7 NMAC	Yes
Reasons why this would be considered a submission for a notification of a major release	From paragraph A. "Major release" determine using: (1) an unauthorized release of a volume, excluding gases, of 25 barrels or more.
With the implementation of the 19.15.27 NMAC (05/25/2021), venting and/or flaring of natural gas (i.e. gas only) are to be submitted on the C-129 form.	

Initial Response

The responsible party must undertake the following actions immediately unless they could create a safety hazard that would result in injury.

The source of the release has been stopped	True
The impacted area has been secured to protect human health and the environment	True
Released materials have been contained via the use of berms or dikes, absorbent pads, or other containment devices	True
All free liquids and recoverable materials have been removed and managed appropriately	True
If all the actions described above have not been undertaken, explain why	Not answered.

Per Paragraph (4) of Subsection B of 19.15.29.8 NMAC the responsible party may commence remediation immediately after discovery of a release. If remediation has begun, please prepare and attach a narrative of actions to date in the follow-up C-141 submission. If remedial efforts have been successfully completed or if the release occurred within a lined containment area (see Subparagraph (a) of Paragraph (5) of Subsection A of 19.15.29.11 NMAC), please prepare and attach all information needed for closure evaluation in the follow-up C-141 submission.

I hereby certify that the information given above is true and complete to the best of my knowledge and understand that pursuant to OCD rules and regulations all operators are required to report and/or file certain release notifications and perform corrective actions for releases which may endanger public health or the environment. The acceptance of a C-141 report by the OCD does not relieve the operator of liability should their operations have failed to adequately investigate and remediate contamination that pose a threat to groundwater, surface water, human health or the environment. In addition, OCD acceptance of a C-141 report does not relieve the operator of responsibility for compliance with any other federal, state, or local laws and/or regulations.

I hereby agree and sign off to the above statement	Name: Nicholas Poole Title: with Tetrattech Email: nicholas.poole@tetrattech.com Date: 01/24/2025
--	---

Sante Fe Main Office
Phone: (505) 476-3441

General Information
Phone: (505) 629-6116

Online Phone Directory
<https://www.emnrd.nm.gov/ocd/contact-us>

State of New Mexico
Energy, Minerals and Natural Resources
Oil Conservation Division
1220 S. St Francis Dr.
Santa Fe, NM 87505

QUESTIONS, Page 3

Action 424625

QUESTIONS (continued)

Operator: BTA OIL PRODUCERS, LLC 104 S Pecos Midland, TX 79701	OGRID: 260297
	Action Number: 424625
	Action Type: [C-141] Initial C-141 (C-141-v-Initial)

QUESTIONS

Site Characterization	
<i>Please answer all the questions in this group (only required when seeking remediation plan approval and beyond). This information must be provided to the appropriate district office no later than 90 days after the release discovery date.</i>	
What is the shallowest depth to groundwater beneath the area affected by the release in feet below ground surface (ft bgs)	Between 100 and 500 (ft.)
What method was used to determine the depth to ground water	NM OSE iWaters Database Search
Did this release impact groundwater or surface water	No
What is the minimum distance, between the closest lateral extents of the release and the following surface areas:	
A continuously flowing watercourse or any other significant watercourse	Between 500 and 1000 (ft.)
Any lakebed, sinkhole, or playa lake (measured from the ordinary high-water mark)	Between 1 and 5 (mi.)
An occupied permanent residence, school, hospital, institution, or church	Greater than 5 (mi.)
A spring or a private domestic fresh water well used by less than five households for domestic or stock watering purposes	Greater than 5 (mi.)
Any other fresh water well or spring	Greater than 5 (mi.)
Incorporated municipal boundaries or a defined municipal fresh water well field	Greater than 5 (mi.)
A wetland	Between 500 and 1000 (ft.)
A subsurface mine	Greater than 5 (mi.)
An (non-karst) unstable area	Greater than 5 (mi.)
Categorize the risk of this well / site being in a karst geology	Medium
A 100-year floodplain	Between 1 and 5 (mi.)
Did the release impact areas not on an exploration, development, production, or storage site	No

Remediation Plan	
<i>Please answer all the questions that apply or are indicated. This information must be provided to the appropriate district office no later than 90 days after the release discovery date.</i>	
Requesting a remediation plan approval with this submission	No
<i>The OCD recognizes that proposed remediation measures may have to be minimally adjusted in accordance with the physical realities encountered during remediation. If the responsible party has any need to significantly deviate from the remediation plan proposed, then it should consult with the division to determine if another remediation plan submission is required.</i>	

Sante Fe Main Office
Phone: (505) 476-3441

General Information
Phone: (505) 629-6116

Online Phone Directory
<https://www.emnrd.nm.gov/ocd/contact-us>

State of New Mexico
Energy, Minerals and Natural Resources
Oil Conservation Division
1220 S. St Francis Dr.
Santa Fe, NM 87505

CONDITIONS

Action 424625

CONDITIONS

Operator: BTA OIL PRODUCERS, LLC 104 S Pecos Midland, TX 79701	OGRID: 260297
	Action Number: 424625
	Action Type: [C-141] Initial C-141 (C-141-v-Initial)

CONDITIONS

Created By	Condition	Condition Date
scwells	None	1/27/2025

APPENDIX B

Site Characterization Data

***** LIQUID SPILLS - VOLUME CALCULATIONS *****

Release Location Name: Mesa Cowboy CTB

Date of Release: 1/21/2025

If the leak/spill is associated with production equipment, i.e. - wellhead, stuffing box,
flowline, tank battery, production vessel, transfer pump, or storage tank place an "X" here: ☒

Input Data:

If spill volumes from measurement, i.e. metering, tank volumes, etc. are known enter the volumes here: OIL: 0.0000 BBL WATER: 66.0000 BBL

If "known" spill volumes are given, input data for the following "Area Calculations" is optional. The above will override the calculated volumes.

Total Area Calculations						Standing Liquid Calculations							
Total Surface Area			wet soil		oil (%)	Standing Liquid Area					oil (%)		
	width	length	depth	width			length	liquid depth					
Rectangle Area #1	0.00 ft	X	0.00 ft	X	0.00 in	0.00%	Rectangle Area #1	60.00 ft	X	75.00 ft	X	1.00 in	0.00%
Rectangle Area #2	0.00 ft	X	0.00 ft	X	0.00 in	0.00%	Rectangle Area #2	0.00 ft	X	0.00 ft	X	0.00 in	0.00%
Rectangle Area #3	0.00 ft	X	0.00 ft	X	0.00 in	0.00%	Rectangle Area #3	0.00 ft	X	0.00 ft	X	0.00 in	0.00%
Rectangle Area #4	0.00 ft	X	0.00 ft	X	0.00 in	0.00%	Rectangle Area #4	0.00 ft	X	0.00 ft	X	0.00 in	0.00%
Rectangle Area #5	0.00 ft	X	0.00 ft	X	0.00 in	0.00%	Rectangle Area #5	0.00 ft	X	0.00 ft	X	0.00 in	0.00%
Rectangle Area #6	0.00 ft	X	0.00 ft	X	0.00 in	0.00%	Rectangle Area #6	0.00 ft	X	0.00 ft	X	0.00 in	0.00%
Rectangle Area #7	0.00 ft	X	0.00 ft	X	0.00 in	0.00%	Rectangle Area #7	0.00 ft	X	0.00 ft	X	0.00 in	0.00%
Rectangle Area #8	0.00 ft	X	0.00 ft	X	0.00 in	0.00%	Rectangle Area #8	0.00 ft	X	0.00 ft	X	0.00 in	0.00%

ERROR - Standing Liquid Area larger than Total Area, Review Data Input
production system leak - DAILY PRODUCTION DATA REQUIRED

Average Daily Production: Oil _____ BBL Water _____ BBL

Did leak occur before the separator?: ☐ YES ☒ N/A (place an "X")

Amount of Free Liquid Recovered: 66 BBL okay

Percentage of Oil in Free Liquid Recovered: 0.00% (percentage)

Liquid holding factor *: _____ gal per gal

Use the following when the spill wets the grains of the soil.

* sand = .08 gallon liquid per gallon volume of soil.

* gravelly (caliche) loam = .14 gallon liquid per gallon volume of soil.

* sandy clay loam soil = .14 gallon liquid per gallon volume of soil.

* clay loam = .16 gallon liquid per gallon volume of soil.

Use the following when the liquid completely fills the pore space of the soil;

Occurs when the spill soaked soil is contained by barriers, natural (or not).

* gravelly (caliche) loam = .25 gallon liquid per gallon volume of soil.

* sandy loam = .5 gallon liquid per gallon volume of soil.

Saturated Soil Volume Calculations:

Total Solid/Liquid Volume: sq. ft. H2O cu. ft. OIL cu. ft.

Estimated Volumes Spilled

Liquid in Soil: 0.0 BBL 0.0 BBL
Free Liquid: 66.8 BBL 0.0 BBL
Totals: 66.8 BBL 0.0 BBL

Total Spill Liquid: 66.0 BBL 0.0 BBL

Recovered Volumes

Estimated oil recovered: 0.0 BBL check - okay
Estimated water recovered: 66.0 BBL check - okay

Free Liquid Volume Calculations:

Total Free Liquid Volume: 4,500 sq. ft. 375 cu. ft. OIL cu. ft.

Estimated Production Volumes Lost

Estimated Production Spilled: 66.0 BBL 0.0 BBL

Estimated Surface Damage

Surface Area: 4,500 sq. ft.

Surface Area: .1033 acre

Estimated Weights, and Volumes

Saturated Soil = lbs cu. ft. cu. yds.
Total Liquid = 66 BBL 2,772 gallon 23,063 lbs

NMOCD - Karst Potential Map

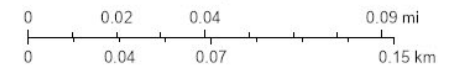


1/23/2025, 1:06:50 PM

Karst Occurrence Potential

Medium

1:2,257



BLM, OCD, New Mexico Tech, Maxar, Microsoft, Esri, HERE, Garmin, IPC

New Mexico Oil Conservation Division
NM OCD Oil and Gas Map. <http://nm-emnrd.maps.arcgis.com/apps/webappviewer/index.html?id=4d017f2306164de29fd2fb9f8f35ca75>: New Mexico Oil Conservation Division



WELL RECORD & LOG

OFFICE OF THE STATE ENGINEER

www.ose.state.nm.us

OSE DIT AUG 2 2021 PM4:45

1. GENERAL AND WELL LOCATION	OSE POD NO. (WELL NO.) POD1 (MW-1)		WELL TAG ID NO. n/a		OSE FILE NO(S). C-4549			
	WELL OWNER NAME(S) BTA Oil Producers				PHONE (OPTIONAL)			
	WELL OWNER MAILING ADDRESS 104 S. Pecos St.				CITY Midland	STATE TX	ZIP 79701	
	WELL LOCATION (FROM GPS)	DEGREES LATITUDE 32	MINUTES 4	SECONDS 40.92 N	* ACCURACY REQUIRED: ONE TENTH OF A SECOND			
		LONGITUDE 103	37	53.68 W	* DATUM REQUIRED: WGS 84			
DESCRIPTION RELATING WELL LOCATION TO STREET ADDRESS AND COMMON LANDMARKS - PLSS (SECTION, TOWNSHIP, RANGE) WHERE AVAILABLE NW NW NW Sec. 11 T26S R32E								
2. DRILLING & CASING INFORMATION	LICENSE NO. 1249		NAME OF LICENSED DRILLER Jackie D. Atkins			NAME OF WELL DRILLING COMPANY Atkins Engineering Associates, Inc.		
	DRILLING STARTED 07/14/2021		DRILLING ENDED 07/14/2021		DEPTH OF COMPLETED WELL (FT) temporary well material		BORE HOLE DEPTH (FT) 103	DEPTH WATER FIRST ENCOUNTERED (FT) n/a
	COMPLETED WELL IS: <input type="checkbox"/> ARTESIAN <input checked="" type="checkbox"/> DRY HOLE <input type="checkbox"/> SHALLOW (UNCONFINED)						STATIC WATER LEVEL IN COMPLETED WELL (FT) n/a	
	DRILLING FLUID: <input checked="" type="checkbox"/> AIR <input type="checkbox"/> MUD ADDITIVES - SPECIFY:							
	DRILLING METHOD: <input type="checkbox"/> ROTARY <input type="checkbox"/> HAMMER <input type="checkbox"/> CABLE TOOL <input checked="" type="checkbox"/> OTHER - SPECIFY: Hollow Stem Auger							
	DEPTH (feet bgl)		BORE HOLE DIAM. (inches)	CASING MATERIAL AND/OR GRADE (include each casing string, and note sections of screen)	CASING CONNECTION TYPE (add coupling diameter)	CASING INSIDE DIAM. (inches)	CASING WALL THICKNESS (inches)	SLOT SIZE (inches)
	FROM	TO						
	0	103	±8.5	Boring- HSA	--	--	--	--
3. ANNULAR MATERIAL	DEPTH (feet bgl)		BORE HOLE DIAM. (inches)	LIST ANNULAR SEAL MATERIAL AND GRAVEL PACK SIZE-RANGE BY INTERVAL	AMOUNT (cubic feet)	METHOD OF PLACEMENT		
	FROM	TO						

FOR OSE INTERNAL USE


WR-20 WELL RECORD & LOG (Version 06/30/17)

FILE NO. C-4549	POD NO. 1	TRN NO. 698318
LOCATION 26S-32E-11	1.1.1	WELL TAG ID NO. NA -
		PAGE 1 OF 2

OSE DTI AUG 2 2021 PM4:45

4. HYDROGEOLOGIC LOG OF WELL	DEPTH (feet bgl)		THICKNESS (feet)	COLOR AND TYPE OF MATERIAL ENCOUNTERED - INCLUDE WATER-BEARING CAVITIES OR FRACTURE ZONES (attach supplemental sheets to fully describe all units)	WATER BEARING? (YES / NO)	ESTIMATED YIELD FOR WATER- BEARING ZONES (gpm)
	FROM	TO				
	0	4	4	Caliche, Consolidated, White	Y ✓ N	
	4	9	5	Caliche, Consolidated, with fine-grained, Tan	Y ✓ N	
	9	14	5	Caliche, Consolidated, White	Y ✓ N	
	14	19	5	Caliche, Consolidated, with fine-grained, Tan	Y ✓ N	
	19	69	50	Sand, Fine-grained poorly graded, with caliche, Tanish Brown	Y ✓ N	
	69	79	103	Clay, Stiff, High Plasticity, Dark Brown,	Y ✓ N	
					Y N	
					Y N	
					Y N	
					Y N	
					Y N	
					Y N	
					Y N	
					Y N	
					Y N	
					Y N	
					Y N	
					Y N	
					Y N	
					Y N	
					Y N	
					Y N	
METHOD USED TO ESTIMATE YIELD OF WATER-BEARING STRATA: <input type="checkbox"/> PUMP <input type="checkbox"/> AIR LIFT <input type="checkbox"/> BAILER <input type="checkbox"/> OTHER - SPECIFY:					TOTAL ESTIMATED WELL YIELD (gpm): 0.00	

5. TEST; RIG SUPERVISION	WELL TEST		TEST RESULTS - ATTACH A COPY OF DATA COLLECTED DURING WELL TESTING, INCLUDING DISCHARGE METHOD, START TIME, END TIME, AND A TABLE SHOWING DISCHARGE AND DRAWDOWN OVER THE TESTING PERIOD.
MISCELLANEOUS INFORMATION:			Temporary well materials removed and the soil boring backfilled using drill cuttings from total depth to ten feet below ground surface, then hydrated bentonite chips from ten feet below ground surface to surface.
PRINT NAME(S) OF DRILL RIG SUPERVISOR(S) THAT PROVIDED ONSITE SUPERVISION OF WELL CONSTRUCTION OTHER THAN LICENSEE: Shane Eldridge, Cameron Pruitt, Carmelo Trevino			

6. SIGNATURE	THE UNDERSIGNED HEREBY CERTIFIES THAT, TO THE BEST OF HIS OR HER KNOWLEDGE AND BELIEF, THE FOREGOING IS A TRUE AND CORRECT RECORD OF THE ABOVE DESCRIBED HOLE AND THAT HE OR SHE WILL FILE THIS WELL RECORD WITH THE STATE ENGINEER AND THE PERMIT HOLDER WITHIN 30 DAYS AFTER COMPLETION OF WELL DRILLING:	
	Jackie D. Atkins	07/29/2021
SIGNATURE OF DRILLER / PRINT SIGNEE NAME		DATE

FOR OSE INTERNAL USE

WR-20 WELL RECORD & LOG (Version 06/30/2017)

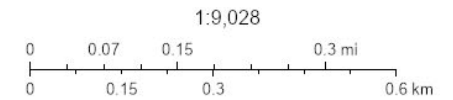
FOR USE BY INTERESTED PARTY		WK-20 WELL RECORD & LOG (version 06/30/2017)	
FILE NO.	C-4549	POD NO.	1
LOCATION	96S-32E-11	WELL TAG ID NO	NA
		TRN NO.	698318
		PAGE 2 OF 2	

NMOCD - Hydrology Map



1/23/2025, 1:12:18 PM

— OSE Streams



Esri, HERE, Garmin, IPC, Maxar, NM OSE

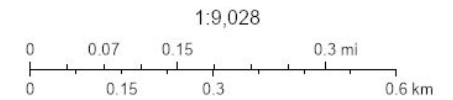
NMOCD - Surface Ownership Map



1/23/2025, 1:12:57 PM

Land Ownership

- BLM
- S



U.S. BLM, Esri, HERE, Garmin, IPC, Maxar

National Flood Hazard Layer FIRMette



103°39'27"W 32°4'2"N



Legend

SEE FIS REPORT FOR DETAILED LEGEND AND INDEX MAP FOR FIRM PANEL LAYOUT

SPECIAL FLOOD HAZARD AREAS		Without Base Flood Elevation (BFE) Zone A, V, A99
		With BFE or Depth Zone AE, AO, AH, VE, AR
		Regulatory Floodway
OTHER AREAS OF FLOOD HAZARD		0.2% Annual Chance Flood Hazard, Areas of 1% annual chance flood with average depth less than one foot or with drainage areas of less than one square mile Zone X
		Future Conditions 1% Annual Chance Flood Hazard Zone X
		Area with Reduced Flood Risk due to Levee. See Notes. Zone X
		Area with Flood Risk due to Levee Zone D
OTHER AREAS		NO SCREEN Area of Minimal Flood Hazard Zone X
		Effective LOMRs
GENERAL STRUCTURES		Area of Undetermined Flood Hazard Zone D
		Channel, Culvert, or Storm Sewer
OTHER FEATURES		Levee, Dike, or Floodwall
		Cross Sections with 1% Annual Chance Water Surface Elevation
MAP PANELS		Coastal Transect
		Base Flood Elevation Line (BFE)
MAP PANELS		Limit of Study
		Jurisdiction Boundary
MAP PANELS		Coastal Transect Baseline
		Profile Baseline
MAP PANELS		Hydrographic Feature
		Digital Data Available
MAP PANELS		No Digital Data Available
		Unmapped



The pin displayed on the map is an approximate point selected by the user and does not represent an authoritative property location.

This map complies with FEMA's standards for the use of digital flood maps if it is not void as described below. The basemap shown complies with FEMA's basemap accuracy standards

The flood hazard information is derived directly from the authoritative NFHL web services provided by FEMA. This map was exported on 1/23/2025 at 7:05 PM and does not reflect changes or amendments subsequent to this date and time. The NFHL and effective information may change or become superseded by new data over time.

This map image is void if the one or more of the following map elements do not appear: basemap imagery, flood zone labels, legend, scale bar, map creation date, community identifiers, FIRM panel number, and FIRM effective date. Map images for unmapped and unmodernized areas cannot be used for regulatory purposes.



National Wetlands Inventory Map



January 23, 2025

Wetlands

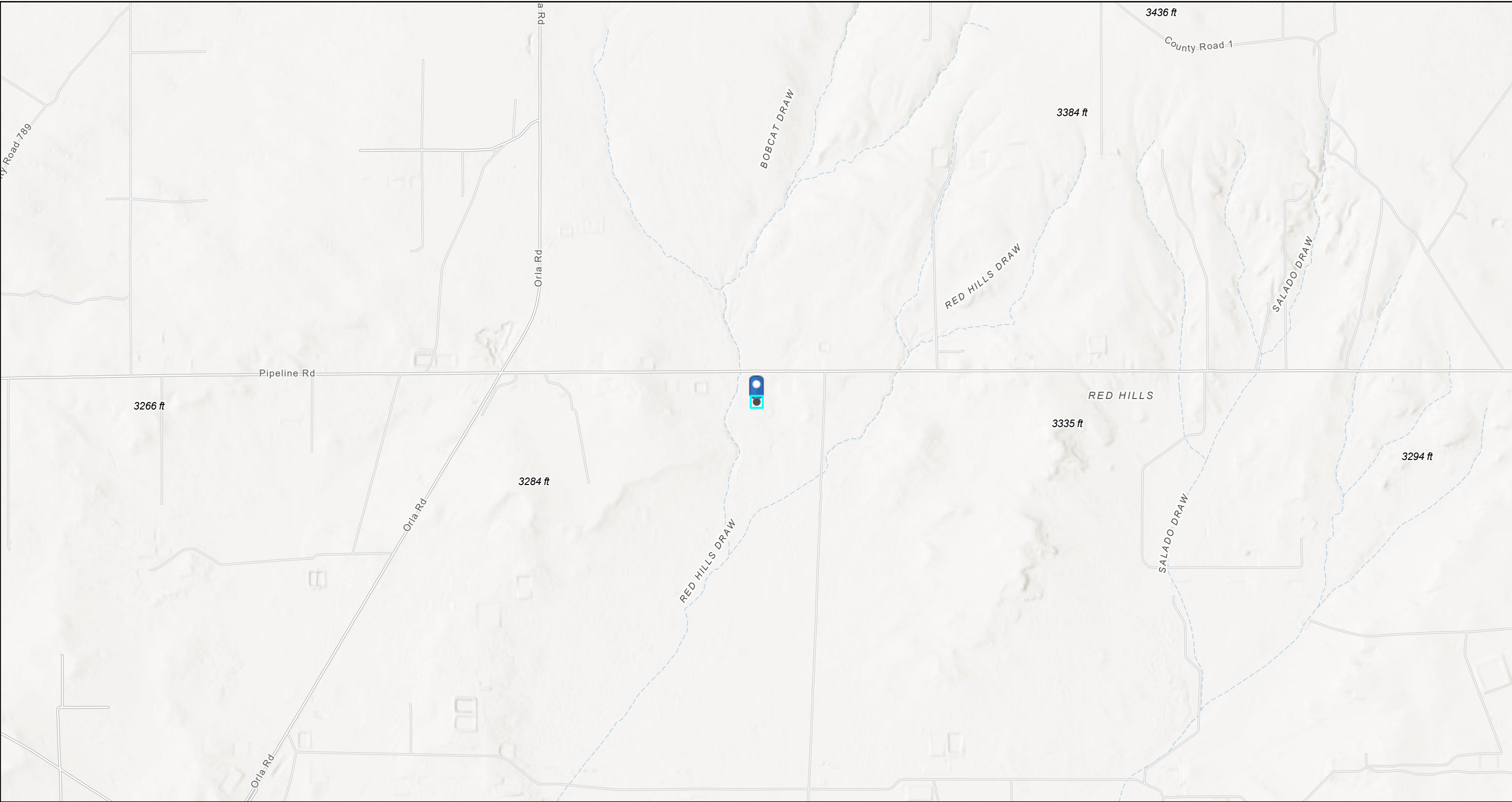
- Estuarine and Marine Deepwater
- Estuarine and Marine Wetland

- Freshwater Emergent Wetland
- Freshwater Forested/Shrub Wetland
- Freshwater Pond

- Lake
- Other
- Riverine

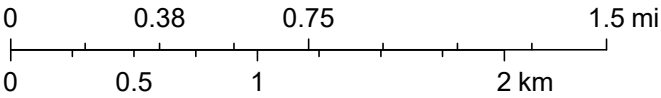
This map is for general reference only. The US Fish and Wildlife Service is not responsible for the accuracy or currentness of the base data shown on this map. All wetlands related data should be used in accordance with the layer metadata found on the Wetlands Mapper web site.

Active Mines in New Mexico



1/23/2025, 1:06:06 PM

1:36,112



Esri, NASA, NGA, USGS, FEMA, Texas Parks & Wildlife, CONANP, Esri, TomTom, Garmin, SafeGraph, GeoTechnologies, Inc, METI/NASA, USGS, EPA, NPS, US Census Bureau, USDA, USFWS

APPENDIX C

Regulatory Correspondence

Sante Fe Main Office
Phone: (505) 476-3441

General Information
Phone: (505) 629-6116

Online Phone Directory
<https://www.emnrd.nm.gov/ocd/contact-us>

State of New Mexico
Energy, Minerals and Natural Resources
Oil Conservation Division
1220 S. St Francis Dr.
Santa Fe, NM 87505

QUESTIONS

Action 425701

QUESTIONS

Operator: BTA OIL PRODUCERS, LLC 104 S Pecos Midland, TX 79701	OGRID: 260297
	Action Number: 425701
	Action Type: [NOTIFY] Notification Of Liner Inspection (C-141L)

QUESTIONS

Prerequisites	
Incident ID (n#)	nAPP2502345164
Incident Name	NAPP2502345164 MESA COWBOY CTB @ 0
Incident Type	Produced Water Release
Incident Status	Initial C-141 Approved
Incident Facility	[fAPP2430953482] Mesa Cowboy

Location of Release Source	
Site Name	Mesa Cowboy CTB
Date Release Discovered	01/21/2025
Surface Owner	Federal

Liner Inspection Event Information	
<i>Please answer all the questions in this group.</i>	
What is the liner inspection surface area in square feet	18,400
Have all the impacted materials been removed from the liner	Yes
Liner inspection date pursuant to Subparagraph (a) of Paragraph (5) of Subsection A of 19.15.29.11 NMAC	01/30/2025
Time liner inspection will commence	02:00 PM
Please provide any information necessary for observers to liner inspection	On January 21, 2025, multiple ball valves within the lined containment facility (Mesa Cowboy CTB) failed due to extreme cold weather event. Approximately 67 BBLS of produced water were released of which 67 BBLS of fluids were recovered. All fluids were contained within the lined facility. The facility has been power washed and cleaned
Please provide any information necessary for navigation to liner inspection site	32.062924,-103.652301

Sante Fe Main Office
Phone: (505) 476-3441

General Information
Phone: (505) 629-6116

Online Phone Directory
<https://www.emnrd.nm.gov/ocd/contact-us>

State of New Mexico
Energy, Minerals and Natural Resources
Oil Conservation Division
1220 S. St Francis Dr.
Santa Fe, NM 87505

CONDITIONS

Action 425701

CONDITIONS

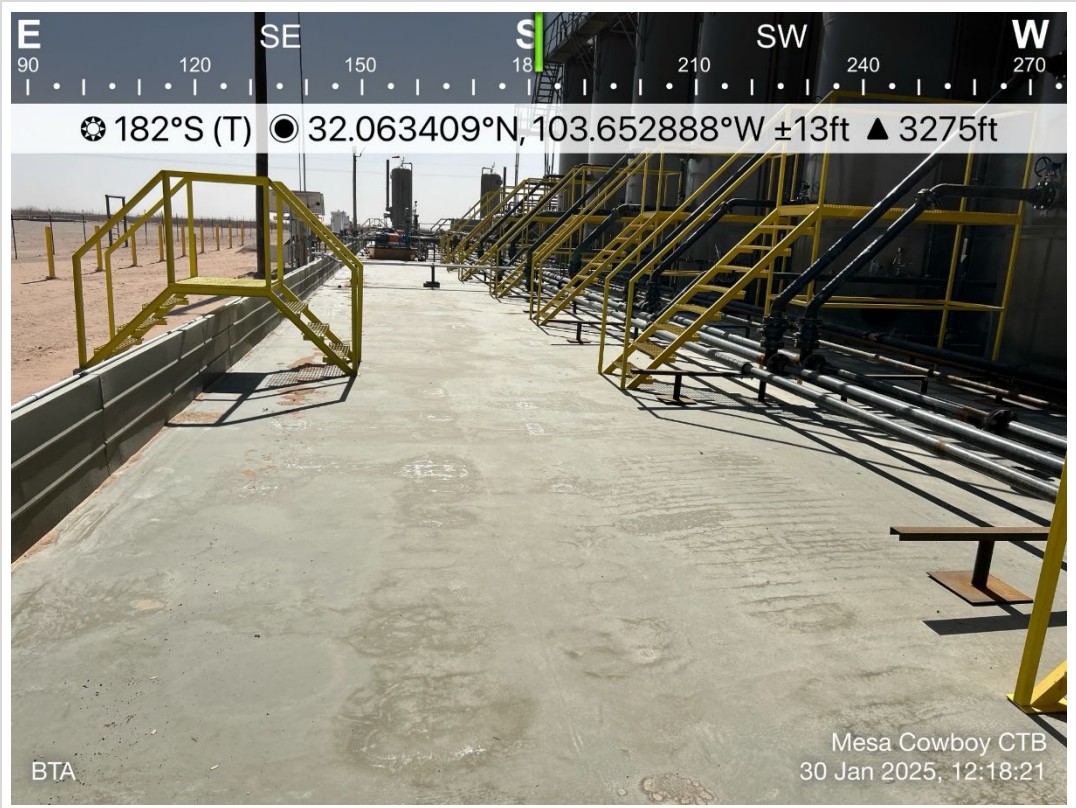
Operator: BTA OIL PRODUCERS, LLC 104 S Pecos Midland, TX 79701	OGRID: 260297
	Action Number: 425701
	Action Type: [NOTIFY] Notification Of Liner Inspection (C-141L)

CONDITIONS

Created By	Condition	Condition Date
nicholas poole	Failure to notify the OCD of liner inspections including any changes in date/time per the requirements of 19.15.29.11.A(5)(a)(ii) NMAC, may result in the inspection not being accepted.	1/28/2025

APPENDIX D

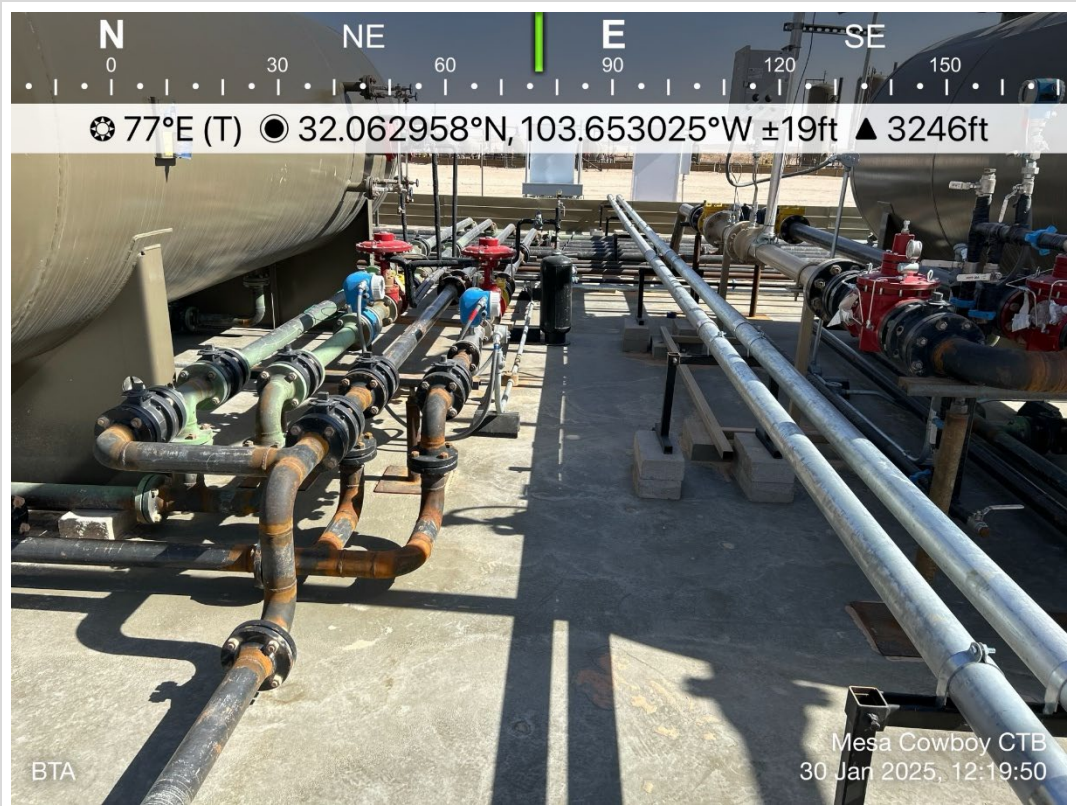
Photographic Documentation



TETRA TECH, INC. PROJECT NO. 212C-MD-03765	DESCRIPTION	View south. Inside tank battery containment. Current lined containment area Conditions: no rips, holes, or tears observed.	1
	SITE NAME	Mesa Cowboy Central Tank Battery Release	1/30/2025



TETRA TECH, INC. PROJECT NO. 212C-MD-03765	DESCRIPTION	View south. Piperack inside tank battery containment. Current lined containment area Conditions: no rips, holes, or tears observed.	2
	SITE NAME	Mesa Cowboy Central Tank Battery Release	1/30/2025



TETRA TECH, INC. PROJECT NO. 212C-MD-03765	DESCRIPTION	View east. Between horizontal separators and piping. Current lined containment area Conditions: no rips, holes, or tears observed.	3
	SITE NAME	Mesa Cowboy Central Tank Battery Release	1/30/2025



TETRA TECH, INC. PROJECT NO. 212C-MD-03765	DESCRIPTION	View south. Inside tank battery containment. Current lined containment area Conditions: no rips, holes, or tears observed.	4
	SITE NAME	Mesa Cowboy Central Tank Battery Release	1/30/2025



TETRA TECH, INC. PROJECT NO. 212C-MD-03765	DESCRIPTION	View south. Flare horizontal separator and heater treaters. Current lined containment area Conditions: no rips, holes, or tears observed.	5
	SITE NAME	Mesa Cowboy Central Tank Battery Release	1/30/2025



TETRA TECH, INC. PROJECT NO. 212C-MD-03765	DESCRIPTION	View north. Inside tank battery containment. Current lined containment area Conditions: no rips, holes, or tears observed.	6
	SITE NAME	Mesa Cowboy Central Tank Battery Release	1/30/2025



TETRA TECH, INC. PROJECT NO. 212C-MD-03765	DESCRIPTION	View northwest. Inside tank battery containment. Current lined containment area Conditions: no rips, holes, or tears observed.	7
	SITE NAME	Mesa Cowboy Central Tank Battery Release	1/30/2025

Sante Fe Main Office
Phone: (505) 476-3441

General Information
Phone: (505) 629-6116

Online Phone Directory
<https://www.emnrd.nm.gov/ocd/contact-us>

State of New Mexico
Energy, Minerals and Natural Resources
Oil Conservation Division
1220 S. St Francis Dr.
Santa Fe, NM 87505

QUESTIONS

Action 432233

QUESTIONS

Operator: BTA OIL PRODUCERS, LLC 104 S Pecos Midland, TX 79701	OGRID: 260297
	Action Number: 432233
	Action Type: [C-141] Remediation Closure Request C-141 (C-141-v-Closure)

QUESTIONS

Prerequisites	
Incident ID (n#)	nAPP2502345164
Incident Name	NAPP2502345164 MESA COWBOY CTB @ 0
Incident Type	Produced Water Release
Incident Status	Remediation Closure Report Received
Incident Facility	[fAPP2430953482] Mesa Cowboy

Location of Release Source*Please answer all the questions in this group.*

Site Name	Mesa Cowboy CTB
Date Release Discovered	01/21/2025
Surface Owner	Federal

Incident Details*Please answer all the questions in this group.*

Incident Type	Produced Water Release
Did this release result in a fire or is the result of a fire	No
Did this release result in any injuries	No
Has this release reached or does it have a reasonable probability of reaching a watercourse	No
Has this release endangered or does it have a reasonable probability of endangering public health	No
Has this release substantially damaged or will it substantially damage property or the environment	No
Is this release of a volume that is or may with reasonable probability be detrimental to fresh water	No

Nature and Volume of Release*Material(s) released, please answer all that apply below. Any calculations or specific justifications for the volumes provided should be attached to the follow-up C-141 submission.*

Crude Oil Released (bbls) Details	Not answered.
Produced Water Released (bbls) Details	Cause: Equipment Failure Valve Produced Water Released: 67 BBL Recovered: 67 BBL Lost: 0 BBL.
Is the concentration of chloride in the produced water >10,000 mg/l	Yes
Condensate Released (bbls) Details	Not answered.
Natural Gas Vented (Mcf) Details	Not answered.
Natural Gas Flared (Mcf) Details	Not answered.
Other Released Details	Not answered.
Are there additional details for the questions above (i.e. any answer containing Other, Specify, Unknown, and/or Fire, or any negative lost amounts)	On January 21, 2025, multiple ball valves within the lined containment facility (Mesa Cowboy CTB) failed due to extreme cold weather event. Approximately 67 BBLS of produced water were released of which 67 BBLS of fluids were recovered. All fluids were contained within the lined facility. The facility will be power washed and cleaned prior to an inspection of the liner. a C-141L will be submitted with minimum 48 hour notice.

Sante Fe Main Office
Phone: (505) 476-3441

General Information
Phone: (505) 629-6116

Online Phone Directory
<https://www.emnrd.nm.gov/ocd/contact-us>

State of New Mexico
Energy, Minerals and Natural Resources
Oil Conservation Division
1220 S. St Francis Dr.
Santa Fe, NM 87505

QUESTIONS, Page 2

Action 432233

QUESTIONS (continued)

Operator: BTA OIL PRODUCERS, LLC 104 S Pecos Midland, TX 79701	OGRID: 260297
	Action Number: 432233
	Action Type: [C-141] Remediation Closure Request C-141 (C-141-v-Closure)

QUESTIONS

Nature and Volume of Release (continued)	
Is this a gas only submission (i.e. only significant Mcf values reported)	No, according to supplied volumes this does not appear to be a "gas only" report.
Was this a major release as defined by Subsection A of 19.15.29.7 NMAC	Yes
Reasons why this would be considered a submission for a notification of a major release	From paragraph A. "Major release" determine using: (1) an unauthorized release of a volume, excluding gases, of 25 barrels or more.
With the implementation of the 19.15.27 NMAC (05/25/2021), venting and/or flaring of natural gas (i.e. gas only) are to be submitted on the C-129 form.	

Initial Response

The responsible party must undertake the following actions immediately unless they could create a safety hazard that would result in injury.

The source of the release has been stopped	True
The impacted area has been secured to protect human health and the environment	True
Released materials have been contained via the use of berms or dikes, absorbent pads, or other containment devices	True
All free liquids and recoverable materials have been removed and managed appropriately	True
If all the actions described above have not been undertaken, explain why	Not answered.

Per Paragraph (4) of Subsection B of 19.15.29.8 NMAC the responsible party may commence remediation immediately after discovery of a release. If remediation has begun, please prepare and attach a narrative of actions to date in the follow-up C-141 submission. If remedial efforts have been successfully completed or if the release occurred within a lined containment area (see Subparagraph (a) of Paragraph (5) of Subsection A of 19.15.29.11 NMAC), please prepare and attach all information needed for closure evaluation in the follow-up C-141 submission.

I hereby certify that the information given above is true and complete to the best of my knowledge and understand that pursuant to OCD rules and regulations all operators are required to report and/or file certain release notifications and perform corrective actions for releases which may endanger public health or the environment. The acceptance of a C-141 report by the OCD does not relieve the operator of liability should their operations have failed to adequately investigate and remediate contamination that pose a threat to groundwater, surface water, human health or the environment. In addition, OCD acceptance of a C-141 report does not relieve the operator of responsibility for compliance with any other federal, state, or local laws and/or regulations.

I hereby agree and sign off to the above statement	Name: Nicholas Poole Title: with Tetrattech Email: nicholas.poole@tetrattech.com Date: 02/14/2025
--	--

Sante Fe Main Office
Phone: (505) 476-3441

General Information
Phone: (505) 629-6116

Online Phone Directory
<https://www.emnrd.nm.gov/ocd/contact-us>

State of New Mexico
Energy, Minerals and Natural Resources
Oil Conservation Division
1220 S. St Francis Dr.
Santa Fe, NM 87505

QUESTIONS, Page 3

Action 432233

QUESTIONS (continued)

Operator: BTA OIL PRODUCERS, LLC 104 S Pecos Midland, TX 79701	OGRID: 260297
	Action Number: 432233
	Action Type: [C-141] Remediation Closure Request C-141 (C-141-v-Closure)

QUESTIONS**Site Characterization**

Please answer all the questions in this group (only required when seeking remediation plan approval and beyond). This information must be provided to the appropriate district office no later than 90 days after the release discovery date.

What is the shallowest depth to groundwater beneath the area affected by the release in feet below ground surface (ft bgs)	Between 100 and 500 (ft.)
What method was used to determine the depth to ground water	NM OSE iWaters Database Search
Did this release impact groundwater or surface water	No
What is the minimum distance, between the closest lateral extents of the release and the following surface areas:	
A continuously flowing watercourse or any other significant watercourse	Between 500 and 1000 (ft.)
Any lakebed, sinkhole, or playa lake (measured from the ordinary high-water mark)	Between 1 and 5 (mi.)
An occupied permanent residence, school, hospital, institution, or church	Greater than 5 (mi.)
A spring or a private domestic fresh water well used by less than five households for domestic or stock watering purposes	Greater than 5 (mi.)
Any other fresh water well or spring	Greater than 5 (mi.)
Incorporated municipal boundaries or a defined municipal fresh water well field	Greater than 5 (mi.)
A wetland	Between 500 and 1000 (ft.)
A subsurface mine	Greater than 5 (mi.)
An (non-karst) unstable area	Greater than 5 (mi.)
Categorize the risk of this well / site being in a karst geology	Medium
A 100-year floodplain	Between 1 and 5 (mi.)
Did the release impact areas not on an exploration, development, production, or storage site	No

Remediation Plan

Please answer all the questions that apply or are indicated. This information must be provided to the appropriate district office no later than 90 days after the release discovery date.

Requesting a remediation plan approval with this submission	Yes
<i>Attach a comprehensive report demonstrating the lateral and vertical extents of soil contamination associated with the release have been determined, pursuant to 19.15.29.11 NMAC and 19.15.29.13 NMAC.</i>	
Have the lateral and vertical extents of contamination been fully delineated	Yes
Was this release entirely contained within a lined containment area	Yes
<i>Per Subsection B of 19.15.29.11 NMAC unless the site characterization report includes completed efforts at remediation, the report must include a proposed remediation plan in accordance with 19.15.29.12 NMAC, which includes the anticipated timelines for beginning and completing the remediation.</i>	
On what estimated date will the remediation commence	01/28/2025
On what date will (or did) the final sampling or liner inspection occur	01/30/2025
On what date will (or was) the remediation complete(d)	01/30/2025
What is the estimated surface area (in square feet) that will be remediated	5080
What is the estimated volume (in cubic yards) that will be remediated	0
<i>These estimated dates and measurements are recognized to be the best guess or calculation at the time of submission and may (be) change(d) over time as more remediation efforts are completed.</i>	
<i>The OCD recognizes that proposed remediation measures may have to be minimally adjusted in accordance with the physical realities encountered during remediation. If the responsible party has any need to significantly deviate from the remediation plan proposed, then it should consult with the division to determine if another remediation plan submission is required.</i>	

Sante Fe Main Office
Phone: (505) 476-3441

General Information
Phone: (505) 629-6116

Online Phone Directory
<https://www.emnrd.nm.gov/ocd/contact-us>

State of New Mexico
Energy, Minerals and Natural Resources
Oil Conservation Division
1220 S. St Francis Dr.
Santa Fe, NM 87505

QUESTIONS, Page 4

Action 432233

QUESTIONS (continued)

Operator: BTA OIL PRODUCERS, LLC 104 S Pecos Midland, TX 79701	OGRID: 260297
	Action Number: 432233
	Action Type: [C-141] Remediation Closure Request C-141 (C-141-v-Closure)

QUESTIONS

Remediation Plan (continued)	
<i>Please answer all the questions that apply or are indicated. This information must be provided to the appropriate district office no later than 90 days after the release discovery date.</i>	
This remediation will (or is expected to) utilize the following processes to remediate / reduce contaminants:	
<i>(Select all answers below that apply.)</i>	
Is (or was) there affected material present needing to be removed	No
Is (or was) there a power wash of the lined containment area (to be) performed	Yes
OTHER (Non-listed remedial process)	Not answered.
<i>Per Subsection B of 19.15.29.11 NMAC unless the site characterization report includes completed efforts at remediation, the report must include a proposed remediation plan in accordance with 19.15.29.12 NMAC, which includes the anticipated timelines for beginning and completing the remediation.</i>	
I hereby certify that the information given above is true and complete to the best of my knowledge and understand that pursuant to OCD rules and regulations all operators are required to report and/or file certain release notifications and perform corrective actions for releases which may endanger public health or the environment. The acceptance of a C-141 report by the OCD does not relieve the operator of liability should their operations have failed to adequately investigate and remediate contamination that pose a threat to groundwater, surface water, human health or the environment. In addition, OCD acceptance of a C-141 report does not relieve the operator of responsibility for compliance with any other federal, state, or local laws and/or regulations.	
I hereby agree and sign off to the above statement	Name: Nicholas Poole Title: with Tetrattech Email: nicholas.poole@tetrattech.com Date: 02/14/2025
<i>The OCD recognizes that proposed remediation measures may have to be minimally adjusted in accordance with the physical realities encountered during remediation. If the responsible party has any need to significantly deviate from the remediation plan proposed, then it should consult with the division to determine if another remediation plan submission is required.</i>	

Sante Fe Main Office
Phone: (505) 476-3441

General Information
Phone: (505) 629-6116

Online Phone Directory
<https://www.emnrd.nm.gov/ocd/contact-us>

State of New Mexico
Energy, Minerals and Natural Resources
Oil Conservation Division
1220 S. St Francis Dr.
Santa Fe, NM 87505

QUESTIONS, Page 6

Action 432233

QUESTIONS (continued)

Operator: BTA OIL PRODUCERS, LLC 104 S Pecos Midland, TX 79701	OGRID:
	260297
	Action Number:
	432233
Action Type:	
[C-141] Remediation Closure Request C-141 (C-141-v-Closure)	

QUESTIONS

Liner Inspection Information	
Last liner inspection notification (C-141L) recorded	425701
Liner inspection date pursuant to Subparagraph (a) of Paragraph (5) of Subsection A of 19.15.29.11 NMAC	01/30/2025
Was all the impacted materials removed from the liner	Yes
What was the liner inspection surface area in square feet	18400

Remediation Closure Request

Only answer the questions in this group if seeking remediation closure for this release because all remediation steps have been completed.

Requesting a remediation closure approval with this submission	Yes
Have the lateral and vertical extents of contamination been fully delineated	Yes
Was this release entirely contained within a lined containment area	Yes
What was the total surface area (in square feet) remediated	5080
What was the total volume (cubic yards) remediated	0
Summarize any additional remediation activities not included by answers (above)	<p>Prior to the liner inspection, the facility was power washed, thus, the integrity of the liner could be inspected and confirmed clean. In accordance with 19.15.29.11(A)(5)(a) NMAC, notification of a liner inspection at the Mesa Cowboy Battery was submitted via the NMOCD portal on January 28, 2025. On January 30, 2025, Tetra Tech personnel was on site to perform an inspection of the liner within the containment area of the Mesa Cowboy Battery. This work was completed to verify the integrity of the liner. The liner was observed to underlie the entirety of the tank battery containment area. The liner was intact with no visible rips or tears and encompassed by an approximately 2-foot-tall muscle wall. The liner was anchored on the interior. Based on the results of the liner inspection, BTA respectfully requests closure of the subject line incident. The release occurred within a lined containment area. The liner integrity demonstration is complete. The affected area of the liner has been visually inspected where the release occurred, and the liner remains intact and had the ability to contain the leak in question. Two business days' notice (C-141N) was provided to the appropriate division district office before conducting the liner inspection.</p>

The responsible party must attach information demonstrating they have complied with all applicable closure requirements and any conditions or directives of the OCD. This demonstration should be in the form of a comprehensive report (in .pdf format) including a scaled site map, sampling diagrams, relevant field notes, photographs of any excavation prior to backfilling, laboratory data including chain of custody documents of final sampling, and a narrative of the remedial activities. Refer to 19.15.29.12 NMAC.

I hereby certify that the information given above is true and complete to the best of my knowledge and understand that pursuant to OCD rules and regulations all operators are required to report and/or file certain release notifications and perform corrective actions for releases which may endanger public health or the environment. The acceptance of a C-141 report by the OCD does not relieve the operator of liability should their operations have failed to adequately investigate and remediate contamination that pose a threat to groundwater, surface water, human health or the environment. In addition, OCD acceptance of a C-141 report does not relieve the operator of responsibility for compliance with any other federal, state, or local laws and/or regulations. The responsible party acknowledges they must substantially restore, reclaim, and re-vegetate the impacted surface area to the conditions that existed prior to the release or their final land use in accordance with 19.15.29.13 NMAC including notification to the OCD when reclamation and re-vegetation are complete.

I hereby agree and sign off to the above statement	Name: Nicholas Poole Title: with Tetrattech Email: nicholas.poole@tetrattech.com Date: 02/14/2025
--	---

Sante Fe Main Office
Phone: (505) 476-3441

General Information
Phone: (505) 629-6116

Online Phone Directory
<https://www.emnrd.nm.gov/ocd/contact-us>

State of New Mexico
Energy, Minerals and Natural Resources
Oil Conservation Division
1220 S. St Francis Dr.
Santa Fe, NM 87505

CONDITIONS

Action 432233

CONDITIONS

Operator: BTA OIL PRODUCERS, LLC 104 S Pecos Midland, TX 79701	OGRID: 260297
	Action Number: 432233
	Action Type: [C-141] Remediation Closure Request C-141 (C-141-v-Closure)

CONDITIONS

Created By	Condition	Condition Date
scwells	None	2/25/2025