



## CLOSURE REPORT

Property:

**NIMITZ MDP1 13 1 Fed. Com. #311H**

**Unit M, S13, T24S, R30E  
32.212551° N, 103.839259° W  
Eddy County, New Mexico  
API: 30-015-48586  
NMOCD Incident ID: nAPP2420440081**

January 15, 2025  
Ensolum Project No. 03B1417213

Prepared for:

**Oxy USA, Inc.  
PO Box 4324  
Houston, Texas 77210**

**Attn: Wade Dittrich**

Prepared by:

---

Tabitha Guadian  
Staff Geologist

---

Beaux Jennings  
Associate Principal

## TABLE OF CONTENTS

<b>1.0</b>	<b>INTRODUCTION.....</b>	<b>3</b>
1.1	Site Description & Background .....	3
1.2	Project Objective.....	3
<b>2.0</b>	<b>CLOSURE CRITERIA.....</b>	<b>3</b>
<b>3.0</b>	<b>SOIL REMEDIATION ACTIVITIES.....</b>	<b>5</b>
<b>4.0</b>	<b>SOIL SAMPLING PROGRAM .....</b>	<b>6</b>
<b>5.0</b>	<b>SOIL LABORATORY ANALYTICAL METHODS .....</b>	<b>6</b>
<b>6.0</b>	<b>DATA EVALUATION .....</b>	<b>7</b>
<b>7.0</b>	<b>RECLAMATION AND RE-VEGETATION .....</b>	<b>7</b>
<b>8.0</b>	<b>FINDINGS AND RECOMMENDATION.....</b>	<b>8</b>
<b>9.0</b>	<b>STANDARDS OF CARE, LIMITATIONS, AND RELIANCE.....</b>	<b>9</b>
9.1	Standard of Care .....	9
9.2	Limitations .....	9
9.3	Reliance.....	9

## LIST OF APPENDICES

<b>Appendix A:</b>	<b>Figures</b>
<b>Appendix B:</b>	<b>Supporting Documentation</b>
<b>Appendix C:</b>	<b>Photographic Documentation</b>
<b>Appendix D:</b>	<b>Tables</b>
<b>Appendix E:</b>	<b>Laboratory Analytical Reports &amp; Chain-of-Custody Documentation</b>

**CLOSURE REPORT****NIMITZ MDP1 13 1 Fed. Com #311H****Unit M, S13, T24S, R30E  
32.212551° N, 103.839259° W  
Eddy County, New Mexico  
API: 30-015-48586  
NMOCD Incident ID: nAPP2420440081****Ensolum Project No. 03B1417213****1.0 INTRODUCTION****1.1 Site Description & Background**

<b>Operator:</b>	OXY USA, Inc. (Oxy)
<b>Site Name:</b>	NIMITZ MDP1 13 1 Fed. Com #311H
<b>Location:</b>	Unit M, Section 13, Township 24 South, Range 30 East American Petroleum Institute (API): 30-015-48586 32.212551° N, 103.839259° W Eddy County, New Mexico
<b>Property:</b>	Federal land managed by the Bureau of Land Management (BLM)
<b>Regulatory:</b>	New Mexico Energy, Minerals and Natural Resources Department (EMNRD) Oil Conservation Division (OCD)

On July 20, 2024, Oxy had a release of produced water and crude oil at the Site due to a flow line rupture. The flow line was isolated, depressurized, locked, and tagged out. Approximately 3 barrels (bbls) of crude oil and 7 bbls of produced water were released onto the ground surface, with none recovered. Oxy reported the release to the New Mexico EMNRD OCD online portal notification of release (NOR) form on July 22, 2024, and was subsequently assigned Incident Number nAPP2420440081.

The **Topographic Map** depicting the location of the Site is included in **Figure 1**, and the **Site Vicinity Map** is included in **Figure 2** in **Appendix A**.

**1.2 Project Objective**

The primary objective of the closure activities was to reduce chemicals of concern (COC) concentrations in the on-Site soil to be in compliance with the applicable New Mexico EMNRD OCD closure criteria concentrations.

**2.0 CLOSURE CRITERIA**

The Site is subject to regulatory oversight by the New Mexico EMNRD OCD. In order to address activities related to exempt oil and gas releases, the New Mexico EMNRD OCD references New Mexico Administrative Code (NMAC) 19.15.29 *Releases*, which establishes investigation and abatement action requirements for sites subject to reporting and/or corrective action. Ensolum,



LLC (Ensolum) utilized information provided by Oxy, the general Site characteristics, and information from the New Mexico Office of the State Engineer (OSE) and the New Mexico EMNRD OCD Imaging database to determine the appropriate closure criteria for the Site. Supporting documentation and figures associated with the following bullets are provided in **Appendix B** and included in **Figure 4** in **Appendix A**.

- One exploratory water well (C-04483-POD1) was identified to the southeast within a 0.5-mile radius of the Site on the OSE Water Rights Reporting System (WRRS) database. Due to an error by the driller when completing the driller's log, the longitude was incorrectly documented. This was subsequently amended to reflect the correct location.
  - Prior to this discovery, Ensolum, on behalf of Oxy, had requested a depth to groundwater Closure Criteria Variance Request to utilize the OSE WRRS water well C-04575-POD1 located approximately 0.62 miles southwest of the Site. Due to the regional depth to groundwater being greater than 100 feet below ground surface (bgs) and the Site being in a low karst potential area, the Closure Criteria Variance Request to reflect groundwater >100 feet as shown in Table I of 19.15.29.12 NMAC was granted by the New Mexico EMNRD OCD on August 9, 2024.
- The Site is not located within 300 feet of a New Mexico ENMRD OCD-defined continuously flowing watercourse or significant watercourse.
- The Site is not located within 200 feet of a lakebed, sinkhole, or playa lake.
- The Site is not located within 300 feet of a permanent residence, school, hospital, institution, or church.
- According to the OSE WRSS database, no private, domestic freshwater wells are used by less than five households for domestic or stock water purposes identified within 500 feet of the Site.
- According to the OSE WRSS database, no freshwater wells have been identified within 1,000 feet of the Site.
- The Site is not located within incorporated municipal boundaries or within a defined municipal freshwater well field covered under a municipal ordinance adopted pursuant to New Mexico Statute Annotated (NMSA) 1978, Section 3-27-3.
- The Site is not located within 300 feet of a wetland.
- Based on information identified on the New Mexico Mining and Minerals Division's Geographical Information System (GIS), Maps, and Mine Data database, the Site is not located within an area overlying a subsurface mine.
- Based on the Karst Occurrence Potential (.kmz) provided by the BLM, the Site is located within a stable area, also referred to as low karst potential.
- The Site is not located within a 100-year floodplain.



Based on the identified siting criteria, cleanup goals for soils remaining in place at the Site include:

CLOSURE CRITERIA FOR SOILS IMPACTED BY A RELEASE (NON-VEGETATIVE ZONE)			
Minimum depth below any point within horizontal boundary of the release to groundwater less than 10,000 mg/l TDS	Constituent	Method	Limit
> 100 feet	Chloride	EPA 300.0 or SM4500 Cl B	20,000 mg/kg
	TPH (GRO+DRO)	EPA SW-846 Method 8015M	1,000 mg/kg
	TPH (GRO+DRO+MRO)	EPA SW-846 Method 8015M	2,500 mg/kg
	BTEX	EPA SW-846 Method 8021B or 8260B	50 mg/kg
	Benzene	EPA SW-846 Method 8021B or 8260B	10 mg/kg

CLOSURE CRITERIA FOR SOILS IMPACTED BY A RELEASE (VEGETATIVE ZONE)			
Minimum depth below any point within horizontal boundary of the release to groundwater less than 10,000 mg/l TDS	Constituent	Method	Limit
≤ 50 feet	Chloride	EPA 300.0 or SM4500 Cl B	600 mg/kg
	TPH (GRO+DRO+MRO)	EPA SW-846 Method 8015M	100 mg/kg
	BTEX	EPA SW-846 Method 8021B or 8260B	50 mg/kg
	Benzene	EPA SW-846 Method 8021B or 8260B	10 mg/kg

### 3.0 SOIL REMEDIATION ACTIVITIES

On July 20, 2024, Oxy had a release of produced water and crude oil at the Site due to a flow line rupture. The flow line was isolated, depressurized, locked, and tagged out. Approximately 3 bbls of crude oil and 7 bbls of produced water were released onto the ground surface, with none recovered.

From August 28 through October 3, 2024, excavation activities were conducted at the Site.

On September 17, 2024, subsequent to excavation activities, Ensolum arrived on-Site to collect 21 composite soil samples from the excavation floor (FS01 through FS21) and six composite soil samples from the excavation sidewalls (SW01 through SW06). The excavation floor samples were collected at a depth of 4 feet bgs, and the excavation sidewall samples were collected at a depth of 0-4 feet bgs. Based on laboratory analytical data, additional excavation was necessary.

On October 3, 2024, subsequent to the completion of additional excavation activities, Ensolum arrived on-Site to collect two composite soil samples from the excavation sidewalls (SW01 and SW02) at a depth of 0-4 feet bgs. Based on laboratory analytical data, no additional excavation and/or remediation was necessary.

The composite soil samples were analyzed for benzene, toluene, ethylbenzene, and total xylenes (BTEX), total petroleum hydrocarbons (TPH), gasoline range organics (GRO), diesel range organics (DRO), motor oil/lube oil range organics (MRO), and chloride in accordance with the New Mexico EMNRD OCD Closure Criteria for Soils Impacted by a Release (NMOCD Closure Criteria).

The final excavation areas measured approximately 125 feet long by 60 feet wide at the maximum extents, with a depth of 4 feet bgs.

The excavation measured approximately 4,328 square feet in areal extent. A total of 641 cubic yards (cy) of impacted soil was removed during the excavation activities. The impacted soil was transported and properly disposed of at the Lea Land Facility located in Hobbs, New Mexico. After completion of confirmation sampling, the excavation was secured with fencing. Backfill of excavation was completed utilizing material purchased locally from the Twin Wells Caliche Pit and recontoured to match pre-existing conditions. A BLM-approved seed mixture will be sown into the surface area of the backfill for re-vegetation.

**Figure 3** is a map that identifies approximate soil sample locations and depicts the approximate dimensions of the impacted soil and excavation extent with respect to the release (**Appendix A**). Photographic documentation of the field activities is included in **Appendix C**.

#### 4.0 SOIL SAMPLING PROGRAM

Ensolum's soil sampling program from September 17, 2024, through October 3, 2024, included the collection of a total of 21 composite soil samples from the excavation floor (FS01 through FS21) and eight composite soil samples from six locations from the excavation sidewalls (SW01 through SW06) for laboratory analysis. Additionally, one composite soil sample was collected from the backfill material at the Site prior to use (Twin Wells Caliche Pit).

The soil samples were collected and placed in laboratory-prepared glassware, labeled/sealed using laboratory-supplied labels and custody seals, and stored on ice in a cooler. Under proper chain-of-custody procedures, the samples were relinquished to Cardinal Laboratories in Hobbs, New Mexico.

#### 5.0 SOIL LABORATORY ANALYTICAL METHODS

The composite soil samples were analyzed for BTEX following the United States Environmental Protection Agency (EPA) SW-846 Method 8021B, TPH GRO/DRO/MRO following EPA SW-846 Method 8015M/D, and chloride using SM4500Cl-B.

Laboratory analytical results are summarized in **Table 1**, **Table 2**, and **Table 3** in **Appendix D**. The executed chain-of-custody forms and laboratory data sheets are provided in **Appendix E**.

## 6.0 DATA EVALUATION

Ensolum compared the benzene, total BTEX, TPH-GRO/DRO/MRO, and chloride concentrations or laboratory sample detection limits (SDLs) associated with the soils remaining in place to the applicable NMOCD Closure Criteria. The final composite soil samples collected from the Non-Vegetative Zone were compared to the NMOCD Closure Criteria for Soils Impacted by a Release (Non-Vegetative Zone), while the final composite soil samples collected from the Vegetative Zone were compared to the NMOCD Closure Criteria for Soils Impacted by a Release (Vegetative Zone)

- Laboratory analytical results indicate benzene concentrations for soils remaining in place at the Site and the backfill material do not exceed the laboratory SDLs or the applicable NMOCD Closure Criteria of 10 milligrams per kilogram (mg/kg).
- Laboratory analytical results indicated that total BTEX concentrations for soils remaining in place at the Site and the backfill material do not exceed the laboratory SDLs and/or the applicable NMOCD Closure Criteria of 50 mg/kg.
- Laboratory analytical results indicate that the combined TPH-GRO/DRO concentrations for soils remaining in place in the Non-Vegetative Zone do not exceed the laboratory SDLs and/or the applicable NMOCD Closure Criteria of 1,000 mg/kg for depth to groundwater >100 feet.
- Laboratory analytical results indicate that the combined TPH-GRO/DRO/MRO concentrations for soils remaining in place in the Non-Vegetative Zone do not exceed the laboratory SDLs and/or the applicable NMOCD Closure Criteria of 2,500 mg/kg for depth to groundwater >100 feet.
- Laboratory analytical results indicate chloride concentrations for soils remaining in place in the Non-Vegetative Zone do not exceed the laboratory SDLs and/or the applicable NMOCD Closure Criteria of 20,000 mg/kg for depth to groundwater >100 feet.
- Laboratory analytical results indicated combined TPH-GRO/DRO/MRO concentrations for soils remaining in place in the Vegetative Zone and the backfill material do not exceed the laboratory SDLs and/or the applicable NMOCD Closure Criteria of 100 mg/kg for depth to groundwater ≤50 feet.
- Laboratory analytical results indicated chloride concentrations for soils remaining in place in the Vegetative Zone and the backfill material do not exceed the laboratory SDLs and/or the applicable NMOCD Closure Criteria of 600 mg/kg for depth to groundwater ≤50 feet.
- Laboratory analytical results are summarized in **Table 1**, **Table 2**, and **Table 3** in **Appendix D**.

## 7.0 RECLAMATION AND RE-VEGETATION

The release occurred off-pad, and as such, a reclamation requirement of 600 mg/kg chloride and 100 mg/kg TPH was applied to the top 4 feet of the Vegetative Zone that was impacted by the release per 19.15.29.13.D (1) NMAC for the top 4 feet of areas that will be reclaimed following remediation. The following Reclamation Plan addresses the reclamation of the Vegetative Zone: Soil in the vicinity of the release include predominately gravelly fine sandy loam;

- The backfilled areas will be seeded utilizing a weed-free seed mix designed by the BLM to meet reclamation standards for this region, which is Pecos District BLM Seed Mix for Gravelly Sandy Loam, SD-3 Ecological Site;
- The seed mixture will be distributed with one of the following methods: push broadcaster seed spreader/tractor-operated broadcast seed spreader/drill seeding/other means;
- Application of the seed mixture will be at a coverage of either 10 pounds of seeds per acre of reclaimed pasture with distribution by a drilling method or 20 pounds of seeds per acre of reclaimed pasture with distribution by a broadcast method, whichever was more applicable;
- Erosion control management will potentially include:
  - The placement of wattles in areas with a propensity for high run-off rates.
  - Straw cover if high winds are anticipated to support moisture retention and limit wind from blowing seeds away before they have had time to germinate.
  - Other erosional control best management practices (BMP) as necessary to support timely and healthy regrowth of vegetation in disturbed areas.
- Backfilling of the excavation utilized locally purchased material and recontoured to pre-existing conditions.
- The backfill material was sampled to comply with the above reclamation requirement. The laboratory analytical results are summarized in **Table 3 in Appendix D**.
- Seeding will be completed during the spring or summer of 2025, during the month(s) when temperatures and precipitation is/are most conducive for vegetation growth. In general, seeding should occur approximately one month after the last frost in the Spring up until approximately one month prior to the first fall frost.
- Annual inspections (at a minimum), will take place on the location until revegetation is consistent with local natural vegetation density. The Site will be inspected the following Spring/Fall to assess the success of regrowth. If necessary, an additional application of the BLM-approved pure live seed mixture will be applied, and any needed BMPs will be installed to support growth and limit erosion.

## 8.0 FINDINGS AND RECOMMENDATION

- On July 20, 2024, Oxy had a release of produced water and crude oil at the Site due to a flow line rupture. The flow line was isolated, depressurized, locked, and tagged out. Approximately 3 bbls of crude oil and 7 bbls of produced water were released onto the ground surface, with none recovered.
- Ensolum's soil sampling program from September 17, 2024, through October 3, 2024, included the collection of a total of 21 composite soil samples from the excavation floor (FS01 through FS21) and eight composite soil samples from six locations from the excavation sidewalls (SW01 through SW06) for laboratory analysis. The composite floor samples were collected at a depth of 4 feet bgs, and the sidewall samples were collected at a depth of 0-4 feet bgs. Additionally, one composite soil sample was collected from the backfill material at the Site prior to its use (Twin Wells Caliche Pit).

- The primary objective of the closure activities was to reduce COC concentrations in the on-Site soil to be in compliance with applicable NMOCD Closure Criteria for Soils Impacted by a Release using the New Mexico EMNRD OCD's NMAC 19.15.29 Releases as guidance.
- The final excavation area measured approximately 125 feet long by 60 feet wide at the maximum extents, with a depth of 4 feet bgs.
- Based on laboratory analytical results, the final composite soil samples collected from the excavation floor, sidewalls, and the backfill material did not exhibit benzene, total BTEX, TPH GRO/DRO, TPH GRO/DRO/MRO, or chloride concentrations above the applicable NMOCD Closure Criteria.
- Once the areas are brought back to their original grade, a BLM-approved seed mixture will be sown into the surface of the backfill for re-vegetation per the above-stated Reclamation Plan.

**Based on field observations and laboratory analytical results, no additional investigation or corrective action appears warranted at this time.**

## **9.0 STANDARDS OF CARE, LIMITATIONS, AND RELIANCE**

### **9.1 Standard of Care**

Ensolum's services were performed in accordance with standards customarily provided by a firm rendering the same or similar services in the area during the same time period. Ensolum makes no warranties, express or implied, as to the services performed hereunder. Additionally, Ensolum does not warrant the work of third parties supplying information used in the report (e.g., laboratories, regulatory agencies, or other third parties). This scope of services was performed in accordance with the scope of work agreed with the client, as detailed in our proposal.

### **9.2 Limitations**

Findings, conclusions, and recommendations resulting from these services are based upon information derived from the on-site activities and other services performed under this scope of work, and it should be noted that this information is subject to change over time. Certain indicators of the presence of hazardous substances, petroleum products, or other constituents may have been latent, inaccessible, unobservable, or not present during these services, and Ensolum cannot represent that the Site contains no hazardous substances, toxic materials, petroleum products, or other latent conditions beyond those identified during the investigation. Environmental conditions in other areas or portions of the Site may vary from those encountered at actual sample locations. Ensolum's findings and recommendations are based solely upon data available to Ensolum at the time of these services.

### **9.3 Reliance**

This report has been prepared for the exclusive use of Oxy USA, Inc., and any authorization for use or reliance by any other party (except a governmental entity having jurisdiction over the Site) is prohibited without the express written authorization of Oxy USA, Inc. and Ensolum. Any unauthorized distribution or reuse is at the client's sole risk. Notwithstanding the foregoing, reliance by authorized parties will be subject to the terms, conditions, and limitations stated in the Closure Report and Ensolum's Master Services Agreement. The limitation of liability defined in the agreement is the aggregate limit of Ensolum's liability to the client.

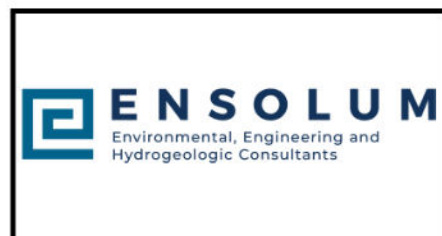
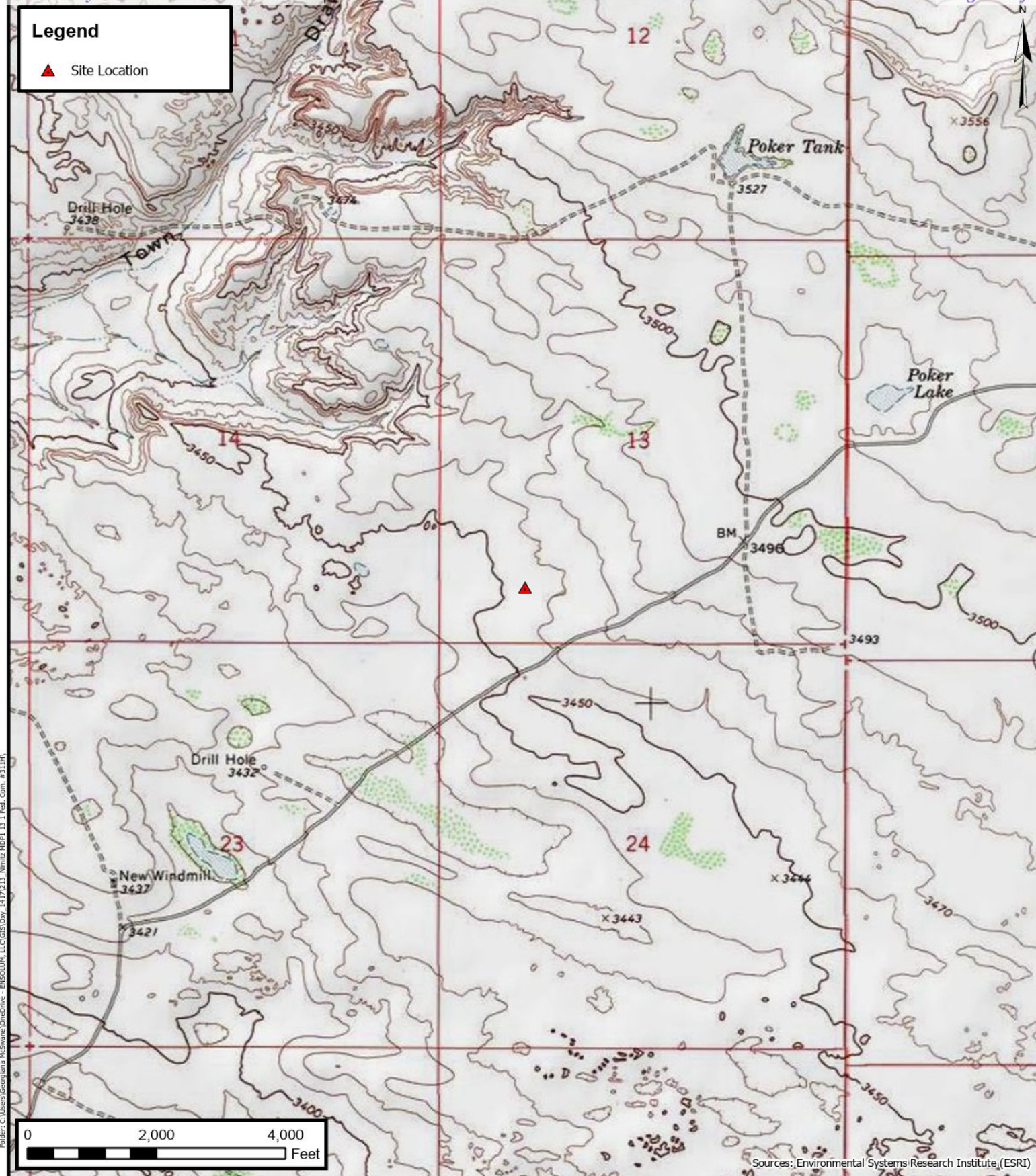


## APPENDIX A

### Figures

---





**Topographic Map**  
Oxy USA Inc.  
NIMITZ MDP1 13 1 Fed. Com. #311H  
32.212551° N, 103.839259° W  
Eddy County, New Mexico

PROJECT NUMBER: 03B1417213

**FIGURE**  
**1**



**Legend** Site Location**Site Vicinity Map**

Oxy USA Inc.  
NIMITZ MDP1 13 1 Fed. Com. #311H  
32.212551° N, 103.839259° W  
Eddy County, New Mexico

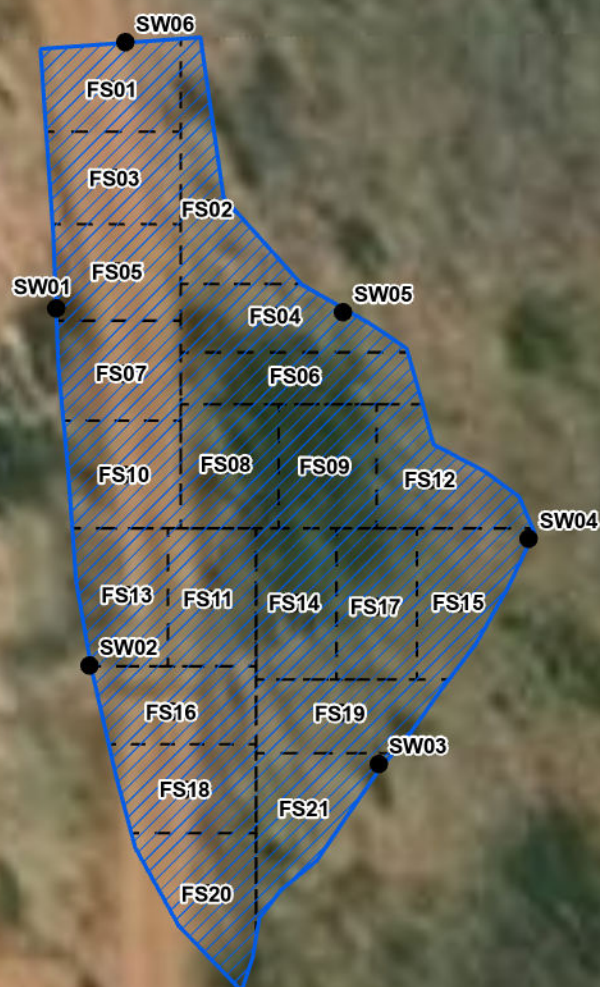
PROJECT NUMBER: 03B1417213

**FIGURE****2**



## Legend

- Confirmation Soil Sample Location
- ▨ Excavation Extent
- - - Composite Soil Sample
- - - Grid Boundary



0 25 50  
Feet

Sources: Environmental Systems Research Institute (ESRI)



## Site Map

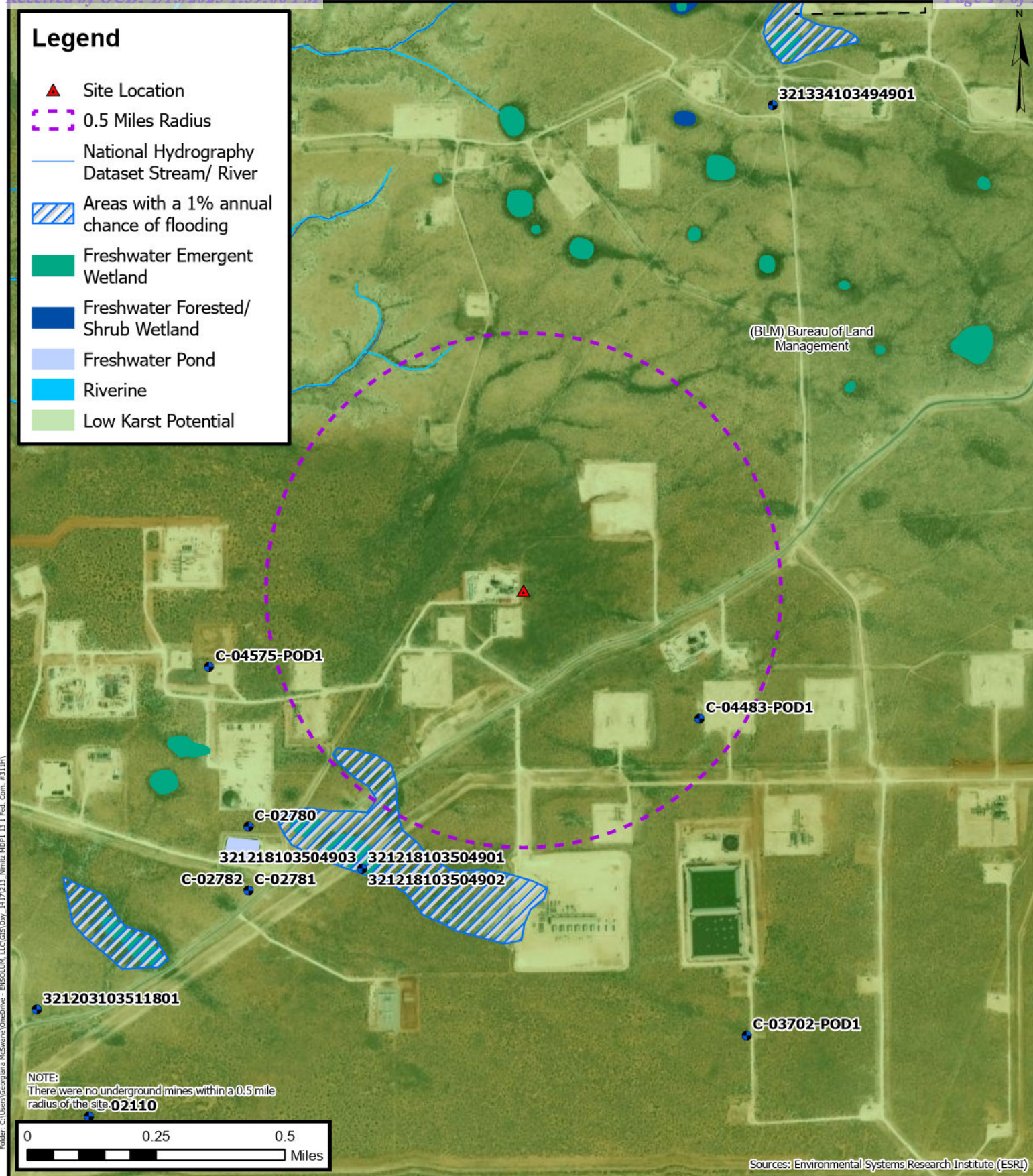
Oxy USA Inc.  
NIMITZ MDP1 13 1 Fed. Com. #311H  
32.212551° N, 103.839259° W  
Eddy County, New Mexico

PROJECT NUMBER: 03B1417213

**FIGURE**

**3**





## Closure Criteria Map

Oxy USA Inc.  
NIMITZ MDP1 13 1 Fed. Com. #311H  
32.212551° N, 103.839259° W  
Eddy County, New Mexico

PROJECT NUMBER: 03B1417213

**FIGURE**

**4**



## APPENDIX B

### Supporting Documentation

---



2904 W 2nd St.  
Roswell, NM 88201  
voice: 575.624.2420  
fax: 575.624.2421  
www.atkinseng.com

4/26/2023

DII-NMOSE  
1900 W 2<sup>nd</sup> Street  
Roswell, NM 88201

*Hand Delivered to the DII Office of the State Engineer*

Re: Resubmitted Well Record C-4483 Pod1

To whom it may concern:

Attached please find a corrected well record and a plugging record, in duplicate, for a one (1) soil borings, C-4483 Pod1. The Longitude was corrected for both records.

If you have any questions, please contact me at 575.499.9244 or [lucas@atkinseng.com](mailto:lucas@atkinseng.com).

Sincerely,

A handwritten signature in black ink, appearing to read "Lucas Middleton". The signature is fluid and cursive, with the first name "Lucas" and last name "Middleton" clearly distinguishable.

Lucas Middleton

Enclosures: as noted above

2025 01 - 10:07 AM - 10:07 AM





# WELL RECORD & LOG

OFFICE OF THE STATE ENGINEER

[www.ose.state.nm.us](http://www.ose.state.nm.us)

01/15/2025 1:59:00 PM

1. GENERAL AND WELL LOCATION	OSE POD NO. (WELL NO.) POD1 (BH-01)		WELL TAG ID NO. n/a		OSE FILE NO(S). C-4483			
	WELL OWNER NAME(S) XTO Energy (Kyle Littrell)				PHONE (OPTIONAL)			
	WELL OWNER MAILING ADDRESS 6401 Holiday Hill Dr.				CITY Midland	STATE TX	ZIP 79707	
	WELL LOCATION (FROM GPS)	DEGREES LATITUDE 32°	MINUTES 12'	SECONDS 31.77" N	* ACCURACY REQUIRED: ONE TENTH OF A SECOND			
		LONGITUDE <del>104°</del> 103°	50'	0.72" W	* DATUM REQUIRED: WGS 84			
DESCRIPTION RELATING WELL LOCATION TO STREET ADDRESS AND COMMON LANDMARKS – PLSS (SECTION, TOWNSHIP, RANGE) WHERE AVAILABLE NW NW NE Sec. 24 T24S R30E								
2. DRILLING & CASING INFORMATION	LICENSE NO. 1249		NAME OF LICENSED DRILLER Jackie D. Atkins			NAME OF WELL DRILLING COMPANY Atkins Engineering Associates, Inc.		
	DRILLING STARTED 11/24/2020	DRILLING ENDED 11/24/2020	DEPTH OF COMPLETED WELL (FT) temporary well material		BORE HOLE DEPTH (FT) 110	DEPTH WATER FIRST ENCOUNTERED (FT) n/a		
	COMPLETED WELL IS: <input type="checkbox"/> ARTESIAN <input checked="" type="checkbox"/> DRY HOLE <input type="checkbox"/> SHALLOW (UNCONFINED)					STATIC WATER LEVEL IN COMPLETED WELL (FT) n/a		
	DRILLING FLUID: <input checked="" type="checkbox"/> AIR <input type="checkbox"/> MUD ADDITIVES – SPECIFY:							
	DRILLING METHOD: <input type="checkbox"/> ROTARY <input type="checkbox"/> HAMMER <input type="checkbox"/> CABLE TOOL <input checked="" type="checkbox"/> OTHER – SPECIFY: Hollow Stem Auger							
	DEPTH (feet bgl) FROM TO		BORE HOLE DIAM (inches)	CASING MATERIAL AND/OR GRADE (include each casing string, and note sections of screen)	CASING CONNECTION TYPE (add coupling diameter)	CASING INSIDE DIAM. (inches)	CASING WALL THICKNESS (inches)	SLOT SIZE (inches)
	0 110		±8.5	Boring- HSA	–	–	–	–
3. ANNULAR MATERIAL	DEPTH (feet bgl) FROM TO		BORE HOLE DIAM. (inches)	LIST ANNULAR SEAL MATERIAL AND GRAVEL PACK SIZE-RANGE BY INTERVAL	AMOUNT (cubic feet)	METHOD OF PLACEMENT		

FOR OSE INTERNAL USE

WR-20 WELL RECORD & LOG (Version 06/30/17)


FILE NO.	POD NO.	TRN NO.
LOCATION	WELL TAG ID NO.	PAGE 1 OF 2

4. HYDROGEOLOGIC LOG OF WELL	DEPTH (feet bgl)		THICKNESS (feet)	COLOR AND TYPE OF MATERIAL ENCOUNTERED - INCLUDE WATER-BEARING CAVITIES OR FRACTURE ZONES (attach supplemental sheets to fully describe all units)	WATER BEARING? (YES / NO)	ESTIMATED YIELD FOR WATER- BEARING ZONES (gpm)
	FROM	TO				
	0	24	24	Sand, Fine-grained, poorly-graded, with caliche, Tan-Off-White	Y    ✓ N	
	24	34	10	Sand, Fine-grained, poorly-graded, silty, with caliche gravel, Tan-Off-White	Y    ✓ N	
	34	51	17	Sand, Fine-grained, poorly-graded, silty, with caliche gravel, Light Brown	Y    ✓ N	
	51	54	3	Sand, Fine-grained, poorly-graded, silty, with caliche gravel, Light Brown-Brown	Y    ✓ N	
	54	76	22	Sand, Fine-grained, poorly-graded, Brown, dry	Y    ✓ N	
	76	101	25	Sand, Fine-grained, poorly-graded, Light-Brown, dry	Y    ✓ N	
	101	110	9	Sand, Fine-grained, poorly-graded, with gravel, Light-Brown, dry-moist	Y    ✓ N	
					Y    N	
					Y    N	
					Y    N	
					Y    N	
					Y    N	
					Y    N	
					Y    N	
					Y    N	
					Y    N	
					Y    N	
					Y    N	
					Y    N	
					Y    N	
					Y    N	
					Y    N	
METHOD USED TO ESTIMATE YIELD OF WATER-BEARING STRATA:					TOTAL ESTIMATED WELL YIELD (gpm):	
<input type="checkbox"/> PUMP <input type="checkbox"/> AIR LIFT <input type="checkbox"/> BAILER <input type="checkbox"/> OTHER - SPECIFY:					0.00	

5. TEST; RIG SUPERVISION	WELL TEST	TEST RESULTS - ATTACH A COPY OF DATA COLLECTED DURING WELL TESTING, INCLUDING DISCHARGE METHOD, START TIME, END TIME, AND A TABLE SHOWING DISCHARGE AND DRAWDOWN OVER THE TESTING PERIOD.
	MISCELLANEOUS INFORMATION: Temporary well materials removed and the soil boring backfilled using drill cuttings from total depth to ten feet below ground surface, then hydrated bentonite chips from ten feet below ground surface to surface. Logs adapted from LTE on-site geologist.	
	PRINT NAME(S) OF DRILL RIG SUPERVISOR(S) THAT PROVIDED ONSITE SUPERVISION OF WELL CONSTRUCTION OTHER THAN LICENSEE: Shane Eldridge	

6. SIGNATURE	THE UNDERSIGNED HEREBY CERTIFIES THAT, TO THE BEST OF HIS OR HER KNOWLEDGE AND BELIEF, THE FOREGOING IS A TRUE AND CORRECT RECORD OF THE ABOVE DESCRIBED HOLE AND THAT HE OR SHE WILL FILE THIS WELL RECORD WITH THE STATE ENGINEER AND THE PERMIT HOLDER WITHIN 30 DAYS AFTER COMPLETION OF WELL DRILLING:   <div style="display: flex; justify-content: space-between; margin-top: 10px;"> <div>SIGNATURE OF DRILLER / PRINT SIGNEE NAME</div> <div>DATE</div> </div>
--------------	--

FOR OSE INTERNAL USE

WR-20 WELL RECORD &amp; LOG (Version 06/30/2017)

FILE NO.	POD NO.	TRN NO.
LOCATION	WELL TAG ID NO.	PAGE 2 OF 2



# PLUGGING RECORD



**NOTE: A Well Plugging Plan of Operations shall be approved by the State Engineer prior to plugging - 19.27.4 NMAC**

## I. GENERAL / WELL OWNERSHIP:

State Engineer Well Number: C-4483-POD1

Well owner: XTO ENERGY (Kyle Littrell)

Phone No.: 432.682.8873

Mailing address: 6401 Holiday Hill Dr.

City: Midland State: Texas Zip code: 79707

## II. WELL PLUGGING INFORMATION:

- 1) Name of well drilling company that plugged well: Jackie D. Atkins ( Atkins Engineering Associates Inc.)
- 2) New Mexico Well Driller License No.: 1249 Expiration Date: 04/30/21
- 3) Well plugging activities were supervised by the following well driller(s)/rig supervisor(s):  
Shane Elridge
- 4) Date well plugging began: 11/30/2020 Date well plugging concluded: 11/30/2020
- 5) GPS Well Location: Latitude: 32 deg, 12 min, 31.77 sec  
Longitude: 104 deg, 50 min, 0.72 sec, WGS 84
- 6) Depth of well confirmed at initiation of plugging as: 110 ft below ground level (bgl),  
by the following manner: weighted tape
- 7) Static water level measured at initiation of plugging: n/a ft bgl
- 8) Date well plugging plan of operations was approved by the State Engineer: 09/29/2020
- 9) Were all plugging activities consistent with an approved plugging plan? Yes If not, please describe differences between the approved plugging plan and the well as it was plugged (attach additional pages as needed):

COG 11-27-2020 PL 44

- For each interval plugged, describe within the following columns:**

MULTIPLY		BY	AND OBTAIN
cubic feet	x	7.4805	= gallons
cubic yards	x	201.97	= gallons

I, Jackie D. Atkins, say that I am familiar with the rules of the Office of the State Engineer pertaining to the plugging of wells and that each and all of the statements in this Plugging Record and attachments are true to the best of my knowledge and belief.

Jack Atkins

12/14/2020

Date \_\_\_\_\_








# 2020-12-15\_C-4483\_POD1\_OSE\_Well Record and Log\_plu13-forsign

Final Audit Report

2020-12-15

Created:	2020-12-15
By:	Lucas Middleton (lucas@atkinseng.com)
Status:	Signed
Transaction ID:	CBJCHBCAABAARxff6o4VHy1EHZsp0Yo_uFsm-rYe4wj2

## "2020-12-15\_C-4483\_POD1\_OSE\_Well Record and Log\_plu13-forsign" History

-  Document created by Lucas Middleton (lucas@atkinseng.com)  
2020-12-15 - 8:03:25 PM GMT- IP address: 69.21.248.123
-  Document emailed to Jack Atkins (jack@atkinseng.com) for signature  
2020-12-15 - 8:03:56 PM GMT
-  Email viewed by Jack Atkins (jack@atkinseng.com)  
2020-12-15 - 8:27:59 PM GMT- IP address: 74.50.153.115
-  Document e-signed by Jack Atkins (jack@atkinseng.com)  
Signature Date: 2020-12-15 - 8:29:23 PM GMT - Time Source: server- IP address: 74.50.153.115
-  Agreement completed.  
2020-12-15 - 8:29:23 PM GMT

CSE DT APR 27 2023 PM 1:00

## Kelly Lowery

---

**From:** Velez, Nelson, EMNRD <Nelson.Velez@emnrd.nm.gov>  
**Sent:** Friday, August 9, 2024 2:19 PM  
**To:** Kelly Lowery  
**Cc:** Dittrich, John W; Pierce, Tyson (Legacy Safety & Consulting LLC); Beaux Jennings  
**Subject:** Re: [EXTERNAL] FW: DTW Variance Request - NIMITZ MDP1 13 1 Fed. Com. #311H (Incident ID: nAPP2420440081)

[ \*\*EXTERNAL EMAIL\*\*]

Good day Kelly,

My apology for not responding in a timely manner.

Your variance request toward the depth to water determination is approved.

Please keep a copy of this communication for inclusion within the appropriate report submittal.

Regards,

**Nelson Velez** • Environmental Specialist - Adv  
Environmental Bureau | EMNRD - Oil Conservation Division  
1000 Rio Brazos Road | Aztec, NM 87410  
(505) 469-6146 | [nelson.velez@emnrd.nm.gov](mailto:nelson.velez@emnrd.nm.gov)  
<http://www.emnrd.nm.gov/ocd>



---

**From:** Kelly Lowery <klowery@ensolum.com>  
**Sent:** Thursday, August 8, 2024 1:42 PM  
**To:** Velez, Nelson, EMNRD <Nelson.Velez@emnrd.nm.gov>  
**Cc:** Dittrich, John W <Wade\_Dittrich@oxy.com>; Pierce, Tyson (Legacy Safety & Consulting LLC) <tyson\_pierce@oxy.com>; Beaux Jennings <bjennings@ensolum.com>  
**Subject:** [EXTERNAL] FW: DTW Variance Request - NIMITZ MDP1 13 1 Fed. Com. #311H (Incident ID: nAPP2420440081)

**CAUTION:** This email originated outside of our organization. Exercise caution prior to clicking on links or opening attachments.

Good afternoon Nelson,

Shelly informed me that she had forwarded this DTW variance request below over to you and I wanted to check in on the status of it.

Thank you,



**Kelly Lowery, GIT**  
Project Geologist  
214-733-3165  
**Ensolum, LLC**  
in f

---

**From:** Kelly Lowery  
**Sent:** Thursday, August 1, 2024 3:33 PM  
**To:** 'Enviro, OCD, EMNRD' <OCD.Enviro@emnrn.nm.gov>  
**Cc:** 'Dittrich, John W' <Wade\_Dittrich@oxy.com>; 'Pierce, Tyson (Legacy Safety & Consulting LLC)' <tyson\_pierce@oxy.com>; Beaux Jennings <bjennings@ensolum.com>  
**Subject:** RE: DTW Variance Request - NIMITZ MDP1 13 1 Fed. Com. #311H (Incident ID: nAPP24200440081)

Good afternoon,

I wanted to inquire about the DTW Variance below for the NIMITZ MDP1 13 1 Fed. Com #311H (Incident ID: nAPP24200440081) that was sent on July 23, 2024.

Thank you,



**Kelly Lowery, GIT**  
Project Geologist  
214-733-3165  
**Ensolum, LLC**  
in f

---

**From:** Kelly Lowery  
**Sent:** Tuesday, July 23, 2024 11:14 AM  
**To:** Enviro, OCD, EMNRD <OCD.Enviro@emnrn.nm.gov>  
**Cc:** Dittrich, John W <Wade\_Dittrich@oxy.com>; Pierce, Tyson (Legacy Safety & Consulting LLC) <tyson\_pierce@oxy.com>; Beaux Jennings <bjennings@ensolum.com>  
**Subject:** DTW Variance Request - NIMITZ MDP1 13 1 Fed. Com. #311H (Incident ID: nAPP24200440081)

Good morning,

On behalf of Oxy USA Inc, Ensolum, LLC would like to request a Closure Criteria Variance for the NIMITZ MDP1 13 1 Fed. Com. #311H (Incident ID: nAPP24200440081).

**NIMITZ MDP1 13 1 Fed. Com. #311H (Incident ID: nAPP24200440081)**


- An equipment failure on a flow line resulted in the release of 7 barrels of produced water and 3 barrels of crude oil, with 0 barrels of produced water recovered and 0 barrels of crude oil recovered. The Site will be vertically and laterally delineated per NMAC 19.15.29.

Attached is groundwater research from the area surrounding the release. All nearby USGS and NMOSE wells indicate depth to groundwater greater than 105 feet bgs. The nearest borehole (C-04575-POD1) with depth to groundwater data is located 0.6 miles west of the release area and has a recorded total depth of the well at 105 feet bgs with no groundwater encountered from January 2022.

Due to the regional depth to groundwater being greater than 105 feet bgs and the site being in low potential karst area, Ensolum requests a Closure Criteria Variance to reflect groundwater > 100 feet as shown in Table 1 of 19.15.29.12 NMAC for all remediation in areas not reasonably needed for production or subsequent drilling operations (off-pad pasture areas) greater than 4 feet bgs.

Please let me know if you have any questions,



**Kelly Lowery, GIT**  
Project Geologist  
214-733-3165  
**Ensolum, LLC**  
in f 



# WELL RECORD & LOG

OFFICE OF THE STATE ENGINEER

[www.ose.state.nm.us](http://www.ose.state.nm.us)

OSE OIT JAN 24 2022 PM 3:00

1. GENERAL AND WELL LOCATION	OSE POD NO. (WELL NO.) POD1 (BH-01)		WELL TAG ID NO. n/a		OSE FILE NO(S). C-4575			
	WELL OWNER NAME(S) XTO Energy (Kyle Littrell)				PHONE (OPTIONAL)			
	WELL OWNER MAILING ADDRESS 6401 Holiday Hill Dr.				CITY Midland	STATE TX	ZIP 79707	
	WELL LOCATION (FROM GPS)	DEGREES LATITUDE 32	MINUTES 12	SECONDS 38.03 N	* ACCURACY REQUIRED: ONE TENTH OF A SECOND			
		LONGITUDE 103	50	58.70 W	* DATUM REQUIRED: WGS 84			
DESCRIPTION RELATING WELL LOCATION TO STREET ADDRESS AND COMMON LANDMARKS - PLSS (SECTION, TOWNSHIP, RANGE) WHERE AVAILABLE NW NE Sec. 23 T24S R30E, NMPM								
2. DRILLING & CASING INFORMATION	LICENSE NO. 1249		NAME OF LICENSED DRILLER Jackie D. Atkins			NAME OF WELL DRILLING COMPANY Atkins Engineering Associates, Inc.		
	DRILLING STARTED 1-4-2022		DRILLING ENDED 1-4-2022		DEPTH OF COMPLETED WELL (FT) temporary well material	BORE HOLE DEPTH (FT) 105	DEPTH WATER FIRST ENCOUNTERED (FT) n/a	
	COMPLETED WELL IS: <input type="checkbox"/> ARTESIAN <input checked="" type="checkbox"/> DRY HOLE <input type="checkbox"/> SHALLOW (UNCONFINED)					STATIC WATER LEVEL IN COMPLETED WELL (FT) n/a		
	DRILLING FLUID: <input type="checkbox"/> AIR <input type="checkbox"/> MUD ADDITIVES - SPECIFY:							
	DRILLING METHOD: <input type="checkbox"/> ROTARY <input type="checkbox"/> HAMMER <input type="checkbox"/> CABLE TOOL <input checked="" type="checkbox"/> OTHER - SPECIFY: Hollow Stem Auger							
	DEPTH (feet bgl)		BORE HOLE DIAM (inches)	CASING MATERIAL AND/OR GRADE (include each casing string, and note sections of screen)	CASING CONNECTION TYPE (add coupling diameter)	CASING INSIDE DIAM. (inches)	CASING WALL THICKNESS (inches)	SLOT SIZE (inches)
	FROM	TO						
	0	105	±8.5	Boring- HSA	--	--	--	--
3. ANNULAR MATERIAL	DEPTH (feet bgl)		BORE HOLE DIAM. (inches)	LIST ANNULAR SEAL MATERIAL AND GRAVEL PACK SIZE-RANGE BY INTERVAL	AMOUNT (cubic feet)	METHOD OF PLACEMENT		
	FROM	TO						

FOR OSE INTERNAL USE

WR-20 WELL RECORD & LOG (Version 06/30/17)

FILE NO. <b>C-4575</b>	POD NO. <b>1</b>	TRN NO. <b>709414</b>
LOCATION <b>2-1-1 24S-30E-23</b>	WELL TAG ID NO. <b>—</b>	PAGE 1 OF 2

MON



05E DII JAN 24 2022 PM 3:00

mon

# OSE\_Well Record and Log\_-forsign

Final Audit Report

2022-01-22

Created:	2022-01-21
By:	Lucas Middleton (lucas@atkinseng.com)
Status:	Signed
Transaction ID:	CBJCHBCAABAAHFW29aZiQH1D931B0LxyAz3o1wYi88ri

## "OSE\_Well Record and Log\_-forsign" History



Document created by Lucas Middleton (lucas@atkinseng.com)

2022-01-21 - 10:47:34 PM GMT- IP address: 69.21.248.123

OSE DIT JAN 24 2022 PM 3:00



Document emailed to Jack Atkins (jack@atkinseng.com) for signature

2022-01-21 - 10:48:19 PM GMT



Email viewed by Jack Atkins (jack@atkinseng.com)

2022-01-21 - 10:49:13 PM GMT- IP address: 64.90.153.232



Document e-signed by Jack Atkins (jack@atkinseng.com)

Signature Date: 2022-01-22 - 0:16:23 AM GMT - Time Source: server- IP address: 64.90.153.232



Agreement completed.

2022-01-22 - 0:16:23 AM GMT



Adobe Sign



# New Mexico Office of the State Engineer

## Water Right Summary


[get image list](#)

WR File Number: C 04575

Subbasin: CUB

Cross Reference: -

Primary Purpose: MON MONITORING WELL

Primary Status: PMT PERMIT

Total Acres:

Subfile: -

Header: -

Total Diversion: 0

Cause/Case: -

Agent: XTO ENERGY INC

Contact: ADRIAN BAKER


User: WSP USA

Contact: KALEI JENNINGS

### Documents on File

Trn #	Doc	File/Act	Status		Transaction Desc.	From/ To	Acres	Diversion	Consumptive
			1	2					
	<a href="#">get images</a>	<a href="#">709414 EXPL 2021-10-06</a>	PMT	LOG	C 04575 POD1	T	0	0	

### Current Points of Diversion

(NAD83 UTM in meters)											
POD Number	Well Tag	Source	Q					X	Y	Other Location Desc	
			64	Q16	Q4	Sec	Tws				Rng
<a href="#">C 04575 POD1</a>	NA		1	1	2	23	24S	30E	608412	3564355	 BH01

The data is furnished by the NMOSE/ISC and is accepted by the recipient with the expressed understanding that the OSE/ISC make no warranties, expressed or implied, concerning the accuracy, completeness, reliability, usability, or suitability for any particular purpose of the data.

5/30/24 5:21 PM

WATER RIGHT SUMMARY



PECOS DISTRICT  
SEED MIX FOR

The following Soils or Soil associations may represent this ecological site:

Bascal Gravelly Loam, Bascom,  
Philder Very Gravelly Fine Sandy Loam  
Yturbide Loamy Sand

Gravelly SD-3 Ecological Site  
Gravelly CP-2 Ecological Site

April 4, 2006

<u>Common Name and Preferred Variety</u>	<u>Scientific Name</u>	<u>Pounds of Pure Live Seed Per Acre</u>
Blue grama	( <i>Bouteloua gracilis</i> )	1.50
Sideoats grama,	( <i>Bouteloua curtipendula</i> )	1.50
Sand dropseed	( <i>Sporobolus cryptandrus</i> )	0.50
Plains bristlegrass	( <i>Setaria macrostachya</i> )	2.50
Vine mesquite	( <i>Panicum obtusum</i> )	1.50
Desert or Scarlet Globemallow	( <i>Sphaeralcea ambigua</i> ) or ( <i>S. coccinea</i> )	1.00
Croton or Desert zinnia	( <i>Croton spp.</i> ) or ( <i>Zinnia grandiflora</i> )	<u>0.50</u>
TOTAL POUNDS PURE LIVE SEED (pls) PER ACRE Certified Weed Free Seed		9.00

If on species is not available,  
increase **ALL** others proportionately.

**NOT JUST ONE SPECIES!**

Use at least 4 species, including 1 forb

No less than 9.0 pounds pls per acre shall be applied

APPROVED: /s/ Douglas J. Burger  
District Manager, Pecos District



## APPENDIX C

### Photographic Documentation

---

Project: NIMITZ MDP1 13 1 Fed Com #311H  
Entity: Oxy USA, Inc  
Incident ID: nAPP2420440081



View of release extent prior to remediation activities, facing south (July 25, 2024).



View of release extent prior to remediation activities, facing northwest (July 25, 2024).



Project: NIMITZ MDP1 13 1 Fed Com #311H  
Entity: Oxy USA, Inc  
Incident ID: nAPP2420440081



View of excavation during remediation activities, facing southeast (September 17, 2024).



View of excavation during remediation activities, facing west (September 17, 2024).



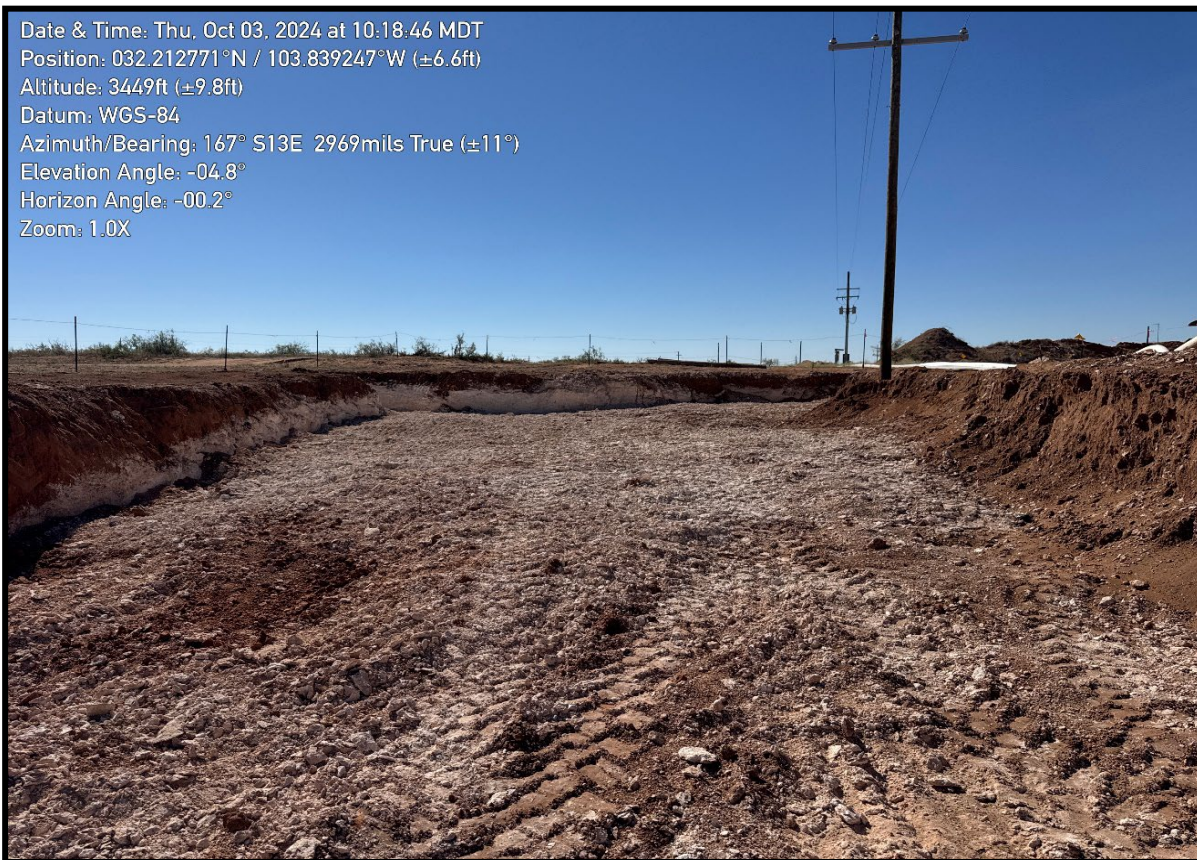
Project: NIMITZ MDP1 13 1 Fed Com #311H

Entity: Oxy USA, Inc

Incident ID: nAPP2420440081



Date & Time: Thu, Oct 03, 2024 at 10:18:46 MDT  
Position: 032.212771°N / 103.839247°W ( $\pm 6.6$ ft)  
Altitude: 3449ft ( $\pm 9.8$ ft)  
Datum: WGS-84  
Azimuth/Bearing: 167° S13E 2969mils True ( $\pm 11^\circ$ )  
Elevation Angle:  $-04.8^\circ$   
Horizon Angle:  $-00.2^\circ$   
Zoom: 1.0X



View of excavation during continued remediation activities, facing southeast (October 3, 2024).

Date & Time: Thu, Oct 03, 2024 at 10:18:20 MDT  
Position: 032.212725°N / 103.839163°W ( $\pm 6.6$ ft)  
Altitude: 3453ft ( $\pm 9.8$ ft)  
Datum: WGS-84  
Azimuth/Bearing: 304° N56W 5404mils True ( $\pm 11^\circ$ )  
Elevation Angle:  $-11.5^\circ$   
Horizon Angle:  $+03.5^\circ$   
Zoom: 1.0X



View of excavation during continued remediation activities, facing northwest (October 3, 2024).



Project: NIMITZ MDP1 13 1 Fed Com #311H  
Entity: Oxy USA, Inc  
Incident ID: nAPP2420440081



View of excavation extent post backfill activities, facing north (January 3, 2025).



View of excavation extent post backfill activities, facing south (January 3, 2025).



## APPENDIX D

Table(s)

---

**TABLE 1**  
**SOIL SAMPLE ANALYTICAL RESULTS (NON-VEGETATIVE ZONE)**  
 NIMITZ MDP1 13 1 Federal Com. #311H  
 Oxy USA, Inc.  
 Eddy County, New Mexico  
 Ensolum Project No. 03B1417213

Sample Designation	Date	Depth (feet bgs)	Benzene (mg/kg)	Toluene (mg/kg)	Ethylbenzene (mg/kg)	Total Xylenes (mg/kg)	Total BTEX (mg/kg)	TPH (GRO+DRO) (mg/kg)	TPH MRO (mg/kg)	Total TPH (GRO+DRO+MRO) (mg/kg)	Chloride (mg/kg)
New Mexico Oil Conservation Division Closure Criteria for Soils Impacted by a Release (> 100 feet)			10	NE	NE	NE	50	1,000	NE	2,500	20,000
Composite Floor Soil Sample Analytical Results											
FS01	09/17/2024	4	<0.050	<0.050	<0.050	<0.150	<0.300	21.0	<10.0	21.0	448
FS02	09/17/2024	4	<0.050	<0.050	<0.050	<0.150	<0.300	<10.0	<10.0	<10.0	64.0
FS03	09/17/2024	4	<0.050	<0.050	<0.050	<0.150	<0.300	15.1	<10.0	15.1	320
FS04	09/17/2024	4	<0.050	<0.050	<0.050	<0.150	<0.300	<10.0	<10.0	<10.0	48.0
FS05	09/17/2024	4	<0.050	<0.050	<0.050	<0.150	<0.300	80.2	15.9	96.1	512
FS06	09/17/2024	4	<0.050	<0.050	<0.050	<0.150	<0.300	<10.0	<10.0	<10.0	160
FS07	09/17/2024	4	<0.050	<0.050	<0.050	<0.150	<0.300	31.8	<10.0	31.8	5,730
FS08	09/17/2024	4	<0.050	<0.050	<0.050	<0.150	<0.300	<10.0	<10.0	<10.0	400
FS09	09/17/2024	4	<0.050	<0.050	<0.050	<0.150	<0.300	403	148	551	336
FS10	09/17/2024	4	<0.050	<0.050	<0.050	<0.150	<0.300	77.8	20.7	98.5	4,240
FS11	09/17/2024	4	<0.050	<0.050	<0.050	<0.150	<0.300	<10.0	<10.0	<10.0	64.0
FS12	09/17/2024	4	<0.050	<0.050	<0.050	<0.150	<0.300	133	34.8	168	704
FS13	09/17/2024	4	<0.050	<0.050	<0.050	<0.150	<0.300	11.8	<10.0	11.8	1,170
FS14	09/17/2024	4	<0.050	<0.050	<0.050	<0.150	<0.300	<10.0	<10.0	<10.0	128
FS15	09/17/2024	4	<0.050	<0.050	<0.050	<0.150	<0.300	478	128	606	3,600
FS16	09/17/2024	4	<0.050	<0.050	<0.050	<0.150	<0.300	49.0	<10.0	49.0	2,800
FS17	09/17/2024	4	<0.050	<0.050	<0.050	<0.150	<0.300	<10.0	<10.0	<10.0	128
FS18	09/17/2024	4	<0.050	<0.050	<0.050	<0.150	<0.300	269	73.3	342	6,960
FS19	09/17/2024	4	<0.050	<0.050	<0.050	<0.150	<0.300	<10.0	<10.0	<10.0	144
FS20	09/17/2024	4	<0.050	<0.050	<0.050	<0.150	<0.300	151	35.9	187	3,840
FS21	09/17/2024	4	<0.050	<0.050	<0.050	<0.150	<0.300	18.7	<10.0	18.7	1,060

bgs: below ground surface

mg/kg: milligrams per kilogram

NE: Not Established

BTEX: Benzene, Toluene, Ethylbenzene, and Xylenes

GRO: Gasoline Range Organics

DRO: Diesel Range Organics

MRO: Motor Oil/Lube Oil Range Organics

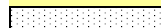
TPH: Total Petroleum Hydrocarbon



**TABLE 2**  
**SOIL SAMPLE ANALYTICAL RESULTS (VEGETATIVE ZONE)**  
 NIMITZ MDP1 13 1 Federal Com. #311H  
 Oxy USA, Inc.  
 Eddy County, New Mexico  
 Ensolum Project No. 03B1417213

Sample Designation	Date	Depth (feet bgs)	Benzene (mg/kg)	Toluene (mg/kg)	Ethylbenzene (mg/kg)	Total Xylenes (mg/kg)	Total BTEX (mg/kg)	TPH GRO (mg/kg)	TPH DRO (mg/kg)	TPH MRO (mg/kg)	Total TPH (GRO+DRO+MRO) (mg/kg)	Chloride (mg/kg)
New Mexico Oil Conservation Division Closure Criteria for Soils Impacted by a Release (≤ 50 feet)			10	NE	NE	NE	50	NE	NE	NE	100	600
Composite Sidewall Soil Sample Analytical Results												
SW01	09/17/2024	0 - 4	<0.050	<0.050	<0.050	<0.150	<0.300	<10.0	13.0	<10.0	13.0	960
	10/03/2024	0 - 4	NS					NS				80.0
SW02	09/17/2024	0 - 4	<0.050	<0.050	<0.050	<0.150	<0.300	<10.0	763	209	972	1,360
	10/03/2024	0 - 4	NS					<10.0	<10.0	<10.0	<10.0	176
SW03	09/17/2024	0 - 4	<0.050	<0.050	<0.050	<0.150	<0.300	<10.0	<10.0	<10.0	<10.0	80.0
SW04	09/17/2024	0 - 4	<0.050	<0.050	<0.050	<0.150	<0.300	<10.0	<10.0	<10.0	<10.0	96.0
SW05	09/17/2024	0 - 4	<0.050	<0.050	<0.050	<0.150	<0.300	<10.0	<10.0	<10.0	<10.0	128
SW06	09/17/2024	0 - 4	<0.050	<0.050	<0.050	<0.150	<0.300	<10.0	<10.0	<10.0	<10.0	48.0

Concentrations in **bold** and yellow exceed the New Mexico Oil Conservation Division Closure Criteria for Soils Impacted by a Release (≤ 50 feet)

 Additional Excavation and/or Re-Sample

bgs: below ground surface

mg/kg: milligrams per kilogram

NE: Not Established

NS: Not Sampled

BTEX: Benzene, Toluene, Ethylbenzene, and Xylenes

GRO: Gasoline Range Organics

DRO: Diesel Range Organics

MRO: Motor Oil/Lube Oil Range Organics

TPH: Total Petroleum Hydrocarbon



**TABLE 3**  
**BACKFILL SOIL SAMPLE ANALYTICAL RESULTS**  
 Twin Wells Caliche Pit  
 Oxy USA, Inc.  
 Eddy County, New Mexico  
 Ensolum Project No. NA

Sample Designation	Date	Depth (feet bgs)	Benzene (mg/kg)	Toluene (mg/kg)	Ethylbenzene (mg/kg)	Total Xylenes (mg/kg)	Total BTEX (mg/kg)	TPH GRO (mg/kg)	TPH DRO (mg/kg)	TPH MRO (mg/kg)	Total TPH (GRO+DRO+MRO) (mg/kg)	Chloride (mg/kg)
New Mexico Oil Conservation Division Closure Criteria for Soils Impacted by a Release (≤ 50 feet)			10	NE	NE	NE	50	NE	NE	NE	100	600
Composite Background Soil Sample Analytical Result												
Twin Wells Caliche Pit	09/09/2024	NA	<0.050	<0.050	<0.050	<0.150	<0.300	<10.0	<10.0	<10.0	<10.0	32.0

bgs: below ground surface

mg/kg: milligrams per kilogram

NA: Not Applicable

NE: Not Established

BTEX: Benzene, Toluene, Ethylbenzene, and Xylenes

GRO: Gasoline Range Organics

DRO: Diesel Range Organics

MRO: Motor Oil/Lube Oil Range Organics

TPH: Total Petroleum Hydrocarbon



## APPENDIX E

### Laboratory Analytical Reports & Chain-of-Custody Documentation

---



PHONE (575) 393-2326 ° 101 E. MARLAND ° HOBBS, NM 88240

September 24, 2024

BEAUX JENNINGS

ENSOLUM

3122 NATIONAL PARKS HWY

CARLSBAD, NM 88220

RE: NIMITZ MDP 13 1 FED COM # 311H

Enclosed are the results of analyses for samples received by the laboratory on 09/19/24 13:15.

Cardinal Laboratories is accredited through Texas NELAP under certificate number TX-C24-00112. Accreditation applies to drinking water, non-potable water and solid and chemical materials. All accredited analytes are denoted by an asterisk (\*). For a complete list of accredited analytes and matrices visit the TCEQ website at [www.tceq.texas.gov/field/qa/lab\\_accred\\_certif.html](http://www.tceq.texas.gov/field/qa/lab_accred_certif.html).

Cardinal Laboratories is accredited through the State of Colorado Department of Public Health and Environment for:

Method EPA 552.2	Haloacetic Acids (HAA-5)
Method EPA 524.2	Total Trihalomethanes (TTHM)
Method EPA 524.4	Regulated VOCs (V1, V2, V3)

Accreditation applies to public drinking water matrices.

This report meets NELAP requirements and is made up of a cover page, analytical results, and a copy of the original chain-of-custody. If you have any questions concerning this report, please feel free to contact me.

Sincerely,

A handwritten signature in black ink that reads "Celey D. Keene". The signature is written in a cursive, flowing style.

Celey D. Keene

Lab Director/Quality Manager





PHONE (575) 393-2326 ° 101 E. MARLAND ° HOBBS, NM 88240

**Analytical Results For:**

ENSOLUM  
BEAUX JENNINGS  
3122 NATIONAL PARKS HWY  
CARLSBAD NM, 88220  
Fax To:

Received: 09/19/2024  
Reported: 09/24/2024  
Project Name: NIMITZ MDP 13 1 FED COM # 311H  
Project Number: 03B1417213  
Project Location: OXY -EDDY CO,NM

Sampling Date: 09/17/2024  
Sampling Type: Soil  
Sampling Condition: Cool & Intact  
Sample Received By: Tamara Oldaker

**Sample ID: FS 01 4 (H245703-01)**

BTEx 8021B		mg/kg		Analyzed By: JH					
Analyte	Result	Reporting Limit	Analyzed	Method Blank	BS	% Recovery	True Value QC	RPD	Qualifier
Benzene*	<0.050	0.050	09/20/2024	ND	2.27	113	2.00	0.0930	
Toluene*	<0.050	0.050	09/20/2024	ND	2.31	116	2.00	2.12	
Ethylbenzene*	<0.050	0.050	09/20/2024	ND	2.32	116	2.00	3.70	
Total Xylenes*	<0.150	0.150	09/20/2024	ND	7.05	118	6.00	3.00	
Total BTEX	<0.300	0.300	09/20/2024	ND					

Surrogate: 4-Bromofluorobenzene (PID) 104 % 71.5-134

Chloride, SM4500Cl-B		mg/kg		Analyzed By: HM					
Analyte	Result	Reporting Limit	Analyzed	Method Blank	BS	% Recovery	True Value QC	RPD	Qualifier
Chloride	448	16.0	09/20/2024	ND	400	100	400	3.92	

TPH 8015M		mg/kg		Analyzed By: MS					
Analyte	Result	Reporting Limit	Analyzed	Method Blank	BS	% Recovery	True Value QC	RPD	Qualifier
GRO C6-C10*	<10.0	10.0	09/20/2024	ND	208	104	200	1.24	
DRO >C10-C28*	21.0	10.0	09/20/2024	ND	205	103	200	0.0439	
EXT DRO >C28-C36	<10.0	10.0	09/20/2024	ND					

Surrogate: 1-Chlorooctane 111 % 48.2-134

Surrogate: 1-Chlorooctadecane 118 % 49.1-148

Cardinal Laboratories

\*=Accredited Analyte

PLEASE NOTE: Liability and Damages. Cardinal's liability and client's exclusive remedy for any claim arising, whether based in contract or tort, shall be limited to the amount paid by client for analyses. All claims, including those for negligence and any other cause whatsoever shall be deemed waived unless made in writing and received by Cardinal within thirty (30) days after completion of the applicable service. In no event shall Cardinal be liable for incidental or consequential damages, including, without limitation, business interruptions, loss of use, or loss of profits incurred by client, its subsidiaries, affiliates or successors arising out of or related to the performance of the services hereunder by Cardinal, regardless of whether such claim is based upon any of the above stated reasons or otherwise. Results relate only to the samples identified above. This report shall not be reproduced except in full with written approval of Cardinal Laboratories.

Celey D. Keene, Lab Director/Quality Manager



PHONE (575) 393-2326 ° 101 E. MARLAND ° HOBBS, NM 88240

**Analytical Results For:**

ENSOLUM  
BEAUX JENNINGS  
3122 NATIONAL PARKS HWY  
CARLSBAD NM, 88220  
Fax To:

Received: 09/19/2024  
Reported: 09/24/2024  
Project Name: NIMITZ MDP 13 1 FED COM # 311H  
Project Number: 03B1417213  
Project Location: OXY -EDDY CO,NM

Sampling Date: 09/17/2024  
Sampling Type: Soil  
Sampling Condition: Cool & Intact  
Sample Received By: Tamara Oldaker

**Sample ID: FS 02 4 (H245703-02)**

BTEx 8021B		mg/kg		Analyzed By: JH						
Analyte	Result	Reporting Limit	Analyzed	Method Blank	BS	% Recovery	True Value QC	RPD	Qualifier	
Benzene*	<0.050	0.050	09/20/2024	ND	2.27	113	2.00	0.0930		
Toluene*	<0.050	0.050	09/20/2024	ND	2.31	116	2.00	2.12		
Ethylbenzene*	<0.050	0.050	09/20/2024	ND	2.32	116	2.00	3.70		
Total Xylenes*	<0.150	0.150	09/20/2024	ND	7.05	118	6.00	3.00		
Total BTEX	<0.300	0.300	09/20/2024	ND						

Surrogate: 4-Bromofluorobenzene (PID) 105 % 71.5-134

Chloride, SM4500Cl-B		mg/kg		Analyzed By: HM						
Analyte	Result	Reporting Limit	Analyzed	Method Blank	BS	% Recovery	True Value QC	RPD	Qualifier	
Chloride	64.0	16.0	09/20/2024	ND	400	100	400	3.92		

TPH 8015M		mg/kg		Analyzed By: MS					
Analyte	Result	Reporting Limit	Analyzed	Method Blank	BS	% Recovery	True Value QC	RPD	Qualifier
GRO C6-C10*	<10.0	10.0	09/20/2024	ND	208	104	200	1.24	
DRO >C10-C28*	<10.0	10.0	09/20/2024	ND	205	103	200	0.0439	
EXT DRO >C28-C36	<10.0	10.0	09/20/2024	ND					

Surrogate: 1-Chlorooctane 109 % 48.2-134

Surrogate: 1-Chlorooctadecane 112 % 49.1-148

Cardinal Laboratories

\*=Accredited Analyte

PLEASE NOTE: Liability and Damages. Cardinal's liability and client's exclusive remedy for any claim arising, whether based in contract or tort, shall be limited to the amount paid by client for analyses. All claims, including those for negligence and any other cause whatsoever shall be deemed waived unless made in writing and received by Cardinal within thirty (30) days after completion of the applicable service. In no event shall Cardinal be liable for incidental or consequential damages, including, without limitation, business interruptions, loss of use, or loss of profits incurred by client, its subsidiaries, affiliates or successors arising out of or related to the performance of the services hereunder by Cardinal, regardless of whether such claim is based upon any of the above stated reasons or otherwise. Results relate only to the samples identified above. This report shall not be reproduced except in full with written approval of Cardinal Laboratories.

Celey D. Keene, Lab Director/Quality Manager



PHONE (575) 393-2326 ° 101 E. MARLAND ° HOBBS, NM 88240

**Analytical Results For:**

ENSOLUM  
BEAUX JENNINGS  
3122 NATIONAL PARKS HWY  
CARLSBAD NM, 88220  
Fax To:

Received: 09/19/2024  
Reported: 09/24/2024  
Project Name: NIMITZ MDP 13 1 FED COM # 311H  
Project Number: 03B1417213  
Project Location: OXY -EDDY CO,NM

Sampling Date: 09/17/2024  
Sampling Type: Soil  
Sampling Condition: Cool & Intact  
Sample Received By: Tamara Oldaker

**Sample ID: FS 03 4 (H245703-03)**

BTEX 8021B		mg/kg		Analyzed By: JH						
Analyte	Result	Reporting Limit	Analyzed	Method Blank	BS	% Recovery	True Value QC	RPD	Qualifier	
Benzene*	<0.050	0.050	09/20/2024	ND	2.27	113	2.00	0.0930		
Toluene*	<0.050	0.050	09/20/2024	ND	2.31	116	2.00	2.12		
Ethylbenzene*	<0.050	0.050	09/20/2024	ND	2.32	116	2.00	3.70		
Total Xylenes*	<0.150	0.150	09/20/2024	ND	7.05	118	6.00	3.00		
Total BTEX	<0.300	0.300	09/20/2024	ND						

Surrogate: 4-Bromofluorobenzene (PID) 106 % 71.5-134

Chloride, SM4500CI-B		mg/kg		Analyzed By: HM						
Analyte	Result	Reporting Limit	Analyzed	Method Blank	BS	% Recovery	True Value QC	RPD	Qualifier	
Chloride	320	16.0	09/20/2024	ND	400	100	400	3.92		

TPH 8015M		mg/kg		Analyzed By: MS					
Analyte	Result	Reporting Limit	Analyzed	Method Blank	BS	% Recovery	True Value QC	RPD	Qualifier
GRO C6-C10*	<10.0	10.0	09/20/2024	ND	208	104	200	1.24	
DRO >C10-C28*	15.1	10.0	09/20/2024	ND	205	103	200	0.0439	
EXT DRO >C28-C36	<10.0	10.0	09/20/2024	ND					

Surrogate: 1-Chlorooctane 108 % 48.2-134

Surrogate: 1-Chlorooctadecane 117 % 49.1-148

Cardinal Laboratories

\*=Accredited Analyte

PLEASE NOTE: Liability and Damages. Cardinal's liability and client's exclusive remedy for any claim arising, whether based in contract or tort, shall be limited to the amount paid by client for analyses. All claims, including those for negligence and any other cause whatsoever shall be deemed waived unless made in writing and received by Cardinal within thirty (30) days after completion of the applicable service. In no event shall Cardinal be liable for incidental or consequential damages, including, without limitation, business interruptions, loss of use, or loss of profits incurred by client, its subsidiaries, affiliates or successors arising out of or related to the performance of the services hereunder by Cardinal, regardless of whether such claim is based upon any of the above stated reasons or otherwise. Results relate only to the samples identified above. This report shall not be reproduced except in full with written approval of Cardinal Laboratories.

Celey D. Keene, Lab Director/Quality Manager





PHONE (575) 393-2326 ° 101 E. MARLAND ° HOBBS, NM 88240

**Analytical Results For:**

ENSOLUM  
BEAUX JENNINGS  
3122 NATIONAL PARKS HWY  
CARLSBAD NM, 88220  
Fax To:

Received: 09/19/2024  
Reported: 09/24/2024  
Project Name: NIMITZ MDP 13 1 FED COM # 311H  
Project Number: 03B1417213  
Project Location: OXY -EDDY CO,NM

Sampling Date: 09/17/2024  
Sampling Type: Soil  
Sampling Condition: Cool & Intact  
Sample Received By: Tamara Oldaker

**Sample ID: FS 04 4 (H245703-04)**

BTEx 8021B		mg/kg		Analyzed By: JH						
Analyte	Result	Reporting Limit	Analyzed	Method Blank	BS	% Recovery	True Value QC	RPD	Qualifier	
Benzene*	<0.050	0.050	09/20/2024	ND	2.27	113	2.00	0.0930		
Toluene*	<0.050	0.050	09/20/2024	ND	2.31	116	2.00	2.12		
Ethylbenzene*	<0.050	0.050	09/20/2024	ND	2.32	116	2.00	3.70		
Total Xylenes*	<0.150	0.150	09/20/2024	ND	7.05	118	6.00	3.00		
Total BTEX	<0.300	0.300	09/20/2024	ND						

Surrogate: 4-Bromofluorobenzene (PID) 105 % 71.5-134

Chloride, SM4500Cl-B		mg/kg		Analyzed By: HM					
Analyte	Result	Reporting Limit	Analyzed	Method Blank	BS	% Recovery	True Value QC	RPD	Qualifier
Chloride	48.0	16.0	09/20/2024	ND	400	100	400	3.92	

TPH 8015M		mg/kg		Analyzed By: MS					
Analyte	Result	Reporting Limit	Analyzed	Method Blank	BS	% Recovery	True Value QC	RPD	Qualifier
GRO C6-C10*	<10.0	10.0	09/20/2024	ND	208	104	200	1.24	
DRO >C10-C28*	<10.0	10.0	09/20/2024	ND	205	103	200	0.0439	
EXT DRO >C28-C36	<10.0	10.0	09/20/2024	ND					

Surrogate: 1-Chlorooctane 108 % 48.2-134

Surrogate: 1-Chlorooctadecane 113 % 49.1-148

Cardinal Laboratories

\*=Accredited Analyte

PLEASE NOTE: Liability and Damages. Cardinal's liability and client's exclusive remedy for any claim arising, whether based in contract or tort, shall be limited to the amount paid by client for analyses. All claims, including those for negligence and any other cause whatsoever shall be deemed waived unless made in writing and received by Cardinal within thirty (30) days after completion of the applicable service. In no event shall Cardinal be liable for incidental or consequential damages, including, without limitation, business interruptions, loss of use, or loss of profits incurred by client, its subsidiaries, affiliates or successors arising out of or related to the performance of the services hereunder by Cardinal, regardless of whether such claim is based upon any of the above stated reasons or otherwise. Results relate only to the samples identified above. This report shall not be reproduced except in full with written approval of Cardinal Laboratories.

Celey D. Keene, Lab Director/Quality Manager



PHONE (575) 393-2326 ° 101 E. MARLAND ° HOBBS, NM 88240

**Analytical Results For:**

ENSOLUM  
BEAUX JENNINGS  
3122 NATIONAL PARKS HWY  
CARLSBAD NM, 88220  
Fax To:

Received: 09/19/2024  
Reported: 09/24/2024  
Project Name: NIMITZ MDP 13 1 FED COM # 311H  
Project Number: 03B1417213  
Project Location: OXY -EDDY CO,NM

Sampling Date: 09/17/2024  
Sampling Type: Soil  
Sampling Condition: Cool & Intact  
Sample Received By: Tamara Oldaker

**Sample ID: FS 05 4 (H245703-05)**

BTEx 8021B		mg/kg		Analyzed By: JH					
Analyte	Result	Reporting Limit	Analyzed	Method Blank	BS	% Recovery	True Value QC	RPD	Qualifier
Benzene*	<0.050	0.050	09/20/2024	ND	2.27	113	2.00	0.0930	
Toluene*	<0.050	0.050	09/20/2024	ND	2.31	116	2.00	2.12	
Ethylbenzene*	<0.050	0.050	09/20/2024	ND	2.32	116	2.00	3.70	
Total Xylenes*	<0.150	0.150	09/20/2024	ND	7.05	118	6.00	3.00	
Total BTEX	<0.300	0.300	09/20/2024	ND					

Surrogate: 4-Bromofluorobenzene (PID) 106 % 71.5-134

Chloride, SM4500Cl-B		mg/kg		Analyzed By: HM					
Analyte	Result	Reporting Limit	Analyzed	Method Blank	BS	% Recovery	True Value QC	RPD	Qualifier
Chloride	512	16.0	09/20/2024	ND	400	100	400	3.92	

TPH 8015M		mg/kg		Analyzed By: MS					
Analyte	Result	Reporting Limit	Analyzed	Method Blank	BS	% Recovery	True Value QC	RPD	Qualifier
GRO C6-C10*	<10.0	10.0	09/20/2024	ND	205	102	200	3.84	
DRO >C10-C28*	80.2	10.0	09/20/2024	ND	200	100	200	6.58	
EXT DRO >C28-C36	15.9	10.0	09/20/2024	ND					

Surrogate: 1-Chlorooctane 89.9 % 48.2-134

Surrogate: 1-Chlorooctadecane 79.6 % 49.1-148

Cardinal Laboratories

\*=Accredited Analyte

PLEASE NOTE: Liability and Damages. Cardinal's liability and client's exclusive remedy for any claim arising, whether based in contract or tort, shall be limited to the amount paid by client for analyses. All claims, including those for negligence and any other cause whatsoever shall be deemed waived unless made in writing and received by Cardinal within thirty (30) days after completion of the applicable service. In no event shall Cardinal be liable for incidental or consequential damages, including, without limitation, business interruptions, loss of use, or loss of profits incurred by client, its subsidiaries, affiliates or successors arising out of or related to the performance of the services hereunder by Cardinal, regardless of whether such claim is based upon any of the above stated reasons or otherwise. Results relate only to the samples identified above. This report shall not be reproduced except in full with written approval of Cardinal Laboratories.

Celey D. Keene, Lab Director/Quality Manager



PHONE (575) 393-2326 ° 101 E. MARLAND ° HOBBS, NM 88240

**Analytical Results For:**

ENSOLUM  
BEAUX JENNINGS  
3122 NATIONAL PARKS HWY  
CARLSBAD NM, 88220  
Fax To:

Received: 09/19/2024  
Reported: 09/24/2024  
Project Name: NIMITZ MDP 13 1 FED COM # 311H  
Project Number: 03B1417213  
Project Location: OXY -EDDY CO,NM

Sampling Date: 09/17/2024  
Sampling Type: Soil  
Sampling Condition: Cool & Intact  
Sample Received By: Tamara Oldaker

**Sample ID: FS 06 4 (H245703-06)**

BTEX 8021B		mg/kg		Analyzed By: JH					
Analyte	Result	Reporting Limit	Analyzed	Method Blank	BS	% Recovery	True Value QC	RPD	Qualifier
Benzene*	<0.050	0.050	09/20/2024	ND	2.06	103	2.00	1.32	
Toluene*	<0.050	0.050	09/20/2024	ND	1.95	97.3	2.00	1.04	
Ethylbenzene*	<0.050	0.050	09/20/2024	ND	1.98	99.2	2.00	0.794	
Total Xylenes*	<0.150	0.150	09/20/2024	ND	5.89	98.1	6.00	0.880	
Total BTEX	<0.300	0.300	09/20/2024	ND					

Surrogate: 4-Bromofluorobenzene (PID) 94.9 % 71.5-134

Chloride, SM4500Cl-B		mg/kg		Analyzed By: HM					
Analyte	Result	Reporting Limit	Analyzed	Method Blank	BS	% Recovery	True Value QC	RPD	Qualifier
Chloride	160	16.0	09/20/2024	ND	400	100	400	3.92	

TPH 8015M		mg/kg		Analyzed By: MS					
Analyte	Result	Reporting Limit	Analyzed	Method Blank	BS	% Recovery	True Value QC	RPD	Qualifier
GRO C6-C10*	<10.0	10.0	09/20/2024	ND	205	102	200	3.84	
DRO >C10-C28*	<10.0	10.0	09/20/2024	ND	200	100	200	6.58	
EXT DRO >C28-C36	<10.0	10.0	09/20/2024	ND					

Surrogate: 1-Chlorooctane 104 % 48.2-134

Surrogate: 1-Chlorooctadecane 86.9 % 49.1-148

Cardinal Laboratories

\*=Accredited Analyte

PLEASE NOTE: Liability and Damages. Cardinal's liability and client's exclusive remedy for any claim arising, whether based in contract or tort, shall be limited to the amount paid by client for analyses. All claims, including those for negligence and any other cause whatsoever shall be deemed waived unless made in writing and received by Cardinal within thirty (30) days after completion of the applicable service. In no event shall Cardinal be liable for incidental or consequential damages, including, without limitation, business interruptions, loss of use, or loss of profits incurred by client, its subsidiaries, affiliates or successors arising out of or related to the performance of the services hereunder by Cardinal, regardless of whether such claim is based upon any of the above stated reasons or otherwise. Results relate only to the samples identified above. This report shall not be reproduced except in full with written approval of Cardinal Laboratories.

Celey D. Keene, Lab Director/Quality Manager





PHONE (575) 393-2326 ° 101 E. MARLAND ° HOBBS, NM 88240

**Analytical Results For:**

ENSOLUM  
BEAUX JENNINGS  
3122 NATIONAL PARKS HWY  
CARLSBAD NM, 88220  
Fax To:

Received: 09/19/2024  
Reported: 09/24/2024  
Project Name: NIMITZ MDP 13 1 FED COM # 311H  
Project Number: 03B1417213  
Project Location: OXY -EDDY CO,NM

Sampling Date: 09/17/2024  
Sampling Type: Soil  
Sampling Condition: Cool & Intact  
Sample Received By: Tamara Oldaker

**Sample ID: FS 07 4 (H245703-07)**

BTEx 8021B		mg/kg		Analyzed By: JH					
Analyte	Result	Reporting Limit	Analyzed	Method Blank	BS	% Recovery	True Value QC	RPD	Qualifier
Benzene*	<0.050	0.050	09/20/2024	ND	2.06	103	2.00	1.32	
Toluene*	<0.050	0.050	09/20/2024	ND	1.95	97.3	2.00	1.04	
Ethylbenzene*	<0.050	0.050	09/20/2024	ND	1.98	99.2	2.00	0.794	
Total Xylenes*	<0.150	0.150	09/20/2024	ND	5.89	98.1	6.00	0.880	
Total BTEX	<0.300	0.300	09/20/2024	ND					

Surrogate: 4-Bromofluorobenzene (PID) 94.0 % 71.5-134

Chloride, SM4500Cl-B		mg/kg		Analyzed By: HM					
Analyte	Result	Reporting Limit	Analyzed	Method Blank	BS	% Recovery	True Value QC	RPD	Qualifier
Chloride	5730	16.0	09/20/2024	ND	400	100	400	3.92	

TPH 8015M		mg/kg		Analyzed By: MS					
Analyte	Result	Reporting Limit	Analyzed	Method Blank	BS	% Recovery	True Value QC	RPD	Qualifier
GRO C6-C10*	<10.0	10.0	09/20/2024	ND	205	102	200	3.84	
DRO >C10-C28*	31.8	10.0	09/20/2024	ND	200	100	200	6.58	
EXT DRO >C28-C36	<10.0	10.0	09/20/2024	ND					

Surrogate: 1-Chlorooctane 105 % 48.2-134

Surrogate: 1-Chlorooctadecane 97.0 % 49.1-148

Cardinal Laboratories

\*=Accredited Analyte

PLEASE NOTE: Liability and Damages. Cardinal's liability and client's exclusive remedy for any claim arising, whether based in contract or tort, shall be limited to the amount paid by client for analyses. All claims, including those for negligence and any other cause whatsoever shall be deemed waived unless made in writing and received by Cardinal within thirty (30) days after completion of the applicable service. In no event shall Cardinal be liable for incidental or consequential damages, including, without limitation, business interruptions, loss of use, or loss of profits incurred by client, its subsidiaries, affiliates or successors arising out of or related to the performance of the services hereunder by Cardinal, regardless of whether such claim is based upon any of the above stated reasons or otherwise. Results relate only to the samples identified above. This report shall not be reproduced except in full with written approval of Cardinal Laboratories.

Celey D. Keene, Lab Director/Quality Manager



PHONE (575) 393-2326 ° 101 E. MARLAND ° HOBBS, NM 88240

**Analytical Results For:**

ENSOLUM  
BEAUX JENNINGS  
3122 NATIONAL PARKS HWY  
CARLSBAD NM, 88220  
Fax To:

Received: 09/19/2024  
Reported: 09/24/2024  
Project Name: NIMITZ MDP 13 1 FED COM # 311H  
Project Number: 03B1417213  
Project Location: OXY -EDDY CO,NM

Sampling Date: 09/17/2024  
Sampling Type: Soil  
Sampling Condition: Cool & Intact  
Sample Received By: Tamara Oldaker

**Sample ID: FS 08 4 (H245703-08)**

BTEX 8021B		mg/kg		Analyzed By: JH					
Analyte	Result	Reporting Limit	Analyzed	Method Blank	BS	% Recovery	True Value QC	RPD	Qualifier
Benzene*	<0.050	0.050	09/20/2024	ND	2.06	103	2.00	1.32	
Toluene*	<0.050	0.050	09/20/2024	ND	1.95	97.3	2.00	1.04	
Ethylbenzene*	<0.050	0.050	09/20/2024	ND	1.98	99.2	2.00	0.794	
Total Xylenes*	<0.150	0.150	09/20/2024	ND	5.89	98.1	6.00	0.880	
Total BTEX	<0.300	0.300	09/20/2024	ND					

Surrogate: 4-Bromofluorobenzene (PID) 95.2 % 71.5-134

Chloride, SM4500Cl-B		mg/kg		Analyzed By: HM					
Analyte	Result	Reporting Limit	Analyzed	Method Blank	BS	% Recovery	True Value QC	RPD	Qualifier
Chloride	400	16.0	09/20/2024	ND	400	100	400	3.92	

TPH 8015M		mg/kg		Analyzed By: MS					
Analyte	Result	Reporting Limit	Analyzed	Method Blank	BS	% Recovery	True Value QC	RPD	Qualifier
GRO C6-C10*	<10.0	10.0	09/20/2024	ND	205	102	200	3.84	
DRO >C10-C28*	<10.0	10.0	09/20/2024	ND	200	100	200	6.58	
EXT DRO >C28-C36	<10.0	10.0	09/20/2024	ND					

Surrogate: 1-Chlorooctane 106 % 48.2-134

Surrogate: 1-Chlorooctadecane 88.8 % 49.1-148

Cardinal Laboratories

\*=Accredited Analyte

PLEASE NOTE: Liability and Damages. Cardinal's liability and client's exclusive remedy for any claim arising, whether based in contract or tort, shall be limited to the amount paid by client for analyses. All claims, including those for negligence and any other cause whatsoever shall be deemed waived unless made in writing and received by Cardinal within thirty (30) days after completion of the applicable service. In no event shall Cardinal be liable for incidental or consequential damages, including, without limitation, business interruptions, loss of use, or loss of profits incurred by client, its subsidiaries, affiliates or successors arising out of or related to the performance of the services hereunder by Cardinal, regardless of whether such claim is based upon any of the above stated reasons or otherwise. Results relate only to the samples identified above. This report shall not be reproduced except in full with written approval of Cardinal Laboratories.

Celey D. Keene, Lab Director/Quality Manager



PHONE (575) 393-2326 ° 101 E. MARLAND ° HOBBS, NM 88240

**Analytical Results For:**

ENSOLUM  
BEAUX JENNINGS  
3122 NATIONAL PARKS HWY  
CARLSBAD NM, 88220  
Fax To:

Received: 09/19/2024  
Reported: 09/24/2024  
Project Name: NIMITZ MDP 13 1 FED COM # 311H  
Project Number: 03B1417213  
Project Location: OXY -EDDY CO,NM

Sampling Date: 09/17/2024  
Sampling Type: Soil  
Sampling Condition: Cool & Intact  
Sample Received By: Tamara Oldaker

**Sample ID: FS 09 4 (H245703-09)**

BTEx 8021B		mg/kg		Analyzed By: JH					
Analyte	Result	Reporting Limit	Analyzed	Method Blank	BS	% Recovery	True Value QC	RPD	Qualifier
Benzene*	<0.050	0.050	09/20/2024	ND	2.06	103	2.00	1.32	
Toluene*	<0.050	0.050	09/20/2024	ND	1.95	97.3	2.00	1.04	
Ethylbenzene*	<0.050	0.050	09/20/2024	ND	1.98	99.2	2.00	0.794	
Total Xylenes*	<0.150	0.150	09/20/2024	ND	5.89	98.1	6.00	0.880	
Total BTEX	<0.300	0.300	09/20/2024	ND					

Surrogate: 4-Bromofluorobenzene (PID) 94.0 % 71.5-134

Chloride, SM4500Cl-B		mg/kg		Analyzed By: HM					
Analyte	Result	Reporting Limit	Analyzed	Method Blank	BS	% Recovery	True Value QC	RPD	Qualifier
Chloride	336	16.0	09/20/2024	ND	400	100	400	3.92	

TPH 8015M		mg/kg		Analyzed By: MS					
Analyte	Result	Reporting Limit	Analyzed	Method Blank	BS	% Recovery	True Value QC	RPD	Qualifier
GRO C6-C10*	<10.0	10.0	09/20/2024	ND	205	102	200	3.84	
DRO >C10-C28*	403	10.0	09/20/2024	ND	200	100	200	6.58	
EXT DRO >C28-C36	148	10.0	09/20/2024	ND					

Surrogate: 1-Chlorooctane 105 % 48.2-134

Surrogate: 1-Chlorooctadecane 98.8 % 49.1-148

Cardinal Laboratories

\*=Accredited Analyte

PLEASE NOTE: Liability and Damages. Cardinal's liability and client's exclusive remedy for any claim arising, whether based in contract or tort, shall be limited to the amount paid by client for analyses. All claims, including those for negligence and any other cause whatsoever shall be deemed waived unless made in writing and received by Cardinal within thirty (30) days after completion of the applicable service. In no event shall Cardinal be liable for incidental or consequential damages, including, without limitation, business interruptions, loss of use, or loss of profits incurred by client, its subsidiaries, affiliates or successors arising out of or related to the performance of the services hereunder by Cardinal, regardless of whether such claim is based upon any of the above stated reasons or otherwise. Results relate only to the samples identified above. This report shall not be reproduced except in full with written approval of Cardinal Laboratories.

Celey D. Keene, Lab Director/Quality Manager





PHONE (575) 393-2326 ° 101 E. MARLAND ° HOBBS, NM 88240

**Analytical Results For:**

ENSOLUM  
BEAUX JENNINGS  
3122 NATIONAL PARKS HWY  
CARLSBAD NM, 88220  
Fax To:

Received: 09/19/2024  
Reported: 09/24/2024  
Project Name: NIMITZ MDP 13 1 FED COM # 311H  
Project Number: 03B1417213  
Project Location: OXY -EDDY CO,NM

Sampling Date: 09/17/2024  
Sampling Type: Soil  
Sampling Condition: Cool & Intact  
Sample Received By: Tamara Oldaker

**Sample ID: FS 10 4 (H245703-10)**

BTEx 8021B		mg/kg		Analyzed By: JH						
Analyte	Result	Reporting Limit	Analyzed	Method Blank	BS	% Recovery	True Value QC	RPD	Qualifier	
Benzene*	<0.050	0.050	09/20/2024	ND	2.06	103	2.00	1.32		
Toluene*	<0.050	0.050	09/20/2024	ND	1.95	97.3	2.00	1.04		
Ethylbenzene*	<0.050	0.050	09/20/2024	ND	1.98	99.2	2.00	0.794		
Total Xylenes*	<0.150	0.150	09/20/2024	ND	5.89	98.1	6.00	0.880		
Total BTEX	<0.300	0.300	09/20/2024	ND						

Surrogate: 4-Bromofluorobenzene (PID) 95.1 % 71.5-134

Chloride, SM4500Cl-B		mg/kg		Analyzed By: HM						
Analyte	Result	Reporting Limit	Analyzed	Method Blank	BS	% Recovery	True Value QC	RPD	Qualifier	
Chloride	4240	16.0	09/20/2024	ND	400	100	400	3.92		

TPH 8015M		mg/kg		Analyzed By: MS					
Analyte	Result	Reporting Limit	Analyzed	Method Blank	BS	% Recovery	True Value QC	RPD	Qualifier
GRO C6-C10*	<10.0	10.0	09/20/2024	ND	205	102	200	3.84	
DRO >C10-C28*	77.8	10.0	09/20/2024	ND	200	100	200	6.58	
EXT DRO >C28-C36	20.7	10.0	09/20/2024	ND					

Surrogate: 1-Chlorooctane 92.4 % 48.2-134

Surrogate: 1-Chlorooctadecane 81.9 % 49.1-148

Cardinal Laboratories

\*=Accredited Analyte

PLEASE NOTE: Liability and Damages. Cardinal's liability and client's exclusive remedy for any claim arising, whether based in contract or tort, shall be limited to the amount paid by client for analyses. All claims, including those for negligence and any other cause whatsoever shall be deemed waived unless made in writing and received by Cardinal within thirty (30) days after completion of the applicable service. In no event shall Cardinal be liable for incidental or consequential damages, including, without limitation, business interruptions, loss of use, or loss of profits incurred by client, its subsidiaries, affiliates or successors arising out of or related to the performance of the services hereunder by Cardinal, regardless of whether such claim is based upon any of the above stated reasons or otherwise. Results relate only to the samples identified above. This report shall not be reproduced except in full with written approval of Cardinal Laboratories.

Celey D. Keene, Lab Director/Quality Manager



PHONE (575) 393-2326 ° 101 E. MARLAND ° HOBBS, NM 88240

**Analytical Results For:**

ENSOLUM  
BEAUX JENNINGS  
3122 NATIONAL PARKS HWY  
CARLSBAD NM, 88220  
Fax To:

Received: 09/19/2024  
Reported: 09/24/2024  
Project Name: NIMITZ MDP 13 1 FED COM # 311H  
Project Number: 03B1417213  
Project Location: OXY -EDDY CO,NM

Sampling Date: 09/17/2024  
Sampling Type: Soil  
Sampling Condition: Cool & Intact  
Sample Received By: Tamara Oldaker

**Sample ID: FS 11 4 (H245703-11)**

BTEx 8021B		mg/kg		Analyzed By: JH					
Analyte	Result	Reporting Limit	Analyzed	Method Blank	BS	% Recovery	True Value QC	RPD	Qualifier
Benzene*	<0.050	0.050	09/20/2024	ND	2.06	103	2.00	1.32	
Toluene*	<0.050	0.050	09/20/2024	ND	1.95	97.3	2.00	1.04	
Ethylbenzene*	<0.050	0.050	09/20/2024	ND	1.98	99.2	2.00	0.794	
Total Xylenes*	<0.150	0.150	09/20/2024	ND	5.89	98.1	6.00	0.880	
Total BTEX	<0.300	0.300	09/20/2024	ND					

Surrogate: 4-Bromofluorobenzene (PID) 95.4 % 71.5-134

Chloride, SM4500Cl-B		mg/kg		Analyzed By: HM					
Analyte	Result	Reporting Limit	Analyzed	Method Blank	BS	% Recovery	True Value QC	RPD	Qualifier
Chloride	64.0	16.0	09/20/2024	ND	400	100	400	3.92	

TPH 8015M		mg/kg		Analyzed By: MS					
Analyte	Result	Reporting Limit	Analyzed	Method Blank	BS	% Recovery	True Value QC	RPD	Qualifier
GRO C6-C10*	<10.0	10.0	09/20/2024	ND	205	102	200	3.84	
DRO >C10-C28*	<10.0	10.0	09/20/2024	ND	200	100	200	6.58	
EXT DRO >C28-C36	<10.0	10.0	09/20/2024	ND					

Surrogate: 1-Chlorooctane 86.2 % 48.2-134

Surrogate: 1-Chlorooctadecane 77.0 % 49.1-148

Cardinal Laboratories

\*=Accredited Analyte

PLEASE NOTE: Liability and Damages. Cardinal's liability and client's exclusive remedy for any claim arising, whether based in contract or tort, shall be limited to the amount paid by client for analyses. All claims, including those for negligence and any other cause whatsoever shall be deemed waived unless made in writing and received by Cardinal within thirty (30) days after completion of the applicable service. In no event shall Cardinal be liable for incidental or consequential damages, including, without limitation, business interruptions, loss of use, or loss of profits incurred by client, its subsidiaries, affiliates or successors arising out of or related to the performance of the services hereunder by Cardinal, regardless of whether such claim is based upon any of the above stated reasons or otherwise. Results relate only to the samples identified above. This report shall not be reproduced except in full with written approval of Cardinal Laboratories.

Celey D. Keene, Lab Director/Quality Manager



PHONE (575) 393-2326 ° 101 E. MARLAND ° HOBBS, NM 88240

**Analytical Results For:**

ENSOLUM  
BEAUX JENNINGS  
3122 NATIONAL PARKS HWY  
CARLSBAD NM, 88220  
Fax To:

Received: 09/19/2024  
Reported: 09/24/2024  
Project Name: NIMITZ MDP 13 1 FED COM # 311H  
Project Number: 03B1417213  
Project Location: OXY -EDDY CO,NM

Sampling Date: 09/17/2024  
Sampling Type: Soil  
Sampling Condition: Cool & Intact  
Sample Received By: Tamara Oldaker

**Sample ID: FS 12 4 (H245703-12)**

BTEx 8021B		mg/kg		Analyzed By: JH					
Analyte	Result	Reporting Limit	Analyzed	Method Blank	BS	% Recovery	True Value QC	RPD	Qualifier
Benzene*	<0.050	0.050	09/20/2024	ND	2.06	103	2.00	1.32	
Toluene*	<0.050	0.050	09/20/2024	ND	1.95	97.3	2.00	1.04	
Ethylbenzene*	<0.050	0.050	09/20/2024	ND	1.98	99.2	2.00	0.794	
Total Xylenes*	<0.150	0.150	09/20/2024	ND	5.89	98.1	6.00	0.880	
Total BTEX	<0.300	0.300	09/20/2024	ND					

Surrogate: 4-Bromofluorobenzene (PID) 94.9 % 71.5-134

Chloride, SM4500Cl-B		mg/kg		Analyzed By: HM					
Analyte	Result	Reporting Limit	Analyzed	Method Blank	BS	% Recovery	True Value QC	RPD	Qualifier
Chloride	704	16.0	09/20/2024	ND	400	100	400	3.92	

TPH 8015M		mg/kg		Analyzed By: MS					
Analyte	Result	Reporting Limit	Analyzed	Method Blank	BS	% Recovery	True Value QC	RPD	Qualifier
GRO C6-C10*	<10.0	10.0	09/20/2024	ND	205	102	200	3.84	
DRO >C10-C28*	133	10.0	09/20/2024	ND	200	100	200	6.58	
EXT DRO >C28-C36	34.8	10.0	09/20/2024	ND					

Surrogate: 1-Chlorooctane 90.3 % 48.2-134

Surrogate: 1-Chlorooctadecane 83.9 % 49.1-148

Cardinal Laboratories

\*=Accredited Analyte

PLEASE NOTE: Liability and Damages. Cardinal's liability and client's exclusive remedy for any claim arising, whether based in contract or tort, shall be limited to the amount paid by client for analyses. All claims, including those for negligence and any other cause whatsoever shall be deemed waived unless made in writing and received by Cardinal within thirty (30) days after completion of the applicable service. In no event shall Cardinal be liable for incidental or consequential damages, including, without limitation, business interruptions, loss of use, or loss of profits incurred by client, its subsidiaries, affiliates or successors arising out of or related to the performance of the services hereunder by Cardinal, regardless of whether such claim is based upon any of the above stated reasons or otherwise. Results relate only to the samples identified above. This report shall not be reproduced except in full with written approval of Cardinal Laboratories.

Celey D. Keene, Lab Director/Quality Manager



PHONE (575) 393-2326 ° 101 E. MARLAND ° HOBBS, NM 88240

**Analytical Results For:**

ENSOLUM  
BEAUX JENNINGS  
3122 NATIONAL PARKS HWY  
CARLSBAD NM, 88220  
Fax To:

Received: 09/19/2024  
Reported: 09/24/2024  
Project Name: NIMITZ MDP 13 1 FED COM # 311H  
Project Number: 03B1417213  
Project Location: OXY -EDDY CO,NM

Sampling Date: 09/17/2024  
Sampling Type: Soil  
Sampling Condition: Cool & Intact  
Sample Received By: Tamara Oldaker

**Sample ID: FS 13 4 (H245703-13)**

BTEx 8021B		mg/kg		Analyzed By: JH					
Analyte	Result	Reporting Limit	Analyzed	Method Blank	BS	% Recovery	True Value QC	RPD	Qualifier
Benzene*	<0.050	0.050	09/20/2024	ND	2.06	103	2.00	1.32	
Toluene*	<0.050	0.050	09/20/2024	ND	1.95	97.3	2.00	1.04	
Ethylbenzene*	<0.050	0.050	09/20/2024	ND	1.98	99.2	2.00	0.794	
Total Xylenes*	<0.150	0.150	09/20/2024	ND	5.89	98.1	6.00	0.880	
Total BTEX	<0.300	0.300	09/20/2024	ND					

Surrogate: 4-Bromofluorobenzene (PID) 95.9 % 71.5-134

Chloride, SM4500Cl-B		mg/kg		Analyzed By: HM					
Analyte	Result	Reporting Limit	Analyzed	Method Blank	BS	% Recovery	True Value QC	RPD	Qualifier
Chloride	1170	16.0	09/20/2024	ND	400	100	400	3.92	

TPH 8015M		mg/kg		Analyzed By: MS					
Analyte	Result	Reporting Limit	Analyzed	Method Blank	BS	% Recovery	True Value QC	RPD	Qualifier
GRO C6-C10*	<10.0	10.0	09/20/2024	ND	205	102	200	3.84	
DRO >C10-C28*	11.8	10.0	09/20/2024	ND	200	100	200	6.58	
EXT DRO >C28-C36	<10.0	10.0	09/20/2024	ND					

Surrogate: 1-Chlorooctane 101 % 48.2-134

Surrogate: 1-Chlorooctadecane 95.9 % 49.1-148

Cardinal Laboratories

\*=Accredited Analyte

PLEASE NOTE: Liability and Damages. Cardinal's liability and client's exclusive remedy for any claim arising, whether based in contract or tort, shall be limited to the amount paid by client for analyses. All claims, including those for negligence and any other cause whatsoever shall be deemed waived unless made in writing and received by Cardinal within thirty (30) days after completion of the applicable service. In no event shall Cardinal be liable for incidental or consequential damages, including, without limitation, business interruptions, loss of use, or loss of profits incurred by client, its subsidiaries, affiliates or successors arising out of or related to the performance of the services hereunder by Cardinal, regardless of whether such claim is based upon any of the above stated reasons or otherwise. Results relate only to the samples identified above. This report shall not be reproduced except in full with written approval of Cardinal Laboratories.

Celey D. Keene, Lab Director/Quality Manager





PHONE (575) 393-2326 ° 101 E. MARLAND ° HOBBS, NM 88240

**Analytical Results For:**

ENSOLUM  
BEAUX JENNINGS  
3122 NATIONAL PARKS HWY  
CARLSBAD NM, 88220  
Fax To:

Received: 09/19/2024  
Reported: 09/24/2024  
Project Name: NIMITZ MDP 13 1 FED COM # 311H  
Project Number: 03B1417213  
Project Location: OXY -EDDY CO,NM

Sampling Date: 09/17/2024  
Sampling Type: Soil  
Sampling Condition: Cool & Intact  
Sample Received By: Tamara Oldaker

**Sample ID: FS 14 4 (H245703-14)**

BTEX 8021B		mg/kg		Analyzed By: JH						
Analyte	Result	Reporting Limit	Analyzed	Method Blank	BS	% Recovery	True Value QC	RPD	Qualifier	
Benzene*	<0.050	0.050	09/20/2024	ND	2.06	103	2.00	1.32		
Toluene*	<0.050	0.050	09/20/2024	ND	1.95	97.3	2.00	1.04		
Ethylbenzene*	<0.050	0.050	09/20/2024	ND	1.98	99.2	2.00	0.794		
Total Xylenes*	<0.150	0.150	09/20/2024	ND	5.89	98.1	6.00	0.880		
Total BTEX	<0.300	0.300	09/20/2024	ND						

Surrogate: 4-Bromofluorobenzene (PID) 94.2 % 71.5-134

Chloride, SM4500Cl-B		mg/kg		Analyzed By: HM					
Analyte	Result	Reporting Limit	Analyzed	Method Blank	BS	% Recovery	True Value QC	RPD	Qualifier
Chloride	128	16.0	09/20/2024	ND	400	100	400	3.92	

TPH 8015M		mg/kg		Analyzed By: MS					
Analyte	Result	Reporting Limit	Analyzed	Method Blank	BS	% Recovery	True Value QC	RPD	Qualifier
GRO C6-C10*	<10.0	10.0	09/20/2024	ND	205	102	200	3.84	
DRO >C10-C28*	<10.0	10.0	09/20/2024	ND	200	100	200	6.58	
EXT DRO >C28-C36	<10.0	10.0	09/20/2024	ND					

Surrogate: 1-Chlorooctane 90.9 % 48.2-134

Surrogate: 1-Chlorooctadecane 77.0 % 49.1-148

Cardinal Laboratories

\*=Accredited Analyte

PLEASE NOTE: Liability and Damages. Cardinal's liability and client's exclusive remedy for any claim arising, whether based in contract or tort, shall be limited to the amount paid by client for analyses. All claims, including those for negligence and any other cause whatsoever shall be deemed waived unless made in writing and received by Cardinal within thirty (30) days after completion of the applicable service. In no event shall Cardinal be liable for incidental or consequential damages, including, without limitation, business interruptions, loss of use, or loss of profits incurred by client, its subsidiaries, affiliates or successors arising out of or related to the performance of the services hereunder by Cardinal, regardless of whether such claim is based upon any of the above stated reasons or otherwise. Results relate only to the samples identified above. This report shall not be reproduced except in full with written approval of Cardinal Laboratories.

Celey D. Keene, Lab Director/Quality Manager



PHONE (575) 393-2326 ° 101 E. MARLAND ° HOBBS, NM 88240

**Analytical Results For:**

ENSOLUM  
BEAUX JENNINGS  
3122 NATIONAL PARKS HWY  
CARLSBAD NM, 88220  
Fax To:

Received: 09/19/2024  
Reported: 09/24/2024  
Project Name: NIMITZ MDP 13 1 FED COM # 311H  
Project Number: 03B1417213  
Project Location: OXY -EDDY CO,NM

Sampling Date: 09/17/2024  
Sampling Type: Soil  
Sampling Condition: Cool & Intact  
Sample Received By: Tamara Oldaker

**Sample ID: FS 15 4 (H245703-15)**

BTEx 8021B		mg/kg		Analyzed By: JH					
Analyte	Result	Reporting Limit	Analyzed	Method Blank	BS	% Recovery	True Value QC	RPD	Qualifier
Benzene*	<0.050	0.050	09/20/2024	ND	2.06	103	2.00	1.32	
Toluene*	<0.050	0.050	09/20/2024	ND	1.95	97.3	2.00	1.04	
Ethylbenzene*	<0.050	0.050	09/20/2024	ND	1.98	99.2	2.00	0.794	
Total Xylenes*	<0.150	0.150	09/20/2024	ND	5.89	98.1	6.00	0.880	
Total BTEX	<0.300	0.300	09/20/2024	ND					

Surrogate: 4-Bromofluorobenzene (PID) 94.1 % 71.5-134

Chloride, SM4500Cl-B		mg/kg		Analyzed By: HM					
Analyte	Result	Reporting Limit	Analyzed	Method Blank	BS	% Recovery	True Value QC	RPD	Qualifier
Chloride	3600	16.0	09/20/2024	ND	400	100	400	3.92	

TPH 8015M		mg/kg		Analyzed By: MS					
Analyte	Result	Reporting Limit	Analyzed	Method Blank	BS	% Recovery	True Value QC	RPD	Qualifier
GRO C6-C10*	<10.0	10.0	09/20/2024	ND	205	102	200	3.84	
DRO >C10-C28*	478	10.0	09/20/2024	ND	200	100	200	6.58	
EXT DRO >C28-C36	128	10.0	09/20/2024	ND					

Surrogate: 1-Chlorooctane 96.6 % 48.2-134

Surrogate: 1-Chlorooctadecane 103 % 49.1-148

Cardinal Laboratories

\*=Accredited Analyte

PLEASE NOTE: Liability and Damages. Cardinal's liability and client's exclusive remedy for any claim arising, whether based in contract or tort, shall be limited to the amount paid by client for analyses. All claims, including those for negligence and any other cause whatsoever shall be deemed waived unless made in writing and received by Cardinal within thirty (30) days after completion of the applicable service. In no event shall Cardinal be liable for incidental or consequential damages, including, without limitation, business interruptions, loss of use, or loss of profits incurred by client, its subsidiaries, affiliates or successors arising out of or related to the performance of the services hereunder by Cardinal, regardless of whether such claim is based upon any of the above stated reasons or otherwise. Results relate only to the samples identified above. This report shall not be reproduced except in full with written approval of Cardinal Laboratories.

Celey D. Keene, Lab Director/Quality Manager



PHONE (575) 393-2326 ° 101 E. MARLAND ° HOBBS, NM 88240

**Analytical Results For:**

ENSOLUM  
BEAUX JENNINGS  
3122 NATIONAL PARKS HWY  
CARLSBAD NM, 88220  
Fax To:

Received: 09/19/2024  
Reported: 09/24/2024  
Project Name: NIMITZ MDP 13 1 FED COM # 311H  
Project Number: 03B1417213  
Project Location: OXY -EDDY CO,NM

Sampling Date: 09/17/2024  
Sampling Type: Soil  
Sampling Condition: Cool & Intact  
Sample Received By: Tamara Oldaker

**Sample ID: FS 16 4 (H245703-16)**

BTEx 8021B		mg/kg		Analyzed By: JH					
Analyte	Result	Reporting Limit	Analyzed	Method Blank	BS	% Recovery	True Value QC	RPD	Qualifier
Benzene*	<0.050	0.050	09/20/2024	ND	2.06	103	2.00	1.32	
Toluene*	<0.050	0.050	09/20/2024	ND	1.95	97.3	2.00	1.04	
Ethylbenzene*	<0.050	0.050	09/20/2024	ND	1.98	99.2	2.00	0.794	
Total Xylenes*	<0.150	0.150	09/20/2024	ND	5.89	98.1	6.00	0.880	
Total BTEX	<0.300	0.300	09/20/2024	ND					

Surrogate: 4-Bromofluorobenzene (PID) 93.8 % 71.5-134

Chloride, SM4500Cl-B		mg/kg		Analyzed By: HM					
Analyte	Result	Reporting Limit	Analyzed	Method Blank	BS	% Recovery	True Value QC	RPD	Qualifier
Chloride	2800	16.0	09/20/2024	ND	400	100	400	3.92	

TPH 8015M		mg/kg		Analyzed By: MS					
Analyte	Result	Reporting Limit	Analyzed	Method Blank	BS	% Recovery	True Value QC	RPD	Qualifier
GRO C6-C10*	<10.0	10.0	09/20/2024	ND	205	102	200	3.84	
DRO >C10-C28*	49.0	10.0	09/20/2024	ND	200	100	200	6.58	
EXT DRO >C28-C36	<10.0	10.0	09/20/2024	ND					

Surrogate: 1-Chlorooctane 109 % 48.2-134

Surrogate: 1-Chlorooctadecane 96.7 % 49.1-148

Cardinal Laboratories

\*=Accredited Analyte

PLEASE NOTE: Liability and Damages. Cardinal's liability and client's exclusive remedy for any claim arising, whether based in contract or tort, shall be limited to the amount paid by client for analyses. All claims, including those for negligence and any other cause whatsoever shall be deemed waived unless made in writing and received by Cardinal within thirty (30) days after completion of the applicable service. In no event shall Cardinal be liable for incidental or consequential damages, including, without limitation, business interruptions, loss of use, or loss of profits incurred by client, its subsidiaries, affiliates or successors arising out of or related to the performance of the services hereunder by Cardinal, regardless of whether such claim is based upon any of the above stated reasons or otherwise. Results relate only to the samples identified above. This report shall not be reproduced except in full with written approval of Cardinal Laboratories.

Celey D. Keene, Lab Director/Quality Manager



PHONE (575) 393-2326 ° 101 E. MARLAND ° HOBBS, NM 88240

**Analytical Results For:**

ENSOLUM  
BEAUX JENNINGS  
3122 NATIONAL PARKS HWY  
CARLSBAD NM, 88220  
Fax To:

Received: 09/19/2024  
Reported: 09/24/2024  
Project Name: NIMITZ MDP 13 1 FED COM # 311H  
Project Number: 03B1417213  
Project Location: OXY -EDDY CO,NM

Sampling Date: 09/17/2024  
Sampling Type: Soil  
Sampling Condition: Cool & Intact  
Sample Received By: Tamara Oldaker

**Sample ID: FS 17 4 (H245703-17)**

BTEX 8021B		mg/kg		Analyzed By: JH						
Analyte	Result	Reporting Limit	Analyzed	Method Blank	BS	% Recovery	True Value QC	RPD	Qualifier	
Benzene*	<0.050	0.050	09/20/2024	ND	2.06	103	2.00	1.32		
Toluene*	<0.050	0.050	09/20/2024	ND	1.95	97.3	2.00	1.04		
Ethylbenzene*	<0.050	0.050	09/20/2024	ND	1.98	99.2	2.00	0.794		
Total Xylenes*	<0.150	0.150	09/20/2024	ND	5.89	98.1	6.00	0.880		
Total BTEX	<0.300	0.300	09/20/2024	ND						

Surrogate: 4-Bromofluorobenzene (PID) 94.5 % 71.5-134

Chloride, SM4500CI-B		mg/kg		Analyzed By: HM						
Analyte	Result	Reporting Limit	Analyzed	Method Blank	BS	% Recovery	True Value QC	RPD	Qualifier	
Chloride	128	16.0	09/20/2024	ND	400	100	400	3.92		

TPH 8015M		mg/kg		Analyzed By: MS					
Analyte	Result	Reporting Limit	Analyzed	Method Blank	BS	% Recovery	True Value QC	RPD	Qualifier
GRO C6-C10*	<10.0	10.0	09/20/2024	ND	205	102	200	3.84	
DRO >C10-C28*	<10.0	10.0	09/20/2024	ND	200	100	200	6.58	
EXT DRO >C28-C36	<10.0	10.0	09/20/2024	ND					

Surrogate: 1-Chlorooctane 109 % 48.2-134

Surrogate: 1-Chlorooctadecane 100 % 49.1-148

Cardinal Laboratories

\*=Accredited Analyte

PLEASE NOTE: Liability and Damages. Cardinal's liability and client's exclusive remedy for any claim arising, whether based in contract or tort, shall be limited to the amount paid by client for analyses. All claims, including those for negligence and any other cause whatsoever shall be deemed waived unless made in writing and received by Cardinal within thirty (30) days after completion of the applicable service. In no event shall Cardinal be liable for incidental or consequential damages, including, without limitation, business interruptions, loss of use, or loss of profits incurred by client, its subsidiaries, affiliates or successors arising out of or related to the performance of the services hereunder by Cardinal, regardless of whether such claim is based upon any of the above stated reasons or otherwise. Results relate only to the samples identified above. This report shall not be reproduced except in full with written approval of Cardinal Laboratories.

Celey D. Keene, Lab Director/Quality Manager





PHONE (575) 393-2326 ° 101 E. MARLAND ° HOBBS, NM 88240

**Analytical Results For:**

ENSOLUM  
BEAUX JENNINGS  
3122 NATIONAL PARKS HWY  
CARLSBAD NM, 88220  
Fax To:

Received: 09/19/2024  
Reported: 09/24/2024  
Project Name: NIMITZ MDP 13 1 FED COM # 311H  
Project Number: 03B1417213  
Project Location: OXY -EDDY CO,NM

Sampling Date: 09/17/2024  
Sampling Type: Soil  
Sampling Condition: Cool & Intact  
Sample Received By: Tamara Oldaker

**Sample ID: FS 18 4 (H245703-18)**

BTEX 8021B		mg/kg		Analyzed By: JH					
Analyte	Result	Reporting Limit	Analyzed	Method Blank	BS	% Recovery	True Value QC	RPD	Qualifier
Benzene*	<0.050	0.050	09/20/2024	ND	2.06	103	2.00	1.32	
Toluene*	<0.050	0.050	09/20/2024	ND	1.95	97.3	2.00	1.04	
Ethylbenzene*	<0.050	0.050	09/20/2024	ND	1.98	99.2	2.00	0.794	
Total Xylenes*	<0.150	0.150	09/20/2024	ND	5.89	98.1	6.00	0.880	
Total BTEX	<0.300	0.300	09/20/2024	ND					

Surrogate: 4-Bromofluorobenzene (PID) 93.8 % 71.5-134

Chloride, SM4500Cl-B		mg/kg		Analyzed By: HM					
Analyte	Result	Reporting Limit	Analyzed	Method Blank	BS	% Recovery	True Value QC	RPD	Qualifier
Chloride	6960	16.0	09/20/2024	ND	400	100	400	3.92	

TPH 8015M		mg/kg		Analyzed By: MS				S-04	
Analyte	Result	Reporting Limit	Analyzed	Method Blank	BS	% Recovery	True Value QC	RPD	Qualifier
GRO C6-C10*	<10.0	10.0	09/20/2024	ND	205	102	200	3.84	
DRO >C10-C28*	269	10.0	09/20/2024	ND	200	100	200	6.58	
EXT DRO >C28-C36	73.3	10.0	09/20/2024	ND					

Surrogate: 1-Chlorooctane 115 % 48.2-134

Surrogate: 1-Chlorooctadecane 157 % 49.1-148

Cardinal Laboratories

\*=Accredited Analyte

PLEASE NOTE: Liability and Damages. Cardinal's liability and client's exclusive remedy for any claim arising, whether based in contract or tort, shall be limited to the amount paid by client for analyses. All claims, including those for negligence and any other cause whatsoever shall be deemed waived unless made in writing and received by Cardinal within thirty (30) days after completion of the applicable service. In no event shall Cardinal be liable for incidental or consequential damages, including, without limitation, business interruptions, loss of use, or loss of profits incurred by client, its subsidiaries, affiliates or successors arising out of or related to the performance of the services hereunder by Cardinal, regardless of whether such claim is based upon any of the above stated reasons or otherwise. Results relate only to the samples identified above. This report shall not be reproduced except in full with written approval of Cardinal Laboratories.

Celey D. Keene, Lab Director/Quality Manager



PHONE (575) 393-2326 ° 101 E. MARLAND ° HOBBS, NM 88240

**Analytical Results For:**

ENSOLUM  
BEAUX JENNINGS  
3122 NATIONAL PARKS HWY  
CARLSBAD NM, 88220  
Fax To:

Received: 09/19/2024  
Reported: 09/24/2024  
Project Name: NIMITZ MDP 13 1 FED COM # 311H  
Project Number: 03B1417213  
Project Location: OXY -EDDY CO,NM

Sampling Date: 09/17/2024  
Sampling Type: Soil  
Sampling Condition: Cool & Intact  
Sample Received By: Tamara Oldaker

**Sample ID: FS 19 4 (H245703-19)**

BTEx 8021B		mg/kg		Analyzed By: JH						
Analyte	Result	Reporting Limit	Analyzed	Method Blank	BS	% Recovery	True Value QC	RPD	Qualifier	
Benzene*	<0.050	0.050	09/20/2024	ND	2.06	103	2.00	1.32		
Toluene*	<0.050	0.050	09/20/2024	ND	1.95	97.3	2.00	1.04		
Ethylbenzene*	<0.050	0.050	09/20/2024	ND	1.98	99.2	2.00	0.794		
Total Xylenes*	<0.150	0.150	09/20/2024	ND	5.89	98.1	6.00	0.880		
Total BTEX	<0.300	0.300	09/20/2024	ND						

Surrogate: 4-Bromofluorobenzene (PID) 94.0 % 71.5-134

Chloride, SM4500Cl-B		mg/kg		Analyzed By: HM						
Analyte	Result	Reporting Limit	Analyzed	Method Blank	BS	% Recovery	True Value QC	RPD	Qualifier	
Chloride	144	16.0	09/20/2024	ND	400	100	400	3.92		

TPH 8015M		mg/kg		Analyzed By: MS					
Analyte	Result	Reporting Limit	Analyzed	Method Blank	BS	% Recovery	True Value QC	RPD	Qualifier
GRO C6-C10*	<10.0	10.0	09/20/2024	ND	205	102	200	3.84	
DRO >C10-C28*	<10.0	10.0	09/20/2024	ND	200	100	200	6.58	
EXT DRO >C28-C36	<10.0	10.0	09/20/2024	ND					

Surrogate: 1-Chlorooctane 98.3 % 48.2-134

Surrogate: 1-Chlorooctadecane 90.2 % 49.1-148

Cardinal Laboratories

\*=Accredited Analyte

PLEASE NOTE: Liability and Damages. Cardinal's liability and client's exclusive remedy for any claim arising, whether based in contract or tort, shall be limited to the amount paid by client for analyses. All claims, including those for negligence and any other cause whatsoever shall be deemed waived unless made in writing and received by Cardinal within thirty (30) days after completion of the applicable service. In no event shall Cardinal be liable for incidental or consequential damages, including, without limitation, business interruptions, loss of use, or loss of profits incurred by client, its subsidiaries, affiliates or successors arising out of or related to the performance of the services hereunder by Cardinal, regardless of whether such claim is based upon any of the above stated reasons or otherwise. Results relate only to the samples identified above. This report shall not be reproduced except in full with written approval of Cardinal Laboratories.

Celey D. Keene, Lab Director/Quality Manager



PHONE (575) 393-2326 ° 101 E. MARLAND ° HOBBS, NM 88240

**Analytical Results For:**

ENSOLUM  
BEAUX JENNINGS  
3122 NATIONAL PARKS HWY  
CARLSBAD NM, 88220  
Fax To:

Received: 09/19/2024  
Reported: 09/24/2024  
Project Name: NIMITZ MDP 13 1 FED COM # 311H  
Project Number: 03B1417213  
Project Location: OXY -EDDY CO,NM

Sampling Date: 09/17/2024  
Sampling Type: Soil  
Sampling Condition: Cool & Intact  
Sample Received By: Tamara Oldaker

**Sample ID: FS 20 4 (H245703-20)**

BTEx 8021B		mg/kg		Analyzed By: JH					
Analyte	Result	Reporting Limit	Analyzed	Method Blank	BS	% Recovery	True Value QC	RPD	Qualifier
Benzene*	<0.050	0.050	09/20/2024	ND	2.29	115	2.00	2.22	
Toluene*	<0.050	0.050	09/20/2024	ND	2.43	121	2.00	4.15	
Ethylbenzene*	<0.050	0.050	09/20/2024	ND	2.61	130	2.00	4.19	
Total Xylenes*	<0.150	0.150	09/20/2024	ND	7.85	131	6.00	4.09	
Total BTEX	<0.300	0.300	09/20/2024	ND					

Surrogate: 4-Bromofluorobenzene (PID) 114 % 71.5-134

Chloride, SM4500Cl-B		mg/kg		Analyzed By: CT					
Analyte	Result	Reporting Limit	Analyzed	Method Blank	BS	% Recovery	True Value QC	RPD	Qualifier
Chloride	3840	16.0	09/20/2024	ND	432	108	400	3.77	QM-07

TPH 8015M		mg/kg		Analyzed By: MS					
Analyte	Result	Reporting Limit	Analyzed	Method Blank	BS	% Recovery	True Value QC	RPD	Qualifier
GRO C6-C10*	<10.0	10.0	09/20/2024	ND	205	102	200	3.84	
DRO >C10-C28*	151	10.0	09/20/2024	ND	200	100	200	6.58	
EXT DRO >C28-C36	35.9	10.0	09/20/2024	ND					

Surrogate: 1-Chlorooctane 111 % 48.2-134

Surrogate: 1-Chlorooctadecane 103 % 49.1-148

Cardinal Laboratories

\*=Accredited Analyte

PLEASE NOTE: Liability and Damages. Cardinal's liability and client's exclusive remedy for any claim arising, whether based in contract or tort, shall be limited to the amount paid by client for analyses. All claims, including those for negligence and any other cause whatsoever shall be deemed waived unless made in writing and received by Cardinal within thirty (30) days after completion of the applicable service. In no event shall Cardinal be liable for incidental or consequential damages, including, without limitation, business interruptions, loss of use, or loss of profits incurred by client, its subsidiaries, affiliates or successors arising out of or related to the performance of the services hereunder by Cardinal, regardless of whether such claim is based upon any of the above stated reasons or otherwise. Results relate only to the samples identified above. This report shall not be reproduced except in full with written approval of Cardinal Laboratories.

Celey D. Keene, Lab Director/Quality Manager



PHONE (575) 393-2326 ° 101 E. MARLAND ° HOBBS, NM 88240

**Analytical Results For:**

ENSOLUM  
BEAUX JENNINGS  
3122 NATIONAL PARKS HWY  
CARLSBAD NM, 88220  
Fax To:

Received:	09/19/2024	Sampling Date:	09/17/2024
Reported:	09/24/2024	Sampling Type:	Soil
Project Name:	NIMITZ MDP 13 1 FED COM # 311H	Sampling Condition:	Cool & Intact
Project Number:	03B1417213	Sample Received By:	Tamara Oldaker
Project Location:	OXY -EDDY CO,NM		

**Sample ID: SW 01 0-4 (H245703-21)**

BTEx 8021B		mg/kg		Analyzed By: JH					
Analyte	Result	Reporting Limit	Analyzed	Method Blank	BS	% Recovery	True Value QC	RPD	Qualifier
Benzene*	<0.050	0.050	09/20/2024	ND	2.29	115	2.00	2.22	
Toluene*	<0.050	0.050	09/20/2024	ND	2.43	121	2.00	4.15	
Ethylbenzene*	<0.050	0.050	09/20/2024	ND	2.61	130	2.00	4.19	
Total Xylenes*	<0.150	0.150	09/20/2024	ND	7.85	131	6.00	4.09	
Total BTEX	<0.300	0.300	09/20/2024	ND					

Surrogate: 4-Bromofluorobenzene (PID) 114 % 71.5-134

Chloride, SM4500Cl-B		mg/kg		Analyzed By: CT					
Analyte	Result	Reporting Limit	Analyzed	Method Blank	BS	% Recovery	True Value QC	RPD	Qualifier
Chloride	960	16.0	09/20/2024	ND	432	108	400	3.77	

TPH 8015M		mg/kg		Analyzed By: MS					
Analyte	Result	Reporting Limit	Analyzed	Method Blank	BS	% Recovery	True Value QC	RPD	Qualifier
GRO C6-C10*	<10.0	10.0	09/20/2024	ND	205	102	200	3.84	
DRO >C10-C28*	13.0	10.0	09/20/2024	ND	200	100	200	6.58	
EXT DRO >C28-C36	<10.0	10.0	09/20/2024	ND					

Surrogate: 1-Chlorooctane 112 % 48.2-134

Surrogate: 1-Chlorooctadecane 97.5 % 49.1-148

Cardinal Laboratories

\*=Accredited Analyte

PLEASE NOTE: Liability and Damages. Cardinal's liability and client's exclusive remedy for any claim arising, whether based in contract or tort, shall be limited to the amount paid by client for analyses. All claims, including those for negligence and any other cause whatsoever shall be deemed waived unless made in writing and received by Cardinal within thirty (30) days after completion of the applicable service. In no event shall Cardinal be liable for incidental or consequential damages, including, without limitation, business interruptions, loss of use, or loss of profits incurred by client, its subsidiaries, affiliates or successors arising out of or related to the performance of the services hereunder by Cardinal, regardless of whether such claim is based upon any of the above stated reasons or otherwise. Results relate only to the samples identified above. This report shall not be reproduced except in full with written approval of Cardinal Laboratories.

Celey D. Keene, Lab Director/Quality Manager





PHONE (575) 393-2326 ° 101 E. MARLAND ° HOBBS, NM 88240

**Analytical Results For:**

ENSOLUM  
BEAUX JENNINGS  
3122 NATIONAL PARKS HWY  
CARLSBAD NM, 88220  
Fax To:

Received: 09/19/2024  
Reported: 09/24/2024  
Project Name: NIMITZ MDP 13 1 FED COM # 311H  
Project Number: 03B1417213  
Project Location: OXY -EDDY CO,NM

Sampling Date: 09/17/2024  
Sampling Type: Soil  
Sampling Condition: Cool & Intact  
Sample Received By: Tamara Oldaker

**Sample ID: SW 02 0-4 (H245703-22)**

BTEx 8021B		mg/kg		Analyzed By: JH						
Analyte	Result	Reporting Limit	Analyzed	Method Blank	BS	% Recovery	True Value QC	RPD	Qualifier	
Benzene*	<0.050	0.050	09/20/2024	ND	2.29	115	2.00	2.22		
Toluene*	<0.050	0.050	09/20/2024	ND	2.43	121	2.00	4.15		
Ethylbenzene*	<0.050	0.050	09/20/2024	ND	2.61	130	2.00	4.19		
Total Xylenes*	<0.150	0.150	09/20/2024	ND	7.85	131	6.00	4.09		
Total BTEX	<0.300	0.300	09/20/2024	ND						

Surrogate: 4-Bromofluorobenzene (PID) 115 % 71.5-134

Chloride, SM4500Cl-B		mg/kg		Analyzed By: CT						
Analyte	Result	Reporting Limit	Analyzed	Method Blank	BS	% Recovery	True Value QC	RPD	Qualifier	
Chloride	1360	16.0	09/20/2024	ND	432	108	400	3.77		

TPH 8015M		mg/kg		Analyzed By: MS					
Analyte	Result	Reporting Limit	Analyzed	Method Blank	BS	% Recovery	True Value QC	RPD	Qualifier
GRO C6-C10*	<10.0	10.0	09/20/2024	ND	205	102	200	3.84	
DRO >C10-C28*	763	10.0	09/20/2024	ND	200	100	200	6.58	
EXT DRO >C28-C36	209	10.0	09/20/2024	ND					

Surrogate: 1-Chlorooctane 105 % 48.2-134

Surrogate: 1-Chlorooctadecane 107 % 49.1-148

Cardinal Laboratories

\*=Accredited Analyte

PLEASE NOTE: Liability and Damages. Cardinal's liability and client's exclusive remedy for any claim arising, whether based in contract or tort, shall be limited to the amount paid by client for analyses. All claims, including those for negligence and any other cause whatsoever shall be deemed waived unless made in writing and received by Cardinal within thirty (30) days after completion of the applicable service. In no event shall Cardinal be liable for incidental or consequential damages, including, without limitation, business interruptions, loss of use, or loss of profits incurred by client, its subsidiaries, affiliates or successors arising out of or related to the performance of the services hereunder by Cardinal, regardless of whether such claim is based upon any of the above stated reasons or otherwise. Results relate only to the samples identified above. This report shall not be reproduced except in full with written approval of Cardinal Laboratories.

Celey D. Keene, Lab Director/Quality Manager



PHONE (575) 393-2326 ° 101 E. MARLAND ° HOBBS, NM 88240

**Analytical Results For:**

ENSOLUM  
BEAUX JENNINGS  
3122 NATIONAL PARKS HWY  
CARLSBAD NM, 88220  
Fax To:

Received: 09/19/2024  
Reported: 09/24/2024  
Project Name: NIMITZ MDP 13 1 FED COM # 311H  
Project Number: 03B1417213  
Project Location: OXY -EDDY CO,NM

Sampling Date: 09/17/2024  
Sampling Type: Soil  
Sampling Condition: Cool & Intact  
Sample Received By: Tamara Oldaker

**Sample ID: SW 03 0-4 (H245703-23)**

BTEX 8021B		mg/kg		Analyzed By: JH					
Analyte	Result	Reporting Limit	Analyzed	Method Blank	BS	% Recovery	True Value QC	RPD	Qualifier
Benzene*	<0.050	0.050	09/20/2024	ND	2.29	115	2.00	2.22	
Toluene*	<0.050	0.050	09/20/2024	ND	2.43	121	2.00	4.15	
Ethylbenzene*	<0.050	0.050	09/20/2024	ND	2.61	130	2.00	4.19	
Total Xylenes*	<0.150	0.150	09/20/2024	ND	7.85	131	6.00	4.09	
Total BTEX	<0.300	0.300	09/20/2024	ND					

Surrogate: 4-Bromofluorobenzene (PID) 120 % 71.5-134

Chloride, SM4500Cl-B		mg/kg		Analyzed By: CT					
Analyte	Result	Reporting Limit	Analyzed	Method Blank	BS	% Recovery	True Value QC	RPD	Qualifier
Chloride	80.0	16.0	09/20/2024	ND	432	108	400	3.77	

TPH 8015M		mg/kg		Analyzed By: MS					
Analyte	Result	Reporting Limit	Analyzed	Method Blank	BS	% Recovery	True Value QC	RPD	Qualifier
GRO C6-C10*	<10.0	10.0	09/20/2024	ND	205	102	200	3.84	
DRO >C10-C28*	<10.0	10.0	09/20/2024	ND	200	100	200	6.58	
EXT DRO >C28-C36	<10.0	10.0	09/20/2024	ND					

Surrogate: 1-Chlorooctane 109 % 48.2-134

Surrogate: 1-Chlorooctadecane 93.9 % 49.1-148

Cardinal Laboratories

\*=Accredited Analyte

PLEASE NOTE: Liability and Damages. Cardinal's liability and client's exclusive remedy for any claim arising, whether based in contract or tort, shall be limited to the amount paid by client for analyses. All claims, including those for negligence and any other cause whatsoever shall be deemed waived unless made in writing and received by Cardinal within thirty (30) days after completion of the applicable service. In no event shall Cardinal be liable for incidental or consequential damages, including, without limitation, business interruptions, loss of use, or loss of profits incurred by client, its subsidiaries, affiliates or successors arising out of or related to the performance of the services hereunder by Cardinal, regardless of whether such claim is based upon any of the above stated reasons or otherwise. Results relate only to the samples identified above. This report shall not be reproduced except in full with written approval of Cardinal Laboratories.

Celey D. Keene, Lab Director/Quality Manager



PHONE (575) 393-2326 ° 101 E. MARLAND ° HOBBS, NM 88240

**Analytical Results For:**

ENSOLUM  
BEAUX JENNINGS  
3122 NATIONAL PARKS HWY  
CARLSBAD NM, 88220  
Fax To:

Received: 09/19/2024  
Reported: 09/24/2024  
Project Name: NIMITZ MDP 13 1 FED COM # 311H  
Project Number: 03B1417213  
Project Location: OXY -EDDY CO,NM

Sampling Date: 09/17/2024  
Sampling Type: Soil  
Sampling Condition: Cool & Intact  
Sample Received By: Tamara Oldaker

**Sample ID: SW 04 0-4 (H245703-24)**

BTEX 8021B		mg/kg		Analyzed By: JH						
Analyte	Result	Reporting Limit	Analyzed	Method Blank	BS	% Recovery	True Value QC	RPD	Qualifier	
Benzene*	<0.050	0.050	09/20/2024	ND	2.29	115	2.00	2.22		
Toluene*	<0.050	0.050	09/20/2024	ND	2.43	121	2.00	4.15		
Ethylbenzene*	<0.050	0.050	09/20/2024	ND	2.61	130	2.00	4.19		
Total Xylenes*	<0.150	0.150	09/20/2024	ND	7.85	131	6.00	4.09		
Total BTEX	<0.300	0.300	09/20/2024	ND						

Surrogate: 4-Bromofluorobenzene (PID) 107 % 71.5-134

Chloride, SM4500CI-B		mg/kg		Analyzed By: CT						
Analyte	Result	Reporting Limit	Analyzed	Method Blank	BS	% Recovery	True Value QC	RPD	Qualifier	
Chloride	96.0	16.0	09/20/2024	ND	432	108	400	3.77		

TPH 8015M		mg/kg		Analyzed By: MS					
Analyte	Result	Reporting Limit	Analyzed	Method Blank	BS	% Recovery	True Value QC	RPD	Qualifier
GRO C6-C10*	<10.0	10.0	09/20/2024	ND	205	102	200	3.84	
DRO >C10-C28*	<10.0	10.0	09/20/2024	ND	200	100	200	6.58	
EXT DRO >C28-C36	<10.0	10.0	09/20/2024	ND					

Surrogate: 1-Chlorooctane 109 % 48.2-134

Surrogate: 1-Chlorooctadecane 93.4 % 49.1-148

Cardinal Laboratories

\*=Accredited Analyte

PLEASE NOTE: Liability and Damages. Cardinal's liability and client's exclusive remedy for any claim arising, whether based in contract or tort, shall be limited to the amount paid by client for analyses. All claims, including those for negligence and any other cause whatsoever shall be deemed waived unless made in writing and received by Cardinal within thirty (30) days after completion of the applicable service. In no event shall Cardinal be liable for incidental or consequential damages, including, without limitation, business interruptions, loss of use, or loss of profits incurred by client, its subsidiaries, affiliates or successors arising out of or related to the performance of the services hereunder by Cardinal, regardless of whether such claim is based upon any of the above stated reasons or otherwise. Results relate only to the samples identified above. This report shall not be reproduced except in full with written approval of Cardinal Laboratories.

Celey D. Keene, Lab Director/Quality Manager



PHONE (575) 393-2326 ° 101 E. MARLAND ° HOBBS, NM 88240

**Analytical Results For:**

ENSOLUM  
BEAUX JENNINGS  
3122 NATIONAL PARKS HWY  
CARLSBAD NM, 88220  
Fax To:

Received: 09/19/2024  
Reported: 09/24/2024  
Project Name: NIMITZ MDP 13 1 FED COM # 311H  
Project Number: 03B1417213  
Project Location: OXY -EDDY CO,NM

Sampling Date: 09/17/2024  
Sampling Type: Soil  
Sampling Condition: Cool & Intact  
Sample Received By: Tamara Oldaker

**Sample ID: SW 05 0-4 (H245703-25)**

BTEX 8021B		mg/kg		Analyzed By: JH						
Analyte	Result	Reporting Limit	Analyzed	Method Blank	BS	% Recovery	True Value QC	RPD	Qualifier	
Benzene*	<0.050	0.050	09/20/2024	ND	2.29	115	2.00	2.22		
Toluene*	<0.050	0.050	09/20/2024	ND	2.43	121	2.00	4.15		
Ethylbenzene*	<0.050	0.050	09/20/2024	ND	2.61	130	2.00	4.19		
Total Xylenes*	<0.150	0.150	09/20/2024	ND	7.85	131	6.00	4.09		
Total BTEX	<0.300	0.300	09/20/2024	ND						

Surrogate: 4-Bromofluorobenzene (PID) 121 % 71.5-134

Chloride, SM4500Cl-B		mg/kg		Analyzed By: CT						
Analyte	Result	Reporting Limit	Analyzed	Method Blank	BS	% Recovery	True Value QC	RPD	Qualifier	
Chloride	128	16.0	09/20/2024	ND	432	108	400	3.77		

TPH 8015M		mg/kg		Analyzed By: MS					
Analyte	Result	Reporting Limit	Analyzed	Method Blank	BS	% Recovery	True Value QC	RPD	Qualifier
GRO C6-C10*	<10.0	10.0	09/20/2024	ND	190	95.1	200	1.99	
DRO >C10-C28*	<10.0	10.0	09/20/2024	ND	188	94.0	200	1.72	
EXT DRO >C28-C36	<10.0	10.0	09/20/2024	ND					

Surrogate: 1-Chlorooctane 85.9 % 48.2-134

Surrogate: 1-Chlorooctadecane 80.1 % 49.1-148

Cardinal Laboratories

\*=Accredited Analyte

PLEASE NOTE: Liability and Damages. Cardinal's liability and client's exclusive remedy for any claim arising, whether based in contract or tort, shall be limited to the amount paid by client for analyses. All claims, including those for negligence and any other cause whatsoever shall be deemed waived unless made in writing and received by Cardinal within thirty (30) days after completion of the applicable service. In no event shall Cardinal be liable for incidental or consequential damages, including, without limitation, business interruptions, loss of use, or loss of profits incurred by client, its subsidiaries, affiliates or successors arising out of or related to the performance of the services hereunder by Cardinal, regardless of whether such claim is based upon any of the above stated reasons or otherwise. Results relate only to the samples identified above. This report shall not be reproduced except in full with written approval of Cardinal Laboratories.

Celey D. Keene, Lab Director/Quality Manager





PHONE (575) 393-2326 ° 101 E. MARLAND ° HOBBS, NM 88240

**Analytical Results For:**

ENSOLUM  
BEAUX JENNINGS  
3122 NATIONAL PARKS HWY  
CARLSBAD NM, 88220  
Fax To:

Received:	09/19/2024	Sampling Date:	09/17/2024
Reported:	09/24/2024	Sampling Type:	Soil
Project Name:	NIMITZ MDP 13 1 FED COM # 311H	Sampling Condition:	Cool & Intact
Project Number:	03B1417213	Sample Received By:	Tamara Oldaker
Project Location:	OXY -EDDY CO,NM		

**Sample ID: SW 06 0-4 (H245703-26)**

BTEx 8021B		mg/kg		Analyzed By: JH					
Analyte	Result	Reporting Limit	Analyzed	Method Blank	BS	% Recovery	True Value QC	RPD	Qualifier
Benzene*	<0.050	0.050	09/20/2024	ND	2.29	115	2.00	2.22	
Toluene*	<0.050	0.050	09/20/2024	ND	2.43	121	2.00	4.15	
Ethylbenzene*	<0.050	0.050	09/20/2024	ND	2.61	130	2.00	4.19	
Total Xylenes*	<0.150	0.150	09/20/2024	ND	7.85	131	6.00	4.09	
Total BTEX	<0.300	0.300	09/20/2024	ND					

Surrogate: 4-Bromofluorobenzene (PID) 124 % 71.5-134

Chloride, SM4500Cl-B		mg/kg		Analyzed By: CT					
Analyte	Result	Reporting Limit	Analyzed	Method Blank	BS	% Recovery	True Value QC	RPD	Qualifier
Chloride	48.0	16.0	09/20/2024	ND	432	108	400	3.77	

TPH 8015M		mg/kg		Analyzed By: MS					
Analyte	Result	Reporting Limit	Analyzed	Method Blank	BS	% Recovery	True Value QC	RPD	Qualifier
GRO C6-C10*	<10.0	10.0	09/20/2024	ND	190	95.1	200	1.99	
DRO >C10-C28*	<10.0	10.0	09/20/2024	ND	188	94.0	200	1.72	
EXT DRO >C28-C36	<10.0	10.0	09/20/2024	ND					

Surrogate: 1-Chlorooctane 84.6 % 48.2-134

Surrogate: 1-Chlorooctadecane 77.6 % 49.1-148

Cardinal Laboratories

\*=Accredited Analyte

PLEASE NOTE: Liability and Damages. Cardinal's liability and client's exclusive remedy for any claim arising, whether based in contract or tort, shall be limited to the amount paid by client for analyses. All claims, including those for negligence and any other cause whatsoever shall be deemed waived unless made in writing and received by Cardinal within thirty (30) days after completion of the applicable service. In no event shall Cardinal be liable for incidental or consequential damages, including, without limitation, business interruptions, loss of use, or loss of profits incurred by client, its subsidiaries, affiliates or successors arising out of or related to the performance of the services hereunder by Cardinal, regardless of whether such claim is based upon any of the above stated reasons or otherwise. Results relate only to the samples identified above. This report shall not be reproduced except in full with written approval of Cardinal Laboratories.

Celey D. Keene, Lab Director/Quality Manager



PHONE (575) 393-2326 ° 101 E. MARLAND ° HOBBS, NM 88240

**Analytical Results For:**

ENSOLUM  
BEAUX JENNINGS  
3122 NATIONAL PARKS HWY  
CARLSBAD NM, 88220  
Fax To:

Received: 09/19/2024  
Reported: 09/24/2024  
Project Name: NIMITZ MDP 13 1 FED COM # 311H  
Project Number: 03B1417213  
Project Location: OXY -EDDY CO,NM

Sampling Date: 09/17/2024  
Sampling Type: Soil  
Sampling Condition: Cool & Intact  
Sample Received By: Tamara Oldaker

**Sample ID: FS 21 4 (H245703-27)**

BTEx 8021B		mg/kg		Analyzed By: JH					
Analyte	Result	Reporting Limit	Analyzed	Method Blank	BS	% Recovery	True Value QC	RPD	Qualifier
Benzene*	<0.050	0.050	09/20/2024	ND	2.29	115	2.00	2.22	
Toluene*	<0.050	0.050	09/20/2024	ND	2.43	121	2.00	4.15	
Ethylbenzene*	<0.050	0.050	09/20/2024	ND	2.61	130	2.00	4.19	
Total Xylenes*	<0.150	0.150	09/20/2024	ND	7.85	131	6.00	4.09	
Total BTEX	<0.300	0.300	09/20/2024	ND					

Surrogate: 4-Bromofluorobenzene (PID) 113 % 71.5-134

Chloride, SM4500Cl-B		mg/kg		Analyzed By: CT					
Analyte	Result	Reporting Limit	Analyzed	Method Blank	BS	% Recovery	True Value QC	RPD	Qualifier
Chloride	1060	16.0	09/20/2024	ND	432	108	400	3.77	

TPH 8015M		mg/kg		Analyzed By: MS					
Analyte	Result	Reporting Limit	Analyzed	Method Blank	BS	% Recovery	True Value QC	RPD	Qualifier
GRO C6-C10*	<10.0	10.0	09/20/2024	ND	190	95.1	200	1.99	
DRO >C10-C28*	18.7	10.0	09/20/2024	ND	188	94.0	200	1.72	
EXT DRO >C28-C36	<10.0	10.0	09/20/2024	ND					

Surrogate: 1-Chlorooctane 99.4 % 48.2-134

Surrogate: 1-Chlorooctadecane 95.3 % 49.1-148

Cardinal Laboratories

\*=Accredited Analyte

PLEASE NOTE: Liability and Damages. Cardinal's liability and client's exclusive remedy for any claim arising, whether based in contract or tort, shall be limited to the amount paid by client for analyses. All claims, including those for negligence and any other cause whatsoever shall be deemed waived unless made in writing and received by Cardinal within thirty (30) days after completion of the applicable service. In no event shall Cardinal be liable for incidental or consequential damages, including, without limitation, business interruptions, loss of use, or loss of profits incurred by client, its subsidiaries, affiliates or successors arising out of or related to the performance of the services hereunder by Cardinal, regardless of whether such claim is based upon any of the above stated reasons or otherwise. Results relate only to the samples identified above. This report shall not be reproduced except in full with written approval of Cardinal Laboratories.

Celey D. Keene, Lab Director/Quality Manager

PHONE (575) 393-2326 ° 101 E. MARLAND ° HOBBS, NM 88240

---

### Notes and Definitions

S-04	The surrogate recovery for this sample is outside of established control limits due to a sample matrix effect.
QM-07	The spike recovery was outside acceptance limits for the MS and/or MSD. The batch was accepted based on acceptable LCS recovery.
BS-3	Blank spike recovery outside of lab established statistical limits, but still within method limits. Data is not adversely affected.
BS1	Blank spike recovery above laboratory acceptance criteria. Results for analyte potentially biased high.
ND	Analyte NOT DETECTED at or above the reporting limit
RPD	Relative Percent Difference
**	Samples not received at proper temperature of 6°C or below.
***	Insufficient time to reach temperature.
-	Chloride by SM4500Cl-B does not require samples be received at or below 6°C Samples reported on an as received basis (wet) unless otherwise noted on report

---

Cardinal Laboratories

\*=Accredited Analyte

PLEASE NOTE: Liability and Damages. Cardinal's liability and client's exclusive remedy for any claim arising, whether based in contract or tort, shall be limited to the amount paid by client for analyses. All claims, including those for negligence and any other cause whatsoever shall be deemed waived unless made in writing and received by Cardinal within thirty (30) days after completion of the applicable service. In no event shall Cardinal be liable for incidental or consequential damages, including, without limitation, business interruptions, loss of use, or loss of profits incurred by client, its subsidiaries, affiliates or successors arising out of or related to the performance of the services hereunder by Cardinal, regardless of whether such claim is based upon any of the above stated reasons or otherwise. Results relate only to the samples identified above. This report shall not be reproduced except in full with written approval of Cardinal Laboratories.

A handwritten signature in black ink, appearing to read "C. D. Keene".

---

Celey D. Keene, Lab Director/Quality Manager



# CHAIN-OF-CUSTODY AND ANALYSIS REQUEST

101 East Marland, Hobbs, NM 88240  
(575) 393-2326 FAX (575) 393-2476

Company Name: Ensolum, LLC				<b>BILL TO</b>				<b>ANALYSIS REQUEST</b>																							
Project Manager: Beaux Jennings				P.O. #:				<div style="display: flex; flex-direction: column; align-items: center;"> <div>BTEX 8021B</div> <div>TPH 8015M</div> <div>Chloride 4500</div> <div>Hold</div> </div>																							
Address: 601 N. Marinfeld St. STE 400				Company: OXY USA																											
City: Midland State: TX Zip: 79701				Attn: Wade Dittrich																											
Phone #: (210)219-8858 Email: bjennings@ensolum.com				Address:																											
Project #: 031417213 Project Owner:				City:																											
Project Name: NFMITE NDP 131 Fed COM				State: Zip:																											
Project Location: #7117				Phone #:																											
Sampler Name: Kaoru Shimada				Email:																											
FOR LAB USE ONLY																															
Lab I.D.	Sample I.D.	Sample Depth (feet)	(GRAB OR COMPOUND)	MATRIX																PRESERV.	SAMPLING										
			# CONTAINERS	GROUNDWATER	WASTEWATER	SOIL	OIL	SLUDGE	OTHER:	ACID/BASE:	ICE / COOL	OTHER:	DATE	TIME																	
H245703	FS01	4	1			X					X		9-17-24	1644	X	X	X														
1	FS02	1	1			1					1		1	146	1	1	1														
2	FS03													147																	
3	FS04													148																	
4	FS05													150																	
5	FS06													151																	
6	FS07													153																	
7	FS08													154																	
8	FS09													155																	
9	FS10	4	1			X					N		9-17-24	156	X	X	X														
10	FS10																														

PLEASE NOTE: Liability and Damages. Cardinal's liability and client's exclusive remedy for any claim arising whether based on contract or tort, shall be limited to the amount paid by the client for the analyses.

All claims including those for negligence and any other cause whatsoever shall be deemed waived unless made in writing and received by Cardinal within 30 days after completion of the applicable service.

In no event shall Cardinal be liable for incidental or consequential damages, including without limitation, business interruptions, loss of use, or loss of profits incurred by client, its subsidiaries, affiliates or successors arising out of or related to the performance of services hereunder by Cardinal, regardless of whether such claim is based upon any of the above stated reasons or otherwise.

Relinquished By: Kaoru Shimada	Date: 9-19-24 Time: 1305	Received By: [Signature]	Verbal Result: <input type="checkbox"/> Yes <input checked="" type="checkbox"/> No	Add'l Phone #:
Relinquished By:	Date:	Received By:	All Results are emailed. Please provide Email address: bjennings@ensolum.com, klwery@ensolum.com	
Delivered By: (Circle One) Sampler - UPS - Bus - Other:	Observed Temp. °C Corrected Temp. °C	Sample Condition Cool Intact <input checked="" type="checkbox"/> Yes <input type="checkbox"/> No	CHECKED BY: (Initials) [Signature]	REMARKS: Paykey/AFE/NonAFE: All samples are composite
				Turnaround Time: Standard <input checked="" type="checkbox"/> Bacteria (only) Sample Condition
				Rush <input type="checkbox"/> Cool Intact <input type="checkbox"/> Observed Temp. °C
				Thermometer ID: #140 Correction Factor: -0.6°C
				<input type="checkbox"/> Yes <input type="checkbox"/> No <input type="checkbox"/> No <input type="checkbox"/> No Corrected Temp. °C

FORM-006 R 3.2 10/07/21

† Cardinal cannot accept verbal changes. Please email changes to celey.keene@cardinallabsnm.com



† Cardinal cannot accept verbal changes. Please email changes to [celey.keene@cardinallabsnm.com](mailto:celey.keene@cardinallabsnm.com)



# CHAIN-OF-CUSTODY AND ANALYSIS REQUEST

101 East Marland, Hobbs, NM 88240  
(575) 393-2326 FAX (575) 393-2476

Company Name: Ensolum, LLC										BILL TO		ANALYSIS REQUEST									
Project Manager: Beaux Jennings										P.O. #:		<div style="display: flex; flex-direction: column; align-items: center;"> <div>BTEX 8021B</div> <div>TPH 8015M</div> <div>Chloride 4500</div> <div>Hold</div> </div>									
Address: 601 N. Marlenfeld St. STE 400										Company: OXY USA											
City: Midland State: TX Zip: 79701										Attn: Wade Dittrich											
Phone #: (210)219-8858 Email: bjennings@ensolum.com										Address:											
Project #: 0581417213 Project Owner:										City:											
Project Name: NEMITZ MDP 13 1 Feed Cam										State: Zip:											
Project Location: #31161										Phone #:											
Sampler Name: Kaoru Shimada										Email:											
Lab I.D.	Sample I.D.	Sample Depth (feet)	(G)RAB OR (C)OMP.	# CONTAINERS	GROUNDWATER	WASTEWATER	SOIL	OIL	SLUDGE	OTHER:	ACID/BASE:	ICE / COOL	OTHER:	DATE	TIME	BTEX 8021B	TPH 8015M	Chloride 4500	Hold		
H245703	SW01	0-4	C	1			X					X		9-17-24	1224	X	X	X			
21	SW02	1	C	1			X					X		1	1220	X	X	X			
22	SW03	1	C	1			X					X		1	1211	X	X	X			
23	SW04	1	C	1			X					X		1	1212	X	X	X			
24	SW05	1	C	1			X					X		1	1213	X	X	X			
25	SW06	0-4	C	1			X					X		9-17-24	1217	X	X	X			
26	FS21	4	C	1			X					X		9-17-24	1209	X	X	X			
27	N F E													9-17-2024							

PLEASE NOTE: Liability and Damages. Cardinal's liability and client's exclusive remedy for any claim arising whether based in contract or tort, shall be limited to the amount paid by the client for the analyses. All claims including those for negligence and any other cause whatsoever shall be deemed waived unless made in writing and received by Cardinal within 30 days after completion of the applicable service. In no event shall Cardinal be liable for incidental or consequential damages, including without limitation, business interruptions, loss of use, or loss of profits incurred by client, its subsidiaries, affiliates or successors arising out of or related to the performance of services hereunder by Cardinal, regardless of whether such claim is based upon any of the above stated reasons or otherwise.

Relinquished By: Kaoru Shimada	Date: 9-19-24	Received By: [Signature]	Verbal Result: <input type="checkbox"/> Yes <input checked="" type="checkbox"/> No	Add'l Phone #:
	Time: 1315		All Results are emailed. Please provide Email address: bjennings@ensolum.com, klowery@ensolum.com	
Relinquished By:	Date:	Received By:	REMARKS: Paykey/AFE/NonAFE:	
	Time:			
Delivered By: (Circle One) Sampler - UPS - Bus - Other:	Observed Temp. °C Corrected Temp. °C	Sample Condition Cool Intact <input checked="" type="checkbox"/> Yes <input type="checkbox"/> No	CHECKED BY: (Initials) [Signature]	Turnaround Time: Standard <input checked="" type="checkbox"/> Bacteria (only) Sample Condition Rush <input type="checkbox"/> Cool Intact <input type="checkbox"/> Observed Temp. °C Thermometer ID: #140 Correction Factor: -0.510 -0.6°C

FORM-006 R 3.2 10/07/21

† Cardinal cannot accept verbal changes. Please email changes to celey.keene@cardinallabsnm.com



PHONE (575) 393-2326 ° 101 E. MARLAND ° HOBBS, NM 88240

---

October 08, 2024

KELLY LOWERY

ENSOLUM, LLC

705 W WADLEY AVE.

MIDLAND, TX 79705

RE: NIMITZ MDP1 13 1 FED COM #311H

Enclosed are the results of analyses for samples received by the laboratory on 10/03/24 12:27.

Cardinal Laboratories is accredited through Texas NELAP under certificate number TX-C24-00112. Accreditation applies to drinking water, non-potable water and solid and chemical materials. All accredited analytes are denoted by an asterisk (\*). For a complete list of accredited analytes and matrices visit the TCEQ website at [www.tceq.texas.gov/field/qa/lab\\_accred\\_certif.html](http://www.tceq.texas.gov/field/qa/lab_accred_certif.html).

Cardinal Laboratories is accredited through the State of Colorado Department of Public Health and Environment for:

Method EPA 552.2	Haloacetic Acids (HAA-5)
Method EPA 524.2	Total Trihalomethanes (TTHM)
Method EPA 524.4	Regulated VOCs (V1, V2, V3)

Accreditation applies to public drinking water matrices.

This report meets NELAP requirements and is made up of a cover page, analytical results, and a copy of the original chain-of-custody. If you have any questions concerning this report, please feel free to contact me.

Sincerely,

A handwritten signature in black ink that reads "Celey D. Keene". The signature is written in a cursive, flowing style.

Celey D. Keene

Lab Director/Quality Manager



PHONE (575) 393-2326 ° 101 E. MARLAND ° HOBBS, NM 88240

**Analytical Results For:**

ENSOLUM, LLC  
 KELLY LOWERY  
 705 W WADLEY AVE.  
 MIDLAND TX, 79705  
 Fax To:

Received: 10/03/2024  
 Reported: 10/08/2024  
 Project Name: NIMITZ MDP1 13 1 FED COM #311H  
 Project Number: 03B1417213  
 Project Location: OXY 32.222561, -103.992187

Sampling Date: 10/03/2024  
 Sampling Type: Soil  
 Sampling Condition: Cool & Intact  
 Sample Received By: Shalyn Rodriguez

**Sample ID: SW 01 0-4' (H246021-01)**

Chloride, SM4500Cl-B		mg/kg		Analyzed By: HM					
Analyte	Result	Reporting Limit	Analyzed	Method Blank	BS	% Recovery	True Value QC	RPD	Qualifier
<b>Chloride</b>	<b>80.0</b>	16.0	10/03/2024	ND	432	108	400	3.64	

**Sample ID: SW 02 0-4' (H246021-02)**

Chloride, SM4500Cl-B		mg/kg		Analyzed By: AC					
Analyte	Result	Reporting Limit	Analyzed	Method Blank	BS	% Recovery	True Value QC	RPD	Qualifier
<b>Chloride</b>	<b>176</b>	16.0	10/03/2024	ND	432	108	400	3.77	
TPH 8015M		mg/kg		Analyzed By: MS					
Analyte	Result	Reporting Limit	Analyzed	Method Blank	BS	% Recovery	True Value QC	RPD	Qualifier
GRO C6-C10*	<10.0	10.0	10/04/2024	ND	195	97.5	200	0.398	
DRO >C10-C28*	<10.0	10.0	10/04/2024	ND	167	83.3	200	5.42	
EXT DRO >C28-C36	<10.0	10.0	10/04/2024	ND					

Surrogate: 1-Chlorooctane 75.1 % 48.2-134

Surrogate: 1-Chlorooctadecane 71.9 % 49.1-148

Cardinal Laboratories

\*=Accredited Analyte

PLEASE NOTE: Liability and Damages. Cardinal's liability and client's exclusive remedy for any claim arising, whether based in contract or tort, shall be limited to the amount paid by client for analyses. All claims, including those for negligence and any other cause whatsoever shall be deemed waived unless made in writing and received by Cardinal within thirty (30) days after completion of the applicable service. In no event shall Cardinal be liable for incidental or consequential damages, including, without limitation, business interruptions, loss of use, or loss of profits incurred by client, its subsidiaries, affiliates or successors arising out of or related to the performance of the services hereunder by Cardinal, regardless of whether such claim is based upon any of the above stated reasons or otherwise. Results relate only to the samples identified above. This report shall not be reproduced except in full with written approval of Cardinal Laboratories.

Celey D. Keene, Lab Director/Quality Manager





PHONE (575) 393-2326 ° 101 E. MARLAND ° HOBBS, NM 88240

### Notes and Definitions

S-06	The recovery of this surrogate is outside control limits due to sample dilution required from high analyte concentration and/or matrix interference's.
QR-03	The RPD value for the sample duplicate or MS/MSD was outside of QC acceptance limits due to matrix interference. QC batch accepted based on LCS and/or LCSD recovery and/or RPD values.
QM-07	The spike recovery was outside acceptance limits for the MS and/or MSD. The batch was accepted based on acceptable LCS recovery.
ND	Analyte NOT DETECTED at or above the reporting limit
RPD	Relative Percent Difference
**	Samples not received at proper temperature of 6°C or below.
***	Insufficient time to reach temperature.
-	Chloride by SM4500Cl-B does not require samples be received at or below 6°C Samples reported on an as received basis (wet) unless otherwise noted on report

Cardinal Laboratories

\*=Accredited Analyte

PLEASE NOTE: Liability and Damages. Cardinal's liability and client's exclusive remedy for any claim arising, whether based in contract or tort, shall be limited to the amount paid by client for analyses. All claims, including those for negligence and any other cause whatsoever shall be deemed waived unless made in writing and received by Cardinal within thirty (30) days after completion of the applicable service. In no event shall Cardinal be liable for incidental or consequential damages, including, without limitation, business interruptions, loss of use, or loss of profits incurred by client, its subsidiaries, affiliates or successors arising out of or related to the performance of the services hereunder by Cardinal, regardless of whether such claim is based upon any of the above stated reasons or otherwise. Results relate only to the samples identified above. This report shall not be reproduced except in full with written approval of Cardinal Laboratories.

A handwritten signature in black ink, appearing to read "Celey D. Keene", written over a horizontal line.

Celey D. Keene, Lab Director/Quality Manager



# CHAIN-OF-CUSTODY AND ANALYSIS REQUEST

101 East Marland, Hobbs, NM 88240  
(575) 393-2326 FAX (575) 393-2476

Company Name: Ensolum, LLC				<b>BILL TO</b>		<b>ANALYSIS REQUEST</b>									
Project Manager: <del>Beaux Jennings</del> Kelly Lowery				P.O. #:		<div style="display: flex; flex-direction: column; align-items: center;"> <div>Chloride 4500</div> <div>TPH 8015M</div> </div>									
Address: 601 N Mariefeld Street, Suite 400				Company: Oxy USA Inc.											
City: Midland		State: TX		Zip: 79701											
Phone #: 210-219-8858		Fax #:		Attn: Wade Dittrich											
Project #: 03BIM17213		Project Owner:		Address:											
Project Name: Nimitz MDP1 131 Fed. com. #311H		City:		State:											
Project Location: Eddy County		Zip:		Phone #: 575-390-2828											
Sampler Name: Tabitha Guadian		Fax #:													
FOR LAB USE ONLY															
Lab I.D.	Sample I.D.	Depth (feet)	(G)RAB OR (C)OMP.	# CONTAINERS	MATRIX	PRESERV.	SAMPLING								
					GROUNDWATER	WASTEWATER	SOIL	OIL	SLUDGE	OTHER :	ACID/BASE:	ICE / COOL	OTHER :	DATE	TIME
#240021	SW01	0-4'	C	1			X				X			10/3/24	1015
1	SW02	0-4'	C	1			X				X			10/3/24	1018
2															
NFE 10/3/24 TNG															

PLEASE NOTE: Liability and Damages. Cardinal's liability and client's exclusive remedy for any claim arising whether based in contract or tort, shall be limited to the amount paid by the client for the analyses. All claims including those for negligence and any other cause whatsoever shall be deemed waived unless made in writing and received by Cardinal within 30 days after completion of the applicable service. In no event shall Cardinal be liable for incidental or consequential damages, including without limitation, business interruptions, loss of use, or loss of profits incurred by client, its subsidiaries, affiliates or successors arising out of or related to the performance of services hereunder by Cardinal, regardless of whether such claim is based upon any of the above stated reasons or otherwise.

Relinquished By:		Date: 10/3/24	Received By:		Verbal Result: <input type="checkbox"/> Yes <input type="checkbox"/> No Add'l Phone #:	
Relinquished By:		Time: 1227	Received By:		All Results are emailed. Please provide Email address:	
		Date:			klowery@ensolum.com	
		Time:			REMARKS:	
Delivered By: (Circle One)		Observed Temp. °C: 3.32	Sample Condition	CHECKED BY: (Initials)	Turnaround Time: Standard <input checked="" type="checkbox"/> Bacteria (only) Sample Condition	
Sampler - UPS - Bus - Other:		Corrected Temp. °C: 2.72	Cool Intact <input type="checkbox"/> Yes <input type="checkbox"/> No	SR	Cool Intact <input type="checkbox"/> Yes <input type="checkbox"/> No	
					Thermometer ID: #143	
					Correction Factor: -0.5°C	

† Cardinal cannot accept verbal changes. Please email changes to celey.keene@cardinallabsnm.com

PHONE (575) 393-2326 ° 101 E. MARLAND ° HOBBS, NM 88240

---

September 18, 2024

KELLY LOWERY

ENSOLUM, LLC

705 W WADLEY AVE.

MIDLAND, TX 79705

RE: TWIN WELLS CALICHE PIT

Enclosed are the results of analyses for samples received by the laboratory on 09/09/24 15:16.

Cardinal Laboratories is accredited through Texas NELAP under certificate number TX-C24-00112. Accreditation applies to drinking water, non-potable water and solid and chemical materials. All accredited analytes are denoted by an asterisk (\*). For a complete list of accredited analytes and matrices visit the TCEQ website at

[www.tceq.texas.gov/field/ga/lab\\_accred\\_certif.html](http://www.tceq.texas.gov/field/ga/lab_accred_certif.html).

Cardinal Laboratories is accredited through the State of Colorado Department of Public Health and Environment for:

Method EPA 552.2	Total Haloacetic Acids (HAA-5)
Method EPA 524.2	Total Trihalomethanes (TTHM)
Method EPA 524.4	Regulated VOCs (V1, V2, V3)

Cardinal Laboratories is accredited through the State of New Mexico Environment Department for:

Method SM 9223-B	Total Coliform and E. coli (Colilert MMO-MUG)
Method EPA 524.2	Regulated VOCs and Total Trihalomethanes (TTHM)
Method EPA 552.2	Total Haloacetic Acids (HAA-5)

Accreditation applies to public drinking water matrices for State of Colorado and New Mexico.

This report meets NELAP requirements and is made up of a cover page, analytical results, and a copy of the original chain-of-custody. If you have any questions concerning this report, please feel free to contact me.

Sincerely,

Celey D. Keene

Lab Director/Quality Manager



PHONE (575) 393-2326 ° 101 E. MARLAND ° HOBBS, NM 88240

**Analytical Results For:**

ENSOLUM, LLC  
705 W WADLEY AVE.  
MIDLAND TX, 79705

Project: TWIN WELLS CALICHE PIT  
Project Number: 03B1417156  
Project Manager: KELLY LOWERY  
Fax To:

Reported:  
18-Sep-24 09:06

Sample ID	Laboratory ID	Matrix	Date Sampled	Date Received
-----------	---------------	--------	--------------	---------------

TWIN WELLS CALICHE PIT	H245437-01	Soil	09-Sep-24 14:00	09-Sep-24 15:16
------------------------	------------	------	-----------------	-----------------

09/18/24 - Client added BTEX and TPH to sample (see COC). This is the revised report and will replace the one sent on 09/12/24.

Cardinal Laboratories

\*=Accredited Analyte

PLEASE NOTE: Liability and Damages. Cardinal's liability and client's exclusive remedy for any claim arising, whether based in contract or tort, shall be limited to the amount paid by client for analyses. All claims, including those for negligence or any other cause whatsoever shall be deemed waived unless made in writing and received by Cardinal within thirty (30) days after completion of the applicable service. In no event shall Cardinal be liable for incidental or consequential damage including, without limitation, business interruptions, loss of use, or loss of profits incurred by client, its subsidiaries, affiliates or successors arising out of or related to the performance of the services hereunder by Cardinal, regardless of whether such claim is based upon any of the above stated reasons or otherwise. Results relate only to the samples identified above. This report shall not be reproduced except in full with written approval of Cardinal Laboratories.

Celey D. Keene, Lab Director/Quality Manager



PHONE (575) 393-2326 ° 101 E. MARLAND ° HOBBS, NM 88240

**Analytical Results For:**

ENSOLUM, LLC  
705 W WADLEY AVE.  
MIDLAND TX, 79705

Project: TWIN WELLS CALICHE PIT  
Project Number: 03B1417156  
Project Manager: KELLY LOWERY  
Fax To:

Reported:  
18-Sep-24 09:06

**TWIN WELLS CALICHE PIT**  
**H245437-01 (Soil)**

Analyte	Result	MDL	Reporting Limit	Units	Dilution	Batch	Analyst	Analyzed	Method	Notes
---------	--------	-----	-----------------	-------	----------	-------	---------	----------	--------	-------

**Cardinal Laboratories****Inorganic Compounds**

Chloride	32.0		16.0	mg/kg	4	4091017	CT	10-Sep-24	4500-Cl-B	
----------	------	--	------	-------	---	---------	----	-----------	-----------	--

**Volatile Organic Compounds by EPA Method 8021**

Benzene*	<0.050		0.050	mg/kg	50	4091601	JH	16-Sep-24	8021B	
Toluene*	<0.050		0.050	mg/kg	50	4091601	JH	16-Sep-24	8021B	
Ethylbenzene*	<0.050		0.050	mg/kg	50	4091601	JH	16-Sep-24	8021B	
Total Xylenes*	<0.150		0.150	mg/kg	50	4091601	JH	16-Sep-24	8021B	
Total BTEX	<0.300		0.300	mg/kg	50	4091601	JH	16-Sep-24	8021B	

Surrogate: 4-Bromofluorobenzene (PID)			99.1 %	71.5-134		4091601	JH	16-Sep-24	8021B	
---------------------------------------	--	--	--------	----------	--	---------	----	-----------	-------	--

**Petroleum Hydrocarbons by GC FID**

GRO C6-C10*	<10.0		10.0	mg/kg	1	4091609	MS	16-Sep-24	8015B	
DRO >C10-C28*	<10.0		10.0	mg/kg	1	4091609	MS	16-Sep-24	8015B	
EXT DRO >C28-C36	<10.0		10.0	mg/kg	1	4091609	MS	16-Sep-24	8015B	

Surrogate: 1-Chlorooctane			77.2 %	48.2-134		4091609	MS	16-Sep-24	8015B	
---------------------------	--	--	--------	----------	--	---------	----	-----------	-------	--

Surrogate: 1-Chlorooctadecane			79.7 %	49.1-148		4091609	MS	16-Sep-24	8015B	
-------------------------------	--	--	--------	----------	--	---------	----	-----------	-------	--

Cardinal Laboratories

\*=Accredited Analyte

PLEASE NOTE: Liability and Damages. Cardinal's liability and client's exclusive remedy for any claim arising, whether based in contract or tort, shall be limited to the amount paid by client for analyses. All claims, including those for negligence or any other cause whatsoever shall be deemed waived unless made in writing and received by Cardinal within thirty (30) days after completion of the applicable service. In no event shall Cardinal be liable for incidental or consequential damage including, without limitation, business interruptions, loss of use, or loss of profits incurred by client, its subsidiaries, affiliates or successors arising out of or related to the performance of the services hereunder by Cardinal, regardless of whether such claim is based upon any of the above stated reasons or otherwise. Results relate only to the samples identified above. This report shall not be reproduced except in full with written approval of Cardinal Laboratories.

Celey D. Keene, Lab Director/Quality Manager





PHONE (575) 393-2326 ° 101 E. MARLAND ° HOBBS, NM 88240

**Analytical Results For:**

ENSOLUM, LLC  
705 W WADLEY AVE.  
MIDLAND TX, 79705

Project: TWIN WELLS CALICHE PIT  
Project Number: 03B1417156  
Project Manager: KELLY LOWERY  
Fax To:

Reported:  
18-Sep-24 09:06

**Inorganic Compounds - Quality Control****Cardinal Laboratories**

Analyte	Result	Reporting Limit	Units	Spike Level	Source Result	%REC Limits	RPD	RPD Limit	Notes
<b>Batch 4091017 - 1:4 DI Water</b>									
<b>Blank (4091017-BLK1)</b>					Prepared & Analyzed: 10-Sep-24				
Chloride	ND	16.0	mg/kg						
<b>LCS (4091017-BS1)</b>					Prepared & Analyzed: 10-Sep-24				
Chloride	400	16.0	mg/kg	400		100	80-120		
<b>LCS Dup (4091017-BSD1)</b>					Prepared & Analyzed: 10-Sep-24				
Chloride	400	16.0	mg/kg	400		100	80-120	0.00	20

Cardinal Laboratories

\*=Accredited Analyte

PLEASE NOTE: Liability and Damages. Cardinal's liability and client's exclusive remedy for any claim arising, whether based in contract or tort, shall be limited to the amount paid by client for analyses. All claims, including those for negligence or any other cause whatsoever shall be deemed waived unless made in writing and received by Cardinal within thirty (30) days after completion of the applicable service. In no event shall Cardinal be liable for incidental or consequential damage including, without limitation, business interruptions, loss of use, or loss of profits incurred by client, its subsidiaries, affiliates or successors arising out of or related to the performance of the services hereunder by Cardinal, regardless of whether such claim is based upon any of the above stated reasons or otherwise. Results relate only to the samples identified above. This report shall not be reproduced except in full with written approval of Cardinal Laboratories.

Celey D. Keene, Lab Director/Quality Manager



PHONE (575) 393-2326 ° 101 E. MARLAND ° HOBBS, NM 88240

**Analytical Results For:**

ENSOLUM, LLC  
705 W WADLEY AVE.  
MIDLAND TX, 79705

Project: TWIN WELLS CALICHE PIT  
Project Number: 03B1417156  
Project Manager: KELLY LOWERY  
Fax To:

Reported:  
18-Sep-24 09:06

**Volatile Organic Compounds by EPA Method 8021 - Quality Control****Cardinal Laboratories**

Analyte	Result	Reporting Limit	Units	Spike Level	Source Result	%REC	%REC Limits	RPD	RPD Limit	Notes
---------	--------	-----------------	-------	-------------	---------------	------	-------------	-----	-----------	-------

**Batch 4091601 - Volatiles****Blank (4091601-BLK1)**

Prepared &amp; Analyzed: 16-Sep-24

Benzene	ND	0.050	mg/kg							
Toluene	ND	0.050	mg/kg							
Ethylbenzene	ND	0.050	mg/kg							
Total Xylenes	ND	0.150	mg/kg							
Total BTEX	ND	0.300	mg/kg							
Surrogate: 4-Bromofluorobenzene (PID)	ND		mg/kg	0.0500		99.0	71.5-134			

**LCS (4091601-BS1)**

Prepared &amp; Analyzed: 16-Sep-24

Benzene	2.16	0.050	mg/kg	2.00		108	82.8-130			
Toluene	2.12	0.050	mg/kg	2.00		106	86-128			
Ethylbenzene	2.14	0.050	mg/kg	2.00		107	85.9-128			
m,p-Xylene	4.29	0.100	mg/kg	4.00		107	89-129			
o-Xylene	2.11	0.050	mg/kg	2.00		105	86.1-125			
Total Xylenes	6.40	0.150	mg/kg	6.00		107	88.2-128			
Surrogate: 4-Bromofluorobenzene (PID)	0.0497		mg/kg	0.0500		99.5	71.5-134			

**LCS Dup (4091601-BSD1)**

Prepared &amp; Analyzed: 16-Sep-24

Benzene	2.10	0.050	mg/kg	2.00		105	82.8-130	2.64	15.8	
Toluene	2.06	0.050	mg/kg	2.00		103	86-128	3.12	15.9	
Ethylbenzene	2.08	0.050	mg/kg	2.00		104	85.9-128	3.13	16	
m,p-Xylene	4.15	0.100	mg/kg	4.00		104	89-129	3.21	16.2	
o-Xylene	2.04	0.050	mg/kg	2.00		102	86.1-125	3.27	16.7	
Total Xylenes	6.19	0.150	mg/kg	6.00		103	88.2-128	3.23	16.3	
Surrogate: 4-Bromofluorobenzene (PID)	0.0494		mg/kg	0.0500		98.8	71.5-134			

Cardinal Laboratories

\*=Accredited Analyte

PLEASE NOTE: Liability and Damages. Cardinal's liability and client's exclusive remedy for any claim arising, whether based in contract or tort, shall be limited to the amount paid by client for analyses. All claims, including those for negligence or any other cause whatsoever shall be deemed waived unless made in writing and received by Cardinal within thirty (30) days after completion of the applicable service. In no event shall Cardinal be liable for incidental or consequential damage including, without limitation, business interruptions, loss of use, or loss of profits incurred by client, its subsidiaries, affiliates or successors arising out of or related to the performance of the services hereunder by Cardinal, regardless of whether such claim is based upon any of the above stated reasons or otherwise. Results relate only to the samples identified above. This report shall not be reproduced except in full with written approval of Cardinal Laboratories.

Celey D. Keene, Lab Director/Quality Manager



PHONE (575) 393-2326 ° 101 E. MARLAND ° HOBBS, NM 88240

**Analytical Results For:**

ENSOLUM, LLC  
705 W WADLEY AVE.  
MIDLAND TX, 79705

Project: TWIN WELLS CALICHE PIT  
Project Number: 03B1417156  
Project Manager: KELLY LOWERY  
Fax To:

Reported:  
18-Sep-24 09:06

**Petroleum Hydrocarbons by GC FID - Quality Control****Cardinal Laboratories**

Analyte	Result	Reporting Limit	Units	Spike Level	Source Result	%REC	%REC Limits	RPD	RPD Limit	Notes
---------	--------	--------------------	-------	----------------	------------------	------	----------------	-----	--------------	-------

**Batch 4091609 - General Prep - Organics****Blank (4091609-BLK1)**

Prepared &amp; Analyzed: 16-Sep-24

GRO C6-C10	ND	10.0	mg/kg							
DRO >C10-C28	ND	10.0	mg/kg							
EXT DRO >C28-C36	ND	10.0	mg/kg							
Surrogate: 1-Chlorooctane	43.5		mg/kg	50.0		87.0	48.2-134			
Surrogate: 1-Chlorooctadecane	46.0		mg/kg	50.0		92.1	49.1-148			

**LCS (4091609-BS1)**

Prepared &amp; Analyzed: 16-Sep-24

GRO C6-C10	199	10.0	mg/kg	200		99.5	66.4-123			
DRO >C10-C28	190	10.0	mg/kg	200		95.1	66.5-118			
Total TPH C6-C28	389	10.0	mg/kg	400		97.3	77.6-123			
Surrogate: 1-Chlorooctane	47.1		mg/kg	50.0		94.2	48.2-134			
Surrogate: 1-Chlorooctadecane	49.2		mg/kg	50.0		98.4	49.1-148			

**LCS Dup (4091609-BSD1)**

Prepared &amp; Analyzed: 16-Sep-24

GRO C6-C10	174	10.0	mg/kg	200		86.8	66.4-123	13.6	17.7	
DRO >C10-C28	160	10.0	mg/kg	200		79.9	66.5-118	17.3	21	
Total TPH C6-C28	333	10.0	mg/kg	400		83.4	77.6-123	15.4	18.5	
Surrogate: 1-Chlorooctane	38.2		mg/kg	50.0		76.5	48.2-134			
Surrogate: 1-Chlorooctadecane	41.4		mg/kg	50.0		82.9	49.1-148			

Cardinal Laboratories

\*=Accredited Analyte

PLEASE NOTE: Liability and Damages. Cardinal's liability and client's exclusive remedy for any claim arising, whether based in contract or tort, shall be limited to the amount paid by client for analyses. All claims, including those for negligence or any other cause whatsoever shall be deemed waived unless made in writing and received by Cardinal within thirty (30) days after completion of the applicable service. In no event shall Cardinal be liable for incidental or consequential damage including, without limitation, business interruptions, loss of use, or loss of profits incurred by client, its subsidiaries, affiliates or successors arising out of or related to the performance of the services hereunder by Cardinal, regardless of whether such claim is based upon any of the above stated reasons or otherwise. Results relate only to the samples identified above. This report shall not be reproduced except in full with written approval of Cardinal Laboratories.

Celey D. Keene, Lab Director/Quality Manager

PHONE (575) 393-2326 ° 101 E. MARLAND ° HOBBS, NM 88240

---

**Notes and Definitions**

ND	Analyte NOT DETECTED at or above the reporting limit
RPD	Relative Percent Difference
**	Samples not received at proper temperature of 6°C or below.
***	Insufficient time to reach temperature.
-	Chloride by SM4500Cl-B does not require samples be received at or below 6°C Samples reported on an as received basis (wet) unless otherwise noted on report

---

Cardinal Laboratories

\*=Accredited Analyte

PLEASE NOTE: Liability and Damages. Cardinal's liability and client's exclusive remedy for any claim arising, whether based in contract or tort, shall be limited to the amount paid by client for analyses. All claims, including those for negligence or any other cause whatsoever shall be deemed waived unless made in writing and received by Cardinal within thirty (30) days after completion of the applicable service. In no event shall Cardinal be liable for incidental or consequential damage including, without limitation, business interruptions, loss of use, or loss of profits incurred by client, its subsidiaries, affiliates or successors arising out of or related to the performance of the services hereunder by Cardinal, regardless of whether such claim is based upon any of the above stated reasons or otherwise. Results relate only to the samples identified above. This report shall not be reproduced except in full with written approval of Cardinal Laboratories.

---

Celey D. Keene, Lab Director/Quality Manager



VI

(575) 393-2326 FAX (575) 393-2476

<b>Company Name:</b> Ensolum, LLC <b>Project Manager:</b> Kelly Lowery <b>Address:</b> 601 N. Marienfeld St. STE 400 <b>City:</b> Midland <b>State:</b> TX <b>Zip:</b> 79701 <b>Phone #:</b> 214-733-3145 <b>Fax #:</b> <b>Project #:</b> 03B1417156 <b>Project Owner:</b> <b>Project Name:</b> Twin Wells caliche Pit <b>Project Location:</b> <b>Sampler Name:</b> Tabitha Guadian				<div style="display: flex; justify-content: space-between;"> <div style="width: 45%;"> <b>BILL TO</b>  <b>P.O. #:</b>  <b>Company:</b> Oxy USA, Inc.  <b>Attn:</b> Wade Dittrich  <b>Address:</b>  <b>City:</b>  <b>State:</b> <b>Zip:</b>  <b>Phone #:</b> 575-390-2828  <b>Fax #:</b> </div> <div style="width: 50%; text-align: center;"> <b>ANALYSIS REQUEST</b>  <div style="display: flex; justify-content: space-around; font-size: 2em; margin-top: 20px;"> Chlorides TPH (Hold) BTEX (Hold)           </div> </div> </div>																							
FOR LAB USE ONLY	Lab I.D.	Sample I.D.	Sample Depth (feet)	(GRAB OR (C)OMP.	# CONTAINERS	GROUNDWATER	WASTEWATER	SOIL	OIL	SLUDGE	OTHER :	ACID/BASE:	ICE / COOL	OTHER :	DATE	TIME											
	11205437	Twin Wells caliche Pit	—		1			X					X		9/9/24	1400	<div style="display: flex; justify-content: space-around; font-size: 1.5em;"> Chlorides TPH (Hold) BTEX (Hold)           </div>										

PLEASE NOTE: Liability and Damages. Cardinal's liability and client's exclusive remedy for any claim arising whether based in contract or tort, shall be limited to the amount paid by the client for the analyses. All claims including those for negligence and any other cause whatsoever shall be deemed waived unless made in writing and received by Cardinal within 30 days after completion of the applicable service. In no event shall Cardinal be liable for incidental or consequential damages, including without limitation, business interruptions, loss of use, or loss of profits incurred by client, its subsidiaries, affiliates or successors arising out of or related to the performance of services hereunder by Cardinal, regardless of whether such claim is based upon any of the above stated reasons or otherwise.

<b>Relinquished By:</b> <div style="font-size: 1.5em; margin-top: 10px;">[Signature]</div>	<b>Date:</b> 9/9/24 <b>Time:</b> 1516	<b>Received By:</b> <div style="font-size: 1.5em; margin-top: 10px;">[Signature]</div>	<b>Date:</b> <b>Time:</b>	<b>Relinquished By:</b> 	<b>Date:</b> <b>Time:</b>	<b>Received By:</b> 	<b>Verbal Result:</b> <input type="checkbox"/> Yes <input type="checkbox"/> No <b>Add'l Phone #:</b> All Results are emailed. Please provide Email address: BJennings@ensolum.com / klowery@ensolum.com	<b>REMARKS:</b> * Cust. added analysis to 9/13/24
<b>Delivered By: (Circle One)</b> Sampler - UPS - Bus - Other:	<b>Observed Temp. °C</b> 0.7°C <b>Corrected Temp. °C</b> 0.1°C	<b>Sample Condition</b> Cool <input type="checkbox"/> Yes <input type="checkbox"/> No Intact <input type="checkbox"/> Yes <input type="checkbox"/> No	<b>CHECKED BY:</b> (Initials) <div style="font-size: 1.5em; margin-top: 10px;">[Signature]</div>	<b>Turnaround Time:</b> Standard <input checked="" type="checkbox"/> Rush <input type="checkbox"/> <b>Thermometer ID</b> #115 <del>#140</del> <b>Correction Factor</b> -0.5°C -0.6°C	<b>Bacteria (only)</b> <input type="checkbox"/> <b>Sample Condition</b> Cool <input type="checkbox"/> Yes <input type="checkbox"/> No Intact <input type="checkbox"/> Yes <input type="checkbox"/> No <b>Observed Temp. °C</b> <b>Corrected Temp. °C</b>			

† Cardinal cannot accept verbal changes. Please email changes to [celey.keene@cardinallabsnm.com](mailto:celey.keene@cardinallabsnm.com)



Sante Fe Main Office  
Phone: (505) 476-3441

General Information  
Phone: (505) 629-6116

Online Phone Directory  
<https://www.emnrd.nm.gov/ocd/contact-us>

**State of New Mexico**  
**Energy, Minerals and Natural Resources**  
**Oil Conservation Division**  
**1220 S. St Francis Dr.**  
**Santa Fe, NM 87505**

QUESTIONS

Action 421121

**QUESTIONS**

Operator: OXY USA INC P.O. Box 4294 Houston, TX 772104294	OGRID: 16696
	Action Number: 421121
	Action Type: [C-141] Remediation Closure Request C-141 (C-141-v-Closure)

**QUESTIONS**

<b>Prerequisites</b>	
Incident ID (n#)	nAPP2420440081
Incident Name	NAPP2420440081 NIMITZ MDP1 13 1 FED. COM. #311H @ 30-015-48586
Incident Type	Oil Release
Incident Status	Remediation Closure Report Received
Incident Well	[30-015-48586] NIMITZ MDP1 13 1 FEDERAL COM #311H

<b>Location of Release Source</b>	
<i>Please answer all the questions in this group.</i>	
Site Name	NIMITZ MDP1 13 1 FED. COM. #311H
Date Release Discovered	07/20/2024
Surface Owner	Federal

<b>Incident Details</b>	
<i>Please answer all the questions in this group.</i>	
Incident Type	Oil Release
Did this release result in a fire or is the result of a fire	No
Did this release result in any injuries	No
Has this release reached or does it have a reasonable probability of reaching a watercourse	No
Has this release endangered or does it have a reasonable probability of endangering public health	No
Has this release substantially damaged or will it substantially damage property or the environment	No
Is this release of a volume that is or may with reasonable probability be detrimental to fresh water	No

<b>Nature and Volume of Release</b>	
<i>Material(s) released, please answer all that apply below. Any calculations or specific justifications for the volumes provided should be attached to the follow-up C-141 submission.</i>	
Crude Oil Released (bbls) Details	Cause: Equipment Failure   Flow Line - Production   Crude Oil   Released: 3 BBL   Recovered: 0 BBL   Lost: 3 BBL.
Produced Water Released (bbls) Details	Cause: Equipment Failure   Flow Line - Production   Produced Water   Released: 7 BBL   Recovered: 0 BBL   Lost: 7 BBL.
Is the concentration of chloride in the produced water >10,000 mg/l	No
Condensate Released (bbls) Details	Not answered.
Natural Gas Vented (Mcf) Details	Not answered.
Natural Gas Flared (Mcf) Details	Not answered.
Other Released Details	Not answered.
Are there additional details for the questions above (i.e. any answer containing Other, Specify, Unknown, and/or Fire, or any negative lost amounts)	Not answered.

Sante Fe Main Office  
Phone: (505) 476-3441

General Information  
Phone: (505) 629-6116

Online Phone Directory  
<https://www.emnrd.nm.gov/ocd/contact-us>

**State of New Mexico**  
**Energy, Minerals and Natural Resources**  
**Oil Conservation Division**  
**1220 S. St Francis Dr.**  
**Santa Fe, NM 87505**

QUESTIONS, Page 2

Action 421121

**QUESTIONS (continued)**

Operator: OXY USA INC P.O. Box 4294 Houston, TX 772104294	OGRID: 16696
	Action Number: 421121
	Action Type: [C-141] Remediation Closure Request C-141 (C-141-v-Closure)

**QUESTIONS**

<b>Nature and Volume of Release (continued)</b>	
Is this a gas only submission (i.e. only significant Mcf values reported)	<b>No, according to supplied volumes this does not appear to be a "gas only" report.</b>
Was this a major release as defined by Subsection A of 19.15.29.7 NMAC	<b>No</b>
Reasons why this would be considered a submission for a notification of a major release	<i>Unavailable.</i>
<i>With the implementation of the 19.15.27 NMAC (05/25/2021), venting and/or flaring of natural gas (i.e. gas only) are to be submitted on the C-129 form.</i>	

**Initial Response**

*The responsible party must undertake the following actions immediately unless they could create a safety hazard that would result in injury.*

The source of the release has been stopped	<b>True</b>
The impacted area has been secured to protect human health and the environment	<b>True</b>
Released materials have been contained via the use of berms or dikes, absorbent pads, or other containment devices	<b>True</b>
All free liquids and recoverable materials have been removed and managed appropriately	<b>True</b>
If all the actions described above have not been undertaken, explain why	<i>Not answered.</i>

*Per Paragraph (4) of Subsection B of 19.15.29.8 NMAC the responsible party may commence remediation immediately after discovery of a release. If remediation has begun, please prepare and attach a narrative of actions to date in the follow-up C-141 submission. If remedial efforts have been successfully completed or if the release occurred within a lined containment area (see Subparagraph (a) of Paragraph (5) of Subsection A of 19.15.29.11 NMAC), please prepare and attach all information needed for closure evaluation in the follow-up C-141 submission.*

I hereby certify that the information given above is true and complete to the best of my knowledge and understand that pursuant to OCD rules and regulations all operators are required to report and/or file certain release notifications and perform corrective actions for releases which may endanger public health or the environment. The acceptance of a C-141 report by the OCD does not relieve the operator of liability should their operations have failed to adequately investigate and remediate contamination that pose a threat to groundwater, surface water, human health or the environment. In addition, OCD acceptance of a C-141 report does not relieve the operator of responsibility for compliance with any other federal, state, or local laws and/or regulations.

I hereby agree and sign off to the above statement	Name: Wade Dittrich Title: Environmental Coordinator Email: <a href="mailto:wade_dittrich@oxy.com">wade_dittrich@oxy.com</a> Date: 01/15/2025
--	--

Sante Fe Main Office  
Phone: (505) 476-3441

General Information  
Phone: (505) 629-6116

Online Phone Directory  
<https://www.emnrd.nm.gov/ocd/contact-us>

**State of New Mexico**  
**Energy, Minerals and Natural Resources**  
**Oil Conservation Division**  
**1220 S. St Francis Dr.**  
**Santa Fe, NM 87505**

QUESTIONS, Page 3

Action 421121

**QUESTIONS (continued)**

Operator: OXY USA INC P.O. Box 4294 Houston, TX 772104294	OGRID: 16696
	Action Number: 421121
	Action Type: [C-141] Remediation Closure Request C-141 (C-141-v-Closure)

**QUESTIONS**

<b>Site Characterization</b>	
<i>Please answer all the questions in this group (only required when seeking remediation plan approval and beyond). This information must be provided to the appropriate district office no later than 90 days after the release discovery date.</i>	
What is the shallowest depth to groundwater beneath the area affected by the release in feet below ground surface (ft bgs)	Between 100 and 500 (ft.)
What method was used to determine the depth to ground water	NM OSE iWaters Database Search
Did this release impact groundwater or surface water	No
<b>What is the minimum distance, between the closest lateral extents of the release and the following surface areas:</b>	
A continuously flowing watercourse or any other significant watercourse	Greater than 5 (mi.)
Any lakebed, sinkhole, or playa lake (measured from the ordinary high-water mark)	Greater than 5 (mi.)
An occupied permanent residence, school, hospital, institution, or church	Between 1 and 5 (mi.)
A spring or a private domestic fresh water well used by less than five households for domestic or stock watering purposes	Between 1 and 5 (mi.)
Any other fresh water well or spring	Between ½ and 1 (mi.)
Incorporated municipal boundaries or a defined municipal fresh water well field	Greater than 5 (mi.)
A wetland	Between ½ and 1 (mi.)
A subsurface mine	Greater than 5 (mi.)
An (non-karst) unstable area	Between 1 and 5 (mi.)
Categorize the risk of this well / site being in a karst geology	Low
A 100-year floodplain	Greater than 5 (mi.)
Did the release impact areas not on an exploration, development, production, or storage site	Yes

<b>Remediation Plan</b>	
<i>Please answer all the questions that apply or are indicated. This information must be provided to the appropriate district office no later than 90 days after the release discovery date.</i>	
Requesting a remediation plan approval with this submission	Yes
<i>Attach a comprehensive report demonstrating the lateral and vertical extents of soil contamination associated with the release have been determined, pursuant to 19.15.29.11 NMAC and 19.15.29.13 NMAC.</i>	
Have the lateral and vertical extents of contamination been fully delineated	Yes
Was this release entirely contained within a lined containment area	No
<b>Soil Contamination Sampling:</b> (Provide the highest observable value for each, in milligrams per kilograms.)	
Chloride (EPA 300.0 or SM4500 Cl B)	6960
TPH (GRO+DRO+MRO) (EPA SW-846 Method 8015M)	972
GRO+DRO (EPA SW-846 Method 8015M)	763
BTEX (EPA SW-846 Method 8021B or 8260B)	0
Benzene (EPA SW-846 Method 8021B or 8260B)	0
<i>Per Subsection B of 19.15.29.11 NMAC unless the site characterization report includes completed efforts at remediation, the report must include a proposed remediation plan in accordance with 19.15.29.12 NMAC, which includes the anticipated timelines for beginning and completing the remediation.</i>	
On what estimated date will the remediation commence	08/28/2024
On what date will (or did) the final sampling or liner inspection occur	10/03/2024
On what date will (or was) the remediation complete(d)	10/03/2024
What is the estimated surface area (in square feet) that will be reclaimed	4328
What is the estimated volume (in cubic yards) that will be reclaimed	641
What is the estimated surface area (in square feet) that will be remediated	4328
What is the estimated volume (in cubic yards) that will be remediated	641
<i>These estimated dates and measurements are recognized to be the best guess or calculation at the time of submission and may (be) change(d) over time as more remediation efforts are completed.</i>	
<i>The OCD recognizes that proposed remediation measures may have to be minimally adjusted in accordance with the physical realities encountered during remediation. If the responsible party has any need to significantly deviate from the remediation plan proposed, then it should consult with the division to determine if another remediation plan submission is required.</i>	

Sante Fe Main Office  
Phone: (505) 476-3441

General Information  
Phone: (505) 629-6116

Online Phone Directory  
<https://www.emnrd.nm.gov/ocd/contact-us>

**State of New Mexico**  
**Energy, Minerals and Natural Resources**  
**Oil Conservation Division**  
**1220 S. St Francis Dr.**  
**Santa Fe, NM 87505**

QUESTIONS, Page 4

Action 421121

**QUESTIONS (continued)**

Operator: OXY USA INC P.O. Box 4294 Houston, TX 772104294	OGRID:
	16696
	Action Number:
	421121
Action Type:	
[C-141] Remediation Closure Request C-141 (C-141-v-Closure)	

**QUESTIONS**

<b>Remediation Plan (continued)</b>	
<i>Please answer all the questions that apply or are indicated. This information must be provided to the appropriate district office no later than 90 days after the release discovery date.</i>	
<b>This remediation will (or is expected to) utilize the following processes to remediate / reduce contaminants:</b>	
<i>(Select all answers below that apply.)</i>	
(Ex Situ) Excavation and <b>off-site</b> disposal (i.e. dig and haul, hydrovac, etc.)	Yes
Which OCD approved facility will be used for <b>off-site</b> disposal	LEA LAND LANDFILL [fEEM0112342028]
<b>OR</b> which OCD approved well (API) will be used for <b>off-site</b> disposal	Not answered.
<b>OR</b> is the <b>off-site</b> disposal site, to be used, out-of-state	Not answered.
<b>OR</b> is the <b>off-site</b> disposal site, to be used, an NMED facility	Not answered.
(Ex Situ) Excavation and <b>on-site</b> remediation (i.e. On-Site Land Farms)	Not answered.
(In Situ) Soil Vapor Extraction	Not answered.
(In Situ) Chemical processing (i.e. Soil Shredding, Potassium Permanganate, etc.)	Not answered.
(In Situ) Biological processing (i.e. Microbes / Fertilizer, etc.)	Not answered.
(In Situ) Physical processing (i.e. Soil Washing, Gypsum, Disking, etc.)	Not answered.
Ground Water Abatement pursuant to 19.15.30 NMAC	Not answered.
OTHER (Non-listed remedial process)	Not answered.
<i>Per Subsection B of 19.15.29.11 NMAC unless the site characterization report includes completed efforts at remediation, the report must include a proposed remediation plan in accordance with 19.15.29.12 NMAC, which includes the anticipated timelines for beginning and completing the remediation.</i>	
I hereby certify that the information given above is true and complete to the best of my knowledge and understand that pursuant to OCD rules and regulations all operators are required to report and/or file certain release notifications and perform corrective actions for releases which may endanger public health or the environment. The acceptance of a C-141 report by the OCD does not relieve the operator of liability should their operations have failed to adequately investigate and remediate contamination that pose a threat to groundwater, surface water, human health or the environment. In addition, OCD acceptance of a C-141 report does not relieve the operator of responsibility for compliance with any other federal, state, or local laws and/or regulations.	
I hereby agree and sign off to the above statement	Name: Wade Dittrich Title: Environmental Coordinator Email: <a href="mailto:wade_dittrich@oxy.com">wade_dittrich@oxy.com</a> Date: 01/15/2025
<i>The OCD recognizes that proposed remediation measures may have to be minimally adjusted in accordance with the physical realities encountered during remediation. If the responsible party has any need to significantly deviate from the remediation plan proposed, then it should consult with the division to determine if another remediation plan submission is required.</i>	

Sante Fe Main Office  
Phone: (505) 476-3441

General Information  
Phone: (505) 629-6116

Online Phone Directory  
<https://www.emnrd.nm.gov/ocd/contact-us>

State of New Mexico  
Energy, Minerals and Natural Resources  
Oil Conservation Division  
1220 S. St Francis Dr.  
Santa Fe, NM 87505

QUESTIONS, Page 5

Action 421121

QUESTIONS (continued)

Operator:  OXY USA INC P.O. Box 4294 Houston, TX 772104294	OGRID:  16696
	Action Number:  421121
	Action Type:  [C-141] Remediation Closure Request C-141 (C-141-v-Closure)

QUESTIONS

Deferral Requests Only	
Only answer the questions in this group if seeking a deferral upon approval this submission. Each of the following items must be confirmed as part of any request for deferral of remediation.	
Requesting a deferral of the remediation closure due date with the approval of this submission	No



Sante Fe Main Office  
Phone: (505) 476-3441

General Information  
Phone: (505) 629-6116

Online Phone Directory  
<https://www.emnrd.nm.gov/ocd/contact-us>

**State of New Mexico**  
**Energy, Minerals and Natural Resources**  
**Oil Conservation Division**  
**1220 S. St Francis Dr.**  
**Santa Fe, NM 87505**

QUESTIONS, Page 6

Action 421121

**QUESTIONS (continued)**

Operator: OXY USA INC P.O. Box 4294 Houston, TX 772104294	OGRID: 16696
	Action Number: 421121
	Action Type: [C-141] Remediation Closure Request C-141 (C-141-v-Closure)

**QUESTIONS**

Sampling Event Information	
Last sampling notification (C-141N) recorded	388152
Sampling date pursuant to Subparagraph (a) of Paragraph (1) of Subsection D of 19.15.29.12 NMAC	10/03/2024
What was the (estimated) number of samples that were to be gathered	2
What was the sampling surface area in square feet	400

Remediation Closure Request	
<i>Only answer the questions in this group if seeking remediation closure for this release because all remediation steps have been completed.</i>	
Requesting a remediation closure approval with this submission	Yes
Have the lateral and vertical extents of contamination been fully delineated	Yes
Was this release entirely contained within a lined containment area	No
All areas reasonably needed for production or subsequent drilling operations have been stabilized, returned to the sites existing grade, and have a soil cover that prevents ponding of water, minimizing dust and erosion	Yes
What was the total surface area (in square feet) remediated	4328
What was the total volume (cubic yards) remediated	641
All areas not reasonably needed for production or subsequent drilling operations have been reclaimed to contain a minimum of four feet of non-waste contain earthen material with concentrations less than 600 mg/kg chlorides, 100 mg/kg TPH, 50 mg/kg BTEX, and 10 mg/kg Benzene	Yes
What was the total surface area (in square feet) reclaimed	4328
What was the total volume (in cubic yards) reclaimed	641
Summarize any additional remediation activities not included by answers (above)	NA
<i>The responsible party must attach information demonstrating they have complied with all applicable closure requirements and any conditions or directives of the OCD. This demonstration should be in the form of a comprehensive report (in .pdf format) including a scaled site map, sampling diagrams, relevant field notes, photographs of any excavation prior to backfilling, laboratory data including chain of custody documents of final sampling, and a narrative of the remedial activities. Refer to 19.15.29.12 NMAC.</i>	
I hereby certify that the information given above is true and complete to the best of my knowledge and understand that pursuant to OCD rules and regulations all operators are required to report and/or file certain release notifications and perform corrective actions for releases which may endanger public health or the environment. The acceptance of a C-141 report by the OCD does not relieve the operator of liability should their operations have failed to adequately investigate and remediate contamination that pose a threat to groundwater, surface water, human health or the environment. In addition, OCD acceptance of a C-141 report does not relieve the operator of responsibility for compliance with any other federal, state, or local laws and/or regulations. The responsible party acknowledges they must substantially restore, reclaim, and re-vegetate the impacted surface area to the conditions that existed prior to the release or their final land use in accordance with 19.15.29.13 NMAC including notification to the OCD when reclamation and re-vegetation are complete.	
I hereby agree and sign off to the above statement	Name: Wade Dittrich Title: Environmental Coordinator Email: <a href="mailto:wade_dittrich@oxy.com">wade_dittrich@oxy.com</a> Date: 01/15/2025

Sante Fe Main Office  
Phone: (505) 476-3441

General Information  
Phone: (505) 629-6116

Online Phone Directory  
<https://www.emnrd.nm.gov/ocd/contact-us>

State of New Mexico  
Energy, Minerals and Natural Resources  
Oil Conservation Division  
1220 S. St Francis Dr.  
Santa Fe, NM 87505

QUESTIONS, Page 7

Action 421121

QUESTIONS (continued)

Operator: OXY USA INC P.O. Box 4294 Houston, TX 772104294	OGRID: 16696
	Action Number: 421121
	Action Type: [C-141] Remediation Closure Request C-141 (C-141-v-Closure)

QUESTIONS

Reclamation Report	
Only answer the questions in this group if all reclamation steps have been completed.	
Requesting a reclamation approval with this submission	No

Sante Fe Main Office  
Phone: (505) 476-3441

General Information  
Phone: (505) 629-6116

Online Phone Directory  
<https://www.emnrd.nm.gov/ocd/contact-us>

State of New Mexico  
Energy, Minerals and Natural Resources  
Oil Conservation Division  
1220 S. St Francis Dr.  
Santa Fe, NM 87505

CONDITIONS

Action 421121

CONDITIONS

Operator: OXY USA INC P.O. Box 4294 Houston, TX 772104294	OGRID: 16696
	Action Number: 421121
	Action Type: [C-141] Remediation Closure Request C-141 (C-141-v-Closure)

CONDITIONS

Created By	Condition	Condition Date
nvez	None	4/8/2025