



March 4, 2025

District Supervisor
Oil Conservation Division, District 2
811 S. First Street
Artesia, New Mexico 88210

**Re: Remediation and Reclamation Closure Report
Chevron Mid Continent Business Unit
Cicada Unit #022H Flowline Release
Unit Letter D, Section 35, Township 25 South, Range 27 East
Eddy County, New Mexico
nAPP2420727981 and nAPP2424378052
DOR: 7/19/2024 and 8/30/2024
Landowner: BLM**

Sir or Madam:

Tetra Tech, Inc. (Tetra Tech) was contacted by Chevron U.S.A., Inc. (Chevron) to assess two releases that occurred at the Cicada Unit #022H (API 30-015-45423). The release footprint is located in Public Land Survey System (PLSS) Unit Letter D, Section 35, Township 25 South, and Range 27 East, in Eddy County, New Mexico (Site). The approximate release point coordinates are 32.093323°, -104.164922°. The Site location is shown on **Figures 1 and 2**.

BACKGROUND

According to the State of New Mexico Notice of Release report, the initial release was discovered on July 19, 2024. The release was caused by a pinhole leak from a 4-inch below grade flowline. Approximately 9 barrels (bbls) of produced water and 2 bbls of crude oil were released on the lease pad and adjacent pasture, of which no produced water or oil were recovered. The initial C-141 report was submitted to and approved by the New Mexico Oil Conservation Division (NMOCD) on July 25, 2024, and the release was assigned the Incident ID nAPP2420727981.

A second release was discovered on August 30, 2024. According to the State of New Mexico Notice of Release report, the release was caused by a pinhole leak from a 4-inch below grade flowline adjacent to the initial release point. Approximately 51 bbls of produced water and 3 bbls of crude oil were released on the lease pad into the previously excavated area from the initial release and adjacent pasture, of which 50 bbls of produced water and 3 bbls of oil were recovered. The initial C-141 report was submitted to and approved by the New Mexico Oil Conservation Division (NMOCD) on August 30, 2024, and the release was assigned the Incident ID nAPP2424378052. After the second release occurred, Chevron Operations personnel excavated around the shut-in buried lines to make repairs.

Chevron requested an extension from the NMOCD for the workplan submittal in an email dated September 24, 2024. The request was made after the second release occurred at the Cicada #022H lease pad (Incident ID nAPP2424378052), to allow for complete assessment and remediation planning for both releases. The extension request was approved by the NMOCD via email on October 8, 2024, for a new due date of December 17, 2024. A copy of the regulatory correspondence is included in **Appendix A**.

Tetra Tech

901 West Wall St., Suite 100, Midland, TX 79701

Tel 432.682.4559

Fax 432.682.3946

www.tetrattech.com

Remediation and Reclamation Closure Report
March 4, 2025

Chevron MCBU

Chevron requested an additional extension from the NMOCD for the workplan submittal in an email dated November 20, 2024. The request was made to allow for additional time needed to complete assessment activities due to pipe removal and repairs in the release point area. The extension request was approved by the NMOCD via email on November 20, 2024, for a new due date of December 30, 2024. A copy of the regulatory correspondence is included in **Appendix A**.

LAND OWNERSHIP

According to the NMOCD Oil and Gas Map, the Site is located on federal lands managed by the Bureau of Land Management (BLM). A copy of this remediation and reclamation closure report will be provided to the BLM for approval.

SITE CHARACTERIZATION

A site characterization was performed in accordance with 19.15.29.11 New Mexico State Administrative Code (NMAC) and the guidance document Process Updates re: Submissions of Form C-141 Release Notification and Corrective Actions (12/01/2023). A summary of the site characterization is presented below:

Shallowest depth to groundwater beneath the area affected by the release in feet below ground surface (feet bgs)	Between 51 and 75 ft
Method used to determine the depth to ground water	NM OSE iWaters Database Search
Did this release impact groundwater or surface water?	No
<u>What is the minimum distance between the closest lateral extents of the release and the following surface areas:</u>	
A continuously flowing watercourse or any other significant watercourse	Greater than 5 (mi.)
Any lakebed, sinkhole, or playa lake (measured from the ordinary high-water mark)	Greater than 5 (mi.)
An occupied permanent residence, school, hospital, institution, or church	Greater than 5 (mi.)
A spring or private domestic fresh water well used by less than five households for domestic or stock watering purposes	Between 1 and 5 (mi.)
Any other fresh water well or spring	Between 1 and 5 (mi.)
Incorporated municipal boundaries or a defined municipal fresh water well field	Greater than 5 (mi.)
A wetland	Between ½ and 1 (mi.)
A subsurface mine	Greater than 5 (mi.)
A (non-karst) unstable area	Greater than 5 (mi.)
Categorized risk of this well / site being in a karst geology	High
A 100-year floodplain	Between ½ and 1 (mi.)
Did the release impact areas not on an exploration, development, production, or storage site?	Yes

According to the New Mexico Office of the State Engineer (NMOSE) reporting system, there is one well within a ½-mile (800-meter) radius of the Site, located approximately 0.43 miles (692 meters) east of the release point. The depth to water is measured at 69 feet below ground surface (bgs). The site characterization data is included in **Appendix B**.

REGULATORY FRAMEWORK

Based upon the release footprints and in accordance with Subsection E of 19.15.29.12 NMAC, per 19.15.29.11 NMAC, the site characterization data was used to determine recommended remedial action levels (RRALs) for benzene, toluene, ethylbenzene, and xylene (collectively referred to as BTEX), total petroleum hydrocarbons (TPH), and chlorides in soil.

Based on the site characterization, the remediation RRALs for the Site are as follows:

Constituent	RRAL
Chloride	600 mg/kg
TPH	100 mg/kg
BTEX	50 mg/kg
Benzene	10 mg/kg

SITE ASSESSMENT ACTIVITIES

Tetra Tech personnel were onsite on August 12, 2024, through August 13, 2024, to conduct release assessment activities for the initial release on behalf of Chevron. Four (4) test trenches (TT-1 through TT-4) were installed within the release footprint in order to vertically delineate the release extent. Four horizontal sample locations (H-1 through H-5) were installed along the perimeter of the release to horizontally delineate the release extent. The sampling locations are presented on **Figure 3**.

A total of twenty-four (24) soil samples were collected during the August assessment events and submitted to Eurofins Testing in Midland, Texas to be analyzed for TPH by EPA method 8015 modified, BTEX by EPA Method 8021B, and chloride by EPA method 300.

The laboratory analytical results are summarized in Table 1. Analytical results associated with soil sampling locations TT-1, TT-2, TT-3, and TT-4 exceeded the chloride RRAL of 600 mg/kg in various sampling intervals ranging from the surface to 7 feet bgs. Analytical results associated with sampling locations TT-1 and TT-4 also exceeded the Total TPH RRAL of 100 mg/kg at select sampling intervals from the surface to 6 feet bgs. There were no analytical results which exceeded the benzene or Total BTEX RRALs.

On October 29, 2024, through November 15, 2024, Tetra Tech personnel returned to the Site to conduct release assessment activities for the second release on behalf of Chevron. A combination of seven (7) Auger holes and test trenches (AH-1/PH-1, AH-2/BH-2, TT-5, TT-6, TT-7, and TT-8) were installed within the release footprint in order to vertically delineate the release extent. Nine (9) horizontal sample locations (H-1.3 through H-9.3) were installed along the perimeter of the release to horizontally delineate the release extent. The sampling locations are presented on **Figure 3**.

A total of forty-one (41) soil samples were collected during the August assessment events and submitted to Cardinal Laboratories in Hobbs, NM to be analyzed for TPH by EPA method 8015 modified, BTEX by EPA Method 8021B, and chloride by Method SM 4500.

The laboratory analytical results from the additional assessment activities are summarized in Table 1. Analytical results associated with soil sampling locations AH-1/PH-1, AH-2, AH-3, TT-5, TT-6, TT-7, and TT-8 exceeded the chloride RRAL of 600 mg/kg in sampling intervals ranging from the surface to 11 feet bgs. Analytical results associated with sampling locations AH-1, AH-2, AH-3, TT-5, TT-7, and TT-8 also exceeded the Total TPH RRAL of 100 mg/kg at select sampling intervals from the surface to 10.5 feet bgs. Analytical samples associated with sampling location AH-3 also exceeded the Total BTEX RRAL of 50 mg/kg in the surface sampling interval. There were no analytical results which exceeded the benzene RRAL.

REMEDIATION WORK PLAN AND REGULATORY APPROVAL

Tetra Tech, on behalf of Chevron, prepared a Remediation Work Plan dated December 13, 2024, that described the assessment activities and proposed remedial actions to address both releases (nAPP2420727981 and nAPP2424378052).

The Remediation Work Plan was approved via email by Nelson Velez of the NMOCD on January 9, 2025, with the following conditions:

- *“The remediation plan is approved as written. Chevron has 90-days (April 9, 2025) to submit to OCD its appropriate or final remediation closure report.”*

The Remediation Work Plan was submitted to the BLM via email on January 21, 2025. A copy of the regulatory correspondence is included in **Appendix A**.

REMEDIATION ACTIVITIES

In November 2024, in conjunction with delineation activities, below-grade piping was removed and replaced. To facilitate piping repair and replacement, Chevron operations removed soil around the shut-in piping as well as removed as much contaminated soil as safely feasible in the immediate release point area to achieve vertical delineation. Five-point composite confirmation floor samples (PH-1 and BH-2) were collected where auger holes (AH-1 and AH-2) were installed following the pipeline repair activities. The area of AH-1/PH-1 was excavated to 12 feet bgs, and the area of AH-2/BH-2 was excavated to 7 feet bgs. Prior to confirmation sampling, on November 19, 2024, the NMOCD district office was first notified via the OCD Portal in accordance with Subsection D of 19.15.29.12 NMAC.

From February 3-12, 2025, Tetra Tech personnel were onsite to supervise the remedial activities proposed in the approved Remediation Work Plan, including excavation, disposal, and confirmation sampling. Prior to confirmation sampling, on February 4, 2025, the NMOCD district office was notified via the OCD Portal in accordance with Subsection D of 19.15.29.12 NMAC. Regulatory correspondence is included in **Appendix A**.

Impacted soils were excavated as indicated in **Figure 4**. The areas within the release footprint were excavated to depths ranging from 1 to 8.5 feet below surrounding grade. Due to safety concerns associated with working around pressurized lines, impacted soils were excavated using hydro-excavation methods within 4 feet of subsurface lines. Heavy machinery remained outside this buffer zone to avoid any associated risk or disturbance. Photographs from the excavated areas prior to backfill are provided in **Appendix C**.

Following excavation, confirmation floor and sidewall samples were collected from the entire remediated area and submitted for laboratory analysis to verify efficacy of remediation activities. Per the NMOCD approved confirmation sampling plan, confirmation samples were collected such that each composite sample (sidewall and floor) was representative of no more than 300 square feet of excavated area. The total square footage of the excavated area (sidewalls and floors) was approximately 5,015 square feet. A total of twelve (12) confirmation floor sample locations and eight (8) confirmation sidewall sample locations were collected for laboratory analysis during remedial activities. Confirmation floor sample locations were labeled with FS-#. Confirmation sidewall sample locations were labeled with SW-#.

Initial confirmation soil sampling analytical results associated with locations FS-1 and FS-2 exceeded the chloride RRAL of 600 mg/kg. Additionally, Initial confirmation soil sampling analytical results associated with locations FS-8, FS-9, FS-11, and SW-5 exceeded the TPH RRAL of 100 mg/kg. The excavation floors were deepened, and sidewalls expanded in these areas, and iterative confirmation samples were collected to encompass the original sample locations that triggered removal (nomenclature defined in **Table 2**) post-additional excavation. Final excavated areas, depths, and representative confirmation sample locations are indicated in **Figure 4**.

Collected confirmation samples were placed into laboratory-provided sample containers, transferred under chain-of-custody, and analyzed within appropriate holding times by Cardinal. The soil samples were analyzed for TPH (GRO+DRO+MRO) by EPA Method 8015M and chlorides by SM4500Cl-B. The analytical results were directly compared to the established Site RRALs to demonstrate compliance.

The results of the February 2025 confirmation sampling events are summarized in **Table 2**. All final confirmation soil samples (floor and sidewall) were below the applicable cleanup levels for all analyzed constituents. Copies of laboratory analysis and chain-of-custody documentation are included in Appendix D.

All excavated material was transported offsite for proper disposal. Approximately 225 cubic yards of material (soil and hydrovac slurry) were transported to the R360 Red Bluff Facility in Orla, TX.

RECLAMATION ACTIVITIES

Based on 19.15.29.13 NMAC, all areas disturbed by the remediation have been reclaimed. Collected confirmation samples were placed into laboratory-provided sample containers, transferred under chain-of-custody, and analyzed within appropriate holding times by Cardinal. The soil samples were analyzed for TPH (GRO+DRO+MRO) by EPA Method 8015M, BTEX by EPA Method 8021B, and chlorides by SM4500Cl-B. The analytical results were directly compared to the reclamation requirements and established Site RRALs to demonstrate compliance. All final confirmation soil samples (floor and sidewall) were below the reclamation limits for chloride, TPH, and BTEX. Excavated areas, depths and confirmation sample locations are indicated in **Figure 4**. The results of the February 2025 confirmation sampling events are summarized in **Table 2**.

Once acceptable confirmation sample results were received, the excavation was backfilled with clean material to pre-release grade. In accordance with 19.15.29.12 NMAC, the reclaimed area contained a minimum of four feet of non-waste containing, uncontaminated, earthen material with chloride concentrations less than 600 mg/kg as analyzed by EPA Method SM4500Cl-B. The soil cover included a top layer consisting of one foot of suitable material to establish vegetation at the site. The backfilled areas in the pasture were seeded following backfilling, to aid in revegetation. Based on the soils of the site, the BLM Seed Mix #2 was used for seeding and was planted in the amount specified in the pounds pure live seed (PLS) per acre.

Site inspections will be performed annually to assess the revegetation progress and evaluate the site for the presence of primary or secondary noxious weeds. If noxious weeds are identified, the NMSLO will be contacted to determine an effective method for eradication. If the site does not show revegetation after one growing season, the area will be reseeded as appropriate. Reclamation activities have been implemented in consultation with the BLM.

CONCLUSION

Chevron respectfully requests closure of Incident IDs nAPP2420727981 and nAPP2424378052 based on the confirmation sampling results and remedial activities performed. The final C-141 forms are enclosed in Appendix A.

Remediation and Reclamation Closure Report
March 4, 2025

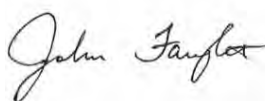
Chevron MCBU

If you have any questions concerning the remedial actions performed at the Site, please call me at (512) 739-7874.

Sincerely,
Tetra Tech, Inc.



Samantha Abbott, PG
Project Manager



John Faught, GIT
Project Manager

cc:
Ms. Kennedy Lincoln – Chevron MCBU
Project Manager

LIST OF ATTACHMENTS

Figures:

- Figure 1 – Overview Map
- Figure 2 – Site Location/Topographic Map
- Figure 3 – Approximate Release Extent and Site Assessment
- Figure 4 – Remediation Extents and Confirmation Sampling Locations

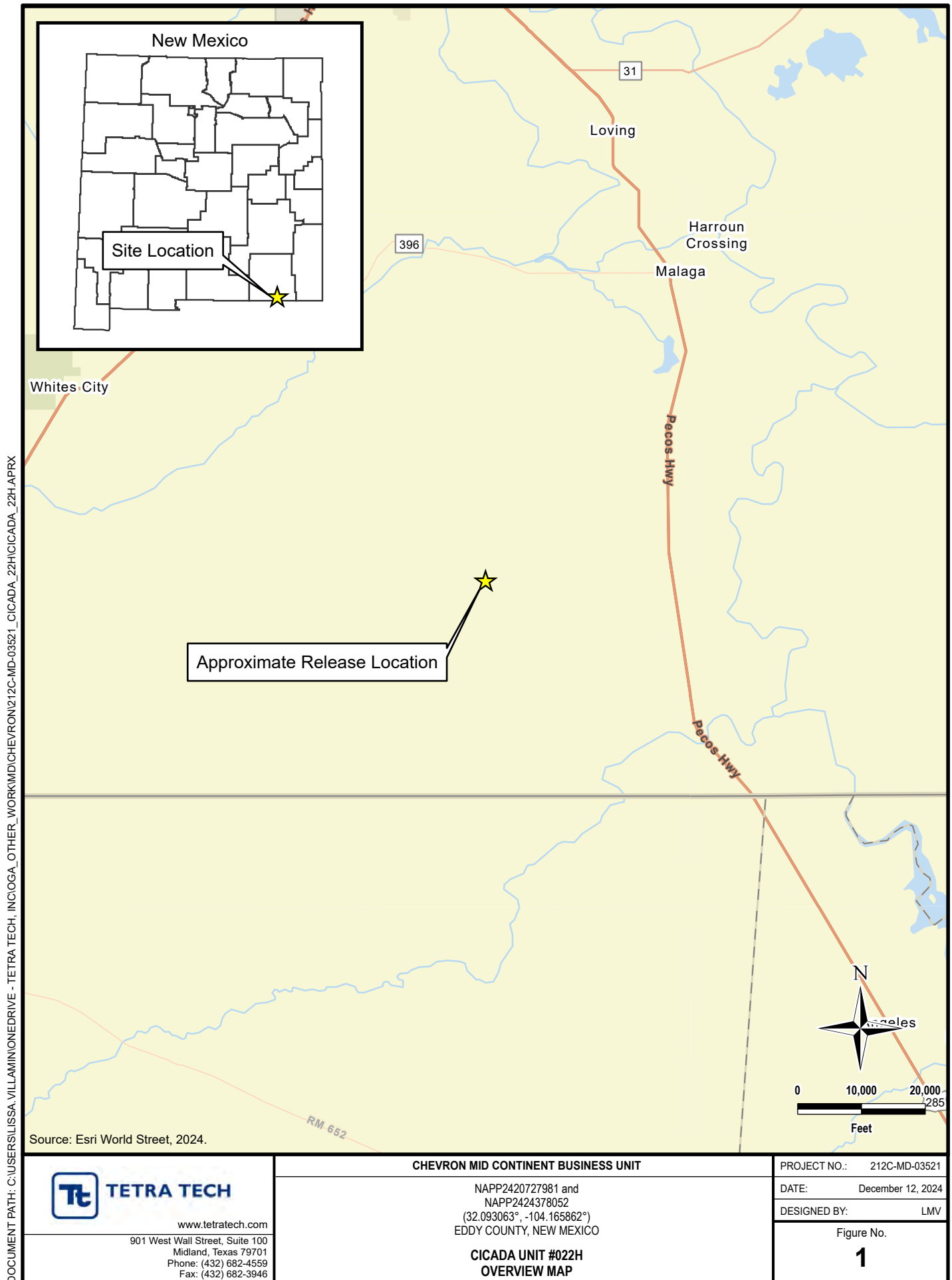
Tables:

- Table 1 – Summary of Analytical Results – Soil Assessment
- Table 2 – Summary of Analytical Results – Soil Remediation

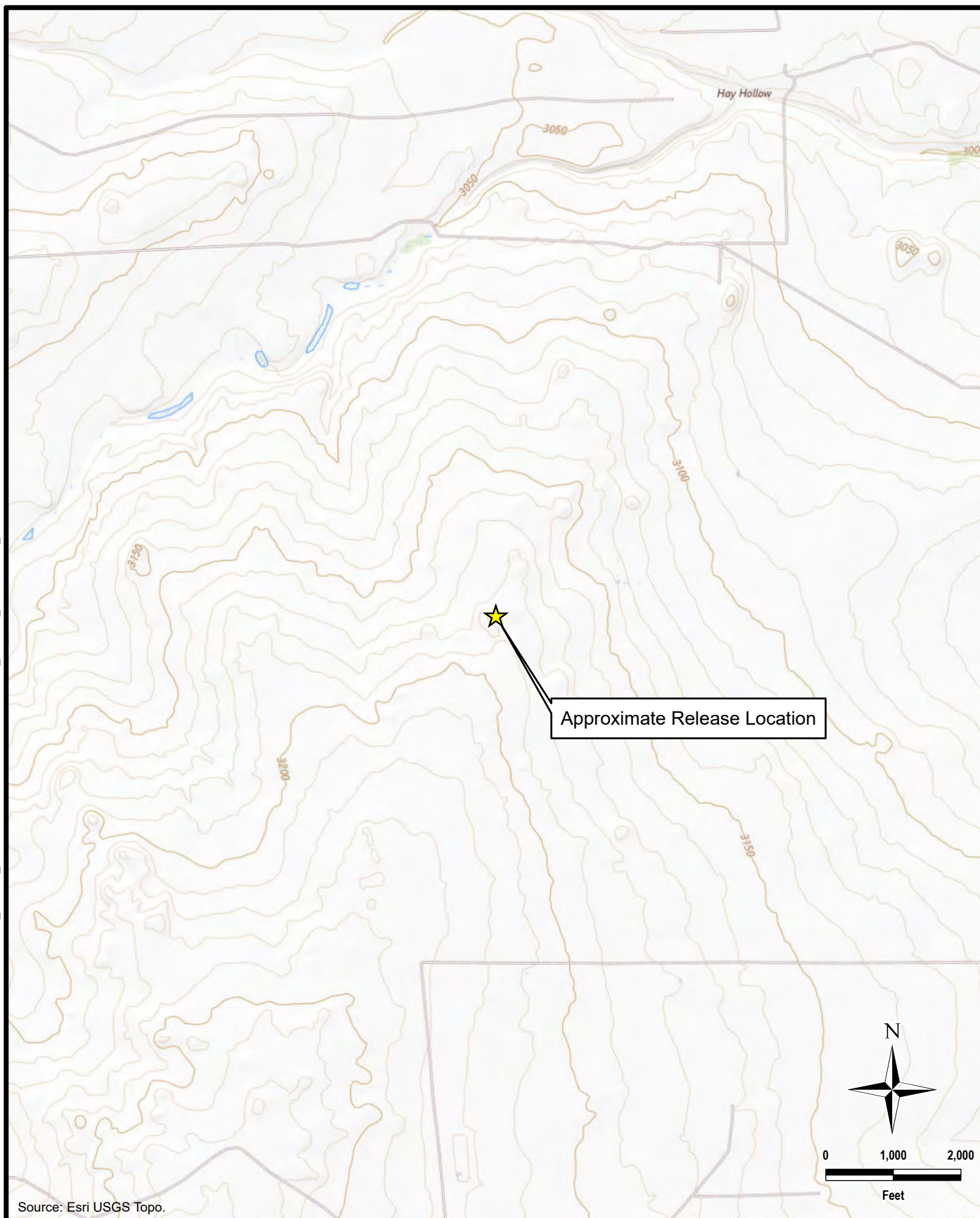
Appendices:


- Appendix A – Regulatory Correspondence
- Appendix B – Site Characterization Data
- Appendix C – Photographic Documentation
- Appendix D – Laboratory Analytical Data

FIGURES

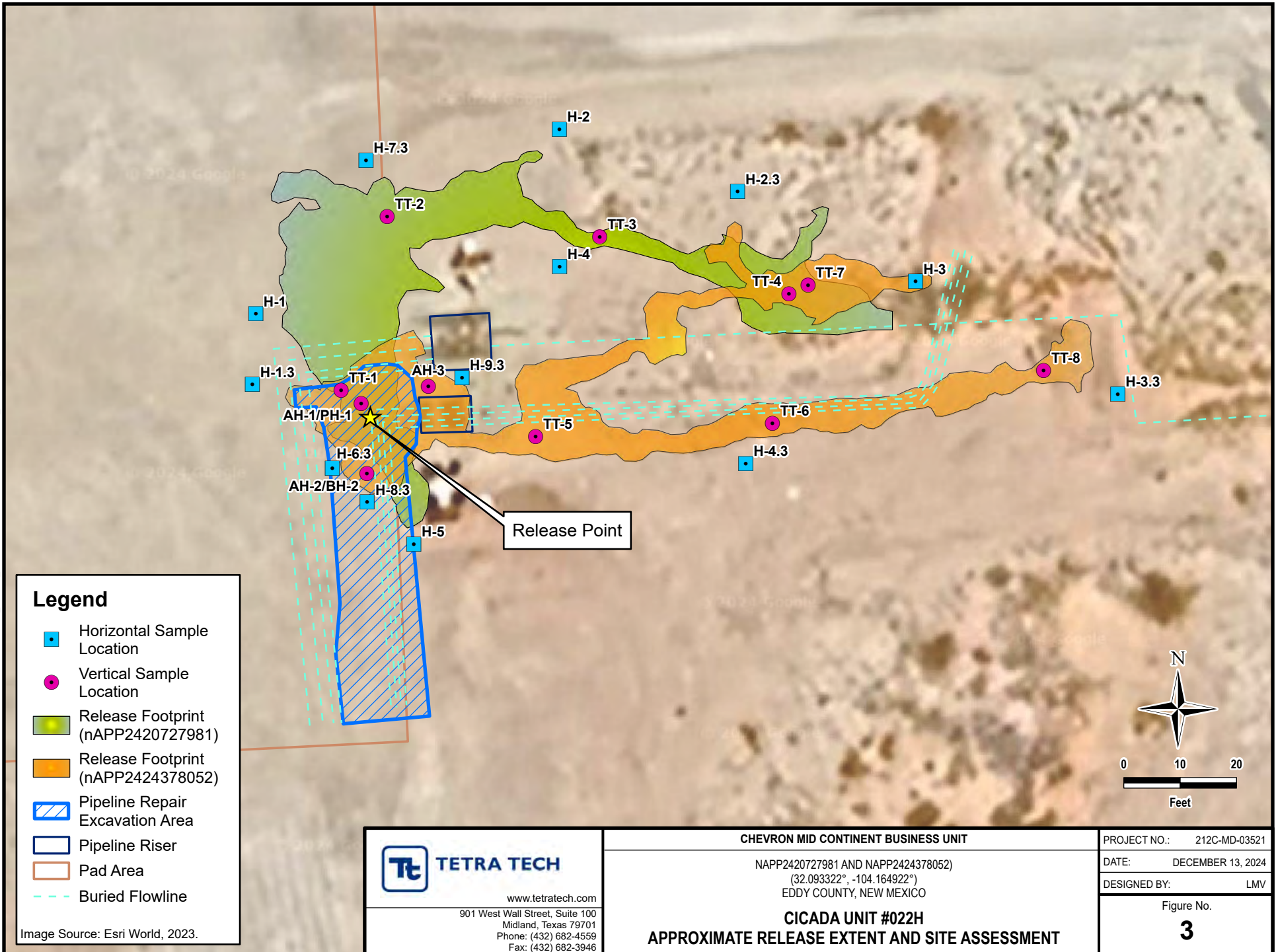


DOCUMENT PATH: C:\USERS\LISSA.VILLAMINON\DRIVE - TETRA TECH\INC\OGA_OTHER_WORK\MD\CHEVRON\212C-MD-03521_CICADA_22H\APRX

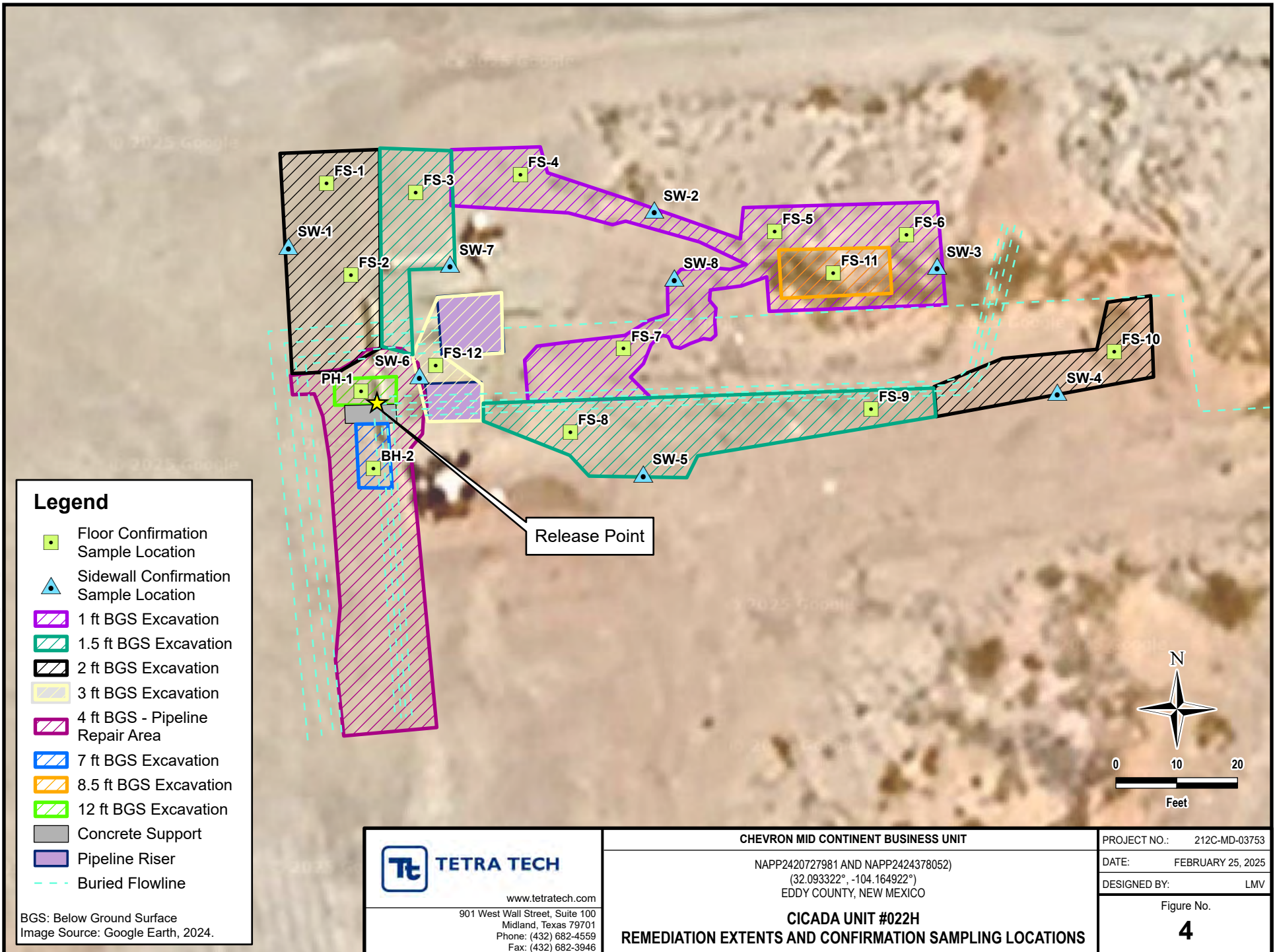


 TETRA TECH www.tetrattech.com 901 West Wall Street, Suite 100 Midland, Texas 79701 Phone: (432) 682-4559 Fax: (432) 682-3946	CHEVRON MID CONTINENT BUSINESS UNIT		PROJECT NO.: 212C-MD-03521
	NAPP2420727981 and NAPP242378052 (32.093063°, -104.165862°) EDDY COUNTY, NEW MEXICO		DATE: December 12, 2024
	CICADA UNIT #022H		DESIGNED BY: LMV
	TOPOGRAPHIC MAP		Figure No. 2

DOCUMENT PATH: C:\USERS\ISSA.VILLAMONEDRA\TETRA TECH\INCOGA_OTHER_WORK\MIDCHEVRON\212C-MD-03521_CICADA_22H\APRX



DOCUMENT PATH: C:\USERS\ISSA.VILLAMONEDRIVE - TETRA TECH, INC\OGA, OTHER_WORK\MIDCHEVRON\212C-MD-03753_CICADA_22H\APRX



TABLES

TABLE 1
SUMMARY OF ANALYTICAL RESULTS
SOIL ASSESSMENT
nAPP2420727981 (DOR 7/19/2024) nAPP2424378052 (DOR 8/30/2024)
CHEVRON MCBU
CICADA UNIT #022H RISER RELEASE
EDDY COUNTY, NEW MEXICO

Sample ID	Sample Date	Sample Depth	Chloride ¹		BTEX ²									TPH ³								
					Benzene		Toluene		Ethylbenzene		Total Xylenes		Total BTEX		GRO		DRO		MRO		Total TPH	
		ft. bgs	mg/kg	Q	mg/kg	Q	mg/kg	Q	mg/kg	Q	mg/kg	Q	mg/kg	Q	mg/kg	Q	mg/kg	Q	mg/kg	Q	mg/kg	Q
VERTICAL DELINEATION SAMPLES																						
TT-1	8/13/2024	4'	15800		<0.00138	U	<0.00199	U	<0.00108	U	<0.00227	U	<0.00227	U	<14.5	U	1380		<15.1	U	1380	
TT-2	8/12/2024	0-0.5'	3300	F1	<0.00140	U	<0.00201	U	<0.00110	U	0.00489	U	0.00489	U	<14.4	U	<32.2	J	<15.0	U	32.2	J
		1'	612		<0.00139	U	<0.00200	U	<0.00109	U	<0.00228	U	<0.00228	U	<14.6	U	<15.2	U	<15.2	U	<15.2	U
		2'	65.8		<0.00138	U	<0.00199	U	<0.00108	U	<0.00227	U	<0.00227	U	<14.6	U	<15.3	U	<15.3	U	<15.3	U
		3'	257		<0.00140	U	<0.00201	U	<0.00109	U	<0.00229	U	<0.00229	U	<14.5	U	25.7	J	<15.1	U	25.7	J
		4'	172		<0.00139	U	<0.00200	U	<0.00109	U	<0.00228	U	<0.00228	U	<14.4	U	17.6	J	<15.0	U	17.6	J
TT-3	8/12/2024	0-0.5'	972		<0.00139	U	<0.00200	U	<0.00109	U	<0.00229	U	<0.00229	U	<14.5	U	37.8	J	<15.1	U	37.8	J
		1'	246		<0.00140	U	<0.00201	U	<0.00110	U	<0.00230	U	<0.00230	U	<14.5	U	47.1	J	<15.1	U	47.1	J
		2'	156		<0.00138	U	<0.00199	U	<0.00108	U	<0.00227	U	<0.00227	U	<14.6	U	<15.2	U	<15.2	U	<15.2	U
		3'	308		<0.00139	U	<0.00200	U	0.00109	J	<0.00229	U	<0.00229	U	<14.6	U	15.3	J	<15.3	U	15.3	J
		4'	119		<0.00139	U	<0.00200	U	<0.00109	U	<0.00228	U	<0.00228	U	<14.7	U	46.6	J	<15.3	U	46.6	J
TT-4	8/12/2024	0-0.5'	4950		<0.00138	U	0.0124		0.00747		0.0071		0.0270		58.2		3890		<15.1	U	3950	
		1'	3200		0.00175	J	0.255		0.177		0.648		1.08		438		7170		<15.0		7610	
		2'	4450		0.00253		0.233		0.0103		0.374		0.620		634		8880		<15.1	U	9510	
		3'	3900		0.00176	J	0.234		0.146		0.485		0.867		742		11700		<15.1	U	12400	
		4'	1530		<0.00138	U	0.138		<0.00108	U	0.0079		0.0217		<14.7	U	893		<15.3	U	893	
		5'	4380		<0.00138	U	<0.00199	U	<0.00108	U	0.0136		0.0210		18.2	J	1350		<15.2	U	1370	
		6'	819		<0.00140	U	<0.00201	U	<0.00109	U	0.0375		0.0375		<14.6	U	614		<15.3		614	
		7'	691		<0.00141	U	<0.00202	U	<0.00110	U	<0.00231	U	<0.00231	U	<14.7	U	65.8		<15.3	U	65.8	
TT-5	10/29/2024	0-0.5'	1150		<0.025	U	0.053		0.127		1.38		1.56		479		3230		622		4330	
		1'	368		<0.025	U	<0.050	U	<0.050	U	<0.150	U	<0.275	U	<25.0	U	73.3		<25.0	U	73.3	
		2'	48.0		<0.025	U	<0.050	U	<0.050	U	<0.150	U	<0.275	U	<25.0	U	<25.0	U	<25.0	U	<25.0	U
		3'	48.0		<0.025	U	<0.050	U	<0.050	U	<0.150	U	<0.275	U	<25.0	U	<25.0	U	<25.0	U	<25.0	U
TT-6	10/29/2024	0-0.5'	3320		<0.025	U	<0.050	U	<0.050	U	<0.150	U	<0.275	U	<25.0	U	<25.0	U	<25.0	U	<25.0	U
		1'	80.0		<0.025	U	<0.050	U	<0.050	U	<0.150	U	<0.275	U	<25.0	U	<25.0	U	<25.0	U	<25.0	U
TT-7	10/29/2024	0-0.5'	2240		<0.100	U	1.08	U	2.09	U	20.6	U	23.8	U	3140		13900		2540		19600	
		1'	3000		<0.025	U	0.077		0.185		1.13		1.4		434		4250		907		5590	
		2'	2320		<0.025	U	0.09		0.202		0.643		0.935		246		2640		559		3440	
		3'	1310		<0.025	U	0.144		0.202		0.841		1.19		55.1		531		108		694	
		4'	6600		<0.025	U	0.515		0.748		3.74		5		889		6240		1250		8380	
		5'	288		<0.025	U	<0.050	U	<0.050	U	<0.150	U	<0.275	U	<25.0	U	64.8		<25.0	U	64.8	
		6'	848		<0.025	U	<0.050	U	<0.050	U	0.209		<0.275	U	28.5		676		153		858	
		7'	176		<0.025	U	<0.050	U	<0.050	U	<0.150	U	<0.275	U	<25.0	U	30.2		<25.0	U	30.2	
TT-8	10/29/2024	0-0.5'	5360		<0.025	U	<0.050	U	0.061		0.530		0.591		247		2540		519		3310	
		1'	1840		<0.025	U	<0.050	U	<0.050	U	<0.150	U	<0.275	U	<25.0	U	41.6		<25.0	U	41.6	
		2'	336		<0.025	U	<0.050	U	<0.050	U	<0.150	U	<0.275	U	<25.0	U	<25.0	U	<25.0	U	<25.0	U
		4'	48		<0.025	U	<0.050	U	<0.050	U	<0.150	U	<0.275	U	<25.0	U	<25.0	U	<25.0	U	<25.0	U

TABLE 1
SUMMARY OF ANALYTICAL RESULTS
SOIL ASSESSMENT
nAPP2420727981 (DOR 7/19/2024) nAPP2424378052 (DOR 8/30/2024)
CHEVRON MCBU
CICADA UNIT #022H RISER RELEASE
EDDY COUNTY, NEW MEXICO

Sample ID	Sample Date	Sample Depth	Chloride ¹		BTEX ²										TPH ³							
					Benzene		Toluene		Ethylbenzene		Total Xylenes		Total BTEX		GRO		DRO		MRO		Total TPH	
		ft. bgs	mg/kg	Q	mg/kg	Q	mg/kg	Q	mg/kg	Q	mg/kg	Q	mg/kg	Q	mg/kg	Q	mg/kg	Q	mg/kg	Q	mg/kg	Q
AH-1	10/31/2024	5-6'	5600		<0.025	U	<0.050	U	<0.050	U	<0.150	U	<0.275	U	<25.0	U	410		98		508	
		6-7'	1500		<0.025	U	<0.050	U	<0.050	U	<0.150	U	<0.275	U	<25.0	U	351		92.9		444	
		7-8'	624		<0.025	U	<0.050	U	<0.050	U	<0.150	U	<0.275	U	<25.0	U	26.0		<25.0	U	26.0	
		8-9'	1250		<0.025	U	<0.050	U	<0.050	U	<0.150	U	<0.275	U	<25.0	U	166		39.1		205	
	11/5/2024	9-9.5'	1120		<0.050	U	<0.050	U	<0.050	U	<0.150	U	<0.300	U	<10.0	U	375		66.7		442	
		9.5-10'	848		<0.050	U	<0.050	U	<0.050	U	<0.150	U	<0.300	U	<10.0	U	512		89.2		601	
		10-10.5	832		<0.050	U	<0.050	U	<0.050	U	0.282		<0.300	U	<10.0	U	476		83.0		559	
11/14/2024	11'	624		<0.050	U	<0.050	U	<0.050	U	<0.150	U	<0.300	U	<10.0	U	<10.0	U	<10.0	U	<10.0	U	
AH-2	10/31/2024	5-6'	3840		<0.025	U	<0.050	U	<0.050	U	<0.150	U	<0.275	U	<25.0	U	108		<25.0	U	108	
		6-7'	336		<0.025	U	<0.050	U	<0.050	U	<0.150	U	<0.275	U	<25.0	U	<25.0	U	<25.0	U	<25.0	U
AH-3	11/15/2024	0-0.5'	4480		<0.500	U	2.11		2.76		55.9		60.7		2100		16300		2320		20720	
		1'	5120		<0.500	U	1.53		2.52		45.3		49.4		1760		14500		2310		18570	
		2'	272		<0.050	U	<0.050	U	<0.050	U	<0.150	U	<0.300	U	<10.0		237		18.9		255.9	
HORIZONTAL DELINEATION SAMPLES																						
H-1	8/12/2024	0-1'	199		<0.00139	U	<0.00200	U	<0.00109	U	<0.00228	U	<0.00228	U	<14.5	U	<15.1	U	<15.1	U	<15.1	U
H-2	8/12/2024	0-1'	119		<0.00138	U	<0.00199	U	<0.00108	U	<0.00227	U	<0.00227	U	<14.7	U	<15.3	U	<15.3	U	<15.3	U
H-3	8/12/2024	0-1'	242		<0.00140	U	<0.00201	U	<0.00110	U	<0.00230	U	<0.00230	U	<14.5	U	<15.1	U	<15.1	U	<15.1	U
H-4	8/12/2024	0-1'	78.0		<0.00141	U	<0.00202	U	<0.00110	U	<0.00231	U	<0.00231	U	<14.5	U	<15.1	U	<15.1	U	<15.1	U
H-5	8/12/2024	0-1'	188		<0.00139	U	<0.00200	U	<0.00109	U	<0.00228	U	<0.00228	U	<14.4	U	<15.0	U	<15.0	U	<15.0	U
H-1.3	10/31/2024	0-1'	128		<0.025	U	<0.050	U	<0.050	U	<0.150	U	<0.275	U	<25.0	U	<25.0	U	<25.0	U	<25.0	U
H-2.3	10/29/2024	0-1'	80.0		<0.025	U	<0.050	U	<0.050	U	<0.150	U	<0.275	U	<25.0	U	<25.0	U	<25.0	U	<25.0	U
H-3.3	10/29/2024	0-1'	96.0		<0.025	U	<0.050	U	<0.050	U	<0.150	U	<0.275	U	<25.0	U	<25.0	U	<25.0	U	<25.0	U
H-4.3	10/29/2024	0-1'	64.0		<0.025	U	<0.050	U	<0.050	U	<0.150	U	<0.275	U	<25.0	U	<25.0	U	<25.0	U	<25.0	U
H-5.3	10/31/2024	0-1'	48.0		<0.025	U	<0.050	U	<0.050	U	<0.150	U	<0.275	U	<25.0	U	<25.0	U	<25.0	U	<25.0	U
H-6.3	10/31/2024	0-1'	112		<0.025	U	<0.050	U	<0.050	U	<0.150	U	<0.275	U	<25.0	U	<25.0	U	<25.0	U	<25.0	U
H-7.3	10/29/2024	0-1'	80.0		<0.025	U	<0.050	U	<0.050	U	<0.150	U	<0.275	U	<25.0	U	<25.0	U	<25.0	U	<25.0	U
H-8.3	11/15/2024	0-1'	64.0		<0.050	U	<0.050	U	<0.050	U	<0.150	U	<0.300	U	<10.0	U	<10.0	U	<10.0	U	<10.0	U
H-9.3	11/15/2024	0-1'	32.0		<0.050	U	<0.050	U	<0.050	U	<0.150	U	<0.300	U	<10.0	U	<10.0	U	<10.0	U	<10.0	U

NOTES:

ft.	Feet	NS	Sample not analyzed for parameter	<i>Bold and italicized values indicate exceedance of proposed Remediation RRALs and Reclamation Requirements.</i>
bgs	Below ground surface	1	EPA Method 300.0	Shaded rows indicate soil intervals that were excavated during remediation activities
mg/kg	Milligrams per kilogram	2	EPA Method 8021B	
TPH	Total Petroleum Hydrocarbons	3	Method SW8015 Mod	Qualifiers:
GRO	Gasoline range organics			B Compound was found in the blank and sample.
DRO	Diesel range organics			F1 MS and/or MSD recovery exceeds control limits.
MRO	Motor Oil range organics			J Result is less than the RL but greater than or equal to the MDL and the concentration is an approximate value.
				U Indicates the analyte was analyzed for but not detected.

TABLE 2
SUMMARY OF ANALYTICAL RESULTS
SOIL REMEDIATION
nAPP2420727981 (DOR 7/19/2024) nAPP2424378052 (DOR 8/30/2024)
CHEVRON MCBU
CICADA UNIT #022H RISER RELEASE
EDDY COUNTY, NEW MEXICO

Sample ID	Sample Date	Sample Depth	Chloride ¹	BTEX ²					TPH ³			
				Benzene	Toluene	Ethylbenzene	Total Xylenes	Total BTEX	GRO	DRO	MRO	Total TPH
		ft. bgs	mg/kg	mg/kg	mg/kg	mg/kg	mg/kg	C ₆ - C ₁₀	> C ₁₀ - C ₂₈	> C ₂₈ - C ₃₆	(GRO+DRO+EXT DRO)	
Reclamation Closure Criteria for Surface (0-4 ft bgs) Soils:			600 mg/kg	10 mg/kg	--	--	--	50 mg/kg	--	--	--	100 mg/kg
Site RRLs for Subsurface (>4 ft bgs) Soils (GW <50 ft):			600 mg/kg	10 mg/kg	--	--	--	50 mg/kg	--	--	--	100 mg/kg
PH-1	11/14/2024	12'	576	<0.050	<0.050	<0.050	<0.150	<0.300	<10.0	34	<10.0	34
BH-2	11/21/2024	7'	64	<0.025	<0.050	<0.050	<0.150	<0.275	<25.0	<25.0	<25.0	<25.0
FS-1	2/7/2025	1.5'	640	<0.050	<0.050	<0.050	<0.150	<0.300	<10.0	23.2	<10.0	23.2
FS-1 (2')*	2/10/2025	2'	64.0	<0.050	<0.050	<0.050	<0.150	<0.300	<10.0	<10.0	<10.0	-
FS-2	2/7/2025	1.5'	640	<0.050	<0.050	<0.050	<0.150	<0.300	<10.0	49.9	<10.0	49.9
FS-2 (2')*	2/10/2025	2'	144	<0.050	<0.050	<0.050	<0.150	<0.300	<10.0	<10.0	<10.0	-
FS-3	2/7/2025	1.5'	304	<0.050	<0.050	<0.050	<0.150	<0.300	<10.0	30.8	<10.0	30.8
FS-4	2/7/2025	1'	304	<0.050	<0.050	<0.050	<0.150	<0.300	<10.0	22.6	<10.0	22.6
FS-5	2/7/2025	1'	560	<0.050	<0.050	<0.050	<0.150	<0.300	<10.0	35.2	<10.0	35.2
FS-6	2/7/2025	1'	592	<0.050	<0.050	<0.050	<0.150	<0.300	<10.0	30.5	<10.0	30.5
FS-7	2/7/2025	1'	112	<0.050	<0.050	<0.050	<0.150	<0.300	<10.0	89.1	<10.0	89.1
FS-8	2/7/2025	1'	80.0	<0.050	<0.050	<0.050	<0.150	<0.300	<10.0	189	<10.0	189
FS-8 (1.5')*	2/10/2025	1.5'	144	<0.050	<0.050	<0.050	<0.150	<0.300	<10.0	17.3	<10.0	17.3
FS-9	2/7/2025	1'	80.0	<0.050	<0.050	0.086	<0.150	<0.300	<10.0	170	<10.0	170
FS-9 (1.5')*	2/7/2025	1.5'	160	<0.050	<0.050	0.086	<0.150	<0.300	<10.0	18.8	<10.0	18.8
FS-10	2/7/2025	2'	96.0	<0.050	<0.050	<0.050	<0.150	<0.300	<10.0	10.3	<10.0	10.3
FS-11	2/7/2025	7.5'	560	<0.050	0.223	1.01	3.2	4.43	121	1500	204	1,825
FS-11 (8.5')*	2/7/2025	8.5'	128	<0.050	0.223	1.01	3.2	4.43	121	<10.0	<10.0	-
FS-12	2/7/2025	3'	128	<0.050	<0.050	<0.050	<0.150	<0.300	<10.0	<10.0	<10.0	-
SW-1	2/7/2025	-	208	<0.050	<0.050	<0.050	<0.150	<0.300	<10.0	23.1	<10.0	23.1
SW-2	2/7/2025	-	48.0	<0.050	<0.050	<0.050	<0.150	<0.300	<10.0	<10.0	<10.0	-
SW-3	2/7/2025	-	32.0	<0.050	<0.050	<0.050	<0.150	<0.300	<10.0	<10.0	<10.0	-
SW-4	2/7/2025	-	112	<0.050	<0.050	<0.050	<0.150	<0.300	<10.0	<10.0	<10.0	23.1
SW-5	2/7/2025	-	64.0	<0.050	<0.050	<0.050	<0.150	<0.300	13.5	374	37.4	424.9
SW-5 (1')*	2/10/2025	-	112	<0.050	<0.050	<0.050	<0.150	<0.300	<10.0	<10.0	<10.0	-
SW-6	2/7/2025	-	144	<0.050	<0.050	<0.050	<0.150	<0.300	<10.0	12.3	<10.0	12.3
SW-7	2/7/2025	-	80.0	<0.050	<0.050	<0.050	<0.150	<0.300	<10.0	<10.0	<10.0	-
SW-8	2/7/2025	-	176	<0.050	<0.050	<0.050	<0.150	<0.300	<10.0	11.9	<10.0	11.9

NOTES:

- ft. Feet
- bgs Below ground surface
- mg/kg Milligrams per kilogram
- TPH Total Petroleum Hydrocarbons
- GRO Gasoline range organics
- DRO Diesel range organics
- 1 Method SM4500CI-B
- 2 Method 8021B
- 3 Method 8015M

Bold and italicized values indicate exceedance of proposed Remediation RRLs and/or Reclamation Requirements.

Gold highlight represents soil horizons that were removed during deepening of excavation floors.

Green highlight represents soil intervals that were removed during horizontal expansion of excavation sidewalls.

* These iterative samples are located to encompass the original sample location that triggered removal, with further excavation in each area indicated in ().

APPENDIX A

Regulatory Correspondence

From: [Lincoln, Kennedy](#)
To: [Faught, John](#)
Subject: Fw: Re: Re: [EXTERNAL] Request for Extension on Workplan Submittal: nAPP2420727981
Date: Tuesday, October 8, 2024 9:57:00 AM
Attachments: [image001.png](#)
[Outlook-5a0cu3qe.png](#)

CAUTION: This email originated from an external sender. Verify the source before opening links or attachments.

Kennedy Lincoln
MCBU Environmental Specialist
Mid-Continent Business Unit (MCBU)
Chevron North America Exploration and Production Company
6301 Deauville Midland, TX
Mobile [\(432\) 813-5384](tel:(432)813-5384)
Kennedy.Lincoln@chevron.com

From: Velez, Nelson, EMNRD <Nelson.Velez@emnrd.nm.gov>
Sent: Tuesday, October 8, 2024 9:43:18 AM
To: Lincoln, Kennedy <Kennedy.Lincoln@chevron.com>
Subject: [****EXTERNAL****] Re: Re: [EXTERNAL] Request for Extension on Workplan Submittal: nAPP2420727981

Be aware this external email contains an attachment and/or link.
Ensure the email and contents are expected. If there are concerns, please submit suspicious messages to the Cyber Intelligence Center using the Report Phishing button.

Good morning Kennedy,

Thank you for your correspondence, assistance, and cooperation.

Your 60-day time extension request is approved (a little early). Remediation Due date has been updated to December 17, 2024.

Please keep a copy of this communication for inclusion within the appropriate report submittal.

The OCD requires a copy of all correspondence relative to remedial activities be included in all proposals and/or final closure reports. Correspondence required to be included in reports may include, but not limited to, notifications for liner inspections, sample events, spill/release/fire, and request for time extensions or variances.

Have a safe and productive day!

Regards,

Nelson Velez • Environmental Specialist - Adv
Environmental Bureau | EMNRD - Oil Conservation Division
1000 Rio Brazos Road | Aztec, NM 87410
(505) 469-6146 | nelson.velez@emnrd.nm.gov
<http://www.emnrd.nm.gov/oed>



From: Lincoln, Kennedy <Kennedy.Lincoln@chevron.com>
Sent: Tuesday, September 24, 2024 12:54 PM
To: Velez, Nelson, EMNRD <Nelson.Velez@emnrd.nm.gov>; Enviro, OCD, EMNRD <OCD.Enviro@emnrd.nm.gov>
Subject: RE: Re: [EXTERNAL] Request for Extension on Workplan Submittal: nAPP2420727981

You don't often get email from kennedy.lincoln@chevron.com. [Learn why this is important](#)

Good afternoon Nelson,

Thank you for your quick response and I understand that the extension will not be granted until a week before the due date expiration. I would like to request a 60-day extension however we still plan to complete the remediation within the 30-day timeframe .

Thank you for your understanding and assistance.

Kennedy Lincoln
MCBU Environmental Specialist
Mid-Continent Business Unit (MCBU)
Chevron North America Exploration and Production Company
6301 Deauville Midland, TX
Mobile (432) 813-5384
Kennedy.Lincoln@chevron.com

From: Velez, Nelson, EMNRD <Nelson.Velez@emnrd.nm.gov>
Sent: Tuesday, September 24, 2024 9:32 AM
To: Lincoln, Kennedy <Kennedy.Lincoln@chevron.com>; Enviro, OCD, EMNRD <OCD.Enviro@emnrd.nm.gov>

Subject: [**EXTERNAL**] Re: [EXTERNAL] Request for Extension on Workplan Submittal: nAPP2420727981

Be aware this external email contains an attachment and/or link.

Ensure the email and contents are expected. If there are concerns, please submit suspicious messages to the Cyber Intelligence Center using the Report Phishing button.

Good morning Kennedy,

Thank you for the correspondence. All three incidents are currently under my review (Robert Hamlet was the reviewer for incident # NAPP2414869489).

The incident in question has a remediation due date of October 18, 2024. I have flagged your email to response and approve your time extension within a week of due date expiration. Since the other two incidents due dates are 11/12 & 11/24/2024, I've surmised that your extension request would follow the same timeline (30-days). Please acknowledge if this is the case or you specifically requesting a longer period of time (60 or 90-days).

Have a safe and pleasant day!

Regards,

Nelson Velez • Environmental Specialist - Adv
Environmental Bureau | EMNRD - Oil Conservation Division
1000 Rio Brazos Road | Aztec, NM 87410
(505) 469-6146 | nelson.velez@emnrd.nm.gov
<http://www.emnrd.nm.gov/ocd>



From: Lincoln, Kennedy <Kennedy.Lincoln@chevron.com>

Sent: Monday, September 23, 2024 5:22 PM

To: Enviro, OCD, EMNRD <OCD.Enviro@emnrd.nm.gov>; Velez, Nelson, EMNRD <Nelson.Velez@emnrd.nm.gov>

Subject: [EXTERNAL] Request for Extension on Workplan Submittal: nAPP2420727981

Some people who received this message don't often get email from kennedy.lincoln@chevron.com. [Learn why this is important](#)

CAUTION: This email originated outside of our organization. Exercise caution prior to clicking on links or opening attachments.

Hello,

I am reaching out to request an extension for the workplan submittal for incident ID (n#) nAPP2420727981 at Cicada 022H. The reason I am requesting an extension for this incident number is because we have three spills (nAPP2414869489, nAPP2420727981 and nAPP2424378052) on the same pad, and we would like to make a workplan that will allow the remediation of all areas to be done at the same time. We have currently delineated the impacted area for the first two spills and are planning to delineate the third spill next week.

Please let me know if you need any additional information to grant the extension.

Thanks,

Kennedy Lincoln
MCBU Environmental Specialist
Mid-Continent Business Unit (MCBU)
Chevron North America Exploration and Production Company
6301 Deauville Midland, TX
Mobile (432) 813-5384
Kennedy.Lincoln@chevron.com

From: OCDOnline@state.nm.us <OCDOnline@state.nm.us>

Sent: Monday, July 29, 2024 4:53 PM

To: Lincoln, Kennedy <Kennedy.Lincoln@chevron.com>

Subject: [****EXTERNAL****] The Oil Conservation Division (OCD) has approved the application, Application ID: 367199

To whom it may concern (c/o Kennedy Lincoln for CHEVRON U S A INC),
The OCD has approved the submitted *Application for administrative approval of a release notification and corrective action* (C-141), for incident ID (n#) nAPP2420727981, with the following conditions:

- **None**

The signed C-141 can be found in the OCD Online: Imaging under the incident ID (n#).

If you have any questions regarding this application, please contact me.

Thank you,

Nelson Velez

Environmental Specialist - Advanced

505-469-6146

Nelson.Velez@emnrd.nm.gov

New Mexico Energy, Minerals and Natural Resources Department

1220 South St. Francis Drive

Santa Fe, NM 87505

From: [Lincoln, Kennedy](#)
To: [Faught, John](#)
Subject: Fw: [EXTERNAL] Re: The Oil Conservation Division (OCD) has approved the application, Application ID: 383687
Date: Wednesday, November 20, 2024 8:59:48 PM
Attachments: [Outlook-fz4shnox.png](#)

CAUTION: This email originated from an external sender. Verify the source before opening links or attachments.

Hello John,

Below is the extension request confirmation.

Kennedy Lincoln
MCBU Environmental Specialist
Mid-Continent Business Unit (MCBU)
Chevron North America Exploration and Production Company
6301 Deauville Midland, TX
Mobile [\(432\) 813-5384](tel:4328135384)
Kennedy.Lincoln@chevron.com

From: Velez, Nelson, EMNRD <Nelson.Velez@emnrd.nm.gov>
Sent: Wednesday, November 20, 2024 1:44:23 PM
To: Lincoln, Kennedy <Kennedy.Lincoln@chevron.com>; ocdonline, emnrd, EMNRD <emnrd.ocdonline@emnrd.nm.gov>
Subject: **[**EXTERNAL**]** Re: [EXTERNAL] Re: The Oil Conservation Division (OCD) has approved the application, Application ID: 383687

Be aware this external email contains an attachment and/or link.
Ensure the email and contents are expected. If there are concerns, please submit suspicious messages to the Cyber Intelligence Center using the Report Phishing button.

Good afternoon Lincoln,

Thank you for the correspondence. Your 30-day time extension request is approved. Remediation Due date has been updated to December 30, 2024.

Please keep a copy of this communication for inclusion within the appropriate report submittal.

The OCD requires a copy of all correspondence relative to remedial activities be included in all proposals and/or final closure reports. Correspondence required to be included in reports may include, but not limited to, notifications for liner inspections, sample events, spill/release/fire, and request for time extensions or variances.

Regards,

Nelson Velez • Environmental Specialist - Adv
Environmental Bureau | EMNRD - Oil Conservation Division
1000 Rio Brazos Road | Aztec, NM 87410
(505) 469-6146 | nelson.velez@emnrd.nm.gov
<http://www.emnrd.nm.gov/oed>



From: Lincoln, Kennedy <Kennedy.Lincoln@chevron.com>
Sent: Wednesday, November 20, 2024 11:59 AM
To: ocdonline, emnrd, EMNRD <emnrd.ocdonline@emnrd.nm.gov>; Velez, Nelson, EMNRD <Nelson.Velez@emnrd.nm.gov>
Subject: [EXTERNAL] Re: The Oil Conservation Division (OCD) has approved the application, Application ID: 383687

CAUTION: This email originated outside of our organization. Exercise caution prior to clicking on links or opening attachments.

Good afternoon,

We respectfully submit request for a work plan submittal extension of Incident # nAPP2424378052. This extension request is due to the need to remove on-site buried piping to safely complete delineation assessment activities within the area of release, which resulted in the delay of the assessment activities. Chevron requests a 30-day extension to complete assessment activities and workplan development.

Thank you for your time.

Kennedy Lincoln
MCBU Environmental Specialist
Mid-Continent Business Unit (MCBU)
Chevron North America Exploration and Production Company
6301 Deauville Midland, TX
Mobile (432) 813-5384
Kennedy.Lincoln@chevron.com

From: OCDOnline@state.nm.us <OCDOnline@state.nm.us>

Sent: Monday, September 16, 2024 12:19 PM

To: Lincoln, Kennedy <Kennedy.Lincoln@chevron.com>

Subject: [****EXTERNAL****] The Oil Conservation Division (OCD) has approved the application, Application ID: 383687

To whom it may concern (c/o Kennedy Lincoln for CHEVRON U S A INC),
The OCD has approved the submitted *Application for administrative approval of a release notification and corrective action* (C-141), for incident ID (n#) nAPP2424378052, with the following conditions:

- **None**

The signed C-141 can be found in the OCD Online: Imaging under the incident ID (n#).

If you have any questions regarding this application, please contact me.

Thank you,

Nelson Velez

Environmental Specialist - Advanced

505-469-6146

Nelson.Velez@emnrd.nm.gov

New Mexico Energy, Minerals and Natural Resources Department

1220 South St. Francis Drive

Santa Fe, NM 87505



Outlook

FW: Notification of Release to BLM Lands - Cicada 022H [nAPP2424378052] - 08.30.2024

From Lincoln, Kennedy <Kennedy.Lincoln@chevron.com>**Date** Mon 2/17/2025 10:58 AM**To** Abbott, Sam <Sam.Abbott@tetrattech.com>

1 attachment (11 MB)

Safe Attachments Scan In Progress;

CAUTION: This email originated from an external sender. Verify the source before opening links or attachments.



Kennedy Lincoln
MCBU Environmental Specialist
Mid-Continent Business Unit (MCBU)
Chevron North America Exploration and Production Company
6301 Deauville Midland, TX
Mobile (432) 813-5384
Kennedy.Lincoln@chevron.com

From: Lincoln, Kennedy**Sent:** Tuesday, January 21, 2025 2:31 PM**To:** Taylor, Shelly J <sjtaylor@blm.gov>**Subject:** FW: Notification of Release to BLM Lands - Cicada 022H [nAPP2424378052] - 08.30.2024

Kennedy Lincoln
MCBU Environmental Specialist
Mid-Continent Business Unit (MCBU)
Chevron North America Exploration and Production Company
6301 Deauville Midland, TX
Mobile (432) 813-5384
Kennedy.Lincoln@chevron.com

From: Lincoln, Kennedy**Sent:** Tuesday, January 21, 2025 1:21 PM**To:** Wells, Shelly, EMNRD <Shelly.Wells@emnrd.nm.gov>; BLM_NM_CFO_REALTY_Spill
<blm_nm_cfo_realty_spill@blm.gov>; BLM_NM_CFO_Spill@blm.gov**Cc:** Barnhill, Amy <ABarnhill@chevron.com>; Tyler, Loyd <Loyd.Tyler@chevron.com>**Subject:** RE: Notification of Release to BLM Lands - Cicada 022H [nAPP2424378052] - 08.30.2024

Hello,

Attached is the workplan for Cicada 022H release nAPP2424378052.

Kennedy Lincoln

MCBU Environmental Specialist
Mid-Continent Business Unit (MCBU)
Chevron North America Exploration and Production Company
6301 Deauville Midland, TX
Mobile (432) 813-5384
Kennedy.Lincoln@chevron.com

From: Lincoln, Kennedy
Sent: Friday, August 30, 2024 11:06 PM
To: Wells, Shelly, EMNRD <Shelly.Wells@emnrd.nm.gov>; BLM_NM_CFO_REALTY_Spill <blm_nm_cfo_realty_spill@blm.gov>; BLM_NM_CFO_Spill@blm.gov
Cc: Barnhill, Amy <ABarnhill@chevron.com>; Tyler, Loyd <Loyd.Tyler@chevron.com>
Subject: Notification of Release to BLM Lands - Cicada 022H [nAPP2424378052] - 08.30.2024

To Whom it May Concern,

Please find this notification of release for your consideration. Attached is the calculation sheet to determine the estimated release volume. The liquid lost estimate is based on the spill dimensions, estimated depth of fluid (wet soil depth) and type of formation. The spreadsheet will calculate the volume lost in the ground and does not include the recovered amount in the calculation. The calculated volume in the ground and the volume recovered were added together and reported on the C-141.

Site Name: CICADA UNIT #022H
Well: [30-015-45423] CICADA UNIT #022H
Operator: [4323] CHEVRON U S A INC
Type: Produced Water Release

SPILL ON PAD

District: Artesia
Severity: Major
Surface Owner: Federal
County: Eddy (15)

Incident Location: D-35-25S-27E 0 FNL 0 FEL
Lat/Long: 32.093063,-104.165862 NAD83

Kennedy Lincoln
MCBU Environmental Specialist
Mid-Continent Business Unit (MCBU)
Chevron North America Exploration and Production Company
6301 Deauville Midland, TX
Mobile (432) 813-5384
Kennedy.Lincoln@chevron.com

APPENDIX B

Site Characterization Data

Site Characterization Summary

Site Information:

Chevron MCBU
Cicada Unit 022H
Eddy County, New Mexico
T25S, R27E, Section 35, Unit D
(32.093063°, -104.165862°)

Site Characterization:

-High Karst
-No significant water features within specified distances
-Groundwater 69' BGS 0.43 Miles Northeast. (NMOSE, POD C-04371-POD1, 2019 Sample)

RRALs:

-600 mg/kg Chlorides
-100 mg/kg Total TPH
-10 mg/kg Benzene
-50 mg/kg Total BTEX




Explanation:


Due to the Cicada Unit 022H location within a high karst area.

Cicada Unit #022H

Karst Map

Legend

-  Cicada Unit #022H
-  High
-  Low

 Cicada Unit #022H



National Flood Hazard Layer FIRMMette



104°10'16"W 32°5'50"N



0 250 500 1,000 1,500 2,000 Feet

1:6,000

104°9'38"W 32°5'20"N

Released to Imaging: 6/6/2025 2:08:24 PM

Basemap Imagery Source: USGS National Map 2023

Legend

SEE FIS REPORT FOR DETAILED LEGEND AND INDEX MAP FOR FIRM PANEL LAYOUT

SPECIAL FLOOD HAZARD AREAS		Without Base Flood Elevation (BFE) Zone A, V, A99
		With BFE or Depth Zone AE, AO, AH, VE, AR
		Regulatory Floodway
OTHER AREAS OF FLOOD HAZARD		0.2% Annual Chance Flood Hazard, Areas of 1% annual chance flood with average depth less than one foot or with drainage areas of less than one square mile Zone X
		Future Conditions 1% Annual Chance Flood Hazard Zone X
		Area with Reduced Flood Risk due to Levee. See Notes. Zone X
		Area with Flood Risk due to Levee Zone D
OTHER AREAS		NO SCREEN Area of Minimal Flood Hazard Zone X
		Effective LOMRs
		Area of Undetermined Flood Hazard Zone D
GENERAL STRUCTURES		Channel, Culvert, or Storm Sewer
		Levee, Dike, or Floodwall
OTHER FEATURES		20.2 Cross Sections with 1% Annual Chance Water Surface Elevation
		17.5 Cross Sections with 1% Annual Chance Water Surface Elevation
		Coastal Transect
		Base Flood Elevation Line (BFE)
		Limit of Study
		Jurisdiction Boundary
		Coastal Transect Baseline
MAP PANELS		Digital Data Available
		No Digital Data Available
		Unmapped



The pin displayed on the map is an approximate point selected by the user and does not represent an authoritative property location.

This map complies with FEMA's standards for the use of digital flood maps if it is not void as described below. The basemap shown complies with FEMA's basemap accuracy standards

The flood hazard information is derived directly from the authoritative NFHL web services provided by FEMA. This map was exported on 6/20/2024 at 4:34 PM and does not reflect changes or amendments subsequent to this date and time. The NFHL and effective information may change or become superseded by new data over time.

This map image is void if the one or more of the following map elements do not appear: basemap imagery, flood zone labels, legend, scale bar, map creation date, community identifiers, FIRM panel number, and FIRM effective date. Map images for unmapped and unmodernized areas cannot be used for regulatory purposes.



New Mexico Office of the State Engineer

Water Column/Average Depth to Water

(A CLW##### in the POD suffix indicates the POD has been replaced & no longer serves a water right file.)

(R=POD has been replaced,
O=orphaned,
C=the file is closed)

(quarters are 1=NW 2=NE 3=SW 4=SE)

(quarters are smallest to largest)

(NAD83 UTM in meters)

(In feet)

POD Number	POD Sub-Code	basin	County	Q 64	Q 16	Q 4	Sec	Tws	Rng	X	Y	Distance	Depth Well	Depth Water	Water Column
C 04371 POD1	CUB	ED		3	3	4	26	25S	27E	579369	3551272	692	100	69	31

Average Depth to Water: **69 feet**

Minimum Depth: **69 feet**

Maximum Depth: **69 feet**

Record Count: 1

UTM NAD83 Radius Search (in meters):

Easting (X): 578711.206

Northing (Y): 3551054.94

Radius: 1600

The data is furnished by the NMOSE/ISC and is accepted by the recipient with the expressed understanding that the OSE/ISC make no warranties, expressed or implied, concerning the accuracy, completeness, reliability, usability, or suitability for any particular purpose of the data.

6/20/24 2:27 PM

Page 1 of 1

WATER COLUMN/ AVERAGE
DEPTH TO WATER



New Mexico Office of the State Engineer

Point of Diversion Summary

		(quarters are 1=NW 2=NE 3=SW 4=SE)						(quarters are smallest to largest)		(NAD83 UTM in meters)			
Well Tag	POD Number	Q64	Q16	Q4	Sec	Tws	Rng	X	Y				
NA	C 04371 POD1	3	3	4	26	25S	27E	579369	3551272				
Driller License:		1456		Driller Company:		WHITE DRILLING COMPANY							
Driller Name:		WHITE, JOHNNOWN.GENER											
Drill Start Date:		10/17/2019		Drill Finish Date:		10/17/2019		Plug Date:		10/17/2019			
Log File Date:		11/04/2019		PCW Rev Date:				Source:		Shallow			
Pump Type:				Pipe Discharge Size:				Estimated Yield:					
Casing Size:				Depth Well:		100 feet		Depth Water:		69 feet			
Water Bearing Stratifications:				Top	Bottom	Description							
				5	100	Other/Unknown							

The data is furnished by the NMOSE/ISC and is accepted by the recipient with the expressed understanding that the OSE/ISC make no warranties, expressed or implied, concerning the accuracy, completeness, reliability, usability, or suitability for any particular purpose of the data.

6/20/24 2:22 PM

POINT OF DIVERSION SUMMARY



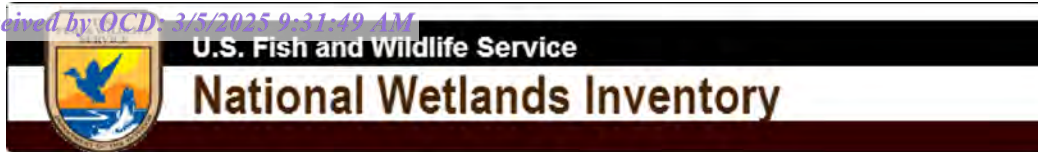
National Water Information System: Mapper

[USGS Home](#)
[Contact USGS](#)
[Search USGS](#)

[Help](#) [Info](#)



Site Information



Cicada Unit 022H



June 20, 2024

Wetlands

- Estuarine and Marine Deepwater
- Estuarine and Marine Wetland

- Freshwater Emergent Wetland
- Freshwater Forested/Shrub Wetland
- Freshwater Pond

- Lake
- Other
- Riverine

This map is for general reference only. The US Fish and Wildlife Service is not responsible for the accuracy or currentness of the base data shown on this map. All wetlands related data should be used in accordance with the layer metadata found on the Wetlands Mapper web site.

APPENDIX C

Photographic Documentation



TETRA TECH, INC. PROJECT NO. 212C-MD-03753	DESCRIPTION	View south-southeast of excavation activities in pipeline repair area.	1
	SITE NAME	Cicada #022H Riser Releases	10/31/2024



TETRA TECH, INC. PROJECT NO. 212C-MD-03753	DESCRIPTION	View southeast of excavation activities in pipeline repair area.	2
	SITE NAME	Cicada #022H Riser Releases	11/14/2024



TETRA TECH, INC. PROJECT NO. 212C-MD-03753	DESCRIPTION	View west-southwest of excavation activities in pipeline repair area.	3
	SITE NAME	Cicada #022H Riser Releases	11/14/2024



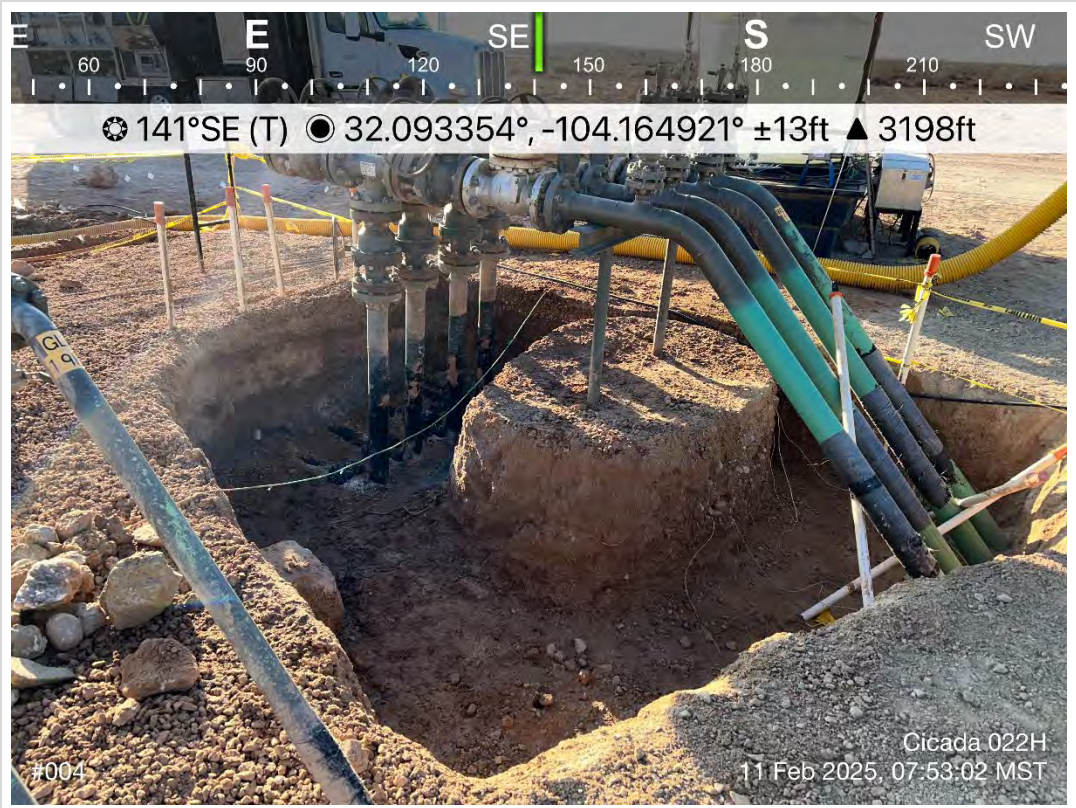
TETRA TECH, INC. PROJECT NO. 212C-MD-03753	DESCRIPTION	View north-northeast of excavation activities in pipeline repair area.	4
	SITE NAME	Cicada #022H Riser Releases	11/14/2024



TETRA TECH, INC. PROJECT NO. 212C-MD-03753	DESCRIPTION	View east-southeast of excavation extent.	5
	SITE NAME	Cicada #022H Riser Releases	2/10/2025



TETRA TECH, INC. PROJECT NO. 212C-MD-03753	DESCRIPTION	View southwest of excavation extent.	6
	SITE NAME	Cicada #022H Riser Releases	2/11/2025



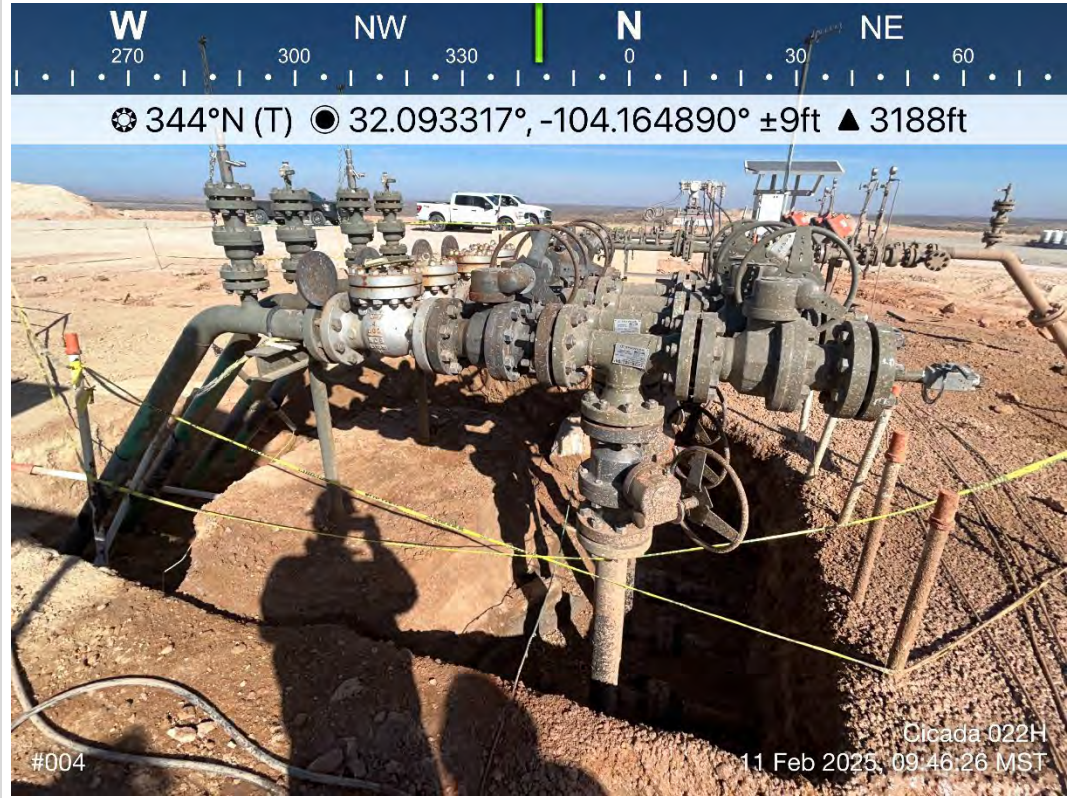
TETRA TECH, INC. PROJECT NO. 212C-MD-03753	DESCRIPTION	View southeast of excavation extent at pipeline riser.	7
	SITE NAME	Cicada #022H Riser Releases	2/11/2025



TETRA TECH, INC. PROJECT NO. 212C-MD-03753	DESCRIPTION	View east-southeast of excavation extent.	8
	SITE NAME	Cicada #022H Riser Releases	2/12/2025



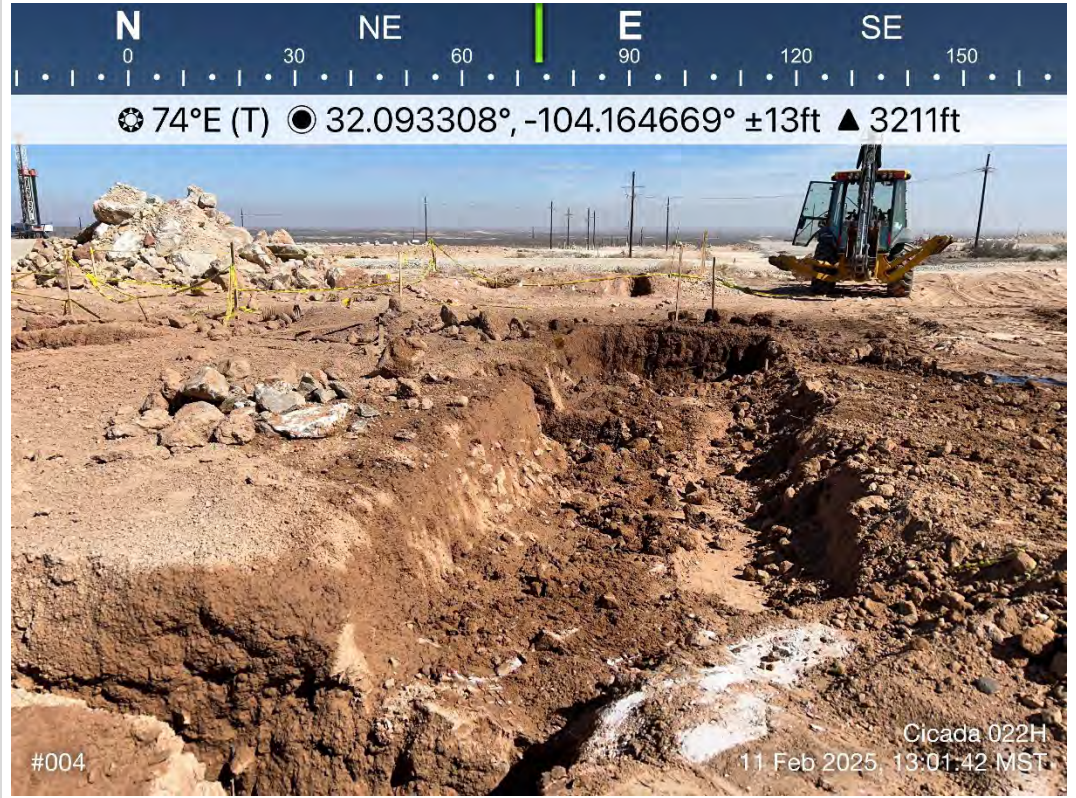
TETRA TECH, INC. PROJECT NO. 212C-MD-03753	DESCRIPTION	View southwest of excavation extent.	9
	SITE NAME	Cicada #022H Riser Releases	2/11/2025



TETRA TECH, INC. PROJECT NO. 212C-MD-03753	DESCRIPTION	View north of excavation extent at pipeline riser.	10
	SITE NAME	Cicada #022H Riser Releases	2/11/2025



TETRA TECH, INC. PROJECT NO. 212C-MD-03753	DESCRIPTION	View west of excavation extent.	11
	SITE NAME	Cicada #022H Riser Releases	2/11/2025



TETRA TECH, INC. PROJECT NO. 212C-MD-03753	DESCRIPTION	View east-northeast of excavation extent.	12
	SITE NAME	Cicada #022H Riser Releases	2/11/2025



TETRA TECH, INC. PROJECT NO. 212C-MD-03753	DESCRIPTION	View north of excavation extent.	13
	SITE NAME	Cicada #022H Riser Releases	2/12/2025



TETRA TECH, INC. PROJECT NO. 212C-MD-03753	DESCRIPTION	View northeast across backfilled excavation.	14
	SITE NAME	Cicada #022H Riser Releases	2/12/2025



TETRA TECH, INC. PROJECT NO. 212C-MD-03753	DESCRIPTION	View southeast across backfilled excavation.	15
	SITE NAME	Cicada #022H Riser Releases	2/12/2025



TETRA TECH, INC. PROJECT NO. 212C-MD-03753	DESCRIPTION	View south of backfilled excavation on the lease pad.	16
	SITE NAME	Cicada #022H Riser Releases	2/12/2025



TETRA TECH, INC. PROJECT NO. 212C-MD-03753	DESCRIPTION	View south-southeast across backfilled and seeded excavation.	17
	SITE NAME	Cicada #022H Riser Releases	2/12/2025



TETRA TECH, INC. PROJECT NO. 212C-MD-03753	DESCRIPTION	View north of backfilled and seeded excavation extent.	18
	SITE NAME	Cicada #022H Riser Releases	2/12/2025

APPENDIX D

Laboratory Analytical Data



PHONE (575) 393-2326 ° 101 E. MARLAND ° HOBBS, NM 88240

February 10, 2025

SAM ABBOTT

TETRA TECH

901 WEST WALL STREET , STE 100

MIDLAND, TX 79701

RE: CICADA UNIT 022H RISER RELEASE

Enclosed are the results of analyses for samples received by the laboratory on 02/07/25 16:08.

Cardinal Laboratories is accredited through Texas NELAP under certificate number TX-C24-00112. Accreditation applies to drinking water, non-potable water and solid and chemical materials. All accredited analytes are denoted by an asterisk (*). For a complete list of accredited analytes and matrices visit the TCEQ website at www.tceq.texas.gov/field/qa/lab_accred_certif.html.

Cardinal Laboratories is accredited through the State of Colorado Department of Public Health and Environment for:

Method EPA 552.2	Haloacetic Acids (HAA-5)
Method EPA 524.2	Total Trihalomethanes (TTHM)
Method EPA 524.4	Regulated VOCs (V1, V2, V3)

Accreditation applies to public drinking water matrices.

This report meets NELAP requirements and is made up of a cover page, analytical results, and a copy of the original chain-of-custody. If you have any questions concerning this report, please feel free to contact me.

Sincerely,

A handwritten signature in black ink that reads "Celey D. Keene". The signature is written in a cursive, flowing style.

Celey D. Keene

Lab Director/Quality Manager



PHONE (575) 393-2326 ° 101 E. MARLAND ° HOBBS, NM 88240

Analytical Results For:

TETRA TECH
 SAM ABBOTT
 901 WEST WALL STREET , STE 100
 MIDLAND TX, 79701
 Fax To: (432) 682-3946

Received:	02/07/2025	Sampling Date:	02/07/2025
Reported:	02/10/2025	Sampling Type:	Soil
Project Name:	CICADA UNIT 022H RISER RELEASE	Sampling Condition:	Cool & Intact
Project Number:	212C - MD - 03753	Sample Received By:	Alyssa Parras
Project Location:	CHEVRON - EDDY CO., NM		

Sample ID: FS-1 (H250769-01)

BTEx 8021B		mg/kg		Analyzed By: JH						
Analyte	Result	Reporting Limit	Analyzed	Method Blank	BS	% Recovery	True Value QC	RPD	Qualifier	
Benzene*	<0.050	0.050	02/07/2025	ND	1.71	85.7	2.00	2.48		
Toluene*	<0.050	0.050	02/07/2025	ND	1.93	96.4	2.00	2.44		
Ethylbenzene*	<0.050	0.050	02/07/2025	ND	1.97	98.3	2.00	2.94		
Total Xylenes*	<0.150	0.150	02/07/2025	ND	6.14	102	6.00	5.14		
Total BTEX	<0.300	0.300	02/07/2025	ND						

Surrogate: 4-Bromofluorobenzene (PID) 102 % 71.5-134

Chloride, SM4500Cl-B		mg/kg		Analyzed By: HM						
Analyte	Result	Reporting Limit	Analyzed	Method Blank	BS	% Recovery	True Value QC	RPD	Qualifier	
Chloride	640	16.0	02/10/2025	ND	416	104	400	0.00		

TPH 8015M		mg/kg		Analyzed By: MS					
Analyte	Result	Reporting Limit	Analyzed	Method Blank	BS	% Recovery	True Value QC	RPD	Qualifier
GRO C6-C10*	<10.0	10.0	02/08/2025	ND	227	113	200	3.98	
DRO >C10-C28*	23.2	10.0	02/08/2025	ND	205	103	200	8.55	
EXT DRO >C28-C36	<10.0	10.0	02/08/2025	ND					

Surrogate: 1-Chlorooctane 107 % 48.2-134

Surrogate: 1-Chlorooctadecane 107 % 49.1-148

Cardinal Laboratories

*=Accredited Analyte

PLEASE NOTE: Liability and Damages. Cardinal's liability and client's exclusive remedy for any claim arising, whether based in contract or tort, shall be limited to the amount paid by client for analyses. All claims, including those for negligence and any other cause whatsoever shall be deemed waived unless made in writing and received by Cardinal within thirty (30) days after completion of the applicable service. In no event shall Cardinal be liable for incidental or consequential damages, including, without limitation, business interruptions, loss of use, or loss of profits incurred by client, its subsidiaries, affiliates or successors arising out of or related to the performance of the services hereunder by Cardinal, regardless of whether such claim is based upon any of the above stated reasons or otherwise. Results relate only to the samples identified above. This report shall not be reproduced except in full with written approval of Cardinal Laboratories.

Celey D. Keene, Lab Director/Quality Manager



PHONE (575) 393-2326 ° 101 E. MARLAND ° HOBBS, NM 88240

Analytical Results For:

TETRA TECH
 SAM ABBOTT
 901 WEST WALL STREET , STE 100
 MIDLAND TX, 79701
 Fax To: (432) 682-3946

Received:	02/07/2025	Sampling Date:	02/07/2025
Reported:	02/10/2025	Sampling Type:	Soil
Project Name:	CICADA UNIT 022H RISER RELEASE	Sampling Condition:	Cool & Intact
Project Number:	212C - MD - 03753	Sample Received By:	Alyssa Parras
Project Location:	CHEVRON - EDDY CO., NM		

Sample ID: FS-2 (H250769-02)

BTEX 8021B		mg/kg		Analyzed By: JH						
Analyte	Result	Reporting Limit	Analyzed	Method Blank	BS	% Recovery	True Value QC	RPD	Qualifier	
Benzene*	<0.050	0.050	02/07/2025	ND	1.71	85.7	2.00	2.48		
Toluene*	<0.050	0.050	02/07/2025	ND	1.93	96.4	2.00	2.44		
Ethylbenzene*	<0.050	0.050	02/07/2025	ND	1.97	98.3	2.00	2.94		
Total Xylenes*	<0.150	0.150	02/07/2025	ND	6.14	102	6.00	5.14		
Total BTEX	<0.300	0.300	02/07/2025	ND						

Surrogate: 4-Bromofluorobenzene (PID) 104 % 71.5-134

Chloride, SM4500Cl-B		mg/kg		Analyzed By: HM						
Analyte	Result	Reporting Limit	Analyzed	Method Blank	BS	% Recovery	True Value QC	RPD	Qualifier	
Chloride	640	16.0	02/10/2025	ND	416	104	400	0.00		

TPH 8015M		mg/kg		Analyzed By: MS					
Analyte	Result	Reporting Limit	Analyzed	Method Blank	BS	% Recovery	True Value QC	RPD	Qualifier
GRO C6-C10*	<10.0	10.0	02/08/2025	ND	227	113	200	3.98	
DRO >C10-C28*	49.9	10.0	02/08/2025	ND	205	103	200	8.55	
EXT DRO >C28-C36	<10.0	10.0	02/08/2025	ND					

Surrogate: 1-Chlorooctane 106 % 48.2-134

Surrogate: 1-Chlorooctadecane 102 % 49.1-148

Cardinal Laboratories

*=Accredited Analyte

PLEASE NOTE: Liability and Damages. Cardinal's liability and client's exclusive remedy for any claim arising, whether based in contract or tort, shall be limited to the amount paid by client for analyses. All claims, including those for negligence and any other cause whatsoever shall be deemed waived unless made in writing and received by Cardinal within thirty (30) days after completion of the applicable service. In no event shall Cardinal be liable for incidental or consequential damages, including, without limitation, business interruptions, loss of use, or loss of profits incurred by client, its subsidiaries, affiliates or successors arising out of or related to the performance of the services hereunder by Cardinal, regardless of whether such claim is based upon any of the above stated reasons or otherwise. Results relate only to the samples identified above. This report shall not be reproduced except in full with written approval of Cardinal Laboratories.

Celey D. Keene, Lab Director/Quality Manager



PHONE (575) 393-2326 ° 101 E. MARLAND ° HOBBS, NM 88240

Analytical Results For:

TETRA TECH
 SAM ABBOTT
 901 WEST WALL STREET , STE 100
 MIDLAND TX, 79701
 Fax To: (432) 682-3946

Received:	02/07/2025	Sampling Date:	02/07/2025
Reported:	02/10/2025	Sampling Type:	Soil
Project Name:	CICADA UNIT 022H RISER RELEASE	Sampling Condition:	Cool & Intact
Project Number:	212C - MD - 03753	Sample Received By:	Alyssa Parras
Project Location:	CHEVRON - EDDY CO., NM		

Sample ID: FS-3 (H250769-03)

BTEX 8021B		mg/kg		Analyzed By: JH						
Analyte	Result	Reporting Limit	Analyzed	Method Blank	BS	% Recovery	True Value QC	RPD	Qualifier	
Benzene*	<0.050	0.050	02/07/2025	ND	1.71	85.7	2.00	2.48		
Toluene*	<0.050	0.050	02/07/2025	ND	1.93	96.4	2.00	2.44		
Ethylbenzene*	<0.050	0.050	02/07/2025	ND	1.97	98.3	2.00	2.94		
Total Xylenes*	<0.150	0.150	02/07/2025	ND	6.14	102	6.00	5.14		
Total BTEX	<0.300	0.300	02/07/2025	ND						

Surrogate: 4-Bromofluorobenzene (PID) 106 % 71.5-134

Chloride, SM4500Cl-B		mg/kg		Analyzed By: HM						
Analyte	Result	Reporting Limit	Analyzed	Method Blank	BS	% Recovery	True Value QC	RPD	Qualifier	
Chloride	304	16.0	02/10/2025	ND	448	112	400	3.64	QM-07	

TPH 8015M		mg/kg		Analyzed By: MS					
Analyte	Result	Reporting Limit	Analyzed	Method Blank	BS	% Recovery	True Value QC	RPD	Qualifier
GRO C6-C10*	<10.0	10.0	02/08/2025	ND	227	113	200	3.98	
DRO >C10-C28*	30.8	10.0	02/08/2025	ND	205	103	200	8.55	
EXT DRO >C28-C36	<10.0	10.0	02/08/2025	ND					

Surrogate: 1-Chlorooctane 105 % 48.2-134

Surrogate: 1-Chlorooctadecane 107 % 49.1-148

Cardinal Laboratories

*=Accredited Analyte

PLEASE NOTE: Liability and Damages. Cardinal's liability and client's exclusive remedy for any claim arising, whether based in contract or tort, shall be limited to the amount paid by client for analyses. All claims, including those for negligence and any other cause whatsoever shall be deemed waived unless made in writing and received by Cardinal within thirty (30) days after completion of the applicable service. In no event shall Cardinal be liable for incidental or consequential damages, including, without limitation, business interruptions, loss of use, or loss of profits incurred by client, its subsidiaries, affiliates or successors arising out of or related to the performance of the services hereunder by Cardinal, regardless of whether such claim is based upon any of the above stated reasons or otherwise. Results relate only to the samples identified above. This report shall not be reproduced except in full with written approval of Cardinal Laboratories.

Celey D. Keene, Lab Director/Quality Manager



PHONE (575) 393-2326 ° 101 E. MARLAND ° HOBBS, NM 88240

Analytical Results For:

TETRA TECH
 SAM ABBOTT
 901 WEST WALL STREET , STE 100
 MIDLAND TX, 79701
 Fax To: (432) 682-3946

Received:	02/07/2025	Sampling Date:	02/07/2025
Reported:	02/10/2025	Sampling Type:	Soil
Project Name:	CICADA UNIT 022H RISER RELEASE	Sampling Condition:	Cool & Intact
Project Number:	212C - MD - 03753	Sample Received By:	Alyssa Parras
Project Location:	CHEVRON - EDDY CO., NM		

Sample ID: FS-4 (H250769-04)

BTEx 8021B		mg/kg		Analyzed By: JH						
Analyte	Result	Reporting Limit	Analyzed	Method Blank	BS	% Recovery	True Value QC	RPD	Qualifier	
Benzene*	<0.050	0.050	02/07/2025	ND	1.71	85.7	2.00	2.48		
Toluene*	<0.050	0.050	02/07/2025	ND	1.93	96.4	2.00	2.44		
Ethylbenzene*	<0.050	0.050	02/07/2025	ND	1.97	98.3	2.00	2.94		
Total Xylenes*	<0.150	0.150	02/07/2025	ND	6.14	102	6.00	5.14		
Total BTEX	<0.300	0.300	02/07/2025	ND						

Surrogate: 4-Bromofluorobenzene (PID) 104 % 71.5-134

Chloride, SM4500CI-B		mg/kg		Analyzed By: HM						
Analyte	Result	Reporting Limit	Analyzed	Method Blank	BS	% Recovery	True Value QC	RPD	Qualifier	
Chloride	304	16.0	02/10/2025	ND	448	112	400	3.64		

TPH 8015M		mg/kg		Analyzed By: MS					
Analyte	Result	Reporting Limit	Analyzed	Method Blank	BS	% Recovery	True Value QC	RPD	Qualifier
GRO C6-C10*	<10.0	10.0	02/08/2025	ND	227	113	200	3.98	
DRO >C10-C28*	22.6	10.0	02/08/2025	ND	205	103	200	8.55	
EXT DRO >C28-C36	<10.0	10.0	02/08/2025	ND					

Surrogate: 1-Chlorooctane 109 % 48.2-134

Surrogate: 1-Chlorooctadecane 106 % 49.1-148

Cardinal Laboratories

*=Accredited Analyte

PLEASE NOTE: Liability and Damages. Cardinal's liability and client's exclusive remedy for any claim arising, whether based in contract or tort, shall be limited to the amount paid by client for analyses. All claims, including those for negligence and any other cause whatsoever shall be deemed waived unless made in writing and received by Cardinal within thirty (30) days after completion of the applicable service. In no event shall Cardinal be liable for incidental or consequential damages, including, without limitation, business interruptions, loss of use, or loss of profits incurred by client, its subsidiaries, affiliates or successors arising out of or related to the performance of the services hereunder by Cardinal, regardless of whether such claim is based upon any of the above stated reasons or otherwise. Results relate only to the samples identified above. This report shall not be reproduced except in full with written approval of Cardinal Laboratories.

Celey D. Keene, Lab Director/Quality Manager



PHONE (575) 393-2326 ° 101 E. MARLAND ° HOBBS, NM 88240

Analytical Results For:

TETRA TECH
 SAM ABBOTT
 901 WEST WALL STREET , STE 100
 MIDLAND TX, 79701
 Fax To: (432) 682-3946

Received:	02/07/2025	Sampling Date:	02/07/2025
Reported:	02/10/2025	Sampling Type:	Soil
Project Name:	CICADA UNIT 022H RISER RELEASE	Sampling Condition:	Cool & Intact
Project Number:	212C - MD - 03753	Sample Received By:	Alyssa Parras
Project Location:	CHEVRON - EDDY CO., NM		

Sample ID: FS-5 (H250769-05)

BTEX 8021B		mg/kg		Analyzed By: JH						
Analyte	Result	Reporting Limit	Analyzed	Method Blank	BS	% Recovery	True Value QC	RPD	Qualifier	
Benzene*	<0.050	0.050	02/07/2025	ND	1.71	85.7	2.00	2.48		
Toluene*	<0.050	0.050	02/07/2025	ND	1.93	96.4	2.00	2.44		
Ethylbenzene*	<0.050	0.050	02/07/2025	ND	1.97	98.3	2.00	2.94		
Total Xylenes*	<0.150	0.150	02/07/2025	ND	6.14	102	6.00	5.14		
Total BTEX	<0.300	0.300	02/07/2025	ND						

Surrogate: 4-Bromofluorobenzene (PID) 104 % 71.5-134

Chloride, SM4500Cl-B		mg/kg		Analyzed By: HM						
Analyte	Result	Reporting Limit	Analyzed	Method Blank	BS	% Recovery	True Value QC	RPD	Qualifier	
Chloride	560	16.0	02/10/2025	ND	448	112	400	3.64		

TPH 8015M		mg/kg		Analyzed By: MS					
Analyte	Result	Reporting Limit	Analyzed	Method Blank	BS	% Recovery	True Value QC	RPD	Qualifier
GRO C6-C10*	<10.0	10.0	02/08/2025	ND	227	113	200	3.98	
DRO >C10-C28*	35.2	10.0	02/08/2025	ND	205	103	200	8.55	
EXT DRO >C28-C36	<10.0	10.0	02/08/2025	ND					

Surrogate: 1-Chlorooctane 96.9 % 48.2-134

Surrogate: 1-Chlorooctadecane 99.1 % 49.1-148

Cardinal Laboratories

*=Accredited Analyte

PLEASE NOTE: Liability and Damages. Cardinal's liability and client's exclusive remedy for any claim arising, whether based in contract or tort, shall be limited to the amount paid by client for analyses. All claims, including those for negligence and any other cause whatsoever shall be deemed waived unless made in writing and received by Cardinal within thirty (30) days after completion of the applicable service. In no event shall Cardinal be liable for incidental or consequential damages, including, without limitation, business interruptions, loss of use, or loss of profits incurred by client, its subsidiaries, affiliates or successors arising out of or related to the performance of the services hereunder by Cardinal, regardless of whether such claim is based upon any of the above stated reasons or otherwise. Results relate only to the samples identified above. This report shall not be reproduced except in full with written approval of Cardinal Laboratories.

Celey D. Keene, Lab Director/Quality Manager



PHONE (575) 393-2326 ° 101 E. MARLAND ° HOBBS, NM 88240

Analytical Results For:

TETRA TECH
 SAM ABBOTT
 901 WEST WALL STREET , STE 100
 MIDLAND TX, 79701
 Fax To: (432) 682-3946

Received:	02/07/2025	Sampling Date:	02/07/2025
Reported:	02/10/2025	Sampling Type:	Soil
Project Name:	CICADA UNIT 022H RISER RELEASE	Sampling Condition:	Cool & Intact
Project Number:	212C - MD - 03753	Sample Received By:	Alyssa Parras
Project Location:	CHEVRON - EDDY CO., NM		

Sample ID: FS-6 (H250769-06)

BTEx 8021B		mg/kg		Analyzed By: JH					
Analyte	Result	Reporting Limit	Analyzed	Method Blank	BS	% Recovery	True Value QC	RPD	Qualifier
Benzene*	<0.050	0.050	02/07/2025	ND	1.71	85.7	2.00	2.48	
Toluene*	<0.050	0.050	02/07/2025	ND	1.93	96.4	2.00	2.44	
Ethylbenzene*	<0.050	0.050	02/07/2025	ND	1.97	98.3	2.00	2.94	
Total Xylenes*	<0.150	0.150	02/07/2025	ND	6.14	102	6.00	5.14	
Total BTEX	<0.300	0.300	02/07/2025	ND					

Surrogate: 4-Bromofluorobenzene (PID) 105 % 71.5-134

Chloride, SM4500Cl-B		mg/kg		Analyzed By: HM					
Analyte	Result	Reporting Limit	Analyzed	Method Blank	BS	% Recovery	True Value QC	RPD	Qualifier
Chloride	592	16.0	02/10/2025	ND	448	112	400	3.64	

TPH 8015M		mg/kg		Analyzed By: MS					
Analyte	Result	Reporting Limit	Analyzed	Method Blank	BS	% Recovery	True Value QC	RPD	Qualifier
GRO C6-C10*	<10.0	10.0	02/08/2025	ND	227	113	200	3.98	
DRO >C10-C28*	30.5	10.0	02/08/2025	ND	205	103	200	8.55	
EXT DRO >C28-C36	<10.0	10.0	02/08/2025	ND					

Surrogate: 1-Chlorooctane 94.7 % 48.2-134

Surrogate: 1-Chlorooctadecane 93.2 % 49.1-148

Cardinal Laboratories

*=Accredited Analyte

PLEASE NOTE: Liability and Damages. Cardinal's liability and client's exclusive remedy for any claim arising, whether based in contract or tort, shall be limited to the amount paid by client for analyses. All claims, including those for negligence and any other cause whatsoever shall be deemed waived unless made in writing and received by Cardinal within thirty (30) days after completion of the applicable service. In no event shall Cardinal be liable for incidental or consequential damages, including, without limitation, business interruptions, loss of use, or loss of profits incurred by client, its subsidiaries, affiliates or successors arising out of or related to the performance of the services hereunder by Cardinal, regardless of whether such claim is based upon any of the above stated reasons or otherwise. Results relate only to the samples identified above. This report shall not be reproduced except in full with written approval of Cardinal Laboratories.

Celey D. Keene, Lab Director/Quality Manager



PHONE (575) 393-2326 ° 101 E. MARLAND ° HOBBS, NM 88240

Analytical Results For:

TETRA TECH
 SAM ABBOTT
 901 WEST WALL STREET , STE 100
 MIDLAND TX, 79701
 Fax To: (432) 682-3946

Received:	02/07/2025	Sampling Date:	02/07/2025
Reported:	02/10/2025	Sampling Type:	Soil
Project Name:	CICADA UNIT 022H RISER RELEASE	Sampling Condition:	Cool & Intact
Project Number:	212C - MD - 03753	Sample Received By:	Alyssa Parras
Project Location:	CHEVRON - EDDY CO., NM		

Sample ID: FS-7 (H250769-07)

BTEx 8021B		mg/kg		Analyzed By: JH						
Analyte	Result	Reporting Limit	Analyzed	Method Blank	BS	% Recovery	True Value QC	RPD	Qualifier	
Benzene*	<0.050	0.050	02/07/2025	ND	1.71	85.7	2.00	2.48		
Toluene*	<0.050	0.050	02/07/2025	ND	1.93	96.4	2.00	2.44		
Ethylbenzene*	<0.050	0.050	02/07/2025	ND	1.97	98.3	2.00	2.94		
Total Xylenes*	<0.150	0.150	02/07/2025	ND	6.14	102	6.00	5.14		
Total BTEX	<0.300	0.300	02/07/2025	ND						

Surrogate: 4-Bromofluorobenzene (PID) 105 % 71.5-134

Chloride, SM4500Cl-B		mg/kg		Analyzed By: HM					
Analyte	Result	Reporting Limit	Analyzed	Method Blank	BS	% Recovery	True Value QC	RPD	Qualifier
Chloride	112	16.0	02/10/2025	ND	448	112	400	3.64	

TPH 8015M		mg/kg		Analyzed By: MS					
Analyte	Result	Reporting Limit	Analyzed	Method Blank	BS	% Recovery	True Value QC	RPD	Qualifier
GRO C6-C10*	<10.0	10.0	02/08/2025	ND	227	113	200	3.98	
DRO >C10-C28*	89.1	10.0	02/08/2025	ND	205	103	200	8.55	
EXT DRO >C28-C36	<10.0	10.0	02/08/2025	ND					

Surrogate: 1-Chlorooctane 86.2 % 48.2-134

Surrogate: 1-Chlorooctadecane 83.0 % 49.1-148

Cardinal Laboratories

*=Accredited Analyte

PLEASE NOTE: Liability and Damages. Cardinal's liability and client's exclusive remedy for any claim arising, whether based in contract or tort, shall be limited to the amount paid by client for analyses. All claims, including those for negligence and any other cause whatsoever shall be deemed waived unless made in writing and received by Cardinal within thirty (30) days after completion of the applicable service. In no event shall Cardinal be liable for incidental or consequential damages, including, without limitation, business interruptions, loss of use, or loss of profits incurred by client, its subsidiaries, affiliates or successors arising out of or related to the performance of the services hereunder by Cardinal, regardless of whether such claim is based upon any of the above stated reasons or otherwise. Results relate only to the samples identified above. This report shall not be reproduced except in full with written approval of Cardinal Laboratories.

Celey D. Keene, Lab Director/Quality Manager



PHONE (575) 393-2326 ° 101 E. MARLAND ° HOBBS, NM 88240

Analytical Results For:

TETRA TECH
 SAM ABBOTT
 901 WEST WALL STREET , STE 100
 MIDLAND TX, 79701
 Fax To: (432) 682-3946

Received:	02/07/2025	Sampling Date:	02/07/2025
Reported:	02/10/2025	Sampling Type:	Soil
Project Name:	CICADA UNIT 022H RISER RELEASE	Sampling Condition:	Cool & Intact
Project Number:	212C - MD - 03753	Sample Received By:	Alyssa Parras
Project Location:	CHEVRON - EDDY CO., NM		

Sample ID: FS-8 (H250769-08)

BTEX 8021B		mg/kg		Analyzed By: JH						
Analyte	Result	Reporting Limit	Analyzed	Method Blank	BS	% Recovery	True Value QC	RPD	Qualifier	
Benzene*	<0.050	0.050	02/08/2025	ND	1.71	85.7	2.00	2.48		
Toluene*	<0.050	0.050	02/08/2025	ND	1.93	96.4	2.00	2.44		
Ethylbenzene*	<0.050	0.050	02/08/2025	ND	1.97	98.3	2.00	2.94		
Total Xylenes*	<0.150	0.150	02/08/2025	ND	6.14	102	6.00	5.14		
Total BTEX	<0.300	0.300	02/08/2025	ND						

Surrogate: 4-Bromofluorobenzene (PID) 105 % 71.5-134

Chloride, SM4500Cl-B		mg/kg		Analyzed By: HM						
Analyte	Result	Reporting Limit	Analyzed	Method Blank	BS	% Recovery	True Value QC	RPD	Qualifier	
Chloride	80.0	16.0	02/10/2025	ND	448	112	400	3.64		

TPH 8015M		mg/kg		Analyzed By: MS					
Analyte	Result	Reporting Limit	Analyzed	Method Blank	BS	% Recovery	True Value QC	RPD	Qualifier
GRO C6-C10*	<10.0	10.0	02/08/2025	ND	227	113	200	3.98	
DRO >C10-C28*	189	10.0	02/08/2025	ND	205	103	200	8.55	
EXT DRO >C28-C36	<10.0	10.0	02/08/2025	ND					

Surrogate: 1-Chlorooctane 105 % 48.2-134

Surrogate: 1-Chlorooctadecane 93.4 % 49.1-148

Cardinal Laboratories

*=Accredited Analyte

PLEASE NOTE: Liability and Damages. Cardinal's liability and client's exclusive remedy for any claim arising, whether based in contract or tort, shall be limited to the amount paid by client for analyses. All claims, including those for negligence and any other cause whatsoever shall be deemed waived unless made in writing and received by Cardinal within thirty (30) days after completion of the applicable service. In no event shall Cardinal be liable for incidental or consequential damages, including, without limitation, business interruptions, loss of use, or loss of profits incurred by client, its subsidiaries, affiliates or successors arising out of or related to the performance of the services hereunder by Cardinal, regardless of whether such claim is based upon any of the above stated reasons or otherwise. Results relate only to the samples identified above. This report shall not be reproduced except in full with written approval of Cardinal Laboratories.

Celey D. Keene, Lab Director/Quality Manager



PHONE (575) 393-2326 ° 101 E. MARLAND ° HOBBS, NM 88240

Analytical Results For:

TETRA TECH
 SAM ABBOTT
 901 WEST WALL STREET , STE 100
 MIDLAND TX, 79701
 Fax To: (432) 682-3946

Received:	02/07/2025	Sampling Date:	02/07/2025
Reported:	02/10/2025	Sampling Type:	Soil
Project Name:	CICADA UNIT 022H RISER RELEASE	Sampling Condition:	Cool & Intact
Project Number:	212C - MD - 03753	Sample Received By:	Alyssa Parras
Project Location:	CHEVRON - EDDY CO., NM		

Sample ID: FS-9 (H250769-09)

BTEx 8021B		mg/kg		Analyzed By: JH						
Analyte	Result	Reporting Limit	Analyzed	Method Blank	BS	% Recovery	True Value QC	RPD	Qualifier	
Benzene*	<0.050	0.050	02/08/2025	ND	1.71	85.7	2.00	2.48		
Toluene*	<0.050	0.050	02/08/2025	ND	1.93	96.4	2.00	2.44		
Ethylbenzene*	0.086	0.050	02/08/2025	ND	1.97	98.3	2.00	2.94	GC-NC1	
Total Xylenes*	<0.150	0.150	02/08/2025	ND	6.14	102	6.00	5.14		
Total BTEX	<0.300	0.300	02/08/2025	ND						

Surrogate: 4-Bromofluorobenzene (PID) 107 % 71.5-134

Chloride, SM4500Cl-B		mg/kg		Analyzed By: HM						
Analyte	Result	Reporting Limit	Analyzed	Method Blank	BS	% Recovery	True Value QC	RPD	Qualifier	
Chloride	80.0	16.0	02/10/2025	ND	448	112	400	3.64		

TPH 8015M		mg/kg		Analyzed By: MS					
Analyte	Result	Reporting Limit	Analyzed	Method Blank	BS	% Recovery	True Value QC	RPD	Qualifier
GRO C6-C10*	<10.0	10.0	02/08/2025	ND	227	113	200	3.98	
DRO >C10-C28*	170	10.0	02/08/2025	ND	205	103	200	8.55	
EXT DRO >C28-C36	<10.0	10.0	02/08/2025	ND					

Surrogate: 1-Chlorooctane 107 % 48.2-134

Surrogate: 1-Chlorooctadecane 99.3 % 49.1-148

Cardinal Laboratories

*=Accredited Analyte

PLEASE NOTE: Liability and Damages. Cardinal's liability and client's exclusive remedy for any claim arising, whether based in contract or tort, shall be limited to the amount paid by client for analyses. All claims, including those for negligence and any other cause whatsoever shall be deemed waived unless made in writing and received by Cardinal within thirty (30) days after completion of the applicable service. In no event shall Cardinal be liable for incidental or consequential damages, including, without limitation, business interruptions, loss of use, or loss of profits incurred by client, its subsidiaries, affiliates or successors arising out of or related to the performance of the services hereunder by Cardinal, regardless of whether such claim is based upon any of the above stated reasons or otherwise. Results relate only to the samples identified above. This report shall not be reproduced except in full with written approval of Cardinal Laboratories.

Celey D. Keene, Lab Director/Quality Manager



PHONE (575) 393-2326 ° 101 E. MARLAND ° HOBBS, NM 88240

Analytical Results For:

TETRA TECH
 SAM ABBOTT
 901 WEST WALL STREET , STE 100
 MIDLAND TX, 79701
 Fax To: (432) 682-3946

Received:	02/07/2025	Sampling Date:	02/07/2025
Reported:	02/10/2025	Sampling Type:	Soil
Project Name:	CICADA UNIT 022H RISER RELEASE	Sampling Condition:	Cool & Intact
Project Number:	212C - MD - 03753	Sample Received By:	Alyssa Parras
Project Location:	CHEVRON - EDDY CO., NM		

Sample ID: FS-10 (H250769-10)

BTEx 8021B		mg/kg		Analyzed By: JH					
Analyte	Result	Reporting Limit	Analyzed	Method Blank	BS	% Recovery	True Value QC	RPD	Qualifier
Benzene*	<0.050	0.050	02/08/2025	ND	1.71	85.7	2.00	2.48	
Toluene*	<0.050	0.050	02/08/2025	ND	1.93	96.4	2.00	2.44	
Ethylbenzene*	<0.050	0.050	02/08/2025	ND	1.97	98.3	2.00	2.94	
Total Xylenes*	<0.150	0.150	02/08/2025	ND	6.14	102	6.00	5.14	
Total BTEX	<0.300	0.300	02/08/2025	ND					

Surrogate: 4-Bromofluorobenzene (PID) 108 % 71.5-134

Chloride, SM4500Cl-B		mg/kg		Analyzed By: HM					
Analyte	Result	Reporting Limit	Analyzed	Method Blank	BS	% Recovery	True Value QC	RPD	Qualifier
Chloride	96.0	16.0	02/10/2025	ND	448	112	400	3.64	

TPH 8015M		mg/kg		Analyzed By: MS					
Analyte	Result	Reporting Limit	Analyzed	Method Blank	BS	% Recovery	True Value QC	RPD	Qualifier
GRO C6-C10*	<10.0	10.0	02/08/2025	ND	227	113	200	3.98	
DRO >C10-C28*	10.3	10.0	02/08/2025	ND	205	103	200	8.55	
EXT DRO >C28-C36	<10.0	10.0	02/08/2025	ND					

Surrogate: 1-Chlorooctane 94.6 % 48.2-134

Surrogate: 1-Chlorooctadecane 94.5 % 49.1-148

Cardinal Laboratories

*=Accredited Analyte

PLEASE NOTE: Liability and Damages. Cardinal's liability and client's exclusive remedy for any claim arising, whether based in contract or tort, shall be limited to the amount paid by client for analyses. All claims, including those for negligence and any other cause whatsoever shall be deemed waived unless made in writing and received by Cardinal within thirty (30) days after completion of the applicable service. In no event shall Cardinal be liable for incidental or consequential damages, including, without limitation, business interruptions, loss of use, or loss of profits incurred by client, its subsidiaries, affiliates or successors arising out of or related to the performance of the services hereunder by Cardinal, regardless of whether such claim is based upon any of the above stated reasons or otherwise. Results relate only to the samples identified above. This report shall not be reproduced except in full with written approval of Cardinal Laboratories.

Celey D. Keene, Lab Director/Quality Manager



PHONE (575) 393-2326 ° 101 E. MARLAND ° HOBBS, NM 88240

Analytical Results For:

TETRA TECH
 SAM ABBOTT
 901 WEST WALL STREET , STE 100
 MIDLAND TX, 79701
 Fax To: (432) 682-3946

Received:	02/07/2025	Sampling Date:	02/07/2025
Reported:	02/10/2025	Sampling Type:	Soil
Project Name:	CICADA UNIT 022H RISER RELEASE	Sampling Condition:	Cool & Intact
Project Number:	212C - MD - 03753	Sample Received By:	Alyssa Parras
Project Location:	CHEVRON - EDDY CO., NM		

Sample ID: FS-11 (H250769-11)

BTEx 8021B		mg/kg		Analyzed By: JH						
Analyte	Result	Reporting Limit	Analyzed	Method Blank	BS	% Recovery	True Value QC	RPD	Qualifier	
Benzene*	<0.050	0.050	02/08/2025	ND	1.71	85.7	2.00	2.48		
Toluene*	0.223	0.050	02/08/2025	ND	1.93	96.4	2.00	2.44	GC-NC1	
Ethylbenzene*	1.01	0.050	02/08/2025	ND	1.97	98.3	2.00	2.94	GC-NC1	
Total Xylenes*	3.20	0.150	02/08/2025	ND	6.14	102	6.00	5.14		
Total BTEX	4.43	0.300	02/08/2025	ND						GC-NC1

Surrogate: 4-Bromofluorobenzene (PID) 129 % 71.5-134

Chloride, SM4500Cl-B		mg/kg		Analyzed By: HM						
Analyte	Result	Reporting Limit	Analyzed	Method Blank	BS	% Recovery	True Value QC	RPD	Qualifier	
Chloride	560	16.0	02/10/2025	ND	448	112	400	3.64		

TPH 8015M		mg/kg		Analyzed By: MS						
Analyte	Result	Reporting Limit	Analyzed	Method Blank	BS	% Recovery	True Value QC	RPD	Qualifier	
GRO C6-C10*	121	10.0	02/08/2025	ND	227	113	200	3.98		
DRO >C10-C28*	1500	10.0	02/08/2025	ND	205	103	200	8.55		
EXT DRO >C28-C36	204	10.0	02/08/2025	ND						

Surrogate: 1-Chlorooctane 114 % 48.2-134

Surrogate: 1-Chlorooctadecane 94.8 % 49.1-148

Cardinal Laboratories

*=Accredited Analyte

PLEASE NOTE: Liability and Damages. Cardinal's liability and client's exclusive remedy for any claim arising, whether based in contract or tort, shall be limited to the amount paid by client for analyses. All claims, including those for negligence and any other cause whatsoever shall be deemed waived unless made in writing and received by Cardinal within thirty (30) days after completion of the applicable service. In no event shall Cardinal be liable for incidental or consequential damages, including, without limitation, business interruptions, loss of use, or loss of profits incurred by client, its subsidiaries, affiliates or successors arising out of or related to the performance of the services hereunder by Cardinal, regardless of whether such claim is based upon any of the above stated reasons or otherwise. Results relate only to the samples identified above. This report shall not be reproduced except in full with written approval of Cardinal Laboratories.

Celey D. Keene, Lab Director/Quality Manager



PHONE (575) 393-2326 ° 101 E. MARLAND ° HOBBS, NM 88240

Analytical Results For:

TETRA TECH
 SAM ABBOTT
 901 WEST WALL STREET , STE 100
 MIDLAND TX, 79701
 Fax To: (432) 682-3946

Received:	02/07/2025	Sampling Date:	02/07/2025
Reported:	02/10/2025	Sampling Type:	Soil
Project Name:	CICADA UNIT 022H RISER RELEASE	Sampling Condition:	Cool & Intact
Project Number:	212C - MD - 03753	Sample Received By:	Alyssa Parras
Project Location:	CHEVRON - EDDY CO., NM		

Sample ID: FS-12 (H250769-12)

BTEX 8021B		mg/kg		Analyzed By: JH						
Analyte	Result	Reporting Limit	Analyzed	Method Blank	BS	% Recovery	True Value QC	RPD	Qualifier	
Benzene*	<0.050	0.050	02/08/2025	ND	1.71	85.7	2.00	2.48		
Toluene*	<0.050	0.050	02/08/2025	ND	1.93	96.4	2.00	2.44		
Ethylbenzene*	<0.050	0.050	02/08/2025	ND	1.97	98.3	2.00	2.94		
Total Xylenes*	<0.150	0.150	02/08/2025	ND	6.14	102	6.00	5.14		
Total BTEX	<0.300	0.300	02/08/2025	ND						

Surrogate: 4-Bromofluorobenzene (PID) 105 % 71.5-134

Chloride, SM4500Cl-B		mg/kg		Analyzed By: HM						
Analyte	Result	Reporting Limit	Analyzed	Method Blank	BS	% Recovery	True Value QC	RPD	Qualifier	
Chloride	128	16.0	02/10/2025	ND	448	112	400	3.64		

TPH 8015M		mg/kg		Analyzed By: MS					
Analyte	Result	Reporting Limit	Analyzed	Method Blank	BS	% Recovery	True Value QC	RPD	Qualifier
GRO C6-C10*	<10.0	10.0	02/08/2025	ND	227	113	200	3.98	
DRO >C10-C28*	<10.0	10.0	02/08/2025	ND	205	103	200	8.55	
EXT DRO >C28-C36	<10.0	10.0	02/08/2025	ND					

Surrogate: 1-Chlorooctane 93.5 % 48.2-134

Surrogate: 1-Chlorooctadecane 93.7 % 49.1-148

Cardinal Laboratories

*=Accredited Analyte

PLEASE NOTE: Liability and Damages. Cardinal's liability and client's exclusive remedy for any claim arising, whether based in contract or tort, shall be limited to the amount paid by client for analyses. All claims, including those for negligence and any other cause whatsoever shall be deemed waived unless made in writing and received by Cardinal within thirty (30) days after completion of the applicable service. In no event shall Cardinal be liable for incidental or consequential damages, including, without limitation, business interruptions, loss of use, or loss of profits incurred by client, its subsidiaries, affiliates or successors arising out of or related to the performance of the services hereunder by Cardinal, regardless of whether such claim is based upon any of the above stated reasons or otherwise. Results relate only to the samples identified above. This report shall not be reproduced except in full with written approval of Cardinal Laboratories.

Celey D. Keene, Lab Director/Quality Manager



PHONE (575) 393-2326 ° 101 E. MARLAND ° HOBBS, NM 88240

Analytical Results For:

TETRA TECH
 SAM ABBOTT
 901 WEST WALL STREET , STE 100
 MIDLAND TX, 79701
 Fax To: (432) 682-3946

Received:	02/07/2025	Sampling Date:	02/07/2025
Reported:	02/10/2025	Sampling Type:	Soil
Project Name:	CICADA UNIT 022H RISER RELEASE	Sampling Condition:	Cool & Intact
Project Number:	212C - MD - 03753	Sample Received By:	Alyssa Parras
Project Location:	CHEVRON - EDDY CO., NM		

Sample ID: SW-1 (H250769-13)

BTEX 8021B		mg/kg		Analyzed By: JH						
Analyte	Result	Reporting Limit	Analyzed	Method Blank	BS	% Recovery	True Value QC	RPD	Qualifier	
Benzene*	<0.050	0.050	02/08/2025	ND	1.71	85.7	2.00	2.48		
Toluene*	<0.050	0.050	02/08/2025	ND	1.93	96.4	2.00	2.44		
Ethylbenzene*	<0.050	0.050	02/08/2025	ND	1.97	98.3	2.00	2.94		
Total Xylenes*	<0.150	0.150	02/08/2025	ND	6.14	102	6.00	5.14		
Total BTEX	<0.300	0.300	02/08/2025	ND						

Surrogate: 4-Bromofluorobenzene (PID) 105 % 71.5-134

Chloride, SM4500Cl-B		mg/kg		Analyzed By: HM						
Analyte	Result	Reporting Limit	Analyzed	Method Blank	BS	% Recovery	True Value QC	RPD	Qualifier	
Chloride	208	16.0	02/10/2025	ND	448	112	400	3.64		

TPH 8015M		mg/kg		Analyzed By: MS					
Analyte	Result	Reporting Limit	Analyzed	Method Blank	BS	% Recovery	True Value QC	RPD	Qualifier
GRO C6-C10*	<10.0	10.0	02/08/2025	ND	227	113	200	3.98	
DRO >C10-C28*	23.1	10.0	02/08/2025	ND	205	103	200	8.55	
EXT DRO >C28-C36	<10.0	10.0	02/08/2025	ND					

Surrogate: 1-Chlorooctane 99.5 % 48.2-134

Surrogate: 1-Chlorooctadecane 97.7 % 49.1-148

Cardinal Laboratories

*=Accredited Analyte

PLEASE NOTE: Liability and Damages. Cardinal's liability and client's exclusive remedy for any claim arising, whether based in contract or tort, shall be limited to the amount paid by client for analyses. All claims, including those for negligence and any other cause whatsoever shall be deemed waived unless made in writing and received by Cardinal within thirty (30) days after completion of the applicable service. In no event shall Cardinal be liable for incidental or consequential damages, including, without limitation, business interruptions, loss of use, or loss of profits incurred by client, its subsidiaries, affiliates or successors arising out of or related to the performance of the services hereunder by Cardinal, regardless of whether such claim is based upon any of the above stated reasons or otherwise. Results relate only to the samples identified above. This report shall not be reproduced except in full with written approval of Cardinal Laboratories.

Celey D. Keene, Lab Director/Quality Manager



PHONE (575) 393-2326 ° 101 E. MARLAND ° HOBBS, NM 88240

Analytical Results For:

TETRA TECH
 SAM ABBOTT
 901 WEST WALL STREET , STE 100
 MIDLAND TX, 79701
 Fax To: (432) 682-3946

Received:	02/07/2025	Sampling Date:	02/07/2025
Reported:	02/10/2025	Sampling Type:	Soil
Project Name:	CICADA UNIT 022H RISER RELEASE	Sampling Condition:	Cool & Intact
Project Number:	212C - MD - 03753	Sample Received By:	Alyssa Parras
Project Location:	CHEVRON - EDDY CO., NM		

Sample ID: SW-2 (H250769-14)

BTEX 8021B		mg/kg		Analyzed By: JH						
Analyte	Result	Reporting Limit	Analyzed	Method Blank	BS	% Recovery	True Value QC	RPD	Qualifier	
Benzene*	<0.050	0.050	02/08/2025	ND	1.71	85.7	2.00	2.48		
Toluene*	<0.050	0.050	02/08/2025	ND	1.93	96.4	2.00	2.44		
Ethylbenzene*	<0.050	0.050	02/08/2025	ND	1.97	98.3	2.00	2.94		
Total Xylenes*	<0.150	0.150	02/08/2025	ND	6.14	102	6.00	5.14		
Total BTEX	<0.300	0.300	02/08/2025	ND						

Surrogate: 4-Bromofluorobenzene (PID) 104 % 71.5-134

Chloride, SM4500Cl-B		mg/kg		Analyzed By: HM						
Analyte	Result	Reporting Limit	Analyzed	Method Blank	BS	% Recovery	True Value QC	RPD	Qualifier	
Chloride	48.0	16.0	02/10/2025	ND	448	112	400	3.64		

TPH 8015M		mg/kg		Analyzed By: MS					
Analyte	Result	Reporting Limit	Analyzed	Method Blank	BS	% Recovery	True Value QC	RPD	Qualifier
GRO C6-C10*	<10.0	10.0	02/08/2025	ND	227	113	200	3.98	
DRO >C10-C28*	<10.0	10.0	02/08/2025	ND	205	103	200	8.55	
EXT DRO >C28-C36	<10.0	10.0	02/08/2025	ND					

Surrogate: 1-Chlorooctane 94.0 % 48.2-134

Surrogate: 1-Chlorooctadecane 94.7 % 49.1-148

Cardinal Laboratories

*=Accredited Analyte

PLEASE NOTE: Liability and Damages. Cardinal's liability and client's exclusive remedy for any claim arising, whether based in contract or tort, shall be limited to the amount paid by client for analyses. All claims, including those for negligence and any other cause whatsoever shall be deemed waived unless made in writing and received by Cardinal within thirty (30) days after completion of the applicable service. In no event shall Cardinal be liable for incidental or consequential damages, including, without limitation, business interruptions, loss of use, or loss of profits incurred by client, its subsidiaries, affiliates or successors arising out of or related to the performance of the services hereunder by Cardinal, regardless of whether such claim is based upon any of the above stated reasons or otherwise. Results relate only to the samples identified above. This report shall not be reproduced except in full with written approval of Cardinal Laboratories.

Celey D. Keene, Lab Director/Quality Manager



PHONE (575) 393-2326 ° 101 E. MARLAND ° HOBBS, NM 88240

Analytical Results For:

TETRA TECH
 SAM ABBOTT
 901 WEST WALL STREET , STE 100
 MIDLAND TX, 79701
 Fax To: (432) 682-3946

Received:	02/07/2025	Sampling Date:	02/07/2025
Reported:	02/10/2025	Sampling Type:	Soil
Project Name:	CICADA UNIT 022H RISER RELEASE	Sampling Condition:	Cool & Intact
Project Number:	212C - MD - 03753	Sample Received By:	Alyssa Parras
Project Location:	CHEVRON - EDDY CO., NM		

Sample ID: SW-3 (H250769-15)

BTEX 8021B		mg/kg		Analyzed By: JH						
Analyte	Result	Reporting Limit	Analyzed	Method Blank	BS	% Recovery	True Value QC	RPD	Qualifier	
Benzene*	<0.050	0.050	02/08/2025	ND	1.71	85.7	2.00	2.48		
Toluene*	<0.050	0.050	02/08/2025	ND	1.93	96.4	2.00	2.44		
Ethylbenzene*	<0.050	0.050	02/08/2025	ND	1.97	98.3	2.00	2.94		
Total Xylenes*	<0.150	0.150	02/08/2025	ND	6.14	102	6.00	5.14		
Total BTEX	<0.300	0.300	02/08/2025	ND						

Surrogate: 4-Bromofluorobenzene (PID) 104 % 71.5-134

Chloride, SM4500Cl-B		mg/kg		Analyzed By: HM						
Analyte	Result	Reporting Limit	Analyzed	Method Blank	BS	% Recovery	True Value QC	RPD	Qualifier	
Chloride	32.0	16.0	02/10/2025	ND	448	112	400	3.64		

TPH 8015M		mg/kg		Analyzed By: MS					
Analyte	Result	Reporting Limit	Analyzed	Method Blank	BS	% Recovery	True Value QC	RPD	Qualifier
GRO C6-C10*	<10.0	10.0	02/08/2025	ND	227	113	200	3.98	
DRO >C10-C28*	<10.0	10.0	02/08/2025	ND	205	103	200	8.55	
EXT DRO >C28-C36	<10.0	10.0	02/08/2025	ND					

Surrogate: 1-Chlorooctane 90.4 % 48.2-134

Surrogate: 1-Chlorooctadecane 89.6 % 49.1-148

Cardinal Laboratories

*=Accredited Analyte

PLEASE NOTE: Liability and Damages. Cardinal's liability and client's exclusive remedy for any claim arising, whether based in contract or tort, shall be limited to the amount paid by client for analyses. All claims, including those for negligence and any other cause whatsoever shall be deemed waived unless made in writing and received by Cardinal within thirty (30) days after completion of the applicable service. In no event shall Cardinal be liable for incidental or consequential damages, including, without limitation, business interruptions, loss of use, or loss of profits incurred by client, its subsidiaries, affiliates or successors arising out of or related to the performance of the services hereunder by Cardinal, regardless of whether such claim is based upon any of the above stated reasons or otherwise. Results relate only to the samples identified above. This report shall not be reproduced except in full with written approval of Cardinal Laboratories.

Celey D. Keene, Lab Director/Quality Manager



PHONE (575) 393-2326 ° 101 E. MARLAND ° HOBBS, NM 88240

Analytical Results For:

TETRA TECH
 SAM ABBOTT
 901 WEST WALL STREET , STE 100
 MIDLAND TX, 79701
 Fax To: (432) 682-3946

Received:	02/07/2025	Sampling Date:	02/07/2025
Reported:	02/10/2025	Sampling Type:	Soil
Project Name:	CICADA UNIT 022H RISER RELEASE	Sampling Condition:	Cool & Intact
Project Number:	212C - MD - 03753	Sample Received By:	Alyssa Parras
Project Location:	CHEVRON - EDDY CO., NM		

Sample ID: SW-4 (H250769-16)

BTEx 8021B		mg/kg		Analyzed By: JH						
Analyte	Result	Reporting Limit	Analyzed	Method Blank	BS	% Recovery	True Value QC	RPD	Qualifier	
Benzene*	<0.050	0.050	02/08/2025	ND	1.71	85.7	2.00	2.48		
Toluene*	<0.050	0.050	02/08/2025	ND	1.93	96.4	2.00	2.44		
Ethylbenzene*	<0.050	0.050	02/08/2025	ND	1.97	98.3	2.00	2.94		
Total Xylenes*	<0.150	0.150	02/08/2025	ND	6.14	102	6.00	5.14		
Total BTEX	<0.300	0.300	02/08/2025	ND						

Surrogate: 4-Bromofluorobenzene (PID) 104 % 71.5-134

Chloride, SM4500Cl-B		mg/kg		Analyzed By: HM						
Analyte	Result	Reporting Limit	Analyzed	Method Blank	BS	% Recovery	True Value QC	RPD	Qualifier	
Chloride	112	16.0	02/10/2025	ND	448	112	400	3.64		

TPH 8015M		mg/kg		Analyzed By: MS					
Analyte	Result	Reporting Limit	Analyzed	Method Blank	BS	% Recovery	True Value QC	RPD	Qualifier
GRO C6-C10*	<10.0	10.0	02/08/2025	ND	227	113	200	3.98	
DRO >C10-C28*	<10.0	10.0	02/08/2025	ND	205	103	200	8.55	
EXT DRO >C28-C36	<10.0	10.0	02/08/2025	ND					

Surrogate: 1-Chlorooctane 100 % 48.2-134

Surrogate: 1-Chlorooctadecane 98.7 % 49.1-148

Cardinal Laboratories

*=Accredited Analyte

PLEASE NOTE: Liability and Damages. Cardinal's liability and client's exclusive remedy for any claim arising, whether based in contract or tort, shall be limited to the amount paid by client for analyses. All claims, including those for negligence and any other cause whatsoever shall be deemed waived unless made in writing and received by Cardinal within thirty (30) days after completion of the applicable service. In no event shall Cardinal be liable for incidental or consequential damages, including, without limitation, business interruptions, loss of use, or loss of profits incurred by client, its subsidiaries, affiliates or successors arising out of or related to the performance of the services hereunder by Cardinal, regardless of whether such claim is based upon any of the above stated reasons or otherwise. Results relate only to the samples identified above. This report shall not be reproduced except in full with written approval of Cardinal Laboratories.

Celey D. Keene, Lab Director/Quality Manager



PHONE (575) 393-2326 ° 101 E. MARLAND ° HOBBS, NM 88240

Analytical Results For:

TETRA TECH
 SAM ABBOTT
 901 WEST WALL STREET , STE 100
 MIDLAND TX, 79701
 Fax To: (432) 682-3946

Received:	02/07/2025	Sampling Date:	02/07/2025
Reported:	02/10/2025	Sampling Type:	Soil
Project Name:	CICADA UNIT 022H RISER RELEASE	Sampling Condition:	Cool & Intact
Project Number:	212C - MD - 03753	Sample Received By:	Alyssa Parras
Project Location:	CHEVRON - EDDY CO., NM		

Sample ID: SW-5 (H250769-17)

BTEx 8021B		mg/kg		Analyzed By: JH						
Analyte	Result	Reporting Limit	Analyzed	Method Blank	BS	% Recovery	True Value QC	RPD	Qualifier	
Benzene*	<0.050	0.050	02/10/2025	ND	1.82	90.9	2.00	5.81		
Toluene*	<0.050	0.050	02/10/2025	ND	1.88	94.1	2.00	5.75		
Ethylbenzene*	<0.050	0.050	02/10/2025	ND	1.79	89.3	2.00	5.68		
Total Xylenes*	<0.150	0.150	02/10/2025	ND	5.25	87.5	6.00	5.61		
Total BTEX	<0.300	0.300	02/10/2025	ND						

Surrogate: 4-Bromofluorobenzene (PID) 93.9 % 71.5-134

Chloride, SM4500Cl-B		mg/kg		Analyzed By: HM						
Analyte	Result	Reporting Limit	Analyzed	Method Blank	BS	% Recovery	True Value QC	RPD	Qualifier	
Chloride	64.0	16.0	02/10/2025	ND	448	112	400	3.64		

TPH 8015M		mg/kg		Analyzed By: MS					
Analyte	Result	Reporting Limit	Analyzed	Method Blank	BS	% Recovery	True Value QC	RPD	Qualifier
GRO C6-C10*	13.5	10.0	02/08/2025	ND	227	113	200	3.98	
DRO >C10-C28*	374	10.0	02/08/2025	ND	205	103	200	8.55	
EXT DRO >C28-C36	37.4	10.0	02/08/2025	ND					

Surrogate: 1-Chlorooctane 103 % 48.2-134

Surrogate: 1-Chlorooctadecane 88.4 % 49.1-148

Cardinal Laboratories

*=Accredited Analyte

PLEASE NOTE: Liability and Damages. Cardinal's liability and client's exclusive remedy for any claim arising, whether based in contract or tort, shall be limited to the amount paid by client for analyses. All claims, including those for negligence and any other cause whatsoever shall be deemed waived unless made in writing and received by Cardinal within thirty (30) days after completion of the applicable service. In no event shall Cardinal be liable for incidental or consequential damages, including, without limitation, business interruptions, loss of use, or loss of profits incurred by client, its subsidiaries, affiliates or successors arising out of or related to the performance of the services hereunder by Cardinal, regardless of whether such claim is based upon any of the above stated reasons or otherwise. Results relate only to the samples identified above. This report shall not be reproduced except in full with written approval of Cardinal Laboratories.

Celey D. Keene, Lab Director/Quality Manager



PHONE (575) 393-2326 ° 101 E. MARLAND ° HOBBS, NM 88240

Analytical Results For:

TETRA TECH
 SAM ABBOTT
 901 WEST WALL STREET , STE 100
 MIDLAND TX, 79701
 Fax To: (432) 682-3946

Received:	02/07/2025	Sampling Date:	02/07/2025
Reported:	02/10/2025	Sampling Type:	Soil
Project Name:	CICADA UNIT 022H RISER RELEASE	Sampling Condition:	Cool & Intact
Project Number:	212C - MD - 03753	Sample Received By:	Alyssa Parras
Project Location:	CHEVRON - EDDY CO., NM		

Sample ID: SW-6 (H250769-18)

BTEx 8021B		mg/kg		Analyzed By: JH						
Analyte	Result	Reporting Limit	Analyzed	Method Blank	BS	% Recovery	True Value QC	RPD	Qualifier	
Benzene*	<0.050	0.050	02/10/2025	ND	1.82	90.9	2.00	5.81		
Toluene*	<0.050	0.050	02/10/2025	ND	1.88	94.1	2.00	5.75		
Ethylbenzene*	<0.050	0.050	02/10/2025	ND	1.79	89.3	2.00	5.68		
Total Xylenes*	<0.150	0.150	02/10/2025	ND	5.25	87.5	6.00	5.61		
Total BTEX	<0.300	0.300	02/10/2025	ND						

Surrogate: 4-Bromofluorobenzene (PID) 92.0 % 71.5-134

Chloride, SM4500Cl-B		mg/kg		Analyzed By: HM						
Analyte	Result	Reporting Limit	Analyzed	Method Blank	BS	% Recovery	True Value QC	RPD	Qualifier	
Chloride	144	16.0	02/10/2025	ND	448	112	400	3.64		

TPH 8015M		mg/kg		Analyzed By: MS					
Analyte	Result	Reporting Limit	Analyzed	Method Blank	BS	% Recovery	True Value QC	RPD	Qualifier
GRO C6-C10*	<10.0	10.0	02/08/2025	ND	227	113	200	3.98	
DRO >C10-C28*	12.3	10.0	02/08/2025	ND	205	103	200	8.55	
EXT DRO >C28-C36	<10.0	10.0	02/08/2025	ND					

Surrogate: 1-Chlorooctane 99.5 % 48.2-134

Surrogate: 1-Chlorooctadecane 97.9 % 49.1-148

Cardinal Laboratories

*=Accredited Analyte

PLEASE NOTE: Liability and Damages. Cardinal's liability and client's exclusive remedy for any claim arising, whether based in contract or tort, shall be limited to the amount paid by client for analyses. All claims, including those for negligence and any other cause whatsoever shall be deemed waived unless made in writing and received by Cardinal within thirty (30) days after completion of the applicable service. In no event shall Cardinal be liable for incidental or consequential damages, including, without limitation, business interruptions, loss of use, or loss of profits incurred by client, its subsidiaries, affiliates or successors arising out of or related to the performance of the services hereunder by Cardinal, regardless of whether such claim is based upon any of the above stated reasons or otherwise. Results relate only to the samples identified above. This report shall not be reproduced except in full with written approval of Cardinal Laboratories.

Celey D. Keene, Lab Director/Quality Manager



PHONE (575) 393-2326 ° 101 E. MARLAND ° HOBBS, NM 88240

Analytical Results For:

TETRA TECH
 SAM ABBOTT
 901 WEST WALL STREET , STE 100
 MIDLAND TX, 79701
 Fax To: (432) 682-3946

Received:	02/07/2025	Sampling Date:	02/07/2025
Reported:	02/10/2025	Sampling Type:	Soil
Project Name:	CICADA UNIT 022H RISER RELEASE	Sampling Condition:	Cool & Intact
Project Number:	212C - MD - 03753	Sample Received By:	Alyssa Parras
Project Location:	CHEVRON - EDDY CO., NM		

Sample ID: SW-7 (H250769-19)

BTEX 8021B		mg/kg		Analyzed By: JH						
Analyte	Result	Reporting Limit	Analyzed	Method Blank	BS	% Recovery	True Value QC	RPD	Qualifier	
Benzene*	<0.050	0.050	02/10/2025	ND	1.82	90.9	2.00	5.81		
Toluene*	<0.050	0.050	02/10/2025	ND	1.88	94.1	2.00	5.75		
Ethylbenzene*	<0.050	0.050	02/10/2025	ND	1.79	89.3	2.00	5.68		
Total Xylenes*	<0.150	0.150	02/10/2025	ND	5.25	87.5	6.00	5.61		
Total BTEX	<0.300	0.300	02/10/2025	ND						

Surrogate: 4-Bromofluorobenzene (PID) 91.9 % 71.5-134

Chloride, SM4500Cl-B		mg/kg		Analyzed By: HM						
Analyte	Result	Reporting Limit	Analyzed	Method Blank	BS	% Recovery	True Value QC	RPD	Qualifier	
Chloride	80.0	16.0	02/10/2025	ND	448	112	400	3.64		

TPH 8015M		mg/kg		Analyzed By: MS					
Analyte	Result	Reporting Limit	Analyzed	Method Blank	BS	% Recovery	True Value QC	RPD	Qualifier
GRO C6-C10*	<10.0	10.0	02/08/2025	ND	227	113	200	3.98	
DRO >C10-C28*	<10.0	10.0	02/08/2025	ND	205	103	200	8.55	
EXT DRO >C28-C36	<10.0	10.0	02/08/2025	ND					

Surrogate: 1-Chlorooctane 86.6 % 48.2-134

Surrogate: 1-Chlorooctadecane 86.5 % 49.1-148

Cardinal Laboratories

*=Accredited Analyte

PLEASE NOTE: Liability and Damages. Cardinal's liability and client's exclusive remedy for any claim arising, whether based in contract or tort, shall be limited to the amount paid by client for analyses. All claims, including those for negligence and any other cause whatsoever shall be deemed waived unless made in writing and received by Cardinal within thirty (30) days after completion of the applicable service. In no event shall Cardinal be liable for incidental or consequential damages, including, without limitation, business interruptions, loss of use, or loss of profits incurred by client, its subsidiaries, affiliates or successors arising out of or related to the performance of the services hereunder by Cardinal, regardless of whether such claim is based upon any of the above stated reasons or otherwise. Results relate only to the samples identified above. This report shall not be reproduced except in full with written approval of Cardinal Laboratories.

Celey D. Keene, Lab Director/Quality Manager



PHONE (575) 393-2326 ° 101 E. MARLAND ° HOBBS, NM 88240

Analytical Results For:

TETRA TECH
 SAM ABBOTT
 901 WEST WALL STREET , STE 100
 MIDLAND TX, 79701
 Fax To: (432) 682-3946

Received:	02/07/2025	Sampling Date:	02/07/2025
Reported:	02/10/2025	Sampling Type:	Soil
Project Name:	CICADA UNIT 022H RISER RELEASE	Sampling Condition:	Cool & Intact
Project Number:	212C - MD - 03753	Sample Received By:	Alyssa Parras
Project Location:	CHEVRON - EDDY CO., NM		

Sample ID: SW-8 (H250769-20)

BTEx 8021B		mg/kg		Analyzed By: JH						
Analyte	Result	Reporting Limit	Analyzed	Method Blank	BS	% Recovery	True Value QC	RPD	Qualifier	
Benzene*	<0.050	0.050	02/10/2025	ND	1.82	90.9	2.00	5.81		
Toluene*	<0.050	0.050	02/10/2025	ND	1.88	94.1	2.00	5.75		
Ethylbenzene*	<0.050	0.050	02/10/2025	ND	1.79	89.3	2.00	5.68		
Total Xylenes*	<0.150	0.150	02/10/2025	ND	5.25	87.5	6.00	5.61		
Total BTEX	<0.300	0.300	02/10/2025	ND						

Surrogate: 4-Bromofluorobenzene (PID) 92.4 % 71.5-134

Chloride, SM4500Cl-B		mg/kg		Analyzed By: HM						
Analyte	Result	Reporting Limit	Analyzed	Method Blank	BS	% Recovery	True Value QC	RPD	Qualifier	
Chloride	176	16.0	02/10/2025	ND	448	112	400	3.64		

TPH 8015M		mg/kg		Analyzed By: MS					
Analyte	Result	Reporting Limit	Analyzed	Method Blank	BS	% Recovery	True Value QC	RPD	Qualifier
GRO C6-C10*	<10.0	10.0	02/08/2025	ND	227	113	200	3.98	
DRO >C10-C28*	11.9	10.0	02/08/2025	ND	205	103	200	8.55	
EXT DRO >C28-C36	<10.0	10.0	02/08/2025	ND					

Surrogate: 1-Chlorooctane 104 % 48.2-134

Surrogate: 1-Chlorooctadecane 104 % 49.1-148

Cardinal Laboratories

*=Accredited Analyte

PLEASE NOTE: Liability and Damages. Cardinal's liability and client's exclusive remedy for any claim arising, whether based in contract or tort, shall be limited to the amount paid by client for analyses. All claims, including those for negligence and any other cause whatsoever shall be deemed waived unless made in writing and received by Cardinal within thirty (30) days after completion of the applicable service. In no event shall Cardinal be liable for incidental or consequential damages, including, without limitation, business interruptions, loss of use, or loss of profits incurred by client, its subsidiaries, affiliates or successors arising out of or related to the performance of the services hereunder by Cardinal, regardless of whether such claim is based upon any of the above stated reasons or otherwise. Results relate only to the samples identified above. This report shall not be reproduced except in full with written approval of Cardinal Laboratories.

Celey D. Keene, Lab Director/Quality Manager

PHONE (575) 393-2326 ° 101 E. MARLAND ° HOBBS, NM 88240

Notes and Definitions

QR-03	The RPD value for the sample duplicate or MS/MSD was outside of QC acceptance limits due to matrix interference. QC batch accepted based on LCS and/or LCSD recovery and/or RPD values.
QM-07	The spike recovery was outside acceptance limits for the MS and/or MSD. The batch was accepted based on acceptable LCS recovery.
GC-NC1	8260 confirmation analysis was performed; initial GC results were not supported by GC/MS analysis and are biased high with interfering compounds.
BS-3	Blank spike recovery outside of lab established statistical limits, but still within method limits. Data is not adversely affected.
ND	Analyte NOT DETECTED at or above the reporting limit
RPD	Relative Percent Difference
**	Samples not received at proper temperature of 6°C or below.
***	Insufficient time to reach temperature.
-	Chloride by SM4500Cl-B does not require samples be received at or below 6°C Samples reported on an as received basis (wet) unless otherwise noted on report

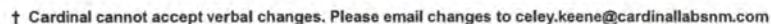
Cardinal Laboratories

*=Accredited Analyte

PLEASE NOTE: Liability and Damages. Cardinal's liability and client's exclusive remedy for any claim arising, whether based in contract or tort, shall be limited to the amount paid by client for analyses. All claims, including those for negligence and any other cause whatsoever shall be deemed waived unless made in writing and received by Cardinal within thirty (30) days after completion of the applicable service. In no event shall Cardinal be liable for incidental or consequential damages, including, without limitation, business interruptions, loss of use, or loss of profits incurred by client, its subsidiaries, affiliates or successors arising out of or related to the performance of the services hereunder by Cardinal, regardless of whether such claim is based upon any of the above stated reasons or otherwise. Results relate only to the samples identified above. This report shall not be reproduced except in full with written approval of Cardinal Laboratories.

A handwritten signature in black ink, appearing to read "Celey D. Keene".

Celey D. Keene, Lab Director/Quality Manager





CHAIN-OF-CUSTODY AND ANALYSIS REQUEST

101 East Marland, Hobbs, NM 88240
(575) 393-2326 FAX (575) 393-2476

[illegible]



PHONE (575) 393-2326 ° 101 E. MARLAND ° HOBBS, NM 88240

February 11, 2025

SAM ABBOTT

TETRA TECH

901 WEST WALL STREET , STE 100

MIDLAND, TX 79701

RE: CICADA UNIT 022H RISER RELEASE

Enclosed are the results of analyses for samples received by the laboratory on 02/11/25 9:06.

Cardinal Laboratories is accredited through Texas NELAP under certificate number TX-C24-00112. Accreditation applies to drinking water, non-potable water and solid and chemical materials. All accredited analytes are denoted by an asterisk (*). For a complete list of accredited analytes and matrices visit the TCEQ website at www.tceq.texas.gov/field/qa/lab_accred_certif.html.

Cardinal Laboratories is accredited through the State of Colorado Department of Public Health and Environment for:

Method EPA 552.2	Haloacetic Acids (HAA-5)
Method EPA 524.2	Total Trihalomethanes (TTHM)
Method EPA 524.4	Regulated VOCs (V1, V2, V3)

Accreditation applies to public drinking water matrices.

This report meets NELAP requirements and is made up of a cover page, analytical results, and a copy of the original chain-of-custody. If you have any questions concerning this report, please feel free to contact me.

Sincerely,

A handwritten signature in black ink that reads "Celey D. Keene". The signature is written in a cursive, flowing style.

Celey D. Keene

Lab Director/Quality Manager



PHONE (575) 393-2326 ° 101 E. MARLAND ° HOBBS, NM 88240

Analytical Results For:

TETRA TECH
 SAM ABBOTT
 901 WEST WALL STREET , STE 100
 MIDLAND TX, 79701
 Fax To: (432) 682-3946

Received:	02/11/2025	Sampling Date:	02/10/2025
Reported:	02/11/2025	Sampling Type:	Soil
Project Name:	CICADA UNIT 022H RISER RELEASE	Sampling Condition:	Cool & Intact
Project Number:	212C - MD - 03753	Sample Received By:	Tamara Oldaker
Project Location:	CHEVRON - EDDY CO., NM		

Sample ID: FS - 1 (H250809-01)

BTEx 8021B		mg/kg		Analyzed By: JH					
Analyte	Result	Reporting Limit	Analyzed	Method Blank	BS	% Recovery	True Value QC	RPD	Qualifier
Benzene*	<0.050	0.050	02/11/2025	ND	1.81	90.4	2.00	0.781	
Toluene*	<0.050	0.050	02/11/2025	ND	1.91	95.3	2.00	1.10	
Ethylbenzene*	<0.050	0.050	02/11/2025	ND	1.94	97.2	2.00	1.82	
Total Xylenes*	<0.150	0.150	02/11/2025	ND	5.90	98.3	6.00	2.45	
Total BTEx	<0.300	0.300	02/11/2025	ND					

Surrogate: 4-Bromofluorobenzene (PID) 112 % 71.5-134

Chloride, SM4500Cl-B		mg/kg		Analyzed By: AC						
Analyte	Result	Reporting Limit	Analyzed	Method Blank	BS	% Recovery	True Value QC	RPD	Qualifier	
Chloride	64.0	16.0	02/11/2025	ND	432	108	400	0.00		

TPH 8015M		mg/kg		Analyzed By: MS					
Analyte	Result	Reporting Limit	Analyzed	Method Blank	BS	% Recovery	True Value QC	RPD	Qualifier
GRO C6-C10*	<10.0	10.0	02/11/2025	ND	218	109	200	0.526	
DRO >C10-C28*	<10.0	10.0	02/11/2025	ND	210	105	200	1.39	
EXT DRO >C28-C36	<10.0	10.0	02/11/2025	ND					

Surrogate: 1-Chlorooctane 82.8 % 48.2-134

Surrogate: 1-Chlorooctadecane 87.9 % 49.1-148

Cardinal Laboratories

*=Accredited Analyte

PLEASE NOTE: Liability and Damages. Cardinal's liability and client's exclusive remedy for any claim arising, whether based in contract or tort, shall be limited to the amount paid by client for analyses. All claims, including those for negligence and any other cause whatsoever shall be deemed waived unless made in writing and received by Cardinal within thirty (30) days after completion of the applicable service. In no event shall Cardinal be liable for incidental or consequential damages, including, without limitation, business interruptions, loss of use, or loss of profits incurred by client, its subsidiaries, affiliates or successors arising out of or related to the performance of the services hereunder by Cardinal, regardless of whether such claim is based upon any of the above stated reasons or otherwise. Results relate only to the samples identified above. This report shall not be reproduced except in full with written approval of Cardinal Laboratories.

Celey D. Keene, Lab Director/Quality Manager



PHONE (575) 393-2326 ° 101 E. MARLAND ° HOBBS, NM 88240

Analytical Results For:

TETRA TECH
 SAM ABBOTT
 901 WEST WALL STREET , STE 100
 MIDLAND TX, 79701
 Fax To: (432) 682-3946

Received:	02/11/2025	Sampling Date:	02/10/2025
Reported:	02/11/2025	Sampling Type:	Soil
Project Name:	CICADA UNIT 022H RISER RELEASE	Sampling Condition:	Cool & Intact
Project Number:	212C - MD - 03753	Sample Received By:	Tamara Oldaker
Project Location:	CHEVRON - EDDY CO., NM		

Sample ID: FS - 2 (H250809-02)

BTEx 8021B		mg/kg		Analyzed By: JH						
Analyte	Result	Reporting Limit	Analyzed	Method Blank	BS	% Recovery	True Value QC	RPD	Qualifier	
Benzene*	<0.050	0.050	02/11/2025	ND	1.81	90.4	2.00	0.781		
Toluene*	<0.050	0.050	02/11/2025	ND	1.91	95.3	2.00	1.10		
Ethylbenzene*	<0.050	0.050	02/11/2025	ND	1.94	97.2	2.00	1.82		
Total Xylenes*	<0.150	0.150	02/11/2025	ND	5.90	98.3	6.00	2.45		
Total BTEX	<0.300	0.300	02/11/2025	ND						

Surrogate: 4-Bromofluorobenzene (PID) 110 % 71.5-134

Chloride, SM4500Cl-B		mg/kg		Analyzed By: AC						
Analyte	Result	Reporting Limit	Analyzed	Method Blank	BS	% Recovery	True Value QC	RPD	Qualifier	
Chloride	144	16.0	02/11/2025	ND	432	108	400	0.00		

TPH 8015M		mg/kg		Analyzed By: ms					
Analyte	Result	Reporting Limit	Analyzed	Method Blank	BS	% Recovery	True Value QC	RPD	Qualifier
GRO C6-C10*	<10.0	10.0	02/11/2025	ND	188	93.8	200	0.571	
DRO >C10-C28*	<10.0	10.0	02/11/2025	ND	185	92.3	200	2.84	
EXT DRO >C28-C36	<10.0	10.0	02/11/2025	ND					

Surrogate: 1-Chlorooctane 87.3 % 48.2-134

Surrogate: 1-Chlorooctadecane 85.5 % 49.1-148

Cardinal Laboratories

*=Accredited Analyte

PLEASE NOTE: Liability and Damages. Cardinal's liability and client's exclusive remedy for any claim arising, whether based in contract or tort, shall be limited to the amount paid by client for analyses. All claims, including those for negligence and any other cause whatsoever shall be deemed waived unless made in writing and received by Cardinal within thirty (30) days after completion of the applicable service. In no event shall Cardinal be liable for incidental or consequential damages, including, without limitation, business interruptions, loss of use, or loss of profits incurred by client, its subsidiaries, affiliates or successors arising out of or related to the performance of the services hereunder by Cardinal, regardless of whether such claim is based upon any of the above stated reasons or otherwise. Results relate only to the samples identified above. This report shall not be reproduced except in full with written approval of Cardinal Laboratories.

Celey D. Keene, Lab Director/Quality Manager



PHONE (575) 393-2326 ° 101 E. MARLAND ° HOBBS, NM 88240

Analytical Results For:

TETRA TECH
 SAM ABBOTT
 901 WEST WALL STREET , STE 100
 MIDLAND TX, 79701
 Fax To: (432) 682-3946

Received:	02/11/2025	Sampling Date:	02/10/2025
Reported:	02/11/2025	Sampling Type:	Soil
Project Name:	CICADA UNIT 022H RISER RELEASE	Sampling Condition:	Cool & Intact
Project Number:	212C - MD - 03753	Sample Received By:	Tamara Oldaker
Project Location:	CHEVRON - EDDY CO., NM		

Sample ID: FS - 8 (H250809-03)

BTEx 8021B		mg/kg		Analyzed By: JH						
Analyte	Result	Reporting Limit	Analyzed	Method Blank	BS	% Recovery	True Value QC	RPD	Qualifier	
Benzene*	<0.050	0.050	02/11/2025	ND	1.81	90.4	2.00	0.781		
Toluene*	<0.050	0.050	02/11/2025	ND	1.91	95.3	2.00	1.10		
Ethylbenzene*	<0.050	0.050	02/11/2025	ND	1.94	97.2	2.00	1.82		
Total Xylenes*	<0.150	0.150	02/11/2025	ND	5.90	98.3	6.00	2.45		
Total BTEX	<0.300	0.300	02/11/2025	ND						

Surrogate: 4-Bromofluorobenzene (PID) 111 % 71.5-134

Chloride, SM4500Cl-B		mg/kg		Analyzed By: AC						
Analyte	Result	Reporting Limit	Analyzed	Method Blank	BS	% Recovery	True Value QC	RPD	Qualifier	
Chloride	144	16.0	02/11/2025	ND	432	108	400	0.00		

TPH 8015M		mg/kg		Analyzed By: ms					
Analyte	Result	Reporting Limit	Analyzed	Method Blank	BS	% Recovery	True Value QC	RPD	Qualifier
GRO C6-C10*	<10.0	10.0	02/11/2025	ND	188	93.8	200	0.571	
DRO >C10-C28*	17.3	10.0	02/11/2025	ND	185	92.3	200	2.84	
EXT DRO >C28-C36	<10.0	10.0	02/11/2025	ND					

Surrogate: 1-Chlorooctane 88.0 % 48.2-134

Surrogate: 1-Chlorooctadecane 87.0 % 49.1-148

Cardinal Laboratories

*=Accredited Analyte

PLEASE NOTE: Liability and Damages. Cardinal's liability and client's exclusive remedy for any claim arising, whether based in contract or tort, shall be limited to the amount paid by client for analyses. All claims, including those for negligence and any other cause whatsoever shall be deemed waived unless made in writing and received by Cardinal within thirty (30) days after completion of the applicable service. In no event shall Cardinal be liable for incidental or consequential damages, including, without limitation, business interruptions, loss of use, or loss of profits incurred by client, its subsidiaries, affiliates or successors arising out of or related to the performance of the services hereunder by Cardinal, regardless of whether such claim is based upon any of the above stated reasons or otherwise. Results relate only to the samples identified above. This report shall not be reproduced except in full with written approval of Cardinal Laboratories.

Celey D. Keene, Lab Director/Quality Manager



PHONE (575) 393-2326 ° 101 E. MARLAND ° HOBBS, NM 88240

Analytical Results For:

TETRA TECH
 SAM ABBOTT
 901 WEST WALL STREET , STE 100
 MIDLAND TX, 79701
 Fax To: (432) 682-3946

Received:	02/11/2025	Sampling Date:	02/10/2025
Reported:	02/11/2025	Sampling Type:	Soil
Project Name:	CICADA UNIT 022H RISER RELEASE	Sampling Condition:	Cool & Intact
Project Number:	212C - MD - 03753	Sample Received By:	Tamara Oldaker
Project Location:	CHEVRON - EDDY CO., NM		

Sample ID: FS - 9 (H250809-04)

BTEx 8021B		mg/kg		Analyzed By: JH						
Analyte	Result	Reporting Limit	Analyzed	Method Blank	BS	% Recovery	True Value QC	RPD	Qualifier	
Benzene*	<0.050	0.050	02/11/2025	ND	1.81	90.4	2.00	0.781		
Toluene*	<0.050	0.050	02/11/2025	ND	1.91	95.3	2.00	1.10		
Ethylbenzene*	<0.050	0.050	02/11/2025	ND	1.94	97.2	2.00	1.82		
Total Xylenes*	<0.150	0.150	02/11/2025	ND	5.90	98.3	6.00	2.45		
Total BTEX	<0.300	0.300	02/11/2025	ND						

Surrogate: 4-Bromofluorobenzene (PID) 109 % 71.5-134

Chloride, SM4500Cl-B		mg/kg		Analyzed By: AC						
Analyte	Result	Reporting Limit	Analyzed	Method Blank	BS	% Recovery	True Value QC	RPD	Qualifier	
Chloride	160	16.0	02/11/2025	ND	432	108	400	0.00		

TPH 8015M		mg/kg		Analyzed By: ms					
Analyte	Result	Reporting Limit	Analyzed	Method Blank	BS	% Recovery	True Value QC	RPD	Qualifier
GRO C6-C10*	<10.0	10.0	02/11/2025	ND	188	93.8	200	0.571	
DRO >C10-C28*	18.8	10.0	02/11/2025	ND	185	92.3	200	2.84	
EXT DRO >C28-C36	<10.0	10.0	02/11/2025	ND					

Surrogate: 1-Chlorooctane 83.7 % 48.2-134

Surrogate: 1-Chlorooctadecane 81.8 % 49.1-148

Cardinal Laboratories

*=Accredited Analyte

PLEASE NOTE: Liability and Damages. Cardinal's liability and client's exclusive remedy for any claim arising, whether based in contract or tort, shall be limited to the amount paid by client for analyses. All claims, including those for negligence and any other cause whatsoever shall be deemed waived unless made in writing and received by Cardinal within thirty (30) days after completion of the applicable service. In no event shall Cardinal be liable for incidental or consequential damages, including, without limitation, business interruptions, loss of use, or loss of profits incurred by client, its subsidiaries, affiliates or successors arising out of or related to the performance of the services hereunder by Cardinal, regardless of whether such claim is based upon any of the above stated reasons or otherwise. Results relate only to the samples identified above. This report shall not be reproduced except in full with written approval of Cardinal Laboratories.

Celey D. Keene, Lab Director/Quality Manager



PHONE (575) 393-2326 ° 101 E. MARLAND ° HOBBS, NM 88240

Analytical Results For:

TETRA TECH
 SAM ABBOTT
 901 WEST WALL STREET , STE 100
 MIDLAND TX, 79701
 Fax To: (432) 682-3946

Received:	02/11/2025	Sampling Date:	02/10/2025
Reported:	02/11/2025	Sampling Type:	Soil
Project Name:	CICADA UNIT 022H RISER RELEASE	Sampling Condition:	Cool & Intact
Project Number:	212C - MD - 03753	Sample Received By:	Tamara Oldaker
Project Location:	CHEVRON - EDDY CO., NM		

Sample ID: FS - 11 (H250809-05)

BTEx 8021B		mg/kg		Analyzed By: JH						
Analyte	Result	Reporting Limit	Analyzed	Method Blank	BS	% Recovery	True Value QC	RPD	Qualifier	
Benzene*	<0.050	0.050	02/11/2025	ND	1.81	90.4	2.00	0.781		
Toluene*	<0.050	0.050	02/11/2025	ND	1.91	95.3	2.00	1.10		
Ethylbenzene*	<0.050	0.050	02/11/2025	ND	1.94	97.2	2.00	1.82		
Total Xylenes*	<0.150	0.150	02/11/2025	ND	5.90	98.3	6.00	2.45		
Total BTEX	<0.300	0.300	02/11/2025	ND						

Surrogate: 4-Bromofluorobenzene (PID) 111 % 71.5-134

Chloride, SM4500Cl-B		mg/kg		Analyzed By: AC						
Analyte	Result	Reporting Limit	Analyzed	Method Blank	BS	% Recovery	True Value QC	RPD	Qualifier	
Chloride	128	16.0	02/11/2025	ND	432	108	400	0.00		

TPH 8015M		mg/kg		Analyzed By: ms					
Analyte	Result	Reporting Limit	Analyzed	Method Blank	BS	% Recovery	True Value QC	RPD	Qualifier
GRO C6-C10*	<10.0	10.0	02/11/2025	ND	188	93.8	200	0.571	
DRO >C10-C28*	<10.0	10.0	02/11/2025	ND	185	92.3	200	2.84	
EXT DRO >C28-C36	<10.0	10.0	02/11/2025	ND					

Surrogate: 1-Chlorooctane 95.6 % 48.2-134

Surrogate: 1-Chlorooctadecane 93.1 % 49.1-148

Cardinal Laboratories

*=Accredited Analyte

PLEASE NOTE: Liability and Damages. Cardinal's liability and client's exclusive remedy for any claim arising, whether based in contract or tort, shall be limited to the amount paid by client for analyses. All claims, including those for negligence and any other cause whatsoever shall be deemed waived unless made in writing and received by Cardinal within thirty (30) days after completion of the applicable service. In no event shall Cardinal be liable for incidental or consequential damages, including, without limitation, business interruptions, loss of use, or loss of profits incurred by client, its subsidiaries, affiliates or successors arising out of or related to the performance of the services hereunder by Cardinal, regardless of whether such claim is based upon any of the above stated reasons or otherwise. Results relate only to the samples identified above. This report shall not be reproduced except in full with written approval of Cardinal Laboratories.

Celey D. Keene, Lab Director/Quality Manager



PHONE (575) 393-2326 ° 101 E. MARLAND ° HOBBS, NM 88240

Analytical Results For:

TETRA TECH
 SAM ABBOTT
 901 WEST WALL STREET , STE 100
 MIDLAND TX, 79701
 Fax To: (432) 682-3946

Received:	02/11/2025	Sampling Date:	02/10/2025
Reported:	02/11/2025	Sampling Type:	Soil
Project Name:	CICADA UNIT 022H RISER RELEASE	Sampling Condition:	Cool & Intact
Project Number:	212C - MD - 03753	Sample Received By:	Tamara Oldaker
Project Location:	CHEVRON - EDDY CO., NM		

Sample ID: SW - 5 (H250809-06)

BTEx 8021B		mg/kg		Analyzed By: JH						
Analyte	Result	Reporting Limit	Analyzed	Method Blank	BS	% Recovery	True Value QC	RPD	Qualifier	
Benzene*	<0.050	0.050	02/11/2025	ND	1.81	90.4	2.00	0.781		
Toluene*	<0.050	0.050	02/11/2025	ND	1.91	95.3	2.00	1.10		
Ethylbenzene*	<0.050	0.050	02/11/2025	ND	1.94	97.2	2.00	1.82		
Total Xylenes*	<0.150	0.150	02/11/2025	ND	5.90	98.3	6.00	2.45		
Total BTEx	<0.300	0.300	02/11/2025	ND						

Surrogate: 4-Bromofluorobenzene (PID) 109 % 71.5-134

Chloride, SM4500Cl-B		mg/kg		Analyzed By: AC					
Analyte	Result	Reporting Limit	Analyzed	Method Blank	BS	% Recovery	True Value QC	RPD	Qualifier
Chloride	112	16.0	02/11/2025	ND	432	108	400	0.00	

TPH 8015M		mg/kg		Analyzed By: ms					
Analyte	Result	Reporting Limit	Analyzed	Method Blank	BS	% Recovery	True Value QC	RPD	Qualifier
GRO C6-C10*	<10.0	10.0	02/11/2025	ND	188	93.8	200	0.571	
DRO >C10-C28*	<10.0	10.0	02/11/2025	ND	185	92.3	200	2.84	
EXT DRO >C28-C36	<10.0	10.0	02/11/2025	ND					

Surrogate: 1-Chlorooctane 63.3 % 48.2-134

Surrogate: 1-Chlorooctadecane 60.3 % 49.1-148

Cardinal Laboratories

*=Accredited Analyte

PLEASE NOTE: Liability and Damages. Cardinal's liability and client's exclusive remedy for any claim arising, whether based in contract or tort, shall be limited to the amount paid by client for analyses. All claims, including those for negligence and any other cause whatsoever shall be deemed waived unless made in writing and received by Cardinal within thirty (30) days after completion of the applicable service. In no event shall Cardinal be liable for incidental or consequential damages, including, without limitation, business interruptions, loss of use, or loss of profits incurred by client, its subsidiaries, affiliates or successors arising out of or related to the performance of the services hereunder by Cardinal, regardless of whether such claim is based upon any of the above stated reasons or otherwise. Results relate only to the samples identified above. This report shall not be reproduced except in full with written approval of Cardinal Laboratories.

Celey D. Keene, Lab Director/Quality Manager



PHONE (575) 393-2326 ° 101 E. MARLAND ° HOBBS, NM 88240

Notes and Definitions

ND	Analyte NOT DETECTED at or above the reporting limit
RPD	Relative Percent Difference
**	Samples not received at proper temperature of 6°C or below.
***	Insufficient time to reach temperature.
-	Chloride by SM4500Cl-B does not require samples be received at or below 6°C Samples reported on an as received basis (wet) unless otherwise noted on report

Cardinal Laboratories

*=Accredited Analyte

PLEASE NOTE: Liability and Damages. Cardinal's liability and client's exclusive remedy for any claim arising, whether based in contract or tort, shall be limited to the amount paid by client for analyses. All claims, including those for negligence and any other cause whatsoever shall be deemed waived unless made in writing and received by Cardinal within thirty (30) days after completion of the applicable service. In no event shall Cardinal be liable for incidental or consequential damages, including, without limitation, business interruptions, loss of use, or loss of profits incurred by client, its subsidiaries, affiliates or successors arising out of or related to the performance of the services hereunder by Cardinal, regardless of whether such claim is based upon any of the above stated reasons or otherwise. Results relate only to the samples identified above. This report shall not be reproduced except in full with written approval of Cardinal Laboratories.

A handwritten signature in black ink, appearing to read "Celey D. Keene".

Celey D. Keene, Lab Director/Quality Manager



PLEASE NOTE: Liability and Damages. Cardinal's liability and client's exclusive remedy for any claim arising whether based in contract or tort, shall be limited to the amount paid by the client for the analyses. All claims including those for negligence and any other cause whatsoever shall be deemed waived unless made in writing and received by Cardinal within 30 days after completion of the applicable service. In no event shall Cardinal be liable for incidental or consequential damages, including without limitation, business interruptions, loss of use, or loss of profits incurred by client, its subsidiaries, affiliates or successors arising out of or related to the performance of services hereunder by Cardinal, regardless of whether such claim is based upon any of the above stated reasons or otherwise.

Relinquished By: William Erlendson		Date: 02/11/2025 Time: 9:00	Received By: <i>Adrian Law</i>	Verbal Result: <input type="checkbox"/> Yes <input type="checkbox"/> No All Results are emailed. Please provide Email address: Sam.Abbott@tetrattech.com
Relinquished By: <i>Adrian Law</i>		Date: <i>2-11-25</i> Time: <i>7:06</i>	Received By: <i>Sam Abbott</i>	REMARKS:
Delivered By: (Circle One) Sampler - UPS - Bus - Other:	Observed Temp. °C <i>-0.5</i> Corrected Temp. °C <i>-0.2</i>	Sample Condition Cool <input checked="" type="checkbox"/> Intact <input type="checkbox"/> Yes <input type="checkbox"/> No <input type="checkbox"/> No <input type="checkbox"/> No	CHECKED BY: (Initials) <i>go.</i>	Turnaround Time: Standard <input type="checkbox"/> Bacteria (only) Sample Condition Result: <input checked="" type="checkbox"/> YES <input type="checkbox"/> NO <input type="checkbox"/> Cool Intact Observed Temp. °C Thermometer ID #140 Correction Factor +0.3°C <i>Same day</i>
				<input type="checkbox"/> Yes <input type="checkbox"/> No <input type="checkbox"/> No <input type="checkbox"/> No Corrected Temp. °C

Sante Fe Main Office
Phone: (505) 476-3441

General Information
Phone: (505) 629-6116

Online Phone Directory
<https://www.emnrd.nm.gov/ocd/contact-us>

State of New Mexico
Energy, Minerals and Natural Resources
Oil Conservation Division
1220 S. St Francis Dr.
Santa Fe, NM 87505

QUESTIONS

Action 439074

QUESTIONS

Operator: CHEVRON U S A INC 6301 Deauville Blvd Midland, TX 79706	OGRID: 4323
	Action Number: 439074
	Action Type: [C-141] Reclamation Report C-141 (C-141-v-Reclamation)

QUESTIONS

Prerequisites	
Incident ID (n#)	nAPP2424378052
Incident Name	NAPP2424378052 CICADA UNIT #022H @ 30-015-45423
Incident Type	Produced Water Release
Incident Status	Reclamation Report Received
Incident Well	[30-015-45423] CICADA UNIT #022H

Location of Release Source	
Please answer all the questions in this group.	
Site Name	CICADA UNIT #022H
Date Release Discovered	08/30/2024
Surface Owner	Federal

Incident Details	
Please answer all the questions in this group.	
Incident Type	Produced Water Release
Did this release result in a fire or is the result of a fire	No
Did this release result in any injuries	No
Has this release reached or does it have a reasonable probability of reaching a watercourse	No
Has this release endangered or does it have a reasonable probability of endangering public health	No
Has this release substantially damaged or will it substantially damage property or the environment	No
Is this release of a volume that is or may with reasonable probability be detrimental to fresh water	No

Nature and Volume of Release	
Material(s) released, please answer all that apply below. Any calculations or specific justifications for the volumes provided should be attached to the follow-up C-141 submission.	
Crude Oil Released (bbls) Details	Cause: High Line Pressure Flow Line - Production Crude Oil Released: 3 BBL Recovered: 3 BBL Lost: 0 BBL.
Produced Water Released (bbls) Details	Cause: High Line Pressure Flow Line - Production Produced Water Released: 51 BBL Recovered: 50 BBL Lost: 1 BBL.
Is the concentration of chloride in the produced water >10,000 mg/l	Yes
Condensate Released (bbls) Details	Not answered.
Natural Gas Vented (Mcf) Details	Not answered.
Natural Gas Flared (Mcf) Details	Not answered.
Other Released Details	Not answered.
Are there additional details for the questions above (i.e. any answer containing Other, Specify, Unknown, and/or Fire, or any negative lost amounts)	Not answered.

Sante Fe Main Office
Phone: (505) 476-3441

General Information
Phone: (505) 629-6116

Online Phone Directory
<https://www.emnrd.nm.gov/ocd/contact-us>

State of New Mexico
Energy, Minerals and Natural Resources
Oil Conservation Division
1220 S. St Francis Dr.
Santa Fe, NM 87505

QUESTIONS, Page 2

Action 439074

QUESTIONS (continued)

Operator: CHEVRON U S A INC 6301 Deauville Blvd Midland, TX 79706	OGRID: 4323
	Action Number: 439074
	Action Type: [C-141] Reclamation Report C-141 (C-141-v-Reclamation)

QUESTIONS

Nature and Volume of Release (continued)	
Is this a gas only submission (i.e. only significant Mcf values reported)	No, according to supplied volumes this does not appear to be a "gas only" report.
Was this a major release as defined by Subsection A of 19.15.29.7 NMAC	Yes
Reasons why this would be considered a submission for a notification of a major release	From paragraph A. "Major release" determine using: (1) an unauthorized release of a volume, excluding gases, of 25 barrels or more.
With the implementation of the 19.15.27 NMAC (05/25/2021), venting and/or flaring of natural gas (i.e. gas only) are to be submitted on the C-129 form.	

Initial Response

The responsible party must undertake the following actions immediately unless they could create a safety hazard that would result in injury.

The source of the release has been stopped	True
The impacted area has been secured to protect human health and the environment	True
Released materials have been contained via the use of berms or dikes, absorbent pads, or other containment devices	True
All free liquids and recoverable materials have been removed and managed appropriately	True
If all the actions described above have not been undertaken, explain why	Not answered.

Per Paragraph (4) of Subsection B of 19.15.29.8 NMAC the responsible party may commence remediation immediately after discovery of a release. If remediation has begun, please prepare and attach a narrative of actions to date in the follow-up C-141 submission. If remedial efforts have been successfully completed or if the release occurred within a lined containment area (see Subparagraph (a) of Paragraph (5) of Subsection A of 19.15.29.11 NMAC), please prepare and attach all information needed for closure evaluation in the follow-up C-141 submission.

I hereby certify that the information given above is true and complete to the best of my knowledge and understand that pursuant to OCD rules and regulations all operators are required to report and/or file certain release notifications and perform corrective actions for releases which may endanger public health or the environment. The acceptance of a C-141 report by the OCD does not relieve the operator of liability should their operations have failed to adequately investigate and remediate contamination that pose a threat to groundwater, surface water, human health or the environment. In addition, OCD acceptance of a C-141 report does not relieve the operator of responsibility for compliance with any other federal, state, or local laws and/or regulations.

I hereby agree and sign off to the above statement	Name: Kennedy Lincoln Title: Environmental Specialist Email: kennedy.lincoln@chevron.com Date: 09/16/2024
--	--

Sante Fe Main Office
Phone: (505) 476-3441

General Information
Phone: (505) 629-6116

Online Phone Directory
<https://www.emnrd.nm.gov/ocd/contact-us>

State of New Mexico
Energy, Minerals and Natural Resources
Oil Conservation Division
1220 S. St Francis Dr.
Santa Fe, NM 87505

QUESTIONS, Page 3

Action 439074

QUESTIONS (continued)

Operator: CHEVRON U S A INC 6301 Deauville Blvd Midland, TX 79706	OGRID: 4323
	Action Number: 439074
	Action Type: [C-141] Reclamation Report C-141 (C-141-v-Reclamation)

QUESTIONS

Site Characterization	
<i>Please answer all the questions in this group (only required when seeking remediation plan approval and beyond). This information must be provided to the appropriate district office no later than 90 days after the release discovery date.</i>	
What is the shallowest depth to groundwater beneath the area affected by the release in feet below ground surface (ft bgs)	Between 51 and 75 (ft.)
What method was used to determine the depth to ground water	NM OSE iWaters Database Search
Did this release impact groundwater or surface water	No
What is the minimum distance, between the closest lateral extents of the release and the following surface areas:	
A continuously flowing watercourse or any other significant watercourse	Greater than 5 (mi.)
Any lakebed, sinkhole, or playa lake (measured from the ordinary high-water mark)	Greater than 5 (mi.)
An occupied permanent residence, school, hospital, institution, or church	Greater than 5 (mi.)
A spring or a private domestic fresh water well used by less than five households for domestic or stock watering purposes	Between 1 and 5 (mi.)
Any other fresh water well or spring	Between 1 and 5 (mi.)
Incorporated municipal boundaries or a defined municipal fresh water well field	Greater than 5 (mi.)
A wetland	Between ½ and 1 (mi.)
A subsurface mine	Greater than 5 (mi.)
An (non-karst) unstable area	Greater than 5 (mi.)
Categorize the risk of this well / site being in a karst geology	High
A 100-year floodplain	Between ½ and 1 (mi.)
Did the release impact areas not on an exploration, development, production, or storage site	Yes

Remediation Plan	
<i>Please answer all the questions that apply or are indicated. This information must be provided to the appropriate district office no later than 90 days after the release discovery date.</i>	
Requesting a remediation plan approval with this submission	Yes
<i>Attach a comprehensive report demonstrating the lateral and vertical extents of soil contamination associated with the release have been determined, pursuant to 19.15.29.11 NMAC and 19.15.29.13 NMAC.</i>	
Have the lateral and vertical extents of contamination been fully delineated	Yes
Was this release entirely contained within a lined containment area	No
Soil Contamination Sampling: (Provide the highest observable value for each, in milligrams per kilograms.)	
Chloride (EPA 300.0 or SM4500 Cl B)	15800
TPH (GRO+DRO+MRO) (EPA SW-846 Method 8015M)	20720
GRO+DRO (EPA SW-846 Method 8015M)	18400
BTEX (EPA SW-846 Method 8021B or 8260B)	60.7
Benzene (EPA SW-846 Method 8021B or 8260B)	0
<i>Per Subsection B of 19.15.29.11 NMAC unless the site characterization report includes completed efforts at remediation, the report must include a proposed remediation plan in accordance with 19.15.29.12 NMAC, which includes the anticipated timelines for beginning and completing the remediation.</i>	
On what estimated date will the remediation commence	01/06/2025
On what date will (or did) the final sampling or liner inspection occur	01/06/2025
On what date will (or was) the remediation complete(d)	01/13/2025
What is the estimated surface area (in square feet) that will be reclaimed	4250
What is the estimated volume (in cubic yards) that will be reclaimed	285
What is the estimated surface area (in square feet) that will be remediated	4250
What is the estimated volume (in cubic yards) that will be remediated	285
<i>These estimated dates and measurements are recognized to be the best guess or calculation at the time of submission and may (be) change(d) over time as more remediation efforts are completed.</i>	
<i>The OCD recognizes that proposed remediation measures may have to be minimally adjusted in accordance with the physical realities encountered during remediation. If the responsible party has any need to significantly deviate from the remediation plan proposed, then it should consult with the division to determine if another remediation plan submission is required.</i>	

Sante Fe Main Office
Phone: (505) 476-3441

General Information
Phone: (505) 629-6116

Online Phone Directory
<https://www.emnrd.nm.gov/ocd/contact-us>

State of New Mexico
Energy, Minerals and Natural Resources
Oil Conservation Division
1220 S. St Francis Dr.
Santa Fe, NM 87505

QUESTIONS, Page 4

Action 439074

QUESTIONS (continued)

Operator: CHEVRON U S A INC 6301 Deauville Blvd Midland, TX 79706	OGRID: 4323
	Action Number: 439074
	Action Type: [C-141] Reclamation Report C-141 (C-141-v-Reclamation)

QUESTIONS

Remediation Plan (continued)	
<i>Please answer all the questions that apply or are indicated. This information must be provided to the appropriate district office no later than 90 days after the release discovery date.</i>	
This remediation will (or is expected to) utilize the following processes to remediate / reduce contaminants:	
<i>(Select all answers below that apply.)</i>	
(Ex Situ) Excavation and off-site disposal (i.e. dig and haul, hydrovac, etc.)	Yes
Which OCD approved facility will be used for off-site disposal	Not answered.
OR which OCD approved well (API) will be used for off-site disposal	Not answered.
OR is the off-site disposal site, to be used, out-of-state	Yes
In which state is the disposal taking place	TEXAS
What is the name of the out-of-state facility	R360 HALFWAY
OR is the off-site disposal site, to be used, an NMED facility	No
(Ex Situ) Excavation and on-site remediation (i.e. On-Site Land Farms)	No
(In Situ) Soil Vapor Extraction	No
(In Situ) Chemical processing (i.e. Soil Shredding, Potassium Permanganate, etc.)	No
(In Situ) Biological processing (i.e. Microbes / Fertilizer, etc.)	No
(In Situ) Physical processing (i.e. Soil Washing, Gypsum, Disking, etc.)	No
Ground Water Abatement pursuant to 19.15.30 NMAC	No
OTHER (Non-listed remedial process)	No
<i>Per Subsection B of 19.15.29.11 NMAC unless the site characterization report includes completed efforts at remediation, the report must include a proposed remediation plan in accordance with 19.15.29.12 NMAC, which includes the anticipated timelines for beginning and completing the remediation.</i>	
I hereby certify that the information given above is true and complete to the best of my knowledge and understand that pursuant to OCD rules and regulations all operators are required to report and/or file certain release notifications and perform corrective actions for releases which may endanger public health or the environment. The acceptance of a C-141 report by the OCD does not relieve the operator of liability should their operations have failed to adequately investigate and remediate contamination that pose a threat to groundwater, surface water, human health or the environment. In addition, OCD acceptance of a C-141 report does not relieve the operator of responsibility for compliance with any other federal, state, or local laws and/or regulations.	
I hereby agree and sign off to the above statement	Name: Kennedy Lincoln Title: Environmental Specialist Email: kennedy.lincoln@chevron.com Date: 12/16/2024
<i>The OCD recognizes that proposed remediation measures may have to be minimally adjusted in accordance with the physical realities encountered during remediation. If the responsible party has any need to significantly deviate from the remediation plan proposed, then it should consult with the division to determine if another remediation plan submission is required.</i>	

Sante Fe Main Office
Phone: (505) 476-3441

General Information
Phone: (505) 629-6116

Online Phone Directory
<https://www.emnrd.nm.gov/ocd/contact-us>

State of New Mexico
Energy, Minerals and Natural Resources
Oil Conservation Division
1220 S. St Francis Dr.
Santa Fe, NM 87505

QUESTIONS, Page 5

Action 439074

QUESTIONS (continued)

Operator: CHEVRON U S A INC 6301 Deauville Blvd Midland, TX 79706	OGRID: 4323
	Action Number: 439074
	Action Type: [C-141] Reclamation Report C-141 (C-141-v-Reclamation)

QUESTIONS

Deferral Requests Only	
Only answer the questions in this group if seeking a deferral upon approval this submission. Each of the following items must be confirmed as part of any request for deferral of remediation.	
Requesting a deferral of the remediation closure due date with the approval of this submission	No

Sante Fe Main Office
Phone: (505) 476-3441

General Information
Phone: (505) 629-6116

Online Phone Directory
<https://www.emnrd.nm.gov/ocd/contact-us>

State of New Mexico
Energy, Minerals and Natural Resources
Oil Conservation Division
1220 S. St Francis Dr.
Santa Fe, NM 87505

QUESTIONS, Page 6

Action 439074

QUESTIONS (continued)

Operator: CHEVRON U S A INC 6301 Deauville Blvd Midland, TX 79706	OGRID: 4323
	Action Number: 439074
	Action Type: [C-141] Reclamation Report C-141 (C-141-v-Reclamation)

QUESTIONS

Sampling Event Information	
Last sampling notification (C-141N) recorded	427908
Sampling date pursuant to Subparagraph (a) of Paragraph (1) of Subsection D of 19.15.29.12 NMAC	02/06/2025
What was the (estimated) number of samples that were to be gathered	21
What was the sampling surface area in square feet	3175

Remediation Closure Request

Only answer the questions in this group if seeking remediation closure for this release because all remediation steps have been completed.

Requesting a remediation closure approval with this submission	Yes
Have the lateral and vertical extents of contamination been fully delineated	Yes
Was this release entirely contained within a lined containment area	No
All areas reasonably needed for production or subsequent drilling operations have been stabilized, returned to the sites existing grade, and have a soil cover that prevents ponding of water, minimizing dust and erosion	Yes
What was the total surface area (in square feet) remediated	5015
What was the total volume (cubic yards) remediated	225
All areas not reasonably needed for production or subsequent drilling operations have been reclaimed to contain a minimum of four feet of non-waste contain earthen material with concentrations less than 600 mg/kg chlorides, 100 mg/kg TPH, 50 mg/kg BTEX, and 10 mg/kg Benzene	Yes
What was the total surface area (in square feet) reclaimed	5015
What was the total volume (in cubic yards) reclaimed	225
Summarize any additional remediation activities not included by answers (above)	In November 2024, in conjunction with delineation activities, below-grade piping was removed and replaced. To facilitate piping repair and replacement, Chevron operations removed soil around the shut-in piping as well as removed as much contaminated soil as safely feasible in the immediate release point area.

The responsible party must attach information demonstrating they have complied with all applicable closure requirements and any conditions or directives of the OCD. This demonstration should be in the form of a comprehensive report (in .pdf format) including a scaled site map, sampling diagrams, relevant field notes, photographs of any excavation prior to backfilling, laboratory data including chain of custody documents of final sampling, and a narrative of the remedial activities. Refer to 19.15.29.12 NMAC.

I hereby certify that the information given above is true and complete to the best of my knowledge and understand that pursuant to OCD rules and regulations all operators are required to report and/or file certain release notifications and perform corrective actions for releases which may endanger public health or the environment. The acceptance of a C-141 report by the OCD does not relieve the operator of liability should their operations have failed to adequately investigate and remediate contamination that pose a threat to groundwater, surface water, human health or the environment. In addition, OCD acceptance of a C-141 report does not relieve the operator of responsibility for compliance with any other federal, state, or local laws and/or regulations. The responsible party acknowledges they must substantially restore, reclaim, and re-vegetate the impacted surface area to the conditions that existed prior to the release or their final land use in accordance with 19.15.29.13 NMAC including notification to the OCD when reclamation and re-vegetation are complete.

I hereby agree and sign off to the above statement	Name: Kennedy Lincoln Title: Environmental Specialist Email: kennedy.lincoln@chevron.com Date: 03/05/2025
--	--

Sante Fe Main Office
Phone: (505) 476-3441

General Information
Phone: (505) 629-6116

Online Phone Directory
<https://www.emnrd.nm.gov/ocd/contact-us>

State of New Mexico
Energy, Minerals and Natural Resources
Oil Conservation Division
1220 S. St Francis Dr.
Santa Fe, NM 87505

QUESTIONS, Page 7

Action 439074

QUESTIONS (continued)

Operator: CHEVRON U S A INC 6301 Deauville Blvd Midland, TX 79706	OGRID: 4323
	Action Number: 439074
	Action Type: [C-141] Reclamation Report C-141 (C-141-v-Reclamation)

QUESTIONS

Reclamation Report	
<i>Only answer the questions in this group if all reclamation steps have been completed.</i>	
Requesting a reclamation approval with this submission	Yes
What was the total reclamation surface area (in square feet) for this site	2715
What was the total volume of replacement material (in cubic yards) for this site	200
<i>Per Paragraph (1) of Subsection D of 19.15.29.13 NMAC the reclamation must contain a minimum of four feet of non-waste containing, uncontaminated, earthen material with chloride concentrations less than 600 mg/kg as analyzed by EPA Method 300.0, or other test methods approved by the division. The soil cover must include a top layer, which is either the background thickness of topsoil or one foot of suitable material to establish vegetation at the site, whichever is greater.</i>	
Is the soil top layer complete and is it suitable material to establish vegetation	Yes
On what (estimated) date will (or was) the reseeded commence(d)	02/12/2025
Summarize any additional reclamation activities not included by answers (above)	Once acceptable confirmation sample results were received, the excavation was backfilled with clean material to pre-release grade. In accordance with 19.15.29.12 NMAC, the reclaimed area contained a minimum of four feet of non-waste containing, uncontaminated, earthen material with chloride concentrations less than 600 mg/kg as analyzed by EPA Method SM4500Cl-B. The soil cover included a top layer consisting of one foot of suitable material to establish vegetation at the site. The backfilled areas in the pasture were seeded following backfilling, to aid in revegetation. Based on the soils of the site, the BLM Seed Mix #2 was used for seeding and was planted in the amount specified in the pounds pure live seed (PLS) per acre. Site inspections will be performed annually to assess the revegetation progress and evaluate the site for the presence of primary or secondary noxious weeds. If noxious weeds are identified, the NMSLO will be contacted to determine an effective method for eradication. If the site does not show revegetation after one growing season, the area will be reseeded as appropriate. Reclamation activities have been implemented in consultation with the BLM.
<i>The responsible party must attach information demonstrating they have complied with all applicable reclamation requirements and any conditions or directives of the OCD. This demonstration should be in the form of attachments (in .pdf format) including a scaled site map, any proposed reseeded plans or relevant field notes, photographs of reclaimed area, and a narrative of the reclamation activities. Refer to 19.15.29.13 NMAC.</i>	
I hereby certify that the information given above is true and complete to the best of my knowledge and understand that pursuant to OCD rules and regulations all operators are required to report and/or file certain release notifications and perform corrective actions for releases which may endanger public health or the environment. The acceptance of a C-141 report by the OCD does not relieve the operator of liability should their operations have failed to adequately investigate and remediate contamination that pose a threat to groundwater, surface water, human health or the environment. In addition, OCD acceptance of a C-141 report does not relieve the operator of responsibility for compliance with any other federal, state, or local laws and/or regulations. The responsible party acknowledges they must substantially restore, reclaim, and re-vegetate the impacted surface area to the conditions that existed prior to the release or their final land use in accordance with 19.15.29.13 NMAC including notification to the OCD when reclamation and re-vegetation are complete.	
I hereby agree and sign off to the above statement	Name: Kennedy Lincoln Title: Environmental Specialist Email: kennedy.lincoln@chevron.com Date: 03/05/2025

Sante Fe Main Office
Phone: (505) 476-3441

General Information
Phone: (505) 629-6116

Online Phone Directory
<https://www.emnrd.nm.gov/ocd/contact-us>

State of New Mexico
Energy, Minerals and Natural Resources
Oil Conservation Division
1220 S. St Francis Dr.
Santa Fe, NM 87505

QUESTIONS, Page 8

Action 439074

QUESTIONS (continued)

Operator: CHEVRON U S A INC 6301 Deauville Blvd Midland, TX 79706	OGRID: 4323
	Action Number: 439074
	Action Type: [C-141] Reclamation Report C-141 (C-141-v-Reclamation)

QUESTIONS

Revegetation Report	
<i>Only answer the questions in this group if all surface restoration, reclamation and re-vegetation obligations have been satisfied.</i>	
Requesting a restoration complete approval with this submission	No
<i>Per Paragraph (4) of Subsection (D) of 19.15.29.13 NMAC for any major or minor release containing liquids, the responsible party must notify the division when reclamation and re-vegetation are complete.</i>	

Sante Fe Main Office
Phone: (505) 476-3441

General Information
Phone: (505) 629-6116

Online Phone Directory
<https://www.emnrd.nm.gov/ocd/contact-us>

State of New Mexico
Energy, Minerals and Natural Resources
Oil Conservation Division
1220 S. St Francis Dr.
Santa Fe, NM 87505

CONDITIONS

Action 439074

CONDITIONS

Operator: CHEVRON U S A INC 6301 Deauville Blvd Midland, TX 79706	OGRID: 4323
	Action Number: 439074
	Action Type: [C-141] Reclamation Report C-141 (C-141-v-Reclamation)

CONDITIONS

Created By	Condition	Condition Date
nvez	None	6/6/2025