



May 14, 2025

District Supervisor
Oil Conservation Division, District 1
1625 North French Drive
Hobbs, New Mexico 88240

**Re: Revegetation Closure Report
ConocoPhillips
Tiger 11 Federal 001H
Unit Letter F, Section 11, Township 20 South, Range 34 East
DOR: 8/28/2024
Lea County, New Mexico
Incident ID: NAPP2426033046**

Sir or Madam:

Tetra Tech, Inc. (Tetra Tech) was contacted by ConocoPhillips to assess a release that occurred as a result of an unauthorized discharge of fluids on a lease road, which is located 0.32 miles southeast of the unrelated Tiger 11 Federal 001H facility (fAPP2203450574). The release footprint is located within Public Land Survey System (PLSS) Unit Letter F, Section 11, Township 20 South, Range 34 East, in Lea County, New Mexico (Site). The approximate release point occurred at coordinates 32.590081°, -103.534634°, as shown on Figures 1 and 2.

BACKGROUND

According to the C-141 Initial Report, the release was discovered on August 28, 2024, and was caused by an unauthorized discharge of fluid on a lease road. The nature of the release and origin of the fluid was undetermined. The release volume was estimated at approximately 5 bbls of an unknown fluid, no fluids were recovered. The approximate release extent is shown in Figure 3. This release extent was identified based on information provided by ConocoPhillips representatives and a review of photographs collected at the release area. The New Mexico Oil Conservation Division (NMOCD) approved the initial C-141 on September 16, 2023, and assigned the release Incident ID NAPP2426033046. The C-141 is included as Appendix A.

LAND OWNERSHIP

According to the NMOCD Oil and Gas Map, the site is located on land owned by the Bureau of Land Management (BLM). This Closure Report will be provided to the BLM for review and approval for concurrence.

SITE CHARACTERIZATION

A site characterization was performed and no sinkholes, residences, schools, hospitals, institutions, churches, springs, private domestic water wells, stream bodies, springs, playa lakes, wetlands, incorporated municipal boundaries, subsurface mines, or floodplains are located within the distances specified in 19.15. 29 New Mexico Administrative Code (NMAC). The Site is in an area of low karst potential.

Tetra Tech

901 West Wall St., Suite 100, Midland, TX 79701

Tel 432.682.4559

Fax 432.682.3946

www.tetrattech.com

According to the NMOSE, there is one well within 1.05 miles (1698 meters) with a well depth of 210 feet (ft). According to the United States Geological Survey (USGS) groundwater well search through the NMOCD mapping system, there is one (1) water well within 1.17 miles (1,855 meters) of the Site with a water depth of 152 ft. The site characterization data is included in Appendix B.

REGULATORY FRAMEWORK

Based upon the release footprint and in accordance with Subsection E of 19.15.29.12 NMAC, per 19.15.29.11 NMAC, the site characterization data was used to determine recommended remedial action levels (RRALs) for benzene, toluene, ethylbenzene, and xylene (collectively referred to as BTEX), total petroleum hydrocarbons (TPH), and chlorides in soil.

Based on the site characterization and in accordance with Table I of 19.15.29.12 NMAC, the remediation RRALs for the Site are as follows:

Constituent	Remediation RRAL
Chloride	600 mg/kg
TPH (GRO+DRO+ORO)	100 mg/kg
BTEX	50 mg/kg
Benzene	10 mg/kg

Additionally, in accordance with the NMOCD guidance *Procedures for Implementation of the Spill Rule (19.15.29 NMAC)* (September 6, 2019), the following reclamation requirements for surface soils (0-4 feet bgs) outside of active oil and gas operations are as follows:

Constituent	Reclamation Requirements
Chloride	600 mg/kg
TPH (GRO+DRO+ORO)	100 mg/kg

SITE ASSESSMENT AND SAMPLING RESULTS

Tetra Tech personnel mobilized to the site on September 10, 2024, to conduct assessment activities. A total of eight (8) borings (AH-1 through AH-8) were installed within and around the release footprint. Four (4) borings (AH-1 through AH-4) were installed to a maximum depth of 4 ft bgs each, and four (4) borings (AH-5 through AH-8) were installed to 1 ft bgs each. Boring locations from the September 2024 sampling event are presented in Figure 3.

A total of fourteen (14) samples were collected from the eight (8) boring locations and submitted to Cardinal Laboratories (Cardinal) in Hobbs, New Mexico to be analyzed for chlorides via EPA Method 4500.0, TPH via EPA Method 8015M, and BTEX via EPA Method 8021B. All analytical results were below the reclamation requirements for all analyzed constituents. A copy of the laboratory analytical report and chain-of-custody documentation are included in Appendix C. Photographic documentation of Site conditions at the time of the assessment is presented in Appendix D.

INITIAL RESPONSE AND REMEDIAL ACTIVITIES

In accordance with 19.15.29.8. B. (4) NMAC that states “the responsible party may commence remediation immediately after discovery of a release,” Tetra Tech on behalf of ConocoPhillips began remedial activities of the impacted area on October 28, 2024. Although the analytical data indicated that soil concentrations were below the reclamation requirements and no remediation was necessary, ConocoPhillips elected to conduct a scrape to remove any residual surficial discoloration. The identified release extent was scraped to a depth of approximately 3 inches bgs, resulting in approximately 2 cubic yards of contaminated soil being removed. Photographic documentation of the release extent before and after the scrape is included in Appendix D. The initial response area is indicated in Figure 4.

SITE CONFIRMATION SAMPLING RESULTS

Tetra Tech personnel conducted confirmation sampling on November 16, 2023, for verification of initial response activities. Prior to confirmation sampling, the NMOCD district office was notified on October 23, 2024 via the OCD Portal (C-141N) in accordance with Subsection D of 19.15.29.12 NMAC. Copies of the regulatory correspondence are included in Appendix E.

Following excavation, confirmation floor and sidewall samples were collected and submitted for laboratory analysis to verify efficacy of remediation activities. Confirmation samples were collected such that each discrete sample (sidewall and floor) was representative of no more than 200 square feet of scraped area. Five (5) confirmation floor sample locations and four (4) confirmation sidewall sample locations were collected for laboratory analysis during remedial activities. Confirmation sidewall sample locations were categorized with the cardinal direction (N, E, S, W) followed by SW-#. Confirmation floor sample locations were labeled with "FS"-#. Excavated areas and confirmation sample locations are indicated in Figure 4. Photographs from the scraped areas are provided in Appendix D.

Collected confirmation samples were placed into laboratory-provided sample containers, transferred under chain-of-custody, and analyzed within appropriate holding times by Cardinal. The soil samples were analyzed for TPH (GRO+DRO+MRO) by EPA Method 8015M, BTEX by EPA Method 8021B, and chlorides by SM4500CI-B. The analytical results were directly compared to the reclamation limits and established Site RRALs to demonstrate compliance. The results of the October 2024 confirmation sampling events are summarized in Table 2. All final confirmation soil samples (floor and sidewall) were below applicable cleanup levels for chloride, TPH, and BTEX. Copies of laboratory analysis and chain-of-custody documentation are included in Appendix C.

RECLAMATION

The analytical data from the assessment was well below reclamation requirements of 600 mg/kg for chlorides and 100 mg/kg for TPH. ConocoPhillips elected to conduct a scrape of the impacted area to remove any surficial discoloration. During the surface scrape, personnel were cautious around existing vegetation as the release had not impacted the established vegetation. Therefore, based on 19.15.29.13 NMAC, areas disturbed by the remediation have been reclaimed, as the responsible party has restored the impacted surface areas to the condition that existed prior to the release.

Collected confirmation samples were placed into laboratory-provided sample containers, transferred under chain-of-custody, and analyzed within appropriate holding times by Cardinal. The soil samples were analyzed for TPH (GRO+DRO+MRO) by EPA Method 8015M, BTEX by EPA Method 8021B, and chlorides by SM4500CI-B. The analytical results were directly compared to the reclamation requirements and established Site RRALs to demonstrate compliance. All final confirmation soil samples (floor and sidewall) were below the reclamation limits for chloride, TPH, and BTEX. Excavated areas, depths and confirmation sample locations are indicated in Figure 4. The results of the October 2024 confirmation sampling events are summarized in Table 2.

The excavated area was re-contoured and no backfill material was used as all confirmation samples were below the reporting limit of 16.0 mg/kg for chloride. Therefore, in accordance with 19.15.29.12 NMAC, the reclaimed area contained a minimum of four feet of non-waste containing, uncontaminated, earthen material with chloride concentrations less than 600 mg/kg as analyzed by SM4500CI-B.

NMOCD APPROVAL

Tetra Tech, on behalf of ConocoPhillips, prepared a Remediation Closure Report dated November 22, 2024, and submitted it to the NMOCD for approval. The Remediation Closure Report was approved by the NMOCD via email dated March 11, 2025, with the following comment:

- *Remediation closure & reclamation report approved, release resolved. Pending revegetation report.*

Re-Vegetation Closure Report
May 14, 2025

ConocoPhillips

REVEGETATION

As remedial activities did not impact or remove established vegetation and based on 19.15.29.13 NMAC, revegetation is complete, and no further restoration is required. All disturbed areas have uniform vegetative cover established that reflects a life-form ratio of plus or minus fifty percent of pre-disturbance levels and a total percent plant cover of at least seventy percent of pre-disturbance levels, excluding noxious weeds.

CONCLUSION

Based on the results of the site assessment, initial response actions, and confirmation sampling, ConocoPhillips respectfully requests closure of the incident as the Site meets the requirements set by 19.15.29.13 NMAC and therefore revegetation is complete. If you have any questions concerning the remediation and reclamation activities for the Site, please call me at (512) 596-8201.

Sincerely,

Tetra Tech, Inc.



Lisbeth Chavira
Project Manager



Christian M. Llull, P.G.
Program Manager

cc:
Mr. Jacob Laird, GPBU – ConocoPhillips

Re-Vegetation Closure Report
May 14, 2025

ConocoPhillips

LIST OF ATTACHMENTS

Figures:

- Figure 1 – Overview Map
- Figure 2 – Topographic Map
- Figure 3 – Approximate Release Extent and Assessment
- Figure 5 – Approximate Release Extent and Remediation Extent

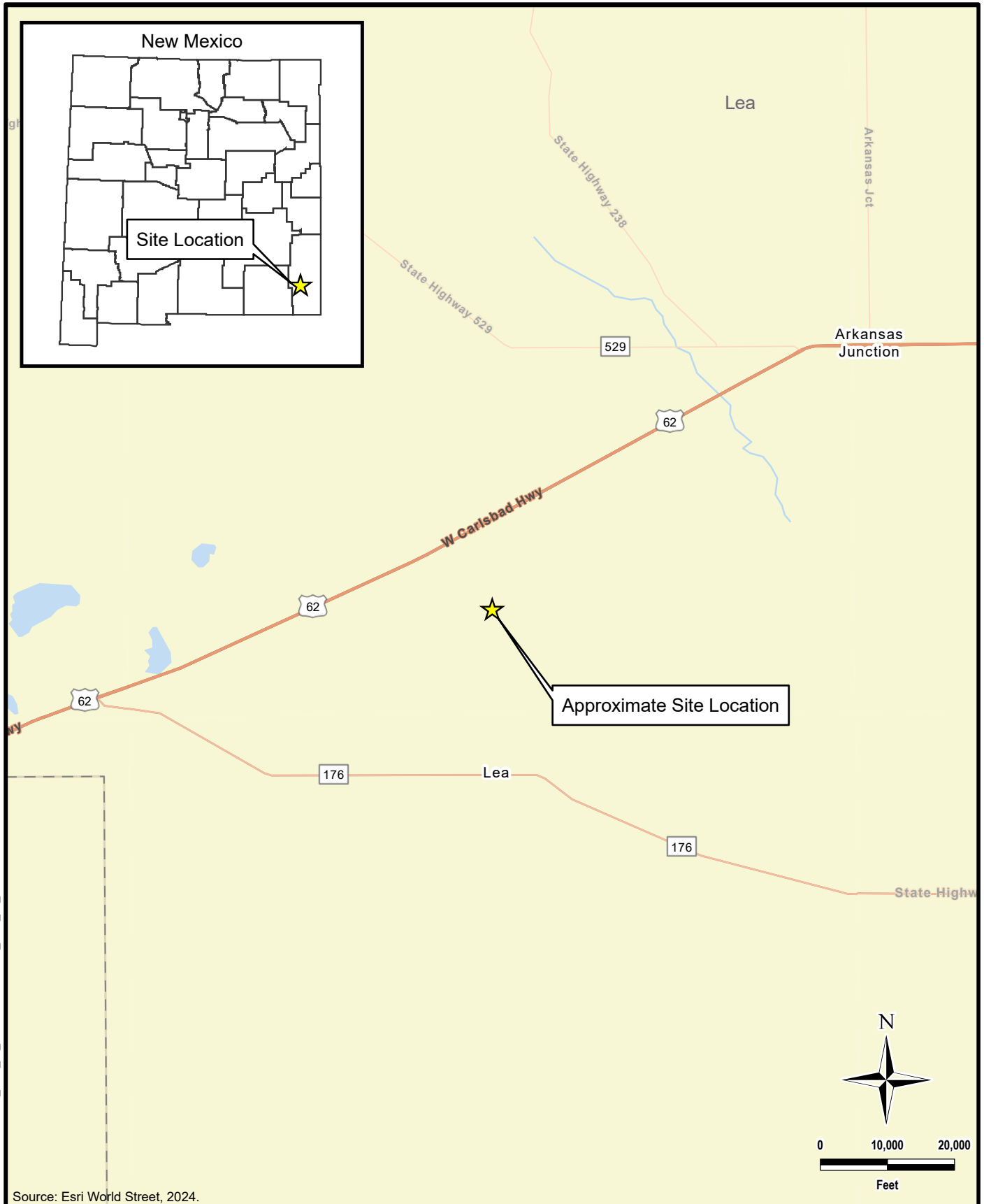
Tables:

- Table 1 – Summary of Analytical Results – Soil Assessment
- Table 2 – Summary of Analytical Results – Soil Remediation

Appendices:

- Appendix A – C-141 Forms
- Appendix B – Site Characterization Data
- Appendix C – Laboratory Analytical Data
- Appendix D – Photographic Documentation
- Appendix E – Regulatory Correspondence

FIGURES



DOCUMENT PATH: Y:\CONOCOPHILLIPS\TIGER_FED_11_BATTERY\TIGER_FED_11_BATTERY.APRX



TETRA TECH

www.tetrattech.com

901 West Wall Street, Suite 100
Midland, Texas 79701
Phone: (432) 682-4559
Fax: (432) 682-3946

CONOCOPHILLIPS

NAPP2426033046
LEA COUNTY, NEW MEXICO
(32.590081°, -103.534634°)

**TIGER 11 FED BATTERY
OVERVIEW MAP**

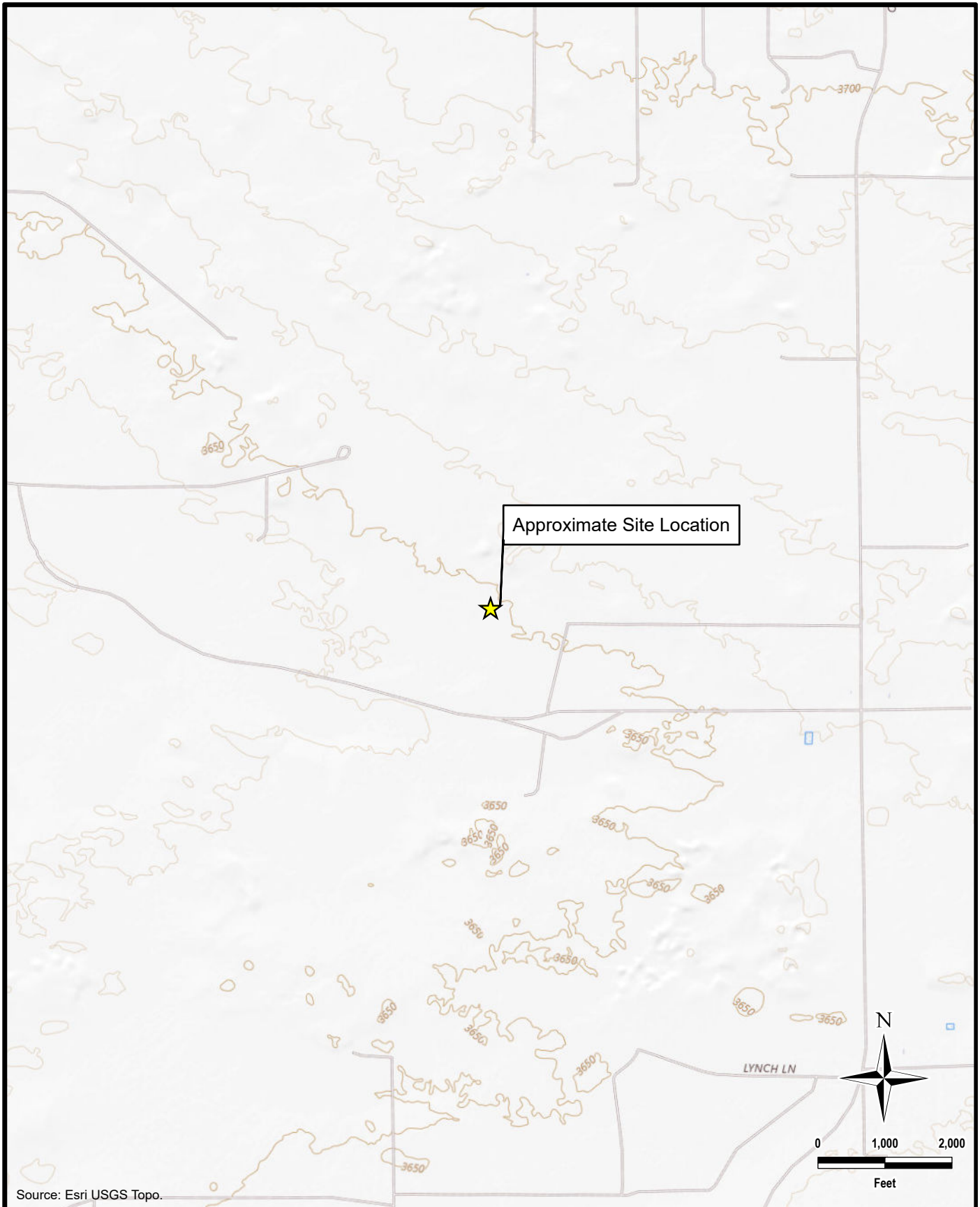
PROJECT NO.: 212C-MD-03607

DATE: NOVEMBER 20, 2024

DESIGNED BY: LMV

Figure No.

1



Source: Esri USGS Topo.



TETRA TECH

www.tetrattech.com

901 West Wall Street, Suite 100
Midland, Texas 79701
Phone: (432) 682-4559
Fax: (432) 682-3946

CONOCOPHILLIPS

NAPP2426033046
LEA COUNTY, NEW MEXICO
(32.590081°, -103.534634°)

**TIGER 11 FED BATTERY
TOPOGRAPHIC MAP**

PROJECT NO.: 212C-MD-03607

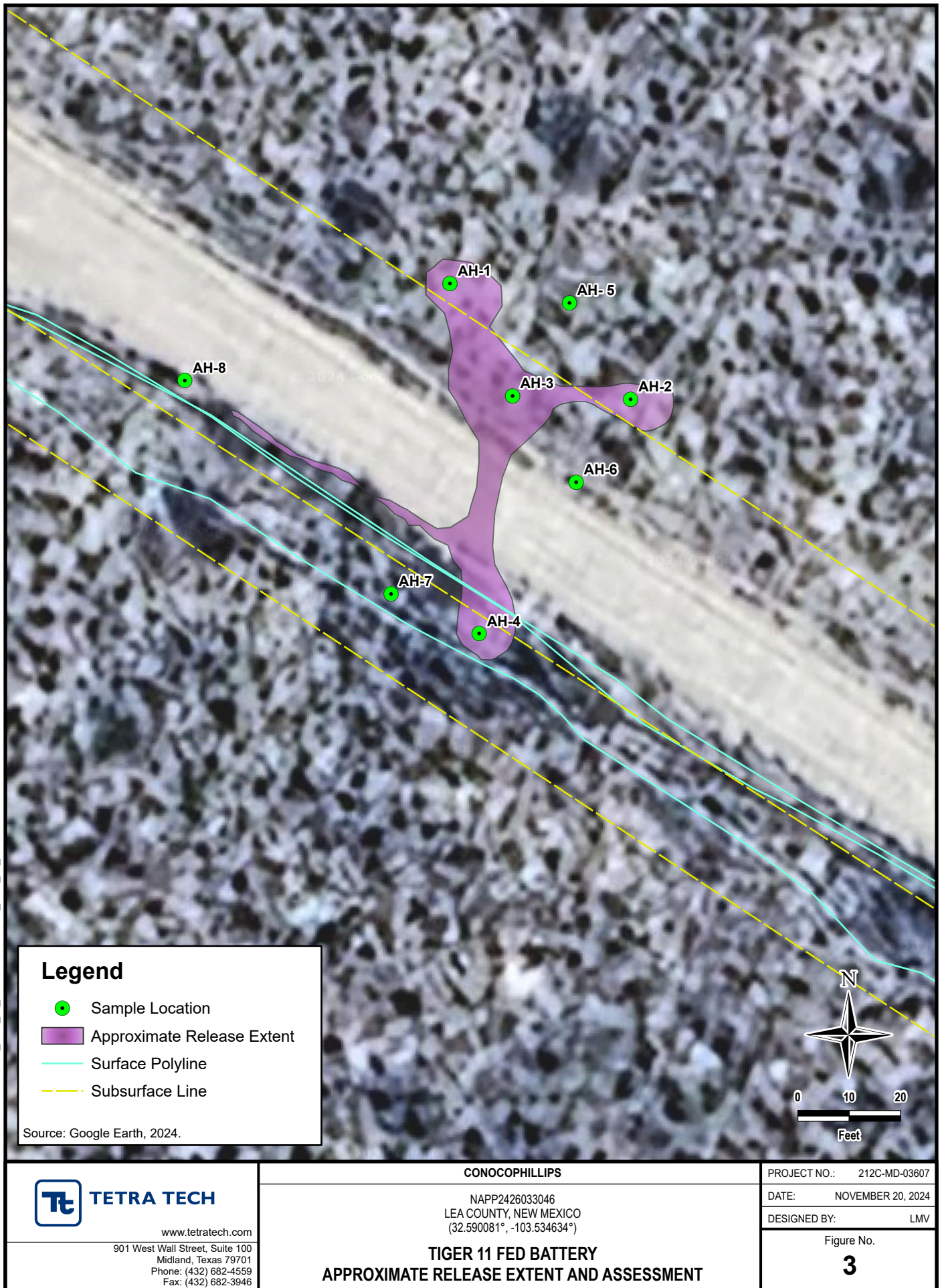
DATE: NOVEMBER 20, 2024

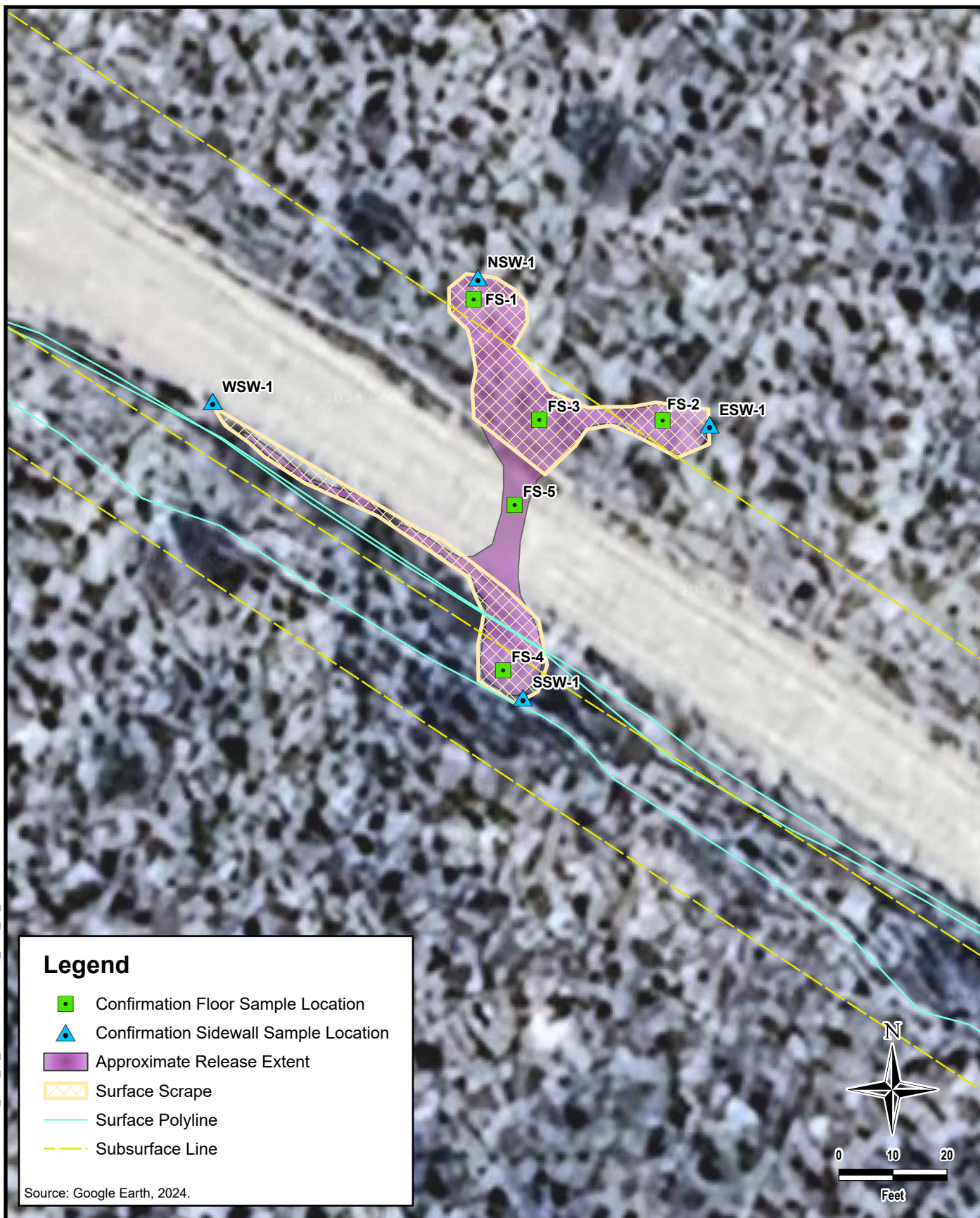
DESIGNED BY: LMV

Figure No.

2

DOCUMENT PATH: Y:\CONOCOPHILLIPS\TIGER_FED_11_BATTERY\TIGER_FED_11_BATTERY.APRX





TETRA TECH

www.tetrattech.com

901 West Wall Street, Suite 100
Midland, Texas 79701
Phone: (432) 682-4559
Fax: (432) 682-3946

CONOCOPHILLIPS

NAPP2426033046
LEA COUNTY, NEW MEXICO
(32.590081°, -103.534634°)

**TIGER 11 FED BATTERY
APPROXIMATE RELEASE EXTENT AND REMEDIATION EXTENT**

PROJECT NO.: 212C-MD-03607

DATE: NOVEMBER 20, 2024

DESIGNED BY: LMV

Figure No.

4

DOCUMENT PATH: Y:\CONOCOPHILLIPS\TIGER_FED_11_BATTERY\TIGER_FED_11_BATTERY.APRX

TABLES

TABLE 1
SUMMARY OF ANALYTICAL RESULTS
SOIL ASSESSMENT- NAPP2426033046
CONOCOPHILLIPS
Tiger 11 Federal 001H
LEA COUNTY, STATE

19.15.29.12 NMAC Closure Criteria for Soils Impacted by a Release (≤ 50 ft):			Chlorides ¹		BTEX ²										TPH ³							
			< 600 mg/kg		< 10 mg/kg		Toluene		Ethylbenzene		Total Xylenes		< 50 mg/kg		GRO		DRO		EXT DRO		< 100 mg/kg	
Sample ID	Sample Date	Sample Depth Interval	Chloride		Benzene								Total BTEX								Total TPH (GRO+DRO+EXT DRO)	
			mg/kg	Q	mg/kg	Q	mg/kg	Q	mg/kg	Q	mg/kg	Q	mg/kg	Q	mg/kg	Q	mg/kg	Q	mg/kg			
AH-1	9/10/2024	0-1	16.0		<0.050		<0.050		<0.050		<0.150		<0.300		<10.0		<10.0		<10.0		-	
AH-2	9/10/2024	0-1	16.0		<0.050		<0.050		<0.050		<0.150		<0.300		<10.0		<10.0		<10.0		-	
		2-3	16.0		<0.050		<0.050		<0.050		<0.150		<0.300		<10.0		<10.0		<10.0		-	
		3-4	16.0		<0.050		<0.050		<0.050		<0.150		<0.300		<10.0		<10.0		<10.0		-	
AH-3	9/10/2024	0-1	16.0		<0.050		<0.050		<0.050		<0.150		<0.300		<10.0		<10.0		<10.0		-	
		2-3	32.0		<0.050		<0.050		<0.050		<0.150		<0.300		<10.0		<10.0		<10.0		-	
		3-4	16.0		<0.050		<0.050		<0.050		<0.150		<0.300		<10.0		<10.0		<10.0		-	
AH-4	9/10/2024	0-1	<16.0		<0.050		<0.050		<0.050		<0.150		<0.300		<10.0		<10.0		<10.0		-	
		2-3	<16.0		<0.050		<0.050		<0.050		<0.150		<0.300		<10.0		<10.0		<10.0		-	
		3-4	16.0		<0.050		<0.050		<0.050		<0.150		<0.300		<10.0		<10.0		<10.0		-	
AH-5	9/10/2024	0-1	16.0		<0.050		<0.050		<0.050		<0.150		<0.300		<10.0		<10.0		<10.0		-	
AH-6	9/10/2024	0-1	16.0		<0.050		<0.050		<0.050		<0.150		<0.300		<10.0		<10.0		<10.0		-	
AH-7	9/10/2024	0-1	16.0		<0.050		<0.050		<0.050		<0.150		<0.300		<10.0		<10.0		<10.0		-	
AH-8	9/10/2024	0-1	<16.0		<0.050		<0.050		<0.050		<0.150		<0.300		<10.0		<10.0		<10.0		-	

NOTES:

ft. Feet

bgs Below ground surface

mg/kg Milligrams per kilogram

TPH Total Petroleum Hydrocarbons

GRO Gasoline range organics

DRO Diesel range organics

1 Method SM4500CI-B

2 Method 8021B

3 Method 8015M

TABLE 2
SUMMARY OF ANALYTICAL RESULTS
SOIL REMEDIATION - NAPP2426033046
CONOCOPHILLIPS
TIGER FEDERAL 11 001H
LEA COUNTY, NM

Sample ID	Sample Date	Sample Depth	Chloride ¹		BTEX ²										TPH ³						
					Benzene		Toluene		Ethylbenzene		Total Xylenes		Total BTEX		GRO		DRO		EXT DRO		Total TPH (GRO+DRO+EXT DRO)
															C ₆ - C ₁₀		> C ₁₀ - C ₂₈		> C ₂₈ - C ₃₆		
															mg/kg	Q	mg/kg	Q	mg/kg	Q	
FS-1	10/28/2024	3	<16.0		<0.050		<0.050		<0.050		<0.150		<0.300		<10.0		<10.0		<10.0		-
FS-2	10/28/2024	3	<16.0		<0.050		<0.050		<0.050		<0.150		<0.300		<10.0		<10.0		<10.0		-
FS-3	10/28/2024	3	<16.0		<0.050		<0.050		<0.050		<0.150		<0.300		<10.0		<10.0		<10.0		-
FS-4	10/28/2024	3	<16.0		<0.050		<0.050		<0.050		<0.150		<0.300		<10.0		<10.0		<10.0		-
FS-5	10/28/2024	3	<16.0		<0.050		<0.050		<0.050		<0.150		<0.300		<10.0		<10.0		<10.0		-
NSW-1	10/28/2024	-	<16.0		<0.050		<0.050		<0.050		<0.150		<0.300		<10.0		<10.0		<10.0		-
WSW-1	10/28/2024	-	<16.0		<0.050		<0.050		<0.050		<0.150		<0.300		<10.0		<10.0		<10.0		-
SSW-1	10/28/2024	-	<16.0		<0.050		<0.050		<0.050		<0.150		<0.300		<10.0		<10.0		<10.0		-
ESW-1	10/28/2024	-	<16.0		<0.050		<0.050		<0.050		<0.150		<0.300		<10.0		<10.0		<10.0		-

NOTES:

ft. Feet

bgs Below ground surface

mg/kg Milligrams per kilogram

TPH Total Petroleum Hydrocarbons

GRO Gasoline range organics

DRO Diesel range organics

1 Method SM4500Cl-B

2 Method 8021B

3 Method 8015M

APPENDIX A C-141 Forms

District I
1625 N. French Dr., Hobbs, NM 88240
Phone:(575) 393-6161 Fax:(575) 393-0720
District II
811 S. First St., Artesia, NM 88210
Phone:(575) 748-1283 Fax:(575) 748-9720
District III
1000 Rio Brazos Rd., Aztec, NM 87410
Phone:(505) 334-6178 Fax:(505) 334-6170
District IV
1220 S. St Francis Dr., Santa Fe, NM 87505
Phone:(505) 476-3470 Fax:(505) 476-3462

State of New Mexico
Energy, Minerals and Natural Resources
Oil Conservation Division
1220 S. St Francis Dr.
Santa Fe, NM 87505

QUESTIONS

Action 383743

QUESTIONS

Operator: COG OPERATING LLC 600 W Illinois Ave Midland, TX 79701	OGRID: 229137
	Action Number: 383743
	Action Type: [C-141] Initial C-141 (C-141-v-Initial)

QUESTIONS

Prerequisites	
Incident ID (n#)	nAPP2426033046
Incident Name	NAPP2426033046 TIGER 11 FEDERAL 001H @ 0
Incident Type	Release Other
Incident Status	Initial C-141 Received
Incident Facility	[fAPP2203450574] TIGER 11 FED BATTERY

Location of Release Source	
Please answer all the questions in this group.	
Site Name	Tiger 11 Federal 001H
Date Release Discovered	08/28/2024
Surface Owner	Federal

Incident Details	
Please answer all the questions in this group.	
Incident Type	Release Other
Did this release result in a fire or is the result of a fire	No
Did this release result in any injuries	No
Has this release reached or does it have a reasonable probability of reaching a watercourse	No
Has this release endangered or does it have a reasonable probability of endangering public health	No
Has this release substantially damaged or will it substantially damage property or the environment	No
Is this release of a volume that is or may with reasonable probability be detrimental to fresh water	No

Nature and Volume of Release	
Material(s) released, please answer all that apply below. Any calculations or specific justifications for the volumes provided should be attached to the follow-up C-141 submission.	
Crude Oil Released (bbls) Details	Not answered.
Produced Water Released (bbls) Details	Not answered.
Is the concentration of chloride in the produced water >10,000 mg/l	No
Condensate Released (bbls) Details	Not answered.
Natural Gas Vented (Mcf) Details	Not answered.
Natural Gas Flared (Mcf) Details	Not answered.
Other Released Details	Cause: Other Unknown Unknown Released: 5 BBL Recovered: 0 BBL Lost: 5 BBL.
Are there additional details for the questions above (i.e. any answer containing Other, Specify, Unknown, and/or Fire, or any negative lost amounts)	COP personnel discovered an unauthorized discharge of fluid on a lease road. The nature and origin of the fluid are currently undetermined. An assessment of the site will be conducted to ascertain the fluid's composition and assess any potential environmental impact.

District I
1625 N. French Dr., Hobbs, NM 88240
Phone:(575) 393-6161 Fax:(575) 393-0720

District II
811 S. First St., Artesia, NM 88210
Phone:(575) 748-1283 Fax:(575) 748-9720

District III
1000 Rio Brazos Rd., Aztec, NM 87410
Phone:(505) 334-6178 Fax:(505) 334-6170

District IV
1220 S. St Francis Dr., Santa Fe, NM 87505
Phone:(505) 476-3470 Fax:(505) 476-3462

State of New Mexico
Energy, Minerals and Natural Resources
Oil Conservation Division
1220 S. St Francis Dr.
Santa Fe, NM 87505

QUESTIONS, Page 2

Action 383743

QUESTIONS (continued)

Operator: COG OPERATING LLC 600 W Illinois Ave Midland, TX 79701	OGRID: 229137
	Action Number: 383743
	Action Type: [C-141] Initial C-141 (C-141-v-Initial)

QUESTIONS

Nature and Volume of Release (continued)	
Is this a gas only submission (i.e. only significant Mcf values reported)	More info needed to determine if this will be treated as a "gas only" report.
Was this a major release as defined by Subsection A of 19.15.29.7 NMAC	No
Reasons why this would be considered a submission for a notification of a major release	Unavailable.
With the implementation of the 19.15.27 NMAC (05/25/2021), venting and/or flaring of natural gas (i.e. gas only) are to be submitted on the C-129 form.	

Initial Response

The responsible party must undertake the following actions immediately unless they could create a safety hazard that would result in injury.	
The source of the release has been stopped	True
The impacted area has been secured to protect human health and the environment	True
Released materials have been contained via the use of berms or dikes, absorbent pads, or other containment devices	True
All free liquids and recoverable materials have been removed and managed appropriately	True
If all the actions described above have not been undertaken, explain why	Not answered.
Per Paragraph (4) of Subsection B of 19.15.29.8 NMAC the responsible party may commence remediation immediately after discovery of a release. If remediation has begun, please prepare and attach a narrative of actions to date in the follow-up C-141 submission. If remedial efforts have been successfully completed or if the release occurred within a lined containment area (see Subparagraph (a) of Paragraph (5) of Subsection A of 19.15.29.11 NMAC), please prepare and attach all information needed for closure evaluation in the follow-up C-141 submission.	
I hereby certify that the information given above is true and complete to the best of my knowledge and understand that pursuant to OCD rules and regulations all operators are required to report and/or file certain release notifications and perform corrective actions for releases which may endanger public health or the environment. The acceptance of a C-141 report by the OCD does not relieve the operator of liability should their operations have failed to adequately investigate and remediate contamination that pose a threat to groundwater, surface water, human health or the environment. In addition, OCD acceptance of a C-141 report does not relieve the operator of responsibility for compliance with any other federal, state, or local laws and/or regulations.	
I hereby agree and sign off to the above statement	Name: Brittany Esparza Title: Environmental Technician Email: brittany.Esparza@ConocoPhillips.com Date: 09/16/2024

District I

1625 N. French Dr., Hobbs, NM 88240
Phone:(575) 393-6161 Fax:(575) 393-0720

District II

811 S. First St., Artesia, NM 88210
Phone:(575) 748-1283 Fax:(575) 748-9720

District III

1000 Rio Brazos Rd., Aztec, NM 87410
Phone:(505) 334-6178 Fax:(505) 334-6170

District IV

1220 S. St Francis Dr., Santa Fe, NM 87505
Phone:(505) 476-3470 Fax:(505) 476-3462

State of New Mexico
Energy, Minerals and Natural Resources
Oil Conservation Division
1220 S. St Francis Dr.
Santa Fe, NM 87505

QUESTIONS, Page 3

Action 383743

QUESTIONS (continued)

Operator: COG OPERATING LLC 600 W Illinois Ave Midland, TX 79701	OGRID: 229137
	Action Number: 383743
	Action Type: [C-141] Initial C-141 (C-141-v-Initial)

QUESTIONS**Site Characterization**

Please answer all the questions in this group (only required when seeking remediation plan approval and beyond). This information must be provided to the appropriate district office no later than 90 days after the release discovery date.

What is the shallowest depth to groundwater beneath the area affected by the release in feet below ground surface (ft bgs)	Not answered.
What method was used to determine the depth to ground water	Not answered.
Did this release impact groundwater or surface water	Not answered.
What is the minimum distance, between the closest lateral extents of the release and the following surface areas:	
A continuously flowing watercourse or any other significant watercourse	Not answered.
Any lakebed, sinkhole, or playa lake (measured from the ordinary high-water mark)	Not answered.
An occupied permanent residence, school, hospital, institution, or church	Not answered.
A spring or a private domestic fresh water well used by less than five households for domestic or stock watering purposes	Not answered.
Any other fresh water well or spring	Not answered.
Incorporated municipal boundaries or a defined municipal fresh water well field	Not answered.
A wetland	Not answered.
A subsurface mine	Not answered.
An (non-karst) unstable area	Not answered.
Categorize the risk of this well / site being in a karst geology	Not answered.
A 100-year floodplain	Not answered.
Did the release impact areas not on an exploration, development, production, or storage site	Not answered.

Remediation Plan

Please answer all the questions that apply or are indicated. This information must be provided to the appropriate district office no later than 90 days after the release discovery date.

Requesting a remediation plan approval with this submission	No
---	----

The OCD recognizes that proposed remediation measures may have to be minimally adjusted in accordance with the physical realities encountered during remediation. If the responsible party has any need to significantly deviate from the remediation plan proposed, then it should consult with the division to determine if another remediation plan submission is required.

Spill Calculation - Subsurface Spill - Rectangle										Remediation Recommendation	
Convert Irregular shape into a series of rectangles										Total Estimated Contaminated Soil, uncompacted, 25% (yd ³ .)	Current Rule of Thumb - RMR Handover Volume, (yd ³ .)
Length (ft.)	Width (ft.)	Average Depth (in.)	On/Off Pad (dropdown)	Soil Spilled-Fluid Saturation (%)	Estimated volume of each area (bbl.)	Total Estimated Volume of Spill (bbl.)	Percentage of Oil if Spilled Fluid is a Mixture (%)	Total Estimated Volume of Spilled Oil (bbl.)	Total Estimated Volume of Spilled Liquid other than Oil (bbl.)		
Rectangle A	30.0	15.0	3.0	Off-Pad	20.03	3.01		0.00	3.01	5.21	
Rectangle B	15.0	2.0	2.0	Off-Pad	0.89	0.13		0.00	0.13	0.23	
Rectangle C	15.0	15.0	2.0	Off-Pad	6.68	1.00		0.00	1.00	1.74	
Rectangle D	10.0	15.0	2.0	Off-Pad	4.45	0.67		0.00	0.67	1.16	
Rectangle E					0.00					0.00	
Rectangle F					0.00					0.00	750
Rectangle G					0.00					0.00	
Rectangle H					0.00					0.00	
Rectangle I					0.00					0.00	
Total Subsurface Volume Released:						4.8124		0.0000	4.8124	8.33	BU

Received by OCD: 11/26/2024 9:20:52 AM

Released to Imaging: 3/11/2025 11:30:36 AM

District I
1625 N. French Dr., Hobbs, NM 88240
Phone:(575) 393-6161 Fax:(575) 393-0720

District II
811 S. First St., Artesia, NM 88210
Phone:(575) 748-1283 Fax:(575) 748-9720

District III
1000 Rio Brazos Rd., Aztec, NM 87410
Phone:(505) 334-6178 Fax:(505) 334-6170

District IV
1220 S. St Francis Dr., Santa Fe, NM 87505
Phone:(505) 476-3470 Fax:(505) 476-3462

State of New Mexico
Energy, Minerals and Natural Resources
Oil Conservation Division
1220 S. St Francis Dr.
Santa Fe, NM 87505

CONDITIONS

Action 383743

CONDITIONS

Operator: COG OPERATING LLC 600 W Illinois Ave Midland, TX 79701	OGRID: 229137
	Action Number: 383743
	Action Type: [C-141] Initial C-141 (C-141-v-Initial)

CONDITIONS

Created By	Condition	Condition Date
nvelez	None	9/16/2024

Incident ID	nAPP2426033046
District RP	
Facility ID	
Application ID	

Site Assessment/Characterization

This information must be provided to the appropriate district office no later than 90 days after the release discovery date.

What is the shallowest depth to groundwater beneath the area affected by the release?	< 50 (ft bgs)
Did this release impact groundwater or surface water?	<input type="checkbox"/> Yes <input checked="" type="checkbox"/> No
Are the lateral extents of the release within 300 feet of a continuously flowing watercourse or any other significant watercourse?	<input type="checkbox"/> Yes <input checked="" type="checkbox"/> No
Are the lateral extents of the release within 200 feet of any lakebed, sinkhole, or playa lake (measured from the ordinary high-water mark)?	<input type="checkbox"/> Yes <input checked="" type="checkbox"/> No
Are the lateral extents of the release within 300 feet of an occupied permanent residence, school, hospital, institution, or church?	<input type="checkbox"/> Yes <input checked="" type="checkbox"/> No
Are the lateral extents of the release within 500 horizontal feet of a spring or a private domestic fresh water well used by less than five households for domestic or stock watering purposes?	<input type="checkbox"/> Yes <input checked="" type="checkbox"/> No
Are the lateral extents of the release within 1000 feet of any other fresh water well or spring?	<input type="checkbox"/> Yes <input checked="" type="checkbox"/> No
Are the lateral extents of the release within incorporated municipal boundaries or within a defined municipal fresh water well field?	<input type="checkbox"/> Yes <input checked="" type="checkbox"/> No
Are the lateral extents of the release within 300 feet of a wetland?	<input type="checkbox"/> Yes <input checked="" type="checkbox"/> No
Are the lateral extents of the release overlying a subsurface mine?	<input type="checkbox"/> Yes <input checked="" type="checkbox"/> No
Are the lateral extents of the release overlying an unstable area such as karst geology?	<input type="checkbox"/> Yes <input checked="" type="checkbox"/> No
Are the lateral extents of the release within a 100-year floodplain?	<input type="checkbox"/> Yes <input checked="" type="checkbox"/> No
Did the release impact areas not on an exploration, development, production, or storage site?	<input checked="" type="checkbox"/> Yes <input type="checkbox"/> No

Attach a comprehensive report (electronic submittals in .pdf format are preferred) demonstrating the lateral and vertical extents of soil contamination associated with the release have been determined. Refer to 19.15.29.11 NMAC for specifics.

Characterization Report Checklist: *Each of the following items must be included in the report.*

- ☒ Scaled site map showing impacted area, surface features, subsurface features, delineation points, and monitoring wells.
- ☒ Field data
- ☒ Data table of soil contaminant concentration data
- ☒ Depth to water determination
- ☒ Determination of water sources and significant watercourses within ½-mile of the lateral extents of the release
- ☐ Boring or excavation logs
- ☒ Photographs including date and GIS information
- ☒ Topographic/Aerial maps
- ☒ Laboratory data including chain of custody

If the site characterization report does not include completed efforts at remediation of the release, the report must include a proposed remediation plan. That plan must include the estimated volume of material to be remediated, the proposed remediation technique, proposed sampling plan and methods, anticipated timelines for beginning and completing the remediation. The closure criteria for a release are contained in Table 1 of 19.15.29.12 NMAC, however, use of the table is modified by site- and release-specific parameters.

State of New Mexico
Oil Conservation Division

Incident ID	nAPP2426033046
District RP	
Facility ID	
Application ID	

I hereby certify that the information given above is true and complete to the best of my knowledge and understand that pursuant to OCD rules and regulations all operators are required to report and/or file certain release notifications and perform corrective actions for releases which may endanger public health or the environment. The acceptance of a C-141 report by the OCD does not relieve the operator of liability should their operations have failed to adequately investigate and remediate contamination that pose a threat to groundwater, surface water, human health or the environment. In addition, OCD acceptance of a C-141 report does not relieve the operator of responsibility for compliance with any other federal, state, or local laws and/or regulations.

Printed Name: Jacob Laird Title: Environmental Engineer, DBE
Signature: *Jacob Laird* Date: 11/22/2024
email: Jacob.Laird@conocophillips.com Telephone: 575-703-5482

OCD Only

Received by: _____ Date: _____

State of New Mexico
Oil Conservation Division

Incident ID	nAPP2426033046
District RP	
Facility ID	
Application ID	

Closure

The responsible party must attach information demonstrating they have complied with all applicable closure requirements and any conditions or directives of the OCD. This demonstration should be in the form of a comprehensive report (electronic submittals in .pdf format are preferred) including a scaled site map, sampling diagrams, relevant field notes, photographs of any excavation prior to backfilling, laboratory data including chain of custody documents of final sampling, and a narrative of the remedial activities. Refer to 19.15.29.12 NMAC.

Closure Report Attachment Checklist: *Each of the following items must be included in the closure report.*

- ☒ A scaled site and sampling diagram as described in 19.15.29.11 NMAC
- ☒ Photographs of the remediated site prior to backfill or photos of the liner integrity if applicable (Note: appropriate OCD District office must be notified 2 days prior to liner inspection)
- ☒ Laboratory analyses of final sampling (Note: appropriate ODC District office must be notified 2 days prior to final sampling)
- ☒ Description of remediation activities

I hereby certify that the information given above is true and complete to the best of my knowledge and understand that pursuant to OCD rules and regulations all operators are required to report and/or file certain release notifications and perform corrective actions for releases which may endanger public health or the environment. The acceptance of a C-141 report by the OCD does not relieve the operator of liability should their operations have failed to adequately investigate and remediate contamination that pose a threat to groundwater, surface water, human health or the environment. In addition, OCD acceptance of a C-141 report does not relieve the operator of responsibility for compliance with any other federal, state, or local laws and/or regulations. The responsible party acknowledges they must substantially restore, reclaim, and re-vegetate the impacted surface area to the conditions that existed prior to the release or their final land use in accordance with 19.15.29.13 NMAC including notification to the OCD when reclamation and re-vegetation are complete.

Printed Name: Jacob Laird Title: Environmental Engineer, DBE
Signature: *Jacob Laird* Date: 11/22/2024
email: Jacob.Laird@conocophillips.com Telephone: 575-703-5482

OCD Only

Received by: _____ Date: _____

Closure approval by the OCD does not relieve the responsible party of liability should their operations have failed to adequately investigate and remediate contamination that poses a threat to groundwater, surface water, human health, or the environment nor does not relieve the responsible party of compliance with any other federal, state, or local laws and/or regulations.

Closure Approved by: _____ Date: _____

Printed Name: _____ Title: _____

Sante Fe Main Office
Phone: (505) 476-3441

General Information
Phone: (505) 629-6116

Online Phone Directory
<https://www.emnrd.nm.gov/ocd/contact-us>

State of New Mexico
Energy, Minerals and Natural Resources
Oil Conservation Division
1220 S. St Francis Dr.
Santa Fe, NM 87505

CONDITIONS

Action 406606

CONDITIONS

Operator: COG OPERATING LLC 600 W Illinois Ave Midland, TX 79701	OGRID: 229137
	Action Number: 406606
	Action Type: [C-141] Reclamation Report C-141 (C-141-v-Reclamation)

CONDITIONS

Created By	Condition	Condition Date
nvez	None	3/11/2025

APPENDIX B

Site Characterization Data

OCD Land Ownership



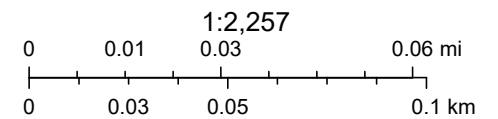
9/17/2024, 3:01:59 PM

Mineral Ownership

Land Ownership

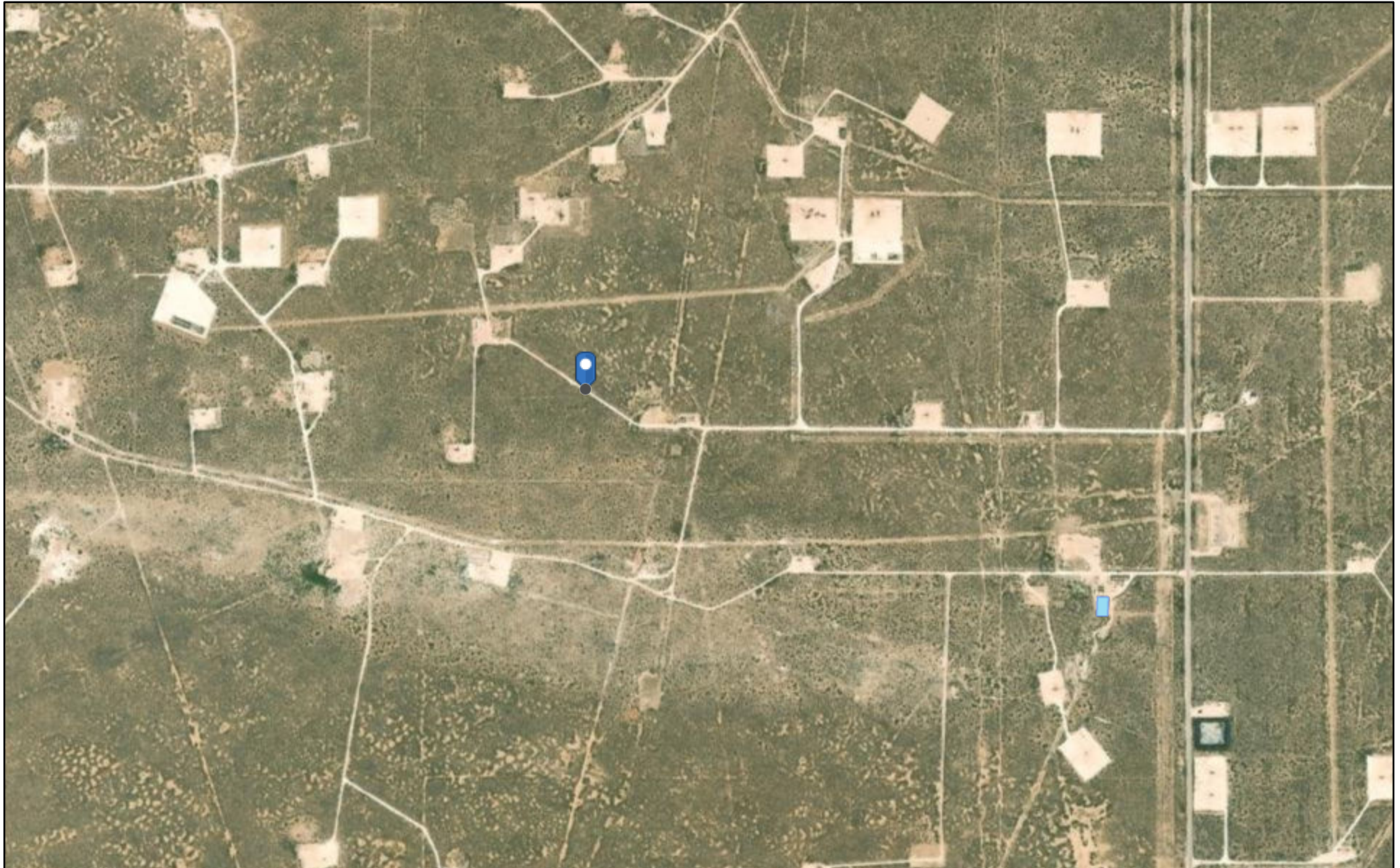
A-All minerals are owned by U.S.

BLM



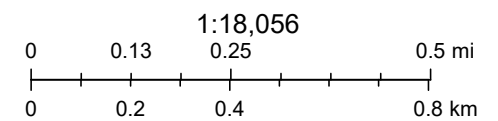
U.S. BLM, Maxar, Microsoft, Esri, HERE, Garmin, iPC

OCD Water Bodys



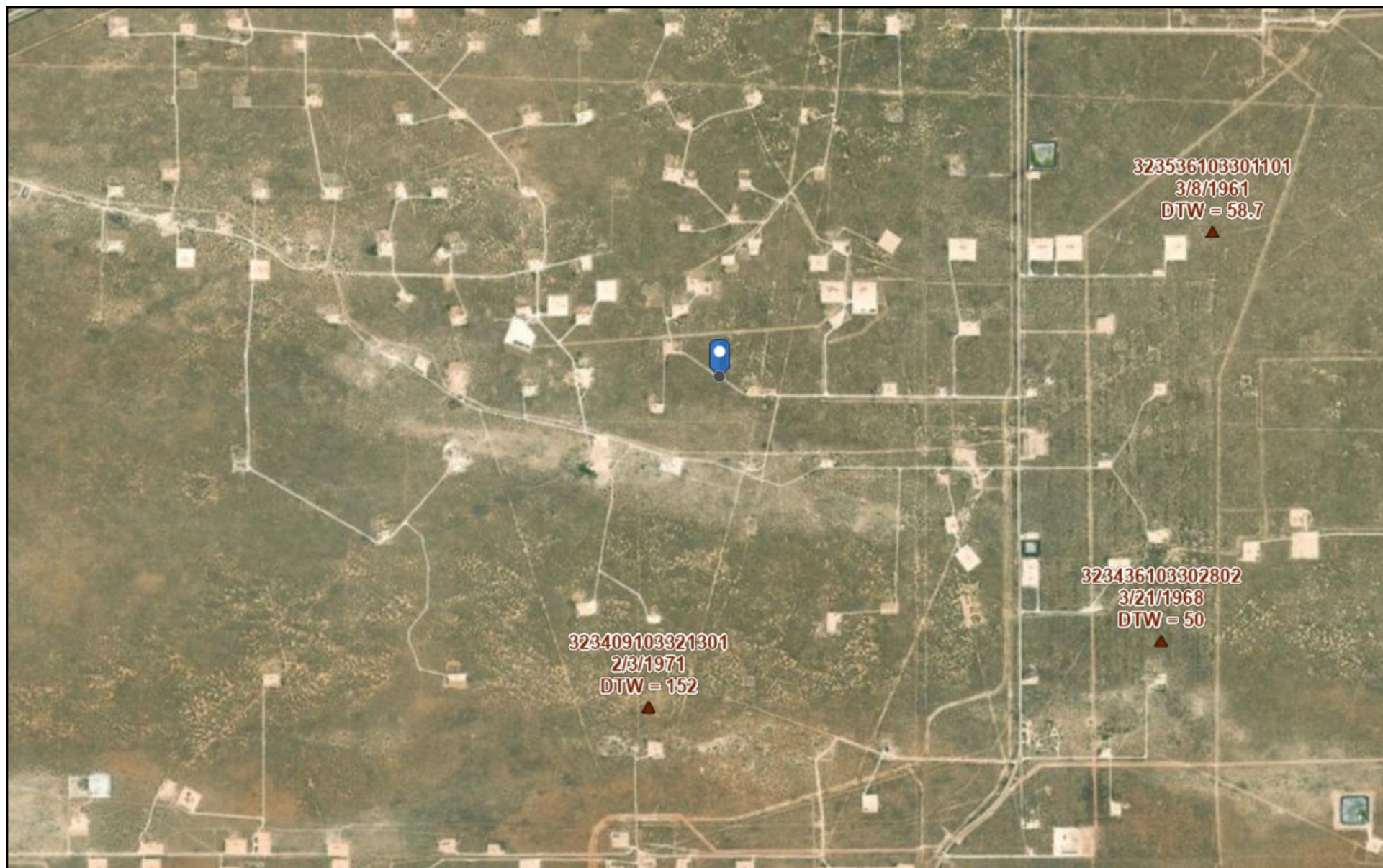
9/17/2024, 3:05:19 PM

 OSW Water Bodys



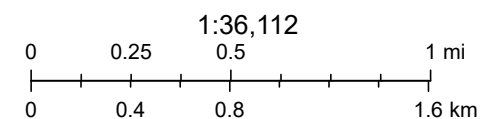
Esri, HERE, Garmin, iPC, Maxar, NM OSE

USGS Groundwater Wells



9/17/2024, 3:25:15 PM

▲ USGS Historical GW Wells



Esri, HERE, Garmin, USGS, Maxar

National Flood Hazard Layer FIRMette



103°32'23"W 32°35'39"N



0 250 500 1,000 1,500 2,000 Feet

1:6,000

103°31'46"W 32°35'9"N

Legend

SEE FIS REPORT FOR DETAILED LEGEND AND INDEX MAP FOR FIRM PANEL LAYOUT

SPECIAL FLOOD HAZARD AREAS		Without Base Flood Elevation (BFE) Zone A, V, A99
		With BFE or Depth Zone AE, AO, AH, VE, AR
		Regulatory Floodway
OTHER AREAS OF FLOOD HAZARD		0.2% Annual Chance Flood Hazard, Areas of 1% annual chance flood with average depth less than one foot or with drainage areas of less than one square mile Zone X
		Future Conditions 1% Annual Chance Flood Hazard Zone X
		Area with Reduced Flood Risk due to Levee. See Notes. Zone X
		Area with Flood Risk due to Levee Zone D
OTHER AREAS		NO SCREEN Area of Minimal Flood Hazard Zone X
		Effective LOMRs
		Area of Undetermined Flood Hazard Zone D
GENERAL STRUCTURES		Channel, Culvert, or Storm Sewer
		Levee, Dike, or Floodwall
OTHER FEATURES		20.2 Cross Sections with 1% Annual Chance Water Surface Elevation
		17.5
		Coastal Transect
		Base Flood Elevation Line (BFE)
		Limit of Study
		Jurisdiction Boundary
		Coastal Transect Baseline
MAP PANELS		Digital Data Available
		No Digital Data Available
		Unmapped



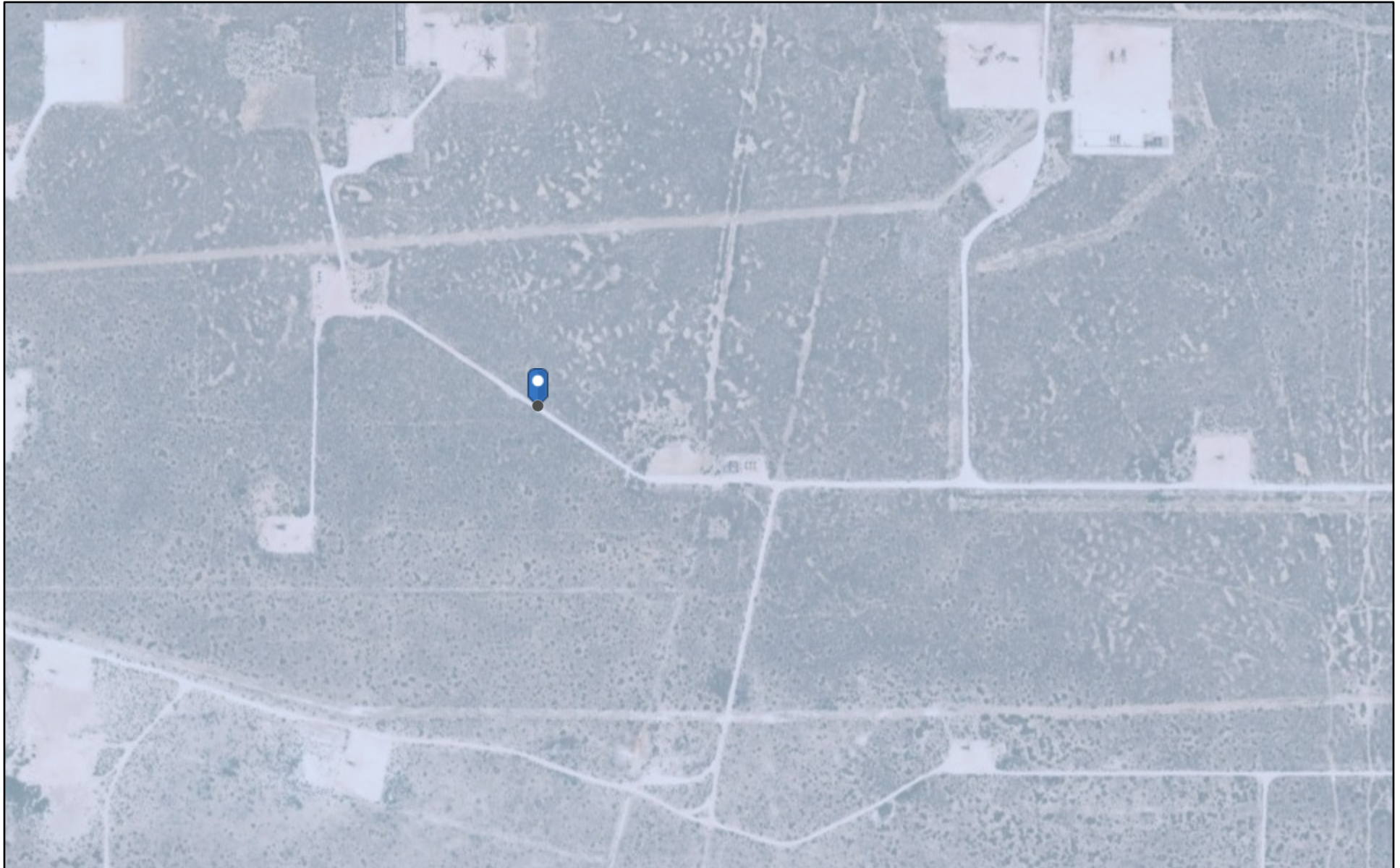
The pin displayed on the map is an approximate point selected by the user and does not represent an authoritative property location.

This map complies with FEMA's standards for the use of digital flood maps if it is not void as described below. The basemap shown complies with FEMA's basemap accuracy standards

The flood hazard information is derived directly from the authoritative NFHL web services provided by FEMA. This map was exported on 9/17/2024 at 4:10 PM and does not reflect changes or amendments subsequent to this date and time. The NFHL and effective information may change or become superseded by new data over time.

This map image is void if the one or more of the following map elements do not appear: basemap imagery, flood zone labels, legend, scale bar, map creation date, community identifiers, FIRM panel number, and FIRM effective date. Map images for unmapped and unmodernized areas cannot be used for regulatory purposes.

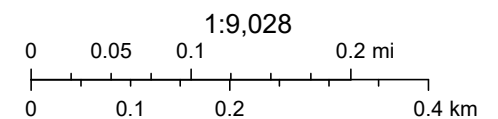
OCD Karst Potential



9/17/2024, 3:06:54 PM

Karst Occurrence Potential

Low



BLM, OCD, New Mexico Tech, Esri, HERE, Garmin, IPC, Maxar



National Wetlands Inventory



September 17, 2024

Wetlands

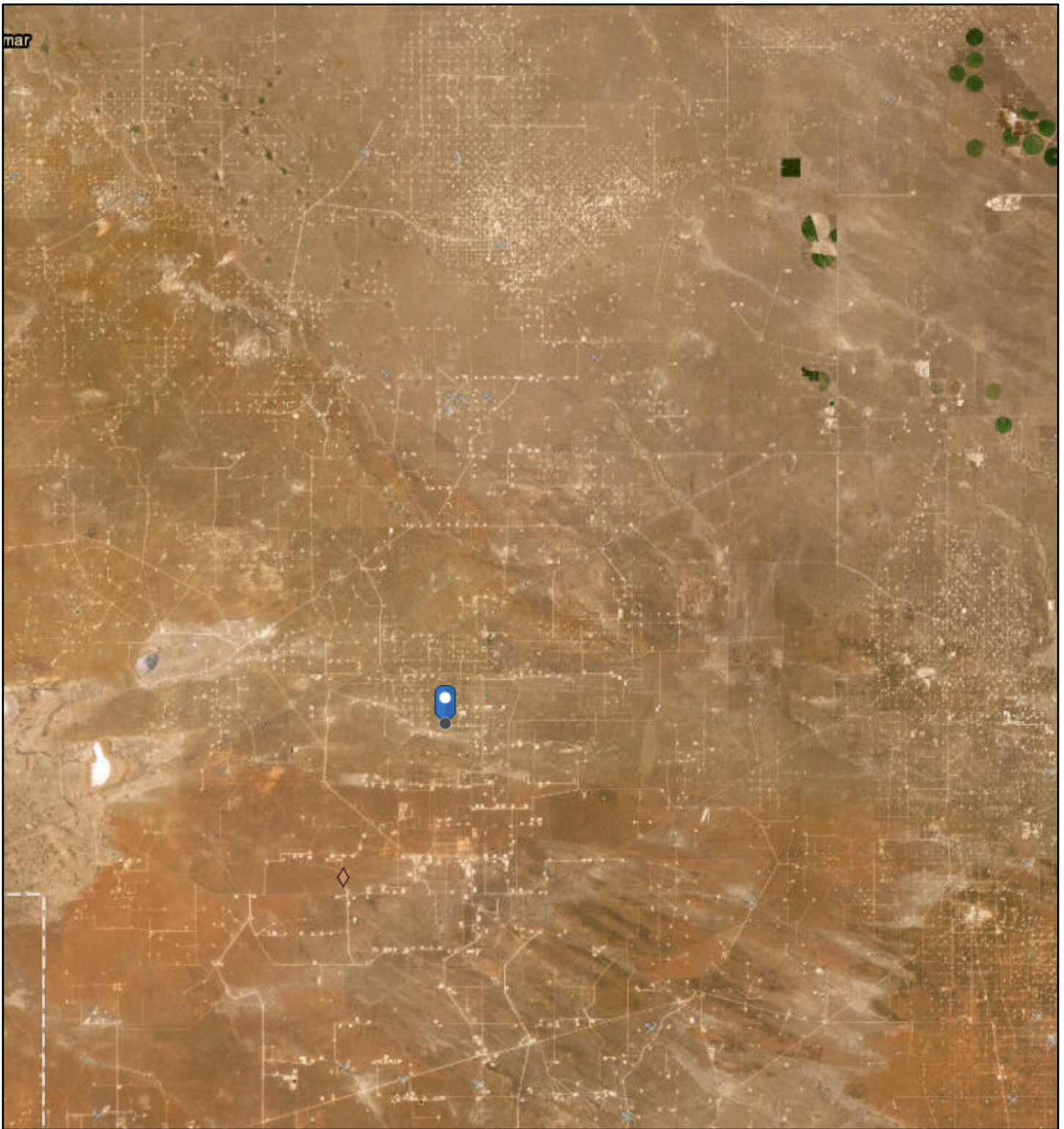
- Estuarine and Marine Deepwater
- Estuarine and Marine Wetland

- Freshwater Emergent Wetland
- Freshwater Forested/Shrub Wetland
- Freshwater Pond

- Lake
- Other
- Riverine

This map is for general reference only. The US Fish and Wildlife Service is not responsible for the accuracy or currentness of the base data shown on this map. All wetlands related data should be used in accordance with the layer metadata found on the Wetlands Mapper web site.

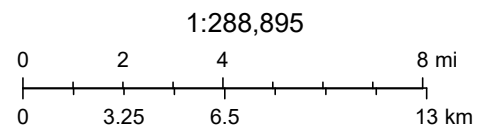
Active Mines in New Mexico



9/17/2024, 3:14:36 PM

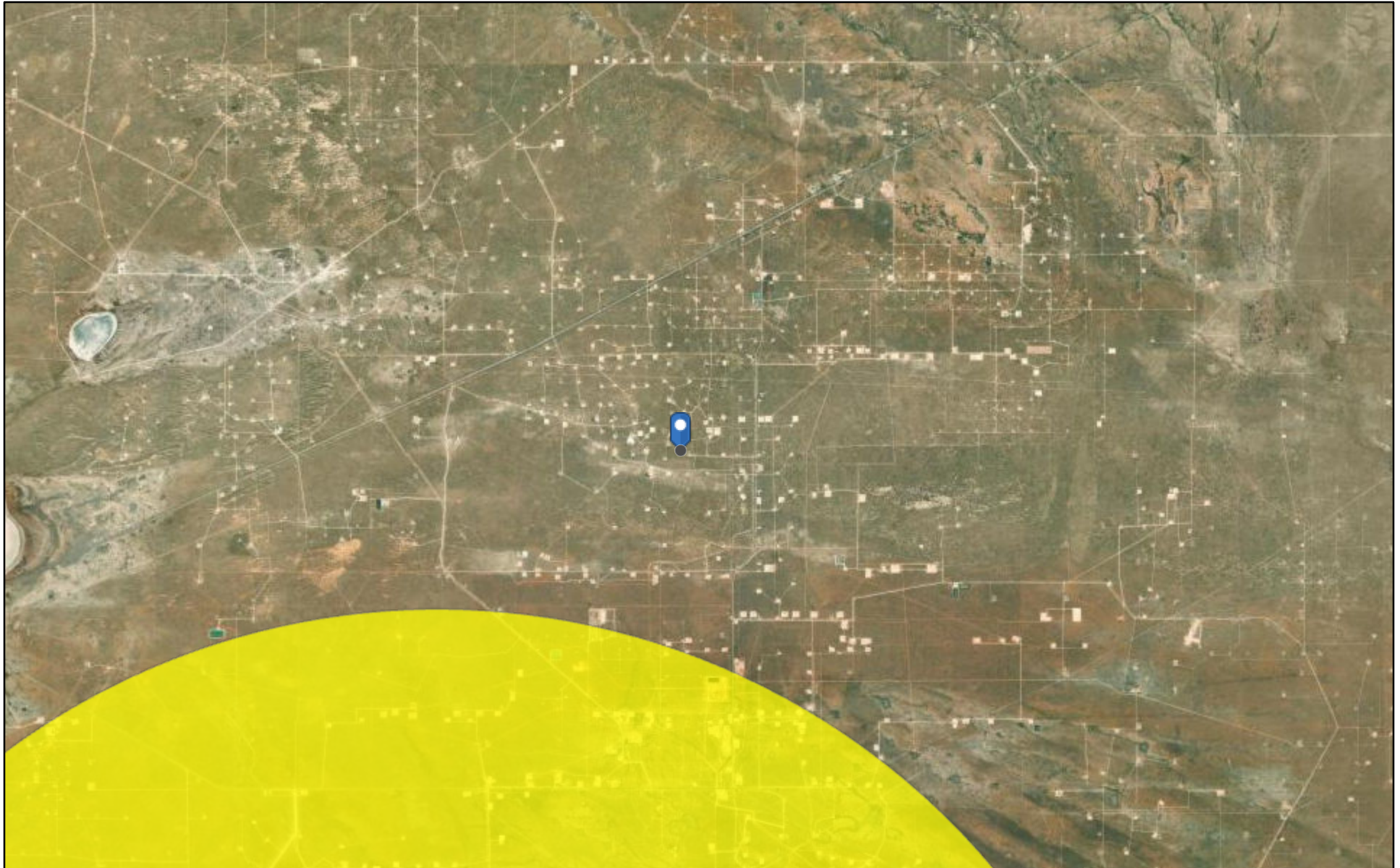
Registered Mines

- ✕ Aggregate, Stone etc.
- ✕ Aggregate, Stone etc.
- ✕ Aggregate, Stone etc.
- ◆ Industrial Minerals (Other)



Esri, HERE, Garmin, Earthstar Geographics

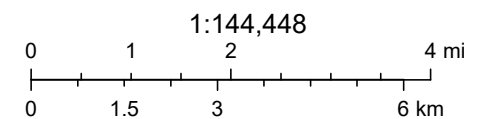
OCD Induced Seismicity



9/17/2024, 3:08:18 PM

Seismic Response 3.0 to 3.4

10 mi.



Oil Conservation Division (OCD), Energy, Minerals and Natural Resources Department (EMNRD), Esri, HERE, Garmin, Earthstar Geographics

New Mexico Oil Conservation Division

APPENDIX C

Laboratory Analytical Data



PHONE (575) 393-2326 ° 101 E. MARLAND ° HOBBS, NM 88240

September 13, 2024

LISBETH CHAVIRA

TETRA TECH

901 WEST WALL STREET , STE 100

MIDLAND, TX 79701

RE: FEDERAL 11 LEA COUNTY ILLEGAL DUMP ON LEASE ROAD

Enclosed are the results of analyses for samples received by the laboratory on 09/10/24 11:30.

Cardinal Laboratories is accredited through Texas NELAP under certificate number TX-C24-00112. Accreditation applies to drinking water, non-potable water and solid and chemical materials. All accredited analytes are denoted by an asterisk (*). For a complete list of accredited analytes and matrices visit the TCEQ website at www.tceq.texas.gov/field/qa/lab_accred_certif.html.

Cardinal Laboratories is accredited through the State of Colorado Department of Public Health and Environment for:

Method EPA 552.2	Haloacetic Acids (HAA-5)
Method EPA 524.2	Total Trihalomethanes (TTHM)
Method EPA 524.4	Regulated VOCs (V1, V2, V3)

Accreditation applies to public drinking water matrices.

This report meets NELAP requirements and is made up of a cover page, analytical results, and a copy of the original chain-of-custody. If you have any questions concerning this report, please feel free to contact me.

Sincerely,

Celey D. Keene

Lab Director/Quality Manager



PHONE (575) 393-2326 ° 101 E. MARLAND ° HOBBS, NM 88240

Analytical Results For:

TETRA TECH
 LISBETH CHAVIRA
 901 WEST WALL STREET , STE 100
 MIDLAND TX, 79701
 Fax To: (432) 682-3946

Received:	09/10/2024	Sampling Date:	09/10/2024
Reported:	09/13/2024	Sampling Type:	Soil
Project Name:	FEDERAL 11 LEA COUNTY ILLEGAL DUM	Sampling Condition:	Cool & Intact
Project Number:	212C - MD - 03607	Sample Received By:	Shalyn Rodriguez
Project Location:	LEA COUNTY, NM		

Sample ID: AH - 1 (0-1') (H245455-01)

BTX 8021B		mg/kg		Analyzed By: JH					
Analyte	Result	Reporting Limit	Analyzed	Method Blank	BS	% Recovery	True Value QC	RPD	Qualifier
Benzene*	<0.050	0.050	09/10/2024	ND	2.05	103	2.00	0.645	
Toluene*	<0.050	0.050	09/10/2024	ND	1.92	96.1	2.00	3.55	
Ethylbenzene*	<0.050	0.050	09/10/2024	ND	1.97	98.5	2.00	4.19	
Total Xylenes*	<0.150	0.150	09/10/2024	ND	6.03	100	6.00	4.10	
Total BTX	<0.300	0.300	09/10/2024	ND					

Surrogate: 4-Bromofluorobenzene (PID) 110 % 71.5-134

Chloride, SM4500Cl-B		mg/kg		Analyzed By: CT					
Analyte	Result	Reporting Limit	Analyzed	Method Blank	BS	% Recovery	True Value QC	RPD	Qualifier
Chloride	16.0	16.0	09/11/2024	ND	416	104	400	0.00	

TPH 8015M		mg/kg		Analyzed By: MS					
Analyte	Result	Reporting Limit	Analyzed	Method Blank	BS	% Recovery	True Value QC	RPD	Qualifier
GRO C6-C10*	<10.0	10.0	09/10/2024	ND	208	104	200	2.38	
DRO >C10-C28*	<10.0	10.0	09/10/2024	ND	202	101	200	2.25	
EXT DRO >C28-C36	<10.0	10.0	09/10/2024	ND					

Surrogate: 1-Chlorooctane 99.0 % 48.2-134

Surrogate: 1-Chlorooctadecane 115 % 49.1-148

Cardinal Laboratories

*=Accredited Analyte

PLEASE NOTE: Liability and Damages. Cardinal's liability and client's exclusive remedy for any claim arising, whether based in contract or tort, shall be limited to the amount paid by client for analyses. All claims, including those for negligence and any other cause whatsoever shall be deemed waived unless made in writing and received by Cardinal within thirty (30) days after completion of the applicable service. In no event shall Cardinal be liable for incidental or consequential damages, including, without limitation, business interruptions, loss of use, or loss of profits incurred by client, its subsidiaries, affiliates or successors arising out of or related to the performance of the services hereunder by Cardinal, regardless of whether such claim is based upon any of the above stated reasons or otherwise. Results relate only to the samples identified above. This report shall not be reproduced except in full with written approval of Cardinal Laboratories.

Celey D. Keene, Lab Director/Quality Manager



PHONE (575) 393-2326 ° 101 E. MARLAND ° HOBBS, NM 88240

Analytical Results For:

TETRA TECH
 LISBETH CHAVIRA
 901 WEST WALL STREET , STE 100
 MIDLAND TX, 79701
 Fax To: (432) 682-3946

Received:	09/10/2024	Sampling Date:	09/10/2024
Reported:	09/13/2024	Sampling Type:	Soil
Project Name:	FEDERAL 11 LEA COUNTY ILLEGAL DUM	Sampling Condition:	Cool & Intact
Project Number:	212C - MD - 03607	Sample Received By:	Shalyn Rodriguez
Project Location:	LEA COUNTY, NM		

Sample ID: AH - 2 (0-1') (H245455-02)

BTEX 8021B		mg/kg		Analyzed By: JH						
Analyte	Result	Reporting Limit	Analyzed	Method Blank	BS	% Recovery	True Value QC	RPD	Qualifier	
Benzene*	<0.050	0.050	09/10/2024	ND	2.05	103	2.00	0.645		
Toluene*	<0.050	0.050	09/10/2024	ND	1.92	96.1	2.00	3.55		
Ethylbenzene*	<0.050	0.050	09/10/2024	ND	1.97	98.5	2.00	4.19		
Total Xylenes*	<0.150	0.150	09/10/2024	ND	6.03	100	6.00	4.10		
Total BTEX	<0.300	0.300	09/10/2024	ND						

Surrogate: 4-Bromofluorobenzene (PID) 108 % 71.5-134

Chloride, SM4500Cl-B		mg/kg		Analyzed By: CT						
Analyte	Result	Reporting Limit	Analyzed	Method Blank	BS	% Recovery	True Value QC	RPD	Qualifier	
Chloride	16.0	16.0	09/11/2024	ND	416	104	400	0.00		

TPH 8015M		mg/kg		Analyzed By: MS					
Analyte	Result	Reporting Limit	Analyzed	Method Blank	BS	% Recovery	True Value QC	RPD	Qualifier
GRO C6-C10*	<10.0	10.0	09/10/2024	ND	208	104	200	2.38	
DRO >C10-C28*	<10.0	10.0	09/10/2024	ND	202	101	200	2.25	
EXT DRO >C28-C36	<10.0	10.0	09/10/2024	ND					

Surrogate: 1-Chlorooctane 105 % 48.2-134

Surrogate: 1-Chlorooctadecane 122 % 49.1-148

Cardinal Laboratories

*=Accredited Analyte

PLEASE NOTE: Liability and Damages. Cardinal's liability and client's exclusive remedy for any claim arising, whether based in contract or tort, shall be limited to the amount paid by client for analyses. All claims, including those for negligence and any other cause whatsoever shall be deemed waived unless made in writing and received by Cardinal within thirty (30) days after completion of the applicable service. In no event shall Cardinal be liable for incidental or consequential damages, including, without limitation, business interruptions, loss of use, or loss of profits incurred by client, its subsidiaries, affiliates or successors arising out of or related to the performance of the services hereunder by Cardinal, regardless of whether such claim is based upon any of the above stated reasons or otherwise. Results relate only to the samples identified above. This report shall not be reproduced except in full with written approval of Cardinal Laboratories.

Celey D. Keene, Lab Director/Quality Manager



PHONE (575) 393-2326 ° 101 E. MARLAND ° HOBBS, NM 88240

Analytical Results For:

TETRA TECH
 LISBETH CHAVIRA
 901 WEST WALL STREET , STE 100
 MIDLAND TX, 79701
 Fax To: (432) 682-3946

Received:	09/10/2024	Sampling Date:	09/10/2024
Reported:	09/13/2024	Sampling Type:	Soil
Project Name:	FEDERAL 11 LEA COUNTY ILLEGAL DUM	Sampling Condition:	Cool & Intact
Project Number:	212C - MD - 03607	Sample Received By:	Shalyn Rodriguez
Project Location:	LEA COUNTY, NM		

Sample ID: AH - 2 (2'-3') (H245455-03)

BTEx 8021B		mg/kg		Analyzed By: JH						
Analyte	Result	Reporting Limit	Analyzed	Method Blank	BS	% Recovery	True Value QC	RPD	Qualifier	
Benzene*	<0.050	0.050	09/10/2024	ND	2.05	103	2.00	0.645		
Toluene*	<0.050	0.050	09/10/2024	ND	1.92	96.1	2.00	3.55		
Ethylbenzene*	<0.050	0.050	09/10/2024	ND	1.97	98.5	2.00	4.19		
Total Xylenes*	<0.150	0.150	09/10/2024	ND	6.03	100	6.00	4.10		
Total BTEx	<0.300	0.300	09/10/2024	ND						

Surrogate: 4-Bromofluorobenzene (PID) 114 % 71.5-134

Chloride, SM4500CI-B		mg/kg		Analyzed By: CT						
Analyte	Result	Reporting Limit	Analyzed	Method Blank	BS	% Recovery	True Value QC	RPD	Qualifier	
Chloride	16.0	16.0	09/11/2024	ND	416	104	400	0.00		

TPH 8015M		mg/kg		Analyzed By: MS					
Analyte	Result	Reporting Limit	Analyzed	Method Blank	BS	% Recovery	True Value QC	RPD	Qualifier
GRO C6-C10*	<10.0	10.0	09/10/2024	ND	208	104	200	2.38	
DRO >C10-C28*	<10.0	10.0	09/10/2024	ND	202	101	200	2.25	
EXT DRO >C28-C36	<10.0	10.0	09/10/2024	ND					

Surrogate: 1-Chlorooctane 99.3 % 48.2-134

Surrogate: 1-Chlorooctadecane 114 % 49.1-148

Cardinal Laboratories

*=Accredited Analyte

PLEASE NOTE: Liability and Damages. Cardinal's liability and client's exclusive remedy for any claim arising, whether based in contract or tort, shall be limited to the amount paid by client for analyses. All claims, including those for negligence and any other cause whatsoever shall be deemed waived unless made in writing and received by Cardinal within thirty (30) days after completion of the applicable service. In no event shall Cardinal be liable for incidental or consequential damages, including, without limitation, business interruptions, loss of use, or loss of profits incurred by client, its subsidiaries, affiliates or successors arising out of or related to the performance of the services hereunder by Cardinal, regardless of whether such claim is based upon any of the above stated reasons or otherwise. Results relate only to the samples identified above. This report shall not be reproduced except in full with written approval of Cardinal Laboratories.

Celey D. Keene, Lab Director/Quality Manager



PHONE (575) 393-2326 ° 101 E. MARLAND ° HOBBS, NM 88240

Analytical Results For:

TETRA TECH
 LISBETH CHAVIRA
 901 WEST WALL STREET , STE 100
 MIDLAND TX, 79701
 Fax To: (432) 682-3946

Received:	09/10/2024	Sampling Date:	09/10/2024
Reported:	09/13/2024	Sampling Type:	Soil
Project Name:	FEDERAL 11 LEA COUNTY ILLEGAL DUM	Sampling Condition:	Cool & Intact
Project Number:	212C - MD - 03607	Sample Received By:	Shalyn Rodriguez
Project Location:	LEA COUNTY, NM		

Sample ID: AH - 2 (3'-4') (H245455-04)

BTEX 8021B		mg/kg		Analyzed By: JH						
Analyte	Result	Reporting Limit	Analyzed	Method Blank	BS	% Recovery	True Value QC	RPD	Qualifier	
Benzene*	<0.050	0.050	09/10/2024	ND	2.05	103	2.00	0.645		
Toluene*	<0.050	0.050	09/10/2024	ND	1.92	96.1	2.00	3.55		
Ethylbenzene*	<0.050	0.050	09/10/2024	ND	1.97	98.5	2.00	4.19		
Total Xylenes*	<0.150	0.150	09/10/2024	ND	6.03	100	6.00	4.10		
Total BTEX	<0.300	0.300	09/10/2024	ND						

Surrogate: 4-Bromofluorobenzene (PID) 111 % 71.5-134

Chloride, SM4500Cl-B		mg/kg		Analyzed By: CT						
Analyte	Result	Reporting Limit	Analyzed	Method Blank	BS	% Recovery	True Value QC	RPD	Qualifier	
Chloride	16.0	16.0	09/11/2024	ND	416	104	400	0.00		

TPH 8015M		mg/kg		Analyzed By: MS					
Analyte	Result	Reporting Limit	Analyzed	Method Blank	BS	% Recovery	True Value QC	RPD	Qualifier
GRO C6-C10*	<10.0	10.0	09/10/2024	ND	208	104	200	2.38	
DRO >C10-C28*	<10.0	10.0	09/10/2024	ND	202	101	200	2.25	
EXT DRO >C28-C36	<10.0	10.0	09/10/2024	ND					

Surrogate: 1-Chlorooctane 94.8 % 48.2-134

Surrogate: 1-Chlorooctadecane 111 % 49.1-148

Cardinal Laboratories

*=Accredited Analyte

PLEASE NOTE: Liability and Damages. Cardinal's liability and client's exclusive remedy for any claim arising, whether based in contract or tort, shall be limited to the amount paid by client for analyses. All claims, including those for negligence and any other cause whatsoever shall be deemed waived unless made in writing and received by Cardinal within thirty (30) days after completion of the applicable service. In no event shall Cardinal be liable for incidental or consequential damages, including, without limitation, business interruptions, loss of use, or loss of profits incurred by client, its subsidiaries, affiliates or successors arising out of or related to the performance of the services hereunder by Cardinal, regardless of whether such claim is based upon any of the above stated reasons or otherwise. Results relate only to the samples identified above. This report shall not be reproduced except in full with written approval of Cardinal Laboratories.

Celey D. Keene, Lab Director/Quality Manager



PHONE (575) 393-2326 ° 101 E. MARLAND ° HOBBS, NM 88240

Analytical Results For:

TETRA TECH
 LISBETH CHAVIRA
 901 WEST WALL STREET , STE 100
 MIDLAND TX, 79701
 Fax To: (432) 682-3946

Received:	09/10/2024	Sampling Date:	09/10/2024
Reported:	09/13/2024	Sampling Type:	Soil
Project Name:	FEDERAL 11 LEA COUNTY ILLEGAL DUM	Sampling Condition:	Cool & Intact
Project Number:	212C - MD - 03607	Sample Received By:	Shalyn Rodriguez
Project Location:	LEA COUNTY, NM		

Sample ID: AH - 3 (0-1') (H245455-05)

BTEX 8021B		mg/kg		Analyzed By: JH						
Analyte	Result	Reporting Limit	Analyzed	Method Blank	BS	% Recovery	True Value QC	RPD	Qualifier	
Benzene*	<0.050	0.050	09/10/2024	ND	2.05	103	2.00	0.645		
Toluene*	<0.050	0.050	09/10/2024	ND	1.92	96.1	2.00	3.55		
Ethylbenzene*	<0.050	0.050	09/10/2024	ND	1.97	98.5	2.00	4.19		
Total Xylenes*	<0.150	0.150	09/10/2024	ND	6.03	100	6.00	4.10		
Total BTEX	<0.300	0.300	09/10/2024	ND						

Surrogate: 4-Bromofluorobenzene (PID) 110 % 71.5-134

Chloride, SM4500Cl-B		mg/kg		Analyzed By: CT						
Analyte	Result	Reporting Limit	Analyzed	Method Blank	BS	% Recovery	True Value QC	RPD	Qualifier	
Chloride	16.0	16.0	09/11/2024	ND	416	104	400	0.00		

TPH 8015M		mg/kg		Analyzed By: MS					
Analyte	Result	Reporting Limit	Analyzed	Method Blank	BS	% Recovery	True Value QC	RPD	Qualifier
GRO C6-C10*	<10.0	10.0	09/10/2024	ND	208	104	200	2.38	
DRO >C10-C28*	<10.0	10.0	09/10/2024	ND	202	101	200	2.25	
EXT DRO >C28-C36	<10.0	10.0	09/10/2024	ND					

Surrogate: 1-Chlorooctane 100 % 48.2-134

Surrogate: 1-Chlorooctadecane 115 % 49.1-148

Cardinal Laboratories

*=Accredited Analyte

PLEASE NOTE: Liability and Damages. Cardinal's liability and client's exclusive remedy for any claim arising, whether based in contract or tort, shall be limited to the amount paid by client for analyses. All claims, including those for negligence and any other cause whatsoever shall be deemed waived unless made in writing and received by Cardinal within thirty (30) days after completion of the applicable service. In no event shall Cardinal be liable for incidental or consequential damages, including, without limitation, business interruptions, loss of use, or loss of profits incurred by client, its subsidiaries, affiliates or successors arising out of or related to the performance of the services hereunder by Cardinal, regardless of whether such claim is based upon any of the above stated reasons or otherwise. Results relate only to the samples identified above. This report shall not be reproduced except in full with written approval of Cardinal Laboratories.

Celey D. Keene, Lab Director/Quality Manager



PHONE (575) 393-2326 ° 101 E. MARLAND ° HOBBS, NM 88240

Analytical Results For:

TETRA TECH
 LISBETH CHAVIRA
 901 WEST WALL STREET , STE 100
 MIDLAND TX, 79701
 Fax To: (432) 682-3946

Received:	09/10/2024	Sampling Date:	09/10/2024
Reported:	09/13/2024	Sampling Type:	Soil
Project Name:	FEDERAL 11 LEA COUNTY ILLEGAL DUM	Sampling Condition:	Cool & Intact
Project Number:	212C - MD - 03607	Sample Received By:	Shalyn Rodriguez
Project Location:	LEA COUNTY, NM		

Sample ID: AH - 3 (2'-3') (H245455-06)

BTEX 8021B		mg/kg		Analyzed By: JH						
Analyte	Result	Reporting Limit	Analyzed	Method Blank	BS	% Recovery	True Value QC	RPD	Qualifier	
Benzene*	<0.050	0.050	09/11/2024	ND	2.05	103	2.00	0.645		
Toluene*	<0.050	0.050	09/11/2024	ND	1.92	96.1	2.00	3.55		
Ethylbenzene*	<0.050	0.050	09/11/2024	ND	1.97	98.5	2.00	4.19		
Total Xylenes*	<0.150	0.150	09/11/2024	ND	6.03	100	6.00	4.10		
Total BTEX	<0.300	0.300	09/11/2024	ND						

Surrogate: 4-Bromofluorobenzene (PID) 112 % 71.5-134

Chloride, SM4500Cl-B		mg/kg		Analyzed By: CT						
Analyte	Result	Reporting Limit	Analyzed	Method Blank	BS	% Recovery	True Value QC	RPD	Qualifier	
Chloride	32.0	16.0	09/11/2024	ND	416	104	400	0.00		

TPH 8015M		mg/kg		Analyzed By: MS					
Analyte	Result	Reporting Limit	Analyzed	Method Blank	BS	% Recovery	True Value QC	RPD	Qualifier
GRO C6-C10*	<10.0	10.0	09/10/2024	ND	208	104	200	2.38	
DRO >C10-C28*	<10.0	10.0	09/10/2024	ND	202	101	200	2.25	
EXT DRO >C28-C36	<10.0	10.0	09/10/2024	ND					

Surrogate: 1-Chlorooctane 94.4 % 48.2-134

Surrogate: 1-Chlorooctadecane 107 % 49.1-148

Cardinal Laboratories

*=Accredited Analyte

PLEASE NOTE: Liability and Damages. Cardinal's liability and client's exclusive remedy for any claim arising, whether based in contract or tort, shall be limited to the amount paid by client for analyses. All claims, including those for negligence and any other cause whatsoever shall be deemed waived unless made in writing and received by Cardinal within thirty (30) days after completion of the applicable service. In no event shall Cardinal be liable for incidental or consequential damages, including, without limitation, business interruptions, loss of use, or loss of profits incurred by client, its subsidiaries, affiliates or successors arising out of or related to the performance of the services hereunder by Cardinal, regardless of whether such claim is based upon any of the above stated reasons or otherwise. Results relate only to the samples identified above. This report shall not be reproduced except in full with written approval of Cardinal Laboratories.

Celey D. Keene, Lab Director/Quality Manager



PHONE (575) 393-2326 ° 101 E. MARLAND ° HOBBS, NM 88240

Analytical Results For:

TETRA TECH
 LISBETH CHAVIRA
 901 WEST WALL STREET , STE 100
 MIDLAND TX, 79701
 Fax To: (432) 682-3946

Received:	09/10/2024	Sampling Date:	09/10/2024
Reported:	09/13/2024	Sampling Type:	Soil
Project Name:	FEDERAL 11 LEA COUNTY ILLEGAL DUM	Sampling Condition:	Cool & Intact
Project Number:	212C - MD - 03607	Sample Received By:	Shalyn Rodriguez
Project Location:	LEA COUNTY, NM		

Sample ID: AH - 3 (3'-4') (H245455-07)

BTEX 8021B		mg/kg		Analyzed By: JH						
Analyte	Result	Reporting Limit	Analyzed	Method Blank	BS	% Recovery	True Value QC	RPD	Qualifier	
Benzene*	<0.050	0.050	09/11/2024	ND	2.05	103	2.00	0.645		
Toluene*	<0.050	0.050	09/11/2024	ND	1.92	96.1	2.00	3.55		
Ethylbenzene*	<0.050	0.050	09/11/2024	ND	1.97	98.5	2.00	4.19		
Total Xylenes*	<0.150	0.150	09/11/2024	ND	6.03	100	6.00	4.10		
Total BTEX	<0.300	0.300	09/11/2024	ND						

Surrogate: 4-Bromofluorobenzene (PID) 113 % 71.5-134

Chloride, SM4500Cl-B		mg/kg		Analyzed By: CT						
Analyte	Result	Reporting Limit	Analyzed	Method Blank	BS	% Recovery	True Value QC	RPD	Qualifier	
Chloride	16.0	16.0	09/11/2024	ND	416	104	400	0.00		

TPH 8015M		mg/kg		Analyzed By: MS					
Analyte	Result	Reporting Limit	Analyzed	Method Blank	BS	% Recovery	True Value QC	RPD	Qualifier
GRO C6-C10*	<10.0	10.0	09/10/2024	ND	208	104	200	2.38	
DRO >C10-C28*	<10.0	10.0	09/10/2024	ND	202	101	200	2.25	
EXT DRO >C28-C36	<10.0	10.0	09/10/2024	ND					

Surrogate: 1-Chlorooctane 71.4 % 48.2-134

Surrogate: 1-Chlorooctadecane 78.6 % 49.1-148

Cardinal Laboratories

*=Accredited Analyte

PLEASE NOTE: Liability and Damages. Cardinal's liability and client's exclusive remedy for any claim arising, whether based in contract or tort, shall be limited to the amount paid by client for analyses. All claims, including those for negligence and any other cause whatsoever shall be deemed waived unless made in writing and received by Cardinal within thirty (30) days after completion of the applicable service. In no event shall Cardinal be liable for incidental or consequential damages, including, without limitation, business interruptions, loss of use, or loss of profits incurred by client, its subsidiaries, affiliates or successors arising out of or related to the performance of the services hereunder by Cardinal, regardless of whether such claim is based upon any of the above stated reasons or otherwise. Results relate only to the samples identified above. This report shall not be reproduced except in full with written approval of Cardinal Laboratories.

Celey D. Keene, Lab Director/Quality Manager



PHONE (575) 393-2326 ° 101 E. MARLAND ° HOBBS, NM 88240

Analytical Results For:

TETRA TECH
 LISBETH CHAVIRA
 901 WEST WALL STREET , STE 100
 MIDLAND TX, 79701
 Fax To: (432) 682-3946

Received:	09/10/2024	Sampling Date:	09/10/2024
Reported:	09/13/2024	Sampling Type:	Soil
Project Name:	FEDERAL 11 LEA COUNTY ILLEGAL DUM	Sampling Condition:	Cool & Intact
Project Number:	212C - MD - 03607	Sample Received By:	Shalyn Rodriguez
Project Location:	LEA COUNTY, NM		

Sample ID: AH - 4 (0-1') (H245455-08)

BTEx 8021B		mg/kg		Analyzed By: JH						
Analyte	Result	Reporting Limit	Analyzed	Method Blank	BS	% Recovery	True Value QC	RPD	Qualifier	
Benzene*	<0.050	0.050	09/11/2024	ND	2.05	103	2.00	0.645		
Toluene*	<0.050	0.050	09/11/2024	ND	1.92	96.1	2.00	3.55		
Ethylbenzene*	<0.050	0.050	09/11/2024	ND	1.97	98.5	2.00	4.19		
Total Xylenes*	<0.150	0.150	09/11/2024	ND	6.03	100	6.00	4.10		
Total BTEx	<0.300	0.300	09/11/2024	ND						

Surrogate: 4-Bromofluorobenzene (PID) 108 % 71.5-134

Chloride, SM4500CI-B		mg/kg		Analyzed By: CT						
Analyte	Result	Reporting Limit	Analyzed	Method Blank	BS	% Recovery	True Value QC	RPD	Qualifier	
Chloride	<16.0	16.0	09/11/2024	ND	416	104	400	0.00		

TPH 8015M		mg/kg		Analyzed By: MS					
Analyte	Result	Reporting Limit	Analyzed	Method Blank	BS	% Recovery	True Value QC	RPD	Qualifier
GRO C6-C10*	<10.0	10.0	09/10/2024	ND	208	104	200	2.38	
DRO >C10-C28*	<10.0	10.0	09/10/2024	ND	202	101	200	2.25	
EXT DRO >C28-C36	<10.0	10.0	09/10/2024	ND					

Surrogate: 1-Chlorooctane 102 % 48.2-134

Surrogate: 1-Chlorooctadecane 113 % 49.1-148

Cardinal Laboratories

*=Accredited Analyte

PLEASE NOTE: Liability and Damages. Cardinal's liability and client's exclusive remedy for any claim arising, whether based in contract or tort, shall be limited to the amount paid by client for analyses. All claims, including those for negligence and any other cause whatsoever shall be deemed waived unless made in writing and received by Cardinal within thirty (30) days after completion of the applicable service. In no event shall Cardinal be liable for incidental or consequential damages, including, without limitation, business interruptions, loss of use, or loss of profits incurred by client, its subsidiaries, affiliates or successors arising out of or related to the performance of the services hereunder by Cardinal, regardless of whether such claim is based upon any of the above stated reasons or otherwise. Results relate only to the samples identified above. This report shall not be reproduced except in full with written approval of Cardinal Laboratories.

Celey D. Keene, Lab Director/Quality Manager



PHONE (575) 393-2326 ° 101 E. MARLAND ° HOBBS, NM 88240

Analytical Results For:

TETRA TECH
 LISBETH CHAVIRA
 901 WEST WALL STREET , STE 100
 MIDLAND TX, 79701
 Fax To: (432) 682-3946

Received:	09/10/2024	Sampling Date:	09/10/2024
Reported:	09/13/2024	Sampling Type:	Soil
Project Name:	FEDERAL 11 LEA COUNTY ILLEGAL DUM	Sampling Condition:	Cool & Intact
Project Number:	212C - MD - 03607	Sample Received By:	Shalyn Rodriguez
Project Location:	LEA COUNTY, NM		

Sample ID: AH - 4 (2'-3') (H245455-09)

BTEX 8021B		mg/kg		Analyzed By: JH						
Analyte	Result	Reporting Limit	Analyzed	Method Blank	BS	% Recovery	True Value QC	RPD	Qualifier	
Benzene*	<0.050	0.050	09/11/2024	ND	2.05	103	2.00	0.645		
Toluene*	<0.050	0.050	09/11/2024	ND	1.92	96.1	2.00	3.55		
Ethylbenzene*	<0.050	0.050	09/11/2024	ND	1.97	98.5	2.00	4.19		
Total Xylenes*	<0.150	0.150	09/11/2024	ND	6.03	100	6.00	4.10		
Total BTEX	<0.300	0.300	09/11/2024	ND						

Surrogate: 4-Bromofluorobenzene (PID) 106 % 71.5-134

Chloride, SM4500Cl-B		mg/kg		Analyzed By: CT						
Analyte	Result	Reporting Limit	Analyzed	Method Blank	BS	% Recovery	True Value QC	RPD	Qualifier	
Chloride	<16.0	16.0	09/11/2024	ND	416	104	400	0.00		

TPH 8015M		mg/kg		Analyzed By: MS					
Analyte	Result	Reporting Limit	Analyzed	Method Blank	BS	% Recovery	True Value QC	RPD	Qualifier
GRO C6-C10*	<10.0	10.0	09/10/2024	ND	208	104	200	2.38	
DRO >C10-C28*	<10.0	10.0	09/10/2024	ND	202	101	200	2.25	
EXT DRO >C28-C36	<10.0	10.0	09/10/2024	ND					

Surrogate: 1-Chlorooctane 96.5 % 48.2-134

Surrogate: 1-Chlorooctadecane 109 % 49.1-148

Cardinal Laboratories

*=Accredited Analyte

PLEASE NOTE: Liability and Damages. Cardinal's liability and client's exclusive remedy for any claim arising, whether based in contract or tort, shall be limited to the amount paid by client for analyses. All claims, including those for negligence and any other cause whatsoever shall be deemed waived unless made in writing and received by Cardinal within thirty (30) days after completion of the applicable service. In no event shall Cardinal be liable for incidental or consequential damages, including, without limitation, business interruptions, loss of use, or loss of profits incurred by client, its subsidiaries, affiliates or successors arising out of or related to the performance of the services hereunder by Cardinal, regardless of whether such claim is based upon any of the above stated reasons or otherwise. Results relate only to the samples identified above. This report shall not be reproduced except in full with written approval of Cardinal Laboratories.

Celey D. Keene, Lab Director/Quality Manager



PHONE (575) 393-2326 ° 101 E. MARLAND ° HOBBS, NM 88240

Analytical Results For:

TETRA TECH
 LISBETH CHAVIRA
 901 WEST WALL STREET , STE 100
 MIDLAND TX, 79701
 Fax To: (432) 682-3946

Received:	09/10/2024	Sampling Date:	09/10/2024
Reported:	09/13/2024	Sampling Type:	Soil
Project Name:	FEDERAL 11 LEA COUNTY ILLEGAL DUM	Sampling Condition:	Cool & Intact
Project Number:	212C - MD - 03607	Sample Received By:	Shalyn Rodriguez
Project Location:	LEA COUNTY, NM		

Sample ID: AH - 4 (3'-4') (H245455-10)

BTEX 8021B		mg/kg		Analyzed By: JH						
Analyte	Result	Reporting Limit	Analyzed	Method Blank	BS	% Recovery	True Value QC	RPD	Qualifier	
Benzene*	<0.050	0.050	09/11/2024	ND	2.05	103	2.00	0.645		
Toluene*	<0.050	0.050	09/11/2024	ND	1.92	96.1	2.00	3.55		
Ethylbenzene*	<0.050	0.050	09/11/2024	ND	1.97	98.5	2.00	4.19		
Total Xylenes*	<0.150	0.150	09/11/2024	ND	6.03	100	6.00	4.10		
Total BTEX	<0.300	0.300	09/11/2024	ND						

Surrogate: 4-Bromofluorobenzene (PID) 110 % 71.5-134

Chloride, SM4500Cl-B		mg/kg		Analyzed By: HM						
Analyte	Result	Reporting Limit	Analyzed	Method Blank	BS	% Recovery	True Value QC	RPD	Qualifier	
Chloride	16.0	16.0	09/10/2024	ND	416	104	400	0.00		

TPH 8015M		mg/kg		Analyzed By: MS					
Analyte	Result	Reporting Limit	Analyzed	Method Blank	BS	% Recovery	True Value QC	RPD	Qualifier
GRO C6-C10*	<10.0	10.0	09/11/2024	ND	208	104	200	2.38	
DRO >C10-C28*	<10.0	10.0	09/11/2024	ND	202	101	200	2.25	
EXT DRO >C28-C36	<10.0	10.0	09/11/2024	ND					

Surrogate: 1-Chlorooctane 92.1 % 48.2-134

Surrogate: 1-Chlorooctadecane 107 % 49.1-148

Cardinal Laboratories

*=Accredited Analyte

PLEASE NOTE: Liability and Damages. Cardinal's liability and client's exclusive remedy for any claim arising, whether based in contract or tort, shall be limited to the amount paid by client for analyses. All claims, including those for negligence and any other cause whatsoever shall be deemed waived unless made in writing and received by Cardinal within thirty (30) days after completion of the applicable service. In no event shall Cardinal be liable for incidental or consequential damages, including, without limitation, business interruptions, loss of use, or loss of profits incurred by client, its subsidiaries, affiliates or successors arising out of or related to the performance of the services hereunder by Cardinal, regardless of whether such claim is based upon any of the above stated reasons or otherwise. Results relate only to the samples identified above. This report shall not be reproduced except in full with written approval of Cardinal Laboratories.

Celey D. Keene, Lab Director/Quality Manager



PHONE (575) 393-2326 ° 101 E. MARLAND ° HOBBS, NM 88240

Analytical Results For:

TETRA TECH
 LISBETH CHAVIRA
 901 WEST WALL STREET , STE 100
 MIDLAND TX, 79701
 Fax To: (432) 682-3946

Received:	09/10/2024	Sampling Date:	09/10/2024
Reported:	09/13/2024	Sampling Type:	Soil
Project Name:	FEDERAL 11 LEA COUNTY ILLEGAL DUM	Sampling Condition:	Cool & Intact
Project Number:	212C - MD - 03607	Sample Received By:	Shalyn Rodriguez
Project Location:	LEA COUNTY, NM		

Sample ID: AH - 5 (0-1') (H245455-11)

BTEx 8021B		mg/kg		Analyzed By: JH					
Analyte	Result	Reporting Limit	Analyzed	Method Blank	BS	% Recovery	True Value QC	RPD	Qualifier
Benzene*	<0.050	0.050	09/11/2024	ND	2.05	103	2.00	0.645	
Toluene*	<0.050	0.050	09/11/2024	ND	1.92	96.1	2.00	3.55	
Ethylbenzene*	<0.050	0.050	09/11/2024	ND	1.97	98.5	2.00	4.19	
Total Xylenes*	<0.150	0.150	09/11/2024	ND	6.03	100	6.00	4.10	
Total BTEX	<0.300	0.300	09/11/2024	ND					

Surrogate: 4-Bromofluorobenzene (PID) 106 % 71.5-134

Chloride, SM4500Cl-B		mg/kg		Analyzed By: HM					
Analyte	Result	Reporting Limit	Analyzed	Method Blank	BS	% Recovery	True Value QC	RPD	Qualifier
Chloride	16.0	16.0	09/10/2024	ND	416	104	400	0.00	

TPH 8015M		mg/kg		Analyzed By: MS					
Analyte	Result	Reporting Limit	Analyzed	Method Blank	BS	% Recovery	True Value QC	RPD	Qualifier
GRO C6-C10*	<10.0	10.0	09/11/2024	ND	208	104	200	2.38	
DRO >C10-C28*	<10.0	10.0	09/11/2024	ND	202	101	200	2.25	
EXT DRO >C28-C36	<10.0	10.0	09/11/2024	ND					

Surrogate: 1-Chlorooctane 98.8 % 48.2-134

Surrogate: 1-Chlorooctadecane 112 % 49.1-148

Cardinal Laboratories

*=Accredited Analyte

PLEASE NOTE: Liability and Damages. Cardinal's liability and client's exclusive remedy for any claim arising, whether based in contract or tort, shall be limited to the amount paid by client for analyses. All claims, including those for negligence and any other cause whatsoever shall be deemed waived unless made in writing and received by Cardinal within thirty (30) days after completion of the applicable service. In no event shall Cardinal be liable for incidental or consequential damages, including, without limitation, business interruptions, loss of use, or loss of profits incurred by client, its subsidiaries, affiliates or successors arising out of or related to the performance of the services hereunder by Cardinal, regardless of whether such claim is based upon any of the above stated reasons or otherwise. Results relate only to the samples identified above. This report shall not be reproduced except in full with written approval of Cardinal Laboratories.

Celey D. Keene, Lab Director/Quality Manager



PHONE (575) 393-2326 ° 101 E. MARLAND ° HOBBS, NM 88240

Analytical Results For:

TETRA TECH
 LISBETH CHAVIRA
 901 WEST WALL STREET , STE 100
 MIDLAND TX, 79701
 Fax To: (432) 682-3946

Received:	09/10/2024	Sampling Date:	09/10/2024
Reported:	09/13/2024	Sampling Type:	Soil
Project Name:	FEDERAL 11 LEA COUNTY ILLEGAL DUM	Sampling Condition:	Cool & Intact
Project Number:	212C - MD - 03607	Sample Received By:	Shalyn Rodriguez
Project Location:	LEA COUNTY, NM		

Sample ID: AH - 6 (0-1') (H245455-12)

BTEx 8021B		mg/kg		Analyzed By: JH						
Analyte	Result	Reporting Limit	Analyzed	Method Blank	BS	% Recovery	True Value QC	RPD	Qualifier	
Benzene*	<0.050	0.050	09/11/2024	ND	2.05	103	2.00	0.645		
Toluene*	<0.050	0.050	09/11/2024	ND	1.92	96.1	2.00	3.55		
Ethylbenzene*	<0.050	0.050	09/11/2024	ND	1.97	98.5	2.00	4.19		
Total Xylenes*	<0.150	0.150	09/11/2024	ND	6.03	100	6.00	4.10		
Total BTEx	<0.300	0.300	09/11/2024	ND						

Surrogate: 4-Bromofluorobenzene (PID) 107 % 71.5-134

Chloride, SM4500CI-B		mg/kg		Analyzed By: HM						
Analyte	Result	Reporting Limit	Analyzed	Method Blank	BS	% Recovery	True Value QC	RPD	Qualifier	
Chloride	16.0	16.0	09/10/2024	ND	416	104	400	0.00		

TPH 8015M		mg/kg		Analyzed By: MS					
Analyte	Result	Reporting Limit	Analyzed	Method Blank	BS	% Recovery	True Value QC	RPD	Qualifier
GRO C6-C10*	<10.0	10.0	09/11/2024	ND	208	104	200	2.38	
DRO >C10-C28*	<10.0	10.0	09/11/2024	ND	202	101	200	2.25	
EXT DRO >C28-C36	<10.0	10.0	09/11/2024	ND					

Surrogate: 1-Chlorooctane 87.5 % 48.2-134

Surrogate: 1-Chlorooctadecane 101 % 49.1-148

Cardinal Laboratories

*=Accredited Analyte

PLEASE NOTE: Liability and Damages. Cardinal's liability and client's exclusive remedy for any claim arising, whether based in contract or tort, shall be limited to the amount paid by client for analyses. All claims, including those for negligence and any other cause whatsoever shall be deemed waived unless made in writing and received by Cardinal within thirty (30) days after completion of the applicable service. In no event shall Cardinal be liable for incidental or consequential damages, including, without limitation, business interruptions, loss of use, or loss of profits incurred by client, its subsidiaries, affiliates or successors arising out of or related to the performance of the services hereunder by Cardinal, regardless of whether such claim is based upon any of the above stated reasons or otherwise. Results relate only to the samples identified above. This report shall not be reproduced except in full with written approval of Cardinal Laboratories.

Celey D. Keene, Lab Director/Quality Manager



PHONE (575) 393-2326 ° 101 E. MARLAND ° HOBBS, NM 88240

Analytical Results For:

TETRA TECH
 LISBETH CHAVIRA
 901 WEST WALL STREET , STE 100
 MIDLAND TX, 79701
 Fax To: (432) 682-3946

Received:	09/10/2024	Sampling Date:	09/10/2024
Reported:	09/13/2024	Sampling Type:	Soil
Project Name:	FEDERAL 11 LEA COUNTY ILLEGAL DUM	Sampling Condition:	Cool & Intact
Project Number:	212C - MD - 03607	Sample Received By:	Shalyn Rodriguez
Project Location:	LEA COUNTY, NM		

Sample ID: AH - 7 (0-1') (H245455-13)

BTEX 8021B		mg/kg		Analyzed By: JH						
Analyte	Result	Reporting Limit	Analyzed	Method Blank	BS	% Recovery	True Value QC	RPD	Qualifier	
Benzene*	<0.050	0.050	09/11/2024	ND	2.05	103	2.00	0.645		
Toluene*	<0.050	0.050	09/11/2024	ND	1.92	96.1	2.00	3.55		
Ethylbenzene*	<0.050	0.050	09/11/2024	ND	1.97	98.5	2.00	4.19		
Total Xylenes*	<0.150	0.150	09/11/2024	ND	6.03	100	6.00	4.10		
Total BTEX	<0.300	0.300	09/11/2024	ND						

Surrogate: 4-Bromofluorobenzene (PID) 107 % 71.5-134

Chloride, SM4500CI-B		mg/kg		Analyzed By: HM						
Analyte	Result	Reporting Limit	Analyzed	Method Blank	BS	% Recovery	True Value QC	RPD	Qualifier	
Chloride	16.0	16.0	09/10/2024	ND	416	104	400	0.00		

TPH 8015M		mg/kg		Analyzed By: MS					
Analyte	Result	Reporting Limit	Analyzed	Method Blank	BS	% Recovery	True Value QC	RPD	Qualifier
GRO C6-C10*	<10.0	10.0	09/11/2024	ND	202	101	200	3.37	
DRO >C10-C28*	<10.0	10.0	09/11/2024	ND	187	93.3	200	5.42	
EXT DRO >C28-C36	<10.0	10.0	09/11/2024	ND					

Surrogate: 1-Chlorooctane 78.5 % 48.2-134

Surrogate: 1-Chlorooctadecane 79.6 % 49.1-148

Cardinal Laboratories

*=Accredited Analyte

PLEASE NOTE: Liability and Damages. Cardinal's liability and client's exclusive remedy for any claim arising, whether based in contract or tort, shall be limited to the amount paid by client for analyses. All claims, including those for negligence and any other cause whatsoever shall be deemed waived unless made in writing and received by Cardinal within thirty (30) days after completion of the applicable service. In no event shall Cardinal be liable for incidental or consequential damages, including, without limitation, business interruptions, loss of use, or loss of profits incurred by client, its subsidiaries, affiliates or successors arising out of or related to the performance of the services hereunder by Cardinal, regardless of whether such claim is based upon any of the above stated reasons or otherwise. Results relate only to the samples identified above. This report shall not be reproduced except in full with written approval of Cardinal Laboratories.

Celey D. Keene, Lab Director/Quality Manager



PHONE (575) 393-2326 ° 101 E. MARLAND ° HOBBS, NM 88240

Analytical Results For:

TETRA TECH
 LISBETH CHAVIRA
 901 WEST WALL STREET , STE 100
 MIDLAND TX, 79701
 Fax To: (432) 682-3946

Received:	09/10/2024	Sampling Date:	09/10/2024
Reported:	09/13/2024	Sampling Type:	Soil
Project Name:	FEDERAL 11 LEA COUNTY ILLEGAL DUM	Sampling Condition:	Cool & Intact
Project Number:	212C - MD - 03607	Sample Received By:	Shalyn Rodriguez
Project Location:	LEA COUNTY, NM		

Sample ID: AH - 8 (0-1') (H245455-14)

BTEx 8021B		mg/kg		Analyzed By: JH						
Analyte	Result	Reporting Limit	Analyzed	Method Blank	BS	% Recovery	True Value QC	RPD	Qualifier	
Benzene*	<0.050	0.050	09/11/2024	ND	1.88	94.0	2.00	8.05		
Toluene*	<0.050	0.050	09/11/2024	ND	1.92	96.2	2.00	11.3		
Ethylbenzene*	<0.050	0.050	09/11/2024	ND	2.04	102	2.00	12.4		
Total Xylenes*	<0.150	0.150	09/11/2024	ND	6.27	105	6.00	13.4		
Total BTEX	<0.300	0.300	09/11/2024	ND						

Surrogate: 4-Bromofluorobenzene (PID) 107 % 71.5-134

Chloride, SM4500Cl-B		mg/kg		Analyzed By: HM						
Analyte	Result	Reporting Limit	Analyzed	Method Blank	BS	% Recovery	True Value QC	RPD	Qualifier	
Chloride	<16.0	16.0	09/10/2024	ND	416	104	400	0.00		

TPH 8015M		mg/kg		Analyzed By: MS					
Analyte	Result	Reporting Limit	Analyzed	Method Blank	BS	% Recovery	True Value QC	RPD	Qualifier
GRO C6-C10*	<10.0	10.0	09/11/2024	ND	202	101	200	3.37	
DRO >C10-C28*	<10.0	10.0	09/11/2024	ND	187	93.3	200	5.42	
EXT DRO >C28-C36	<10.0	10.0	09/11/2024	ND					

Surrogate: 1-Chlorooctane 81.3 % 48.2-134

Surrogate: 1-Chlorooctadecane 82.6 % 49.1-148

Cardinal Laboratories

*=Accredited Analyte

PLEASE NOTE: Liability and Damages. Cardinal's liability and client's exclusive remedy for any claim arising, whether based in contract or tort, shall be limited to the amount paid by client for analyses. All claims, including those for negligence and any other cause whatsoever shall be deemed waived unless made in writing and received by Cardinal within thirty (30) days after completion of the applicable service. In no event shall Cardinal be liable for incidental or consequential damages, including, without limitation, business interruptions, loss of use, or loss of profits incurred by client, its subsidiaries, affiliates or successors arising out of or related to the performance of the services hereunder by Cardinal, regardless of whether such claim is based upon any of the above stated reasons or otherwise. Results relate only to the samples identified above. This report shall not be reproduced except in full with written approval of Cardinal Laboratories.

Celey D. Keene, Lab Director/Quality Manager

PHONE (575) 393-2326 • 101 E. MARLAND • HOBBS, NM 88240

Notes and Definitions

S-04	The surrogate recovery for this sample is outside of established control limits due to a sample matrix effect.
QM-07	The spike recovery was outside acceptance limits for the MS and/or MSD. The batch was accepted based on acceptable LCS recovery.
ND	Analyte NOT DETECTED at or above the reporting limit
RPD	Relative Percent Difference
**	Samples not received at proper temperature of 6°C or below.
***	Insufficient time to reach temperature.
-	Chloride by SM4500Cl-B does not require samples be received at or below 6°C Samples reported on an as received basis (wet) unless otherwise noted on report

Cardinal Laboratories

*=Accredited Analyte

PLEASE NOTE: Liability and Damages. Cardinal's liability and client's exclusive remedy for any claim arising, whether based in contract or tort, shall be limited to the amount paid by client for analyses. All claims, including those for negligence and any other cause whatsoever shall be deemed waived unless made in writing and received by Cardinal within thirty (30) days after completion of the applicable service. In no event shall Cardinal be liable for incidental or consequential damages, including, without limitation, business interruptions, loss of use, or loss of profits incurred by client, its subsidiaries, affiliates or successors arising out of or related to the performance of the services hereunder by Cardinal, regardless of whether such claim is based upon any of the above stated reasons or otherwise. Results relate only to the samples identified above. This report shall not be reproduced except in full with written approval of Cardinal Laboratories.

A handwritten signature in black ink, appearing to read "Celey D. Keene".

Celey D. Keene, Lab Director/Quality Manager

† Cardinal cannot accept verbal changes. Please email changes to celey.keene@cardinallabsnm.com



CHAIN-OF-CUSTODY AND ANALYSIS REQUEST

101 East Marland, Hobbs, NM 88240
(575) 393-2326 FAX (575) 393-2476

[illegible][illegible]

Relinquished By: Colton Bickerstaff		Date: 09/10/24	Received By: <i>Sfledrickmeyer</i>		Verbal Result: <input type="checkbox"/> Yes <input type="checkbox"/> No		Add'l Phone #:
		Time: <i>1:30</i>			All Results are emailed. Please provide Email address: Lisbeth.Chavira@tetrattech.com		
Relinquished By:		Date:	Received By:		REMARKS:		
		Time:					
Delivered By: (Circle One) Sampler - UPS - Bus - Other:	Observed Temp. °C <i>3.42</i> Corrected Temp. °C <i>2.82</i>	Sample Condition Cool Intact <input checked="" type="checkbox"/> Yes <input type="checkbox"/> No <input type="checkbox"/> No <input type="checkbox"/> No	CHECKED BY: (Initials) <i>SP</i>	Turnaround Time: * Rush: <i>N/A, NO</i> <input type="checkbox"/> Cool Intact	Standard <input checked="" type="checkbox"/> Bacteria (only) Sample Condition	Thermometer ID #140 Correction Factor -0.6°C	
						<input type="checkbox"/> Yes <input type="checkbox"/> Yes <input type="checkbox"/> No <input type="checkbox"/> No Corrected Temp. °C	

FORM-006 R 3.2 10/07/21

† Cardinal cannot accept verbal changes. Please email changes to celey.keene@cardinallabsnm.com



PHONE (575) 393-2326 ° 101 E. MARLAND ° HOBBS, NM 88240

November 01, 2024

LISBETH CHAVIRA

TETRA TECH

901 WEST WALL STREET , STE 100

MIDLAND, TX 79701

RE: FEDERAL 11 LEA CO. ILLEGAL DUMP ON LEASE RD

Enclosed are the results of analyses for samples received by the laboratory on 10/28/24 11:51.

Cardinal Laboratories is accredited through Texas NELAP under certificate number TX-C24-00112. Accreditation applies to drinking water, non-potable water and solid and chemical materials. All accredited analytes are denoted by an asterisk (*). For a complete list of accredited analytes and matrices visit the TCEQ website at www.tceq.texas.gov/field/qa/lab_accred_certif.html.

Cardinal Laboratories is accredited through the State of Colorado Department of Public Health and Environment for:

Method EPA 552.2	Haloacetic Acids (HAA-5)
Method EPA 524.2	Total Trihalomethanes (TTHM)
Method EPA 524.4	Regulated VOCs (V1, V2, V3)

Accreditation applies to public drinking water matrices.

This report meets NELAP requirements and is made up of a cover page, analytical results, and a copy of the original chain-of-custody. If you have any questions concerning this report, please feel free to contact me.

Sincerely,

A handwritten signature in black ink that reads "Celey D. Keene". The signature is written in a cursive, flowing style.

Celey D. Keene

Lab Director/Quality Manager



PHONE (575) 393-2326 ° 101 E. MARLAND ° HOBBS, NM 88240

Analytical Results For:

TETRA TECH
 LISBETH CHAVIRA
 901 WEST WALL STREET , STE 100
 MIDLAND TX, 79701
 Fax To: (432) 682-3946

Received:	10/28/2024	Sampling Date:	10/28/2024
Reported:	11/01/2024	Sampling Type:	Soil
Project Name:	FEDERAL 11 LEA CO. ILLEGAL DUMP ON	Sampling Condition:	** (See Notes)
Project Number:	212C-MD-03607 (TIGER 11 FEDERAL 11-	Sample Received By:	Tamara Oldaker
Project Location:	LEA COUNTY, NM		

Sample ID: FS - 5 (H246541-01)

BTX 8021B		mg/kg		Analyzed By: JH					
Analyte	Result	Reporting Limit	Analyzed	Method Blank	BS	% Recovery	True Value QC	RPD	Qualifier
Benzene*	<0.050	0.050	10/29/2024	ND	2.24	112	2.00	8.67	
Toluene*	<0.050	0.050	10/29/2024	ND	2.40	120	2.00	7.34	
Ethylbenzene*	<0.050	0.050	10/29/2024	ND	2.70	135	2.00	10.2	
Total Xylenes*	<0.150	0.150	10/29/2024	ND	8.40	140	6.00	10.1	
Total BTX	<0.300	0.300	10/29/2024	ND					

Surrogate: 4-Bromofluorobenzene (PID) 106 % 71.5-134

Chloride, SM4500Cl-B		mg/kg		Analyzed By: AC						
Analyte	Result	Reporting Limit	Analyzed	Method Blank	BS	% Recovery	True Value QC	RPD	Qualifier	
Chloride	<16.0	16.0	10/29/2024	ND	416	104	400	3.92		

TPH 8015M		mg/kg		Analyzed By: MS					
Analyte	Result	Reporting Limit	Analyzed	Method Blank	BS	% Recovery	True Value QC	RPD	Qualifier
GRO C6-C10*	<10.0	10.0	10/29/2024	ND	221	111	200	0.408	
DRO >C10-C28*	<10.0	10.0	10/29/2024	ND	223	111	200	0.139	
EXT DRO >C28-C36	<10.0	10.0	10/29/2024	ND					

Surrogate: 1-Chlorooctane 103 % 48.2-134

Surrogate: 1-Chlorooctadecane 91.8 % 49.1-148

Cardinal Laboratories

*=Accredited Analyte

PLEASE NOTE: Liability and Damages. Cardinal's liability and client's exclusive remedy for any claim arising, whether based in contract or tort, shall be limited to the amount paid by client for analyses. All claims, including those for negligence and any other cause whatsoever shall be deemed waived unless made in writing and received by Cardinal within thirty (30) days after completion of the applicable service. In no event shall Cardinal be liable for incidental or consequential damages, including, without limitation, business interruptions, loss of use, or loss of profits incurred by client, its subsidiaries, affiliates or successors arising out of or related to the performance of the services hereunder by Cardinal, regardless of whether such claim is based upon any of the above stated reasons or otherwise. Results relate only to the samples identified above. This report shall not be reproduced except in full with written approval of Cardinal Laboratories.

Celey D. Keene, Lab Director/Quality Manager

PHONE (575) 393-2326 ° 101 E. MARLAND ° HOBBS, NM 88240

Notes and Definitions

QR-03	The RPD value for the sample duplicate or MS/MSD was outside of QC acceptance limits due to matrix interference. QC batch accepted based on LCS and/or LCSD recovery and/or RPD values.
QM-07	The spike recovery was outside acceptance limits for the MS and/or MSD. The batch was accepted based on acceptable LCS recovery.
BS1	Blank spike recovery above laboratory acceptance criteria. Results for analyte potentially biased high.
ND	Analyte NOT DETECTED at or above the reporting limit
RPD	Relative Percent Difference
**	Samples not received at proper temperature of 6°C or below.
***	Insufficient time to reach temperature.
-	Chloride by SM4500Cl-B does not require samples be received at or below 6°C Samples reported on an as received basis (wet) unless otherwise noted on report

Cardinal Laboratories

*=Accredited Analyte

PLEASE NOTE: Liability and Damages. Cardinal's liability and client's exclusive remedy for any claim arising, whether based in contract or tort, shall be limited to the amount paid by client for analyses. All claims, including those for negligence and any other cause whatsoever shall be deemed waived unless made in writing and received by Cardinal within thirty (30) days after completion of the applicable service. In no event shall Cardinal be liable for incidental or consequential damages, including, without limitation, business interruptions, loss of use, or loss of profits incurred by client, its subsidiaries, affiliates or successors arising out of or related to the performance of the services hereunder by Cardinal, regardless of whether such claim is based upon any of the above stated reasons or otherwise. Results relate only to the samples identified above. This report shall not be reproduced except in full with written approval of Cardinal Laboratories.

A handwritten signature in black ink, appearing to read "Celey D. Keene".

Celey D. Keene, Lab Director/Quality Manager



CHAIN-OF-CUSTODY AND ANALYSIS REQUEST

101 East Marland, Hobbs, NM 88240
(575) 393-2326 FAX (575) 393-2476

[illegible]

† Cardinal cannot accept verbal changes. Please email changes to celey.keene@cardinallabsnm.com



PHONE (575) 393-2326 ° 101 E. MARLAND ° HOBBS, NM 88240

November 01, 2024

LISBETH CHAVIRA

TETRA TECH

901 WEST WALL STREET , STE 100

MIDLAND, TX 79701

RE: FEDERAL 11 LEA CO. ILLEGAL DUMP ON LEASE RD

Enclosed are the results of analyses for samples received by the laboratory on 10/28/24 11:51.

Cardinal Laboratories is accredited through Texas NELAP under certificate number TX-C24-00112. Accreditation applies to drinking water, non-potable water and solid and chemical materials. All accredited analytes are denoted by an asterisk (*). For a complete list of accredited analytes and matrices visit the TCEQ website at www.tceq.texas.gov/field/qa/lab_accred_certif.html.

Cardinal Laboratories is accredited through the State of Colorado Department of Public Health and Environment for:

Method EPA 552.2	Haloacetic Acids (HAA-5)
Method EPA 524.2	Total Trihalomethanes (TTHM)
Method EPA 524.4	Regulated VOCs (V1, V2, V3)

Accreditation applies to public drinking water matrices.

This report meets NELAP requirements and is made up of a cover page, analytical results, and a copy of the original chain-of-custody. If you have any questions concerning this report, please feel free to contact me.

Sincerely,

Celey D. Keene

Lab Director/Quality Manager



PHONE (575) 393-2326 ° 101 E. MARLAND ° HOBBS, NM 88240

Analytical Results For:

TETRA TECH
 LISBETH CHAVIRA
 901 WEST WALL STREET , STE 100
 MIDLAND TX, 79701
 Fax To: (432) 682-3946

Received:	10/28/2024	Sampling Date:	10/28/2024
Reported:	11/01/2024	Sampling Type:	Soil
Project Name:	FEDERAL 11 LEA CO. ILLEGAL DUMP ON	Sampling Condition:	** (See Notes)
Project Number:	212C-MD-03607 (TIGER 11 FEDERAL 11-	Sample Received By:	Tamara Oldaker
Project Location:	LEA COUNTY, NM		

Sample ID: FS - 1 (H246542-01)

BTX 8021B		mg/kg		Analyzed By: JH					
Analyte	Result	Reporting Limit	Analyzed	Method Blank	BS	% Recovery	True Value QC	RPD	Qualifier
Benzene*	<0.050	0.050	10/29/2024	ND	2.24	112	2.00	8.67	
Toluene*	<0.050	0.050	10/29/2024	ND	2.40	120	2.00	7.34	
Ethylbenzene*	<0.050	0.050	10/29/2024	ND	2.70	135	2.00	10.2	
Total Xylenes*	<0.150	0.150	10/29/2024	ND	8.40	140	6.00	10.1	
Total BTX	<0.300	0.300	10/29/2024	ND					

Surrogate: 4-Bromofluorobenzene (PID) 122 % 71.5-134

Chloride, SM4500Cl-B		mg/kg		Analyzed By: AC						
Analyte	Result	Reporting Limit	Analyzed	Method Blank	BS	% Recovery	True Value QC	RPD	Qualifier	
Chloride	<16.0	16.0	10/29/2024	ND	416	104	400	3.92		

TPH 8015M		mg/kg		Analyzed By: MS					
Analyte	Result	Reporting Limit	Analyzed	Method Blank	BS	% Recovery	True Value QC	RPD	Qualifier
GRO C6-C10*	<10.0	10.0	10/29/2024	ND	221	111	200	0.408	
DRO >C10-C28*	<10.0	10.0	10/29/2024	ND	223	111	200	0.139	
EXT DRO >C28-C36	<10.0	10.0	10/29/2024	ND					

Surrogate: 1-Chlorooctane 107 % 48.2-134

Surrogate: 1-Chlorooctadecane 93.6 % 49.1-148

Cardinal Laboratories

*=Accredited Analyte

PLEASE NOTE: Liability and Damages. Cardinal's liability and client's exclusive remedy for any claim arising, whether based in contract or tort, shall be limited to the amount paid by client for analyses. All claims, including those for negligence and any other cause whatsoever shall be deemed waived unless made in writing and received by Cardinal within thirty (30) days after completion of the applicable service. In no event shall Cardinal be liable for incidental or consequential damages, including, without limitation, business interruptions, loss of use, or loss of profits incurred by client, its subsidiaries, affiliates or successors arising out of or related to the performance of the services hereunder by Cardinal, regardless of whether such claim is based upon any of the above stated reasons or otherwise. Results relate only to the samples identified above. This report shall not be reproduced except in full with written approval of Cardinal Laboratories.

Celey D. Keene, Lab Director/Quality Manager



PHONE (575) 393-2326 ° 101 E. MARLAND ° HOBBS, NM 88240

Analytical Results For:

TETRA TECH
 LISBETH CHAVIRA
 901 WEST WALL STREET , STE 100
 MIDLAND TX, 79701
 Fax To: (432) 682-3946

Received:	10/28/2024	Sampling Date:	10/28/2024
Reported:	11/01/2024	Sampling Type:	Soil
Project Name:	FEDERAL 11 LEA CO. ILLEGAL DUMP ON	Sampling Condition:	** (See Notes)
Project Number:	212C-MD-03607 (TIGER 11 FEDERAL 11-	Sample Received By:	Tamara Oldaker
Project Location:	LEA COUNTY, NM		

Sample ID: FS - 2 (H246542-02)

BTEx 8021B		mg/kg		Analyzed By: JH						
Analyte	Result	Reporting Limit	Analyzed	Method Blank	BS	% Recovery	True Value QC	RPD	Qualifier	
Benzene*	<0.050	0.050	10/29/2024	ND	2.24	112	2.00	8.67		
Toluene*	<0.050	0.050	10/29/2024	ND	2.40	120	2.00	7.34		
Ethylbenzene*	<0.050	0.050	10/29/2024	ND	2.70	135	2.00	10.2		
Total Xylenes*	<0.150	0.150	10/29/2024	ND	8.40	140	6.00	10.1		
Total BTEX	<0.300	0.300	10/29/2024	ND						

Surrogate: 4-Bromofluorobenzene (PID) 117 % 71.5-134

Chloride, SM4500Cl-B		mg/kg		Analyzed By: AC						
Analyte	Result	Reporting Limit	Analyzed	Method Blank	BS	% Recovery	True Value QC	RPD	Qualifier	
Chloride	<16.0	16.0	10/29/2024	ND	416	104	400	3.92		

TPH 8015M		mg/kg		Analyzed By: MS					
Analyte	Result	Reporting Limit	Analyzed	Method Blank	BS	% Recovery	True Value QC	RPD	Qualifier
GRO C6-C10*	<10.0	10.0	10/29/2024	ND	221	111	200	0.408	
DRO >C10-C28*	<10.0	10.0	10/29/2024	ND	223	111	200	0.139	
EXT DRO >C28-C36	<10.0	10.0	10/29/2024	ND					

Surrogate: 1-Chlorooctane 89.8 % 48.2-134

Surrogate: 1-Chlorooctadecane 80.0 % 49.1-148

Cardinal Laboratories

*=Accredited Analyte

PLEASE NOTE: Liability and Damages. Cardinal's liability and client's exclusive remedy for any claim arising, whether based in contract or tort, shall be limited to the amount paid by client for analyses. All claims, including those for negligence and any other cause whatsoever shall be deemed waived unless made in writing and received by Cardinal within thirty (30) days after completion of the applicable service. In no event shall Cardinal be liable for incidental or consequential damages, including, without limitation, business interruptions, loss of use, or loss of profits incurred by client, its subsidiaries, affiliates or successors arising out of or related to the performance of the services hereunder by Cardinal, regardless of whether such claim is based upon any of the above stated reasons or otherwise. Results relate only to the samples identified above. This report shall not be reproduced except in full with written approval of Cardinal Laboratories.

Celey D. Keene, Lab Director/Quality Manager



PHONE (575) 393-2326 ° 101 E. MARLAND ° HOBBS, NM 88240

Analytical Results For:

TETRA TECH
 LISBETH CHAVIRA
 901 WEST WALL STREET , STE 100
 MIDLAND TX, 79701
 Fax To: (432) 682-3946

Received:	10/28/2024	Sampling Date:	10/28/2024
Reported:	11/01/2024	Sampling Type:	Soil
Project Name:	FEDERAL 11 LEA CO. ILLEGAL DUMP ON	Sampling Condition:	** (See Notes)
Project Number:	212C-MD-03607 (TIGER 11 FEDERAL 11-	Sample Received By:	Tamara Oldaker
Project Location:	LEA COUNTY, NM		

Sample ID: FS - 3 (H246542-03)

BTX 8021B		mg/kg		Analyzed By: JH						
Analyte	Result	Reporting Limit	Analyzed	Method Blank	BS	% Recovery	True Value QC	RPD	Qualifier	
Benzene*	<0.050	0.050	10/29/2024	ND	2.24	112	2.00	8.67		
Toluene*	<0.050	0.050	10/29/2024	ND	2.40	120	2.00	7.34		
Ethylbenzene*	<0.050	0.050	10/29/2024	ND	2.70	135	2.00	10.2		
Total Xylenes*	<0.150	0.150	10/29/2024	ND	8.40	140	6.00	10.1		
Total BTX	<0.300	0.300	10/29/2024	ND						

Surrogate: 4-Bromofluorobenzene (PID) 117 % 71.5-134

Chloride, SM4500CI-B		mg/kg		Analyzed By: AC						
Analyte	Result	Reporting Limit	Analyzed	Method Blank	BS	% Recovery	True Value QC	RPD	Qualifier	
Chloride	<16.0	16.0	10/29/2024	ND	416	104	400	3.92		

TPH 8015M		mg/kg		Analyzed By: MS					
Analyte	Result	Reporting Limit	Analyzed	Method Blank	BS	% Recovery	True Value QC	RPD	Qualifier
GRO C6-C10*	<10.0	10.0	10/29/2024	ND	221	111	200	0.408	
DRO >C10-C28*	<10.0	10.0	10/29/2024	ND	223	111	200	0.139	
EXT DRO >C28-C36	<10.0	10.0	10/29/2024	ND					

Surrogate: 1-Chlorooctane 100 % 48.2-134

Surrogate: 1-Chlorooctadecane 88.9 % 49.1-148

Cardinal Laboratories

*=Accredited Analyte

PLEASE NOTE: Liability and Damages. Cardinal's liability and client's exclusive remedy for any claim arising, whether based in contract or tort, shall be limited to the amount paid by client for analyses. All claims, including those for negligence and any other cause whatsoever shall be deemed waived unless made in writing and received by Cardinal within thirty (30) days after completion of the applicable service. In no event shall Cardinal be liable for incidental or consequential damages, including, without limitation, business interruptions, loss of use, or loss of profits incurred by client, its subsidiaries, affiliates or successors arising out of or related to the performance of the services hereunder by Cardinal, regardless of whether such claim is based upon any of the above stated reasons or otherwise. Results relate only to the samples identified above. This report shall not be reproduced except in full with written approval of Cardinal Laboratories.

Celey D. Keene, Lab Director/Quality Manager



PHONE (575) 393-2326 ° 101 E. MARLAND ° HOBBS, NM 88240

Analytical Results For:

TETRA TECH
 LISBETH CHAVIRA
 901 WEST WALL STREET , STE 100
 MIDLAND TX, 79701
 Fax To: (432) 682-3946

Received:	10/28/2024	Sampling Date:	10/28/2024
Reported:	11/01/2024	Sampling Type:	Soil
Project Name:	FEDERAL 11 LEA CO. ILLEGAL DUMP ON	Sampling Condition:	** (See Notes)
Project Number:	212C-MD-03607 (TIGER 11 FEDERAL 11-	Sample Received By:	Tamara Oldaker
Project Location:	LEA COUNTY, NM		

Sample ID: FS - 4 (H246542-04)

BTEx 8021B		mg/kg		Analyzed By: JH						
Analyte	Result	Reporting Limit	Analyzed	Method Blank	BS	% Recovery	True Value QC	RPD	Qualifier	
Benzene*	<0.050	0.050	10/29/2024	ND	2.24	112	2.00	8.67		
Toluene*	<0.050	0.050	10/29/2024	ND	2.40	120	2.00	7.34		
Ethylbenzene*	<0.050	0.050	10/29/2024	ND	2.70	135	2.00	10.2		
Total Xylenes*	<0.150	0.150	10/29/2024	ND	8.40	140	6.00	10.1		
Total BTEX	<0.300	0.300	10/29/2024	ND						

Surrogate: 4-Bromofluorobenzene (PID) 124 % 71.5-134

Chloride, SM4500Cl-B		mg/kg		Analyzed By: AC						
Analyte	Result	Reporting Limit	Analyzed	Method Blank	BS	% Recovery	True Value QC	RPD	Qualifier	
Chloride	<16.0	16.0	10/29/2024	ND	416	104	400	3.92		

TPH 8015M		mg/kg		Analyzed By: MS					
Analyte	Result	Reporting Limit	Analyzed	Method Blank	BS	% Recovery	True Value QC	RPD	Qualifier
GRO C6-C10*	<10.0	10.0	10/29/2024	ND	221	111	200	0.408	
DRO >C10-C28*	<10.0	10.0	10/29/2024	ND	223	111	200	0.139	
EXT DRO >C28-C36	<10.0	10.0	10/29/2024	ND					

Surrogate: 1-Chlorooctane 99.6 % 48.2-134

Surrogate: 1-Chlorooctadecane 89.1 % 49.1-148

Cardinal Laboratories

*=Accredited Analyte

PLEASE NOTE: Liability and Damages. Cardinal's liability and client's exclusive remedy for any claim arising, whether based in contract or tort, shall be limited to the amount paid by client for analyses. All claims, including those for negligence and any other cause whatsoever shall be deemed waived unless made in writing and received by Cardinal within thirty (30) days after completion of the applicable service. In no event shall Cardinal be liable for incidental or consequential damages, including, without limitation, business interruptions, loss of use, or loss of profits incurred by client, its subsidiaries, affiliates or successors arising out of or related to the performance of the services hereunder by Cardinal, regardless of whether such claim is based upon any of the above stated reasons or otherwise. Results relate only to the samples identified above. This report shall not be reproduced except in full with written approval of Cardinal Laboratories.

Celey D. Keene, Lab Director/Quality Manager



PHONE (575) 393-2326 ° 101 E. MARLAND ° HOBBS, NM 88240

Analytical Results For:

TETRA TECH
 LISBETH CHAVIRA
 901 WEST WALL STREET , STE 100
 MIDLAND TX, 79701
 Fax To: (432) 682-3946

Received:	10/28/2024	Sampling Date:	10/28/2024
Reported:	11/01/2024	Sampling Type:	Soil
Project Name:	FEDERAL 11 LEA CO. ILLEGAL DUMP ON	Sampling Condition:	** (See Notes)
Project Number:	212C-MD-03607 (TIGER 11 FEDERAL 11-	Sample Received By:	Tamara Oldaker
Project Location:	LEA COUNTY, NM		

Sample ID: NSW - 1 (H246542-05)

BTX 8021B		mg/kg		Analyzed By: JH						
Analyte	Result	Reporting Limit	Analyzed	Method Blank	BS	% Recovery	True Value QC	RPD	Qualifier	
Benzene*	<0.050	0.050	10/29/2024	ND	2.24	112	2.00	8.67		
Toluene*	<0.050	0.050	10/29/2024	ND	2.40	120	2.00	7.34		
Ethylbenzene*	<0.050	0.050	10/29/2024	ND	2.70	135	2.00	10.2		
Total Xylenes*	<0.150	0.150	10/29/2024	ND	8.40	140	6.00	10.1		
Total BTX	<0.300	0.300	10/29/2024	ND						

Surrogate: 4-Bromofluorobenzene (PID) 103 % 71.5-134

Chloride, SM4500CI-B		mg/kg		Analyzed By: AC						
Analyte	Result	Reporting Limit	Analyzed	Method Blank	BS	% Recovery	True Value QC	RPD	Qualifier	
Chloride	<16.0	16.0	10/29/2024	ND	416	104	400	3.92		

TPH 8015M		mg/kg		Analyzed By: MS					
Analyte	Result	Reporting Limit	Analyzed	Method Blank	BS	% Recovery	True Value QC	RPD	Qualifier
GRO C6-C10*	<10.0	10.0	10/29/2024	ND	221	111	200	0.408	
DRO >C10-C28*	<10.0	10.0	10/29/2024	ND	223	111	200	0.139	
EXT DRO >C28-C36	<10.0	10.0	10/29/2024	ND					

Surrogate: 1-Chlorooctane 95.6 % 48.2-134

Surrogate: 1-Chlorooctadecane 86.8 % 49.1-148

Cardinal Laboratories

*=Accredited Analyte

PLEASE NOTE: Liability and Damages. Cardinal's liability and client's exclusive remedy for any claim arising, whether based in contract or tort, shall be limited to the amount paid by client for analyses. All claims, including those for negligence and any other cause whatsoever shall be deemed waived unless made in writing and received by Cardinal within thirty (30) days after completion of the applicable service. In no event shall Cardinal be liable for incidental or consequential damages, including, without limitation, business interruptions, loss of use, or loss of profits incurred by client, its subsidiaries, affiliates or successors arising out of or related to the performance of the services hereunder by Cardinal, regardless of whether such claim is based upon any of the above stated reasons or otherwise. Results relate only to the samples identified above. This report shall not be reproduced except in full with written approval of Cardinal Laboratories.

Celey D. Keene, Lab Director/Quality Manager



PHONE (575) 393-2326 ° 101 E. MARLAND ° HOBBS, NM 88240

Analytical Results For:

TETRA TECH
 LISBETH CHAVIRA
 901 WEST WALL STREET , STE 100
 MIDLAND TX, 79701
 Fax To: (432) 682-3946

Received:	10/28/2024	Sampling Date:	10/28/2024
Reported:	11/01/2024	Sampling Type:	Soil
Project Name:	FEDERAL 11 LEA CO. ILLEGAL DUMP ON	Sampling Condition:	** (See Notes)
Project Number:	212C-MD-03607 (TIGER 11 FEDERAL 11-	Sample Received By:	Tamara Oldaker
Project Location:	LEA COUNTY, NM		

Sample ID: WSW - 1 (H246542-06)

BTEx 8021B		mg/kg		Analyzed By: JH					
Analyte	Result	Reporting Limit	Analyzed	Method Blank	BS	% Recovery	True Value QC	RPD	Qualifier
Benzene*	<0.050	0.050	10/29/2024	ND	2.24	112	2.00	8.67	
Toluene*	<0.050	0.050	10/29/2024	ND	2.40	120	2.00	7.34	
Ethylbenzene*	<0.050	0.050	10/29/2024	ND	2.70	135	2.00	10.2	
Total Xylenes*	<0.150	0.150	10/29/2024	ND	8.40	140	6.00	10.1	
Total BTEX	<0.300	0.300	10/29/2024	ND					

Surrogate: 4-Bromofluorobenzene (PID) 125 % 71.5-134

Chloride, SM4500Cl-B		mg/kg		Analyzed By: AC					
Analyte	Result	Reporting Limit	Analyzed	Method Blank	BS	% Recovery	True Value QC	RPD	Qualifier
Chloride	<16.0	16.0	10/29/2024	ND	416	104	400	3.92	

TPH 8015M		mg/kg		Analyzed By: MS					
Analyte	Result	Reporting Limit	Analyzed	Method Blank	BS	% Recovery	True Value QC	RPD	Qualifier
GRO C6-C10*	<10.0	10.0	10/29/2024	ND	221	111	200	0.408	
DRO >C10-C28*	<10.0	10.0	10/29/2024	ND	223	111	200	0.139	
EXT DRO >C28-C36	<10.0	10.0	10/29/2024	ND					

Surrogate: 1-Chlorooctane 87.9 % 48.2-134

Surrogate: 1-Chlorooctadecane 76.6 % 49.1-148

Cardinal Laboratories

*=Accredited Analyte

PLEASE NOTE: Liability and Damages. Cardinal's liability and client's exclusive remedy for any claim arising, whether based in contract or tort, shall be limited to the amount paid by client for analyses. All claims, including those for negligence and any other cause whatsoever shall be deemed waived unless made in writing and received by Cardinal within thirty (30) days after completion of the applicable service. In no event shall Cardinal be liable for incidental or consequential damages, including, without limitation, business interruptions, loss of use, or loss of profits incurred by client, its subsidiaries, affiliates or successors arising out of or related to the performance of the services hereunder by Cardinal, regardless of whether such claim is based upon any of the above stated reasons or otherwise. Results relate only to the samples identified above. This report shall not be reproduced except in full with written approval of Cardinal Laboratories.

Celey D. Keene, Lab Director/Quality Manager



PHONE (575) 393-2326 ° 101 E. MARLAND ° HOBBS, NM 88240

Analytical Results For:

TETRA TECH
 LISBETH CHAVIRA
 901 WEST WALL STREET , STE 100
 MIDLAND TX, 79701
 Fax To: (432) 682-3946

Received:	10/28/2024	Sampling Date:	10/28/2024
Reported:	11/01/2024	Sampling Type:	Soil
Project Name:	FEDERAL 11 LEA CO. ILLEGAL DUMP ON	Sampling Condition:	** (See Notes)
Project Number:	212C-MD-03607 (TIGER 11 FEDERAL 11-	Sample Received By:	Tamara Oldaker
Project Location:	LEA COUNTY, NM		

Sample ID: SSW - 1 (H246542-07)

BTEx 8021B		mg/kg		Analyzed By: JH						
Analyte	Result	Reporting Limit	Analyzed	Method Blank	BS	% Recovery	True Value QC	RPD	Qualifier	
Benzene*	<0.050	0.050	10/29/2024	ND	2.24	112	2.00	8.67		
Toluene*	<0.050	0.050	10/29/2024	ND	2.40	120	2.00	7.34		
Ethylbenzene*	<0.050	0.050	10/29/2024	ND	2.70	135	2.00	10.2		
Total Xylenes*	<0.150	0.150	10/29/2024	ND	8.40	140	6.00	10.1		
Total BTEX	<0.300	0.300	10/29/2024	ND						

Surrogate: 4-Bromofluorobenzene (PID) 104 % 71.5-134

Chloride, SM4500Cl-B		mg/kg		Analyzed By: AC						
Analyte	Result	Reporting Limit	Analyzed	Method Blank	BS	% Recovery	True Value QC	RPD	Qualifier	
Chloride	<16.0	16.0	10/29/2024	ND	416	104	400	3.92		

TPH 8015M		mg/kg		Analyzed By: MS						
Analyte	Result	Reporting Limit	Analyzed	Method Blank	BS	% Recovery	True Value QC	RPD	Qualifier	
GRO C6-C10*	<10.0	10.0	10/29/2024	ND	223	112	200	3.80		
DRO >C10-C28*	<10.0	10.0	10/29/2024	ND	219	110	200	3.63		
EXT DRO >C28-C36	<10.0	10.0	10/29/2024	ND						

Surrogate: 1-Chlorooctane 98.7 % 48.2-134

Surrogate: 1-Chlorooctadecane 86.2 % 49.1-148

Cardinal Laboratories

*=Accredited Analyte

PLEASE NOTE: Liability and Damages. Cardinal's liability and client's exclusive remedy for any claim arising, whether based in contract or tort, shall be limited to the amount paid by client for analyses. All claims, including those for negligence and any other cause whatsoever shall be deemed waived unless made in writing and received by Cardinal within thirty (30) days after completion of the applicable service. In no event shall Cardinal be liable for incidental or consequential damages, including, without limitation, business interruptions, loss of use, or loss of profits incurred by client, its subsidiaries, affiliates or successors arising out of or related to the performance of the services hereunder by Cardinal, regardless of whether such claim is based upon any of the above stated reasons or otherwise. Results relate only to the samples identified above. This report shall not be reproduced except in full with written approval of Cardinal Laboratories.

Celey D. Keene, Lab Director/Quality Manager



PHONE (575) 393-2326 ° 101 E. MARLAND ° HOBBS, NM 88240

Analytical Results For:

TETRA TECH
 LISBETH CHAVIRA
 901 WEST WALL STREET , STE 100
 MIDLAND TX, 79701
 Fax To: (432) 682-3946

Received:	10/28/2024	Sampling Date:	10/28/2024
Reported:	11/01/2024	Sampling Type:	Soil
Project Name:	FEDERAL 11 LEA CO. ILLEGAL DUMP ON	Sampling Condition:	** (See Notes)
Project Number:	212C-MD-03607 (TIGER 11 FEDERAL 11-	Sample Received By:	Tamara Oldaker
Project Location:	LEA COUNTY, NM		

Sample ID: ESW - 1 (H246542-08)

BTEx 8021B		mg/kg		Analyzed By: JH					
Analyte	Result	Reporting Limit	Analyzed	Method Blank	BS	% Recovery	True Value QC	RPD	Qualifier
Benzene*	<0.050	0.050	10/29/2024	ND	2.20	110	2.00	1.27	
Toluene*	<0.050	0.050	10/29/2024	ND	2.14	107	2.00	1.16	
Ethylbenzene*	<0.050	0.050	10/29/2024	ND	2.18	109	2.00	1.31	
Total Xylenes*	<0.150	0.150	10/29/2024	ND	6.50	108	6.00	1.88	
Total BTEX	<0.300	0.300	10/29/2024	ND					

Surrogate: 4-Bromofluorobenzene (PID) 97.7 % 71.5-134

Chloride, SM4500Cl-B		mg/kg		Analyzed By: AC						
Analyte	Result	Reporting Limit	Analyzed	Method Blank	BS	% Recovery	True Value QC	RPD	Qualifier	
Chloride	<16.0	16.0	10/29/2024	ND	416	104	400	3.92		

TPH 8015M		mg/kg		Analyzed By: MS						
Analyte	Result	Reporting Limit	Analyzed	Method Blank	BS	% Recovery	True Value QC	RPD	Qualifier	
GRO C6-C10*	<10.0	10.0	10/29/2024	ND	223	112	200	3.80		
DRO >C10-C28*	<10.0	10.0	10/29/2024	ND	219	110	200	3.63		
EXT DRO >C28-C36	<10.0	10.0	10/29/2024	ND						

Surrogate: 1-Chlorooctane 97.3 % 48.2-134

Surrogate: 1-Chlorooctadecane 85.7 % 49.1-148

Cardinal Laboratories

*=Accredited Analyte

PLEASE NOTE: Liability and Damages. Cardinal's liability and client's exclusive remedy for any claim arising, whether based in contract or tort, shall be limited to the amount paid by client for analyses. All claims, including those for negligence and any other cause whatsoever shall be deemed waived unless made in writing and received by Cardinal within thirty (30) days after completion of the applicable service. In no event shall Cardinal be liable for incidental or consequential damages, including, without limitation, business interruptions, loss of use, or loss of profits incurred by client, its subsidiaries, affiliates or successors arising out of or related to the performance of the services hereunder by Cardinal, regardless of whether such claim is based upon any of the above stated reasons or otherwise. Results relate only to the samples identified above. This report shall not be reproduced except in full with written approval of Cardinal Laboratories.

Celey D. Keene, Lab Director/Quality Manager

PHONE (575) 393-2326 • 101 E. MARLAND • HOBBS, NM 88240

Notes and Definitions

QR-03	The RPD value for the sample duplicate or MS/MSD was outside of QC acceptance limits due to matrix interference. QC batch accepted based on LCS and/or LCSD recovery and/or RPD values.
QM-07	The spike recovery was outside acceptance limits for the MS and/or MSD. The batch was accepted based on acceptable LCS recovery.
BS1	Blank spike recovery above laboratory acceptance criteria. Results for analyte potentially biased high.
ND	Analyte NOT DETECTED at or above the reporting limit
RPD	Relative Percent Difference
**	Samples not received at proper temperature of 6°C or below.
***	Insufficient time to reach temperature.
-	Chloride by SM4500Cl-B does not require samples be received at or below 6°C Samples reported on an as received basis (wet) unless otherwise noted on report

Cardinal Laboratories

*=Accredited Analyte

PLEASE NOTE: Liability and Damages. Cardinal's liability and client's exclusive remedy for any claim arising, whether based in contract or tort, shall be limited to the amount paid by client for analyses. All claims, including those for negligence and any other cause whatsoever shall be deemed waived unless made in writing and received by Cardinal within thirty (30) days after completion of the applicable service. In no event shall Cardinal be liable for incidental or consequential damages, including, without limitation, business interruptions, loss of use, or loss of profits incurred by client, its subsidiaries, affiliates or successors arising out of or related to the performance of the services hereunder by Cardinal, regardless of whether such claim is based upon any of the above stated reasons or otherwise. Results relate only to the samples identified above. This report shall not be reproduced except in full with written approval of Cardinal Laboratories.

A handwritten signature in black ink, appearing to read "Celey D. Keene".

Celey D. Keene, Lab Director/Quality Manager



CHAIN-OF-CUSTODY AND ANALYSIS REQUEST

101 East Marland, Hobbs, NM 88240
(575) 393-2326 FAX (575) 393-2476

Company Name: Tetra Tech				BILL TO				ANALYSIS REQUEST																	
Project Manager: Lisbeth Chavira lisbeth.chavira@tetrattech.com				P.O. #: 1210515				<div style="display: flex; flex-direction: column; align-items: center;"> <div>Chloride SM4500CL-B</div> <div>BTEX 8021B</div> <div>Chloride SM4500CL-B TPH</div> <div>TPH 10/28/24</div> </div>																	
Address: 8911 Capital o Texas Hwy, Suite 2310				Company: Tetra Tech																					
City: Austin State: TX Zip: 78750				Attn: Lisbeth Chavira																					
Phone #: (512) 217-7254 Fax #:				Address: EMAIL																					
Project #: 212C-MD-03607 Project Owner: ConocoPhillips				City: Austin																					
Project Name: Federal 11 Lea Co. Illegal Dump on Lease Road (Tiger 11 Federal 1H Battery)				State: TX Zip: 78759																					
Project Location: Lea County, New Mexico				Phone #: (512) 596-8201																					
Sampler Name: Will Erlendson				Fax #:																					
Lab I.D.	Sample I.D.	(GRAB OR C/COMP)	# CONTAINERS	MATRIX					PRESERV.		SAMPLING														
				GROUNDWATER	WASTEWATER	SOIL	OIL	SLUDGE	OTHER : ACID/BASE	ICE / COOL	OTHER :	DATE	TIME												
H246542																									
1	FS-1	C	1			X				X		10/28/2024	8:00	X	X	X									
2	FS-2	C	1			X				X		10/28/2024	8:10	X	X	X									
3	FS-3	C	1			X				X		10/28/2024	8:20	X	X	X									
4	FS-4	C	1			X				X		10/28/2024	8:30	X	X	X									
5	NSW-1	C	1			X				X		10/28/2024	8:40	X	X	X									
6	WSW-1	C	1			X				X		10/28/2024	8:50	X	X	X									
7	SSW-1	C	1			X				X		10/28/2024	9:00	X	X	X									
8	ESW-1	C	1			X				X		10/28/2024	9:10	X	X	X									

PLEASE NOTE: Liability and Damages. Cardinal's liability and client's exclusive remedy for any claim arising whether based in contract or tort, shall be limited to the amount paid by the client for the analyses. All claims, including those for negligence and any other cause whatsoever shall be deemed waived unless made in writing and received by Cardinal within 30 days after completion of the applicable service. In no event shall Cardinal be liable for incidental or consequential damages, including without limitation, business interruptions, loss of use, or loss of profits incurred by client, its subsidiaries, affiliates or successors arising out of or related to the performance of services hereunder by Cardinal, regardless of whether such claim is based upon any of the above stated reasons or otherwise.

Relinquished By: Will Erlendson	Date: 10/28/2024	Received By: Gustavo Cortez	Verbal Result: <input type="checkbox"/> Yes <input type="checkbox"/> No	Add'l Phone #:
	Time: 7:51		All Results are emailed. Please provide Email address: Lisbeth.chavira@tetrattech.com AND Christian.Llull@tetrattech.com	
Relinquished By:	Date:	Received By:	REMARKS:	
	Time:			
Delivered By: (Circle One) Sampler - UPS - Bus - Other:	Observed Temp. °C Corrected Temp. °C	Sample Condition Cool Intact <input type="checkbox"/> Yes <input checked="" type="checkbox"/> No	CHECKED BY: (Initials)	Turnaround Time: Standard <input checked="" type="checkbox"/> Bacteria (only) Sample Condition
	7.1 6.5			Rush: <input type="checkbox"/> No <input type="checkbox"/> Cool Intact <input type="checkbox"/> Observed Temp. °C
				Thermometer ID #140 Correction Factor: -0.6°C
				<input type="checkbox"/> Yes <input type="checkbox"/> No <input type="checkbox"/> No <input type="checkbox"/> No Corrected Temp. °C

FORM-006 R 3.2 10/07/21

† Cardinal cannot accept verbal changes. Please email changes to celey.keene@cardinallabsnm.com

APPENDIX D

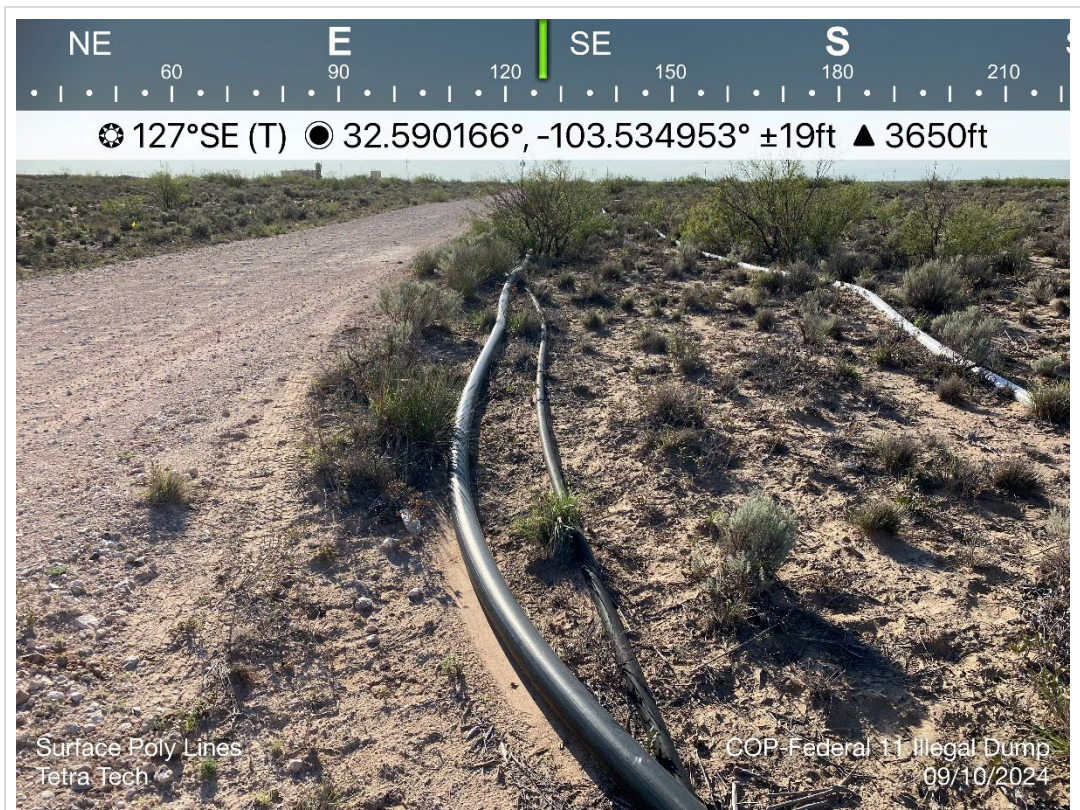
Photographic Documentation



TETRA TECH, INC. PROJECT NO. 212C-MD-03607	DESCRIPTION	View of release area.	1
	SITE NAME	Tiger 11 Federal 001H	8/29/2024



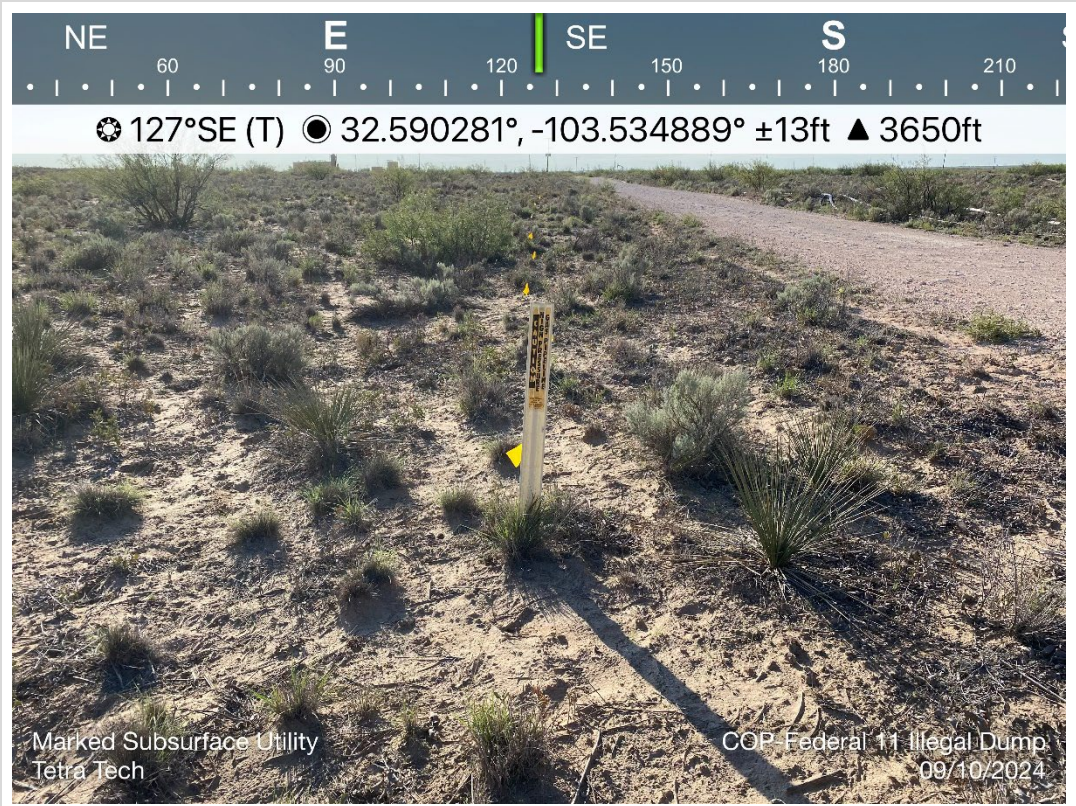
TETRA TECH, INC. PROJECT NO. 212C-MD-03607	DESCRIPTION	View of release area.	2
	SITE NAME	Tiger 11 Federal 001H	8/29/2024



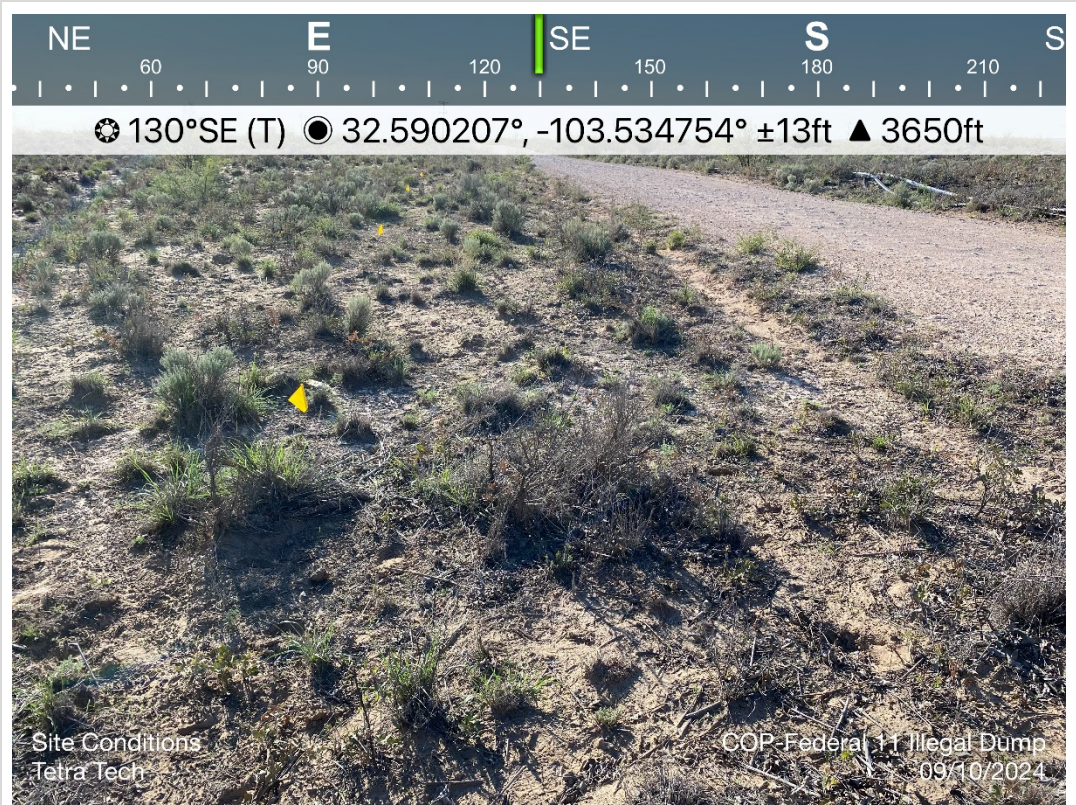
TETRA TECH, INC. PROJECT NO. 212C-MD-03607	DESCRIPTION	View east-southeast. View of approximate release extent. View of surface lines, vegetation present.	3
	SITE NAME	Tiger 11 Federal 001H	9/10/2024



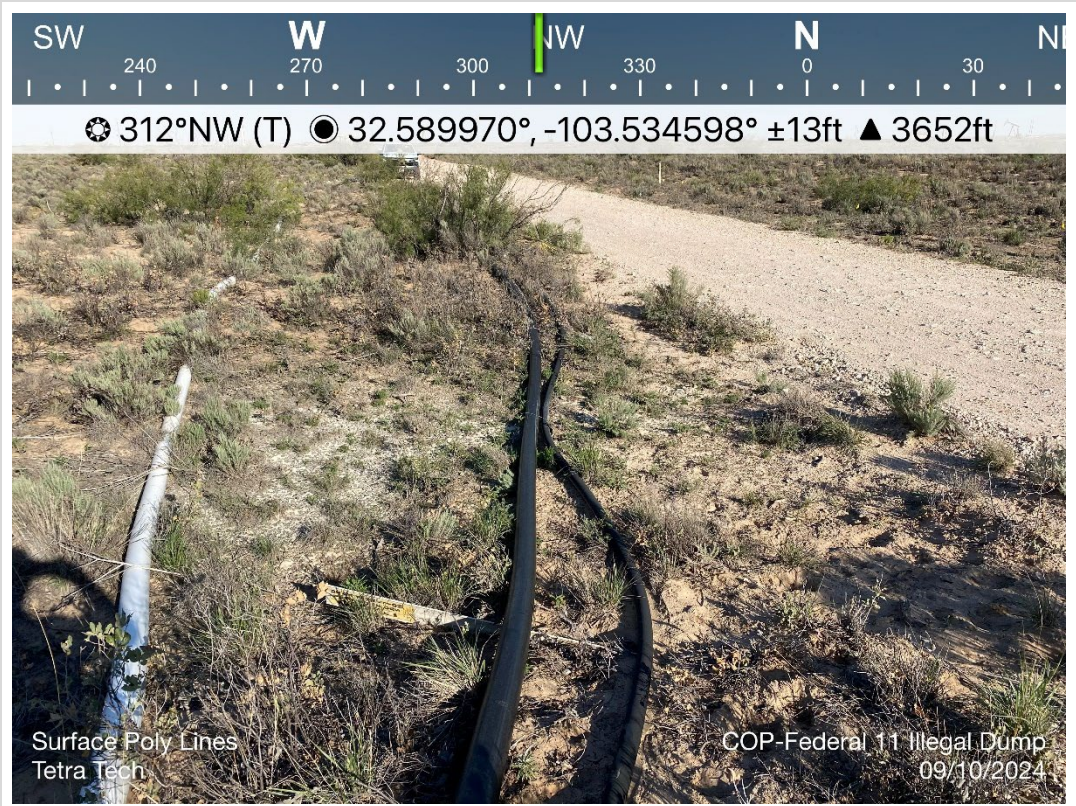
TETRA TECH, INC. PROJECT NO. 212C-MD-03607	DESCRIPTION	View southeast. View of approximate release extent. View of surface lines, vegetation present	4
	SITE NAME	Tiger 11 Federal 001H	9/10/2024



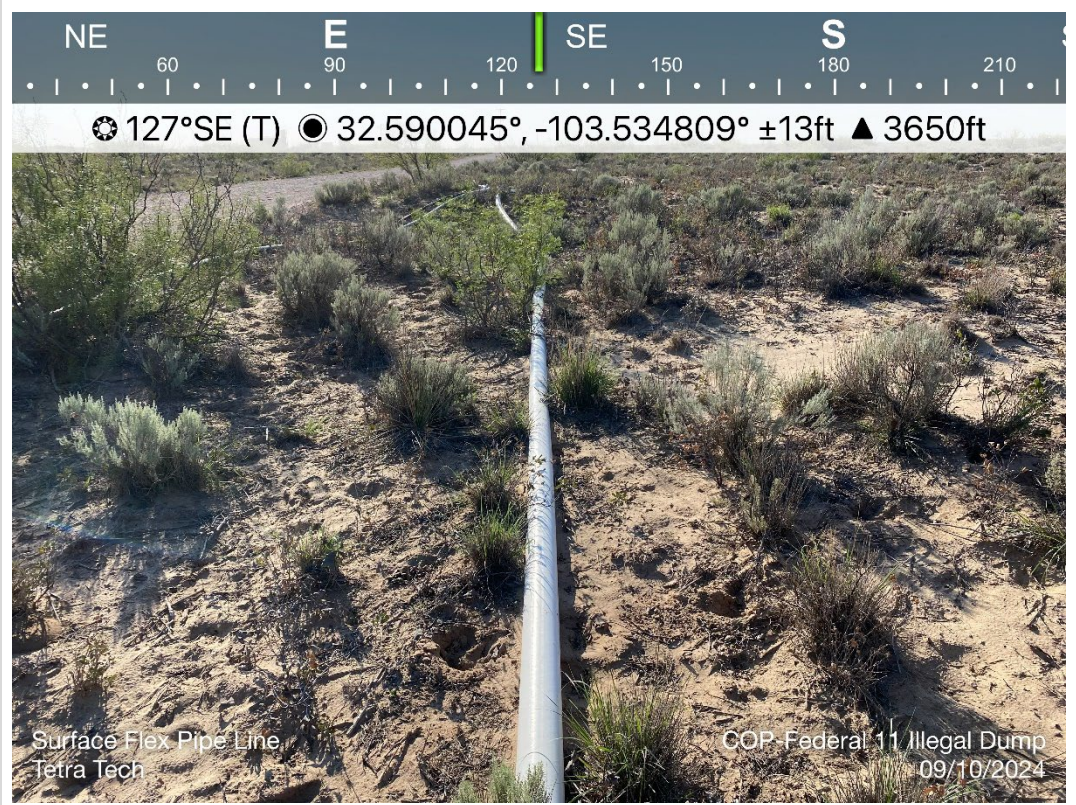
TETRA TECH, INC. PROJECT NO. 212C-MD-03607	DESCRIPTION	View southeast. View of approximate release extent. View of subsurface line, vegetation present	5
	SITE NAME	Tiger 11 Federal 001H	9/10/2024



TETRA TECH, INC. PROJECT NO. 212C-MD-03607	DESCRIPTION	View southeast. View of approximate release extent. View of subsurface line, vegetation present	6
	SITE NAME	Tiger 11 Federal 001H	9/10/2024



TETRA TECH, INC. PROJECT NO. 212C-MD-02832	DESCRIPTION	View northwest. View of approximate release extent. View of surface lines, vegetation present	7
	SITE NAME	Tiger 11 Federal 001H	9/10/2024



TETRA TECH, INC. PROJECT NO. 212C-MD-02832	DESCRIPTION	View southeast. View of approximate release extent. View of surface lines, vegetation present	8
	SITE NAME	Tiger 11 Federal 001H	9/10/2024



TETRA TECH, INC. PROJECT NO. 212C-MD-03607	DESCRIPTION	View west. View of release area following surface scrape. Vegetation present.	9
	SITE NAME	Tiger 11 Federal 001H	10/28/2024



TETRA TECH, INC. PROJECT NO. 212C-MD-03607	DESCRIPTION	View north. View of release area following surface scrape. Vegetation present.	10
	SITE NAME	Tiger 11 Federal 001H	10/28/2024



TETRA TECH, INC. PROJECT NO. 212C-MD-03607	DESCRIPTION	View northeast. View of release area following surface scrape. Vegetation present.	11
	SITE NAME	Tiger 11 Federal 001H	10/28/2024



TETRA TECH, INC. PROJECT NO. 212C-MD-03607	DESCRIPTION	View east. View of release area following surface scrape. Vegetation present.	12
	SITE NAME	Tiger 11 Federal 001H	10/28/2024

APPENDIX E

Regulatory Correspondence

Chavira, Lisbeth

From: OCDOnline@state.nm.us
Sent: Wednesday, October 23, 2024 1:43 PM
To: Llull, Christian
Subject: The Oil Conservation Division (OCD) has accepted the application, Application ID: 395156

⚠ CAUTION: This email originated from an external sender. Verify the source before opening links or attachments. **⚠**

To whom it may concern (c/o Christian Llull for COG OPERATING LLC),

The OCD has received the submitted *Notification for (Final) Sampling of a Release (C-141N)*, for incident ID (n#) nAPP2426033046.

The sampling event is expected to take place:

When: 10/28/2024 @ 10:00

Where: F-11-20S-34E 0 FNL 0 FEL (32.59,-103.5346)

Additional Information: Pls contact Lisbeth Chavira at Mobile +1 (512) 596-8201

Additional Instructions: Approximate Release Point: 32.590081, -103.534634

An OCD representative may be available onsite at the date and time reported. In the absence or presence of an OCD representative, sampling pursuant to 19.15.29.12.D NMAC is required. Sampling must be performed following an approved sampling plan or pursuant to 19.15.29.12.D.(1).(c) NMAC. Should there be a change in the scheduled date and time of the sampling event, then another notification should be resubmitted through OCD permitting as soon as possible.

- **Failure to notify the OCD of sampling events including any changes in date/time per the requirements of 19.15.29.12.D.(1).(a) NMAC, may result in the remediation closure samples not being accepted.**

If you have any questions regarding this application, or don't know why you have received this email, please contact us.

New Mexico Energy, Minerals and Natural Resources Department

1220 South St. Francis Drive
Santa Fe, NM 87505

Sante Fe Main Office
Phone: (505) 476-3441

General Information
Phone: (505) 629-6116

Online Phone Directory
<https://www.emnrd.nm.gov/ocd/contact-us>

State of New Mexico
Energy, Minerals and Natural Resources
Oil Conservation Division
1220 S. St Francis Dr.
Santa Fe, NM 87505

QUESTIONS

Action 473338

QUESTIONS

Operator: COG OPERATING LLC 600 W Illinois Ave Midland, TX 79701	OGRID: 229137
	Action Number: 473338
	Action Type: [C-141] Revegetation Report C-141 (C-141-v-Revegetation)

QUESTIONS

Prerequisites	
Incident ID (n#)	nAPP2426033046
Incident Name	NAPP2426033046 TIGER 11 FEDERAL 001H @ 0
Incident Type	Release Other
Incident Status	Re-vegetation Report Received
Incident Facility	[fAPP2203450574] TIGER 11 FED BATTERY

Location of Release Source	
Please answer all the questions in this group.	
Site Name	TIGER 11 FEDERAL 001H
Date Release Discovered	08/28/2024
Surface Owner	Federal

Incident Details	
Please answer all the questions in this group.	
Incident Type	Release Other
Did this release result in a fire or is the result of a fire	No
Did this release result in any injuries	No
Has this release reached or does it have a reasonable probability of reaching a watercourse	No
Has this release endangered or does it have a reasonable probability of endangering public health	No
Has this release substantially damaged or will it substantially damage property or the environment	No
Is this release of a volume that is or may with reasonable probability be detrimental to fresh water	No

Nature and Volume of Release	
Material(s) released, please answer all that apply below. Any calculations or specific justifications for the volumes provided should be attached to the follow-up C-141 submission.	
Crude Oil Released (bbls) Details	Not answered.
Produced Water Released (bbls) Details	Not answered.
Is the concentration of chloride in the produced water >10,000 mg/l	No
Condensate Released (bbls) Details	Not answered.
Natural Gas Vented (Mcf) Details	Not answered.
Natural Gas Flared (Mcf) Details	Not answered.
Other Released Details	Cause: Other Unknown Unknown Released: 5 BBL Recovered: 0 BBL Lost: 5 BBL.
Are there additional details for the questions above (i.e. any answer containing Other, Specify, Unknown, and/or Fire, or any negative lost amounts)	COP personnel discovered an unauthorized discharge of fluid on a lease road. The nature and origin of the fluid are currently undetermined. An assessment of the site will be conducted to ascertain the fluid's composition and assess any potential environmental impact.

Sante Fe Main Office
Phone: (505) 476-3441

General Information
Phone: (505) 629-6116

Online Phone Directory
<https://www.emnrd.nm.gov/ocd/contact-us>

State of New Mexico
Energy, Minerals and Natural Resources
Oil Conservation Division
1220 S. St Francis Dr.
Santa Fe, NM 87505

QUESTIONS, Page 2

Action 473338

QUESTIONS (continued)

Operator: COG OPERATING LLC 600 W Illinois Ave Midland, TX 79701	OGRID: 229137
	Action Number: 473338
	Action Type: [C-141] Revegetation Report C-141 (C-141-v-Revegetation)

QUESTIONS

Nature and Volume of Release (continued)	
Is this a gas only submission (i.e. only significant Mcf values reported)	More info needed to determine if this will be treated as a "gas only" report.
Was this a major release as defined by Subsection A of 19.15.29.7 NMAC	No
Reasons why this would be considered a submission for a notification of a major release	Unavailable.
With the implementation of the 19.15.27 NMAC (05/25/2021), venting and/or flaring of natural gas (i.e. gas only) are to be submitted on the C-129 form.	

Initial Response

The responsible party must undertake the following actions immediately unless they could create a safety hazard that would result in injury.

The source of the release has been stopped	True
The impacted area has been secured to protect human health and the environment	True
Released materials have been contained via the use of berms or dikes, absorbent pads, or other containment devices	True
All free liquids and recoverable materials have been removed and managed appropriately	True
If all the actions described above have not been undertaken, explain why	Not answered.

Per Paragraph (4) of Subsection B of 19.15.29.8 NMAC the responsible party may commence remediation immediately after discovery of a release. If remediation has begun, please prepare and attach a narrative of actions to date in the follow-up C-141 submission. If remedial efforts have been successfully completed or if the release occurred within a lined containment area (see Subparagraph (a) of Paragraph (5) of Subsection A of 19.15.29.11 NMAC), please prepare and attach all information needed for closure evaluation in the follow-up C-141 submission.

I hereby certify that the information given above is true and complete to the best of my knowledge and understand that pursuant to OCD rules and regulations all operators are required to report and/or file certain release notifications and perform corrective actions for releases which may endanger public health or the environment. The acceptance of a C-141 report by the OCD does not relieve the operator of liability should their operations have failed to adequately investigate and remediate contamination that pose a threat to groundwater, surface water, human health or the environment. In addition, OCD acceptance of a C-141 report does not relieve the operator of responsibility for compliance with any other federal, state, or local laws and/or regulations.

I hereby agree and sign off to the above statement	Name: Brittany Esparza Title: Environmental Technician Email: brittany.Esparza@ConocoPhillips.com Date: 09/16/2024
--	--

Sante Fe Main Office
Phone: (505) 476-3441

General Information
Phone: (505) 629-6116

Online Phone Directory
<https://www.emnrd.nm.gov/ocd/contact-us>

State of New Mexico
Energy, Minerals and Natural Resources
Oil Conservation Division
1220 S. St Francis Dr.
Santa Fe, NM 87505

QUESTIONS, Page 3

Action 473338

QUESTIONS (continued)

Operator: COG OPERATING LLC 600 W Illinois Ave Midland, TX 79701	OGRID: 229137
	Action Number: 473338
	Action Type: [C-141] Revegetation Report C-141 (C-141-v-Revegetation)

QUESTIONS**Site Characterization**

Please answer all the questions in this group (only required when seeking remediation plan approval and beyond). This information must be provided to the appropriate district office no later than 90 days after the release discovery date.

What is the shallowest depth to groundwater beneath the area affected by the release in feet below ground surface (ft bgs)	Between 26 and 50 (ft.)
What method was used to determine the depth to ground water	NM OSE iWaters Database Search
Did this release impact groundwater or surface water	No
What is the minimum distance, between the closest lateral extents of the release and the following surface areas:	
A continuously flowing watercourse or any other significant watercourse	Between 1 and 5 (mi.)
Any lakebed, sinkhole, or playa lake (measured from the ordinary high-water mark)	Greater than 5 (mi.)
An occupied permanent residence, school, hospital, institution, or church	Greater than 5 (mi.)
A spring or a private domestic fresh water well used by less than five households for domestic or stock watering purposes	Greater than 5 (mi.)
Any other fresh water well or spring	Greater than 5 (mi.)
Incorporated municipal boundaries or a defined municipal fresh water well field	Greater than 5 (mi.)
A wetland	Between 1 and 5 (mi.)
A subsurface mine	Greater than 5 (mi.)
An (non-karst) unstable area	Greater than 5 (mi.)
Categorize the risk of this well / site being in a karst geology	Low
A 100-year floodplain	Greater than 5 (mi.)
Did the release impact areas not on an exploration, development, production, or storage site	No

Remediation Plan

Please answer all the questions that apply or are indicated. This information must be provided to the appropriate district office no later than 90 days after the release discovery date.

Requesting a remediation plan approval with this submission	Yes
<i>Attach a comprehensive report demonstrating the lateral and vertical extents of soil contamination associated with the release have been determined, pursuant to 19.15.29.11 NMAC and 19.15.29.13 NMAC.</i>	
Have the lateral and vertical extents of contamination been fully delineated	Yes
Was this release entirely contained within a lined containment area	No

Soil Contamination Sampling: (Provide the highest observable value for each, in milligrams per kilograms.)

Chloride (EPA 300.0 or SM4500 Cl B)	16
TPH (GRO+DRO+MRO) (EPA SW-846 Method 8015M)	9
GRO+DRO (EPA SW-846 Method 8015M)	9
BTEX (EPA SW-846 Method 8021B or 8260B)	0.2
Benzene (EPA SW-846 Method 8021B or 8260B)	0.1

Per Subsection B of 19.15.29.11 NMAC unless the site characterization report includes completed efforts at remediation, the report must include a proposed remediation plan in accordance with 19.15.29.12 NMAC, which includes the anticipated timelines for beginning and completing the remediation.

On what estimated date will the remediation commence	10/28/2024
On what date will (or did) the final sampling or liner inspection occur	10/28/2024
On what date will (or was) the remediation complete(d)	10/28/2024
What is the estimated surface area (in square feet) that will be reclaimed	968
What is the estimated volume (in cubic yards) that will be reclaimed	2
What is the estimated surface area (in square feet) that will be remediated	968
What is the estimated volume (in cubic yards) that will be remediated	2

These estimated dates and measurements are recognized to be the best guess or calculation at the time of submission and may (be) change(d) over time as more remediation efforts are completed.

The OCD recognizes that proposed remediation measures may have to be minimally adjusted in accordance with the physical realities encountered during remediation. If the responsible party has any need to significantly deviate from the remediation plan proposed, then it should consult with the division to determine if another remediation plan submission is required.

Sante Fe Main Office
Phone: (505) 476-3441

General Information
Phone: (505) 629-6116

Online Phone Directory
<https://www.emnrd.nm.gov/ocd/contact-us>

State of New Mexico
Energy, Minerals and Natural Resources
Oil Conservation Division
1220 S. St Francis Dr.
Santa Fe, NM 87505

QUESTIONS, Page 4

Action 473338

QUESTIONS (continued)

Operator: COG OPERATING LLC 600 W Illinois Ave Midland, TX 79701	OGRID: 229137
	Action Number: 473338
	Action Type: [C-141] Revegetation Report C-141 (C-141-v-Revegetation)

QUESTIONS

Remediation Plan (continued)	
<i>Please answer all the questions that apply or are indicated. This information must be provided to the appropriate district office no later than 90 days after the release discovery date.</i>	
This remediation will (or is expected to) utilize the following processes to remediate / reduce contaminants:	
<i>(Select all answers below that apply.)</i>	
(Ex Situ) Excavation and off-site disposal (i.e. dig and haul, hydrovac, etc.)	Yes
Which OCD approved facility will be used for off-site disposal	TIGER 11 FED BATTERY [APP2203450574]
OR which OCD approved well (API) will be used for off-site disposal	Not answered.
OR is the off-site disposal site, to be used, out-of-state	No
OR is the off-site disposal site, to be used, an NMED facility	No
(Ex Situ) Excavation and on-site remediation (i.e. On-Site Land Farms)	No
(In Situ) Soil Vapor Extraction	No
(In Situ) Chemical processing (i.e. Soil Shredding, Potassium Permanganate, etc.)	No
(In Situ) Biological processing (i.e. Microbes / Fertilizer, etc.)	No
(In Situ) Physical processing (i.e. Soil Washing, Gypsum, Disking, etc.)	No
Ground Water Abatement pursuant to 19.15.30 NMAC	No
OTHER (Non-listed remedial process)	No
<i>Per Subsection B of 19.15.29.11 NMAC unless the site characterization report includes completed efforts at remediation, the report must include a proposed remediation plan in accordance with 19.15.29.12 NMAC, which includes the anticipated timelines for beginning and completing the remediation.</i>	
I hereby certify that the information given above is true and complete to the best of my knowledge and understand that pursuant to OCD rules and regulations all operators are required to report and/or file certain release notifications and perform corrective actions for releases which may endanger public health or the environment. The acceptance of a C-141 report by the OCD does not relieve the operator of liability should their operations have failed to adequately investigate and remediate contamination that pose a threat to groundwater, surface water, human health or the environment. In addition, OCD acceptance of a C-141 report does not relieve the operator of responsibility for compliance with any other federal, state, or local laws and/or regulations.	
I hereby agree and sign off to the above statement	Name: Brittany Esparza Title: Environmental Technician Email: brittany.Esparza@ConocoPhillips.com Date: 11/26/2024
<i>The OCD recognizes that proposed remediation measures may have to be minimally adjusted in accordance with the physical realities encountered during remediation. If the responsible party has any need to significantly deviate from the remediation plan proposed, then it should consult with the division to determine if another remediation plan submission is required.</i>	

Sante Fe Main Office
Phone: (505) 476-3441

General Information
Phone: (505) 629-6116

Online Phone Directory
<https://www.emnrd.nm.gov/ocd/contact-us>

State of New Mexico
Energy, Minerals and Natural Resources
Oil Conservation Division
1220 S. St Francis Dr.
Santa Fe, NM 87505

QUESTIONS, Page 5

Action 473338

QUESTIONS (continued)

Operator: COG OPERATING LLC 600 W Illinois Ave Midland, TX 79701	OGRID: 229137
	Action Number: 473338
	Action Type: [C-141] Revegetation Report C-141 (C-141-v-Revegetation)

QUESTIONS

Deferral Requests Only	
Only answer the questions in this group if seeking a deferral upon approval this submission. Each of the following items must be confirmed as part of any request for deferral of remediation.	
Requesting a deferral of the remediation closure due date with the approval of this submission	No

Sante Fe Main Office
Phone: (505) 476-3441

General Information
Phone: (505) 629-6116

Online Phone Directory
<https://www.emnrd.nm.gov/ocd/contact-us>

State of New Mexico
Energy, Minerals and Natural Resources
Oil Conservation Division
1220 S. St Francis Dr.
Santa Fe, NM 87505

QUESTIONS, Page 6

Action 473338

QUESTIONS (continued)

Operator: COG OPERATING LLC 600 W Illinois Ave Midland, TX 79701	OGRID: 229137
	Action Number: 473338
	Action Type: [C-141] Revegetation Report C-141 (C-141-v-Revegetation)

QUESTIONS

Sampling Event Information	
Last sampling notification (C-141N) recorded	395156
Sampling date pursuant to Subparagraph (a) of Paragraph (1) of Subsection D of 19.15.29.12 NMAC	10/28/2024
What was the (estimated) number of samples that were to be gathered	10
What was the sampling surface area in square feet	2158

Remediation Closure Request	
<i>Only answer the questions in this group if seeking remediation closure for this release because all remediation steps have been completed.</i>	
Requesting a remediation closure approval with this submission	Yes
Have the lateral and vertical extents of contamination been fully delineated	Yes
Was this release entirely contained within a lined containment area	No
All areas reasonably needed for production or subsequent drilling operations have been stabilized, returned to the sites existing grade, and have a soil cover that prevents ponding of water, minimizing dust and erosion	Yes
What was the total surface area (in square feet) remediated	968
What was the total volume (cubic yards) remediated	2
All areas not reasonably needed for production or subsequent drilling operations have been reclaimed to contain a minimum of four feet of non-waste contain earthen material with concentrations less than 600 mg/kg chlorides, 100 mg/kg TPH, 50 mg/kg BTEX, and 10 mg/kg Benzene	Yes
What was the total surface area (in square feet) reclaimed	968
What was the total volume (in cubic yards) reclaimed	2
Summarize any additional remediation activities not included by answers (above)	NA
<i>The responsible party must attach information demonstrating they have complied with all applicable closure requirements and any conditions or directives of the OCD. This demonstration should be in the form of a comprehensive report (in .pdf format) including a scaled site map, sampling diagrams, relevant field notes, photographs of any excavation prior to backfilling, laboratory data including chain of custody documents of final sampling, and a narrative of the remedial activities. Refer to 19.15.29.12 NMAC.</i>	
I hereby certify that the information given above is true and complete to the best of my knowledge and understand that pursuant to OCD rules and regulations all operators are required to report and/or file certain release notifications and perform corrective actions for releases which may endanger public health or the environment. The acceptance of a C-141 report by the OCD does not relieve the operator of liability should their operations have failed to adequately investigate and remediate contamination that pose a threat to groundwater, surface water, human health or the environment. In addition, OCD acceptance of a C-141 report does not relieve the operator of responsibility for compliance with any other federal, state, or local laws and/or regulations. The responsible party acknowledges they must substantially restore, reclaim, and re-vegetate the impacted surface area to the conditions that existed prior to the release or their final land use in accordance with 19.15.29.13 NMAC including notification to the OCD when reclamation and re-vegetation are complete.	
I hereby agree and sign off to the above statement	Name: Brittany Esparza Title: Environmental Technician Email: brittany.Esparza@ConocoPhillips.com Date: 11/26/2024

Sante Fe Main Office
Phone: (505) 476-3441

General Information
Phone: (505) 629-6116

Online Phone Directory
<https://www.emnrd.nm.gov/ocd/contact-us>

State of New Mexico
Energy, Minerals and Natural Resources
Oil Conservation Division
1220 S. St Francis Dr.
Santa Fe, NM 87505

QUESTIONS, Page 7

Action 473338

QUESTIONS (continued)

Operator: COG OPERATING LLC 600 W Illinois Ave Midland, TX 79701	OGRID: 229137
	Action Number: 473338
	Action Type: [C-141] Revegetation Report C-141 (C-141-v-Revegetation)

QUESTIONS

Reclamation Report	
<i>Only answer the questions in this group if all reclamation steps have been completed.</i>	
Requesting a reclamation approval with this submission	Yes
What was the total reclamation surface area (in square feet) for this site	968
What was the total volume of replacement material (in cubic yards) for this site	2
<i>Per Paragraph (1) of Subsection D of 19.15.29.13 NMAC the reclamation must contain a minimum of four feet of non-waste containing, uncontaminated, earthen material with chloride concentrations less than 600 mg/kg as analyzed by EPA Method 300.0, or other test methods approved by the division. The soil cover must include a top layer, which is either the background thickness of topsoil or one foot of suitable material to establish vegetation at the site, whichever is greater.</i>	
Is the soil top layer complete and is it suitable material to establish vegetation	Yes
On what (estimated) date will (or was) the reseedling commence(d)	10/28/2024
Summarize any additional reclamation activities not included by answers (above)	na
<i>The responsible party must attach information demonstrating they have complied with all applicable reclamation requirements and any conditions or directives of the OCD. This demonstration should be in the form of attachments (in .pdf format) including a scaled site map, any proposed reseedling plans or relevant field notes, photographs of reclaimed area, and a narrative of the reclamation activities. Refer to 19.15.29.13 NMAC.</i>	
I hereby certify that the information given above is true and complete to the best of my knowledge and understand that pursuant to OCD rules and regulations all operators are required to report and/or file certain release notifications and perform corrective actions for releases which may endanger public health or the environment. The acceptance of a C-141 report by the OCD does not relieve the operator of liability should their operations have failed to adequately investigate and remediate contamination that pose a threat to groundwater, surface water, human health or the environment. In addition, OCD acceptance of a C-141 report does not relieve the operator of responsibility for compliance with any other federal, state, or local laws and/or regulations. The responsible party acknowledges they must substantially restore, reclaim, and re-vegetate the impacted surface area to the conditions that existed prior to the release or their final land use in accordance with 19.15.29.13 NMAC including notification to the OCD when reclamation and re-vegetation are complete.	
I hereby agree and sign off to the above statement	Name: Brittany Esparza Title: Environmental Technician Email: brittany.Esparza@ConocoPhillips.com Date: 11/26/2024

Sante Fe Main Office
Phone: (505) 476-3441

General Information
Phone: (505) 629-6116

Online Phone Directory
<https://www.emnrd.nm.gov/ocd/contact-us>

State of New Mexico
Energy, Minerals and Natural Resources
Oil Conservation Division
1220 S. St Francis Dr.
Santa Fe, NM 87505

QUESTIONS, Page 8

Action 473338

QUESTIONS (continued)

Operator: COG OPERATING LLC 600 W Illinois Ave Midland, TX 79701	OGRID:
	229137
	Action Number:
	473338
	Action Type:
	[C-141] Revegetation Report C-141 (C-141-v-Revegetation)

QUESTIONS

Revegetation Report	
<i>Only answer the questions in this group if all surface restoration, reclamation and re-vegetation obligations have been satisfied.</i>	
Requesting a restoration complete approval with this submission	Yes
What was the total revegetation surface area (in square feet) for this site	968
<i>Per Paragraph (2) of Subsection D of 19.15.29.13 NMAC the responsible party must reseed disturbed area in the first favorable growing season following closure of the site.</i>	
On what date did the reseeded commence	10/28/2024
On what date was the vegetative cover inspected	10/28/2024
What was the life form ratio compared to pre-disturbance levels	50
What was the total percent plant cover compared to pre-disturbance levels	70
Summarize any additional revegetation activities not included by answers (above)	"The life form ration is the same as it was prior to disturbance, thus, 100" "Cover is the same as it was prior to disturbance, 100"
<i>The responsible party must attach information demonstrating they have complied with all applicable re-vegetation requirements and any conditions or directives of the OCD. This demonstration should be in the form of attachments (in .pdf format) including a scaled site map, any life form ratio and percent plant cover sampling diagrams or other relevant field notes, photographs of re-vegetated areas, and a narrative of the re-vegetation activities. Refer to 19.15.29.13 NMAC.</i>	
I hereby certify that the information given above is true and complete to the best of my knowledge and understand that pursuant to OCD rules and regulations all operators are required to report and/or file certain release notifications and perform corrective actions for releases which may endanger public health or the environment. The acceptance of a C-141 report by the OCD does not relieve the operator of liability should their operations have failed to adequately investigate and remediate contamination that pose a threat to groundwater, surface water, human health or the environment. In addition, OCD acceptance of a C-141 report does not relieve the operator of responsibility for compliance with any other federal, state, or local laws and/or regulations. The responsible party acknowledges they must substantially restore, reclaim, and re-vegetate the impacted surface area to the conditions that existed prior to the release or their final land use in accordance with 19.15.29.13 NMAC including notification to the OCD when reclamation and re-vegetation are complete.	
I hereby agree and sign off to the above statement	Name: Brittany Esparza Title: Environmental Technician Email: brittany.Esparza@ConocoPhillips.com Date: 06/11/2025
<i>Per Paragraph (4) of Subsection (D) of 19.15.29.13 NMAC for any major or minor release containing liquids, the responsible party must notify the division when reclamation and re-vegetation are complete.</i>	

Sante Fe Main Office
Phone: (505) 476-3441

General Information
Phone: (505) 629-6116

Online Phone Directory
<https://www.emnrd.nm.gov/ocd/contact-us>

State of New Mexico
Energy, Minerals and Natural Resources
Oil Conservation Division
1220 S. St Francis Dr.
Santa Fe, NM 87505

CONDITIONS

Action 473338

CONDITIONS

Operator: COG OPERATING LLC 600 W Illinois Ave Midland, TX 79701	OGRID: 229137
	Action Number: 473338
	Action Type: [C-141] Revegetation Report C-141 (C-141-v-Revegetation)

CONDITIONS

Created By	Condition	Condition Date
nvez	None	6/12/2025