



April 25, 2025

District Supervisor  
Oil Conservation Division, District 2  
506 W. Texas  
Artesia, New Mexico 88210

**Re: Closure Request  
J R Oil, Ltd. Co.  
Fred Turner Jr B #001 Valve Release  
Unit Letter F, Section 17, Township 20 South, Range 38 East  
Lea County, New Mexico  
Incident ID# nGRL1013259660  
1RP-2524**

Sir or Madam,

Tetra Tech, Inc. (Tetra Tech) was contacted by JR Oil, Ltd. Co. (JR Oil) to evaluate a historical release associated with the Fred Turner Jr B #001 well (API# 30-025-07780). This historical release was initially associated with OXY USA WTP Limited Partnership (Oxy), however, ownership of the well appears to have been transferred to J R Oil, Ltd. Co. in April 2021.

The release footprint is located in Public Land Survey System (PLSS) Unit Letter F, Section 17, Township 20 South, Range 38 East, in Lea County, New Mexico (Site). The coordinates listed on the initial C-141 are listed as 32° 219.55', 103° 44.784' (degrees minutes format). These coordinates do not translate to a geographic point located on pad or in the surrounding pasture, and are assumed to have been transcribed incorrectly in the initial documentation. From available information, the approximate coordinates of the release point are 32.574932°, -103.172889°. The approximate well location is shown on Figures 1 and 2.

## **BACKGROUND**

According to the State of New Mexico Oil Conservation Division (NMOCD) C-141 Initial Report, the release was discovered on April 25, 2010. The release occurred as a result of the back pressure valve plugging and failing. Approximately 14 barrels (bbls) of produced water and 8 bbls crude oil were released, of which 14 bbls of produced water were and 6 bbls of crude oil were recovered, a total loss of 2 bbls of crude oil. A vacuum truck was utilized to collect all remaining standing fluid. The inferred release point was located on a section of the pumping unit located on pad. The inferred release point is shown in Figure 3.

The NMOCD approved the initial C-141 on May 5, 2010, and subsequently assigned the release the Incident ID nGRL1013259660 and the remediation permit (RP) number 1RP-2524. The initial C-141 form is included in Appendix A.

## **LAND OWNERSHIP**

According to the NMOCD Oil and Gas Map, the Site is located on land owned by a private, independent, party.

Tetra Tech

901 West Wall St., Suite 100, Midland, TX 79701

Tel 432.682.4559 Fax 432.682.3946 www.tetrattech.com

Closure Request  
April 25, 2025

J R Oil, Ltd. Co.

## SITE CHARACTERIZATION

A site characterization was performed and no sinkholes, residences, schools, hospitals, institutions, churches, springs, private domestic water wells, playa lakes, stream bodies, wetlands, incorporated municipal boundaries, subsurface mines, or floodplains are located within the distances specified in 19.15.29 New Mexico Administrative Code (NMAC). The Site is in an area of medium karst potential.

According to the New Mexico Office of the State Engineers (NMOSE) reporting system, there are 12 wells within 1 mile (1,600 meters) of the Site with available water level data. There is one USGS well 2,030 feet to the south (USGS Site No 323410103102701), which has water level data from 1996 and a measured Water level 71.88 of 71.88 feet.

Based on available data from the twelve (12) water wells located with 1,600 meters (approximately 1.0 mile) of the Site, as well as the more recent data from the USGS well (1996), the average depth to groundwater is established at 68-71 ft below ground surface (bgs). The site characterization data is included as Appendix B.

## REGULATORY FRAMEWORK

Based upon the release footprint location (on-pad and in areas immediately under or around production equipment) and in accordance with Subsection E of 19.15.29.12 NMAC, per 19.15.29.11 NMAC, the site characterization data was used in attempt to determine recommended remedial action levels (RRALs) for benzene, toluene, ethylbenzene, and xylene (collectively referred to as BTEX), total petroleum hydrocarbons (TPH), and chlorides in soil.

Based on the site characterization and in accordance with Table I of 19.15.29.12 NMAC, the RRALs for the Site are as follows:

Constituent	Site RRALs
Chloride	10,000 mg/kg
TPH (GRO+DRO+MRO)	2,500 mg/kg
GRO+DRO	1,000 mg/kg
BTEX	50 mg/kg
Benzene	10 mg/kg

Additionally, in accordance with the NMOCD guidance *Procedures for Implementation of the Spill Rule (19.15.29 NMAC)* (September 6, 2019), the following reclamation requirements for surface soils (0-4 ft bgs) outside of active oil and gas operations are as follows:

Constituent	Reclamation Requirements
Chloride	600 mg/kg
TPH (GRO+DRO+ORO)	100 mg/kg

## SITE ASSESSMENT

Based on the available information from the C-141 and information online from the NMOCD permitting website, no release footprint for this incident was found. As such, Tetra Tech elected to perform an assessment in the direct vicinity of the wellhead (back pressure valve), the source of the release. Tetra Tech was on site March 13, 2025, to install four (4) hand auger borings around the wellhead at the Fred Turner Jr B #001 pad to a depth of 1-foot below ground surface (bgs).

A total of four (4) soil samples were collected from the four boring locations. The collected samples were transferred under chain of custody and analyzed within appropriate holding times by Cardinal Laboratories (Cardinal). The soil samples were analyzed for TPH via Method 8015 Modified, chloride via Method SM4500Cl-B, and BTEX via Method 8021B. A copy of the laboratory analytical report and chain-of-custody documentation are included in Appendix C.

Closure Request  
April 25, 2025

J R Oil, Ltd. Co.

Results from the March 2025 soil sampling event are summarized in Table 1. All analytical results associated with soil samples collected from boring locations installed during the March 2025 assessment were below Site Reclamation Limits for chlorides, TPH, and BTEX. Photographic documentation from the Site and assessment area are included in Appendix D.

**CONCLUSION**

Based on the age of the release and no indication of remaining impact in the area surrounding the wellhead and pumping unit, J R Oil, Ltd. Co. respectfully requests closure for this subject line incident. According to the C-141, the release was addressed initially by recovering all but 2 bbls of oil. There is no indication of any remaining impact associated with the subject line incident release nGRL1013259660. Additionally, the C-141 indicates remediation activities were ongoing. In all likelihood, the original operator Oxy, addressed the remaining impact on pad and failed to submit a final C-141 form.

Due to the lack of observed impact located in the vicinity of the inferred release point, total loss of 2 bbls of oil, and no visible impact remaining on pad, JR Oil, Ltd. Co. respectfully requests closure of incident ID nGRL1013259660.

The final C-141 forms are enclosed in Appendix A. If you have any questions concerning the remedial activities for the Site, please call me at (509) 768-2191.

Sincerely,  
**Tetra Tech, Inc.**



Sam Chama, P.G.  
Project Geologist



Christian M. Llull, P.G.  
Program Manager

Closure Request  
April 25, 2025

J R Oil, Ltd. Co.

---

## LIST OF ATTACHMENTS

### Figures:

- Figure 1 – Overview Map
- Figure 2 – Topographic Map
- Figure 3 – Site Assessment Map

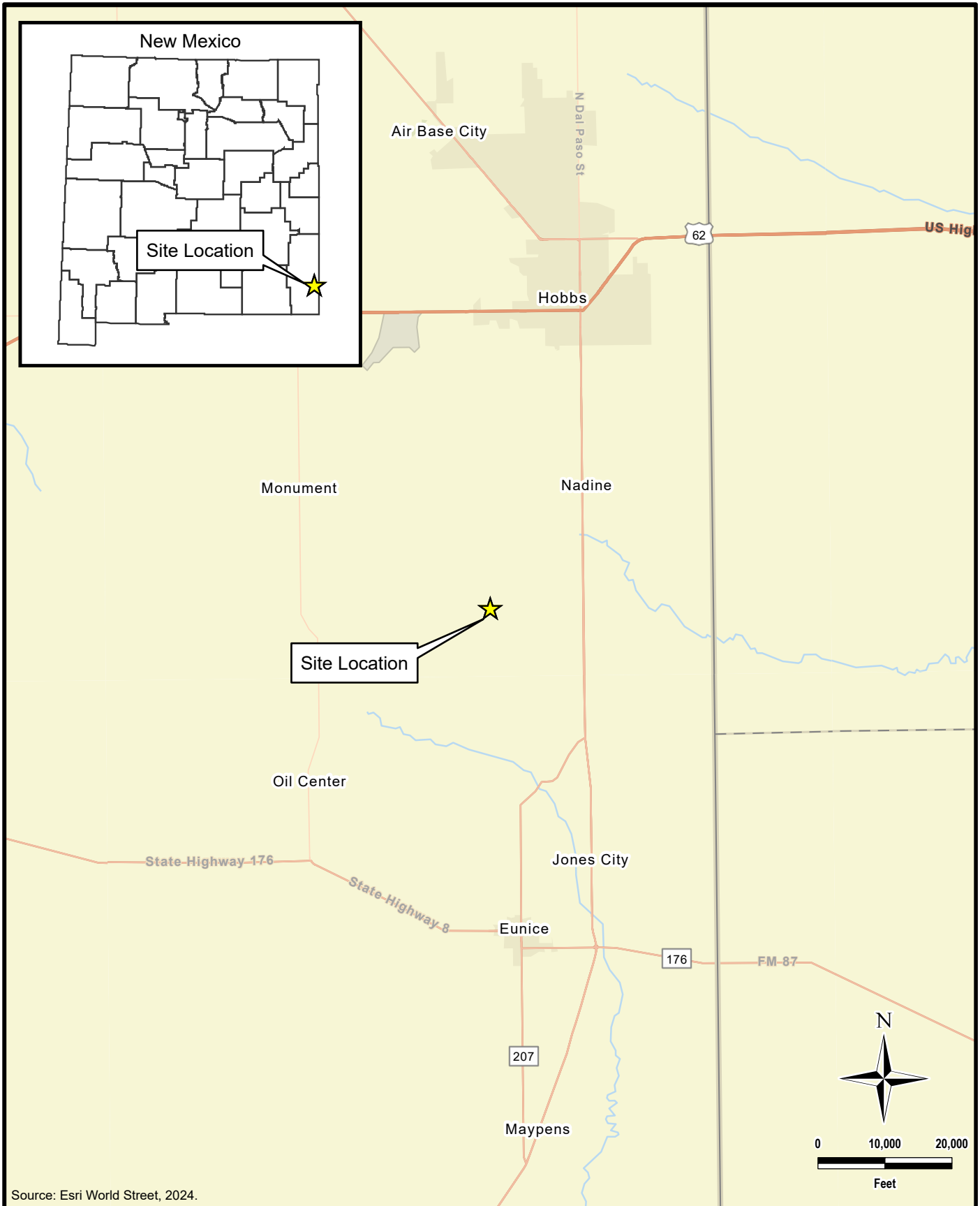
### Tables:

- Figure 1 – 2025 Soil Assessment – nGRL1013259660

### Appendices:

- Appendix A – C-141 Forms
- Appendix B – Site Characterization Data
- Appendix C – Laboratory Analytical Data
- Appendix D – Photographic Documentation

# **FIGURES**



Source: Esri World Street, 2024.

DOCUMENT PATH: Y:\JR\_OIL\FRED\_TURNER\_JR\_B\_1\FRED\_TURNER\_JR\_B\_1.APRX



**TETRA TECH**

www.tetrattech.com

901 West Wall Street, Suite 100  
Midland, Texas 79701  
Phone: (432) 682-4559  
Fax: (432) 682-3946

JR OIL, LTD. CO.

FRED TURNER JR B #001  
(32.574932°, -103.172889°)  
LEA COUNTY, NEW MEXICO

**FRED TURNER JR B #001  
OVERVIEW MAP**

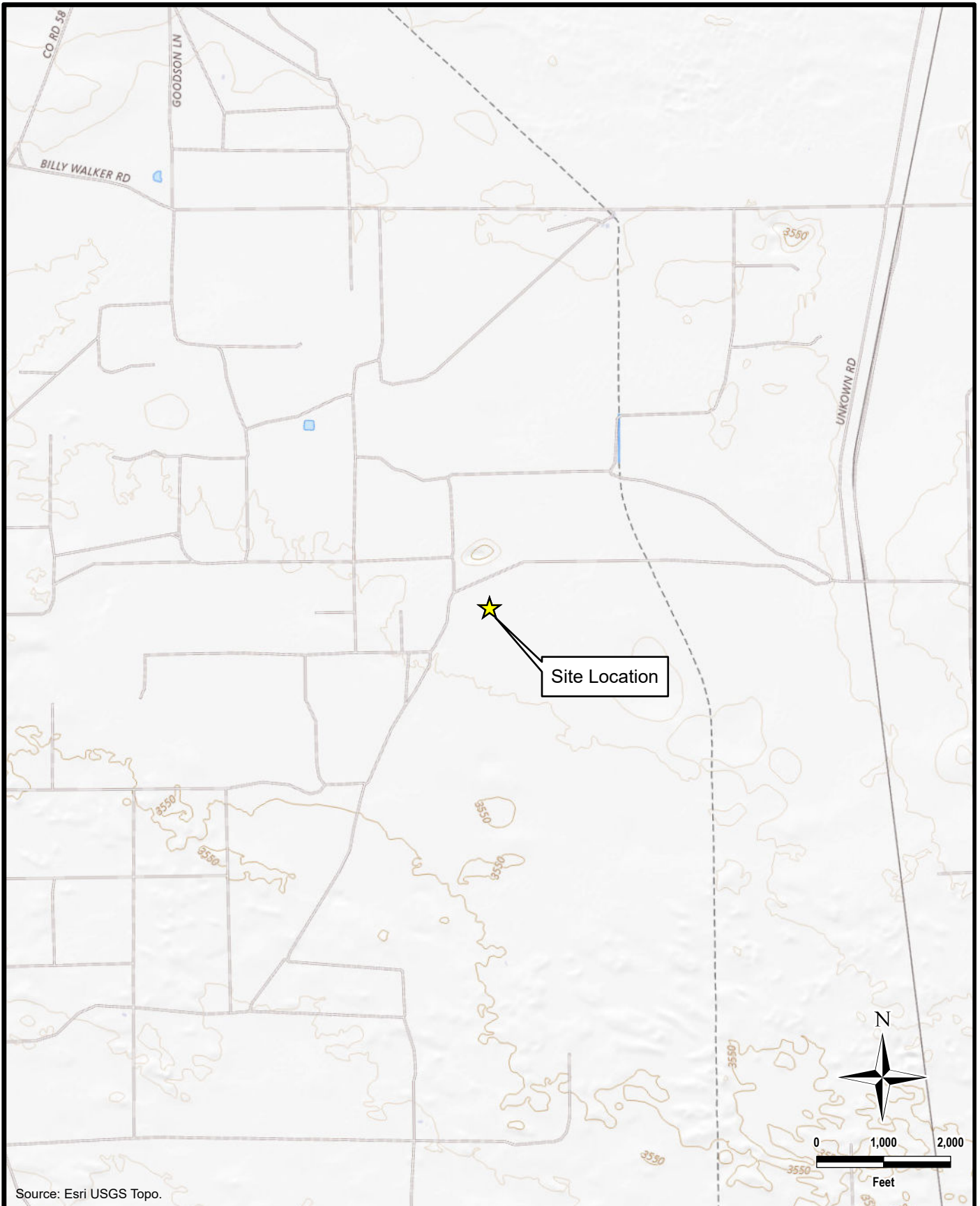
PROJECT NO.: 212C-MD-03536

DATE: MARCH 28, 2025

DESIGNED BY: LMV

Figure No.

**1**



Source: Esri USGS Topo.

DOCUMENT PATH: Y:\JR\_OIL\FRED\_TURNER\_JR\_B\_1\FRED\_TURNER\_JR\_B\_1.APRX



www.tetrattech.com  
 901 West Wall Street, Suite 100  
 Midland, Texas 79701  
 Phone: (432) 682-4559  
 Fax: (432) 682-3946

JR OIL, LTD. CO.

NGRL1013259660  
 (32.574932°, -103.172889°)  
 LEA COUNTY, NEW MEXICO

**FRED TURNER JR B #001  
 TOPOGRAPHIC MAP**

PROJECT NO.: 212C-MD-03536

DATE: MARCH 28, 2025

DESIGNED BY: LMV

Figure No.

**2**




**Legend**

- Hand Auger Location

Source: Google Earth, 2024.

DOCUMENT PATH: Y:\JR\_OIL\FRED\_TURNER\_JR\_B\_1\FRED\_TURNER\_JR\_B\_1.APRX

 <b>TETRA TECH</b> www.tetrattech.com 901 West Wall Street, Suite 100 Midland, Texas 79701 Phone: (432) 682-4559 Fax: (432) 682-3946	<b>JR OIL, LTD. CO.</b>  NGRL1013259660 (32.574932°, -103.172889°) LEA COUNTY, NEW MEXICO	PROJECT NO.: 212C-MD-03536 DATE: MARCH 28, 2025 DESIGNED BY: LMV
	<b>FRED TURNER JR B #001 SITE ASSESSMENT MAP</b>	Figure No. <b>3</b>



# **TABLES**

TABLE 1  
 SUMMARY OF ANALYTICAL RESULTS  
 2025 SOIL ASSESSMENT - nGRL1013259660  
 JR Oil Ltd.  
 Fred Turner JR B #001  
 LEA COUNTY, NM

Sample ID	Sample Date	Sample Depth	Chloride <sup>1</sup>		BTEX <sup>2</sup>										TPH <sup>3</sup>						
					Benzene		Toluene		Ethylbenzene		Total Xylenes		Total BTEX		GRO		DRO		EXT DRO		Total TPH (GRO+DRO+EXT DRO)
					mg/kg	Q	mg/kg	Q	mg/kg	Q	mg/kg	Q	mg/kg	Q	mg/kg	Q	mg/kg	Q	mg/kg	Q	
AH-1	3/13/2025	0-1'	48		<0.050		<0.050		<0.050		<0.150		<0.300		<10.0		<10.0		<10.0		<10.0
AH-2	3/13/2025	0-1'	16		<0.050		<0.050		<0.050		<0.150		<0.300		<10.0		<10.0		<10.0		<10.0
AH-3	3/13/2025	0-1'	112		<0.050		<0.050		<0.050		<0.150		<0.300		<10.0		<10.0		<10.0		<10.0
AH-4	3/13/2025	0-1'	16		<0.050		<0.050		<0.050		<0.150		<0.300		<10.0		<10.0		<10.0		<10.0

NOTES:  
 ft. Feet  
 bgs Below ground surface  
 mg/kg Milligrams per kilogram  
 TPH Total Petroleum Hydrocarbons  
 GRO Gasoline range organics  
 DRO Diesel range organics  
 1 Method SM4500C1-B  
 2 Method 8021B  
 3 Method 8015M

*Bold and italicized values indicate exceedance of Site RRALs approved by the NMOCD.*

# **APPENDIX A C-141 Forms**

RECEIVED

District I  
1625 N French Dr., Hobbs, NM 88240  
District II  
1301 W Grand Avenue, Artesia, NM 88210  
District III  
1000 Rio Brazos Road, Aztec, NM 87410  
District IV  
1220 S St Francis Dr., Santa Fe, NM 87505

MAY 05 2010

HOBBSUCD

State of New Mexico  
Energy Minerals and Natural Resources  
Oil Conservation Division  
1220 South St. Francis Dr.  
Santa Fe, NM 87505

Form C-141  
Revised October 10, 2003

Submit 2 Copies to appropriate  
District Office in accordance  
with Rule 116 on back  
side of form

### Release Notification and Corrective Action

#### OPERATOR

X Initial Report  Final Report

Name of Company Oxy USA WTP	Contact Dusty Wilson
Address 1017 W. Stanolind Rd	Telephone No. (575) 397-8247
Facility Name Fred Turner Jr. B # 1	Facility Type Well Site

Surface Owner State	Mineral Owner Oxy/State	Lease No. 30-025-07780
---------------------	-------------------------	------------------------

#### LOCATION OF RELEASE

Unit Letter	Section	Township	Range	Feet from the	North/South Line	Feet from the	East/West Line	County
F	17	20s	38e					Lea

Latitude\_N32\*219.55 Longitude\_W103\*44.784

#### NATURE OF RELEASE

Type of Release Oil and Produce Water	Volume of Release 8 bo and 14 bw	Volume Recovered 6 bo and 14 bw
Source of Release Plugged Backpressure Valve	Date and Hour of Occurrence 04/25/10 0100 pm	Date and Hour of Discovery Same
Was Immediate Notice Given? X Yes <input type="checkbox"/> No <input type="checkbox"/> Not Required	If YES, To Whom? Jeff Leking(OCD)	
By Whom? Dusty Wilson	Date and Hour 4/28/2010 0300 pm	
Was a Watercourse Reached? <input type="checkbox"/> Yes X No	If YES, Volume Impacting the Watercourse. n/a	

If a Watercourse was Impacted, Describe Fully.\*

N/A

WATERCOURSE

Describe Cause of Problem and Remedial Action Taken.\*

Back Pressure Valve plugged and blew out. Vac truck deployed to location picked up all free standing fluids. Remediation efforts continue.

Describe Area Affected and Cleanup Action Taken.\*

Remediate to NMOCD Requirements.

I hereby certify that the information given above is true and complete to the best of my knowledge and understand that pursuant to NMOCD rules and regulations all operators are required to report and/or file certain release notifications and perform corrective actions for releases which may endanger public health or the environment. The acceptance of a C-141 report by the NMOCD marked as "Final Report" does not relieve the operator of liability should their operations have failed to adequately investigate and remediate contamination that pose a threat to ground water, surface water, human health or the environment. In addition, NMOCD acceptance of a C-141 report does not relieve the operator of responsibility for compliance with any other federal, state, or local laws and/or regulations.

Signature:	<b>OIL CONSERVATION DIVISION</b>	
Printed Name: Dusty L. Wilson	ENV ENGINEER: Approved by District Supervisor:	
Title: HES Specialist	Approval Date: 05/12/10	Expiration Date 07/12/10
E-mail Address: dusty.wilson@oxy.com	Conditions of Approval: SUBMIT FINAL C-141 BY 07/12/10	Attached <input type="checkbox"/>
Date: 05/03/2010 Phone: (575) 397-8210		IRP-10-5-2524

- Attach Additional Sheets If Necessary

State of New Mexico  
Oil Conservation Division

Incident ID	
District RP	
Facility ID	
Application ID	

Was this a major release as defined by 19.15.29.7(A) NMAC?  <input type="checkbox"/> Yes <input type="checkbox"/> No	If YES, for what reason(s) does the responsible party consider this a major release?
If YES, was immediate notice given to the OCD? By whom? To whom? When and by what means (phone, email, etc)?	

### Initial Response

*The responsible party must undertake the following actions immediately unless they could create a safety hazard that would result in injury*

<input type="checkbox"/> The source of the release has been stopped. <input type="checkbox"/> The impacted area has been secured to protect human health and the environment. <input type="checkbox"/> Released materials have been contained via the use of berms or dikes, absorbent pads, or other containment devices. <input type="checkbox"/> All free liquids and recoverable materials have been removed and managed appropriately.
If all the actions described above have <u>not</u> been undertaken, explain why:
Per 19.15.29.8 B. (4) NMAC the responsible party may commence remediation immediately after discovery of a release. If remediation has begun, please attach a narrative of actions to date. If remedial efforts have been successfully completed or if the release occurred within a lined containment area (see 19.15.29.11(A)(5)(a) NMAC), please attach all information needed for closure evaluation.
I hereby certify that the information given above is true and complete to the best of my knowledge and understand that pursuant to OCD rules and regulations all operators are required to report and/or file certain release notifications and perform corrective actions for releases which may endanger public health or the environment. The acceptance of a C-141 report by the OCD does not relieve the operator of liability should their operations have failed to adequately investigate and remediate contamination that pose a threat to groundwater, surface water, human health or the environment. In addition, OCD acceptance of a C-141 report does not relieve the operator of responsibility for compliance with any other federal, state, or local laws and/or regulations.
Printed Name: _____ Title: _____ Signature: _____ Date: _____ email: _____ Telephone: _____
<b><u>OCD Only</u></b> Received by: _____ Date: _____

Incident ID	
District RP	
Facility ID	
Application ID	

## Site Assessment/Characterization

*This information must be provided to the appropriate district office no later than 90 days after the release discovery date.*

What is the shallowest depth to groundwater beneath the area affected by the release?	_____ (ft bgs)
Did this release impact groundwater or surface water?	<input type="checkbox"/> Yes <input type="checkbox"/> No
Are the lateral extents of the release within 300 feet of a continuously flowing watercourse or any other significant watercourse?	<input type="checkbox"/> Yes <input type="checkbox"/> No
Are the lateral extents of the release within 200 feet of any lakebed, sinkhole, or playa lake (measured from the ordinary high-water mark)?	<input type="checkbox"/> Yes <input type="checkbox"/> No
Are the lateral extents of the release within 300 feet of an occupied permanent residence, school, hospital, institution, or church?	<input type="checkbox"/> Yes <input type="checkbox"/> No
Are the lateral extents of the release within 500 horizontal feet of a spring or a private domestic fresh water well used by less than five households for domestic or stock watering purposes?	<input type="checkbox"/> Yes <input type="checkbox"/> No
Are the lateral extents of the release within 1000 feet of any other fresh water well or spring?	<input type="checkbox"/> Yes <input type="checkbox"/> No
Are the lateral extents of the release within incorporated municipal boundaries or within a defined municipal fresh water well field?	<input type="checkbox"/> Yes <input type="checkbox"/> No
Are the lateral extents of the release within 300 feet of a wetland?	<input type="checkbox"/> Yes <input type="checkbox"/> No
Are the lateral extents of the release overlying a subsurface mine?	<input type="checkbox"/> Yes <input type="checkbox"/> No
Are the lateral extents of the release overlying an unstable area such as karst geology?	<input type="checkbox"/> Yes <input type="checkbox"/> No
Are the lateral extents of the release within a 100-year floodplain?	<input type="checkbox"/> Yes <input type="checkbox"/> No
Did the release impact areas <b>not</b> on an exploration, development, production, or storage site?	<input type="checkbox"/> Yes <input type="checkbox"/> No

Attach a comprehensive report (electronic submittals in .pdf format are preferred) demonstrating the lateral and vertical extents of soil contamination associated with the release have been determined. Refer to 19.15.29.11 NMAC for specifics.

**Characterization Report Checklist: Each of the following items must be included in the report.**

- Scaled site map showing impacted area, surface features, subsurface features, delineation points, and monitoring wells.
- Field data
- Data table of soil contaminant concentration data
- Depth to water determination
- Determination of water sources and significant watercourses within ½-mile of the lateral extents of the release
- Boring or excavation logs
- Photographs including date and GIS information
- Topographic/Aerial maps
- Laboratory data including chain of custody

If the site characterization report does not include completed efforts at remediation of the release, the report must include a proposed remediation plan. That plan must include the estimated volume of material to be remediated, the proposed remediation technique, proposed sampling plan and methods, anticipated timelines for beginning and completing the remediation. The closure criteria for a release are contained in Table 1 of 19.15.29.12 NMAC, however, use of the table is modified by site- and release-specific parameters.

State of New Mexico  
Oil Conservation Division

Page 4

Incident ID	
District RP	
Facility ID	
Application ID	

I hereby certify that the information given above is true and complete to the best of my knowledge and understand that pursuant to OCD rules and regulations all operators are required to report and/or file certain release notifications and perform corrective actions for releases which may endanger public health or the environment. The acceptance of a C-141 report by the OCD does not relieve the operator of liability should their operations have failed to adequately investigate and remediate contamination that pose a threat to groundwater, surface water, human health or the environment. In addition, OCD acceptance of a C-141 report does not relieve the operator of responsibility for compliance with any other federal, state, or local laws and/or regulations.

Printed Name: \_\_\_\_\_ Title: \_\_\_\_\_

Signature: \_\_\_\_\_ Date: \_\_\_\_\_

email: \_\_\_\_\_ Telephone: \_\_\_\_\_

**OCD Only**

Received by: \_\_\_\_\_ Date: \_\_\_\_\_

Incident ID	
District RP	
Facility ID	
Application ID	

## Closure

The responsible party must attach information demonstrating they have complied with all applicable closure requirements and any conditions or directives of the OCD. This demonstration should be in the form of a comprehensive report (electronic submittals in .pdf format are preferred) including a scaled site map, sampling diagrams, relevant field notes, photographs of any excavation prior to backfilling, laboratory data including chain of custody documents of final sampling, and a narrative of the remedial activities. Refer to 19.15.29.12 NMAC.

**Closure Report Attachment Checklist:** *Each of the following items must be included in the closure report.*

- A scaled site and sampling diagram as described in 19.15.29.11 NMAC
- Photographs of the remediated site prior to backfill or photos of the liner integrity if applicable (Note: appropriate OCD District office must be notified 2 days prior to liner inspection)
- Laboratory analyses of final sampling (Note: appropriate ODC District office must be notified 2 days prior to final sampling)
- Description of remediation activities

I hereby certify that the information given above is true and complete to the best of my knowledge and understand that pursuant to OCD rules and regulations all operators are required to report and/or file certain release notifications and perform corrective actions for releases which may endanger public health or the environment. The acceptance of a C-141 report by the OCD does not relieve the operator of liability should their operations have failed to adequately investigate and remediate contamination that pose a threat to groundwater, surface water, human health or the environment. In addition, OCD acceptance of a C-141 report does not relieve the operator of responsibility for compliance with any other federal, state, or local laws and/or regulations. The responsible party acknowledges they must substantially restore, reclaim, and re-vegetate the impacted surface area to the conditions that existed prior to the release or their final land use in accordance with 19.15.29.13 NMAC including notification to the OCD when reclamation and re-vegetation are complete.

Printed Name: \_\_\_\_\_ Title: \_\_\_\_\_

Signature: \_\_\_\_\_ Date: \_\_\_\_\_

email: \_\_\_\_\_ Telephone: \_\_\_\_\_

**OCD Only**

Received by: \_\_\_\_\_ Date: \_\_\_\_\_

Closure approval by the OCD does not relieve the responsible party of liability should their operations have failed to adequately investigate and remediate contamination that poses a threat to groundwater, surface water, human health, or the environment nor does not relieve the responsible party of compliance with any other federal, state, or local laws and/or regulations.

Closure Approved by: \_\_\_\_\_ Date: \_\_\_\_\_

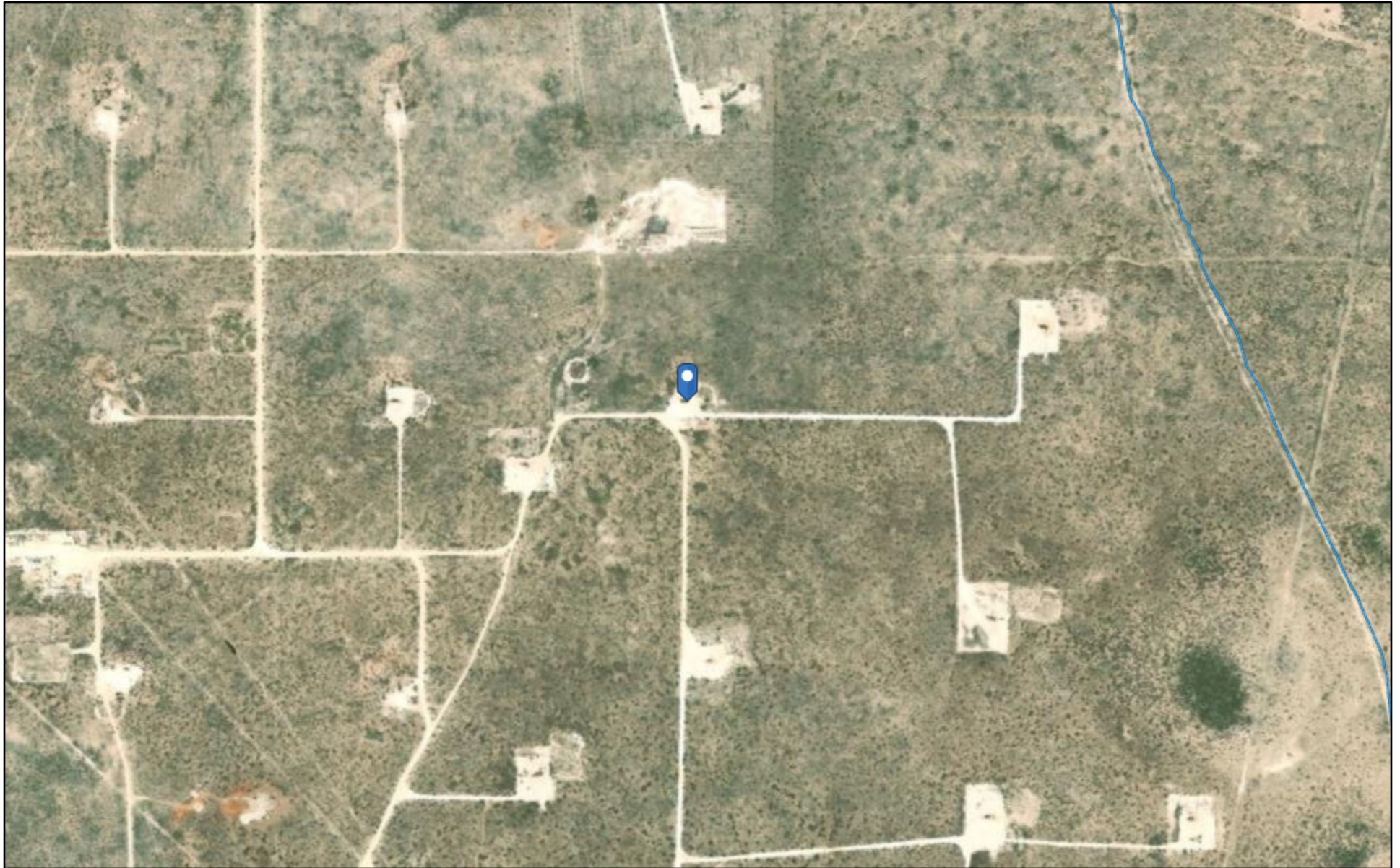
Printed Name: \_\_\_\_\_ Title: \_\_\_\_\_



# **APPENDIX B**

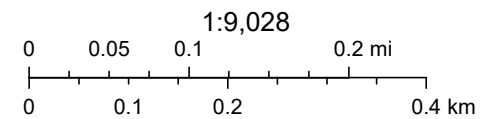
## **Site Characterization Data**

# OCD Waterbodies



4/10/2025, 3:36:51 PM

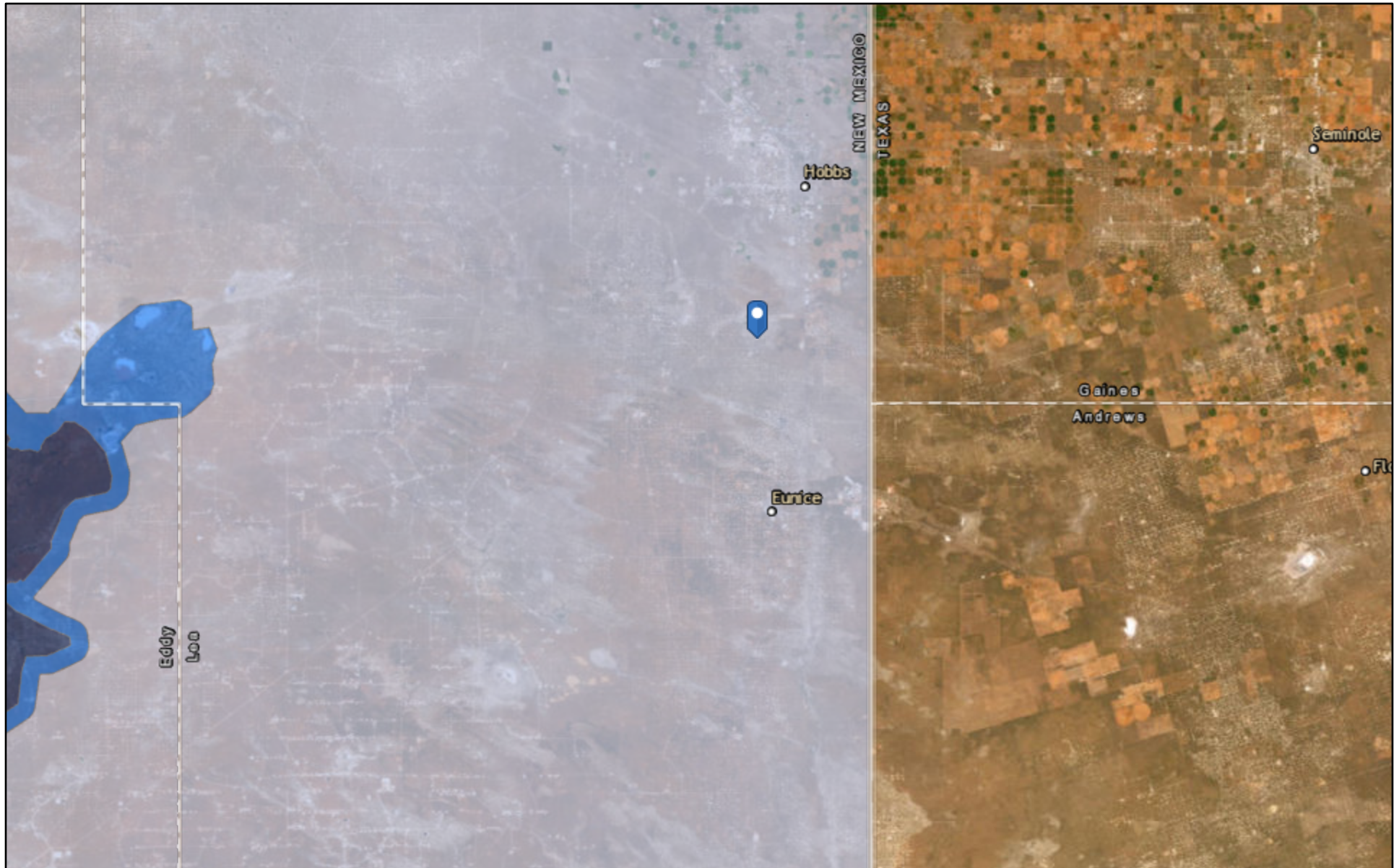
— OSE Streams



Source: Esri, Maxar, Earthstar Geographics, and the GIS User Community, Esri, HERE, Garmin, iPC, NM OSE


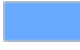

New Mexico Oil Conservation Division

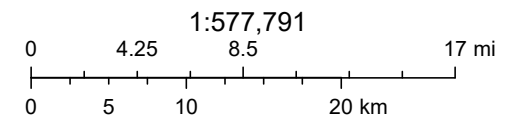
# OCD Karst Areas



4/10/2025, 3:43:07 PM

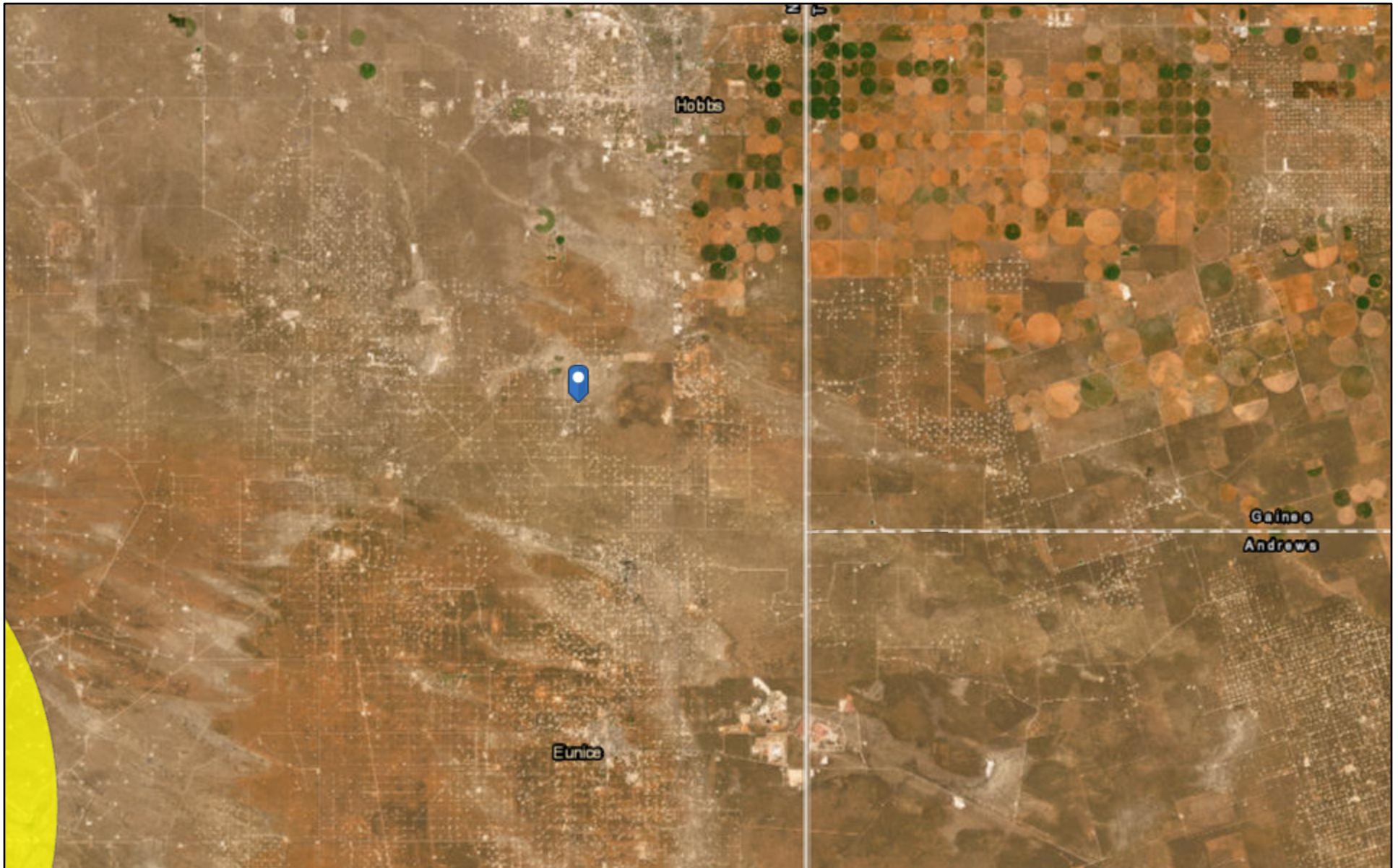
Karst Occurrence Potential

	High		Medium
	Low		



BLM, OCD, New Mexico Tech, Esri, HERE, Garmin, Earthstar Geographics

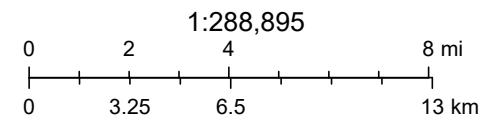
# OCD Induced Seismicity



4/10/2025, 3:44:05 PM

Seismic Response 3.0 to 3.4

 10 mi.



Oil Conservation Division (OCD), Energy, Minerals and Natural Resources Department (EMNRD), Esri, HERE, Garmin, Earthstar Geographics

New Mexico Oil Conservation Division



USGS Home  
Contact USGS  
Search USGS

## National Water Information System: Web Interface

USGS Water Resources

Data Category:

Groundwater

Geographic Area:

United States

GO

Click to hide News Bulletins

- Explore the *NEW* [USGS National Water Dashboard](#) interactive map to access real-time water data from over 13,500 stations nationwide.

Groundwater levels for the Nation

**!** Important: [Next Generation Monitoring Location Page](#)

### Search Results -- 1 sites found

**Agency code =** usgs

**site\_no list =**

- 323410103102701

**Minimum number of levels =** 1

[Save file of selected sites](#) to local disk for future upload

### USGS 323410103102701 20S.38E.17.141341

Available data for this site

SUMMARY OF ALL AVAILABLE DATA

GO

Lea County, New Mexico

Hydrologic Unit Code 13070007

Latitude 32°34'10", Longitude 103°10'27" NAD27

Land-surface elevation 3,557 feet above NAVD88

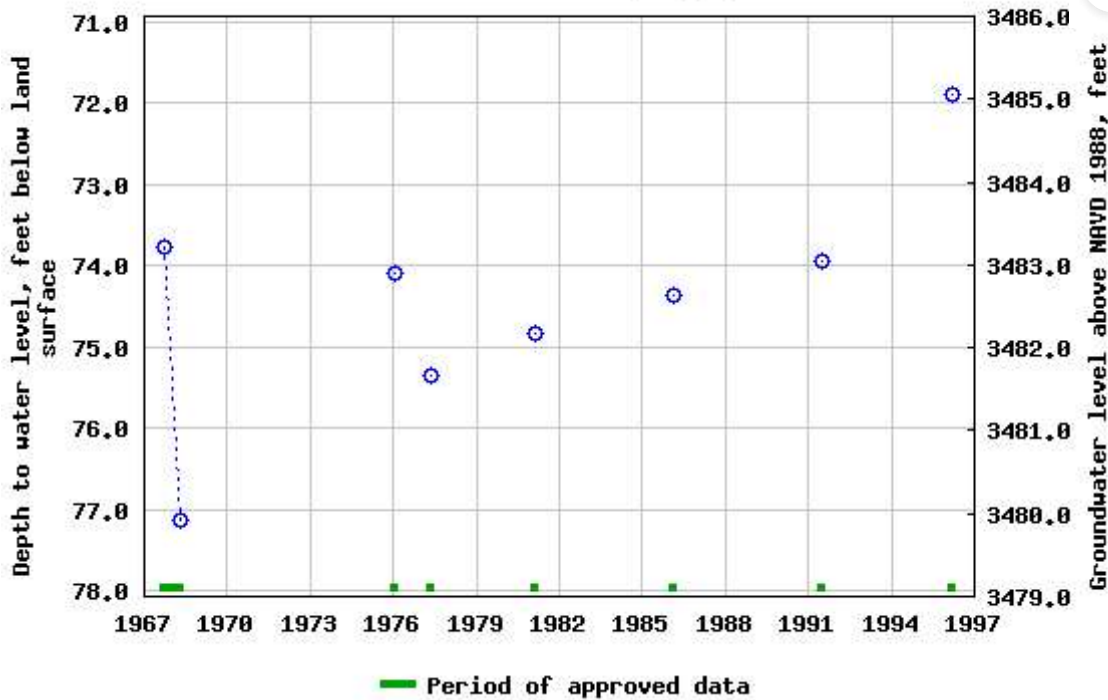
This well is completed in the High Plains aquifer (N100HGHPN) national aquifer.

This well is completed in the Alluvium, Bolson Deposits and Other Surface Deposits (110AVMB) local aquifer.

#### Output formats

<a href="#">Table of data</a>
<a href="#">Tab-separated data</a>
<a href="#">Graph of data</a>
<a href="#">Reselect period</a>

USGS 323410103102701 20S,38E,17,141341



Breaks in the plot represent a gap of at least one year between field measurements. [Download a presentation-quality graph](#)

[Questions or Comments](#)

[Help](#)

[Data Tips](#)

[Explanation of terms](#)

[Subscribe for system changes](#)

[Accessibility](#)   [FOIA](#)   [Privacy](#)   [Policies and Notices](#)

[U.S. Department of the Interior](#) | [U.S. Geological Survey](#)

**Title: Groundwater for USA: Water Levels**

**URL: <https://nwis.waterdata.usgs.gov/nwis/gwlevels?>**



Page Contact Information: [USGS Water Data Support Team](#)

Page Last Modified: 2025-04-15 13:57:46 EDT

0.6 0.44 nadww02



# New Mexico Office of the State Engineer

## Water Column/Average Depth to Water

(A CLW##### in the POD suffix indicates the POD has been replaced & no longer serves a water right file.) (R=POD has been replaced, O=orphaned, C=the file is closed)

(quarters are smallest to largest)

(meters)

(In feet)

POD Number	Code	Sub basin	County	Q64	Q16	Q4	Sec	Tws	Range	X	Y	Map	Distance	Well Depth	Depth Water	Water Column
<a href="#">L 02109</a>		L	LE	NE	SE	NE	18	20S	38E	670803.0	3605719.0 *	●	709	124	50	74
<a href="#">L 02125</a>		L	LE	NE	SE	SW	08	20S	38E	671593.0	3606538.0	●	904	120		
<a href="#">L 02124</a>	R	L	LE	NW	SW	SW	08	20S	38E	671190.0	3606531.0 *	●	948	131		
<a href="#">L 02124 POD2</a>		L	LE	NE	SW	SW	08	20S	38E	671190.0	3606531.0	●	948	122	70	52
<a href="#">L 00438 POD6</a>		L	LE	NW	NE	SW	08	20S	38E	671385.0	3606941.0 *	●	1309	125	90	35
<a href="#">L 00407 POD4</a>		L	LE	SE	NE	SE	07	20S	38E	670781.0	3606727.0 *	●	1309	136	72	64
<a href="#">L 00438 POD7</a>		L	LE	NW	NW	SE	08	20S	38E	671788.0	3606948.0	●	1340	123		
<a href="#">L 00407 S</a>		L	LE	NE	NE	SE	07	20S	38E	670781.0	3606927.0 *	●	1480	134	66	68
<a href="#">L 00407 S</a>	R	L	LE	NE	NE	SE	07	20S	38E	670781.0	3606927.0 *	●	1480	134	66	68
<a href="#">L 03799</a>		L	LE	NW	NE	SE	08	20S	38E	672190.0	3606955.0 *	●	1483	83		
<a href="#">L 03800</a>		L	LE	NW	NE	SE	08	20S	38E	672190.0	3606955.0 *	●	1483	103		
<a href="#">L 00407 POD5</a>		L	LE	NW	NE	SE	07	20S	38E	670581.0	3606927.0 *	●	1588	136	64	72

Average Depth to Water: **68 feet**

Minimum Depth: **50 feet**

Maximum Depth: **90 feet**

**Record Count:** 12

**Basin/County Search:**

**County:** LE

**UTM Filters (in meters):**

**Easting:** 671507.995

**Northing:** 3605637.504

**Radius:** 1600

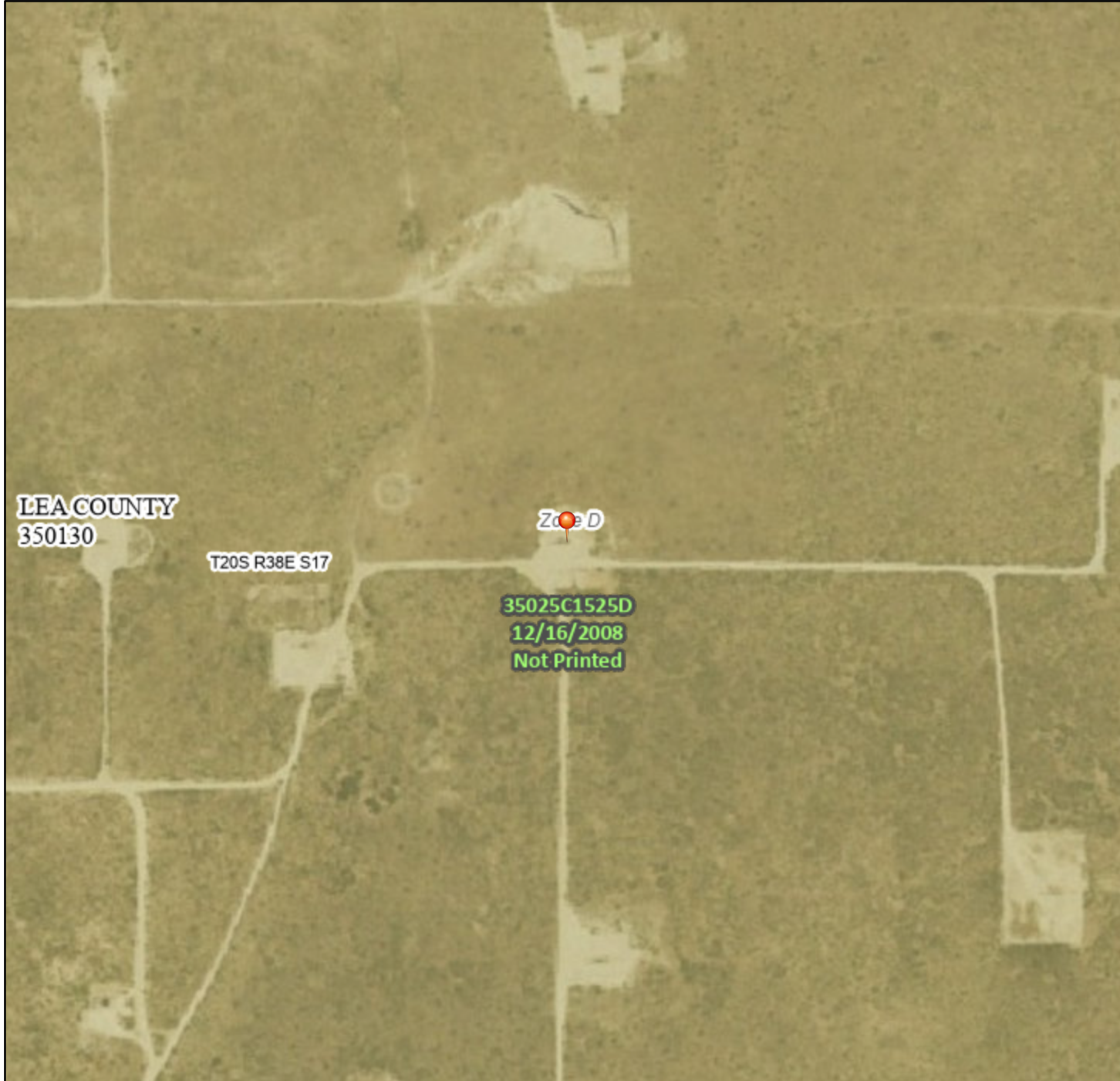
\* UTM location was derived from PLSS - see Help

The data is furnished by the NMOSE/ISC and is accepted by the recipient with the expressed understanding that the OSE/ISC make no warranties, expressed or implied, concerning the accuracy, completeness, reliability, usability, or suitability for any particular purpose of the data.

# National Flood Hazard Layer FIRMette



103°10'41"W 32°34'45"N



## Legend

SEE FIS REPORT FOR DETAILED LEGEND AND INDEX MAP FOR FIRM PANEL LAYOUT

SPECIAL FLOOD HAZARD AREAS		Without Base Flood Elevation (BFE) <i>Zone A, V, A99</i>
		With BFE or Depth <i>Zone AE, AO, AH, VE, AR</i>
		Regulatory Floodway

OTHER AREAS OF FLOOD HAZARD		0.2% Annual Chance Flood Hazard, Areas of 1% annual chance flood with average depth less than one foot or with drainage areas of less than one square mile <i>Zone X</i>
		Future Conditions 1% Annual Chance Flood Hazard <i>Zone X</i>
		Area with Reduced Flood Risk due to Levee. See Notes. <i>Zone X</i>
		Area with Flood Risk due to Levee <i>Zone D</i>

OTHER AREAS		NO SCREEN Area of Minimal Flood Hazard <i>Zone X</i>
		Effective LOMRs
		Area of Undetermined Flood Hazard <i>Zone D</i>

GENERAL STRUCTURES		Channel, Culvert, or Storm Sewer
		Levee, Dike, or Floodwall

OTHER FEATURES		20.2 Cross Sections with 1% Annual Chance
		17.5 Water Surface Elevation
		Coastal Transect
		Base Flood Elevation Line (BFE)
		Limit of Study
		Jurisdiction Boundary
		Coastal Transect Baseline
		Profile Baseline
		Hydrographic Feature

MAP PANELS		Digital Data Available
		No Digital Data Available
		Unmapped



The pin displayed on the map is an approximate point selected by the user and does not represent an authoritative property location.

This map complies with FEMA's standards for the use of digital flood maps if it is not void as described below. The basemap shown complies with FEMA's basemap accuracy standards

The flood hazard information is derived directly from the authoritative NFHL web services provided by FEMA. This map was exported on 4/10/2025 at 9:42 PM and does not reflect changes or amendments subsequent to this date and time. The NFHL and effective information may change or become superseded by new data over time.

This map image is void if the one or more of the following map elements do not appear: basemap imagery, flood zone labels, legend, scale bar, map creation date, community identifiers, FIRM panel number, and FIRM effective date. Map images for unmapped and unmodernized areas cannot be used for regulatory purposes.

Released to Imaging: 6/24/2025 2:25:49 PM

1:6,000

Basemap Imagery Source: USGS National Map 2023



# OCD Land Ownership



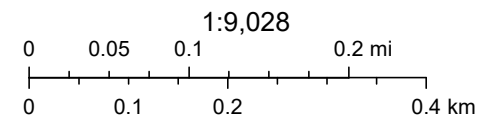
4/10/2025, 3:39:04 PM

### Mineral Ownership

- A-All minerals are owned by U.S.
- N-No minerals are owned by the U.S.

### Land Ownership

P



U.S. BLM, Source: Esri, Maxar, Earthstar Geographics, and the GIS User Community, Esri, HERE, Garmin, IPC

New Mexico Oil Conservation Division



# National Wetlands Inventory Map



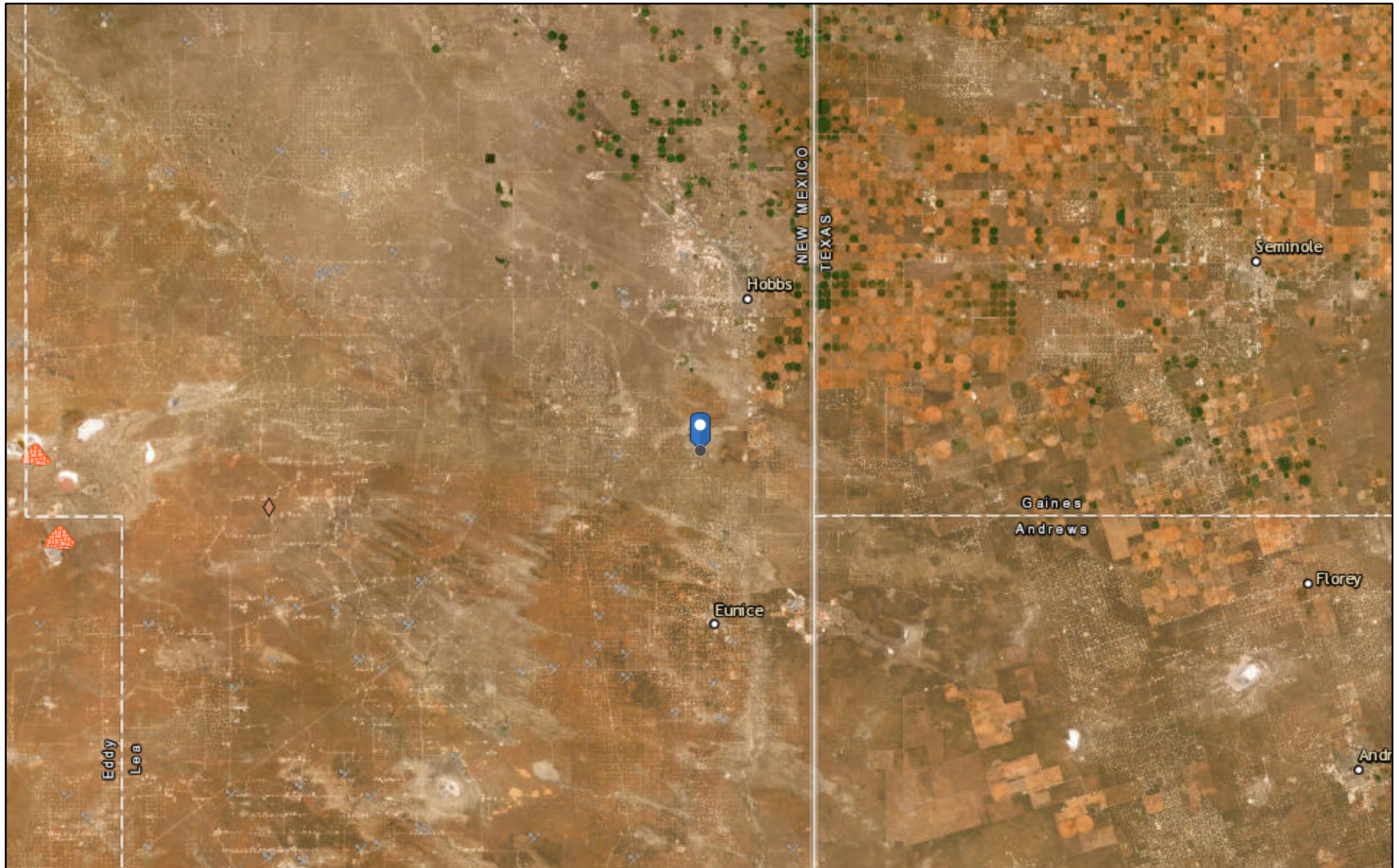
April 10, 2025

### Wetlands

- |  |   |  |
|--|---|--|
|  Estuarine and Marine Deepwater |  Freshwater Emergent Wetland       |  Lake     |
|  Estuarine and Marine Wetland   |  Freshwater Forested/Shrub Wetland |  Other    |
|  |  Freshwater Pond                   |  Riverine |

This map is for general reference only. The US Fish and Wildlife Service is not responsible for the accuracy or currentness of the base data shown on this map. All wetlands related data should be used in accordance with the layer metadata found on the Wetlands Mapper web site.

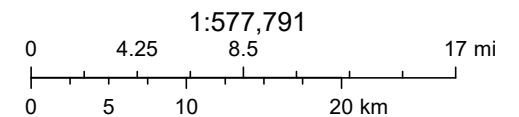
# Active Mines in New Mexico



4/10/2025, 5:10:12 PM

Registered Mines

- Aggregate, Stone etc.
- Aggregate, Stone etc.
- Aggregate, Stone etc.
- Aggregate, Stone etc.
- Aggregate, Stone etc.
- Aggregate, Stone etc.
- Aggregate, Stone etc.
- Aggregate, Stone etc.
- Industrial Minerals (Other)
- Potash



Esri, HERE, Garmin, Earthstar Geographics

# **APPENDIX C**

## **Laboratory Analytical Data**



PHONE (575) 393-2326 ° 101 E. MARLAND ° HOBBS, NM 88240

March 21, 2025

SAM CHAMA

TETRA TECH

901 WEST WALL STREET , STE 100

MIDLAND, TX 79701

RE: FRED TURNER JR B 001

Enclosed are the results of analyses for samples received by the laboratory on 03/13/25 10:12.

Cardinal Laboratories is accredited through Texas NELAP under certificate number TX-C24-00112. Accreditation applies to drinking water, non-potable water and solid and chemical materials. All accredited analytes are denoted by an asterisk (\*). For a complete list of accredited analytes and matrices visit the TCEQ website at [www.tceq.texas.gov/field/ga/lab\\_accred\\_certif.html](http://www.tceq.texas.gov/field/ga/lab_accred_certif.html).

Cardinal Laboratories is accredited through the State of Colorado Department of Public Health and Environment for:

Method EPA 552.2	Total Haloacetic Acids (HAA-5)
Method EPA 524.2	Total Trihalomethanes (TTHM)
Method EPA 524.4	Regulated VOCs (V1, V2, V3)

Cardinal Laboratories is accredited through the State of New Mexico Environment Department for:

Method SM 9223-B	Total Coliform and E. coli (Colilert MMO-MUG)
Method EPA 524.2	Regulated VOCs and Total Trihalomethanes (TTHM)
Method EPA 552.2	Total Haloacetic Acids (HAA-5)

Accreditation applies to public drinking water matrices for State of Colorado and New Mexico.

This report meets NELAP requirements and is made up of a cover page, analytical results, and a copy of the original chain-of-custody. If you have any questions concerning this report, please feel free to contact me.

Sincerely,

Celey D. Keene

Lab Director/Quality Manager



PHONE (575) 393-2326 ° 101 E. MARLAND ° HOBBS, NM 88240

**Analytical Results For:**

TETRA TECH 901 WEST WALL STREET , STE 100 MIDLAND TX, 79701	Project: FRED TURNER JR B 001 Project Number: 212C-MD-03536 Project Manager: SAM CHAMA Fax To: (432) 682-3946	Reported: 21-Mar-25 17:46
---	--	------------------------------

Sample ID	Laboratory ID	Matrix	Date Sampled	Date Received
AH - 1 ( 0-1' )	H251489-01	Soil	13-Mar-25 09:00	13-Mar-25 10:12
AH - 2 ( 0-1' )	H251489-02	Soil	13-Mar-25 09:05	13-Mar-25 10:12
AH - 3 ( 0-1' )	H251489-03	Soil	13-Mar-25 09:10	13-Mar-25 10:12
AH - 4 ( 0-1' )	H251489-04	Soil	13-Mar-25 09:15	13-Mar-25 10:12

03/21/25 - The wrong depth was originally logged in. This is the revised report and will replace the one sent on 03/19/25.

Cardinal Laboratories

\*=Accredited Analyte

PLEASE NOTE: Liability and Damages. Cardinal's liability and client's exclusive remedy for any claim arising, whether based in contract or tort, shall be limited to the amount paid by client for analyses. All claims, including those for negligence or any other cause whatsoever shall be deemed waived unless made in writing and received by Cardinal within thirty (30) days after completion of the applicable service. In no event shall Cardinal be liable for incidental or consequential damage including, without limitation, business interruptions, loss of use, or loss of profits incurred by client, its subsidiaries, affiliates or successors arising out of or related to the performance of the services hereunder by Cardinal, regardless of whether such claim is based upon any of the above stated reasons or otherwise. Results relate only to the samples identified above. This report shall not be reproduced except in full with written approval of Cardinal Laboratories.

Celey D. Keene, Lab Director/Quality Manager



PHONE (575) 393-2326 ° 101 E. MARLAND ° HOBBS, NM 88240

**Analytical Results For:**

TETRA TECH 901 WEST WALL STREET , STE 100 MIDLAND TX, 79701	Project: FRED TURNER JR B 001 Project Number: 212C-MD-03536 Project Manager: SAM CHAMA Fax To: (432) 682-3946	Reported: 21-Mar-25 17:46
---	--	------------------------------

**AH - 1 ( 0-1' )  
H251489-01 (Soil)**

Analyte	Result	MDL	Reporting Limit	Units	Dilution	Batch	Analyst	Analyzed	Method	Notes
---------	--------	-----	-----------------	-------	----------	-------	---------	----------	--------	-------

**Cardinal Laboratories**

**Inorganic Compounds**

<b>Chloride</b>	<b>48.0</b>		16.0	mg/kg	4	5031347	AC	13-Mar-25	4500-Cl-B	
-----------------	-------------	--	------	-------	---	---------	----	-----------	-----------	--

**Volatile Organic Compounds by EPA Method 8021**

Benzene*	<0.050		0.050	mg/kg	50	5031315	JH	14-Mar-25	8021B	
Toluene*	<0.050		0.050	mg/kg	50	5031315	JH	14-Mar-25	8021B	
Ethylbenzene*	<0.050		0.050	mg/kg	50	5031315	JH	14-Mar-25	8021B	
Total Xylenes*	<0.150		0.150	mg/kg	50	5031315	JH	14-Mar-25	8021B	
Total BTEX	<0.300		0.300	mg/kg	50	5031315	JH	14-Mar-25	8021B	

<i>Surrogate: 4-Bromofluorobenzene (PID)</i>			119 %		71.5-134	5031315	JH	14-Mar-25	8021B	
--	--	--	-------	--	----------	---------	----	-----------	-------	--

**Petroleum Hydrocarbons by GC FID**

GRO C6-C10*	<10.0		10.0	mg/kg	1	5031322	MS	14-Mar-25	8015B	
DRO >C10-C28*	<10.0		10.0	mg/kg	1	5031322	MS	14-Mar-25	8015B	
EXT DRO >C28-C36	<10.0		10.0	mg/kg	1	5031322	MS	14-Mar-25	8015B	

<i>Surrogate: 1-Chlorooctane</i>			89.3 %		44.4-145	5031322	MS	14-Mar-25	8015B	
----------------------------------	--	--	--------	--	----------	---------	----	-----------	-------	--

<i>Surrogate: 1-Chlorooctadecane</i>			87.3 %		40.6-153	5031322	MS	14-Mar-25	8015B	
--------------------------------------	--	--	--------	--	----------	---------	----	-----------	-------	--

Cardinal Laboratories

\*=Accredited Analyte

PLEASE NOTE: Liability and Damages. Cardinal's liability and client's exclusive remedy for any claim arising, whether based in contract or tort, shall be limited to the amount paid by client for analyses. All claims, including those for negligence or any other cause whatsoever shall be deemed waived unless made in writing and received by Cardinal within thirty (30) days after completion of the applicable service. In no event shall Cardinal be liable for incidental or consequential damage including, without limitation, business interruptions, loss of use, or loss of profits incurred by client, its subsidiaries, affiliates or successors arising out of or related to the performance of the services hereunder by Cardinal, regardless of whether such claim is based upon any of the above stated reasons or otherwise. Results relate only to the samples identified above. This report shall not be reproduced except in full with written approval of Cardinal Laboratories.

Celey D. Keene, Lab Director/Quality Manager



PHONE (575) 393-2326 ° 101 E. MARLAND ° HOBBS, NM 88240

**Analytical Results For:**

TETRA TECH 901 WEST WALL STREET , STE 100 MIDLAND TX, 79701	Project: FRED TURNER JR B 001 Project Number: 212C-MD-03536 Project Manager: SAM CHAMA Fax To: (432) 682-3946	Reported: 21-Mar-25 17:46
---	--	------------------------------

**AH - 2 ( 0-1' )**

**H251489-02 (Soil)**

Analyte	Result	MDL	Reporting Limit	Units	Dilution	Batch	Analyst	Analyzed	Method	Notes
---------	--------	-----	-----------------	-------	----------	-------	---------	----------	--------	-------

**Cardinal Laboratories**

**Inorganic Compounds**

Chloride	16.0		16.0	mg/kg	4	5031347	AC	13-Mar-25	4500-CI-B	
----------	------	--	------	-------	---	---------	----	-----------	-----------	--

**Volatile Organic Compounds by EPA Method 8021**

Benzene*	<0.050		0.050	mg/kg	50	5031315	JH	14-Mar-25	8021B	
Toluene*	<0.050		0.050	mg/kg	50	5031315	JH	14-Mar-25	8021B	
Ethylbenzene*	<0.050		0.050	mg/kg	50	5031315	JH	14-Mar-25	8021B	
Total Xylenes*	<0.150		0.150	mg/kg	50	5031315	JH	14-Mar-25	8021B	
Total BTEX	<0.300		0.300	mg/kg	50	5031315	JH	14-Mar-25	8021B	

Surrogate: 4-Bromofluorobenzene (PID)			110 %	71.5-134		5031315	JH	14-Mar-25	8021B	
---------------------------------------	--	--	-------	----------	--	---------	----	-----------	-------	--

**Petroleum Hydrocarbons by GC FID**

GRO C6-C10*	<10.0		10.0	mg/kg	1	5031322	MS	14-Mar-25	8015B	
DRO >C10-C28*	<10.0		10.0	mg/kg	1	5031322	MS	14-Mar-25	8015B	
EXT DRO >C28-C36	<10.0		10.0	mg/kg	1	5031322	MS	14-Mar-25	8015B	

Surrogate: 1-Chlorooctane			83.8 %	44.4-145		5031322	MS	14-Mar-25	8015B	
---------------------------	--	--	--------	----------	--	---------	----	-----------	-------	--

Surrogate: 1-Chlorooctadecane			82.2 %	40.6-153		5031322	MS	14-Mar-25	8015B	
-------------------------------	--	--	--------	----------	--	---------	----	-----------	-------	--

Cardinal Laboratories

\*=Accredited Analyte

PLEASE NOTE: Liability and Damages. Cardinal's liability and client's exclusive remedy for any claim arising, whether based in contract or tort, shall be limited to the amount paid by client for analyses. All claims, including those for negligence or any other cause whatsoever shall be deemed waived unless made in writing and received by Cardinal within thirty (30) days after completion of the applicable service. In no event shall Cardinal be liable for incidental or consequential damage including, without limitation, business interruptions, loss of use, or loss of profits incurred by client, its subsidiaries, affiliates or successors arising out of or related to the performance of the services hereunder by Cardinal, regardless of whether such claim is based upon any of the above stated reasons or otherwise. Results relate only to the samples identified above. This report shall not be reproduced except in full with written approval of Cardinal Laboratories.

Celey D. Keene, Lab Director/Quality Manager





PHONE (575) 393-2326 ° 101 E. MARLAND ° HOBBS, NM 88240

**Analytical Results For:**

TETRA TECH 901 WEST WALL STREET , STE 100 MIDLAND TX, 79701	Project: FRED TURNER JR B 001 Project Number: 212C-MD-03536 Project Manager: SAM CHAMA Fax To: (432) 682-3946	Reported: 21-Mar-25 17:46
---	--	------------------------------

**AH - 3 ( 0-1' )**

**H251489-03 (Soil)**

Analyte	Result	MDL	Reporting Limit	Units	Dilution	Batch	Analyst	Analyzed	Method	Notes
---------	--------	-----	-----------------	-------	----------	-------	---------	----------	--------	-------

**Cardinal Laboratories**

**Inorganic Compounds**

Chloride	112		16.0	mg/kg	4	5031347	AC	13-Mar-25	4500-CI-B	
----------	-----	--	------	-------	---	---------	----	-----------	-----------	--

**Volatile Organic Compounds by EPA Method 8021**

Benzene*	<0.050		0.050	mg/kg	50	5031315	JH	14-Mar-25	8021B	
Toluene*	<0.050		0.050	mg/kg	50	5031315	JH	14-Mar-25	8021B	
Ethylbenzene*	<0.050		0.050	mg/kg	50	5031315	JH	14-Mar-25	8021B	
Total Xylenes*	<0.150		0.150	mg/kg	50	5031315	JH	14-Mar-25	8021B	
Total BTEX	<0.300		0.300	mg/kg	50	5031315	JH	14-Mar-25	8021B	

Surrogate: 4-Bromofluorobenzene (PID)			115 %	71.5-134		5031315	JH	14-Mar-25	8021B	
---------------------------------------	--	--	-------	----------	--	---------	----	-----------	-------	--

**Petroleum Hydrocarbons by GC FID**

GRO C6-C10*	<10.0		10.0	mg/kg	1	5031322	MS	14-Mar-25	8015B	
DRO >C10-C28*	<10.0		10.0	mg/kg	1	5031322	MS	14-Mar-25	8015B	
EXT DRO >C28-C36	<10.0		10.0	mg/kg	1	5031322	MS	14-Mar-25	8015B	

Surrogate: 1-Chlorooctane			87.6 %	44.4-145		5031322	MS	14-Mar-25	8015B	
---------------------------	--	--	--------	----------	--	---------	----	-----------	-------	--

Surrogate: 1-Chlorooctadecane			85.4 %	40.6-153		5031322	MS	14-Mar-25	8015B	
-------------------------------	--	--	--------	----------	--	---------	----	-----------	-------	--

Cardinal Laboratories

\*=Accredited Analyte

PLEASE NOTE: Liability and Damages. Cardinal's liability and client's exclusive remedy for any claim arising, whether based in contract or tort, shall be limited to the amount paid by client for analyses. All claims, including those for negligence or any other cause whatsoever shall be deemed waived unless made in writing and received by Cardinal within thirty (30) days after completion of the applicable service. In no event shall Cardinal be liable for incidental or consequential damage including, without limitation, business interruptions, loss of use, or loss of profits incurred by client, its subsidiaries, affiliates or successors arising out of or related to the performance of the services hereunder by Cardinal, regardless of whether such claim is based upon any of the above stated reasons or otherwise. Results relate only to the samples identified above. This report shall not be reproduced except in full with written approval of Cardinal Laboratories.

Celey D. Keene, Lab Director/Quality Manager



PHONE (575) 393-2326 ° 101 E. MARLAND ° HOBBS, NM 88240

**Analytical Results For:**

TETRA TECH 901 WEST WALL STREET , STE 100 MIDLAND TX, 79701	Project: FRED TURNER JR B 001 Project Number: 212C-MD-03536 Project Manager: SAM CHAMA Fax To: (432) 682-3946	Reported: 21-Mar-25 17:46
---	--	------------------------------

**AH - 4 ( 0-1' )**

**H251489-04 (Soil)**

Analyte	Result	MDL	Reporting Limit	Units	Dilution	Batch	Analyst	Analyzed	Method	Notes
---------	--------	-----	-----------------	-------	----------	-------	---------	----------	--------	-------

**Cardinal Laboratories**

**Inorganic Compounds**

Chloride	16.0		16.0	mg/kg	4	5031347	AC	13-Mar-25	4500-CI-B	
----------	------	--	------	-------	---	---------	----	-----------	-----------	--

**Volatile Organic Compounds by EPA Method 8021**

Benzene*	<0.050		0.050	mg/kg	50	5031315	JH	14-Mar-25	8021B	
Toluene*	<0.050		0.050	mg/kg	50	5031315	JH	14-Mar-25	8021B	
Ethylbenzene*	<0.050		0.050	mg/kg	50	5031315	JH	14-Mar-25	8021B	
Total Xylenes*	<0.150		0.150	mg/kg	50	5031315	JH	14-Mar-25	8021B	
Total BTEX	<0.300		0.300	mg/kg	50	5031315	JH	14-Mar-25	8021B	

Surrogate: 4-Bromofluorobenzene (PID)			115 %	71.5-134		5031315	JH	14-Mar-25	8021B	
---------------------------------------	--	--	-------	----------	--	---------	----	-----------	-------	--

**Petroleum Hydrocarbons by GC FID**

GRO C6-C10*	<10.0		10.0	mg/kg	1	5031322	MS	14-Mar-25	8015B	
DRO >C10-C28*	<10.0		10.0	mg/kg	1	5031322	MS	14-Mar-25	8015B	
EXT DRO >C28-C36	<10.0		10.0	mg/kg	1	5031322	MS	14-Mar-25	8015B	

Surrogate: 1-Chlorooctane			87.7 %	44.4-145		5031322	MS	14-Mar-25	8015B	
---------------------------	--	--	--------	----------	--	---------	----	-----------	-------	--

Surrogate: 1-Chlorooctadecane			85.3 %	40.6-153		5031322	MS	14-Mar-25	8015B	
-------------------------------	--	--	--------	----------	--	---------	----	-----------	-------	--

Cardinal Laboratories

\*=Accredited Analyte

PLEASE NOTE: Liability and Damages. Cardinal's liability and client's exclusive remedy for any claim arising, whether based in contract or tort, shall be limited to the amount paid by client for analyses. All claims, including those for negligence or any other cause whatsoever shall be deemed waived unless made in writing and received by Cardinal within thirty (30) days after completion of the applicable service. In no event shall Cardinal be liable for incidental or consequential damage including, without limitation, business interruptions, loss of use, or loss of profits incurred by client, its subsidiaries, affiliates or successors arising out of or related to the performance of the services hereunder by Cardinal, regardless of whether such claim is based upon any of the above stated reasons or otherwise. Results relate only to the samples identified above. This report shall not be reproduced except in full with written approval of Cardinal Laboratories.

Celey D. Keene, Lab Director/Quality Manager



PHONE (575) 393-2326 ° 101 E. MARLAND ° HOBBS, NM 88240

**Analytical Results For:**

TETRA TECH 901 WEST WALL STREET , STE 100 MIDLAND TX, 79701	Project: FRED TURNER JR B 001 Project Number: 212C-MD-03536 Project Manager: SAM CHAMA Fax To: (432) 682-3946	Reported: 21-Mar-25 17:46
---	--	------------------------------

**Inorganic Compounds - Quality Control**

**Cardinal Laboratories**

Analyte	Result	Reporting Limit	Units	Spike Level	Source Result	%REC	%REC Limits	RPD	RPD Limit	Notes
<b>Batch 5031347 - 1:4 DI Water</b>										
<b>Blank (5031347-BLK1)</b>										
Prepared & Analyzed: 13-Mar-25										
Chloride	ND	16.0	mg/kg							
<b>LCS (5031347-BS1)</b>										
Prepared & Analyzed: 13-Mar-25										
Chloride	384	16.0	mg/kg	400		96.0	80-120			
<b>LCS Dup (5031347-BSD1)</b>										
Prepared & Analyzed: 13-Mar-25										
Chloride	416	16.0	mg/kg	400		104	80-120	8.00	20	

Cardinal Laboratories

\*=Accredited Analyte

PLEASE NOTE: Liability and Damages. Cardinal's liability and client's exclusive remedy for any claim arising, whether based in contract or tort, shall be limited to the amount paid by client for analyses. All claims, including those for negligence or any other cause whatsoever shall be deemed waived unless made in writing and received by Cardinal within thirty (30) days after completion of the applicable service. In no event shall Cardinal be liable for incidental or consequential damage including, without limitation, business interruptions, loss of use, or loss of profits incurred by client, its subsidiaries, affiliates or successors arising out of or related to the performance of the services hereunder by Cardinal, regardless of whether such claim is based upon any of the above stated reasons or otherwise. Results relate only to the samples identified above. This report shall not be reproduced except in full with written approval of Cardinal Laboratories.

Celey D. Keene, Lab Director/Quality Manager



PHONE (575) 393-2326 ° 101 E. MARLAND ° HOBBS, NM 88240

**Analytical Results For:**

TETRA TECH 901 WEST WALL STREET , STE 100 MIDLAND TX, 79701	Project: FRED TURNER JR B 001 Project Number: 212C-MD-03536 Project Manager: SAM CHAMA Fax To: (432) 682-3946	Reported: 21-Mar-25 17:46
---	--	------------------------------

**Volatile Organic Compounds by EPA Method 8021 - Quality Control**

**Cardinal Laboratories**

Analyte	Result	Reporting Limit	Units	Spike Level	Source Result	%REC	%REC Limits	RPD	RPD Limit	Notes
---------	--------	-----------------	-------	-------------	---------------	------	-------------	-----	-----------	-------

**Batch 5031315 - Volatiles**

**Blank (5031315-BLK1)**

Prepared & Analyzed: 13-Mar-25

Benzene	ND	0.050	mg/kg							
Toluene	ND	0.050	mg/kg							
Ethylbenzene	ND	0.050	mg/kg							
Total Xylenes	ND	0.150	mg/kg							
Total BTEX	ND	0.300	mg/kg							
Surrogate: 4-Bromofluorobenzene (PID)	0.0552		mg/kg	0.0500		110	71.5-134			

**LCS (5031315-BS1)**

Prepared & Analyzed: 13-Mar-25

Benzene	1.93	0.050	mg/kg	2.00		96.4	82.8-130			
Toluene	1.97	0.050	mg/kg	2.00		98.4	86-128			
Ethylbenzene	2.22	0.050	mg/kg	2.00		111	85.9-128			
m,p-Xylene	4.53	0.100	mg/kg	4.00		113	89-129			
o-Xylene	2.29	0.050	mg/kg	2.00		114	86.1-125			
Total Xylenes	6.82	0.150	mg/kg	6.00		114	88.2-128			
Surrogate: 4-Bromofluorobenzene (PID)	0.0557		mg/kg	0.0500		111	71.5-134			

**LCS Dup (5031315-BSD1)**

Prepared & Analyzed: 13-Mar-25

Benzene	1.81	0.050	mg/kg	2.00		90.5	82.8-130	6.31	15.8	
Toluene	1.84	0.050	mg/kg	2.00		92.0	86-128	6.73	15.9	
Ethylbenzene	2.00	0.050	mg/kg	2.00		99.9	85.9-128	10.3	16	
m,p-Xylene	4.05	0.100	mg/kg	4.00		101	89-129	11.2	16.2	
o-Xylene	2.05	0.050	mg/kg	2.00		102	86.1-125	11.0	16.7	
Total Xylenes	6.10	0.150	mg/kg	6.00		102	88.2-128	11.2	16.3	
Surrogate: 4-Bromofluorobenzene (PID)	0.0528		mg/kg	0.0500		106	71.5-134			

Cardinal Laboratories

\*=Accredited Analyte

PLEASE NOTE: Liability and Damages. Cardinal's liability and client's exclusive remedy for any claim arising, whether based in contract or tort, shall be limited to the amount paid by client for analyses. All claims, including those for negligence or any other cause whatsoever shall be deemed waived unless made in writing and received by Cardinal within thirty (30) days after completion of the applicable service. In no event shall Cardinal be liable for incidental or consequential damage including, without limitation, business interruptions, loss of use, or loss of profits incurred by client, its subsidiaries, affiliates or successors arising out of or related to the performance of the services hereunder by Cardinal, regardless of whether such claim is based upon any of the above stated reasons or otherwise. Results relate only to the samples identified above. This report shall not be reproduced except in full with written approval of Cardinal Laboratories.

Celey D. Keene, Lab Director/Quality Manager



PHONE (575) 393-2326 ° 101 E. MARLAND ° HOBBS, NM 88240

**Analytical Results For:**

TETRA TECH 901 WEST WALL STREET , STE 100 MIDLAND TX, 79701	Project: FRED TURNER JR B 001 Project Number: 212C-MD-03536 Project Manager: SAM CHAMA Fax To: (432) 682-3946	Reported: 21-Mar-25 17:46
---	--	------------------------------

**Petroleum Hydrocarbons by GC FID - Quality Control**

**Cardinal Laboratories**

Analyte	Result	Reporting Limit	Units	Spike Level	Source Result	%REC	%REC Limits	RPD	RPD Limit	Notes
---------	--------	-----------------	-------	-------------	---------------	------	-------------	-----	-----------	-------

**Batch 5031322 - General Prep - Organics**

**Blank (5031322-BLK1)** Prepared: 13-Mar-25 Analyzed: 14-Mar-25

GRO C6-C10	ND	10.0	mg/kg							
DRO >C10-C28	ND	10.0	mg/kg							
EXT DRO >C28-C36	ND	10.0	mg/kg							
Surrogate: 1-Chlorooctane	43.0		mg/kg	50.0		85.9	44.4-145			
Surrogate: 1-Chlorooctadecane	41.3		mg/kg	50.0		82.6	40.6-153			

**LCS (5031322-BS1)** Prepared: 13-Mar-25 Analyzed: 14-Mar-25

GRO C6-C10	200	10.0	mg/kg	200		100	81.5-123			
DRO >C10-C28	189	10.0	mg/kg	200		94.4	77.7-122			
Total TPH C6-C28	389	10.0	mg/kg	400		97.2	80.9-121			
Surrogate: 1-Chlorooctane	44.1		mg/kg	50.0		88.3	44.4-145			
Surrogate: 1-Chlorooctadecane	44.1		mg/kg	50.0		88.3	40.6-153			

**LCS Dup (5031322-BSD1)** Prepared: 13-Mar-25 Analyzed: 14-Mar-25

GRO C6-C10	212	10.0	mg/kg	200		106	81.5-123	6.00	13	
DRO >C10-C28	197	10.0	mg/kg	200		98.7	77.7-122	4.45	15.6	
Total TPH C6-C28	410	10.0	mg/kg	400		102	80.9-121	5.25	18.5	
Surrogate: 1-Chlorooctane	49.6		mg/kg	50.0		99.3	44.4-145			
Surrogate: 1-Chlorooctadecane	47.6		mg/kg	50.0		95.2	40.6-153			

Cardinal Laboratories

\*=Accredited Analyte

PLEASE NOTE: Liability and Damages. Cardinal's liability and client's exclusive remedy for any claim arising, whether based in contract or tort, shall be limited to the amount paid by client for analyses. All claims, including those for negligence or any other cause whatsoever shall be deemed waived unless made in writing and received by Cardinal within thirty (30) days after completion of the applicable service. In no event shall Cardinal be liable for incidental or consequential damage including, without limitation, business interruptions, loss of use, or loss of profits incurred by client, its subsidiaries, affiliates or successors arising out of or related to the performance of the services hereunder by Cardinal, regardless of whether such claim is based upon any of the above stated reasons or otherwise. Results relate only to the samples identified above. This report shall not be reproduced except in full with written approval of Cardinal Laboratories.

Celey D. Keene, Lab Director/Quality Manager



PHONE (575) 393-2326 ° 101 E. MARLAND ° HOBBS, NM 88240

Notes and Definitions

- ND Analyte NOT DETECTED at or above the reporting limit
- RPD Relative Percent Difference
- \*\* Samples not received at proper temperature of 6°C or below.
- \*\*\* Insufficient time to reach temperature.
- Chloride by SM4500Cl-B does not require samples be received at or below 6°C  
Samples reported on an as received basis (wet) unless otherwise noted on report

Cardinal Laboratories

\*=Accredited Analyte

PLEASE NOTE: Liability and Damages. Cardinal's liability and client's exclusive remedy for any claim arising, whether based in contract or tort, shall be limited to the amount paid by client for analyses. All claims, including those for negligence or any other cause whatsoever shall be deemed waived unless made in writing and received by Cardinal within thirty (30) days after completion of the applicable service. In no event shall Cardinal be liable for incidental or consequential damage including, without limitation, business interruptions, loss of use, or loss of profits incurred by client, its subsidiaries, affiliates or successors arising out of or related to the performance of the services hereunder by Cardinal, regardless of whether such claim is based upon any of the above stated reasons or otherwise. Results relate only to the samples identified above. This report shall not be reproduced except in full with written approval of Cardinal Laboratories.

*Celey D. Keene*

Celey D. Keene, Lab Director/Quality Manager



# Tetra Tech, Inc.

901 West Wall Street, Suite 100  
Midland, Texas 79701  
Tel (432) 682-4559  
Fax (432) 682-3948

**ANALYSIS REQUEST**

**(Circle or Specify Method No.)**

Client Name: TR Oil Ltd

Site Manager: Sara Chavira

Project Name: Fred Turner TR B PD1

Contact Info: Sara.Chavira@tetratech.com

Project Location: Lea, 60 f Wm

Project #: 212-1110-03536

Invoice to: Tetra Tech

Receiving Laboratory: Cardinal Labs

Sampler Signature: [Signature] Matthew Castrejon

Comments:

LAB # M251489  
(LAB USE ONLY)

**SAMPLE IDENTIFICATION**

1	AH-1 (0-1')	8-13-25	0900	X	X	X	X	1	
2	AH-2 (0-1')		0905	X	X	X	X	1	
3	AH-3 (0-1')		0910	X	X	X	X	1	
4	AH-4 (0-1')		0915	X	X	X	X	1	

SAMPLING  
YEAR: 2025  
DATE: 8-13-25 TIME: 0900

MATRIX  
WATER  
SOIL  
PRESERVATIVE METHOD  
HCL  
HNO<sub>3</sub>  
ICE  
NONE

# CONTAINERS  
FILTERED (Y/N)

- BTEX 8021B BTEX 8260B
- TPH TX1005 (Ext to C35)
- TPH 8015M (GRO - DRO - ORO - MRO)
- PAH 8270C
- Total Metals Ag As Ba Cd Cr Pb Se Hg
- TCLP Metals Ag As Ba Cd Cr Pb Se Hg
- TCLP Volatiles
- TCLP Semi Volatiles
- RCI
- GC/MS Vol. 8260B / 624
- GC/MS Semi. Vol. 8270C/625
- PCB's 8082 / 608
- NORM
- PLM (Asbestos)
- Chloride 300.0 4500 3/13/25
- Chloride Sulfate TDS
- General Water Chemistry (see attached list)
- Anion/Cation Balance
- TPH 8015R
- HOLD

Relinquished by: [Signature] Date: 3-13-25 Time:

Received by: [Signature] Date: 3-13-25 Time: 1012

Relinquished by: [Signature] Date:  Time:

Received by: [Signature] Date:  Time:

Relinquished by:  Date:  Time:

Received by:  Date:  Time:

LAB USE ONLY

Sample Temperature  
3.9c / 4.3c  
CF 40.3c  
#1140

REMARKS:  
 Standard

- RUSH: Same Day 24 hr. 48 hr. 72 hr.
- Rush Changes Authorized
- Special Report Limits or TRRP Report

ORIGINAL COPY

# **APPENDIX D**

## **Photographic Documentation**

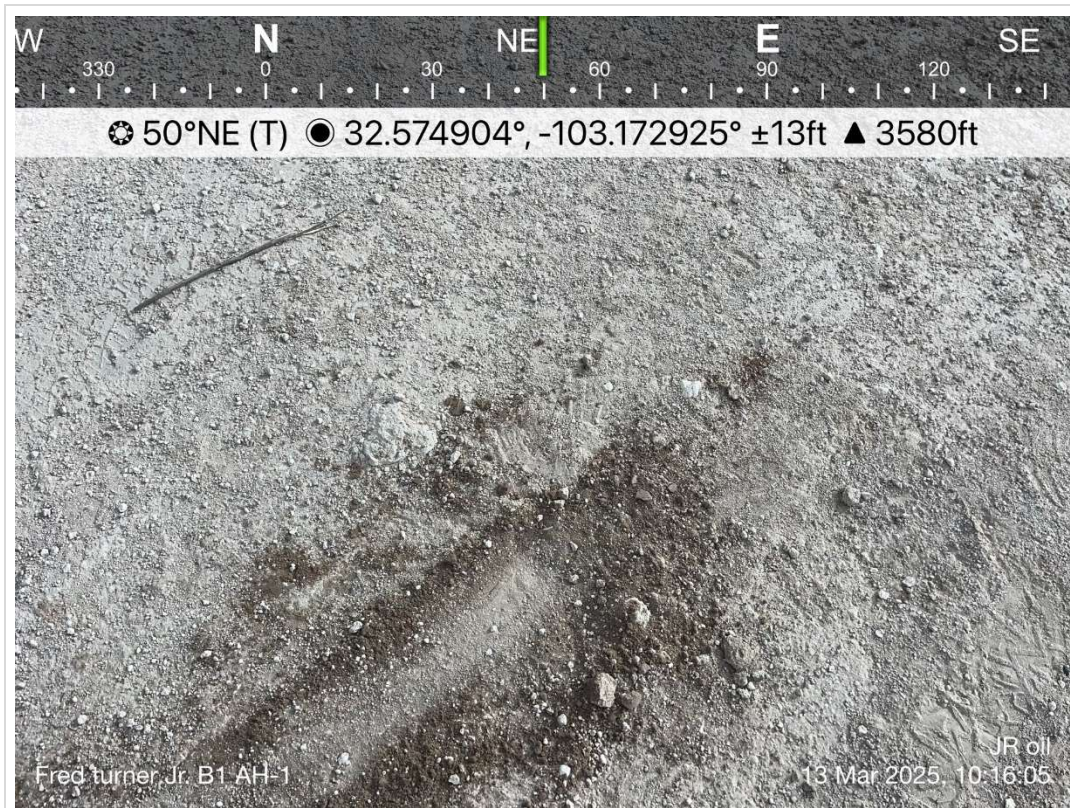




TETRA TECH, INC. PROJECT NO. 212C-MD-03536	DESCRIPTION	Site Signage at Site	1
	SITE NAME	JR Oil LTD Fred Turner JR B 001	03/13/2025



TETRA TECH, INC. PROJECT NO. 212C-MD-03536	DESCRIPTION	View northeast, north-side of pad and pumping unit.	2
	SITE NAME	JR Oil LTD Fred Turner JR B 001	03/13/2025



TETRA TECH, INC. PROJECT NO. 212C-MD-03536	DESCRIPTION	Photographic documentation of sample location AH-1.	3
	SITE NAME	JR Oil LTD Fred Turner JR B 001	03/13/2025



TETRA TECH, INC. PROJECT NO. 212C-MD-03536	DESCRIPTION	Photographic documentation of sample location AH-3.	4
	SITE NAME	JR Oil LTD Fred Turner JR B 001	03/13/2025



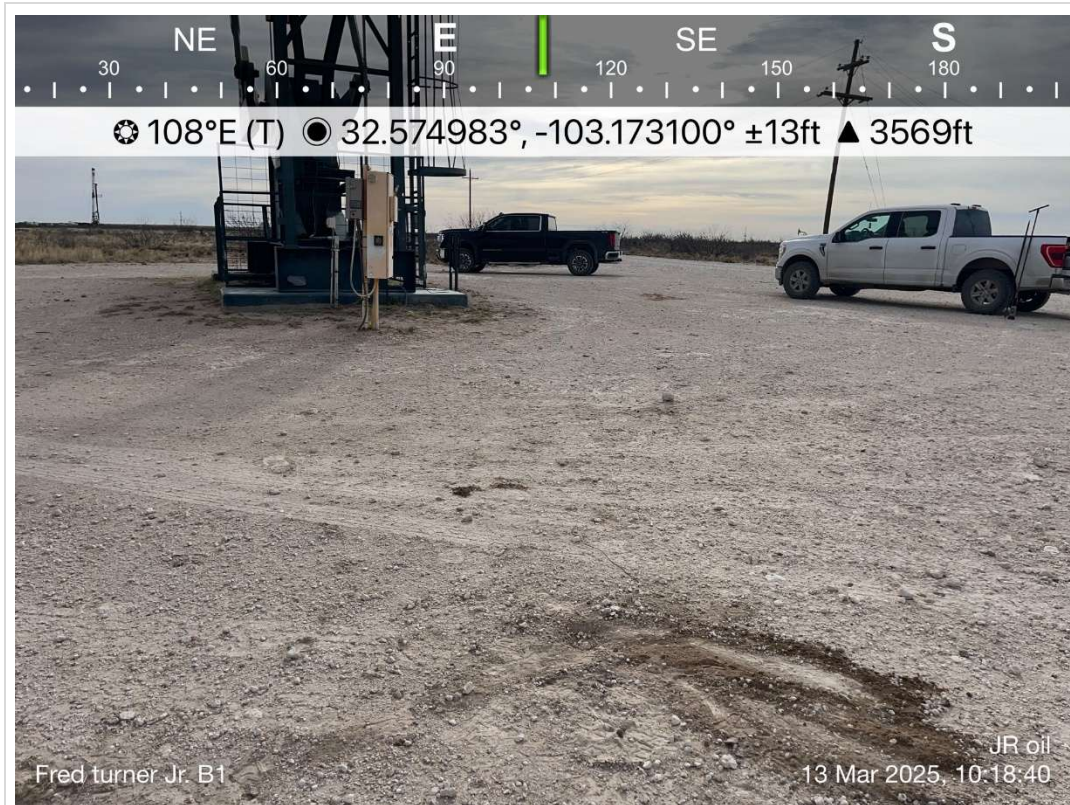
TETRA TECH, INC. PROJECT NO. 212C-MD-03536	DESCRIPTION	View northwest, area of pad directly south of pumping unit.	5
	SITE NAME	JR Oil LTD Fred Turner JR B 001	03/13/2025



TETRA TECH, INC. PROJECT NO. 212C-MD-03536	DESCRIPTION	View northwest, east-northeast side of pumping unit.	6
	SITE NAME	JR Oil LTD Fred Turner JR B 001	03/13/2025



TETRA TECH, INC. PROJECT NO. 212C-MD-03536	DESCRIPTION	View west-southwest, north- and west-sides of pad adjacent to pumping unit visible.	7
	SITE NAME	JR Oil LTD Fred Turner JR B 001	03/13/2025



TETRA TECH, INC. PROJECT NO. 212C-MD-03536	DESCRIPTION	View east, west side of pumping unit and adjacent pad area.	8
	SITE NAME	JR Oil LTD Fred Turner JR B 001	03/13/2025

Sante Fe Main Office  
Phone: (505) 476-3441

General Information  
Phone: (505) 629-6116

Online Phone Directory  
<https://www.emnrd.nm.gov/ocd/contact-us>

**State of New Mexico**  
**Energy, Minerals and Natural Resources**  
**Oil Conservation Division**  
**1220 S. St Francis Dr.**  
**Santa Fe, NM 87505**

QUESTIONS

Action 455887

**QUESTIONS**

Operator: J R OIL, LTD. CO. P.O. Box 53657 Lubbock, TX 79453	OGRID: 256073
	Action Number: 455887
	Action Type: [C-141] Remediation Closure Request C-141 (C-141-v-Closure)

**QUESTIONS**

<b>Prerequisites</b>	
Incident ID (n#)	nGRL1013259660
Incident Name	NGRL1013259660 FRED TURNER JR B 001 VALVE RELEASE @ 30-025-07780
Incident Type	Oil Release
Incident Status	Remediation Closure Report Received
Incident Well	[30-025-07780] FRED TURNER JR B #001

<b>Location of Release Source</b>	
<i>Please answer all the questions in this group.</i>	
Site Name	Fred Turner Jr B 001 Valve Release
Date Release Discovered	04/25/2010
Surface Owner	Private

<b>Incident Details</b>	
<i>Please answer all the questions in this group.</i>	
Incident Type	Oil Release
Did this release result in a fire or is the result of a fire	No
Did this release result in any injuries	No
Has this release reached or does it have a reasonable probability of reaching a watercourse	No
Has this release endangered or does it have a reasonable probability of endangering public health	No
Has this release substantially damaged or will it substantially damage property or the environment	No
Is this release of a volume that is or may with reasonable probability be detrimental to fresh water	No

<b>Nature and Volume of Release</b>	
<i>Material(s) released, please answer all that apply below. Any calculations or specific justifications for the volumes provided should be attached to the follow-up C-141 submission.</i>	
Crude Oil Released (bbls) Details	Cause: Equipment Failure   Valve   Crude Oil   Released: 8 BBL   Recovered: 6 BBL   Lost: 2 BBL.
Produced Water Released (bbls) Details	Cause: Equipment Failure   Valve   Produced Water   Released: 14 BBL   Recovered: 14 BBL   Lost: 0 BBL.
Is the concentration of chloride in the produced water >10,000 mg/l	Yes
Condensate Released (bbls) Details	Not answered.
Natural Gas Vented (Mcf) Details	Not answered.
Natural Gas Flared (Mcf) Details	Not answered.
Other Released Details	Not answered.
Are there additional details for the questions above (i.e. any answer containing Other, Specify, Unknown, and/or Fire, or any negative lost amounts)	Not answered.

Sante Fe Main Office  
Phone: (505) 476-3441

General Information  
Phone: (505) 629-6116

Online Phone Directory  
<https://www.emnrd.nm.gov/ocd/contact-us>

**State of New Mexico**  
**Energy, Minerals and Natural Resources**  
**Oil Conservation Division**  
**1220 S. St Francis Dr.**  
**Santa Fe, NM 87505**

QUESTIONS, Page 2

Action 455887

**QUESTIONS (continued)**

Operator: J R OIL, LTD. CO. P.O. Box 53657 Lubbock, TX 79453	OGRID: 256073
	Action Number: 455887
	Action Type: [C-141] Remediation Closure Request C-141 (C-141-v-Closure)

**QUESTIONS**

<b>Nature and Volume of Release (continued)</b>	
Is this a gas only submission (i.e. only significant Mcf values reported)	<b>No, according to supplied volumes this does not appear to be a "gas only" report.</b>
Was this a major release as defined by Subsection A of 19.15.29.7 NMAC	<b>No</b>
Reasons why this would be considered a submission for a notification of a major release	<i>Unavailable.</i>

*With the implementation of the 19.15.27 NMAC (05/25/2021), venting and/or flaring of natural gas (i.e. gas only) are to be submitted on the C-129 form.*

**Initial Response**

*The responsible party must undertake the following actions immediately unless they could create a safety hazard that would result in injury.*

The source of the release has been stopped	<b>True</b>
The impacted area has been secured to protect human health and the environment	<b>True</b>
Released materials have been contained via the use of berms or dikes, absorbent pads, or other containment devices	<b>True</b>
All free liquids and recoverable materials have been removed and managed appropriately	<b>True</b>
If all the actions described above have not been undertaken, explain why	<i>Not answered.</i>

*Per Paragraph (4) of Subsection B of 19.15.29.8 NMAC the responsible party may commence remediation immediately after discovery of a release. If remediation has begun, please prepare and attach a narrative of actions to date in the follow-up C-141 submission. If remedial efforts have been successfully completed or if the release occurred within a lined containment area (see Subparagraph (a) of Paragraph (5) of Subsection A of 19.15.29.11 NMAC), please prepare and attach all information needed for closure evaluation in the follow-up C-141 submission.*

I hereby certify that the information given above is true and complete to the best of my knowledge and understand that pursuant to OCD rules and regulations all operators are required to report and/or file certain release notifications and perform corrective actions for releases which may endanger public health or the environment. The acceptance of a C-141 report by the OCD does not relieve the operator of liability should their operations have failed to adequately investigate and remediate contamination that pose a threat to groundwater, surface water, human health or the environment. In addition, OCD acceptance of a C-141 report does not relieve the operator of responsibility for compliance with any other federal, state, or local laws and/or regulations.

I hereby agree and sign off to the above statement	Name: Brittany Long Title: Consultant Email: brittany.long@tetrattech.com Date: 04/25/2025
--	---

Sante Fe Main Office  
Phone: (505) 476-3441

General Information  
Phone: (505) 629-6116

Online Phone Directory  
<https://www.emnrd.nm.gov/ocd/contact-us>

**State of New Mexico**  
**Energy, Minerals and Natural Resources**  
**Oil Conservation Division**  
**1220 S. St Francis Dr.**  
**Santa Fe, NM 87505**

QUESTIONS, Page 3

Action 455887

**QUESTIONS (continued)**

Operator: J R OIL, LTD. CO. P.O. Box 53657 Lubbock, TX 79453	OGRID: 256073
	Action Number: 455887
	Action Type: [C-141] Remediation Closure Request C-141 (C-141-v-Closure)

**QUESTIONS**

<b>Site Characterization</b>	
<i>Please answer all the questions in this group (only required when seeking remediation plan approval and beyond). This information must be provided to the appropriate district office no later than 90 days after the release discovery date.</i>	
What is the shallowest depth to groundwater beneath the area affected by the release in feet below ground surface (ft bgs)	Between 51 and 75 (ft.)
What method was used to determine the depth to ground water	U.S. Geological Survey
Did this release impact groundwater or surface water	No
<b>What is the minimum distance, between the closest lateral extents of the release and the following surface areas:</b>	
A continuously flowing watercourse or any other significant watercourse	Between 1000 (ft.) and ½ (mi.)
Any lakebed, sinkhole, or playa lake (measured from the ordinary high-water mark)	Between ½ and 1 (mi.)
An occupied permanent residence, school, hospital, institution, or church	Between 1 and 5 (mi.)
A spring or a private domestic fresh water well used by less than five households for domestic or stock watering purposes	Between 1 and 5 (mi.)
Any other fresh water well or spring	Between 1 and 5 (mi.)
Incorporated municipal boundaries or a defined municipal fresh water well field	Between 1 and 5 (mi.)
A wetland	Between 300 and 500 (ft.)
A subsurface mine	Greater than 5 (mi.)
An (non-karst) unstable area	Greater than 5 (mi.)
Categorize the risk of this well / site being in a karst geology	Low
A 100-year floodplain	Between 1000 (ft.) and ½ (mi.)
Did the release impact areas not on an exploration, development, production, or storage site	No

<b>Remediation Plan</b>	
<i>Please answer all the questions that apply or are indicated. This information must be provided to the appropriate district office no later than 90 days after the release discovery date.</i>	
Requesting a remediation plan approval with this submission	Yes
<i>Attach a comprehensive report demonstrating the lateral and vertical extents of soil contamination associated with the release have been determined, pursuant to 19.15.29.11 NMAC and 19.15.29.13 NMAC.</i>	
Have the lateral and vertical extents of contamination been fully delineated	Yes
Was this release entirely contained within a lined containment area	No
<b>Soil Contamination Sampling:</b> (Provide the highest observable value for each, in milligrams per kilograms.)	
Chloride (EPA 300.0 or SM4500 Cl B)	112
TPH (GRO+DRO+MRO) (EPA SW-846 Method 8015M)	0.1
GRO+DRO (EPA SW-846 Method 8015M)	0.1
BTEX (EPA SW-846 Method 8021B or 8260B)	0.3
Benzene (EPA SW-846 Method 8021B or 8260B)	0.1
<i>Per Subsection B of 19.15.29.11 NMAC unless the site characterization report includes completed efforts at remediation, the report must include a proposed remediation plan in accordance with 19.15.29.12 NMAC, which includes the anticipated timelines for beginning and completing the remediation.</i>	
On what estimated date will the remediation commence	03/13/2025
On what date will (or did) the final sampling or liner inspection occur	03/13/2025
On what date will (or was) the remediation complete(d)	03/13/2025
What is the estimated surface area (in square feet) that will be reclaimed	0
What is the estimated volume (in cubic yards) that will be reclaimed	0
What is the estimated surface area (in square feet) that will be remediated	0
What is the estimated volume (in cubic yards) that will be remediated	0
<i>These estimated dates and measurements are recognized to be the best guess or calculation at the time of submission and may (be) change(d) over time as more remediation efforts are completed.</i>	
<i>The OCD recognizes that proposed remediation measures may have to be minimally adjusted in accordance with the physical realities encountered during remediation. If the responsible party has any need to significantly deviate from the remediation plan proposed, then it should consult with the division to determine if another remediation plan submission is required.</i>	

Sante Fe Main Office  
Phone: (505) 476-3441

General Information  
Phone: (505) 629-6116

Online Phone Directory  
<https://www.emnrd.nm.gov/ocd/contact-us>

**State of New Mexico**  
**Energy, Minerals and Natural Resources**  
**Oil Conservation Division**  
**1220 S. St Francis Dr.**  
**Santa Fe, NM 87505**

QUESTIONS, Page 4

Action 455887

**QUESTIONS (continued)**

Operator: J R OIL, LTD. CO. P.O. Box 53657 Lubbock, TX 79453	OGRID: 256073
	Action Number: 455887
	Action Type: [C-141] Remediation Closure Request C-141 (C-141-v-Closure)

**QUESTIONS**

**Remediation Plan (continued)**

Please answer all the questions that apply or are indicated. This information must be provided to the appropriate district office no later than 90 days after the release discovery date.

**This remediation will (or is expected to) utilize the following processes to remediate / reduce contaminants:**

(Select all answers below that apply.)

(Ex Situ) Excavation and <b>off-site</b> disposal (i.e. dig and haul, hydrovac, etc.)	No
(Ex Situ) Excavation and <b>on-site</b> remediation (i.e. On-Site Land Farms)	No
(In Situ) Soil Vapor Extraction	No
(In Situ) Chemical processing (i.e. Soil Shredding, Potassium Permanganate, etc.)	No
(In Situ) Biological processing (i.e. Microbes / Fertilizer, etc.)	No
(In Situ) Physical processing (i.e. Soil Washing, Gypsum, Disking, etc.)	No
Ground Water Abatement pursuant to 19.15.30 NMAC	No
OTHER (Non-listed remedial process)	Yes

Other Non-listed Remedial Process. Please specify	Historical release incident with no exact information on where the release took place. Assessment was performed in order to locate impacted soils in the vicinity of the pumpjack. No impact was located. Therefore, no remedial action was required in order to address the subject line release incident (nGRL1013259660).
---	--

Per Subsection B of 19.15.29.11 NMAC unless the site characterization report includes completed efforts at remediation, the report must include a proposed remediation plan in accordance with 19.15.29.12 NMAC, which includes the anticipated timelines for beginning and completing the remediation.

I hereby certify that the information given above is true and complete to the best of my knowledge and understand that pursuant to OCD rules and regulations all operators are required to report and/or file certain release notifications and perform corrective actions for releases which may endanger public health or the environment. The acceptance of a C-141 report by the OCD does not relieve the operator of liability should their operations have failed to adequately investigate and remediate contamination that pose a threat to groundwater, surface water, human health or the environment. In addition, OCD acceptance of a C-141 report does not relieve the operator of responsibility for compliance with any other federal, state, or local laws and/or regulations.

I hereby agree and sign off to the above statement	Name: Brittany Long Title: Consultant Email: brittany.long@tetrattech.com Date: 04/25/2025
--	---

The OCD recognizes that proposed remediation measures may have to be minimally adjusted in accordance with the physical realities encountered during remediation. If the responsible party has any need to significantly deviate from the remediation plan proposed, then it should consult with the division to determine if another remediation plan submission is required.



Sante Fe Main Office  
Phone: (505) 476-3441

General Information  
Phone: (505) 629-6116

Online Phone Directory  
<https://www.emnrd.nm.gov/ocd/contact-us>

**State of New Mexico**  
**Energy, Minerals and Natural Resources**  
**Oil Conservation Division**  
**1220 S. St Francis Dr.**  
**Santa Fe, NM 87505**

QUESTIONS, Page 5

Action 455887

**QUESTIONS (continued)**

Operator: J R OIL, LTD. CO. P.O. Box 53657 Lubbock, TX 79453	OGRID: 256073
	Action Number: 455887
	Action Type: [C-141] Remediation Closure Request C-141 (C-141-v-Closure)

**QUESTIONS**

<b>Deferral Requests Only</b>	
<i>Only answer the questions in this group if seeking a deferral upon approval this submission. Each of the following items must be confirmed as part of any request for deferral of remediation.</i>	
Requesting a deferral of the remediation closure due date with the approval of this submission	No

Sante Fe Main Office  
Phone: (505) 476-3441

General Information  
Phone: (505) 629-6116

Online Phone Directory  
<https://www.emnrd.nm.gov/ocd/contact-us>

**State of New Mexico**  
**Energy, Minerals and Natural Resources**  
**Oil Conservation Division**  
**1220 S. St Francis Dr.**  
**Santa Fe, NM 87505**

QUESTIONS, Page 6

Action 455887

**QUESTIONS (continued)**

Operator: J R OIL, LTD. CO. P.O. Box 53657 Lubbock, TX 79453	OGRID: 256073
	Action Number: 455887
	Action Type: [C-141] Remediation Closure Request C-141 (C-141-v-Closure)

**QUESTIONS**

<b>Sampling Event Information</b>	
Last sampling notification (C-141N) recorded	<b>455894</b>
Sampling date pursuant to Subparagraph (a) of Paragraph (1) of Subsection D of 19.15.29.12 NMAC	<b>03/13/2025</b>
What was the (estimated) number of samples that were to be gathered	<b>4</b>
What was the sampling surface area in square feet	<b>1550</b>

<b>Remediation Closure Request</b>	
<i>Only answer the questions in this group if seeking remediation closure for this release because all remediation steps have been completed.</i>	
Requesting a remediation closure approval with this submission	Yes
Have the lateral and vertical extents of contamination been fully delineated	Yes
Was this release entirely contained within a lined containment area	No
All areas reasonably needed for production or subsequent drilling operations have been stabilized, returned to the sites existing grade, and have a soil cover that prevents ponding of water, minimizing dust and erosion	Yes
What was the total surface area (in square feet) remediated	0
What was the total volume (cubic yards) remediated	0
All areas not reasonably needed for production or subsequent drilling operations have been reclaimed to contain a minimum of four feet of non-waste contain earthen material with concentrations less than 600 mg/kg chlorides, 100 mg/kg TPH, 50 mg/kg BTEX, and 10 mg/kg Benzene	Yes
What was the total surface area (in square feet) reclaimed	0
What was the total volume (in cubic yards) reclaimed	0
Summarize any additional remediation activities not included by answers (above)	No additional information

*The responsible party must attach information demonstrating they have complied with all applicable closure requirements and any conditions or directives of the OCD. This demonstration should be in the form of a comprehensive report (in .pdf format) including a scaled site map, sampling diagrams, relevant field notes, photographs of any excavation prior to backfilling, laboratory data including chain of custody documents of final sampling, and a narrative of the remedial activities. Refer to 19.15.29.12 NMAC.*

I hereby certify that the information given above is true and complete to the best of my knowledge and understand that pursuant to OCD rules and regulations all operators are required to report and/or file certain release notifications and perform corrective actions for releases which may endanger public health or the environment. The acceptance of a C-141 report by the OCD does not relieve the operator of liability should their operations have failed to adequately investigate and remediate contamination that pose a threat to groundwater, surface water, human health or the environment. In addition, OCD acceptance of a C-141 report does not relieve the operator of responsibility for compliance with any other federal, state, or local laws and/or regulations. The responsible party acknowledges they must substantially restore, reclaim, and re-vegetate the impacted surface area to the conditions that existed prior to the release or their final land use in accordance with 19.15.29.13 NMAC including notification to the OCD when reclamation and re-vegetation are complete.

I hereby agree and sign off to the above statement	Name: Brittany Long Title: Consultant Email: brittany.long@tetrattech.com Date: 04/25/2025
--	---

Sante Fe Main Office  
Phone: (505) 476-3441

General Information  
Phone: (505) 629-6116

Online Phone Directory  
<https://www.emnrd.nm.gov/ocd/contact-us>

**State of New Mexico**  
**Energy, Minerals and Natural Resources**  
**Oil Conservation Division**  
**1220 S. St Francis Dr.**  
**Santa Fe, NM 87505**

QUESTIONS, Page 7

Action 455887

**QUESTIONS (continued)**

Operator: J R OIL, LTD. CO. P.O. Box 53657 Lubbock, TX 79453	OGRID: 256073
	Action Number: 455887
	Action Type: [C-141] Remediation Closure Request C-141 (C-141-v-Closure)

**QUESTIONS**

<b>Reclamation Report</b>	
<i>Only answer the questions in this group if all reclamation steps have been completed.</i>	
Requesting a reclamation approval with this submission	No

Sante Fe Main Office  
Phone: (505) 476-3441

General Information  
Phone: (505) 629-6116

Online Phone Directory  
<https://www.emnrd.nm.gov/ocd/contact-us>

**State of New Mexico**  
**Energy, Minerals and Natural Resources**  
**Oil Conservation Division**  
**1220 S. St Francis Dr.**  
**Santa Fe, NM 87505**

CONDITIONS

Action 455887

**CONDITIONS**

Operator: J R OIL, LTD. CO. P.O. Box 53657 Lubbock, TX 79453	OGRID: 256073
	Action Number: 455887
	Action Type: [C-141] Remediation Closure Request C-141 (C-141-v-Closure)

**CONDITIONS**

Created By	Condition	Condition Date
michael.buchanan	The remediation closure for the historic site is approved.	6/24/2025