



## SITE INFORMATION

---

### **Closure Report**

**Dos Equis 12 Federal Com #001 (05.23.2025)**

**Incident ID: NAPP2514427530**

**Lea County, New Mexico**

**Unit A, Sec 12, T24S, R32E**

**32.23847° -103.62239°**

### **Produced Water and Crude Oil Release**

**Point of Release: Packing leak on well head**

**Release Date: 05.23.2025**

**Volume Released: 4 Barrels of Crude Oil and 4 Barrels of Produced Water**

**Volume Recovered: 2 Barrels of Crude Oil and 2 Barrels of Produced Water**

**CARMONA RESOURCES**



### **Prepared for:**

**Coterra Energy Operating Co.**

**6001 Deauville Blvd.**

**Suite 300N**

**Midland, Texas 79706**

### **Prepared by:**

**Carmona Resources, LLC**

**310 West Wall Street**

**Suite 500**

**Midland, Texas 79701**

310 West Wall Street, Suite 500  
Midland TX, 79701  
432.813.1992



## TABLE OF CONTENTS

---

### 1.0 SITE INFORMATION AND BACKGROUND

### 2.0 SITE CHARACTERIZATION AND GROUNDWATER

### 3.0 NMAC REGULATORY CRITERIA

### 4.0 REMEDIATION ACTIVITIES

### 5.0 CONCLUSIONS

### FIGURES

FIGURE 1      OVERVIEW      FIGURE 2      TOPOGRAPHIC

FIGURE 3      EXCAVATION DEPTH

### APPENDICES

APPENDIX A      TABLES

APPENDIX B      PHOTOS

APPENDIX C      NMOCD CORRESPONDENCE

APPENDIX D      SITE CHARACTERIZATION AND GROUNDWATER

APPENDIX E      LABORATORY REPORTS



June 17, 2025

New Mexico Oil Conservation Division  
1220 South St, Francis Drive  
Santa Fe, New Mexico 87505

Re: **Closure Report**  
**Dos Equis 12 Federal Com #001 (05.23.2025)**  
**Incident ID: NAPP2510433552**  
**Coterra Energy Operating Co.**  
**Site Location: Unit A, S12, T24S, R32E**  
**32.23847° -103.62239°**  
**Lea County, New Mexico**

To whom it may concern:

On behalf of Coterra Energy Operating Co. (Coterra) Carmona Resources LLC, has prepared this letter to document the remediation activities for the Dos Equis 12 Federal Com #001 release. The site is located at 32.23847° -103.62239° within Unit A, S12, T24S, R32E, in Lea County, New Mexico (Figures 1 and 2).

### **1.0 Site Information and Background**

Based on the Notification of Release obtained from the New Mexico Oil Conservation Division (NMOCD), the release was discovered on May 23, 2025, due to a packing leak at the well head. It resulted in approximately four (4) barrels of produced water and four (4) barrels of crude oil being released on pad, with two (2) barrels of produced water and two (2) barrels of crude oil recovered. The release area is approximately 2,753 sq ft. The spill boundaries are shown in Figure 3. The Notification of Release and Initial C-141 form is attached in Appendix C.

### **2.0 Site Characterization and Groundwater**

The site is located within a low karst area. Based on a review of the New Mexico Office of State Engineers and USGS databases, there are no known water sources within a 0.50-mile radius of the location. The nearest Groundwater Determination Bore (GWDB) is approximately 0.44 miles West of the site in S12, T24S, R32E, (32.238879°, -103.63003°) and was drilled in 2023. The GWDB was drilled to 105 feet below the ground surface (ft bgs) and did not have any evidence of groundwater present after 72 hours. A copy of the associated well log is attached in Appendix D.

### **3.0 NMAC Regulatory Criteria**

Per the NMOCD regulatory criteria established in 19.15.29.12 NMAC, the following criteria were utilized in assessing and remediating the site.

- Benzene: 10 milligrams per kilogram (mg/kg).
- Benzene, toluene, ethylbenzene, and total xylenes (BTEX): 50 mg/kg.
- TPH: 1,000 mg/kg (GRO + DRO).
- TPH: 2,500 mg/kg (GRO + DRO + MRO).
- Chloride: 20,000 mg/kg.



#### **4.0 Remediation Activities**

Beginning on June 11, 2025, Carmona Resources personnel were onsite to supervise the remediation activities, collect confirmation samples, and document backfill activities. Before collecting composite confirmation samples, the NMOCD division office was notified via NMOCD portal on June 6, 2025, per Subsection D of 19.15.29.12 NMAC. See Appendix C. The area was excavated to a depth of 0.5 ft bgs. A total of fifteen (15) confirmation floor samples were collected (CS-1 through CS-15) were collected every 200 square feet to ensure the proper removal of the contaminated soils, and five (5) horizontal samples (H-1 through H-5) were collected for horizontal delineation. For chemical analysis, the soil samples were collected and placed into laboratory-provided sample containers, stored on ice, and transported under the proper chain-of-custody protocol to Cardinal Laboratories in Hobbs, New Mexico. All collected samples were analyzed for TPH analysis by EPA method 8015 modified, BTEX by EPA Method 8021B, and Chloride by EPA method 4500. Copies of laboratory analysis and chain-of-custody documentation are included in Appendix E. The excavation depths and confirmation sample locations are shown in Figure 3.

All final confirmation samples were below the regulatory requirements for TPH, BTEX, and Chloride. Refer to Table 1. The excavation depth and confirmation sample locations are shown in Figure 3.

Once the remediation activities were completed, the excavated areas were backfilled with clean material to surface grade. A composite sample of the backfill material was collected for laboratory analysis on June 12, 2025 before being utilized. The backfill material was sourced from Ramirez & Sons, located in Hobbs, New Mexico. Refer to Table 1. Approximately 2,753 square feet of contamination was remediated, resulting in 60 cubic yards of material being excavated and transported offsite for proper disposal.

#### **5.0 Conclusions**

Based on the assessment and analytical data from the remediation, no further actions are required at the site. Cimarex formally requests the closure of the spill. The entire area will be reclaimed and revegetated during normal P/A activities per NMAC 19.15.29.13. If you have any questions regarding this report or need additional information, please contact us at 432-813-8988.

Sincerely,  
**Carmona Resources, LLC**

Ashton Thielke  
Environmental Manager

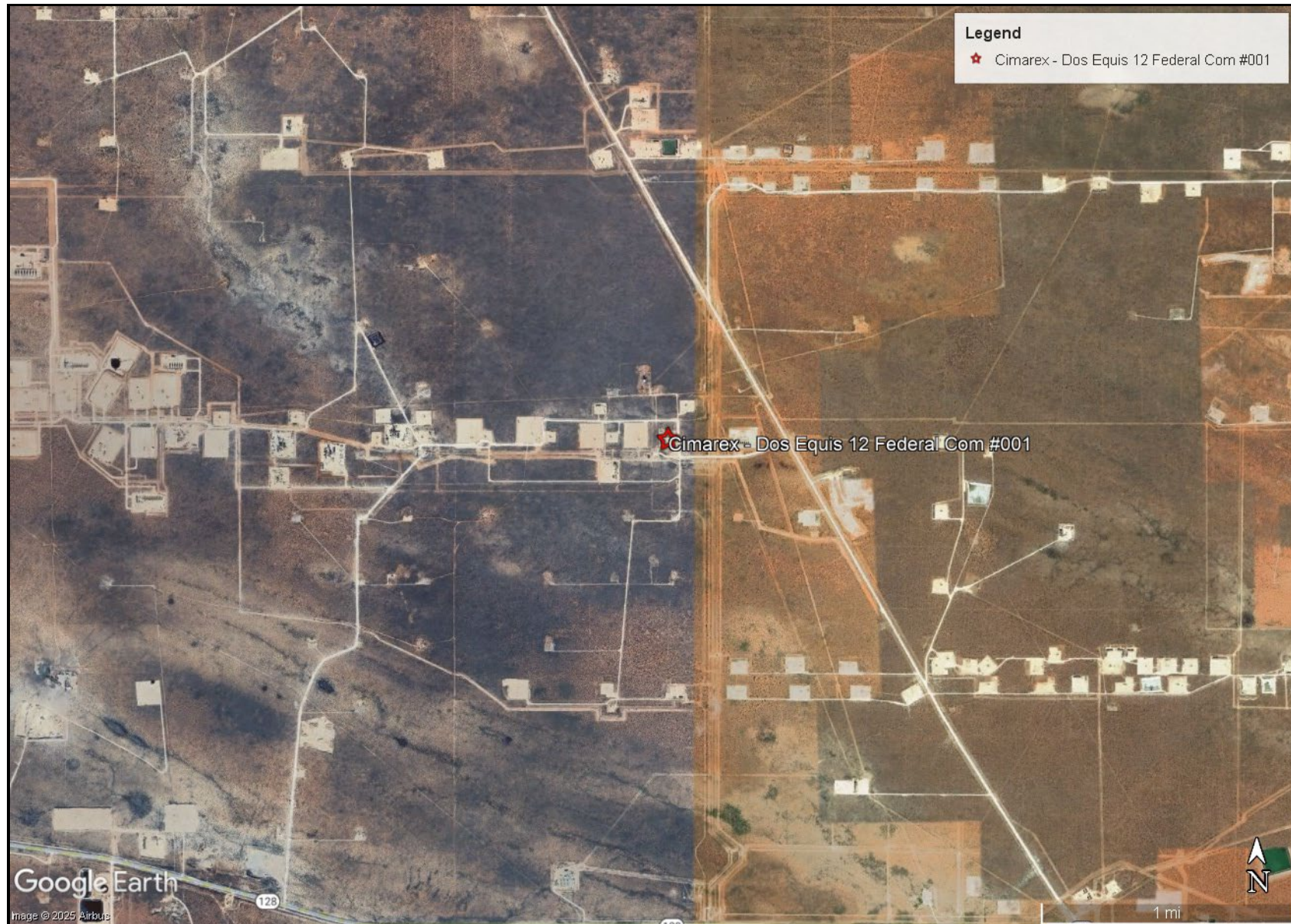
Gilbert Priego  
Project Manager



## FIGURES

CARMONA RESOURCES



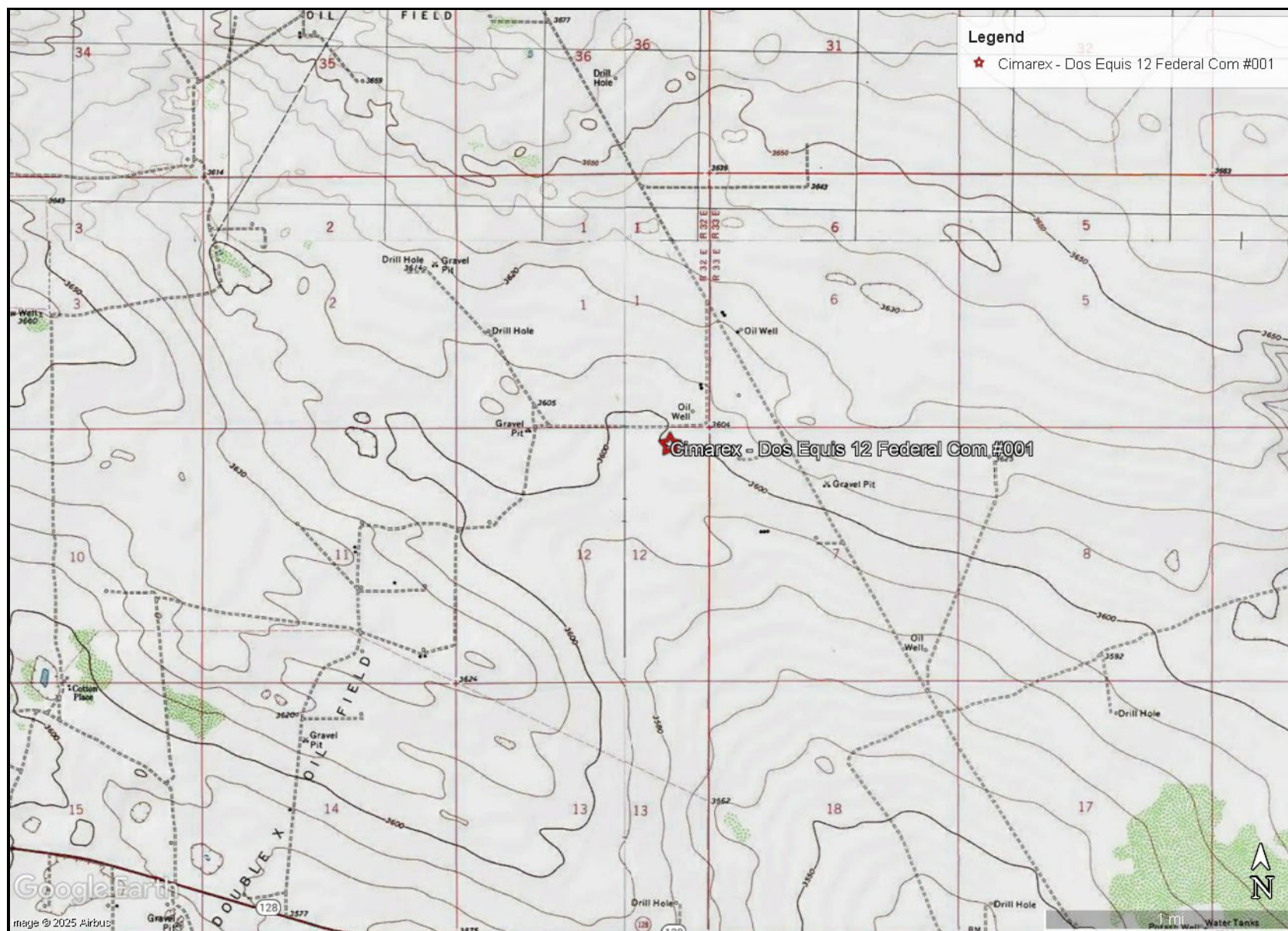


OVERVIEW MAP  
COTERRA ENERGY OPERATING CO.  
DOS EQUIS 12 FEDERAL COM 1  
LEA COUNTY, NEW MEXICO  
32.23847°, -103.62239°



FIGURE 1



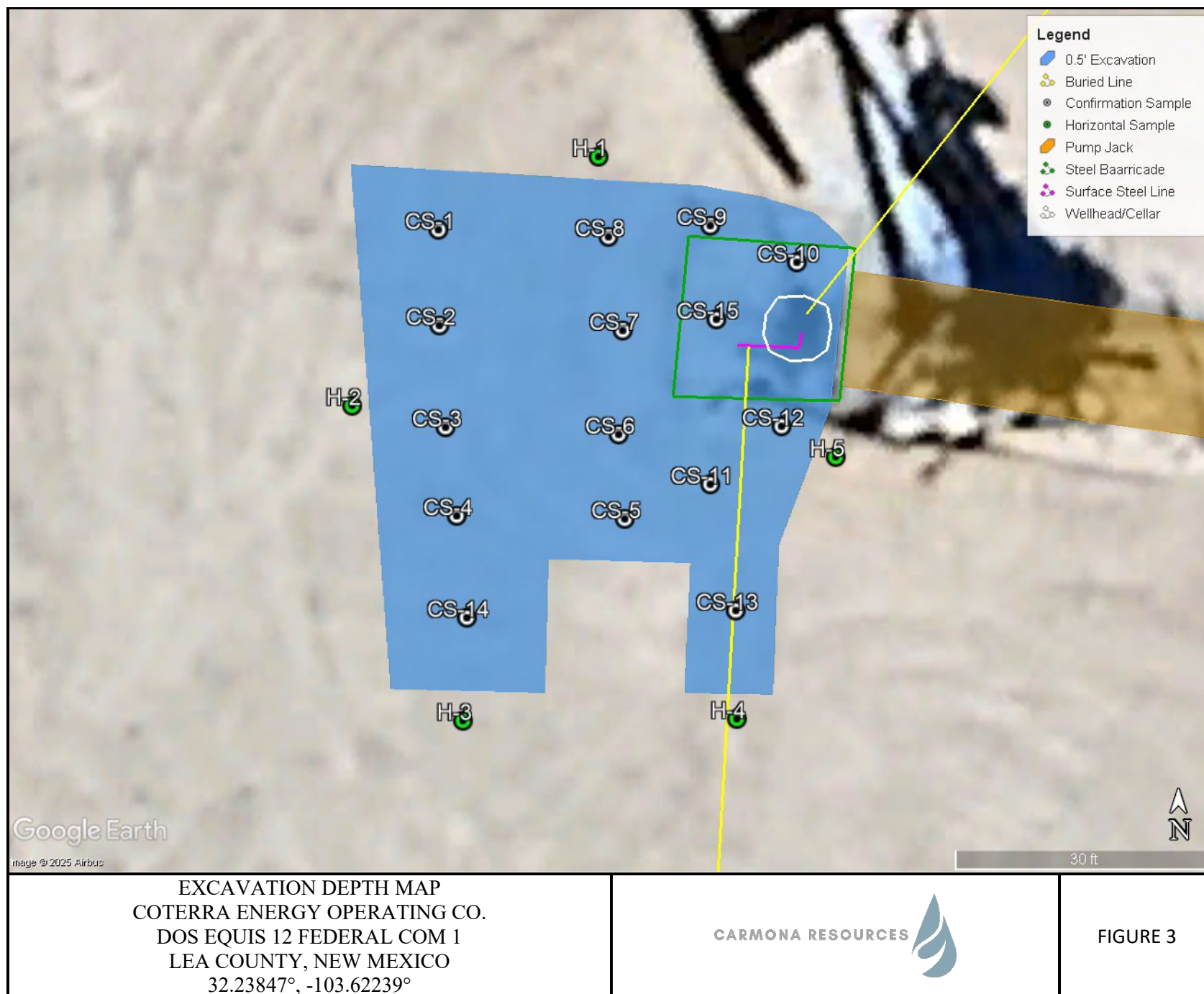


TOPOGRAPHIC MAP  
COTERRA ENERGY OPERATING CO.  
DOS EQUIS 12 FEDERAL COM 1  
LEA COUNTY, NEW MEXICO  
32.23847°, -103.62239°

CARMONA RESOURCES



FIGURE 2



## APPENDIX A

CARMONA RESOURCES



**Table 1**  
**Coterra Energy Operating Co.**  
**Dos Equis 12 Federal Com #001**  
**Lea County, New Mexico**

Sample ID	Date	Depth (ft)	TPH (mg/kg)				Benzene (mg/kg)	Toluene (mg/kg)	Ethlybenzene (mg/kg)	Xylene (mg/kg)	Total BTEX (mg/kg)	Chloride (mg/kg)
			GRO	DRO	MRO	Total						
<b>CS-1</b>	6/12/2025	0.5'	<10.0	<10.0	<10.0	<10.0	<0.050	<0.050	<0.050	<0.150	<0.300	1,360
<b>CS-2</b>	6/12/2025	0.5'	<10.0	<10.0	<10.0	<10.0	<0.050	<0.050	<0.050	<0.150	<0.300	780
<b>CS-3</b>	6/12/2025	0.5'	<10.0	17.7	<10.0	17.7	<0.050	<0.050	<0.050	<0.150	<0.300	352
<b>CS-4</b>	6/12/2025	0.5'	<10.0	20.3	<10.0	20.3	<0.050	<0.050	<0.050	<0.150	<0.300	320
<b>CS-5</b>	6/12/2025	0.5'	<10.0	13.7	<10.0	13.7	<0.050	<0.050	<0.050	<0.150	<0.300	352
<b>CS-6</b>	6/12/2025	0.5'	<10.0	17.8	<10.0	17.8	<0.050	<0.050	<0.050	<0.150	<0.300	448
<b>CS-7</b>	6/12/2025	0.5'	<10.0	<10.0	<10.0	<10.0	<0.050	<0.050	<0.050	<0.150	<0.300	480
<b>CS-8</b>	6/12/2025	0.5'	<10.0	<10.0	<10.0	<10.0	<0.050	<0.050	<0.050	<0.150	<0.300	1,490
<b>CS-9</b>	6/12/2025	0.5'	<10.0	17.0	<10.0	17.0	<0.050	<0.050	<0.050	<0.150	<0.300	384
<b>CS-10</b>	6/12/2025	0.5'	<10.0	16.1	<10.0	16.1	<0.050	<0.050	<0.050	<0.150	<0.300	448
<b>CS-11</b>	6/12/2025	0.5'	<10.0	12.6	<10.0	12.6	<0.050	<0.050	<0.050	<0.150	<0.300	864
<b>CS-12</b>	6/12/2025	0.5'	<10.0	<10.0	<10.0	<10.0	<0.050	<0.050	<0.050	<0.150	<0.300	608
<b>CS-13</b>	6/12/2025	0.5'	<10.0	17.3	<10.0	17.3	<0.050	<0.050	<0.050	<0.150	<0.300	96.0
<b>CS-14</b>	6/12/2025	0.5'	<10.0	<10.0	<10.0	<10.0	<0.050	<0.050	<0.050	<0.150	<0.300	608
<b>CS-15</b>	6/12/2025	0.5'	<10.0	<10.0	<10.0	<10.0	<0.050	<0.050	<0.050	<0.150	<0.300	1,600
<b>Regulatory Criteria<sup>A</sup></b>			<b>1,000 mg/kg</b>			<b>2,500 mg/kg</b>	<b>10 mg/kg</b>				<b>50 mg/kg</b>	<b>20,000 mg/kg</b>

<sup>A</sup> – Table 1 - 19.15.29 NMAC  
mg/kg - milligram per kilogram  
TPH - Total Petroleum Hydrocarbons  
ft - feet  
CS- Confirmation Sample

**Table 1**  
**Coterra Energy Operating Co.**  
**Dos Equis 12 Federal Com #001**  
**Lea County, New Mexico**

Sample ID	Date	Depth (ft)	TPH (mg/kg)				Benzene (mg/kg)	Toluene (mg/kg)	Ethlybenzene (mg/kg)	Xylene (mg/kg)	Total BTEX (mg/kg)	Chloride (mg/kg)
			GRO	DRO	MRO	Total						
H-1	6/12/2025	0-0.5'	<10.0	<10.0	<10.0	<10.0	<0.050	<0.050	<0.050	<0.150	<0.300	112
H-2	6/12/2025	0-0.5'	<10.0	<10.0	<10.0	<10.0	<0.050	<0.050	<0.050	<0.150	<0.300	192
H-3	6/12/2025	0-0.5'	<10.0	<10.0	<10.0	<10.0	<0.050	<0.050	<0.050	<0.150	<0.300	144
H-4	6/12/2025	0-0.5'	<10.0	<10.0	<10.0	<10.0	<0.050	<0.050	<0.050	<0.150	<0.300	32.0
H-5	6/12/2025	0-0.5'	<10.0	<10.0	<10.0	<10.0	<0.050	<0.050	<0.050	<0.150	<0.300	144
Backfill	6/12/2025	0-0.5'	<10.0	<10.0	<10.0	<10.0	<0.050	<0.050	<0.050	<0.150	<0.300	144
<i>Regulatory Criteria<sup>A</sup></i>						100 mg/kg	10 mg/kg				50 mg/kg	600 mg/kg

<sup>A</sup> – Table 1 - 19.15.29 NMAC

mg/kg - milligram per kilogram

TPH - Total Petroleum Hydrocarbons

ft - feet

H- Horizontal Sample



## APPENDIX B

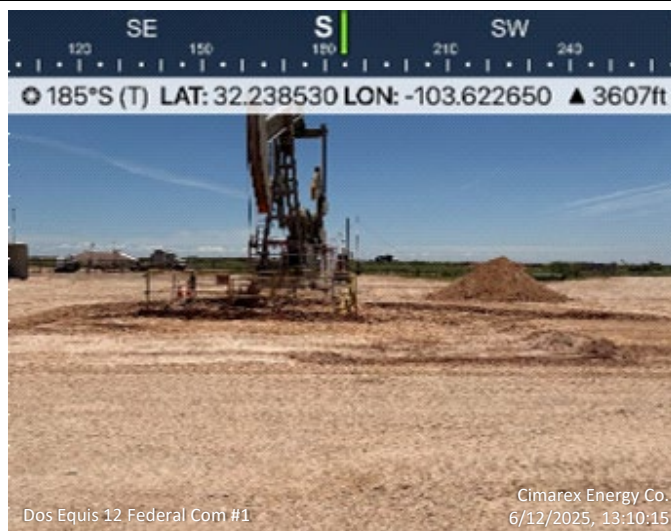
CARMONA RESOURCES





**PHOTOGRAPHIC LOG****Coterra Energy Operating Co.****Photograph No. 1****Facility:** Dos Equis 12 Federal Com #001  
(05.23.2025)**County:** Eddy County, New Mexico**Description:**

View South, area of CS-1 through CS-15.

**Photograph No. 2****Facility:** Dos Equis 12 Federal Com #001  
(05.23.2025)**County:** Eddy County, New Mexico**Description:**

View Southeast, area of CS-1 through CS-15.

**Photograph No. 3****Facility:** Dos Equis 12 Federal Com #001  
(05.23.2025)**County:** Eddy County, New Mexico**Description:**

View North, area of CS-1 through CS-15.



# PHOTOGRAPHIC LOG

Coterra Energy Operating Co.

## Photograph No. 4

**Facility:** Dos Equis 12 Federal Com #001  
(05.23.2025)

**County:** Eddy County, New Mexico

**Description:**

View Southeast of backfill area.



## Photograph No. 5

**Facility:** Dos Equis 12 Federal Com #001  
(05.23.2025)

**County:** Eddy County, New Mexico

**Description:**

View Southeast of backfill area.



## Photograph No. 6

**Facility:** Dos Equis 12 Federal Com #001  
(05.23.2025)

**County:** Eddy County, New Mexico

**Description:**

View Northeast of backfill area.





## APPENDIX C

CARMONA RESOURCES



Sante Fe Main Office  
Phone: (505) 476-3441

General Information  
Phone: (505) 629-6116

Online Phone Directory  
<https://www.emnrd.nm.gov/ocd/contact-us>

**State of New Mexico**  
**Energy, Minerals and Natural Resources**  
**Oil Conservation Division**  
**1220 S. St Francis Dr.**  
**Santa Fe, NM 87505**

QUESTIONS

Action 467017

**QUESTIONS**

Operator: Coterra Energy Operating Co. 6001 Deauville Blvd Midland, TX 79706	OGRID: 215099
	Action Number: 467017
	Action Type: [NOTIFY] Notification Of Release (NOR)

**QUESTIONS**

Location of Release Source	
<i>Please answer all the questions in this group.</i>	
Site Name	DOS EQUIS 12 FEDERAL COM 1
Date Release Discovered	05/23/2025
Surface Owner	Federal

Incident Details	
<i>Please answer all the questions in this group.</i>	
Incident Type	Oil Release
Did this release result in a fire or is the result of a fire	No
Did this release result in any injuries	No
Has this release reached or does it have a reasonable probability of reaching a watercourse	No
Has this release endangered or does it have a reasonable probability of endangering public health	No
Has this release substantially damaged or will it substantially damage property or the environment	No
Is this release of a volume that is or may with reasonable probability be detrimental to fresh water	No

Nature and Volume of Release	
<i>Material(s) released, please answer all that apply below. Any calculations or specific justifications for the volumes provided should be attached to the follow-up C-141 submission.</i>	
Crude Oil Released (bbls) Details	Cause: Equipment Failure   Well   Crude Oil   Released: 4 BBL   Recovered: 2 BBL   Lost: 2 BBL.
Produced Water Released (bbls) Details	Cause: Equipment Failure   Well   Produced Water   Released: 4 BBL   Recovered: 2 BBL   Lost: 2 BBL.
Is the concentration of chloride in the produced water >10,000 mg/l	Yes
Condensate Released (bbls) Details	Not answered.
Natural Gas Vented (Mcf) Details	Not answered.
Natural Gas Flared (Mcf) Details	Not answered.
Other Released Details	Not answered.
Are there additional details for the questions above (i.e. any answer containing Other, Specify, Unknown, and/or Fire, or any negative lost amounts)	We had a reportable release at the Dos Equis 12 Federal Com 1 due to a packing leak on the well. The pumping unit successfully shut down when the environmental pot tripped; however, the well continued to leak from the packing. This incident resulted in a release of 4 barrels oil and 4 barrels water onto the well pad. A vac truck was able to recover 3 barrels fluid from the well pad. In the upcoming weeks, we will assess the affected soils and implement necessary remediation measures.

Sante Fe Main Office  
Phone: (505) 476-3441

General Information  
Phone: (505) 629-6116

Online Phone Directory  
<https://www.emnrd.nm.gov/ocd/contact-us>

**State of New Mexico**  
**Energy, Minerals and Natural Resources**  
**Oil Conservation Division**  
**1220 S. St Francis Dr.**  
**Santa Fe, NM 87505**

QUESTIONS, Page 2

Action 467017

**QUESTIONS (continued)**

Operator: Coterra Energy Operating Co. 6001 Deauville Blvd Midland, TX 79706	OGRID: 215099
	Action Number: 467017
	Action Type: [NOTIFY] Notification Of Release (NOR)

**QUESTIONS**

<b>Nature and Volume of Release (continued)</b>	
Is this a gas only submission (i.e. only significant Mcf values reported)	No, according to supplied volumes this does not appear to be a "gas only" report.
Was this a major release as defined by Subsection A of 19.15.29.7 NMAC	No
Reasons why this would be considered a submission for a notification of a major release	Unavailable.
With the implementation of the 19.15.27 NMAC (05/25/2021), venting and/or flaring of natural gas (i.e. gas only) are to be submitted on the C-129 form.	

**Initial Response**

The responsible party must undertake the following actions immediately unless they could create a safety hazard that would result in injury.

The source of the release has been stopped	True
The impacted area has been secured to protect human health and the environment	True
Released materials have been contained via the use of berms or dikes, absorbent pads, or other containment devices	True
All free liquids and recoverable materials have been removed and managed appropriately	True
If all the actions described above have not been undertaken, explain why	Not answered.

Per Paragraph 4 of Subsection B of 19.15.29.8 NMAC the responsible party may commence remediation immediately after discovery of a release. If remediation has begun, please prepare and attach a narrative of actions to date in the follow-up C-141 submission. If remedial efforts have been successfully completed or if the release occurred within a lined containment area (see 19.15.29.11(A)(5)(a) NMAC), please prepare and attach all information needed for closure evaluation in the follow-up C-141 submission.

Sante Fe Main Office  
Phone: (505) 476-3441

General Information  
Phone: (505) 629-6116

Online Phone Directory  
<https://www.emnrd.nm.gov/ocd/contact-us>

**State of New Mexico**  
**Energy, Minerals and Natural Resources**  
**Oil Conservation Division**  
**1220 S. St Francis Dr.**  
**Santa Fe, NM 87505**

ACKNOWLEDGMENTS

Action 467017

**ACKNOWLEDGMENTS**

Operator: Coterra Energy Operating Co. 6001 Deauville Blvd Midland, TX 79706	OGRID: 215099
	Action Number: 467017
	Action Type: [NOTIFY] Notification Of Release (NOR)

**ACKNOWLEDGMENTS**

<input checked="" type="checkbox"/>	I acknowledge that I am authorized to submit notification of a release on behalf of my operator.
<input checked="" type="checkbox"/>	I acknowledge that upon submitting this application, I will be creating a new incident file (assigned to my operator) to track the notification(s) and corrective action(s) for a release, pursuant to NMAC 19.15.29.
<input checked="" type="checkbox"/>	I acknowledge that creating a new incident file will require my operator to file subsequent submission(s) of form "C-141, Application for administrative approval of a release notification and corrective action", pursuant to NMAC 19.15.29.
<input checked="" type="checkbox"/>	I hereby certify that the information given above is true and complete to the best of my knowledge and understand that pursuant to OCD rules and regulations all operators are required to report and/or file certain release notifications and perform corrective actions for releases which may endanger public health or the environment.
<input checked="" type="checkbox"/>	I acknowledge the fact that the acceptance of a C-141 report by the OCD does not relieve the operator of liability should their operations have failed to adequately investigate and remediate contamination that pose a threat to groundwater, surface water, human health or the environment.
<input checked="" type="checkbox"/>	I acknowledge the fact that, in addition, OCD acceptance of a C-141 report does not relieve the operator of responsibility for compliance with any other federal, state, or local laws and/or regulations.

Sante Fe Main Office  
Phone: (505) 476-3441

General Information  
Phone: (505) 629-6116

Online Phone Directory  
<https://www.emnrd.nm.gov/ocd/contact-us>

State of New Mexico  
Energy, Minerals and Natural Resources  
Oil Conservation Division  
1220 S. St Francis Dr.  
Santa Fe, NM 87505

CONDITIONS

Action 467017

CONDITIONS

Operator: Coterra Energy Operating Co. 6001 Deauville Blvd Midland, TX 79706	OGRID: 215099
	Action Number: 467017
	Action Type: [NOTIFY] Notification Of Release (NOR)

CONDITIONS

Created By	Condition	Condition Date
lluig	When submitting future reports regarding this release, please submit the calculations used or specific justification for the volumes reported on the initial C-141.	5/24/2025



COTERRA ENERGY  
TAOS FEDERAL 5H  
EDDY, NM

8:44

[< Home](#)

## Standing Liquid Calculation

Dos Equis 12-1

L(Ft)

W(Ft)

D(In)

Oil %

35

40

.25

50

H<sub>2</sub>O Spill Total: 2.60 Bbls

Oil Spill Total: 2.60 Bbls

Total Spilled: 5.19 Bbls

Total Spilled: 218.17 Gals

Add Section to Spill

8:44

[< Home](#)

## Saturated Soil Calculation

Dos Equis 12-1

L(Ft)

W(Ft)

D(In)

Oil %

35

40

1

50



Soil Definitions



## SOIL TYPE FACTOR

0.08

0.14

0.16

0.25

0.15

H<sub>2</sub>O Spill Total: 1.45 Bbls

Oil Spill Total: 1.45 Bbls

Total Spilled: 2.91 Bbls

Total Spilled: 122.17 Gals

Add Section to Spill





COTERRA ENERGY  
TAOS FEDERAL 5H  
EDDY, NM



Sante Fe Main Office  
Phone: (505) 476-3441

General Information  
Phone: (505) 629-6116

Online Phone Directory  
<https://www.emnrd.nm.gov/ocd/contact-us>

**State of New Mexico**  
**Energy, Minerals and Natural Resources**  
**Oil Conservation Division**  
**1220 S. St Francis Dr.**  
**Santa Fe, NM 87505**

QUESTIONS

Action 467023

**QUESTIONS**

Operator: Coterra Energy Operating Co. 6001 Deauville Blvd Midland, TX 79706	OGRID: 215099
	Action Number: 467023
	Action Type: [C-141] Initial C-141 (C-141-v-Initial)

**QUESTIONS**

Prerequisites	
Incident ID (n#)	nAPP2514427530
Incident Name	NAPP2514427530 DOS EQUIS 12 FEDERAL COM 1 @ 30-025-40700
Incident Type	Oil Release
Incident Status	Initial C-141 Received
Incident Well	[30-025-40700] DOS EQUIS 12 FEDERAL COM #001

**Location of Release Source**

Please answer all the questions in this group.

Site Name	DOS EQUIS 12 FEDERAL COM 1
Date Release Discovered	05/23/2025
Surface Owner	Federal

**Incident Details**

Please answer all the questions in this group.

Incident Type	Oil Release
Did this release result in a fire or is the result of a fire	No
Did this release result in any injuries	No
Has this release reached or does it have a reasonable probability of reaching a watercourse	No
Has this release endangered or does it have a reasonable probability of endangering public health	No
Has this release substantially damaged or will it substantially damage property or the environment	No
Is this release of a volume that is or may with reasonable probability be detrimental to fresh water	No

**Nature and Volume of Release**

Material(s) released, please answer all that apply below. Any calculations or specific justifications for the volumes provided should be attached to the follow-up C-141 submission.

Crude Oil Released (bbls) Details	Cause: Equipment Failure   Well   Crude Oil   Released: 4 BBL   Recovered: 2 BBL   Lost: 2 BBL.
Produced Water Released (bbls) Details	Cause: Equipment Failure   Well   Produced Water   Released: 4 BBL   Recovered: 2 BBL   Lost: 2 BBL.
Is the concentration of chloride in the produced water >10,000 mg/l	Yes
Condensate Released (bbls) Details	Not answered.
Natural Gas Vented (Mcf) Details	Not answered.
Natural Gas Flared (Mcf) Details	Not answered.
Other Released Details	Not answered.
Are there additional details for the questions above (i.e. any answer containing Other, Specify, Unknown, and/or Fire, or any negative lost amounts)	We had a reportable release at the Dos Equis 12 Federal Com 1 due to a packing leak on the well. The pumping unit successfully shut down when the environmental pot tripped; however, the well continued to leak from the packing. This incident resulted in a release of 4 barrels oil and 4 barrels water onto the well pad. A vac truck was able to recover 3 barrels fluid from the well pad. In the upcoming weeks, we will assess the affected soils and implement necessary remediation measures.

Sante Fe Main Office  
Phone: (505) 476-3441

General Information  
Phone: (505) 629-6116

Online Phone Directory  
<https://www.emnrd.nm.gov/ocd/contact-us>

**State of New Mexico**  
**Energy, Minerals and Natural Resources**  
**Oil Conservation Division**  
**1220 S. St Francis Dr.**  
**Santa Fe, NM 87505**

QUESTIONS, Page 2

Action 467023

**QUESTIONS (continued)**

Operator: Coterra Energy Operating Co. 6001 Deauville Blvd Midland, TX 79706	OGRID: 215099
	Action Number: 467023
	Action Type: [C-141] Initial C-141 (C-141-v-Initial)

**QUESTIONS**

<b>Nature and Volume of Release (continued)</b>	
Is this a gas only submission (i.e. only significant Mcf values reported)	No, according to supplied volumes this does not appear to be a "gas only" report.
Was this a major release as defined by Subsection A of 19.15.29.7 NMAC	No
Reasons why this would be considered a submission for a notification of a major release	Unavailable.
With the implementation of the 19.15.27 NMAC (05/25/2021), venting and/or flaring of natural gas (i.e. gas only) are to be submitted on the C-129 form.	

**Initial Response**

The responsible party must undertake the following actions immediately unless they could create a safety hazard that would result in injury.

The source of the release has been stopped	True
The impacted area has been secured to protect human health and the environment	True
Released materials have been contained via the use of berms or dikes, absorbent pads, or other containment devices	True
All free liquids and recoverable materials have been removed and managed appropriately	True
If all the actions described above have not been undertaken, explain why	Not answered.

Per Paragraph (4) of Subsection B of 19.15.29.8 NMAC the responsible party may commence remediation immediately after discovery of a release. If remediation has begun, please prepare and attach a narrative of actions to date in the follow-up C-141 submission. If remedial efforts have been successfully completed or if the release occurred within a lined containment area (see Subparagraph (a) of Paragraph (5) of Subsection A of 19.15.29.11 NMAC), please prepare and attach all information needed for closure evaluation in the follow-up C-141 submission.

I hereby certify that the information given above is true and complete to the best of my knowledge and understand that pursuant to OCD rules and regulations all operators are required to report and/or file certain release notifications and perform corrective actions for releases which may endanger public health or the environment. The acceptance of a C-141 report by the OCD does not relieve the operator of liability should their operations have failed to adequately investigate and remediate contamination that pose a threat to groundwater, surface water, human health or the environment. In addition, OCD acceptance of a C-141 report does not relieve the operator of responsibility for compliance with any other federal, state, or local laws and/or regulations.

I hereby agree and sign off to the above statement	Name: Laci Luig Title: ES&H Specialist Email: DL_PermianEnvironmental@coterra.com Date: 05/24/2025
--	---

Sante Fe Main Office  
Phone: (505) 476-3441

General Information  
Phone: (505) 629-6116

Online Phone Directory  
<https://www.emnrd.nm.gov/ocd/contact-us>

**State of New Mexico**  
**Energy, Minerals and Natural Resources**  
**Oil Conservation Division**  
**1220 S. St Francis Dr.**  
**Santa Fe, NM 87505**

QUESTIONS, Page 3

Action 467023

**QUESTIONS (continued)**

Operator: Coterra Energy Operating Co. 6001 Deauville Blvd Midland, TX 79706	OGRID: 215099
	Action Number: 467023
	Action Type: [C-141] Initial C-141 (C-141-v-Initial)

**QUESTIONS**

<b>Site Characterization</b>	
<i>Please answer all the questions in this group (only required when seeking remediation plan approval and beyond). This information must be provided to the appropriate district office no later than 90 days after the release discovery date.</i>	
What is the shallowest depth to groundwater beneath the area affected by the release in feet below ground surface (ft bgs)	Not answered.
What method was used to determine the depth to ground water	Not answered.
Did this release impact groundwater or surface water	Not answered.
<b>What is the minimum distance, between the closest lateral extents of the release and the following surface areas:</b>	
A continuously flowing watercourse or any other significant watercourse	Not answered.
Any lakebed, sinkhole, or playa lake (measured from the ordinary high-water mark)	Not answered.
An occupied permanent residence, school, hospital, institution, or church	Not answered.
A spring or a private domestic fresh water well used by less than five households for domestic or stock watering purposes	Not answered.
Any other fresh water well or spring	Not answered.
Incorporated municipal boundaries or a defined municipal fresh water well field	Not answered.
A wetland	Not answered.
A subsurface mine	Not answered.
An (non-karst) unstable area	Not answered.
Categorize the risk of this well / site being in a karst geology	Not answered.
A 100-year floodplain	Not answered.
Did the release impact areas not on an exploration, development, production, or storage site	Not answered.

<b>Remediation Plan</b>	
<i>Please answer all the questions that apply or are indicated. This information must be provided to the appropriate district office no later than 90 days after the release discovery date.</i>	
Requesting a remediation plan approval with this submission	No
<i>The OCD recognizes that proposed remediation measures may have to be minimally adjusted in accordance with the physical realities encountered during remediation. If the responsible party has any need to significantly deviate from the remediation plan proposed, then it should consult with the division to determine if another remediation plan submission is required.</i>	

Sante Fe Main Office  
Phone: (505) 476-3441

General Information  
Phone: (505) 629-6116

Online Phone Directory  
<https://www.emnrd.nm.gov/oed/contact-us>

State of New Mexico  
Energy, Minerals and Natural Resources  
Oil Conservation Division  
1220 S. St Francis Dr.  
Santa Fe, NM 87505

CONDITIONS

Action 467023

CONDITIONS

Operator: Coterra Energy Operating Co. 6001 Deauville Blvd Midland, TX 79706	OGRID: 215099
	Action Number: 467023
	Action Type: [C-141] Initial C-141 (C-141-v-Initial)

CONDITIONS

Created By	Condition	Condition Date
michael.buchanan	Standing and saturated liquid calculations accepted for the record. App ID: 467023	5/27/2025



Sante Fe Main Office  
Phone: (505) 476-3441

General Information  
Phone: (505) 629-6116

Online Phone Directory  
<https://www.emnrd.nm.gov/ocd/contact-us>

**State of New Mexico**  
**Energy, Minerals and Natural Resources**  
**Oil Conservation Division**  
**1220 S. St Francis Dr.**  
**Santa Fe, NM 87505**

QUESTIONS

Action 471456

**QUESTIONS**

Operator: Coterra Energy Operating Co. 6001 Deauville Blvd Midland, TX 79706	OGRID: 215099
	Action Number: 471456
	Action Type: [NOTIFY] Notification Of Sampling (C-141N)

**QUESTIONS**

Prerequisites	
Incident ID (n#)	nAPP2514427530
Incident Name	NAPP2514427530 DOS EQUIS 12 FEDERAL COM 1 @ 30-025-40700
Incident Type	Oil Release
Incident Status	Initial C-141 Approved
Incident Well	[30-025-40700] DOS EQUIS 12 FEDERAL COM #001

Location of Release Source	
Site Name	DOS EQUIS 12 FEDERAL COM 1
Date Release Discovered	05/23/2025
Surface Owner	Federal

Sampling Event General Information	
<i>Please answer all the questions in this group.</i>	
What is the sampling surface area in square feet	2,800
What is the estimated number of samples that will be gathered	22
Sampling date pursuant to Subparagraph (a) of Paragraph (1) of Subsection D of 19.15.29.12 NMAC	06/12/2025
Time sampling will commence	08:00 AM
Please provide any information necessary for observers to contact samplers	Carmona Resources - 432-813-8988
Please provide any information necessary for navigation to sampling site	(32.23847,-103.62239) - Carmona Resources will be onsite to collect confirmation floor samples from the recently scraped release area. The contaminated area was scraped to a depth of 4inches and all material was disposed properly. Due to the excavation being less than 6inches in depth, horizontal delineation samples will be collected in place of composite confirmation sidewall samples.

Sante Fe Main Office  
Phone: (505) 476-3441

General Information  
Phone: (505) 629-6116

Online Phone Directory  
<https://www.emnrd.nm.gov/ocd/contact-us>

State of New Mexico  
Energy, Minerals and Natural Resources  
Oil Conservation Division  
1220 S. St Francis Dr.  
Santa Fe, NM 87505

CONDITIONS

Action 471456

CONDITIONS

Operator: Coterra Energy Operating Co. 6001 Deauville Blvd Midland, TX 79706	OGRID: 215099
	Action Number: 471456
	Action Type: [NOTIFY] Notification Of Sampling (C-141N)

CONDITIONS

Created By	Condition	Condition Date
athielke	Failure to notify the OCD of sampling events including any changes in date/time per the requirements of 19.15.29.12.D.(1).(a) NMAC, may result in the remediation closure samples not being accepted.	6/6/2025

## APPENDIX D

CARMONA RESOURCES



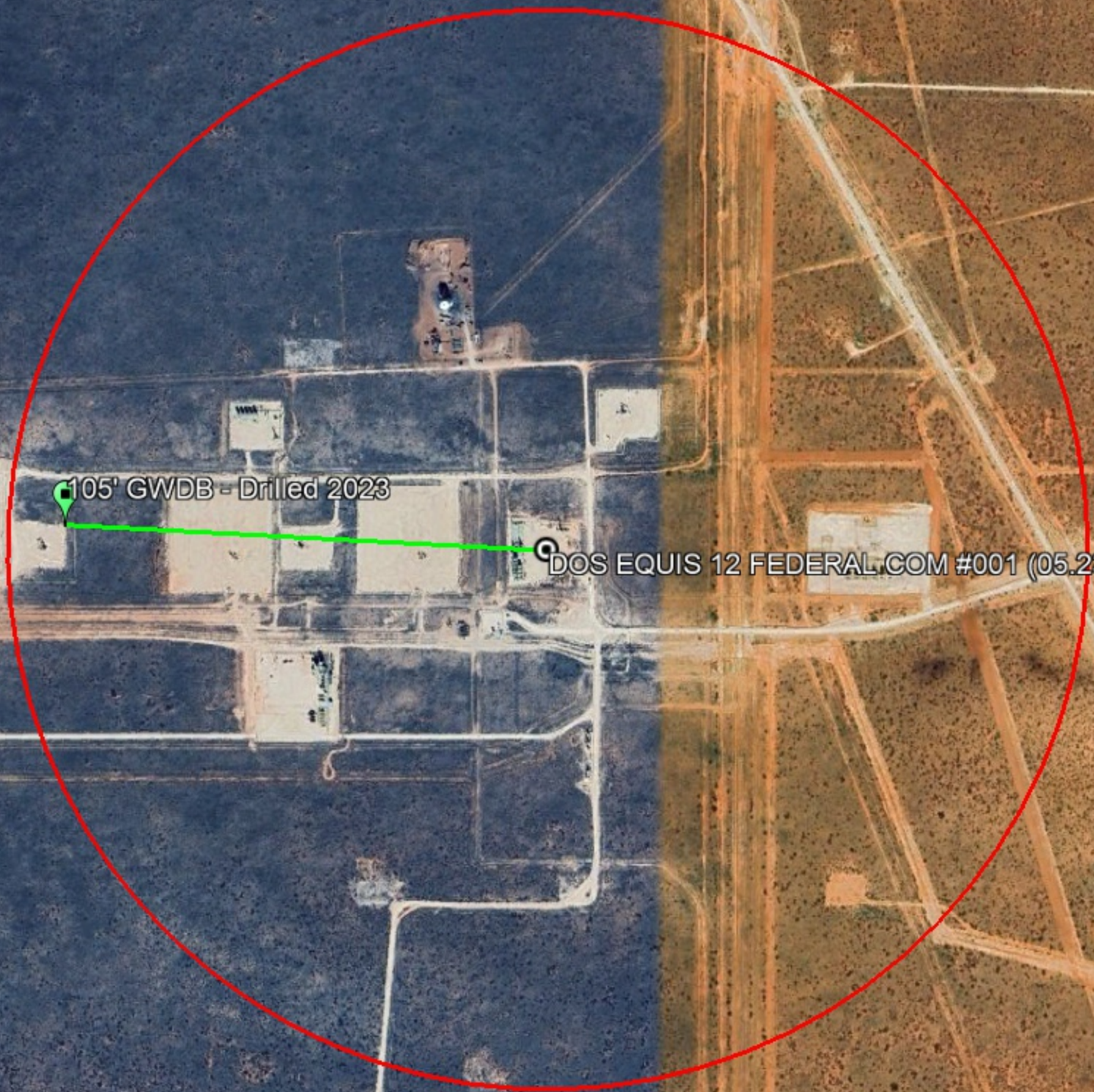


**Nearest water well**

Coterra Energy Operating Co.

**Legend**

- 0.44 Miles
- 0.50 Mile Radius
- DOS EQUIS 12 FEDERAL COM #001 (05.23.2025)
- Groundwater Determination Bore



105' GWDB - Drilled 2023

DOS EQUIS 12 FEDERAL COM #001 (05.23.2025)





Low Karst

Coterra Energy Operating Co.

Legend

- DOS EQUIS 12 FEDERAL COM #001 (05.23.2025)
- Low

DOS EQUIS 12 FEDERAL COM #001 (05.23.2025)





# New Mexico Office of the State Engineer

## Water Column/Average Depth to Water

(A CLW##### in the POD suffix indicates the POD has been replaced & no longer serves a water right file.)

(R=POD has been replaced, O=orphaned, C=the file is closed)

(quarters are 1=NW 2=NE 3=SW 4=SE)

(quarters are smallest to largest)

(NAD83 UTM in meters)

(In feet)

POD Number	POD Sub-Code	basin	County	Q 64	Q 16	Q 4	Sec	Tws	Rng	X	Y	Distance	Depth Well	Depth Water	Water Column
<a href="#">C 01932</a>	C		ED	3	1	12	24S	32E		628633	3567188*	1270	492		
<a href="#">C 04551 POD1</a>	CUB		LE	4	4	3	31	23S	33E	630671	3569556	2042			
<a href="#">C 03591 POD1</a>	CUB		LE	2	1	4	05	24S	33E	632731	3568518	3050			
<a href="#">C 03565 POD3</a>	CUB		LE	3	4	08	24S	33E		632763	3566546	3195		1533	

Average Depth to Water: **1533 feet**

Minimum Depth: **1533 feet**

Maximum Depth: **1533 feet**

Record Count: 4

UTMNAD83 Radius Search (in meters):

**Easting (X):** 629789

**Northing (Y):** 3567714

**Radius:** 4000

\*UTM location was derived from PLSS - see Help

The data is furnished by the NMOSE/ISC and is accepted by the recipient with the expressed understanding that the OSE/ISC make no warranties, expressed or implied, concerning the accuracy, completeness, reliability, usability, or suitability for any particular purpose of the data.

3/29/23 7:43 AM

Page 1 of 1

WATER COLUMN/ AVERAGE  
DEPTH TO WATER



CARMONA RESOURCES



Project Name :	Dos Equis 12 Federal Com 3H	Date :	Thursday, April 6, 2023
Project No. :	1242	Sampler :	Michael Collier
Location :	Lea County, New Mexico	Driller :	H&R Enterprises
Coordinates :	32.238879°, -103.63003°	Method :	Air Rotary
Elevation :	3,606'		

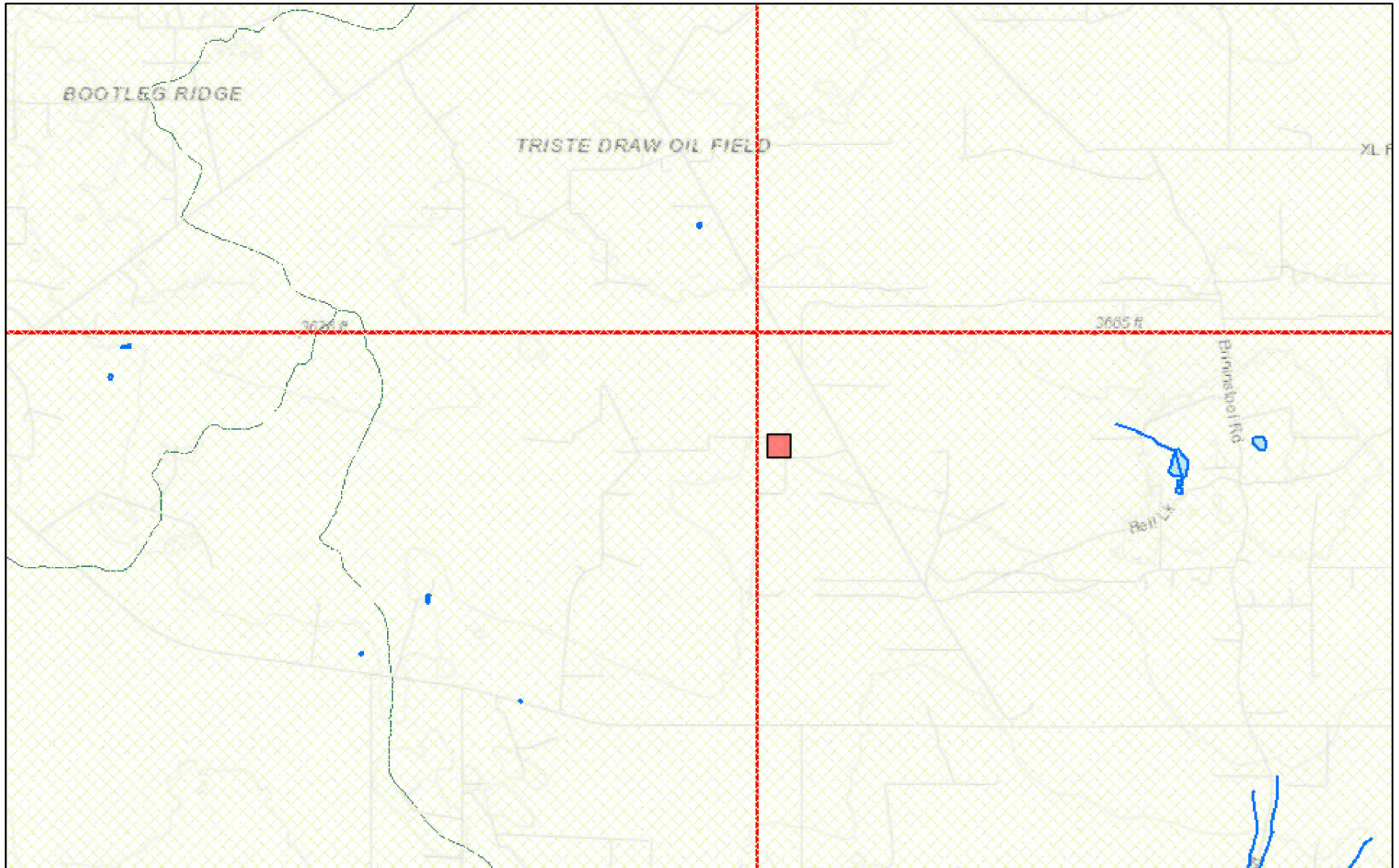
Depth (ft.)	WL	Soil Description	Lithology	Depth (ft.)	WL	Soil Description	Lithology
0				50			
5		(0-30') - White/Grey well graded gravel, caliche, no organics, dry (GM).		55		(30'-60') - Light brown/Red, Red Bed Sands, 90% Silty Sand, 10% Clay, dry (SM).	
10				60			
15		(0-30') - White/Grey well graded gravel, 80% caliche, 20% Silty Sand, no organics, dry (GM).		65		(60'-90') - Red, Red Bed Sands, 70% Silty Sand, 30% Clay, dry (SC).	
20				70			
25				75			
30				80		(60'-90') - Red, Red Bed Sands, 70% Silty Sand, 30% Clay, dry (SC).	
35		(30'-60') - Light brown/Red, Red Bed Sands, 90% Silty Sand, 10% Clay, dry (SM).		85			
40				90			
45				95		(90'-105') - Red, Red Bed Clayey Sands, 70% Clay, 30% Silty Sands, dry (CL).	
50		(30'-60') - Light brown/Red, Red Bed Sands, 90% Silty Sand, 10% Clay, dry (SM).		105			

Comments : Boring terminated at 105' with no presence of groundwater or moisture.  
Well measured 4/10/2023 with no detection of groundwater

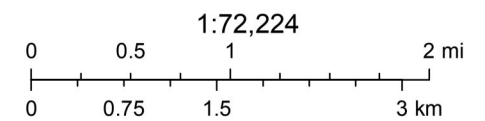
Dry @ 105'



# New Mexico NFHL Data



February 28, 2023



FEMA, Sources: Esri, HERE, Garmin, Intermap, increment P Corp., GEBCO, USGS, FAO, NPS, NRCAN, GeoBase, IGN, Kadaster NL, Ordnance Survey,

nmflood.org is made possible through a collaboration with NMDHSEM,  
This is a non-regulatory product for informational use only. Please consult your local floodplain administrator for further information.

## APPENDIX E

CARMONA RESOURCES







PHONE (575) 393-2326 ° 101 E. MARLAND ° HOBBS, NM 88240

June 13, 2025

ASHTON THIELKE

CARMONA RESOURCES

310 W WALL ST, SUITE 500

MIDLAND, TX 79701

RE: DOS EQUIS 12 FEDERAL COM #001

Enclosed are the results of analyses for samples received by the laboratory on 06/12/25 13:52.

Cardinal Laboratories is accredited through Texas NELAP under certificate number TX-C25-00101. Accreditation applies to drinking water, non-potable water and solid and chemical materials. All accredited analytes are denoted by an asterisk (\*). For a complete list of accredited analytes and matrices visit the TCEQ website at [www.tceq.texas.gov/field/qa/lab\\_accred\\_certif.html](http://www.tceq.texas.gov/field/qa/lab_accred_certif.html).

Cardinal Laboratories is accredited through the State of Colorado Department of Public Health and Environment for:

Method EPA 552.2	Haloacetic Acids (HAA-5)
Method EPA 524.2	Total Trihalomethanes (TTHM)
Method EPA 524.4	Regulated VOCs (V1, V2, V3)

Accreditation applies to public drinking water matrices.

This report meets NELAP requirements and is made up of a cover page, analytical results, and a copy of the original chain-of-custody. If you have any questions concerning this report, please feel free to contact me.

Sincerely,

A handwritten signature in black ink that reads "Mike Snyder". The signature is fluid and cursive, with the first name "Mike" and last name "Snyder" clearly distinguishable.

Mike Snyder For Celey D. Keene

Lab Director/Quality Manager



PHONE (575) 393-2326 • 101 E. MARLAND • HOBBS, NM 88240

**Analytical Results For:**

CARMONA RESOURCES  
 ASHTON THIELKE  
 310 W WALL ST, SUITE 500  
 MIDLAND TX, 79701  
 Fax To:

Received: 06/12/2025  
 Reported: 06/13/2025  
 Project Name: DOS EQUIS 12 FEDERAL COM #001  
 Project Number: 2742  
 Project Location: CIMAREX - LEA COUNTY, NEW MEXICO

Sampling Date: 06/12/2025  
 Sampling Type: Soil  
 Sampling Condition: Cool & Intact  
 Sample Received By: Shalyn Rodriguez

**Sample ID: CS - 1 ( 0.5' ) (H253499-01)**

BTX 8021B		mg/kg		Analyzed By: JH					
Analyte	Result	Reporting Limit	Analyzed	Method Blank	BS	% Recovery	True Value QC	RPD	Qualifier
Benzene*	<0.050	0.050	06/12/2025	ND	1.72	86.1	2.00	5.49	
Toluene*	<0.050	0.050	06/12/2025	ND	1.80	89.9	2.00	4.64	
Ethylbenzene*	<0.050	0.050	06/12/2025	ND	1.82	91.2	2.00	4.85	
Total Xylenes*	<0.150	0.150	06/12/2025	ND	5.54	92.3	6.00	4.37	
Total BTX	<0.300	0.300	06/12/2025	ND					

Surrogate: 4-Bromofluorobenzene (PID) 113 % 71.5-134

Chloride, SM4500Cl-B		mg/kg		Analyzed By: AC						
Analyte	Result	Reporting Limit	Analyzed	Method Blank	BS	% Recovery	True Value QC	RPD	Qualifier	
Chloride	1360	16.0	06/13/2025	ND	480	120	400	0.00		

TPH 8015M		mg/kg		Analyzed By: MS					
Analyte	Result	Reporting Limit	Analyzed	Method Blank	BS	% Recovery	True Value QC	RPD	Qualifier
GRO C6-C10*	<10.0	10.0	06/12/2025	ND	231	116	200	7.60	
DRO >C10-C28*	<10.0	10.0	06/12/2025	ND	219	109	200	6.37	
EXT DRO >C28-C36	<10.0	10.0	06/12/2025	ND					

Surrogate: 1-Chlorooctane 119 % 44.4-145

Surrogate: 1-Chlorooctadecane 119 % 40.6-153

Cardinal Laboratories

\*=Accredited Analyte

PLEASE NOTE: Liability and Damages. Cardinal's liability and client's exclusive remedy for any claim arising, whether based in contract or tort, shall be limited to the amount paid by client for analyses. All claims, including those for negligence and any other cause whatsoever shall be deemed waived unless made in writing and received by Cardinal within thirty (30) days after completion of the applicable service. In no event shall Cardinal be liable for incidental or consequential damages, including, without limitation, business interruptions, loss of use, or loss of profits incurred by client, its subsidiaries, affiliates or successors arising out of or related to the performance of the services hereunder by Cardinal, regardless of whether such claim is based upon any of the above stated reasons or otherwise. Results relate only to the samples identified above. This report shall not be reproduced except in full with written approval of Cardinal Laboratories.

Mike Snyder For Celey D. Keene, Lab Director/Quality Manager





PHONE (575) 393-2326 ° 101 E. MARLAND ° HOBBS, NM 88240

**Analytical Results For:**

CARMONA RESOURCES  
 ASHTON THIELKE  
 310 W WALL ST, SUITE 500  
 MIDLAND TX, 79701  
 Fax To:

Received: 06/12/2025  
 Reported: 06/13/2025  
 Project Name: DOS EQUIS 12 FEDERAL COM #001  
 Project Number: 2742  
 Project Location: CIMAREX - LEA COUNTY, NEW MEXICO

Sampling Date: 06/12/2025  
 Sampling Type: Soil  
 Sampling Condition: Cool & Intact  
 Sample Received By: Shalyn Rodriguez

**Sample ID: CS - 2 ( 0.5' ) (H253499-02)**

BTEx 8021B		mg/kg		Analyzed By: JH						
Analyte	Result	Reporting Limit	Analyzed	Method Blank	BS	% Recovery	True Value QC	RPD	Qualifier	
Benzene*	<0.050	0.050	06/12/2025	ND	1.72	86.1	2.00	5.49		
Toluene*	<0.050	0.050	06/12/2025	ND	1.80	89.9	2.00	4.64		
Ethylbenzene*	<0.050	0.050	06/12/2025	ND	1.82	91.2	2.00	4.85		
Total Xylenes*	<0.150	0.150	06/12/2025	ND	5.54	92.3	6.00	4.37		
Total BTEX	<0.300	0.300	06/12/2025	ND						

Surrogate: 4-Bromofluorobenzene (PID) 109 % 71.5-134

Chloride, SM4500Cl-B		mg/kg		Analyzed By: AC						
Analyte	Result	Reporting Limit	Analyzed	Method Blank	BS	% Recovery	True Value QC	RPD	Qualifier	
Chloride	768	16.0	06/13/2025	ND	480	120	400	0.00		

TPH 8015M		mg/kg		Analyzed By: MS					
Analyte	Result	Reporting Limit	Analyzed	Method Blank	BS	% Recovery	True Value QC	RPD	Qualifier
GRO C6-C10*	<10.0	10.0	06/12/2025	ND	231	116	200	7.60	
DRO >C10-C28*	<10.0	10.0	06/12/2025	ND	219	109	200	6.37	
EXT DRO >C28-C36	<10.0	10.0	06/12/2025	ND					

Surrogate: 1-Chlorooctane 104 % 44.4-145

Surrogate: 1-Chlorooctadecane 105 % 40.6-153

Cardinal Laboratories

\*=Accredited Analyte

PLEASE NOTE: Liability and Damages. Cardinal's liability and client's exclusive remedy for any claim arising, whether based in contract or tort, shall be limited to the amount paid by client for analyses. All claims, including those for negligence and any other cause whatsoever shall be deemed waived unless made in writing and received by Cardinal within thirty (30) days after completion of the applicable service. In no event shall Cardinal be liable for incidental or consequential damages, including, without limitation, business interruptions, loss of use, or loss of profits incurred by client, its subsidiaries, affiliates or successors arising out of or related to the performance of the services hereunder by Cardinal, regardless of whether such claim is based upon any of the above stated reasons or otherwise. Results relate only to the samples identified above. This report shall not be reproduced except in full with written approval of Cardinal Laboratories.

Mike Snyder For Celey D. Keene, Lab Director/Quality Manager



PHONE (575) 393-2326 ° 101 E. MARLAND ° HOBBS, NM 88240

**Analytical Results For:**

CARMONA RESOURCES  
 ASHTON THIELKE  
 310 W WALL ST, SUITE 500  
 MIDLAND TX, 79701  
 Fax To:

Received: 06/12/2025  
 Reported: 06/13/2025  
 Project Name: DOS EQUIS 12 FEDERAL COM #001  
 Project Number: 2742  
 Project Location: CIMAREX - LEA COUNTY, NEW MEXICO

Sampling Date: 06/12/2025  
 Sampling Type: Soil  
 Sampling Condition: Cool & Intact  
 Sample Received By: Shalyn Rodriguez

**Sample ID: CS - 3 ( 0.5' ) (H253499-03)**

BTEx 8021B		mg/kg		Analyzed By: JH						
Analyte	Result	Reporting Limit	Analyzed	Method Blank	BS	% Recovery	True Value QC	RPD	Qualifier	
Benzene*	<0.050	0.050	06/12/2025	ND	1.72	86.1	2.00	5.49		
Toluene*	<0.050	0.050	06/12/2025	ND	1.80	89.9	2.00	4.64		
Ethylbenzene*	<0.050	0.050	06/12/2025	ND	1.82	91.2	2.00	4.85		
Total Xylenes*	<0.150	0.150	06/12/2025	ND	5.54	92.3	6.00	4.37		
Total BTEX	<0.300	0.300	06/12/2025	ND						

Surrogate: 4-Bromofluorobenzene (PID) 109 % 71.5-134

Chloride, SM4500Cl-B		mg/kg		Analyzed By: AC						
Analyte	Result	Reporting Limit	Analyzed	Method Blank	BS	% Recovery	True Value QC	RPD	Qualifier	
Chloride	352	16.0	06/13/2025	ND	480	120	400	0.00		

TPH 8015M		mg/kg		Analyzed By: MS					
Analyte	Result	Reporting Limit	Analyzed	Method Blank	BS	% Recovery	True Value QC	RPD	Qualifier
GRO C6-C10*	<10.0	10.0	06/12/2025	ND	231	116	200	7.60	
DRO >C10-C28*	17.7	10.0	06/12/2025	ND	219	109	200	6.37	
EXT DRO >C28-C36	<10.0	10.0	06/12/2025	ND					

Surrogate: 1-Chlorooctane 110 % 44.4-145

Surrogate: 1-Chlorooctadecane 112 % 40.6-153

Cardinal Laboratories

\*=Accredited Analyte

PLEASE NOTE: Liability and Damages. Cardinal's liability and client's exclusive remedy for any claim arising, whether based in contract or tort, shall be limited to the amount paid by client for analyses. All claims, including those for negligence and any other cause whatsoever shall be deemed waived unless made in writing and received by Cardinal within thirty (30) days after completion of the applicable service. In no event shall Cardinal be liable for incidental or consequential damages, including, without limitation, business interruptions, loss of use, or loss of profits incurred by client, its subsidiaries, affiliates or successors arising out of or related to the performance of the services hereunder by Cardinal, regardless of whether such claim is based upon any of the above stated reasons or otherwise. Results relate only to the samples identified above. This report shall not be reproduced except in full with written approval of Cardinal Laboratories.

Mike Snyder For Celey D. Keene, Lab Director/Quality Manager



PHONE (575) 393-2326 ° 101 E. MARLAND ° HOBBS, NM 88240

**Analytical Results For:**

CARMONA RESOURCES  
 ASHTON THIELKE  
 310 W WALL ST, SUITE 500  
 MIDLAND TX, 79701  
 Fax To:

Received: 06/12/2025  
 Reported: 06/13/2025  
 Project Name: DOS EQUIS 12 FEDERAL COM #001  
 Project Number: 2742  
 Project Location: CIMAREX - LEA COUNTY, NEW MEXICO

Sampling Date: 06/12/2025  
 Sampling Type: Soil  
 Sampling Condition: Cool & Intact  
 Sample Received By: Shalyn Rodriguez

**Sample ID: CS - 4 ( 0.5' ) (H253499-04)**

BTEx 8021B		mg/kg		Analyzed By: JH						
Analyte	Result	Reporting Limit	Analyzed	Method Blank	BS	% Recovery	True Value QC	RPD	Qualifier	
Benzene*	<0.050	0.050	06/12/2025	ND	1.72	86.1	2.00	5.49		
Toluene*	<0.050	0.050	06/12/2025	ND	1.80	89.9	2.00	4.64		
Ethylbenzene*	<0.050	0.050	06/12/2025	ND	1.82	91.2	2.00	4.85		
Total Xylenes*	<0.150	0.150	06/12/2025	ND	5.54	92.3	6.00	4.37		
Total BTEX	<0.300	0.300	06/12/2025	ND						

Surrogate: 4-Bromofluorobenzene (PID) 110 % 71.5-134

Chloride, SM4500Cl-B		mg/kg		Analyzed By: AC						
Analyte	Result	Reporting Limit	Analyzed	Method Blank	BS	% Recovery	True Value QC	RPD	Qualifier	
Chloride	320	16.0	06/13/2025	ND	480	120	400	0.00		

TPH 8015M		mg/kg		Analyzed By: MS					
Analyte	Result	Reporting Limit	Analyzed	Method Blank	BS	% Recovery	True Value QC	RPD	Qualifier
GRO C6-C10*	<10.0	10.0	06/12/2025	ND	231	116	200	7.60	
DRO >C10-C28*	20.3	10.0	06/12/2025	ND	219	109	200	6.37	
EXT DRO >C28-C36	<10.0	10.0	06/12/2025	ND					

Surrogate: 1-Chlorooctane 121 % 44.4-145

Surrogate: 1-Chlorooctadecane 123 % 40.6-153

Cardinal Laboratories

\*=Accredited Analyte

PLEASE NOTE: Liability and Damages. Cardinal's liability and client's exclusive remedy for any claim arising, whether based in contract or tort, shall be limited to the amount paid by client for analyses. All claims, including those for negligence and any other cause whatsoever shall be deemed waived unless made in writing and received by Cardinal within thirty (30) days after completion of the applicable service. In no event shall Cardinal be liable for incidental or consequential damages, including, without limitation, business interruptions, loss of use, or loss of profits incurred by client, its subsidiaries, affiliates or successors arising out of or related to the performance of the services hereunder by Cardinal, regardless of whether such claim is based upon any of the above stated reasons or otherwise. Results relate only to the samples identified above. This report shall not be reproduced except in full with written approval of Cardinal Laboratories.

Mike Snyder For Celey D. Keene, Lab Director/Quality Manager



PHONE (575) 393-2326 ° 101 E. MARLAND ° HOBBS, NM 88240

**Analytical Results For:**

CARMONA RESOURCES  
 ASHTON THIELKE  
 310 W WALL ST, SUITE 500  
 MIDLAND TX, 79701  
 Fax To:

Received: 06/12/2025  
 Reported: 06/13/2025  
 Project Name: DOS EQUIS 12 FEDERAL COM #001  
 Project Number: 2742  
 Project Location: CIMAREX - LEA COUNTY, NEW MEXICO

Sampling Date: 06/12/2025  
 Sampling Type: Soil  
 Sampling Condition: Cool & Intact  
 Sample Received By: Shalyn Rodriguez

**Sample ID: CS - 5 ( 0.5' ) (H253499-05)**

BTEx 8021B		mg/kg		Analyzed By: JH						
Analyte	Result	Reporting Limit	Analyzed	Method Blank	BS	% Recovery	True Value QC	RPD	Qualifier	
Benzene*	<0.050	0.050	06/12/2025	ND	1.72	86.1	2.00	5.49		
Toluene*	<0.050	0.050	06/12/2025	ND	1.80	89.9	2.00	4.64		
Ethylbenzene*	<0.050	0.050	06/12/2025	ND	1.82	91.2	2.00	4.85		
Total Xylenes*	<0.150	0.150	06/12/2025	ND	5.54	92.3	6.00	4.37		
Total BTEX	<0.300	0.300	06/12/2025	ND						

Surrogate: 4-Bromofluorobenzene (PID) 110 % 71.5-134

Chloride, SM4500Cl-B		mg/kg		Analyzed By: AC						
Analyte	Result	Reporting Limit	Analyzed	Method Blank	BS	% Recovery	True Value QC	RPD	Qualifier	
Chloride	352	16.0	06/13/2025	ND	480	120	400	0.00		

TPH 8015M		mg/kg		Analyzed By: MS					
Analyte	Result	Reporting Limit	Analyzed	Method Blank	BS	% Recovery	True Value QC	RPD	Qualifier
GRO C6-C10*	<10.0	10.0	06/12/2025	ND	231	116	200	7.60	
DRO >C10-C28*	13.7	10.0	06/12/2025	ND	219	109	200	6.37	
EXT DRO >C28-C36	<10.0	10.0	06/12/2025	ND					

Surrogate: 1-Chlorooctane 118 % 44.4-145

Surrogate: 1-Chlorooctadecane 118 % 40.6-153

Cardinal Laboratories

\*=Accredited Analyte

PLEASE NOTE: Liability and Damages. Cardinal's liability and client's exclusive remedy for any claim arising, whether based in contract or tort, shall be limited to the amount paid by client for analyses. All claims, including those for negligence and any other cause whatsoever shall be deemed waived unless made in writing and received by Cardinal within thirty (30) days after completion of the applicable service. In no event shall Cardinal be liable for incidental or consequential damages, including, without limitation, business interruptions, loss of use, or loss of profits incurred by client, its subsidiaries, affiliates or successors arising out of or related to the performance of the services hereunder by Cardinal, regardless of whether such claim is based upon any of the above stated reasons or otherwise. Results relate only to the samples identified above. This report shall not be reproduced except in full with written approval of Cardinal Laboratories.

Mike Snyder For Celey D. Keene, Lab Director/Quality Manager



PHONE (575) 393-2326 ° 101 E. MARLAND ° HOBBS, NM 88240

**Analytical Results For:**

CARMONA RESOURCES  
 ASHTON THIELKE  
 310 W WALL ST, SUITE 500  
 MIDLAND TX, 79701  
 Fax To:

Received: 06/12/2025  
 Reported: 06/13/2025  
 Project Name: DOS EQUIS 12 FEDERAL COM #001  
 Project Number: 2742  
 Project Location: CIMAREX - LEA COUNTY, NEW MEXICO

Sampling Date: 06/12/2025  
 Sampling Type: Soil  
 Sampling Condition: Cool & Intact  
 Sample Received By: Shalyn Rodriguez

**Sample ID: CS - 6 ( 0.5' ) (H253499-06)**

BTEx 8021B		mg/kg		Analyzed By: JH						
Analyte	Result	Reporting Limit	Analyzed	Method Blank	BS	% Recovery	True Value QC	RPD	Qualifier	
Benzene*	<0.050	0.050	06/12/2025	ND	1.72	86.1	2.00	5.49		
Toluene*	<0.050	0.050	06/12/2025	ND	1.80	89.9	2.00	4.64		
Ethylbenzene*	<0.050	0.050	06/12/2025	ND	1.82	91.2	2.00	4.85		
Total Xylenes*	<0.150	0.150	06/12/2025	ND	5.54	92.3	6.00	4.37		
Total BTEX	<0.300	0.300	06/12/2025	ND						

Surrogate: 4-Bromofluorobenzene (PID) 112 % 71.5-134

Chloride, SM4500Cl-B		mg/kg		Analyzed By: AC						
Analyte	Result	Reporting Limit	Analyzed	Method Blank	BS	% Recovery	True Value QC	RPD	Qualifier	
Chloride	448	16.0	06/13/2025	ND	480	120	400	0.00		

TPH 8015M		mg/kg	Analyzed By: MS						
Analyte	Result	Reporting Limit	Analyzed	Method Blank	BS	% Recovery	True Value QC	RPD	Qualifier
GRO C6-C10*	<10.0	10.0	06/12/2025	ND	231	116	200	7.60	
DRO >C10-C28*	17.8	10.0	06/12/2025	ND	219	109	200	6.37	
EXT DRO >C28-C36	<10.0	10.0	06/12/2025	ND					

Surrogate: 1-Chlorooctane 114 % 44.4-145

Surrogate: 1-Chlorooctadecane 116 % 40.6-153

Cardinal Laboratories

\*=Accredited Analyte

PLEASE NOTE: Liability and Damages. Cardinal's liability and client's exclusive remedy for any claim arising, whether based in contract or tort, shall be limited to the amount paid by client for analyses. All claims, including those for negligence and any other cause whatsoever shall be deemed waived unless made in writing and received by Cardinal within thirty (30) days after completion of the applicable service. In no event shall Cardinal be liable for incidental or consequential damages, including, without limitation, business interruptions, loss of use, or loss of profits incurred by client, its subsidiaries, affiliates or successors arising out of or related to the performance of the services hereunder by Cardinal, regardless of whether such claim is based upon any of the above stated reasons or otherwise. Results relate only to the samples identified above. This report shall not be reproduced except in full with written approval of Cardinal Laboratories.

Mike Snyder For Celey D. Keene, Lab Director/Quality Manager





PHONE (575) 393-2326 ° 101 E. MARLAND ° HOBBS, NM 88240

**Analytical Results For:**

CARMONA RESOURCES  
 ASHTON THIELKE  
 310 W WALL ST, SUITE 500  
 MIDLAND TX, 79701  
 Fax To:

Received: 06/12/2025  
 Reported: 06/13/2025  
 Project Name: DOS EQUIS 12 FEDERAL COM #001  
 Project Number: 2742  
 Project Location: CIMAREX - LEA COUNTY, NEW MEXICO

Sampling Date: 06/12/2025  
 Sampling Type: Soil  
 Sampling Condition: Cool & Intact  
 Sample Received By: Shalyn Rodriguez

**Sample ID: CS - 7 ( 0.5' ) (H253499-07)**

BTEx 8021B		mg/kg		Analyzed By: JH						
Analyte	Result	Reporting Limit	Analyzed	Method Blank	BS	% Recovery	True Value QC	RPD	Qualifier	
Benzene*	<0.050	0.050	06/12/2025	ND	1.72	86.1	2.00	5.49		
Toluene*	<0.050	0.050	06/12/2025	ND	1.80	89.9	2.00	4.64		
Ethylbenzene*	<0.050	0.050	06/12/2025	ND	1.82	91.2	2.00	4.85		
Total Xylenes*	<0.150	0.150	06/12/2025	ND	5.54	92.3	6.00	4.37		
Total BTEX	<0.300	0.300	06/12/2025	ND						

Surrogate: 4-Bromofluorobenzene (PID) 110 % 71.5-134

Chloride, SM4500Cl-B		mg/kg		Analyzed By: AC						
Analyte	Result	Reporting Limit	Analyzed	Method Blank	BS	% Recovery	True Value QC	RPD	Qualifier	
Chloride	480	16.0	06/13/2025	ND	480	120	400	0.00		

TPH 8015M		mg/kg		Analyzed By: MS					
Analyte	Result	Reporting Limit	Analyzed	Method Blank	BS	% Recovery	True Value QC	RPD	Qualifier
GRO C6-C10*	<10.0	10.0	06/12/2025	ND	231	116	200	7.60	
DRO >C10-C28*	<10.0	10.0	06/12/2025	ND	219	109	200	6.37	
EXT DRO >C28-C36	<10.0	10.0	06/12/2025	ND					

Surrogate: 1-Chlorooctane 104 % 44.4-145

Surrogate: 1-Chlorooctadecane 104 % 40.6-153

Cardinal Laboratories

\*=Accredited Analyte

PLEASE NOTE: Liability and Damages. Cardinal's liability and client's exclusive remedy for any claim arising, whether based in contract or tort, shall be limited to the amount paid by client for analyses. All claims, including those for negligence and any other cause whatsoever shall be deemed waived unless made in writing and received by Cardinal within thirty (30) days after completion of the applicable service. In no event shall Cardinal be liable for incidental or consequential damages, including, without limitation, business interruptions, loss of use, or loss of profits incurred by client, its subsidiaries, affiliates or successors arising out of or related to the performance of the services hereunder by Cardinal, regardless of whether such claim is based upon any of the above stated reasons or otherwise. Results relate only to the samples identified above. This report shall not be reproduced except in full with written approval of Cardinal Laboratories.

Mike Snyder For Celey D. Keene, Lab Director/Quality Manager



PHONE (575) 393-2326 ° 101 E. MARLAND ° HOBBS, NM 88240

**Analytical Results For:**

CARMONA RESOURCES  
 ASHTON THIELKE  
 310 W WALL ST, SUITE 500  
 MIDLAND TX, 79701  
 Fax To:

Received: 06/12/2025  
 Reported: 06/13/2025  
 Project Name: DOS EQUIS 12 FEDERAL COM #001  
 Project Number: 2742  
 Project Location: CIMAREX - LEA COUNTY, NEW MEXICO

Sampling Date: 06/12/2025  
 Sampling Type: Soil  
 Sampling Condition: Cool & Intact  
 Sample Received By: Shalyn Rodriguez

**Sample ID: CS - 8 ( 0.5' ) (H253499-08)**

BTEx 8021B		mg/kg		Analyzed By: JH						
Analyte	Result	Reporting Limit	Analyzed	Method Blank	BS	% Recovery	True Value QC	RPD	Qualifier	
Benzene*	<0.050	0.050	06/12/2025	ND	1.72	86.1	2.00	5.49		
Toluene*	<0.050	0.050	06/12/2025	ND	1.80	89.9	2.00	4.64		
Ethylbenzene*	<0.050	0.050	06/12/2025	ND	1.82	91.2	2.00	4.85		
Total Xylenes*	<0.150	0.150	06/12/2025	ND	5.54	92.3	6.00	4.37		
Total BTEX	<0.300	0.300	06/12/2025	ND						

Surrogate: 4-Bromofluorobenzene (PID) 111 % 71.5-134

Chloride, SM4500Cl-B		mg/kg		Analyzed By: AC					
Analyte	Result	Reporting Limit	Analyzed	Method Blank	BS	% Recovery	True Value QC	RPD	Qualifier
Chloride	1490	16.0	06/13/2025	ND	480	120	400	0.00	

TPH 8015M		mg/kg		Analyzed By: MS					
Analyte	Result	Reporting Limit	Analyzed	Method Blank	BS	% Recovery	True Value QC	RPD	Qualifier
GRO C6-C10*	<10.0	10.0	06/12/2025	ND	231	116	200	7.60	
DRO >C10-C28*	<10.0	10.0	06/12/2025	ND	219	109	200	6.37	
EXT DRO >C28-C36	<10.0	10.0	06/12/2025	ND					

Surrogate: 1-Chlorooctane 103 % 44.4-145

Surrogate: 1-Chlorooctadecane 103 % 40.6-153

Cardinal Laboratories

\*=Accredited Analyte

PLEASE NOTE: Liability and Damages. Cardinal's liability and client's exclusive remedy for any claim arising, whether based in contract or tort, shall be limited to the amount paid by client for analyses. All claims, including those for negligence and any other cause whatsoever shall be deemed waived unless made in writing and received by Cardinal within thirty (30) days after completion of the applicable service. In no event shall Cardinal be liable for incidental or consequential damages, including, without limitation, business interruptions, loss of use, or loss of profits incurred by client, its subsidiaries, affiliates or successors arising out of or related to the performance of the services hereunder by Cardinal, regardless of whether such claim is based upon any of the above stated reasons or otherwise. Results relate only to the samples identified above. This report shall not be reproduced except in full with written approval of Cardinal Laboratories.

Mike Snyder For Celey D. Keene, Lab Director/Quality Manager



PHONE (575) 393-2326 ° 101 E. MARLAND ° HOBBS, NM 88240

**Analytical Results For:**

CARMONA RESOURCES  
 ASHTON THIELKE  
 310 W WALL ST, SUITE 500  
 MIDLAND TX, 79701  
 Fax To:

Received: 06/12/2025  
 Reported: 06/13/2025  
 Project Name: DOS EQUIS 12 FEDERAL COM #001  
 Project Number: 2742  
 Project Location: CIMAREX - LEA COUNTY, NEW MEXICO

Sampling Date: 06/12/2025  
 Sampling Type: Soil  
 Sampling Condition: Cool & Intact  
 Sample Received By: Shalyn Rodriguez

**Sample ID: CS - 9 ( 0.5' ) (H253499-09)**

BTEx 8021B		mg/kg		Analyzed By: JH						
Analyte	Result	Reporting Limit	Analyzed	Method Blank	BS	% Recovery	True Value QC	RPD	Qualifier	
Benzene*	<0.050	0.050	06/12/2025	ND	1.72	86.1	2.00	5.49		
Toluene*	<0.050	0.050	06/12/2025	ND	1.80	89.9	2.00	4.64		
Ethylbenzene*	<0.050	0.050	06/12/2025	ND	1.82	91.2	2.00	4.85		
Total Xylenes*	<0.150	0.150	06/12/2025	ND	5.54	92.3	6.00	4.37		
Total BTEX	<0.300	0.300	06/12/2025	ND						

Surrogate: 4-Bromofluorobenzene (PID) 110 % 71.5-134

Chloride, SM4500Cl-B		mg/kg		Analyzed By: AC						
Analyte	Result	Reporting Limit	Analyzed	Method Blank	BS	% Recovery	True Value QC	RPD	Qualifier	
Chloride	384	16.0	06/13/2025	ND	480	120	400	0.00		

TPH 8015M		mg/kg		Analyzed By: MS					
Analyte	Result	Reporting Limit	Analyzed	Method Blank	BS	% Recovery	True Value QC	RPD	Qualifier
GRO C6-C10*	<10.0	10.0	06/12/2025	ND	231	116	200	7.60	
DRO >C10-C28*	17.0	10.0	06/12/2025	ND	219	109	200	6.37	
EXT DRO >C28-C36	<10.0	10.0	06/12/2025	ND					

Surrogate: 1-Chlorooctane 119 % 44.4-145

Surrogate: 1-Chlorooctadecane 121 % 40.6-153

Cardinal Laboratories

\*=Accredited Analyte

PLEASE NOTE: Liability and Damages. Cardinal's liability and client's exclusive remedy for any claim arising, whether based in contract or tort, shall be limited to the amount paid by client for analyses. All claims, including those for negligence and any other cause whatsoever shall be deemed waived unless made in writing and received by Cardinal within thirty (30) days after completion of the applicable service. In no event shall Cardinal be liable for incidental or consequential damages, including, without limitation, business interruptions, loss of use, or loss of profits incurred by client, its subsidiaries, affiliates or successors arising out of or related to the performance of the services hereunder by Cardinal, regardless of whether such claim is based upon any of the above stated reasons or otherwise. Results relate only to the samples identified above. This report shall not be reproduced except in full with written approval of Cardinal Laboratories.

Mike Snyder For Celey D. Keene, Lab Director/Quality Manager



PHONE (575) 393-2326 ° 101 E. MARLAND ° HOBBS, NM 88240

**Analytical Results For:**

CARMONA RESOURCES  
 ASHTON THIELKE  
 310 W WALL ST, SUITE 500  
 MIDLAND TX, 79701  
 Fax To:

Received: 06/12/2025  
 Reported: 06/13/2025  
 Project Name: DOS EQUIS 12 FEDERAL COM #001  
 Project Number: 2742  
 Project Location: CIMAREX - LEA COUNTY, NEW MEXICO

Sampling Date: 06/12/2025  
 Sampling Type: Soil  
 Sampling Condition: Cool & Intact  
 Sample Received By: Shalyn Rodriguez

**Sample ID: CS - 10 ( 0.5' ) (H253499-10)**

BTEx 8021B		mg/kg		Analyzed By: JH					
Analyte	Result	Reporting Limit	Analyzed	Method Blank	BS	% Recovery	True Value QC	RPD	Qualifier
Benzene*	<0.050	0.050	06/12/2025	ND	1.72	86.1	2.00	5.49	
Toluene*	<0.050	0.050	06/12/2025	ND	1.80	89.9	2.00	4.64	
Ethylbenzene*	<0.050	0.050	06/12/2025	ND	1.82	91.2	2.00	4.85	
Total Xylenes*	<0.150	0.150	06/12/2025	ND	5.54	92.3	6.00	4.37	
Total BTEX	<0.300	0.300	06/12/2025	ND					

Surrogate: 4-Bromofluorobenzene (PID) 112 % 71.5-134

Chloride, SM4500Cl-B		mg/kg		Analyzed By: AC					
Analyte	Result	Reporting Limit	Analyzed	Method Blank	BS	% Recovery	True Value QC	RPD	Qualifier
Chloride	448	16.0	06/13/2025	ND	480	120	400	0.00	

TPH 8015M		mg/kg		Analyzed By: MS					
Analyte	Result	Reporting Limit	Analyzed	Method Blank	BS	% Recovery	True Value QC	RPD	Qualifier
GRO C6-C10*	<10.0	10.0	06/12/2025	ND	231	116	200	7.60	
DRO >C10-C28*	16.1	10.0	06/12/2025	ND	219	109	200	6.37	
EXT DRO >C28-C36	<10.0	10.0	06/12/2025	ND					

Surrogate: 1-Chlorooctane 103 % 44.4-145

Surrogate: 1-Chlorooctadecane 103 % 40.6-153

Cardinal Laboratories

\*=Accredited Analyte

PLEASE NOTE: Liability and Damages. Cardinal's liability and client's exclusive remedy for any claim arising, whether based in contract or tort, shall be limited to the amount paid by client for analyses. All claims, including those for negligence and any other cause whatsoever shall be deemed waived unless made in writing and received by Cardinal within thirty (30) days after completion of the applicable service. In no event shall Cardinal be liable for incidental or consequential damages, including, without limitation, business interruptions, loss of use, or loss of profits incurred by client, its subsidiaries, affiliates or successors arising out of or related to the performance of the services hereunder by Cardinal, regardless of whether such claim is based upon any of the above stated reasons or otherwise. Results relate only to the samples identified above. This report shall not be reproduced except in full with written approval of Cardinal Laboratories.

Mike Snyder For Celey D. Keene, Lab Director/Quality Manager



PHONE (575) 393-2326 ° 101 E. MARLAND ° HOBBS, NM 88240

**Analytical Results For:**

CARMONA RESOURCES  
 ASHTON THIELKE  
 310 W WALL ST, SUITE 500  
 MIDLAND TX, 79701  
 Fax To:

Received: 06/12/2025  
 Reported: 06/13/2025  
 Project Name: DOS EQUIS 12 FEDERAL COM #001  
 Project Number: 2742  
 Project Location: CIMAREX - LEA COUNTY, NEW MEXICO

Sampling Date: 06/12/2025  
 Sampling Type: Soil  
 Sampling Condition: Cool & Intact  
 Sample Received By: Shalyn Rodriguez

**Sample ID: CS - 11 ( 0.5' ) (H253499-11)**

BTEx 8021B		mg/kg		Analyzed By: JH						
Analyte	Result	Reporting Limit	Analyzed	Method Blank	BS	% Recovery	True Value QC	RPD	Qualifier	
Benzene*	<0.050	0.050	06/12/2025	ND	1.72	86.1	2.00	5.49		
Toluene*	<0.050	0.050	06/12/2025	ND	1.80	89.9	2.00	4.64		
Ethylbenzene*	<0.050	0.050	06/12/2025	ND	1.82	91.2	2.00	4.85		
Total Xylenes*	<0.150	0.150	06/12/2025	ND	5.54	92.3	6.00	4.37		
Total BTEX	<0.300	0.300	06/12/2025	ND						

Surrogate: 4-Bromofluorobenzene (PID) 112 % 71.5-134

Chloride, SM4500Cl-B		mg/kg		Analyzed By: HM					
Analyte	Result	Reporting Limit	Analyzed	Method Blank	BS	% Recovery	True Value QC	RPD	Qualifier
Chloride	864	16.0	06/13/2025	ND	432	108	400	3.77	

TPH 8015M		mg/kg		Analyzed By: MS					
Analyte	Result	Reporting Limit	Analyzed	Method Blank	BS	% Recovery	True Value QC	RPD	Qualifier
GRO C6-C10*	<10.0	10.0	06/12/2025	ND	231	116	200	7.60	
DRO >C10-C28*	12.6	10.0	06/12/2025	ND	219	109	200	6.37	
EXT DRO >C28-C36	<10.0	10.0	06/12/2025	ND					

Surrogate: 1-Chlorooctane 109 % 44.4-145

Surrogate: 1-Chlorooctadecane 110 % 40.6-153

Cardinal Laboratories

\*=Accredited Analyte

PLEASE NOTE: Liability and Damages. Cardinal's liability and client's exclusive remedy for any claim arising, whether based in contract or tort, shall be limited to the amount paid by client for analyses. All claims, including those for negligence and any other cause whatsoever shall be deemed waived unless made in writing and received by Cardinal within thirty (30) days after completion of the applicable service. In no event shall Cardinal be liable for incidental or consequential damages, including, without limitation, business interruptions, loss of use, or loss of profits incurred by client, its subsidiaries, affiliates or successors arising out of or related to the performance of the services hereunder by Cardinal, regardless of whether such claim is based upon any of the above stated reasons or otherwise. Results relate only to the samples identified above. This report shall not be reproduced except in full with written approval of Cardinal Laboratories.

Mike Snyder For Celey D. Keene, Lab Director/Quality Manager





PHONE (575) 393-2326 ° 101 E. MARLAND ° HOBBS, NM 88240

**Analytical Results For:**

CARMONA RESOURCES  
 ASHTON THIELKE  
 310 W WALL ST, SUITE 500  
 MIDLAND TX, 79701  
 Fax To:

Received: 06/12/2025  
 Reported: 06/13/2025  
 Project Name: DOS EQUIS 12 FEDERAL COM #001  
 Project Number: 2742  
 Project Location: CIMAREX - LEA COUNTY, NEW MEXICO

Sampling Date: 06/12/2025  
 Sampling Type: Soil  
 Sampling Condition: Cool & Intact  
 Sample Received By: Shalyn Rodriguez

**Sample ID: CS - 12 ( 0.5' ) (H253499-12)**

BTEx 8021B		mg/kg		Analyzed By: JH						
Analyte	Result	Reporting Limit	Analyzed	Method Blank	BS	% Recovery	True Value QC	RPD	Qualifier	
Benzene*	<0.050	0.050	06/12/2025	ND	1.72	86.1	2.00	5.49		
Toluene*	<0.050	0.050	06/12/2025	ND	1.80	89.9	2.00	4.64		
Ethylbenzene*	<0.050	0.050	06/12/2025	ND	1.82	91.2	2.00	4.85		
Total Xylenes*	<0.150	0.150	06/12/2025	ND	5.54	92.3	6.00	4.37		
Total BTEX	<0.300	0.300	06/12/2025	ND						

Surrogate: 4-Bromofluorobenzene (PID) 110 % 71.5-134

Chloride, SM4500Cl-B		mg/kg		Analyzed By: HM						
Analyte	Result	Reporting Limit	Analyzed	Method Blank	BS	% Recovery	True Value QC	RPD	Qualifier	
Chloride	608	16.0	06/13/2025	ND	432	108	400	3.77		

TPH 8015M		mg/kg		Analyzed By: MS					
Analyte	Result	Reporting Limit	Analyzed	Method Blank	BS	% Recovery	True Value QC	RPD	Qualifier
GRO C6-C10*	<10.0	10.0	06/12/2025	ND	231	116	200	7.60	
DRO >C10-C28*	<10.0	10.0	06/12/2025	ND	219	109	200	6.37	
EXT DRO >C28-C36	<10.0	10.0	06/12/2025	ND					

Surrogate: 1-Chlorooctane 106 % 44.4-145

Surrogate: 1-Chlorooctadecane 112 % 40.6-153

Cardinal Laboratories

\*=Accredited Analyte

PLEASE NOTE: Liability and Damages. Cardinal's liability and client's exclusive remedy for any claim arising, whether based in contract or tort, shall be limited to the amount paid by client for analyses. All claims, including those for negligence and any other cause whatsoever shall be deemed waived unless made in writing and received by Cardinal within thirty (30) days after completion of the applicable service. In no event shall Cardinal be liable for incidental or consequential damages, including, without limitation, business interruptions, loss of use, or loss of profits incurred by client, its subsidiaries, affiliates or successors arising out of or related to the performance of the services hereunder by Cardinal, regardless of whether such claim is based upon any of the above stated reasons or otherwise. Results relate only to the samples identified above. This report shall not be reproduced except in full with written approval of Cardinal Laboratories.

Mike Snyder For Celey D. Keene, Lab Director/Quality Manager



PHONE (575) 393-2326 ° 101 E. MARLAND ° HOBBS, NM 88240

**Analytical Results For:**

CARMONA RESOURCES  
 ASHTON THIELKE  
 310 W WALL ST, SUITE 500  
 MIDLAND TX, 79701  
 Fax To:

Received: 06/12/2025  
 Reported: 06/13/2025  
 Project Name: DOS EQUIS 12 FEDERAL COM #001  
 Project Number: 2742  
 Project Location: CIMAREX - LEA COUNTY, NEW MEXICO

Sampling Date: 06/12/2025  
 Sampling Type: Soil  
 Sampling Condition: Cool & Intact  
 Sample Received By: Shalyn Rodriguez

**Sample ID: CS - 13 ( 0.5' ) (H253499-13)**

BTEx 8021B		mg/kg		Analyzed By: JH						
Analyte	Result	Reporting Limit	Analyzed	Method Blank	BS	% Recovery	True Value QC	RPD	Qualifier	
Benzene*	<0.050	0.050	06/12/2025	ND	1.72	86.1	2.00	5.49		
Toluene*	<0.050	0.050	06/12/2025	ND	1.80	89.9	2.00	4.64		
Ethylbenzene*	<0.050	0.050	06/12/2025	ND	1.82	91.2	2.00	4.85		
Total Xylenes*	<0.150	0.150	06/12/2025	ND	5.54	92.3	6.00	4.37		
Total BTEX	<0.300	0.300	06/12/2025	ND						

Surrogate: 4-Bromofluorobenzene (PID) 112 % 71.5-134

Chloride, SM4500Cl-B		mg/kg		Analyzed By: HM						
Analyte	Result	Reporting Limit	Analyzed	Method Blank	BS	% Recovery	True Value QC	RPD	Qualifier	
Chloride	96.0	16.0	06/13/2025	ND	432	108	400	3.77		

TPH 8015M		mg/kg		Analyzed By: MS					
Analyte	Result	Reporting Limit	Analyzed	Method Blank	BS	% Recovery	True Value QC	RPD	Qualifier
GRO C6-C10*	<10.0	10.0	06/12/2025	ND	231	116	200	7.60	
DRO >C10-C28*	17.3	10.0	06/12/2025	ND	219	109	200	6.37	
EXT DRO >C28-C36	<10.0	10.0	06/12/2025	ND					

Surrogate: 1-Chlorooctane 115 % 44.4-145

Surrogate: 1-Chlorooctadecane 117 % 40.6-153

Cardinal Laboratories

\*=Accredited Analyte

PLEASE NOTE: Liability and Damages. Cardinal's liability and client's exclusive remedy for any claim arising, whether based in contract or tort, shall be limited to the amount paid by client for analyses. All claims, including those for negligence and any other cause whatsoever shall be deemed waived unless made in writing and received by Cardinal within thirty (30) days after completion of the applicable service. In no event shall Cardinal be liable for incidental or consequential damages, including, without limitation, business interruptions, loss of use, or loss of profits incurred by client, its subsidiaries, affiliates or successors arising out of or related to the performance of the services hereunder by Cardinal, regardless of whether such claim is based upon any of the above stated reasons or otherwise. Results relate only to the samples identified above. This report shall not be reproduced except in full with written approval of Cardinal Laboratories.

Mike Snyder For Celey D. Keene, Lab Director/Quality Manager



PHONE (575) 393-2326 ° 101 E. MARLAND ° HOBBS, NM 88240

**Analytical Results For:**

CARMONA RESOURCES  
 ASHTON THIELKE  
 310 W WALL ST, SUITE 500  
 MIDLAND TX, 79701  
 Fax To:

Received: 06/12/2025  
 Reported: 06/13/2025  
 Project Name: DOS EQUIS 12 FEDERAL COM #001  
 Project Number: 2742  
 Project Location: CIMAREX - LEA COUNTY, NEW MEXICO

Sampling Date: 06/12/2025  
 Sampling Type: Soil  
 Sampling Condition: Cool & Intact  
 Sample Received By: Shalyn Rodriguez

**Sample ID: CS - 14 ( 0.5' ) (H253499-14)**

BTEx 8021B		mg/kg		Analyzed By: JH						
Analyte	Result	Reporting Limit	Analyzed	Method Blank	BS	% Recovery	True Value QC	RPD	Qualifier	
Benzene*	<0.050	0.050	06/12/2025	ND	1.72	86.1	2.00	5.49		
Toluene*	<0.050	0.050	06/12/2025	ND	1.80	89.9	2.00	4.64		
Ethylbenzene*	<0.050	0.050	06/12/2025	ND	1.82	91.2	2.00	4.85		
Total Xylenes*	<0.150	0.150	06/12/2025	ND	5.54	92.3	6.00	4.37		
Total BTEX	<0.300	0.300	06/12/2025	ND						

Surrogate: 4-Bromofluorobenzene (PID) 109 % 71.5-134

Chloride, SM4500Cl-B		mg/kg		Analyzed By: HM						
Analyte	Result	Reporting Limit	Analyzed	Method Blank	BS	% Recovery	True Value QC	RPD	Qualifier	
Chloride	608	16.0	06/13/2025	ND	432	108	400	3.77		

TPH 8015M		mg/kg		Analyzed By: MS					
Analyte	Result	Reporting Limit	Analyzed	Method Blank	BS	% Recovery	True Value QC	RPD	Qualifier
GRO C6-C10*	<10.0	10.0	06/12/2025	ND	231	116	200	7.60	
DRO >C10-C28*	<10.0	10.0	06/12/2025	ND	219	109	200	6.37	
EXT DRO >C28-C36	<10.0	10.0	06/12/2025	ND					

Surrogate: 1-Chlorooctane 122 % 44.4-145

Surrogate: 1-Chlorooctadecane 124 % 40.6-153

Cardinal Laboratories

\*=Accredited Analyte

PLEASE NOTE: Liability and Damages. Cardinal's liability and client's exclusive remedy for any claim arising, whether based in contract or tort, shall be limited to the amount paid by client for analyses. All claims, including those for negligence and any other cause whatsoever shall be deemed waived unless made in writing and received by Cardinal within thirty (30) days after completion of the applicable service. In no event shall Cardinal be liable for incidental or consequential damages, including, without limitation, business interruptions, loss of use, or loss of profits incurred by client, its subsidiaries, affiliates or successors arising out of or related to the performance of the services hereunder by Cardinal, regardless of whether such claim is based upon any of the above stated reasons or otherwise. Results relate only to the samples identified above. This report shall not be reproduced except in full with written approval of Cardinal Laboratories.

Mike Snyder For Celey D. Keene, Lab Director/Quality Manager



PHONE (575) 393-2326 ° 101 E. MARLAND ° HOBBS, NM 88240

**Analytical Results For:**

CARMONA RESOURCES  
 ASHTON THIELKE  
 310 W WALL ST, SUITE 500  
 MIDLAND TX, 79701  
 Fax To:

Received: 06/12/2025  
 Reported: 06/13/2025  
 Project Name: DOS EQUIS 12 FEDERAL COM #001  
 Project Number: 2742  
 Project Location: CIMAREX - LEA COUNTY, NEW MEXICO

Sampling Date: 06/12/2025  
 Sampling Type: Soil  
 Sampling Condition: Cool & Intact  
 Sample Received By: Shalyn Rodriguez

**Sample ID: CS - 15 ( 0.5' ) (H253499-15)**

BTEx 8021B		mg/kg		Analyzed By: JH						
Analyte	Result	Reporting Limit	Analyzed	Method Blank	BS	% Recovery	True Value QC	RPD	Qualifier	
Benzene*	<0.050	0.050	06/12/2025	ND	1.72	86.1	2.00	5.49		
Toluene*	<0.050	0.050	06/12/2025	ND	1.80	89.9	2.00	4.64		
Ethylbenzene*	<0.050	0.050	06/12/2025	ND	1.82	91.2	2.00	4.85		
Total Xylenes*	<0.150	0.150	06/12/2025	ND	5.54	92.3	6.00	4.37		
Total BTEX	<0.300	0.300	06/12/2025	ND						

Surrogate: 4-Bromofluorobenzene (PID) 111 % 71.5-134

Chloride, SM4500Cl-B		mg/kg		Analyzed By: HM						
Analyte	Result	Reporting Limit	Analyzed	Method Blank	BS	% Recovery	True Value QC	RPD	Qualifier	
Chloride	1600	16.0	06/13/2025	ND	432	108	400	3.77		

TPH 8015M		mg/kg		Analyzed By: MS					
Analyte	Result	Reporting Limit	Analyzed	Method Blank	BS	% Recovery	True Value QC	RPD	Qualifier
GRO C6-C10*	<10.0	10.0	06/12/2025	ND	231	116	200	7.60	
DRO >C10-C28*	<10.0	10.0	06/12/2025	ND	219	109	200	6.37	
EXT DRO >C28-C36	<10.0	10.0	06/12/2025	ND					

Surrogate: 1-Chlorooctane 108 % 44.4-145

Surrogate: 1-Chlorooctadecane 111 % 40.6-153

Cardinal Laboratories

\*=Accredited Analyte

PLEASE NOTE: Liability and Damages. Cardinal's liability and client's exclusive remedy for any claim arising, whether based in contract or tort, shall be limited to the amount paid by client for analyses. All claims, including those for negligence and any other cause whatsoever shall be deemed waived unless made in writing and received by Cardinal within thirty (30) days after completion of the applicable service. In no event shall Cardinal be liable for incidental or consequential damages, including, without limitation, business interruptions, loss of use, or loss of profits incurred by client, its subsidiaries, affiliates or successors arising out of or related to the performance of the services hereunder by Cardinal, regardless of whether such claim is based upon any of the above stated reasons or otherwise. Results relate only to the samples identified above. This report shall not be reproduced except in full with written approval of Cardinal Laboratories.

Mike Snyder For Celey D. Keene, Lab Director/Quality Manager



---

PHONE (575) 393-2326 ° 101 E. MARLAND ° HOBBS, NM 88240

---

### Notes and Definitions

S-04	The surrogate recovery for this sample is outside of established control limits due to a sample matrix effect.
QR-03	The RPD value for the sample duplicate or MS/MSD was outside of QC acceptance limits due to matrix interference. QC batch accepted based on LCS and/or LCSD recovery and/or RPD values.
QM-03	Multiple analyses indicate the percent recovery exceeds the Quality Control acceptance criteria due to a matrix effect.
ND	Analyte NOT DETECTED at or above the reporting limit
RPD	Relative Percent Difference
**	Samples not received at proper temperature of 6°C or below.
***	Insufficient time to reach temperature.
-	Chloride by SM4500Cl-B does not require samples be received at or below 6°C Samples reported on an as received basis (wet) unless otherwise noted on report

---

Cardinal Laboratories

\*=Accredited Analyte

PLEASE NOTE: Liability and Damages. Cardinal's liability and client's exclusive remedy for any claim arising, whether based in contract or tort, shall be limited to the amount paid by client for analyses. All claims, including those for negligence and any other cause whatsoever shall be deemed waived unless made in writing and received by Cardinal within thirty (30) days after completion of the applicable service. In no event shall Cardinal be liable for incidental or consequential damages, including, without limitation, business interruptions, loss of use, or loss of profits incurred by client, its subsidiaries, affiliates or successors arising out of or related to the performance of the services hereunder by Cardinal, regardless of whether such claim is based upon any of the above stated reasons or otherwise. Results relate only to the samples identified above. This report shall not be reproduced except in full with written approval of Cardinal Laboratories.

A handwritten signature in black ink, appearing to read "Mike Snyder", is written over a horizontal line.

Mike Snyder For Celey D. Keene, Lab Director/Quality Manager



## Chain of Custody

Work Order No.: 4253499

Project Manager:	Ashton Thielke		Bill to: (if different)	Laci Luig
Company Name:	Carmona Resources		Company Name:	Cimax Energy
Address:	310 West Wall Ste. 500		Address:	600 N Mainfield St. Suite 600
City, State ZIP:	Midland, TX 79701		City, State ZIP:	Midland, TX 79701
Phone:	432-813-8988		Email:	<a href="mailto:laci.luig@coterra.com">laci.luig@coterra.com</a> & <a href="mailto:ashton.thielke@coterra.com">ashton.thielke@coterra.com</a>

Work Order Comments				
Program:	UST/PST <input type="checkbox"/>	PRP <input type="checkbox"/>	Brownfields <input type="checkbox"/>	RRC <input type="checkbox"/> Superfund <input type="checkbox"/>
State of Project:				
Reporting Level II	<input type="checkbox"/>	Level III	<input type="checkbox"/>	PST/UST <input type="checkbox"/> RRP <input type="checkbox"/> Level IV <input type="checkbox"/>
Deliverables: EDD	<input type="checkbox"/>	ADAPT	<input type="checkbox"/>	Other: <input type="checkbox"/>

Project Name:		Dos Equis 2 Federal Com #001		Turn Around		ANALYSIS REQUEST													Preservative Codes									
Project Number:		2742		<input type="checkbox"/> Routine <input checked="" type="checkbox"/> Rush															None: NO DI Water: H <sub>2</sub> O									
Project Location		Lea County, NM		Due Date:															Cool: Cool MeOH: Me									
Sampler's Name:		GPJ/JDC		48 hr.															HCL: HC HNO <sub>3</sub> : HN									
PO #:																			H <sub>2</sub> SO <sub>4</sub> : H <sub>2</sub> NaOH: Na									
SAMPLE RECEIPT				Temp Blank:		Yes No		Wet Ice:		Yes No																		
Received In tact:				Yes No		Thermometer ID:				490																		
Cooler Custody Seals:				Yes No		N/A		Correction Factor:		10.3																		
Sample Custody Seals:				Yes No		N/A		Temperature Reading:		1.7																		
Total Containers:						Corrected Temperature:		2.0																				
Sample Identification				Date		Time		Soil		Depth		Grab/ Comp		# of Cont														
CS-1 (0.5')				6/12/2025				X				C		1														
CS-2 (0.5')				6/12/2025				X				C		1														
CS-3 (0.5')				6/12/2025				X				C		1														
CS-4 (0.5')				6/12/2025				X				C		1														
CS-5 (0.5')				6/12/2025				X				C		1														
CS-6 (0.5')				6/12/2025				X				C		1														
CS-7 (0.5')				6/12/2025				X				C		1														
CS-8 (0.5')				6/12/2025				X				C		1														
CS-9 (0.5')				6/12/2025				X				C		1														
CS-10 (0.5')				6/12/2025				X				C		1														
																BTEX 8021B												
																TPH 8015M ( GRO + DRO + MRO)												
																Chloride 4500												
																HOLD												
																None: NO DI Water: H <sub>2</sub> O												
																Cool: Cool MeOH: Me												
																HCL: HC HNO <sub>3</sub> : HN												
																H <sub>2</sub> SO <sub>4</sub> : H <sub>2</sub> NaOH: Na												
																H <sub>3</sub> PO <sub>4</sub> : HP												
																NaHSO <sub>4</sub> : NABIS												
																Na <sub>2</sub> S <sub>2</sub> O <sub>3</sub> : NaSO <sub>3</sub>												
																Zn Acetate+NaOH: Zn												
																NaOH+Ascorbic Acid: SAPC												
																Sample Comments												

Please send results to [cmoehring@carmonaresources.com](mailto:cmoehring@carmonaresources.com) and [mcarmona@carmonaresources.com](mailto:mcarmona@carmonaresources.com)

Relinquished by: (Signature)	Received by: (Signature)	Date/Time	Relinquished by: (Signature)	Received by: (Signature)	Date/Time
1. <i>[Signature]</i>	<i>[Signature]</i>	06/25/13	2. <i>[Signature]</i>		
3. <i>[Signature]</i>			4. <i>[Signature]</i>		
5. <i>[Signature]</i>			6. <i>[Signature]</i>		



## Chain of Custody

Work Order No: 1253499

<b>Project Manager:</b>	Ashlon Thielke	<b>Bill to: (if different)</b>	Laci Luig
<b>Company Name:</b>	Carmona Resources	<b>Company Name:</b>	Cimarex Energy
<b>Address:</b>	310 West Wall Ste. 500	<b>Address:</b>	600 N Marinfeld St. Suite 600
<b>City, State ZIP:</b>	Midland, TX 79701	<b>City, State ZIP:</b>	Midland, TX 79701
<b>Phone:</b>	432-813-8988	<b>Email:</b>	laci.luig@coterra.com & ashlon.thielke@coterra.com

<b>Work Order Comments</b>			
<b>Program:</b>	UST/PST <input type="checkbox"/> PRP <input type="checkbox"/>	Brownfields <input type="checkbox"/>	RRC <input type="checkbox"/> Superfund <input type="checkbox"/>
<b>State of Project:</b>			
<b>Reporting Level:</b>	I <input type="checkbox"/> Level III <input type="checkbox"/>	PST/UST <input type="checkbox"/>	RRP <input type="checkbox"/> Level IV <input type="checkbox"/>
<b>Deliverables:</b>	EDD <input type="checkbox"/>	ADAPT <input type="checkbox"/>	Other: _____

Project Name:						Dos Equis Federal Com #001	Turn Around										
Project Number:						2742	<input type="checkbox"/> Routine <input checked="" type="checkbox"/> Rush										
Project Location						Lea County, NM	Due Date:		48 hr.								
Sampler's Name:						GRJ/JDC											
PO #:																	
SAMPLE RECEIPT									Parameters								
Received In tact:						Temp Blank:	Yes No	Wet Ice:	Yes No								
Cooler Custody Seals:						Yes No	Thermometer ID:	140									
Sample Custody Seals:						Yes No	N/A	Correction Factor:	10.3%								
Total Containers:						Yes No	N/A	Temperature Reading:	1.7%								
								Corrected Temperature:	2.0%								
Sample Identification				Date	Time	Soil	Depth	Grab/ Comp	# of Cont	BTEX 8021B	TPH 8015M ( GRO + DRO + MRO)	Chloride 4500	HOLD	Preservative Codes			
CS-11 (0.5')				6/12/2025		X	C	1	1	X X X X				None: NO	DI Water: H <sub>2</sub> O		
CS-12 (0.5')				6/12/2025		X	C	1	1	X X X X				Cool: Cool	Meth: Me		
CS-13 (0.5')				6/12/2025		X	C	1	1	X X X X				HCL: HC	HNO <sub>3</sub> : HN		
CS-14 (0.5')				6/12/2025		X	C	1	1	X X X X				H <sub>2</sub> SO <sub>4</sub> : H <sub>2</sub>	NaOH: Na		
CS-15 (0.5')				6/12/2025		X	C	1	1	X X X X				H <sub>3</sub> PO <sub>4</sub> : HP			
														NaHSO <sub>4</sub> : NABIS			
														Na <sub>2</sub> S <sub>2</sub> O <sub>3</sub> : NaSO <sub>3</sub>			
														Zn Acetate+NaOH: Zn			
														NaOH+Ascorbic Acid: SAPC			
Sample Comments																	

Please send results to [cmoehring@carmonaresources.com](mailto:cmoehring@carmonaresources.com) and [mcarmona@carmonaresources.com](mailto:mcarmona@carmonaresources.com)

Relinquished by: (Signature)	Received by: (Signature)	Date/Time	Relinquished by: (Signature)	Received by: (Signature)	Date/Time
<i>[Signature]</i>	<i>[Signature]</i>	10-12-25 1352			



PHONE (575) 393-2326 ° 101 E. MARLAND ° HOBBS, NM 88240

June 13, 2025

ASHTON THIELKE

CARMONA RESOURCES

310 W WALL ST, SUITE 500

MIDLAND, TX 79701

RE: DOS EQUIS 12 FEDERAL COM #001

Enclosed are the results of analyses for samples received by the laboratory on 06/12/25 13:52.

Cardinal Laboratories is accredited through Texas NELAP under certificate number TX-C25-00101. Accreditation applies to drinking water, non-potable water and solid and chemical materials. All accredited analytes are denoted by an asterisk (\*). For a complete list of accredited analytes and matrices visit the TCEQ website at [www.tceq.texas.gov/field/qa/lab\\_accred\\_certif.html](http://www.tceq.texas.gov/field/qa/lab_accred_certif.html).

Cardinal Laboratories is accredited through the State of Colorado Department of Public Health and Environment for:

Method EPA 552.2	Haloacetic Acids (HAA-5)
Method EPA 524.2	Total Trihalomethanes (TTHM)
Method EPA 524.4	Regulated VOCs (V1, V2, V3)

Accreditation applies to public drinking water matrices.

This report meets NELAP requirements and is made up of a cover page, analytical results, and a copy of the original chain-of-custody. If you have any questions concerning this report, please feel free to contact me.

Sincerely,

A handwritten signature in black ink that reads "Mike Snyder". The signature is fluid and cursive, with the first name "Mike" and last name "Snyder" clearly distinguishable.

Mike Snyder For Celey D. Keene

Lab Director/Quality Manager



PHONE (575) 393-2326 ° 101 E. MARLAND ° HOBBS, NM 88240

**Analytical Results For:**

CARMONA RESOURCES  
 ASHTON THIELKE  
 310 W WALL ST, SUITE 500  
 MIDLAND TX, 79701  
 Fax To:

Received: 06/12/2025  
 Reported: 06/13/2025  
 Project Name: DOS EQUIS 12 FEDERAL COM #001  
 Project Number: 2742  
 Project Location: CIMAREX - LEA COUNTY, NEW MEXICO

Sampling Date: 06/12/2025  
 Sampling Type: Soil  
 Sampling Condition: Cool & Intact  
 Sample Received By: Shalyn Rodriguez

**Sample ID: H - 1 (0-0.5') (H253502-01)**

BTEX 8021B		mg/kg		Analyzed By: JH					
Analyte	Result	Reporting Limit	Analyzed	Method Blank	BS	% Recovery	True Value QC	RPD	Qualifier
Benzene*	<0.050	0.050	06/12/2025	ND	1.91	95.5	2.00	5.54	
Toluene*	<0.050	0.050	06/12/2025	ND	2.01	100	2.00	5.31	
Ethylbenzene*	<0.050	0.050	06/12/2025	ND	2.00	99.8	2.00	4.89	
Total Xylenes*	<0.150	0.150	06/12/2025	ND	5.94	99.0	6.00	5.49	
Total BTEX	<0.300	0.300	06/12/2025	ND					

Surrogate: 4-Bromofluorobenzene (PID) 94.0 % 71.5-134

Chloride, SM4500Cl-B		mg/kg		Analyzed By: HM						
Analyte	Result	Reporting Limit	Analyzed	Method Blank	BS	% Recovery	True Value QC	RPD	Qualifier	
Chloride	112	16.0	06/13/2025	ND	432	108	400	3.77		

TPH 8015M		mg/kg		Analyzed By: MS					
Analyte	Result	Reporting Limit	Analyzed	Method Blank	BS	% Recovery	True Value QC	RPD	Qualifier
GRO C6-C10*	<10.0	10.0	06/12/2025	ND	210	105	200	3.11	
DRO >C10-C28*	<10.0	10.0	06/12/2025	ND	212	106	200	5.03	
EXT DRO >C28-C36	<10.0	10.0	06/12/2025	ND					

Surrogate: 1-Chlorooctane 119 % 44.4-145

Surrogate: 1-Chlorooctadecane 119 % 40.6-153

Cardinal Laboratories

\*=Accredited Analyte

PLEASE NOTE: Liability and Damages. Cardinal's liability and client's exclusive remedy for any claim arising, whether based in contract or tort, shall be limited to the amount paid by client for analyses. All claims, including those for negligence and any other cause whatsoever shall be deemed waived unless made in writing and received by Cardinal within thirty (30) days after completion of the applicable service. In no event shall Cardinal be liable for incidental or consequential damages, including, without limitation, business interruptions, loss of use, or loss of profits incurred by client, its subsidiaries, affiliates or successors arising out of or related to the performance of the services hereunder by Cardinal, regardless of whether such claim is based upon any of the above stated reasons or otherwise. Results relate only to the samples identified above. This report shall not be reproduced except in full with written approval of Cardinal Laboratories.

Mike Snyder For Celey D. Keene, Lab Director/Quality Manager



PHONE (575) 393-2326 ° 101 E. MARLAND ° HOBBS, NM 88240

**Analytical Results For:**

CARMONA RESOURCES  
 ASHTON THIELKE  
 310 W WALL ST, SUITE 500  
 MIDLAND TX, 79701  
 Fax To:

Received: 06/12/2025  
 Reported: 06/13/2025  
 Project Name: DOS EQUIS 12 FEDERAL COM #001  
 Project Number: 2742  
 Project Location: CIMAREX - LEA COUNTY, NEW MEXICO

Sampling Date: 06/12/2025  
 Sampling Type: Soil  
 Sampling Condition: Cool & Intact  
 Sample Received By: Shalyn Rodriguez

**Sample ID: H - 2 (0-0.5') (H253502-02)**

BTEx 8021B		mg/kg		Analyzed By: JH					
Analyte	Result	Reporting Limit	Analyzed	Method Blank	BS	% Recovery	True Value QC	RPD	Qualifier
Benzene*	<0.050	0.050	06/12/2025	ND	1.91	95.5	2.00	5.54	
Toluene*	<0.050	0.050	06/12/2025	ND	2.01	100	2.00	5.31	
Ethylbenzene*	<0.050	0.050	06/12/2025	ND	2.00	99.8	2.00	4.89	
Total Xylenes*	<0.150	0.150	06/12/2025	ND	5.94	99.0	6.00	5.49	
Total BTEX	<0.300	0.300	06/12/2025	ND					

Surrogate: 4-Bromofluorobenzene (PID) 94.7 % 71.5-134

Chloride, SM4500Cl-B		mg/kg		Analyzed By: AC					
Analyte	Result	Reporting Limit	Analyzed	Method Blank	BS	% Recovery	True Value QC	RPD	Qualifier
Chloride	192	16.0	06/13/2025	ND	432	108	400	7.14	

TPH 8015M		mg/kg		Analyzed By: MS					
Analyte	Result	Reporting Limit	Analyzed	Method Blank	BS	% Recovery	True Value QC	RPD	Qualifier
GRO C6-C10*	<10.0	10.0	06/12/2025	ND	210	105	200	3.11	
DRO >C10-C28*	<10.0	10.0	06/12/2025	ND	212	106	200	5.03	
EXT DRO >C28-C36	<10.0	10.0	06/12/2025	ND					

Surrogate: 1-Chlorooctane 108 % 44.4-145

Surrogate: 1-Chlorooctadecane 109 % 40.6-153

Cardinal Laboratories

\*=Accredited Analyte

PLEASE NOTE: Liability and Damages. Cardinal's liability and client's exclusive remedy for any claim arising, whether based in contract or tort, shall be limited to the amount paid by client for analyses. All claims, including those for negligence and any other cause whatsoever shall be deemed waived unless made in writing and received by Cardinal within thirty (30) days after completion of the applicable service. In no event shall Cardinal be liable for incidental or consequential damages, including, without limitation, business interruptions, loss of use, or loss of profits incurred by client, its subsidiaries, affiliates or successors arising out of or related to the performance of the services hereunder by Cardinal, regardless of whether such claim is based upon any of the above stated reasons or otherwise. Results relate only to the samples identified above. This report shall not be reproduced except in full with written approval of Cardinal Laboratories.

Mike Snyder For Celey D. Keene, Lab Director/Quality Manager



PHONE (575) 393-2326 ° 101 E. MARLAND ° HOBBS, NM 88240

**Analytical Results For:**

CARMONA RESOURCES  
 ASHTON THIELKE  
 310 W WALL ST, SUITE 500  
 MIDLAND TX, 79701  
 Fax To:

Received: 06/12/2025  
 Reported: 06/13/2025  
 Project Name: DOS EQUIS 12 FEDERAL COM #001  
 Project Number: 2742  
 Project Location: CIMAREX - LEA COUNTY, NEW MEXICO

Sampling Date: 06/12/2025  
 Sampling Type: Soil  
 Sampling Condition: Cool & Intact  
 Sample Received By: Shalyn Rodriguez

**Sample ID: H - 3 (0-0.5') (H253502-03)**

BTEx 8021B		mg/kg		Analyzed By: JH						
Analyte	Result	Reporting Limit	Analyzed	Method Blank	BS	% Recovery	True Value QC	RPD	Qualifier	
Benzene*	<0.050	0.050	06/12/2025	ND	1.91	95.5	2.00	5.54		
Toluene*	<0.050	0.050	06/12/2025	ND	2.01	100	2.00	5.31		
Ethylbenzene*	<0.050	0.050	06/12/2025	ND	2.00	99.8	2.00	4.89		
Total Xylenes*	<0.150	0.150	06/12/2025	ND	5.94	99.0	6.00	5.49		
Total BTEX	<0.300	0.300	06/12/2025	ND						

Surrogate: 4-Bromofluorobenzene (PID) 94.6 % 71.5-134

Chloride, SM4500Cl-B		mg/kg		Analyzed By: AC						
Analyte	Result	Reporting Limit	Analyzed	Method Blank	BS	% Recovery	True Value QC	RPD	Qualifier	
Chloride	144	16.0	06/13/2025	ND	432	108	400	7.14		

TPH 8015M		mg/kg		Analyzed By: MS					
Analyte	Result	Reporting Limit	Analyzed	Method Blank	BS	% Recovery	True Value QC	RPD	Qualifier
GRO C6-C10*	<10.0	10.0	06/12/2025	ND	210	105	200	3.11	
DRO >C10-C28*	<10.0	10.0	06/12/2025	ND	212	106	200	5.03	
EXT DRO >C28-C36	<10.0	10.0	06/12/2025	ND					

Surrogate: 1-Chlorooctane 93.2 % 44.4-145

Surrogate: 1-Chlorooctadecane 93.9 % 40.6-153

Cardinal Laboratories

\*=Accredited Analyte

PLEASE NOTE: Liability and Damages. Cardinal's liability and client's exclusive remedy for any claim arising, whether based in contract or tort, shall be limited to the amount paid by client for analyses. All claims, including those for negligence and any other cause whatsoever shall be deemed waived unless made in writing and received by Cardinal within thirty (30) days after completion of the applicable service. In no event shall Cardinal be liable for incidental or consequential damages, including, without limitation, business interruptions, loss of use, or loss of profits incurred by client, its subsidiaries, affiliates or successors arising out of or related to the performance of the services hereunder by Cardinal, regardless of whether such claim is based upon any of the above stated reasons or otherwise. Results relate only to the samples identified above. This report shall not be reproduced except in full with written approval of Cardinal Laboratories.

Mike Snyder For Celey D. Keene, Lab Director/Quality Manager





PHONE (575) 393-2326 ° 101 E. MARLAND ° HOBBS, NM 88240

**Analytical Results For:**

CARMONA RESOURCES  
 ASHTON THIELKE  
 310 W WALL ST, SUITE 500  
 MIDLAND TX, 79701  
 Fax To:

Received: 06/12/2025  
 Reported: 06/13/2025  
 Project Name: DOS EQUIS 12 FEDERAL COM #001  
 Project Number: 2742  
 Project Location: CIMAREX - LEA COUNTY, NEW MEXICO

Sampling Date: 06/12/2025  
 Sampling Type: Soil  
 Sampling Condition: Cool & Intact  
 Sample Received By: Shalyn Rodriguez

**Sample ID: H - 4 (0-0.5') (H253502-04)**

BTEx 8021B		mg/kg		Analyzed By: JH						
Analyte	Result	Reporting Limit	Analyzed	Method Blank	BS	% Recovery	True Value QC	RPD	Qualifier	
Benzene*	<0.050	0.050	06/12/2025	ND	1.91	95.5	2.00	5.54		
Toluene*	<0.050	0.050	06/12/2025	ND	2.01	100	2.00	5.31		
Ethylbenzene*	<0.050	0.050	06/12/2025	ND	2.00	99.8	2.00	4.89		
Total Xylenes*	<0.150	0.150	06/12/2025	ND	5.94	99.0	6.00	5.49		
Total BTEX	<0.300	0.300	06/12/2025	ND						

Surrogate: 4-Bromofluorobenzene (PID) 94.5 % 71.5-134

Chloride, SM4500Cl-B		mg/kg		Analyzed By: AC						
Analyte	Result	Reporting Limit	Analyzed	Method Blank	BS	% Recovery	True Value QC	RPD	Qualifier	
Chloride	32.0	16.0	06/13/2025	ND	432	108	400	7.14		

TPH 8015M		mg/kg		Analyzed By: MS					
Analyte	Result	Reporting Limit	Analyzed	Method Blank	BS	% Recovery	True Value QC	RPD	Qualifier
GRO C6-C10*	<10.0	10.0	06/12/2025	ND	210	105	200	3.11	
DRO >C10-C28*	<10.0	10.0	06/12/2025	ND	212	106	200	5.03	
EXT DRO >C28-C36	<10.0	10.0	06/12/2025	ND					

Surrogate: 1-Chlorooctane 112 % 44.4-145

Surrogate: 1-Chlorooctadecane 113 % 40.6-153

Cardinal Laboratories

\*=Accredited Analyte

PLEASE NOTE: Liability and Damages. Cardinal's liability and client's exclusive remedy for any claim arising, whether based in contract or tort, shall be limited to the amount paid by client for analyses. All claims, including those for negligence and any other cause whatsoever shall be deemed waived unless made in writing and received by Cardinal within thirty (30) days after completion of the applicable service. In no event shall Cardinal be liable for incidental or consequential damages, including, without limitation, business interruptions, loss of use, or loss of profits incurred by client, its subsidiaries, affiliates or successors arising out of or related to the performance of the services hereunder by Cardinal, regardless of whether such claim is based upon any of the above stated reasons or otherwise. Results relate only to the samples identified above. This report shall not be reproduced except in full with written approval of Cardinal Laboratories.

Mike Snyder For Celey D. Keene, Lab Director/Quality Manager



PHONE (575) 393-2326 ° 101 E. MARLAND ° HOBBS, NM 88240

**Analytical Results For:**

CARMONA RESOURCES  
 ASHTON THIELKE  
 310 W WALL ST, SUITE 500  
 MIDLAND TX, 79701  
 Fax To:

Received: 06/12/2025  
 Reported: 06/13/2025  
 Project Name: DOS EQUIS 12 FEDERAL COM #001  
 Project Number: 2742  
 Project Location: CIMAREX - LEA COUNTY, NEW MEXICO

Sampling Date: 06/12/2025  
 Sampling Type: Soil  
 Sampling Condition: Cool & Intact  
 Sample Received By: Shalyn Rodriguez

**Sample ID: H - 5 (0-0.5') (H253502-05)**

BTEx 8021B		mg/kg		Analyzed By: JH						
Analyte	Result	Reporting Limit	Analyzed	Method Blank	BS	% Recovery	True Value QC	RPD	Qualifier	
Benzene*	<0.050	0.050	06/12/2025	ND	1.91	95.5	2.00	5.54		
Toluene*	<0.050	0.050	06/12/2025	ND	2.01	100	2.00	5.31		
Ethylbenzene*	<0.050	0.050	06/12/2025	ND	2.00	99.8	2.00	4.89		
Total Xylenes*	<0.150	0.150	06/12/2025	ND	5.94	99.0	6.00	5.49		
Total BTEX	<0.300	0.300	06/12/2025	ND						

Surrogate: 4-Bromofluorobenzene (PID) 94.1 % 71.5-134

Chloride, SM4500Cl-B		mg/kg		Analyzed By: AC					
Analyte	Result	Reporting Limit	Analyzed	Method Blank	BS	% Recovery	True Value QC	RPD	Qualifier
Chloride	144	16.0	06/13/2025	ND	432	108	400	7.14	

TPH 8015M		mg/kg		Analyzed By: MS					
Analyte	Result	Reporting Limit	Analyzed	Method Blank	BS	% Recovery	True Value QC	RPD	Qualifier
GRO C6-C10*	<10.0	10.0	06/12/2025	ND	210	105	200	3.11	
DRO >C10-C28*	<10.0	10.0	06/12/2025	ND	212	106	200	5.03	
EXT DRO >C28-C36	<10.0	10.0	06/12/2025	ND					

Surrogate: 1-Chlorooctane 111 % 44.4-145

Surrogate: 1-Chlorooctadecane 111 % 40.6-153

Cardinal Laboratories

\*=Accredited Analyte

PLEASE NOTE: Liability and Damages. Cardinal's liability and client's exclusive remedy for any claim arising, whether based in contract or tort, shall be limited to the amount paid by client for analyses. All claims, including those for negligence and any other cause whatsoever shall be deemed waived unless made in writing and received by Cardinal within thirty (30) days after completion of the applicable service. In no event shall Cardinal be liable for incidental or consequential damages, including, without limitation, business interruptions, loss of use, or loss of profits incurred by client, its subsidiaries, affiliates or successors arising out of or related to the performance of the services hereunder by Cardinal, regardless of whether such claim is based upon any of the above stated reasons or otherwise. Results relate only to the samples identified above. This report shall not be reproduced except in full with written approval of Cardinal Laboratories.

Mike Snyder For Celey D. Keene, Lab Director/Quality Manager



PHONE (575) 393-2326 ° 101 E. MARLAND ° HOBBS, NM 88240

### Notes and Definitions

ND	Analyte NOT DETECTED at or above the reporting limit
RPD	Relative Percent Difference
**	Samples not received at proper temperature of 6°C or below.
***	Insufficient time to reach temperature.
-	Chloride by SM4500Cl-B does not require samples be received at or below 6°C Samples reported on an as received basis (wet) unless otherwise noted on report

Cardinal Laboratories

\*=Accredited Analyte

PLEASE NOTE: Liability and Damages. Cardinal's liability and client's exclusive remedy for any claim arising, whether based in contract or tort, shall be limited to the amount paid by client for analyses. All claims, including those for negligence and any other cause whatsoever shall be deemed waived unless made in writing and received by Cardinal within thirty (30) days after completion of the applicable service. In no event shall Cardinal be liable for incidental or consequential damages, including, without limitation, business interruptions, loss of use, or loss of profits incurred by client, its subsidiaries, affiliates or successors arising out of or related to the performance of the services hereunder by Cardinal, regardless of whether such claim is based upon any of the above stated reasons or otherwise. Results relate only to the samples identified above. This report shall not be reproduced except in full with written approval of Cardinal Laboratories.

A handwritten signature in black ink, appearing to read "Mike Snyder".

Mike Snyder For Celey D. Keene, Lab Director/Quality Manager

## Chain of Custody

Work Order No: 755508

Page 8 of 8

Revised Date 05/01/2020 Rev. 2020.1



PHONE (575) 393-2326 ° 101 E. MARLAND ° HOBBS, NM 88240

June 13, 2025

ASHTON THIELKE

CARMONA RESOURCES

310 W WALL ST, SUITE 500

MIDLAND, TX 79701

RE: DOS EQUIS 12 FEDERAL COM #001

Enclosed are the results of analyses for samples received by the laboratory on 06/12/25 13:52.

Cardinal Laboratories is accredited through Texas NELAP under certificate number TX-C25-00101. Accreditation applies to drinking water, non-potable water and solid and chemical materials. All accredited analytes are denoted by an asterisk (\*). For a complete list of accredited analytes and matrices visit the TCEQ website at [www.tceq.texas.gov/field/qa/lab\\_accred\\_certif.html](http://www.tceq.texas.gov/field/qa/lab_accred_certif.html).

Cardinal Laboratories is accredited through the State of Colorado Department of Public Health and Environment for:

Method EPA 552.2	Haloacetic Acids (HAA-5)
Method EPA 524.2	Total Trihalomethanes (TTHM)
Method EPA 524.4	Regulated VOCs (V1, V2, V3)

Accreditation applies to public drinking water matrices.

This report meets NELAP requirements and is made up of a cover page, analytical results, and a copy of the original chain-of-custody. If you have any questions concerning this report, please feel free to contact me.

Sincerely,

A handwritten signature in black ink that reads "Mike Snyder". The signature is fluid and cursive, with the first name "Mike" and last name "Snyder" clearly distinguishable.

Mike Snyder For Celey D. Keene

Lab Director/Quality Manager



PHONE (575) 393-2326 ° 101 E. MARLAND ° HOBBS, NM 88240

**Analytical Results For:**

CARMONA RESOURCES  
 ASHTON THIELKE  
 310 W WALL ST, SUITE 500  
 MIDLAND TX, 79701  
 Fax To:

Received: 06/12/2025  
 Reported: 06/13/2025  
 Project Name: DOS EQUIS 12 FEDERAL COM #001  
 Project Number: 2742  
 Project Location: CIMAREX - LEA COUNTY, NEW MEXICO

Sampling Date: 06/12/2025  
 Sampling Type: Soil  
 Sampling Condition: Cool & Intact  
 Sample Received By: Shalyn Rodriguez

**Sample ID: BACKFILL (H253500-01)**

BTEx 8021B		mg/kg		Analyzed By: JH						
Analyte	Result	Reporting Limit	Analyzed	Method Blank	BS	% Recovery	True Value QC	RPD	Qualifier	
Benzene*	<0.050	0.050	06/12/2025	ND	1.72	86.1	2.00	5.49		
Toluene*	<0.050	0.050	06/12/2025	ND	1.80	89.9	2.00	4.64		
Ethylbenzene*	<0.050	0.050	06/12/2025	ND	1.82	91.2	2.00	4.85		
Total Xylenes*	<0.150	0.150	06/12/2025	ND	5.54	92.3	6.00	4.37		
Total BTEX	<0.300	0.300	06/12/2025	ND						

Surrogate: 4-Bromofluorobenzene (PID) 114 % 71.5-134

Chloride, SM4500Cl-B		mg/kg		Analyzed By: HM						
Analyte	Result	Reporting Limit	Analyzed	Method Blank	BS	% Recovery	True Value QC	RPD	Qualifier	
Chloride	144	16.0	06/13/2025	ND	432	108	400	3.77		

TPH 8015M		mg/kg		Analyzed By: MS					
Analyte	Result	Reporting Limit	Analyzed	Method Blank	BS	% Recovery	True Value QC	RPD	Qualifier
GRO C6-C10*	<10.0	10.0	06/12/2025	ND	231	116	200	7.60	
DRO >C10-C28*	<10.0	10.0	06/12/2025	ND	219	109	200	6.37	
EXT DRO >C28-C36	<10.0	10.0	06/12/2025	ND					

Surrogate: 1-Chlorooctane 121 % 44.4-145

Surrogate: 1-Chlorooctadecane 124 % 40.6-153

Cardinal Laboratories

\*=Accredited Analyte

PLEASE NOTE: Liability and Damages. Cardinal's liability and client's exclusive remedy for any claim arising, whether based in contract or tort, shall be limited to the amount paid by client for analyses. All claims, including those for negligence and any other cause whatsoever shall be deemed waived unless made in writing and received by Cardinal within thirty (30) days after completion of the applicable service. In no event shall Cardinal be liable for incidental or consequential damages, including, without limitation, business interruptions, loss of use, or loss of profits incurred by client, its subsidiaries, affiliates or successors arising out of or related to the performance of the services hereunder by Cardinal, regardless of whether such claim is based upon any of the above stated reasons or otherwise. Results relate only to the samples identified above. This report shall not be reproduced except in full with written approval of Cardinal Laboratories.

Mike Snyder For Celey D. Keene, Lab Director/Quality Manager





PHONE (575) 393-2326 ° 101 E. MARLAND ° HOBBS, NM 88240

### Notes and Definitions

S-04	The surrogate recovery for this sample is outside of established control limits due to a sample matrix effect.
QR-03	The RPD value for the sample duplicate or MS/MSD was outside of QC acceptance limits due to matrix interference. QC batch accepted based on LCS and/or LCSD recovery and/or RPD values.
QM-03	Multiple analyses indicate the percent recovery exceeds the Quality Control acceptance criteria due to a matrix effect.
ND	Analyte NOT DETECTED at or above the reporting limit
RPD	Relative Percent Difference
**	Samples not received at proper temperature of 6°C or below.
***	Insufficient time to reach temperature.
-	Chloride by SM4500Cl-B does not require samples be received at or below 6°C Samples reported on an as received basis (wet) unless otherwise noted on report

Cardinal Laboratories

\*=Accredited Analyte

PLEASE NOTE: Liability and Damages. Cardinal's liability and client's exclusive remedy for any claim arising, whether based in contract or tort, shall be limited to the amount paid by client for analyses. All claims, including those for negligence and any other cause whatsoever shall be deemed waived unless made in writing and received by Cardinal within thirty (30) days after completion of the applicable service. In no event shall Cardinal be liable for incidental or consequential damages, including, without limitation, business interruptions, loss of use, or loss of profits incurred by client, its subsidiaries, affiliates or successors arising out of or related to the performance of the services hereunder by Cardinal, regardless of whether such claim is based upon any of the above stated reasons or otherwise. Results relate only to the samples identified above. This report shall not be reproduced except in full with written approval of Cardinal Laboratories.

A handwritten signature in black ink, appearing to read "Mike Snyder", written over a horizontal line.

Mike Snyder For Celey D. Keene, Lab Director/Quality Manager

## Chain of Custody

Work Order No: 185500

<b>Project Manager:</b>	Ashton Thielke	<b>Bill to: (if different)</b>	Laci Luig
<b>Company Name:</b>	Carmiona Resources	<b>Company Name:</b>	Cimarex Energy
<b>Address:</b>	310 West Wall Ste. 500	<b>Address:</b>	600 N Marientfield St. Suite 600
<b>City, State ZIP:</b>	Midland, TX 79701	<b>City, State ZIP:</b>	Midland, TX 79701
<b>Phone:</b>	432-813-8988	<b>Email:</b>	laci.luig@coterra.com & ashton.thielke@coterra.com

<b>Work Order Comments</b>	
<b>Program:</b> UST/PST <input type="checkbox"/> PRP <input type="checkbox"/> brownfields <input type="checkbox"/> RRC <input type="checkbox"/> superfund <input type="checkbox"/>	
<b>State of Project:</b>	
Reporting Level II <input type="checkbox"/> Level III <input type="checkbox"/> PST/UST <input type="checkbox"/> TRRP <input type="checkbox"/> Level IV <input type="checkbox"/>	
Deliverables: EDD <input type="checkbox"/> ADAPT <input type="checkbox"/> Other: _____	

[illegible]

Sante Fe Main Office  
Phone: (505) 476-3441

General Information  
Phone: (505) 629-6116

Online Phone Directory  
<https://www.emnrd.nm.gov/ocd/contact-us>

**State of New Mexico**  
**Energy, Minerals and Natural Resources**  
**Oil Conservation Division**  
**1220 S. St Francis Dr.**  
**Santa Fe, NM 87505**

QUESTIONS

Action 477292

**QUESTIONS**

Operator: Coterra Energy Operating Co. 6001 Deauville Blvd Midland, TX 79706	OGRID: 215099
	Action Number: 477292
	Action Type: [C-141] Remediation Closure Request C-141 (C-141-v-Closure)

**QUESTIONS**

Prerequisites	
Incident ID (n#)	nAPP2514427530
Incident Name	NAPP2514427530 DOS EQUIS 12 FEDERAL COM 1 @ 30-025-40700
Incident Type	Oil Release
Incident Status	Remediation Closure Report Received
Incident Well	[30-025-40700] DOS EQUIS 12 FEDERAL COM #001

Location of Release Source	
<i>Please answer all the questions in this group.</i>	
Site Name	DOS EQUIS 12 FEDERAL COM 1
Date Release Discovered	05/23/2025
Surface Owner	Federal

Incident Details	
<i>Please answer all the questions in this group.</i>	
Incident Type	Oil Release
Did this release result in a fire or is the result of a fire	No
Did this release result in any injuries	No
Has this release reached or does it have a reasonable probability of reaching a watercourse	No
Has this release endangered or does it have a reasonable probability of endangering public health	No
Has this release substantially damaged or will it substantially damage property or the environment	No
Is this release of a volume that is or may with reasonable probability be detrimental to fresh water	No

Nature and Volume of Release	
<i>Material(s) released, please answer all that apply below. Any calculations or specific justifications for the volumes provided should be attached to the follow-up C-141 submission.</i>	
Crude Oil Released (bbls) Details	Cause: Equipment Failure   Well   Crude Oil   Released: 4 BBL   Recovered: 2 BBL   Lost: 2 BBL.
Produced Water Released (bbls) Details	Cause: Equipment Failure   Well   Produced Water   Released: 4 BBL   Recovered: 2 BBL   Lost: 2 BBL.
Is the concentration of chloride in the produced water >10,000 mg/l	Yes
Condensate Released (bbls) Details	Not answered.
Natural Gas Vented (Mcf) Details	Not answered.
Natural Gas Flared (Mcf) Details	Not answered.
Other Released Details	Not answered.
Are there additional details for the questions above (i.e. any answer containing Other, Specify, Unknown, and/or Fire, or any negative lost amounts)	We had a reportable release at the Dos Equis 12 Federal Com 1 due to a packing leak on the well. The pumping unit successfully shut down when the environmental pot tripped; however, the well continued to leak from the packing. This incident resulted in a release of 4 barrels oil and 4 barrels water onto the well pad. A vac truck was able to recover 3 barrels fluid from the well pad. In the upcoming weeks, we will assess the affected soils and implement necessary remediation measures.

Sante Fe Main Office  
Phone: (505) 476-3441

General Information  
Phone: (505) 629-6116

Online Phone Directory  
<https://www.emnrd.nm.gov/ocd/contact-us>

**State of New Mexico**  
**Energy, Minerals and Natural Resources**  
**Oil Conservation Division**  
**1220 S. St Francis Dr.**  
**Santa Fe, NM 87505**

QUESTIONS, Page 2

Action 477292

**QUESTIONS (continued)**

Operator: Coterra Energy Operating Co. 6001 Deauville Blvd Midland, TX 79706	OGRID: 215099
	Action Number: 477292
	Action Type: [C-141] Remediation Closure Request C-141 (C-141-v-Closure)

**QUESTIONS**

<b>Nature and Volume of Release (continued)</b>	
Is this a gas only submission (i.e. only significant Mcf values reported)	<b>No, according to supplied volumes this does not appear to be a "gas only" report.</b>
Was this a major release as defined by Subsection A of 19.15.29.7 NMAC	<b>No</b>
Reasons why this would be considered a submission for a notification of a major release	<i>Unavailable.</i>
<i>With the implementation of the 19.15.27 NMAC (05/25/2021), venting and/or flaring of natural gas (i.e. gas only) are to be submitted on the C-129 form.</i>	

**Initial Response**

*The responsible party must undertake the following actions immediately unless they could create a safety hazard that would result in injury.*

The source of the release has been stopped	<b>True</b>
The impacted area has been secured to protect human health and the environment	<b>True</b>
Released materials have been contained via the use of berms or dikes, absorbent pads, or other containment devices	<b>True</b>
All free liquids and recoverable materials have been removed and managed appropriately	<b>True</b>
If all the actions described above have not been undertaken, explain why	<i>Not answered.</i>

*Per Paragraph (4) of Subsection B of 19.15.29.8 NMAC the responsible party may commence remediation immediately after discovery of a release. If remediation has begun, please prepare and attach a narrative of actions to date in the follow-up C-141 submission. If remedial efforts have been successfully completed or if the release occurred within a lined containment area (see Subparagraph (a) of Paragraph (5) of Subsection A of 19.15.29.11 NMAC), please prepare and attach all information needed for closure evaluation in the follow-up C-141 submission.*

I hereby certify that the information given above is true and complete to the best of my knowledge and understand that pursuant to OCD rules and regulations all operators are required to report and/or file certain release notifications and perform corrective actions for releases which may endanger public health or the environment. The acceptance of a C-141 report by the OCD does not relieve the operator of liability should their operations have failed to adequately investigate and remediate contamination that pose a threat to groundwater, surface water, human health or the environment. In addition, OCD acceptance of a C-141 report does not relieve the operator of responsibility for compliance with any other federal, state, or local laws and/or regulations.

I hereby agree and sign off to the above statement	Name: Ashton Thielke Title: EHS Specialist Email: Ashton.Thielke@coterra.com Date: 06/20/2025
--	--

Sante Fe Main Office  
Phone: (505) 476-3441

General Information  
Phone: (505) 629-6116

Online Phone Directory  
<https://www.emnrd.nm.gov/ocd/contact-us>

**State of New Mexico**  
**Energy, Minerals and Natural Resources**  
**Oil Conservation Division**  
**1220 S. St Francis Dr.**  
**Santa Fe, NM 87505**

QUESTIONS, Page 3

Action 477292

**QUESTIONS (continued)**

Operator: Coterra Energy Operating Co. 6001 Deauville Blvd Midland, TX 79706	OGRID: 215099
	Action Number: 477292
	Action Type: [C-141] Remediation Closure Request C-141 (C-141-v-Closure)

**QUESTIONS****Site Characterization**

Please answer all the questions in this group (only required when seeking remediation plan approval and beyond). This information must be provided to the appropriate district office no later than 90 days after the release discovery date.

What is the shallowest depth to groundwater beneath the area affected by the release in feet below ground surface (ft bgs)	Between 100 and 500 (ft.)
What method was used to determine the depth to ground water	Direct Measurement
Did this release impact groundwater or surface water	No
<b>What is the minimum distance, between the closest lateral extents of the release and the following surface areas:</b>	
A continuously flowing watercourse or any other significant watercourse	Between 1 and 5 (mi.)
Any lakebed, sinkhole, or playa lake (measured from the ordinary high-water mark)	Between 1 and 5 (mi.)
An occupied permanent residence, school, hospital, institution, or church	Between 1 and 5 (mi.)
A spring or a private domestic fresh water well used by less than five households for domestic or stock watering purposes	Between 1 and 5 (mi.)
Any other fresh water well or spring	Between 1 and 5 (mi.)
Incorporated municipal boundaries or a defined municipal fresh water well field	Greater than 5 (mi.)
A wetland	Between 1 and 5 (mi.)
A subsurface mine	Greater than 5 (mi.)
An (non-karst) unstable area	Greater than 5 (mi.)
Categorize the risk of this well / site being in a karst geology	Low
A 100-year floodplain	Between 1 and 5 (mi.)
Did the release impact areas not on an exploration, development, production, or storage site	No

**Remediation Plan**

Please answer all the questions that apply or are indicated. This information must be provided to the appropriate district office no later than 90 days after the release discovery date.

Requesting a remediation plan approval with this submission	Yes
<i>Attach a comprehensive report demonstrating the lateral and vertical extents of soil contamination associated with the release have been determined, pursuant to 19.15.29.11 NMAC and 19.15.29.13 NMAC.</i>	
Have the lateral and vertical extents of contamination been fully delineated	Yes
Was this release entirely contained within a lined containment area	No

**Soil Contamination Sampling:** (Provide the highest observable value for each, in milligrams per kilograms.)

Chloride (EPA 300.0 or SM4500 Cl B)	1600
TPH (GRO+DRO+MRO) (EPA SW-846 Method 8015M)	20.3
GRO+DRO (EPA SW-846 Method 8015M)	20.3
BTEX (EPA SW-846 Method 8021B or 8260B)	0
Benzene (EPA SW-846 Method 8021B or 8260B)	0

Per Subsection B of 19.15.29.11 NMAC unless the site characterization report includes completed efforts at remediation, the report must include a proposed remediation plan in accordance with 19.15.29.12 NMAC, which includes the anticipated timelines for beginning and completing the remediation.

On what estimated date will the remediation commence	06/11/2025
On what date will (or did) the final sampling or liner inspection occur	06/12/2025
On what date will (or was) the remediation complete(d)	06/12/2025
What is the estimated surface area (in square feet) that will be reclaimed	0
What is the estimated volume (in cubic yards) that will be reclaimed	0
What is the estimated surface area (in square feet) that will be remediated	2753
What is the estimated volume (in cubic yards) that will be remediated	60

These estimated dates and measurements are recognized to be the best guess or calculation at the time of submission and may (be) change(d) over time as more remediation efforts are completed.

The OCD recognizes that proposed remediation measures may have to be minimally adjusted in accordance with the physical realities encountered during remediation. If the responsible party has any need to significantly deviate from the remediation plan proposed, then it should consult with the division to determine if another remediation plan submission is required.



Sante Fe Main Office  
Phone: (505) 476-3441

General Information  
Phone: (505) 629-6116

Online Phone Directory  
<https://www.emnrd.nm.gov/ocd/contact-us>

**State of New Mexico**  
**Energy, Minerals and Natural Resources**  
**Oil Conservation Division**  
**1220 S. St Francis Dr.**  
**Santa Fe, NM 87505**

QUESTIONS, Page 4

Action 477292

**QUESTIONS (continued)**

Operator: Coterra Energy Operating Co. 6001 Deauville Blvd Midland, TX 79706	OGRID: 215099
	Action Number: 477292
	Action Type: [C-141] Remediation Closure Request C-141 (C-141-v-Closure)

**QUESTIONS**

<b>Remediation Plan (continued)</b>	
<i>Please answer all the questions that apply or are indicated. This information must be provided to the appropriate district office no later than 90 days after the release discovery date.</i>	
<b>This remediation will (or is expected to) utilize the following processes to remediate / reduce contaminants:</b>	
<i>(Select all answers below that apply.)</i>	
(Ex Situ) Excavation and <b>off-site</b> disposal (i.e. dig and haul, hydrovac, etc.)	Yes
Which OCD approved facility will be used for <b>off-site</b> disposal	LEA LAND LANDFILL [fEEM0112342028]
<b>OR</b> which OCD approved well (API) will be used for <b>off-site</b> disposal	Not answered.
<b>OR</b> is the <b>off-site</b> disposal site, to be used, out-of-state	Not answered.
<b>OR</b> is the <b>off-site</b> disposal site, to be used, an NMED facility	Not answered.
(Ex Situ) Excavation and <b>on-site</b> remediation (i.e. On-Site Land Farms)	Not answered.
(In Situ) Soil Vapor Extraction	Not answered.
(In Situ) Chemical processing (i.e. Soil Shredding, Potassium Permanganate, etc.)	Not answered.
(In Situ) Biological processing (i.e. Microbes / Fertilizer, etc.)	Not answered.
(In Situ) Physical processing (i.e. Soil Washing, Gypsum, Disking, etc.)	Not answered.
Ground Water Abatement pursuant to 19.15.30 NMAC	Not answered.
OTHER (Non-listed remedial process)	Not answered.
<i>Per Subsection B of 19.15.29.11 NMAC unless the site characterization report includes completed efforts at remediation, the report must include a proposed remediation plan in accordance with 19.15.29.12 NMAC, which includes the anticipated timelines for beginning and completing the remediation.</i>	
I hereby certify that the information given above is true and complete to the best of my knowledge and understand that pursuant to OCD rules and regulations all operators are required to report and/or file certain release notifications and perform corrective actions for releases which may endanger public health or the environment. The acceptance of a C-141 report by the OCD does not relieve the operator of liability should their operations have failed to adequately investigate and remediate contamination that pose a threat to groundwater, surface water, human health or the environment. In addition, OCD acceptance of a C-141 report does not relieve the operator of responsibility for compliance with any other federal, state, or local laws and/or regulations.	
I hereby agree and sign off to the above statement	Name: Ashton Thielke Title: EHS Specialist Email: Ashton.Thielke@coterra.com Date: 06/20/2025
<i>The OCD recognizes that proposed remediation measures may have to be minimally adjusted in accordance with the physical realities encountered during remediation. If the responsible party has any need to significantly deviate from the remediation plan proposed, then it should consult with the division to determine if another remediation plan submission is required.</i>	



Sante Fe Main Office  
Phone: (505) 476-3441

General Information  
Phone: (505) 629-6116

Online Phone Directory  
<https://www.emnrd.nm.gov/ocd/contact-us>

**State of New Mexico**  
**Energy, Minerals and Natural Resources**  
**Oil Conservation Division**  
**1220 S. St Francis Dr.**  
**Santa Fe, NM 87505**

QUESTIONS, Page 5

Action 477292

**QUESTIONS (continued)**

Operator: Coterra Energy Operating Co. 6001 Deauville Blvd Midland, TX 79706	OGRID: 215099
	Action Number: 477292
	Action Type: [C-141] Remediation Closure Request C-141 (C-141-v-Closure)

**QUESTIONS**

<b>Deferral Requests Only</b>	
<i>Only answer the questions in this group if seeking a deferral upon approval this submission. Each of the following items must be confirmed as part of any request for deferral of remediation.</i>	
Requesting a deferral of the remediation closure due date with the approval of this submission	No

Sante Fe Main Office  
Phone: (505) 476-3441

General Information  
Phone: (505) 629-6116

Online Phone Directory  
<https://www.emnrd.nm.gov/ocd/contact-us>

**State of New Mexico**  
**Energy, Minerals and Natural Resources**  
**Oil Conservation Division**  
**1220 S. St Francis Dr.**  
**Santa Fe, NM 87505**

QUESTIONS, Page 6

Action 477292

**QUESTIONS (continued)**

Operator: Coterra Energy Operating Co. 6001 Deauville Blvd Midland, TX 79706	OGRID: 215099
	Action Number: 477292
	Action Type: [C-141] Remediation Closure Request C-141 (C-141-v-Closure)

**QUESTIONS**

Sampling Event Information	
Last sampling notification (C-141N) recorded	471456
Sampling date pursuant to Subparagraph (a) of Paragraph (1) of Subsection D of 19.15.29.12 NMAC	06/12/2025
What was the (estimated) number of samples that were to be gathered	22
What was the sampling surface area in square feet	2800

Remediation Closure Request	
<i>Only answer the questions in this group if seeking remediation closure for this release because all remediation steps have been completed.</i>	
Requesting a remediation closure approval with this submission	Yes
Have the lateral and vertical extents of contamination been fully delineated	Yes
Was this release entirely contained within a lined containment area	No
All areas reasonably needed for production or subsequent drilling operations have been stabilized, returned to the sites existing grade, and have a soil cover that prevents ponding of water, minimizing dust and erosion	Yes
What was the total surface area (in square feet) remediated	2753
What was the total volume (cubic yards) remediated	60
All areas not reasonably needed for production or subsequent drilling operations have been reclaimed to contain a minimum of four feet of non-waste contain earthen material with concentrations less than 600 mg/kg chlorides, 100 mg/kg TPH, 50 mg/kg BTEX, and 10 mg/kg Benzene	Yes
What was the total surface area (in square feet) reclaimed	0
What was the total volume (in cubic yards) reclaimed	0
Summarize any additional remediation activities not included by answers (above)	"Area was excavated (scraped) to a depth of 0.5' to remove all discolored soil. Following the surface scrape composite confirmation floor samples and horizontal delineation samples were collected to ensure all impact was removed. The area was backfilled with clean material."
<i>The responsible party must attach information demonstrating they have complied with all applicable closure requirements and any conditions or directives of the OCD. This demonstration should be in the form of a comprehensive report (in .pdf format) including a scaled site map, sampling diagrams, relevant field notes, photographs of any excavation prior to backfilling, laboratory data including chain of custody documents of final sampling, and a narrative of the remedial activities. Refer to 19.15.29.12 NMAC.</i>	
I hereby certify that the information given above is true and complete to the best of my knowledge and understand that pursuant to OCD rules and regulations all operators are required to report and/or file certain release notifications and perform corrective actions for releases which may endanger public health or the environment. The acceptance of a C-141 report by the OCD does not relieve the operator of liability should their operations have failed to adequately investigate and remediate contamination that pose a threat to groundwater, surface water, human health or the environment. In addition, OCD acceptance of a C-141 report does not relieve the operator of responsibility for compliance with any other federal, state, or local laws and/or regulations. The responsible party acknowledges they must substantially restore, reclaim, and re-vegetate the impacted surface area to the conditions that existed prior to the release or their final land use in accordance with 19.15.29.13 NMAC including notification to the OCD when reclamation and re-vegetation are complete.	
I hereby agree and sign off to the above statement	Name: Ashton Thielke Title: EHS Specialist Email: Ashton.Thielke@coterra.com Date: 06/20/2025

Sante Fe Main Office  
Phone: (505) 476-3441

General Information  
Phone: (505) 629-6116

Online Phone Directory  
<https://www.emnrd.nm.gov/ocd/contact-us>

State of New Mexico  
Energy, Minerals and Natural Resources  
Oil Conservation Division  
1220 S. St Francis Dr.  
Santa Fe, NM 87505

QUESTIONS, Page 7

Action 477292

QUESTIONS (continued)

Operator: Coterra Energy Operating Co. 6001 Deauville Blvd Midland, TX 79706	OGRID: 215099
	Action Number: 477292
	Action Type: [C-141] Remediation Closure Request C-141 (C-141-v-Closure)

QUESTIONS

Reclamation Report	
Only answer the questions in this group if all reclamation steps have been completed.	
Requesting a reclamation approval with this submission	No

Sante Fe Main Office  
Phone: (505) 476-3441

General Information  
Phone: (505) 629-6116

Online Phone Directory  
<https://www.emnrd.nm.gov/ocd/contact-us>

**State of New Mexico**  
**Energy, Minerals and Natural Resources**  
**Oil Conservation Division**  
**1220 S. St Francis Dr.**  
**Santa Fe, NM 87505**

CONDITIONS

Action 477292

**CONDITIONS**

Operator: Coterra Energy Operating Co. 6001 Deauville Blvd Midland, TX 79706	OGRID: 215099
	Action Number: 477292
	Action Type: [C-141] Remediation Closure Request C-141 (C-141-v-Closure)

**CONDITIONS**

Created By	Condition	Condition Date
michael.buchanan	The remediation closure is approved.	6/30/2025
michael.buchanan	The reclamation report will need to include: Executive Summary of the reclamation activities; Scaled Site Map including sampling locations; Analytical results including, but not limited to, results showing that any remaining impacts meet the reclamation standards and results to prove the backfill is non-waste containing; At least one (1) representative 5-point composite sample will need to be collected from the backfill material that will be used for the reclamation of the top four feet of the excavation. The OCD reserves the right to request additional sampling if needed; pictures of the backfilled areas showing that the area is back, as nearly as practical, to the original condition or the final land use and maintain those areas to control dust and minimize erosion to the extent practical; pictures of the top layer, which is either the background thickness of topsoil or one foot of suitable material to establish vegetation at the site, whichever is greater; and a revegetation plan.	6/30/2025
michael.buchanan	A reclamation report will not be accepted until reclamation of the release area, including areas reasonably needed for production or drilling activities, is complete and meet the requirements of 19.15.29.13 NMAC. Areas not reasonably needed for production or drilling activities will still need to be reclaimed and revegetated as early as practicable.	6/30/2025
michael.buchanan	All revegetation activities will need to be documented and included in the revegetation report. The revegetation report will need to include: An executive summary of the revegetation activities including: Seed mix, Method of seeding, dates of when the release area was reseeded, information pertinent to inspections, information about any amendments added to the soil, information on how the vegetative cover established meets the life-form ratio of plus or minus fifty percent of pre-disturbance levels and a total percent plant cover of at least seventy percent of pre-disturbance levels, excluding noxious weeds per 19.15.29.13 D.(3) NMAC, and any additional information; a scaled Site Map including area that was revegetated in square feet; and pictures of the revegetated areas during reseeding activities, inspections, and final pictures when revegetation is achieved.	6/30/2025
michael.buchanan	A revegetation report will not be accepted until revegetation of the release area, including areas reasonably needed for production or drilling activities, is complete and meet the requirements of 19.15.29.13 NMAC. Areas not reasonably needed for production or drilling activities will still need to be reclaimed and revegetated as early as practicable.	6/30/2025
michael.buchanan	Per 19.15.29.13 E. NMAC, if a reclamation and revegetation report has been submitted to the surface owner, it may be used if the requirements of the surface owner provide equal or better protection of freshwater, human health, and the environment. A copy of the approval of the reclamation and revegetation report from the surface owner and a copy of the approved reclamation and revegetation report will need to be submitted to the OCD via the Permitting website.	6/30/2025