



July 21, 2025

**New Mexico Energy Minerals and Natural Resources Department**

New Mexico Oil Conservation Division  
1220 South St. Francis Drive  
Santa Fe, New Mexico 87505

**Re: Closure Request Addendum  
Billiken 6 CTB 1  
Incident Number nAPP2506357698  
Lea County, New Mexico**

To Whom It May Concern:

Ensolum, LLC (Ensolum), on behalf of Devon Energy Production Company, LP (Devon), has prepared this *Closure Request Addendum* to document assessment, excavation, and soil sampling activities at the Billiken 6 CTB 1 (Site) and to address concerns held by the New Mexico Oil Conservation Division (NMOCD) per the *Closure Request* (CR) report submitted via web portal on May 20, 2025. The *Closure Request* report that was submitted to the NMOCD on May 20, 2025, and associated with Incident Number nAPP2506357698 was denied for the following reasons:

*1) Under the Site Characterization portion of the C-141 application, the minimum distances to the following are incorrect and need updated upon resubmission and in report: any playa lake (1/2-1 mile W) and a wetland (1/2-1 mile W). 2) On Figure 3, FS07 says excavated to .5'. The remediation summary and Table 2 say 2.5'. Update. 3) Per 19.15.29.12(E), photographs of the remediated site prior to backfill must be included. Do you have a photograph of the completed excavation at FS07? Photograph 14 shows it in the process of being excavated as opposed to the completed excavation. 4) Photographs 9-12 list the location as 32.385748, -104.221781 which puts the location in downtown Carlsbad.*

In order to address the concerns held by the NMOCD, the Site characterization has been updated on this *Closure Request Addendum* and the C-141 application will be updated prior to report submission. Ensolum personnel corrected the confirmation floor sample FS07 excavation depth on Figure 3. The final excavation depth of 2.5 feet bgs on Table 2 - Soil Sample Analytical Results (Excavation Floor Soil Samples) is the correct depth.

A photograph of the excavation area surrounding confirmation floor sample FS07 was included in the *Closure Report* submitted on May 20, 2025. The photograph was taken while the area itself was being excavated with heavy mechanical equipment; confirmation sample area FS07 was advanced to a depth of 2.5 feet below ground surface (bgs) per the laboratory analytical results. Below is an illustration of the scrape and the extended excavation of the area representing confirmation soil sample FS07:



Ensolum staff responsible for collecting photos of the excavation throughout field activities maintained T-Mobile® as their cellular service provider; however due to a lack of service in the area surrounding the Site, the mobile phone used could not adequately access nearby towers to collect the correct global positioning system (GPS) data at the time of the photographs and as such, the coordinates were memorialized on the digital photographs once service was received in the city limits of Carlsbad, but the coordinates were captured where service was received and not at the location of where the photographs were taken. It is evident based on equipment located in the photographs taken they are of the correct Site and photographs 9 through 12 on the photographic log were re-taken from the same locations on June 30, 2025, with the correct coordinates to compare the original photos and corroborate the correct location, are included in Appendix B.

Due to the safety concerns associated with working in and around an open excavation and located near in-use separators on an active oil and gas well pad, Devon backfilled the excavation area, after receiving confirmation all excavation floor and confirmation sidewall soil samples were in compliance with the Site Closure Criteria and with the strictest Closure Criteria per NMOCD Table I.

What follows is a summary of the requested information and a subsequent closure request for the Site.

## **SITE DESCRIPTION AND RELEASE SUMMARY**

The Site is located in Unit D, Section 06, Township 26 South, Range 35 East, in Lea County, New Mexico (32.077005°, -103.411037°) and is associated with oil and gas exploration and production operations on Federal Land managed by the Bureau of Land Management (BLM).

On March 3, 2025, a pinhole leak developed in a fire tube. The oil caught fire and damaged the firetube flame regulator. Jal Fire Department visited the Site to help to extinguish fire. There were no injuries, and the damage was isolated to the fire tube and some oil on pad surface. Approximately 3 barrels (bbls) of crude oil was released onto the caliche pad and 2 bbls were recovered. Devon reported the release to the NMOCD via on the NMOCD Portal March 4, 2025, and submitted a Release Notification Form C-141 (Form C-141) on March 5, 2025. The release was assigned Incident Number nAPP2506357698. The Form C-141 can be referenced on the NMOCD Portal.

## **SITE CHARACTERIZATION AND CLOSURE CRITERIA**

The Site was characterized to assess applicability of Table I, Closure Criteria for Soils Impacted by a Release, of Title 19, Chapter 15, Part 29 (19.15.29) of the New Mexico Administrative Code (NMAC).

Results from the characterization desktop review are presented on page 3 of the Form C-141, Site Assessment/Characterization. Potential Site receptors are identified on Figure 1.

The closest permitted groundwater well with depth to groundwater data is New Mexico Office of the State Engineer (NMOSE) well C 04846, located approximately 281 feet northeast of the Site, which was drilled to assess for depth to groundwater in the immediate region and was subsequently plugged and abandoned. The well had a reported depth to groundwater greater than 101 feet bgs and a total depth of 101 feet bgs. There are no regional or Site-specific hydrogeological conditions, such as shallow surface water, karst features, wetlands, or vegetation to suggest the Site is conducive to shallower groundwater. All wells used for depth to groundwater determination are presented on Figure 1. The referenced well record is included in Appendix A.

The closest continuously flowing or significant watercourse to the Site is an intermittent dry wash, located approximately 1.18 miles east of the Site. The Site is greater than 200 feet from a lakebed, sinkhole, or playa lake and greater than 300 feet from an occupied residence, school, hospital, institution, church, or wetland. The Site is greater than 1,000 feet to a freshwater well or spring and is not within a 100-year floodplain or overlying a subsurface mine. The Site is not underlain by unstable geology (low potential karst designation area). Site receptors are identified on Figure 1.

- Benzene: 10 milligrams per kilogram (mg/kg)
- Benzene, toluene, ethylbenzene, and total xylenes (BTEX): 50 mg/kg
- Total petroleum hydrocarbons (TPH)-gasoline range organics (GRO) and TPH-diesel range organics (DRO): 1,000 mg/kg
- TPH: 2,500 mg/kg
- Chloride: 20,000 mg/kg

## SITE ASSESSMENT ACTIVITIES

On March 06, 2025, Ensolum personnel visited the Site to evaluate the release extent based on information provided on the Form C-141 and visual observations. Beginning on March 11, 2025 four preliminary soil samples (SS01 through SS04) were collected around the release extent at ground surface and 1-foot bgs to assess the lateral extent of the impacted area and three boreholes (BH01 through BH03) were advanced within the release extent to assess the vertical extent of impacted soil; borehole BH01 was advanced to a depth of 3 feet bgs and boreholes BH02 and BH03 were advanced to a depth of 2 feet bgs. The preliminary soil samples were field screened for chloride and TPH utilizing Hach® QuanTab® chloride test strips and a PetroFLAG® Soil Analyzer System, respectively. The release extent and preliminary soil sample locations were mapped utilizing a handheld Global Positioning System (GPS) unit and are depicted on Figure 2. Field screening results and observations for the boreholes were logged on lithologic/soil sampling logs, which are included in Appendix C.

The soil samples were placed directly into pre-cleaned glass jars, labeled with the location, date, time, sampler name, method of analysis, and immediately placed on ice and transported under strict chain-of-custody procedures to Envirotech Analysis Laboratory (Envirotech) in Farmington, New Mexico, for analysis of the following chemicals of concern (COCs): BTEX following United States Environmental Protection Agency (EPA) Method 8021B; TPH-GRO, TPH-DRO, and TPH-oil range organics (ORO) following EPA Method 8015M/D; and chloride following EPA Method 300.0.

## EXCAVATION AND CONFIRMATION SOIL SAMPLING ACTIVITIES

Beginning on April 14, 2025, impacted soil was excavated via surface scrape from the release area as indicated by visible staining and delineation soil sampling results. On April 30, 2025, the area around borehole (BH02) was excavated to a depth of 2.5 feet bgs in order to remove the contaminated soil found at 2 feet bgs during delineation. Excavation activities were performed using a backhoe, hand digging, and belly dump trucks. The excavation occurred on the east side of the separators. To direct excavation activities, Ensolum personnel screened soil for chloride and TPH.

Following removal of impacted soil to depths ranging from 0.5 to 2.5 feet bgs, Ensolum personnel collected 5-point composite soil samples representing at most 200 square feet from the floor of the scrape. The 5-point composite samples were collected by placing five equivalent aliquots of soil into a 1-gallon, resealable plastic bag and homogenizing the samples by thoroughly mixing. Composite soil samples FS01 through FS06 were collected from the floor of the excavation just beneath the scraped surface (0.5 feet to 2.5 feet bgs). Due to the shallow nature of the excavation, the sidewall soil samples were incorporated into the floor confirmation samples. Composite soil sample FS07 and sidewall sample SW01 were collected from the area around borehole BH02. The excavation soil samples were collected, handled, and analyzed following the same procedures as described above. The excavation extent and excavation soil sample locations are presented on Figure 3.

The final excavation extent measured approximately 1,163 square feet. A total of approximately 40 cubic yards of impacted soil was removed during the excavation activities. The impacted soil was transported and properly disposed of at the Northern Delaware Basin Landfill, New Mexico. After completion of confirmation sampling, the excavation areas were secured with fencing.

## LABORATORY ANALYTICAL RESULTS

Laboratory analytical results for preliminary soil samples (SS01 through SS04) were all in compliance with the strictest Closure Criteria per NMOCD Table I at ground surface. Laboratory analytical results for borehole BH01 indicated all COCs were in compliance with the strictest Closure Criteria at 3 feet bgs. Laboratory analytical results for borehole BH02 indicated all COCs were in compliance with the Site Closure Criteria at 2 feet bgs. Laboratory analytical results for borehole BH03 indicated all COCs were in compliance with the strictest Closure Criteria at 2 feet bgs.

Laboratory analytical results for excavation floor soil samples FS01 through FS07 and sidewall soil sample SW01 indicated all COC concentrations were compliant with the strictest Closure Criteria. Laboratory analytical results are summarized in Tables 1 through 2 and the complete laboratory analytical reports are included as Appendix D.

## CLOSURE REQUEST

Site assessment and excavation activities were conducted at the Site to address the March 2025 release of crude oil. Laboratory analytical results for the excavation soil samples, collected from the final excavation extent, indicated all COC concentrations were in compliance with the Site Closure Criteria. Based on the soil sample analytical results, no further remediation was required.

Excavation of impacted and waste-containing soil has mitigated adverse conditions at this Site. Depth to groundwater has been estimated to be greater than 101 feet bgs and no other sensitive receptors were identified near the release extent. Devon believes these remedial actions are protective of human health, the environment, and groundwater. As such, Devon respectfully requests closure for Incident Number nAPP2506357698.

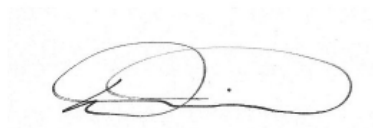


If you have any questions or comments, please contact Ms. Ashley Giovengo at (575) 988-0055 or [agiovengo@ensolum.com](mailto:agiovengo@ensolum.com).

Sincerely,  
**Ensolum, LLC**



Ashley Giovengo  
Associate Principal



Daniel R. Moir, PG (licensed in WY & TX)  
Senior Managing Geologist

Cc: Jim Raley, Devon  
BLM

**Appendices:**

Figure 1 Site Receptor Map  
Figure 2 Delineation Soil Sample Locations  
Figure 3 Excavation Soil Sample Locations

Table 1 Soil Sample Analytical Results (Delineation Soil Samples)  
Table 2 Soil Sample Analytical Results (Excavation Floor Soil Samples)  
Table 3 Soil Sample Analytical Results (Sidewall Soil Samples)

Appendix A Well Log and Record  
Appendix B Photographic Log  
Appendix C Lithologic / Soil Sampling Logs  
Appendix D Laboratory Analytical Reports & Chain-of-Custody Documentation  
Appendix E NMOCD Correspondence



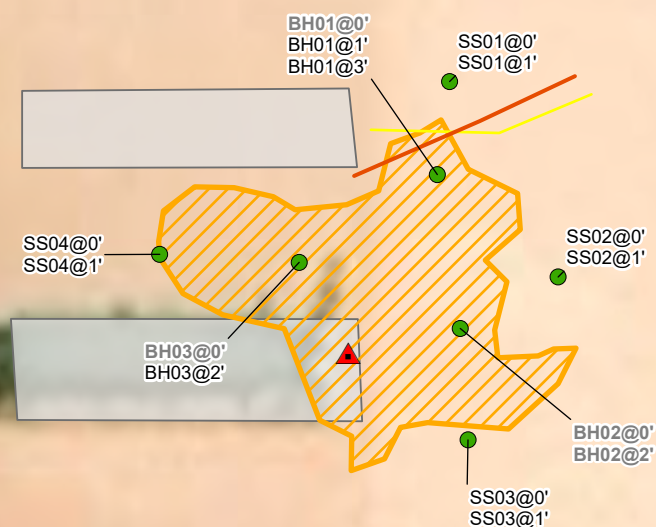
FIGURES

---

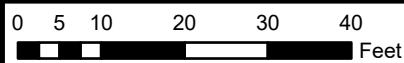
# FIGURE 1

**Legend**

- Delineation Soil Sample in Compliance with Closure Criteria
- ▲ Point of Release (POR)
- Electric Utility Line
- Oil and Gas Utility Line
- ▨ Release Extent
- Production Equipment



Notes:  
 Sample ID @ Depth Below Ground Surface.  
 Samples in bold indicate sample exceeded applicable closure criteria.  
 Grey text indicate soil sample was removed during excavation activities.



Sources: Environmental Systems Research Institute (ESRI)

**Delineation Soil Sample Locations**

Devon Energy Production Company, LP

Billiken 6 CTB 1

Incident Number: nAPP2506357698

Unit D, Section 06, T 26S, R 35E

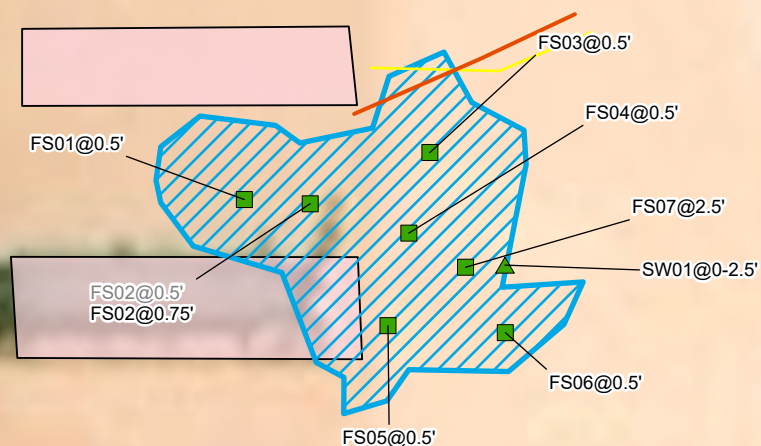
Lea County, New Mexico

**FIGURE****2**



**Legend**

- Excavation Floor Sample in Compliance with Closure Criteria
- ▲ Excavation Sidewall Sample in Compliance with Closure Criteria
- Electric Utility Line
- Oil and Gas Utility Line
- ▨ Excavation Extent
- ▭ Infrastructure



Notes:  
 Sample ID @ Depth Below Ground Surface.  
 Grey text indicate soil sample was removed during excavation activities.

0 5 10 20 30 40  
 Feet

Sources: Environmental Systems Research Institute (ESRI)



## Excavation Soil Sample Locations

Devon Energy Production Company, LP  
 Billiken 6 CTB 1  
 Incident Number: nAPP2506357698  
 Unit D, Section 06, T 26S, R 35E  
 Lea County, New Mexico

**FIGURE**

**3**



TABLES

**TABLE 1**  
**SOIL SAMPLE ANALYTICAL RESULTS**  
 Billiken 6 CTB 1  
 Devon Energy Production Company, LP  
 Lea County, New Mexico

Sample Designation	Date	Depth (feet bgs)	Benzene (mg/kg)	Total BTEX (mg/kg)	TPH GRO (mg/kg)	TPH DRO (mg/kg)	TPH ORO (mg/kg)	GRO+DRO (mg/kg)	Total TPH (mg/kg)	Chloride (mg/kg)
<b>NMOCD Table I Closure Criteria (NMAC 19.15.29)</b>			<b>10</b>	<b>50</b>	<b>NE</b>	<b>NE</b>	<b>NE</b>	<b>1,000</b>	<b>2,500</b>	<b>20,000</b>
<b>Delineation Soil Samples</b>										
SS01	3/11/2025	0	<0.0250	<0.0500	<20.0	<25.0	<50.0	<25.0	<50.0	25.6
SS01	3/11/2025	1	<0.0250	<0.0500	<20.0	<25.0	<50.0	<25.0	<50.0	<20.0
SS02	3/11/2025	0	<0.0250	<0.0500	<20.0	<25.0	<50.0	<25.0	<50.0	<20.0
SS02	3/11/2025	1	<0.0250	<0.0500	<20.0	<25.0	<50.0	<25.0	<50.0	<20.0
SS03	3/11/2025	0	<0.0250	<0.0500	<20.0	34.2	<50.0	34.2	34.2	23.7
SS03	3/11/2025	1	<0.0250	<0.0500	<20.0	<25.0	<50.0	<25.0	<50.0	<20.0
SS04	3/11/2025	0	<0.0250	<0.0500	<20.0	<25.0	<50.0	<25.0	<50.0	33.7
SS04	3/11/2025	1	<0.0250	<0.0500	<20.0	<25.0	<50.0	<25.0	<50.0	<20.0
BH01	3/11/2025	0	2.21	292.41	1,610	11,900	3,000	13,510	16,510	23.6
BH01	3/11/2025	1	<0.0250	<0.0500	<20.0	<25.0	<50.0	<25.0	<50.0	<20.0
BH01	3/11/2025	3	<0.0250	<0.0500	<20.0	<25.0	<50.0	<25.0	<50.0	<20.0
BH02	3/11/2025	0	0.134	195.434	840	7,340	1,870	8,180	10,050	37.0
BH02	3/11/2025	2	<0.0250	<0.0500	<20.0	117	96.4	117	213.4	<20.0
BH03	3/11/2025	0	0.267	183.567	950	3,730	944	4,680	5,624	55.9
BH03	3/11/2025	2	<0.0250	0.1603	<20.0	<25.0	<50.0	<25.0	<50.0	<20.0

**Notes:**

bgs: below ground surface

mg/kg: milligrams per kilogram

NMOCD: New Mexico Oil Conservation Division

NMAC: New Mexico Administrative Code

Grey text represents samples that have been excavated

&lt;": Laboratory Analytical result is less than reporting limit

Concentrations in **bold** exceed the NMOCD Table I Closure Criteria or reclamation standard where applicable.

\* Indicates sample was collected in area to be reclaimed after remediation is complete; reclamation for chloride in the top 4 feet is 600 mg/kg and total TPH is 100 mg/kg.

GRO: Gasoline Range Organics

DRO: Diesel Range Organics

ORO: Oil Range Organics

TPH: Total Petroleum Hydrocarbon

BTEX: Benzene, Toluene, Ethylbenzene, and Xylenes



**TABLE 2**  
**SOIL SAMPLE ANALYTICAL RESULTS**  
 Billiken 6 CTB 1  
 Devon Energy Production Company, LP  
 Lea County, New Mexico

Sample Designation	Date	Depth (feet bgs)	Benzene (mg/kg)	Total BTEX (mg/kg)	TPH GRO (mg/kg)	TPH DRO (mg/kg)	TPH ORO (mg/kg)	GRO+DRO (mg/kg)	Total TPH (mg/kg)	Chloride (mg/kg)
<b>NMOCD Table I Closure Criteria (NMAC 19.15.29)</b>			<b>10</b>	<b>50</b>	<b>NE</b>	<b>NE</b>	<b>NE</b>	<b>1,000</b>	<b>2,500</b>	<b>20,000</b>
<b>Excavation Floor Soil Samples</b>										
FS01	4/14/2025	0.5	<0.0250	<0.0500	<20.0	<25.0	<50.0	<25.0	<50.0	41.8
FS02	4/14/2025	0.5	<0.0250	<0.0500	<20.0	129	57.4	129	186.4	55.3
FS02	4/30/2025	0.75	<0.0250	<0.0500	<20.0	<25.0	<50.0	<25.0	<50.0	<20.0
FS03	4/14/2025	0.5	<0.0250	<0.0500	<20.0	<25.0	<50.0	<25.0	<50.0	37.8
FS04	4/14/2025	0.5	<0.0250	<0.0500	<20.0	<25.0	<50.0	<25.0	<50.0	42.3
FS05	4/14/2025	0.5	<0.0250	<0.0500	<20.0	<25.0	<50.0	<25.0	<50.0	50.6
FS06	4/14/2025	0.5	<0.0250	<0.0500	<20.0	<25.0	<50.0	<25.0	<50.0	32.9
FS07	4/30/2025	2.5	<0.0250	<0.0500	<20.0	<25.0	<50.0	<25.0	<50.0	<20.0

**Notes:**

bgs: below ground surface

mg/kg: milligrams per kilogram

NMOCD: New Mexico Oil Conservation Division

NMAC: New Mexico Administrative Code

Grey text represents samples that have been excavated

&lt;: Laboratory Analytical result is less than reporting limit

Concentrations in **bold** exceed the NMOCD Table I Closure Criteria or reclamation standard where applicable.

\* Indicates sample was collected in area to be reclaimed after remediation is complete; reclamation for chloride in the top 4 feet is 600 mg/kg and total TPH is 100 mg/kg.

GRO: Gasoline Range Organics

DRO: Diesel Range Organics

ORO: Oil Range Organics

TPH: Total Petroleum Hydrocarbon

BTEX: Benzene, Toluene, Ethylbenzene, and Xylenes





<b>TABLE 3</b> <b>SOIL SAMPLE ANALYTICAL RESULTS</b> <b>Billiken 6 CTB 1</b> <b>Devon Energy Production Company, LP</b> <b>Lea County, New Mexico</b>										
Sample Designation	Date	Depth (feet bgs)	Benzene (mg/kg)	Total BTEX (mg/kg)	TPH GRO (mg/kg)	TPH DRO (mg/kg)	TPH ORO (mg/kg)	GRO+DRO (mg/kg)	Total TPH (mg/kg)	Chloride (mg/kg)
<b>NMOCD Table I Closure Criteria (NMAC 19.15.29)</b>			<b>10</b>	<b>50</b>	<b>NE</b>	<b>NE</b>	<b>NE</b>	<b>1,000</b>	<b>2,500</b>	<b>20,000</b>
<b>Sidewall Soil Samples</b>										
SW01	4/30/2025	0-2.5	<0.0250	<0.0500	<20.0	<25.0	<50.0	<25.0	<50.0	<20.0

**Notes:**

bgs: below ground surface

mg/kg: milligrams per kilogram

NMOCD: New Mexico Oil Conservation Division

NMAC: New Mexico Administrative Code

Grey text represents samples that have been excavated

&lt;: Laboratory Analytical result is less than reporting limit

Concentrations in **bold** exceed the NMOCD Table I Closure Criteria or reclamation standard where applicable.

\* Indicates sample was collected in area to be reclaimed after remediation is complete; reclamation for chloride in the top 4 feet is 600 mg/kg and total TPH is 100 mg/kg.

GRO: Gasoline Range Organics

DRO: Diesel Range Organics

ORO: Oil Range Organics

TPH: Total Petroleum Hydrocarbon

BTEX: Benzene, Toluene, Ethylbenzene, and Xylenes



## APPENDIX A

### Well Log and Record

---



# WELL RECORD & LOG

OFFICE OF THE STATE ENGINEER

www.ose.state.nm.us

1. GENERAL AND WELL LOCATION	OSE POD NO. (WELL NO.) <b>C-4846-POD1</b>		WELL TAG ID NO.		OSE FILE NO(S) <b>C-4846</b>		
	WELL OWNER NAME(S) <b>Devon Energy Corp</b>				PHONE (OPTIONAL) <b>405-318-4697</b>		
	WELL OWNER MAILING ADDRESS <b>333 West Sheridan Avenue</b>				CITY STATE ZIP <b>Oklahoma City OK 73102</b>		
	WELL LOCATION (FROM GPS)	DEGREES LATITUDE <b>32</b>	MINUTES <b>04</b>	SECONDS <b>38.32</b>	* ACCURACY REQUIRED: ONE TENTH OF A SECOND		
	LONGITUDE <b>-103</b>	<b>24</b>	<b>39.97</b>	* DATUM REQUIRED: WGS 84			
DESCRIPTION RELATING WELL LOCATION TO STREET ADDRESS AND COMMON LANDMARKS - PLSS (SECTION, TOWNSHIP, RANGE) WHERE AVAILABLE							
2. DRILLING & CASING INFORMATION	LICENSE NO. <b>WD-1188</b>		NAME OF LICENSED DRILLER <b>John Scarborough</b>		NAME OF WELL DRILLING COMPANY <b>John Scarborough Drilling Inc.</b>		
	DRILLING STARTED <b>7/17/2024</b>	DRILLING ENDED <b>7/17/2024</b>	DEPTH OF COMPLETED WELL (FT) <b>101</b>	BORE HOLE DEPTH (FT) <b>101</b>	DEPTH WATER FIRST ENCOUNTERED (FT) <b>0</b>		
	COMPLETED WELL IS: <input type="checkbox"/> ARTESIAN (add Centralizer info below) <input checked="" type="checkbox"/> DRY HOLE <input type="checkbox"/> SHALLOW (UNCONFINED)				STATIC WATER LEVEL IN COMPLETED WELL (FT) <b>0</b>	DATE STATIC MEASURED <b>7/22/2024</b>	
	DRILLING FLUID: <input type="checkbox"/> AIR <input checked="" type="checkbox"/> MUD <input checked="" type="checkbox"/> ADDITIVES - SPECIFY: <b>AQF-2 XG (Foaming agent)</b>				CHECK HERE IF PITLESS ADAPTER IS INSTALLED <input type="checkbox"/>		
	DRILLING METHOD <input checked="" type="checkbox"/> ROTARY <input type="checkbox"/> HAMMER <input type="checkbox"/> CABLE TOOL <input type="checkbox"/> OTHER - SPECIFY:						
	DEPTH (feet bgl)		BORE HOLE DIAM (inches)	CASING MATERIAL AND OR GRADE (include each casing string, and note sections of screen)	CASING CONNECTION TYPE (add coupling diameter)	CASING INSIDE DIAM. (inches)	CASING WALL THICKNESS (inches)
	FROM	TO					
	<b>0</b>	<b>101</b>	<b>5</b>	<b>Borehole</b>			
3. ANNULAR MATERIAL	DEPTH (feet bgl)		BORE HOLE DIAM. (inches)	LIST ANNULAR SEAL MATERIAL AND GRAVEL PACK SIZE - RANGE BY INTERVAL (if using Centralizers for Artesian wells, indicate the spacing below) <b>N/A</b>	AMOUNT (cubic feet)	METHOD OF PLACEMENT	
	FROM	TO					

OSE DII ROSWELL NM  
AUG 15 2024 PM 2:07

FOR OSE INTERNAL USE

WR-20 WELL RECORD & LOG (Version 09/22/2022)

FILE NO. <b>C-4846-POD1</b>	POD NO. <b>1</b>	TRN NO. <b>761438</b>
LOCATION <b>Mon 26.35.06.321</b>	WELL TAG ID NO.	PAGE 1 OF 2



[illegible]

FOR USE INTERNAL USE		WR-20 WELL RECORD & LOG (Version 09/22/2022)	
FILE NO	C-4846-POD 1	POD NO	1
LOCATION	Mon 26.35.06.321	TRN NO	761438
		WELL TAG ID NO	_____
			PAGE 2 OF 2



Elizabeth K. Anderson, P.E.  
State Engineer



Roswell Office  
1900 WEST SECOND STREET  
ROSWELL, NM 88201

**STATE OF NEW MEXICO  
OFFICE OF THE STATE ENGINEER**

Trn Nbr: 761438  
File Nbr: C 04846  
Well File Nbr: C 04846 POD1

Aug. 15, 2024

STEPHANIE HINDS  
SOUDER MILLER & ASSOCIATES  
401 W BROADWAY  
FARMINGTON, NM 87401

Greetings:

The above numbered permit was issued in your name on 06/11/2024.

The Well Record was received in this office on 08/15/2024, stating that it had been completed on 07/17/2024, and was a dry well. The well is to be plugged according to 19.27.4.30 NMAC.

Please note that another well can be drilled under this permit if the well is completed and the well log filed on or before 06/11/2025.

If you have any questions, please feel free to contact us.

Sincerely,

A handwritten signature in cursive script, appearing to read "Maret Thompson".

Maret Thompson  
(575) 622-6521

drywell



## APPENDIX B

### Photographic Log

---



# Photographic Log

Devon Energy Production, LP

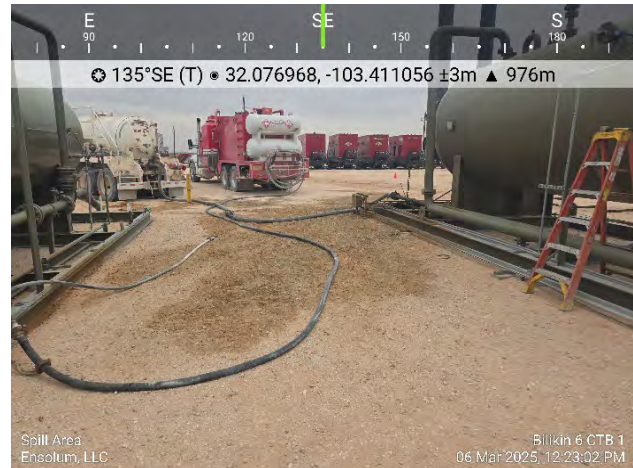
Billiken 6 CTB 1

nAPP2506357698



Photograph 1  
Description: Signage  
View: North

Date: 3/6/2025



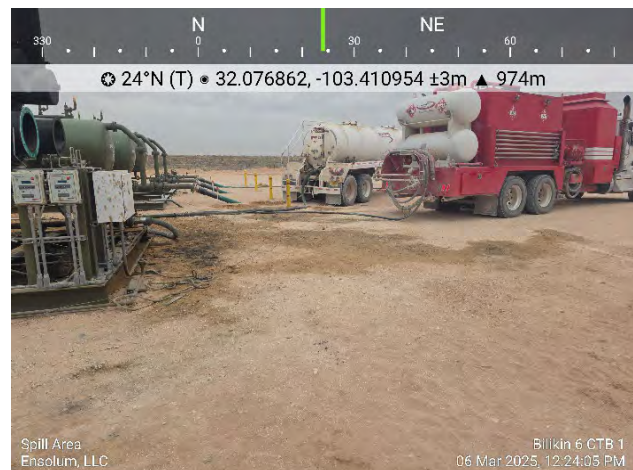
Photograph 2  
Description: Spill Area  
View: Southeast

Date: 3/6/2025



Photograph 3  
Description: Spill Area  
View: Southeast

Date: 3/6/2025



Photograph 4  
Description: Spill Area  
View: Northeast

Date: 3/6/2025





# Photographic Log

Devon Energy Production, LP

Billiken 6 CTB 1

nAPP2506357698



Photograph 5

Date: 3/11/2025

Description: SS01

View: South



Photograph 6

Date: 3/11/2025

Description: BH01

View: South



Photograph 7

Date: 3/11/2025

Description: BH02

View: West



Photograph 8

Date: 3/11/2025

Description: BH03

View: East

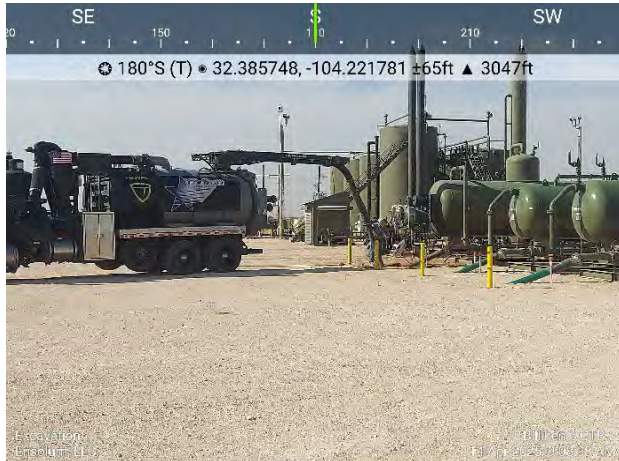


**Photographic Log**

Devon Energy Production, LP

Billiken 6 CTB 1

nAPP2506357698



Photograph 9

Date:4/14/2025

Description: Excavation

View: South

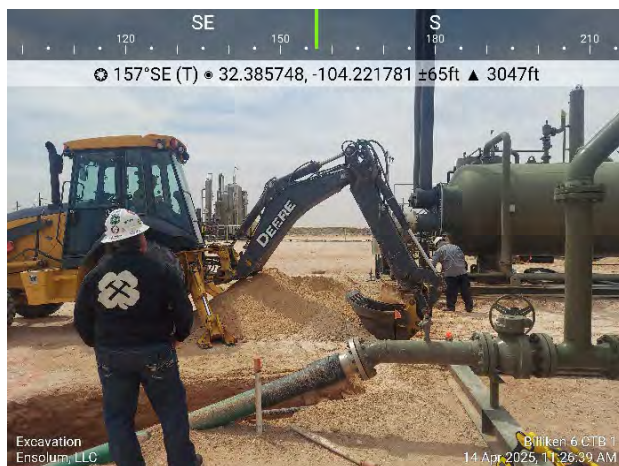


Photograph 10

Date:6/30/2025

Description: Photo Retake (Correct GPS)

View: South

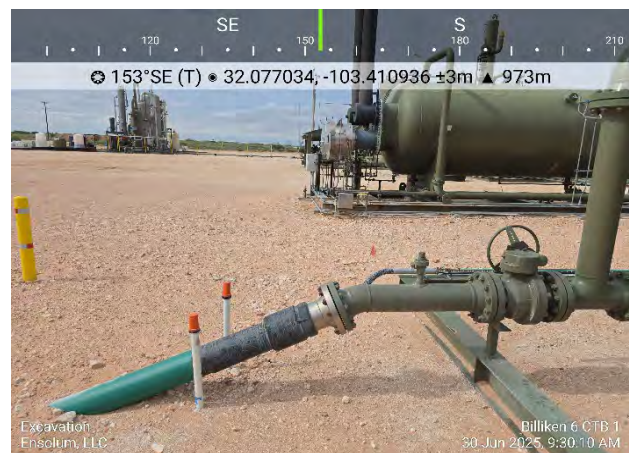


Photograph 11

Date:4/14/2025

Description: Excavation

View: Southeast



Photograph 12

Date:6/30/2025

Description: Photo Retake (Correct GPS)

View: Southeast



## Photographic Log

Devon Energy Production, LP

Billiken 6 CTB 1

nAPP2506357698



Photograph 13  
Description: Excavation  
View: East

Date:4/14/2025



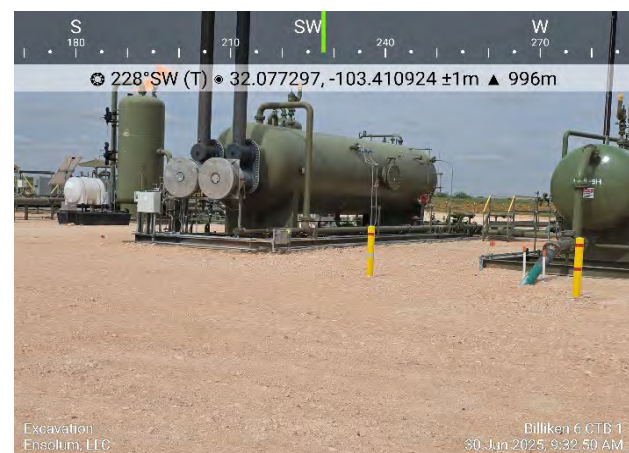
Photograph 14  
Description: Photo Retake (Correct GPS)  
View: East

Date:6/30/2025



Photograph 15  
Description: Excavation  
View: Southwest

Date:4/14/2025



Photograph 16  
Description: Photo Retake (Correct GPS)  
View: Southwest

Date:6/30/2025



**Photographic Log**

Devon Energy Production, LP

Billiken 6 CTB 1

nAPP2506357698



Photograph 17  
Description: Excavation  
View: West



Photograph 18  
Description: Excavation at FS07  
View: Southeast





## APPENDIX C


### Lithologic Soil Sampling Logs

---



								Sample Name: BH01		Date: 3/11/25	
								Site Name: Billiken 6 CTB 1			
								Incident Number: nAPP2506357698			
								Job Number: 03A1987165			
<b>LITHOLOGIC / SOIL SAMPLING LOG</b>								Logged By: Israel Estrella		Method: Hand Auger	
Coordinates: 32.076985, -103.410930								Hole Diameter: 3"		Total Depth: 3'	
Comments: Field screening conducted with HACH Chloride Test Strips and PetroFlag® for chloride and TPH, respectively. Chloride test performed with 1:4 dilution factor of soil to distilled water. No correction factors included.											
Moisture Content	Chloride (ppm)	Vapor (ppm)	Staining	Sample ID	Sample Depth (ft bgs)	Depth (ft bgs)	USCS/Rock Symbol	Lithologic Descriptions			
M	ND		Y	BH01	0	0	CCHE	moist, heavy stain, pad caliche, non pliable.			
	ND		N		1	1	SP-SM	moist, no stain, sand, non pliable.			
	ND		N		2	2					
	ND	19	N		3	3					
Total depth 3 ft.											

 <b>ENSOLUM</b>		Sample Name: BH02		Date: 3/11/25				
		Site Name: Billiken 6 CTB 1						
		Incident Number: nAPP2506357698						
		Job Number: 03A1987165						
<b>LITHOLOGIC / SOIL SAMPLING LOG</b>								
Coordinates: 32.076944, -103.410865			Logged By: Israel Estrella		Method: Hand Auger			
			Hole Diameter: 3"		Total Depth: 2'			
Comments: Field screening conducted with HACH Chloride Test Strips and PetroFlag® for chloride and TPH, respectively. Chloride test performed with 1:4 dilution factor of soil to distilled water. No correction factors included.								
Moisture Content	Chloride (ppm)	Vapor (ppm)	Staining	Sample ID	Sample Depth (ft bgs)	Depth (ft bgs)	USCS/Rock Symbol	Lithologic Descriptions
M	ND		Y	BH02	0	0	CCHE	moist, heavy stain, pad caliche, non pliable.
			N		1	1		SP-SM
		23	N		2	2		
Total depth 2 ft.								

								Sample Name: BH03		Date: 3/11/25	
								Site Name: Billiken 6 CTB 1			
								Incident Number: nAPP2506357698			
								Job Number: 03A1987165			
<b>LITHOLOGIC / SOIL SAMPLING LOG</b>								Logged By: Israel Estrella		Method: Hand Auger	
Coordinates: 32.076948, -103.410986								Hole Diameter: 3"		Total Depth: 2'	
Comments: Field screening conducted with HACH Chloride Test Strips and PetroFlag® for chloride and TPH, respectively. Chloride test performed with 1:4 dilution factor of soil to distilled water. No correction factors included.											
Moisture Content	Chloride (ppm)	Vapor (ppm)	Staining	Sample ID	Sample Depth (ft bgs)	Depth (ft bgs)	USCS/Rock Symbol	Lithologic Descriptions			
M	ND	24	Y	BH03	0	0	CCHE	moist, heavy stain, pad caliche, non pliable.			
			N		1	1		moist, no stain, sand, non pliable.			
			N		2	2	SP-SM				
Total depth 2 ft.											



## APPENDIX D

### Laboratory Analytical Reports & Chain-of-Custody Documentation

---



Report to:

Ashley Giovengo



# envirotech

*Practical Solutions for a Better Tomorrow*

## Analytical Report

Devon Energy - Carlsbad

Project Name: Billiken 6 CTB 1

Work Order: E503080

Job Number: 01058-0007

Received: 3/13/2025

Revision: 1

Report Reviewed By:

Walter Hinchman  
Laboratory Director  
3/19/25

5796 U.S. Hwy 64  
Farmington, NM 87401

Phone: (505) 632-1881  
Envirotech-inc.com



Envirotech Inc. certifies the test results meet all requirements of TNI unless noted otherwise.  
Statement of Data Authenticity: Envirotech Inc. attests the data reported has not been altered in any way.  
Partial or incomplete reproduction of this report is prohibited, unless approved by Envirotech Inc.  
Envirotech Inc. holds the Utah TNI certification NM00979 for data reported.  
Envirotech Inc. holds the Texas TNI certification T104704557 for data reported.

Date Reported: 3/19/25



Ashley Giovengo  
6488 7 Rivers Hwy  
Artesia, NM 88210

Project Name: Billiken 6 CTB 1  
Workorder: E503080  
Date Received: 3/13/2025 8:00:00AM

Ashley Giovengo,

Thank you for choosing Envirotech, Inc. as your analytical testing laboratory for the sample(s) received on, 3/13/2025 8:00:00AM, under the Project Name: Billiken 6 CTB 1.

The analytical test results summarized in this report with the Project Name: Billiken 6 CTB 1 apply to the individual samples collected, identified and submitted bearing the project name on the enclosed chain-of-custody. Subcontracted sample analyses not conducted by Envirotech, Inc., are attached in full as issued by the subcontract laboratory.

Please review the Chain-of-Custody (COC) and Sample Receipt Checklist (SRC) for any issues regarding sample receipt temperature, containers, preservation etc. To best understand your test results, review the entire report summarizing your sample data and the associated quality control batch data.

All reported data in this analytical report were analyzed according to the referenced method(s) and are in compliance with the latest NELAC/TNI standards, unless otherwise noted. Samples or analytical quality control parameters not meeting specific QC criteria are qualified with a data flag. Data flag definitions are located in the Notes and Definitions section of this analytical report.

If you have any questions concerning this report, please feel free to contact Envirotech, Inc.

Respectfully,

**Walter Hinchman**  
Laboratory Director  
Office: 505-632-1881  
Cell: 775-287-1762  
[whinchman@envirotech-inc.com](mailto:whinchman@envirotech-inc.com)

**Raina Schwanz**  
Laboratory Administrator  
Office: 505-632-1881  
[rainaschwanz@envirotech-inc.com](mailto:rainaschwanz@envirotech-inc.com)

Field Offices:

**Southern New Mexico Area**

**Lynn Jarboe**  
Laboratory Technical Representative  
Office: 505-421-LABS(5227)  
Cell: 505-320-4759  
[ljjarboe@envirotech-inc.com](mailto:ljjarboe@envirotech-inc.com)

**Michelle Gonzales**  
Client Representative  
Office: 505-421-LABS(5227)  
Cell: 505-947-8222  
[mgonzales@envirotech-inc.com](mailto:mgonzales@envirotech-inc.com)

Envirotech Web Address: [www.envirotech-inc.com](http://www.envirotech-inc.com)

## Table of Contents

Title Page	1
Cover Page	2
Table of Contents	3
Sample Summary	5
Sample Data	6
SS01-0'	6
SS02-0'	7
SS03-0'	8
SS04-0'	9
SS01-1'	10
SS02-1'	11
SS03-1'	12
SS04-1'	13
BH01-0'	14
BH01-1'	15
BH01-3'	16
BH02-0'	17
BH02-2'	18
BH03-0'	19
BH03-2'	20
QC Summary Data	21
QC - Volatile Organics by EPA 8021B	21
QC - Nonhalogenated Organics by EPA 8015D - GRO	22
QC - Nonhalogenated Organics by EPA 8015D - DRO/ORO	23
QC - Anions by EPA 300.0/9056A	24

## Table of Contents (continued)

Definitions and Notes	25
Chain of Custody etc.	26



## Sample Summary

Devon Energy - Carlsbad	Project Name:	Billiken 6 CTB 1	Reported:
6488 7 Rivers Hwy	Project Number:	01058-0007	
Artesia NM, 88210	Project Manager:	Ashley Giovengo	03/19/25 08:56

Client Sample ID	Lab Sample ID	Matrix	Sampled	Received	Container
SS01-0'	E503080-01A	Soil	03/11/25	03/13/25	Glass Jar, 2 oz.
SS02-0'	E503080-02A	Soil	03/11/25	03/13/25	Glass Jar, 2 oz.
SS03-0'	E503080-03A	Soil	03/11/25	03/13/25	Glass Jar, 2 oz.
SS04-0'	E503080-04A	Soil	03/11/25	03/13/25	Glass Jar, 2 oz.
SS01-1'	E503080-05A	Soil	03/11/25	03/13/25	Glass Jar, 2 oz.
SS02-1'	E503080-06A	Soil	03/11/25	03/13/25	Glass Jar, 2 oz.
SS03-1'	E503080-07A	Soil	03/11/25	03/13/25	Glass Jar, 2 oz.
SS04-1'	E503080-08A	Soil	03/11/25	03/13/25	Glass Jar, 2 oz.
BH01-0'	E503080-09A	Soil	03/11/25	03/13/25	Glass Jar, 2 oz.
BH01-1'	E503080-10A	Soil	03/11/25	03/13/25	Glass Jar, 2 oz.
BH01-3'	E503080-11A	Soil	03/11/25	03/13/25	Glass Jar, 2 oz.
BH02-0'	E503080-12A	Soil	03/11/25	03/13/25	Glass Jar, 2 oz.
BH02-2'	E503080-13A	Soil	03/11/25	03/13/25	Glass Jar, 2 oz.
BH03-0'	E503080-14A	Soil	03/11/25	03/13/25	Glass Jar, 2 oz.
BH03-2'	E503080-15A	Soil	03/11/25	03/13/25	Glass Jar, 2 oz.



## Sample Data

Devon Energy - Carlsbad 6488 7 Rivers Hwy Artesia NM, 88210	Project Name: Billiken 6 CTB 1 Project Number: 01058-0007 Project Manager: Ashley Giovengo	<b>Reported:</b> 3/19/2025 8:56:41AM
-------------------------------------------------------------------	--------------------------------------------------------------------------------------------------	-----------------------------------------

**SS01-0'**

**E503080-01**

Analyte	Result	Reporting Limit	Dilution	Prepared	Analyzed	Notes
<b>Volatile Organics by EPA 8021B</b>	mg/kg	mg/kg	Analyst: SL		Batch: 2511055	
Benzene	ND	0.0250	1	03/13/25	03/14/25	
Ethylbenzene	ND	0.0250	1	03/13/25	03/14/25	
Toluene	ND	0.0250	1	03/13/25	03/14/25	
o-Xylene	ND	0.0250	1	03/13/25	03/14/25	
p,m-Xylene	ND	0.0500	1	03/13/25	03/14/25	
Total Xylenes	ND	0.0250	1	03/13/25	03/14/25	
<i>Surrogate: 4-Bromochlorobenzene-PID</i>		80.6 %	70-130	03/13/25	03/14/25	
<b>Nonhalogenated Organics by EPA 8015D - GRO</b>	mg/kg	mg/kg	Analyst: SL		Batch: 2511055	
Gasoline Range Organics (C6-C10)	ND	20.0	1	03/13/25	03/14/25	
<i>Surrogate: 1-Chloro-4-fluorobenzene-FID</i>		94.5 %	70-130	03/13/25	03/14/25	
<b>Nonhalogenated Organics by EPA 8015D - DRO/ORO</b>	mg/kg	mg/kg	Analyst: NV		Batch: 2511053	
Diesel Range Organics (C10-C28)	ND	25.0	1	03/13/25	03/13/25	
Oil Range Organics (C28-C36)	ND	50.0	1	03/13/25	03/13/25	
<i>Surrogate: n-Nonane</i>		102 %	61-141	03/13/25	03/13/25	
<b>Anions by EPA 300.0/9056A</b>	mg/kg	mg/kg	Analyst: DT		Batch: 2511063	
Chloride	25.6	20.0	1	03/13/25	03/14/25	



## Sample Data

Devon Energy - Carlsbad  
6488 7 Rivers Hwy  
Artesia NM, 88210

Project Name: Billiken 6 CTB 1  
Project Number: 01058-0007  
Project Manager: Ashley Giovengo

**Reported:**  
3/19/2025 8:56:41AM

SS02-0'

E503080-02

Analyte	Result	Reporting Limit	Dilution	Prepared	Analyzed	Notes
<b>Volatile Organics by EPA 8021B</b>	mg/kg	mg/kg	Analyst: SL		Batch: 2511055	
Benzene	ND	0.0250	1	03/13/25	03/14/25	
Ethylbenzene	ND	0.0250	1	03/13/25	03/14/25	
Toluene	ND	0.0250	1	03/13/25	03/14/25	
o-Xylene	ND	0.0250	1	03/13/25	03/14/25	
p,m-Xylene	ND	0.0500	1	03/13/25	03/14/25	
Total Xylenes	ND	0.0250	1	03/13/25	03/14/25	
<i>Surrogate: 4-Bromochlorobenzene-PID</i>		80.7 %	70-130	03/13/25	03/14/25	
<b>Nonhalogenated Organics by EPA 8015D - GRO</b>	mg/kg	mg/kg	Analyst: SL		Batch: 2511055	
Gasoline Range Organics (C6-C10)	ND	20.0	1	03/13/25	03/14/25	
<i>Surrogate: 1-Chloro-4-fluorobenzene-FID</i>		93.4 %	70-130	03/13/25	03/14/25	
<b>Nonhalogenated Organics by EPA 8015D - DRO/ORO</b>	mg/kg	mg/kg	Analyst: NV		Batch: 2511053	
Diesel Range Organics (C10-C28)	ND	25.0	1	03/13/25	03/13/25	
Oil Range Organics (C28-C36)	ND	50.0	1	03/13/25	03/13/25	
<i>Surrogate: n-Nonane</i>		104 %	61-141	03/13/25	03/13/25	
<b>Anions by EPA 300.0/9056A</b>	mg/kg	mg/kg	Analyst: DT		Batch: 2511063	
Chloride	ND	20.0	1	03/13/25	03/14/25	



## Sample Data

Devon Energy - Carlsbad  
6488 7 Rivers Hwy  
Artesia NM, 88210

Project Name: Billiken 6 CTB 1  
Project Number: 01058-0007  
Project Manager: Ashley Giovengo

**Reported:**  
3/19/2025 8:56:41AM

SS03-0'

E503080-03

Analyte	Result	Reporting Limit	Dilution	Prepared	Analyzed	Notes
<b>Volatile Organics by EPA 8021B</b>						
	mg/kg	mg/kg		Analyst: SL		Batch: 2511055
Benzene	ND	0.0250	1	03/13/25	03/14/25	
Ethylbenzene	ND	0.0250	1	03/13/25	03/14/25	
Toluene	ND	0.0250	1	03/13/25	03/14/25	
o-Xylene	ND	0.0250	1	03/13/25	03/14/25	
p,m-Xylene	ND	0.0500	1	03/13/25	03/14/25	
Total Xylenes	ND	0.0250	1	03/13/25	03/14/25	
<i>Surrogate: 4-Bromochlorobenzene-PID</i>						
	80.5 %	70-130		03/13/25	03/14/25	
<b>Nonhalogenated Organics by EPA 8015D - GRO</b>						
	mg/kg	mg/kg		Analyst: SL		Batch: 2511055
Gasoline Range Organics (C6-C10)	ND	20.0	1	03/13/25	03/14/25	
<i>Surrogate: 1-Chloro-4-fluorobenzene-FID</i>						
	95.1 %	70-130		03/13/25	03/14/25	
<b>Nonhalogenated Organics by EPA 8015D - DRO/ORO</b>						
	mg/kg	mg/kg		Analyst: NV		Batch: 2511053
Diesel Range Organics (C10-C28)	34.2	25.0	1	03/13/25	03/13/25	
Oil Range Organics (C28-C36)	ND	50.0	1	03/13/25	03/13/25	
<i>Surrogate: n-Nonane</i>						
	104 %	61-141		03/13/25	03/13/25	
<b>Anions by EPA 300.0/9056A</b>						
	mg/kg	mg/kg		Analyst: DT		Batch: 2511063
Chloride	23.7	20.0	1	03/13/25	03/14/25	





## Sample Data

Devon Energy - Carlsbad  
6488 7 Rivers Hwy  
Artesia NM, 88210

Project Name: Billiken 6 CTB 1  
Project Number: 01058-0007  
Project Manager: Ashley Giovengo

**Reported:**  
3/19/2025 8:56:41AM

SS04-0'

E503080-04

Analyte	Result	Reporting Limit	Dilution	Prepared	Analyzed	Notes
<b>Volatile Organics by EPA 8021B</b>						
	mg/kg	mg/kg		Analyst: SL		Batch: 2511055
Benzene	ND	0.0250	1	03/13/25	03/14/25	
Ethylbenzene	ND	0.0250	1	03/13/25	03/14/25	
Toluene	ND	0.0250	1	03/13/25	03/14/25	
o-Xylene	ND	0.0250	1	03/13/25	03/14/25	
p,m-Xylene	ND	0.0500	1	03/13/25	03/14/25	
Total Xylenes	ND	0.0250	1	03/13/25	03/14/25	
<i>Surrogate: 4-Bromochlorobenzene-PID</i>						
	79.9 %	70-130		03/13/25	03/14/25	
<b>Nonhalogenated Organics by EPA 8015D - GRO</b>						
	mg/kg	mg/kg		Analyst: SL		Batch: 2511055
Gasoline Range Organics (C6-C10)	ND	20.0	1	03/13/25	03/14/25	
<i>Surrogate: 1-Chloro-4-fluorobenzene-FID</i>						
	94.8 %	70-130		03/13/25	03/14/25	
<b>Nonhalogenated Organics by EPA 8015D - DRO/ORO</b>						
	mg/kg	mg/kg		Analyst: NV		Batch: 2511053
Diesel Range Organics (C10-C28)	ND	25.0	1	03/13/25	03/13/25	
Oil Range Organics (C28-C36)	ND	50.0	1	03/13/25	03/13/25	
<i>Surrogate: n-Nonane</i>						
	108 %	61-141		03/13/25	03/13/25	
<b>Anions by EPA 300.0/9056A</b>						
	mg/kg	mg/kg		Analyst: DT		Batch: 2511063
Chloride	33.7	20.0	1	03/13/25	03/14/25	



## Sample Data

Devon Energy - Carlsbad  
6488 7 Rivers Hwy  
Artesia NM, 88210

Project Name: Billiken 6 CTB 1  
Project Number: 01058-0007  
Project Manager: Ashley Giovengo

**Reported:**  
3/19/2025 8:56:41AM

SS01-1'

E503080-05

Analyte	Result	Reporting Limit	Dilution	Prepared	Analyzed	Notes
<b>Volatile Organics by EPA 8021B</b>						
	mg/kg	mg/kg	Analyst: SL		Batch: 2511055	
Benzene	ND	0.0250	1	03/13/25	03/14/25	
Ethylbenzene	ND	0.0250	1	03/13/25	03/14/25	
Toluene	ND	0.0250	1	03/13/25	03/14/25	
o-Xylene	ND	0.0250	1	03/13/25	03/14/25	
p,m-Xylene	ND	0.0500	1	03/13/25	03/14/25	
Total Xylenes	ND	0.0250	1	03/13/25	03/14/25	
<i>Surrogate: 4-Bromochlorobenzene-PID</i>						
	79.7 %	70-130		03/13/25	03/14/25	
<b>Nonhalogenated Organics by EPA 8015D - GRO</b>						
	mg/kg	mg/kg	Analyst: SL		Batch: 2511055	
Gasoline Range Organics (C6-C10)	ND	20.0	1	03/13/25	03/14/25	
<i>Surrogate: 1-Chloro-4-fluorobenzene-FID</i>						
	95.1 %	70-130		03/13/25	03/14/25	
<b>Nonhalogenated Organics by EPA 8015D - DRO/ORO</b>						
	mg/kg	mg/kg	Analyst: NV		Batch: 2511053	
Diesel Range Organics (C10-C28)	ND	25.0	1	03/13/25	03/13/25	
Oil Range Organics (C28-C36)	ND	50.0	1	03/13/25	03/13/25	
<i>Surrogate: n-Nonane</i>						
	102 %	61-141		03/13/25	03/13/25	
<b>Anions by EPA 300.0/9056A</b>						
	mg/kg	mg/kg	Analyst: DT		Batch: 2511063	
Chloride	ND	20.0	1	03/13/25	03/14/25	



## Sample Data

Devon Energy - Carlsbad  
6488 7 Rivers Hwy  
Artesia NM, 88210

Project Name: Billiken 6 CTB 1  
Project Number: 01058-0007  
Project Manager: Ashley Giovengo

**Reported:**  
3/19/2025 8:56:41AM

SS02-1'

E503080-06

Analyte	Result	Reporting Limit	Dilution	Prepared	Analyzed	Notes
<b>Volatile Organics by EPA 8021B</b>	mg/kg	mg/kg	Analyst: SL		Batch: 2511055	
Benzene	ND	0.0250	1	03/13/25	03/14/25	
Ethylbenzene	ND	0.0250	1	03/13/25	03/14/25	
Toluene	ND	0.0250	1	03/13/25	03/14/25	
o-Xylene	ND	0.0250	1	03/13/25	03/14/25	
p,m-Xylene	ND	0.0500	1	03/13/25	03/14/25	
Total Xylenes	ND	0.0250	1	03/13/25	03/14/25	
<i>Surrogate: 4-Bromochlorobenzene-PID</i>		84.0 %	70-130	03/13/25	03/14/25	
<b>Nonhalogenated Organics by EPA 8015D - GRO</b>	mg/kg	mg/kg	Analyst: SL		Batch: 2511055	
Gasoline Range Organics (C6-C10)	ND	20.0	1	03/13/25	03/14/25	
<i>Surrogate: 1-Chloro-4-fluorobenzene-FID</i>		93.1 %	70-130	03/13/25	03/14/25	
<b>Nonhalogenated Organics by EPA 8015D - DRO/ORO</b>	mg/kg	mg/kg	Analyst: NV		Batch: 2511053	
Diesel Range Organics (C10-C28)	ND	25.0	1	03/13/25	03/13/25	
Oil Range Organics (C28-C36)	ND	50.0	1	03/13/25	03/13/25	
<i>Surrogate: n-Nonane</i>		102 %	61-141	03/13/25	03/13/25	
<b>Anions by EPA 300.0/9056A</b>	mg/kg	mg/kg	Analyst: DT		Batch: 2511063	
Chloride	ND	20.0	1	03/13/25	03/14/25	



## Sample Data

Devon Energy - Carlsbad  
6488 7 Rivers Hwy  
Artesia NM, 88210

Project Name: Billiken 6 CTB 1  
Project Number: 01058-0007  
Project Manager: Ashley Giovengo

**Reported:**  
3/19/2025 8:56:41AM

SS03-1'

E503080-07

Analyte	Result	Reporting Limit	Dilution	Prepared	Analyzed	Notes
<b>Volatile Organics by EPA 8021B</b>	mg/kg	mg/kg	Analyst: SL		Batch: 2511055	
Benzene	ND	0.0250	1	03/13/25	03/14/25	
Ethylbenzene	ND	0.0250	1	03/13/25	03/14/25	
Toluene	ND	0.0250	1	03/13/25	03/14/25	
o-Xylene	ND	0.0250	1	03/13/25	03/14/25	
p,m-Xylene	ND	0.0500	1	03/13/25	03/14/25	
Total Xylenes	ND	0.0250	1	03/13/25	03/14/25	
<i>Surrogate: 4-Bromochlorobenzene-PID</i>	84.5 %	70-130		03/13/25	03/14/25	
<b>Nonhalogenated Organics by EPA 8015D - GRO</b>	mg/kg	mg/kg	Analyst: SL		Batch: 2511055	
Gasoline Range Organics (C6-C10)	ND	20.0	1	03/13/25	03/14/25	
<i>Surrogate: 1-Chloro-4-fluorobenzene-FID</i>	93.1 %	70-130		03/13/25	03/14/25	
<b>Nonhalogenated Organics by EPA 8015D - DRO/ORO</b>	mg/kg	mg/kg	Analyst: NV		Batch: 2511053	
Diesel Range Organics (C10-C28)	ND	25.0	1	03/13/25	03/13/25	
Oil Range Organics (C28-C36)	ND	50.0	1	03/13/25	03/13/25	
<i>Surrogate: n-Nonane</i>	103 %	61-141		03/13/25	03/13/25	
<b>Anions by EPA 300.0/9056A</b>	mg/kg	mg/kg	Analyst: DT		Batch: 2511063	
Chloride	ND	20.0	1	03/13/25	03/14/25	



## Sample Data

Devon Energy - Carlsbad  
6488 7 Rivers Hwy  
Artesia NM, 88210

Project Name: Billiken 6 CTB 1  
Project Number: 01058-0007  
Project Manager: Ashley Giovengo

**Reported:**  
3/19/2025 8:56:41AM

SS04-1'

E503080-08

Analyte	Result	Reporting Limit	Dilution	Prepared	Analyzed	Notes
<b>Volatile Organics by EPA 8021B</b>						
	mg/kg	mg/kg	Analyst: SL		Batch: 2511055	
Benzene	ND	0.0250	1	03/13/25	03/14/25	
Ethylbenzene	ND	0.0250	1	03/13/25	03/14/25	
Toluene	ND	0.0250	1	03/13/25	03/14/25	
o-Xylene	ND	0.0250	1	03/13/25	03/14/25	
p,m-Xylene	ND	0.0500	1	03/13/25	03/14/25	
Total Xylenes	ND	0.0250	1	03/13/25	03/14/25	
<i>Surrogate: 4-Bromochlorobenzene-PID</i>						
	84.2 %	70-130		03/13/25	03/14/25	
<b>Nonhalogenated Organics by EPA 8015D - GRO</b>						
	mg/kg	mg/kg	Analyst: SL		Batch: 2511055	
Gasoline Range Organics (C6-C10)	ND	20.0	1	03/13/25	03/14/25	
<i>Surrogate: 1-Chloro-4-fluorobenzene-FID</i>						
	93.4 %	70-130		03/13/25	03/14/25	
<b>Nonhalogenated Organics by EPA 8015D - DRO/ORO</b>						
	mg/kg	mg/kg	Analyst: NV		Batch: 2511053	
Diesel Range Organics (C10-C28)	ND	25.0	1	03/13/25	03/13/25	
Oil Range Organics (C28-C36)	ND	50.0	1	03/13/25	03/13/25	
<i>Surrogate: n-Nonane</i>						
	98.8 %	61-141		03/13/25	03/13/25	
<b>Anions by EPA 300.0/9056A</b>						
	mg/kg	mg/kg	Analyst: DT		Batch: 2511063	
Chloride	ND	20.0	1	03/13/25	03/14/25	





## Sample Data

Devon Energy - Carlsbad  
6488 7 Rivers Hwy  
Artesia NM, 88210

Project Name: Billiken 6 CTB 1  
Project Number: 01058-0007  
Project Manager: Ashley Giovengo

**Reported:**  
3/19/2025 8:56:41AM

BH01-0'

E503080-09

Analyte	Result	Reporting Limit	Dilution	Prepared	Analyzed	Notes
<b>Volatile Organics by EPA 8021B</b>						
	mg/kg	mg/kg	Analyst: SL		Batch: 2511055	
Benzene	2.21	0.250	10	03/13/25	03/14/25	
Ethylbenzene	46.9	0.250	10	03/13/25	03/14/25	
Toluene	113	0.250	10	03/13/25	03/14/25	
o-Xylene	58.3	0.250	10	03/13/25	03/14/25	
p,m-Xylene	174	0.500	10	03/13/25	03/14/25	
Total Xylenes	232	0.250	10	03/13/25	03/14/25	
<i>Surrogate: 4-Bromochlorobenzene-PID</i>						
	89.7 %	70-130		03/13/25	03/14/25	
<b>Nonhalogenated Organics by EPA 8015D - GRO</b>						
	mg/kg	mg/kg	Analyst: SL		Batch: 2511055	
Gasoline Range Organics (C6-C10)	1610	200	10	03/13/25	03/14/25	
<i>Surrogate: 1-Chloro-4-fluorobenzene-FID</i>						
	107 %	70-130		03/13/25	03/14/25	
<b>Nonhalogenated Organics by EPA 8015D - DRO/ORO</b>						
	mg/kg	mg/kg	Analyst: NV		Batch: 2511053	
Diesel Range Organics (C10-C28)	11900	125	5	03/13/25	03/13/25	T9
Oil Range Organics (C28-C36)	3000	250	5	03/13/25	03/13/25	
<i>Surrogate: n-Nonane</i>						
	484 %	61-141		03/13/25	03/13/25	S5
<b>Anions by EPA 300.0/9056A</b>						
	mg/kg	mg/kg	Analyst: DT		Batch: 2511063	
Chloride	23.6	20.0	1	03/13/25	03/14/25	



Sample Data

Devon Energy - Carlsbad 6488 7 Rivers Hwy Artesia NM, 88210	Project Name: Billiken 6 CTB 1 Project Number: 01058-0007 Project Manager: Ashley Giovengo	Reported: 3/19/2025 8:56:41AM
-------------------------------------------------------------------	--------------------------------------------------------------------------------------------------	----------------------------------

BH01-1'

E503080-10

Analyte	Result	Reporting Limit	Dilution	Prepared	Analyzed	Notes
<b>Volatile Organics by EPA 8021B</b>	mg/kg	mg/kg	Analyst: SL		Batch: 2511055	
Benzene	ND	0.0250	1	03/13/25	03/14/25	
Ethylbenzene	ND	0.0250	1	03/13/25	03/14/25	
Toluene	ND	0.0250	1	03/13/25	03/14/25	
o-Xylene	ND	0.0250	1	03/13/25	03/14/25	
p,m-Xylene	ND	0.0500	1	03/13/25	03/14/25	
Total Xylenes	ND	0.0250	1	03/13/25	03/14/25	
Surrogate: 4-Bromochlorobenzene-PID	79.8 %	70-130		03/13/25	03/14/25	
<b>Nonhalogenated Organics by EPA 8015D - GRO</b>	mg/kg	mg/kg	Analyst: SL		Batch: 2511055	
Gasoline Range Organics (C6-C10)	ND	20.0	1	03/13/25	03/14/25	
Surrogate: 1-Chloro-4-fluorobenzene-FID	95.6 %	70-130		03/13/25	03/14/25	
<b>Nonhalogenated Organics by EPA 8015D - DRO/ORO</b>	mg/kg	mg/kg	Analyst: NV		Batch: 2511053	
Diesel Range Organics (C10-C28)	ND	25.0	1	03/13/25	03/13/25	
Oil Range Organics (C28-C36)	ND	50.0	1	03/13/25	03/13/25	
Surrogate: n-Nonane	103 %	61-141		03/13/25	03/13/25	
<b>Anions by EPA 300.0/9056A</b>	mg/kg	mg/kg	Analyst: DT		Batch: 2511063	
Chloride	ND	20.0	1	03/13/25	03/14/25	



## Sample Data

Devon Energy - Carlsbad  
6488 7 Rivers Hwy  
Artesia NM, 88210

Project Name: Billiken 6 CTB 1  
Project Number: 01058-0007  
Project Manager: Ashley Giovengo

**Reported:**  
3/19/2025 8:56:41AM

BH01-3'

E503080-11

Analyte	Result	Reporting Limit	Dilution	Prepared	Analyzed	Notes
<b>Volatile Organics by EPA 8021B</b>						
	mg/kg	mg/kg		Analyst: SL		Batch: 2511055
Benzene	ND	0.0250	1	03/13/25	03/14/25	
Ethylbenzene	ND	0.0250	1	03/13/25	03/14/25	
Toluene	ND	0.0250	1	03/13/25	03/14/25	
o-Xylene	ND	0.0250	1	03/13/25	03/14/25	
p,m-Xylene	ND	0.0500	1	03/13/25	03/14/25	
Total Xylenes	ND	0.0250	1	03/13/25	03/14/25	
<i>Surrogate: 4-Bromochlorobenzene-PID</i>						
		81.3 %	70-130	03/13/25	03/14/25	
<b>Nonhalogenated Organics by EPA 8015D - GRO</b>						
	mg/kg	mg/kg		Analyst: SL		Batch: 2511055
Gasoline Range Organics (C6-C10)	ND	20.0	1	03/13/25	03/14/25	
<i>Surrogate: 1-Chloro-4-fluorobenzene-FID</i>						
		96.3 %	70-130	03/13/25	03/14/25	
<b>Nonhalogenated Organics by EPA 8015D - DRO/ORO</b>						
	mg/kg	mg/kg		Analyst: NV		Batch: 2511053
Diesel Range Organics (C10-C28)	ND	25.0	1	03/13/25	03/13/25	
Oil Range Organics (C28-C36)	ND	50.0	1	03/13/25	03/13/25	
<i>Surrogate: n-Nonane</i>						
		100 %	61-141	03/13/25	03/13/25	
<b>Anions by EPA 300.0/9056A</b>						
	mg/kg	mg/kg		Analyst: DT		Batch: 2511063
Chloride	ND	20.0	1	03/13/25	03/14/25	



## Sample Data

Devon Energy - Carlsbad  
6488 7 Rivers Hwy  
Artesia NM, 88210

Project Name: Billiken 6 CTB 1  
Project Number: 01058-0007  
Project Manager: Ashley Giovengo

**Reported:**  
3/19/2025 8:56:41AM

BH02-0'

E503080-12

Analyte	Result	Reporting Limit	Dilution	Prepared	Analyzed	Notes
<b>Volatile Organics by EPA 8021B</b>						
	mg/kg	mg/kg	Analyst: SL		Batch: 2511055	
Benzene	0.134	0.125	5	03/13/25	03/14/25	
Ethylbenzene	21.0	0.125	5	03/13/25	03/14/25	
Toluene	29.4	0.125	5	03/13/25	03/14/25	
o-Xylene	29.9	0.125	5	03/13/25	03/14/25	
p,m-Xylene	84.7	0.250	5	03/13/25	03/14/25	
Total Xylenes	115	0.125	5	03/13/25	03/14/25	
<i>Surrogate: 4-Bromochlorobenzene-PID</i>						
	93.3 %	70-130		03/13/25	03/14/25	
<b>Nonhalogenated Organics by EPA 8015D - GRO</b>						
	mg/kg	mg/kg	Analyst: SL		Batch: 2511055	
Gasoline Range Organics (C6-C10)	840	100	5	03/13/25	03/14/25	
<i>Surrogate: 1-Chloro-4-fluorobenzene-FID</i>						
	115 %	70-130		03/13/25	03/14/25	
<b>Nonhalogenated Organics by EPA 8015D - DRO/ORO</b>						
	mg/kg	mg/kg	Analyst: NV		Batch: 2511053	
Diesel Range Organics (C10-C28)	7340	50.0	2	03/13/25	03/14/25	T9
Oil Range Organics (C28-C36)	1870	100	2	03/13/25	03/14/25	
<i>Surrogate: n-Nonane</i>						
	264 %	61-141		03/13/25	03/14/25	S5
<b>Anions by EPA 300.0/9056A</b>						
	mg/kg	mg/kg	Analyst: DT		Batch: 2511063	
Chloride	37.0	20.0	1	03/13/25	03/14/25	



## Sample Data

Devon Energy - Carlsbad  
6488 7 Rivers Hwy  
Artesia NM, 88210

Project Name: Billiken 6 CTB 1  
Project Number: 01058-0007  
Project Manager: Ashley Giovengo

**Reported:**  
3/19/2025 8:56:41AM

## BH02-2'

## E503080-13

Analyte	Result	Reporting Limit	Dilution	Prepared	Analyzed	Notes
<b>Volatile Organics by EPA 8021B</b>						
	mg/kg	mg/kg		Analyst: SL		Batch: 2511055
Benzene	ND	0.0250	1	03/13/25	03/14/25	
Ethylbenzene	ND	0.0250	1	03/13/25	03/14/25	
Toluene	ND	0.0250	1	03/13/25	03/14/25	
o-Xylene	ND	0.0250	1	03/13/25	03/14/25	
p,m-Xylene	ND	0.0500	1	03/13/25	03/14/25	
Total Xylenes	ND	0.0250	1	03/13/25	03/14/25	
<i>Surrogate: 4-Bromochlorobenzene-PID</i>						
	82.0 %	70-130		03/13/25	03/14/25	
<b>Nonhalogenated Organics by EPA 8015D - GRO</b>						
	mg/kg	mg/kg		Analyst: SL		Batch: 2511055
Gasoline Range Organics (C6-C10)	ND	20.0	1	03/13/25	03/14/25	
<i>Surrogate: 1-Chloro-4-fluorobenzene-FID</i>						
	97.1 %	70-130		03/13/25	03/14/25	
<b>Nonhalogenated Organics by EPA 8015D - DRO/ORO</b>						
	mg/kg	mg/kg		Analyst: NV		Batch: 2511053
Diesel Range Organics (C10-C28)	117	25.0	1	03/13/25	03/14/25	
Oil Range Organics (C28-C36)	96.4	50.0	1	03/13/25	03/14/25	
<i>Surrogate: n-Nonane</i>						
	102 %	61-141		03/13/25	03/14/25	
<b>Anions by EPA 300.0/9056A</b>						
	mg/kg	mg/kg		Analyst: DT		Batch: 2511063
Chloride	ND	20.0	1	03/13/25	03/14/25	





## Sample Data

Devon Energy - Carlsbad  
6488 7 Rivers Hwy  
Artesia NM, 88210

Project Name: Billiken 6 CTB 1  
Project Number: 01058-0007  
Project Manager: Ashley Giovengo

**Reported:**  
3/19/2025 8:56:41AM

BH03-0'

E503080-14

Analyte	Result	Reporting Limit	Dilution	Prepared	Analyzed	Notes
<b>Volatile Organics by EPA 8021B</b>						
	mg/kg	mg/kg	Analyst: SL		Batch: 2511055	
Benzene	0.267	0.125	5	03/13/25	03/14/25	
Ethylbenzene	22.6	0.125	5	03/13/25	03/14/25	
Toluene	44.7	0.125	5	03/13/25	03/14/25	
o-Xylene	28.9	0.125	5	03/13/25	03/14/25	
p,m-Xylene	86.8	0.250	5	03/13/25	03/14/25	
Total Xylenes	116	0.125	5	03/13/25	03/14/25	
<i>Surrogate: 4-Bromochlorobenzene-PID</i>						
	89.5 %	70-130		03/13/25	03/14/25	
<b>Nonhalogenated Organics by EPA 8015D - GRO</b>						
	mg/kg	mg/kg	Analyst: SL		Batch: 2511055	
Gasoline Range Organics (C6-C10)	950	100	5	03/13/25	03/14/25	
<i>Surrogate: 1-Chloro-4-fluorobenzene-FID</i>						
	122 %	70-130		03/13/25	03/14/25	
<b>Nonhalogenated Organics by EPA 8015D - DRO/ORO</b>						
	mg/kg	mg/kg	Analyst: NV		Batch: 2511053	
Diesel Range Organics (C10-C28)	3730	50.0	2	03/13/25	03/14/25	T9
Oil Range Organics (C28-C36)	944	100	2	03/13/25	03/14/25	
<i>Surrogate: n-Nonane</i>						
	221 %	61-141		03/13/25	03/14/25	S5
<b>Anions by EPA 300.0/9056A</b>						
	mg/kg	mg/kg	Analyst: DT		Batch: 2511063	
Chloride	55.9	20.0	1	03/13/25	03/14/25	



## Sample Data

Devon Energy - Carlsbad  
6488 7 Rivers Hwy  
Artesia NM, 88210

Project Name: Billiken 6 CTB 1  
Project Number: 01058-0007  
Project Manager: Ashley Giovengo

**Reported:**  
3/19/2025 8:56:41AM

BH03-2'

E503080-15

Analyte	Result	Reporting Limit	Dilution	Prepared	Analyzed	Notes
<b>Volatile Organics by EPA 8021B</b>						
	mg/kg	mg/kg	Analyst: SL		Batch: 2511055	
Benzene	ND	0.0250	1	03/13/25	03/17/25	
Ethylbenzene	ND	0.0250	1	03/13/25	03/17/25	
Toluene	<b>0.102</b>	0.0250	1	03/13/25	03/17/25	
o-Xylene	ND	0.0250	1	03/13/25	03/17/25	
p,m-Xylene	<b>0.0583</b>	0.0500	1	03/13/25	03/17/25	
Total Xylenes	<b>0.0583</b>	0.0250	1	03/13/25	03/17/25	
<i>Surrogate: 4-Bromochlorobenzene-PID</i>						
	81.3 %	70-130		03/13/25	03/17/25	
<b>Nonhalogenated Organics by EPA 8015D - GRO</b>						
	mg/kg	mg/kg	Analyst: SL		Batch: 2511055	
Gasoline Range Organics (C6-C10)	ND	20.0	1	03/13/25	03/17/25	
<i>Surrogate: 1-Chloro-4-fluorobenzene-FID</i>						
	98.6 %	70-130		03/13/25	03/17/25	
<b>Nonhalogenated Organics by EPA 8015D - DRO/ORO</b>						
	mg/kg	mg/kg	Analyst: NV		Batch: 2511053	
Diesel Range Organics (C10-C28)	ND	25.0	1	03/13/25	03/14/25	
Oil Range Organics (C28-C36)	ND	50.0	1	03/13/25	03/14/25	
<i>Surrogate: n-Nonane</i>						
	104 %	61-141		03/13/25	03/14/25	
<b>Anions by EPA 300.0/9056A</b>						
	mg/kg	mg/kg	Analyst: DT		Batch: 2511063	
Chloride	ND	20.0	1	03/13/25	03/14/25	



## QC Summary Data

Devon Energy - Carlsbad	Project Name:	Billiken 6 CTB 1	Reported:
6488 7 Rivers Hwy	Project Number:	01058-0007	
Artesia NM, 88210	Project Manager:	Ashley Giovengo	3/19/2025 8:56:41AM

## Volatile Organics by EPA 8021B

Analyst: SL

Analyte	Result mg/kg	Reporting Limit mg/kg	Spike Level mg/kg	Source Result mg/kg	Rec %	Rec Limits %	RPD %	RPD Limit %	Notes
---------	-----------------	-----------------------------	-------------------------	---------------------------	----------	--------------------	----------	-------------------	-------

## Blank (2511055-BLK1)

Prepared: 03/13/25 Analyzed: 03/14/25

Benzene	ND	0.0250							
Ethylbenzene	ND	0.0250							
Toluene	ND	0.0250							
o-Xylene	ND	0.0250							
p,m-Xylene	ND	0.0500							
Total Xylenes	ND	0.0250							
Surrogate: 4-Bromochlorobenzene-PID	6.46		8.00		80.8	70-130			

## LCS (2511055-BS1)

Prepared: 03/13/25 Analyzed: 03/14/25

Benzene	4.24	0.0250	5.00		84.8	70-130			
Ethylbenzene	4.04	0.0250	5.00		80.8	70-130			
Toluene	4.16	0.0250	5.00		83.3	70-130			
o-Xylene	4.09	0.0250	5.00		81.8	70-130			
p,m-Xylene	8.24	0.0500	10.0		82.4	70-130			
Total Xylenes	12.3	0.0250	15.0		82.2	70-130			
Surrogate: 4-Bromochlorobenzene-PID	6.62		8.00		82.8	70-130			

## Matrix Spike (2511055-MS1)

Source: E503080-02

Prepared: 03/13/25 Analyzed: 03/14/25

Benzene	4.49	0.0250	5.00	ND	89.9	54-133			
Ethylbenzene	4.27	0.0250	5.00	ND	85.4	61-133			
Toluene	4.41	0.0250	5.00	ND	88.2	61-130			
o-Xylene	4.29	0.0250	5.00	ND	85.8	63-131			
p,m-Xylene	8.69	0.0500	10.0	ND	86.9	63-131			
Total Xylenes	13.0	0.0250	15.0	ND	86.5	63-131			
Surrogate: 4-Bromochlorobenzene-PID	6.49		8.00		81.2	70-130			

## Matrix Spike Dup (2511055-MSD1)

Source: E503080-02

Prepared: 03/13/25 Analyzed: 03/14/25

Benzene	5.20	0.0250	5.00	ND	104	54-133	14.7	20	
Ethylbenzene	4.97	0.0250	5.00	ND	99.4	61-133	15.1	20	
Toluene	5.12	0.0250	5.00	ND	102	61-130	14.9	20	
o-Xylene	4.93	0.0250	5.00	ND	98.7	63-131	14.0	20	
p,m-Xylene	10.1	0.0500	10.0	ND	101	63-131	14.7	20	
Total Xylenes	15.0	0.0250	15.0	ND	100	63-131	14.4	20	
Surrogate: 4-Bromochlorobenzene-PID	6.51		8.00		81.4	70-130			



QC Summary Data

Devon Energy - Carlsbad	Project Name:	Billiken 6 CTB 1	Reported:
6488 7 Rivers Hwy	Project Number:	01058-0007	
Artesia NM, 88210	Project Manager:	Ashley Giovengo	3/19/2025 8:56:41AM

Nonhalogenated Organics by EPA 8015D - GRO

Analyst: SL

Analyte	Result mg/kg	Reporting Limit mg/kg	Spike Level mg/kg	Source Result mg/kg	Rec %	Rec Limits %	RPD %	RPD Limit %	Notes
---------	-----------------	-----------------------------	-------------------------	---------------------------	----------	--------------------	----------	-------------------	-------

Blank (2511055-BLK1)					Prepared: 03/13/25 Analyzed: 03/14/25				
Gasoline Range Organics (C6-C10)	ND	20.0							
Surrogate: 1-Chloro-4-fluorobenzene-FID	7.57		8.00		94.6	70-130			

LCS (2511055-BS2)					Prepared: 03/13/25 Analyzed: 03/14/25				
Gasoline Range Organics (C6-C10)	37.0	20.0	50.0		74.0	70-130			
Surrogate: 1-Chloro-4-fluorobenzene-FID	7.61		8.00		95.1	70-130			

Matrix Spike (2511055-MS2)					Source: E503080-02	Prepared: 03/13/25 Analyzed: 03/17/25			
Gasoline Range Organics (C6-C10)	41.9	20.0	50.0	ND	83.9	70-130			
Surrogate: 1-Chloro-4-fluorobenzene-FID	7.97		8.00		99.6	70-130			

Matrix Spike Dup (2511055-MSD2)					Source: E503080-02	Prepared: 03/13/25 Analyzed: 03/14/25			
Gasoline Range Organics (C6-C10)	37.1	20.0	50.0	ND	74.1	70-130	12.3	20	
Surrogate: 1-Chloro-4-fluorobenzene-FID	7.64		8.00		95.4	70-130			



QC Summary Data

Devon Energy - Carlsbad	Project Name:	Billiken 6 CTB 1	Reported:
6488 7 Rivers Hwy	Project Number:	01058-0007	
Artesia NM, 88210	Project Manager:	Ashley Giovengo	3/19/2025 8:56:41AM

Nonhalogenated Organics by EPA 8015D - DRO/ORO

Analyst: NV

Analyte	Result mg/kg	Reporting Limit mg/kg	Spike Level mg/kg	Source Result mg/kg	Rec %	Rec Limits %	RPD %	RPD Limit %	Notes
---------	-----------------	-----------------------------	-------------------------	---------------------------	----------	--------------------	----------	-------------------	-------

Blank (2511053-BLK1)					Prepared: 03/13/25 Analyzed: 03/13/25				
Diesel Range Organics (C10-C28)	ND	25.0							
Oil Range Organics (C28-C36)	ND	50.0							
Surrogate: n-Nonane	51.5		50.0		103	61-141			

LCS (2511053-BS1)					Prepared: 03/13/25 Analyzed: 03/13/25				
Diesel Range Organics (C10-C28)	245	25.0	250		98.1	66-144			
Surrogate: n-Nonane	50.0		50.0		100	61-141			

Matrix Spike (2511053-MS1)					Source: E503080-08		Prepared: 03/13/25 Analyzed: 03/13/25		
Diesel Range Organics (C10-C28)	248	25.0	250	ND	99.3	56-156			
Surrogate: n-Nonane	51.3		50.0		103	61-141			

Matrix Spike Dup (2511053-MSD1)					Source: E503080-08		Prepared: 03/13/25 Analyzed: 03/13/25		
Diesel Range Organics (C10-C28)	254	25.0	250	ND	102	56-156	2.37	20	
Surrogate: n-Nonane	53.0		50.0		106	61-141			





QC Summary Data

Devon Energy - Carlsbad	Project Name:	Billiken 6 CTB 1	Reported:
6488 7 Rivers Hwy	Project Number:	01058-0007	
Artesia NM, 88210	Project Manager:	Ashley Giovengo	3/19/2025 8:56:41AM

Anions by EPA 300.0/9056A

Analyst: DT

Analyte	Result	Reporting Limit	Spike Level	Source Result	Rec	Rec Limits	RPD	RPD Limit	Notes
	mg/kg	mg/kg	mg/kg	mg/kg	%	%	%	%	

Blank (2511063-BLK1)					Prepared: 03/13/25 Analyzed: 03/14/25				
Chloride	ND	20.0							
LCS (2511063-BS1)					Prepared: 03/13/25 Analyzed: 03/14/25				
Chloride	256	20.0	250		102	90-110			
Matrix Spike (2511063-MS1)					Source: E503080-05		Prepared: 03/13/25 Analyzed: 03/14/25		
Chloride	262	20.0	250	ND	105	80-120			
Matrix Spike Dup (2511063-MSD1)					Source: E503080-05		Prepared: 03/13/25 Analyzed: 03/14/25		
Chloride	261	20.0	250	ND	104	80-120	0.612	20	

QC Summary Report Comment:  
Calculations are based off of the raw (non-rounded) data. However, for reporting purposes all QC data is rounded to three significant figures.  
Therefore, hand calculated values may differ slightly.



Definitions and Notes

Devon Energy - Carlsbad	Project Name:	Billiken 6 CTB 1	
6488 7 Rivers Hwy	Project Number:	01058-0007	Reported:
Artesia NM, 88210	Project Manager:	Ashley Giovengo	03/19/25 08:56

- S5 Surrogate spike recovery exceeded acceptance limits due to interfering target and/or non-target analytes.
- T9 DRO includes undifferentiated early eluting analytes characteristic of GRO.
- ND Analyte NOT DETECTED at or above the reporting limit
- NR Not Reported
- RPD Relative Percent Difference
- DNI Did Not Ignite
- DNR Did not react with the addition of acid or base.

Note (1): Methods marked with \*\* are non-accredited methods.

Note (2): Soil data is reported on an "as received" weight basis, unless reported otherwise.



## Chain of Custody

Page 1 of 2

Received by OCD: 7/22/2025 8:35:39 AM

Client Information				Invoice Information				Lab Use Only				TAT				State					
Client: Devon				Company: Devon				Lab WO#		Job Number		1D	2D	3D	Std	NM	CO	UT	TX		
Project: Billiken 6 CTB 1				Address: 5315 Buena Vista Dr				E503080		01058-0007					X	X					
Project Manager: Ashley Giovengo				City, State, Zip: Carlsbad NM, 88220																	
Address: 3122 National Parks Hwy				Phone: (575)689-7597																	
City, State, Zip: Carlsbad NM, 88220				Email: jim.raley@dvn.com																	
Phone: 575-988-0055				Miscellaneous: Jim Raley																	
Email: agiovengo@ensolum.com																					
Sample Information										Analysis and Method								EPA Program			
Time Sampled	Date Sampled	Matrix	No. of Containers	Sample ID	Field Filter	Lab Number	DRO/DRO by 8015	GRO/DRO by 8015	BTEX by 8021	VOC by 8260	Chloride 300.0	BGDOC - NM	TCEQ 1005 - TX	RCRA 8 Metals	SDWA	CWA	RCRA	Compliance	Y	or	N
1026	3/11/25	Soil	1	SS01 - 0'		1						X									
1027				02		2						X									
1029				03		3						X									
1030				04		4						X									
1054				01-1'		5						X									
1057				02		6						X									
1104				03		7						X									
1107				04		8						X									
Additional Instructions: Please CC: cburton@ensolum.com, agiovengo@ensolum.com, jim.raley@dvn.com, chamilton@ensolum.com, iestrella@ensolum.com																					
I, (field sampler), attest to the validity and authenticity of this sample. I am aware that tampering with or intentionally mislabeling the sample location, date or time of collection is considered fraud and may be grounds for legal action.																					
Sampled by: Israel Estrella																					
Relinquished by: (Signature)		Date		Time		Received by: (Signature)		Date		Time		Samples requiring thermal preservation must be received on ice the day they are sampled or received packed in ice at an avg temp above 0 but less than 6 °C on subsequent days. Lab Use Only Received on ice: <input checked="" type="radio"/> Y <input type="radio"/> N T1 _____ T2 _____ T3 _____ AVG Temp °C 4									
Relinquished by: (Signature)		Date		Time		Received by: (Signature)		Date		Time											
Relinquished by: (Signature)		Date		Time		Received by: (Signature)		Date		Time											
Relinquished by: (Signature)		Date		Time		Received by: (Signature)		Date		Time											
Sample Matrix: S - Soil, Sd - Solid, Sg - Sludge, A - Aqueous, O - Other												Container Type: g - glass, p - poly/plastic, ag - amber glass, v - VOA									
Note: Samples are discarded 14 days after results are reported unless other arrangements are made. Hazardous samples will be returned to client or disposed of at the client expense. The report for the analysis of the above samples is applicable only to those samples received by the laboratory with this COC. The liability of the laboratory is limited to the amount paid for on the report.																					





## Chain of Custody

Page 2 of 2

WO# 21530755

Client Information				Invoice Information		Lab Use Only		TAT				State						
Client: Devon				Company: Devon		Lab WO#		1D 2D 3D Std				NM CO UT TX						
Project: <u>Brixton 6 CTB 1</u>				Address: 5315 Buena Vista Dr		E503080		Job Number				01058-0007						
Project Manager: Ashley Giovengo				City, State, Zip: Carlsbad NM, 88220														
Address: 3122 National Parks Hwy				Phone: (575)689-7597														
City, State, Zip: Carlsbad NM, 88220				Email: jim.raley@dvn.com														
Phone: 575-988-0055				Miscellaneous: Jim Raley														
Email: agiovengo@ensolum.com																		
Sample Information						Analysis and Method										EPA Program		
Time Sampled	Date Sampled	Matrix	No. of Containers	Sample ID	Field Filter	Lab Number	DRO/DRO by 8015	GRO/DRO by 8015	BTEX by 8021	VOC by 8260	Chloride 300.0	BGDOC - NM	TCEQ 1005 - TX	RCRA 8 Metals	SDWA	CWA	RCRA	
1124	3/11/25	soil	1	BH01-01		9						X						
1127				-1'		10						X						
1130				-3'		11						X						
1132				02-01		12						X						
1137				-2'		13						X						
1138				03-01		14						X						
1143				-2'		15						X						
Additional Instructions: Please CC: cburton@ensolum.com, agiovengo@ensolum.com, jim.raley@dvn.com, chamilton@ensolum.com, iestrella@ensolum.com																		
I, (field sampler), attest to the validity and authenticity of this sample. I am aware that tampering with or intentionally mislabeling the sample location, date or time of collection is considered fraud and may be grounds for legal action.																		
Sampled by: <u>Israel Estrella</u>																		
Relinquished by: (Signature)		Date	Time	Received by: (Signature)		Date	Time	Samples requiring thermal preservation must be received on ice the day they are sampled or received packed in ice at an avg temp above 0 but less than 6 °C on subsequent days. Lab Use Only Received on ice: <u>Y</u> / N T1 _____ T2 _____ T3 _____ AVG Temp °C <u>4</u>										
<u>Michelle Gonzalez</u>		3-12-25	7:11	<u>Michelle Gonzalez</u>		3-12-25	0711											
<u>Michelle Gonzalez</u>		3-12-25	1545	<u>Richard Gonzalez</u>		3-12-25	1545											
<u>Richard Gonzalez</u>		3-12-25	2145	<u>Noe Soto</u>		3-13-25	0800											
Relinquished by: (Signature)		Date	Time	Received by: (Signature)		Date	Time											
Relinquished by: (Signature)		Date	Time	Received by: (Signature)		Date	Time											
Sample Matrix: S - Soil, Sd - Solid, Sg - Sludge, A - Aqueous, O - Other _____																		
Container Type: g - glass, p - poly/plastic, ag - amber glass, v - VOA _____																		
Note: Samples are discarded 14 days after results are reported unless other arrangements are made. Hazardous samples will be returned to client or disposed of at the client expense. The report for the analysis of the above samples is applicable only to those samples received by the laboratory with this COC. The liability of the laboratory is limited to the amount paid for on the report.																		


**envirotech**

## Envirotech Analytical Laboratory

Printed: 3/13/2025 10:24:23AM

## Sample Receipt Checklist (SRC)

Instructions: Please take note of any NO checkmarks.

If we receive no response concerning these items within 24 hours of the date of this notice, all the samples will be analyzed as requested.

Client:	Devon Energy - Carlsbad	Date Received:	03/13/25 08:00	Work Order ID:	E503080
Phone:	(505) 382-1211	Date Logged In:	03/12/25 15:18	Logged In By:	Caitlin Mars
Email:	agiovento@ensolum.com	Due Date:	03/19/25 17:00 (4 day TAT)		

Chain of Custody (COC)

1. Does the sample ID match the COC? Yes
2. Does the number of samples per sampling site location match the COC? Yes
3. Were samples dropped off by client or carrier? Yes
4. Was the COC complete, i.e., signatures, dates/times, requested analyses? Yes
5. Were all samples received within holding time? Yes

Note: Analysis, such as pH which should be conducted in the field, i.e., 15 minute hold time, are not included in this discussion.

Carrier: CourierComments/ResolutionSample Turn Around Time (TAT)

6. Did the COC indicate standard TAT, or Expedited TAT? Yes

Sample Cooler

7. Was a sample cooler received? Yes
8. If yes, was cooler received in good condition? Yes
9. Was the sample(s) received intact, i.e., not broken? Yes
10. Were custody/security seals present? No
11. If yes, were custody/security seals intact? NA
12. Was the sample received on ice? If yes, the recorded temp is 4°C, i.e., 6°±2°C Yes

Note: Thermal preservation is not required, if samples are received w/i 15 minutes of sampling

13. If no visible ice, record the temperature. Actual sample temperature: 4°C

Sample Container

14. Are aqueous VOC samples present? No
15. Are VOC samples collected in VOA Vials? NA
16. Is the head space less than 6-8 mm (pea sized or less)? NA
17. Was a trip blank (TB) included for VOC analyses? NA
18. Are non-VOC samples collected in the correct containers? Yes
19. Is the appropriate volume/weight or number of sample containers collected? Yes

Field Label

20. Were field sample labels filled out with the minimum information:
  - Sample ID? Yes
  - Date/Time Collected? Yes
  - Collectors name? Yes

Sample Preservation

21. Does the COC or field labels indicate the samples were preserved? No
22. Are sample(s) correctly preserved? NA
24. Is lab filtration required and/or requested for dissolved metals? No

Multiphase Sample Matrix

26. Does the sample have more than one phase, i.e., multiphase? No
27. If yes, does the COC specify which phase(s) is to be analyzed? NA

Subcontract Laboratory

28. Are samples required to get sent to a subcontract laboratory? No
29. Was a subcontract laboratory specified by the client and if so who? NA Subcontract Lab: NA

Client Instruction

Signature of client authorizing changes to the COC or sample disposition.

Date



envirotech Inc.



Report to:  
Ashley Giovengo



# envirotech

*Practical Solutions for a Better Tomorrow*

## Analytical Report

Devon Energy - Carlsbad

Project Name: Billiken 6 CTB 1

Work Order: E504123

Job Number: 01058-0007

Received: 4/16/2025

Revision: 1

Report Reviewed By:

Walter Hinchman  
Laboratory Director  
4/22/25

5796 U.S. Hwy 64  
Farmington, NM 87401

Phone: (505) 632-1881  
Envirotech-inc.com



Envirotech Inc. certifies the test results meet all requirements of TNI unless noted otherwise.  
Statement of Data Authenticity: Envirotech Inc, attests the data reported has not been altered in any way.  
Partial or incomplete reproduction of this report is prohibited, unless approved by Envirotech Inc.  
Envirotech Inc, holds the Utah TNI certification NM00979 for data reported.  
Envirotech Inc, holds the Texas TNI certification T104704557 for data reported.

Date Reported: 4/22/25



Ashley Giovengo  
6488 7 Rivers Hwy  
Artesia, NM 88210

Project Name: Billiken 6 CTB 1  
Workorder: E504123  
Date Received: 4/16/2025 8:00:00AM

Ashley Giovengo,

Thank you for choosing Envirotech, Inc. as your analytical testing laboratory for the sample(s) received on, 4/16/2025 8:00:00AM, under the Project Name: Billiken 6 CTB 1.

The analytical test results summarized in this report with the Project Name: Billiken 6 CTB 1 apply to the individual samples collected, identified and submitted bearing the project name on the enclosed chain-of-custody. Subcontracted sample analyses not conducted by Envirotech, Inc., are attached in full as issued by the subcontract laboratory.

Please review the Chain-of-Custody (COC) and Sample Receipt Checklist (SRC) for any issues regarding sample receipt temperature, containers, preservation etc. To best understand your test results, review the entire report summarizing your sample data and the associated quality control batch data.

All reported data in this analytical report were analyzed according to the referenced method(s) and are in compliance with the latest NELAC/TNI standards, unless otherwise noted. Samples or analytical quality control parameters not meeting specific QC criteria are qualified with a data flag. Data flag definitions are located in the Notes and Definitions section of this analytical report.

If you have any questions concerning this report, please feel free to contact Envirotech, Inc.

Respectfully,

**Walter Hinchman**  
Laboratory Director  
Office: 505-632-1881  
Cell: 775-287-1762  
[whinchman@envirotech-inc.com](mailto:whinchman@envirotech-inc.com)

**Raina Schwanz**  
Laboratory Administrator  
Office: 505-632-1881  
[rainaschwanz@envirotech-inc.com](mailto:rainaschwanz@envirotech-inc.com)

Field Offices:

**Southern New Mexico Area**

**Lynn Jarboe**  
Laboratory Technical Representative  
Office: 505-421-LABS(5227)  
Cell: 505-320-4759  
[ljjarboe@envirotech-inc.com](mailto:ljjarboe@envirotech-inc.com)

**Michelle Gonzales**  
Client Representative  
Office: 505-421-LABS(5227)  
Cell: 505-947-8222  
[mgonzaless@envirotech-inc.com](mailto:mgonzaless@envirotech-inc.com)

Envirotech Web Address: [www.envirotech-inc.com](http://www.envirotech-inc.com)

## Table of Contents

Title Page	1
Cover Page	2
Table of Contents	3
Sample Summary	4
Sample Data	5
FS01-0.5'	5
FS02-0.5'	6
FS03-0.5'	7
FS04-0.5'	8
FS05-0.5'	9
FS06-0.5'	10
QC Summary Data	11
QC - Volatile Organics by EPA 8021B	11
QC - Nonhalogenated Organics by EPA 8015D - GRO	12
QC - Nonhalogenated Organics by EPA 8015D - DRO/ORO	13
QC - Anions by EPA 300.0/9056A	14
Definitions and Notes	15
Chain of Custody etc.	16

Sample Summary

Devon Energy - Carlsbad	Project Name:	Billiken 6 CTB 1	Reported:
6488 7 Rivers Hwy	Project Number:	01058-0007	
Artesia NM, 88210	Project Manager:	Ashley Giovengo	04/22/25 12:13

Client Sample ID	Lab Sample ID	Matrix	Sampled	Received	Container
FS01-0.5'	E504123-01A	Soil	04/14/25	04/16/25	Glass Jar, 2 oz.
FS02-0.5'	E504123-02A	Soil	04/14/25	04/16/25	Glass Jar, 2 oz.
FS03-0.5'	E504123-03A	Soil	04/14/25	04/16/25	Glass Jar, 2 oz.
FS04-0.5'	E504123-04A	Soil	04/14/25	04/16/25	Glass Jar, 2 oz.
FS05-0.5'	E504123-05A	Soil	04/14/25	04/16/25	Glass Jar, 2 oz.
FS06-0.5'	E504123-06A	Soil	04/14/25	04/16/25	Glass Jar, 2 oz.



## Sample Data

Devon Energy - Carlsbad 6488 7 Rivers Hwy Artesia NM, 88210	Project Name: Billiken 6 CTB 1 Project Number: 01058-0007 Project Manager: Ashley Giovengo	<b>Reported:</b> 4/22/2025 12:13:33PM
-------------------------------------------------------------------	--------------------------------------------------------------------------------------------------	------------------------------------------

**FS01-0.5'**

**E504123-01**

Analyte	Result	Reporting Limit	Dilution	Prepared	Analyzed	Notes
<b>Volatile Organics by EPA 8021B</b>	mg/kg	mg/kg	Analyst: BA		Batch: 2516052	
Benzene	ND	0.0250	1	04/16/25	04/18/25	
Ethylbenzene	ND	0.0250	1	04/16/25	04/18/25	
Toluene	ND	0.0250	1	04/16/25	04/18/25	
o-Xylene	ND	0.0250	1	04/16/25	04/18/25	
p,m-Xylene	ND	0.0500	1	04/16/25	04/18/25	
Total Xylenes	ND	0.0250	1	04/16/25	04/18/25	
<i>Surrogate: 4-Bromochlorobenzene-PID</i>		102 %	70-130	04/16/25	04/18/25	
<b>Nonhalogenated Organics by EPA 8015D - GRO</b>	mg/kg	mg/kg	Analyst: BA		Batch: 2516052	
Gasoline Range Organics (C6-C10)	ND	20.0	1	04/16/25	04/18/25	
<i>Surrogate: 1-Chloro-4-fluorobenzene-FID</i>		90.2 %	70-130	04/16/25	04/18/25	
<b>Nonhalogenated Organics by EPA 8015D - DRO/ORO</b>	mg/kg	mg/kg	Analyst: HM		Batch: 2516057	
Diesel Range Organics (C10-C28)	ND	25.0	1	04/16/25	04/17/25	
Oil Range Organics (C28-C36)	ND	50.0	1	04/16/25	04/17/25	
<i>Surrogate: n-Nonane</i>		106 %	61-141	04/16/25	04/17/25	
<b>Anions by EPA 300.0/9056A</b>	mg/kg	mg/kg	Analyst: RAS		Batch: 2516055	
Chloride	41.8	20.0	1	04/16/25	04/16/25	



## Sample Data

Devon Energy - Carlsbad  
6488 7 Rivers Hwy  
Artesia NM, 88210

Project Name: Billiken 6 CTB 1  
Project Number: 01058-0007  
Project Manager: Ashley Giovengo

**Reported:**  
4/22/2025 12:13:33PM

FS02-0.5'

E504123-02

Analyte	Result	Reporting Limit	Dilution	Prepared	Analyzed	Notes
<b>Volatile Organics by EPA 8021B</b>						
	mg/kg	mg/kg		Analyst: BA		Batch: 2516052
Benzene	ND	0.0250	1	04/16/25	04/18/25	
Ethylbenzene	ND	0.0250	1	04/16/25	04/18/25	
Toluene	ND	0.0250	1	04/16/25	04/18/25	
o-Xylene	ND	0.0250	1	04/16/25	04/18/25	
p,m-Xylene	ND	0.0500	1	04/16/25	04/18/25	
Total Xylenes	ND	0.0250	1	04/16/25	04/18/25	
<i>Surrogate: 4-Bromochlorobenzene-PID</i>						
		101 %	70-130	04/16/25	04/18/25	
<b>Nonhalogenated Organics by EPA 8015D - GRO</b>						
	mg/kg	mg/kg		Analyst: BA		Batch: 2516052
Gasoline Range Organics (C6-C10)	ND	20.0	1	04/16/25	04/18/25	
<i>Surrogate: 1-Chloro-4-fluorobenzene-FID</i>						
		90.3 %	70-130	04/16/25	04/18/25	
<b>Nonhalogenated Organics by EPA 8015D - DRO/ORO</b>						
	mg/kg	mg/kg		Analyst: HM		Batch: 2516057
Diesel Range Organics (C10-C28)	129	25.0	1	04/16/25	04/17/25	
Oil Range Organics (C28-C36)	57.4	50.0	1	04/16/25	04/17/25	
<i>Surrogate: n-Nonane</i>						
		106 %	61-141	04/16/25	04/17/25	
<b>Anions by EPA 300.0/9056A</b>						
	mg/kg	mg/kg		Analyst: RAS		Batch: 2516055
Chloride	55.3	20.0	1	04/16/25	04/16/25	





## Sample Data

Devon Energy - Carlsbad  
6488 7 Rivers Hwy  
Artesia NM, 88210

Project Name: Billiken 6 CTB 1  
Project Number: 01058-0007  
Project Manager: Ashley Giovengo

**Reported:**  
4/22/2025 12:13:33PM

FS03-0.5'

E504123-03

Analyte	Result	Reporting Limit	Dilution	Prepared	Analyzed	Notes
<b>Volatile Organics by EPA 8021B</b>	mg/kg	mg/kg	Analyst: BA		Batch: 2516052	
Benzene	ND	0.0250	1	04/16/25	04/18/25	
Ethylbenzene	ND	0.0250	1	04/16/25	04/18/25	
Toluene	ND	0.0250	1	04/16/25	04/18/25	
o-Xylene	ND	0.0250	1	04/16/25	04/18/25	
p,m-Xylene	ND	0.0500	1	04/16/25	04/18/25	
Total Xylenes	ND	0.0250	1	04/16/25	04/18/25	
<i>Surrogate: 4-Bromochlorobenzene-PID</i>		102 %	70-130	04/16/25	04/18/25	
<b>Nonhalogenated Organics by EPA 8015D - GRO</b>	mg/kg	mg/kg	Analyst: BA		Batch: 2516052	
Gasoline Range Organics (C6-C10)	ND	20.0	1	04/16/25	04/18/25	
<i>Surrogate: 1-Chloro-4-fluorobenzene-FID</i>		89.9 %	70-130	04/16/25	04/18/25	
<b>Nonhalogenated Organics by EPA 8015D - DRO/ORO</b>	mg/kg	mg/kg	Analyst: HM		Batch: 2516057	
Diesel Range Organics (C10-C28)	ND	25.0	1	04/16/25	04/17/25	
Oil Range Organics (C28-C36)	ND	50.0	1	04/16/25	04/17/25	
<i>Surrogate: n-Nonane</i>		105 %	61-141	04/16/25	04/17/25	
<b>Anions by EPA 300.0/9056A</b>	mg/kg	mg/kg	Analyst: RAS		Batch: 2516055	
Chloride	37.8	20.0	1	04/16/25	04/16/25	



## Sample Data

Devon Energy - Carlsbad  
6488 7 Rivers Hwy  
Artesia NM, 88210

Project Name: Billiken 6 CTB 1  
Project Number: 01058-0007  
Project Manager: Ashley Giovengo

**Reported:**  
4/22/2025 12:13:33PM

FS04-0.5'

E504123-04

Analyte	Result	Reporting Limit	Dilution	Prepared	Analyzed	Notes
<b>Volatile Organics by EPA 8021B</b>	mg/kg	mg/kg	Analyst: BA		Batch: 2516052	
Benzene	ND	0.0250	1	04/16/25	04/18/25	
Ethylbenzene	ND	0.0250	1	04/16/25	04/18/25	
Toluene	ND	0.0250	1	04/16/25	04/18/25	
o-Xylene	ND	0.0250	1	04/16/25	04/18/25	
p,m-Xylene	ND	0.0500	1	04/16/25	04/18/25	
Total Xylenes	ND	0.0250	1	04/16/25	04/18/25	
<i>Surrogate: 4-Bromochlorobenzene-PID</i>	99.3 %	70-130		04/16/25	04/18/25	
<b>Nonhalogenated Organics by EPA 8015D - GRO</b>	mg/kg	mg/kg	Analyst: BA		Batch: 2516052	
Gasoline Range Organics (C6-C10)	ND	20.0	1	04/16/25	04/18/25	
<i>Surrogate: 1-Chloro-4-fluorobenzene-FID</i>	91.3 %	70-130		04/16/25	04/18/25	
<b>Nonhalogenated Organics by EPA 8015D - DRO/ORO</b>	mg/kg	mg/kg	Analyst: HM		Batch: 2516057	
Diesel Range Organics (C10-C28)	ND	25.0	1	04/16/25	04/17/25	
Oil Range Organics (C28-C36)	ND	50.0	1	04/16/25	04/17/25	
<i>Surrogate: n-Nonane</i>	107 %	61-141		04/16/25	04/17/25	
<b>Anions by EPA 300.0/9056A</b>	mg/kg	mg/kg	Analyst: RAS		Batch: 2516055	
Chloride	42.3	20.0	1	04/16/25	04/16/25	



## Sample Data

Devon Energy - Carlsbad  
6488 7 Rivers Hwy  
Artesia NM, 88210

Project Name: Billiken 6 CTB 1  
Project Number: 01058-0007  
Project Manager: Ashley Giovengo

**Reported:**  
4/22/2025 12:13:33PM

FS05-0.5'

E504123-05

Analyte	Result	Reporting Limit	Dilution	Prepared	Analyzed	Notes
<b>Volatile Organics by EPA 8021B</b>						
	mg/kg	mg/kg	Analyst: BA		Batch: 2516052	
Benzene	ND	0.0250	1	04/16/25	04/18/25	
Ethylbenzene	ND	0.0250	1	04/16/25	04/18/25	
Toluene	ND	0.0250	1	04/16/25	04/18/25	
o-Xylene	ND	0.0250	1	04/16/25	04/18/25	
p,m-Xylene	ND	0.0500	1	04/16/25	04/18/25	
Total Xylenes	ND	0.0250	1	04/16/25	04/18/25	
<i>Surrogate: 4-Bromochlorobenzene-PID</i>						
		101 %	70-130	04/16/25	04/18/25	
<b>Nonhalogenated Organics by EPA 8015D - GRO</b>						
	mg/kg	mg/kg	Analyst: BA		Batch: 2516052	
Gasoline Range Organics (C6-C10)	ND	20.0	1	04/16/25	04/18/25	
<i>Surrogate: 1-Chloro-4-fluorobenzene-FID</i>						
		90.1 %	70-130	04/16/25	04/18/25	
<b>Nonhalogenated Organics by EPA 8015D - DRO/ORO</b>						
	mg/kg	mg/kg	Analyst: HM		Batch: 2516057	
Diesel Range Organics (C10-C28)	ND	25.0	1	04/16/25	04/17/25	
Oil Range Organics (C28-C36)	ND	50.0	1	04/16/25	04/17/25	
<i>Surrogate: n-Nonane</i>						
		106 %	61-141	04/16/25	04/17/25	
<b>Anions by EPA 300.0/9056A</b>						
	mg/kg	mg/kg	Analyst: RAS		Batch: 2516055	
Chloride	50.6	20.0	1	04/16/25	04/16/25	



## Sample Data

Devon Energy - Carlsbad  
6488 7 Rivers Hwy  
Artesia NM, 88210

Project Name: Billiken 6 CTB 1  
Project Number: 01058-0007  
Project Manager: Ashley Giovengo

**Reported:**  
4/22/2025 12:13:33PM

FS06-0.5'

E504123-06

Analyte	Result	Reporting Limit	Dilution	Prepared	Analyzed	Notes
<b>Volatile Organics by EPA 8021B</b>	mg/kg	mg/kg	Analyst: BA		Batch: 2516052	
Benzene	ND	0.0250	1	04/16/25	04/18/25	
Ethylbenzene	ND	0.0250	1	04/16/25	04/18/25	
Toluene	ND	0.0250	1	04/16/25	04/18/25	
o-Xylene	ND	0.0250	1	04/16/25	04/18/25	
p,m-Xylene	ND	0.0500	1	04/16/25	04/18/25	
Total Xylenes	ND	0.0250	1	04/16/25	04/18/25	
<i>Surrogate: 4-Bromochlorobenzene-PID</i>		101 %	70-130	04/16/25	04/18/25	
<b>Nonhalogenated Organics by EPA 8015D - GRO</b>	mg/kg	mg/kg	Analyst: BA		Batch: 2516052	
Gasoline Range Organics (C6-C10)	ND	20.0	1	04/16/25	04/18/25	
<i>Surrogate: 1-Chloro-4-fluorobenzene-FID</i>		92.0 %	70-130	04/16/25	04/18/25	
<b>Nonhalogenated Organics by EPA 8015D - DRO/ORO</b>	mg/kg	mg/kg	Analyst: HM		Batch: 2516057	
Diesel Range Organics (C10-C28)	ND	25.0	1	04/16/25	04/17/25	
Oil Range Organics (C28-C36)	ND	50.0	1	04/16/25	04/17/25	
<i>Surrogate: n-Nonane</i>		105 %	61-141	04/16/25	04/17/25	
<b>Anions by EPA 300.0/9056A</b>	mg/kg	mg/kg	Analyst: RAS		Batch: 2516055	
Chloride	32.9	20.0	1	04/16/25	04/16/25	



QC Summary Data

Devon Energy - Carlsbad	Project Name:	Billiken 6 CTB 1	Reported:
6488 7 Rivers Hwy	Project Number:	01058-0007	
Artesia NM, 88210	Project Manager:	Ashley Giovengo	4/22/2025 12:13:33PM

Volatile Organics by EPA 8021B

Analyst: BA

Analyte	Result	Reporting Limit	Spike Level	Source Result	Rec	Rec Limits	RPD	RPD Limit	Notes
	mg/kg	mg/kg	mg/kg	mg/kg	%	%	%	%	

Blank (2516052-BLK1) Prepared: 04/16/25 Analyzed: 04/17/25

Benzene	ND	0.0250							
Ethylbenzene	ND	0.0250							
Toluene	ND	0.0250							
o-Xylene	ND	0.0250							
p,m-Xylene	ND	0.0500							
Total Xylenes	ND	0.0250							
Surrogate: 4-Bromochlorobenzene-PID	7.98		8.00		99.8	70-130			

LCS (2516052-BS1) Prepared: 04/16/25 Analyzed: 04/18/25

Benzene	5.23	0.0250	5.00		105	70-130			
Ethylbenzene	5.08	0.0250	5.00		102	70-130			
Toluene	5.18	0.0250	5.00		104	70-130			
o-Xylene	5.03	0.0250	5.00		101	70-130			
p,m-Xylene	10.2	0.0500	10.0		102	70-130			
Total Xylenes	15.2	0.0250	15.0		102	70-130			
Surrogate: 4-Bromochlorobenzene-PID	7.97		8.00		99.7	70-130			

Matrix Spike (2516052-MS1) Source: E504123-04 Prepared: 04/16/25 Analyzed: 04/18/25

Benzene	5.64	0.0250	5.00	ND	113	70-130			
Ethylbenzene	5.46	0.0250	5.00	ND	109	70-130			
Toluene	5.57	0.0250	5.00	ND	111	70-130			
o-Xylene	5.41	0.0250	5.00	ND	108	70-130			
p,m-Xylene	10.9	0.0500	10.0	ND	109	70-130			
Total Xylenes	16.4	0.0250	15.0	ND	109	70-130			
Surrogate: 4-Bromochlorobenzene-PID	8.01		8.00		100	70-130			

Matrix Spike Dup (2516052-MSD1) Source: E504123-04 Prepared: 04/16/25 Analyzed: 04/18/25

Benzene	5.81	0.0250	5.00	ND	116	70-130	2.96	27	
Ethylbenzene	5.63	0.0250	5.00	ND	113	70-130	3.07	26	
Toluene	5.74	0.0250	5.00	ND	115	70-130	3.02	20	
o-Xylene	5.59	0.0250	5.00	ND	112	70-130	3.24	25	
p,m-Xylene	11.3	0.0500	10.0	ND	113	70-130	3.19	23	
Total Xylenes	16.9	0.0250	15.0	ND	113	70-130	3.21	26	
Surrogate: 4-Bromochlorobenzene-PID	8.02		8.00		100	70-130			



QC Summary Data

Devon Energy - Carlsbad	Project Name:	Billiken 6 CTB 1	Reported:
6488 7 Rivers Hwy	Project Number:	01058-0007	
Artesia NM, 88210	Project Manager:	Ashley Giovengo	4/22/2025 12:13:33PM

Nonhalogenated Organics by EPA 8015D - GRO

Analyst: BA

Analyte	Result mg/kg	Reporting Limit mg/kg	Spike Level mg/kg	Source Result mg/kg	Rec %	Rec Limits %	RPD %	RPD Limit %	Notes
---------	-----------------	-----------------------------	-------------------------	---------------------------	----------	--------------------	----------	-------------------	-------

Blank (2516052-BLK1) Prepared: 04/16/25 Analyzed: 04/17/25

Gasoline Range Organics (C6-C10)	ND	20.0							
Surrogate: 1-Chloro-4-fluorobenzene-FID	7.23		8.00		90.4	70-130			

LCS (2516052-BS2) Prepared: 04/16/25 Analyzed: 04/18/25

Gasoline Range Organics (C6-C10)	35.0	20.0	50.0		70.1	70-130			
Surrogate: 1-Chloro-4-fluorobenzene-FID	7.37		8.00		92.1	70-130			

Matrix Spike (2516052-MS2) Source: E504123-04 Prepared: 04/16/25 Analyzed: 04/18/25

Gasoline Range Organics (C6-C10)	35.5	20.0	50.0	ND	71.0	70-130			
Surrogate: 1-Chloro-4-fluorobenzene-FID	7.28		8.00		91.0	70-130			

Matrix Spike Dup (2516052-MSD2) Source: E504123-04 Prepared: 04/16/25 Analyzed: 04/18/25

Gasoline Range Organics (C6-C10)	35.6	20.0	50.0	ND	71.2	70-130	0.342	20	
Surrogate: 1-Chloro-4-fluorobenzene-FID	7.31		8.00		91.4	70-130			





QC Summary Data

Devon Energy - Carlsbad	Project Name:	Billiken 6 CTB 1	Reported:
6488 7 Rivers Hwy	Project Number:	01058-0007	
Artesia NM, 88210	Project Manager:	Ashley Giovengo	4/22/2025 12:13:33PM

Nonhalogenated Organics by EPA 8015D - DRO/ORO

Analyst: HM

Analyte	Result mg/kg	Reporting Limit mg/kg	Spike Level mg/kg	Source Result mg/kg	Rec %	Rec Limits %	RPD %	RPD Limit %	Notes
---------	-----------------	-----------------------------	-------------------------	---------------------------	----------	--------------------	----------	-------------------	-------

Blank (2516057-BLK1)					Prepared: 04/16/25 Analyzed: 04/16/25				
Diesel Range Organics (C10-C28)	ND	25.0							
Oil Range Organics (C28-C36)	ND	50.0							
Surrogate: n-Nonane	52.2		50.0		104	61-141			

LCS (2516057-BS1)					Prepared: 04/16/25 Analyzed: 04/16/25				
Diesel Range Organics (C10-C28)	280	25.0	250		112	66-144			
Surrogate: n-Nonane	52.5		50.0		105	61-141			

Matrix Spike (2516057-MS1)					Source: E504120-01		Prepared: 04/16/25 Analyzed: 04/16/25		
Diesel Range Organics (C10-C28)	289	25.0	250	ND	116	56-156			
Surrogate: n-Nonane	54.2		50.0		108	61-141			

Matrix Spike Dup (2516057-MSD1)					Source: E504120-01		Prepared: 04/16/25 Analyzed: 04/16/25		
Diesel Range Organics (C10-C28)	295	25.0	250	ND	118	56-156	1.85	20	
Surrogate: n-Nonane	54.1		50.0		108	61-141			



QC Summary Data

Devon Energy - Carlsbad	Project Name:	Billiken 6 CTB 1	Reported:
6488 7 Rivers Hwy	Project Number:	01058-0007	
Artesia NM, 88210	Project Manager:	Ashley Giovengo	4/22/2025 12:13:33PM

Anions by EPA 300.0/9056A

Analyst: RAS

Analyte	Result	Reporting Limit	Spike Level	Source Result	Rec	Rec Limits	RPD	RPD Limit	Notes
	mg/kg	mg/kg	mg/kg	mg/kg	%	%	%	%	

Blank (2516055-BLK1)					Prepared: 04/16/25 Analyzed: 04/16/25				
Chloride	ND	20.0							
LCS (2516055-BS1)					Prepared: 04/16/25 Analyzed: 04/16/25				
Chloride	256	20.0	250		102	90-110			
Matrix Spike (2516055-MS1)					Source: E504122-02		Prepared: 04/16/25 Analyzed: 04/16/25		
Chloride	256	20.0	250	ND	102	80-120			
Matrix Spike Dup (2516055-MSD1)					Source: E504122-02		Prepared: 04/16/25 Analyzed: 04/16/25		
Chloride	255	20.0	250	ND	102	80-120	0.475	20	

QC Summary Report Comment:  
Calculations are based off of the raw (non-rounded) data. However, for reporting purposes all QC data is rounded to three significant figures.  
Therefore, hand calculated values may differ slightly.



Definitions and Notes

Devon Energy - Carlsbad	Project Name:	Billiken 6 CTB 1	
6488 7 Rivers Hwy	Project Number:	01058-0007	Reported:
Artesia NM, 88210	Project Manager:	Ashley Giovengo	04/22/25 12:13

ND Analyte NOT DETECTED at or above the reporting limit

NR Not Reported

RPD Relative Percent Difference

DNI Did Not Ignite

DNR Did not react with the addition of acid or base.

Note (1): Methods marked with \*\* are non-accredited methods.

Note (2): Soil data is reported on an "as received" weight basis, unless reported otherwise.





[illegible]



Client Information				Invoice Information		Lab Use Only		TAT				State					
Client: Devon				Company: Devon Energy		Lab WO#		1D 2D 3D Std				NM CO UT TX					
Project: Bill Wren 6 CTB1				Address: 5315 Buena Vista Dr		E504123		Job Number				0058-0007					
Project Manager: Ashley Giovengo				City, State, Zip: Carlsbad NM, 88220								x					
Address: 3122 National Parks Hwy				Phone: (575)689-7597													
City, State, Zip: Carlsbad NM, 88220				Email: jim.raley@dv.com													
Phone: 575-988-0055				Miscellaneous: Jim Raley													
Email: agiovengo@ensolum.com																	
Sample Information						Analysis and Method								EPA Program			
Time Sampled	Date Sampled	Matrix	No. of Containers	Sample ID	Field Filter	Lab Number	DRO/DRO by 8015	GRO/DRO by 8015	BTEX by 8021	VOC by 8260	Chloride 300.0	BGDOC - NM	TCEQ 1005 - TX	RCRA 8 Metals	SDWA	CWA	RCRA
1402	4/14/25	Sr1	1	FS01-0		1						x					
1404				02		2						x					
1424				03		3						x					
1427				04		4						x					
1405				05		5						x					
1210				06		6						x					
Additional Instructions: Please CC: cburton@ensolum.com, agiovengo@ensolum.com, jim.raley@dv.com, iestrella@ensolum.com, chamilton@ensolum.com, bsimmons@ensolum.com, jhinkle@ensolum.com																	
I, (field sampler), attest to the validity and authenticity of this sample. I am aware that tampering with or intentionally mislabeling the sample location, date or time of collection is considered fraud and may be grounds for legal action.																	
Sampled by: Jenna Hinkle																	
Relinquished by: (Signature)	Date	Time	Received by: (Signature)	Date	Time	Samples requiring thermal preservation must be received on ice the day they are sampled or received packed in ice at an avg temp above 0 but less than 6 °C on subsequent days.											
Jenna Hinkle			Michelle Gonzales	4-15-25	1015												
Relinquished by: (Signature)	Date	Time	Received by: (Signature)	Date	Time												
Michelle Gonzales	4-15-25	1615	Jenna Hinkle	4-15-25	1615												
Relinquished by: (Signature)	Date	Time	Received by: (Signature)	Date	Time	Lab Use Only Received on ice: <input checked="" type="radio"/> Y <input type="radio"/> N											
Jenna Hinkle	4-15-25	2200	Caitlin Mann	4-16-25	800												
Relinquished by: (Signature)	Date	Time	Received by: (Signature)	Date	Time	T1 _____ T2 _____ T3 _____											
						AVG Temp °C 4											
Sample Matrix: S - Soil, Sd - Solid, Sg - Sludge, A - Aqueous, O - Other _____						Container Type: g - glass, p - poly/plastic, ag - amber glass, v - VOA											
Note: Samples are discarded 14 days after results are reported unless other arrangements are made. Hazardous samples will be returned to client or disposed of at the client expense. The report for the analysis of the above samples is applicable only to those samples received by the laboratory with this COC. The liability of the laboratory is limited to the amount paid for on the report.																	



## Envirotech Analytical Laboratory

Printed: 4/16/2025 9:09:34AM

## Sample Receipt Checklist (SRC)

Instructions: Please take note of any NO checkmarks.

If we receive no response concerning these items within 24 hours of the date of this notice, all the samples will be analyzed as requested.

Client:	Devon Energy - Carlsbad	Date Received:	04/16/25 08:00	Work Order ID:	E504123
Phone:	(505) 382-1211	Date Logged In:	04/15/25 13:02	Logged In By:	Noe Soto
Email:	agiovengo@ensolum.com	Due Date:	04/22/25 17:00 (4 day TAT)		

Chain of Custody (COC)

1. Does the sample ID match the COC? No
2. Does the number of samples per sampling site location match the COC? Yes
3. Were samples dropped off by client or carrier? Yes
4. Was the COC complete, i.e., signatures, dates/times, requested analyses? Yes
5. Were all samples received within holding time? Yes

Note: Analysis, such as pH which should be conducted in the field, i.e., 15 minute hold time, are not included in this discussion.

Carrier: CourierComments/ResolutionSample Turn Around Time (TAT)

6. Did the COC indicate standard TAT, or Expedited TAT? Yes

Sample Cooler

7. Was a sample cooler received? Yes
8. If yes, was cooler received in good condition? Yes
9. Was the sample(s) received intact, i.e., not broken? Yes
10. Were custody/security seals present? No
11. If yes, were custody/security seals intact? NA
12. Was the sample received on ice? If yes, the recorded temp is 4°C, i.e., 6°±2°C? Yes

Note: Thermal preservation is not required, if samples are received w/i 15 minutes of sampling

13. If no visible ice, record the temperature. Actual sample temperature: 4°C

Sample Container

14. Are aqueous VOC samples present? No
15. Are VOC samples collected in VOA Vials? NA
16. Is the head space less than 6-8 mm (pea sized or less)? NA
17. Was a trip blank (TB) included for VOC analyses? NA
18. Are non-VOC samples collected in the correct containers? Yes
19. Is the appropriate volume/weight or number of sample containers collected? Yes

Field Label

20. Were field sample labels filled out with the minimum information:
  - Sample ID? Yes
  - Date/Time Collected? Yes
  - Collectors name? Yes

Sample Preservation

21. Does the COC or field labels indicate the samples were preserved? No
22. Are sample(s) correctly preserved? NA
24. Is lab filtration required and/or requested for dissolved metals? No

Multiphase Sample Matrix

26. Does the sample have more than one phase, i.e., multiphase? No
27. If yes, does the COC specify which phase(s) is to be analyzed? NA

Subcontract Laboratory

28. Are samples required to get sent to a subcontract laboratory? No
29. Was a subcontract laboratory specified by the client and if so who? NA Subcontract Lab: NA

Client Instruction

Signature of client authorizing changes to the COC or sample disposition.

Date



envirotech Inc.



Report to:

Ashley Giovengo



# envirotech

*Practical Solutions for a Better Tomorrow*

## Analytical Report

Devon Energy - Carlsbad

Project Name: Billiken 6 CTB 1

Work Order: E505011

Job Number: 01058-0007

Received: 5/2/2025

Revision: 1

Report Reviewed By:

Walter Hinchman  
Laboratory Director  
5/7/25

5796 U.S. Hwy 64  
Farmington, NM 87401

Phone: (505) 632-1881  
Envirotech-inc.com



Envirotech Inc. certifies the test results meet all requirements of TNI unless noted otherwise.  
Statement of Data Authenticity: Envirotech Inc. attests the data reported has not been altered in any way.  
Partial or incomplete reproduction of this report is prohibited, unless approved by Envirotech Inc.  
Envirotech Inc. holds the Utah TNI certification NM00979 for data reported.  
Envirotech Inc. holds the Texas TNI certification T104704557 for data reported.

Date Reported: 5/7/25

Ashley Giovengo  
6488 7 Rivers Hwy  
Artesia, NM 88210



Project Name: Billiken 6 CTB 1  
Workorder: E505011  
Date Received: 5/2/2025 7:00:00AM

Ashley Giovengo,

Thank you for choosing Envirotech, Inc. as your analytical testing laboratory for the sample(s) received on, 5/2/2025 7:00:00AM, under the Project Name: Billiken 6 CTB 1.

The analytical test results summarized in this report with the Project Name: Billiken 6 CTB 1 apply to the individual samples collected, identified and submitted bearing the project name on the enclosed chain-of-custody. Subcontracted sample analyses not conducted by Envirotech, Inc., are attached in full as issued by the subcontract laboratory.

Please review the Chain-of-Custody (COC) and Sample Receipt Checklist (SRC) for any issues regarding sample receipt temperature, containers, preservation etc. To best understand your test results, review the entire report summarizing your sample data and the associated quality control batch data.

All reported data in this analytical report were analyzed according to the referenced method(s) and are in compliance with the latest NELAC/TNI standards, unless otherwise noted. Samples or analytical quality control parameters not meeting specific QC criteria are qualified with a data flag. Data flag definitions are located in the Notes and Definitions section of this analytical report.

If you have any questions concerning this report, please feel free to contact Envirotech, Inc.

Respectfully,

**Walter Hinchman**  
Laboratory Director  
Office: 505-632-1881  
Cell: 775-287-1762  
[whinchman@envirotech-inc.com](mailto:whinchman@envirotech-inc.com)

**Raina Schwanz**  
Laboratory Administrator  
Office: 505-632-1881  
[rainaschwanz@envirotech-inc.com](mailto:rainaschwanz@envirotech-inc.com)

Field Offices:

**Southern New Mexico Area**

**Lynn Jarboe**  
Laboratory Technical Representative  
Office: 505-421-LABS(5227)  
Cell: 505-320-4759  
[ljjarboe@envirotech-inc.com](mailto:ljjarboe@envirotech-inc.com)

**Michelle Gonzales**  
Client Representative  
Office: 505-421-LABS(5227)  
Cell: 505-947-8222  
[mgonzaless@envirotech-inc.com](mailto:mgonzaless@envirotech-inc.com)

Envirotech Web Address: [www.envirotech-inc.com](http://www.envirotech-inc.com)

## Table of Contents

Title Page	1
Cover Page	2
Table of Contents	3
Sample Summary	4
Sample Data	5
FS02-0.75'	5
FS07-2.5'	6
SW01-0'-2.5'	7
QC Summary Data	8
QC - Volatile Organics by EPA 8021B	8
QC - Nonhalogenated Organics by EPA 8015D - GRO	9
QC - Nonhalogenated Organics by EPA 8015D - DRO/ORO	10
QC - Anions by EPA 300.0/9056A	11
Definitions and Notes	12
Chain of Custody etc.	13

Sample Summary

Devon Energy - Carlsbad	Project Name:	Billiken 6 CTB 1	Reported: 05/07/25 10:41
6488 7 Rivers Hwy	Project Number:	01058-0007	
Artesia NM, 88210	Project Manager:	Ashley Giovengo	

Client Sample ID	Lab Sample ID	Matrix	Sampled	Received	Container
FS02-0.75'	E505011-01A	Soil	04/30/25	05/02/25	Glass Jar, 2 oz.
FS07-2.5'	E505011-02A	Soil	04/30/25	05/02/25	Glass Jar, 2 oz.
SW01-0'-2.5'	E505011-03A	Soil	04/30/25	05/02/25	Glass Jar, 2 oz.



## Sample Data

Devon Energy - Carlsbad  
6488 7 Rivers Hwy  
Artesia NM, 88210

Project Name: Billiken 6 CTB 1  
Project Number: 01058-0007  
Project Manager: Ashley Giovengo

**Reported:**  
5/7/2025 10:41:04AM

**FS02-0.75'**

**E505011-01**

Analyte	Result	Reporting Limit	Dilution	Prepared	Analyzed	Notes
<b>Volatile Organics by EPA 8021B</b>	mg/kg	mg/kg	Analyst: SL		Batch: 2518103	
Benzene	ND	0.0250	1	05/02/25	05/02/25	
Ethylbenzene	ND	0.0250	1	05/02/25	05/02/25	
Toluene	ND	0.0250	1	05/02/25	05/02/25	
o-Xylene	ND	0.0250	1	05/02/25	05/02/25	
p,m-Xylene	ND	0.0500	1	05/02/25	05/02/25	
Total Xylenes	ND	0.0250	1	05/02/25	05/02/25	
<i>Surrogate: 4-Bromochlorobenzene-PID</i>		83.6 %	70-130	05/02/25	05/02/25	
<b>Nonhalogenated Organics by EPA 8015D - GRO</b>	mg/kg	mg/kg	Analyst: SL		Batch: 2518103	
Gasoline Range Organics (C6-C10)	ND	20.0	1	05/02/25	05/02/25	
<i>Surrogate: 1-Chloro-4-fluorobenzene-FID</i>		93.5 %	70-130	05/02/25	05/02/25	
<b>Nonhalogenated Organics by EPA 8015D - DRO/ORO</b>	mg/kg	mg/kg	Analyst: HM		Batch: 2519001	
Diesel Range Organics (C10-C28)	ND	25.0	1	05/05/25	05/05/25	
Oil Range Organics (C28-C36)	ND	50.0	1	05/05/25	05/05/25	
<i>Surrogate: n-Nonane</i>		94.7 %	61-141	05/05/25	05/05/25	
<b>Anions by EPA 300.0/9056A</b>	mg/kg	mg/kg	Analyst: DT		Batch: 2518107	
Chloride	ND	20.0	1	05/02/25	05/02/25	



## Sample Data

Devon Energy - Carlsbad  
6488 7 Rivers Hwy  
Artesia NM, 88210

Project Name: Billiken 6 CTB 1  
Project Number: 01058-0007  
Project Manager: Ashley Giovengo

**Reported:**  
5/7/2025 10:41:04AM

FS07-2.5'

E505011-02

Analyte	Result	Reporting Limit	Dilution	Prepared	Analyzed	Notes
<b>Volatile Organics by EPA 8021B</b>						
	mg/kg	mg/kg	Analyst: SL		Batch: 2518103	
Benzene	ND	0.0250	1	05/02/25	05/02/25	
Ethylbenzene	ND	0.0250	1	05/02/25	05/02/25	
Toluene	ND	0.0250	1	05/02/25	05/02/25	
o-Xylene	ND	0.0250	1	05/02/25	05/02/25	
p,m-Xylene	ND	0.0500	1	05/02/25	05/02/25	
Total Xylenes	ND	0.0250	1	05/02/25	05/02/25	
<i>Surrogate: 4-Bromochlorobenzene-PID</i>						
	84.3 %	70-130		05/02/25	05/02/25	
<b>Nonhalogenated Organics by EPA 8015D - GRO</b>						
	mg/kg	mg/kg	Analyst: SL		Batch: 2518103	
Gasoline Range Organics (C6-C10)	ND	20.0	1	05/02/25	05/02/25	
<i>Surrogate: 1-Chloro-4-fluorobenzene-FID</i>						
	93.4 %	70-130		05/02/25	05/02/25	
<b>Nonhalogenated Organics by EPA 8015D - DRO/ORO</b>						
	mg/kg	mg/kg	Analyst: HM		Batch: 2519001	
Diesel Range Organics (C10-C28)	ND	25.0	1	05/05/25	05/05/25	
Oil Range Organics (C28-C36)	ND	50.0	1	05/05/25	05/05/25	
<i>Surrogate: n-Nonane</i>						
	92.4 %	61-141		05/05/25	05/05/25	
<b>Anions by EPA 300.0/9056A</b>						
	mg/kg	mg/kg	Analyst: DT		Batch: 2518107	
Chloride	ND	20.0	1	05/02/25	05/02/25	





## Sample Data

Devon Energy - Carlsbad  
6488 7 Rivers Hwy  
Artesia NM, 88210

Project Name: Billiken 6 CTB 1  
Project Number: 01058-0007  
Project Manager: Ashley Giovengo

**Reported:**  
5/7/2025 10:41:04AM

SW01-0'-2.5'

E505011-03

Analyte	Result	Reporting Limit	Dilution	Prepared	Analyzed	Notes
<b>Volatile Organics by EPA 8021B</b>						
	mg/kg	mg/kg	Analyst: SL		Batch: 2518103	
Benzene	ND	0.0250	1	05/02/25	05/02/25	
Ethylbenzene	ND	0.0250	1	05/02/25	05/02/25	
Toluene	ND	0.0250	1	05/02/25	05/02/25	
o-Xylene	ND	0.0250	1	05/02/25	05/02/25	
p,m-Xylene	ND	0.0500	1	05/02/25	05/02/25	
Total Xylenes	ND	0.0250	1	05/02/25	05/02/25	
<i>Surrogate: 4-Bromochlorobenzene-PID</i>						
	84.2 %	70-130		05/02/25	05/02/25	
<b>Nonhalogenated Organics by EPA 8015D - GRO</b>						
	mg/kg	mg/kg	Analyst: SL		Batch: 2518103	
Gasoline Range Organics (C6-C10)	ND	20.0	1	05/02/25	05/02/25	
<i>Surrogate: 1-Chloro-4-fluorobenzene-FID</i>						
	94.5 %	70-130		05/02/25	05/02/25	
<b>Nonhalogenated Organics by EPA 8015D - DRO/ORO</b>						
	mg/kg	mg/kg	Analyst: HM		Batch: 2519001	
Diesel Range Organics (C10-C28)	ND	25.0	1	05/05/25	05/05/25	
Oil Range Organics (C28-C36)	ND	50.0	1	05/05/25	05/05/25	
<i>Surrogate: n-Nonane</i>						
	93.6 %	61-141		05/05/25	05/05/25	
<b>Anions by EPA 300.0/9056A</b>						
	mg/kg	mg/kg	Analyst: DT		Batch: 2518107	
Chloride	ND	20.0	1	05/02/25	05/02/25	



## QC Summary Data

Devon Energy - Carlsbad	Project Name:	Billiken 6 CTB 1	Reported:
6488 7 Rivers Hwy	Project Number:	01058-0007	
Artesia NM, 88210	Project Manager:	Ashley Giovengo	5/7/2025 10:41:04AM

## Volatile Organics by EPA 8021B

Analyst: SL

Analyte	Result mg/kg	Reporting Limit mg/kg	Spike Level mg/kg	Source Result mg/kg	Rec %	Rec Limits %	RPD %	RPD Limit %	Notes
---------	-----------------	-----------------------------	-------------------------	---------------------------	----------	--------------------	----------	-------------------	-------

## Blank (2518103-BLK1)

Prepared: 05/02/25 Analyzed: 05/02/25

Benzene	ND	0.0250							
Ethylbenzene	ND	0.0250							
Toluene	ND	0.0250							
o-Xylene	ND	0.0250							
p,m-Xylene	ND	0.0500							
Total Xylenes	ND	0.0250							
Surrogate: 4-Bromochlorobenzene-PID	6.73		8.00		84.1	70-130			

## LCS (2518103-BS1)

Prepared: 05/02/25 Analyzed: 05/02/25

Benzene	4.79	0.0250	5.00		95.8	70-130			
Ethylbenzene	5.39	0.0250	5.00		108	70-130			
Toluene	5.22	0.0250	5.00		104	70-130			
o-Xylene	5.37	0.0250	5.00		107	70-130			
p,m-Xylene	10.9	0.0500	10.0		109	70-130			
Total Xylenes	16.3	0.0250	15.0		108	70-130			
Surrogate: 4-Bromochlorobenzene-PID	6.84		8.00		85.4	70-130			

## Matrix Spike (2518103-MS1)

Source: E505007-02

Prepared: 05/02/25 Analyzed: 05/02/25

Benzene	4.64	0.0250	5.00	ND	92.8	70-130			
Ethylbenzene	5.18	0.0250	5.00	ND	104	70-130			
Toluene	5.02	0.0250	5.00	ND	100	70-130			
o-Xylene	5.16	0.0250	5.00	ND	103	70-130			
p,m-Xylene	10.5	0.0500	10.0	ND	105	70-130			
Total Xylenes	15.7	0.0250	15.0	ND	104	70-130			
Surrogate: 4-Bromochlorobenzene-PID	6.88		8.00		86.1	70-130			

## Matrix Spike Dup (2518103-MSD1)

Source: E505007-02

Prepared: 05/02/25 Analyzed: 05/02/25

Benzene	4.65	0.0250	5.00	ND	92.9	70-130	0.170	27	
Ethylbenzene	5.19	0.0250	5.00	ND	104	70-130	0.0858	26	
Toluene	5.02	0.0250	5.00	ND	100	70-130	0.124	20	
o-Xylene	5.17	0.0250	5.00	ND	103	70-130	0.250	25	
p,m-Xylene	10.5	0.0500	10.0	ND	105	70-130	0.252	23	
Total Xylenes	15.7	0.0250	15.0	ND	104	70-130	0.00	26	
Surrogate: 4-Bromochlorobenzene-PID	6.72		8.00		84.0	70-130			



QC Summary Data

Devon Energy - Carlsbad	Project Name:	Billiken 6 CTB 1	Reported:
6488 7 Rivers Hwy	Project Number:	01058-0007	
Artesia NM, 88210	Project Manager:	Ashley Giovengo	5/7/2025 10:41:04AM

Nonhalogenated Organics by EPA 8015D - GRO

Analyst: SL

Analyte	Result mg/kg	Reporting Limit mg/kg	Spike Level mg/kg	Source Result mg/kg	Rec %	Rec Limits %	RPD %	RPD Limit %	Notes
---------	-----------------	-----------------------------	-------------------------	---------------------------	----------	--------------------	----------	-------------------	-------

Blank (2518103-BLK1) Prepared: 05/02/25 Analyzed: 05/02/25

Gasoline Range Organics (C6-C10)	ND	20.0							
Surrogate: 1-Chloro-4-fluorobenzene-FID	7.53		8.00		94.2	70-130			

LCS (2518103-BS2) Prepared: 05/02/25 Analyzed: 05/02/25

Gasoline Range Organics (C6-C10)	44.9	20.0	50.0		89.8	70-130			
Surrogate: 1-Chloro-4-fluorobenzene-FID	7.59		8.00		94.9	70-130			

Matrix Spike (2518103-MS2) Source: E505007-02 Prepared: 05/02/25 Analyzed: 05/02/25

Gasoline Range Organics (C6-C10)	44.9	20.0	50.0	ND	89.8	70-130			
Surrogate: 1-Chloro-4-fluorobenzene-FID	7.62		8.00		95.2	70-130			

Matrix Spike Dup (2518103-MSD2) Source: E505007-02 Prepared: 05/02/25 Analyzed: 05/02/25

Gasoline Range Organics (C6-C10)	49.1	20.0	50.0	ND	98.3	70-130	9.00	20	
Surrogate: 1-Chloro-4-fluorobenzene-FID	7.78		8.00		97.2	70-130			



QC Summary Data

Devon Energy - Carlsbad	Project Name:	Billiken 6 CTB 1	Reported:
6488 7 Rivers Hwy	Project Number:	01058-0007	
Artesia NM, 88210	Project Manager:	Ashley Giovengo	5/7/2025 10:41:04AM

Nonhalogenated Organics by EPA 8015D - DRO/ORO

Analyst: HM

Analyte	Result mg/kg	Reporting Limit mg/kg	Spike Level mg/kg	Source Result mg/kg	Rec %	Rec Limits %	RPD %	RPD Limit %	Notes
---------	-----------------	-----------------------------	-------------------------	---------------------------	----------	--------------------	----------	-------------------	-------

Blank (2519001-BLK1)					Prepared: 05/05/25 Analyzed: 05/05/25				
Diesel Range Organics (C10-C28)	ND	25.0							
Oil Range Organics (C28-C36)	ND	50.0							
Surrogate: n-Nonane	39.9		50.0		79.8	61-141			

LCS (2519001-BS1)					Prepared: 05/05/25 Analyzed: 05/05/25				
Diesel Range Organics (C10-C28)	226	25.0	250		90.4	66-144			
Surrogate: n-Nonane	41.1		50.0		82.3	61-141			

Matrix Spike (2519001-MS1)					Source: E504285-06RE1 Prepared: 05/05/25 Analyzed: 05/05/25				
Diesel Range Organics (C10-C28)	234	25.0	250	ND	93.8	56-156			
Surrogate: n-Nonane	41.7		50.0		83.4	61-141			

Matrix Spike Dup (2519001-MSD1)					Source: E504285-06RE1 Prepared: 05/05/25 Analyzed: 05/05/25				
Diesel Range Organics (C10-C28)	238	25.0	250	ND	95.3	56-156	1.60	20	
Surrogate: n-Nonane	43.6		50.0		87.2	61-141			



QC Summary Data

Devon Energy - Carlsbad	Project Name:	Billiken 6 CTB 1	Reported:
6488 7 Rivers Hwy	Project Number:	01058-0007	
Artesia NM, 88210	Project Manager:	Ashley Giovengo	5/7/2025 10:41:04AM

Anions by EPA 300.0/9056A

Analyst: DT

Analyte	Result	Reporting Limit	Spike Level	Source Result	Rec	Rec Limits	RPD	RPD Limit	Notes
	mg/kg	mg/kg	mg/kg	mg/kg	%	%	%	%	

Blank (2518107-BLK1)					Prepared: 05/02/25 Analyzed: 05/02/25				
Chloride	ND	20.0							
LCS (2518107-BS1)					Prepared: 05/02/25 Analyzed: 05/02/25				
Chloride	255	20.0	250		102	90-110			
Matrix Spike (2518107-MS1)					Source: E505007-01		Prepared: 05/02/25 Analyzed: 05/02/25		
Chloride	309	20.0	250	74.1	94.1	80-120			
Matrix Spike Dup (2518107-MSD1)					Source: E505007-01		Prepared: 05/02/25 Analyzed: 05/02/25		
Chloride	331	20.0	250	74.1	103	80-120	6.76	20	

QC Summary Report Comment:  
Calculations are based off of the raw (non-rounded) data. However, for reporting purposes all QC data is rounded to three significant figures.  
Therefore, hand calculated values may differ slightly.



Definitions and Notes

Devon Energy - Carlsbad	Project Name:	Billiken 6 CTB 1	
6488 7 Rivers Hwy	Project Number:	01058-0007	Reported:
Artesia NM, 88210	Project Manager:	Ashley Giovengo	05/07/25 10:41

- ND      Analyte NOT DETECTED at or above the reporting limit
  - NR      Not Reported
  - RPD      Relative Percent Difference
  - DNI      Did Not Ignite
  - DNR      Did not react with the addition of acid or base.
- Note (1): Methods marked with \*\* are non-accredited methods.
- Note (2): Soil data is reported on an "as received" weight basis, unless reported otherwise.



Client Information				Invoice Information		Lab Use Only		TAT		State									
Client: Devon				Company: Devon Energy		Lab WO# E505011		Job Number 01058-0007		1D	2D	3D	Std	NM	CO	UT	TX		
Project: BPH/Kan 6 CTB 1				Address: 5315 Buena Vista Dr									x	x					
Project Manager: Ashley Giovengo				City, State, Zip: Carlsbad NM, 88220															
Address: 3122 National Parks Hwy				Phone: (575)689-7597															
City, State, Zip: Carlsbad NM, 88220				Email: jim.raley@dv.com															
Phone: 575-988-0055				Miscellaneous: Jim Raley															
Email: agiovengo@ensolum.com																			
Sample Information				Analysis and Method										EPA Program					
Time Sampled	Date Sampled	Matrix	No. of Containers	Sample ID	Field Filter	Lab Number	DRO/DRO by 8015	GRO/DRO by 8015	BTEX by 8021	VOC by 8260	Chloride 300.0	TCEQ 1005 - TX	RCRA 8 Metals	BGDOC - NM	BGDOC - TX	SDWA	CWA	RCRA	
1011	4/30/2025	Soil	1	FS02-0.75'		1													
1023	4/30/2025	Soil	1	FS07-2.5'		2													
1030	4/30/2025	Soil	1	SW01-0'-2.5'		3													
Additional Instructions: Please CC: cburton@ensolum.com, agiovengo@ensolum.com, jim.raley@dv.com, iestrella@ensolum.com, chamilton@ensolum.com, bmoir@ensolum.com, jhinkle@ensolum.com, akone@ensolum.com, jgonzales@ensolum.com, rrai@ensolum.com, oaderinto@ensolum.com																			
I, (field sampler), attest to the validity and authenticity of this sample. I am aware that tampering with or intentionally mislabeling the sample location, date or time of collection is considered fraud and may be grounds for legal action.																			
Sampled by: Jenna Hinkle																			
Relinquished by: (Signature)		Date	Time	Received by: (Signature)		Date	Time	Samples requiring thermal preservation must be received on ice the day they are sampled or received packed on ice at a temp above 0 but less than 6°C on subsequent days.											
Jenna Hinkle		5-1-25	1630	Michelle Gonzales		5-1-25	1100												
Michelle Gonzales		5-1-25	2315	L. J. M.		5-1-25	1630												
L. J. M.		5-1-25	2315	Cathy Mc		5-2-25	700												
Relinquished by: (Signature)		Date	Time	Received by: (Signature)		Date	Time	Lab Use Only Received on ice: Y N											
Sample Matrix: S - Soil, Sd - Solid, Sg - Sludge, A - Aqueous, O - Other																			
Container Type: g - glass, p - poly/plastic, ag - amber glass, v - VOA																			
Note: Samples are discarded 14 days after results are reported unless other arrangements are made. Hazardous samples will be returned to client or disposed of at the client expense. The report for the analysis of the above samples is applicable only to those samples received by the laboratory with this COC. The liability of the laboratory is limited to the amount paid for on the report.																			

## Envirotech Analytical Laboratory

Printed: 5/2/2025 8:54:48AM

## Sample Receipt Checklist (SRC)

Instructions: Please take note of any NO checkmarks.

If we receive no response concerning these items within 24 hours of the date of this notice, all the samples will be analyzed as requested.

Client:	Devon Energy - Carlsbad	Date Received:	05/02/25 07:00	Work Order ID:	E505011
Phone:	(505) 382-1211	Date Logged In:	05/01/25 15:31	Logged In By:	Caitlin Mars
Email:	agiovengo@ensolum.com	Due Date:	05/08/25 17:00 (4 day TAT)		

Chain of Custody (COC)

1. Does the sample ID match the COC? Yes
2. Does the number of samples per sampling site location match the COC? Yes
3. Were samples dropped off by client or carrier? Yes
4. Was the COC complete, i.e., signatures, dates/times, requested analyses? Yes
5. Were all samples received within holding time? Yes

Note: Analysis, such as pH which should be conducted in the field, i.e., 15 minute hold time, are not included in this discussion.

Carrier: CourierComments/ResolutionSample Turn Around Time (TAT)

6. Did the COC indicate standard TAT, or Expedited TAT? Yes

Sample Cooler

7. Was a sample cooler received? Yes
8. If yes, was cooler received in good condition? Yes
9. Was the sample(s) received intact, i.e., not broken? Yes
10. Were custody/security seals present? No
11. If yes, were custody/security seals intact? NA
12. Was the sample received on ice? Yes

Note: Thermal preservation is not required, if samples are received within 15 minutes of sampling

13. See COC for individual sample temps. Samples outside of 0°C-6°C will be recorded in comments.

Sample Container

14. Are aqueous VOC samples present? No
15. Are VOC samples collected in VOA Vials? NA
16. Is the head space less than 6-8 mm (pea sized or less)? NA
17. Was a trip blank (TB) included for VOC analyses? NA
18. Are non-VOC samples collected in the correct containers? Yes
19. Is the appropriate volume/weight or number of sample containers collected? Yes

Field Label

20. Were field sample labels filled out with the minimum information:
  - Sample ID? Yes
  - Date/Time Collected? Yes
  - Collectors name? Yes

Sample Preservation

21. Does the COC or field labels indicate the samples were preserved? No
22. Are sample(s) correctly preserved? NA
24. Is lab filtration required and/or requested for dissolved metals? No

Multiphase Sample Matrix

26. Does the sample have more than one phase, i.e., multiphase? No
27. If yes, does the COC specify which phase(s) is to be analyzed? NA

Subcontract Laboratory

28. Are samples required to get sent to a subcontract laboratory? No
29. Was a subcontract laboratory specified by the client and if so who? NA Subcontract Lab: NA

Client Instruction

Signature of client authorizing changes to the COC or sample disposition.

Date



envirotech Inc.



## APPENDIX E

### NMOCD Correspondence

---

Sante Fe Main Office  
Phone: (505) 476-3441

General Information  
Phone: (505) 629-6116

Online Phone Directory  
<https://www.emnrd.nm.gov/ocd/contact-us>

**State of New Mexico**  
**Energy, Minerals and Natural Resources**  
**Oil Conservation Division**  
**1220 S. St Francis Dr.**  
**Santa Fe, NM 87505**

QUESTIONS

Action 450968

**QUESTIONS**

Operator: DEVON ENERGY PRODUCTION COMPANY, LP 333 West Sheridan Ave. Oklahoma City, OK 73102	OGRID: 6137
	Action Number: 450968
	Action Type: [NOTIFY] Notification Of Sampling (C-141N)

**QUESTIONS**

Prerequisites	
Incident ID (n#)	nAPP2506357698
Incident Name	NAPP2506357698 BILLIKEN 6 CTB 1 @ 0
Incident Type	Fire
Incident Status	Initial C-141 Approved
Incident Facility	[fAPP2123637205] BILLIKEN 6 CTB 1

Location of Release Source	
Site Name	BILLIKEN 6 CTB 1
Date Release Discovered	03/03/2025
Surface Owner	Federal

Sampling Event General Information	
Please answer all the questions in this group.	
What is the sampling surface area in square feet	1,163
What is the estimated number of samples that will be gathered	8
Sampling date pursuant to Subparagraph (a) of Paragraph (1) of Subsection D of 19.15.29.12 NMAC	04/14/2025
Time sampling will commence	09:30 AM
Please provide any information necessary for observers to contact samplers	Please contact Jenna Hinkle @ 510-417-5262
Please provide any information necessary for navigation to sampling site	32.077005, -103.411037

Sante Fe Main Office  
Phone: (505) 476-3441

General Information  
Phone: (505) 629-6116

Online Phone Directory  
<https://www.emnrd.nm.gov/ocd/contact-us>

State of New Mexico  
Energy, Minerals and Natural Resources  
Oil Conservation Division  
1220 S. St Francis Dr.  
Santa Fe, NM 87505

CONDITIONS

Action 450968

CONDITIONS

Operator: DEVON ENERGY PRODUCTION COMPANY, LP 333 West Sheridan Ave. Oklahoma City, OK 73102	OGRID: 6137
	Action Number: 450968
	Action Type: [NOTIFY] Notification Of Sampling (C-141N)

CONDITIONS

Created By	Condition	Condition Date
jralej	Failure to notify the OCD of sampling events including any changes in date/time per the requirements of 19.15.29.12.D.(1).(a) NMAC, may result in the remediation closure samples not being accepted.	4/10/2025

Sante Fe Main Office  
Phone: (505) 476-3441

General Information  
Phone: (505) 629-6116

Online Phone Directory  
<https://www.emnrd.nm.gov/ocd/contact-us>

**State of New Mexico**  
**Energy, Minerals and Natural Resources**  
**Oil Conservation Division**  
**1220 S. St Francis Dr.**  
**Santa Fe, NM 87505**

QUESTIONS

Action 456224

**QUESTIONS**

Operator: DEVON ENERGY PRODUCTION COMPANY, LP 333 West Sheridan Ave. Oklahoma City, OK 73102	OGRID: 6137
	Action Number: 456224
	Action Type: [NOTIFY] Notification Of Sampling (C-141N)

**QUESTIONS**

Prerequisites	
Incident ID (n#)	nAPP2506357698
Incident Name	NAPP2506357698 BILLIKEN 6 CTB 1 @ 0
Incident Type	Fire
Incident Status	Initial C-141 Approved
Incident Facility	[fAPP2123637205] BILLIKEN 6 CTB 1

Location of Release Source	
Site Name	BILLIKEN 6 CTB 1
Date Release Discovered	03/03/2025
Surface Owner	Federal

Sampling Event General Information	
Please answer all the questions in this group.	
What is the sampling surface area in square feet	200
What is the estimated number of samples that will be gathered	1
Sampling date pursuant to Subparagraph (a) of Paragraph (1) of Subsection D of 19.15.29.12 NMAC	04/30/2025
Time sampling will commence	09:30 AM
Please provide any information necessary for observers to contact samplers	Please contact Jenna Hinkle @ 510-417-5262
Please provide any information necessary for navigation to sampling site	32.077005, -103.411037



Sante Fe Main Office  
Phone: (505) 476-3441

General Information  
Phone: (505) 629-6116

Online Phone Directory  
<https://www.emnrd.nm.gov/ocd/contact-us>

State of New Mexico  
Energy, Minerals and Natural Resources  
Oil Conservation Division  
1220 S. St Francis Dr.  
Santa Fe, NM 87505

CONDITIONS

Action 456224

CONDITIONS

Operator: DEVON ENERGY PRODUCTION COMPANY, LP 333 West Sheridan Ave. Oklahoma City, OK 73102	OGRID: 6137
	Action Number: 456224
	Action Type: [NOTIFY] Notification Of Sampling (C-141N)

CONDITIONS

Created By	Condition	Condition Date
jralej	Failure to notify the OCD of sampling events including any changes in date/time per the requirements of 19.15.29.12.D.(1).(a) NMAC, may result in the remediation closure samples not being accepted.	4/28/2025

Sante Fe Main Office  
Phone: (505) 476-3441

General Information  
Phone: (505) 629-6116

Online Phone Directory  
<https://www.emnrd.nm.gov/ocd/contact-us>

**State of New Mexico**  
**Energy, Minerals and Natural Resources**  
**Oil Conservation Division**  
**1220 S. St Francis Dr.**  
**Santa Fe, NM 87505**

QUESTIONS

Action 487154

**QUESTIONS**

Operator: DEVON ENERGY PRODUCTION COMPANY, LP 333 West Sheridan Ave. Oklahoma City, OK 73102	OGRID: 6137
	Action Number: 487154
	Action Type: [C-141] Remediation Closure Request C-141 (C-141-v-Closure)

**QUESTIONS**

Prerequisites	
Incident ID (n#)	nAPP2506357698
Incident Name	NAPP2506357698 BILLIKEN 6 CTB 1 @ 0
Incident Type	Fire
Incident Status	Remediation Closure Report Received
Incident Facility	[fAPP2123637205] BILLIKEN 6 CTB 1

**Location of Release Source**

Please answer all the questions in this group.

Site Name	BILLIKEN 6 CTB 1
Date Release Discovered	03/03/2025
Surface Owner	Federal

**Incident Details**

Please answer all the questions in this group.

Incident Type	Fire
Did this release result in a fire or is the result of a fire	Yes
Did this release result in any injuries	No
Has this release reached or does it have a reasonable probability of reaching a watercourse	No
Has this release endangered or does it have a reasonable probability of endangering public health	No
Has this release substantially damaged or will it substantially damage property or the environment	No
Is this release of a volume that is or may with reasonable probability be detrimental to fresh water	No

**Nature and Volume of Release**

Material(s) released, please answer all that apply below. Any calculations or specific justifications for the volumes provided should be attached to the follow-up C-141 submission.

Crude Oil Released (bbls) Details	Cause: Fire   Treating Tower   Crude Oil   Released: 3 BBL   Recovered: 2 BBL   Lost: 1 BBL.
Produced Water Released (bbls) Details	Not answered.
Is the concentration of chloride in the produced water >10,000 mg/l	Yes
Condensate Released (bbls) Details	Not answered.
Natural Gas Vented (Mcf) Details	Not answered.
Natural Gas Flared (Mcf) Details	Not answered.
Other Released Details	Not answered.
Are there additional details for the questions above (i.e. any answer containing Other, Specify, Unknown, and/or Fire, or any negative lost amounts)	Pinhole leak developed in fire tube, this allowed approx. 3 bbls of oil to be released. The oil caught fire and damaged the firetube flame regulator. Jal TX Fire Dept. visited site to help to extinguish fire. There were no injuries and damage was isolated to the fire tube and some oil on pad surface. Approx. 2 bbls of fluid was recovered from the pad surface.

Sante Fe Main Office  
Phone: (505) 476-3441

General Information  
Phone: (505) 629-6116

Online Phone Directory  
<https://www.emnrd.nm.gov/ocd/contact-us>

**State of New Mexico**  
**Energy, Minerals and Natural Resources**  
**Oil Conservation Division**  
**1220 S. St Francis Dr.**  
**Santa Fe, NM 87505**

QUESTIONS, Page 2

Action 487154

**QUESTIONS (continued)**

Operator: DEVON ENERGY PRODUCTION COMPANY, LP 333 West Sheridan Ave. Oklahoma City, OK 73102	OGRID: 6137
	Action Number: 487154
	Action Type: [C-141] Remediation Closure Request C-141 (C-141-v-Closure)

**QUESTIONS**

<b>Nature and Volume of Release (continued)</b>	
Is this a gas only submission (i.e. only significant Mcf values reported)	More info needed to determine if this will be treated as a "gas only" report.
Was this a major release as defined by Subsection A of 19.15.29.7 NMAC	Yes
Reasons why this would be considered a submission for a notification of a major release	From paragraph A. "Major release" determine using: (2) an unauthorized release of a volume that: (a) results in a fire or is the result of a fire.
With the implementation of the 19.15.27 NMAC (05/25/2021), venting and/or flaring of natural gas (i.e. gas only) are to be submitted on the C-129 form.	

**Initial Response**

The responsible party must undertake the following actions immediately unless they could create a safety hazard that would result in injury.

The source of the release has been stopped	True
The impacted area has been secured to protect human health and the environment	True
Released materials have been contained via the use of berms or dikes, absorbent pads, or other containment devices	True
All free liquids and recoverable materials have been removed and managed appropriately	True
If all the actions described above have not been undertaken, explain why	Not answered.

Per Paragraph (4) of Subsection B of 19.15.29.8 NMAC the responsible party may commence remediation immediately after discovery of a release. If remediation has begun, please prepare and attach a narrative of actions to date in the follow-up C-141 submission. If remedial efforts have been successfully completed or if the release occurred within a lined containment area (see Subparagraph (a) of Paragraph (5) of Subsection A of 19.15.29.11 NMAC), please prepare and attach all information needed for closure evaluation in the follow-up C-141 submission.

I hereby certify that the information given above is true and complete to the best of my knowledge and understand that pursuant to OCD rules and regulations all operators are required to report and/or file certain release notifications and perform corrective actions for releases which may endanger public health or the environment. The acceptance of a C-141 report by the OCD does not relieve the operator of liability should their operations have failed to adequately investigate and remediate contamination that pose a threat to groundwater, surface water, human health or the environment. In addition, OCD acceptance of a C-141 report does not relieve the operator of responsibility for compliance with any other federal, state, or local laws and/or regulations.

I hereby agree and sign off to the above statement	Name: James Raley Title: EHS Professional Email: jim.raley@dvsn.com Date: 07/22/2025
----------------------------------------------------	-----------------------------------------------------------------------------------------------

Sante Fe Main Office  
Phone: (505) 476-3441

General Information  
Phone: (505) 629-6116

Online Phone Directory  
<https://www.emnrd.nm.gov/ocd/contact-us>

**State of New Mexico**  
**Energy, Minerals and Natural Resources**  
**Oil Conservation Division**  
**1220 S. St Francis Dr.**  
**Santa Fe, NM 87505**

QUESTIONS, Page 3

Action 487154

**QUESTIONS (continued)**

Operator: DEVON ENERGY PRODUCTION COMPANY, LP 333 West Sheridan Ave. Oklahoma City, OK 73102	OGRID: 6137
	Action Number: 487154
	Action Type: [C-141] Remediation Closure Request C-141 (C-141-v-Closure)

**QUESTIONS**

<b>Site Characterization</b>	
<i>Please answer all the questions in this group (only required when seeking remediation plan approval and beyond). This information must be provided to the appropriate district office no later than 90 days after the release discovery date.</i>	
What is the shallowest depth to groundwater beneath the area affected by the release in feet below ground surface (ft bgs)	Between 100 and 500 (ft.)
What method was used to determine the depth to ground water	NM OSE iWaters Database Search
Did this release impact groundwater or surface water	No
<b>What is the minimum distance, between the closest lateral extents of the release and the following surface areas:</b>	
A continuously flowing watercourse or any other significant watercourse	Between 1 and 5 (mi.)
Any lakebed, sinkhole, or playa lake (measured from the ordinary high-water mark)	Between ½ and 1 (mi.)
An occupied permanent residence, school, hospital, institution, or church	Greater than 5 (mi.)
A spring or a private domestic fresh water well used by less than five households for domestic or stock watering purposes	Between 1 and 5 (mi.)
Any other fresh water well or spring	Between 1 and 5 (mi.)
Incorporated municipal boundaries or a defined municipal fresh water well field	Greater than 5 (mi.)
A wetland	Between ½ and 1 (mi.)
A subsurface mine	Greater than 5 (mi.)
An (non-karst) unstable area	Greater than 5 (mi.)
Categorize the risk of this well / site being in a karst geology	Low
A 100-year floodplain	Greater than 5 (mi.)
Did the release impact areas not on an exploration, development, production, or storage site	No

<b>Remediation Plan</b>	
<i>Please answer all the questions that apply or are indicated. This information must be provided to the appropriate district office no later than 90 days after the release discovery date.</i>	
Requesting a remediation plan approval with this submission	Yes
<i>Attach a comprehensive report demonstrating the lateral and vertical extents of soil contamination associated with the release have been determined, pursuant to 19.15.29.11 NMAC and 19.15.29.13 NMAC.</i>	
Have the lateral and vertical extents of contamination been fully delineated	Yes
Was this release entirely contained within a lined containment area	No
<b>Soil Contamination Sampling:</b> (Provide the highest observable value for each, in milligrams per kilograms.)	
Chloride (EPA 300.0 or SM4500 Cl B)	55.9
TPH (GRO+DRO+MRO) (EPA SW-846 Method 8015M)	16510
GRO+DRO (EPA SW-846 Method 8015M)	13510
BTEX (EPA SW-846 Method 8021B or 8260B)	292
Benzene (EPA SW-846 Method 8021B or 8260B)	2
<i>Per Subsection B of 19.15.29.11 NMAC unless the site characterization report includes completed efforts at remediation, the report must include a proposed remediation plan in accordance with 19.15.29.12 NMAC, which includes the anticipated timelines for beginning and completing the remediation.</i>	
On what estimated date will the remediation commence	04/14/2025
On what date will (or did) the final sampling or liner inspection occur	04/30/2025
On what date will (or was) the remediation complete(d)	04/30/2025
What is the estimated surface area (in square feet) that will be reclaimed	1163
What is the estimated volume (in cubic yards) that will be reclaimed	40
What is the estimated surface area (in square feet) that will be remediated	1163
What is the estimated volume (in cubic yards) that will be remediated	40
<i>These estimated dates and measurements are recognized to be the best guess or calculation at the time of submission and may (be) change(d) over time as more remediation efforts are completed.</i>	
<i>The OCD recognizes that proposed remediation measures may have to be minimally adjusted in accordance with the physical realities encountered during remediation. If the responsible party has any need to significantly deviate from the remediation plan proposed, then it should consult with the division to determine if another remediation plan submission is required.</i>	

Sante Fe Main Office  
Phone: (505) 476-3441

General Information  
Phone: (505) 629-6116

Online Phone Directory  
<https://www.emnrd.nm.gov/ocd/contact-us>

**State of New Mexico**  
**Energy, Minerals and Natural Resources**  
**Oil Conservation Division**  
**1220 S. St Francis Dr.**  
**Santa Fe, NM 87505**

QUESTIONS, Page 4

Action 487154

**QUESTIONS (continued)**

Operator: DEVON ENERGY PRODUCTION COMPANY, LP 333 West Sheridan Ave. Oklahoma City, OK 73102	OGRID: 6137
	Action Number: 487154
	Action Type: [C-141] Remediation Closure Request C-141 (C-141-v-Closure)

**QUESTIONS**

<b>Remediation Plan (continued)</b>	
<i>Please answer all the questions that apply or are indicated. This information must be provided to the appropriate district office no later than 90 days after the release discovery date.</i>	
<b>This remediation will (or is expected to) utilize the following processes to remediate / reduce contaminants:</b>	
<i>(Select all answers below that apply.)</i>	
(Ex Situ) Excavation and <b>off-site</b> disposal (i.e. dig and haul, hydrovac, etc.)	Yes
Which OCD approved facility will be used for <b>off-site</b> disposal	HALFWAY DISPOSAL AND LANDFILL [FEEM0112334510]
<b>OR</b> which OCD approved well (API) will be used for <b>off-site</b> disposal	Not answered.
<b>OR</b> is the <b>off-site</b> disposal site, to be used, out-of-state	Not answered.
<b>OR</b> is the <b>off-site</b> disposal site, to be used, an NMED facility	Not answered.
(Ex Situ) Excavation and <b>on-site</b> remediation (i.e. On-Site Land Farms)	Not answered.
(In Situ) Soil Vapor Extraction	Not answered.
(In Situ) Chemical processing (i.e. Soil Shredding, Potassium Permanganate, etc.)	Not answered.
(In Situ) Biological processing (i.e. Microbes / Fertilizer, etc.)	Not answered.
(In Situ) Physical processing (i.e. Soil Washing, Gypsum, Disking, etc.)	Not answered.
Ground Water Abatement pursuant to 19.15.30 NMAC	Not answered.
OTHER (Non-listed remedial process)	Not answered.
<i>Per Subsection B of 19.15.29.11 NMAC unless the site characterization report includes completed efforts at remediation, the report must include a proposed remediation plan in accordance with 19.15.29.12 NMAC, which includes the anticipated timelines for beginning and completing the remediation.</i>	
I hereby certify that the information given above is true and complete to the best of my knowledge and understand that pursuant to OCD rules and regulations all operators are required to report and/or file certain release notifications and perform corrective actions for releases which may endanger public health or the environment. The acceptance of a C-141 report by the OCD does not relieve the operator of liability should their operations have failed to adequately investigate and remediate contamination that pose a threat to groundwater, surface water, human health or the environment. In addition, OCD acceptance of a C-141 report does not relieve the operator of responsibility for compliance with any other federal, state, or local laws and/or regulations.	
I hereby agree and sign off to the above statement	Name: James Raley Title: EHS Professional Email: jim.raley@dmv.com Date: 07/22/2025
<i>The OCD recognizes that proposed remediation measures may have to be minimally adjusted in accordance with the physical realities encountered during remediation. If the responsible party has any need to significantly deviate from the remediation plan proposed, then it should consult with the division to determine if another remediation plan submission is required.</i>	

Sante Fe Main Office  
Phone: (505) 476-3441

General Information  
Phone: (505) 629-6116

Online Phone Directory  
<https://www.emnrd.nm.gov/ocd/contact-us>

State of New Mexico  
Energy, Minerals and Natural Resources  
Oil Conservation Division  
1220 S. St Francis Dr.  
Santa Fe, NM 87505

QUESTIONS, Page 5

Action 487154

QUESTIONS (continued)

Operator: DEVON ENERGY PRODUCTION COMPANY, LP 333 West Sheridan Ave. Oklahoma City, OK 73102	OGRID: 6137
	Action Number: 487154
	Action Type: [C-141] Remediation Closure Request C-141 (C-141-v-Closure)

QUESTIONS

Deferral Requests Only	
Only answer the questions in this group if seeking a deferral upon approval this submission. Each of the following items must be confirmed as part of any request for deferral of remediation.	
Requesting a deferral of the remediation closure due date with the approval of this submission	No



Sante Fe Main Office  
Phone: (505) 476-3441

General Information  
Phone: (505) 629-6116

Online Phone Directory  
<https://www.emnrd.nm.gov/ocd/contact-us>

**State of New Mexico**  
**Energy, Minerals and Natural Resources**  
**Oil Conservation Division**  
**1220 S. St Francis Dr.**  
**Santa Fe, NM 87505**

QUESTIONS, Page 6

Action 487154

**QUESTIONS (continued)**

Operator: DEVON ENERGY PRODUCTION COMPANY, LP 333 West Sheridan Ave. Oklahoma City, OK 73102	OGRID: 6137
	Action Number: 487154
	Action Type: [C-141] Remediation Closure Request C-141 (C-141-v-Closure)

**QUESTIONS**

Sampling Event Information	
Last sampling notification (C-141N) recorded	456224
Sampling date pursuant to Subparagraph (a) of Paragraph (1) of Subsection D of 19.15.29.12 NMAC	04/30/2025
What was the (estimated) number of samples that were to be gathered	1
What was the sampling surface area in square feet	200

Remediation Closure Request	
<i>Only answer the questions in this group if seeking remediation closure for this release because all remediation steps have been completed.</i>	
Requesting a remediation closure approval with this submission	Yes
Have the lateral and vertical extents of contamination been fully delineated	Yes
Was this release entirely contained within a lined containment area	No
All areas reasonably needed for production or subsequent drilling operations have been stabilized, returned to the sites existing grade, and have a soil cover that prevents ponding of water, minimizing dust and erosion	Yes
What was the total surface area (in square feet) remediated	1163
What was the total volume (cubic yards) remediated	40
All areas not reasonably needed for production or subsequent drilling operations have been reclaimed to contain a minimum of four feet of non-waste contain earthen material with concentrations less than 600 mg/kg chlorides, 100 mg/kg TPH, 50 mg/kg BTEX, and 10 mg/kg Benzene	Yes
What was the total surface area (in square feet) reclaimed	1163
What was the total volume (in cubic yards) reclaimed	40
Summarize any additional remediation activities not included by answers (above)	Remediation Complete
<i>The responsible party must attach information demonstrating they have complied with all applicable closure requirements and any conditions or directives of the OCD. This demonstration should be in the form of a comprehensive report (in .pdf format) including a scaled site map, sampling diagrams, relevant field notes, photographs of any excavation prior to backfilling, laboratory data including chain of custody documents of final sampling, and a narrative of the remedial activities. Refer to 19.15.29.12 NMAC.</i>	
I hereby certify that the information given above is true and complete to the best of my knowledge and understand that pursuant to OCD rules and regulations all operators are required to report and/or file certain release notifications and perform corrective actions for releases which may endanger public health or the environment. The acceptance of a C-141 report by the OCD does not relieve the operator of liability should their operations have failed to adequately investigate and remediate contamination that pose a threat to groundwater, surface water, human health or the environment. In addition, OCD acceptance of a C-141 report does not relieve the operator of responsibility for compliance with any other federal, state, or local laws and/or regulations. The responsible party acknowledges they must substantially restore, reclaim, and re-vegetate the impacted surface area to the conditions that existed prior to the release or their final land use in accordance with 19.15.29.13 NMAC including notification to the OCD when reclamation and re-vegetation are complete.	
I hereby agree and sign off to the above statement	Name: James Raley Title: EHS Professional Email: jim.raley@dmv.com Date: 07/22/2025

Sante Fe Main Office  
Phone: (505) 476-3441

General Information  
Phone: (505) 629-6116

Online Phone Directory  
<https://www.emnrd.nm.gov/ocd/contact-us>

State of New Mexico  
Energy, Minerals and Natural Resources  
Oil Conservation Division  
1220 S. St Francis Dr.  
Santa Fe, NM 87505

QUESTIONS, Page 7  
  
Action 487154

QUESTIONS (continued)

Operator:  DEVON ENERGY PRODUCTION COMPANY, LP 333 West Sheridan Ave. Oklahoma City, OK 73102	OGRID:  6137
	Action Number:  487154
	Action Type:  [C-141] Remediation Closure Request C-141 (C-141-v-Closure)

QUESTIONS

Reclamation Report	
Only answer the questions in this group if all reclamation steps have been completed.	
Requesting a reclamation approval with this submission	No

Sante Fe Main Office  
Phone: (505) 476-3441

General Information  
Phone: (505) 629-6116

Online Phone Directory  
<https://www.emnrd.nm.gov/oed/contact-us>

State of New Mexico  
Energy, Minerals and Natural Resources  
Oil Conservation Division  
1220 S. St Francis Dr.  
Santa Fe, NM 87505

CONDITIONS

Action 487154

CONDITIONS

Operator: DEVON ENERGY PRODUCTION COMPANY, LP 333 West Sheridan Ave. Oklahoma City, OK 73102	OGRID: 6137
	Action Number: 487154
	Action Type: [C-141] Remediation Closure Request C-141 (C-141-v-Closure)

CONDITIONS

Created By	Condition	Condition Date
scwells	None	7/24/2025